

TECHNICAL MANUAL

**DIRECT SUPPORT AND GENERAL SUPPORT
MAINTENANCE REPAIR PARTS AND
SPECIAL TOOLS LIST**

FOR

**RIFLE, RECOILLESS, 106-MM:
M40A2 (1015-00-133-8484)
AND
M40A4 (1015-00-133-8485)**

HEADQUARTERS, DEPARTMENT OF THE ARMY

MAY 1986

**Direct Support and General Support Maintenance
Repair Parts and Special Tools List
for
RIFLE, RECOILLESS, 106-MM:
M40A2 (1015-00-133-8484)
and
M40A4 (1015-00-133-8485)**

Current as of 13 February 1986

REPORTING ERRORS AND RECOMMENDING IMPROVEMENTS

You can help improve this manual. If you find any mistakes or if you know of a way to improve the procedures, please let us know. Mail your letter, DA Form 2028 (Recommended Changes to Publications and Blank Forms), or DA Form 2028-2 located in the back of this manual direct to: Commander, US Army Armament, Munitions and Chemical Command, ATTN: AMSMC-MAS, Rock Island, IL 61299-6000. A reply will be furnished to you.

TABLE OF CONTENTS

		Page	Illus. Figure
Section	I. INTRODUCTION	1	
Section	II. REPAIR PARTS LIST	1-1	
Group 00	Rifle, recoilless, 106-mm: M40A2 (11578739) or M40A4 (11578740)	1-1	1
Group 01	Gun, spotting, caliber .50: M8C (7268115)	2-1	2
	0101 Bolt assembly (7266341)	3-1	3
	0102 Buffer assembly (7266342)	4-1	4
	0103 Operating rod assembly (7267859)	5-1	5
	0104 Firing mechanism assembly (7268119)	6-1	6
	010401 Sear release assembly (7266500)	7-1	7
	010402 Housing and catch assembly (7268118)	8-1	8
	0105 Receiver and barrel assembly (7268255)	9-1	9
	010501 Receiver assembly (7268254)	10-1	10
	010502 Barrel assembly (7790489)	11-1	11
Group 04	Cannon, 106-mm: M206 (11578014)	12-1	12
	0405 Hinge assembly (7308856)	12-1	12
Group 04	Cannon, 106-mm: M206 (11578014)	13-1	13
	0406 Vent assembly (7309187)	13-1	13

*This manual supersedes TM 9-1015-221-35P, dated 14 July 1969, including all changes.

Illus. Page	Figure			
Group 04	Cannon, 106-mm: M206 (11578014)	14-1	14	
	0401 Detent assembly, cartridge case (7230797)	15-1	15	
	0402 Dog assembly (8766017)	16-1	16	
	0403 Operating lever (7307520)	17-1	17	
	0404 Lanyard rod assembly (7307472)	18-1	18	
Group 05	Mount, rifle, 106-mm: M79 (8403200)	19-1	19	
	0501 and 0601 Elevating and firing assembly (8403260).....	20-1	20	
	0501 and 0601 Elevating and firing assembly (8403260)	21-1	21	
	050102 and 060102 Planetary gear assembly (8403270)	21-1	21	
	050101 and 060101 Elevating cradle assembly (8403193).....	22-1	22	
	0502 and 0602 Traversing assembly (8403250)	23-1	23	
	050201 and 060201 Shaft assembly (8413117)	23-1	23	
	050201 and 060202 Traversing drive assembly (8403259)	24-1	24	
	0503 Base assembly (front arm and parts) (8403161)	26-1	26	
	0503 Base assembly (rear arms and parts) (8403161)	26-1	26	
Group 06	Mount, rifle, 106-mm: M92 (8407830)	27-1	27	
	0603 Rifle mount adapter assembly (8407836)	28-1	28	
	060301 Collar and pin assembly (8407817)	28-1	28	
Group 07	Tripod, rifle mount: M27 (8407810)	29-1	29	
Group 09	Gun, subcaliber caliber .30: M9 (7307568)	30-1	30	
	0901 Door assembly (11577244)	30-1	30	
Group 12	Venturi wrench (7309119)	31-1	31	
Group 13	Artillery cleaning brush (8766039).....	32-1	32	
Section III.	SPECIAL TOOLS LIST	33-1		
Group 9500	Special tools.....	33-1	33	
Section IV.	NATIONAL STOCK NUMBER AND PART NUMBER INDEX	I-1		

**DIRECT SUPPORT AND GENERAL SUPPORT MAINTENANCE
REPAIR PARTS AND SPECIAL TOOLS LIST**

SECTION I INTRODUCTION

1. SCOPE. This RPSTL lists and authorizes spares and repair parts; special tools; special test, measurement, and diagnostic equipment (TMDE); and other special support equipment required for performance of direct support and general support maintenance of the 106-mm recoilless rifle. It authorizes the requisitioning, issue, and disposition of spares, repair parts and special tools as indicated by the Source, Maintenance and Recoverability (SMR) codes.

2. GENERAL. In addition to Section I, Introduction, this Repair Parts and Special Tools List is divided into the following sections:

a. *Section II Repair Parts List.* A list of spares and repair parts authorized by this RPSTL for use in the performance of maintenance. The list also includes parts which must be removed for replacement of the authorized parts. Parts lists are composed of functional groups in ascending alphanumeric sequence, with the parts in each group listed in ascending figure and item number sequence. Bulk materials are listed in item name sequence. Repair parts kits are listed separately in their own functional group within section II. Repair parts for repairable special tools are also listed in this section. Items listed are shown on the associated illustration(s)/figure(s).

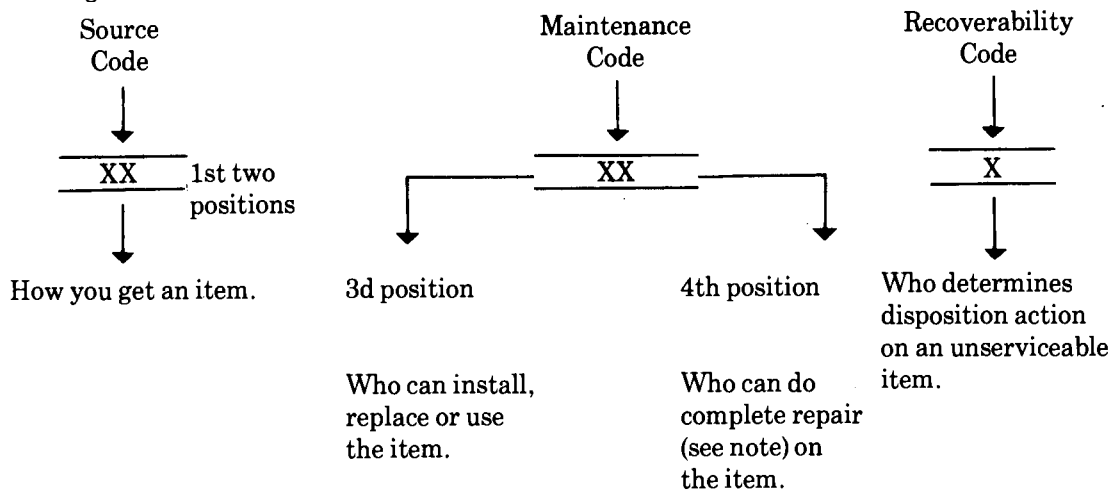
b. *Section III Special Tools List.* A list of special tools, special TMDE, and other special support equipment authorized by this RPSTL (as indicated by Basis of Issue (BOI) information in DESCRIPTION AND USABLE ON CODE column) for the performance of maintenance.

c. *Section IV National Stock Number and Part Number Index.* A list, in National item identification number (NIIN) sequence, of all National stock numbered items appearing in the listings, followed by a list in alphanumeric sequence of all part numbers appearing in the listings. National stock numbers and part numbers are cross-referenced to each illustration figure and item number appearance.

3. EXPLANATION OF COLUMNS.

a. *ITEM NO. (Column (1)).* Indicates the number used to identify items called out in the illustration.

b. *SMR CODE (Column (2)).* The Source, Maintenance, and Recoverability (SMR) code is a 5-position code containing supply/requisitioning information, maintenance category authorization criteria, and disposition instructions, as shown in the following breakout:



*Complete Repair: Maintenance capacity, capability, and authority to perform all the corrective maintenance tasks of the "Repair" function in a use/user environment in order to restore serviceability to a failed item.

(1) Source code. The source code tells you how you get an item needed for maintenance, repair, or overhaul of an end item/equipment. Explanations of source codes follow:

Code

Explanation

FA
PH
PC
PD
PE
PF
PG

Stocked items; use the applicable NSN to request/requisition items with these source codes. They are authorized to the category indicated by the code entered in the 3d position of the SMR code.

**NOTE: Items coded PC are subject to deterioration.

KD
KF
KB

Items with these codes are not to be requested/requisitioned individually. They are part of a kit which is authorized to the maintenance category indicated in the 3d position of the SMR code. The complete kit must be requisitioned and applied.

MO—Made at org/AVUM category
MF—Made at DS/AVUM category
MH—Made at GS category
ML—Made at Specialized Repair Activity (SRA)
MD—Made at Depot

Items with these codes are not to be requested/requisitioned individually. They must be made from bulk material which is identified by the part number in the DESCRIPTION AND USABLE ON CODE (UOC) column and listed in the bulk material group in the repair parts list in this RPSTL. If the item is authorized to you by the 3d position code of the SMR code, but the source code indicates it is made at a higher level, order the item from the higher level of maintenance.

AO—Assembled by org/AVUM category
AF—Assembled by DS/AVUM category
AI—Assembled by GS category
AL—Assembled by SRA
AD—Assembled by Depot

Items with these codes are not to be requested/requisitioned individually. The parts that make up the assembled item must be requisitioned or fabricated and assembled at the level of maintenance indicated by the source code. If the 3d position code of the SMR code authorizes you to replace the item, but the source code indicates the item is assembled at a higher level, order the item from the higher level of maintenance.

- XA - Do not requisition an "XA"-coded item. Order its next higher assembly. (Also, refer to the NOTE below.)
- XB - If an "XB" item is not available from salvage, order it using the FSCM and part number given.
- XC - Installation drawing, diagram, instruction sheet, field service drawing, that is identified by manufacturer's part number.
- XD- Item is not stocked. Order an "XD"-coded item through normal supply channels using the FSCM and part number given, if no NSN is available.

NOTE

Cannibalization or controlled exchange, when authorized, may be used as a source of supply for items with the above source codes, except for those source coded "XA" or those aircraft support items restricted by requirements of AR 700-42.

(2) Maintenance code. Maintenance codes tell you the level(s) of maintenance authorized to USE and REPAIR support items. The maintenance codes are entered in the third and fourth positions of the SMR code as follows:

(a) The maintenance code entered in the third position tells you the lowest maintenance level authorized to remove, replace, and use an item. The maintenance code entered in the third position will indicate authorization to one of the following categories of maintenance.

<i>Code</i>	<i>Application/Explanation</i>
C	- Crew or operator maintenance done within organizational or aviation unit maintenance.
O	- Organizational or aviation unit category can remove, replace, and use the item.
F	- Direct support or aviation intermediate level can remove, replace, and use the item.
H	- General support level can remove, replace, and use the item.
L	- Specialized repair activity can remove, replace, and use the item.
D	- Depot level can remove, replace, and use the item.

(b) The maintenance code entered in the fourth position tells you whether or not the item is to be repaired and identifies the lowest maintenance level with the capability to do complete repair (i.e., perform all authorized repair functions).

NOTE

Some limited repair may be done on the item at a lower level of maintenance, if authorized by the Maintenance Allocation Chart (MAC) and SMR codes.

This position will contain one of the following maintenance codes.

<i>Code</i>	<i>Application/Explanation</i>
O	- Organizational or aviation unit is the lowest level that can do complete repair of the item.
F	- Direct support or aviation intermediate is the lowest level that can do complete repair of the item.
H	- General support is the lowest level that can do complete repair of the item.
L	- Specialized repair activity (designate the specialized repair activity) is the lowest level that can do complete repair of the item.

<i>Code</i>	<i>Explanation</i>
D	- Depot is the lowest level that can do complete repair of the item.
Z	- Nonreparable. No repair is authorized.
B	- No repair is authorized. No parts or special tools are authorized for the maintenance of a "B"-coded item. However, the item may be reconditioned by adjusting, lubricating, etc., at the user level.

(3) Recoverability code. Recoverability codes are assigned to items to indicate the disposition action on unserviceable items. The recoverability code is entered in the fifth position of the SMR code as follows:

<i>Code</i>	<i>Application/Explanation</i>
Z	- Nonreparable item. When unserviceable, condemn and dispose of the item at the level of maintenance shown in 3d position of SMR code.
O	- Repairable item. When uneconomically repairable, condemn and dispose of the item at organizational or aviation unit level.
F	- Repairable item. When uneconomically repairable, condemn and dispose of the item at the direct support or aviation intermediate level.
H	- Repairable item. When uneconomically repairable, condemn and dispose of the item at the general support level.
D	- Repairable item. When beyond lower level repair capability, return to depot. Condemnation and disposal of item not authorized below depot category.
L	- Repairable item. Condemnation and disposal not authorized below specialized repair activity (SRA).
A	- Item requires special handling or condemnation procedures because of specific reasons (e.g., precious metal content, high dollar value, critical material, or hazardous material). Refer to appropriate manuals/directives for specific instructions.

c. *FSCM (Column (3))*. The Federal Supply Code for Manufacturer (FSCM) is a 5-digit numeric code which is used to identify the manufacturer, distributor, or Government agency, etc., that supplies the item.

d. *PART NUMBER (Column (4))*. Indicates the primary number used by the manufacturer (individual, company, firm, corporation, or Government activity), which controls the design and characteristics of the item by means of its engineering drawings, specifications standards, and inspection requirements to identify an item or range of items.

NOTE

When you use an NSN to requisition an item, the item you receive may have a different part number from the part ordered.

e. *DESCRIPTION AND USABLE ON CODE (UOC) (Column (5))*. This column includes the following information:

- (1) The Federal item name and, when required, a minimum description to identify the item.
- (2) Spare/repair parts that make up an assembled item are listed immediately following the assembled item line entry or reference is made to the applicable figure.
- (3) The usable on code, when applicable (see paragraph 5, special information).

(4) In the Special Tools List section, the basis of issue (BOI) appears as the last line(s) in the entry for each special tool, special TMDE, and other special support equipment. When density of equipments supported exceeds density spread indicated in the basis of issue, the total authorization is increased proportionately.

(5) The statement "END OF FIGURE" appears just below the last item description in column 5 for a given figure in both section II and section III.

f. *QTY(Column (6))*. The QTY (quantity per figure column) indicates the quantity of the item used in the breakout shown on the illustration figure, which is prepared for a functional group, subfunctional group, or an assembly. A "V" appearing in this column in lieu of a quantity indicates that the quantity is variable and the quantity may vary from application to application.

4. EXPLANATION OF COLUMNS (Section IV).

a. *NATIONAL STOCK NUMBER INDEX.*

(1) STOCK NUMBER column. This column lists the NSN by National item identification number

(NIIN) sequence. The NIIN consists of the last nine digits of the NSN (i.e., 5385-01-574-1467).

NSN
5385-01-574-1467
NIIN

When using this column to locate an item, ignore the first four digits of the NSN. However, the complete NSN should be used when ordering items by stock number.

(2) FIG. column. This column lists the number of the figure where the item is identified/located. The figures are in numerical order in section II and section III.

(3) ITEM column. The item number identifies the item associated with the figure listed in the adjacent FIG. column. This item is also identified by the NSN listed on the same line.

b. *PART NUMBER INDEX.* Part numbers in this index are listed by part number in ascending alphanumeric sequence (i.e., vertical arrangement of letter and number combination which places the first letter or digit of each group in order A through Z, followed by the numbers 0 through 9 and each following letter or digit in like order).

(1) FSCM column. The Federal Supply Code for Manufacturer (FSCM) is a 5-digit numeric code used to identify the manufacturer, distributor, or Government agency, etc., that supplies the item.

(2) PART NUMBER column. Indicates the primary number used by the manufacturer (individual, firm, corporation, or Government activity), which controls the design and characteristics of the item by means of its engineering drawings, specifications standards, and inspection requirements to identify an item or range of items.

(3) STOCK NUMBER column. This column lists the NSN for the associated part number and manufacturer identified in the PART NUMBER and FSCM columns to the left.

(4) FIG. column. This column lists the number of the figure where the item is identified/located in sections II and III.

(5) ITEM column. The item number is that number assigned to the item as it appears in the figure referenced in the adjacent figure number column.

5. SPECIAL INFORMATION.

a. *Usable on Code.* The usable on code appears in the lower left corner of the DESCRIPTION column heading. Usable on codes are shown as "UOC:" in DESCRIPTION column (justified left) on the first line applicable item description/nomenclature. Uncoded items are applicable to all models. Identification of the usable on codes used in the RPSTL are:

<i>Code</i>	<i>Used On</i>
J80	Model M40A2
J81	Model M40A4

- b. Assembly Instructions. Detailed assembly instructions for items source coded to be assembled from component spare/repair parts are found in TM 9-1015-221-12 and TM 9-1015-221-34. Items that make up the assembly are listed immediately following the assembled item entry or reference is made to an applicable figure.
- c. Associated Publications. The publication(s) listed below pertain to the recoilless rifle and its components:

<i>Publication</i>	<i>Short Title</i>
LO 9-1015-221-12	Rifle, Recoilless, 106-mm: M40A2 and M40A4
TM 9-1015-221-12	Rifle, Recoilless, 106-mm: M40A2 and M40A4
TM 9-1015-221-20P	Rifle, Recoilless, 106-mm: M40A2 and M40A4
TM 9-1015-221-34	Rifle, Recoilless, 106-mm: M40A2 and M40A4

6. HOW TO LOCATE REPAIR PARTS.

a. *When National Stock Number or Part Number is Not Known:*

- (1) First. Using the table of contents, determine the assembly group or subassembly group to which the item belongs. This is necessary since figures are prepared for assembly groups and subassembly groups, and listings are divided into the same groups.
- (2) Second. Find the figure covering the functional group or subfunctional group to which the item belongs.
- (3) Third. Identify the item on the figure and note the item number.
- (4) Fourth. Refer to the Repair Parts List for the figure to find the part number for the item number noted on the figure.

b. *When National Stock Number or Part Number is Known:*

- (1) First. Using the index of National stock numbers and part numbers, find the pertinent National stock number or part number. The NSN index is in National Item Identification Number (NIIN) sequence (see 4a(1)). The part numbers in the PART NUMBER INDEX are listed in ascending alphanumeric sequence (see 4b). Both indexes cross-reference you to the illustration figure and item number of the item you are looking for.
- (2) Second. After finding the figure and item number, verify that the item is the one you're looking for, then locate the item number in the repair parts list for the figure.

7. ABBREVIATIONS. Not applicable.

Section II. REPAIR PARTS LIST

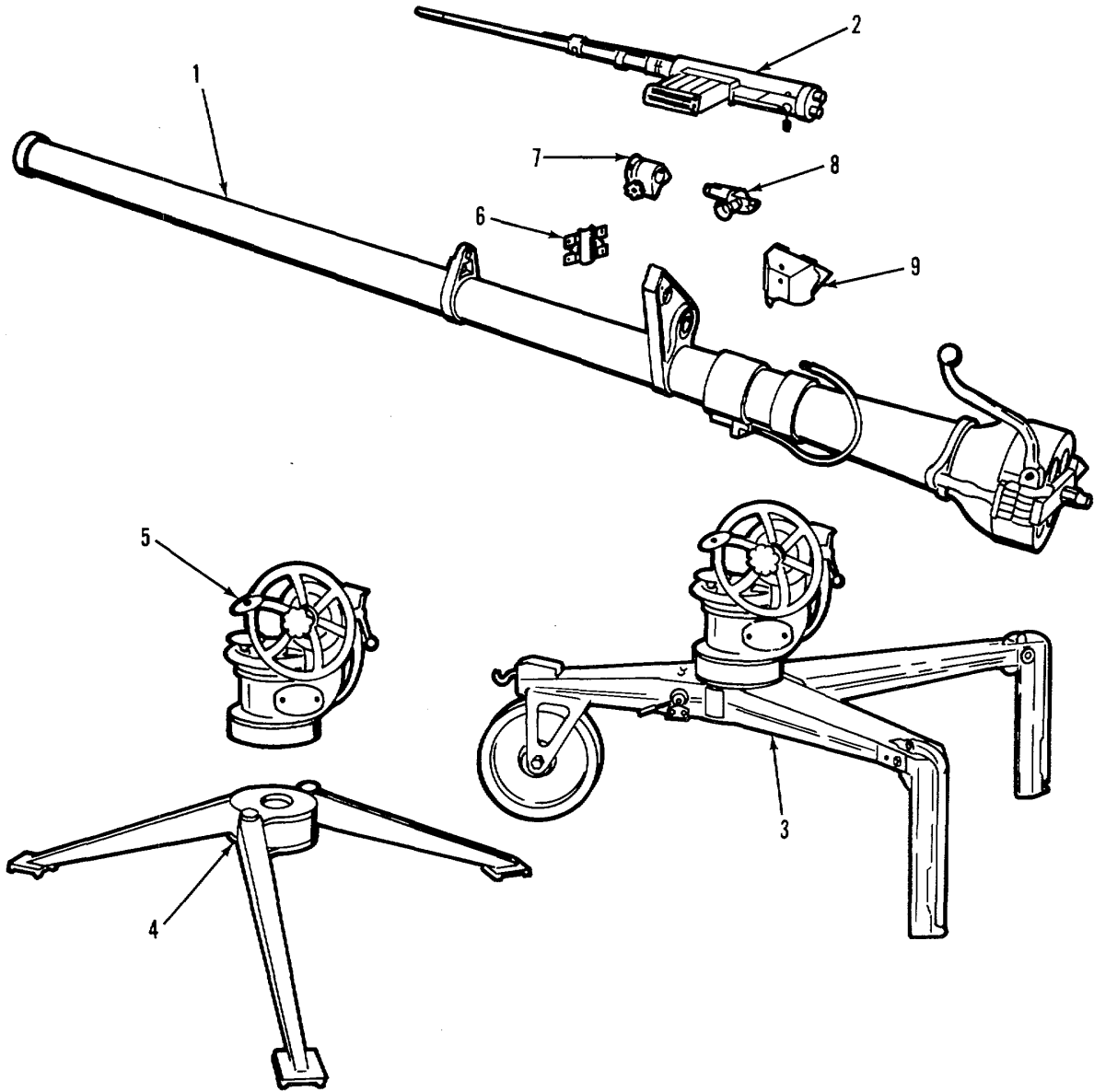


Figure 1. Rifle, recoilless, 106-mm: M40A2 or M40A4.

(1) ITEM NO	(2) SMR CODE	(3) FSCM	(4) PART NUMBER	(5) DESCRIPTION AND USABLE ON CODE (UOC)	(6) QTY
				GROUP 00 RIFLE, RECOILLESS, 106-MM: M40A2 (11578739) OR M40A4 (11578740)	
				FIG.1 RIFLE, RECOILLESS, 106MM: M40A2 OR M40A4	
1	PAFDD	19206	11578014	CANNON, 106 MILLIMETER, M206	1
2	PAFHH	19204	7268115	GUN, SPOTTING, M8C	1
3	XAFFA	19204	8403200	MOUNT, 106MM RIFLE, M79	1
				UOC:J80	
4	PAFFF	19204	8407810	TRIPOD, RIFLE MOUNT M27	1
				UOC:J81	
5	PAFFA	19204	8407830	MOUNT, RIFLE M92	1
				UOC:J81	
6	PAOFF	19200	8299677	CLAMP	1
7	PAODD	19200	8299670	MOUNT TELESCOPE, M90	1
8	PACDD	19200	8286960	TELESCOPE, ELBOW	1
9	PAOFF	19200	8293769	COVER.....	1

END OF FIGURE

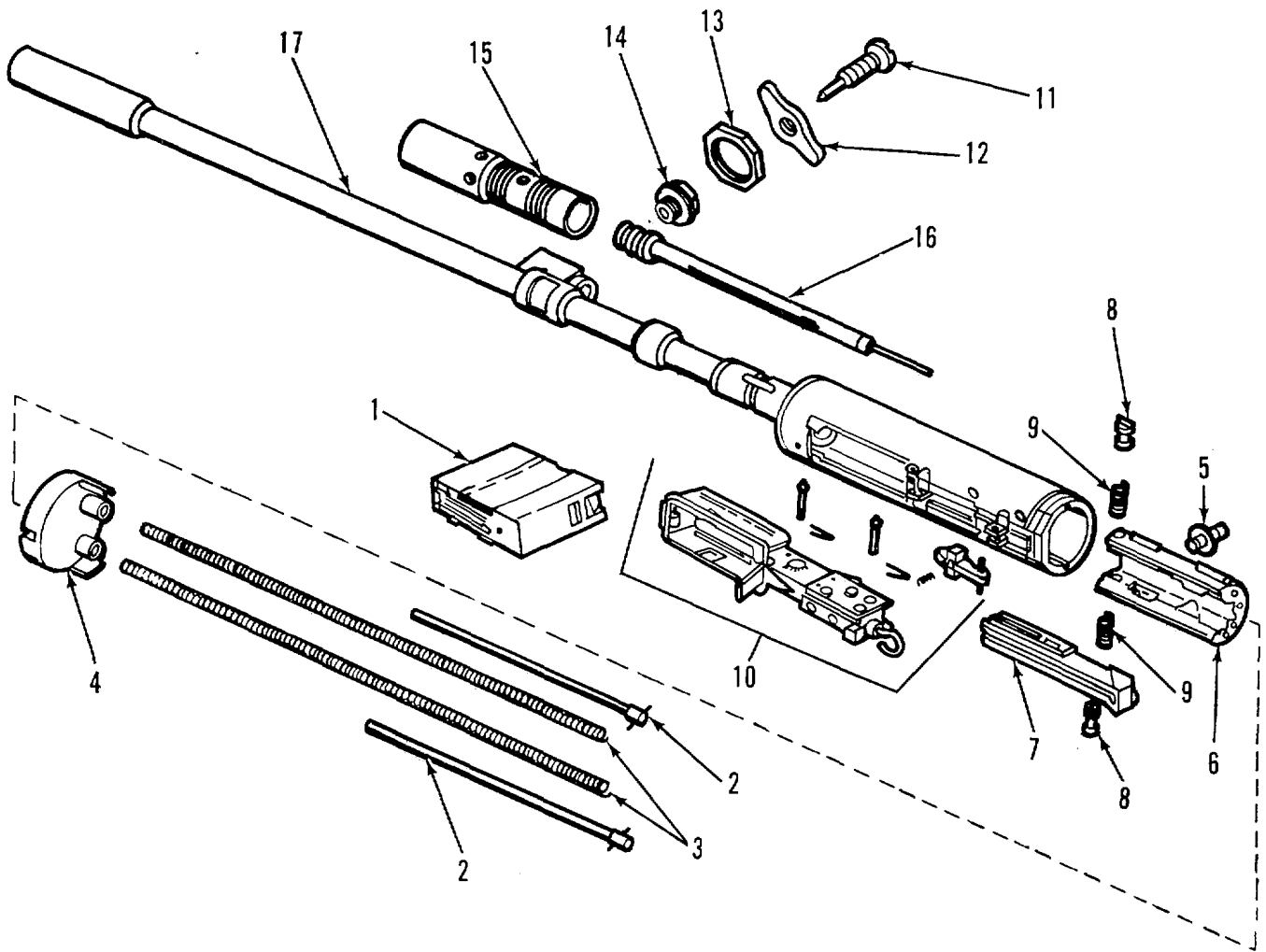


Figure 2. Gun, spotting, caliber .50: M8C.

(1) ITEM NO	(2) SMR CODE	(3) FSCM	(4) PART NUMBER	(5) DESCRIPTION AND USABLE ON CODE (UOC)	(6) QTY
GROUP 01 GUN, SPOTTING, CALIBER .50: M8C (7268115)					
FIG.2 GUN, SPOTTING, CALIBER .50: M8C					
1	PAOZZ	19204	12003046	MAGAZINE, CARTRIDGE	1
2	PAOZZ	19204	7267851	ROD, GUIDE ASSEMBLY	2
3	PAOZZ	19204	7791229	SPRING, HELICAL COMPRESSION	2
4	PAFFF	19204	7266342	BUFFER ASSEMBLY	1
5	PAFZZ	19204	7267383	HANDLE, CHARGING ASSEMBLY	1
6	PAFZZ	19204	7266409	SLIDE	1
7	AFOFF	19204	7266341	BOLT, ASSEMBLY (SEE FIG.3 FOR ASSEMBLY BREAKDOWN)	1
8	PACZZ	19204	7268393	GUIDE, BOLT RECEIVER	2
9	PACZZ	19204	7266415	SPRING, HELICAL COMPRESSION	2
10	AFFFF	19204	7268119	FIRING MECHANISM ASSEMBLY (SEE FIG.6 FOR ASSEMBLY BREAKDOWN)	1
11	PAFZZ	19204	7790871	REGULATOR, GAS	1
12	PAFZZ	19205	7266831	NUT, PLAIN, WING	1
13	PAFZZ	19204	7266330	NUT, PLAIN, ROUND	1
14	PAFZZ	19204	7266833	BUSHING, REGULATOR	1
15	PAFZZ	19204	7790870	CYLINDER, GAS	1
16	PAFFF	19204	7267859	ROD ASSEMBLY OPERATING	1
17	XCHHA	19204	7268255	RECEIVER AND BARREL ASSEMBLY	1

END OF FIGURE

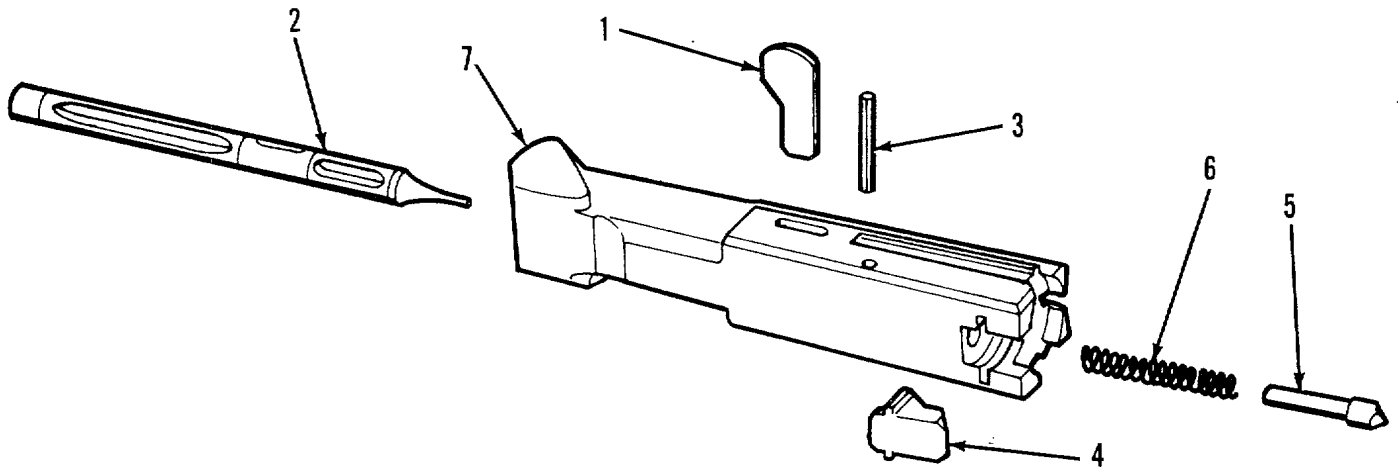


Figure 3. Bolt Assembly

(1) ITEM NO	(2) SMR CODE	(3) FSCM	(4) PART NUMBER	(5) DESCRIPTION AND USABLE ON CODE (UOC)	(6) QTY
-------------------	--------------------	-------------	-----------------------	---	------------

GROUP 0101 BOLT ASSEMBLY (7266341)

FIG.3 BOLT ASSEMBLY

1	PACZZ	19204	7266400	RETRACTOR, FIRING PIN	1
2	PACZZ	19204	7266374	PIN, FIRING	1
3	PACZZ	96906	MS16562-131	PIN, SPRING.....	1
4	PACZZ	19204	7266357	EXTRACTOR, CARTRIDGE	1
5	PACZZ	19204	7266393	PLUNGER, EXTRACTOR	1
6	PACZZ	19204	7266416	SPRING, HELICAL COMPRESSION	1
7	PAFZZ	19204	7266340	BOLT, BREECH	1

END OF FIGURE

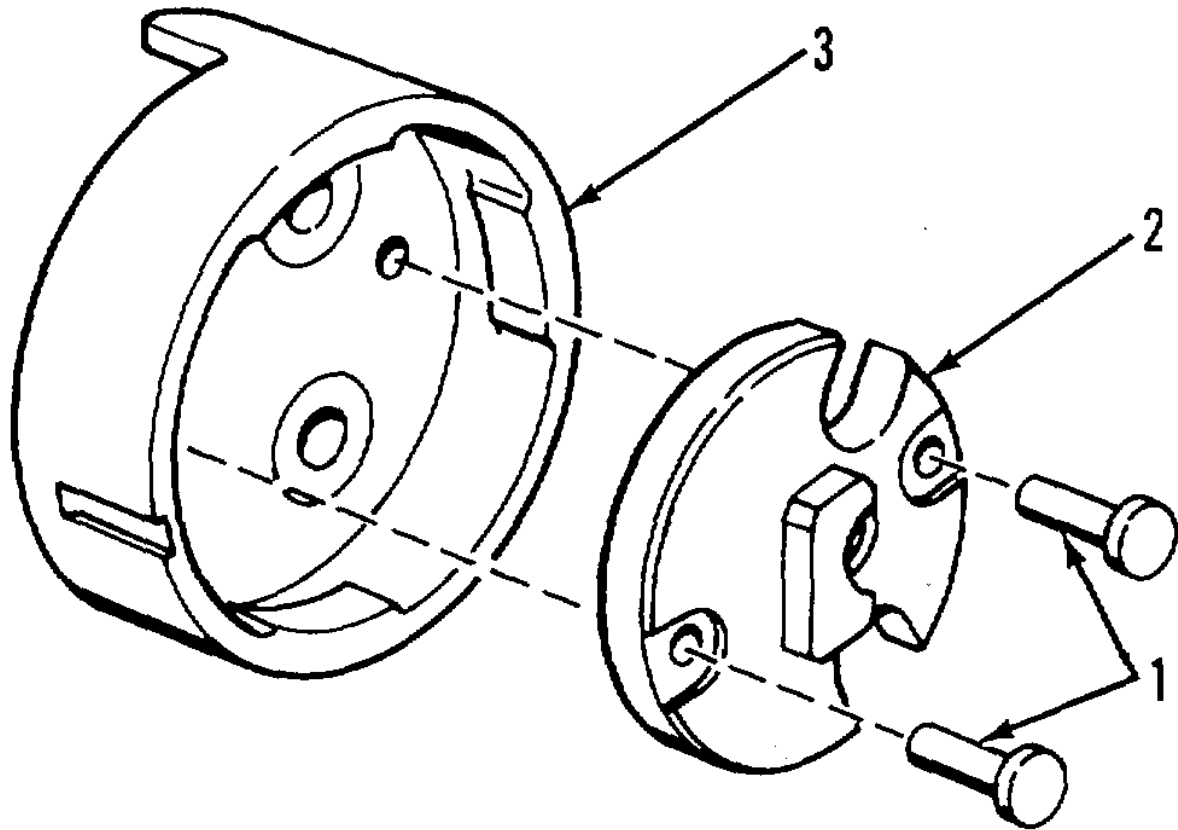


Figure 4. Buffer assembly

(1) ITEM NO	(2) SMR CODE	(3) FSCM	(4) PART NUMBER	(5) DESCRIPTION AND USABLE ON CODE (UOC)	(6) QTY
GROUP 0102 BUFFER ASSEMBLY (7266342)					
FIG.4 BUFFER ASSEMBLY					
1	PAFZZ	19204	7790869	RIVET, SOLID	2
2	PAFZZ	19204	7266353	DISK, BUFFER, BOLT SLIDE	1
3	XAFZZ	19204	7266344	BUSHING, BUFFER	1

END OF FIGURE

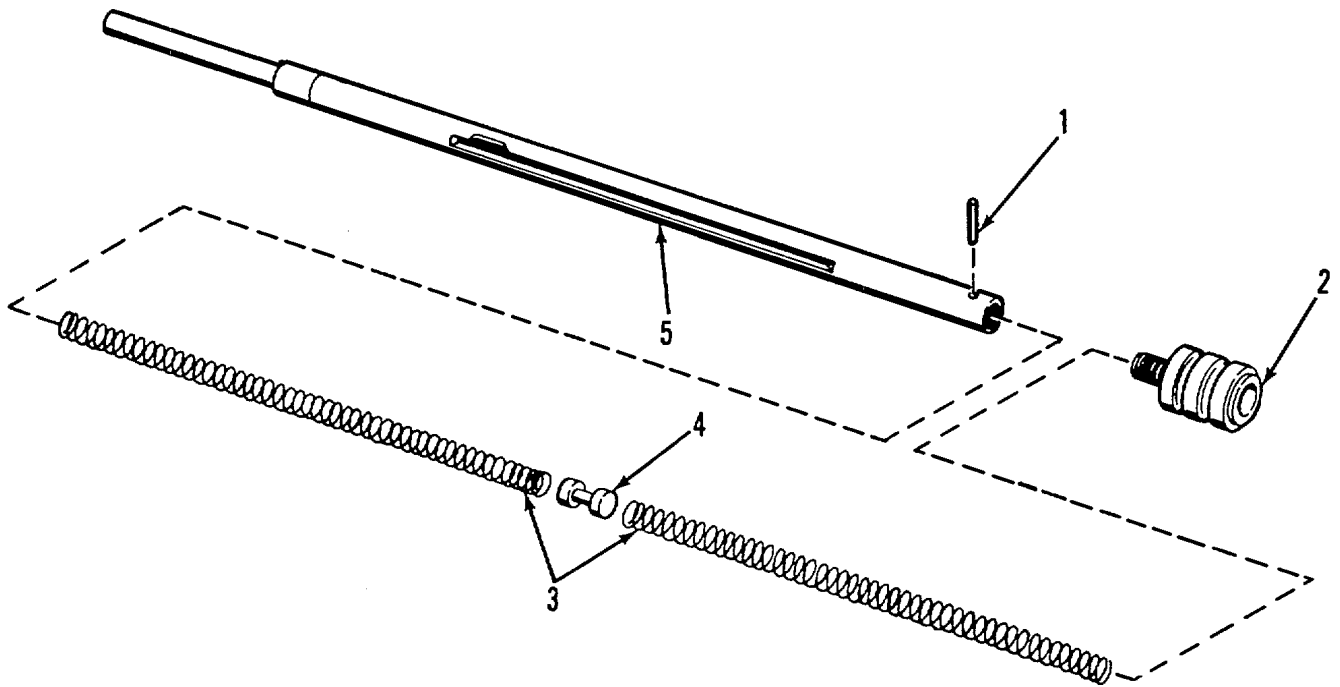


Figure 5. Operating rod assembly.

(1) ITEM NO	(2) SMR CODE	(3) FSCM	(4) PART NUMBER	(5) DESCRIPTION AND USABLE ON CODE (UOC)	(6) QTY
GROUP 0103 OPERATING ROD ASSEMBLY (7267859)					
FIG.5 OPERATING ROD ASSEMBLY					
1	PAFZZ	96906	MS16562-109	PIN, SPRING	1
2	XAFZZ	19204	7266389	PISTON, GAS.....	1
3	PAFZZ	19204	7266421	SPRING, HELICAL COMPRESSION	2
4	PAFZZ	19204	7266501	PLUNGER, OPERATING ROD	1
5	XAFZZ	19204	7267852	ROD, OPERATING	1

END OF FIGURE

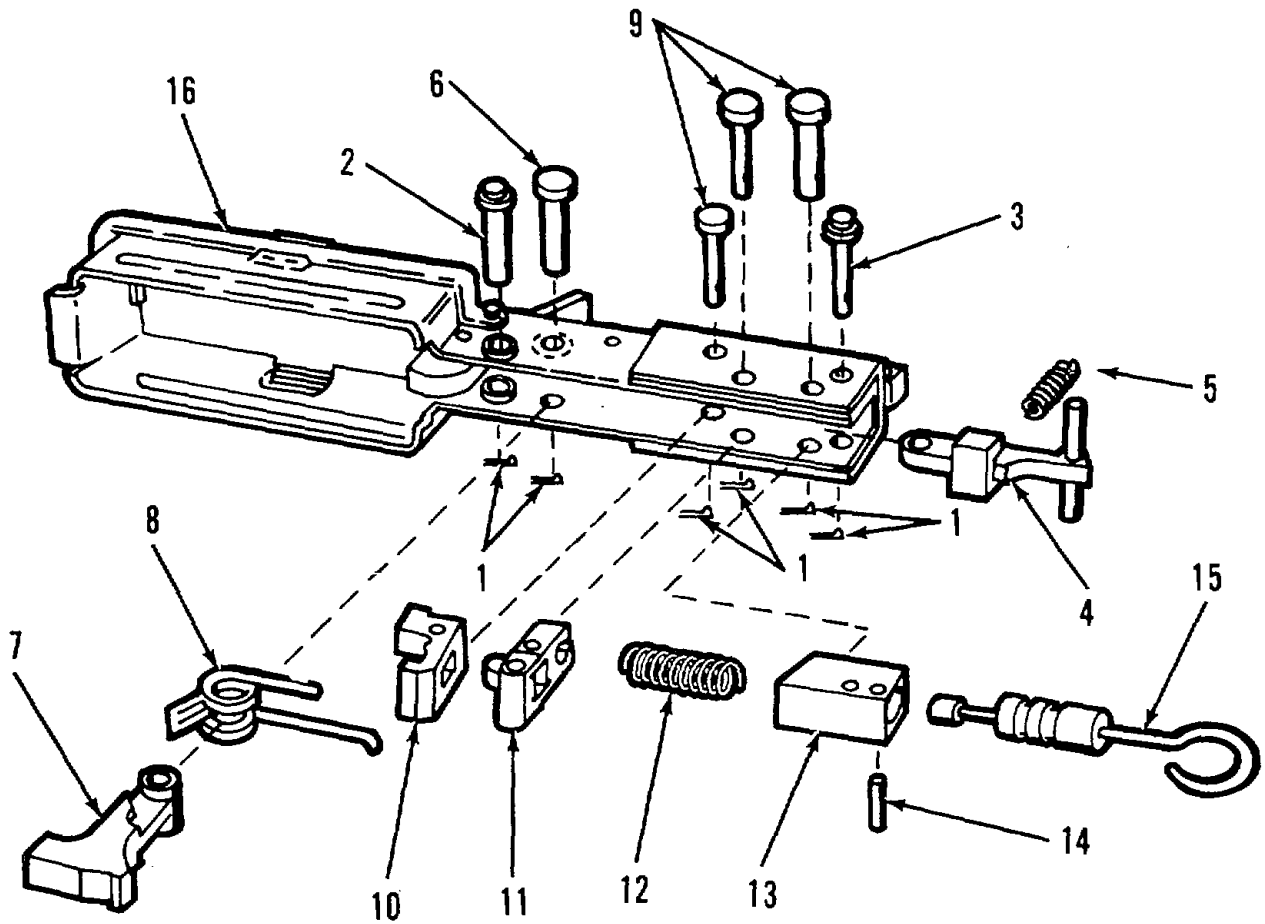


Figure 6. Firing mechanism assembly.

(1) ITEM NO	(2) SMR CODE	(3) FSCM	(4) PART NUMBER	(5) DESCRIPTION AND USABLE ON CODE (UOC)	(6) QTY
GROUP 0104 FIRING MECHANISM ASSEMBLY (7268119)					
FIG.6 FIRING MECHANISM ASSEMBLY					
1	PACZZ	96906	MS24665-814	PIN, COTTER	6
2	PAFZZ	19204	7266497	PIN, SHOULDER HEADLESS	1
3	PAFZZ	19204	7266498	PIN, STRAIGHT, HEADED	1
4	PAFZZ	19204	7266348	CATCH, BUFFER ASSEMBLY	1
5	PAFZZ	19204	7266413	SPRING, HELICAL COMPRESSION.....	1
6	PAFZZ	19204	7266377	PIN, STRAIGHT, HEADED	1
7	PAFZZ	19204	7266361	HAMMER, FIRING, SMALL.....	1
8	PAFZZ	19205	7266417	SPRING, HELICAL TORSION	1
9	PAFZZ	19204	7266380	PIN, GROOVED, HEADED	3
10	PAFZZ	19204	7266408	SEAR	1
11	AFFFF	19204	7266500	SEAR RELEASE ASSEMBLY (SEE FIG.7..... FOR ASSEMBLY BREAKDOWN)	1
12	PAFZZ	19204	7266420	SPRING, HELICAL COMPRESSION	1
13	PAFZZ	19204	7266366	HOUSING, FIRING CABLE.....	1
14	PAOZZ	96906	MS16562-120	PIN, SPRING	1
15	PAOZZ	19204	7266561	ROD, FIRING ASSEMBLY	1
16	PAFHH	19204	7268118	HOUSING AND CATCH ASSEMBLY	1

END OF FIGURE

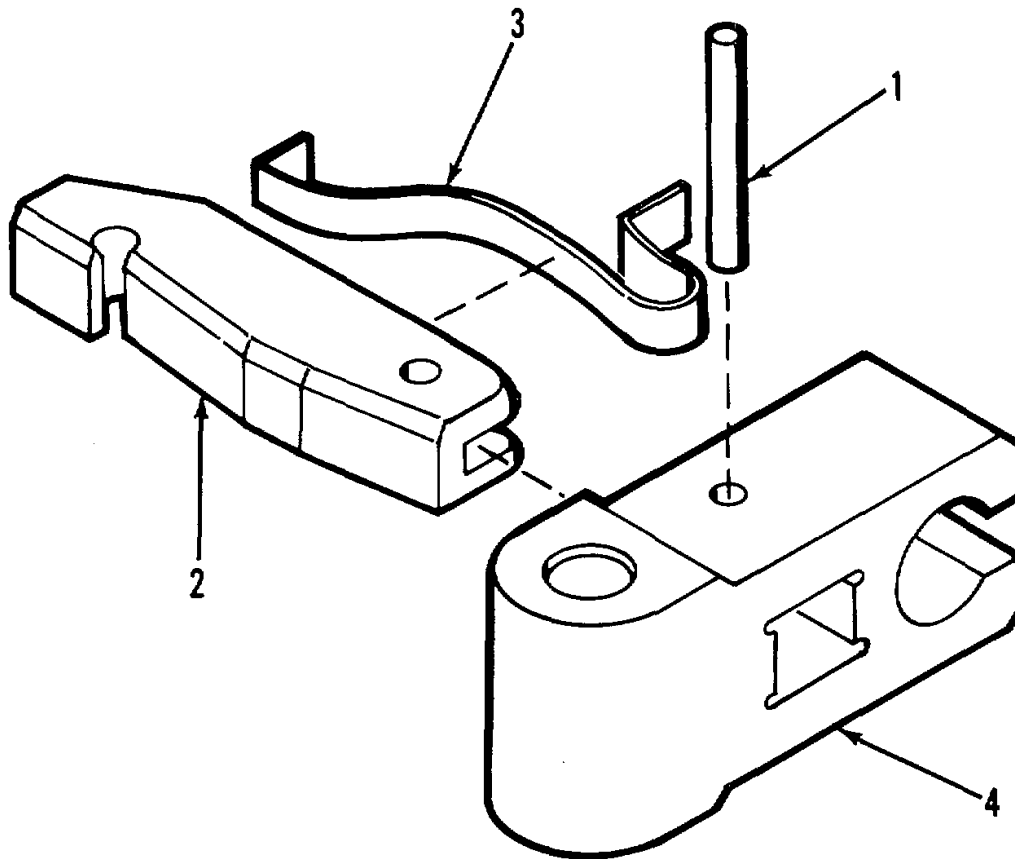


Figure 7. Sear release assembly.

(1) ITEM NO	(2) SMR CODE	(3) FSCM	(4) PART NUMBER	(5) DESCRIPTION AND USABLE ON CODE (UOC)	(6) QTY
GROUP 010401 SEAR RELEASE ASSEMBLY (7266500)					
FIG.7 SEAR RELEASE ASSEMBLY					
1	PAFZZ	19204	7266386	PIN, STRAIGHT HEADLESS	1
2	PAFZZ	19204	7267838	RELEASE, SEAR	1
3	PAFZZ	19204	7266422	SPRING, FLAT	1
4	PAFZZ	19204	7266399	RETAINER, SEAR RELEASE	1

END OF FIGURE

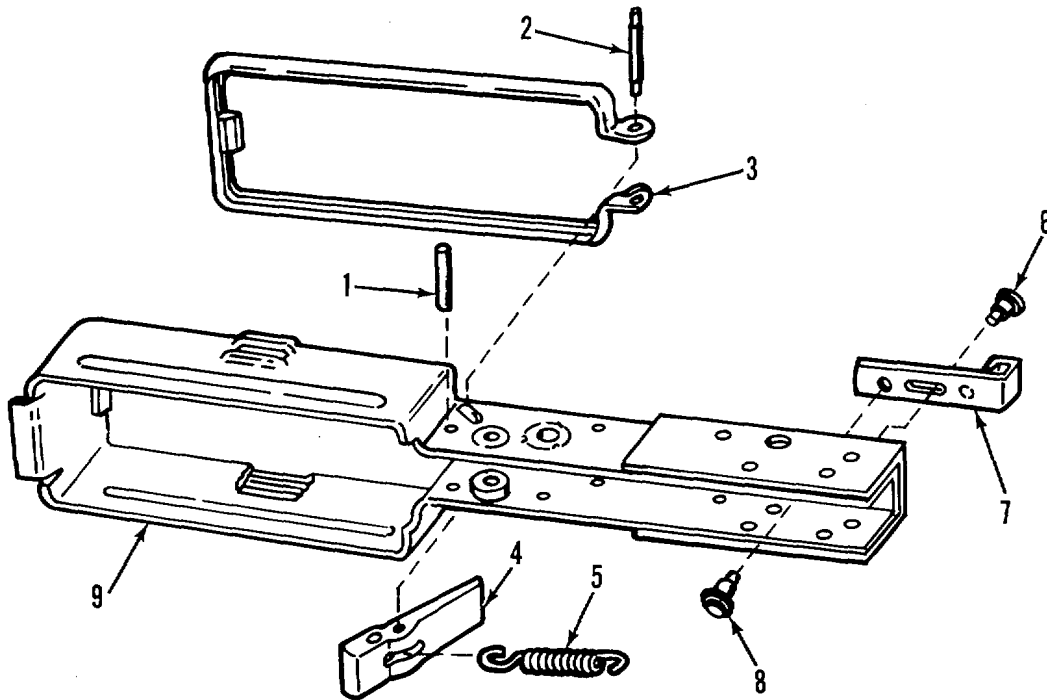


Figure 8. Housing and catch assembly.

(1) ITEM NO	(2) SMR CODE	(3) FSCM	(4) PART NUMBER	(5) DESCRIPTION AND USABLE ON CODE (UOC)	(6) QTY
GROUP 010402 HOUSING AND CATCH ASSEMBLY (7268118)					
FIG.8 HOUSING AND CATCH ASSEMBLY					
1	PAFZZ	19204	7266379	PIN, STRAIGHT HEADLESS	1
2	PAFZZ	19204	7266388	PIN, SHOULDER HEADLESS	1
3	PAFZZ	19204	7266430	CATCH, MAGAZINE FRONT ASSEMBLY	1
4	PAFZZ	19204	7266349	CATCH, MAGAZINE REAR ASSEMBLY	1
5	PAFZZ	19205	7266419	SPRING, HELICAL EXTENSION	1
6	PAHZZ	19204	7266447	RIVET, SOLID	1
7	PAHZZ	19204	7266448	SAFETY, SPOTTING GUN	1
8	PAHZZ	19204	7266446	LOCK, GUN SAFETY	1
9	XAFHH	19204	7268117	HOUSING ASSEMBLY	1

END OF FIGURE

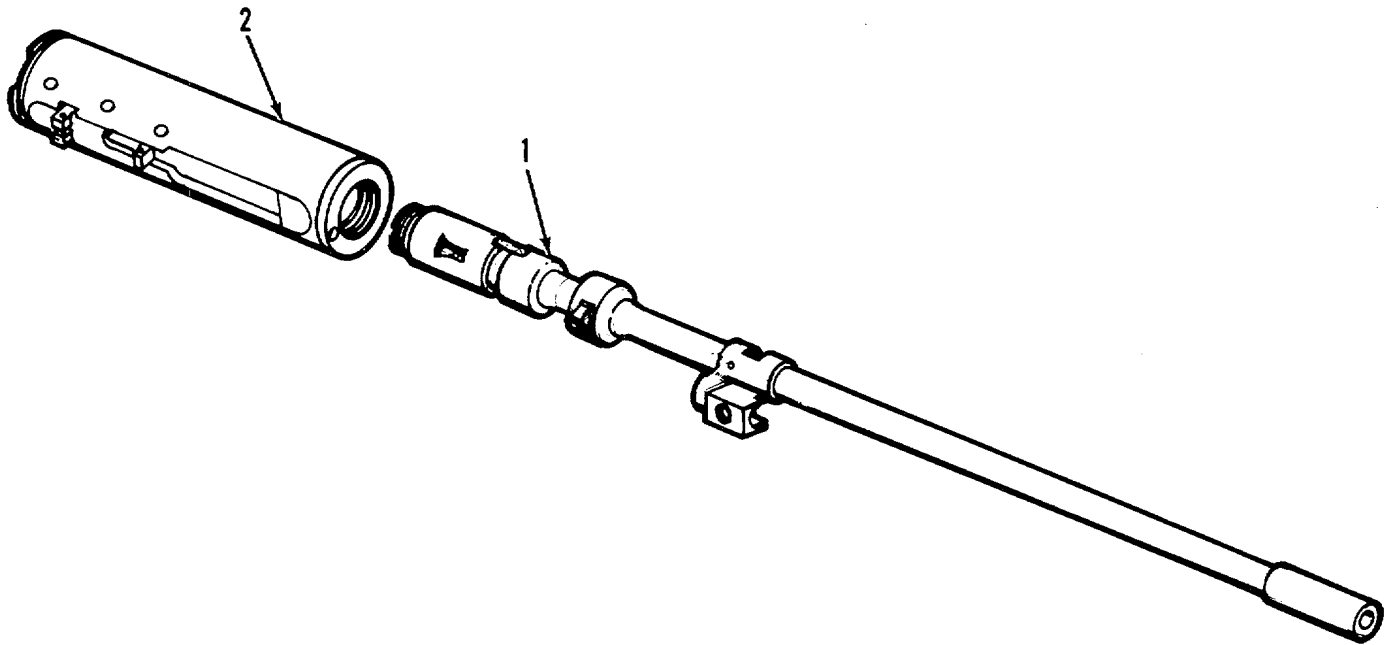


Figure 9. Receiver and barrel assembly.

(1) ITEM NO	(2) SMR CODE	(3) FSCM	(4) PART NUMBER	(5) DESCRIPTION AND USABLE ON CODE (UOC)	(6) QTY
GROUP 0105 RECEIVER AND BARREL ASSEMBLY (7268255)					
FIG.9 RECEIVER AND BARREL ASSEMBLY					
1	PAHHH	19204	7790489	BARREL ASSEMBLY, GUN	1
2	XAFFA	19204	7268254	RECEIVER ASSEMBLY	1

END OF FIGURE

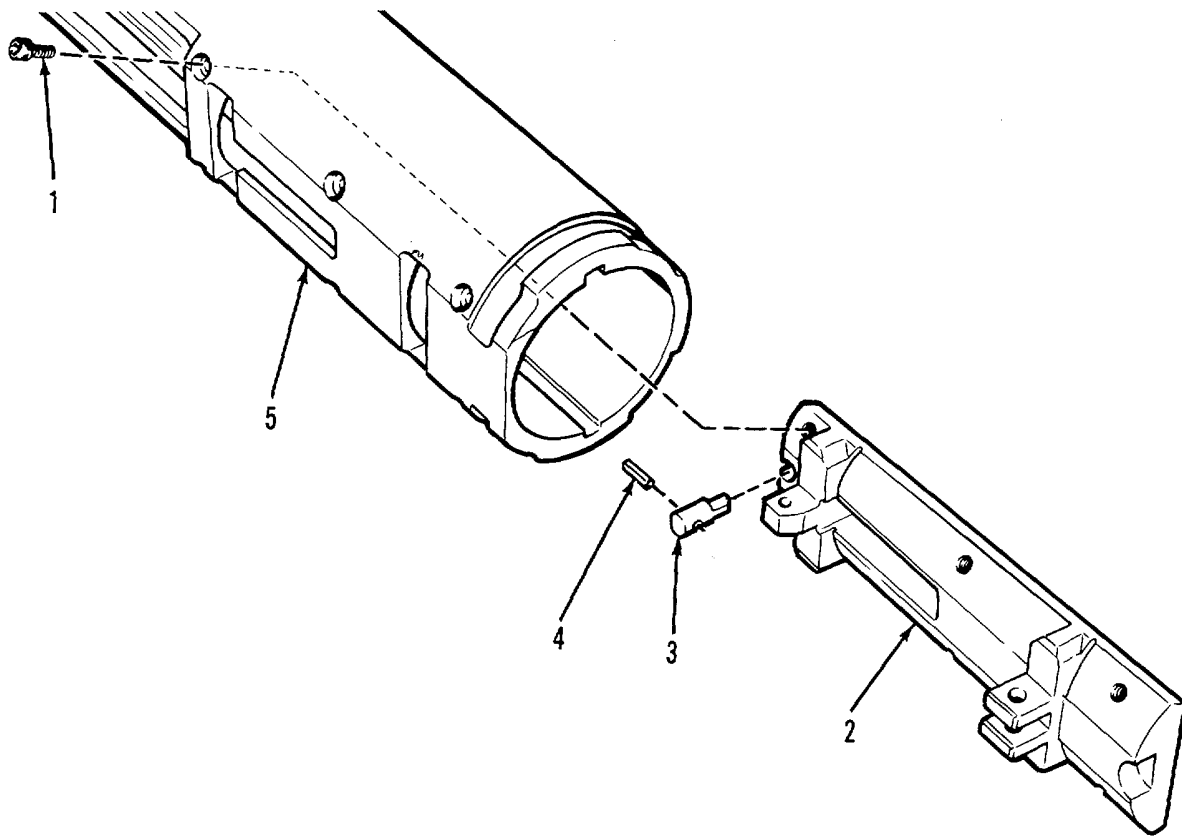
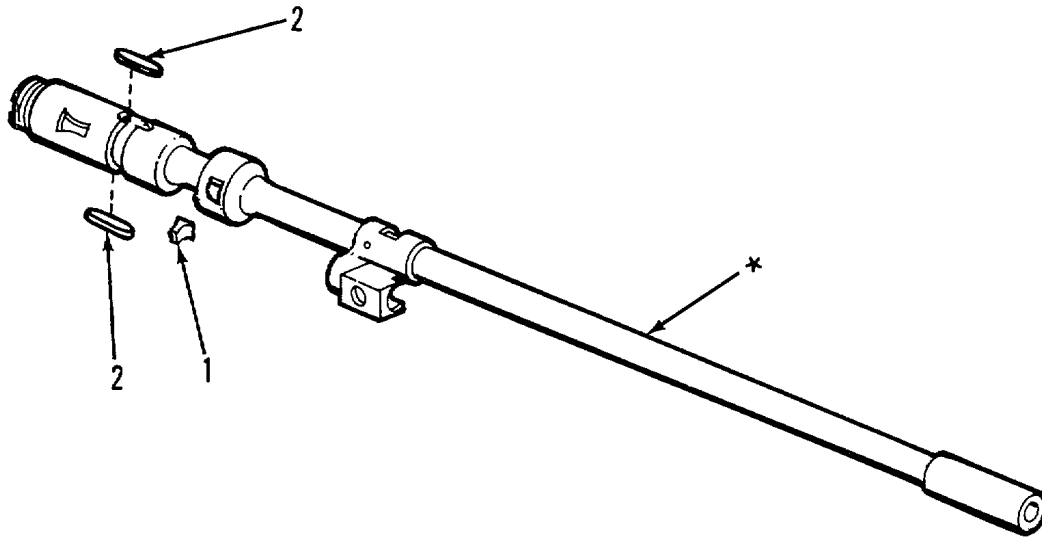


Figure 10. Receiver assembly.

(1) ITEM NO	(2) SMR CODE	(3) FSCM	(4) PART NUMBER	(5) DESCRIPTION AND USABLE ON CODE (UOC)	(6) QTY
GROUP 010501 RECEIVER ASSEMBLY (7268254)					
FIG.10 RECEIVER ASSEMBLY					
1	PAFZZ	19204	7266871	SCREW, CAP, SOCKET HEAD	6
2	PAFZZ	19204	7266367	LOCK BOLT	1
3	PAFZZ	19204	7266355	EJECTOR, CARTRIDGE	1
4	PAFZZ	96906	MS16562-134	PIN, SPRING	1
5	XAFDD	19204	7268253	RECEIVER	1

END OF FIGURE



* NO FURTHER
DISASSEMBLY AUTHORIZED

Figure 11. Barrel assembly.

(1) ITEM NO	(2) SMR CODE	(3) FSCM	(4) PART NUMBER	(5) DESCRIPTION AND USABLE ON CODE (UOC)	(6) QTY
GROUP 010502 BARREL. ASSEMBLY (7790489)					
FIG.11 BARREL ASSEMBLY					
1	PAHZZ	19204	7266423	STOP, OPERATING ROD	1
2	PAFZZ	19204	7266849	KEY, MACHINE	2

END OF FIGURE

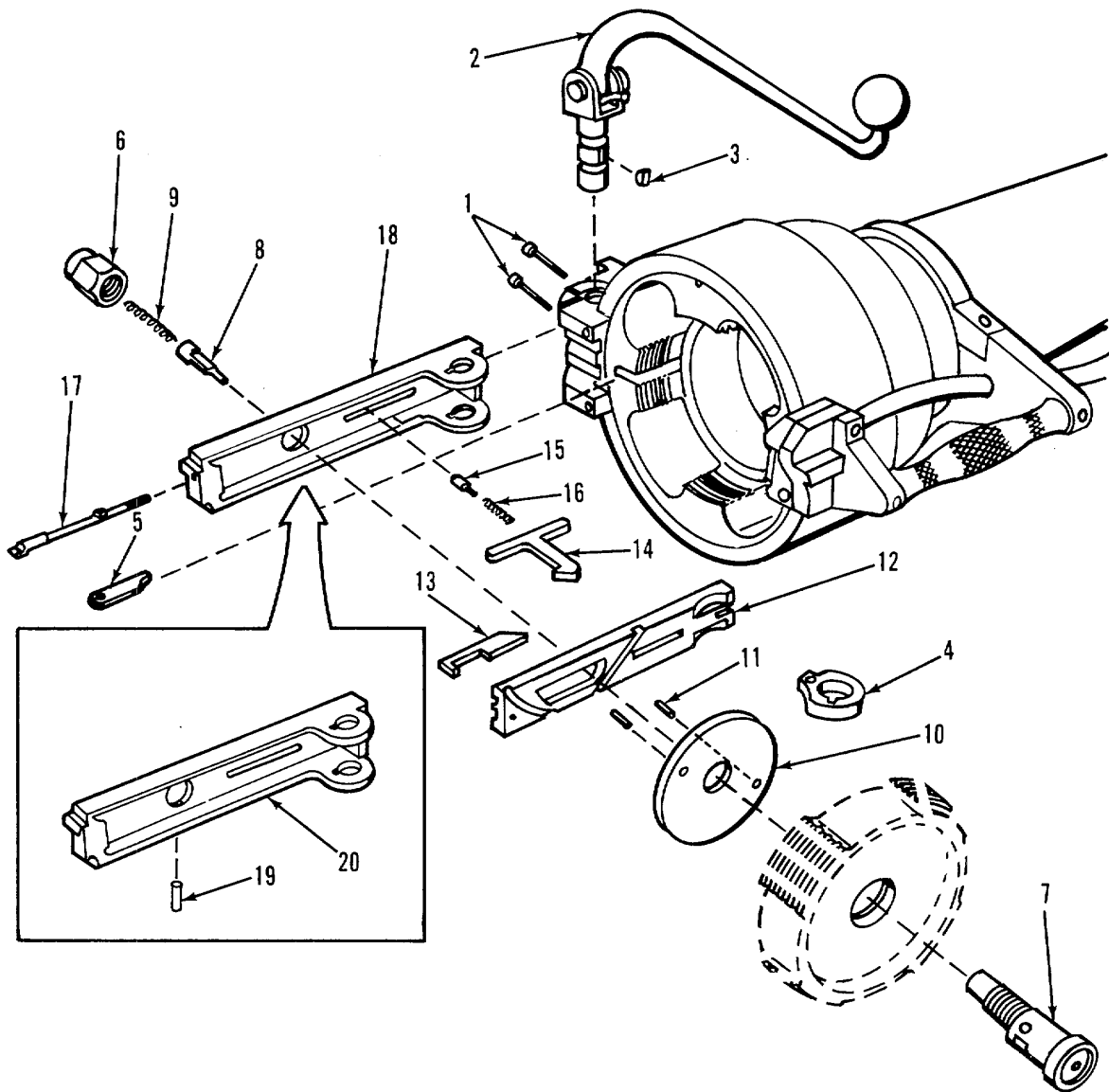
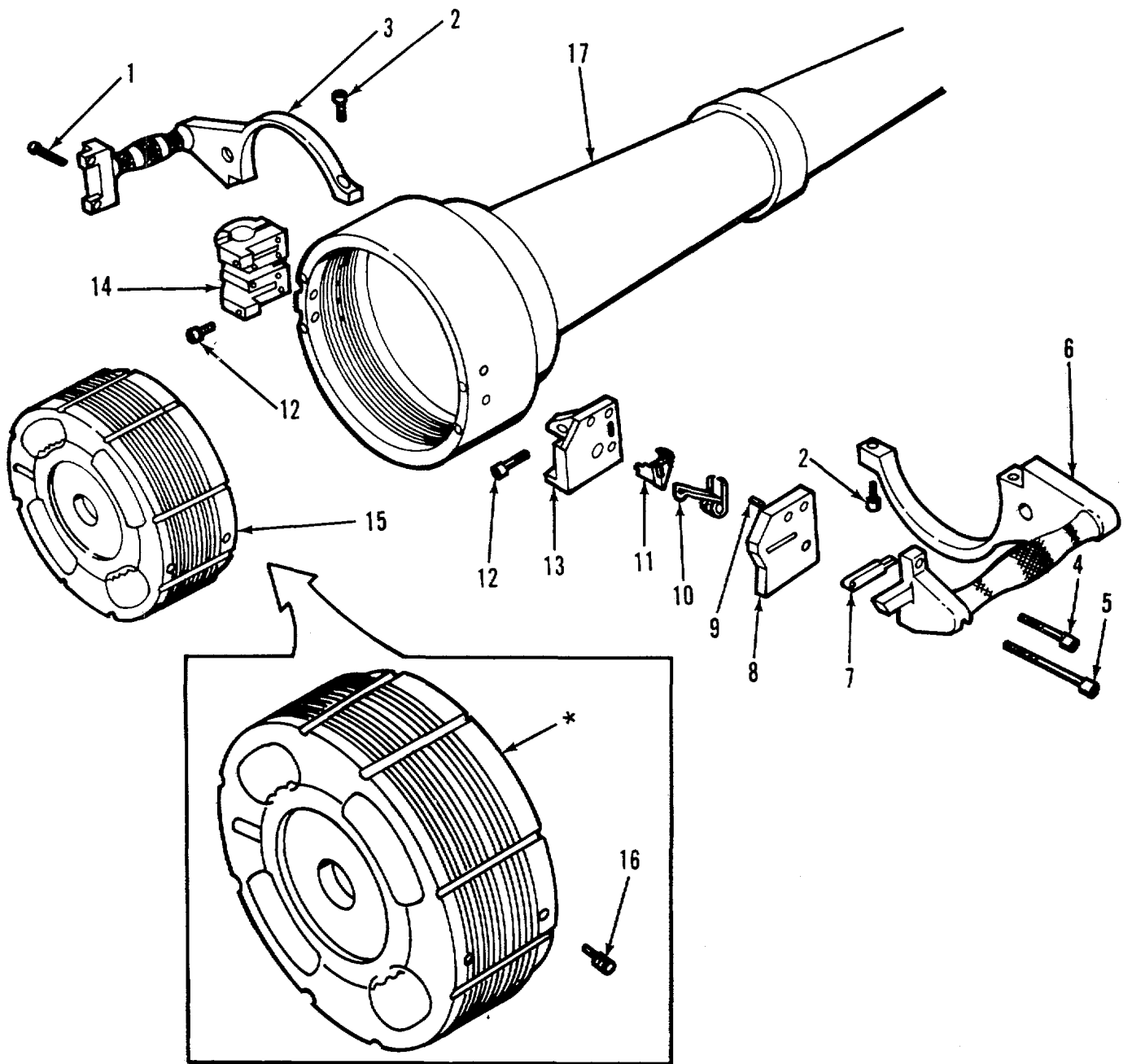


Figure 12. Cannon, 106-mm: M206 and hinge assembly.

(1) ITEM NO	(2) SMR CODE	(3) FSCM	(4) PART NUMBER	(5) DESCRIPTION AND USABLE ON CODE (UOC)	(6) QTY
GROUP 04 CANNON, 106-MM: M206 (11578014) AND GROUP 0405 HINGE ASSEMBLY (7308856)					
FIG.12 CANNON, 106-MM: M206 AND HINGE ASSEMBLY					
1	PAOZZ	96906	MS16998-50	SCREW, CAP, SOCKET HEAD	2
2	AOOOO	19206	7307520	LEVER, BREECHBLOCK OPERATING (SEE	1
FIG.17 FOR ASSEMBLY BREAKDOWN)					
3	PACZZ	96906	MS35756-6	KEY, WOODRUFF	1
4	PAOFF	19206	8766017	DOG ASSEMBLY	1
5	PACOO	19206	7230797	DETENT ASSEMBLY	1
6	PAFZZ	19206	7230796	CAP	1
7	PAOZZ	19206	8766068	HOUSING	1
8	PACZZ	19206	11578018	PIN, FIRING,	1
9	PACZZ	19206	7230810	SPRING, HELICAL, COMPRESSION	1
10	PAFZZ	19206	7230806	SPACER, PLATE	1
11	PACZZ	19206	7230807	ROLLER, BEARING	2
12	PAFZZ	19206	7308853	PLATE CAM	1
13	PACZZ	19206	11578017	CAM, CONTROL	1
14	PACZZ	19206	7230799	EXTRACTOR, CARTRIDGE	1
15	PAOZZ	19206	11578301	PLUNGER, DETENT	1
16	PAOZZ	19206	7230809	SPRING, HELICAL COMPRESSION	1
17	PACZZ	19206	11578019	SEAR	1
18	PAFFF	19206	7308856	HINGE ASSEMBLY	1
19	PAFZZ	96906	MS16562-127	..PIN, SPRING	1
20	XAFZZ	19206	7308854	..HINGE BODY	1

END OF FIGURE



* NO FURTHER
DISASSEMBLY AUTHORIZED

Figure 13. Cannon, 106-mm: M206 and vent assembly.

(1) ITEM NO	(2) SMR CODE	(3) FSCM	(4) PART NUMBER	(5) DESCRIPTION AND USABLE ON CODE (UOC)	(6) QTY
GROUP 04 CANNON, 106-MM: M206 (11578014) AND GROUP 0406 VENT ASSEMBLY (7309187)					
FIG.13 CANNON, 106-MM: M206 AND VENT ASSEMBLY					
1	PAOZZ	96906	MS16998-50	SCREW, CAP, SOCKET HEAD	4
2	PAOZZ	96906	MS16998-74	SCREW, CAP, SOCKET HEAD	2
3	PAFZZ	19206	7307519	BRACKET LEFT	1
4	PAOZZ	96906	MS16998-47	SCREW, CAP, SOCKET HEAD	1
5	PAOZZ	19203	9406768	SCREW, CAP, SOCKET HEAD	1
6	PAFZZ	19206	7307517	BRACKET, RIGHT	1
7	PAOOO	19206	7307472	ROD LANYARD ASSEMBLY	1
8	PAOZZ	19206	7307503	COVER TRIGGER	1
9	PAOZZ	96906	MS16562-49	PIN, SPRING	1
10	FAOZZ	19206	11578016	SPRING, HELICAL TORSION	1
11	PAOZZ	19206	11578015	TRIGGER	1
12	PAOZZ	96906	MS16998-45	SCREW, CAP, SOCKET HEAD	4
13	PAOZZ	19206	7307502	HOUSING, TRIGGER	1
14	PAFZZ	19206	7308861	BLOCK HINGE	1
15	PAOOO	19206	7309187	VENT ASSEMBLY.....	1
16	PAOZZ	19206	7309107	SETSCREW	1
17	XAFDD	19206	7309749	BARREL ASSEMBLY	1

END OF FIGURE

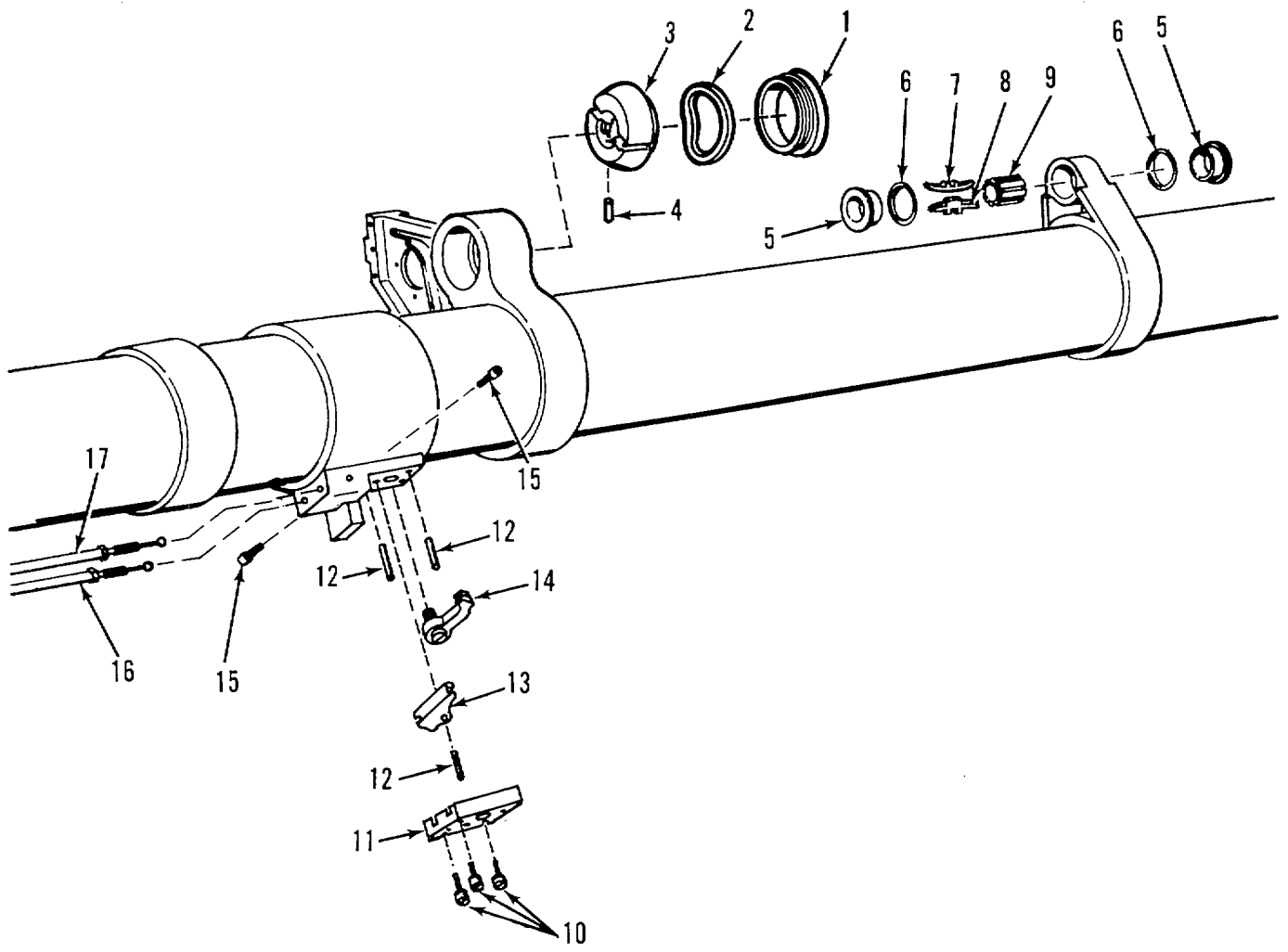


Figure 14. Cannon, 106-mm: M206.

(1) ITEM NO	(2) SMR CODE	(3) FSCM	(4) PART NUMBER	(5) DESCRIPTION AND USABLE ON CODE (UOC)	(6) QTY
GROUP 04 CANNON, 106-MM: M206 (11578014)					
FIG.14 CANNON, 106-MM: M206					
1	PAFZZ	19206	7307494	RING, EXTERNALLY THREADED	1
2	PAFZZ	19206	7307493	WASHER, SPRING TENSION	1
3	PAFZZ	19206	7309208	PAD, SPOTTING GUN ALIGNING	1
4	PAFZZ	96906	MS16562-62	PIN, SPRING	1
5	PAFZZ	19206	7307514	CAM, SPOTTING GUN	2
6	PAFZZ	19206	7307498	WASHER, SPRING TENSION	2
7	PAFZZ	19206	7307497	SPRING CAM	7
8	PAFZZ	19206	7307496	SPRING CAM	1
9	PAFZZ	19206	7307495	BEARING, SLEEVE	1
10	PAOZZ	96906	MS16997-58	SCREW, CAP, SOCKET HEAD	3
11	PAOZZ	19206	7307512	COVER, QUICK BREAKDOWN	1
12	PAFZZ	96906	MS16562-48	PIN, SPRING	3
13	PAFZZ	19206	7307490	LEVER CABLE OPERATING	1
14	PAFZZ	19206	7307513	LEVER CABLE OPERATING	1
15	PAOZZ	19206	7307478	SETSCREW	2
16	PAOZZ	19206	11578002	CABLE 50 CALIBER SPOTTING GUN	1
17	PAOZZ	19206	11577981	CABLE, FIRING, 106MM RECOILLESS..... RIFLE	1

END OF FIGURE

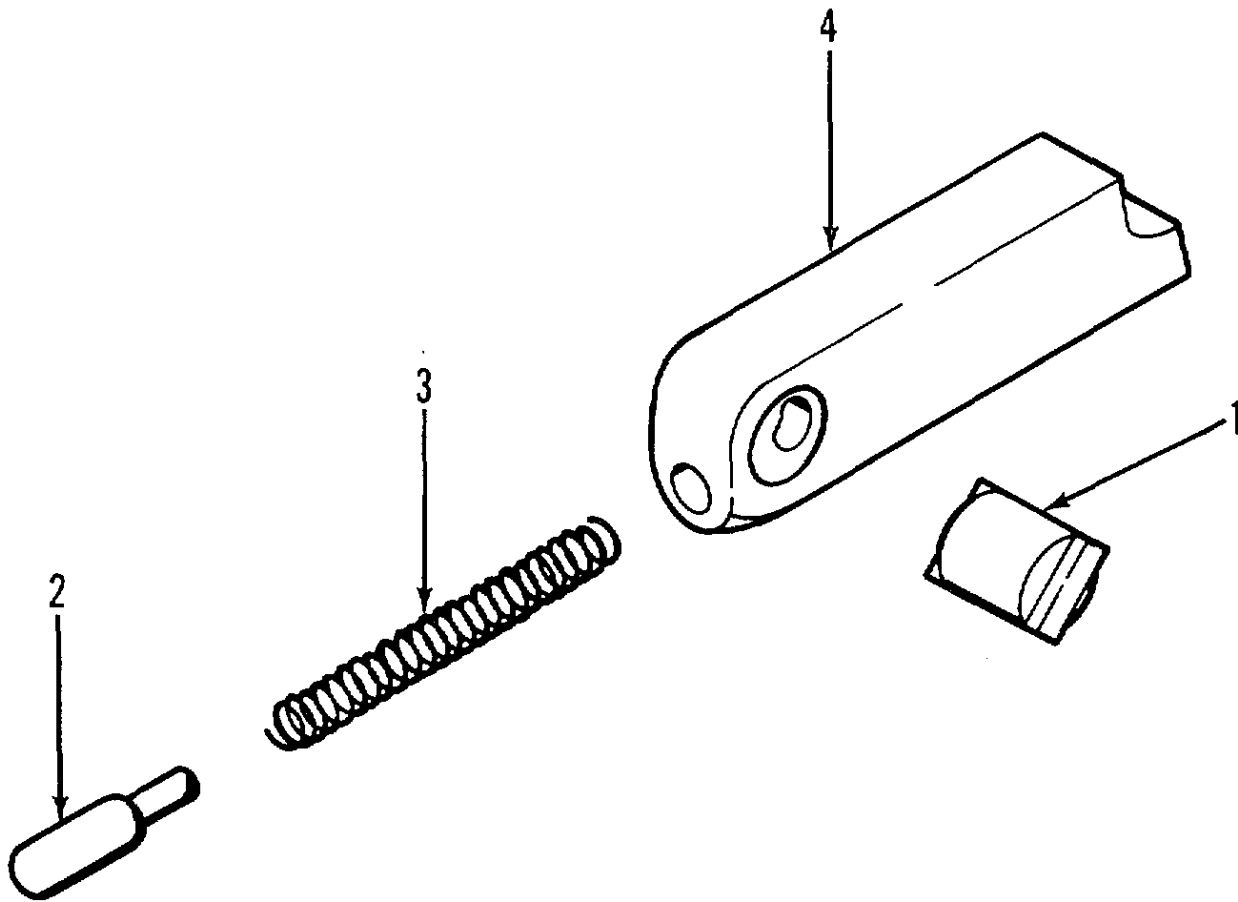


Figure 15. Detent assembly, cartridge case.

(1) ITEM NO	(2) SMR CODE	(3) FSCM	(4) PART NUMBER	(5) DESCRIPTION AND USABLE ON CODE (UOC)	(6) QTY
-------------------	--------------------	-------------	-----------------------	---	------------

GROUP 0401 DETENT ASSEMBLY,
CARTRIDGE CASE (7230797)

FIG.15 DETENT ASSEMBLY,
CARTRIDGE CASE

1	PAOZZ	19206	7230800	FULCRUM	1
2	PAOZZ	19206	11578301	PLUNGER, DETENT	1
3	PACZZ	19206	7230809	SPRING, HELICAL COMPRESSION	1
4	XAOZZ	19204	7230794	BODY, CARTRIDGE, CASE	1

END OF FIGURE

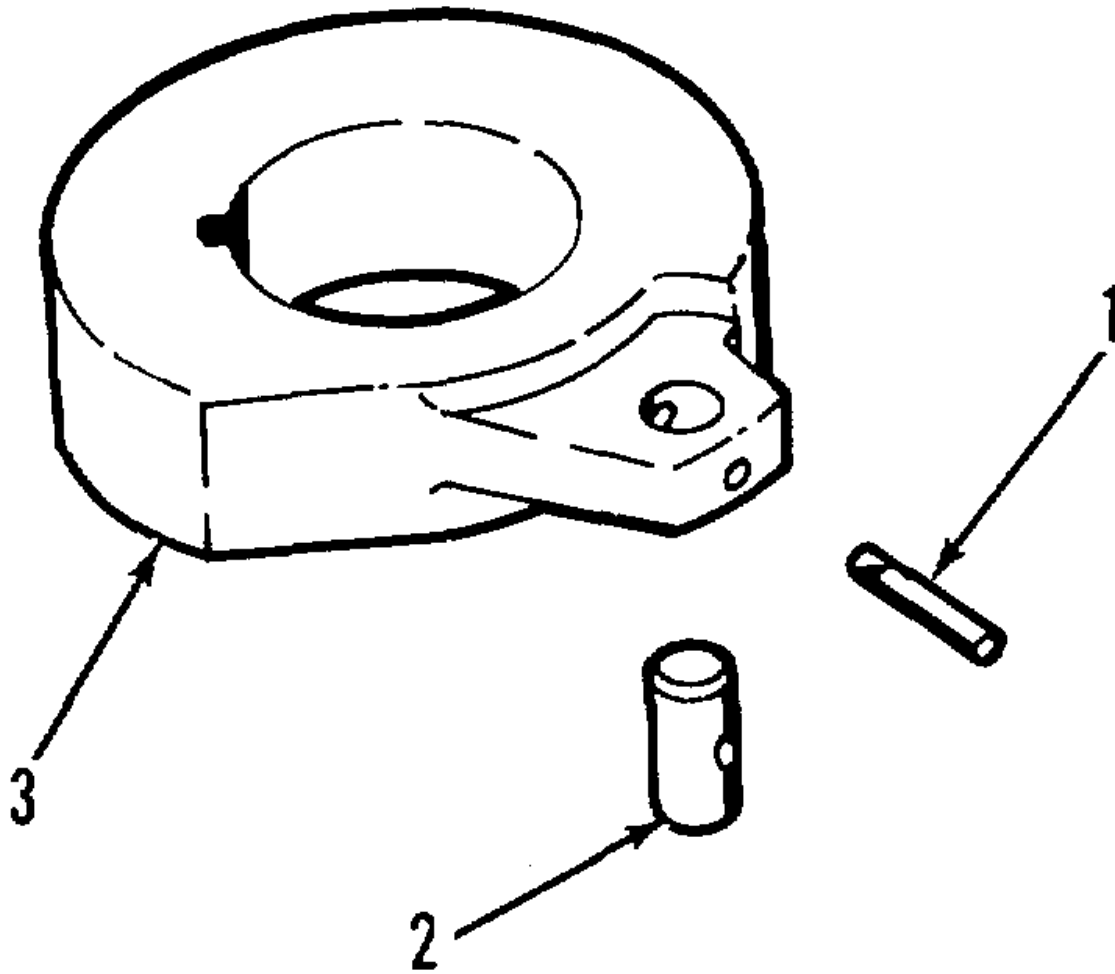


Figure 16. Dog assembly.

(1) ITEM NO	(2) SMR CODE	(3) FSCM	(4) PART NUMBER	(5) DESCRIPTION AND USABLE ON CODE (UOC)	(6) QTY
GROUP 0402 DOG ASSEMBLY (8766017)					
FIG. 16 DOG ASSEMBLY					
1	PAFZZ	96906	MS16562-100	PIN, SPRING.....	1
2	PAFZZ	19206	8766016	ROLLER, DOG ASSEMBLY	1
3	XAFZZ	19206	8766015	DOG	1

END OF FIGURE

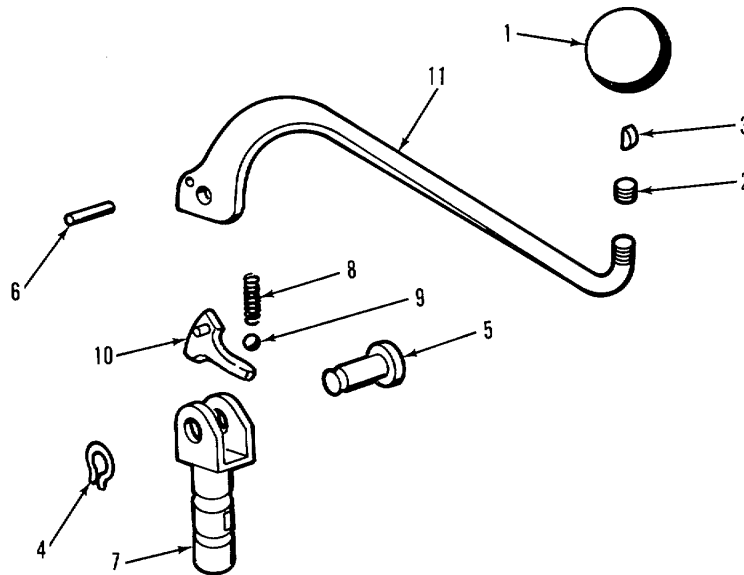


Figure 17. Breechblock operating lever.

(1) ITEM NO	(2) SMR CODE	(3) FSCM	(4) PART NUMBER	(5) DESCRIPTION AND USABLE ON CODE (UOC)	(6) QTY
GROUP 0403 BREECHBLOCK OPERATING LEVER (7307520)					
FIG.17 BREECHBLOCK OPERATING LEVER					
1	PAOZZ	19206	7307477	BALL BREECH BLOCK	1
2	PAOZZ	88044	AN565D820H6	SETSCREW	1
3	PACZZ	96906	MS35756-6	KEY, WOODRUFF	1
4	PAOZZ	96906	MS16626-1050	RING, RETAINING	1
5	PAOZZ	19206	8767165	PIN, GROOVED, HEADED	1
6	PAOZZ	19206	7307476	PIN, STRAIGHT HEADLESS	1
7	PAOZZ	19206	7307509	PIN, GROOVED, HEADED	1
8	PAOZZ	19206	7307475	SPRING, HELICAL COMPRESSION	1
9	PAOZZ	96906	MS19061-13	BALL, BEARING	1
10	PAOZZ	19206	7307484	CAM, CONTROL	1
11	PAOZZ	19206	7307523	BODY, BREECHBLOCK	1

END OF FIGURE

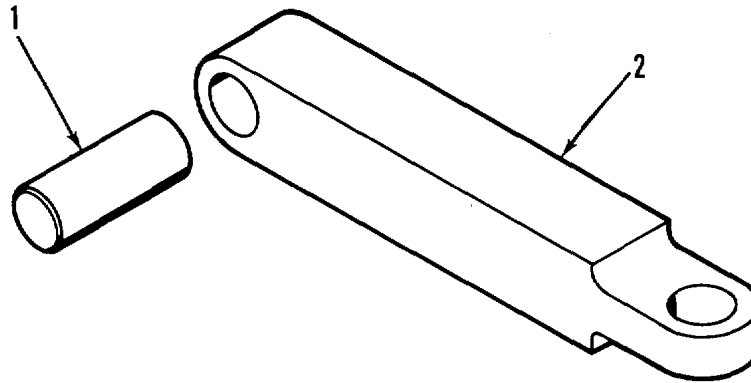


Figure 18. Lanyard rod assembly.

(1) ITEM NO	(2) SMR CODE	(3) FSCM	(4) PART NUMBER	(5) DESCRIPTION AND USABLE ON CODE (UOC)	(6) QTY
GROUP 0404 LANYARD ROD ASSEMBLY (7307472)					
FIG.18 LANYARD ROD ASSEMBLY					
1	PAOZZ	96906	MS16562-141	PIN, SPRING	1
2	XAOZZ	19206	7307485	BODY	1

END OF FIGURE

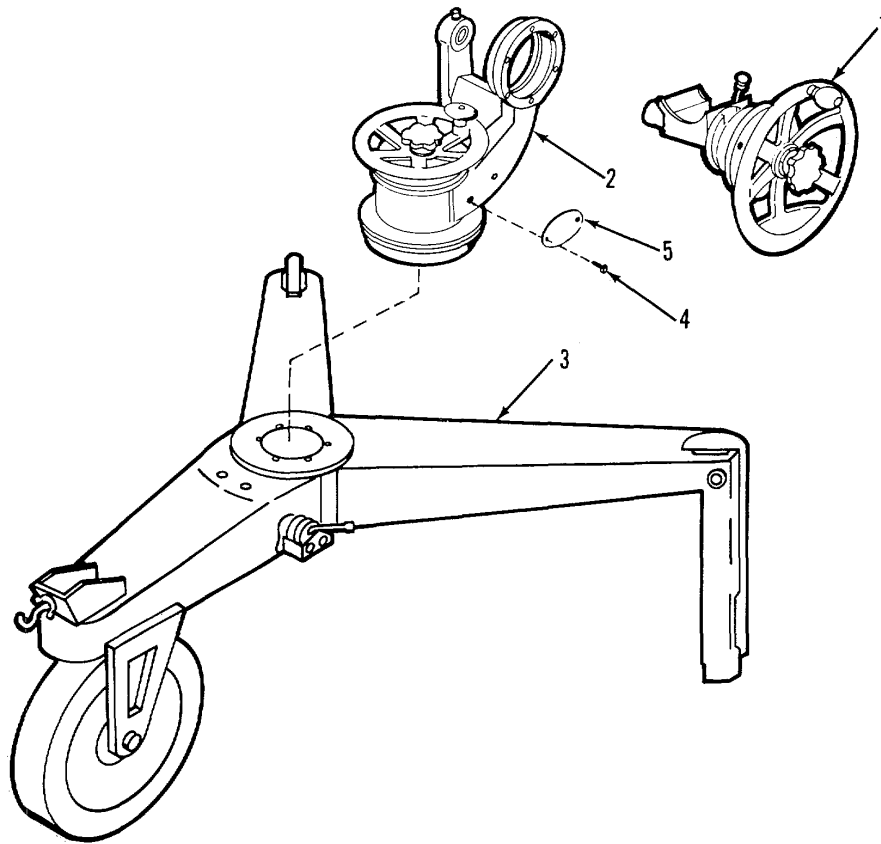


Figure 19. Mount, rifle, 106-mm: M79

(1) ITEM NO	(2) SMR CODE	(3) FSCM	(4) PART NUMBER	(5) DESCRIPTION AND USABLE ON CODE (UOC)	(6) QTY
GROUP 05 MOUNT, RIFLE, 106-MM: M79 (8403200)					
FIG.19 MOUNT, RIFLE, 106-MM: M79					
1	AFFFF	19204	8403260	ELEVATING AND FIRING ASSEMBLY (SEE FIGS.20 & 21 FOR ASSEMBLY BREAKDOWN)	1
2	XAFDD	19204	8403250	TRAVERSING ASSEMBLY (SEE FIG.23 FOR ASSEMBLY BREAKDOWN)	1
3	AFFFF	19206	8403161	BASE ASSEMBLY (SEE FIGS. 25 & 26 FOR ASSEMBLY BREAKDOWN) UOC:J80	1
4	PAFZZ	96906	MS24629-23	SCREW, TAPPING THREAD	2
5	PAFZZ	19206	11578397	PLATE, IDENTIFICATION	1

END OF FIGURE

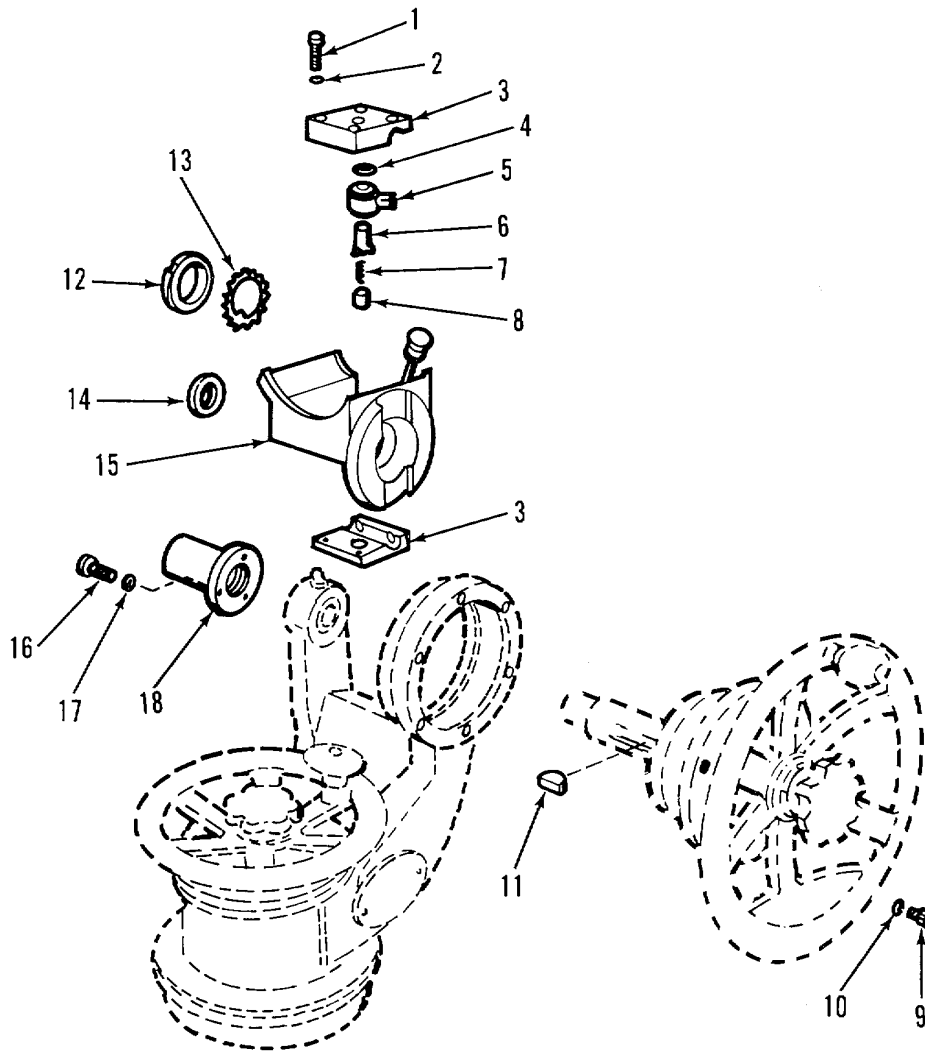


Figure 20. Elevating and firing assembly.

(1) ITEM NO	(2) SMR CODE	(3) FSCM	(4) PART NUMBER	(5) DESCRIPTION AND USABLE ON CODE (UOC)	(6) QTY
GROUP 0501 AND 0601 ELEVATING AND FIRING ASSEMBLY (8403260)					
FIG.20 ELEVATING AND FIRING ASSEMBLY					
1	PAFZZ	96906	MS16998-45	SCREW, CAP, SOCKET HEAD	4
2	PAFZZ	96906	MS35338-63	WASHER, LOCK	4
3	PAFZZ	19206	8403194	HOUSING FIRING TRANSFER	1
4	PAFZZ	19206	11578302	WASHER, FLAT	1
5	PAFZZ	19206	8403186	LEVER, FIRING TRANSFER	1
6	PAFZZ	19206	8403185	TANG, FIRING TRANSFER	1
7	PAFZZ	19206	8403188	SPRING, HELICAL COMPRESSION	1
8	PAFZZ	19200	8403189	PIN, STRAIGHT HEADLESS	1
9	PAFZZ	96906	MS90726-33	BOLT, MACHINE	6
10	PAFZZ	96906	MS35338-45	WASHER, LOCK	6
11	PAFZZ	96906	MS35756-6	KEY, WOODRUFF	1
12	PAFZZ	96906	MS19068-082	NUT, PLAIN, ROUND	1
13	PAFZZ	96906	MS19070-082	WASHER, KEY	1
14	PAFZZ	19200	8403025	WASHER, FLAT	1
15	AFFFF	19204	8403193	CRADLE, ELEVATING ASSEMBLY (SEE FIG.22 FOR ASSEMBLY BREAKDOWN)	1
16	PAFZZ	96906	MS35207-263	SCREW, MACHINE	3
17	PAFZZ	96906	MS35338-62	WASHER, LOCK SPRING	3
18	PAFZZ	19206	11578254	HOUSING ASSEMBLY, FIRING	1

END OF FIGURE

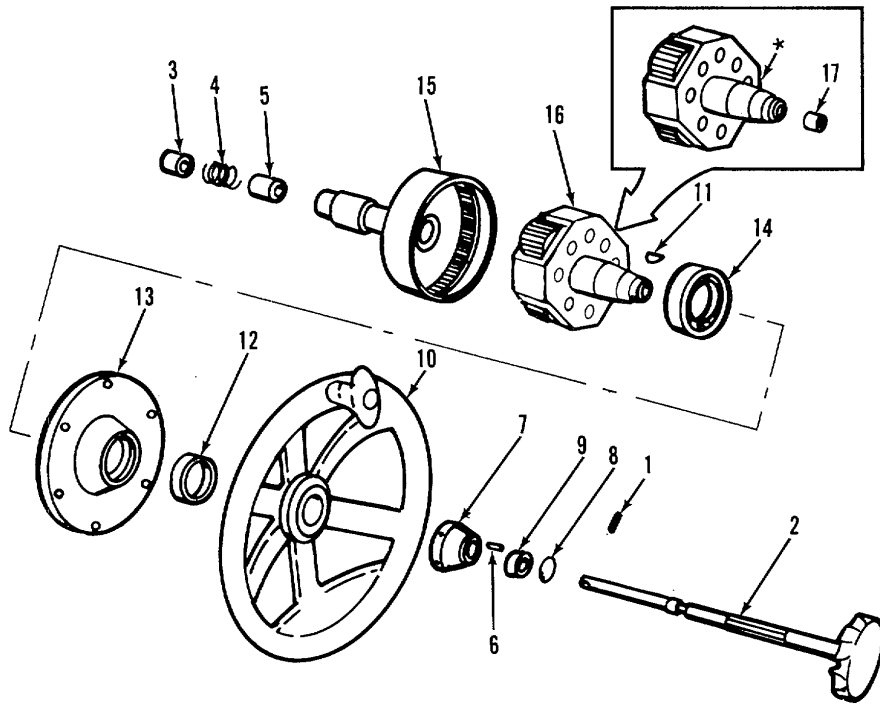


Figure 21. Elevating and firing assembly and planetary gear assembly

(1) ITEM NO	(2) SMR CODE	(3) FSCM	(4) PART NUMBER	(5) DESCRIPTION AND USABLE ON CODE (UOC)	(6) QTY
GROUP 0501 & 0601 ELEVATING AND FIRING ASSEMBLY (8403260) AND GROUP 050102 AND 060102 PLANETARY GEAR ASSEMBLY (8403270)					
FIG.21 ELEVATING AND FIRING ASSEMBLY AND PLANETARY GEAR ASSEMBLY					
1	PAFZZ	96906	MS16562-24	PIN, SPRING	1
2	PAFZZ	19206	11578253	SHAFT, FIRING ASSEMBLY	1
3	PAFZZ	19206	11578250	SPACER, SLEEVE	1
4	PAFZZ	96906	MS24585-1314	SPRING, HELICAL COMPRESSION	1
5	PAFZZ	19206	11578249	SPACER, SLEEVE	1
6	PAFZZ	96906	MS51964-51	SETSCREW	1
7	PAFZZ	19206	8403274	NUT, PLAIN, ROUND	1
8	PAFZZ	96906	MS16625-1100	RING, RETAINING	1
9	PAFZZ	19206	11579632	SEAL, PLAIN ENCASED	1
10	PAFZZ	19206	8403277	HANDWHEEL ASSEMBLY	1
11	PAFZZ	96906	MS35756-12	KEY, WOODRUFF	1
12	PAFZZ	19206	11579631	SEAL, PLAIN ENCASED	1
13	PAFZZ	19206	8403262	COVER ELEVATING	1
14	PAFZZ	79410	B107A	BEARING, BALL, ANNULAR	1
15	PAFZZ	19206	8403261	HOUSING, ELEVATING	1
16	PAFFF	19206	8403270	GEAR, PLANETARY ASSEMBLY	1
17	PAFZZ	19206	11578875	..BEARING, SLEEVE	1

END OF FIGURE

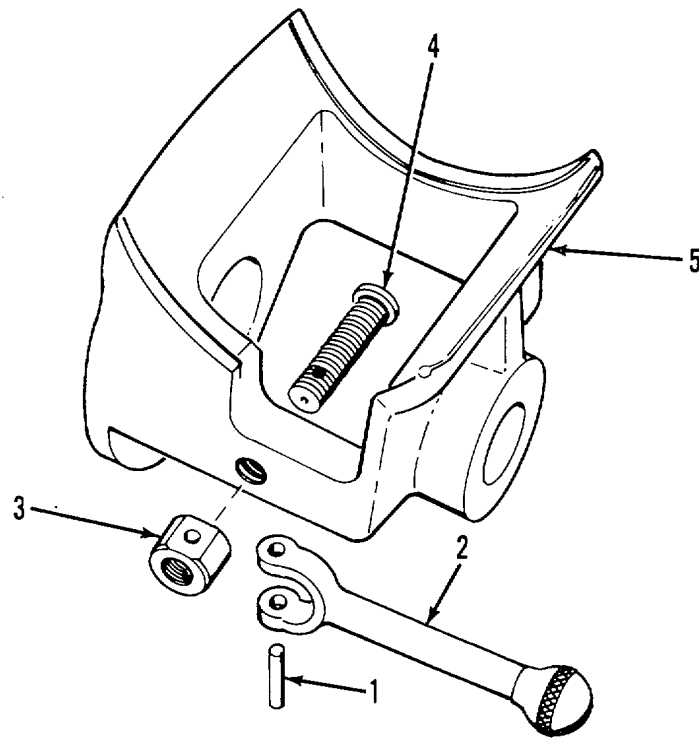


Figure 22. Elevating cradle assembly.

(1) ITEM NO	(2) SMR CODE	(3) FSCM	(4) PART NUMBER	(5) DESCRIPTION AND USABLE ON CODE (UOC)	(6) QTY
GROUP 050101 AND 060101 ELEVATING CRADLE ASSEMBLY (8403193)					
FIG.22 ELEVATING CRADLE ASSEMBLY					
1	PAFZZ	96906	MS16562-50	PIN, SPRING	1
2	PAFZZ	19206	8766848	YOKE, LOCKING	1
3	PAFZZ	19200	8403192	NUT, PLAIN, ROUND	1
4	PAFZZ	19206	8403187	BOLT, MACHINE	1
5	PAFZZ	19206	8403195	SUPPORT, ELEVATING AND FIRING	1

END OF FIGURE

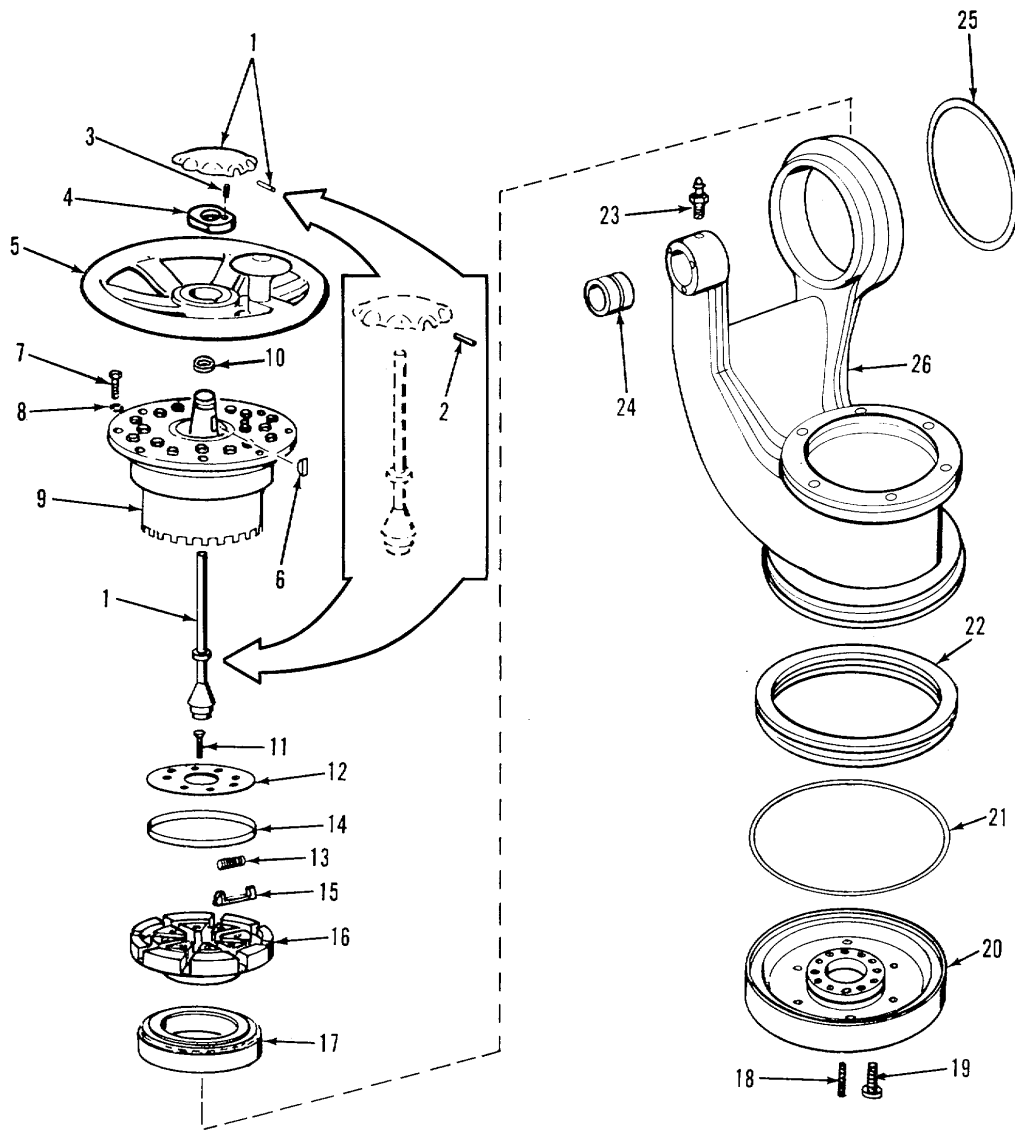


Figure 23. Traversing assembly and shaft assembly.

SECTION II

TM 9-1015-221-34P

(1) ITEM NO	(2) SMR CODE	(3) FSCM	(4) PART NUMBER	(5) DESCRIPTION AND USABLE ON CODE (UOC)	(6) QTY
GROUP 0502 AND 0602 TRAVERSING ASSEMBLY (8403250) AND GROUP 050201 AND 060201 SHAFT ASSEMBLY (8413117)					
FIG.23 TRAVERSING ASSEMBLY AND SHAFT ASSEMBLY					
1	PAFFF	19206	8413117	SHAFT ASSEMBLY	1
2	PAFZZ	96906	MS16562-43	PIN, SPRING	1
3	PAFZZ	96906	MS51964-51	SETSCREW	1
4	PAFZZ	19206	8403353	NUT, PLAIN, ROUND	1
5	PAFZZ	19206	8403329	HANDWHEEL ASSEMBLY	1
6	PAFZZ	96906	MS35756-12	KEY, WOODRUFF	1
7	PAFZZ	96906	MS90726-33	BOLT, MACHINE	8
8	PAFZZ	96906	MS35338-45	WASHER, LOCK	8
9	AFFFF	19206	8403259	DRIVE ASSEMBLY, TRAVERSE (SEE..... FIG.24 FOR ASSEMBLY BREAKDOWN)	1
10	PAFZZ	96906	MS28775-112	PACKING, PREFORMED	1
11	PAFZZ	96906	MS35191-272	SCREW, MACHINE	8
12	PAFZZ	19206	8403027	PLATE TRAVERSE LOCK	1
13	PAFZZ	19206	8403028	SPRING, HELICAL COMPRESSION	8
14	PAFZZ	19206	8403029	SPACER, RING	1
15	PAFZZ	19206	8403026	LOCK TRAVERSE	8
16	PAFZZ	19206	8403000	PLATE, LOCK, TRAVERSE	1
17	PAFZZ	19206	11579630	BEARING, ROLLER, TAPERED	1
18	PAFZZ	88044	AN565E624H16	SETSCREW	6
19	PAFZZ	96906	MS16998-59	SCREW, CAP, SOCKET HEAD	6
20	PAFZZ	19206	8403005	PLATE, BOTTOM, TRAVERSE	1
21	PAFZZ	19200	8403010	SPACER, RING	1
22	PAFZZ	19206	8403009	BEARING, BALL, THRUST	1

SECTION II

TM 9-1015-221-34P

(1) ITEM NO	(2) SMR CODE	(3) FSCM	(4) PART NUMBER	(5) DESCRIPTION AND USABLE ON CODE (UOC)	(6) QTY
23	PAFZZ	96906	MS15003-1	FITTING, LUBRICATION	1
24	PAFZZ	19206	8403023	BEARING, SLEEVE	1
25	PAFZZ	19200	8403031	SPACER, RING	1
26	XAFZZ	19200	8403136	YOKE.....	1

END OF FIGURE

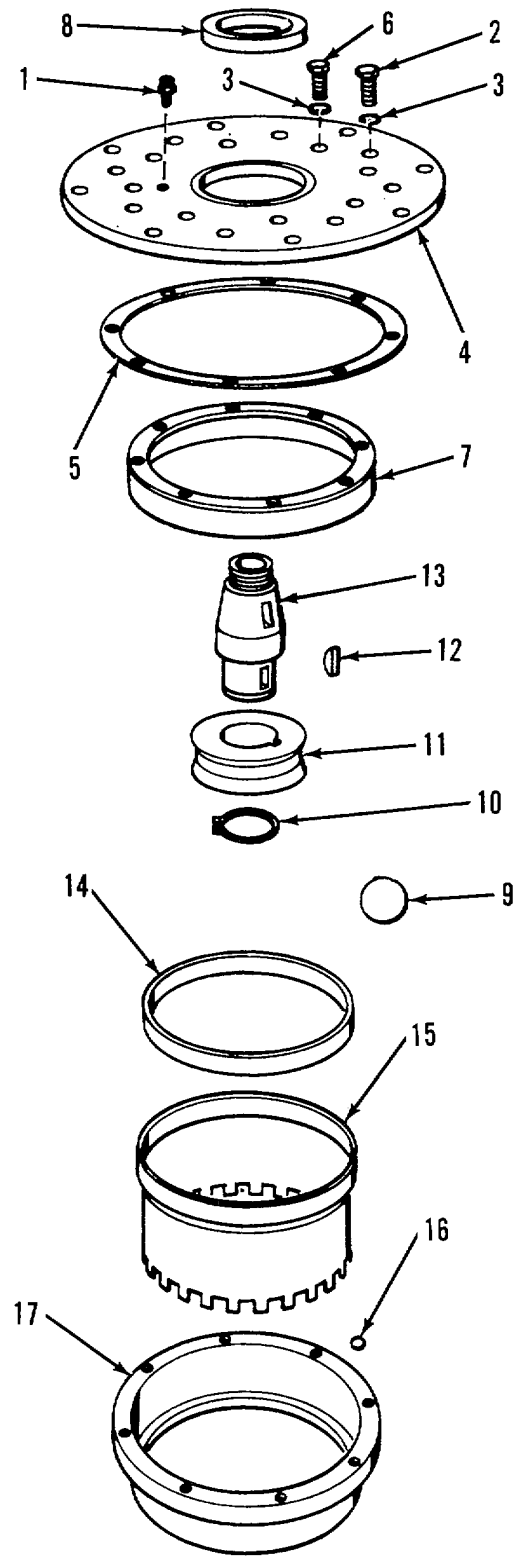


Figure 24. Traversing drive assembly.

(1) ITEM NO	(2) SMR CODE	(3) FSCM	(4) PART NUMBER	(5) DESCRIPTION AND USABLE ON CODE (UOC)	(6) QTY
GROUP 050202 AND 060202 TRAVERSING DRIVE ASSEMBLY (8403259)					
FIG.24 TRAVERSING DRIVE ASSEMBLY					
1	PAFZZ	96906	MS15001-1	FITTING, LUBRICATION	1
2	PAFZZ	96906	MS90726-6	SCREW, CAP, HEXAGON HEAD.....	8
3	PAFZZ	96906	MS35338-63	WASHER, LOCK	16
4	PAFZZ	19206	8403252	COVER TRAVERSE DRIVE	1
5	PAFZZ	19206	8403333	SHIM	1
6	PAFZZ	96906	MS90726-5	SCREW, CAP, HEXAGON HEAD	8
7	PAFZZ	19206	8403253	RING, BEARING, OUTER.....	1
8	PAFZZ	19206	11579631	SEAL, PLAIN ENCASED	1
9	PAFZZ	96906	MS19059-1638	BALL, BEARING.....	9
10	PAFZZ	96906	MS16628-1112	RING, RETAINING	1
11	PAFZZ	19206	8403254	RING, BEARING, INNER	1
12	PAFZZ	96906	MS35756-9	KEY, WOODRUFF	1
13	PAFZZ	19206	8403251	ARBOR TRAVERSE DRIVE	1
14	PAFZZ	19206	8403257	RING, BEARING, OUTER	1
15	PAFZZ	19206	8403258	SLEEVE, TRAVERSE DRIVE	1
16	PAFZZ	96906	MS19059-1012	BALL, BEARING	79
17	PAFZZ	19206	8403255	RING, CLAMP, TRAVERSE	1

END OF FIGURE

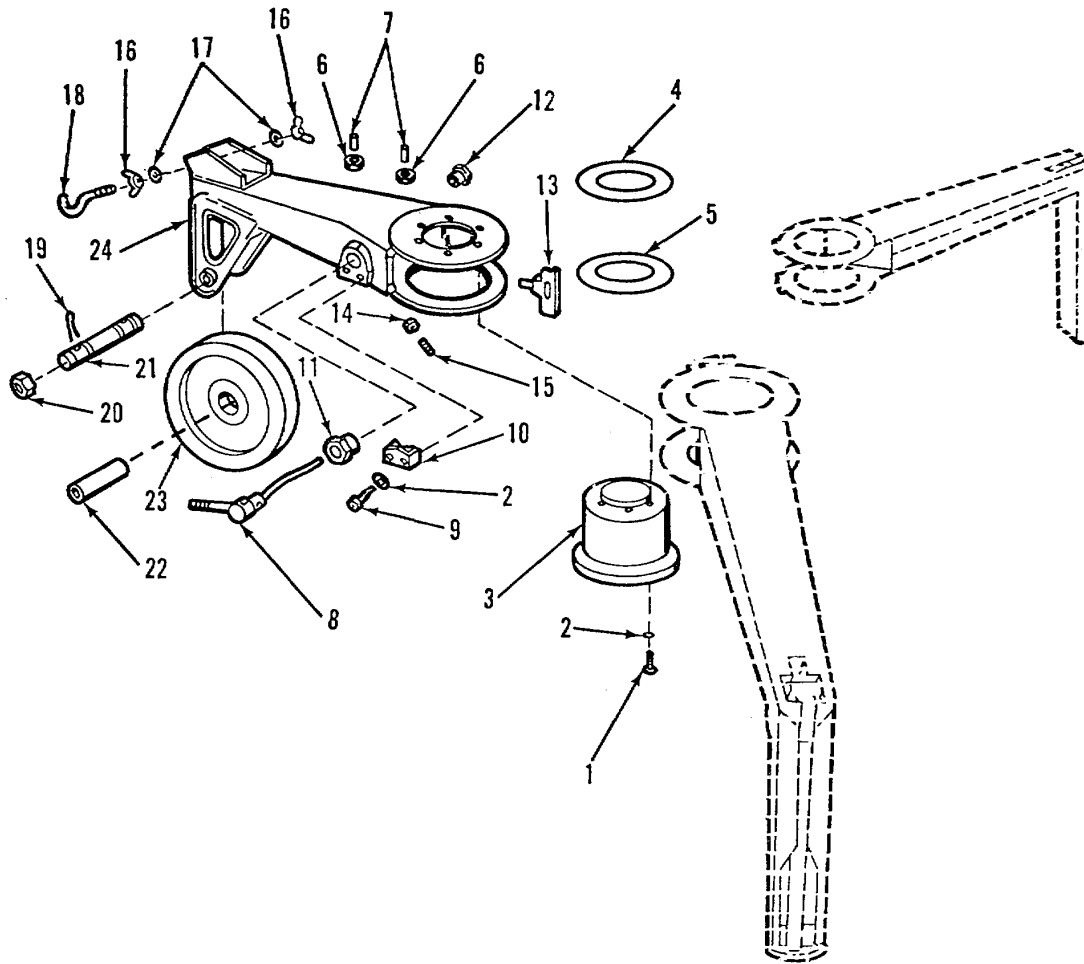


Figure 25. Base assembly (front arm and parts).

(1) ITEM NO	(2) SMR CODE	(3) FSCM	(4) PART NUMBER	(5) DESCRIPTION AND USABLE ON CODE (UOC)	(6) QTY
GROUP 0503 BASE ASSEMBLY (FRONT ARM AND PARTS) (8403161)					
FIG.25 BASE ASSEMBLY (FRONT ARM AND PARTS)					
1	PAFZZ	96906	MS16998-58	SCREW, CAP, SOCKET HEAD UOC:J80	6
2	PAFZZ	96906	MS35338-45	WASHER, LOCK UOC:J80	8
3	PAFZZ	19206	8403054	TRUNNION, BASE UOC:J80	1
4	PAFZZ	19206	8403087	SHIM .015 UOC:J80	1
5	PAFZZ	19206	8403086	SHIM .010 UOC:J80	1
6	PAFZZ	96906	MS35650-302	NUT, PLAIN, HEXAGON UOC:J80	2
7	PAFZZ	96906	MS51974-38	SETSCREW UOC:J80	2
8	PAFZZ	19206	8403060	LEVER ASSEMBLY, BASE LOCK..... UOC:J80	1
9	PAFZZ	96906	MS16998-61	SCREW, CAP, SOCKET HEAD UOC:J80	2
10	PAFZZ	19206	8403056	CAP, BASE LOCKING UOC:J80	1
11	PAFZZ	19206	8403243	ECCENTRIC BASE ARM UOC:J80	1
12	PAFZZ	19206	8403242	ECCENTRIC BASE ARM UOC:J80	1
13	PAFZZ	19205	8403061	KEY, BASE LOCKING UOC:J80	1
14	PAFZZ	96906	MS51968-3	NUT, PLAIN, HEXAGON UOC:J80	4
15	PAFZZ	96906	MS51964-70	SETSCREW UOC:J80	4
16	PAFZZ	96906	MS35426-31	NUT, PLAIN, WING UOC:J80	2
17	PAFZZ	96906	MS35333-42	WASHER, LOCK UOC:J80	2
18	PAFZZ	19206	11579601	HOOK, SCREW UOC:J80	1
19	PAFZZ	96906	MS24665-359	PIN, COTTER UOC:J80	2
20	PAFZZ	96906	MS35692-61	NUT, PLAIN, SLOTTED HEAD UOC:J80	2
21	PAFZZ	19206	8403064	STUD, PLAIN UOC:J80	1
22	PAFZZ	19206	8403062	SPACER, SLEEVE UOC:J80	1
23	PAFZZ	19206	8403063	WHEEL UOC:J80	1

SECTION II

TM9-1015-221-34P

(1) ITEM NO	(2) SMR CODE	(3) FSCM	(4) PART NUMBER	(5) DESCRIPTION AND USABLE ON CODE (UOC)	(6) QTY
24	PAFZZ	19206	8403090	ARM ASSEMBLY, FRONT BASE UOC:J80	1

END OF FIGURE

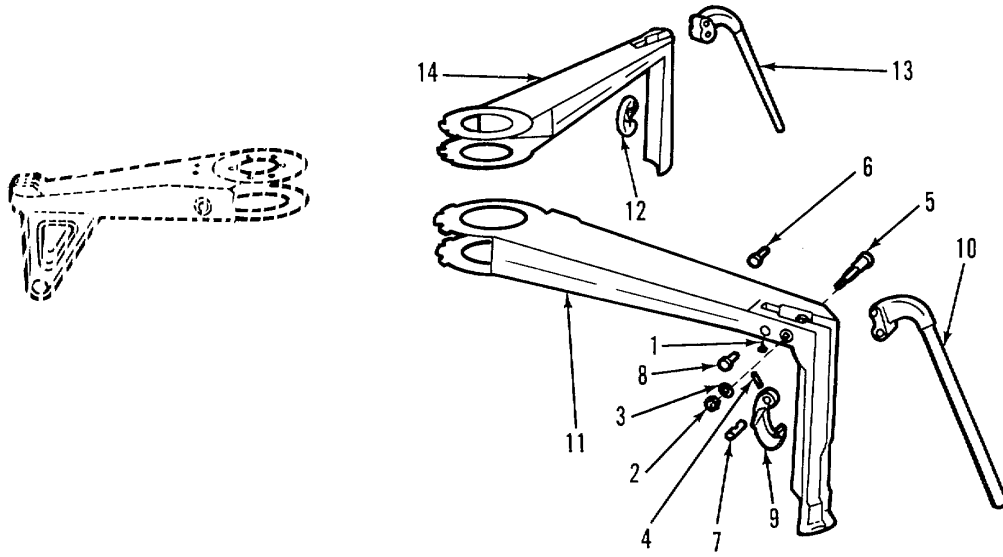


Figure 26. Base assembly (rear arms and parts).

(1) ITEM NO	(2) SMR CODE	(3) FSCM	(4) PART NUMBER	(5) DESCRIPTION AND USABLE ON CODE (UOC)	(6) QTY
GROUP 0503 BASE ASSEMBLY (REAR ARMS AND PARTS) (8403161)					
FIG.26 BASE ASSEMBLY (REAR ARMS AND PARTS)					
1	PAFZZ	96906	MS51974-38	SETSCREW UOC:J80	4
2	PAFZZ	96906	MS51968-9	NUT, PLAIN, HEXAGON UOC:J80	2
3	PAFZZ	96906	MS35338-46	WASHER, LOCK UOC:J80	3
4	PAFZZ	96906	MS16562-132	PIN, SPRING UOC:J80	2
5	PAFZZ	19206	8403048	PIN, BASE HANDLE SUPPORT UOC:J80	2
6	PAFZZ	19200	8403073	PIN, STRAIGHT, HEADED UOC:J80	2
7	PAFZZ	19200	8403071	PIN, STRAIGHT HEADLESS UOC:J80	2
8	PAFZZ	19200	8403072	PIN, STRAIGHT, HEADED UOC:J80	2
9	PAFZZ	19206	8403045	CLAMP, LH BASE UOC:J80	1
10	PAFZZ	19206	8403070	HANDLE ASSEMBLY, LH BASE UOC:J80	1
11	PAFZZ	19206	8403096	ARM ASSEMBLY, REAR LEFT UOC:J80	1
12	PAFZZ	19206	8403044	CLAMP, RH BASE UOC:J80	1
13	PAFZZ	19206	8403069	HANDLE ASSEMBLY, RH BASE UOC:J80	1
14	PAFZZ	19206	8403093	ARM ASSEMBLY, REAR RIGHT UOC:J80	1

END OF FIGURE

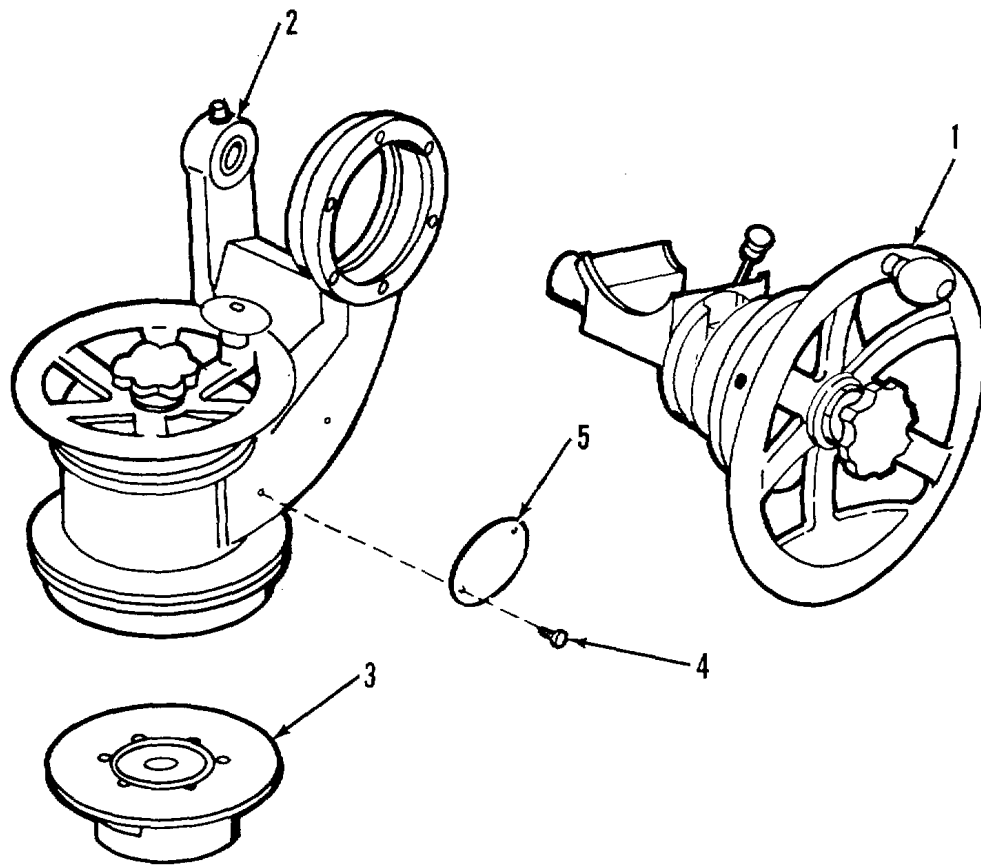


Figure 27. Mount, rifle, 106-mm: M92.

(1) ITEM NO	(2) SMR CODE	(3) FSCM	(4) PART NUMBER	(5) DESCRIPTION AND USABLE ON CODE (UOC)	(6) QTY
GROUP 06 MOUNT, RIFLE, 106-MM: M92 (8407830)					
FIG. 27 MOUNT, RIFLE, 106-MM: M92					
1	AFFFF	19204	8403260	ELEVATING AND FIRING ASSEMBLY (SEE FIGS. 20 & 21 FOR ASSEMBLY BREAKDOWN)	1
2	XFDD	19204	8403250	TRAVERSING ASSEMBLY (SEE FIG. 23 FOR ASSEMBLY BREAKDOWN)	1
3	PAFFF	19206	8407836	ADAPTER, RIFLE MOUNT ASSEMBLY UOC:J81	1
4	PAFZZ	96906	MS24629-23	SCREW, TAPPING THREAD	2
5	PAFZZ	19206	11578397	PLATE, IDENTIFICATION	1

END OF FIGURE

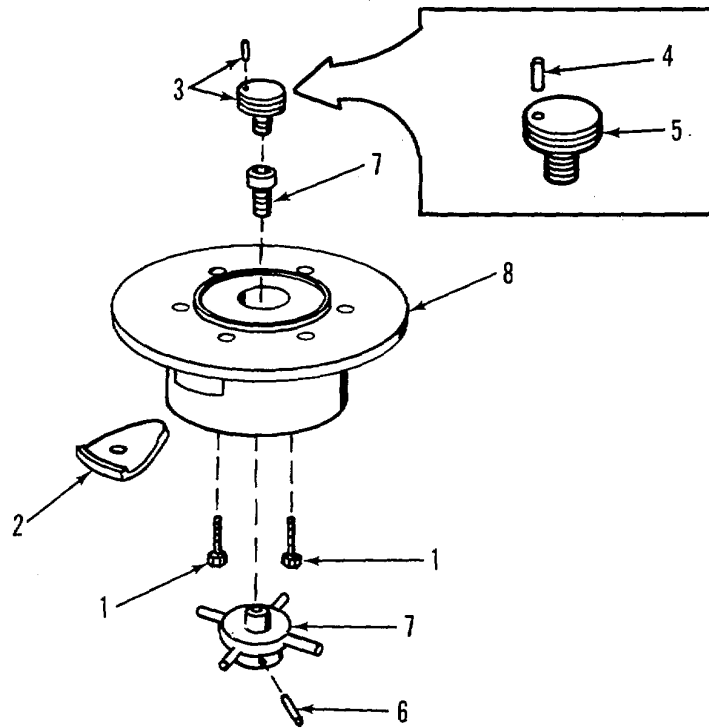


Figure 28. Rifle mount adapter assembly and collar and pin assembly.

(1) ITEM NO	(2) SMR CODE	(3) FSCM	(4) PART NUMBER	(5) DESCRIPTION AND USABLE ON CODE (UOC)	(6) QTY
GROUP 0603 RIFLE MOUNT ADAPTER ASSEMBLY (8407836) AND GROUP 060301 COLLAR AND PIN ASSEMBLY (8407817)					
FIG.28 RIFLE MOUNT ADAPTER ASSEMBLY AND COLLAR AND PIN ASSEMBLY					
1	PAFZZ	96906	MS16998-60	SCREW, CAP, SOCKET HEAD UOC:J81	6
2	PAFZZ	19204	8407831	LATCH, ADAPTER UOC:J81	3
3	AFFFF	19204	8407817	COLLAR AND PIN ASSEMBLY UOC: J81	1
4	PAFZZ	96906	MS16562-127	..PIN, SPRING UOC:J81	1
5	PAFZZ	19204	8407816	..COLLAR, LATCH ASSEMBLY UOC:J81	1
6	PAFZZ	96906	MS35671-55	PIN, GROOVED HEADLESS UOC: J81	1
7	PAFZZ	19206	11577210	CAPSTAN ASSEMBLY UOC: J81	1
8	XAFZZ	19204	8407835	PLATE AND GUIDE ASSEMBLY..... UOC:J81	1

END OF FIGURE

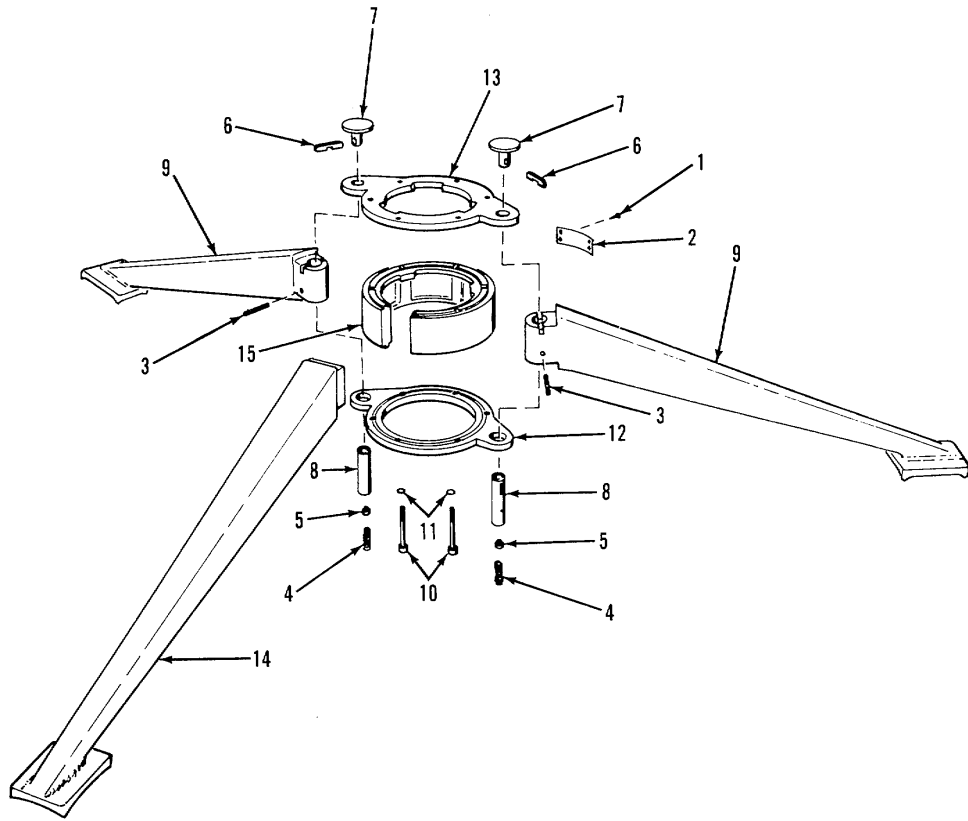


Figure 29. Tripod, rifle mount; M27.

(1) ITEM NO	(2) SMR CODE	(3) FSCM	(4) PART NUMBER	(5) DESCRIPTION AND USABLE ON CODE (UOC)	(6) QTY
GROUP 07 TRIPOD, RIFLE MOUNT: M27 (8407810)					
FIG.29 TRIPOD, RIFLE MOUNT: M27					
1	PAFZZ	96906	MS21318-27	SCREW, DRIVE UOC:J81	4
2	PAFZZ	19206	11577713	PLATE IDENTIFICATION UOC:J81	1
3	PAFZZ	21450	586127	PIN, SPRING UOC:J81	2
4	PAFZZ	19204	8407812	SPRING, HELICAL, COMPRESSION UOC:J81	2
5	PAFZZ	19204	8407811	PIN, SHOULDER HEADLESS UOC:J81	2
6	PAFZZ	19200	8407815	KEY, MACHINE UOC:J81	2
7	XAFZZ	19200	8407814	BUTTON UOC:J81	2
8	PAFZZ	19204	8407813	PIN, HOLLOW UOC:J81	2
9	XAFZZ	19204	8407828	LEG UOC:J81	2
10	PAFZZ	96906	MS90727-72	SCREW, CAP, HEXAGON HEAD UOC:J81	6
11	PAFZZ	96906	MS35333-42	WASHER, LOCK UOC:J81	6
12	XAFZZ	19200	8407832	RING UOC:J81	1
13	XAFZZ	19200	8407834	RING UOC:J81	1
14	XAFZZ	19200	8407829	LEG UOC:J81	1
15	XAFZZ	19200	8407833	RING UOC:J81	1

END OF FIGURE

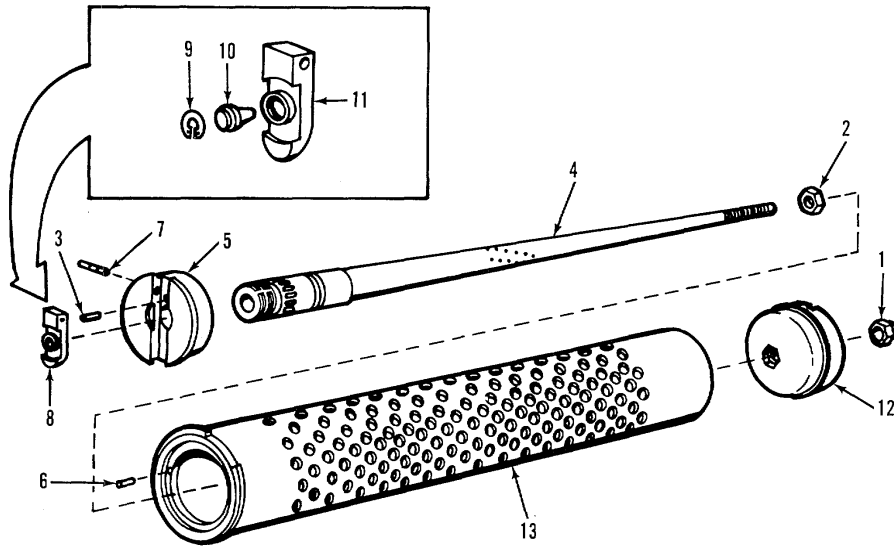
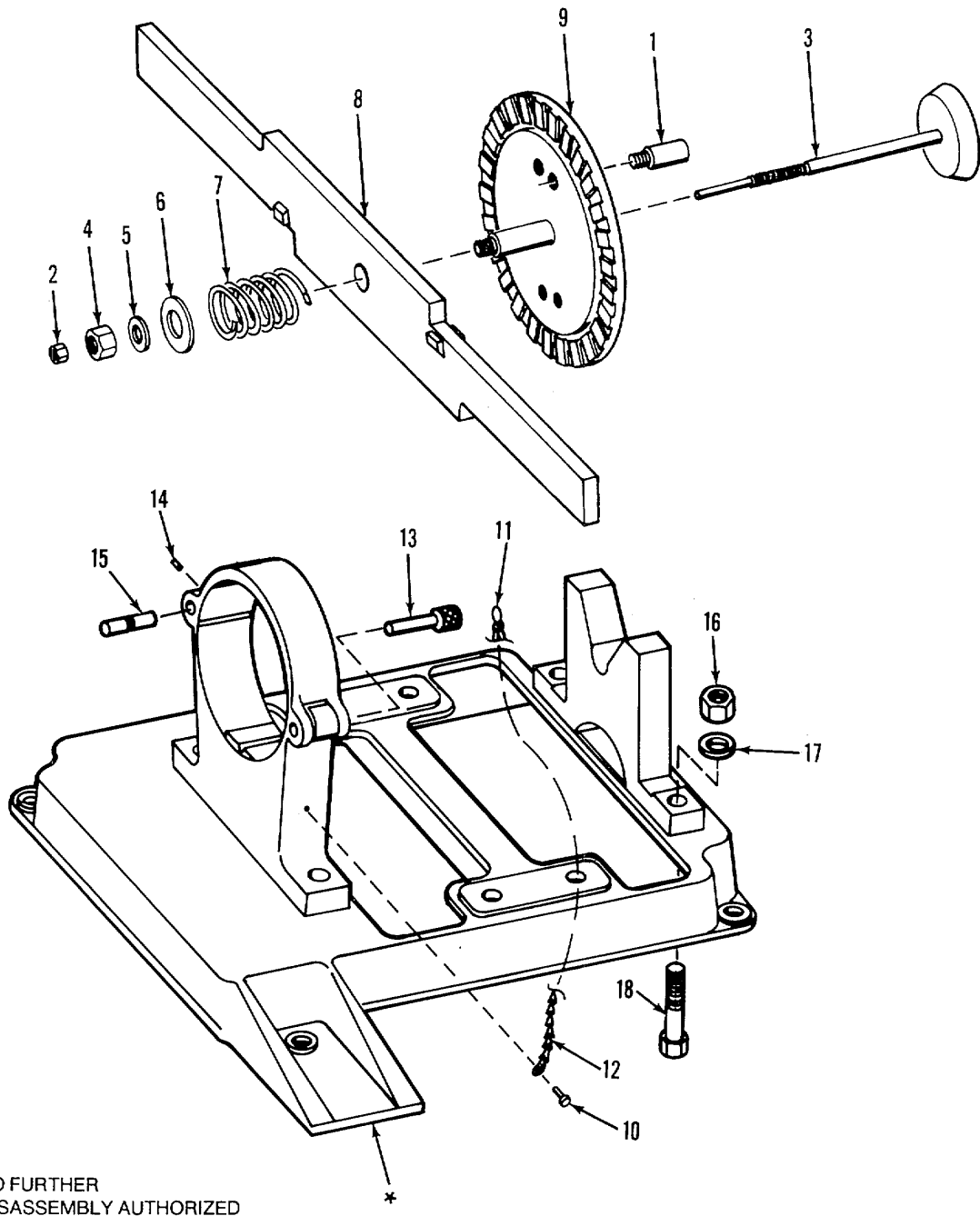


Figure 30. Gun, subcaliber caliber .30: M9 and door assembly.

(1) ITEM NO	(2) SMR CODE	(3) FSCM	(4) PART NUMBER	(5) DESCRIPTION AND USABLE ON CODE (UOC)	(6) QTY
GROUP 09 GUN, SUBCALIBER CALIBER .30: M9 (7307568) AND GROUP 0901 DOOR ASSEMBLY (11577244)					
FIG.30 GUN, SUBCALIBER CALIBER .30: M9 AND DOOR ASSEMBLY					
1	XAFZZ	96906	MS51922-53	NUT, SELF-LOCKING, HEAD UOC:M63	1
2	XAFZZ	96906	MS35691-1022	NUT, PLAIN, HEXAGON UOC:M63	1
3	PAFZZ	96906	MS16562-49	PIN, SPRING UOC:M63	1
4	XAFZZ	19204	7309726	BARREL UOC:M63	1
5	XAFZZ	19204	7307553	BUSHING BREECH UOC:M63	1
6	PAFZZ	96906	MS16562-47	PIN, SPRING UOC:M63	1
7	XAFZZ	19204	7307567	PIN UOC:M63	1
8	PAFFF	19206	11577244	DOOR ASSEMBLY UOC:M63	1
9	PAFZZ	96906	MS16625-1037	..RING, RETAINING UOC:M63	1
10	PAFZZ	19206	11577242	..PIN, FIRING UOC:M63	1
11	XAFZZ	19206	11577243	..DOOR BODY UOC:M63	1
12	XAFZZ	19204	7309725	MUZZLE, NOSE UOC:M63	1
13	XAFZZ	19204	7307559	CASE, SHELL UOC: M63	1

END OF FIGURE



* NO FURTHER
DISASSEMBLY AUTHORIZED

Figure 31. Venturi wrench.

(1) ITEM NO	(2) SMR CODE	(3) FSCM	(4) PART NUMBER	(5) DESCRIPTION AND USABLE ON CODE (UOC)	(6) QTY
GROUP 12 VENTURI WRENCH (7309119)					
FIG.31 VENTURI WRENCH					
1	PAHZZ	19206	7306689	LOCK	4
2	PAHZZ	96906	MS51967-15	NUT, PLAIN, HEXAGON	1
3	PAHZZ	19206	7309114	KEEPER ASSEMBLY	1
4	PAHZZ	19206	11579321	NUT, PLAIN, HEXAGON	1
5	PAHZZ	96906	MS27183-27	WASHER, FLAT	1
6	PAHZZ	19206	7305409	WASHER, SHOULDERED	1
7	PAHZZ	19206	7305402	SPRING, HELICAL COMPRESSION	1
8	PAHZZ	19206	7305413	HANDLE	1
9	PAHZZ	19206	7309115	PLATE ASSEMBLY	1
10	PAHZZ	96906	MS35206-228	SCREW, MACHINE	1
11	PAHZZ	19206	7305405	RING, CONNECTING, ROUND	1
12	PAHZZ	81348	RR-C-271	CHAIN, WELDLESS	1
13	PAHZZ	19206	7305400	PIN, STRAIGHT, HEADED	1
14	PAHZZ	96906	MS51981-40	SETSCREW	1
15	PAHZZ	19206	7305399	PIN, GROOVED HEADLESS	1
16	PAHZZ	96906	MS51967-30	NUT, PLAIN, HEXAGON	4
17	PAHZZ	96906	MS35338-72	WASHER, LOCK	4
18	PAHZZ	96906	MS18154-214	SCREW, CAP, HEXAGON HEAD	4

END OF FIGURE

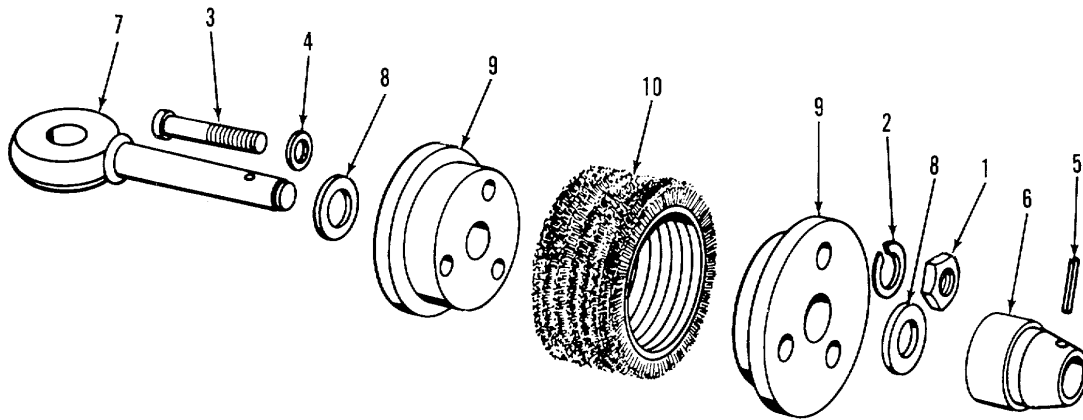
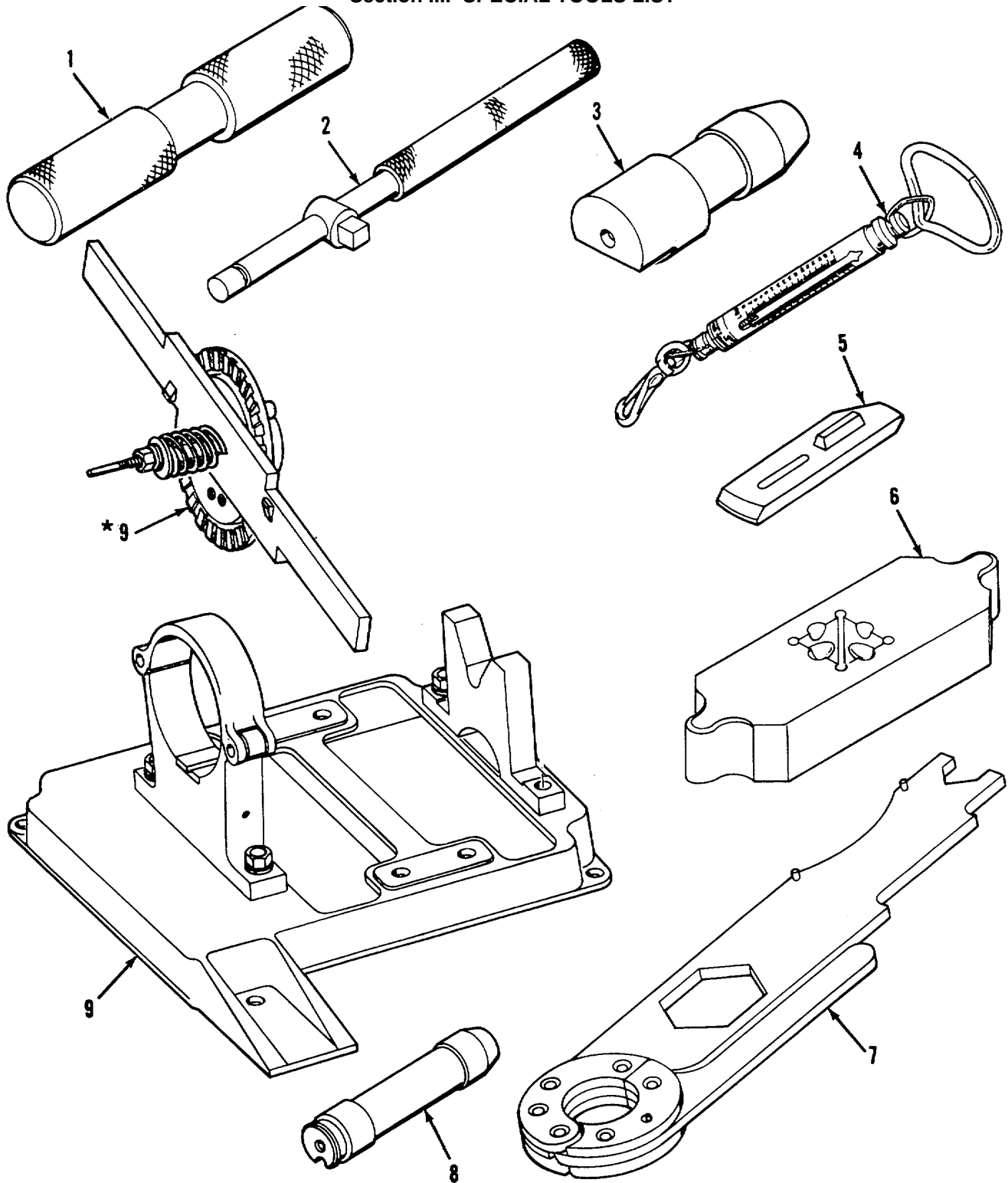


Figure 32. Artillery cleaning brush.

(1) ITEM NO	(2) SMR CODE	(3) FSCM	(4) PART NUMBER	(5) DESCRIPTION AND USABLE ON CODE (UOC)	(6) QTY
GROUP 13 ARTILLERY CLEANING BRUSH (8766039)					
FIG.32 ARTILLERY CLEANING BRUSH					
1	PAOZZ	96906	MS51967-2	NUT, PLAIN, HEXAGON	3
2	PAOZZ	96906	MS35338-63	WASHER, LOCK	3
3	PAOZZ	96906	MS90728-16	SCREW, CAP, HEXAGON HEAD	3
4	PAOZZ	96906	MS27183-10	WASHER, FLAT	3
5	PAOZZ	96906	MS16562-42	PIN, SPRING	1
6	PAOZZ	19206	8766029	ADAPTER, BORE BRUSH	1
7	PAOZZ	19206	8766031	BOLT BLANK	1
8	PAOZZ	96906	MS27183-18	WASHER, FLAT	2
9	PAOZZ	19206	8766038	CAP, END.....	2
10	PAOZZ	19207	6157208	BRUSH SECTION	1

END OF FIGURE

Section III. SPECIAL TOOLS LIST



* SUPPLIED WITH IDENTICALLY NUMBERED PART

Figure 33. Special tools.

(1) ITEM NO	(2) SMR CODE	(3) FSCM	(4) PART NUMBER	(5) DESCRIPTION AND USABLE ON CODE (UOC)	(6) QTY
GROUP 9500 SPECIAL TOOLS					
FIG. 33 SPECIAL TOOLS					
	ADFFA	19204	5910378	TOOL AND GAGE KIT, MAINTENANCE RIFLE, 106-MM, M40A2 AND M40A4 BOI: 1 PER SUPPORTING DSU/GSU	
1	PAFZZ	19206	11577693	..ALIGNING TOOL, CAM	
2	PAOZZ	50024	2479141	..HANDLE, SOCKET WRENCH -T- SLIDING 3/4 DRIVE 18-1/2 O/A LG	
3	PAFZZ	19205	7799716	..GAGE, HEAD SPACE	
4	PAFZZ	81349	MIL-T-11752	..TENSION HANDLE, STEEL MEASURING TAPE SURVEYORS 0 TO 30 LB GRADUATIONS, 1/2 LB SMALLEST INCREMENT	
5	PAOZZ	19206	7307536	..TOOL, FIRING CABLE	
6	PAOZZ	19206	7309111	..TOOL, RECOIL, COMPENSATING RING ADJUSTING	
7	PACZZ	19206	7307537	..WRENCH, SPOTTING GUN ADJUSTING	
8	PAFZZ	19205	7319944	GAGE, HEADSPACE CALIBER .30 BOI: 1 PER SUPPORTING DSU/GSU	
9	PAHHH	19206	7309119	WRENCH, VENTURI BOI: 1 PER SUPPORTING GS UNIT	

END OF FIGURE

Section IV. NATIONAL STOCK NUMBER AND PART NUMBER INDEX

STOCK NUMBER	FIG.	ITEM	STOCK NUMBER	FIG.	ITEM
1015-00-004-2318	12	15	1015-00-219-8148	24	4
	15	2	3110-00-219-8149	24	7
5310-00-013-1074	31	17	3110-00-219-8150	24	11
5315-00-013-7137	6	1	1015-00-219-8151	24	17
5315-00-013-7214	25	19	3110-00-219-8153	24	14
5310-00-021-7216	31	4	1015-00-219-8154	24	15
1005-00-047-3861	14	3	1015-00-219-8156	21	15
5315-00-049-5240	29	5	1015-00-219-8157	21	13
5350-00-049-5241	29	4	5310-00-219-8159	21	7
1015-00-049-5242	28	5	1015-00-219-8161	21	10
1015-00-049-5244	28	2	1015-00-219-8165	23	5
1015-00-049-5246	27	3	5365-00-219-8166	24	5
4730-00-050-4203	24	1	5310-00-219-8177	23	4
4730-00-050-4208	23	23	1015-00-219-8178	21	16
5315-00-051-8636	6	14	5306-00-225-9088	20	9
5315-00-051-8637	5	1		23	7
5315-00-052-6697	18	1	5315-00-226-2670	31	13
5305-00-052-8251	12	1	5315-00-240-1008	32	5
	13	1	9905-00-248-1143	29	2
3110-00-052-8408	24			9	
5305-00-253-5618	29	1			
5315-00-058-6079	12	19	5365-00-256-2861	17	4
	28	4	5305-00-269-3248	29	10
5315-00-058-6094	10	4	5310-00-274-8710	20	17
5315-00-058-6127	29	3	5310-00-274-8715	20	2
5315-00-060-5074	28	6		24	3
5365-00-067-6910	24	10		32	2
5305-00-067-9867	31	18	1015-00-300-5386	12	12
5305-00-068-0505	24	6	1015-00-300-5391	13	14
5305-00-068-0506	24	2	1015-00-300-5392	23	1
5305-00-071-2513	32	3	1290-00-300-8034	1	9
4933-00-082-0105	31	8	1015-00-305-0754	12	18
4933-00-082-0118	31	1	4933-00-334-0498	33	6
4933-00-082-0128	31	3	4933-00-334-0499	33	9
4933-00-082-0134	31	9	5305-00-336-1616	13	16
5360-00-088-4815	31	7	1015-00-340-3426	13	15
5365-00-088-4845	31	11	1240-00-344-4689	1	7
1015-00-089-8542	14	17	1005-00-315-3826	7	2
5120-00-099-8544	33	2	1005-00-345-3827	2	2
3110-00-100-5348	23	17	1005-00-345-3828	2	16
5315-00-127-2201	31	15	1015-00-351-2925	21	2
1015-00-133-9436	1	1	1015-00-357-0016	20	18
3110-00-142-0145	24	16	5305-00-389-8133	10	1
5306-00-143-1678	32	7	4933-00-398-4106	33	8
5320-00-143-6343	4	1	5310-00-407-9566	20	10
5360-00-150-2565	21	4		23	8
5330-00-154-3110	21	9		25	2
4010-00-171-4512	31	12	5365-00-419-3094	21	3
5330-00-171-9075	21	12	5365-00-445-5188	21	5
	24	8	1015-00-445-9902	17	10
1015-00-219-8147	24	13	5315-00-474-7405	17	5

NATIONAL STOCK NUMBER AND PART NUMBER INDEX

STOCK NUMBER	FIG.	ITEM	STOCK NUMBER	FIG.	ITEM
9905-30-480-5661	19	5	1005-00-726-6349	8	4
	27	5	1005-00-726-6353	4	2
1015-00-505-5248	1	4	1005-00-726-6355	10	3
5315-00-505-5249	29	8	1005-00-726-6357	3	4
5315-00-505-5250	29	6	1005-00-726-6361	6	7
1005-00-506-5543	2	5	1005-00-726-6366	6	13
1005-00-511-9042	1	2	1005-00-726-6367	10	2
1005-00-511-9043	6	16	1005-00-726-6374	3	2
1015-00-511-9124	1	5	5315-00-726-6377	6	6
1290-00-535-7761	1	6	5315-00-726-6379	8	1
5310-00-543-1863	20	12	5315-00-726-6380	6	9
3110-00-554-5304	2i	14	5315-00-726-6386	7	1
5310-00-570-9739	S1	6	5315-00-726-6388	8	2
5305-00-576-2150	17	2	1005-00-726-6393	3	5
5310-00-595-7237	25	17	1005-00-726-6399	7	4
	29	11	1005-00-726-6400	3	1
5330-00-599-2934	23	10	1005-00-726-6408	6	10
1005-00-603-1297	2	8	1005-00-726-6409	2	6
1015-00-615-7208	32	10	5360-00-796-6413	6	5
5315-00-616-5514	12	3	5360-00-726-6415	2	9
	17	3	5360-00-726-6416	3	6
	20	11	5360-00-726-6417	6	8
5315-00-616-5522	21	11	5360-00-726-6419	8	5
	23	6	5360-00-726-6420	6	12
5315-00-616-5525	24	12	5360-00-726-6421	5	3
5310-00-637-9541	26	3	5360-00-726-6422	7	3
5305-00-638-7518	13	5	1005-00-726-6423	11	1
6675-00-641-3540	33	4	1005-00-726-6430	8	3
1015-00-672-8735	12	7	1005-00-726-6416	8	8
1015-00-679-0481	12	4	5320-00-726-6447	8	6
5310-00-682-5444	20	13	1005-00-726-6448	8	7
1005-00-690-4002	9	1	5315-00-726-6497	6	2
5305-00-715-1216	31	14	5315-00-726-6498	6	3
5305-00-716-8001	25	7	1005-00-726-6501	5	4
	26	1	1005-00-726-6561	6	15
1015-00-723-0796	12	6	5310-00-726-6830	2	13
1015-00-723-0797	12	5	5310-00-726-6831	2	12
1015-00-723-0799	12	14	1005-00-726-6833	2	14
1015-00-723-8001	15	1	5315-00-726-S849	11	2
5365-00-723-0806	12	10	1015-00-730-7472	13	7
3110-00-723-0807	12	11	5360-00-730-7475	17	8
5360-00-723-0809	12	16	5315-00-730-7473	17	6
	15	3	1015-00-730-7477	17	1
5360-00-723-0810	12	9	5305-00-730-7478	14	15
5305-00-724-5817	25	15	1015-00-730-7490	14	13
5305-00-724-6799	21	6	5310-00-730-7493	14	2
	23	3	5365-00-730-7494	14	1
1005-00-726-6340	3	7	3120-00-730-7495	14	9
1005-00-726-6342	2	4	1015-00-730-7496	14	8
1005-00-726-6348	6	4	1015-00-730-7497	14	7

NATIONAL STOCK NUMBER AND PART NUMBER INDEX

STOCK NUMBER	FIG.	ITEM	STOCK NUMBER	FIG.	ITEM
5310-00-730-7498	14	6	5365-00-840-3062	25	22
1015-00-730-7502	13	13	1015-00-840-3063	25	23
1015-00-730-7503	13	8	5307-00-840-3064	25	21
1015-00-730-7509	17	7	1015-00-840-3069	26	13
1015-00-730-7512	14	11	1015-00-840-3070	26	10
1015-00-730-7513	14	14	5315-00-840-3071	26	7
1005-00-730-7514	14	5	5315-00-340-3072	26	8
1015-00-730-7517	13	6	5315-00-840-3073	26	6
1015-00-730-7519	13	3	5365-00-840-3086	25	5
1015-00-730-7523	17	11	5365-00-840-3087	25	4
4933-00-730-7536	33	5	1015-00-840-3090	25	24
4933-00-730-7537	33	7	1015-00-840-3093	26	14
1005-00-751-9108	2	11	1015-00-840-3096	26	11
5310-00-761-3706	31	2	1015-00-840-3185	20	6
5310-00-761-6882	32	1	1015-00-840-3186	20	5
5310-00-762-6219	31	16	5306-00-840-3187	22	4
1015-00-782-9872	32	6	5360-00-840-3188	20	7
1015-00-782-9873	32	9	5315-00-840-3189	20	8
5310-00-785-1762	26	2	5310-00-840-3192	22	3
1005-00-795-5402	2	15	1015-00-840-3194	20	3
1015-00-797-3568	22	2	1015-00-840-3195	22	5
5365-00-804-9735	30	9	1015-00-840-3242	25	12
5365-00-807-2636	21	8	1015-00-840-3243	25	11
5310-00-809-4058	32	4	5315-00-312-3308	16	1
5310-00-809-5998	32	8	5315-00-844-3662	14	4
5310-00-809-8541	31	5	5315-00-844-3961	23	2
5315-00-814-3531	22	1	5315-00-844-3964	30	6
4933-00-822-1718	33	3	5315-00-844-3965	14	12
5305-00-823-5719	23	18	5315-00-844-3966	13	9
5310-00-827-8487	25	16		30	3
5315-00-828-9829	26	4	5360-00-854-4471	2	3
5315-00-840-0227	21	1	5305-00-855-0972	19	4
1015-00-840-3000	23	16		27	4
1015-00-840-3005	23	20	5360-00-873-6959	13	10
3110-00-840-3009	23	22	1015-00-878-0032	14	16
5330-00-840-3010	23	21	1240-00-886-5888	1	8
3120-00-840-3023	23	24	4933-00-891-7892	33	1
5310-00-840-3025	20	14	5315-00-898-9323	3	3
1015-00-840-3026	23	15	1005-00-909-2854	30	10
1025-00-840-3027	23	12	5310-00-913-7020	25	14
5360-00-840-3028	23	13	1015-00-921-0587	28	7
5365-00-840-3029	23	14	1005-00-923-4255	30	8
5330-00-840-3031	23	25	5310-00-934-9751	25	6
1015-00-840-3044	26	12	1015-00-945-9769	16	2
1015-00-840-3045	26	9	3110-00-948-9796	17	9
1015-00-840-3048	26	5	5305-00-978-9378	14	10
1015-00-840-3054	25	3	5305-00-983-6662	13	12
1015-00-840-3056	25	10		20	1
1015-00-840-3060	25	8	5305-00-983-6664	13	4
1015-00-840-3061	25	13	5305-00-983-6670	25	1

NATIONAL STOCK NUMBER AND PART NUMBER INDEX

5305-00-983-6672	28	1
5305-00-983-6673	25	9
5305-00-983-7448	13	2
5305-00-984-4988	31	10
5305-00-984-7363	23	11
5305-00-989-7434	20	16
5310-00-998-0608	25	20
1015-00-998-6072	13	11
1015-00-998-6073	12	13
1015-00-998-6074	12	8
1015-00-998-6075	12	17
1015-01-044-6921	2	1
5310-01-064-7229	20	4
5340-01-071-3937	25	18
5310-01-080-2211	25	16
3120-01-113-9909	21	17

NATIONAL STOCK NUMBER AND PART NUMBER INDEX

FSCM	PART NUMBER	STOCK NUMBER	FIG.	ITEM
88044	AN565D820H6	5305-00-576-2150	17	2
88044	AN565E624H16	5305-00-823-5719	23	18
79410	B107A	3110-00-554-5304	21	14
81349	MIL-T-11752	6675-00-641-3540	33	4
96906	MS15001-1	4730-00-050-4203	24	1
96906	MS15003-1	4730-00-050-4208	23	23
96906	MS16562-100	5315-00-842-3308	16	1
96906	MS16562-109	5315-00-051-8637	5	1
96906	MS16562-120	5315-00-051-8636	6	14
96906	MS16562-127	5315-00-058-6079	12	19
			28	4
96906	MS16562-131	5315-00-898-9823	3	3
96906	MS16562-132	5315-00-828-9829	26	4
96908	MS16562-134	5315-00-058-6094	10	4
96906	MS16562-141	5315-00-052-6697	18	1
96906	MS16562-24	5315-00-840-0227	21	1
96906	MS16562-42	5315-00-240-1008	32	5
96906	MS16562-43	5315-00-844-3961	23	2
96906	MS16562-47	5315-00-844-3964	30	6
96906	MS16562-48	5315-00-844-3965	14	12
96906	MS16562-49	5315-00-844-3966	13	9
			30	3
96906	MS16562-50	5315-00-814-3531	22	1
96906	MS16562-62	5315-00-844-3662	14	4
96906	MS16625-1037	5365-00-804-9735	30	9
96906	MS16625-1100	5365-00-807-2636	21	8
96906	MS16626-1050	5365-00-256-2861	17	4
96906	MS16628-1112	5365-00-067-6910	24	10
96906	MS16997-58	5305-00-978-9378	14	10
96906	MS16998-45	5305-00-983-6662	13	12
			20	1
96906	MS16998-47	5305-00-983-6664	13	4
96906	MS16998-50	5305-00-052-8251	12	1
			13	1
96906	MS16998-58	5305-00-983-6670	25	1
96906	MS16998-59	5305-00-383-6671	23	19
96906	MS16998-60	5305-00-983-6672	28	1
96906	MS16998-61	5305-00-983-6673	25	9
96906	MS16998-74	5305-00-983-7448	13	2
96906	MS18154-214	5305-00-067-9867	31	13
96906	MS19059-1012	3110-00-142-0145	24	16
96906	MS19059-1638	3110-00-052-8408	24	9
96906	MS19061-13	3110-00-948-9796	17	9
96906	MS19068-082	5310-00-543-4863	20	12
96906	MS19070-082	5310-00-682-5444	20	13
96906	MS21318-27	5305-00-253-5618	29	1
96906	MS24585-1314	5360-00-150-2565	21	4
96906	MS24629-23	5305-00-855-0972	19	4
			27	4
96906	MS24665-359	5315-00-013-7214	25	19
96906	MS24665-814	5315-00-013-7137	6	1

NATIONAL STOCK NUMBER AND PART NUMBER INDEX

FSCM	PART NUMBER	STOCK NUMBER	FIG.	ITEM
96906	MS27183-10	5310-00-809-4058	32	4
96906	MS27183-18	5310-00-809-5998	32	8
90906	MS27183-27	5310-00-809-8541	31	5
96906	MS28775-112	5330-00-599-2934	23	10
96906	MS35191-272	5305-00-981-7363	23	11
96906	MS35206-228	5305-00-984-4988	31	10
96906	MS35207-233	5305-00-989-7434	20	16
96906	MS35333-42	5310-00-595-7237	25	17
			29	11
96906	MS35338-45	5310-03-407-9566	20	10
			23	8
			25	2
96906	MS35338-46	5310-00-637-9541	26	3
96906	MS35338-62	5310-00-274-8710	20	17
96906	MS35338-63	5310-00-274-8715	20	2
			24	3
			32	2
96906	MS35338-72	5310-00-013-1074	31	17
96906	MS35426-31	5310-01-080-2211	25	16
96906	MS35650-302	5313-00-934-9751	25	6
96906	MS35671-55	5315-00-060-5074	28	6
96106	MS35691-1022		30	2
96906	MS35692-61	5310-00-998-0608	25	20
96906	MS35756-12	5315 00-616-5522	21	11
			23	6
96906	MS35756-6	5315-00-616-5514	12	3
			17	3
			20	11
96906	MS35756-9	5315-00-616-5525	24	12
96906	MS51922-53		30	1
96906	MS51964-51	5305-00-724-6799	21	6
			23	3
96906	MS51964-70	5305-00-724-5817	25	15
96906	MS51967-15	5310-00-761-3706	31	2
96906	MS51967-2	5310-00-761-6882	32	1
96906	MS51967-33	5310-00-762-6219	31	16
96906	MS51968-3	5310-00-913-7020	25	14
96906	MS51968-9	5310-00-785-1762	26	2
96906	MS51974-38	5305-00-716-8001	25	7
			26	1
96906	MS51981-40	5305-00-715-1216	31	14
96906	MS90726-33	5306-00-225-9088	20	9
			23	7
96906	MS90726-5	5305-00-068-0505	24	6
96906	MS90726-6	5305-00-068-0506	24	2
96906	MS90727-72	5305-00-269-3248	29	10
96906	MS90728-16	5305-00-071-2513	32	3
81348	RR-C-271	4010-00-171-4512	31	12
19206	11577210	1015-00-921-0587	28	7
19206	11577242	1005-00-909-2854	30	10
19206	11577243		30	11

NATIONAL STOCK NUMBER AND PART NUMBER INDEX

FSCM	PART NUMBER	STOCK NUMBER	FIG.	ITEM
19206	11577244	1005-00-923-4255	30	8
19206	11577693	4933-00-891-7892	33	1
19206	11577713	9905-00-248-1143	29	2
19206	11577981	1015-00-089-8542	14	17
19206	11578002	1015-00-878-0032	14	16
19206	11578014	1015-00-133-9436	1	1
19206	11578015	1015-00-998-6072	13	11
19206	11578016	5360-00-873-6959	13	10
19206	11578017	1015-00-998-6073	12	13
19206	11578018	1015-00-998-6074	12	8
19206	11578019	1015-00-998-6075	12	17
19206	11578249	5365-00-445-5188	21	5
19206	11578250	5365-00-419-3094	21	3
19206	11578253	1015-00-351-2925	21	2
19206	11578254	1015-00-357-0016	20	18
19206	11578301	1015-00-004-2318	12	15
			15	2
19206	11578302	5310-01-064-7229	20	4
19206	11578397	9905-00-480-5661	19	5
			27	5
19206	11576875	3120-01-113-9909	21	17
19206	11579321	5310-00-021-7216	31	4
19206	11579601	5310-01-071-3937	25	18
19206	11579630	3110-00-100-5348	23	17
19206	11579631	5330-00-171-9075	21	12
			24	8
19206	11579632	5330-00-154-3110	21	9
19204	12003046	1015-01-044-6921	2	1
50024	2479141	5120-00-099-8544	33	2
21450	586127	5315-00-058-6127	29	3
19204	5910378		33	
19207	6157208	1015-00-615-7208	32	10
19204	7230794		15	4
19206	7230796	1015-00-723-0796	12	6
19206	7230797	1015-00-723-0797	12	5
19206	7230799	1015-00-723-0799	12	14
19206	7230800	1015-00-723-0800	15	1
19206	7230806	5365-00-723-0806	12	10
19206	7230807	3110-00-723-0807	12	11
19206	7230809	5360-00-723-0809	12	16
			15	3
19206	7230810	5360-00-723-0810	12	9
19204	7266340	1005-00-726-6340	3	7
19204	7266341		2	7
19204	7266342	1005-00-726--6342	2	4
19204	7266344		4	3
19204	7266348	1005-00-726-6348	6	4
19204	7266349	1005-00-726-6349	8	4
19204	7266353	1005-00-726-6353	4	2
19204	7266355	1005-00-726-6355	10	3
19204	7266357	1005-00-726-6357	3	4

**NATIONAL. STOCK NUMBER AND PART NUMBER INDEX
PART NUMBER INDEX**

FSCM	PART NUMBER	STOCK NUMBER	FIG.	ITEM
19204	7266361	1005-00-726-6361	6	7
19204	7266366	1005-00-726-6366	6	13
19204	7266367	1005-00-726-6367	10	2
19204	7266374	1005-00-726-6374	3	2
19204	7266377	5315-00-726-6377	6	6
19204	725S379	5315-00-726-6379	8	1
19204	7266380	5315-00-726-6380	6	9
19204	7266386	5315-00-726-6386	7	1
19204	7266388	5315-00-726-6388	8	2
19204	7266389		5	2
19204	7266393	1005-00-726-6393	3	5
19204	7266399	1005-00-726-6399	7	4
19204	7266400	1005-00-725-6400	3	1
19204	7266408	1005-00-726-6408	6	10
19204	7266409	1005-00-726-6409	2	6
19204	7266413	5360-00-726-6413	6	5
19204	7266415	5360-00-726-6415	2	9
19204	7266416	5360-00-726-6416	3	6
19205	7266417	5360-00-726-6417	6	8
19205	7266419	5360-00-726-6419	8	5
19204	7266420	5360-00-726-6420	5	12
19204	7266421	5360-00-726-6421	5	3
19204	7266422	5360-00-726-6422	7	3
19204	7266423	1005-00-726-6423	11	1
19204	7265830	1005-00-726-6430	8	3
19204	7265446	1005-00-726-6416	8	8
19204	7266447	5320-00-726-6447	8	6
19204	7266448	1005-00-726-6448	8	7
19204	7266497	5315-00-726-6497	6	2
19204	7266498	5315-00-726-6498	6	3
19204	7266500		6	11
19204	7266501	1005-00-726-6501	5	4
19204	7266561	1005-00-726-6561	6	15
19204	7266830	5310-00-726-6830	2	13
19205	7266831	5310-00-726-6831	2	12
19204	7266833	1005-00-726-6833	2	14
19204	7266349	5315-00-726-6849	11	2
19204	7266871	5305-00-339-8133	10	1
19204	7267383	1005-00-506-5543	2	5
19204	7267838	1005-00-345-3826	7	2
19204	7267851	1005-00-345-3827	2	2
19204	7267852		5	5
19204	7267859	1005-00-345-3828	2	16
19204	7268115	1005-00-511-9042	1	2
19204	7263117		8	9
19204	7268118	1005-00-511-9043	6	16
19204	7268119		2	10
19204	7268253		10	5
19204	7268254		9	2
19204	7268255		2	17
19204	7268393	1005-00-603-1297	2	8

**NATIONAL STOCK NUMBER AND PART NUMBER INDEX
PART NUMBER INDEX**

FSCM	PART NUMBER	STOCK NUMBER	FIG.	ITEM
19206	7305399	5311-00-127-2201	31	15
19206	7305400	5315 00-226-2670	31	13
19206	7305402	5360-00-088-4815	31	7
19206	7305405	5365-00-088-4845	31	11
19206	7305409	5310-00-570-9739	31	6
19206	7305413	4933-00-082-0105	31	8
19206	7306689	4933-00-082-0118	31	1
19206	7307472	1015-00-730-7472	13	7
19206	7307475	5360-00-730-7475	17	8
19206	7307476	5315-00-730-7476	17	6
19206	7307477	1015-00-730-7477	17	1
19206	7307478	5305-00-730-7478	14	15
19206	7307484	1015-00-445-9902	17	10
19206	7307185		18	2
19206	7307490	1015-00-730-7490	14	13
19206	7397493	5310-00-730-7493	14	2
19206	7307494	5365-00-730-7434	14	1
19206	7307495	3120-00-730-7495	14	9
19206	7337496	1015-00-730-7496	14	8
19206	7307497	1015-00-730-7497	14	7
19206	7307498	5310-00-730-7498	14	6
19206	7307502	1015-00-730-7532	13	13
19206	7307503	1015-00-730-7503	13	8
19206	7307509	1015-00-730-7503	17	7
19206	7307512	1015-00-730-7512	14	11
19206	7307513	1015-00-730-7513	14	14
19206	7307514	1005-00-730-7514	14	5
19206	7307517	1015-00-730-7517	13	6
19206	7307519	1015-00-730-7519	13	3
19206	7307520		12	2
19206	7307523	1015-00-730-7523	17	11
19206	7307536	4933-00-730-7536	33	5
19206	7307537	4033-00-730-7537	33	7
19201	7307553		30	5
19204	7307559		30	13
19204	7307567		30	7
19206	7308853	1015-00-300-5386	12	12
19206	7308854		12	20
19206	7308855	1015-00-305-0734	12	18
19206	7308861	1015-00-300-5391	13	14
19206	7309107	5305-00-336-1616	13	16
19206	7309111	4933-00-334-0498	33	6
19206	7309114	4933-00-082-0128	31	3
19206	7309115	4533-00-082-0134	31	9
19206	7309119	4933-00-334-0499	33	9
19206	7309187	1015-00-340-3426	13	15
19206	7309208	1005-00-047-3861	14	3
19204	7309725		30	12
19204	7309726		30	4
19206	7309749		13	17
19205	7319944	4933-00-398-4106	33	8

**NATIONAL STOCK NUMBER AND PART NUMBER INDEX
PART NUMBER INDEX**

FSCM	PART NUMBER	STOCK NUMBER	FIG.	ITEM
19204	7790489	1005-00-690-4002	9	1
19204	7790869	5320-00-143-6343	4	1
19204	7790870	1005-00-795-5402	2	15
19204	7790871	1005-00-751-9108	2	11
19204	7791229	5360-00-854-4471	2	3
19205	7799716	4933-00-822-1718	33	3
19200	8286960	1240-00-886-5888	1	8
19200	8293769	1290-00-300-8034	1	9
19200	8299670	1240-00-344-4689	1	7
19200	8239677	1290-00-535-7761	1	6
19206	8403000	1015-00-840-3000	23	16
19206	8403005	1015-00-840-3005	23	20
19206	8403009	3110-00-840-3009	23	22
19200	8403010	5333-00-840-3010	23	21
19206	8403023	3120-00-840-3023	23	24
19200	8403025	5310-00-840-3025	20	14
19206	8403026	1015-00-840-3026	23	15
19206	8403027	1025-00-840-3027	23	12
19206	8403028	5360-00-840-3028	23	13
19206	8403029	5365-00-840-3029	23	14
19200	8403031	5330-00-840-3031	23	25
19206	8403044	1015-00-840-3044	26	12
19206	8403045	1015-00-840-3045	26	9
19206	8403048	1015-00-840-3048	26	5
19206	8403054	1015-00-840-3054	25	3
19206	8403056	1015-00-840-3050	25	10
19206	8403060	1015-00-840-3060	25	8
19206	8403061	1015-00-840-3061	25	13
19206	8403062	5365-00-840-3052	25	22
19206	8403063	1015-00-840-7063	25	23
19206	8403064	5307-00-840-3064	25	21
19206	8403069	1015-00-840-3069	26	13
19206	8403070	1015-00-840-3070	26	10
19200	8403071	5315-00-840-3071	26	7
19200	8403072	5315-00-840-3072	26	8
19200	8403073	5315-00-840-3073	26	6
19206	8403086	5365-00-840-3086	25	5
19206	8403087	5365-00-840-3087	25	4
19206	8403090	1015-00-840-3090	25	24
19206	8403093	1015-00-840-3093	26	14
19206	8403096	1015-00-840-3096	26	11
19200	8403136		23	26
19206	8403161		19	3
19206	8403185	1015-00-840-3185	20	6
19206	8403136	1015-00-840-3186	20	5
19206	8403187	5306-00-840-3187	22	4
19205	8403188	5360-00-840-3188	20	7
19200	8403189	5315-00-840-3189	20	8
19200	8403192	5310-00-840-3192	22	3
19204	8403193		20	15
19206	8403194	1015-00-840-3194	20	3

NATIONAL STOCK NUMBER AND PART NUMBER INDEX

19206	8403195	1015-00-840-3195	22	5
19204	8403200		1	3
19206	8403242	1015-00-840-3242	25	12
19206	8403243	1015-00-840-3243	25	11
19204	8403250		19	2
			27	2
19206	8403251	1015-00-219-8147	24	13
19206	8403252	1015-00-219-8148	24	4
19206	8403253	3110-00-219-8149	24	7
19206	8403254	3110-00-219-8150	24	11
19206	8403255	1015-00-219-8151	24	17
19206	8403257	3110-00-219-8153	24	14
19206	8403258	1015-00-219-8154	24	15
19206	8403259		23	9
19204	8403260		19	1
			27	1
19206	8403261	1013-00-219-8156	21	15
19206	8403262	1015-00-219-8157	21	13
19206	8403270	1015-00-219-8178	21	16
19206	8403274	5310-00-219-8159	21	7
19206	8403277	1015-00-219-8161	21	10
19206	8403329	1015-00-219-8165	23	5
19206	8403333	5365-00-219-8166	24	5
19206	8403353	5310-00-219-8177	23	4
19204	8407810	1015-00-505-5248	1	4
19204	8407811	5315-00-049-5240	29	5
19204	8407812	5360-00-049-5241	29	4
19204	8497813	5315-00-505-5249	29	8
19200	8407814		29	7
19200	8407815	5315-00-505-5250	29	6
19204	8407816	1015-00-049-5242	28	5
19204	8407817		28	3
19204	3407828		29	9
19200	8407829		29	14
19204	8407830	1013-00-511-9124	1	5
19204	8407831	1015-00-049-5244	28	2
19200	8407832		29	12
19200	8407833		29	15
19200	8407834		29	13
19204	8407835		28	8
19206	8407836	1015-00-049-5246	27	3
19206	8413117	1015-00-300-5392	23	1
19206	8766015		16	3
19206	8766016	1015-00-945-9769	16	2
19206	8766017	1015-00-679-0481	12	4
19206	8766029	1015-00-782-9872	32	6
19206	8766031	5306-00-143-1678	32	7
19206	8766038	1015-00-782-9873	32	9
19206	8766068	1015-00-672-8735	12	7
19206	8766848	1015-00-797-3568	22	2
19206	8767165	5315-00-474-7405	17	5

NATIONAL STOCK NUMBER AND PART NUMBER INDEX
PART NUMBER INDEX

FSCM	PART NUMBER	STOCK NUMBER	FIG.	ITEM
19203	9406768	5305-00-638-7518	13	5

By Order of the Secretary of the Army:

JOHN A. WICKHAM, JR.
General, United States Army
Chief of Staff

Official:

R. L. DILWORTH
Brigadier General, United States Army
The Adjutant General

DISTRIBUTION:

To be distributed in accordance with DA Form 12-40, Direct Support and General Support Maintenance requirements for Rifle, Recoilless, 106-MM, M40A2, M40A4.

 U.S. GOVERNMENT PRINTING OFFICE: 1992 - 311-831/60161

RECOMMENDED CHANGES TO EQUIPMENT TECHNICAL PUBLICATIONS



THEN... JOT DOWN THE DOPE ABOUT IT ON THIS FORM, CAREFULLY TEAR IT OUT, FOLD IT AND DROP IT IN THE MAIL!

SOMETHING WRONG WITH THIS PUBLICATION?

FROM: (PRINT YOUR UNIT'S COMPLETE ADDRESS)

DATE SENT

PUBLICATION NUMBER

PUBLICATION DATE

PUBLICATION TITLE

BE EXACT... PIN-POINT WHERE IT IS

IN THIS SPACE TELL WHAT IS WRONG AND WHAT SHOULD BE DONE ABOUT IT:

PAGE NO.	PARA-GRAPH	FIGURE NO.	TABLE NO.
----------	------------	------------	-----------

TEAR ALONG PERFORATED LINE

PRINTED NAME, GRADE OR TITLE, AND TELEPHONE NUMBER

SIGN HERE:

DA FORM 2028-2 JUL 79

PREVIOUS EDITIONS ARE OBSOLETE.

P.S.—IF YOUR OUTFIT WANTS TO KNOW ABOUT YOUR RECOMMENDATION MAKE A CARBON COPY OF THIS AND GIVE IT TO YOUR HEADQUARTERS.

This fine document...

Was brought to you by me:



[Liberated Manuals -- free army and government manuals](#)

Why do I do it? I am tired of sleazy CD-ROM sellers, who take publicly available information, slap “watermarks” and other junk on it, and sell it. Those masters of search engine manipulation make sure that their sites that sell free information, come up first in search engines. They did not create it... They did not even scan it... Why should they get your money? Why are not letting you give those free manuals to your friends?

I am setting this document FREE. This document was made by the US Government and is NOT protected by Copyright. Feel free to share, republish, sell and so on.

I am not asking you for donations, fees or handouts. If you can, please provide a link to liberatedmanuals.com, so that free manuals come up first in search engines:

<A HREF=<http://www.liberatedmanuals.com/>>Free Military and Government Manuals

- Sincerely
Igor Chudov
<http://igor.chudov.com/>
- [Chicago Machinery Movers](#)