

TECHNICAL MANUAL

**ORGANIZATIONAL, DIRECT SUPPORT AND
GENERAL SUPPORT MAINTENANCE
REPAIR PARTS AND SPECIAL TOOLS LIST**

FOR

**SPRAY OUTFIT, PAINT
NSN 4940-00-255-8683**

HEADQUARTERS, DEPARTMENT OF THE ARMY

10 NOVEMBER 1980

CHANGE

NO. 3

HEADQUARTERS
DEPARTMENT OF THE ARMY
WASHINGTON, D. C., 18 MAY 1992

Organizational, Direct Support and
General Support Maintenance
Repair Parts and Special Tools List
for

SPRAY OUTFIT, PAINT
NSN 4940-00-255-8683

Approved for public release; Distribution is unlimited

TM 5-4940-228-24P, 10 November 1980 is changed as follows:

1. Remove and insert pages as indicated below. New or changed text material is indicated by a vertical bar in the margin. An illustration change is indicated by a miniature pointing hand.

Remove pages

Insert pages

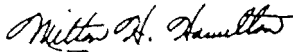
7 and 8
35 and 36

7 and 8
35 and 36

2. Retain this sheet in front of manual for reference purposes.

By Order of the Secretary of the Army:

Official:



MILTON H. HAMILTON
*Administrative Assistant to the
Secretary of the Army*

01379

GORDON R. SULLIVAN
*General, United States Army
Chief of Staff*

DISTRIBUTION:

To be distributed in accordance with DA Form 12-25E, (qty rqr block no. 1640).

CHANGE }
NO. 2 }

HEADQUARTERS
DEPARTMENT OF THE ARMY
WASHINGTON, D.C., 30 December 1987

Organizational, Direct Support and
General Support Maintenance
Repair Parts and Special Tools List

FOR

SPRAY OUTFIT, PAINT
NSN 4940-00-255-8683

TM 5-4940-228-24P, 10 November 1980, is changed as follows:

1. Remove and insert pages as indicated below. New or changed text material is indicated by a vertical bar in the margin. An illustration change is indicated by a miniature pointing hand.

Remove pages

7 and 8

Insert pages

7 and 8

2. Retain this sheet in front of manual for reference purposes.

By Order of the Secretary of the Army:

OFFICIAL:

R. L. DILWORTH
Brigadier General, United States Army
The Adjutant General

CARL E. VUONO
General, United States Army
Chief of Staff

DISTRIBUTION:

To be distributed in accordance with DA Form 12-25A, Unit, Direct Support and General Support Maintenance Requirements for Spray Outfit, Pain (50-6609).

CHANGE }
NO 1 }

HEADQUARTERS
DEPARTMENT OF THE ARMY
WASHINGTON, D.C., 20 July 1987

ORGANIZATIONAL, DIRECT SUPPORT AND
GENERAL SUPPORT MAINTENANCE
REPAIR PARTS AND SPECIAL TOOLS LIST

FOR

SPRAY OUTFIT, PAINT
NSN 4940-00-255-8683

TM 5-4940-228-24P, 10 November 1980, is changed as follows:

1. Remove and insert pages as indicated below. New or changed text material is indicated by a vertical bar in the margin. An illustration change is indicated by a miniature pointing hand.

Remove pages

i/ii
19 and 20
25 and 26
33 through 38

Insert pages

i/ii
19 and 20
25 and 26
33 through 38

2. Retain this sheet in front of manual for reference purposes

By Order of the Secretary of the Army:

Official:

R. L. DILWORTH
Brigadier General, United States Army
The Adjutant General

CARL E. VUONO
General, United States Army
Chief of Staff

DISTRIBUTION:

To be distributed in accordance with DA Form 12-25A, Unit and Direct Support and General Support Maintenance Requirements for Spray Outfit, Paint (50-6609).

TECHNICAL MANUAL

No. 5-4940-228-24P

HEADQUARTERS
DEPARTMENT OF THE ARMY
WASHINGTON, D. C., 10 November 1980

ORGANIZATIONAL, DIRECT SUPPORT AND GENERAL SUPPORT
MAINTENANCE REPAIR PARTS AND SPECIAL TOOLS LIST
(INCLUDING DEPOT MAINTENANCE REPAIR PARTS AND SPECIAL TOOLS)
FOR
SPRAY OUTFIT, PAINT
NSN 4940-00-255-8683

Current as of 5 October 1979

REPORTING ERRORS AND RECOMMENDING IMPROVEMENTS

You can help improve this manual. If you find any mistake or if you know of a way to improve the procedures, please let us know. Mail your letter, DA Form 2028 (Recommended Changes to Publications and Blank Forms), or DA Form 2028-2 located in the back of this manual direct to: Commander, U.S. Army Troop Support Command, ATTN: AMSTR-MCTS, 4300 Goodfellow Boulevard, St. Louis, MO 63120-1798. A reply will be furnished directly to you.

TABLE OF CONTENTS

	Page	Illus. Figure
Section I. INTRODUCTION		
II. REPAIR PARTS LIST	7	
Group 01 Spray gun assembly	7	1
02 Pressure cup assembly.	9	2
03 Extension assembly	11	3
04 Hose assembly	13	4
05 Pressure tank assembly	19	5
06 Respirator	23	6
07 Chest, spray outfit	25	7
08 Compressor Assembly	31	8
Section III. Special tools list (not applicable)		
IV. NSN, Part No. Index	35	

Section I. INTRODUCTION

1. Scope. This manual lists spares and repair parts; special tools; special test, measurement, and diagnostic equipment (TMDE), and other special support equipment required for performance of organizational, direct support, and general support depot maintenance of the spray outfit, paint. It authorizes the requisitioning and issue of spares and repair parts as indicated by the source and maintenance codes,

2. General. This Repair Parts and Special Tools List is divided into the following sections:

a. Section II. Repair Parts List. A list of spares and repair parts authorized for use in the performance of maintenance. The list also includes parts which must be removed for replacement of the authorized parts. Parts lists are composed of functional groups in ascending numeric sequence, with the parts in each group listed in figure and item number sequence. Bulk materials are listed in NSN sequence.

b. Section III. Special Tools List. A list of special tools, special TMDE, and other special support equipment authorized for the performance of maintenance,

c. Section IV. National Stock Number and Part Number Index. A list, in National Item Identification Number (NIIN) sequence, of all National Stock Numbers (NSN) appearing in the listings, followed by a list in alphanumeric sequence of all part numbers appearing in the listings. National stock numbers and part numbers are cross-referenced to each illustration figure and item number appearance. This index is followed by a cross-reference list of reference designators to figure and item numbers.

3. Explanation of Columns.

a. Illustration. This column is divided as follows:

(1) Figure Number. Indicates the figure number of the illustration on which the item is shown,

(2) Item Number, The number used to identify item called out in the illustration.

b. Source, Maintenance and Recoverability (SMR) Codes.

(1) Source Code. Source codes indicate the manner of acquiring support items for maintenance, repair or overhaul of end items. Source codes are entered in the first and second positions of the Uniform SMR Code format as follows:

Code	Definition
P A	Item procured and stocked for anticipated or known usage.
P B	Item procured and stocked for insurance purposes because essentiality dictates that a minimum quantity be available in the supply system.
P C	Item procured and stocked and which otherwise would be coded PA except that it is deteriorative in nature.
P D	Support item, excluding support equipment, procured for initial issue or outfitting and stocked only for subsequent or additional initial issues or outfitting. Not subject to automatic replenishment.
P E	Support equipment procured and stocked for initial issue or outfitting to specified maintenance repair activities,
P F	Support equipment which will not be stocked but which will be centrally procured on demand.
P G	Item procured and stocked to provide for sustained support for the life of the equipment. It is applied to an item peculiar to the equipment which, because of probable discontinuance or shutdown of production facilities, would prove uneconomical to reproduce at a later time.
K D	An item of a depot overhaul/repair kit and not purchased separately. Depot kit defined as a kit that provides items required at the time of overhaul or repair.
K F	An item of a maintenance kit and not purchased separately. Maintenance kit defined as a kit that provides an item that can be replaced at organizational or intermediate levels of maintenance.
K B	Item included in both a depot overhaul/repair kit and a maintenance kit.

<i>Code</i>	<i>Definition</i>
M O	Item to be manufactured or fabricated at the organizational level.
M F	Item to be manufactured or fabricated at the direct support maintenance level.
M H	Item to be manufactured or fabricated at the general support maintenance level.
M D	Item to be manufactured or fabricated at the depot support maintenance level.
A O	Item to be assembled at organizational level.
A F	Item to be assembled at the direct support maintenance level.
A H	Item to be assembled at general support maintenance level.
A D	Item to be assembled at depot maintenance level.
X A	Item is not procured or stocked because the requirements for the item will result in the replacement of the next higher assembly.
X B	Item is not procured or stocked. If not available through salvage, requisition.
X C	Installation drawing, diagram, instruction sheet, field service drawing, that is identified by manufacturer's part number.
X D	A support item that is not stocked. When required, item will be procured through normal supply channels.

NOTE

Cannibalization or salvage maybe used as a source of supply for any items source coded above except those coded XA and XD.

(2) Maintenance Code. Maintenance codes are assigned to indicate the levels of maintenance authorized to USE and REPAIR support items. The maintenance codes are entered in the third and fourth positions of the Uniform SMR Code format as follows:

(a) The maintenance code entered in the third position will indicate the lowest maintenance level authorized to remove, replace, and use the support item. The maintenance code entered in the fourth position will indicate one of the following levels of maintenance:

<i>Code</i>	<i>Definition</i>
C	Crew or operator maintenance performed within organizational maintenance.
O	Support item is removed, replaced, used at the organizational level.
F	Support item is removed, replaced, used at the direct support level.
H	Support item is removed, replaced, used at the general support level.
D	Support items that are removed, replaced, used at depot, mobile depot, or specialized repair activity only.

(b) The maintenance code entered in the fourth position indicates whether the item is to be repaired and identifies the lowest maintenance level with the capability to perform complete repair (i.e., all authorized maintenance functions). This position will contain one of the following maintenance codes:

<i>Code</i>	<i>Application/Explanation</i>
o	The lowest maintenance level capable of complete repair of the support item is the organizational level.
F	The lowest maintenance level capable of complete repair of the support item is the direct support level.
H	The lowest maintenance level capable of complete repair of the support item is the general support level.
D	The lowest maintenance level capable of complete repair of the support item is the depot level.
L	Repair restricted to designated, Specialized Repair Activity.
Z	Nonreparable. No repair is authorized.
B	No repair is authorized. The item maybe reconditioned by adjusting, lubricating, etc., at the user level. No parts or special tools are procured for the maintenance of this item.

(3) Recoverability Code. Recoverability codes are assigned to support items to indicate the disposition action on unserviceable items. The recoverability code is entered in the fifth position of the Uniform SMR Code format as follows:

Recoverability

Code	Definition
Z	Nonreparable item. When unserviceable, condemn and dispose at the level indicated in position 3.
O	Reparable item. When uneconomically repairable, condemn and dispose at organizational level.
F	Reparable item. When uneconomically repairable, condemn and dispose at the direct support level.
H	Reparable item. When uneconomically repairable, condemn and dispose at the general support level.
D	Reparable item. When beyond lower level repair capability, return to depot. Condemnation and disposal not authorized below depot level.
L	Reparable item. Repair, condemnation, and disposal not authorized below depot/specialized repair activity level.
A	Item requires special handling or condemnation procedures because of specific reasons (i.e., precious metal content, high dollar value, critical material or hazardous material). Refer to appropriate manuals/directives for specific instructions.

c. National Stock Number. Indicates the National stock number assigned to the item and which will be used for requisitioning purposes.

d. Part Number. Indicates the primary number used by the manufacturer which controls the design and characteristics of the item by means of its engineering drawings, specifications standards, and inspection requirements to identify an item or range of items.

NOTE

When a stock numbered item is requisitioned, the repair part received may have a different part number than the part being replaced.

e. Federal Supply Code for Manufacturer (FSCM), The FSCM is a 5-digit numeric code listed in SB 708-42 which is used to identify the manufacturer, distributor, or Government agency, etc.

f. Description. Indicates the Federal item name and, if required, a minimum description to identify

the item. Items that are included in kits and sets are listed below the name of the kit or set, with the quantity of each item in the kit or set indicated in the quantity incorporated in unit column. When the part to be used differs between serial numbers of the same model, the effective serial numbers are shown as the last line of the description. In the Special Tools List, the initial basis of issue (BOI) appears as the last line in the entry for each special tool, special TMDE, and other special support equipment. When density of equipments supported exceeds density spread indicated in the basis of issue, the total authorization is increased accordingly.

g. Unit of Measure (U/M). Indicates the standard of the basic quantity of the listed item as used in performing the actual maintenance function. This measure is expressed by a two-character alphabetical abbreviation (e.g., ea, in., pr, etc.). When the unit of measure differs from the unit of issue, the lowest unit of issue that will satisfy the required units of measure will be requisitioned.

h. Quantity Incorporated in Unit. Indicates the quantity of the item used in the breakout shown on the illustration figure, which is prepared for a functional group, subfunctional group, or an assembly, A "V" appearing in this column in lieu of a quantity indicates that no specific quantity is applicable (e.g., shims, spacers, etc.).

4. Special Information.

a. Repair parts kits and gasket sets appear as the last entries in the repair parts listing for the figure in which its parts are listed as repair parts.

b. The following publication pertains to spray outfit, paint and its components:

Publication and Short Title

TM 5-4940-228-14, Maintenance Manual

5. How to Locate Repair Parts.

a. When National Stock Number or Part Number is Unknown:

(1) First. Using the table of contents, determine the functional group within which the repair part belongs. This is necessary since illustrations are prepared for functional groups, and listings are divided into the same groups.

(2) Second. Find the illustration covering the functional group to which the repair part belongs.

(3) *Third.* Identify the repair part on the illustration and note the illustration figure number and item number of the repair part.

(4) *Fourth.* Using the Repair Parts Listing, find the figure and item number noted on the illustration.

b. When National Stock Number or Part Number is Known.

(1) *First.* Using the Index of National Stock Numbers and Part Numbers, find the pertinent National stock number or part number. This index is in NIIN sequence followed by a list of part numbers in alphanumeric sequence, cross-referenced to the illustration figure number and item number.

(2) *Second.* After finding the figure and item number, locate the figure and item number in the repair parts list.

6. Abbreviations.

<i>Abbreviations</i>	<i>Explanation</i>
ASSY	Assembly(ies)
FT	Feet(foot)
HD	Head
HEX	Hexagon
IN	Inch(es)
LG	Long(length)
NO	Number(s)

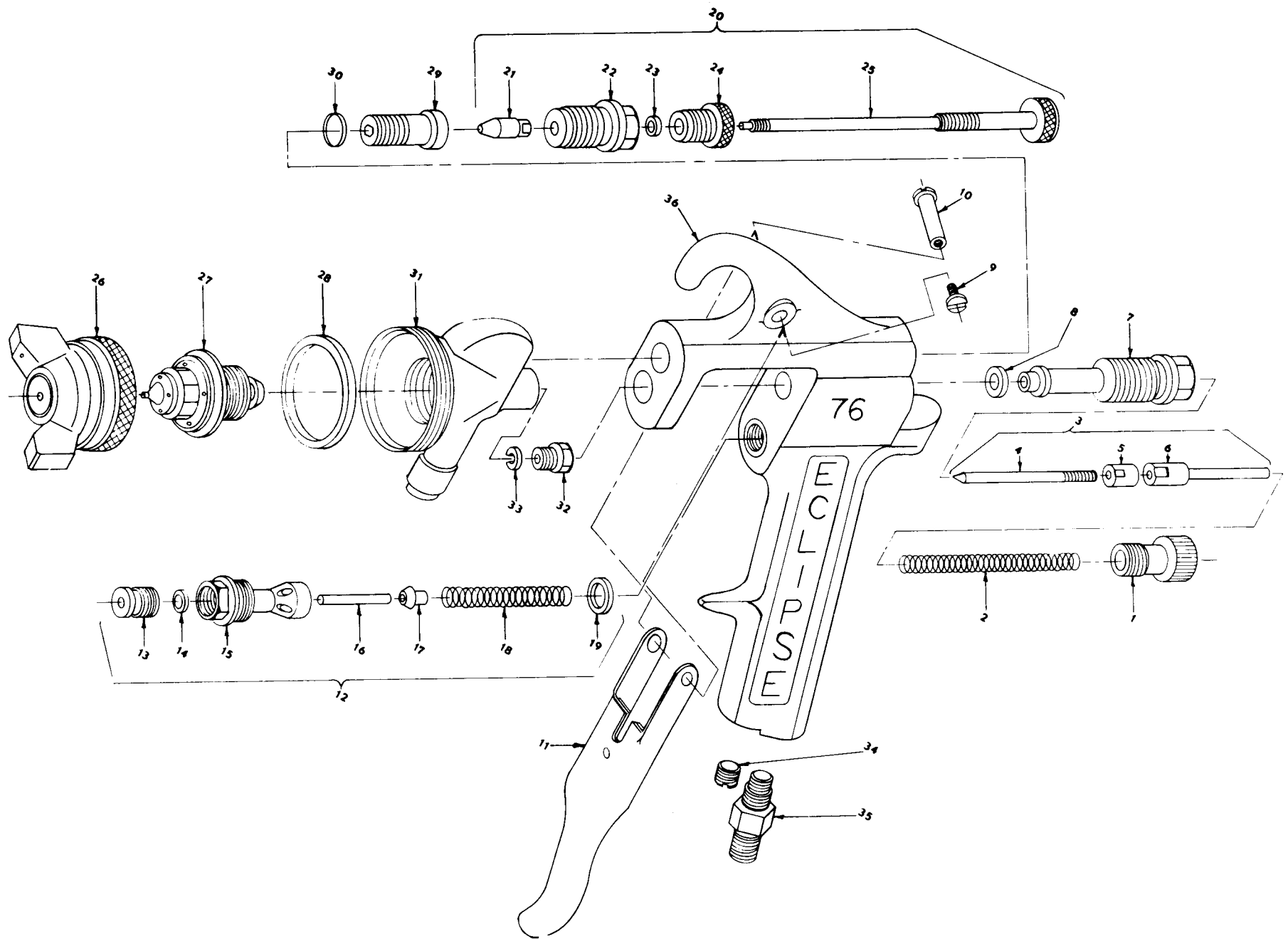


Figure 1. Spray Gun Assembly

SECTION II (1) ILLUSTRATION (A) (B) FIG ITEM NO NO		(2) SMR CODE	(3) NATIONAL STOCK NUMBER	(4) PART NUMBER	(5) FSCM	(6) DESCRIPTION	(7) USABLE ON CODE U/M	(8) QTY INC IN UNIT
						GROUP 01 SPRAY GUN ASSEMBLY		
1		PAOFF	4940-00-261-8413	50-6510	19272	GUN ASSY, SPRAY (ALSO NSN 4940-01-174-5164)	EA	1
1	1	XDOZZ		20-5660	19272	.SCREW, FLUID CONTROL	EA	1
1	2	PAOZZ		3-4359	19272	.SPRING, FL CONTROL	EA	1
1	3	XDOZZ	4820-01-165-6863	50-6507	19272	.NEEDLE ASSY	EA	1
1	4	XBOZZ		20-5966	19272	.NEEDLE	EA	1
1	5	XBOZZ		50-5967	19272	..LOCKNUT	EA	1
1	6	XBOZZ		20-5968	19272	..EXTENSION, LOCKNUT	EA	1
1	7	XBOZZ		20-5962	19272	.HOUSING, FL CONTROL	EA	1
1	8	PAOZZ	5330-02-091-0258	4-4438	19272	.GASKET, FL CONTROL	EA	2
1	9	XBOZZ		M36C4832-5E	02015	.SCREW, TRIGGER	EA	1
1	10	XBOZZ		1-4342	19272	.STUD, TRIGGER	EA	1
1	11	XBOZZ		50-6508	19272	.TRIGGER ASSY	EA	1
1	12	PAOOF	4820-01-165-6862	50-6511	19272	.VALVE ASSY, AIR	EA	1
1	3	PAOZZ		20-5652	19272	..NUT, PACKING	EA	2
1	14	PAOZZ	5330-00-285-7384	17433	81321	..PACKING	EA	3
1	15	XBOZZ		20-5977	19272	..BODY, AIR VALVE	EA	1
1	16	XBOZZ		20-5651	19272	..STEM, AIR VALVE	EA	1
1	17	PAOZZ	4820-01-091-1458	20-5654	19272	..VALV, AIR	EA	1
1	18	XBOZZ		3-4358	19272	..SPRING, AIR VALVE	EA	1
1	19	PAOZZ	5330-01-092-0258	4-4438	19272	..GASKET	EA	REF
1	20	PFOZZ	4820-01-116-5295	50-6513	19272	..CONTROL ASSY, FAN	EA	1
1	21	XAOZZ		20-5964	19272	..HEAD, FAN CONTROL	EA	1
1	2	XAOZZ		20-5974	19272	..BODY, FAN CONTROL	EA	1
1	23	PAOZZ	5330-00-285-7384	17433	81321	..PACKING	EA	REF
1	24	XBOZZ		20-5965	19272	..SCREW, FAN CONTROL	EA	1
1	25	XBOZZ		50-6506	19272	..ROD ASSY, FAN	EA	1
1	26	PAOZZ	4730-01-149-5795	50-6509	19272	.NOZZLE ASSY, AIR	EA	1
1	27	XAOZZ		43-15-1-4	19272	.NOZZLE, FLUID	EA	1
1	28	PAOZZ	5330-01-091-7693	4-4437	19272	.GASKET	EA	1
1	29	XBOZZ		20-5963	19272	.SCREW, GUN HEAD	EA	1
1	30	PAOZZ	5330-01-091-3932	4-4420	19272	.GASKET	EA	1
1	31	XAOZZ		20-5972	19272	.HEAD, GUN	EA	1
1	32	XBPZZ		20-5652	19272	.NUT, PACKING	EA	REF
1	33	PAOZZ	5330-00-285-7384	17433	81321	.PACKING	EA	REF
1	34	XBOZZ		5-07-12-8	19272	.PLUG	EA	1
1	35	PAOZZ	4730-01-092-3029	20-5572	19272	.CONNECTOR, AIR	EA	1
1	36	XAOZZ		20-5973	19272	.HANDLE, GUN	EA	1

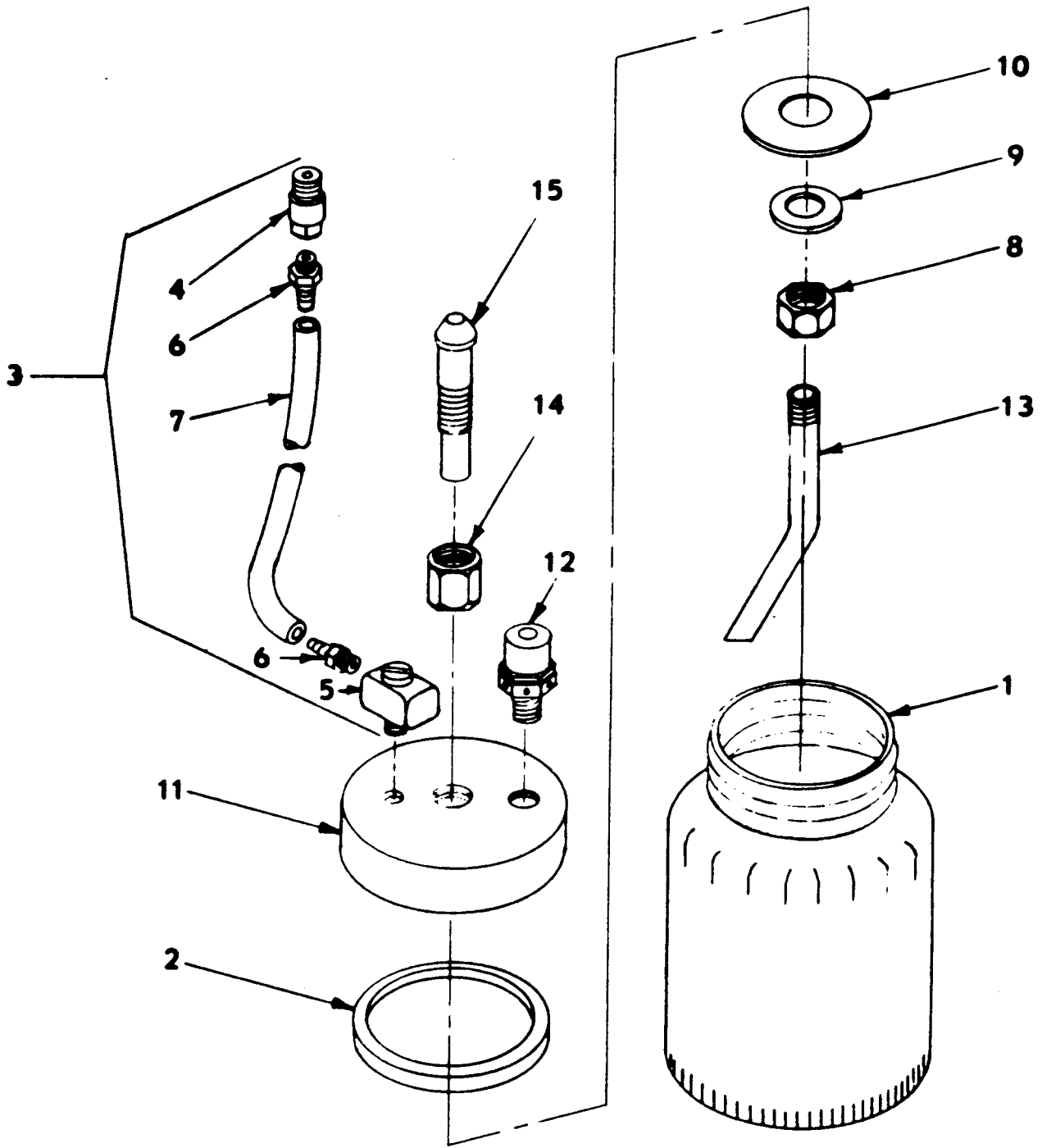


Figure 2. PressureCup Assembly

SECTION II (1) ILLUSTRATION		(2)	(3)	(4)	(5)	(6)	(7)	(8)
FIG NO	ITEM NO	SMR CODE	NATIONAL STOCK NUMBER	PART NUMBER	FSCM	DESCRIPTION	USABLE ON CODE	QTY INC IN UNIT
						GROUP 02 PRESSURE CUP ASSEMBLY		
2		PBOOO		50-6539	19227	CUP ASSEMBLY,PRESSURE	EA	1
2	1	XBOZZ		20-5997	19272	.CUP,1 QT	EA	1
2	2	PAOZZ		4-4406	19272	.GASKET,CUP	EA	1
2	3	PBOZZ		50-6612	19272	.TUBE ASSY,PRESSURE	EA	1
2	4	XBOZZ		20-6020	19272	..ADAPTER	EA	1
2	5	XBOZZ		15002-1	90526	..FITTING,MINIATURE L	EA	1
2	6	XBOZZ		11752-1	90526	..FITTING,HOSE	EA	2
2	7	XBOZZ		3814-1	90526	..TUBE	EA	1
2	8	XBOZZ		1-10-15-3	19272	.NUT,JAM	EA	1
2	9	XBOZZ		1-20-29-2	19272	.WASHER	EA	1
2	10	XBOZZ		20-5998	19272	.DIAPHRAGM	EA	1
2	11	XBOZZ		20-5999	19272	.COVER,PRESSURE	EA	1
2	12	XBOZZ		6-4341	19272	.VALVE,SAFETY 45PSI	EA	1
2	13	XBOZZ		20-6000	19272	.POST,FLUID	EA	1
2	14	XBOZZ		20-4588	19272	.NUT,COMPRESSION	EA	1
2	15	XBOZZ		20-5980	19272	.STEM	EA	1

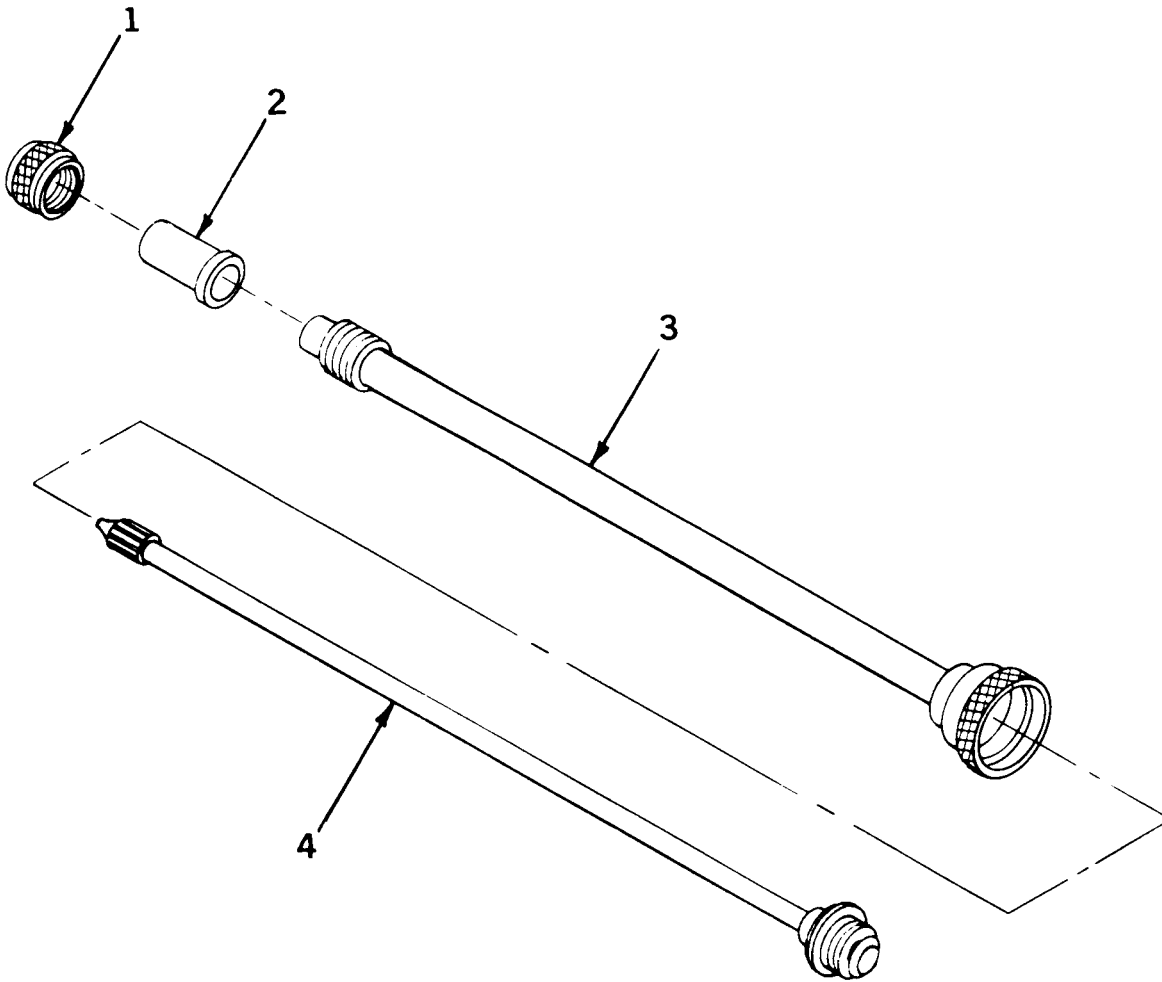


Figure 3. Extension Assembly.

SECTION II (1) ILLUSTRATION		(2)	(3)	(4)	(5)	(6)	(7)	(8)
FIG NO	ITEM NO	SMR CODE	NATIONAL STOCK NUMBER	PART NUMBER	FSCM	DESCRIPTION	USABLE ON CODE	QTY INC IN UNIT
GROUP 03 EXTENSION ASSEMBLY								
3		PBOFF		50-6602-48	19272	EXTENSION ASSY		EA 1
3	1	XBOZZ		20-4616	19272	.LOCKNUT		EA 1
3	2	XBOZZ		41-7-4-3	19272	.NOZZLE,ST,SLOT		EA 1
3	3	XAOZZ		50-6615	19272	.TUBE ASSY,AIR		EA 1
3	4	XAOZZ		50-6616	19272	.TUBE ASSY,FLUID		EA 1

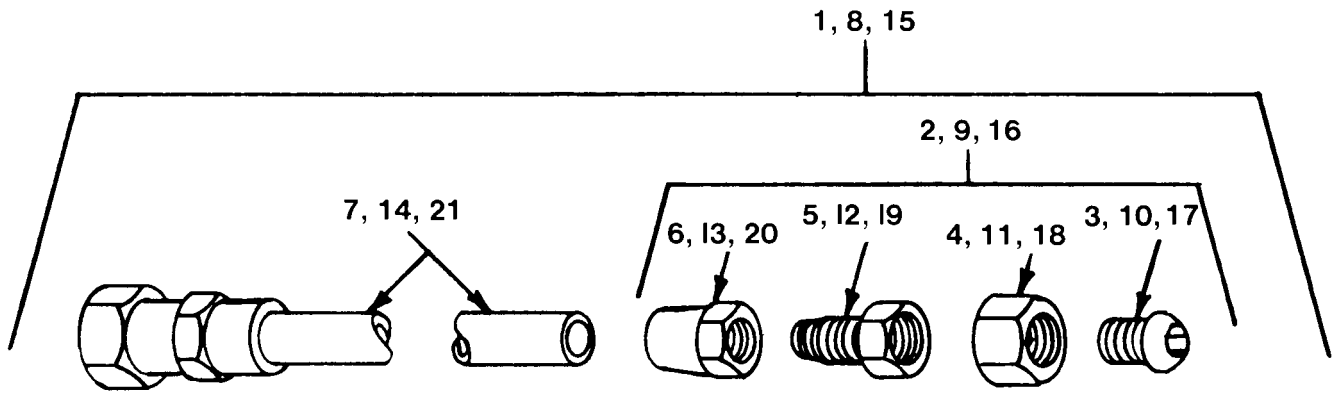


Figure 4. Hose Assembly

SECTION II (1) ILLUSTRATION		(2)	(3)	(4)	(5)	(6)	(7)	(8)
(A) FIG NO	(B) ITEM NO	SMR CODE	NATIONAL STOCK NUMBER	PART NUMBER	FSCM	DESCRIPTION	USABLE ON CODE U/M	QTY INC IN UNIT
GROUP 04 HOSE ASSEMBLY								
4	1	PAOFF		7-118-225	19272	HOSE ASSY, FL 25FT	EA	1
4	2	PBFZZ		50-4360-7	19272	.CONNECTOR ASSY	EA	2
4	3	XAOZZ		20-4587	19272	..SEAT	EA	2
4	4	XAOZZ		20-4584	19272	..NUT	EA	2
4	5	XAOZZ		20-4592	19272	..STEM	EA	2
4	6	XAOZZ		20-4591	19272	..SLEEVE	EA	2
4	7	XAOZZ		7-103-225	19272	.HOSE, FLUID 25FT	EA	1
4	8	PAOFF		7-116-125	19272	.HOSE ASSY, AIR 25FT	EA	1
4	9	PBFZZ		50-4360-1	19272	.CONNECTOR ASSY	EA	2
4	10	XAOZZ		20-4585	19272	..SEAT	EA	2
4	11	XAOZZ		20-4325	19272	..NUT	EA	2
4	12	XAOZZ		20-4586	19272	..STEM	EA	2
4	13	XAOZZ		20-4590	19272	..SLEEVE	EA	1
4	14	PAOZZ		7-102-125	19272	.HOSE, AIR 25FT	EA	1
4	15	PAOFF		7-1111-150	19272	HOSE ASSY, AIR 50FT	EA	1
4	16	PBFZZ		50-4360-10	19272	.CONNECTOR ASSY	EA	2
4	17	XAOZZ		20-4585	19272	..SEAT	EA	2
4	18	XAOZZ		20-4325	19272	..NUT	EA	2
4	19	XAOZZ		20-5617	19272	..STEM	EA	2
4	20	XAOZZ		20-4591	19272	..SLEEVE	EA	2
4	21	PAFZZ		7-103-150	19272	.HOSE, AIR 50FT	EA	1

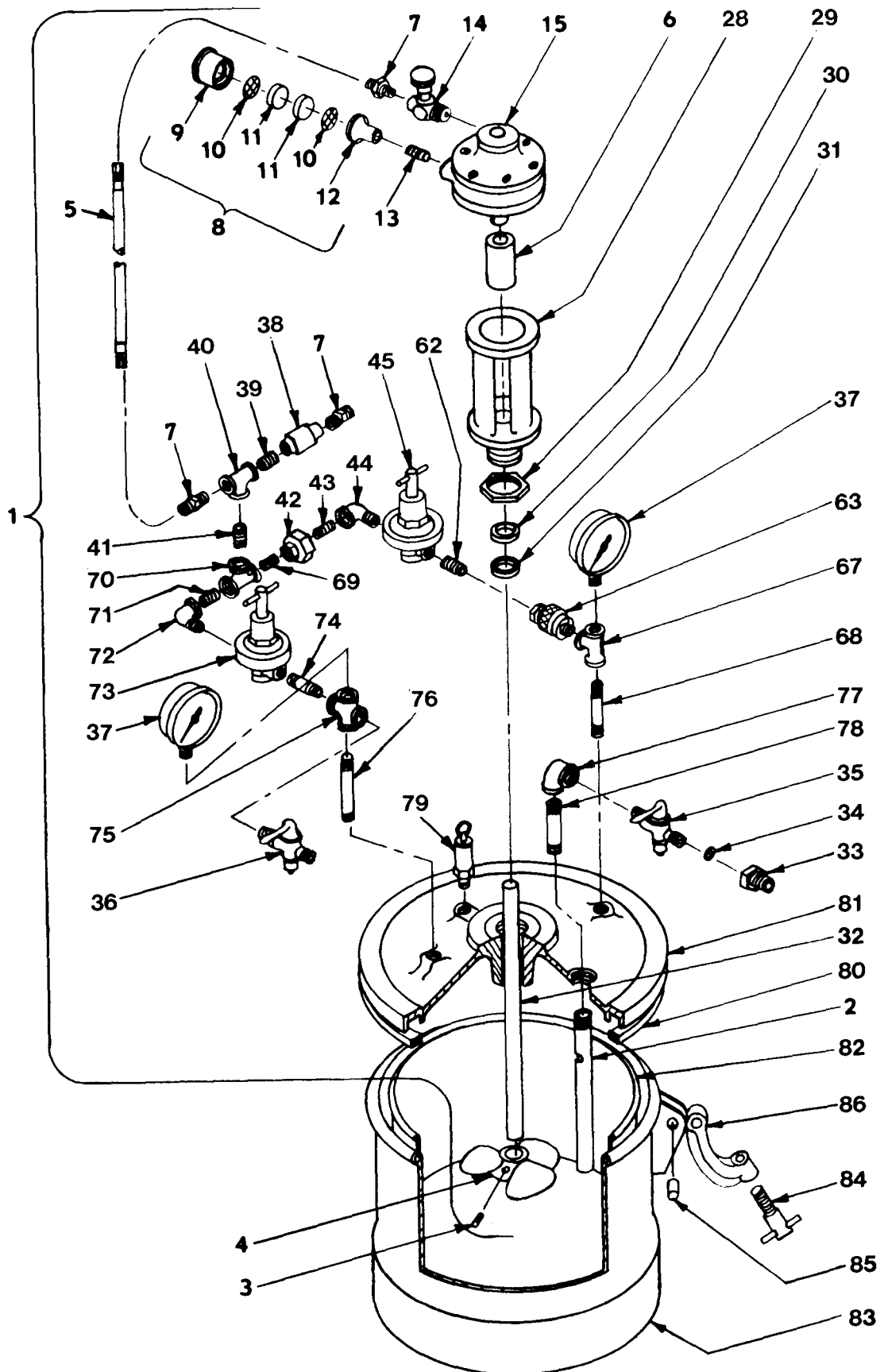


Figure 5. Pressure Tank Assembly (Sheet 1 of 4)

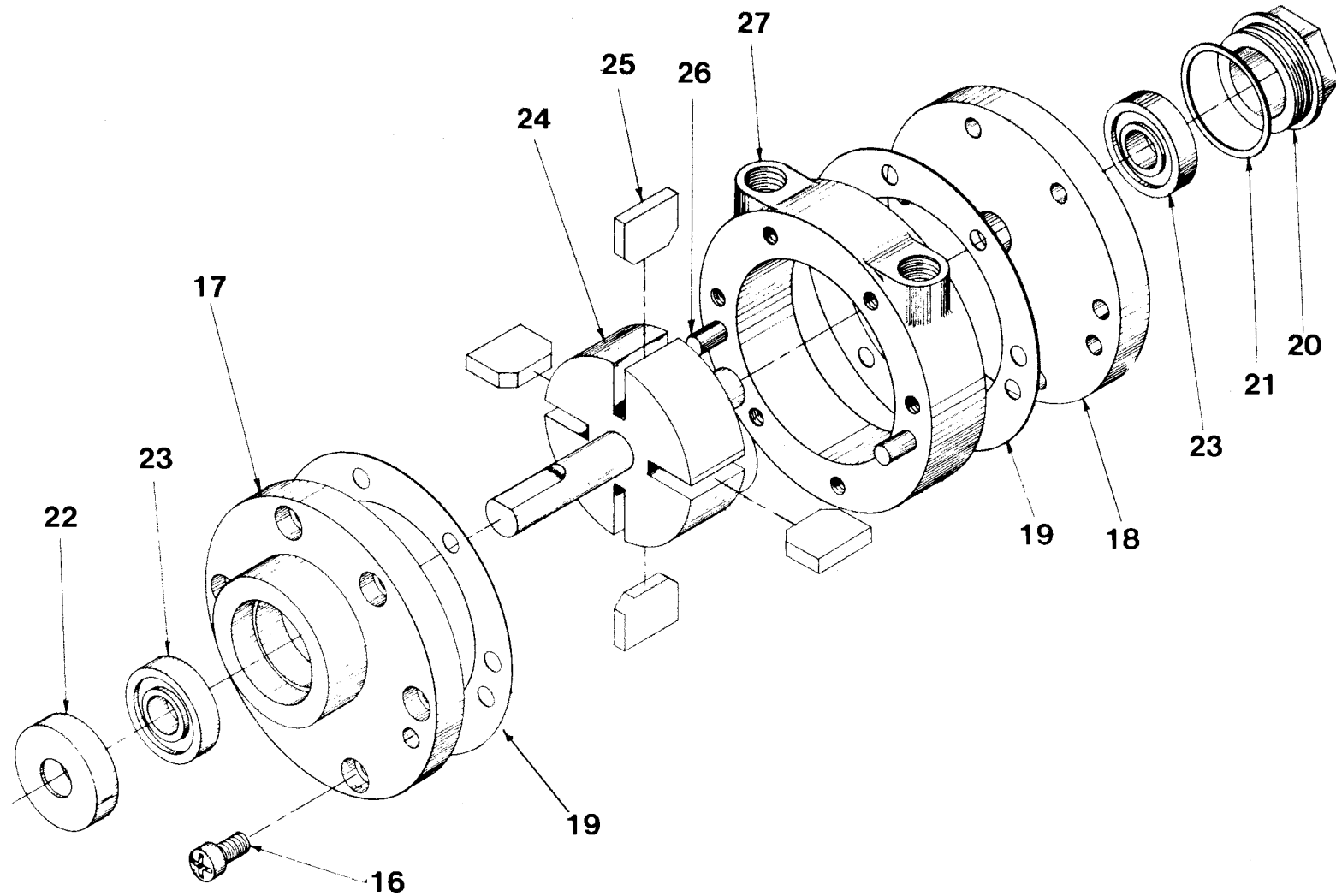


Figure 5. Pressure Tank Assembly
(Sheet 2 of 4)

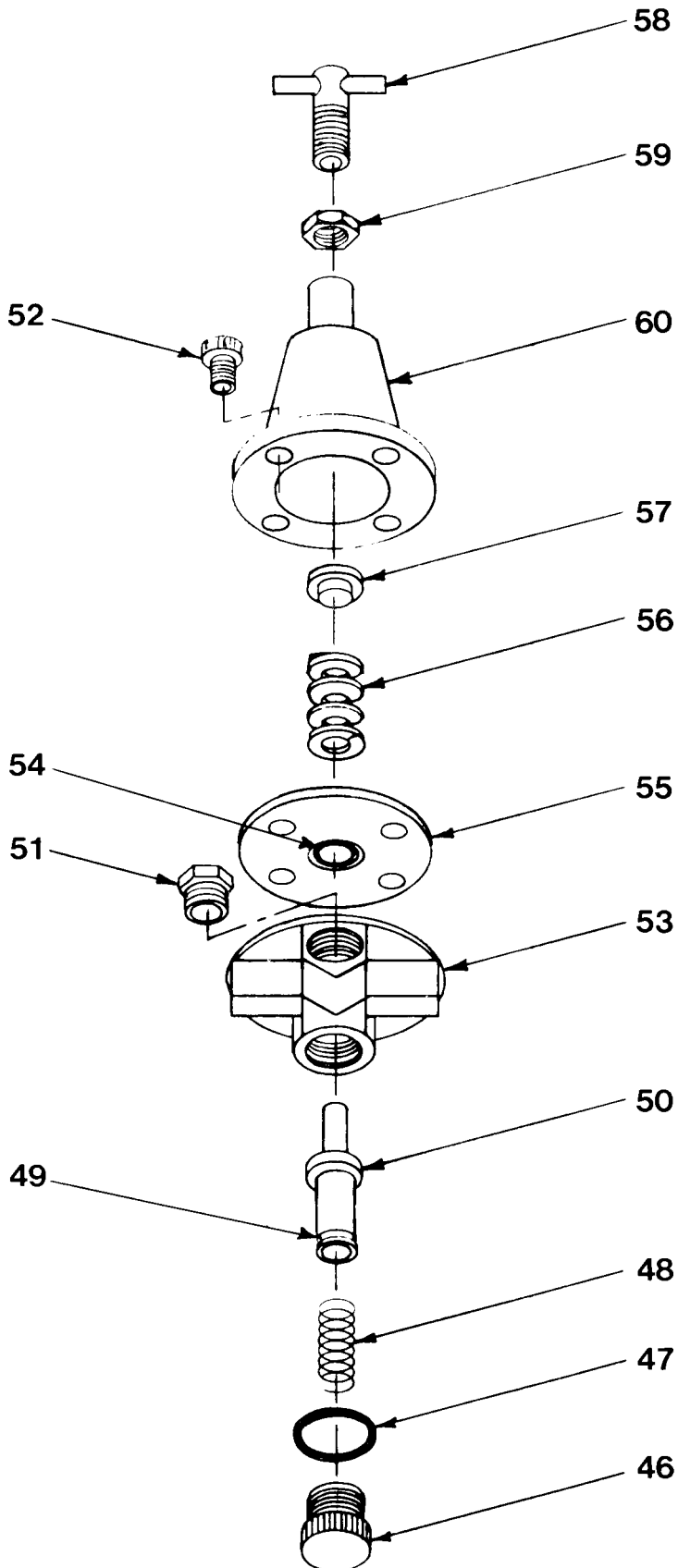


Figure 5. Pressure Tank Assembly
(Sheet 3 of 4)

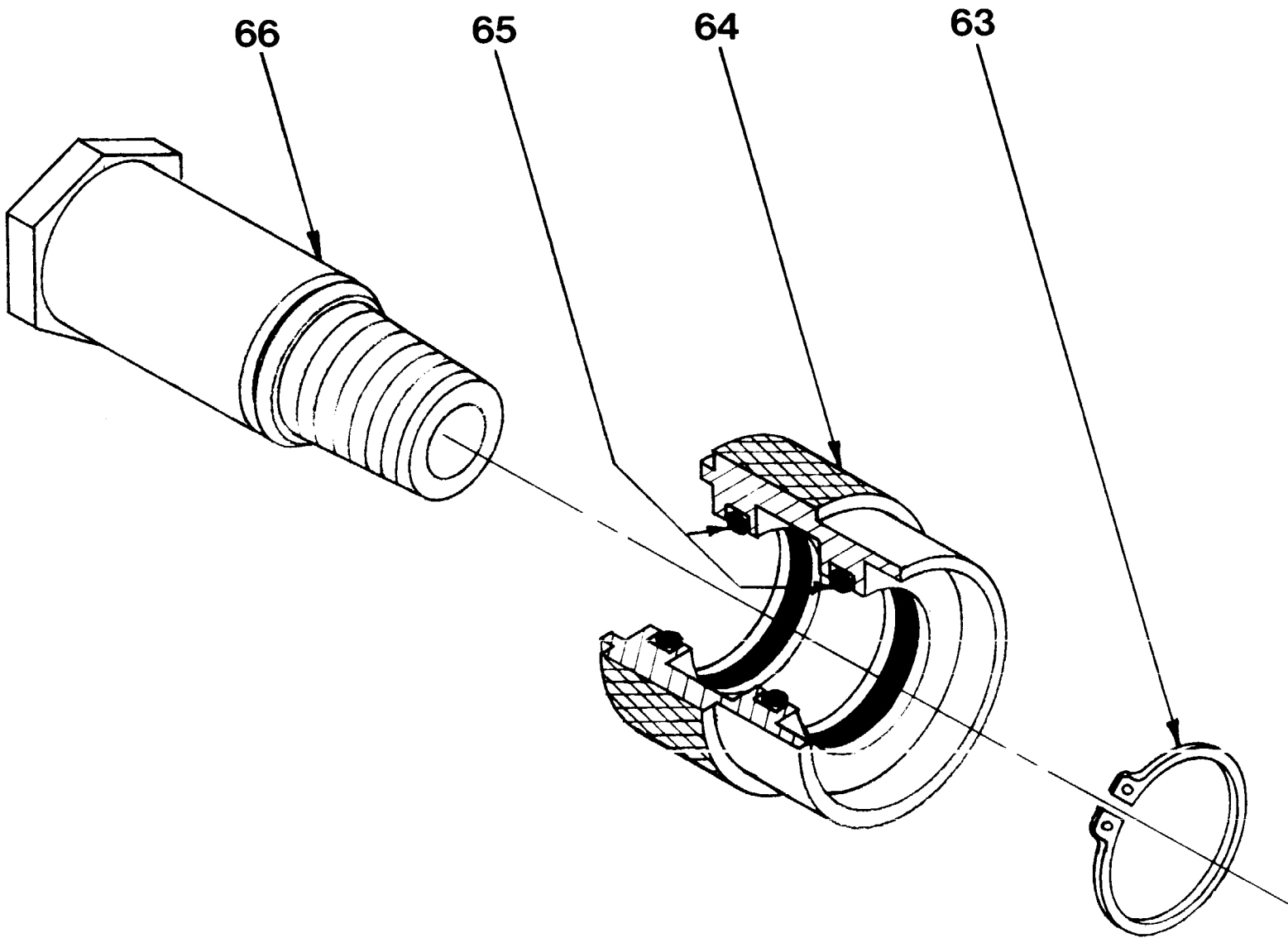


Figure 5. Pressure Tank Assembly
(Sheet 4 of 4)

SECTION II (1) ILLUSTRATION		(2)	(3)	(4)	(5)	(6)	(7)	(8)
FIG NO	ITEM NO	SMR CODE	NATIONAL STOCK NUMBER	PART NUMBER	FSCM	DESCRIPTION	USABLE ON CODE U/M	QTY INC IN UNIT
						GROUP 05 PRESSURE TANK ASSEMBLY		
5		XBOZZ		50-6523	19272	TANK ASSY,PRESSURE	EA	1
5	1	XBOFF		50-6605	19272	.HEAD ASSY,CONTROL	EA	1
5	2	XBFZZ		50-5005	19272	..POST,FLUID	EA	1
5	3	XBFZZ		1-05-1004-5	19272	..SCREW,PROP	EA	1
5	4	XBOZZ		20-5082	19272	..PROPELLER	EA	1
5	5	PAFZZ		50-6611	19272	..HOSE ASSY,PRESSURE	EA	1
5	6	XBFZZ		11-5693	19272	..COUPLING	EA	1
5	7	XBOZZ		20-4400-4	19272	..FITTING	EA	3
5	8	PBOFF		50-4419-1	19272	..MUFFLER ASSY	EA	1
5	9	XBOZZ		20-4439-1	19272	...CAP	EA	1
5	10	PAOZZ		20-4438-1	19272	...SCREEN	EA	2
5	11	PAOZZ		20-4435-1	19272	...FELT	EA	2
5	12	XAOZZ		20-4440-1	19272	...BASE	EA	1
5	13	XBOZZ	4730-00-407-6440	MS51953-25	96906	..NIPPLE	EA	6
5	14	PBOZZ		6-4300	19272	..VALVE,NEEDLE	EA	1
5	15	PAOFF		9-4300-7	19272	..MOTOR,AIR	EA	1
5	16	PAFZZ	5305-00-912-7295	MS35276-279	96906	...SCREW,END PLATE	EA	12
5	17	XAFZZ		20-5014	19272	...END PLATE,DRIVE	EA	1
5	18	XAFZZ		20-5016	19272	...END PLATE,DEAD	EA	1
5	19	PAFZZ		4-4344	19272	...GASKET,END PLATE	EA	2
5	20	XBFZZ		20-5040	19272	...CAP,END	EA	1
5	21	PAFZZ		4-4347	19272	...GASKET,END CAP	EA	1
5	22	PAFZZ		4-4340	19272	...SEAL,SHAFT	EA	1
5	23	PAFZZ		2-4340	19272	...BEARING	EA	2
5	24	XBFZZ		20-5021	19272	...ROTOR ASSY	EA	1
5	25	XBFZZ		20-5030	19272	...VANE	EA	4
5	26	XBFZZ		11-4317	19272	...PIN,DOWEL	EA	4
5	27	XAFZZ		20-5000	19272	...HOUSING	EA	1
5	28	XBFZZ		20-5994	19272	..SUPPORT,MOTOR	EA	1
5	29	XBFZZ		1-10-28-3	19272	..NUT	EA	1
5	30	XBFZZ		20-5991	19272	..WASHER,PACKING	EA	1
5	31	PAFZZ		4-4301-1	19272	..PACKING	EA	1
5	32	XBFZZ		20-5993	19272	..SHAFT,PROPELLER	EA	1
5	33	XBFZZ		20-4570-4	19272	..ADAPTER	EA	1
5	34	XBFZZ		11-4126	19272	..STRAINER,FLUID	EA	1
5	35	PBOZZ	4820-00-289-4228	5-10-9	19272	..COCK,SHUTOFF	EA	1
5	36	PBOZZ		5-10-4	19272	..COCK,SHUTOFF	EA	1
5	37	PAOZZ	6685-00-482-6230	6-4325-160	19272	..GAGE,PRESSURE,DIAL	EA	2
5	38	PAFZZ		11-5529	19272	..FILTER,AIR	EA	1

SECTION II (1) ILLUSTRATION		(2)	(3)	(4)	(5)	(6)	(7)	(8)
FIG NO	ITEM NO	SMR CODE	NATIONAL STOCK NUMBER	PART NUMBER	FSCM	DESCRIPTION	USABLE ON CODE U/M	QTY INC IN UNIT
5	39	XBFZZ	4730-00-407-6440	MS51953-25	96906	..NIPPLE	EA	REF
5	40	XBFZZ		5-03-222-8	19272	..TEE	EA	3
5	41	XBFZZ	4730-00-407-6440	MS51953-25	96906	..NIPPLE	EA	REF
5	42	XBFZZ		5-05-22-8	19272	..UNION	EA	1
5	43	XBFZZ	4730-00-407-6440	MS51953-25	96906	..NIPPLE	EA	REF
5	44	XBFZZ		5-02-22-8	19272	..STREET ELL	EA	2
5	45	PBFFF		6-4420	19272	..REGULATOR, PR	EA	2
5	46	XAFZZ		11-5642	19272	..PLUG, BOTTOM	EA	1
5	47	PCFZZ	5330-00-840-6269	MS29561-019	96906	...O RING	EA	1
5	48	XBFZZ		11-5640	19272	...SPRING	EA	1
5	49	PBFZZ	5330-00-580-5939	MS29561-009	96906	...O RING	EA	1
5	50	XAFZZ		11-5638	19272	..VALVE	EA	1
5	51	XAFZZ		5-07-22-8	19272	..PLUG, PIPE	EA	1
5	52	XAFZZ		11-5630	19272	...SCREW	EA	4
5	53	XAFZZ		11-5637	19272	...BODY	EA	1
5	54	PCFZZ	5330-00-580-5937	MS29561-008	96906	...O RING	EA	1
5	55	XAFZZ		11-5634	19272	...DIAPHRAGM ASSY	EA	1
5	56	XAFZZ		11-5633	19272	...SPRING	EA	1
5	57	XAFZZ		11-5632	19272	...DISC, PR	EA	1
5	58	XBFZZ		11-5628	19272	...SCREW, ADJUSTMENT	EA	1
5	59	XBFZZ		11-5629	19272	...NUT	EA	1
5	60	XAFZZ		11-5631	19272	...COVER	EA	1
5	61	XBOZZ	4730-00-407-6440	MS51953-25	96906	...NIPPLE	EA	REF
5	62	PBFFF		50-4581	19272	..VALVE ASSY, SLIDE	EA	1
5	63	XAFZZ		1-5100-68	19272	..STOP, SLIDE	EA	1
5	64	XAFZZ		20-4144	19272	..PISTON, SLIDE	EA	1
5	65	PCFZZ		4-4300-16	19272	...O RING	EA	2
5	66	XAFZZ		20-4143	19272	...BODY	EA	1
5	67	XBFZZ		5-03-222-8	19272	..TEE	EA	REF
5	68	XBOZZ		MS51953-35	96906	..NIPPLE	EA	2
5	69	XBOZZ	4730-00-407-6440	MS51953-25	96906	..NIPPLE	EA	REF
5	70	XBOZZ		5-03-222-8	19272	...TEE	EA	REF
5	71	XBOZZ	4730-00-196-1486	MS51953-33	96906	..NIPPLE	EA	2
5	72	XBOZZ		5-02-22-8	19272	..STREET ELL	EA	REF
5	73	PBFFF		6-4420	19272	..REGULATOR, PR	EA	REF
5	74	XBOZZ	4730-00-196-1486	MS51953-33	96906	..NIPPLE	EA	REF
5	75	XBOZZ		5-06-2222-8	19272	..CROSS	EA	1
5	76	XBOZZ		MS51953-35	96906	..NIPPLE	EA	REF
5	77	XBOZZ		5-01-33-8	19272	..ELBOW	EA	1
5	78	XBOZZ		MS51953-57	96906	..NIPPLE	EA	1

SECTION II		(2)	(3)	(4)	(5)	(6)	(7)	(8)
(1) ILLUSTRATION								
(A) FIG NO	(B) ITEM NO	SMR CODE	NATIONAL STOCK NUMBER	PART NUMBER	FSCM	DESCRIPTION	USABLE ON CODE	QTY INC IN UNIT
5	79	PBFZZ	4820-00-893-9841	112C		.. VALVE, SAFETY	EA	1
5	80	PAOZZ	5330-00-253-2199	4-433C	19272	.. GASKET	EA	1
5	81	XBOZZ		50-6524	19272	.. COVER ASSY	EA	1
5	82	XBOZZ		11-4351-1	19272	.. PAIL	EA	1
5	83	XBOFF		50-5004	19272	.. TANK	EA	1
5	84	XBOZZ		2C-311		.. SCREW, CLAMP	EA	6
5	85	XBOZZ		20-179		.. PIN	EA	6
5	85	XBOZZ		20-179		.. PIN	EA	6
5	86	XBOZZ		20-403		.. CLAMP	EA	6

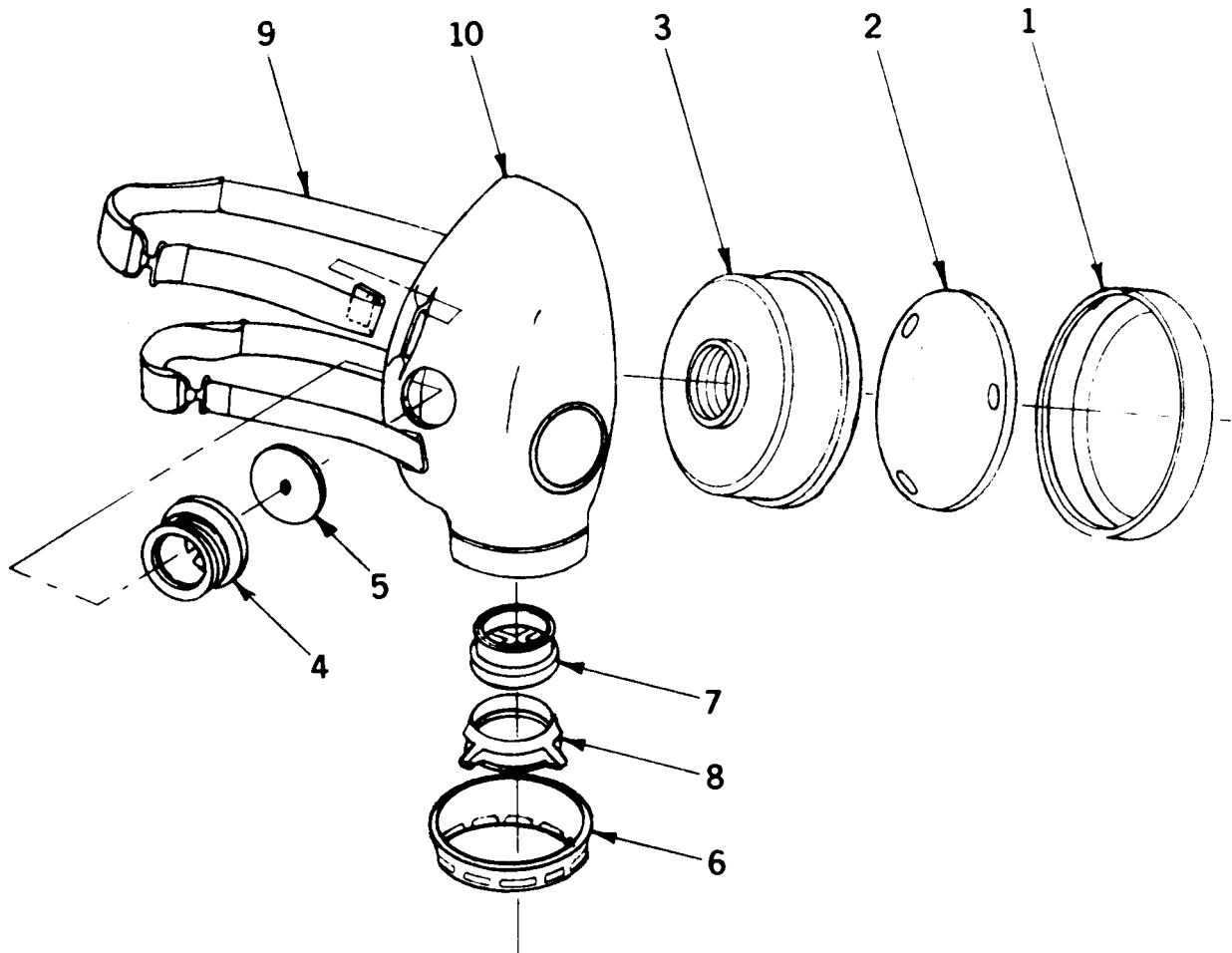


Figure 6. Respirator

SECTION II (1) ILLUSTRATION		(2)	(3)	(4)	(5)	(6)	(7)	(8)
FIG NO	ITEM NO	SMR CODE	NATIONAL STOCK NUMBER	PART NUMBER	FSCM	DESCRIPTION	USABLE ON CODE U/M	QTY INC IN UNIT
						GROUP 06 RESPIRATOR		
6		PAOOO		7531	79250	RESPIRATOR	EA	1
6	1	XBOZZ		7500-26	79250	.COVER, FILTER	EA	2
6	2	XBOZZ		7500-10	79250	.PREFILTER	EA	2
6	3	XBOZZ		7500-1	79250	.CARTRIDGE	EA	2
6	4	XAOZZ		7500-16	79250	.CONN, INHALATION	EA	2
6	5	XBOZZ		7500-17	79250	.VALVE, INHALATION	EA	2
6	6	XAOZZ		7500-20	79250	.GUARD, VALVE	EA	1
6	7	XAOZZ		7500-18	79250	.VALVE, EXHALATION	EA	1
6	8	XAOZZ		7500-19	79250	.SEAT, VALVE	EA	1
6	9	XAOZZ		7500-12	79250	.HEADBAND SET	EA	1
6	10	XAOZZ		7500-11	79250	.FACEPIECE	EA	1

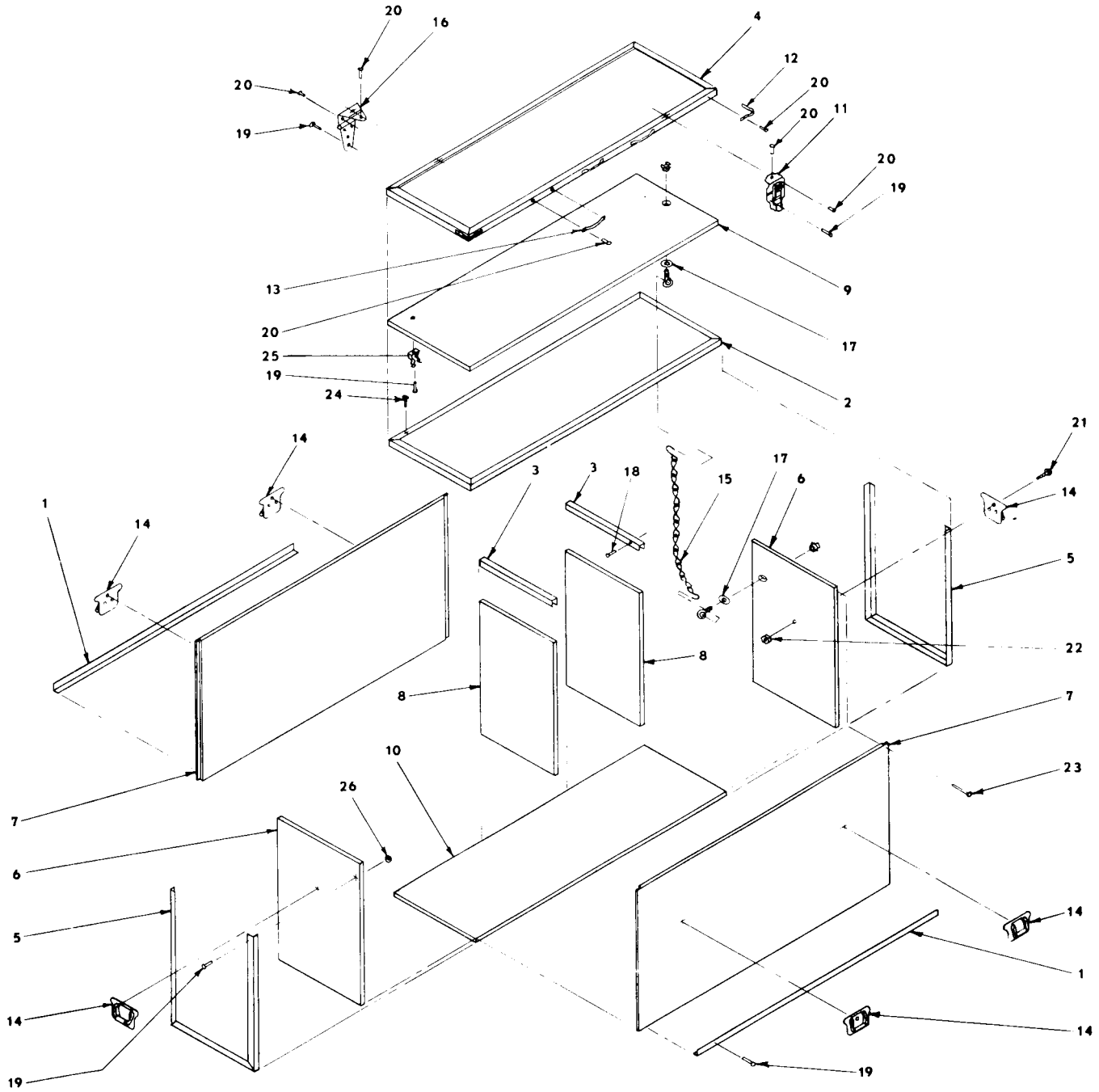


Figure 7. Chest, Spray Outfit

SECTION II					TM5-1940-228-34P		
(1)	(2)	(3)	(4)	(5)	(6)	(7)	(8)
ILLUSTRATION		NATIONAL	PART	FSCM	DESCRIPTION	USABLE ON CODE	QTY
(A)	(B)	STOCK	NUMBER				INC
FIG	ITEM	NUMBER					IN
NO	NO						UNIT
		SMR					
		CODE					
		PAOZZ	50-6618	19272	GROUP 07 CEST, SPRAY OUTFIT		
7		PAOZZ	50-6618	19272	CHEST, SPRAY OUTFIT	EA	1
7	1	XBFFF	20-6027	19272	.BINDING, BOTTOM	EA	2
7	2	XBFFF	20-6028	19272	.BINDING, EDGE	EA	1
7	3	XBFFF	20-6029	19272	.BINDING, PARTITION	EA	2
7	4	XBFFF	20-6030	19272	.BINDING, COVER	EA	1
7	5	XBFFF	20-6026	19272	.BINDING, CORNER	EA	2
7	6	XBFFF	11-6102	19272	.PANEL, SIDE	EA	2
7	7	XBFFF	11-6103	19272	.PANEL, FRONT, REAR	EA	2
7	8	XBFZZ	11-6104	19272	.PARTITION	EA	2
7	9	XBFZZ	11-6114	19272	.PANEL, COVER	EA	1
7	10	XBFZZ	11-6101	19272	.PANEL, BOTTOM	EA	1
7	11	PAFZZ	20-6032	19272	.DRAWBOLT	EA	4
7	12	XBFZZ	20-6033	19272	.PULL, CORNER COVER	EA	2
7	13	XBFZZ	20-6034	19272	.PULL, COVER	EA	3
7	14	PAFZZ	20-6035	19272	.HANDLE	EA	6
7	15	PAFZZ	20-6036	19272	.CHAIN, COVER	EA	2
7	16	PAFZZ	5340-00-240-2584	MS27972-20	96906 .HINGE	EA	4
7	17	XBFZZ	1-20-06-3	19272	.WASHER, EYEBOLT	EA	2
7	18	PAFZZ	11-6113	19272	.RIVER 1/16 TUBULAR	EA	64
7	19	PAFZZ	11-6117	19272	.RIVET 9/64 TUBULAR	EA	180
7	20	PAFZZ	11-6116	19272	.RIVER 5/32 FH	EA	36
7	21	PAFZZ	11-6119	19272	.SCREW, 1/4-20	EA	18
7	22	PAFZZ	5310-00-250-9477	MS35649-2254	96906 .NUT, 1/4-20	EA	18
7	23	PAFZZ	5315-00-162-3151	FFN105	81348 .NAIL, 4D COATED	EA	96
7	24	PAFZZ	5305-00-939-9234	FF-S-111	81348 .SCREW, #5X1, WOOD, RH	EA	48
7	25	PAFZZ	20-6044	19272	.CLIP, TUBULAR	EA	3
7	26	XBFZZ	1-20-30-3	19272	.WASHER, FLAT	EA	60

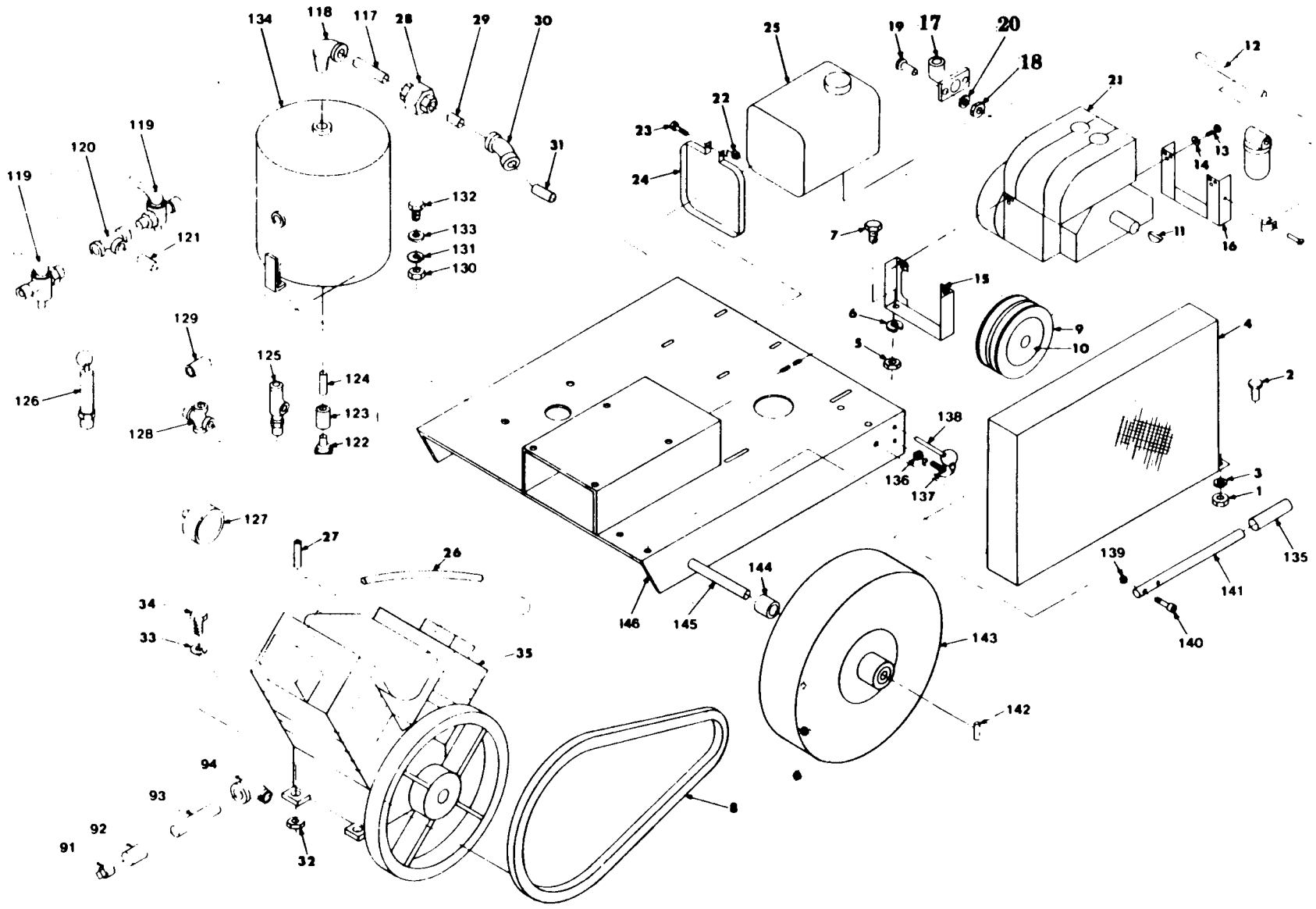


Figure B. Compressor Assembly
(Sheet 1 of 5)

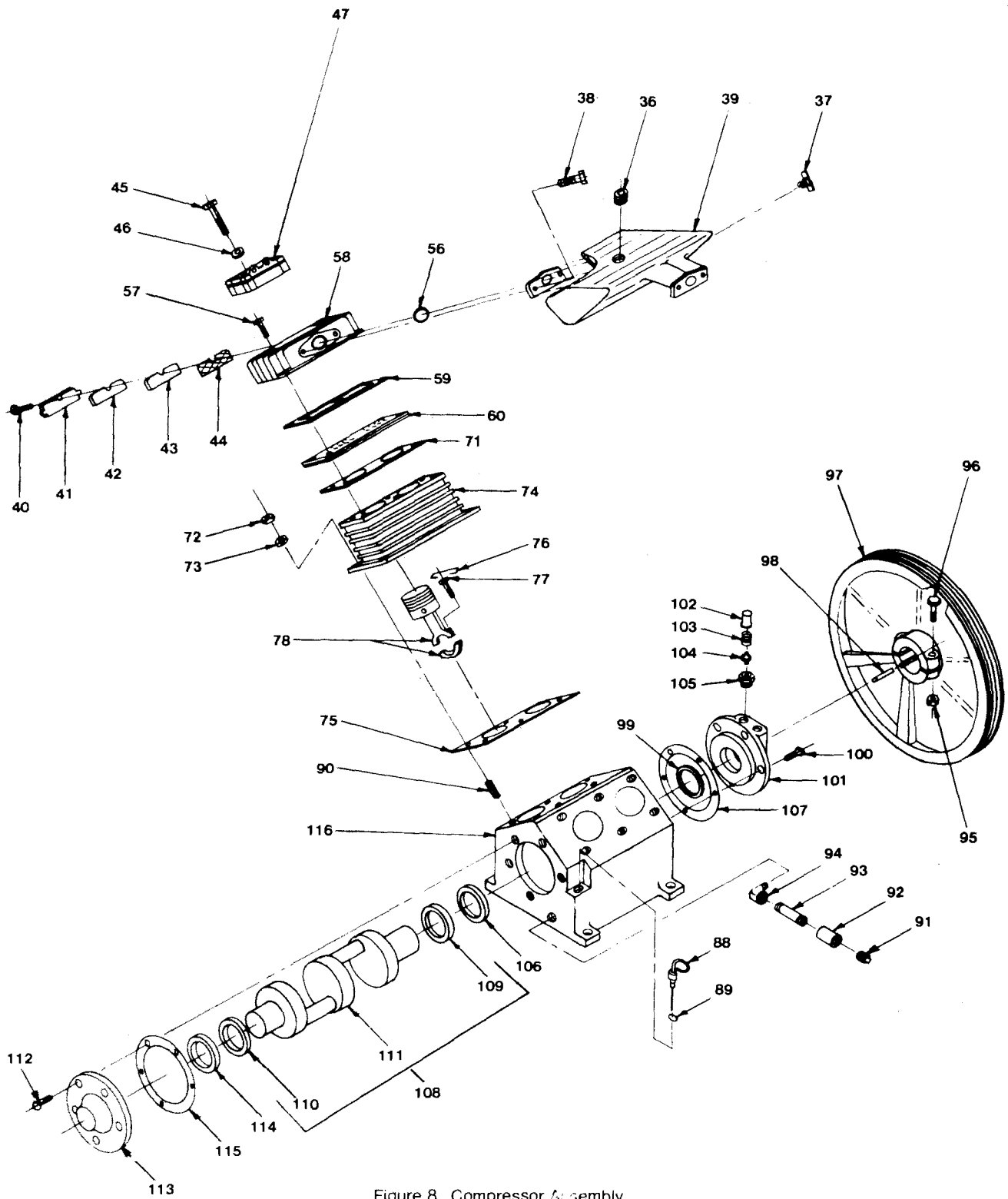


Figure 8. Compressor Assembly
(Sheet 2 of 5)

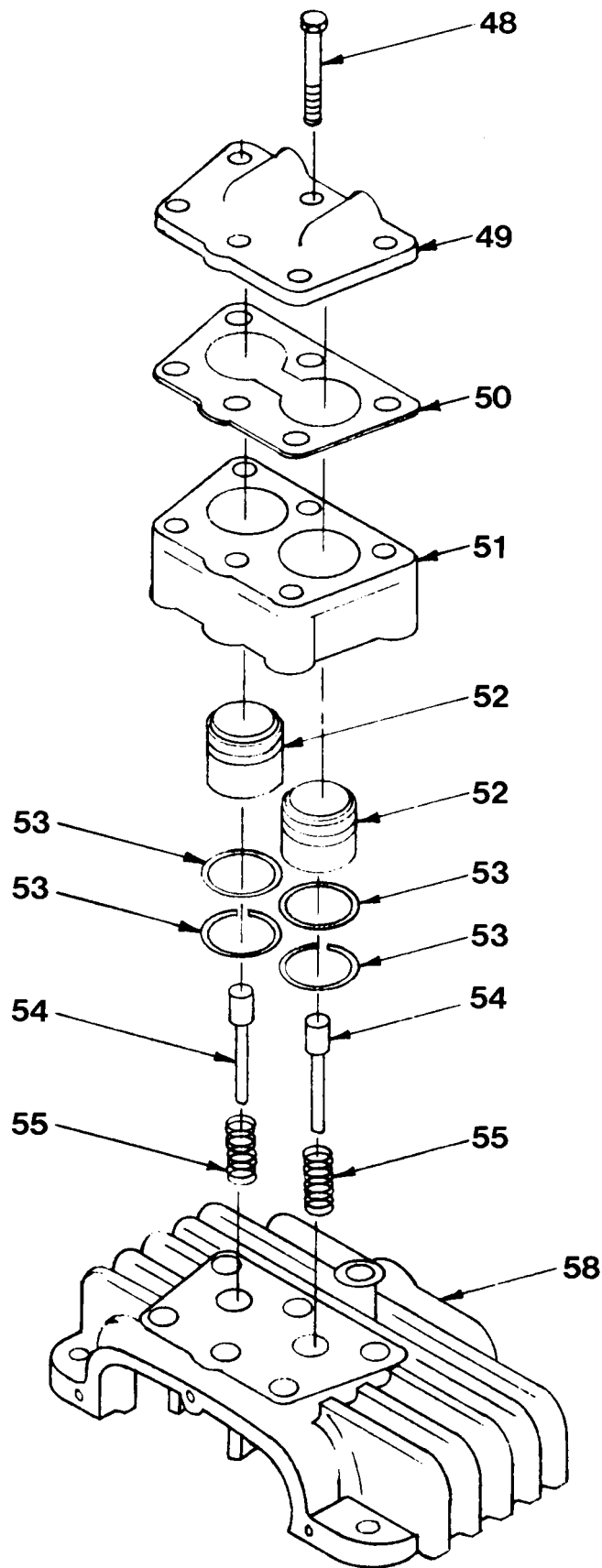


Figure 8. Compressor Assembly (Sheet 3 of 5)

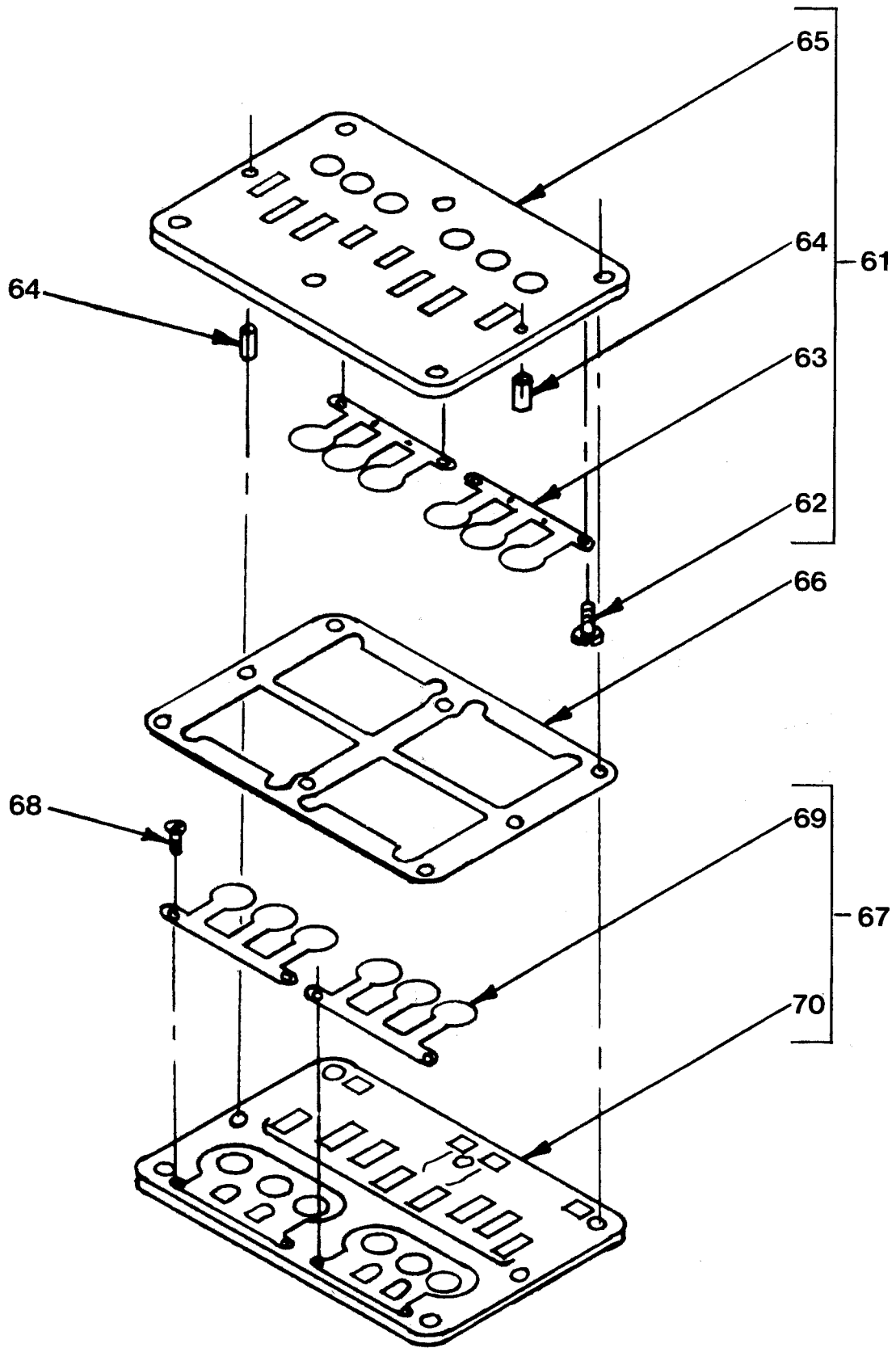


Figure 8. Compressor Assembly
(Sheet 4 of 5)

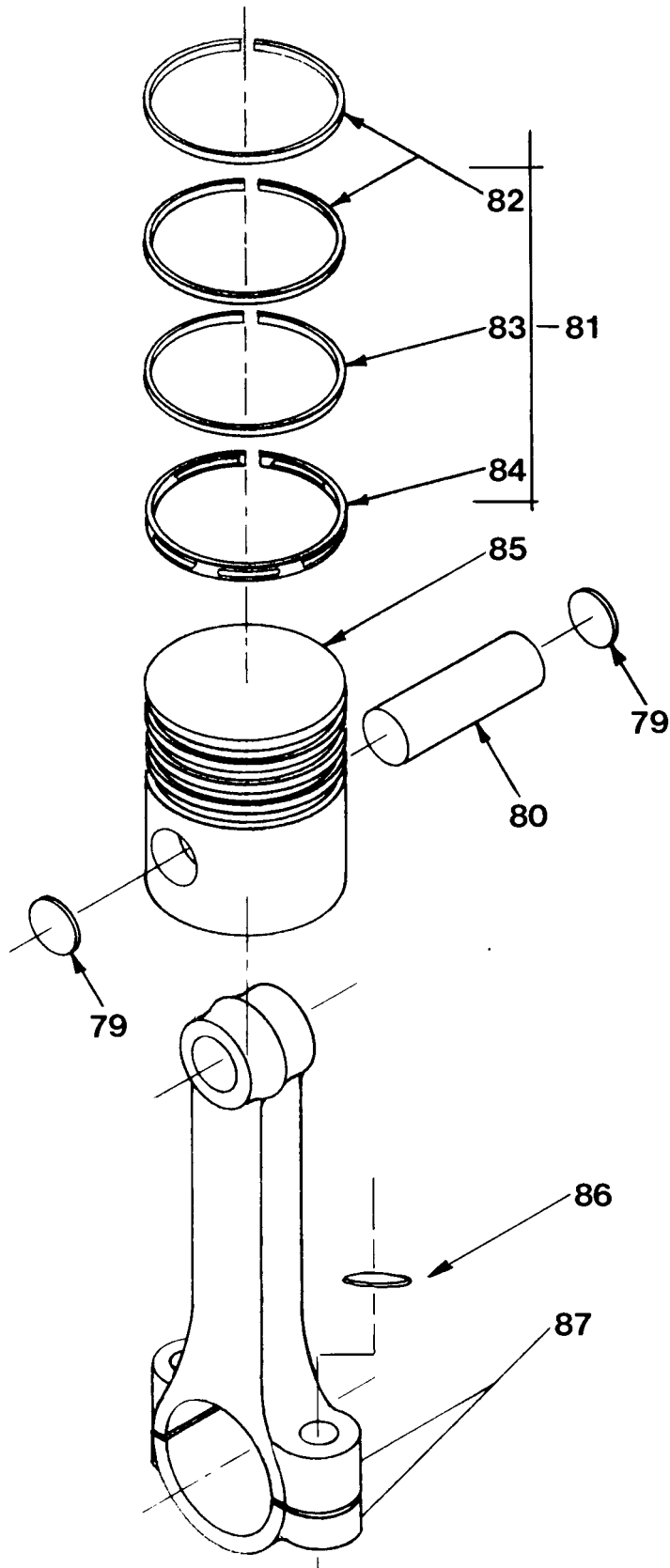


Figure 8. Compressor Assembly (Sheet 5 of 5)

SECTION II (1) ILLUSTRATION		(2)	(3)	(4)	(5)	(6)	(7)	(8)
FIG NO	ITEM NO	SMR CODE	NATIONAL STOCK NUMBER	PART NUMBER	FSCM	DESCRIPTION	USABLE ON CODE U/M	QTY INC IN UNIT
GROUP 08 COMPRESSOR ASSEMBLY								
8		XBCFF		50-6624	19272	.COMPRESSOR ASSEMBLY	EA	1
8	1	PAOZZ	5310-00-250-9477	MS35649-2254	96906	.NUT, 1/4-20	EA	4
8	2	PAOZZ	5305-00-719-3997	MS35307-303	96906	.BOLT, 1/4-20X1/2	EA	2
8	3	PAOZZ	5310-00-933-8121	MS35338-139	96906	.WASHER, 1/4	EA	4
8	4	XBOFF		20-6054	19272	.GUARD, BELT	EA	1
8	5	PAOZZ	5310-00-913-8881	MS51971-3	96906	.NUT, 3/8-16	EA	4
8	6	PAOZZ	5310-00-984-7042	MS35338-141	96906	.WASHER, LOCK, 3/8	EA	4
8	7	PAOZZ	5305-00-576-5417	MS35307-360	96906	.BOLT, 3/8-16X1	EA	4
8	8	PAOZZ		A58	71176	.BELT	EA	2
8	9	XBFZZ		2BK5CH	7116	.SHEAVE	EA	1
8	10	XBFZZ		H-3/4	71176	.BUSHING	EA	1
8	11	PAFZZ	5315-00-616-5514	MS35756-6	96906	.KEY, WOODRUFF	EA	1
8	12	PAFZZ		20-6060	19272	.TUBE ASSEMBLY, METAL	EA	1
8	13	PAOZZ	5305-00-719-3997	MS35307-303	96906	.BOLT, 1/4-20X1/2	EA	12
8	14	PAOZZ	5310-00-933-8121	MS35338-139	96906	.WASHER, LOCK, 1/4	EA	12
8	15	XBFZZ		20-6058	19272	.MOUNT, ENGINE FRONT	EA	1
8	16	XBFZZ		20-6057	19272	.MOUNT, ENGINE REAR	EA	1
8	17	XBFZZ		20-6059	19272	.DEFLECTOR, EXHAUST	EA	1
8	18	PAFZZ	5310-00-250-9477	MS35649-2254	96906	.NUT, 1/4-20	EA	2
8	19	PAFZZ	5305-00-207-8253	MS35307-308	96906	.BOLT, 1/4-20X1	EA	2
8	20	PAFZZ	5310-00-933-8121	1-21-10-3	19272	.WASHER, LOCK, 1/4	EA	12
8	21	PAFFF	2805-00-072-4871	2AC16-3	97403	.ENGINE, GASOLINE	EA	1
8	22	PAFZZ	5310-00-826-8965	22NU04C	72962	.NUT, 1/4-20	EA	2
8	23	PAFZZ	5305-00-721-8010	MS35307-314	96906	.SCREW, CAP, HEXAGON H	EA	2
8	24	XBFZZ		11-6137	19272	.STRAP, MOUNTING	EA	2
8	25	XBFFF		434	00165	.TANK, GASOLINE, 2GAL	EA	1
8	26	XBFFF		20-6061	19272	.LINE, UNLOADER	EA	1
8	27	XBFFF		20-6062	19272	.LINE, PILOT	EA	1
8	28	XBFZZ		5-C5-55-8	19272	.UNION 3/4	EA	1
8	29	XBFZZ	4730-00-196-1468	MS51953-97	96906	.NIPPLE 3/4X1 3/8	EA	1
8	30	XBFZZ		5-C1-55-8	19272	.ELBOW, 45, 3/4	EA	1
8	31	XBFZZ		MS-51953-97	96906	.NIPPLE, 3/4X1 3/8	EA	1
8	32	PAFZZ	5310-00-913-8881	MS51971-3	96906	.NUT, 3/8-16	EA	4
8	33	PAFZZ	5310-00-984-7042	MS35338-141	96906	.WASHER, LOCK, 3/8	EA	4
8	34	PAFZZ	5305-00-021-3740	MS35307-364	96906	.BOLT, 3/8-16X1 1/2	EA	4
8	35	PBFFH		V-230	01605	.COMPRESSOR, AIR	EA	1
8	36	XBOZZ		1923	01605	..PLUG, PIPE	EA	2
8	37	PBOZZ		1459	01605	..COCK, DRAIN	EA	1
8	38	XBFZZ		2136	01605	..BOLT, MOUNTING	EA	4

SECTION II (1) ILLUSTRATION		(2)	(3)	(4)	(5)	(6)	(7)	(8)
(A) FIG NO	(B) ITEM NO	SMR CODE	NATIONAL STOCK NUMBER	PART NUMBER	FSCM	DESCRIPTION	USABLE ON CODE	U/M INC IN UNIT
8	39	XBFZZ		2099	01605	..TANK,PULSATION	EA	1
8	40	PAOZZ	5305-00-995-3444	MS35207-266	96906	..SCREW,FILTER	EA	3
8	41	XBOZZ		21C4	01605	..RETAINER,FILTER	EA	1
8	42	PAOZZ		2128	01605	..ELEMENT,FILTER,OUT	EA	1
8	43	PAOZZ		2129	01605	..ELEMENT,FILTER,IN	EA	1
8	44	PAOZZ		2130	01605	..SCREEN,FILTER	EA	1
8	45	XBFZZ		2132	01605	..BOLT,HEAD LONG	EA	1
8	46	XBFZZ		1244	01605	..WASHER,GASKET	EA	1
8	47	XBFHH		2160	01605	..UNLOADER ASSY	EA	1
8	48	XBFZZ		2170	01605	...BOLT,COVER	EA	5
8	49	XBFZZ		2106	01605	...COVER,UNLOADER	EA	1
8	50	PAFZZ		2113	01605	...GASKET,COVER	EA	1
8	51	XBFZZ		2105	01605	...BODY,UNLOADER	EA	1
8	52	XBFZZ		2107	01605	...PISTON,UNLOADER	EA	2
8	53	PBFZZ	5330-00-690-9594	MS29561-210	96906	...O RING,PISTON	EA	4
8	54	XBFZZ		2159	01605	...PLUNGER,UNLOADER	EA	2
8	55	XBFZZ		2097	01605	...SPRING,PLUNGER	EA	2
8	56	PAFZZ	5330-00-618-2517	MS29561-214	96906	..O RING	EA	1
8	57	XBFZZ		1174	01605	..BOLT,HEAD,SHORT	EA	4
8	58	XBFHH		2148	01605	..HEAD	EA	1
8	59	PAFZZ		2138	01605	..GASKET, TOP	EA	1
8	60	XBFZZ		2143	01605	..PLATE ASSY, VALVE	EA	1
8	61	XBFHH		2157	01605	...PLATE ASSY, TOP	EA	1
8	62	XBHZZ		2057	01605SCREW, REED VALVE	EA	4
8	63	XBFZZ		2035	01605VALVE, REED, INTAKE	EA	2
8	64	XBHZZ		2023	01605PIN, VALVE PLATE	EA	2
8	65	XBHZZ		2149	01605PLATE, TOP	EA	1
8	66	PAFZZ		2058	01605	...GASKET, MIDDLE	EA	1
8	67	PAFHH		2158	01605	...PLATE ASSY, BOTTOM	EA	1
8	66	XBHZZ		2057	01605SCREW, REED VALVE	EA	4
8	69	PBFZZ		2036	01605VALVE, REED, DISCH	EA	2
8	70	XBHZZ		2037	01605PLATE, BOTTOM	EA	1
8	71	PAHZZ		1316	01605	..GASKET, BOTTOM	EA	1
8	72	XBFZZ		1978	01605	..NUT, CYLINDER	EA	6
8	73	XBFZZ		1353	01605	..LOCKWASHER	EA	6
8	74	XBHZZ		1394	01605	..CYLINDER	EA	1
8	75	XBHZZ		1404	01605	..GASKET, CYLINDER	EA	2
8	76	XBHZZ		1537	01605	..WIRE, CON ROD	EA	1
8	77	XBHZZ		1524	01605	..BOLT, CON ROD	EA	2
8	78	XBHHH		1548	01605	..PISTON ASSY	EA	2

SECTION II (1) ILLUSTRATION		(2)	(3)	(4)	(5)	(6)	(7)	(8)
FIG NO	ITEM NO	SMR CODE	NATIONAL STOCK NUMBER	PART NUMBER	FSCM	DESCRIPTION	USABLE ON CODE	QTY INC IN UNIT
8	79	XBHZZ		1210-2	01605	...PLUG,PISTON PIN		EA 2
8	80	XBHZZ		1319	01605	...PIN,PISTON		EA 1
8	81	PBHZZ		1549	01605	...RING SET		EA 1
8	82	XAHZZ		1533	01605	...RING,COMP,EDGE UP		EA 2
8	83	XAHZZ		1534	01605	...RING,COMP,GROOVE DN		EA 1
8	84	XAHZZ		1321	01605	...RING,OIL		EA 1
8	85	XAHZZ		1460	01605	...PISTON		EA 1
8	86	XBHZZ		1227	01605	...WASHER,CON ROD		EA 2
8	87	XBHZZ		1399	01605	...ROD CONNECTING		EA 1
8	88	XBOZZ		1521	01605	..STICK,DIP		EA 1
8	89	XBOZZ		1265	01605	..O RING		EA 1
8	90	PAFZZ		1970	01605	..STUD,5/16 X 1 5/16		EA 12
8	91	XBOZZ		1111	01605	..PLUG,OIL DRAIN 1/4		EA 1
8	90	XBFZZ		5-04-22-8	19272	..COUPLING,PIPE 1/4		EA 1
8	93	XBFZZ	4730-00-196-1486	MS51953-33	96906	..NIPPLE,PIPE 1/4		EA 1
8	94	XBFZZ		5-02-22-8	19272	..ELBOW,STREET 1/4		EA
8	95	XBFZZ		1379	01605	..NUT,PULLEY CLAMP		EA 2
8	96	XBFZZ		13 3	01605	..BOLT, PULLEY CLAMP		EA 2
8	97	XBFZZ		1390	01605	..PULLEY,2 GROOVE		EA 1
8	98	XBFZZ		1382	01605	..KEY,PULLEY		EA 1
8	99	PAFZZ	5330-00-207-8975	45C245	11614	..SEAL,OIL		EA 1
8	100	PAFZZ	5305-00-753-4322	MS51095-334	96906	..SCREW,HEX CAP		EA 5
8	101	PAFZZ		1397	01605	..CARRIER,BEARING		EA 1
8	102	XBOZZ		1358	01605	..CAP,BEATHER		EA 2
8	103	XBOZZ		1291	01605	..SPRING,BREATHER		EA 2
8	104	PAOZZ		1153	01605	..VALVE,BREATHER		EA 2
8	105	XBFZZ		1357	01605	..SEAT,BREATHER		EA 2
8	106	PAFZZ		LM67C10	01605	..CUP,BEARING		EA 1
8	107	PAFZZ		14C3	01605	..GASKET,CARRIER		EA 3
8	108	XBHZZ		1430	01605	..CRANKSHAFT ASSY		EA 1
8	109	PAFZZ		LM67C48	01605	..CONE,BEARING		EA 1
8	110	PAFZZ		L44649	01605	..CONE,BEARING		EA 1
8	111	XBHZZ		1400	01605	..CRANKSHAFT		EA 1
8	112	PAFZZ	5305-00-753-4322	MS51095-334	96906	..SCREW,CAP, HEX		EA 5
8	113	XBFZZ		1396	01605	..CARRIER,BEARING		EA 1
8	114	PAFZZ		L44610	01605	..CUP,BEARING		EA 1
8	115	PAFZZ		1402	01605	..GASKET,CARRIER		EA 3
8	116	XBHZZ		1398	01605	..CRANKCASE		EA 1
8	117	XBFZZ	4730-00-196-1497	MS51953-102	96906	..NIPPLE,3/4X2 1/2		EA 1
8	118	XBFZZ		5-02-55-3	19272	..ELBOW,STREET 3/4PT		EA 1

SECTION II		(2)	(3)	(4)	(5)	(6)	(7)	(8)
(1)	ILLUSTRATION					DESCRIPTION	USABLE ON CODE	QTY INC IN UNIT
(A)	(B)	SMR	NATIONAL	PART	FSCM		U/M	
FIG	ITEM	CODE	STOCK	NUMBER				
NO	NO		NUMBER					
8	119	PAOZZ		5-10-4	19272	.COCK,SHUTOFF	EA	2
8	120	XBFZZ		5-03-222-8	19272	.TEE,1/4NPT	EA	1
8	121	XBFZZ	4730-00-407-6440	MS51953-25	96906	.NIPPLE,CLOSE 1/4NPT	EA	1
8	122	PAOZZ		1459	01605	.COCK,DRAIN 1/4NPT	EA	1
8	123	XBFZZ		5-04-22-8	19272	.COUPLING	EA	1
8	124	XBFZZ	4730-00-407-6440	MS51953-25	96906	.NIPPLE 1/4 CLOSE	EA	1
8	125	PBOFF		625T	75336	.VALVE,PILOT,65-80	EA	1
8	126	PAOZZ	4820-00-893-9841	112C	75336	.VALVE,SAFETY,100PSI	EA	1
8	127	PAOZZ		6-4348-200	19272	.GUAGE,0-200PSIG	EA	1
8	128	XBFZZ		5-06-2222-8	19272	.CROSS,1/4NPT	EA	1
8	129	XBFZZ	4730-00-407-6440	MS51953-25	96906	.NIPPLE,CLOSE 1/4NPT	EA	1
8	130	PAFZZ	5310-00-913-8881	MS51971-3	96906	.NUT,3/8-16	EA	3
8	131	PAFZZ	5310-00-984-7042	MS35338-141	96906	.WASHER,LOCK,3/8	EA	3
8	132	PAFZZ	5305-00-021-3740	MS35307-364	96906	.BOLT,3/8-16X1 1/2	EA	3
8	133	PAFZZ	5310-00-773-7618	MS15795-814	96906	.WASHER,FLAT,3/8	EA	3
8	134	XBFZZ		50-6634	19272	.CHAMBER,PULSATION	EA	1
8	135	XBFZZ		11-6138	19272	.GRIP,HANDLE	EA	2
8	136	PAFZZ	5310-00-941-6019	MS21083N08	96906	.NUT,8-32	EA	2
8	137	PAFZZ	5305-00-942-8431	MS35275-245	96906	.SCREW	EA	2
8	138	XBFZZ		11-6139	19272	.PIN,DETENT	EA	2
8	139	PAFZZ	5310-00-826-8965	22NU040	72962	.NUT,1/4-20	EA	2
8	140	XBFZZ		1-4375	19272	.SCREW,SHOULDER	EA	2
8	141	XBFZZ		20-6056	19272	.HANDLE	EA	2
8	142	XBFZZ		1-4376	19272	.PIN,ROLL 3/16X1 1/2	EA	2
8	143	XBOFF		203437410	80557	.WHEEL ASSY	EA	2
8	144	XBFZZ		20-6066	19272	.SPACER,WHEEL	EA	2
8	145	XBFZZ		20-6055	19272	.AXLE	EA	1
8	146	XBFZZ		20-6637	19272	.PLATFORM	EA	1

SECTION IV. NATIONAL STOCK NUMBER AND PART NUMBER INDEX

STOCK NUMBER	FIGURE NO	ITEM NO	STOCK NUMBER	FIGURE NO	ITEM NO
5305-00-021-3740	8	34	5330-00-618-2517	8	56
5305-00-021-3740	8	132	5330-00-690-9594	8	53
2805-00-072-4871	8	21	5305-00-719-5997	8	2
5315-00-162-3151	7	23	5305-00-719-5997	8	13
4730-00-196-1468	8	29	5305-00-721-8010	8	23
4730-00-196-1486	5	71	5305-00-753-4322	8	100
4730-00-196-1486	5	74	5305-00-753-4322	8	112
4730-00-156-1486	8	93	5310-00-773-7618	8	133
4730-00-196-1497	8	117	5310-00-826-8965	8	22
5305-00-207-8253	8	29	5310-00-826-8965	8	139
5330-00-207-8975	8	99	5330-00-840-6269	5	47
5340-00-240-2584	7	26	4820-00-898-9841	5	79
5310-00-250-9477	7	22	4820-00-893-9841	8	126
5310-00-250-9477	8	1	5305-00-912-7295	5	16
5310-00-250-9477	8	28	5310-00-913-8881	8	5
5330-00-253-2199	5	50	5310-00-913-8881	8	32
4940-00-261-8413	1		5310-00-913-8881	8	130
5330-00-285-7384	1	14	5310-00-933-8121	8	3
5330-00-285-7384	1	25	5310-00-933-8121	8	14
5330-00-285-7384	1	33	5310-00-933-8121	8	20
4820-00-289-4228	5	33	5305-00-939-9234	7	24
4730-00-407-6440	5	23	5310-00-914-8019	8	136
4730-00-407-6440	5	59	5305-00-942-8432	8	137
4730-00-407-6440	5	41	5310-00-984-7042	8	6
4730-00-407-6440	5	43	5310-00-984-7042	8	33
4730-00-407-6440	5	61	5310-00984-7042	8	131
4730-00-407-6440	5	69	5305-00-995-3444	8	40
4730-00-407-6440	8	121	4940-01-074-5164	1	
4730-00-407-6440	8	124	4820-01-091-1458	1	17
4730-00-407-6440	8	129	5330-01-091-3932	1	30
6685-00-492-6230	5	37	5330-01-091-7693	1	27
5305-00-576-5417	8	7	5330-01-092-0258	1	19
5330-00-580-5937	5	54	4730-01-092-3029	1	35
5330-00-580-5939	5	49	4730-01-149-5795	1	26
5315-00-616-5514	8	11	5330-02-091-0258	1	8

PART NUMBER	FSCM	FIG NO	ITEM NO	PART NUMBER	FSCM	FIG NO	ITEM NO
A58		71176	8	MS51953-25	96906	5	69
FF-S-111		81348	7	MS51953-25	96906	8	121
FFN105		81348	7	MS51953-25	96906	8	124
F-3/4		71176	8	MS51953-25	96906	8	129
LM6701C		01605	8	MS51953-33	96906	5	71
LM67048		01605	8	MS51953-33	96906	5	74
L4461C		01605	8	MS51953-33	96906	8	93
L44649		01605	8	MS51953-35	96906	5	68
MS-51953-97		96906	8	MS51953-35	96906	5	76
MS15795-814		96906	8	MS51953-57	96906	5	78
MS21083N08		96906	8	MS51953-97	96906	8	29
MS27972-20		96906	7	MS51971-3	96906	8	5
MS29561-008		96906	5	MS51971-3	96906	8	32
MS29561-009		96906	5	MS51971-3	96906	8	130
MS29561-019		96906	5	M36CR832-58	02615	1	9
MS29561-210		96906	8	V-230	01605	8	35
MS29561-214		96906	8	1-05-1004-5	19272	5	3
MS35207-266		96906	8	1-10-15-3	19272	2	8
MS35275-245		96906	8	1-10-28-3	19272	5	29
MS35276-279		96906	5	1-20-06-3	19272	7	17
MS35307-303		96906	8	1-20-29-2	19272	2	9
MS35307-303		96906	8	1-20-30-3	19272	7	26
MS35307-308		96906	8	1-21-10-3	19272	8	20
MS35307-314		96906	8	1-4342	19272	1	10
MS35307-360		96906	8	1-4375	19272	8	140
MS35307-364		96906	8	1-4376	19272	8	142
MS35307-364		96906	8	1-5100-68	19272	5	63
MS35338-139		96906	8	11-4126	19272	5	34
M235338-139		96906	8	11-4317	19272	5	26
MS35338-141		96906	8	11-4351-1	19272	5	82
MS35338-141		96906	8	11-5529	19272	5	38
MS35338-141		96906	8	11-5628	19272	5	58
MS35649-2254		96906	7	11-5269	19272	5	59
MS35649-2254		96906	8	11-5630	19272	5	52
MS35649-2254		96906	8	11-5631	19272	5	60
MS35756-6		96906	8	11-5632	19272	5	57
MS51095-334		96906	8	11-5633	19272	5	56
MS51095-334		96906	8	11-5634	19272	5	55
MS51953-102		96906	8	11-5637	19272	5	53
MS51953-25		96906	5	11-5640	19272	5	48
MS51953-25		96906	5	11-5642	19272	5	46
MS51953-25		96906	5	11-5693	19272	5	6
MS51953-25		96906	5	11-6101	19272	7	10
MS51953-25		96906	5	11-6102	19272	7	6

NATIONAL STOCK NUMBER AND PART NUMBER INDEX

PART NUMBER	FSCM	FIG NO	ITEM NO	PART NUMBER	FSCM	FIG NO	ITEM NO
11-6103	19272	7	7	20-4591	19272	4	6
11-6104	19272	7	8	20-4591	19272	4	20
11-6113	19272	7	18	20-4592	19272	4	5
11-6114	19272	7	9	20-4616	19272	3	1
11-6116	19272	7	20	20-5000	19272	5	27
11-6117	19272	7	19	20-5014	19272	5	17
11-6119	19272	7	21	20-5016	19272	5	18
11-6137	19272	8	24	20-5021	19272	5	24
11-6138	19272	8	135	20-5030	19272	5	25
11-6139	19272	8	138	20-5040	19272	5	20
1111	01605	8	91	20-5082	19272	5	4
1120	75336	5	79	20-5572	19272	1	35
1120	75336	8	126	20-5617	19272	4	19
1153	01605	8	104	20-5651	19272	1	16
1174	01605	8	57	20-5652	19272	1	32
11752-1	90526	2	6	20-5652	19272	1	13
1210-2	01605	8	79	20-5654	19272	1	17
1227	01605	8	86	20-5660	19272	1	1
1244	01605	8	46	20-5962	19272	1	7
1265	01605	8	89	20-5963	19272	1	29
1291	01605	8	103	20-5964	19272	1	21
1316	01605	8	71	20-5965	19272	1	24
1319	01605	8	80	20-5966	19272	1	4
1321	01605	8	84	20-5967	19272	1	5
1353	01605	8	73	20-5968	19272	1	6
1357	01605	8	105	20-5972	19272	1	31
1358	01605	8	102	20-5973	19272	1	36
1379	01605	8	95	20-5974	19272	1	22
1382	01605	8	98	20-5977	19272	1	15
1383	01605	8	96	20-5980	19272	2	15
1390	01605	8	97	20-5991	19272	5	30
1394	01605	8	74	20-5993	19272	5	32
1396	01605	8	113	20-5994	19272	5	28
1397	01605	8	101	20-5997	19272	2	1
1398	01605	8	116	20-5998	19272	2	10
1399	01605	8	87	20-5999	19272	2	11
1400	01605	8	111	20-6000	19272	2	13
1402	01605	8	115	20-6020	19272	2	4
1403	01605	8	107	20-6026	19272	7	5
1430	01605	8	108	20-6027	19272	7	1
1459	01605	8	37	20-6028	19272	7	2
1459	01605	8	122	20-6029	19272	7	3
1460	01605	8	85	20-6030	19272	7	4
15002-1	90526	2	5	20-6032	19272	7	11
1521	01605	8	88	20-6033	19272	7	12
1524	01605	8	77	20-6034	19272	7	13
1533	01605	8	82	20-6035	19272	7	14
1534	01605	8	83	20-6036	19272	7	15
1537	01605	8	76	20-6044	19272	7	25
1548	01605	8	78	20-6054	19272	8	4
1549	01605	8	81	20-6055	19272	8	145
17433	81321	1	14	20-6056	19272	8	141
17433	81321	1	23	20-6057	19272	8	16
17433	81321	1	33	20-6058	19272	8	15
1923	01605	8	36	20-6059	19272	8	17
1970	01605	8	90	20-6060	19272	8	12
1978	01605	8	72	20-6061	19272	8	26
2-4340	19272	5	23	20-6637	19272	8	146
2A016-3	97403	8	21	2023	01605	8	64
2BK50H	71176	8	9	2035	01605	8	63
20-179	96480	5	85	2036	01605	8	69
20-311	96480	5	84	2037	01605	8	70
203437410	80557	8	143	2057	01605	8	82
20-403	96480	5	86	2057	01605	8	68
20-4143	19272	5	66	2058	01605	8	66
20-4144	19272	5	64	2097	01605	8	55
20-4325	19272	4	11	2099	01605	8	39
20-4325	19272	4	18	2104	01605	8	41
20-4400-4	19272	5	7	2105	01605	8	51
20-4435-1	19272	5	11	2106	01605	8	49
20-4438-1	19272	5	10	2107	01605	8	52
20-4439-1	19272	5	9	2113	01605	8	50
20-4440-1	19272	5	12	2128	01605	8	42
20-4570-4	19272	5	33	2129	01605	8	43
20-4584	19272	4	4	2130	01605	8	44
20-4585	19272	4	10	2132	01605	8	45
20-4585	19272	4	17	2136	01605	8	38
20-4586	19272	4	12	2138	01605	8	59
20-4587	19272	4	3	2143	01605	8	60
20-4588	01605	2	14	2148	01605	8	58
20-4590	19272	4	13				

NATIONAL STOCK NUMBER AND PART NUMBER INDEX

PART NUMBER	FSCM	FIG NO	ITEM NO	PART NUMBER	FSCM	FIG NO	ITEM NO
2149	01605	8	65	50-4360-7	19272	4	2
2157	01605	8	61	50-4419-1	19272	5	8
2158	01605	8	67	50-4581	19272	5	62
2159	01605	8	54	50-5004	19272	5	83
2160	01605	8	47	50-5005	19272	5	2
2170	01605	8	48	50-6506	19272	1	25
22NU040	72962	8	22	50-6507	19272	1	3
22NU040	72962	8	139	50-6508	19272	1	11
3-4358	19272	1	18	50-6509	19272	1	26
3-4359	19272	1	2	50-6510	19272	1	
3814-1	90526	2	7	50-6511	19272	1	12
4-4300-16	19272	5	65	50-6513	19272	1	20
4-4301-1	19272	8	31	50-6523	19272	5	
4-4330	19272	5	80	50-6524	19272	5	81
4-4340	19272	5	22	50-6602-48	19272	3	
4-4344	19272	5	19	50-6605	19272	5	1
4-4347	19272	5	21	50-6611	19272	5	5
4-4406	19272	2	2	50-6612	19272	2	3
4-4420	19272	1	30	50-6615	19272	3	3
4-4437	19272	1	28	50-6616	19272	3	4
4-4438	19272	1	19	50-6618	19272	7	
4-4438	19272	1	8	50-6624	19272	8	
41-7-4-3	19272	3	2	50-6634	19272	8	134
43-15-1-4	19272	1	27	6-4300	19272	5	14
434	00165	8	25	6-4325-160	19272	5	37
450245	11314	8	99	6-4341	19272	2	12
5-01-33-8	19272	5	77	6-4348-200	19272	8	127
5-01-55-8	19272	8	30	6-4420	19272	5	45
5-02-22-8	19272	5	44	6-4420	19272	5	73
5-02-22-8	19272	5	72	625T	75336	8	125
5-02-22-8	19272	8	94	7-102-125	19272	4	14
5-02-55-8	19272	8	118	7-103-150	19272	4	21
5-03-222-8	19272	5	40	7-103-225	19272	4	7
5-03-222-8	19272	5	67	7-1111-150	19272	4	15
5-03-222-8	19272	5	70	7-116-125	19272	4	8
5-03-222-8	19272	8	120	7-118-225	19272	4	1
5-04-22-8	19272	8	92	7500-1	79250	6	3
5-04-22-8	19272	8	123	7500-10	79250	6	2
5-05-22-8	19272	5	42	7500-11	79250	6	10
5-05-55-8	19272	8	28	7500-12	79250	6	9
5-06-2222-8	19272	5	75	7500-16	79250	6	4
5-06-2222-8	19272	8	128	7500-17	79250	6	5
5-07-12-8	19272	1	34	7500-18	79250	6	7
5-07-22-8	19272	5	51	7500-19	79250	6	8
5-10-4	19272	5	36	7500-20	79250	6	6
5-10-4	19272	8	119	7500-26	79250	6	1
5-10-9	19272	5	35	7531	79250	6	
50-4360-1	19272	4	9	9-4300-7	19272	5	15
50-4360-10	19272	4	16				

NATIONAL STOCK NUMBER AND PART NUMBER SUPPLEMENTAL INDEX

STOCK NUMBER	FIGURE NO	ITEM NO	STOCK NUMBER	FIGURE NO	ITEM NO
5330-00-166-0993	5	65	5330-01-091-4173	5	31
3030-00-605-1377	8	8	2990-01-091-4220	5	8
3110-00-606-1840	8	106	5330-01-091-4581	2	2
3110-00-606-1841	8	109	5340-01-091-6154	7	11
3110-00-926-1379	8	110	5307-01-091-6198	8	90
2040-01-019-8260	5	15	4330-01-091-6965	8	42
4940-01-072-5922	2		5360-01-091-7173	1	2
4940-01-088-3229	7		5330-01-091-7963	1	28
4240-01-090-6698	8	104	5330-01-091-7964	8	50
4720-01-091-1378	4	14	5330-01-091-8075	5	22
4820-01-091-1458	1	17	5330-01-091-8588	8	59
4710-01-091-1587	8	12	5330-01-091-8589	8	71
6685-01-091-2009	5	45	5330-01-092-0258	1	8
6685-01-091-2009	5	73	5330-01-092-0258	1	19
4720-01-091-2829	4	21	4330-01-092-0297	8	43
6685-01-091-3095	8	127	4010-01-092-1096	7	15
4710-01-091-3138	2	3	4730-01-092-1681	4	9
4310-01-091-3142	5	38	4730-01-092-1698	5	10
5305-01-091-3489	7	21	4730-01-092-3022	4	2
5330-01-091-3517	8	66	4730-01-092-3029	1	35
3110-01-091-3533	5	23	3110-01-092-4765	8	101
5340-01-091-3672	7	25	5320-01-092-5524	7	18
5330-01-091-3930	5	19	5320-01-092-5525	7	19
5330-01-091-3932	1	30	5340-01-092-0095	7	14
5330-01-091-3933	5	21	4310-01-093-0582	8	67
4720-01-091-4015	5	5	5330-01-093-3871	8	107

NATIONAL STOCK NUMBER AND PART NUMBER SUPPLEMENTAL INDEX

PART NUMBER	FSCM	FIG NO	ITEM NO	PART NUMBER	FSCM	FIG NO	ITEM NO
11-5638	19272	5	50	20-6066	19272	8	144
1404	01605	8	75	50-6539	19272	2	
20-6062	19272	8	27				

By Order of the Secretary of the Army:

E. C. MEYER
General, United States Army
Chief of Staff

Official:

J. C. PENNINGTON
Major General, United States Army
The Adjutant General

DISTRIBUTION :

To be distributed in accordance with DA Form 12-28, Organizational Maintenance Requirements for Respirators, Paint Spray.



SOMETHING WRONG WITH THIS MANUAL?

THEN... JOT DOWN THE DOPE ABOUT IT ON THIS FORM, TEAR IT OUT, FOLD IT AND DROP IT IN THE MAIL!

FROM: (YOUR UNIT'S COMPLETE ADDRESS)

PFC JOHN DOE
COA, 3^d ENGINEER BN
FT. LEONARD WOOD MO 63108

DATE

PUBLICATION NUMBER

TM 5-4940-228-24P

DATE

10 Nov 80

TITLE Organizational, Direct Support and General Support Maintenance RPST for Spray Outfit, Paint NSN 4940-00-

255-8683

BE EXACT... PIN-POINT WHERE IT IS

IN THIS SPACE TELL WHAT IS WRONG AND WHAT SHOULD BE DONE ABOUT IT:

PAGE NO.	PARA-GRAPH	FIGURE NO.	TABLE NO.
6	2-1 a		
81		4-3	
125	line 20		

In line 6 of paragraph 2-1a the manual states the engine has 6 cylinders. The engine on my set only has 4 cylinders. Change the manual to show 4 cylinders.

Callout 16 on figure 4-3 is pointing at a bolt. In the key to fig. 4-3, item 16 is called a skim. Please correct one or the other.

Ordered a gasket, item 19 on figure B-16 by NSN 2910-00-762-3001. I got a gasket but it doesn't fit. Supply says I got what I ordered, so the NSN is wrong. Please give me a good NSN.

SAMPLE

TYPED NAME, GRADE OR TITLE, AND TELEPHONE NUMBER

JOHN DOE, PFC (268) 317-7111

SIGN HERE:

John Doe

RECOMMENDED CHANGES TO EQUIPMENT TECHNICAL PUBLICATIONS



THEN... JOT DOWN THE
DOPE ABOUT IT ON THIS
FORM, CAREFULLY TEAR IT
OUT, FOLD IT AND DROP IT
IN THE MAIL!

SOMETHING WRONG WITH THIS PUBLICATION?

FROM: (PRINT YOUR UNIT'S COMPLETE ADDRESS)

DATE SENT

PUBLICATION NUMBER
TM 5-4940-228-24P

PUBLICATION DATE
10 Nov 80

PUBLICATION TITLE Organizational, DS &
GS Maintenance RPSTL for Spray
Outfit. Paint NSN 4940-00-255-8683

BE EXACT... PIN-POINT WHERE IT IS

PAGE
NO.

PARA-
GRAPH

FIGURE
NO.

TABLE
NO.

IN THIS SPACE TELL WHAT IS WRONG
AND WHAT SHOULD BE DONE ABOUT IT:

PRINTED NAME, GRADE OR TITLE, AND TELEPHONE NUMBER

SIGN HERE:

DA FORM 2028-2
1 JUL 79

PREVIOUS EDITIONS
ARE OBSOLETE.
DRSTS-M Overprint 2, 1 Mar 80.

P.S.-IF YOUR OUTFIT WANTS TO KNOW ABOUT YOUR
RECOMMENDATION MAKE A CARBON COPY OF THIS
AND GIVE IT TO YOUR HEADQUARTERS.

FILL IN YOUR
UNIT'S ADDRESS

FOLD BACK

DEPARTMENT OF THE ARMY

OFFICIAL BUSINESS
PENALTY FOR PRIVATE USE \$300

POSTAGE AND FEES PAID
DEPARTMENT OF THE ARMY
DOD 314



COMMANDER
U S ARMY SUPPORT AND AVIATION MATERIEL READINESS COMMAND
ATTN: DRSTS-MTT
4300 GOODFELLOW BOULEVARD
ST. LOUIS, MO 63120

The Metric System and Equivalents

Linear Measure

1 centimeter = 10 millimeters = .39 inch
 1 decimeter = 10 centimeters = 3.94 inches
 1 meter = 10 decimeters = 39.37 inches
 1 dekameter = 10 meters = 32.8 feet
 1 hectometer = 10 dekameters = 328.08 feet
 1 kilometer = 10 hectometers = 3,280.8 feet

Weights

1 centigram = 10 milligrams = .15 grain
 1 decigram = 10 centigrams = 1.54 grains
 1 gram = 10 decigrams = .035 ounce
 1 dekagram = 10 grams = .35 ounce
 1 hectogram = 10 dekagrams = 3.52 ounces
 1 kilogram = 10 hectograms = 2.2 pounds
 1 quintal = 100 kilograms = 220.46 pounds
 1 metric ton = 10 quintals = 1.1 short tons

Liquid Measure

1 centiliter = 10 milliliters = .34 fl. ounce
 1 deciliter = 10 centiliters = 3.38 fl. ounces
 1 liter = 10 deciliters = 33.81 fl. ounces
 1 dekaliter = 10 liters = 2.64 gallons
 1 hectoliter = 10 dekaliters = 26.42 gallons
 1 kiloliter = 10 hectoliters = 264.18 gallons

Square Measure

1 sq. centimeter = 100 sq. millimeters = .155 sq. inch
 1 sq. decimeter = 100 sq. centimeters = 15.5 sq. inches
 1 sq. meter (centare) = 100 sq. decimeters = 10.76 sq. feet
 1 sq. dekameter (are) = 100 sq. meters = 1,076.4 sq. feet
 1 sq. hectometer (hectare) = 100 sq. dekameters = 2.47 acres
 1 sq. kilometer = 100 sq. hectometers = .386 sq. mile

Cubic Measure

1 cu. centimeter = 1000 cu. millimeters = .06 cu. inch
 1 cu. decimeter = 1000 cu. centimeters = 61.02 cu. inches
 1 cu. meter = 1000 cu. decimeters = 35.31 cu. feet

Approximate Conversion Factors

To change	To	Multiply by	To change	To	Multiply by
inches	centimeters	2.540	ounce-inches	newton-meters	.007062
feet	meters	.305	centimeters	inches	.394
yards	meters	.914	meters	feet	3.280
miles	kilometers	1.609	meters	yards	1.094
square inches	square centimeters	6.451	kilometers	miles	.621
square feet	square meters	.093	square centimeters	square inches	.155
square yards	square meters	.836	square meters	square feet	10.764
square miles	square kilometers	2.590	square meters	square yards	1.196
acres	square hectometers	.405	square kilometers	square miles	.386
cubic feet	cubic meters	.028	square hectometers	acres	2.471
cubic yards	cubic meters	.765	cubic meters	cubic feet	35.315
fluid ounces	milliliters	29.573	cubic meters	cubic yards	1.308
pints	liters	.473	milliliters	fluid ounces	.034
quarts	liters	.946	liters	pints	2.113
gallons	liters	3.785	liters	quarts	1.057
ounces	grams	28.349	liters	gallons	.264
pounds	kilograms	.454	grams	ounces	.035
short tons	metric tons	.907	kilograms	pounds	2.205
pound-feet	newton-meters	1.365	metric tons	short tons	1.102
pound-inches	newton-meters	.11375			

Temperature (Exact)

°F	Fahrenheit	5/9 (after	Celsius	°C
	temperature	subtracting 32)	temperature	

PIN: 047387-003

This fine document...

Was brought to you by me:



[Liberated Manuals -- free army and government manuals](#)

Why do I do it? I am tired of sleazy CD-ROM sellers, who take publicly available information, slap “watermarks” and other junk on it, and sell it. Those masters of search engine manipulation make sure that their sites that sell free information, come up first in search engines. They did not create it... They did not even scan it... Why should they get your money? Why are not letting you give those free manuals to your friends?

I am setting this document FREE. This document was made by the US Government and is NOT protected by Copyright. Feel free to share, republish, sell and so on.

I am not asking you for donations, fees or handouts. If you can, please provide a link to liberatedmanuals.com, so that free manuals come up first in search engines:

<A HREF=<http://www.liberatedmanuals.com/>>Free Military and Government Manuals

- Sincerely
Igor Chudov
<http://igor.chudov.com/>
- [Chicago Machinery Movers](#)