

**TECHNICAL MANUAL**

**UNIT, INTERMEDIATE DIRECT SUPPORT AND  
INTERMEDIATE GENERAL SUPPORT MAINTENANCE  
REPAIR PARTS AND SPECIAL TOOLS LIST**

**FOR**

**COMPRESSOR UNIT, RECIPROCATING  
5 CFM, 175 PSI  
GASOLINE ENGINE DRIVEN,  
HAND TRUCK MOUNTED  
MODEL NUMBER ZPC 175/5  
NSN 4310401-19040285**

**This manual supersedes TM 5-4310-378-24P, 20 February 1987.**

**Approved for public release; distribution is unlimited**

**This copy is a reprint which includes current  
pages from Changes 1 and 2.**

---

**HEADQUARTERS, DEPARTMENT OF THE ARMY**

**7 AUGUST 1989**

CHANGE  
NO. 3

HEADQUARTERS  
DEPARTMENT OF THE ARMY  
WASHINGTON, D.C., 5 July 1997

Unit, Intermediate Direct Support and  
Intermediate General Support  
Maintenance Repair Parts and Special Tools List

for

COMPRESSOR UNIT, RECIPROCATING, 5 CF1  
175 PSI, GASOLINE ENGINE DRIVEN, HAND TRUCK MOUNTED  
MODEL NUMBER ZPC175/5  
NSN 4310-01-190-4285

DISTRIBUTION STATEMENT A: Approved for public release; distribution is unlimited

TM 5-4310-378-24P, 7 August 1989, is changed as follows:

1. Remove and insert pages as indicated below. New or changed text material is indicated by a vertical bar in the margin. An illustration change is indicated by a miniature pointing hand.

Remove pages

i and ii  
2-1 and Figure 3  
I-3 and I-4  
I-9 and I-10

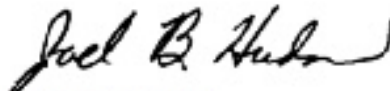
Insert pages

i and ii  
2-1 and Figure 3  
I-3 and I-4  
I-9 and I-10

2. Retain this sheet in front of manual for reference purposes.

By Order of the Secretary of the Army:

Official:



JOEL B. HUDSON  
Administrative Assistant to the  
Secretary of the Army  
03495

DENNIS J. REIMER  
General, United States Army  
Chief of Staff

DISTRIBUTION:

To be distributed in accordance with DA Form 12-25-E, block No. 2438, requirements for TM 5-4310-378-24P.

CHANGE  
NO. 2

HEADQUARTERS  
DEPARTMENT OF THE ARMY  
WASHINGTON, D.C., 30 April 1993

Unit, Intermediate Direct Support and Intermediate General Support  
Maintenance Repair Parts and Special Tools List  
for  
COMPRESSOR UNIT, RECIPROCATING  
5 CFM, 175 PSI  
GASOLINE ENGINE DRIVEN,  
HAND TRUCK MOUNTED  
MODEL NUMBER ZPC 175/5  
NSN 4310-01-190-0285

SPECIAL DISTRIBUTION A: Approved for public release; distribution is unlimited

TM 5431 10378-24P, 7 August 1989, is changed as follows:

1. Remove and insert pages as Indicated below. New or changed text material is indicated by a vertical bar in the margin. An illustration change is indicated by a miniature pointing hand.

Remove pages

i and ii  
2-1 and fig. 3  
6-1 and 6-2  
I-3 through I-10  
I-13 and I-14

Insert pages

i and ii  
2-1 and fig. 3  
6-1 and 6-2  
I-3 through I-10  
I-13 and I-14

2. Retain this sheet in front of manual for reference purposes.

By Order of the Secretary of the Army:

Official:

MILTON H. HAMILTON  
Administrative Assistant to the  
Secretary of the Army  
04289

GORDON R. SULLIVAN  
General, United States Army  
Chief of Staff

DISTRIBUTION:

To be distributed in accordance with DA Form 12-25E, block No. 2438, requirements for TM 5-4310-378-24P.

CHANGE  
NO. 1

HEADQUARTERS  
DEPARTMENT OF THE ARMY  
WASHINGTON, D.C., 9 NOVEMBER 1992

Unit, Intermediate Direct Support and Intermediate General Support  
Maintenance Repair Parts and Special Tools List  
for  
COMPRESSOR UNIT, RECIPROCATING  
5 CFM, 175 PSI  
GASOLINE ENGINE DRIVEN,  
HAND TRUCK MOUNTED  
MODEL NUMBER ZPC 175/5  
NSN 4310-01-190-0285

Approved for public release; Distribution is unlimited

TM 5-4310-378-24P, 7 August 1989 is changed as follows:

1. Remove and insert pages as indicated below. New or changed text material is indicated by a vertical bar in the margin. An illustration change is indicated by a miniature pointing hand.

Remove pages

2-1 and Fig. 3  
6-1 and 6-2  
7-1 and 7-2  
14-1  
I-1 through I-4  
I-7 through I-10  
I-13 through I-16

Insert pages

2-1 and Fig. 3  
6-1 and 6-2  
7-1 and 7-2  
14-1  
I-1 through I-4  
I-7 through I-10  
I-13 through I-16

2. Retain this sheet in front of manual for referee purposes.

By Order of the Secretary of the Army:

Official:

MILTON H. HAMILTON  
*Administrative Assistant to the  
Secretary of the Army*  
O2916

GORDON R. SULLIVAN  
*General, United States Army  
Chief of Staff*

DISTRIBUTION:

To be distributed in accordance with DA Form 1 2-25E, block No. 2438, requirements for TM 54310-378-24P.

TECHNICAL MANUAL

NO. 5-4310-378-24P

HEADQUARTERS  
DEPARTMENT OF THE ARMY  
WASHINGTON, D.C., 7 August 1989

TECHNICAL MANUAL

Unit, Intermediate Direct Support and  
Intermediate General Support  
Maintenance Repair Parts and Special Tools List

for

COMPRESSOR UNIT, RECIPROCATING, 5 CFM  
175 PSI, GASOLINE ENGINE DRIVEN, HAND TRUCK MOUNTED  
MODEL NUMBER ZPC175/5  
NSN 4310-01-190 285  
Current as of 7 August 1969

**REPORTING ERRORS AND RECOMMENDING IMPROVEMENTS**

You can help improve this manual. If you find any mistakes, or if you know of a way to improve these procedures, please let us know. Mail your letter or DA Form 2028 (Recommended Changes to Publications and Blank Forms), or DA Form 2028-2 located in the back of this manual directly to: Commander, US Army Aviation and Troop Command, ATTN: AMSAT-I-MP, 4300 Goodfellow Blvd., St. Louis, MO 63120-1798. You may also submit your recommended changes by E-mail directly to <mpmt%avma28st-louis-emh7.army.mil>. A reply will be furnished directly to you. Instructions for sending an electronic 2028 may be found at the back of this manual immediately preceding the hard copy 2028.

DISTRIBUTION STATEMENT A: Approved for public release; distribution is unlimited

**TABLE OF CONTENTS**

|             |                                    | Page | Illust<br>Figure |
|-------------|------------------------------------|------|------------------|
| Section I.  | INTRODUCTION .....                 | 1    |                  |
| Section II. | REPAIR PARTS LIST .....            | 1-1  |                  |
| Group 01.   | COMPRESSOR DRIVE                   |      |                  |
|             | Drive Belt and Engine Pulley ..... | 1-1  | 1                |
| Group 02.   | COMPRESSOR ASSEMBLY                |      |                  |
|             | Compressor Assembly .....          | 2-1  | 2                |
|             | Compressor Cylinder Heads .....    | 3-1  | 3                |
|             | Compressor Cylinder .....          | 4.1  | 4                |
|             | Crankcase .....                    | 5-1  | 5                |

\* This manual supersedes TM 5-4310-378-24P, dated 20 February 1987.

|  | Page | Illust<br>Figure |
|--|------|------------------|
| Group 03. ENGINE ASSEMBLY                            |      |                  |
| EMI Kit, Flywheel Shroud, and Flywheel .....         | 6-1  | 6                |
| Air Cleaner and Carburetor .....                     | 7-1  | 7                |
| Governor Lever, Spring, and Rod Sets.....            | 8-1  | 8                |
| Recoil Starter Assembly.....                         | 9-1  | 9                |
| Piston Connecting Rod, and Crankshaft.....           | 10-1 | 10               |
| Crankcase.....                                       | 11-1 | 11               |
| <br>Group 04. AIR RECEIVER SYSTEM                    |      |                  |
| Gauge, Vales and Air Tank .....                      | 12-1 | 12               |
| <br>Group 05. AIR DISCHARGE SYSTEM                   |      |                  |
| Delivery Hose Assembly .....                         | 13-1 | 13               |
| <br>Group 06. HANDTRUCK ASSEMBLY                     |      |                  |
| Wheels and Frame Assembly .....                      | 14-1 | 14               |
| <br>Section III. SPECIAL TOOLS LIST (Not Applicable) |      |                  |
| <br>Section IV. CROSS REFERENCE INDEXES              |      |                  |
| National Stock Number Index .....                    | I-1  |                  |
| Part Number Index .....                              | I-3  |                  |
| Figure and Item Number Index .....                   | I-10 |                  |

UNIT, INTERMEDIATE DIRECT SUPPORT AND  
INTERMEDIATE GENERAL SUPPORT MAINTENANCE  
REPAIR PARTS AND SPECIAL TOOLS LIST

---

SECTION I. INTRODUCTION

**1. SCOPE.** This RPSTL lists and authorizes spares and repair parts; special tools; special test, measurement, and diagnostic equipment (TMDE); and other special support equipment required for performance of Unit, Intermediate Direct Support and Intermediate General Support Maintenance of the Compressor Unit, 5 CFM. It authorizes the requisitioning, issue, and disposition of spares, repair parts and special tools as indicated by the source, maintenance and recoverability (SMR) codes.

**2. GENERAL.** In addition to this section, Introduction, this Repair Parts and Special Tools List is divided into the following sections:

**a. Section II. Repair Parts List.** A list of spares and repair parts authorized by this RPSTL for use in the performance of maintenance. The list also includes parts which must be removed for replacement of the authorized parts. Parts lists are composed of functional groups in ascending alphanumeric sequence, with the parts in each group listed in ascending figure and item number sequence. Bulk materials are listed in item name sequence. Repair parts kits are, listed separately in their own functional group within Section II. Repair parts for repairable special tools are also listed in this section. Items listed are shown on the associated illustration(s)/figure(s).

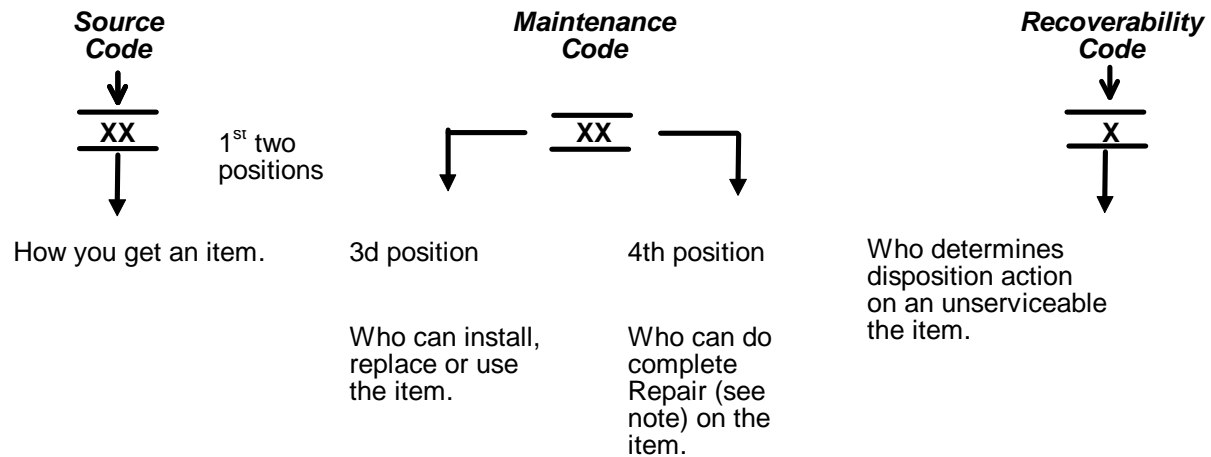
**b. Section III. Special Tools List.** A list of special tools, special TMDE, and other special support equipment authorized by this RPSTL (as indicated by Basis of Issue (BOI) information in DESCRIPTION AND USABLE ON CODE column) for the performance of maintenance.

**c. Section IV. Cross-references Indexes.** A list, in National Item Identification Number (NIIN) sequence, of all National stock numbered items appearing in the listing, followed by a list in alphanumeric sequence of all part numbers appearing in the listings. National stock numbers and part numbers are cross-referenced to each illustration figure and item number appearance. The figure and item number index lists figure and item number in alphanumeric sequence and crossreferences NSN, FSCM and part number.

**3. EXPLANATION OF COLUMNS (SECTIONS II AND III).**

**a. ITEM NO. (Column (1)).** Indicates the number used to identify items called out in the illustration.

**b. SMR Code (Column (2)).** The Source, Maintenance, and Recoverability (SMR) code is a 5-position code containing supply/requisitioning information, maintenance category authorization criteria, and disposition instruction, as shown in the following breakout:



\*Complete Repair: Maintenance capacity, capability, and authority to perform all corrective maintenance tasks of the "Repair" function in a use/user environment in order to restore serviceability to a failed item.

(1) **Source Code.** The source code tells you how to get an item needed for maintenance, repair, or overhaul of an end item/equipment. Explanations of source codes follows:

| Code                                     | Explanation   |
|--|---|
| PA<br>PB<br>PC**<br>PD<br>PE<br>PF<br>PG | Stocked items; use the applicable NSN to request/requisition items with these source codes. They are authorized to the category indicated by the code entered in the 3d position of the SMR code.   |
| KD<br>KF<br>KB                           | Items with these codes are not to be requested/requisitioned individually. They are part of a kit which is authorized to the maintenance category indicated in the 3d position of the SMR code. The complete kit must be requisitioned and applied. |

| Code   | Explanation  |
|--|--|
| MO--(Made at org. AVUM Level)<br>MF--(Made at DS/ AVUM Level)<br>MH--(Made at GS Level)<br>ML--Made at Specialized Repair Activity (SRA))<br>MD--(Made at Depot) | Items with these codes are not to be requested/requisitioned individually. They must be made from bulk material which is identified by the part number in the DESCRIPTION and USABLE ON CODE (UOC) column and listed in the Bulk Material group of the repair parts list in this RPSTL. If the item is authorized to you by the 3d position code of the SMR code, but the source code indicates it is made at a higher level, order the item from the higher level of maintenance. |



|                                   |
|-----------------------------------|
| AO--(Assembled by org/AVUM Level) |
| AF--(Assembled by DS/AVIM Level)  |
| AH--(Assembled by GS Category)    |
| AL--(Assembled by SRA)            |
| AD--(Assembled by Depot)          |

Explanation

Items with these codes are not to be requested/requisitioned individually. The parts that make up the assembled item must be requisitioned or fabricated and assembled at the level of maintenance indicated by the source code. If the 3d position code of the SMR code authorizes you to replace the item, but the source code indicates the items are assembled at a higher level, order the item from the higher level of maintenance.

Code

Explanation

- XA-- Do not requisition an "XA"-coded item. Order its next higher assembly. (Also, refer to the NOTE below.)
- XB-- If an "XB" item is not available from salvage, order it using the FSCM and part number given.
- XC-- Installation drawing, diagram, instruction sheet, field service drawing, that is identified by manufacturer's part number.
- XD-- Item is not stocked. Order an "XD"-coded item through normal supply channels using the FSCM and part number given, if no NSN is available.

**NOTE**

**Cannibalization or controlled exchange, when authorized, may be used as a source of supply for items with the above source codes, except for those source coded "XA" or those aircraft support items restricted by requirements of AR 750-1.**

**(2) Maintenance Code.** Maintenance codes tells you the level(s) of maintenance authorized to USE and REPAIR support items. The maintenance codes are entered in the third and fourth positions of the SMR code as follows:

- (a) The maintenance code entered in the third position tells you the lowest maintenance level authorized to remove, replace, and use an item. The maintenance code entered in the third position will indicate authorization to one of the following levels of maintenance.

Code

Application/Explanation

- C -- Crew or operator maintenance done within organizational or aviation unit maintenance.
- O -- Organizational or aviation unit category can remove, replace, and use the item.
- F -- Direct support or aviation intermediate level can remove, replace, and use the item.

H -- General support level can remove, replace, and use the item.

L --Specialized repair activity can remove, replace, and use the item.

D --Depot level can remove, replace, and use the item.

(b) The maintenance code entered in the fourth position tells whether or not the item is to be repaired and identifies the lowest maintenance level with the capability to do complete repair (i.e., perform all authorized repair functions.) NOTE: Some limited repair may be done on the item at a lower level of maintenance, if authorized by the Maintenance Allocation Chart (MAC) and SMR codes. This position will contain one of the following maintenance codes.

| Code | Application/Explanation |
|------|-------------------------|
|------|-------------------------|

|   |  |
|---|--|
| O | --Organizational or (aviation unit) is the lowest level that can do complete repair of the item. |
|---|--|

|   |  |
|---|--|
| F | --Direct support or aviation intermediate is the lowest level that can do complete repair of the item. |
|---|--|

|   |  |
|---|--|
| H | --General Support is the lowest level that can do complete repair of the item. |
|---|--|

|   |  |
|---|--|
| L | --Specialized repair activity is the lowest level that can do complete repair of the item. |
|---|--|

|   |  |
|---|--|
| D | --Depot is the lowest level that can do complete repair of the item. |
|---|--|

|   |  |
|---|--|
| Z | --Nonreparable. No repair is authorized. |
|---|--|

|   |   |
|---|---|
| B | --No repair is authorized. (No parts or special tools are authorized for the maintenance of a "B" coded item). However, the item may be reconditioned by adjusting, lubricating, etc., at the user level. |
|---|---|

**(3) Recoverability Code.** Recoverability codes are assigned to items to indicate the disposition action on unserviceable items. The recoverability code is entered in the fifth position of the SMR Code as follows:

| Recoverability<br>Codes | Application/Explanation |
|-------------------------|-------------------------|
|-------------------------|-------------------------|

|   |   |
|---|---|
| Z | -- Nonreparable item. When unserviceable, condemn and dispose of the item at the level of maintenance shown in 3d position of SMR Code. |
|---|---|

| Recoverability Codes | Application/Explanation   |
|----------------------|---|
| O                    | --Reparable item. When uneconomically reparable, condemn and dispose of the item at organizational or aviation unit level.  |
| F                    | --Reparable item. When uneconomically reparable, condemn and dispose of the item at the direct support or aviation intermediate level.  |
| H                    | --Reparable item. When uneconomically reparable, condemn and dispose of the item at the general support level.  |
| D                    | --Reparable item. When beyond lower level repair capability, return to depot. Condemnation and disposal of item not authorized below depot level.   |
| L                    | --Reparable item. Condemnation and disposal not authorized below specialized repair activity (SRA).   |
| A                    | --Item requires special handling or condemnation procedures because of specific reasons (e.g., precious metal content, high dollar value, critical material, or hazardous material). Refer to appropriate manuals/directives for specific instructions. |

**c. FSCM (Column (3)).** The Federal Supply Code for Manufacturer (FSCM) is a 5-digit numeric code which is used to identify the manufacturer, distributor, or Government agency, etc., that supplies the item.

**d. PART NUMBER (Column (4)).** Indicates the primary number used by the manufacturer, (individual, company, firm, corporation, or Government activity), which controls the design and characteristics of the item by means of its engineering drawings, specifications standards, and inspection requirements to identify an item or range of items.

**NOTE**

**When you use an NSN to requisition an item, the item you receive may have a different part number from the part ordered.**

**e. DESCRIPTION AND USABLE ON CODE (UOC) (Column (5)).** This column includes the following information:

- (1) The Federal item name and, when required, a minimum description to identify the item.
- (2) The physical security classification of the Item is indicated by the parenthetical entry, e.g., Phy Sec C1 - Confidential, Phy Sec C1 (S) - Secret, Phy Sec C1 (T) - Top Secret.

- (3) Items that are included in kits and sets are listed below the name of the kit or set.
- (4) Spare/repair parts that make up an assembled item are listed immediately following the assembled item line entry.
- (5) Part numbers for bulk materials are referenced in this column in the line item entry for the item to be manufactured/fabricated.
- (6) When the item is not used with all serial numbers of the same model, the effective serial numbers are shown on the last line(s) of the description (before UOC).
- (7) The usable on code, when applicable (see paragraph 5, Special Information).
- (8) In the Special Tools List section, the basis of issue (BOI) appears as the last line(s) in the entry for each special tool, special TMDE, and other special support equipment. When density of equipments supported exceeds density spread indicated in the basis of issue, the total authorization is increased proportionately.
- (9) The statement "END OF FIGURE" appears just below the last item description in Column 5 for a given figure in both Section II and Section III.
- (10) The indenture, shown as dots appearing before the repair part, indicates that the item is a repair part of the next higher assembly.

f. **QTY (Column (6)).** The QTY (quantity per figure column) indicates the quantity of the item used in the breakout shown on the illustration figure, which is prepared for a functional group, subfunctional group, or an assembly. A "V" appearing in this column in lieu of a quantity indicates that the quantity is variable and may vary from application to application.

**4. EXPLANATION OF COLUMNS (SECTION IV).**

**a. NATIONAL STOCK NUMBER (NSN) INDEX.**

(1) **STOCK NUMBER column.** This column lists the NSN by National item identification number

(NIIN) sequence. The NIIN consists of the last nine digits of the

$$\frac{\text{NSN}}{\text{NIIN}}$$
 NSN, i.e.  $\frac{5305-01-574-1467}{\text{NIIN}}$

When using this column to locate an item, ignore the first 4 digits of the NSN. However, the complete NSN should be used when ordering items by stock number.

(2) **FIG. column.** This column lists the number of the figure where the item is identified/located. The figures are in numerical order in Section II and Section III.

- (3) **ITEM column.** The item number identifies the item associated with the figure listed in the adjacent FIG. column. This item is also identified by the NSN listed on the same line.

**b. PART NUMBER INDEX.** Part numbers in this index are listed by part number in ascending alphanumeric sequence (i.e., vertical arrangement of letter and number combination which places the first letter or digit of each group in order A through Z, followed by the numbers 0 through 9 and each following letter or digit in like order).

- (1) **FSCM column.** The Federal Supply Code for Manufacturer (FSCM) is a 5-digit numeric code used to identify the manufacturer, distributor, or Government agency, etc., that supplies the item.
- (2) **PART NUMBER.** column. Indicates the primary number used by the manufacturer (individual, firm, corporation, or Government activity), which controls the design and characteristics of the item by means of its engineering drawings, specifications standards, and inspection requirements to identify an item or range of items.
- (3) **STOCK NUMBER column.** This column lists the NSN for the associated part number and manufacturer identified in the PART NUMBER and FSCM columns to the left.
- (4) **FIG. column.** This column lists the number of the figure where the item is identified/located in Sections II and III.
- (5) **ITEM column.** The item number is that number assigned to the item as it appears in the figure referenced in adjacent figure number column.

**c. FIGURE AND ITEM NUMBER INDEX.**

- (1) **FIG. column.** This column lists the number of the figure where the item is identified/located in Section II and III.
- (2) **ITEM column.** The item number is that number assigned to the item as it appears in the figure referenced in the adjacent figure number column.
- (3) **STOCK NUMBER column.** This column lists the NSN for the item.
- (4) **FSCM column.** The Federal Supply Code for Manufacturer (FSCM) is a 5-digit numeric code used to identify the manufacturer, distributor, or Government agency, etc., that supplies the item.
- (5) **PART NUMBER** column. Indicates the primary number used by the manufacturer (individual, firm, corporation, or Government activity), which controls the design and characteristics of the item by means of its engineering drawings, specifications standards, and inspection requirements to identify an item or range of items.

**5. SPECIAL INFORMATION.**

**a. USABLE ON CODE.** The usable on code appears in the lower left corner of the Description column heading. Usable on codes are shown as "UOC:...." in the Description Column (justified left) on the last line applicable item description/ nomenclature. Uncoded items are applicable to all models..

**b. ASSOCIATED PUBLICATIONS.** The publication listed below pertains to the Compressor Unit, 5 CFM, and its components.

| Publication      | Short Title   |
|------------------|---|
| TM 5-4310-378-14 | Operator's and Maintenance Manual for 5 CFM Compressor Unit |

**6. HOW TO LOCATE REPAIR PARTS.**

**a. When National Stock Number or Part Number is NOT Known.**

- (1) **First.** Using the table of contents, determine the assembly group or subassembly group to which the item belongs. This is necessary since figures are prepared for assembly groups and subassembly groups, and listings are divided into the same groups.
- (2) **Second.** Find the figure covering the assembly group or subassembly group to which the item belongs.
- (3) **Third.** Identify the item on the figure and note the item number.
- (4) **Fourth.** Refer to the Repair Parts List for the figure to find the part number for the item number noted on the figure.
- (5) **Fifth.** Refer to the Part Number Index to find the NSN, if assigned.

**b. When National Stock Number or Part Number is Known:**

- (1) **First.** Using the Index of National Stock Numbers and Part Numbers, find the pertinent National Stock Number or Part Number. The NSN index is in National Item Identification Number (NIIN) sequence (see 4a(1)). The part numbers in the Part Number index are listed in ascending alphanumeric sequence (see paragraph 4b). Both indexes cross-reference you to the illustration figure and item number of the item you are looking for.
- (2) **Second.** After finding the figure and item number, verify that the item is the one you are looking for, then locate the item number in the repair parts list for the figure.

**7. ABBREVIATIONS.** Abbreviations used in this manual are listed in MIL-STD-12.

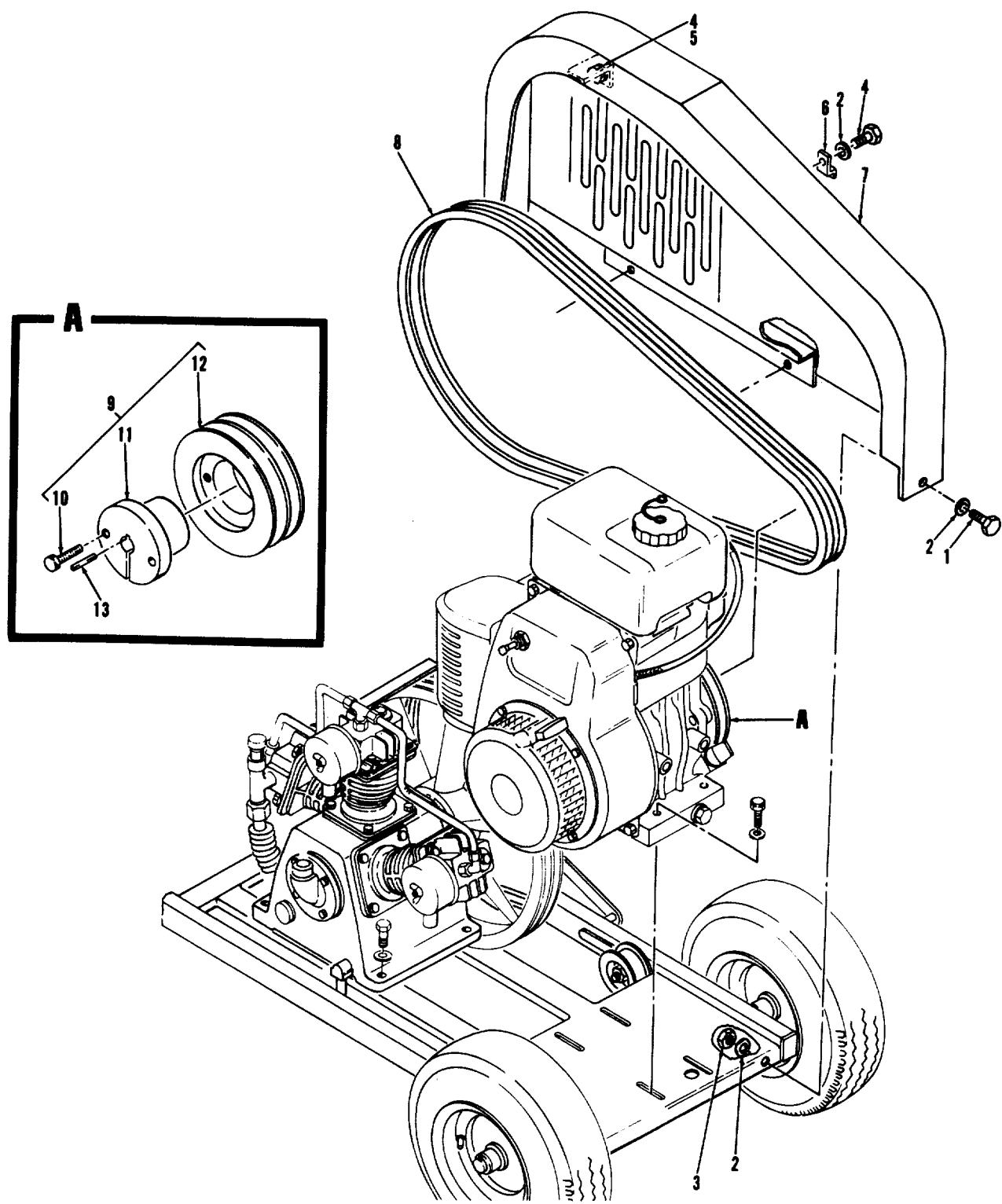


Figure 1. Drive Belt and Engine Pulley

## SECTION II

TM 5-4310-378-24P

| (1)                                    | (2)      | (3)   | (4)              | (5)                                  | (6) |
|--|----------|-------|------------------|--------------------------------------|-----|
| ITEM NO                                | SMR CODE | CAGEC | PART NUMBER      | DESCRIPTION AND USABLE ON CODES(UOC) | QTY |
| GROUP 01. COMPRESSOR DRIVE             |          |       |                  |                                      |     |
| FIGURE 1. DRIVE BELT AND ENGINE PULLEY |          |       |                  |                                      |     |
| 1                                      | PAOZZ    | 96906 | MS35307-306      | SCREW, CAP, HEXAGON H.....           | 4   |
| 2                                      | PAOZZ    | 96906 | MS15795-810      | WASHER, FLAT.....                    | 6   |
| 3                                      | PAOZZ    | 96906 | MS16228-4C       | NUT, SELF-LOCKING, HE.....           | 2   |
| 4                                      | PAOZZ    | 96906 | MS35307-303      | SCREW, CAP, HEXAGON H.....           | 1   |
| 5                                      | PAOZZ    | 96906 | MS35338-139      | WASHER, LOCK.....                    | 3   |
| 6                                      | XDOZZ    | 58328 | ZPC1000234       | LATCH, LEVER.....                    | 1   |
| 7                                      | XDOZZ    | 58328 | ZPC1000027       | SHROUD, BELT.....                    | 1   |
| 8                                      | PAOZZ    | 81348 | ZZ-B-190/2P66B2R | BELTS, V, MATCHED SET.....           | 1   |
| 9                                      | XDOZZ    | 58328 | ZPC1000028       | PULLEY, ENGINE, ASSY.....            | 1   |
| 10                                     | PAOZZ    | 96906 | MS90728-6        | .SCREW, CAP, HEXAGON H.....          | 2   |
| 11                                     | PAOZZ    | 76241 | HQX3/4           | .BUSHING.....                        | 1   |
| 12                                     | PAOZZ    | 76241 | DH2400           | .SHEAVE.....                         | 1   |
| 13                                     | PAOZZ    | 96906 | MS20066-191      | .KEY, MACHINE.....                   | 1   |

END OF FIGURE



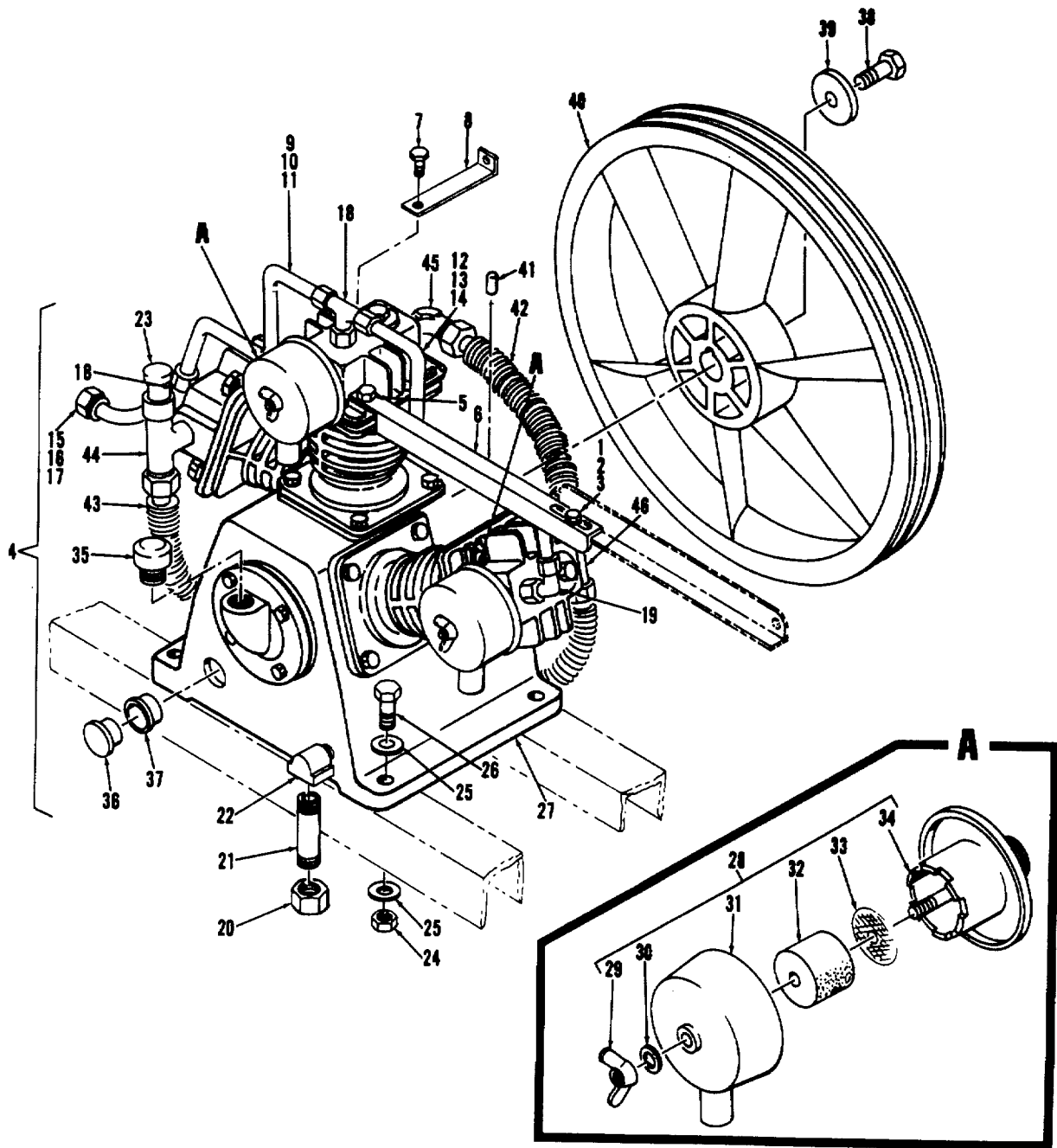


Figure 2. Compressor Assembly

## SECTION II

TM 5-4310-378-24P

| (1)     | (2)      | (3)   | (4)            | (5)  | (6) |
|---------|----------|-------|----------------|--|-----|
| ITEM NO | SMR CODE | CAGEC | PART NUMBER    | DESCRIPTION AND USABLE ON CODES(UOC)                           | QTY |
|         |          |       |                | GROUP 02. COMPRESSOR ASSEMBLY<br>FIGURE 2. COMPRESSOR ASSEMBLY |     |
| 1       | PAOZZ    | 96906 | MS16228-4C     | .NUT, SELF-LOCKING, HE .....                                   | 1   |
| 2       | PAOZZ    | 96906 | MS15795-810    | .WASHER, FLAT .....  | 1   |
| 3       | PAOZZ    | 96906 | MS35307-306    | .SCREW, CAP, HEXAGON H.....                                    | 1   |
| 4       | PDOHH    | 58328 | ZPC1000051     | COMPRESSOR UNIT, REC .....                                     | 1   |
| 5       | PAOZZ    | 58328 | ZPC1000059     | SCREW, CAP, HEXAGON H.....                                     | 1   |
| 6       | XDOZZ    | 58328 | ZPC1000049     | .BRACKET, REAR STRUT .....                                     | 1   |
| 7       | PAOZZ    | 58328 | ZPC1000059     | SCREW, CAP, HEXAGON H.....                                     | 1   |
| 8       | XDOZZ    | 58328 | ZPC1000037     | BRACKET, SHROUD .....  | 1   |
| 9       | XBOZZ    | 58328 | ZPC1000053     | TUBE ASSEMBLY.....   | 1   |
| 10      | PAOZZ    | 96906 | MS39177-3      | SLEEVE, COMPRESSION.....                                       | 2   |
| 11      | PAOZZ    | 96906 | MS39176-3      | NUT, TUBE COUPLING .....                                       | 2   |
| 12      | XBOZZ    | 58328 | ZPC1000054     | TUBE ASSEMBLY.....   | 1   |
| 13      | PAOZZ    | 96906 | MS39177-3      | SLEEVE, COMPRESSION.....                                       | 2   |
| 14      | PAOZZ    | 96906 | MS39176-3      | NUT, TUBE COUPLING .....                                       | 2   |
| 15      | XBOZZ    | 58328 | ZPC1000055     | TUBE ASSEMBLY.....   | 1   |
| 16      | PAOZZ    | 96906 | MS39177-3      | .SLEEVE, COMPRESSION .....                                     | 2   |
| 17      | PAOZZ    | 96906 | MS39176-3      | NUT, TUBE COUPLING .....                                       | 2   |
| 18      | PAOZZ    | 93061 | 172C-4-2       | TEE, PIPE TO TUBE.....   | 2   |
| 19      | PAOZZ    | 96906 | MS39171-13     | ELBOW, PIPE TO TUBE .....                                      | 1   |
| 20      | PAOZZ    | 93061 | 213P-4         | .CAP 1/4 NPT, BRASS .....                                      | 1   |
| 21      | PAOZZ    | 96906 | MS51846-28     | .NIPPLE, PIPE 1/4 IN NPT BRASS .....                           | 1   |
| 22      | PAOZZ    | 81343 | 4-430239B      | .ELBOW 1/4 NPT BRASS .....                                     | 1   |
| 23      | PBOZZ    | 65514 | AS213-2-2M-70  | .VALVE, SAFETY RELIEF.....                                     | 1   |
| 24      | PAOZZ    | 96906 | MS16228-5C     | NUT, SELF-LOCKING, HE .....                                    | 4   |
| 25      | PAOZZ    | 96906 | MS15795-812    | WASHER, FLAT.....  | 8   |
| 26      | PAOZZ    | 96906 | MS35307-336    | BOLT, MACHINE.....   | 4   |
| 27      | PBOFH    | 55921 | E-23A          | COMPRESSOR, RECIPROC .....                                     | 1   |
| 28      | PBOZZ    | 55921 | C70111-66000   | ..STRAINER, S EDIMENT .....                                    | 2   |
| 29      | PAOZZ    | 39428 | 90924A124      | ..NUT, PLAIN, WING.....  | 100 |
| 30      | PAOZZ    | 55921 | C92521-150400  | ..WASHER, FLAT.....  | 1   |
| 31      | XDOZZ    | 55921 | C70111-66170   | ..COVER, AIR STRAINER.....                                     | 1   |
| 32      | PAOZZ    | 55921 | C70111-66141   | ..FILTER ELEMENT, INTA .....                                   | 1   |
| 33      | PAOZZ    | 55921 | C70111-66110   | ..STRAINER ELEMENT, SE NO.8, CAD PLATED                        | 1   |
| 34      | XBOZZ    | 55921 | C70111-66010   | ..BODY, AIR STRAINER .....                                     | 1   |
| 35      | XDOZZ    | 55921 | C70103-57610   | .CAP, OIL BREATHER NO.8X62L, CAD PLATED                        | 1   |
| 36      | XDOZZ    | 55921 | C70111-57700   | .COVER, OIL GAGE .....   | 1   |
| 37      | XDOZZ    | 55921 | C70111-57730   | .RETAINER, PACKING .....                                       | 1   |
| 38      | PAOZZ    | 55921 | C91501-1308025 | .SCREW, CAP, HEXAGON H.....                                    | 1   |
| 39      | PAOZZ    | 55921 | C70112-76210   | .WASHER, FLAT .....  | 1   |
| 40      | XDOZZ    | 55921 | C70132-76010   | .PULLEY, COMPRESSOR .....                                      | 1   |
| 41      | PAOZZ    | 55921 | C70112-56060   | .PIN, STRAIGHT, HEADLE .....                                   | 1   |
| 42      | XDOZZ    | 55921 | C70132-87100   | .TUBE ASSEMBLY, METAL.....                                     | 1   |
| 43      | XDOZZ    | 55921 | C70172-87300   | .PIPING ASSEMBLY .....   | 1   |
| 44      | PBOZZ    | 55921 | C70172-87030   | .TEE, PIPE.....  | 1   |
| 45      | PBOZZ    | 55921 | C70122-87010   | .ELBOW, PIPE.....  | 1   |
| 46      | PBOZZ    | 55921 | C70132-87030A  | TEE.....   | 1   |

END OF FIGURE

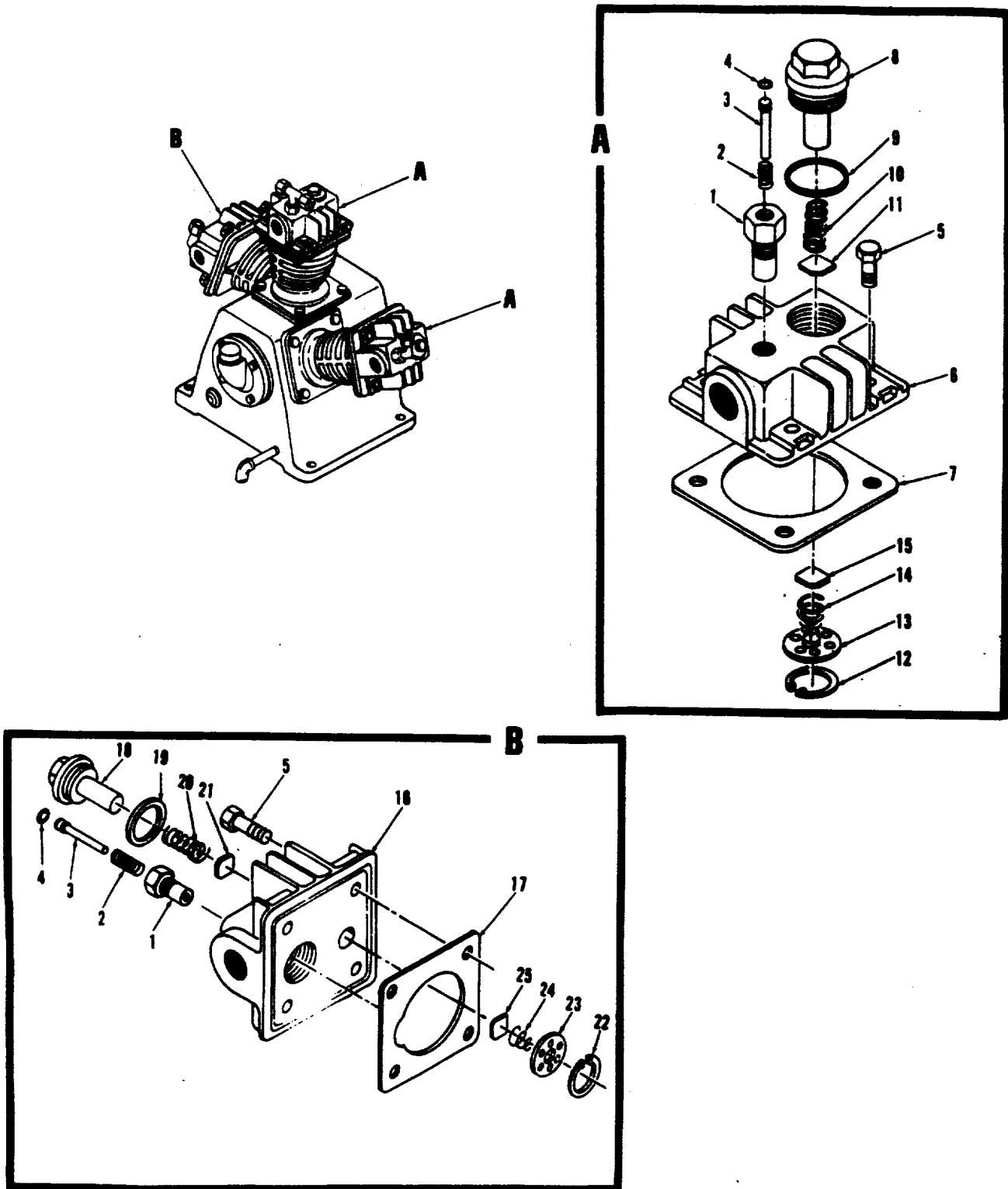


Figure 3. Compressor Cylinder Heads

| (1)                                 | (2)      | (3)   | (4)            | (5)                                  | (6) |
|-------------------------------------|----------|-------|----------------|--------------------------------------|-----|
| ITEM NO                             | SMR CODE | CAGEC | PART NUMBER    | DESCRIPTION AND USABLE ON CODES(UOC) | QTY |
| GROUP 02. COMPRESSOR ASSEMBLY       |          |       |                |                                      |     |
| FIGURE 3. COMPRESSOR CYLINDER HEADS |          |       |                |                                      |     |
| 1                                   | PAOZZ    | 55921 | C70112-11210   | CYLINDER, RECIPROCAT .....           | 3   |
| 2                                   | PAOZZ    | 55921 | C70112-11230   | SPRING .....                         | 3   |
| 3                                   | PAOZZ    | 55921 | C70112-11220   | PISTON, COMPRESSOR .....             | 3   |
| 4                                   | PAOZZ    | 55921 | C93601-87002   | PACKING .....                        | 3   |
| 5                                   | PAFZZ    | 55921 | C91505-1308025 | BOLT, MACHINE.....                   | 10  |
| 6                                   | PBFZZ    | 55921 | C70112-11010   | CYLINDER HEAD, COMPR.....            | 2   |
| 7                                   | PAFZZ    | 55921 | C70112-11020   | GASKET.....                          | 2   |
| 8                                   | XDFZZ    | 55921 | C70112-11450   | COVER, 1STG OUT V .....              | 2   |
| 9                                   | PAFZZ    | 55921 | C70112-11460   | GASKET.....                          | 2   |
| 10                                  | PAFZZ    | 55921 | C70112-41070   | SPRING, HELICAL, COMP .....          | 2   |
| 11                                  | PAFZZ    | 55921 | C70112-31030   | PLATE, OUTLET VALVE.....             | 2   |
| 12                                  | PAFZZ    | 55921 | C93610-130032  | RING, RETAINING .....                | 2   |
| 13                                  | PAFZZ    | 55921 | C70112-31020   | RECEIVER, INLET VALV .....           | 2   |
| 14                                  | PAFZZ    | 55921 | C70112-31070   | SPRING, HELICAL, COMP .....          | 2   |
| 15                                  | PAFZZ    | 55921 | C70112-31030   | PLATE, OUTLET VALVE.....             | 2   |
| 16                                  | PBFZF    | 55921 | C70172-12010   | CYLINDER HEAD, COMPR.....            | 1   |
| 17                                  | PAFZZ    | 55921 | C70111-11020   | GASKET.....                          | 1   |
| 18                                  | XDFZZ    | 55921 | C70111-11450   | COVER, 2STG OUT V .....              | 1   |
| 19                                  | PAFZZ    | 55921 | C70111-11460   | PACKING, PREFORMED.....              | 1   |
| 20                                  | PAFZZ    | 55921 | C70172-42070   | SPRING, HELICAL, COMP .....          | 1   |
| 21                                  | PAFZZ    | 55921 | C70111-31030   | PLATE, REED VALVE .....              | 1   |
| 22                                  | PAFZZ    | 55921 | C93610-130025  | RING, RETAINING .....                | 1   |
| 23                                  | PAFZZ    | 55921 | C70111-31020   | RECEIVER, VALVE INLE .....           | 1   |
| 24                                  | PAFZZ    | 55921 | C70172-32070   | SPRING, HELICAL, COMP .....          | 1   |
| 25                                  | PAFZZ    | 55921 | C70111-31030   | PLATE, REED VALVE.....               | 1   |

END OF FIGURE

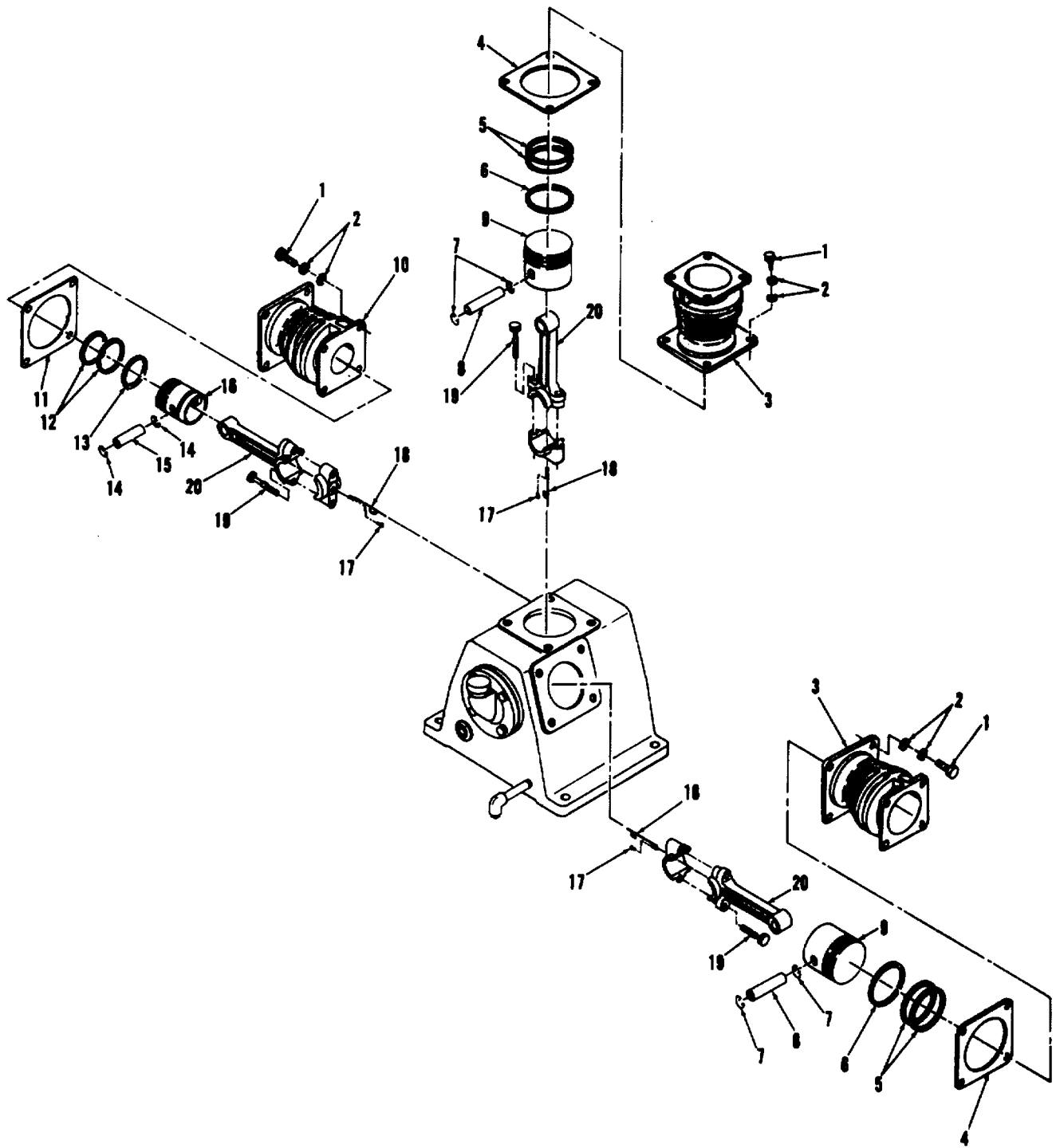


Figure 4. Compressor Cylinders

## SECTION II

TM 5-4310-378-24P

| (1)                            | (2)      | (3)   | (4)            | (5)                                  | (6) |
|--------------------------------|----------|-------|----------------|--------------------------------------|-----|
| ITEM NO                        | SMR CODE | CAGEC | PART NUMBER    | DESCRIPTION AND USABLE ON CODES(UOC) | QTY |
| GROUP 02. COMPRESSOR ASSEMBLY  |          |       |                |                                      |     |
| FIGURE 4. COMPRESSOR CYLINDERS |          |       |                |                                      |     |
| 1                              | PAFZZ    | 80204 | B18231A08020N  | BOLT, MACHINE.....                   | 12  |
| 2                              | PAFZZ    | 55921 | C92521-190800  | WASHER, FLAT.....                    | 24  |
| 3                              | XDFZZ    | 55921 | C70112-51010   | CYLINDER, 1STG.....                  | 2   |
| 4                              | PAFZZ    | 55921 | C70112-51030   | GASKET.....                          | 2   |
| 5                              | PAFZZ    | 55921 | C70112-61030   | RING, PISTON.....                    | 4   |
| 6                              | PAFZZ    | 55921 | C70112-61050   | RING, PISTON.....                    | 2   |
| 7                              | PAFZZ    | 55921 | C70112-61070   | RING, RETAINING.....                 | 4   |
| 8                              | PAFZZ    | 55921 | C70112-61120   | PIN, PISTON.....                     | 2   |
| 9                              | PAFZZ    | 55921 | C70112-61010   | PISTON, COMPRESSOR.....              | 2   |
| 10                             | XDFZZ    | 55921 | C70172-52010   | CYLINDER, 2STG.....                  | 1   |
| 11                             | PAFZZ    | 55921 | C70112-51030   | GASKET.....                          | 1   |
| 12                             | PAFZZ    | 55921 | C70111-61030   | RING, PISTON.....                    | 2   |
| 13                             | PAFZZ    | 55921 | C70111-61050   | RING, PISTON.....                    | 1   |
| 14                             | PAFZZ    | 55921 | C70112-61070   | RING, RETAINING.....                 | 2   |
| 15                             | PAFZZ    | 55921 | C70172-62120   | PIN, PISTON.....                     | 1   |
| 16                             | PAFZZ    | 55921 | C70172-62010   | PISTON, COMPRESSOR.....              | 1   |
| 17                             | PBFZZ    | 55921 | C91505-2304010 | SCREW, MACHINE.....                  | 3   |
| 18                             | XDFZZ    | 55921 | C70122-61280   | DIPPER, OIL SPLASH.....              | 3   |
| 19                             | PAFZZ    | 55921 | C70112-61250   | BOLT, EXTERNALLY REL.....            | 6   |
| 20                             | PAFZZ    | 55921 | C70112-61200   | CONNECTING ROD, PIST.....            | 3   |

END OF FIGURE

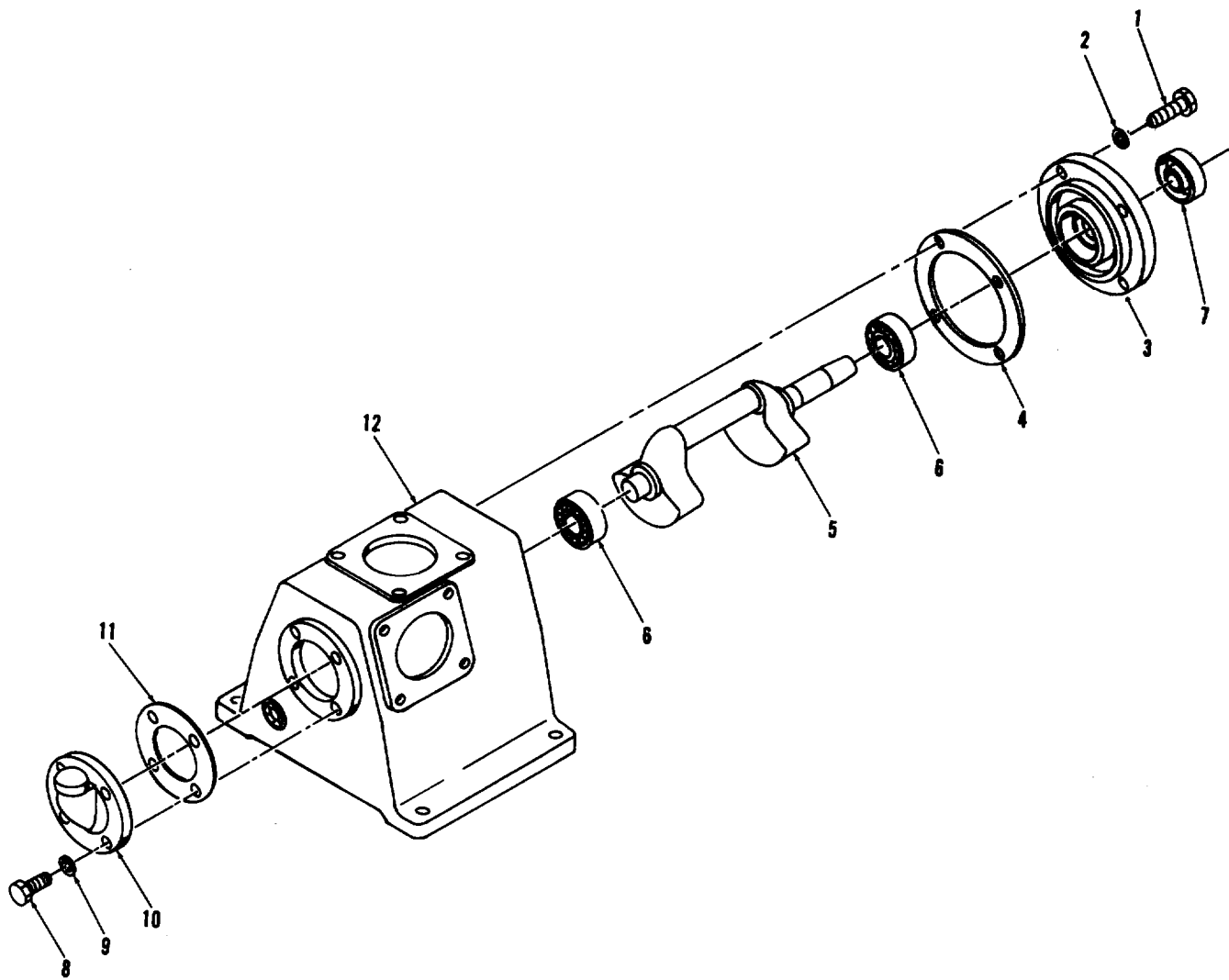


Figure 5. Crankcase

## SECTION II

TM 5-4310-378-24P

| (1)     | (2)      | (3)   | (4)           | (5)                                  | (6) |
|---------|----------|-------|---------------|--------------------------------------|-----|
| ITEM NO | SMR CODE | CAGEC | PART NUMBER   | DESCRIPTION AND USABLE ON CODES(UOC) | QTY |
|         |          |       |               | GROUP 02.COMPRESSOR ASSEMBLY         |     |
|         |          |       |               | FIGURE 5.CRANKCASE                   |     |
| 1       | PAFZZ    | 80204 | B18231A08020N | BOLT, MACHINE.....                   | 4   |
| 2       | PAFZZ    | 55921 | C92521-190800 | WASHER, FLAT.....                    | 4   |
| 3       | XDFZZ    | 55921 | C70122-57030  | COVER, FRONT BEARING.....            | 1   |
| 4       | PAFZZ    | 55921 | C70122-57040  | GASKET.....                          | 1   |
| 5       | XDFZZ    | 55921 | C70132-56010  | CRANKSHAFT .....                     | 1   |
| 6       | PAFZZ    | 21760 | 1205          | BEARING, BALL, ANNULA .....          | 2   |
| 7       | PAFZZ    | 55921 | C70122-57080  | SEAL, PLAIN ENCASED.....             | 1   |
| 8       | PAFZZ    | 80204 | B18231A08020N | BOLT, MACHINE.....                   | 4   |
| 9       | PAFZZ    | 55921 | C92521-190800 | WASHER, FLAT.....                    | 4   |
| 10      | PAFZZ    | 55921 | C70122-57060  | COVER, REAR BEARING.....             | 1   |
| 11      | PAFZZ    | 55921 | C70122-57070  | GASKET.....                          | 1   |
| 12      | XDFZZ    | 55921 | C70132-57010A | CRANKCASE .....                      | 1   |

END OF FIGURE



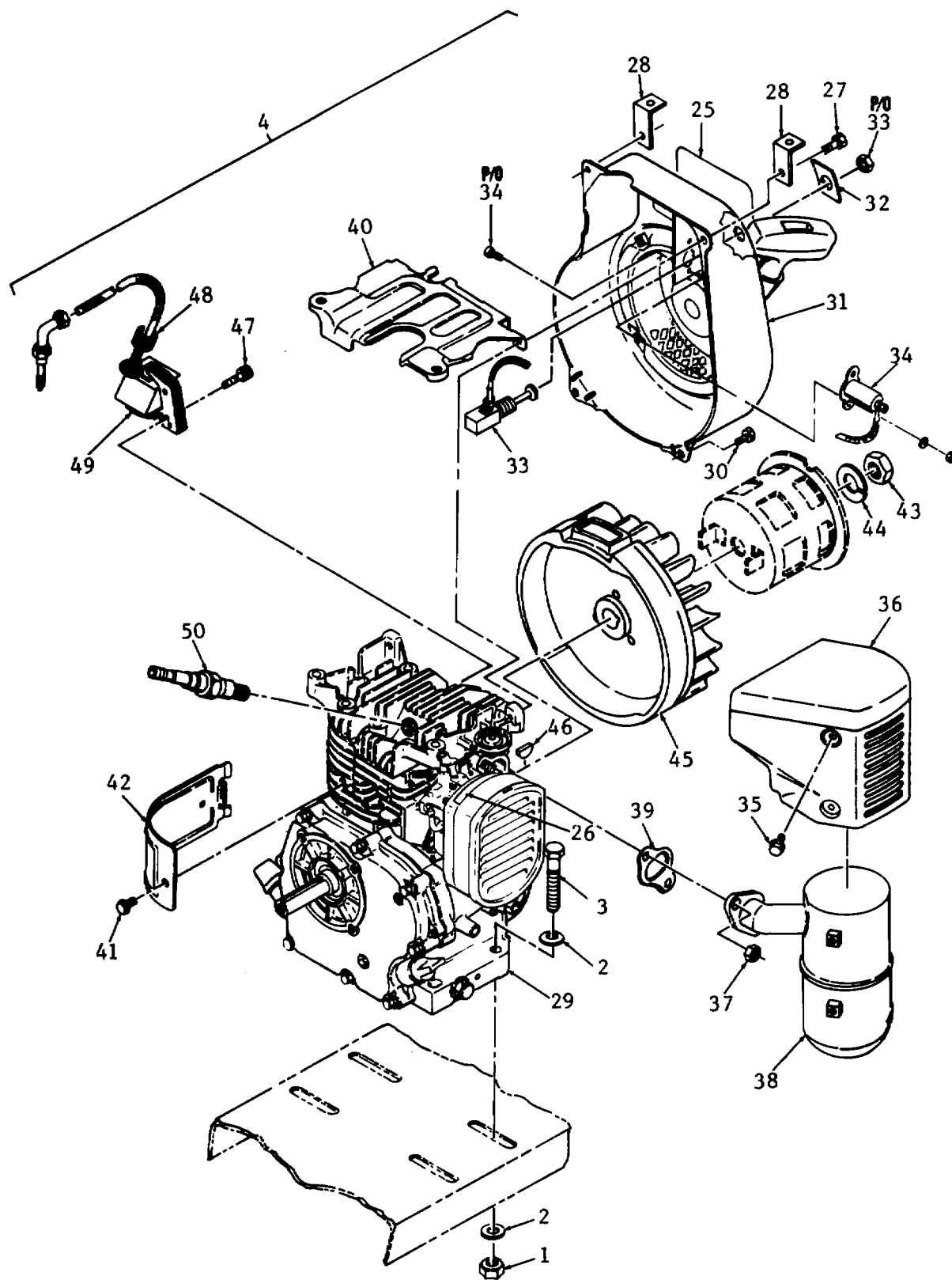


Figure 6. EMI Kit, Flywheel Shroud, and Flywheel  
(Sheet 1 of 2)

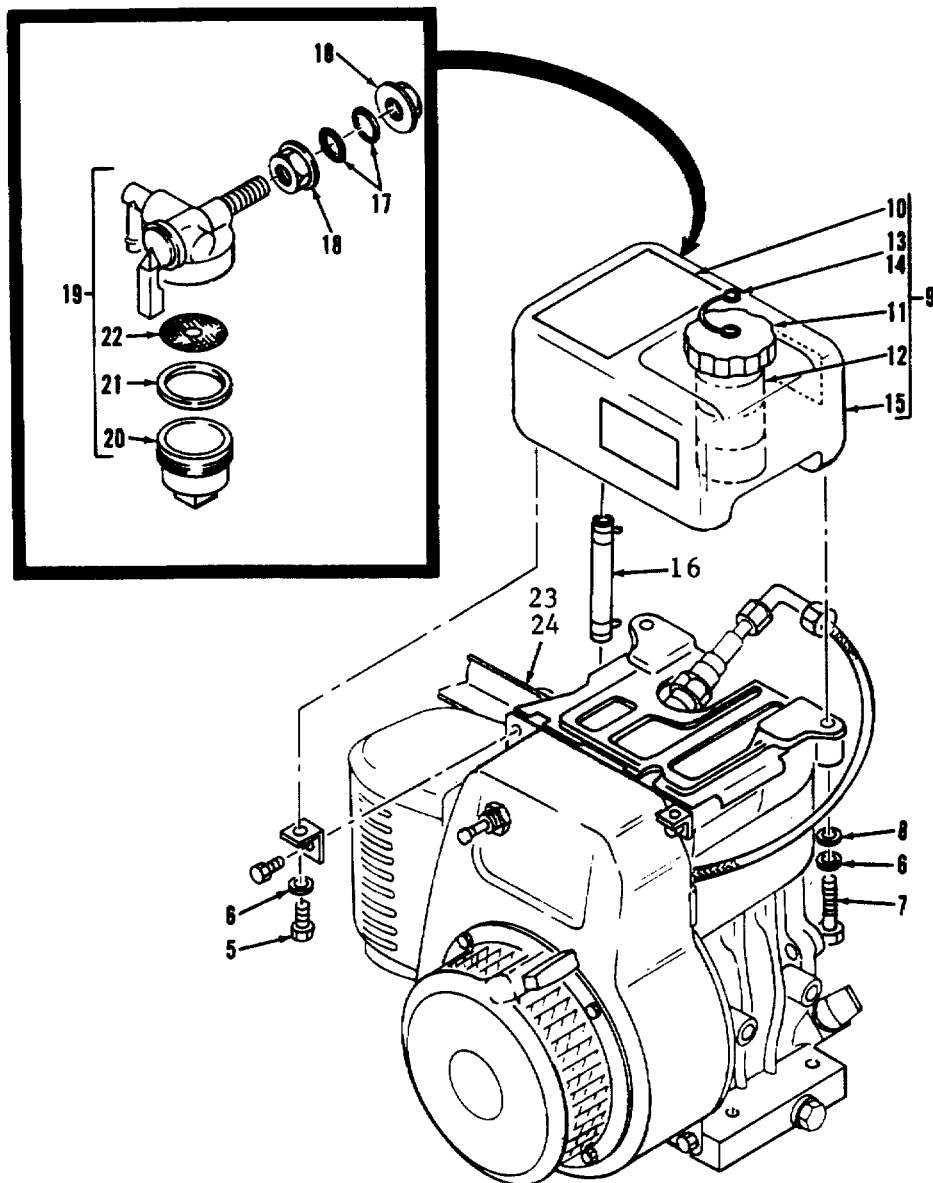


Figure 6. EMI Kit, Flywheel Shroud, and Flywheel  
(Sheet 2 of 2)

| (1)  | (2)      | (3)   | (4)           | (5)                                       | (6) |
|--|----------|-------|---------------|---|-----|
| ITEM NO  | SMR CODE | CAGEC | PART NUMBER   | DESCRIPTION AND USABLE ON CODES(UOC)      | QTY |
| GROUP 03. ENGINE ASSEMBLY                      |          |       |               |   |     |
| FIGURE 6. EMI KIT FLYWHEEL SHROUD AND FLYWHEEL |          |       |               |   |     |
| 1  | PAOZZ    | 96906 | MS16228-5C    | NUT, SELF-LOCKING, HE .....               | 4   |
| 2  | PAOZZ    | 96906 | MS15795-812   | WASHER, FLAT.....                         | 8   |
| 3  | PAOZZ    | 96906 | MS35307-339   | BOLT, MACHINE.....                        | 4   |
| 4  | AFOFH    | 58328 | ZPC1000002    | ENGINE, GASOLINE .....                    | 1   |
| 5  | PAOZZ    | 96906 | MS35307-303   | SCREW, CAP, HEXAGON H.....                | 2   |
| 6  | PAOZZ    | 96906 | MS35338-139   | WASHER, LOCK.....                         | 4   |
| 7  | PAOZZ    | 96906 | MS35307-308   | SCREW, CAP, HEXAGON H.....                | 2   |
| 8  | PAOZZ    | 96906 | MS15795-810   | WASHER, FLAT.....                         | 2   |
| 9  | PAOZZ    | 58328 | ZPC1000026    | TANK, FUEL, ENGINE .....                  | 1   |
| 10   | XCOZZ    | 58328 | ZPC1000033    | LABEL, OPERATION .....                    | 1   |
| 11   | PAOZZ    | 23224 | CAP70500SL    | .CAP, FILLER OPENING.....                 | 1   |
| 12   | PAOZZ    | 66036 | 39940         | .STRAINER ELEMENT, SE.....                | 1   |
| 13   | PAOZZ    | 96906 | MS35333-73    | WASHER, LOCK.....                         | 1   |
| 14   | PAOZZ    | 96906 | MS51958-61    | SCREW, MACHINE.....                       | 1   |
| 15   | PAOZZ    | 58328 | ZPC1000041    | .TANK, FUEL, ENGINE .....                 | 1   |
| 16   | PAOZZ    | 66289 | EY2276264001  | FUEL LINE ASSEMBLY .....                  | 2   |
| 17   | PAOZZ    | 66289 | EY0643000118  | STRAP, MOUNTING RUBB .....                | 1   |
| 18   | PAOZZ    | 66289 | EY0642004260  | LOCKNUT, TUBE FITTIN.....                 | 1   |
| 19   | PAOZZ    | 66289 | EY0642006400  | STRAINER ASSY , FUEL.....                 | 1   |
| 20   | KFOZZ    | 66289 | EY0642004210  | BOWL PART OF KIT P/N EY2266230407.....    | 1   |
| 21   | KFOZZ    | 66289 | EY0642004230  | GASKET PART OF KIT P/N EY2266230407.....  | 1   |
| 22   | KFOZZ    | 66289 | EY0642004220  | SCREEN PART OF KIT P/N EY2266230407.....  | 1   |
| 23   | PAOZZ    | 96906 | MS51958-61    | SCREW, MACHINE.....                       | 1   |
| 24   | XDOZZ    | 58328 | ZPC1000048    | .BRACKET, FRONT STRUT.....                | 1   |
| 25   | XCOZZ    | 58328 | ZPC1000038    | .LABEL, ENGINE.....                       | 1   |
| 26   | XCOZZ    | 58328 | ZPC1000032    | .LABEL,CHOKE DIR.....                     | 1   |
| 27   | PAOZZ    | 66289 | EY0110060030  | .SCREW, SELF-LOCKING .....                | 1   |
| 28   | XDOZZ    | 58328 | ZPC1000029    | .BRACKET, FUEL TANK .....                 | 2   |
| 29   | PAOFH    | 66289 | 800392        | .ENGINE.GASOLINE .....                    | 1   |
| 30   | PAOZZ    | 66289 | EY0110060020  | .SCREW, SELF-LOCKING .....                | 2   |
| 31   | XDOZZ    | 66289 | SKM10-0010    | .SHROUD, FLYWHEEL.....                    | 1   |
| 32   | XDOZZ    | 58328 | ZPC1000063    | ..SCREW-WASHER, HEX HD.....               | 1   |
| 33   | PAOZZ    | 66289 | YC9FS1        | ..SWITCH, PUSH-PULL .....                 | 1   |
| 34   | XDOZZ    | 66289 | SKM10-0011    | ..FILTER, COAXIAL.....                    | 1   |
| 35   | PAOZZ    | 66289 | EY0110060010  | .SCREW, SELF- LOCKING .....               | 1   |
| 36   | PAOZZ    | 66289 | EY2273420101  | .SHROUD, MUFFLER .....                    | 1   |
| 37   | PAOZZ    | 66289 | EY0C21908000  | .NUT, PLAIN, HEXAGON .....                | 1   |
| 38   | PAOZZ    | 66289 | EY2273010101  | .MUFFLER, EXHAUST .....                   | 2   |
| 39   | KFOZZ    | 66289 | EY12143520111 | .GASKET, MUFFLER MTG PART OF KIT P/N..... | 1   |
|  |          |       |               | EY2279900207.....                         | 1   |
| 40   | PAOZZ    | 66289 | EY2275270103  | .COVER, CYLINDER HD .....                 |     |
| 41   | PAOZZ    | 66289 | EY0110060010  | .SCREW, SELF-LOCKING .....                | 1   |
| 42   | PAOZZ    | 66289 | EY2275260103  | .BAFFLE.A'RFLOW .....                     | 1   |
| 43   | PAOZZ    | 66289 | EY0021814000  | NUT, PLAIN, HEXAGON .....                 | 1   |

## SECTION II

TM 5-4310-378-24P

| (1)     | (2)      | (3)   | (4)          | (5)                                  | (6) |
|---------|----------|-------|--------------|--------------------------------------|-----|
| ITEM NO | SMR CODE | CAGEC | PART NUMBER  | DESCRIPTION AND USABLE ON CODES(UOC) | QTY |
| 44      | PAOZZ    | 66289 | BY0032014000 | WASHER, LOCK.....                    | 1   |
| 45      | PBOZZ    | 66289 | EY2277012108 | .FLYWHEEL, ENGINE.....               | 1   |
| 46      | PAOZZ    | 66289 | EY0323030010 | KEY, WOODRUF .....                   | 1   |
| 47      | PAOZZ    | 66289 | EY0011706250 | .SCREW-WASHER, X H D.....            | 2   |
| 48      | PAOZZ    | 66289 | EY226702450B | .GROMMT, NONM ETA LLIC.....          | 1   |
| 49      | XDOZZ    | 66289 | EY227013028  | .EMI COIL .....                      | 1   |
| 50      | PAOZZ    | 96906 | MS35909-4    | ..SPA PLU .....                      | 1   |
| 51      | PAOZZ    | 66289 | EY2266230407 | REPAIR KIT, FUEL STR .....           | 1   |
|         |          |       |              | BOWL ( 1) 6-20                       |     |
|         |          |       |              | GASKET ( 1) 6-21                     |     |
|         |          |       |              | SCREEN ( 1) 6-22                     |     |

END OF FIGURE

Change 2 6-2

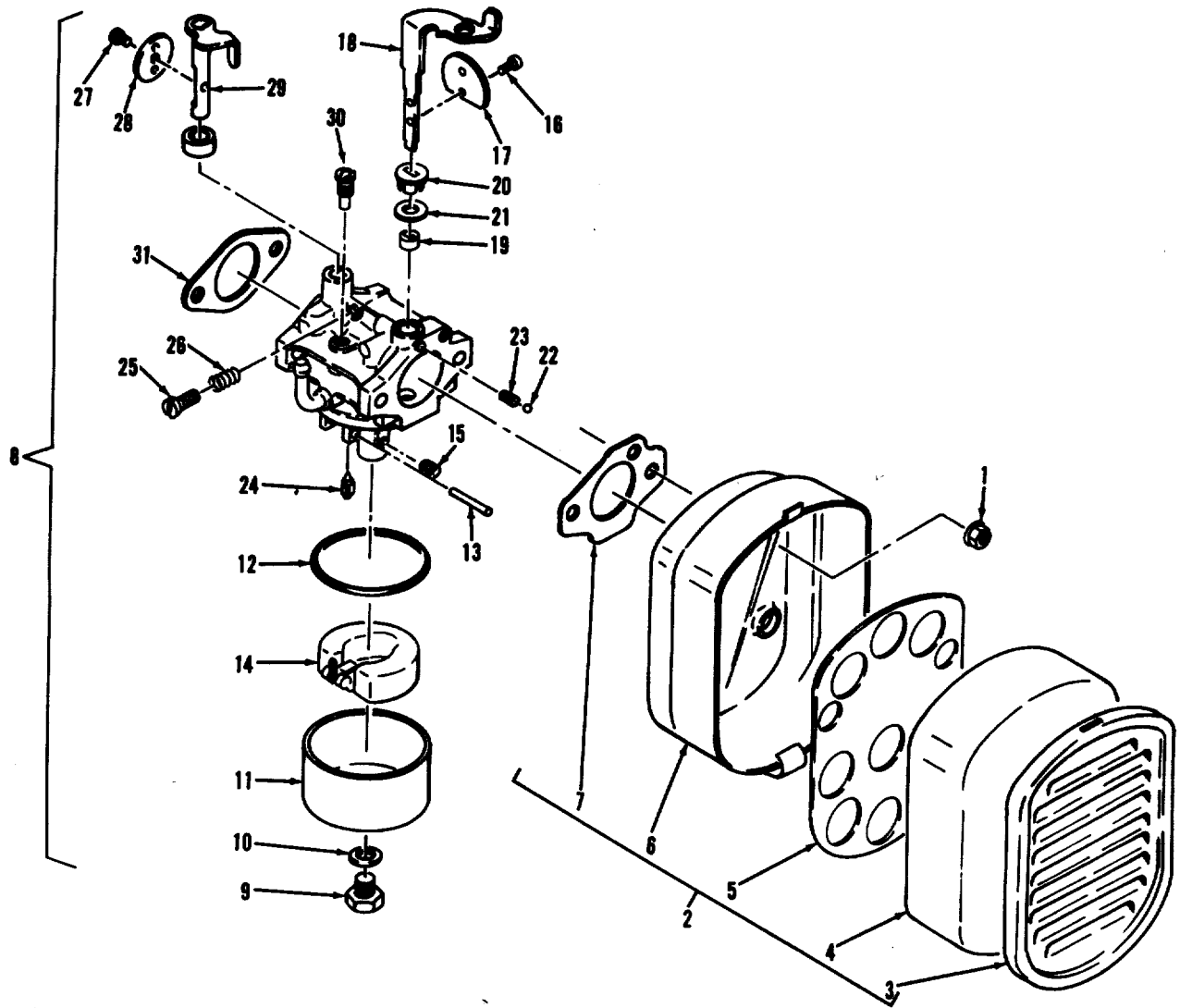


Figure 7. Air Cleaner and Carburetor

## SECTION II

TM 5-4310-378-24P

| (1)  | (2)      | (3)   | (4)          | (5)  | (6) |
|--|----------|-------|--------------|--|-----|
| ITEM NO  | SMR CODE | CAGEC | PART NUMBER  | DESCRIPTION AND USABLE ON CODES(UOC)   | QTY |
| GROUP 03. ENGINE ASSEMBLY<br>FIGURE 7. AIR CLEANER AND<br>CARBURETOR |          |       |              |  |     |
| 1  | PAOZZ    | 66289 | EY0023806000 | NUT, SELF-LOCKING, HE .....  | 2   |
| 2  | PAOZZ    | 66289 | EY2273260100 | AIR CLEANER, INTAKE .....  | 1   |
| 3  | PBOZZ    | 66289 | EY2273510101 | .COVER .....   | 1   |
| 4  | PAOZZ    | 66289 | EY2273600203 | .FILTER ELEMENT, INTA .....  | 1   |
| 5  | XAOZZ    | 66289 | EY2273600103 | .RETAINER .....  | 1   |
| 6  | XAOZZ    | 66289 | EY2273500101 | .BODY .....  | 1   |
| 7  | KFOZZ    | 66289 | EY2273600313 | GASKET PART OF KIT P/N EY2276230107 .....  | 1   |
|  |          |       |              | PART OF KIT P/N EY2266230217 PART OF<br>KIT P/N EY2279900207 .....                             |     |
| 8  | PAOZZ    | 66289 | EY2276232600 | CARBURETOR ASSEMBLY .....  | 1   |
| 9  | KFOZZ    | 66289 | EY2146245108 | SCREW, FLT CHMBR MTG PART OF KIT P/N ...<br>EY2276230107 .....                                 | 1   |
| 10   | KFOZZ    | 66289 | EY2146245008 | WASHER, FLT CHMBR PART OF KIT P/N.....<br>EY2276230107 PART OF KIT P/<br>EY2266230217 .....    | 1   |
| 11   | XAOZZ    | 66289 | EY2146255108 | .CHAMBER, FLOAT .....  | 1   |
| 12   | KFOZZ    | 66289 | EY2146254008 | GASKET, FLT CHMBR PART OF KIT P/N.....<br>EY2276230107 PART OF KIT P/N<br>EY2266230217 .....   | 1   |
| 13   | KFOZZ    | 66289 | EY2146251508 | PIN, FLOAT PART OF KIT P/N .....   | 1   |
| 14   | XAOZZ    | 66289 | EY2266250508 | .FLOAT .....   | 1   |
| 15   | KFOZZ    | 66289 | EY2276240008 | JET, MAIN PART OF KIT P/N .....  | 1   |
| 16   | KFOZZ    | 66289 | EY2266235108 | SCREW, PAN HEAD PART OF KIT P/N .....  | 2   |
|  |          |       |              | EY2096244608 .....   |     |
| 17   | XAOZZ    | 66289 | EY2266252508 | .VALVE, CHOKE .....  | 1   |
| 18   | XAOZZ    | 66289 | EY2266230507 | .SHAFT, CHOKE .....  | 1   |
| 19   | XAOZZ    | 66289 | EY2266255008 | ..BSGH, LWR CH SHAFT .....   | 1   |
| 20   | XAOZZ    | 66289 | EY2266255108 | ..BSGH, UPR CH SHAFT .....   | 1   |
| 21   | KFOZZ    | 66289 | EY2276255008 | GASKET, CHOKE SHAFT PART OF KIT P/N.....<br>EY2276230107 PART OF KIT P/N<br>EY2266230217 ..... | 1   |
| 22   | XAOZZ    | 66289 | EY2096235308 | .BALL, CH SHAFT RTNR .....   | 1   |
|  |          |       |              | JET, MAIN ( 1) 7-10  |     |
|  |          |       |              | SCREW, PAN HEAD ( 2) 7-20  |     |
| 23   | XAOZZ    | 66289 | EY2096244608 | .SPRING, CH BALL RTNR .....  | 1   |
| 24   | KFOZZ    | 66289 | EY2266250008 | VALVE ASSY, FUEL PART OF KIT P/N.....<br>EY2276230107 .....                                    | 1   |
| 25   | KFOZZ    | 66289 | EY1066239308 | SCREW, THROTTLE STOP PART OF KIT P/N...<br>EY2276230107 .....                                  | 1   |
| 26   | PAOZZ    | 66289 | EY2096244508 | .SPRING, HELICAL, COMP .....   | 1   |
| 27   | KFOZZ    | 66289 | EY1506235608 | SCREW, THROT VALVE PART OF KIT P/N.....<br>EY2276230107 .....                                  | 1   |
| 28   | XAOZZ    | 66289 | EY2206253508 | .VALVE, THROTTLE .....   | 1   |
| 29   | XAOZZ    | 66289 | EY2266253008 | .SHAFT, THROTTLE .....   | 1   |
| 30   | KFOZZ    | 66289 | EY2096242008 | JET, PILOT PART OF KIT EY2276230107.....   | 1   |

## SECTION II

TM 5-4310-378-24P

| (1)     | (2)      | (3)   | (4)          | (5)  | (6) |
|---------|----------|-------|--------------|--|-----|
| ITEM NO | SMR CODE | CAGEC | PART NUMBER  | DESCRIPTION AND USABLE ON CODES(UOC)   | QTY |
| 31      | KFOZZ    | 66289 | EY2273590203 | PART OF KIT P/N EY2276230107.<br>GASKET, CARB FLANGE PART OF KIT P/N .....<br>EY2276230107 PART OF KIT P/N<br>EY2266230217.  | 1   |
|         | PAOZZ    | 66289 | EY2276230107 | REPAIR KIT , CARBURET .....<br>GASKET ( 1).....7-10<br>GASKET, CHOKE SHAFT ( 1) 7-20<br>GASKET, CARB FLANGE ( 1) 7-30<br>GASKET, FLT CHMBR ( 1) 7-40<br>JET, PILOT ( 1) 7-50<br>PIN, FLOAT ( 1) 7-60<br>SCREW, FLT CHMBR MTG( 1) 7-70<br>SCREW, THROTTLE STOP( 1) 7-80<br>SCREW, THROT VALVE ( 1) 7-90<br>VALVE ASSY, FUEL ( 1) 7-100<br>WASHER, FLT CHMBR ( 1) 7-50 | 1   |
|         | PAOZZ    | 66289 | EY2266230217 | GASKET SET, CARBURET .....<br>GASKET ( 1) 7-10<br>GASKET, CHOKE SHAFT ( 1) 7-20<br>GASKET, CARB FLANGE ( 1) 7-30<br>GASKET, FLT CHMBR ( 1) 7-40<br>WASHER, FLT CHMBR ( 1) 7-50   | 1   |

END OF FIGURE

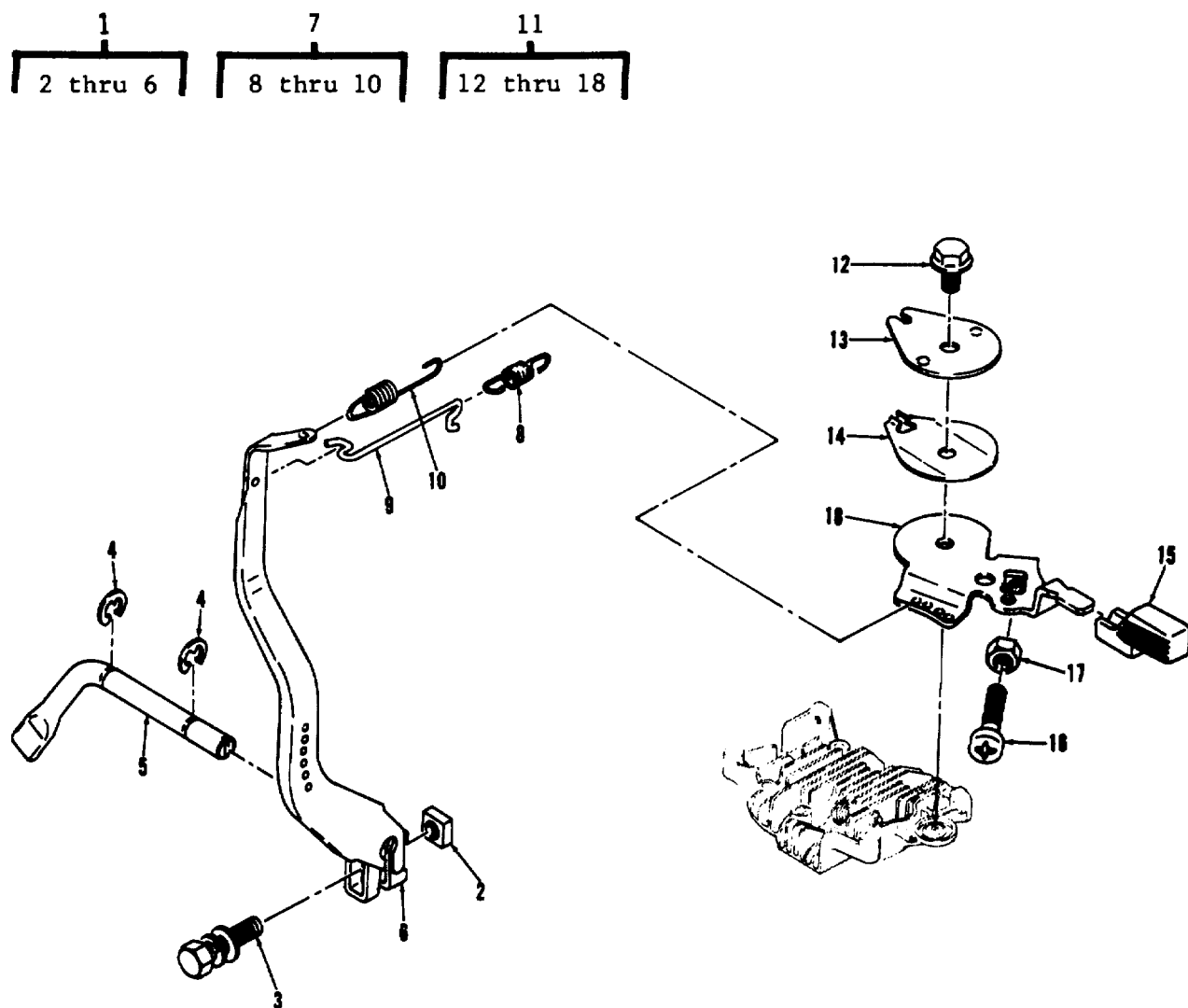


Figure 8. Governor Lever, Spring, and Rod Sets



## SECTION II

TM 5-4310-378-24P

| (1)   | (2)      | (3)   | (4)          | (5)                                  | (6) |
|---|----------|-------|--------------|--------------------------------------|-----|
| ITEM NO                                       | SMR CODE | CAGEC | PART NUMBER  | DESCRIPTION AND USABLE ON CODES(UOC) | QTY |
| GROUP 03. ENGINE ASSEMBLY                     |          |       |              |                                      |     |
| FIGURE 8. GOVERNOR LEVER, SPRING AND ROD SETS |          |       |              |                                      |     |
| 1   | PBFZZ    | 66289 | EY2274230107 | SHAFT SET, LEVER.....                | 1   |
| 2   | XAFZZ    | 66289 | EY0186060010 | .NUT, GOVERNOR LEVER.....            | 1   |
| 3   | XAFZZ    | 66289 | EY0032006000 | .SCREW-WASHER ASSY.....              | 1   |
| 4   | XAFZZ    | 66289 | EY0031306000 | .CLIP, SHAFT RETAINER.....           | 2   |
| 5   | XAFZZ    | 66289 | EY2274220103 | .SHAFT, CROSS.....                   | 1   |
| 6   | XAFZZ    | 66289 | EY2274230101 | .LEVER, GOVERNOR.....                | 1   |
| 7   | PAFZZ    | 66289 | EY2274250107 | ROD SET, GOVERNOR.....               | 1   |
| 8   | PAOZZ    | 66289 | EY2274280101 | .SPRING, HELICAL, EXTE.....          | 1   |
| 9   | XAOZZ    | 66289 | EY2274270101 | .ROD, GOVERNOR.....                  | 1   |
| 10  | PAOZZ    | 66289 | EY2274250111 | .SPRING, HELICALPEXTE.....           | 1   |
| 11  | PAOZZ    | 66289 | EY2274330107 | LEVER SET, CONTROL G.....            | 1   |
| 12  | XAOZZ    | 66289 | EY0110060030 | .SCREW, SELF-LOCKING.....            | 1   |
| 13  | XAOZZ    | 66289 | EY2274350101 | .PLATE, STOP.....                    | 1   |
| 14  | XAOZZ    | 66289 | EY2274500203 | .WASHER, STOP PLATE.....             | 1   |
| 15  | XAOZZ    | 66289 | EY2274360103 | .HANDLE, CONT LEVER.....             | 1   |
| 16  | XAOZZ    | 66289 | EY0043106300 | .SCREW, FILLISTER H D.....           | 1   |
| 17  | XAOZZ    | 66289 | EY0022706000 | .NUT, HEX.....                       | 1   |
| 18  | XAOZZ    | 66289 | EY2274330101 | .LEVER, CONTROL.....                 | 1   |

END OF FIGURE

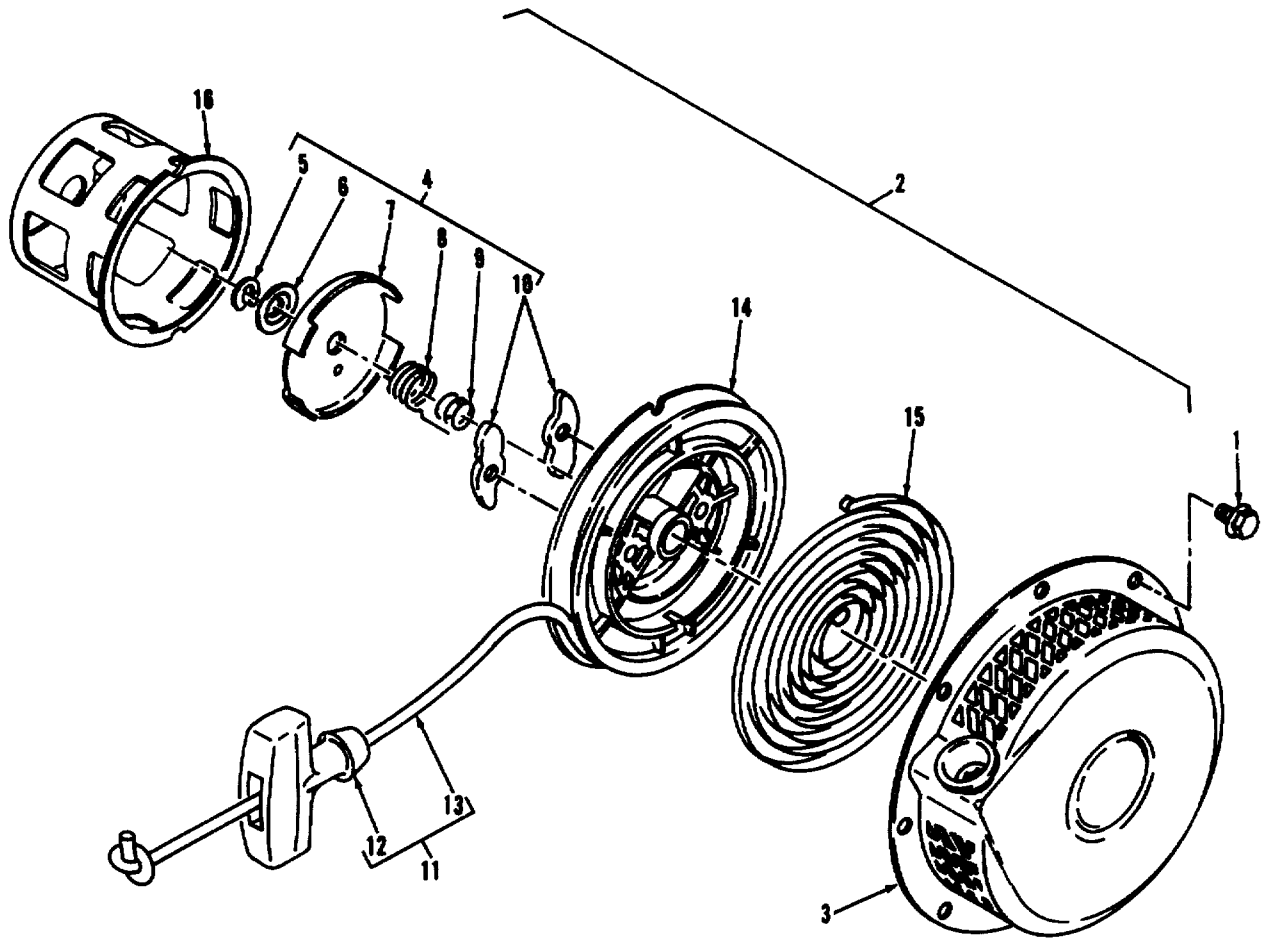


Figure 9. Recoil Starter Assembly

## SECTION II

TM 5-4310-378-24P

| (1)     | (2)      | (3)   | (4)          | (5)                                  | (6) |
|---------|----------|-------|--------------|--------------------------------------|-----|
| ITEM NO | SMR CODE | CAGEC | PART NUMBER  | DESCRIPTION AND USABLE ON CODES(UOC) | QTY |
|         |          |       |              | GROUP 03. ENGINE ASSEMBLY            |     |
|         |          |       |              | FIGURE 9. RECOIL STARTER ASSEMBLY    |     |
| 1       | PAOZZ    | 66289 | EY0110060010 | SCREW, SELF-LOCKING .....            | 4   |
| 2       | PBOFF    | 66289 | EY2275021100 | STARTER, ENGINE, HAND .....          | 1   |
| 3       | XAOZZ    | 66289 | EY2275153601 | HOUSING .....                        | 1   |
| 4       | PAOZZ    | 66289 | EY2265010107 | HARDWARE KIT, STARTE .....           | 1   |
| 5       | XAOZZ    | 66289 | EY1065018608 | .CLIP, RETAINER LOCK.....            | 1   |
| 6       | XAOZZ    | 66289 | EY1065018508 | .WASHER, RETAINER.....               | 1   |
| 7       | XAOZZ    | 66289 | EY1065014408 | .RETAINER, RATCHET.....              | 1   |
| 8       | XAOZZ    | 66289 | EY1065013618 | .SPRING, RETURN.....                 | 1   |
| 9       | XAOZZ    | 66289 | EY1065013208 | .SPRING, COMPRESSION .....           | 1   |
| 10      | XAOZZ    | 66289 | EY1065012818 | .RATCHET .....                       | 2   |
| 11      | PAOZZ    | 66289 | EY2275010508 | STARTER ROPE, ENGINE .....           | 1   |
| 12      | XAOZZ    | 66289 | EY2265010008 | .BUSHING, HANDLE AND .....           | 1   |
| 13      | XAOZZ    | 66289 | EY2275011008 | .ROPE.....                           | 1   |
| 14      | PAOZZ    | 66289 | EY2275012008 | .PULLEY, ENGINE START.....           | 1   |
| 15      | PAOZZ    | 66289 | EY1065011608 | SPRING, SPIRAL, TORSI .....          | 1   |
| 16      | PAOZZ    | 66289 | EY2275014508 | PULLEY, STARTING.....                | 1   |

END OF FIGURE

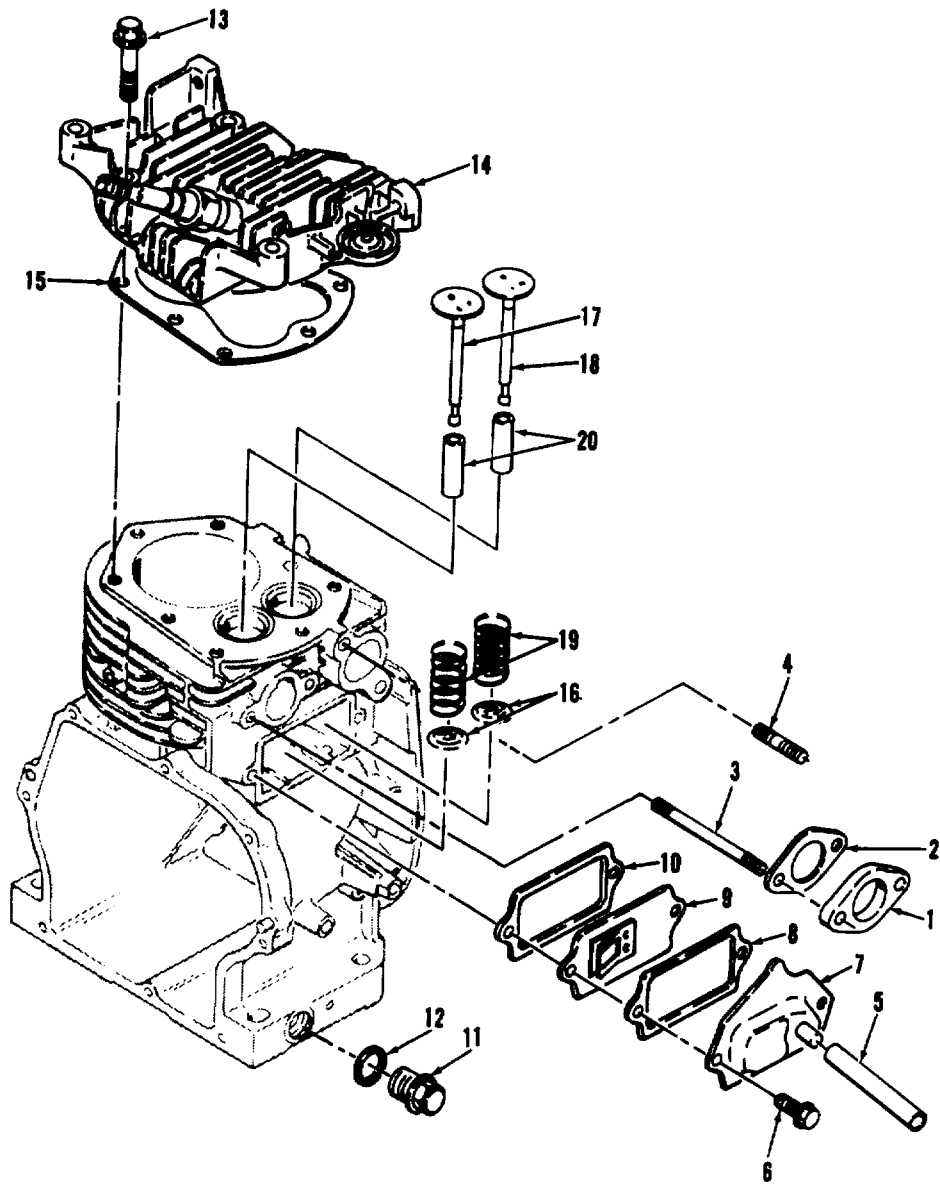


Figure 10. Piston, Connecting Rod and Crankshaft

## SECTION II

TM 5-4310-378-24P

| (1)<br>ITEM<br>NO                                   | (2)<br>SMR<br>CODE | (3)<br>CAGEC | (4)<br>PART<br>NUMBER | (5)<br>DESCRIPTION AND USABLE ON CODES(UOC)                      | (6)<br>QTY |
|---|--------------------|--------------|-----------------------|--|------------|
| GROUP 03. ENGINE ASSEMBLY                           |                    |              |                       |  |            |
| FIGURE 10. PISTON, CONNECTING ROD<br>AND CRANKSHAFT |                    |              |                       |  |            |
| 1   | PAOZZ              | 66289        | EY2273290103          | INSULATING PLATE, CA.....  | 1          |
| 2   | KFOZZ              | 66289        | EY2273590103          | GASKET, INSUL PLATE PART OF KIT P/N.....<br>EY2279900207 .....   | 1          |
| 3   | PBOZZ              | 66289        | EY0105060120          | ROD, THREADED END.....   | 2          |
| 4   | PBOZZ              | 66289        | EY0105080250          | ROD, THREADED END.....   | 2          |
| 5   | PAOZZ              | 66289        | EY0851080210          | TUBE, BREATHER .....   | 1          |
| 6   | PAOZZ              | 66289        | EY0110060020          | SCREW, SELF-LOCKING .....  | 2          |
| 7   | XDOZZ              | 66289        | EY2271430101          | COVER, VALVE TAPPET .....  | 1          |
| 8   | KFOZZ              | 66289        | EY2271600603          | GSKT, TPT INSP COVER PART OF KIT P/N .....<br>EY2279900207 ..... | 1          |
| 9   | XDOZZ              | 66289        | EY2271440101          | PLATE, BREATHER.....   | 1          |
| 10  | KFOZZ              | 66289        | EY2271600703          | GSKT, BREATHER PLATE PART OF KIT P/N.....<br>EY2279900207 .....  | 1          |
| 11  | PAOZZ              | 66289        | EY2276360007          | PLUG, MACHINE THREAD.....  | 2          |
| 12  | PAOZZ              | 66289        | EY0211140020          | .GASKET.....   | 2          |
| 13  | PAOZZ              | 66289        | EY0110080010          | SCREW, SELF-LOCKING .....  | 8          |
| 14  | XDOZZ              | 66289        | EY2271300103          | HEAD, CYLINDER.....  | 1          |
| 15  | KFOZZ              | 66289        | EY2271500101          | GASKET, CYLINDER HD PART OF KIT P/N .....<br>EY2279900207 .....  | 1          |
| 16  | PAOZZ              | 66289        | EY2273370103          | SEAT, HELICAL COMPRE.....  | 2          |
| 17  | PAOZZ              | 66289        | EY2273340103          | VALVE, POPPET, ENGINE.....                                       | 1          |
| 18  | PAOZZ              | 66289        | EY2273350103          | VALVE, POPPET, ENGINE.....                                       | 1          |
| 19  | PAOZZ              | 66289        | EY2273360103          | SPRING, HELICAL, COMP .....                                      | 2          |
| 20  | PAOZZ              | 66289        | EY2271420203          | GUIDE, VALVE STEM.....   | 2          |

END OF FIGURE

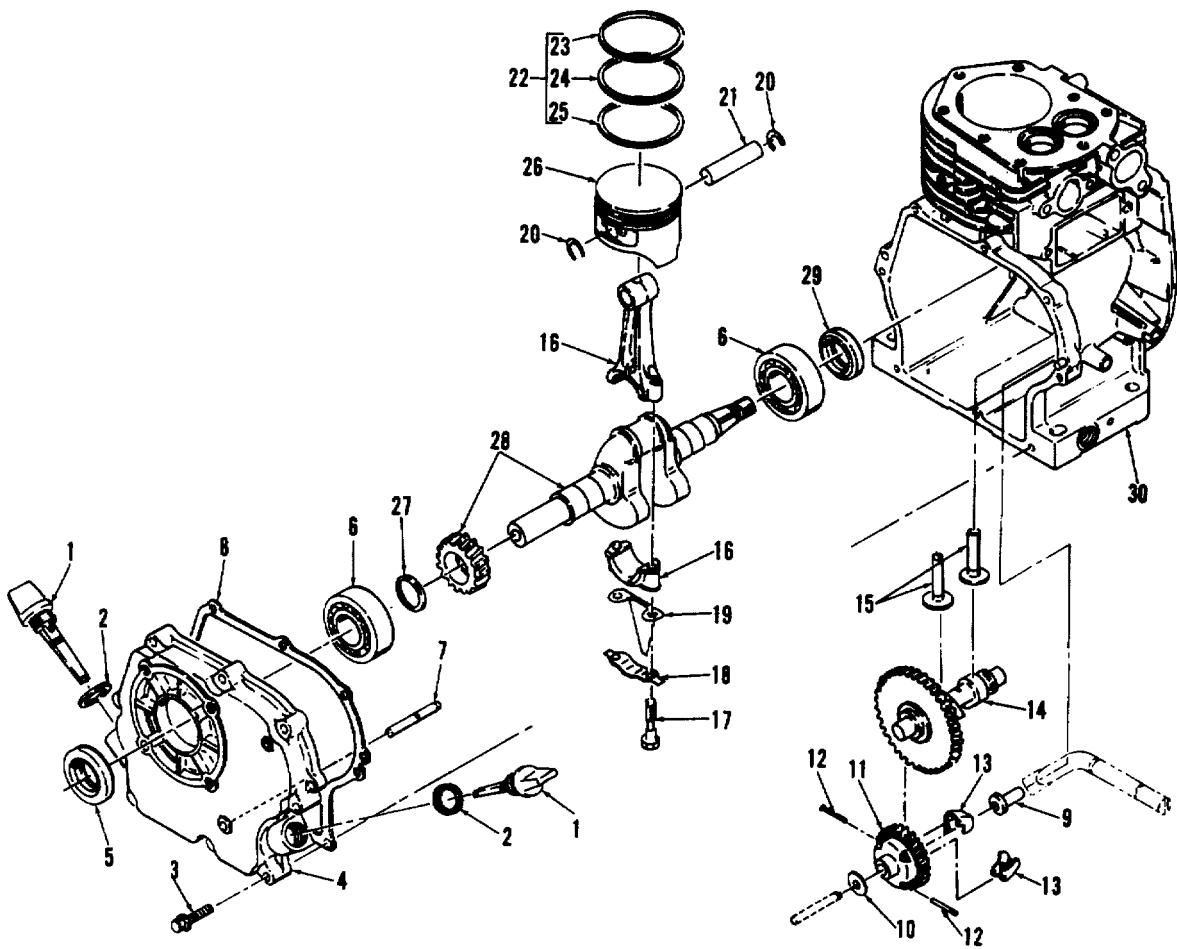


Figure 11. Crankcase

## SECTION II

TM 5-4310-378-24P

| (1)                       | (2)      | (3)   | (4)          | (5)  | (6) |
|---------------------------|----------|-------|--------------|--|-----|
| ITEM NO                   | SMR CODE | CAGEC | PART NUMBER  | DESCRIPTION AND USABLE ON CODES (UOC)                    | QTY |
| GROUP 03. ENGINE ASSEMBLY |          |       |              |  |     |
| FIGURE 11. CRANKCASE      |          |       |              |  |     |
| 1                         | PAOZZ    | 66289 | EY2276360107 | GAGE ROD-CAP, LIQUID.....                                | 2   |
| 2                         | PAOZZ    | 66289 | EY0213160010 | .GASKET.DIP STICK .....                                  | 1   |
| 3                         | PAOZZ    | 66289 | EY0130060040 | SCREW-WASHER, HEXAGO .....                               | 8   |
| 4                         | XDOZZ    | 66289 | EY2271100201 | COVER ASSY, GEAR .....                                   | 1   |
| 5                         | PAOZZ    | 66289 | EY0440250020 | .SEAL, GEAR COVER OIL.....                               | 1   |
| 6                         | PAFZZ    | 66289 | EY0600250010 | .BEARING, MAIN, CRANKS.....                              | 1   |
| 7                         | XAFZZ    | 66289 | EY2054600703 | .SHAFT, GOVERNOR GEAR.....                               | 1   |
| 8                         | KFFZZ    | 66289 | EY2271600103 | GASKET, GEAR COVER PART OF KIT P/N.....<br>EY2279900207. | 1   |
| 9                         | XAFZZ    | 66289 | EY2054190103 | SLEEVE, GOVERNOR.....                                    | 1   |
| 10                        | XAFZZ    | 66289 | EY0230060010 | SPACER, GEAR.....  | 1   |
| 11                        | XAFZZ    | 66289 | EY2274500301 | GEAR ASSY, GOVERNOR .....                                | 1   |
| 12                        | XAFZZ    | 66289 | EY0307300070 | .PINFLYWEIGHT PH .....                                   | 2   |
| 13                        | XAFZZ    | 66289 | EY2204160103 | .FLYWEIGHT. ....   | 2   |
| 14                        | XAFZZ    | 66289 | EY2273170103 | CAMSHAFT, GEAR ASSY .....                                | 1   |
| 15                        | XAFZZ    | 66289 | EY2273330103 | TAPPET, VALVE .....                                      | 2   |
| 16                        | XAFZZ    | 66289 | EY2272250100 | CONN, ROD ASSY .....                                     | 1   |
| 17                        | XAFZZ    | 66289 | EY2272300103 | .BOLT, ROD.....  | 2   |
| 18                        | XAFZZ    | 66289 | EY2272320103 | .PLATE, LOCK .....                                       | 1   |
| 19                        | XAFZZ    | 66289 | EY2272310103 | .SCRAPER, OIL .....                                      | 1   |
| 20                        | XAFZZ    | 66289 | EY0565140010 | RING, PSTN PIN SNAP .....                                | 2   |
| 21                        | XAFZZ    | 66289 | EY2142330103 | PIN, PISTON.....   | 1   |
| 22                        | XAFZZ    | 66289 | EY2272350107 | RING SET, STANDARD .....                                 | 1   |
| 23                        | XAFZZ    | 66289 | EY2262360103 | .RING, COMPRESSION.....                                  | 1   |
| 24                        | XAFZZ    | 66289 | EY2262371107 | .RING, SCRAPER .....                                     | 1   |
| 25                        | XAFZZ    | 66289 | EY2262391103 | .RING, OIL .....   | 1   |
| 26                        | XAFZZ    | 66289 | EY2272340103 | PISTON, STANDARD.....                                    | 1   |
| 27                        | XAFZZ    | 66289 | EY0230250110 | SHIM .....   | 1   |
| 28                        | XAFZZ    | 66289 | EY2272090201 | CRANKSHAFT, KEYWAY .....                                 | 1   |
| 29                        | XAFZZ    | 66289 | EY0440250070 | SEAL, CRANKCASE OIL.....                                 | 1   |
| 30                        | XAFZZ    | 66289 | EY227101010  | CRANKCASE, CYLINDER.....                                 | 1   |
|                           | PAFZZ    | 66289 | EY2279900207 | GASKET SET.....  | 1   |
|                           |          |       |              | GASKET ( 1) 7-10   |     |
|                           |          |       |              | GASKET, CYLINDER HD ( 1) 10-20                           |     |
|                           |          |       |              | GASKET, GEAR COVER ( 1) 11-30                            |     |
|                           |          |       |              | GASKET, INSUL PLATE ( 1) 10-40                           |     |
|                           |          |       |              | GASKET, MUFFLER MTG ( 1) 6-50                            |     |
|                           |          |       |              | GSKT, BREATHER PLATE ( 1) 10-60                          |     |
|                           |          |       |              | GSKT, TPT INSP COVER ( 1) 10-70                          |     |

END OF FIGURE

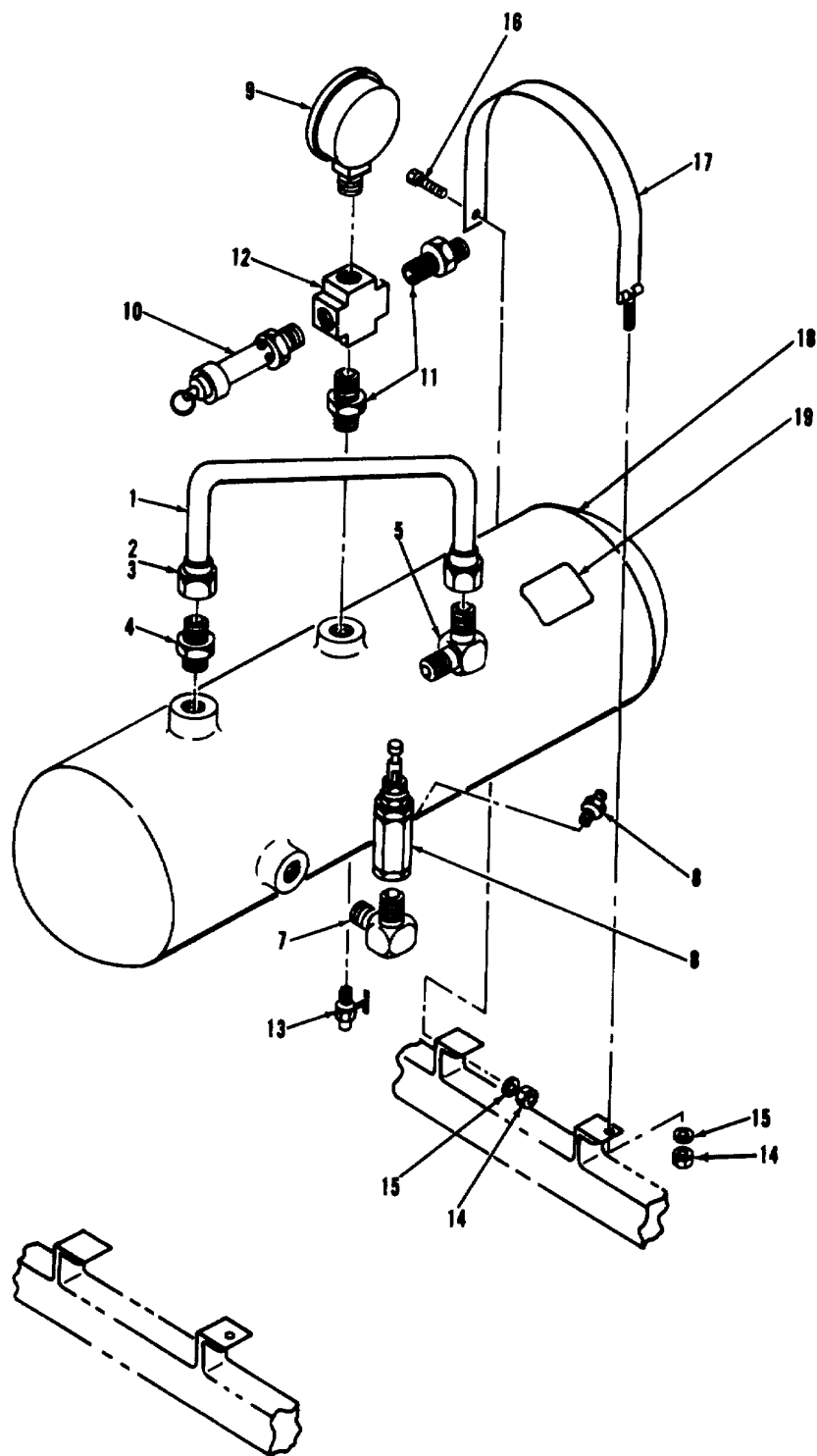


Figure 12. Gauge, Valves, and Air Tank Assembly



## SECTION II

TM 5-4310-378-24P

| (1)  | (2)      | (3)   | (4)                      | (5)                                  | (6) |
|--|----------|-------|--------------------------|--------------------------------------|-----|
| ITEM NO  | SMR CODE | CAGEC | PART NUMBER              | DESCRIPTION AND USABLE ON CODES(UOC) | QTY |
| GROUP 04. AIR RECEIVER SYSTEM                  |          |       |                          |                                      |     |
| FIGURE 12. GAUGE, VALVES AND AIR TANK ASSEMBLY |          |       |                          |                                      |     |
| 1  | PAOZZ    | 58328 | ZPC1000024               | TUBE ASSEMBLY, METAL.....            | 1   |
| 2  | PAOZZ    | 96906 | MS39177-7                | SLEEVE, COMPRESSION, .....           | 2   |
| 3  | PAOZZ    | 96906 | MS39176-7                | NUT, TUBE COUPLING .....             | 2   |
| 4  | PAOZZ    | 93061 | 68C-8-8                  | ADAPTER, STRAIGHT, PI .....          | 1   |
| 5  | PAOZZ    | 96906 | MS39171-17               | ELBOW, PIPE TO TUBE.....             | 1   |
| 6  | PAOZZ    | 71647 | RCB-HU-165-185           | VALVE, PILOT .....                   | 1   |
| 7  | PAOZZ    | 30780 | 1/4X1/4CR-B              | ELBOW .....                          | 1   |
| 8  | PAOZZ    | 92392 | 0910197                  | ADAPTER, STRAIGHT, PI .....          | 1   |
| 9  | PAOZZ    | 61349 | P500 1/4LM2IN-30<br>OPSI | GAGE, PRESSURE, DIAL.....            | 1   |
| 10   | PAOZZ    | 17875 | 95202-200-ASME           | VALVE, SAFETY RELIEF.....            | 1   |
| 11   | PAOZZ    | 30780 | 1/4X1/4FF-S              | NIPPLE, PIPE .....                   | 2   |
| 12   | PAOZZ    | 30780 | 1/4KMMOO-S               | CROSS, PIPE .....                    | 1   |
| 13   | PAOZZ    | 25299 | 2305X2                   | VALVE, DRAIN.....                    | 1   |
| 14   | PAOZZ    | 96906 | MS16228-4C               | NUT, SELF-LOCKING, HE .....          | 4   |
| 15   | PAOZZ    | 96906 | MS15795-810              | WASHER, FLAT .....                   | 6   |
| 16   | PAOZZ    | 96906 | MS35307-306              | SCREW, CAP, HEXAGON H.....           | 2   |
| 17   | PAOZZ    | 58328 | ZPC1000010               | STRAP, RETAINING .....               | 2   |
| 18   | XDOZZ    | 58328 | ZPC1000007               | TANK ASSY, AIR .....                 | 1   |
| 19   | XCOZZ    | 58328 | ZPC1000031               | .LABEL, AIR TANK.....                | 1   |

END OF FIGURE

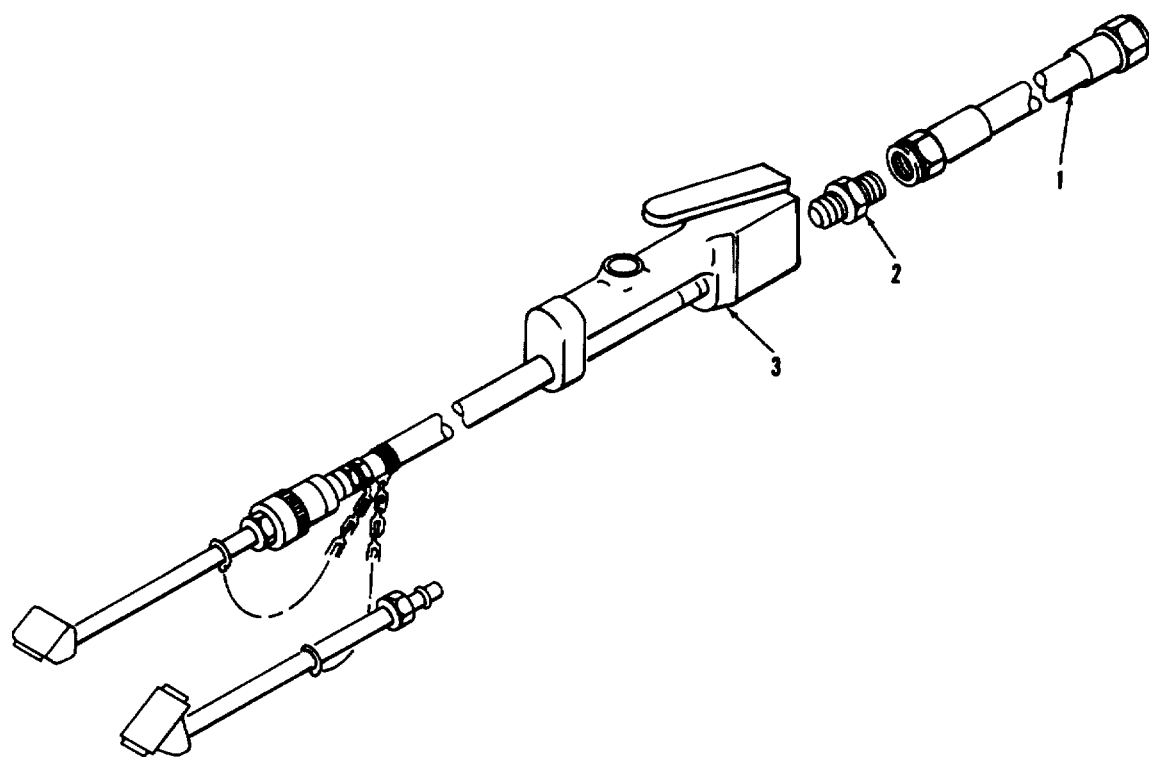


Figure 13. Delivery Hose Assembly

SECTION II

TM 5 4310-378-24P

| (1)     | (2)      | (3)   | (4)         | (5)                                  | (6) |
|---------|----------|-------|-------------|--------------------------------------|-----|
| ITEM NO | SMR CODE | CAGEC | PART NUMBER | DESCRIPTION AND USABLE ON CODES(UOC) | QTY |
|         |          |       |             | GROUP 05. AIR DISCHARGE SYSTEM       |     |
|         |          |       |             | FIGURE 13. DELIVERY HOSE ASSEMBLY    |     |
| 1       | PAOZZ    | 16004 | 85403       | HOSE ASSEMBLY, NONME .....           | 1   |
| 2       | PAOZZ    | 30780 | 1/4X1/4FF-S | NIPPLE, PIPE .....                   | 1   |
| 3       | PAOZZ    | 94894 | 1506        | INFLATOR-GAGE, PNEUM.....            | 1   |
|         |          |       |             | END OF FIGURE                        |     |

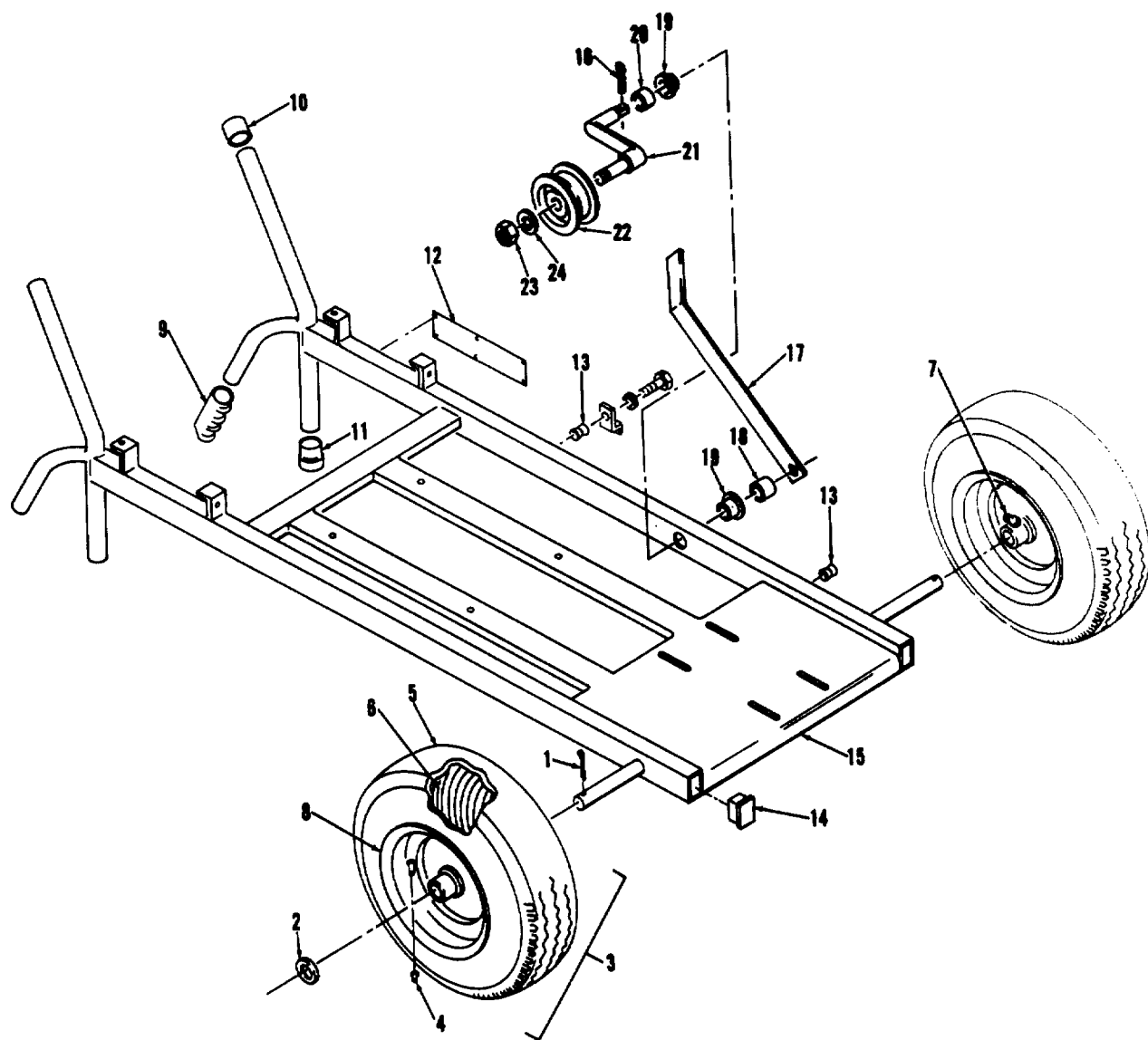


Figure 14. Wheels and Frame Assemblies

| (1)                                    | (2)      | (3)   | (4)              | (5)                                  | (6) |
|--|----------|-------|------------------|--------------------------------------|-----|
| ITEM NO                                | SMR CODE | CAGEC | PART NUMBER      | DESCRIPTION AND USABLE ON CODES(UOC) | QTY |
| GROUP 06. HANDTRUCK ASSEMBLY           |          |       |                  |                                      |     |
| FIGURE 14. WHEELS AND FRAME ASSEMBLIES |          |       |                  |                                      |     |
| 1                                      | XDOZZ    | 96906 | MS24665-457      | PIN, COTTER.....                     | 2   |
| 2                                      | PAOZZ    | 88044 | AN960C1216       | WASHER, FLAT.....                    | 2   |
| 3                                      | PBOZZ    | 58328 | ZPC1000006       | WHEEL ASSEMBLY .....                 | 2   |
| 4                                      | PAOZZ    | 81348 | ZZ-V-25/TYPEIV/C | .CAP, PNEUMATIC VALVE.....           | 1   |
|  |          |       |                  | LASS1 /TR-VC-2                       |     |
| 5                                      | XDOZZ    | 73842 | 4.10-3.50-6      | .TIRE.....                           | 1   |
| 6                                      | PAOZZ    | 81348 | ZZ-1-550/G5/4.10 | INNER TUBE, PNEUMATI.....            | 1   |
|  |          |       | /3.50-6/TR87/OFF |                                      |     |
| 7                                      | XDOZZ    | 96906 | MS15720-1        | FITTING, LUBRICATION.....            | 2   |
| 8                                      | PAOZZ    | 94189 | 40159            | .WHEEL AND HUB.....                  | 1   |
| 9                                      | PAOZZ    | 15819 | 7/8EC0-89        | GRIP, HANDLE .....                   | 2   |
| 10                                     | PAOZZ    | 15819 | 706-89           | CAP, END LEG .....                   | 2   |
| 11                                     | PAOZZ    | 11544 | 11-91            | CUSHION, LEG.....                    | 2   |
| 12                                     | XCOZZ    | 58328 | ZPC1000034       | PLATE, ID .....                      | 1   |
| 13                                     | PAOZZ    | 65461 | 021-5-8100       | INSERT, SCREW THREAD . .....         | 2   |
| 14                                     | PAOZZ    | 11897 | 132-BB-1 399     | CAP, MAINFRAME FRONT.....            | 2   |
| 15                                     | XDOZZ    | 58328 | ZPC1000001       | FRAME ASSEMBLY.....                  | 1   |
| 16                                     | PAOZZ    | 58328 | MS24665-353      | PIN, COTTER.....                     | 1   |
| 17                                     | XDOZZ    | 58328 | ZPC100145        | LEVER, MANUAL CONTRO.....            | 1   |
| 18                                     | PAOZZ    | 58328 | ZPC1000147-03    | SPACER, SLEEVE.....                  | 1   |
| 19                                     | PAOZZ    | 58328 | ZPC1000149       | BUSHING, SLEEVE .....                | 2   |
| 20                                     | PAOZZ    | 58328 | ZPC1000147-01    | SPACER, SLEEVE .....                 | 1   |
| 21                                     | PAOZZ    | 58328 | ZPC1000213       | LEVER, MANUAL CONTRO.....            | 1   |
| 22                                     | PAOZZ    | 59254 | 011-4410         | BEARING UNIT, BALL .....             | 1   |
| 23                                     | PAOZZ    | 96906 | MS16228-8C       | NUT, SELF-LOCKING .....              | 1   |
| 24                                     | PAOZZ    | 96906 | MS15795-818      | WASHER, FLAT.....                    | 1   |

END OF FIGURE

**Section III. SPECIAL TOOLS LIST**

**(Not Applicable)**

**CROSS-REFERENCE INDEXES**  
**NATIONAL STOCK NUMBER INDEX**

| STOCK NUMBER     | FIG. | ITEM | STOCK NUMBER     | FIG. | ITEM |
|------------------|------|------|------------------|------|------|
| 4730-00-011-4627 | 2    | 11   | 4730-01-130-8523 | 2    | 18   |
|                  | 2    | 14   | 4730-01-147-1703 | 2    | 20   |
|                  | 2    | 17   | 5306-01-174-8741 | 4    | 1    |
| 2610-00-051-9114 | 14   | 6    |                  | 5    | 1    |
| 5305-00-059-3657 | 6    | 14   |                  | 5    | 8    |
|                  | 6    | 23   | 4720-01-179-5414 | 13   | 1    |
| 2640-00-060-3550 | 14   | 4    | 4310-01-184-7536 | 4    | 5    |
| 5305-00-068-0508 | 1    | 10   | 4310-01-184-7537 | 4    | 6    |
| 5310-00-167-0809 | 14   | 2    | 4310-01-184-7538 | 4    | 12   |
| 4730-00-196-1973 | 2    | 21   | 4310-01-195-7877 | 4    | 13   |
| 4910-00-204-2644 | 13   | 3    | 4310-01-204-5242 | 4    | 15   |
| 5305-00-207-8253 | 6    | 7    | 4310-01-204-5260 | 3    | 23   |
| 5930-00-224-5668 | 6    | 33   | 4310-01-204-5261 | 3    | 11   |
| 4730-00-240-1741 | 12   | 3    |                  | 3    | 15   |
| 5310-00-241-6638 | 2    | 24   | 4310-01-204-5262 | 3    | 13   |
|                  | 6    | 1    | 4310-01-204-5301 | 4    | 9    |
| 5310-00-241-6667 | 14   | 23   | 4310-01-204-7890 | 2    | 32   |
| 5310-00-245-8825 | 1    | 3    | 4730-01-204-7945 | 2    | 44   |
|                  | 2    | 1    | 4310-01-204-8406 | 4    | 8    |
|                  | 12   | 14   | 4310-01-204-8434 | 3    | 21   |
| 4730-00-278-3828 | 12   | 5    |                  | 3    | 25   |
| 4730-00-278-4357 | 12   | 8    | 4730-01-204-8479 | 2    | 28   |
| 4730-00-278-8763 | 2    | 10   | 4730-01-204-8481 | 2    | 33   |
|                  | 2    | 13   | 4310-01-205-9492 | 4    | 16   |
|                  | 2    | 16   | 4730-01-206-3546 | 2    | 45   |
| 4730-00-278-8767 | 12   | 2    | 5306-01-207-7529 | 4    | 19   |
| 4730-00-287-1766 | 2    | 19   | 5306-01-207-9308 | 3    | 5    |
| 5310-00-543-5933 | 6    | 13   | 5330-01-207-9375 | 5    | 7    |
| 3110-00-554-5403 | 5    | 6    | 5330-01-207-9422 | 5    | 11   |
| 4730-00-575-0405 | 12   | 12   | 5330-01-207-9423 | 5    | 4    |
| 5310-00-582-5677 | 1    | 2    | 5310-01-208-0289 | 2    | 30   |
|                  | 2    | 2    | 5330-01-208-1979 | 3    | 9    |
|                  | 6    | 8    | 5330-01-208-1980 | 4    | 4    |
|                  | 12   | 15   |                  | 4    | 11   |
| 4730-00-595-2628 | 12   | 4    | 5310-01-208-2898 | 2    | 29   |
| 5310-00-625-5756 | 2    | 25   | 5305-01-208-5210 | 4    | 17   |
|                  | 6    | 2    | 5360-01-208-5660 | 3    | 14   |
| 5306-00-637-9674 | 2    | 26   | 5310-01-208-6733 | 2    | 39   |
| 5315-00-682-1811 | 1    | 13   | 5365-01-208-6926 | 3    | 12   |
| 5305-00-702-4523 | 1    | 1    | 5365-01-208-6927 | 4    | 7    |
|                  | 2    | 3    |                  | 4    | 14   |
|                  | 12   | 16   | 5330-01-209-7301 | 3    | 17   |
| 6685-00-718-6887 | 12   | 9    | 5360-01-209-7612 | 3    | 20   |
| 5305-00-719-3997 | 1    | 4    | 5360-01-209-7613 | 3    | 10   |
|                  | 6    | 5    | 5365-01-209-9711 | 3    | 22   |
| 5306-00-727-4578 | 6    | 3    | 5315-01-210-6547 | 2    | 41   |
| 5310-00-767-9425 | 14   | 24   | 5360-01-210-6554 | 3    | 24   |
| 2920-00-865-6665 | 6    | 50   | 5330-01-210-6557 | 3    | 19   |
| 4730-00-916-3368 | 14   | 7    | 5330-01-210-6559 | 3    | 7    |
| 5310-00-933-8121 | 1    | 5    | 2910-01-222-6130 | 6    | 19   |
|                  | 6    | 6    |                  |      |      |

**CROSS-REFERENCE INDEXES**  
**NATIONAL STOCK NUMBER INDEX**

| STOCK NUMBER     | FIG. | ITEM | STOCK NUMBER     | FIG. | ITEM |
|------------------|------|------|------------------|------|------|
| 2805-01-222-6131 | 6    |      | 2805-01-222-6253 | 6    | 45   |
| 2990-01-222-6133 | 6    | 36   | 2805-01-222-6258 | 6    | 42   |
| 2990-01-222-6134 | 6    | 40   | 4820-01-225-6546 | 12   | 13   |
| 5305-01-222-6135 | 6    | 47   | 3920-01-225-6547 | 14   | 3    |
| 2940-01-222-6136 | 7    | 3    | 3920-01-225-6548 | 14   | 8    |
| 2910-01-222-6137 | 8    | 1    | 3920-01-225-6549 | 14   | 10   |
| 2910-01-222-6138 | 8    | 7    | 3920-01-225-6550 | 14   | 11   |
| 2910-01-222-6139 | 8    | 11   | 3920-01-225-6551 | 14   | 14   |
| 2990-01-222-6140 | 9    | 16   | 3020-01-225-6583 | 1    | 12   |
| 2910-01-222-6141 | 10   | 1    | 4730-01-225-6584 | 2    | 46   |
| 2805-01-222-6142 | 10   | 5    | 4310-01-225-6685 | 2    | 27   |
| 5330-01-222-6143 | 11   | 2    | 5340-01-225-6692 | 12   | 17   |
| 5305-01-222-6144 | 11   | 3    | 4820-01-225-6695 | 12   | 10   |
| 5330-01-222-6145 | 11   | 5    | 4820-01-225-6696 | 2    | 23   |
| 3110-01-222-6146 | 11   | 6    | 5340-01-225-6703 | 14   | 13   |
| 2910-01-222-6193 | 7    | 8    | 5340-01-225-6706 | 14   | 9    |
| 5310-01-222-6194 | 6    | 37   | 5305-01-225-6716 | 2    | 5    |
| 5310-01-222-6195 | 6    | 43   |                  | 2    | 7    |
| 5315-01-222-6197 | 6    | 46   | 4730-01-225-6718 | 6    | 12   |
| 2805-01-222-6198 | 6    | 29   | 2910-01-225-6730 | 6    | 15   |
| 5365-01-222-6202 | 10   | 11   | 2910-01-225-6731 | 6    | 9    |
| 5360-01-222-6203 | 7    | 26   | 4710-01-225-6732 | 12   | 1    |
| 5360-01-222-6205 | 8    | 8    | 4310-01-225-6739 | 2    | 4    |
| 5360-01-222-6206 | 8    | 10   | 2805-01-225-6740 | 6    | 11   |
| 5360-01-222-6207 | 9    | 15   | 4310-01-225-6782 | 3    | 6    |
| 5330-01-222-6209 | 10   | 12   | 4310-01-225-6783 | 3    | 16   |
| 5310-01-222-6213 | 7    | 1    | 5360-01-226-7500 | 3    | 2    |
| 5305-01-222-6216 | 6    | 27   | 5330-01-226-7501 | 3    | 4    |
| 5305-01-222-6217 | 6    | 30   | 2805-01-226-7502 | 5    | 10   |
|                  | 10   | 6    | 2910-01-226-7503 | 6    | 16   |
| 5305-01-222-6218 | 6    | 35   | 5340-01-226-7504 | 6    | 17   |
|                  | 6    | 41   | 5310-01-226-7638 | 4    | 2    |
|                  | 9    | 1    |                  | 5    | 2    |
| 5305-01-222-6219 | 10   | 13   |                  | 5    | 9    |
| 2940-01-222-6221 | 7    | 2    | 5305-01-226-7664 | 2    | 38   |
| 2990-01-222-6222 | 6    | 38   | 4310-01-226-7673 | 3    | 1    |
| 2990-01-222-6223 | 9    | 11   | 4310-01-226-7675 | 3    | 3    |
| 5310-01-222-6226 | 6    | 44   | 4310-01-226-7701 | 4    | 20   |
| 2805-01-222-6229 | 10   | 17   | 2910-01-228-1629 | 7    |      |
| 2805-01-222-6230 | 10   | 18   | 5330-01-228-1630 | 7    |      |
| 5306-01-222-6231 | 10   | 3    | 5365-01-229-6066 | 1    | 11   |
| 5306-01-222-6232 | 10   | 4    | 2990-01-229-6247 | 9    | 2    |
| 2990-01-222-6233 | 9    | 14   | 2990-01-230-0674 | 9    | 4    |
| 4730-01-222-6236 | 6    | 18   | 4820-01-230-0692 | 12   | 6    |
| 5330-01-222-6241 | 11   |      | 5360-01-245-1324 | 10   | 19   |
| 6680-01-222-6243 | 11   | 1    | 3120-01-305-2528 | 14   | 19   |
| 5340-01-222-6245 | 10   | 16   | 5365-01-305-9435 | 14   | 18   |
| 2805-01-222-6249 | 10   | 20   | 5365-01-305-9436 | 14   | 20   |
| 5325-01-222-6251 | 6    | 48   | 3040-01-305-9926 | 14   | 21   |
| 2940-01-222-6252 | 7    | 4    |                  |      |      |



**CROSS-REFERENCE INDEXES  
PART NUMBER INDEX**

| FSCM  | PART NUMBER   | STOCK NUMBER     | FIG. | ITEM |
|-------|---------------|------------------|------|------|
| 88044 | AN960C1216    | 5310-00-167-0809 | 14   | 2    |
| 65514 | AS213-2-2M-70 | 4820-01-225-6696 | 2    | 23   |
| 80204 | B18231 A0802N | 5306-01-174-8741 | 4    | 1    |
|       |               |                  | 5    | 1    |
|       |               |                  | 5    | 8    |
| 23224 | CAP70500SL    | 2805-01-225-6740 | 6    | 11   |
| 55921 | C70103-57610  |                  | 2    | 35   |
| 55921 | C70111-11020  | 5330-01-209-7301 | 3    | 17   |
| 55921 | C70111-11450  |                  | 3    | 18   |
| 55921 | C70111-11460  | 5330-01-210-6557 | 3    | 19   |
| 55921 | C70111-31020  | 4310-01-204-5260 | 3    | 23   |
| 55921 | C70111-31030  | 4310-01-204-8434 | 3    | 21   |
|       |               |                  | 3    | 25   |
| 55921 | C70111-57700  |                  | 2    | 36   |
| 55921 | C70111-57730  |                  | 2    | 37   |
| 55921 | C70111-61030  | 4310-01-184-7538 | 4    | 12   |
| 55921 | C70111-61050  | 4310-01-195-7877 | 4    | 13   |
| 55921 | C70111-66000  | 4730-01-204-8479 | 2    | 28   |
| 55921 | C70111-66010  |                  | 2    | 34   |
| 55921 | C70111-66110  | 4730-01-204-8481 | 2    | 33   |
| 55921 | C70111-66170  |                  | 2    | 31   |
| 55921 | C70112-11010  | 4310-01-225-6782 | 3    | 6    |
| 55921 | C70112-11020  | 5330-01-210-6559 | 3    | 7    |
| 55921 | C70112-11210  | 4310-01-226-7673 | 3    | 1    |
| 55921 | C70112-11220  | 4310-01-226-7675 | 3    | 3    |
| 55921 | C70112-11230  | 5360-01-226-7500 | 3    | 2    |
| 55921 | C70112-11450  |                  | 3    | 8    |
| 55921 | C70112-11460  | 5330-01-208-1979 | 3    | 9    |
| 55921 | C70112-31020  | 4310-01-204-5262 | 3    | 13   |
| 55921 | C70112-31030  | 4310-01-204-5261 | 3    | 11   |
|       |               |                  | 3    | 15   |
| 55921 | C70112-31070  | 5360-01-208-5660 | 3    | 14   |
| 55921 | C70112-41070  | 5360-01-209-7613 | 3    | 10   |
| 55921 | C70112-51010  |                  | 4    | 3    |
| 55921 | C70112-51030  | 5330-01-208-1980 | 4    | 4    |
|       |               |                  | 4    | 11   |
| 55921 | C70112-56060  | 5315-01-210-6547 | 2    | 41   |
| 55921 | C70112-61010  | 4310-01-204-5301 | 4    | 9    |
| 55921 | C70112-61030  | 4310-01-184-7536 | 4    | 5    |
| 55921 | C70112-61050  | 4310-01-184-7537 | 4    | 6    |
| 55921 | C70112-61070  | 5365-010208-6927 | 4    | 7    |
|       |               |                  | 4    | 14   |
| 55921 | C70112-61120  | 4310-01-204-8406 | 4    | 8    |
| 55921 | C70112-61200  | 4310-01-226-7701 | 4    | 20   |
| 55921 | C70112-61250  | 5306-01-207-7529 | 4    | 19   |
| 55921 | C70112-76210  | 5310-01-208-6733 | 4    | 39   |
| 55921 | C70122-57030  |                  | 5    | 3    |
| 55921 | C70122-57040  | 5330-01-207-9423 | 5    | 4    |
| 55921 | C70122-57060  | 2805-01-226-7502 | 5    | 10   |
| 55921 | C70122-57070  | 5330-01-207-9422 | 5    | 11   |
| 55921 | C70122-57080  | 5330-01-207-9375 | 5    | 7    |

**CROSS-REFERENCE INDEXES  
PART NUMBER INDEX**

| FSCM  | PART NUMBER    | STOCK NUMBER     | FIG. | ITEM |
|-------|----------------|------------------|------|------|
| 55921 | C70122-61280   |                  | 4    | 18   |
| 55921 | C70122-87010   | 4730-01-206-3546 | 2    | 45   |
| 55921 | C70132-56010   |                  | 5    | 5    |
| 55921 | C70132-57010A  |                  | 5    | 12   |
| 55921 | C70132-76010   |                  | 2    | 40   |
| 55921 | C70132-87030   | 4730-01-204-7945 | 2    | 44   |
| 55921 | C70132-87030A  | 4730-01-225-6584 | 2    | 46   |
| 55921 | C70132-87100   |                  | 2    | 42   |
| 55921 | C70172-12010   | 4310-01-225-6783 | 3    | 16   |
| 55921 | C70172-32070   | 5360-01-210-6554 | 3    | 24   |
| 55921 | C70172-42070   | 5360-01-209-1612 | 3    | 20   |
| 55921 | C70172-52010   |                  | 4    | 10   |
| 55921 | C70172-62010   | 4310-01-205-9492 | 4    | 16   |
| 55921 | C70172-62120   | 4310-01-204-5242 | 4    | 15   |
| 55921 | C70172-87300   |                  | 2    | 43   |
| 55921 | C91501-1308005 | 5305-01-226-7664 | 2    | 38   |
| 55921 | C91505-1308005 | 5306-01-207-9308 | 3    | 5    |
| 55921 | C91505-2304010 | 5305-01-208-5210 | 4    | 17   |
| 55921 | C92521-150400  | 5310-01-208-0289 | 2    | 30   |
| 55921 | C92521-190800  | 5310-01-226-7638 | 4    | 2    |
|       |                |                  | 5    | 2    |
|       |                |                  | 5    | 9    |
| 55921 | C93601-87002   | 5330-01-226-7501 | 3    | 4    |
| 55921 | C93610-130025  | 5365-01-209-9711 | 3    | 22   |
| 55921 | C93610-130032  | 5365-01-208-6926 | 3    | 12   |
| 76241 | DH2400         | 3020-01-225-0583 | 1    | 12   |
| 55921 | E-23A          | 4310-01-225-0685 | 2    | 27   |
| 66289 | EY0011706250   | 5305-01-222-6135 | 6    | 47   |
| 66289 | EY0021814000   | 5310-01-222-6195 | 6    | 43   |
| 66289 | EY0021908000   | 5310-01-222-6194 | 6    | 37   |
| 66289 | EY0022706000   |                  | 8    | 17   |
| 66289 | EY0023806000   | 5310-01-222-6213 | 7    | 1    |
| 66289 | EY0031306000   |                  | 8    | 4    |
| 66289 | EY0032006000   |                  | 8    | 3    |
| 66289 | EY0032014000   | 5310-01-222-6226 | 6    | 44   |
| 66289 | EY0043106300   |                  | 8    | 16   |
| 66289 | EY0105060120   | 5306-01-222-6231 | 10   | 3    |
| 66289 | EY0105080250   | 5306-01-222-6232 | 10   | 4    |
| 66289 | EY0110060010   | 5305-01-222-6218 | 6    | 35   |
|       |                |                  | 6    | 41   |
|       |                |                  | 9    | 1    |
| 66289 | EY0110060020   | 5305-01-222-6217 | 6    | 30   |
|       |                |                  | 10   | 6    |
| 66289 | EY0110060030   | 5305-01-222-6216 | 6    | 27   |
|       |                |                  | 8    | 12   |
| 66289 | EY0110080010   | 5305-01-222-6219 | 10   | 13   |
| 66289 | EY0130060040   | 5305-01-222-6144 | 11   | 3    |
| 66289 | EY0186060010   |                  | 8    | 2    |
| 66289 | EY0211140020   | 5330-01-222-6209 | 10   | 12   |
| 66289 | EY0213160010   | 5330-01-222-6143 | 11   | 2    |
| 66289 | EY0230060010   |                  | 11   | 10   |

**CROSS-REFERENCE INDEXES**  
**PART NUMBER INDEX**

| FSCM  | PART NUMBER  | STOCK NUMBER     | FIG. | ITEM |
|-------|--------------|------------------|------|------|
| 66289 | EY0230250110 |                  | 11   | 27   |
| 66289 | EY0307300070 |                  | 11   | 12   |
| 66289 | EY0323030010 | 5315-01-222-6197 | 6    | 46   |
| 66289 | EY0440250020 | 5330-01-222-6145 | 11   | 5    |
| 66289 | EY0440250070 |                  | 11   | 29   |
| 66289 | EY0565140010 |                  | 11   | 20   |
| 66289 | EY0600250010 | 3110-01-222-6146 | 11   | 6    |
| 66289 | EY0642004210 |                  | 6    | 20   |
| 66289 | EY0642004220 |                  | 6    | 22   |
| 66289 | EY0642004230 |                  | 6    | 21   |
| 66289 | EY0642004260 | 4730-01-222-6236 | 6    | 18   |
| 66289 | EY0642006400 | 2910-01-222-6130 | 6    | 19   |
| 66289 | EY0643000118 | 5340-01-226-7504 | 6    | 17   |
| 66289 | EY0851080210 | 2805-01-222-6142 | 10   | 5    |
| 66289 | EY1065011608 | 5360-01-222-6207 | 9    | 15   |
| 66289 | EY1065012818 |                  | 9    | 10   |
| 66289 | EY1065013208 |                  | 9    | 9    |
| 66289 | EY1065013618 |                  | 9    | 8    |
| 66289 | EY1065014408 |                  | 9    | 7    |
| 66289 | EY1065018508 |                  | 9    | 6    |
| 66289 | EY1065018608 |                  | 9    | 5    |
| 66289 | EY1066239308 |                  | 7    | 25   |
| 66289 | EY1506235608 |                  | 7    | 27   |
| 66289 | EY2054190103 |                  | 11   | 9    |
| 66289 | EY2054600703 |                  | 11   | 7    |
| 66289 | EY2096235308 |                  | 7    | 22   |
| 66289 | EY2096242008 |                  | 7    | 30   |
| 66289 | EY2096244508 | 5360-01-222-6203 | 7    | 26   |
| 66289 | EY2096244608 |                  | 7    | 23   |
| 66289 | EY2142330103 |                  | 11   | 21   |
| 66289 | EY2143520111 |                  | 6    | 39   |
| 66289 | EY2146245008 |                  | 7    | 10   |
| 66289 | EY2146245108 |                  | 7    | 9    |
| 66289 | EY2146251508 |                  | 7    | 13   |
| 66289 | EY2146254008 |                  | 7    | 12   |
| 66289 | EY2146255108 |                  | 7    | 11   |
| 66289 | EY2204160103 |                  | 11   | 13   |
| 66289 | EY2206253508 |                  | 7    | 28   |
| 66289 | EY2262360103 |                  | 11   | 23   |
| 66289 | EY2262371107 |                  | 11   | 24   |
| 66289 | EY2262391103 |                  | 11   | 25   |
| 66289 | EY2265010008 |                  | 9    | 12   |
| 66289 | EY2265010107 | 2990-01-230-0674 | 9    | 4    |
| 66289 | EY2266230217 | 5330-01-228-1630 | 7    |      |
| 66289 | EY2266230407 | 2805-01-222-6131 | 6    |      |
| 66289 | EY2266230507 |                  | 7    | 18   |
| 66289 | EY2266235108 |                  | 7    | 16   |
| 66289 | EY2266250008 |                  | 7    | 24   |
| 66289 | EY2266250508 |                  | 7    | 14   |
| 66289 | EY2266252508 |                  | 7    | 17   |
| 66289 | EY2266253008 |                  | 7    | 29   |

**CROSS-REFERENCE INDEXES**  
**PART NUMBER INDEX**

| FSCM  | PART NUMBER  | STOCK NUMBER     | FIG. | ITEM |
|-------|--------------|------------------|------|------|
| 66289 | EY2266255008 |                  | 7    | 19   |
| 66289 | EY2266255108 |                  | 7    | 20   |
| 66289 | EY2267024508 | 5325-01-222-6251 | 6    | 48   |
| 66289 | EY227013028  |                  | 6    | 49   |
| 66289 | EY227101010  |                  | 11   | 30   |
| 66289 | EY2271100201 |                  | 11   | 4    |
| 66289 | EY2271300103 |                  | 10   | 14   |
| 66289 | EY2271420203 | 280501-222-6249  | 10   | 20   |
| 66289 | EY2271430101 |                  | 10   | 7    |
| 66289 | EY2271440101 |                  | 10   | 9    |
| 66289 | EY2271500101 |                  | 10   | 15   |
| 66289 | EY2271600103 |                  | 11   | 8    |
| 66289 | EY2271600603 |                  | 10   | 8    |
| 66289 | EY2271600703 |                  | 10   | 10   |
| 66289 | EY2272090201 |                  | 11   | 28   |
| 66289 | EY2272250100 |                  | 11   | 16   |
| 66289 | EY2272300103 |                  | 11   | 17   |
| 66289 | EY2272310103 |                  | 11   | 19   |
| 66289 | EY2272320103 |                  | 11   | 18   |
| 66289 | EY2272340103 |                  | 11   | 26   |
| 66289 | EY2272340107 |                  | 11   | 22   |
| 66289 | EY2273010101 | 2990-01-222-6222 | 6    | 38   |
| 66289 | EY2273170103 |                  | 11   | 14   |
| 66289 | EY2273260100 | 2940-01-222-6221 | 7    | 2    |
| 66289 | EY2273290103 | 2910-01-222-6141 | 10   | 1    |
| 66289 | EY2273330103 |                  | 11   | 15   |
| 66289 | EY2273340103 | 2805-01-222-6229 | 10   | 17   |
| 66289 | EY2273350103 | 2805-01-222-6230 | 10   | 18   |
| 66289 | EY2273360103 | 5360-01-245-1324 | 10   | 19   |
| 66289 | EY2273370103 | 5340-01-222-6245 | 10   | 16   |
| 66289 | EY2273420101 | 2990-01-222-6133 | 6    | 36   |
| 66289 | EY2273500101 |                  | 7    | 6    |
| 66289 | EY2273510101 | 2940-01-222-6136 | 7    | 3    |
| 66289 | EY2273590103 |                  | 10   | 2    |
| 66289 | EY2273590203 |                  | 7    | 31   |
| 66289 | EY2273600103 |                  | 7    | 5    |
| 66289 | EY2273600203 | 2940-01-222-6252 | 7    | 4    |
| 66289 | EY2273600313 |                  | 7    | 7    |
| 66289 | EY2274220103 |                  | 8    | 5    |
| 66289 | EY2274230101 |                  | 8    | 6    |
| 66289 | EY2274230107 | 2910-01-222-6137 | 8    | 1    |
| 66289 | EY2274250107 | 2910-01-222-6138 | 8    | 7    |
| 66289 | EY2274250111 | 5360-01-222-6206 | 8    | 10   |
| 66289 | EY2274270101 |                  | 8    | 9    |
| 66289 | EY2274280101 | 5360-01-222-6205 | 8    | 8    |
| 66289 | EY2274330101 |                  | 8    | 18   |
| 66289 | EY2274330107 | 2910-01-222-6139 | 8    | 11   |
| 66289 | EY2274350101 |                  | 8    | 13   |
| 66289 | EY2274360103 |                  | 8    | 15   |
| 66289 | EY2274500203 |                  | 8    | 14   |
| 66289 | EY2274500301 |                  | 11   | 11   |
| 66289 | EY2275010508 | 2990-01-222-6223 | 9    | 11   |

**CROSS-REFERENCE INDEXES**  
**PART NUMBER INDEX**

| FSCM  | PART NUMBER  | STOCK NUMBER     | FIG. | ITEM |
|-------|--------------|------------------|------|------|
| 66289 | EY2275011008 |                  | 9    | 13   |
| 66289 | EY2275012008 | 2990-01-222-6233 | 9    | 14   |
| 66289 | EY2275014508 | 2990-01-222-6140 | 9    | 16   |
| 66289 | EY2275021100 | 2990-01-229-6247 | 9    | 2    |
| 66289 | EY2275153601 |                  | 9    | 3    |
| 66289 | EY2275260103 | 2805-01-222-6258 | 6    | 42   |
| 66289 | EY2275270103 | 2990-01-222-6134 | 6    | 40   |
| 66289 | EY2276230107 | 2910-01-228-1629 | 7    |      |
| 66289 | EY2276230200 | 2910-01-222-6193 | 7    | 8    |
| 66289 | EY2276240008 |                  | 7    | 15   |
| 66289 | EY2276255008 |                  | 7    | 21   |
| 66289 | EY2276264001 | 2910-01-226-7503 | 6    | 16   |
| 66289 | EY2276360007 | 5365-01-222-6202 | 10   | 11   |
| 66289 | EY2276360107 | 6680-01-222-6243 | 11   | 1    |
| 66289 | EY2277012108 | 2805-01-222-6253 | 6    | 45   |
| 66289 | EY2279900207 | 5330-01-222-6241 | 11   |      |
| 76241 | HQX3/4       | 5365-01-229-6066 | 1    | 11   |
| 96906 | MS15795-810  | 5310-00-582-5677 | 1    | 2    |
|       |              |                  | 2    | 2    |
|       |              |                  | 6    | 8    |
|       |              |                  | 12   | 15   |
| 96906 | MS15795-812  | 5310-00-625-5756 | 2    | 25   |
|       |              |                  | 6    | 2    |
| 96906 | M515795-818  | 5310-00-767-9425 | 14   | 24   |
| 96906 | MS16228-4C   | 5310-00-245-8825 | 1    | 3    |
|       |              |                  | 2    | 1    |
|       |              |                  | 12   | 14   |
| 96906 | MS16228-5C   | 5310-00-241-6638 | 2    | 24   |
|       |              |                  | 6    | 1    |
| 96906 | MS16228-8C   | 5310-00-241-6667 | 14   | 23   |
| 96906 | MS20066-191  | 5315-00-682-1811 | 1    | 13   |
| 58328 | MS24665-353  |                  | 16   | 16   |
| 96906 | MS24665-457  |                  | 14   | 1    |
| 96906 | MS35307-303  | 5305-00-719-3997 | 1    | 4    |
|       |              |                  | 6    | 5    |
| 96906 | MS35307-306  | 5305-00-702-4523 | 1    | 1    |
|       |              |                  | 2    | 3    |
|       |              |                  | 12   | 16   |
| 96906 | MS35307-308  | 5305-00-207-8253 | 6    | 7    |
| 96906 | MS35307-336  | 5306-00-637-9674 | 2    | 26   |
| 96906 | MS35307-339  | 5306-00-727-4578 | 6    | 3    |
| 96906 | MS35333-73   | 5310-00-543-5933 | 6    | 13   |
| 96906 | MS35338-139  | 5310-00-933-8121 | 1    | 5    |
|       |              |                  | 6    | 6    |
| 96906 | MS35909-4    | 2920-00-865-6665 | 6    | 50   |
| 96906 | MS39171-13   | 4730-00-287-1766 | 2    | 19   |
| 96906 | MS39171-17   | 4730-00-278-3828 | 12   | 5    |
| 96906 | MS39176-3    | 4730-00-011-4627 | 2    | 11   |
|       |              |                  | 2    | 14   |
|       |              |                  | 2    | 17   |
| 96906 | MS39176-7    | 4730-00-240-1741 | 12   | 3    |

## CROSS-REFERENCE INDEXES

## PART NUMBER INDEX

| FSCM  | PART NUMBER                          | STOCK NUMBER     | FIG. | ITEM |
|-------|--------------------------------------|------------------|------|------|
| 96906 | MS39177-3                            | 4730-00-278-8763 | 2    | 10   |
|       |                                      |                  | 2    | 13   |
|       |                                      |                  | 2    | 16   |
| 96906 | MS39177-7                            | 4730-00-278-8767 | 12   | 2    |
| 96906 | MS51846-28                           | 4730-00-196-1973 | 2    | 21   |
| 96906 | MS51958-61                           | 5305-00-059-3657 | 6    | 14   |
|       |                                      |                  | 6    | 23   |
| 96906 | MS90728-6                            | 5305-00-068-0508 | 1    | 10   |
| 61349 | P500 1/4LM2IN-30<br>OPSI             | 6685-00-718-6887 | 12   | 9    |
| 71647 | RCB-HU-165-185                       | 4824-01-230-0692 | 12   | 6    |
| 66289 | SKM10-0010                           |                  | 6    | 31   |
| 66289 | SKM10-0011                           |                  | 6    | 34   |
| 66289 | YC9FS1                               | 5930-00-224-5668 | 6    | 33   |
| 58328 | ZPC1000001                           |                  | 14   | 15   |
| 58328 | ZPC1000002                           |                  | 6    | 4    |
| 58328 | ZPC1000006                           | 3920-01-225-6547 | 14   | 3    |
| 58328 | ZPC1000007                           |                  | 12   | 18   |
| 58328 | ZPC1000010                           | 5340-01-225-6692 | 12   | 17   |
| 58328 | ZPC1000024                           | 4710-01-225-6732 | 12   | 1    |
| 58328 | ZPC1000026                           | 2910-01-225-6731 | 6    | 9    |
| 58328 | ZPC1000027                           |                  | 1    | 7    |
| 58328 | ZPC1000028                           |                  | 1    | 9    |
| 58328 | ZPC1000029                           |                  | 6    | 28   |
| 58328 | ZPC1000031                           |                  | 12   | 19   |
| 58328 | ZPC1000032                           |                  | 6    | 26   |
| 58328 | ZPC1000033                           |                  | 6    | 10   |
| 58328 | ZPC1000034                           |                  | 14   | 12   |
| 58328 | ZPC1000037                           |                  | 2    | 8    |
| 58328 | ZPC1000038                           |                  | 6    | 25   |
| 58328 | ZPC1000041                           | 2910-01-225-6730 | 6    | 15   |
| 58328 | ZPC1000048                           |                  | 6    | 24   |
| 58328 | ZPC1000049                           |                  | 2    | 6    |
| 58328 | ZPC1000051                           | 4310-01-225-6739 | 2    | 4    |
| 58328 | ZPC1000053                           |                  | 2    | 9    |
| 58328 | ZPC1000054                           |                  | 2    | 12   |
| 58328 | ZPC1000055                           |                  | 2    | 15   |
| 58328 | ZPC1000059                           | 5305-01-225-6716 | 2    | 5    |
|       |                                      |                  | 2    | 7    |
| 58328 | ZPC1000063                           |                  | 6    | 32   |
| 58328 | ZPC1000147-01                        | 5365-01-305-9436 | 14   | 20   |
| 58328 | ZPC1000147-03                        | 5365-01-305-9435 | 14   | 18   |
| 58328 | ZPC1000149                           | 3120-01-305-2528 | 14   | 19   |
| 58328 | ZPC1000213                           | 3040-01-305-9926 | 14   | 21   |
| 58328 | ZPC1000234                           |                  | 1    | 6    |
| 58328 | ZPC100145                            |                  | 14   | 17   |
| 81348 | ZZ-B-190/2P66B2R                     |                  | 1    | 8    |
| 81348 | ZZ-I-550/G5/4.10<br>/3 50-6/TR87/OFF | 2610-00-051-9114 | 14   | 6    |
| 81348 | 2Z-V-25/TYPEIV/C<br>LASS1/TR-VC-2    | 2640-00-060-3550 | 14   | 4    |

**CROSS-REFERENCE INDEXES**  
**PART NUMBER INDEX**

| <b>FSCM</b> | <b>PART NUMBER</b> | <b>STOCK NUMBER</b> | <b>FIG.</b> | <b>ITEM</b> |
|-------------|--------------------|---------------------|-------------|-------------|
| 59254       | 011-4410           |                     | 14          | 22          |
| 65461       | 021-5-8100         | 5340-01-225-6703    | 14          | 13          |
| 92392       | 0910197            | 4730-00-278-4357    | 12          | 8           |
| 30780       | 1/4KMOO-S          | 4730-00-575-0405    | 12          | 12          |
| 30780       | 1/4X1/4CR-B        |                     | 12          | 7           |
| 30780       | 1/4X1/4FF-S        |                     | 12          | 11          |
|             |                    |                     | 13          | 2           |
| 11544       | 11-91              | 3920-01-225-6550    | 14          | 11          |
| 21760       | 1205               | 3110-00-554-5403    | 5           | 6           |
| 11897       | 132-BB-1399        | 3920-01-225-6551    | 14          | 14          |
| 94894       | 1506               | 4910-00-204-2644    | 13          | 3           |
| 93061       | 172C-4-2           | 4730-01-130-8523    | 2           | 18          |
| 93061       | 213P-4             | 4730-01-147-1703    | 2           | 20          |
| 25229       | 2305X2             | 4820-01-225-6646    | 12          | 13          |
| 95789       | 3038-B             |                     | 14          | 7           |
| 66036       | 39940              | 4730-01-225-6718    | 6           | 12          |
| 73842       | 4.10-3.50-6        |                     | 14          | 5           |
| 81343       | 4-4 30239B         |                     | 2           | 22          |
| 94189       | 40159              | 3920-01-225-6548    | 14          | 8           |
| 93061       | 68C-8-8            | 4730-00-595-2628    | 12          | 4           |
| 15819       | 7/8EC0-89          | 5340-01-225-6706    | 14          | 9           |
| 55921       | 70111-66141        | 4310-01-204-7890    | 2           | 32          |
| 15819       | 706-89             | 3920-01-225-6549    | 14          | 10          |
| 66289       | 800392             | 2805-01-222-6198    | 6           | 29          |
| 16004       | 85403              | 4720-01-179-5414    | 13          | 1           |
| 39428       | 90924A124          | 5310-01-208-2898    | 2           | 29          |
| 17875       | 95202-200-ASME     | 4820-01-225-6695    | 12          | 10          |

## CROSS-REFERENCE INDEXES

## PART NUMBER INDEX

| FSCM  | PART NUMBER   | STOCK NUMBER     | FIG. | ITEM |
|-------|---------------|------------------|------|------|
| 88044 | AN960C1216    | 5310-00-167-0809 | 14   | 2    |
| 65514 | AS213-2-2M-70 | 4820-01-225-6696 | 2    | 23   |
| 80204 | B18231A0802N  | 5306-01-174-8741 | 4    | 1    |
|       |               |                  | 5    | 1    |
|       |               |                  | 5    | 8    |
| 23224 | CAP70500SL    | 2805-01-225-6740 | 6    | 11   |
| 55921 | C70103-57610  |                  | 2    | 35   |
| 55921 | C70111-11020  | 5330-01-209-7301 | 3    | 17   |
| 55921 | C70111-11450  |                  | 3    | 18   |
| 55921 | C70111-11460  | 5330-01-210-6557 | 3    | 19   |
| 55921 | C70111-31020  | 4310-01-204-5260 | 3    | 23   |
| 55921 | C70111-31030  | 4310-01-204-8434 | 3    | 21   |
|       |               |                  | 3    | 25   |
| 55921 | C70111-57700  |                  | 2    | 36   |
| 55921 | C70111-57730  |                  | 2    | 37   |
| 55921 | C70111-61030  | 4310-01-184-7538 | 4    | 12   |
| 55921 | C70111-61050  | 4310-01-195-7877 | 4    | 13   |
| 55921 | C70111-66000  | 4730-01-204-8479 | 2    | 28   |
| 55921 | C70111-66010  |                  | 2    | 34   |
| 55921 | C70111-66110  | 4730-01-204-8481 | 2    | 33   |
| 55921 | C70111-66170  |                  | 2    | 31   |
| 55921 | C70112-11010  | 4310-01-225-6782 | 3    | 6    |
| 55921 | C70112-11020  | 5330-01-210 6559 | 3    | 7    |
| 55921 | C70112-11210  | 4310-01-226-7673 | 3    | 1    |
| 55921 | C70112-11220  | 4310-01-226-7675 | 3    | 3    |
| 55921 | C70112-11230  | 5360-01-226-7500 | 3    | 2    |
| 55921 | C70112-11450  |                  | 3    | 8    |
| 55921 | C70112-11460  | 5330-01-208-1979 | 3    | 9    |
| 55921 | C70112-31020  | 4310-01-204-5262 | 3    | 13   |
| 55921 | C70112-31030  | 4310-01-204-5261 | 3    | 11   |
|       |               |                  | 3    | 15   |
| 55921 | C70112-31070  | 5360-01-208-5660 | 3    | 14   |
| 55921 | C70112-41070  | 5360-01-209-7613 | 3    | 10   |
| 55921 | C70112-51010  |                  | 4    | 3    |
| 55921 | C70112-51030  | 5330-01-208-1980 | 4    | 4    |
|       |               |                  | 4    | 11   |
| 55921 | C70112-56060  | 5315-01-210-6547 | 2    | 41   |
| 55921 | C70112-61010  | 4310-01-204-5301 | 4    | 9    |
| 55921 | C70112-61030  | 4310-01-184-7536 | 4    | 5    |
| 55921 | C70112-61050  | 4310-01-184-7537 | 4    | 6    |
| 55921 | C70112-61070  | 5365-01-208-6927 | 4    | 7    |
|       |               |                  | 4    | 14   |
| 55921 | C70112-61120  | 4310-01-204-8406 | 4    | 8    |
| 55921 | C70112-61200  | 4310-01-226-7701 | 4    | 20   |
| 55921 | C70112-61250  | 5306-01-207-7529 | 4    | 19   |
| 55921 | C70112-76210  | 5310-01-208-6733 | 4    | 39   |
| 55921 | C70122-57030  |                  | 5    | 3    |
| 55921 | C70122-57040  | 5330-01-207-9423 | 5    | 4    |
| 55921 | C70122-57060  | 2805-01-226-7502 | 5    | 10   |
| 55921 | C70122-57070  | 5330-01-207-9422 | 5    | 11   |
| 55921 | C70122-57080  | 5330-01-207-9375 | 5    | 7    |



**CROSS-REFERENCE INDEXES**  
**FIGURE AND ITEM NUMBER INDEX**

| FIG. | ITEM | STOCK NUMBER     | CAGEC | PART NUMBER    |
|------|------|------------------|-------|----------------|
| 2    | 39   | 5310-01-208-6733 | 55921 | C70112-76210   |
| 2    | 40   |                  | 55921 | C70132-76010   |
| 2    | 41   | 5315-01-210-6547 | 55921 | C70112-56060   |
| 2    | 42   |                  | 55921 | C70132-87100   |
| 2    | 43   |                  | 55921 | C70172-87300   |
| 2    | 44   | 4730-01-204-7945 | 55921 | C70132-87030   |
| 2    | 45   | 4730-01-206-3546 | 55921 | C70122-87010   |
| 2    | 46   | 4730-01-225-6584 | 55921 | C70132-87030A  |
| 3    | 1    | 4310-01-226-7673 | 55921 | C70112-11210   |
| 3    | 2    | 5360-01-226-7500 | 55921 | C70112-11230   |
| 3    | 3    | 4310-01-226-7675 | 55921 | C70112-11220   |
| 3    | 4    | 5330-01-226-7501 | 55921 | C93601-87002   |
| 3    | 5    | 5306-01-207-9308 | 55921 | C91505-1308025 |
| 3    | 6    | 4310-01-225-6782 | 55921 | C70112-11010   |
| 3    | 7    | 5330-01-210-6559 | 55921 | C70112-11020   |
| 3    | 8    |                  | 55921 | C70112-11450   |
| 3    | 9    | 5330-01-208-1979 | 55921 | C70112-11460   |
| 3    | 10   | 5360-01-209-7613 | 55921 | C70112-41070   |
| 3    | 11   | 4310-01-204-5261 | 55921 | C70112-31030   |
| 3    | 12   | 5365-01-208-6926 | 55921 | C93610-130032  |
| 3    | 13   | 4310-01-204-5262 | 55921 | C70112-31020   |
| 3    | 14   | 5360-01-208-5660 | 55921 | C70112-31070   |
| 3    | 15   | 4310-01-204-5261 | 55921 | C70112-31030   |
| 3    | 16   | 4310-01-225-6783 | 55921 | C70172-12010   |
| 3    | 17   | 5330-01-209-7301 | 55921 | C70111-11020   |
| 3    | 18   |                  | 55921 | C70111-11450   |
| 3    | 19   | 5330-01-210-6557 | 55921 | C70111-11460   |
| 3    | 20   | 5360-01-209-7612 | 55921 | C70172-42070   |
| 3    | 21   | 4310-01-204-8434 | 55921 | C70111-31030   |
| 3    | 22   | 5365-01-209-9711 | 55921 | C93610-130025  |
| 3    | 23   | 4310-01-204-5260 | 55921 | C70111-31020   |
| 3    | 24   | 5360-01-210-6554 | 55921 | C70172-32070   |
| 3    | 25   | 4310-01-204-8434 | 55921 | C70111-31030   |
| 4    | 1    | 5306-01-174-8741 | 80204 | B18231A08020N  |
| 4    | 2    | 5310-01-226-7638 | 55921 | C92521-190800  |
| 4    | 3    |                  | 55921 | C70112-51010   |
| 4    | 4    | 5330-01-208-1980 | 55921 | C70112-51030   |
| 4    | 5    | 4310-01-184-7536 | 55921 | C70112-61030   |
| 4    | 6    | 4310-01-184-7537 | 55921 | C70112-61050   |
| 4    | 7    | 5365-01-208-6927 | 55921 | C70112-61070   |
| 4    | 8    | 4310-01-204-8406 | 55921 | C70112-61120   |
| 4    | 9    | 4310-01-204-5301 | 55921 | C70112-61010   |
| 4    | 10   |                  | 55921 | C70172-52010   |
| 4    | 11   | 5330-01-208-1980 | 55921 | C70112-51030   |
| 4    | 12   | 4310-01-184-7538 | 55921 | C70111-61030   |
| 4    | 13   | 4310-01-195-7877 | 55921 | C70111-61050   |
| 4    | 14   | 5365-01-208-6927 | 55921 | C70112-61070   |
| 4    | 15   | 4310-01-204-5242 | 55921 | C70172-62120   |
| 4    | 16   | 4310-01-205-9492 | 55921 | C70172-62010   |
| 4    | 17   | 5305-01-208-5210 | 55921 | C91505-2304010 |
| 4    | 18   |                  | 55921 | C70122-61280   |

**CROSS-REFERENCE INDEXES**  
**FIGURE AND ITEM NUMBER INDEX**

| FIG. | ITEM | STOCK NUMBER     | CAGEC | PART NUMBER   |
|------|------|------------------|-------|---------------|
| 4    | 19   | 5306-01-207-7529 | 55921 | C70112-61250  |
| 4    | 20   | 4310-01-226-7701 | 55921 | C70112-61200  |
| 5    | 1    | 5306-01-174-8741 | 80204 | B18231A08020N |
| 5    | 2    | 5310-01-226-7638 | 55921 | C92521-190800 |
| 5    | 3    |                  | 55921 | C70122-57030  |
| 5    | 4    | 5330-01-207-9423 | 55921 | C70122-57040  |
| 5    | 5    |                  | 55921 | C70132-56010  |
| 5    | 6    | 3110-00-554-5403 | 21760 | 1205          |
| 5    | 7    | 5330-01-207-9375 | 55921 | C70122-57080  |
| 5    | 8    | 5306-01-174-8741 | 80204 | B18231A08020N |
| 5    | 9    | 5310-01-226-7638 | 55921 | C92521-190800 |
| 5    | 10   | 2805-01-226-7502 | 55921 | C70122-57060  |
| 5    | 11   | 5330-01-207-9422 | 55921 | C70122-57070  |
| 5    | 12   |                  | 55921 | C70132-57010A |
| 6    |      | 2805-01-222-6131 | 66289 | EY2266230407  |
| 6    | 1    | 5310-00-241-6638 | 96906 | MS16228-5C    |
| 6    | 2    | 5310-00-625-5756 | 96906 | MS15795-812   |
| 6    | 3    | 5306-00-727-4578 | 96906 | MS35307-339   |
| 6    | 4    |                  | 58328 | ZPC1000002    |
| 6    | 5    | 5305-00-719-3997 | 96906 | MS35307-303   |
| 6    | 6    | 5310-00-933-8121 | 96906 | MS35338-139   |
| 6    | 7    | 5305-00-207-8253 | 96906 | MS35307-308   |
| 6    | 8    | 5310-00-582-5677 | 96906 | MS15795-810   |
| 6    | 9    | 2910-01-225-6731 | 58328 | ZPC1000026    |
| 6    | 10   |                  | 58328 | ZPC1000033    |
| 6    | 11   | 2805-01-225-6740 | 23224 | CAP70500SL    |
| 6    | 12   | 4730-01-225-6718 | 66036 | 39940         |
| 6    | 13   | 5310-00-543-5933 | 96906 | MS35333-73    |
| 6    | 14   | 5305-00-059-3657 | 96906 | MS51958-61    |
| 6    | 15   | 2910-01-225-6730 | 58328 | ZPC1000041    |
| 6    | 16   | 2910-01-226-7503 | 66289 | EY2276264001  |
| 6    | 17   | 5340-01-226-7504 | 66289 | EY0643000118  |
| 6    | 18   | 4730-01-222-6236 | 66289 | EY0642004260  |
| 6    | 19   | 2910-01-222-6130 | 66289 | EY0642006400  |
| 6    | 20   |                  | 66289 | EY0642004210  |
| 6    | 21   |                  | 66289 | EY0642004230  |
| 6    | 22   |                  | 66289 | EY0642004220  |
| 6    | 23   | 5305-00-059-3657 | 96906 | MS51958-61    |
| 6    | 24   |                  | 58328 | ZPC1000048    |
| 6    | 25   |                  | 58328 | ZPC1000038    |
| 6    | 26   |                  | 58328 | ZPC1000032    |
| 6    | 27   | 5305-01-222-6216 | 66289 | EY0110060030  |
| 6    | 28   |                  | 58328 | ZPC1000029    |
| 6    | 29   | 2805-01-222-6198 | 66289 | 800392        |
| 6    | 30   | 5305-01-222-6217 | 66289 | EY0110060020  |
| 6    | 31   |                  | 66289 | SKM10-0010    |
| 6    | 32   |                  | 58328 | ZPC1000063    |
| 6    | 33   | 5930-00-224-5668 | 66289 | YC9FS1        |
| 6    | 34   |                  | 66289 | SKM10-0011    |
| 6    | 35   | 5305-01-222-6218 | 66289 | EY0110060010  |
| 6    | 36   | 2990-01-222-6133 | 66289 | EY2273420101  |

**CROSS-REFERENCE INDEXES**  
**FIGURE AND ITEM NUMBER INDEX**

| FIG. | ITEM | STOCK NUMBER     | CAGEC | PART NUMBER  |
|------|------|------------------|-------|--------------|
| 6    | 37   | 5310-01-222-6194 | 66289 | EY0021908000 |
| 6    | 38   | 2990-01-222-6222 | 66289 | EY2273010101 |
| 6    | 39   |                  | 66289 | EY2143520111 |
| 6    | 40   | 2990-01-222-6134 | 66289 | EY2275270103 |
| 6    | 41   | 5305-01-222-6218 | 66289 | EY0110060010 |
| 6    | 42   | 2805-01-222-6258 | 66289 | EY2275260103 |
| 6    | 43   | 5310-01-222-6195 | 66289 | EY0021814000 |
| 6    | 44   | 5310-01-222-6226 | 66289 | EY0032014000 |
| 6    | 45   | 2805-01-222-6253 | 66289 | EY2277012108 |
| 6    | 46   | 5315-01-222-6197 | 66289 | EY0323030010 |
| 6    | 47   | 5305-01-222-6135 | 66289 | EY0011706250 |
| 6    | 48   | 5325-01-222-6251 | 66289 | EY2267024508 |
| 6    | 49   |                  | 66289 | EY227013028  |
| 6    | 50   | 2920-00-865-6665 | 96906 | MS35909-4    |
| 7    |      | 2910-01-228-1629 | 66289 | EY2276230107 |
| 7    |      | 5330-01-228-1630 | 66289 | EY2266230217 |
| 7    | 1    | 5310-01-222-6213 | 66289 | EY002380600  |
| 7    | 2    | 2940-01-222-6221 | 66289 | EY2273260100 |
| 7    | 3    | 2940-01-222-6136 | 66289 | EY2273510101 |
| 7    | 4    | 2940-01-222-6252 | 66289 | EY2273600203 |
| 7    | 5    |                  | 66289 | EY2273600103 |
| 7    | 6    |                  | 66289 | EY2273500101 |
| 7    | 7    |                  | 66289 | EY2273600313 |
| 7    | 8    | 2910-01-222-6193 | 66289 | EY2276230200 |
| 7    | 9    |                  | 66289 | EY2146245108 |
| 7    | 10   |                  | 66289 | EY2146245008 |
| 7    | 11   |                  | 66289 | EY2146255108 |
| 7    | 12   |                  | 66289 | EY2146254008 |
| 7    | 13   |                  | 66289 | EY2146251508 |
| 7    | 14   |                  | 66289 | EY2266250508 |
| 7    | 15   |                  | 66289 | EY2276240008 |
| 7    | 16   |                  | 66289 | EY2266235108 |
| 7    | 17   |                  | 66289 | EY2266252508 |
| 7    | 18   |                  | 66289 | EY2266230507 |
| 7    | 19   |                  | 66289 | EY2266255008 |
| 7    | 20   |                  | 66289 | EY2266255108 |
| 7    | 21   |                  | 66289 | EY2276255008 |
| 7    | 22   |                  | 66289 | EY2096235308 |
| 7    | 23   |                  | 66289 | EY2096244608 |
| 7    | 24   |                  | 66289 | EY2266250008 |
| 7    | 25   |                  | 66289 | EY1066239308 |
| 7    | 26   | 5360-01-222-6203 | 66289 | EY2096244508 |
| 7    | 27   |                  | 66289 | EY1506235608 |
| 7    | 28   |                  | 66289 | EY2206253508 |
| 7    | 29   |                  | 66289 | EY2266253008 |
| 7    | 30   |                  | 66289 | EY2096242008 |
| 7    | 31   |                  | 66289 | EY2273590203 |
| 8    | 1    | 2910-01-222-6137 | 66289 | EY2274230107 |
| 8    | 2    |                  | 66289 | EY0186060010 |
| 8    | 3    |                  | 66289 | EY0032006000 |
| 8    | 4    |                  | 66289 | EY0031306000 |

**CROSS-REFERENCE INDEXES**  
**FIGURE AND ITEM NUMBER INDEX**

| FIG. | ITEM | STOCK NUMBER     | CAGEC | PART NUMBER  |
|------|------|------------------|-------|--------------|
| 8    | 5    |                  | 66289 | EY2274220103 |
| 8    | 6    |                  | 66289 | EY2274230101 |
| 8    | 7    | 2910-01-222-6138 | 66289 | EY2274250107 |
| 8    | 8    | 5360-01-222-6205 | 66289 | EY2274280101 |
| 8    | 9    |                  | 66289 | EY2274270101 |
| 8    | 10   | 5360-01-222-6206 | 66289 | EY2274250111 |
| 8    | 11   | 2910-01-222-6139 | 66289 | EY2274330107 |
| 8    | 12   |                  | 66289 | EY0110060030 |
| 8    | 13   |                  | 66289 | EY2274350101 |
| 8    | 14   |                  | 66289 | EY2274500203 |
| 8    | 15   |                  | 66289 | EY2274360103 |
| 8    | 16   |                  | 66289 | EY0043106300 |
| 8    | 17   |                  | 66289 | EY0022706000 |
| 8    | 18   |                  | 66289 | EY2274330101 |
| 9    | 1    | 5305-01-222-6218 | 66289 | EY0110060010 |
| 9    | 2    | 2990-01-229-6247 | 66289 | EY2275021100 |
| 9    | 3    |                  | 66289 | EY2275153601 |
| 9    | 4    | 2990-01-230-0674 | 66289 | EY2265010107 |
| 9    | 5    |                  | 66289 | EY1065018608 |
| 9    | 6    |                  | 66289 | EY1065018508 |
| 9    | 7    |                  | 66289 | EY1065014408 |
| 9    | 8    |                  | 66289 | EY1065013618 |
| 9    | 9    |                  | 66289 | EY1065013208 |
| 9    | 10   |                  | 66289 | EY1065012818 |
| 9    | 11   | 2990-01-222-6223 | 66289 | EY2275010508 |
| 9    | 12   |                  | 66289 | EY2265010008 |
| 9    | 13   |                  | 66289 | EY2275011008 |
| 9    | 14   | 2990-01-222-6233 | 66289 | EY2275012008 |
| 9    | 15   | 5360-01-222-6207 | 66289 | EY1065011608 |
| 9    | 16   | 2990-01-222-6140 | 66289 | EY2275014508 |
| 10   | 1    | 2910-01-222-6141 | 66289 | EY2273290103 |
| 10   | 2    |                  | 66289 | EY2273590103 |
| 10   | 3    | 5306-01-222-6231 | 66289 | EY0105060120 |
| 10   | 4    | 5306-01-222-6232 | 66289 | EY0105080250 |
| 10   | 5    | 2805-01-222-6142 | 66289 | EY0851080210 |
| 10   | 6    | 5305-01-222-6217 | 66289 | EY0110060020 |
| 10   | 7    |                  | 66289 | EY2271430101 |
| 10   | 8    |                  | 66289 | EY2271600603 |
| 10   | 9    |                  | 66289 | EY2271440101 |
| 10   | 10   |                  | 66289 | EY2271600703 |
| 10   | 11   | 5365-01-222-6202 | 66289 | EY2276360007 |
| 10   | 12   | 5330-01-222-6209 | 66289 | EY0211140020 |
| 10   | 13   | 5305-01-222-6219 | 66289 | EY0110080010 |
| 10   | 14   |                  | 66289 | EY2271300103 |
| 10   | 15   |                  | 66289 | EY2271500101 |
| 10   | 16   | 5340-01-222-6245 | 66289 | EY2273370103 |
| 10   | 17   | 2805-01-222-6229 | 66289 | EY2273340103 |
| 10   | 18   | 2805-01-222-6230 | 66289 | EY2273350103 |
| 10   | 19   | 5360-01-245-1324 | 66289 | EY2273360103 |
| 10   | 20   | 2805-01-222-6249 | 66289 | EY2271420203 |
| 11   |      | 5330-01-222-6241 | 66289 | EY2279900207 |

**CROSS-REFERENCE INDEXES**  
**FIGURE AND ITEM NUMBER INDEX**

| FIG. | ITEM | STOCK NUMBER     | CAGEC | PART NUMBER              |
|------|------|------------------|-------|--------------------------|
| 11   | 1    | 6680-01-222-6243 | 66289 | EY2276360107             |
| 11   | 2    | 5330-01-222-6143 | 66289 | EY0213160010             |
| 11   | 3    | 5305-01-222-6144 | 66289 | EY0130060040             |
| 11   | 4    |                  | 66289 | EY2271100201             |
| 11   | 5    | 5330-01-222-6145 | 66289 | EY0440250020             |
| 11   | 6    | 3110-01-222-6146 | 66289 | EY0600250010             |
| 11   | 7    |                  | 66289 | EY2054600703             |
| 11   | 8    |                  | 66289 | EY2271600103             |
| 11   | 9    |                  | 66289 | EY2054190103             |
| 11   | 10   |                  | 66289 | EY0230060010             |
| 11   | 11   |                  | 66289 | EY2274500301             |
| 11   | 12   |                  | 66289 | EY0307300070             |
| 11   | 13   |                  | 66289 | EY2204160103             |
| 11   | 14   |                  | 66289 | EY2273170103             |
| 11   | 15   |                  | 66289 | EY2273330103             |
| 11   | 16   |                  | 66289 | EY2272250100             |
| 11   | 17   |                  | 66289 | EY2272300103             |
| 11   | 18   |                  | 66289 | EY2272320103             |
| 11   | 19   |                  | 66289 | EY2272310103             |
| 11   | 20   |                  | 66289 | EY0565140010             |
| 11   | 21   |                  | 66289 | EY2142330103             |
| 11   | 22   |                  | 66289 | EY2272350107             |
| 11   | 23   |                  | 66289 | EY2262360103             |
| 11   | 24   |                  | 66289 | EY2262371107             |
| 11   | 25   |                  | 66289 | EY2262391103             |
| 11   | 26   |                  | 66289 | EY2272340103             |
| 11   | 27   |                  | 66289 | EY0230250110             |
| 11   | 28   |                  | 66289 | EY2272090201             |
| 11   | 29   |                  | 66289 | EY0440250070             |
| 11   | 30   |                  | 66289 | EY227101010              |
| 12   | 1    | 4710-01-225-6732 | 58328 | ZPC1000024               |
| 12   | 2    | 4730-00-278-8767 | 96906 | MS39177-7                |
| 12   | 3    | 4730-00-240-1741 | 96906 | MS39176-7                |
| 12   | 4    | 4730-00-595-2628 | 93061 | 68C-8-8                  |
| 12   | 5    | 4730-00-278-3828 | 96906 | MS39171-17               |
| 12   | 6    | 4820-01-230-0692 | 71647 | RCB-HU-165-185           |
| 12   | 7    |                  | 30780 | 1/4X1/4CR-B              |
| 12   | 8    | 4730-00-278-4357 | 92392 | 0910197                  |
| 12   | 9    | 6685-00-718-6887 | 61349 | P500 1/4LM2IN-30<br>OPSI |
| 12   | 10   | 4820-01-225-6695 | 17875 | 95202-200-ASME           |
| 12   | 11   |                  | 30780 | 1/4X1/4FF-S              |
| 12   | 12   | 4730-00-575-0405 | 30780 | 1/4KMMOO-S               |
| 12   | 13   | 4820-01-225-6546 | 25299 | 2305X2                   |
| 12   | 14   | 5310-00-245-8825 | 96906 | MS16228-4C               |
| 12   | 15   | 5310-00-582-5677 | 96906 | MS15795-810              |
| 12   | 16   | 5305-00-702-4523 | 96906 | MS35307-306              |
| 12   | 17   | 5340-01-225-6692 | 58328 | ZPC1000010               |
| 12   | 18   |                  | 58328 | ZPC1000007               |
| 12   | 19   |                  | 58328 | ZPC1000031               |
| 13   | 1    | 4720-01-179-5414 | 16004 | 85403                    |

**CROSS-REFERENCE INDEXES**  
**FIGURE AND ITEM NUMBER INDEX**

| FIG. | ITEM | STOCK NUMBER     | CAGEC | PART NUMBER                          |
|------|------|------------------|-------|--------------------------------------|
| 13   | 2    |                  | 30780 | 1/4X1/4FF-2                          |
| 13   | 3    | 4910-00-204-2644 | 94894 | 1506                                 |
| 14   | 1    |                  | 96906 | MS24665-457                          |
| 14   | 2    | 5310-00-167-0809 | 88044 | AN960C1216                           |
| 14   | 3    | 3920-01-225-6547 | 58328 | ZPC1 000006                          |
| 14   | 4    | 2640-00-060-3550 | 81348 | ZZ-V-25/TYPEIV/C<br>LASS1/TR-VC-2    |
| 14   | 5    |                  | 73842 | 4.10-3.50-6                          |
| 14   | 6    | 2610-00-051-9114 | 81348 | ZZ-1-550/G5/4.10<br>/3.50-6/TR87/OFF |
| 14   | 7    | 4730-00-916-3368 | 96906 | MS15720-1                            |
| 14   | 8    | 3920-01-225-6548 | 94189 | 40159                                |
| 14   | 9    | 5340-01-225-6706 | 15819 | 7/8EC0-89                            |
| 14   | 10   | 3920-01-225-6549 | 15819 | 706-89                               |
| 14   | 11   | 3920-01-225-6550 | 11544 | 11-91                                |
| 14   | 12   |                  | 58328 | ZPC1000034                           |
| 14   | 13   | 5340-01-225-6703 | 65461 | 021-5-8100                           |
| 14   | 14   | 3920-01-225-6551 | 11897 | 132-BB-1399                          |
| 14   | 15   |                  | 58328 | ZPC100001                            |
| 14   | 17   |                  | 58328 | ZPC100145                            |
| 14   | 18   | 5365-01-305-9434 | 58328 | ZPC1000147-03                        |
| 14   | 19   | 3120-01-305-2528 | 58328 | ZPC1000149                           |
| 14   | 20   | 5365-01-305-9436 | 58328 | ZPC1000147-01                        |
| 14   | 21   | 3040-01-305-9926 | 58328 | ZPC1000213                           |
| 14   | 22   |                  | 59254 | 011-4410                             |
| 14   | 23   | 5310-00-241-6667 | 96906 | MS16228-8C                           |
| 14   | 24   | 5310-00-767-9425 | 96906 | MS15795-818                          |
| 16   | 16   |                  | 58328 | MS24665-353                          |

***These are the instructions for sending an electronic 2028***

The following format must be used if submitting an electronic 2028. The subject line must be exactly the same and all fields must be included; however only the following fields are mandatory: 1, 3, 4, 5, 6, 7, 8, 9,10,13,15,16, 17, and 27.

From: "Whomever" <whomever-avma27.army.mil>

To: mpmt%avma28Cft-louis-emh7.army.mil

Subject: DA Form 2028

1. **From:** Joe Smith
2. **Unit:** home
3. **Address:**4300 Park
4. **City:** Hometown
5. **St:** MO
6. **Zip:** 77777
7. **Date Sent:** 19-OCT-93
8. **Pub no:** 55-2840-229-23
9. **Pub Title:** TM
10. **Publication Date:** 04-JUL-85
11. **Change Number:** 7
12. **Submitter Rank:** MSG
13. **Submitter FName:** Joe
14. **Submitter MName:** T
15. **Submitter LName:** Smith
16. **Submitter Phone:** 123-123-1234
17. **Problem:** 1
18. **Page:** 2
19. **Paragraph:** 3
20. **Line:** 4
21. **NSN:** 5
22. **Reference:** 6
23. **Figure:** 7
24. **Table:** 8
25. **Item:** 9
26. **Total:** 123
27. **Text:**

This is the text for the problem below line 27.

By Order of the Secretary of the Army:

CARL E. VUONO  
*General, United States Army*  
*Chief of Staff*

Official:

WILLIAM J. MEEHAN, II  
*Brigadier General, United States Army*  
*The Adjutant General*

DISTRIBUTION:

To be distributed in accordance with DA Form 12-25A, Unit and Direct Support and General Support Maintenance Requirements for Compressor Unit, Reciprocal, Model ZPC 175/5 (TM 5-4310-378 Series).





## The Metric System and Equivalents

### *Linear Measure*

1 centimeter = 10 millimeters = .39 inch  
 1 decimeter = 10 centimeters = 3.94 inches  
 1 meter = 10 decimeters = 39.37 inches  
 1 dekameter = 10 meters = 32.8 feet  
 1 hectometer = 10 dekameters = 328.08 feet  
 1 kilometer = 10 hectometers = 3,280.8 feet

### *Weights*

1 centigram = 10 milligrams = .15 grain  
 1 decigram = 10 centigrams = 1.54 grains  
 1 gram = 10 decigrams = .035 ounce  
 1 decagram = 10 grams = .35 ounce  
 1 hectogram = 10 decagrams = 3.52 ounces  
 1 kilogram = 10 hectograms = 2.2 pounds  
 1 quintal = 100 kilograms = 220.46 pounds  
 1 metric ton = 10 quintals = 1.1 short tons

### *Liquid Measure*

1 centiliter = 10 milliliters = .34 fl. ounce  
 1 deciliter = 10 centiliters = 3.38 fl. ounces  
 1 liter = 10 deciliters = 33.81 fl. ounces  
 1 dekaliter = 10 liters = 2.64 gallons  
 1 hectoliter = 10 dekaliters = 26.42 gallons  
 1 kiloliter = 10 hectoliters = 264.18 gallons

### *Square Measure*

1 sq. centimeter = 100 sq. millimeters = .155 sq. inch  
 1 sq. decimeter = 100 sq. centimeters = 15.5 sq. inches  
 1 sq. meter (centare) = 100 sq. decimeters = 10.76 sq. feet  
 1 sq. dekameter (are) = 100 sq. meters = 1,076.4 sq. feet  
 1 sq. hectometer (hectare) = 100 sq. dekameters = 2.47 acres  
 1 sq. kilometer = 100 sq. hectometers = .386 sq. mile

### *Cubic Measure*

1 cu. centimeter = 1000 cu. millimeters = .06 cu. inch  
 1 cu. decimeter = 1000 cu. centimeters = 61.02 cu. inches  
 1 cu. meter = 1000 cu. decimeters = 35.31 cu. feet

## Approximate Conversion Factors

| <i>To change</i> | <i>To</i>          | <i>Multiply by</i> | <i>To change</i>   | <i>To</i>     | <i>Multiply by</i> |
|------------------|--------------------|--------------------|--------------------|---------------|--------------------|
| inches           | centimeters        | 2.540              | ounce-inches       | Newton-meters | .007062            |
| feet             | meters             | .305               | centimeters        | inches        | .394               |
| yards            | meters             | .914               | meters             | feet          | 3.280              |
| miles            | kilometers         | 1.609              | meters             | yards         | 1.094              |
| square inches    | square centimeters | 6.451              | kilometers         | miles         | .621               |
| square feet      | square meters      | .093               | square centimeters | square inches | .155               |
| square yards     | square meters      | .836               | square meters      | square feet   | 10.764             |
| square miles     | square kilometers  | 2.590              | square meters      | square yards  | 1.196              |
| acres            | square hectometers | .405               | square kilometers  | square miles  | .386               |
| cubic feet       | cubic meters       | .028               | square hectometers | acres         | 2.471              |
| cubic yards      | cubic meters       | .765               | cubic meters       | cubic feet    | 35.315             |
| fluid ounces     | milliliters        | 29.573             | cubic meters       | cubic yards   | 1.308              |
| pints            | liters             | .473               | milliliters        | fluid ounces  | .034               |
| quarts           | liters             | .946               | liters             | pints         | 2.113              |
| gallons          | liters             | 3.785              | liters             | quarts        | 1.057              |
| ounces           | grams              | 28.349             | liters             | gallons       | .264               |
| pounds           | kilograms          | .454               | grams              | ounces        | .035               |
| short tons       | metric tons        | .907               | kilograms          | pounds        | 2.205              |
| pound-feet       | Newton-meters      | 1.356              | metric tons        | short tons    | 1.102              |
| pound-inches     | Newton-meters      | .11296             |                    |               |                    |

## Temperature (Exact)

|    |                           |                               |                        |    |
|----|---------------------------|-------------------------------|------------------------|----|
| °F | Fahrenheit<br>temperature | 5/9 (after<br>subtracting 32) | Celsius<br>temperature | °C |
|----|---------------------------|-------------------------------|------------------------|----|

**PIN: 061099-003**

This fine document...

Was brought to you by me:



## [Liberated Manuals -- free army and government manuals](#)

Why do I do it? I am tired of sleazy CD-ROM sellers, who take publicly available information, slap “watermarks” and other junk on it, and sell it. Those masters of search engine manipulation make sure that their sites that sell free information, come up first in search engines. They did not create it... They did not even scan it... Why should they get your money? Why are not letting you give those free manuals to your friends?

I am setting this document FREE. This document was made by the US Government and is NOT protected by Copyright. Feel free to share, republish, sell and so on.

I am not asking you for donations, fees or handouts. If you can, please provide a link to [liberatedmanuals.com](http://liberatedmanuals.com), so that free manuals come up first in search engines:

<A HREF=<http://www.liberatedmanuals.com/>>Free Military and Government Manuals</A>

- Sincerely  
Igor Chudov  
<http://igor.chudov.com/>
- [Chicago Machinery Movers](#)