

TECHNICAL MANUAL

**ORGANIZATIONAL, DIRECT SUPPORT, AND
GENERAL SUPPORT MAINTENANCE
REPAIR PARTS AND SPECIAL TOOLS LIST**

**COMPRESSOR, RECIPROCATING:
AIR, TANK MOUNTED, GASOLINE
ENGINE DRIVEN, 15 CFM, 175 PSI
MODEL C=20X-80/6E
NSN 4310-01-1 28-1 826**

Approved for public release; distribution is unlimited.

*This manual supersedes TM 5-4310-372-24P, 16 August 1984, including all changes.

HEADQUARTERS, DEPARTMENT OF THE ARMY

10 OCTOBER 1989

CHANGE
NO. 1

HEADQUARTERS
DEPARTMENT OF THE ARMY
WASHINGTON, D.C., 30 JUNE 1993

Organizational, Direct Support, and General Support Maintenance
Repair Parts and Special Tools List

COMPRESSOR, RECIPROCATING: AIR, TANK MOUNTED,
GASOLINE ENGINE DRIVEN, 15 CFM, 175 PSI
MODEL C-20X-80/6E
NSN 4310-01-128-1826

DISTRIBUTION STATEMENT A: Approved for public release; distribution is unlimited.

TM 5-4310-372-24P, 10 October 1989, is changed as follows:

1. Remove and insert pages as indicated below. New or changed text material is indicated by a vertical bar in the margin. An illustration change is indicated by a miniature pointing hand.

Remove pages

1-1 and Figure 2
2-1 and Figure 3
I-3 and I-4
I-7 and I-8

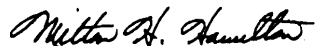
Insert pages

1-1 and Figure 2
2-1 and Figure 3
I-3 and I-4
I-7 and I-8

2. Retain this sheet in front of manual for reference purposes.

By Order of the Secretary of the Army:

Official:



MILTON H. HAMILTON
Administrative Assistant to the
Secretary of the Army

04474

GORDON R. SULLIVAN
General, United States Army
Chief of Staff

DISTRIBUTION:

To be distributed in accordance with DA Form 12-25-E, block no.0428, requirements for TM 5-4310-372-24P.

TECHNICAL MANUAL

No. 5-4310-372-24P

HEADQUARTERS
DEPARTMENT OF THE ARMY

WASHINGTON, D. C., 10 October 1989

**Organizational, Direct Support, and General Support Maintenance
Repair Parts and Special Tools List**

for

**COMPRESSOR, RECIPROCATING: AIR, TANK MOUNTED,
GASOLINE ENGINE DRIVEN, 15 CFM, 175 PSI**

**MODEL C-20X-80/6E
NSN 4310-01-128-1826**

Current as of June 22, 1989

REPORTING ERRORS AND RECOMMENDING IMPROVEMENTS

You can help improve this manual. If you find any mistake or if you know of a way to improve the procedures, please let us know. Mail your letter DA Form 2028 (Recommended Changes to Publications and Blank Forms), or DA Form 2028-2 located in the back of this manual direct to: Commander, U.S. Army Troop Support Command, ATTN: AMSTR-MCTS, 4300 Goodfellow Boulevard, St. Louis, MO 63120-1798. A reply will be furnished directly to you.

Approved for public release; distribution is unlimited.

TABLE OF CONTENTS

	Page	Illust/ Figure
Section I. Introduction	1	
Section II. Repair Parts List		
Group 01 Compressor Drive	1-1	1
Group 02 Fuel System	2-1	2
Group 03 Capacity Control	3-1	3
Group 04 Compressor Assembly	4-1	4
Group 05 Air Receiver	5-1	5
Group 06 Air Discharge System	6-1	6
Group 07 Engine Assembly	7-1	7
Section III. Special Tools List (Not Applicable)		
Section IV. Cross Reference Index	I-1	
National Stock Number Index	I-1	
Part Number Index	I-3	
Figure and Item Number Index	I-8	

*This manual supersedes TM 5-4310-372-24P, 16 August 1994, including all changes.

SECTION I

INTRODUCTION

1. Scope.

This RPSTL lists and authorizes spares and repair parts; special tools; special test, measurement, and diagnostic equipment (TMDE); and other special support equipment required for performance of organizational, direct support, and general support maintenance of the Air Compressor. It authorizes the requisitioning, issue, and disposition of spares, repair parts and special tools as indicated by the source, maintenance and recoverability (SMR) codes.

2. General.

In addition to Section 1, Introduction, this Repair Parts and Special Tools List is divided into the following sections:

a. Section II. Repair Parts List. A list of spares and repair parts authorized by this RPSTL for use in the performance of maintenance. The list also includes parts which must be removed for replacement of the authorized parts. Parts lists are composed of functional groups in ascending alphanumeric sequence, with the parts in each group listed in ascending figure and item number sequence. Bulk materials are listed in name sequence. Repair parts kits are listed separately in their own functional group within Section II. Repair parts for repairable special tools are also listed in this section. Items listed are shown on the associated illustration(s)/figure(s).

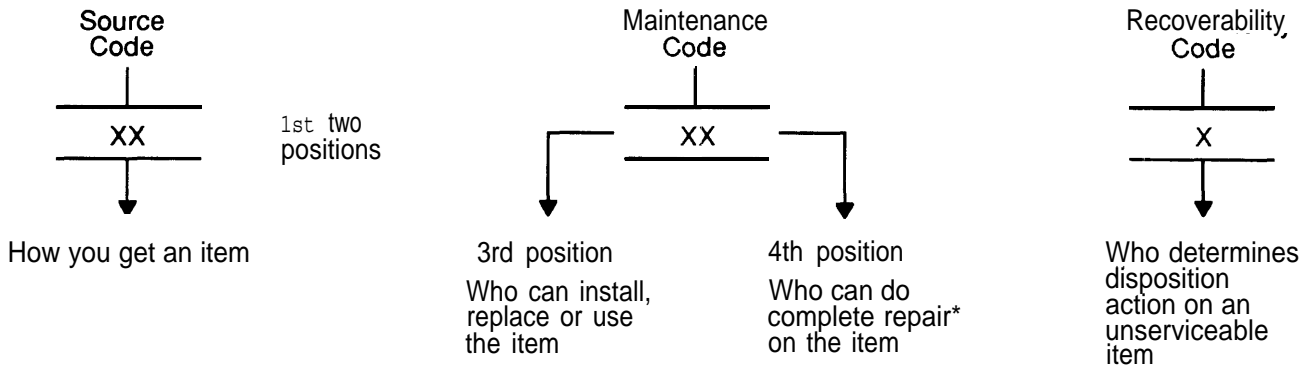
b. Section III. Special Tools List. A list of special tools, special TMDE, and other special support equipment authorized by this RPSTL (as indicated by Basis of Issue (BOI) information in DESCRIPTION AND USABLE ON CODE (column) for the performance of maintenance.

c. Section IV. National Stock Number and Part Number Index. A list, in National item identification number (NIIN) sequence, of all National stock numbered items appearing in the listing, followed by a list in alphanumeric sequence of all part numbers appearing in the listings. National stock numbers and part numbers are cross-referenced to each illustration figure and item number appearance.

3. Explanation of Columns (Sections II and III).

a. Item No. (Column (1)). Indicates the number used to identify items called out in the illustration.

b. SMR Code (Column (2)) The Source, Maintenance, and Recoverability (SMR) code is a 5-position code containing supply/requisitioning information, maintenance category authorization criteria, and disposition instructions, as shown in the following breakout:



* Complete Repair: Maintenance capacity, capability, and authority to perform all the corrective maintenance tasks of the "Repair" function in a use/user environment in order to restore serviceability to a failed item.

(1) *Source code*. The source code tells you how to get an item needed for maintenance, repair, or overhaul of an end item/equipment. Explanations of source codes follows:

Code	Explanation
PA	Stocked items; use the applicable NSN to request/requisition items with these source codes. They are authorized to the category indicated by the code entered in the 3rd position of the SMR code. **NOTE: Items coded PC are subject to deterioration.
PB	
PC**	
PD	
PE	
PF	
PG	
KD	Items with these codes are not to be requested/requisitioned individually. They are part of a kit which is authorized to the maintenance category indicated in the 3rd position of the SMR code. The complete kit must be requisitioned and applied.
KF	
KB	

Code	Explanation
MO - (Made at unit/ AVUM Level)	Items with these codes are not to be requested/requisitioned individually. They must be made from bulk material which is identified by the part number in the DESCRIPTION and USABLE ON CODE (UOC) column and listed in the Bulk Material group of the repair parts list in the RPSTL. If the item is authorized to you by the 3rd position code of the SMR code, the source code indicates it is made at a higher level, order the item from the higher level of maintenance.
MF - (Made at DS/ AVUM Level)	
MH - (Made at GS Level)	
ML - (Made at Spe- cialized Repair Activity)	
MD - (Made at Depot)	

Code	Explanation
AO - (Assembled by unit/AVUM Level)	Items with these codes are not to be requested/requisitioned individually. The parts that make up the assembled item must be requisitioned or fabricated and assembled at the level of maintenance indicated by the source code. If the 3rd position code of the SMR code authorizes you to replace the item, but the source code indicates the item assembled at a higher level, order the item from the higher level of maintenance.
AF - (Assembled by DS/AVIM Level)	
AH - (Assembled by GS Category)	
AL - (Assembled by SRA)	
AD - (Assembled by Depot)	

Code	Explanation
XA _____	Do not requisition an "XA" - coded item. Order its next higher assembly. (Also refer to the NOTE below.)
XB _____	If an "X6" item is not available from salvage, order it using the FSCM and part number given.
XC _____	Installation drawing, diagram, instruction sheet, field service drawing, that is identified by manufacturer's part number.
XD _____	Item is not stocked, Order an "XD"- coded item through normal supply channels using the FSCM and part number given, if no NSN is available.

NOTE

Cannibalization or controlled exchange, when authorized, maybe used as a source of supply for items with the above source codes, except for those source coded "XA" or those aircraft support items restricted by requirements of AR 750-1.

(2) *Maintenance code.* Maintenance codes tell you the level(s) of maintenance authorized to USE and REPAIR support items. The maintenance codes are entered in the third and fourth positions of the SMR Code as follows:

(a) The maintenance code entered in the third position tells you the lowest maintenance level authorized to remove, replace, and use an item. The maintenance code entered in the third position will indicate authorization to one of the following levels of maintenance.

Code	Application/Explanation
C ———	Crew or operator maintenance done within unit or aviation unit maintenance.
O ———	Unit or aviation unit category can remove, replace, and use the item.
F ———	Direct support or aviation intermediate level can remove, replace, and use the item,
H ———	General support level can remove, replace, and use the item.
L ———	Specialized repair activity can remove, replace, and use the item.
D ———	Depot level can remove, replace, and use the item.

(b) The maintenance code entered in the fourth position tells whether or not the item is to be repaired and identifies the lowest maintenance level with the capability to do complete repair (i.e., perform all authorized functions.) (NOTE: Some limited repair may be done on the item at a lower level of maintenance, if authorized by the Maintenance Allocation Chart (MAC) and SMR code.) This position will contain one of the following maintenance codes.

Code	Application/Explanation
O ———	Unit or aviation unit is the lowest level that can do complete repair of the item.
F ———	Direct support or aviation intermediate is the lowest level that can do complete repair of the item.
H ———	General support is the lowest level that can do complete repair of the item.
L ———	Specialized repair activity (designate the specialized repair activity) is the lowest level that can do complete repair of the item.
D ———	Depot is the lowest level that can do complete repair of the item.
Z ———	Nonreparable. No repair is authorized.
B ———	No repair is authorized. (No parts or special tools are authorized for the maintenance of a "B" coded item.) However, the item may be reconditioned by adjusting, lubricating, etc., at the user level.

(3) Recoverability code. Recoverability codes are assigned to items to indicate the disposition action on unserviceable items. The recoverability code is entered in the fifth position of the SMR Code as follows:

Recoverability codes	Application/Explanation
Z _____	Nonreparable item. When unserviceable, condemn and dispose of the item at the level of maintenance shown in 3rd position of SMR Code.
O _____	Reparable item. When uneconomically repairable, condemn and dispose of the item at unit or aviation unit level.
F _____	Reparable item. When uneconomically repairable, condemn and dispose of the item at the direct support or aviation intermediate level.
H _____	Reparable item. When uneconomically repairable, condemn and dispose of the item at the general support level.
D _____	Reparable item. When beyond lower level repair capability, return to depot. Condemnation and disposal of item not authorized below depot level.
L _____	Reparable item. Condemnation and disposal not authorized below specialized repair activity (SRA).
A _____	Item requires special handling or condemnation procedures because of specific reasons (e.g., precious metal content, high dollar value, critical material). Refer to appropriate manuals/directives for specific instructions.

c. FSCM (Column (3)). The Federal Supply Code for Manufacturer (FSCM) is a 5-digit numeric code which is used to identify the manufacturer, distributor, or Government agency, etc., that supplies the item.

d. Part Number (Column (4J)). Indicates the primary number used by the manufacturer (individual, company, firm, corporation, or Government activity), which controls the design and characteristics of the item by means of its engineering drawings, specifications, standards, and inspection requirements to identify an item or range of items.

NOTE

When you use a NSN to requisition an item, the item you receive may have a different part number from the part ordered.

e. Description and Usable on Code (UOC)(Column (5)). This column includes the following information:

- (1) The Federal item name and, when required, a minimum description to identify the item.
- (2) The physical security classification of the item is indicated by the parenthetical entry. (Insert applicable physical security classification abbreviation, e.g., Phy Sec C1 (C) - Confidential, Phy Sec C1 (S) - Secret, Phy Sec C1 (T) - Top Secret).
- (3) Items that are included in kits and sets are listed below the name of the kit or set.

- (4) Spare/repair parts that make up an assembled item are listed immediately following the assembled item line entry.
- (5) Part numbers for bulk materials are referenced in this column in the line item entry for the item to be manufactured/fabricated.
- (6) When the item is not used with all serial numbers of the same model, the effective serial numbers are shown on the last line(s) of the description (before UOC).
- (7) The usable on code, when applicable (see paragraph 5, Special Information).
- (8) In the Special Tools List section, the basis of issue (BOI) appears as the last line(s) in the entry for each special tool, special TM DE, and other special support equipment. When density of equipments supported exceeds density spread indicated in the basis of issue, the total authorization is increased proportionately.
- (9) The statement "End of Figure" appears just below the last item description in Column 5 for a given figure in Section II.

f. Qty (Column (6)). The Qty (quantity per figure column) indicates the quantity of the item used in the breakout shown on the illustration figure, which is prepared for a functional group, subfunctional group, or an assembly. A "V" appearing in the column in lieu of a quantity indicates that the quantity is variable and may vary from application to application.

4. Explanation of Columns (Sect. IV).

a. National Stock Number (NSN) Index.

(1) STOCK NUMBER column (5). This column lists the NSN by National item identification number (NIIN) sequence. The NIIN consists of the last nine digits of the NSN i.e.

$$\begin{array}{c} \text{NSN} \\ \hline (5305-01-064-1467) \\ \hline \text{NIIN} \end{array}$$

When using this column to locate an item, ignore the first 4 digits of the NSN. However, the complete NSN should be used when ordering items by stock number.

(2) *FIG. column.* This column lists the number of the figure where the item is identified/located. The figures are in numerical order in Section II and Section III.,

(3) *ITEM column.* The item number identifies the item associated with the figure listed in the adjacent FIG. column. This item is also identified by the NSN listed on the same line.

b. Part Number Index. Part numbers in this index are listed by part number in ascending alphanumeric sequence (i.e., vertical arrangement of letter and number combination which places the first letter or digit of each group in order A through Z, followed by the numbers 0 through 9 and each following letter or digit in like order.

(1) FSCM column. The Federal Supply Code for Manufacturer (FSCM) is a 5-digit numeric code used to identify the manufacturer, distributor, or Government agency, etc., that supplies the item.

(2) *PART NUMBER column*. Indicates the primary number used by the manufacturer (individual, firm, corporation, or Government activity), which controls the design and characteristics of the item by means of its engineering drawings, specifications standards, and inspection requirements to identify an item or range of items.

(3) *STOCK NUMBER column*. This column lists the NSN for the associated part number and manufacturer identified in the *PART NUMBER* and *FSCM* columns to the left.

(4) *FIG. column*. This column lists the number of the figure where the item is identified/located in Section II and III.

(5) *ITEM column*. The item number is that number assigned to the item as it appears in the figure referenced in the adjacent figure number column.

5. Special Information.

a. Usable On Codes Usable on codes are shown in the description column. Uncoded items are applicable to all models.

b. Assembly Instructions. Detailed assembly instructions for items source coded to be assembled from component spare/repair parts are found in TM 5-4310-372-14. Items that make up the assembly are listed immediately following the assembly item entry or reference is made to an applicable figure.

c. Index Numbers. Items which have the work BULK in the figure column will have an index number shown in the item number column. This index number is a cross-reference between the National Stock Number/Part Number Index and the bulk material list in Section II.

d. Associated Publications. The publication(s) listed below pertain to the Air Compressor and its components:

Publication	Short Title
TM 5-4310-372-14	Compressor, Reciprocating: Air Tank Mounted
TM 5-2805-203-14	Engine, Gasoline, 6 HP Military Standard Models
TM 5-2805-203-24P	Engine, Gasoline 6 HP Military Standard Models

6. How to Locate Repair Parts.

a. When National Stock Number or Part Number is Not Known.

(1) *First.* Using the table of contents, determine the assembly group or subassembly group to which the item belongs. This is necessary since figures are prepared for assembly groups and subassembly groups, and listings are divided into the same groups.

(2) *Second.* Find the figure covering the assembly group or subassembly group to which the item belongs.

(3) *Third.* Identify the items on the figure and note the item number.

(4) *Fourth.* Refer to the Repair Parts List for the figure to find the part number.

(5) *Fifth.* Refer to the Part Number Index to find the NSN, if assigned.

b. When National Stock Number or Part Number is Known.

(1) *First.* Using the Index of National Stock Numbers and Part Numbers, find the pertinent National Stock Number or Part Number. The NSN index is in National Item Identification Number (NIIN) sequence (see 4.a.(1)). The part numbers in the Part Number index are listed in ascending alphanumeric sequence (see 4 b). Both indexes cross-reference you to the illustration figure and item number of the item you are looking for.

(2) *Second.* After finding the figure and item number, verify that the item is the one you're looking for, then locate the item number in the repair parts list for the figure.

7. Abbreviations.

Abbreviations	Explanation	Abbreviations	Explanation
ASSY	Assembly	LP	Low Pressure
CM	Centimeters	M	Meters
DIA	Diameter	MM	Millimeters
FT	Feet	MTG	Mounting
GR	Grade	NO	Number(s)
HD	Head	OD	Outside Diameter
HEX	Hexagon	PLTD	Plated
HP	High Pressure	PR	Pair
ID	Inside Diameter	RD	Round
IN	Inch(es)	RH	Right Hand
INSTR	Instrument	SPEC	Specification
KG	Kilograms	SQ	Square
LG	Long (Length)	THD	Thread
LH	Left Hand	THK	Thick

7
8 THRU 10

12
11 THRU 22

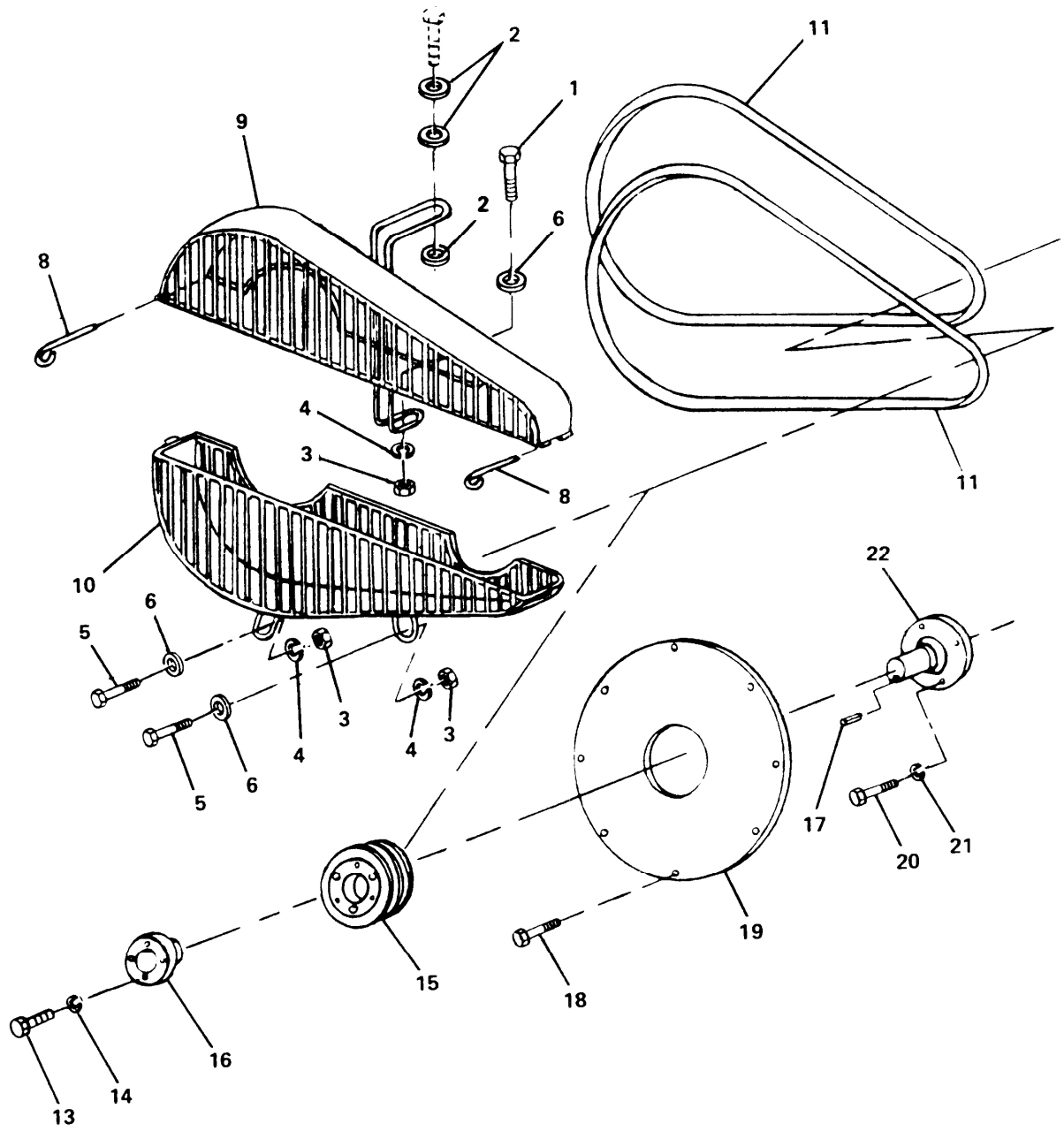
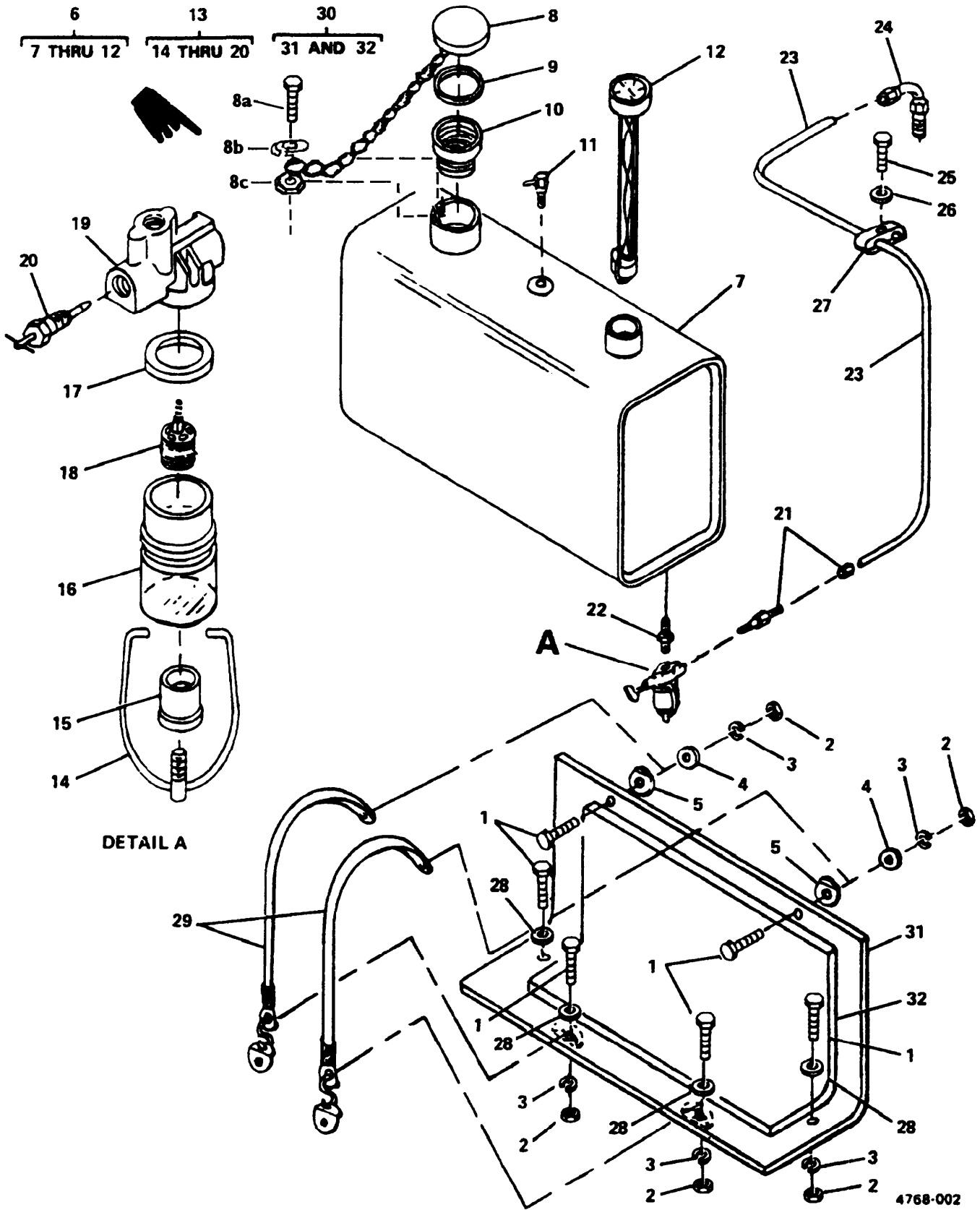


Figure 1. Compressor Drive.

SECTION II (1)	(2)	(3)	TM5-4310-372-24P (4)	(5)	(6)
ITEM NO	SMR CODE	FSCM	PART NUMBER	DESCRIPTION AND USABLE ON CODE (UOC)	QTY
GROUP 01 COMPRESSOR DRIVE					
FIG. 1 COMPRESSOR DRIVE					
1	PAOZZ	96906	MS90725-11	.SCREW,CAP,HEXAGON H HEXAGON HEAD, 1/4-20 X 1-3/8,GR 5	1
2	PAOZZ	60746	PSI-678-SP-01-01	.WASHER, FLAT 3/8 ID X 1-1/2 OD	3
3	PAOZZ	96906	MS51967-2	.NUT,PLAIN,HEXAGON 1/4-20,GR B	3
4	PAOZZ	96906	MS35338-44	.WASHER,LOCK	3
5	PAOZZ	96906	MS90725-8	.SCREW,CAP,HEXAGON H HEXAGON HEAD, 1/4-20 X 1, GR 5	2
6	PAOZZ	96906	MS15795-811	.WASHER,FLAT 5/16 ID X 3/4 OD	3
7	XDOOO	60746	PSI-678-SP-01-07	.BELT GUARD ASSEMBLY	1
8	XDOZZ	60746	PSI-678-SP-01-08	..PIN,GUARD ASSEMBLY, 3/32 IN DIA X 5 IN LG	2
9	XAOZZ	60746	PSI-678-SP-01-09	..BELT GUARD, UPPER HALF	1
10	XAOZZ	60746	PSI-678-SP-01-10	..BELT GUARD, LOWER HALF	1
11	PAOZZ	20796	AP69	.BELT,V, MATCHED SET	2
12	XDOOO	60746	PSI-678-SP-01-12	.ENGINE DRIVE ASSEMBLY	1
13	PAOZZ	96906	MS90725-11	..SCREW,CAP,HEXAGON H HEXAGON HEAD, 1/4-20 X 1-3/8,GR 5	3
14	PAOZZ	96906	MS35338-44	..WASHER,LOCK	3
15	PAOZZ	20796	2AQ46	..PULLEY,GROOVE	1
16	PAOZZ	20796	SDS-1	..BUSHING,SHEAVE	1
17	XDOZZ	60746	PSI-678-SP-01-17	..KEY, 1/4 IN SQ STOCK X 1-1/4 IN LG	1
18	PAOZZ	96906	MS18154-58	..SCREW,CAP,HEXAGON H HEXAGON HEAD, 3/8-16 X 3/4,GR 5	8
19	XDOZZ	60746	PSI-678-SP-01-19	..FLYWHEEL SHIELD, 14 IN DIA X 16 GAUGE SHEET METAL STOCK	1
20	PAOZZ	96906	MS90727-39	..BOLT,MACHINE 5/16-24 X 1-3/4,GR 8	4
21	XDOZZ	96906	MS35338-45	..WASHER, LOCK	4
22	PBOZZ	60746	PSI-678-SP-01-22	..SHAFT,STUB	1

END OF FIGURE



4768-002

Figure 2. Fuel System

SECTION II (1)	SMR (2)	FSCM (3)	TM5-4310-372-24P (4) PART NUMBER	(5) DESCRIPTION AND USABLE ON CODE (UOC)	(6) QTY
GROUP 02 FUEL SYSTEM (TANK, LINES AND FILTER)					
FIG.2 FUEL SYSTEM					
1	PAOZZ	96906	MS90725-8	.SCREW, CAP, HEXAGON HEAD, 1/4-20 X1, GR5	6
2	PAOZZ	96906	MS51967-2	.NUT, PLAIN, HEXAGON 1/4-20, GR B	6
3	PAOZZ	96906	MS35338-44	.WASHER, LOCK	6
4	PAOZZ	60746	PSI-678-SP-02-04	.WASHER, FLAT 1/4 ID X 1-1/4 OD	2
5	XBOZZ	60746	PSI-678-SP-02-05	.STANDOFF, STRAP	2
6	PBOOO	19099	MEB87-0027	.TANK, FUEL, ENGINE GASOLINE ENGINE	1
7	XAOZZ	19099	MEB87-0028	..GAS TANK	1
8	XDOZZ	19099	MEB87-0033	..CAP, FILLER OPENING WITH CHAIN	1
8A		96906	MS35206-229	..SCREW, MACHINE, 6-32 X 7/16	1
8B		96906	MS35338-41	..WASHER, LOCK-SPRING	1
8C		96906	MS35649-262	..NUT, PLAIN, HEX 6-32	1
9	XAOZZ	60746	PSI-678-SP-02-09	..GASKET, GASOLINE CAP	1
10	PAOZZ	19099	MEB87-0031	..FILTER ELEMENT, FLUI GASOLINE FILL OPENING	1
11	XBOZZ	19099	MEB87-0029	..VENT, GAS TANK, 1/4 IN NPT	1
12	PAOZZ	19099	MEB87-0032	..INDICATOR, LIQUID QU	1
13	PAOZZ	96906	MS51086-1	.STRAINER, SEDIMENT, PART OF GFP ENGINE (SEE TM 5-4310-203-24P FOR REPAIR PARTS)	1
14	XAOZZ	60746	PSI-678-SP-02-15	..RETAINER CRADLE, BOWL	1
15	XAOZZ	60746	PSI-678-SP-02-14	..NUT, RETAINER CRADLE	1
16	XAOZZ	60746	PSI-678-SP-02-16	..BOWL, FILTER	1
17	PAOZZ	96906	MS51091-4	..GASKET	1
18	XAOZZ	60746	PSI-678-SP-02-18	..STRAINER ELEMENT, FILTER	1
19	XAOZZ	60746	PSI-678-SP-02-19	..BODY, FILTER	1
20	XBOZZ	60746	PSI-678-SP-02-20	..STOP VALVE, FILTER	1
21	PAOZZ	30327	68-F-03X02	.ADAPTER, COMPRESSION, TUBE, STRAIGHT, 3/16 THD X 1/8 NPT	1
22	PAOZZ	30327	123-B-04X02	.REDUCER, PIPE REDUCING	1
23	XBOZZ	60746	PSI-678-SP-02-23	.FUEL LINE, 3/16 OD, TYPE K, COPPER, 48 IN LG	1
24	PAOZZ	30327	69-F-03X02	.ELBOW, PIPE TO TUBE 3/16 THD X 1/8 NPT	1
25	PAOZZ	96906	MS90725-6	.SCREW, CAP, HEXAGON H HEAD, 1/4-20 X 3/4, GR 5	1
26	PAOZZ	88044	AN960-416L	.WASHER, FLAT 1/4 ID X 5/8 OD	1
27	XDOZZ	60746	PSI-678-SP-02-27	.CLAMP, TUBING	1
28	PAOZZ	88044	AN960-516L	.WASHER, FLAT 5/16 ID X 3/4 OD	4
29	PAOZZ	60746	PSI-678-SP-02-29	.STRAP, RETAINING, GASOLINE TANK (STRAPS)	2
30	XDOOO	60746	PSI-678-SP-02-30	.HEAT SHIELD ASSEMBLY, GASOLINE TANK SUPPORT	1
31	XDOZZ	60746	PSI-678-SP-02-31	..SHIELD, GASOLINE TANK	1
32	PBOZZ	60746	PSI-678-SP-02-32	..INSULATION FELT, THE GASOLINE TANK SHIELD	1

END OF FIGURE

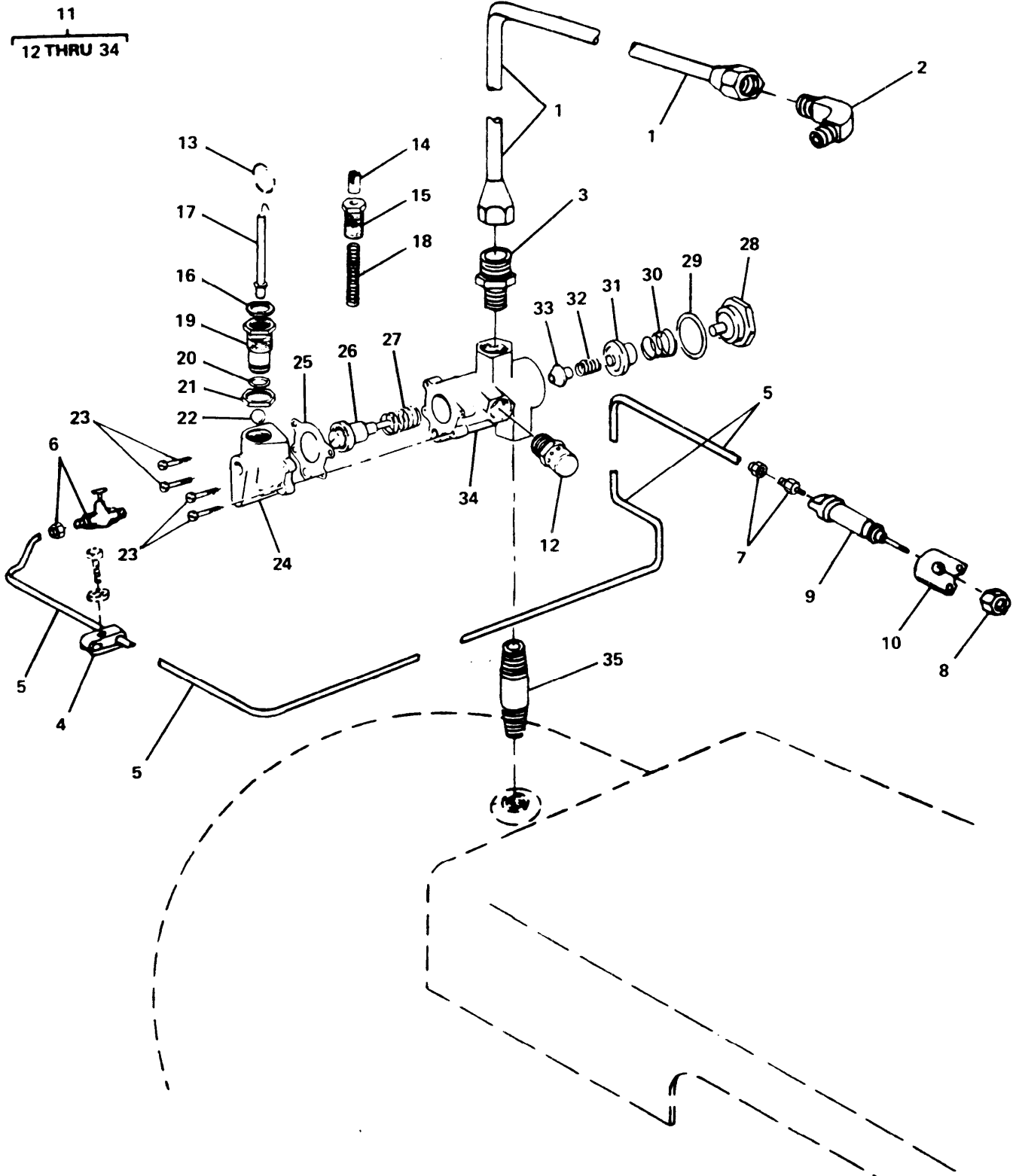


Figure 3. Capacity Control.

SECTION II (1) ITEM NO	(2) SMR CODE	(3) FSCM	TM5-4310-372-24P (4) PART NUMBER	(5) DESCRIPTION AND USABLE ON CODE (UOC)	(6) QTY
GROUP 03 CAPACITY CONTROL					
FIG. 3 CAPACITY CONTROL					
1	PAOZZ	60746	PSI-678-SP-03-01	.TUBE ASSEMBLY,METAL METAL,WITH FITTINGS	1
2	PAOZZ	79470	49X12X12	.ELBOW, PIPE TO TUBE, 3/4 THD (45 DEG) X 3/4 NPT	1
3	PAOZZ	41947	A4739	ADAPTER, STRAIGHT	1
4	XDOZZ	60746	PSI-678-SP-03-04	.CLAMP,TUBE	1
5	XBFZZ	60746	PSI-678-SP-03-01	.TUBE ASSEMBLY,METAL 1/4 OD, TYPE K COPPER TUBING, 54 IN LG	1
6	PAOZZ	30327	101-EF	.COCK, SHUTOFF, SCREW WITH FITTINGS	1
7	PAOZZ	30327	68-F-04X02	.ADAPTER,STRAIGHT,PI FLARELESS, 1/4 OD X 1/8 NPT	1
8	PAOZZ	96906	MS51968-20	.NUT,PLAIN,HEXAGON 5/8-18, GR B	1
9	PAFZZ	60746	PSI-678-SP-03-09	.CYLINDER,PNEUMATIC	1
10	XBOZZ	60746	PSI-678-SP-03-10	.BRACKET,CYLINDER	1
11	PAOOO	58818	LGM-20TM	.VALVE,UNLOADING AND CHECK, SET TO LOAD AT 175 PSI, UNLOAD AT 195 PSI	1
12	XDOZZ	58818	M20053	..MUFFLER,EXHAUST	1
13	XDOZZ	58818	M20001	..RING, PULL	1
14	XDOZZ	58818	M20055	..SLEEVE,UNLOCKING	1
15	XDOZZ	58818	M20005	..HOUSING,SPRING	1
16	XDOZZ	58818	M20011	..NUT,UPPER JAM	1
17	XDOZZ	58818	M20003	..ROD, PRESSURE	1
18	PBOZZ	58818	M20008	..SPRING,HELICAL,COMP	1
19	XDOZZ	58818	M20013	..SCREW, DIFFERENTIAL	1
20	PAOZZ	02697	2-110N103-70	..PACKING,PREFORMED	1
21	XDOZZ	58818	M20017	..NUT, LOWER JAM	1
22	PAOZZ	58818	M20019	..BEARING,BALL,ANNULA	1
23	PAOZZ	58818	M20023	..SCREW, MACHINE	4
24	XAOZZ	58818	M20021	..REGULATOR BODY	1
25	PAOZZ	58818	M20025	..GASKET	1
26	XDOZZ	58818	M20028-1	..PISTON ASSEMBLY	1
27	PAOZZ	58818	M20033	..SPRING,HELICAL,COMP	1
28	XDOZZ	58818	M20045	..CAP,END	1
29	PAOZZ	58818	M20043	..GASKET	1
30	PAOZZ	58818	M20041	..SPRING,HELICAL,COMP	1
31	PAOZZ	58818	M20039	..VALVE,CHECK	1
32	PAOZZ	58818	350501	..SPRING,HELICAL,COMP	1
33	XDOZZ	58818	M20037	..STEM,VALVE	1
34	XAOZZ	58818	M20035	..BODY,MAIN, VALVE	1
35	PAOZZ	96906	MS51873-78	.NIPPLE,PIPE 1/2 NPT HW X 2 IN	1

END OF FIGURE

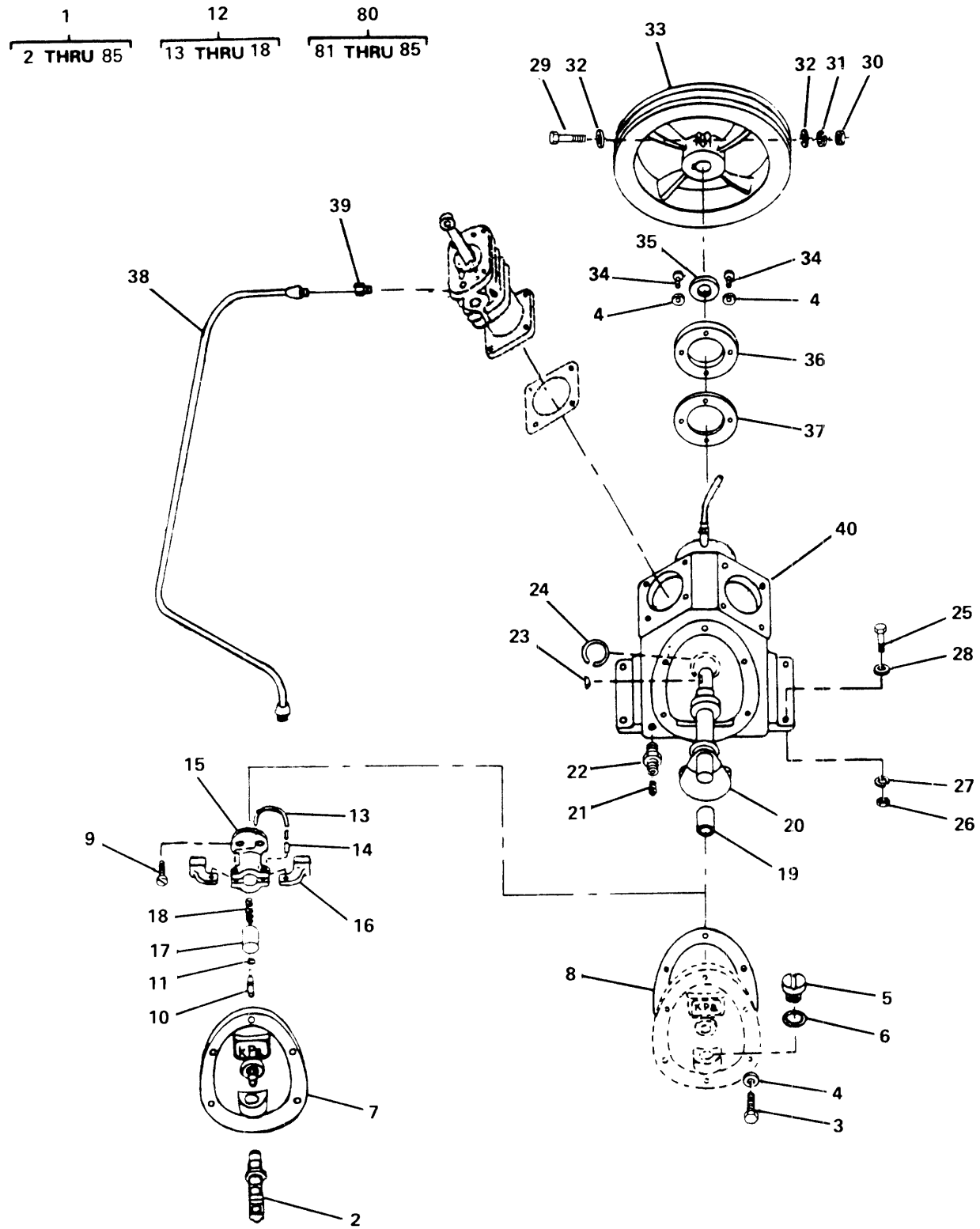


Figure 4. Compressor Assembly (Sheet 1 of 2).

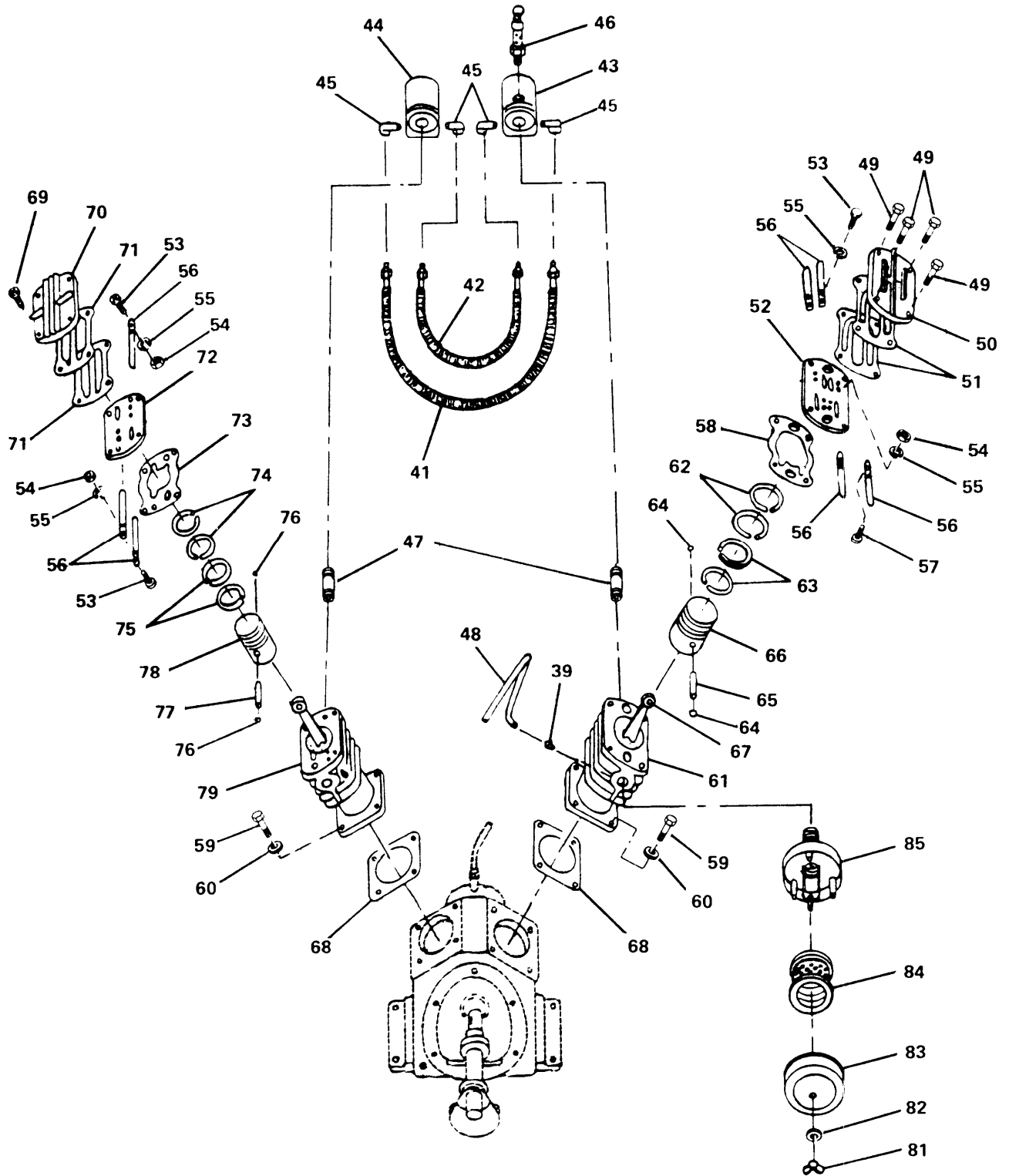


Figure 4. Compressor Assembly (Sheet 2 of 2).

SECTION II (1) ITEM NO	(2) SMR CODE	(3) FSCM	TM5-4310-372-24P (4) PART NUMBER	(5) DESCRIPTION AND USABLE ON CODE (UOC)	(6) QTY
GROUP 04 COMPRESSOR ASSEMBLY					
FIG. 4 COMPRESSOR ASSEMBLY					
1	PBOFH	60747	C-20X	COMPRESSOR,RECIPROC RECIPROCATING	1
2	PAFZZ	60747	7-040-35-01-3	.VALVE,PILOT ASSEMBLY,CENTRIFUGAL UNLOADER	1
3	PAFZZ	96906	MS90725-34	.BOLT, MACHINE 5/16-18 X 1,GR 5	6
4	PAFZZ	88044	AN960-516L	.WASHER,FLAT 5/16 ID X 9/16 OD, COPPER	10
5	XBOZZ	60747	6-015-35-02-1	.PLUG,OIL FILLER	1
6	PAOZZ	60747	6-014-35-01-1	.GASKET PLUG	1
7	XBOZZ	60747	8-005-23-01-3	.COVER,CRANKCASE	1
8	PAFZZ	60747	6-004-23-01-1	.GASKET CRANKCASE COVER	1
9	PAFZZ	96906	MS18154-61	.SCREW,CAP, HEXAGON HEAD,3/8-16 X 1-1/4, GR 5	1
10	PBFZZ	60747	6-039-35-01-3	.PIN	1
11	PBFZZ	60747	6-239-35-01-3	.PACKING,PREFORMED THRUST PIN	1
12	PBFZZ	60747	7-033-23-01-1	.UNLOADER,MAGNETIC CENTRIFUGAL, ASSEMBLY	1
13	PBFZZ	96906	MS20995C32	..WIRE,NONELECTRICAL .095 DIAMETER	1
14	XBFZZ	60747	6-037-35-01-1	..PIN, UNLOADER, WEIGHT	2
15	XBFZZ	60747	6-033-23-01-1	..BODY,UNLOADER	1
16	XBFZZ	60747	6-036-35-01-1	..WEIGHT,UNLOADER	2
17	XBFZZ	60747	6-035-35-01-1	..PLUNGER,UNLOADER	1
18	PBFZZ	60747	6-034-35-01-1	..SPRING,HELICAL	1
19	PAFZZ	60747	6-017-23-01-3	.BUSHING,SLEEVE	1
20	PBFZZ	60747	7-032-23-01-3	.CRANKSHAFT,COMPRESS ASSEMBLY, WITH BEARINGS	1
21	XBOZZ	60747	1-768-06-00-3	.PLUG,OIL DRAIN, 1/2 NPT	1
22	XBOZZ	60747	6-002-35-01-1	.PIPE, OIL DRAIN, 1/2 NPT	1
23	XBOZZ	96906	MS35756-38	.KEY,WOODRUFF	1
24	PBFZZ	60747	9-000-23-04-1	.RING,RETAINING CRANKSHAFT BEARING	1
25	PAOZZ	96906	MS90725-138	.SCREW,CAP,HEXAGON H HEXAGON HEAD, 9/16-12 X 1-1/2,GR 5	4
26	PAOZZ	96906	MS51967-17	.NUT,PLAIN,HEXAGON, 9/16-12	4
27	PAOZZ	96906	MS35338-49	.WASHER,LOCK 9/16	4
28	PAOZZ	88044	AN960-916L	.WASHER,FLAT 9/16 ID X 1-1/4 OD	4
29	PAOZZ	96906	MS90728-125	.SCREW,CAP,HEXAGON H HEXAGON HEAD, 1/2-13 X 4-1/2,GR 5	1
30	PAOZZ	96906	MS51967-14	.NUT,PLAIN,HEXAGON, 1/2-13,GR B	1
31	XDOZZ	96906	MS35338-48	.WASHER,LOCK	1
32	PAOZZ	88044	AN960-916L	.WASHER,FLAT 9/16 ID X 1-1/8 OD	2
33	XBOZZ	60747	6-028-23-01-3	.FLYWHEEL	1
34	PAFZZ	96906	MS90725-32	BOLT,MACHINE 5/16-18 X 3/4,GR 5	4
35	PBFZZ	60747	6-010-23-01-1	.RETAINER,OIL SEAL	1
36	XBFZZ	60747	6-009-23-01-1	.COVER,OIL RETAINER	1
37	PAFZZ	60747	6-008-23-01-1	.GASKET COVER	1
38	XBOZZ	60747	7-045-23-41-1	.TUBE,UNLOADER	1
39	PAFZZ	60747	1-481-05-02-4	.ADAPTER,STRAIGHT, BREATHER TUBE	3
40	XAHZZ	60747	6-001-23-01-3	.CRANKCASE	1
41	PAFZZ	60747	9-072-23-01-1	.TUBE,INTERCOOLER,CO OUTSIDE	2

SECTION II (1) ITEM NO	(2) SMR CODE	(3) FSCM	TM5-4310-372-24P (4) PART NUMBER	(5) DESCRIPTION AND USABLE ON CODE (UOC)	(6) QTY
42	PAFZZ	60747	9-072-23-41-1	.TUBE,INTERCOOLER,CO INSIDE	2
43	XBFZZ	60747	6-098-35-01-1	.MANIFOLD, INTERCOOLER, LP, WITH SAFETY VALVE PORT	1
44	XBFZZ	60747	6-098-35-41-1	.MANIFOLD, INTERCOOLER, HP	
45	PBFZZ	60747	1-481-08-06-4	.ELBOW,TUBE, INTERCOOLER	
46	PBFZZ	60747	7-101-35-04-1	.VALVE, SAFETY RELIEF, 1/4 NPT, SET 70 PSI (MIN FLOW 40 CFM)	1
47	XBFZZ	60747	6-058-35-01-1	.NIPPLE,CONNECTOR, 1 NPT X 2 1/2	2
48	XBFZZ	60747	7-045-23-41-1	.TUBE, BREATHER ASSEMBLY	1
49	PAOZZ	96906	MS51095-416	.SCREW,CAP, HEXAGON HEAD,1/2-13 X 2,GR 5	4
50	XBOZZ	60747	6-071-23-01-3	.HEAD, CYLINDER, LP	1
51	PAOZZ	60747	6-070-23-01-1	.GASKET HEAD	2
52	XBOZZ	60747	6-066-23-01-1	.PLATE,VALVE, LP	1
53	PAOZZ	96906	MS35206-277	.SCREW,MACHINE, 1/4-20 X 3/8	4
54	PAOZZ	96906	MS51967-2	.NUT,PLAIN,HEXAGON 1/4-20,UNC	8
55	PAOZZ	96906	MS35338-44	.WASHER,LOCK 1/4 ID	12
56	PAOZZ	60747	6-067-35-01-1	.VALVE,REED	7
57	PAOZZ	96906	MS35206-280	.SCREW,MACHINE, 1/4-20 X 5/8	8
58	PAOZZ	60747	6-065-23-01-1	.GASKET PLATE	1
59	PAFZZ	96906	MS18154-113	.SCREW,CAP, HEXAGON HEAD,1/2-13 X 1-1/4,GR 5	8
60	PAFZZ	60747	1-504-08-00-4	.WASHER,FLAT 1/2 ID X 13/16 OD, COPPER	8
61	XBFZZ	60747	6-061-23-01-3	.CYLINDER, LOW PRESSURE	
62	PAFZZ	60747	6-201-23-01-1	.RINGPISTON COMPRESSION, LP	
63	PAFZZ	60747	6-285-23-01-1	.RINGPISTON OIL WIPER, LP	2
64	PAFZZ	60747	1-830-13-00-4	.RINGRETAINING PISTON PIN	2
65	PBFZZ	60747	6-020-23-01-3	.PIN,PISTON	1
66	XBFZZ	60747	6-019-23-02-3	.PISTON,LOW PRESSURE	1
67	PBFZZ	60747	6-018-23-01-3	.CONNECTING ROD, PIST	2
68	PAFZZ	60747	6-060-23-01-1	.GASKET	2
69	PAOZZ	96906	MS90725-66	.SCREW,CAP,HEXAGON H HEXAGON HEAD, 3/8-16 X 2,GR 5	4
70	XBOZZ	60747	6-071-10-01-1	.HEAD,CYLINDER, HP	1
71	PAOZZ	60747	6-070-10-01-1	.GASKET CYLINDER HEAD, HP	2
72	XBOZZ	60747	6-066-10-01-1	.PLATE,VALVE, HP	1
73	PAOZZ	60747	6-065-23-41-1	.GASKET VALVE PLATE, LP	1
74	PAFZZ	60747	7-200-23-01-1	.RING SET, PISTON COMPRESSION, HP	2
75	XAFZZ	60747	6-285-80-01-1	.RING,PISTON OIL WIPER, HP	2
76	PAFZZ	60747	1-830-13-00-4	.RING,RETAINING PISTON PIN	2
77	PBFZZ	60747	6-020-80-01-3	.PISTON PIN	1
78	XBFZZ	60747	6-019-23-41-3	.PISTON, HIGH PRESSURE	1
79	XBFZZ	60747	6-061-23-41-3	.CYLINDER, HIGH PRESSURE	1
80	PAOOO	60747	9-074-23-00-1	.FILTER,AIR ASSEMBLY	1
81	PAOZZ	60747	9-074-23-01-1	.NUT,PLAIN,WING 1/4-20	
82	PAOZZ	60747	9-074-23-02-1	.WASHER,FLAT 5/16 ID X 13/16 OD	
83	XAOZZ	60747	9-074-23-03-1	.COVER,FILTER, HOUSING	1
84	PAOZZ	60747	9-074-23-04-1	.FILTER ELEMENT,INTA	1
85	XAOZZ	60747	9-074-23-05-1	.HOUSING,FILTER,BASE	1

END OF FIGURE

1
2 THRU 11

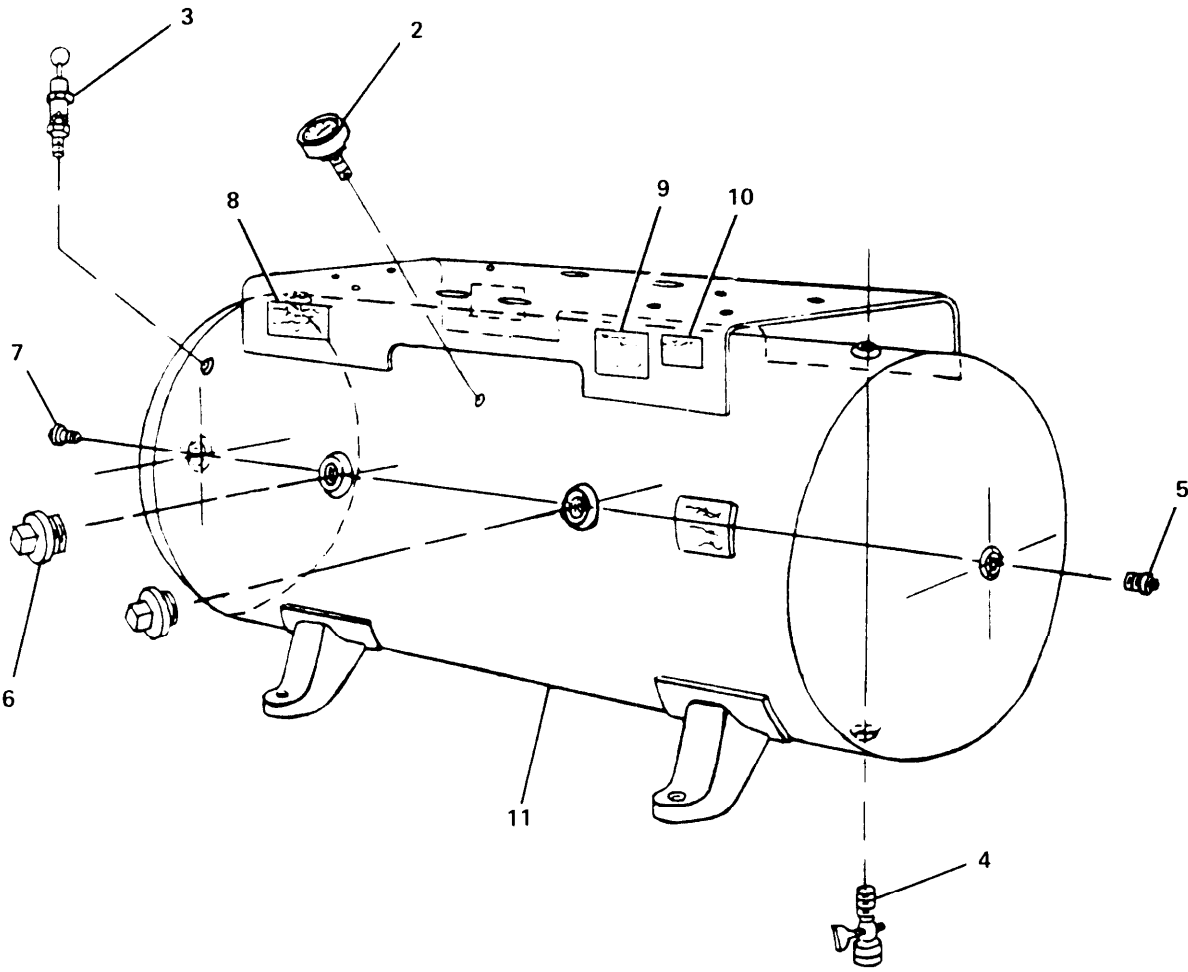
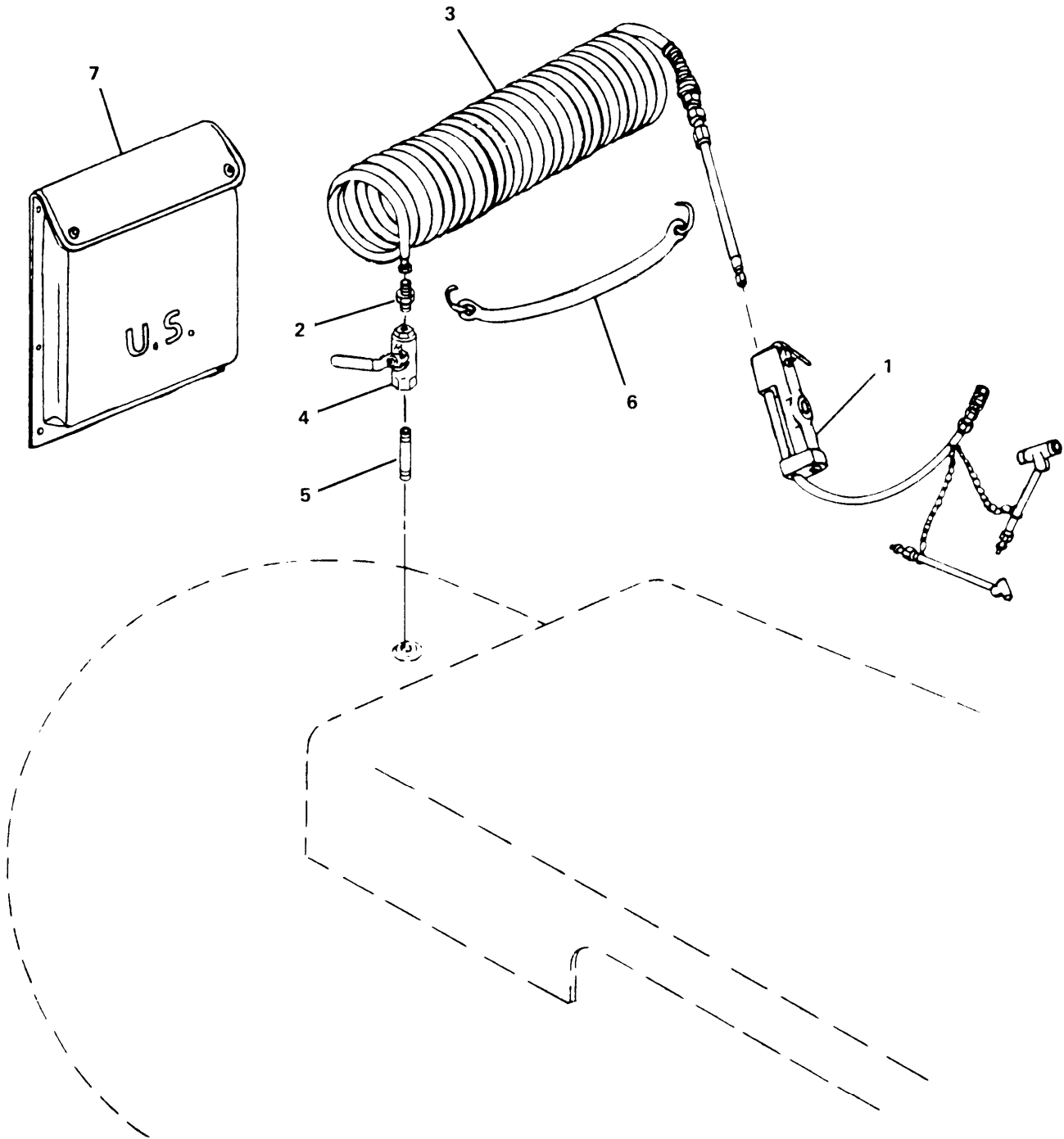


Figure 5. Air Receiver.

SECTION II					
(1)	(2)	(3)	(4)	(5)	(6)
ITEM NO	SMR CODE	FSCM	PART NUMBER	DESCRIPTION AND USABLE ON CODE (UOC)	QTY
TM5-4310-372-24P					
GROUP 05 AIR RECEIVER SYSTEM					
FIG. 5 AIR RECEIVER					
1	XBHHH	60746	PSI-678-SP-05-01	AIR RECEIVER ASSEMBLY	1
2	PAOZZ	38508	J5458	.GAGE,PRESSURE,DIAL, 1/4 NPT, 0-300 PSI	1
3	PAOZZ	58818	SV-25-200	.VALVE,SAFETY RELIEF SAFETY, RELIEF, SET 200 PSI, 1/4 NPT	1
4	PAOZZ	72219	41-090-01	.COCK,DRAIN 1/2 NPT	1
5	XBOZZ	60746	PSI-678-SP-05-05	.PLUG,PIPE, 1-1/4 NPT	1
6	XBOZZ	60746	PSI-678-SP-05-06	.PLUG,PIPE, 2 NPT	2
7	XBOZZ	60746	PSI-678-SP-05-07	.PLUG,PIPE, 3/4 NPT	1
8	XBZZ	60746	PSI-678-SP-05-08	.PLATE,WARNING,NOISE	2
9	XCFZZ	60746	PSI-678-SP-05-09	.PLATE, INSTRUCTION	1
10	XCFZZ	60746	PSI-678-SP-05-10	.PLATE, IDENIFICATION	1
11	XBHZZ	60746	PSI-678-SP-05-11	.TANK,AIR RECEIVER, 80 GAL., 200 PSI WP, ASME CODED, WITH LEGS AND PLATFORM	1
END OF FIGURE					



4768-007

Figure 6. Air Discharge System.

SECTION II					
(1)	(2)	(3)	(4)	(5)	(6)
ITEM NO	SMR CODE	FSCM	PART NUMBER	DESCRIPTION AND USABLE ON CODE (UOC)	QTY
				TM5-4310-372-24P	
				GROUP 06 AIR DISCHARGE SYSTEM	
				FIG. 6 AIR DISCHARGER SYSTEM	
1	PAOZZ	94894	61J2-1506	.INFLATOR-GAGE,PNEUM PNEUMATIC	1
2	XDOZZ	79470	9205X4X4	.ADAPTER,SWIVEL, 1/4-18 FSPT X 1/4-18 MNPT	1
3	PAOZZ	58277	N516-50C	.HOSE ASSEMBLY,NONME 50 FT. COIL, WITH PIGTAIL	1
4	XDOZZ	72219	70-101-01	.VALVE,BALL 1/4 NPT X 1/4 NPT	1
5	PAOZZ	96906	MS51873-33	.NIPPLE,PIPE 1/4 NPT X 2-1/2	1
6	XBOZZ	60746	PSI-678-SP-06-06	.STRAP,HOSE,SECURING	1
7	XDOZZ	81349	MIL-C-11743	.CASE, MAINTENANCE AND OPERATION MANUAL	1
				END OF FIGURE	

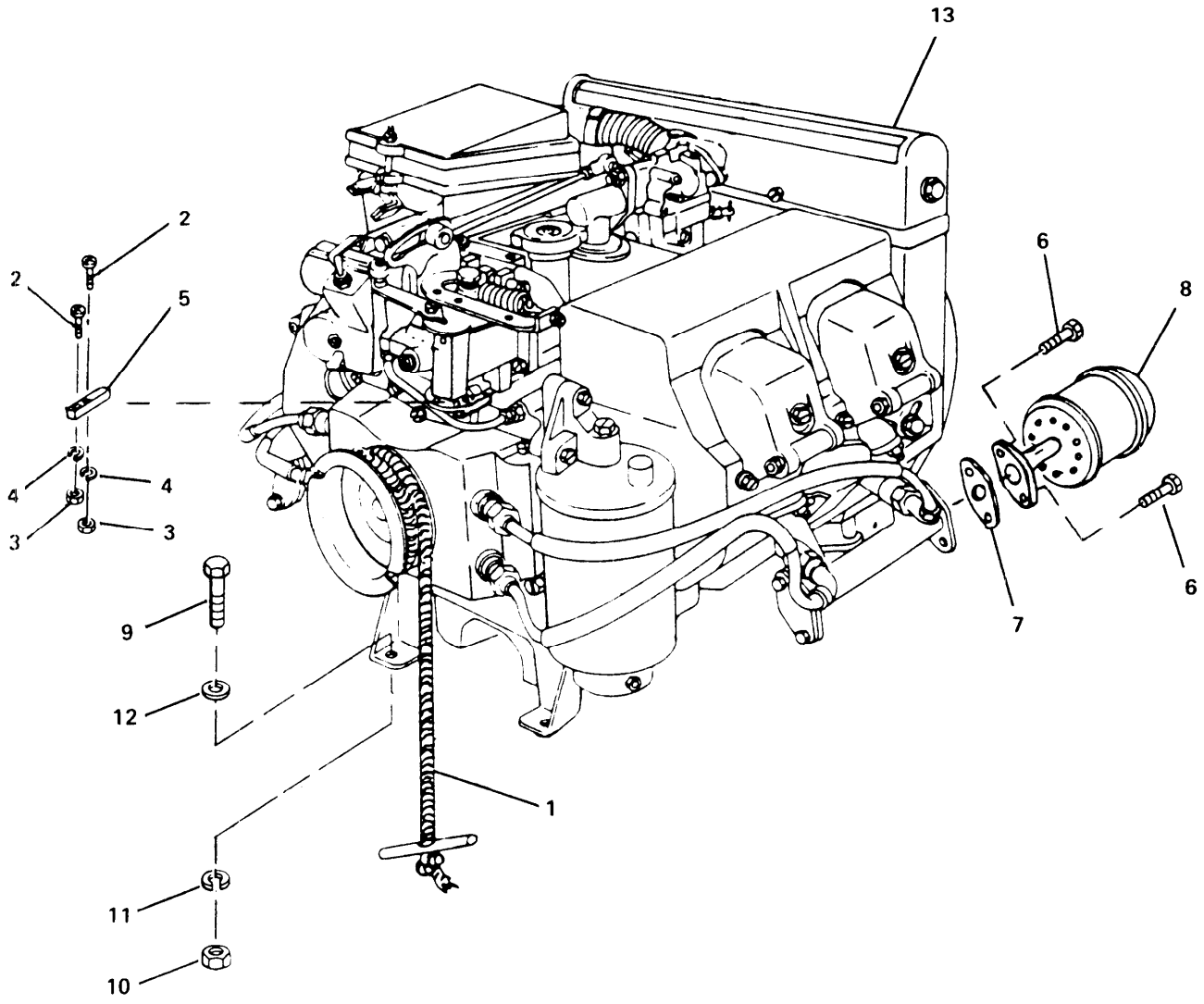


Figure 7. Engine Assembly.

SECTION II				TM5-4310-372-24P	
(1)	(2)	(3)	(4)	(5)	(6)
ITEM NO	SMR CODE	FSCM	PART NUMBER	DESCRIPTION AND USABLE ON CODE (UOC)	QTY
GROUP 07 ENGINE ASSEMBLY					
FIG. 7 ENGINE ASSEMBLY					
1	PAOZZ	97403	9786E121	.STARTER ROPE,ENGINE	1
2	PAOZZ	96906	MS35206-245	.SCREW,MACHINE, 8/32 UNC X 1/2 IN LG	2
3	PAOZZ	96906	MS35649-282	.NUT,PLAIN,HEXAGON, NO.8,8/32,UNC	2
4	PAOZZ	96906	MS35338-42	.WASHER,LOCK NO.8	2
5	XBOZZ	60746	PSI-678-SP-07-04	.POST,GOVERNOR, CONTROL	1
6	PAOZZ	96906	MS90726-3	.SCREW,CAP,HEXAGON H HEXAGON HEAD, 1/4-28 X 1/2,GR 5	4
7	PAOZZ	97403	9786E50-2	.GASKET	2
8	PAOZZ	33379	19324-N	.MUFFLER,EXHAUST	2
9	PAOZZ	96906	MS90728-38	.BOLT,MACHINE 5/16-18 X 1-1/2 GR 5	4
10	PAOZZ	96906	MS51967-5	.NUT,PLAIN,HEXAGON, 5/16-18	4
11	XDOZZ	96906	MS35338-45	.WASHER,LOCK 5/16	4
12	PAOZZ	96906	MS15795-813	.WASHER,FLAT, 3/8 ID X 7/8 OD	4
13	PDFHH	97403	13206E0000-3	.ENGINE,GASOLINE FOR REPAIR PARTS REFER TO TM5-2805-203-24P,MODEL 4A032-3	1
END OF FIGURE					

Section **III.** SPECIAL TOOLS LIST

(Not Applicable)

CROSS-REFERENCE INDEXES

NATIONAL STOCK NUMBER INDEX

STOCK NUMBER	FIG	ITEM	STOCK NUMBER	FIG	ITEM
5310-00-045-3299	7	4	5305-00-914-3786	4	9
4730-00-050-1718	3	35	5305-00-915-8087	4	59
5306-00-051-4081	1	20	5310-00-934-9757	7	3
5305-00-068-0502	2	25	4730-00-939-6247	3	2
5305-00-068-0504	7	6	5305-00-964-0589	4	49
5305-00-071-2081	4	29	2990-00-972-7950	7	1
5305-00-071-2240	1	1	5305-00-984-6193	7	2
	1	13	5305-00-988-1721	4	53
5330-00-087-3612	2	17	5305-00-988-1724	4	57
5305-00-115-9526	1	18	6685-01-078-7556	5	2
5310-00-167-0680	4	27	2805-01-139-0596	7	13
5310-00-167-0835	2	26	4810-01-144-7989	3	11
5310-00-167-0836	2	28	4310-01-144-7990	4	80
	4	4	2910-01-144-8088	2	6
5310-00-167-0840	4	28	3040-01-153-2291	3	9
	4	32	4310-01-153-2306	4	1
4730-00-199-3552	6	5	4720-01-154-2079	6	3
4910-00-204-2644	6	1	4820-01-154-3696	5	4
5305-00-225-3839	1	5	4820-01-154-6676	3	31
	2	1	5330-01-155-7435	3	25
5306-00-225-8497	4	34	5330-01-155-7436	3	29
5306-00-225-8499	4	3	5305-01-155-7455	3	23
5306-00-226-4831	7	9	4820-01-156-0523	5	3
4730-00-266-0544	3	3	5360-01-157-1876	3	27
	3	3	5360-01-157-1877	3	30
5305-00-269-3216	4	69	5360-01-157-1878	3	32
4820-00-272-3351	3	6	5360-01-157-3291	3	18
4730-00-278-0187	2	24	3110-01-157-9785	3	22
4730-00-278-4357	3	7	5310-01-163-5688	4	82
9505-00-293-4208	4	13	5310-01-163-5689	4	60
5330-00-316-8014	3	20	5330-01-164-0897	4	11
3030-00-571-4737	1	11	5330-01-164-0907	4	51
5310-00-582-5965	1	4	5330-01-164-0908	4	58
	1	14	5330-01-164-0909	4	71
	2	3	5330-01-164-0910	4	73
	4	55	5330-01-164-0911	4	6
4730-00-640-6330	2	22	5330-01-164-0912	4	8
5305-00-716-8211	4	25	5330-01-164-0913	4	68
5310-00-761-6882	1	3	5330-01-164-0914	4	37
	2	3	5365-01-164-0967	4	64
	4	54		4	76
5310-00-763-8905	3	8	3120-01-164-0989	4	19
5310-00-763-8913	4	26	5315-01-164-5366	4	10
5310-00-768-0318	4	30	4310-01-164-9246	4	74
5330-00-797-3506	7	7	4310-01-164-9328	4	84
5310-00-802-4701	7	12	4310-01-165-0764	4	63
4730-00-851-1940	2	21	5310-01-165-2275	4	81
5310-00-880-5977	1	6	5365-01-165-2349	4	24
5310-00-880-7744	7	10	5310-01-165-5599	1	2
2910-00-905-9792	2	13	4310-01-165-5886	4	62

CROSS-REFERENCE INDEXES

NATIONAL STOCK NUMBER INDEX

STOCK NUMBER	FIG	ITEM	STOCK NUMBER	FIG	ITEM
5310-01-165-7573	2	4			
4310-01-165-7937	4	67			
4310-01-165-8133	4	41			
4310-01-165-8205	4	12			
4310-01-165-8245	4	20			
4310-01-166-8183	4	65			
5640-01-171-7629	2	32			
3020-01-178-8924	1	15			
4810-01-222-4226	4	2			
4710-01-223-3254	3	1			
4810-01-223-6272	4	56			
4730-01-223-6310	4	45			
4730-01-223-6311	4	39			
5360-01-223-6312	4	18			
4810-01-223-6314	4	46			
5330-01-223-6335	4	35			
3020-01-223-7994	1	16			
4310-01-223-7995	4	77			
3040-01-224-6660	1	22			
6680-01-224-6684	2	12			
4330-01-224-6701	2	10			
5340-01-225-6693	2	29			
4310-01-247-2428	4	42			

CROSS-REFERENCE INDEXES

PART NUMBER INDEX

FSCM	PART NUMBER	STOCK NUMBER	FIG	ITEM
88044	AN960-416L	5310-00-167-0835	2	26
88044	AN960-516L	5310-00-167-0836	2	28
			4	4
88044	AN960-916L	5310-00-167-0840	4	28
			4	32
20796	AP69	3030-00-571-4737	1	11
41947	A4739	4730-00-266-0544	3	3
			3	3
60747	C-20X	4310-01-153-2306	4	1
38508	J5458	6685-01-078-7556	5	2
58818	LGM-20TM	4810-01-144-7989	3	11
19099	MEB87-0027	2910-01-144-8088	2	6
19099	MEB87-0028		2	7
19099	MEB87-0029		2	11
19099	MEB87-0031	4330-01-224-6701	2	10
19099	MEB87-0032	6680-01-224-6684	2	12
19099	MEB87-0033		2	8
81349	MIL-C-11743		6	7
96906	MS15795-811	5310-00-880-5977	1	6
96906	MS15795-813	5310-00-802-4701	7	12
96906	MS18154-113	5305-00-915-8087	4	59
96906	MS18154-58	5305-00-115-9526	1	18
96906	MS18154-61	5305-00-914-3786	4	9
96906	MS20995C32	9505-00-293-4208	4	13
96906	MS35206-229		2	8A
96906	MS35206-245	5305-00-984-6193	7	2
96906	MS35206-277	5305-00-988-1721	4	53
96906	MS35206-280	5305-00-988-1724	4	57
96906	MS35338-41		2	8B
96906	MS35338-42	5310-00-045-3299	7	4
96906	MS35338-44	5310-00-582-5965	1	4
			1	14
			2	3
			4	55
96906	MS35338-45		1	21
			7	11
96906	MS35338-48		4	31
96906	MS35338-49	5310-00-167-0680	4	27
96906	MS35649-262		2	8C
96906	MS35649-282	5310-00-934-9757	7	3
96906	MS35756-38		4	23
96906	MS51086-1	2910-00-905-9792	2	13
96906	MS51091-4	5330-00-087-3612	2	17
96906	MS51095-416	5305-00-964-0589	4	49
96906	MS51873-33	4730-00-199-3552	6	5
96906	MS51873-78	4730-00-050-1718	3	35
96906	MS51967-14	5310-00-768-0318	4	30
96906	MS51967-17	5310-00-763-8913	4	26
96906	MS51967-2	5310-00-761-6882	1	3
			2	2
			4	54
96906	MS51967-5	5310-00-880-7744	7	10
96906	MS51968-20	5310-00-763-8905	3	8
96906	MS90725-11	5305-00-071-2240	1	1

CROSS-REFERENCE INDEXES

PART NUMBER INDEX

FSCM	PART NUMBER	STOCK NUMBER	FIG	ITEM
96906	MS90725-11	5305-00-071-2240	1	13
96906	MS90725-138	5305-00-716-8211	4	25
96906	MS90725-32	5306-00-225-8497	4	34
96906	MS90725-34	5306-00-225-8499	4	3
96906	MS90725-6	5305-00-068-0502	2	25
96906	MS90725-66	5305-00-269-3216	4	69
96906	MS90725-8	5305-00-225-3839	1	5
			2	1
96906	MS90726-3	5305-00-068-0504	7	6
96906	MS90727-39	5306-00-051-4081	1	20
96906	MS90728-125	5305-00-071-2081	4	29
96906	MS90728-38	5306-00-226-4831	7	9
58818	M20001		3	13
58818	M20003		3	17
58818	M20005		3	15
58818	M20008	5360-01-157-3291	3	18
58818	M20011		3	16
58818	M20013		3	19
58818	M20017		3	21
58818	M20019	3110-01-157-9785	3	22
58818	M20021		3	24
58818	M20023	5305-01-155-7455	3	23
58818	M20025	5330-01-155-7435	3	25
58818	M20028-1		3	26
58818	M20033	5360-01-157-1876	3	27
58818	M20035		3	34
58818	M20037		3	33
58818	M20039	4820-01-154-6676	3	31
58818	M20041	5360-01-157-1877	3	30
58818	M20043	5330-01-155-7436	3	29
58818	M20045		3	28
58818	M20053		3	12
58818	M20055		3	14
58277	N516-50C	4720-01-154-2079	6	3
60746	PSI-678-SP-01-01	5310-01-165-5599	1	2
60746	PSI-678-SP-01-07		1	7
60746	PSI-678-SP-01-08		1	8
60746	PSI-678-SP-01-09		1	9
60746	PSI-678-SP-01-10		1	10
60746	PSI-678-SP-01-12		1	12
60746	PSI-678-SP-01-17		1	17
60746	PSI-678-SP-01-19		1	19
60746	PSI-678-SP-01-22	3040-01-224-6660	1	22
60746	PSI-678-SP-02-04	5310-01-165-7573	2	4
60746	PSI-678-SP-02-05		2	5
60746	PSI-678-SP-02-09		2	9
60746	PSI-678-SP-02-14		2	15
60746	PSI-678-SP-02-15		2	14
60746	PSI-678-SP-02-16		2	16
60746	PSI-678-SP-02-18		2	18
60746	PSI-678-SP-02-19		2	19

CROSS-REFERENCE INDEXES

PART NUMBER INDEX

FSCM	PART NUMBER	STOCK NUMBER	FIG	ITEM
60746	PSI-678-SP-02-20		2	20
60746	PSI-678-SP-02-23		2	23
60746	PSI-678-SP-02-27		2	27
60746	PSI-678-SP-02-29	5340-01-225-6693	2	29
60746	PSI-678-SP-02-30		2	30
60746	PSI-678-SP-02-31		2	31
60746	PSI-678-SP-02-32	5640-01-171-7629	2	32
60746	PSI-678-SP-03-01	4710-01-223-3254	3	1
			3	5
60746	PSI-678-SP-03-04		3	4
60746	PSI-678-SP-03-09	3040-01-153-2291	3	9
60746	PSI-678-SP-03-10		3	10
60746	PSI-678-SP-05-01		5	1
60746	PSI-678-SP-05-05		5	5
60746	PSI-678-SP-05-06		5	6
60746	PSI-678-SP-05-07		5	7
60746	PSI-678-SP-05-08		5	8
60746	PSI-678-SP-05-09		5	9
60746	PSI-678-SP-05-10		5	10
60746	PSI-678-SP-05-11		5	11
60746	PSI-678-SP-06-06		6	6
60746	PSI-678-SP-07-04		7	5
20796	SDS-1	3020-01-223-7994	1	16
58818	SV-25-200	4820-01-156-0523	5	3
60747	1-481-05-02-4	4730-01-223-6311	4	39
60747	1-481-08-06-4	4730-01-223-6310	4	45
60747	1-504-08-00-4	5310-01-163-5689	4	60
60747	1-768-06-00-3		4	21
60747	1-830-13-00-4	5365-01-164-0967	4	64
			4	76
30327	101-EF	4820-00-272-3351	3	6
30327	123-B-04X02	4730-00-640-6330	2	22
97403	13206E0000-3	2805-01-139-0596	7	13
33379	19324-N		7	8
02697	2-110N103-70	5330-00-316-8014	3	20
20796	2AQ46	3020-01-178-8924	1	15
58818	350501	5360-01-157-1878	3	32
72219	41-090-01	4820-01-154-3696	5	4
79470	49X12X12	4730-00-939-6247	3	2
60747	6-001-23-01-3		4	40
60747	6-002-35-01-1		4	22
60747	6-004-23-01-1	5330-01-164-0912	4	8
60747	6-008-23-01-1	5330-01-164-0914	4	37
60747	6-009-23-01-1		4	36
60747	6-010-23-01-1	5330-01-223-6335	4	35
60747	6-014-35-01-1	5330-01-164-0911	4	6
60747	6-015-35-02-1		4	5
60747	6-017-23-01-3	3120-01-164-0989	4	19
60747	6-018-23-01-3	4310-01-165-7937	4	67
60747	6-019-23-02-3		4	66
60747	6-019-23-41-3		4	78

CROSS-REFERENCE INDEXES

PART NUMBER INDEX

FSCM	PART NUMBER	STOCK NUMBER	FIG	ITEM
60747	6-020-23-01-3	4310-01-166-8183	4	65
60747	6-020-80-01-3	4310-01-223-7995	4	77
60747	6-028-23-01-3		4	33
60747	6-033-23-01-1		4	15
60747	6-034-35-01-1	5360-01-223-6312	4	18
60747	6-035-35-01-1		4	17
60747	6-036-35-01-1		4	16
60747	6-037-35-01-1		4	14
60747	6-039-35-01-3	5315-01-164-5366	4	10
60747	6-058-35-01-1		4	47
60747	6-060-23-01-1	5330-01-164-0913	4	68
60747	6-061-23-01-3		4	61
60747	6-061-23-41-3		4	79
60747	6-065-23-01-1	5330-01-164-0908	4	58
60747	6-065-23-41-1	5330-01-164-0910	4	73
60747	6-066-10-01-1		4	72
60747	6-066-23-01-1		4	52
60747	6-067-35-01-1	4810-01-223-6272	4	56
60747	6-070-10-01-1	5330-01-164-0909	4	71
60747	6-070-23-01-1	5330-01-164-0907	4	51
60747	6-071-10-01-1		4	70
60747	6-071-23-01-3		4	50
60747	6-098-35-01-1		4	43
60747	6-098-35-41-1		4	44
60747	6-201-23-01-1	4310-01-165-5886	4	62
60747	6-239-35-01-3	5330-01-164-0897	4	11
60747	6-285-23-01-1	4310-01-165-0764	4	63
60747	6-285-80-01-1		4	75
94894	61J2-1506	4910-00-204-2644	6	1
30327	68-F-03X02	4730-00-851-1940	2	21
30327	68-F-04X02	4730-00-278-4357	3	7
30327	69-F-03X02	4730-00-278-0187	2	24
60747	7-032-23-01-3	4310-01-165-8245	4	20
60747	7-033-23-01-1	4310-01-165-8205	4	12
60747	7-040-35-01-3	4810-01-222-4226	4	2
60747	7-045-23-41-1		4	38
			4	48
60747	7-101-35-04-1	4810-01-223-6314	4	46
60747	7-200-23-01-1	4310-01-164-9246	4	74
72219	70-101-01		6	4
60747	8-005-23-01-3		4	7
60747	9-000-23-04-1	5365-01-165-2349	4	24
60747	9-072-23-01-1	4310-01-165-8133	4	41
60747	9-072-23-41-1	4310-01-247-2428	4	42
60747	9-074-23-00-1	4310-01-144-7990	4	80
60747	9-074-23-01-1	5310-01-165-2275	4	81
60747	9-074-23-02-1	5310-01-163-5688	4	82
60747	9-074-23-03-1		4	83
60747	9-074-23-04-1	4310-01-164-9328	4	84
60747	9-074-23-05-1		4	85
79470	9205X4X4		6	2

CROSS-REFERENCE INDEXES

PART NUMBER INDEX

FSCM	PART NUMBER	STOCK NUMBER	FIG	ITEM
97403	9786E121	2990-00-972-7950	7	1
97403	9786E50-2	5330-00-797-3506	7	7

CROSS-REFERENCE INDEXES

FIG	ITEM	FIGURE AND ITEM NUMBER INDEX		PART NUMBER
		STOCK NUMBER	FSCM	
1	1	5305-00-071-2240	96906	MS90725-11
1	2	5310-01-165-5599	60746	PSI-678-SP-01-01
1	3	5310-00-761-6882	96906	MS51967-2
1	4	5310-00-582-5965	96906	MS35338-44
1	5	5305-00-225-3839	96906	MS90725-8
1	6	5310-00-880-5977	96906	MS15795-811
1	7		60746	PSI-678-SP-01-07
1	8		60746	PSI-678-SP-01-08
1	9		60746	PSI-678-SP-01-09
1	10		60746	PSI-678-SP-01-10
1	11	3030-00-571-4737	20796	AP69
1	12		60746	PSI-678-SP-01-12
1	13	5305-00-071-2240	96906	MS90725-11
1	14	5310-00-582-5965	96906	MS35338-44
1	15	3020-01-178-8924	20796	2AQ46
1	16	3020-01-223-7994	20796	SDS-1
1	17		60746	PSI-678-SP-01-17
1	18	5305-00-115-9526	96906	MS18154-58
1	19		60746	PSI-678-SP-01-19
1	20	5306-00-051-4081	96906	MS90727-39
1	21		96906	MS35338-45
1	22	3040-01-224-6660	60746	PSI-678-SP-01-22
2	1	5305-00-225-3839	96906	MS90725-8
2	2	5310-00-761-6882	96906	MS51967-2
2	3	5310-00-582-5965	96906	MS35338-44
2	4	5310-01-165-7573	60746	PSI-678-SP-02-04
2	5		60746	PSI-678-SP-02-05
2	6	2910-01-144-8088	19099	MEB87-0027
2	7		19099	MEB87-0028
2	8		19099	MEB87-0033
2	8A		96906	MS35206-229
2	8B		96906	MS35338-41
2	8C		96906	MS35649-262
2	9		60746	PSI-678-SP-02-09
2	10	4330-01-224-6701	19099	MEB87-0031
2	11		19099	MEB87-0029
2	12	6680-01-224-6684	19099	MEB87-0032
2	13	2910-00-905-9792	96906	MS51086-1
2	14		60746	PSI-678-SP-02-15
2	15		60746	PSI-678-SP-02-14
2	16		60746	PSI-678-SP-02-16
2	17	5330-00-087-3612	96906	MS51091-4
2	18		60746	PSI-678-SP-02-18
2	19		60746	PSI-678-SP-02-19
2	20		60746	PSI-678-SP-02-20
2	21	4730-00-851-1940	30327	68-F-03X02
2	22	4730-00-640-6330	30327	123-B-04X02
2	23		60746	PSI-678-SP-02-23
2	24	4730-00-278-0187	30327	69-F-03X02
2	25	5305-00-068-0502	96906	MS90725-6
2	26	5310-00-167-0835	88044	AN960-416L
2	27		60746	PSI-678-SP-02-27
2	28	5310-00-167-0836	88044	AN960-516L
2	29	5340-01-225-6693	60746	PSI-678-SP-02-29

CROSS-REFERENCE INDEXES

FIG	ITEM	FIGURE AND ITEM NUMBER INDEX		PART NUMBER
		STOCK NUMBER	FSCM	
2	30		60746	PSI-678-SP-02-30
2	31		60746	PSI-678-SP-02-31
2	32	5640-01-171-7629	60746	PSI-678-SP-02-32
3	1	4710-01-223-3254	60746	PSI-678-SP-03-01
3	2	4730-00-939-6247	79470	49X12X12
3	3	4730-00-266-0544	41947	A4739
3	3	4730-00-266-0544	41947	A4739
3	4		60746	PSI-678-SP-03-04
3	5		60746	PSI-678-SP-03-01
3	6	4820-00-272-3351	30327	101-EF
3	7	4730-00-278-4357	30327	68-F-04X02
3	8	5310-00-763-8905	96906	MS51968-20
3	9	3040-01-153-2291	60746	PSI-678-SP-03-09
3	10		60746	PSI-678-SP-03-10
3	11	4810-01-144-7989	58818	LGM-20TM
3	12		58818	M20053
3	13		58818	M20001
3	14		58818	M20055
3	15		58818	M20005
3	16		58818	M20011
3	17		58818	M20003
3	18	5360-01-157-3291	58818	M20008
3	19		58818	M20013
3	20	5330-00-316-8014	02697	2-110N103-70
3	21		58818	M20017
3	22	3110-01-157-9785	58818	M20019
3	23	5305-01-155-7455	58818	M20023
3	24		58818	M20021
3	25	5330-01-155-7435	58818	M20025
3	26		58818	M20028-1
3	27	5360-01-157-1876	58818	M20033
3	28		58818	M20045
3	29	5330-01-155-7436	58818	M20043
3	30	5360-01-157-1877	58818	M20041
3	31	4820-01-154-6676	58818	M20039
3	32	5360-01-157-1878	58818	350501
3	33		58818	M20037
3	34		58818	M20035
3	35	4730-00-050-1718	96906	MS51873-78
4	1	4310-01-153-2306	60747	C-20X
4	2	4810-01-222-4226	60747	7-040-35-01-3
4	3	5306-00-225-8499	96906	MS90725-34
4	4	5310-00-167-0836	88044	AN960-516L
4	5		60747	6-015-35-02-1
4	6	5330-01-164-0911	60747	6-014-35-01-1
4	7		60747	8-005-23-01-3
4	8	5330-01-164-0912	60747	6-004-23-01-1
4	9	5305-00-914-3786	96906	MS18154-61
4	10	5315-01-164-5366	60747	6-039-35-01-3
4	11	5330-01-164-0897	60747	6-239-35-01-3
4	12	4310-01-165-8205	60747	7-033-23-01-1

CROSS-REFERENCE INDEXES

FIG	ITEM	FIGURE AND ITEM NUMBER INDEX		PART NUMBER
		STOCK NUMBER	FSCM	
4	13	9505-00-293-4208	96906	MS20995C32
4	14		60747	6-037-35-01-1
4	15		60747	6-033-23-01-1
4	16		60747	6-036-35-01-1
4	17		60747	6-035-35-01-1
4	18	5360-01-223-6312	60747	6-034-35-01-1
4	19	3120-01-164-0989	60747	6-017-23-01-3
4	20	4310-01-165-8245	60747	7-032-23-01-3
4	21		60747	1-768-06-00-3
4	22		60747	6-002-35-01-1
4	23		96906	MS35756-38
4	24	5365-01-165-2349	60747	9-000-23-04-1
4	25	5305-00-716-8211	96906	MS90725-138
4	26	5310-00-763-8913	96906	MS51967-17
4	27	5310-00-167-0680	96906	MS35338-49
4	28	5310-00-167-0840	88044	AN960-916L
4	29	5305-00-071-2081	96906	MS90728-125
4	30	5310-00-768-0318	96906	MS51967-14
4	31		96906	MS35338-48
4	32	5310-00-167-0840	88044	AN960-916L
4	33		60747	6-028-23-01-3
4	34	5306-00-225-8497	96906	MS90725-32
4	35	5330-01-223-6335	60747	6-010-23-01-1
4	36		60747	6-009-23-01-1
4	37	5330-01-164-0914	60747	6-008-23-01-1
4	38		60747	7-045-23-41-1
4	39	4730-01-223-6311	60747	1-481-05-02-4
4	40		60747	6-001-23-01-3
4	41	4310-01-165-8133	60747	9-072-23-01-1
4	42	4310-01-247-2428	60747	9-072-23-41-1
4	43		60747	6-098-35-01-1
4	44		60747	6-098-35-41-1
4	45	4730-01-223-6310	60747	1-481-08-06-4
4	46	4810-01-223-6314	60747	7-101-35-04-1
4	47		60747	6-058-35-01-1
4	48		60747	7-045-23-41-1
4	49	5305-00-964-0589	96906	MS51095-416
4	50		60747	6-071-23-01-3
4	51	5330-01-164-0907	60747	6-070-23-01-1
4	52		60747	6-066-23-01-1
4	53	5305-00-988-1721	96906	MS35206-277
4	54	5310-00-761-6882	96906	MS51967-2
4	55	5310-00-582-5965	96906	MS35338-44
4	56	4810-01-223-6272	60747	6-067-35-01-1
4	57	5305-00-988-1724	96906	MS35206-280
4	58	5330-01-164-0908	60747	6-065-23-01-1
4	59	5305-00-915-8087	96906	MS18154-113
4	60	5310-01-163-5689	60747	1-504-08-00-4
4	61		60747	6-061-23-01-3
4	62	4310-01-165-5886	60747	6-201-23-01-1
4	63	4310-01-165-0764	60747	6-285-23-01-1

CROSS-REFERENCE INDEXES

FIG	ITEM	FIGURE AND ITEM NUMBER INDEX		PART NUMBER
		STOCK NUMBER	FSCM	
4	64	5365-01-164-0967	60747	1-830-13-00-4
4	65	4310-01-166-8183	60747	6-020-23-01-3
4	66		60747	6-019-23-02-3
4	67	4310-01-165-7937	60747	6-018-23-01-3
4	68	5330-01-164-0913	60747	6-060-23-01-1
4	69	5305-00-269-3216	96906	MS90725-66
4	70		60747	6-071-10-01-1
4	71	5330-01-164-0909	60747	6-070-10-01-1
4	72		60747	6-066-10-01-1
4	73	5330-01-164-0910	60747	6-065-23-41-1
4	74	4310-01-164-9246	60747	7-200-23-01-1
4	75		60747	6-285-80-01-1
4	76	5365-01-164-0967	60747	1-830-13-00-4
4	77	4310-01-223-7995	60747	6-020-80-01-3
4	78		60747	6-019-23-41-3
4	79		60747	6-061-23-41-3
4	80	4310-01-144-7990	60747	9-074-23-00-1
4	81	5310-01-165-2275	60747	9-074-23-01-1
4	82	5310-01-163-5688	60747	9-074-23-02-1
4	83		60747	9-074-23-03-1
4	84	4310-01-164-9328	60747	9-074-23-04-1
4	85		60747	9-074-23-05-1
5	1		60746	PSI-678-SP-05-01
5	2	6685-01-078-7556	38508	J5458
5	3	4820-01-156-0523	58818	SV-25-200
5	4	4820-01-154-3696	72219	41-090-01
5	5		60746	PSI-678-SP-05-05
5	6		60746	PSI-678-SP-05-06
5	7		60746	PSI-678-SP-05-07
5	8		60746	PSI-678-SP-05-08
5	9		60746	PSI-678-SP-05-09
5	10		60746	PSI-678-SP-05-10
5	11		60746	PSI-678-SP-05-11
6	1	4910-00-204-2644	94894	61J2-1506
6	2		79470	9205X4X4
6	3	4720-01-154-2079	58277	N516-50C
6	4		72219	70-101-01
6	5	4730-00-199-3552	96906	MS51873-33
6	6		60746	PSI-678-SP-06-06
6	7		81349	MIL-C-11743
7	1	2990-00-972-7950	97403	9786E121
7	2	5305-00-984-6193	96906	MS35206-245
7	3	5310-00-934-9757	96906	MS35649-282
7	4	5310-00-045-3299	96906	MS35338-42
7	5		60746	PSI-678-SP-07-04
7	6	5305-00-068-0504	96906	MS90726-3
7	7	5330-00-797-3506	97403	9786E50-2
7	8		33379	19324-N
7	9	5306-00-226-4831	96906	MS90728-38
7	10	5310-00-880-7744	96906	MS51967-5
7	11		96906	MS35338-45

CROSS-REFERENCE INDEXES

FIG	ITEM	FIGURE AND ITEM NUMBER INDEX		PART NUMBER
		STOCK NUMBER	FSCM	
7	12	5310-00-802-4701	96906	MS15795-813
7	13	2805-01-139-0596	97403	13206E0000-3

By Order of the Secretary of the Army:

Official:

CARL E. VUONO

*General, United States Army
Chief of Staff*

WILLIAM J. MEEHAN, II

*Brigadier General, United States Army
The Adjutant General*

DISTRIBUTION:

To be distributed in accordance with DA Form 12-25A, Compressor, Reciprocating, Air, Gas, Tank Mounted, 15 CFM, 175 PSI (C-20X-806E)

RECOMMENDED CHANGES TO EQUIPMENT TECHNICAL PUBLICATIONS



THEN... JOT DOWN THE DOPE ABOUT IT ON THIS FORM. CAREFULLY TEAR IT OUT. FOLD IT AND DROP IT IN THE MAIL!

SOMETHING WRONG WITH THIS PUBLICATION?

FROM: (PRINT YOUR UNIT'S COMPLETE ADDRESS)
PFC JOHN DOE
COA, 3d ENGINEER BN
FT. LEONARDWOOD, MO 63108

DATE SENT

PUBLICATION NUMBER: **TM 5-4310-372-24P**
 PUBLICATION DATE: **10 OCT 89**
 PUBLICATION TITLE: **ORGANIZATIONAL, DS & GS MAINTENANCE RPSTL COMPRESSOR, AIR, TANK MOUNTED GASOLINE ENGINE**

BE EXACT - PIN-POINT WHERE IT IS

PAGE NO	PARA-GRAPH	FIGURE NO	TABLE NO
6	2-1 a		
B1		4-3	
125	line 20		

IN THIS SPACE TELL WHAT IS WRONG AND WHAT SHOULD BE DONE ABOUT IT:

In line 6 of paragraph 2-1a the manual states the engine has 6 cylinders. The engine on my set only has 4 cylinders. Change the manual to show 4 cylinders.

Callout 16 on figure 4-3 is pointing at a bolt. In key to figure 4-3, item 16 is called a shim - Please correct one or the other.

I ordered a gasket, item 19 on figure B-16 by NSN 2 910-05-762-3001. I got a gasket but it doesn't fit. Supply says I got what I ordered, so the NSN is wrong. Please give me a good NSN

PRINTED NAME, GRADE OR TITLE, AND TELEPHONE NUMBER

JOHN DOE, PFC (268) 317.7111

SIGN HERE

JOHN DOE

DA FORM 1 JUL 79 **2028-2**

PREVIOUS EDITIONS ARE OBSOLETE.
 DRSTS-M Overprint 1, 1 Nov 80

PS--IF YOUR OUTFIT WANTS TO KNOW ABOUT YOUR RECOMMENDATION MAKE A CARBON COPY OF THIS AND GIVE IT TO YOUR HEADQUARTERS

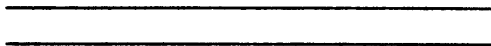
TEAR ALONG PERFORATED LINE

FILL IN YOUR
UNITS ADDRESS



FOLD BACK

DEPARTMENT OF THE ARMY



OFFICIAL BUSINESS

COMMANDER
U.S. ARMY AVIATION AND TROOP COMMAND
ATTN: AMSAT-I-MP
4300 GOODFELLOW BOULEVARD
ST. LOUIS, MO 63120-1798

TEAR ALONG PERFORATED LINE

RECOMMENDED CHANGES TO EQUIPMENT TECHNICAL PUBLICATIONS



SOMETHING WRONG WITH THIS PUBLICATION?

THEN JOT DOWN THE DOPE ABOUT IT ON THIS FORM CAREFULLY TEAR IT OUT FOLD IT AND DROP IT IN THE MAIL

FROM (PRINT YOUR UNIT'S COMPLETE ADDRESS)

DATE SENT

PUBLICATION NUMBER

TM 5-4310-372-24P

PUBLICATION DATE

10 OCT 89

PUBLICATION TITLE ORGANIZATIONAL, DS & GS MAINTENANCE RPSTL COMPRESSOR, AIR, TANK MOUNTED, GASOLINE ENGINE

BE EXACT PIN-POINT WHERE IT IS

PAGE NO	PARA-GRAPH	FIGURE NO	TABLE NO

IN THIS SPACE TELL WHAT IS WRONG AND WHAT SHOULD BE DONE ABOUT IT:

PRINTED NAME GRADE OR TITLE AND TELEPHONE NUMBER

SIGN HERE

DA FORM 2028-2
1 JUL 79

PREVIOUS EDITIONS ARE OBSOLETE

PS--IF YOUR OUTFIT WANTS TO KNOW ABOUT YOUR RECOMMENDATION MAKE A CARBON COPY OF THIS AND GIVE IT TO YOUR HEADQUARTERS

U.S. G.P.O. 1983-381-646/8515

THIS FORM IS UNCLASSIFIED

FILL IN YOUR
UNITS ADDRESS



FOLD BACK

DEPARTMENT OF THE ARMY

OFFICIAL BUSINESS

COMMANDER
U.S. ARMY AVIATION AND TROOP COMMAND
ATTN: AMSAT-I-MP
4300 GOODFELLOW BOULEVARD
ST. LOUIS, MO 63120-1798

TEAR ALONG PERFORATED LINE

RECOMMENDED CHANGES TO EQUIPMENT TECHNICAL PUBLICATIONS



THEN JOT DOWN THE DOPE ABOUT IT ON THIS FORM. CAREFULLY TEAR IT OUT FOLD IT AND DROP IT IN THE MAIL.

SOMETHING WRONG WITH THIS PUBLICATION?

FROM (PRINT YOUR UNIT'S COMPLETE ADDRESS)

DATE SENT

PUBLICATION NUMBER

TM 5-4310-372-24P

PUBLICATION DATE

10 OCT 89

PUBLICATION TITLE ORGANIZATIONAL, DS & GS MAINTENANCE RPSTL COMPRESSOR, AIR, TANK MOUNTED, GASOLINE DRIVEN

BE EXACT PIN-POINT WHERE IT IS

PAGE NO	PARA. GRAPH	FIGURE NO	TABLE NO

IN THIS SPACE TELL WHAT IS WRONG AND WHAT SHOULD BE DONE ABOUT IT:

PRINTED NAME GRADE OR TITLE AND TELEPHONE NUMBER

SIGN HERE

DA FORM 2028-2
1 JUL 79

PREVIOUS EDITIONS ARE OBSOLETE

P.S. ...IF YOUR OUTFIT WANTS TO KNOW ABOUT YOUR RECOMMENDATION MAKE A CARBON COPY OF THIS AND GIVE IT TO YOUR HEADQUARTERS

THIS COPY PERFORMED BY

1 Nov 80

FILL IN YOUR
UNITS ADDRESS



FOLD BACK

DEPARTMENT OF THE ARMY

OFFICIAL BUSINESS

COMMANDER
U.S. ARMY AVIATION AND TROOP COMMAND
ATTN: AMSAT-I-MP
4300 GOODFELLOW BOULEVARD
ST. LOUIS, MO 63120-1798

TEAR ALONG PERFORATED LINE

RECOMMENDED CHANGES TO EQUIPMENT TECHNICAL PUBLICATIONS

SOMETHING WRONG WITH THIS PUBLICATION?



THEN JOT DOWN THE DOPE ABOUT IT ON THIS FORM. CAREFULLY TEAR IT OUT FOLD IT AND DROP IT IN THE MAIL.

FROM (PRINT YOUR UNIT'S COMPLETE ADDRESS)

DATE SENT

PUBLICATION NUMBER

TM 5-4310-372-24P

PUBLICATION DATE

10 OCT 89

PUBLICATION TITLE ORGANIZATIONAL, DS & GS MAINTENANCE RPSTL COMPRESSOR, AIR, TANK MOUNTED, GASOLINE ENGINE

BE EXACT PIN-POINT WHERE IT IS

PAGE NO	PARA GRAPH	FIGURE NO	TABLE NO

IN THIS SPACE TELL WHAT IS WRONG AND WHAT SHOULD BE DONE ABOUT IT:

PRINTED NAME GRADE OR TITLE AND TELEPHONE NUMBER

SIGN HERE

DA FORM 2028-2
1 JUL 79

PREVIOUS EDITIONS ARE OBSOLETE

PS--IF YOUR OUTFIT WANTS TO KNOW ABOUT YOUR RECOMMENDATION MAKE A CARBON COPY OF THIS AND GIVE IT TO YOUR HEADQUARTERS

TO BE USED ONLY BY PERSONNEL

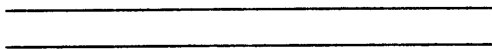
1 Nov 80

FILL IN YOUR
UNITS ADDRESS



FOLD BACK

DEPARTMENT OF THE ARMY



OFFICIAL BUSINESS

COMMANDER
U.S. ARMY AVIATION AND TROOP COMMAND
ATTN: AMSAT-I-MP
4300 GOODFELLOW BOULEVARD
ST. LOUIS, MO 63120-1798

TEAR ALONG PERFORATED LINE

The Metric System and Equivalents

Linear Measure

1 centimeter = 10 millimeters = .39 inch
 1 decimeter = 10 centimeters = 3.94 inches
 1 meter = 10 decimeters = 39.37 inches
 1 dekameter = 10 meters = 32.8 feet
 1 hectometer = 10 dekameters = 328.08 feet
 1 kilometer = 10 hectometers = 3,280.8 feet

Weights

1 centigram = 10 milligrams = .15 grain
 1 decigram = 10 centigrams = 1.54 grains
 1 gram = 10 decigram = .035 ounce
 1 dekagram = 10 grams = .35 ounce
 1 hectogram = 10 dekagrams = 3.52 ounces
 1 kilogram = 10 hectograms = 2.2 pounds
 1 quintal = 100 kilograms = 220.46 pounds
 1 metric ton = 10 quintals = 1.1 short tons

Liquid Measure

1 centiliter = 10 milliliters = .34 fl. ounce
 1 deciliter = 10 centiliters = 3.38 fl. ounces
 1 liter = 10 deciliters = 33.81 fl. ounces
 1 dekaliter = 10 liters = 2.64 gallons
 1 hectoliter = 10 dekaliters = 26.42 gallons
 1 kiloliter = 10 hectoliters = 264.18 gallons

Square Measure

1 sq. centimeter = 100 sq. millimeters = .155 sq. inch
 1 sq. decimeter = 100 sq. centimeters = 15.5 sq. inches
 1 sq. meter (centare) = 100 sq. decimeters = 10.76 sq. feet
 1 sq. dekameter (are) = 100 sq. meters = 1,076.4 sq. feet
 1 sq. hectometer (hectare) = 100 sq. dekameters = 2.47 acres
 1 sq. kilometer = 100 sq. hectometers = 386 sq. mile

Cubic Measure

1 cu. centimeter = 1000 cu. millimeters = .06 cu. inch
 1 cu. decimeter = 1000 cu. centimeters = 61.02 cu. inches
 1 cu. meter = 1000 cu. decimeters = 35.31 cu. feet

Approximate Conversion Factors

To change	To	Multiply by	To change	To	Multiply by
inches	centimeters	2.540	ounce-inches	newton-meters	.007062
feet	meters	.305	centimeters	inches	.394
yards	meters	.914	meters	feet	3.280
miles	kilometers	1.609	meters	yards	1.094
square inches	square centimeters	6.451	kilometers	miles	.621
square feet	square meters	.093	square centimeters	square inches	.155
square yards	square meters	.836	square meters	square feet	10.764
square miles	square kilometers	2.590	square meters	square yards	1.196
acres	square hectometers	.405	square kilometers	square miles	.386
cubic feet	cubic meters	.028	square hectometers	acres	2.471
cubic yards	cubic meters	.765	cubic meters	cubic feet	35.315
fluid ounces	milliliters	29.573	cubic meters	cubic yards	1.308
pints	liters	.473	milliliters	fluid ounces	.034
quarts	liters	.946	liters	pints	2.113
gallons	liters	3.785	liters	quarts	1.057
ounces	grams	28.349	liters	gallons	.264
pounds	kilograms	.454	grams	ounces	.035
short tons	metric tons	.907	kilograms	pounds	2.205
pound-feet	newton-meters	1.356	metric tons	short tons	1.102
pound-inches	newton-meters	11296			

Temperature (Exact)

°F Fahrenheit temperature 5/9 (after subtracting 32) Celsius temperature °C

This fine document...

Was brought to you by me:



[Liberated Manuals -- free army and government manuals](#)

Why do I do it? I am tired of sleazy CD-ROM sellers, who take publicly available information, slap “watermarks” and other junk on it, and sell it. Those masters of search engine manipulation make sure that their sites that sell free information, come up first in search engines. They did not create it... They did not even scan it... Why should they get your money? Why are not letting you give those free manuals to your friends?

I am setting this document FREE. This document was made by the US Government and is NOT protected by Copyright. Feel free to share, republish, sell and so on.

I am not asking you for donations, fees or handouts. If you can, please provide a link to liberatedmanuals.com, so that free manuals come up first in search engines:

<A HREF=<http://www.liberatedmanuals.com/>>Free Military and Government Manuals

- Sincerely
Igor Chudov
<http://igor.chudov.com/>
- [Chicago Machinery Movers](#)