

**TECHNICAL MANUAL**

**ORGANIZATIONAL, DIRECT SUPPORT  
AND GENERAL SUPPORT MAINTENANCE  
REPAIR PARTS AND SPECIAL TOOLS LIST**

**COMPRESSOR, RECIPROCATING: AIR:  
ELECTRIC MOTOR DRIVEN,  
5 CFM AT 175 PSI  
(C & H DISTRIBUTORS MODEL 20-904)  
NSN 4310-01-064-2386  
(C & H DISTRIBUTORS MODEL 20-911)  
NSN 4310-01-125-0934**

Approved for public release; distribution is unlimited.

\*This manual supersedes TM 5-4310-362-24P, 27 June 1983.

---

**HEADQUARTERS, DEPARTMENT OF THE ARMY**  
24 AUGUST 1989

**Organizational, Direct Support and General Support Maintenance  
Repair Parts and Special Tools List**

for  
**COMPRESSOR, RECIPROCATING: AIR: ELECTRIC MOTOR DRIVEN, 5 CFM AT 175 PSI  
(C&H DISTRIBUTORS MODEL 20-904) NSN 4310-01-064-2386  
(C&H DISTRIBUTORS MODEL 20-911) NSN 4310-01-125-0934**

Current as of May 10, 1989

**REPORTING OF ERRORS AND RECOMMENDING IMPROVEMENTS**

You can help improve this manual. If you find any mistake or if you know of a way to improve the procedures, please let us know. Mail your letter, DA Form 2028 (Recommended Changes to Publications and Blank Forms) or DA Form 2028-2 located in the back of this manual direct to: Commander, U.S. Army Troop Support Command, ATTN: AMSTR-MCTS, 4300 Goodfellow Blvd., St. Louis, MO 63120-1798. A reply will be furnished directly to you.

Approved for public release; distribution is unlimited.

**TABLE OF CONTENTS**

	Page	Illust/ Figure
Section I.	Introduction .....	1
Section II.	Repair Parts List	
Group 01	Motor Controls	
	Motor Controls and Wiring .....	1-1      1
	Motor Starter .....	2-1      2
Group 02	Compressor Drive	
	Compressor Drive .....	3-1      3
Group 03	Compressor Assembly	
	Compressor Assembly, Model 20-904 .....	4-1      4
	Compressor Assembly, Model 20-911 .....	5-1      5
	Intake and Exhaust Valves, Model 20-904 .....	6-1      6
	Intake and Exhaust Valves, Model 20-911 .....	7-1      7
	Centrifugal Unloader, Model 20-904 .....	8-1      8
	Pistons, Connecting Rods and Cylinder Block, Model 20-904 .....	9-1      9
	Pistons, Connecting Rods and Cylinder Block, Model 20-911 .....	10-1     10
	Crankshaft, Bearing and Oil Seals, Model 20-904 .....	11-1     11
	Crankshaft, Bearing and Oil Seals, Model 20-911 .....	12-1     12
Group 04	Electric Motor	
	Electric Motor .....	13-1     13

\*This manual supersedes TM 5-4310-362-24P, 27 June 1983.

	Page	Illust/ Figure
Group 05	Tank	
	Air Tank .....	14
Group 06	Air Discharge System.....	15
Group 07	Bulk Materials.....	Bulk
Group 06	Casing and Bottom Panel	
Section III.	Special Tools List (Not Applicable)	
Section IV.	Cross Reference Index .....	I-1
	National Stock Number Index .....	I-1
	Part Number Index .....	I-3
	Figure and Item Number Index .....	I-9

Organizational, Direct Support, and General Support Maintenance  
Repair Parts and Special Tools List

COMPRESSOR, RECIPROCATING: AIR: ELECTRIC MOTOR DRIVEN, 5 CFM at 175 PSI  
(C & H DISTRIBUTORS MODEL 20-904) NSN 4310-01-064-2386  
(C & H DISTRIBUTORS MODEL 20-911) NSN 4310-01-125-0934

## SECTION I. INTRODUCTION

**1. SCOPE.** This RPSTL lists and authorizes spares and repair parts; special tools; special test, measurement, and diagnostic equipment (TMDE) ; and other special support equipment required for performance of organizational, direct support, general support maintenance of the Compressor, Reciprocating Air: Electric Motor Driven Section. It authorizes the requisitioning, issue, and disposition of spares, repair parts and special tools as indicated by the source, maintenance and recoverability (SMR) codes.

**2. GENERAL.** In addition to this section, Introduction, this Repair Parts and Special Tools List is divided into the following sections:

**a. Section II. Repair Parts List.** A list of spares and repair parts authorized by this RPSTL for use in the performance of maintenance. The list also includes parts which must be removed for replacement of the authorized parts. Parts lists are composed of functional groups in ascending alphanumeric sequence, with the parts in each group listed in ascending figure and item number sequence. Bulk materials are listed in item name sequence. Repair parts kits are listed separately in their own functional group within Section II. Repair parts for repairable special tools are also listed in this section. Items listed are shown on the associated illustration(s) /figure(s).

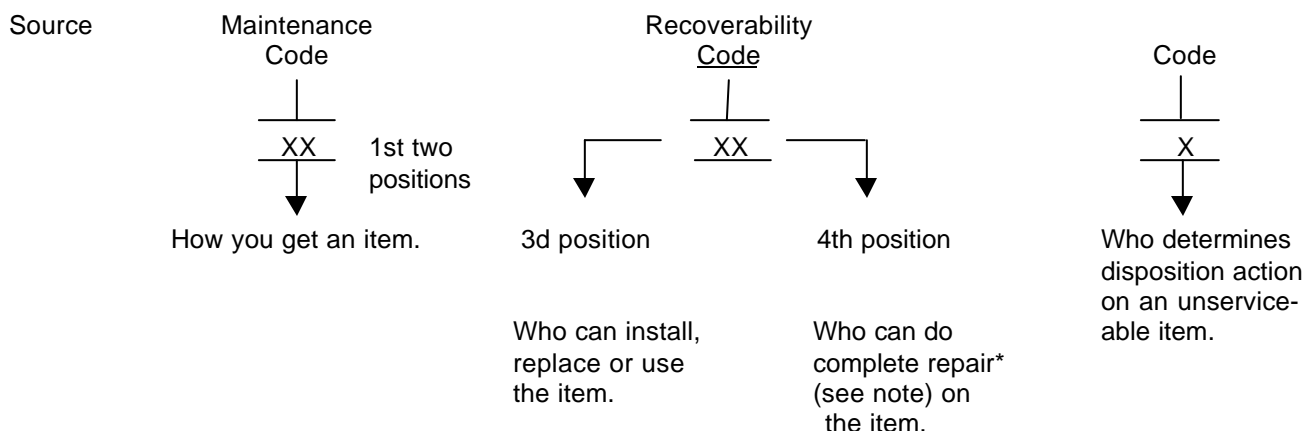
**b. Section III. Special Tools List.** A list of special tools, special TMDE, and other special support equipment authorized by this RPSTL (as indicated by Basis of Issue (BOI) information in DESCRIPTION AND USABLE ON CODE column) for the performance of maintenance.

**c. Section IV. Cross-references Indexes.** A list, in National Item Identification Number (NIIN) sequence, of all National stock numbered items appearing in the listing, followed by a list in alphanumeric sequence of all part numbers appearing in the listings. National stock numbers and part numbers are cross-referenced to each illustration figure and item number appearance. The figure and item number index lists figure and item number in alphanumeric sequence and cross-references NSN, FSCM and part number.

### 3. EXPLANATION OF COLUMNS (SECTIONS II AND III).

**a. ITEM NO. (Column (1) ).** Indicates the number used to identify items called out in the illustration.

**b. SMR Code (Column (2) ).** The Source, Maintenance, and Recoverability (SMR) code is a 5-position code containing supply/requisitioning information, maintenance category authorization criteria, and disposition instruction, as shown in the following breakout:



\*Complete Repair: Maintenance capacity, capability, and authority to perform all corrective maintenance tasks of the "Repair" function in a use/user environment in order to restore serviceability to a failed item.

**(1) Source Code.** The source code tells you how to get an item needed for maintenance, repair, or overhaul of an end item/equipment. Explanations of source codes follows:

Code	Explanation
PA	Stocked items; use the applicable NSN to request/requisition items with these source codes. They are authorized to the category indicated by the code entered in the 3d position of the SMR code.
PB	
PC**	
PD	
PE	
PF	
PG	
KD	Items with these codes are not to be requested/requisitioned individually. They are part of a kit which is authorized to the maintenance category indicated in the 3d position of the SMR code. The complete kit must be requisitioned and applied.
KF	
KB	

\*\*NOTE: Items coded PC are subject to deterioration.

Code	Explanation
MO-(Made at org. AVUM Level)	Items with these codes are not to be requested/requisitioned individually. They must be made from bulk material which is identified by the part number in the DESCRIPTION and USABLE ON CODE (UOC) column and listed in the Bulk Material group of the repair parts list in this RPSTL. If the item is authorized to you by the 3d position code of the SMR code, but the source code indicates it is made at a higher level, order the item from the higher level of maintenance.
MF-(Made at DS/ AVUM Level)	
MH-(Made at GS Level)	
ML-Made at Specialized Repair Activity (SRA)	
MD-(Made at Depot)	

AO-(Assembled by org/AVUM Level)  
 AF-(Assembled by DS/AVIM Level)  
 AH-(Assembled by GS Category)  
 AL-(Assembled by SRA)  
 AD-(Assembled by Depot)

Explanation

Items with these codes are not to be requested/requisitioned individually. The parts that make up the assembled item must be requisitioned or fabricated and assembled at the level of maintenance indicated by the source code. If the 3d position code of the SMR code authorizes you to replace the item, but the source code indicates the items are assembled at a higher level, order the item from the higher level of maintenance.

Code Explanation

XA--Do not requisition an "XA"-coded item. Order its next higher assembly. (Also, refer to the NOTE below.)

XB--If an "XB" item is not available from salvage, order it using the FSCM and part number given.

XC--Installation drawing, diagram, instruction sheet, field service drawing, that is identified by manufacturer's part number.

XD--Item is not stocked. Order an "XD"-coded item through normal supply channels using the FSCM and part number given, if no NSN is available.

**NOTE**

**Cannibalization or controlled exchange, when authorized, may be used as a source of supply for items with the above source codes, except for those source coded "XA" or those aircraft support items restricted by requirements of AR 750-1.**

**(2) Maintenance Code.** Maintenance codes tells you the level(s) of maintenance authorized to USE and REPAIR support items. The maintenance codes are entered in the third and fourth positions of the SMR code as follows:

(a) The maintenance code entered in the third position tells you the lowest maintenance level authorized to remove, replace, and use an item. The maintenance code entered in the third position will indicate authorization to one of the following levels of maintenance.

Code	Application/Explanation
C	--Crew or operator maintenance done within organizational or aviation unit maintenance.
O	--Organizational or aviation unit category can remove, replace, and use the item.
F	--Direct support or aviation intermediate level can remove, replace, and use the item.

- H --General support level can remove, replace, and use the item.
- L --Specialized repair activity can remove, replace, and use the item.
- D --Depot level can remove, replace, and use the item.

(b) The maintenance code entered in the fourth position tells whether or not the item is to be repaired and identifies the lowest maintenance level with the capability to do complete repair (i.e., perform all authorized repair functions.) NOTE: Some limited repair may be done on the item at a lower level of maintenance, if authorized by the Maintenance Allocation Chart (MAC) and SMR codes. This position will contain one of the following maintenance codes.

Code	Application/Explanation
O	--Organizational or (aviation unit) is the lowest level that can do complete repair of the item.
F	--Direct support or aviation intermediate is the lowest level that can do complete repair of the item.
H	--General Support is the lowest level that can do complete repair of the item.
L	--Specialized repair activity is the lowest level that can do complete repair of the item.
D	--Depot is the lowest level that can do complete repair of the item.
Z	--Nonreparable. No repair is authorized.
B	--No repair is authorized. (No parts or special tools are authorized for the maintenance of a "B" coded item). However, the item may be reconditioned by adjusting, lubricating, etc., at the user level.

**(3) Recoverability Code.** Recoverability codes are assigned to items to indicate the disposition action on unserviceable items. The recoverability code is entered in the fifth position of the SMR Code as follows:

Recoverability Codes	Application/Explanation
Z	--Nonreparable item. When unserviceable, condemn and dispose of the item at the level of maintenance shown in 3d position of SMR Code.

Recoverability Codes	Application/Explanation
O	--Reparable item. When uneconomically reparable, condemn and dispose of the item at organizational or aviation unit level.
F	--Reparable item. When uneconomically reparable, condemn and dispose of the item at the direct support or aviation intermediate level.
H	--Reparable item. When uneconomically reparable, condemn and dispose of the item at the general support level.
D	--Reparable item. When beyond lower level repair capability, return to depot. Condemnation and disposal of item not authorized below depot level.
L	--Reparable item. Condemnation and disposal not authorized below specialized repair activity (SRA).
A	--Item requires special handling or condemnation procedures because of specific reasons (e.g., precious metal content, high dollar value, critical material, or hazardous material). Refer to appropriate manuals/directives for specific instructions.

c. **FSCM (Column (3) ).** The Federal Supply Code for Manufacturer (FSCM) is a 5-digit numeric code which is used to identify the manufacturer, distributor, or Government agency, etc., that supplies the item.

d. **PART NUMBER (Column (4) ).** Indicates the primary number used by the manufacturer, (individual, company, firm, corporation, or Government activity), which controls the design and characteristics of the item by means of its engineering drawings, specifications standards, and inspection requirements to identify an item or range of items.

**NOTE**

**When you use an NSN to requisition an item, the item you receive may have a different part number from the part ordered.**

e. **DESCRIPTION AND USABLE ON CODE (UOC) (Column (5) ).** This column includes the following information:

- (1) The Federal item name and, when required, a minimum description to identify the item.
- (2) The physical security classification of the item is indicated by the parenthetical entry, e.g., Phy Sec C1 Confidential, Phy Sec C1 (S) Secret, Phy Sec C1 (T) Top Secret.



- (3) Items that are included in kits and sets are listed below the name of the kit or set.
- (4) Spare/repair parts that make up an assembled item are listed immediately following the assembled item line entry.
- (5) Part numbers for bulk materials are referenced in this column in the line item entry for the item to be manufactured/fabricated.
- (6) When the item is not used with all serial numbers of the same model, the effective serial numbers are shown on the last line(s) of the description (before UOC).
- (7) The usable on code, when applicable (see paragraph 5, Special information).
- (8) in the Special Tools List section, the basis of issue (BOI) appears as the last line(s) in the entry for each special tool, special TMDE, and other special support equipment. When density of equipments supported exceeds density spread indicated in the basis of issue, the total authorization is increased proportionately.
- (9) The statement "END OF FIGURE" appears just below the last item description in Column 5 for a given figure in both Section II and Section III.
- (10) The indenture, shown as dots appearing before the repair part, indicates that the item is a repair part of the next higher assembly.

f. **QTY (Column (6) ).** The QTY (quantity per figure column) indicates the quantity of the item used in the breakout shown on the illustration figure, which is prepared for a functional group, subfunctional group, or an assembly. A "V" appearing in this column in lieu of a quantity indicates that the quantity is variable and may vary from application to application.

#### 4. EXPLANATION OF COLUMNS (SECTION IV).

##### a. NATIONAL STOCK NUMBER (NSN) INDEX.

- (1) **STOCK NUMBER column.** This column lists the NSN by National item identification number (NIIN) sequence. The NIIN consists of the last nine digits of the  

$$\frac{\text{NSN}}{\text{NIIN}}$$
NSN, i.e. (5305-01-574-1467).

When using this column to locate an item, ignore the first 4 digits of the NSN. However, the complete NSN should be used when ordering items by stock number.

- (2) **FIG. column.** This column lists the number of the figure where the item is identified/located. The figures are in numerical order in Section II and Section III.

- (3) **ITEM column.** The item number identifies the item associated with the figure listed in the adjacent FIG. column. This item is also identified by the NSN listed on the same line.

**b. PART NUMBER INDEX.** Part numbers in this index are listed by part number in ascending alphanumeric sequence (i.e., vertical arrangement of letter and number combination which places the first letter or digit of each group in order A through Z, followed by the numbers 0 through 9 and each following letter or digit in like order).

- (1) **FSCM column.** The Federal Supply Code for Manufacturer (FSCM) is a 5-digit numeric code used to identify the manufacturer, distributor, or Government agency, etc., that supplies the item.
- (2) **PART NUMBER column.** Indicates the primary number used by the manufacturer (individual, firm, corporation, or Government activity), which controls the design and characteristics of the item by means of its engineering drawings, specifications standards, and inspection requirements to identify an item or range of items.
- (3) **STOCK NUMBER column.** This column lists the NSN for the associated part number and manufacturer identified in the PART NUMBER and FSCM columns to the left.
- (4) **FIG. column.** This column lists the number of the figure where the item is identified/located in Sections II and III.
- (5) **ITEM column.** The item number is that number assigned to the item as it appears in the figure referenced in adjacent figure number column.

**c. FIGURE AND ITEM NUMBER INDEX.**

- (1) **FIG. column.** This column lists the number of the figure where the item is identified/located in Section II and III.
- (2) **ITEM column.** The item number is that number assigned to the item as it appears in the figure referenced in the adjacent figure number column.
- (3) **STOCK NUMBER column.** This column lists the NSN for the item.
- (4) **FSCM column.** The Federal Supply Code for Manufacturer (FSCM) is a 5-digit numeric code used to identify the manufacturer, distributor, or Government agency, etc., that supplies the item.
- (5) **PART NUMBER column.** Indicates the primary number used by the manufacturer (individual, firm., corporation, or Government activity), which controls the design and characteristics of the item by means of its engineering drawings, specifications standards, and inspection requirements to identify an item or range of items.

**5. SPECIAL information.**

**a. USABLE ON CODE.** The usable on code appears in the lower left corner of the Description column heading. Usable on codes are shown as "UOC: ....." in the Description Column (justified left) on the last line applicable item description/ nomenclature. Uncoded items are applicable to all models.

Code	Used on
DBC	Model 20-904
DNY	Model 20-911

**b. ASSOCIATED PUBLICATIONS.** The publications listed below pertains to the Air Compressor Section, and its components.

Publication	Short Title
TM 5-4310-362-14	Compressor, Reciprocating: (C & H Distributors Model 20-904), (C & H Distributors Model 20-911)

**6. HOW TO LOCATE REPAIR PARTS.**

**a. When National Stock Number or Part Number is NOT Known.**

- (1) **First.** Using the table of contents, determine the assembly group for subassembly group to which the item belongs. This is necessary since figures are prepared for assembly groups and subassembly groups, and listings are divided into the same groups.
- (2) **Second.** Find the figure covering the assembly group or subassembly group to which the item belongs.
- (3) **Third.** Identify the item on the figure and note the item number.
- (4) **Fourth.** Refer to the Repair Parts List for the figure to find the part number for the item number noted on the figure.
- (5) **Fifth.** Refer to the Part Number Index to find the NSN, if assigned.

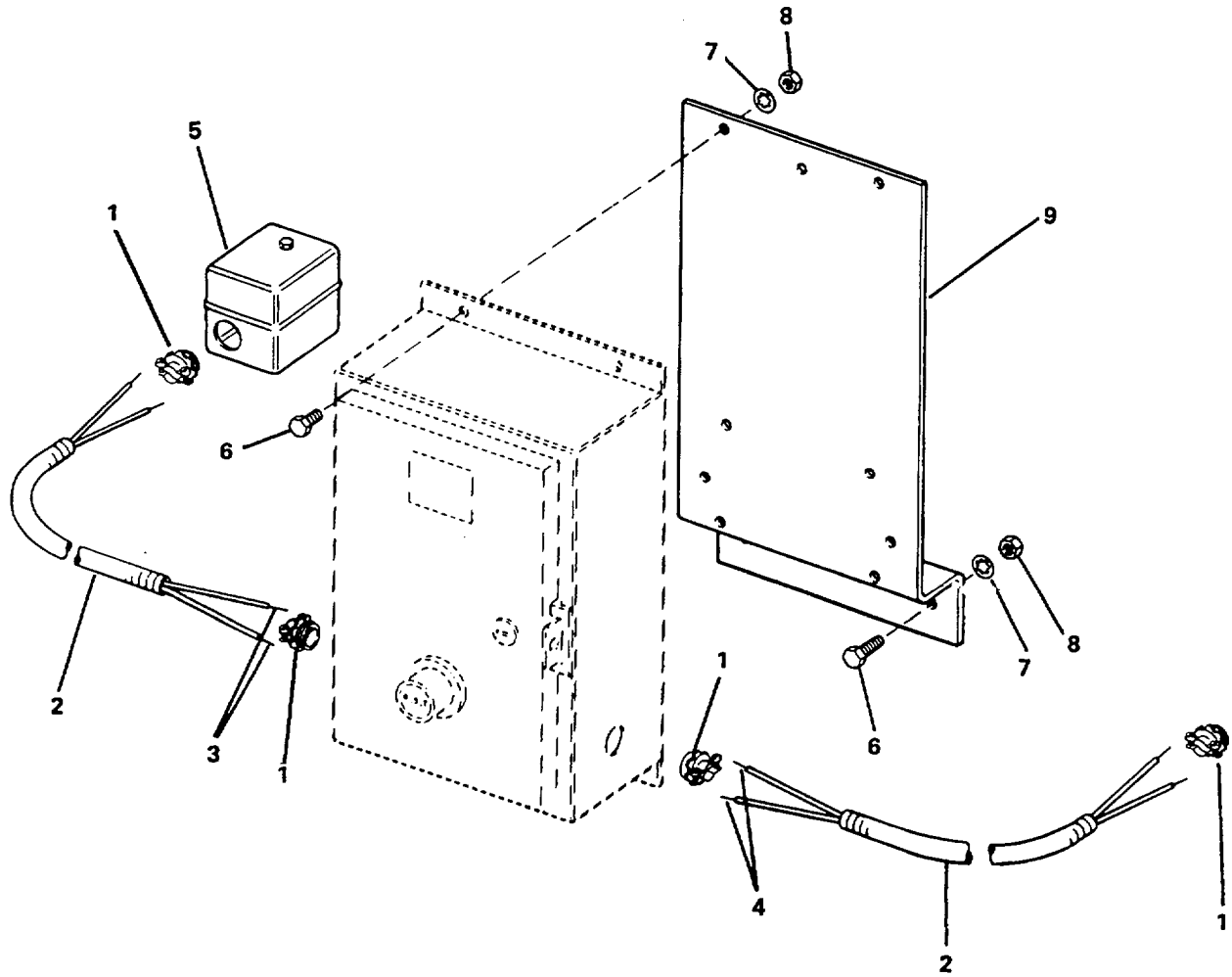
**b. When National Stock Number or Part Number is Known:**

- (1) **First.** Using the Index of National Stock Numbers and Part Numbers, find the pertinent National Stock Number or Part Number. The NSN index is in National Item Identification Number (NIIN) sequence (see 4a(1) ). The part numbers in the Part Number index are listed in ascending alphanumeric sequence (see paragraph 4b). Both indexes cross-reference you to the illustration figure and item number of the item you are looking for.

(2) **Second.** After finding the figure and item number, verify that the item is the one you are looking for, then locate the item number in the repair parts list for the figure.

7. **ABBREVIATIONS.** Abbreviations that are not listed in MIL-STL-12 are listed below.

Abbreviations	Explanation	Abbreviations	Explanation
DEG	Degree(s)	IN.	Inch(es)
EA	Each	LG	Long (length)
FT	Feet (foot)	MTG	Mounting(s)
GRP	Group	NO.	Number(s)
ID	Inside Diameter	OD	Outside Diameter



4760-001

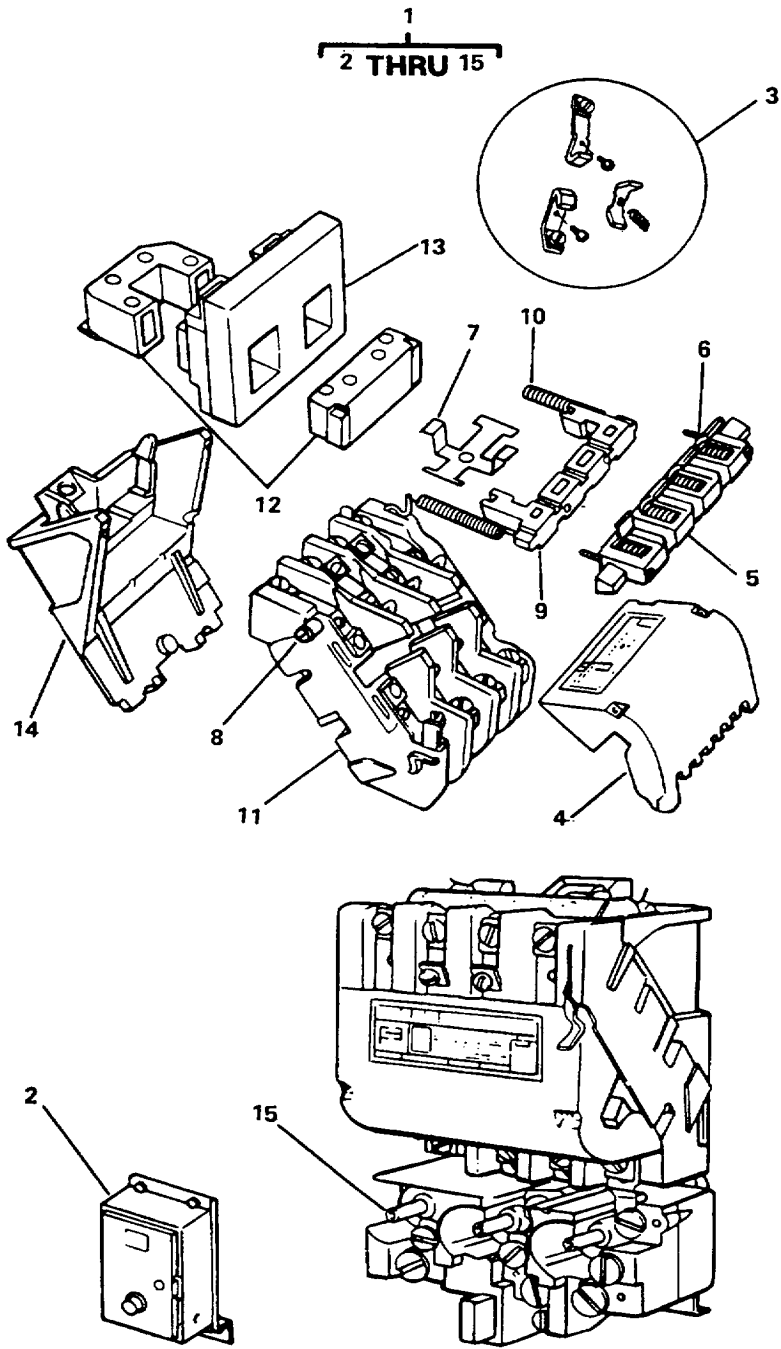
Figure 1. Motor Controls and Wiring.

SECTION II

TM 5-4310-362-24P

(1) ITEM NO	(2) SMR CODE	(3) FSCM	(4) PART NUMBER	(5) DESCRIPTION AND USABLE ON CODES (UOC)	(6) QTY
GROUP 01 MOTOR CONTROLS					
FIG. 1 MOTOR CONTROLS AND WIRING					
1	XDOZZ	04718	1047-06-1	CONNECTOR, CONDUIT 1/2IN.NOM.SIZE, ..... 90 DEGREE ANGLE .....	4
2	XBOZZ	04718	1047-07	CONDUIT, FLEXIBLE 1/2IN.NOM.SIZE; ..... LIQUID TIGHT.....	36
3	MOOZZ	04718	1047-05	WIRE, ELECTRICAL MANUFACTURED FROM..... J-C-30THW06CE1/12TUJ6.....	24
4.	MOOZZ	04718	1046-06	WIRE, ELECT, 12GA RED MANUFACTURED..... FROM P/N J-C-30THW06CE1/12TUJ2..... UOC: DBC	24
5	PBOFZ	23826	69HAU1	SWITCH , PRESSURE..... UOC: DNY	1
5	PBFZZ	23826	69HA1	SWITCH , PRESSURE. ....	1
6	PAOZZ	96906	MS90725-34	BOLT, MACHINE 5/16-18X1.....	6
7	PAOZZ	96906	MS35333-41	WASHER, LOCK 5/16.....	6
8	PAOZZ	96906	MS51967-35	NUT, PLAIN, HEXAGON 5/16-18.....	6
9	XBOZZ	04718	86-073	BRACKET, STARTER.....	1
	PAOZZ	23826	75HA69	..REPAIR KIT, PRESSURE WITH..... V UNLOADER VALVE..... UOC: DBC	

END OF FIGURE



4760-002

Figure 2. Motor Starter.

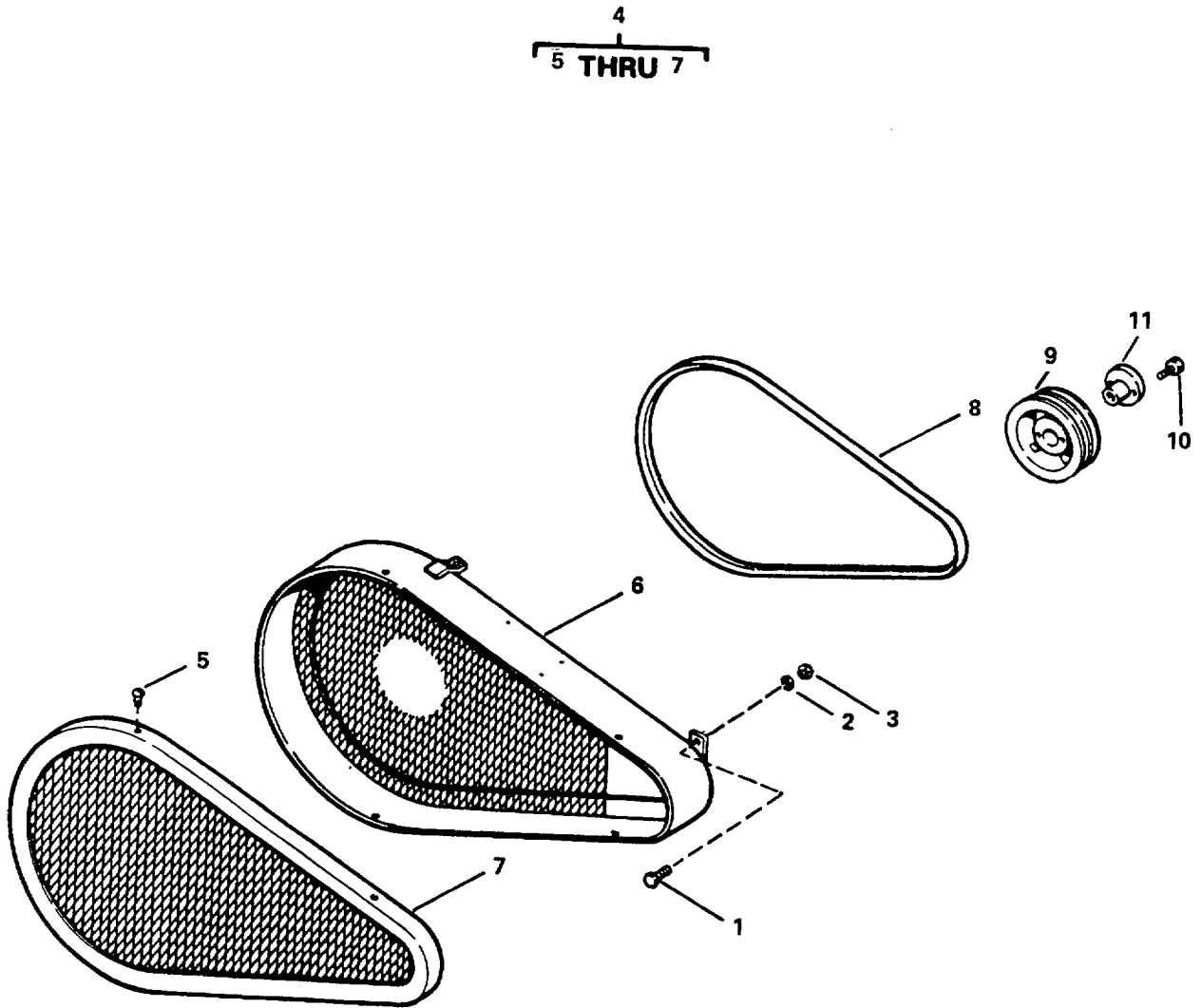
SECTION II

TM5-4310-362-24P

(1) ITEM NO	(2) SMR CODE	(3) FSCM	(4) PART NUMBER	(5) DESCRIPTION AND USABLE ON ODES(UOC) GROUP 01 MOTOR CONTROLS	(6) QTY
FIG. 2 MOTOR STARTER					
1	XBFFF	23826	14CF120A	STARTER, MAGNETIC .....	1
2	XBFZZ	04718	1047-08	.ENCLOSURE, STARTER NEMA 12 .....	1
3	XBFZZ	23826	75CF14	CONTACT, POWER POLE .....	1
4	XBFZZ	23826	73062-001	.COVER, CONTACT BOARD .....	1
5	XBFZZ	23826	D54670-001	.CROSS ARM .....	1
6	XBFZZ	23826	D25013-001	.SCREW .....	1
7	XBFZZ	23826	24817-001	.CLIP, SPRING.....	1
8	XBFZZ	23826	D24827-001	.SCREW, TAPPING, THREA.....	2
9	XBFZZ	23826	D54873-001	.BASE, CROSS ARM .....	1
10	XBFZZ	23826	D24826-001	.SPRING, CROSS ARM .....	1
11	XBFZZ	23826	D73116-021	.BOARD, CONTACT.....	1
12	XBFZZ	23826	D25551-001	.MAGNET AND ARMATURE .....	1
13	XBFZZ	23826	75D73070A	.COIL, 60HZ 110-120/208-240 VOLTS .....	1
				50HZ 110 VOLTS .....	
14	XBFZZ	23826	D73060-001	.BASE.....	1
15	XBFZZ	23826	48DC11A2	.RELAY, OVERLOAD.....	1

END OF FIGURE





4760-003

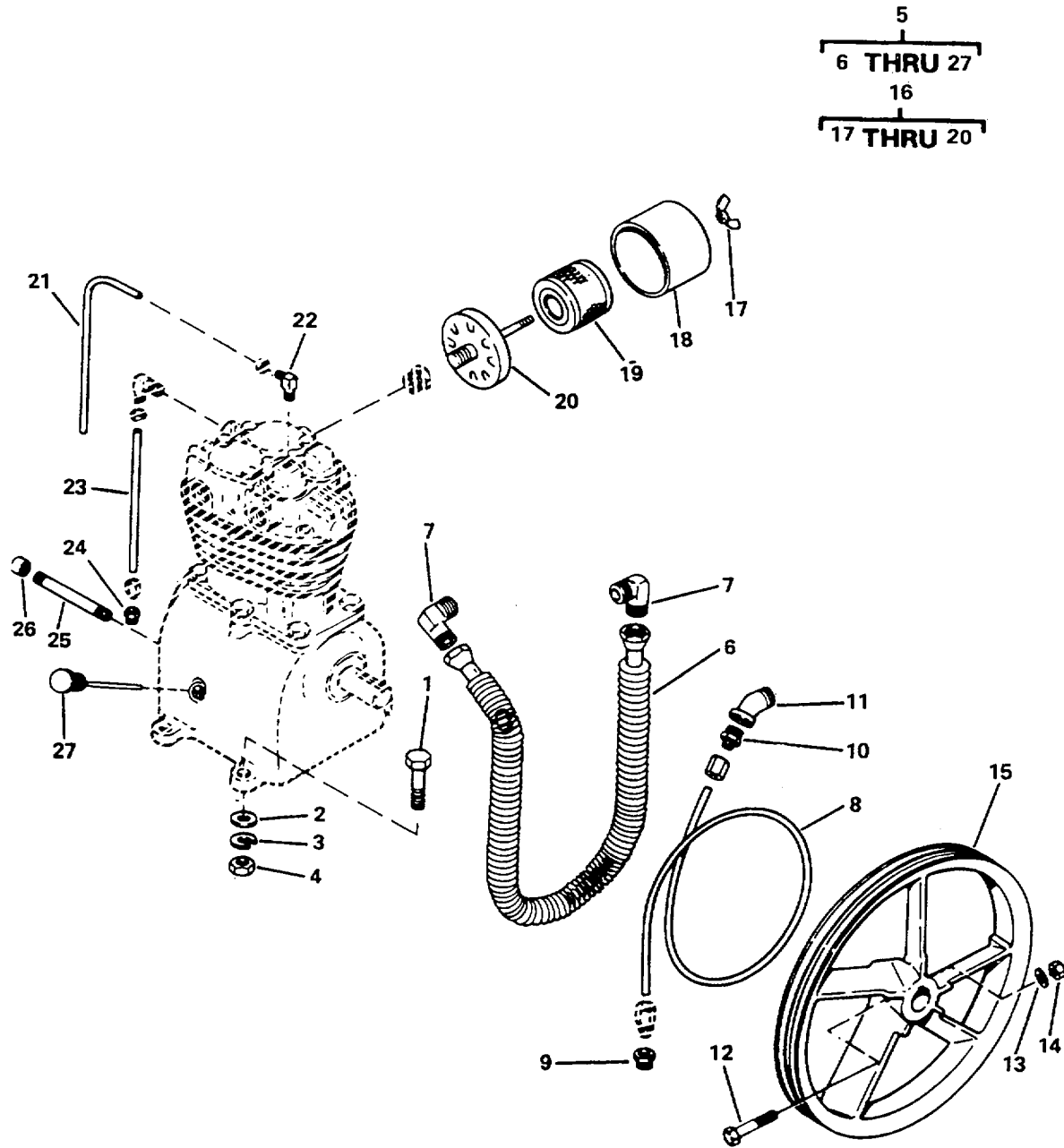
Figure 3. Compressor Drive.

## SECTION II

TM5-4310-362-24P

(1) ITEM NO	(2) SMR CODE	(3) FSCM	(4) PART NUMBER	(5) DESCRIPTION AND USABLE ON CODES(UOC)	(6) QTY
GROUP 02 COMPRESSOR DRIVE					
FIG. 3 COMPRESSOR DRIVE					
1	PAOZZ	96906	MS90728-32	BOLT, MACHINE 5/16-18X3 /4.....	2
2	PAOZZ	96906	MS35333-41	WASHER, LOCK. ....	2
3	PAOZZ	96906	MS51967-35	NUT, PLAIN, HEXAGON 18 .....	2
4	XBOOO	04718	86-099	GUARD ASSY, BELT. ....	1
4	XBOOO	04718	86-191	GUARD ASSEMBLY, BELT .....	1
UOC: DNY					
5	PAOZZ	96906	MS35206-243	.SCREW, MACHINE X3/8 .....	4
6	XBOOZ	04718	86-099A	.BODY, BELT GUARD .....	1
7	XBOZZ	04718	86-099B	.COVER, BELT GUARD .....	1
8	PAOZZ	71176	A54	BELT, V .....	2
9	XBFZZ	71176	2AK74H	PULLEY ASSY, DRIVE .....	1
UOC: DBC					
9	PAOZZ	71176	2AK64H	.PULLEY, GROOVE.....	1
UOC: DNY					
10	PAOZZ	96906	90725-6	.SCREW, CAP, HEXAGON H.....	2
11	PAOZZ	71176	H1-1/8	.BUSHING, SLEEVE.....	1
UOC: DNY					

END OF FIGURE



4760-004

Figure 4. Compressor Assembly, Model 20-904.

## SECTION II

TM5-4310-362-24P

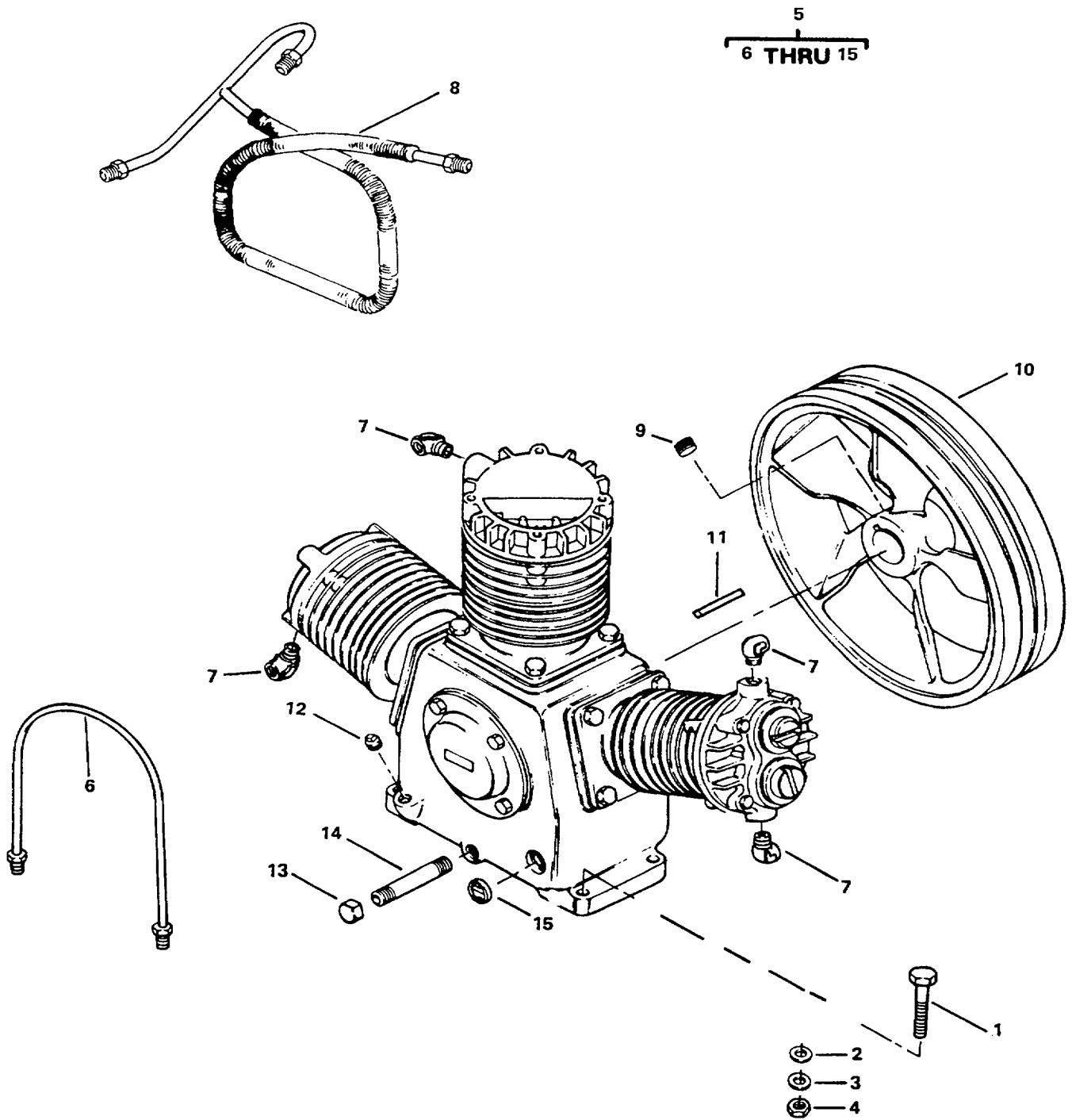
(1) ITEM NO	(2) SMR CODE	(3) FSCM	(4) PART NUMBER	(5) DESCRIPTION AND USABLE ON CODES(UOC) GROUP 03 COMPRESSOR ASSEMBLY	(6) QTY
1	PAOZZ	96906	MS18154-60	FIG. 4 COMPRESSOR ASSY, MODEL 20-904 SCREW, CAP, HEXAGON H .....	4
				UOC: DBC	
2	PAOZZ	96906	MS27183-14	WASHER, FLAT .....	4
				UOC: DBC	
3	PAOZZ	96906	MS35333-42	WASHER , LOCK .....	4
				UOC: DBC	
4	PAOZZ	96906	MS51967-38	NUT, PLAIN, HEXAGON.....	4
				UOC: DBC	
5	XDOFF	04718	86-082	COMPRESSOR ASSEMBLY .....	1
				UOC: DBC	
6	PBOZZ	53239	48211	.FINNED TUBING, INTER.....	1
				UOC: DBC	
7	XDOZZ	53239	38466	.ELBOW, PIPE TO TUBE 5/8 TUBE SIZE, .....	2
				1/2 PIPE THREAD.....	
				UOC: DBC	
8	XBOZZ	04718	86-109	.TUBING, AFTER COOLER .....	1
				UOC: DBC	
9	PAOZZ	30327	68FL1-2X3-8	.ADAPTER, STRAIGHT, PI 3/8 PIPE .....	1
				THREAD. ....	
				UOC: DBC	
10	PAOZZ	93061	68C8-8	.ADAPTER, STRAIGHT, PI 1/2 PIPE .....	1
				THREAD. ....	
				UOC: DBC	
11	PAOZZ	96906	MS39231-4	.ELBOW, PIPE .....	1
				UOC: DBC	
12	PAOZZ	96906	MS90725-122	.SCREW, CAP, HEXAGON H .....	1
				UOC: DBC	
13	XDOZZ	96906	MS35338-48	.WASHER, LOCK .....	1
				UOC: DBC	
14	PAOZZ	12603	61D8	.NUT, PLAIN, HEXAGON .....	1
				UOC: DBC	
15	PBOZZ	04718	86-078	.PULLEY, GROOVE .....	1
				UOC: DBC	
16	PBOOZ	04718	86-103	.AIR CLEANER, INTAKE .....	1
				UOC: DBC	
17	PAOZZ	04718	1047-09	..NUT, PLAIN, WING.....	1
				UOC: DBC	
18	XBOZZ	04718	86-103A	..COVER, AIR FILTER .....	1
				UOC: DBC	
19	PAOZZ	04718	PA-1915	..FILTER ELEMENT, FLUI.....	1
				UOC: DBC	
20	XBOZZ	04718	86-103B	..BODY, AIR FILTER.....	1
				UOC: DBC	
21	XBOZZ	04718	1047-12	.TUBING, UNLOADER.....	1
				UOC: DBC	
22	XDOZZ	93061	169C-5-4	.ELBOW, PIPE TO TUBE 1/4 PIPE THREAD .....	2
				UOC: DBC	

**SECTION II**

**TM5-4310-362-24P**

(1) ITEM NO	(2) SMR CODE	(3) FSCM	(4) PART NUMBER	(5) DESCRIPTION AND USABLE ON CODES(UOC)	(6) QTY
23	XBOZZ	04718	48198	.TUBING, BREATHER ..... UOC: DBC	1
24	PAOZZ	93061	68C5-4	ADAPTER, STRAIGHT, PI 1/4 PIPE ..... .THREAD..... UOC: DBC	1
25	PAOZZ	96906	MS51953-39	.NIPPLE, PIPE X5-1/2..... UOC: DBC	1
26	PBOZZ	81348	WW-P-521	.CAP, PIPE ..... UOC: DBC	1
27	PBOZZ	53239	13523	.GAGE, OIL LEVEL, BAYO ..... UOC: DBC	1

**END OF FIGURE**



4760-005

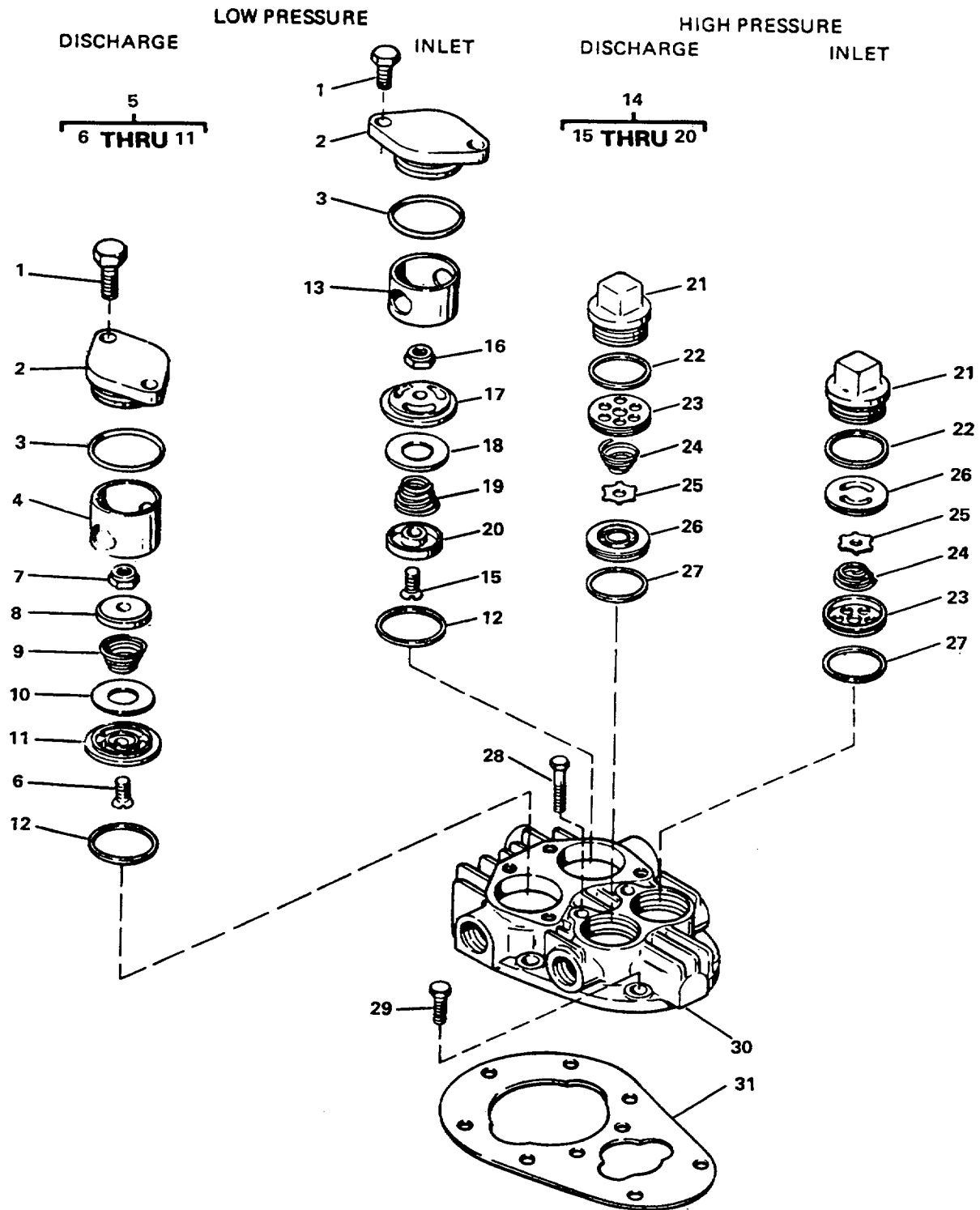
Figure 5. Compressor Assembly, Model 20-911.

## SECTION II

TM5-4310-362-24P

(1) ITEM NO	(2) SMR CODE	(3) FSCM	(4) PART NUMBER	(5) DESCRIPTION AND US ABLE ON CODES(UOC)	(6) QTY
GROUP 03 COMPRESSOR ASSEMBLY					
FIG. 5 COMPRESSOR ASSY, MODEL 20-911					
1	PAOZZ	96906	MS18154-60	.SCREW, CAP, HEXAGON H ..... UOC: DNY	2
2	PAOZZ	96906	MS27183-14	.WASHER, FLAT ..... UOC: DNY	4
3	PAOZZ	96906	MS35333-42	.WASHER , LOCK ..... UOC: DNY	4
4	PAOZZ	96906	MS51967-38	.NUT, PLAIN, HEXAGON ..... UOC: DNY	4
5	PAOFO	11568	CAW-1	.COMPRESSOR, RECIPROC ..... UOC: DNY	1
6	XDOZZ	04718	86-152	.AFTERCOOLER ..... UOC: DNY	1
7	XDOZZ	11568	Z-515	.ELBOW, PIPE TO TUBE ,1/2X3/8X90DEG. .... UOC: DNY	4
8	PAOZZ	11568	A-12A	.MANIFOLD, FLUID COOL ..... UOC: DNY	1
9	PAOZZ	36422	1X485	.SETSCREW 3/8-16X3/8 (FLYWHEEL) ..... UOC: DNY	1
10	XBOZZ	11568	NR-4-7A	.FLYWHEEL ..... UOC: DNY	1
11	PAOZZ	96906	MS20066-256	.KEY, MACHINE 1/4X1/4X1-1/2 ..... UOC DNY	1
12	PAOZZ	11568	M-1796	.PLUG, PIPE 3/8 IN ..... UOC: DNY	1
13	XBOZZ	11568	M-461	.CAP, OIL DRAIN 3/8 IN ..... UOC: DNY	1
14	PAOZZ	11568	M-492	.NIPPLE, PIPE 3/8-4 ..... UOC: DNY	1
15	PAFZZ	11568	B-14	.INDICATOR, SIGHT, LIQ ..... UOC: DNY	1

END OF FIGURE



4760-006

Figure 6. Intake and Exhaust Valves, Model 20-904.



## SECTION II

TM5-4310-362-24P

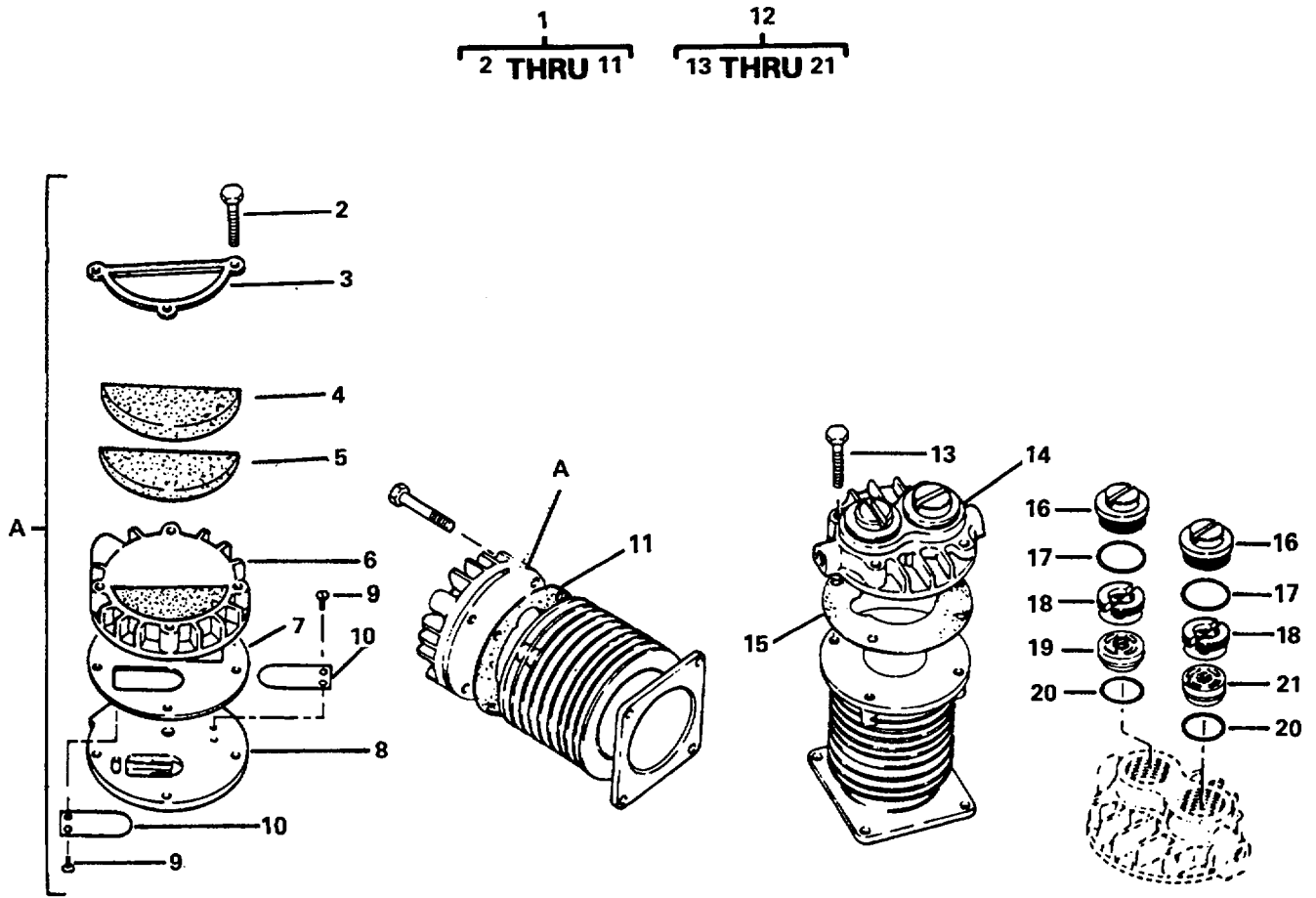
(1) ITEM NO	(2) SMR CODE	(3) FSCM	(4) PART NUMBER	(5) DESCRIPTION AND USABLE ON CODES(UOC) GROUP 03 COMPRESSOR ASSEMBLY	(6) QTY
				FIG. 6 INTAKE AND EXHAUST VALVES, MODEL 20-904	
1	PAOZZ	53239	47934	.SCREW, CAP, HEXAGON H 5/16 IN.-18X3/4 IN..... UOC: DBC	4
2	XBOZZ	53239	47929	.COVER, ACCESS ..... UOC: DBC	2
3	PAOZZ	53239	47931	.PACKING, PREFORMED..... UOC: DBC	2
4	XDOZZ	53239	48001	.CAP, VALVE ..... UOC: DBC	1
5	PAOOZ	53239	47936	.VALVE ASSEMBLY, COMP ..... UOC: DBC	1
6	PAOZZ	53239	50679	..SCREW 1/4 IN.-28 THREAD..... UOC: DBC	1
7	PAFZZ	53239	50680	..NUT, SELF-LOCKING, HE 1/4 IN.-28..... THREAD..... UOC: DBC	1
8	PAOZZ	53239	47981	..VALVE RETAINER, LOW ..... UOC: DBC	1
9	PAOZZ	53239	47993	..SPRING, HELICAL, COMP ..... UOC: DBC	1
10	PAOZZ	53239	47973	..WASHER, FLAT ..... UOC: DBC	1
11	PAOZZ	53239	48147	..SEAT, VALVE ..... UOC: DBC	1
12	PAOZZ	53239	47938	.GASKET ..... UOC: DBC	2
13	XDOZZ	53239	47999	.TUBE ASSEMBLY, METAL..... UOC: DBC	1
14	PAOOZ	53239	50681	.INLET VALVE, COMPRES ..... UOC: DBC	1
15	PAOZZ	53239	50679	..SCREW 1/4 IN.-28 THREAD ..... UOC: DBC	1
16	PAOZZ	53239	50680	..NUT, SELF-LOCKING, HE 1/4 IN.-28..... THREAD..... UOC: DBC	1
17	PAOZZ	53239	47977	..SEAT, VALVE ..... UOC: DBC	1
18	PAOZZ	53239	47973	..WASHER, FLAT ..... UOC: DBC	1
19	PAOZZ	53239	47993	..SPRING, HELICAL, COMP..... UOC: DBC	1
20	PAOZZ	53239	48146	..SEAT, HELICAL COMPRES ..... UOC: DBC	1
21	XBOZZ	53239	48122	.COVER, VALVE, HP ..... UOC: DBC	2
22	PAOZZ	53239	48210	.GASKET ..... UOC: DBC	2

SECTION II

TM5-4310-362-24P

(1) ITEM NO	(2) SMR CODE	(3) FSCM	(4) PART NUMBER	(5) DESCRIPTION AND USABLE ON CODES(UOC)	(6) QTY
23	PAOZZ	53239	12524	UOC: DBC .SEAT, VALVE. ....	2
24	PAOZZ	53239	7891	UOC: DBC .SPRING, HELICAL, COMP. ....	2
25	PAOZZ	53239	12525	UOC: DBC .PLATE , VALVE. ....	2
26	PAOZZ	53239	12526	UOC: DBC .SEAT, VALVE. ....	2
27	PAOZZ	53239	12549	UOC: DBC .SHIM .....	2
28	XBOZZ	53239	990	UOC: DBC .BOLT, MACHINE 5/16-18X2-1/2 .....	2
29	PAOZZ	96906	MS90725-34	UOC: DBC .BOLT, MACHINE 5/16-18X1 IN .....	7
30	PBOZZ	53239	48123	UOC: DBC .CYLINDER HEAD, COMPR.....	1
31	PAOZZ	53239	48204	UOC: DBC .GASKET .....	1

END OF FIGURE



4760-007

Figure 7. Intake and Exhaust Valves, Model 20-911.

## SECTION II

TM5-4310-362-24P

(1) ITEM NO	(2) SMR CODE	(3) FSCM	(4) PART NUMBER	(5) DESCRIPTION AND USABLE ON CODES(UOC) GROUP 03 COMPRESSOR ASSEMBLY	(6) QTY
				FIG. 7 INTAKE AND EXHAUST VALVES, MODEL 20-911	
1	XBOOZ	11568	Z-676	HEAD ASSEMBLY, REED ..... UOC: DNY	2
2	PAOZZ	96906	MS51095-337	..SCREW, CAP, HEXAGON H 5/16-8X1-3/4. .... UOC: DNY	8
3	PAOZZ	11568	P-3703A	..RETAINER FILTER..... UOC: DNY	2
4	PAOZZ	11568	M-1586	..FILTER ELEMENT, INTA ..... UOC: DNY	2
5	PAOZZ	11568	M-1587	..PAD, INTAKE, COMPRESS. .... UOC: DNY	2
6	PAOZZ	11568	M-1561	..CYLINDER HEAD, COM PR. .... UOC: DNY	2
7	PAOZZ	11568	M-1564	..GASKET. .... UOC: NY	2
8	PAOZZ	11568	M-1562	..PLATE, REED VALVE..... UOC: DNY	2
9	PAOZZ	11568	M-1565	..SCREW ROLLING THREAD..... UOC: DNY	8
10	PAOZZ	11568	M-1563	..FLAPPER, MAGNETIC, VA..... UOC: DNY	4
11	PAOZZ	11568	B-31	..GASKET LOW PRESSURE..... UOC: DNY	2
12	PAFFZ	11568	ZC-1	..CYLINDER HEAD, COMPR..... UOC: DNY	1
13	PAOZZ	96906	MS90725-36	..SCREW, CAP, HEXAGON H 5/16-8X3/4..... UOC: DNY	4
14	PAFZZ	11568	C-1	..CYLINDER HEAD, COMPR. .... UOC: DNY	1
15	PAOZZ	11568	C-31	..GASKET HIGH PRESSURE ..... UOC: DNY	1
16	XBOZZ	11568	B-28A	..CAP, VALVE ..... UOC: DNY	2
17	PAOZZ	11568	B-75	..GASKET ..... UOC: DNY	2
18	XBFZZ	11568	B-26A	..RETAINER, VALVE ..... UOC: DNY	2
19	PAOZZ	11568	Z-184	..VALVE ASSEMBLY, INTA ..... UOC: DNY	1
20	PAOZZ	11568	Z122A	..VALVE ASSEMBLY, EXHA ..... UOC: DNY	1
21	PAOZZ	11568	U-48	..GASKET ..... UOC: DNY	2

END OF FIGURE

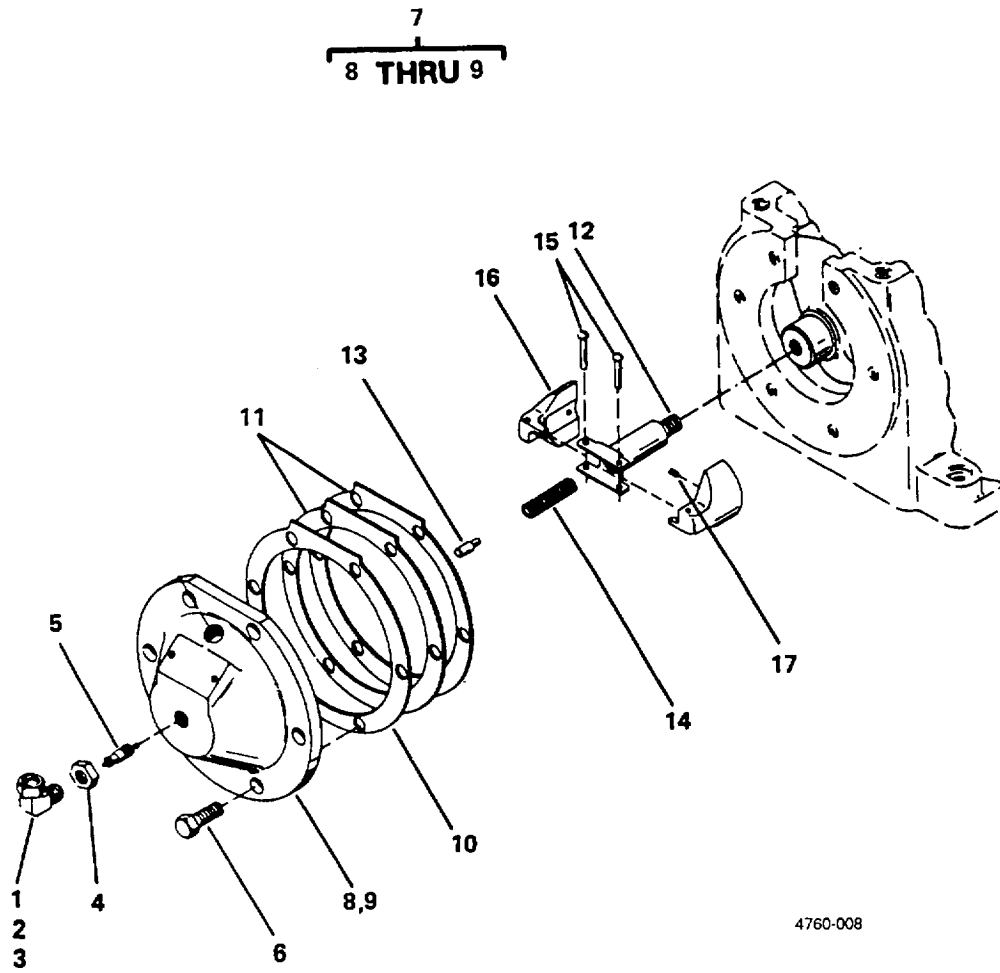


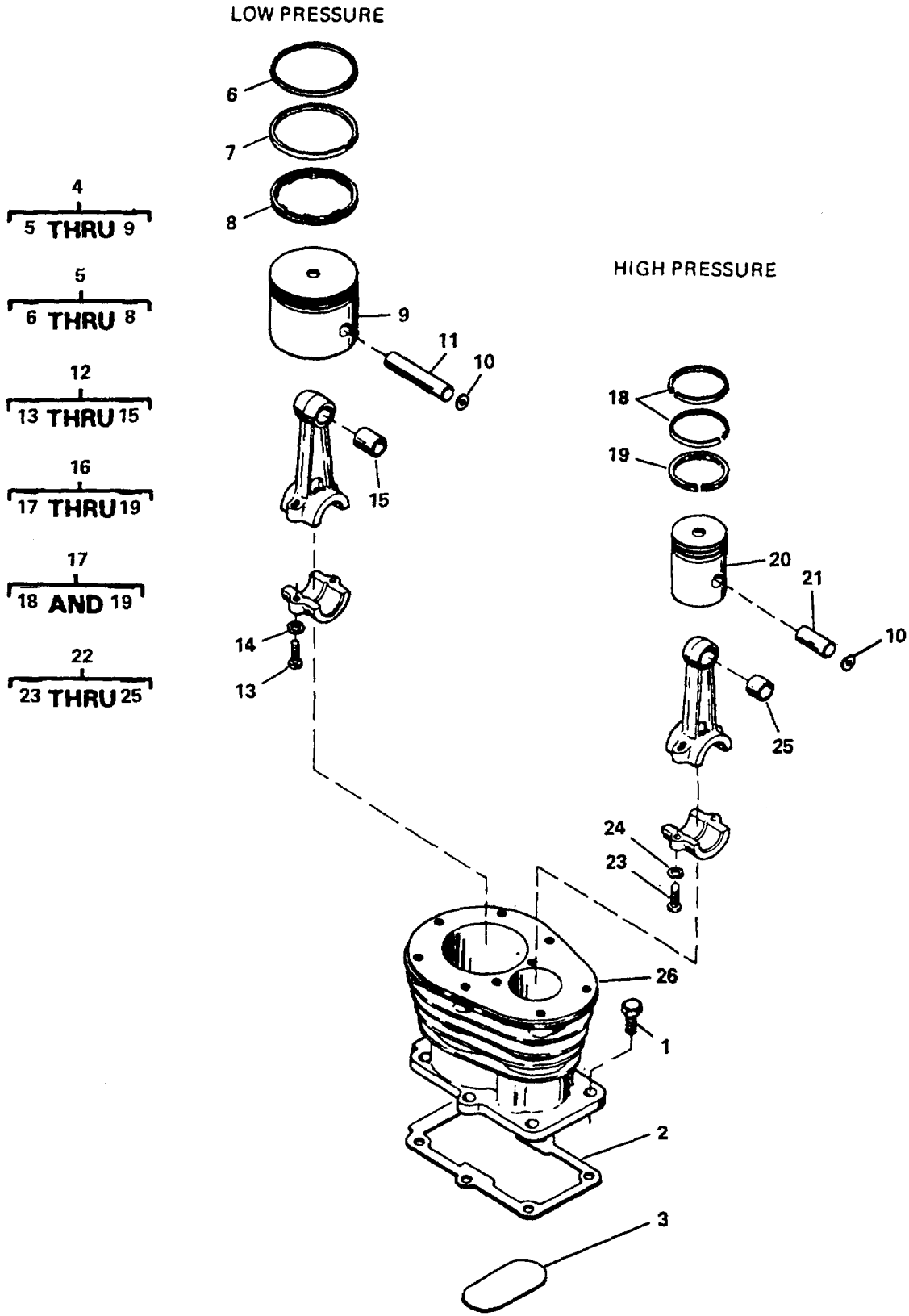
Figure 8. Centrifugal Unloader, Model 20-904.

## SECTION II

TM 5-4310-362-24P

(1) ITEM NO	(2) SMR CODE	(3) FSCM	(4) PART NUMBER	(5) DESCRIPTION AND USABLE ON CODES (UOC)	(6) QTY
GROUP 03 COMPRESSOR ASSEMBLY					
FIG. 8 CENTRIFUGAL UNLOADER, MODEL 20-904					
1	XBFZZ	53239	47990	.ELBOW, VALVE..... UOC: DBC	1
2	XBFZZ	53239	31797	.NUT, TUBING, 5/16 ..... UOC: DBC	1
3	XBFZZ	53239	31796	.SLEEVE, TUBING, 5/16 ..... UOC: DBC	1
4	PAFZZ	53239	48070	.NUT..... UOC: DBC	1
5	PAFZZ	53239	48069	.VALVE CORE..... UOC: DBC	1
6	XDFZZ	53239	48222	.SCREW, CAP, SOCKET HE 1/4 IN.-20X3/ 4 IN..... UOC: DBC	1
7	XBFFF	53239	48200	.END COVER & CUP ASSY..... UOC: DBC	1
8	XBFZZ	53239	48127	..COVER, END ..... UOC: DBC	1
9	PBFZZ	60038	14117A	..CONE AND ROLLERS, TA ..... UOC: DBC	1
10	PAFZZ	53239	31765	.GASKET 0.007 IN ..... UOC: DBC	3
11	PAFZZ	53239	31764	.GASKET 0.005 IN ..... UOC: DBC	2
12	XDFZZ	53239	49913	.SHAFT ASSEMBLY, WEIG ..... UOC: DBC	1
13	PBFZZ	53239	47958	.PLUNGER..... UOC: DBC	1
14	PAFZZ	53239	47956	.SPRING, HELICAL, COMP..... UOC: DBC	1
15	XDFZZ	53239	47957	.RIVET..... UOC: DBC	2
16	PBFZZ	53239	48839	.WEIGHT..... UOC: DBC	2
17	PAFZZ	53239	38195	.SPRING, HELICAL, COMP ..... UOC: DBC	2

END OF FIGURE



4760-009

Figure 9. Pistons, Connecting Rods and Cylinder Block, Model 20-904.

## SECTION II

TM 5-4310-362-24P

(1) ITEM NO	(2) SMR CODE	(3) FSCM	(4) PART NUMBER	(5) DESCRIPTION AND USABLE ON CODES (UOC)	(6) QTY
GROUP 03 COMPRESSOR ASSEMBLY					
FIG. 9 PISTONS, CONNECTING RODS AND CYLINDER BLOCK, MODEL 20-904					
1	PAFZZ	53239	34090	.SCREW, CAP, HEXAGON H .....	6
				UOC: DBC	
2	PAHZZ	53239	31772	.GASKET .....	1
				UOC: DBC	
3	XBHZZ	53239	31767	.COVER PLATE ACCESS.....	1
				UOC: DBC	
4	XBHHZ	53239	48418	.PISTON, COMPRESSOR.....	1
				UOC: DBC	
5	PBHZZ	53239	48419	..RING SET, PISTON .....	1
				UOC: DBC	
6	XDHZZ	53239	48207	...RING, PISTON.....	1
				UOC: DBC	
7	XAHHZ	53239	48208	...RING, PISTON.....	1
				UOC: DBC	
8	XDHZZ	53239	48209	...RING, PISTON.....	1
				UOC: DBC	
9	XAHHZ	53239	48124	..PISTON, COMPRESSOR.....	1
				UOC: DBC	
10	PBHZZ	53239	7890	.WASHER, FLAT .....	2
				UOC: DBC	
11	PBHZZ	53239	48202	.PIN, STRAIGHT, HEADLE .....	1
				UOC: DBC	
12	PAHHZ	53239	31769	.CONNECTING ROD, PIST.....	1
				UOC: DBC	
13	XDFZZ	53239	32736	..SCREW, CAP, SOCKET HE 1/4 IN.-28X 3/4 IN.....	2
				UOC: DBC	
14	PAFZZ	53239	9522	..WASHER, LOCK .....	2
				UOC: DBC	
15	PBHZZ	53239	10161	..BEARING, SLEEVE .....	1
				UOC: DBC	
16	PAHHZ	53239	48416	.PISTON, COMPRESSOR.....	1
				UOC: DBC	
17	PBHZZ	53239	48417	..RING SET, PISTON .....	1
				UOC: DBC	
18	XAHHZ	53239	48205	...RING, PISTON .....	2
				UOC: DBC	
19	XAHHZ	53239	48206	...RING, PISTON.....	1
				UOC: DBC	
20	PBHZZ	53239	48203	.PIN, STRAIGHT, HEADLE .....	1
				UOC: DBC	
21	XDHZZ	53239	48125	..PISTON, COMPRESSOR.....	1
				UOC: DBC	
22	PBHZZ	53239	48199	.ROD ASSY, CONNECT.....	1
				UOC: DBC	
23	XDFZZ	53239	32736	..SCREW, CAP, SOCKET HE 1/4 IN.-28X3/ .....	2

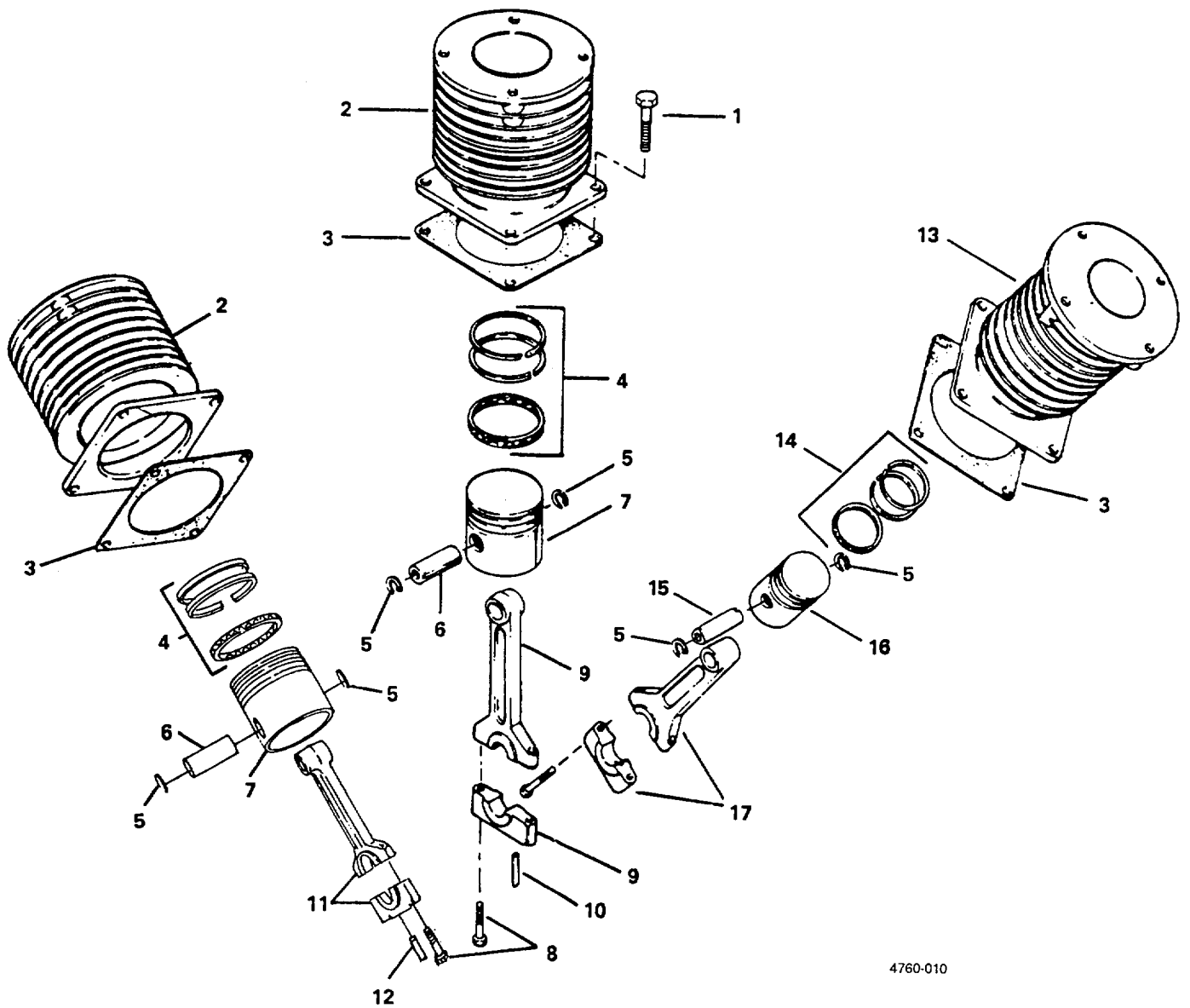


SECTION II

TM 5-4310-362-24P

(1) ITEM NO	(2) SMR CODE	(3) FSCM	(4) PART NUMBER	(5) DESCRIPTION AND USABLE ON CODES (UOC)	(6) QTY
				4 IN.....	
				UOC: DBC	
24	PAFZZ	53239	9522	..WASHER, LOCK .....	2
				UOC: DBC	
25	PBHZZ	96906	MS17795-73	..BEARING, SLEEVE HP .....	1
				UOC: DBC	
26	XBHZZ	53239	48126	.CYLINDER, RECIPROCAT .....	1
				UOC: DBC	

END OF FIGURE



4760-010

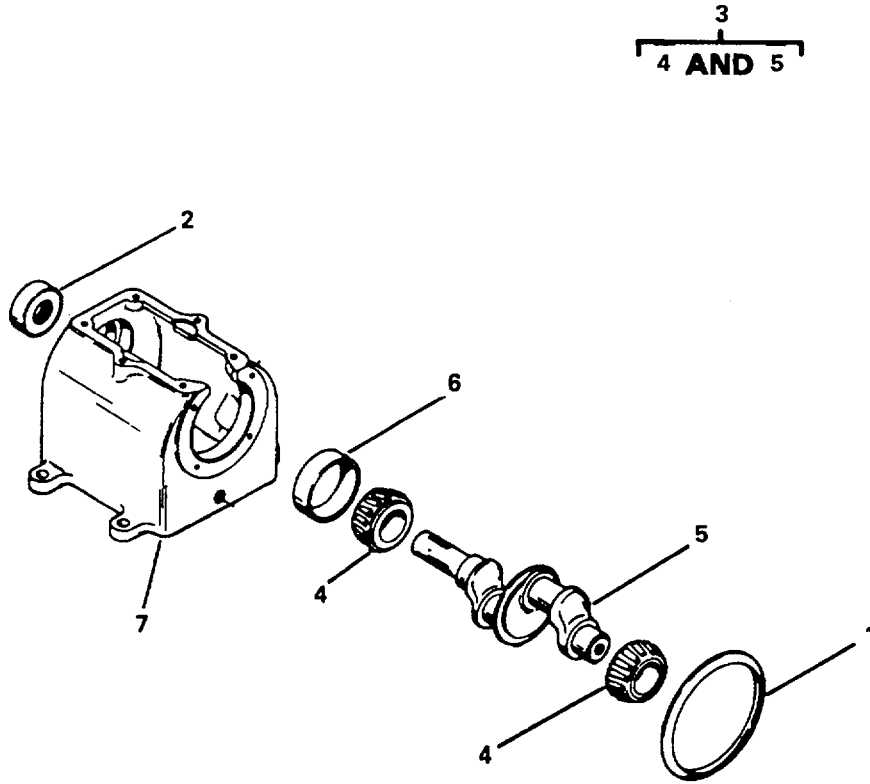
Figure 10. Pistons, Connecting Rods and Cylinder Block, Model 20-911.

## SECTION II

TM 5-4310-362-24P

(1) ITEM NO	(2) SMR CODE	(3) FSCM	(4) PART NUMBER	(5) DESCRIPTION AND USABLE ON CODES (UOC)	(6) QTY
GROUP 03 COMPRESSOR ASSEMBLY					
FIG. 10 PISTONS, CONNECTING RODS AND CYLINDER BLOCK, MODEL 20-911					
1	PAOZZ	70188	2X167	.BOLT, MACHINE 5/16-8 IN (CYLINDER RETAINING)..... UOC: DNY	12
2	XBOZZ	11568	A-6A	.CYLINDER, LP ..... UOC: DNY	2
3	PAOZZ	11568	A-29	.GASKET ..... UOC: DNY	3
4	XDFZZ	11568	ZA-10	.RING, PISTON LP SET ..... UOC: DNY	2
5	PAFZZ	11568	A-102	.RING, RETAINING WRIST PIN ..... UOC: DNY	6
6	PAFZZ	11568	A-21	.PIN, PISTON. .... UOC: DNY	2
7	XDOZZ	11568	A-4A	.PISTON, COMPRESSOR..... UOC: DNY	2
8	XBFZZ	11568	M-780	.SCREW, CAP, HEXAGON H 1/4-X1-1/2 ..... (CONNECTING ROD)..... UOC: DNY	4
9	XBFZZ	11568	Z-1053	ASSEMBLY, CONNECTING ROD; CENTER ..... UOC: DNY	1
10	XBFZZ	11568	Z-822	.DIPPER, OIL ..... UOC: DNY	1
11	XBFZZ	11568	Z-1052	.ASSEMBLY, CONNECTING ROD ..... UOC: DNY	3
12	XBFZZ	11568	P-5087A	.DIPPER, OIL ..... UOC: DNY	1
13	XBFZZ	11568	C-6B	.CYLINDER, HP ..... UOC: DNY	1
14	PAFZZ	11568	ZC-10	.RING SET, PISTON..... UOC: DNY	1
15	XAFZZ	11568	C-21A	.PIN, PISTON..... UOC: DNY	1
16	PAFZZ	11568	C-4A	.PISTON, COMPRESSOR ..... UOC: DNY	1
17	XBFZZ	11568	Z-1054	ASSEMBLY, CONNECTING ROD; RIGHT ..... UOC: DNY	1

END OF FIGURE



4760-011

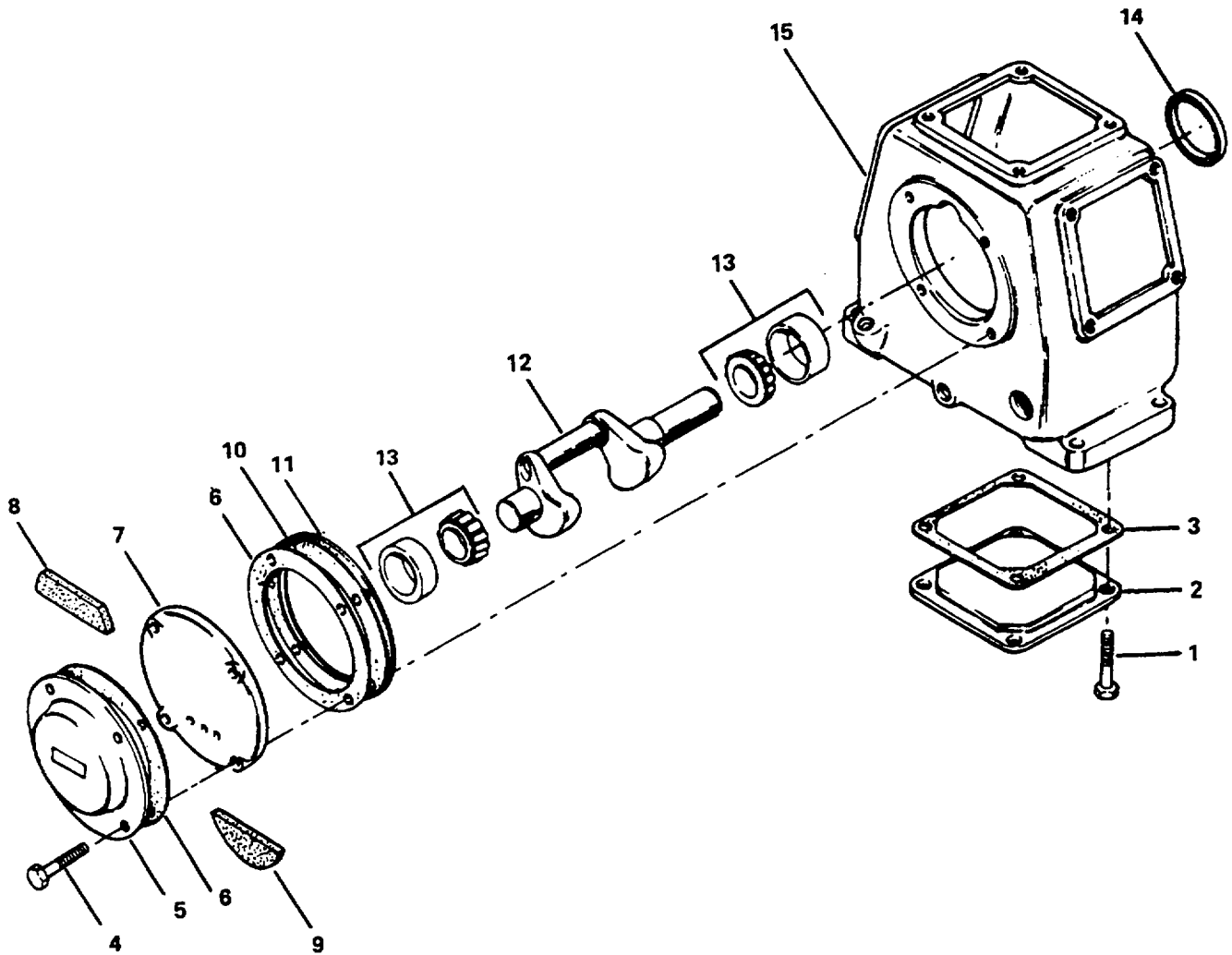
Figure 11. Crankshaft, Bearings and Oil Seals, Model 20-904.

SECTION II

TM 5-4310-362-24P

(1) ITEM NO	(2) SMR CODE	(3) FSCM	(4) PART NUMBER	(5) DESCRIPTION AND USABLE ON CODES (UOC)	(6) QTY
GROUP 03 COMPRESSOR ASSEMBLY					
FIG. 11 CRANKSHAFT, BEARINGS AND OIL SEALS, MODEL 20-904					
1	PBHZZ	53239	31762	.RING, WIPER..... UOC: DBC	1
2	PAHZZ	80201	10126	.SEAL, PLAIN ENCASED..... UOC: DBC	1
3	XDHHZ	53239	48196	.CRANKSHAFT, COMPRESS ..... UOC: DBC	1
4	PBHZZ	60038	14274	..CUP, TAPERED ROLLER..... UOC: DBC	2
5	PBHZZ	53239	35755	..CRANKSHAFT, COMPRESS ..... UOC: DBC	1
6	PBHZZ	60038	14117A	.CONE AND ROLLERS, TA..... UOC: DBC	1
7	XDHZZ	53239	31770	.CRANKCASE, COMPRESSO..... UOC: DBC	1

END OF FIGURE



4760-012

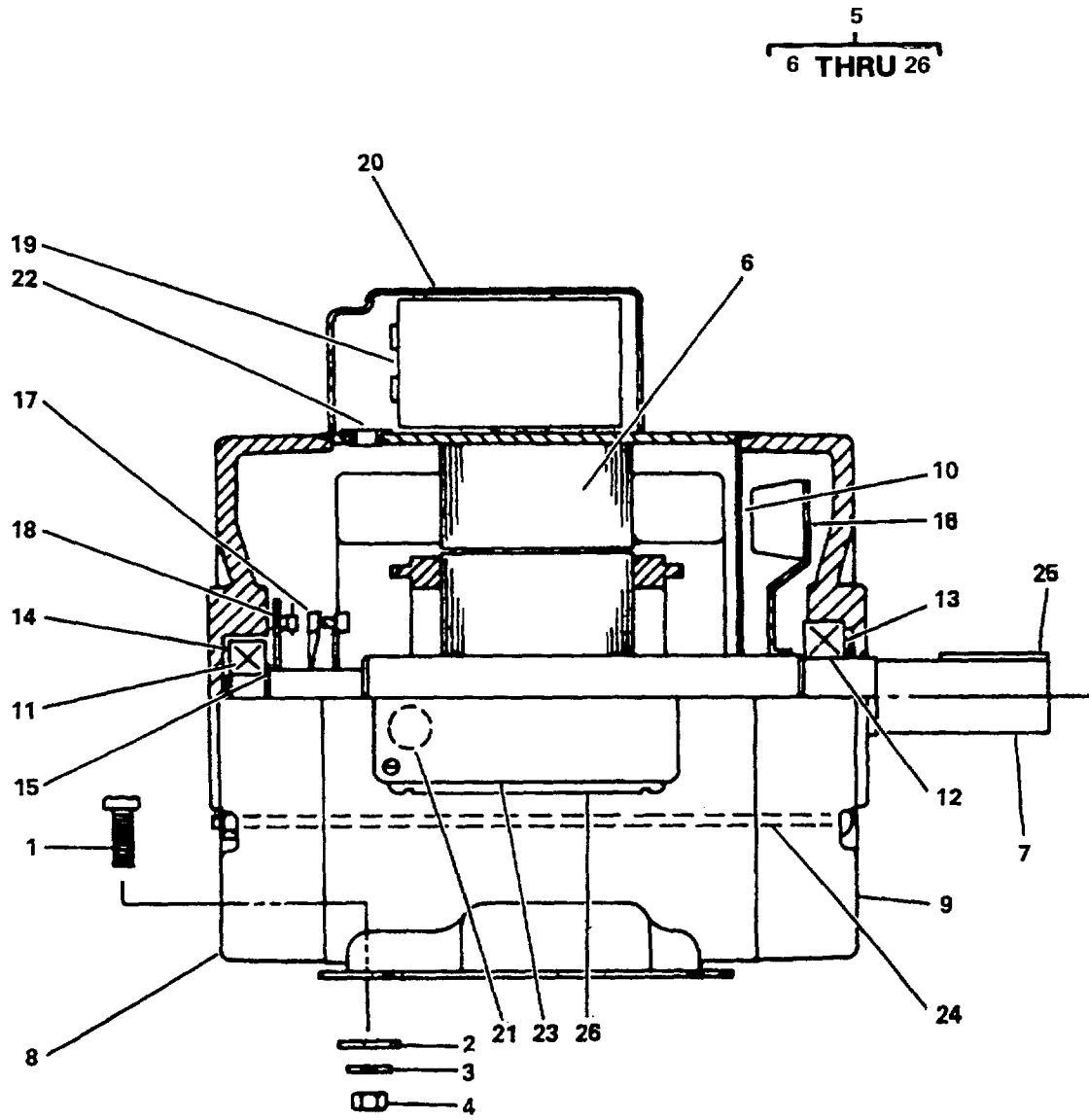
Figure 12. Crankshaft, Bearings and Oil Seals, Model 20-911.

SECTION II

TM 5-4310-362-24P

(1) ITEM NO	(2) SMR CODE	(3) FSCM	(4) PART NUMBER	(5) DESCRIPTION AND USABLE ON CODES (UOC)	(6) QTY
GROUP 03 COMPRESSOR ASSEMBLY					
FIG. 12 CRANKSHAFT, BEARINGS AND OIL SEALS, MODEL 20-911					
1	PAOZZ	96906	MS90728-3	.SCREW, CAP, HEXAGON H 1/4-2X1/2 ..... UOC: DNY	4
2	XBOZZ	11568	A-15	.COVER, ACCESS ..... UOC: DNY	1
3	PAOZZ	11568	A-33	.GASKET HOLE ..... UOC: DNY	1
4	PAOZZ	96906	MS90725-6	.SCREW, CAP, HEXAGON H 1/4-2X3/4..... UOC: DNY	4
5	XBOZZ	11568	A-100	.COVER, CHAMBER BREATHER ..... UOC: DNY	1
6	PAOZZ	11568	C-30	.GASKET CRANKCASE PART OF KIT P/N Z..... -132..... UOC: DNY	2
7	XBOZZ	11568	C-14C	.COVER, CRANKCASE ..... UOC: DNY	1
8	PAOZZ	11568	P-4581A	.FILTER ELEMENT, INTA ..... UOC: DNY	1
9	XDOZZ	11568	P-4582A	.FILTER, ELEMENT, INTA OIL ..... UOC: DNY	1
10	PAOZZ	11568	C-30A	.GASKET, CRANKCASE PART OF KIT P/N Z..... -132..... UOC: DNY	1
11	PAOZZ	11568	C-30B	.GASKET, CRANKCASE PART OF KIT P/N Z..... -132..... UOC: DNY	1
12	PBFZZ	11568	C-5	.CRANKSHAFT, COMPRESS ..... UOC: DNY	1
13	PAFZZ	11568	ZC-16	.BEARING ASSEMBLY CUP ASSEMBLY ..... UOC: DNY	2
14	PAOZZ	11568	0S-A5A	.SEAL, PLAIN ENCASED..... UOC: DNY	1
15	XBFZZ	11568	B-9	.CRANKCASE ..... UOC: DNY	1
	PAOZZ	11568	Z-132	GASKET KIT ..... UOC: DNY	1
				GASKET ( 2) 12-6	
				GASKET, CRANKCASE ( 1) 12-10	
				GASKET, CRANKCASE ( 1) 12-11	

END OF FIGURE



4760-013

Figure 13. Electric Motor.



## SECTION II

TM 5-4310-362-24P

(1) ITEM NO	(2) SMR CODE	(3) FSCM	(4) PART NUMBER	(5) DESCRIPTION AND USABLE ON CODES (UOC)	(6) QTY
GROUP 04 ELECTRIC MOTOR					
FIG. 13 ELECTRIC MOTOR					
1	XDOZZ	96906	MS90725-61	SCREW, CAP, HEX HD 3/8-16X1-1/4.....	4
2	PAOZZ	96906	MS27183-14	WASHER, FLAT.....	4
3	PAOZZ	96906	MS35333-42	WASHER, LOCK.....	4
4	PAOZZ	96906	MS51967-38	NUT, PLAIN, HEXAGON.....	4
5	PBOFO	56065	N182C17DB1A	MOTOR, ALTERNATING C 1750 RPM, 115/ 230V, 60 HZ, 1 PHASE.....	1
6	XBFZZ	04718	86-105	.FRAME & STATOR ASSY.....	1
7	XBOZZ	04718	86-106	.ROTOR & SHAFT ASSY.....	1
8	XBFZZ	56065	021501-01	.ENDBELL, FRONT.....	1
9	XBFZZ	56065	021500-01	.ENDBELL, REAR.....	1
10	XBFZZ	56065	003702-01	.BAFFLE.....	1
11	XBFZZ	56065	002003-04	.BEARING FRONT.....	1
12	XBFZZ	56065	002003-06	.BEARING, REAR.....	1
13	XBFZZ	56065	004300-06	.SPRING, WAVY.....	1
14	XBFZZ	56065	004302-01	.SHIM.....	1
15	XBFZZ	56065	006059-01	.SPACER, FRONT BRG.....	1
16	XBFZZ	56065	003523-02	.FAN.....	1
17	PAFZZ	56065	002503-02	.SWITCH, CENTRIFUGAL.....	1
18	PAFZZ	56065	002758-02	.CONTACT ASSEMBLY, EL.....	1
19	PAFZZ	56065	003001-10	.CAPACITOR, FIXED, ELE.....	1
20	XBOZZ	56065	003101-01	.CASE, CAPACITOR.....	1
21	XBOZZ	56065	006028-02	.BUSHING.....	2
22	XDOZZ	56065	006028-01	.BUSHING.....	1
23	XBOZZ	56065	003202-0	.CONDUIT BOX & COVER.....	1
24	XBOZZ	56065	003802-06	.BOLT, THRU.....	4
25	XBOZZ	56065	006002-02	.KEY, MACHINE.....	1
26	XBOZZ	56065	006034-01	.GASKET, CONDUIT BOX.....	1

END OF FIGURE

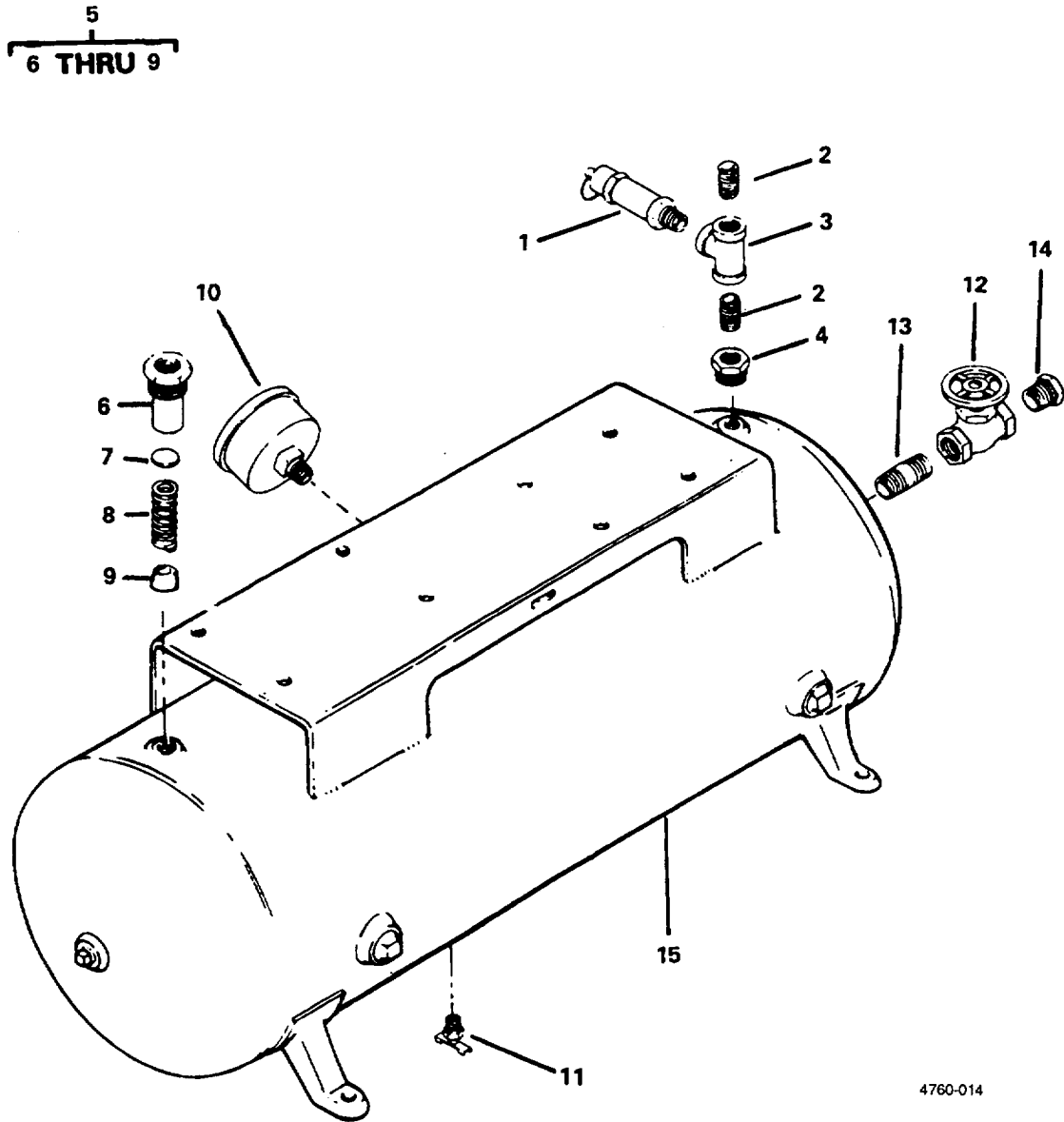


Figure 14. Air Tank.

## SECTION II

TM 5-4310-362-24P

(1) ITEM NO	(2) SMR CODE	(3) FSCM	(4) PART NUMBER	(5) DESCRIPTION AND USABLE ON CODES (UOC)	(6) QTY
GROUP 05 AIR TANK					
FIG. 14 AIR TANK					
1	PAOZZ	75336	112C1/4 200	.VALVE, SAFETY RELIEF.....	1
2	PAOZZ	96906	MS51953-25	.NIPPLE, PIPE CLOSE .....	2
3	XDOZZ	04718	1047-14	.TEE , PIPE.....	1
4	XBOZZ	04718	1047-15	.BUSHING, REDUCER 1/4X1/2.....	1
5	PAOOZ	75336	225A1/2X3/8	.VALVE, CHECK.....	1
UOC: DNY					
6	XAOZZ	75336	225A-3/8X1/2-1	.BODY, CHECK VALVE .....	1
7	XAOZZ	75336	225A-3/8X1/2-2	.CAGE, CHECK VALVE .....	1
8	PAOZZ	75336	225A-3/8X1/2-3	.DISK, VALVE .....	1
9	PAOZZ	75336	225A3/8X1/2-4	.SPRING, CHECK VALVE.....	1
10	PAOZZ	38508	J5458	.GAGE, PRESSURE, DIAL.....	1
UOC: DBC					
11	XDOZZ	93061	DC604-4	.COCK, DRAIN .....	1
12	XDOZZ	76364	502-3/8	.VALVE, GATE .....	1
13	PAOZZ	96906	MS51953-49	.NIPPLE, PIPE CLOSE .....	1
14	XBOZZ	04718	1047-16	.BUSHING, REDUCER.....	1
15	XBOZZ	04718	86-084	.TANK, AIR.....	1

END OF FIGURE

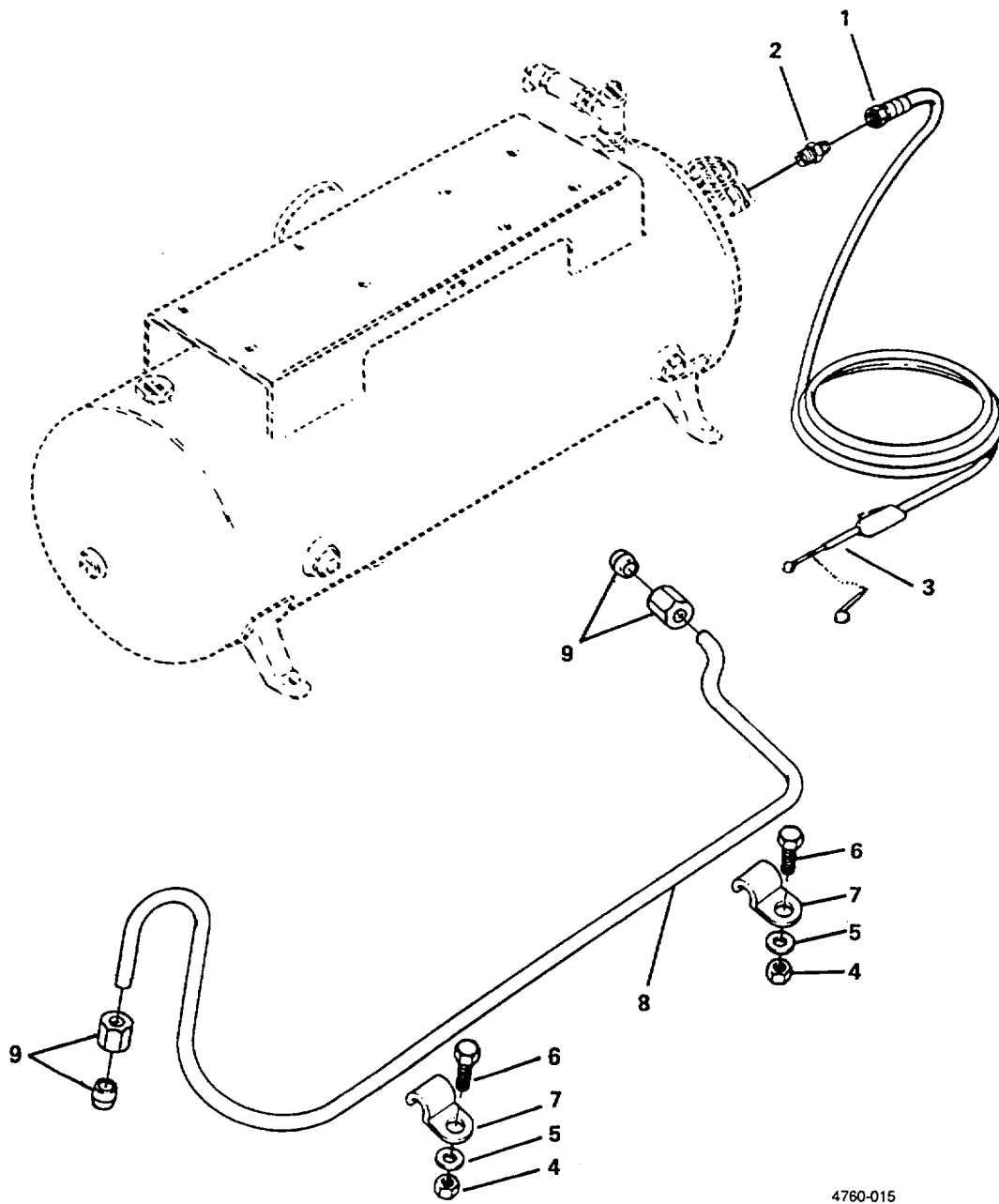


Figure 15. Air Discharge System.

SECTION II

TM 5-4310-362-24P

(1) ITEM NO	(2) SMR CODE	(3) FSCM	(4) PART NUMBER	(5) DESCRIPTION AND USABLE ON CODES (UOC)	(6) QTY
GROUP 06 AIR DISCHARGE SYSTEM					
FIG. 15 AIR DISCHARGE SYSTEM					
1	PAOZZ	04718	88-751	HOSE ASSEMBLY, NONME 50 FT 5/16 IN.....	1
2	XBOZZ	04718	1047-17	ADAPTER, HOSE.....	1
3	PAOZZ	94894	61J2-1506	INFLATOR-GAGE, PNEUM.....	1
4	PAOZZ	96906	MS35649-284	NUT, PLAIN, HEXAGON..... UOC: DNY	2
5	PAOZZ	96906	MS35338-42	WASHER, LOCK ..... UOC: DNY	2
6	PAOZZ	96906	MS35206-231	SCREW, MACHINE ..... UOC: DNY	2
7	XBOZZ	04718	86-192	CLAMP, UNLOADER TUBING ..... UOC: DNY	2
8	XBOZZ	04718	86-190	TUBING ASSEMBLY, UNLOADER..... UOC: DNY	1

END OF FIGURE

SECTION II

TM 5-4310-362-24P

(1) ITEM NO	(2) SMR CODE	(3) FSCM	(4) PART NUMBER	(5) DESCRIPTION AND USABLE ON CODES (UOC)	(6) QTY
				GROUP 07 BULK MATERIALS	
				FIG. BULK	
1	PAOZZ	81348	J-C-30THW06C E1/12TUJ6	WIRE, ELECTRICAL .....	V
2	PAOZZ	81348	J-C-30THW06C E1/12TUJ2	WIRE, ELECTRICAL .....	V

END OF FIGURE

**Section III. SPECIAL TOOLS LIST**

**(Not Applicable)**

## CROSS-REFERENCE INDEXES

NATIONAL STOCK NUMBER INDEX					
STOCK NUMBER	FIG.	ITEM	STOCK NUMBER	FIG.	ITEM
4730-00-019-2067	14	13	5310-00-641-8377	9	10
4310-00-033-1415	7	14	3120-00-687-8575	3	11
5310-00-045-3299	15	5	5310-00-762-6241	1	8
5305-00-068-0502	12	4		3	3
5305-00-071-1775	4	12	5310-00-762-6247	4	4
5305-00-071-2506	12	1		5	4
5310-00-080-6004	4	2		13	4
	5	2	5310-00-768-0318	4	14
	13	2	4310-00-777-6942	9	16
5930-00-087-4027	1	5	4310-00-777-6945	9	17
3110-00-100-0515	11	4	4310-00-777-6946	9	5
3110-00-100-3139	8	9	5330-00-781-4788	6	31
	11	6	4310-00-781-4789	9	22
2930-00-105-2373	5	8	5306-00-781-5649	7	2
5306-00-149-7111	10	1	5365-00-808-3957	10	5
6680-00-150-6875	5	15	5305-00-889-3001	15	6
5310-00-167-0721	1	7	3120-00-891-8887	9	25
	3	2	5330-00-900-2337	12	6
5330-00-179-0904	11	2	5330-00-900-2339	12	10
4730-00-188-1870	5	14	5330-00-900-2340	12	11
4730-00-193-2733	4	25	4310-00-911-6607	7	19
4730-00-196-1465	14	2	4310-00-911-6608	7	20
4730-00-203-3168	4	26	4310-00-911-9571	10	14
4910-00-204-2644	15	3	5310-00-934-9759	15	4
5330-00-213-1641	9	2	5305-00-942-2196	4	1
5306-00-225-8499	1	6		5	1
	6	29	6145-00-959-0871	BULK	1
5306-00-226-4825	3	1	5305-00-984-6191	3	5
4730-00-249-3935	4	11	6145-00-990-3001	BULK	2
5360-00-253-6915	6	24	5310-01-012-3599	6	7
5315-00-256-4794	5	11		6	16
4730-00-278-4586	4	9	5305-01-015-3345	5	9
5330-00-291-2337	12	14	4310-01-021-1589	10	6
5330-00-295-8839	7	15	5330-01-022-1857	7	7
4310-00-319-0481	4	27	4310-01-022-4007	11	5
5330-00-374-9517	8	11	5305-01-023-1901	9	1
5330-00-374-9518	8	10	4310-01-039-3732	7	6
4310-00-374-9521	9	12	4310-01-039-5955	10	16
3120-00-431-1643	9	15	4310-01-039-6115	7	8
4310-00-431-1649	6	25	4310-01-039-6504	7	5
5365-00-431-1655	6	27	4310-01-040-3470	7	4
4310-00-446-8995	11	1	4820-01-041-8006	7	10
4310-00-462-7487	5	5	4820-01-042-2923	14	5
4820-00-477-7958	14	1	4820-01-045-7791	6	23
5930-00-521-8471	1		4820-01-046-0269	6	26
5930-00-539-2108	1	5	4310-01-052-2462	12	8
3030-00-574-7433	3	8	5330-01-065-5889	12	3
5310-00-595-7237	4	3	6105-01-065-6660	13	5
	5	3	5305-01-065-9046	7	9
	13	3	5910-01-067-0868	13	19



## CROSS-REFERENCE INDEXES

STOCK NUMBER	FIG.	NATIONAL STOCK NUMBER INDEX		FIG.	ITEM
		ITEM	STOCK NUMBER		
5330-01-073-6966	7	11			
5330-01-073-6967	10	3			
5306-01-075-8519	7	13			
2940-01-078-4655	4	16			
3020-01-078-4904	4	15			
6685-01-078-7556	14	10			
4310-01-079-1992	6	17			
4310-01-079-2003	6	5			
5340-01-079-2004	6	20			
4820-01-079-3303	6	11			
5305-01-079-6365	6	6			
	6	15			
5305-01-079-6366	6	1			
4820-01-079-6865	6	8			
5330-01-079-7312	6	22			
5315-01-079-8240	9	11			
5315-01-079-8241	9	20			
5310-01-080-1750	6	10			
	6	18			
5330-01-080-3004	6	12			
5360-01-080-5472	6	9			
	6	19			
5310-01-083-6383	4	17			
5360-01-083-6384	8	17			
5360-01-083-6385	8	14			
5310-01-083-6386	8	4			
5310-01-083-6413	9	14			
	9	24			
5330-01-083-9598	6	3			
4820-01-083-9935	8	5			
4720-01-084-0118	15	1			
4320-01-084-0534	4	6			
4310-01-084-0535	6	14			
4310-01-084-4233	6	30			
4330-01-084-5451	4	19			
5999-01-084-5625	13	18			
5930-01-084-5732	13	17			
4310-01-095-2088	7	12			
4310-01-095-3581	12	12			
4730-01-096-1611	5	12			
4935-01-100-6567	12	13			
4935-01-100-6569	7	3			
4310-01-104-2598	8	13			
4310-01-104-4070	8	16			
5330-01-106-5104	12				
5330-01-106-9382	7	17			
5330-01-106-9383	7	21			
4820-01-166-1161	14	9			
4820-01-168-2158	14	8			
3020-01-183-7328	3	9			

FSCM	PART NUMBER	PART NUMBER INDEX		FIG.	ITEM
			STOCK NUMBER		
11568	A-100			12	5
11568	A-102		5365-00-808-3957	10	5
11568	A-12A		2930-00-105-2373	5	8
11568	A-15			12	2
11568	A-21		4310-01-021-1589	10	6
11568	A-29		5330-01-073-6967	10	3
11568	A-33		5330-01-065-5889	12	3
11568	A-4A			10	7
11568	A-6A			10	2
71176	A54		3030-00-574-7433	3	8
11568	B-14		6680-00-150-6875	5	15
11568	B-26A			7	18
11568	B-28A			7	16
11568	B-31		5330-01-073-6966	7	11
11568	B-75		5330-01-106-9382	7	17
11568	B-9			12	15
11568	C-1		4310-00-033-1415	7	14
11568	C-14C			12	7
11568	C-21A			10	15
11568	C-30		5330-00-900-2337	12	6
11568	C-30A		5330-00-900-2339	12	10
11568	C-30B		5330-00-900-2340	12	11
11568	C-31		5330-00-295-8839	7	15
11568	C-4A		4310-01-039-5955	10	16
11568	C-5		4310-01-095-3581	12	12
11568	C-6B			10	13
11568	CAW-1		4310-00-462-7487	5	5
93061	DC604-4			14	11
23826	D24826-001			2	10
23826	D24827-001			2	8
23826	D25013-001			2	6
23826	D25551-001			2	12
23826	D54670-001			2	5
23826	D54873-001			2	9
23826	D73060-001			2	14
23826	D73116-021			2	11
71176	H1-1/8		3120-00-687-8575	3	11
81348	J-C-30THW06CE1/1 2TUJ2		6145-00-990-3001	BULK	2
81348	J-C-30THW06CE1/1 2TUJ6		6145-00-959-0871	BULK	1
38508	J5458		6685-01-078-7556	14	10
11568	M-1561		4310-01-039-3732	7	6
11568	M-1562		4310-01-039-6115	7	8
11568	M-1563		4820-01-041-8006	7	10
11568	M-1564		5330-01-022-1857	7	7
11568	M-1565		5305-01-065-9046	7	9
11568	M-1586		4310-01-040-3470	7	4
11568	M-1587		4310-01-039-6504	7	5
11568	M-1796		4730-01-096-1611	5	12
11568	M-461			5	13

FSCM	PART NUMBER	PART NUMBER INDEX		FIG.	ITEM
			STOCK NUMBER		
11568	M-492		4730-00-188-1870	5	14
11568	M-780			10	8
96906	MS17795-73		3120-00-891-8887	9	25
96906	MS18154-60		5305-00-942-2196	4	1
				5	1
96906	MS20066-256		5315-00-256-4794	5	11
96906	MS27183-14		5310-00-080-6004	4	2
				5	2
				13	2
96906	MS35206-231		5305-00-889-3001	15	6
96906	MS35206-243		5305-00-984-6191	3	5
96906	MS35333-41		5310-00-167-0721	1	7
				3	2
96906	MS35333-42		5310-00-595-7237	4	3
				5	3
				13	3
96906	MS35338-42		5310-00-045-3299	15	5
96906	MS35338-48			4	13
96906	MS35649-284		5310-00-934-9759	15	4
96906	MS39231-4		4730-00-249-3935	4	11
96906	MS51095-337		5306-00-781-5649	7	2
96906	MS51953-25		4730-00-196-1465	14	2
96906	MS51953-39		4730-00-193-2733	4	25
96906	MS51953-49		4730-00-019-2067	14	13
96906	MS51967-35		5310-00-762-6241	1	8
				3	3
96906	MS51967-38		5310-00-762-6247	4	4
				5	4
				13	4
96906	MS90725-122		5305-00-071-1775	4	12
96906	MS90725-34		5306-00-225-8499	1	6
				6	29
96906	MS90725-36		5306-01-075-8519	7	13
96906	MS90725-6		5305-00-068-0502	12	4
96906	MS90725-61			13	1
96906	MS90728-3		5305-00-071-2506	12	1
96906	MS90728-32		5306-00-226-4825	3	1
11568	NR-4-7A			5	10
56065	N182C17DB1A		6105-01-065-6660	13	5
11568	P-3703A		4935-01-100-6569	7	3
11568	P-4581A		4310-01-052-2462	12	8
11568	P-4582A			12	9
11568	P-5087A			10	12
04718	PA-1915		4330-01-084-5451	4	19
11568	U-48		5330-01-106-9383	7	21
81348	WW-P-521		4730-00-203-3168	4	26
11568	Z-1052			10	11
11568	Z-1053			10	9
11568	Z-1054			10	17
11568	Z-132		5330-01-106-5104	12	
11568	Z-184		4310-00-911-6607	7	19

FSCM	PART NUMBER	PART NUMBER INDEX		FIG.	ITEM
			STOCK NUMBER		
11568	Z-515			5	7
11568	Z-676			7	1
11568	Z-822			10	10
11568	ZA-10			10	4
11568	ZC-1		4310-01-095-2088	7	12
11568	ZC-10		4310-00-911-9571	10	14
11568	ZC-16		4935-01-100-6567	12	13
11568	Z122A		4310-00-911-6608	7	20
11568	05-A5A		5330-00-291-2337	12	14
56065	002003-04			13	11
56065	002003-06			13	12
56065	002503-02		5930-01-084-5732	13	17
56065	002758-02		5999-01-084-5625	13	18
56065	003001-10		5910-01-067-0868	13	19
56065	003101-01			13	20
56065	003202-0			13	23
56065	003523-02			13	16
56065	003702-01			13	10
56065	003802-06			13	24
56065	004300-06			13	13
56065	004302-01			13	14
56065	006002-02			13	25
56065	006028-01			13	22
56065	006028-02			13	21
56065	006034-01			13	26
56065	006059-01			13	15
56065	021500-01			13	9
56065	021501-01			13	8
36422	1X485		5305-01-015-3345	5	9
80201	10126		5330-00-179-0904	11	2
53239	10161		3120-00-431-1643	9	15
04718	1046-06			1	4
04718	1047-05			1	3
04718	1047-06-1			1	1
04718	1047-07			1	2
04718	1047-08			2	2
04718	1047-09		5310-01-083-6383	4	17
04718	1047-12			4	21
04718	1047-14			14	3
04718	1047-15			14	4
04718	1047-16			14	14
04718	1047-17			15	2
75336	112C1/4 200		4820-00-477-7958	14	1
53239	12524		4820-01-045-7791	6	23
53239	12525		4310-00-431-1649	6	25
53239	12526		4820-01-046-0269	6	26
53239	12549		5365-00-431-1655	6	27
53239	13523		4310-00-319-0481	4	27
23826	14CF120A			2	1
60038	14117A		3110-00-100-3139	8	9
				11	6

FSCM	PART NUMBER	PART NUMBER INDEX		FIG.	ITEM
			STOCK NUMBER		
60038	14274		3110-00-100-0515	11	4
93061	169C-5-4			4	22
71176	2AK64H		3020-01-183-7328	3	9
71176	2AK74H			3	9
70188	2X167		5306-00-149-7111	10	1
75336	225A-3/8X1/2-1			14	6
75336	225A-3/8X1/2-2			14	7
75336	225A-3/8X1/2-3		4820-01-168-2158	14	8
75336	225A1/2X3/8		4820-01-042-2923	14	5
75336	225A3/8X1/2-4		4820-01-166-1161	14	9
23826	24817-001			2	7
53239	31762		4310-00-446-8995	11	1
53239	31764		5330-00-374-9517	8	11
53239	31765		5330-00-374-9518	8	10
53239	31767			9	3
53239	31769		4310-00-374-9521	9	12
53239	31770			11	7
53239	31772		5330-00-213-1641	9	2
53239	31796			8	3
53239	31797			8	2
53239	32736			9	13
				9	23
53239	34090		5305-01-023-1901	9	1
53239	35755		4310-01-022-4007	11	5
53239	38195		5360-01-083-6384	8	17
53239	38466			4	7
53239	47929			6	2
53239	47931		5330-01-083-9598	6	3
53239	47934		5305-01-079-6366	6	1
53239	47936		4310-01-079-2003	6	5
53239	47938		5330-01-080-3004	6	12
53239	47956		5360-01-083-6385	8	14
53239	47957			8	15
53239	47958		4310-01-104-2598	8	13
53239	47973		5310-01-080-1750	6	10
				6	18
53239	47977		4310-01-079-1992	6	17
53239	47981		4820-01-079-6865	6	8
53239	47990			8	1
53239	47993		5360-01-080-5472	6	9
				6	19
53239	47999			6	13
23826	48DC11A2			2	15
53239	48001			6	4
53239	48069		4820-01-083-9935	8	5
53239	48070		5310-01-083-6386	8	4
53239	48122			6	21
53239	48123		4310-01-084-4233	6	30
53239	48124			9	9
53239	48125			9	21
53239	48126			9	26

FSCM	PART NUMBER	PART NUMBER INDEX		FIG.	ITEM
			STOCK NUMBER		
53239	48127			8	8
53239	48146		5340-01-079-2004	6	20
53239	48147		4820-01-079-3303	6	11
53239	48196			11	3
04718	48198			4	23
53239	48199		4310-00-781-4789	9	22
53239	48200			8	7
53239	48202		5315-01-079-8240	9	11
53239	48203		5315-01-079-8241	9	20
53239	48204		5330-00-781-4788	6	31
53239	48205			9	18
53239	48206			9	19
53239	48207			9	6
53239	48208			9	7
53239	48209			9	8
53239	48210		5330-01-079-7312	6	22
53239	48211		4320-01-084-0534	4	6
53239	48222			8	6
53239	48416		4310-00-777-6942	9	16
53239	48417		4310-00-777-6945	9	17
53239	48418			9	4
53239	48419		4310-00-777-6946	9	5
53239	48839		4310-01-104-4070	8	16
53239	49913			8	12
76364	502-3/8			14	12
53239	50679		5305-01-079-6365	6	6
				6	15
53239	50680		5310-01-012-3599	6	7
				6	16
53239	50681		4310-01-084-0535	6	14
12603	61D8		5310-00-768-0318	4	14
94894	61J2-1506		4910-00-204-2644	15	3
93061	68C5-4			4	24
93061	68C8-8			4	10
30327	68FL1-2X3-8		4730-00-278-4586	4	9
23826	69HAU1		5930-00-539-2108	1	5
23826	69HA1		5930-00-087-4027	1	5
23826	73062-001			2	4
23826	75CF14			2	3
23826	75D73070A			2	13
23826	75HA69		5930-00-521-8471	1	
53239	7890		5310-00-641-8377	9	10
53239	7891		5360-00-253-6915	6	24
04718	86-073			1	9
04718	86-078		3020-01-078-4904	4	15
04718	86-082			4	5
04718	86-084			14	15
04718	86-099			3	4
04718	86-099A			3	6
04718	86-099B			3	7
04718	86-103		2940-01-078-4655	4	16

FSCM	PART NUMBER	PART NUMBER INDEX STOCK NUMBER	FIG.	ITEM
04718	86-103A		4	18
04718	86-103B		4	20
04718	86-105		13	6
04718	86-106		13	7
04718	86-109		4	8
04718	86-152		5	6
04718	86-190		15	8
04718	86-191		3	4
04718	86-192		15	7
04718	88-751	4720-01-084-0118	15	1
96906	90725-6		3	10
53239	9522	5310-01-083-6413	9	14
			9	24
53239	990		6	28

## CROSS-REFERENCE INDEXES

FIG.	ITEM	FIGURE AND ITEM NUMBER INDEX		PART NUMBER
		STOCK NUMBER	FSCM	
BULK	1	6145-00-959-0871	81348	J-C-30THW06CE1/1 2TUJ6
BULK	2	6145-00-990-3001	81348	J-C-30THW06CE1/1 2TUJ2
1		5930-00-521-8471	23826	75HA69
1	1		04718	1047-06-1
1	2		04718	1047-07
1	3		04718	1047-05
1	4		04718	1046-06
1	5	5930-00-087-4027	23826	69HA1
1	5	5930-00-539-2108	23826	69HAU1
1	6	5306-00-225-8499	96906	MS90725-34
1	7	5310-00-167-0721	96906	MS35333-41
1	8	5310-00-762-6241	96906	MS51967-35
1	9		04718	86-073
2	1		23826	14CF120A
2	2		04718	1047-08
2	3		23826	75CF14
2	4		23826	73062-001
2	5		23826	D54670-001
2	6		23826	D25013-001
2	7		23826	24817-001
2	8		23826	D24827-001
2	9		23826	D54873-001
2	10		23826	D24826-001
2	11		23826	D73116-021
2	12		23826	D25551-001
2	13		23826	75D73070A
2	14		23826	D73060-001
2	15		23826	48DC11A2
3	1	5306-00-226-4825	96906	MS90728-32
3	2	5310-00-167-0721	96906	MS35333-41
3	3	5310-00-762-6241	96906	MS51967-35
3	4		04718	86-099
3	4		04718	86-191
3	5	5305-00-984-6191	96906	MS35206-243
3	6		04718	86-099A
3	7		04718	86-099B
3	8	3030-00-574-7433	71176	A54
3	9		71176	2AK74H
3	9	3020-01-183-7328	71176	2AK64H
3	10		96906	90725-6
3	11	3120-00-687-8575	71176	H1-1/8
4	1	5305-00-942-2196	96906	MS18154-60
4	2	5310-00-080-6004	96906	MS27183-14
4	3	5310-00-595-7237	96906	MS35333-42
4	4	5310-00-762-6247	96906	MS51967-38
4	5		04718	86-082
4	6	4320-01-084-0534	53239	48211
4	7		53239	38466
4	8		04718	86-109



## CROSS-REFERENCE INDEXES

FIG.	ITEM	FIGURE AND ITEM NUMBER INDEX		PART NUMBER
		STOCK NUMBER	FSCM	
4	9	4730-00-278-4586	30327	68FL1-2X3-8
4	10		93061	68C8-8
4	11	4730-00-249-3935	96906	MS39231-4
4	12	5305-00-071-1775	96906	MS90725-122
4	13		96906	MS35338-48
4	14	5310-00-768-0318	12603	61D8
4	15	3020-01-078-4904	04718	86-078
4	16	2940-01-078-4655	04718	86-103
4	17	5310-01-083-6383	04718	1047-09
4	18		04718	86-103A
4	19	4330-01-084-5451	04718	PA-1915
4	20		04718	86-103B
4	21		04718	1047-12
4	22		93061	169C-5-4
4	23		04718	48198
4	24		93061	68C5-4
4	25	4730-00-193-2733	96906	MS51953-39
4	26	4730-00-203-3168	81348	WW-P-521
4	27	4310-00-319-0481	53239	13523
5	1	5305-00-942-2196	96906	MS18154-60
5	2	5310-00-080-6004	96906	MS27183-14
5	3	5310-00-595-7237	96906	MS35333-42
5	4	5310-00-762-6247	96906	MS51967-38
5	5	4310-00-462-7487	11568	CAW-1
5	6		04718	86-152
5	7		11568	Z-515
5	8	2930-00-105-2373	11568	A-12A
5	9	5305-01-015-3345	36422	1X485
5	10		11568	NR-4-7A
5	11	5315-00-256-4794	96906	MS20066-256
5	12	4730-01-096-1611	11568	M-1796
5	13		11568	M-461
5	14	4730-00-188-1870	11568	M-492
5	15	6680-00-150-6875	11568	B-14
6	1	5305-01-079-6366	53239	47934
6	2		53239	47929
6	3	5330-01-083-9598	53239	47931
6	4		53239	48001
6	5	4310-01-079-2003	53239	47936
6	6	5305-01-079-6365	53239	50679
6	7	5310-01-012-3599	53239	50680
6	8	4820-01-079-6865	53239	47981
6	9	5360-01-080-5472	53239	47993
6	10	5310-01-080-1750	53239	47973
6	11	4820-01-079-3303	53239	48147
6	12	5330-01-080-3004	53239	47938
6	13		53239	47999
6	14	4310-01-084-0535	53239	50681
6	15	5305-01-079-6365	53239	50679
6	16	5310-01-012-3599	53239	50680
6	17	4310-01-079-1992	53239	47977

## CROSS-REFERENCE INDEXES

FIG.	ITEM	FIGURE AND ITEM NUMBER INDEX		PART NUMBER
		STOCK NUMBER	FSCM	
6	18	5310-01-080-1750	53239	47973
6	19	5360-01-080-5472	53239	47993
6	20	5340-01-079-2004	53239	48146
6	21		53239	48122
6	22	5330-01-079-7312	53239	48210
6	23	4820-01-045-7791	53239	12524
6	24	5360-00-253-6915	53239	7891
6	25	4310-00-431-1649	53239	12525
6	26	4820-01-046-0269	53239	12526
6	27	5365-00-431-1655	53239	12549
6	28		53239	990
6	29	5306-00-225-8499	96906	MS90725-34
6	30	4310-01-084-4233	53239	48123
6	31	5330-00-781-4788	53239	48204
7	1		11568	Z-676
7	2	5306-00-781-5649	96906	MS51095-337
7	3	4935-01-100-6569	11568	P-3703A
7	4	4310-01-040-3470	11568	M-1586
7	5	4310-01-039-6504	11568	M-1587
7	6	4310-01-039-3732	11568	M-1561
7	7	5330-01-022-1857	11568	M-1564
7	8	4310-01-039-6115	11568	M-1562
7	9	5305-01-065-9046	11568	M-1565
7	10	4820-01-041-8006	11568	M-1563
7	11	5330-01-073-6966	11568	B-31
7	12	4310-01-095-2088	11568	ZC-1
7	13	5306-01-075-8519	96906	MS90725-36
7	14	4310-00-033-1415	11568	C-1
7	15	5330-00-295-8839	11568	C-31
7	16		11568	B-28A
7	17	5330-01-106-9382	11568	B-75
7	18		11568	B-26A
7	19	4310-00-911-6607	11568	Z-184
7	20	4310-00-911-6608	11568	Z122A
7	21	5330-01-106-9383	11568	U-48
8	1		53239	47990
8	2		53239	31797
8	3		53239	31796
8	4	5310-01-083-6386	53239	48070
8	5	4820-01-083-9935	53239	48069
8	6		53239	48222
8	7		53239	48200
8	8		53239	48127
8	9	3110-00-100-3139	60038	14117A
8	10	5330-00-374-9518	53239	31765
8	11	5330-00-374-9517	53239	31764
8	12		53239	49913
8	13	4310-01-104-2598	53239	47958
8	14	5360-01-083-6385	53239	47956
8	15		53239	47957
8	16	4310-01-104-4070	53239	48839

## CROSS-REFERENCE INDEXES

FIG.	ITEM	FIGURE AND ITEM NUMBER INDEX		PART NUMBER
		STOCK NUMBER	FSCM	
8	17	5360-01-083-6384	53239	38195
9	1	5305-01-023-1901	53239	34090
9	2	5330-00-213-1641	53239	31772
9	3		53239	31767
9	4		53239	48418
9	5	4310-00-777-6946	53239	48419
9	6		53239	48207
9	7		53239	48208
9	8		53239	48209
9	9		53239	48124
9	10	5310-00-641-8377	53239	7890
9	11	5315-01-079-8240	53239	48202
9	12	4310-00-374-9521	53239	31769
9	13		53239	32736
9	14	5310-01-083-6413	53239	9522
9	15	3120-00-431-1643	53239	10161
9	16	4310-00-777-6942	53239	48416
9	17	4310-00-777-6945	53239	48417
9	18		53239	48205
9	19		53239	48206
9	20	5315-01-079-8241	53239	48203
9	21		53239	48125
9	22	4310-00-781-4789	53239	48199
9	23		53239	32736
9	24	5310-01-083-6413	53239	9522
9	25	3120-00-891-8887	96906	MS17795-73
9	26		53239	48126
10	1	5306-00-149-7111	70188	2X167
10	2		11568	A-6A
10	3	5330-01-073-6967	11568	A-29
10	4		11568	ZA-10
10	5	5365-00-808-3957	11568	A-102
10	6	4310-01-021-1589	11568	A-21
10	7		11568	A-4A
10	8		11568	M-780
10	9		11568	Z-1053
10	10		11568	Z-822
10	11		11568	Z-1052
10	12		11568	P-5087A
10	13		11568	C-6B
10	14	4310-00-911-9571	11568	ZC-10
10	15		11568	C-21A
10	16	4310-01-039-5955	11568	C-4A
10	17		11568	Z-1054
11	1	4310-00-446-8995	53239	31762
11	2	5330-00-179-0904	80201	10126
11	3		53239	48196
11	4	3110-00-100-0515	60038	14274
11	5	4310-01-022-4007	53239	35755
11	6	3110-00-100-3139	60038	14117A
11	7		53239	31770

## CROSS-REFERENCE INDEXES

FIG.	ITEM	FIGURE AND ITEM NUMBER INDEX		PART NUMBER
		STOCK NUMBER	FSCM	
12		5330-01-106-5104		11568-Z-132
12	1	5305-00-071-2506	96906	MS90728-3
12	2		11568	A-15
12	3	5330-01-065-5889	11568	A-33
12	4	5305-00-068-0502	96906	MS90725-6
12	5		11568	A-100
12	6	5330-00-900-2337	11568	C-30
12	7		11568	C-14C
12	8	4310-01-052-2462	11568	P-4581A
12	9		11568	P-4582A
12	10	5330-00-900-2339	11568	C-30A
12	11	5330-00-900-2340	11568	C-30B
12	12	4310-01-095-3581	11568	C-5
12	13	4935-01-100-6567	11568	ZC-16
12	14	5330-00-291-2337	11568	0S-A5A
12	15		11568	B-9
13	1		96906	MS90725-61
13	2	5310-00-080-6004	96906	MS27183-14
13	3	5310-00-595-7237	96906	MS35333-42
13	4	5310-00-762-6247	96906	MS51967-38
13	5	6105-01-065-6660	56065	N182C17DB1A
13	6		04718	86-105
13	7		04718	86-106
13	8		56065	021501-01
13	9		56065	021500-01
13	10		56065	003702-01
13	11		56065	002003-04
13	12		56065	002003-06
13	13		56065	004300-06
13	14		56065	004302-01
13	15		56065	006059-01
13	16		56065	003523-02
13	17	5930-01-084-5732	56065	002503-02
13	18	5999-01-084-5625	56065	002758-02
13	19	5910-01-067-0868	56065	003001-10
13	20		56065	003101-01
13	21		56065	006028-02
13	22		56065	006028-01
13	23		56065	003202-0
13	24		56065	003802-06
13	25		56065	006002-02
13	26		56065	006034-01
14	1	4820-00-477-7958	75336	112C1/4 200
14	2	4730-00-196-1465	96906	MS51953-25
14	3		04718	1047-14
14	4		04718	1047-15
14	5	4820-01-042-2923	75336	225A1/2X3/8
14	6		75336	225A-3/8X1/2-1
14	7		75336	225A-3/8X1/2-2
14	8	4820-01-168-2158	75336	225A-3/8X1/2-3
14	9	4820-01-166-1161	75336	225A3/8X1/2-4

## CROSS-REFERENCE INDEXES

FIG.	ITEM	FIGURE AND ITEM NUMBER INDEX		PART NUMBER
		STOCK NUMBER	FSCM	
14	10	6685-01-078-7556	38508	J5458
14	11		93061	DC604-4
14	12		76364	502-3/8
14	13	4730-00-019-2067	96906	MS51953-49
14	14		04718	1047-16
14	15		04718	86-084
15	1	4720-01-084-0118	04718	88-751
15	2		04718	1047-17
15	3	4910-00-204-2644	94894	61J2-1506
15	4	5310-00-934-9759	96906	MS35649-284
15	5	5310-00-045-3299	96906	MS35338-42
15	6	5305-00-889-3001	96906	MS35206-231
15	7		04718	86-192
15	8		04718	86-190

**By Order of the Secretary of the Army:**

**CARL E. VUONO**  
*General, United States Army*  
*Chief of Staff*

**Official:**

**WILLIAM J. MEEHAN, II**  
*Brigadier General, United States Army*  
*The Adjutant General*

**DISTRIBUTION:**

To be distributed in accordance with DA Form 12-25A, Unit, Direct Support and General Support Maintenance requirements for Compressor, Reciprocating, Air, Electric, 5 CFM, 175 PSI (20-904, 20-911)

RECOMMENDED CHANGES TO EQUIPMENT TECHNICAL PUBLICATIONS



THEN... JOT DOWN THE DOPE ABOUT IT ON THIS FORM. CAREFULLY TEAR IT OUT, FOLD IT AND DROP IT IN THE MAIL!

SOMETHING WRONG WITH THIS PUBLICATION?

FROM: (PRINT YOUR UNIT'S COMPLETE ADDRESS)  
**PFC JOHN DOE**  
**COA, 3d ENGINEER BN**  
**FT. LEONARDWOOD, MD 63108**

DATE SENT

PUBLICATION NUMBER: **TM 5-4310-362-24P**      PUBLICATION DATE: **24 August 1989**      PUBLICATION TITLE: **COMPRESSOR, ELECTRIC MOTOR DRIVEN**

BE EXACT... PIN-POINT WHERE IT IS				IN THIS SPACE TELL WHAT IS WRONG AND WHAT SHOULD BE DONE ABOUT IT:
PAGE NO.	PARA-GRAPH	FIGURE NO.	TABLE NO.	
<b>6</b>	<b>2-1 a</b>			<i>In line 6 of paragraph 2-1a the manual states the engine has <u>6</u> cylinders. The engine on my set only has <u>4</u> cylinders. Change the manual to show <u>4</u> cylinders.</i>
<b>B1</b>		<b>4-3</b>		<i>Callout 16 on figure 4-3 is pointing at a <u>bolt</u>. In key to figure 4-3, item 16 is called a <u>shim</u> - Please correct one or the other.</i>
<b>125</b>	<b>line 20</b>			<i>I ordered a gasket, item 19 on figure B-16 by NSN 2 910-05-762-3001. I got a gasket but it doesn't fit. Supply says I got what I ordered, so the NSN is wrong. Please give me a good NSN</i>

PRINTED NAME, GRADE OR TITLE, AND TELEPHONE NUMBER  
**JOHN DOE, PFC (268) 317.7111**

SIGN HERE: *John DOE*  
**JOHN DOE**

DA FORM 2028-2  
 1 JUL 79

PREVIOUS EDITIONS ARE OBSOLETE.  
 DRSTS-M Overprint 1, 1 Nov 80

P.S.--IF YOUR OUTFIT WANTS TO KNOW ABOUT YOUR RECOMMENDATION MAKE A CARBON COPY OF THIS AND GIVE IT TO YOUR HEADQUARTERS.

TEAR ALONG PERFORATED LINE

REVERSE OF DA FORM 2028-2 Reverse of DRSTS-M Overprint 2,  
1 Nov 80

FILL IN YOUR  
UNIT'S ADDRESS

FOLD BACK

DEPARTMENT OF THE ARMY

---


---

TEAR ALONG PERFORATED LINE

COMMANDER  
U S ARMY TROOP SUPPORT COMMAND  
ATTN: AMSTR-MCTS  
4300 GOODFELLOW BOULEVARD  
ST. LOUIS, MO 63120-1798



RECOMMENDED CHANGES TO EQUIPMENT TECHNICAL PUBLICATIONS



## SOMETHING WRONG WITH THIS PUBLICATION?

**THEN... JOT DOWN THE DOPE ABOUT IT ON THIS FORM. CAREFULLY TEAR IT OUT, FOLD IT AND DROP IT IN THE MAIL!**

FROM: (PRINT YOUR UNIT'S COMPLETE ADDRESS)

DATE SENT

PUBLICATION NUMBER  
TM 5-4310-362-24P

PUBLICATION DATE  
24 August 1989

PUBLICATION TITLE  
COMPRESSOR, ELECTRIC MOTOR DRIVEN

BE EXACT... PIN-POINT WHERE IT IS				IN THIS SPACE TELL WHAT IS WRONG AND WHAT SHOULD BE DONE ABOUT IT:
PAGE NO.	PARA-GRAPH	FIGURE NO.	TABLE NO.	

PRINTED NAME, GRADE OR TITLE, AND TELEPHONE NUMBER

SIGN HERE

TEAR ALONG PERFORATED LINE

REVERSE OF DA FORM 2028-2 Reverse of DRSTS-M Overprint 2,  
1 Nov 80

FILL IN YOUR  
UNIT'S ADDRESS

FOLD BACK

DEPARTMENT OF THE ARMY

---

---

COMMANDER  
U S ARMY TROOP SUPPORT COMMAND  
ATTN: AMSTR-MCTS  
4300 GOODFELLOW BOULEVARD  
ST. LOUIS, MO 63120-1798

TEAR ALONG PERFORATED LINE

### The Metric System and Equivalents

#### Linear Measure

1 centimeter = 10 millimeters = .39 inch  
 1 decimeter = 10 centimeters = 3.94 inches  
 1 meter = 10 decimeters = 39.37 inches  
 1 dekameter = 10 Meters = 32.8 feet  
 1 hectometer = 10 dekameters = 328.08 feet  
 1 kilometer = 10 hectometers = 3,280.8 feet

#### Weights

1 centigram = 10 milligrams = .15 grain  
 1 decigram = 10 centigrams = 1.54 grains  
 1 gram = 10 decigram = 0.35 ounce  
 1 dekagram = 10 Grams = .35 ounce  
 1 hectogram = 10 dekagrams = 3.52 ounces  
 1 kilogram = 10 hectograms = 2.2 pounds  
 1 quintal = 100 kilograms = 220.46 pounds  
 1 metric ton = 10 quintals = 1.1 short tons

#### Liquid Measure

1 centiliter = 10 milliliters = .34 fluid ounce  
 1 deciliter = 10 centiliters = 3.38 fluid ounces  
 1 liter = 10 deciliters = 33.81 fluid ounces  
 1 dekaliter = 10 liters = 2.64 gallons  
 1 hectoliter = 10 dekaliters = 27.42 gallons  
 1 kiloliter = 10 hectoliters = 264.18 gallons

#### Square Measure

1 sq. centimeter = 100 sq millimeters = .155 sq. inch  
 1 sq. decimeter = 100 sq centimeters = 125.5 sq. inches  
 1 sq. meter (centare) = 100 sq decimeters = 10.76 sq. feet  
 1 sq. dekameter (are) = 1,076.4 sq. feet  
 1 sq. hectometer (hectare) = 100 sq. dekameters = 2.47 acres  
 1 sq. kilometer = 100 sq. hectometers = .386 sq. mile

#### Cubic Measure

1 cu. centimeter = 1000 cu. millimeters = .06 cu. inch  
 1 cu. decimeter = 1000 cu. decimeters = 61.02 cu. inches  
 1 cu. meter = 1000 cu. decimeters = 35.31 cu. feet

### Approximate Conversion Factors

To change	To	Multiply by	To change	To	Multiply by
inches	centimeters	2.540	ounce-inches	newton-meters	.007062
feet	meters	.305	centimeters	inches	.394
yards	meters	.914	meters	feet	3.280
miles	kilometers	1.609	meters	yards	1.094
square inches	square centimeters	6.451	kilometers	miles	.621
square feet	square meters	.093	square centimeters	square inches	.155
square yards	square meters	.836	square meters	square feet	10.764
square miles	square kilometers	2.590	square meters	square yards	1.196
acres	square hectometers	.405	square kilometers	square miles	.386
cubic feet	cubic meters	.028	square hectometers	acres	2.471
cubic yards	cubic meters	.765	cubic meters	cubic feet	35.315
fluid ounces	milliliters	29.573	cubic meters	cubic yards	1.308
pints	liters	.473	milliliters	fluid ounces	.034
quarts	liters	.946	liters	pints	2.113
gallons	liters	3.785	liters	quarts	1.057
ounces	grams	28.349	liters	gallons	.264
pounds	kilograms	.454	grams	ounces	.035
short tons	metric tons	.907	kilograms	pounds	2.205
pound-feet	newton-meters	1.356	metric tons	short tons	1.102
pounds-inches	newton-meters	.11296			

#### Temperature (Exact)

°F Fahrenheit Temperature      5/9 (after subtracting 32)      Celsius Temperature      °C

**TM 5-4310-362-24P**

**PIN: 044626-000**

This fine document...

Was brought to you by me:



## [Liberated Manuals -- free army and government manuals](#)

Why do I do it? I am tired of sleazy CD-ROM sellers, who take publicly available information, slap “watermarks” and other junk on it, and sell it. Those masters of search engine manipulation make sure that their sites that sell free information, come up first in search engines. They did not create it... They did not even scan it... Why should they get your money? Why are not letting you give those free manuals to your friends?

I am setting this document FREE. This document was made by the US Government and is NOT protected by Copyright. Feel free to share, republish, sell and so on.

I am not asking you for donations, fees or handouts. If you can, please provide a link to [liberatedmanuals.com](http://liberatedmanuals.com), so that free manuals come up first in search engines:

<A HREF=<http://www.liberatedmanuals.com/>>Free Military and Government Manuals</A>

- Sincerely  
Igor Chudov  
<http://igor.chudov.com/>
- [Chicago Machinery Movers](#)