

TECHNICAL MANUAL

ORGANIZATIONAL, DIRECT SUPPORT AND
GENERAL SUPPORT MAINTENANCE
REPAIR PARTS AND SPECIAL TOOLS LIST

COMPRESSOR, AIR, RECIPROCATING,
ELECTRIC MOTOR DRIVEN, RECEIVER MOUNTED,
15CFM AT 175 PSI (12.30 KGS PER SQ CM)
(CHAMPION PNEUMATIC MACHINERY COMPANY
MODEL NOS. HR5-8M-3 AND HR5-8M-4)
NSN 4310-00-537-8876

This manual supersedes TM 5-4310-350-24P, 18 August 1975.

HEADQUARTERS DEPARTMENT OF THE ARMY

18 MAY 1982

TECHNICAL MANUAL }
 No. 5-4310-350-24P }

HEADQUARTERS
 DEPARTMENT OF THE ARMY
 WASHINGTON, D. C., 18 May 1982

**ORGANIZATIONAL, DIRECT SUPPORT AND GENERAL SUPPORT
 MAINTENANCE REPAIR PARTS AND SPECIAL TOOLS LIST
 FOR
 COMPRESSOR, AIR, RECIPROCATING,
 ELECTRIC MOTOR DRIVEN, RECEIVER MOUNTED
 15 CFM AT 175 PSI (12.30 KGS PER SQ CM)
 (CHAMPION PNEUMATIC MACHINERY COMPANY
 MODEL NO. HR5-8M-3 AND HR5-8M-4)
 NSN 4310-00-537-8876**

Current as of 15 December 1981

REPORTING ERRORS AND RECOMMENDING IMPROVEMENTS

You can help improve this manual. If you find any mistake or if you know of a way to improve the procedures, please let us know. Mail your letter, DA Form 2028 (Recommended Changes to Publications and Blank Forms), or DA Form 2028-2 located in the back of this manual direct to: Commander, US Army Troop Support & Aviation Materiel Readiness Command, ATTN: DRSTS-MPSD, 4300 Goodfellow Boulevard, St. Louis, MO 63120. A reply will be furnished directly to you.

TABLE OF CONTENTS

			Page	Figure
SECTION	I.	INTRODUCTION		
SECTION	II.	REPAIR PARTS LIST		
Group	01	BELT GUARD ASSEMBLY	8	1
Group	02	ELECTRIC MOTOR	10	2
		Switch Assembly Pressure	12	3
		Starter Assembly Magnetic	14	4
Group	03	AIR COMPRESSOR ASSEMBLY		
		Air Compressor Muffler	16	5
		Air Compressor Manifolds	18	7
		Air Compressor Valve Assembly	20	8
		Intake Muffler	22	6
		Air Compressor Piston and Rod Assembly	24	9
		Crankcase	26	10
		Compressor Piston Rings	28	11

TABLE OF CONTENTS (Continued)

			Page	Figure
Group	04	RECEIVER		
		Air Receiver Tank and Parts	30	12
SECTION	III.	SPECIAL TOOLS LIST (Not Applicable) . .		
SECTION	IV.	NATIONAL STOCK NUMBER AND) PART NUMBER	33	
		INDEX		

ORGANIZATIONAL, DIRECT AND GENERAL SUPPORT MAINTENANCE
REPAIR PARTS AND SPECIAL TOOLS LIST

Section I. INTRODUCTION

1. Scope.

This manual lists spares and repair parts; special tools; special test, measurement, and diagnostic-equipment (TMDE) , and other special support equipment required for performance of organizational, direct support, general support maintenance of the air compressor. It authorizes the requisitioning and issue of repair parts as indicated by the source and maintenance codes.

2. General.

This Repair Parts and Special Tools List is divided into the following sections:

a. Section II. Repair Parts List. A list of spares and repair parts authorized for use in the performance of maintenance. The list also includes parts which must be removed for replacement of the authorized parts. Parts lists are composed of functional groups in numeric sequence, with the parts in each group listed in figure and item number sequence. Bulk materials are listed in NSN sequence.

b. Section III. Special Tools List. A list of special tools, special TMDE, and other special support equipment authorized for the performance of maintenance (not applicable).

c. Section IV. National Stock Number and Part Number Index. A list, in National item identification number (NIIN) sequence, of all National stock numbers (NSN) appearing in the listings, followed by a list in alphameric sequence of all part numbers appearing in the listings. National stock numbers and part numbers are cross-referenced to each illustration figure and item number appearance. This index is followed by a cross-reference list of reference designators to figure and item numbers.

3. Explanation of Columns.

a. Illustration. This column is divided as follows:

(1) Figure Number. Indicates the figure number of the illustration on which the item is shown.

(2) Item Number. The number used to identify item called out in the illustration.

b. Source, Maintenance, and Recoverability (SMR) Codes.

(1) Source Code. Source codes indicate the manner of acquiring support items for maintenance, repair, or overhaul of end items. Source codes are entered in the first and second positions of the Uniform SMR Code format as follows:

Code	Definition
PA	- Item procured and stocked for anticipated or known usage.
PB	- Item procured and stocked for insurance purpose because essentiality dictates that a minimum quantity be available in the supply system.
PC	- Item procured and stocked and which otherwise would be coded PA except that it is deteriorative in nature.
PD	- Support item, excluding support equipment, procured for initial issue or outfitting and stocked only for subsequent or additional initial issues or outfitting. Not subject to automatic replenishment.
PE	- Support equipment procured and stocked for initial issue or outfitting to specified maintenance repair activities.
PF	- Support equipment which will not be stocked but which will be centrally procured on demand.
PG	- Item procured and stocked to provided for sustained support for the life of the equipment. It is applied to an item peculiar to the equipment which, because of probable discontinuance or shutdown of production facilities, would prove uneconomical to reproduce at a later time.
KD	- An item of a depot overhaul/repair kit and not purchased separately. Depot kit defined as a kit that provides items required at the time of overhaul or repair.
KF	- An item of a maintenance kit and not purchased separately. Maintenance kit defined as a kit that provides an item that can be replaced at organizational or intermediate levels of maintenance.
KB	- Item included in both a depot overhaul/repair kit and a maintenance kit.
MO	- Item to be manufactured or fabricated at organizational level.
MF	- Item to be manufactured or fabricated at the direct support maintenance level.
MH	- Item to be manufactured or fabricated at the general support maintenance level.
MD	- Item to be manufactured or fabricated at the depot maintenance level.
AO	- Item to be assembled at organizational level.
AF	- Item to be assembled at direct support maintenance level.
AH	- Item to be assembled at general support maintenance level.
AD	- Item to be assembled at depot maintenance level.
XA	- Item is not procured or stocked because the requirements for the item will result in the replacement of the next higher assembly.
XB	- Item is not procured or stocked. If not available through salvage, requisition.
xc	- Installation drawing, diagram, instruction sheet, field service drawing, that is identified by manufacturer's part number.
XD	- A support item that is not stocked. When required, item will be procured through normal supply channels.

NOTE

Cannibalization or salvage may be used as a source of supply for any items coded above except those coded XA or XD and support items as restricted by AR 700-42.

(2) Maintenance Code. Maintenance codes are assigned to indicate the levels of maintenance authorized to USE and REPAIR support items. The maintenance codes are entered in the third and fourth positions of the Uniform SMR Code format as follows:

(a) The maintenance code entered in the third position will indicate the lowest maintenance level authorized to remove, replace, and use the support item. The maintenance code entered in the third position will indicate one of the following levels of maintenance:

Code	Application/Explanation
C	- Crew or operator maintenance performed within organizational maintenance.
O	- Support item is removed, replaced, used at the organizational level.
F	- Support item is removed, replaced, used at the direct support level.
H	- Support item is removed, replaced, used at the general support level.
D	- Support items that are removed, replaced, used at depot, mobile depot, or specialized repair activity only.

(b) The maintenance code entered in the fourth position indicates whether the item is to be repaired and identifies the lowest maintenance level with the capability to perform complete repair (i.e., all authorized maintenance functions). This position will contain one of the following maintenance codes.

Code	Application/Explanation
O	- The lowest maintenance level capable of complete repair of the support item is the organizational level.
F	- The lowest maintenance level capable of complete repair of the support item is the direct support level.
H	- The lowest maintenance level capable of complete repair of the support item is the general support level.
D	- The lowest maintenance level capable of complete repair of the support item is the depot level.
L	- Repair restricted to designated, Specialized Repair Activity.
Z	- Nonreparable. No repair is authorized.
B	- No repair is authorized. The item may be reconditioned by adjusting, lubricating, etc., at the user level. No parts or special tools are procured for the maintenance of this item.

(3) Recoverability Code. Recoverability codes are assigned to support items to indicate the disposition action on unscerviceable items. The recoverability code is entered in the fifth position of the Uniform SMR Code format as follows:

Recoverability Codes	Definition
z -	Nonreparable item. When unscerviceable, condemn and dispose at the level indicated in position 3.
o -	Reparable item. When uneconomically reparable, condemn and dispose at organizational level.
F -	Reparable item. When uneconomically reparable, condemn and dispose at the direct support level.
H -	Reparable item. When uneconomically reparable, condemn and dispose at the general support level.
D -	Reparable item. When beyond lower level repair capability, return to depot. Condemnation and disposal not authorized below depot level.
L -	Reparable item. Repair, condemnation, and disposal not authorized below depot/specialized repair activity level.
A -	Item requires special handling or condemnation procedures because of specific reasons (i.e., precious metal content, high dollar value, critical material or hazardous material). Refer to appropriate manuals/directives for specific instructions.

C. National Stock Number. Indicates the National stock number assigned to the item and which will be used for requisitioning.

d. Part Number. Indicates the primary number used by the manufacturer (individual, company, firm, corporation, or Government activity), which control the design and characteristics of the item by means of its engineering drawings, specifications, standards, and inspection requirements to identify an item or range of items.

NOTE

When a stock numbered item is requisitioned, the item received may have a different part number than the part being replaced.

e. Federal Supply Code for Manufacturer (FSCM). The FSCM is a 5-digit numeric code listed in SB 708-42; which is used to identify the manufacturer, distributor, or Government agency, etc.

f. Description. Indicates the Federal item name and, if required, a minimum description to identify the items. Items that are included in kits and sets are listed below the name of the kit or set with the quantity of each item in the kit or set indicated in the quantity incorporated in unit column.

g. Unit of Measure (U/M). Indicates the standard of the basic quantity of the listed item as used in performing the actual maintenance function. This measure is expressed by a two-character alphabetical abbreviation (e.g. , ea, in, pr, etc). When the unit of measure differs from the unit of issue, the lowest unit of issue that will satisfy the required units of measure will be requisitioned.

h. Quantity Incorporated in Unit. Indicates the quantity of the item used in the breakout shown on the illustration figure, which is prepared for functional group, subfunctional group, or an assembly. A "V" appearing in this column in lieu of a quantity indicates that no specific quantity is applicable, (e.g., shims, spacers, etc).

4. Special Information.

a. Usable on codes are shown in the description column. Uncoded items are applicable to all models. Identification of the usable codes used in this publication are:

Code	Used On	Serial No. Range
A	HR5-8M-3	Through 18658
B	HR5-8M-3	18659-18758
C	HR5-8M-3	18864-18944
D	HR5-8M-4	18945-19019

Note : Uncoded items are applicable to all serial number ranges.

b. Bulk material required to manufacture items are listed in the Bulk Material Group of this manual.

c. Detailed assembly instructions for items source coded to be assembled are found in TM 5-4310-350-14. Assembly components are listed immediately following the item to be assembled.

d. Repair parts kits and gasket sets appear as the last entries in the repair parts listing for the figure in which its parts are listed as repair parts.

e. The following publications pertain to the air compressor and its components.

TM 5-4310-350-14 Operator, Organizational, Direct Support and General Support Maintenance Manual for Compressor, Model Nos. HR5-8M-3 and HR5-8M-4, NSN 4310-00-537-8876

LO 5-4310-350-12 Lubrication Order for Compressor, Model Nos. HR5-8M-3 and HR5-8M-4, NSN 4310-00-537-8876

f. In the parts list, some items are indented to show that they are a component or components of the item under which they are indented.

5. How to Locate Repair Parts.

a. When National Stock Number or Part Number is Unknown:

(1) Using the table of contents determine the assembly group within which the repair part belongs. This is necessary since illustrations are prepared for assembly groups, and listings are divided into the same groups.

(2) Find the illustration covering the assembly group to which the repair part belongs.

(3) Identify the repair part on the illustration and note the illustration figure number and item number of the repair part.

(4) Using the repair parts listing, find the assembly group to which the repair part belongs and locate the illustration figure and item number noted on the illustration.

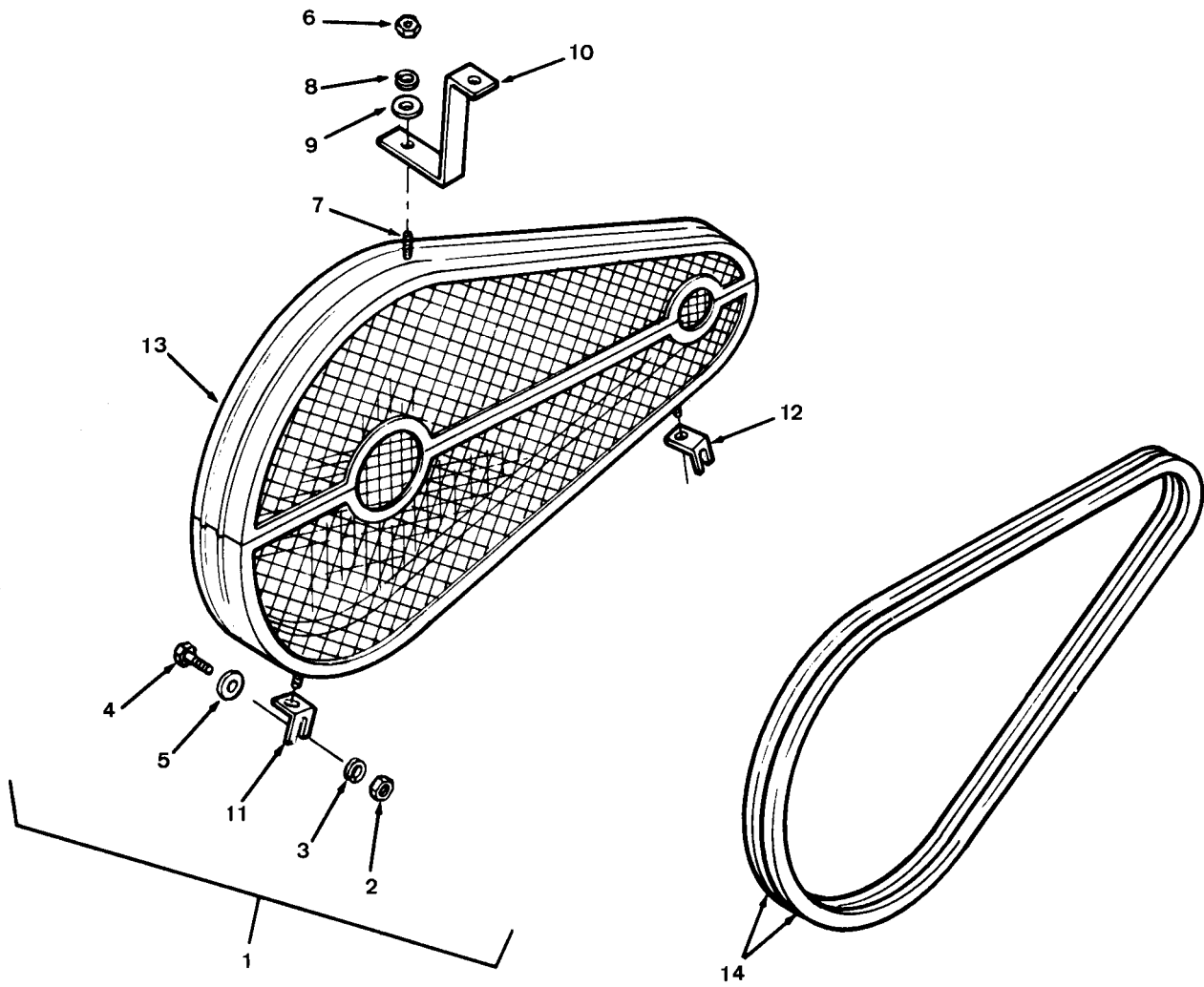
b. When National Stock Number of Part Number is Known:

(1) First. Using the Index of National Stock Numbers and Part Numbers, find the pertinent National stock number or part number. This index is in NIIN sequence followed by a list of part numbers in alphameric sequence, cross-referenced to the illustration figure number and item number.

(2) Second. After finding the figure and item number, locate the figure and item number in the repair parts list.

6. Abbreviations.

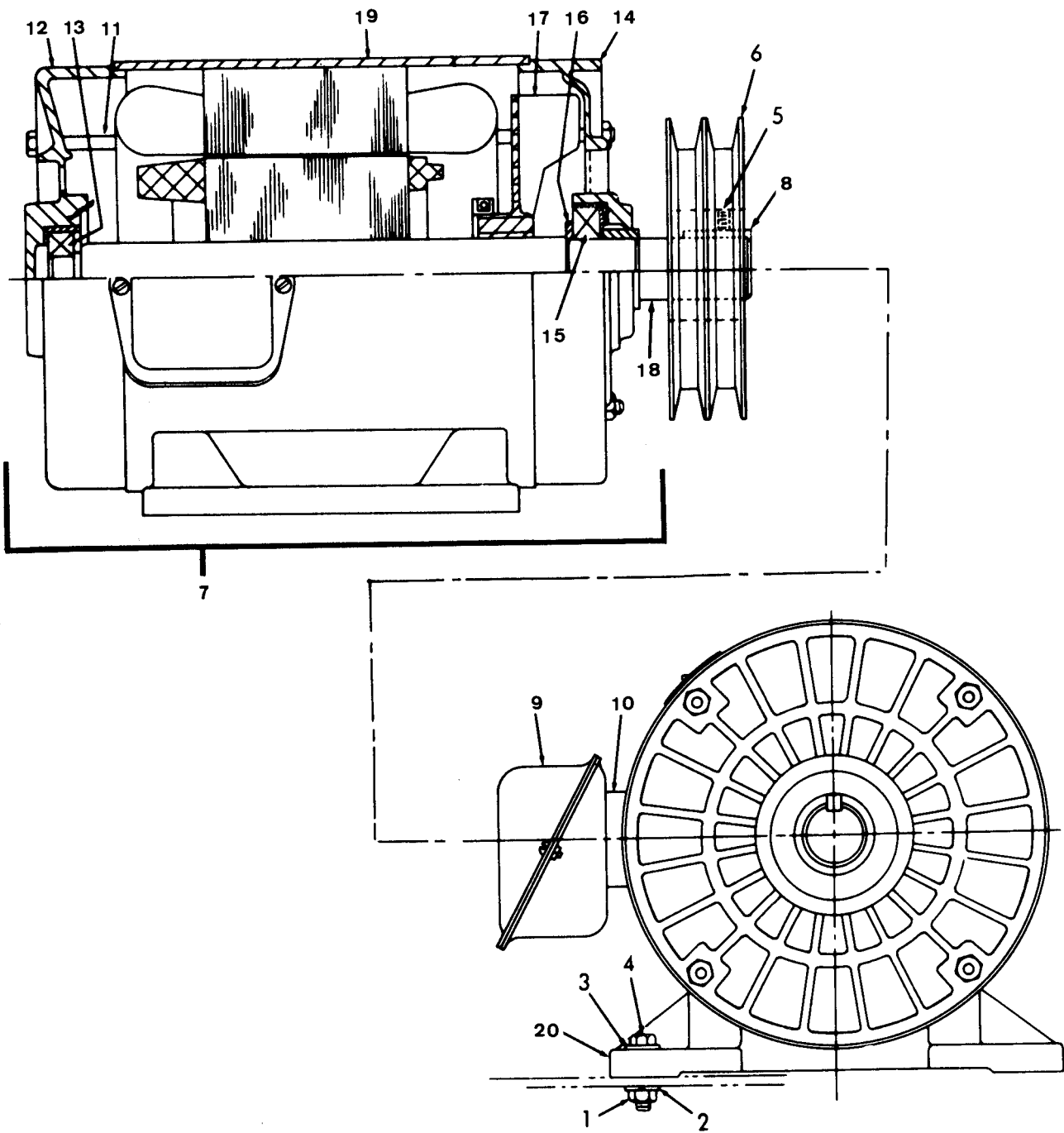
Abbreviations	Explanation
attch	attaching
hd	head
hex	hexagon
hp	high pressure
lp	low pressure
mtg	mounting
rd	round



TS 4310-350-24P/1

Figure 1. Belt Guard Assembly.

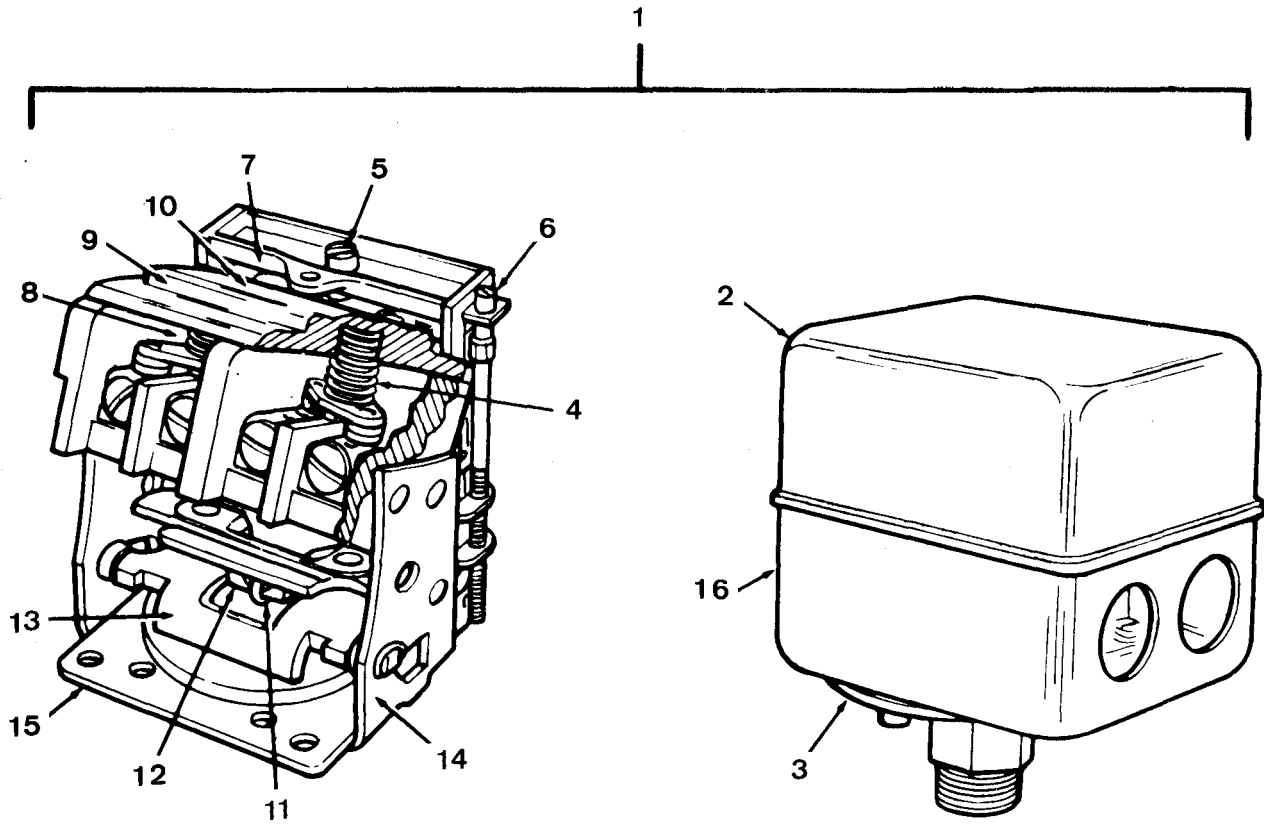
SECTION II (1) ILLUSTRATION		TM5-4310-350-24P		(6)		(7)		(8)	
(A) FIG NO	(B) ITEM NO	(2) SMR CODE	(3) NATIONAL STOCK NUMBER	(4) FSCM	(5) PART NUMBER	DESCRIPTION	USABLE ON CODE	U/M	QTY INC IN UNIT
						GROUP 01 BELT GUARD ASSEMBLY			
1	1	XBOZZ		11568	Z307	GUARD ASSEMBLY,BELT		EA	1
1	2	XDFZZ	5310-00-761-6882	96906	MS51967-2	.NUT,PLAIN,HEXAGON, GUARD MTG		EA	1
1	3	PAOZZ	5310-00-209-0786	96906	MS353555-33	.WASHER,LOCK, GUARD MTG		EA	2
1	4	PAOZZ	5305-00-068-0502	96906	MS90725-6	.SCREW,CAP, HEXAGON HEAD,GUARD MTG		EA	2
1	5	PAFZZ	5310-00-823-8804	96906	MS27183-9	.WASHER,FLAT, GUARD MTG		EA	2
1	6	PAOZZ	5310-01-017-3842	11568	M935A	.NUT,PLAIN,HEXAGON, GUARD BRACKET MTG		EA	3
1	7	PAOZZ	5310-00-880-7744	96906	MS51967-5	.SCREW,CAP,HEXAGON HEAD		EA	3
1	8	PAOZZ	5310-00-407-9566	96906	MS35338-45	.WASHER,LOCK GUARD BRACKET MTG		EA	3
1	9	PAOZZ	5310-00-230-7342	11568	M912A	.WASHER,FLAT, GUARD BRACKET MTG		EA	3
1	10	XBOZZ		11568	M855	.BRACKET, BELT GUARD MTG		EA	1
1	11	XBOZZ		11568	M856	.BRACKET, BELT GUARD MTG		EA	1
1	12	XBOZZ		11568	M854	.BRACKET, BELT GUARD MTG		EA	1
1	13	XBOZZ		11568	M1894	.GUARD,BELT		EA	1
1	14	PAOZZ	3030-00-232-2492	24161	B65	BELT,V	ABC	ST	1
1	14	PAOZZ		24161	P5019A	V BELT SET	D	ST	1



TS 4310-350-24P/2

Figure 2. Electric Motor.

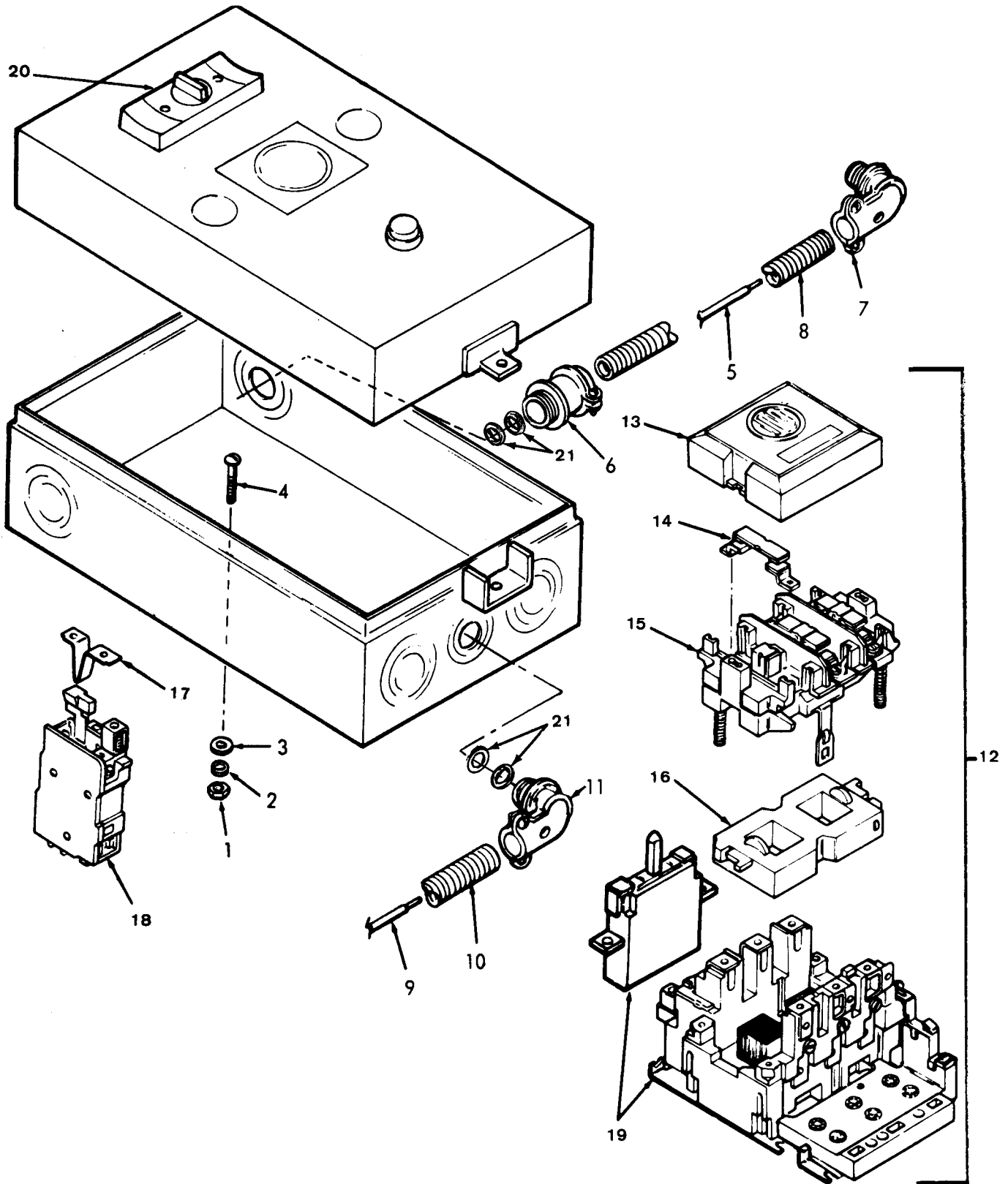
SECTION II (1) ILLUSTRATION		TM5-4310-350-24P		(6)		(7)		(8)	
(A) FIG NO	(B) ITEM NO	(2) SMR CODE	(3) NATIONAL STOCK NUMBER	(4) FSCM	(5) PART NUMBER	DESCRIPTION	USABLE ON CODE	U/M	QTY INC IN UNIT
GROUP 02 ELECTRIC MOTOR									
2	1	PAOZZ	5310-00-732-0558	96906	MS51967-8	NUT,PLAIN,HEXAGON, MOTOR MTG		EA	4
2	2	PAOZZ	5310-00-224-0772	96906	MS35338-46	WASHER,LOCK, MOTOR MTG		EA	4
2	3	PAOZZ	5310-00-080-6004	96906	MS27183-14	WASHER,FLAT MOTOR MTG		EA	4
2	4	PAOZZ	5305-00-071-2513	96906	MS90728-16	SCREW,CAP, HEXAGON,MOTOR MTG		EA	4
2	5	PAOZZ	5305-01-015-3345	11568	M568	SETSCREW, PULLEY MTG		EA	1
2	6	XBOZZ		11568	M7009D	PULLEY,MOTOR		EA	1
2	7	PBOLH	6105-01-011-0697	11568	P4106A	MOTOR, ALTERNATING CURRENT, 5-HP		EA	1
2	8	XBOZZ		92940	22A02292-04-00	.KEY,MACHINE, MOTOR PULLEY		EA	1
2	9	PAOZZ		92940	09C01042-01-00	.BOX,CONDUIT, ELECTRIC MOTOR		EA	1
2	10	XBFZZ		92940	29A01631-01-00	.SPACER, CONDUIT BOX		EA	1
2	11	XBFZZ		92940	19A03515-32-00	.BOLT,THRU, ELECTRIC MOTOR		EA	4
2	12	XBFZZ		92940	07C02593-04-05	.END,SHIELD, ELECTRIC MOTOR		EA	1
2	13	XBFZZ	3110-00-443-5874	92940	04A09101-03-00	.BEARING, ELECTRIC MOTOR		EA	1
2	14	XBFZZ		92940	07C02357-06-02	.END,SHIELD, ELECTRIC MOTOR		EA	1
2	15	XBFZZ	3110-01-035-3705	92940	04A09101-05-00	.BEARING,ELECTRIC MOTOR		EA	1
2	16	XBFZZ		92940	24A08256-01-00	.SPACER,BEARING, ELECTRIC MOTOR		EA	1
2	17	XBFZZ		92940	12B04339-01-00	.FAN,INTERNAL, ELECTRIC MOTOR		EA	1
2	18	XBFZZ		92940	74110ROT	.ROTOR ASSEMBLY, ELECTRIC MOTOR		EA	1
2	19	XBFZZ		92940	74110STA	.STATOR ASSEMBLY, ELECTRIC MOTOR		EA	1
2	20	XBFZZ		92940	10C03046-01-00	.BASE,MOTOR		EA	1



TS 4310-350-24P/3

Figure 3. Switch Assembly Pressure.

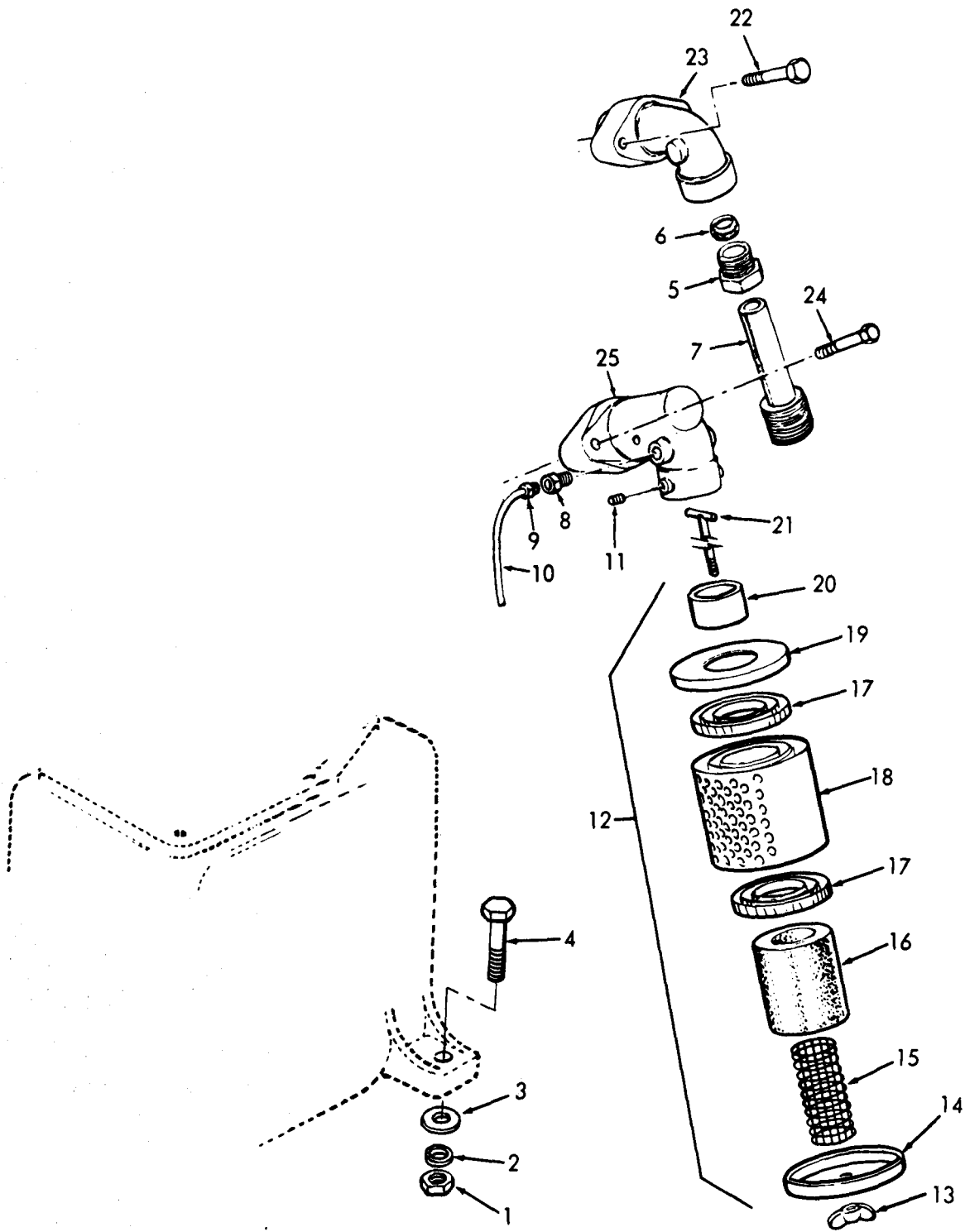
SECTION II		TM5-4310-350-24P				(6) DESCRIPTION	(7) USABLE ON CODE	(8) QTY INC IN UNIT
(1) ILLUSTRATION (A) FIG NO	(2) (B) ITEM NO	(3) SMR CODE	(4) NATIONAL STOCK NUMBER	(5) FSCM PART NUMBER				
3	1	PAFZZ	5930-00-087-4027	23826	69HA1	SWITCH,PRESSURE	EA	1
3	2	XDFZZ	5930-00-426-6670	23826	D9271-15	.ENCLOSURE, DIAPHRAGM,PRESSURE SWITCH	EA	1
3	3	XBFZZ	5930-00-772-6081	23826	D274-1	.DIAPHRAGM, PRESSURE SWITCH	EA	1
3	4	XBFZZ	5360-00-530-4936	23826	D467-1	.SPRING,HELICAL	EA	1
3	5	XBFZZ	5305-01-042-2554	23826	D323-1	.SCREW,PRESSURE ADJUSTING	EA	1
3	6	XBFZZ	5305-01-042-2555	23826	D9096-1	.SCREW AND NUT, DIFFERENTIAL	EA	1
3	7	XBFZZ		23826	D9935-1	.BAR,TOP,SWITCH	EA	1
3	8	XBFZZ		23826	D1673-1	.CONTACT BOARD ASSEMBLY,SWITCH	EA	1
3	9	XBFZZ	5360-01-040-3845	23826	D276-1	.SPRING,EQUALIZER,SWITCH	EA	1
3	10	XBFZZ	5340-00-805-0825	23826	D10037-1	.SPRING, MAIN SWITCH	EA	1
3	11	XBFZZ	5360-00-756-9452	23826	D357-1	.SPRING, TOGGLE SWITCH	EA	1
3	12	XBFZZ	6110-00-887-5005	23826	D317-2	.TOGGLE,SWITCH	EA	1
3	13	XBFZZ		23826	D1366-1	.LEVER, SWITCH	EA	1
3	14	XBFZZ	4310-01-085-2547	23826	D10456-1	.PLATE,DIAPHRAGM, SWITCH	EA	1
3	15	XBFZZ		23826	D9078-1	.FRAME,COMPLETE, SWITCH	EA	1
3	16	XBFZZ	4310-00-279-2804	23826	D9943-10	.COVER,ENCLOSURE, SWITCH	EA	1



TS 4310-350-24P/4

Figure 4. Starter Assembly Magnetic.

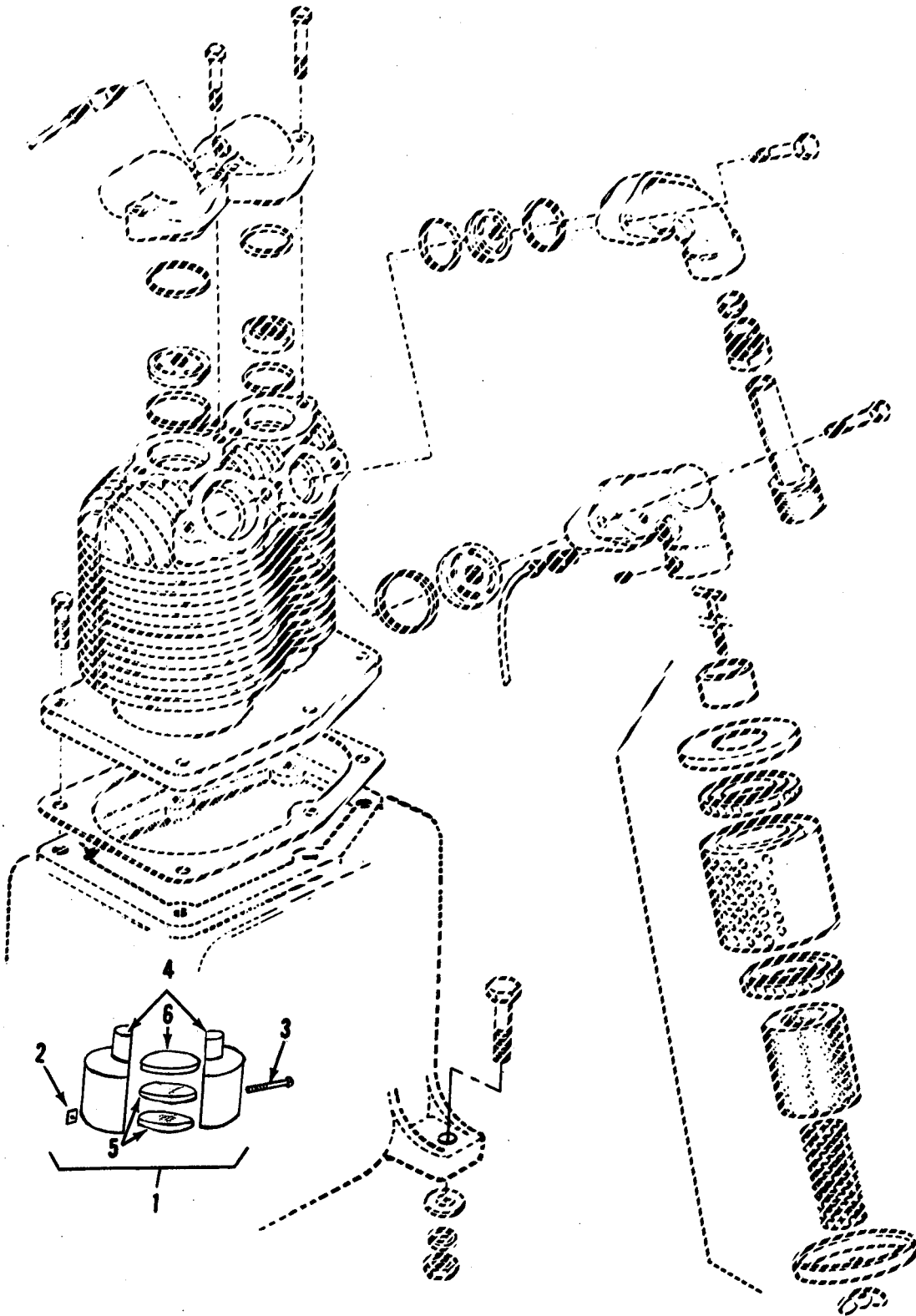
SECTION II (1) ILLUSTRATION		TM5-4310-350-24P		(6)		(7)		(8)	
(A) FIG NO	(B) ITEM NO	(2) SMR CODE	(3) NATIONAL STOCK NUMBER	(4) FSCM	(5) PART NUMBER	(6) DESCRIPTION	(7) USABLE ON CODE	U/M	(8) QTY INC IN UNIT
4	1	XDOZZ	5310-00-761-6882	96906	MS51967-2	NUT,PLAIN,HEXAGON		EA	2
4	2	PAFZZ	5310-01-009-7208	11568	M919A	WASHER,LOCK, STARTER MTG		EA	2
4	3	PAOZZ	5310-00-823-8804	96906	MS27183-9	WASHER,FLAT, STARTER MTG		EA	2
4	4	PAFZZ	5305-00-068-0502	96906	MS90725-6	SCREW,CAP, HEXAGON HEAD,STARTER MTG		EA	1
4	5	XBFZZ		11568	12 TWX35	WIRE,ELECTRIC		EA	1
4	6	PAFZZ	5975-00-578-3666	03743	ST50	BOX CONNECTOR, ELECT,1/2 IN,CLAMP TYPE		EA	1
4	7	PAFZZ	5975-00-152-1122	72971	2002	CONNECTOR,ELECTRIC	ABC	EA	1
4	7	PAFZZ	5975-00-578-3643	03743	ST9050	BOX CONNECTOR, ELECT,1/2 IN X 90 DEG	D	EA	2
4	8	XBFZZ		11568	P4132A	CONDUIT,FLEXIBLE	ABC	EA	1
4	8	PAFZZ	5975-01-086-5640	11568	P-5021A	CONDUIT,FLEXIBLE, 1/2 IN X 15 IN LG	D	EA	1
4	9	XBFZZ		11568	14TWX39	WIRE,ELECTRIC		EA	1
4	10	XBFZZ		11568	P4133A	CONDUIT,ELECTRICAL,22 IN	ABC	EA	1
4	10	PAFZZ	5975-01-086-4408	11568	P-5020A	CONDUIT,METAL, FLEXIBLE,1/2 IN X 22 IN LG	D	EA	1
4	11	PAFZZ	5975-00-152-1127	37437	380V	CONNECTOR,CONDUIT		EA	2
4	12	PBFFF		30086	A203C24C1	STARTER ASSEMBLY, MAGNETIC,COMPRESSOR	ABC	EA	1
4	12	XBFFF		30086	A203C24C2C	STARTER ASSEMBLY, MAGNETIC	D	EA	1
4	13	XBFZZ		30086	G213C	.CAP, CONTACT COVERING		EA	1
4	14	XBFZZ		30086	G203C	.KIT, CONTACT REPLACING		EA	1
4	15	XBFZZ		30086	G223C	.CARRIER ASSEMBLY, CONTACT		EA	1
4	16	PAFZZ	6110-01-021-2636	30086	G102C246	.COIL		EA	1
4	17	XBFZZ		30086	G30T46	.COIL,HEATER		EA	3
4	18	PAFZZ		30086	E20C0L1	.RELAY,OVERLOAD		EA	1
4	19	PAFZZ	5945-01-013-2094	30086	F11NOC	.RELAY,ELECTRICAL		EA	1
4	20	XBFZZ		30086	E11ESS	.SWITCH,SELECTOR, HAND-OFF-AUTO		EA	1
4	21	PAFZZ	5975-00-715-3710	03743	STG50	GASKET ASSEMBLY	D	EA	2



TS 4310-350-24P/5

Figure 5. Air Compressor Muffler.

SECTION II (1) ILLUSTRATION		TM5-4310-350-24P		(6)		(7)		(8)	
(A) FIG NO	(B) ITEM NO	(2) SMR CODE	(3) NATIONAL STOCK NUMBER	(4) FSCM	(5) PART NUMBER	DESCRIPTION	USABLE ON CODE	U/M	QTY INC IN UNIT
GROUP 03 AIR COMPRESSOR ASSEMBLY									
5	1	PAFZZ	5310-00-732-0558	96906	MS51967-8	NUT,PLAIN,HEXAGON, COMPRESSOR MTG		EA	4
5	2	PAFZZ	5310-00-224-0772	96906	MS35338-46	WASHER,LOCK, COMPRESSOR MTG		EA	4
5	3	PAFZZ	5310-00-080-6004	96906	MS27183-14	WASHER,FLAT,COMPRESSOR MTG		EA	4
5	4	PAFZZ	5305-00-269-3214	96906	MS90725-64	SCREW,CAP, HEXAGON HEAD		EA	4
5	5	PAFZZ	4730-00-850-7971	11568	SE5-41	.INVERTED NUT, TUBE,COMPRESSION		EA	2
5	6	XBZZ	4730-00-270-6113	11568	SE5-42	.FERRULE,COMPRESSION		EA	2
5	7	XBOZZ	4710-00-977-8670	11568	RE4-12A	.TUBE ASSEMBLY,METAL		EA	1
5	8	XBOZZ	4730-00-406-6969	11568	Z513	.FITTING,COMPRESSION		EA	1
5	9	XBOZZ		11568	M499	.FITTING,COMPRESSION		EA	2
5	10	XBOZZ	4710-00-961-5554	11568	SB250A	.TUBE ASSEMBLY,METAL		EA	1
5	11	XBOZZ	5305-01-011-3072	11568	M432	.SETSCREW,SLOTTED, MUFFLER MTG		EA	1
5	12	XBOOO		11568	Z66A	.MUFFLER ASSEMBLY, INTAKE		EA	1
5	13	XBOZZ	5310-01-005-4336	24929	BE10-24	..NUT,WING		EA	1
5	14	XBOZZ	4310-00-993-4188	11568	M30	..COVER,LOWER		EA	1
5	15	XBOZO		11568	M674	..FILTER ELEMENT, FLUID		EA	1
5	16	PAOZZ	4130-00-351-7387	11568	M673	..FILTER ELEMENT, INTAKE		EA	1
5	17	XBOZZ	4310-00-689-3024	11568	M62	..SEPARATOR		EA	2
5	18	XBOZZ		11568	M54C	..PLATE		EA	1
5	19	XBOZZ		11568	M31A	..COVER,UPPPER		EA	1
5	20	XBOZZ		11568	M32A	..FERRULE		EA	1
5	21	XBOZZ		11568	M1711	..T-STUD,MUFFLER		EA	1
5	22	PAOZZ	5305-00-331-4856	11568	M1737	.SCREW,CAP, HEXAGON HEAD,MANIFOLD MTG		EA	2
5	23	PAOZZ	2815-00-928-6078	11568	SE5-2A	.MANIFOLD,INTAKE,HP		EA	1
5	24	PAOZZ	5305-00-331-4856	11568	M1737	.SCREW,CAP, HEXAGON HEAD	ABC	EA	2
5	24	PAOZZ	5305-01-088-6838	11568	P-5005	.SCREW,CAP, HEXAGON HEAD,3/8-16 X 1-3/4 IN	D	EA	2
5	25	XBOZZ	4730-00-279-8122	11568	R1082	.MANIFOLD,INTAKE,LP		EA	1



TS 4310-350-24P/8

Figure 6. Intake Muffler.

SECTION II (1) ILLUSTRATION		TM5-4310-350-24P				(6)	(7)	(8)
(A) FIG NO	(B) ITEM NO	(2) SMR CODE	(3) NATIONAL STOCK NUMBER	(4) FSCM	(5) PART NUMBER	DESCRIPTION	USABLE ON CODE	U/M
6	1	XBOOF	4310-00-450-9213	11568	Z828	.MUFFLER ASSEMBLY, INTAKE		EA 1
6	2	PAOZZ	5310-01-088-4027	11568	P4752	.NUT,PLAIN,SQUARE		EA 1
6	3	PAOZZ	5305-01-088-6824	11568	P-4751	.SCREW,MACHINE, 10-24 X 3-1/2 IN		EA 1
6	4	XBOOO		11568	P4576C	.INTAKE,AIR		EA 2
6	5	PAOZZ	4310-01-087-1344	11568	P4631A	.ELEMENT,MUFFLER		EA 2
6	6	PAOZZ	4310-01-087-0018	11568	P4630A	.ELEMENT,MUFFLER		EA 1

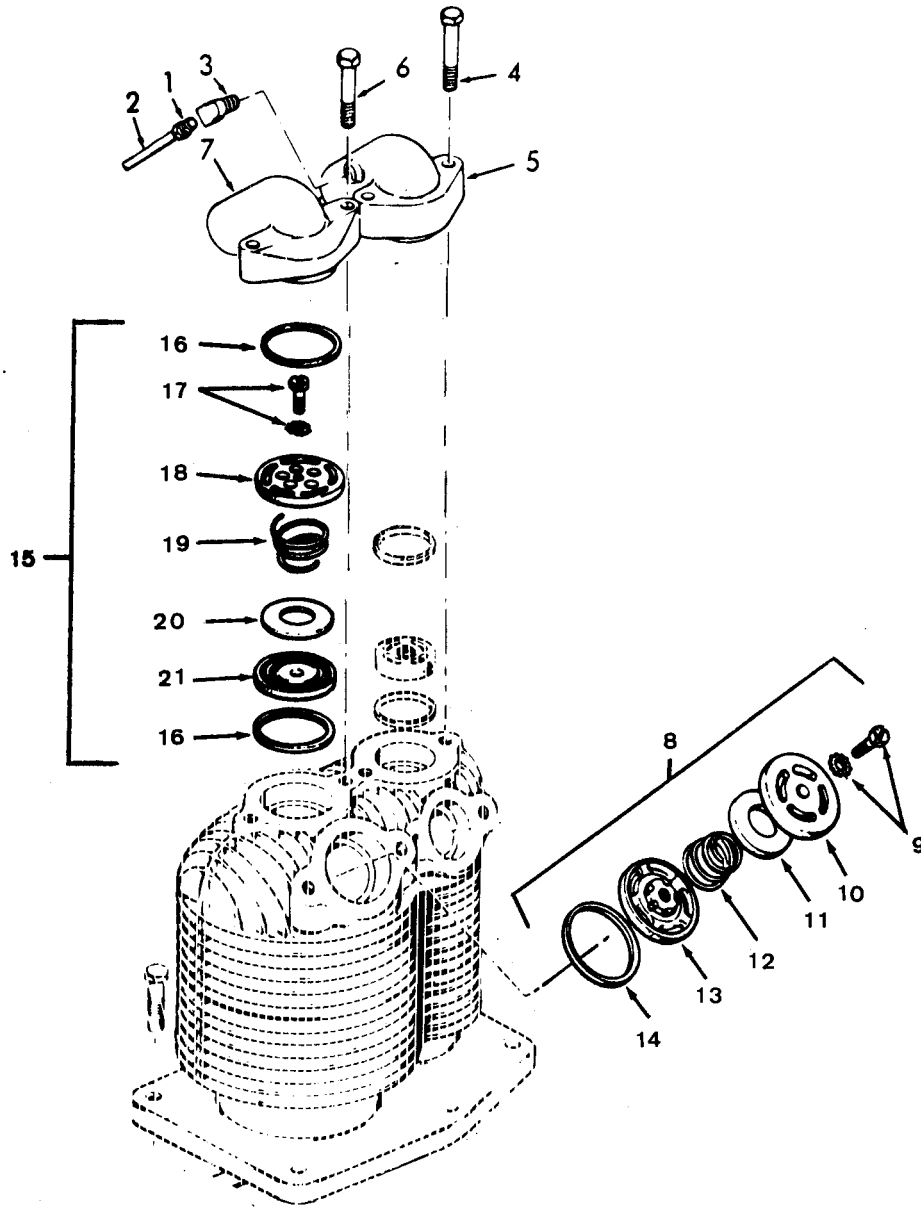


Figure 7. Air Compressor Manifolds.

SECTION II		TM5-4310-350-24P							
(1)	(2)	(3)	(4)	(5)	(6)	(7)	(8)		
ILLUSTRATION		NATIONAL			DESCRIPTION		QTY		
(A)	(B)	STOCK	FSCM	PART		USABLE ON CODE	INC		
FIG	ITEM	NUMBER		NUMBER			IN		
NO	NO						UNIT		
7	1	PAOZZ	4730-00-242-5373	11568	Z509	.ADAPTER, STRAIGHT, PI	EA	2	
7	2	XBOZZ		11568	UB375	.TUBE, BREATHER	EA	1	
7	3	XBOZZ		11568	M499	.FITTING, COMPRESSION	EA	2	
7	4	PAOZZ	5305-00-331-4856	11568	M1737	.SCREW, CAP, HEXAGON HEAD, MANIFOLD MTG	EA	2	
7	5	XBOZZ	4310-00-283-3288	11568	NR2B	.MANIFOLD, EXHAUST, HP	EA	1	
7	6	PAOZZ	5305-00-331-4856	11568	M1737	.SCREW, CAP, HEXAGON HEAD, MANIFOLD MTG	EA	2	
7	7	XBOZZ		11568	RE10-2E	.MANIFOLD, EXHAUST, LP	EA	1	
7	8	PAOZZ	4310-00-631-3399	11568	Z118	.VALVE ASSEMBLY, INTAKE, LP	EA	1	
7	9	PAOZZ	5305-00-307-1420	11568	RE14-81	..SCREW, ASSEMBLED WASHER	EA	1	
7	10	XBOZZ	4820-00-625-6760	11568	RE14-71A	..SEAT, INTAKE VALVE	EA	1	
7	11	XBOZZ	5310-00-625-6761	11568	RE14-70	..WASHER, FLAT	EA	1	
7	12	PAOZZ	5360-00-616-4374	11568	RE14-58	..SPRING, VALVE	EA	1	
7	13	XBOZZ		11568	RE14-72	..CAGE, INTAKE VALVE	EA	1	
7	14	PAOZZ	5330-00-584-8999	11568	RE14-75A	..GASKET, VALVE	EA	1	
7	15	PAOZZ	4310-00-631-3398	11568	Z813	.VALVE ASSEMBLY, EXHAUST, LP	EA	1	
7	16	PAOZZ	5330-00-283-7635	11568	RE10-63A	..GASKET	EA	2	
7	17	PAOZZ	5305-00-740-9196	11568	RE7-81	..SCREW, ASSEMBLED WASHER	EA	1	
7	18	XBOZZ		11568	RE10-51A	..CAGE, EXHAUST VALVE	EA	1	
7	19	PAFZZ	5360-00-619-0215	11568	RE10-59	..SPRING, HELICAL	EA	1	
7	20	XBOZZ	5310-00-625-6758	11568	RE10-61	..WASHER, FLAT	EA	1	
7	21	XBOZZ	4820-01-077-6468	11568	RE10-65A	..SEAT, EXHAUST VALVE	EA	1	

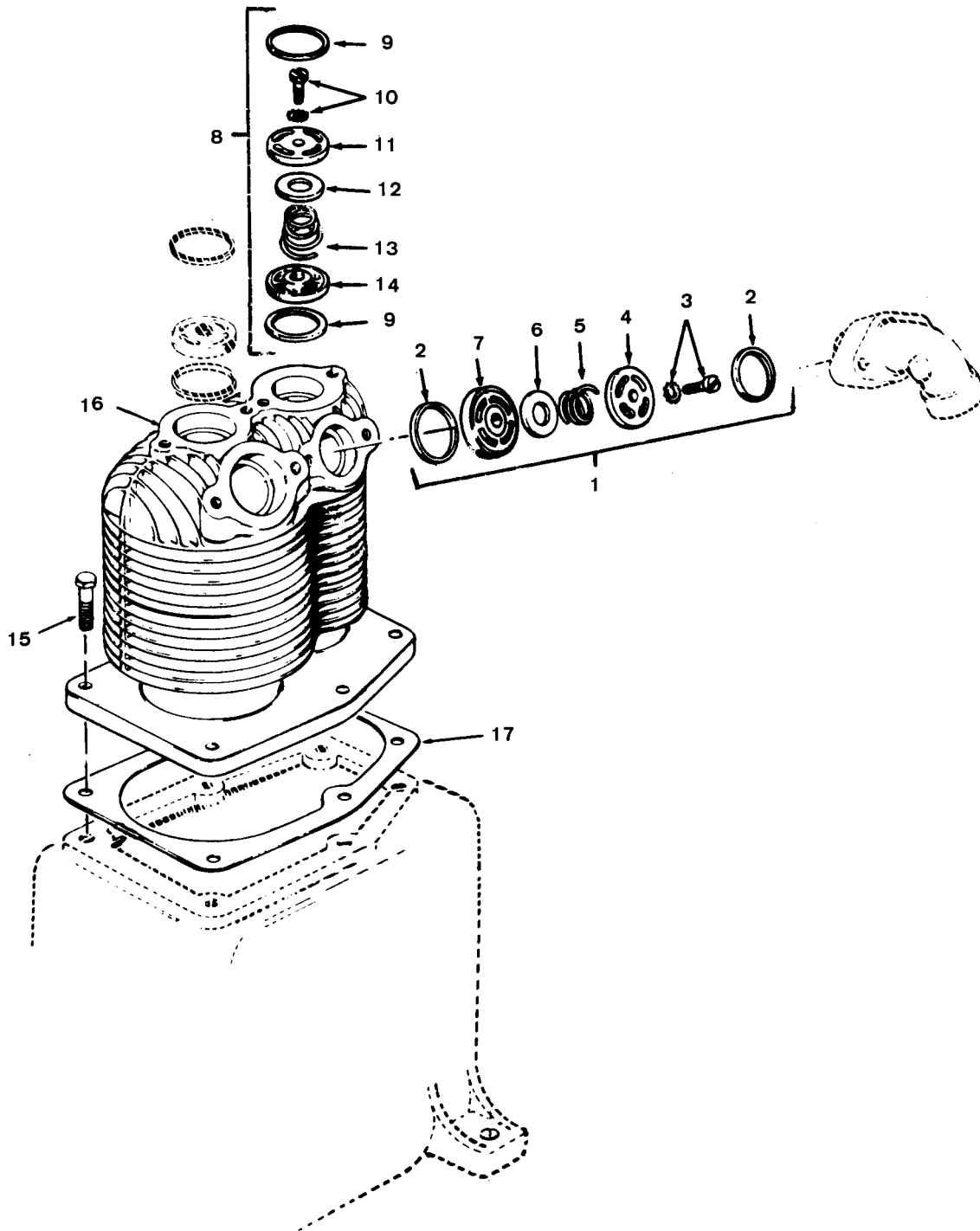
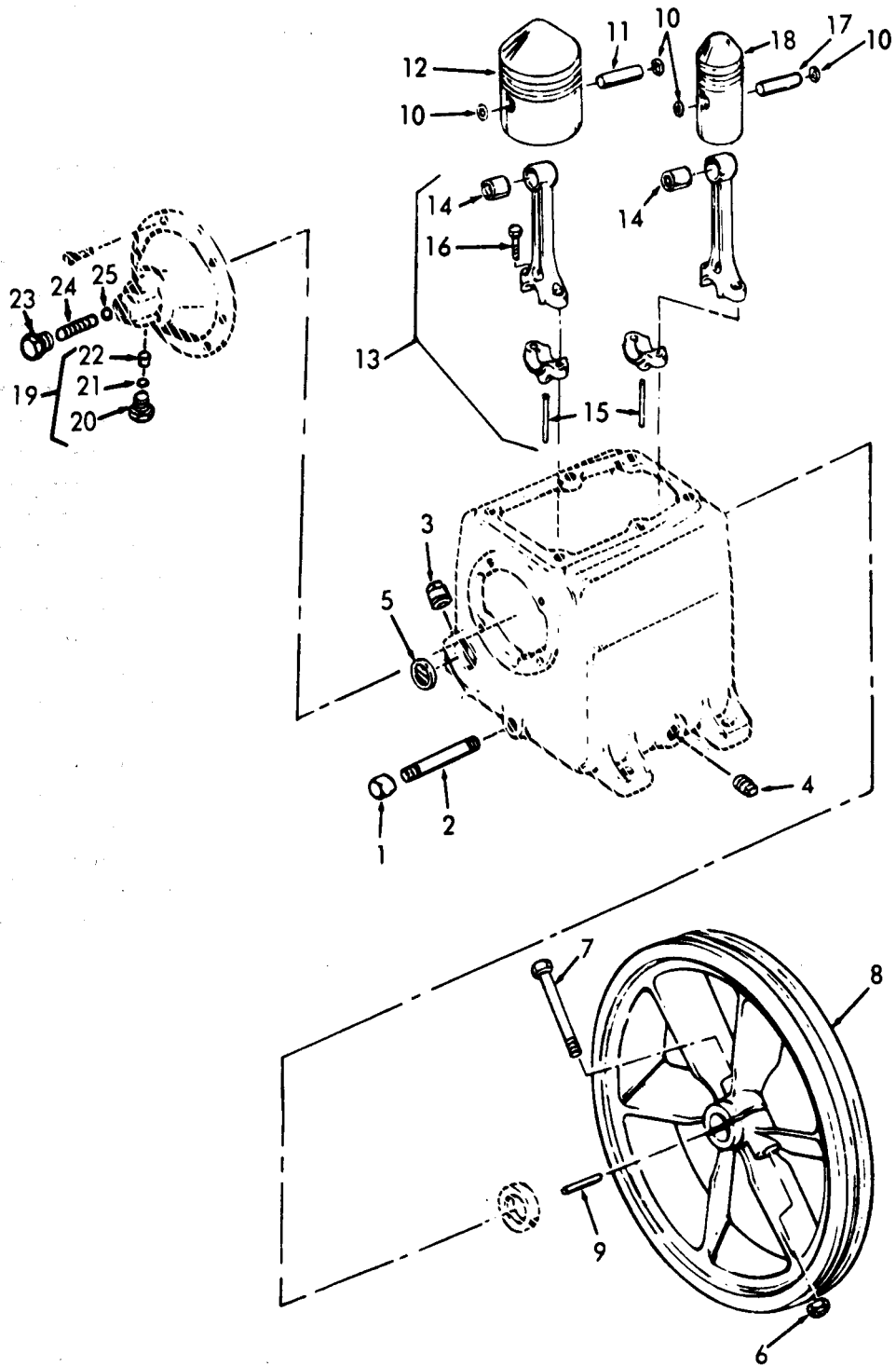


Figure 8. Air Compressor Valve Assembly.

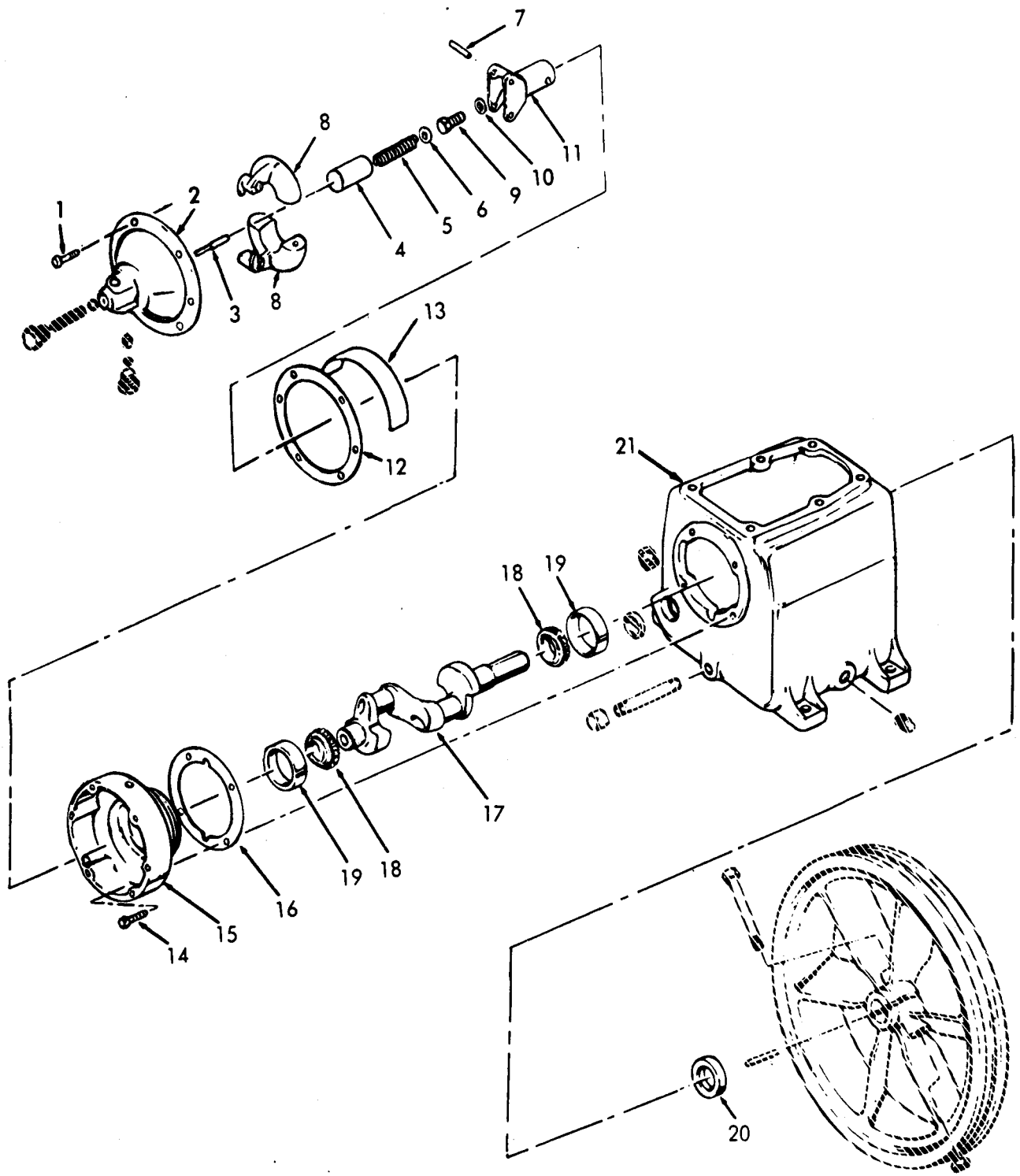
SECTION II (1) ILLUSTRATION				TM5-4310-350-24P					
(A) FIG NO	(B) ITEM NO	(2) SMR CODE	(3) NATIONAL STOCK NUMBER	(4) FSCM	(5) PART NUMBER	(6) DESCRIPTION	(7) USABLE ON CODE	U/M	(8) QTY INC IN UNIT
8	1	PAOZZ	4310-00-631-3397	11568	Z113	.VALVE ASSEMBLY, INTAKE,HP	EA		1
8	2	PAOZZ	5330-00-287-6419	11568	SE5-28A	..GASKET	EA		2
8	3	PAOZZ	5305-00-740-9196	11568	RE7-81	..SCREW,ASSEMBLED WASHER	EA		1
8	4	XBOZZ	4310-00-625-6754	11568	RE7-56A	..SEAT,INTAKE VALVE	EA		1
8	5	PAFZZ	5360-00-616-4372	11568	RE7-60	..SPRING,HELICAL,COMP	EA		1
8	6	XBOZZ	5310-00-625-6755	11568	RE10-62	..WASHER,FLAT	EA		1
8	7	XBOZZ		11568	RE7-52A	..CAGE,INTAKE VALVE	EA		1
8	8	PAOZZ	4310-00-631-3396	11568	Z115	.VALVE ASSEMBLY,EXHAUST,HP	EA		1
8	9	PAOZZ	5330-00-287-6419	11568	SE5-28A	..GASKET	EA		2
8	10	PAOZZ	5305-00-740-9196	11568	RE7-81	..SCREW,ASSEMBLED WASHER	EA		1
8	11	XBOZZ	4310-00-625-6753	11568	RE7-53A	..PLATE,HOUSING,EXHAUST	EA		1
8	12	XBOZZ	5310-00-625-6755	11568	RE10-62	..WASHER,FLAT	EA		1
8	13	PAOZZ	5360-00-616-4372	11568	RE7-60	..SPRING,HELICAL,COMP	EA		1
8	14	XBOZZ	4310-00-625-6752	11568	RE7-57A	..SEAT,EXHAUST VALVE	EA		1
8	15	XDOZZ	5305-00-710-4192	96906	MS90726-87	.SCREW,CAP,HEXAGON HEAD	EA		6
8	16	XBOZZ		11568	NR14-6A	..CYLINDER,COMPRESSOR	EA		1
8	17	PAOZZ	5330-00-450-4130	11568	NR29A	..GASKET,CLYLINDER	EA		1



TS 4310-350-24P/9

Figure 9. Air Compressor Piston and Rod Assembly.

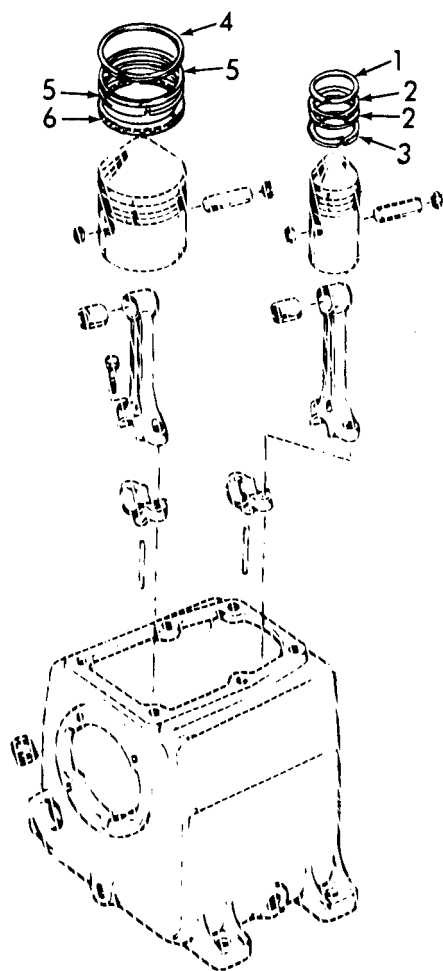
SECTION II		TM5-4310-350-24P							
(1)	(2)	(3)	(4)	(5)	(6)	(7)	(8)		
ILLUSTRATION		NATIONAL			DESCRIPTION		QTY		
(A)	(B)	STOCK	FSCM	PART		USABLE ON CODE	INC		
FIG	ITEM	NUMBER		NUMBER			IN		
NO	NO						UNIT		
9	1	XBOZZ	4730-00-213-0651	11568	M461		EA	1	
9	2	XBOZZ	4730-00-188-1874	11568	M460		EA	1	
9	3	XBOZZ		11568	M459		EA	1	
9	4	XBOZZ	4730-00-187-4207	11568	M504		EA	2	
9	5	XBOZZ	6680-00-377-4915	70925	B5093		EA	1	
9	6	PAOZZ	5310-00-768-0318	96906	MS51967-14		EA	1	
9	7	PAOZZ	5305-00-071-1776	96906	MS90725-123		EA	1	
9	8	XBFZZ	4310-00-873-1766	11568	NR7A		EA	1	
9	9	XBFZZ	5315-00-230-7446	11568	SE5-8		EA	1	
9	10	XBFZZ		75364	N5000-81		EA	2	
9	11	PAFZZ	5315-01-014-4456	11568	R10-21		EA	2	
9	12	XBFZZ		11568	R10-4		EA	1	
9	13	PAFZZ	4310-01-036-8684	11568	Z-750		EA	1	
9	14	XDFZZ	3110-00-293-8320	60380	B1316		EA	1	
9	15	XBOZZ		11568	R15-24		EA	1	
9	16	XBFZZ	5306-01-004-9473	11568	M1583		EA	2	
9	17	PAFZZ	5315-01-014-4456	11568	R10-21		EA	1	
9	18	XBFZZ	4310-00-208-7126	11568	R15-4		EA	1	
9	19	XBFZZ	4310-00-896-5984	11568	Z60A		EA	1	
9	20	XBFZZ		11568	M1046		EA	1	
9	21	PAOZZ		11568	M97A		EA	1	
9	22	PAOZZ	5330-01-120-4402	11568	M98A		EA	1	
9	23	XBOZZ		11568	NR101		EA	1	
9	24	XBFZZ	5360-00-616-4373	11568	SE5-91		EA	1	
9	25	PAFZZ	3110-00-198-1050	96906	MS19060-4814		EA	1	



TS 4310-350-24P/10

Figure 10. Crankcase.

SECTION II		TM5-4310-350-24P				(6) DESCRIPTION	(7) USABLE ON CODE U/M	(8) QTY INC IN UNIT
(1) ILLUSTRATION (A) FIG NO	(2) (B) ITEM NO	(3) SMR CODE	(4) NATIONAL STOCK NUMBER	(5) FSCM PART NUMBER				
10	1	PAFZZ	5305-00-151-6876	11568	SE14-84	.SCREW,MACHINE, GOVERNOR HOUSING,COVER ATTACHING	EA	6
10	2	XBFZZ		11568	RE10-100A	.COVER, GOVERNOR HOUSING	EA	1
10	3	PAFZZ	2815-00-625-6747	11568	SE5-86B	.PLUNGER, DETENT VALVE	EA	1
10	4	XBFZZ	4310-00-884-4582	11568	SE5-87	.GUIDE,SPRING	EA	1
10	5	PAFZZ	5360-00-850-5541	11568	SE5-90	.SPRING,HELICAL	EA	1
10	6	PAFZZ	5310-00-230-7342	11568	M912A	.WASHER,FLAT	EA	1
10	7	PAFZZ	5315-00-168-2969	11568	SE5-92A	.PIN	EA	1
10	8	XBFZZ		11568	SE5-82	.WEIGHT,GOVERNOR	EA	1
10	9	XDFZZ		96906	MS90726-25	.SCREW,CAP, HEXAGON HEAD,GOVERNOR SPINDLE MTG	EA	1
10	10	PAFZZ	5310-00-237-6749	11568	M466	.WASHER,LOCK	EA	1
10	11	XBFZZ	2990-00-863-0926	11568	SE5-83B	.SPINDLE,GOVERNOR	EA	1
10	12	PAFZZ	5330-00-585-4283	11568	SE14-89	.GASKET, COVER	EA	1
10	13	XBFZZ		11568	NR104	.PLATE,BAFFLE	EA	1
10	14	PAFZZ	5305-00-942-2196	96906	MS90725-60	.SCREW,CAP, HEXAGON,GOVERNOR HOUSING MTG	EA	4
10	15	XBFZZ		11568	NR80A	.HOUSING,GOVERNOR	EA	1
10	16	PAFZZ	5330-00-633-6114	11568	SE14-30A	.GASKET, HOUSING	EA	1
10	16	PAFZZ	5330-01-014-4308	11568	SE14-30B	.GASKET, HOUSING	EA	1
10	16	PAFZZ	5330-01-014-4309	11568	SE14-30C	.GASKET, HOUSING	EA	1
10	16	PAFZZ	5330-00-585-9950	11568	SE14-30	.GASKET, HOUSING	EA	1
10	17	PBFZZ	4310-00-493-2057	11568	R15-5	.CRANKSHAFT,COMPRESS	EA	1
10	18	PAFZZ	3110-00-100-3150	60038	14138A	.CONE AND ROLLER	EA	2
10	19	PAFZZ	3110-00-100-0516	60038	14276	.CUP,TAPERED ROLLER	EA	2
10	20	PAFZZ		80201	21211201	.SEAL,OIL	EA	1
10	21	XBFZZ		11568	M1820	.CRANKCASE	EA	1



TS 4310-350-24P/11

Figure 11. Compressor Piston Rings.

SECTION II (1) ILLUSTRATION		(2)	(3)	TM5-4310-350-24P		(6)	(7)	(8)
(A) FIG NO	(B) ITEM NO	SMR CODE	NATIONAL STOCK NUMBER	(4) FSCM	(5) PART NUMBER	DESCRIPTION	USABLE ON CODE U/M	QTY INC IN UNIT
11	1	KFFZZ		11568	R10-10A	.RING,PISTION, PART OF KIT P/N Z189C	EA	1
11	2	KFFZZ		11568	R10-10B	.RING,PISTION, PART OF KIT P/N Z189C	EA	2
11	3	KFFZZ		11568	RE36-10D	.RING,OIL,PISTON, PART OF KIT P/N Z189C	EA	1
11	4	KFFZZ		11568	R15-10A	.RING,PISTON, PART OF KIT P/N Z179C	EA	1
11	5	KFFZZ		11568	R15-10B	.RING,PISTON, PART OF KIT P/N Z179C	EA	2
11	6	KFFZZ		11568	R14-10D	.RING,OIL,PISTON PART OF KIT P/N Z179C	EA	1
11	1	PAFZZ	4310-00-477-9775	11568	Z189C	RING SET,PISTON	EA	1
11	2					RING,PISTON	EA	1
11	3					RING,PISTON	EA	2
11						RING,OIL,PISTON,	EA	1
11	4	PAFZZ	4310-00-773-7986	11568	Z179C	RING SET,PISTON	EA	1
11						RING,PISTON	EA	1
11	5					RING,PISTON	EA	2
11	6					RING,OIL,PISTON	EA	1

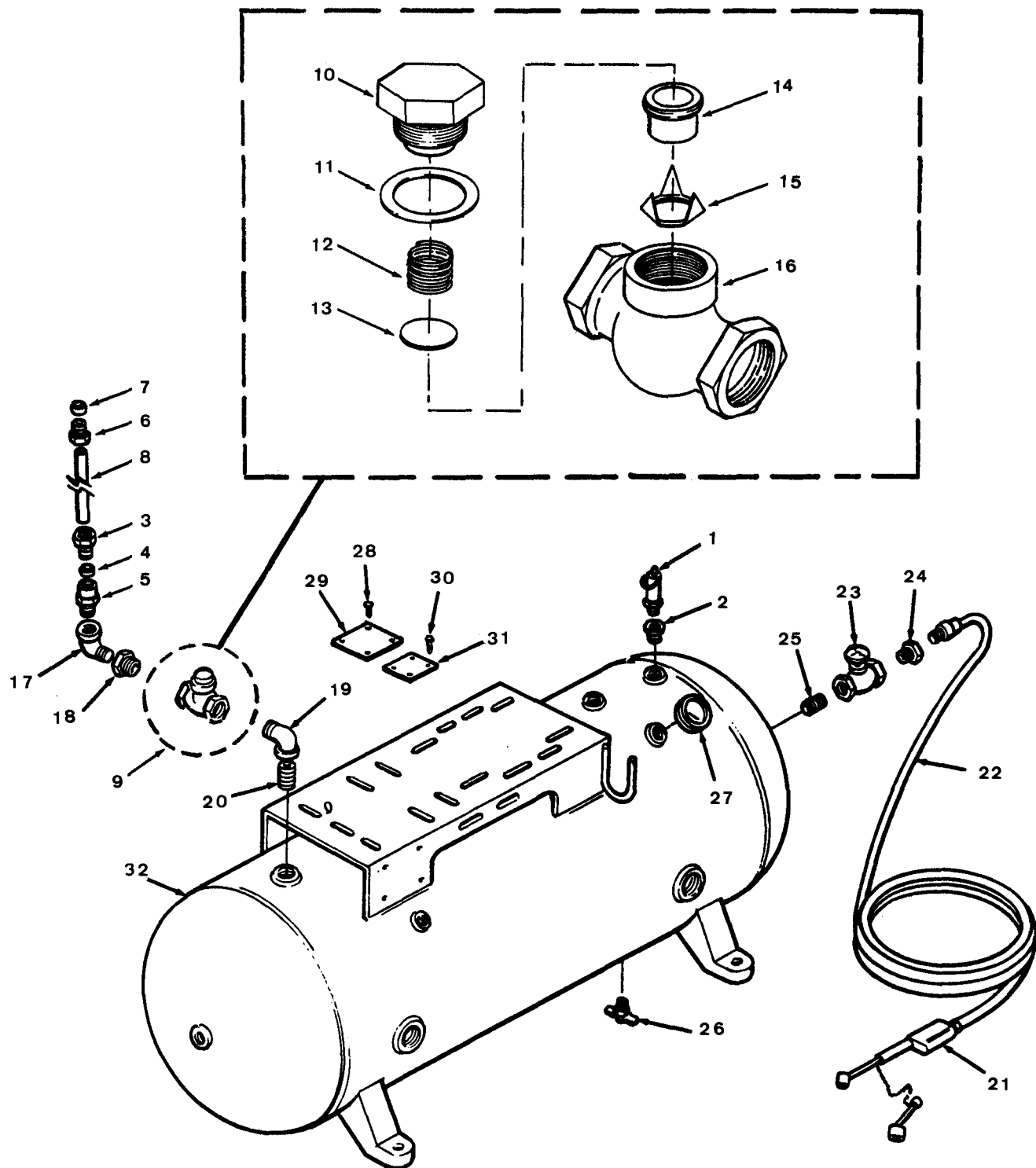


Figure 12. Air Receiver Tank and Parts.

SECTION II (1) ILLUSTRATION		(2)	(3)	TM5-4310-350-24P		(6)	(7)	(8)
(A) FIG NO	(B) ITEM NO	SMR CODE	NATIONAL STOCK NUMBER	FSCM	PART NUMBER	DESCRIPTION	USABLE ON CODE	QTY INC IN UNIT
						GROUP 04 RECEIVER		
12	1	PAFZZ	4820-00-287-2199	75336	FIG112C	VALVE,SAFETY RELIEF	EA	1
12	2	XBFZZ		11568	M482	BUSHING,REDUCER	EA	1
12	3	XBFZZ	4730-00-850-7971	11568	SE5-41	.INVERTED NUT,TUBE	EA	1
12	4	XBFZZ	4730-00-270-6113	11568	SE5-42	.FERRULE,COMPRESSION	EA	1
12	5	XBFZZ	4730-00-103-5461	11568	RE10-99	BODY,COMPRESSION	EA	1
12	6	PAFZZ	4730-00-850-7971	11568	SE5-41	.INVERTED NUT,TUBE	EA	1
12	7	PAFZZ	4730-00-270-6113	11568	SE5-42	.SLEEVE,COMPRESSION	EA	1
12	8	XBOZZ	4710-00-873-1765	11568	NRLH	TUBE,AFTERCOOLER	EA	1
12	9	PAFZZ	4820-00-209-5018	11568	Z57B	VALVE ASSEMBLY, CHECK	EA	1
12	10	XBFZZ		11568	M1668	.CAP,CHECK VALVE	EA	1
12	11	PAFZZ	5330-01-014-4306	11568	P3831A	.GASKET	EA	1
12	12	PAFZZ	5360-00-875-4108	11568	M453A	.SPRING	EA	1
12	13	XBFZZ		11568	M1102	.DISC,CHECK VALVE	EA	1
12	14	XBFZZ		11568	M1100	.SEAT,CHECK VALVE	EA	1
12	15	XBFZZ		11568	M1099	.GUIDE,CHECK VALVE	EA	1
12	16	XBFZZ		11568	M1665	.BODY,CHECK VALVE	EA	1
12	17	PAOZZ	4730-00-246-9218	72582	141621	ELBOW,PIPE	EA	1
12	18	XBFZZ		11568	M483	BUSHING,REDUCER	EA	1
12	19	PAFZZ	4730-00-246-9217	61208	M2055AM	ELBOW,PIPE	EA	1
12	20	XBFZZ		11568	M10288	NIPPLE,PIPE	EA	1
12	21	PAOZZ	4910-00-030-2365	94894	61-J2-1506	GAGE, TIRE PRESSURE	EA	1
12	22	PAOZZ	4720-00-874-3179	11568	Z538A	HOSE ASSEMBLY, NONMETALIC,AIR	EA	1
12	23	PAFZZ	4820-00-209-1775	11568	M-524	VALVE,GLOBE	EA	1
12	24	XBOZZ		11568	M482	BUSHING,REDUCER	EA	1
12	25	XBOZZ		11568	M1034B	NIPPLE,CLOSE	EA	1
12	26	XDOZZ	4820-00-849-1220	96906	MS35782-5	COCK,DRAIN	EA	1
12	27	PAOZZ	6685-00-264-3961	61349	046778	GAGE,PRESSURE,DIAL	EA	1
12	28	PAOZZ	5305-00-253-5615	96906	MS21318-21	SCREW, PLATE ATTACHING	EA	4
12	29	XBOZZ		11568	M811	PLATE,INSTRUCTION	EA	1
12	30	PAOZZ	5305-01-004-9376	11568	M835	SCREW, PLATE ATTACHING	EA	4
12	31	XBOZZ		11568	P4117A	PLATE, INDETIFICATION	A	EA 1
12	31	XBOZZ		11568	P5024A	PLATE, INDETIFICATION	D	EA 1
12	31	XBOZZ		11568	P4632A	PLATE, INDETIFICATION	B	EA 1
12	32	XBFZZ		11568	PP4130D	RECEIVER,AIR	EA	1
						END OF REPORT		

SECTION IV

NATIONAL STOCK NUMBER AND PART NUMBER INDEX

TM5-4310-350-24P

STOCK NUMBER	FIGURE NO	ITEM NO	STOCK NUMBER	FIGURE NO	ITEM NO
4910-00-030-2365	12	21	5310-00-625-6755	8	6
5305-00-068-0502	1	4	5310-00-625-6755	8	12
5305-00-068-0502	4	4	5310-00-625-6758	7	20
5305-00-071-1776	9	7	4820-00-625-6760	7	10
5305-00-071-2513	2	4	5310-00-625-6761	7	11
5310-00-080-6004	2	3	4310-00-631-3396	8	8
5310-00-080-6004	5	3	4310-00-631-3397	8	1
5930-00-087-4027	3	1	4310-00-631-3398	7	15
3110-00-100-0516	10	19	4310-00-631-3399	7	8
3110-00-100-3150	10	18	5330-00-633-6114	10	16
4730-00-103-5461	12	5	4310-00-689-3024	5	17
5305-00-151-6876	10	1	5305-00-710-4192	8	15
5975-00-152-1122	4	7	5975-00-715-3710	4	21
5975-00-152-1127	4	11	5310-00-732-0558	2	1
5315-00-168-2969	10	7	5310-00-732-0558	5	1
4730-00-187-4207	9	4	5305-00-740-9196	7	17
4730-00-188-1874	9	2	5305-00-740-9196	8	3
3110-00-198-1050	9	25	5305-00-740-9196	8	10
4310-00-208-7126	9	18	5360-00-756-9452	3	11
5310-00-209-0786	1	3	5310-00-761-6882	1	2
4820-00-209-1775	12	23	5310-00-761-6882	4	1
4820-00-209-5018	12	9	5310-00-768-0318	9	6
4730-00-213-0651	9	1	5930-00-772-6081	3	3
5310-00-224-0772	2	2	4310-00-773-7986	11	
5310-00-224-0772	5	2	5340-00-805-0825	3	10
5310-00-230-7342	1	9	5310-00-823-8804	1	5
5310-00-230-7342	10	6	5310-00-823-8804	4	3
5315-00-230-7446	9	9	4820-00-849-1220	12	26
3030-00-232-2492	1	14	5360-00-850-5541	10	5
5310-00-237-6749	10	10	4730-00-850-7971	5	5
4730-00-242-5373	7	1	4730-00-850-7971	12	3
4730-00-246-9217	12	19	4730-00-850-7971	12	6
4730-00-246-9218	12	17	2990-00-863-0926	10	11
5305-00-253-5615	12	28	4710-00-873-1765	12	8
6685-00-264-3961	12	27	4310-00-873-1766	9	8
5305-00-269-3214	5	4	4720-00-874-3179	12	22
4730-00-270-6113	5	6	5360-00-875-4108	12	12
4730-00-270-6113	12	4	5310-00-880-7744	1	7
4730-00-270-6113	12	7	4310-00-884-4582	10	4
4310-00-279-2804	3	16	6110-00-887-5005	3	12
4730-00-279-8122	5	25	4310-00-896-5984	9	19
4310-00-283-3288	7	5	2815-00-928-6078	5	23
5330-00-283-7635	7	16	5305-00-942-2196	10	14
4820-00-287-2199	12	1	4710-00-961-5554	5	10
5330-00-287-6419	8	2	4710-00-977-8670	5	7
5330-00-287-6419	8	9	4310-00-993-4188	5	14
3110-00-293-8320	9	14	5305-01-004-9376	12	30
5305-00-307-1420	7	9	5306-01-004-9473	9	16
5305-00-331-4856	5	22	5310-01-005-4336	5	13
5305-00-331-4856	5	24	5310-01-009-7208	4	2
5305-00-331-4856	7	4	6105-01-011-0697	2	7
5305-00-331-4856	7	6	5305-01-011-3072	5	11
4130-00-351-7387	5	16	5945-01-013-2094	4	19
6680-00-377-4915	9	5	5330-01-014-4306	12	11
4730-00-406-6969	5	8	5330-01-014-4308	10	16
5310-00-407-9566	1	8	5330-01-014-4309	10	16
5930-00-426-6670	3	2	5315-01-014-4456	9	11
3110-00-443-5874	2	13	5315-01-014-4456	9	17
5330-00-450-4130	8	17	5305-01-015-3345	2	5
4310-00-450-9213	6	1	5310-01-017-3842	1	6
4310-00-477-9775	11		6110-01-021-2636	4	16
4310-00-493-2057	10	17	3110-01-035-3705	2	15
5360-00-530-4936	3	4	4310-01-036-8684	9	13
5975-00-578-3643	4	7	5360-01-040-3845	3	9
5975-00-578-3666	4	6	5305-01-042-2554	3	5
5330-00-584-8999	7	14	5305-01-042-2555	3	6
5330-00-585-4283	10	12	4820-01-077-6468	7	21
5330-00-585-9950	10	16	4310-01-085-2547	3	14
5360-00-616-4372	8	5	5975-01-086-4408	4	10
5360-00-616-4372	8	13	5975-01-086-5640	4	8
5360-00-616-4373	9	24	4310-01-087-0018	6	6
5360-00-616-4374	7	12	4310-01-087-1344	6	5
5360-00-619-0215	7	19	5310-01-088-4027	6	2
2815-00-625-6747	10	3	5305-01-088-6824	6	3
4310-00-625-6752	8	14	5305-01-088-6838	5	24
4310-00-625-6753	8	11	5330-01-120-4402	9	22
4310-00-625-6754	8	4			

SECTION IV

NATIONAL STOCK NUMBER AND PART NUMBER INDEX

TM5-4310-350-24P

FSCM	PART NUMBER	FIGURE NO	ITEM NO	FSCM	PART NUMBER	FIGURE NO	ITEM NO
30086	A203C24C1	4	12	11568	M461	9	1
30086	A203C24C2C	4	12	11568	M466	10	10
24929	BE10-24	5	13	11568	M482	12	2
60380	B1316	9	14	11568	M482	12	24
70925	B5093	9	5	11568	M483	12	18
24161	B65	1	14	11568	M499	5	9
23826	D10037-1	3	10	11568	M499	7	3
23826	D10456-1	3	14	11568	M504	9	4
23826	D1366-1	3	13	11568	M54C	5	18
23826	D1673-1	3	8	11568	M568	2	5
23826	D274-1	3	3	11568	M62	5	17
23826	D276-1	3	9	11568	M673	5	16
23826	D317-2	3	12	11568	M674	5	15
23826	D323-1	3	5	11568	M7009D	2	6
23826	D357-1	3	11	11568	M811	12	29
23826	D467-1	3	4	11568	M835	12	30
23826	D9078-1	3	15	11568	M854	1	12
23826	D9096-1	3	6	11568	M855	1	10
23826	D9271-15	3	2	11568	M856	1	11
23826	D9935-1	3	7	11568	M912A	1	9
23826	D9943-10	3	16	11568	M912A	10	6
30086	E11ESS	4	20	11568	M919A	4	2
30086	E20COL1	4	18	11568	M935A	1	6
75336	FIG112C	12	1	11568	M97A	9	21
30086	F11NOC	4	19	11568	M98A	9	22
30086	G10C246	4	16	11568	NR1H	12	8
30086	G203C	4	14	11568	NR101	9	23
30086	G213C	4	13	11568	NR104	10	13
30086	G223C	4	15	11568	NR14-6A	8	16
30086	G30T46	4	17	11568	NR28	7	5
11568	M-524	12	23	11568	NR29A	8	17
96906	MS19060-4814	9	25	11568	NR7A	9	8
96906	MS21318-21	12	28	11568	NR80A	10	15
96906	MS27183-14	2	3	75364	N5000-81	9	10
96906	MS27183-14	5	3	11568	P-4751	6	3
96906	MS27183-9	1	5	11568	P-5005	5	24
96906	MS27183-9	4	3	11568	P-5020A	4	10
96906	MS35338-45	1	8	11568	P-5021A	4	8
96906	MS35338-46	2	2	11568	PP4130D	12	32
96906	MS35338-46	5	2	11568	P3831A	12	11
96906	MS353555-33	1	3	11568	P4106A	2	7
96906	MS35782-5	12	26	11568	P4117A	12	31
96906	MS51967-14	9	6	11568	P4132A	4	8
96906	MS51967-2	1	2	11568	P4133A	4	10
96906	MS51967-2	4	1	11568	P4576C	6	4
96906	MS51967-5	1	7	11568	P4630A	6	6
96906	MS51967-8	2	1	11568	P4631A	6	5
96906	MS51967-8	5	1	11568	P4632A	12	31
96906	MS90725-123	9	7	11568	P4752	6	2
96906	MS90725-6	1	4	24161	P5019A	1	14
96906	MS90725-6	4	4	11568	P5024A	12	31
96906	MS90725-60	10	14	11568	RE10-100A	10	2
96906	MS90725-64	5	4	11568	RE10-2E	7	7
96906	MS90726-25	10	9	11568	RE10-51A	7	18
96906	MS90726-87	8	15	11568	RE10-59	7	19
96906	MS90728-16	2	4	11568	RE10-61	7	20
11568	M10288	12	20	11568	RE10-62	8	6
11568	M1034B	12	25	11568	RE10-62	8	12
11568	M1046	9	20	11568	RE10-63A	7	16
11568	M1099	12	15	11568	RE10-65A	7	21
11568	M1100	12	14	11568	RE10-99	12	5
11568	M1102	12	13	11568	RE14-58	7	12
11568	M1583	9	16	11568	RE14-70	7	11
11568	M1665	12	16	11568	RE14-71A	7	10
11568	M1668	12	10	11568	RE14-72	7	13
11568	M1711	5	21	11568	RE14-75A	7	14
11568	M1737	5	22	11568	RE14-81	7	9
11568	M1737	5	24	11568	RE36-100	11	3
11568	M1737	7	4	11568	RE4-12A	5	7
11568	M1737	7	6	11568	RE7-52A	8	7
11568	M1820	10	21	11568	RE7-53A	8	11
11568	M1894	1	13	11568	RE7-56A	8	4
61208	M2055AM	12	19	11568	RE7-57A	8	14
11568	M30	5	14	11568	RE7-60	8	5
11568	M31A	5	19	11568	RE7-60	8	13
11568	M32A	5	20	11568	RE7-81	7	17
11568	M432	5	11	11568	RE7-81	8	3
11568	M453A	12	12	11568	RE7-81	8	10
11568	M459	9	3	11568	R10-10A	11	1
11568	M460	9	2	11568	R10-10B	11	2

SECTION IV

NATIONAL STOCK NUMBER AND PART NUMBER INDEX

TM5-4310-350-24P

FSCM	PART NUMBER	FIGURE NO	ITEM NO	FSCM	PART NUMBER	FIGURE NO	ITEM NO
11568	R10-21	9	11	11568	Z113	8	1
11568	R10-21	9	17	11568	Z115	8	8
11568	R10-4	9	12	11568	Z118	7	8
11568	R10B2	5	25	11568	Z179C	11	
11568	R14-10D	11	6	11568	Z189C	11	
11568	R15-10A	11	4	11568	Z307	1	1
11568	R15-10B	11	5	11568	Z509	7	1
11568	R15-24	9	15	11568	Z513	5	8
11568	R15-4	9	18	11568	Z538A	12	22
11568	R15-5	10	17	11568	Z57B	12	9
11568	SB250A	5	10	11568	Z60A	9	19
11568	SE14-30	10	16	11568	Z66A	5	12
11568	SE14-30A	10	16	11568	Z813	7	15
11568	SE14-30B	10	16	11568	Z828	6	1
11568	SE14-30C	10	16	92940	04A09101-03-00	2	13
11568	SE14-84	10	1	92940	04A09101-05-00	2	15
11568	SE14-89	10	12	61349	046778	12	27
11568	SE5-2A	5	23	92940	07C02357-06-02	2	14
11568	SE5-28A	8	2	92940	07C02593-04-05	2	12
11568	SE5-28A	8	9	92940	09C01042-01-00	2	9
11568	SE5-41	5	5	92940	10C03046-01-00	2	20
11568	SE5-41	12	3	92940	12B04339-01-00	2	17
11568	SE5-41	12	6	11568	12TWX35	4	5
11568	SE5-42	5	6	11568	14TWX39	4	9
11568	SE5-42	12	4	60038	14138A	10	18
11568	SE5-42	12	7	72582	141621	12	17
11568	SE5-8	9	9	60038	14276	10	19
11568	SE5-82	10	8	92940	19A03515-32-00	2	11
11568	SE5-83B	10	11	72971	2002	4	7
11568	SE5-86B	10	3	80201	21211201	10	20
11568	SE5-87	10	4	92940	22A02292-04-00	2	8
11568	SE5-90	10	5	92940	24A08256-01-00	2	16
11568	SE5-91	9	24	92940	29A01631-01-00	2	10
11568	SE5-92A	10	7	37437	380V	4	11
03743	STG50	4	21	94894	61-J2-1506	12	21
03743	ST50	4	6	23826	69HA1	3	1
03743	ST9050	4	7	92940	74110ROT	2	18
11568	UB375	7	2	92940	74110STA	2	19
11568	Z-750	9	13				

By Order of the Secretary of the Army:

E. C. MEYER
General, United States Army
Chief of Staff

Official:

ROBERT M. JOYCE
Brigadier General, United States Army
The Adjutant General

DISTRIBUTION :

To be distributed in accordance with DA Form 12-25A, Organizational Maintenance Requirements for Air Compressors, 15 CFM.

RECOMMENDED CHANGES TO EQUIPMENT TECHNICAL PUBLICATIONS



THEN... JOT DOWN THE DOPE ABOUT IT ON THIS FORM, CAREFULLY TEAR IT OUT, FOLD IT AND DROP IT IN THE MAIL!

SOMETHING WRONG WITH THIS PUBLICATION?

FROM: (PRINT YOUR UNIT'S COMPLETE ADDRESS)
PFC JOHN DOE
COA, 3d ENGINEER BN
FT. LEONARDWOOD, MO 63108
 DATE SENT

PUBLICATION NUMBER
 TM 5-4310-350-24P

PUBLICATION DATE
 18 May 82

PUBLICATION TITLE
 Compressor
 NSN 4310-00-537-8876

BE EXACT... PIN-POINT WHERE IT IS

PAGE NO	PARA-GRAPH	FIGURE NO	TABLE NO
6	2-1 a		
B1		4-3	
125	line 20		

IN THIS SPACE TELL WHAT IS WRONG AND WHAT SHOULD BE DONE ABOUT IT:

In line 6 of paragraph 2-1a the manual states the engine has 6 Cylinders. The engine on my set only has 4 Cylinders. Change the manual to show 4 Cylinders.

Callout 16 on figure 4-3 is pointing at a bolt. In key to figure 4-3, item 16 is called a shim - Please correct one or the other.

I ordered a gasket, item 19 on figure B-16 by NSN 2 910-00-762-3001. I got a gasket but it doesn't fit. Supply says I got what I ordered, so the NSN is wrong. Please give me a good NSN

PRINTED NAME, GRADE OR TITLE, AND TELEPHONE NUMBER
JOHN DOE, PFC (268) 317-7111

SIGN HERE: **JOHN DOE**
JOHN DOE

DA FORM 2028-2
 1 JUL 79

PREVIOUS EDITIONS ARE OBSOLETE.
 DRSTS-M Overprint 1, 1 Nov 80

P.S.--IF YOUR OUTFIT WANTS TO KNOW ABOUT YOUR RECOMMENDATION MAKE A CARBON COPY OF THIS AND GIVE IT TO YOUR HEADQUARTERS.

TEAR ALONG PERFORATED LINE

FILL IN YOUR
UNIT'S ADDRESS

FOLD BACK

DEPARTMENT OF THE ARMY

OFFICIAL BUSINESS
PENALTY FOR PRIVATE USE \$300

POSTAGE AND FEES PAID
DEPARTMENT OF THE ARMY
DOD 314



TEAR ALONG PERFORATED LINE

COMMANDER
U S ARMY SUPPORT AND AVIATION MATERIEL READINESS COMMAND
ATTN: DRSTS-MPSD
4300 GOODFELLOW BOULEVARD
ST. LOUIS, MO 63120

RECOMMENDED CHANGES TO EQUIPMENT TECHNICAL PUBLICATIONS



THEN... JOT DOWN THE DOPE ABOUT IT ON THIS FORM. CAREFULLY TEAR IT OUT. FOLD IT AND DROP IT IN THE MAIL!

SOMETHING WRONG WITH THIS PUBLICATION?

FROM: (PRINT YOUR UNIT'S COMPLETE ADDRESS)

DATE SENT

PUBLICATION NUMBER TM 5-4310-350-24P	PUBLICATION DATE 18 May 82	PUBLICATION TITLE Compressor NSN 4310-00-537-8876
---	-------------------------------	--

BE EXACT... PIN-POINT WHERE IT IS				IN THIS SPACE TELL WHAT IS WRONG AND WHAT SHOULD BE DONE ABOUT IT:
PAGE NO	PARA-GRAPH	FIGURE NO	TABLE NO	

TEAR ALONG PERFORATED LINE

PRINTED NAME, GRADE OR TITLE, AND TELEPHONE NUMBER	SIGN HERE
--	-----------

FILL IN YOUR
UNIT'S ADDRESS

FOLD BACK

DEPARTMENT OF THE ARMY

OFFICIAL BUSINESS
PENALTY FOR PRIVATE USE \$300

POSTAGE AND FEES PAID
DEPARTMENT OF THE ARMY
DOD 314



TEAR ALONG PERFORATED LINE

COMMANDER
U S ARMY SUPPORT AND AVIATION MATERIEL READINESS COMMAND
ATTN: DRSTS-MPSD
4300 GOODFELLOW BOULEVARD
ST. LOUIS, MO 63120

RECOMMENDED CHANGES TO EQUIPMENT TECHNICAL PUBLICATIONS



THEN... JOT DOWN THE DOPE ABOUT IT ON THIS FORM. CAREFULLY TEAR IT OUT. FOLD IT AND DROP IT IN THE MAIL!

SOMETHING WRONG WITH THIS PUBLICATION?

FROM: (PRINT YOUR UNIT'S COMPLETE ADDRESS)

DATE SENT

PUBLICATION NUMBER

TM 5-4310-350-24P

PUBLICATION DATE

18 May 82

PUBLICATION TITLE Compressor

NSN 4310-00-537-8876

BE EXACT... PIN-POINT WHERE IT IS

PAGE NO	PARA-GRAPH	FIGURE NO	TABLE NO

IN THIS SPACE TELL WHAT IS WRONG AND WHAT SHOULD BE DONE ABOUT IT:

TEAR ALONG PERFORATED LINE

PRINTED NAME, GRADE OR TITLE, AND TELEPHONE NUMBER

SIGN HERE:

DA FORM 2028-2
1 JUL 79

PREVIOUS EDITIONS ARE OBSOLETE.
DRSTS-M Overprint 2, 1 Nov 80.

P.S.--IF YOUR OUTFIT WANTS TO KNOW ABOUT YOUR RECOMMENDATION MAKE A CARBON COPY OF THIS AND GIVE IT TO YOUR HEADQUARTERS.

FILL IN YOUR
UNIT'S ADDRESS

FOLD BACK

DEPARTMENT OF THE ARMY

OFFICIAL BUSINESS
PENALTY FOR PRIVATE USE \$300

POSTAGE AND FEES PAID
DEPARTMENT OF THE ARMY
DOD 314



TEAR ALONG PERFORATED LINE

COMMANDER
U S ARMY SUPPORT AND AVIATION MATERIEL READINESS COMMAND
ATTN: DRSTS-MPSD
4300 GOODFELLOW BOULEVARD
ST. LOUIS, MO 63120

RECOMMENDED CHANGES TO EQUIPMENT TECHNICAL PUBLICATIONS



THEN... JOT DOWN THE DOPE ABOUT IT ON THIS FORM, CAREFULLY TEAR IT OUT, FOLD IT AND DROP IT IN THE MAIL!

SOMETHING WRONG WITH THIS PUBLICATION?

FROM: (PRINT YOUR UNIT'S COMPLETE ADDRESS)

DATE SENT

PUBLICATION NUMBER

TM 5-4310-350-24P

PUBLICATION DATE

18 May 82

PUBLICATION TITLE Compressor

NSN 4310-00-537-8876

BE EXACT... PIN-POINT WHERE IT IS

PAGE NO.

PARA-GRAPH

FIGURE NO.

TABLE NO.

IN THIS SPACE TELL WHAT IS WRONG AND WHAT SHOULD BE DONE ABOUT IT:

TEAR ALONG PERFORATED LINE

PRINTED NAME, GRADE OR TITLE, AND TELEPHONE NUMBER

SIGN HERE:

FILL IN YOUR
UNIT'S ADDRESS

FOLD BACK

DEPARTMENT OF THE ARMY

OFFICIAL BUSINESS
PENALTY FOR PRIVATE USE \$300

POSTAGE AND FEES PAID
DEPARTMENT OF THE ARMY
DOD 314



TEAR ALONG PERFORATED LINE

COMMANDER
U S ARMY SUPPORT AND AVIATION MATERIEL READINESS COMMAND
ATTN: DRSTS-MPSD
4300 GOODFELLOW BOULEVARD
ST. LOUIS, MO 63120

The Metric System and Equivalents

Linear Measure

1 centimeter = 10 millimeters = .39 inch
 1 decimeter = 10 centimeters = 3.94 inches
 1 meter = 10 decimeters = 39.37 inches
 1 dekameter = 10 meters = 32.8 feet
 1 hectometer = 10 dekameters = 328.08 feet
 1 kilometer = 10 hectometers = 3,280.8 feet

Weights

1 centigram = 10 milligrams = .15 grain
 1 decigram = 10 centigrams = 1.54 grains
 1 gram = 10 decigrams = .035 ounce
 1 dekagram = 10 grams = .35 ounce
 1 hectogram = 10 dekagrams = 3.52 ounces
 1 kilogram = 10 hectograms = 2.2 pounds
 1 quintal = 100 kilograms = 220.46 pounds
 1 metric ton = 10 quintals = 1.1 short tons

Liquid Measure

1 centiliter = 10 milliliters = .34 fl. ounce
 1 deciliter = 10 centiliters = 3.38 fl. ounces
 1 liter = 10 deciliters = 33.81 fl. ounces
 1 dekaliter = 10 liters = 2.64 gallons
 1 hectoliter = 10 dekaliters = 26.42 gallons
 1 kiloliter = 10 hectoliters = 264.18 gallons

Square Measure

1 sq. centimeter = 100 sq. millimeters = .155 sq. inch
 1 sq. decimeter = 100 sq. centimeters = 15.5 sq. inches
 1 sq. meter (centare) = 100 sq. decimeters = 10.76 sq. feet
 1 sq. dekameter (are) = 100 sq. meters = 1,076.4 sq. feet
 1 sq. hectometer (hectare) = 100 sq. dekameters = 2.47 acres
 1 sq. kilometer = 100 sq. hectometers = .386 sq. mile

Cubic Measure

1 cu. centimeter = 1000 cu. millimeters = .06 cu. inch
 1 cu. decimeter = 1000 cu. centimeters = 61.02 cu. inches
 1 cu. meter = 1000 cu. decimeters = 35.31 cu. feet

Approximate Conversion Factors

To change	To	Multiply by	To change	To	Multiply by
inches	centimeters	2.540	ounce-inches	newton-meters	.007062
feet	meters	.305	centimeters	inches	.394
yards	meters	.914	meters	feet	3.280
miles	kilometers	1.609	meters	yards	1.094
square inches	square centimeters	6.451	kilometers	miles	.621
square feet	square meters	.093	square centimeters	square inches	.155
square yards	square meters	.836	square meters	square feet	10.764
square miles	square kilometers	2.590	square meters	square yards	1.196
acres	square hectometers	.405	square kilometers	square miles	.386
cubic feet	cubic meters	.028	square hectometers	acres	2.471
cubic yards	cubic meters	.765	cubic meters	cubic feet	35.315
fluid ounces	milliliters	29.573	cubic meters	cubic yards	1.308
pints	liters	.473	milliliters	fluid ounces	.034
quarts	liters	.946	liters	pints	2.113
gallons	liters	3.785	liters	quarts	1.057
ounces	grams	28.349	liters	gallons	.264
pounds	kilograms	.454	grams	ounces	.035
short tons	metric tons	.907	kilograms	pounds	2.205
pound-feet	newton-meters	1.356	metric tons	short tons	1.102
pound-inches	newton-meters	.11296			

Temperature (Exact)

°F Fahrenheit temperature 5/9 (after subtracting 32) Celsius temperature °C

This fine document...

Was brought to you by me:



[Liberated Manuals -- free army and government manuals](#)

Why do I do it? I am tired of sleazy CD-ROM sellers, who take publicly available information, slap “watermarks” and other junk on it, and sell it. Those masters of search engine manipulation make sure that their sites that sell free information, come up first in search engines. They did not create it... They did not even scan it... Why should they get your money? Why are not letting you give those free manuals to your friends?

I am setting this document FREE. This document was made by the US Government and is NOT protected by Copyright. Feel free to share, republish, sell and so on.

I am not asking you for donations, fees or handouts. If you can, please provide a link to liberatedmanuals.com, so that free manuals come up first in search engines:

<A HREF=<http://www.liberatedmanuals.com/>>Free Military and Government Manuals

- Sincerely
Igor Chudov
<http://igor.chudov.com/>
- [Chicago Machinery Movers](#)