

DEPARTMENT OF THE ARMY TECHNICAL MANUAL

ORGANIZATIONAL MAINTENANCE REPAIR PARTS
AND SPECIAL TOOLS LISTS
COMPRESSOR, RECIPROCATING, AIR,
WHEEL MOUNTED, 2 WHEEL, PNEUMATIC TIRES,
GED, 4 CFM, 3000 PSI
(WALTER KIDDE MODEL 893811)
FSN 4310-997-6004



HEADQUARTERS, DEPARTMENT OF THE ARMY

SEPTEMBER 1969

ORGANIZATIONAL MAINTENANCE REPAIR PARTS AND SPECIAL TOOLS LISTS

COMPRESSOR, RECIPROCATING, AIR, WHEEL MOUNTED,

2 WHEEL, PNEUMATIC TIRES, GED, 4 CFM, 3000 PSI,

(WALTER KIDDE MODEL 893811) FSN 4310-997-6004

Current as of 17 March 19169

		Paragraph	Page
SECTION I.	INTRODUCTION		
	Scope.....	1	iii
	General	2	iii
	Explanation of columns	3	iii
	Special information.....	4	iv
	How to locate repair parts.....	5	v
	Abbreviations	6	v
	Federal supply codes for manufacturers.....	7	v
	Recommendations for maintenance publications improvements.....	8	vi
SECTION II.	PRESCRIBED LOAD ALLOWANCE		vii
SECTION III.	REPAIR PARTS FOR ORGANIZATIONAL MAINTENANCE		
Group 01.	Engine		
	0100 Engine assembly		1
03.	Fuel System		
	0306 Tanks, lines, fittings.....		1
11.	Rear Axle		
	1100 Rear axle assembly		2
12.	Brakes		
	1206 Mechanical brakes.....		2
13.	Wheels		
	1311 Wheel assembly.....		2
15.	Frame and Towing Attachments		
	1501 Frame assembly.....		8
18.	Body, Cab, Hood and Hull		
	1801 Body cab, hood and hull assemblies.....		5
22.	Body, Chassis or Hull and Accessory Items		
	2202 Accessory items		6
	2210 Data plates.....		6
47.	Gauges (Non-Electrical), Weighing and Measuring Devices		
	4702 Gauges, lines and fittings		6
50.	Pneumatic Equipment		
	5000 Air compressor assembly		7
	5006 Lubrication system		8
	5007 Compressor drive.....		8
	5009 Unloader system		8
	5010 Compressor cooling and heating		12
	5014 Air receiver.....		13
SECTION IV.	SPECIAL TOOLS, TEST AND SUPPORT EQUIPMENT FOR ORGANIZATIONAL MAINTENANCE (NOT APPLICABLE)		
V.	FEDERAL STOCK NUMBER AND REFERENCE NUMBER INDEX.....		39

SECTION I

INTRODUCTION

1. Scope

This manual lists repair parts and special tools, required for the performance of organizational maintenance of the compressor.

2. General

This Repair Parts and Special Tools List is divided into the following sections:

a. Prescribed Load Allowance (PLA)-Section II.

A composite listing of the repair parts, special tools, test and support equipment having quantitative allowances for initial stockage at the organizational level.

b. Repair Parts-Section III. A list of repair parts authorized for the performance of maintenance at the organizational level in figure and item number sequence.

c. Special Tools, Test and Support Equipment - Section IV. (Not applicable).

d. Federal Stock Number and Reference Number Index-Section V. A list of Federal stock numbers in ascending numerical sequence followed by a list of reference numbers in ascending alpha-numeric sequence, cross-referenced to the illustration figure number and item number.

3. Explanation of Columns

The following provides an explanation of columns in the tabular lists in sections II, III, and IV.

a. Source, Maintenance, and Recoverability Codes (SMR).

Note

Common hardware items known to be readily available in Army supply channels are assigned Maintenance codes only. Source codes, Recoverability codes, and Maintenance Allowances are not assigned this category.

(1) Source code, indicates the selection status and source for the listed item. Source codes are:

Code	Explanation
P	Applied to repair parts which are stocked in or supplied from DSA/GSA or Army supply system, and authorized for use at indicated maintenance categories.
P2	Applied to repair parts which are procured and stocked for insurance purposes because the combat or military essentiality of the end item dictates that a minimum quantity be available in the supply system.

Code Explanation

M	Applied to repair parts which are not procured or stocked but are to be manufactured at indicated maintenance categories.
A	Applied to assemblies which are not procured or stocked as such but are made up of two or more units, each of which carry individual stock numbers and descriptions and are procured and stocked and can be assembled by units at indicated maintenance categories.
X	Applied to parts and assemblies which are not procured or stocked; the mortality of which normally is below that of the applicable end item; and the failure of which should result in retirement of the end item from the supply system.
X1	Applied to repair parts which are not procured or stocked, the requirement for which will be supplied by use of the next higher assembly or component.
X2	Applied to repair parts which are not stocked. The indicated maintenance category requiring such repair parts will attempt to obtain them through cannibalization; if not obtainable through cannibalization, such repair parts will be requisitioned with supporting justification through normal supply channels.
C	Applied to repair parts authorized for local procurement. If not obtainable from local procurement, such repair parts will be requisitioned through normal supply channels with a supporting statement of nonavailability from local procurement.
G	Applied to major assemblies that are procured with PEMA (Procurement Equipment Missile Army) funds for initial issue only to be used as exchange assemblies at DSU and GSU maintenance level. These assemblies will not be stocked above DSU and GSU level or returned to depot supply level.

(2) Maintenance code, indicates the lowest category of maintenance authorized to install the listed item. The maintenance level code is:

Code	Explanation
O	Organizational maintenance

(3) Recoverability code, indicates whether unserviceable items should be returned for recovery or salvage. Items not coded are expendable. Recoverability codes are:

Code	Explanation
R	Applied to repair parts and assemblies which are

Code	Explanation
	are economically repairable at DSU and GSU activities and are normally furnished by supply on an exchange basis.
S	Applied to repair parts and assemblies which are economically repairable at DSU and GSU activities and which normally are furnished by supply on an exchange basis. When items are determined by a GSU to be uneconomically repairable, they will be evacuated to a depot for evaluation and analysis before final disposition.
T	Applied to high dollar value recoverable repair parts which are subject to special handling and are issued on an exchange basis. Such repair parts are normally repaired or overhauled at depot maintenance activities.
U	Applied to repair parts specifically selected for salvage by reclamation units because of precious metal content, critical materials, high dollar value reusable casings or castings.
	<p><i>b. Federal Stock Number.</i> This column indicates the Federal stock number assigned to the item and will be used for requisitioning purposes.</p> <p><i>c. Description.</i> This column indicates the Federal item name and any additional description of the item required. The abbreviation "w/e", when used as a part of the nomenclature, indicates the Federal stock number includes all armament, equipment, accessories, and repair parts issued with the item. A part number or other reference number is followed by the applicable five-digit Federal supply code for manufacturers in parentheses. Repair parts quantities included in kits, sets, and assemblies are shown in front of the repair part name. The physical security classification of the item is indicated by the parenthetical entry. Material required for manufacture or fabrication is identified.</p> <p><i>d. Unit of Measure (U/M).</i> A two-character alphabetic abbreviation indicating the amount or quantity of the item upon which the allowances are based, e.g., ft, ea, pr, etc.</p> <p><i>e. Quantity Incorporated in Unit.</i> This column indicates the quantity of the item used. A "V" appearing in this column in lieu of a quantity indicates that a definite quantity cannot be indicated (e.g., shims, spacers, etc.).</p> <p><i>f. Fifteen-Day Organizational Maintenance Allowance, Column (3) of Section II and Column (6) of Sections III and IV.</i></p> <p>(1) The allowance columns are divided into four subcolumns. Indicated on each subcolumn opposite the first appearance of each item is the total quantity of</p>

items authorized for the number of equipments supported. Subsequent appearances of the same item will have the letters "REF" in the allowance column.

(2) The quantitative allowances for organizational level of maintenance represents one initial prescribed load for a 15-day period for the number of equipments supported. Units and organizations authorized additional prescribed loads will multiply the number of prescribed loads authorized by the quantity of repair parts reflected in the density column applicable to the number of items supported to obtain the total quantity of repair parts authorized.

(3) Organizational units providing maintenance for more than 100 of these equipments shall determine the total quantity of parts required by converting the equipment quantity to a decimal factor by placing a decimal point before the next to last digit of the number to indicate hundredths, and multiplying the decimal factor by the parts quantity authorized in the 51-100 allowance column. Example, authorized allowance for 51-100 equipments is 40; for 150 equipments multiply 40 by 1.50 or 60 parts required.

(4) Subsequent changes to allowances will be limited as follows: No change in the range of items is authorized. If additional items are considered necessary, recommendation should be forwarded to U. S. Army Mobility Equipment Command for exception or revision to the allowance list. Revisions to the range of items authorized will be made by the U. S. Army Mobility Equipment Command based upon engineering experience, demand data, or TAERS information.

g. Illustration. This column is divided as follows:

(1) *Figure number.* Indicates the figure number of the illustration in which the item is shown.

(2) *Item number.* Indicates the callout number used to reference the item in the illustration.

4. Special Information

a. Repair parts mortality has been based on 1000 hours of operation per year.

b. Parts which require manufacture or assembly at a category higher than that authorized for installation will indicate in the source column the higher category.

c. For end items authorized mandatory stockage of repair parts by the Department of the Army, on a case by case basis, the mandatory stockage items are indicated by a plus "+" sign as the first character in the end item density column of both the Repair Parts List and the Prescribed Load Allowance for each such authorized allowance quantity.

d. Action change codes indicated in the left hand margin of the listing page denote the following:

N— Indicates an added item not included in previous publications.

C— Indicates a change in data.

F— Indicates a change in FSN only.

e. The following publications pertain to the Compressor and its components:

TM 5-2805- 257-14	Organizational, DS and GS Maintenance Manual (Including ,Repair Parts and Special Tools List)
TM 5-4310- B35-15	Operator, Organizational Field and Depot Maintenance Manual
TM 5-4310- 335-35P	Direct and General Support and Depot Maintenance Repair Parts and Special Tools
LO 5-4310- 335-12	Lubrication Order

f. The illustrations in this manual are identical to those published in the -35P. The -35P illustrations are given for a better understanding of the parts relationship; however, only those parts assigned a maintenance code "O" are listed in the tabular portion and only these parts are authorized for requisitioning from this manual.

5. How to Locate Repair Parts

a. *When Federal Stock Number or Reference Number is Unknown:*

(1) *First.* Using the table of contents, determine the functional group, functional subgroup, or assembly group, i. e., engine, engine assembly, transmission, transmission assembly, within which the repair part belongs. This is necessary since illustrations are prepared for functional groups, functional subgroups, or assembly groups, and listings are divided into the same groups.

(2) *Second.* Find the illustration covering the functional group, functional subgroup, or assembly group to which the repair part belongs.

(3) *Third.* Identify the repair part on the illustration and note the illustration figure and item number of the repair part.

(4) *Fourth.* Using the Repair parts listing, find the functional group, functional subgroup, or assembly group to which the repair part belongs and locate the illustration figure and item number noted on the illustration.

b. *When the Federal Stock Number or Reference Number is Known:*

(1) *First.* Using the index of Federal stock numbers and reference numbers find the pertinent Federal stock number or reference number. This index is

in ascending FSN sequence followed by a list of reference numbers in alphanumeric sequence, cross-referenced to the illustration figure number and item number.

(2) *Second.* Using the repair part listing, find the functional group, functional subgroup, or assembly group of the repair part and the illustration figure number and item number referenced in the Index of Federal Stock Numbers and Reference Numbers.

6. Abbreviations

dia.....	diameter
in.....	inch (inches)
id.....	inside diameter
mtg.....	mounting
od.....	outside diameter
thk.....	thick (thickness)
thd.....	thread

7. Federal Supply Codes for Manufacturers

Code	Explanation
00624	Aeroquip Corp. Aircraft Div. Jackson Plant, Jackson, Mich.
01989	Weatherhead Co., Antwerp, Ohio
03681	Rowco Mfg. Co., Inc. Keene N. H.
04633	Minnesota Mining and Mfg. Co. Adhesives Coatings and Sealers Div. Los Angeles, Calif.
05662	Barbour-Stockwell Instruments Div. of Curtis and Marble Machine Co. Worcester, Mass.
06848	Bendix Corp. The Bendix Products Aerospace Division, South Bend, Inc.
09094	Waldick Aero-Space Devices, Inc. Huntington Station, L. I., N. Y.
09505	Imperial-Eastman Corp. Canada Ltd. Barrie, Ontario, Canada.
28968	Hoke Inc., Tenakill Park, Cresskill, N. J.
33525	Kidde, Walter and Co., Belleville, N. J.
39481	Mead Specialties Co., Chicago, Ill.
5793	Saginaw Products Corp., Saginaw, Mich.
56878	Standard Pressed Steel Co., Jenkinbown, Pa.
58553	Superior Valve and Fittings Co., Pittsburgh, Pa.
59730	Thomas and Betts Co., Elizabeth, N. J.
60038	Timken Roller Bearing Co., Canton, Ohio
72100	Marshalltown Mfg. Co. Dial Thermometer Division, Marshalltown, Iowa
79470	Weatherhead Co., The, Cleveland, Ohio
81349	Military Specifications Promulgated by Standardization Div. of Directorate of Logistic Services
81361	Edgewood Arsenal, Edgewood, Md.
88930	Adel Products Division Huntington Plant, Huntington, W. Va.
84971	T A Mfg. Co.; Los Angeles, Calif.
88044	Aeronautical Standards Group Dept. of Navy and Air Force

Code	Explanation
89162.....	Saginaw Bearing Co., Saginaw, Mich.
94222.....	South Chester Corp., Chester, Pa.
9576.....	Protective Closures Co. Inc. Buffalo, N. Y.
95987.....	Weckesser Co., Chicago, Ill.
96906.....	Military Standard
99657.....	Marotta Valve Corp., Boonton, N. J.
99879.....	Aeroquip Corp., Elbecco Division, Jackson, Mich.

8. Recommendations for Maintenance Publication Improvements

Report of errors, omissions, and recommendations for improving this publication by the individual user is encouraged. Reports should be submitted on DA Form 2028 (Recommended Changes to DA Publications) and forwarded direct to the Commanding General, U. S. Army Mobility Equipment Command, ATTN: AMSME-MPP, 4300 Goodfellow Boulevard, St. Louis, Mo. 63120.

SECTION II

PRESCRIBED LOAD ALLOWANCE

(1) Federal stock number	(2) Description useable on code	(3) 15-Day org. maint. alw			
		(A) 1-5	(B) 6-20	(C) 21-50	(D) 51-100
	Group 15—FRAME AND TOWING ATTACHMENTS				
	1501—FRAME ASSEMBLY				
2540-110-1950	PAD: Strap and Ring Mtg 252453 (33525)				2
4310-107-1069	CAP, PROTECTION: handle 7-8-5C (95760)				2
	PAD, MOUNTING: handle 242541 (3,3525)				2
	Group 18—BODY, CAB, HOOD AND HULL				
	1801—BODY, CAB, HOOD AND HULL ASSEMBLIES				
2540-110-1949	PAD, ROOF 251428 (335625)		2	2	2
	Group 50—PNEUMATIC EQUIPMENT				
	5000—AIR COMPRESSOR ASSEMBLY				
1040-084-2928	FILTER ASSEMBLY, 1 st STAGE 842231 (33525)		2	2	4
5330-815-9489	GASKET Drain Plug MS35769-11 (96906)			2	2
5330-953-0559	PACKING, PREFORMED: Strainer Mtg. 914-1467 (86519)		2	2	2
	5006—LUBRICATION SYSTEM				
5310-111-3666	LOCKNUT: Tube, Nylon, Mtg 251825 (33525)				2
4730-133-3976	FITTING: Tube, Nylon, Mtg TYPE-7 (39481)				2
	5009—UNLOADER SYSTEM				
4310-939-6840	RING, BACKUP: Tee and Elbow Mtg MS9484-4 (96906)		2	2	2
4440-580-7293	CARTRIDGE MILC4952TYPEMA1 (81349)	20	20	40	80
5330-186-4128	RING, BACKUP AN6246-36 (88044)	20	20	40	80
5330-196-5322	PACKING, PREFORMED AN6227-36 (88044)	20	20	40	80
5330-297-6868	PACKING, PREFORMED AN6290-10 (88044)	20	20	40	80
5330-580-1223	PACKING, PREFORMED 5304-0400 (33525)	2	2	4	8
5330-640-9476	PACKING, PREFORMED AN6227-34 (88044)	20	20	40	80
	5014—AIR RECEIVER				
5330-285-9842	PACKING, PREFORMED: Plug and Bleeder MS28778-10 (96906)		2	2	2
5330-599-0081	GASKET: Bottle Fitting 206589 (33625)		2	2	2

(1) SMR CODE	(2) FEDERAL STOCK NUMBER	(3) DESCRIPTION REFERENCE NUMBER & MFR CODE USABLE ON CODE		(4) UNIT OF MEAS	(5) QTY. INC IN UNIT	(6) 15-DAY ORGANIZATIONAL MAINTENANCE ALW				(7) ILLUSTRATION	
						(a)	(b)	(c)	(d)	(a)	(b)
						1-5	6-20	21-50	51-100	FIG. NO.	ITEM NO.
		SECTION III - REPAIR PARTS FOR ORGANIZATIONAL MAINTENANCE									
		GROUP 01 - ENGINE									
		0100 - ENGINE ASSEMBLY									
O	4730-186-7797	NIPPLE, CONNECTING: FUEL FILTER TO FUEL PUMP AN911-1 (88044)		EA	1					1	2
O	5310-167-0821	WASHER, FLAT: BRACKET AND AXLE MTG, 3/8 IN. SCREW SIZE AN960-616 (88044)		EA	2					1	15
O		NUT, SELF-LOCKING, HEXAGON: BRACKET AND AXLE MTG, 3/8 IN. SCREW SIZE 21FK616 (56878)		EA	2					1	16
		GROUP 03 - FUEL SYSTEM									
		0306 - TANK, LINES AND FITTINGS									
P20	2910-107-3412	FUEL TANK ASSEMBLY 894283 (33525)		EA	1	*	*	*	*		
X20		CAP, WITH CHAIN: FUEL TANK 2302J019 (7822)		EA	1					2	1
X20		SCREEN, FUEL TANK 2343V053 (78252)		EA	1					2	2
X1		TANK, FUEL 276339 (33525)		EA	1					2	3
P20	5640-109-3825	BLANKET INSULATION: FUEL TANK 276830 (33525)		EA	1	*	*	*	*	2	4
P20	5640-107-1145	BLANKET INSULATION: FUEL TANK 276814 (33525)		EA	1	*	*	*	*	2	5
O		BOLT, MACHINE: STRAP MTG, 1/4-20 THD SIZE, 7/8 IN. LG 1264-1618 (33525)		EA	4					2	6
O	5310-167-0766	WASHER, FLAT: STRAP MTG, 1/4 IN. SCREW SIZE AN970-4 (88044) (AS REQUIRED)		EA	2					2	7
O	5310-141-1795	WASHER, FLAT: STRAP MTG, 1/4 IN. SCREW SIZE AN960-416 (88044)		EA	2					2	8
O	5310-013-1245	NUT, LOCK, HEXAGON: STRAP MTG, 1/4-20 THD SIZE 21FK420 (56878)		EA	4					2	9
P20		STRAP, TANK: TANK MTG 10 276672 (33525)		EA						2	2
P20	4730-132-4663	FITTING, ELBOW: FUEL TANK OUTLET 843642 (33525)		EA	1	*	*	*	*	2	11
P O	2910-107-1144	HOSE, FUEL LINE: ELBOW TO FITTING 5094B40404-2000 (79470)		EA	1	*	*	*	*	2	12
O		FITTING, CONNECTOR: FUEL LINE TO FILTER 1995-0440 (33525)		EA	1					2	13

(1) SMR CODE	(2) FEDERAL STOCK NUMBER	(3) DESCRIPTION REFERENCE NUMBER & MFR CODE USABLE ON CODE		(4) UNIT OF MEAS	(5) QTY. INC IN UNIT	(6) 15-DAY ORGANIZATIONAL MAINTENANCE ALW				(7) ILLUSTRATION	
						(a)	(b)	(c)	(d)	(a)	(b)
						1-5	6-20	21-50	51-100	FIG. NO.	ITEM NO.
		GROUP 11 - REAR AXLE									
		1100 - REAR AXLE ASSEMBLY									
O		BOLT, MACHINE: AXLE MTG, ¼-20 THD SIZE 2 ¾ IN. LG 1264-1644 (33525)		EA	4					3	1
O	5310-809-4058	WASHER, FLAT: AXLE .MT, ¼ IN. SCREW SIZE MS27183-10 (96906)		EA	4					3	2
X20		AXLE STEEL: WHEEL 875248 (33525)		EA	2					3	3
O	5310-013-1245	NUT, LOCK HEXAGON: AXLE MTG, ¼-20 THD SIZE 21FK420 (56878)		EA	4					3	4
O	5310-101-1795	WASHER, FLAT: AXLE MTG, ¼ IN. SCREW SIZE AN960-416 (88044)		EA	4					3	5
P20	2530-110-3533	SPINDLE AXLE 251588 (33525)		EA	2	*	*	*	^	3	6
		GROUP 12 - BRAKES									
		1206 - MECHANICAL BRAKES									
O		BOLT, MACHINE: SPACER AND BLOCK MTG, ¼-20 THD SIZE, 4 ½ IN. LG 1264-1672 (33525)		EA	4					4	1
O	5310-809-4058	WASHER, FLAT: SPACER AND BLOCK MTG, ¼ IN. SCREW SIZE MS2783-10 (96906)		EA	8					4	2
X20		SPACER: BLOCK MTG 276350 (33525)		EA	2					4	3
O		BOLT, MACHINE: BRAKE MTG, 3/8-16 THD SIZE 2 ¾ IN. LG 1264-2444 (33525)		EA	4					4	4
X20		BRAKE, LEFT 276352 (33525)		EA	1					4	5
X20		BLOCK, BRAKE MOUNTING 276351 (33525)		EA	2					4	6
X20		STOP: NUT AND BRAKE 251462 (3355)		EA	4					4	7
O	5310-167-0821	WASHER, FLAT: BRAKE MTG, 3/8 IN. SCREW SIZE AN960-616 (88044)		EA	4					4	8
O		NUT, SELF-LOCKING: BRAKE MTG, 3/8-16 THD SIZE 21FK616 (53878)		EA	4					4	9
O	5310-013-1245	NUT, SELF-LOCKING: SPACER AND BLOCK MTG, ¼-20 THD SIZE 21FK120 (56878)		EA	4					4	10
X20		BRAKE, RIGHT 276353 (33525)		EA	1					4	11
		GROUP 13 - WHEELS									
		1311 - WHEEL ASSEMBLY									
X20		WHEEL AND HUB ASSEMBLY M5214322-1A4 (96906)		EA	2					5	

(1) SMR CODE	(2) FEDERAL STOCK NUMBER	(3) DESCRIPTION REFERENCE NUMBER & MFR CODE USABLE ON CODE		(4) UNIT OF MEAS	(5) QTY. INC IN UNIT	(6) 15-DAY ORGANIZATIONAL MAINTENANCE ALW				(7) ILLUSTRATION	
						(a)	(b)	(c)	(d)	(a)	(b)
						1-5	6-20	21-50	51-100	FIG. NO.	ITEM NO.
P20	2530-893-1997	HUB ASSEMBLY MS24327-1 (96906)		EA	1	*	*	*	*	5	
X20		CAP, HUB MS24327-1HC (96906)		EA	1					5	1
O		PIN COTTER S2A66-335 (96906)		EA	1					5	2
O		NUT, CASTELLATED: BEARING AN320-10 (88044)		EA	1					5	3
O	5310-579-0462	NUT, PLAIN, HEXAGON: HUB MTG MS35990-622 (96906)		EA	5					5	4
O		WASHER, LOCK: HUB MTG AN935-616 (88044)		EA	5					5	5
O		WASHER, FLAT: BEARING AN960-1016 (88044)		EA	V					5	6
X20	1730-651-0312	WASHER THRUST: BEARING 10312 (52793)		EA	1					5	7
P20	3110-159-1631	BEARING OUTER 09067 (60038)		EA	1	*	*	*	*	5	8
P20	3110-198-2170	BEARING INNER 15245 (60038)		EA	1	*	*	*	*	5	9
X20		SEAL, BEARING 103023 (89162)		EA	1					5	10
P20	2530-529-2706	WHEEL MS524323-1 (96906)		EA	1	*	*	*	*	5	11
PO	2610-050-9560	TIRE PNEUMATIC: 4:10 x 3:50-6 MS35389-1 (96906)		EA	1	*	*	*	*		
PO	2610-051-9114	TUBE, INNER: 4:10 x 3:50-6 MS3532-.48 (96906)		EA	1	*	*	*	*		
GROUP 15 - FRAME AND TOWING ATTACHMENTS											
1501 - FRAME ASSEMBLY											
O	5310-013-1245	NUT, LOCK, HEXAGON: STRAP, CLAMP AND TOW BAR BRACKET MTG, ¼-20 THD SIZE 21FK420 (56878)		EA	18					6	1
O	5310-141-1795	WASHER, FLAT: CLAMP MTG, ¼ IN. SCREW SIZE AN960-416 (88041)		EA	2					6	2
X20		HANDLE, CART 251427 (33525)		EA	1					6	3
PO	4310-107-1057	PAD, MOUNTING: HANDLE 212541 (33525)		EA	1	*	*	*	2	6	4
PO	4310-107-1069	CAP, PROTECTION: HANDLE 7-8-5C (95760)		EA	2	*	*	*	2	6	5
X20		CLAMP, HANDLE: CART 3412 (33525)		EA	2					6	6
O	5310-809-4058	WASHER, FLAT: CLAMP AND TOWBAR BRACKET MTG ¼ IN. SCREW SIZE M527183-10 (96906)		EA	26					6	7
O	5310-809-4058	BOLT, MACHINE: CLAMP MTG, ¼-20 THD SIZE, 2 ¾ IN. LG MS27183-10 (96906)		EA	2					6	8
X20		RING, LIFTING: 3 IN. ID 251409 (33525)		EA	4					6	11

(1) SMR CODE	(2) FEDERAL STOCK NUMBER	(3) DESCRIPTION REFERENCE NUMBER & MFR CODE USABLE ON CODE		(4) UNIT OF MEAS	(5) QTY. INC IN UNIT	(6) 15-DAY ORGANIZATIONAL MAINTENANCE ALW				(7) ILLUSTRATION	
						(a)	(b)	(c)	(d)	(a)	(b)
						1-5	6-20	21-50	51-100	FIG. NO.	ITEM NO.
X20		STRAP, LIFTING RING 252063 (33525)		EA	4					6	12
O	5310-809-4058	WASHER, FLAT: STRAP MTG, ¼ IN. SCREW SIZE MS27183-10 (96906)		EA	8					6	13
O	5310-809-4058	BOLT, MACHINE, HEXAGON HEAD: STRAP MTG, ¼-20 THD SIZE, 2 ¾ IN. LG MS27183-10 (96906)		EA	4					6	14
P O	2540-110-1950	PAD: STRAP AND RING MTG 252453 (33525)		EA	4	*	*	*	2	6	15
X20		COVER: FRAME END 252100 (33525)		EA	4					6	16
X20		TOWBAR, CART 893905 (33525)		EA	1					6	17
X20		HOSE, PAD: TOWBAR 252441 (33525)		EA	1					6	18
X20		BRACKET, TOWBAR MOUNTING 27697 (33525)		EA	2					6	19
P20	5340-132-1418	PIN, QUICK RELEASE: TOWBAR ECOPIN 1-2-26C (0094)		EA	2	*	*	*	*	6	20
O	4030-956-6126	HOOK, CHAIN: TOWBAR A81-1-882 (81361)		EA	2					6	21
O		CHAIN: QUICK RELEASE PIN 213350 (33525)		EA	1					6	22
O	3515-223-6120	PIN, COTTER: PIN MTG, 1/16 IN. DIA, 1 ½ IN. LG 1332-6424 (33525)		EA	2					6	23
X20		SPREADER TUBE: TOWBAR 251442 (33525)		EA	1					6	24
O	5310-167-0229	WASHER, FLAT: SPREADER MTG, 1 1/8 IN. ID, 1 13/16 IN. OD AN960-1716 (88040)		EA	2					6	25
O		BOLT MACHINE: BRACKET MTG, ¼-20 THD SIZE, 3 IN. LG 1264-1648 (33525)		EA	8					6	26
O		NUT, LOCK, HEXAGON: BRACKET MTG, ¼-20 THD SIZE 21FK1032 (56878)		EA	4					6	31
O	5310-167-0818	WASHER, FLAT: BRACKET MTG, ¼ IN. SCREW SIZE AN960-(88044)		EA	8					6	32
O		NUT, LOCK, HEXAGON: TIE DOWN MTG 21FK524 (56878)		EA	4					6	33
O	5310-167-0836	WASHER, FLAT: TIE DOWN MTG, 3/8 IN. SCREW SIZE A960-516L (88044)		EA	4					6	34
X20		SUPPORT TIE DOWN 251449 (33525)		EA	8					6	35
X20		TIE DOWN, CART 251434 (33525)		EA	4					6	36
X20		BRACKET: TIMER DRIVE ADAPTER MTG 291443 (33525)		EA	1					6	37
O		BOLT, MACHINE, HEXAGON HEAD: BRACKET MTG 5670-1111 (33525)		EA	4					6	38

(1) SMR CODE	(2) FEDERAL STOCK NUMBER	(3) DESCRIPTION REFERENCE NUMBER & MFR CODE USABLE ON CODE		(4) UNIT OF MEAS	(5) QTY. INC IN UNIT	(6) 15-DAY ORGANIZATIONAL MAINTENANCE ALW				(7) ILLUSTRATION	
						(a)	(b)	(c)	(d)	(a)	(b)
						1-5	6-20	21-50	51-100	FIG. NO.	ITEM NO.
		GROUP 18 - BODY, CAB, HOOD AND HULL									
		1801 - BODY, CAB, HOOD AND HULL ASSEMBLIES									
P O	2540-110-1949	PAD, ROOF 251428 (33525)		EA	4	*	2	2	2	7	1
O		SCREW, CAP, HEXAGON HEAD: ROOF MTG, ¼-20 THD SIZE, 5/8 IN. LG 1264-1612 (33525)		EA	10					7	2
O	5310-141-1795	WASHER, FLAT: ROOF MTG, ¼ IN. SCREW SIZE AN960-416 (88044)		EA	80					7	3
O		SCREW, MACHINE: TRAY MTG, NO. 10-241 THD SIZE, ½ IN. LO 1692-1008 (33525)		EA	10					7	5
O	5310-167-0818	WASHER, FLAT: HINGE, DOOR, BRACKET AND TRAY MTG, NO. 10 SCREW SIZE AN960-10 (88044)		EA	61					7	6
O		SCREW, MACHINE: DOOR AND HINGE MTG, NO. 10-24 THD SIZE, ½ IN. LG 5129-1008 (33525)		EA	10					7	7
P O	5340-016-0118	LATCH, DOOR 31-10-11-11 (94222)		EA	2	*	*	*	*	7	8
X20		DOOR: STORAGE TRAY 276282 (33525)		EA	1					7	9
X20		HINGE, DOOR 276341 (33525)		EA	1					7	10
O	5310-964-5094	NUT, LOCK: DOOR, HINGE, TRAY AND BRACKET MTG; NO. 10-24 21FK1024 (56878)		EA	32					7	11
X20		TRAY, STORAGE 291341 (33525)		EA	1					7	12
O		SCREW, MACHINE: BRACKET MTG, NO. 10-24 THD SIZE 5/8 IN. LB 1692-1010 (33523)		EA	12					7	13
X20		BRACKET, TRAY 251581 (33525)		EA	6					7	14
O	5310-013-1245	NUT, LOCK, HEXAGON: ROOF MTG, ¼-20 THD SIZE 21FK420 (56878)		EA	53					7	15
O		SCREW, CAP, HEXAGON HEAD: ROOF MTG, ¼-20 THD SIZE, 2 ½ IN. LG 1264-1642 (33525)		EA	8					7	16
O	5310-809-4058	WASHER, FLAT: ROOF MTG, ¼ IN. SCREW SIZE MS27183-10 (96906)		EA	8					7	17
		GROUP 22 - BODY, CHASSIS OR HULL AND ACCESSORY ITEMS									
		2202 - ACCESSORY ITEMS									
P O	5340-071-3832	PLUG, PROTECTION 5659-4 (00624)		EA	1	*	*	*	*	8	1
P O	4730-110-8351	COUPLING, HOSE 5601-4-4S (00624)		EA	1	*	*	*	*	8	2

(1) SMR CODE	(2) FEDERAL STOCK NUMBER	(3) DESCRIPTION REFERENCE NUMBER & MFR CODE USABLE ON CODE		(4) UNIT OF MEAS	(5) QTY. INC IN UNIT	(6) 15-DAY ORGANIZATIONAL MAINTENANCE ALW				(7) ILLUSTRATION	
						(a)	(b)	(c)	(d)	(a)	(b)
						1-5	6-20	21-50	51-100	FIG. NO.	ITEM NO.
O	4730-698-4048	NIPPLE PIPE AN16A-4-4 (88044)		EA	1					8	3
P O	4720-143-8925	HOSE, CHARGING MS28759E2520 (96906)		EA	1	*	*	*	*	8	4
X20		FITTING 273503 (33525)		EA	1					8	5
P O	4820-678-9467	VALVE SERVICING 569 (58553)		EA	1	*	*	*	*	8	6
P O	4310-107-1028	CHUCK CHARGING 843339 (33525)		EA	1	*	*	*	*	8	7
P O	4720-762-7227	HOSE, CHARG ING MS18759E0090 (96906)		EA	1	*	*	*	*	8	8
O	4730-698-4028	NIPPLE PIPE AN816-4-4C (88044)		EA	1					8	9
		2210 - DATA PLATES									
X20		PLATE, INSTRUCTION: MOISTURE SEPARATOR HEATER 242908 (33525)		EA	1						
X20		PLATE, WARNING: HIGH PRESSURE AIR 276652 (33525)		EA	1						
X20		PLATE, INSTRUCTION: FUEL AND LUBRICATION, STARTING, STOPPING 276717 (33525)		EA	1						
X20		PLATE, SCHEMATIC 276640 (33525)		EA	1						
X20		PLATE, INSTRUCTION: DEHYDRATOR CARTRIDGE REPLACING 276653 (33525)		EA	1						
		GROUP 47 - GAUGES, NON-ELECTRICAL, WEIGHING AND MEASURING DEVICES									
		4702 - GAUGES, LINES AND FITTINGS									
P O	6685-168-0381	GAUGE, 0-600: LOW DISCHARGE PRESSURE WK23B3DZX (72100)		EA	1	*	*	*	*	9	1
P O	6685-168-0384	GAUGE, 0-4000: HIGH DISCHARGE PRESSURE WK50B3EZX (72100)		EA	1	*	*	*	*	9	2
P O	6685-168-0383	GAUGE, 0-5000: RESERVOIR PRESSURE WK50B3FZX (72100)		EA	1	*	*	*	*	9	3
P20	4730-555-9360	CONNECTOR: GAUGE TO TUBE 5267X4X4 (01989)		EA	2	*	*	*	*	9	4
P20	4720-107-3089	TUBES CONNECTOR TO TEE 875361 (33525)		EA	1	*	*	*	*	9	5
P20	4310-117-0842	TUBE: CONNECTOR TO TEE 894047 (33525)		EA	1	*	*	*	*	9	6
P20	4720-107-3094	TUBE: NIPPLE TO TEE 894045 (33525)		EA	1	*	*	*	*	9	7
O	4730-698-4048	NIPPLE: GAUGE PROTECTOR TO TUBE AN816-4-4C (88044)		EA	1					9	8
P20	6685-18-0391	PROTECTOR, GAUGE: LOW PRESSURE 276476 (33525)		EA	1	*	*	*	*	9	9

(1) SMR CODE	(2) FEDERAL STOCK NUMBER	(3) DESCRIPTION REFERENCE NUMBER & MFR CODE USABLE ON CODE		(4) UNIT OF MEAS	(5) QTY. INC IN UNIT	(6) 15-DAY ORGANIZATIONAL MAINTENANCE ALW				(7) ILLUSTRATION	
						(a)	(b)	(c)	(d)	(a)	(b)
						1-5	6-20	21-50	51-100	FIG. NO.	ITEM NO.
X1		GROUP 50 - PNEUMATIC EQUIPHENT 5000 - AIR COMPRESSOR ASSEMBLY									
			WASHER, LOCK: CAP MTG, NO. 10 SCREW SIZE H5122055 (96906)	EA	4					10	31
P20	5310-131-7128		PLUG, MAGNETIC: DRAIN MS35814-4 (96906)	EA	1	*	*	*	*	10	61
P O	5330-815-9489		GASKET: DRAIN PLUG MS35769-11 (96906)	EA	1	*	*	2	2	10	62
X20	5330-850-4011		PACKING PREFORMED: DIPSTICK 5304-0800 (33525)	EA	1					10	64
P20	6680-107-1146		DIPSTICK: CRANKCASE 276573 (33525)	EA	1	*	*	*	*	10	65
P O	1040-084-2928		FILTER ASSEMBLY, FIRST STAGE 842231 (33525)	EA	1	*	2	2	4	10	112
X1	5330-878-2407		PACKING, PREFORMED: CAP MTG 5785-0031 (33525)	EA	1					10	113
X20	1040-971-1923		CAP, FIRST STAGE 272198 (33525)	EA	1					10	114
X1			SCREW, CAP, SOCKET HEAD: CAP AND HEAD MTG, NO. 10-21 THD SIZE, 1½ IN. LG 5833-1034 (33525)	EA	4					10	115
P20	1040-977-9173		CAP, PROTECTION: FIRST STAGE HEAD 216308 (33525)	EA	1	*	*	*	*	10	116
P O	4720-107-3098		TUBE OIL SUPPLY 875385 (33525)	EA	1	*	*	*	*	11	23
P20	4730-133-3977		FITTING, TUBE: OIL LINE 273502 (33525)	EA	1	*	*	*	*	11	27
P20	4310-110-3099		STRAINER OIL 813685 (33525)	EA	1	*	*	*	*	11	28
P O	5330-953-0559		PACKING, PREFORMED: STRAINER MTG 914-1167 (86519)	EA	1	*	2	2	2	11	29
P O	4310-107-1061		TUBE, AFTERCOOLER: MOISTURE SEPARATOR TO COOLER 891071 (33525)	EA	1	*	*	*	*	12	9
P20	4310-107-1060		TUBE, RELIEF VALVE: FOURTH STAGE 875436 (33525)	EA	1	*	*	*	*	12	10
P O	5310-964-5094		NUT, LOCK, HEXAGON: CLAMP MTG, NO. 104-2 THD SIZE 21FK1024 (56878)	EA	1					12	11
O	5310-167-0818		WASHER, FLAT: CLAMP MTG, NO. 10 SCREW SIZE AN960-10 (88044)	EA	2					12	12
P20	5310-598-0523		CLAMP, CUSHIONED: VALVE MTG 751-14-2-8 (83930)	EA	1	*	*	*	*	12	13
O			SCREW, MACHINE, FILLISTER HEAD: CLAMP MTG, NO. 10-24 THD SIZE, 5/8 IN. LG 1692-1012 (8804)	EA	1					12	14
P O R	4310-758-5528		VALVE, RELIEF, FOURTH STAGE 872131-3900 (33525)	EA	1	*	*	*	*	13	1

(1) SMR CODE	(2) FEDERAL STOCK NUMBER	(3) DESCRIPTION REFERENCE NUMBER & MFR CODE USABLE ON CODE		(4) UNIT OF MEAS	(5) QTY. INC IN UNIT	(6) 15-DAY ORGANIZATIONAL MAINTENANCE ALW				(7) ILLUSTRATION	
						(a)	(b)	(c)	(d)	(a)	(b)
						1-5	6-20	21-50	51-100	FIG. NO.	ITEM NO.
		5006 - LUBRICATION SYSTEM									
P O	4730-133-3976	FITTING: TUBE, NYLON MTG TYPE7252072 (39481)		EA	7	*	*	*	2	14	1
P O	5310-111-3666	NUT, LOCK: TUBE, NYLON MTG 251825 (33525)		EA	2	*	*	*	2	14	2
P20	4730-681-7531	CONNECTOR: TUBES, OIL PRESSURE AND SUPPLY TO FITTING C5255X4 (79470)		EA	2	*	*	*	*	14	3
P20	4720-107-3082	TUBE, OIL PRESSURE 875387 (33525)		EA	1	*	*	*	*	14	4
P O	5340-715-1635	CLAMP, CUSHION: TUBE TO 754-4-2-6 (83930)		EA	4	*	*	*	*	14	5
O	5310-515-8058	WASHER, FLAT: CLAMP MTG, NO. 8 SCREW SIZE AN960-8 (88014)		EA	20					14	6
O		SCREW, MACHINE: CLAMP MTG, NO. 8-32 THD SIZE, 5/8 IN. LG 1692-0810 (33525)		EA	2					14	7
P O	5310-565-0004	CLAMP, CUSHION: TUBE MTG MS21919DG10 (96906)		EA	2	*	*	*	*	14	8
O	5310-559-0522	NUT, LOCK, HEXAGON: CLAMP MTG 21FK832 (56878)		EA	4					14	9
O		CLAMP: TUBE, NYLON MTG 5959-0001 (83930)		EA	1					14	10
P O	4730-287-0482	CONNECTOR: TUBE, NYLON MTG TYPE NO 3 (39481)		EA	1	*	*	*	*	14	11
P20	4720-107-3083	TUBE OIL SUPPLY 875386 (33525)		EA	1	*	*	*	*	14	12
		5007 - COMPRESSOR DRIVE									
P O	4310-107-1058	ADAPTER, RIGHT ANGLE: TIMER DRIVE 1A11-073 (05662)		EA	1	*	*	*	*	15	1
O	5310-167-0808	WASHER, FLAT: TIMER DRIVE ADAPTER MTG .640 IN. ID, 1.180 OD, .064 IN. THK AN960C1016 (88044)		EA	6					15	2
P O	4310-107-1059	COUPLING, DRIVE: TIMER DRIVE ADAPTER 252547 (33525)		EA	V	*	*	*	*	15	3
		5009 - UNLOADER SYSTEM									
O		SCREW, MACHINE, BINDER HEAD: CLAMP MTG, NO. 10-24 THD SIZE, ¾ IN. LG 5129-1012 (33525)		EA	1					16	1
O	5310-167-0818	WASHER, FLAT: CLAMP MTG, NO. 10 SCREW SIZE A960-10 (88044)		EA	2					16	2
O		SCREW, MACHINE, BINDER HEAD: CLAMP MTG, NO. 8-32 THD SIZE, 1 IN. LG 5129-0812 (33525)		EA	1					16	3
O	5310-515-8058	WASHER, FLAT: CLAMP MTG, NO. 8 SCREW SIZE AN960-8 (88042)		EA	5					16	4
O	4730-698-4048	NIPPLE: DEHYDRATOR TUBE TO FILTER AN816-4-4C (88044)		EA	3					16	5

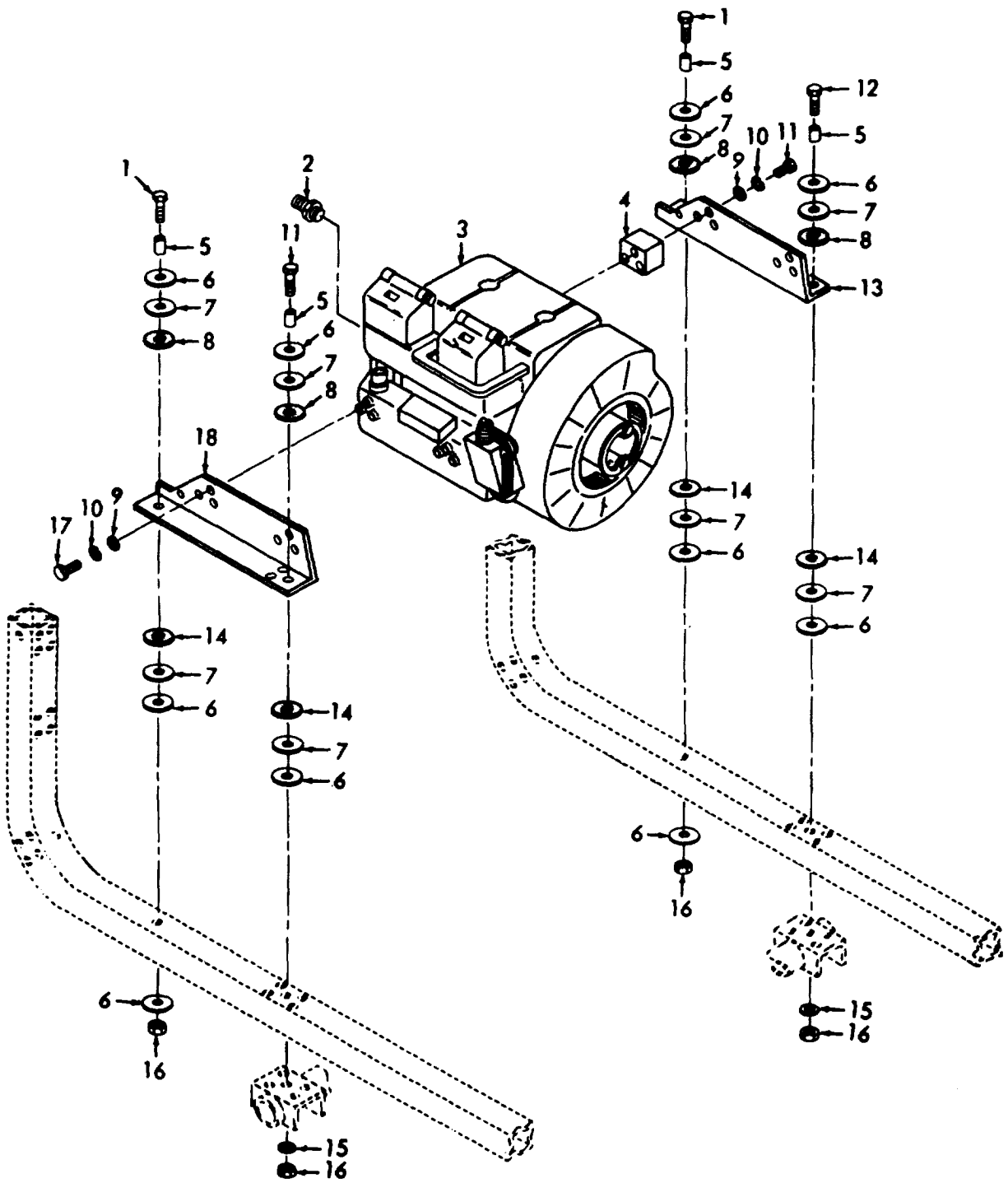
(1) SMR CODE	(2) FEDERAL STOCK NUMBER	(3) DESCRIPTION REFERENCE NUMBER & MFR CODE USABLE ON CODE		(4) UNIT OF MEAS	(5) QTY. INC IN UNIT	(6) 15-DAY ORGANIZATIONAL MAINTENANCE ALW				(7) ILLUSTRATION	
						(a)	(b)	(c)	(d)	(a)	(b)
						1-5	6-20	21-50	51-100	FIG. NO.	ITEM NO.
O	5310-559-0522	NUT, LOCK, HEXAGON: CLAMP MTG, NO. 8-32 THD SIZE 21FK832 (56878)		EA	1					16	6
O	5340-200-6535	CLAMP, CUSHIONED: FILTER TO 754-13-2-6 (83930)		EA	1					16	7
P O	4330-107-3410	FILTER 6322F4B (289683)		EA	1	*	*	*	*	16	8
O	4730-698-4048	NIPPLE: FILTER TO TUBE AN816-4-4C (88004)		EA	1					16	9
P20	4720-107-3085	TUBE ;NIPPLE TO BACK PRESSURE VALVE 843693 (33525)		EA	1	*	*	*	*	16	10
O	5310-579-1034	NUT, LOCK, HEXAGON: CLAMP MTG, NO. 10-24 THD SIZE 21FK1024 (56878)		EA	1					16	11
O	5340-591-4181	CLAMP, CUSHIONED: BACK PRESSURE VALVE MTG 754-15-2-8 (83930)		EA	1					16	12
P O	5330-580-1223	PACKING, PREFORMED: CHECK VALVE MTG 5304-040 (33525)		EA	1	2	2	4	8	16	13
P O	1650-684-0733	VALVE CHECK 840780 (33525)		EA	1	*	*	*	*	16	14
P20	4720-107-3086	TUBE: CHECK VALVE TO CROSS 843692 (33525)		EA	1	*	*	*	*	16	15
X20	4730-613-5604	CROSS AN827-4C (88024)		EA	1					16	16
P O R	4820-110-3535	VALVE BACK PRESSURE 841342-1750 (33525)		EA	1	*	*	*	*	17	1
X20		BRACKET, REGULATOR 276336 (33525)		EA	1					18	1
X20		BRACKET, REGULATOR 276281 (33525)		EA	1					18	2
O	5310-141-1795	WASHER, FLAT: BRACKET MTG, ¼ IN. SCREW SIZE AN960-416 (88044)		EA	4					18	3
O	5310-013-1245	NUT, LOCK, HEXAGON: BRACKET MTG ¼-20 THD SIZE 21FK420 (56B78E)		EA	4					18	4'
O	5310-167-0836	WASHER, FLAT: REGULATOR MTG, 5/16 IN. SCREW SIZE A960-516L (88044)		EA	4					18	5
O	5310-818-3044	WASHER, LOCK: REGULATOR MTG, 5/16 IN. SCREW SIZE MS122058 (96906)		EA	4					18	6
O		BOLT, MACHINE, HEXAGON HEAD: REGULATOR MTG 1264-2008 (33525)		EA	4					18	7
O		BOLT, MACHINE, HEXAGON HEAD: BRACKET MTG, ¼-20 THD SIZE, 5/8 IN. LG 1264-1610 (33525)		EA	4					18	8
O	5310-167-0766	WASHER, FLAT: BRACKET MTG, ¼ IN. SCREW SIZE AN970-4 (88042)		EA	4					18	9
P O	3655-794-2999	REGULATOR, PRESSURE 280190 (99657)		EA	1	*	*	*	*	18	10
P O	5330-580-1223	PACKING, PREFORMED: PLUG 5304-0400 (33525)		EA	1	REF	REF	REF	REF	18	11
P20	4730-079-2396	PLUG: PRESSURE REGULATOR AN814-4C (88004)		EA	1	*	*	*	*	18	12

(1) SMR CODE	(2) FEDERAL STOCK NUMBER	(3) DESCRIPTION REFERENCE NUMBER & MFR CODE USABLE ON CODE		(4) UNIT OF MEAS	(5) QTY. INC IN UNIT	(6) 15-DAY ORGANIZATIONAL MAINTENANCE ALW				(7) ILLUSTRATION	
						(a)	(b)	(c)	(d)	(a)	(b)
						1-5	6-20	21-50	51-100	FIG. NO.	ITEM NO.
O		SCREW, MACHINE, FILLISTER HEAD: CLAMP MTG, NO. 8-32 THD SIZE, 5/8 IN. LG 1692-0812 (33525)		EA	2					19	1
O	5310-515-8058	WASHER, FLAT: CLAMP MTG, NO. 8 SCREW SIZE AN960-8 (88044)		EA	8					19	2
O	5310-579-1031	NUT, LOCK, HEXAGON: CLAMP MTG, NO. 10-24 THD SIZE 21FK1024 (56878)		EA	1					19	5
P20	4720-277-6173	TEE: TUBE TO VALVE: AN826-4C (88004)		EA	2	*	*	*	*	19	8
P20	4720-107-3092	TUBE: CROSS TO TEE 894043 (33525)		EA	1	*	*	*	*	19	9
O	5340-715-1635	CLAMP, CUSHIONED: TUBE MTG 754-4-2-6 (83930)		EA	3					19	15
O		NUT, LOCK, HEXAGON: CLAMP MTG, NO. 8-32 THD SIZE 21FK832 (56878)		EA	2					19	16
P O	4720-107-3091	TUBE: ELBOW TO CROSS 875360 (33525)		EA	1	*	*	*	*	19	17
X20	5340-074-2072	TIE, WRAP: TUBE MTG TY25M (59730)		EA	2	*	*	*	*	19	18
O		SCREW, MACHINE, FILLISTER HEAD: CLAMP MTG, NO. 10-24 THD SIZE 5/8 IN. LG 1692-0810 (33525)		EA	1					19	19
P O	4820-110-1909	VALVE, SHUTOFF: DRAIN AND RESERVOIR BY-PASS 802BS5P1-8 (09505)		EA	2	*	*	*	*	19	20
P O	4730-331-4950	ELBOW: VALVE TO TUBE AN822-21C (880224)		EA	2	REF	REF	REF	REF	19	21
P20	4720-107-3088	TUBE: ELBOW TO CROSS 875359 (33525)		EA	1	*	*	*	*	19	22
P20	4310-109-3486	TUBE REGULATOR: ELBOW TO TEE A910411 (33525)		EA	1	*	*	*	*	19	23
P20	4730-277-6172	TEE: TUBE TO REGULATOR AN834-4C (88022)		EA	1	*	*	*	*	19	24
P20	4730-580-7302	NUT, BULK HEAD: ELBOW AND TEE AN6289C4 (88024)		EA	3	*	*	*	*	19	25
P O	4310-939-6840	RING, BACKUP: TEE AND ELBOW MTG MS59484- (96906)		EA	3	*	*	*	*	19	26
P O	5330-580-1223	PACKING, PREFORMED: TEE AND ELBOW MOUNTING 5304-0400 (33525)		EA	3	REF	REF	REF	REF	19	27
O	4730-542-1041	NUT, BULK HEAD: FITTING TO TUBE AN924-4C (88082)		EA	1					19	28
P20	4720-107-3095	TUBE, OUTLET: REGULATOR 875365 (33525)		EA	1	*	*	*	*	19	29
P20	4730-608-8676	ELBOW, BULK HEAD: REGULATOR TO TUBE AN833-4C (88044)		EA	2	*	*	*	*	19	30
O	5310-167-0822	WASHER, FLAT: FITTING, 7/16 IN. ID AN960-716 (88044)		EA	2					19	31
P20	4730-997-6004	FITTING, OUTLET 252113 (33525)		EA	1	*	*	*	*	19	32
P O	4730-143-8912	COUPLING: CAP TO FITTING 5602-4-45 (99879)		EA	1	*	*	*	*	19	33

(1) SMR CODE	(2) FEDERAL STOCK NUMBER	(3) DESCRIPTION REFERENCE NUMBER & MFR CODE USABLE ON CODE		(4) UNIT OF MEAS	(5) QTY. INC IN UNIT	(6) 15-DAY ORGANIZATIONAL MAINTENANCE ALW				(7) ILLUSTRATION	
						(a)	(b)	(c)	(d)	(a)	(b)
						1-5	6-20	21-50	51-100	FIG. NO.	ITEM NO.
P O	5340-071-3831	CAP, DUST 5657-4 (99879)		EA	1	*	*	*	*	19	34
P20	4310-107-3105	DEHYDRATOR 291352 (33525)		EA	1	*	*	*	*	20	
O		CAP, DEHYDRATOR 293352-1 (81349)		EA	1					20	1
P O	5330-186-4128	RING, BACKUP: CAP MTG AN6246-36 (88411)		EA	1	20	20	40	80	20	2
P O	5330-196-5322	PACKING, PREFORMED: CAP MTG AN6227-36 (88044)		EA	1	20	20	41	80	20	3
P O	5330-640-9476	PACKING, PREFORMED: CARTRIDGE MOUNTING AN6227-34 (88044)		EA	1	20	20	40	80	20	4
P O	4440-580-7293	CARTRIDGE, DEHYDRATOR MILC4952TYPEHA1 (81349)		EA	1	20	20	40	80	20	5
P O	5330-297-6868	PACKING, PREFORMED: CARTRIDGE MOUNTING AN6290-10 (88011)		EA	1	20	20	40	80	20	6
X1		BODY, DEHYDRATOR 291352-2 (81349)		EA	1					20	7
P20	4310-107-1064	TUBE DEHYDRATOR 875358 (33525)		EA	1	*	*	*	*	20	8
P20	4730-278-5610	ELBOW, TUBE: DEHYDRATOR INLET AND OUTLET MS20822-4-4C (96906)		EA	2	REF	REF	REF	REF	20	9
O		BOLT, MACHINE, HEXAGON HEAD: BRACKET MTG 1264-1616 (33525)		EA	2					20	10
O	5310-809-4058	WASHER, FLAT: BRACKET MTG, ¼ IN. SCREW SIZE M527183-10 (96906)		EA	8					20	11
X20		BRACKET: DEHYDRATOR MTG 276139 (33525)		EA	2					20	12
X20		SPACER, ALUMINUM: BRACKET MTG 252242 (3325)		EA	2					20	13
O		NUT, PLAIN, HEXAGON: BRACKET AND U-BOLT MTG MS20865-4282 (96906)		EA	4					20	14
O	5310-141-1795	WASHER, FLAT: BRACKET AND U-BOLT MTG, ¼ IN. SCREW SIZE AN960-416 (88044)		EA	4					20	15
O		BOLT, MACHINE, HEXAGON HEAD: BRACKET MTG, ¼-20 THD SIZE, ¾ IN. LG 1264-1612 (33525)		EA	2					20	16
P20	4310-110-3103	TUBE OUTLET: MOISTURE SEPARATOR 894107 (33525)		EA	1	*	*	*	*	20	17
X20		SADDLE: MOISTURE SEPARATOR MTG 276348 (33525)		EA	2					20	18
P20	4730-608-8676	ELBOW, TUBE: TUBE TO SEPARATOR AN833-4C (88044)		EA	3	REF	REF	REF	REF	20	19
O	5310-013-1245	NUT, LOCK, HEXAGON: BRACKET MTG, ¼-20 THD SIZE 21FK420 (56878)		EA	4					20	20
O		PLATE, WARNING: MOISTURE SEPARATOR DUMP 25240A (33525)		EA	1					20	21

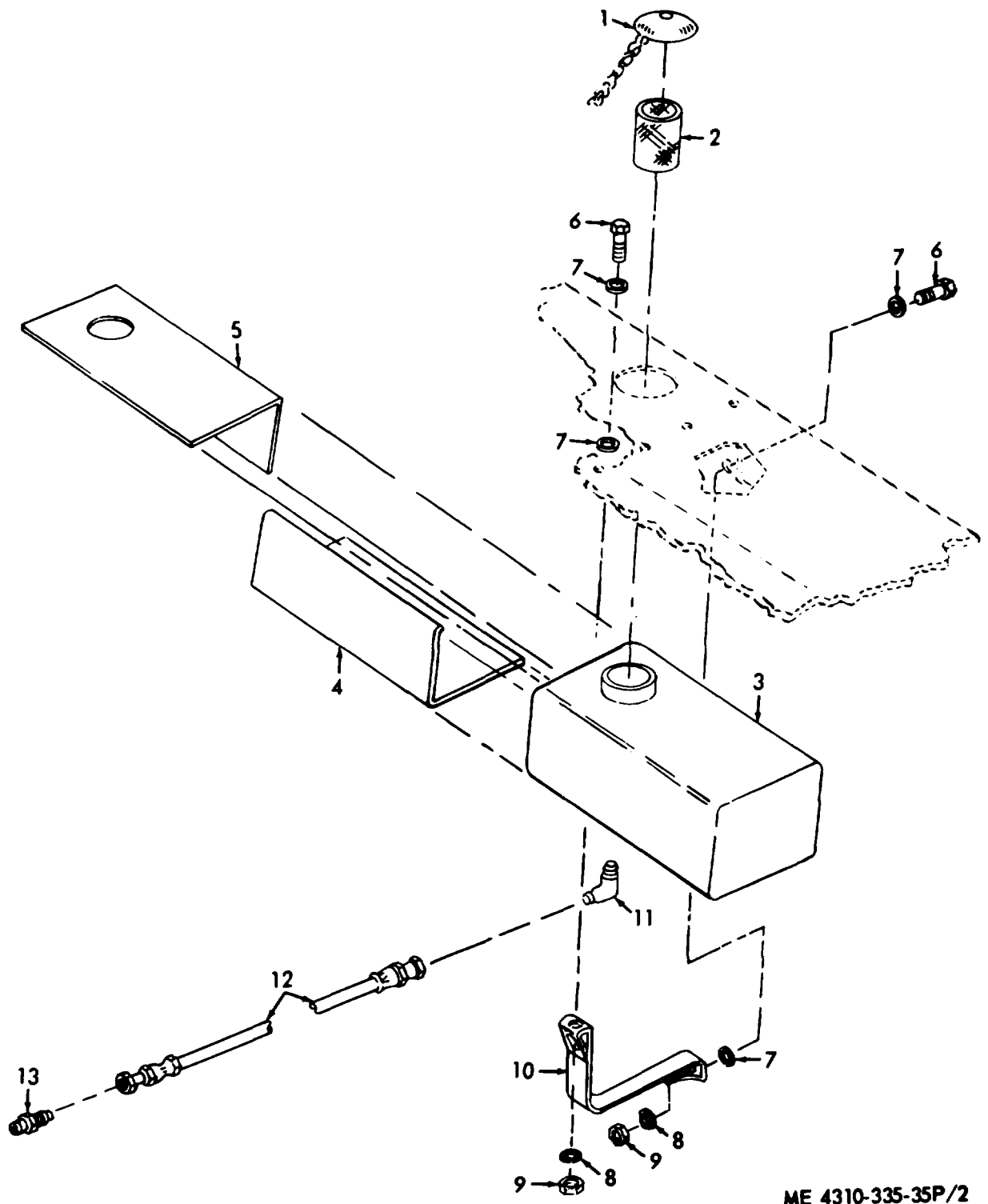
(1) SMR CODE	(2) FEDERAL STOCK NUMBER	(3) DESCRIPTION REFERENCE NUMBER & MFR CODE USABLE ON CODE		(4) UNIT OF MEAS	(5) QTY. INC IN UNIT	(6) 15-DAY ORGANIZATIONAL MAINTENANCE ALW				(7) ILLUSTRATION	
						(a)	(b)	(c)	(d)	(a)	(b)
						1-5	6-20	21-50	51-100	FIG. NO.	ITEM NO.
O	5310-167-0818	WASHER, FLAT: U-BOLT MTG, NO. 5 SCREW SIZE AN960-10 (88044)		EA	1					20	22
O	5310-964-5091	NUT, LOCK, HEXAGON: U-BOLT MTG 21FK1024 (56878)		EA	1					20	23
O	4730-277-6372	NUT, PLAIN, HEXAGON: ELBOW MTG AN6289-4 (86011)		EA	3					20	24
P O	5330-932-5640	RING, BACK UP: ELBOW MTG MS9484-04- (96906)		EA	3	REF	REF	REF	REF	20	25
P O	5330-580-1223	PACKING, PREFORMED: ELBOW MTG 5304-0400 (33525)		EA	3	REF	REF	REF	REF	20	26
M O		TUBING , NYLON: TO UNLOADER VALVE 252078 (33925) MANUFACTURE FROM: TUBING, 5 ½ FT REQUIRED, FSN 4720-109-3479		EA	1					20	27
O		NUT, LOCK: TUBE, NYLON MTG 251825 (33525)		EA	1					20	28
P O	4730-133-3976	FITTING, ELBOW TUBE, NYLON 252072 (33525)		EA	1	REF	REF	REF	REF	20	29
X20		U-BOLT: MOISTURE SEPARATOR MTG 251478 (33525)		EA	2					20	30
X20		U-BOLT: DEHYDRATOR MTG 276110 (33525)		EA	2					20	31
P20	4310-107-1067	SEPARATOR MOISTURE 893940 (33525) (INCLUDES COMPONENT OF KIT, STOCK NO. 4310-107-1071)		EA	1	*	*	*	*	21	
P O	5330-580-1223	PACKING, PREFORMED: PLUG MTG 5304-0400 (33525)		EA	1	REF	REF	REF	REF	21	15
P O	4310-939-6838	TAPE, PLUG CAP MOISTURE SEPARATOR, 4 IN. REQUIRED 850 (00633)		EA		*	*	*	*	21	21
X1	5310-726-7663	RING, SAFETY DISC 211922 (33525)		EA	1						
X20	4730-203-0711	PLUG, BODY 206650 (33525) SPRING, HELICAL, COMPRESSION: 1 EA, (33525), 216505 5010 - COMPRESSOR COOLING AND HEATING		EA	1					21	25
O		SCREW, MACHINE, FILLISTER HEAD: CABLE ASSEMBLY AND CHAIN MTG, NO. 4-40 THD SIZE, ½ IN. LG 1692-0408 (33525)		EA	5					22	1
O	5310-167-0815	WASHER, FLAT: CABLE ASSEMBLY AND CHAIN MTG, NO. 4 SCREW SIZE AN960-4 (88044)		EA	10					22	2
O	5310-013-4524	NUT, PLAIN, HEXAGON: CABLE ASSEMBLY AND CHAIN MTG, NO. 4-40 THD SIZE MS35649-42 (96906)		EA	5					22	3
P20	4310-106-5588	CABLE ASSEMBLY, HEATER: MOISTURE 875371 (33525)		EA	1	*	*	*	*	22	4
P20	5340-282-7965	CLAMP, CABLE 1-4-6 (95987)		EA	2	*	*	*	*	22	5

(1) SMR CODE	(2) FEDERAL STOCK NUMBER	(3) DESCRIPTION REFERENCE NUMBER & MFR CODE USABLE ON CODE		(4) UNIT OF MEAS	(5) QTY. INC IN UNIT	(6) 15-DAY ORGANIZATIONAL MAINTENANCE ALW				(7) ILLUSTRATION	
						(a)	(b)	(c)	(d)	(a)	(b)
						1-5	6-20	21-50	51-100	FIG. NO.	ITEM NO.
O	5310-167-0918	WASHER, FLAT: CLAMP MTG, NO. 10 SCREW SIZE AN960-10 (88044)		EA	4					22	6
O		NUT, LOCK, HEXAGON: CLAMP MTG, NO. 10-32 THD SIZE 21FK1032 (56878)		EA	2					22	7
O	5306-656-0358	BOLT, MACHINE, HEXAGON HEAD: CLAMP MTG, NO. 10-32 THD SIZE ¾ IN. LG AN3-6A (88044)		EA	2					22	8
X20	5935-642-0955	CAP, PROTECTION 10-37398-1 (06848) 5014 - AIR RECEIVER		EA	1					22	9
P20	4730-287-0107	PLUG AND BLEEDER: SPHERE AN814-10 (88044)		EA	1	*	*	*	*	23	1
P O	5330-285-9842	PACKING, PREFORMED: PLUG AND BLEEDER MS28778-10 (96906)		EA	1	*	2	2	2	23	2
P O	5330-599-0081	GASKET: BOTTLE FITTING 206589 (33525)		EA	1	*	2	2	2	23	4
P20	4310-659-2621	FITTING, BOTTLE: SPHERE 27062 (33525)		EA	1	*	*	*	*	23	5
P O	5330-580-1223	PACKING, PREFORMED: VALVE, FITTING AND TEE MTG 5304-0400 (33525)		EA	3	REF	REF	REF	REF	24	2
O	5310-167-0818	WASHER, FLAT: CLAMP, LOOP AND BRACKET MTG, NO. 10 SCREW SIZE AN960-10 (88044)		EA	6					24	6
O	5310-964-5094	NUT, LOCK, HEXAGON: CLAMP, LOOP AND BRACKET MTG NO. 10-24 THD SIZE 21FK1024 (03681)		EA	2					24	7
X20	5340-912-7324	CLAMP, CUSHION: TUBE, MOISTURE, SEPARATOR MTG TA712SS4 (84971)		EA	2					24	8
P O	4310-107-1057	PAD, MOUNTING: SPHERE 242541 (33525)		EA	3	REF	REF	REF	REF	24	10
P O		FITTING, SAFETY DISC: SPHERE 871621 (33525)		EA	1	*	*	*	*	24	12
P20	4310-110-1049	TUBE SPHERE 894041 (33525)		EA	1	*	*	*	*	24	13
O		TEE, TUBE: SPHERE TO TUBE 5862-0407 (33525)		EA	1					24	14
O		NUT, HEXAGON: TEE MTG 5811-0402 (33525)		EA	1					24	15
O	4310-939-6840	RING: BACKUP: TEE MTG MS9484-4 (96906)		EA	1					24	16
P O R	4310-758-5528	VALVE, RELIEF, SPHERE 874231-3900 (33525)		EA	1	REF	REF	REF	REF	25	1



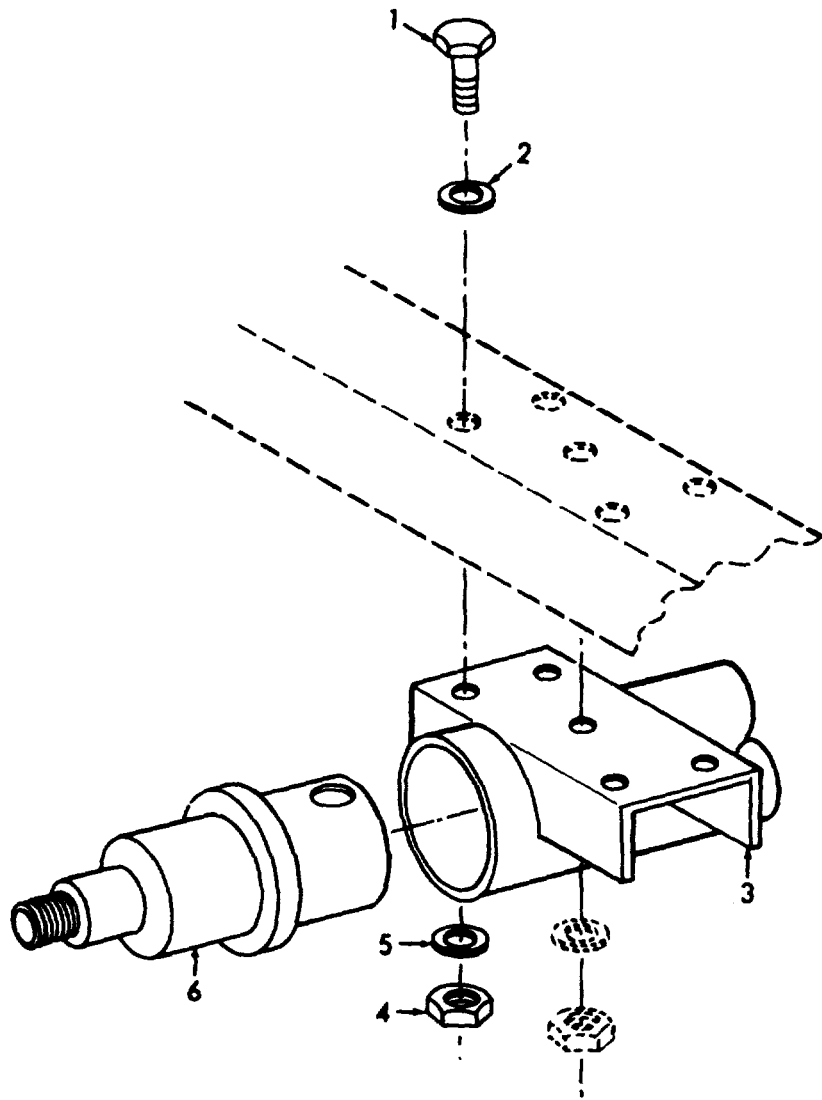
ME 4310-335-3SP/1

Figure No. 1. Engine And Mounting Hardware.



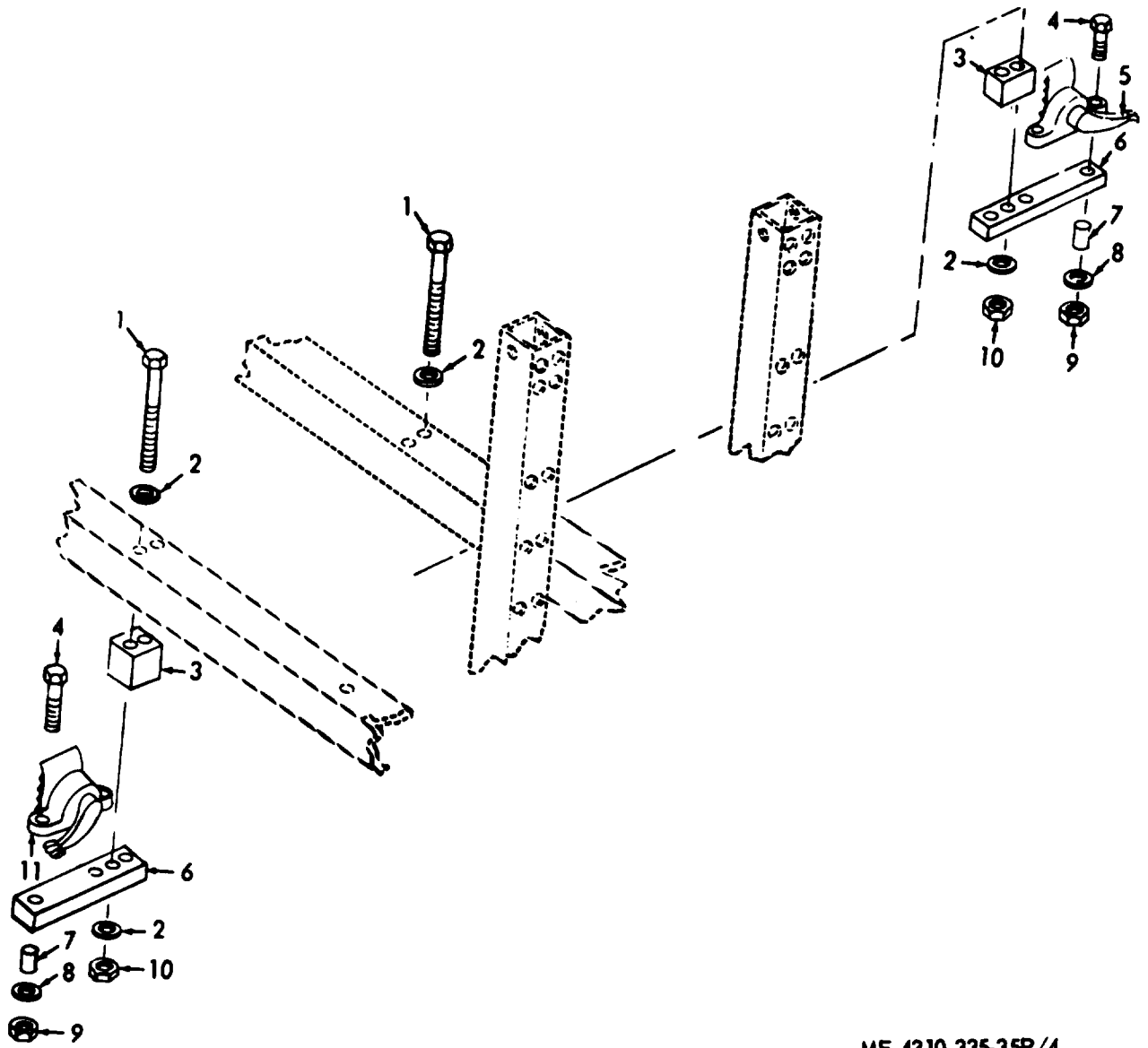
ME 4310-335-35P/2

Figure No. 2. Fuel Tank And Mounting Hardware.



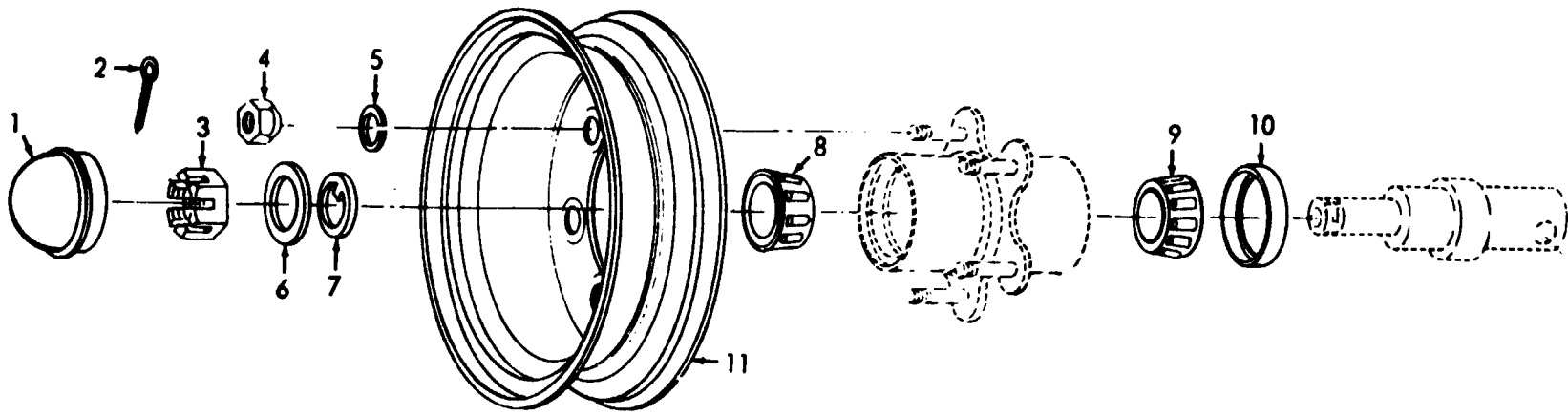
ME 4310-335-35P/3

Figure No. 3. Axle.



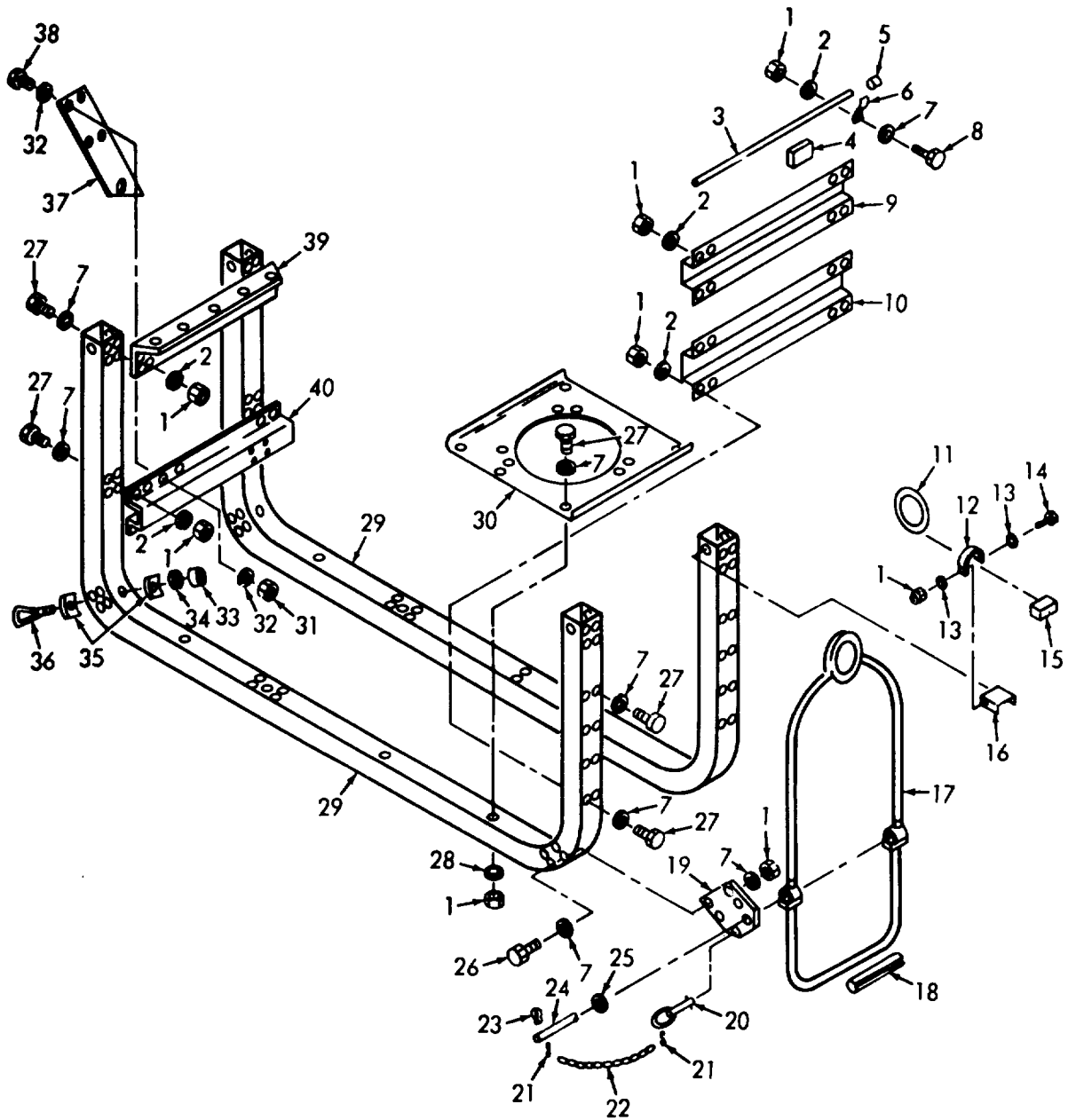
ME 4310-335-35P/4

Figure No. 4. Brakes.



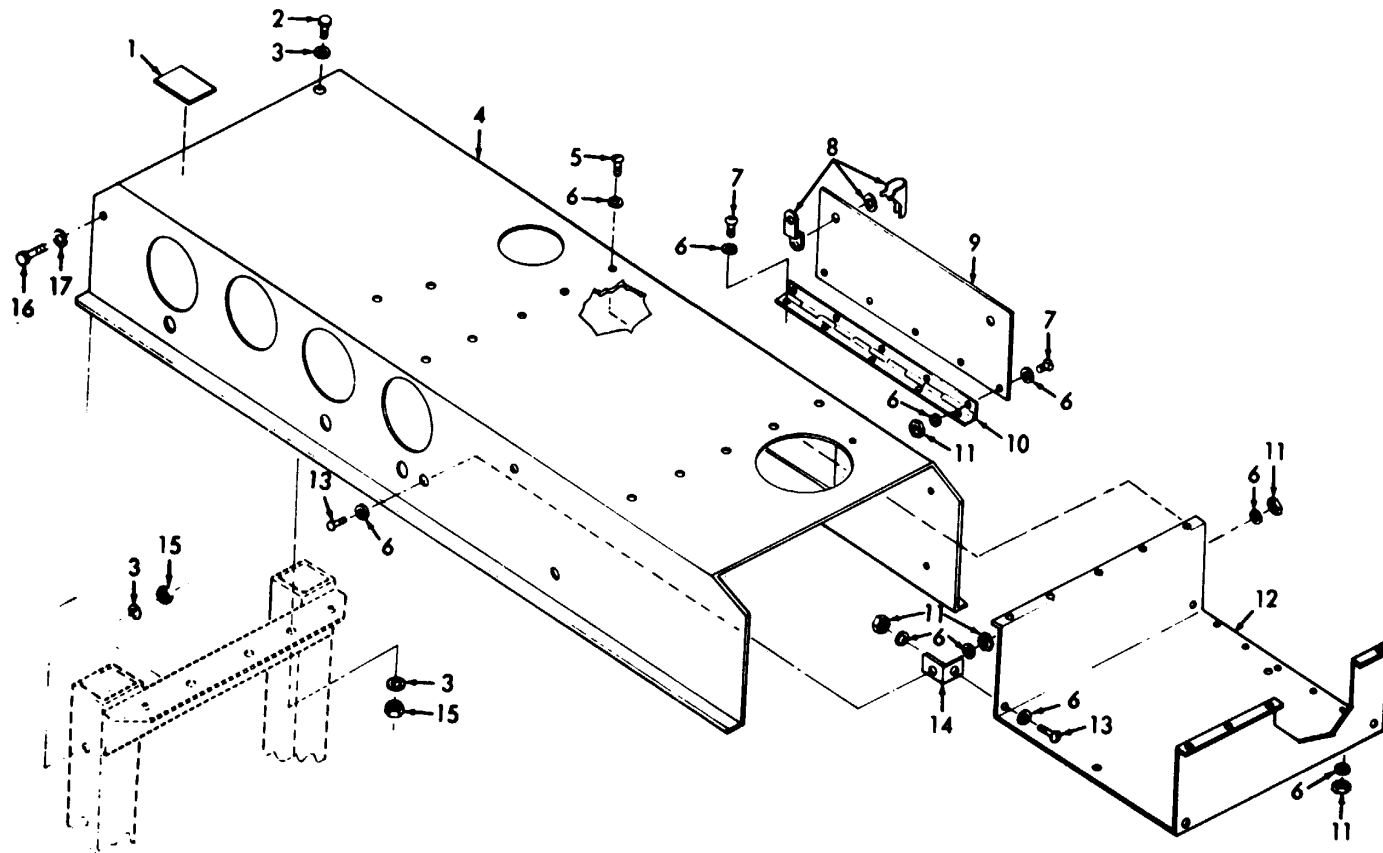
ME 4310-335-35P/5

Figure No. 5. Wheel And Hub.



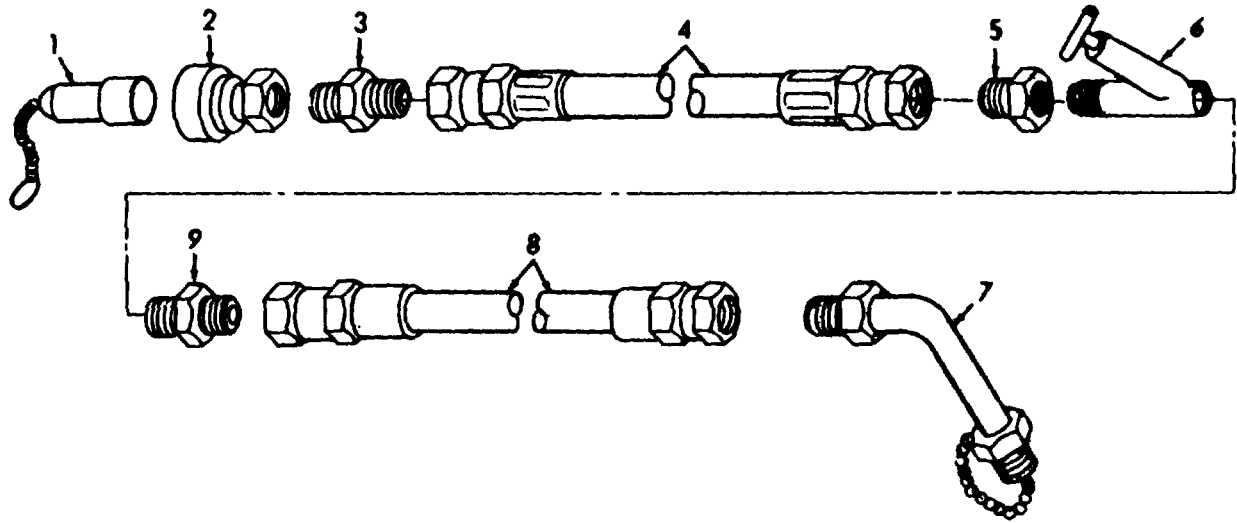
ME 4310-335-35P/6

Figure No. 6. Handle, Towbar, Tie Down And Mounting Hardware.



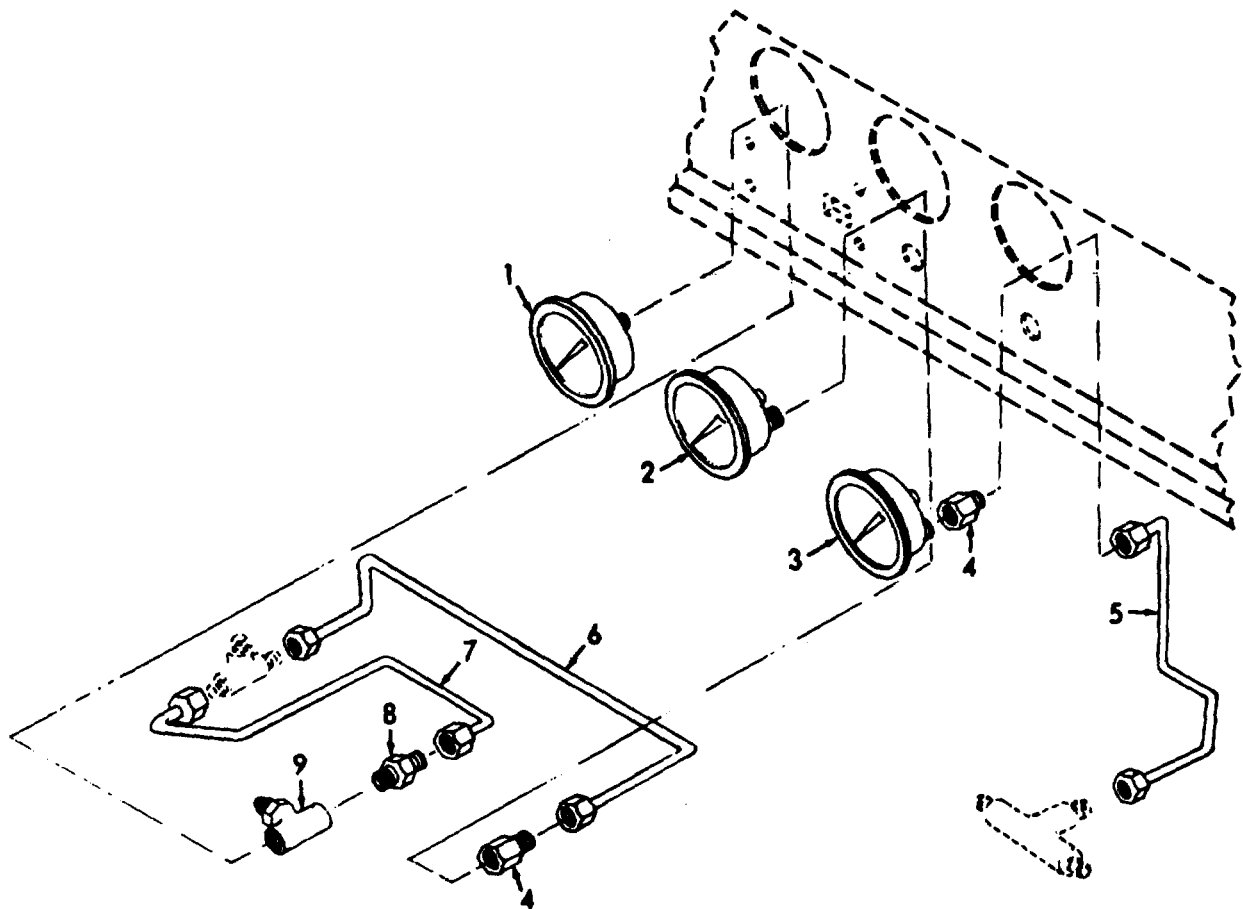
ME 4310-335-35P/7

Figure No. 7. Storage Tray And Mounting Hardware.



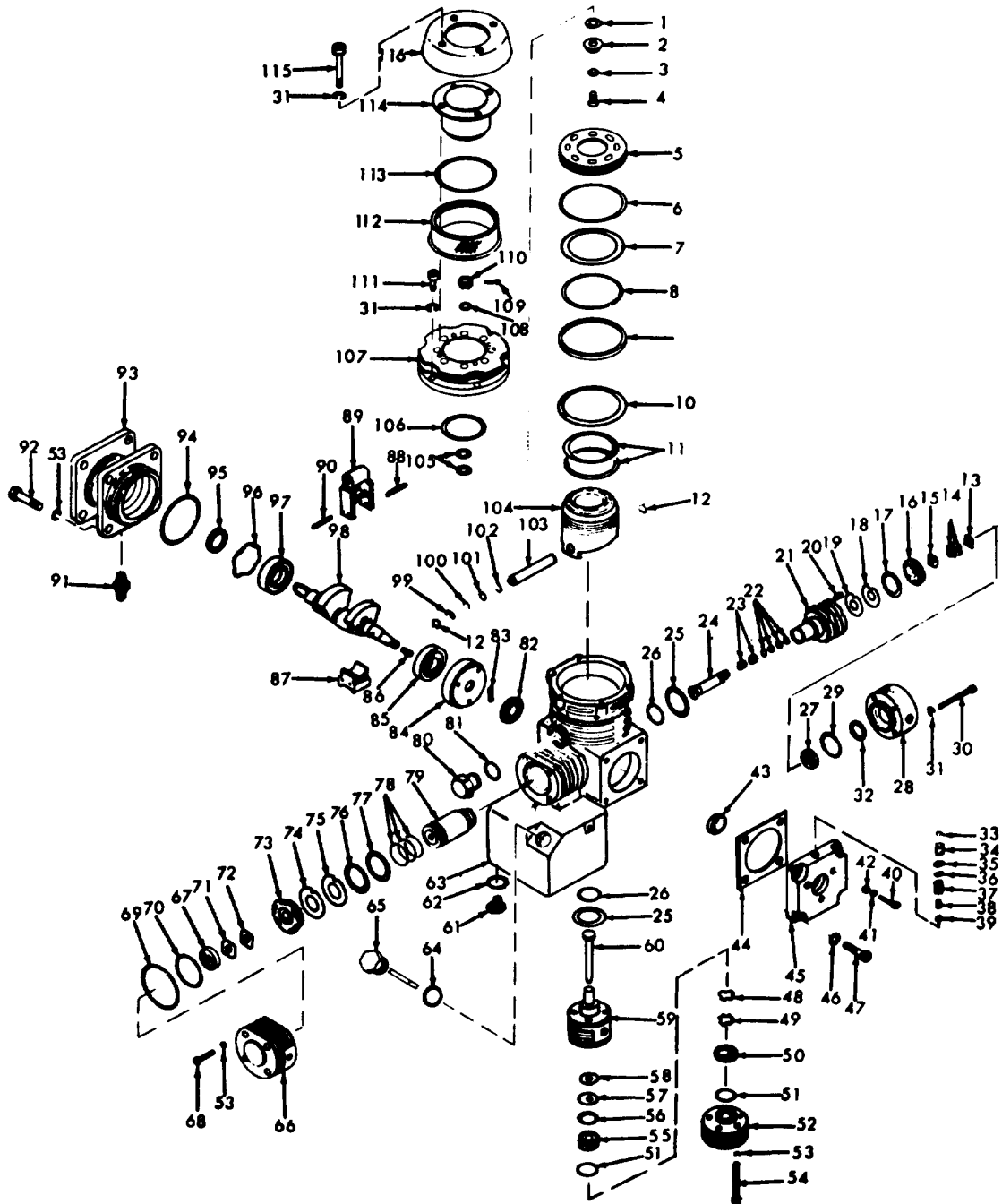
ME 4310-335-36P/B

Figure No. 8. Charging Chuck.



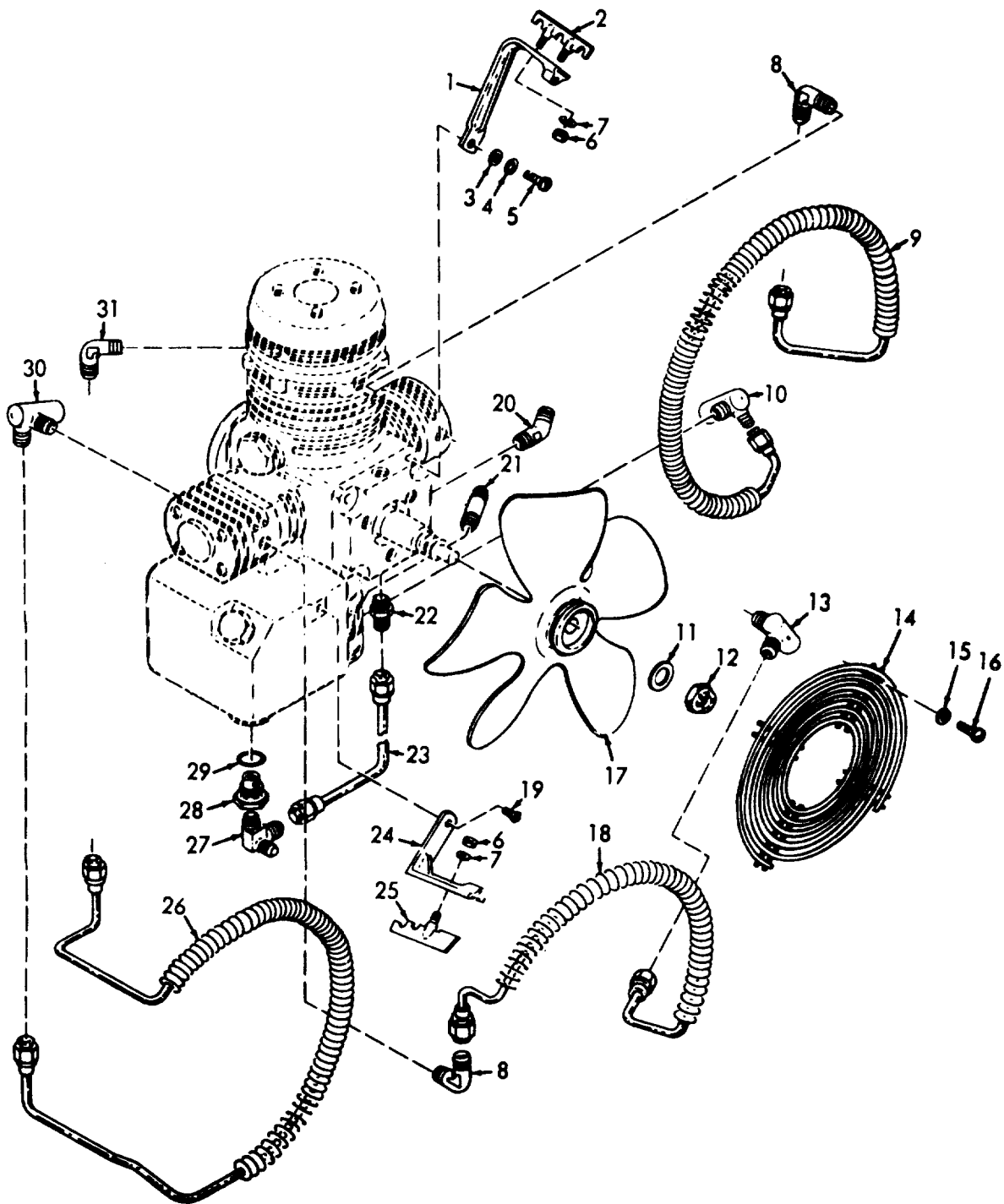
ME 4310-335-35P/9

Figure No. 9. Gauges, Lines And Fittings.



ME 4310-335-35P/10

Figure No. 10. Compressor Filter, Dipstick And Drain Plug.



ME 4310-335-35P/11

Figure No. 11. Oil Supply Line And Strainer.

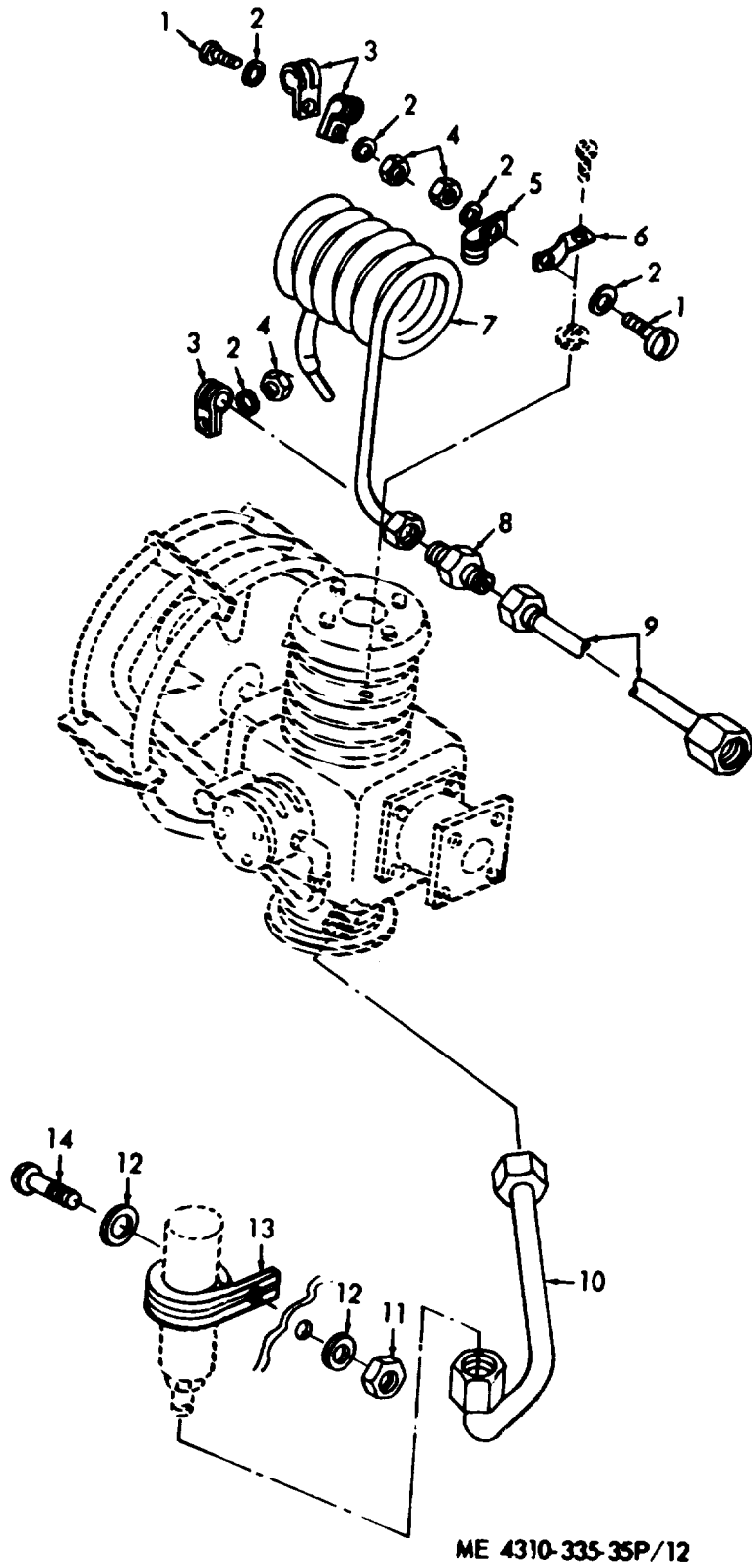
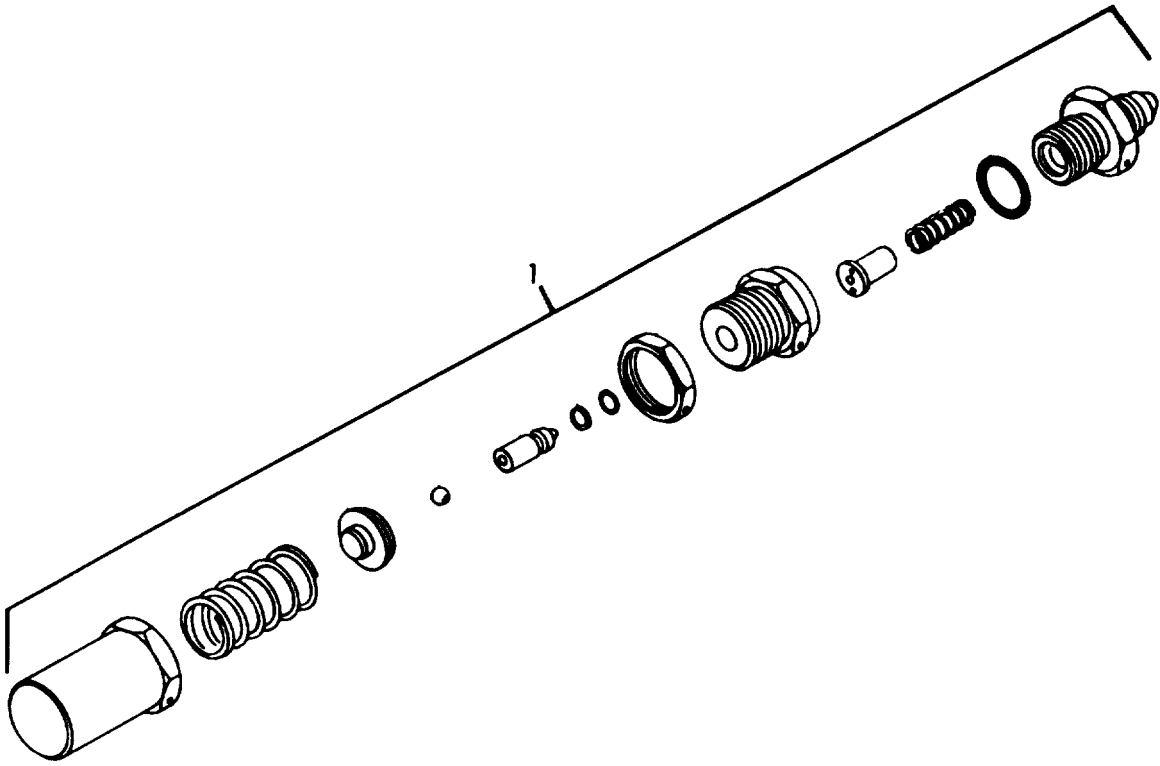
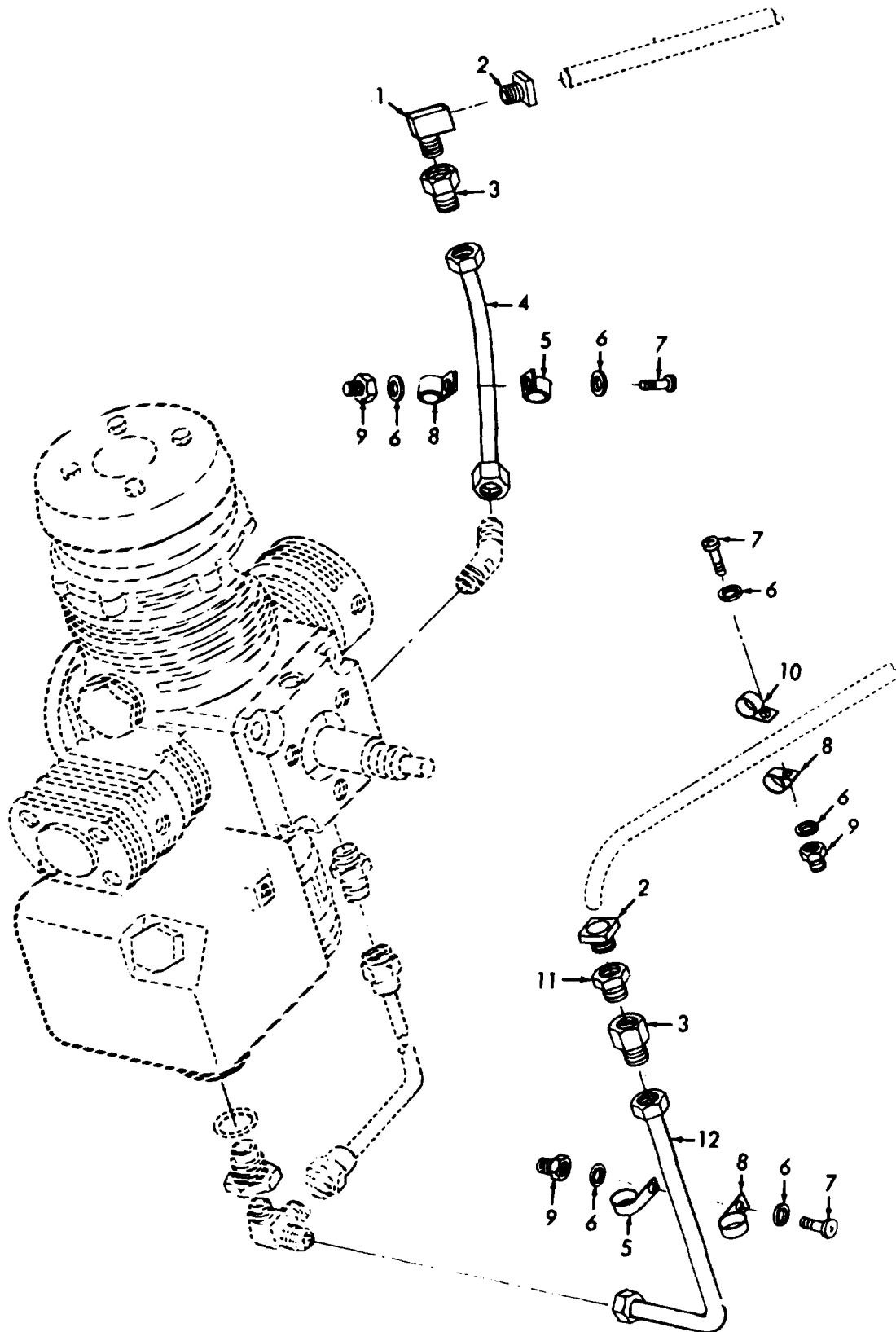


Figure No. 12. After-cooler And Relief Valve Lines And Mounting Hardware.



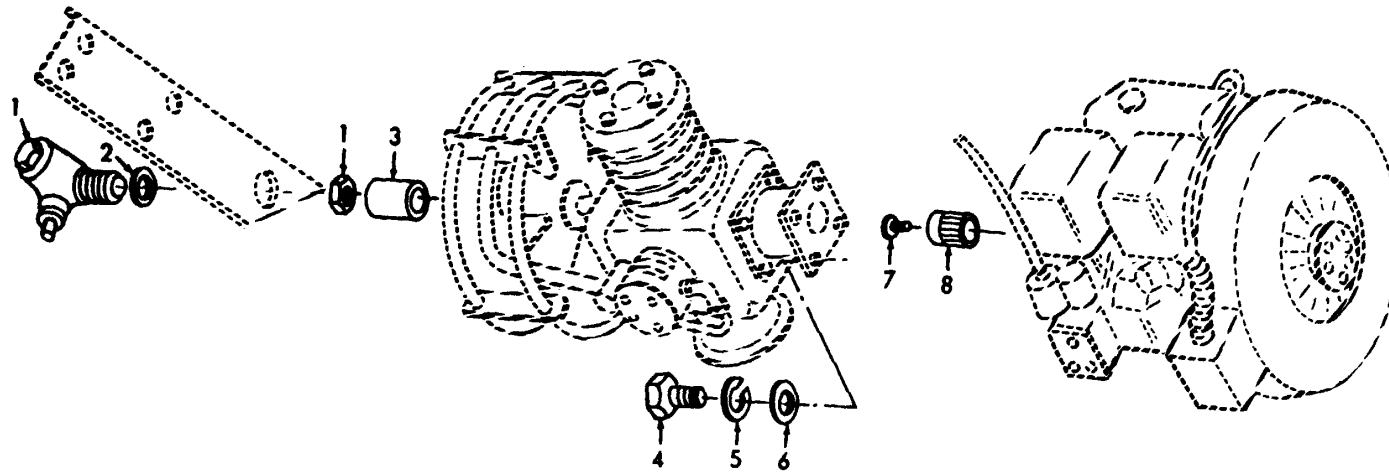
ME 4310-335-20P/13

Figure No. 13. Relief Valve, 4th Stage.



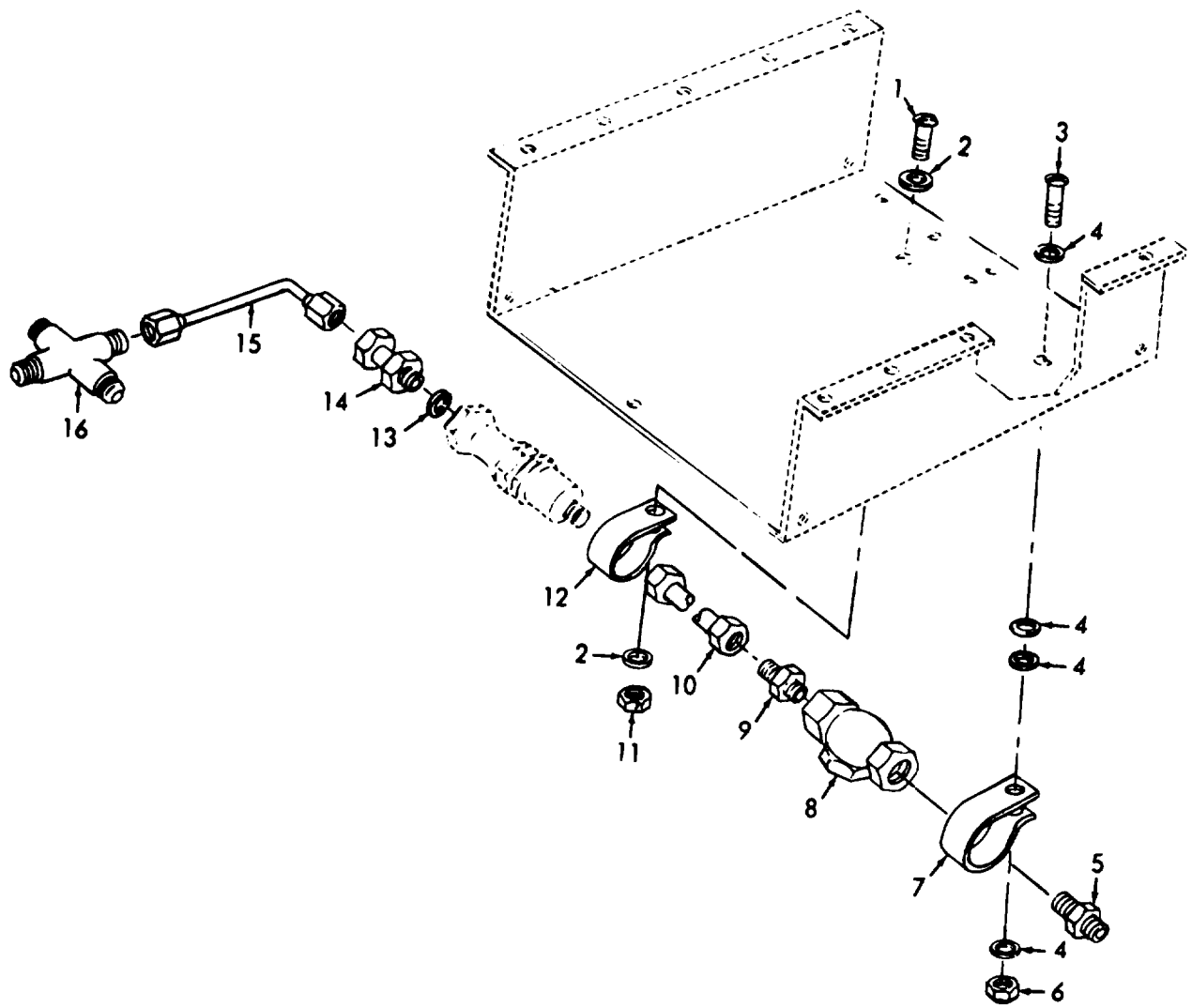
ME 4310-335-35P/14

Figure No. 14. Oil Lines And Mounting Hardware.



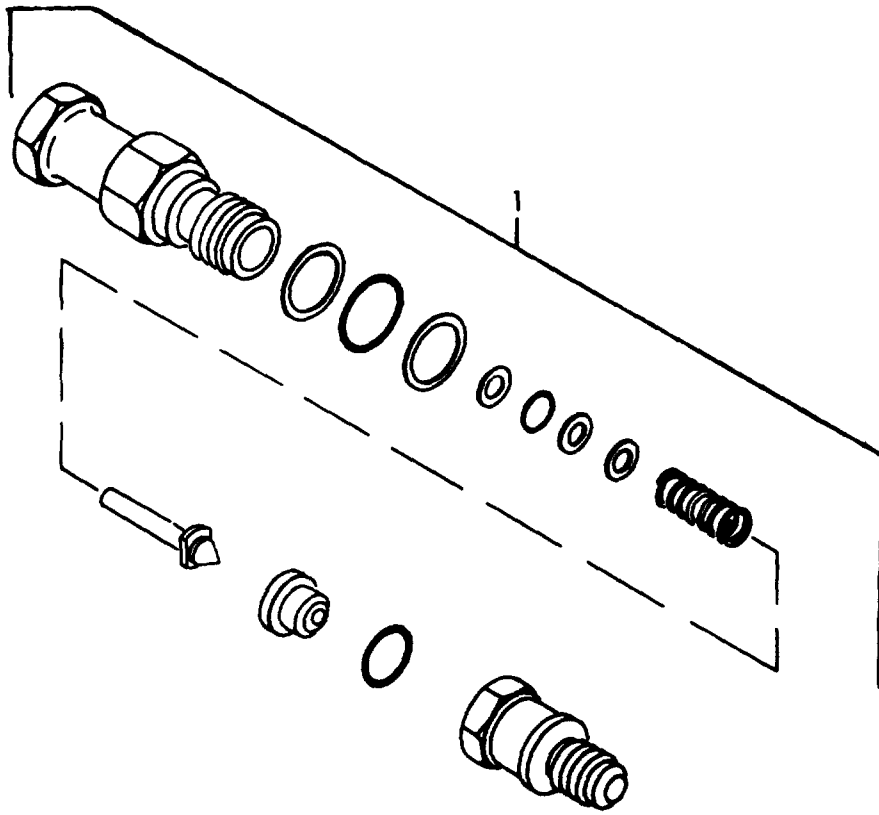
ME 4310-335-35P/15

Figure No. 15. Timer Drive Adapter.



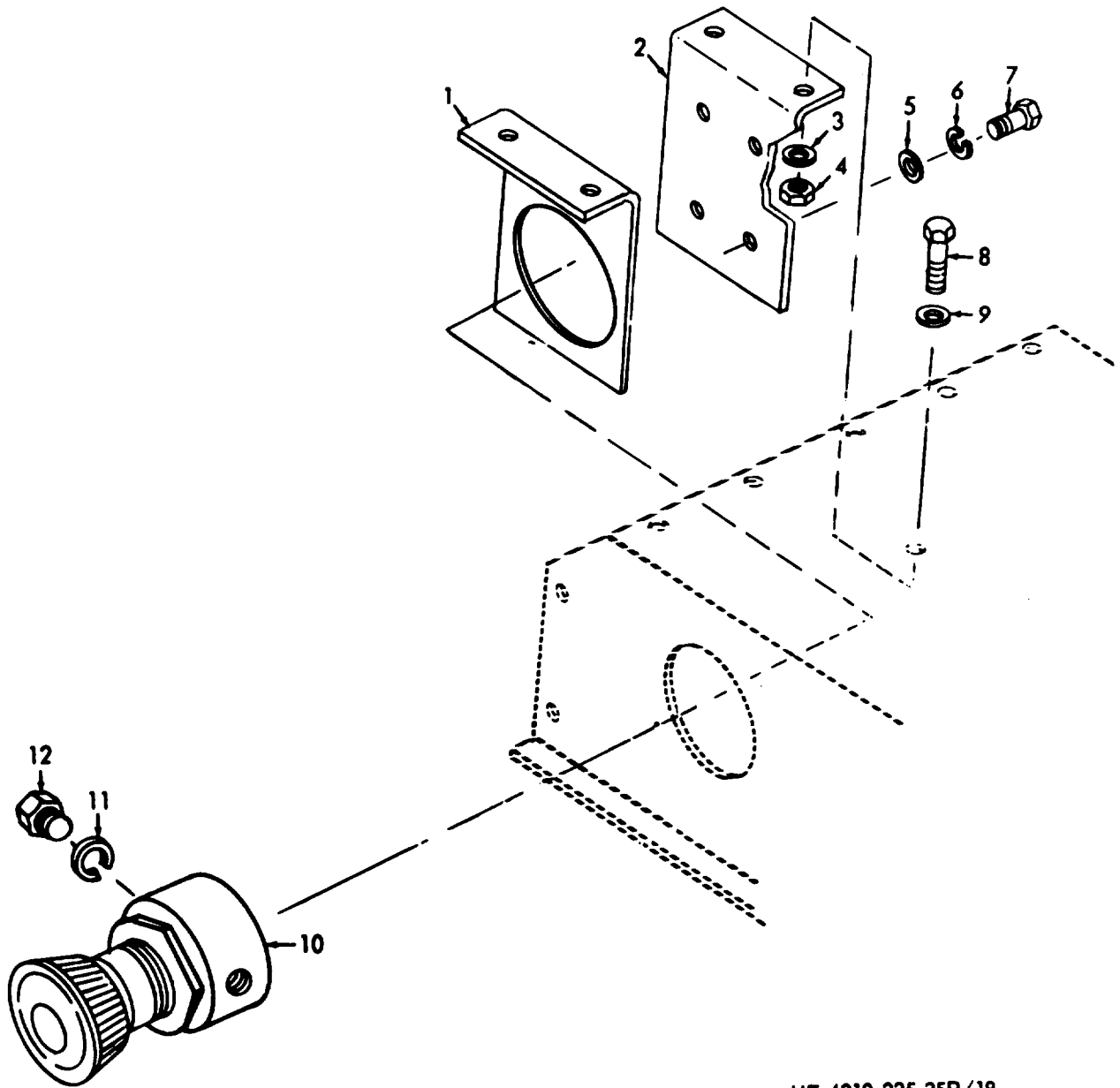
ME 4310-335-35P/16

Figure No. 16. Filter, Check Valve, Lines And Fittings.



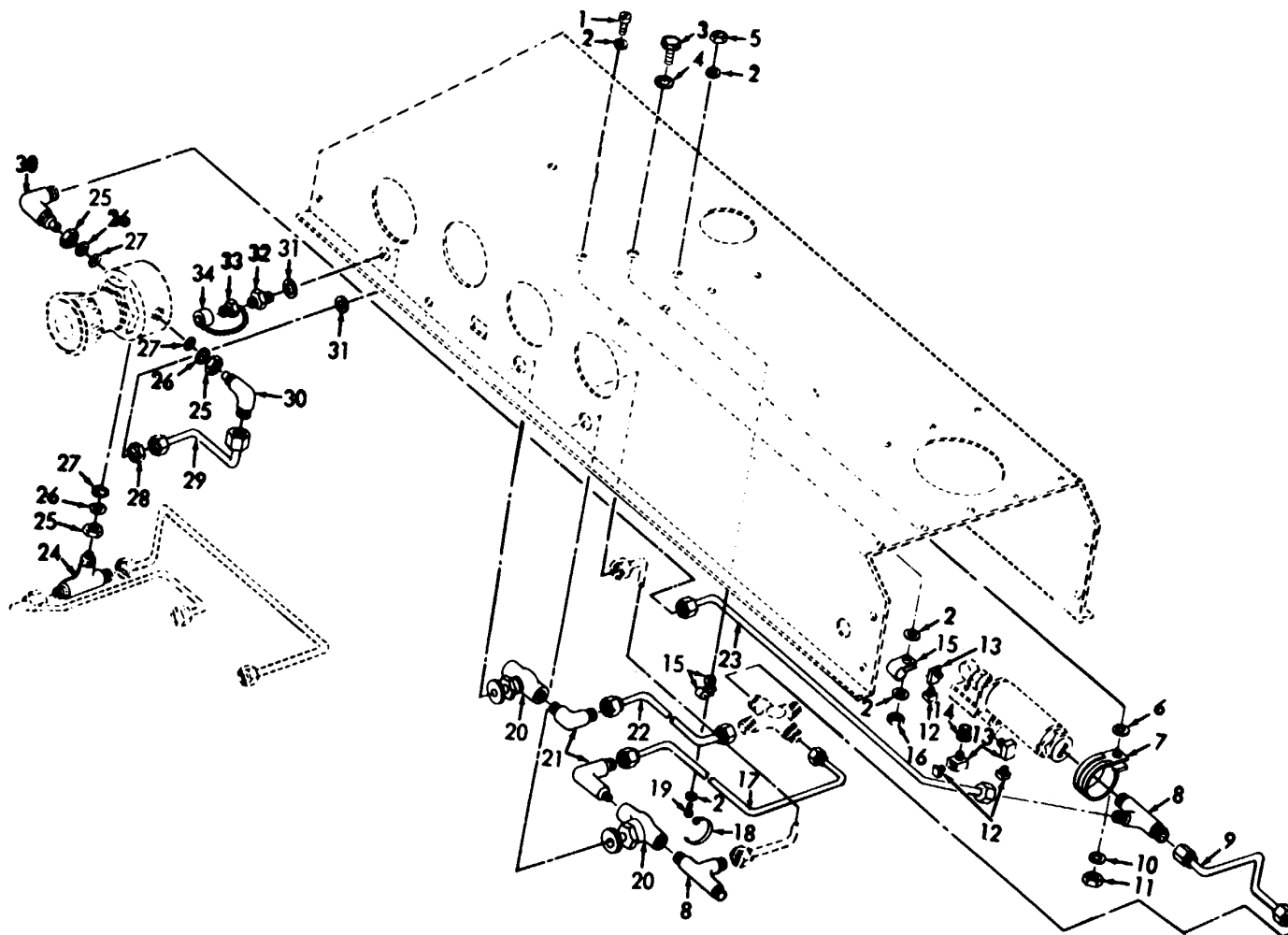
ME 4310-335-35P/17

Figure No. 17. Back Pressure Valve.



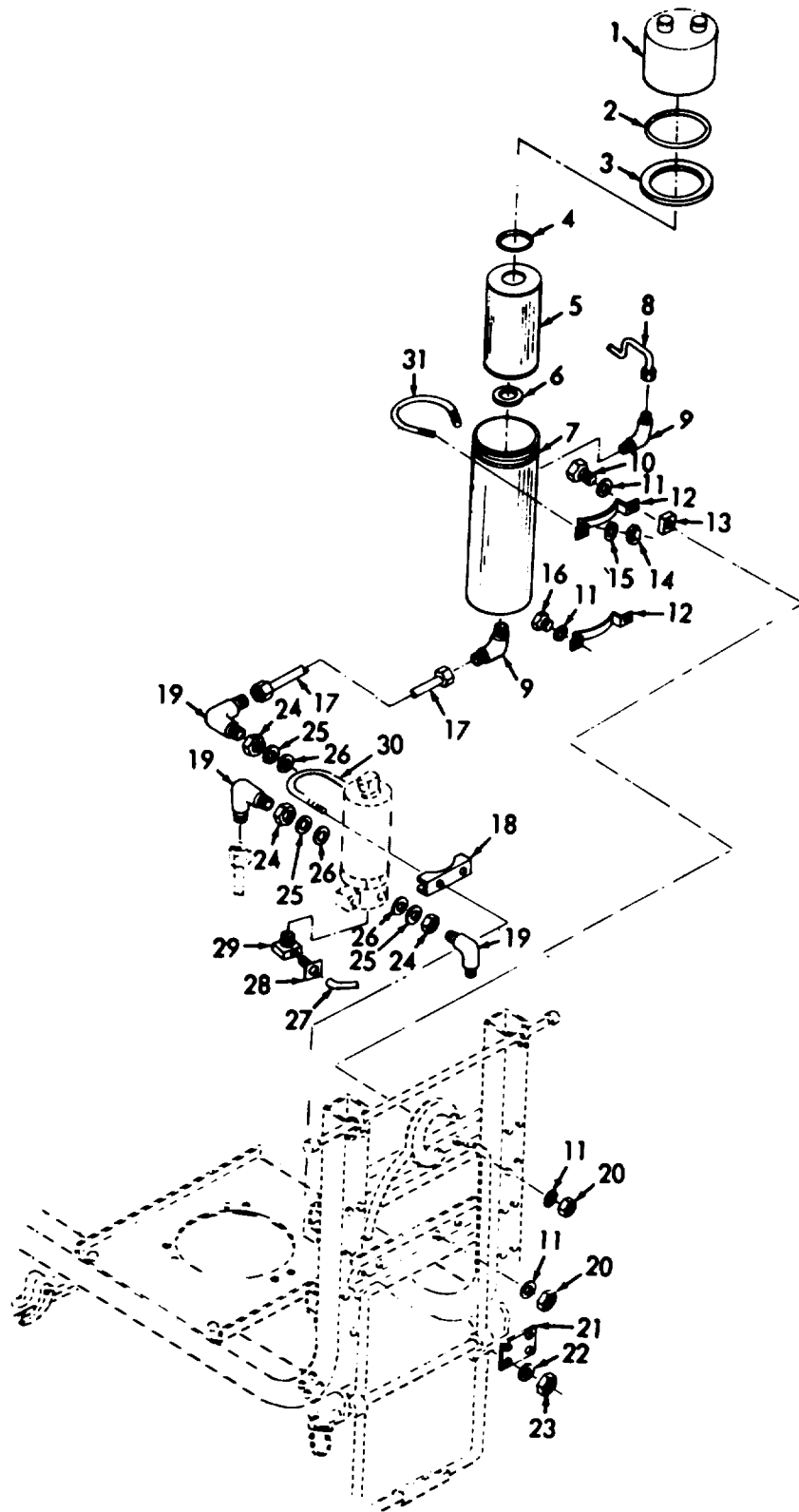
ME 4310-335-35P/18

Figure No. 18. Pressure Regulator And Mounting Hardware.



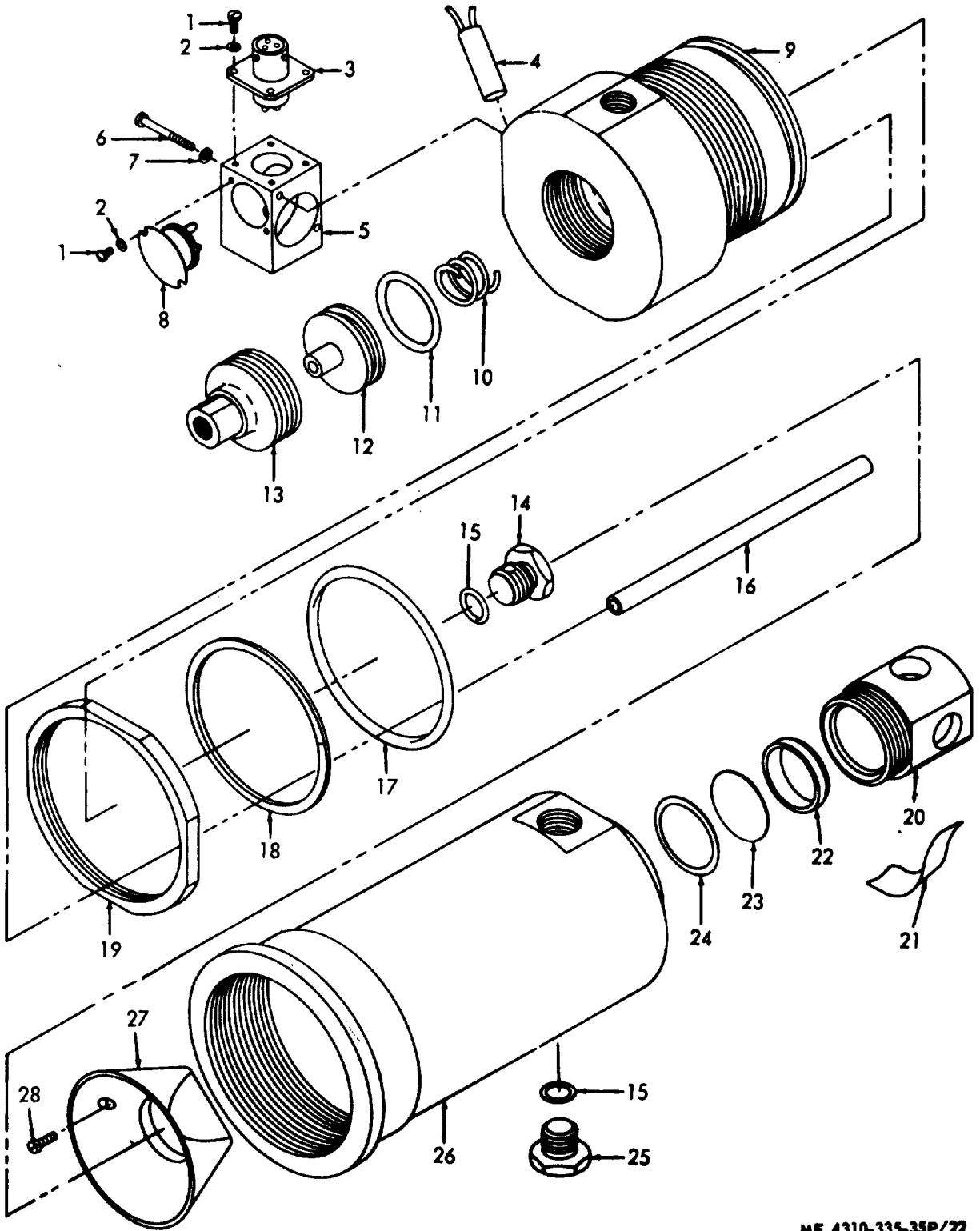
ME 4310-335-35P/19

Figure No. 19. Shutoff Valves, Lines And Fittings.



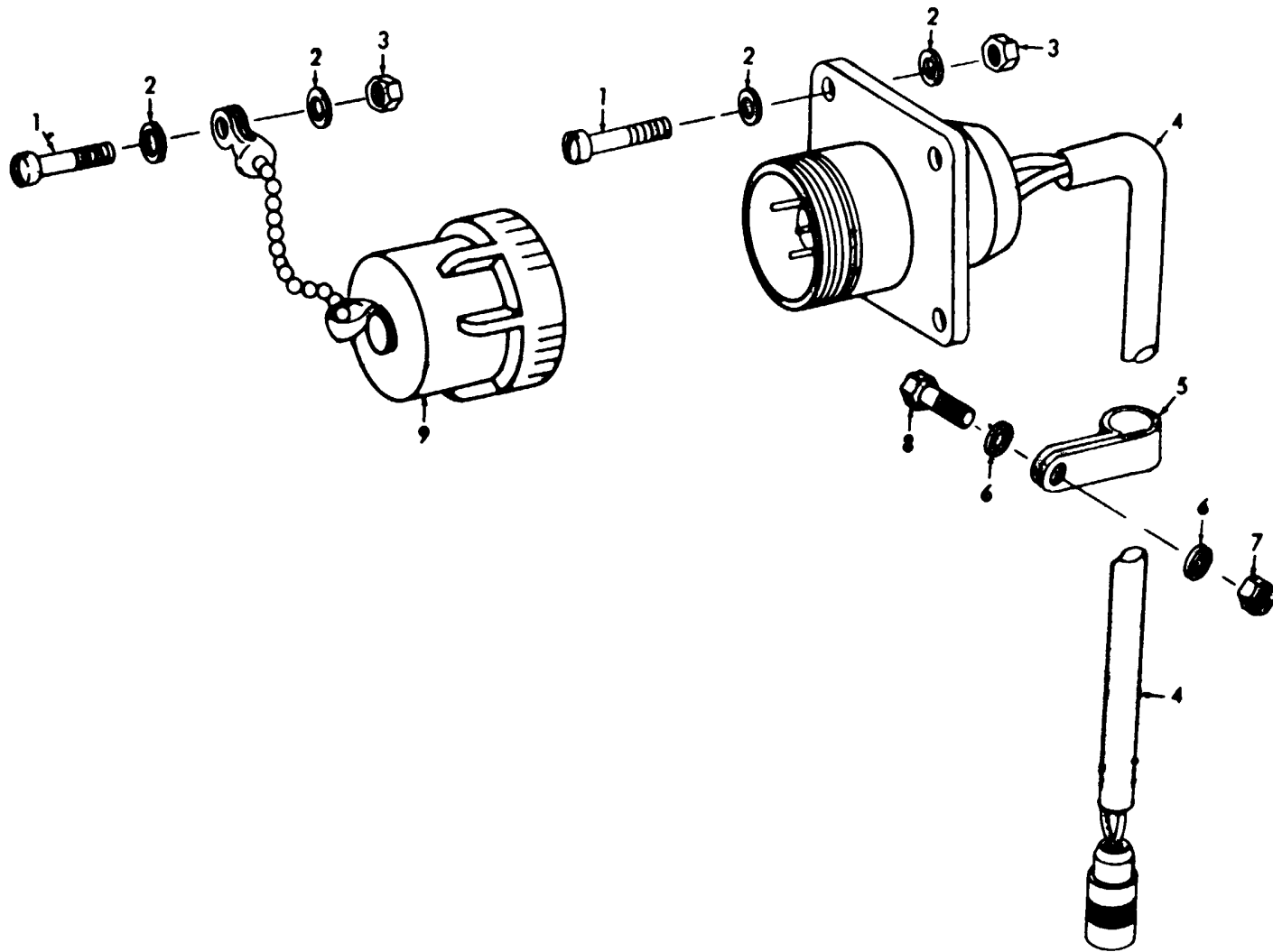
ME 4310-335-35P/21

Figure No. 20. Dehydrator, Lines, Fittings And Mounting Hardware.



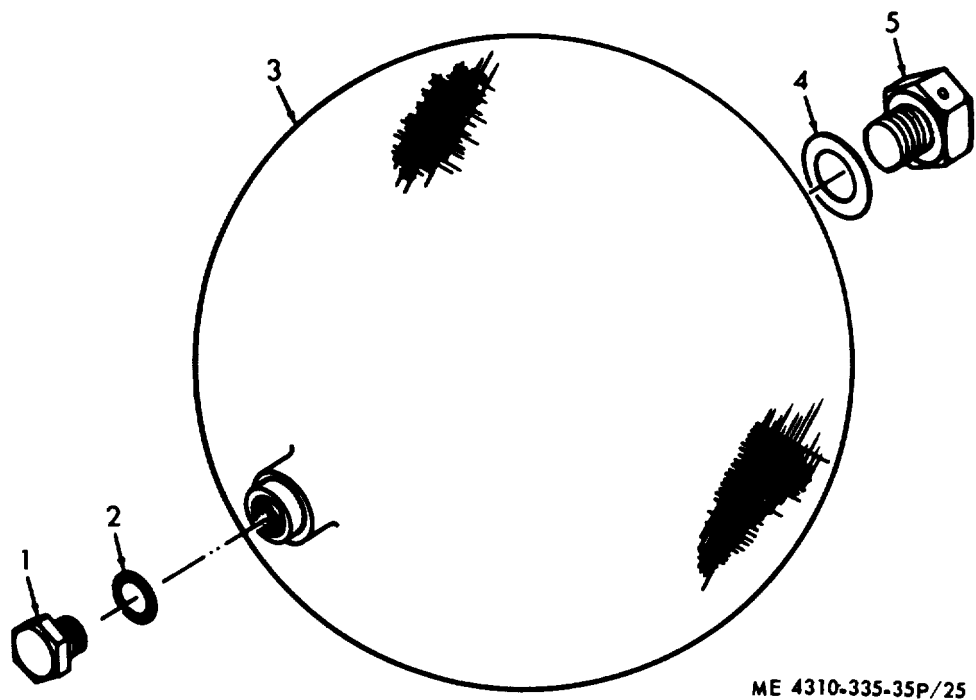
ME 4310-335-35P/22

Figure No. 21. Moisture Separator.



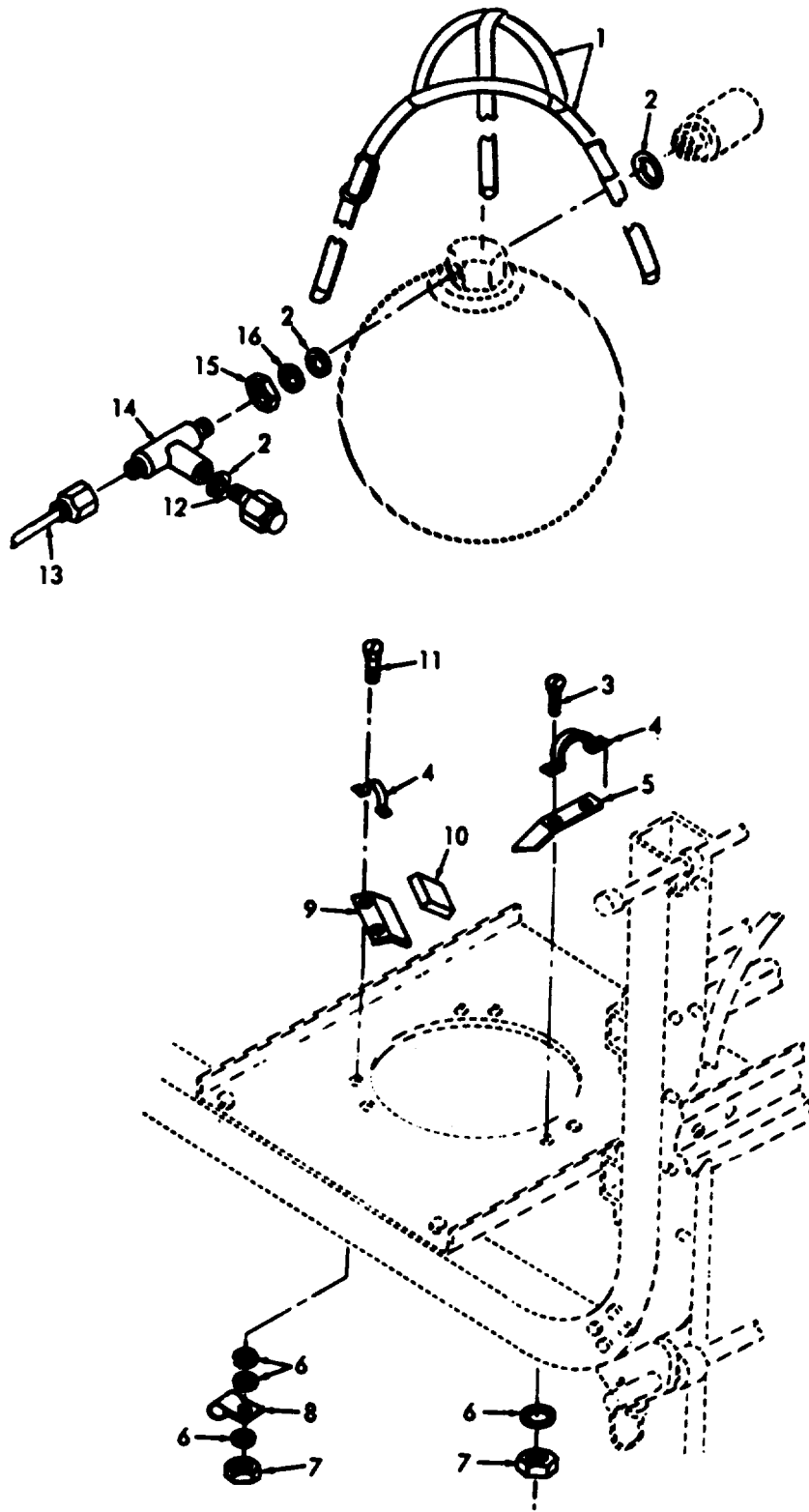
ME 4310-33S-35P/24

Figure No. 22. Cable.



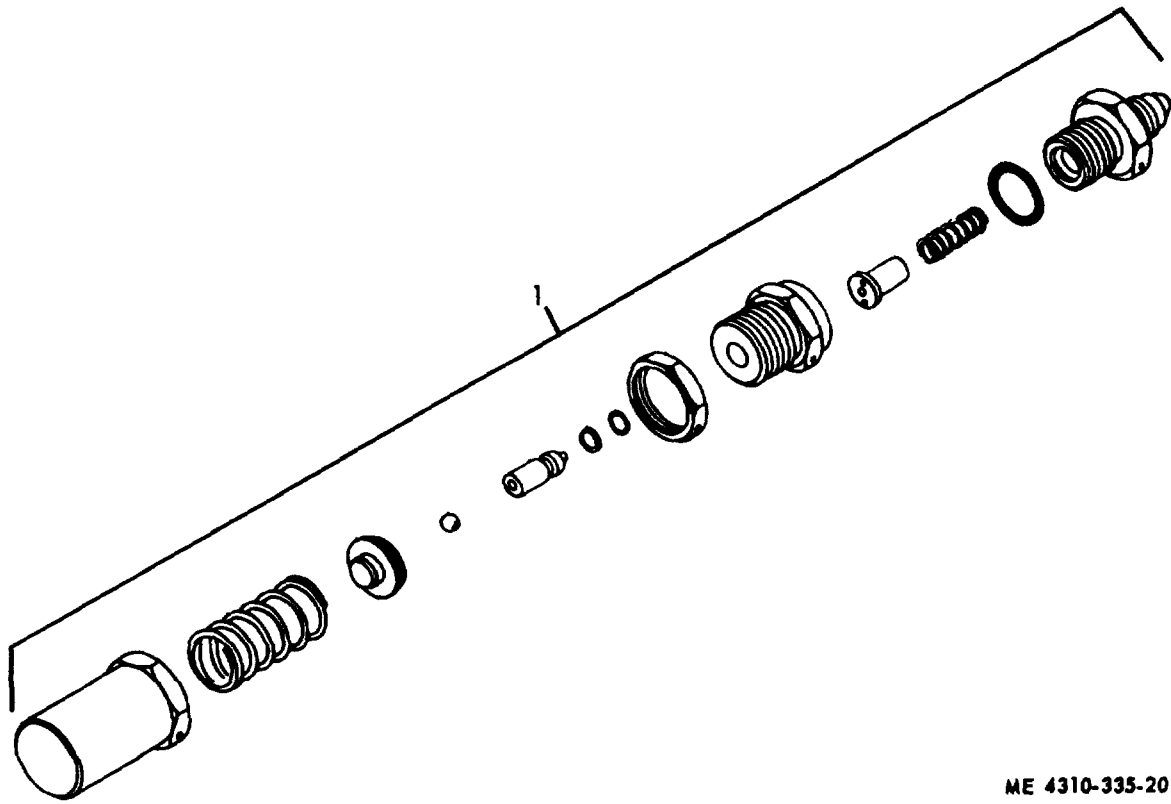
ME 4310-335-35P/25

Figure No. 23. Sphere.



ME 4810-335-399/26

Figure No. 24. Sphere Lines, Fittings And Mounting Hardware.



ME 4310-335-20P/13

Figure No. 25. Relief Valve, Sphere.

Section V

INDEX-FEDERAL STOCK NUMBER AND REFERENCE NUMBER
CROSS-REFERENCE TO FIGURE AND ITEM NUMBER

<u>STOCK NUMBER</u>	<u>Figure No.</u>	<u>Item No.</u>
1730-651-0312	5	7
2530-110-3533	3	6
2530-529-2706	5	11
2530-893-1997	5	
2540-110-1950	6	15
2910-107-1144	2	12
3110-159-1631	5	8
3110-198-2170	5	9
4310-107-1057	6	4
4310-107-1065	6	5
4310-110-1045	24	13
4730-132-4663	2	11
4730-186-7797	1	2
4730-287-0107	23	1
4730-698-4048	16	5
5310-013-1245	2	9
	3	4
	4	10
	6	1
	18	4
5310-141-1795	2	8
	3	5
	6	2
5310-167-0229	6	25
5310-167-0766	2	7
5310-167-0818	16	2
5310-167-0821	1	15
	4	8
5310-515-8058	19	2
5310-579-0462	5	4
5310-809-4058	3	2
	4	2
	6	7
	6	8
	6	13
	6	14
5330-580-1223	24	2
5340-074-2072	19	18
5340-282-7965	22	5
5340-715-1635	14	5
5640-107-1145	2	5
5640-109-3825	2	4
6685-168-0384	9	2

**Section V INDEX-FEDERAL STOCK NUMBER AND REFERENCE NUMBER
CROSS-REFERENCE TO FIGURE AND ITEM NUMBER**

<u>Reference No.</u>	<u>Mfg Code</u>	<u>Fig No.</u>	<u>Item No.</u>
AN320-10	88044	5	3
AN814-10	88044	23	1
AN816-4-4C	88044	16	5
AN911-1	88044	1	2
AN935-616	88044	5	5
AN960-10	88044	16	2
AN960-1016	88044	5	6
AN960-1716	88044	6	25
AN960-416	88044	2	8
	88044	3	5
	88044	6	2
AN960-616	88044	1	15
	88044	4	8
AN960-8	88044	19	2
AN970-4	88044	2	7
MS24322-1A4	96906	5	
MS24323-1	96906	5	11
MS24327-1	96906	5	
MS24327-1HC	96906	5	1
MS24665-335	96906	5	2
MS27183-10	96906	3	2
	96906	4	2
	96906	6	7
	96906	6	8
	96906	6	13
	96906	6	14
MS35690-622	96906	5	4
TY25M	59370	19	18
WK50B3EZ	72100	9	2
09067	60038	5	8
1-4-6	95987	22	5
103023	89162	5	10
10312	52793	5	7
1264-1618	33525	2	6
1264-1644	33525	3	1
1264-1648	33525	6	26
1264-1672	33525	4	1
1264-2444	33525	4	4
15245	60038	5	9
1692-0810	33525	19	19
1995-0440	33525	2	13
21FK420	56878	2	9
	56878	3	4
	56878	4	10
	56878	6	1
	56878	18	4
21FK616	56878	1	16
	56878	4	9
2302J019	78252	2	1
2343V053	78252	2	2
242541	33525	6	4
251409	33525	6	11
251427	33525	6	3
251462	33525	4	7
251588	33525	3	6
252063	33525	6	12
25210C	33525	6	16
252453	33525	6	15
276336	33525	18	1
276339	33525	2	3
276350	33525	4	3
276351	33525	4	6
276352	33525	4	5
276353	33525	4	11
276672	33525	2	10
276814	33525	2	5
276830	33525	2	4
293352-1	81349	20	1
3412	33525	6	6
5094B40404-2000	79470	2	12
5304-0400	33525	24	2
7-8-5C	95760	6	5
754-4-2-6	83930	14	5
843642	33525	2	11
875248	33525	3	3
893905	33525	6	17
894041	33525	24	13

By Order of the Secretary of the Army:

Official:

KENNETH G. WICKHAM,
Major General, United States Army,
The Adjutant General.

W. C. WESTMORELAND,
General, United States Army,
Chief of Staff.

Distribution:

To be distributed in accordance with DA Form 1225, Section I, (qty rqr block No. 2) organizational maintenance requirements for Air Compressor: Under 5CFM.

☆U. S. GOVERNMENT PRINTING OFFICE: 1996 O - 406-421 (53260)

RECOMMENDED CHANGES TO EQUIPMENT TECHNICAL PUBLICATIONS



THEN...JOT DOWN THE
DOPE ABOUT IT ON THIS FORM.
CAREFULLY TEAR IT OUT, FOLD IT
AND DROP IT IN THE MAIL.

SOMETHING WRONG WITH PUBLICATION

FROM: (PRINT YOUR UNIT'S COMPLETE ADDRESS)

DATE SENT

PUBLICATION NUMBER

PUBLICATION DATE

PUBLICATION TITLE

BE EXACT PIN-POINT WHERE IT IS

PAGE
NO.

PARA-
GRAPH

FIGURE
NO.

TABLE
NO.

IN THIS SPACE, TELL WHAT IS WRONG
AND WHAT SHOULD BE DONE ABOUT IT.

PRINTED NAME, GRADE OR TITLE AND TELEPHONE NUMBER

SIGN HERE

The Metric System and Equivalents

Linear Measure

1 centimeter = 10 millimeters = .39 inch
 1 decimeter = 10 centimeters = 3.94 inches
 1 meter = 10 decimeters = 39.37 inches
 1 dekameter = 10 meters = 32.8 feet
 1 hectometer = 10 dekameters = 328.08 feet
 1 kilometer = 10 hectometers = 3,280.8 feet

Weights

1 centigram = 10 milligrams = .15 grain
 1 decigram = 10 centigrams = 1.54 grains
 1 gram = 10 decigram = .035 ounce
 1 dekagram = 10 grams = .35 ounce
 1 hectogram = 10 dekagrams = 3.52 ounces
 1 kilogram = 10 hectograms = 2.2 pounds
 1 quintal = 100 kilograms = 220.46 pounds
 1 metric ton = 10 quintals = 1.1 short tons

Liquid Measure

1 centiliter = 10 milliliters = .34 fl. ounce
 1 deciliter = 10 centiliters = 3.38 fl. ounces
 1 liter = 10 deciliters = 33.81 fl. ounces
 1 dekaliter = 10 liters = 2.64 gallons
 1 hectoliter = 10 dekaliters = 26.42 gallons
 1 kiloliter = 10 hectoliters = 264.18 gallons

Square Measure

1 sq. centimeter = 100 sq. millimeters = .155 sq. inch
 1 sq. decimeter = 100 sq. centimeters = 15.5 sq. inches
 1 sq. meter (centare) = 100 sq. decimeters = 10.76 sq. feet
 1 sq. dekameter (are) = 100 sq. meters = 1,076.4 sq. feet
 1 sq. hectometer (hectare) = 100 sq. dekameters = 2.47 acres
 1 sq. kilometer = 100 sq. hectometers = .386 sq. mile

Cubic Measure

1 cu. centimeter = 1000 cu. millimeters = .06 cu. inch
 1 cu. decimeter = 1000 cu. centimeters = 61.02 cu. inches
 1 cu. meter = 1000 cu. decimeters = 35.31 cu. feet

Approximate Conversion Factors

<i>To change</i>	<i>To</i>	<i>Multiply by</i>	<i>To change</i>	<i>To</i>	<i>Multiply by</i>
inches	centimeters	2.540	ounce-inches	newton-meters	.007062
feet	meters	.305	centimeters	inches	.394
yards	meters	.914	meters	feet	3.280
miles	kilometers	1.609	meters	yards	1.094
square inches	square centimeters	6.451	kilometers	miles	.621
square feet	square meters	.093	square centimeters	square inches	.155
square yards	square meters	.836	square meters	square feet	10.764
square miles	square kilometers	2.590	square meters	square yards	1.196
acres	square hectometers	.405	square kilometers	square miles	.386
cubic feet	cubic meters	.028	square hectometers	acres	2.471
cubic yards	cubic meters	.765	cubic meters	cubic feet	35.315
fluid ounces	milliliters	29.573	cubic meters	cubic yards	1.308
pints	liters	.473	milliliters	fluid ounces	.034
quarts	liters	.946	liters	pints	2.113
gallons	liters	3.785	liters	quarts	1.057
ounces	grams	28.349	liters	gallons	.264
pounds	kilograms	.454	grams	ounces	.035
short tons	metric tons	.907	kilograms	pounds	2.205
pound-feet	newton-meters	1.365	metric tons	short tons	1.102
pound-inches	newton-meters	.11375			

Temperature (Exact)

° F	Fahrenheit	5/9 (after	Celsius	° C
	temperature	subtracting 32)	temperature	

TM 5-4310-335-20P COMPRESSOR, RECIPROCATING, AIR, WHEEL MOUNTED ¾ 1969

PIN : 026826-000

This fine document...

Was brought to you by me:



[Liberated Manuals -- free army and government manuals](#)

Why do I do it? I am tired of sleazy CD-ROM sellers, who take publicly available information, slap “watermarks” and other junk on it, and sell it. Those masters of search engine manipulation make sure that their sites that sell free information, come up first in search engines. They did not create it... They did not even scan it... Why should they get your money? Why are not letting you give those free manuals to your friends?

I am setting this document FREE. This document was made by the US Government and is NOT protected by Copyright. Feel free to share, republish, sell and so on.

I am not asking you for donations, fees or handouts. If you can, please provide a link to liberatedmanuals.com, so that free manuals come up first in search engines:

<A HREF=<http://www.liberatedmanuals.com/>>Free Military and Government Manuals

- Sincerely
Igor Chudov
<http://igor.chudov.com/>
- [Chicago Machinery Movers](#)