

TECHNICAL MANUAL

**ORGANIZATIONAL, DIRECT SUPPORT, AND
GENERAL SUPPORT MAINTENANCE REPAIR PARTS
AND SPECIAL TOOLS LISTS
(INCLUDING DEPOT MAINTENANCE REPAIR
PARTS AND SPECIAL TOOLS)**

**SPRAYER, INSECTICIDE, SKID MOUNTED:
GASOLINE ENGINE DRIVEN; 40 GAL PER HOUR,
FOG (CURTIS DYNA PRODUCTS CORP MODEL CFR-41500)
SERIAL NUMBER RANGE 66-801 THROUGH 66-867
NSN 3740-00-930-9384**

**HEADQUARTERS, DEPARTMENT OF THE ARMY
31 JULY 1981**

**ORGANIZATIONAL , DIRECT SUPPORT, AND
GENERAL SUPPORT MAINTENANCE REPAIR PARTS
AND SPECIAL TOOLS LISTS
(INCLUDING DEPOT MAINTENANCE REPAIR
PARTS AND SPECIAL TOOLS
SPRAYER, INSECTICIDE, SKID MOUNTED;
GASOLINE ENGINE DRIVEN; RO GAL PER HOUR
FOG (CURTIS DYNA PRODUCTS CORP MODEL (CFR-415000
SERIAL NUMBER RANGE 66-801 THROUGH 66-867
NSN 3740-00-930-9384**

REPORTING ERRORS AND RECOMMENDING IMPROVEMENTS

You can help Improve this manual. If you find any mistake or if you know of a way to improve the procedures, please let us know. Mail your letter, DA Form 2028 (Recommended Changes to Publications and Blank Forms), or DA Form 2028-2, located in the back of this manual, direct to Commander, US Army Troop Support and Aviation Materiel Readiness Command, ATTN DRSTS-MTT, 4300 Goodfellow Blvd, St Louis, MO 63120. A reply will be furnished directly to you.

TABLE OF CONTENTS

			Page	Figure
Section	I.	Introduction.....	1	
Section	II.	Repair Parts List.....	7	
	Group 01	Frame Assembly and Data Plates		
		Engine mounting hardware	7	1
		Frame and related parts.....	9	2
	Group 02	Fuel System		
		Fuel tank lines and fittings	11	3
	Group 03	Exhaust System		
		Exhaust system and air inlet guard	13	4
	Group 04	Electrical System		
		Engine control box.....	15	5
		Battery and related parts.....	17	6
	Group 05	Pumps		
		Water pump sheave and belt.....	19	7
		Water pump.....	21	8
	Group 06	Spray Equipment		
		Air blower components	23	9
		Air blower explode	25	10
		Air blower housing and breather assembly	27	11
		Filter silencer	29	12
		Flywheel adapter and pulleys.....	31	13
		Manifold spray	33	14
		Flow meter, gages, and fittings	35	15
		Instrument panel, lines and fittings.....	37	16
		Valves, screens, and fittings	39	17
Section	III.	Special Tools List (Not applicable)		
Section	IV.	NSN, Part No Index.....	40	

*This publication supersedes TM 5-3740-206-25P, February 1969.

SECTION I. INTRODUCTION

1. Scope This manual lists spares and repair parts, special tools, special test, measurement, and diagnostic equipment (TMDE), and other special support equipment required for performance of organizational, direct support, and general support depot maintenance of the Sprayer, Insecticide It authorizes the requisitioning and issue of spares and repair parts as indicated by the source and maintenance codes

2. General. This Repair Parts and Special Tools list is divided into the following sections

a. Section II. Repair Parts List . A list of spares and repair parts authorized for use in the performance of maintenance The list also includes parts which must be removed for replacement of the authorized parts. Parts lists are composed of functional groups In ascending numeric sequence, with the parts In each group listed In figure and item number sequence Bulk materials are listed in NSN sequence

b. Section III, Special Tools Lis t A list of special tools, special TMDE, and other special support equipment authorized for the performance of maintenance

c. Section IV. National Stock Number and Part Number Index A list, In National Item Identification Number (NIIN) sequence, of all National Stock Numbers (NSN) appearing in the listings, followed by a list In alphanumeric sequence, of all part numbers appearing In the listings National stock numbers and part numbers are cross referenced to each illustration figure and item number appearance This index is followed by a cross-reference list of reference designators to figure and item numbers

3. Explanation of Columns.

a. Illustration This column is divided as follows

(1) Figure Number Indicates the figure number of the illustration on which the item is shown

(2) Item Number The number used to identify Item called out In the illustration

b. Source, Maintenance and Recoverability (SMR) Codes.

(1) Source Code . Source codes indicate the manner of acquiring support items for maintenance, repair or overhaul of end items Source codes are entered in the first and second positions of the Uniform SMR Code format as follows

Code	Definition
PA	Item procured and stocked for anticipated or known usage
PB	Item procured and stocked for insurance purposes because essentially dictates that a minimum quantity be available in the supply system
PC	Item procured and stocked and which otherwise would be coded PA except that it is deteriorate In nature
PD	Support item, excluding support equipment, procured for initial issue or outfitting and stocked only for subsequent or additional initial issues or outfitting Not subject to automatic replenishment
PE	Support equipment procured and stocked for initial Issue or outfitting to specified maintenance repair activities
PF	Support equipment which will not be stocked but which will be centrally procured on demand.
PG	Item procured and stocked to provide for sustained support for the life of the equipment It is applied to an item peculiar to the equipment which, because of probable discontinuance or shutdown of production facilities, would prove uneconomical to reproduce at a later time
KD	An item of a depot overhaul/repair kit and not purchased separately Depot kit defined as a kit that provides Items required at the time of overhaul or repair
KF	An item of a maintenance kit and not purchased separately Maintenance kit defined as a kit that provides an item that can be replaced at organizational or intermediate levels of maintenance.
KB	Item included in both a depot overhaul/repair kit and a maintenance kit.

MO	Item to be manufactured or fabricated at the organizational level.
MF	Item to be manufactured or fabricated at the direct support maintenance level.
MH	Item to be manufactured or fabricated at the general support maintenance level.
MD	Item to be manufactured or fabricated at the depot support maintenance level.
AO	Item to be assembled at organizational level.
AF	Item to be assembled at the direct support maintenance level.
AH	Item to be assembled at general support maintenance level.
AD	Item to be assembled at depot maintenance level.
XA	Item is not procured or stocked because the requirements for the item will result in the replacement of the next higher assembly
XB	Item is not procured or stocked. If not available through salvage, requisition.
XC	Installation drawing, diagram, instruction sheet, field service drawing, that is identified by manufacturer's part number
XD	A support item that is not stocked. When required, item will be procured through normal supply channels.

NOTE

Cannibalization or salvage may be used as a source of supply for any items source coded above except those coded XA and XD.

(2) Maintenance Code. Maintenance codes are assigned to indicate the levels of maintenance authorized to USE and REPAIR support items. The maintenance codes are entered in the third and fourth positions of the Uniform SMR Code format as follows-

(a) The maintenance code entered in the third position will indicate the lowest maintenance level authorized to remove, replace, and use the support item. The maintenance code entered in the third position will indicate one of the following levels of maintenance

Code	Definition
C	Crew or operator maintenance performed within organizational maintenance.
O	Support item is removed, replaced, used at the organizational level.
F	Support item is removed, replaced, used at the direct support level.
H	Support item is removed, replaced, used at the general support level.
D	Support items that are removed, replaced, used at depot, mobile depot, or specialized repair activity only.

(b) The maintenance code entered in the fourth position indicates whether the item is to be repaired and identifies the lowest maintenance level with the capability to perform complete repair (i.e., all authorized maintenance functions) This position will contain one of the following maintenance codes:

Code	Application/Explanation
O	The lowest maintenance level capable of complete repair of the support item is the organizational level.
F	The lowest maintenance level capable of complete repair of the support item is the direct support level.
H	The lowest maintenance level capable of complete repair of the support item is the general support level
D	The lowest maintenance level capable of complete repair of the support item is the depot level.
L	Repair restricted to designated. Specialized Repair Activity.
Z	Nonreparable. No repair is authorized
B	No repair is authorized. The item may be reconditioned by adjusting, lubricating, etc , at the user level No parts or special tools are procured for the maintenance of this item.

(3) Recoverability Code. Recoverability codes are assigned to support items to indicate the disposition action on unserviceable items. The recoverability code is entered in the fifth position of the Uniform SMR Code format as follows

Recoverability

Code	Definition
Z	Nonreparable item. When unserviceable, condemn and dispose at the level indicated in position 3.
O	Reparable item. When uneconomically reparable, condemn and dispose at organizational level.
F	Reparable item. When uneconomically reparable, condemn and dispose at the direct support level.
H	Reparable item. When uneconomically reparable, condemn and dispose at the general support level.
D	Reparable item. When beyond lower level repair capability, return to depot. Condemnation and disposal not authorized below depot level.
L	Reparable item. Repair, condemnation, and disposal not authorized below depot/specialized repair activity level.
A	Item requires special handling or condemnation procedures because of specific reasons (i.e., precious metal content, high dollar value, critical material or hazardous material). Refer to appropriate manuals/directives for specific instructions.

c. National Stock Number. Indicates the National stock number assigned to the item and which will be used for requisitioning purposes.

d. Part Number. Indicates the primary number used by the manufacturer which controls the design and characteristics of the item by means of its (engineering drawings, specifications standards, and inspection requirements to identify an item or range of items).

NOTE

When a stock numbered item is requisitioned, the repair part received may have a different part number than the part being replaced.

e. Federal Supply Code for Manufacturer (FSCM). The FSCM is a 5-digit numeric code listed in SII 708-42 which is used to identify the manufacturer, distributor, or Government agency, etc.

f. Description. Indicates the Federal item name and, 11 required, a minimum description to identify the item that are included in kits and sets are listed below

the name of the kit or set, with the quantity of each item in the kit or set indicated in the quantity incorporated in unit column. When the part to be used differs between serial numbers of the same model, the effective serial numbers are shown as the last line of the description in the Special Tools List, the initial basis of issue (BOI) appears as the last line in the entry for each special tool, special TMDE, and other special support equipment. When density of equipment supported exceeds density spread indicated in the basis of issue, the total authorization is increased accordingly.

g. Unit of Measure (U/M). Indicates the standard of the basic quantity of the listed item as used in performing the actual maintenance function. This measure is expressed by a two-character alphabetical abbreviation (e.g., ea., in, pr, etc.) When the unit of measure differs from the unit of issue, the lowest unit of issue that will satisfy the required units of measure will be requisitioned.

h. Quantity Incorporated in Unit. Indicates the quantity of the item used in the breakout shown on the illustration figure, which is prepared for a functional group, subfunctional group, or an assembly. A "V" appearing in this column in lieu of a quantity indicates that no specific quantity is applicable (e.g., shims, spacers, etc).

4. Special Information.

a. Repair parts kits and gasket sets appear as the last entries in the repair parts listing for the figure in which its parts are listed as repair parts or are listed at the end of the repair parts listing for the last figure containing parts of the kits

b. The following publications pertain to the Sprayer, Insecticide and its components

TM 5-3740-206-14	Sprayer, Insecticide
LO 5-3740-206-12	Sprayer, Insecticide
TM 5-2805-258-14	Engine, Gasoline
LO 5-2805-258-12	Engine, Gasoline

5 How to locate Repair Parts.

a. When National Stock Number or Part Number is Unknown.

(1) First. Using the table of contents, determine the functional group within which the repair part belongs. This is necessary since illustrations are prepared for functional groups and listings are divided into the same groups.

(2) Second Find the illustration covering the functional group to which the repair part belongs.

(3) Third. Identify the repair part on the illustration and note the illustration figure number and item number of the repair part.

(4) Fourth. Using the repair parts listing, find the figure and item number noted on the illustration

b. When National Stock Number or Part Number is Known.

(1) First. Using the Index of National Stock Numbers and Part Numbers, find the pertinent National stock number or part number. This index is in NIIN sequence followed by a list of part numbers in alphameric sequence, cross-referenced to the illustration figure number and item number.

(2) Second. After finding the figure and item number, locate the figure and item number in the repair parts list.

6. Abbreviations.
Abbreviations

Abbreviations	Explanation
DEG	Degree
IN	Inches
LG	Length, long
MTG	Mounting
NO	Number
SQ	Square
THD	Thread(s)
THK	Thick
W	Width
W/	With

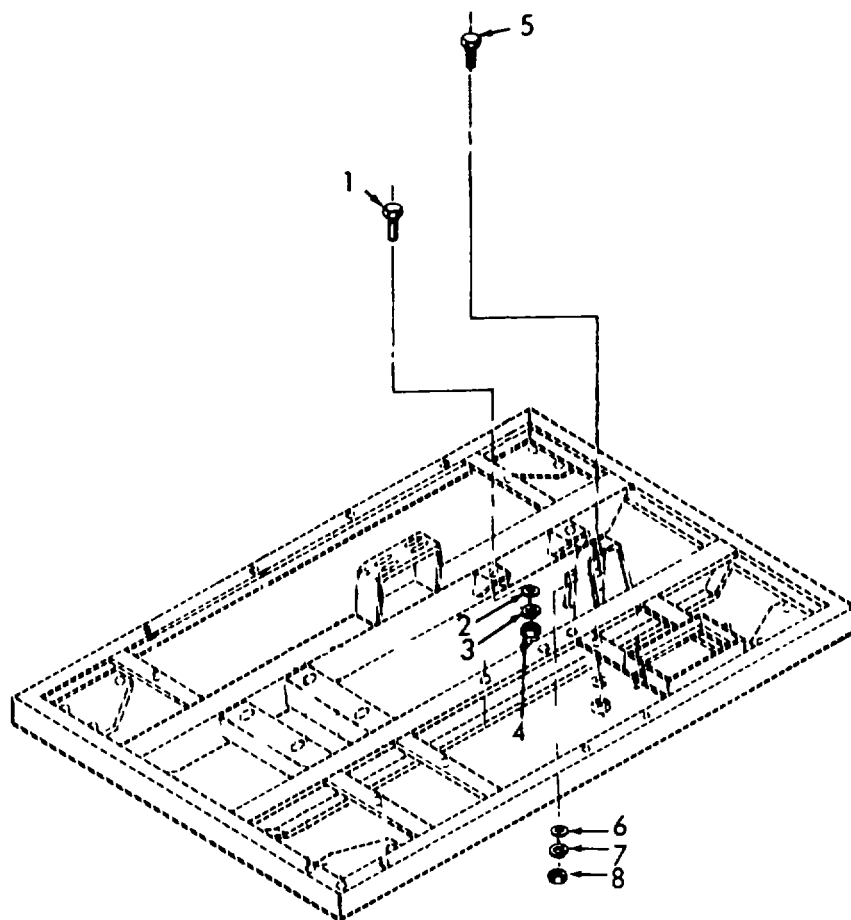


Figure 1. Engine Mounting Hardware.

SECTION II.

TM 5-3740-206-24P

(1) ILLUSTRATION		(2)	(3)	(4)	(5)	(6)	(7)	(8)
(a) FIG NO.	(b) ITEM NO.	SMR CODE	NATIONAL STOCK NUMBER	PART NUMBER	FSCM	DESCRIPTION USABLE ON CODE	U/M	QTY INC IN UNIT
						GROUP 01 FRAME ASSEMBLY		
		XBFHH	2805-00-872-597	12A042-111	97403	ENGINE,GASOLINE GENERATOR 24 VOLT DC STARTER WITH ELEC SOLENOID 10 AMP ALTERNATOR REGULATOR TYPE RECTIFIER	EA	1
1	1	PAFZZ	5305-00-269-3210	MS90725-59	96906	SCREW,CAP,HEXAGON ENGINE MTG.....	EA	2
1	2	PAFZZ	5310-00-080-6004	MS27183-14	96906	WASHZER,FLAT ENGINE MTG	EA	2
1	3	PAFZZ	5310-00-637-9541	MS35338-46	96906	WASHER,LOCK ENGINE MTG	EA	2
1	4	XBFZZ		MS51967-7	96906	NUT,PLAIN,HEXAGON ENGINE MTG.....	EA	2
1	5	XDFZZ	5305-00-071-1766	MS90725-108	96906	SCREW,CAP,HEXAGON ENGINE MTG.....	EA	1
1	6	PAFZZ	5310-00-809-5998	MS271863-18	96906	WASHER,FLAT ENGINE MTG	EA	1
1	7	PAFZZ	5310-00-584-5272	MS35338-48	96906	WASHER,LOCK ENGINE MTG	EA	1
1	8	XBFZZ		MS51967-13	96906	NUT,PLAIN,HEXAGON ENGINE MTG.....	EA	1
					7			

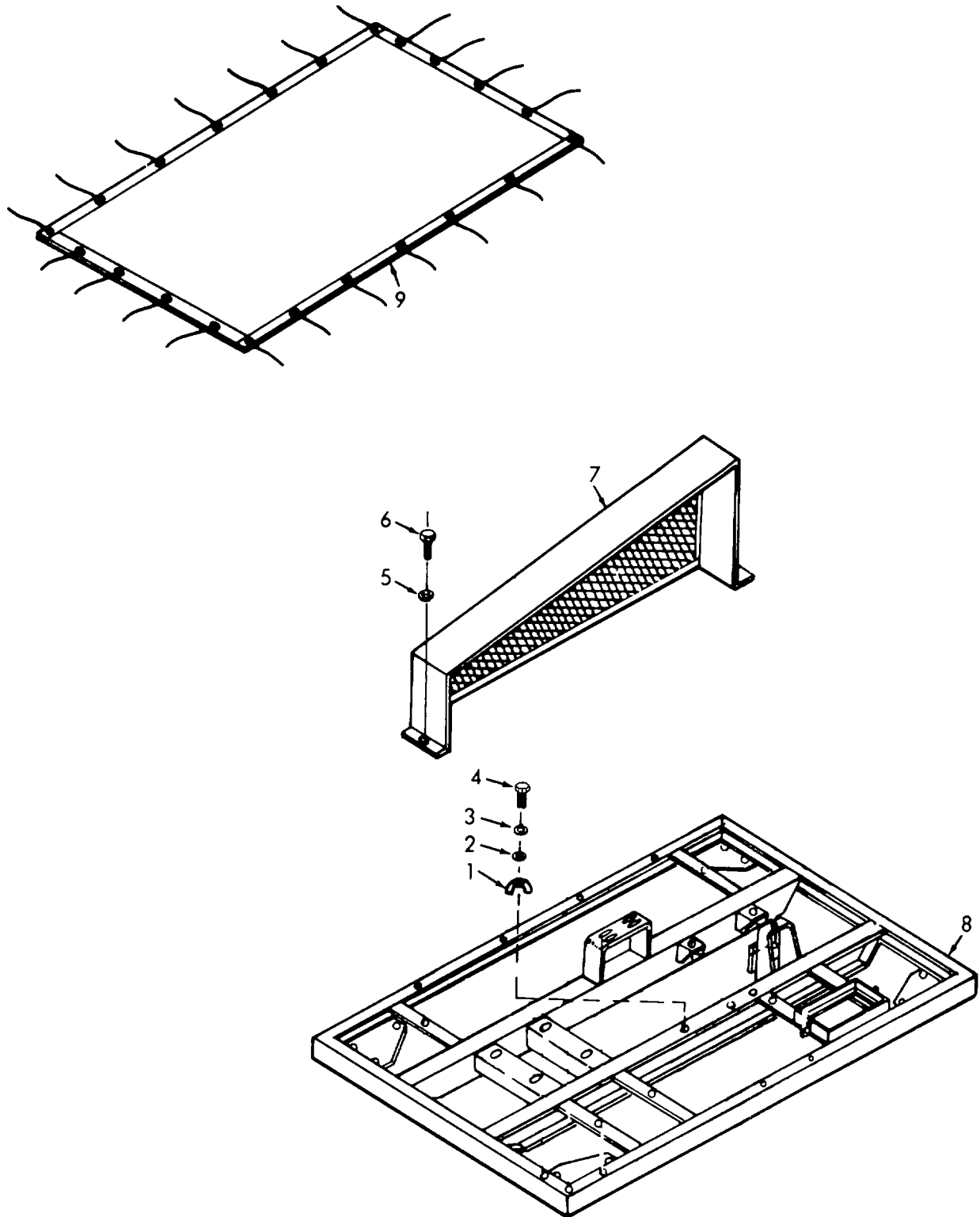


Figure 2. Frame and Related Parts.

SECTION II

TM 5-3740-206-24P

(1) ILLUSTRATION		(2)	(3)	(4)	(5)	(6) DESCRIPTION	(7)	(8)
(a) FIG NO.	(b) ITEM NO.	SMR CODE	NATIONAL STOCK NUMBER	PART NUMBER	FSCM	USABLE ON CODE	U/M	QTY INC IN UNIT
2	1	XBOZZ		MS21919F5	96906	CLAMP FUEL LINE RETAINING	EA	2
2	2	PAOZZ	5310-00-809-8546	MS27183-8	96906	WASHER,FLATFUEL LINE CLAMP MTG	EA	2
2	3	PAOZZ	5310-00-045-3296	MS35338-43	96906	WASHER,LOCKFUEL LINE CLAMP MTG	EA	2,
2	4	PAOZZ	5305-00-984-6208	MS35206-261	96906	SCREW,MACHINEFUEL LINE CLAMP MTG	EA	2
2	5	PAOZZ	5310-00-582-5965	MS35338-44	96906	WASHER,LOCKBELT GUARD MTG .-	EA	6
2	6	PAOZZ	5305-00-225-3838	5S90725-4	96906	SCREW,CAP,HEXAGONBELT GUARD MTG	,EA	6
2	7	XBOZZ		13214E6131	97403	GUARD ASSEMBLY,BELT	EA	1
2	8	XBFZZ		13214E6139	97403	FRAME	EA	1
2	9	PBOZZ	3740-00-934-7933	13214E6146	97403	TARPAULIN	EA	1
		XBOZZ		MS63045-1	96906	PLATE	EA	1
		XBOZZ		13214E6145-2	97403	PLATEAIR PRESSURE	EA	1
		XBOZZ		13214E6145-4	97403	PLATEBY-PASS	EA	1
		XBOZZ		13214E6145-5	97403	PLATEFLOW CONTROL.....	EA	1
		XBOZZ		13214E6145-1	97403	PLATEINTAKE	EA	1
		XBOZZ		13214E6145-6	97403	PLATELIQUID PRESSURE.....	EA	1
		XBOZZ		13214E6145-3	97403	PLATE NOZZLES	EA	1
		XBOZZ		13214E6145-10	97403	PLATE,INSTRUCTIONRUN	EA	1
		XBOZZ		13214E6145-9	97403	PLATE,INSTRUCTIONSTART	EA	1
		XBOZZ		13214E6145-7	97403	PLATE,INSTRUCTIONSTOP	EA	1
		XBOZZ		6459	03951	PLATE BLOWER	EA	11
		XBOZZ	5320-00-582-3304	MS20600AD4W2	96906	RIVETPLATETG.....	EA	22
		XBOZZ	5320-00-582-3305	MS20600AD4W3	96906	RIVETIDENTIFICATION PLATE MTG.....	EA	41
		XBOZZ		1120	03951	SCREW,DRIVEBLOWER NAME PLATE MTG	EA	6
					9			

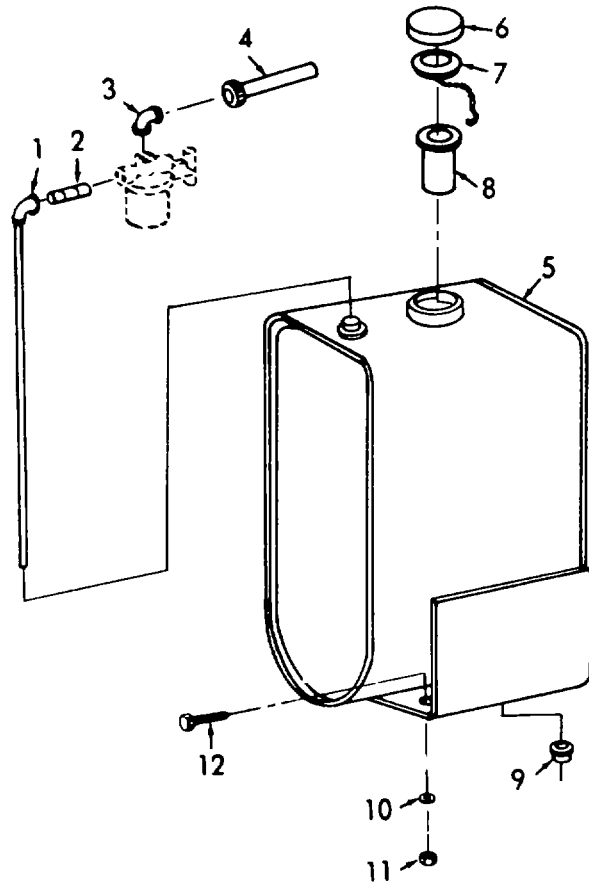


Figure 3. Fuel Tank, Lines and Fittings.

SECTION II

TM 5-3740-206-24P

(1) ILLUSTRATION		(2)	(3)	(4)	(5)	(6) DESCRIPTION	(7)	(8)
(a) FIG NO.	(b) ITEM NO.	SMR CODE	NATIONAL STOCK NUMBER	PART NUMBER	FSCM	USABLE ON CODE	U/M	QTY INC IN UNIT
						GROUP 02 FUEL SYSTEM		
3	1	XBOZZ		CFA41681	82254	STANDPIPE ASSEMBLY FUEL TANK.....	EA	1
3	2	XBOZZ		CFA41703	82254	NIPPLE,PIPESTAND PIPE TO FILTER.....	EA,	1
3	3	XBOZZ		CFA41702	82254	ELBOW,PIPEFUEL LINE TO FUEL FILTER .	EA	1
	4	XBOZZ		CFD41654	82254	LINE,FUEL	EA	1
3	5	PAOZO	2910-00-933-0591	113214E6116	97403	TANK,FUELGASOLINE	EA	1
3	6	XBOZZ		CFA41646	82254	CAP,FUEL TANK.....	EA	1
3	7	PAOZZ	5330-00-995-1494	CFA41647	82254	GASKETFUEL TANK CAP.....	EA	1
3	8	XBOZZ		CSA47523	82254	FILTER,FUEL	EA	1
3	9	XBOZZ		CSA47540	82254	PLUG,PIPETANK DRAIN.....	EA	1
3	10	PAOZZ	5310-00-582-5965	MS35338-44	96906	WASHER,LOCKFUEL TANK NTG	EA	4
3	11	XBOZZ		MS51967-1	96906	NUT,PLAIN,HEXAGON FUEL TANK MTG	EA	41
3	12	PAOZZ	5305-00-068-0502	MS90725-6	96906	SCREW,CAP,HEXAGON FUEL TANK MTG	EA	4
					11			

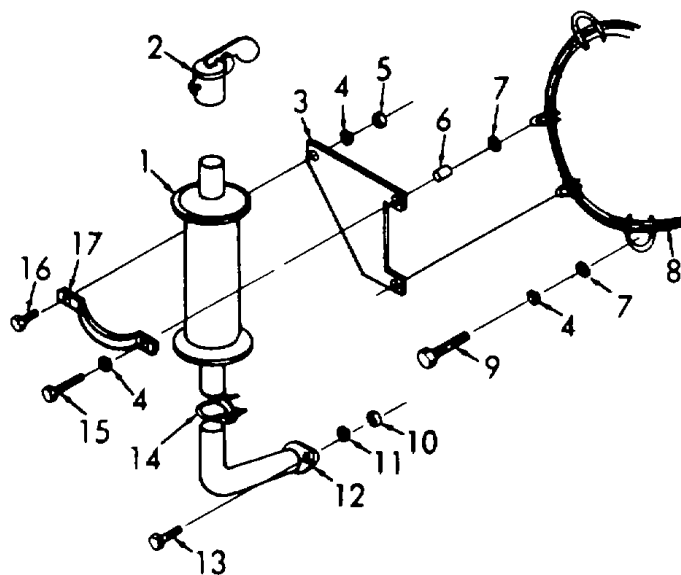


Figure 4. Exhaust System and Air Inlet Guard.

SECTION II

TM 5-3740-206-24P

(1) ILLUSTRATION		(2)	(3)	(4)	(5)	(6) DESCRIPTION	(7)	(8)
(a) FIG NO.	(b) ITEM NO.	SMR CODE	NATIONAL STOCK NUMBER	PART NUMBER	FSCM	USABLE ON CODE	U/M	QTY INC IN UNIT
						GROUP 03 EXHAUST SYSTEM		
4	1	PAOZZ	2990-00-934-7928	13214E6136	97403	SPARK ARRESTER.....	EA	1
4	2	XBOZZ		13214E6142	97403	CAP,EXHAUST SPARK ARRESTER COVER	EA	1
4	3	XBOZZ		13214E6133	97403	PLATESPARKARRESTER SHIELD	EA	1
4	4	XBOZZ		KS35333-24	96906	WASHER,LOC X AIR GUARDAND CLAMP MTG	EA	10
4	5	PAOZZ	5310-00-880-7744	MS51967-4	96906	NUT,PLAIN,HEX CLAMP MTG TO PLATE ...	EA	1
4	6	XBOZZ		CFA41697	82254	SPACER,SLEZVEMUFFLER MTG.....	EA	2
4	7	PAOZZ	5310-00-087-7493	MS27183-13	96906	WASHER,FLAT AND PLATE MTG	EA	8
4	8	XBOZZ		CrD41685	82254	GUARDAIR INLET.....	EA	1
4	9	PAOZZ	5306-00-225-8497	MS90725-32	96906	BOLT,MACHINE AIR INLET GUARD MTG	EA	6
4	10	XBOZZ		MS51967-7	96906	NUT,PLAIN,HEXAGON EXHAUST PIPE MTG	EA	2
4	11	PAOZZ	5310-00-637-9541	MS35338-46	96906	WASHER,LOCKEXHAUST PIPE MTG.....	EA	2
4	12	XBFHH		13214E6134	97403	PIPE,EXHAUST.....	EA	1
4	13	PAOZZ	5305-00-269-3210	MS90725-59	96906	SCREW,CAP,HEXEXHAUST PIPE MTG	EA	2
4	14	XBOZZ		P19035-28	00736	CLAMP ASSEMBLYSPARK ARRESTER MTG	EA	1
4	15	PAOZZ	5306-00-225-8502	MS90725-38	96906	BOLT,MACHINE CLAMPMTG TO PLATE AND GUARD	EA	1
4	16	PAOZZ	5306-00-225-8498	MS90725-33	96906	BOLT,MACHINE CLAMP MTG TO PLATE....	EA	1
4	17	XBOZZ		13214E6132	97403	CLAMPSPARX ARRESTER MTG	EA	1
					13			

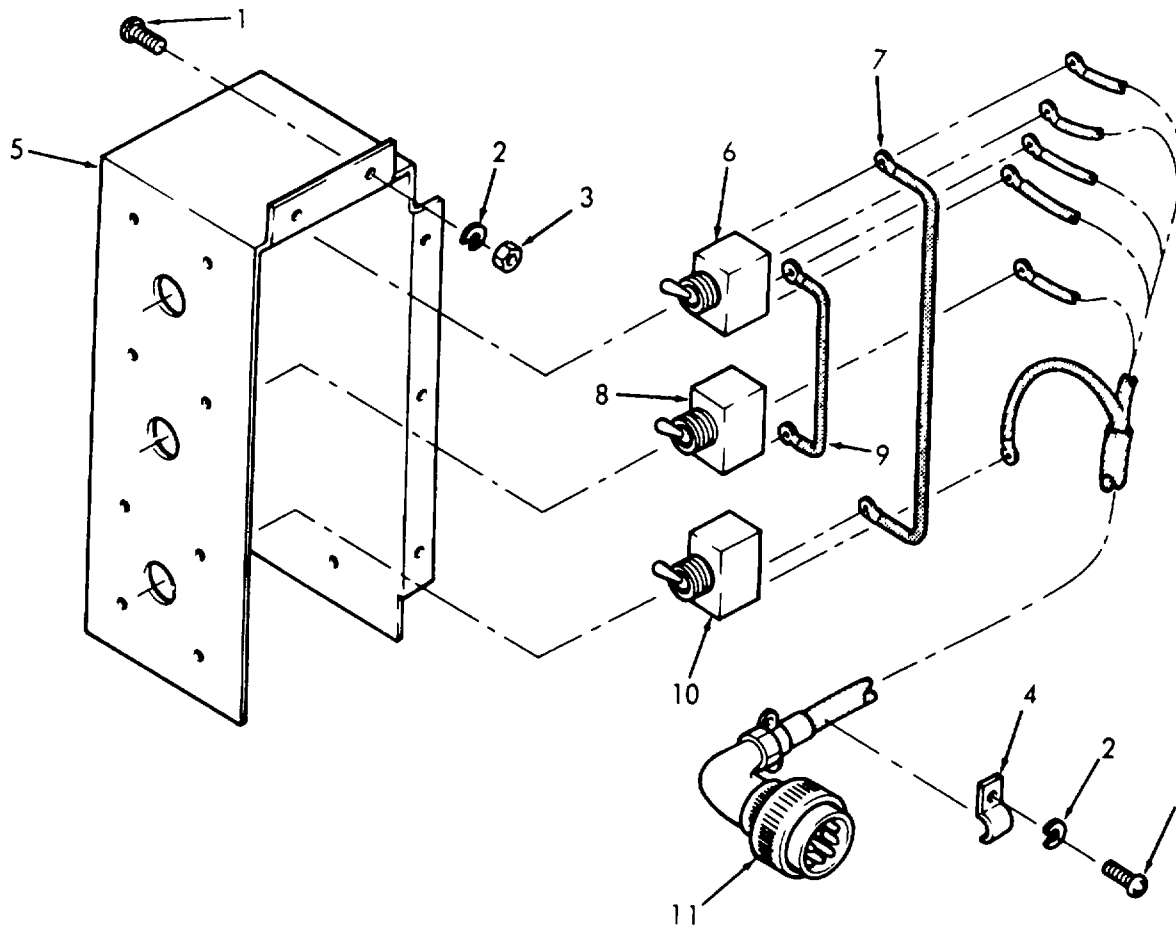


Figure 5. Engine Control Box

SECTION II

TM 5-3740-206-24P

(1) ILLUSTRATION		(2)	(3)	(4)	(5)	(6)	(7)	(8)
(a) FIG NO.	(b) ITEM NO.	SMR CODE	NATIONAL STOCK NUMBER	PART NUMBER	FSCM	DESCRIPTION USABLE ON CODE	U/M	QTY INC IN UNIT
						GROUP 04 ELECTRICAL SYSTEM		
5	1	PAOZZ	5305-00-984-6208	MS35206-261	96906	SCREW,MACH CONTROL PANELCLAMP MTG	EA	7
5	2	PAOZZ	5310-00-045-3296	MS35338-43	96906	WASHER, CONTROL PANEL AND CLAMP	EA	7
5	3	XBOZZ	5310-00-934-9758	HS35649-102	96906	NUT,PLAIN,HEX CONTROL PANEL MTG	EA	6
5	4	XBOZZ	5340-00-663-3854	MS21919G10	96906	CLAMP,LOOP WIRING RARNESS MTG ..	EA	2
5		XBOZZ		13214E6141	97403	PANEL ASSEMBLY	EA	1
5	5	XAOZZ		13214E6140	97403	BOXCONTROL PANEL HOUSING	EA	1
5	6	PAOZZ	5930-00-655-1575	MS35059-22	96906	SWITCR,TOGGLERUN	EA	1
5	7	XBOZZ		CFA41561-1	82254	LEAD,ELECTRICALCONTROL PANEL.....	EA	1
5	8	PAOZZ	5930-00-655-1521	MS35058-29	96906	SWITCHN,TOGGLESTOP.....	EA	1
5	9	XBOZZ		CPA41561-2	82254	LEAD,ELECTRICAL CONTROL PANEL.....	EA	1
5	10	PAOZZ	5930-00-655-1522	HS35058-30	96906	SWITCH,TOGGLESTART	EA	1
5	11	XBOZZ		13214E6143	97403	WIRING HARNESSCONTROL PANEL	EA	1
					15			

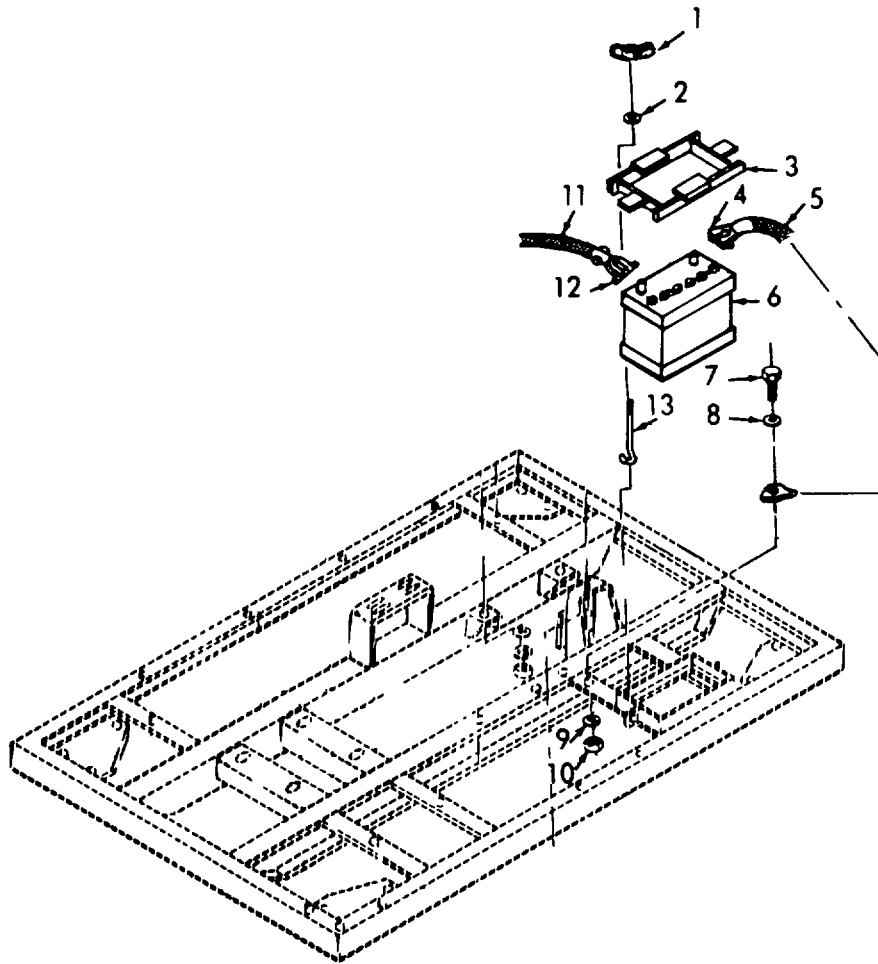


Figure 6. Battery and Related Parts.

SECTION II

TM 5-3740-206-24P

(1) ILLUSTRATION		(2)	(3)	(4)	(5)	(6)	(7)	(8)
(a) FIG NO.	(b) ITEM NO.	SMR CODE	NATIONAL STOCK NUMBER	PART NUMBER	FSCM	DESCRIPTION USABLE ON CODE	U/M	QTY INC IN UNIT
6	1	PAOZZ	5310-00-889-2606	MS35425-42	96906	NUT,PLAIN WING ..BATTERY HOLD-DOWN	EA	2
6	2	PAOZZ	5310-00-809-4061	MS27183-15	96906	WASHFR,FLATBATTERY HOLD-DOWN	EA	2
6	3	XBOZZ		13214E6113	97403	CLAMP BATTERY HOLD-DON.....	EA	1
6	4	XBOZZ	5940-00-549-6583	MS75004-2	96906	TERNINAL LG BATTERY	EA	1
6	5	XBOZZ		MS35915-18	96906	CABLE,BATTERY	EA	1
6	6	PAOZZ	6140-00-059-3528	MS75047-1	96906	BATTERY,STORAGE	EA	1
6	7	PAOZZ	5305-00-269-321C	M4590725-59	96906	SCREW,CAP,HEXAGON,GROUND	EA	1
6	8	PAOZZ	5310-00-080-6004	MS27183-14	96906	WASHER,FLAT GROUND CABLE.....	EA	2
6	9	PAOZZ	5310-00-637-9541	MS35338-46	96906	WASHER,LOCK GROUND CABLE.....	EA	1
6	10	XBOZZ	MS4551967-7		96906	NUT,PLAIN,HEXAGONGROUND CABLE	EA	1
6	11	XBOZZ	6140-00-773-1229	MS35915-16	96906	CABLE,BATTERY	EA	1
6	12	XBOZZ	5940-00-549-6581	MS75004-1	96906	TERMINAL LUG.BATTERY.....	EA	1
6	13	XBOZZ		CFA41576	82254	BOLT,EYE BATTERY HOLD DOWN	EA	2
					17			

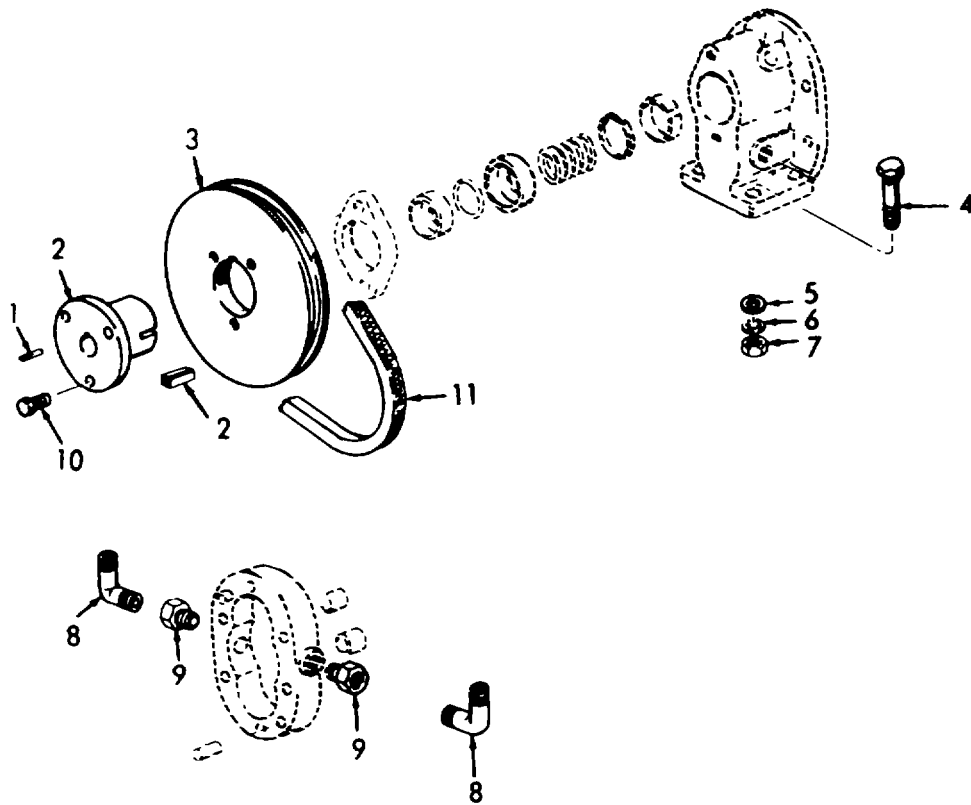


Figure 7. Water Pump Sheave and Belt.

SECTION II

TM 5-3740-206-24P

(1) ILLUSTRATION		(2)	(3)	(4)	(5)	(6)	(7)	(8)
(a) FIG NO.	(b) ITEM NO.	SMR CODE	NATIONAL STOCK NUMBER	PART NUMBER	FSCM	DESCRIPTION USABLE ON CODE	U/M	QTY INC IN UNIT
						GROUP 05 PUMPS		
7	1	XBOZZ	5315-00-761-1680	MS20066-80	96906	KEY,MACHINE DRIVE GEAR SHAFT TO..... SHEAVE BUSHING	EA	1
7	2	XBOZZ		P19-16	71176	BUSHING DRIVE SHEAVE.....	EA	1
7	3	XBOZZ		13214E6137	97403	SHEAVE.PUMP DRIVE.....	EA	1
7	4	PAOZZ	5305-00-269-3213	MS90725-62	96906	SCREW,CAP,HEXAGONPUMP AND SHIM MTG	EA	4
7	5	PAOZZ	5310-00-080-6004	MS27183-14	96906	WASHER,FLAT.WATER PUMP STAND	EA	4
7	6	PAOZZ	5310-00-637-9541	MS35338-46	96906	WASHER,LOCK.PUMP MTG.....	EA	4
7	7	XBOZZ		MS51967-7	96906	NUT,PLAIN,HEXAGON PUMP AND SHIM MTG	EA	4
7	8	XBOZZ		13207E9906-2	97403	ELBOW,PIPE.WATER PUMP HOUSING.....	EA	2
7	9	XBOZZ		CFR40605	82254	BUSHING,PIPE.PUMP TO UNION	EA	2
7	10	PAOZZ	5306-00-206-1071	XD17	66289	BOLT,MACHINE.BUSHING TO SHEAVE.....	EA	3
7	11	PAOZZ	3030-00-849-1033	MS51066-51	96906	BELT,V.PUMP DRIVE.....	EA	
					19			

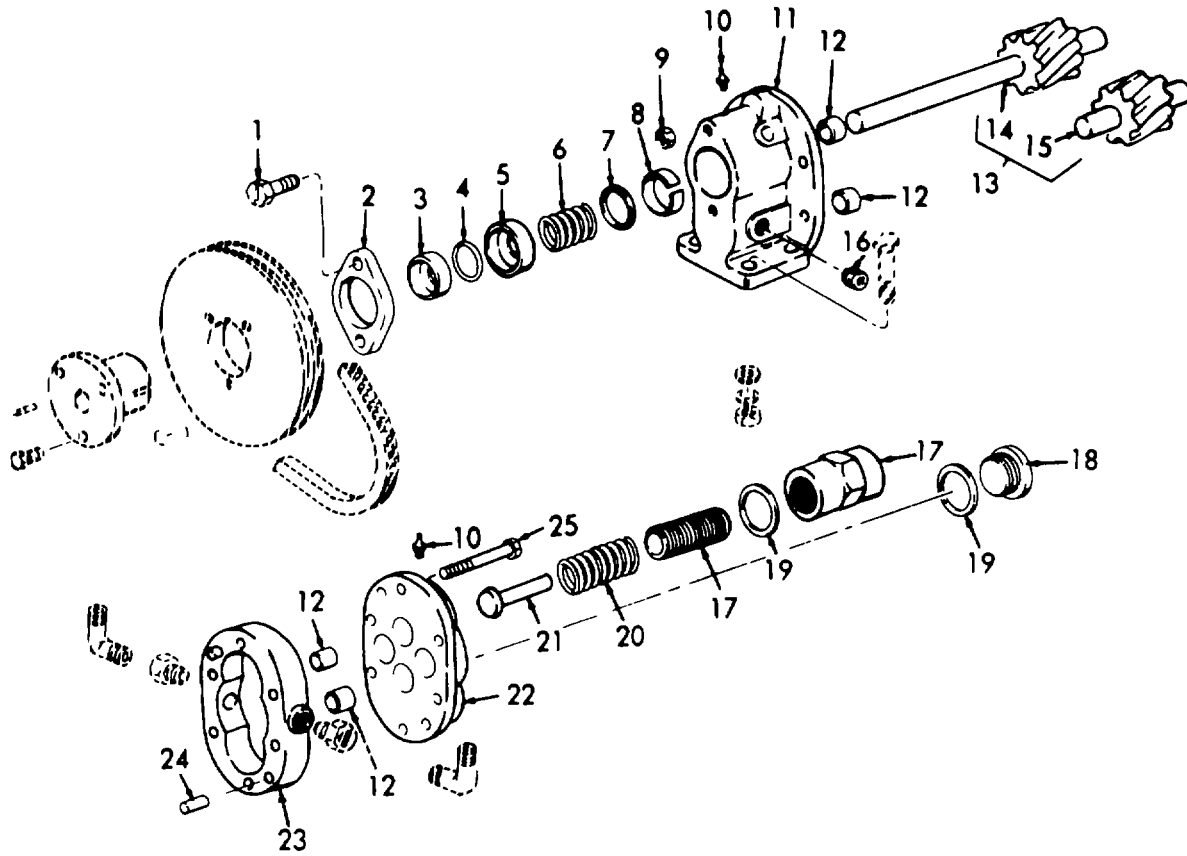


Figure 8. Water Pump.

SECTION II

TM 5-3740-206-24P

(1) ILLUSTRATION		(2)	(3)	(4)	(5)	(6) DESCRIPTION	(7)	(8)
(a) FIG NO.	(b) ITEM NO.	SMR CODE	NATIONAL STOCK NUMBER	PART NUMBER	FSCM	USABLE ON CODE	U/M	QTY INC IN UNIT
8		PAOZZ	4320-00-934-7934	13204E2411-2	97403	PUMP ASSEMBLY,WATER.....	EA	1
8	1	XBFZZ		213-10-280	09058	.SCREW,CAP,HEXAGON GLAND TO STAND MTG	EA	2
8	2	XBFZZ	5330-00-097-9708	213-10-204	09058	.GLAND,PACKING DRIVE GEAR.....	EA	1
8	3	PBFZZ	5330-00-997-1867	213-10-214-1	09058	.RING,SEAL DRIVE GEAR.....	EA	1
8	4	XBFZZ		CSA40330	82254	.PACKING,PREFORMED DRIVE GEAR.....	EA	1
8	5	PAFZZ	5330-00-995-6900	213-10-213-1	09058	.RETAINER,PACKING DRIVE GEAR.....	EA	1
8	6	XBFZZ	5360-00-498-6252	213-10-215	09058	.SPRING,HELICAL DRIVE GEAR.....	EA	1
8	7	XBFZZ		213-10-216	09058	.STOP,SEAL DRIVE GEAR.....	EA	1
8	8	XBFZZ		429-66	09058	RING,RETAINER DRIVE GEAR.....	EA	1
8	9	XBFZZ		213-1-187	09058	.NUT,PLAIN,HEXAGON HOUSING MTG.....	EA	4
8	10	XBOZZ	4730-00-084-0469	92-5660-1348	09058	.FITTING,LUBRICATION CAP AND STAND .	EA	3
8	11	XBFZZ		213-1-401-99	09058	.STAND,PUMP.....	EA	1
8	12	XBFZZ	4320-00-918-9988	713-9001-107	09058	.BUSHING,SLEEVEPUMP DRIVE AND DRIVEN	EA	4
8	13	PAFZZ	3020-00-972-8724	713-9010-205	09058	.GEAR SET,HELICAL,MA.....	EA	1
8	14	XAOZZ		213-10-205-1	09058	..GEAR,DRIVE.....	EA	1
8	15	XAOZZ		213-10-206-1	09058	..GEAR,DRIVEN.....	EA	1
8	16	XBOZZ		462-698	09058	.PLUG,PIPE PUMP STAND.....	EA	2
8	17	YBFZZ		213-1-783	09058	.SCREW,ADJUSTINGRELIEF VALVE W/NUT	EA	1
8	18	XBFZZ		213-1-782	09058	.CAP,PLUG.....	EA	1
8	19	PAFZZ	5330-00-815-9489	466-3989	09058	.GASKET PLUG CAP.....	EA	2
8	20	XBFZZ		92-1000-1240-18	09058	.SPRING,HELICAL RELIEF PLUNGER.....	EA	1
8	21	XBFZZ		213-1-786	09058	.PLUNGER,RELIEF.....	EA	1
8	22	XBFZZ		213-1-903-99	09058	.CAP,PUMP.....	EA	1
8	23	XAOZZ		213-10-202	09058	.HOUSING,PUMP.....	EA	1
8	24	XBFZZ		92-900-820	09058	.PIN,STRAIGHTCAP AND STAND LOCATING	EA	4
8	25	XBFZZ		213-1-179	09058	.SCREW,CAP,HEXAGON CAP TO HOUSING MTG	EA	6

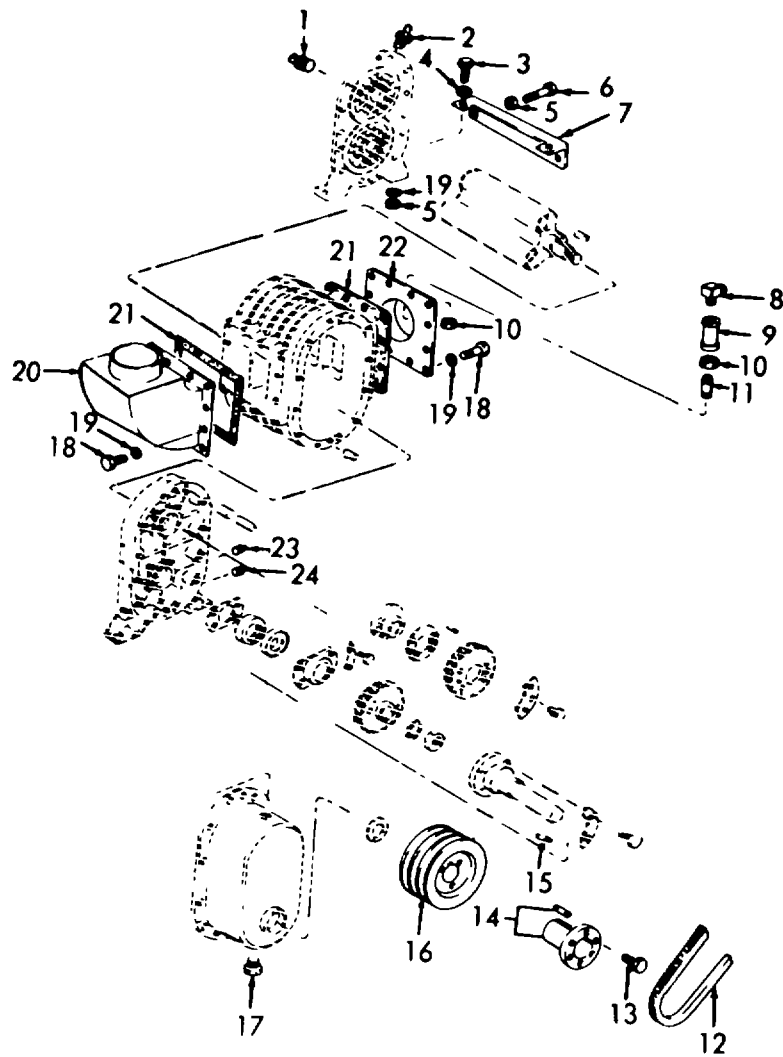


Figure 9. Air Blower Components.

SECTION II

TM 5-3740-206-24P

(1) ILLUSTRATION		(2)	(3)	(4)	(5)	(6) DESCRIPTION	(7)	(8)
(a) FIG NO.	(b) ITEM NO.	SMR CODE	NATIONAL STOCK NUMBER	PART NUMBER	FSCM	USABLE ON CODE	U/M	QTY INC IN UNIT
GROUP 06 SPRAY EQUIPMENT								
9	1	XBOZZ		90094	03951	PLUG,PIPE HEARING CAP.....	EA	2
9	2	XBOZZ		90265	03951	FITTING, LUBRICATIN END PLATE.....	EA	2
9	3	PAOZZ	5305-00-269-3214	MS90725-64	96906	SCREWCAP,HEXAGONBLOWERANDBRACKET MTG	EA	4
9	4	XBOZZ		MS27185-14	96906	WASHER,FLAT BRACKET MTG	EA	2
9	5	XDOZZ	5310-00-761-6882	MS51967-2	96906	NUT,PLAINHEXAGON BLOWER MTG AND SETSCREW	EA	6
9	6	XBOZZ		MS51967-75	96906	SETSCREW BELT TENSION BRACKETD...	EA	2
9	7	XBOZZ		13214E6147	97403	BRACKET,BLOWER,ALIGNMENTANDBELT	EA	1
		XBOZZ		1321414145-8	97403	PLATE.OIL.PRESSURE	EA	1
9	8	XBOZZ		13207R9906-1	97403	ELBOW,PIPE TO TUBE PRESSURE TO EXHAUST FLANGE	EA	1
9	9	XBOZZ	4730-00-941-5269	103B	30327	COUPLING,PIPE,PRESSURE TUBE TO EXHAUST FLANGE	EA	1
9	10	XBOZZ		111B	30327	LOCKNUT,PIPE NIPPLE LOCKING.....	EA	2
9	11	PAOZZ	4730-00-222-1837	112B	30327	NIPPLE,PIPE PRESSURE .TUBE.ELBOWTO EXHAUST.FLANGE	EA	1
9	12	PAOZZ	3030-00-995-1512	BP81-3	71176	BELT,V BLOWER DRIVE MATCHED SET OF 3 BELTS	ST	1
9	13	PAOZZ	5306-00-206-1071	XD17	66289	BOLT,MACHINE,BUSHINGTOSHEAVES	EA	3
9	14	XBOZZ		P1-1-18	71176	BUSHING SHEAVE	EA	1
9	15	XBOZZ		8900	03951	KEY MACHINE, DRIVE SHAFT	EA	1
9	16	XBOZZ		3TB60	71176	SHEAVE BOWER DRIVE	EA	1
9	17	XBOZZ		90209	03951	PLUG,MAGNETIC OIL DRAIN	EA	1
9	18	PAOZZ	5305-00-269-3213	MS90725-62	96906	SCREW,CAP,HEXAGON EXHAUST FLANG AND,INTAKE,MANIFOLD.MTG.ON.HEAD	EA	24
9	19	PAOZZ	5310-00-595-7237	MS35333-42	96906	WASHER.LOCK.EXHAUSTFLANGEINTAKE . MANIFOLDBLOWERANDBRACKET MTG SCREW.SIZE	EA	28
9	20	XBOZZ		1320015363	97403	MANIFOLD ASSEMBLY	EA	1
9	21	PAOZZ	5330-00-542-3717	7932	03951	GASKET INTAKE AND EXHAUST	EA	2
9	22	XBOZZ	3740-01-020-1900	1320015355	97403	FLANGE EXHAUST EXHAUST MANIFOLD ..	EA	1
9	23	XBOZZ		CP1X2-143980	00000	PLUG,PIPIE PLATE	EA	2
9	24	XBOZZ		CPIX2-144012	00000	PLUG,PIPE,GEAR ENDPLATE	EA	6

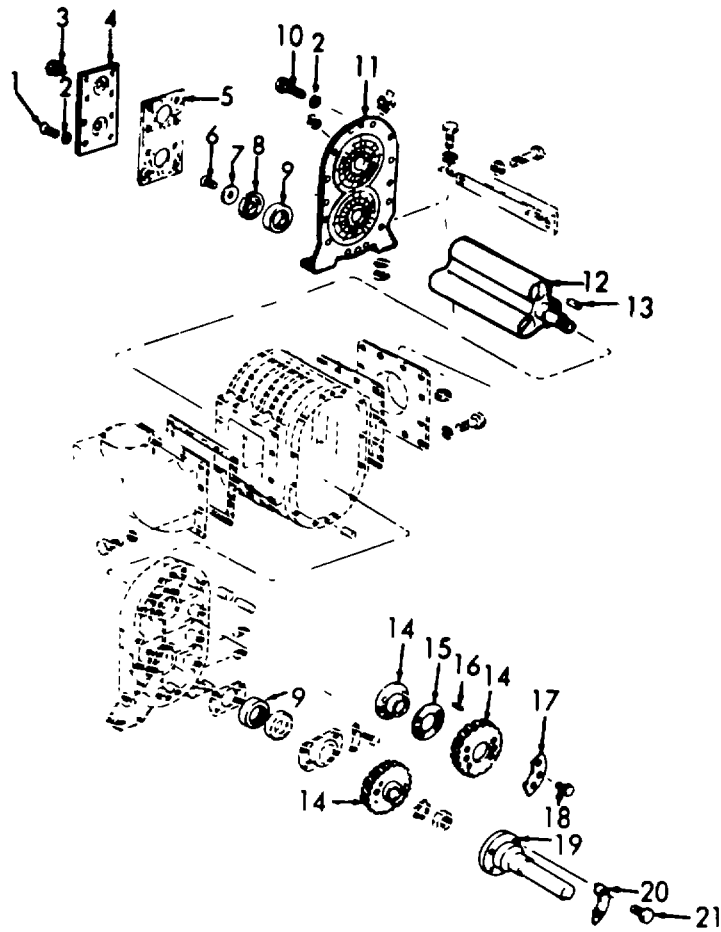


Figure 10. Air Blower Explode.

SECTION II

TM 5-3740-206-24P

(1) ILLUSTRATION		(2)	(3)	(4)	(5)	(6)	(7)	(8)
(a) FIG NO.	(b) ITEM NO.	SMR CODE	NATIONAL STOCK NUMBER	PART NUMBER	FSCM	DESCRIPTION USABLE ON CODE	U/M	QTY INC IN UNIT
10		PAFZZ	3740-00-934-7937	13207E9896	97403	.BLOWER,AIR.....	EA	1
10	1	XBFZZ		90197	03951	.SCREW,MACHINE.BEARING CAP MTG.....	EA	8
10	2	PAFZZ	5310-00-637-9541	MS35338	96906	.WASHER,LOCK.BEARING COVER ANDFREE END PLATE MTG	EA	22
10	3	XBOZZ		90102	03951	.FITTING,RELIEF	EA	2
10	4	XBFZZ		11703	03951	.CAP,BEARING.FREE END PLATE	EA	1
10	5	PAFZZ	5330-00-995-1507	11705	03951	.GASKET.BEARING CAP	EA	1
10	6	XBFZZ		90293	03951	.SCREW,MACHINE.TO ROTOR SHAFT.....	EA	2
10	7	XBFZZ		11778	03951	.WASHER,FLAT.ROTOR SHAFT	EA	2
10	8	PAFZZ	3110-00-155-7315	11248	03951	.BEARING,ROLLER.ROTOR SHAFT.....	EA	2
10	9	XBFZZ		11443	03951	.SEAL,PLAIN.ROTOR SHAFT	EA	2
10	10	PAFZZ	5306-00-225-8496	MS90725-31	96906	.BOLT,MACHINE.FREE END PLATE MTG ...	EA	14
10	11	XBFZZ		11429R	03951	.PLATE.B LOWER MTG	EA	1
10	12	PAFZZ	3740-00-995-1508	11255	03951	.ROTOR,BLOWER	EA	2
10	13	XBFZZ		11150	03951	.KEY,MACHINE . DRIVE GEAR AND DRIVEN .GEAR NULAR	EA	2
10	14	XDFZZ	3020-00-995-1510	60169	03951	.GEAR ASSEMBLY TIMING	EA	1
10	15	XBFZZ		40357	03951	.SHIM TIMING GEAR	EA	1
10	16	XBFZZ		6036	03951	.DOWEL,GEAR.LOCK PLATE AND SHIM ... ALIGNING	EA	2
10	17	XBFZZ		40325	03951	.PLATE,LOCK.TIMING GEAR SCREW.....	EA	2
10	18	XBFZZ		MS35308-32	96906	.SCREW,CAP,HEXAGON.DRIVEN GEAR TO HUB	EA	4
10	19	PAFZZ	3740-00-995-1511	11707	03951	SHAFT.DRIVE	EA	1
10	20	XBFZZ		11739	03951	PLATE,LOCK	EA	2
10	21	XBFZZ	5305-543-2271		82254	SCREW,CAP,HEXAGON.. DRIVE SHAFT TO DRIVE GEAR	EA	4
					25			

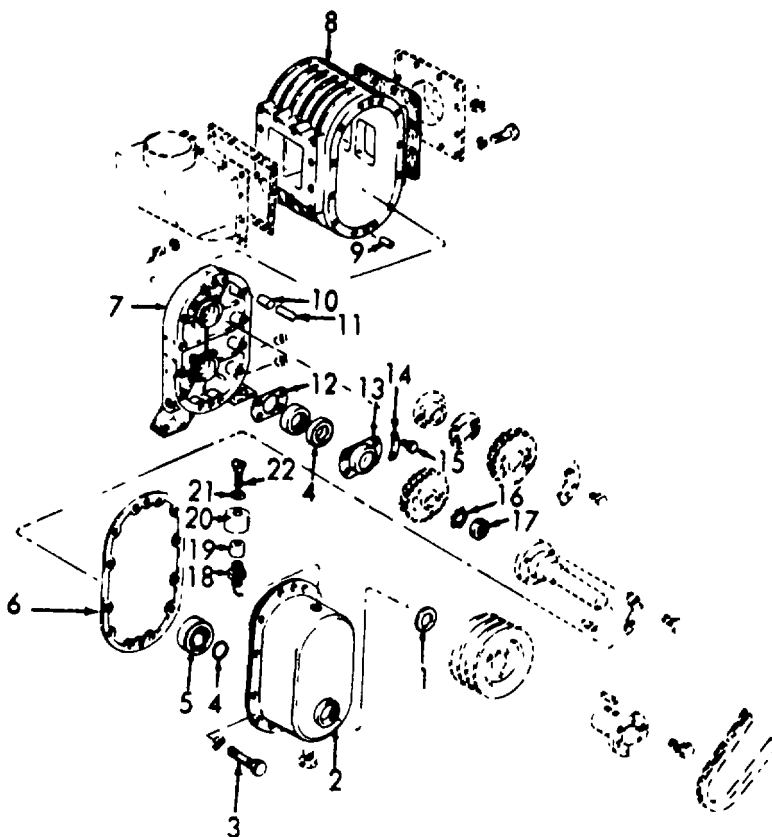


Figure 11. Air Blower Housing and Breather Assembly.

SECTION II

TM 5-3740-206-24P

(1) ILLUSTRATION		(2)	(3)	(4)	(5)	(6)	(7)	(8)
(a) FIG NO.	(b) ITEM NO.	SMR CODE	NATIONAL STOCK NUMBER	PART NUMBER	FSCM	DESCRIPTION USABLE ON CODE	U/M	QTY INC IN UNIT
11	1	PAFZZ	5330-00-997-1899	11600	03951	.SEAL,PLAINDRIVE SHAFT GEAR END COVER	EA	1
11	2	XBFZZ		11701	03951	.COVER.GEAR END.....	EA	1
11	2	XBFZZ		MS35291-42	96906	.BOLT,MACHINZ.GEAR END COVER MTG	EA	14
11	4	XBFZZ		90259	03951	.RING,RETAINING.BEARING.....	EA	1
11	5	XBFZZ		11249	03951	.BEARING,BALL GEAR END	EA	3
11	6	XBFZZ		11322	03951	.GASKET.GEAR. END COVER.....	EA	1
11	7	XBFZZ		11772R	03951	.PLATE.GEAR END AND BLOWER MTG	EA	1
11	8	XBFZZ		11512	03951	.HOUSING,ROTOR	EA	1
11	9	XBFZZ		5792	03951	.PIN,STRAIGHT.HOUSING	EA	4
11	10	XAOZZ		10991	03951	.SPACER.PLATE GEAR	EA	2
11	11	XBFZZ	5315-00-014-1244	10991	03951	.SPACER.GEAR END COVER.....	EA	2
11	12	XBFZZ		29688	03951	.SPACER.RETAINING RING	EA	2
11	13	XDFZZ	3110-00-995-1505	11140	03951	.RETAINER,BEARING.GEAR END.	EA	2
11	14	XBFZZ		6038	03951	.PLATE,LOCK.OIL RETAINER.....	EA	4
11	15	XBFZZ		MS35291-31	9690E	.BOLT,MACHINE.BEARING RETAINER	EA	8
11	16	XBFZZ		5872	03953	.WASHER,LOCK.GEAR	EA	2
11	17	XBFZZ		58971	03951	.NUT,PLAIN,KEXAGON.LOCK GEAR.....	EA	2
11		XBOZZ		90247	03951	BREATHER ASSEMBLY.....	EA	1
11	18	XAOZZ		569021	03951	.BASE BREATHER	EA	1
11	19	XBOZZ		R16-16	03951	.ELEMENT,BREATHER	EA	1
11	20	XAOZZ		568702B	03951	.SHIELD,BREATHER.....	EA	1
11	21	XBOZZ		CFR40827	82254	.WASHER,LOCK.SHIELD TO BASE MTG	EA	1
11	22	XBOZZ		CFR40826	82254	.SCREW,MACHINE.SHIELD TO BASE MTG	EA	1

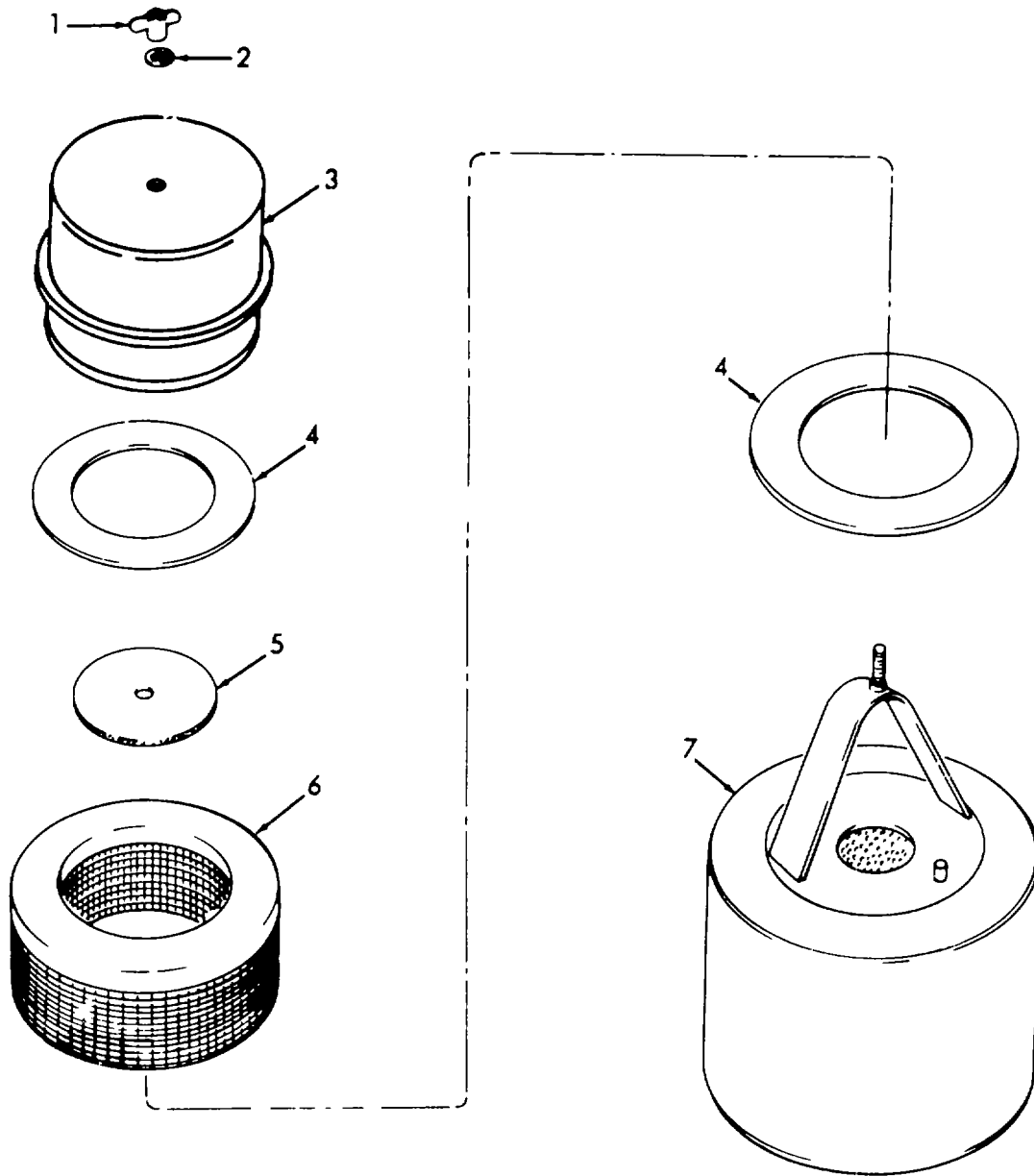


Figure 12. Filter Silencer.

SECTION II

TM 5-3740-206-24P

(1) ILLUSTRATION		(2)	(3)	(4)	(5)	(6) DESCRIPTION	(7)	(8)
(a) FIG NO.	(b) ITEM NO.	SMR CODE	NATIONAL STOCK NUMBER	PART NUMBER	FSCM	USABLE ON CODE	U/M	QTY INC IN UNIT
12		PAOZF	3740-00-934-7940	13214E6129	97403	FILTER,SILENCER.AIR BLOWER	EA	1
12	1	XBOZZ		CFR40570	82254	NUT,PLAIN,WING.TO TO BODY	EA	1
12	2	PAOZZ	5310-00-194-1483	M535333-44	96906	WASHER,LOCK.TOP TO BODY	EA	1
12	3	XBOZZ		CFD41632	82254	TOP ASBSMBLY	EA	1
12	4	XBOZZ		CFB41633	82254	.GASKET.ELEMENT TO BODY AND TOP...	EA	2
12	5	XBOZZ		CFB41636	82254	FELT.TOP ASSEMBLY	EA	1
12	6	PAOZZ	4330-00-811-8257	CF041634	82254	ELEMENT,FILTER.....	EA	1
12	7	XAOZZ		CFD41635	82254	BODY,FILTER	EA	1
					29			

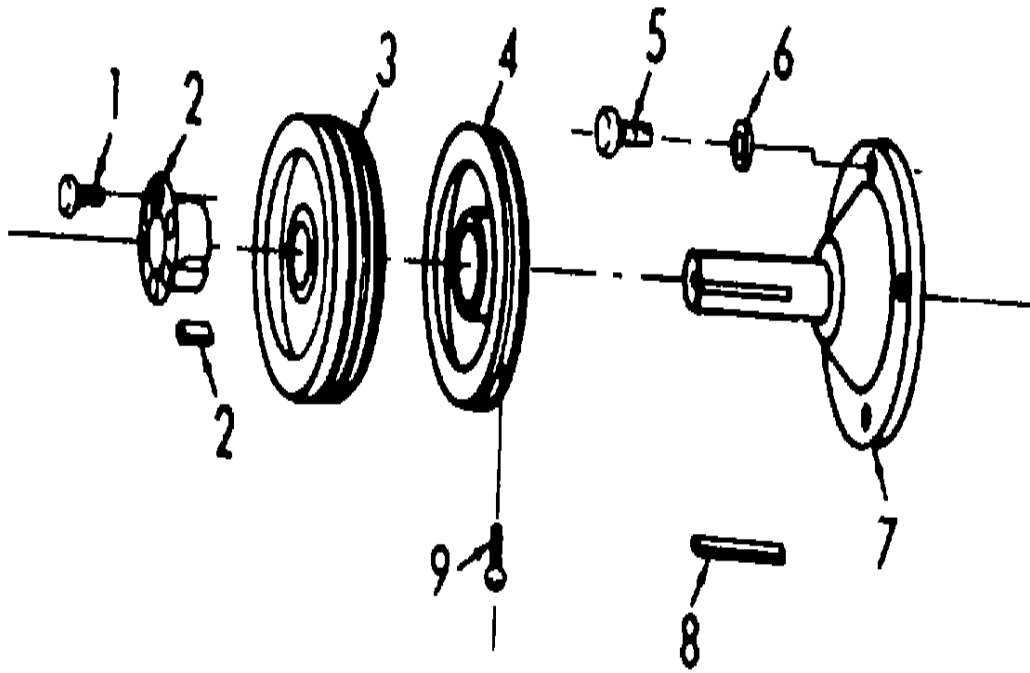


Figure 13. Flywheel Adapter and Pulleys.

SECTION II

TM 5-3740-206-24P

(1) ILLUSTRATION		(2)	(3)	(4)	(5)	(6) DESCRIPTION	(7)	(8)
(a) FIG NO.	(b) ITEM NO.	SMR CODE	NATIONAL STOCK NUMBER	PART NUMBER	FSCM	USABLE ON CODE	U/M	QTY INC IN UNIT
13		XBOZZ		13214E6114-1	97403	SHEAVE AND BUSHING.PULLEY TO AIR BLOWER	EA	1
13	1	PAOZZ	5306-00-225-8499	MS90725-34	96906	BOLT,MACHINE.BUSHING TO SHEAVE	EA	3
13	2	XBOZZ		P1-I	71956	BUSHING.....	EA	1
13	3	XBOZZ		3TB52	71596	SHEAVE.BLOWER DRIVE	EA	1
13	4	XBOZZ		13214E6138	97403	SHEAVE.....	EA	1
13	5	PAOZZ	5306-00-226-4831	MS90728-38	96906	BOLT,MACHINECOUPLING TO AIR BLOWER	EA	4
13	6	PAOZZ	5310-00-407-9566	MS35338-45	36906	WASHER,LOCK AIR BLOWER FLYWHEEL	EA	5
13	7	XBOZZ		13214E6135	37403	COUPLING.AIR BLOWER TO PULLEY	EA	1
13	8	XBOZZ		MN20067-180	36906	KEY,MACHINE	EA	1
13	9	PAOZZ	5305-00-724-5903	MS51963-85	36906	SETSCREW AIR BLOWER PULLEY	EA	1
					31			

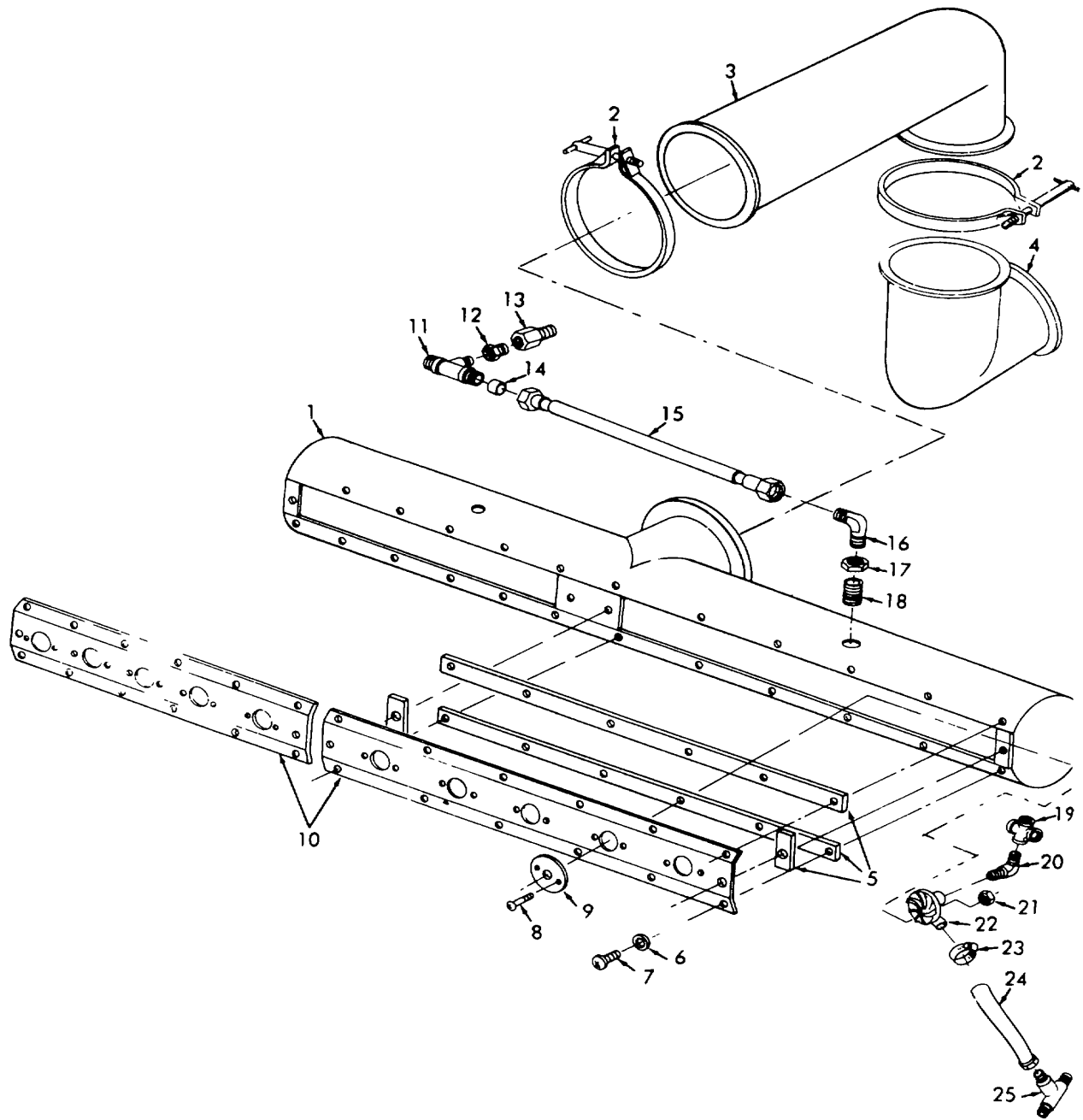


Figure 14. Manifold Spray.

SECTION II

TM 5-3740-206-24P

(1) ILLUSTRATION		(2)	(3)	(4)	(5)	(6) DESCRIPTION	(7)	(8)
(a) FIG NO.	(b) ITEM NO.	SMR CODE	NATIONAL STOCK NUMBER	PART NUMBER	FSCM	USABLE ON CODE	U/M	QTY INC IN UNIT
14		XDOZF	3740-00-876-7704	13214E6124	97403	MANIFOLD ASSXMBLY.....	EA	1
14	1	XBOZZ	3740-01-023-0169	13200:5342	97403	NOZZLEZ HEAD.ASSEMBLY	EA	1
14	2	XBOZZ	5340-00-999-2621	13200E5358	97403	CLAMP,LOOP	EA	5
14	3	XJOZZ	4730-00-876-7706	132002350-1	97403	ELBOW,LONG	EA	1
14	4	XBOZZ	4730-00-854-4628	13200Z350-2	97403	ELBOW,SHORT	EA	1
14	5	XDOZZ	5330-00-938-5665	13211E4405	97403	GASKET.COVER MANIFOLD TO SPRAY MANIFOLD	EA	2
14	6	PAOZZ	5310-00-550-1130	MS35333-40	96906	WASER,LOCKCOVER MANIFOLD TO SPRAY MANIFOLD	EA	28
14	7	PAOZZ	5305-00-993-2463	1S35207-279	96906	SCREW,MACHINE.COVER MANIFOLD TO SPRAY MANIFOLD	EA	28
14	8	XBOZZ	5305-00-045-8338	M524693S7	96906	SCREW,M.ACHINENOZZLE HEAD TO MANIFOLD COVER	EA	20
14	9	PAOSZ	3740-00-934-7938	13211Z4410	97403	NOZZLE HEAD.MANIFOLD COVER.....	EA	10
14	10	XBOSZ		132114402	97403	COVER,MANIFOLD ASSY.....	EA	2
14	11	XBOZZ		MS39173-4	96906	TEE,PIPE TO TUBE . INSECIDE TUBE/16-24 THD SIZE	EA	1
14	12	PAOZZ	4730-00-277-1896	110B	30327	BUSHING,PIPE.SPRAY LINE	EA	1
14	13	XBOZZ		13207E9908-2	97403	CONNECTOR,HOSE TO SPRAY LINE.....	EA	1
14	14	XBOZ	4730-00-278-8764	MS39177-4	96906	SLEEVE, COMPRESSION.TUBETO.TEE	EA	4
14	15	XBOZZ		13200Z5341-8	97403	TUBE,COPPER	EA	2
14	16	PAOZZ	4730-00-229-9289	MS39172-4	96906	ELBON,PIPE TO TUBESPRAY NOZZLED MALE 1/8-27 THD SIZE	EA	2
14	17	XBOZZ		CFA40458	82254	LOCKNUT,PIPE CLOSE NIPPLE TO SPRAY MANIFOLD	EA	2
14	18	XBOZZ		CFR40626	82254	NIPPLE,PIPE.SPRAY MANIFOLD	EA	2
14	19	XBOZZ		102B	30327	CROSS,PIPE.SPRAY NOZZLE TUBE	EA	2
14	20	XBOZZ		13207E9906-1	97403	ELBOW,PIPE.TO TUBE SPRAY TO . CROSS	EA	2
14	21	PAOZZ	5310-00-088-0551	MS21044N04	96906	LOCKNUT.NOZZLE ATOMIZER TO TUBE ...	EA	20
14	22	PAOZZ	3740-00-977-8672	13212E3235	97403	NOZZLE,ATOMIZER	EA	10
14	23	XBOZZ		13214E6123-1	97403	CLAMP,HOSE.ATOMIZER NOZZLE	EA	10
14	24	XBOZZ		CPA41603	82254	TUBE ASSEMBLY.ELBON TO SPRAY	EA	10
14	25	XBOZZ		13207E9907	97403	NOZZLE TEFLON 13 IN LG TEE,PIPE.SPRAY NOZZLE TUBE CONNECTION IONTHD SIZE	EA	4

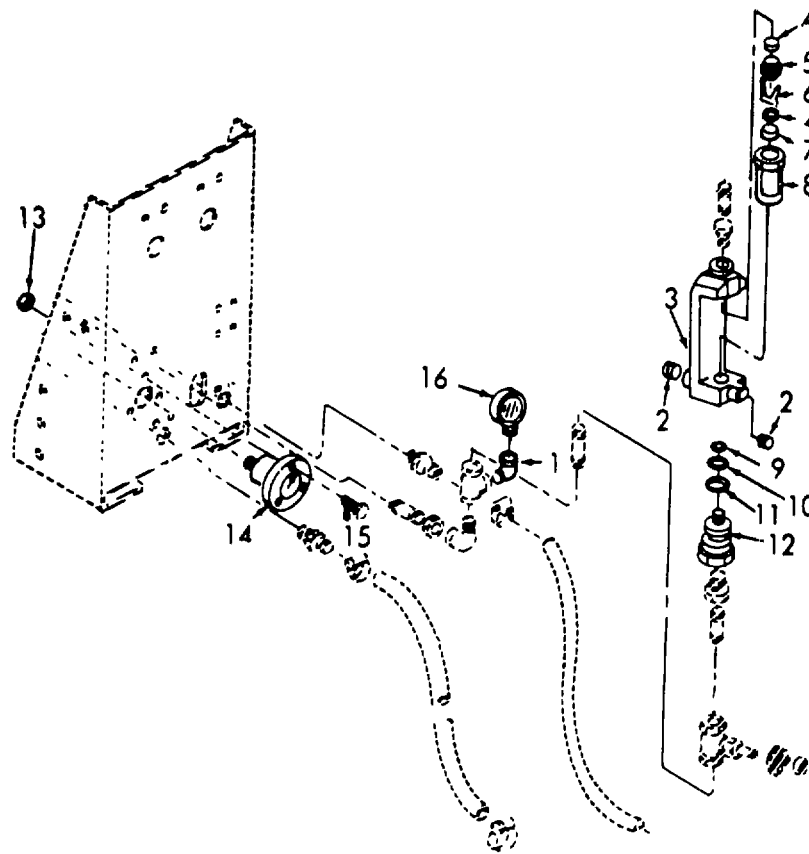


Figure 15. Flowmeter, Gages and Fittings.

SECTION II

TM 5-3740-206-24P

(1) ILLUSTRATION		(2)	(3)	(4)	(5)	(6)	(7)	(8)
(a) FIG NO.	(b) ITEM NO.	SMR CODE	NATIONAL STOCK NUMBER	PART NUMBER	FSCM	DESCRIPTION USABLE ON CODE	U/M	QTY INC IN UNIT
15	1	XBOZZ	4730-00-277-5553	MS1952-2	96906	ELBOW,PIPE.CAGZ MTG	EA	1
15		PAOZZ	6680-00-854-4623	13214E6126	97403	METER FLOW RATE.IND.....	EA	1
15	2	XAOZS		137P009	22375	.PLUG,PIPE.FLOW.METER BODY.....	EA	2
15	3	XAOZZ		322A035	22375	.BODY METER	EA	1
15	4	XBO44	5330-00-833-8984	101A714	22375	.PACKING,PREFORMED	EA	2
15	5	XAOZZ		3760032	22375	RING ADAPTER	EA	1
15	6	XAOZZ		304A193	22375	STOP.FLOAT	EA	1
15	7	XAOZZ		RL1-2-4	22375	FLOAT.OUT	EA	1
15	8	XBOZZ	I	1-20	22375	TUBE,METER.....	EA	1
15	9	XBOZZ	5330-00-006-7124	101A926	22375	PACKING,PREFORMED.INLET FITTING	EA	1
15	10	XDOZZ	5330-00-834-3471	101A923	22375	PACIING,PREFORMED.INLET FITTING	EA	1
15	11	XBOZZ		101A710	22375	PACKING,PREFORMED.INLET FITTING	EA	1
15	12	XAOZZ		364DO64	22375	FITTING,INLET	EA	1
15	13	PAOZZ	5310-00-877 5797	MS21044N3	96906	NUT.SET-LOCKING.GAGE MTG.....	EA	3
15	14	PAOZZ	6685-00-913-5030	CFA41581	82254	CAGE PRESSURE	EA	1
15	15	PAOZZ	5305-00-989-7435	MS35207	96906	SCREW,MACHINE GAGE MTG	EA	3
15	16	PAOZZ	6685-00-936-5030	CFA4581	82254	CAGE,PRESSURE DIAL SCALE MARK 0 TO 100	EA	1
					35			

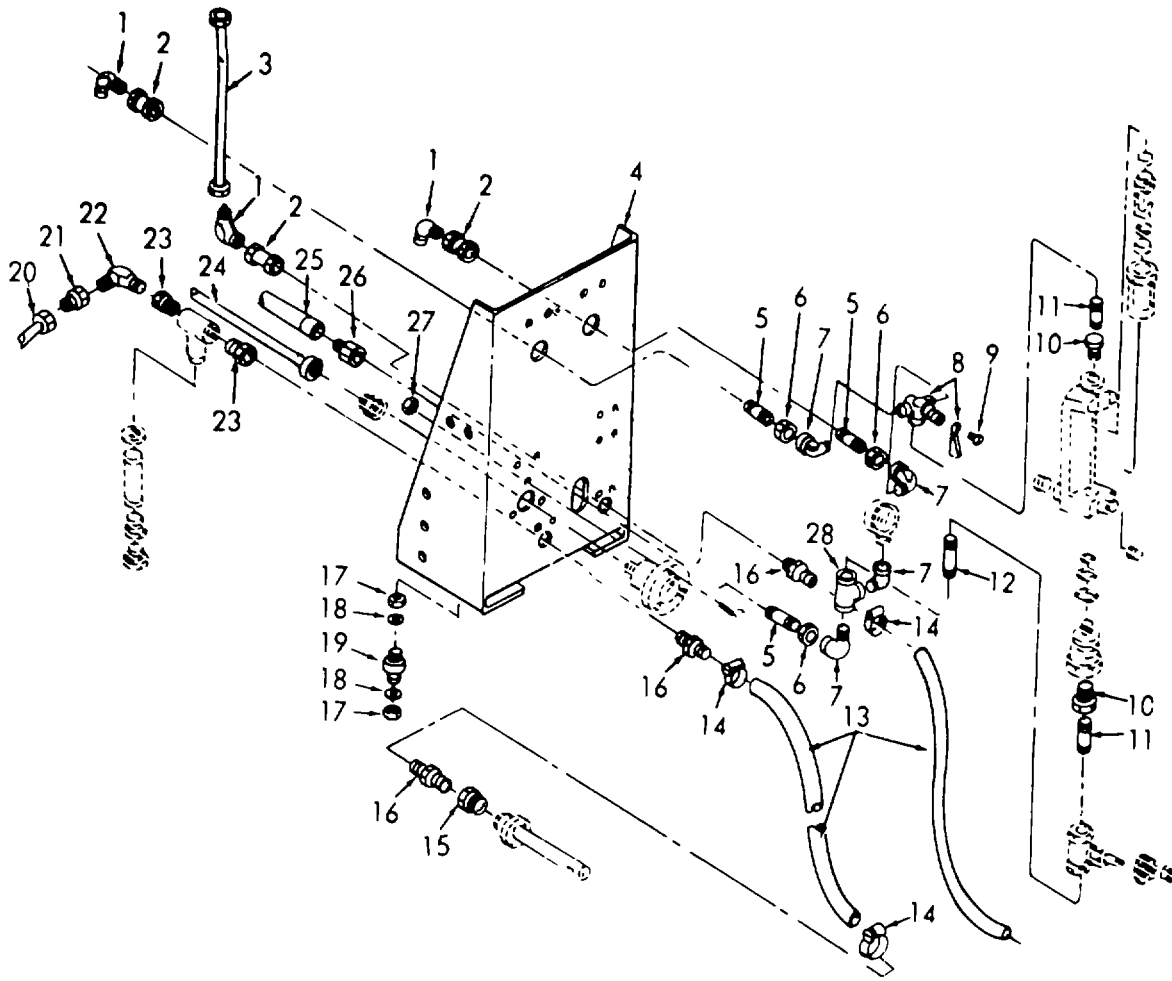


Figure 16. Instrument Panel, Lines and Fittings.

SECTION II

TM 5-3740-206-24P

(1) ILLUSTRATION		(2)	(3)	(4)	(5)	(6)	(7)	(8)
(a) FIG NO.	(b) ITEM NO.	SMR CODE	NATIONAL STOCK NUMBER	PART NUMBER	FSCM	DESCRIPTION USABLE ON CODE	U/M	QTY INC IN UNIT
16	1	XBOZZ		13207E9906-2	97403	ELBOW,HOSE. REAR OF PANEL BY-PASS 3-WAY VALVE STRAINER	EA	3
16	2	PAOZZ	4730-00-277-5734	3300X4	79470	COUPLING,PIPE THREE-WAY BY-PASS	EA	3
16	3	PAOZZ	4720-00-995-1522	CFA41529	82254	TUBING,NONMETALLIC.....	EA	1
16	4	XBOZZ		13214E6112	97403	PANEL,INSTRUMENT	EA	1
16	5	XBOZZ		13206E7943	97403	NIPPLE,PIPE	EA	1
16	6	XBOZZ		144575	24617	LOCK,... THREE-WAY BY-PASS CONTROL	EA	5
16	7	PAOZZ	4730-00-277-5553	MS51952-2	96906	ELBOW,PIPE	EA	1
16	8	XBOZZ	4820-00-639-9224	MS35932-2	96906	VALVE	EA	1
16	9	XBOZZ	5305-00-206-8263	82254		SCREW,MACHINE POINTER TO VALVE	EA	1
16	10	PAOZZ	4730-00-202-6694	WWP471TYPE B	81348	BUSHING,PIPESTRAINER FLOWMETER ..	EA	2
16	11	XBOZZ		CFA41627	82254	NIPPLE,PIPE	EA	2
16	12	XBOZZ		CFA41625	82254	NIPPLE,PIPE	EA	1
16	13	PAOZZ	4720-00-936-8135	13204E2415-4	97403	HOSE,NONMETALLIC.....	EA	2
16	14	PAOZZ	4730-00-908-3194	MS35842-1	96906	CLAMP,HOSE SUCTION HOSE	EA	3
16	15	XBOZZ	4730-00-289-0147	32203XX6	79470	BUSHING,PIPE TO CONNECTOR.....	EA	1
16	16	XBOZZ		N524522-3	96906	ADAPTER,STRAIGHT	EA	3
16	17	XBOZZ		MS551967-1	96906	NUT,PLAIN,HEXAGONPANEL	EA	8
16	18	PAOZZ	5310-00-582-5965	MS35338-44	96906	WASHER,LOCK PANEL MTG.....	EA	8
16	19	XBOZZ		13206E7944	97403	MOUNT,VIBRATION.....	EA	4
16	20	PAOZZ	4720-00-995-1520	CFA41530	82254	TUBE	EA	1
16	21	XBOZZ		13207E9908-1	97403	ADAPTER,STRAIGHT	EA	3
16	22	XBOZZ		CFA41703	82254	ELBOW,PIPEHOSE TO CONNECTOR	EA	1
16	23	PAOZZ	4730-00-194-0219	AN912-8	88044	BUSHING,PIPELINE STRAINER..... TPIPE	EA	2
16	24	PAOZZ		CFA41651	82254	TUBE	EA	1
16	25	PAOZZ	4720-00-995-1521	CRA41528	82254	TUBE	EA	1
16	26	XBOZZ		13207E9908-1	97403	ADAPTER,STRAIGHT	EA	1
16	27	XBOZZ		13207E9914	97403	HALF UNIONGAGE TO TUBE	EA	1
16	28	XBOZZ	4730-278-4034	82247		TEE,PIPE-	EA	1
					37			

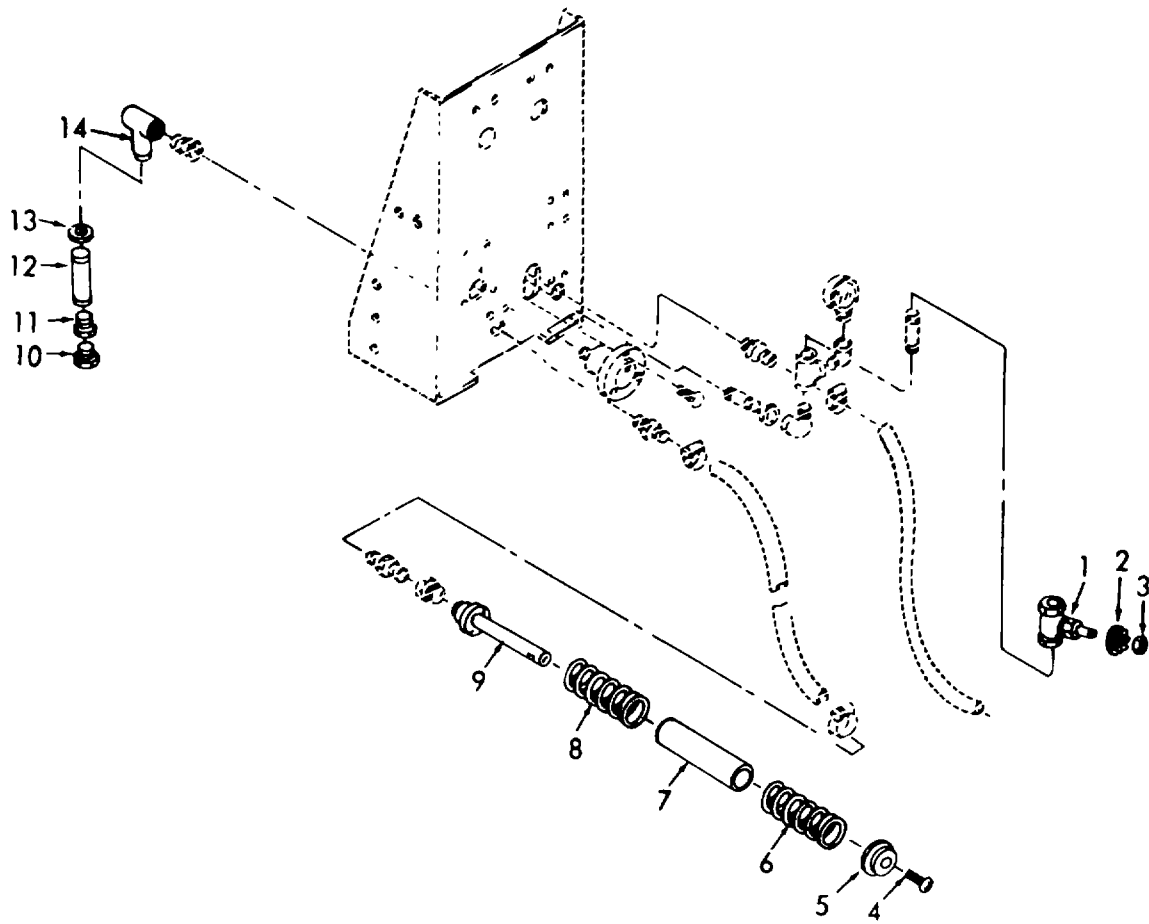


Figure 17. Valves, Screens and Fittings.

SECTION II

TM 5-3740-206-24P

(1) ILLUSTRATION		(2)	(3)	(4)	(5)	(6)	(7)	(8)
(a) FIG NO.	(b) ITEM NO.	SMR CODE	NATIONAL STOCK NUMBER	PART NUMBER	FSCM	DESCRIPTION USABLE ON CODE	U/M	QTY INC IN UNIT
17	1	PAOZZ	4820-00-200-0664	CA40614	8254	VALVE,NEEDLE FLOW CONTROL.....	EA	1
17	2	XAOZZ		SYLEPX1-3-4	14959	WHEELLOW VALVE	EA	1
17	3	XAOZZ	5310-012-0361		82254	NUT,PLAIN,HEXAGONWHEEL	EA	1
17		PAOZZ	4730-00-936-5018	13207E9919	97403	STRAINER ELEMENT,SE.....	EA	1
17	4	XAOZZ		7698	82247	SCREW,MACHINECAP TO BODY	EA	1
17	5	XAOZZ		4649	93146	CAP,ENDCAP TO BODY	EA	1
17	6	XAOZZ		4296	93146	SPRING,HELICAL	EA	1
17	7	XAOZZ		3910	82247	SCREEN,STRAINER	EA	1
17	8	XAOZZ		4263	93146	SPRING,RELICAL	EA	1
17	9	XAOZZ		4652-2	82247	BODY,STRAINER.....	EA	1
17		XBOZZ		A3-4ATWB	82247	STRAINER ASSEMBLY	EA	1
17	10	XAOZZ		2812	82247	PLUG,PIPETRAINER BODY CAP	EA	1
17	11	XAOZZ		5851	82247	CAPSTRAINER	EA	1
17	12	XAOZZ		4537A3-44TW	82247	SCREEN,STRAINER	EA	1
17	13	PAOZZ	5330-00-997-1868	5852	82247	GASKET STRAINER SCREEN TO BODY	EA	1
17	14	XAOZZ		5850	82247	BODY,STRAINER.....	EA	1
					39			

NATIONAL STOCK NUMBER AND PART NUMBER INDEX

STOCK NUMBER	FIGURE NO.	ITEM NO.	STOCK NUMBER	FIGURE NO.	ITEM NO.
5315-00-014-1244	11	11	5933-00-655-1575	5	6
5313-00-045-3296	2	3	5340-00-663-3854	5	4
5310-00-045-3296	5	2	5305-00-724-5903	13	9
5305-00-045-8338	14	8	5315-00-761-1680	7	1
6140-00-059-3528	6	6	5310-00-761-6882	9	5
5305-00-068-0502	3	12	6140-00-773-1229	6	11
5305-00-071-1766	1	5	5330-00-806-7624	15	9
5310-00-080-6004	1	2	5310-00-809-4061	6	2
5310-00-080-6004	6	8	5310-00-809-5998	1	6
5310-00-080-6004	7	5	5310-00-809-8546	2	2
4730-00-084-3469	8	10	4330-00-811-8257	12	6
5310-00-087-7493	4	7	5330-00-815-9489	8	19
5310-00-088-0551	14	21	5330-00-833-8984	15	4
5330-00-097-9708	10	2	5330-00-834-3471	15	10
3110-00-155-7315	10	8	3330-00-849-1033	7	11
4730-00-194-3219	16	23	6680-00-854-4623	8	
5310-00-194-1483	12	2	4730-00-854-4628	14	4
4820-00-200-3664	17	1	2805-00-872-5971		
4733-00-202-6694	16	10	3740-00-876-7704	14	
5306-00-206-1071	7	10	4730-00-876-7706	14	3
5306-00-206-1071	9	13	5310-00-877-5797	15	13
4130-00-222-1837	9	11	5310-00-880-7714	4	5
5305-00-225-3838	2	6	5310-00-889-2606	6	1
5306-00-225-8496	10	10	4730-00-908-3194	16	14
5306-00-225-8497	4	9	4320-00-918-9988	8	12
5306-00-225-8498	4	16	2913-00-933-0591	3	5
5306-00-225-8499	13	1	2990-00-934-7928	4	1
5306-00-225-8502	4	15	3740-00-934-7933	2	9
5306-00-226-4831	13	5	4320-00-934-1934	8	
4730-00-229-9289	14	16	3740-00-934-7937	10	
5305-00-269-3210	1	1	3740-00-934-7938	14	9
5305-00-269-3210	4	13	3740-00-934-1940	12	
5305-00-269-3210	6	7	5310-00-934-9758	5	3
5305-00-269-3213	7	4	4733-00-936-5018	17	
5305-30-269-3213	9	18	6685-00-930-5030	15	14
5305-00-269-3214	9	3	6685-00-936-5030	15	16
4730-00-277-1896	14	12	4720-00-936-8139	16	13
4730-00-277-5553	15	1	5330-00-938-5665	14	5
4730-00-277-5553	16	7	4130-00-941-5269	11	9
4730-00-277-5736	16	2	3020-00-972-8724	8	13
4730-00-278-8764	14	14	3740-00-977-8672	14	22
4730-00-289-0147	16	15	5305-00-984-6208	2	4
5310-00-407-9566	15	6	5315-00-984-6208	5	1
5360-30-498-6252	8	6	5305-00-989-7435	15	1
5330-00-542-3717	9	21	5305-00-993-2463	14	7
5940-00-549-6581	6	12	5330-00-995-1494	3	7
5940-00-549-6583	6	4	5330-00-995-1507	11	5
5310-00-550-1130	14	6	3740-00-995-1508	10	12
5320-00-582-3304			3110-00-995-1509	11	13
5320-00-582-3305			3020-00-995-1510	12	14
5310-00-582-5965	2	5	3740-00-995-1511	10	19
5310-00-582-5965	3	10	3030-00-995-1512	9	12
5310-00-582-5965	16	18	4720-00-995-1520	16	20
5310-00-584-5272	1	7	4720-00-995-1521	16	25
5310-00-595-7237	9	19	4720-00-995-1522	16	3
5310-00-637-9541	1	3	5330-00-995-6900	8	5
5310-00-637-9541	4	11	5330-00-997-1867	8	3
5310-00-637-9541	6	9	5330-00-997-1868	17	13
5310-00-637-9541	7	6	5330-00-997-1899	11	1
5310-00-637-9541	10	2	5340-00-999-2621	14	2
4820-00-639-9224	16	8	3740-01-020-1900	9	22
5930-00-655-1521	5	8	3743-01-023-0169	14	1
5930-00-655-1522		5	10		

PART NUMBER	FSCM	FIG. NO.	ITEM NO.	PART NUMBER	FSCM	FIG. NO.	ITEM NO.
AN912-8	88044	16	23	CFA411581	82254	15	16
A3-4ATWB	82247	17		CFA41603	82254	14	24
BP81-3	71176	9	12	CFA41625	82254	16	12
CFA40458	82254	14	17	CFA41627	82254	16	11
CFA40614	82254	17	1	CFA41646	82254	3	6
CFA41528	12254	16	25	CFA41647	82224	3	7
CFA41529	82254	16	3	CFA41651	82254	16	24
CFA4L530	82254	16	20	CFA41681	82254	3	1
CFA41561-1	82254	5	7	CFA41697	82254	4	6
CFA41561-2	82254	5	9	CFA41702	82254	3	3
CFA41576	62254	6	13	CFA41703	82254	3	2
CFA41581	82254	15	14		82254	16	22

NATIONAL STOCK NUMBER AND PART NUMBER INDEX

PART NUMBER	FSCM	FIG. NO.	ITEM NO.	PART NUMBER	FSCM	FIG. NO.	ITEM NO.
CFB41633	82254	12	4	MS51967-7	96906	4	10
CFB41636	82254	12	5	MS51967-7	96906	6	10
CFC41634	82254	12	6	MS51967-7	96906	7	7
CFD41632	82254	12	3	MS51967-75	96906	9	8
CF04L635	82254	12	7	MS63045-1	96906		
CF041654	82254	3	4	MS75004-1	96906	6	12
CFD41685	82254	4	8	MS75004-2	96906	6	4
CFR40570	82254	12	1	MS75047-1	96906	6	6
CFR40605	82254	7	9	MS90725-108	96906	1	5
CFR40626	82254	14	18	MS90725-31	96906	10	10
CFR40826	82254	11	22	MS90725-32	96906	4	9
CFR4J827	82254	11	21	MS90725-33	96906	4	16
CPMX2-143980	00000	9	23	MS90725-34	96906	13	1
CPMX2-144012	00000	9	24	MS90725-38	96906	4	15
CSA40330	82254	8	4	MS90725-4	96906	2	6
CSA47523	82254	3	8	MS90725-59	96906	1	1
CSA47540	82254	3	9	MS90725-59	96906	4	13
MS20066-80	96906	7	1	MS90725-59	969069	6	7
4S20067-183	96906	13	8	MS90725-6	96906	3	12
MS20600AD4W2	96906			MS90725-62	96906	7	4
MS20600A04W3	96906			MS90725-62	96906	9	18
MS21044N04	96906	14	21	MS90725-64	96906	9	3
MS21O44N3	96906	15	13	MS90728-38	96906	13	5
MS21919F5	96906	2	1	P1-1	71956	13	2
MS21919G10	96906	5	4	P1-1-18	71176	9	14
MS24522-3	96906	16	16	P19-16	71176	7	2
MS24693S7	96906	14	8	P19035-28	00736	4	14
MS27183-13	96906	4	7	RL1-2-4	22375	15	7
MS27183-14	96906	1	2	R16-16	03951	11	19
MS27183-14	96906	6	8	SYLEFX1-3-4	14959	17	2
MS27183-14	96906	7	5	WWP471TYPE21TYPEB	81348	16	10
MS27183-15	96906	6	2	XD17	66289	7	10
MS27183-18	96906	1	6	XD17	66289	9	13
MS27183-8	96906	2	2	1-2C	22375	15	8
MS27185-14	96906	9	4	101A710	22375	15	11
MS35058-29	96906	5	8	101A714	22375	15	4
MS35058-30	96906	5	10	101A923	22375	15	10
MS35059-22	96906	5	6	101A926	22375	15	9
MS35206-261	96906	2	4	1028	30327	14	19
MS35206-261	96906	5	1	1038	30327	11	9
MS35207-264	96906	15	15	10991	03951	11	10
MS35207-279	96906	14	7	10991	03951	11	11
MS35291-31	96906	11	15	110B	30327	14	12
MS35291-42	96906	11	3	111B	30327	9	10
MS35308-32	96906	10	18	11140	03951	11	13
MS35333-24	96906	4	4	11150	03951	10	13
MS35333-40	96906	14	6	1128	30327	9	11
MS35333-42	96906	9	19	1128	03951		
MS35333-44	96906	12	2	11248	03951	10	8
MS35338	96906	10	2	112499	03951	11	5
MS35338-43	96906	2	3	112555	03951	10	12
MS35338-43	96906	5	2	11322	03951	11	6
MS35338-44	96906	2	5	114298	03951	10	11
MS35338-44	96906	3	10	11443	03951	10	9
MS35338-44	96906	16	18	11512	03951	11	8
MS35338-45	96906	15	6	11600	03951	11	1
MS35338-46	96906	1	3	11701	03951	11	2
MS35338-46	96906	4	11	11703	03951	10	4
MS35338-46	96906	6	9	11705	03951	10	5
MS35338-46	96906	7	6	11707	03951	10	19
MS35338-48	96906	1	7	11739	03951	10	20
MS35425-42	96906	6	1	117728	03951	11	7
MS35649-102	96906	5	3	117728	03951	10	7
MS35842-1	96906	16	14	13200E5341-8	97403	14	15
MS35915-16	96906	8	11	13200E5432	97403	14	1
MS35915-18	96906	6	5	13200E5350-1	97403	14	3
MS35932-2	96906	16	8	13200E5350-2	97403	14	4
MS39172-4	96906	14	16	13200E5355	97403	9	
MS39173-4	96906	14	11	13200E5338	97403	14	2
MS39177-4	96906	14	14	13200E5353	97403	9	20
MS51066-51	96906	7	11	13204E2411-2	97403	8	
MS51952-2	96906	15	1	13204E2415-4	97403	16	13
MS51952-2	96906	16	7	13206E7943	97403	16	5
MS51963-85	96906	13	9	13206E7944	97403	16	19
MS51967-1	96906	3	11	13207E9896	97403	10	
MS51967-1	96906	16	17	13207E9906-1	97403	9	8
MS51967-1	96906	1	8	13207E9906-1	97403	14	20
MS51967-2	96906	9	5	13207E9906-2	97403	7	8
MS51967 4	96906	4	5	13207E9906-2	97403	16	1
MS51967-7	96906	1	4	13207E9907	97403	14	25

NATIONAL STOCK NUMBER AND PART NUMBER INDEX

PART NUMBER	FSCM	FIG. NO.	ITEM NO.	PART NUMBER	FSCM	FIG. NO.	ITEM NO.
13207E9908-1	97403	16	21	213-10-214-1	09058	8	3
13207E9908-1	97403	16	26	213-10-215	09058	8	6
13207E9908-2	97403	14	13	213-10-216	09058	8	7
13207E9914	97403	16	27	213-10-280	09058	8	1
13207E9919	97403	17		2812	82247	17	10
13207E4402	97403	14	10	3T852	71598	13	3
13211E4405	97403	14	5	3T860	71176	9	16
13211E4410	97403	14	9	3819304	22375	15	6
13212E3235	97403	14	22	3228035	22375	15	3
13214E6112	97403	16	4	3220XAX6	79470	16	15
13214E6113.	97403	6	3	3300X4	79470	16	2
13214E6114-1	97403	13	3	364064	22375	15	12
13214E6116	97403	3	5	3760032	22375	15	5
13214E6123-1	97403	14	23	8910	82247	17	7
13214E6124	97403	14	-	40325	03951	10	17
13214E6126	97403	8		40357	03951	10	15
13214E6129	97403	12		4263	93146	17	8
13214E6131	97403	2	7	429-66	09058	8	8
13214E6132	97403	4	17	4296	93146	17	6
13214E6133	97403	4	3	4537A3-44TW	82247	17	12
13214E6134	97403	4.	12	462-698	09058	8	16
13214E6135	97403	13	7	4649.	93146	17	5
13214E6136	97403	9	1	4652-2	82247	17	9
13214E6137	97403	7	3	466-3989	09058	8	19
13214E6138	97403	2	8	4730-278-4034	82247	16	28
13214E6139	97403	2	8	5305-206-8263	82254	16	9
13214E6140	97403	5	5	5305-543-2271	82254	10	21
13214E6141	97403	5	5	5310-012-0361	82254	17	3
13214E6142	97403	4	2	568702B	03951	11	20
13214E6143	97403	5	11	569021.	03951	11	18
13214E6145-1	97403			5792	03951	11	9
13214E6145-10	97403			5850	82247	17	14
13214E6145-2	97403			5851	82247	17	11
13214E6145-3	97403			5852	82247	17	13
13214E6145-4	97403			5871	82247	11	17
13214E6145-5	97403			5872	03951	11	16
13214E6145-6	97403			60169	03951	12	14
13214E6145-7	97403			6036	03951	10	16
13214E6145-8	97403			6038	03951	11	14
13214E61145-9	97403			6459	03951		
13214E6146	97403	2	9	713-9001-107	03951	8	12
13214E6147	97403	9	7	713-9010-205	09058	8	13
137POO9	22375	15	2	7698	09058	17	4
144575	24617	16	6	7932	82247	9	21
2A042-111	97403			8288	0395F	11	12
213-1-179	09058	8	25	8900	03951	9.	15
213-1-187	09058	8	9	90094	03951	9	1
213-1-401-99	09058	8	11	90102	03951	10	3
213-1-782	09058	8	18	90197	03951	10	1
213-1-783	09058	8	17	90209	03951	9	17
213-1-786	09058	8	21	90247	03951	11	
213-1-903-99	09058	8	22	90259	03951	11	4
213-10-202	09058	8	23	90265	03951	9	2
213-10-204	09058	10	2	90293	03951	10	6
213-10-205-1	09058	8	14	92-1000-1240-18	09058	8	20
213-10-206-1	09058	8	15	92-5660-1348	09058	8	10
213-10-213-1	09058	8	5	92-900-820	09058	8	24

By Order of the Secretary of the Army:

Official:

ROBERT M. JOYCE
Brigadier General, United States Army
The Adjutant General

E. C. MEYER
General, United States Army
Chief of Staff

DISTRIBUTION:

To be distributed in accordance with DA Form 12-25A, Organizational Maintenance requirements for Insect and Pest Control.

***U.S. GOVERNMENT PRINTING OFFICE : 1985 0 - 461-202 (20243)**

The Metric System and Equivalents

Linear Measure

1 centimeter = 10 millimeters = .39 inch
 1 decimeter = 10 centimeters = 3.94 inches
 1 meter = 10 decimeters = 39.37 inches
 1 dekameter = 10 meters = 32.8 feet
 1 hectometer = 10 dekameters = 328.08 feet
 1 kilometer = 10 hectometers = 3,280.8 feet

Weights

1 centigram = 10 milligrams = .15 grain
 1 decigram = 10 centigrams = 1.54 grains
 1 gram = 10 decigram = .035 ounce
 1 dekagram = 10 grams = .35 ounce
 1 hectogram = 10 dekagrams = 3.52 ounces
 1 kilogram = 10 hectograms = 2.2 pounds
 1 quintal = 100 kilograms = 220.46 pounds
 1 metric ton = 10 quintals = 1.1 short tons

Liquid Measure

1 centiliter = 10 milliliters = .34 fl. ounce
 1 deciliter = 10 centiliters = 3.38 fl. ounces
 1 liter = 10 deciliters = 33.81 fl. ounces
 1 dekaliter = 10 liters = 2.64 gallons
 1 hectoliter = 10 dekaliters = 26.42 gallons
 1 kiloliter = 10 hectoliters = 264.18 gallons

Square Measure

1 sq. centimeter = 100 sq. millimeters = .155 sq. inch
 1 sq. decimeter = 100 sq. centimeters = 15.5 sq. inches
 1 sq. meter (centare) = 100 sq. decimeters = 10.76 sq. feet
 1 sq. dekameter (are) = 100 sq. meters = 1,076.4 sq. feet
 1 sq. hectometer (hectare) = 100 sq. dekameters = 2.47 acres
 1 sq. kilometer = 100 sq. hectometers = .386 sq. mile

Cubic Measure

1 cu. centimeter = 1000 cu. millimeters = .06 cu. inch
 1 cu. decimeter = 1000 cu. centimeters = 61.02 cu. inches
 1 cu. meter = 1000 cu. decimeters = 35.31 cu. feet

Approximate Conversion Factors

To change	To	Multiply by	To change	To	Multiply by
inches	centimeters	2.540	ounce-inches	newton-meters	.007062
feet	meters	.305	centimeters	inches	.394
yards	meters	.914	meters	feet	3.280
miles	kilometers	1.609	meters	yards	1.094
square inches	square centimeters	6.451	kilometers	miles	.621
square feet	square meters	.093	square centimeters	square inches	.155
square yards	square meters	.836	square meters	square feet	10.764
square miles	square kilometers	2.590	square meters	square yards	1.196
acres	square hectometers	.405	square kilometers	square miles	.386
cubic feet	cubic meters	.028	square hectometers	acres	2.471
cubic yards	cubic meters	.765	cubic meters	cubic feet	35.315
fluid ounces	milliliters	29.573	cubic meters	cubic yards	1.308
pints	liters	.473	milliliters	fluid ounces	.034
quarts	liters	.946	liters	pints	2.113
gallons	liters	3.785	liters	quarts	1.057
ounces	grams	28.349	liters	gallons	.264
pounds	kilograms	.454	grams	ounces	.035
short tons	metric tons	.907	kilograms	pounds	2.205
pound-feet	newton-meters	1.356	metric tons	short tons	1.102
pound-inches	newton-meters	.11296			

Temperature (Exact)

°F	Fahrenheit temperature	5/9 (after subtracting 32)	Celsius temperature	°C
----	------------------------	----------------------------	---------------------	----

This fine document...

Was brought to you by me:



[Liberated Manuals -- free army and government manuals](#)

Why do I do it? I am tired of sleazy CD-ROM sellers, who take publicly available information, slap “watermarks” and other junk on it, and sell it. Those masters of search engine manipulation make sure that their sites that sell free information, come up first in search engines. They did not create it... They did not even scan it... Why should they get your money? Why are not letting you give those free manuals to your friends?

I am setting this document FREE. This document was made by the US Government and is NOT protected by Copyright. Feel free to share, republish, sell and so on.

I am not asking you for donations, fees or handouts. If you can, please provide a link to liberatedmanuals.com, so that free manuals come up first in search engines:

<A HREF=<http://www.liberatedmanuals.com/>>Free Military and Government Manuals

- Sincerely
Igor Chudov
<http://igor.chudov.com/>
- [Chicago Machinery Movers](#)