

ARMY TM 11-6625-3041-30P
AIR FORCE TO 33A1-8-908-14

DIRECT SUPPORT MAINTENANCE REPAIR
PARTS AND SPECIAL TOOL LISTS
(INCLUDING DEPOT REPORT MAINTENANCE
REPAIR PARTS AND SPECIAL TOOLS)
FOR
DIGITAL DATA GENERATOR SG-1139()/G
(NSN 6625-01-136-2046)

DEPARTMENTS OF THE ARMY AND THE AIR FORCE

19 OCTOBER 1983



5

SAFETY STEPS TO FOLLOW IF SOMEONE IS THE VICTIM OF ELECTRICAL SHOCK

1

DO NOT TRY TO PULL OR GRAB THE INDIVIDUAL

2

IF POSSIBLE, TURN OFF THE ELECTRICAL POWER

3

IF YOU CANNOT TURN OFF THE ELECTRICAL POWER, PULL, PUSH, OR LIFT THE PERSON TO SAFETY USING A WOODEN POLE OR A ROPE OR SOME OTHER INSULATING MATERIAL

4

SEND FOR HELP AS SOON AS POSSIBLE

5

AFTER THE INJURED PERSON IS FREE OF CONTACT WITH THE SOURCE OF ELECTRICAL SHOCK, MOVE THE PERSON A SHORT DISTANCE AWAY AND IMMEDIATELY START ARTIFICIAL RESUSCITATION

ARMY TM 11-6625-3041-30P
AIR FORCE TO 33A1-8-908-14

DIRECT SUPPORT MAINTENANCE REPAIR
PARTS AND SPECIAL TOOL LISTS
(INCLUDING DEPOT REPORT MAINTENANCE
REPAIR PARTS AND SPECIAL TOOLS)
FOR
DIGITAL DATA GENERATOR SG-1139()/G
(NSN 6625-01-136-2046)

DEPARTMENTS OF THE ARMY AND THE AIR FORCE

19 OCTOBER 1983

Technical Manual
No. 11-6625-3041-40P
Technical Order
No. TO 33A1-8-908-14

DEPARTMENTS OF THE ARMY
AND THE AIR FORCE

Washington, DC, 19 October 1983

**DIRECT SUPPORT MAINTENANCE REPAIR PARTS AND SPECIAL TOOLS LIST
[INCLUDING DEPOT MAINTENANCE REPAIR PARTS AND SPECIAL TOOLS]
FOR
DIGITAL DATA GENERATOR SG-1139[]/G
[NSN 6625-01-136-2046]**

Current as of 25 July 1983

REPORTING ERRORS AND RECOMMENDING IMPROVEMENTS

You can help improve this manual. If you find any mistakes or if you know of a way to improve the procedures, please let us know. Mail your letter, DA Form 2028(Recommended Changes to Publications and Blank Forms), or DA Form 2028-2 located in back of this manual direct to: Command, US Army Communications-Electronics Command and Fort Monmouth, ATTN: DRSEL-ME-MP, Fort Monmouth, NJ 07703.

For Air Force, submit AFTO Form 22 (Technical Order System Publication Improvement Report and Reply) in accordance with paragraph 6-5, Section VI, T.O. 00-5-1. Forward direct to prime ALC/MST.

In either case, a reply will be furnished direct to you.

Table of Contents

		Page	Illus Figure
Section	I.	Introduction	1
	II.	Repair Parts List	5
Group	00	Digital Data Generator SG-1139()/G	5
	01	Circuit Card Assembly, Multi Vdc, A1	9
	02	Circuit Card Assembly, AC Input, A2	15
	03	Circuit Card Assembly, Transmit Board, A3	19
	04	Circuit Card Assembly, Transmit 2 Board, A4	23
	05	Circuit Card Assembly, Receive Board A5	27
	06	Circuit Card Assembly, Receive 2 Board, A6	31
	07	Accessory Set	33
		0701 Interface Assembly	35
		0702 Cable Assembly, Power	37
		0703 Cable Assembly, Coaxial	37
	08	Case Assembly, Electrical Equipment	41
		0801 Connector Assembly, Logic	45
		0802 Connector Assembly, Power Supply Interconnect	47
	09	Control Filter Assembly	51
Section	III.	Special Tools List (Not applicable)	
	IV.	National Stock Number and Part Number Index	53

SECTION I INTRODUCTION

1. Scope

This manual lists spares and repair parts; special tools; special test, measurement, and diagnostic equipment (TMDE), and other special support equipment required for performance of direct support maintenance of the SG-1139()/G. It authorizes the requisitioning and issue of spares and repair parts as indicated by the source and maintenance codes.

2. General

This Repair Parts and Special Tools List is divided into the following sections:

a. Section II. Repair Parts List. A list of spares and repair parts authorized for use in the performance of maintenance. The list also includes parts which must be removed for replacement of the authorized parts. Parts lists are composed of functional groups in numeric sequence, with the parts in each group listed in figure and item number sequence.

b. Section III. Special Tools List. Not applicable.

c. Section IV. National Stock Number and Part Number Index. A list, in National item identification number (NIIN) sequence, of all National stock numbers (NSN) appearing in the listings, followed by a list, in alphameric sequence, of all parts numbers appearing in the listings. National stocks numbers and part numbers are cross-referenced to each illustration figure and item number appearance.

3. Explanation of Columns

a. Illustration. This column is divided as follows:

(1) *Figure number.* Indicates the figure number of the illustration on which the item is shown.

(2) *Item number.* The number used to identify item called out in the illustration.

b. Source, Maintenance, and Recoverability (SMR) Codes.

(1) *Source code.* Source codes indicate the manner of acquiring support items for maintenance, repair, or overhaul of end items. Source codes are entered in the first and second positions of the Uniform SMR Code format as follows:

<i>Code</i>	<i>Definition</i>
PA	Item procured and stocked for anticipated or known usage.
PG	Item procured and stocked to provide for sustained support for the life of the equipment. It is applied to an item peculiar to the equipment which,

because of probable discontinuance or shut-down of production facilities, would prove uneconomical to reproduce at a later time.

<i>Code</i>	<i>Definition</i>
XA	Item is not procured or stocked because the requirements for the item will result in the replacement of the next higher assembly.
XB	Item is not procured or stocked. If not available through salvage, requisition.

NOTE

Cannibalization or salvage may be used as a source of supply for any items source coded above except those coded XA and aircraft support items as restricted by AR 750.1.

(2) *Maintenance code.* Maintenance codes are assigned to indicate the levels of maintenance authorized to USE and REPAIR support items. The maintenance codes are entered in the third and fourth positions of the Uniform SMR Code as follows:

(a) The maintenance code entered in the third position will indicate the lowest maintenance level authorized to remove, replace, and use the support item. The maintenance code entered in the third position will indicate one of the following levels of maintenance:

<i>Code</i>	<i>Application/Explanation</i>
O	Support item is removed, replaced, used at the organizational level.
F	Support item is removed, replaced, used at the direct support level.
D	Support items that are removed, replaced, used at depot, mobile depot, specialized repair actively only.

(b) The maintenance code entered in the fourth position indicates whether the item is to be repaired and identifies the lowest maintenance level with the capability to perform complete repair (i.e., all authorized maintenance functions). This position will contain one of the following maintenance codes:

<i>Code</i>	<i>Application/Explanation</i>
H	The lowest maintenance level capable of complete repair of the support item is the general support level.
D	The lowest maintenance level capable of complete repair of the support item is the depot level.
Z	Nonreparable. No repair is authorized.

The maintenance code entered in the third position will indicate one of the following levels of maintenance:

- | <i>Code</i> | <i>Application/Explanation</i> |
|-------------|--|
| 0 | Support item is removed, replaced, used at the organizational level. |
| F | Support item is removed, replaced, used at the direct support level. |
| D | Support items that are removed, replaced, used at depot, mobile depot, specialized repair actively only. |

(b) The maintenance code entered in the fourth position indicates whether the item is to be repaired and identifies the lowest maintenance level with the capability to perform complete repair (i.e., all authorized maintenance functions). This position will contain one of the following maintenance codes:

- | <i>Code</i> | <i>Application/Explanation</i> |
|-------------|---|
| H | The lowest maintenance level capable of complete repair of the support item is the general support level. |
| D | The lowest maintenance level capable of complete repair of the support item is the depot level. |
| Z | Nonreparable. No repair is authorized. |

(3) *Coverability code*. Recoverability codes are assigned to support items to indicate the disposition action on unserviceable items. The recoverability code is entered in the fifth position of the Uniform SMR Code as

follows:

- | <i>Code</i> | <i>Application/Explanation</i> |
|-------------|---|
| Z | Nonreparable item. When unserviceable, condemn and dispose at the level indicated in position 3. |
| H | Reparable item. When uneconomically repairable, condemn and dispose at the general support level. |
| D | Reparable item. When beyond lower level repair capability, return to depot, Condemnation and disposal not authorized below depot level. |
- c. *National Stock Number*. Indicates the National stock number assigned to the item and will be used for requisitioning purposes.
- d. *Federal Supply Code for Manufacturer (FSCM)*. The FSCM is a 5-digit numeric code listed in SB 708-41/42 which is used to identify the manufacturer, distributor, or Government agency, etc.
- e. *Part Number*. Indicates the primary number used by the manufacturer (individual, company, firm, corporation, or Government activity), which controls the design and characteristics of the item by means of its engineering drawings, specifications, standards, and inspection requirements to identify an item or range of items

NOTE

When a stock numbered item is requisitioned, the repair part received may have a different part number than the part being replaced.

Code *Application/Explanation*
(3) *Recoverability code.* Recoverability codes are assigned to support items to indicate the disposition action on unserviceable items. The recoverability code is entered in the fifth position of the Uniform SMR Code as follows:

<i>Recoverability codes</i>	<i>Application/Explanation</i>
Z -	Nonreparable item. When unserviceable, condemn and dispose at the level indicated in position 3.
H -	Reparable item. When uneconomically repairable, condemn and dispose at the general support level.
D -	Reparable item. When beyond lower level repair capability, return to depot, Condemnation and disposal not authorized below depot level.

c. National Stock Number. Indicates the National stock number assigned to the item and will be used for requisitioning purposes.

d. Federal Supply Code for Manufacturer (FSCM). The FSCM is a 5-digit numeric code listed in SB 708-41/42 which is used to identify the manufacturer, distributor, or Government agency, etc.

e. Part Number. Indicates the primary number used by the manufacturer (individual, company, firm, corporation, or Government activity), which controls the design and characteristics of the item by means of its engineering drawings, specifications, standards, and inspection requirements to identify an item or range of item^s.

NOTE

When a stock numbered item is requisitioned, the repair part received may have a different part number than the part being replaced.

f. Description. Indicates the Federal item name and, if required, a minimum description to identify the item.

g. Unit of Measure (U/M). Indicates the standard of the basic quantity of the listed item as used in performing the actual maintenance function. This measure is expressed by a two-character alphabetical abbreviation (e.g., ea, in, pr, etc). When the unit of measure differs from the unit of issue, the lowest unit of issue that will satisfy the required units of measure will be requisitioned.

h. Quantity Incorporated in Unit. Indicates the quantity of the item used in the breakout shown on the illustration figure, which is prepared for a functional group, subfunctional group, or an assembly.

4. Special Information

a. The following publications pertain to the SG-1139()/G and its components:

- TM 11-6625-3041-12, Digital Data Generator SG-1139()/G (To be published)
- TM 11-6625-3041-20P, Digital Data Generator SG-1139()/G (To be published)
- TM 11-6625-3041-40, Digital Data Generator SG-1139()/G (To be published)

b. National stock numbers (NSN'S) that are missing from P source coded items have been applied for and will be added to this TM by future change/revision when they are entered in the Army Master Data File (AMDF). Until the NSN'S are established and published, submit exception requisitions to: Commander, US Army Communications - Electronics Command and Fort Monmouth, ATTN: DRSEL-MM, Fort Monmouth, NJ 07703 for the part required to support your equipment.

5. How to Locate Repair Parts

a. When National stock number or part number is unknown.

(1) *First.* Using the table of contents, determine the functional group within which the item belongs. This is necessary since illustrations are prepared for functional groups and listings are divided into the same groups.

(2) *Second.* Find the illustration covering the functional group to which the item belongs.

(3) *Third.* Identify the item on the illustration and note the illustration figure and item number of the item.

(4) *Fourth.* Using the Repair Parts Listing, find the figure and item number noted on the illustration.

b. When National stock number or part number is known.

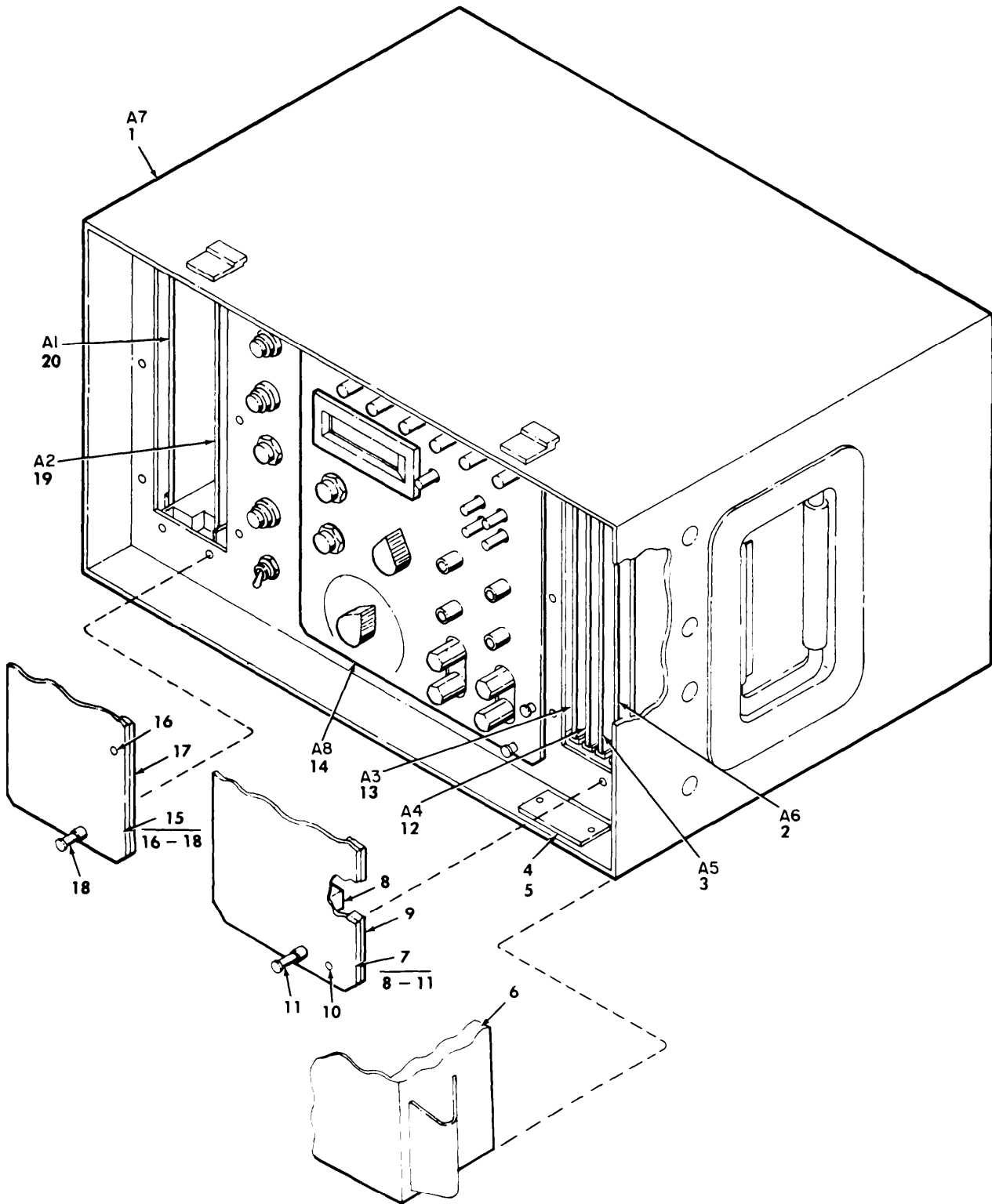
(1) *First.* Using the Index of National Stock Numbers and Part Numbers, find the pertinent National stock number or part number. This index is in NIIN sequence followed by a list of part numbers in alphameric sequence, cross-referenced to the illustration figure number and item number.

(2) *Second.* After finding the figure and item number, locate the figure and item number in the repair parts list.

6. Abbreviations

Not applicable.

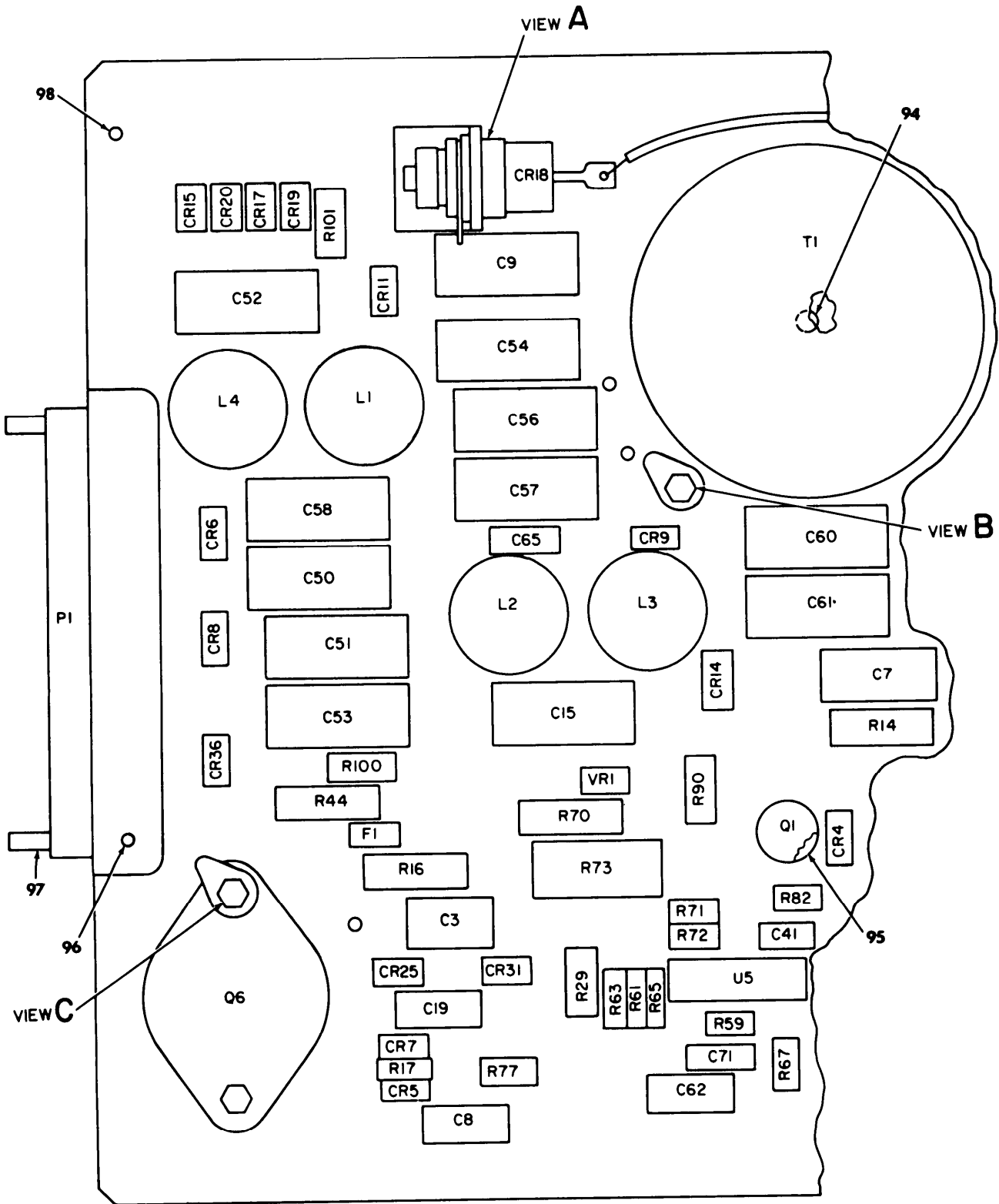
(Next printed page is 4).



EL8TKOOI

Figure 1. Digital Data Generator SG-1139()/G

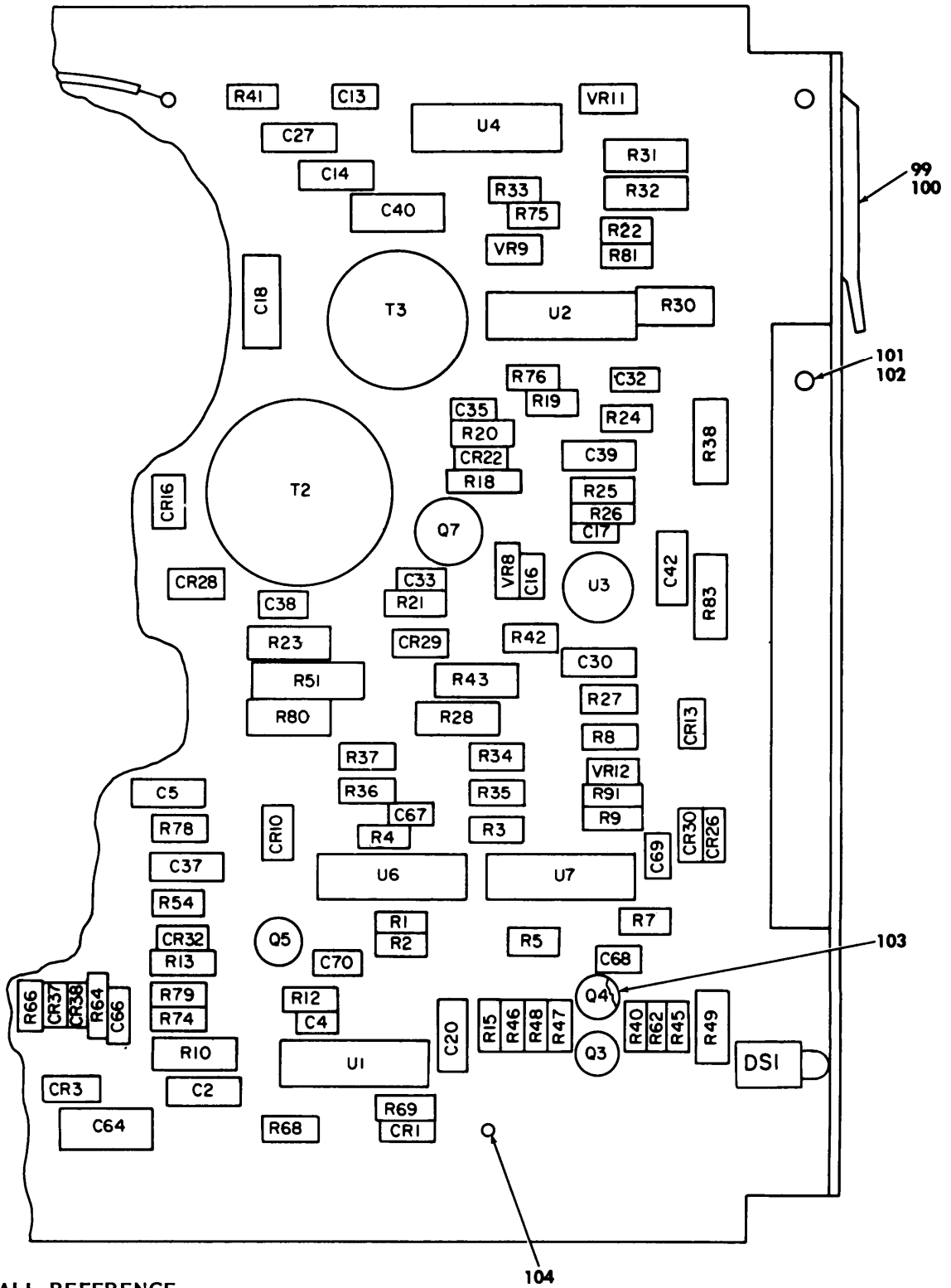
(1) ILLUSTRATION (a) FIG NO	(b) ITEM NO	(2) SMR CODE	(3) NATIONAL STOCK NUMBER	(4) FSCM	(5) PART NUMBER	(6) DESCRIPTION USABLE ON CODE	(7) U/M	(8) QTY INC IN UNIT
GROUP 00 DIGITAL DATA GENERATOR								
SG-1139()/G								
1	1	SBDDD		56996	B4027018	CASE ASSY ELEC EQPT	EA	1
1	2	PAODD	6625-01-146-4053	56996	B4027014	CIRCUIT CARD ASSEMB	EA	1
1	3	PAODD	6625-01-146-4052	56996	B4027010	CIRCUIT CARD ASSEMB	EA	1
1	4	XBDZZ		56996	B4027083	NAMEPLATE	EA	1
1	5	PADZZ	5305-00-175-3230	96906	MS21318-14	SCREW,DRIVE	EA	2
1	6	XBOHH		56996	B4027022	COVER,ACCESS ASSY	EA	1
1	7	XBODD		56996	B4027054	COVER,FRONT ACCESS	EA	1
1	8	XBDZZ		56996	B4027054-5	RUBBER STRIP	EA	2
1	9	XBDZZ		56996	B4027052	SHIELDING GSKT,ELEC	EA	1
1	10	PADZZ	5320-00-117-6938	18876	801118	RIVET,SOLID	EA	8
1	11	PADZZ		08524	HRT7900-8Q-B-4	SCREW ASSY,CAPTIVE	EA	8
1	12	PAODD	6625-01-146-4051	56996	B4027006	CIRCUIT CARD ASSEMB	EA	1
1	13	PAODD	6625-01-146-4050	56996	B4027002	CIRCUIT CARD ASSEMB	EA	1
1	14	PAODD	6625-01-146-3863	56996	B4027043	CONTROL FILTER ASSE	EA	1
1	15	XBODD		56996	B4027055	COVR,FRONT ACCESS	EA	1
1	16	PADZZ	5320-00-117-6938	11876	801118	RIVET,SOLID	EA	6
1	17	XBDZZ		56996	B4027051	SHIELDING GSKT,ELEC	EA	1
1	18	PADZZ		08524	HRT7900-8Q-8-4	SCREW ASSY,CAPTIVE	EA	10
1	19	PAODD	5820-01-140-1289	80063	SM-D-884579	CIRCUIT CARD ASSEMB	EA	1
1	20	PAODD	5820-01-140-1287	80063	SM-D-884567	CIRCUIT CARD ASSEMB	EA	1



PREFIX ALL REFERENCE
DESIGNATIONS WITH A1

EL8TK002

Figure 2. Circuit card assembly, multi Vdc, A1 (sheet 1 of 3)



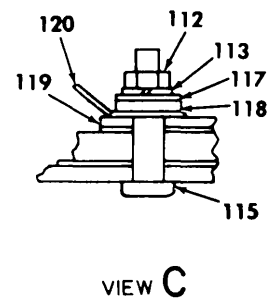
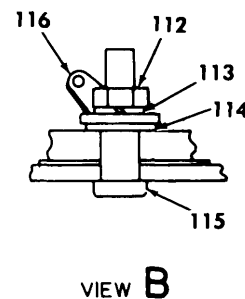
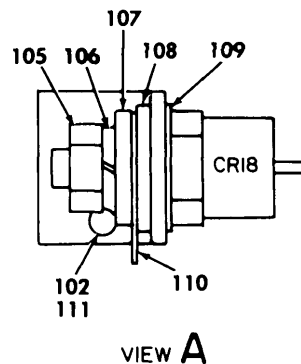
PREFIX ALL REFERENCE DESIGNATIONS WITH A1

EL8TK003

Figure 2. Circuit card assembly, multi Vdc, A1 (sheet 2 of 3)

LEGEND

REF DES	ITEM No.	REF DES	ITEM NO.	REF DES	ITEM NO.	REF DES	ITEM NO.	REF DES	ITEM NO.
C2	1	CR1	17	Q6	31	R46	45	U7	89
C3	2	CR3	17	Q7	32	R47	66		
C4	3	CR4	18			R48	42	VR1	90
C5	4	CR5	19	R1	33	R49	67	VR8	91
C7	5	CR6	20	R2	34	R51	68	VR9	92
C8	6	CR7	19	R3	35	R54	69	VR11	93
C9	7	CR8	20	R4	36	R59	70	VR12	91
C13	3	CR9	20	R5	37	R61	71		
C14	4	CR10	17	R7	38	R62	45		
C15	8	CR11	20	R8	39	R63	45		
C16	9	CR13	17	R9	40	R64	72		
C17	10	CR14	21	R10	41	R65	45		
C18	11	CR15	21	R12	42	R66	72		
C19	12	CR16	21	R13	43	R67	52		
C20	4	CR17	21	R14	44	R68	43		
C27	4	CR18	22	R15	45	R69	73		
C30	4	CR19	21	R16	46	R70	74		
C32	9	CR20	21	R17	47	R71	45		
C33	3	CR22	17	R18	48	R72	45		
C35	13	CR25	23	R19	49	R73	75		
C37	4	CR26	17	R20	50	R74	70		
C38	3	CR28	18	R21	49	R75	76		
C39	4	CR29	18	R22	43	R76	43		
C40	11	CR30	17	R23	51	R77	77		
C41	14	CR31	23	R24	45	R78	43		
C42	4	CR32	17	R25	43	R79	78		
C50	7	CR36	18	R26	52	R80	63		
C51	7	CR37	17	R27	45	R81	66		
C52	7	CR38	17	R28	53	R82	72		
C53	7			R29	54	R83	63		
C54	7	DS1	24	R30	55	R 90	79		
C56	8			R31	56	R91	80		
C57	8	F1	25	R32	57	R100	81		
C58	8			R33	58	R101	81		
C60	8	L1	26	R34	59				
C61	8	L2	26	R35	60	T1	82		
C62	15	L3	26	R36	61	T2	83		
C64	15	L4	26	R37	62	T3	84		
C65	4			R38	63				
C66	14	P1	27	R40	45	U1	85		
C67	16			R41	49	U2	86		
C68	16	Q1	28	R42	49	U3	87		
C69	16	Q3	29	R43	64	U4	88		
C70	16	Q4	30	R44	65	U5	89		
C71	4	Q5	29	R45	49	U6	89		



PREFIX ALL REFERENCE DESIGNATIONS WITH A1

EL8TK004

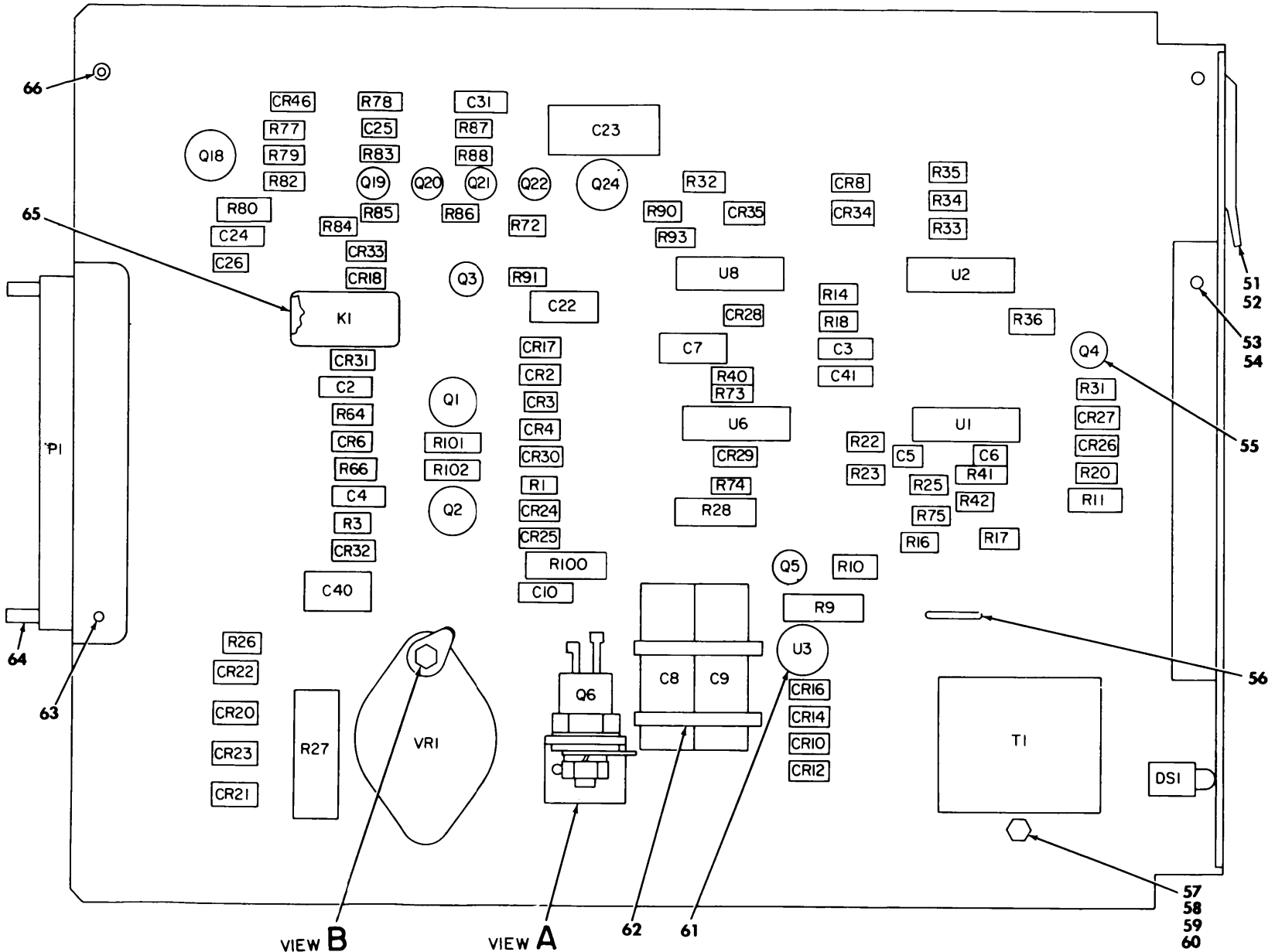
Figure 2. Circuit card assembly, multi Vdc, A1 (sheet 3 of 3)

(1) ILLUSTRATION (a) FIG NO	(2) (b) ITEM NO	(3) NATIONAL STOCK NUMBER	(4) FSCM	(5) PART NUMBER	(6) DESCRIPTION USABLE ON CODE	(7) U/M	(8) QTY INC IN UNIT
GROUP 01 CIRCUIT CARD ASSEMBLY							
MULTI VDC,AL							
2	1	PADZZ		81349	CCR77CG161FM	EA	1
2	2	PADZZ	5910-00-113-5540	81349	M39014/05-2310	EA	1
2	3	PADZZ	5910-00-098-9281	81349	M39014/05-2237	EA	4
2	4	PADZZ	5910-00-113-5610	81349	M39014-05-2291	EA	10
2	5	PADZZ	5910-01-125-4353	81349	M39006/09-8304	EA	1
2	6	PADZZ	5910-01-100-6977	81349	M39006/09-8315	EA	1
2	7	PADZZ		81349	M39003/09-0031	EA	6
2	8	PADZZ	5910-01-150-3493	81349	M39003/09-0064	EA	6
2	9	PADZZ	5910-00-176-2295	81349	M39014/05-2213	EA	2
2	10	PADZZ	5910-01-030-8388	81349	M39014/05-2655	EA	1
2	11	PADZZ	5910-00-189-4248	81349	M39003-01-2977	EA	2
2	12	PADZZ		81349	M39006/09-8210	EA	1
2	13	PADZZ	5910-00-114-0804	81349	M39014/05-2243	EA	1
2	14	PADZZ	5910-00-010-8721	81349	M39014-02-1419	EA	2
2	15	PADZZ	5910-01-036-9186	81349	M39006/09-8318	EA	2
2	16	PADZZ	5910-00-010-8717	81349	M39014/01-1473	EA	4
2	17	PADZZ	5961-01-038-6918	81349	JAN1N4148-1	EA	10
2	18	PADZZ	5961-01-016-8856	81349	JAN1N649-1	EA	4
2	19	PADZZ	5961-00-404-9136	81349	JAN1N5615	EA	2
2	20	PADZZ	5961-00-237-2384	81349	JAN1N5614	EA	4
2	21	PADZZ	5961-00-472-0762	81349	JAN1N5418	EA	6
2	22	PADZZ	5961-01-085-0517	81349	JAN1N5816	EA	1
2	23	PADZZ	5961-00-165-2903	81349	JAN1N5619	EA	2
2	24	PADZZ		72619	550-2406-100	EA	1
2	25	PADZZ	5920-00-004-0274	81349	FM04A125V1A	EA	1
2	26	PADZZ		10581	13728	EA	4
2	27	PADZZ		25330	GC2801	EA	1
2	28	PADZZ		81349	JAN2N3439A	EA	1
2	29	PADZZ	5961-00-951-8757	81349	JAN2N2222A	EA	2
2	30	PADZZ	5961-00-925-3777	81349	JAN2N2907A	EA	1
2	31	PADZZ	5961-01-077-5440	81349	JAN2N6547	EA	1
2	32	PADZZ	5961-00-777-0925	81349	JAN2N2326A	EA	1
2	33	PADZZ	5905-01-016-0000	81349	RLR07C7500FR	EA	1
2	34	PADZZ	5905-01-074-2985	81349	RLR07C2050FR	EA	1
2	35	PADZZ	5905-01-070-9476	81349	RLR07C1272FR	EA	1
2	36	PADZZ	5905-01-021-1493	81349	RLR07C8251FR	EA	1
2	37	PADZZ	5905-00-481-1110	81349	RNC55H4991FS	EA	1
2	38	PADZZ	5905-00-005-2902	81349	RNC55H3012FS	EA	1

(1) ILLUSTRATION (a) FIG NO	(2) (b) ITEM NO	(3) SMR CODE	(4) NATIONAL STOCK NUMBER	(5) FSCM	(6) PART NUMBER	(7) DESCRIPTION USABLE ON CODE	(8) QTY INC IN UNIT
2	39	PADZZ	5905-01-044-2935	81349	RNC55H5901FM	RESISTOR, FIXED, FILM	EA 1
2	40	PADZZ	5905-01-038-7846	81349	RLR07C2052FR	RESISTOR, FIXED, FILM	EA 1
2	41	PADZZ	5905-00-481-3076	81349	RNC60H6192FS	RESISTOR, FIXED, FILM	EA 1
2	42	PADZZ	5905-01-047-1530	81349	RLR07C2201GR	RESISTOR, FIXED, FILM	EA 2
2	43	PADZZ	5905-01-047-1529	81349	RLR07C1001GR	RESISTOR, FIXED, FILM	EA 6
2	44	PADZZ	5905-01-057-8113	81349	RLR32C5600GR	RESISTOR, FIXED, FILM	EA 1
2	45	PADZZ	5905-01-047-1531	81349	RLR07C1002GR	RESISTOR, FIXED, FILM	EA 10
2	46	PADZZ	5905-00-133-0381	81349	RCR32G562JR	RESISTOR, FIXED, COMP	EA 1
2	47	PADZZ	5905-00-721-0009	81349	RLR07C1800GR	RESISTOR, FIXED, FILM	EA 1
2	48	PADZZ	5905-00-450-8530	81349	RLR07C1500GR	RESISTOR, FIXED, FILM	EA 1
2	49	PADZZ	5905-00-458-9263	81349	RLR07C1000GR	RESISTOR, FIXED, FILM	EA 5
2	50	PADZZ	5905-01-086-5553	81349	RLR07C1690FR	RESISTOR, FIXED, FILM	EA 1
2	51	PADZZ	5905-00-138-1283	81349	RNC60H1002FS	RESISTOR, FIXED, FILM	EA 1
2	52	PADZZ	5905-00-116-8554	81349	RCR07G105JS	RESISTOR, FIXED, COMP	EA 2
2	53	PADZZ	5905-00-146-4159	81349	RNC60H3651FS	RESISTOR, FIXED, FILM	EA 1
2	54	PADZZ	5905-01-138-3786	81349	RLR20C3833FR	RESISTOR, FIXED, FILM	EA 1
2	55	PADZZ	5905-00-445-1684	81349	M39015/3-007WM	RESISTOR, VARIABLE, W	EA 1
2	56	PADZZ	5905-00-402-9225	81349	RNC60H1621FS	RESISTOR, FIXED, FILM	EA 1
2	57	PADZZ	5905-00-185-5443	81349	RNC60H4421FS	RESISTOR, FIXED, FILM	EA 1
2	58	PADZZ	5905-00-240-7955	81349	RLR07C22R0GR	RESISTOR, FIXED, FILM	EA 1
2	59	PADZZ	5905-00-477-9176	81349	RNC55H2001FS	RESISTOR, FIXED, FILM	EA 1
2	60	PADZZ	5905-00-284-5525	81349	RNC55H5230FS	RESISTOR, FIXED, FILM	EA 1
2	61	PADZZ	5905-00-285-1289	81349	RNC55H7680FS	RESISTOR, FIXED, FILM	EA 1
2	62	PADZZ	5905-00-484-7888	81349	RNC55H1741FS	RESISTOR, FIXED, FILM	EA 1
2	63	PADZZ	5905-00-165-3107	81349	RNC60H2002FS	RESISTOR, FIXED, FILM	EA 3
2	64	PADZZ	5905-00-468-5820	81349	RNC60H2050FS	RESISTOR, FIXED, FILM	EA 1
2	65	PADZZ	5905-00-246-9399	81349	RCR32G202JS	RESISTOR, FIXED, COMP	EA 1
2	66	PADZZ	5905-00-400-9612	81349	RLR07C5601GR	RESISTOR, FIXED, FILM	EA 2
2	67	PADZZ	5905-00-196-7213	81349	RLR20C6800GR	RESISTOR, FIXED, FILM	EA 1
2	68	PADZZ	5905-01-057-8113	81349	RLR3205600GR	RESISTOR, FIXED, FILM	EA 1
2	69	PADZZ	5905-00-458-9267	81349	RLR07C2200GR	RESISTOR, FIXED, FILM	EA 1
2	70	PADZZ	5905-01-021-1497	81349	RLR07C5111FR	RESISTOR, FIXED, FILM	EA 2
2	71	PADZZ	5905-01-064-6736	81349	RLR07C1202GR	RESISTOR, FIXED, FILM	EA 1
2	72	PADZZ	5905-01-033-3492	81349	RLR07C5110FR	RESISTOR, FIXED, FILM	EA 3
2	73	PADZZ	5905-00-436-8557	81349	RLR07C1203GR	RESISTOR, FIXED, FILM	EA 1
2	74	PADZZ		81349	RLR32C1203FR	RESISTOR, FIXED FILM	EA 1
2	75	PADZZ		81349	RL425822GTX	RESISTOR, FIXED FILM	EA 1
2	76	PADZZ	5905-00-240-7950	81349	RLR07C1501GR	RESISTOR, FIXED, FILM	EA 1
2	77	PADZZ	5905-00-240-7949	81349	RLR07C15R0GR	RESISTOR, FIXED, FILM	EA 1
2	78	PADZZ	5905-00-438-0505	81349	RLR07C4701GR	RESISTOR, FIXED, FILM	EA 1

(1) ILLUSTRATION (a) FIG NO	(2) (b) ITEM NO	(3) NATIONAL STOCK NUMBER	(4) FSCM	(5) PART NUMBER	(6) DESCRIPTION USABLE ON CODE	(7) U/M	(8) QTY INC IN UNIT
2	79	PADZZ 5905-00-484-7566	81349	RLR20C10R0GR	RESISTOR, FIXED, FILM	EA	1
2	80	PADZZ 5905-01-086-1700	81349	RLR07C3480FR	RESISTOR, FIXED, FILM	EA	1
2	81	PADZZ 5905-01-016-0005	81349	RLR20C5110FR	RESISTOR, FIXED, FILM	EA	2
2	82	PADZZ	10581	13729	TRANSFORMER, POWER	EA	1
2	83	PADZZ	10581	13547	TRANSFORMER, POWER	EA	1
2	84	PADZZ	10581	13544	TRANSFORMER, CURRENT	EA	1
2	85	PADZZ	80063	SM-A-959304	MICROCIRCUIT, DIGITA	EA	1
2	86	PADZZ	81349	M38510/10304BCX	MICROCIRCUIT, LINEAR	EA	1
2	87	PADZZ	80063	SM-A-959303	MICROCIRCUIT, LINEAR	EA	1
2	88	PADZZ 5962-00-417-1080	81349	M38510/10201BCB	MICROCIRCUIT, LINEAR	EA	1
2	89	PGDZZ	81349	M38510/11201BCX	MICROCIRCUIT, LINEAR	EA	3
2	90	PADZZ 5961-00-008-8361	81349	JAN1N4104	SEMICONDUCTOR DEVICE	EA	1
2	91	PADZZ 5961-00-821-2309	81349	JAN1N751A	SEMICONDUCTOR DEVIC	EA	2
2	92	PADZZ 5961-00-222-2514	81349	JAN1N4620	SEMICONDUCTOR DEVIC	EA	1
2	93	PADZZ 5961-00-333-9058	81349	JAN1N4622	SEMICONDUCTOR DEVIC	EA	1
2	94	PADZZ 5305-00-054-5651	96906	MS51957-17	SCREW, MACHINE	EA	1
2	95	PADZZ 5999-00-110-1109	80063	SMA544876	MOUNTING PAD, ELECTR	EA	2
2	96	PADZZ 5320-00-837-4885	96906	MS16535-25	RIVET, TUBULAR	EA	2
2	97	PADZZ	80063	SM-B-876188	PIN, KEYING	EA	2
2	98	PADZZ 5315-00-881-2253	96906	MS16562-221	PIN, SPRING	EA	1
2	99	PADZZ	80063	SM-D-884662	EXTRACTOR	EA	1
2	100	PADZZ 5315-00-823-8743	96906	MS16562-219	PIN, SPRING	EA	1
2	101	XBDZZ	80063	SM-C-884688	BARRIER, PROTECTIVE	EA	1
2	102	PADZZ 5320-00-243-8357	96906	MS20470AD2-5	RIVET, SOLID	EA	9
2	103	PADZZ 5999-01-136-4069	81349	M38527/1-03D	MOUNTING PAD, ELECTR	EA	3
2	104	PADZZ 5940-00-915-6128	81349	SE25XC02	TERMINAL, STUD	EA	1
2	105	PADZZ 5310-00-812-4292	80205	NAS671C10	NUT PLAIN HEXAGON	EA	1
2	106	PADZZ 5310-00-933-8120	96906	MS35338-138	WASHER, LOCK	EA	1
2	107	PADZZ 5310-00-619-1148	96906	MS15795-808	WASHER, FLAT	EA	1
2	108	PADZZ	04813	A000-096	WASHER, SHOULDERED	EA	1
2	109	PADZZ 5970-01-032-4410	81349	M38526/1-102	INSULATOR, WASHER	EA	1
2	110	PADZZ 5940-00-683-4339	96906	MS35431-7	TERMINAL, LUG	EA	1
2	111	XBDZZ	80063	SM-C-884614	SCR BRACKET	EA	1
2	112	PADZZ 5310-00-812-4294	80205	NAS671C2	NUT, PLAIN, HEXAGON	EA	3
2	113	PADZZ 5310-00-928-2690	96906	MS35338-134	WASHER, LOCK	EA	3
2	114	PADZZ 5310-00-126-0022	96906	MS16213-57	WASHER, LOCK	EA	1
2	115	PADZZ 5305-00-054-5642	96906	MS51957-8	SCREW, MACHINE	EA	3
2	116	PADZZ 5940-00-614-0537	96906	MS35431-1	TERMINAL, LUG	EA	1
2	117	PADZZ 5310-00-595-6761	96906	MS15795-802	WASHER, FLAT	EA	2
2	118	PADZZ	04813	A000-076	WASHER, SHOULDERED	EA	2

(1)	(2)	(3)	(4)	(5)	(6)	(7)	(8)
ILLUSTRATION					DESCRIPTION		QTY
(a)	(b)		NATIONAL				INC
FIG	ITEM	SMR	STOCK	PART			IN
NO	NO	CODE	NUMBER	FSCM	NUMBER	USABLE ON CODE	U/M
							UNIT
2	119	PADZZ	5970-01-152-2595	18565	60-11-6875-1671	INSULATOR, PLATE	EA 1
2	120	PADZZ	5940-00-050-2308	96906	MS0035431-3	TERMINAL, LUG	EA 1



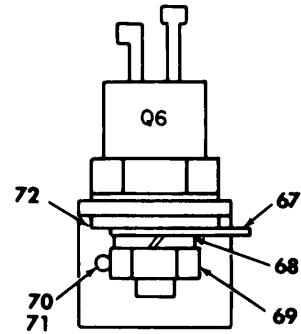
PREFIX ALL REFERENCE
DESIGNATIONS WITH A2

EL8TK005

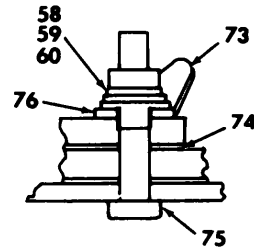
Figure 3. Circuit card assembly, AC input, A2 (sheet 1 of 2)

LEGEND

REF DES	ITEM NO.	REF DES	ITEM NO.	REF DES	ITEM NO.
C2	1	DS1	13	R72	33
C3	1			R73	34
C4	1	K1	14	R74	34
C5	2			R75	26
C6	2	P1	15	R77	35
C7	3			R78	36
C8	4	Q1	16	R79	36
C9	4	Q2	16	R80	37
C10	1	Q3	17	R82	36
C22	3	Q4	17	R83	38
C23	5	Q5	17	R84	39
C24	1	Q6	18	R85	40
C25	6	Q18	19	R86	22
C26	2	Q19	17	R87	41
C31	1	Q20	17	R88	41
C40	7	Q21	17	R90	31
C41	1	Q22	20	R91	42
		Q24	21	R93	26
CR2	8			R100	43
CR3	9	R1	22	R101	44
CR4	8	R3	22	R102	44
CR6	8	R9	23		
CR8	10	R10	24	T1	45
CR10	8	R11	25		
CR12	8	R14	26	U1	46
CR14	8	R16	26	U2	47
CR16	8	R17	26	U3	48
CR17	8	R18	26	U6	49
CR18	8	R20	26	U8	47
CR20	11	R22	27		
CR21	11	R23	26	VR1	50
CR22	11	R25	28		
CR23	11	R26	22		
CR24	8	R27	29		
CR25	8	R28	30		
CR26	8	R31	31		
CR27	8	R32	31		
CR28	12	R33	26		
CR29	12	R34	26		
CR30	8	R35	26		
CR31	8	R36	26		
CR32	8	R40	32		
CR33	8	R41	28		
CR34	8	R42	28		
CR35	8	R64	22		
CR46	12	R66	22		



VIEW A



VIEW B

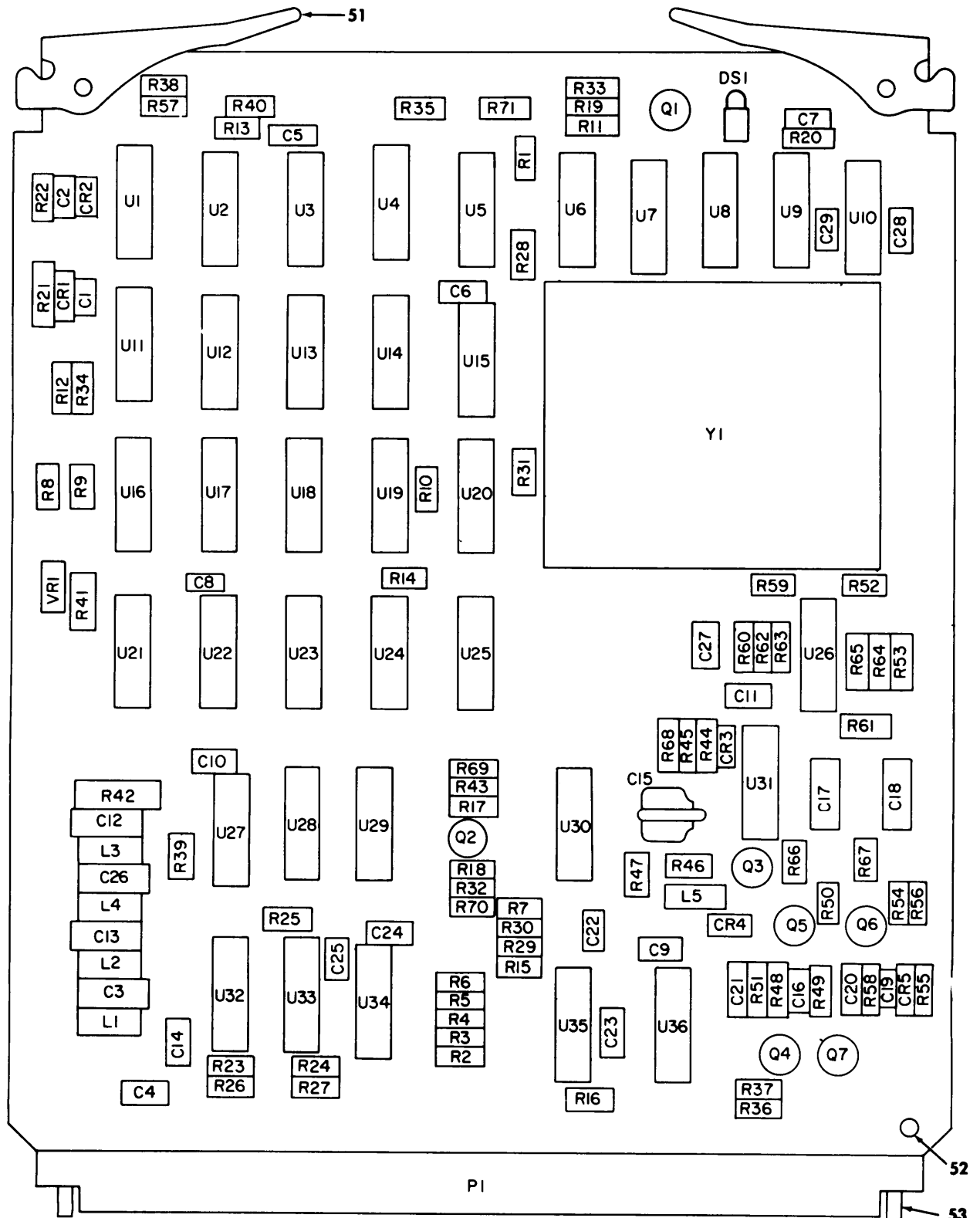
PREFIX ALL REFERENCE
DESIGNATIONS WITH A2

EL8TK006

Figure 3. Circuit card assembly, AC input, A2 (sheet 2 of 2)

(1) ILLUSTRATION (a) FIG NO	(2) (b) ITEM NO	(3) NATIONAL STOCK NUMBER	(4) FSCM	(5) PART NUMBER	(6) DESCRIPTION USABLE ON CODE	(7) U/M	(8) QTY INC IN UNIT
GROUP 02 CIRCUIT CARD ASSEMBLY							
AC INPUT,A2							
3	1	PADZZ 5910-00-113-5610	81349	M39014-05-2291	CAPACITOR, FIXED, CER	EA	7
3	2	PADZZ 5910-00-098-9281	81349	M39014/05-2237	CAPACITOR, FIXED, CER	EA	3
3	3	PADZZ 5910-01-036-9186	81349	M39006/09-8318	CAPACITOR, FIXED, ELE	EA	2
3	4	PADZZ 5910-01-119-4348	81349	M39006/22-0580	CAPACITOR, FIXED, ELE	EA	2
3	5	PADZZ 5910-00-236-8745	81349	M39003-01-3021	CAPACITOR, FIXED, ELE	EA	1
3	6	PADZZ 5910-00-185-4009	81349	M39014/05-2245	CAPACITOR, FIXED, CER	EA	1
3	7	PADZZ 5910-00-186-9522	81349	M39014/05-2321	CAPACITOR, FIXED, CER	EA	1
3	8	PADZZ 5961-01-016-8856	81349	JAN1N649-1	SEMICONDUCTOR DEVIC	EA	19
3	9	PADZZ 5961-00-237-2384	81349	JAN1N5614	SEMICONDUCTOR DEVIC	EA	1
3	10	PADZZ 5961-00-232-3279	81349	JAN1N5711	SEMICONDUCTOR DEVIC	EA	1
3	11	PADZZ 5961-00-140-0031	81349	JAN1N5551	SEMICONDUCTOR DEVIC	EA	4
3	12	PADZZ 5961-01-038-6918	81349	JAN1N4148-1	SEMICONDUCTOR DEVIC	EA	3
3	13	PADZZ	72619	550-2406-100	SEMICON DEVICE, DIOD	EA	1
3	14	PADZZ 5945-01-054-6752	81349	M39016/6-116M	RELAY, ELECTROMAGNET	EA	1
3	15	PADZZ	25330	GC2801	CONNECTOR, PLUG, ELEC	EA	1
3	16	PADZZ 5961-00-777-0925	81349	JAN2N2326A	SEMICONDUCTOR DEVIC	EA	2
3	17	PADZZ 5961-00-951-8757	81349	JAN2N2222A	TRANSISTOR	EA	6
3	18	PADZZ 5961-00-983-7279	81349	JAN2N1777A	SEMICONDUCTOR DEVIC	EA	1
3	19	PADZZ 5961-00-926-0237	81349	JAN2N2369A	TRANSISTOR	EA	1
3	20	PADZZ 5961-00-925-3777	81349	JAN2N2907A	TRANSISTOR	EA	1
3	21	PADZZ 5961-00-241-3456	81349	JAN2N3019	TRANSISTOR	EA	1
3	22	PADZZ 5905-01-047-1529	81349	RLR07C1001GR	RESISTOR, FIXED, FILM	EA	6
3	23	PADZZ 5905-01-080-2155	81349	RLR32C8202GR	RESISTOR, FIXED, FILM	EA	1
3	24	PADZZ 5905-00-240-7983	81349	RLR07C8202GR	RESISTOR, FIXED, FILM	EA	1
3	25	PADZZ 5905-00-196-7213	81349	RLR20C6800GR	RESISTOR, FIXED, FILM	EA	1
3	26	PADZZ 5905-01-047-1531	81349	RLR07C1002GR	RESISTOR, FIXED, FILM	EA	12
3	27	PADZZ 5905-01-067-7341	81349	RLR07C7151FR	RESISTOR, FIXED, FILM	EA	1
3	28	PADZZ 5905-01-021-1497	81349	RLR07C5111FR	RESISTOR, FIXED, FILM	EA	3
3	29	PADZZ 5905-00-163-7094	81349	RWR74S24R9FM	RESISTOR, FIXED, WIRE	EA	1
3	30	PADZZ 5905-01-065-0682	81349	RLR32C2200GR	RESISTOR, FIXED, FILM	EA	1
3	31	PADZZ 5905-01-042-3729	81349	RLR07C3301GR	RESISTOR, FIXED, FILM	EA	3
3	32	PADZZ 5905-01-050-4106	81349	RLR07C1004GR	RESISTOR, FIXED, FILM	EA	1
3	33	PADZZ 5905-00-401-8683	81349	RLR07C2700GR	RESISTOR, FIXED, FILM	EA	1
3	34	PADZZ 5905-01-064-8328	81349	RLR07C1003GR	RESISTOR, FIXED, FILM	EA	2
3	35	PADZZ 5905-01-047-1530	81349	RLR07C2201GR	RESISTOR, FIXED, FILM	EA	1
3	36	PADZZ 5905-01-038-6281	81349	RLR07C4222FR	RESISTOR, FIXED, FILM	EA	3
3	37	PADZZ 5905-01-026-0744	81349	RLR20C51P1FR	RESISTOR, FIXED, FILM	EA	1
3	38	PADZZ 5905-00-419-0189	81349	RLR07C1801GR	RESISTOR, FIXED, FILM	EA	1

(1) ILLUSTRATION (a) FIG NO	(2) (b) ITEM NO	(3) SMR CODE	(4) NATIONAL STOCK NUMBER	(5) FSCM	(6) PART NUMBER	(7) DESCRIPTION USABLE ON CODE	(8) QTY INC IN UNIT
3	39	PADZZ	5905-01-076-6256	81349	RLR07C3650FR	RESISTOR, FIXED, FILM	EA 1
3	40	PADZZ	5905-00-240-7948	81349	RLR07C1201GR	RESISITOR, FIXED, FILM	EA 1
3	41	PADZZ	5905-00-458-9263	81349	RLR07C1000GR	RESISTOR, FIXED, FILM	EA 2
3	42	PADZZ	5905-00-438-0505	81349	RLR07C4701GR	RESISTOR, FIXED, FILM	EA 1
3	43	PADZZ	5905-01-070-8918	81349	RLR32C10R0GR	RESISTOR, FIXED, FILM	EA 1
3	44	PADZZ		81349	RWR51P54FM	RESISTOR, FIXED WW	EA 2
3	45	PADZZ		10581	53092	TRANSFORMER, STPON	EA 1
3	46	PGDZZ		81349	M38510/11201BCX	MICROCIRCUIT, LINEAR	EA 1
3	47	PADZZ		81349	M38510/05553BEX	MICROCIRCUIT, DIGITA	EA 2
3	48	PADZZ	5961-01-124-9712	81349	JAN4N24A	COUPLER, OPTCELECTRO	EA 1
3	49	PADZZ		81349	M38510/05252BCX	MICROCIRCUIT, DIGITA	EA 1
3	50	PGDZZ	5962-01-084-5554	81349	M38510/10707BYC	MICROCIRCUIT, LINEAR	EA 1
3	51	PADZZ	5315-00-823-8743	96906	MS16562-219	PIN, SPRING	EA 1
3	52	PADZZ		80063	SM-D-884662	EXTRACTOR	EA 1
3	53	XBDZZ		80063	SM-C-884687	BARRIER, PROTECTIVE	EA 1
3	54	PADZZ	5320-00-243-8357	96906	MS20470AD2-5	RIVET, SOLID	EA 6
3	55	PADZZ	5999-01-136-4069	81349	M38527/1-03D	HUNTING PAD, ELECTR	EA 8
3	56	XBDZZ		09062	2829-75-1	STRAP, RUBBER	EA 1
3	57	PADZZ	5305-00-054-5643	96906	MS51957-9	SCREW, MACHINE	EA 2
3	58	PADZZ	5310-00-595-6761	96906	MS15795-802	WASHER, FLAT	EA 2
3	59	PADZZ	5310-00-928-2690	96906	MS35338-134	WASHER, LOCK	EA 4
3	60	PADZZ	5310-00-812-4294	80205	NAS671C2	NUT, PLAIN, HEXAGON	EA 4
3	61	PADZZ	5999-00-110-1109	80063	SMA544876	MOUNTING PAD, ELECTR	EA 3
3	62	PADZZ	5975-00-727-5153	96906	MS3367-4-9	STRAP, TIEDOWN, ELECT	EA 2
3	63	PADZZ	5320-00-837-4885	96906	MS16535-25	RIVET, TUBULAR	EA 2
3	64	PADZZ		80063	SM-B-876188	PIN, KEYING	EA 2
3	65	PADZZ	5999-00-481-5513	81349	M38527/6-01D	MOUNTING PAD, ELECTR	EA 1
3	66	PADZZ	5315-00-881-2253	96906	MS16562-221	PIN, SPRING	EA 1
3	67	PADZZ	5940-00-683-4339	96906	MS35431-7	TERMINAL, LUG	EA 1
3	68	PADZZ	5310-00-933-8120	96906	MS35338-138	WASHER, LOCK	EA 1
3	69	PADZZ	5310-00-812-4292	80205	NAS671C10	NUT PLAIN HEXAGON	EA 1
3	70	XBDZZ		80063	SM-C-959319	SCR BRACKET	EA 1
3	71	PADZZ	5320-00-821-4996	96906	MS16535-23	RIVET, TUBULAR	EA 2
3	72	PADZZ	5310-00-619-1148	96906	MS15795-808	WASHER, FLAT	EA 1
3	73	PADZZ	5940-00-050-2308	96906	MS0035431-3	TERMINAL, LUG	EA 1
3	74	PADZZ	5970-01-152-2595	18565	60-11-6875-1671	INSULATOR, PLATE	EA 1
3	75	PADZZ	5305-00-054-5642	96906	MS51957-8	SCREW, MACHINE	EA 3
3	76	PADZZ		04813	A000-076	WASHER, SHOULDERED	EA 2



PREFIX ALL REFERENCE DESIGNATIONS WITH A3

EL8TK007

Figure 4. Circuit card assembly, transmit 1 board, A3
(sheet 1 of 2)

LEGEND

REF DES	ITEM NO.	REF DES	ITEM NO.	REF DES	ITEM NO.	REF DES	ITEM NO.
C1	1	Q1	13	R38	15	U11	39
C2	2	Q2	13	R39	15	U12	40
C3	3	Q3	14	R40	15	U13	41
C4	2	Q4	14	R41	26	U14	36
C5	2	Q5	13	R42	27	U15	42
C6	2	Q6	13	R43	18	U16	43
C7	2	Q7	14	R44	25	U17	44
C8	2			R45	28	U18	36
C9	2	R1	15	R46	29	U19	41
C10	2	R2	15	R47	18	U20	36
C11	2	R3	15	R48	20	U21	40
C12	4	R4	15	R49	30	U22	44
C13	3	R5	15	R50	31	U23	37
C14	2	R6	15	R51	32	U24	36
C15	5	R7	16	R52	30	U25	36
C16	6	R8	17	R53	22	U26	45
C17	3	R9	18	R54	15	U27	38
C18	3	R10	15	R55	28	U28	46
C19	7	R11	15	R56	33	U29	36
C20	2	R12	15	R57	15	U30	36
C21	2	R13	15	R58	32	U31	37
C22	2	R14	15	R59	30	U32	45
C23	2	R15	16	R60	22	U33	47
C24	2	R16	15	R61	15	U34	48
C25	2	R17	18	R62	15	U35	45
C26	4	R18	19	R63	28	U36	41
C27	2	R19	19	R64	15		
C28	2	R20	20	R65	28	VR1	49
C29	2	R21	21	R66	31		
		R22	21	R67	31	Y1	50
CR1	8	R23	15	R68	34		
CR2	8	R24	22	R69	15		
CR3	8	R25	22	R70	19		
CR4	8	R26	22	R71	19		
CR5	8	R27	22				
		R28	15	U1	35		
DS1	9	R29	23	U2	36		
		R30	23	U3	37		
L1	10	R31	15	U4	38		
L2	10	R32	24	U5	36		
L3	10	R33	24	U6	37		
L4	10	R34	25	U7	39		
L5	11	R35	15	U8	36		
		R36	20	U9	36		
P1	12	R37	15	U10	39		

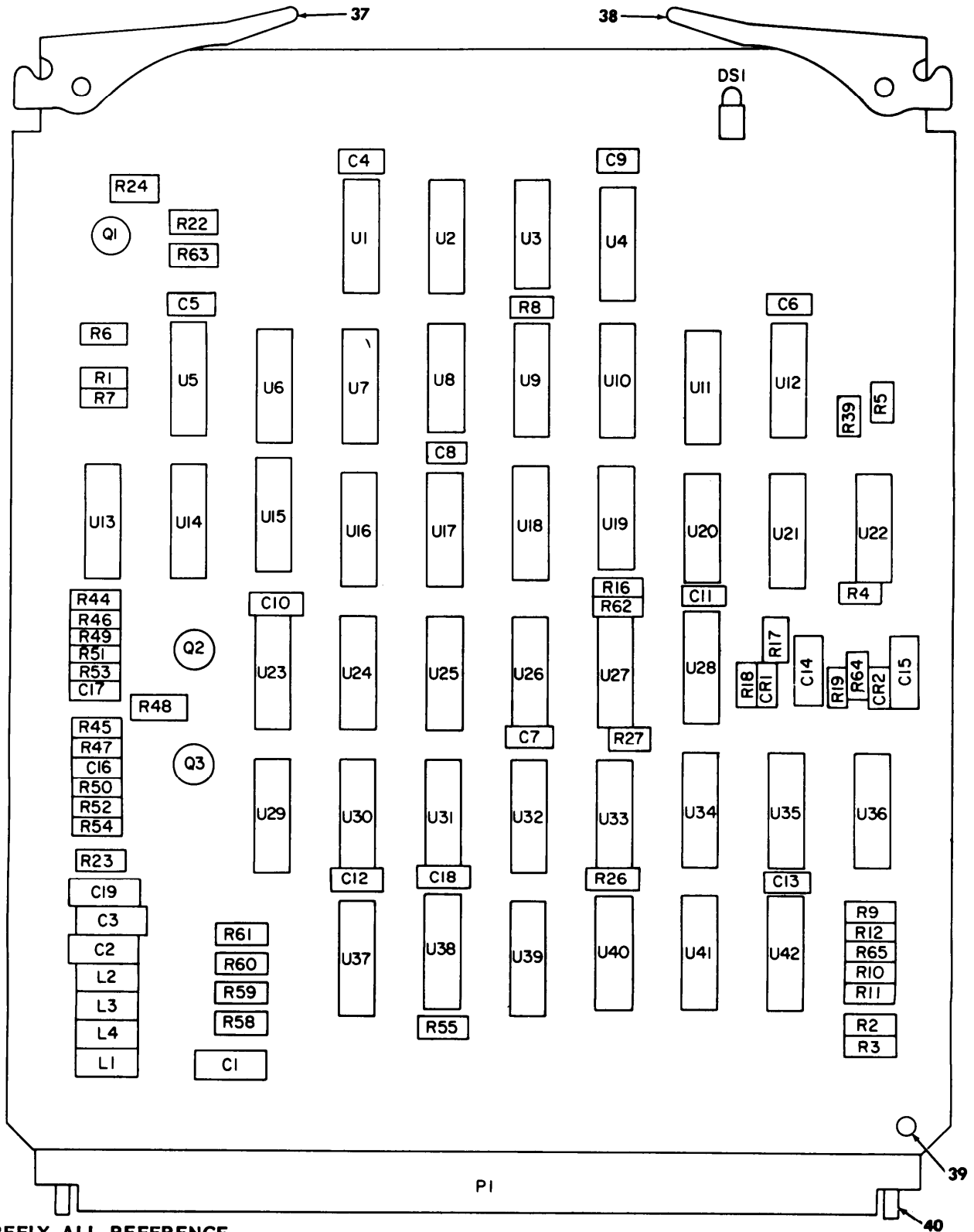
**PREFIX ALL REFERENCE
DESIGNATIONS WITH A3**

EL8TK008

Figure 4. Circuit card assembly, transmit 1 board, A3
(sheet 2 of 2)

(1) ILLUSTRATION (a) FIG NO	(2) (b) ITEM NO	(3) NATIONAL STOCK NUMBER	(4) FSCM	(5) PART NUMBER	(6) DESCRIPTION USABLE ON CODE	(7) U/M	(8) QTY INC IN UNIT
GROUP 03 CIRCUIT CARD ASSEMBLY,							
TRANSMIT 1 BOARD,A3							
4	1	PADZZ 5910-00-113-5490	81349	M39014/05-2219	CAPACITOR, FIXED, CER	EA	1
4	2	PAOZZ 5910-00-163-7238	81349	M39014-05-2273	CAPACITOR, FIXED, CER	EA	19
4	3	PADZZ 5910-00-189-4248	81349	M39003-01-2977	CAPACITOR, FIXED, ELE	EA	4
4	4	PADZZ 5910-00-007-2003	81349	M39003/01-3009	CAPACITOR, FIXED, ELE	EA	2
4	5	PADZZ	81349	CMR04F151FPDM	CAPACITOR, FXD, MICA	EA	1
4	6	PADZZ 5910-00-284-8288	81349	M39014/05-2239	CAPACITOR, FIXED, CER	EA	1
4	7	PADZZ 5910-00-185-4821	81349	M39014/05-2225	CAPACITOR, FIXED, CER	EA	1
4	8	PADZZ 5961-01-038-6918	81349	JAN1N4148-1	SEMICONDUCTOR DEVIC	EA	5
4	9	PADZZ	72619	550-2406	LIGHT, INDICATOR	EA	1
4	10	PADZZ 5950-00-419-7588	99800	BS766	COIL, RADIO FREQUENC	EA	4
4	11	PAOZZ	81349	HS75089-5	COIL, RADIO FREQ	EA	1
4	12	PADZZ 5935-01-065-8013	05041	000403-0121	CONNECTOR, RECEPTACL	EA	1
4	13	PADZZ 5961-00-951-8757	81349	JAN2N2222A	TRANSISTOR	EA	4
4	14	PADZZ 5961-00-925-3777	81349	JAN2N2907A	TRANSISTOR	EA	3
4	15	PADZZ 5905-01-047-1529	81349	RLR07C1001GR	RESISTOR, FIXED, FILM	EA	26
4	16	PADZZ 5905-00-223-2610	81349	RLR07C51R0GR	RESISTOR, FIXED, FILM	EA	2
4	17	PADZZ 5905-00-458-9263	81349	RLR07C1000GR	RESISTOR, FIXED, FILM	EA	1
4	18	PADZZ 5905-00-240-7979	81349	RLR07C4700GR	RESISTOR, FIXED, FILM	EA	4
4	19	PADZZ 5905-00-491-2638	81349	RLR07C2701GR	RESISTOR, FIXED, FILM	EA	4
4	20	PADZZ 5905-00-450-8530	81349	RLR07C1500GR	RESISTOR, FIXED, FILM	EA	3
4	21	PADZZ 5905-01-050-4106	81349	RLR07C1004GR	RESISTOR, FIXED, FILM	EA	2
4	22	PADZZ 5905-00-458-9267	81349	RLR07C2200GR	RESISTOR, FIXED, FILM	EA	6
4	23	PADZZ 5905-01-064-6736	81349	RLR07C1202GR	RESISTOR, FIXED, FILM	EA	2
4	24	PADZZ 5905-00-240-2748	81349	RLR07C5602GR	RESISTOR, FIXED, FILM	EA	2
4	25	PADZZ 5905-00-438-0505	81349	RLR07C4701GR	RESISTOR, FIXED, FILM	EA	2
4	26	PADZZ 5905-00-914-9213	81349	RLR20C4700GR	RESISTOR, FIXED, FILM	EA	1
4	27	PADZZ 5905-01-072-1408	81349	RLR32C2700GR	RESISTOR, FIXED, FILM	EA	1
4	28	PADZZ 5905-01-047-1530	81349	RLR07C2201GR	RESISTOR, FIXED, FILM	EA	4
4	29	PADZZ 5905-00-401-8683	81349	RLR07C2700GR	RESISTOR, FIXED, FILM	EA	1
4	30	PADZZ 5905-00-490-0247	81349	RLR07C7500GR	RESISTOR, FIXED, FILM	EA	3
4	31	PADZZ 5905-00-496-7860	81349	RLR07C33R0GR	RESISTOR, FIXED, FILM	EA	3
4	32	PADZZ 5905-00-436-8560	81349	RLR07C91R0GR	RESISTOR, FIXED, FILM	EA	2
4	33	PADZZ 5905-00-482-0505	81349	RLR07C10R0GR	RESISTOR, FIXED, FILM	EA	1
4	34	PADZZ 5905-00-240-7980	81349	RLR07C5600GR	RESISTOR, FIXED, FILM	EA	1
4	35	PADZZ	81349	M38510/05553BEX	MICROCIRCUIT, DIGITA	EA	1
4	36	PGDZZ 5962-01-058-1539	81349	M38510-30102BCB	MICROCIRCUIT, DIGITA	EA	11
4	37	PADZZ 5962-01-031-7030	81349	M38510/30001BCB	MICROCIRCUIT, DIGITA	EA	4
4	38	PADZZ 5962-01-050-0919	81349	M38510/30902BEB	MICROCIRCUIT, DIGITA	EA	2

(1) ILLUSTRATION (a) FIG NO	(2) (b) ITEM NO	(3) SMR CODE	(4) NATIONAL STOCK NUMBER	(5) FSCM	(5) PART NUMBER	(6) DESCRIPTION USABLE ON CODE	(7) U/M	(8) QTY INC IN UNIT
4	39	PGDZZ	5962-01-065-7026	81349	M38510/31504BEB	MICROCIRCUIT,DIGITA	EA	3
4	40	PADZZ		81349	M38510/30302BCK	MICROCIRCUIT,DGTL	EA	2
4	41	PGDZZ	5962-01-091-8195	81349	M38510/30003BCX	MICROCIRCUIT,DIGITA	EA	3
4	42	PGDZZ	5962-01-050-0920	81349	M38510/30901BEB	MICROCIRCUIT,DIGITA	EA	1
4	43	PGDZZ	5962-01-041-3214	81349	M38510/30502BCB	MICROCIRCUIT,DIGITA	EA	1
4	44	PADZZ	5962-01-068-9593	81349	M38510/30605BCB	MICROCIRCUIT,DIGITA	EA	2
4	45	PGDZZ	5962-00-621-7201	81349	M38510/10401BCB	INTEGRATED CIRCUIT	EA	3
4	46	PADZZ		56996	B4026971	MICROCIRCUIT,DGTL	EA	1
4	47	PADZZ		94086	SNC55109J	MICROCIRCUIT,LINEAR	EA	1
4	48	PADZZ		56996	B4026974-2	MICROCIRCUIT,DGTL	EA	1
4	49	PADZZ	5961-00-892-3361	81349	JAN1N750A	SEMICONDUCTOR DEVIC	EA	1
4	50	PADZZ		56996	B4026972	OSCILLATOR,CRYSTAL	EA	1
4	51	PADZZ		52094	107-1036-1	EXTRACTOR,PCB	EA	2
4	52	PADZZ	5320-01-092-0275	96906	MS16535-36	RIVET,TUBULAR	EA	2
4	53	PADZZ		80063	SM-B-876188	PIN,KEYING	EA	2



PREFIX ALL REFERENCE DESIGNATIONS WITH A4

EL8TK009

Figure 5. Circuit card assembly, transmit 2 board, A4 (sheet 1 of 2)

LEGEND

REF DES	ITEM NO.	REF DES	ITEM NO.	REF DES	ITEM NO.
C1	1	R10	13	U12	25
C2	2	R11	13	U13	31
C3	2	R12	10	U14	31
C4	3	R16	14	U15	28
C5	3	R17	14	U16	29
C6	3	R18	15	U17	28
C7	3	R19	16	U18	26
C8	3	R22	17	U19	26
C9	3	R23	18	U20	27
C10	3	R24	11	U21	27
C11	3	R26	13	U22	27
C12	3	R27	19	U23	28
C13	3	R39	10	U24	29
C14	2	R44	20	U25	28
C15	1	R45	20	U26	27
C16	3	R46	21	U27	32
C17	3	R47	21	U28	30
C18	3	R48	22	U29	28
C19	1	R49	23	U30	29
		R50	23	U31	28
CR1	4	R51	19	U32	29
CR2	4	R52	19	U33	27
		R53	10	U34	26
DS1	5	R54	10	U35	25
		R55	10	U36	33
L1	6	R58	24	U37	34
L2	6	R59	24	U38	35
L3	6	R60	24	U39	36
L4	6	R61	24	U40	31
		R62	16	U41	26
P1	7	R63	17	U42	30
		R64	13		
Q1	8	R65	10		
Q2	9				
Q3	9	U1	25		
		U2	26		
R1	10	U3	25		
R2	11	U4	27		
R3	12	U5	26		
R4	10	U6	28		
R5	10	U7	29		
R6	10	U8	26		
R7	10	U9	26		
R8	10	U10	30		
R9	13	U11	27		

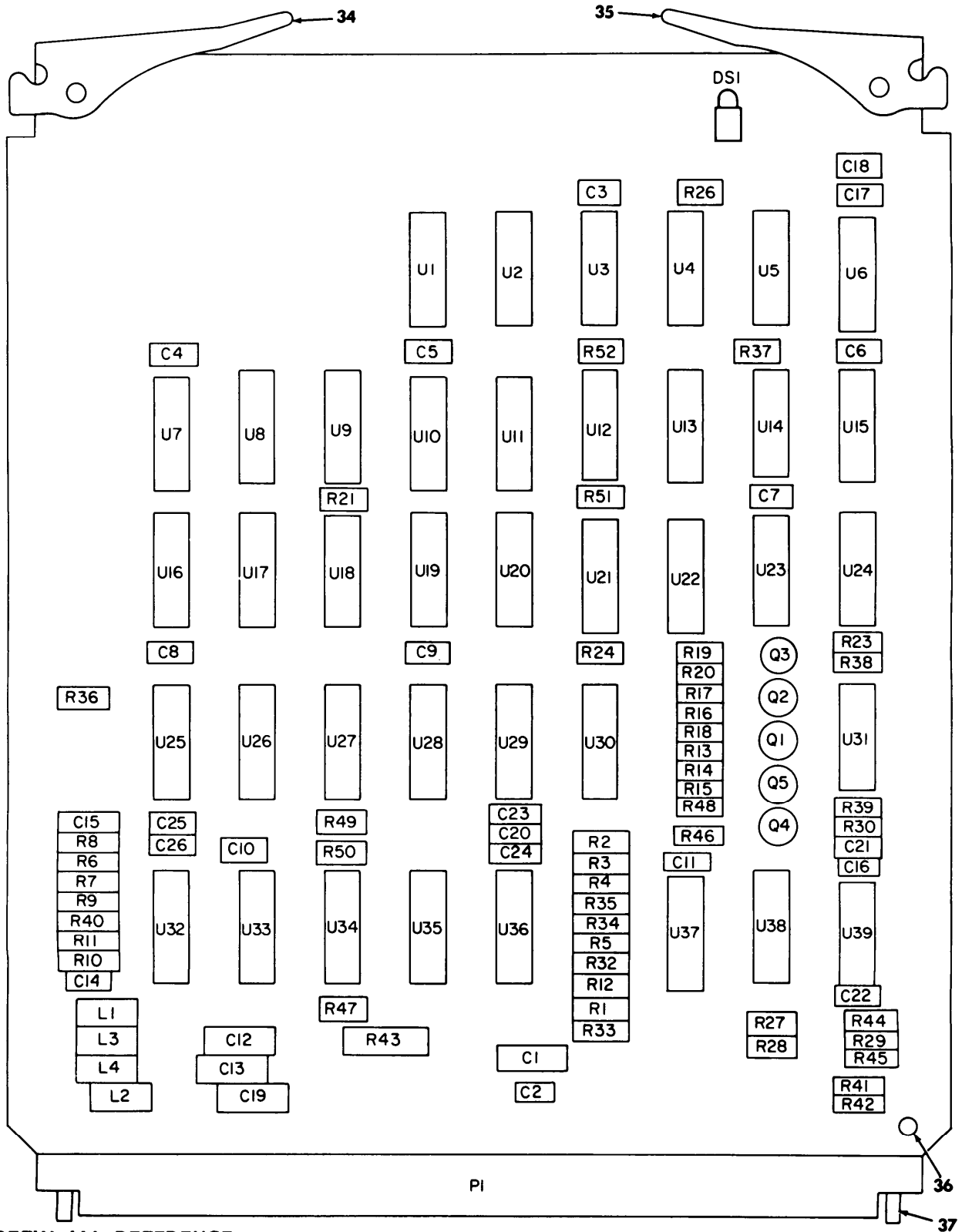
**PREFIX ALL REFERENCE
DESIGNATIONS WITH A4**

EL8TKO10

Figure 5. Circuit card assembly, transmit 2 board, A4
(sheet 2 of 2)

(1) ILLUSTRATION (a) FIG NO	(2) (b) ITEM NO	(3) NATIONAL STOCK NUMBER	(4) FSCM	(5) PART NUMBER	(6) DESCRIPTION USABLE ON CODE	(7) U/M	(8) QTY INC IN UNIT
GROUP 04 CIRCUIT CARD ASSEMBLY, TRANSMIT 2 BOARD,A4							
5	1	PADZZ 5910-00-189-4248	81349	M39003-01-2977	CAPACITOR, FIXED, ELE	EA	3
5	2	PADZZ 5910-00-007-2003	81349	M39003/01-3009	CAPACITOR, FIXED, ELE	EA	3
5	3	PADZZ 5910-00-163-7238	81349	M39014-05-2273	CAPACITOR, FIXED, CER	EA	13
5	4	PADZZ 5961-01-038-6918	81349	JAN1N4148-1	SEMICONDUCTOR DEVIC	EA	2
5	5	PADZZ	72619	550-2406	LIGHT, INDICATOR	EA	1
5	6	PADZZ 5950-00-419-7588	99800	BS766	COIL, RADIO FREQUENC	EA	4
5	7	PADZZ 5935-01-065-8013	05041	000403-0121	CONNECTOR, RECEPTAC	EA	1
5	8	PADZZ 5961-00-951-8757	81349	JAN2N2222A	TRANSISTOR	EA	1
5	9	PADZZ 5961-00-925-3777	81349	JAN2N2907A	TRANSISTOR	EA	2
5	10	PADZZ 5905-01-047-1529	81349	RLR07C1001GR	RESISTOR, FIXED, FILM	EA	12
5	11	PADZZ 5905-00-450-8530	81349	RLR07C1500GR	RESISTOR, FIXED, FILM	EA	2
5	12	PADZZ 5905-00-498-5684	81349	RLR07C8200GR	RESISTRO, FIXED, FILM	EA	1
5	13	PADZZ 5905-00-240-7979	81349	RLR07C4700GR	RESISTOR, FIXED, FILM	EA	5
5	14	PADZZ 5905-00-438-0505	81349	RLR07C4701GR	RESISTOR, FIXED, FILM	EA	2
5	15	PADZZ 5905-01-050-4106	81349	RLR07C1004GR	RESISTOR, FIXED, FILM	EA	1
5	16	PADZZ 5905-01-009-0175	81349	RLR07C3303GR	RESISTOR, FIXED, FILM	EA	2
5	17	PADZZ 5905-00-491-2638	81349	RLR07C2701GR	RESISTOR, FIXED, FILM	EA	2
5	18	PADZZ 5905-00-240-7958	81349	RLR07C2202GR	RESISTOR, FIXED, FILM	EA	1
5	19	PADZZ 5905-01-047-1531	81349	RLR07C1002GR	RESISTOR, FIXED, FILM	EA	3
5	20	PADZZ 5905-00-240-7950	81349	RLR07C1501GR	RESISTOR, FIXED, FILM	EA	2
5	21	PADZZ 5905-00-458-9267	81349	RLR07C2200GR	RESISTOR, FIXED, FILM	EA	2
5	22	PADZZ 5905-00-940-2751	81349	RLR20C5600GR	RESISTOR, FIXED, FILM	EA	1
5	23	PADZZ 5905-00-240-7980	81349	RLR07C5600GR	RESISTOR, FIXED, FILM	EA	2
5	24	PADZZ 5905-00-419-0189	81349	RLR07C1801GR	RESISTOR, FIXED, FILM	EA	4
5	25	PADZZ 5962-01-031-7030	81349	M38510/30001BCB	MICROCIRCUIT, DIGITA	EA	4
5	26	PGDZZ 5962-01-058-1539	81349	M38510/30102BCB	MICROCIRCUIT, DIGITA	EA	8
5	27	PGDZZ 5962-01-065-7026	81349	M38510/31504BEB	MICROCIRCUIT, DIGITA	EA	7
5	28	PADZZ	81349	M38510/31503BEX	MICROCIRCUIT, DIGITA	EA	7
5	29	PGDZZ 5962-01-050-0920	81349	M38510/30901BEB	MICROCIRCUIT, DIGITA	EA	5
5	30	PGDZZ 5962-01-091-8195	81349	M38510/30003BCX	MICROCIRCUIT, DIGITA	EA	3
5	31	PADZZ	81349	M38510/30203BCX	MICROCIRCUIT, DGTL	EA	3
5	32	PADZZ	81349	M38510/05553BEX	MICROCIRCUIT, DIGITA	EA	1
5	33	PADZZ	81349	M38510/30302BCK	MICROCIRCUIT, DGTL	EA	1
5	34	PGDZZ 5962-01-050-0918	81349	M38510-30701BEB	MICROCIRCUIT, DIGITA	EA	1
5	35	PGDZZ 5962-00-621-7201	81349	M38510/10401BCB	INTEGRATED CIRCUIT	EA	1
5	36	PADZZ	56996	B4026974-4	MICROCIRCUIT, DGUL	EA	1
5	37	PADZZ	52094	107-1036-2	EXTRACTOR, PCB	EA	1
5	38	PADZZ 5999-01-079-1171	52094	107	EXTRACTOR, ELECTRICA	EA	1

(1) ILLUSTRATION (a) FIG NO	(2) (b) ITEM NO	(3) NATIONAL STOCK NUMBER	(4) FSCM NUMBER	(5) PART NUMBER	(6) DESCRIPTION USABLE ON CODE	(7) U/M	(8) QTY INC IN UNIT
5	39	PADZZ 5320-01-092-0275	96906	MS16535-36	RIVET,TUBULAR	EA	2
5	40	PADZZ	80063	SM-B-876188	PIN,KEYING	EA	2



PREFIX ALL REFERENCE DESIGNATIONS WITH A5

EL8TK011

Figure 6. Circuit card assembly, receive 1 board, A5
(sheet 1 of 2)

LEGEND

REF DES	ITEM NO.	REF DES	ITEM NO.	REF DES	ITEM NO.
C1	1	R4	9	R52	18
C2	2	R5	10		
C3	2	R6	11	U1	22
C4	2	R7	12	U2	22
C5	2	R8	13	U3	23
C6	2	R9	13	U4	22
C7	2	R10	11	U5	22
C8	2	R11	12	U6	24
C9	2	R12	10	U7	25
C10	2	R13	14	U8	22
C11	2	R14	15	U9	26
C12	3	R15	16	U10	27
C13	3	R16	14	U11	27
C14	2	R17	15	U12	28
C15	2	R18	16	U13	22
C16	4	R19	14	U14	22
C17	4	R20	15	U15	22
C18	4	R21	10	U16	26
C19	1	R23	10	U17	23
C20	2	R24	10	U18	22
C21	2	R26	17	U19	29
C22	2	R27	18	U20	28
C23	2	R28	18	U21	27
C24	2	R29	10	U22	30
C25	2	R30	19	U23	22
C26	2	R32	13	U24	22
		R33	13	U25	22
DS1	5	R34	13	U26	26
		R35	13	U27	22
L1	6	R36	10	U28	22
L2	6	R37	10	U29	29
L3	6	R38	10	U30	23
L4	6	R39	16	U31	22
		R40	18	U32	31
P1	7	R41	17	U33	32
		R42	20	U34	23
Q1	8	R43	21	U35	32
Q2	8	R44	20	U36	31
Q3	8	R45	20	U37	30
Q4	8	R46	10	U38	22
Q5	8	R47	16	U39	33
		R48	10		
R1	9	R49	14		
R2	9	R50	14		
R3	9	R51	14		

**PREFIX ALL REFERENCE
DESIGNATIONS WITH A5**

EL8TK012

Figure 6. Circuit card assembly, receive 1 board, A5
(sheet 2 of 2)

(1) ILLUSTRATION (a) FIG NO	(2) (b) ITEM NO	(3) NATIONAL STOCK NUMBER	(4) FSCM	(5) PART NUMBER	(6) DESCRIPTION USABLE ON CODE GROUP 05 CIRCUIT CARD ASSEMBLY, RECEIVE 1 BOARD, A5	(7) QTY INC IN U/M	(8) UNIT
6	1	PADZZ 5910-00-189-4248	81349	M39003-01-2977	CAPACITOR, FIXED, ELE	EA	2
6	2	PADZZ 5910-00-163-7238	81349	M39014-05-2273	CAPACITOR, FIXED, CER	EA	19
6	3	PADZZ 5910-00-007-2003	81349	M39003/01-3009	CAPACITOR, FIXED, ELE	EA	2
6	4	PADZZ 5910-00-185-4821	81349	M39014/05-2225	CAPACITOR, FIXED, CER	EA	3
6	5	PADZZ	72619	550-2406	LIGHT, INDICATOR	EA	1
6	6	PADZZ 5950-00-419-7588	99800	BS766	COIL, RADIO FREQUENC	EA	4
6	7	PADZZ 5935-01-065-8013	05041	000403-0121	CONNECTOR, RECEPACL	EA	1
6	8	PADZZ 5961-00-951-8757	81349	JAN2N2222A	TRANSISTOR	EA	5
6	9	PADZZ 5905-00-223-2610	81349	RLR07C51R0GR	RESISTOR, FIXED, FILM	EA	4
6	10	PADZZ 5905-01-047-1529	81349	RLR07C1001GR	RESISTOR, FIXED, FILM	EA	11
6	11	PADZZ 5905-00-419-0189	81349	RLR07C1801GR	RESISTOR, FIXED, FILM	EA	2
6	12	PADZZ 5905-00-240-2749	81349	RLRC7C6801GR	RESISTOR, FIXED, FILM	EA	2
6	13	PAOZZ 5905-01-064-6736	81349	RLR07C1202GR	RESISTOR, FIXED, FILM	EA	6
6	14	PADZZ 5905-00-491-2638	81349	RLR07C2701GR	RESISTOR, FIXED, FILM	EA	6
6	15	PADZZ 5905-00-240-2748	81349	RLR07C5602GR	RESISTOR, FIXED, FILM	EA	3
6	16	PADZZ 5905-00-240-7979	81349	RLR07C4700GR	RESISTOR, FIXED, FILM	EA	2
6	17	PADZZ 5905-00-450-8530	RLR07C1500GR	RESISTOR, FIXED, FILM	EA	2	
6	18	PADZZ 5905-00-438-0505	81349	RLR07C4701GR	RESISTOR, FIXED, FILM	EA	4
6	19	PADZZ 5905-01-009-0175	81349	RLR07C3303GR	RESISTOR, FIXED, FILM	EA	1
6	20	PADZZ 5905-00-240-7980	81349	RLR075C5600GR	RESISTOR, FIXED, FILM	EA	3
6	21	PADZZ 5905-01-072-1408	81349	RLR32C2700GR	RESISTOR, FIXED, FILM	EA	1
6	22	PGDZZ 5962-01-058-1539	81349	M38510-30102BCB	MICROCIRCUIT, DIGITA	EA	16
6	23	PADZZ 5962-01-031-7030	81349	M38510/30001BCB	MICROCIRCUIT, DIGITA	EA	4
6	24	PADZZ	81349	M38510/05553BEX	MICROCIRCUIT, DIGITA	EA	1
6	25	PADZZ 5962-01-050-0919	81349	M38510/30902BEB	MICROCIRCUIT, DIGITA	EA	1
6	26	PADZZ 5962-01-068-9593	81349	M38510/30605BCB	MICROCIRCUIT, DIGITA	EA	3
6	27	PGDZZ 5962-01-065-7026	81349	M38510/31504BEB	MICROCIRCUIT, DIGITA	EA	3
6	28	PADZZ	81349	M38510/30302BCK	MICROCIRCUIT, DGTL	EA	2
6	29	PGDZZ 5962-01-091-8195	81349	M38510/30003BCX	MICROCIRCUIT, DIGITA	EA	2
6	30	PGDZZ 5962-01-050-0920	81349	M38510/30901BEB	MICROCIRCUIT, DIGITA	EA	2
6	31	PGDZZ 5962-00-621-7201	81349	M38510/10401BCB	INTEGRATED CIRCUIT	EA	2
6	32	PGDZZ 5962-01-041-3214	81349	M38510/30502BCB	MICROCIRCUIT, DIGITA	EA	2
6	33	PGDZZ 5962-01-089-1814	81349	M38510/10305BEB	MICROCIRCUIT, LINEAR	EA	1
6	34	PADZZ	52094	107-1036-3	EXTRACTOR, PCB	EA	1
6	35	PADZZ	56996	107	EXTRACTOR, PCB	EA	1
6	36	PADZZ 5320-01-092-0275	96906	MS16535-36	RIVET, TUBULAR	EA	2
6	37	PADZZ	80063	SM-B-876188	PIN, KEYING	EA	2

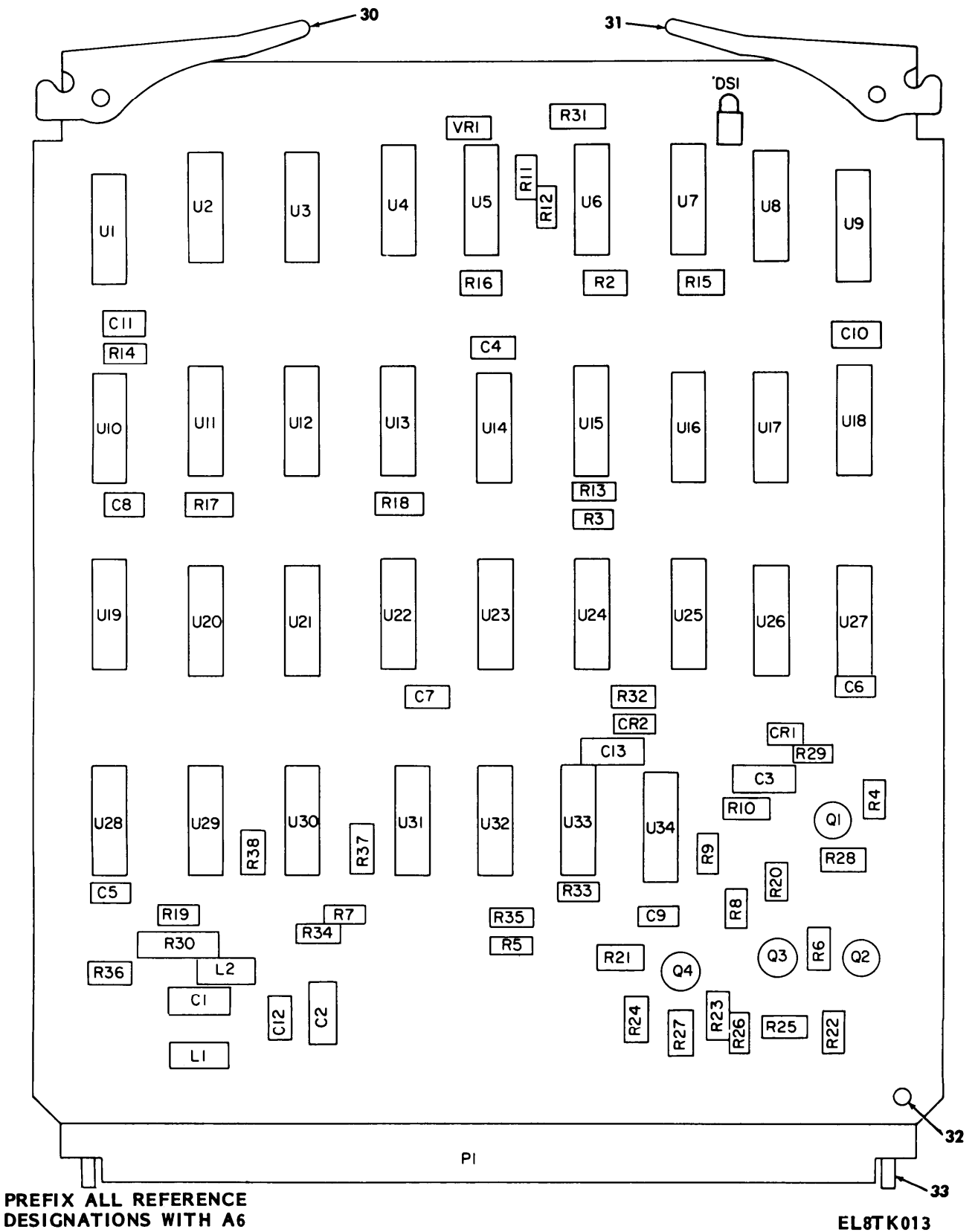


Figure 7. Circuit card assembly, receive 2 board, A6

(sheet 1 of 2)

LEGEND

REF DES	ITEM NO.	REF DES	ITEM NO.	REF DES	ITEM NO.
C1	1	R18	9	U24	21
C2	2	R19	11	U25	26
C3	2	R20	11	U26	22
C4	3	R21	11	U27	22
C5	3	R22	12	U28	27
C6	3	R23	12	U29	27
C7	3	R24	12	U30	26
C8	3	R25	13	U31	27
C9	3	R26	13	U32	24
C10	3	R27	13	U33	27
C11	3	R28	10	U34	28
C12	3	R29	16		
C13	2	R30	17	VR1	29
		R31	18		
CR1	4	R32	14		
CR2	4	R33	19		
		R34	20		
DS1	5	R35	11		
		R36	11		
L1	6	R37	11		
L2	6	R38	11		
P1	7	U1	21		
		U2	22		
Q1	8	U3	22		
Q2	8	U4	21		
Q3	8	U5	23		
Q4	8	U6	21		
		U7	21		
R2	9	U8	22		
R3	9	U9	21		
R4	10	U10	22		
R5	11	U11	21		
R6	12	U12	24		
R7	13	U13	21		
R8	13	U14	22		
R9	14	U15	21		
R10	14	U16	22		
R11	15	U17	22		
R12	13	U18	24		
R13	9	U19	21		
R14	9	U20	25		
R15	9	U21	25		
R16	9	U22	24		
R17	9	U23	21		

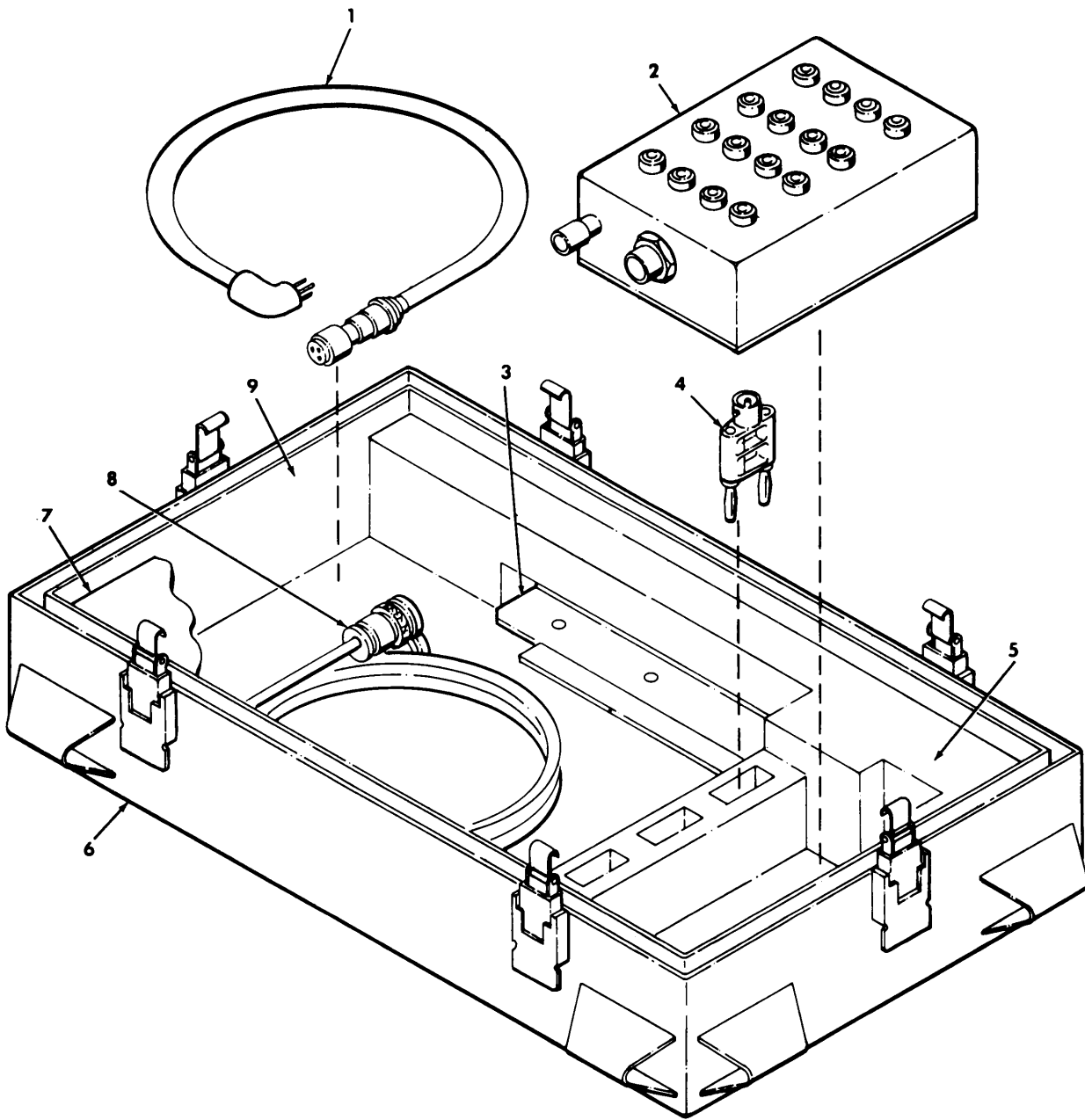
**PREFIX ALL REFERENCE
DESIGNATIONS WITH A6**

EL8TK014

Figure 7. Circuit card assembly, receive 2 board, A6

(sheet 2 of 2)

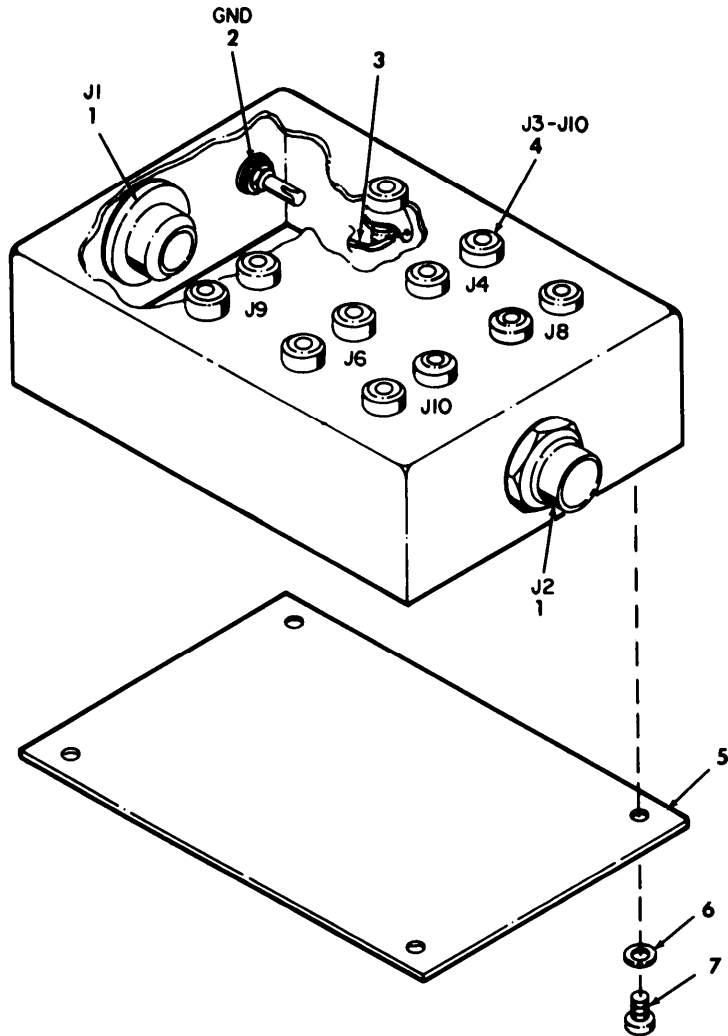
(1) ILLUSTRATION (a) (b) FIG ITEM NO NO	(2) SMR CODE	(3) NATIONAL STOCK NUMBER	(4) FSCM	(5) PART NUMBER	(6) DESCRIPTION USABLE ON CODE GROUP 06 CIRCUIT CARD ASSEMBLY, RECEIVE 2 BOARD,A6	(7) QTY INC IN U/M	(8) UNIT
7	1	PADZZ 5910-00-189-4248	81349	M39003-01-2977	CAPACITOR, FIXED, ELE	EA	1
7	2	PADZZ 5910-00-007-2003	81349	M39003/01-3009	CAPACITOR, FIXED, ELE	EA	3
7	3	PADZZ 5910-00-163-7238	81349	M39014-05-2273	CAPACITOR, FIXED, CER	EA	9
7	4	PADZZ 5961-01-038-6918	81349	JAN1N4148-1	SEMICONDUCTOR DEVIC	EA	2
7	5	PADZZ	72619	550-2406	LIGHT, INDICATOR	EA	1
7	6	PADZZ 5950-00-419-7588	99800	BS766	COIL, RADIO FREQUENC	EA	2
7	7	PADZZ 5935-01-065-8013	05041	000403-0121	CONNECTOR, RECEPTACL	EA	1
7	8	PADZZ 5961-00-951-8757	81349	JAN2N2222A	TRANSISTOR	EA	4
7	9	PADZZ 5905-01-047-1529	81349	RLR07C1001GR	RESISTOR, FIXED, FILM	EA	8
7	10	PADZZ 5905-00-450-8530	81349	RLR07C1500GR	RESISTOR, FIXED, FILM	EA	2
7	11	PADZZ 5905-00-491-2638	81349	RLR07C2701GR	RESISTOR, FIXED, FILM	EA	8
7	12	PADZZ 5905-00-240-2748	81349	RLR07C5602GR	RESISTOR, FIXED, FILM	EA	4
7	13	PADZZ 5905-00-240-7979	81349	RLR07C4700GR	RESISTOR, FIXED, FILM	EA	6
7	14	PADZZ 5905-01-064-8328	81349	RLR07C1003GR	RESISTOR, FIXED, FILM	EA	3
7	15	PADZZ 5905-00-458-9263	81349	RLR07C1000GR	RESISTOR, FIXED, FILM	EA	1
7	16	PADZZ 5905-00-240-7982	81349	RLR07C6800GR	RESISTOR, FIXED, FILM	EA	1
7	17	PADZZ 5905-01-072-1408	81349	RLR32C2700GR	RESISTOR, FIXED, FILM	EA	1
7	18	PADZZ 5905-00-914-9213	81349	RLR20C4700GR	RESISTOR, FIXED, FILM	EA	1
7	19	PADZZ 5905-00-240-7950	81349	RLR07C1501GR	RESISTOR, FIXED, FILM	EA	1
7	20	PADZZ 5905-00-438-0505	81349	RLR07C4701GR	RESISTOR, FIXED, FILM	EA	1
7	21	PAGDZZ 5962-01-058-1539	81349	M38510-30102BCB	MICROCIRCUIT, DIGITA	EA	11
7	22	PADZZ	81349	M38510/31503BEX	MICROCIRCUIT, DIGITA	EA	9
7	23	PGDZZ 5962-01-041-3214	81349	M38510/30502BCB	MICROCIRCUIT, DIGITA	EA	1
7	24	PADZZ	81349	M38510/30302BCK	MICROCIRCUIT, DGTL	EA	4
7	25	PADZZ 5962-01-050-0919	81349	M38510/30902BEB	MICROCIRCUIT, DIGITA	EA	2
7	26	PGDZZ 5962-01-091-8195	81349	M38510/30003BCX	MICROCIRCUIT, DIGITA	EA	2
7	27	PADZZ 5962-01-031-7030	81349	M38510/30001BCB	MICROCIRCUIT, DIGITA	EA	4
7	28	PADZZ	81349	M38510/05553BEX	MICROCIRCUIT, DIGITA	EA	1
7	29	PADZZ 5961-00-892-3361	81349	JAN1N750A	SEMICONDUCTOR DEVIC	EA	1
7	30	PADZZ	52094	107-1036-4	EXTRACTOR, PCB	EA	1
7	31	PADZZ	56996	107	EXTRACTOR, PCB	EA	1
7	32	PADZZ 5320-01-092-0275	96906	MS16535-36	RIVET, TUBULAR	EA	2
7	33	PADZZ	80063	SM-B-876188	PIN, KEYING	EA	2



EL8TK015

Figure 8. Assessor set

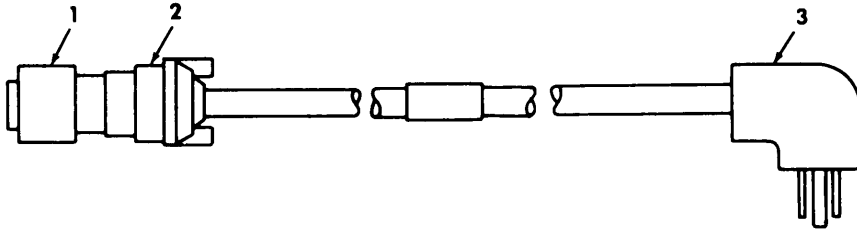
(1) ILLUSTRATION (a) FIG NO	(2) (b) ITEM NO	(3) SMR CODE	(4) NATIONAL STOCK NUMBER	(5) FSCM NUMBER	(6) DESCRIPTION USABLE ON CODE	(7) QTY INC IN U/M	(8) UNIT
GROUP 07 ACCESSORY SET							
8	1	PAOZZ	5995-01-123-4512	80063	SM-D-525130 CABLE ASSEMBLY,POWE	EA	1
8	2	PAOHH	6625-01-146-3862	56996	B4027047 INTERFACE BOX ASSEM	EA	1
8	3	XBOZZ		56996	B4027049 ANGLE ASSY,MTG	EA	2
8	4	PAOZZ	5935-00-053-9454	05276	1269 ADAPTER,CONNECTOR	EA	4
8	5	XBFZZ		56996	B4027071 CUSHION,BOTTOM	EA	1
8	6	XBFZZ		56996	B4027042 COVER ASSY, FRONT	EA	1
8	7	XBFZZ		56996	B4027078 COVER,ACCESS	EA	1
8	8	PAOHH	5995-01-148-6561	56996	B4027048 CIRCUIT CARD ASSEMB	EA	4
8	9	XBFZZ		56996	B4027077 CUSHION, SIDE	EA	2



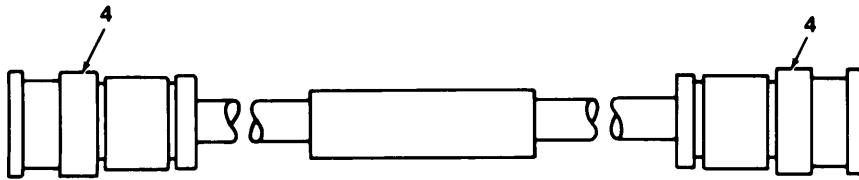
EL8TK016

Figure 9. Interface assembly

(1) ILLUSTRATION (a) FIG NO	(2) (b) ITEM NO	(3) NATIONAL STOCK NUMBER	(4) FSCM	(5) PART NUMBER	(6) DESCRIPTION USABLE ON CODE GROUP 0701 INTERFACE ASSEMBLY	(7) QTY INC IN U/M	(8) UNIT
9	1	PAFZZ 5935-00-488-7202	96906	MS3124P14-19P	CONNECTOR,RECEPTACL	EA	2
9	2	PAFZZ 5940-00-937-5237	81349	PB08NA01	POST,BINDING,ELECTR	EA	1
9	3	XBFZZ	56996	B4027079	LEAD,ELECTRICAL	EA	1
9	4	PAFZZ 5935-00-258-9897	05869	716062-38	JACK,TIP	EA	16
9	5	XBFZZ	56996	B4027075	COVER,CHASSIS	EA	1
9	6	PAFZZ 5310-00-880-5976	96906	MS15795-806	WASHER,FLAT	EA	4
9	7	PAFZZ 5305-00-054-6654	96906	MS51957-30	SCREW,MACHINE	EA	4



POWER CABLE ASSEMBLY



COAXIAL CABLE ASSEMBLY

EL8TK017

Figure 10. Cable assemblies, power and coaxial

(1) ILLUSTRATION (a) FIG NO	(2) (b) ITEM NO	(3) NATIONAL STOCK SMR CODE	(4) FSCM	(5) PART NUMBER	(6) DESCRIPTION USABLE ON CODE	(7) U/M	(8) QTY INC IN UNIT
GROUP 0702 CABLE ASSEMBLY, POWER							
10	1	XADZZ	80063	SM-B-525568	CONNECTOR, PLUG, ELEC	EA	1
10	2	XADZZ	06324	G1519A-1288-1.25 P	ADAPTER, CABLE CLAMP	EA	1
10	3	XADZZ	81348	W-C-596/13-1	CONNECTOR, PLUG,	EA	1
GROUP 0703 CABLE ASSEMBLY, COAXIAL							
10	4	PAFZZ	5935-01-043-6935	81349 M39012/16-0102	CONNECTOR, PLUG, ELEC	EA	2

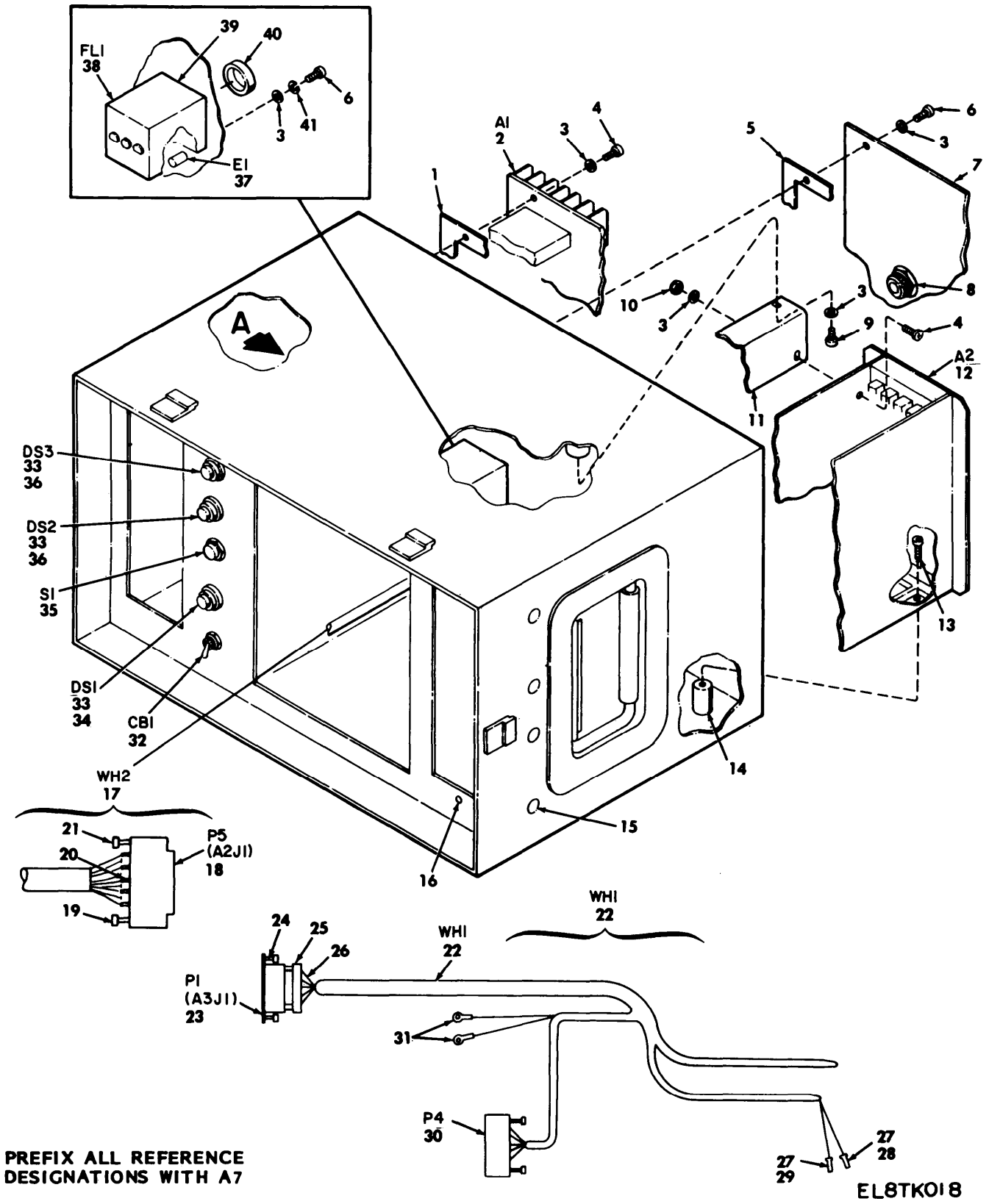
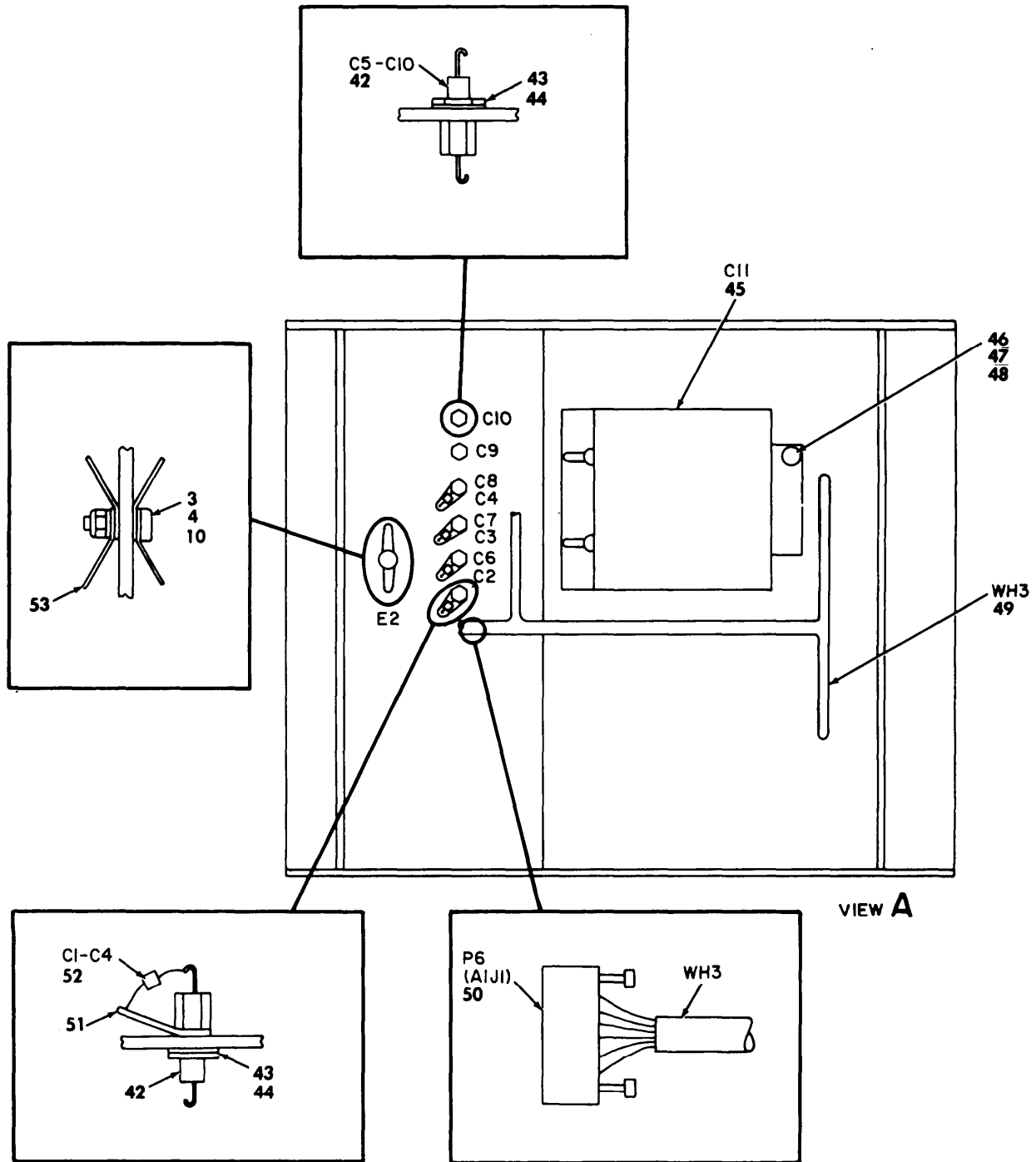


Figure 11. Case assembly, electrical equipment (sheet 1 of 2)



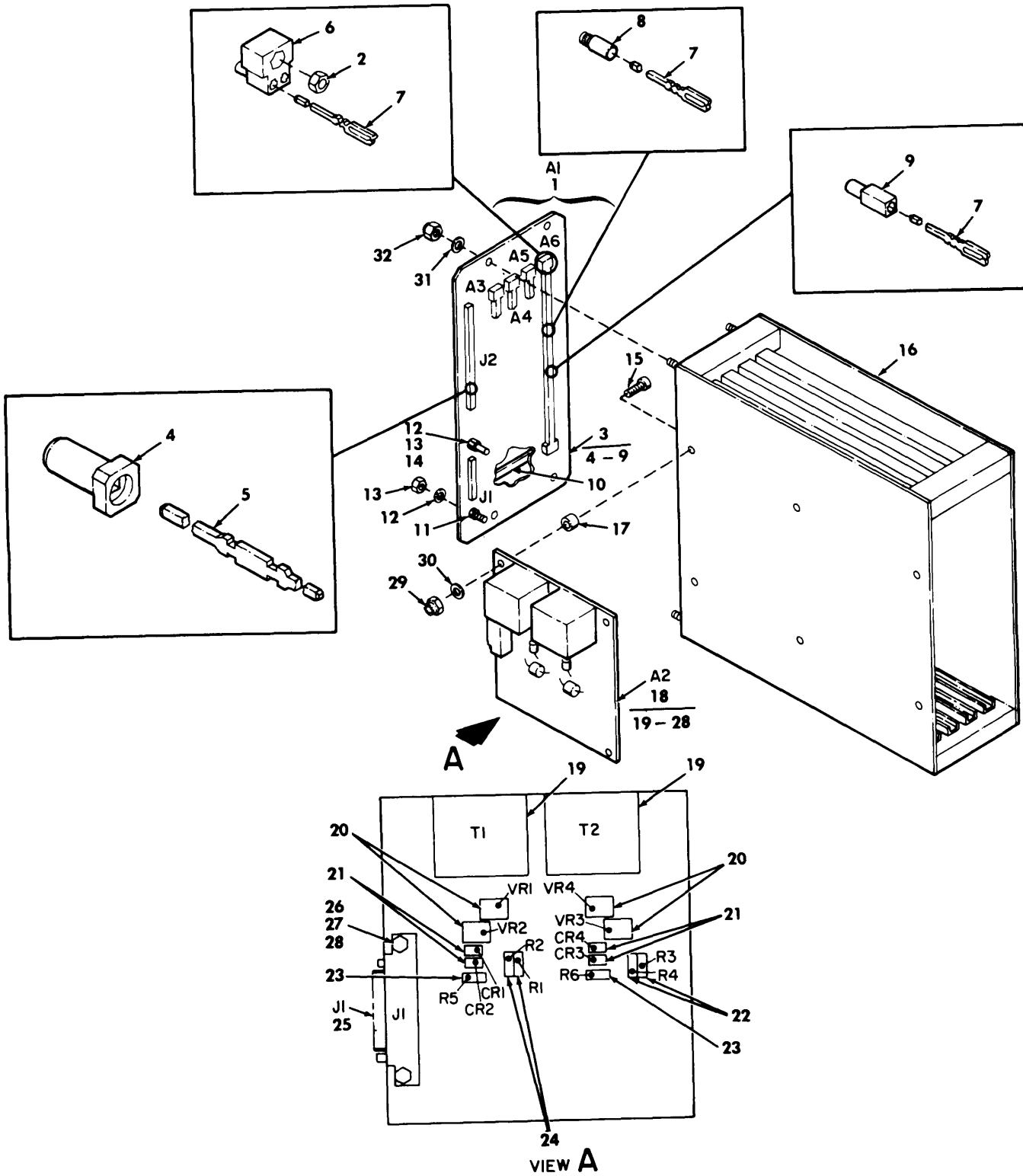
PREFIX ALL REFERENCE DESIGNATIONS WITH A7

EL8TK019

Figure 11. Case assembly, electrical equipment (sheet 2 of 2)

(1) ILLUSTRATION (a) FIG NO	(2) (b) ITEM NO	(3) SMR CODE	(4) NATIONAL STOCK NUMBER	(5) PART FSCM NUMBER	(6) DESCRIPTION USABLE ON CODE	(7) U/M	(8) QTY INC IN UNIT
GROUP 08 CASE ASSEMBLY, ELECTRICAL EQUIPMENT							
11	1	XBDZZ		56996 B4027073	SHLD GASKET, ELMCH	EA	1
11	2	XBODD		56996 B4027036	CONN ASSY, PWR SPLY	EA	1
11	3	PADZZ	5310-00-880-5978	96906 MS15795-807	WASHER, FLAT	EA	33
11	4	PADZZ	5305-00-054-6671	96906 MS51957-46	SCREW, MACHINE	EA	13
11	5	XBDZZ		56996 B4027072	SHLD GASKET, ELMCH	EA	1
11	6	PADZZ	5305-00-054-6670	96906 MS51957-45	SCREW, MACHINE	EA	18
11	7	XBDZZ		56996 B4027050	COVER, REAR ACCESS	EA	1
11	8	PADZZ	4820-00-491-3115	98021 790-RPV-1.0-3.0	VALVE, VACUUM BREAKI	EA	1
11	9	PADZZ	5305-00-054-6669	96906 MS51957-44	SCRW, MACHINE	EA	2
11	10	PADZZ	5310-00-982-6814	96906 MS21044C08	NUT, SELF-LOCKING, HE	EA	3
11	11	XBDZZ		56996 B4027065	BRACKET, ANGLE	EA	1
11	12	XBODD		56996 B4027035	CONN ASSY, LOGIC	EA	1
11	13	PADZZ	5305-00-978-9371	96906 MS16997-33	SCREW, CAP, SOCKET HE	EA	4
11	14	PADZZ	5340-00-815-4929	96906 MS21209C0815	INSERT, SCREW THREAD	EA	30
11	15	PADZZ	5340-00-800-7874	96906 MS21209F1-15	INSERT, SCREW THREAD	EA	8
11	16	PADZZ	5310-01-079-6807	08524 FFM6010-8F-B	NUT, SELF-LOCKING, CL	EA	30
11	17	XBDDD		56996 B4027084	WIRING HARNESS, BR	EA	1
11	18	PADZZ		00779 1-86672-9	CONV RCPT ELEC	EA	1
11	19	PADZZ		00779 87185-1	JACKSCREW, ELEC CONN	EA	1
11	20	PADZZ	5999-01-039-7213	87990 755090A0113-4	CONTACT, ELECTRICAL	EA	15
11	21	PADZZ		00779 86603-1	JACKSCREW, ELEC CONN	EA	1
11	22	XBDDD		56996 B4027034	WIRING HARNESS, BR	EA	1
11	23	PADZZ	5935-00-976-5425	81349 M24308/2-4	CONNECTOR, RECEPTACL	EA	1
11	24	PADZZ	5935-01-069-6794	81349 M24308/25-1	JACKSCREW, ELECTICA	EA	2
11	25	PADZZ	5935-01-037-0898	81349 M24308/20-4	SHIELD, ELECTRICAL C	EA	1
11	26	PADZZ	5940-00-168-3401	06090 D-133-06	SOLDER SLEEVE COAXI	EA	8
11	27	PADZZ	5999-01-013-3835	14440 421283	CONTACT, ELECTRICAL	EA	30
11	28	PADZZ	5935-01-023-8282	00779 87175-2	CONNECTOR BODY, PLUG	EA	7
11	29	PADZZ	5935-01-078-3483	26916 010-005290-029	CONNECTOR BODY, PLUG	EA	11
11	30	PADZZ		81349 M55302/66-20L	CONNECTOR, PC ASSEMB	EA	1
11	31	PADZZ	5940-00-557-1629	96906 MS25036-149	TERMINAL, LUG	EA	2
11	32	PADZZ		81349 M39019/03-312	CIRCUIT BREAKER	EA	1
11	33	PAOZZ	6240-00-155-7836	96906 MS25237-327	LAMP, INCANDESCENT	EA	3
11	34	PADZZ	6210-01-090-4181	76854 08-83283-164	LIGHT, INDICATOR	EA	1
11	35	PADZZ	5930-00-621-9949	81349 M8805/95-002	SWITCH, PUSH	EA	1
11	36	PADZZ	6210-01-152-2641	76854 08-83283-163	LIGHT INDICATOR	EA	2
11	37	PAFZZ	5940-00-937-5237	81349 PB08NA01	POST, BINDING, ELECT	EA	1
11	38	PADZZ	5915-01-091-1868	80063 SM-C-938592	FILTER, RADIO FREQUE	EA	1

(1) ILLUSTRATION (a) FIG NO	(2) (b) ITEM NO	(3) SMR CODE	(4) NATIONAL STOCK NUMBER	(5) FSCM	(5) PART NUMBER	(6) DESCRIPTION USABLE ON CODE	(7) U/M	(8) QTY INC IN UNIT
11	39	XBDZZ		56996	B4027067	SHILEDING GSKT,ELEC	EA	1
11	40	PAOZZ		96906	MS3181-12C-A	COVER,PROTECTIVE	EA	1
11	41	PADZZ	5310-00-933-8119	96906	MS35338-137	WASHER, LOCK	EA	4
11	42	PADZZ	5910-00-857-2123	81349	CK70AW152M	CAPACITOR, FIXED, CER	EA	6
11	43	PADZZ	5310-00-137-3134	96906	MS25082-C4	NUT, PLAIN, HEXAGON	EA	6
11	44	PADZZ	5310-00-894-2353	96906	MS16213-61	WASHER, LOCK	EA	6
11	45	PADZZ		56289	640D-381X0250E2	CAPACITOR, ELCTLT	EA	1
11	46	PADZZ	5305-00-054-6655	96906	MS51957-31	SCREW, MACHCINE	EA	5
11	47	PADZZ	5310-00-880-5976	96906	MS15795-806	WASHER, FLAT	EA	5
11	48	PADZZ	5310-00-982-6813	96906	MS21044C06	NUT, SELF-LOCKING, HE	EA	5
11	49	XBDDD		56996	B4027085	WIRING HARNESS, BR	EA	1
11	50	PADZZ	5935-01-103-0593	81349	M55302/66-30L	CONNECTOR, PLUG, ELEC	EA	1
11	51	PADZZ	5940-01-080-0015	96906	MS0035431-9	TERMINAL, LUG	EA	4
11	52	PADZZ	5910-00-010-8721	81349	M39014-02-1419	CAPACITOR, FIXED, CER	EA	4
11	53	PADZZ	5940-00-838-2651	96906	MS0035431-6	TERMINAL, LUG	EA	4

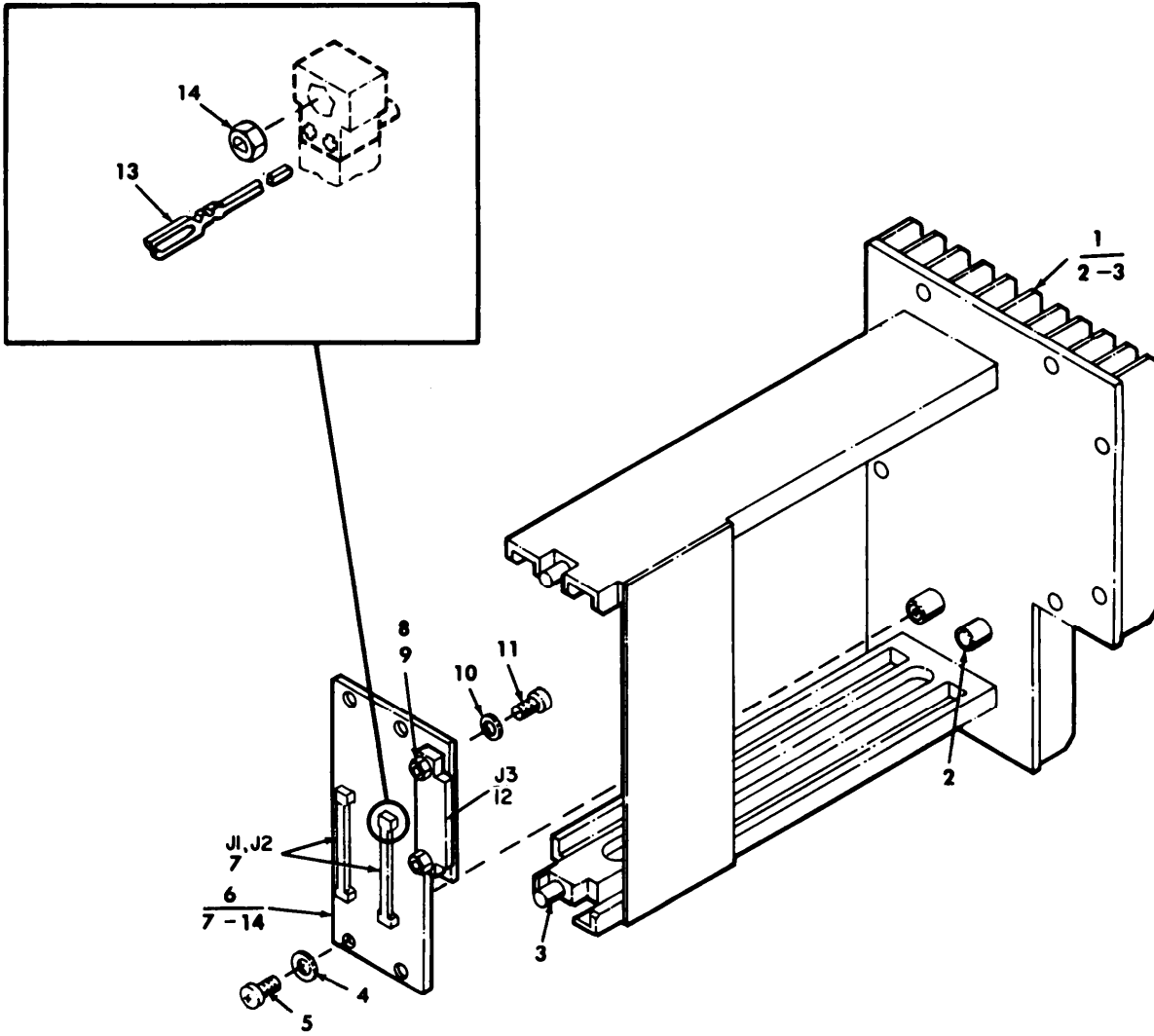


PREFIX ALL REFERENCE DESIGNATIONS WITH A7A2

EL8TK020

Figure 12. Connector assembly, Logic

(1) ILLUSTRATION (a) FIG NO	(2) ITEM NO	(3) SMR CODE	(4) NATIONAL STOCK NUMBER	(5) FSCM NUMBER	(6) PART NUMBER	(7) DESCRIPTION USABLE ON CODE GROUP 0801 CONNECTOR ASSEMBLY, LOGIC	(8) QTY INC IN UNIT
12	1	XBDDD		56996	B4027040	CONNECTOR ASSY	EA 1
12	2	PADZZ	7021-01-101-3690	05041	007-0056-000	INSERT SPECIAL	EA 8
12	3	XBDDD		56996	B4027057	CONN ASSY, ELEC LGC	EA 1
12	4	PADZZ	5970-00-275-5258	05041	039-0067-000	INSULATOR, BUSHING	EA
12	5	PADZZ		05041	027-0111-139	TERMINAL, FEEDTHRU	EA 84
12	6	XBDZZ		05041	040-0025-000	INSULATOR, POLARIZIN	EA 8
12	7	PADZZ	5999-01-091-0947	80063	SM-C-780243	CONTACT, ELECTRICAL	EA 448
12	8	PADZZ	5940-01-081-9479	05041	130-0001-941	TERMINAL, STUD	EA 32
12	9	PADZZ	5970-00-167-4962	05041	040-0045-000	INSULATOR, BUSHING	EA 400
12	10	PADZZ		55783	2000CL2532X.100-5Y.600-3Y.900-1G	BUS CONDUCTOR	EA 2
12	11	PADZZ	5935-00-053-0331	28528	4590042-1	RETAINER, ELECTRICAL	EA 2
12	12	PADZZ	5310-00-782-1349	96906	MS15795-804	WASHER, FLAT	EA 4
12	13	PADZZ	5310-00-982-4999	96906	MS21044C04	NUT, SELF-LOCKING, HE	EA 4
12	14	PADZZ		00779	86602-1	JACKSCREW, ELEC CONN	EA 2
12	15	PADZZ	5305-00-054-5651	96906	MS51957-17	SCREW, MACHINE	EA 4
12	16	XBDZZ		56996	B4027061	HOLDER ASY, PCB	EA 1
12	17	PADZZ	5365-00-632-3101	80205	NAS43DD0-12	SPACER, SLEEVE	EA 4
12	18	PADDD	6625-01-146-4049	56996	B4027023	CIRCUIT CARD ASSEMB	EA 1
12	19	PADZZ		06978	317-0745	TRANSFORMER, PULSE	EA 2
12	20	PADZZ	5961-01-053-4360	81349	JAN1N5907	SEMICONDUCTOR DEVIC	EA 4
12	21	PADZZ	5961-00-138-1269	81349	JAN1N5616	SEMICONDUCTOR DEVIC	EA 4
12	22	PADZZ	5905-00-472-1063	81349	RWR81S49R9FR	RESISTOR, FIXED, WIRE	EA 2
12	23	PADZZ		81349	RWR82S1150FM	RESISTOR, FXD, WW	EA 2
12	24	PADZZ	5905-00-170-8370	81349	RWR81S1740FR	RESISTOR, FIXED, WIRE	EA 2
12	25	PADZZ	5935-01-085-4542	81349	M55302/61-A20	CONNECTOR, RECEPTACL	EA 1
12	26	PADZZ	5305-00-054-5649	96906	MS51957-15	SCREW, MACHINE	EA 2
12	27	PADZZ	5310-00-933-8118	96906	MS35338-135	WASHER, LOCK	EA 2
12	28	PADZZ	5310-00-208-3786	82577	717899-038	NUT, PLAIN, HEXAGON	EA 2
12	29	PADZZ	5310-00-982-4999	96906	MS21044C04	NUT, SELF-LOCKING, HE	EA 4
12	30	PADZZ	5310-00-782-1349	96906	MS15795-804	WAHSER, FLAT	EA 4
12	31	PADZZ	5310-00-880-5976	96906	MS15795-806	WASHER, FLAT	EA 4
12	32	PADZZ	5310-00-982-6813	96906	MS21044C06	NUT, SELF-LOCKING, HE	EA 4

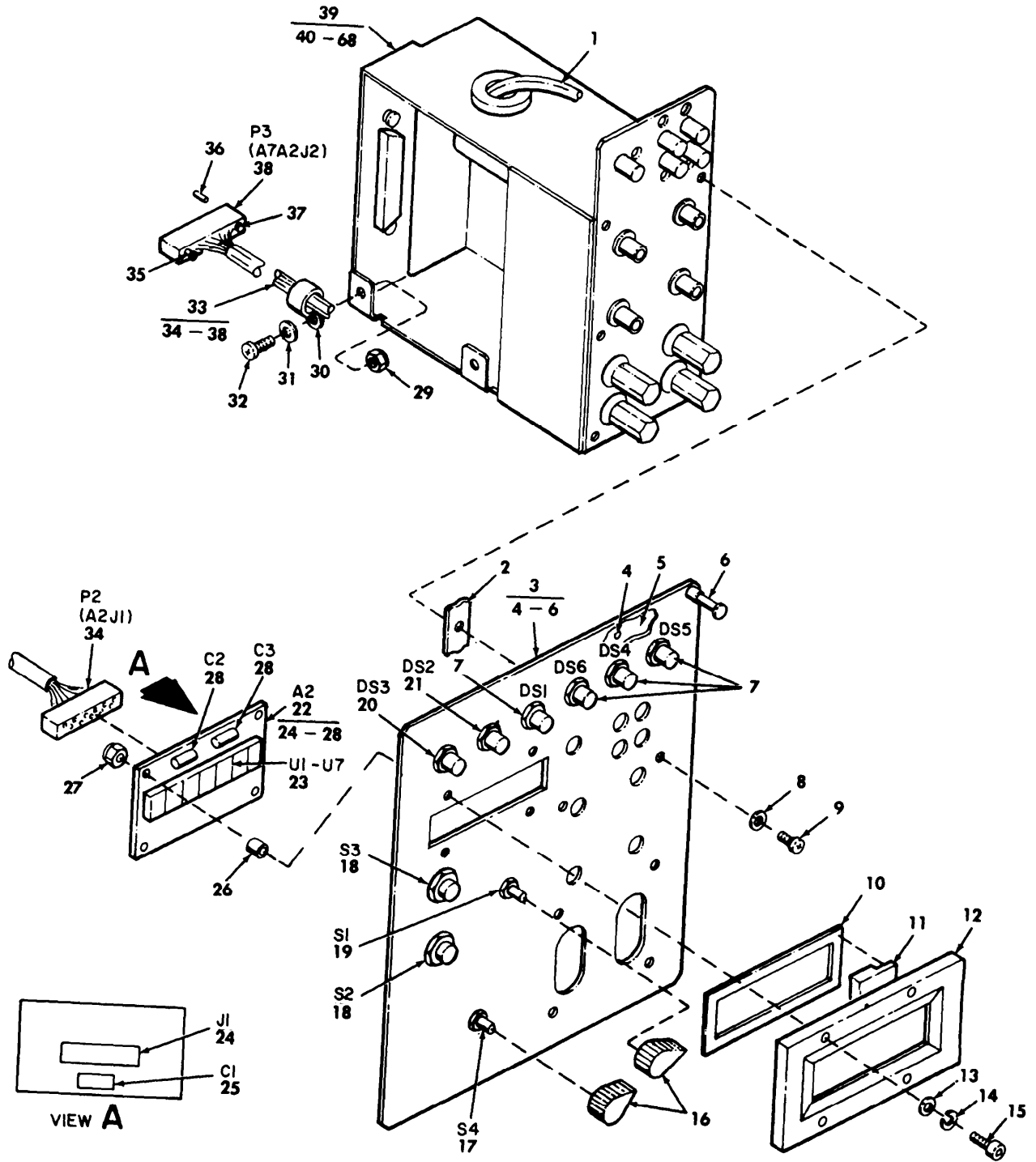


**PREFIX ALL REFERENCE
DESIGNATIONS WITH A7A1**

EL8TK021

Figure 13. Connector assembly, power supply interconnect

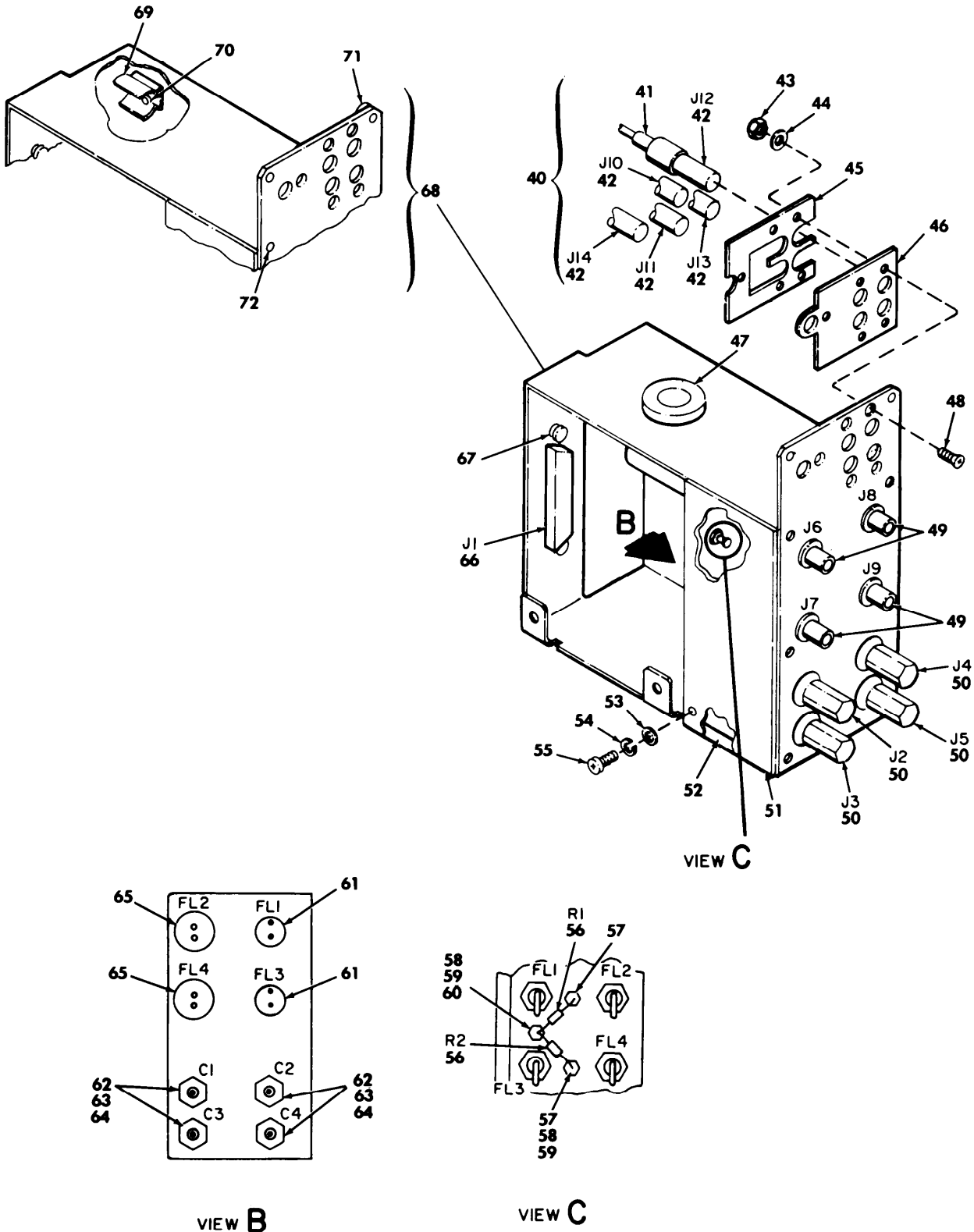
(1) ILLUSTRATION (a) FIG NO	(2) (b) ITEM NO	(3) NATIONAL STOCK NUMBER	(4) FSCM	(5) PART NUMBER	(6) DESCRIPTION USABLE ON CODE GROUP 0802 CONNECTOR ASSEMBLY, POWER SUPPLY INTERCONNECT	(7) U/M	(8) QTY INC IN UNIT
13	1	XBDDD	56996	B4027062	HOLDER ASSY,PCB	EA	1
13	2	PADZZ 5340-00-631-7894	96906	MS21209C0415	INSERT,SCREW THREAD	EA	4
13	3	XBDZZ	54013	293-1009P5	PIN,STR,HEADLESS	EA	2
13	4	PADZZ 5310-00-782-1349	96906	MS15795-804	WASHER,FLAT	EA	4
13	5	PADZZ 5305-00-054-5648	96906	MS51957-14	SCREW,MACHINE	EA	4
13	6	XBDDD	56996	B4027038	BACKPLANIE,CCA	EA	1
13	7	PADZZ	81349	M28859/2-01	HOUSING,CONNECTOR	EA	2
13	8	PADZZ 5310-00-208-3786	82577	717899-038	NUT,PLAIN,HEXAGON	EA	2
13	9	PADZZ 5310-00-933-8118	96906	MS35338-135	WASHER,LOCK	EA	2
13	10	PADZZ 5310-00-595-6211	96906	MS15795-803	WASHER,FLAT	EA	2
13	11	PADZZ 5305-00-054-5649	96906	MS51957-15	SCREW,MACHINE	EA	2
13	12	PADZZ 5935-01-108-4210	81349	M55302/61-A30	CONNECTOR,RECEPTACL	EA	1
13	13	PADZZ	81349	M28859/1-01	CONTACTS	EA	80
13	14	PADZZ 7021-01-101-3690	05041	007-0056-0000	INSERT SPECIAL	EA	4



PREFIX ALL REFERENCE DESIGNATIONS WITH A8

EL8TK022

Figure 14. Control filter assembly (sheet 1 of 2)



PREFIX ALL REFERENCE DESIGNATIONS WITH A8

EL8TK023

Figure 14. Control filter assembly (sheet 2 of 2)

(1) ILLUSTRATION (a) FIG NO	(2) (b) ITEM NO	(3) SMR CODE	(4) NATIONAL STOCK NUMBER	(5) PART FSCM NUMBER	(6) DESCRIPTION USABLE ON CODE GROUP 09 CONTROL FILTER ASSEMBLY	(7) U/M	(8) QTY INC IN UNIT
14	1	XBDZZ		56996 B4027076	LEAD, ELECTRICAL	EA	1
14	2	XBDZZ		56996 B4027064	SHIELDING GSKT, ELEC	EA	1
14	3	XBDDD		56996 B4027056	PANEL, FRONT	EA	1
14	4	PADZZ	5320-00-117-6938	18876 8011118	RIVET, SOLID	EA	8
14	5	XBDZZ		56996 B4027053	SHIELDING GSKT, ELEC	EA	1
14	6	PADZZ		08524 HRT7900-8Q-B-4	SCREW ASSY, CAPTIVE	EA	12
14	7	PAFZZ		L1022-1C12-F2L-0 51628 5	LIGHT, INDICATOR	EA	4
14	8	PADZZ	5310-00-880-5976	96906 MS15795-806	WASHER, FLAT	EA	6
14	9	PADZZ	5305-00-054-6653	96906 MS51957-29	SCREW, MACHINE	EA	6
14	10	XBDZZ		56996 B4027070	SHIELDING GSKT, ELEC	EA	1
14	11	PADZZ		56996 B4026987	WINDOW, OBSERVATION	EA	1
14	12	PADZZ	6695-01-151-7748	56996 B4027066	BEZEL	EA	1
14	13	PADZZ	5310-00-782-1349	96906 MS15795-804	WASHER, FLAT	EA	4
14	14	PADZZ	5310-00-933-8118	96906 MS35338-135	WASHER, LOCK	EA	4
14	15	PADZZ	5305-00-978-9345	96906 MS16997-13	SCREW, CAP, SOCKET HE	EA	4
14	16	PADZZ	5355-00-556-0145	96906 MS91528-1K2B	KNOB	EA	2
14	17	PADZZ		81349 M3786/36-0226	SWITCH, ROTARY	EA	1
14	18	PAFZZ	5930-00-501-1755	96906 MS25089-3F	SWITCH, PUSH	EA	2
14	19	PADZZ		81073 44MY24819	SWITCH, ROTARY	EA	1
14	20	PAFZZ		L1022-1A02-F2L-0 51628 5	LIGHT INDICATOR	EA	1
14	21	PAFZZ		L1022-1D14-F2L-0 51628 5	LIGHT, INDICATOR	EA	1
14	22	PADDD	6625-01-146-4054	56996 B4027027	CIRCUIT CARD ASSEMB	EA	1
14	23	PADZZ	5962-01-108-0296	50434 4N54TXV	MICROCIRCUIT, LINEAR	EA	7
14	24	PADZZ	5935-01-107-0870	81349 M55302/56-A30	CONNECTOR, RECEPTACL	EA	1
14	25	PADZZ	5910-00-189-4248	81349 M39003-01-2977	CAPACITOR, FIXED, ELE	EA	1
14	26	PADZZ		06540 9552B-A-156-1B	SPACER, SLV, CLINCH	EA	4
14	27	PADZZ		06540 18093B-B-0440-28	NUT, PLAIN, CLINCH	EA	4
14	28	PADZZ	5910-00-163-7238	81349 M39014-05-2273	CAPACITOR, FIXED, CER	EA	2
14	29	PADZZ	5310-00-982-6814	96906 MS21044C08	NUT, SELF-LOCKING, HE	EA	1
14	30	PADZZ	5340-00-543-4394	96906 MS21919DG6	CLAMP, LOOP	EA	2
14	31	PADZZ	5310-00-880-5978	96906 MS15795-807	WASHER, FLAT	EA	2
14	32	PADZZ	5305-00-054-6670	96906 MS51957-45	SCREW, MACHINE	EA	2
14	33	XBDDD		56996 B4027046	WIRING HARNESS, BR	EA	1
14	34	PADZZ	5935-01-103-0593	81349 M55302/66-30L	CONNECTOR, PLUG, ELEC	EA	1
14	35	PADZZ		00779 87185-1	JACKSCREW, ELEC CONN	EA	1
14	36	PADZZ	5999-01-039-7213	87990 755090A0113-4	CONTACT, ELECTRICAL	EA	36
14	37	PADZZ		00779 86603-1	JACKSCREW, ELEC CONN	EA	1

(1) ILLUSTRATION (a) FIG NO	(2) (b) ITEM NO	(3) SMR CODE	(4) NATIONAL STOCK NUMBER	(5) FSCM NUMBER	(6) PART NUMBER	(7) DESCRIPTION USABLE ON CODE	(8) QTY INC IN UNIT
14	38	PADZZ	5935-01-118-0370	18876	11569878-010	CONNECTOR BODY, RECE	EA 1
14	39	XBDDD		56996	B4027031	FILTER ASSEMBLY	EA 1
14	40	XBDDD		56996	B4026995	LEAD, ELECTRICAL	EA 1
14	41	PADZZ	5940-00-168-3401	06090	D-133-06	SOLDER SLEEVE COAXI	EA 8
14	42	PADZZ	5935-01-053-9852	80063	SM-C-859779	CONNECTOR, RECEPTACL	EA 5
14	43	PADZZ	5310-00-058-1823	96906	MS21042-02	NUT, SELF-LOCKING, EX	EA 5
14	44	PADZZ	5310-00-595-6761	96906	MS15795-802	WASHER, FLAT	EA 5
14	45	XBDZZ		56996	B4027068	PLATE, BACKING	EA 1
14	46	XBDZZ		56996	B4027069	SHIELDING GSKT, ELEC	EA 1
14	47	PADZZ	5325-00-291-9366	96906	MS35489-11	GROMMET, NONMETALLIC	EA 1
14	48	PADZZ	5305-00-725-4191	96906	MS51959-7	SCREW, MACHINE	EA 5
14	49	PADZZ	5935-00-721-0003	81349	M39012/21-0003	CONNECTOR, RECEPTACL	EA 4
14	50	PADZZ	5940-00-269-2219	81349	PB01FA04	POST BINDING	EA 4
14	51	XBDZZ		56996	B4027059	COVER, FILTER BOX	EA 1
14	52	XBDZZ		56996	B4027060	SHIELDING GSKT, ELEC	EA 1
14	53	PADZZ	5310-00-782-1349	96906	MS15795-804	WASHER, FLAT	EA 6
14	54	PADZZ	5310-00-933-8118	96906	MS35338-135	WASHER, LOCK	EA 6
14	55	PADZZ	5305-00-054-5648	96906	MS51957-14	SCREW, MACHINE	EA 6
14	56	PADZZ	5905-00-436-8560	81349	RLR07C91ROGR	RESISTOR, FIXED, FILM	EA 2
14	57	PADZZ	5940-01-075-7960	81349	SE219E04	TERMINAL, STUD	EA 2
14	58	PADZZ	5310-00-880-5976	96906	MS15795-806	WASHER, FLAT	EA 3
14	59	PADZZ	5310-00-982-6813	96906	MS21044C06	NUT, SELF-LOCKING, HE	EA 3
14	60	PADZZ	5940-00-259-8376	97087	227-1050P4	TERMINAL, STUD	EA 1
14	61	PADZZ	5915-01-091-1869	80063	SM-C-780258-1	FILTER, RADIO FREQUE	EA 2
14	62	PADZZ	5910-01-014-4265	81349	M39014/08-0204	CAPACITOR, FIXED, CER	EA 4
14	63	PADZZ	5310-00-111-3671	96906	MS16213-62	WASHER, LOCK	EA 4
14	64	PADZZ	5310-00-465-5113	96906	MS25082-C5	NUT, PLAIN, HEXAGON	EA 4
14	65	PADZZ	5915-01-097-3710	80063	SM-C-780257	FILTER, RADIO FREQUE	EA 2
14	66	PADZZ	5935-00-410-9252	81349	M24308/4-4	CONNECTOR, RECEPTACL	EA 1
14	67	PADZZ	5935-01-052-9436	81349	M24308/26-1	JACKSOCKET, ELECTRIC	EA 2
14	68	XBDDD		56996	B4027058	BOX, FILTER	EA 1
14	69	XBDZZ		80205	NAS1464B074-05T	CLIP, SPRING TENSION	EA 2
14	70	PADZZ	5320-00-117-6826	96906	MS20470AD4-4	RIVET, SOLID	EA 4
14	71	PADZZ	5310-00-052-3626	94135	1222000-18	NUT, SELF-LOCKING, SP	EA 2
14	72	PADZZ	5340-00-815-4930	96906	MS21209C0615	INSERT, SCREW THREAD	EA 6

NATIONAL STOCK NUMBER AND PART NUMBER INDEX

STOCK NUMBER	FIGURE NO.	ITEM NO.	STOCK NUMBER	FIGURE NO.	ITEM NO.
5920-00-004-0274	2	25	5905-00-196-7213	2	67
5905-00-005-2902	2	38	5905-00-196-7213	3	25
5910-00-007-2003	4	4	5310-00-208-3786	12	28
5910-00-007-2003	5	2	5310-00-208-3786	13	8
5910-00-007-2003	6	3	5961-00-222-2514	2	92
5910-00-007-2003	7	2	5905-00-223-2610	4	16
5961-00-008-8361	2	90	5905-00-223-2610	6	9
5910-00-010-8717	2	16	5961-00-232-3279	3	10
5910-00-010-8721	2	14	5910-00-236-8745	3	5
5910-00-010-8721	11	52	5961-00-237-2384	2	20
5940-00-050-2308	2	120	5961-00-237-2384	3	9
5940-00-050-2308	3	73	5905-00-240-2748	4	24
5310-00-052-3626	14	71	5905-00-240-2748	6	15
5935-00-053-0331	12	11	5905-00-240-2748	7	12
5935-00-053-9454	8	4	5905-00-240-2749	6	12
5305-00-054-5642	2	115	5905-00-240-7948	3	40
5305-00-054-5642	3	75	5905-00-240-7949	2	77
5305-00-054-5643	3	57	5905-00-240-7950	2	76
5305-00-054-5648	13	5	5905-00-240-7950	5	20
5305-00-054-5648	14	55	5905-00-240-7950	7	19
5305-00-054-5649	12	26	5905-00-240-7955	2	58
5305-00-054-5649	13	11	5905-00-240-7958	5	18
5305-00-054-5651	2	94	5905-00-240-7979	4	18
5305-00-054-5651	12	15	5905-00-240-7979	5	13
5305-00-054-6653	14	9	5905-00-240-7979	6	16
5305-00-054-6654	9	7	5905-00-240-7979	7	13
5305-00-054-6655	11	46	5905-00-240-7980	4	34
5305-00-054-6669	11	9	5905-00-240-7980	5	23
5305-00-054-6670	11	6	5905-00-240-7980	6	20
5305-00-054-6670	14	32	5905-00-240-7982	7	16
5305-00-054-6671	11	4	5905-00-240-7983	3	24
5310-00-058-1823	14	43	5961-00-241-3456	3	21
5910-00-098-9281	2	3	5320-00-243-8357	2	102
5910-00-098-9281	3	2	5320-00-243-8357	3	54
5999-00-110-1109	2	95	5905-00-246-9399	2	65
5999-00-110-1109	3	61	5935-00-258-9897	9	4
5310-00-111-3671	14	63	5940-00-259-8376	14	60
5910-00-113-5490	4	1	5940-00-269-2219	14	50
5910-00-113-5540	2	2	5970-00-275-5258	12	4
5910-00-113-5610	2	4	5905-00-284-5525	2	60
5910-00-113-5610	3	1	5910-00-284-8288	4	6
5910-00-114-0804	2	13	5905-00-285-1289	2	61
5905-00-116-8554	2	52	5325-00-291-9366	14	47
5320-00-117-6826	14	70	5961-00-333-9058	2	93
5320-00-117-6938	1	10	5905-00-400-9612	2	66
5320-00-117-6938	1	16	5905-00-401-8683	3	33
5320-00-117-6938	14	4	5905-00-401-8683	4	29
5310-00-126-0022	2	114	5905-00-402-9225	2	56
5905-00-133-0381	2	46	5961-00-404-9136	2	19
5310-00-137-3134	11	43	5935-00-410-9252	14	66
5961-00-138-1269	12	21	5962-00-417-1080	2	88
5905-00-138-1283	2	51	5905-00-419-0189	3	38
5961-00-140-0031	3	11	5905-00-419-0189	5	24
5905-00-146-4159	2	53	5905-00-419-0189	6	11
6240-00-155-7836	11	33	5950-00-419-7588	4	10
5905-00-163-7094	3	29	5950-00-419-7588	5	6
5910-00-163-7238	4	2	5950-00-419-7588	6	6
5910-00-163-7238	5	3	5950-00-419-7588	7	6
5910-00-163-7238	6	2	5905-00-436-8557	2	73
5910-00-163-7238	7	3	5905-00-436-8560	4	32
5910-00-163-7238	14	28	5905-00-436-8560	14	56
5961-00-165-2903	2	23	5905-00-438-0505	2	78
5905-00-165-3107	2	63	5905-00-438-0505	3	42
5970-00-167-4962	12	9	5905-00-438-0505	4	25
5940-00-168-3401	11	26	5905-00-438-0505	5	14
5940-00-168-3401	14	41	5905-00-438-0505	6	18
5905-00-170-8370	12	24	5905-00-438-0505	7	20
5305-00-175-3230	1	5	5905-00-445-1684	2	55
5910-00-176-2295	2	9	5905-00-450-8530	2	48
5910-00-185-4009	3	6	5905-00-450-8530	4	20
5910-00-185-4821	4	7	5905-00-450-8530	5	11
5910-00-185-4821	6	4	5905-00-450-8530	6	17
5905-00-185-5443	2	57	5905-00-450-8530	7	10
5910-00-186-9522	3	7	5905-00-458-9263	2	49
5910-00-189-4248	2	11	5905-00-458-9263	3	41
5910-00-189-4248	4	3	5905-00-458-9263	4	17
5910-00-189-4248	5	1	5905-00-458-9263	7	15
5910-00-189-4248	6	1	5905-00-458-9267	2	69
5910-00-189-4248	7	1	5905-00-458-9267	4	22
5910-00-189-4248	14	25	5905-00-458-9267	5	21

NATIONAL STOCK NUMBER AND PART NUMBER INDEX

STOCK NUMBER	FIGURE NO.	ITEM NO.	STOCK NUMBER	FIGURE NO.	ITEM NO.
5310-00-465-5113	14	64	5961-00-925-3777	2	30
5905-00-468-5820	2	64	5961-00-925-3777	3	20
5961-00-472-0762	2	21	5961-00-925-3777	4	14
5905-00-472-1063	12	22	5961-00-925-3777	5	9
5905-00-477-9176	2	59	5961-00-926-0237	3	19
5905-00-481-1110	2	37	5310-00-928-2690	2	113
5905-00-481-3076	2	41	5310-00-928-2690	3	59
5999-00-481-5513	3	65	5310-00-933-8118	12	27
5905-00-482-0505	4	33	5310-00-933-8118	13	9
5905-00-484-7566	2	79	5310-00-933-8118	14	14
5905-00-484-7888	2	62	5310-00-933-8118	14	54
5935-00-488-7202	9	1	5310-00-933-8119	11	41
5905-00-490-0247	4	30	5310-00-933-8120	2	106
5905-00-491-2638	4	19	5310-00-933-8120	3	68
5905-00-491-2638	5	17	5940-00-937-5237	9	2
5905-00-491-2638	6	14	5940-00-937-5237	11	37
5905-00-491-2638	7	11	5905-00-940-2751	5	22
4820-00-491-3115	11	8	5961-00-951-8757	2	29
5905-00-496-7860	4	31	5961-00-951-8757	3	17
5905-00-498-5684	5	12	5961-00-951-8757	4	13
5930-00-501-1755	14	18	5961-00-951-8757	5	8
5340-00-543-4394	14	30	5961-00-951-8757	6	8
5355-00-556-0145	14	16	5961-00-951-8757	7	8
5940-00-557-1629	11	31	5935-00-976-5425	11	23
5310-00-595-6211	13	10	5305-00-978-9345	14	15
5310-00-595-6761	2	117	5305-00-978-9371	11	13
5310-00-595-6761	3	58	5310-00-982-4999	12	13
5310-00-595-6761	14	44	5310-00-982-4999	12	29
5940-00-614-0537	2	116	5310-00-982-6813	11	48
5310-00-619-1148	2	107	5310-00-982-6813	12	32
5310-00-619-1148	3	72	5310-00-982-6813	14	59
5962-00-621-7201	4	45	5310-00-982-6814	11	10
5962-00-621-7201	5	35	5310-00-982-6814	14	29
5962-00-621-7201	6	31	5961-00-983-7279	3	18
5930-00-621-9949	11	35	5905-01-009-0175	5	16
5340-00-631-7894	13	2	5905-01-009-0175	6	19
5365-00-632-3101	12	17	5999-01-013-3835	11	27
5940-00-683-4339	2	110	5910-01-014-4265	14	62
5940-00-683-4339	3	67	5905-01-016-0000	2	33
5935-00-721-0003	14	49	5905-01-016-0005	2	81
5905-00-721-0009	2	47	5961-01-016-8856	2	18
5305-00-725-4191	14	48	5961-01-016-8856	3	8
5975-00-727-5153	3	62	5905-01-021-1493	2	36
5961-00-777-0925	2	32	5905-01-021-1497	2	70
5961-00-777-0925	3	16	5905-01-021-1497	3	28
5310-00-782-1349	12	12	5935-01-023-8282	11	28
5310-00-782-1349	12	30	5905-01-026-0744	3	37
5310-00-782-1349	13	4	5910-01-030-8388	2	10
5310-00-782-1349	14	13	5962-01-031-7030	4	37
5310-00-782-1349	14	53	5962-01-031-7030	5	25
5340-00-800-7874	11	15	5962-01-031-7030	6	23
5310-00-812-4292	2	105	5962-01-031-7030	7	27
5310-00-812-4292	3	69	5970-01-032-4410	2	109
5310-00-812-4294	2	112	5905-01-033-3492	2	72
5310-00-812-4294	3	60	5910-01-036-9186	2	15
5340-00-815-4929	11	14	5910-01-036-9186	3	3
5340-00-815-4930	14	72	5935-01-037-0898	11	25
5961-00-821-2309	2	91	5905-01-038-6281	3	36
5320-00-821-4996	3	71	5961-01-038-6918	2	17
5315-00-823-8743	2	100	5961-01-038-6918	3	12
5315-00-823-8743	3	51	5961-01-038-6918	4	8
5320-00-837-4885	2	96	5961-01-038-6918	5	4
5320-00-837-4885	3	63	5961-01-038-6918	7	4
5940-00-838-2651	11	53	5905-01-038-7846	2	40
5910-00-857-2123	11	42	5999-01-039-7213	11	20
5310-00-880-5976	9	6	5999-01-039-7213	14	36
5310-00-880-5976	11	47	5962-01-041-3214	4	43
5310-00-880-5976	12	31	5962-01-041-3214	6	32
5310-00-880-5976	14	8	5962-01-041-3214	7	23
5310-00-880-5976	14	58	5905-01-042-3729	3	31
5310-00-880-5978	11	3	5935-01-043-6935	10	4
5310-00-880-5978	14	31	5905-01-044-2935	2	39
5315-00-881-2253	2	98	5905-01-047-1529	2	43
5315-00-881-2253	3	66	5905-01-047-1529	3	22
5961-00-892-3361	4	49	5905-01-047-1529	4	15
5961-00-892-3361	7	29	5905-01-047-1529	5	10
5310-00-894-2353	11	44	5905-01-047-1529	6	10
5905-00-914-9213	4	26	5905-01-047-1529	7	9
5905-00-914-9213	7	18	5905-01-047-1530	2	42
5940-00-915-6128	2	104	5905-01-047-1530	3	35

NATIONAL STOCK NUMBER AND PART NUMBER INDEX

STOCK NUMBER	FIGURE NO.	ITEM NO.	STOCK NUMBER	FIGURE NO.	ITEM NO.
5905-01-047-1530	4	28	5905-01-080-2155	3	23
5905-01-047-1531	2	45	5940-01-081-9479	12	8
5905-01-047-1531	3	26	5962-01-084-5554	3	50
5905-01-047-1531	5	19	5961-01-085-0517	2	22
5962-01-050-0918	5	34	5935-01-085-4542	12	25
5962-01-050-0919	4	38	5905-01-086-1700	2	80
5962-01-050-0919	6	25	5905-01-086-5553	2	50
5962-01-050-0919	7	25	5962-01-089-1814	6	33
5962-01-050-0920	4	42	6210-01-090-4181	11	34
5962-01-050-0920	5	29	5999-01-091-0947	12	7
5962-01-050-0920	6	30	5915-01-091-1868	11	38
5905-01-050-4106	3	32	5915-01-091-1869	14	61
5905-01-050-4106	4	21	5962-01-091-8195	4	41
5905-01-050-4106	5	15	5962-01-091-8195	5	30
5935-01-052-9436	14	67	5962-01-091-8195	6	29
5961-01-053-4360	12	20	5962-01-091-8195	7	26
5935-01-053-9852	14	42	5320-01-092-0275	4	52
5945-01-054-6752	3	14	5320-01-092-0275	5	39
5905-01-057-8113	2	44	5320-01-092-0275	6	36
5905-01-057-8113	2	68	5320-01-092-0275	7	32
5962-01-058-1539	4	36	5915-01-097-3710	14	65
5962-01-058-1539	5	26	5910-01-100-6977	2	6
5962-01-058-1539	6	22	7021-01-101-3690	12	2
5962-01-058-1539	7	21	7021-01-101-3690	13	14
5905-01-064-6736	2	71	5935-01-103-0593	11	50
5905-01-064-6736	4	23	5935-01-103-0593	14	34
5905-01-064-6736	6	13	5935-01-107-0870	14	24
5905-01-064-8328	3	34	5962-01-108-0296	14	23
5905-01-064-8328	7	14	5935-01-108-4210	13	12
5905-01-065-0682	3	30	5935-01-118-0370	14	38
5962-01-065-7026	4	39	5910-01-119-4348	3	4
5962-01-065-7026	5	27	5995-01-123-4512	8	1
5962-01-065-7026	6	27	5961-01-124-9712	3	48
5935-01-065-8013	4	12	5910-01-125-4353	2	5
5935-01-065-8013	5	7	5999-01-136-4069	2	103
5935-01-065-8013	6	7	5999-01-136-4069	3	55
5935-01-065-8013	7	7	5905-01-138-3786	2	54
5905-01-067-7341	3	27	5820-01-140-1287	1	20
5962-01-068-9593	4	44	5820-01-140-1289	1	19
5962-01-068-9593	6	26	6625-01-146-3862	8	2
5935-01-069-6794	11	24	6625-01-146-3863	1	14
5905-01-070-8918	3	43	6625-01-146-4049	12	18
5905-01-070-9476	2	35	6625-01-146-4050	1	13
5905-01-072-1408	4	27	6625-01-146-4051	1	12
5905-01-072-1408	6	21	6625-01-146-4052	1	3
5905-01-072-1408	7	17	6625-01-146-4053	1	2
5905-01-074-2985	2	34	6625-01-146-4054	14	22
5940-01-075-7960	14	57	5995-01-148-6561	8	8
5905-01-076-6256	3	39	5910-01-150-3493	2	8
5961-01-077-5440	2	31	6695-01-151-7748	14	12
5935-01-078-3483	11	29	5970-01-152-2595	2	119
5999-01-079-1171	5	38	5970-01-152-2595	3	74
5310-01-079-6807	11	16	6210-01-152-2641	11	36
5940-01-080-0015	11	51			

FSCM	PART NUMBER	FIGURE NO.	ITEM NO.	FSCM	PART NUMBER	FIGURE NO.	ITEM NO.
04813	A000-076	2	118	56996	B4027031	14	39
04813	A000-076	3	76	56996	B4027034	11	22
4813	A000-096	2	108	56996	B4027035	11	12
99800	BS766	4	10	56996	B4027036	11	2
99800	BS766	5	6	56996	B4027038	13	6
99800	BS766	6	6	56996	B4027040	12	1
99800	BS766	7	6	56996	B4027042	8	6
56996	B4026971	4	46	56996	B4027043	1	14
56996	B4026972	4	50	56996	B4027046	14	33
56996	B4026974-2	4	48	56996	B4027047	8	2
56996	B4026974-4	5	36	56996	B4027048	8	8
56996	B4026987	14	11	56996	B4027049	8	3
56996	B4026995	14	40	56996	B4027050	11	7
56996	B4027002	1	13	56996	B4027051	1	17
56996	B4027006	1	12	56996	B4027052	1	9
56996	B4027010	1	3	56996	B4027053	14	5
56996	B4027014	1	2	56996	B4027054	1	7
56996	B4027018	1	1	56996	B4027054-5	1	8
56996	B4027022	1	6	56996	B4027055	1	15
56996	B4027023	12	18	56996	B4027056	14	3
56996	B4027027	14	22	56996	B4027057	12	3

NATIONAL STOCK NUMBER AND PART NUMBER INDEX

FSCM	PART NUMBER	FIGURE NO.	ITEM NO.	FSCM	PART NUMBER	FIGURE NO.	ITEM NO.
56996	B4027058	14	68	51628	L1022-1D14-F2L-05	14	21
56996	B4027059	14	51	96906	MS0035431-3	2	120
56996	B4027060	14	52	96906	MS0035431-3	3	73
56996	B4027061	12	16	96906	MS0035431-6	11	53
56996	B4027062	13	1	96906	MS0035431-9	11	51
56996	B4027064	14	2	96906	MS15795-802	2	117
56996	B4027065	11	11	96906	MS15795-802	3	58
56996	B4027066	14	12	96906	MS15795-802	14	44
56996	B4027067	11	39	96906	MS15795-803	13	10
56996	B4027068	14	45	96906	MS15795-804	12	12
56996	B4027069	14	6	96906	MS15795-804	12	30
56996	B4027070	14	10	96906	MS15795-804	13	4
56996	B4027071	8	5	96906	MS15795-804	14	13
56996	B4027072	11	5	96906	MS15795-804	14	53
56996	B4027073	11	1	96906	MS15795-806	9	6
56996	B4027075	9	5	96906	MS15795-806	11	47
56996	B4027076	14	1	96906	MS15795-806	12	31
56996	B4027077	8	9	96906	MS15795-806	14	8
56996	B4027078	8	7	96906	MS15795-806	14	58
56996	B4027079	9	3	96906	MS15795-807	11	3
56996	B4027083	1	4	96906	MS15795-807	14	31
56996	B4027084	11	17	96906	MS15795-808	2	107
56996	B4027085	11	49	96906	MS15795-808	3	72
81349	CCR77CG161FM	2	1	96906	MS16213-57	2	114
81349	CK70AW152M	11	42	96906	MS16213-61	11	44
81349	CMR04F151FPDM	4	5	96906	MS16213-62	14	63
06090	D-133-06	11	26	96906	MS16535-23	3	71
06090	D-133-06	14	41	96906	MS16535-25	2	96
08524	FFM6010-8F-B	11	16	96906	MS16535-25	3	63
81349	FM04A125V1A	2	25	96906	MS16535-36	4	52
25330	GC2801	2	27	96906	MS16535-36	5	39
25330	GC2801	3	15	96906	MS16535-36	6	36
06324	G1519A-128B-1.25P	10	2	96906	MS16535-36	7	32
08524	HRT7900-8Q-B-4	1	11	96906	MS16562-219	2	100
08524	HRT7900-8Q-B-4	1	18	96906	MS16562-219	3	51
08524	HRT7900-8Q-B-4	14	6	96906	MS16562-221	2	98
81349	HS75089-5	4	11	96906	MS16562-221	3	66
81349	JAN1N4104	2	90	96906	MS16997-13	14	15
81349	JAN1N4148-1	2	17	96906	MS16997-33	11	13
81349	JAN1N4148-1	3	12	96906	MS20470AD2-5	2	102
81349	JAN1N4148-1	4	8	96906	MS20470AD2-5	3	54
81349	JAN1N4148-1	5	4	96906	MS20470AD4-4	14	70
81349	JAN1N4148-1	7	4	96906	MS21042-02	14	43
81349	JAN1N4620	2	92	96906	MS21044C04	12	13
81349	JAN1N4622	2	93	96906	MS21044C04	12	29
81349	JAN1N5418	2	21	96906	MS21044C06	11	48
81349	JAN1N5551	3	11	96906	MS21044C06	12	32
81349	JAN1N5614	2	20	96906	MS21044C06	14	59
81349	JAN1N5614	3	9	96906	MS21044C08	11	10
81349	JAN1N5615	2	19	96906	MS21044C08	14	29
81349	JAN1N5616	12	21	96906	MS21209C0415	13	2
81349	JAN1N5619	2	23	96906	MS21209C0615	14	72
81349	JAN1N5711	3	10	96906	MS21209C0815	11	14
81349	JAN1N5816	2	22	96906	MS21209F1-15	11	15
81349	JAN1N5907	12	20	96906	MS21318-14	1	5
81349	JAN1N649-1	2	18	96906	MS21919DG6	14	30
81349	JAN1N649-1	3	8	96906	MS25036-149	11	31
81349	JAN1N750A	4	49	96906	MS25082-C4	11	43
81349	JAN1N750A	7	29	96906	MS25082-C5	14	64
81349	JAN1N751A	2	91	96906	MS25089-3F	14	18
81349	JAN2N1777A	3	18	96906	MS25237-327	11	33
81349	JAN2N2222A	2	29	96906	MS3124P14-19P	9	1
81349	JAN2N2222A	3	17	96906	MS3181-12C-A	11	40
81349	JAN2N2222A	4	13	96906	MS3367-4-9	3	62
81349	JAN2N2222A	5	8	96906	MS35338-134	2	113
81349	JAN2N2222A	6	8	96906	MS35338-134	3	59
81349	JAN2N2222A	7	8	96906	MS35338-135	12	27
81349	JAN2N2326A	2	32	96906	MS35338-135	13	9
81349	JAN2N2326A	3	16	96906	MS35338-135	14	14
81349	JAN2N2369A	3	19	96906	MS35338-135	14	54
81349	JAN2N2907A	2	30	96906	MS35338-137	11	41
81349	JAN2N2907A	3	20	96906	MS35338-138	2	106
81349	JAN2N2907A	4	14	96906	MS35338-138	3	68
81349	JAN2N2907A	5	9	96906	MS35431-1	2	116
81349	JAN2N3019	3	21	96906	MS35431-7	2	110
81349	JAN2N3439A	2	28	96906	MS35431-7	3	67
81349	JAN2N6547	2	31	96906	MS35489-11	14	47
81349	JAN4N24A	3	48	96906	MS51957-14	13	5
51628	L1022-1A02-F2L-05	14	20	96906	MS51957-14	14	55
51628	L1022-1C12-F2L-05	14	7	96906	MS51957-15	12	26

NATIONAL STOCK NUMBER AND PART NUMBER INDEX

FSCM	PART NUMBER	FIGURE NO.	ITEM NO.	FSCM	PART NUMBER	FIGURE NO.	ITEM NO.
96906	MS51957-15	13	11	81349	M39003-01-2977	7	1
96906	MS51957-17	2	94	81349	M39003-01-2977	14	25
96906	MS51957-17	12	15	81349	M39003-01-3021	3	5
96906	MS51957-29	14	9	81349	M39003/01-3009	4	4
96906	MS51957-30	9	7	81349	M39003/01-3009	5	2
96906	MS51957-31	11	46	81349	M39003/01-3009	6	3
96906	MS51957-44	11	9	81349	M39003/01-3009	7	2
96906	MS51957-45	11	6	81349	M39003/09-0031	2	7
96906	MS51957-45	14	32	81349	M39003/09-0064	2	8
96906	MS51957-46	11	4	81349	M39006/09-8210	2	12
96906	MS51957-8	2	115	81349	M39006/09-8304	2	5
96906	MS51957-8	3	75	81349	M39006/09-8315	2	6
96906	MS51957-9	3	57	81349	M39006/09-8318	2	15
96906	MS51959-7	14	48	81349	M39006/09-8318	3	3
96906	MS91528-1K2B	14	16	81349	M39006/22-0580	3	4
81349	M24308/2-4	11	23	81349	M39012/16-0102	10	4
81349	M24308/20-4	11	25	81349	M39012/21-0003	14	49
81349	M24308/25-1	11	24	81349	M39014-02-1419	2	14
81349	M24308/26-1	14	67	81349	M39014-02-1419	11	52
81349	M24308/4-4	14	66	81349	M39014-05-2273	4	2
81349	M28859/1-01	13	13	81349	M39014-05-2273	5	3
81349	M28859/2-01	13	7	81349	M39014-05-2273	6	2
81349	M3786/36-0226	14	17	81349	M39014-05-2273	7	3
81349	M38510-30102BCB	4	36	81349	M39014-05-2273	14	28
81349	M38510-30102BCB	5	26	81349	M39014-05-2291	2	4
81349	M38510-30102BCB	6	22	81349	M39014-05-2291	3	1
81349	M38510-30102BCB	7	21	81349	M39014/01-1473	2	16
81349	M38510-30701BEB	5	34	81349	M39014/05-2213	2	9
81349	M38510/05252BCX	3	49	81349	M39014/05-2219	4	1
81349	M38510/05553BEX	3	47	81349	M39014/05-2225	4	7
81349	M38510/05553BEX	4	35	81349	M39014/05-2225	6	4
81349	M38510/05553BEX	5	32	81349	M39014/05-2237	2	3
81349	M38510/05553BEX	6	24	81349	M39014/05-2237	3	2
81349	M38510/05553BEX	7	28	81349	M39014/05-2239	4	6
81349	M38510/10201BCB	2	88	81349	M39014/05-2243	2	13
81349	M38510/10304BCX	2	86	81349	M39014/05-2245	3	6
81349	M38510/10305BEB	6	33	81349	M39014/05-2310	2	2
81349	M38510/10401BCB	4	45	81349	M39014/05-2321	3	7
81349	M38510/10401BCB	5	35	81349	M39014/05-2655	2	10
81349	M38510/10401BCB	6	31	81349	M39014/08-0204	14	62
81349	M38510/10707BYC	3	50	81349	M39015/3-007WM	2	55
81349	M38510/11201BCX	2	89	81349	M39016/6-116M	3	14
81349	M38510/11201BCX	3	46	81349	M39019/03-312	11	32
81349	M38510/30001BCB	4	37	81349	M55302/56-A30	14	24
81349	M38510/30001BCB	5	25	81349	M55302/61-A20	12	25
81349	M38510/30001BCB	6	23	81349	M55302/61-A30	13	12
81349	M38510/30001BCB	7	27	81349	M55302/66-20L	11	30
81349	M38510/30003BCX	4	41	81349	M55302/66-30L	11	50
81349	M38510/30003BCX	5	30	81349	M55302/66-30L	14	34
81349	M38510/30003BCX	6	29	81349	M8805/95-002	11	35
81349	M38510/30003BCX	7	26	80205	NAS1464B074-05T	14	69
81349	M38510/30203BCX	5	31	80205	NAS43DD0-12	12	17
81349	M38510/30302BCK	4	40	80205	NAS671C10	2	105
81349	M38510/30302BCK	5	33	80205	NAS671C10	3	69
81349	M38510/30302BCK	6	28	80205	NAS671C2	2	112
81349	M38510/30302BCK	7	24	80205	NAS671C2	3	60
81349	M38510/30502BCB	4	43	81349	PB01FA04	14	50
81349	M38510/30502BCB	6	32	81349	PB08NA01	9	2
81349	M38510/30502BCB	7	23	81349	PB08NA01	11	37
81349	M38510/30605BCB	4	44	81349	RCR07G105JS	2	52
81349	M38510/30605BCB	6	26	81349	RCR32G202JS	2	65
81349	M38510/30901BEB	4	42	81349	RCR32G562JR	2	46
81349	M38510/30901BEB	5	29	81349	RLR07C10R0GR	4	33
81349	M38510/30901BEB	6	30	81349	RLR07C1000GR	2	49
81349	M38510/30902BEB	4	38	81349	RLR07C1000GR	3	41
81349	M38510/30902BEB	6	25	81349	RLR07C1000GR	4	17
81349	M38510/30902BEB	7	25	81349	RLR07C1000GR	7	15
81349	M38510/31503BEX	5	28	81349	RLR07C1001GR	2	43
81349	M38510/31503BEX	7	22	81349	RLR07C1001GR	3	22
81349	M38510/31504BEB	4	39	81349	RLR07C1001GR	4	15
81349	M38510/31504BEB	5	27	81349	RLR07C1001GR	5	10
81349	M38510/31504BEB	6	27	81349	RLR07C1001GR	6	10
81349	M38526/1-102	2	109	81349	RLR07C1001GR	7	9
81349	M38527/1-03D	2	103	81349	RLR07C1002GR	2	45
81349	M38527/1-03D	3	55	81349	RLR07C1002GR	3	26
81349	M38527/6-01D	3	65	81349	RLR07C1002GR	5	19
81349	M39003-01-2977	2	11	81349	RLR07C1003GR	3	34
81349	M39003-01-2977	4	3	81349	RLR07C1003GR	7	14
81349	M39003-01-2977	5	1	81349	RLR07C1004GR	3	32
81349	M39003-01-2977	6	1	81349	RLR07C1004GR	4	21

NATIONAL STOCK NUMBER AND PART NUMBER INDEX

FSCM	PART NUMBER	FIGURE NO.	ITEM NO.	FSCM	PART NUMBER	FIGURE NO.	ITEM NO.
81349	RLR07C1004GR	5	15	81349	RLR20C51R1FR	3	37
81349	RLR07C1201GR	3	40	81349	RLR20C5110FR	2	81
81349	RLR07C1202GR	2	71	81349	RLR20C5600GR	5	22
81349	RLR07C1202GR	4	23	81349	RLR20C6800GR	2	67
81349	RLR07C1202GR	6	13	81349	RLR20C6800GR	3	25
81349	RLR07C1203GR	2	73	81349	RLR32C10R0GR	3	43
81349	RLR07C1272FR	2	35	81349	RLR32C1203FR	2	74
81349	RLR07C15R0GR	2	77	81349	RLR32C2200GR	3	30
81349	RLR07C1500GR	2	48	81349	RLR32C2700GR	4	27
81349	RLR07C1500GR	4	20	81349	RLR32C2700GR	6	21
81349	RLR07C1500GR	5	11	81349	RLR32C2700GR	7	17
81349	RLR07C1500GR	6	17	81349	RLR32C5600GR	2	44
81349	RLR07C1500GR	7	10	81349	RLR32C5600GR	2	68
81349	RLR07C1501GR	2	76	81349	RLR32C8202GR	3	23
81349	RLR07C1501GR	5	20	81349	RL425822GTX	2	75
81349	RLR07C1501GR	7	19	81349	RNC55H1741FS	2	62
81349	RLR07C1690FR	2	50	81349	RNC55H2001FS	2	59
81349	RLR07C1800GR	2	47	81349	RNC55H3012FS	2	38
81349	RLR07C1801GR	3	38	81349	RNC55H4991FS	2	37
81349	RLR07C1801GR	5	24	81349	RNC55H5230FS	2	60
81349	RLR07C1801GR	6	11	81349	RNC55H5901FM	2	39
81349	RLR07C2050FR	2	34	81349	RNC55H7680FS	2	61
81349	RLR07C2052FR	2	40	81349	RNC60H1002FS	2	51
81349	RLR07C22R0GR	2	58	81349	RNC60H1621FS	2	56
81349	RLR07C2200GR	2	69	81349	RNC60H2002FS	2	63
81349	RLR07C2200GR	4	22	81349	RNC60H2050FS	2	64
81349	RLR07C2200GR	5	21	81349	RNC60H3651FS	2	53
81349	RLR07C2201GR	2	42	81349	RNC60H4421FS	2	57
81349	RLR07C2201GR	3	35	81349	RNC60H6192FS	2	41
81349	RLR07C2201GR	4	28	81349	RWR51R54FM	3	44
81349	RLR07C2202GR	5	18	81349	RWR74S24R9FM	3	29
81349	RLR07C2700GR	3	33	81349	RWR81S1740FR	12	24
81349	RLR07C2700GR	4	29	81349	RWR81S49R9FR	12	22
81349	RLR07C2701GR	4	19	81349	RWR82S1150FM	12	23
81349	RLR07C2701GR	5	17	81349	SE219EO4	14	57
81349	RLR07C2701GR	6	14	81349	SE25XC02	2	104
81349	RLR07C2701GR	7	11	80063	SM-A-959303	2	87
81349	RLR07C33R0GR	4	31	80063	SM-A-959304	2	85
81349	RLR07C3301GR	3	31	80063	SM-B-525568	10	1
81349	RLR07C3303GR	5	16	80063	SM-B-876188	2	97
81349	RLR07C3303GR	6	19	80063	SM-B-876188	3	64
81349	RLR07C3480FR	2	80	80063	SM-B-876188	4	53
81349	RLR07C3650FR	3	39	80063	SM-B-876188	5	40
81349	RLR07C4222FR	3	36	80063	SM-B-876188	6	37
81349	RLR07C4700GR	4	18	80063	SM-B-876188	7	33
81349	RLR07C4700GR	5	13	80063	SM-C-780243	12	7
81349	RLR07C4700GR	6	16	80063	SM-C-780257	14	65
81349	RLR07C4700GR	7	13	80063	SM-C-780258-1	14	61
81349	RLR07C4701GR	2	78	80063	SM-C-859779	14	42
81349	RLR07C4701GR	3	42	80063	SM-C-884614	2	111
81349	RLR07C4701GR	4	25	80063	SM-C-884687	3	53
81349	RLR07C4701GR	5	14	80063	SM-C-884688	2	101
81349	RLR07C4701GR	6	18	80063	SM-C-938592	11	38
81349	RLR07C4701GR	7	20	80063	SM-C-959319	3	70
81349	RLR07C51R0GR	4	16	80063	SM-D-525130	8	1
81349	RLR07C51R0GR	6	9	80063	SM-D-884567	1	20
81349	RLR07C5110FR	2	72	80063	SM-D-884579	1	19
81349	RLR07C5111FR	2	70	80063	SM-D-884662	2	99
81349	RLR07C5111FR	3	28	80063	SM-D-884662	3	52
81349	RLR07C5600GR	4	34	80063	SMA544876	2	95
81349	RLR07C5600GR	5	23	80063	SMA544876	3	61
81349	RLR07C5600GR	6	20	94086	SNC55109J	4	47
81349	RLR07C5601GR	2	66	81349	W-C-596/13-1	10	3
81349	RLR07C5602GR	4	24	05041	000403-0121	4	12
81349	RLR07C5602GR	6	15	05041	000403-0121	5	7
81349	RLR07C5602GR	7	12	05041	000403-0121	6	7
81349	RLR07C6800GR	7	16	05041	000403-0121	7	7
81349	RLR07C6801GR	6	12	05041	007-0056-000	12	2
81349	RLR07C7151FR	3	27	05041	007-0056-0000	13	14
81349	RLR07C7500FR	2	33	26916	010-005290-029	11	29
81349	RLR07C7500GR	4	30	05041	027-0111-139	12	5
81349	RLR07C8200GR	5	12	05041	039-0067-000	12	4
81349	RLR07C8202GR	3	24	05041	040-0025-000	12	6
81349	RLR07C8251FR	2	36	05041	040-0045-000	12	9
81349	RLR07C91RORG	14	56	76854	08-83283-163	11	36
81349	RLR07C91R0GR	4	32	76854	08-83283-164	11	34
81349	RLR20C10R0GR	2	79	00779	1-86672-9	11	18
81349	RLR20C3833FR	2	54	52094	107	5	38
81349	RLR20C4700GR	4	26	56996	107	6	35
81349	RLR20C4700GR	7	18	56996	107	7	31

NATIONAL STOCK NUMBER AND PART NUMBER INDEX

FSCM	PART NUMBER	FIGURE NO.	ITEM NO.	FSCM	PART NUMBER	FIGURE NO.	ITEM NO.
52094	107-1036-1	4	51	72619	550-2406	5	5
52094	107-1036-2	5	37	72619	550-2406	6	5
52094	107-1036-3	6	34	72619	550-2406	7	5
52094	107-1036-4	7	30	72619	550-2406-100	2	24
18876	11569878-010	14	38	72619	550-2406-100	3	13
94135	1222000-18	14	71	18565	60-11-6875-1671	2	119
05276	1269	8	4	18565	60-11-6875-1671	3	74
05041	130-0001-941	12	8	56289	640D-381X0250E2	11	45
10581	13544	2	84	05869	716062-38	9	4
10581	13547	2	83	82577	717899-038	12	28
10581	13728	2	26	82577	717899-038	13	8
10581	13729	2	82	87990	755090A0113-4	11	20
06540	18093B-B-0440-28	14	27	87990	755090A0113-4	14	36
55783	2000CL2532X.100-5Y.600-3Y.900-1G	12	10	98021	790-RPV-1.0-3.0	11	8
97087	227-1050P4	14	60	18876	801118	1	10
09062	2829-75-1	3	56	18876	801118	1	16
54013	293-1009P5	13	3	18876	801118	14	4
06978	317-0745	12	19	00779	86602-1	12	14
50434	4N54TXV	14	23	00779	86603-1	11	21
14440	421283	11	27	00779	86603-1	14	37
81073	44MY24819	14	19	00779	87175-2	11	28
28528	4590042-1	12	11	00779	87185-1	11	19
10581	53092	3	45	00779	87185-1	14	35
72619	550-2406	4	9	06540	9552B-A-156-1B	14	26



THEN. JOT DOWN THE DOPE ABOUT IT ON THIS FORM. CAREFULLY TEAR IT OUT, FOLD IT AND DROP IT IN THE MAIL!

SOMETHING WRONG WITH THIS PUBLICATION?

FROM (PRINT YOUR UNIT'S COMPLETE ADDRESS)
 Commander
 Stateside Army Depot
 ATTN: AMSTA-US
 Stateside, N.J. 07703

DATE SENT
 10 July 1975

PUBLICATION NUMBER TM 11-5840-340-20P	PUBLICATION DATE 23 Jan 78	PUBLICATION TITLE Radar Set AN/PRC-76
--	-------------------------------	--

BE EXACT PIN-POINT WHERE IT IS				IN THIS SPACE TELL WHAT IS WRONG AND WHAT SHOULD BE DONE ABOUT IT:
PAGE NO	PARA-GRAPH	FIGURE NO	TABLE NO	
33				For item 2, change the NSN to read: 5835-00-134-9186. Reason: Accuracy.
44		19		Identify the cover on the junction box (item no. 5). Reason: It is a separate item and is not called out on figure 19.
45				Add the cover of the junction box as an item in the listing for figure 19. Reason: Same as above

SAMPLE

TEAR ALONG PERFORATED LINE

PRINTED NAME GRADE OR TITLE AND TELEPHONE NUMBER SSG I. M. DeSpirit of 999-1776	SIGN HERE
--	---------------

FILL IN YOUR
UNIT'S ADDRESS

FOLD BACK

DEPARTMENT OF THE ARMY

POSTAGE AND FEES PAID
DEPARTMENT OF THE ARMY
DOD 314



OFFICIAL BUSINESS
PENALTY FOR PRIVATE USE \$300

SAMPLE

Commander
US Army Communications-Electronics Command
and Fort Monmouth
ATTN: DRSEL-ME-MP
Fort Monmouth, New Jersey 07703

TEAR ALONG PERFORATED LINE



SOMETHING WRONG WITH THIS PUBLICATION?

THEN...JOT DOWN THE DOPE ABOUT IT ON THIS FORM. CAREFULLY TEAR IT OUT, FOLD IT AND DROP IT IN THE MAIL.

FROM: (PRINT YOUR UNIT'S COMPLETE ADDRESS)

DATE SENT

PUBLICATION NUMBER

TM 11-6625-3041-30P

PUBLICATION DATE

19 Oct 1983

PUBLICATION TITLE

Digital Data Generator
SG-1139()/G

BE EXACT PIN-POINT WHERE IT IS

PAGE NO.	PARA GRAPH	FIGURE NO.	TABLE NO.

IN THIS SPACE TELL WHAT IS WRONG AND WHAT SHOULD BE DONE ABOUT IT:

TEAR ALONG PERFORATED LINE

PRINTED NAME GRADE OR TITLE AND TELEPHONE NUMBER

SIGN HERE

FILL IN YOUR
UNIT'S ADDRESS

FOLD BACK

DEPARTMENT OF THE ARMY

OFFICIAL BUSINESS
PENALTY FOR PRIVATE USE \$300

POSTAGE AND FEES PAID
DEPARTMENT OF THE ARMY
DOD 314



TEAR ALONG PERFORATED LINE

Commander
US Army Communications-Electronics Command
and Fort Monmouth
ATTN: DRSEL-ME-MP
Fort Monmouth, New Jersey 07703

RECOMMENDED CHANGES TO EQUIPMENT TECHNICAL PUBLICATIONS



THEN...JOT DOWN THE DOPE ABOUT IT ON THIS FORM. CAREFULLY TEAR IT OUT, FOLD IT AND DROP IT IN THE MAIL.

SOMETHING WRONG WITH THIS PUBLICATION?

FROM: (PRINT YOUR UNIT'S COMPLETE ADDRESS)

DATE SENT

PUBLICATION NUMBER

TM 11-6625-3041-30P

PUBLICATION DATE

19 Oct 1983

PUBLICATION TITLE

Digital Data Generator
SG-1139()/G

BE EXACT PIN-POINT WHERE IT IS

PAGE NO.	PARA GRAPH	FIGURE NO.	TABLE NO.
----------	------------	------------	-----------

IN THIS SPACE TELL WHAT IS WRONG AND WHAT SHOULD BE DONE ABOUT IT:

TEAR ALONG PERFORATED LINE

PRINTED NAME GRADE OR TITLE AND TELEPHONE NUMBER

SIGN HERE

DA FORM 2028-2
1 JUL 79

PREVIOUS EDITIONS ARE OBSOLETE

P.S.--IF YOUR OUTFIT WANTS TO KNOW ABOUT YOUR RECOMMENDATION MAKE A CARBON COPE OF THIS AND GIVE IT TO YOUR HEADQUARTERS.

FILL IN YOUR
UNIT'S ADDRESS

FOLD BACK

DEPARTMENT OF THE ARMY

POSTAGE AND FEES PAID
DEPARTMENT OF THE ARMY
DOD 314

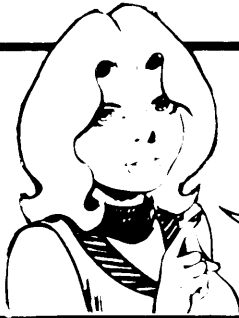


OFFICIAL BUSINESS
PENALTY FOR PRIVATE USE \$300

Commander
US Army Communications-Electronics Command
and Fort Monmouth
ATTN: DRSEL-ME-MP
Fort Monmouth, New Jersey 07703

TEAR ALONG PERFORATED LINE

RECOMMENDED CHANGES TO EQUIPMENT TECHNICAL PUBLICATIONS



SOMETHING WRONG WITH THIS PUBLICATION?

THEN...JOT DOWN THE DOPE ABOUT IT ON THIS FORM. CAREFULLY TEAR IT OUT, FOLD IT AND DROP IT IN THE MAIL.

FROM: (PRINT YOUR UNIT'S COMPLETE ADDRESS)

DATE SENT

PUBLICATION NUMBER

TM 11-6625-3041-30P

PUBLICATION DATE

19 Oct 1983

PUBLICATION TITLE

Digital Data Generator
SG-1139()/G

BE EXACT PIN-POINT WHERE IT IS

PAGE NO.	PARA GRAPH	FIGURE NO.	TABLE NO.

IN THIS SPACE TELL WHAT IS WRONG AND WHAT SHOULD BE DONE ABOUT IT:

TEAR ALONG PERFORATED LINE

PRINTED NAME GRADE OR TITLE AND TELEPHONE NUMBER

SIGN HERE

DA FORM 2028-2
1 JUL 79

PREVIOUS EDITIONS ARE OBSOLETE

P.S.--IF YOUR OUTFIT WANTS TO KNOW ABOUT YOUR RECOMMENDATION MAKE A CARBON COPE OF THIS AND GIVE IT TO YOUR HEADQUARTERS.

FILL IN YOUR
UNIT'S ADDRESS

FOLD BACK

DEPARTMENT OF THE ARMY

OFFICIAL BUSINESS
PENALTY FOR PRIVATE USE \$300

POSTAGE AND FEES PAID
DEPARTMENT OF THE ARMY
DOD 314



TEAR ALONG PERFORATED LINE

Commander
US Army Communications-Electronics Command
and Fort Monmouth
ATTN: DRSEL-ME-MP
Fort Monmouth, New Jersey 07703

By Order of the Secretaries of the Army and the Air Force:

Official:

JOHN A. WICKHAM JR.
General, United States Army
Chief of Staff

ROBERT M. JOYCE
Major General, United States Army
The Adjutant General

Official:

JAMES P. MULLINS
General, USAF, Commander, Air Force
Logistics Command

CHARLES A. GABRIEL
General, USAF
Chief of Staff

DISTRIBUTION:

To be distributed in accordance with DA Form 12-51C, Organizational Maintenance requirements for TD-1065/G.

This fine document...

Was brought to you by me:



[Liberated Manuals -- free army and government manuals](#)

Why do I do it? I am tired of sleazy CD-ROM sellers, who take publicly available information, slap “watermarks” and other junk on it, and sell it. Those masters of search engine manipulation make sure that their sites that sell free information, come up first in search engines. They did not create it... They did not even scan it... Why should they get your money? Why are not letting you give those free manuals to your friends?

I am setting this document FREE. This document was made by the US Government and is NOT protected by Copyright. Feel free to share, republish, sell and so on.

I am not asking you for donations, fees or handouts. If you can, please provide a link to liberatedmanuals.com, so that free manuals come up first in search engines:

<A HREF=<http://www.liberatedmanuals.com/>>Free Military and Government Manuals

- Sincerely
Igor Chudov
<http://igor.chudov.com/>
- [Chicago Machinery Movers](#)