

AIR FORCE
ARMY
MARINE CORPS

T.O. 35E9-188-4
TM 11-5895-1045-24P
TM SL-4-08045-15/7

**TECHNICAL MANUAL
ILLUSTRATED PARTS BREAKDOWN**

**AIR CONDITIONER GROUP
OA-8840(V)2/T
PART NUMBER 2037603-1**

**TEXAS INSTRUMENTS INCORPORATED
F1962877-C-0126**

**Each transmittal of this document outside of the Department of Defense must have approval of the
issuing Service**

Published under authority of the Secretary of the Air Force.

AIR FORCE (2) APRIL 6, 1981-450-ORIGINAL

1 MAY 1980

LIST OF EFFECTIVE PAGES

Insert latest changed pages; dispose of superseded pages in accordance with applicable regulations.

NOTE: On a changed page, the portion of the text affected by the latest change is indicated by a vertical line, or other change symbol, in the outer margin of the page. Changes to illustrations are indicated by miniature pointing hands. Changes to wiring diagrams are indicated by shaded areas.

Total number of pages in this manual is 62 consisting of the following:

Page No.	#Change No.
Title.....	0
A.....	0
i.....	0
ii.....	0
1-1-1-5.....	0
1-6 Blank.....	0
1-7-1-15.....	0
1-16 Blank.....	0
2-1-2-25.....	0
2-26 Blank.....	0
3-1-3-11.....	0
3-14 Blank.....	0
4-1.....	0
4-2 Blank.....	0

Zero in this column indicates an original page.

TABLE OF CONTENTS

<i>Section</i>	<i>Title</i>	<i>Page</i>
I	INTRODUCTION TO THE ILLUSTRATED PARTS BREAKDOWN	1-1
II	PARTS LIST	2-1
	Air Conditioner Group, OA-8840(V)2/T	2-2
	Turning Vane Assembly	2-9
	Shelter Repair Kit Assembly	2-11
	Power Distribution Cabinet Assembly	2-13
	Air Conditioner Control Relay Assembly	2-19
	Plenum Assembly	2-21
	Environmental Control Unit	2-24
III	NUMERICAL INDEX	3-1
IV	REFERENCE DESIGNATION INDEX	4-1

i/(ii blank)

SECTION I

INTRODUCTION TO THE ILLUSTRATED PARTS BREAKDOWN

1-1. SCOPE.

1-2. This Illustrated Parts Breakdown lists and illustrates the Air Conditioner Group OA-8840(V)2/T, part number 2037603-1.

1-3. RELATED PUBLICATIONS.

1-4. The following related publication contains maintenance and overhaul instructions for the equipment covered by this Illustrated Parts Breakdown.

T.O. 35E9-170-1	Operating & Maintenance Instruction Manual
T.O. 35E9-170-3	Overhaul Manual

1-5. SECTION I-INTRODUCTION TO THE ILLUSTRATED PARTS BREAKDOWN.

1-6. Section I defines and explains the use of the Illustrated Parts Breakdown.

1-7. SECTION II-MAINTENANCE PART LIST.

1-8. The Maintenance Parts List (MPL) consists of the Air Conditioner Group OA-8840(V)2/T broken down into assemblies, subassemblies, and detail parts. The following paragraphs define the use of each column.

1-9. FIGURE AND INDEX NUMBER. The column contains the numerically assigned figure numbers for each illustration. Within each figure, numerically arranged index numbers are assigned to aid in locating a part in the Maintenance Parts List and the associated illustrations. If more than one sheet is required to illustrate the assembly, the sheet number will follow the figure number separated by a diagonal (/).

1-10. PART NUMBER. The numbers listed in this column are those pertaining to the manufacturer, except in the case of Government standard parts (AF, AN, MS, JAN, MIL, and USN), and are used exclusively to identify parts. Parts which are used exactly as purchased, i.e., in a condition ready for installation, are listed in the Part No. column by the manufacturer's part number with the Texas Instruments specification control number parenthetically following the description in the description column. An asterisk (*) following a part number signifies that the part must be requisitioned in accordance with the requirements of AFR 6-4. A number sign (#) following a part number identifies the item as GFE/CFE and signifies that a detailed parts breakdown appears in a separate manual. Reference should be made to paragraph 1-4 for related publications. In general, assemblies and parts installed at the time the end item was manufactured are listed and identified in the manual. When an assembly or part (including vendor items), different from the original, was installed during the manufacture of later items, series, or blocks, all assemblies or parts are listed and identified by a "Usable-on" code (see 1-15). However, when the original assembly or part does not have continued application (no spares of the original were procured or such spares are no longer authorized for replacement), only the preferred assembly or part is listed. Also,

when an assembly or part was installed during modification, and the original does not have continued application, only the preferred item is listed. Interchangeable and substitute assemblies and parts, subsequently authorized by the Government, are not listed in this manual; such items are identified by information available through the Interchangeable and Substitute (I& S) Data Systems. Refer to T.O. 00-25-184.

1-11. FEDERAL SUPPLY CODE FOR MANUFACTURERS (FSCM). The FSCM identifies the manufacturer or Government agency whose number appears in the Part Number column. When an FSCM does not appear in the current issue of H4-1, H4-2, or H4-3 Cataloging Handbooks, the word "None" will appear in the FSCM column and the name and address of the manufacturer or Government agency will be shown in parentheses following the item description. See table 1-1 for FSCM information.

1-12. DESCRIPTION. This column contains the approval item name for each part and distinguishing modifiers, where applicable. The Maintenance Parts List is indented to indicate item relationship. Indentation is indicated by leader points or period, one point or period signifying one indentation. When the nomenclature exceeds a single line presentation, the second or following lines are indented two additional indents from the first line. The term "NHA" (Next Higher Assembly) indicates the assembly of the item from which reference is made. Texas Instruments Incorporated Equipment Group specification control numbers parenthetically follow the description where applicable. When the word "None" appears in the FSCM column, the name and address of the manufacturer or Government agency parenthetically follows the description.

Example of indentation procedure:

1 2 3 4 5 6 7 Description
Article, Main group, or Main assembly
. Assembly
. Attaching parts for assembly (AP)
. . Detail parts for assembly
. . Subassemblies
. . . Attaching parts for subassemblies (AP)
. . . Detail parts for subassemblies
. . . Sub-subassemblies
. . . Attaching parts for sub-subassemblies (AP)
. . . . Detail parts for sub-subassemblies

1-13. UNITS PER ASSEMBLY. Shown in this column is the number of units required per assembly, per subassembly, and per sub-subassembly, as applicable. If more than one assembly is required, the total number of such assemblies is shown. For detail or subassembly parts of an assembly, the quantity required for one assembly is shown. The unit of measure is "each" unless otherwise specified in the description column. The notation "REF" in the Units Per Assembly column indicates that the quantity of the referenced assembly at any one location can be determined by referring to the next higher assembly figure number which parenthetically follows the nomenclature of the item.

1-14. ATTACHING PARTS. Attaching parts are listed immediately beneath the item to be attached and preceding any detail parts of the item. Identification of attaching parts is by the parenthetic code (AP) following the description of the part. Attaching parts are listed at the same indentation as the part they attach.

Example

PLATE
SCREW (AP)
WASHER (AP)
CONNECTOR

1-15. USABLE ON CODES. Part variations within groups or models are identified by a symbol in the Usable on Code column of the Maintenance Parts List. See table 1-3 for explanation. The absence of a code or symbol in the Usable on Code column indicates that the parts so shown are usable as replacements on all models or groups covered by this publication.

1-16. SOURCE, MAINTENANCE, AND RECOVERABILITY (SMR) CODE. This manual contains Joint Military Services Uniform SMR codes only. Definitions of these SMR codes are available in T.O. 00-25-195.

1-17. SECTION III-NUMERICAL INDEX.

1-18. The Numerical Index contains a complete alphanumerical listing of all the part numbers appearing in the Maintenance Parts List with applicable figure and index numbers for each part. Part numbers listed that do not appear in the Maintenance Parts List are followed by cross-reference note to a new part number, next higher assembly or numbers under which parts are to be requisitioned.

1-19. PART NUMBER. This column contains all the part numbers listed in accordance with the alphanumerical part number filing system described below.

1-20. Part number arrangement starts with the left-hand figure or letter and continues from left to right, one position at a time.

1-21. The order of precedence for the first position is as follows:

- a. Letters A through Z
- b. Numeral 0 through 9

1-22. The order of precedence in the second and succeeding positions is as follows:

- a Space
- b. Symbol
- c. Letter A through Z
- d. Numerals 0 through 9

1-23. NATIONAL STOCK NUMBER. This column contains the assigned National Stock Number for the part number. When a National Stock Number has not been assigned, a class code will be used.

1-24. FIGURE AND INDEX NUMBER. This column contains figure and index numbers which are used to locate parts in the Maintenance Parts List. When an item is not assigned an index number, the figure and index number of the preceding part in the Maintenance Parts List is used. The letter "F" precedes the figure number, i.e., F7-6, to mean "follows." The entry 7/2-81 means that reference is made to index 81 on illustration sheet 2 of figure 7.

1-25. QUANTITY PER END ITEM. The quantity shown in this column is the total quantity required per end item. When more than one model, type, or configuration of the end item is covered in the Illustrated Parts Breakdown, and the total quantity for a part differs, the largest quantity for any one end item is shown.

1-26. USMC UNIQUE SMR CODES. This column lists only USMC SMR codes that differ from the SMR codes shown in the Maintenance Parts List.

1-27. USMC SPECIAL STOCK INDICATOR (SSI) CODE. This column lists the conditions for stocking unique maintenance parts [those assigned NSNs and coded in the P series (source) of the SMR code]. The SSI codes are as follows:

a. No code-Indicates that the part may or may not be authorized in initial allowances to using or supporting organizations. The initial allowance is explained in the Replacement (REPL) Factor description which follows;

b. I-Applied to maintenance parts for which predicted consumption would not warrant inclusion in mount-out but, for which a quantity of I is authorized as insurance for mount-out using a 360-day criteria based on the total density of equipment employed by the DIV/WING team. Mount allowances, so authorized, will be stocked by the FSR or MWSG for Marine wing peculiar equipment, as applicable.

c. D-Applied to maintenance parts that are not considered critical or essential stockage; therefore, they are not authorized in initial allowances. However, these items are stocked within the supply system and may be requisitioned when needed.

d. T-Indicates that the part is authorized in garrison operating allowances to comply with state and local laws; however, the part is not authorized in mount-out since it is not combat essential.

1-28. USMC REPL FACTOR. This column lists the REPL factor assigned to each national stock numbered maintenance repair part. The REPL factor is a decimal number which indicates the average rate at which the type of part so coded has been used by Marine Corps field units, or the rate at which design engineers anticipate the part will fail, wear out, or otherwise require replacement. All computations are based on a replacement period of 1 year.

a. Initial authorized stockage levels of consumable and salvageable parts for an organization are to be computed for predicted consumption based on the number of parts employed and/or supported by an organization within the number of days for which stockage is authorized. In computing garrison operating stock or mount-out, authorized levels can be determined by the requiring Marine Corps unit by multiplying the REPL factor times the quantity used per equipment, times the number of end items employed by the using organization or supported by the service organization, times the authorized day level expressed in months and divided by 12. Specific formulas and examples are provided in Marine Corps Order (MCO) P4400.79. The REPL factors used in initial stockage computations should be revised, if warranted, after significant use is experienced, in accordance with guidelines of MCO 4400.32A. Use the following formula for revising the REPL factors based on actual use. W equals the revised REPL factor; X is the usage experience of 1 year; A is the application per equipment; and B is the number of equipments supported.

$$W = \frac{X}{A+B}$$

b. Initial allowances for maintenance float items (recoverability codes F, H, and D) for FMF and appropriate post and stations are as furnished by initial issue actions. Changes to maintenance replacement rates resulting from actual use may require recomputation maintenance float allowances by holding units. Recomputation should be made in accordance with MCO 4442.3

1-29. SECTION IV-REFERENCE DESIGNATION INDEX.

1-30. The Reference Designation Index consists of those electrical and electronic parts to which reference may be made in schematics, with applicable figure and index number for each reference designation.

1-31. REFERENCE DESIGNATION. This column consists of alphabetically and numerically arranged designations which have been assigned to electrical and electronic parts in accordance with USA Standard Reference Designations for Electrical and Electronics Parts and Equipments, Y32.16. Typical class designation letters are explained in table 1-3. Refer to Y32.16 for a complete explanation of reference designations.

1-32. FIGURE AND INDEX NUMBER. This column contains the figure and index number for each reference designated item listed. When a reference designated part has not been assigned an index number, the figure and index number of the preceding part in the Maintenance Parts List is used with the letter "F" before and figure number, i.e., F7-6, to mean "follows." The notation (Same as. . .) refers to a like assembly which has component designations listed.

1-33. ABBREVIATIONS.

1-34. The abbreviations used throughout this publication are in accordance with MIL-STD-12.

1-35. HOW TO USE THE MAINTENANCE PARTS LIST.

1-36. Information on how to use the Maintenance Parts List follows at the end of the introduction.

1-5/(1-6 blank)

Table 1-1. Federal Supply Code Symbol to Manufacturer's Name

The manufacturers of vendor parts are identified by code symbols listed numerically below. Parts not followed by a vendor's code symbol are either military (AN, MS, JAN, or MIL) or Texas Instruments Incorporated, Equipment Group part numbers.

Code	Mfr. Name and Address	Code	Mfr. Name and Address
00779	AMP Inc. P.O. Box 3608 Harrisburg, PA 17105	70485	Atlantic India Rubber Works Inc. 571 W. Polk St. Chicago, IL 60607
04740	Duramark Inc. 2 Secatoag Ave. Port Washington, NY 11050	71286	Rexnord Inc. Specialty Fastener Div. 22 Spring Valley Rd. Paramus, NJ 07652
04967	Fastener Specialty Inc. 2200 S. Smith-Barry Rd. Arlington, TX 76013	74545	Harvey Hubbell Inc. 584 Derby Milford Rd. Orange, CT 06477
06324	Glenair Inc. 1211 Air Way Glendale, CA 91201	77820	Bendix Corp. The Electrical Components Div. Sherman Ave. Sidney, NY 13838
07418	Sunbank Electronics Inc. 3110 Winona Ave. Burbank, CA 91504	81349	Military Specifications promulgated by Military Departments/Agencies under authority of Defense Standardization Manual 4120 3-M
09922	Burndy Corp. Richards Ave. Norwalk, CT 06852	82877	Rotron Inc. 7-9 Hasbrouck Lane Woodstock, NY 12498
13861	National Precision Products Co. 10549 Denton Dr. Dallas, TX 75220	83144	Automation Industries Inc. Flexible Tubing Div. 230 E. Main St. Branford, CT 06405
29381	Gichner Mobile Systems Div. of Union Corp. P.O. Box B Dallastown, PA 17313	86160	CBF Industries Inc. P.O. Box 20204 10414 Harry Hines Blvd. Dallas, TX 75220
31541	DSM Co. 1056 Hypoluxo Rd. Lantana, FL 33462	89946	Westinghouse Electric Corp. Distribution Control and Equipment Divs. Tuscarawas Rd. Beaver, PA 15009
46384	Penn Engineering and Mfg. Corp. P.O. Box 311 Doylestown, PA 18901		
59730	The Thomas and Betts Co. 36 Butler St. Elizabeth, NJ 07207		

Table 1-1. Federal Supply Code Symbol to Manufacturer's Name (Continued)

Code	Mfr. Name and Address	Code	Mfr. Name and Address
94222	Southco Inc. 242 Industrial Hwy. Lester, PA 19113	98003	Nielsen Hardware Corp. P.O. Box 568 770 Wethersfield Ave. Hartford, CT 06101
96214	Texas Instruments Inc. Govt. Div. of Equipment Group P.O. Box 6015 13510 N. Central Expressway Dallas, TX 75222	99862	Carr Lane Mfg. Co. 4200 Carr Lane Ct. St. Louis, MO 63119
96906	Military Standards promulgated by Military Departments under authority of Defense Standardization Manual 4120 3-M applies to book form documents that establish engineering and technical limitations and applications for items and which are identified by numbers such as MIL-STD-198 and MIL-STD-242, etc. Also, sheet form documents that depict design criteria for items and which are identified by numbers such as MS 3057 and MS 75052, etc.		

Table 1-2. Manufacturer's Name to Federal Supply Code Symbol

The manufacturers of vendor parts are identified by code symbols listed alphabetically below. Parts not followed by a vendor's code symbol are either military (AN, MS, JAN, or MIL) or Texas Instruments Incorporated, Equipment Group part numbers.

Mfr. Name and Address	Code	Mfr. Name and Address	Code
AMP Inc. P.O. Box 3608 Harrisburg, PA 17105	00779	Gichner Mobile Systems Div. of Union Corp. P.O. Box B Dallastown, PA 17313	29381
Atlantic India Rubber Works Inc. 571 W. Polk St. Chicago, IL 60607	70485	Glenair Inc.06324 1211 Air Way Glendale, CA 91201	
Automation Industries Inc. Flexible Tubing Div. 230 E. Main St. Branford, CT 06405	83144	Harvey Hubbell Inc.74545 584 Derby Milford Rd. Orange, CT 06477	
Bendix Corp. The Electrical Components Div. Sherman Ave. Sidney, NY 13838	77820	Military Specifications promulgated by Military Departments/Agencies under authority of Defense Standardization Manual 4120 3-M	81349
Burndy Corp. Richards Ave. Norwalk, CT 06852	09922	Military Standards promulgated by Military Departments under authority of Defense Standardization Manual 4120 3-M applies to book form documents that establish engineering and technical limitations and applications for items and which are identified by numbers such as MIL-STD-198 and MIL-STD-242, etc. Also, sheet form documents that depict design criteria for items and which are identified by numbers such as MS 3057 and MS 75052, etc.	96906
Carr Lane Mfg. Co. 4200 Carr Lane Ct. St. Louis, MO 63119	99862	National Precision Products Co. 10549 Denton Dr. Dallas, TX 75220	13861
CBF Industries Inc. P.O. Box 20204 10414 Harry Hines Blvd. Dallas, TX 75220	86160	Nielsen Hardware Corp. P.O. Box 568 770 Weathersfield Ave. Hartford, CT 06101	98003
DSM Co. 1056 Hypoluxo Rd. Lantana, FL 33462	31541		
Duramark Inc. 2 Secatoag Ave. Fort Washington, NY 11050	04740		
Fastener Specialty Inc. 2200 S. Smith-Barry Rd. Arlington, TX 76013	04967		

Table 1-2. Manufacturer's Name to Federal Supply Code Symbol (Continued)

Mfr. Name and Address	Code	Mfr. Name and Address	Code
Penn Engineering and Mfg. Corp. P.O. Box 311 Doylestown, PA 18901	46384	Texas Instruments Incorporated Govt. Div. of Equipment Group P.O. Box 6015 13510 N. Central Expressway Dallas, TX 75222	96214
Rexnord Inc. Specialty Fastener Div. 22 Spring Valley Rd. Paramus, NJ 07652	71286	The Thomas and Betts Co. 36 Butler St. Elizabeth, NJ 07207	59730
Rotron Inc. 7-9 Hasbrouck Lane Woodstock, NY 12498	82877	Westinghouse Electric Corp. Distribution Control and Equipment Divs. Tuscarawas Rd. Beaver, PA 15009	89946
Southco Inc. 242 Industrial Hwy. Lester, PA 19113	94222		
Sunbank Electronics Inc 3110 Winona Ave. Burbank, CA 91504	.07418		

Table 1-3. Usable on Codes

(Not Applicable)

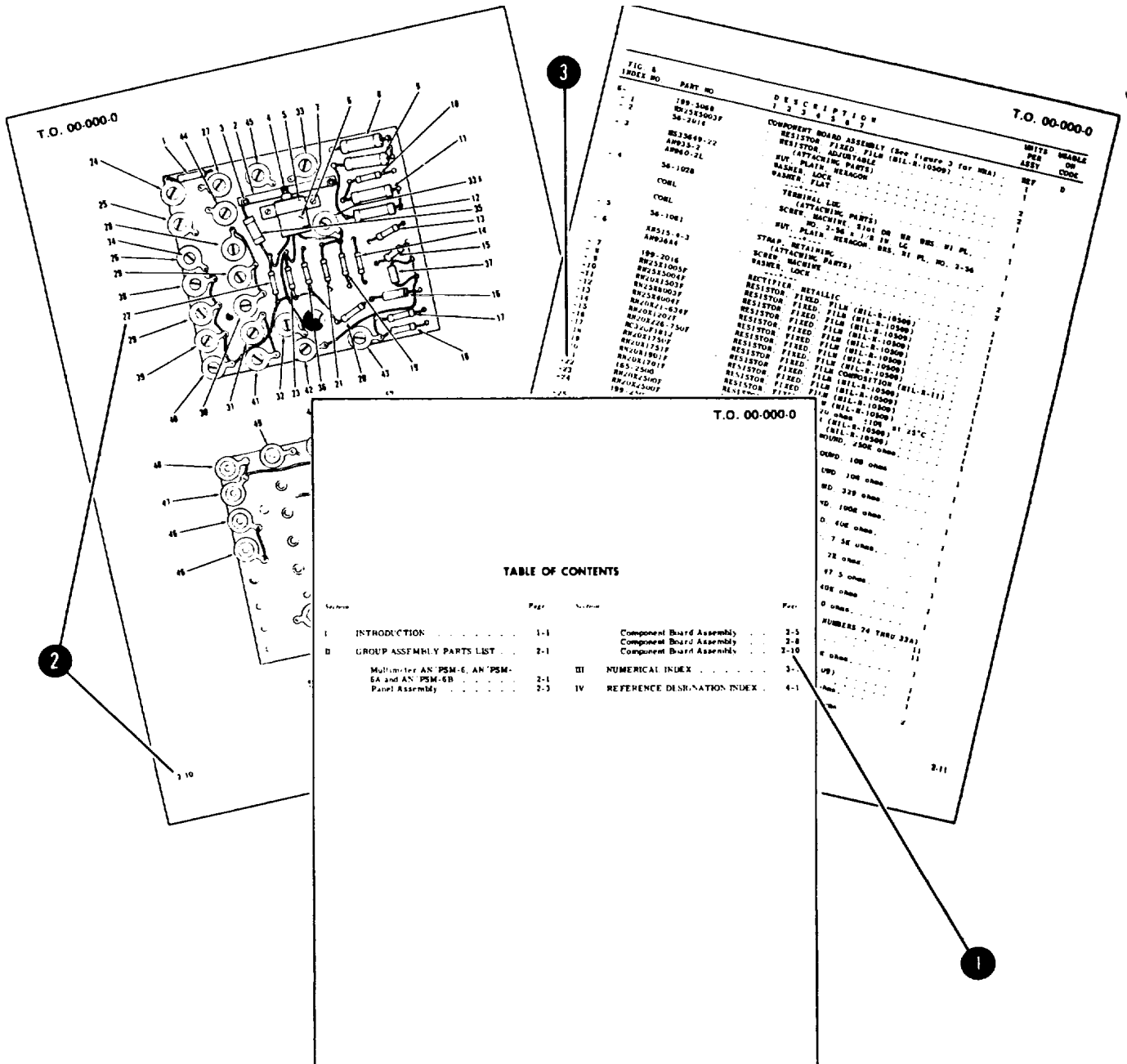
Table 1-4. Class Designation Letters

A	Assembly, separable or repairable Subassembly, separable or repairable	G	Amplifier, rotating Chopper, electronic Exciter (rotating machine) Frequency changer Generator
AR	Amplifier (other than rotating)		
AT	Attenuator Isolator	H	Hardware
B	Blower Fan Motor Resolver Synchro	HP	Hydraulic part
BT	Battery	HR	Heater Lamp, heating Lamp, infrared
C	Capacitance bushing Capacitor	HS	Handset
CB	Circuit breaker	HT	Earphone Headset
CP	Adapter, connector Junction (coaxial or waveguide)	J	Connector, receptacle, electrical Jack Receptacle (connector, stationary portion) Waveguide flange (choke)
CR	Absorber, overvoltage Crystal diode Crystal unit Detector, crystal Rectifier Selenium cell Semiconductor device, diode Switch, semiconductor diode Varistor	K	Contractor Relay
DC	Coupler, directional	L	Coil Inductor Reactor Solenoid, electrical
DL	Delay line	LS	Horn, electrical Speaker
DS	Audible signaling device Flasher Lamp	M	Clock Counter, electrical Gage Instrument Meter Oscillograph Oscilloscope Recorder, elapsed time Strain gage Thermometer Timer, electric
E	Antenna Brush, electrical contact Contact, electrical Insulator Loop antenna Magnet, permanent Part, Miscellaneous electrical Post, binding Protector gap Rotary joint Shield, electrical Terminal (individual)	MG	Converter Dynamotor Inverter
EQ	Equalizer Network, equalizing	MK	Microphone
F	Fuse Limiter, current	MP	Gyroscope Part, miscellaneous mechanical (bearing, coupling, gear, shaft) Part, structural Reed, vibration Tuning fork
FL	Filter	MT	Transducer

Table 1-4. Class Designation Letters (Continued)

P	Connector, plug, electrical Disconnecting device (connector, plug) Plug, electrical (connector, movable portion) Waveguide flange (plain)	TP	Test point
PS	Inverter, static (dc to ac) Power supply Thermogenerator	TR	Transmitter, radio
PU	Eraser, magnetic Recording head	U	Integrated circuit package
Q	Transistor Rectifier, semiconductor controlled Switch, semiconductor Triode thyristor	V	Barrier photocell Electron tube Phototube Photoelectric cell
R	Potentiometer Resistor Rheostat Shunt, instrument	VR	Crystal diode, breakdown Regulator, voltage (excluding electron tube)
RE	Receiver, radio	W	Bus bar Cable Waveguide Wire
RT	Ballast lamp Ballast tube Lamp, resistance Thermistor	WT	Tiepoint, wiring
RV	Varistor	X	Followed by reference designation of mounted part
S	Key, telegraph Switch Thermostat	XF	Fuseholder
SQ	Squib	XDS	Lampholder
SR	Slip ring	XV	Electron tube socket
T	Taper Transformer	Y	Crystal unit Oscillator Resonator, tuning fork
TB	Terminal board	Z	Cavity, tuned Mode suppressor
TC	Thermocouple		Network, general (where specific class letters do not fit) Tuned circuit

HOW TO USE THE ILLUSTRATED PARTS BREAKDOWN



WHEN THE PART NUMBER IS NOT KNOWN

- (1) Determine the function and application of the part required. Turn to the Table of Contents and select the most appropriate title. Note the illustration page number.
- (2) Turn to the page indicated and locate the desired part on the illustration.

- (3) From the illustration, obtain the index number assigned to the part desired. Refer to the accompanying description for specific information regarding the part.

HOW TO USE THE ILLUSTRATED PARTS BREAKDOWN

SECTION III
NUMERICAL INDEX

PART NO.	FIG. AND INDEX NO.	QTY PER ART.	UNIT CODE	REMARKS
APPT18181000	4-1	1		
APPT18181000	4-2	1		
APPT18181000	4-3	1		
APPT18181000	4-4	1		
APPT18181000	4-5	1		
APPT18181000	4-6	1		
APPT18181000	4-7	1		
APPT18181000	4-8	1		
APPT18181000	4-9	1		
APPT18181000	4-10	1		
APPT18181000	4-11	1		
APPT18181000	4-12	1		
APPT18181000	4-13	1		
APPT18181000	4-14	1		
APPT18181000	4-15	1		
APPT18181000	4-16	1		
APPT18181000	4-17	1		
APPT18181000	4-18	1		
APPT18181000	4-19	1		
APPT18181000	4-20	1		
APPT18181000	4-21	1		
APPT18181000	4-22	1		
APPT18181000	4-23	1		
APPT18181000	4-24	1		
APPT18181000	4-25	1		
APPT18181000	4-26	1		
APPT18181000	4-27	1		
APPT18181000	4-28	1		
APPT18181000	4-29	1		
APPT18181000	4-30	1		
APPT18181000	4-31	1		
APPT18181000	4-32	1		
APPT18181000	4-33	1		
APPT18181000	4-34	1		
APPT18181000	4-35	1		
APPT18181000	4-36	1		
APPT18181000	4-37	1		
APPT18181000	4-38	1		
APPT18181000	4-39	1		
APPT18181000	4-40	1		
APPT18181000	4-41	1		
APPT18181000	4-42	1		
APPT18181000	4-43	1		
APPT18181000	4-44	1		
APPT18181000	4-45	1		
APPT18181000	4-46	1		
APPT18181000	4-47	1		
APPT18181000	4-48	1		
APPT18181000	4-49	1		
APPT18181000	4-50	1		
APPT18181000	4-51	1		
APPT18181000	4-52	1		
APPT18181000	4-53	1		
APPT18181000	4-54	1		
APPT18181000	4-55	1		
APPT18181000	4-56	1		
APPT18181000	4-57	1		
APPT18181000	4-58	1		
APPT18181000	4-59	1		
APPT18181000	4-60	1		
APPT18181000	4-61	1		
APPT18181000	4-62	1		
APPT18181000	4-63	1		
APPT18181000	4-64	1		
APPT18181000	4-65	1		
APPT18181000	4-66	1		
APPT18181000	4-67	1		
APPT18181000	4-68	1		
APPT18181000	4-69	1		
APPT18181000	4-70	1		
APPT18181000	4-71	1		
APPT18181000	4-72	1		
APPT18181000	4-73	1		
APPT18181000	4-74	1		
APPT18181000	4-75	1		
APPT18181000	4-76	1		
APPT18181000	4-77	1		
APPT18181000	4-78	1		
APPT18181000	4-79	1		
APPT18181000	4-80	1		
APPT18181000	4-81	1		
APPT18181000	4-82	1		
APPT18181000	4-83	1		
APPT18181000	4-84	1		
APPT18181000	4-85	1		
APPT18181000	4-86	1		
APPT18181000	4-87	1		
APPT18181000	4-88	1		
APPT18181000	4-89	1		
APPT18181000	4-90	1		
APPT18181000	4-91	1		
APPT18181000	4-92	1		
APPT18181000	4-93	1		
APPT18181000	4-94	1		
APPT18181000	4-95	1		
APPT18181000	4-96	1		
APPT18181000	4-97	1		
APPT18181000	4-98	1		
APPT18181000	4-99	1		
APPT18181000	4-100	1		

SECTION IV
REFERENCE DESIGNATION INDEX

REFERENCE DESIGNATION	FIGURE & INDEX NO.	PART NUMBER
A101	3-26	165-2808
A102	3-27	165-2800
A103	3-28	165-2801
A104	3-29	165-2802
A105	3-30	165-2803
A106	3-31	165-2804
A107	3-32	165-2805
A108	3-33	165-2806
A109	3-34	165-2807
A110	3-35	165-2808
A111	3-36	165-2809
A112	3-37	165-2810
A113	3-38	165-2811
A114	3-39	165-2812
A115	3-40	165-2813
A116	3-41	165-2814
A117	3-42	165-2815
A118	3-43	165-2816
A119	3-44	165-2817
A120	3-45	165-2818
A121	3-46	165-2819
A122	3-47	165-2820
A123	3-48	165-2821
A124	3-49	165-2822
A125	3-50	165-2823
A126	3-51	165-2824
A127	3-52	165-2825
A128	3-53	165-2826
A129	3-54	165-2827
A130	3-55	165-2828
A131	3-56	165-2829
A132	3-57	165-2830
A133	3-58	165-2831
A134	3-59	165-2832
A135	3-60	165-2833
A136	3-61	165-2834
A137	3-62	165-2835
A138	3-63	165-2836
A139	3-64	165-2837
A140	3-65	165-2838
A141	3-66	165-2839
A142	3-67	165-2840
A143	3-68	165-2841
A144	3-69	165-2842
A145	3-70	165-2843
A146	3-71	165-2844
A147	3-72	165-2845
A148	3-73	165-2846
A149	3-74	165-2847
A150	3-75	165-2848
A151	3-76	165-2849
A152	3-77	165-2850
A153	3-78	165-2851
A154	3-79	165-2852
A155	3-80	165-2853
A156	3-81	165-2854
A157	3-82	165-2855
A158	3-83	165-2856
A159	3-84	165-2857
A160	3-85	165-2858
A161	3-86	165-2859
A162	3-87	165-2860
A163	3-88	165-2861
A164	3-89	165-2862
A165	3-90	165-2863
A166	3-91	165-2864
A167	3-92	165-2865
A168	3-93	165-2866
A169	3-94	165-2867
A170	3-95	165-2868
A171	3-96	165-2869
A172	3-97	165-2870
A173	3-98	165-2871
A174	3-99	165-2872
A175	3-100	165-2873

WHEN THE PART NUMBER OR REFERENCE DESIGNATION IS KNOWN

- (1) WHEN THE PART NUMBER IS KNOWN, refer to Section III Numerical Index Locate the part number and note the figure and index number assigned to the part number.
- (2) Turn to the figure indicated and locate the index number referenced in the Numerical Index.
- (3) If a pictorial representation of the part, or its location is desired, refer to the same index number on the accompanying illustration.
- (4) WHEN THE REFERENCE DESIGNATION IS KNOWN, refer to Section IV, Reference Designation Index Locate the reference designation and note the figure and index number and the part number assigned.
- (5) Turn to the figure indicated and locate the index number referenced in the Reference Designation Index.
- (6) If a pictorial representation of the part, or its location is desired, refer to the same index number on the accompanying illustration.

SECTION II

MAINTENANCE PARTS LIST

FIGURE & INDEX NUMBER	PART NUMBER	FSCM	DESCRIPTION							UNITS PER ASSY	USABLE ON CODE	SMR CODE
			1	2	3	4	5	6	7			
1-	2037603-1	96214	AIR CONDITIONER GROUP, OA-8840(V)2/T							1		AFFDD
1/1-1	902509-2	96214	. DUCT ASSEMBLY, FLEXIBLE							2		PBOZZ
1/1-2	2080561-1	96214	. DUCT ASSEMBLY, FLEXIBLE							2		
1/1-	922833-1	96214	. BAG, STORAGE ASSEMBLY ACS-3							1		MFFZZ
1/1-3	7001260-504	29381	. . BAG, STORAGE(TI SPEC 92076-16)							1		MFFZZ
1/1-4	335088-1	96214	. . HARNESS, FLEXIBLE DUCT							1		XBFZZ
1/1-5	70012598-1	29381	. STRAP. ECU DUCT, STORAGE BAG							8		MFFZZ
			ASSEMBLY(TI SPEC 920769-12)									
1/1-6	NAS1212R10CJ4B		80205							5		XBFZZ
1/1-7	335015-1	96214	. BUCKLE (ALTERED ITEM)							6		XBFZZ
1/1-8	NAS1212R10DK6	80205	. STRAP ASSEMBLY							3		XBFZZ
1/1-9	MS35309-340	96906	. SCREW(AP)							1		PAFZZ
1/1-	MS15795-812	96906	. WASHER(AP)							1		PAOZZ
1/1-	MS21083C5	96906	. NUT(AP)							1		PAOZZ
1/1-10	NAS1212R10DK 12	80205	. STRAP ASSEMBLY							3		XBFZZ
1/1-11	MS35308-340	96906	. SCREW(AP)							1		PAFZZ
1/1-	MS15795-812	96906	. WASHER(AP)							1		PAOZZ
1/1-	MS21083C5	96906	. NUT(AP)							1		PAOZZ
1/1-12	335014-1	96214	. SPACER TRANSITION SUPPORT							6		XBFZZ
1/1-13	NAS1212R15KJ2680205		. STRAP ASSEMBLY							6		XBFZZ
1/1-	MS24665-300	96906	. PIN(AP)							2		PAFZZ
1/1-14	NAS1213R15K31	80205	. STRAP ASSEMBLY							6		XBFZZ
1/1-	MS20392-5C65	96906	. PIN(AP)							2		PAFZZ
1/1-15	MS35308-365	96906	. SCREW							1		PAFZZ
1/1-16	MS21083C6	96906	. NUT(AP)							1		PAFZZ
1/1-	MS15795-814	96906	. WASHER(AP)							1		PAFZZ
1/1-	2053647-1	96214	. DRUM (ALTERED ITEM)							4		AFFFF
1/1-17	MS35307-371	96906	. . SCREW							1		PAFZZ
1/1-18	MS51971-3	96906	. NUT							1		PAFZZ
1/1-19	201-687-8233	NONE	. DRUM, METAL SHIPPING (GENERAL							1		XBFZZ
			CONTAINER, NEWARK. NJ)(TI SPEC 804524-1)									
1/1-20	2053540-1	96214	. CHANNEL, SUPPORT, DRUM							1		XBFZZ
1/1-21	MS35308-334	96906	. SCREW(AP)							3		
1/1-	MS15795-812	96906	. WASHER(AP)							3		PAOZZ
1/1-	MS21083C5	96906	. NUT(AP)							3		PAOZZ
1/1-22	2053540-2	96214	. CHANNEL, SUPPORT, DRUM							5		XBFZZ
1/1-23	MS35309-334	96906	. SCREW(AP)							3		
1/1-	MS15795-812	96906	. WASHER(AP)							3		PAOZZ
1/1-	MS21083C5	96906	. NUT(AP)							3		PAOZZ
1/1-24	2053552-1	96214	. BAND, CANNISTER							1		XBFZZ
1/1-25	2053614-1	96214	. SUPPORT FRAME, STORAGE DRUM							1		XBFZZ
1/1-26	MS35307-362	96906	. SCREW(AP)							3		
1/1-	MS15795-812	96906	. WASHER(AP)							3		PAOZZ
1/1-	MS35338-141	96906	. WASHER(AP)							3		PAOZZ
1/1-27	MS16996-12	96906	. SCREW(AP)							2		PAFZZ
1/1-	MS35338-138	96906	. WASHER(AP)							2		PAFZZ
1/1-	MS15795-808	96906	. WASHER(AP)							2		PAFZZ
1/1-28	92081B-2	96214	. COVER, PROTECTIVE (CHILDRESS CANVAS							1		MFFZZ
			DALLAS, TX)									
1/1-29	32273	NONE	. COVER, PROTECTIVE (CHILDRESS CANVAS							4		MFFZZ
			DALLAS, TX)(TI SPEC 920818-1)									
1/1-30	335000-1	96214	. STORAGE RING, TRANSITION							1		XBFZZ

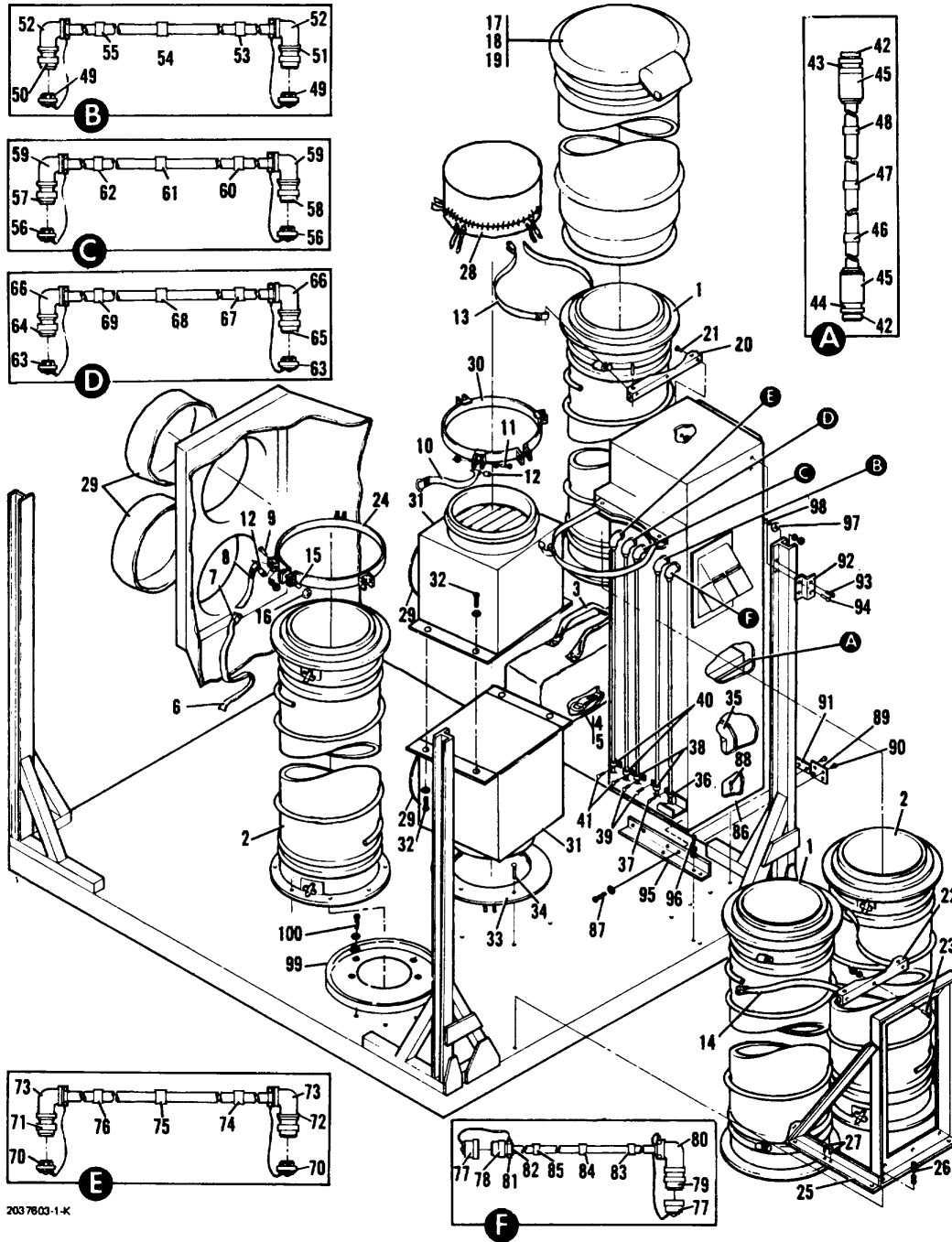
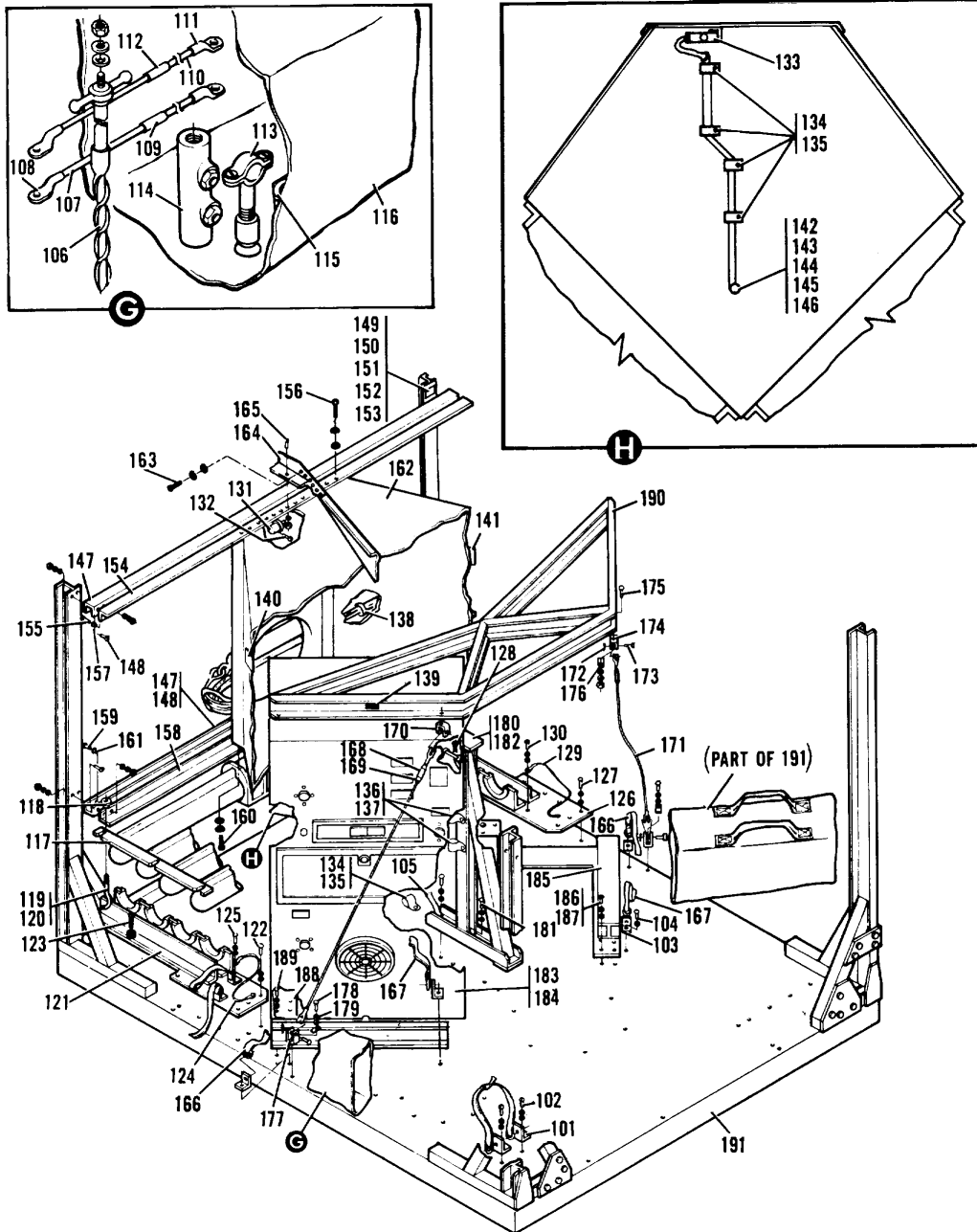


Figure 1. Air Conditioner Group, OA-8840(VJ2/T (Sheet 1 of 2)



2037603-1-K

Figure 1. Air Conditioner Group, OA-8840(V)2/T (Sheet 2 of 2)

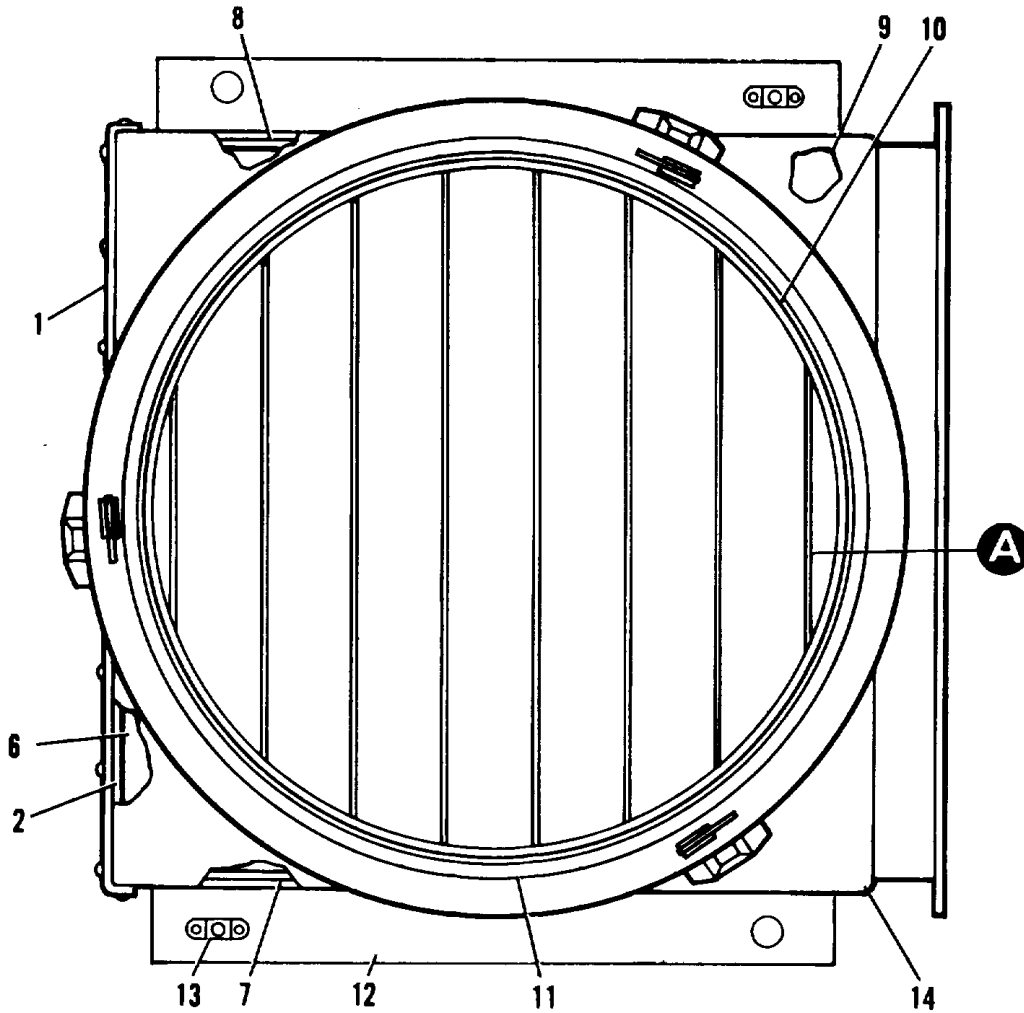
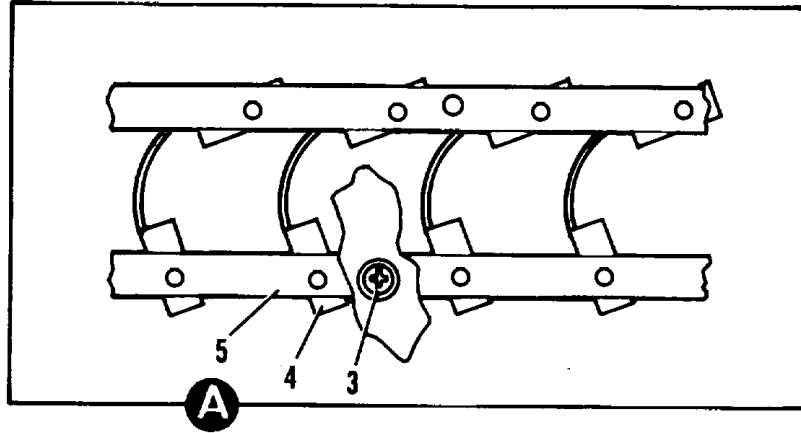
FIGURE & INDEX NUMBER	PART NUMBER	FSCM	DESCRIPTION 1 2 3 4 5 6 7	UNITS PER ASSY	USABLE ON CODE	SMR CODE
1/1-31	914490-3	96214	. TURNING VANE ASSEMBLY(SEE FIG. 2 FOR..... BREAKDOWN	2		
1/1-32	M535308-305	96906	. SCREW(AP)	4		
1/1-	MS15795-810	96906	. WASHER(AP)	4		PAFZZ
1/1-33	2053679-1	96214	. LOCATING RING, TRANSITION	1		XBFZZ
1/1-34	M551958-66	96906	. SCREW(AP)	6		PAFZZ
1/1-	MS35338-13B	96906	. WASHER(AP)	6		PAFZZ
1/1-	MS15795-808	96906	. WASHER(AP)	6		PAFZZ
1/1-35	2355889-1	96214	. SHELTER REPAIR KIT ASSEMBLY(SEE FIG. 3	1		
			FOR BREAKDOWN)			
1/1-36	M521919DG8	96906	. CLAMP	2		PAFZZ
1/1-37	MS51958-63	96906	. SCREW(AP)	1		PAFZZ
1/1-	MS35338-13B	96906	. WASHER(AP)	1		PAFZZ
1/1-	MS35650-304	96906	. NUT(AP)	1		PAFZZ
1/1-3B	MS21919DG14	96906	. CLAMP	4		PAFZZ
1/1-39	MS51958-63	96906	. SCREW(AP)	1		PAFZZ
1/1-	MS35338-13B	eso06	. WASHER(AP)	1		PAFZZ
1/1-	MS35650-304	96906	. NUT(AP)	1		PAFZZ
1/1-40	MS21919DG17	96906	. CLAMP	4		PAFZZ
1/1-41	MS51958-63	96906	. SCREW(AP)	1		PAFZZ
1/1-	MS35338-138	96906	. WASHER(AP)	1		PAFZZ
1/1-	MS35650-304	96906	. NUT(AP)	1		PAFZZ
1/1-	2053656-1	96214	. CABLE ASSEMBLY. ECS CONTROL	1		AFFFF
1/1-42	SE91H21C-2R-12	0741B	. . COVER. PROTECTIVE, RADIO FREQUENCY	2		PAFZZ
			INTERMEDIATE SHIELDED, CONNECTOR(TI SPEC 903563-5)			
1/1-43	M81511/56FF03S1	81349	. . CONNECTOR	1		PAFZZ
1/1-44	MB1511/56FF03P181349		. . CONNECTOR	1		PAFZZ
1/1-45	SE10G2116E40	0741B	. . ADAPTER, CONNECTOR, STRAIN RELIEF	2		PAFZZ
			RFI SHIELDED(TI SPEC 804517-1)			
1/1-46	902338-73	96214	. . MARKER, EXTERNAL CABLE	1		XC---
1/1-47	902338-74	96214	. . MARKER, EXTERNAL CABLE	1		XC---
1/1-48	902338-75	96214	. . MARKER, EXTERNAL CABLE	1		XC---
1/1-	2053655-1	96214	. CABLE ASSEMBLY, ECU CONTROL	1		AFFFF
1/1-49	MS25042-20D	96906	. . COVER	2		
1/1-50	MS3456W20-29P	96906	. . CONNECTOR	1		PAFZZ
1/1-51	MS3456W20-29S	96906	. . CONNECTOR	1		PAFZZ
1/1-52	MS3188B16A	96906	. . BACKSHELL	2		XBFZZ
1/1-53	902338-67	96214	. . MARKER, EXTERNAL CABLE	1		
1/1-54	902338-69	96214	. . MARKER, EXTERNAL CABLE	1		
1/1-55	902338-69	96214	. . MARKER, EXTERNAL CABLE	1		
1/1-	2053655-2	96214	. CABLE ASSEMBLY. ECU CONTROL	1		PBFFF
1/1-56	MS25042-200	96906	. . COVER	2		
1/1-57	MS3456W20-29P	96906	. . CONNECTOR	1		PAFZZ
1/1-58	MS3456W20-29S	96906	. . CONNECTOR	1		PAFZZ
1/1-59	MS3188B16A	96906	. . BACKSHELL	2		XBFZZ
1/1-60	902339-70	96214	. . MARKER, EXTERNAL CABLE	1		XC---
1/1-61	902338-71	96214	. . MARKER, EXTERNAL CABLE	1		XC---
1/1-62	902339-72	96214	. . MARKER, EXTERNAL CABLE	1		XC---
1/1-	2053654-1	96214	. POWER CABLE ASSEMBLY	1		PBFFF
1/1-63	MS25042-22D	96906	. . COVER	2		PAFZZ
1/1-64	MS3106R22-22S	96906	. . CONNECTOR	1		PAFZZ
1/1-65	MS3106R22-22P	96906	. . CONNECTOR	1		
1/1-66	G2904N-22-30B	06324	. . ADAPTER, 90 DEGREE ELBOW FOR	2		PAFZZ
			MIL-C-5015 CONNECTORS(TI SPEC 804513-1)			
1/1-67	902338-61	96214	. . MARKER, EXTERNAL CABLE	1		XC---
1/1-69	902338-62	96214	. . MARKER, EXTERNAL CABLE	1		XC---

FIGURE & INDEX NUMBER	PART NUMBER	FSCM	DESCRIPTION 1 2 3 4 5 6 7	UNITS PER ASSY	USABLE ON CODE	SMR CODE
1/1-69	902338-63	96214	. . MARKER, EXTERNAL CABLE	1		XC---
1/1-	2053654-2	96214	. POWER CABLE ASSEMBLY	1		AFFFF
1/1-70	MS25042-22D	96906	. . COVER	2		PAFZZ
1/1-71	MS3106R22-225	96906	. . CONNECTOR	1		PAFZZ
1/1-72	MS3106R22-22P	96906	. . CONNECTOR	1		
1/1-73	G2804N-22-30B	06324	. . ADAPTER, 90 DEGREE ELBOW FOR MIL-C-5015 CONNECTORS(TI SPEC 804513-1)	2		PAFZZ
1/1-74	902338-64	96214	. . MARKER, EXTERNAL CABLE	1		XC---
1/1-75	902338-65	96214	. . MARKER, EXTERNAL CABLE	1		XC---
1/1-76	902338-66	96214	. . MARKER, EXTERNAL CABLE	1		XC---
1/1-	2053653-1	96214	. CABLE ASSEMBLY, AIR FLOW SENSOR	1		AFFFF
1/1-77	MS25042-16D	96906	. . COVER	2		
1/1-78	MS3456W16-10 SW	96906	. . CONNECTOR	1		PAFZZ
1/1-79	MS3456W16-10 PW	96906	. . CONNECTOR	1		PAFZZ
1/1-80	G8595-165N	06324	. . ADAPTER, CONNECTOR, ENVIRONMENTAL(TI SPEC B04552-1)	1		PAFZZ
1/1-81	MS3417-16C	96906	. . CLAMP	1		PAFZZ
1/1-82	MS3420-12A	96906	. . BUSHING	2		PAFZZ
1/1-83	902338-58	96214	. . MARKER, EXTERNAL CABLE	1		XC---
1/1-84	902338-59	96214	. . MARKER, EXTERNAL CABLE	1		XC---
1/1-85	902338-60	96214	. . MARKER, EXTERNAL CABLE	1		XC---
1/1-86	2053503-1	96214	. POWER DISTRIBUTION CABINET ASSEMBLY(SEE FIG. 4 FOR BREAKDOWN)	1		PBODD
1/1-87	MS35307-361	96906	. SCREW(AP)	4		
1/1-	M535338-141	96906	. WASHER(AP)	4		PAOZZ
1/1-88	MS35308-334	96906	. SCREW(AP)	8		
1/1-	MS15795-B12	96906	. WASHER(AP)	8		PAOZZ
1/1-	MS21083C5	96906	. NUT(AP)	8		PAOZZ
1/1-89	2062220-4	96214	. PLATE, IDENTIFICATION	1		
1/1-90	MS51957-14	96906	. SCREW(AP)	4		PAFZZ
1/1-	MS35338-135	96906	. WASHER(AP)	4		PAFZZ
1/1-	MS15795-804	96906	. WASHER(AP)	4		PAFZZ
1/1-91	2062213-17	96214	. PLATE, IDENTIFICATION.SERIAL NUMBER	1		
1/1-	MS20604AD4W4	96906	. RIVET(AP)	2		
1/1-92	2053539-1	96214	. BRACKET, SUPPORT, CABINET	1		XBFZZ
1/1-93	MS35308-333	96906	. SCREW(AP)	2		
1/1-	MS15795-812	96906	. WASHER(AP)	2		PAOZZ
1/1-	MS21083C5	96906	. NUT(AP)	2		PAOZZ
1/1-94	MS35308-339	96906	. SCREW(AP)	2		
1/1-	MS15795-812	96906	. WASHER(AP)	2		PAOZZ
1/1-	MS21083C5	96906	. NUT(AP)	2		PAOZZ
1/1-95	2053538-1	96214	. ANGLE, SUPPORT, CABINET, POWER DISTRIBUTION	1		XBFZZ
1/1-96	MS35307-362	96906	. SCREW(AP)	3		
1/1-	MS35338-141	96906	. WASHER(AP)	3		PAOZZ
1/1-	MS15795-814	96906	. WASHER(AP)	3		PAFZZ
1/1-97	1019	70485	. BUMPER, RUBBER(TI SPEC 414492-2)	1		PAFZZ
1/1-98	MS51957-47	96906	. SCREW(AP)	1		PAFZZ
1/1-	M515795-807	96906	. WASHER(AP)	2		PAFZZ
1/1-	MS21083C08	96906	. NUT(AP)	1		PAFZZ
1/1-99	2053649-1	96214	. BASE, LOCATING, STORAGE DRUMM	1		XBFZZ
1/1-100	M551957-47	96906	. SCREW(AP)	8		PAFZZ
1/1-	MS35338-137	96906	. WASHER(AP)	8		PAFZZ
1/1-	MS15795-807	96906	. WASHER(AP)	8		PAFZZ

FIGURE & INDEX NUMBER	PART NUMBER	FSCM	DESCRIPTION 1 2 3 4 5 6 7	UNITS PER ASSY	USABLE ON CODE	SMR CODE
1/1-101	2053556-1	96214	. ANGLE, TIE-DOWN	6		XBFZZ
1/1-102	M535307-362	96906	. SCREW(AP)	1		
1/1-	MS35338-141	96906	. WASHER(AP)	1		PAOZZ
1/1-	MS15795-814	96906	. WASHER(AP)	1		PAFZZ
1/2-103	2053556-1	96214	. ANGLE, TIE-DOWN	1		XBFZZ
1/2-104	M535308-362	96906	. SCREW(AP)	1		PAFZZ
1/2-	MS35338-141	96906	. WASHER(AP)	1		PAOZZ
1/2-	MS15795-814	96906	. WASHER(AP)	1		PAFZZ
1/2-105	NAS1213R10C 25	80205	. STRAP ASSEMBLY	1		XBFZZ
1/2-106	2077110-1	96214	. ROD. GROUNDING. MODIFIED ASSEMBLY	2		
1/2-107	2059876-1	96214	. GROUND CABLE ASSEMBLY	1		
1/2-108	M520659-135	96906	. . TERMINAL	2		PAFZZ
1/2-109	902269-916	96214	. . MARKER. CABLE (ALTERED ITEM)	1		
1/2-110	2059876-2	96214	. GROUND CABLE ASSEMBLY	1		
1/2-111	MS20659-135	96906	. . TERMINAL	2		PAFZZ
1/2-112	902269-917	96214	. . MARKER. CABLE (ALTERED ITEM)	1		
1/2-113	4338-4	NONE	. HOLDER. STACK POINT (ROBBINS LIGHTNING PROTECTION, MARYVILLE, MO)(TI SPEC 8C4366-1)	2		XBFZZ
1/2-114	MS16228-8C	96906	. NUT	2		PAFZZ
1/2-115	920770-2	96214	. CABLE. GROUND ROD ASSEMBLY	1		XBFZZ
1/2-116	335001-1	96214	. BAG, STORAGE, AIR CONDITIONER SYSTEM	1		MFFZZ
1/2-117	2053497-1	96214	. CLAMP, JACK STORAGE	2		XBFZZ
1/2-118	335047-1	96214	. NUT, SPECIAL, JACK STORAGE	6		XBFZZ
1/2-119	335045-1	96214	. SCREW, SPECIAL, JACK STORAGE	6		XBFZZ
1/2-120	MS16628-4037	96906	. RING	6		
1/2-121	335044-1	96214	. SUPPORT NO. 2, JACI(STORAGE	1		AFFFF
1/2-122	MS35307-364	96906	. SCREW(AP)	6		
1/2-	M535338-141	96906	. WASHER(AP)	6		PAOZZ
1/2-	MS15795-814	96906	. WASHER(AP)	6		PAFZZ
1/2-123	M535307-362	96906	. SCREW(AP)	2		
1/2-	M535338-141	96906	. WASHER(AP)	2		PAOZZ
1/2-	M515795-814	96906	. WASHER(AP)	2		PAFZZ
1/2-124	CL-52-KA-9.00- 4-4	99862	. . WIRE ROPE ASSEMBLY, SINGLE LEG(TI SPEC 533789-1)	1		XBFZZ
1/2-125	M551958-60	96906	. . SCREW(AP)	1		PAFZZ
1/2-	M535338-138	96906	. . WASHER(AP)	1		PAFZZ
1/2-	MS15795-808	96906	. . WASHER(AP)	1		PAFZZ
1/2-126	335043-1	96214	. SUPPORT NO. 1, JACK STORAGE	1		AFFFF
1/2-127	MS35307-364	96906	. SCREW(AP)	6		
1/2-	M535338-141	96906	. WASHER(AP)	6		PAOZZ
1/2-	MS15795-814	96906	. WASHER(AP)	6		PAFZZ
1/2-128	MS35307-362	96906	. SCREW(AP)	2		
1/2-	MS35338-141	96906	. WASHER(AP)	2		PAOZZ
1/2-	M515795-814	96906	. WASHER(AP)	2		PAFZZ
1/2-129	CL-52-KA-9.00- 4-4	99862	. . WIRE ROPE ASSEMBLY, SINGLE LEG(TI SPEC 5337989-1)	1		XBFZZ
1/2-130	MS551958-60	96906	. . SCREW(AP)	1		PAFZZ
1/2-	MS35338-138	96906	. . WASHER(AP)	1		PAFZZ
1/2-	MS15795-808	96906	. . WASHER(AP)	1		PAFZZ
1/2-131	2A/1350	82877	. SWITCH, AIRFLOW(TI SPEC 51552-1)	1		
1/2-132	MS51958-63	96906	. SCREW(AP)	1		PAFZZ
1/2-	MS35338-138	96906	. WASHER(AP)	1		PAFZZ
1/2-	MS15795-808	96906	. WASHER(AP)	1		PAFZZ
1/2-	MS21083C3	96906	. NUT(AP)	1		PAFZZ
1/2-133	MS35489-6	96906	. GROMMET	1		

FIGURE & INDEX NUMBER	PART NUMBER	FSCM	DESCRIPTION 1 2 3 4 5 6 7	UNITS PER ASSY	USABLE ON CODE	SMR CODE
1/2-134	HP-2N	09922	. CLAMP, LOOP(TI SPEC 54967-2)	4		
1/2-135	MS51957-44	96906	. SCREW(AP)	1		PAFZZ
1/2-	MS15795-807	96906	. WASHER(AP)	1		PAFZZ
1/2-	MS35338-137	96906	. WASHER(AP)	1		PAFZZ
1/2-136	HP-2N	09922	. CLAMP, LOOP(TI SPEC 54967-2)	2		
1/2-137	MS51957-45	96906	. SCREW(AP)	1		
1/2-	MS15795-807	96906	. WASHER(AP)	1		PAFZZ
1/2-	MS35338-137	96906	. WASHER(AP)	1		PAFZZ
1/2-138	NAS1213R10J48	80205	. STRAP ASS EMBLY	1		XBFFZ
1/2-139	2053652-1	96214	. PLATE, IDENTIFICATION, SAFETY	2		XC---
1/2-140	335003-1	96214	. PLATE, IDENTIFICATION, MARKER	1		XC---
			ADJUSTMENT EXHAUST			
1/2-141	335004-1	96214	. PLATE, IDENTIFICATION, MARKER	1		XC---
			ADJUSTMENT EXHAUST			
1/2-142	MS25043-16D	96906	. COVER	1		PAFZZ
1/2-143	FSU-16/27	04967	. NUT ASSEMBLY. RETAINER PLATE(TI SPEC.....	1		PAFZZ
			531161-6)			
1/2-144	M551957-16	96906	. SCREW(AP.)	4		
1/2-	MS15795-804	96906	. WASHER(AP)	4		PAFZZ
1/2-145	3450W16-10PW	96906	. CONNECTOR	1		
1/2-146	10-40450-16	77820	. GASKET, AN CONNECTOR(TI SPEC 34015-24).....	1		
1/2-147	2053577-1	96214	. CHANNEL, SUPPORT. PLENUM	4		XBFFZ
1/2-148	MS35308-362	96906	. SCREW(AP)	8		PAFZZ
1/2-	MS15795-814	96906	. WASHER(AP)	8		PAFZZ
1/2-	MS21083C6	96906	. NUT(AP)	8		PAFZZ
1/2-149	2053676-1	96214	. PLATE, SHIM	4		
1/2-150	2053676-2	96214	. PLATE, SHIM	4		
1/2-151	2053676-3	96214	. PLATE, SHIM	4		
1/2-152	2053676-4	96214	. PLATE, SHIM	4		
1/2-153	2053676-5	96214	. PLATE, SHIM	4		
1/2-154	2053574-2	96214	. ANGLE, SUPPORT. PLENUM	1		AFFFF
1/2-155	MS35308-361	96906	. SCREW(AP)	4		
1/2-	MS15795-814	96906	. WASHER(AP.)	4		PAFZZ
1/2-	MS21083C6	96906	. NUT(AP)	4		PAFZZ
1/2-156	MS35308-310	96906	. SCREW(AP)	5		
1/2-	MS15795-810	96906	. WASHER(AP)	5		PAFZZ
1/2-	MS35338-139	96906	. WASHER(AP)	5		PAFZZ
1/2-157	M521209F4-10	96906	. INSERT	2		PAFZZ
1/2-158	2053574-1	96214	. ANGLE, SUPPORT, PLENUM.	1		AFFFF
1/2-159	MS35308-360	96906	. SCREW(AP)	4		
1/2-	MS15795-814	96906	. WASHER(AP)	4		PAFZZ
1/2-	MS35339-141	96906	. WASHER(AP)	4		PAOZZ
1/2-160	MS35308-310	96906	. SCREW(AP)	5		
1/2-	MS15795-810	96906	. WASHER(AP)	5		PAFZZ
1/2-	MS35338-139	96906	. WASHER(AP)	5		PAFZZ
1/2-161	MS21209F4-10	96906	. INSERT	2		PAFZZ
1/2-162	2053632-1	96214	. PLENUM ASSEMBLY(SEE FIG. 6 FOR	1		AFFFF
			BREAKDOWN)			
1/2-163	MS35308-308	96906	. SCREW(AP)	3		PAFZZ
1/2-	MS35338-139	96906	. WASHER(AP)	3		PAFZZ
1/2-	MS15795-810	96906	. WASHER(AP)	3		PAFZZ
1/2-164	2053576-1	96214	. BRACKET, SUPPORT. PLENUM	1		XBFFZ
1/2-165	MS35308-306	86906	. SCREW(AP)	2		PAFZZ
1/2-	MS15795-810	96906	. WASHER(AP)	2		PAFZZ
1/2-	MS21083C4	96906	. NUT(AP)	2		PAFZZ
1/2-166	NAS1212R10CJ16	80205 STRAP ASSEMBLY		3	XBFFZ
1/2-167	NAS1213R10C16	80205	. STRAP ASSEMBLY	2		XBFFZ
1/2-168	MS21251-BSL	96906	. TURNBUCKLE BODY	4		

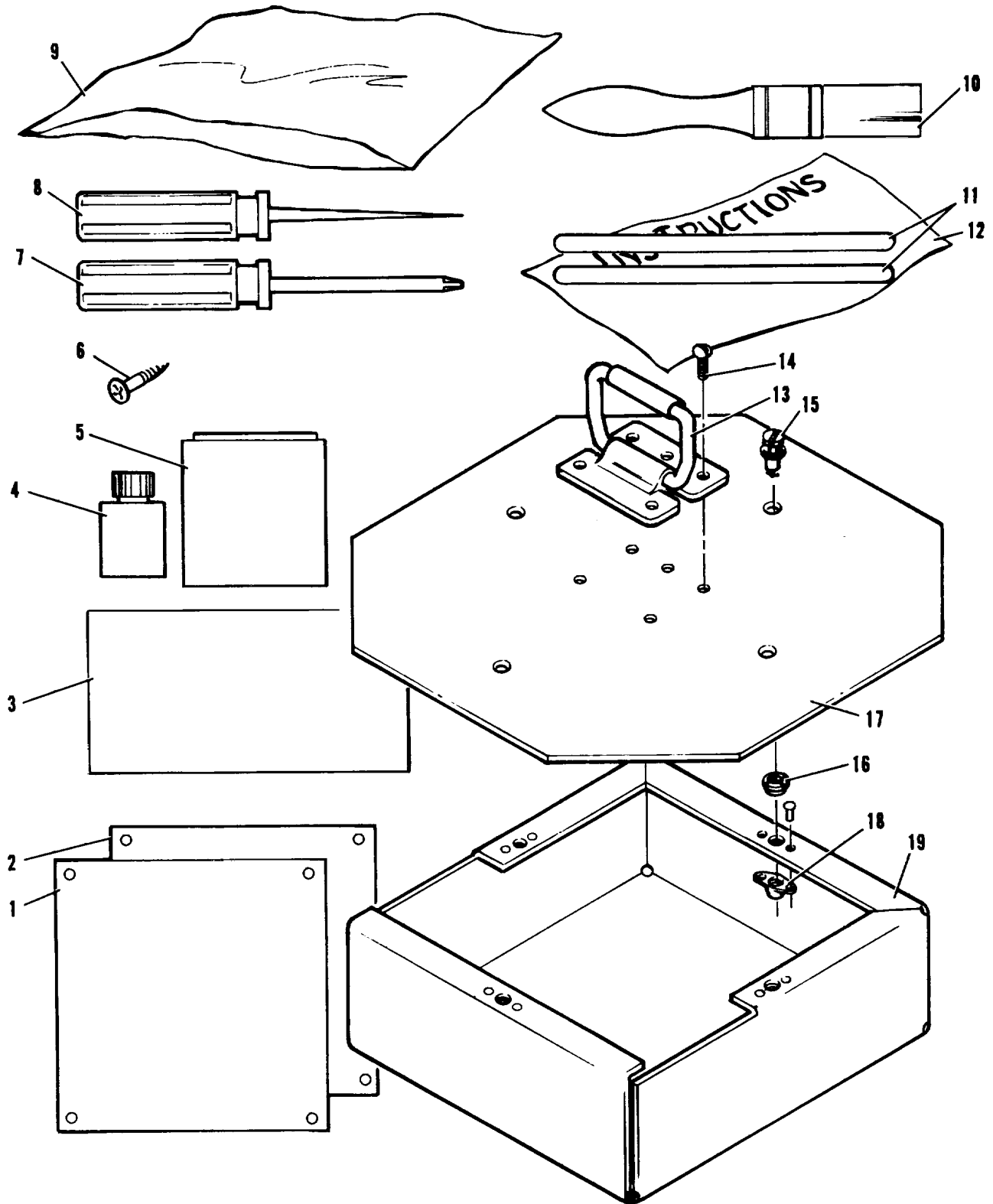
FIGURE & INDEX NUMBER	PART NUMBER	FSCM	DESCRIPTION							UNITS PER ASSY	USABLE ON CODE	SMR CODE
			1	2	3	4	5	6	7			
1/2-169	MS21256-2	96906	.	CLIP					8		
1/2-170	MS21252-BLL	96906	.	CLEVIS					4		
1/2-171	2053677-1	96214	.	WIRE. ROPE SUPPORT					4		XBFZZ
1/2-172	MS20392-5C41	96906	.	PIN					8		PAFZZ
1/2-173	MS24665-300	96906	.	PIN(AP)					1		PAFZZ
1/2-174	2053650-1	96214	.	BRACKET. CABLE TIE-DOWN					4		XBFZZ
1/2-175	MS35307-362	96906	.	SCREW(AP)					1		
1/2-	MS35338-141	96906	.	WASHER(AP)					1		PAOZZ
1/2-	MS15795-814	96906	.	WASHER(AP)					1		PAFZZ
1/2-176	20S3651-1	96214	.	SPACER, CABLE TIE-DOWN(AP)					1		XBFZZ
1/2-177	20S3650-1	96214	.	BRACKET, CABLE TIE-DOWN					4		XBFZZ
1/2-178	MS35308-361	96906	.	SCREW(AP)					1		
1/2-	MS35338-141	96906	.	WASHER(AP)					1		PAOZZ
1/2-	MS15795-914	96906	.	WASHER(AP)					1		PAFZZ
1/2-	MS21083C6	96906	.	NUT(AP)					1		PAFZZ
1/2-179	2053651-1	96214	.	SPACER, CABLE TIE-DOWN(AP)					1		XBFZZ
1/2-180	2053596-1	96214	.	SUPPORT, PLENUM							XBFZZ
1/2-181	MS35307-365	96906	.	SCREW(AP)					3		
1/2-	MS35338-141	96906	.	WASHER(AP)					3		PAOZZ
1/2-	MS15795-814	96906	.	WASHER(AP)					3		PAFZZ
1/2-182	MS35308-306	96906	.	SCREW(AP)					2		PAFZZ
1/2-	MS35338-139	96906	.	WASHER(AP)					2		PAFZZ
1/2-	MS15795-910	96906	.	WASHER(AP)					2		PAFZZ
1/2-183	335050-1	96214	.	ENVIRONMENT CONTROL UNIT (ALTERED ITEM)(SEE FIG. 7 FOR BREAKDOWN)					2		PBFDD
1/2-184	MS35307-391	96906	.	SCREW(AP)					4		PAFZZ
1/2-	MS35338-142	96906	.	WASHER(AP)					4		PAFZZ
1/2-	MS15795-817	96906	.	WASHER(AP)					4		PAFZZ
1/2-185	2053492-1	96214	.	SUPPORT, AIR CONDITIONER					1		AFFFF
1/2-186	MS35307-363	96906	.	SCREW(AP)							
1/2-	MS35338-141	96906	.	WASHER(AP)					8		PAOZZ
1/2-	MS15795-814	96906	.	WASHER(AP)					8		PAFZZ
1/2-187	MS21209F6-10	96906	.	INSERT					1		PAFZZ
1/2-188	2053612-1	96214	.	BASE. SUPPORT, AIR CONDITIONER					1		XBFZZ
1/2-189	MS35307-364	96906	.	SCREW(AP)					7		
1/2-	MS35338-141	96906	.	WASHER(AP)					7		PAOZZ
1/2-	MS15795-814	96906	.	WASHER(AP)					7		PAFZZ
1/2-190	2053494-1	96214	.	SUPPORT, TOP, AIR CONDITI ONER					1		XBFZZ
1/2-191	7001297-501	29381	.	PALLET ASSEMBLY(TI SPEC 2053486-1)					1		AFFDD



914490-3-T

Figure 2. Turning Vane Assembly

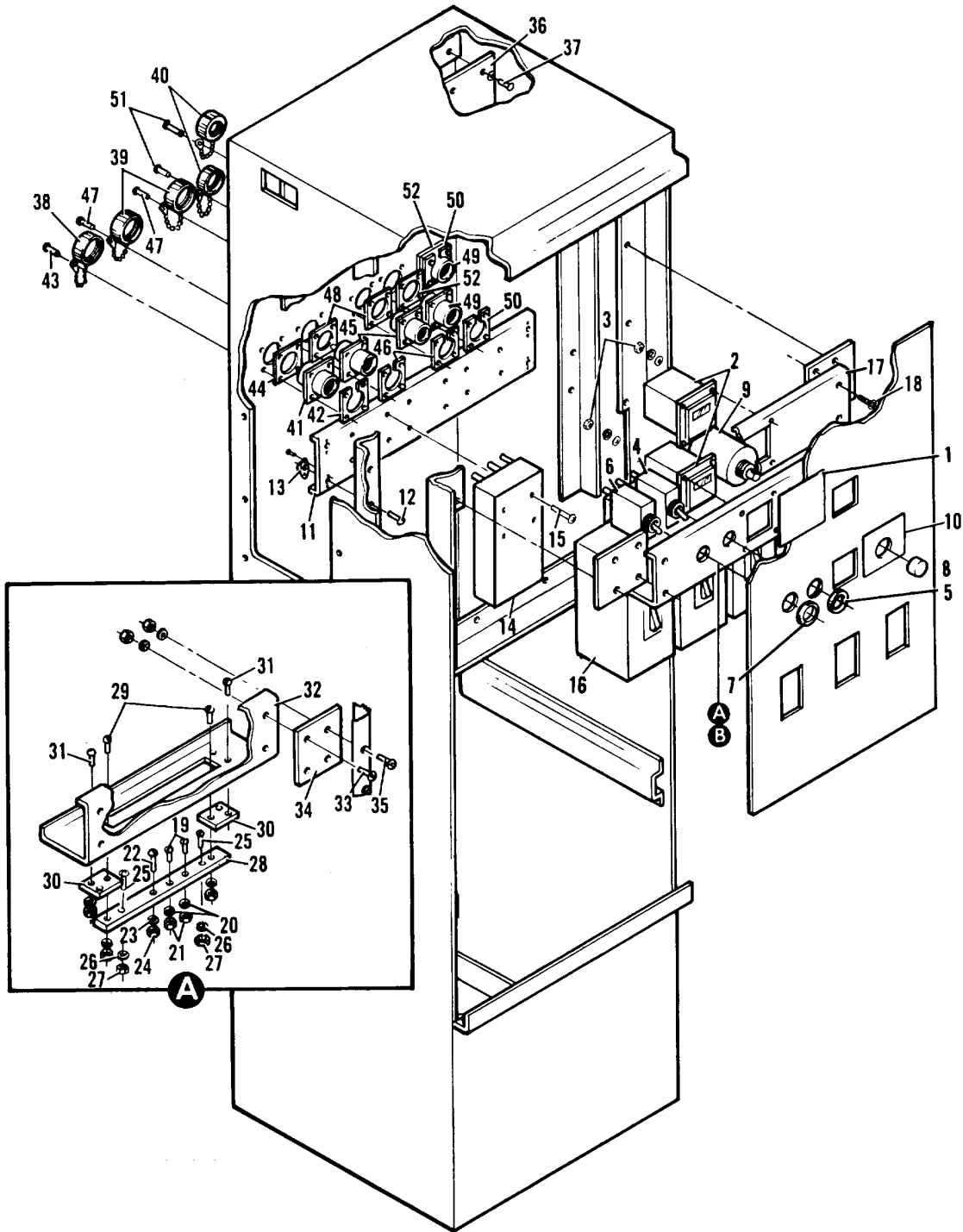
FIGURE & INDEX NUMBER	PART NUMBER	FSCM	DESCRIPTION							UNITS PER ASSY	USABLE ON CODE	SMR CODE
			1	2	3	4	5	6	7			
2-	914490-3	96214	TURNING VANE ASSEMBLY(SEE FIG. 1 FOR NHA)							REF		
2-1	914488-1	96214	. COVER, TURNING VANE							1		
2-	MS20470AD4-5	96906	. RIVET(AP)							60		PAFZZ
2-2	913015-1	96214	. INSULATION, SIDE AND BACK							1		MFFZZ
			(M/F .125THK RUBBER SHEET MIL-I-16562)									
2-	915858-3	96214	. AIRTURN ASSEMBLY							1		AFFFF
2-3	MS3212-13	96906	. SCREW(AP)							12		PAFZZ
2-	MS15795-805	96906	. WASHER(AP)							12		PAFZZ
2-	MS35338-136	96906	. WASHER(AP)							12		PAFZZ
2-	M535649-264	96906	. NUT(AP)							12		PAFZZ
2-4	915859-4	96214	. . BLADE, AIRTURN							15		XBFZZ
2-	MS20426A3-3	96906	. . RIVET(AP)							4		PAFZZ
2-5	914489-1	96214	. . STABILIZER, 20.24 - AIRTURN							4		XBFZZ
2-6	913015-2	96214	. INSULATION, SIDE AND BACK							1		MFFZZ
			(M/F .125THK RUBBER SHEET MIL-I-16562)									
2-7	913016-1	96214	. INSULATION, TOP							2		MFFZZ
			(M/F .125THK RUBBER SHEET MIL-I-16562)									
2-8	913016-2	96214	. INSULATION. TOP							2		MFFZZ
			(M/F .125THK RUBBER SHEET MIL-I-16562)									
2-9	922377-1	96214	. INSULATION, CORNER							4		MFFZZ
			(M/F .125THK RUBBER SHEET MIL-I-16562)									
2-10	922935-3	96214	. INSULATION. CIRCUMFERENTIAL							1		MFFZZ
			(M/F .125THK RUBBER SHEET MIL-I-16562)									
2-11	FT-8056	83144	. DUCT ASSEMBLY, FLEXIBLE(TI SPEC							1		
			539428-7)									
2-12	2085452-1	96214	. CLAMP, TURNING VANE							2		
2-	M520601-AD5W3	96906	. RIVET(AP)							8		
2-13	MS21060L4	96906	. . NUT							1		
2-	M520470A3-3	96906	. . RIVET(AP)							2		
2-14	902609-2	96214	. HOUSING, TURNING VANE							1		



2355889-1-D

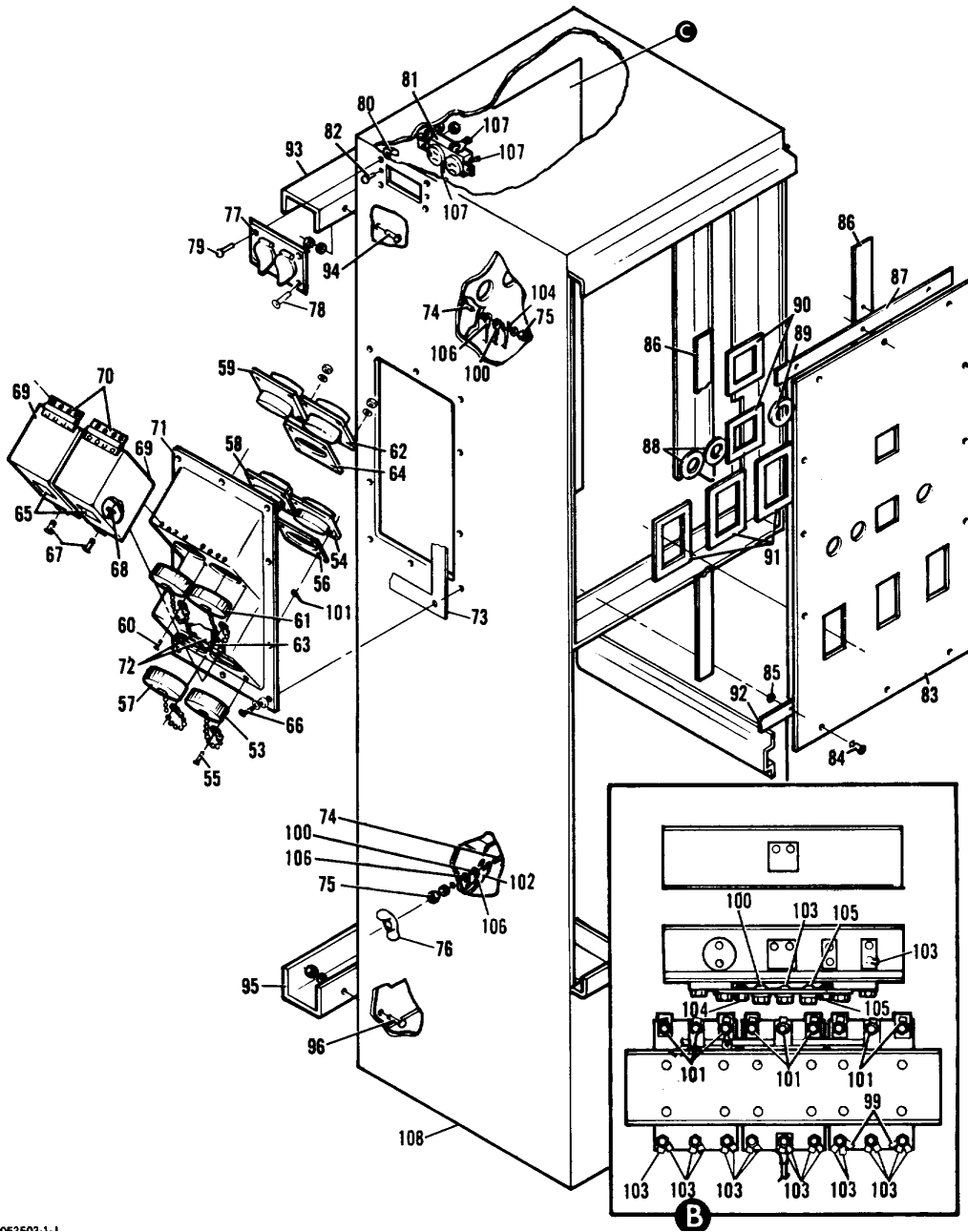
Figure 3. Shelter Repair Kit Assembly

FIGURE & INDEX NUMBER	PART NUMBER	FSCM	DESCRIPTION							UNITS PER ASSY	USABLE ON CODE	SMR CODE
			1	2	3	4	5	6	7			
3-	2355889-1	96214	SHELTER REPAIR KIT ASSEMBLY(SEE FIG. 1 FOR NHA)							REF		
3-1	920775-3	96214	. PLATE, PREPUNCHED, SHELTER REPAIR KIT							3		XBFZZ
3-2	920775-4	96214	. PLATE, PREPUNCHED, SHELTER REPAIR KIT							3		
3-3	920775-5	96214	. EMERY CLOTH, SHELTER REPAIR KIT							2		XBFZZ
3-4	920775-6	96214	. ADHESIVE KIT, SHELTER REPAIR KIT							1		XBFZZ
3-5	920775-7	96214	. PAINT, SHELTER REPAIR KIT							1		XBFZZ
3-6	920775-8	96214	. SCREW. SHELTER REPAIR KIT							144		XBFZZ
3-7	920775-9	96214	. SCREWDRIVER, PHILLIPS, SHELTER REPAIR KIT							1		XBFZZ
3-8	920775-10	96214	. AWL, SHELTER REPAIR KIT							1		XBFZZ
3-9	920775-11	96214	. SHREDDED FOAM. SHELTER REPAIR KIT							1		XBFZZ
3-10	920775-12	96214	. PAINT BRUSH, SHELTER REPAIR KIT							4		XBFZZ
3-11	920775-13	96214	. MIXING STICKS, SHELTER REPAIR KIT							2		XBFZZ
3-12	920775-14	96214	. INSTRUCTION SHEET, SHELTER REPAIR KIT							1		XC---
3-13	H945-AL-2-RGX	98003	. HANDLE, BAIL(TI SPEC 413082-4)									XBFZZ
3-14	M551957-46	96906	. SCREW(AP)							5		PAFZZ
3-	M535338-137	96906	. WASHER(AP)							5		PAFZZ
3-	M515795-807	96906	. WASHER(AP)							5		PAFZZ
3-	MS35649-284	96906	. NUT(AP)							5		PAFZZ
3-15	2700-7S	71286	. STUD, TURNLOCK FASTENER(TI SPEC 401823-6)							4		PAFZZ
3-16	2755-1	71286	. PUSH ON NUT(TI SPEC 532176-1)(AP)							4		PAFZZ
3-17	920767-1	96214	. COVER, SHELTER REPAIR KIT							1		XBFZZ
3-	920735-2	96214	. ENCLOSURE, SHELTER REPAIR KIT							1		
3-18	212-125	71286	. . RECEPTACLE, TURNLOCK FASTENER(TI SPEC 402094-2)							4		
3-	MS20426AD3-4	96906	. . RIVET(AP)							2		
3-19	920735-1	96214	. . ENCLOSURE, SHELTER REPAIR KIT							1		XBFZZ



2053503-1-J

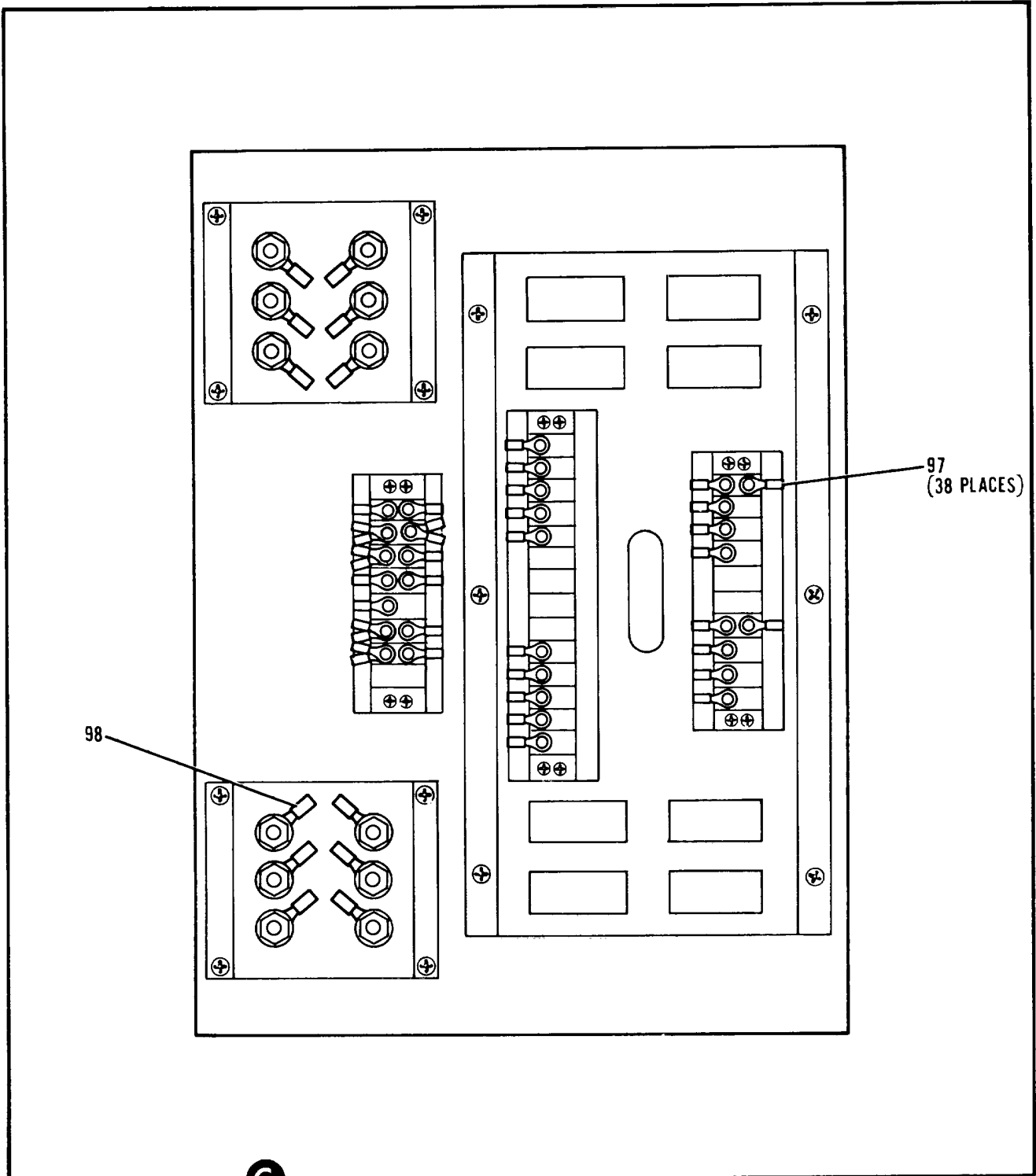
Figure 4. Power Distribution Cabinet Assembly (Sheet 1 of 3)



2053503-1-J

W32003.1.1

Figure 4. Power Distribution Cabinet Assembly (Sheet 2 of 3)



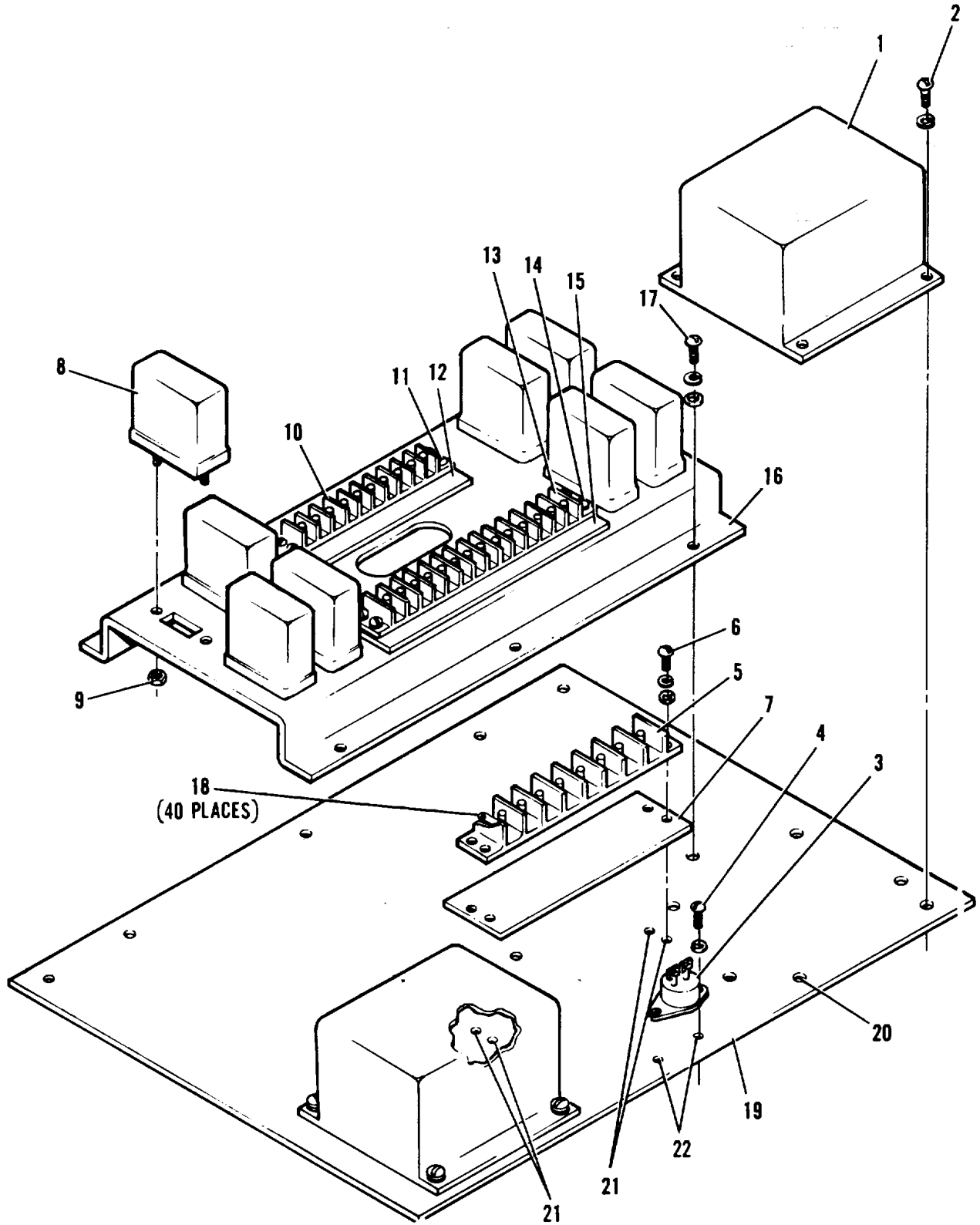
2053503-1-J

Figure 4. Power Distribution Cabinet Assembly (Sheet 3 of 3)

FIGURE & INDEX NUMBER	PART NUMBER	FSCM	DESCRIPTION 1 2 3 4 5 6 7	UNITS PER ASSY	USABLE ON CODE	SMR CODE
4-	2053503-1	96214	POWER DISTRIBUTION CABINET ASSEMBLY(SEE FIG. 1 FOR NHA)	REF		PBODD
4/1-1	2053495-1	96214	. PLATE, IDENTIFICATION. SAFETY	2		XC---
4/1-2	MS90445-2	96906	. METER	2		PAFZZ
4/1-3	MS35649-244	96906	. NUT(AP)	4		
4/1-	MS35338-135	96906	. WASHER(AP)	4		PAFZZ
4/1-	MS15795-804	96906	. WASHER(AP)	4		PAFZZ
4/1-4	M39019/01-249	81349	. CIRCUIT BREAKER	1		PAFZZ
4/1-5	642-310-5060	31541	. RING, LOCK, SERRATED(TI SPEC 536132-1)(AP)	1		PAFZZ
4/1-6	M39019/01-255	81349	. CIRCUIT BREAKER	1		PAFZZ
4/1-7	642-310-5060	31541	. RING, LOCK. SERRATED(TI SPEC 536132-1)(AP)	1		PAFZZ
4/1-E	M59152E-2P2B	96906	. KNOB	1		PAOZZ
4/1-9	M3786/4-5742	81349	. SWITCH.....	1		PAFZZ
4/1-10	2053537-1	96214	. PLATE, IDENTIFICATION, SELECTOR	1		XC---
4/1-11	2053533-1	96214	. BRACKET. MOUNTING, CIRCUIT BREAKER.....	1		AFFFF
4/1-12	MS35308-306	96906	. SCREW(AP)	4		PAFZZ
4/1-	MS15795-810	96906	. WASHER(AP)	4		PAFZZ
4/1-13	MS21076L4	96906	. NUT	4		PAFZZ
4/1-	MS20426AD3-7	96906	. RIVET(AP)	2		PAFZZ
4/1-14	315C364G02	89946	. BASE. MOUNTING, CIRCUIT BREAKER(TI SPEC 804520-1)	3		PAFZZ
4/1-15	MS551958-82	96906	. SCREW(AP)	4		PAFZZ
4/1-	MS35338-139	96906	. WASHER(AP)	4		PAFZZ
4/1-	MS15795-B10	96906	. WASHER(AP)	4		PAFZZ
4/1-	MS51972-1	96906	. NUT(AP)	4		
4/1-16	AQB-A101-50L	81349	. CIRCUIT BREAKER	3		
4/1-17	2053529-1	96214	. BRACKET. METER MOUNTING	1		XBFZZ
4/1-18	MS24693-C273	96906	. SCREW(AP)	4		
4/1-	MS15795-807	96906	. WASHER(AP.)	4		PAFZZ
4/1-	MS21083C6	96906	. NUT(AP)	4		PAFZZ
4/1-19	MS51957-47	96906	. SCREW	2		PAFZZ
4/1-20	M515795-807	96906	. WASHER	2		PAFZZ
4/1-21	MS18064-308	96906	. SETSCREW	2		
4/1-22	M551958-81	96906	. SCREW	1		PAFZZ
4/1-23	MS15795-810	96906	. WASHER	1		PAFZZ
4/1-24	MS21083C4	96906	. NUT	1		PAFZZ
4/1-25	MS51958-109	96906	. SCREW	2		
4/1-26	MS15795-814	96906	. WASHER	2		PAFZZ
4/1-27	MS21083C6	96906	. NUT	2		PAFZZ
4/1-28	2053531-1	96214	. BAR, BUSS	1		PAFZZ
4/1-29	MS51958-67	96906	. SCREW(AP)	2		PAFZZ
4/1-	MS15795-808	96906	. WASHER(AP)	2		PAFZZ
4/1-	MS21083C6	96906	. NUT(AP)	2		PAFZZ
4/1-30	2053532-1	96214	. SPACER	2		PAFZZ
4/1-31	MS51958-66	96906	. SCREW(AP)	2		PAFZZ
4/1-	MS15795-808	96906	. WASHER(AP)	2		PAFZZ
4/1-	MS21083C3	96906	. NUT(AP)	2		PAFZZ
4/1-32	2053527-1	96214	. BRACKET, MOUNTING	1		XBFZZ
4/1-33	MS24693-C273	96906	. SCREW(AP)	4		
4/1-	MS15795-807	96906	. WASHER(AP)	4		PAFZZ
4/1-	MS21083C6	96906	. NUT(AP)	4		PAFZZ
4/1-34	2053528-1	96214	. PLATE, MOUNTING	4		XBFZZ
4/1-35	MS24693-C273	96906	. SCREW(AP)	2		
4/1-	M515795-E07	96906	. WASHER(AP)	2		PAFZZ
4/1-	MS21083C6	96906	. NUT(AP)	2		PAFZZ
4/1-36	335052-1	9621	. AIR CONDITIONER CONTROL RELAY ASSEMBLY(SEE FIG. 5 FOR BREAKDOWN)	1		PBFDD
4/1-37	MS51958-63	96906	. SCREW(AP)	9		PAFZZ
4/1-	MS15795-808	96906	. WASHER(AP)	9		PAFZZ

FIGURE & INDEX NUMBER	PART NUMBER	FSCM	DESCRIPTION							UNITS PER ASSY	USABLE ON CODE	SMR CODE																						
			1	2	3	4	5	6	7																									
4/1-38	MS25043-16D	96906	.	C	O	V	E	R	.	1		PAFZZ																						
4/1-39	MS25043-20D	96906	.	C	O	V	E	R	.	2		PAFZZ																						
4/1-40	MS25043-22D	96906	.	C	O	V	E	R	.	2		PAFZZ																						
4/1-41	MS3450W16-10S W	96906	.	C	O	N	N	E	C	T	O	R	PAFZZ																					
4/1-42	FSU-16/27	04967	.	N	U	T	A	S	S	E	M	B	LY, RETAINER PLATE(TI SPEC 531161-6)	1		PAFZZ																		
4/1-43	MS51957-17	96906	.	S	C	R	E	W	(A	P)	.	4		PAFZZ																				
4/1-	MS15795-804	96906	.	W	A	S	H	E	R	(A	P)	4		PAFZZ																				
4/1-44	10-40450-16S	77820	.	G	A	S	K	E	T, AN	C	O	N	N	E	C	T	O	R(TI SPEC 34015-37)	1		PAFZZ													
4/1-45	MS3450W20-29P	96906	.	C	O	N	N	E	C	T	O	R	2		PAFZZ																			
4/1-46	FSU-20	04967	.	N	U	T	A	S	S	E	M	B	LY, RETAINER PLATE(TI SPEC 531161-8)	2		PAFZZ																		
4/1-47	MS51957-17	96906	.	S	C	R	E	W	(A	P)	.	4		PAFZZ																				
4/1-	MS 15795-804	96906	.	W	A	S	H	E	R	(A	P)	4		PAFZZ																				
4/1-48	10-40450-20S	77820	.	G	A	S	K	E	T, AN	C	O	N	N	E	C	T	O	R(TI SPEC 34015-30)	2		PAFZZ													
4/1-49	MS3100R22-225	96906	.	C	O	N	N	E	C	T	O	R	2		PAFZZ																			
4/1-50	FSU-22	04967	.	N	U	T	A	S	S	E	M	B	LY. RETAINER PLATE(TI SPEC 531161-9)	2		PAFZZ																		
4/1-51	MS551957-17	96906	.	S	C	R	E	W	(A	P)	.	4		PAFZZ																				
4/1-	MS15795-804	96906	.	W	A	S	H	E	R	(A	P)	4		PAFZZ																				
4/1-52	10-40450-225	77820	.	G	A	S	K	E	T, AN	C	O	N	N	E	C	T	O	R(TI SPEC 34015-28)	2		PAFZZ													
4/2-53	MS17349C24B	96906	.	C	O	V	E	R	.	1		PAFZZ																						
4/2-54	MS17343R24N22 5W	96906	.	C	O	N	N	E	C	T	O	R	1		PAFZZ																			
4/2-55	MS51957-46	96906	.	S	C	R	E	W	(A	P)	.	4		PAFZZ																				
4/2-	MS15795-607	96906	.	W	A	S	H	E	R	(A	P)	4		PAFZZ																				
4/2-	MS21083C08	96906	.	N	U	T	(A	P)	.	4		PAFZZ																						
4/2-56	2085450-1	96214	.	G	A	S	K	E	T, C	O	N	N	E	C	T	O	R	1		PAFZZ														
4/2-57	M81511/18-18	81349	.	C	O	V	E	R	.	1		PAFZZ																						
4/2-58	M81511/53-FF03S1	81349	.	C	O	N	N	E	C	T	O	R	1		PAFZZ																			
4/2-59	MS90558C32412P	96906	.	C	O	N	N	E	C	T	O	R	1		PAFZZ																			
4/2-60	MS51958-64	96906	.	S	C	R	E	W	(A	P)	.	4		PAFZZ																				
4/2-	MS15795-808	96906	.	W	A	S	H	E	R	(A	P)	4		PAFZZ																				
4/2-	MS21083C3	96906	.	N	U	T	(A	P)	.	4		PAFZZ																						
4/2-61	MS17349C36B	96906	.	C	O	V	E	R	.	1		PAFZZ																						
4/2-62	MS17343R36N5PY	96906	.	C	O	N	N	E	C	T	O	R	1		PAFZZ																			
4/2-63	MS51958-64	96906	.	S	C	R	E	W	(A	P)	.	4		PAFZZ																				
4/2-	MS15795-808	96906	.	W	A	S	H	E	R	(A	P)	4		PAFZZ																				
4/2-	MS21083C3	96906	.	N	U	T	(A	P)	.	4		PAFZZ																						
4/2-64	10-40450-40	77820	.	G	A	S	K	E	T, AN	C	O	N	N	E	C	T	O	R(TI SPEC 34015-26)	1		PAFZZ													
4/2-65	335016-1	96214	.	P	L	A	T	E, I	D	E	N	T	I	F	I	C	A	T	I	O	N	2		XC---										
4/2-	2053542-1	96214	.	P	A	N	E	L, C	O	N	N	E	C	T	O	R	A	S	S	E	M	B	LY	1		AFFFF								
4/2-66	MS51958-63	96906	.	C	R	E	W	(A	P)	.	10		PAFZZ																					
4/2-	MS15795-808	96906	.	A	S	H	E	R	(A	P)	.	10		PAFZZ																				
4/2-	MS35338-138	96906	.	A	S	H	E	R	(A	P)	.	10		PAFZZ																				
4/2-67	82-11-120-16	94222	.	S	T	U	D, T	U	R	N	L	O	C	K	F	A	S	T	E	N	E	R(TI SPEC 410955-3)	2		PAFZZ									
4/2-68	82-32-101-1794222		.	R	E	T	A	I	N	E	R, T	U	R	N	L	O	C	K	F	A	S	T	E	N	E	R	S	T	U	D(TI SPEC 420323-1)(AP)	2		PAFZZ	
4/2-69	2053549-1	96214	.	C	O	V	E	R	C	O	N	N	E	C	T	O	R	.	2											XBFZZ				
4/2-	MS20470A3-4	96906	.	R	I	V	E	T	(A	P)	.	4		PAFZZ																				
4/2-70	2053551-1	96214	.	H	I	N	G	E, C	O	V	E	R, C	O	N	N	E	C	T	O	R	.	2								XBFZZ				
4/2-	MS20470A3-4	96906	.	R	I	V	E	T	(A	P)	.	4		PAFZZ																				
4/2-71	2053544-1	96214	.	C	O	N	N	E	C	T	O	R	P	A	N	E	L, D	I	S	T	R	I	B	U	T	I	O	N	B	O	X	1		AFFFF
4/2-72	82-35-302-15	94222	.	C	L	I	P, S	P	R	I	N	G	T	E	N	S	I	O	N	(T	I	S	P	E	C 419912-1)	2		PAFZZ						
4/2-	MS20426A3-4	96906	.	R	I	V	E	T	(A	P)	.	2		PAFZZ																				
4/2-73	2085451-1	96214	.	G	A	S	K	E	T, C	O	N	N	E	C	T	O	R	P	A	N	E	L	.	1							PAFZZ			
4/2-74	MS51958-81	96906	.	S	C	R	E	W	.	2		PAFZZ																						
4/2-75	MS21083C4	96906	.	N	U	T	(A	P)	.	1		PAFZZ																						
4/2-	MS15795-810	96906	.	W	A	S	H	E	R	(A	P)	.	1		PAFZZ																			

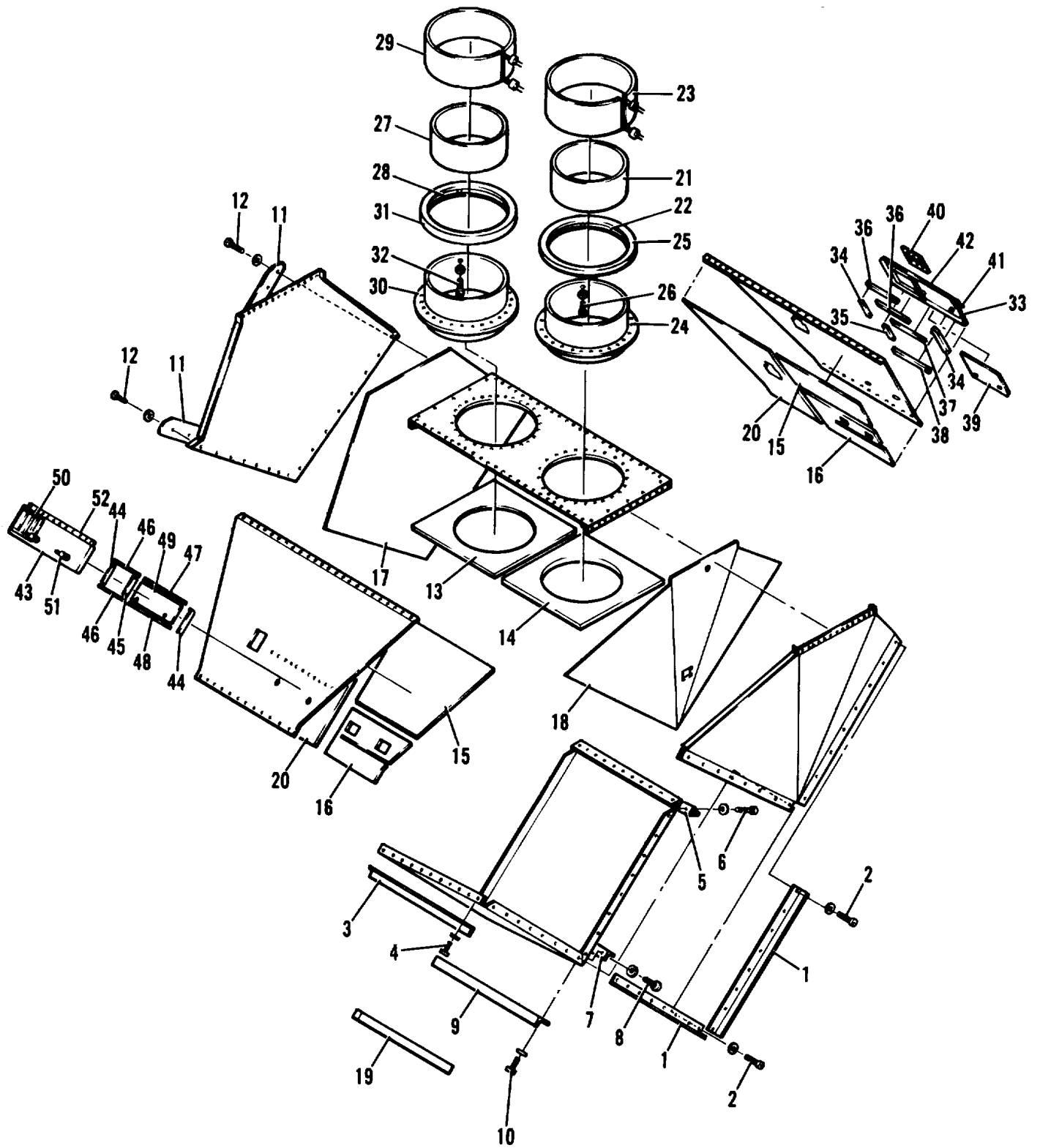
FIGURE & INDEX NUMBER	PART NUMBER	FSCM	DESCRIPTION							UNITS PER ASSY	USABLE ON CODE	SMR CODE
			1	2	3	4	5	6	7			
4/2-76	402126-4	96214	.	NUT. PLAIN, WING						1		
4/2-77	5206	74545	.	COVER. ELECTRICAL, OUTLET BOX(TI SPEC						1		
				800097-2)								
4/2-78	MSS51957-31	96906	.	SCREW(AP)						2		PAFZZ
4/2-	MS15795-806	96906	.	WASHER(AP)						2		PAFZZ
4/2-	MS35338-136	96906	.	WASHER(AP)						2		PAFZZ
4/2-	MS35649-264	96906	.	NUT(AP)						2		PAFZZ
4/2-79	MS51957-32	96906	.	SCREW(AP)						2		PAFZZ
4/2-	MS15795-806	96906	.	WASHER(AP)						2		PAFZZ
4/2-	MS35338-136	96906	.	WASHER(AP)						2		PAFZZ
4/2-	MS35649-264	96906	.	NUT(AP)						2		PAFZZ
4/2-90	HP-6N	09922	.	CLAMP. LOOP(TI SPEC 54967-6)						2		
4/2-81	WC596/12-1	81349	.	CONNECTOR						1		
4/2-82	MS51957-30	96906	.	SCREW(AP)						2		PAFZZ
4/2-	MS21083C06	96906	.	NUT(AP)						2		PAFZZ
4/2-83	2053522-1	96214	.	POWER, PANEL, CONTROL						1		AFFFF
4/2-84	85-11-300-17	94222	..	STUD. TURNLOCK FASTENER(TI SPEC						12		PAFZZ
				532009-13)								
4/2-85	85-34-101-20	94222	..	RING. RETAINING(TI SPEC 413841-2)(AP)						1		PAFZZ
4/2-	85-43-201-38	94222	..	WASHER. NONMETALLIC(TI SPEC						1		PAFZZ
				537697-2)(AP)								
4/2-86	2053523-1	96214	..	SEAL. CONTROL PANEL						2		MFFZZ
				(M/F .125THK RUBBER SHEET MIL-I-6130)								
4/2-87	2053523-2	96214	..	SEAL. CONTROL PANEL						1		MFFZZ
				(M/F .125THK RUBBER SHEET MIL-I-6130)								
4/2-88	2053526-1	96214	..	SEAL. SWITCH						2		MFFZZ
				(M/F .125THK RUBBER SHEET MIL-I-6130)								
4/2-89	2053526-2	96214	..	SEAL. SWITCH						1		MFFZZ
				(M/F .125THK RUBBER SHEET MIL-I-6130)								
4/2-90	2053524-1	96214	..	SEAL. TIME METER						2		MFFZZ
				(M/F .125THK RUBBER SHEET MIL-I-6130)								
4/2-91	2053525-1	96214	..	SEAL. CIRCUIT BREAKER						3		MFFZZ
				(M/F .125THK RUBBER SHEET MIL-I-6130)								
4/2-92	2053523-3	96214	..	SEAL. CONTROL PANEL						1		MFFZZ
				(M/F .125THK RUBBER SHEET MIL-I-6130)								
4/2-93	2053535-1	96214	.	SUPPORT. CHANNEL DRUM						1		XBFZZ
4/2-94	MS35308-332	96906	.	SCREW(AP)						3		PAOZZ
4/2-	MS15795-812	96906	.	WASHER(AP)						3		PAOZZ
4/2-	MS2108305	96906	.	NUT(AP)						3		PAOZZ
4/2-95	2053536-1	96214	.	SUPPORT, CHANNEL DRUM						1		XBFZZ
4/2-96	MS35308-332	96906	.	SCREW(AP)						3		PAOZZ
4/2-	MS15795-812	96906	.	WASHER(AP)						3		PAOZZ
4/2-	MS2108305	96906	.	NUT(AF)						3		PAOZZ
4/3-97	MS25036-106	96906	.	TERMINAL						38		PAFZZ
4/3-98	MS25036-108	96906	.	TERMINAL						12		PAFZZ
4/2-99	MS25036-110	96906	.	TERMINAL						2		
4/2-100	MS25036-116	96906	.	TERMINAL						3		PAFZZ
4/2-101	MS25036-118	96906	.	TERMINAL						9		PAFZZ
4/2-102	MS25036-120	96906	.	TERMINAL						1		PAFZZ
4/2-103	MS25036-122	96906	.	TERMINAL						20		PAFZZ
4/2-104	MS25036-149	96906	.	TERMINAL						2		PAFZZ
4/2-105	MS25036-153	96906	.	TERMINAL						2		PAFZZ
4/2-106	MS25036-154	96906	.	TERMINAL						3		PAFZZ
4/2-107	32057	00779	.	LUG. SLOTTED(TI SPEC 404448-1)						3		PAFZZ
4/2-108	2053502-1	96214	.	POWER DISTRIBUTION CABINET SUBASSEMBLY						1		AFFFF



335052-1-D

Figure 5. Air Conditioner Control Relay Assembly

FIGURE & INDEX NUMBER	PART NUMBER	FSCM	DESCRIPTION 1 2 3 4 5 6 7	UNITS PER ASSY	USABLE ON CODE	SMR CODE
5-	335052-1	96214	AIR CONDITIONER CONTROL RELAY ASSEMBLY(SEE FIG. 4 FOR NHA)	REF		PBFDD
5-1	MS27997-A2	96906	. RELAY	2		PAFZZ
5-2	MS5195B-63	96906	. SCREW(AP)	8		PAFZZ
5-	MS35338-138	96906	. WASHER(AP)	8		PAFZZ
5-3	M24236/1-CCSBL	81349	. SWITCH	1		PAFZZ
5-4	MS51957-14	96906	. SCREW(AP)	2		PAFZZ
5-	MS35338-135	96906	. WASHER(AP)	2		PAFZZ
5-5	37TBB	81349	. TERMINAL BOARD	1		PAFZZ
5-6	MS51957-32	96906	. SCREW(AP)	4		PAFZZ
5-	MS35338-136	96906	. WASHER(AP)	4		PAFZZ
5-	MS15795-805	96906	. WASHER(AP)	4		PAFZZ
5-7	651928-9	96214	. PLATE. MARKER. NO. 8	1		XC---
5-8	MS25395-A3	96906	. RELAY	8		PAFZZ
5-9	MS35649-264	96906	. NUT(AP)	16		PAFZZ
5-	MS15795-806	96906	. WASHER(AP)	16		PAFZZ
5-	MS35338-136	96906	. WASHER(AP)	16		PAFZZ
5-10	37TB9	91349	. TERMINAL BOARD	1		PAFZZ
5-11	MS51957-32	96906	. SCREW(AP)	4		PAFZZ
5-	MS35338-136	96906	. WASHER(AP)	4		PAFZZ
5-	MS15795-805	96906	. WASHER(AP)	4		PAFZZ
5-	MS35649-264	96906	. NUT(AP)	4		PAFZZ
5-12	651928-10	96214	. PLATE. MARKER. NO. 8	1		XC---
5-13	37TB14	81349	. TERMINAL BOARD	1		PAFZZ
5-14	MS51957-32	96906	. SCREW(AP)	4		PAFZZ
5-	MS35338-136	96906	. WASHER(AP)	4		PAFZZ
5-	MS15795-805	96906	. WASHER(AP)	4		PAFZZ
5-	MS35649-264	96906	. NUT(AP)	4		PAFZZ
5-15	651928-14	96214	. PLATE, MARKER. NO. 8	1		XC---
5-16	335051-1	96214	. BRACKET. RELAY MOUNTING	1		XBFZZ
5-17	MS51958-63	96906	. SCREW(AP)	3		PAFZZ
5-	MS35338-138	96906	. WASHER(AP)	3		PAFZZ
5-	MS15795-808	96906	. WASHER(AP)	3		PAFZZ
5-18	MS25036-106	96906	. TERMINAL	40		PAFZZ
5-19	2053530-1	96214	. PANEL, MOUNTING	1		AFFFF
5-20	CLSS-032-3	46384	. . NUT. PLAIN. CLINCH-FINE THREAD..... CRES(TI SPEC 410818-1003)	11		PAFZZ
5-21	CLS-632-3	46384	. . NUT. PLAIN. CLINCH. COARSE THREAD(TI..... SPEC 410817-603)	4		PAFZZ
5-22	CLS-440-3	46394	. . NUT. PLAIN. CLINCH, COARSE THREAD(TI SPEC 410817-403)	2		PAFZZ



2053632-1-E

Figure 6. Plenum Assembly

FIGURE & INDEX NUMBER	PART NUMBER	FSCM	DESCRIPTION							UNITS PER ASSY	USABLE ON CODE	SMR CODE
			1	2	3	4	5	6	7			
6-	2053632-1	96214	PLENUM ASSEMBLY(SEE FIG. 1 FOR NHA)							REF		AFFFF
6-1	2053639-1	96214	. ALTERNATE CURRENT SEAL. BOTTOM							2		XBFZZ
6-2	MS35308-310	96906	. SCREW(AP)							8		
6-	MS15795-810	96906	. WASHER(AP)							8		PAFZZ
6-3	2053573-1	96214	. ALTERNATE CURRENT SEAL. RIGHT SIDE							1		XBFZZ
6-4	MS35308-310	96906	. SCREW(AP)							7		
6-	M515795-810	96906	. WASHER(AP)							7		PAFZZ
6-5	2053571-1	96214	. ALTERNATE CURRENT SEAL. LEFT HAND							1		XBFZZ
6-6	MS35308-310	96906	. SCREW(AP)							7		
6-	M515795-810	96906	. WASHER(AP)							7		PAFZZ
6-7	2053572-1	96214	. ALTERNATE CURRENT SEAL. RIGHT HAND							1		XBFZZ
6-8	MS35308-310	96906	. SCREW(AP)							7		
6-	M515795-810	96906	. WASHER(AP)							7		PAFZZ
6-9	2053570-1	96214	. ALTERNATE CURRENT SEAL..... LEFT HAND SIDE							1		XBFZZ
6-10	MS35308-310	96906	. SCREW(AP)							7		
6-	MS15795-810	96906	. WASHER(AP)							7		PAFZZ
6-11	2053575-1	96214	. ALTERNATE CURRENT SEAL. TOP.....							2		XBFZZ
6-12	MS35308-310	96906	. CREW(AP)							8		
6-	MS15795-810	96906	. WASHER(AP)							8		PAFZZ
6-13	2053671-1	96214	. INSULATION, DUCT FRAME.....							1		MFFZZ
			(M/F 1.00THK THERMAL URETHANE SHEET)									
6-14	2053671-2	96214	. INSULATION. DUCT FRAME							1		MFFZZ
			(M/F 1.00THK THERMAL URETHANE SHEET)									
6-15	2053672-1	96214	. INSULATION. SIDE, LOWER							2		MFFZZ
			(M/F 1.00THK POLYURETHANE FOAM SHEET)									
6-16	335022-1	96214	. INSULATION. LOWER BACK							2		MFFZZ
			(M/F 1.00THK POLYURETHANE FOAM SHEET)									
6-17	335026-1	96214	. INSULATION, TOP							1		MFFZZ
			(M/F 1.00THK POLYURETHANE FOAM SHEET)									
6-18	335028-1	96214	. INSULATION. BOTTOM							1		MFFZZ
			(M/F 1.00THK POLYURETHANE FOAM SHEET)									
6-19	335031-1	96214	. INSULATING STRIP, BAFFLE HOUSING							2		MFFZZ
			(M/F 1.00THK POLYURETHANE FOAM SHEET)									
6-20	335024-1	96214	. INSULATION, UPPER SIDE							2		MFFZZ
			(M/F 1.00THK POLYURETHANE FOAM SHEET)									
6-	2053590-1	96214	. RING ASSEMBLY							1		AFFFF
6-	MS20604B5W6	96906	. RIVET(AP)							24		
6-21	2053644-1	96214	. . INSULATION. RIN G							1		XBFZZ
6-22	335023-1	96214	. . INSULATION. RING							4		XBFZZ
6-23	2053595-1	96214	. . SKIRT, TRANSITION. AIR CONDITIONER							1		XBFZZ
			SYSTEM									
6-24	2053591-1	96214	. . CONNECTOR (ALTERED ITEM)							1		XBFZZ
6-25	2059868-1	96214	. . RING							1		
6-26	NAS1635-08-8	80205	. . SCREW(AP)							4		
6-	MS35333-138	96906	. . WASHER(AP)							4		PAFZZ
6-	2053590-2	96214	. RING ASSEMBLY							1		AFFFF
6-	MS20604B5W6	96906	. RIVET(AP)							24		
6-27	2053644-1	96214	. . INSULATION, RING							1		XBFZZ
6-28	335023-1	96214	. . INSULATION, RING							4		XBFZZ
6-29	2053595-1	96214	. . SKIRT, TRANSITION, AIR CONDITIONER							1		XBFZZ
			SYSTEM									
6-30	2053591-1	96214	. . CONNECTOR (ALTERED ITEM)							1		XBFZZ
6-31	2059868-19	6214	. . RING							1		
6-32	NAS1635-08-8	80205	. . SCREW(AP)							4		
6-	MS35338-13B	96906	. . WASHER(AP)							4		PAFZZ

FIGURE & INDEX NUMBER	PART NUMBER	FSCM	DESCRIPTION							UNITS PER ASSY	USABLE ON CODE	SMR CODE
			1	2	3	4	5	6	7			
6-33	2053602--	96214	1		AFFFF
6-	MS20470AD4-4	96906	9		PAFZZ
6-	MS20426AD4-4	96906	1		PAFZZ
6-	MS20470AD4-7	96906	1		PAFZZ
6-34	2053606-1	96214	2		MFFZZ
6-35	2053606-2	96214	1		MFFZZ
6-36	2053606-4	96214	2		MFFZZ
6-37	2053606-5	96214	1		MFFZZ
6-39	2053606-6	96214	1		MFFZZ
6-39	2053608-1	96214	1		XBFZZ
6-40	335013-1	96214	1		XBFZZ
6-	MS20470AD4-5	96906	6		PAFZZ
6-	MS20470AD4-7	96906	4		PAFZZ
6-41	44-1-14-0	94222	2		XBFZZ
6-	MS20470AD6-9	96906	4		PAFZZ
6-42	2053610-1	96214	1		XBFZZ
6-	MS20470AD4-6	96906	11		PAFZZ
6-43	2053601-1	96214	1		AFFFF
6-	MS20470AD4-4	96906	9		PAFZZ
6-	MS20426AD4-4	96906	1		PAFZZ
6-	MS20470AD4-7	96906	1		PAFZZ
6-44	2053606-1	96214	2		MFFZZ
6-45	2053606-2	96214	1		MFFZZ
6-46	2053606-4	96214	2		MFFZZ
6-47	2053606-5	96214	1		MFFZZ
6-48	2053606-6	96214	1		MFFZZ
6-49	2053608-1	96214	1		XBFZZ
6-50	335013-1	96214	1		XBFZZ
6-	MS20470AD4-5	96906	6		PAFZZ
6-	MS20470AD4-7	96906	4		PAFZZ
6-51	44-1-14-0	94222	2		XBFZZ
6-	MS20470AD6-9	96906	4		PAFZZ
6-52	2053610-1	96214	1		XBFZZ
6-	MS20470AD4-6	96906	11		PAFZZ

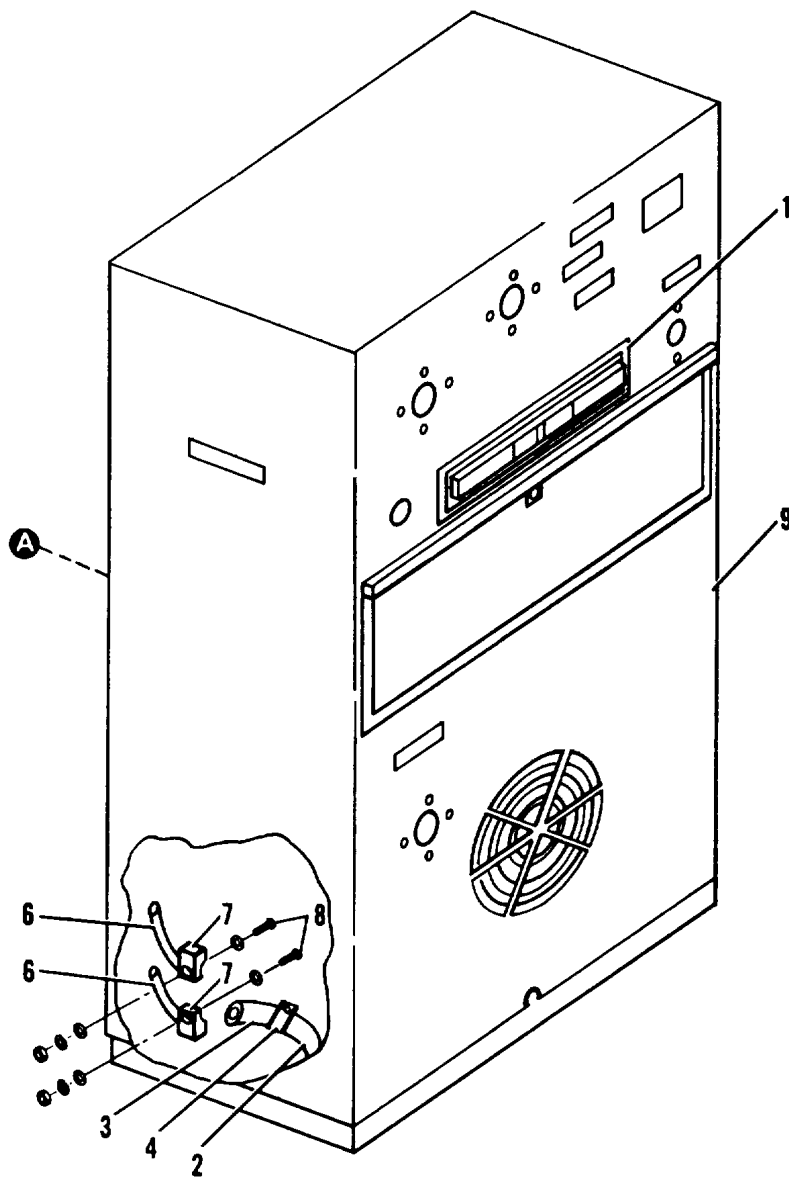
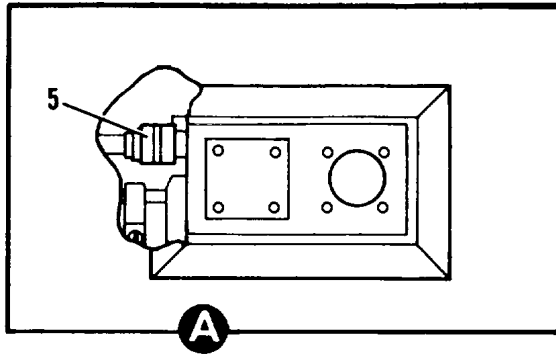


Figure 7. Environment Control Unit

FIGURE & INDEX NUMBER	PART NUMBER	FSCM	DESCRIPTION							UNITS PER ASSY	USABLE ON CODE	SMR CODE
			1	2	3	4	5	6	7			
7-	335050-1	96214	ENVIRONMENT CONTROL UNIT (ALTERED ITEM)(SEE FIG. 1 FOR NHA)							REF		PBFDD
7-1	334994-1	96214	. PLATE, DAMPER							1		XBFZZ
7-2	2080535-1	96214	. ECU DRAIN HOSE							1		
7-3	MS171500	96906	. PIN							1		
7-4	MS35842-11	96906	. CLAMP							2		
7-5	MS25043-20D	96906	. COVER							1		PAFZZ
7-6	MS3367-5-9	96906	. STRAP							2		
7-7	TC-812	59730	. MOUNTING PAD(TI SPEC 535485-1)							2		
7-8	MS51958-63	96906	. SCREW(AP)							1		PAFZZ
7-	MS35338-138	96906	. WASHER(AP)							1		PAFZZ
7-	MS15795-808	96906	. WASNER(AP)							1		PAFZZ
7-	NAS620C10	80205	. WASHER(AP)							1		
7-	M535650-304	96906	. NUT(AP)							1		PAFZZ
7-9	MIL-A-38345, A/E3 2C-24A/C	96906	. AIR CONDITIONER							1		PAODD

2-25/(2-26 blank)

SECTION III

NUMERICAL INDEX

PART NUMBER	STOCK NUMBER	FIGURE & INDEX NUMBER	QUANTITY PER END ITEM	USM UNIQUE SMR CODES	USMC SPECIAL STOCK IND. CODE	USMC REPL. FACTOR
AQB-A101-50L		4-16	3			
CL-52-KA-9.00-4- 1-129		1-124	2			
CLS-440-3		5-22	2			
CLS-632-3		5-21	4			
CLSS-032-3		5-20	11			
FSU-16/27 4-42		1-143	2			
FSU-20		4-46	2			
FSU-22		4-50	2			
FT-8056		2-11	2			
G2804N-22-30B 1-73	5935	1-66	4			
G8595-165N		1-80	1			
HP-2N 1-136		1-134	6			
HP-6N		4-80	2			
H945-AL-2-RGX		3-13	1			
MIL-A-3B345, A/E3		7-9	2			
MS15795-804	5310007921349	F 1-90	24			
		F 1-144				
		F 4-3				
		F 4-43				
		F 4-47				
		F 4-51				
MS1579	5-9055310007225998	F 2-3	36			
		F 5-6				
		F 5-11				
		F 5-14				
MS1579	5-8065310008805976	F 4-78	20			
		F 4-79				
		F 5-9				
MS1579	5-8075310008805978	4-20	33			
		F 1-98				
		F 1-100				
		F 1-135				
		F 1-137				
		F 3-14				
		F 4-18				
		F 4-33				
		F 4-35				
		F 4-55				
MS1579	5-8085310006191148	F 1-27	47			
		F 1-34				
		F 1-125				

PART NUMBER	STOCK NUMBER	FIGURE & INDEX NUMBER	QUANTITY PER END ITEM	USM UNIQUE SMR CODES	USMC SPECIAL STOCK IND. CODE	USMC REPL. FACTOR
MS15795-810	5310005825677	F 1-132	75			
		F 4-29				
		F 4-31				
		F 4-37				
		F 4-60				
		F 4-63				
		F 4-66				
		F 5-17				
		F 7-8				
		4-23				
		F 1-32				
		F 1-156				
		F 1-160				
		F 1-163				
MS15795-812	5310006255756	F 1-165	29	PAFZZ		
		F 1-1B2				
		F 4-12				
		F 4-15				
		F 4-75				
		F 6-2				
		F 6-4				
		F 6-6				
		F 6-8				
		F 6-10				
		F 6-12				
		F 1-9				
		F 1-11				
		F 1-21				
MS15795-814	5310007737618	F 1-23	60			
		F 1-26				
		F 1-88				
		F 1-93				
		F 1-94				
		F 4-94				
		F 4-96				
		4-26				
		F 1-16				
		F 1-96				
		F 1-102				
		F 1-104				
		F 1-122				
		F 1-123				
MS151795-817	5310006143506	F 1-127	4			
MS16228-8C	5310002416667	F 1-12B	2			
MS166298-4037		F 1-148	6			
MS16996-12	5305009925959	F 1-155	2			
MS171500		F 1-159	2			
MS17343R24N22SW	5935	F 1-175	2			
MS 1 7343R36N5PY	5935	F 1-178	1			
MS17349C24B	5935000602286	F 1-181	1			
		F 1-186	1			
		F 1-189	1			
		F 1-184	4			
		1-114	2			
		1-120	6			
		1-27	2			
		7-3	2			
		4-54	1			
		4-62	1			
		4-53	1			

**AIR FORCE
ARMYTM
MARINE CORPS**

**T.O. 35E9-188-4
11-5895-1045-24P
TM SL-4-08045-15/7**

PART NUMBER	STOCK NUMBER	FIGURE & INDEX NUMBER	QUANTITY PER END ITEM	USM UNIQUE SMR CODES	USMC SPECIAL STOCK IND. CODE	USMC REPL. FACTOR
MS18064-308		4-21	2			
MS20392-5C41	5315000581568	1-172	8			
MS20392-5C65	5315000579985	F 1-14	2			
MS20426AD3-4		F 3-18	2			
MS20426AD3-7	5320001176941	F 4-13	2			
MS20426AD4-4	5320001176949	F 6-33	2			
		F 6-43				
MS20426A3-3	5320002341555	F 2-4	8			
MS20426A3-4	5320006554757	F 4-72	2			
MS20470AD4-4	5320001176826	F 6-33	18			
		F 6-43				
MS20470AD4-5	5320007540822	F 2-1	132			
		F 6-40				
		F 6-50				
MS20470AD4-6	5320001176828	F 6-42	22			
		F 6-52				
MS20470AD4-7	5320001176829	F 6-33	10			
		F 6-40				
		F 6-43				
		F 6-50				
MS20470AD6-9	5320007540991	F 6-41	8			
		F 6-51				
MS20470A3-3		F 2-13	8			
MS20470A3-4	5320006375422	F 4-69	8			
		F 4-70				
MS20601-ADSW3		F 2-12	16			
MS20604AD4W4		F 1-91	2			
MS20604B5W6		F 6-20	48			
		F 6-26				
MS20659-135	5940001153001	1-108	4			
		1-111				
MS21060L4		2-13	4			
MS21076L4		4-13	4			
MS21083C06	5310009259646	F 4-82	2			
MS210B3C08	5310009390850	F 1-98	5			
		F 4-55				
MS21083C3	5310009261835	F 1-132	11			
		F 4-31				
		F 4-60				
		F 4-63				
MS21083C4	5310008976145	4-24	4			
		4-75				
		F 1-165				
MS21083C5	5310000203260	F 1-9	26	PAFZZ		
		F 1-11		PAFZZ		
		F 1-21		PAFZZ		
		F 1-23		PAFZZ		
		F 1-B8		PAFZZ		
		F 1-93		PAFZZ		
		F 1-94		PAFZZ		
		F 4-94		PAFZZ		
		F 4-96		PAFZZ		
MS21083C6	5310009564549	1-16	28			
		4-27				
		F 1-148				
		F 1-155				
		F 1-178				
		F 4-18				
		F 4-29				
		F 4-33				

PART NUMBER	STOCK NUMBER	FIGURE & INDEX NUMBER	QUANTITY PER END ITEM	USM UNIQUE SMR CODES	USMC SPECIAL STOCK IND. CODE	USMC REPL. FACTOR
MS21209F4-10		1-1574				
		1-161				
MS21209F6-10		1-187	1			
MS21251-BSL		1-168	4			
MS21252-SLL		1-170	4			
MS21256-2		1-169	8			
MS21919DG14	5340005334463	1-38	4			
MS21919DG17	5340005984136	1-40	4			
MS21919DGB	5340005335342	1-36	2			
MS24665-300	5315002341863	1-173	3			
		F 1-13				
MS24693-C273		4-18	10			
		4-33				
		4-35				
MS25036-106	5940002835280	4-97	78			
		5-18				
MS25036-108	5940001434780	4-98	12			
MS25036-110		4-99	1			
MS25036-1 6		4-100	3			
MS25036-118	5940005574345	4-101	9			
MS25036-120	5940010238577	4-102	1			
MS25036-122	5940001138190	4-103	20			
MS25036-149	5940010102898	4-104	2			
MS25036-153	5940010138287	4-105	2			
MS25036-154	5940002300515	4-106	3			
MS25042-16D		1-77	2			
MS25042-20D		1-49	4			
		1-56				
MS25042-22D	5935001527887	1-63	4			
		1-70				
MS25043-16D	5935001374671	1-142	2			
		4-38				
MS25043-20D	5935002218620	4-39	4			
		7-5				
MS25043-22D	5935001374670	4-40	2			
MS25395-A3	5945	5-8	8			
MS27997-A2		5-1	2			
MS3100R22-225	5935008532537	4-49	2			
MS3106R22-22P	5935000871667	1-65	2			
		1-72				
MS3106R22-22S		1-64	2			
		1-71				
MS3188B16A		1-52	4			
		1-59				
MS3212-13	530500082B440	2-3	24			
MS3367-5-9		7-6	4			
MS3417-16C		1-81	1			
MS3420-12A	5365005985287	1-82	2			
MS3450W16-1OSW	5935	4-41	1			
MS3450W20-29P	5935	4-45	2			
MS3456W16-10PW	5935	1-79	1			
MS3456W16-10SW	5935	1-78	1			
MS3456W20-29P	5935	1-50	2			
		1-57				
MS3456W20-29S	5935	1-51	2			
		1-58				
MS35307-361		1-87	4			
MS35307-362		1-2	12			
		1-102				

**AIR FORCE
ARMY
MARINE CORPS**

**T.O. 35E9-188-4
TM11-5895-1045-24P
TM SL-4-0804S-1S/7**

PART NUMBER	STOCK NUMBER	FIGURE & INDEX NUMBER	QUANTITY PER END ITEM	USM UNIQUE SMR CODES	USMC SPECIAL STOCK IND. CODE	USMC REPL. FACTOR
MS35307-363		1-128				
		1-175				
		1-186	6			
MS35307-364		1-122	19			
		1-127				
		1-189				
MS35307-365		1-181	3			
MS35307-371	5305008798351	1-17	4			
MS35307-391	5305008070013	1-184	4			
MS35308-305		1-32	4			
MS35308-306	5305006853511	1-165	8			
		1-182				
		4-12				
MS35308-308	5305005907865	1-163	3			
MS35308-310		1-156	54			
		1-160				
		6-2				
		6-4				
		6-6				
		6-8				
		6-10				
		6-12				
MS35308-332	5306004490385	4-94	6	PAFZZ		
		4-96				
MS35308-333		1-93	2			
MS35308-334		1-21	14			
		1-23				
		1-88				
MS35308-339		1-94	2			
MS35308-340	5305002525082	1-9	2			
		1-11				
MS35308-360		1-159	4			
MS35308-361		1-155	5			
		1-178				
MS35308-362	5305006853509	1-1049				
		1-148				
MS35308-365	5305005311097	1-15	1			
MS35338-135	5310009338118	F 1-90	10			
		F 4-3				
		F 5-4				
MS35338-136	5310009296395	F 2-356				
		F 4-78				
		F 4-79				
		F 5-6				
		F 5-9				
		F 5-11				
		F 5-14				
MS35338-137	5310009338119	F 1-100	15			
		F 1-135				
		F 1-137				
		F 3-14				
MS35338-138	5945005098862	F 1-27	45			
		F 1-34				
		F 1-37				
		F 1-39				
		F 1-41				
		F 1-125				
		F 1-130				
		F 1-132				
		F 4-66				

PART NUMBER	STOCK NUMBER	FIGURE & INDEX NUMBER	QUANTITY PER END ITEM	USM UNIQUE SMR CODES	USMC SPECIAL STOCK IND. CODE	USMC REPL. FACTOR
MS35338-139	5310009338121	F 5-17	19			
		F 6-26				
		F 6-32				
		F 7-8				
		F 1-156				
		F 1-160				
		F 1-163				
MS35338-141	5310009847042	F 1-182	52	PAFZZ		
		F 4-15				
		F 1-26				
		F 1-97				
		F 1-96				
		F 1-102				
		F 1-104				
		F 1-122				
		F 1-123				
		F 1-127				
		F 1-128				
		F 1-159				
		F 1-175				
		F 1-178				
		F 1-181				
F 1-186						
F 1-189						
MS35338-142		F 1-184	4			
MS35499-6		1-133	1			
MS35649-244		4-3	4			
MS35649-264	5310009349761	5-9	52			
		F 2-3				
		F 4-78				
		F 4-79				
		F 5-11				
		F 5-14				
		F 3-14				
MS35649-294	5310009349759	F 1-37	5			
		F 1-39				
MS35650-304	5310009349765	F 1-41				
		F 7-8				
		F 7-4				
MS35942-11		7-4	4			
MS551957-14	5305000545649	1-90	6			
		5-4				
MS51957-16		1-144	4			
MS51957-17	5302000545651	4-43	12			
		4-47				
		4-51				
MS51957-30	5305000546654	4-82	2			
MS51957-31	5305000546655	4-78	2			
MS51957-32	5305000546656	4-79	14			
		5-6				
		5-11				
		5-14				
MS51957-44	5305000546669	1-135	1			
MS51957-45		1-137	1			
MS51957-46	5305000546671	3-14	9			
		4-55				
MS51957-47	5305000546672	1-98	11			
		1-100				
		4-19				
MS51958-109		4-25	2			
MS551958-60	5305000593656	1-125	2			

**AIR FORCE
ARMY
MARINE CORPS**

**T.O. 35E9-188-4
TM 11-5895-1045-24P
TM SL4-08045-15/7**

PART NUMBER	STOCK NUMBER	FIGURE & INDEX NUMBER	QUANTITY PER END ITEM	USM UNIQUE SMR CODES	USMC SPECIAL STOCK IND. CODE	USMC REPL. FACTOR
MS51959-63	5305000593659	1-37 1-39 1-41 1-132 4-37 4-66 5-2 5-17 7-8	36			
MS51958-64		4-60 4-63	8			
MS51959-66	5305000593662	1-34 4-31	8			
MS51958-67	5305000593663	4-29	2			
MS51958-81	5305000593677	4-22 4-74	3			
MS551958-82	5305000595432	4-15	4			
MS51971-3	5310009138881	1-18	4			
MS51972-1		F 4-15	4			
MS90445-2	6645004567653	4-2	2			
MS90558C32412P	5935001148708	4-59	1			
MS91528-2P2B	5355005923804	4-8	1			
M24236/1-CCSBL	5930	5-3	1			
M3786/4-5742	5930	4-9	1			
M39019/01-249		4-4	1			
M39019/01-255		4-6	1			
M91511/18-18		4-57	1			
M81511/53-FF03S1		4-58	1			
M81511/56FF03P1	5935	1-44	1			
M81511/56FF0351	5935005658639	1-43	1			
NAS1212R10CJ16		1-166	3			
NAS1212R10CJ48		1-6	5			
NAS1212R10DK12		1-10	3			
NAS1212R10DK6		1-8	3			
NAS1212R15KJ26		1-13	6			
NAS1213R10C16		1-167	2			
NAS1213R10C25		1-105	1			
NAS5213R10J48		1-138	1			
NAS1213R15K31		1-14	6			
NAS1635-08-8		6-26 6-32	9			
NAS620C10F		7-8	2			
SE10G2116E40	5935	1-45	2			
SE91H21C-2R-12		1-42	2			
TC-812		7-7	4			
WC596/12-1		4-81	1			
10-40450-16		1-146	1			
10-40450-165		4-44	1			
10-40450-205		4-48	2			
10-40450-22S		4-52	2			
10-40450-40		4-64	1			
101953400081 39751		1-97	1			
2A/1350		1-131	1			
201-687-8233		1-19	4			
2037603-1		F 1-	1	OA		
2053486-1 (SEE 7001297-501)						
2053492-1		1-185	1			
2053494-1		1-190	1			
2053495-1		4-1	2			
2053497-1		1-117	2			

PART NUMBER	STOCK NUMBER	FIGURE & INDEX NUMBER	QUANTITY PER END ITEM	USM UNIQUE SMR CODES	USMC SPECIAL STOCK IND. CODE	USMC REPL. FACTOR
2053503-1	6110	1-86	1	M PBFDD		
		F 4-				
2053522-1		4-83	1			
2053523-1		4-86	2			
2053523-2		4-87	1			
2053523-3		4-92	1			
2053524-1		4-90	2			
2053525-1		4-91	3			
2053526-1		4-88	2			
2053526-2		4-89	1			
2053527-1		4-32	1			
2053528-1		4-34	4			
2053529-1		4-17	1			
2053530-1		5-19	1			
2053531-1	6150	4-28	1			
2053532-1	5365	4-30	2			
2053533-1		4-11	1			
2053535-1		4-93	1			
2053536-1		4-95	1			
2053537-1		4-10	1			
2053538-1		1-95	1			
2053539-1		1-92	1			
2053540-1		1-20	1			
2053540-2		1-22	5			
2053542-1		F 4-65	1			
2053544-1		4-71	1			
2053549-1		4-69	2			
2053551-1		4-70	2			
2053552-1		1-24	1			
2053556-1		1-101	7			
		1-103				
2053570-1		6-9	1			
2053571-1		6-5	1			
2053572-1		6-7	1			
2053573-1		6-3	1			
2053574-1		1-158	1			
2053574-2		1-154	1			
2053575-1		6-11	2			
2053576-1		1-164	1			
2053577-1		1-147	4			
2053590-1		F 6-20	1			
2053590-2		F 6-26	1			
2053591-1		6-24	2			
		6-30				
2053595-1		6-23	2			
		6-29				
2053596-1		1-180	1			
2053601-1		6-43	1			
2053602-1		6-33	1			
2053606-1		6-34	4			
		6-44				
2053606-2		6-35	2			
		6-45				
2053606-4		6-36	4			
		6-46				
2053606-5		6-37	2			
		6-47				
2053606-6		6-38	2			
		6-48				
2053608-1		6-39	2			

**AIR FORCE
ARMY
MARINE CORPS**

**T.O. 35E9-188-4
TM 11-5895-1045-24P
TM SL-4-08045-15/7**

PART NUMBER	STOCK NUMBER	FIGURE & INDEX NUMBER	QUANTITY PER END ITEM	USM UNIQUE SMR CODES	USMC SPECIAL STOCK IND. CODE	USMC REPL. FACTOR
2053610-1		6-42	2			
		6-52				
2053612-1		1-188	1			
2053614-1		1-25	1			
2053632-1		1-162	1			
		F 6-				
2053639-1		6-1	2			
2053644-1		6-21	2			
		6-27				
2053647-1		F 1-16	4			
2053649-1		1-99	1			
2053650-1		1-174	8			
		1-177				
2053651-1		1-176	2			
1-179						
2053652-1		1-139	2			
2053653-1		F 1-76	1			
2053654-1	5995	F 1-62	1	M		
2053654-2		F 1-69	1			
2053655-1		F 1-48	1			
2053655-2	5995	F 1-55	1	M		
2053656-1		F 1-41	1			
2053671-1		6-13	1			
2053671-2		6-14	1			
2053672-1		6-15	2			
2053676-1		1-149	4			
2053676:2		1-150	4			
2053676-3		1-151	4			
2053676-4		1-152	4			
2053676-5		1-153	4			
2053677-1		1-171	4			
2053679-1		1-33	1			
2059868-1		6-25	2			
		6-31				
2059876-1		1-107	1			
2059876-2		1-110	1			
2062213-17		1-91	1			
2062220-4		1-89	1			
2077110-1		1-106	2			
2080535-1		7-2	2			
2090561-1		1-2	2			
2085450-1		4-56	1			
2085451-1		4-73	1			
2085452-1		2-12	4			
212-125		3-18	4			
2355889-1		1-35	1			
		F 3-				
27S5-1	5310008457769	3-16	4			
2700-75	5325007878677	3-15	4			
315C364GO2	5925005212526	4-14	3			
32057	5940005522019	4-107	3			
32273		1-29	4			
334994-1		7-1	2			
33;000- 1		1-30	1			
335001-1		1-116	1			
335003-1		1-140	1			
335004-1		1-141	1			
335013-1		6-40	2			
		6-50				
335014-1		1-12	6			

PART NUMBER	STOCK NUMBER	FIGURE & INDEX NUMBER	QUANTITY PER END ITEM	USM UNIQUE SMR CODES	USMC SPECIAL STOCK IND. CODE	USMC REPL. FACTOR
335016-1		4-65	2			
335022-1		6-16	2			
335023-1		6-22V				
		6-28				
335024-1		6-20	2			
335026-1		6-17	1			
335028-1		6-18	1			
335031-1		6-19	2			
335043-1		1-126	1			
335044-1		1-121	1			
335045-1		1-119	6			
335047-1		1-118	6			
335050-1	4120	1-183	2	M		
		F 7-				
335051-1	5310009338120	5-16	1			
335052-1	5945	4-36	1			
		F 5-				
335088-1		1-4	1			
34015-24	(SEE 10-40450-16)					
34015-26	(SEE 10-40450-40)					
34015-28	(SEE 10-40450-22S)					
34015-30	(SEE 10-40450-20S)					
34015-37	(SEE 10-40450-16S)					
3450W16-10OPW		1-145	1			
37TB14	5940009836055	5-13	1			
37TB8	5940009836049	5-5	1			
37TB9	5940009836050	5-10	1			
401699-2	(SEE WC596/12-1)					
401823-6	(SEE 2700-75)					
402094-2	(SEE 212-125)					
402126-4		4-76	1			
404448-1	(SEE 32057)					
410817-403	(SEE CLS-440-3)					
410817-603	(SEE CLS-632-3)					
410818-1003	(SEE CLSS-032-3)					
410955-3	(SEE 82-11-120-16)					
411020-8441	(SEE MS3100R22-22S)					
411023-8440	(SEE MS3106R22-22P)					
411023-8441	(SEE MS3106R22-22S)					
411027-807	(SEE MS15795-807)					
411027-910	(SEE MS15795-810)					
411027-814	(SEE M515795-B14)					
411034-1005	(SEE MS25042-16D)					
411034-1007	(SEE MS25042-20D)					
411034-1008	(SEE MS25042-22D)					
411035-1005	(SEE M525043-16D)					
411035-1007	(SEE MS25043-20D)					
411035-1008	(SEE MS25043-22D)					
411099-305	(SEE M535308-305)					
411099-306	(SEE MS35308-306)					
411099-308	(SEE MS35308-308)					
411099-310	(SEE MS35308-310)					
411099-332	(SEE MS35308-332)					
411099-333	(SEE MS35308-333)					
411099-334	(SEE MS35308-334)					
411099-339	(SEE MS35308-339)					
411099-340	(SEE MS35308-340)					
411099-360	(SEE MS35308-360)					
411099-361	(SEE MS35308-361)					
411099-362	(SEE MS35308-362)					

**AIR FORCE
ARMY
MARINE CORPS**

**T.O. 35E9-18-4
TM 11-5895-1045-24P
TM SL-08045-15/7**

PART NUMBER	STOCK NUMBER	FIGURE & INDEX NUMBER	QUANTITY PER END ITEM	USM UNIQUE SMR CODES	USMC SPECIAL STOCK IND. CODE	USMC REPL. FACTOR
411115-44	(SEE MS35649-244)					
411115-64	(SEE M535649-264)					
411123-53	(SEE M591528-2P2B)					
411177-135	(SEE M520659-135)					
411178-364	(SEE MS21919DGB)					
411179-370	(SEE MS21919DG14)					
411179-373	(SEE MS21919DG17)					
411196-1500	(SEE MS171500)					
411324-10	(SEE MS25036-110)					
411324-16	(SEE MS25036-116)					
411324-18	(SEE MS25036-118)					
411324-20	(SEE MS25036-120)					
411324-22	(SEE MS25036-122)					
411324-49	(SEE MS25036-149)					
411324-53	(SEE MS25036-153)					
411324-54	(SEE MS25036-154)					
411324-6	(SEE M525036-106)					
411324-8	(SEE MS25036-108)					
413082-4	(SEE H945-AL-2-RGX)					
413841-2	(SEE 85-34-101-20)					
414492-2	(SEE 1019)					
414728-11	(SEE 37TB14)					
414728-7	(SEE 37TB8)					
414728-9	(SEE 37TB9)					
416097-1B	(SEE MS3420-12A)					
416129-61	(SEE M535307-361)					
416129-62	(SEE MS35307-362)					
416129-63	(SEE MS35307-363)					
416129-64	(SEE MS35307-364)					
416129-65	(SEE MS35307-365)					
416129-71	(SEE MS35307-371)					
416129-91	(SEE MS35307-391)					
416131-6	(SEE MS35489-6)					
416146-179	(SEE MS20392-5C41)					
416176-5	(SEE M516228-8C)					
416743-4037	(SEE MS16628-4037)					
416937-52	(SEE MS21209F4-10)					
416937-54	(SEE MS21209F6-10)					
418139-300	(SEE MS24665-300)					
418212-50	(SEE MS3367-5-9)					
418250-59	(SEE NA51213R10C25)					
418250-61	(SEE NAS1213R10C16)					
418250-63	(SEE NAS1213R10J48)					
418250-64	(SEE NAS1213R15K31)					
418251-59	(SEE NAS1212R10CJI6)					
418251-60	(SEE NAS1212R10CJ48)					
418251-62	(SEE NA5S1212R15KJ26)					
418251-63	(SEE NAS1212R10DK12)					
418251-64	(SEE NAS1212R10DK6)					
418255-109	(SEE MS51958-109)					
419255-60	(SEE MS51959-60)					
418255-63	(SEE MS51958-63)					
418255-64	(SEE MS51958-64)					
418255-66	(SEE MS51958-66)					
418255-67	(SEE MS551958-67)					
418255-81	(SEE MS51958-81)					
418255-82	(SEE MS51958-82)					
418276-308	(SEE MS18064-308)					
418293-14	(SEE MS51957-14)					
418293-16	(SEE MS51957-16)					

PART NUMBER	STOCK NUMBER	FIGURE & INDEX NUMBER	QUANTITY PER END ITEM	USM UNIQUE SMR CODES	USMC SPECIAL STOCK IND. CODE	USMC REPL. FACTOR
418293-30	(SEE MS51957-30)					
418293-31	(SEE MS51957-31)					
418293-32	(SEE MS51957-32)					
418293-44	(SEE MS51957-44)					
418293-45	(SEE MS51957-45)					
418293-46	(SEE MS51957-46)					
418293-47	(SEE MS51957-47)					
418300-380	(SEE MS24693-C273)					
418460-74	(SEE MS21060L4)					
418470-74	(SEE MS21076L4)					
418476-34	(SEE MS21083C4)					
418476-36	(SEE MS21083C6)					
419480-82	(SEE MS21251-B8L)					
418530-3	(SEE MS51971-3)					
418590-12	(SEE MS16996-12)					
418739-38	(SEE NAS1635-08-8)					
418860-249	(SEE w39019/01-249)					
41B860-255	(SEE M39019/01-255)					
418953-2	(SEE MS27997-A2)					
418958-13	(SEE MS3212-13)					
419912-1	(SEE 82-35-302-15)					
420323-1	(SEE 82-32-101-17)					
433B-4		1-113	2			
44-1-14-0		6-41	4			
6-51						
51552-1	(SEE 2A/1350)					
5206		4-77				
531161-6	(SEE FSU-16/27)					
531161-8	(SEE FSU-20)					
531161-9	(SEE FSU-22)					
532009-13	(SEE 85-11-300-17)					
532176-1	(SEE 27S5-1)					
533789-1	(SEE CL-52-KA-9.00-4-4)					
535485-1	(SEE TC-812)					
536132-1	(SEE 642-310-5060)					
539097-5742	(SEE M3786/4-5742)					
538144-5	(SEE M81511/18-18)					
538183-14	(SEE MS17349C24B)					
538183-20	(SEE MS17349C36B)					
538259-11	(SEE M535842-11)					
538330-3	(SEE AQB-AO11-50L)					
538382-169	(SEE MN1511/56FF03P1)					
538382-175	(SEE M81511/S6FF0351)					
538414-2001	(SEE M24236/1-CCSBL)					
538578-4	(SEE M81511/53-FF0351)					
539428-7	(SEE FT-8056)					
54967-2	(SEE MP-2N)					
54967-6	(SEE HP-6N)					
642-310-5060	5365	4-5	2			
		4-7				
651928-10		5-12				
651928-14		5-15				
651928-		5-7	1			
7001258-1		1-5	9			
7001260- 504		1-3	1			
7001297-501		1-191	1			
800097-2	(SEE 5206)					
800446-8	(SEE 44-1-14-0)					
803563-5	(SEE SE91H21C-2R-12)					
804366-1	(SEE 4339-4)					

**AIR FORCE
ARMY
MARINE CORPS**

**T.O. 35E9-188-4
TM 11-5895-1045-24P
TM SL-4-08045-15/7**

PART NUMBER	STOCK NUMBER	FIGURE & INDEX NUMBER	QUANTITY PER END ITEM	USM UNIQUE SMR CODES	USMC SPECIAL STOCK IND. CODE	USMC REPL. FACTOR
804513-1	(SEE G2804N-22-308)					
804516-5	(SEE MS25395-A3)					
804517-1	(SEE SE10OG2116E40)					
804520-1	(SEE 315C364G02)					
804524-1	(SEE 201-687-8233)					
804552-1	(SEE G89595-165N)					
804557-2	(SEE MS21256-2)					
804558-1	(SEE MS21252-BLL)					
80029-1	(SEE MS90445-2)					
808073-158	(SEE M5S3456W20-29S)					
809073-159	(SEE MS3456W20-29P)					
808073-19	(SEE M53456W16-10PW)					
808073-20	(SEE MS3456W16-10SW)					
808092-155	(SEE MS3450W20-29P)					
808092-19	(SEE 3450W16-10PW)					
808092-20	(SEE MS3450W16-10SW)					
809154-16	(SEE M5S3417-16C)					
808232-2	(SEE M590558C32412P)					
808242-1	(SEE MS17343R24N225W)					
808242-2	(SEE M5S17343R36N5PY)					
808261-1	(SEE MIL-A-38345, A/E32)					
82-11-120-16		C-24				
82-32-101-17		4-67	2			
82-35-302-15	5325007885635	4-68	2			
85-11-300-17	5325001788673	4-72	2			
85-34-101-20	5310008228525	4-84	12			
85-43-201-38	5310008665647	4-85	1			
902269-916		F 4-85	1			
902269-917		1-109	1			
902338-58		1-112	1			
902338-59		1-83	1			
902338-60		1-84	1			
902338-61		1-85	1			
902338-62		1-67	1			
902338-62		1-68	1			
902338-63		1-69	1			
902338-64		1-74	1			
902338-65		1-75	1			
902338-66		1-76	1			
902338-67		1-53	1			
902338-68		1-54	1			
902338-69		1-55	1			
902338-70		1-60	1			
902338-71		1-61	1			
902338-72		1-62	1			
902338-73		1-46	1			
902338-74		1-47	1			
902338-75		1-48	1			
902509-2		1-1	2			
902609-2		2-14	2			
913015-1		2-2	2			
913015-2		2-6	2			
913016-1		2-7	4			
913016-2		2-8	4			
914489-1		2-1	2			
914499-1		2-5	8			
914490-3		1-31	2			
915858-3		F 2-				
915859-4		F 2-2	2			
920735-1		2-4	30			
		3-19	1			

PART NUMBER	STOCK NUMBER	FIGURE & INDEX NUMBER	QUANTITY PER END ITEM	USM UNIQUE SMR CODES	USMC SPECIAL STOCK IND. CODE	USMC REPL. FACTOR
920767-1		3-17	1			
920768-12	(SEE 7001258-1)					
920768-16	(SEE 7001260-504)					
920770-2		1-115	1			
920775-10		3-8	1			
920775-11		3-9	1			
920775-12		3-10	4			
920775-13		3-11	2			
920775-14		3-12	1			
920775-3		3-1	3			
920775-4		3-2	3			
920775-5		3-3	2			
920775-6		3-4	1			
920775-7		3-5	1			
920775-8		3-6	144			
920775-9		3-7	1			
920918-1	(SEE 32273)					
920818-2		1-28	1			
922377-1		2-9	E			
922933-1		F 1-2	1			
922835-3		2-10	2			
NAS1212R15KJ26		1-13	6			
2053572-1		6-7	1			

SECTION IV
 REFERENCE DESIGNATION INDEX

REFERENCE DESIGNATION	FIGURE & INDEX NUMBER	REFERENCE DESIGNATION	FIGURE & INDEX NUMBER	REFERENCE DESIGNATION	FIGURE & INDEX NUMBER
GFE	7-9	6A1A1TB3	5-5	6A151	4-9
VI	1-191	6A1CB1	4-16	6A1W1	4-28
6	F 1-	6A1CB2	4-16	6J14	1-145
6A1	1-86	6A1CB3	4-16	651	1-131
6A1	F 4-	6A1CB4	4-4	6W2	F 1-76
6AA1A	4-36	6A1CB5	4-6	6W2P2	1-79
6A1A1	F 5-	6A1E1	4-74	6W2P14	1-78
6A1A1K1	5-8	6A1E2	4-74	6W3	F 1-62
6A1A1K2	5-9	6AIJ1	4-62	6W3P3	1-65
6A1A1K3	5-8	6A1J2	4-41	6W3P13	1-64
6A1A1K4	5-8	6A1J3	4-49	6W4	F 1-48
6A1A1K5	5-8	6A1J4	4-45	6W4P4	1-51
6A1A1K6	5-8	6A1J5	4-45	6W4PB	1-50
6A1A1K7	5-8	6A1J6	4-49	6W5	F 1-55
6A1A1K8	5-8	6A1J7	4-58	6W5P5	1-58
6A1A1K9	5-1	6A1J8	4-54	6W5P8	1-57
6A1A1K10	5-1	6A1J9	4-81	6W6	F 1-69
6A1A152	5-3	6A1J10	4-59	6W6P6	1-72
6A1A1TB1	5-10	6A1M1	4-2	6W6P13	1-71
6A1A1TB2	5-13	6A1M2	4-2	6W8	F 1-41
				6W8P2	1-43
				6W8P7	1-44

☆U. S. GOVERNMENT PRINTING OFFICE: 1981--700-007--536

4-1/(4-2 blank)

RECOMMENDED CHANGES TO EQUIPMENT TECHNICAL PUBLICATIONS



THEN... JOT DOWN THE DOPE ABOUT IT ON THIS FORM, CAREFULLY TEAR IT OUT, FOLD IT AND DROP IT IN THE MAIL!

SOMETHING WRONG WITH THIS PUBLICATION?

FROM: (PRINT YOUR UNIT'S COMPLETE ADDRESS)

DATE SENT

PUBLICATION NUMBER

TM 11-5825-270-10

PUBLICATION DATE

23 Jul 81

PUBLICATION TITLE

Radio Frequency R-2176/FRN

BE EXACT... PIN-POINT WHERE IT IS

PAGE NO.	PARA-GRAPH	FIGURE NO.	TABLE NO.

IN THIS SPACE TELL WHAT IS WRONG AND WHAT SHOULD BE DONE ABOUT IT:

TEAR ALONG PERFORATED LINE

PRINTED NAME, GRADE OR TITLE, AND TELEPHONE NUMBER

SIGN HERE:

DA FORM 2028-2
1 JUL 79

PREVIOUS EDITIONS ARE OBSOLETE.

P.S.—IF YOUR OUTFIT WANTS TO KNOW ABOUT YOUR RECOMMENDATION MAKE A CARBON COPY OF THIS AND GIVE IT TO YOUR HEADQUARTERS.

PIN: 049510-000

This fine document...

Was brought to you by me:



[Liberated Manuals -- free army and government manuals](#)

Why do I do it? I am tired of sleazy CD-ROM sellers, who take publicly available information, slap “watermarks” and other junk on it, and sell it. Those masters of search engine manipulation make sure that their sites that sell free information, come up first in search engines. They did not create it... They did not even scan it... Why should they get your money? Why are not letting you give those free manuals to your friends?

I am setting this document FREE. This document was made by the US Government and is NOT protected by Copyright. Feel free to share, republish, sell and so on.

I am not asking you for donations, fees or handouts. If you can, please provide a link to liberatedmanuals.com, so that free manuals come up first in search engines:

<A HREF=<http://www.liberatedmanuals.com/>>Free Military and Government Manuals

- Sincerely
Igor Chudov
<http://igor.chudov.com/>
- [Chicago Machinery Movers](#)