

TECHNICAL MANUAL

DIRECT SUPPORT AND GENERAL SUPPORT
MAINTENANCE REPAIR PARTS
AND SPECIAL TOOLS LIST
[INCLUDING DEPOT MAINTENANCE
REPAIR PARTS AND SPECIAL TOOLS]

FOR

RECEIVER CONTROL
C-10026/USQ

HEADQUARTERS, DEPARTMENT OF THE ARMY

APRIL 1980

DIRECT SUPPORT AND GENERAL SUPPORT MAINTENANCE
REPAIR PARTS AND SPECIAL TOOLS LIST
INCLUDING DEPOT MAINTENANCE REPAIR PARTS AND SPECIAL TOOLS)
FOR
CONTROL, RECEIVER C-10026/USQ
Current as of 7 April 1980

REPORTING ERRORS AND RECOMMENDED IMPROVEMENTS

You can improve this manual. If you find any mistakes or if you know of a way to improve procedures, please let us know. Mail your letter, DA Form 2028 (Recommended Changes to Publications and Blank Forms), or DA Form 2028-2 located in the back of this manual direct to: Commander, US Army Communications and Electronics Materiel Readiness Command, ATTN: DRSEL-ME-MQ, Fort Monmouth, New Jersey 07703.

In either case a reply will be furnished direct to you.

Table of Contents

		Page	Illus Figure
Section	I. Introduction	1	
	II. Repair Parts List	5	
Group	00 Control, Receiver C-10026/USQ 1951-1-4024-1.	5	1
	01 CCA, Micro Processor 10-133594-1 A1.	9	2
	02 CCA, Lamp Driver 10-124184-1 A2.	13	3
	03 CCA, ADC & Audio 10-133602-1 A3.	17	4
	04 CCA, Programmer Memory 10-124164-1 A4 Program(2128)	21	5
	05 CCA, Output Interface 10-124154-1 A5	25	6
	06 CCA, Control 10-133598-1 A7.	29	7
	07 Contact Assembly 1951-1-4537-1 A8.	33	8
	08 Front Panel Assembly 1951-1-4078-1 A10.	37	
	09 Cable Assembly 1951-1-4217-1 W1.	41	10
	10 Cable Assembly 1951-1-4218-1 W2.	43	11
	11 Fan Assy 1951-1-4526-1 B1.	45	12

Table of Contents - Continued

	Page	Illus Figure
Section III. Special Tools List (Not Applicable)		
IV. National Stock Number and Part Number		
Index	46	

SECTION I
INTRODUCTION

1. Scope

This manual lists spares and repair parts; special tools; special test, measurement, and diagnostic equipment (TMDE), and other special support equipment required for performance of direct support and general support maintenance of the C-10026/USQ. It authorizes the requisitioning and issue of spares and repair parts as indicated by the source and maintenance codes.

2. General

This Repair Parts and Special Tools List is divided into the following sections:

a. Section II. Repair Parts List. A list of spares and repair parts authorized for use in the performance of maintenance. The list also includes parts which must be removed for replacement of the authorized parts. Parts lists are composed of functional groups in numeric sequence, with the parts in each group listed in figure and item number sequence.

b. Section III. Special Tools List. Not applicable.

c. Section IV. National Stock Number and Part Number Index. A list, in National item identification number (NIIN) sequence, of all National stock numbers (NSN's) appearing in the listings, followed by a list, in alphameric sequence, of all part numbers appearing in the listings. National stock numbers and part numbers are cross-referenced to each illustration figure and item number appearance.

3. Explanation of Columns

a. Illustration. This column is divided as follows:

(1) Figure number. Indicates the figure number of the illustration on which the item is shown.

(2) Item number. The number used to identify item called out in the illustration.

b. Source, Maintenance, and Recoverability (SMR) Codes.

(1) Source code. Source codes indicate the manner of acquiring support items for maintenance, repair, or overhaul of end items. Source codes are entered in the first and second positions of the Uniform SMR Code format as follows:

<u>Code</u>	<u>Definition</u>
PA	- Item procured and stocked for anticipated or known usage.
XA	- Item is not procured or stocked because the requirements for the item will result in the replacement of the next higher assembly.
XD	- A support item that is not stocked. When required, item will be procured through normal supply channels.

NOTE

Cannibalization or salvage may be used as a source of supply for any items coded above except those coded XA and aircraft support items as restricted by AR 700-42.

(2) Maintenance code. Maintenance codes are assigned to indicate the levels of maintenance authorized to USE and REPAIR support items. The maintenance codes are entered in the third and fourth positions of the Uniform SMR Code format as follows:

(a) The maintenance code entered in the third position will indicate the lowest maintenance level authorized to remove, replace, and use the support item. The maintenance code entered in the third position will indicate one of the following levels of maintenance:

<u>Code</u>	<u>Application/Explanation</u>
F	- Support item is removed, replaced, used at the direct support level.
H	- Support item is removed, replaced, used at the general support level.

(b) The maintenance code entered in the fourth position indicates whether the item is to be repaired and identifies the lowest maintenance level with the capability to perform complete repair (i.e., all authorized maintenance functions). This position will contain one of the following maintenance codes.

<u>Code</u>	<u>Application/Explanation</u>
D	- The lowest maintenance level capable of complete repair of the support item is the depot level.
Z	- Nonreparable. No repair is authorized.

(3) Recoverability code. Recoverability codes are assigned to support items to indicate the disposition action on unserviceable items. The recoverability code is entered in the fifth position of the Uniform SMR Code format as follows:

Recoverability
Codes

Definition

- Z - Nonreparable item. When unserviceable, condemn and dispose at the level indicated in position 3.
- D - Reparable item. When beyond lower level repair capability, return to depot. Condemnation and disposal not authorized below depot level.

c. National Stock Number. Indicates the National stock number assigned to the item and will be used for requisitioning purposes.

d. Part Number. Indicates the primary number used by the manufacturer (individual, company, firm, corporation, or Government activity), which controls the design and characteristics of the item by means of its engineering drawings, specifications, standards, and inspection requirements to identify an item or range of items.

NOTE

When a stock numbered item is requisitioned, the repair part received may have a different part number than the part being replaced.

e. Federal Supply Code for Manufacturer (FSCM). The FSCM is a 5-digit numeric code listed in SB 708-42 which is used to identify the manufacturer, distributor, or Government agency, etc.

f. Description. Indicates the Federal item name and, if required, a minimum description to identify the item.

g. Unit of Measure (U/M). Indicates the standard of the basic quantity of the listed item as used in performing the actual maintenance function. This measure is expressed by a two-character alphabetical abbreviation (e.g., ea, in, pr, etc). When the unit of measure differs from the unit of issue, the lowest unit of issue that will satisfy the required units of measure will be requisitioned.

h. Quantity Incorporated in Unit. Indicates the quantity of the item used in the breakout shown on the illustration figure, which is prepared for a functional group, subfunctional group, or an assembly.

4. Special Information

a. The following publication pertains to the C-10026/USQ and its components:

TM 11-5865-215-13, Control, Receiver C-10026/USQ

b. National stock numbers (NSN's) that are missing from P source coded items have been applied for and will be added to this TM by future change/revision when they are entered in the Army Master Data File (AMDF). Until the NSN's are established and published, submit exception requisitions to: Commander, US Army Communications and Electronics Materiel Readiness Command, ATTN: DRSEL-MM, Fort Monmouth, New Jersey 07703 for the part required to support your equipment.

5. How to Locate Repair Parts

a. When National stock number or part number is unknown.

(1) First. Using the table of contents, determine the functional group within which the item belongs. This is necessary since illustrations are prepared for functional groups and listings are divided into the same groups.

(2) Second. Find the illustration covering the functional group to which the item belongs.

(3) Third. Identify the item on the illustration and note the illustration figure and item number of the item.

(4) Fourth. Using the Repair Parts Listing, find the figure and item number noted on the illustration.

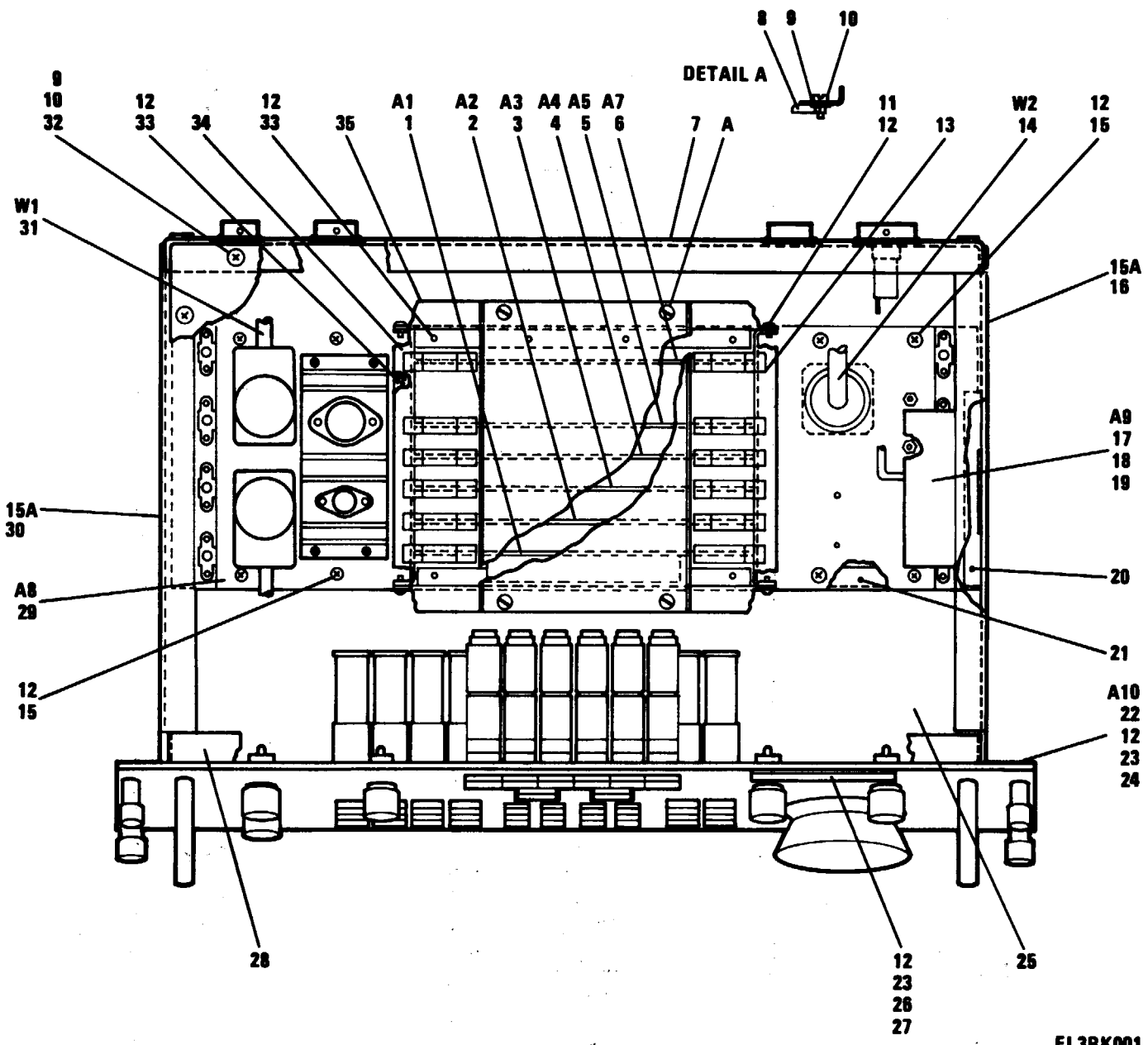
b. When National stock number or part number is known.

(1) First. Using the Index of National Stock Numbers and Part Numbers, find the pertinent National stock number or part number. This index is in NIIN sequence followed by a list of part numbers in alphameric sequence, cross-referenced to the illustration figure number and item number.

(2) Second. After finding the figure and item number, locate the figure and item number in the repair parts list.

6. Abbreviations

Not applicable.



EL3RK001

Figure 1. Control, Receiver C-10026/USQ 1951-1-4024-1 (Sheet 1 of 2).

Figure 1. Control, Receiver C-10026/USQ 1951-1-4024-1 (Sheet 1 of 2).

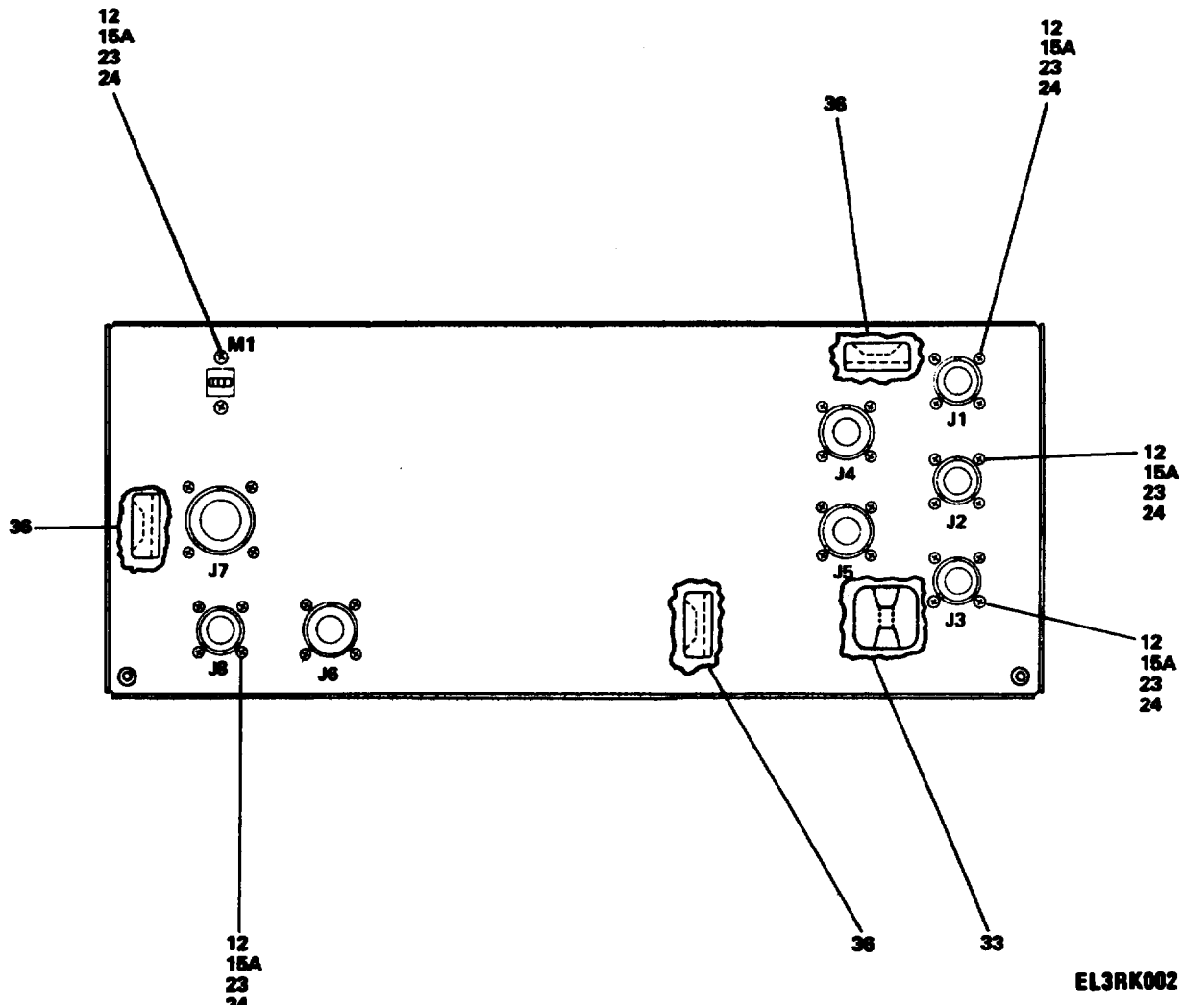


Figure 1. Control, Receiver C-10026/USQ 1951-1-4024-1 (Sheet 2 of 2).

SECTION II

TM11-5865-215-34P

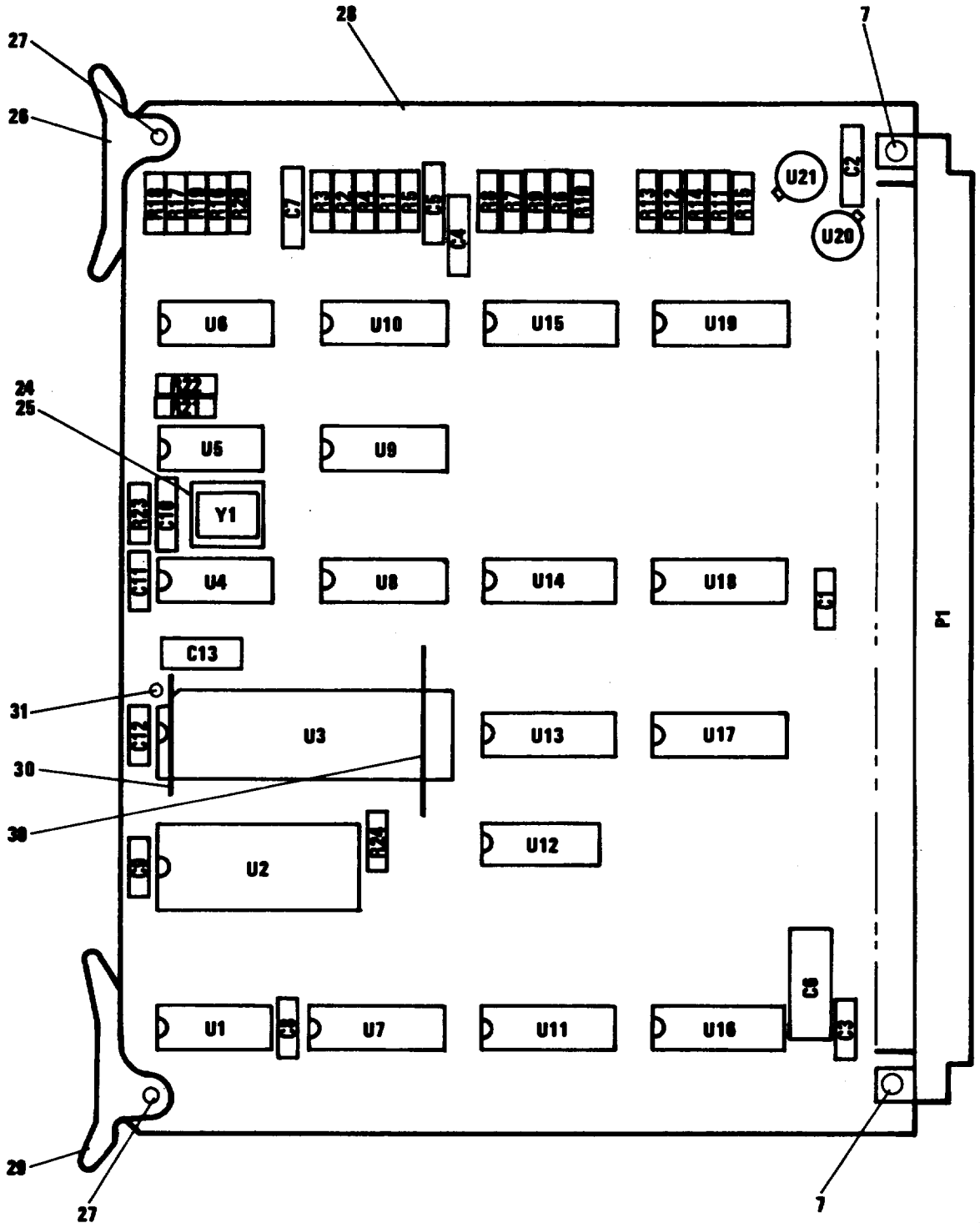
(1) Illustration	(2)	(3)	(4)	(5)	(6)	(7)	(8)
(a) Fig No.	(b) Item No.	SMR code	National stock number	Part number	FSCM	Description	U/M Qty inc in unit
						Usable on Code	
						GROUP 00 CONTROL, RECEIVER C-10026/USQ	
						1951-1-4024-1	
1	1	PAFDD	5865-01-071-2393	10-133594-1	28815	CIRCUIT CARD ASSEMB	EA 1
1	2	PAFDD	5865-01-075-1192	10-124184-1	28815	CIRCUIT CARD ASSEMB	EA 1
1	3	PAFDD	5865-01-075-1193	10-133602-1	28815	CIRCUIT CARD ASSEMB	EA 1
1	4	PAFDD	5865-01-070-8909	10-124164-1	28815	CIRCUIT CARD ASSEMB	EA 1
1	5	PAFDD	5865-01-070-8910	10-124154-1	28815	CIRCUIT CARD ASSEMB	EA 1
1	6	PAFDD	5865-01-070-8911	10-133598-1	28815	CIRCUIT CARD ASSEMB	EA 1
1	7	XDFZZ		1951-1-4047-1	19942	PANEL, REAR	EA 1
1	8	XDFZZ		1951-1-4219-1	19942	RETAINER, CD	EA 1
1	9	XDFZZ	5325-00-829-2650	587-7	71286	STUD, TURNLOCK PASTE	EA 24
1	10	XDFZZ	5310-00-849-1984	583-2	71286	WASHER, SPLIT	EA 24
1	11	PAFZZ	5305-00-054-5647	MS51957-13	96906	SCREW, MACHINE	EA 16
1	12	PAFZZ	5310-00-595-6211	MS15795-803	96906	WASHER, FLAT	EA 84
1	13	XDFZZ		1951-1-4263-1	15942	PLATE, SIDE	EA 1
1	14	XDFZZ		1951-1-4218-1	15942	CABLE ASSY	EA 1
1	15	PAFZZ	5305-00-054-5649	MS51957-15	96906	SCREW, MACHINE	EA 8
1	15A	PAFZZ	5305-00-225-6400	MS24693C3	96906	SCREW, MACHINE	EA 50
1	16	XDFZZ		1951-1-4049-2	15942	PLATE, SIDE	EA 1
1	17	XDFDD		1951-1-4526-1	15942	FAN ASSEMBLY	EA 1
1	18	XDFZZ	5340-00-984-6629	271166	82877	CLAMP, RIM CLENCHING	EA 3
1	19	XDFZZ	5305-00-056-9961	MS24693C4	96906	SCREW, MACHINE	EA 3
1	20	XDFZZ		1951-1-3017-1	15942	SPACER, FAN	EA 1
1	21	XDFZZ		1951-1-4290-1	15942	STRUCTURAL ANGLE	EA 2
1	22	XDFZZ		1951-1-4078-1	15942	PANEL ASSY	EA 1
1	23	PAFZZ	5310-00-933-8118	MS35338-135	96906	WASHER, LOCK	EA 52
1	24	PAFZZ	5310-00-208-3786	NAS671C4	80205	NUT, PLAIN, HAXAGON	EA 42
1	25	XDFZZ		1951-1-4045-2	15942	COVER ACCESS	EA 1
1	26	XDFZZ		1951-1-4290-5	15942	PLATE, IDENT	EA 1
1	27	XDFZZ	5305-00-054-5644	MS51957-11	96906	SCREW, MACHINE	EA 2
1	28	XDFZZ		1951-1-4048-1	15942	FRAME, FRONT	EA 1
1	29	XDFZZ		1951-1-4537-1	15942	CONTACT ASSY	EA 1
1	30	XDFZZ		1951-1-4049-1	15942	PLATE, SIDE	EA 1
1	31	XDFZZ		1951-1-4217-1	15942	CABLE ASSY	EA 1
1	32	XDFZZ		1951-1-4045-1	15942	COVER, ACCESS	EA 1
1	33	XDFZZ	5305-00-054-5648	MS51957-14	96906	SCREW, MACHINE	EA 16
1	34	XDFZZ		1951-1-4263-2	15942	PLATE, SIDE	EA 1
1	35	XDFZZ		1951-1-4220-1	15942	END PLATE	EA 2
1	36	XDFZZ		TC817	59730	PLATE, MOUNTING	EA 3

SECTION II

TM11-5865-215-34P

(1) Illustration		(2)	(3)	(4)	(5)	(6)	(7)	(8)
(a) Fig No.	(b) Item No.	SMR code	National stock number	Part number	FSCM	Description	U/M	Qty inc in unit
1	37	XDFZZ		TC342	59730	TIE,CABLE	EA	1

Usable on Code



EL3AK003

Figure 2. CCA, Micro Processor 10-133594-1 A1 (Sheet 1 of 2).

REF DES	ITEM NO	REF DES	ITEM NO	REF DES	ITEM NO	REF DES	ITEM NO	REF DES	ITEM NO	REF DES	ITEM NO
C1	1	C11	2	R7	8	R17	8	U3	13	U13	19
C2	2	C12	2	R8	8	R18	8	U4	14	U14	19
C3	1	C13	5	R9	8	R19	8	U5	15	U15	16
C4	1	P1	6	R10	8	R20	8	U6	16	U16	11
C5	2	R1	8	R11	8	R21	8	U7	11	U17	20
C6	3	R2	8	R12	8	R22	8	U8	17	U18	20
C7	2	R3	8	R13	8	R23	9	U9	17	U19	16
C8	2	R4	8	R14	8	R24	10	U10	16	U20	21
C9	2	R5	8	R15	8	U1	11	U11	11	U21	22
C10	4	R6	8	R16	8	U2	12	U12	18	Y1	23

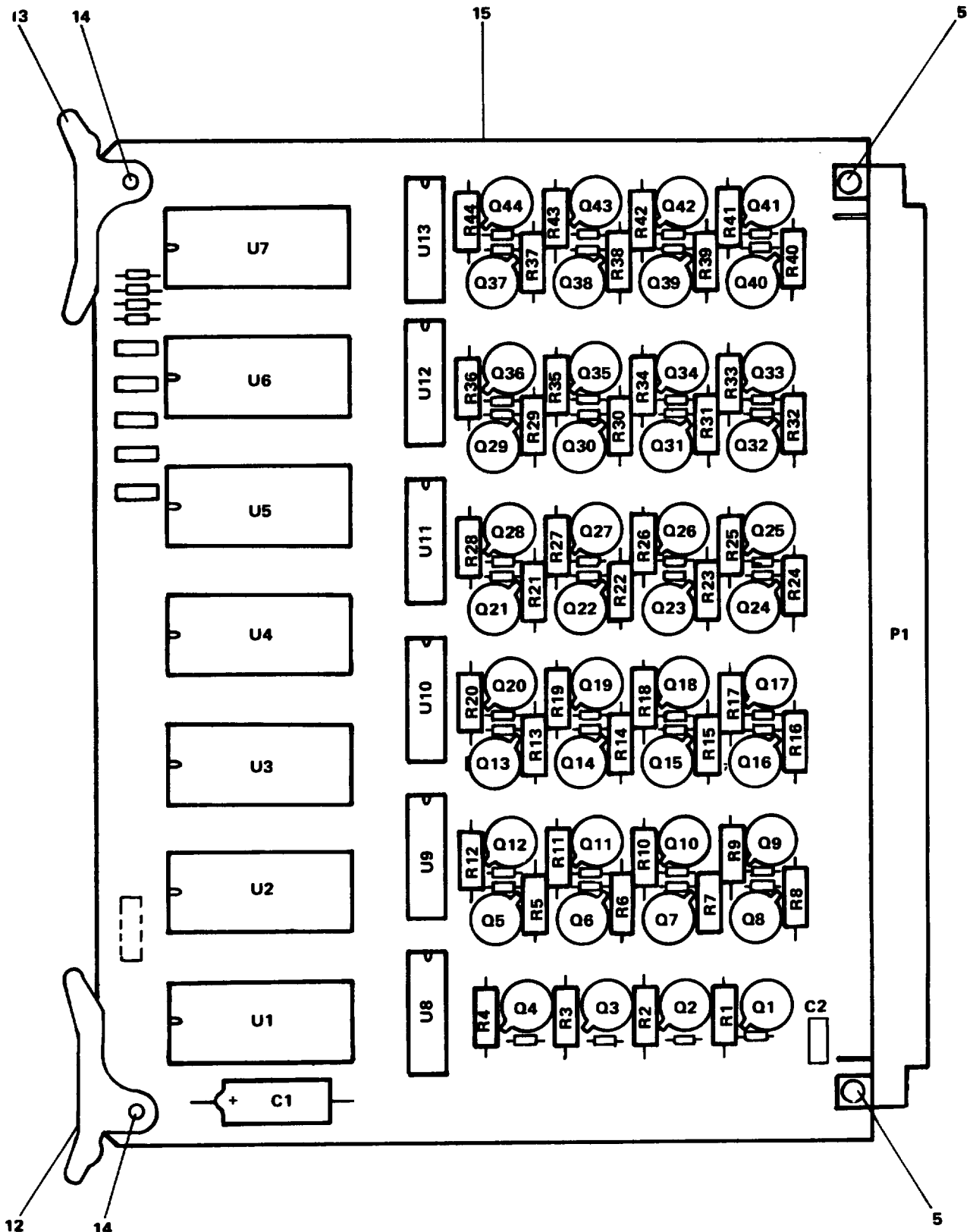
EL3RK004

Figure 2. CCA, Micro Processor 10-133594-1 A1 (Sheet 2 of 2).

SECTION II

TM11-5865-215-34P

(1) Illustration	(2)	(3)	(4)	(5)	(6)	(7)	(8)
(a) Fig No.	(b) Item No.	SMR code	National stock number	Part number	FSCM	Description	U/M Qty inc in unit
						Usable on Code	
						GROUP 01 CCA,MICRO PROCESSOR	
						10-133594-1 A1	
2	1	PAHZZ	5910-00-068-4302	M39003-01-2596	81349	CAPACITOR, FIXED, ELE	EA 3
2	2	PAFZZ	5910-01-047-8498	M39014-02-1270	81349	CAPACITOR, FIXED, CER	EA 7
2	3	PAFZZ	5910-00-246-9383	M39003-01-2532	81349	CAPACITOR, FIXED, ELE	EA 1
2	4	PAFZZ	5910-01-043-8882	CMR03E300GOCR	81349	CAPACITOR, FIXED, MIC	EA 1
2	5	PAFZZ	5910-00-072-7647	M39003-01-2526	81349	CAPACITOR, FIXED, ELE	EA 1
2	6	XDFZZ	5935-01-078-2226	16-124186-11	28815	CONNECTOR, RECEPACL	EA 1
2	7	PAFZZ	5320-00-243-8357	MS20470AD2-5	96906	RIVET, SOLID	EA 2
2	8	PAFZZ	5905-01-035-5065	RCR05G103JS	81349	RESISTOR, FIXED, COMP	EA 22
2	9	PAFZZ	5905-00-519-0559	RCR05G104JP	81349	RESISTOR, FIXED, COMP	EA 1
2	10	PAFZZ	5905-00-458-9500	RCR05G102JS	81349	RESISTOR, FIXED, COMP	EA 1
2	11	XDFZZ	5962-01-083-3616	CD4099BF3	18714	MICROCKT, DGTL	EA 4
2	12	XDFZZ	5962-01-033-5523	AM8228DMB	34335	MICROCIRCUIT, DIGITA	EA 1
2	13	PAFZZ	5962-01-033-5522	AM9080ADMB	34335	MICROCIRCUIT, DIGITA	EA 1
2	14	PAFZZ	5962-01-033-6351	AM8224DMB	34335	MICROCIRCUIT, DIGITA	EA 1
2	15	PAFZZ	5962-01-031-7030	M38510-30001BCB	81349	MICROCIRCUIT, DIGITA	EA 1
2	16	XDFZZ	5962-01-030-7991	HL69436	34148	MICROCKT, DGTL	EA 4
2	517	XDFZZ	5962-01-065-7838	911L12ADMB	34335	MICROCKT, DGTL	EA 2
2	18	PAFZZ	5962-01-033-2266	54LS02DMQB	34148	MICROCIRCUIT, DIGITA	EA 1
2	19	PAFZZ	5962-01-028-6965	DM70L97J883B	27014	MICROCIRCUIT, DIGITA	EA 2
2	20	PAFZZ	5962-01-055-9932	54LS367DMQB	34148	MICROCIRCUIT, DIGITA	EA 2
2	21	PAFZZ	5962-01-015-8531	LH120H5-0-883B	27014	MICROCIRCUIT, LINEAR	EA 1
2	22	PAFZZ	5962-00-604-0826	UA78M12HMQB	34148	MICROCIRCUIT, LINEAR	EA 1
2	23	XDFZZ		CR60AU15MHZ	81349	XTAL UNIT, QTZ	EA 1
2	24	PAFZZ	5340-00-120-2035	100-206-10	99378	CLIP, SPRING TENSION	EA 1
2	25	PAFZZ	5320-00-119-6754	MS20470AD2-3	96906	RIVET, SOLID	EA 2
2	26	PAFZZ	5999-00-605-7936	14009-1P12	91506	EXTRACTOR, ELECTRICA	EA 1
2	27	XDFZZ	5999-01-068-9564	14007-1P4	91506	PIN, SPRING	EA 2
2	28	XDFZZ		12-133593-1	28815	PRINTED WRG BD	EA 1
2	29	PAFZZ	5999-01-028-6070	14009-1P14	91506	RETAINER-EJECTOR, EL	EA 1
2	30	PAFZZ	5975-00-441-1610	2829-75-3	98159	STRAP, TIEDOWN, ELECT	EA 2
2	31	XDFZZ		740AG30D	91506	SKT ELEK CMPNT	EA 1



EL3RK005

Figure 3. CCA, Lamp Driver 10-124184-1 A2 (Sheet 1 of 3).

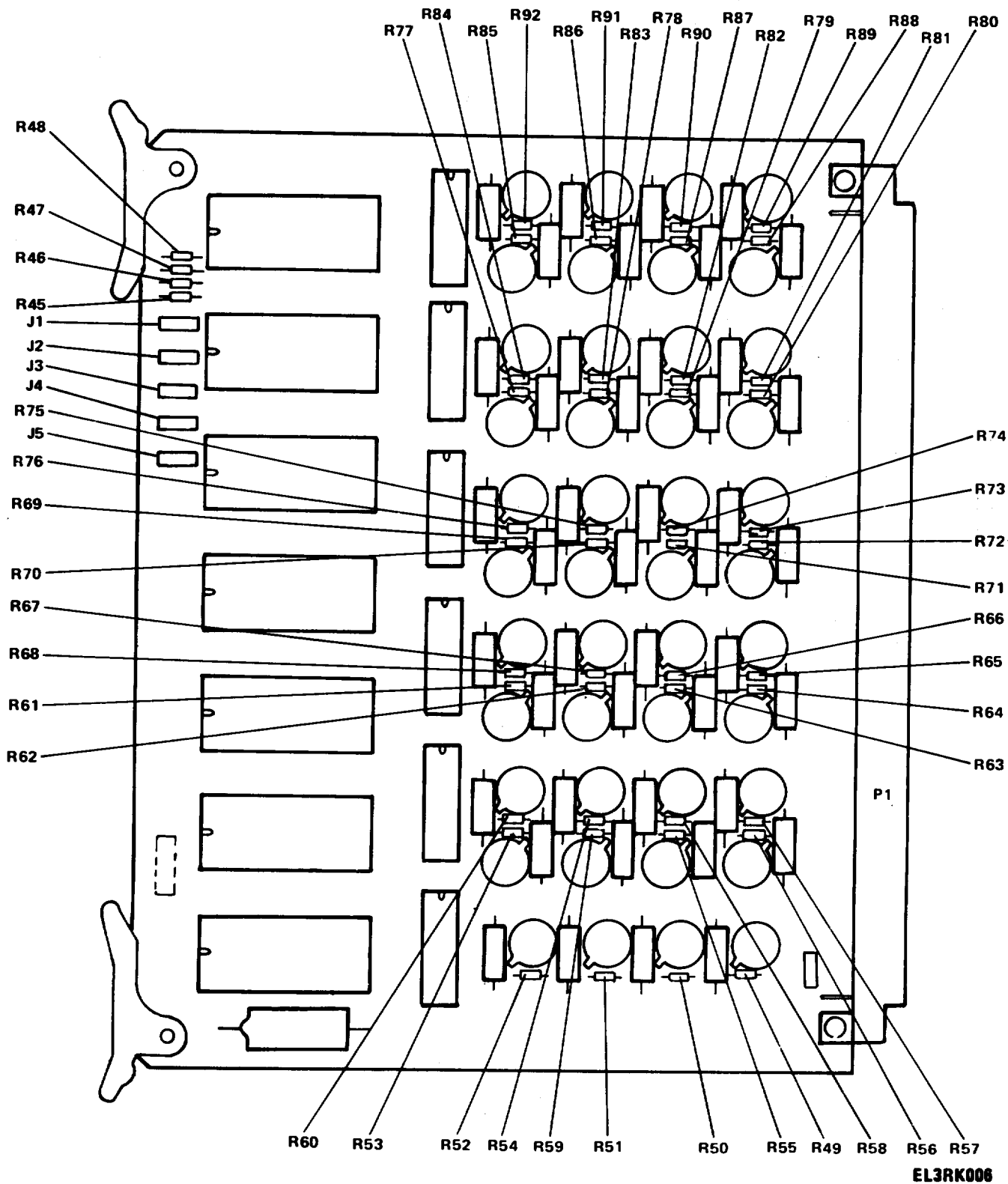


Figure 3. CCA, Lamp Driver 10-124184-1 A2 (Sheet 2 of 3)

REF DES	ITEM NO	REF DES	ITEM NO	REF DES	ITEM NO	REF DES	ITEM NO	REF DES	ITEM NO	REF DES	ITEM NO
C1	1	Q20	6	R2	7	R28	7	R54	8	R80	8
C2	2	Q21	6	R3	7	R29	7	R55	8	R81	8
J1	3	Q22	6	R4	7	R30	7	R56	8	R82	8
J2	3	Q23	6	R5	7	R31	7	R57	8	R83	8
J3	3	Q24	6	R6	7	R32	7	R58	8	R84	8
J4	3	Q25	6	R7	7	R33	7	R59	8	R85	8
J5	3	Q26	6	R8	7	R34	7	R60	8	R86	8
M	4	Q27	6	R9	7	R35	7	R61	8	R87	8
Q1	6	Q28	6	R10	7	R36	7	R62	8	R88	8
Q2	6	Q29	6	R11	7	R37	7	R63	8	R89	8
Q3	6	Q30	6	R12	7	R38	7	R64	8	R90	8
Q4	6	Q31	6	R13	7	R39	7	R65	8	R91	8
Q5	6	Q32	6	R14	7	R40	7	R66	8	R92	8
Q6	6	Q33	6	R15	7	R41	7	R67	8	U1	9
Q7	6	Q34	6	R16	7	R42	7	R68	8	U2	10
Q8	6	Q35	6	R17	7	R43	7	R69	8	U3	10
Q9	6	Q36	6	R18	7	R44	7	R70	8	U4	10
Q10	6	Q37	6	R19	7	R45	8	R71	8	U5	10
Q11	6	Q38	6	R20	7	R46	8	R72	8	U6	10
Q12	6	Q39	6	R21	7	R47	8	R73	8	U7	10
Q13	6	Q40	6	R22	7	R48	8	R74	8	U8	11
Q14	6	Q41	6	R23	7	R49	8	R75	8	U9	11
Q15	6	Q42	6	R24	7	R50	8	R76	8	U10	11
Q16	6	Q43	6	R25	7	R51	8	R77	8	U11	11
Q17	6	Q44	6	R26	7	R52	8	R78	8	U12	11
Q18	6	R1	7	R27	7	R53	8	R79	8	U13	11
Q19	6										

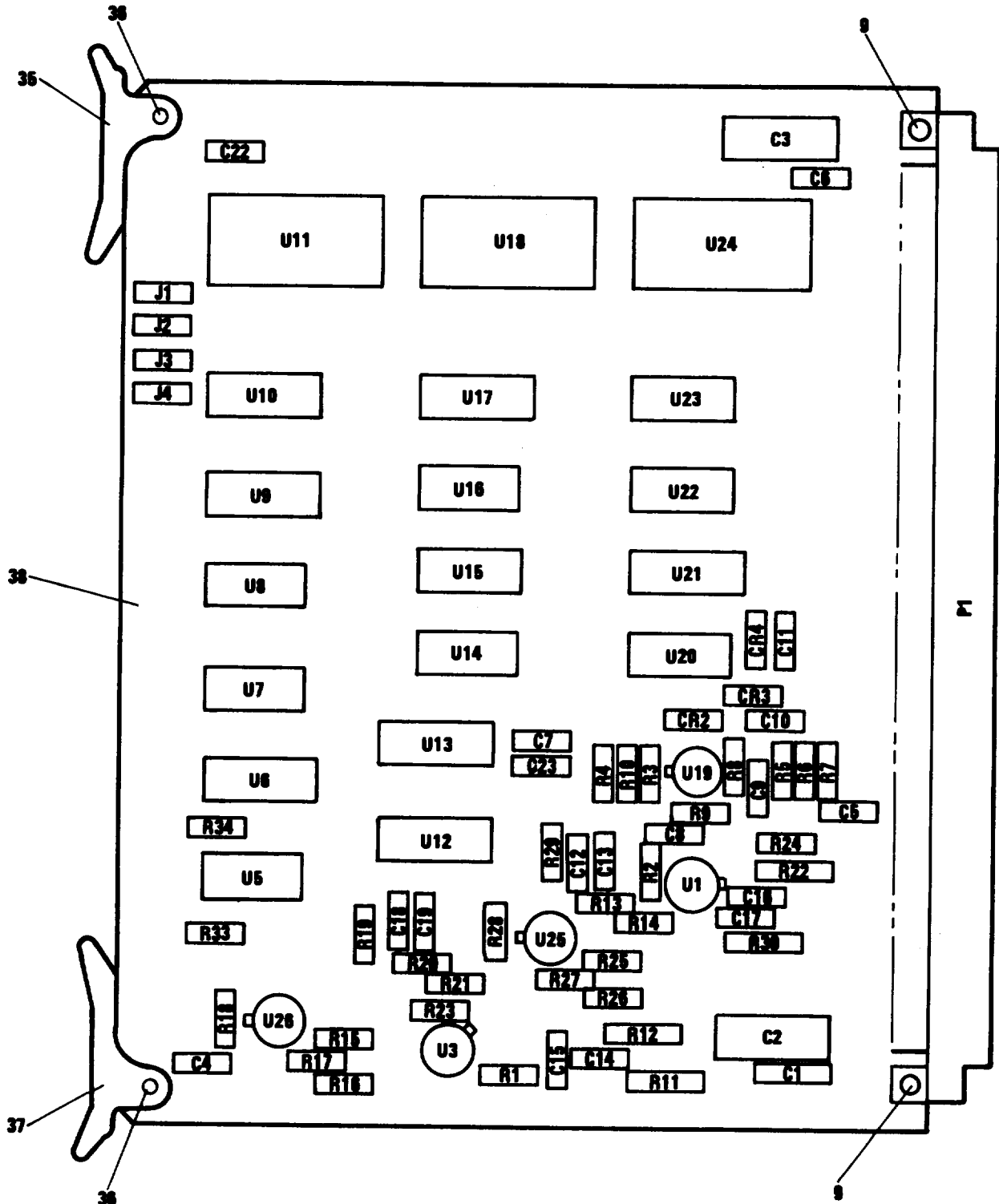
EL3RK007

Figure 3. CCA, Lamp Driver 10-124184-1 A2 (Sheet 3 of 3).

SECTION II

TM11-5865-215-34P

(1) Illustration	(2)	(3)	(4)	(5)	(6)	(7)	(8)
(a) Fig No.	(b) Item No.	SMR code	National stock number	Part number	FSCM	Description	U/M Qty inc in unit
						Usable on Code	
						GROUP 02 CCA,LAMP DRIVER 10-124184-1 A2	
3	1	PAFZZ	5910-00-464-9812	M39003-01-2497	81349	CAPACITOR, FIXED, ELE	EA 1
3	2	PAFZZ	5910-01-047-8498	M39014-02-1270	81349	CAPACITOR, FIXED, CER	EA 1
3	3	XDFZZ	5935-00-988-6438	3422-1-03	71279	JACK, TIP	EA 5
3	4	XDFZZ	5935-01-081-6831	16-124186-22	38815	CONNECTOR, RECEPTACL	EA 1
3	5	PAFZZ	5320-00-243-8357	MS20470AD2-5	96906	RIVET, SOLID	EA 2
3	6	XDFZZ		17-123787-9	28815	TRANSISTOR	EA 44
3	7	XDFZZ	5905-00-935-8539	RCR20G202JS	81349	RES, FXD, CMPSN	EA 44
3	8	PAFZZ	5905-01-035-5065	RCR05G103JS	81349	RESISTOR, FIXED, COMP	EA 48
3	9	XDFZZ	5962-01-081-3450	CD4514BD3	49671	MICROCIRCUIT, DIGITA	EA 1
3	10	XDFZZ	5962-01-050-5506	MC14508BALD	04713	MICROCKT, DGTL	EA 6
3	11	XDFZZ		M83401-02M2001JA	81349	RESISTOR, NIWK	EA 6
3	12	PAFZZ	5999-01-028-6070	14009-1P14	91506	RETAINER-EJECTOR, EL	EA 1
3	13	PAFZZ	5999-00-605-7936	14009-1P12	91506	EXTRACTOR, ELECTRICA	EA 1
3	14	XDFZZ	5999-01-068-9564	14007-1P4	91506	PIN, SPRING	EA 2
3	15	XDFZZ		12-124183-1	28815	PRINTED WRG BD	EA 1



EL3RK088

Figure 4. CCA, ADC and Audio 10-133602-1 A3 (Sheet 1 of 2).

REF DES	ITEM NO	REF DES	ITEM NO	REF DES	ITEM NO	REF DES	ITEM NO	REF DES	ITEM NO	REF DES	ITEM NO
CR2	1	C12	5	P1	8	R14	14	R28	15	U12	25
CR3	1	C13	5	R1	10	R15	17	R29	17	U13	20
CR4	1	C14	5	R2	10	R16	15	R30	16	U14	26
C1	2	C15	5	R3	11	R17	17	R33	15	U15	27
C2	3	C16	5	R4	12	R18	15	R34	15	U16	22
C3	4	C17	5	R5	12	R19	17	U1	18	U17	28
C4	5	C18	5	R6	12	R20	14	U3	18	U18	24
C5	5	C19	5	R7	13	R21	14	U5	19	U19	29
C6	5	C22	5	R8	14	R22	16	U6	20	U20	30
C7	6	C23	6	R9	14	R23	17	U7	21	U21	31
C8	5	J1	7	R10	15	R24	17	U8	22	U22	32
C9	5	J2	7	R11	16	R25	17	U9	23	U23	33
C10	5	J3	7	R12	16	R26	15	U10	23	U24	24
C11	5	J4	7	R13	14	R27	17	U11	24	U25	34
										U26	34

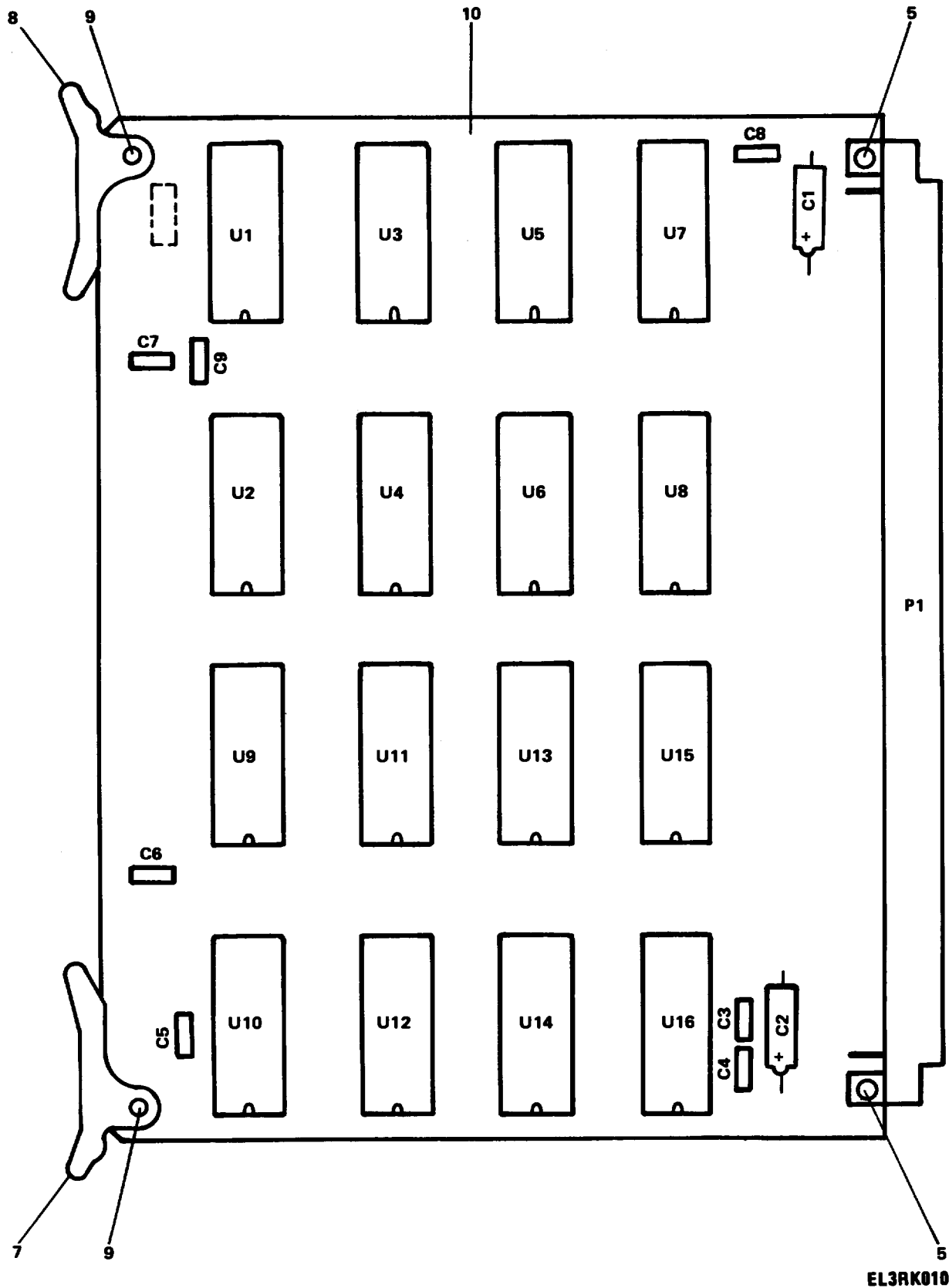
EL3RK009

Figure 4. CCA, ADC and Audio 10-133602-1 A3 (Sheet 2 of 2).

SECTION II

TM11-5865-215-34P

(1) Illustration	(2)	(3)	(4)	(5)	(6)	(7)	(8)
(a) Fig No.	(b) Item No.	SMR code	National stock number	Part number	FSCM	Description	U/M Qty inc in unit
						Usable on Code	
						GROUP 03 CCA,ADC & AUDIO 10-133602-1 A3	
4	1	PAFZZ	5961-00-494-4915	JANTXIN4148	81349	SEMICONDUCTOR DEVIC	EA 3
4	2	PAFZZ	5910-00-464-9812	M39003-01-2497	81349	CAPACITOR, FIXED, ELE	EA 1
4	3	PAFZZ	5910-00-068-4299	M39003-01-2546	81349	CAPACITOR, FIXED, ELE	EA 1
4	4	XDFZZ	5910-00-010-8157	M39003/01-3012	81349	CAPACITOR, FIXED, ELE	EA 1
4	5	PAFZZ	5910-01-047-8498	M39014-02-1270	81349	CAPACITOR, FIXED, CER	EA 16
4	6	PAFZZ	5910-01-042-4453	M39014-01-1277	81349	CAPACITOR, FIXED, CER	EA 2
4	7	XDFZZ	5935-00-988-6438	3422-1-03	71279	JACK, TIP	EA 4
4	8	XDFZZ	5935-01-077-4719	16-124186-33	28815	CONNCOCTR, RECEPTACL	EA 1
4	9	PAFZZ	5320-00-243-8357	MS20470AD2-5	96906	RIVET, SOLID	EA 2
4	10	PAFZZ	5905-00-113-4861	RCR07G390JS	81349	RESISTOR, FIXED, COMP	EA 2
4	11	PAFZZ	5905-00-519-0559	RCR05G104JP	81349	RESISTOR, FIXED, COMP	EA 1
4	12	PAFZZ	5905-00-461-8987	RNR55C1001FS	81349	RESISTOR, FIXED, FILM	EA 2
4	13	PAFZZ	5905-00-419-2861	RNR55C1401FS	81349	RESISTOR, FIXED, FILM	EA 1
4	14	PAFZZ	5905-00-180-8301	RCR05G101JS	81349	RESISTOR, FIXED, COMP	EA 6
4	15	PAFZZ	5905-00-617-5091	RCR05G472JS	81349	RESISTOR, FIXED, COMP	EA 7
4	516	XDFZZ	5905-00-104-8350	RCR20G221JS	81349	RESISTOR, FIXED, COMP	EA 4
4	17	PAFZZ	5905-00-458-9500	RCR05G102JS	81349	RESISTOR, FIXED, COMP	EA 8
4	18	PAFZZ	5962-00-264-4822	LH0002H883B	27014	MICROCIRCUIT, LINEAR	EA 2
4	19	PAFZZ	5962-00-523-9603	M38510-05101BCA	81349	MICROCIRCUIT, DIGITA	EA 1
4	20	PAFZZ	5962-01-015-3896	M38510-05102BEA	81349	MICROCIRCUIT, DIGITA	EA 2
4	21	PAFZZ	5962-00-523-9672	M38510-05202BCA	81349	MICROCIRCUIT, DIGITA	EA 1
4	22	PAFZZ	5962-01-007-6752	M38510-05605BCA	81349	MICROCIRCUIT, DIGITA	EA 2
4	23	PAFZZ	5962-01-003-2226	CD4029AD3	02735	MICROCIRCUIT, DIGITA	EA 2
4	24	XDFZZ	5962-01-050-5506	MC14508BALD	04713	MICROCKT, DGTL	EA 3
4	25	PAFZZ	5962-01-014-4958	M38510-05604BEA	81349	MICROCIRCUIT, DIGITA	EA 1
4	26	PAFZZ	5962-00-513-0528	M38510-05001BCA	81349	MICROCIRCUIT, DIGITA	EA 1
4	27	PAFZZ	5962-01-003-2220	CD4016AD3	02735	MICROCIRCUIT, DIGITA	EA 1
4	28	XDFZZ	5962-01-065-6671	MM70C97D883B	27014	MICROCIRCUIT, DIGITA	EA 1
4	29	PAFZZ	5962-00-131-9460	LM111H883B	27014	MICROCIRCUIT, LINEAR	EA 1
4	30	PAFZZ	5962-00-139-2881	DAC01FY	06665	MICROCIRCUIT, LINEAR	EA 1
4	31	PAFZZ	5962-01-012-8153	M38510-05503BEA	81349	MICROCIRCUIT, DIGITA	EA 1
4	32	PAFZZ	5962-01-033-2283	CD4068BD3	18714	MICROCIRCUIT, DIGITA	EA 1
4	33	PAFZZ	5962-01-055-4961	CD4081BD3	02735	MICROCIRCUIT, DIGITA	EA 1
4	34	PAHZZ	5962-00-167-6330	M38510-10101BGC	81349	MICROCIRCUIT, LINEAR	EA 2
4	35	PAFZZ	5999-01-028-6070	14009-1P14	91506	RETAINER-EJECTOR, EL	EA 1
4	36	XDFZZ	5999-01-068-9564	14007-1P4	91506	PIN, SPRING	EA 2
4	37	PAFZZ	5999-00-605-7936	14009-1P12	91506	EXTRACTOR, ELECTRICA	EA 1
4	38	XAFZZ		12-133601-1	28815	PRINTED WRG BD	EA 1



EL3RK010

Figure 5. CCA, Programmer Memory 10-124154-1 A4 (Program No. 2128)
(Sheet 1 of 2) .

REF DES	ITEM NO	REF DES	ITEM NO	REF DES	ITEM NO	REF DES	ITEM NO	REF DES	ITEM NO	REF DES	ITEM NO
C1	1	C6	3	U1	6	U5	6	U9	6	U13	6
C2	2	C7	3	U2	6	U6	6	U10	6	U14	6
C3	3	C8	3	U3	6	U7	6	U11	6	U15	6
C4	3	C9	3	U4	6	U8	6	U12	6	U16	6
C5	3	P1	4								

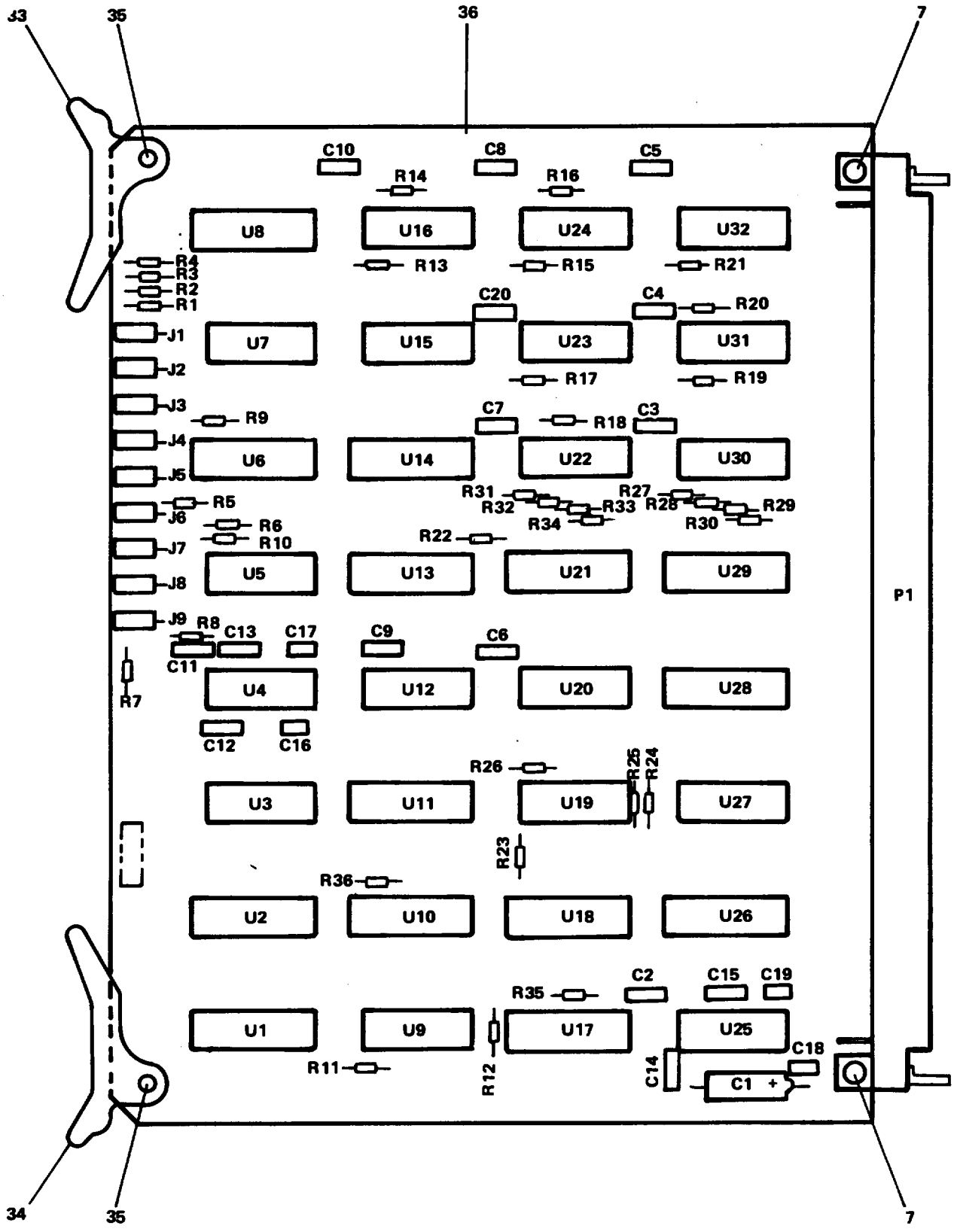
EL3RK011

Figure 5. CCA, Programmer Memory 10-124154-1 A4 (Program No. 2128)
(Sheet 2 of 2)

SECTION II

TM11-5865-215-34P

(1) Illustration	(2)	(3)	(4)	(5)	(6)	(7)	(8)
(a) Fig No.	(b) Item No.	SMR code	National stock number	Part number	FSCM	Description	U/M Qty inc in unit
						Usable on Code	
						GROUP 04 CCA, PROGRAMMER MEMORY	
						10-124164-1 A4 PROGRAM (2128)	
5	1	PAFZZ	5910-00-464-9812	M39003-01-2497	81349	CAPACITOR, FIXED, ELE	EA 1
5	2	XDFZZ	5910-00-010-8157	M39003/01-3012	81349	CAPACITOR, FIXED, ELE	EA 1
5	3	PAFZZ	5910-01-047-8498	M39014-02-1270	81349	CAPACITOR, FIXED, CER	EA 7
5	4	CFGXX	5935-01-077-4659	16-124186-44	28815	CONNECTOR, PLUG, ELEC	EA 1
5	5	PAFZZ	5320-00-243-8357	MS20470AD2-5	96906	RIVET, SOLID	EA 2
5	6	PAFZZ	5962-01-043-1614	17-123497-1	28815	MICROCIRCUIT, DIGITA	EA 16
5	7	PAFZZ	5999-01-028-6070	14009-1P14	91506	RETAINER-EJECTOR, EL	EA 1
5	8	PAFZZ	5999-00-605-7936	14009-1P12	91506	EXTRACTOR, ELECTRICA	EA 1
5	9	XDFZZ	5999-01-068-9564	14007-1P4	91506	PIN, SPRING	EA 2
5	10	XAFZZ		12-124163-1	28815	PRINTED WRG BD	EA 1



EL3RK012

Figure 6. CCA, Output Interface 10-124154-1 A5 (Sheet 1 OF 2).

REF DES	ITEM NO	REF DES	ITEM NO	REF DES	ITEM NO	REF DES	ITEM NO	REF DES	ITEM NO	REF DES	ITEM NO
C1	1	C18	4	R5	8	R21	9	U1	11	U17	19
C2	2	C19	4	R6	8	R22	9	U2	11	U18	26
C3	2	C20	2	R7	8	R23	9	U3	12	U19	12
C4	2	J1	5	R8	8	R24	9	U4	13	U20	21
C5	2	J2	5	R9	9	R25	9	U5	14	U21	27
C6	2	J3	5	R10	9	R26	9	U6	15	U22	28
C7	2	J4	5	R11	9	R27	9	U7	16	U23	25
C8	2	J5	5	R12	9	R28	9	U8	17	U24	25
C9	2	J6	5	R13	9	R29	9	U9	18	U25	13
C10	2	J7	5	R14	9	R30	9	U10	19	U26	29
C11	2	J8	5	R15	9	R31	9	U11	20	U27	30
C12	3	J9	5	R16	9	R32	9	U12	21	U28	31
C13	3	P1	6	R17	9	R33	9	U13	22	U29	27
C14	3	R1	8	R18	9	R34	9	U14	23	U30	32
C15	3	R2	8	R19	9	R35	10	U15	24	U31	25
C16	4	R3	8	R20	9	R36	8	U16	25	U32	25
C17	4	R4	8								

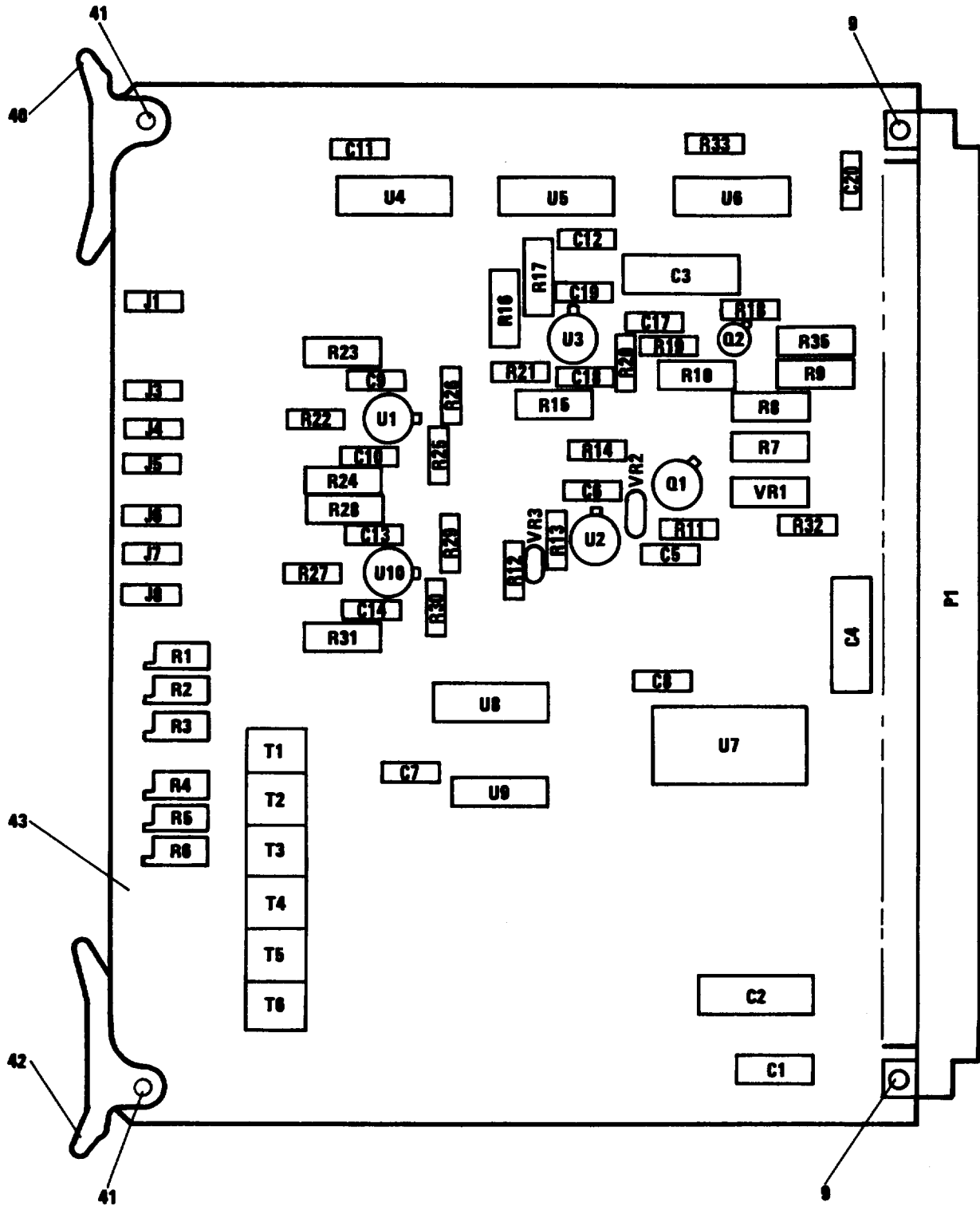
EL3RK013

Figure 6. CCA, Output Interface 10-124154-1 AS (Sheet 2 of 2).

SECTION II

TM11-5865-215-34P

(1) Illustration	(2)	(3)	(4)	(5)	(6)	(7)	(8)
(a) Fig No.	(b) Item No.	SMR code	National stock number	Part number	FSCM	Description	U/M Qty inc in unit
						Usable on Code	
						GROUP 05 CCA,OUTPUT INTERFACE	
						10-124154-1 A5	
6	1	PAFZZ	5910-00-464-9812	M39003-01-2497	81349	CAPACITOR, FIXED, ELE	EA 1
6	2	PAFZZ	5910-01-047-8498	M39014-02-1270	81349	CAPACITOR, FIXED, CER	EA 11
6	3	PAFZZ	5910-00-124-0659	M39014-01-1495	81349	CAPACITOR, FIXED, CER	EA 4
6	4	XDFZZ		CMR03F101JOYP	81349	CAP, FXD, MICA	EA 4
6	5	XDFZZ	5935-00-988-6438	3422-1-03	71279	JACK, TIP	EA 9
6	6	XDFZZ		16-124186-55	28815	CONN, RCPT, ELEC	EA 1
6	7	PAFZZ	5320-00-243-8357	MS20470AD2-5	96906	RIVET, SOLID	EA 2
6	8	PAFZZ	5905-01-035-5065	RCR05G103JS	81349	RESISTOR, FIXED, COMP	EA 9
6	9	PAFZZ	5905-00-421-8918	RCR05G302JS	81349	RESISTOR, FIXED, COMP	EA 26
6	10	PAFZZ	5905-00-617-5093	RCR05G473JS	81349	RESISTOR, FIXED, COMP	EA 1
6	11	PAFZZ	5962-01-003-2226	CD4029AD3	02735	MICROCIRCUIT, DIGITA	EA 2
6	12	PAFZZ	5962-01-062-8080	CD4071BD3	02735	MICROCIRCUIT, DIGITA	EA 2
6	13	PAFZZ	5962-00-264-3566	DS7820AJ883B	27014	MICROCIRCUIT, DIGITA	EA 2
6	14	PAFZZ	5962-01-055-4961	CD4081BD3	02735	MICROCIRCUIT, DIGITA	EA 1
6	15	XDFZZ		M38510-05705BEA	81349	MICROCKT, DGTL	EA 1
6	16	XDFZZ	5962-00-513-0528	M38510-05001BCA	81349	MICROCIRCUIT, DIGITA	EA 1
6	17	PAFZZ	5962-01-016-2685	CD4040AD3	02735	MICROCIRCUIT, DIGITA	EA 1
6	18	XDFZZ	5962-00-523-9672	M38510-05202BCA	81349	MICROCIRCUIT, DIGITA	EA 1
6	19	XDFZZ	5962-01-072-8655	CD4052BD3	49671	MICROCIRCUIT, DIGITA	EA 2
6	20	XDFZZ	5962-01-033-2287	MC14555BALD	04713	MICROCKT, DGTL	EA 1
6	21	PAFZZ	5962-01-034-9832	M38510-31004BCB	81349	MICROCIRCUIT, DIGITA	EA 2
6	22	XDFZZ	5962-01-012-8153	M38510-05503BEA	81349	MICROCIRCUIT, DIGITA	EA 1
6	23	PAFZZ	5962-01-030-2101	CD4044AD3	02735	MICROCIRCUIT, DIGITA	EA 1
6	24	XDFZZ	5962-00-523-9602	M38510-05003BCA	81349	MICROCIRCUIT, DIGITA	EA 1
6	25	PAFZZ	5962-01-012-6507	M38510/05003BCB	81349	MICROCIRCUIT, DIGITA	EA 5
6	26	XDFZZ		MC14519BALD	04713	MICROCKT, DGTL	EA 1
6	27	XDFZZ	5962-00-628-8708	M38510-05504BEA	81349	MICROCIRCUIT, DIGITA	EA 2
6	28	PAFZZ	5962-01-015-8539	M38510/05504BEB	81349	MICROCIRCUIT, DIGITA	EA 1
6	29	XDFZZ		AM27LS02DMB	34335	MICROCKT, DGTL	EA 1
6	30	PAFZZ	5962-00-390-7958	M38510-02004BCB	81349	MICROCIRCUIT, DIGITA	EA 1
6	31	PAFZZ	5962-01-003-2228	CD4028AD3	02735	MICROCIRCUIT, DIGITA	EA 1
6	32	PAFZZ	5962-00-369-9839	M38510-00803BCB	81349	MICROCIRCUIT, DIGITA	EA 1
6	33	PAFZZ	5999-00-605-7936	14009-1P12	91506	EXTRACTOR, ELECTRICA	EA 1
6	34	PAFZZ	5999-01-028-6070	14009-1P14	91506	RETAINER-EJECTOR, EL	EA 1
6	35	XDFZZ	5999-01-068-9564	14007-1P4	91506	PIN, SPRING	EA 2
6	36	XAFZZ		12-124153-1	28815	PRINTED WRG BD	EA 1



EL3RK014

Figure 7. CCA, Control 10-133598-1 A7 (Sheet 1 of 2).

REF DES	ITEM NO	REF DES	ITEM NO.	REF DES	ITEM NO	REF DEE	ITEM NO	REF DES	ITEM NO	REF DES	ITEM NO
C1	1	C14	5	Q1	10	R12	18	R26	26	T6	29
C2	2	C17	5	Q2	11	R13	19	R27	24	U1	30
C3	3	C18	5	R1	12	R14	20	R28	25	U2	31
C4	4	C19	6	R2	12	R15	21	R29	26	U3	31
C5	5	C20	5	R3	12	R16	22	R30	26	U4	32
C6	6	J1	7	R4	12	R17	22	R31	25	U5	33
C7	5	J3	7	R5	12	R18	22	R32	27	U6	34
C8	5	J4	7	R6	12	R19	23	R33	23	U7	35
C9	5	J5	7	R7	13	R20	17	R35	28	U8	36
C10	5	J6	7	R8	14	R21	17	T1	29	U9	37
C11	5	J7	7	R9	15	R22	24	T2	29	U10	30
C12	5	J8	7	R10	16	R23	25	T3	29	VR1	38
C13	5	P1	8	R11	17	R24	25	T4	29	VR2	39
						R25	26	T5	29	VR3	39

EL3RK015

Figure 7. CCA, Control 10-133598-1 A7 (Sheet 2 of 2).

SECTION II

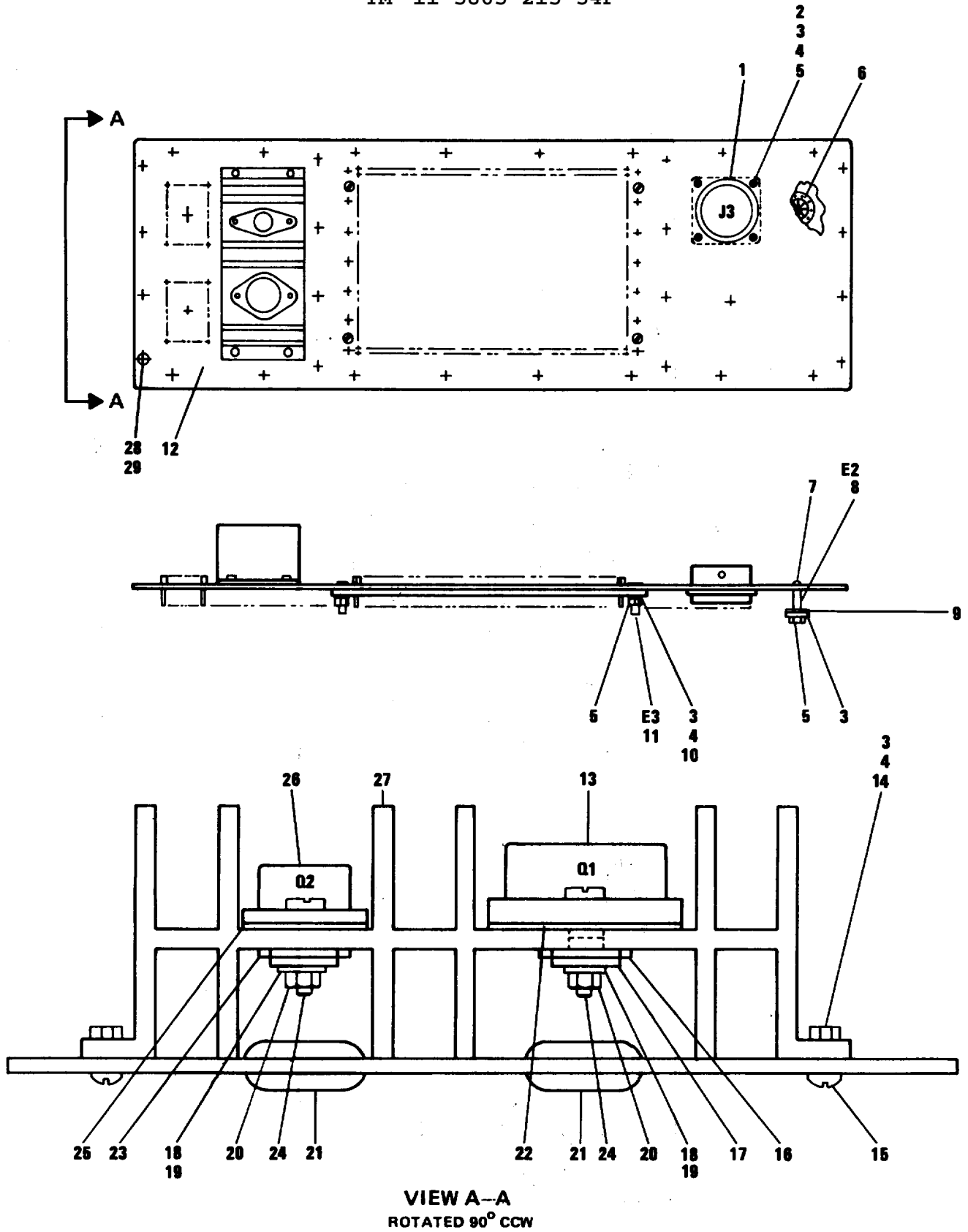
TM11-5865-215-34P

(1) Illustration	(2)	(3)	(4)	(5)	(6)	(7)	(8)
(a) Fig No.	(b) Item No.	SMR code	National stock number	Part number	FSCM	Description	U/M Qty inc in unit
						Usable on Code	
						GROUP 06 CCA, CONTROL 10-133598-1 A7	
7	1	PAFZZ	5910-00-464-9812	M39003-01-2497	81349	CAPACITOR, FIXED, ELE	EA 1
7	2	PAFZZ	5910-00-068-4299	M39003-01-2546	81349	CAPACITOR, FIXED, ELE	EA 1
7	3	PAFZZ	5910-00-246-9383	M39003-01-2532	81349	CAPACITOR, FIXED, ELE	EA 1
7	4	PAFZZ	5910-00-996-2238	M39003-01-2617	81349	CAPACITOR, FIXED, ELE	EA 1
7	5	PAFZZ	5910-01-047-8498	M39014-02-1270	81349	CAPACITOR, FIXED, CER	EA 12
7	6	PAFZZ	5910-00-124-0659	M39014-01-1495	81349	CAPACITOR, FIXED, CER	EA 2
7	7	XDFZZ	5935-00-988-6438	3422-1-03	71279	JACK, TIP	EA 7
7	8	XDFZZ		16-124186-77	28815	CONN, RCPT, ELEC	EA 1
7	9	PAFZZ	5320-00-243-8357	MS20470AD2-5	96906	RIVET, SOLID	EA 2
7	10	PAFZZ	5961-00-504-5134	JANTX2N4150	81349	TRANSISTOR	EA 1
7	11	PAFZZ	5961-00-858-3826	JANTX2N2222A	81349	TRANSISTOR	EA 1
7	12	XDFZZ		M39015-3-007XP	81349	RES, VAR, WW	EA 6
7	13	XDFZZ	5905-00-246-8695	RCR32G680JS	81349	RESISTOR, FIXED, COMP	EA 1
7	14	XDFZZ	5905-00-131-1256	RCR32G820JS	81349	RESISTOR, FIXED, COMP	EA 1
7	15	XDFZZ	5905-00-111-1679	RCR07G512JS	81349	RES, FXD, CMPSN	EA 1
7	16	XDFZZ	5905-00-106-3666	RCR07G103JS	81349	RES, FXD, CMPSN	EA 1
7	17	XDFZZ	5905-00-141-1183	RCR07G101JS	81349	RES, FXD, CMPSN	EA 3
7	18	XDFZZ	5905-00-110-7620	RCR07G102JS	81349	RES, FXD, CMPSN	EA 1
7	19	XDFZZ	5905-00-121-9938	RCR07G753JP	81349	RES, FXD, CMPSN	EA 1
7	20	XDFZZ	5905-00-110-0388	RCR07G104JS	81349	RES, FXD, CMPSN	EA 1
7	21	XDFZZ	5905-00-208-4360	RNR55C4222FS	81349	RESISTOR, FIXED, FILM	EA 1
7	22	XDFZZ	5905-00-405-7843	RNR55C4871FS	81349	RESISTOR FIXED FILM	EA 3
7	23	XDFZZ	5905-00-114-0711	RCR07G472JS	81349	RESISTOR, FIXED, COMP	EA 2
7	24	PAFZZ	5905-00-113-4861	RCR07G390JS	81349	RESISTOR, FIXED, COMP	EA 2
7	25	XDFZZ	5905-00-104-8350	RCR20G221JP	81349	RES, FXD, CMPSN	EA 4
7	26	PAFZZ	5905-00-104-8350	RCR20G221JS	81349	RESISTOR, FIXED, COMP	EA 4
7	27	XDFZZ	5905-00-306-2271	RWR80SR499FR	81349	RESISTOR, FIXED, WIRE	EA 1
7	28	XDFZZ		RCR20G390JP	81349	RES, FXD, CMPSN	EA 1
7	29	PAFZZ	5950-00-134-9595	SP67	26667	TRANSFORMER, AUDIO F	EA 6
7	30	PAFZZ	5962-00-264-4822	LH0002H883B	27014	MICROCIRCUIT, LINEAR	EA 2
7	31	PAFZZ	5962-00-167-6330	M38510-10101BGC	81349	MICROCIRCUIT, LINEAR	EA 2
7	32	XDFZZ	5962-00-549-0976	M38510-02305BCB	81349	MICROCIRCUIT, DIGITA	EA 1
7	33	XDFZZ	5962-01-065-7839	DM76L93J883B	27014	MICROCIRCUIT, DIGITA	EA 1
7	34	PAFZZ	5962-01-028-6118	CD4060AD3	54590	MICROCIRCUIT, DIGITA	EA 1
7	35	PAFZZ	5962-01-016-4670	SNC54L154J	01295	MICROCIRCUIT, DIGITA	EA 1
7	36	XDFZZ	5962-01-012-8153	M38510-05503BEA	81349	MICROCIRCUIT, DIGITA	EA 1
7	37	PAFZZ	5962-00-341-0544	M38510-00105BCB	81349	MICROCIRCUIT, DIGITA	EA 1
7	38	PAFZZ	5961-00-172-4970	JANTX1N5555	81349	SEMICONDUCTOR DEVIC	EA 1
7	39	PAFZZ	5961-01-012-8198	JANTX1N4626	81349	SEMICONDUCTOR DEVIC	EA 2

SECTION II

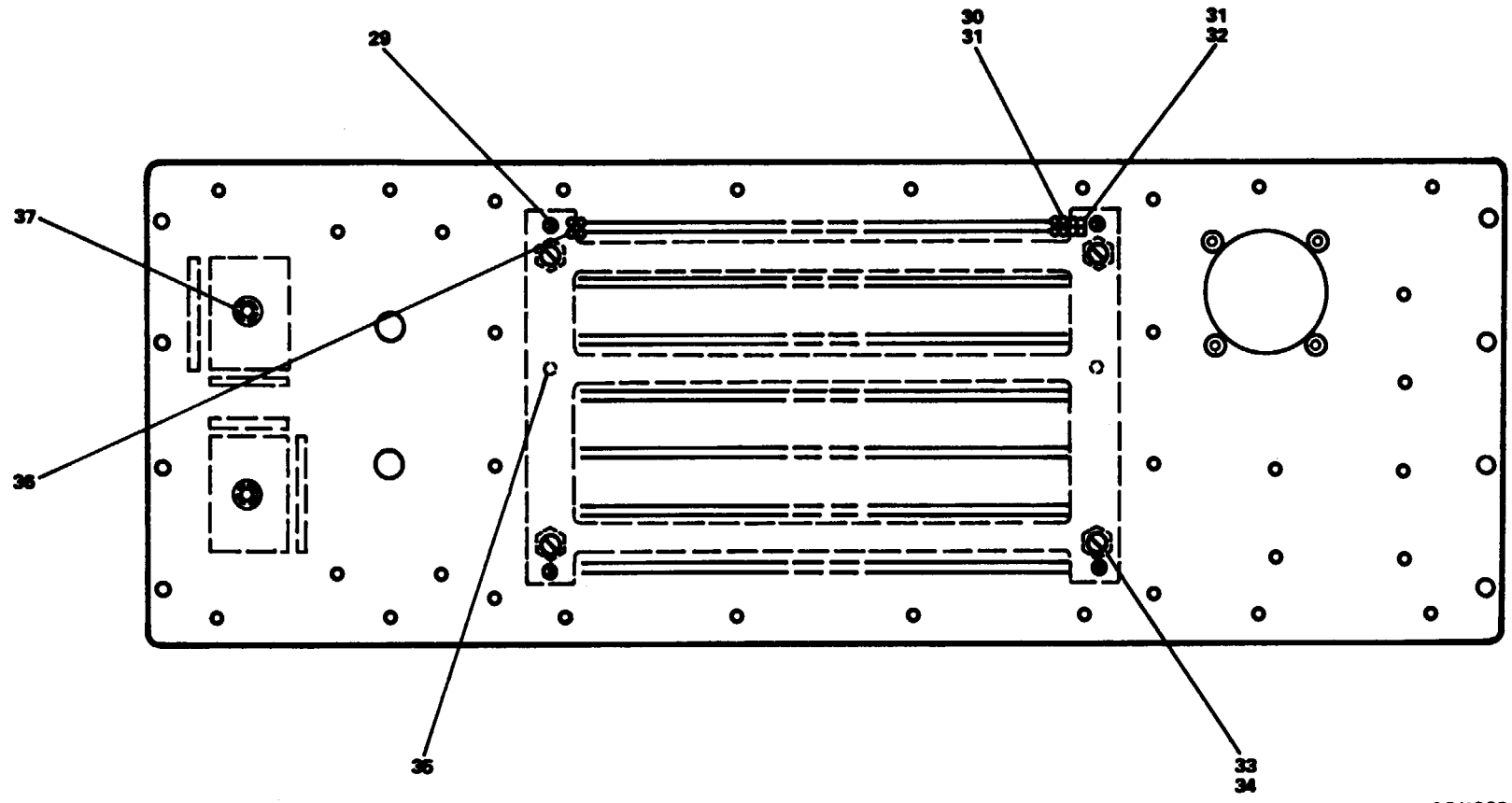
TM11-5865-215-34P

(1) Illustration	(2)	(3)	(4)	(5)	(6)	(7)	(8)
(a) Fig No.	(b) Item No.	SMR code	National stock number	Part number	FSCM	Description	U/M Qty inc in unit
7	40	PAFZZ	5999-00-605-7936	14009-1P12	91506	EXTRACTOR,ELECTIRCA	EA 1
7	41	XDFZZ	5999-01-068-9564	14007-1P4	91506	PIN,SPRING	EA 2
7	42	PAFZZ	5999-01-028-6070	14009-1P14	91506	RETAINER-EJECTOR,EL	EA 1
7	43	XAFZZ		12-133597-1	28815	PRINTED WRG BD	EA 1



EL3RK016

Figure 8. Contact Assy 1951-1-4537-1 A8 (Sheet 1 of 2).



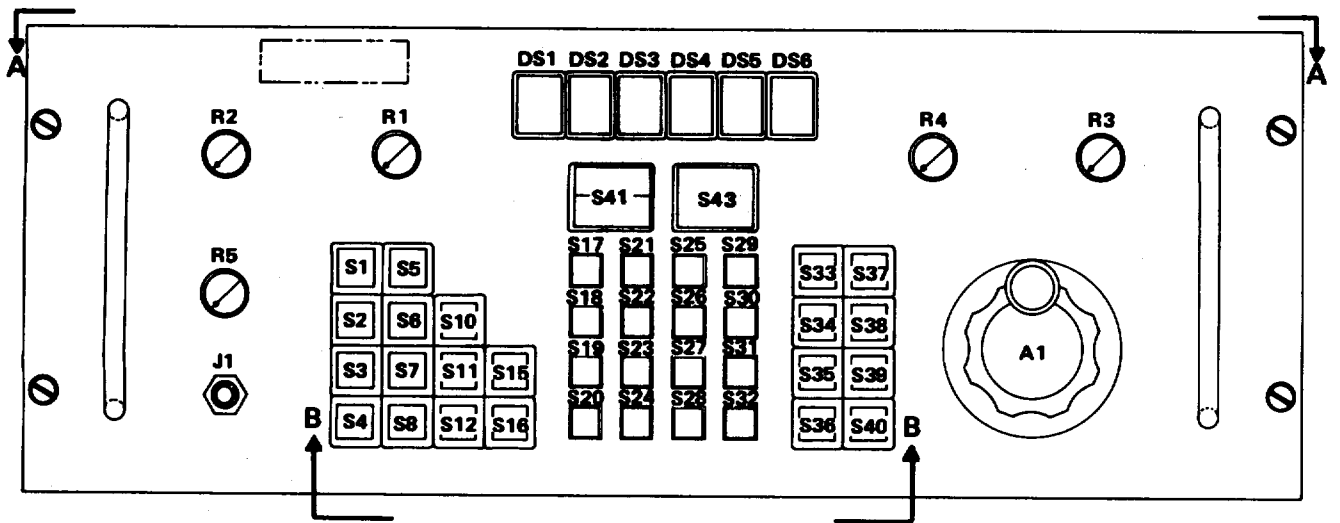
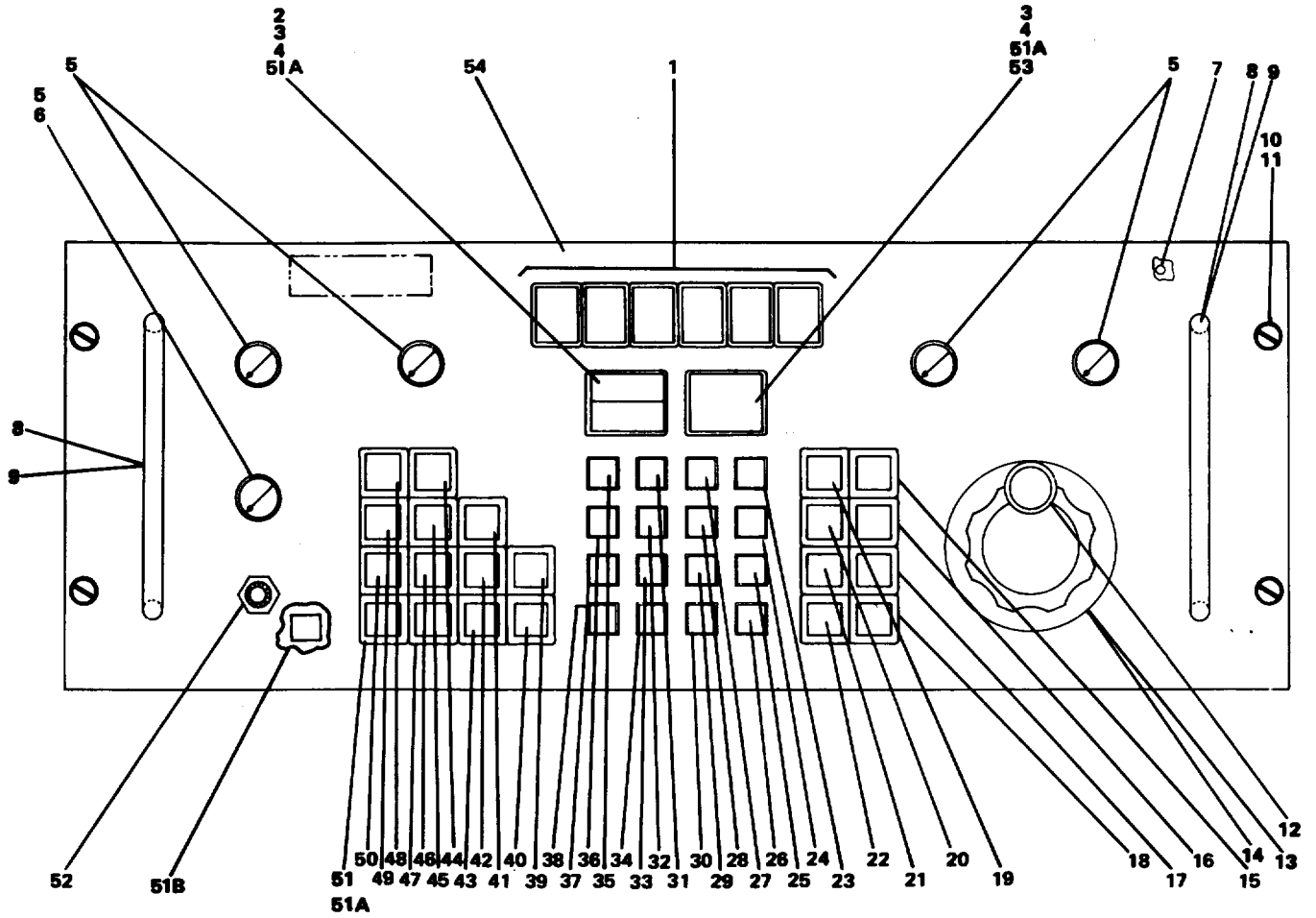
EL3RK022

Figure 8. Contact Assy 1951-1-4537-1 A8 (Sheet 2 of 2).

SECTION II

TM11-5865-215-34P

(1) Illustration	(2)	(3)	(4)	(5)	(6)	(7)	(8)
(a) Fig No.	(b) Item No.	SMR code	National stock number	Part number	FSCM	Description	U/M Qty inc in unit
						Usable on Code	
GROUP 07 CONTACT ASSEMBLY 1951-1-4537-1 A8							
8	1	XDFZZ	5935-01-065-7472	MS27508E20F16P	96906	CONN,RCPT,ELEC	EA 1
8	2	PAFZZ	5305-00-225-6400	MS24693C3	96906	SCREW,MACHINE	EA 4
8	3	PAFZZ	5310-00-595-6211	MS15795-803	96906	WASHER,PLAT	EA 12
8	4	PAFZZ	5310-00-933-8118	MS35338-135	96906	WASHER, LOCK	EA 12
8	5	PAFZZ	5310-00-208-3786	NAS671C4	80205	NUT,PLAIN,HEXAGON	EA 6
8	6	PAFZZ	5310-00-614-3552	MS35335-59	96906	WASHER, LOCK	EA 1
8	7	PAFZZ	5305-00-054-5653	MS51957-19	96906	SCREW,MACHINE	EA 2
8	8	PAFZZ	5940-00-839-0828	SE26XF01	81349	TERMINAL,STUD	EA 2
8	9	PAFZZ	5970-01-043-5759	N276	08863	INSULATOR,BUSHING	EA 3
8	10	PAFZZ	5310-00-058-3599	MS35335-57	96906	WASHER, LOCK	EA 2
8	11	XDFZZ	5940-00-204-8966	MS25036-102	96906	TERMINAL,LUG	EA 2
8	12	XDFZZ		1951-1-5030-1	15942	PLATE,MTG	EA 1
8	13	PAFZZ	5961-00-627-0275	JANTX2N3792	81349	TRANSISTOR	EA 1
8	14	PAFZZ	5310-00-589-7962	FE440	46384	NUT,SLFLKG CLENCH	EA 1
8	15	PAFZZ	5305-00-054-5649	MS51957-15	96906	SCREW,MACHINE	EA 4
8	16	PAFZZ	5961-00-004-0112	TM1	95987	INSULATOR TRANSISTO	EA 1
8	17	PAFZZ	5310-00-722-5998	MS15795-805	96906	WASHER,PLAT	EA 4
8	18	PAFZZ	5310-00-929-6395	MS35338-136	96906	WASHER, LOCK	EA 4
8	19	PAFZZ	5940-00-827-2653	MS77068-2	96906	TERMINAL,LUG	EA 2
8	20	PAFZZ	5310-00-616-8660	NAS671C6	80205	NUT,PLAIN,HEXAGON	EA 4
8	21	PAFZZ	5325-00-621-9154	2170	83330	GROMMET,NONMETALLIC	EA 2
8	22	PAFZZ	5970-01-025-0710	6285	83330	INSULATOR,PLATE	EA 1
8	23	PAFZZ	5961-00-004-0113	TM2	95987	INSULATOR TRANSISTO	EA 1
8	24	PAFZZ	5305-00-054-6654	MS51957-30	96906	SCREW,MACHINE	EA 4
8	25	PAFZZ	5970-01-045-7597	6286	83330	INSULATOR,PLATE	EA 1
8	26	PAFZZ	5961-00-416-4897	JANTX2N3740	81349	TRANSISTOR	EA 1
8	27	XDFZZ		1951-1-3093-1	15942	HEATSINK	EA 1
8	28	PAFZZ	5310-00-849-1984	5S3-2	71286	WASHER,SPLIT	EA 8
8	29	PAFZZ	5325-00-831-3400	5S5-13	71286	STUD,TURNLOCK FASTE	EA 8
8	30	XDFZZ	5999-01-049-8327	516-0014-505	31413	CONTACT,ELECTRICAL	EA 53
8	31	XDFZZ	5999-01-051-3735	010-8509-502	31413	CONTACT,ELECTRICAL	EA 1072
8	32	XDFZZ		302-0002-000	31413	INSULATOR	EA 1019
8	33	XDFZZ	5305-00-582-6151	MS18212-30	96906	SCREW,MACHINE	EA 4
8	34	XDFZZ	5310-00-218-2181	MS51858-3	96906	NUT,PLAIN,HEXAGON	EA 4
8	35	XDFZZ	5307-00-475-1172	FHS440-6	46384	STUD,SELF-LOCKING	EA 2
8	36	XDFZZ		516-0028-580	31413	BUSHING	EA 28
8	37	XDFZZ	5325-01-039-7460	516-0027-000	31413	FASTENER,PANEL	EA 2



EL3RK017

Figure 9. Front Panel Assy 1951-1-4078-1 A10 (Sheet 1 of 2).

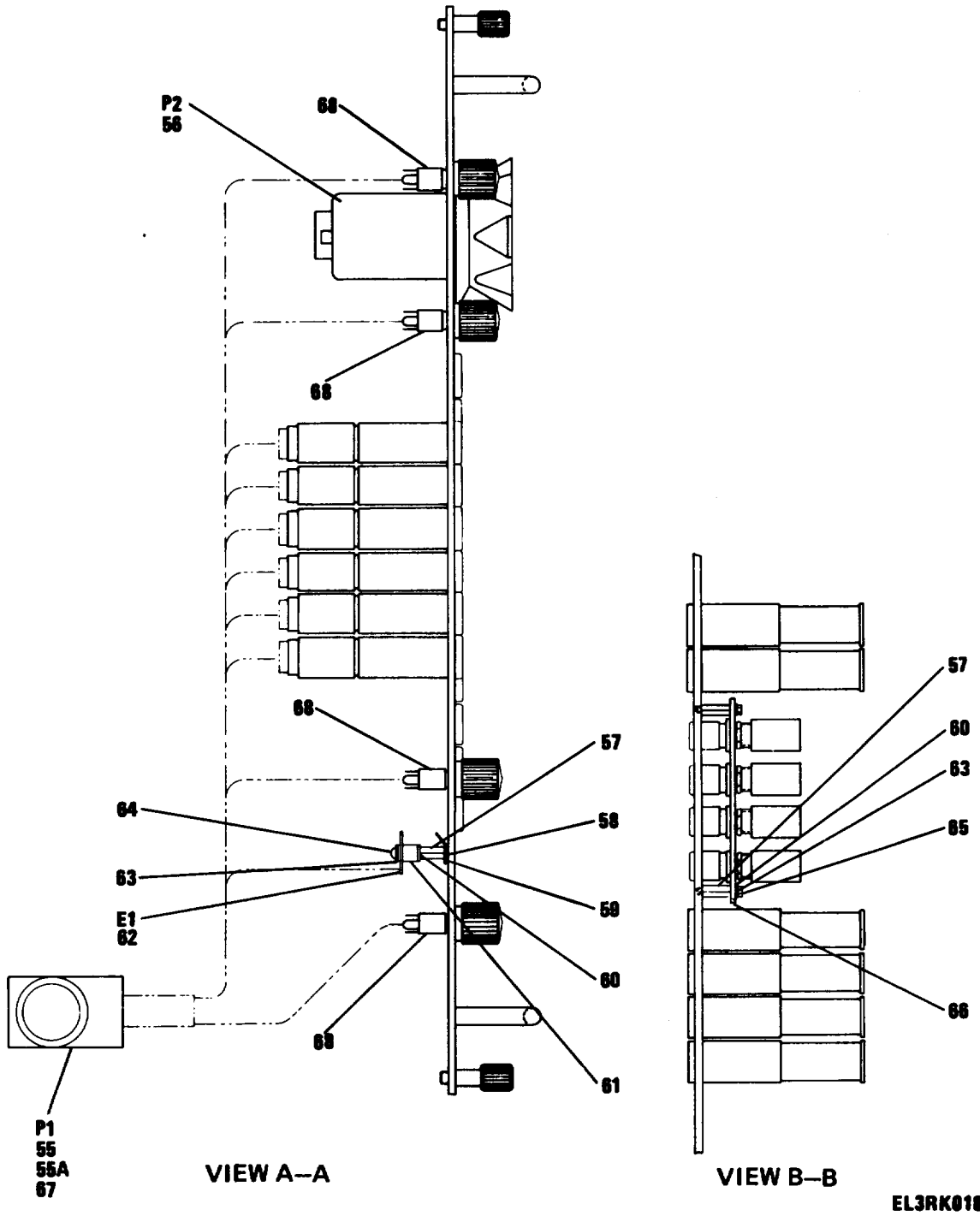


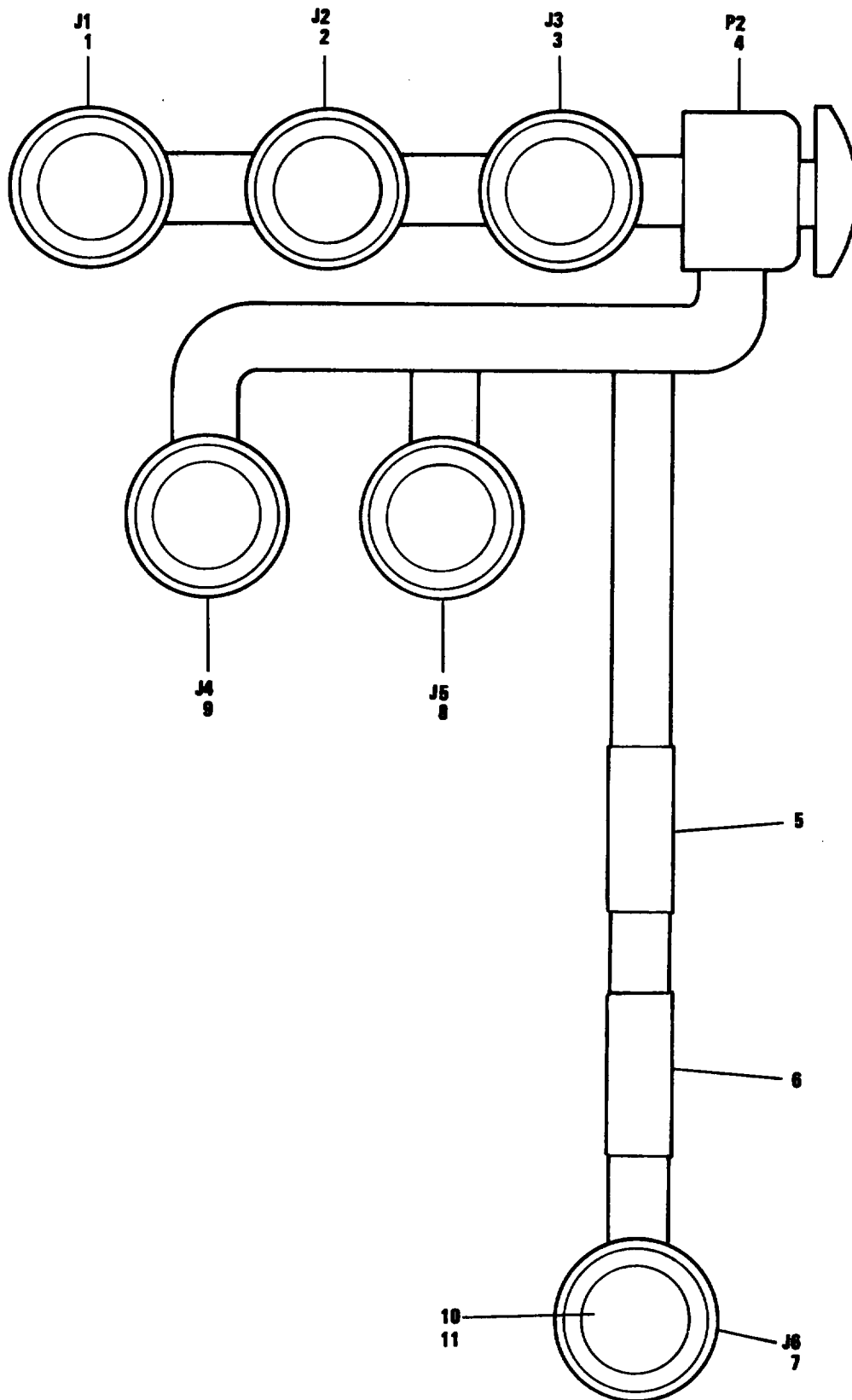
Figure 9. Front Panel Assy 1951-1-4078-1 A10 (Sheet 2 of 2).

(1) Illustration	(2)	(3)	(4)	(5)	(6)	(7)	(8)
(a) Fig No.	(b) Item No.	SMR code	National stock number	Part number	FSCM	Description	U/M Qty inc in unit
Usable on Code							
GROUP 08 FRONT PANEL ASSEMBLY							
1951-1-4078-1 A10							
9	1	XDFZZ	6625-01-079-3547	351-28176-001	96182	READOUT ASSEMBLY	EA 6
9	2	XDFZZ	5930-01-067-2550	10648EL5-10	08719	SWITCH,PUSH	EA 1
9	3	XDFZZ		50905	08719	CUP	EA 2
9	4	XDFZZ	5999-01-076-7731	50906	08719	CLAMP,SEAL ADAPTER	EA 2
9	5	PAFZZ	5355-00-682-6753	MS91528-1F1B	96906	KNOB	EA 5
9	6	PAFZZ	5905-00-422-3528	RV6SAYS103C	81349	RESISTOR,VARIABLE,N	EA 1
9	7	XDFZZ		CFHC440-4	46384	STUD,SELF-LOCKING	EA 9
9	8	PAFZZ	5340-01-066-2139	10352SS0832-7	06540	HANDLE,BOW	EA 2
9	9	PAFZZ	5305-00-054-6668	MS51957-43	96906	SCREW,MACHINE	EA 4
9	10	XDFZZ		6254CSS1032	06540	FASTENER,PANEL	EA 4
9	11	PAFZZ	5305-00-939-0890	6109SS1032	06540	SCREW,EXTERNALLY RE	EA 4
9	12	XDFZZ		PS210FSP2BLK	21604	KNOB	EA 1
9	13	XDFZZ	6625-01-079-3546	16-123997-1	28815	ENCODER,OPTICAL	EA 1
9	14	PAFZZ	5305-00-225-6400	MS24693C3	96906	SCREW,MACHINE	EA 4
9	15	XDFZZ	5930-01-066-0890	10648EL1-13	08719	SWITCH,PUSH	EA 1
9	16	XDFZZ	5930-01-065-2995	10648EL1-14	08719	SWITCH,PUSH	EA 1
9	17	XDFZZ	5930-01-066-0891	10648EL1-15	08719	SWITCH,PUSH	EA 1
9	18	XDFZZ	5930-01-065-2996	10648EL1-16	08719	SWITCH,PUSH	EA 1
9	19	PAFZZ	5930-01-065-2994	10648EL1-20	08719	SWITCH,PUSH	EA 1
9	20	XDFZZ	5930-01-065-2993	10648EL1-21	08719	SWITCH,PUSH	EA 1
9	21	XDFZZ	5930-01-066-0889	10648EL1-9	08719	SWITCH,PUSH	EA 1
9	22	XDFZZ	5930-01-065-2992	10648EL1-10	08719	SWITCH,PUSH	EA 1
9	23	XDFZZ	5930-01-070-6899	10530EL12	08719	SWITCH,PUSH	EA 1
9	24	XDFZZ	5930-01-069-3850	10530EL13	08719	SWITCH,PUSH	EA 1
9	25	XDFZZ	5930-01-069-3851	10530EL15	08719	SWITCH,PUSH	EA 1
9	26	XDFZZ	5930-01-070-6900	10530EL16	08719	SWITCH,PUSH	EA 1
9	27	XDFZZ	5930-01-069-3848	10530EL10	08719	SWITCH,PUSH	EA 1
9	8	XDFZZ	5930-01-070-6897	10530EL7	08719	SWITCH,PUSH	EA 1
9	29	XDFZZ	5930-01-069-3849	10530EL4	08719	SWITCH,PUSH	EA 1
9	30	XDFZZ	5930-01-070-6898	10530EL14	08719	SWITCH,PUSH	EA 1
9	31	XDFZZ	5930-01-070-6894	10530EL9	08719	SWITCH,PUSH	EA 1
9	32	XDFZZ	5930-01-070-6895	10530EL6	08719	SWITCH,PUSH	EA 1
9	33	XDFZZ	5930-01-070-6896	10530EL3	08719	SWITCH,PUSH	EA 1
9	34	XDFZZ	5930-01-072-8543	10530EL11	08719	SWITCH,PUSH	EA 1
9	35	XDFZZ	5930-01-070-6893	10530EL8	08719	SWITCH,PUSH	EA 1
9	36	XDFZZ	5930-01-069-3845	10530EL5	08719	SWITCH,PUSH	EA 1
9	37	XDFZZ	5930-01-069-3846	10530EL2	08719	SWITCH,PUSH	EA 1
9	38	PAFZZ	5930-01-069-3847	10530EL1	08719	SWITCH,PUSH	EA 1

SECTION II

TM11-5865-215-34P

(1) Illustration		(2)	(3)	(4)	(5)	(6)	(7)	(8)
(a) Fig No.	(b) Item No.	SMR code	National stock number	Part number	FSCM	Description	U/M	Qty inc in unit
							Usable on Code	
9	39	XDFZZ	5930-01-065-7513	10648EL1-7	08719	SWITCH, PUSH	EA	1
9	40	XDFZZ	5930-01-065-2991	10648EL1-8	08719	SWITCH, PUSH	EA	1
9	41	XDFZZ	5930-01-065-2989	10648EL1-4	08719	SWITCH, PUSH	EA	1
9	42	DFZZ	5930-01-066-3055	10648EL1-5	08719	SWITCH, PUSH	EA	1
9	43	XDFZZ	5930-01-065-2990	10648EL1-6	08719	SWITCH, PUSH	EA	1
9	44	XDFZZ	5930-01-065-3010	10648EL1-12	08719	SWITCH, PUSH	EA	1
9	45	XDFZZ	5930-01-065-2986	10648EL1-17	08719	SWITCH, PUSH	EA	1
9	46	XDFZZ	5930-01-065-2987	10648EL1-18	08719	SWITCH, PUSH	EA	1
9	47	XDFZZ	5930-01-065-2988	10648EL1-19	08719	SWITCH, PUSH	EA	1
9	48	XDFZZ		10648EL1-11	08719	SWITCH, PUSH	EA	1
9	49	XDFZZ	5930-01-065-3009	10648EL1-1	08719	SWITCH, PUSH	EA	1
9	50	XDFZZ	5930-01-066-0897	10648EL1-2	08719	SWITCH, PUSH	EA	1
9	51	XDFZZ		10648EL1-3	08719	SWITCH, PUSH	EA	1
9	51A	XDFZZ	5999-00-137-5066	M39029-1-16-20	81349	CONTACT, ELECTRICAL	EA	119
9	51B	XDFZZ		TC342	59730	TIE, CABLE	EA	2
9	52	PAFZZ	5935-00-683-2746	JJ034	81349	JACK, TELEPHONE	EA	1
9	53	XDFZZ	5930-01-066-9459	10648EL5-9	08719	SWITCH, PUSH	EA	1
9	54	XDFZZ		1951-1-4069-1	28815	PANEL, FRONT	EA	1
9	55	XDFZZ	5935-01-035-7822	1-0100	31413	CONN, PLUG, ELEC	EA	1
9	55A	PAFZZ	5999-01-059-6610	001-6500-514	31413	CONTACT, ELECTRICAL	EA	92
9	56	PAFZZ	5935-00-490-5219	M24308-2-1	81349	CONNECTOR, RECEPTACL	EA	1
9	57	PAFZZ	5340-00-491-6000	8106A0440-10A	06540	POST, ELECTRICAL-MEC	EA	5
9	58	PAFZZ	5310-00-058-3599	MS35335-57	96906	WASHER, LOCK	EA	1
9	59	PAFZZ	5940-00-113-9828	MS25036-148	96906	TERMINAL, LUG	EA	1
9	60	PAFZZ	5310-00-595-6211	MS15795-803	96906	WASHER, FLAT	EA	5
9	61	PAFZZ	5970-01-043-5759	N276	08863	INSULATOR, BUSHINE	EA	2
9	62	XDFZZ	5940-00-839-0828	SE26XF01	81349	TERMINAL, STUD	EA	1
9	63	PAFZZ	5310-00-933-8118	MS35338-135	96906	WASHER, LOCK	EA	5
9	64	PFZZ	5305-00-054-5655	MS51957-21	96906	SCREW, MACHINE	EA	1
9	65	PAFZZ	5310-00-208-3786	NAS671C4	80205	NUT, PLAIN, HEXAGON	EA	4
9	66	XDFZZ		1951-1-3028-1	28815	PLATE, MOUNTING	EA	1
9	67	PAFZZ	5805-00-342-4514	544-0005-000	31413	KEY, POLARIZING	EA	1
9	68	XDFZZ		RVESAYS103A	81349	RES, VAR, NWW	EA	4



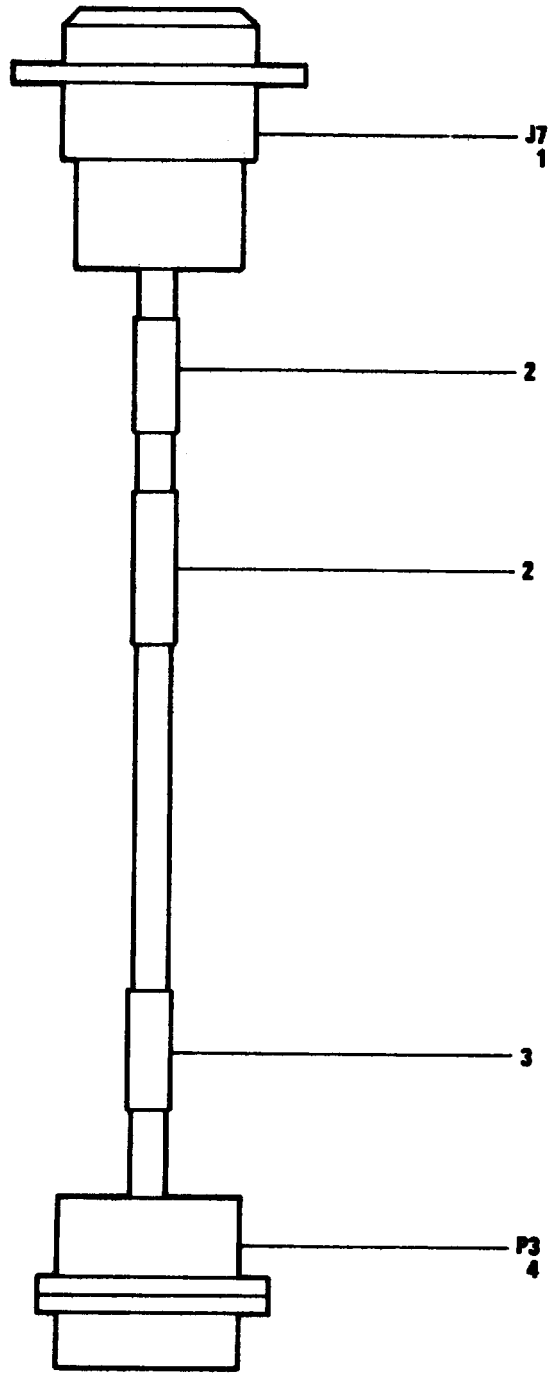
EL3RK019

Figure 10. Cable Assy 1951-1-4217-1 W1.
40

SECTION II

TM11-5865-215-34P

(1) Illustration	(2)	(3)	(4)	(5)	(6)	(7)	(8)
(a) Fig No.	(b) Item No.	SMR code	National stock number	Part number	FSCM	Description	U/M Qty inc in unit
						Usable on Code	
						GROUP 09 CABLE ASSEMBLY 1951-1-4217-1 W1	
10	1	XDFZZ	5935-01-024-1895	MS27508E12F35S	96906	CONNECTOR, RECEPTACL	EA 1
10	2	XDFZZ	5935-01-042-2410	MS27508E12F35SA	96906	CONNECTOR, RECEPTACL	EA 1
10	3	XDFZZ	5935-01-056-6658	MS27508E12F35SB	96906	CONNECTOR, RECEPTACL	EA 1
10	4	XDFZZ	5935-01-086-5653	10-100-00000	31413	CONNECTOR, PLUG, ELEC	EA 1
10	5	XDFZZ	7690-01-052-4755	WTW2334	59730	MARKER, IDENTIFICATI	EA 1
10	6	XDFZZ		WTW1334	59730	BAND, MARKER	EA 7
10	7	XDFZZ	5935-01-082-4457	MS27508E14F18P	96906	CONNECTOR, RECEPTACL	EA 1
10	8	XDFZZ	5935-01-065-7471	MS27508E14F15PA	96906	CONNECTOR, RECEPTACL	EA 1
10	9	XDFZZ	5935-01-026-9170	MS27508E14F15P	96906	CONNECTOR, RECEPTACL	EA 1
10	10	XDFZZ	5805-00-342-4514	544-0005-000	31413	KEY, POLARIZING	EA 1
10	11	XDFZZ	5999-01-059-6610	001-6500-514	31413	CONTACT, ELECTRICAL	EA 80



EL3RK820

Figure 11. Cable Assy 1951-1-4218-1 W2.

SECTION II

TM11-5865-215-34P

(1) Illustration	(2)	(3)	(4)	(5)	(6)	(7)	(8)
(a) Fig No.	(b) Item No.	SMR code	National stock number	Part number	FSCM	Description	U/M inc in unit
Usable on Code							
GROUP 10 CABLE ASSEMBLY 1951-1-4218-1 W2							
11	1	XDFZZ	5935-01-065-7472	MS27508E20F16P	96906	CONNECTOR, RECEPTACL	EA 1
11	2	XDFZZ		WTW1334	59730	BAND, MARKER	EA 2
11	3	XDFZZ	7690-01-052-4755	WTW2334	59730	MARKER, IDENTIFICATI	EA 1
11	4	XDFZZ		MS27484E20F16S	96906	CONN. PLUG, ELEC	EA 1

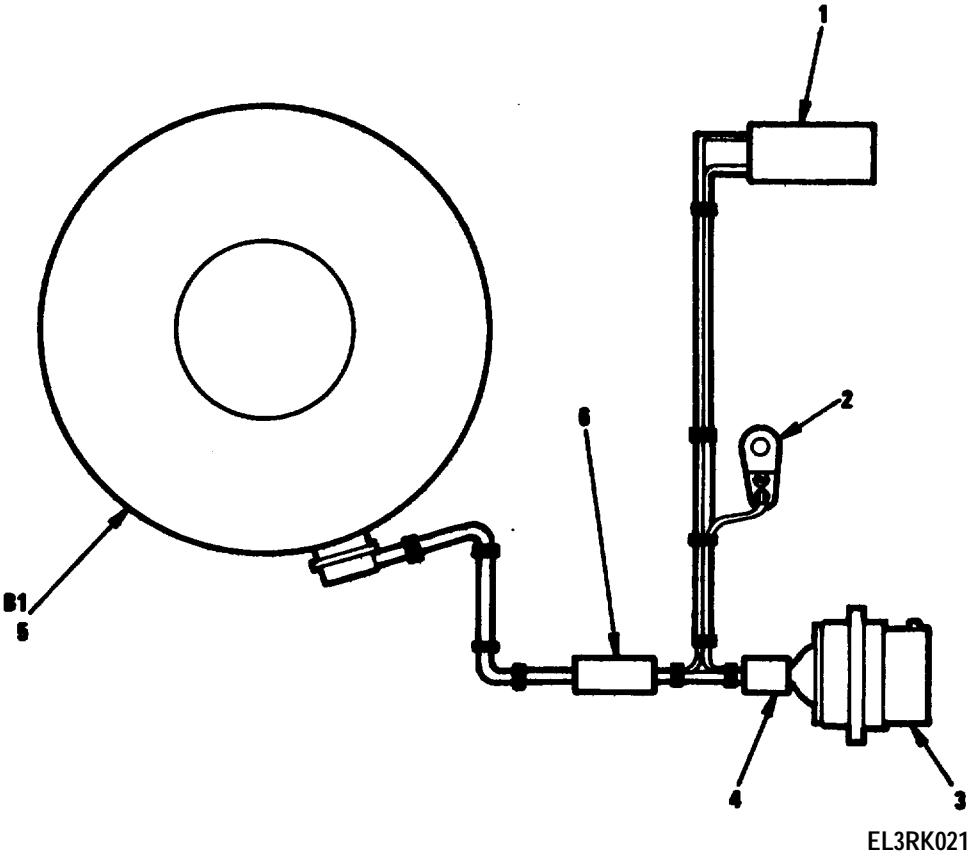


Figure 12. Fan Assy 1951-1-4526-1 B1.

SECTION II

TM11-5865-215-34P

(1) Illustration	(2)	(3)	(4)	(5)	(6)	(7)	(8)
(a) Fig No.	(b) Item No.	SMR code	National stock number	Part number	FSCM	Description	U/M Qty inc in unit
						Usable on Code	
						GROUP 11 FAN ASSY 1951-1-4526-1 B1	
12	1	PAFZZ	6645-00-255-1371	MS17322-10	96906	METER, TIME TOTALIZI	EA 1
12	2	PAFZZ	5940-00-682-2477	MS77068-1	96906	TERMINAL, LUG	EA 1
12	3	XDFZZ	5935-01-064-7840	MS27508E12F8P	96906	CONNECTOR, RECEPTACL	EA 1
12	4	XDFZZ		WTW1112	59730	BAND, MARKER	EA 1
12	5	PAFZZ	4140-01-064-6473	027743	82877	FAM, TUBEAXIAL	EA 1
12	6	PAFZZ	7690-01-052-4755	WTW2334	59730	MARKER, IDENTIFICATI	EA 1

NATIONAL STOCK NUMBER AND PART NUMBER INDEX

NOTE: LATEST NATIONAL STOCK NUMBER AND PART NUMBER ASSIGNMENTS ARE INCLUDED AT END OF INDEX.

STOCK NUMBER	FIGURE NO.	ITEM NO.	STOCK NUMBER	FIGURE NO.	ITEM NO.
5961-00-004-0112	8	16	5905-00-458-9500	2	10
5961-00-004-0113	8	23	5905-00-458-9500	4	17
5910-00-010-8157	4	4	5905-00-461-8987	4	12
5910-00-010-8157	5	2	5910-00-464-9812	3	1
5305-00-054-5644	1	27	5910-00-464-9812	4	2
5305-00-054-5647	1	11	5910-00-464-9812	5	1
5305-00-054-5648	1	33	5910-00-464-9812	6	1
5305-00-054-5649	1	15	5910-00-464-9812	7	1
5305-00-054-5649	8	15	5307-00-475-1172	8	35
5305-00-054-5653	8	7	5935-00-490-5219	9	56
5305-00-054-5655	9	64	5340-00-491-6000	9	57
5305-00-054-6654	8	24	5961-00-494-4915	4	1
5305-00-054-6668	9	9	5961-00-504-5134	7	10
5305-00-056-9961	1	19	5962-00-513-0528	4	26
5310-00-058-3599	8	10	5962-00-513-0528	6	16
5310-00-058-3599	9	58	5905-00-519-0559	2	9
5910-00-068-4299	4	3	5905-00-519-0559	4	11
5910-00-068-4299	7	2	5962-00-523-9602	6	24
5910-00-068-4302	2	1	5962-00-523-9603	4	19
5910-00-072-7647	2	5	5962-00-523-9672	4	21
5905-00-104-8350	4	16	5962-00-523-9672	6	18
5905-00-104-8350	7	25	5962-00-549-0976	7	32
5905-00-104-8350	7	26	5305-00-582-6151	8	33
5905-00-106-3666	7	16	5310-00-595-6211	1	12
5905-00-110-0388	7	20	5310-00-595-6211	8	3
5905-00-110-7620	7	18	5310-00-595-6211	9	60
5905-00-111-1679	7	15	5962-00-604-0826	2	22
5905-00-113-4861	4	10	5999-00-605-7936	2	26
5905-00-113-4861	7	24	5999-00-605-7936	3	13
5940-00-113-9828	9	59	5999-00-605-7936	4	37
5905-00-114-0711	7	23	5999-00-605-7936	5	8
5320-00-119-6754	2	25	5999-00-605-7936	6	33
5340-00-120-2035	2	24	5999-00-605-7936	7	40
5905-00-121-9938	7	19	5310-00-614-3552	8	6
5910-00-124-0659	6	3	5310-00-616-8660	8	20
5910-00-124-0659	7	6	5905-00-617-5091	4	15
5905-00-131-1256	7	14	5905-00-617-5093	6	10
5962-00-131-9460	4	29	5325-00-621-9154	8	21
5950-00-134-9595	7	29	5961-00-627-0275	8	13
5999-00-137-5066	9	51A	5962-00-628-8708	6	27
5962-00-139-2881	4	30	5940-00-682-2477	12	2
5905-00-141-1183	7	17	5355-00-682-6753	9	5
5962-00-167-6330	4	34	5935-00-683-2746	9	52
5962-00-167-6330	7	31	5310-00-722-5998	8	17
5961-00-172-4970	7	38	5940-00-827-2653	8	19
5905-00-180-8301	4	14	5325-00-829-2650	1	9
5940-00-204-8966	8	11	5325-00-831-3400	8	29
5310-00-208-3786	1	24	5940-00-839-0828	8	8
5310-00-208-3786	8	5	5940-00-839-0828	9	62
5310-00-208-3786	9	65	5310-00-849-1984	1	10
5905-00-208-4360	7	21	5310-00-849-1984	8	28
5310-00-218-2181	8	34	5961-00-858-3826	7	11
5305-00-225-6400	1	15A	5310-00-929-6395	8	18
5305-00-225-6400	8	2	5310-00-933-8118	1	23
5305-00-225-6400	9	14	5310-00-933-8118	8	4
5320-00-243-8357	2	7	5310-00-933-8118	9	63
5320-00-243-8357	3	5	5905-00-935-8539	3	7
5320-00-243-8357	4	9	5305-00-939-0890	9	11
5320-00-243-8357	5	5	5340-00-984-6629	1	18
5320-00-243-8357	6	7	5935-00-988-6438	3	3
5320-00-243-8357	7	9	5935-00-988-6438	4	7
5905-00-246-8695	7	13	5935-00-988-6438	6	5
5910-00-246-9383	2	3	5935-00-988-6438	7	7
5910-00-246-9383	7	3	5910-00-996-2238	7	4
6645-00-255-1371	12	1	5962-01-003-2220	4	27
5962-00-264-3566	6	13	5962-01-003-2226	4	23
5962-00-264-4822	4	18	5962-01-003-2226	6	11
5962-00-264-4822	7	30	5962-01-003-2228	6	31
5905-00-306-2271	7	27	5962-01-007-6752	4	22
5962-00-341-0544	7	37	5962-01-012-6507	6	25
5805-00-342-4514	9	67	5962-01-012-8153	4	31
5805-00-342-4514	10	10	5962-01-012-8153	6	22
5962-00-369-9839	6	32	5962-01-012-8153	7	36
5962-00-390-7958	6	30	5961-01-012-8198	7	39
5905-00-405-7843	7	22	5962-01-014-4958	4	25
5961-00-416-4897	8	26	5962-01-015-3896	4	20
5905-00-419-2861	4	13	5962-01-015-8531	2	21
5905-00-421-8918	6	9	5962-01-015-8539	6	28
5905-00-422-3528	9	6	5962-01-016-2685	6	17
5975-00-441-1610	2	30	5962-01-016-4670	7	35

NATIONAL STOCK NUMBER AND PART NUMBER INDEX

STOCK NUMBER	FIGURE NO.	ITEM NO.	STOCK NUMBER	FIGURE NO.	ITEM NO.
5935-01-024-1895	10	1	5930-01-065-2993	9	20
5970-01-025-0710	8	22	5930-01-065-2994	9	19
5935-01-026-9170	10	9	5930-01-065-2995	9	16
5999-01-028-6070	2	29	5930-01-065-2996	9	18
5999-01-028-6070	3	12	5930-01-065-3009	9	49
5999-01-028-6070	4	35	5930-01-065-3010	9	44
5999-01-028-6070	5	7	5962-01-065-6671	4	28
5999-01-028-6070	6	34	5935-01-065-7471	10	8
5999-01-028-6070	7	42	5935-01-065-7472	8	1
5962-01-028-6118	7	34	5935-01-065-7472	11	1
5962-01-028-6965	2	19	5930-01-065-7513	9	39
5962-01-030-2101	6	23	5962-01-065-7838	2	17
5962-01-030-7991	2	16	5962-01-065-7839	7	33
5962-01-031-7030	2	15	5930-01-066-0889	9	21
5962-01-033-2266	2	18	5930-01-066-0890	9	15
5962-01-033-2283	4	32	5930-01-066-0891	9	17
5962-01-033-2287	6	20	5930-01-066-0897	9	50
5962-01-033-5522	2	13	5340-01-066-2139	9	8
5962-01-033-5523	2	12	5930-01-066-3055	9	42
5962-01-033-6351	2	14	5930-01-066-9459	9	53
5962-01-034-9832	6	21	5930-01-067-2550	9	2
5905-01-035-5065	2	8	5999-01-068-9564	2	27
5905-01-035-5065	3	8	5999-01-068-9564	3	14
5905-01-035-5065	6	8	5999-01-068-9564	4	36
5935-01-035-7822	9	55	5999-01-068-9564	5	9
5325-01-039-7460	8	37	5999-01-068-9564	6	35
5935-01-042-2410	10	2	5999-01-068-9564	7	41
5910-01-042-4453	4	6	5930-01-069-3845	9	36
5962-01-043-1614	5	6	5930-01-069-3846	9	37
5970-01-043-5759	8	9	5930-01-069-3847	9	38
5970-01-043-5759	9	61	5930-01-069-3848	9	27
5910-01-043-8882	2	4	5930-01-069-3849	9	29
5970-01-045-7597	8	25	5930-01-069-3850	9	24
5910-01-047-8498	2	2	5930-01-069-3851	9	25
5910-01-047-8498	3	2	5930-01-070-6893	9	35
5910-01-047-8498	4	5	5930-01-070-6894	9	31
5910-01-047-8498	5	3	5930-01-070-6895	9	32
5910-01-047-8498	6	2	5930-01-070-6896	9	33
5910-01-047-8498	7	5	5930-01-070-6897	9	28
5999-01-049-8327	8	30	5930-01-070-6898	9	30
5962-01-050-5506	3	10	5930-01-070-6899	9	23
5962-01-050-5506	4	24	5930-01-070-6900	9	26
5999-01-051-3735	8	31	5865-01-070-8909	1	4
7690-01-052-4755	10	5	5865-01-070-8910	1	5
7690-01-052-4755	11	3	5865-01-070-8911	1	6
7690-01-052-4755	12	6	5865-01-071-2393	1	1
5962-01-055-4961	4	33	5930-01-072-8543	9	34
5962-01-055-4961	6	14	5962-01-072-8655	6	19
5962-01-055-9932	2	20	5865-01-075-1192	1	2
5935-01-056-6658		3	5865-01-075-1193	1	3
5999-01-059-6610	9	55A	5999-01-076-7731	9	4
5999-01-059-6610	10	11	5935-01-077-4659	5	4
5962-01-062-8080	6	12	5935-01-077-4719	4	8
4140-01-064-6473	12	5	5935-01-078-2226	2	6
5935-01-064-7840	12	3	6625-01-079-3546	9	13
5930-01-065-2986	9	45	6625-01-079-3547	9	1
5930-01-065-2987	9	46	5962-01-081-3450	3	9
5930-01-065-2988	9	47	5935-01-081-6831	3	4
5930-01-065-2989	9	41	5935-01-082-4457	10	7
5930-01-065-2990	9	43	5962-01-083-3616	2	11
5930-01-065-2991	9	40	5935-01-086-5653	10	4
5930-01-065-2992	9	22			

PART NUMBER	FSCM	FIG. NO.	ITEM NO.	PART NUMBER	FSCM	FIG. NO.	ITEM NO.
AM27LS02DMB	34335	6	29	CD4071BD3	02735	6	12
AM8224DMB	34335	2	14	CD4081BD3	02735	4	33
AM8228DMB	34335	2	12	CD4081BD3	02735	6	14
AM9080ADMB	34335	2	13	CD4099BF3	18714	2	11
CD4016AD3	02735	4	27	CD4514BD3	49671	3	9
CD4028AD3	02735	6	31	CFHC440-4	46384	9	7
CD4029AD3	02735	4	23	CMR03E30G0CR	81349	2	4
CD4029AD3	02735	6	11	CMR03F101JOYP	81349	6	4
CD4040AD3	02735	6	17	CR60AU15MHZ	81349	2	23
CD4044AD3	02735	6	23	DAC01FY	06665	4	30
CD4052BD3	49671	6	19	DM70L97J883B	27014	2	19
CD4060AD3	54590	7	34	DM76L93J883B	27014	7	33
CD4068BD3	18714	4	32	DS7820AJ883B	27014	6	13

National Stock Number and Part Number Index (Continued)

Part Number	FSCM	Fig. No.	Item No.	Part Number	FSCM	Fig. No.	Item No.
FHS440-6	46384	8	35	M38510-05202BCA	81349	6	18
HL69436	34148	2	16	M38510-05503BEA	81349	4	31
I0-100-00000	31413	10	4	M38510-05503BEA	81349	6	22
JANTX1N4148	81349	4	1	M38510-05503BEA	81349	7	36
JANTX1N4626	81349	7	39	M38510-05504BEA	81349	6	27
JANTX1N5555	81349	7	38	M38510-05604BEA	81349	4	25
JANTX2N2222A	81349	7	11	M38510-05605BCA	81349	4	22
JANTX2N3740	81349	8	26	M38510-05705BEA	81349	4	15
JANTX2N3792	81349	8	13	M38510-10101BGC	81349	4	34
JANTX2N4150	81349	7	10	M38510-10101BGC	81349	7	31
JJ034	81349	9	52	M38510-30001BCB	81349	2	15
LH0002H883B	27014	4	18	M38510-31004BCB	81349	6	21
LH0002H883B	27014	7	30	M38510/05003BCB	81349	6	25
LM11H883B	27014	4	29	M38510/05504BEB	81349	6	28
LM120H5-0-883B	27014	2	21	M39003-01-2497	81349	3	1
MC14508BALD	04713	3	10	M39003-01-2497	81349	4	2
MC14508BALD	04713	4	24	M39003-01-2497	81349	5	1
MC14519BALD	04713	6	26	M39003-01-2497	81349	6	1
MC14555BALD	04713	6	20	M39003-01-2497	81349	7	1
MM70C97D8838	27014	4	28	M39003-01-2526	81349	2	5
MS15795-803	96906	1	12	M39003-01-2532	81349	2	3
MS15795-803	96906	8	3	M39003-01-2532	81349	7	3
MS15795-803	96906	9	60	M39003-01-2546	81349	4	3
MS15795-805	96906	8	17	M39003-01-2546	81349	7	2
MS17322-10	96906	12	1	M39003-01-2596	81349	2	1
MS18212-30	96906	8	33	M39003-01-2617	81349	7	4
MS20470AD2-3	96906	2	25	M39003/01-3012	81349	4	4
MS20470AD2-5	96906	2	7	M39003/01-3012	81349	5	2
MS20470AD2-5	96906	3	5	M39014-01-1277	81349	4	6
MS20470AD2-5	96906	4	9	M39014-01-1495	81349	6	3
MS20470AD2-5	96906	5	5	M39014-01-1495	81349	7	6
MS20470AD2-5	96906	6	7	M39014-02-1270	81349	2	2
MS20470AD2-5	96906	7	9	M39014-02-1270	81349	3	2
MS24693C3	96906	1	15A	M39014-02-1270	81349	4	5
MS24693C3	96906	8	2	M39014-02-1270	81349	5	3
MS24693C3	96906	9	14	M39014-02-1270	81349	6	2
MS24693C4	96906	1	19	M39014-02-1270	81349	7	5
MS25036-102	96906	8	11	M39015-3-007XP	81349	7	12
MS25036-14B	96906	9	59	M39029-1-16-20	81349	9	51A
MS27484E20F16S	96906	11	4	M83401-02M2001JA	81349	3	11
MS27508E12F35S	96906	10	1	NAS671C4	80205	1	24
MS27508E12F35SA	96906	10	2	NAS671C4	80205	8	5
MS27508E12F35SB	96906	10	3	NAS671C4	80205	9	65
MS27508E12F8P	96906	12	3	NAS671C6	80205	8	20
MS27508E14F15P	96906	10	9	N276	08863	8	9
MS27508E14F15PA	96906	10	8	N276	08863	9	61
MS27508E14F18P	96906	10	7	PS210FSP2BLK	21604	9	12
MS27508E20F16P	96906	8	1	RCR05G101JS	81349	4	14
MS27508E20F16P	96906	11	1	RCR05G102JS	81349	2	10
MS35335-57	96906	8	10	RCR05G102JS	81349	4	17
MS35335-57	96906	9	58	RCR05G103JS	81349	2	8
MS35335-59	96906	8	6	RCR05G103JS	81349	3	8
MS35338-135	96906	1	23	RCR05G103JS	81349	6	8
MS35338-135	96906	8	4	RCR05G104JP	81349	2	9
MS35338-135	96906	9	63	RCR05G104JP	81349	4	11
MS35338-136	96906	8	18	RCR05G302JS	81349	6	9
MS51858-3	96906	8	34	RCR05G472JS	81349	4	15
MS51957-11	96906	1	27	RCR05G473JS	81349	6	10
MS51957-13	96906	1	11	RCR07G101JS	81349	7	17
MS51957-14	96906	1	33	RCR07G102JS	81349	7	18
MS51957-15	96906	1	15	RCR07G103JS	81349	7	16
MS51957-15	96906	8	15	RCR07G104JS	81349	7	20
MS51957-19	96906	8	7	RCR07G390JS	81349	4	10
MS51957-21	96906	9	64	RCR07G390JS	81349	7	24
MS51957-30	96906	8	24	RCR07G472JS	81349	7	23
MS51957-43	96909	9	9	RCR07G512JS	81349	7	15
MS77068-1	96906	12	2	RCR07G753JP	81349	7	19
MS77068-2	96906	8	19	RCR20G202JS	81349	3	7
MS91528-1F1B	96906	9	5	RCR20G221JP	81349	7	25
M24308-2-1	81349	9	6	RCR20G221JS	81349	4	16
M38510-00105BCB	81349	7	37	RCR20G221JS	81349	7	26
M38510-00803BCB	81349	6	32	RCR20G390JP	81349	7	28
M38510-02004BCB	81349	6	30	RCR32G680JS	81349	7	13
M38510-02305BCB	81349	7	32	RCR32G820JS	81349	7	14
M38510-05001BCA	81349	4	26	RNR55C1001FS	81349	4	12
M38510-05001BCA	81349	6	16	RNR55C1401FS	81349	4	13
M38510-05003BCA	81349	6	24	RNR55C4222FS	81349	7	21
M38510-05101BCA	81349	4	19	RNR55C4871FS	81349	7	22
M38510-05102BBA	81349	4	20	RVESAYS103A	81349	9	68
M38510-05202BCA	81349	4	21	RV6SAYS103C	81349	9	6

National Stock Number and Part Number Index

Part Number	FSCM	Fig. No.	Item No.	Part Number	FSCM	Fig. No.	Item No.
RWR80SR499FR	81349	7	27	14007-1P4	91506	4	36
SE26XF01	81349	8	8	14007-1P4	91506	5	9
SE26XF01	81349	9	62	14007-1P4	91506	6	35
SNC54L154J	01295	7	35	14007-1P4	91506	7	41
SP67	26667	7	29	14009-1P12	91506	2	26
TC342	59730	1	37	14009-1P12	91506	3	13
TC342	59730	9	51B	14009-1P12	91506	4	37
TC817	59730	1	36	14009-1P12	91506	5	8
TM1	95987	8	16	14009-1P12	91506	6	33
TM2	95987	8	23	14009-1P12	91506	7	40
UA78M12HMQB	34148	2	22	14009-1P14	91506	2	29
WTW1112	59730	12	4	14009-1P14	91506	3	12
WTW1334	59730	10	6	14009-1P14	91506	4	35
WTW1334	59730	11	2	14009-1P14	91506	5	7
WTW2334	59730	10	5	14009-1P14	91506	6	34
WTW2334	59730	11	3	14009-1P14	91506	7	42
WTW2334	59730	12	6	16-123997-1	28815	9	13
001-6500-514	31413	9	55A	16-124186-11	28815	2	6
001-6500-514	31413	10	11	16-124186-22	28815	3	4
010-8509-502	31413	8	31	16-124186-33	28815	4	8
027743	82877	12	5	16-124186-44	28815	5	4
1-0100	31413	9	55	16-124186-55	28815	6	6
10-124154-1	28815	1	5	16-124186-77	28815	7	8
10-124164-1	28815	1	4	17-123497-1	28815	5	6
10-124184-1	28815	1	2	17-123787-9	28815	3	6
10-133594-1	28815	1	1	1951-1-3017-1	15942	1	20
10-133598-1	28815	1	6	1951-1-3028-1	28815	9	66
10-133602-1	28815	1	3	1951-1-3093-1	15942	8	27
100-206-10	99378	2	24	1951-1-4045-1	15942	1	32
10352SS0832-7	06540	9	8	1951-1-4045-2	15942	1	25
10530EL1	08719	9	38	1951-1-4047-1	15942	1	7
10530EL10	08719	9	27	1951-1-4048-1	15942	1	28
10530EL11	08719	9	34	1951-1-4049-1	15942	1	30
10530EL12	08719	9	23	1951-1-4049-2	15942	1	16
10530EL13	08719	9	24	1951-1-4069-1	28815	9	54
10530EL14	08719	9	30	1951-1-4078-1	15942	1	22
10530EL15	08719	9	25	1951-1-4217-1	15942	1	31
10530EL16	08719	9	26	1951-1-4218-1	15942	1	14
10530EL2	08719	9	37	1951-1-4219-1	15942	1	8
10530EL3	08719	9	33	1951-1-4220-1	15942	1	35
10530EL4	08719	9	29	1951-1-4263-1	15942	1	13
10530EL5	08719	9	36	1951-1-4263-2	15942	1	34
10530EL6	08719	9	32	1951-1-4290-1	15942	1	21
10530EL7	08719	9	28	1951-1-4290-5	15942	1	26
10530EL8	08719	9	35	1951-1-4526-1	15942	1	17
10530EL9	08719	9	31	1951-1-4537-1	15942	1	29
10648EL1-1	08719	9	49	1951-1-5030-1	15942	8	12
10648EL1-10	08719	9	22	2170	83330	8	21
10648EL1-12	08719	9	44	271166	82877	1	18
10648EL1-13	08719	9	15	2829-75-3	98159	2	30
10648EL1-14	08719	9	16	302-0002-000	31413	8	32
10648EL1-15	08719	9	17	3422-1-03	71279	3	3
10648EL1-16	08719	9	18	3422-1-03	71279	4	7
10648EL1-17	08719	9	45	3422-1-03	71279	6	5
10648EL1-18	08719	9	46	3422-1-03	71279	7	7
10648EL1-19	08719	9	47	351-28176-001	96182	9	1
10648EL1-2	08719	9	50	5S3-2	71286	1	10
10648EL1-20	08719	9	19	5S3-2	71286	8	28
10648EL1-21	08719	9	20	5S5-13	71286	8	29
10648EL1-3	08719	9	51	5S7-7	71286	1	9
10648EL1-4	08719	9	41	50905	08719	9	3
10648EL1-5	08719	9	42	50906	08719	9	4
10648EL1-6	08719	9	43	516-0014-505	31413	8	30
10648EL1-7	08719	9	39	516-0027-000	31413	8	37
10648EL1-8	08719	9	40	516-0028-580	31413	8	36
10648EL1-9	08719	9	21	54LS02DMQB	34148	2	18
10648EL5-10	08719	9	2	54LS367DMQB	34148	2	20
10648EL5-9	08719	9	53	544-0005-000	31413	9	67
12-124153-1	28815	6	36	544-0005-000	31413	10	10
12-124163-1	28815	5	10	6109SS1032	06540	9	11
12-124183-1	28815	3	15	6254CSS1032	06540	9	10
12-133593-1	28815	2	28	62B5	83330	8	22
12-133597-1	28815	7	43	6286	83330	8	25
12-133601-1	28815	4	38	740AG30D	91506	2	31
14007-1P4	91506	2	27	8106A0440-10A	06540	9	57
14007-1P4	91506	3	14	91L12ADMB	34335	2	17

NATIONAL STOCK NUMBER AND PART NUMBER INDEX

LATEST NATIONAL STOCK NUMBER ASSIGNMENT

STOCK NUMBER	FIG. NO.	ITEM NO.
5310-00-589-7962	8	14

LATEST PART NUMBER ASSIGNMENTS

PART NUMBER	FSCM	FIG. NO.	ITEM NO.
FE440	46384	8	14
10648EL1-11	08719	9	48



SOMETHING WRONG WITH THIS MANUAL?

THEN...JOT DOWN THE DOPE ABOUT IT ON THIS FORM, TEAR IT OUT, FOLD IT AND DROP IT IN THE MAIL!

FROM: (YOUR UNIT'S COMPLETE ADDRESS)

Commander
Stateside Army Depot
ATTN: AMSTA-US
Stateside, N.J. 07703

PUBLICATION NUMBER

TM 11-5840-340-20P

DATE

23 Jan 78

TITLE

Radar Set AN/PRC-76

BE EXACT. . . PIN-POINT WHERE IT IS

PAGE NO.	PAR & GRAPH	FIGURE NO.	TABLE NO.
33			
44		19	
45			

IN THIS SPACE TELL WHAT IS WRONG AND WHAT SHOULD BE DONE ABOUT IT:

For item 2, change the NSN to read: 5835-00-134-9186.
Reason: Accuracy.

Identify the cover on the junction box (item no. 5) .
Reason: It is a separate item and is not called out on figure 19.

Add the cover of the junction box as an item in the listing for figure 19.
Reason: Same as above.

TEAR ALONG DOTTED LINE

S

A

M

TYPE NAME, GRADE OR TITLE, AND TELEPHONE NUMBER

SSG I. M. DeSpirito 999-1776

SIGN HERE:

SSG I. M. DeSpirito

RECOMMENDED CHANGES TO EQUIPMENT TECHNICAL MANUALS



SOMETHING WRONG WITH THIS MANUAL?

FROM: (YOUR UNIT'S COMPLETE ADDRESS)

DATE

PUBLICATION NUMBER

DATE

TITLE

TM 11-5865-215-34P

30 APR 1980

CONTROL, RECEIVER C-10026/USQ

BE EXACT . PIN-POINT WERE IT IS

IN THIS SPACE TELL WHAT IS WRONG AND WHAT SHOULD BE DONE ABOUT IT:

PAGE NO.

PARA GRAPH

FIGURE NO.

TEAR ALONG DOTTED LINE

TYPED NAME, GRADE OR TITLE, AND TELEPHONE NUMBER

SIGN HERE:

FILL IN YOUR
UNIT'S ADDRESS

FOLD BACK

DEPARTMENT OF THE ARMY

OFFICIAL BUSINESS

PENALTY FOR PRIVATE USE, \$300

POSTAGE AND FEES PAID
DEPARTMENT OF THE ARMY
DCG-314



Commander
US Army Communications and
Electronics Materiel Readiness Command
ATTN: DRSEL-ME-MQ
Fort Monmouth, New Jersey 07703

TEAR ALONG DOTTED LINE

FOLD BACK

RECOMMENDED CHANGES TO EQUIPMENT TECHNICAL MANUALS

SOMETHING WRONG WITH THIS MANUAL?



THEN... JOT DOWN THE DOPE ABOUT IT ON THIS FORM, TEAR IT OUT, FOLD IT AND DROP IT IN THE MAIL!

FROM: (YOUR UNIT'S COMPLETE ADDRESS)

DATE

PUBLICATION NUMBER

TM 11-5865-215-34P

30 APR 1980

CONTROL, RECEIVER C-10026/USQ

BE EXACT .PIN-POINT WHERE IT IS

IN THIS SPACE TELL WHAT IS WRONG AND WHAT SHOULD BE DONE ABOUT IT:

PAGE NO.	PARA GRAPH	FIGURE NO.	TABLE NO.

TEAR ALONG DOTTED LINE

TYPED NAME, GRADE OR TITLE, AND TELEPHONE NUMBER

SIGN HERE:

FILL IN YOUR
UNIT'S ADDRESS

FOLD BACK

DEPARTMENT OF THE ARMY

POSTAGE AND FEES PAID
DEPARTMENT OF THE ARMY
DDG-814



OFFICIAL BUSINESS

PENALTY FOR PRIVATE USE, \$300

Commander
US Army Communications and
Electronics Materiel Readiness Command
ATTN: DRSEL-ME-MQ
Fort Monmouth, New Jersey 07703

TEAR ALONG DOTTED LINE

FOLD BACK

RECOMMENDED CHANGES TO EQUIPMENT TECHNICAL MANUALS

SOMETHING WRONG WITH THIS MANUAL?



THEN... JOT DOWN THE DOPE ABOUT IT ON THIS FORM, TEAR IT OUT, FOLD IT AND DROP IT IN THE MAIL!

FROM: (YOUR UNIT'S COMPLETE ADDRESS)

DATE

PUBLICATION NUMBER

DATE

TITLE

TM 11-5865-215-34P

30 APR 1980 CONTROL, RECEIVER C-10026/USQ

BE EXACT. . . PIN-POINT WHERE IT IS

IN THIS SPACE TELL WHAT IS WRONG AND WHAT SHOULD BE DONE ABOUT IT:

PARA GRAPH	FIGURE NO.	TABLE NO.

IN THIS SPACE TELL WHAT IS WRONG AND WHAT SHOULD BE DONE ABOUT IT:

TYPED NAME, GRADE OR TITLE, AND TELEPHONE NUMBER

SIGN HERE:

TEAR ALONG DOTTED LINE

FILL IN YOUR
UNIT'S ADDRESS

FOLD BACK

DEPARTMENT OF THE ARMY

OFFICIAL BUSINESS

PENALTY FOR PRIVATE USE, \$300

POSTAGE AND FEES PAID
DEPARTMENT OF THE ARMY
DCC-814



Commander
US Army Communications and
Electronics Materiel Readiness Command
ATTN: DRSEL-ME-MQ
Fort Monmouth, New Jersey 07703

TEAR ALONG DOTTED LINE

FOLD BACK

By Order of the Secretary of the Army:

BERNARD W. ROGERS
General United States Army
Chief of Staff

Official:

J. C. PENNINGTON

Brigadier General, United States Army
The Adjutant General

Distribution:

Special.

This fine document...

Was brought to you by me:



[Liberated Manuals -- free army and government manuals](#)

Why do I do it? I am tired of sleazy CD-ROM sellers, who take publicly available information, slap “watermarks” and other junk on it, and sell it. Those masters of search engine manipulation make sure that their sites that sell free information, come up first in search engines. They did not create it... They did not even scan it... Why should they get your money? Why are not letting you give those free manuals to your friends?

I am setting this document FREE. This document was made by the US Government and is NOT protected by Copyright. Feel free to share, republish, sell and so on.

I am not asking you for donations, fees or handouts. If you can, please provide a link to liberatedmanuals.com, so that free manuals come up first in search engines:

<A HREF=<http://www.liberatedmanuals.com/>>Free Military and Government Manuals

- Sincerely
Igor Chudov
<http://igor.chudov.com/>
- [Chicago Machinery Movers](#)