

**TECHNICAL MANUAL
ORGANIZATIONAL AND DIRECT
SUPPORT MAINTENANCE
REPAIR PARTS AND SPECIAL TOOLS LISTS
(INCLUDING DEPOT MAINTENANCE REPAIR
PARTS AND SPECIAL TOOLS)
FOR
NIGHT VISION SIGHT,
CREW SERVED WEAPONS
AN/TVS-2 (NSN 5855-00-087-3144)
AN/TVS-2A (NSN 5855-00-791-3358)
AND
AN/TVS-2B (NSN 5855-00-484-8638)**

HEADQUARTERS, DEPARTMENT OF THE ARMY

This copy is a reprint which includes current pages from Changes 1.

NOVEMBER 1977



**ORGANIZATIONAL AND DIRECT SUPPORT MAINTENANCE
 REPAIR PARTS AND SPECIAL TOOLS LISTS
 (INCLUDING DEPOT MAINTENANCE REPAIR PARTS
 AND SPECIAL TOOLS)
 FOR
 NIGHT VISION SIGHT, CREW SERVED WEAPONS
 AN/rVS-2 (NSN 5855-00-087-3144)
 ANIrVS-2A (NSN 5855-00-791-3358)
 AND
 AN/TVS-2B (NSN 5855-00-484-8638)**

REPORTING OF ERRORS

You can improve this manual by recommending improvements using DA Form 2022 located in the back of the manual. Simply tear out the self-addressed form, fill it out as shown on the sample, fold it where shown, and drop it in the mail.

If there are no blank DA Forms 2028-2 in the back of your manual, use the standard DA Form 2028 (Recommended Changes to Publications and Blank Forms) and forward to the Commander, US Army Communications and Electronics Materiel Readiness Command, ATTN: DRSEL-ME-MQ, Fort Monmouth, New Jersey 07703.

In either case a reply will be furnished direct to you.

Table of Contents

	Page	Illus Figure
Section I. Introduction	1	
II. Repair parts list	5	
Group 00 Night Vision Sight, Crew Served Weapons AN/TSV-2, AN/TVS 2A, and AN/TVS-2B	5	1
01 Case, carrying	7	2
02 Eyepiece assembly, right angle	9	3
03 Night Vision Sight Subassembly, MC-7794/TVS-2, MX-7794A/TVS-2, MX-7794B/TVS-2	11	4 - 8
0301 Eyepiece assembly.....	21	9
0302 Hood assembly	23	10
0303 Objective lens assembly.....	25	11
030301 Reticle assembly.....	27	12
0304 Image intensifier assembly.....	29	13, 14
0305 Boresight assembly.....	35	15, 16
Section III. Special tools list (Not applicable).....	41	
IV. National stock number and part number index.....		

*The manual supersedes much of TM 11-5855-202-13, 27 April 1967, Including Change 2, 26 September 1969, as pertains to repair parts and special tools list.

SECTION I

INTRODUCTION

1. Scope

This manual lists spares and repair parts; special tools; special test, measurement, and diagnostic equipment (TMDE), and other special support equipment required for performance of organizational and direct support maintenance of the AN/TVS-2, AN/TVS-2A and AN/TVS-2B. It authorizes the requisitioning and issue of spares and repair parts as indicated by the source and maintenance codes.

2. General

This Repair Parts and Special Tools List is divided into the following sections:

a. Section II. Repair Parts List. A list of spares and repair parts authorized for use in the performance of maintenance. The list also includes parts which must be removed for replacement of the authorized parts. Parts lists are composed of functional groups in numeric sequence, with the parts in each group listed figure and item number sequence.

b. Section III. Special Tools List. Not applicable.

c. Section IV. National Stock Number and Part Number Index. A list, in National item identification number (NIIN) sequence, of all National stock number (NSN) appearing in the listings, followed by a list, in alphanumeric sequence, of all part numbers appearing in the listings. National stock number and part number are cross-referenced to each illustration figure and item number appearance.

3. Explanation of Columns

a. Illustration. This column is divided as follows:

(1) *Figure number.* Indicates the figure number of the illustration on which the item is shown.

(2) *Item number.* The number used to identify item called out in the illustration.

b. Source Maintenance, and Recoverability (SMR) Codes.

(1) *Source code.* Source codes indicate the manner of acquiring support items for maintenance, repair, or overhaul of end items. Source codes are entered in the first and second positions of the Uniform SMR Code format as follows:

Code

Definition

PA—Item procured and stocked for anticipated or known usage.

PD—Support item, excluding support equipment, procured for initial issue or outfitting and stocked only for subsequent or additional initial issues or outfittings. Not subject to automatic replenishment.

XD—A support item that is not stocked. When required, item will be procured through normal supply channels.

NOTE

Cannibalization or salvage may be used as a source of supply for any items source coded above except those coded XA and aircraft support items as restricted by AR 700-42.

(2) *Maintenance code.* Maintenance codes are assigned to indicate the levels of maintenance authorized to USE and REPAIR support items. The maintenance codes are entered in the third and fourth positions of the Uniform SMR Code format as follows:

(a) The maintenance codes entered in the third position will indicate the lowest maintenance level authorized to remove, replace, and use the support item. The maintenance code entered in the third position will indicate one of the following levels of maintenance:

Code

Application/Explanation

C—Crew or operator maintenance performed within organization maintenance.

O—Support item is removed, replaced, used at the organizational level.

F—Support item is removed, replaced, used at the direct support level.

D--Support items that are removed, replaced, used at depot, mobile depot, specialized repair activity only.

(b) The maintenance code entered in the fourth position indicates whether the item is to be paired and identifies the lowest maintenance level with the capability to perform complete repair (i.e., all authorized maintenance functions). This position will contain one of the following maintenance codes:

Code *Application/Explanation*
D--The lowest maintenance level of complete repair of the support item is the depot level.

Z--Nonreparable. No repair is authorized.

(3) *Recoverability code.* Recoverability codes are assigned to support items to indicate the disposition action on unserviceable items. The recoverability code is entered in the fifth position of the Uniform CMR Code format as follows:

Recoverability

<i>codes</i>	<i>Definition</i>
Z--Nonreparable item.	When unserviceable, condemn and dispose at the level indicated in position 3.
D--Reparable item.	When beyond lower level repair capability, return to depot. Condemnation and disposal not authorized below depot level.
L--Reparable item.	Repair, condemnation, and disposal not authorized below depot/specialized repair activity level.

c. *National Stock Number.* Indicates the National stock number assigned to the item and will be used for requisitioning purposes.

d. *Part Number.* Indicates the primary number used by the manufacturer (individual, company, firm, corporation, or Government activity), which controls the design and characteristics of the item by means of its engineering drawings, specifications, standards, and inspection requirements to identify an item or range of items.

NOTE

When a stock numbered item is requisitioned, the repair part received may have a different part number than the part being replaced.

e. *Federal Supply Code for Manufacturer (FSCM).* The FSCM is a 5-digit numeric code listed in SB 708-42 which is used to identify the manufacturer, distributor, or Government agency, etc.

f. *Description.* Indicates the Federal item name and, if required, a minimum description to identify the item.

g. *Unit of Measure.* Indicates the standard of the basic quantity of the listed item as used in performing the actual maintenance function. This measure is expressed by a two-character alphabetical abbreviation (e.g., ea, in, pr, etc). When the unit of measure differs from the unit of issue, the lowest unit of issue that will satisfy the required units of measure will be requisitioned.

h. *Quantity Incorporated in Unit.* Indicates the quantity of the item used in the breakout shown on the illustration figure, which is prepared for a functional group, subfunctional group, or an assembly.

4. Special Information

a. Usable on codes are shown in the description column. Uncoded items are applicable to all models. Identification of the usable on codes used in this publication are:

<i>Code</i>	<i>Used on</i>
2H8	AN/TVS-2
2H9	AN/TVS-2A
AJO	AN/TVS-2B

b. The following publication pertains to the AN/TVS-2, AN/TVS-2A, AN/TVS-2B and its components:

TM 11-5855-202-13, Night Vision Sight, Crew Served Weapons AN/TVS-2 and AN/TIS-2A.

c. Action change codes indicated in the left-hand margin of the listing page denote the following:

- N--Indicates an added item.
- C--Indicates a change in data.
- R--Indicates a change in NSN only.

5. How to Locate Repair Parts

a. When National stock number or part number is unknown.

(1) First. Using the table of contents, determine the functional group within which the item belongs. This is necessary since illustrations are prepared for functional groups and listings are divided into the same groups.

(2) Second. Find the illustration covering the functional group to which the item belongs.

(3) Third. Identify the item on the illustration and note the illustration figure and item number of the item.

(4) Fourth. Using the Repair Parts Listing, find the figure and item number noted on the illustration.

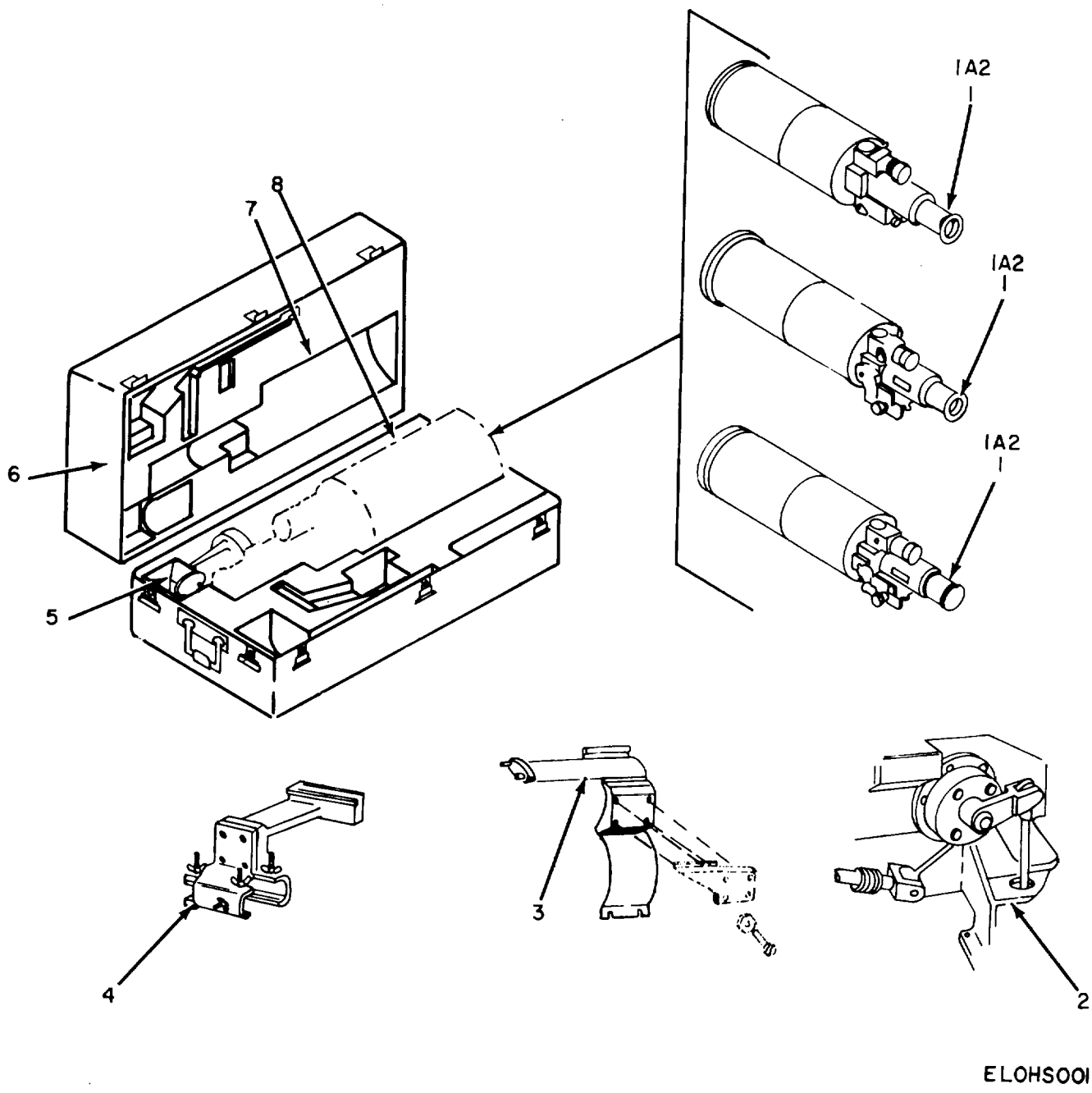
b. When National stock number or part number is known.

(1) First. Using the Index of National Stock Numbers and Part Numbers, find the pertinent National stock number or part number. This index is in NIIN sequence followed by a list of part numbers in alphameric sequence, cross-referenced to the illustration figure number and item number.

(2) Second. After finding the figure and item number, locate the figure and item number in the repair parts list.

6. Abbreviations

Not applicable.



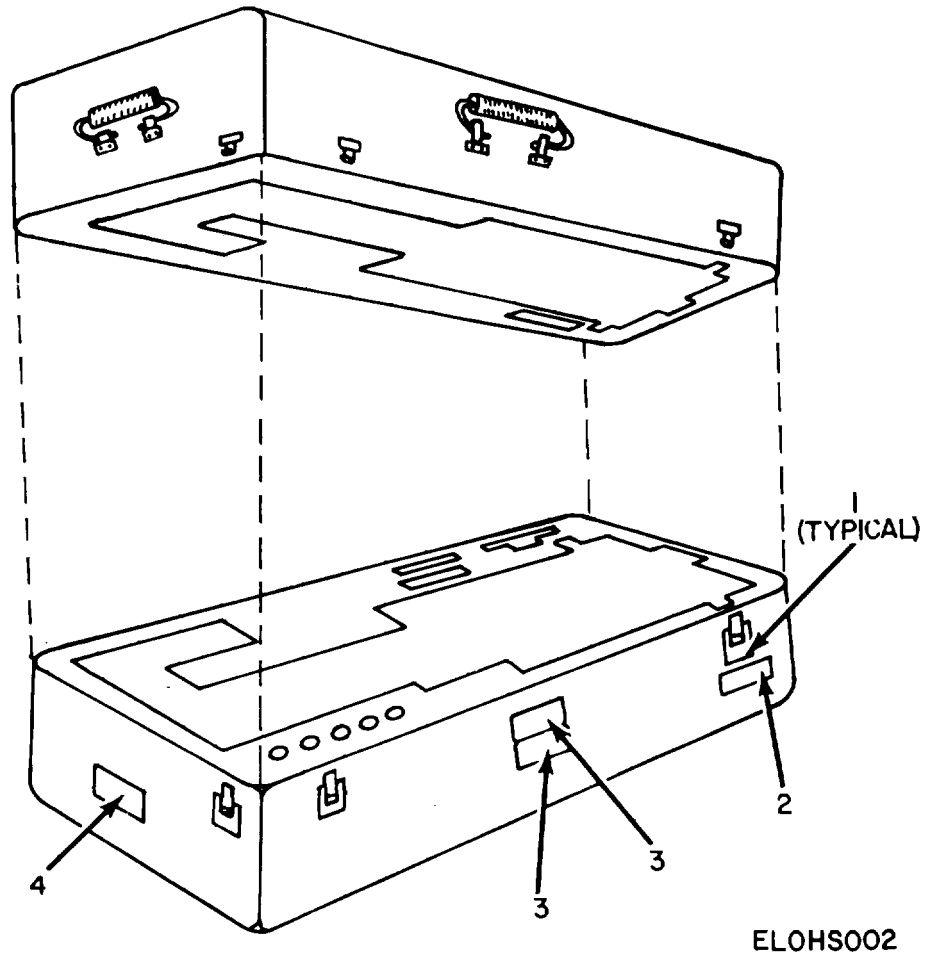
ELOHS001

Figure 1. Night Vision Sight, Crew Served Weapons AN/TVS-2, AN/TVS-2A, and AN/TVS-2B.

SECTION II

TM11-5855-202-23P

(1) ILLUSTRATION		(2)	(3)	(4)	(5)	(6)	(7)	(8)
(a) FIG NO.	(b) ITEM NO.	SMR CODE	NATIONAL STOCK NUMBER	PART NUMBER	FSCM	DESCRIPTION USABLE ON CODE	U/M	QTY INC IN UNIT
						GROUP 00 NIGHT VISION SIGHT, CREW SERVCED WEAPONS AN/TV-2, AN/TVS-2A, AND AN/TVS-2B		
1	1	PDODD	5855-00-409-0915	MX7794BTVS2	80058	SIGHT SUBASSY,N/V..... AJO	EA	1
1	1	POODD	5855-00-791-1653	MX7794ATVS2	80058	SIGHT SUBASSY,N/V..... 2H9	EA	1
1	1	PDODD	5855-00-937-1662	MX7794TVS2	80058	SIGHT SUBASSY,N/V..... 2H8	EA	1
1	2	PAOZZ	1005-00-52-3811	11635905	19207	ADAPTER ASSEMBLY	EA	1
1	3	PAOZZ	5855-00-189-6084	SC0645720	80063	ADAPTER ASSEMBLY	EA	1
1	4	PAOZZ	5855-00-911-0703	SCC614826	80063	ADAPTER ASSEMBLY	EA	1
1	5	PAFDD	5855-00-925-6896	SC0614350	80063	EYEPIECE ASSEMBLY	EA	1
1	6	PAODD	5855-00-936-8896	SC064581	80063	CASE,CARRYING..... AJO	EA	1
1	6	PAODD	5855-00-903-4043	SC0614377	80063	CASE,CARRYING 2H8,2H9	EA	1
1	7	PAOZZ	5855-00-762-4820	SCD645684	80063	CUSHION,TOP AJO	EA	1
1	7	PAOZZ	5855-00-999-9260	13213E2315	97403	CUSHION,TOP 2B8,2H9	EA	1
1	8	PAOZZ	5855-00-762-4833	SCD645685	80063	CUSHION,BOTTOM..... AJO	EA	1
1	8	PAOZZ	5855-00-999-9261	13213E2316	97403	CUSHION,BOTTOM 2H,2R9	EA	1
					5			



ELOHS002

Figure 2. Case, Carrying.

SECTION II

TM11-5855-202-23P

(1) ILLUSTRATION		(2)	(3)	(4)	(5)	(6)	(7)	(8)
(a) FIG NO.	(b) ITEM NO.	SMR CODE	NATIONAL STOCK NUMBER	PART NUMBER	FSCM	DESCRIPTION USABLE ON CODE	U/M	QTY INC IN UNIT
						GROUP 01 CASE CARRYING		
2	1	XDFZZ	5340-00-975-2126	MS18015-1	96506	LATCH	EA	6
2	2	XDFZZ		SB645676	80063	TAG,IDENTIFICATION..... AJO	EA	1
2	3	XDFZZ		SCB645678	80063	PLATE,IDENT AJO	EA	2
2	3	XDFZZ		SCB614476	80063	PLATE,IDENT 2H8,2H9	EA	1
2	4	XDFZZ		SCB645577	80063	TAG,IDENTIFICATION..... AJO	EA	1
2	4	XDFZZ		SCB614376	80063	TAG,IDENTIFICATION..... 2H822H9	EA	1
						7		

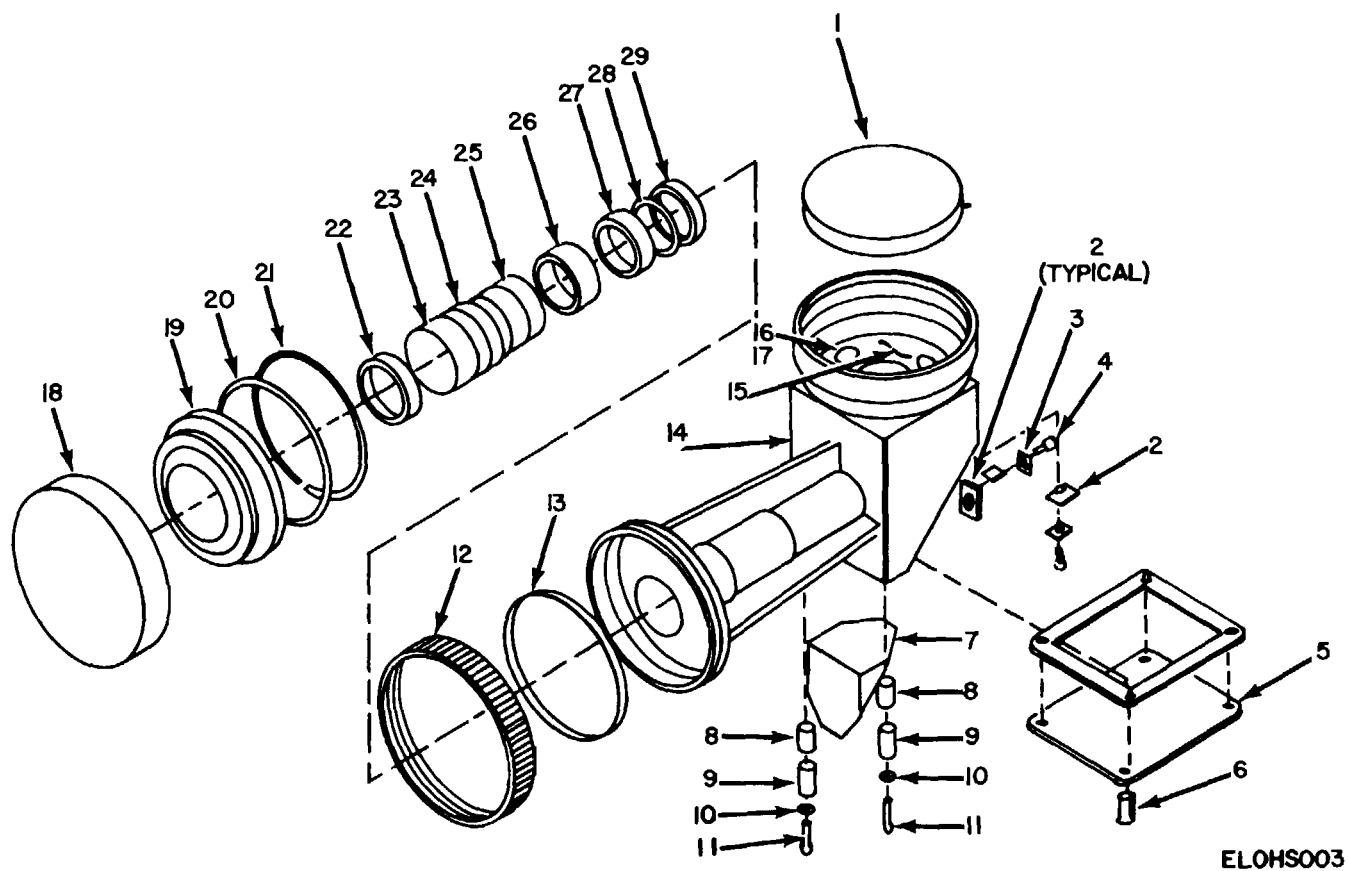
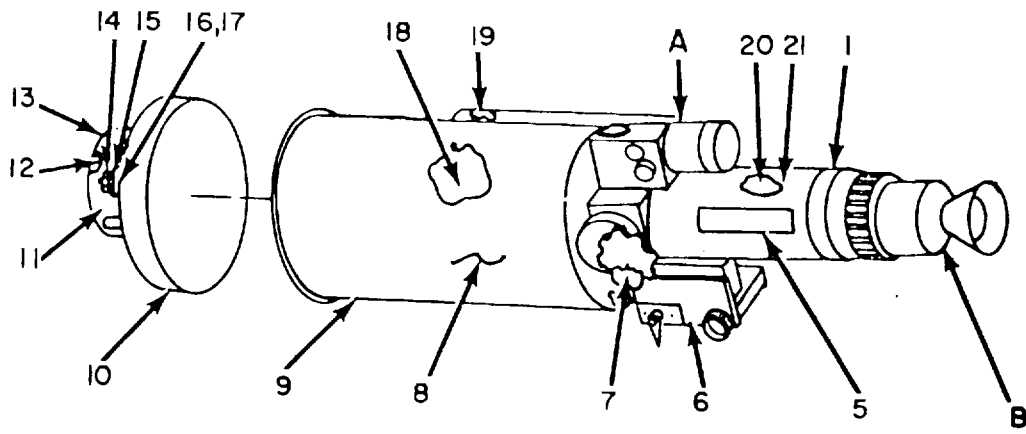
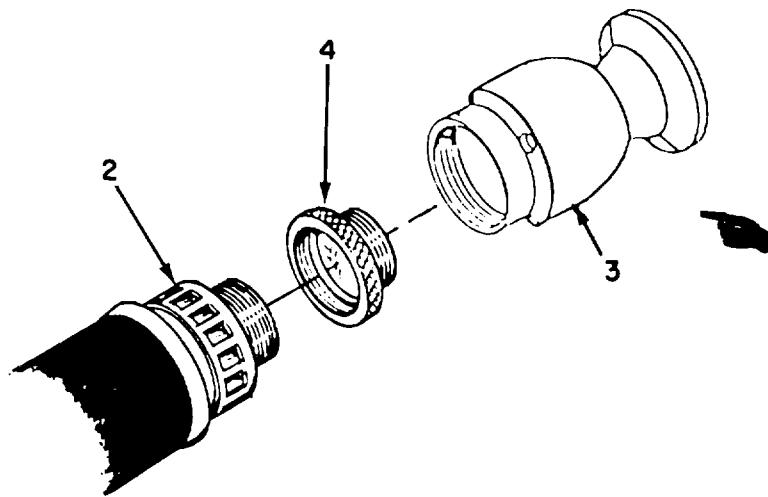
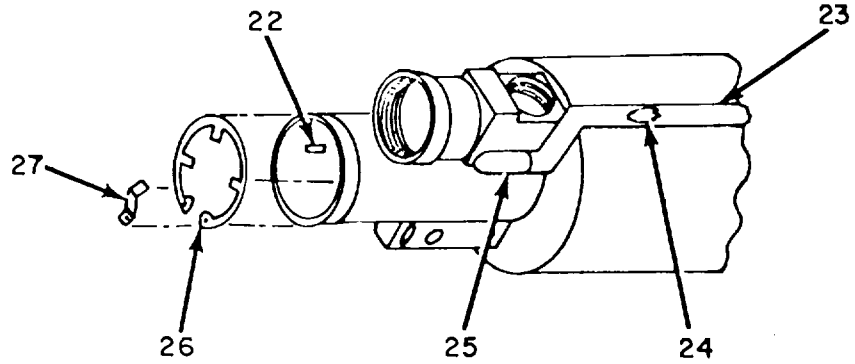


Figure 3. Eyepiece Assembly, Right Angle

(1) ILLUSTRATION		(2)	(3)	(4)	(5)	(6)	(7)	(8)
(a) FIG NO.	(b) ITEM NO.	SMR CODE	NATIONAL STOCK NUMBER	PART NUMBER	FSCM	DESCRIPTION USABLE ON CODE	U/M	QTY INC IN UNIT
						GROUP 02 EYEPICE ASSEMBLY, RIGHT ANGLE		
3	1	PADZZ	5855-00-941-1787	SCB614604	80063	WINDOW	EA	1
3	2	XDDZZ		SCB341352-1	80063	BRACKET AND PAD	EA	2
3	3	PADZZ	5310-00-224-0747	MS35338-136B	96906	WASHER, LOCK	EA	2
3	4	PADZZ	5305-00-999-6878	SCB614415-3	80063	SCREW, MACHINE	EA	4
3	5	PADZZ	5935-00-940-7980	SCC614353-1	80063	COVER AND GSKT ASSY	EA	1
3	6	PADZZ	5305-00-459-4687	MS51957-14B	96906	SCREW, MACHINE	EA	4
3	7	PADZZ	5855-00-903-4031	SCD614342	80063	PRISM, OPTICAL INSTR	EA	1
3	8	PADZZ	5855-00-903-4032	SCB614362	80063	SPACER, PRISM	EA	2
3	9	PADZZ	5855-00-903-4062	SCB614363	80063	SPACER, SHOCK	EA	2
3	10	PADZZ	5310-00-409-1763	MS15795-8058	96906	WASHER, FLAT	EA	2
3	11	PADZZ	5305-00-068-5415	SCB614416-4	80063	SCREW, MACHINE	EA	2
3	12	PAFZZ	5310-00-914-8274	SC0614600-1	80063	NUT, RETAINING	EA	1
3	13	XDFZZ		SCEL64310	80063	PING, RETANING	EA	1
3	14	PADZZ	5855-00-903-4061	SCD614297-1	80063	HOUSING, PRISM	EA	1
3	15	XDDZZ		SCR614355	80063	SPACER	EA	1
3	16	XDDZZ		NAS1395C04	90202	INSERT, SCREW	EA	4
3	17	PADZZ	5310-00-725-4719	SCB614355	80063	NUT, SLFLK, CLINCH	EA	3
3	18	PAOZZ	5855-00-943-5309	SCC614415	80063	CAP, EYEPICE	EA	1
3	19	PADZZ	5855-00-903-4055	SCC614351-1	80063	INSULATOR ASSEMBLY	EA	1
3	20	PAFZZ	5330-00-063-0602	MS9021-038	96906	PACKING, PREFORMED	EA	1
3	21	PAFZZ	5330-00-804-2747	59371-035	96906	PACKING, PREFOPMEO	EA	1
3	22	PADZZ	5855-00-903-4070	SCB614364	80063	PING	EA	1
3	23	PADZZ	5855-00-930-7047	SCB614347	80063	LENS, OPTICAL INSTR	EA	1
3	24	PADZZ	5855-00-903-4306	SCC614298	80063	SPACER	EA	1
3	25	PADZZ	5855-00-903-4068	SCC614341-1	80063	LENS, OPTICAL INSTK	EA	1
3	26	PADZZ	5855-00-903-4060	SCB614349	80063	SPACER, SLEEVE	EA	1
3	27	PADZZ	5855-00-903-4063	SCC341640-1-	80063	LENS, OPTICAL INST	EA	1
3	28	PADZZ	5330-00-551-8250	MS9021-020	96906	PACKING, PREFORMEO	EA	1
3	29	PADZZ	5E55-00-903-4066	SCB614354	80063	RING	EA	1



DETAIL A (REVERSED SIDE)



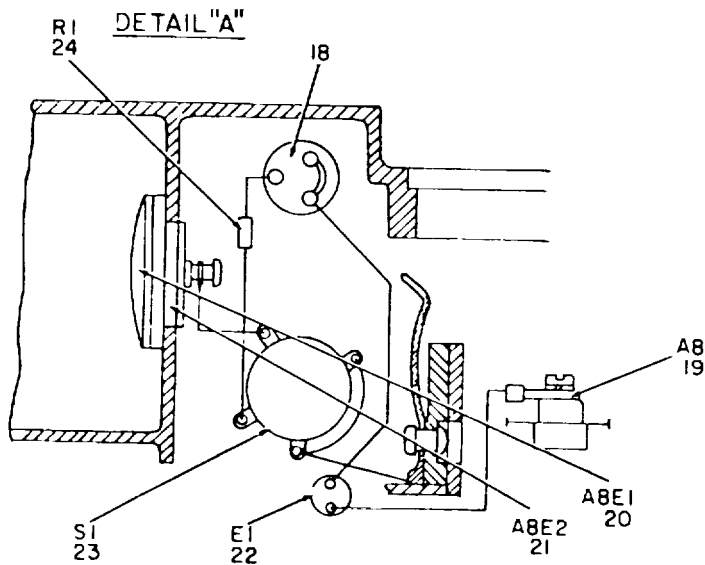
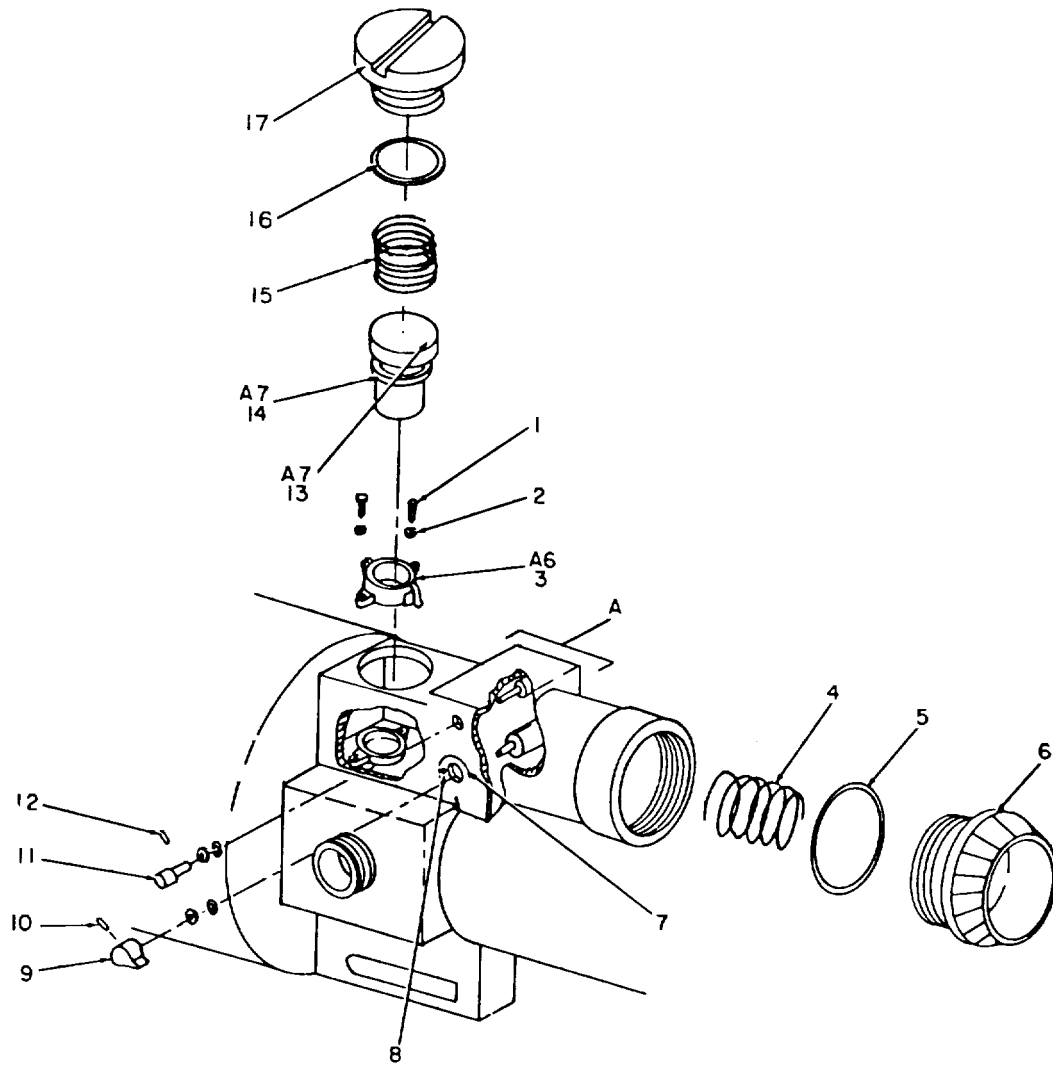
DETAIL B

ELOHS019

Figure 4. Night Vision Sight Subassembly, MX-7794/TVS-2, MX-7794A/TVS-2, MX-7794B/TVS2

(1) ILLUSTRATION		(2)	(3)	(4)	(5)	(6)	(7)	(8)
(a) FIG NO.	(b) ITEM NO.	SMR CODE	NATIONAL STOCK NUMBER	PART NUMBER	FSCM	DESCRIPTION USABLE ON CODE	U/M	QTY INC IN UNIT
						GROUP 03 NIGHT VISION SIGHT SUBASSEMBLY, MX-77S4/TVS-2HMX-7794A/TVS-2, MX-7794i/TVS-2		
4	1	PAFZZ	5310-00914-8266	SC0614600-2	80063	NUT,RETAINING AJO	EA	1
4	Z	PAFDL	5855-00-941-3037	SC0614601	80063	EYEPIECE ASSEMBLY	EA	1
4	3	PAODD	5855-00-925-0114	SCD614703	80063	EYESHIELD ASSEMBLY	EA	1
4	4	PAFZZ	5855-00-165-3093	SCD649064	80063	ADAPTER RING	EA	1
4	5	XDDZZ		SCB614294	80063	PLATE IDENT	EA	1
4	6	PAFFF	5855-00-762-4814	SCD645657-1	80063	BOPE SIGHT ASSEMBLY AJO,2H9	EA	1
4	6	PAFFF	5855-00-944-0949	SCD614305	80063	BORESIGHT ASSEMBLY 2H8	EA	1
4	7	XDFZZ		SCB614464	80063	LOCKNUT AJO,2H9	EA	1
4	8	PADZZ	5855-00-903-4219	SCD614381	80063	HOUSING ASSEMBLY AJO,2H9	EA	1
4	9	PACZZ	5855-00-762-4837	SC645175-1	80063	HOOD ASSEMBLY	EA	1
4	10	PAODD	5855-00-762-4800	SC0645663	80063	COVER ASSEMBLY,BRSIT AJO,2H9	EA	1
4	10	PAOZZ	5855-00-791-3372	SCD614480	80063	COVER ASSEMBLY 2H8	EA	1
4	11	PADZZ	5855-00-791-3371	SCC614488-1	80063	FILTER WHEEL ASSY	EA	1
4	12	PAFZZ	5305-00-419-3329	SCB614411	80063	SCREW,MACHINE	EA	3
4	13	XDDZZ		SCC645664	80063	COVER ASSEMBLY AJO,2H9	EA	1
4	13	XDDZZ		SCC614492	60063	COVER ASSEMBLY 2H8	EA	1
4	14	XDFZZ		SCC614486	80063	KNOB	EA	1
4	15	XDFZZ		SCB614491	80063	SPACER,NONMETALLIC	EA	1
4	16	XDFZZ		SCB614501	80063	WASHER,LOCK,MOD AJO,2H9	EA	1
4	17	PADZZ	5310-00-869-1018	MS35650-3255	96906	NUT,PLAN,HEXAGON	EA	1
4	18	PAFDL	5855-00-762-4816	SCD645667	80063	LENS ASSY,OBJECTIVE	EA	1
4	19	PADZZ	5855-00-791-3374	SCD614498	80063	WIRING HARNESS AJO,2H9	EA	1
4	19	PADZZ	5855-00-937-1893	SCD614279	80063	WIRING HARNESS 2H8	EA	1
4	20	PAFDL	5855-00-051-2792	MX7854UV	80058	IMAGE INTENSIFIER	EA	1
4	21	PADZZ	5855-00-936-895t	SCD614293	80063	HOUSING ASSEMBLY AJO,2H9	EA	1
4	21	PADZZ	5855-00-937-1890	SCD614293	80063	HOUSING ASSEMBLY 2H8	EA	1
4	22	PAFZZ	5310-00-276-0112	AN122683	88044	PIN DOWEL	EA	1
4	23	PAFZZ	5975-00-474-9988	SCD614320-2	80063	SHIELD,CABLE,MLDG	EA	1
4	24	PAFZZ	5975-00-475-0005	SCD614320-3	80063	SHIELD,CABLE,MLDG	EA	1
4	25	PFZZ	5855-00-925-8009	SCB614406	80063	SHIELD,WIRE	EA	1
4	26	PAFZZ	5855-00-925-8058	13213E2373	97403	CONTACT SPRING	EA	1
4	27	PAFZZ	5655-00-937-1891	SC6L14280	80063	SPRING,CONTACT	EA	1

Change 1 11



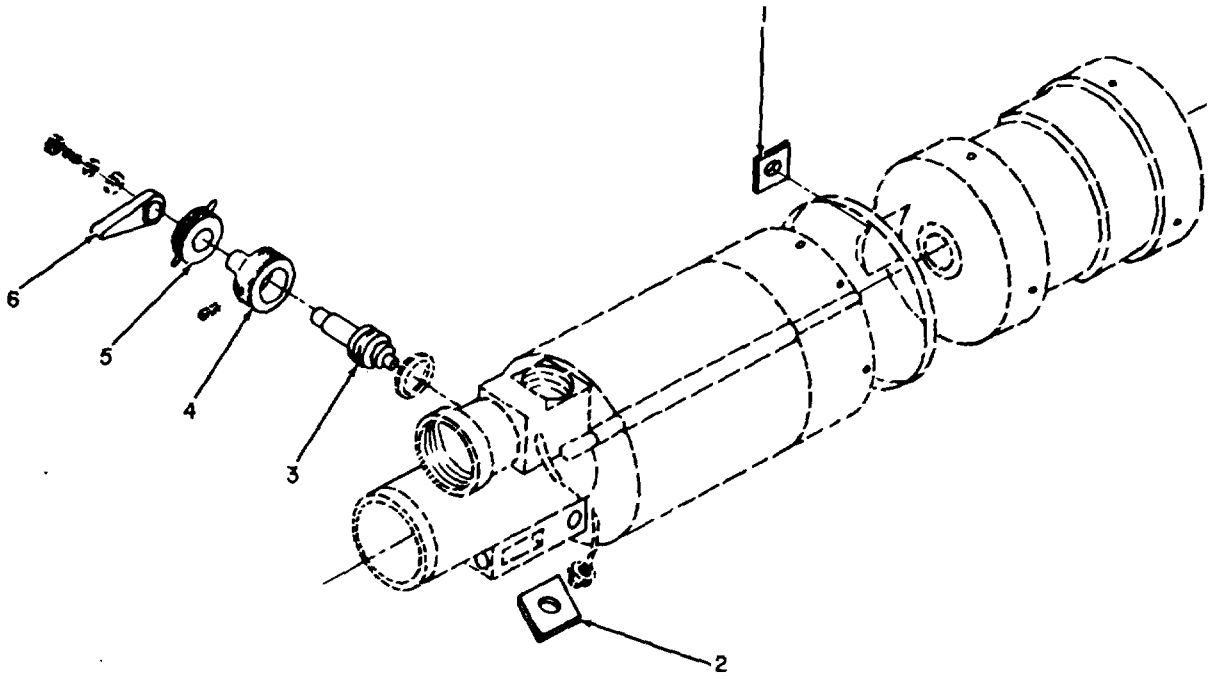
ELOHS005

Figure 5. Night Vision Sight Subassembly, MX-7794/TVS-2, MX-7794A/TVS-2, MX-7794B/TVS-2, Oscillator and Battery Views.

SECTION II

TM11-5855-202-23P

(1) ILLUSTRATION		(2)	(3)	(4)	(5)	(6)	(7)	(8)	
(a) FIG NO.	(b) ITEM NO.	SMR CODE	NATIONAL STOCK NUMBER	PART NUMBER	FSCM	DESCRIPTION USABLE ON CODE	U/M	QTY INC IN UNIT	
5	1	PAFZZ	5305-00-224-0783	MS51957-48	96906	SCREW,MACHINE	EA	2	
5	2	PAFZZ	5310-00-177-1301	MS35338-1348	96906	WASHER, LOCK.....	EA	4	
5	3	PAFZZ	5855-00-999-9262	SCC614442-1	80063	CONTACT, OSCILATOR	EA	1	
5	4	PAOZZ	5360-00-947-3743	SCB514427	80063	SPRING, BATTERY	EA	1	
5	5	PAOZZ	5330-00-551-8251	MS9021-028	96906	PACKING, PREFORMED	EA	1	
5	6	PAOZZ	5855-00-941-5887	SCC614431	80063	CAP, BATTERY	EA	1	
5	7	PADZZ	5975-00-937-1864	SCB614281	80063	PLATE, SWITCH	AJO, 2H9	EA	1
5	8	PAFZZ	5305-00-L50-3485	MS16995-9B	96906	SCREW, MODIFIED	EA	2	
S	9	PAFZZ	5355-00-904-9517	SCC614405	80063	KNOB	EA	1	
5	10	PAFZZ	5305-00-999-6877	SCB614421-4	80063	SETSCREW	EA	1	
5	11	PAFZZ	5355-00-961-1512	66144	83003	KNOB.....	AJO, 2H9	EA	1
5	12	PAFZZ	5305-00-926-5595	S18064-6	96906	SETSCREW, HEX SOCKET	EA	1	
5	13	PAFZZ	5855-00-922-6435	SCC614440-1	80063	CAP ASSEMBLY, OSC	EA	1	
5	14	PAFZZ	5855-00-904-0684	MIL052374	81349	OSCILLATOR, HIGH Y	EA	1	
5	15	PAFZZ	5360-00-946-7340	SCB614434	80063	SPRING, COVEP. OSC	EA	1	
5	16	PAFZZ	5330-00-551-8252	MS9021-030	96906	PACKAGING, PREFORMED	EA	1	
5	17	PAFZZ	5855-00-762-4799	SCC645666	80063	COVER, OSCILLATOR	EA	1	
5	18	PAFZZ	5905-00-499-6862	SC643672	80063	RESISTOR, VARPABLE	EA	1	
5	19	PAFZZ	5940-00-924-8044	SCB614432-1	80063	TERMINAL ASSEMBLY	EA	1	
5	20	XDDZZ		SCB614429	80063	TERMINAL, BATTERY	EA	1	
5	21	XDFZZ		SCB614428	80063	INSULATOR, TERMINAL	EA	1	
5	22	XDFZZ		SCD645675-3	80063	TERMINL, LUG	EA	1	
5	23	PAFZZ	5930-00-939-7438	SC0614425	80063	SWITCH, ROTARY	EA	1	
5	24	PAFZZ	5905-00-808-6136	RC07GF361J	81349	RESTSTOR, FIXED. CGN P	EA	1	



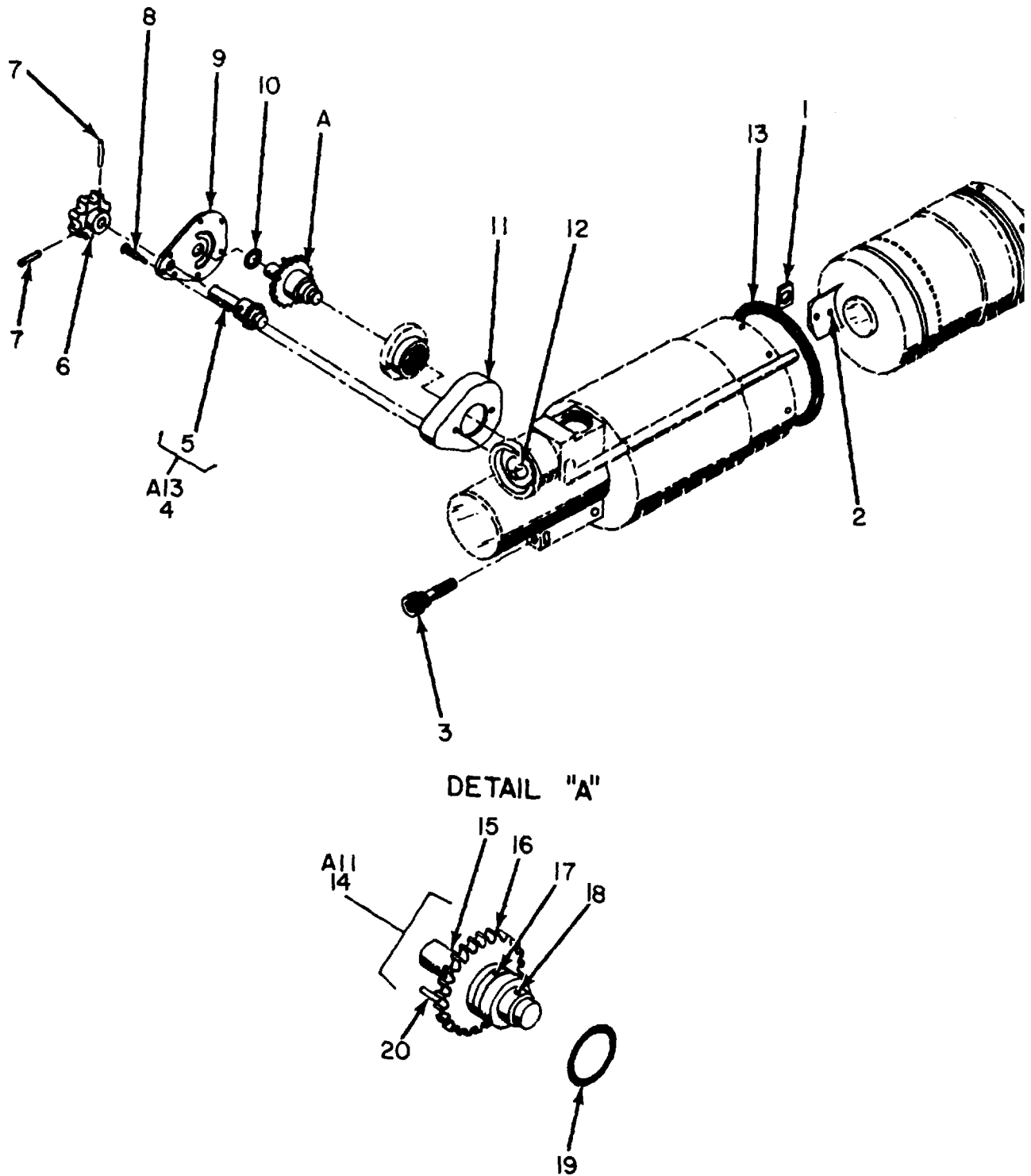
ELOHS006

Figure 6. Night Vision Sight Subassembly, MX-7794/TVS-2, MX-7794A/TVS-2., MX-77948/TVS-2, Focusing Section for MX-7794/TVS-2.

SECTION II

TM11-5855-202-23P

(1) ILLUSTRATION		(2)	(3)	(4)	(5)	(6)	(7)	(8)
(a) FIG NO.	(b) ITEM NO.	SMR CODE	NATIONAL STOCK NUMBER	PART NUMBER	FSCM	DESCRIPTION USABLE ON CODE	U/M	QTY INC IN UNIT
6	1	PAFZZ	5822-00-941-5881	SCC614451	80063	BLOCK SLIDER 2H8	EA	1
6	2	XDFZZ		SCB614313	80063	BLOCK SLIDER 2H8	EA	1
6	3	PADZZ	5855-00-925-9507	SCC614401	80063	SHAFT, FOCUS 2H8	EA	1
6	4	PADZZ	5855-00-925-7887	SCC614403	80063	SHAFT, LOCK 2H8	EA	1
6	5	XDFZZ		SCC614402	80063	NUT, ADJUSTABLE 2H8	EA	1
6	6	PAFZZ	5355-00-924-8938	SC614398	80063	KNOB, FOCUS 2H8	EA	1
					15			



NOTE: FOR COMPLETE REFERENCE
DESIGNATION PREFIX WITH IA2

ELOHS007

Figure 7. Night Vision Sight Subassembly, MX-7794/TVS-2, MX-7794A/TVS-2, MX-7794B/TVS-2, Focusing Section for MX-7794A/TVS-2 and MX-7794B/TVS-2.

(1) ILLUSTRATION		(2)	(3)	(4)	(5)	(6) DESCRIPTION	(7)	(8)
(a) FIG NO.	(b) ITEM NO.	SMR CODE	NATIONAL STOCK NUMBER	PART NUMBER	FSCM	USABLE ON CODE	U/M	QTY INC IN UNIT
7	1	PADZZ	5855-00-941-5881	SCB614451	80063	BLOCK,SLIDERAJO,2H9	EA	1
7	2	PAFZZ	5315-00-945-6388	MS9389-28	96906	PIN,STRAIGHT,HDLS.....AJO,2H9	EA	1
7	3	PADZZ	5355-00-018-4523	SCB614461	80063	KNOBAJO,2H9	EA	1
7	4	PADZZ	5855-00-791-3427	SCB614482-1	80063	SHAFT ASSY, FOCUS.....AJO,2H9	EA	1
7	5	XDDZZ		SCB614460	80063	SHAFT, FOCUSAJO,2H9	EA	1
7	6	XDFZZ	5355-00-018-4523	SCC614495	80063	KNOB FOCUSAJO,2H9	EA	1
7	7	XDDZZ		MS9389-53	96906	PIN,STRAIGHT,HDLS.....AJO,2H9	EA	1
7	8	PAFZZ	5305-00-764-2964	MS51959-4	96906	SCREW,MACHINEAJO,2H9	EA	1
7	9	PADZZ	5855-00-791-1638	SCC614466	80063	PLATE COVERAJO,2H9	EA	1
7	10	PAFZZ	5310-00-584-7981	MS16212-3	96906	WASHER, FLAT AJO	EA	1
7	11	PADZZ	5855-00-791-3428	SCC614467	80063	BOX,GEAR.....AJO,2H9	EA	1
7	12	PADZZ	5315-00-823-8745	MS6562-215	96906	PIN, SPRING AJO	EA	1
7	13	PADZZ	5330-00-999-9263	SCB614409	80063	PACKING PREFORMED AJO ,2H	EA	1
7	14	PADZZ	5855-00-791-3423	SCB614481	8a0063	CAMSHAFT ASSEMBLYAJO,2H9	EA	1
7	15	XDDZZ		SCC614472	80063	SHAFT FOCUSAJO,2H9	EA	1
7	16	XDDZZ		SCC614473-1	80063	GEAR,CAMSHAFT.....AJO,2H9	EA	1
7	17	XDDZZ	5305-00-051-448	MS51973-8	96906	SETSCREW,HEX SKT.....AJO,2H9	EA	1
7	18	PADZZ	5315-00-871-7863	MS9390-16	96906	PIN,STRAIGHT,HDLS.....AJO,2H9	EA	1
7	19	PADZZ	5330-00-579-8108	M528775-111	96906	PACKING,PREFORMED AJO,2H9	EA	1
7	20	PADZZ	5315-00-524-0523	MS9389-30	96906	PIN,STRAINGHT,HDLSAJO,2H9	EA	1

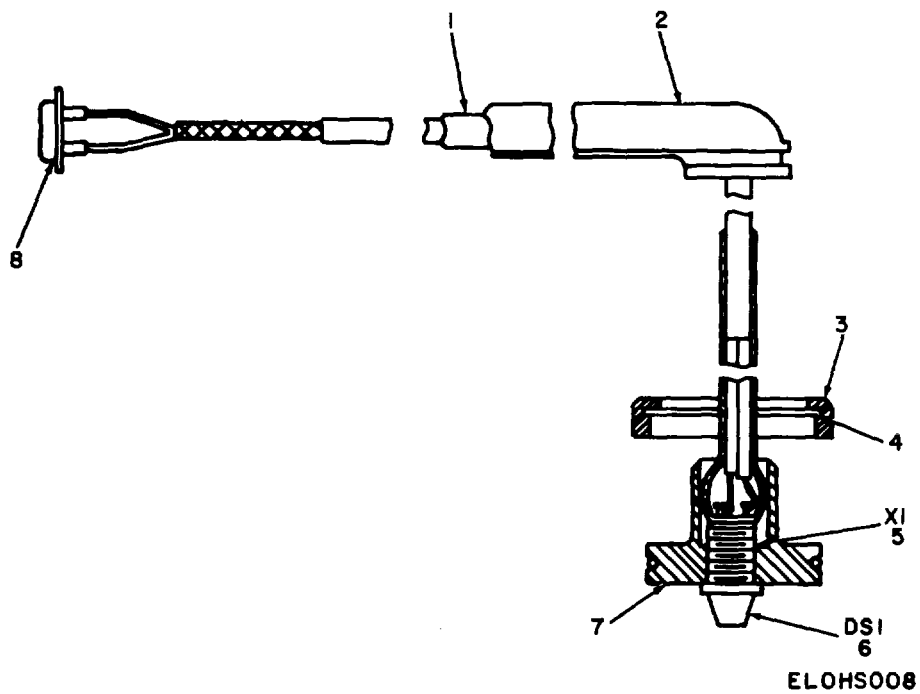
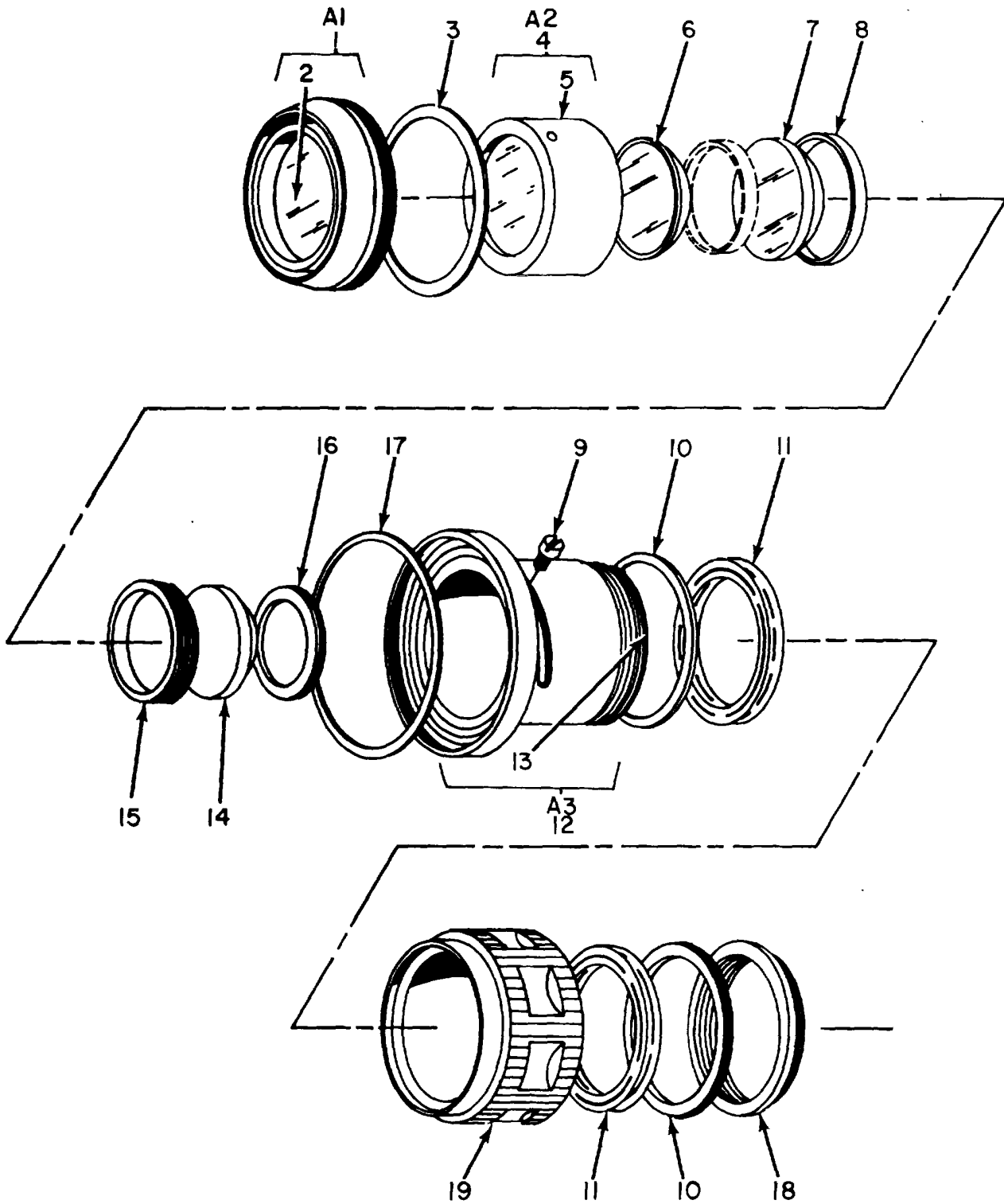


Figure 8. Night Vision Sight Subassembly, MX-7794/TVS-2, MX-7794A/TVS-2, MX-7794B/TVS-2, Wiring Harness.

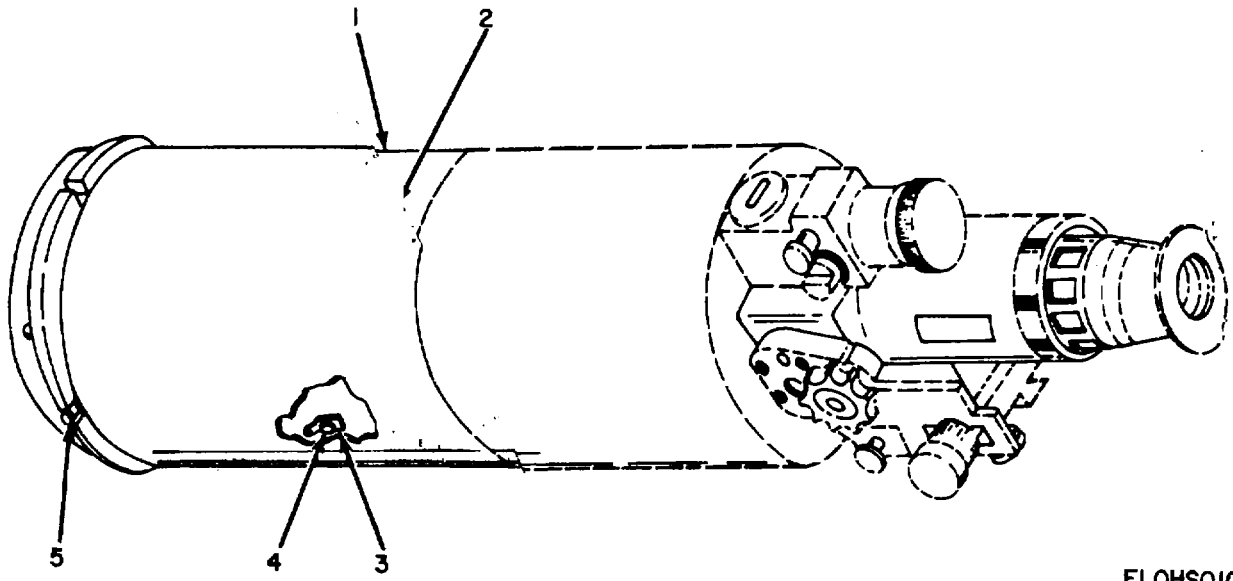
(1) ILLUSTRATION		(2)	(3)	(4)	(5)	(6)	(7)	(8)
(a) FIG NO.	(b) ITEM NO.	SMR CODE	NATIONAL STOCK NUMBER	PART NUMBER	FSCM	DESCRIPTION USABLE ON CODE	U/M	QTY INC IN UNIT
8	1	XDFZZ		SCD614320-1	80063	SHIELD.CABLE MLDG	EA	1
8	2	XDFZZ		SCB614407	80063	SHIELD,WIRE	EA	1
8	3	PAFZZ	5310-00-937-2016	SCC614283	80063	NUT RETAINER	EA	1
8	4	PADZZ	5330-00-584-1231	MS9021-016	96906	PACKING,PREFORMED	EA	1
8	5	PAFZZ	6210-00-560-1558	SCB614497	80063	LAMPHOLDER.....AJO,2H9	EA	1
8	5	PAFZZ	6210-00-809-5717	SCB614449	80063	LAMPHOLDER.....2H8	EA	1
8	6	PACZZ	6240-00-941-1255	SCB614441	80063	LAP,PILOT,MINTR	EA	1
8	7	XDDZZ		SCB614496	80063	HOUSING,LAMPHOLDER	EA	1
8	7	XDDZZ		SCC614282	80063	HOUSING,LAMPHOLDER	EA	1
8	8	XDFZZ		SCB614291	80063	TERIMNAL	EA	1
					19			



ELOHS009

Figure 9. Eyepiece Assembly

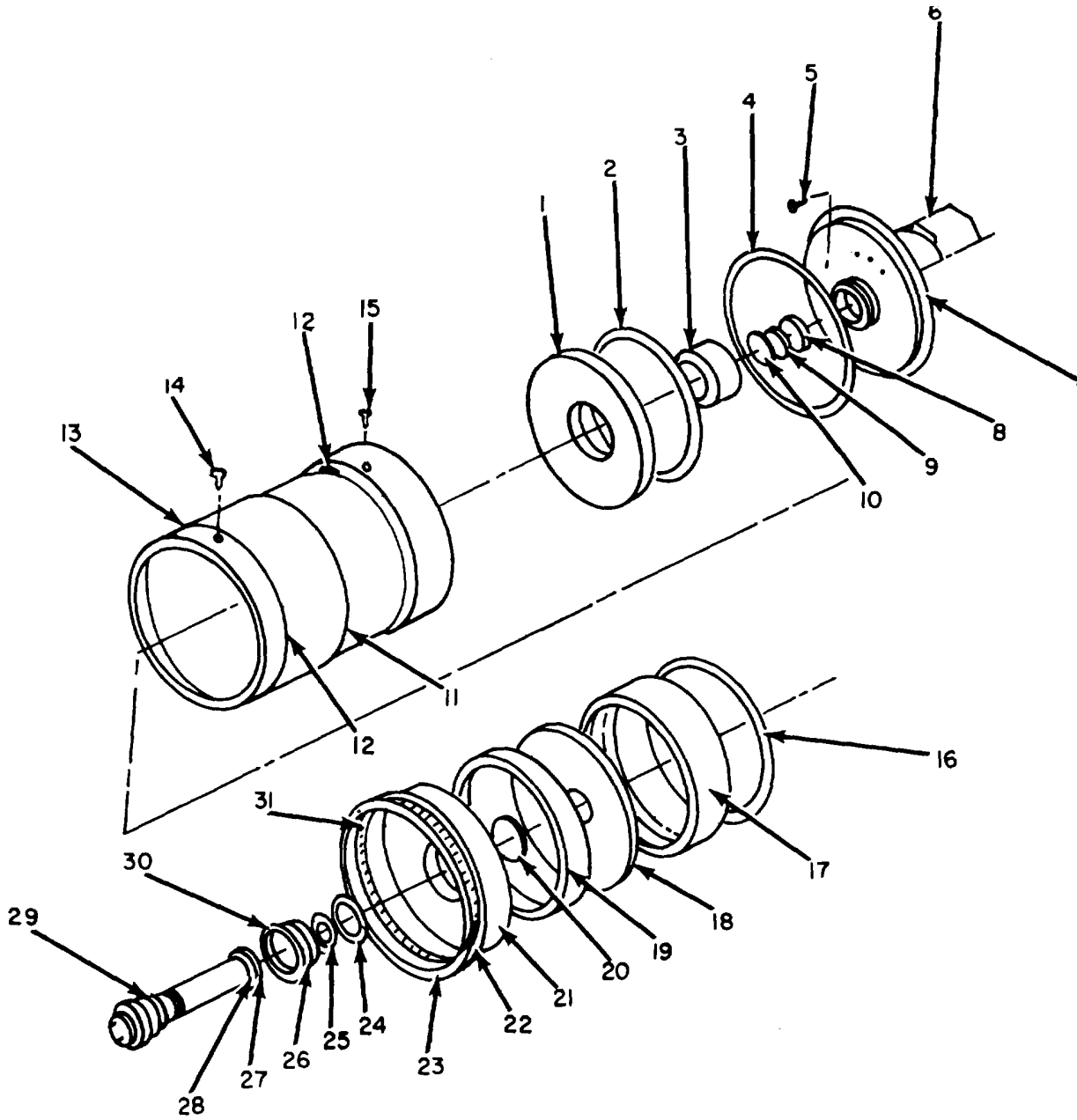
(1) ILLUSTRATION		(2)	(3)	(4)	(5)	(6)	(7)	(8)
(a) FIG NO.	(b) ITEM NO.	SMR CODE	NATIONAL STOCK NUMBER	PART NUMBER	FSCM	DESCRIPTION USABLE ON CODE	U/M	QTY INC IN UNIT
GROUP 0301 EYEPIECE ASSEMBLY								
9	1	PADZZ	5855-00-922-6440	SCC614602-1	80063	INSULATOR ASSEMBLY.....	EA	1
9	2	PADZZ	5855-00-941-1787	SCB614604	80063	WINDOW,EYEPIECE	EA	1
9	3	PADZZ	5330-00-804-2747	MS9021-035	96906	PACKING,PREFORMED	EA	1
9	4	PADZZ	5855-00-962-2518	SCC614607-1	80063	LENS CELL ASSEMBLY.....	EA	1
9	5	PADZZ	5855-00-791-1649	SCD614612	80063	CELL,EYEPIECE	EA	1
9	6	PADZZ	5855-00-791-1644	SCC614614	80063	ELEMENT, FIFTH	EA	11
9	7	PADZZ	5855-00-791-1628	SCB614608-1	80063	ELEMENT,3RD & 4TH.....	EA	1
9	8	PADZZ	5855-00-791-1637	SCC614611	80063	SPACER,4TH &5TH.....	EA	1
9	9	PADZZ	5855-0-962-6737	SCB614627	80063	STUD, DRIVE.....	EA	1
9	10	XDDZZ		SCB614625	80063	WASHER, FLAT	EA	2
9	11	PADZZ	5330-00-946-6373	SCB614626	80063	QUADRANT RING	EA	2
9	12	PADDD	5855-00-962-2520	SCD614616	80063	MAIN BODY ASSY.....	EA	1
9	13	PADZZ	5855-00-962-3069	SCD614620	80063	BODY,EYEPIECE.....	EA	1
9	14	PADZZ	5855-00-962-3069	SCC614617-1	80063	ELEMENT,1ST & 2ND	EA	1
9	15	PADZZ	5340-00-910-9452	SCC614621	80063	NUT,RETAINING	EA	1
9	16	PADZZ	5855-00-962-5554	SCB614622	80063	GASKET,EYEPIECE	EA	1
9	17	PADZZ	5330-00-060-0602	MS9021-038	96906	PACKING, PREFORMED	EA	11
9	18	PADZZ	5340-00-832-8258	SCC614706	80063	RING,RETAINING.....	EA	1
9	19	PADZZ	5855-00-962-3121	SCD614628	80063	RING,FOCUSING	EA	1
					21			



ELOHS010

Figure 10. Hood Assembly.

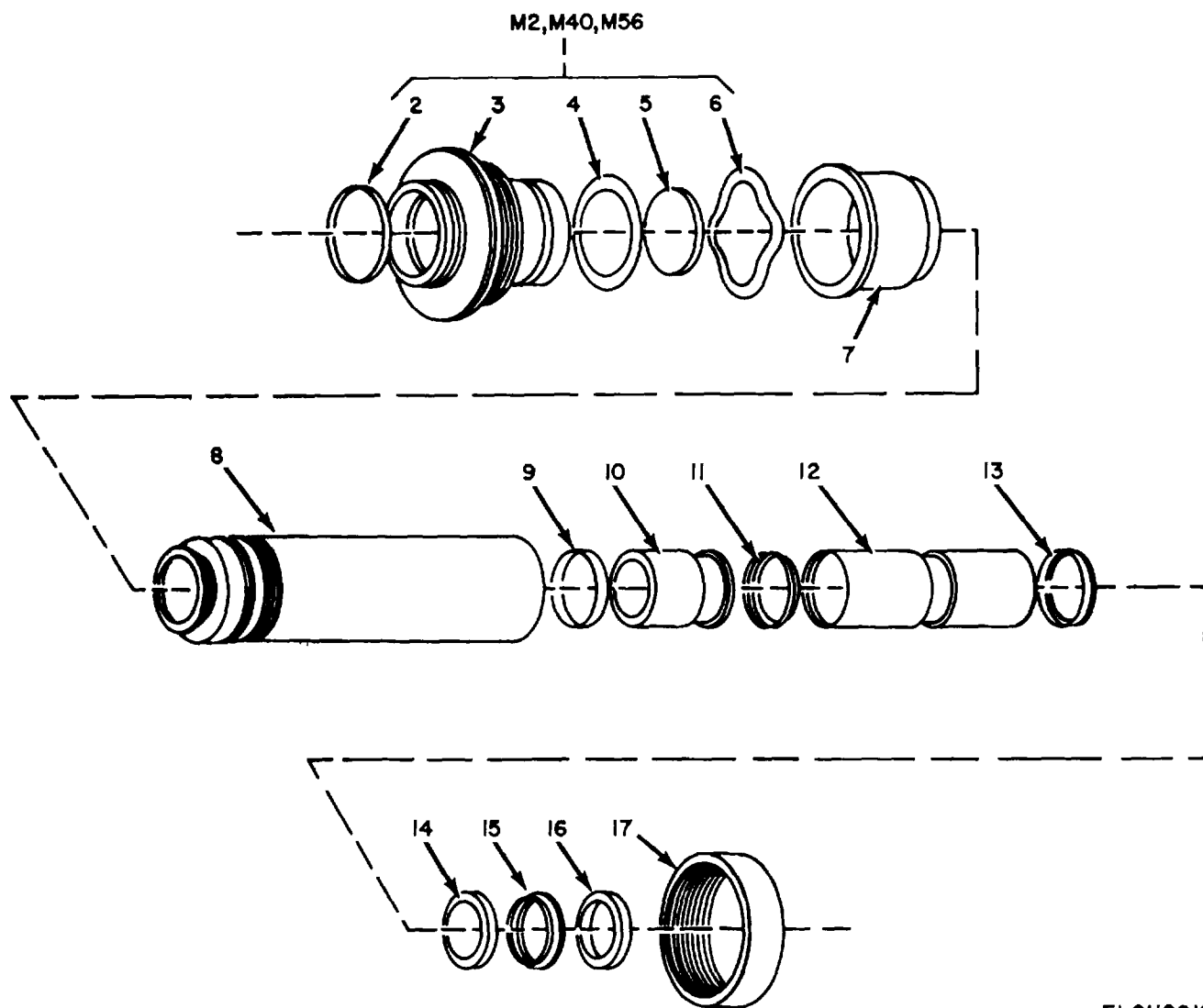
(1) ILLUSTRATION		(2)	(3)	(4)	(5)	(6)	(7)	(8)
(a) FIG NO.	(b) ITEM NO.	SMR CODE	NATIONAL STOCK NUMBER	PART NUMBER	FSCM	DESCRIPTION USABLE ON CODE	U/M	QTY INC IN UNIT
						GROUP 0302 HOOD ASSEMBLY		
10	1	XDFZZ		SCD345675-2	80063	HOOD	EA	1
10	2	PAFZZ	5305-00-402-4598	MS51957-18	96906	SCREW.PAN HEAD	EA	5
10	3	XDFZZ		SCD645675-3	80063	LUG,TERMINAL.....	EA	2
10	4	XDFZZ	5320-00-721-5243	MSL1535-78	96906	RIVET,SOLID	EA	2
10	5	XDFZZ	5320-00-637-5422	MS20470-A3-4	96906	RIVET,SOLID	EA	2
					23			



ELOHSOII

Figure 11. Objective Lens Assembly
24

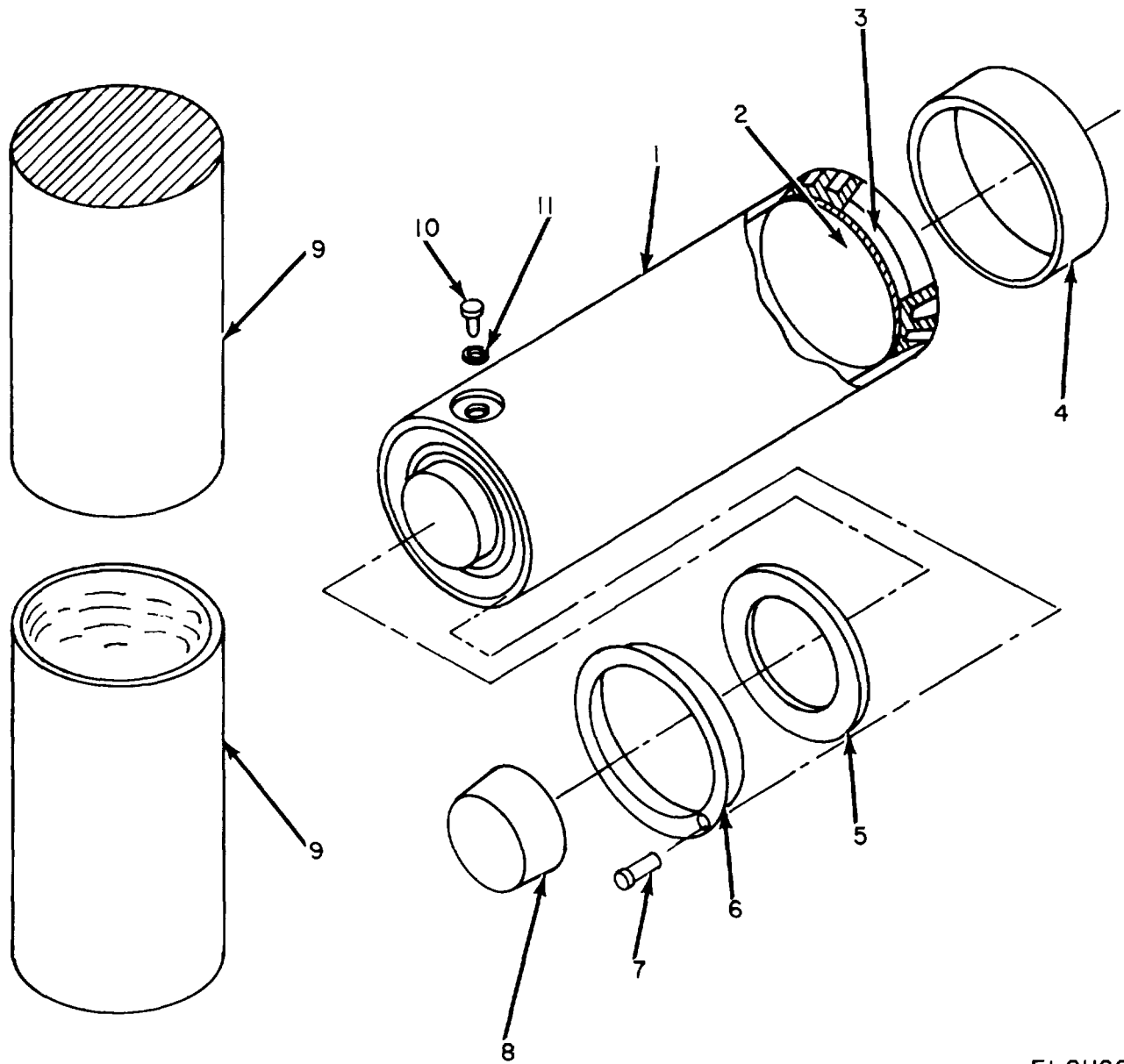
(1) ILLUSTRATION		(2)	(3)	(4)	(5)	(6)	(7)	(8)
(a) FIG NO.	(b) ITEM NO.	SMR CODE	NATIONAL STOCK NUMBER	PART NUMBER	FSCM	DESCRIPTION USABLE ON CODE	U/M	QTY INC IN UNIT
						GROUP 0303 OBJECTIVE LENS ASSEMBLY		
11	1	PADZZ	5855-00-903-4202	SCC614385	80063	MIRROR,PRIMARY.....	EA	1
11	2	PADZZ	5310-00-880-9173	SCC614393	80063	LOCKNUT	EA	1
11	3	PADZZ	5310-00-914-3290	SCB614392	80063	LOCKNUT	EA	1
11	4	PADZZ	5330-00-882-8056	MS9241-162	96906	PACKING,PREFORMED	EA	1
11	5	PADZZ	5305-00-421-7920	MS16955-108	96906	SCREW,CAP,SCH.....	EA	3
11	6	PADZZ	5855-00-903-4175	SCC6144382	80063	BRACKET POSITIONING	EA	1
11	7	PADZZ	5999-00-903-4168	SCD645669	80063	CAP, END	EA	1
11	8	PADZZ	5855-00-903-4201	SCC614396	80063	LENS CORRECTOR.....	EA	1
11	9	PADZZ	5855-00-903-4161	SC96iu3s	80063	SPACER	EA	1
11	10	PADZZ	5855-00-903-4176	SCD614391	80063	LENS CORRECTOR.....	EA	1
11	11	PADZZ	5330-00-584-1231	MS9021-016	96906	PACKNG,PREFORMED	EA	1
11	12	PADZZ	5330-00-118-9090	SCB614410	80063	PACKING,PREFORMED	EA	2
11	13	PADDD	5855-00-936-9006	SCD645670	80063	HOUSING ASSY, OBJV.....	EA	1
11	14	XDDZZ		SCB614400	80063	BUTTON, FRONT	EA	6
11	15	XDDZZ		SCB214399	80063	BUTTON, REAR.....	EA	6
11	16	PADZZ	5855-00-903-4150	SCC614389	80063	LENS COPRECTOR	EA	1
11	17	PADZZ	5855-00-903-4177	SCB614383	80063	SPACER	EA	1
11	18	PADZZ	5855-00-903-4151	SCC614388	80063	LENS CORRECTOR.....	EA	1
11	19	PADZZ	5855-00-930-7046	SCC614390	80063	SPACER	EA	1
11	20	PADZZ	5365-00-402-4457	SCD645671	80063	LOCKNUT	EA	1
11	21	PADZZ	5855-00-903-4162	SCC6144386	80063	LENS CORRECTOR.....	EA	1
11	22	PADZZ	5330-00-551-8251	MS9241-030	96906	PACKING,PREFORMED	EA	1
11	23	XDDZZ		SCC614316	80063	LOCKNUT	EA	1
11	24	PADZZ	5330-00-930-6295	MS9241-030	96906	PACKING,PREFORMED	EA	1
11	25	PADZZ	5365-00-406-3446	SCC645668	80063	RING, EXTERNALLY THD.....	EA	1
11	26	PADZZ	5855-00-903-4225	SCC614394	80063	HUB LENS ASSY.....	EA	1
11	27	PA0ZZ	5855-00-937-1665	SCB614315-1	80063	SHIM, SPACE	EA	1
11	28	PADZZ	5855-00-937-1666	SCB614315-2	80063	SHIM, SPACER.....	EA	1
11	29	PADDD	5855-00-937-1668	SCD614290	80063	RECTICLE ASSEMBLY	EA	1
11	30	PADZZ	5855-00-937-1667	SCB614315-3	80063	SHIM, SPACER.....	EA	1
11	31	PADZZ	5330-00-690-9743	MS9021-018	96906	PACKING,PREFORMED	EA	1



ELOHS012

Figure 12. Reticle Assembly.

(1) ILLUSTRATION		(2)	(3)	(4)	(5)	(6)	(7)	(8)
(a) FIG NO.	(b) ITEM NO.	SMR CODE	NATIONAL STOCK NUMBER	PART NUMBER	FSCM	DESCRIPTION USABLE ON CODE	U/M	QTY INC IN UNIT
						GROUP 030301 RETICLE ASSEMBLY		
12	1	PAFDL	5855-00-937-1670	SCC614287-1	80063	CELL ASSY.M40 SEL	EA	1
12	1	PADFL	5855-00-483-1219,	SCC614287-3	80063	CELL ASSY,M56 SEL	EA	1
12	1	PAFDL	5855-00-937-1895	SCC614287-2	80063	CELL ASSY,M2 SEL	EA	1
12	2	PADZZ	5855-00-937-1897	SCB614286	80063	PLATE,DIFFUSER	EA	1
12	3	PADZZ	5855-00-937-1896	SCC614289	80063	CELL, RECTILE	EA	1
12	4	PADZZ	5330-00-690-9743	MS9021-018	96906	PACKING, PREFORMED	EA	1
12	5	XDDZZ		SCC614325-1	80063	RETICLE.M40 SEL	EA	1
12	5	XDDZZ	6650-00-350-4181	SCD614325-3	80063	RETICLE,M56 SEL	EA	1
12	5	PMZZZ	5855-00-937-1894	SCD614325-2	80063	RECTICLE ,M2 SELECT.....	EA	1
12	6	XDDZZ		SCB614288	80063	WASHER, SPRING TNSN	EA	1
12	7	PADZZ	5855-00-937-1669	SCC614285	80063	HOUSING,.LENS	EA	1
12	8	PADZZ	5855-00-903-4329	SCD614371	80063	HOUSNG,LENS	EA	1
12	9	PADZZ	5855-00-903-4326	SCD614374-1	80063	LENS,FIELD FL'NR.....	EA	1
12	10	PADZZ	5855-00-903-4324	SCC614373	80063	SPACER, LENS	EA	1
12	11	PADZZ	5855-00-903-4316	SCD614372-1	80063	LENS,DOUBLET	EA	1
12	12	PADZZ	5855-00-903-4315	SCC614370	80063	SPACER,LENS	EA	1
12	13	XDDZZ		SCC614369	80063	LENS,DOUBLET	EA	1
12	14	PADZZ	5855-00-903-4309	SCB614368	80063	SPACER,LENS	EA	1
12	15	PADZZ	5855-00-903-4308	SCB614368	80063	LENS,DOUBLET	EA	1
12	16	XDDZZ		SCD614367-1	80063	NUT,RETAINING	EA	1
12	17	XDDZZ		SCC6144284	80063	NUT,RETAININGAJO2H9	EA	1



ELOHS013

Figure 13. Image Intensifier Assembly

(1) ILLUSTRATION		(2)	(3)	(4)	(5)	(6)	(7)	(8)
(a) FIG NO.	(b) ITEM NO.	SMR CODE	NATIONAL STOCK NUMBER	PART NUMBER	FSCM	DESCRIPTION USABLE ON CODE	U/M	QTY INC IN UNIT
						GROUP 0304 IMAGE INTENSIFIER ASSEMBLY		
13	1	PADZZ	5855-00-134-6234	SCD3611759	80063	HOUSING ASSY SELECT	EA	1
13	1	PADZZ	5855-00-134-6233	SCD611760	80063	HOUSING ASSY SELECTAJO,2H8	EA	1
13	2	XDDZZ	5855-00-174-3477	510-1010-200	27777	WINDOWAJO,2H8	EA	1
13	3	XDDZZ		RT204-120	13567	WINDOW,SPACERAJO,2H8	EA	1
13	4	PADZZ	5999-00-937-5317	SCB611742-2	80063	CAP,PROTECTIVE	EA	1
13	5	PADZZ	5855-00-937-5328	SCB611730	80063	RING,SPACER.....	EA	1
13	6	XDDZZ		SCC611740-1	80063	RING,RETAINER BLACK 2H8.	EA	1
13	7	PADZZ	5855-00-937-5330	SCB11732	80063	PIN,LOCATING	EA	1
13	8	PADZZ	5855-00-937-5327	SCB11742-1	80063	CAP,PROTECTIVE	EA	1
13	9	PADZZ	5855-00-832-7287	SCD611726	80063	CONTAINER	EA	2
13	10	PADZZ	5855-00-937-5329	SCC611733	80063	PIN, CONNECTOR	EA	1
13	11	PADZZ	5855-00-179-8201	RT202-622	13567	RING,SPACER.....2H8	EA	1
					29			

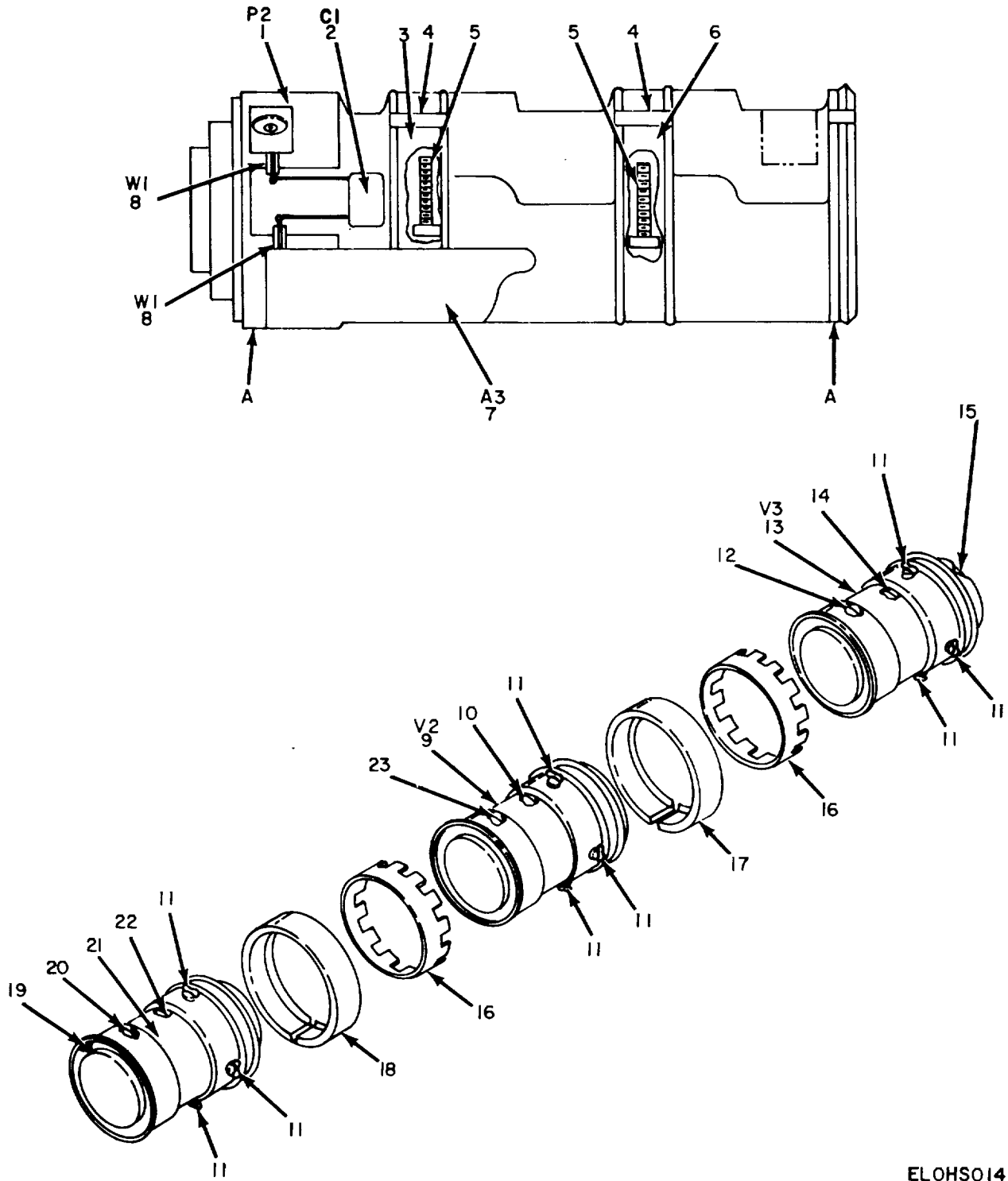
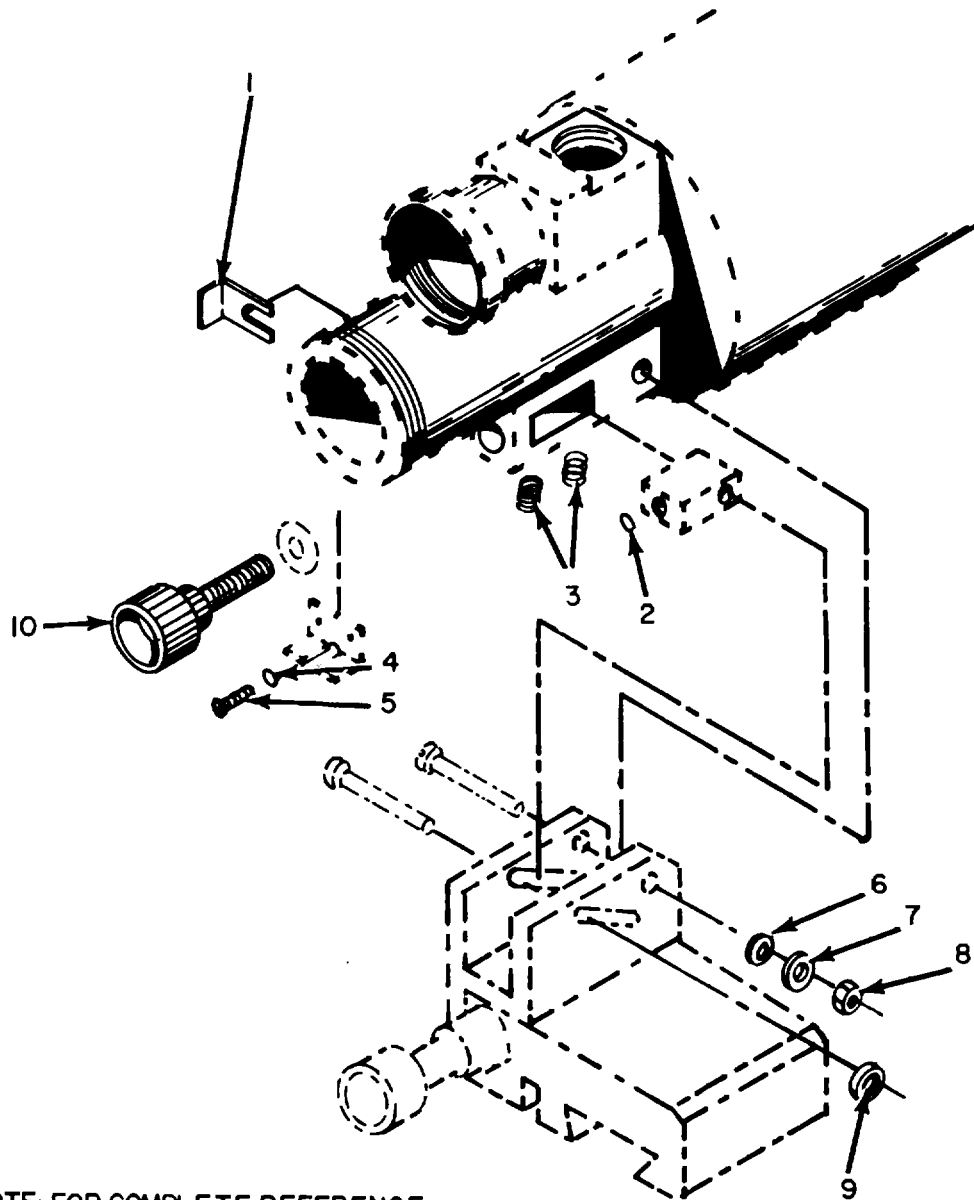


Figure 14. Image Intensifier Assembly, Interior View.

SECTION II

TM11-5855-202-23P

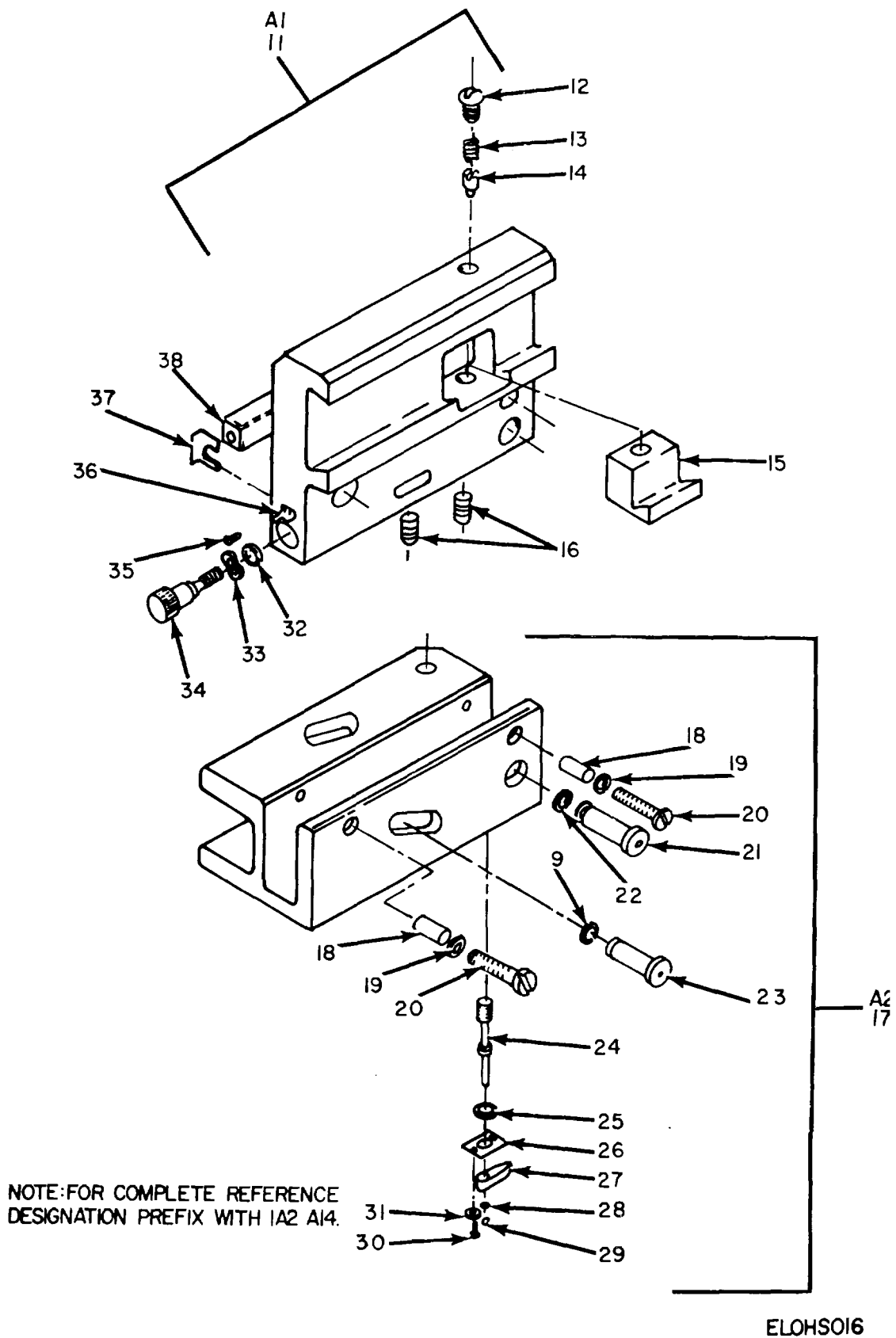
(1) ILLUSTRATION		(2)	(3)	(4)	(5)	(6)	(7)	(8)
(a) FIG NO.	(b) ITEM NO.	SMR CODE	NATIONAL STOCK NUMBER	PART NUMBER	FSCM	DESCRIPTION USABLE ON CODE	U/M	QTY INC IN UNIT
14	1	PADZZ	5935-00-832-7294	SCC611734	80063	CONNECTOR ASSEMBLY	EA	1
14	2	XDDZZ		SCB611727-1	80063	CAPACITOR,FXD SEL.....	EA	1
14	2	XDDZZ		SCB611727-2	80063	CAPACITOR,FXD SEL.....	EA	1
14	2	XDDZZ		SCB611727-3	80063	CAPACITOR,FXD SEL.....	EA	1
14	2	XDDZZ		SCB611727-4	80063	CAPACITOR,FXD SEL.....	EA	1
14	2	XDDZZ		SCB611727-5	80063	CAPACITOR,FXD SEL.....	EA	1
14	2	XDDZZ		SCB611727-6	80063	CAPACITOR,FXD SEL.....	EA	1
14	2	XDDZZ		SCB611727-7	80063	CAPACITOR,FXD SEL.....	EA	1
14	2	XDDZZ		SCB611727-7	80063	CAPACITOR,FXD SEL.....	EA	1
14	2	XDDZZ		SCB611727-8	80063	CAPACITOR,FXD SEL.....	EA	1
14	3	PADZZ	5855-00-937-5321	SCC611744-1	80063	RING, OUTER COUPLING	EA	1
14	4	XDDZZ		SCB611747	80063	TAB	EA	2
14	5	PADZZ	5305-00-959-1082	RT-VA202-962	13561	SCREW, SOCKET HEAS2H8	EA	2
14	6	PADZZ	5305-00-959-5322	SCC611744-2	80063	RING, OUTER.....	EA	1
14	7	PADZZ	5855-00-937-5331	SCD611738	80063	VOLTAGE MULTR ASSY.....	EA	1
14	8	XDDZZ		P535298	80063	SPLICER WIRE	EA	2
14	9	PADDL	5855-00-179-8203	MX8585-21	80058	MODULE, IMAGE INTENS	EA	
14	10	PADZZ	5855-00-089-5108	SCC611745-7	80063	RING, INNER COUPLING.....	EA	1
14	11	PADZZ	5855-00-937-5319	SCB11746	80063	CAP, SEAL-OFF	EA	9
14	12	PADZZ	585-00-089-5109	SCC611745-8	80063	RING, INNER COUPLING.....	EA	1
14	13	PADDL	5855-00-179-8202	MX8585-22	80058	MODULE, IMAGE INTENS	EA	1
14	14	PADZZ	5855-00-089-5110	SCC611745-9	80063	RING INNER COUPLING.....	EA	1
14	15	PADZZ	5855-00-937-5324	SCC611745-2	80063	RING INNER COUPLING.....	EA	1
14	16	PADZZ	5855-00-237-4087	P536320	37480	RING ALIGNMENT.....	EA	2
14	17	PADZZ	5855-00-127-5558	510-1012-202	27777	RING COUPLING.....	EA	1
14	18	PADZZ	5855-00-127-5559	510-1012-201	27777	RING COUPLING	EA	1
14	19	PADZZ	5855-00-937-5323	SCC611745-1	80063	RING INNER COUPLING.....	EA	1
14	20	PADZZ	5855-00-089-5106	SCC611745-5	80063	RING INNER COUPLING.....	EA	1
14	21	PADDL	5855-00-179-8204	MX8585-20	80063	MODULE, IMAGE INTENS	EA	1
14	22	PADZZ	5855-00-089-5113	SCC611745-10	80063	RING INNER COUPLING.....	EA	1
14	23	PADZZ	5855-00-089-5107	SCC611745-6	80063	RING INNER COUPLING.....	EA	1
					31/(32 blank)			



NOTE: FOR COMPLETE REFERENCE
DESIGNATION PREFIX WITH 1A2A14

ELOHS015

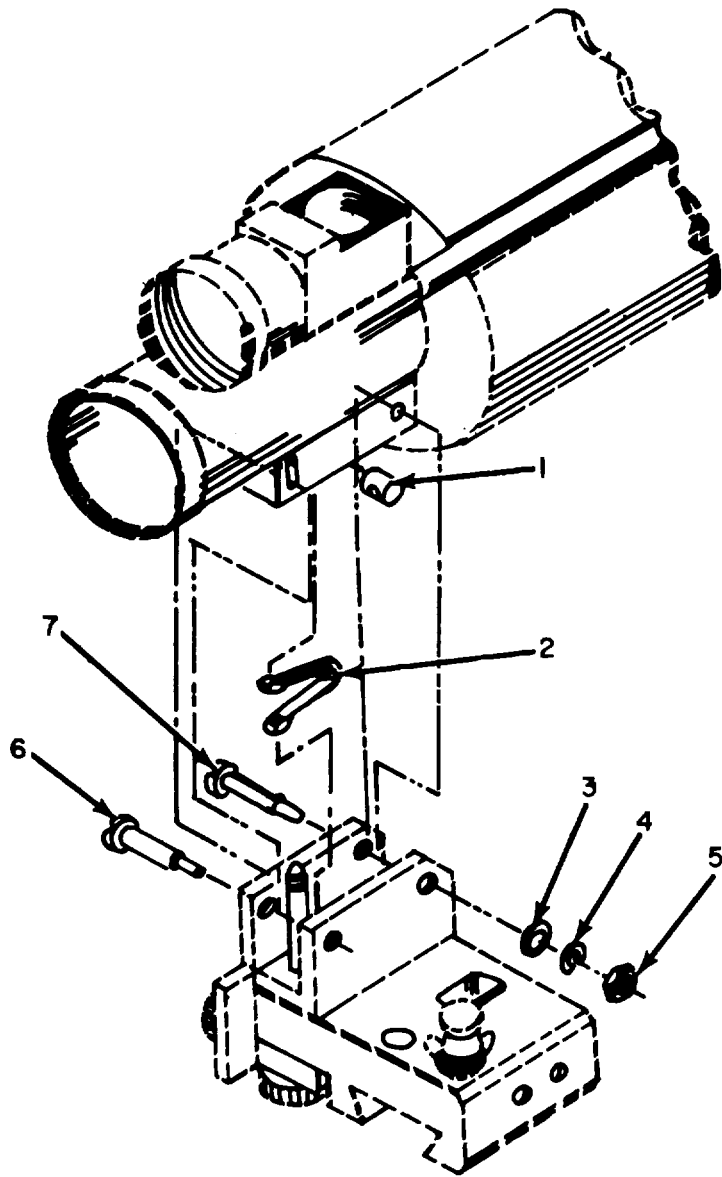
Figure 15. Boresight Assembly, Used on AN/TVS-2 (Sheet 1 of 2)



ELOHSO16

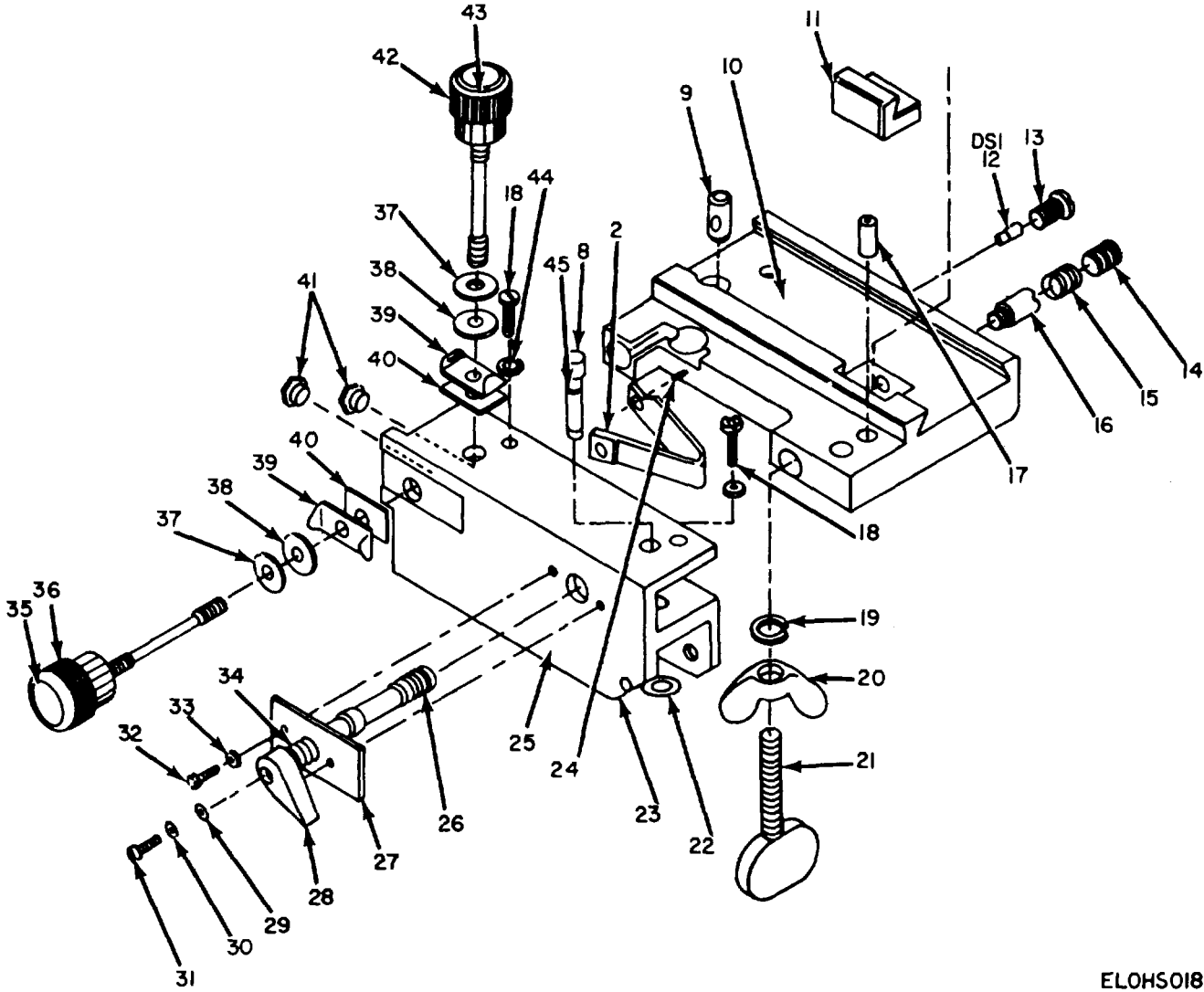
Figure 15. Boresight Assembly, Used on AN/TVS-2 (Sheet 2 of 2).

(1) ILLUSTRATION		(2)	(3)	(4)	(5)	(6)	(7)	(8)
(a) FIG NO.	(b) ITEM NO.	SMR CODE	NATIONAL STOCK NUMBER	PART NUMBER	FSCM	DESCRIPTION USABLE ON CODE	U/M	QTY INC IN UNIT
						GROUP 0305 BORESIGHT ASSEMBLY		
15	1	PAFZZ	5855-00-937-6419	SCB614331	80063	RETAINER, BORESIGHT 2H8	EA	1
15	2	XDFZZ	5305-00-999-6877	SCB614421-1	80063	SETSCREW 2H8	EA	1
15	3	PAFZZ	5360-00-791-3381	SCD614468	80063	SPRING 2H8	EA	2
15	4	PAFZZ	5310-00-177-1301	MS35338-134B	96906	WASHER, LOCK 2H8	EA	2
15	5	PAFZZ	5305-00-402-4558	MS51957-1B	96906	SCREW, MACHINE 2H8	EA	2
15	6	PAFZZ	5310-00-194-3647	MS15795-803B	96906	WASHER, FLAT 2H8	EA	1
15	7	PAFZZ	5310-00-685-7625	SCB614418-3	80063	WASHER, LOCK 2H8	EA	1
15	8	PAFZZ	5310-00-946-8007	SCB614419	80063	NUT 2H8	EA	1
15	9	PAFZZ	5365-00-803-6227	MS16624-1028	96906	RING, RETAINING 2H8	EA	1
15	10	PAFZZ	5355-00-018-4523	SCB614461	80063	KNOB 2H8	EA	1
15	11	XDFZZ		SCD614303	80063	BLOCK ASSEMBLY, AZ 2H8	EA	1
15	12	PAFZZ	5305-00-937-5742	SCB614422	80063	SCREW, MACHINE 2H8	EA	1
15	13	PAFZZ	5855-00-933-7007	SCB614317-1	80063	SPRING COMPRESSOR 2H8	EA	2
15	14	XDFZZ		SCB614329	80063	SCREW, SHOULDER 2H8	EA	1
15	15	PAFZZ	5855-00-405-4493	SCC614307	80063	CLAMP 2H8	EA	1
15	16	PAFZZ	5855-00-933-7007	SCB614317-1	80063	SPRING 2H8	EA	2
15	17	XDFZZ		SCD614302	80063	FRAME 2H8	EA	1
15	18	PAFZZ	5855-00-933-5025	SCB614339	80063	SPACER, BLUSHING 2H8	EA	2
15	19	PAFZZ	5310-00-685-7625	SCC61418-3	80063	WASHER, LOCK 2H8	EA	2
15	20	PAFZZ	5305-00-435-7784	SCB614420-2	80063	SCREW, MACHINE 2H8	EA	2
15	21	PAFZZ	5315-00-910-9611	SCC614337	80063	PIN, SHOULDER 2H8	EA	1
15	22	PAFZZ	5365-00-720-8064	MS16624-1025	96906	RING, RETAINING 2H8	EA	1
15	23	PAFZZ	5315-00-913-3851	SCD614301-1	80063	PIN, SHOULDER 2H8	EA	1
15	24	PAFZZ	5855-00-922-6453	SCB614328	80063	SHAFT, QUICK-DISC 2H8	EA	1
15	25	PAFZZ	5330-00-580-2278	MS9021-010	96906	PACKING, O RING 2H8	EA	1
15	26	XDFZZ		SCB614450	80063	LOCK, BORESIGHT 2H8	EA	1
15	27	PAFZZ	5355-00-924-8777	SCC614330	80063	KNOB, LOCKING 2H8	EA	1
15	28	XDFZZ		SCC614417-1	80063	WASHER, FLAT 2H8	EA	4
15	29	PAFZZ	5305-00-421-7920	MS16995-108	96906	SCREW, CAP 2H8	EA	1
15	30	PAFZZ	5305-00-402-4558	MS51957-1B	96906	SCREW, MACHINE 2H8	EA	2
15	31	PAFZZ	5310-00-893-5637	SCC614418-1	80063	WASHER, LOCK 2H8	EA	2
15	32	PAFZZ	5855-00-937-5316	SCB614319	80063	SHIM. 2H8	EA	1
15	33	XDFZZ		SCB614335	80063	WASHER, WAVE 2H8	EA	1
15	34	PAFZZ	5305-00-937-2021	SCD614388-1	80063	SCREW, BORESIGHT 2H8	EA	1
15	35	PAFZZ	5305-00-937-5742	SCB614422	80063	SCREW 2H8	EA	1
15	36	XDFZZ		SCB614318	80063	SPRING, CLICK 2H8	EA	1
15	37	XDFZZ		SCC614365	80063	RETAINER, QUICK-DISC 2H8	EA	1
15	38	PAFZZ	5855-00-933-5024	SCC614304	80063	BLOCK, SLIDER 2H8	EA	1
					35/(36 blank)			



ELOHS017

Figure 16.
Bore sight Assembly, Used On AN/TVS-2A and AN/TVS-2B (Sheet 1 of 2)



ELOHSO18

Figure 16. Bore-sight Assembly, Used On AN/TVS-2A, and AN/TVS-2B (Sheet 2 of 2).

SECTION II

TM 11-5855-202-23P

(1) ILLUSTRATION		(2)	(3)	(4)	(5)	(6)	(7)	(8)
(a) FIG NO.	(b) ITEM NO.	SMR CODE	DESCRIPTION NATIONAL STOCK NUMBER	PART NUMBER	FSCM	USABLE ON CODE	U/M	QTY INC IN
			UNIT					
16	1	PAFZZ	5315-00-910-9611	SCC164337	80063	PIN, SHOULDER		
16	2	PAFZZ	5360-00-168-6663	SCD645662	80063	SPRING, BORESIGHTAJ0,2H9	EA	1
16	3	PAFZZ	5310-00-194-3649	MS15795-8088	96906	WASHER, FLATAJOAAJ0,2H9	EA	2
16	4	PAFZZ	5310-00-685-7625	SCB61448-3	80063	WASHER, LOCKAJ0,2H9	EA	1
16	5	PAFZZ	5310-00-946-8007	SCB61449	80063	NUT, PLAIN, HEXAGON AJ0	EA	1
16	6	XDFZZ	SCB614457	80063	PIN LIMIT	ELEVATIONAJ0,2H9	EA	1
16	7	PAFZZ	5305-00-930-2274	SCB614336	80063	BOLT,PIVOTAJ0,2H9	EA	1
16	8	PAFZZ	5305-00-138-0192	SCB614458-1	80063	PIN, STRAIGHT, HDLS AJ0	EA	1
16	9	PAFZZ	5315-00-138-0193	SCB614458-2	80063	PIN, AZIMUTAJ0,2H9	EA	1
16	10	PAFZZ	5855-00-196-2803	SCB645653-1	80063	ASSEMBLY, QIK-DISCAJ0,2H9	EA	1
16	11	PAFZZ	5855-00-405-4493	SCB614307	80063	CLAMPAJ0,2H9	EA	1
16	12	PAFZZ	6240-00-941-1255	SC6L1441	80063	LAMP, PILOT, MINTRAJ0,2H9	EA	1
16	13	PAFZZ	5305-00-150-3852	SC645754-86	80063	SCREW, MACHINEAJ0,2H9	EA	1
16	14	PAFZZ	MS51023A61	96906		SET SCREW, HEX SKTAJ0,2H9	EA	1
16	15	PAFZZ	SCB614332	80063		SPRING, COMPRESSIONAJ0,2H9	EA	1
16	16	XDFZZ	SCB614329	80063		SCREW, SHOULDERAJ0,2H9	EA	1
16	17	PAFZZ	5855-00-933-5025	SCB6143239	80063	SPACER, BUSHINGAJ0,2H9	EA	1
16	18	PAFZZ	5305-00-224-0783	MS51957-48	96906	SCREW, MACHINEAJ0,2H9	EA	2
16	9	PAFZZ	5310-00-224-0746	MS35338-1358	96906	WASHER, LOCKAJ0,2H9	EA	1
16	20	PAFZZ	5310-00-087-3099	SCB607255	80063	NUT PLAIN WINGAJ0,2H9	EA	1
116	21	PAFZZ	5305-00-477-9968	SCC645656	80063	THUMBSCREWAJ0,2H9	EA	1
16	22	PAFZZ	5365-00-720-8064	MS6624-1025	96906	RING, RTNG EXTAJ0,2H9	EA	1
16	23	XDFZZ		SCD614462-1	80063	FRAME ASSEMBLYAJ0,2H9	EA	1
16	24	PAFZZ	5315-00-276-0112	AN122683	88044	PIN, STRAIGHT HEADLESSAJ0,2H9	EA	3
16	25	XDFZZ		SCD614462-2	80063	FRAMEAJ0,2H9	EA	1
16	26	PAFZZ	5855-00-922-6453	SCB614328	80063	SHAFT, QIK-DISCAJ0,2H9	EA	1
16	27	PAFZZ	5855-00-925-9840	SCB645661	80063	LOCK, BORESIGHTAJ0,2H9	EA	1
16	28	PAFZZ	5355-00-8777	SCC614330	80063	KNOB, LOCKINGAJ0,2H9	EA	1
16	29	PAFZZ	5310-00-933-821	MS35338-139	96906	WASHER, LOCKAJ0	EA	1
16	30	XDFZZ		SCB614417-1	80063	WASHER, FLATAJ0,2H9	EA	1
16	31	PAFZZ	5305-00-421-1920	MS16995-108	96906	SCREW, CAPAJ0,2H9	EA	1
16	32	PAFZZ	5305-00-435-7784	SCB61420-2	80063	SCREW, MACHINEAJ0,2H9	EA	2
16	33	PAFZZ		SCB614478	80063	WASHER, FLATAJ0,2H9	EA	2
16	34	PAFZZ	5360-00-146-2487	SCB614469	80063	SPRING COMPRESSIONAJ0,2H9	EA	1
16	35	XDFZZ		SCB645658	80063	MARKER, RIGHTAJ0	EA	1
16	36	XDFZZ		SCC614459	80063	KNOB, AZIMUTHAJ0,2H9	EA	1
16	37	PAFZZ	3110-00-948-9844	NTA411	60380	BEARING ROLLER JNLAJ0,2H9	EA	2
16	38	PAFZZ		SCB614478	80063	SPACERAJ0,2H9	EA	2
16	39	PAFZZ	5340-00-023-4917	SCB614483	80063	SPRNG, CLICKAJ0,2H9	EA	2

SECTION II

TM11-5855-202-23P

(1) ILLUSTRATION		(2) NATIONAL SMR CODE	(3) DESCRIPTION STOCK NUMBER	(4) PART NUMBER	(5) FSCM	(6) USABLE ON CODE	(7) U/M	(8) QTY INC IN UNIT
(a) FIG NO.	(b) ITEM NO.							
16	40	PAFZZ	5365-00-138-0119	SCB614503	80063	BEARING, SLIDEAJ0,2H9	EA	2
16	41	PAFZZ	5310-00-027-1869	SCB614471	80063	NUT, SLEEVE	EA	2
16	42	PAFZZ	5310-00-0148-525	SCC614459-2	80063	KNOB, ELEVATIONAJ0,2H9	EA	1
16	43	XDFZZ		SCB465659	80063	MARKER, UP AJ0	EA	1
16	44	PAFZZ	5310-00-177-1301	MS35338-134B	96906	WASHER.LOCK.....AJ0,2H9	EA	2
16	45	ZDFZZ		SCB614418-4	80063	WASHER FLATAJ0,2H9	EA	1
					40			

NATIONAL STOCK NUMBER AND PART NUMBER INDEX

NOTE: LATEST STOCK NUMBER ASSIGNMENTS ARE INCLUDED AT END OF INDEX

STOCK NUMBER	FIG.	ITEM	STOCK NUMBER	FIG.	ITEM
5355-00-018-4523	7	3			
5355-00-018-4523	7	6 5310-00-685-7625	15		7
5355-00-018-4523	15	10 5310-00-685-7625	15		19
5555-00-018-4525	16	42 5310-00-685-1762	16		4
5340-00-023-4917	16	39 5330-00-690-9743	11		31
5310-00-027-1869	16	41 5330-00-690-9743	12		4
5855-00-051-2792	4	20 5365-00-720-8064	15		22
5305-00-051-4483	7	17 5365-00-720-8064	16		22
5330-00-060-0602	3	20 5320-00-721-5243	10		4
5330-00-060-0602	9	17			
5305-00-068-5415	3	11 5310-00-725-4719	3		17
5310-00-087-3099	16	20 5855-00-762-4799	5		17
5855-00-089-5106	14	20 5855-00-762-4800	4		10
5855-00-089-5107	14	23 5855-00-762-4814	4		6
5855-00-089-5108	14	10 5855-00-762-4816	4		18
5855-00-089-5109	14	12 5855-00-762-4820	1		7
5855-00-089-5110	14	14 5855-00-762-4833	1		8
5855-00-089-5113	14	22 5855-00-762-4837	4		9
5330-00-118-9090	14	12 5305-00-764-2964	7		8
5855-00-127-5558	14	17 5855-00-791-1628	9		7
5855-00-127-5559	14	18 5855-00-791-1637	9		8
5855-00-134-6233	13	1 5855-00-791-1638	7		9
5855-00-134-6234	13	1 5855-00-791-1644	9		6
5365-00-138-0119	16	40 5855-00-791-1649	9		5
5315-00-138-0192	16	8 5855-00-791-1653	1		L
5315-00-138-0193	16	9 5855-00-791-3371	4		11
5360-00-146-2487	16	34 5855-00-791-3372	4		10
5305-00-150-3485	5	8 5855-00-791-3374	4		19
5305-00-150-3852	16	13 5360-00-791-3381	15		3
5855-00-165-3093	4	4 5855-00-791-3423	7		14
5360-00-168-6663	16	2 5855-00-791-3427	7		4
5855-00-174-3477	13	2 5855-00-791-3428	7		11
5310-00-177-1301	5	2 5330-00-804-2747	3		21
5310-00-177-1301	15	4 5330-00-804-2747	9		3
5310-00-177-1301	16	44 5905-00-808-6136	5		24
5855-00-179-8201	13	11 5315-00-823-8745	7		12
5855-00-179-8201	13	11 5855-00-832-7287	13		9
5855-00-179-8202	14	13 5340-00-832-8258	9		18
5855-00-179-8203	14	9 5310-00-869-1018	4		17
5855-00-179-8204	14	21 5315-00-871-7863	7		18
5855-00-189-6084	1	3 5310-00-880-9173	11		2
5310-00-194-3647	15	6 5330-00-882-8056	11		4
5310-00-194-3649	16	3 5310-00-893-5637	15		31
5855-00-196-2803	16	10 5855-00-933-4031	3		7
		5855-00-903-4032	3		8
5310-00-224-0746	16	19 5855-00-903-4055	3		19
5310-00-224-0747	3	3 5855-00-903-4060	3		26
5305-00-224-0783	5	1 5855-00-903-4061	3		14
5305-00-224-0783	16	18 5855-00-903-4062	3		9
5855-00-237-4087	14	16 5855-00-903-4063	3		27
6650-00-350-4181	11	5 5855-00-903-4066	3		29
5365-00-402-4457	11	20 5855-00-903-4068	3		25
5305-00-402-4558	10	2 5855-00-903-4070	3		22
5305-00-402-4558	15	5 5855-00-903-4150	11		16
5305-00-402-4558	15	30 5855-00-903-4151	11		18
5855-00-405-4493	15	15 5855-00-903-4161	11		9
5855-00-405-4493	16	11 5855-00-903-4162	11		21
5365-00-406-3446	11	25 5999-00-903-4168	11		7
5855-00-409-0915	1	1 5855-00-933-4175	11		6
5310-00-409-1763	3	10 5855-00-903-4176	11		10
5305-00-419-3329	4	12 5855-00-903-4177	11		17
5305-00-421-7920	11	5 5855-00-903-4201	11		8
5305-00-421-7920	15	29 5855-00-903-4202	11		1
5305-00-421-7920	16	31 5855-00-903-4219	4		8
5305-00-435-7784	15	20 5855-00-903-4225	11		26
5305-00-435-7784	16	32 5855-00-903-4306	3		24
		5855-00-903-4308	12		15
5305-00-459-4687	3	6 5855-00-903-4309	12		14
5975-00-474-9988	4	23 5855-00-903-4315	12		12
5975-00-475-0005	4	24 5855-00-903-4316	12		11
5305-00-477-9968	16	21 5855-00-933-4324	12		10
5855-00-483-1219	12	1 5855-00-903-4326	12		9
5905-00-499-6862	5	18 5855-00-903-4329	12		8
5330-00-551-8250	3	28 5855-00-904-0684	5		14
5330-00-551-8251	5	5 5355-00-904-9517	5		9
5330-00-551-8251	11	22 5340-00-910-9452	9		15
5330-00-551-8252	5	16 5315-00-910-9611	15		21
6210-00-560-1558	9	5 5315-00-910-9611	16		1
5330-00-579-8108	8	19 5855-00-911-0703	1		4
5330-00-580-2278	15	25 5310-00-914-3290	11		3

SECTION IV

TM11-5855-202-23P

NATIONAL STOCK NUMBER AND PART NUMBER INDEX

STOCK NUMBER	FIG.	ITEM	STOCK NUMBER	FIG.	ITEM
5310-00-914-8266	4	15	855-00-937-1897	12	1
5310-00-914-8274	3	12	5310-00-937-2016	8	3
5855-00-922-6435	5	13	5855-00-937-5316	15	32
5855-00-922-6440	9	1	59S9-00-937-5317	13	
5855-00-922-6453	15	24	5855-00-937-5319	14	11
5855-00-922-6453	16	26	5855-00-937-5321	14	
5940-00-924-8044	5	19	5855-00-937-5322	14	6
5355-00-924-8777	15	27	5855-00-937-5323	14	19
5355-00-924-8777	16	2	5855-00-937-5324	14	15
5355-00-924-8938	6	6	5855-00-937-5327	13	8
5855-00-925-0114	4	3	5655-00-937-5328	13	5
5055-00-925-6896	1	5	5855-00-937-5329	13	10
555-00-9255-7887	6	4	5855-00-937-5330	13	7
5055-00-925-8009	4	25	5855-00-937-5331	14	7
5855-00-925-8058	4	26	5305-00-937-5742	15	12
5855-00-925-9507	6	3	5305-00-937-5742	15	35
5855-00-925-9840	16	27	5855-00-937-6419	15	1
5305-00-926-5595	5	12	5930-00-939-7438	5	23
5305-00-930-2274	16	7	5935-00-940-7980	3	5
5330-00-930-6295	11	24	6240-00-941-1255	8	6
5855-00-930-7046	11	19	6240-00-941-1255	16	12
5855-00-930-7047	3	23	5855-00-941-1787	3	1
5855-00-933-5024	15	38	5855-00-941-1787	9	2
58S5-00-933-5025	15	18	5855-00-941-3037	4	2
5855-00-933-5025	16	17	5855-00-941-5881	6	1
5855-00-933-7007	15	13	5855-00-941-5881	7	1
S855-00-933-7007	15	16	5855-00-941-5887	5	6
5310-00-933-8121	16	29	5855-00-943-3069	3	18
5855-00-936-8896	1	6	5855-00-944-0949	4	6
5855-00-936-8951	4	21	5315-00-995-6388	7	2
5855-00-936-9006	11	13	5330-00-946-6373	9	11
			5360-00-946-7340	5	15
			5360-00-947-3743	5	4
5055-00-937-1665	11	27	5305-00-959-1082	14	5
5855-00-937-1666	11	28	5855-00-962-2518	9	4
5855-00-937-1667	11	30	5855-00-962-2520	9	12
5855-00-937-1668	11	29	5855-00-962-3065	9	14
5855-00-937-1669	12	7	5855-00-962-3111	9	13
5855-00-937-1670	12	1	5855-00-962-3121	9	19
5975-00-937-1864	5	7	5855-00-962-5554	9	15
5855-00-937-1890	4	21	5855-00-962-6737	9	9
5855-00-931-189L	5	27	5340-00-975-2126	2	1
5855-00-937-1893	4	19	5305-00-999-6877	5	10
5855-00-937-1894	12	5	5305-00-999-6877	15	2
5855-00-937-1895	12	1	5855-00-999-9262	5	3
5855-00-937-1896	12	3	5330-00-999-9263	7	13

PART NUMBER	FSCM	FIG. NO.	ITEM NO.	PART NUMBER	FSCM	FIG. NO.	ITEM NO.
AN122683	88044	4	22	MS51957-1B	96906	15	5
AN122683	88044	16	24	MS51957-1B	96906	15	30
				MS51957-14B	96906	3	0
MIL052374	81349	5	14	MS51957-4B	96906	5	1
MS15795-8038	96906	15	6	MS51957-4B	96906	16	18
MS15795-8058	96906	3	10	MS51959-4	96906	7	8
MS15795-8088	96906	16	3	MS51973-8	96906	7	17
MS16212-3	96906	7	10	MS6562-215	96906	7	17
				MS9021-010	96906	15	25
MS16535-718	96906	10	4	MS9021-016	96906	8	4
MS16624-1025	96906	15	22	NS9021-016	96906	11	11
MS16C24-1025	96906	16	22	MS9021-018	S6906	11	31
MS16624-1028	96906	15	9	M59021-018	96906	12	4
MS16955-108	96906	11	5	MS9021-020	96906	3	28
MS16995-108	96906	15	29	MS59021-028	96906	5	5
MS16995-108	96906	16	31	MS9021-028	96906	11	22
MS16995-98	96906	5	8	MS9021-030	96906	5	16
MS18015-1	96906	z	1	MS9021-035	96906	9	8
MS18064-6	96906	5	12	MS9021-038	96906	3	21
MS28775-111	96906	7	19	MS9021-038	96906	3	20
MS35338-134B	96906	5	2	MS9021-038	96906	9	17
MS35338-134B	96906	15	4	MS9241-030	96906	11	24
MS35338-134B	96906	16	44	MS9241-162	96906	1	4
MS35338-135B	96906	16	19	MS9389-28	96906	7	2
MS35338-136B	96906	3	3	MS9389-30	96906	7	20
MS35338-139	96906	16	29	MS9389-53	96906	7	7
MS35650-3255	96906	4	17	MS59390-16	96906	7	18
MS51023A61	96936	16	14	MX7794ATVS2	80058	1	1
MS51957-1B	96906	10	2	MX7794BTVS2	80058	1	1

SECTION IV.

TM11-5855-202-239

NATIONAL STOCK NUMBER AND PART NUMBER INDEX

PART NUMBER	FSCM	FIG. NO.	ITEM NO.	PART NUMBER	FSCM	FIG. NO.	ITEM NO.
MX7794TVS2	80058	1	1	SC8614418-3	80063	15	7
MX7854UV	80058	4	20	SC8614418-3	80063	16	4
MX8585-20	80058	14	21	SC8614418-4	80063	16	45
MX8585-21	80058	14	9	SCB614419	80063	16	5
MX8585-22	80058	14	13	SC8614420-2	60063	15	20
NAS1395C04	83405	3	16	SCB614420-2	80063	16	32
NTA411	60380	16	37	SC8614421-1	80063	15	2
P535298	37480	14	8	SC8614421-4	80063	5	10
P536320	37480	14	16	SCB614422	80063	15	12
RC07GF361J	81349	5	24	SC8614422	80063	15	35
RT-VA202-962	13567	14	5	SC8614427	80063	5	4
R1202-622	13567	13	11	SC8614426	80063	5	21
RT202-622	13567	13	11	SCB614429	80063	5	20
RT204-120	13567	13	3	SCB614432-1	80063	5	19
SCB607255	80063	16	20	SCB614434	80063	5	15
SCB611727-1	80063	14	2	SCB614441	80063	8	6
SCB611727-2	80063	14	2	SCB614441	80063	16	12
SCB611727-3	80063	14	2	SCB614450	80063	15	26
SCB611727-4	80063	14	2	SCB614451	80063	7	1
SCB611727-5	80063	14	2	SCB614457	80063	16	6
SCB611727-6	80063	14	2	SCB614458-1	80063	16	8
SCB611727-7	80063	14	2	SCB614458-2	80063	16	9
SCB611727-8	80063	14	2	SCB614460	80063	7	5
SCB611730	80063	13	5	SCB614461	80063	7	3
SCB611732	80063	13	7	SCB614461	80063	15	10
SCB611742-1	80063	13	8	SCB614464	80063	4	7
SCB611742-2	80063	13	4	SC8614469	80063	16	34
SCB611746	80063	14	11	SCB614471	80063	16	41
SCB611747	80063	14	4	SCB614476	80063	Z	3
SCB614280	80063	4	27	SCB614478	80063	16	33
SCB614281	80063	5	7	SCB614478	80063	16	38
SCB614286	80063	12	2	SCB614481	80063	7	14
SCB614288	80063	12	6	SCB614482-1	80063	7	4
SCB614291	80063	8	8	SCB614483	60063	16	39
SCB614294	80063	4	5				
SCB614310	80063	3	13	SCB614491	80063	4	15
SCB614313	80063	6	2	SCB614496	80063	8	7
SCB614315-1	80063	11	21	SC8614497	80063	8	5
SCB614315-2	80063	11	28	SCB614501	80063	4	16
SCB614315-3	80063	11	30	SC8614503	80063	16	40
SCB614317-1	80063	15	13	SCB614604	80063	3	1
SCB614317-1	80063	15	16	SCB614604	80063	9	2
SCB614318	80063	15	36	SCB614608-1	80063	9	7
SCB614319	80063	15	32	SCB614622	80063	9	16
				SCB614625	80063	9	10
SCB614328	83063	15	24	SCB614626	80063	9	11
SCB614328	80063	16	26	SCB614627	80063	9	9
SCB614329	80063	15	14				
SCBe14329	80063	16	16				
SCB614331	80063	15	1	SCB645658	80063	16	35
SCB614332	80063	16	15	SCB645659	80063	16	43
SCB614335	80063	15	33	SCB645661	80063	16	27
SC8614336	80063	16	7	SCB645672	80063	5	18
SC8614339	80063	15	18	SC8645676	80063	2	2
SCB614339	80063	16	17	SCB645677	80063	2	4
SCB614347	80063	3	23	SCB645678	80063	2	3
SC8614349	80063	3	26	SCC611733	80063	13	10
SCB614352-1	80063	3	2	SCC611734	80063	14	1
SCB614354	80063	3	29	SCC611740-1	80063	13	6
SCB614355	80063	3	17	SCC611744-1	80063	14	3
SCB614356	80063	3	15	SCC611744-2	80063	14	6
SCB614362	80063	3	8	SCC611745-1	80063	14	19
SC8614363	80063	3	9	SCC611745-10	80063	14	22
SCB614364	80063	3	22	SCC611745-1	80063	14	15
SCB614366	80063	12	16	SCC611745-5	80063	14	20
SC8614368	80063	12	14	SCC611745-6	80063	14	23
SC8614376	80063	2	4	SCC611745-7	80063	14	10
SC8614383	80063	11	17	SCC611745-8	80063	14	12
SCB614392	80063	11	3	SCC611745-9	80063	14	14
sC8614399	80063	11	15	SCC61418-3	80063	15	19
SC8614400	80063	11	14	SCC614282	80063	8	7
SCB614406	80063	4	25	SCC614283	80063	8	3
SC8614407	60063	8	2	SCC614284	80063	12	17
SC8614409	80063	7	13	SCC614285	80063	12	7
SC8614410	80063	11	12	SCC614287-1	80063	12	1
SC8614411	80063	4	2	SCC614287-2	80063	12	1
SC8614416-3	80063	3	4	SCC614287-3	80063	12	1
SC8614416-4	80063	3	11	SCC614289	80063	12	3
SC8614417-1	80063	16	30	SCC614298	80063	3	24

SECTION IV.

TM11-5855-202-239

NATIONAL STOCK NUMBER AND PART NUMBER INDEX

PART NUMBER	FSCM	FIG. NO.	ITEM NO.	PART NUMBER	FSCM	FIG. NO.	ITEM NO.
				SCD611738	80063	14	7
SCC614304	80063	15	38	SCD611759	80063	13	1
SCC614307	80063	15	15	SCD611760	80063	13	1
SCC614307	80063	16	11				
SCC614316	80063	11	23				
SCC614325-1	80063	12	5	SCD614279	80063	4	19
SCC614330	80063	15	27	SCD614290	80063	11	29
SCC614s330	80063	16	28	SCD614293	80063	4	21
SCC614337	80063	15	21	SCD614297-1	80063	3	14
SCC614337	80063	16	1	SCD614302	80063	15	17
SCC614340-1	80063	3	27	SCD614303	80063	15	11
SCC614341-1	80063	3	25	SCD614305	80063	4	6
SCC614351-1	80063	3	19	SCD614320-1	80063	8	1
SCC614353-1	80063	3	5	SCD614320-2	80063	4	23
SCC614365	80063	15	37	SCD614320-3	80063	4	24
SCC614369-1	80063	12	13	SCD614325-2	80063	12	5
SCC614370	80063	12	12	SCD614325-3	80063	12	5
SCC614373	80063	12	10	SCD061342	80063	3	7
SCC614382	80063	11	6	SCD614350	80063	1	5
SCC614385	80063	11	1	SCD614367-1	80063	12	15
SCC614386	80063	11	21	SCD614371	80063	12	8
SCC614388	80063	11	18	SCD614372-1	80063	12	11
SCC614389	80063	11	16	SCD614374-1	80063	12	9
SCC614390	80063	11	19	SCD614377	80063	1	6
SCC614393	80063	11	2				
SCC614394	80063	11	26				
SCC614395	80063	11	10	SCD614381	80063	4	8
SCC614396	80063	11	8	SCD614388-1	80063	15	34
SCC614398	80063	6	6	SCD614391	80063	11	9
SCC614401	80063	6	3				
SCC614402	80063	6	5	SCD614425	80063	5	23
SCC614403	80063	6	4	SCD614462-1	80063	16	23
SCC614405	80063	5	9	SCF61446Z-2	80063	16	25
SCC614415	80063	3	18	SCD614468	80063	15	3
SCC614417-1	80063	15	28	SCD064480	80063	4	10
SCC614418-1	80063	15	31	SCD614498	80063	4	19
SCC614431	80063	5	6	SCD614600-1	80063	3	12
SCC614440-1	80063	5	13	SCD614600-2	80063	4	1
SCC614442-1	80063	5	3	SCD61460t	80063	4	2
SCC614451	80063	6	1	SCD614612	80063	9	5
SCC6144S9-I	80063	16	36	SCD614616	80063	9	12
SCC614459-2	80063	16	42	SCD614620	80063	9	13
SCC614466	80063	7	9	SCD614628	80063	9	19
SCC614467	80063	7	11	SCD614703	80063	4	3
SCC614472	80063	7	15	SCD645653-1	80063	16	10
SCC614473-1	80063	7	16	SCD645657-1	80063	4	6
SCC614486	80063	4	14	SCD645662	80063	16	2
SCC614488-1	80063	4	11	SCD645663	80063	4	10
SCC614492	80063	4	13	SCD645667	80063	4	18
SCC614495	80063	7	6	SCD645669	80063	11	7
SCC614602-1	80063	9	1	SCD645670	80063	11	13
SCC614607-	80063	9	4	SCD645671	80063	11	20
SCC614611	80063	9	8	SCD645674-1	80063	4	21
SCC614614	80063	9	6	SCD6456T5-1	80063	4	9
SCC614617-1	80063	9	14				
SCC614621	80063	9	15				
SCC614706	80063	9	18	SCD645681	80063	1	6
SCC614826	80063	1	4	SCD645720	80063	1	3
SCC645656	80063	16	21	SCD649064	80063	4	4
SCC645664	80063	4	13	11635905	19207	1	2
SCC645666	80063	5	17	13213E2373	97403	4	26
SCC645668	80063	11	25	510-1010-200	27777	13	2
SCC645754-86	80063	16	13	510-1012-201	27777	14	18
SCD611726	80063	13	9	510-1012-202	27777	14	17

NATIONAL STOCK NUMBER AND PART NUMBER INDEX

LATEST NATIONAL STOCK NUMBER ASSIGNMENTS

STOCK NUMBER	FIG. No.	ITEM No.	STOCK NUMBER	FIG. No.	ITEM No.
1005-00-052-3811	1	2	5855-00-903-4043	1	6
5310-00-276-0112	4	22	5315-00-913-3851	15	23
5315-00-276-0112	16	24	5305-00-937-2021	15	34
5315-00-524-0523	7	20	5310-00-946-8007	15	8
5330-00-584-1231	8	4	5310-00-946-8007	16	5
5330-00-584-1231	11	11	3110-00-948-9844	16	37
5310-00-584-7981	7	10	5355-00-961-1512	5	11
5365-00-803-6227	15	9	5305-00-999-687	3	4
5935-00-832-7294	14	1	5855-00-999-926	1	7
		5855-00-999-9261	1	8	

LATEST NATIONAL PART NUMBER ASSIGNMENTS

PART NUMBER	FSCM	FIG. NO.	ITEM NO.	PART NUMBER	FSCM	FIG. NO.	ITEM NO.
MS20470-A3-4	96906	10	5	SCD645684	80063	1	7
SCB614419	80063	15	8	SCD645685	80063	1	8
SCD614301-1	80063	15	23	13213E2315	97403	1	7
SCD645675-2	80063	10	1	13213E2316	97403	1	8
SCD645675-3	80063	5	22	66144	83003	5	11
SCD645675-3	80063	10	3				

ADDITIONAL LATEST NATIONAL STOCK NUMBER ASSIGNMENTS

STOCK NUMBER	FIG.	ITEM
532000-637-5422	10	5
6210-00809-5717	8	5
5855-00.937-662	1	1

ADDITIONAL LATEST PART NUMBER INDEX ASSIGNMENTS

PART NUMBER	FSCM	FIG. No.	ITEM NO
SCB6h4449	80063	8	5

By Order of the Secretary of the Army:

BERNARD W. ROGERS
General, United States Army
Chief of Staff

Official:

J.C. PENNINGTON
Brigadier General, United States Army
The Adjutant General

Distribution:

Active Army:

USAINSC (2)	Units org under fol TOE: 1 ea.	
COE (1)	127	17-56
TSG (1)	5-145	17-67
USAARENBD (1)	146	17-75
USAIB (2)	5-147	17-77
USAIC (2)	5155	17-95
DARCOM (1)	5-157	17-99
TECOM (2)	7	17-100
USACC (4)	7-15	17-106
TRADOC (2)	7-16	17-106
OS Maj Comd (4)	7-18	17-107
MDW (1)	7-35	17-117
Armies (2)	7-36	7-127
Corps (2)	7-37	2-16
Fort Gem (1)	7-45	2-26
Fort Gordon (10)	7-46	29-1
Fort Huachuca (10)	7-47	2 136
Fort Cason (6)	7-55	29-137
HISA (Ft Monmouth) (33)	7-58	37
Ft Richardson (ECOM Ofc) (2)	7-100	7-100
USAARMS (15)	11-35	57
USAIS (15)	11-36	57-100
USAES (16)	11-37	
USAFAS(10)	11-38	
USAICS (3)	11-99	
USASIGS (1)	11-96	
AD (1) excet	11-117	
SAAD (30)	11-215	
LBAD (14)	11-216	
TOAD (1)	11-10(AA-ACI)	
SHAD (9)	17	
Svc Colleges (1)	17-15	
USA Dep (1)	17-16	
Sig Sec USA Dep (1)	17-18	
Sig Dep (1)	17-27	
MAAG (1)	17-35	
USARMIS (1)	1-36	
USAERDAA (1)	17-37	
USAERDAW (1)	1-61	
Sig FLDMS (1)	17-66	

ARNG: Stage AG (3)

USAR: None

For explanation of abbreviation used, see AR 10-50.

RECOMMENDED CHANGES TO EQUIPMENT TECHNICAL PUBLICATIONS



THEN... JOT DOWN THE DOPE ABOUT IT ON THIS FORM, CAREFULLY TEAR IT OUT, FOLD IT AND DROP IT IN THE MAIL!

SOMETHING WRONG WITH THIS PUBLICATION?

FROM: (PRINT YOUR UNIT'S COMPLETE ADDRESS)

DATE SENT

PUBLICATION NUMBER

TM 11-5825-270-10

PUBLICATION DATE

23 Jul 81

PUBLICATION TITLE

Radio Frequency R-2176/FRN

BE EXACT... PIN-POINT WHERE IT IS

PAGE NO.

PARA-GRAPH

FIGURE NO.

TABLE NO.

IN THIS SPACE TELL WHAT IS WRONG AND WHAT SHOULD BE DONE ABOUT IT:

TEAR ALONG PERFORATED LINE

PRINTED NAME, GRADE OR TITLE, AND TELEPHONE NUMBER

SIGN HERE:

DA FORM 2028-2
1 JUL 79

PREVIOUS EDITIONS ARE OBSOLETE.

P.S.—IF YOUR OUTFIT WANTS TO KNOW ABOUT YOUR RECOMMENDATION MAKE A CARBON COPY OF THIS AND GIVE IT TO YOUR HEADQUARTERS.

This fine document...

Was brought to you by me:



[Liberated Manuals -- free army and government manuals](#)

Why do I do it? I am tired of sleazy CD-ROM sellers, who take publicly available information, slap “watermarks” and other junk on it, and sell it. Those masters of search engine manipulation make sure that their sites that sell free information, come up first in search engines. They did not create it... They did not even scan it... Why should they get your money? Why are not letting you give those free manuals to your friends?

I am setting this document FREE. This document was made by the US Government and is NOT protected by Copyright. Feel free to share, republish, sell and so on.

I am not asking you for donations, fees or handouts. If you can, please provide a link to liberatedmanuals.com, so that free manuals come up first in search engines:

<A HREF=<http://www.liberatedmanuals.com/>>Free Military and Government Manuals

- Sincerely
Igor Chudov
<http://igor.chudov.com/>
- [Chicago Machinery Movers](#)