

**TECHNICAL MANUAL**  
**ORGANIZATIONAL, DIRECT SUPPORT, AND**  
**GENERAL SUPPORT MAINTENANCE**  
**REPAIR PARTS AND**  
**SPECIAL TOOLS LISTS**  
**(INCLUDING DEPOT MAINTENANCE**  
**REPAIR PARTS AND SPECIAL TOOLS)**  
**FOR**  
**RADIO TERMINAL**  
**SET AN/TRC-112**  
**(NSN 5820-00-868-8154)**

This copy is a reprint which includes current  
pages from Changes 1

---

**HEADQUARTERS, DEPARTMENT OF THE ARMY**

**OCTOBER 1977**

CHANGE }  
No. 1 }

C 1  
HEADQUARTERS  
DEPARTMENT OF THE ARMY  
WASHINGTON, DC, 21 November 1983

Organizational, Direct Support, and General Support  
Maintenance Repair Parts and Special Tools List  
(Including Depot Maintenance Repair Parts and Special Tools)  
for

**RADIO TERMINAL SET AN/TRC-112  
(NSN 5820-00-868-8154)**

TM 11-5820-556-24P, 24 October 1977, is changed as follows:

1. New or changed material is indicated by a vertical bar in the margin.
2. Added or revised illustrations are indicated by a vertical bar in front of the figure caption. Action change codes indicated in the left-hand margin of the listing page denote the following: N - Indicates an added item, C - indicates a change in data, R - indicates a change in NSN only.
3. Remove old pages and insert new pages as indicated below:

<i>Remove</i>	<i>Insert</i>
i and ii .....	i and ii
1 through 8 .....	1 through 8
25 through 28 .....	25 through 28
33 and 34.....	33 and 34
49 through 53/(54 blank).....	49 through 53/(54 blank)

4. File this change sheet in front of the publication for reference purposes.

By Order of the Secretary of the Army:

Official:

**ROBERT M. JOYCE**

*Major General, United States Army*

*The Adjutant General*

**JOHN A. WICKHAM JR.**

*General United States Army*

*Chief of Staff*

DISTRIBUTION:

To be distributed in accordance with DA Form 12-51A-I, Organizational Maintenance requirements for AN/TRC- 112.

TECHNICAL MANUAL }  
No. 11-5820-556-24P }

HEADQUARTERS  
DEPARTMENT OF THE ARMY  
WASHINGTON, DC, 24 October 1977

**ORGANIZATIONAL, DIRECT SUPPORT, AND  
GENERAL SUPPORT MAINTENANCE  
(INCLUDING DEPOT MAINTENANCE REPAIR PARTS  
AND SPECIAL TOOLS)  
FOR  
RADIO TERMINAL SET AN/TRC-112  
(NSN 5820-00-868-8154)**

**Basic manual current as of 14 June 1977  
Change 1 current as of 8 August 1983**

**REPORTING ERRORS AND RECOMMENDING IMPROVEMENTS**

You can help improve this manual. If you find any mistakes or if you know of a way to improve the procedures, please let us know. Mail your letter, DA Form 2028 (Recommended Changes to Publications and Blank Forms), or DA Form 2028-2 located in back of this manual direct to: Commander, US Army Communications-Electronics Command and Fort Monmouth, ATTN: DRSEL-ME-MP, Fort Monmouth, NJ 07703.

In either case, a reply will be furnished direct to you.

---

\*This manual supersedes so much of TM 11-5820-556-15, 29 July 1971 as pertains to repair parts and special tools list.

Table of Contents

		Page	Illus Figure
SECTION	I. Introduction .....	1	
	II. Repair parts list .....	5	
GROUP	00 Radio Terminal Set AN/TRC-112 .....	5	1
	01 Antenna Group AN/TRA-37 (See TM 11 -5985-324-15 for parts)		
	02 Converter, Telegraph-Telephone CV-425/U (See TM 11-5805-356-12 and TM 11-5805-356-34P-2 for parts)		
	03 Power Supply PP-4763A/GRC (See TM 11 -5820-765-35 for parts)		
	04 Radio Set AN/GRC-106 (See TM 11-5820-520-25P for parts)		
	05 Radio Set AN/GRC-143 (See TM 11-5820-520-12, TM 11-5820-595-35P-1 and TM 11-5820-595-35P-2 for parts)		
	06 Telephone Set TA-312/PT (See TM 11 -5805-201-20P and TM 11-5805-201-34P for parts)		
	07 Shelter. Electrical Equipment S-336/TRC-112 .....	7	2-11
	0701 Blower exhaust .....	29	12
	0702 Box assembly control indicator .....	29	12
	0703 Cable assemblies .....	33	13
	0704 Indicator box assembly .....	35	14
	0705 Patch panel assembly .....	37	15
	0706 Power distribution box assembly .....	39	16
	0707 Power selector switch .....	41	17
	0708 Reel, Cable RC-405( )/TR (No parts authorized)		
	0709 Waveguide installation assembly .....	45	18
	0710 Generator switch assembly .....	49	19
	08 Generator Set, Gasoline Engine. Trailer Mounted PU-332/G (See TM 5- 6115-365-15 for parts)		
	09 Transit Frame, Antenna MT-3894/TRC (No parts authorized)		
SECTION	III. Special tools list (Not applicable)		
	IV. National stock number and part number index .....	50	

## SECTION I INTRODUCTION

---

### 1. Scope

This manual lists spares and repair parts; special tools; special test, measurement, and diagnostic equipment (TMDE), and other special support equipment required for performance of organizational, direct support, and general support maintenance of the AN/TRC-12. It authorizes the requisitioning and issue of spares and repair parts as indicated by the source and maintenance codes.

### 2. General

This Repair Parts and Special Tools List is divided into the following sections:

*a. Section II. Repair Parts List.* A list of spares and repair parts authorized for use in the performance of maintenance. The list also includes parts which must be removed for replacement of the authorized parts. Parts lists are composed of functional groups in numeric sequence, with the parts in each group listed in figure and item number sequence.

*b. Section III. Special Tools List.* Not applicable.

*c. Section IV. National Stock Number and Part Number Index.* A list, in National item identification number (NIIN) sequence, of all National stock numbers (NSN) appearing in the listings, followed by a list, in alphanumeric sequence, of all part numbers appearing in the listings. National stock numbers and part numbers are cross-referenced to each illustration figure and item number appearance.

### 3. Explanation of Columns

*a. Illustration.* This column is divided as follows:

(1) *Figure number.* Indicates the figure number of the illustration on which the item is shown.

(2) *Item number.* The number used to identify item called out in the illustration.

*b. Source Maintenance, and Recoverability (SMR) Codes.*

(1) *Source code.* Source codes indicate the manner of acquiring support items for maintenance, repair, or overhaul of end items. Source codes are entered

in the first and second positions of the Uniform SMR Code format as follows:

<i>Code</i>	<i>Definition</i>
PA	Item procured and stocked for anticipated or known usage.
PD	Support item, excluding support equipment, procured for initial issue or outfitting and stocked only for subsequent or additional initial issues or outfittings. Not subject to automatic replenishment.
MD	Item to be manufactured or fabricated at the depot maintenance level.
XD	A support item that is not stocked. When required, item will be procured through normal supply channels.

#### NOTE

Cannibalization or salvage may be used as a source of supply for any items source coded above except those coded XA and aircraft support items as restricted by AR 750-1.

(2) *Maintenance code.* Maintenance codes are assigned to indicate the levels of maintenance authorized to USE and REPAIR support items. The maintenance codes are entered in the third and fourth positions of the Uniform SMR Code format as follows:

(a) The maintenance code entered in the third position will indicate the lowest maintenance level authorized to remove, replace, and use the support item. The maintenance code entered in the third position will indicate one of the following levels of maintenance:

<i>Code</i>	<i>Application/Explanation</i>
C	Crew or operator maintenance performed within organizational maintenance.
O	Support item is removed, replaced, used at the organizational level.
F	Support item is removed, replaced, used at the direct support level.

(b) The maintenance code entered in the fourth position indicates whether the item is to be repaired and identifies the lowest maintenance level

## TM 11-5820-556-24P

with the capability to perform complete repair (i.e., all authorized maintenance functions). This position will contain one of the following maintenance codes:

Code	Application/Explanation
F	The lowest maintenance level capable of complete repair of the support item is the direct support level.
H	The lowest maintenance level capable of complete repair of the support item is the general support level.
D	The lowest maintenance level capable of complete repair of the support item is the depot level.
Z	Nonrepairable repair is authorized.

(3) *Recoverability code.* Recoverability codes are assigned to support items to indicate the disposition action on unserviceable items. The recoverability code is entered in the fifth position of the Uniform SMR Code format as follows:

Recoverability codes	Definition
Z	Nonrepairable item. When unserviceable, condemn and dispose at the level indicated in position 3.
F	Reparable item. When uneconomically repairable, condemn and dispose at the direct support level.
H	Reparable item. When uneconomically repairable, condemn and dispose at general support level.
D	Reparable item. When beyond lower level repair capability, return to depot. Condemnation and disposal not authorized below depot level.
L	Reparable item. Repair, condemnation, and disposal not authorized below depot-specialized repair activity level.

*c. National Stock Number.* Indicates the National stock number assigned to the item and will be used for requisitioning purposes.

*d. Part Number.* Indicates the primary number used by the manufacturer (individual, company, firm, corporation, or Government activity), which controls the design and characteristics of the item by means of its engineering drawings, specifications, standards, and inspection requirements to identify an item or range of items.

### NOTE

When a stock numbered item is requisitioned, the repair part received may have a different part number than the part being replaced.

*e. Federal Supply Code for Manufacturer (FSCM).* The FSCM is a 5-digit numeric code listed in

2 Change 1

SB 708-42 which is used to identify the manufacturer, distributor, or Government agency, etc.

*f. Description.* Indicates the Federal item name and, if required, a minimum description to identify the item.

*g. Unit of Measure (U/M).* Indicates the standard of the basic quantity of the listed item as used in performing the actual maintenance function. This measure is expressed by a two-character alphabetical abbreviation (e.g., ea. in, pr, etc.). When the unit of measure differs from the unit of issue, the lowest unit of issue, that will satisfy the required units of measure will be requisitioned.

*h. Quantity Incorporated in Unit.* Indicates the quantity of the item used in the breakout shown on the illustration figure, which is prepared for a functional group, subfunctional group, or an assembly.

## 4. Special Information

The following publications pertain to the AN/TRC-112 and its components:

- TM 5-6115-365-15, Generator Set, Gasoline and Diesel Engine Driver, Trailer Mounted PU -332/G
- TM 11-5410-214-12P, Shelter, Electrical Equipments S-250/G
- TM 11-5410-214-34P, Shelter, Electrical Equipments S-250/G
- TM 11-5805-201-12, Telephone Set TA-312/PT
- TM 11-5805-201-20P, Telephone Set TA-312/PT
- TM 11-5805-201-34P, Telephone Set TA-312/PT
- TM 11-5805-356-12, Terminal, Telegraph-Telephone AN/TCC-29 (Including Terminal, Telegraph TH-22/TC and Converter Telegraph-Telephone Signal CV-425/U
- TM 11-5805-356-34-2, Converter, Telegraph Telephone Signal CV-425/U
- TM 11-5805-356-34P-1, Terminal, Telegraph TH-22/G
- TM 11-5805-356-34P-2, Converter, Telegraph Telephone Signal CV-425/U
- TM 11-5820-520-12, Radio Sets AN/GRC-106 and 106A
- TM 11-5820-520-34, Radio Sets AN/GRC-106 and 106A
- TM 11-5820-520-34P-1, Radio Set AN/GRC-106
- TM 11-5820-520-34P-2, Radio Set AN/GRC-106A
- TM 11-5820-556-15, Radio Terminal Set AN/TRC-112
- TM 11-5820-595-12, Radio Set AN/GRC-143
- TM 11-5820-595-20P, Radio Set AN/GRC-143

TM 11-5820-595-34P, Radio Set AN/GRC-143  
 TM 11-5820-595-35, Radio Set AN/GRC-143  
 TM 11-5820-765-12, Power Supplies PP-4763/GRC  
 and PP-4763A/GRC  
 TM 11-5820-765-34P-1, Power Supplies PP-  
 4763/GRC and PP-4763A/GRC  
 TM 11-5820-765-35, Power Supplies PP-4763/GRC  
 and PP-4763A/GRC  
 TM 11-5965-222-14P, Dynamic Loud Speaker LS-  
 166/U  
 TM 11-5985-324-15, Antenna Group AN/TRA-37 and  
 Transit Frames, Antenna MT-3894/TRC, MT-  
 5894A/TRC and TR-3895/TRC  
 TM 11-5985-324-24P, Antenna Group AN/TRA-37  
 and Transit Frames, Antenna MT-3894/TRC,  
 MT-5894A/TRC and TR-3895/TRC

**5. How to Locate Repair Parts**

a. When National stock number or part number is unknown.

(1) *First.* Using the table of contents, determine the functional group within which the item belongs. This is necessary since illustrations are prepared for

functional groups and listings are divided into the same groups.

(2) *Second.* Find the illustration covering the functional group to which the item belongs.

(3) *Third.* Identify the item on the illustration and note the illustration figure and item number of the item.

(4) *Fourth.* Using the Repair Parts Listing, find the figure and item number noted on the illustration.

b. When National stock number or part number is known.

(1) *First.* Using the Index of National Stock Numbers and Part Numbers, find the pertinent National stock number or part number. This index is in NIIN sequence followed by a list of part numbers in alph a-numeric sequence, cross-referenced to the illustration figure number and item number.

(2) *Second.* After finding the figure and item number, locate the figure and item number in the repair parts list.

**6. Abbreviations**

Not applicable.

(Next printed page is 4)



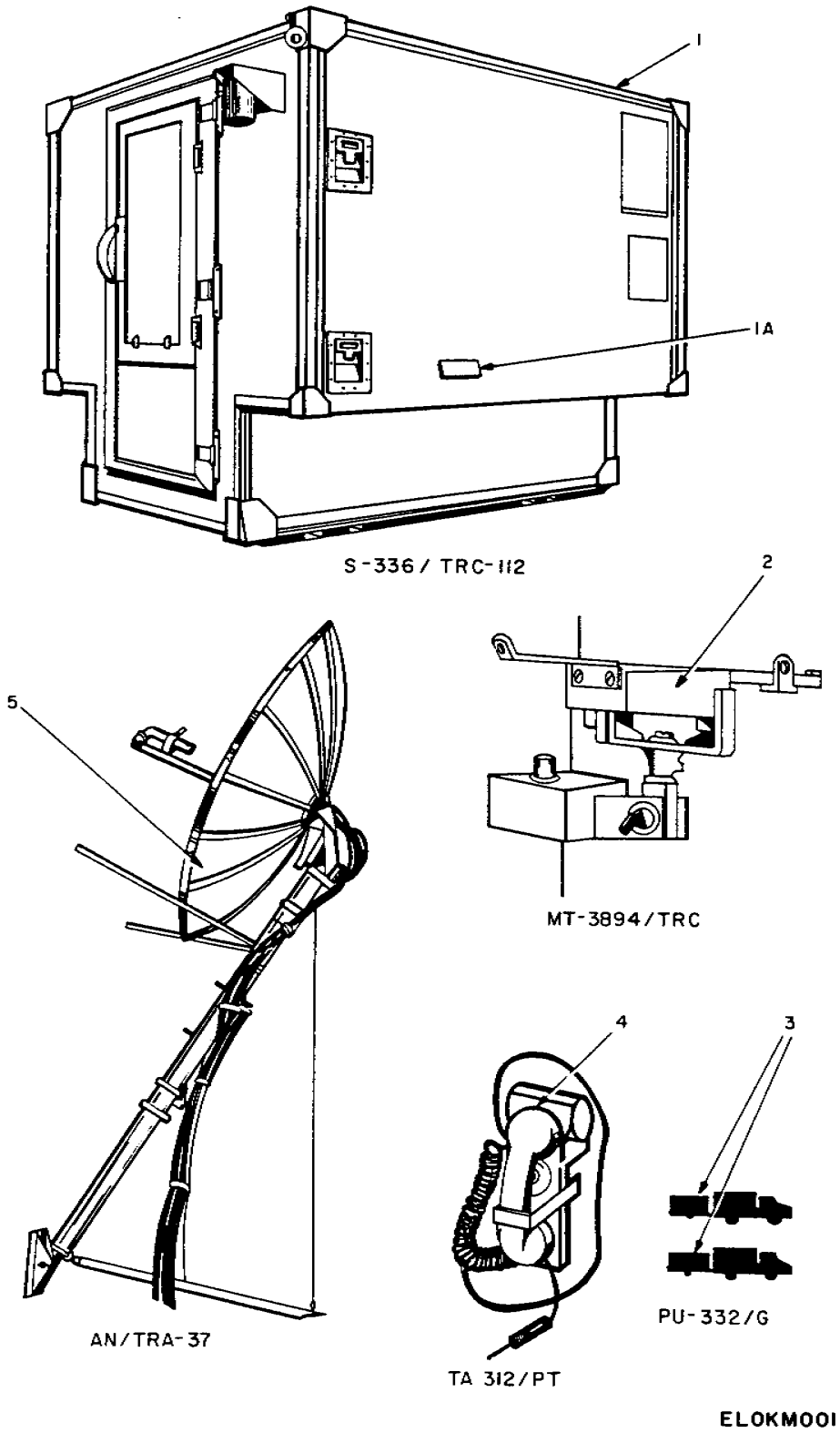
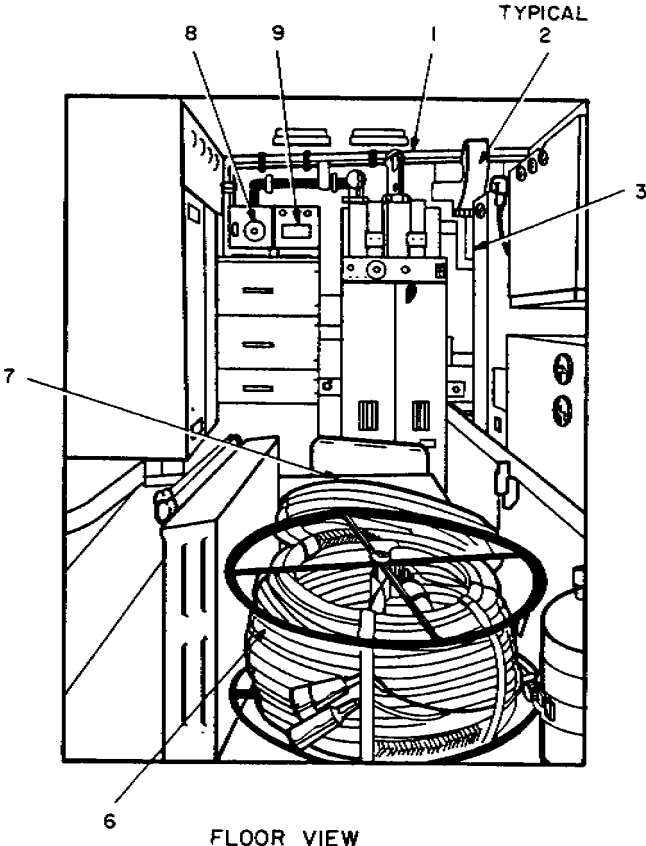


Figure 1. Radio Terminal Set AN/TRC-112 (Sheet 1 of 3)

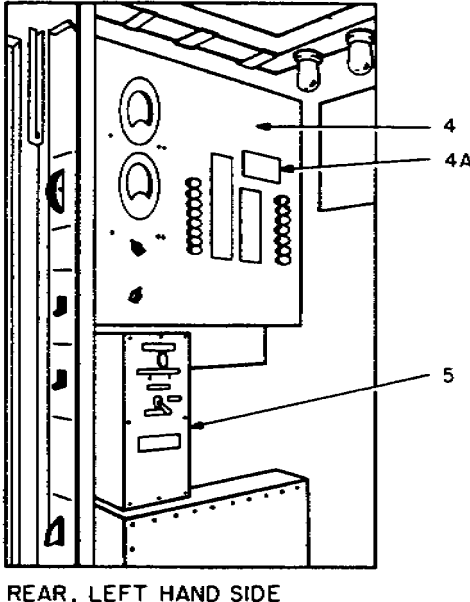
SECTION II

TM 11-5820-556-24P

(1) ILLUSTRATION		(2)	(3)	(4)	(5)	(6) DESCRIPTION	(7)	(8) QTY INC IN UNIT
(a) FIG NO.	(b) ITEM NO.	SMR CODE	NATIONAL STOCK NUMBER	PART NUMBER	FSCM	<i>USABLE ON CODE</i>	U/M	
						GROUP 00 RADIO TERMINAL SET AN/TRC-112		
1	1	PDFDL	5411-00-880-3092	S-336/TRC-112	80058	SHELTER, ELECTRICAL EQUIPMENT S-336/TRC-112.....	EA	1
N 1	1A	MDOZZ		SC-C-938742	80063	CAUTION, DECAL ( TO BE MANUFACTURED AT DEPOT )	EA	1
1	2	PDODD	2510-00-824-5524	MT-3894/TRC	80058	TRANSIT FRAME, ANTENNA MT-3894/TRC.....	EA	1
1	3	PDOFF	6115-00-577-8471	PU-332/G	80058	TENERATOR SET, GASOLINE ENGINE, PU-322/G.....	EA	2
1	4	PDOFD	5805-00-543-0012	TA-312/PT	80058	TELEPHONE SET TA-312/PT.....	EA	1
1	5	PDPDD	5920-00-727-4352	AN/TRA-37	80058	ANTENNA GROUP AN/TRA-37.....	EA	1
1	6	PDODD	5820-00-926-7355	AN/GRC-143	80058	RADIO SET AN/GRC-143.....	EA	1
1	7	PDOHH	5805-00-985-9088	CV-425/V	80058	CONVERTER, TELEGRAPH TELEPHONE CV-425/V.....	EA	1
1	8	PDOHD	5820-00-113-9768	PP-4763A/GRC	80058	POWER SUPPLY PP-4763A/GRC.....	EA	1
1	9	PDODD	5820-00-402-2263	AN/GRC-106	80058	RADIO SET AN/GRC-106.....	EA	1



FLOOR VIEW



REAR, LEFT HAND SIDE

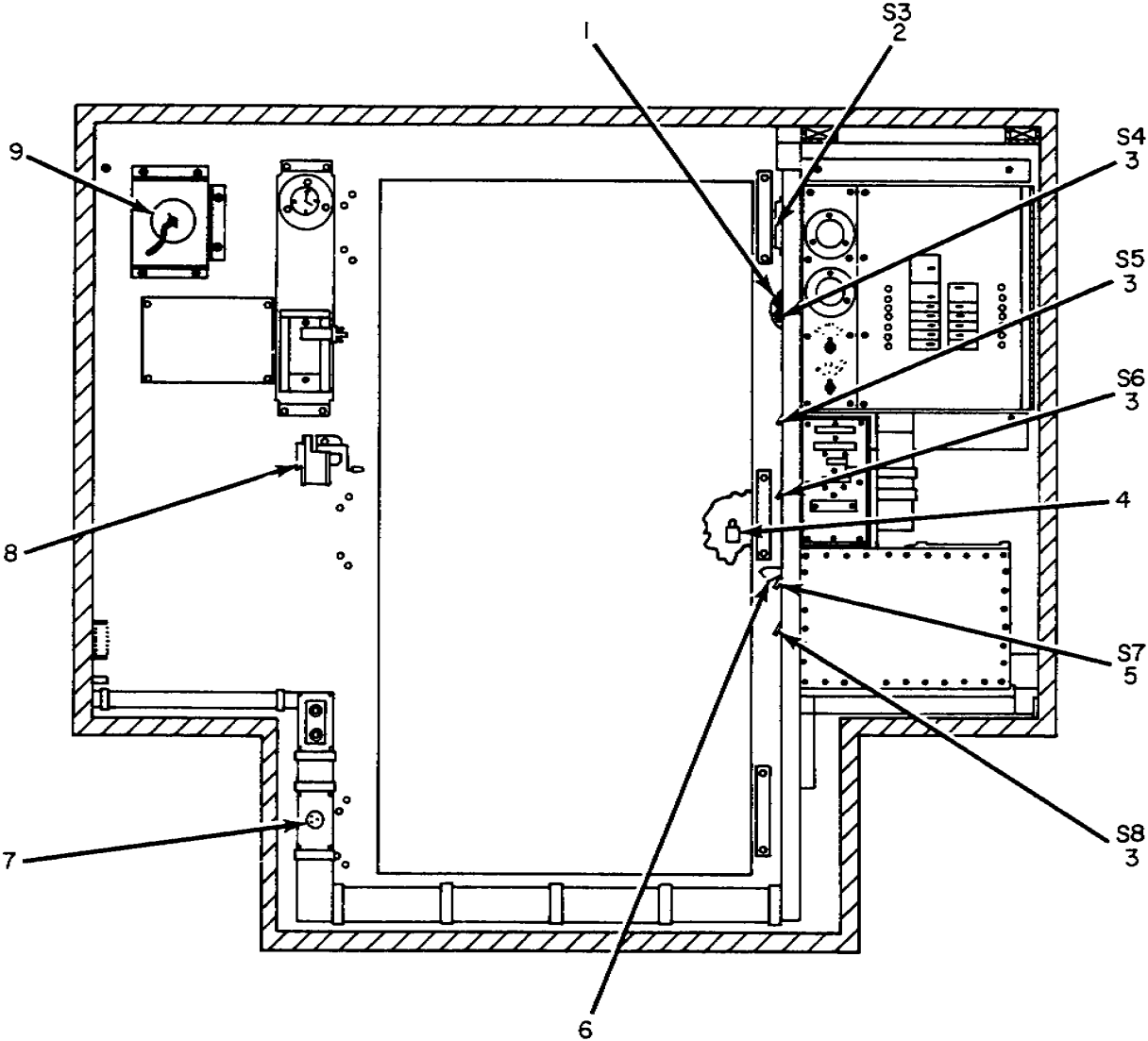
ELOKMO02

Figure 2. Shelter, Electrical Equipment S-336/TRC-112.

SECTION II

TM 11-5820-556-24P

(1)		(2)	(3)	(4)	(5)	(6)	(7)	(8)
ILLUSTRATION		SMR CODE	NATIONAL STOCK NUMBER	PART NUMBER	FSCM	DESCRIPTION  <i>USABLE ON CODE</i>	U/M	QTY INC IN UNIT
(a) FIG NO.	(b) ITEM NO.							
						GROUP 07 SHELTER, ELECTRICAL EQUIPMENT S-336/TRC-112		
2	1	XDFFF		SC-D-630194	80063	WAVEGUIDE INSTALLATION ASSEMBLY .....	EA	1
2	2	XDFFF		SCD539899	80063	BLOWER EXHAUST .....	EA	2
2	3	PAFFF	5820-00-474-9563	SC-D-630281	80063	PATCH PANEL ASSEMBLY .....	EA	1
2	4	XDFFF		SC-D-630221	80063	POWER DISTRIBUTION BOX ASSEMBLY .....	EA	1
N 2	4A	MDOZZ		SC-C-938742	80063	CAUTION, DECAL (TO BE MANUFACTURED AT DEPOT)	EA	1
2	5	PAFZZ	5820-00-474-9560	SC-D-630236	80063	FILTER BOX ASSEMBLY .....	EA	1
2	6	PAFZZ	8130-00-711-0537	RC-4Q5/TR	80058	REEL, CABLE RC-405 ( )/TR.....	EA	1
2	7	XDFFF		SCD630402	80063	GENERATOR SWITCH ASSEMBLY .....	EA	1
2	8	PAFFF	5820-00-474-9568	SCD632556	80063	INDICATOR BOX ASSEMBLY .....	EA	1
2	9	PAFFF	5820-00-474-9567	SCD630371	80063	BOX ASSEMBLY, CONTROL INDICATOR.....	EA	1



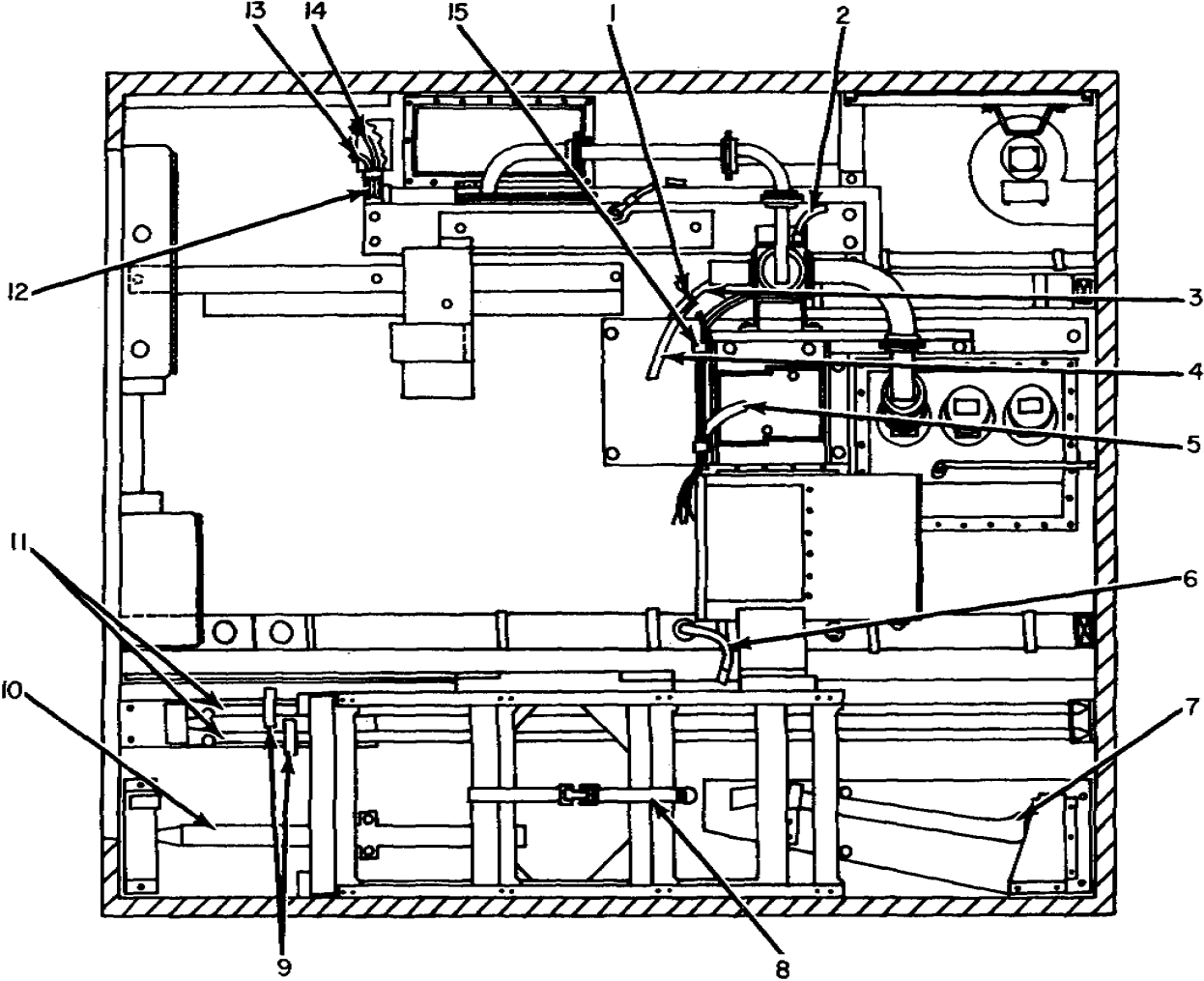
ELOKMO03

Figure 3. Shelter, Electrical Equipment S-336/TRC-112 Interior, Rear View.

SECTION II

TM 11-5820-556-24P

(1) ILLUSTRATION		(2)	(3)	(4)	(5)	(6)	(7)	(8)
(a) FIG NO.	(b) ITEM NO.	SMR CODE	NATIONAL STOCK NUMBER	PART NUMBER	FSCM	DESCRIPTION  <i>USABLE ON CODE</i>	U/M	QTY INC IN UNIT
3	1	XDFZZ		SCD681026	80063	GUARD, SWITCH.....	EA	1
3	2	XDFZZ		BZ-2RW822-A2	91929	MICRO SWITCH.....	EA	1
3	3	PAFZZ	5930-00-865-6101	WS896	81348	SWITCH, TOGGLE.....	EA	4
3	4	PAFZZ	5340-00-682-1508	MS35647-3	96906	PADLOCK, YALE.....	EA	1
3	5	PAFZZ	5930-00-655-1582	MS35059-23	96906	SWITCH, TOGGLE.....	EA	1
3	6	PAFZZ	5930-00-615-6731	MS25224-1	96906	GUARD SWITCH.....	EA	1
3	7	PAFZZ	5935-00-985-4295	3330	83315	RECEPTACLE, TWIST LOCK.....	EA	1
3	8	PAFZZ	7520-00-162-6178	015-1212-00	13499	SHARPENER, PENCIL.....	EA	1
3	9	XDFZZ		1051-0C	72656	BOWL INSULATOR.....	EA	1
						<b>9</b>		



ELOKM004

Figure 4. Shelter, Electrical Equipment S-336/TRC-112 Interior, Roadside View.

SECTION II

TM 11-5820-556-24P

(1) ILLUSTRATION		(2)	(3)	(4)	(5)	(6)	(7)	(8)
(a) FIG NO.	(b) ITEM NO.	SMR CODE	NATIONAL STOCK NUMBER	PART NUMBER	FSCM	DESCRIPTION  USABLE ON CODE	U/M	QTY INC IN UNIT
4	1	PAFFF	5995-00-474-9612	SCD630326-10-9	80063	CABLE ASSEMBLY .....	EA	1
4	2	XDFFF		SCD630322	80063	CABLE ASSEMBLY .....	EA	1
4	3	XDFFF		SCD630324	80063	CABLE ASSEMBLY .....	EA	1
4	4	PAFFF	5995-00-138-8634	SCD630327-6-6	80063	CABLE ASSEMBLY, POWER, ELECTRICAL.....	EA	1
4	5	XDFFF		CV-475	80058	CABLE ASSEMBLY .....	EA	1
4	6	XDFFF		SCD630323	80063	CABLE ASSEMBLY .....	EA	1
4	7	PACZZ	4210-00-727-8111	SCD539451	80063	AXE.....	EA	1
4	8	XDFZZ		SCC681100GR3	80063	STRAP, TIE DOWN .....	EA	1
4	9	PACZZ	6150-00-495-1214	SCB539492	80063	GROUND STRAP .....	EA	2
4	10	PACZZ	5120-00-900-6096	SCC539505	80063	HAMMER .....	EA	1
4	11	PACZZ	5975-00-998-2819	MX-148/G	80063	GROUND ROD .....	EA	1
4	12	XDFFF		SCD630305	80063	CABLE ASSEMBLY, AUDIO.....	EA	1
4	13	XDFFF		SCD630314GR1	80063	CABLE ASSEMBLY, VIDEO .....	EA	1
4	14	XDFFF		SCD630314GR2	80063	CABLE ASSEMBLY, VIDEO .....	EA	1
4	15	XDFZZ		SCB539529	80063	CLIP, CRADLE .....	EA	1



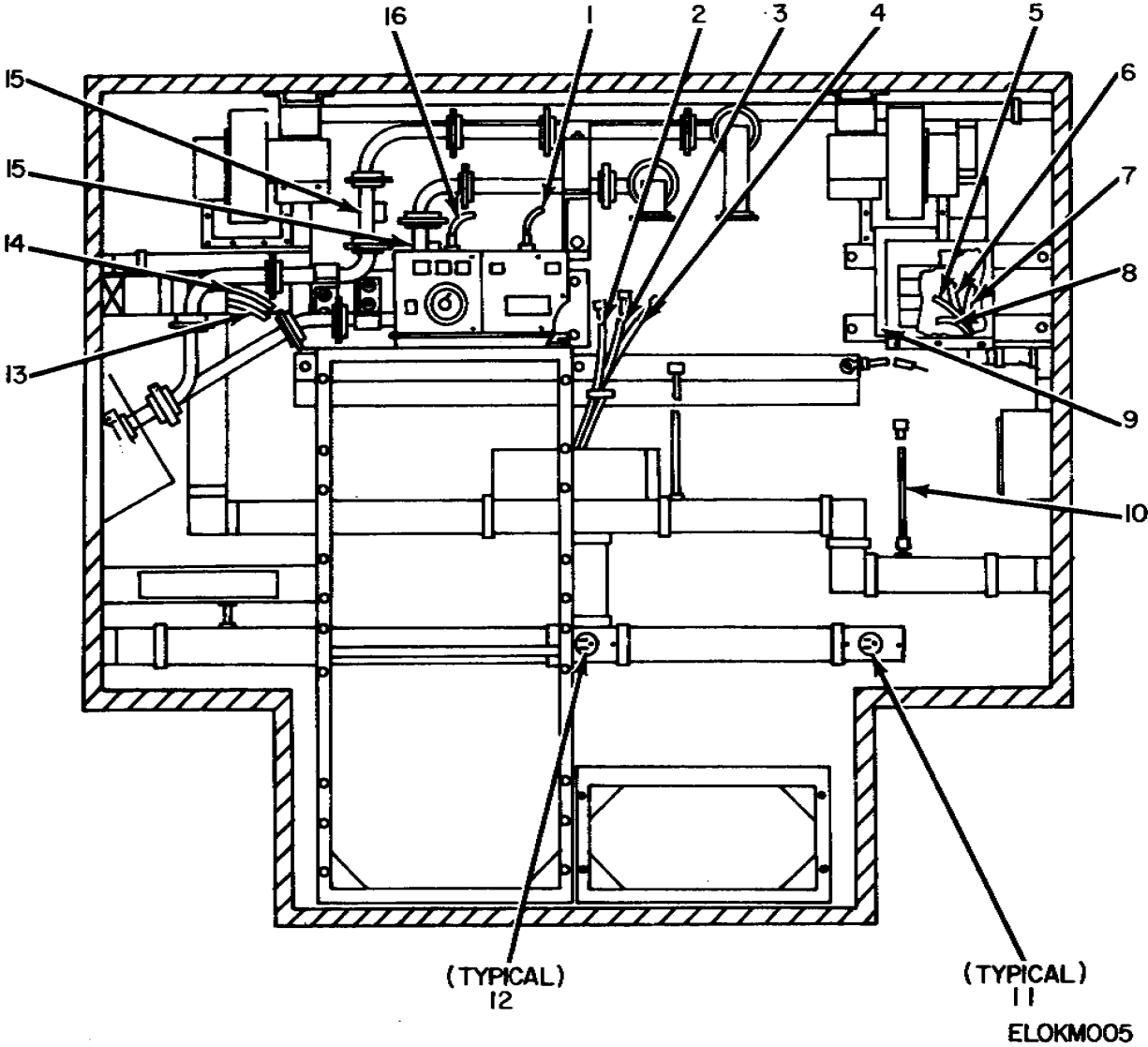


Figure 5. Shelter, Electrical Equipment S-336/TRC-112 Interior, Front View.

SECTION II

TM 11-5820-556-24P

(1) ILLUSTRATION		(2)	(3)	(4)	(5)	(6) DESCRIPTION	(7)	(8)
(a) FIG NO.	(b) ITEM NO.	SMR CODE	NATIONAL STOCK NUMBER	PART NUMBER	FSCM	USABLE ON CODE	U/M	QTY INC IN UNIT
5	1	PAFFF	5995-00-472-4993	SCD630321-4-6	80063	CABLE ASSEMBLY, CONTROL .....	EA	1
5	2	XDFFF		SCD630264GR1	80063	CABLE ASSEMBLY, TRAFFIC .....	EA	1
				( 7FT)				
5	3	XDFFF		SCD630264GR1	80063	CABLE ASSEMBLY, TRAFFIC .....	EA	1
				( 7FT 6IN)				
5	4	XDFFF		SCD630264GR1	80063	CABLE ASSEMBLY, TRAFFIC .....	EA	1
				( 9FT 6IN)				
5	5	XDFFF		SCD630306GR1	80063	CABLE ASSEMBLY, VIDEO .....	EA	1
5	6	XDFFF		SCD630306GR2	80063	CABLE ASSEMBLY, VIDEO .....	EA	1
5	7	PAFFF	5995-00-139-4913	SCD630306-3-6	80063	CABLE ASSEMBLY, VIDEO .....	EA	1
5	8	XDFFF		SCD630306GR4	80063	CABLE ASSEMBLY, VIDEO .....	EA	1
5	9	XDFFF		SCD630270	80063	CABLE ASSEMBLY, VIDEO .....	EA	1
5	10	XDFFF		SCD630263	80063	CABLE ASSEMBLY .....	EA	1
5	11	PAFZZ	5935-00-933-3454	5361	83315	RECEPTACLE .....	EA	2
5	12	XDFZZ		5261	83315	RECEPTACLE .....	EA	6
5	13	XDFFF		SCD630266GR4	80063	CABLE ASSEMBLY .....	EA	1
5	14	XDFFF		SCD630266GR5	80063	CABLE ASSEMBLY .....	EA	1
5	15	PAOZZ	5985-00-227-8092	CU-1890/GRC	80058	COUPLER, DIRECTIONAL CU-1890/GRC.....	EA	2
5	16	PAFFF	5995-00-168-8657	SCD630319-4-6	80063	CABLE ASSEMBLY, CONTROL .....	EA	1

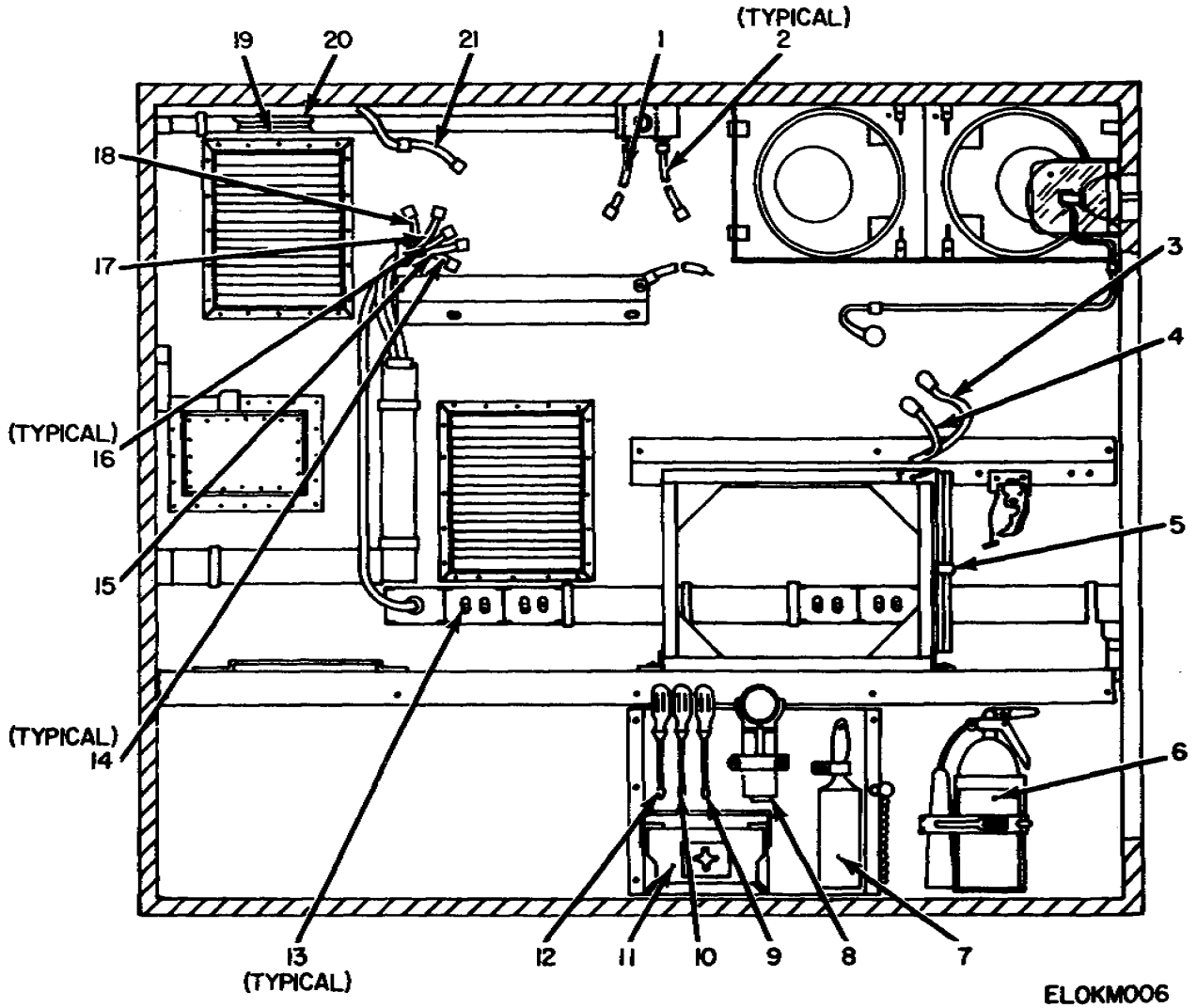


Figure 6. Shelter, Electrical Equipment S-336/TRC-112 Interior, Curbside View.

(1) ILLUSTRATION		(2)	(3)	(4)	(5)	(6)	(7)	(8)
(a) FIG NO.	(b) ITEM NO.	SMR CODE	NATIONAL STOCK NUMBER	PART NUMBER	FSCM	DESCRIPTION  USABLE ON CODE	U/M	QTY INC IN UNIT
6	1	XDFFF		SCD630273GR2	80063	CABLE ASSEMBLY, VIDEO .....	EA	1
6	2	XDFFF		SCD630273GR1	80063	CABLE ASSEMBLY, VIDEO .....	EA	2
6	3	PAFFF	5995-00-474-9616	CX-10071/U(4FT)	80058	CABLE ASSEMBLY, SPECIAL PURPOSE, ELEC (4FT).....	EA	1
6	4	XDFFF		CX-10071/U(3FT)	80058	CABLE ASSEMBLY, SPECIAL PURPOSE, ELEC (3FT).....	EA	1
6	5	XDFZZ		SCB539529-3	80063	CLIP, CRADLE .....	EA	2
6	6	PACZZ	4210-00-270-4512	SCC539482	80063	FIRE EXTINGUISHER .....	EA	1
6	7	PACZZ	7920-00-342-4521	SCC539469	80063	BRUSH, DUST .....	EA	1
6	8	PACZZ	6230-00-729-9614	SCC539491	80063	LANTERN .....	EA	1
6	9	XDCZZ		MS15224-5	96906	SCREWDRIVER.....	EA	1
6	10	XDCZZ		MS15224-6	96906	SCREWDRIVER, CROSS TIP, PHILLIP TYPE.....	EA	1
6	11	XDCZZ		SCD539483	80063	FIRST AID KIT .....	EA	1
6	12	PACZZ	5120-00-451-8250	SCC539502-2	80063	SCREWDRIVER.....	EA	1
6	13	PAFZZ	5935-00-283-4003	5262	74545	RECEPTACLE, DUPLEX .....	EA	5
6	14	XDFFF		SCD630326 (7FT 6IN)	80063	CABLE ASSEMBLY .....	EA	4
6	15	XDFFF		SCD630266GR1	80063	CABLE ASSEMBLY (6FT).....	EA	1
6	16	XDFFF		SCD630266GR3	80063	CABLE ASSEMBLY .....	EA	3
6	17	XDFFF		SCD630266GR1	80063	CABLE ASSEMBLY (4FT).....	EA	1
6	18	XDFFF		SCD630266GR2	80063	CABLE ASSEMBLY .....	EA	1
6	19	XDFFF		SCD630314GR3	80063	CABLE ASSEMBLY, VIDEO .....	EA	1
6	20	XDFFF		SCD630314GR4	80063	CABLE ASSEMBLY, VIDEO .....	EA	1
6	21	XDFFF		SCD630272	80063	CABLE ASSEMBLY, VIDEO .....	EA	1

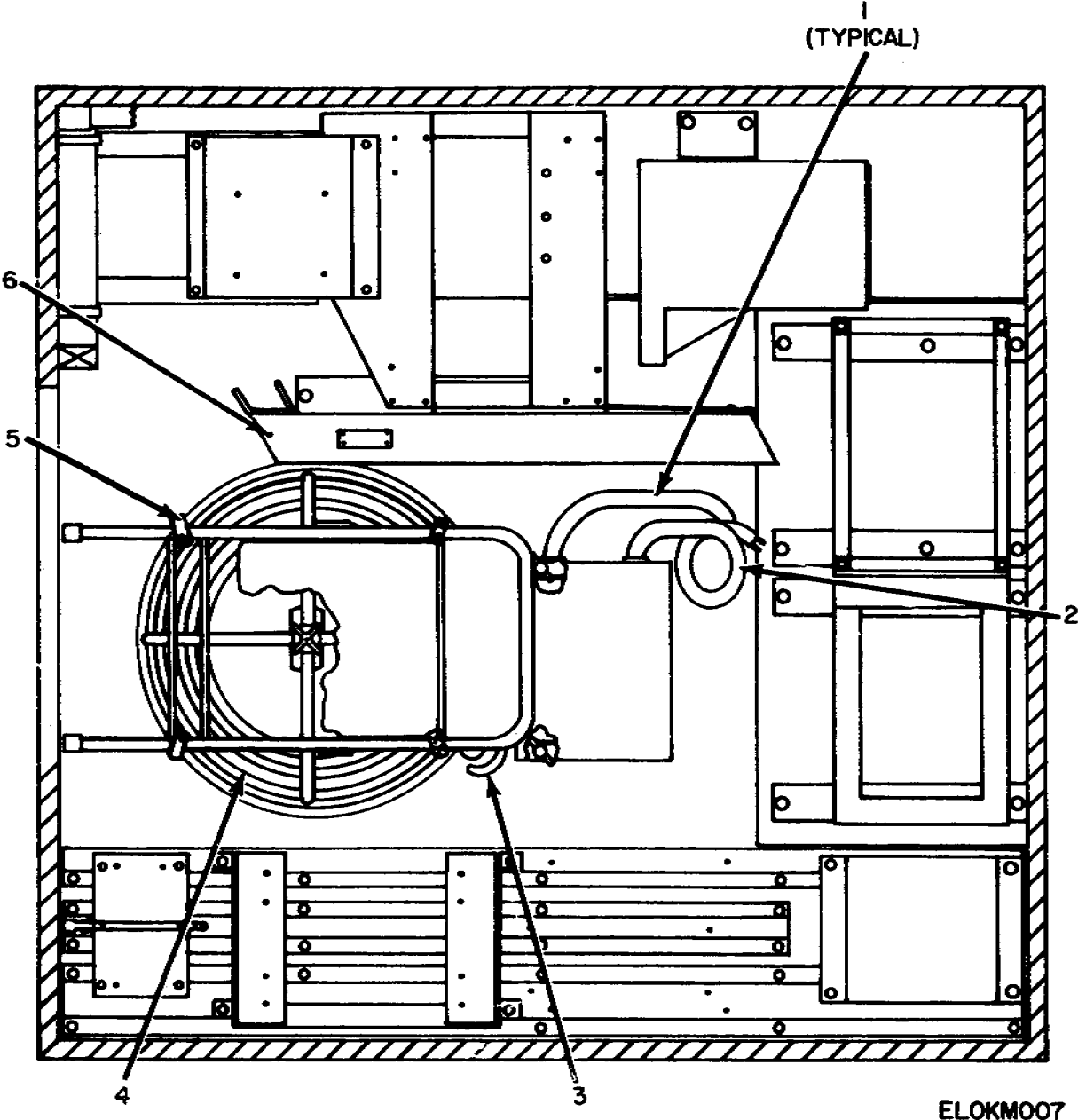


Figure 7. Shelter, Electrical Equipment S-336/TRC-112 Interior, Floor Plan

SECTION II

TM 11-5820-556-24P

(1)		(2)	(3)	(4)	(5)	(6)	(7)	(8)
ILLUSTRATION		SMR CODE	NATIONAL STOCK NUMBER	PART NUMBER	FSCM	DESCRIPTION  <i>USABLE ON CODE</i>	U/M	QTY INC IN UNIT
(a) FIG NO.	(b) ITEM NO.							
7	1	XDFFF	5340-00-016-5669	SCC630401GR2	80063	CABLE ASSEMBLY .....	EA	2
7	2	XDFZZ		SCC630401GR1	80063	CABLE ASSEMBLY .....	EA	1
7	3	XDFFF		SCD630395	80063	CABLE ASSEMBLY, DIRECT CURRENT POWER.....	EA	1
7	4	XDFFF		SCD630304	80063	CABLE ASSEMBLY, POWER, ELECTRICAL.....	EA	1
7	5	XDFZZ		SCB547271GR4	80063	STRAP ASSEMBLY.....	EA	2
7	6	XDCZZ		MX-3543/G	80058	LADDER, VEHICLE BOARDING MX3543/G.....	EA	1

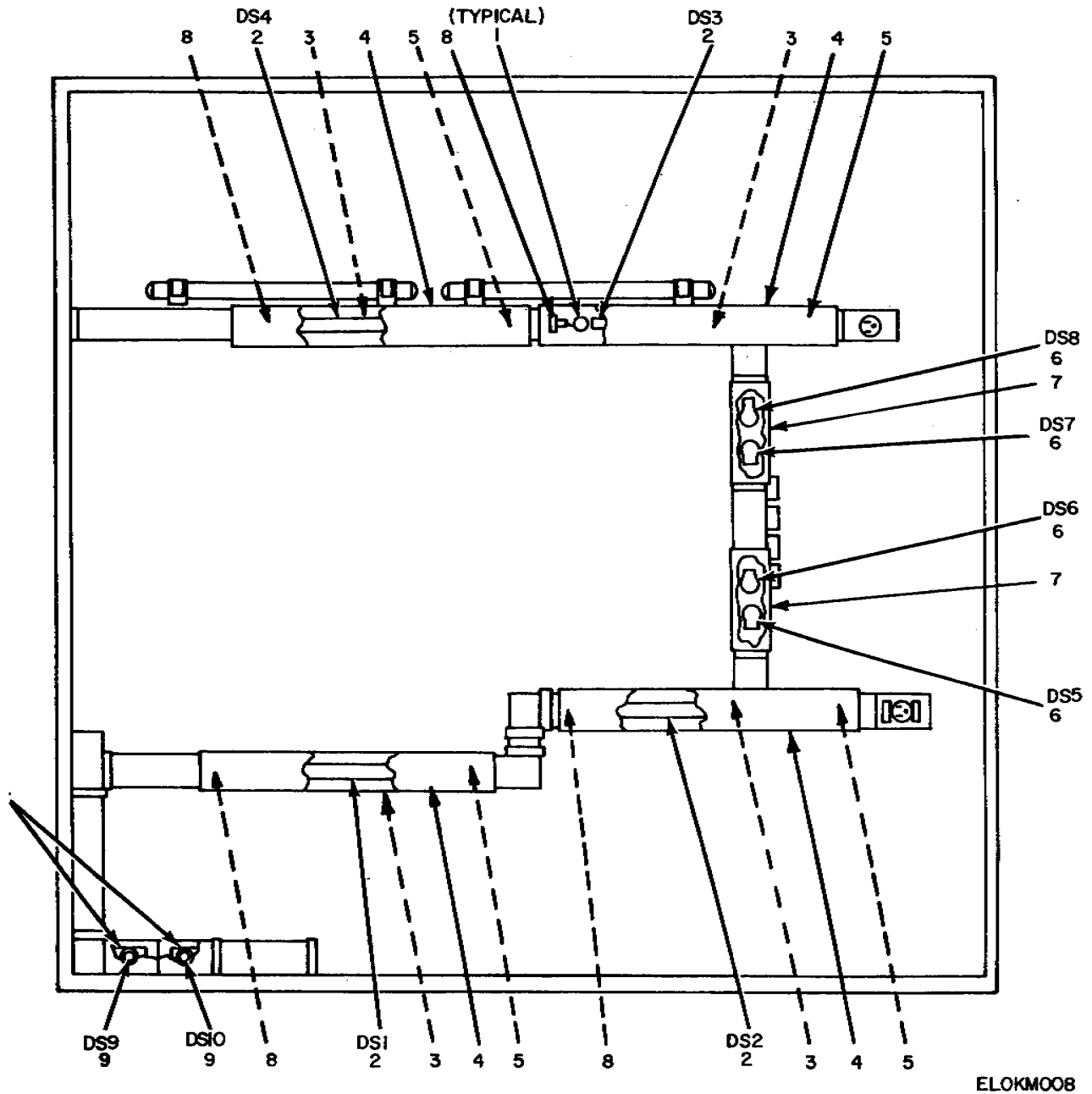


Figure 8. Shelter, Electrical Equipment S-336/TRC-112 Interior, Ceiling View.

## SECTION II

TM 11-5820-556-24P

(1) ILLUSTRATION		(2)	(3)	(4)	(5)	(6)	(7)	(8)
(a) FIG NO.	(b) ITEM NO.	SMR CODE	NATIONAL STOCK NUMBER	PART NUMBER	FSCM	DESCRIPTION  <i>USABLE ON CODE</i>	U/M	QTY INC IN UNIT
8	1	PACZZ	6250-00-194-4794	SCB539504	80063	STARTER, FLUORESCENT .....	EA	4
8	2	PACZZ	6240-00-152-2996	SCC539495	80063	LAMP, FLUORESCENT .....	EA	4
8	3	XDFZZ		SCC681185	80063	BALLAST, LAMP .....	EA	4
8	4	PACZZ	6210-00-472-4497	SCB539466	80063	SHIELD, LIGHT F/FLUORESCENT .....	EA	4
8	5	PAFZZ	6250-00-146-1641	SCC539561GP2	80063	LAMPHOLDER, ASSEMBLY .....	EA	4
8	6	XDCZZ		25T8DC	24455	LAMP, INCANDESCENT .....	EA	4
8	7	PACZZ	6210-00-930-1217	SCC539560GP2	80063	SHIELD, LIGHT F/COLD START LIGHT .....	EA	2
8	8	PAFZZ	6250-00-146-1636	SCC539560GP2	80063	LAMPHOLDER W/STARTER BASE ASSEMBLY .....	EA	4
8	9	PACZZ	6240-00-63-9753	NE-34	81349	LAMP, NEON .....	EA	2
8	10	XDFZZ		4109	83315	LAMPHOLDER .....	EA	2



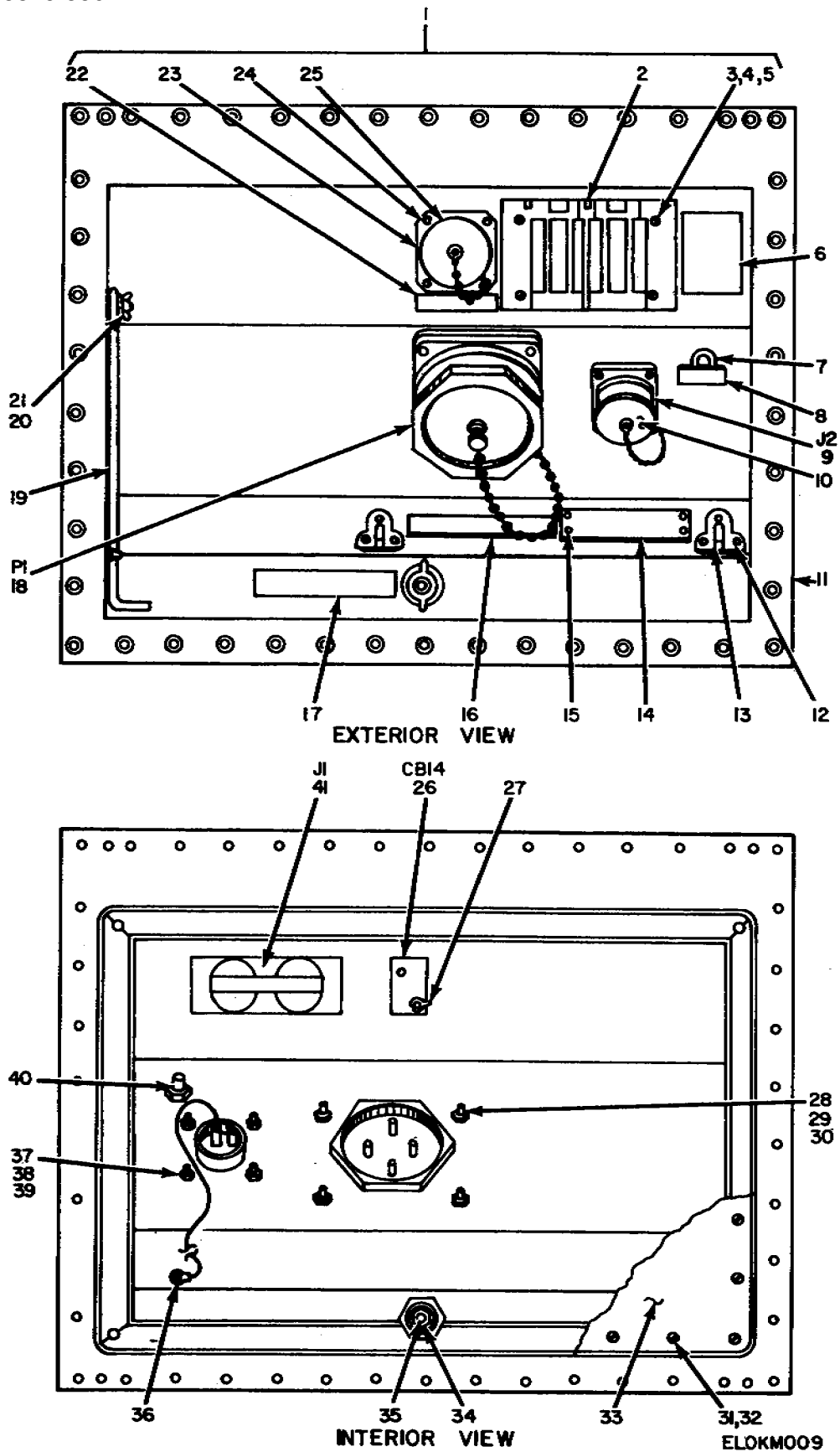


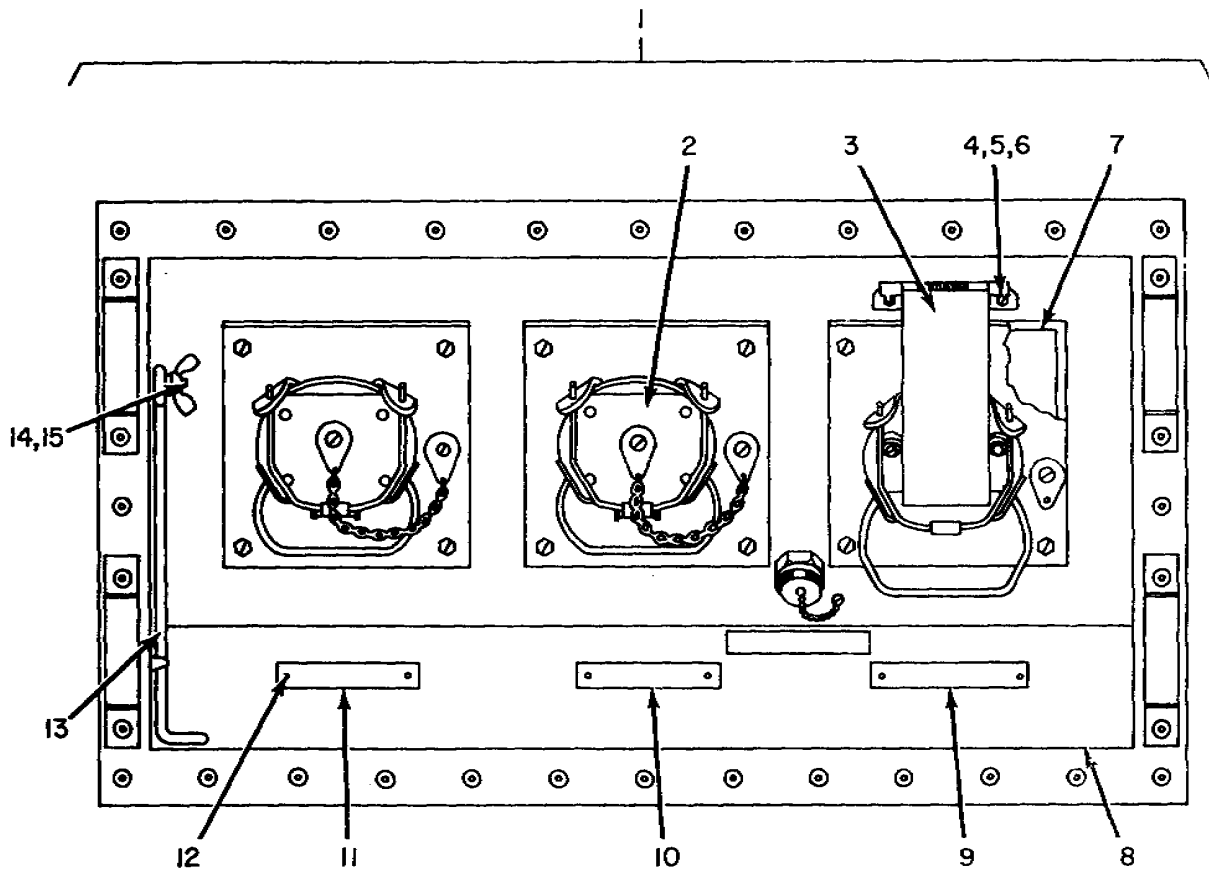
Figure 9. Shelter, Electrical Equipment S-336/TRC-112 Power Entrance Box Assembly.

(1) ILLUSTRATION		(2)	(3)	(4)	(5)	(6)	(7)	(8)
(a) FIG NO.	(b) ITEM NO.	SMR CODE	NATIONAL STOCK NUMBER	PART NUMBER	FSCM	DESCRIPTION  USABLE ON CODE	U/M	QTY INC IN UNIT
9	1	XDFFF		SCD630108	80063	BOX ASSEMBLY.....	EA	1
9	2	XDFZZ	5935-00-959-3606	5206	74545	PLATE, WEATHER PROOF.....	EA	1
9	3	XDFZZ		MS21044-N6	96906	NUT, SELF-LOCKING, HEXAGON.....	EA	16
9	4	XDFFF		SCD630108-10	80063	SCREW, PAN HEAD.....	EA	4
9	5	XDFZZ	5310-00-983-8483	MS27183-5	96906	WASHER, FLAT ROUND.....	EA	1
9	6	XDFZZ		SCB543943	80063	NAMEPLATE.....	EA	1
9	7	XDFZZ		SCB539857GR2	80063	STUD ASSEMBLY.....	EA	1
9	8	XDFZZ		SCB577541	80063	IDENTIFICATION PLATE.....	EA	1
9	9	XDFZZ		MS3100R22-19	96906	CONNECTOR, RECEPTACLE, ELECTRICAL.....	EA	1
9	10	PAFZZ	5935-00-577-8589	MS25043-22C	96906	COVER, ELECTRICAL CONNECTOR, RECEPTACLE.....	EA	1
9	11	XDFZZ		SCD630224	80063	BOX.....	EA	1
9	12	XDFZZ		SCD630108-5	80063	SCREW, FLAT HEAD.....	EA	6
9	13	XDFZZ		254SIZE1	79577	HOOK, FENDER, BRASS.....	EA	2
9	14	XDFZZ		SCB630110	80063	NAMEPLATE.....	EA	1
9	15	XDFZZ	5305-00-175-3230	MS21318-14	96906	SCREW, DRIVE, ROUND HEAD.....	EA	16
9	16	XDFZZ		SCB630109	80063	NAMEPLATE.....	EA	1
9	17	XDFZZ		SCB543937	80063	NAMEPLATE.....	EA	1
9	18	PAFZZ	5935-00-243-8641	RPC-633-014-P14A	15235	CONNECTOR, BULKHEAD.....	EA	1
9	19	XDFZZ		SCB539607-3	80063	SUPPORT.....	EA	1
9	20	XDFZZ	5310-00-809-4058	MS27183-10	96906	WASHER, FLAT ROUND.....	EA	2
9	21	XDFZZ	5310-00-180-8495	MS35425-39	96906	NUT, WING.....	EA	1
9	22	XDFZZ		SCB427923	80063	NAMEPLATE.....	EA	1
9	23	PAFZZ	5935-00-135-6163	10-37093-323	12143	ADAPTER, ELECTRICAL CONNECTOR.....	EA	1
9	24	XDFZZ		SCD630108-6	80063	SCREW, OVAL HEAD.....	EA	4
9	25	PAFZZ	5935-00-965-8146	10-37147-28	77820	CAP, PROTECTIVE, RECEPTACLE.....	EA	1
9	26	PAFZZ	5925-00-681-4952	MS25244-10	96906	BREAKER, CIRCUIT, TRIP FREE, PUSH.....	EA	1
9	27	XDFZZ		32510	84134	TERMINAL, LUG.....	EA	1
9	28	XDFZZ	5310-00-877-5797	MS21044-N3	96906	NUT, SELF-LOCKING, HEXAGON.....	EA	4
9	29	XDFZZ		SCD630108-17	80063	SCREW, PAN HEAD.....	EA	4
9	30	XDFZZ	5310-00-809-8546	MS27183-8	96906	WASHER, FLAT, ROUND.....	EA	4
9	31	XDFZZ		SCD630108-16	80063	SCREW, PAN HEAD.....	EA	34
9	32	XDFZZ	5310-00-809-8544	MS27183-7	96906	WASHER, FLAT, ROUND.....	EA	34
9	33	XDFZZ		SCC539716	80063	COVER, ENTRANCE BOX.....	EA	1
9	34	XDFZZ	5940-00-204-9141	MS25036-14	96906	TERMINAL, LUG.....	EA	1
9	35			SCB539861GR1	80063	STUD ASSEMBLY.....	EA	1
9	36	XDFZZ	5940-00-114-1305	MS25036-116	96906	TERMINAL, LUG.....	EA	2
9	37	XDFZZ		MS21044-N4	96906	NUT, SELF-LOCKING, HEXAGON.....	EA	4
9	38	XDFZZ		SCD630108-15	80063	SCREW, PANHEAD.....	EA	8
9	39	XDFZZ	5310-00-951-4679	MS27183-3	96906	WASHER, FLAT, ROUND.....	EA	4
9	40	XDFZZ	5940-00-204-9142	MS25036-12	96906	TERMINAL, LUG.....	EA	2

SECTION II

TM 11-5820-556-24P

(1) ILLUSTRATION		(2)	(3)	(4)	(5)	(6)	(7)	(8)
(a) FIG NO.	(b) ITEM NO.	SMR CODE	NATIONAL STOCK NUMBER	PART NUMBER	FSCM	DESCRIPTION  <i>USABLE ON CODE</i>	U/M	QTY INC IN UNIT
9	41	PAFZZ	5935-00-283-4003	5262	74545	RECEPTACLE .....	EA	1



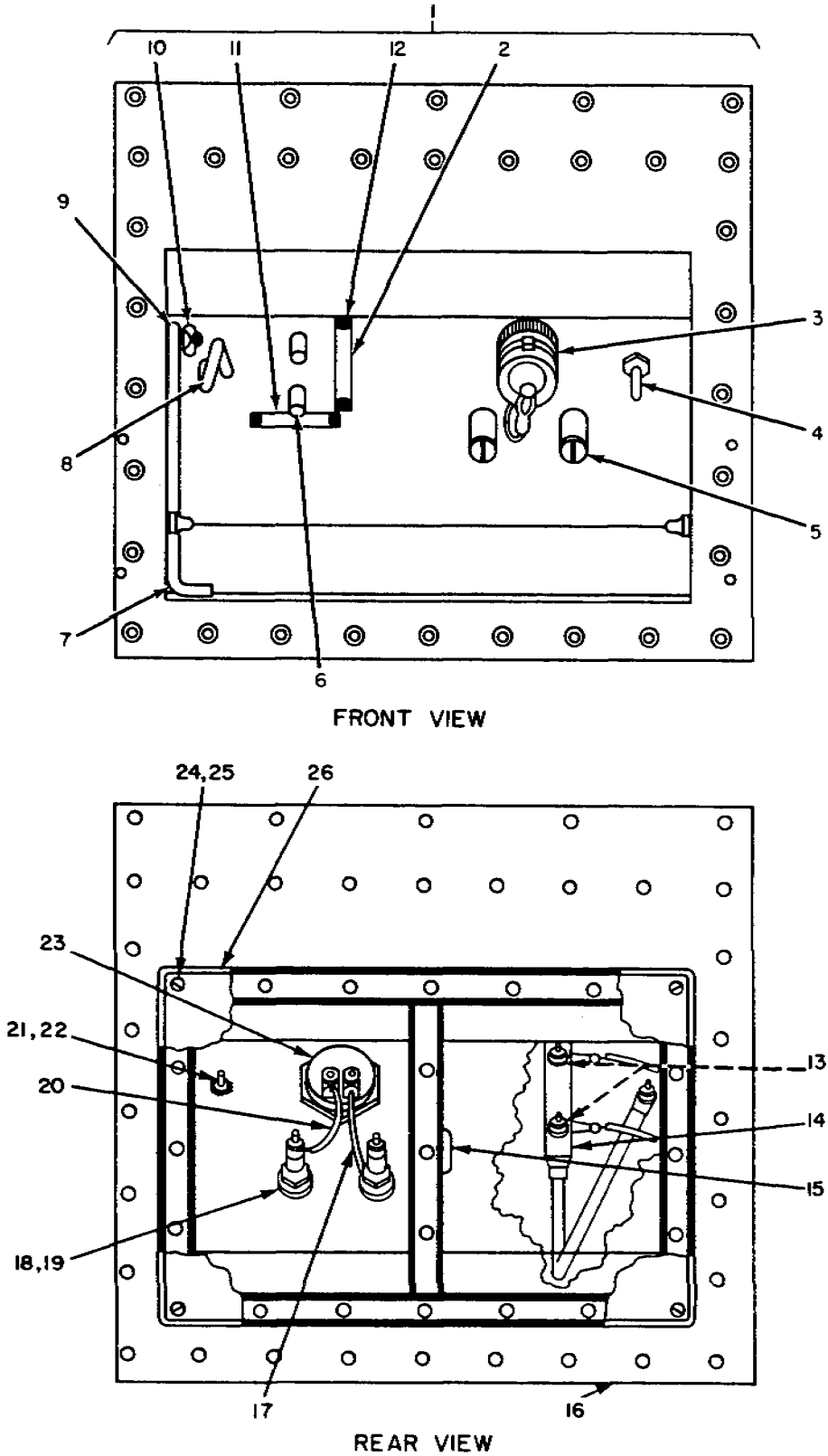
ELOKMO10

Figure 10. Shelter, Electrical Equipment S-336/TRC-112 Antenna Entrance Box

SECTION II

TM 11-5820-556-24P

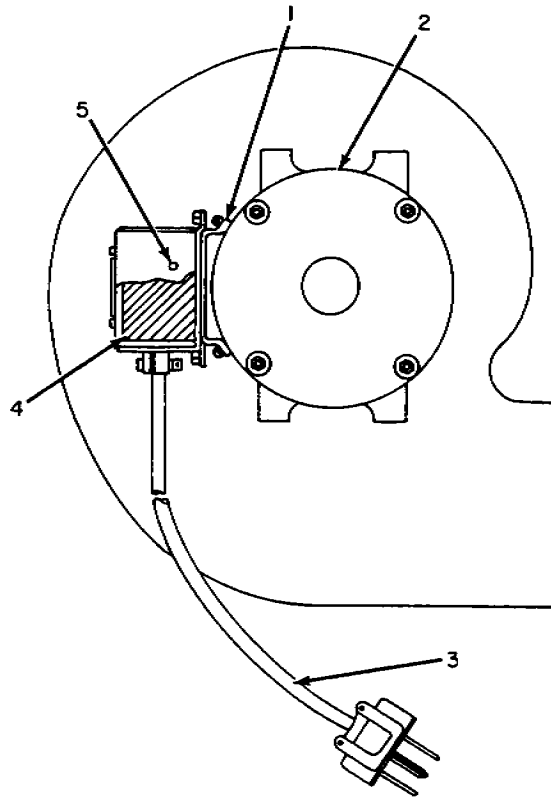
(1) ILLUSTRATION		(2)	(3)	(4)	(5)	(6)	(7)	(8)
(a) FIG NO.	(b) ITEM NO.	SMR CODE	NATIONAL STOCK NUMBER	PART NUMBER	FSCM	DESCRIPTION  <i>USABLE ON CODE</i>	U/M	QTY INC IN UNIT
10	1	XDFFF		SCD630114	80063	BOX ASSEMBLY .....	EA	1
10	2	XDFZZ		SCC630160	80063	PRESSURIZING SECTION ASSEMBLY .....	EA	1
10	3	XDFZZ		SCC630184	80063	PRESSURIZING SECTION ASSEMBLY .....	EA	1
10	4	XDFZZ	5310-00-877-5797	MS21044-N3	96906	NUT, SELF-LOCKING, HEXAGON .....	EA	12
10	5	XDFZZ		SCD630114-1	80063	SCREW, PAN HEAD .....	EA	12
10	6	XDFZZ	5310-00-809-8546	MS27183-8	96906	WASHER, FLAT .....	EA	24
10	7	XDFZZ		SCB630269	80063	GASKET .....	EA	3
10	8	XDFZZ		SCD630124	80063	BOX ASSEMBLY .....	EA	1
10	9	XDFZZ		SCB630190	80063	NAMEPLATE .....	EA	1
10	10	XDFZZ		SCB630191-2	80063	NAMEPLATE .....	EA	1
10	11	XDFZZ		SCB630191-1	80063	NAMEPLATE .....	EA	1
10	12	XDFZZ	5305-00-175-3230	MS21318-14	96906	SCREW DRIVE .....	EA	6
10	13	XDFZZ		SCB69607-3	80063	SUPPORT .....	EA	1
10	14	XDFZZ	5310-00-180-8495	MS35425-39	96906	NUT, WING .....	EA	1
10	15	XDFZZ	5310-00-809-4058	MS27183-10	96906	WASHER, FLAT .....	EA	2



ELOKM011

Figure 11. Shelter, Electrical Equipment S-336/TRC-112 Signal Video Entrance Box Assembly

(1) ILLUSTRATION		(2)	(3)	(4)	(5)	(6)	(7)	(8)	
(a) FIG NO.	(b) ITEM NO.	SMR CODE	NATIONAL STOCK NUMBER	PART NUMBER	FSCM	DESCRIPTION  USABLE ON CODE	U/M	QTY INC IN UNIT	
	11	1	XDFFF		SC-D-639120	80063	BOX ASSEMBLY .....	EA	1
	11	2	XDFZZ		SCB543941	80063	NAMEPLATE.....	EA	1
	11	3	PAFZZ	5999-00-136-9040	SC-C-388423	80063	CAP ASSEMBLY.....	EA	1
	11	4	XDFZZ		SCB547250	80063	EYE BOLT.....	EA	1
C	11	5	PAFZZ	5920-01-150-0758	F-1537/G	80058	ARRESTER, ELEC, SURGE.....	EA	2
	11	6	PAFZZ	5940-00-283-5386	U/106 ( )/U	81349	BINDING POST .....	EA	2
	11	7	XDFZZ		SCB539607-1	80063	SUPPORT .....	EA	1
	11	8	XDFZZ		SC-B-5399608-1	80063	RING, BRIDLE.....	EA	1
	11	9	XDFZZ	5310-00-809-4058	MS27183-10	96906	WASHER, FLAT, ROUND.....	EA	2
	11	10	XDFZZ		MS35425-39	96906	NUT, WING.....	EA	1
	11	11	XDFZZ		SC-B-630115	80063	NAMEPLATE.....	EA	1
	11	12	XDFZZ	5305-00-175-3230	MS21318-14	96906	SCREW, DRIVE, ROUND HEAD.....	EA	4
C	11	13	PAFZZ	5920-01-146-6196	F-1538/G	80058	ARRESTER, ELEC, SURGE.....	EA	2
C	11	14	XDFZZ		SC-D-781348-002	80063	GROUND STRAP ASSEMBLY .....	EA	1
C	11	15	XDFZZ		MS35490-28	96906	GROMMET, RUBBER, SPLIT.....	EA	1
C	11	16	XDFZZ		SC-D-630113	80063	BOX, SUBASSEMBLY.....	EA	1
C	11	17	XDFZZ		SC-C-781349	80063	GROUND WIRE ASSEMBLY.....	EA	1
C	11	18	XDFZZ		SC-D-620120-4	80063	NUT, HEXAGON.....	EA	2
C	11	19	XDFZZ		SC-D-620120-3	80063	WASHER, LOCK, INTERNAL EXTENSION.....	EA	2
C	11	20	XDFZZ		SCB547000	80063	WIRE ASSEMBLY .....	EA	2
C	11	21	XDFZZ	5310-00-851-2674	MS35691-1	96906	NUT, HEXAGON.....	EA	4
C	11	22	XDFZZ	5310-00-889-2528	MS45904-68	96906	WASHER, INTERNAL-EXTERNAL TOOTH.....	EA	2
C	11	23	XDFZZ	5935-00-449-7747	SC-B-598923	80063	CONNECTOR, RECEPTACLE .....	EA	1
N	11	24	XDFZZ		SC-D-630120-2	80063	SCREW, PAN HEAD.....	EA	20
N	11	25	XDFZZ	5310-00-809-8544	MS27183-7	96906	WASHER, FLAT, ROUND.....	EA	20
N	11	26	XDFZZ		SC-C-630116	80063	COVER.....	EA	1
N	11	27	XDFZZ		SC-B-781351	80063	DECAL, MWO .....	EA	1



BLOWER, SIDE VIEW

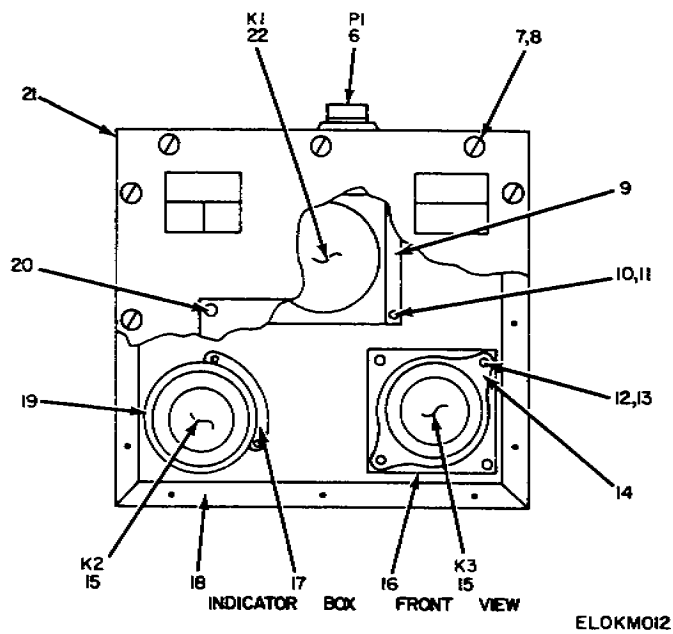


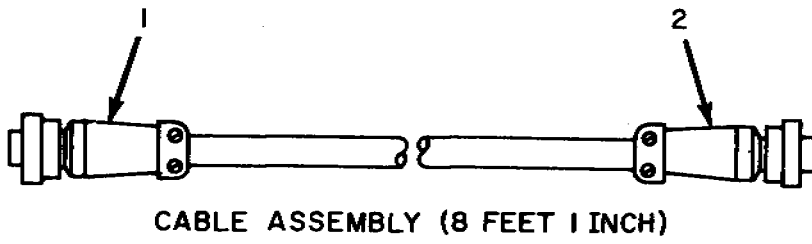
Figure 12. Blower Exhaust and Box Assembly Control Indicator



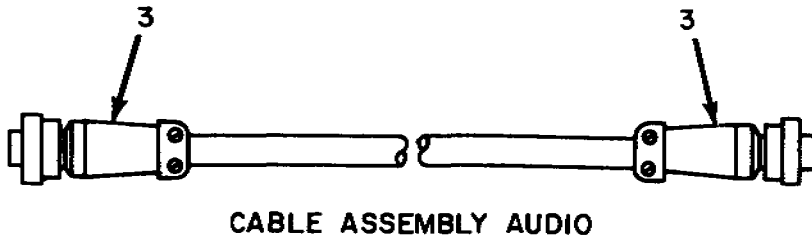
SECTION II

TM 11-5820-556-24P

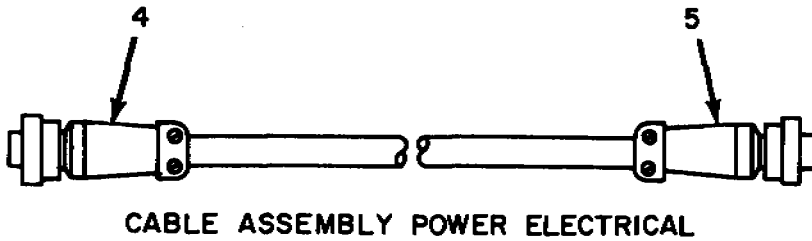
(1) ILLUSTRATION		(2)	(3)	(4)	(5)	(6)	(7)	(8)
(a) FIG NO.	(b) ITEM NO.	SMR CODE	NATIONAL STOCK NUMBER	PART NUMBER	FSCM	DESCRIPTION  <i>USABLE ON CODE</i>	U/M	QTY INC IN UNIT
						GROUP 0701 BLOWER EXHAUST		
12	1	XDCZZ		SCD539618	80063	BASE, CAPACITOR .....	EA	1
12	2	XDCZZ		SCD539615	80063	MOTOR, BLOWER.....	EA	1
12	3	XDCZZ		SCC539839GP2	80063	CABLE ASSEMBLY, BLOWER .....	EA	1
12	4	XDCZZ		SCB539881	80063	CAPACITOR .....	EA	1
12	5	XDCZZ		SCC539881	80063	CAPACITOR .....	EA	1
						GROUP 0702 BOX ASSEMBLY, CONTROL INDICATOR		
12	6	PAFZZ	5935-00-951-9333	MS3114E22-21P	96906	CONNECTOR, RECEPTACLE .....	EA	1
12	7	XDFZZ		SCD630371-7	80063	SCREW, PAN HEAD.....	EA	4
12	8	XDFZZ	5310-00-082-1404	MS27183-6	96906	WASHER, FLAT .....	EA	20
12	9	XDFZZ		SCC630344	80063	BRACKET, RELAY-INDICATOR BOX .....	EA	1
12	10	XDFZZ		MS21044-N06	96906	NUT, SELF LOCKING, HEXAGON .....	EA	8
12	11	XDFZZ	5310-00-809-8546	MS27183-8	96906	WASHER, FLAT .....	EA	4
12	12	XDFZZ		SCD630371-4	80063	SCREW, PAN HEAD.....	EA	12
12	13	XDFZZ	5310-00-877-5797	MS21044-N3	96906	NUT, SELF-LOCKING, HEXAGON HEAD.....	EA	4
12	14	XDFZZ		121-31-00-015	71785	SOCKET, TUBE.....	EA	1
12	15	XDFZZ		26F75T	70563	RELAY, ELECTRON TUBE.....	EA	2
12	16	XDFZZ		SCB630345	80063	TUBE SUPPORT-INDICATOR BOX .....	EA	2
12	17	XDFZZ		SCD630371-6	80063	STRAP NUT .....	EA	2
12	18	XDFZZ		SCD630343	80063	INDICATOR BOX, WELDED ASSEMBLY .....	EA	1
12	19	XDFZZ	5960-00-856-8336	151-11-33-013	71785	SHIELD, TUBE.....	EA	2
12	20	XDFZZ	5305-00-253-5609	MS21318-13	96906	SCREW, DRIVE.....	EA	4
12	21	XDFZZ		SCC630369	80063	COVER ASSEMBLY-INDICATOR BOX .....	EA	1
12	22	XDFZZ		26S-AGBC3P-83851 115AC		RELAY .....	EA	1



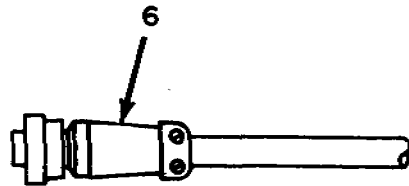
CABLE ASSEMBLY (8 FEET 1 INCH)



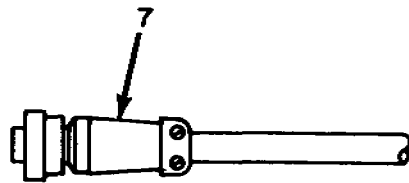
CABLE ASSEMBLY AUDIO



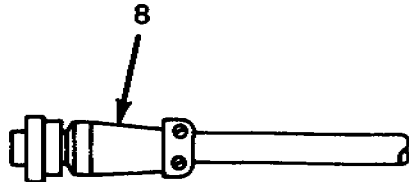
CABLE ASSEMBLY POWER ELECTRICAL



CABLE ASSEMBLY CONTROL INDICATOR II



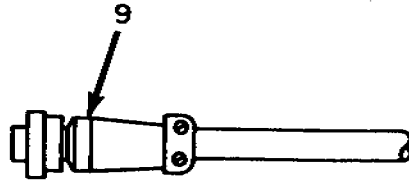
CABLE ASSEMBLY WAVEGUIDE SWITCH



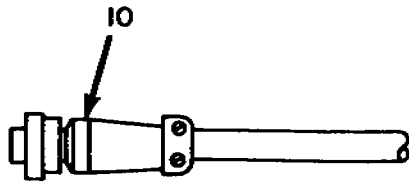
CABLE ASSEMBLY POWER AMPLIFIER

ELOKMO13

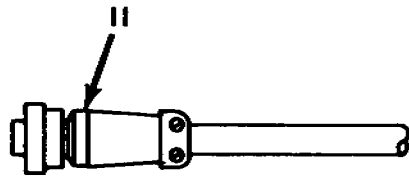
Figure 13. Cable Assemblies (Sheet 1 of 2).



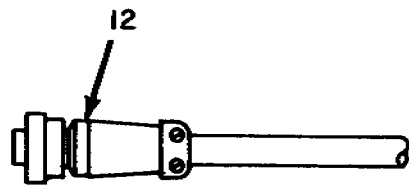
CABLE ASSEMBLY POWER AMPLIFIER



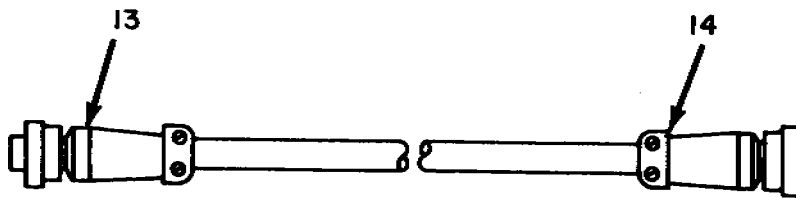
CABLE ASSEMBLY 7 FEET 6 INCHES



CABLE ASSEMBLY 10 FEET 9 INCHES



CABLE ASSEMBLY POWER ELECTRICAL



CABLE ASSEMBLY DC POWER

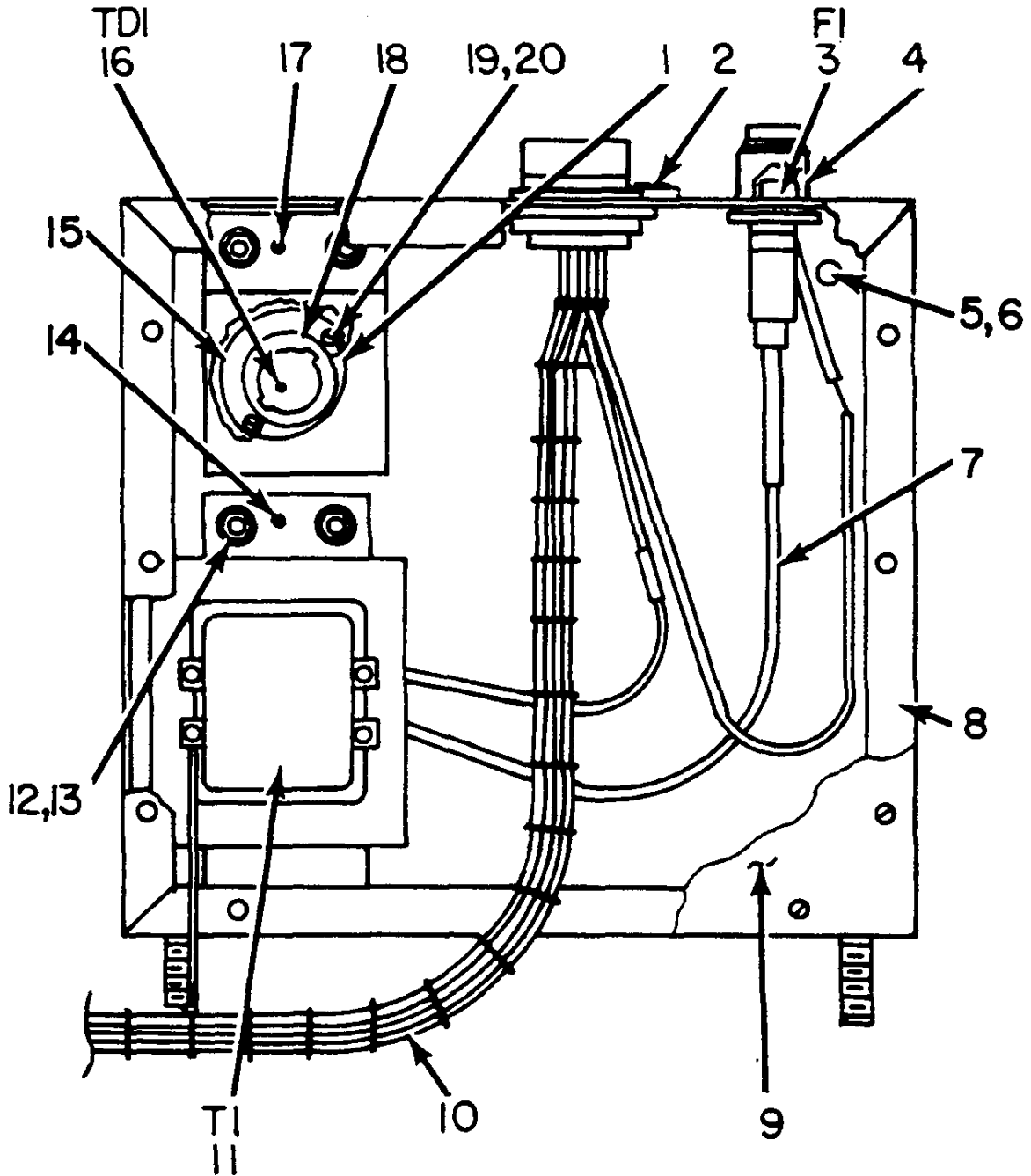
ELOKMO

Figure 13. Cable Assemblies (Sheet 2 of 2).

SECTION II

TM 11-5820-556-24P

(1)		(2)	(3)	(4)	(5)	(6)	(7)	(8)	
ILLUSTRATION (a) FIG NO.	(b) ITEM NO.	SMR CODE	NATIONAL STOCK NUMBER	PART NUMBER	FSCM	DESCRIPTION  <i>USABLE ON CODE</i>	U/M	QTY INC IN UNIT	
									GROUP 0703 CABLE ASSEMBLIES
	13	1	XDFZZ		MS3116E12-8P	96906	CONNECTOR, PLUG.....	EA	1
	13	2	PAFZZ	5935-00-403-7651	MS3114E12-8S	96909	CONNECTOR PLUG.....	EA	1
	13	3	PAFZZ	5935-00-577-8677	U-161/U	81349	CONNECTOR .....	EA	2
C	13	4	PAFZZ	5935-01-056-6258	RPCK133-553- S14A-D138D	15235	CONNECTOR, RECEPTACLE .....	EA	1
C	13	5	PAFZZ	5935-01-056-6624	RPCK133-553- P14A-D138D	15235	CONNECTOR, PLUG.....	EA	1
	13	6	PAFZZ	5935-00-067-8296	MS3116F22-21S	96906	CONNECTOR, PLUG.....	EA	1
	13	7	XDFZZ		MS3106E14-6S	96906	CONNECTOR, PLUG.....	EA	1
	13	8	PAFZZ	5935-00-762-1495	MS3116F12-10S	96906	CONNECTOR, PLUG.....	EA	1
	13	9	PAFZZ	5935-00-762-1504	MS3116F10-6P	96906	CONNECTOR .....	EA	1
	13	10	PAFZZ	5935-00-827-1545	MS3112E16-26S	96906	CONNECTOR .....	EA	1
	13	11	PAFZZ	5935-00-827-1545	MS2112E16-26S	96906	CONNECTOR, PLUG.....	EA	1
	13	12	XDFZZ		MS3016E24-10S	96906	CONNECTOR, PLUG,.....	EA	1
	13	13	PAFZZ	5935-00-502-5104	MS3106A22-1S	96906	CONNECTOR, PLUG, ELECTRICAL, STRAIGHT.....	EA	1
	13	14	PAFZZ	5935-00-223-0572	MS2057-12A	96906	CLAMP, CONNECTOR .....	EA	1



REAR INTERIOR VIEW

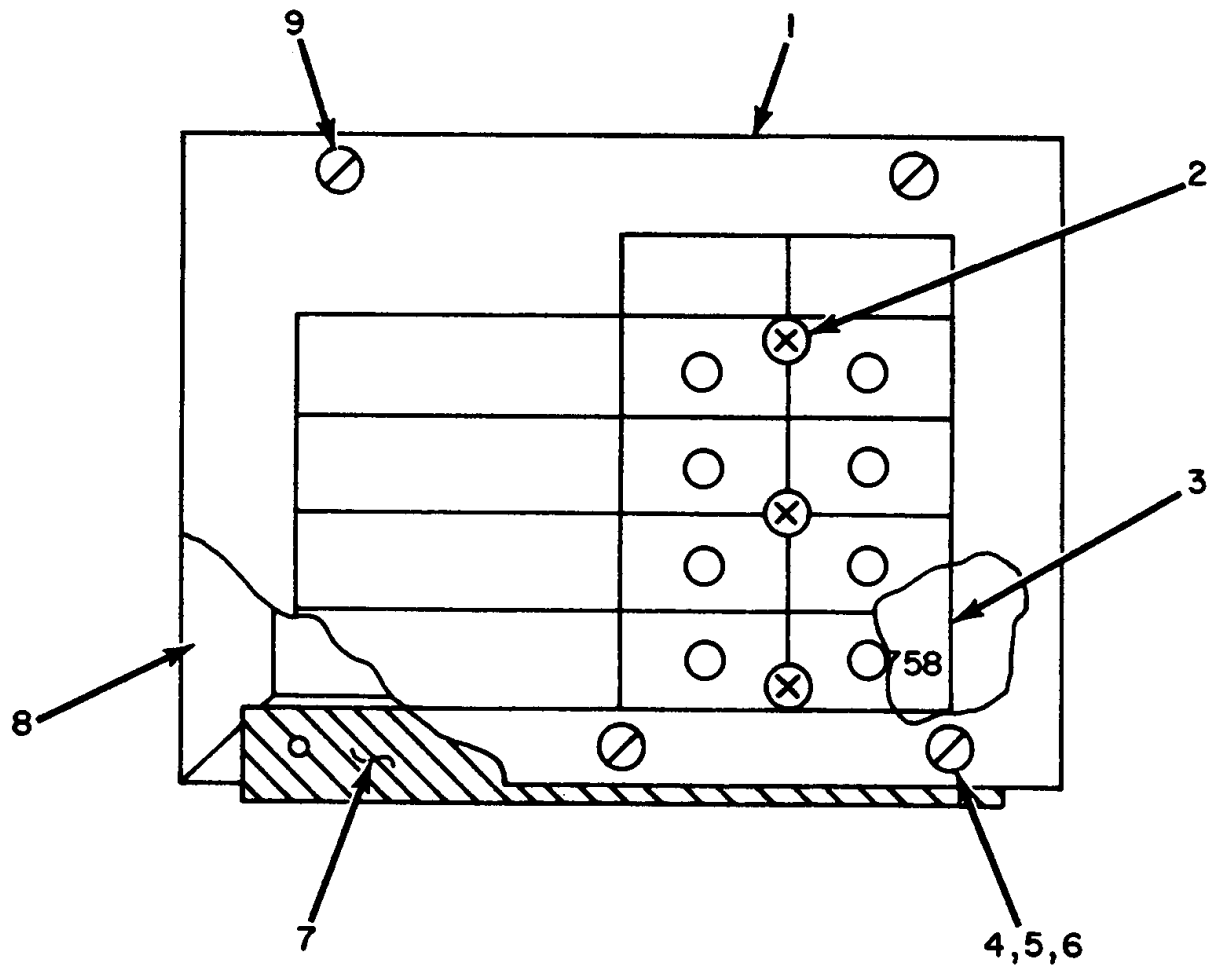
ELOKMO15

Figure 14. Indicator Box Assembly.

SECTION II

TM 11-5820-556-24P

(1) ILLUSTRATION		(2)	(3)	(4)	(5)	(6)	(7)	(8)
(a) FIG NO.	(b) ITEM NO.	SMR CODE	NATIONAL STOCK NUMBER	PART NUMBER	FSCM	DESCRIPTION  <i>USABLE ON CODE</i>	U/M	QTY INC IN UNIT
						GROUP 0704 INDICATOR BOX ASSEMBLY		
14	1	XDFZZ		121-3100-014	71785	SOCKET, TUBE.....	EA	1
14	2	XDFZZ	5305-00-253-5609	MS21318-13	96906	SCREW, DRIVE, ROUND HEAD.....	EA	4
14	3	PACZZ	5920-00-280-8342	MS90078-9	96906	FUSE .....	EA	1
14	4	PAFZZ	5920-00-892-9311	HKP	71400	FUSEHOLDER.....	EA	1
14	5	XDFZZ		SCD632556-7	80063	SCREW, PAN HEAD, SLOTTED.....	EA	12
14	6	XDFZZ	5310-00-082-1404	MS27183-6	96906	WASHER, FLAT .....	EA	12
14	7	XDFZZ		SCD632556-3	80063	WIRE.....	FT	1
14	8	XDFZZ		SCD632520	80063	INDICATOR BOX, WELDED.....	EA	1
14	9	XDFZZ		SCD632555	80063	COVER ASSEMBLY.....	EA	1
14	10	XDFZZ		SCD632553	80063	HARNES ASSEMBLY .....	EA	1
14	11	XDFZZ		201-N	94227	TRANSFORMER .....	EA	1
14	12	XDFZZ	5310-00-809-8546	MS27183-8	96906	WASHER, FLAT .....	EA	6
14	13	XDFZZ		MS35338-N3	96906	WASHER, LOCK, SPLIT .....	EA	6
14	14	XDFZZ		SCB632516	80063	TRANSFORMER SUPPORT .....	EA	1
14	15	XDFZZ		422-05-11-015	71785	NUT, STRAP .....	EA	1
14	16	XDFZZ		26F75T	70563	RELAY, ELECTRON TUBE.....	EA	1
14	17	XDFZZ		SCB632518	80063	TUBE SUPPORT.....	EA	1
14	18	PAFZZ	5960-00-856-8336	151-11-33-013	71785	SHIELD, J-SLOT TUBE.....	EA	1
14	19	XDFZZ	5310-00-543-2410	MS35338-40	96906	WASHER, LOCK, SPLIT .....	EA	2
14	20	XDFZZ		SCD632556-8	80063	SCREW, PAN HEAD, SLOTTED.....	EA	2



ELOKM016

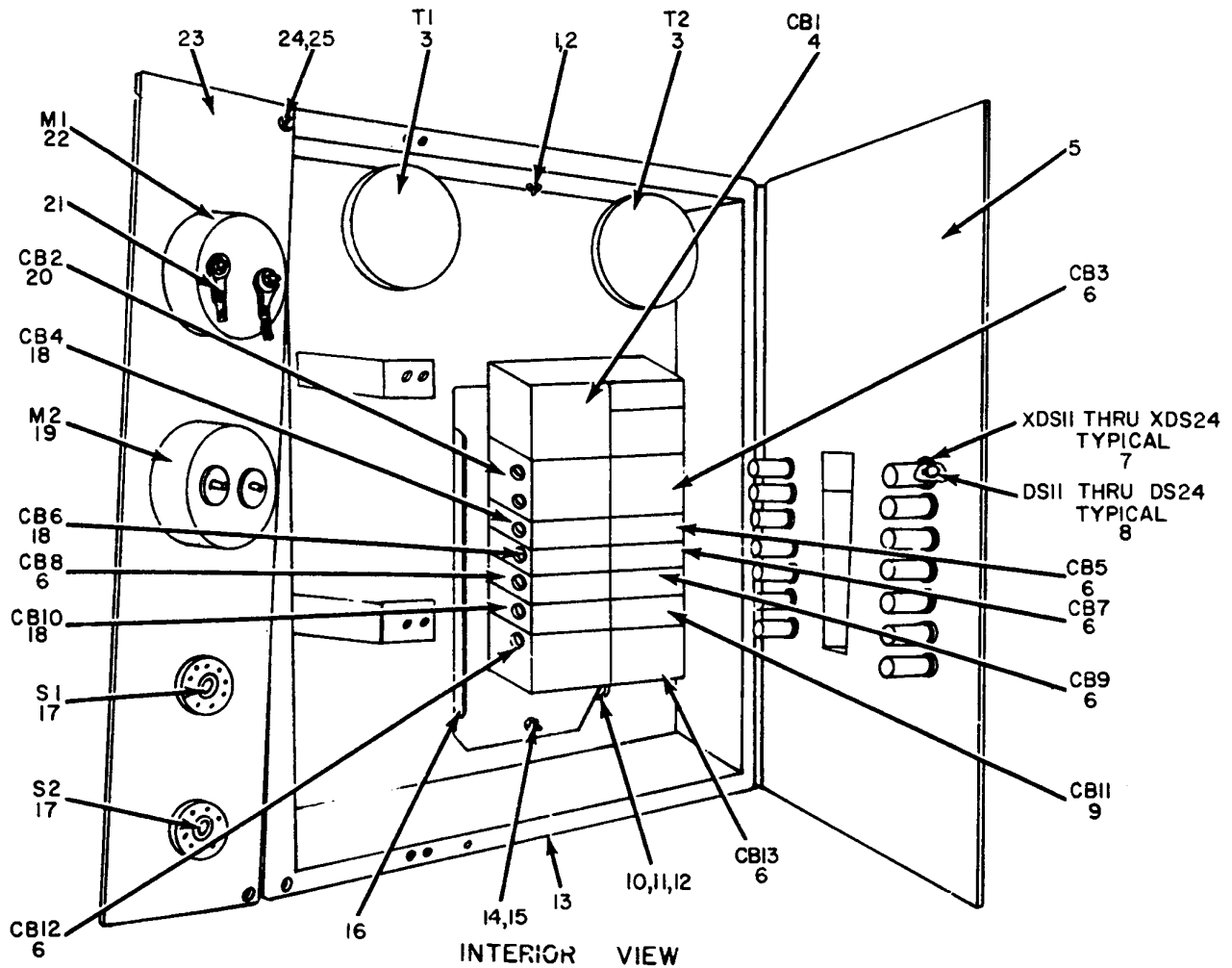
Figure 15. Patch Panel Assembly.

SECTION II

TM 11-5820-556-24P

(1) ILLUSTRATION		(2)	(3)	(4)	(5)	(6)	(7)	(8)
(a) FIG NO.	(b) ITEM NO.	SMR CODE	NATIONAL STOCK NUMBER	PART NUMBER	FSCM	DESCRIPTION  <i>USABLE ON CODE</i>	U/M	QTY INC IN UNIT
						GROUP 0705 PATCH PANEL ASSEMBLY		
15	1	XDFZZ		SCC630280	80063	PLATE, MARKED.....	EA	1
15	2	XDFZZ		SCD630281-3	80063	SCREW, MACHINE, PAN HEAD.....	EA	3
15	3	XDFZZ		SCC630283	80063	PANEL, MARKED.....	EA	1
15	4	XDFZZ	5310-00-877-5797	MS21044-N3	96906	NUT, SELF-LOCKING.....	EA	9
15	5	XDFZZ		SCD630281-2	80096	SCREW, MACHINE, PAN HEAD.....	EA	6
15	6	XDFZZ	5310-00-809-8546	MS27183-8	96906	WASHER, FLAT, ROUND.....	EA	9
15	7	XDFZZ		SCC630289	80063	HINGE, MODIFIED .....	EA	1
15	8	XDFZZ		SCD630278	80063	BOX, WELDED ASSEMBLY.....	EA	1
15	9	XDFZZ		SCD630281-1	80063	FASTENER, SPRING EJECTED .....	EA	2





ELOKM017

Figure 16. Power Distribution Box Assembly.

## SECTION II

TM 11-5820-556-24P

(1) ILLUSTRATION		(2)	(3)	(4)	(5)	(6)	(7)	(8)
(a) FIG NO.	(b) ITEM NO.	SMR CODE	NATIONAL STOCK NUMBER	PART NUMBER	FSCM	DESCRIPTION  USABLE ON CODE	U/M	QTY INC IN UNIT
						GROUP 0706 POWER DISTRIBUTION BOX ASSEMBLY		
16	1	XDFZZ	5310-00-934-9766	MS35650-305	96906	NUT, PLAIN HEXAGON.....	EA	2
16	2	XDFZZ	5310-00-942-5110	MS35335-88	96906	WASHER, LOCK, FLAT, EXTERNAL TOOTH.....	EA	2
16	3	PAFZZ	5950-00-892-8208	3CT11B	93993	TRANSFORMER.....	EA	2
16	4	XDFZZ		5QD-Q1L-370	56365	CIRCUIT BREAKER, MAIN.....	EA	1
16	5	XDFZZ		SCD630219	80063	COVER, MARKED.....	EA	1
16	6	XDFZZ		SQD-Q0-120	56365	CIRCUIT BREAKER, SWITCH, SINGLE.....	EA	7
16	7	PAFZZ	6210-00-087-4248	37-0408-0331-245	72619	LAMPHOLDER.....	EA	14
16	8	PACZZ	6240-00-223-9100	NE-51	81349	LAMP NEON.....	EA	14
16	9	PAFZZ	5925-00-844-4132	SQD-Q0-220	56365	CIRCUIT BREAKER, SWITCH, DOUBLE.....	EA	1
16	10	XDFZZ		SCD630221-16	80063	LUG, LOCK, TITE.....	EA	2
16	11	XDFZZ	5310-00-809-8544	MS27183-7	96906	WASHER, FLAT, ROUND.....	EA	17
16	12	XDFZZ	5310-00-809-8544	SCD630221-17	80063	NUT, SELF-LOCKING.....	EA	17
16	13	XDFZZ		SCD630210	80063	BOX, SUB ASSEMBLY.....	EA	1
16	14	XDFZZ	5310-00-809-4058	MS27183-10	96906	WASHER, FLAT ROUND.....	EA	2
16	15	XDFZZ		M24129/2-4C	96906	NUT, SELF-LOCKING.....	EA	2
16	16	XDFZZ		40504-114-50	88753	BASE ASSEMBLY, CIRCUIT BREAKER.....	EA	1
16	17	XDFZZ		SR0353083MPC	81349	SWITCH, ROTARY.....	EA	2
16	18	PAFZZ	5925-00-818-4811	SQD-Q0-115	56365	CIRCUIT BREAKER, SWITCH, SINGLE.....	EA	3
16	19	PAFZZ	6625-00-752-8464	AC-MR36-100- ACAAR	81349	AMMETER.....	EA	1
16	20	XDFZZ		SQD-Q0-230	56365	CIRCUIT BREAKER, SWITCH, DOUBLE.....	EA	1
16	21	XDFZZ		MS25036-54	96906	TERMINAL, LUG, CRIMP STYLE.....	EA	4
16	22	XDFZZ		0-250-VAC-MR36 W-250-VAC-VVR	81349	VOLTMETER.....	EA	1
16	23	XDFZZ		SCC630214	80063	METER PLATE ASSEMBLY.....	EA	1
16	24	XDFZZ	5310-00-877-5797	MS21044-N3	96906	NUT, SELF LOCKING.....	EA	4
16	25	XDFZZ	5310-00-809-8546	MS27183-8	96906	WASHER, FLAT, ROUND.....	EA	6

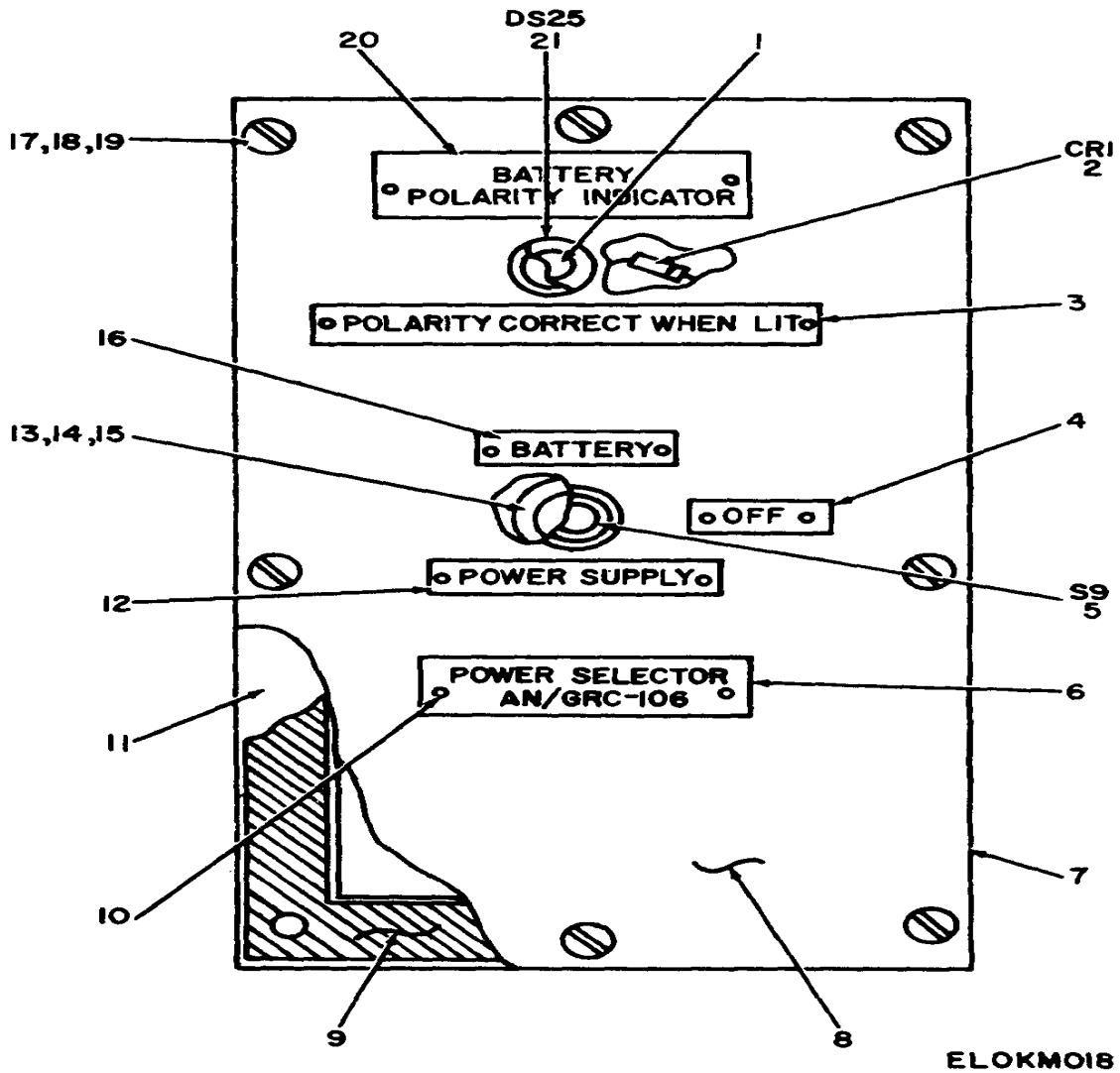


Figure 17. Power Selector Switch.

SECTION II

TM 11-5820-556-24P

(1) ILLUSTRATION		(2)	(3)	(4)	(5)	(6)	(7)	(8)
(a) FIG NO.	(b) ITEM NO.	SMR CODE	NATIONAL STOCK NUMBER	PART NUMBER	FSCM	DESCRIPTION  <i>USABLE ON CODE</i>	U/M	QTY INC IN UNIT
						GROUP 0707 POWER SELECTOR SWITCH		
17	1	PACZZ	6240-00-155-8707	1819	24455	LAMP .....	EA	1
17	2	PAFZZ	5961-00-808-2008	IN1621	84970	SEMICONDUCTOR DEVICE, DIODE.....	EA	1
17	3	XDFZZ		SCB630376	80063	IDENTIFICATION PLATE.....	EA	1
17	4	XDFZZ		SCB630374	80063	NAMEPLATE.....	EA	1
17	5	PAFZZ	5930-00-232-1499	8790K4	15605	SWITCH.....	EA	1
17	6	XDFZZ		SCB630287	80063	IDENTIFICATION PLATE.....	EA	1
17	7	XDFFF		SCD630216	80063	COVER ASSEMBLY (FILTER BOX) .....	EA	1
17	8	XDFZZ		SCD630232	80063	COVER.....	EA	1
17	9	XDFZZ		SCD630236-1	80063	SHIELDING, RADIO FREQUENCY .....	EA	v
17	10	XDFZZ	5305-00-175-3230	MS21318-14	96906	SCREW, DRIVE, ROUND HEAD.....	EA	12
17	11	XDFZZ		SCD630234	80063	BOX, WELDED ASSEMBLY.....	EA	1
17	12	XDFZZ		SCB630375	80063	NAMEPLATE.....	EA	1
17	13	XDFZZ	5310-00-934-9751	MS35650-302	96906	NUT, SELF-LOCKING .....	EA	1
17	14	XDFZZ	5310-00-576-5752	MS35333-39	96906	WASHER, INTERNAL TOOTH.....	EA	1
17	15	XDFZZ	5310-00-809-8546	MS27183-8	96906	WASHER, FLAT .....	EA	1
17	16	XDFZZ		SCB630299	80063	NAMEPLATE.....	EA	1
17	17	XDFZZ		SCD630236-2	80063	SCREW, PAN HEAD.....	EA	8
17	18	XDFZZ	5310-00-809-8544	MS27183-7	96906	WASHER, FLAT, ROOF DRAIN .....	EA	8
17	19	XDFZZ	5310-00-045-3299	MS35338-42	96906	WASHER, LOCK, SPLIT, HELICAL .....	EA	8
17	20	XDFZZ		SCB630377	80063	NAMEPLATE.....	EA	1
17	21	PACZZ	6210-00-299-4104	MS25331-6	96906	INDICATOR LIGHT .....	EA	1

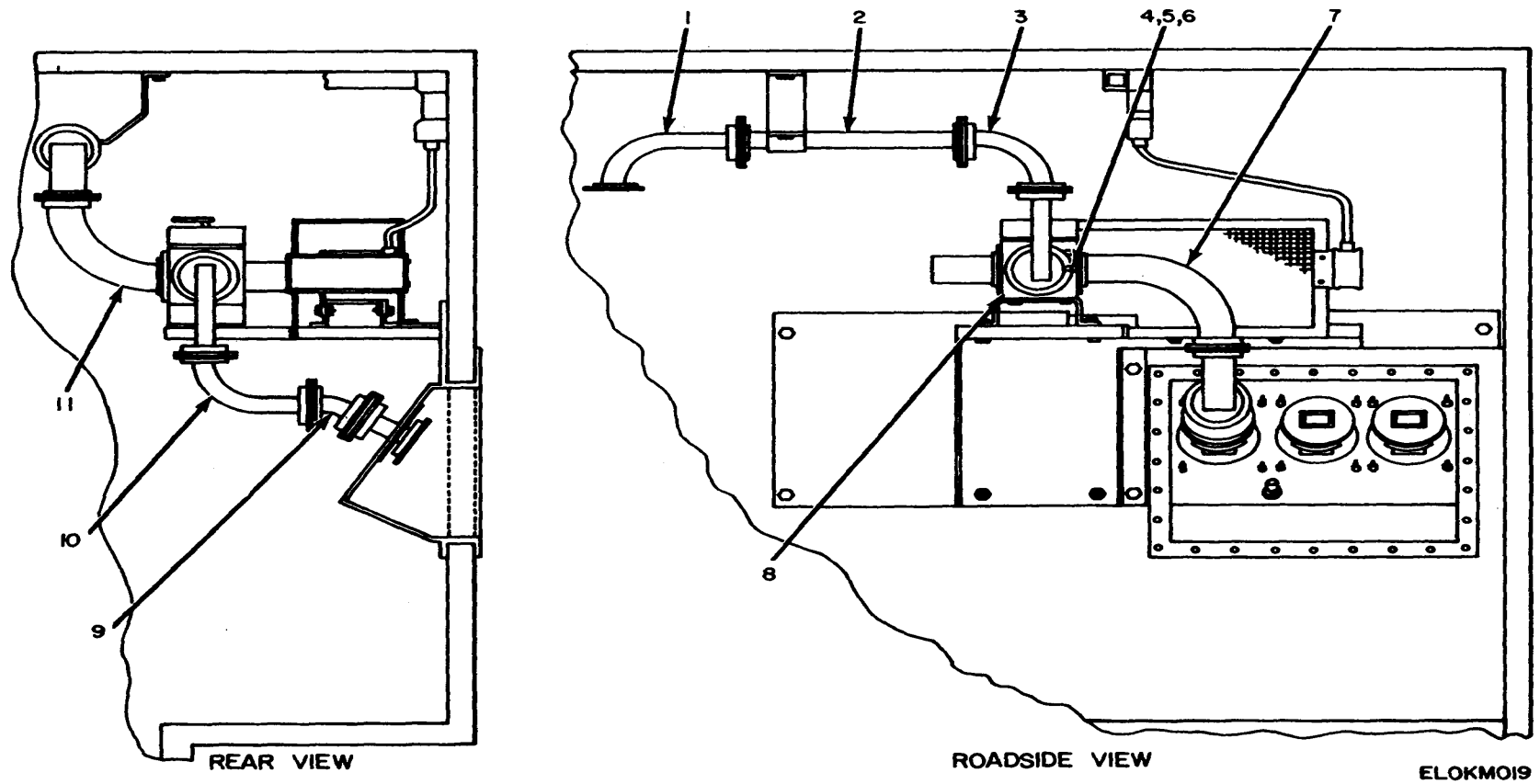
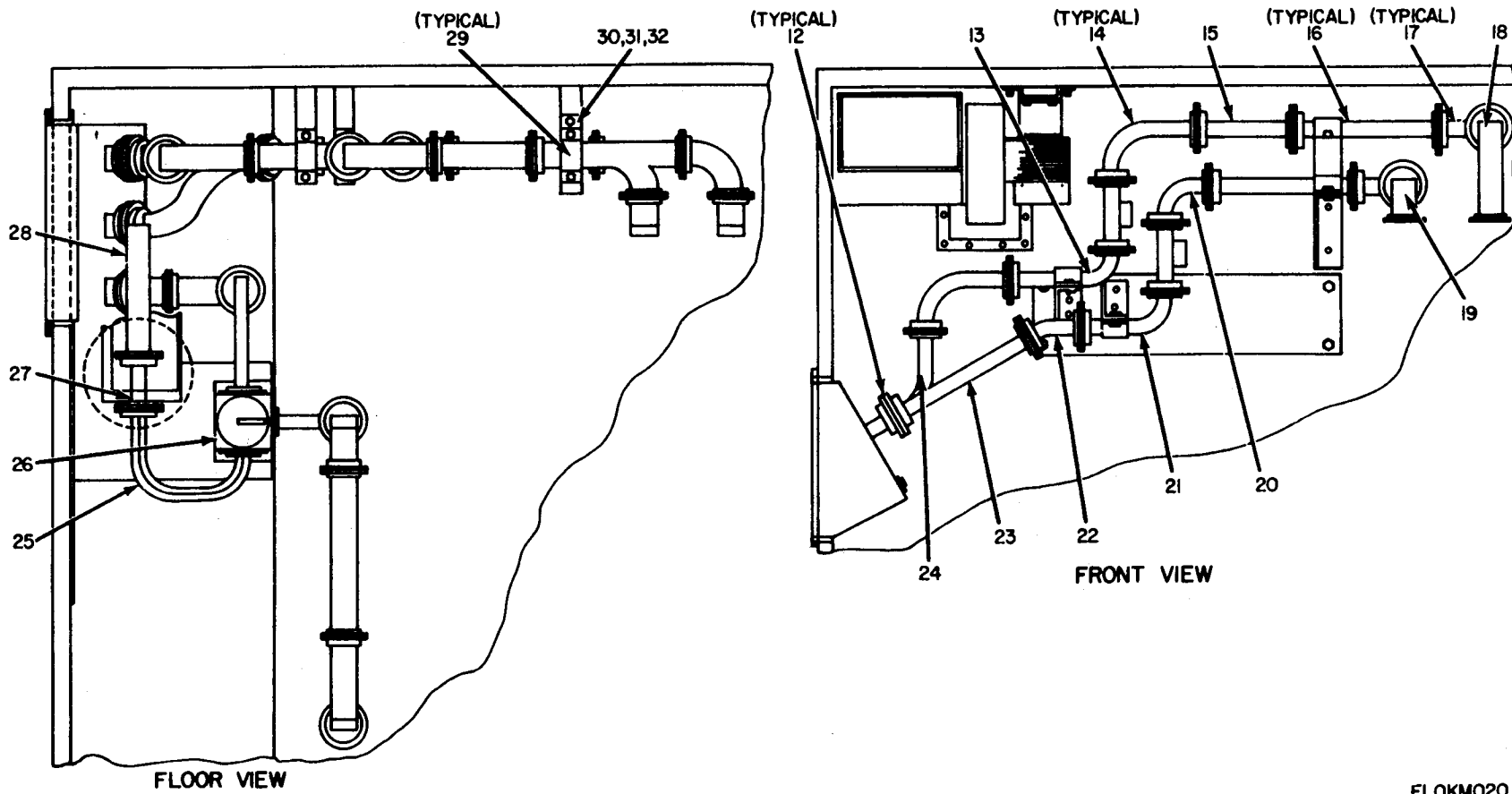


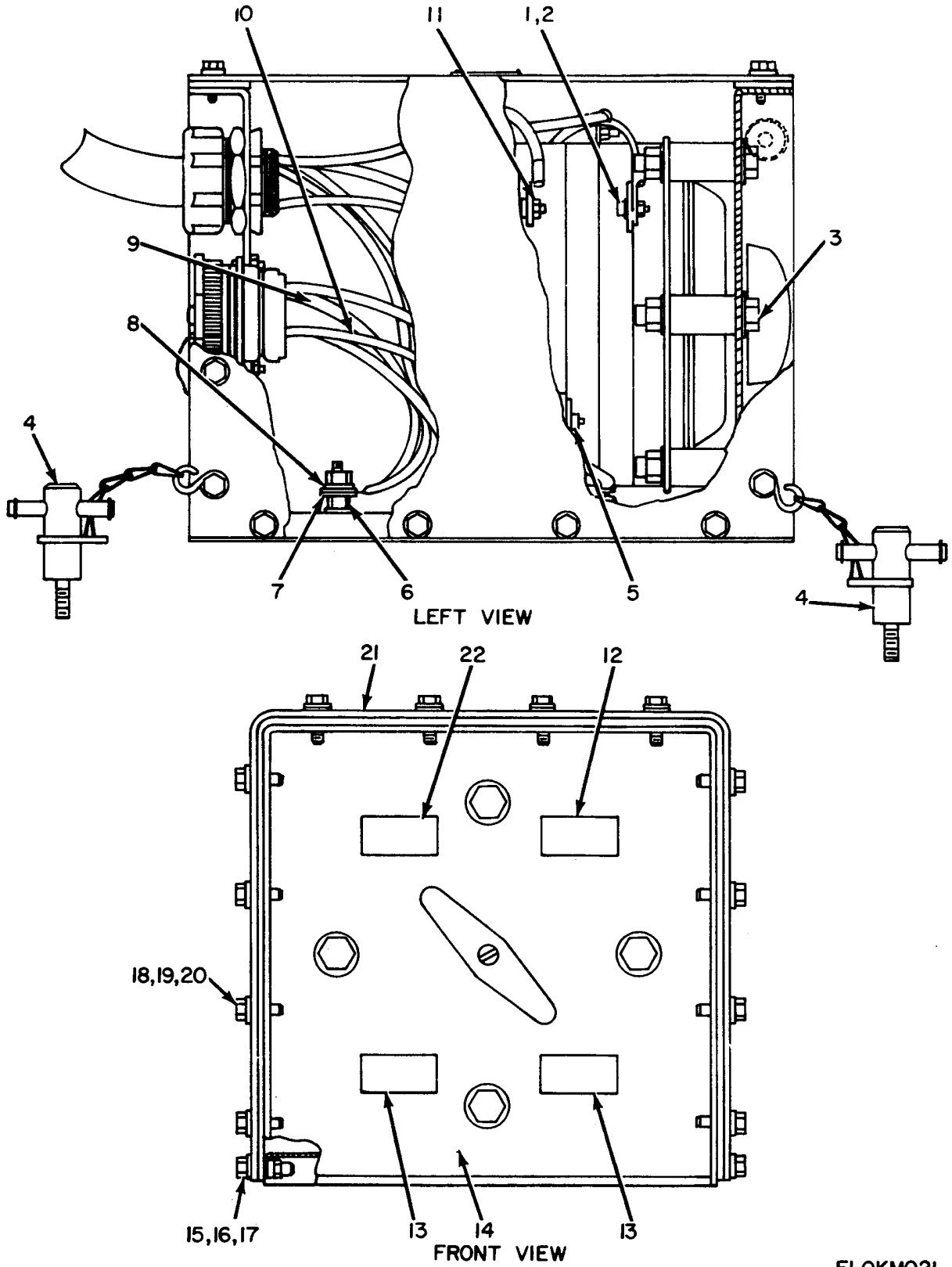
Figure 18. Wave Guide Installation Assembly (Sheet 1 of 2)



ELOKM020

Figure 18. Wave Guide Installation Assembly (Sheet 2 of 2).

(1) ILLUSTRATION		(2)	(3)	(4)	(5)	(6)	(7)	(8)
(a) FIG NO.	(b) ITEM NO.	SMR CODE	NATIONAL STOCK NUMBER	PART NUMBER	FSCM	DESCRIPTION  <i>USABLE ON CODE</i>	U/M	QTY INC IN UNIT
						GROUP 0709 WAVEGUIDE INSTALLATION ASSEMBLY		
18	1	PACZZ	5985-00-455-1681	SCC630164	80063	WAVEGUIDE ASSEMBLY .....	EA	1
18	2	XDCZZ		SCC630165	80063	WAVEGUIDE ASSEMBLY .....	EA	1
18	3	PACZZ	5985-00-455-1683	SCC630169	80063	WAVEGUIDE ASSEMBLY .....	EA	1
18	4	XDFZZ	5310-00-869-9576	MS35338-157	96906	WASHER, LOCK, SPRING.....	EA	72
18	5	XDFZZ	5310-00850-1611	MS15795-808	96906	WASHER, FLAT.....	EA	72
18	6	XDFZZ		MS24673	96906	SCREW, CAP.....	EA	72
18	7	XDCZZ		SCC630166	80063	WAVEGUIDE ASSEMBLY .....	EA	1
18	8	XDFZZ	5985-00-469-2209	SCC630329	80063	SWITCH, WAVEGUIDE.....	EA	1
18	9	PACZZ	5985-00-455-1688	SCC630168	80063	WAVEGUIDE ASSEMBLY.....	EA	1
18	10	PACZZ	5985-00-455-1712	SCC630170	80063	WAVEGUIDE ASSEMBLY.....	EA	1
18	11	PACZZ	5985-00-455-1682	SCC630167	80063	WAVEGUIDE ASSEMBLY.....	EA	1
18	12	XDFZZ		SCD630194-1	80063	WINDOW, MICA.....	EA	3
18	13	PACZZ	5985-00-469-2210	SCC630177	80063	WAVEGUIDE ASSEMBLY.....	EA	1
18	14	PACZZ	5985-00-469-2207	SCC630175	80063	WAVEGUIDE ASSEMBLY.....	EA	2
18	15	PACZZ	5985-00-455-1697	SCC630144GR1	80063	WAVEGUIDE ASSEMBLY.....	EA	1
18	16	PACZZ	5985-00-455-1690	SCC630144GR2	80063	WAVEGUIDE ASSEMBLY.....	EA	2
18	17	XDCZZ		SCC630179	80063	WAVEGUIDE ASSEMBLY.....	EA	2
18	18	PACZZ	5985-00-469-2208	SCC630174	80063	WAVEGUIDE ASSEMBLY.....	EA	1
18	19	PACZZ	5985-00-469-2206	SCC630173	80063	WAVEGUIDE ASSEMBLY.....	EA	1
18	20	PACZZ	5985-00-469-2211	SCC630176	80063	WAVEGUIDE ASSEMBLY.....	EA	1
18	21	PACZZ	5985-00-455-1699	SCC630178	80063	WAVEGUIDE ASSEMBLY.....	EA	1
18	22	XDCZZ		SCC630181	80063	WAVEGUIDE ASSEMBLY.....	EA	1
18	23	PACZZ	5985-00-137-7934	SCC630182	80063	WAVEGUIDE ASSEMBLY.....	EA	1
18	24	XDCZZ		SCC630183	80063	WAVEGUIDE ASSEMBLY.....	EA	1
18	25	PACZZ	5985-00-469-2204	SCC630171	80063	WAVEGUIDE ASSEMBLY.....	EA	1
18	26	PACZZ	5330-00-809-3816	MS90064-16	96906	PACKING, PREFORMED, ROUND.....	EA	5
18	27	XDFZZ	5985-00-469-2205	SCC630328	80063	HEAT EXCHANGE WAVEGUIDE.....	EA	1
18	28	XDFZZ		SCD630194-2	80063	DUMMY LOAD.....	EA	1
18	29	XDFZZ		SCC630339	80063	BRACKET ASSEMBLY.....	EA	5
18	30	XDFZZ	5305-00-225-3839	MS90725-8	96906	SCREW, CAP, HEXAGON HEAD.....	EA	23
18	31	XDFZZ	5310-00-809-4058	MS27183-10	96906	WASHER, FLAT.....	EA	23
18	32	XDFZZ		MS412912-4C	96906	NUT, SELF-LOCKING, HEXAGON.....	EA	23



ELOKM021

Figure 19. Generator Switch Assembly (Sheet 1 of 2),



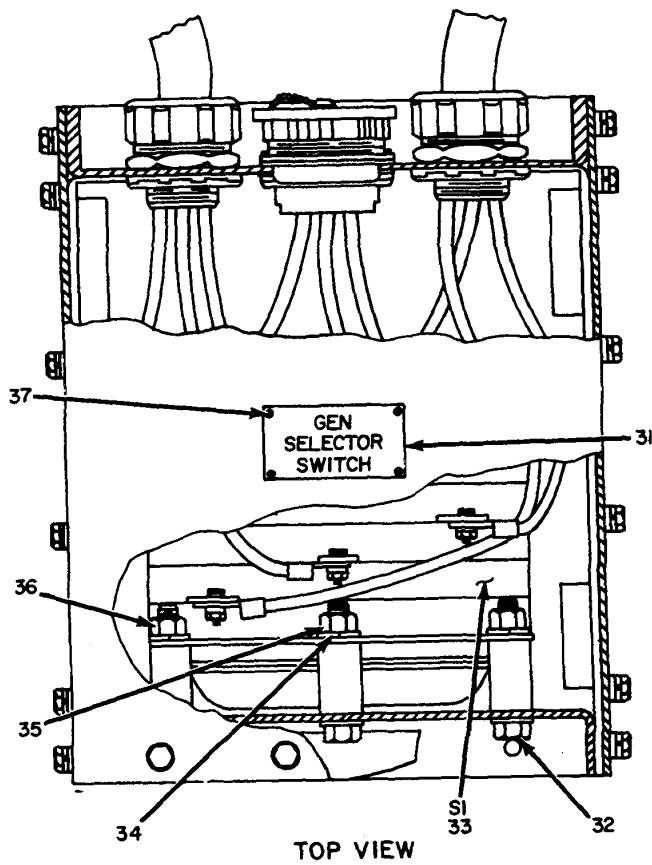
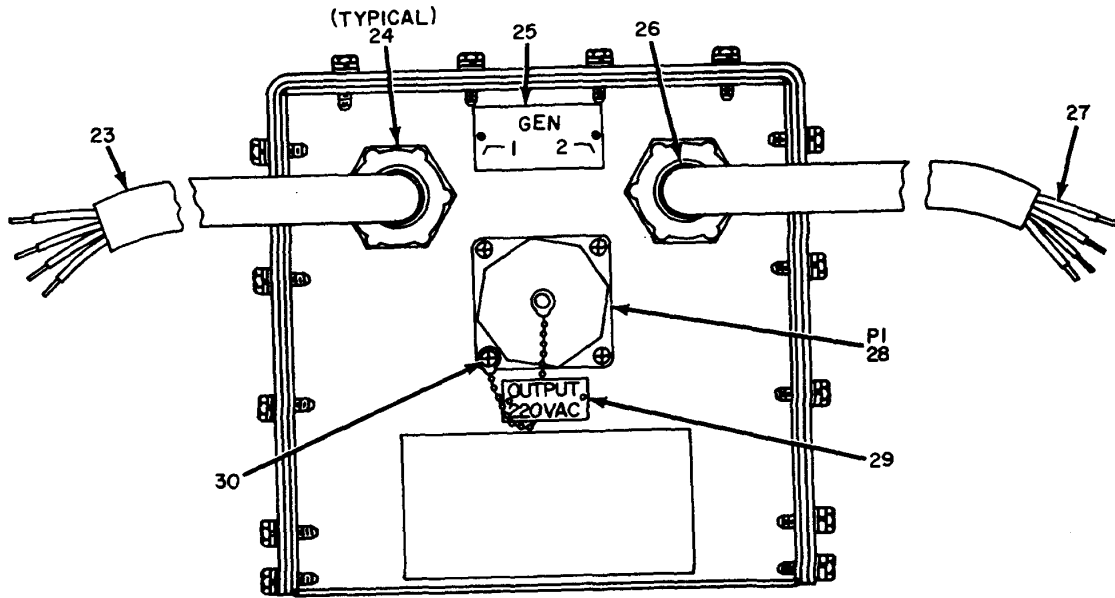


Figure 19. Generator Switch Assembly (Sheet 2 of 2).

(1)		(2)	(3)	(4)	(5)	(6)	(7)	(8)
ILLUSTRATION		SMR CODE	NATIONAL STOCK NUMBER	PART NUMBER	FSCM	DESCRIPTION  USABLE ON CODE	U/M	QTY INC IN UNIT
(a) FIG NO.	(b) ITEM NO.							
GROUP 0710 GENERATOR SWITCH ASSEMBLY								
19	1	XDFZZ	5310-00-984-3806	MS51922-9	96906	NUT, SELF-LOCKING, HEXAGON.....	EA	12
19	2	XDFZZ	5306-00-225-8497	MS90725-32	96906	SCREW, HEXAGON.....	EA	12
19	3	XDFZZ	5305-00-071-1772	MS90725-119	96906	SCREW, CAP, HEXAGON HEAD.....	EA	4
19	4	XDFZZ		SCB630405	80063	TIE DOWN ASSEMBLY.....	EA	2
19	5	XDFZZ	5310-00-934-9748	MS35649-44	96906	NUT, PLAIN, HEXAGON.....	EA	32
19	6	XDFZZ	5310-00-829-9981	MS35649-2312	96906	NUT, PLAIN, HEXAGON HEAD.....	EA	2
19	7	XDFZZ	5310-00-514-6674	MS35335-34	96906	WASHER, LOCK.....	EA	2
19	8	XDFZZ	5310-00-081-4219	MS27183-12	96906	WASHER, FLAT.....	EA	24
19	9	XDFZZ		SCC630394GR4	80063	CABLE ASSEMBLY.....	EA	1
19	10	XDFZZ		SCC630394GR1	80063	WIRE ASSEMBLY.....	EA	1
19	11	XDFZZ	5310-00-616-3092	MS35649-45	96906	NUT, PLAIN, HEXAGON.....	EA	2
19	12	XDFZZ		SCB630399	80063	NAMEPLATE.....	EA	1
19	13	XDFZZ		SCB630271	80063	NAMEPLATE.....	EA	2
19	14	XDFZZ		SCD630392	80063	CASE, SWITCH.....	EA	1
19	15	XDFZZ	5305-00-068-0502	MS90725-6	96906	SCREW, CAP, HEXAGON HEAD.....	EA	8
19	16	XDFZZ	5310-00-584-5272	MS35338-10	96906	WASHER, LOCK.....	EA	32
19	17	XDFZZ	5310-00-997-1888	MS35649-2252	96906	NUT, PLAIN, HEXAGON.....	EA	8
19	18	XDFZZ	5305-00-068-0500	MS90725-3	96906	SCREW, CAP, HEXAGON HEAD.....	EA	24
19	19	XDFZZ	5310-00-809-8546	MS17183-8	96906	WASHER, FLAT, ROUND.....	EA	4
19	20	XDFZZ	5310-00-045-3296	MS35338-43	96906	WASHER, LOCK.....	EA	4
19	21	XDFZZ		SCD630393	80063	COVER ASSEMBLY, SWITCH CASE.....	EA	1
19	22	XDFZZ		SCB630397	80063	NAMEPLATE.....	EA	1
19	23	XDFZZ		SCC630401GR1	80063	CABLE ASSEMBLY.....	EA	1
19	24	PAFZZ	5975-00-825-6728	2564	59730	CONNECTOR, STRAIN RELIEF.....	EA	2
19	25	XDFZZ		SCB630395	80063	NAMEPLATE.....	EA	1
19	26	XDFZZ		SCD630402-1	80063	NUT, LOCK.....	EA	2
19	27	XDFZZ		SCC630401GR1	80063	CABLE ASSEMBLY.....	EA	1
19	28	PAFZZ	5935-00-042-3668	RPC-633-014-S14A	15235	RECEPTACLE.....	EA	1
19	29	XDFZZ		SCB630398	80063	NAMEPLATE.....	EA	1
19	30	XDFZZ		SCD630402-5	80063	SCREW, PAN HEAD.....	EA	4
19	31	XDFZZ		SCB630400	80063	NAMEPLATE.....	EA	1
19	32	XDFZZ	5306-00-225-8498	MS90725-33	96906	SCREW, CAP, HEXAGON HEAD.....	EA	4
19	33	XDFZZ		93030	82121	SWITCH, ROTARY.....	EA	1
19	34	XDFZZ		MS35338-19	96906	WASHER, LOCK.....	EA	4
19	35	XDFZZ	5310-00-934-9751	MS35650-302	96906	NUT, SELF-LOCKING.....	EA	4
19	36	XDFZZ		MS35649-48	96906	NUT, PLAIN, HEXAGON.....	EA	4
19	37	XDFZZ	5305-00-175-3230	MS21318-14	96906	SCREW, DRIVE, ROUND HEAD.....	EA	16

NOTE: LATEST NATIONAL STOCK NUMBER AND PART NUMBER ASSIGNMENTS ARE INCLUDED AT END OF INDEX

STOCK NUMBER	FIGURE NO.	ITEM NO.	STOCK NUMBER	FIGURE NO.	ITEM NO.		
5340-00-016-5669	7	5	5310-00-576-5752	17	14		
5310-00-045-3296	19	20	5935-00-577-8589	9	10		
5310-00-045-3299	17	19	5935-00-577-8677	13	3		
5935-00-067-8296	13	6	5310-00-584-5272	19	16		
5305-00-068-0500	19	18	5930-00-615-6731	3	6		
5305-00-068-0502	19	15	5310-00-616-3092	19	11		
5305-00-071-1772	19	3					
5310-00-081-4219	19	8	5930-00-655-1582	3	5		
5310-00-082-1404	12	18	5925-00-681-4952	9	26		
5310-00-082-1404	14	3	8130-00-711-0537	2	6		
6210-00-087-4248	16	7	4210-00-727-8111	4	7		
5940-00-114-1305	9	3b	6230-00-729-9614	6	8		
5935-00-135-6163	9	23	6625-00-752-8464	16	19		
5999-00-136-9040	11	3	5935-00-762-1495	13	8		
5985-00-137-7934	18	23	5935-00-762-1504	13	9		
6240-00-152-2996	8	2	5961-00-808-2008	17	2		
6240-00-155-8707	17	1	5330-00-809-3816	18	26		
7520-00-162-6178	3	8	5310-00-809-4058	9	20		
5305-00-175-3230	9	15	5310-00-809-4058	10	15		
5305-00-175-3230	10	12	5310-00-809-4058	11	9		
5305-00-175-3230	11	12	5310-00-809-4058	16	14		
5305-00-175-3230	17	10	5310-00-809-4058	18	31		
5305-00-175-3230	19	37	5310-00-809-8544	9	32		
5310-00-180-8495	9	21	5310-00-809-8544	11	22		
5310-00-180-8495	10	14	5310-00-809-8544	16	11		
5310-00-180-8495	11	10	5310-00-809-8544	16	12		
6250-00-194-4794	8	1	5310-00-809-8544	17	18		
5940-00-204-9141	9	34	5310-00-809-8546	9	30		
5940-00-204-9142	9	40	5310-00-809-8546	10	6		
5935-00-223-0572	13	14	5310-00-809-8546	12	14		
6240-00-223-9100	16	8	5310-00-809-8546	14	6		
5305-00-225-3839	18	30	5310-00-809-8546	15	6		
5306-00-225-8497	19	2	5310-00-809-8546	16	25		
5306-00-225-8498	19	32	5310-00-809-8546	17	15		
5985-00-227-8092	5	15	5310-00-809-8546	19	19		
5930-00-232-1499	17	5	5925-00-818-4811	16	18		
5935-00-243-8641	9	18	5975-00-825-6728	19	24		
5305-00-253-5609	12	19	5935-00-827-1545	13	10		
5305-00-253-5609	14	15	5935-00-827-1545	13	11		
5920-00-280-8342	12	20	5310-00-829-9981	19	6		
5935-00-283-4003	6	13	5925-00-844-4132	16	9		
5935-00-283-4003	9	41	5310-00-850-1611	18	5		
5940-00-283-5386	11	6	5310-00-851-2674	11	21		
5960-00-856-8336	12	5	5960-00-856-8336	12	5		
7920-00-342-4521	6	7	5960-00-856-8336	14	14		
5935-00-403-7651	13	2	5310-00-869-9576	18	4		
5120-00-451-8250	6	12	5310-00-877-5797	10	4		
6110-00-451-8253	2	4	5310-00-877-5797	14	a		
	15	4	5310-00-877-5797	15	4		
5985-00-455-1681	18	1	5310-00-877-5797	16	24		
5985-00-455-1682	18	11	5410-00-880-3092	1	1		
5985-00-455-1683	18	3	5310-00-889-2528	11	22		
5985-00-455-1688	18	9	5950-00-892-8208	16	3		
5985-00-455-1699	18	21	5920-00-892-9311	12	9		
5985-00-455-1712	18	10	5120-00-900-6096	4	10		
5985-00-469-2204	18	25					
5985-00-469-2205	18	27	5935-00-933-3454	5	11		
5985-00-469-2206	18	19	5310-00-934-9748	19	5		
5985-00-469-2207	18	14	5310-00-934-9751	17	13		
5985-00-469-2208	19	18	5310-00-934-9751	19	35		
5985-00-469-2209	18	8	5310-00-934-9766	16	1		
5985-00-469-2210	18	13	5310-00-942-5110	16	2		
5985-00-469-2211	18	20	5310-00-951-4679	9	39		
5820-00-474-9560	2	5	5935-00-951-9333	14	1		
5820-00-474-9563	2	3	5935-00-959-3606	9	2		
5820-00-474-9567	2	9	5935-00-965-8146	9	25		
5820-00-474-9568	2	8	5310-00-983-8483	9	5		
6150-00-495-1214	4	9	5310-00-984-3806	19	1		
5935-00-502-5104	13	13	5935-00-985-4295	3	7		
5310-00-514-6674	19	7	5310-00-997-1888	19	17		
5310-00-543-2410	12	6	5975-00-998-2819	4	11		
PART NUMBER	FCSM	FIG NO.	ITEM NO.	PART NUMBER	FCSM	FIG. NO.	ITEM NO.
AC-MR36 -100-ACAAAR	81349	16	19	CX-10071/U(3FT)	80058	6	4
BZ-ZRW822-A2	91929	3	2	CX-10071/U(4FT)	80058	6	3
CL -1890/GRC	80058	5	15	HKP	71400	12	9
CV-425	80058	4	5	MS15224 5	96906	6	9

PART NUMBER	FCSM	FIG NO.	ITEM NO.	PART NUMBER	FCSM	FIG. NO.	ITEM NO.
MS15224-6	96906	6	10	MS35649-48	96906	19	36
MS15795-808	96906	18	5	MS35S50-302	96906	17	13
MS2057-12A	96906	13	14	MS35650-302	96906	19	35
MS21044-N06	96906	14	5	MS35650-305	96906	16	1
MS21044-N3	96906	9	28	MS35691-1	96906	11	21
MS21044-N3	96906	10	4	MS412912-4C	96906	18	32
MS21044-N3	96906	14	8	MS45904-68	96906	11	22
MS21044-N3	96906	15	4	MS51922-9	96906	19-	1
MS21044-N3	96906	16	24	MS90064 16	96906	18	26
MS21044-N4	96906	9	37	MS90078-9	96906	12	20
MS21044-N6	96906	9	3	MS9072S-119	96906	19	3
MS21318-13	96906	12	19	MS9072S-3	96906	19	18
MS21318-13	96906	14	15	MS9072S-32	96906	19	2
MS21318-14	96906	9	15	MS9072S-33	96906	19	32
MS21318-14	96906	10	12	MS9072S-6	96906	19	15
MS21318-14	96906	11	12	MS9072S-8	96906	18	30
MS21318-14	96906	17	10	MX-148/G	80063	4	11
MS21318-14	96906	19	37	MX-3543/G	80058	7	6
MS24673-6	96906	18	6	M24129t2-4C	96906	16	15
MS25036-116	96906	9	36				
MS25036-12	96906	9	40	NE-51	81349	16	8
MS25036-14	96906	9	34	RC-405()/TR	80058	2	6
MS25036-54	96906	16	21	RPC-633-014-P14A	15235	9	18
MS25043-22C	96906	9	10	RPCK133-IS3-P14A-D1380	15235	13	5
MS25224-1	96906	3	6	RPCK133-153-S14A-D1380	15235	13	4
MS25244-10	96906	9	26	S-336/TRC-112	80058	1	1
MS2 5331-6	96906	17	21	SCB427923	80063	9	22
MS271B3-10	96906	9	20	SCB539492	80063	4	9
MS27183-10	96906	10	15	SCB539504	80063	8	1
MS27183-10	96906	11	9	SCB539529	80063	4	15
MS27183-10	96906	16	14	SCB539529-3	80063	6	5
MS27183-10	96906	18	31	SCBS39607-1	80063	11	7
MS27183-12	96906	19	8	SCB539607-3	80063	9	19
MS27183-3	96906	9	39	SCB539607-3	80063	10	13
MS27183-5	96906	9	5	SCB539608-1	80063	11	8
MS27183-6	96906	12	18	SCB539857GR2	80063	9	7
MS27183-6	96906	14	3	SCB539861GR1	80063	9	35
MS27183-7	96906	9	32	SCB543937	80063	9	17
SCB543941	80063	11	2				
MS2 7183-7	96906	16	11	SC8543943	80063	9	6
MS27183-7	96906	17	18	SCB547222	80063	11	20
MS27183-8	96906	9	30				
MS27183-8	96906	10	6	SCB547250	80063	11	4
MS27183-8	96906	12	14	SCB547271GR4	80063	7	5
MS27183-8	96906	14	6	SCB577541	80063	9	8
MS27183-8	96906	15	6	SCB630109	80063	9	16
MS27183-8	96906	16	25	SCB630110	80063	9	14
S27183-8	96906	17	15	5CB630115	80063	11	11
MS27183-8	96906	19	19	SCB630190	80063	10	9
MS3016E24-10S	96906	13	12	SCB630191-1	80063	10	11
MS3100R22-19	96906	9	9	SCB630191-2	80063	10	10
MS3106A22-1S	96906	13	13	SCB630269	80063	10	7
MS3106E14-6S	96906	13	7	SC8630271	80063	19	13
MS3112E16-26S	96906	13	10	SC8630287	80063	17	6
MS3112E16-26S	96906	13	11	SCB630299	80063	17	16
MS3114E12-8S	96906	13	2	SCB630345	80063	14	11
MS3114E22-21P	96906	14	1	SCB630374	80063	17	4
MS3116E12-8P	96906	13	1	SCB630375	80063	17	12
MS3116F10-6P	96906	13	9	SCB630376	80063	17	3
MS3116F12-10S	96906	13	8	SCB630377	80063	17	20
MS3116F22-21S	96906	13	6	SCB630395	80063	19	25
MS35059-23	96906	3	5	SCB630397	80063	19	22
MS35333-39	96906	17	14	SCB63039B	80063	19	29
MS35335-34	96906	19	7	SCB630399	80063	19	12
MS35335-88	96906	16	2	SCB630400	80063	19	31
MS35338-N3	96906	12	15	SCB630405	80063	19	4
MS35338-10	96906	19	16	SCB632516	80063	12	1
MS35338-157	96906	18	4	SCB632518	80063	12	4
MS35338-19	96906	19	34	SCC388423	80063	11	3
MS35338-40	96906	12	6	SCC539469	80063	6	7
MS35338-42	96906	17	19	SCC539482	80063	6	6
MS35338-43	96906	19	20	SCC539491	80063	6	8
MS35425-39	96906	9	21	SCC539495	80063	8	2
MS35425-39	96906	10	14	SCC539502-2	80063	6	12
MS35425-39	96906	11	10	SCC539505	80063	4	10
MS35490-28	96906	11	15	SCC539716	80063	9	33
MS35649-2252	96906	19	17				
MS35649-2312	96906	19	6	SCC630144GR1	80063	18	15
MS35649-44	96906	19	5	SCC630144GR2	80063	18	16
MS35649-45	96906	19	11	SCC630160	80063	10	2

PART NUMBER	FCSM	FIG NO.	ITEM NO.	PART NUMBER	FCSM	FIG. NO.	ITEM NO.
SCC630164	80063	18	1	SCD630273GR1	80063	6	2
SCC630165	80063	18	2	SCD630273GR2	80063	6	2
SCC630166	80063	18	7	SCD630278	80063	15	8
SCC630167	80063	18	11	SCD630281	80063	2	3
SCC630168	80063	18	9	SCD630281-1	80063	15	9
SCC630169	80063	18	3	SCD630281-2	80063	15	5
SCC630170	80063	18	10	SCD630281-3	80063	15	2
SCC630171	80063	18	25	SCD630304	80063	7	4
SCC630173	80063	18	19	SCD630305	80063	4	12
SCC630174	80063	18	18	SCD630306GR1	80063	5	5
SCC630175	80063	18	14	SCD630306GR2	80063	5	6
SCC630176	80063	18	20				
SCC630177	80063	18	13	SCD630306GR4	80063	5	8
SCC630178	80063	18	21	SCD630314GR1	80063	4	13
SCC630179	80063	18	17	SCD630314GR2	80063	4	14
SCC630181	80063	18	22	SCD630314GR3	80063	6	19
SCC630182	80063	18	23	SCD630314GR4	80063	6	20
SCC630183	80063	18	24	SCD630319-4-6	80063	5	16
SCC630184	80063	10	3	SCD630321-4-6	80063	5	1
SCC630214	80063	16	23	SCD630322	80063	4	2
SCC630280	80063	15	1	SCD630323	80063	4	6
SCC630283	80063	15	3	SC0630324	80063	4	3
SCC630289	80063	15	7	SCD630326-10-9	80063	4	1
SCC630328	80063	18	27	SCD630326(7FT6IN)	80063	6	14
SCC630329	80063	18	8	SCD630327-6-6	80063	4	4
SCC630339	80063	18	29	SCD630343	80063	14	13
SCC630344	80063	14	4	SCD630371	80063	2	9
SCC630369	80063	14	16	SCD630371-4	80063	14	7
SCC630394GR1	80063	19	10	SCD630371-6	80063	14	12
SCC630394GR4	80063	19	9	SCD630371-7	80063	14	2
SCC630401GR1	80063	7	2	SCD630392	80063	19	14
SCC630401GR1	80063	19	23	SCD630393	80063	19	21
SCC630401GR2	80063	7	1	SCD630395	80063	7	3
SCC630401GR2	80063	19	27	SCD630402	80063	2	7
SCC681100GR3	80063	4	8	SCD630402-1	80063	19	26
SCDS39451	80063	4	7	SCD630402-5	80063	19	30
SCDS39483	80063	6	11	SCD632520	80063	12	11
SCDS39899	80063	2	2	SCD632553	80063	12	12
SCD620120-4	80063	11	18	SCD632555	80063	12	16
SCD630108	80063	9	1	SCD632556	80063	2	8
SCD630108-10	80063	9	4	SCD632556-3	80063	12	10
SCD630108-15	80063	9	38	SCD632556-7	80063	12	17
SCD630108-16	80063	9	31	SCD632556-8	80063	12	7
SCD630108-17	80063	9	29	SCD681026	80063	3	1
SCD630108-5	80063	9	12	SQD-QO-115	56365	16	18
SCD630108-6	80063	9	24	500-00-120	56365	16	6
SCD630113	80063	11	16	SQD-QO-220	56365	16	9
SCD630114	80063	10	1	SQD-QO230	56365	16	20
SCD630114-1	80063	10	5	SQD-Q11-370	56365	16	4
SCD630120	80063	11	1	SR0353083MPC	81349	16	17
				U-106()/U	81349	11	6
				U-161/U	81349	13	3
SCD630120-3	80063	11	18				
SCD630124	80063	10	8				
SCD630194	80063	2	1	0-2SO-VAC-MR36W-250-VAC-VVR	81349	16	22
SCD630194-1	80063	18	12	015-1212-00	13499	3	3
SCD630194-2	80063	18	28	IN1621	84970	17	2
SCD630210	80063	16	13	10-37093-323	12143	9	23
SCD630216	80063	17	7	10-37147-28	77820	9	2'
SCD630219	80063	16	5	1051-OC	72656	3	9
SCD630221	80063	2	4	121-31-00-015	71785	14	9
SCD630221-16	80063	16	10	121-3100-014	71785	12	2
SCD630221-17	80063	16	12	151-11-33-013	71785	12	5
SCD630224	80063	9	11	151-11-33-013	71785	14	14
SCD630232	80063	17	8	1819	24455	17	I
SCD630234	80063	17	11	201-N	9422712	13	
SCD630236	80063	2	5				
SCD630236-1	80063	17	9	254 SIZE 1	79577	9	13
SCD630236-2	80063	17	17	2564	59730	19	24
SCD630263	80063	5	10	26F75T	70563	12	1
SCD630264GRI(7FT))	80063	5	2	26F75T	70563	14	10
SCD630264GRI(7FT6IN))	80063	5	3	265-AG8C3P-115AC	83851	14	17
SCD630264GRI(9FT6IN))	80063	5	4	3CT11B	93993	16	
SCD630266GR1	80063	6	15	32510	84134	9	21
SCD630266GR1	80063	6	17	3330	83315	3	1
SCD630266GR2	80063	6	18	37-0408-0331-245	72619	16	1
SCD630266GR3	80063	6	16	40504-114-50	88753	16	It
SCD630266GR4	80063	5	13				
SCD630266GR5	80063	5	14	422-05-11-015	71785	12	L
SCD630270	80063	5	9	5206	74545	9	2
SCD630272	80063	6	21	5261	83315	5	12

PART NUMBER	FCSM	FIG NO.	ITEM NO.	PART NUMBER	FCSM	FIG. NO.	ITEM NO.
5262	74545	6	13	8790K4	15605	17	5
5262	74545	9	41	93030	82121	9	3353
5361	83315	5	11				

LATEST NATIONAL STOCK NUMBER ASSIGNMENTS

STOCK NUMBER	FIGURE NO.	ITEM NO.	STOCK NUMBER	FIGURE NO.	ITEM NO.
5935-00-042-3668	19	28	6115-00-577-8471	1	3
5820-00-167-8005	1	9	5820-00-727-4352	1	5
5995-00-168-8657	5	16	2510-00-824-5524	1	2
4210-00-270-4512	6	6	5310-00-877-5797	9	28
6210-00-299-4104	17	21	5820-00-926-7355	1	6
5985-00-455-1690	18	16	5820-00-937-7690	1	8
5985-00-455-1697	18	15	5805-00-985-9088	1	7
5805-00-543-0012	1	4			

LATEST PART NUMBER ASSIGNMENTS

PART NUMBER	FCSM	FIG NO.	ITEM NO.	PART NUMBER	FCSM	FIG. NO.	ITEM NO.
AN/GRC-106	80058	1	9	RPC-633-014-S14A	15235	19	28
AN/GRC-143	80058	1	6	SC8539881	80063	12	4
AN/TRA-37	80058	1	5	SCCS39617	80063	12	5
CV-425/V	80058	1	7	SCC539839GP2	80063	12	3
MT-3894/TRC	80058	1	2	SCD593615	80063	12	2
PP-4763A/GRC	80058	1	8	SCD593618	80063	12	1
PU-332/G	80058	1	3	TA-312/PT	80058	1	4

ADDITIONAL LATEST NATIONAL STOCK NUMBER ASSIGNMENTS

STOCK NUMBER	FIGURE NO.	ITEM NO.	STOCK NUMBER	FIGURE NO.	ITEM NO.
5995-00-138-8634	4	4	5995-00-474-9612	4	1
599-00-139-4913	5	7	5995-00-574-9616	6	3
6250-00-146-1636	8	8	6240-00-635-9753	8	9
6250-00-146-1641	8	5	5340-00-682-1508	3	4
5995-00-472-4493	5	1	5930-00-865-6101	3	3
6210-00-472-4497	8	4	6210-00-930-1217	8	7

ADDITIONAL LATEST PART NUMBER ASSIGNMENTS

PART NUMBER	FCSM	FIG NO.	ITEM NO.	PART NUMBER	FCSM	FIG. NO.	ITEM NO.
MS35647-3	96906	3	4	SCC681185	80063	8	3
NE-34	81349	8	9	SCD630306-3-6	80063	5	7
SCB539466	80063	8	4	WS896	81348	3	3
SCC53956OGP2	80063	8	8	25T8DC	24455	8	6
SCC539561GP2	80063	8	5	4109	83315	8	10
SCC547186	80063	8	7				

ADDITIONAL LATEST STOCK NUMBER AND PART NUMBER ASSIGNMENTS

STOCK NUMBER	FIGURE NO.	ITEM NO.
5310-00-809-8544	11	25
5935-01-056-6258	13	4
5935-01-056-6624	13	5
5920-01-146-6196	11	13
5920-01 -1 50-0758		

PART NUMBER	FCSM	FIG NO.	ITEM NO.	PART NUMBER
F-1537/G	80058	11	5	
F-1538/G	80058	11	13	
MS27183-7	96906	11	25	
SCB598923	80063	11	23	
SCB781351	80063	11	27	
SCC630116	80063	11	26	
SCC781349	80063	11	17	
SCC938742	80063	1	1A	
SCC938742	80063	2	4A	
SCD630120-2	80063	11	24	
SCD781348	80063	11	14	

By Order of the Secretary of the Army:

BERNARD W. ROGERS  
*General, United States Army*  
*Chief of Staff*

Official:

J. C. PENNINGTON  
*Brigadier General, United States Army*  
*The Adjutant General*

Distribution:

Units org under fol TOE: 1 ea.

Active Army:	11-16
USASA (2)	11-17
COE (1)	11-38
TSG (1)	11-45
USAARENBD (1)	11-46
DARCOM (1)	11-97
TECOM (2)	11-98
USACC (4)	11-117
TRADOC (2)	11-127
OS Maj Comd (4)	11-215
MDW (1)	11-216
Armies (2)	11-217
Corps (2)	11-218
HISA (Ft Monmouth) (33)	11-225
Ft Gordon (10)	11-227
Ft Huachuca (10)	11-228
Ft Gillem (10)	11-237
Ft Richardson (ECOM Ofc) (2)	11-247
Svc Colleges (1)	11-302
USASIGS (5)	11-327
USAICS (3)	11-347
USAADS (2)	11-367
USAFAS (2)	11-500 (AA-AC)
USAARMS (2)	
USAIS (2)	
USAES (2)	
AD (1) except	
SAAD (30)	
LBAD (14)	
TOAD (14)	
SHAD (3)	
USA Dep (2)	
Sig Sec USA Dep (2)	
Sig Dep (2)	
MAAG (1)	
USARMIS (1)	
USAERDAA (1)	
USAERDAW (1)	
Sig FLDMS (1)	

ARNG & USAR: None

For explanation of abbreviations used, see AR 310-50.

RECOMMENDED CHANGES TO EQUIPMENT TECHNICAL PUBLICATIONS



THEN...JOT DOWN THE  
DOPE ABOUT IT ON THIS FORM.  
CAREFULLY TEAR IT OUT, FOLD IT  
AND DROP IT IN THE MAIL.

**SOMETHING WRONG WITH PUBLICATION**

FROM: (PRINT YOUR UNIT'S COMPLETE ADDRESS)

DATE SENT

PUBLICATION NUMBER

PUBLICATION DATE

PUBLICATION TITLE

BE EXACT PIN-POINT WHERE IT IS

PAGE  
NO.

PARA-  
GRAPH

FIGURE  
NO.

TABLE  
NO.

IN THIS SPACE, TELL WHAT IS WRONG  
AND WHAT SHOULD BE DONE ABOUT IT.

TEAR ALONG PERFORATED LINE

PRINTED NAME, GRADE OR TITLE AND TELEPHONE NUMBER

SIGN HERE

DA FORM 2028-2  
1 JUL 79

PREVIOUS EDITIONS  
ARE OBSOLETE.

P.S.--IF YOUR OUTFIT WANTS TO KNOW ABOUT YOUR  
RECOMMENDATION MAKE A CARBON COPY OF THIS  
AND GIVE IT TO YOUR HEADQUARTERS.



This fine document...

Was brought to you by me:



## [Liberated Manuals -- free army and government manuals](#)

Why do I do it? I am tired of sleazy CD-ROM sellers, who take publicly available information, slap “watermarks” and other junk on it, and sell it. Those masters of search engine manipulation make sure that their sites that sell free information, come up first in search engines. They did not create it... They did not even scan it... Why should they get your money? Why are not letting you give those free manuals to your friends?

I am setting this document FREE. This document was made by the US Government and is NOT protected by Copyright. Feel free to share, republish, sell and so on.

I am not asking you for donations, fees or handouts. If you can, please provide a link to [liberatedmanuals.com](http://liberatedmanuals.com), so that free manuals come up first in search engines:

<A HREF=<http://www.liberatedmanuals.com/>>Free Military and Government Manuals</A>

- Sincerely  
Igor Chudov  
<http://igor.chudov.com/>
- [Chicago Machinery Movers](#)