

TECHNICAL MANUAL

DIRECT SUPPORT AND GENERAL SUPPORT MAINTENANCE

REPAIR PARTS AND SPECIAL TOOLS LISTS

(INCLUDING DEPOT MAINTENANCE REPAIR PARTS AND SPECIAL TOOLS)

FOR

**CONTROL, RADIO SET C-6118/FRC 93
(NSN 5820-00-082-4082)**

HEADQUARTERS, DEPARTMENT OF THE ARMY
28 MAY 1980

TECHNICAL MANUAL }
NO. 11-5820-554-34P-2 }

HEADQUARTERS
DEPARTMENT OF THE ARMY
WASHINGTON, DC, 28 May 1980

**DIRECT SUPPORT AND GENERAL SUPPORT MAINTENANCE
REPAIR PARTS AND SPECIAL TOOLS LISTS
(INCLUDING DEPOT MAINTENANCE REPAIR PARTS AND SPECIAL TOOLS)
FOR
CONTROL, RADIO SET C-6118/FRC-93
(NSN 5820-00-082-4082)**

Current as of 26 October 1979

REPORTING ERRORS AND RECOMMENDING IMPROVEMENTS

You can help improve this manual. If you find any mistakes or if you know of a way to improve the procedures, please let us know. Mail your letter, DA Form 2028 (Recommended Changes to Publications and Blank Forms), or DA Form 2028-2 located in back of this manual direct to Commander, US Army Communications and Electronics Materiel Readiness Command, ATTN: DRSEL-ME-MQ, Fort Monmouth, NJ 07703.

In either case, a reply will be furnished direct to you.

Table of Contents

| SECTION | | Page | Illus. Figure |
|---------|---|------|------------------|
| | I. Introduction..... | 1 | |
| | II. Repair Parts List | 5 | |
| GROUP | 00 Control, Radio Set C-6118/FRC-93..... | 5 | 1 |
| SECTION | III. Special Tools List (Not applicable) | | |
| | IV. National Stock Number and Part Number Index | 10 | |

* This manual together with TM 11-5820-554-20P-2, 14 May 1980, supersedes TM 11-5820-530-24P, 29 June 1973.

SECTION I INTRODUCTION

1. Scope

This manual lists spares and repair parts; special tools; special test, measurement, and diagnostic equipment (TMDE), and other special support equipment required for performance of direct support, and general support maintenance of the C-6118/FRC-93. It authorizes the requisitioning and issue of spares and repair parts as indicated by the source and maintenance codes.

2. General

This Repair Parts and Special Tools List is divided into the following sections:

a. Section II. Repair Parts List. A list of spares and repair parts authorized for use in the performance of maintenance. The list also includes parts which must be removed for replacement of the authorized parts. Parts lists are composed of functional groups in numeric sequence, with the parts in each group listed in figure and item number sequence.

b. Section III. Special Tools List. Not applicable.

c. Section IV. National Stock Number and Part Number Index. A list, in National item identification number (NIIN) sequence, of all National stock numbers (NSN) appearing in the listings, followed by a list, in alphameric sequence, of all part numbers appearing in the listings. National stock numbers and part numbers are cross-referenced to each illustration figure and item number appearance.

3. Explanation of Columns

a. Illustration This column is divided as follows:

(1) *Figure number.* Indicates the figure number of the illustration on which the item is shown.

(2) *Item number.* The number used to identify item called out in the illustration.

b. Source, Maintenance, and Recoverability (SMR) Codes.

(1) *Source code.* Source codes indicate the manner of acquiring support items for maintenance, repair, or overhaul of end items. Source codes are

entered in the first and second positions of the Uniform SMR Code format as follows:

| <i>Code</i> | <i>Definition</i> |
|-------------|--|
| PA | Item procured and stocked for anticipated or known usage. |
| AF | Item to be assembled at direct support maintenance level. |
| XD | A support item that is not stocked. When required, item will be procured through normal supply channels. |

NOTE

Cannibalization or salvage may be used as a source of supply for any items source coded above except those coded XA and aircraft support items as restricted by AR 700-2.

(2) *Maintenance code.* Maintenance codes are assigned to indicate the levels of maintenance authorized to USE and REPAIR support items. The maintenance codes are entered in the third and fourth positions of the Uniform SMR Code format as follows:

(a) position will indicate the lowest maintenance level authorized to remove, replace, and use the support item. The maintenance code entered in the third position will indicate one of the following levels of maintenance:

| <i>Code</i> | <i>Application/Explanation</i> |
|-------------|--|
| O | Support item is removed, replaced, used at the organizational level. |
| F | Support item is removed, replaced, used at the direct support level. |

(b) The maintenance code entered in the fourth position indicates whether the item is to be repaired and identifies the lowest maintenance level with the capability to perform complete repair (i.e., all authorized maintenance functions). This position will contain one of the following maintenance codes:

TM 11-5820-554-34P-2

| Code | Application/Explanation |
|------|--|
| F | The lowest maintenance level capable of complete repair of the support item is the direct support level. |
| Z | Nonrepairable. No repair is authorized. |

(3) *Recoverability code.* Recoverability codes are assigned to support items to indicate the disposition action on unserviceable items. The recoverability code is entered in the fifth position of the Uniform SMR Code format as follows:

| Recoverability codes | Definition |
|----------------------|---|
| Z | Nonrepairable item When unserviceable, condemn and dispose at the level indicated in position 8. |
| F | Reparable item. When uneconomically reparable, condemn and dispose at the direct support level. |
| D | Reparable item. When beyond lower level repair capability, return to depot. Condemnation and disposal not authorized below depot level. |

c. National Stock Number. Indicates the National stock number assigned to the item and will be used for requisitioning purposes.

d. Part Number. Indicates the primary number used by the manufacturer (individual, company, firm, corporation, or Government activity), which controls the design and characteristics of the item by means of its engineering: drawings, specifications, standards, and inspection requirements: to identify an item or range of items

NOTE

When a stock numbered item is requisitioned, the repair part received may have a different part number than the part being replaced.

e. Federal Supply Code for Manufacturer (FSCM). The FSCM is a 5-Digit numeric code listed in SB 708 42 which is used to identify the manufacturer, distributor, or Government agency, etc..

f. Description. Indicates the Federal item name and, if required, a minimum description to identify the item.

g. Unit of Measure (D/M). Indicates the standard of the basic quantity of the listed item as used in performing the actual maintenance function. This measure is expressed by a two-character alphabetical abbreviation (e.g., ea; in, pr, etc). When the unit of measure differs from the unit of issue, the lowest unit

of issue that will satisfy the required units of measure will be requisitioned.

h. Quantity Incorporated in Unit. Indicates the quantity of the item used in the breakout shown on the illustration figure, which is prepared for a functional group, subfunctional group, or an assembly.

4. Special Information

a. Detailed assembly instructions for items source coded to be assembled are found in TM 11-5820-530-15. Assembly components are listed immediately following the item to be assembled.

b. The following publications pertain to the 6118/FRC-93 and its components:

TM 11-5820-530-15, Controls, Radio Set C -6118/
FRC-93 and C-7515/FRC-93

TM 11-5820-554-12, Radio Set AN/FRC-93

TM 11-5820-554-20P-2 Control, Radio Set C6118/FR-93.

5. How to Locate Repair Parts

a. When National stock number or part number is unknown.

(1) *First.* Using the table of contents, determine the functional group within which the item belongs This is' necessary since illustrations are prepared for functional groups and listing are divided into the same groups

(2) *Second.* Find the illustration covering the functional group to which the item belongs.

(3) *Third* Identify the item on the illustration and note the illustration figure and item number of the item.

(4) *Fourth.* Using the Repair Parts Listing, find the figure and item number noted on the illustration.

b. When National stock number or part number is known.

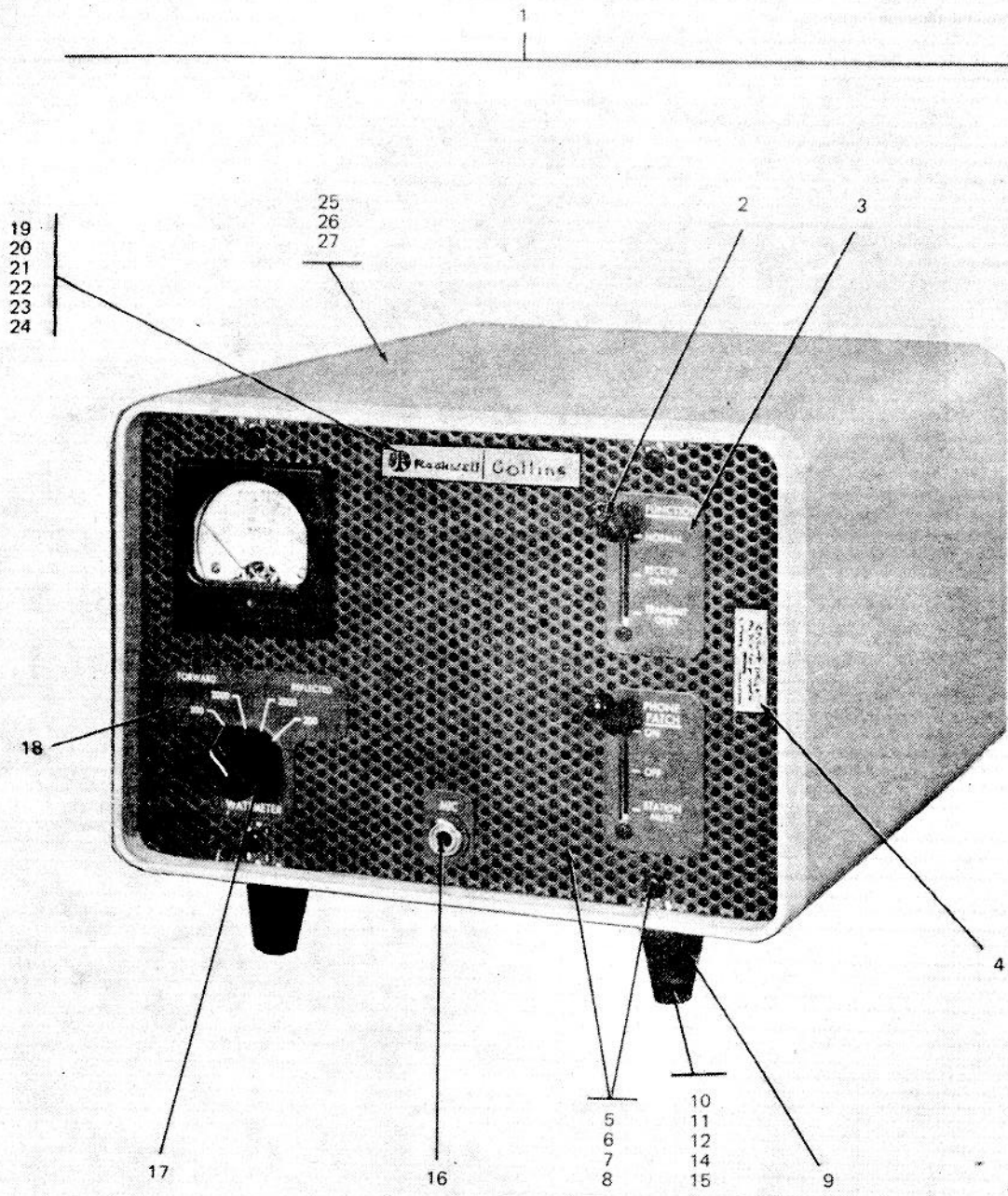
(1) *First.* Using the Index of National Stock Numbers 'and Part Numbers, find the pertinent National stock number or part number. This index is in NIIN sequence followed by a list of part numbers in alphameric sequence, cross-referenced to the illustration figure number and item number.

(2) *Second.* After finding the figure and item number, locate the figure end 'item number in the repair parts list.

6. Abbreviations

Not applicable.

(Next printed page is 4.1)



STATION CONTROL C-6118/FRC-93

EL6MP001

Figure 1. Control, Radio Set C-6118/FRC-93 (Sheet 1 of 6)

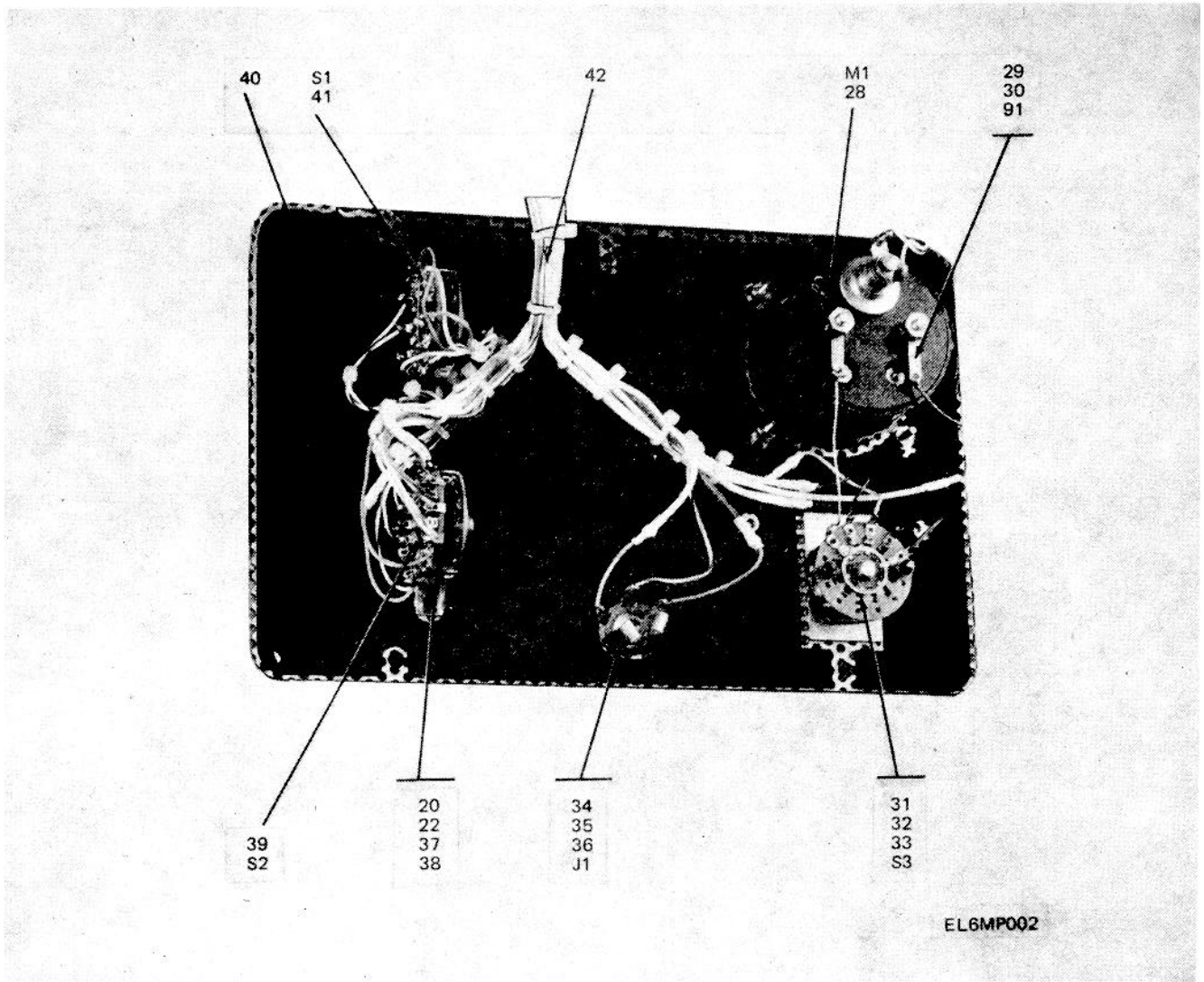
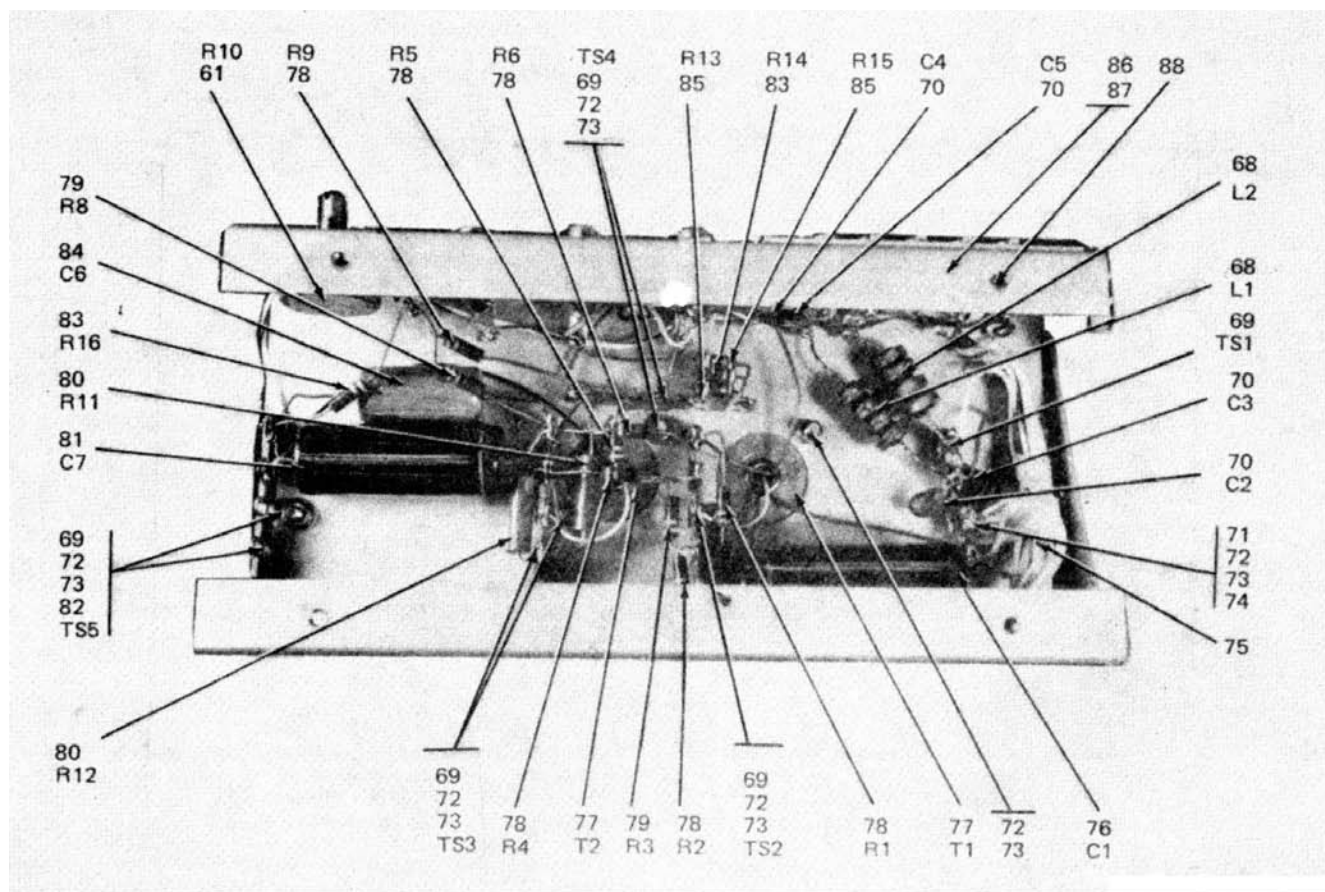


Figure 1. Control, Radio Set C 6118/FRC-93 (Sheet 2 of 6).



EL6MP004

Figure 1. Control, Radio Set C-6118/FRC-95 (Sheet 4 of 6).

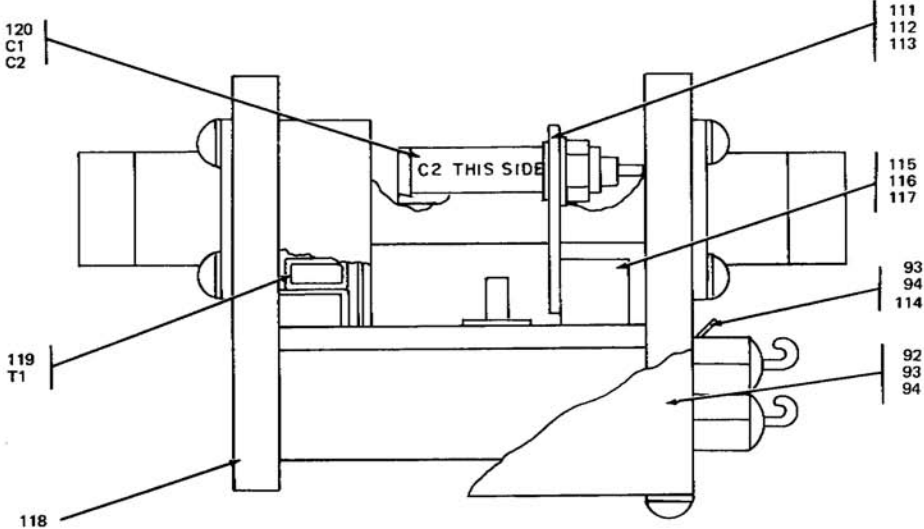
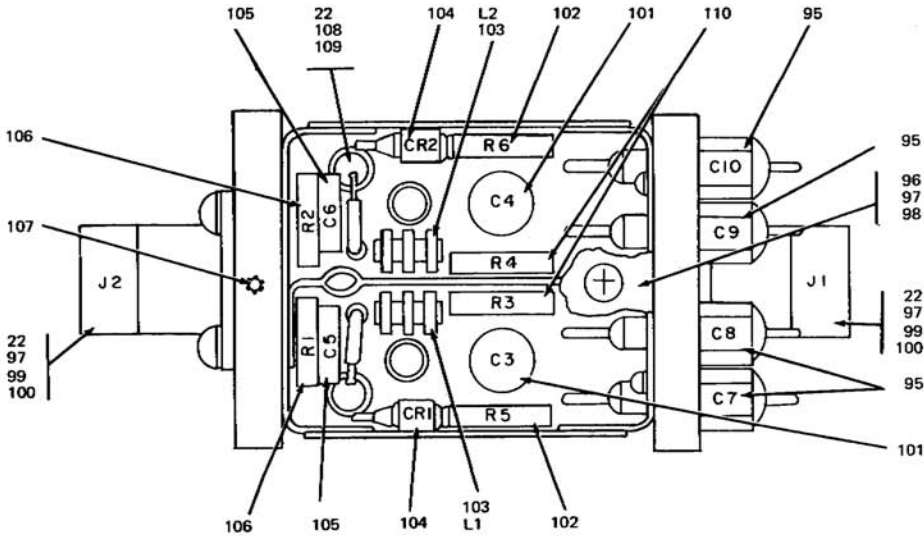


FIGURE 1 (SHEET 5 OF 6)

EL6MP005

Figure 1. Control, Radio Set C-6118/FRC--93 (Sheet 5 of 6).

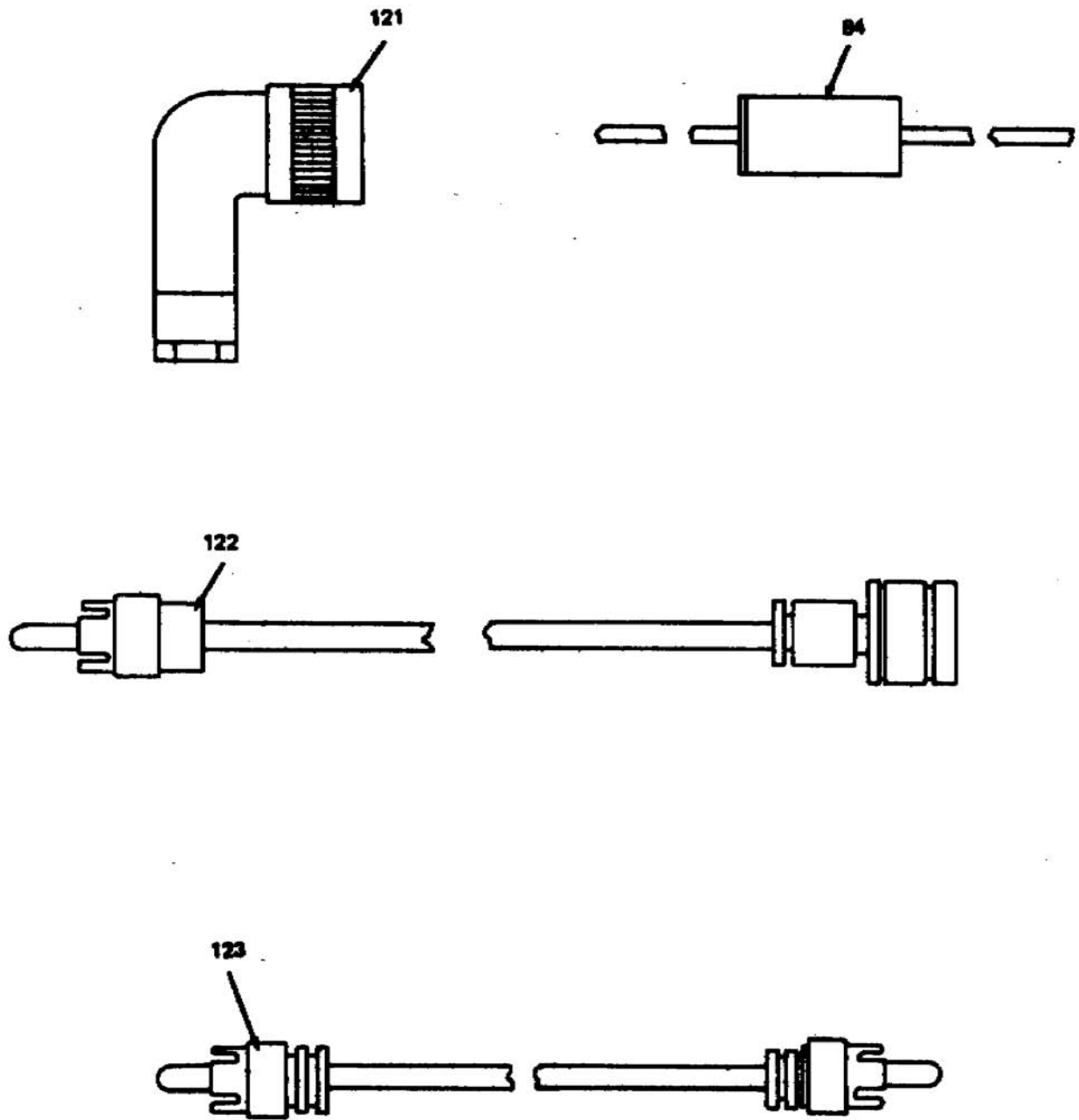


FIGURE 1 (SHEET 6 of 6)

EL6MP006

Figure 1. Control, Radio Set C-6118/FRC-93 (Sheet 6 of 6).

SECTION II

TM 11-5820-5820-554-34P-2

| (1) ILLUSTRATION | | (2) | (3) | (4) | (5) | (6) DESCRIPTION | (7) | (8) QTY INC IN UNIT |
|---------------------|--------------------|-------------|-----------------------------|----------------|-------|--|-----|---------------------------------|
| (a) FIG NO. | (b) ITEM NO. | SMR CODE | NATIONAL STOCK NUMBER | PART NUMBER | FSCM | USABLE ON CODE | U/M | |
| | | | | | | GROUP 00 CONTROL, RADIO SET C-6118/FRC-93 | | |
| 1 | 1 | XDFDD | 5820-00-082-4082 | C-6118/FRC-93 | 80058 | ASSEMBLY,CONTROL RADIO SET C-6118/FRC—93 | EA | 1 |
| 1 | 2 | PAOZZ | 5930-00-057-1844 | 544-2852-000 | 13499 | HANDLE,SWITCH | EA | 2 |
| 1 | 3 | XDFZZ | | 548-1339—002 | 13499 | PLATE, INSTRUCTION | EA | 1 |
| 1 | 4 | XDFZZ | | 757-4780-000 | 13499 | PLAT | EA | 1 |
| 1 | 5 | XDFFF | | 543-8117-003 | 13499 | PANEL | EA | 1 |
| 1 | 6 | XDFZZ | | 330-2420-000 | 90123 | SCREW MACHINE | EA | 4 |
| 1 | 7 | XDFZZ | | 302-7000-000 | 74921 | WASHER,NONMETALLIC | EA | 4 |
| 1 | 8 | XDFZZ | | 543-8114-003 | 13499 | PANEL ,FRONT | EA | 1 |
| 1 | 9 | PAFZZ | 5820-00-974-3142 | 543-8101-002 | 13499 | FOOT,CABINET | EA | 2 |
| 1 | 10 | PAFZZ | 5340-00-264-7182 | 747RBLACK | 75543 | BUMPER,RUBBER | EA | 4 |
| 1 | 11 | XDFZZ | | P313-0053-000 | 77250 | NUT, PLAIN, HEXAGON | EA | 2 |
| 1 | 12 | PAFZZ | 5305-00-054-6660 | MS51957-36 | 96906 | SCREW, MACHINE | EA | 2 |
| 1 | 13 | XDFZZ | | P343-0332-000 | 77250 | SCREW MACHINE | EA | 2 |
| 1 | 14 | PAFZZ | 5310-00-584-7139 | 310-0055-000 | 79807 | WASHER,FLAT | EA | 4 |
| 1 | 15 | XDFZZ | | 310-0056-000 | 79807 | WASHER,FLAT | EA | 2 |
| 1 | 16 | XOFZZ | | 5403233-002 | 13499 | PLATE, MICROPHONE | EA | 1 |
| 1 | 17 | PAOZZ | 5355-00-971-0588 | 543-8039-000 | 13499 | KNOB | EA | 1 |
| 1 | 18 | XOFZZ | | 544-3234-002 | 13499 | PLATE,WATTMETER | EA | 1 |
| 1 | 19 | XDFZZ | | 632-5234-001 | 13499 | HOLDER | EA | 1 |
| 1 | 20 | PAFZZ | 5310-00-208-7021 | P313-0156-000 | 77250 | NUT,PLAIN,HEXAGO | EA | 2 |
| 1 | 21 | PAFZZ | 5305-00-770-2579 | MS51959-15 | 96906 | SCREW, MACHINE | EA | 2 |
| 1 | 22 | PAFZZ | 5310-00-184-8996 | MS35338-97 | 96906 | WASHER, LOCK | EA | 2 |
| 1 | 23 | XDFZZ | | 623-9022-001 | 13499 | INSERT,COLLINS | EA | 1 |
| 1 | 24 | XDFZZ | | 623-9008-001 | 13499 | INSERT ,ROCKWELL | EA | 1 |
| 1 | 25 | XDFZZ | | 543-8112-001 | 13499 | CABINET, STATION | EA | 1 |
| 1 | 26 | XDFZZ | | 543-8111-005 | 13499 | CABINET, WELDED | EA | 1 |
| 1 | 27 | XDFZZ | | 609-1251-001 | 13499 | FRAME | EA | 1 |
| 1 | 28 | PAFFO | 6625-00-995-3884 | 458-0467-000 | 13499 | METER,DC | EA | 1 |
| 1 | 29 | XDFZZ | | 2523-08-00HT | 78189 | TERMINAL,LUG | EA | 2 |
| 1 | 30 | PAFZZ | 5310-00-209-0330 | 310-0054-000 | 79807 | WASHER,FLAT | EA | 2 |
| 1 | 31 | PAFZZ | 5930-00-996-4300 | 192971F1 | 768S4 | SWITCH, ROTARY | EA | 1 |
| 1 | 32 | PAFZZ | 5310-00-282-4653 | 334 4060-000 | 13499 | NUT,PLAIN,HEXAGO | EA | 1 |
| 1 | 33 | PAFZZ | 5310-00-261-7717 | 1720-02 | 78189 | WASHER LOCK | EA | 1 |
| 1 | 34 | PAFZZ | 5935-00-192-4729 | M641-5-1 | 81349 | JACK,TELEPHONE | EA | 1 |
| 1 | 35 | XDFZZ | | N020BRASS | 08591 | NUT, PLAIN,HEXAGON | EA | 1 |
| 1 | 36 | XDFZZ | | 302-1600-000 | 74921 | WASHER, NONMETALL | EA | 2 |
| 1 | 37 | PAFZZ | 5305-00-459-4687 | MS51957-14B | 96906 | SCREW MACHINE | EA | 4 |
| 1 | 38 | PAFZZ | 5310-00-194-3647 | MS15795-8038 | 96906 | WASHER FLAT | EA | 4 |
| 1 | 39 | PAFZZ | 5930-00-996-4302 | 103081-187J1 | 76854 | SWITCH,LEVER | EA | 1 |
| 1 | 40 | XDFZZ | | 790-2075-001 | 13499 | BACKING,PANEL | EA | 1 |

SECTION II

TM 11-5820-554-34P-2

| (1) ILLUSTRATION | | (2) | (3) | (4) | (5) | (6) | (7) | (8) |
|---------------------|--------------------|-------------|-----------------------------|-----------------|-------|-----------------------------------|-----|--------------------------|
| (a) FIG NO. | (b) ITEM NO. | SMR CODE | NATIONAL STOCK NUMBER | PART NUMBER | FSCM | DESCRIPTION USABLE ON CODE | U/M | QTY INC IN UNIT |
| 1 | 41 | PAFZZ | 5930-00-996-4301 | 89077N1 | 76854 | SWITCH, LEVER..... | EA | 1 |
| 1 | 42 | XDFZZ | | 544-3228-000 | 13499 | CABLE, PHDNE PATCH | EA | 1 |
| 1 | 43 | PAFFD | 5965-00-990-8669 | SP57F | 80331 | LOUDSPEAKE | EA | 1 |
| 1 | 44 | AFFFD | | 544-3229-000 | 13499 | CHASSIS ASSEMBL | EA | 1 |
| 1 | 45 | PAFZZ | 5305-00-206-3716 | P343-0330-000 | 77250 | SCREW, MACHINE..... | EA | 1 |
| 1 | 46 | PAFZZ | 5325-00-291-9366 | MS35489-11 | 96906 | GROMMET, RUBBER | EA | 1 |
| 1 | 47 | PAFZZ | 5975-00-727-5153 | MS3367-4-9 | 96906 | STRAP, TIEDOWN | EA | 12 |
| 1 | 48 | XDFZZ | | 544-3227-000 | 13499 | CABLE, COUPLER | EA | 1 |
| 1 | 49 | PAFZZ | 5940-00-781- 2775 | 321035 | 00779 | TERMINAL, LUG | EA | 5 |
| 1 | so | XDFZZ | | 1775 | 71785 | TERMINAL BOARD | EA | 1 |
| 1 | 51 | XDFZZ | | 330-0731-000 | 45722 | SCREW, TAPPIN | EA | 2 |
| 1 | 52 | PBFZZ | 5940-00-202-0237 | 1781 | 71785 | TERMINAL BOARD | EA | 1 |
| 1 | 53 | PAFZZ | 5935-00-259-2034 | 201-11-01-018 | 71785 | CONNECTOR, RECEPT | EA | 1 |
| 1 | 54 | XDFZZ | | 544-2422-002 | 13499 | BOARD, INSULATIN..... | EA | 1 |
| 1 | 55 | XDFZZ | | P313-0163-000 | 77250 | NUT, PLAIN, HEXAGON | EA | 2 |
| 1 | 56 | XDFZZ | | P343-0384-000 | 77250 | SCREW, MACHINE..... | EA | 2 |
| 1 | 57 | XDFZZ | | R3472X5-32CADPL | 12014 | RIVET, TUBULAR..... | EA | 8 |
| 1 | 58 | XDFZZ | | P343-0311-000 | 77250 | SCREW, MACHINE..... | EA | 1 |
| 1 | 59 | XDFZZ | | 310-0058-000 | 79807 | WASHER, FLAT | EA | 1 |
| 1 | 60 | PAFZZ | 5310-00-576-0546 | MS35338-99 | 96906 | WASHER, LOCK..... | EA | 1 |
| 1 | 61 | PAFZZ | 5905-00-808-0546 | 376-4738-001 | 3499 | RESISTOR, VARIABLE | EA | 1 |
| 1 | 62 | PAFZZ | 5310-00-275-5147 | P334-4120-000 | 77250 | NUT, PLAIN, HEXAGO | EA | 1 |
| 1 | 63 | XDFZZ | | 280-2946-000 | 85480 | MARKER, LABEL | EA | 1 |
| 1 | 64 | XDFZZ | | 544-2405-002 | 13499 | BOARD, INSULATING..... | EA | 1 |
| 1 | 65 | XDFZZ | | 543-8116-002 | 13499 | SCREW, MACHIN | EA | 2 |
| 1 | 66 | XDFZZ | | P330-0279-000 | 77250 | SCREW, MACHINE..... | EA | 2 |
| 1 | 67 | PAFFD | 5985-00-809-5851 | 543- 8118-004 | 13499 | COUPLER, DIRECTIO | EA | 1 |
| 1 | 68 | PAFZZ | 5940-00-913-3000 | 9348 | 24226 | SHIELD, BINDING POST..... | EA | 2 |
| 1 | 69 | PBFZZ | 5940-00-842-2917 | 332-14-05-034 | 71785 | TERMINAL BOARD | EA | 5 |
| 1 | 70 | PAFZZ | 5910-00-064-2244 | 19C372 | 56389 | CAPACITOR, FIXED | EA | 4 |
| 1 | 71 | PAFZZ | 5305-00-054-6654 | MS51957-30 | 96906 | SCREW, MACHINE..... | EA | 1 |
| 1 | 72 | PAFZZ | 5310-00-929-6395 | MS35338-136 | 96906 | WASHER, LOCK..... | EA | 2 |
| 1 | 73 | PAFZZ | 5310-00-616-8660 | P313-0045-000 | 77250 | NUT, PLAIN, HEXAGO | EA | 3 |
| 1 | 74 | PAFZZ | 5310-00-275-1347 | 310-0046-000 | 79807 | WASHER, FLAT | EA | 2 |
| 1 | 75 | XDFZZ | 5340-00-975-1440 | HP6N | 09922 | CLAMP, LOOP | EA | 1 |
| 1 | 76 | PAFZZ | 5910-00-912-6456 | 931-0170-000 | 13499 | CAPACITOR, FIXE | EA | 1 |
| 1 | 77 | PAFZZ | 5950-00-959-4382 | 28849 | 80089 | TRANSFORMER, AUDI | EA | 2 |
| 1 | 78 | PAFZZ | 5905-01-060-2641 | RCR20G101KS | 81349 | RESISTOR, FIXED, COMP | EA | 6 |
| 1 | 79 | PAFZZ | 5905-00-215-5910 | RCR20G821KS | 81349 | RESISTOR, FIXED, COMP | EA | 2 |
| 1 | 80 | PAFZZ | 5905-00-088-0985 | RN70D6190F | 81349 | RESISTOR, FIXED, F | EA | 2 |

SECTION II

TM 11-5820-554-34P-2

| (1) ILLUSTRATION | | (2) | (3) | (4) | (5) | (6) | (7) | (8) |
|---------------------|--------------------|-------------|-----------------------------|-----------------|-------|-----------------------------------|-----|--------------------------|
| (a) FIG NO. | (b) ITEM NO. | SMR CODE | NATIONAL STOCK NUMBER | PART NUMBER | FSCM | DESCRIPTION USABLE ON CODE | U/M | QTY INC IN UNIT |
| 1 | 81 | PAFZZ | 5910-00-476-5120 | LP9AIE224K | 01884 | CAPACITOR, FIXED, MET | EA | 1 |
| 1 | 82 | PAFZZ | 5305-00-054-6651 | MS51957-27 | 96906 | SCREW, MACHINE | EA | 1 |
| 1 | 83 | PAFZZ | 5905-00-114-5407 | RCR20G271KS | 81349 | RESISTOR, FIXE | EA | 2 |
| 1 | 84 | PAFZZ | 5910-00-834-6449 | CC30LH430F | 81349 | CAPACIOR, FIXE | EA | 1 |
| 1 | 85 | PAFZZ | 5905-00-558-9410 | RCR20G391KS | 81349 | RESISTOR, FIXED, C | EA | 2 |
| 1 | 86 | XDFZZ | | 544-3230-000 | 13499 | CHASSIS, PHONE PAICH | EA | 1 |
| 1 | 87 | XDFZZ | | 544-2851-003 | 13499 | CHASSIS, PHONE PATCH | EA | 1 |
| 1 | 88 | XDFZZ | | CL632-1C | 46384 | NUT, PLAIN, CLINCH | EA | 4 |
| 1 | 89 | XDFZZ | | CL832-1C | 46384 | NUT, PLAIN, CLINCH | EA | 1 |
| 1 | 90 | XDFZZ | | 280-3013-000 | 00000 | LABEL | EA | 1 |
| 1 | 91 | PAFZZ | 5310-00-184-8977 | MS35338-98 | 96906 | WASHER, LOCK | EA | 2 |
| 1 | 92 | XDFZZ | | 790-0645-001 | 13499 | COVER, DIRECTIONAL | EA | 2 |
| 1 | 93 | XDFZZ | | P343-0328-000 | 77250 | SCREW, MACHINE | EA | 4 |
| 1 | 94 | PAFZZ | 5310-00-184-0977 | 310-0078-000 | 79807 | WASHER, LOCK | EA | 4 |
| 1 | 95 | PAHZZ | 5910-00-811-4384 | 327-029X5T0102Z | 72982 | CAPACITOR, FIXED, CER | EA | 4 |
| 1 | 96 | XDFZZ | | 542--117-002 | 13499 | COVER, CHASSIS | EA | 1 |
| 1 | 97 | XDFZZ | | P343-0286-000 | 77250 | SCREW, MACHINE | EA | 4 |
| 1 | 98 | PAFZZ | 5310-00-939-10b3 | MS35335-85 | 96906 | WASHER, LOCK | EA | 2 |
| 1 | 99 | PAFZZ | 5935-00-97--5418 | M39012-04-0002 | 13499 | CONNECTOR, RECEPT | EA | 2 |
| 1 | 100 | XDFZZ | | P343-0290-000 | 77250 | SCREW, MACHINE | EA | 4 |
| 1 | 101 | PAFZZ | 5910-00-821-5215 | 416709 | 96214 | CAPACITOR, FIXE | EA | 2 |
| | | | | | | SELECT AND TEST | | |
| 1 | 102 | PAFZZ | 5905-00-8d3-9198 | RN65D1001F | 81349 | RESISTOR, FIXED, F | EA | 2 |
| 1 | 102 | PAFZZ | 5905-00-988-0160 | RN65D1051F | 81349 | RESISTOR, FIXED, F | EA | 2 |
| 1 | 102 | PAFZZ | 5905-00-964-2376 | RN65D1101F | 81349 | RESISTOR, FIXED, F | EA | 2 |
| 1 | 102 | PAFZZ | 5905-00-702-5826 | RN65D1151F | 81349 | RESISTOR, FIXED, F | EA | 2 |
| 1 | 102 | PAFZZ | 5905-00-062-5039 | RN65D1211F | 81349 | RESISTOR, FIXED, F | EA | 2 |
| 1 | 102 | PAFZZ | 5905-00-990-5153 | RN65D1271F | 81349 | RESISTOR, FIXED, F | EA | 2 |
| 1 | 102 | PAFZZ | 5905-00-950-6790 | RN65D1331F | 81349 | RESISTOR, FIXED, F | EA | 2 |
| 1 | 102 | PAFZZ | 5905-00-993-6011 | RN65D1401F | 81349 | RESISTOR, FIXED, F | EA | 2 |
| 1 | 102 | PAFZZ | 5905-00-993-6012 | RN65D1471F | 81349 | RESISTOR, FIXED, F | EA | 2 |
| 1 | 102 | PAFZZ | 5905-00-952-4716 | RN65D1541F | 81349 | RESISTOR, FIXED, F | EA | 2 |
| 1 | 102 | PAFZZ | 5905-00-990-5147 | RN65D1621F | 81349 | RESISTOR, FIXED, F | EA | 2 |
| 1 | 102 | PAFZZ | 5905-00-990-7986 | RN65D1691F | 81349 | RESISTOR, FIXED, F | EA | 2 |
| 1 | 102 | PAFZZ | 5905-00-993-6975 | RN65D1781F | 81349 | RESISTOR, FIXED, F | EA | 2 |
| 1 | 102 | PAFZZ | 5905-00-993-2274 | RN65D1871F | 81349 | RESISTOR, FIXED, F | EA | 2 |
| 1 | 102 | PAFZZ | 5905-00-225-8175 | RN65D1961F | 81349 | RESISTOR, FIXED, F | EA | 2 |
| 1 | 102 | PAFZZ | 5905-00-990-4915 | RN65D2051F | 81349 | RESISTOR, FIXED, F | EA | 2 |
| 1 | 102 | PAFZZ | 5905-00-063-8405 | RN6502151F | 81349 | RESISTOR, FIXED, F | EA | 2 |
| 1 | 102 | PAFZZ | 5905-00-990-4917 | RN65D2261F | 81349 | RESISTOR, FIXED, F | EA | 2 |

| (1) ILLUSTRATION | | (2) | (3) | (4) | (5) | (6) | (7) | (8) |
|---------------------|--------------------|-------------|-----------------------------|---------------------------------|-------|--|-----|--------------------------|
| (a) FIG NO. | (b) ITEM NO. | SMR CODE | NATIONAL STOCK NUMBER | PART NUMBER | FSCM | DESCRIPTION USABLE ON CODE | U/M | QTY INC IN UNIT |
| 1 | 102 | PAFZZ | 5905-00-993-1358 | RN65D2371F | 81349 | RESISTOR, FIXED,F | EA | 2 |
| 1 | 102 | PAFZZ | 5905-00-814-0737 | RN65D2491F | 81349 | RESISTOR, FIXED,F | EA | 2 |
| 1 | 103 | PAFZZ | 5950-00-237-1531 | 10205-3 | 06560 | COIL, RADIO FREQ..... | EA | 2 |
| 1 | 104 | PAFZZ | 5910-00-912-4907 | IN82AG | 81349 | SEMICONDUCTOR DE..... | EA | 3 |
| 1 | 105 | PAFZZ | 5910-00-814-6449 | CC30LH430F | 81349 | CAPACITOR, FIXED..... | EA | 2 |
| 1 | 105 | PAFZZ | 5905-00-713-2013 | RN65D12R1F | 81349 | RESISTOR, FIXED.F | EA | 2 |
| 1 | 107 | XDFZZ | | 6-32X1-4, 4SPLINE OVPT416SST | 08664 | SETSCREEN..... | EA | 1 |
| 1 | 108 | XDFZZ | | ST1050-34 | 95238 | TERMINAL,STUD..... | EA | 4 |
| 1 | 109 | XOFZZ | | P343-0284-000 | 77250 | SCREW, MACHINE..... SELECT AND TEST | EA | 4 |
| 1 | 110 | PAFZZ | 5905-00-989-6488 | RN65D5361F | 81349 | RESISTOR, FIXED,F | EA | 2 |
| 1 | 110 | PAFZZ | 5905-00-960-2219 | RN65D5621F | 81349 | RESISTOR, FIXED,F | EA | 2 |
| 1 | 110 | PAFZZ | 5905-00-225-4027 | RN65D5901F | 81349 | RESISTOR, FIXED,F | EA | 2 |
| 1 | 110 | PAFZZ | 5905-00-081-6381 | RN65D6191F | 81349 | RESISTOR, F IXED,F | EA | 2 |
| 1 | 110 | PAFZZ | 5905-00-068-0066 | RN65D6491F | 81349 | RESISTOR, FIXED,F | EA | 2 |
| 1 | 110 | PAFZZ | 5905-00-060-2481 | RN65D6811F | 81349 | RESISTOR, FIXED,F | EA | 2 |
| 1 | 110 | PAFZZ | 5905-00-989-5579 | RN65D7151F | 81349 | RESISTOR, FIXED,F | EA | 2 |
| 1 | 110 | PAFZZ | 5905-00-892-7283 | RN65D7501F | 81349 | RESISTOR, FIXED,F | EA | 2 |
| 1 | 110 | PAFZZ | 5905-00-763-3600 | RN65D7d71F | 81349 | RESISTOR, FIXED,F | EA | 2 |
| 1 | 110 | PAFZZ | 5905-00-857-2445 | RN65D8251F | 81349 | RESISTOR, FIXED,F | EA | 2 |
| 1 | 110 | PAFZZ | 5905-00-763-3601 | RN65D8661F | 81349 | RESISTOR, FIXED,F | EA | 2 |
| 1 | 110 | PAFZZ | 5905-00-959-6008 | RN65D9D91F | 81349 | RESISTOR, FIXED,F | EA | 2 |
| 1 | 110 | PAFZZ | 5905-00-088-3100 | RN6SD9531F | 81349 | RESISTOR, FIXED,FILM..... | EA | 2 |
| 1 | 110 | PAFZZ | 5905-00-064-0555 | RN6SD1002F | 81349 | RESISTOR, FIXED,F | EA | 2 |
| 1 | 110 | PAFZZ | 5905-00-951-5754 | RN65D1052F | 81349 | RESISTOR, FIXED,F | EA | 2 |
| 1 | 110 | PAFZZ | 5905-00-062-0537 | RN65D1102F | 81349 | RESISTOR, FIXED,F | EA | 2 |
| 1 | 110 | PAFZZ | 5905-00-951-4925 | RN65D1152F | 81349 | RESISTOR, FIXED,F | EA | 2 |
| 1 | 110 | PAFZZ | 5905-00-812-1558 | RN65D1212F | 81349 | RESISTOR, FIXED,F | EA | 2 |
| 1 | 111 | XDFZZ | | 542-4114-002 | 13499 | BRACKET,CAPACITOR..... | EA | 2 |
| 1 | 112 | PAFZZ | 5305-00-059-8228 | P343 0299-000 | 77250 | SCREW MACHINE..... | EA | 4 |
| 1 | 113 | PAFZZ | 5310-00-261-7160 | 1214-05 | 78189 | WASHER, LOCK..... | EA | 4 |
| 1 | 114 | PAFZZ | 5940-00-763-1288 | 403 | 79963 | TERMINAL,LUG | EA | 1 |
| 1 | 115 | XDFZZ | | 542-4115-002 | 13499 | PLATE. CAPACITOR | EA | 1 |
| 1 | 116 | PAFZZ | 5305-00-616-2568 | P343-0285-000 | 77250 | SCREW MACHINE..... | EA | 2 |
| 1 | 117 | PAFZZ | 5310-00-782-1349 | 310-0045-000 | 79807 | WASHER, FLAT | EA | 2 |
| 1 | 118 | XDFZZ | | 790-0647-001 | 13499 | CHASIS, COUPLER..... | EA | 1 |
| 1 | 119 | PAFZZ | 5950-00-679-9539 | 542-0916-002 | 13499 | COIL RADIO FREQU..... | EA | 1 |
| 1 | 120 | PAFZZ | 5910-00-998-1606 | VCJ1065D | 73899 | CAPACITOR,VARIAB..... | EA | 2 |
| 1 | 121 | PAFZZ | 5935-00-945-5435 | M39012-05-0001 | 81349 | CONNECTOR, PLUG, E | EA | 1 |
| 1 | 122 | XDFZZ | 4C1335 | 82389 | CABLE | ASSEMBLY | EA | 1 |

SECTION II

TM 11-5820-554-34P-2

| (1) | | (2) | (3) | (4) | (5) | (6) | (7) | (8) |
|-------------------|--------------------|-------------|-----------------------------|----------------|-------|--|-----|--------------------------|
| ILLUSTRATION | | SMR CODE | NATIONAL STOCK NUMBER | PART NUMBER | FSCM | DESCRIPTION <i>USABLE ON CODE</i> | U/M | QTY INC IN UNIT |
| (a) FIG NO. | (b) ITEM NO. | | | | | | | |
| 1 | 123 | XDFZZ | | 426-2027-000 | 12127 | CABLE ASSEMBLY | EA | 5 |

SECTION IV

NATIONAL STOCK NUMBER AND PART NUMBER INDEX

TM 11-5820 - 554-34P-2

NOTE: LATEST NATIONAL STOCK NUMBER AND PART NUMBER ASSIGNMENTS ARE INCLUDED AT END OF INDEX.

| STOCK NUMBER | FIGURE NO. | ITEM NO. | STOCK NUMBER | FIGURE NO. | ITEM NO. |
|------------------|------------|----------|------------------|------------|----------|
| 5305-00-054-6651 | 1 | 82 | 5905-00-763-3600 | 1 | 110 |
| 5305-00-054-6654 | 1 | 71 | 5905-00-763-3601 | 1 | 110 |
| 5305-00-054-6660 | 1 | 12 | 5305-00-770-2579 | 1 | 21 |
| 5930-00-057-1844 | 1 | 2 | 5940-00-781-Z775 | 1 | 49 |
| 5305-00-059-8228 | 1 | 112 | 5310-00-782-1349 | 1 | 117 |
| 5905-00-060-2481 | 1 | 110 | 5985-00-809-5851 | 1 | 67 |
| 5905-00-062-0537 | 1 | 110 | 5910-00-811-4384 | 1 | 95 |
| 5905-00-062-5039 | 1 | 102 | 5905-00-770-2579 | 1 | 110 |
| 5905-00-063-8405 | 1 | 102 | 5905-00-814-0737 | 1 | 102 |
| 5905-00-064-0555 | 1 | 110 | 5910-00-814-6449 | 1 | 105 |
| 5910-00-064-2244 | 1 | 70 | 5940-00-842-2917 | 1 | 64 |
| 5905-00-068-0066 | 1 | 110 | 5905-00-857-Z445 | 1 | 110 |
| 5905-00-081-6381 | 1 | 110 | 5905-00-883-9198 | 1 | 102 |
| 5905-00-088-0985 | 1 | 80 | 5905-00-892-7283 | 1 | 110 |
| 5905-00-088-3100 | 1 | 110 | 5961-00-912-4907 | 1 | 104 |
| 5310-00-184-8977 | 1 | 91 | 5440-00-913-3000 | 1 | 68 |
| 5310-00-184-8977 | 1 | 94 | 5310-00-929-6395 | 1 | 72 |
| 5310-00-184-8996 | 1 | 22 | 5310-00-939-1063 | 1 | 98 |
| 5935-00-192-4729 | 1 | 34 | 5935-00-945-5435 | 1 | 121 |
| 5310-00-194-3647 | 1 | 38 | 5905-00-960-6790 | 1 | 102 |
| 5940-00-202-0237 | 1 | 52 | 5905-00-951-4925 | 1 | 110 |
| 5305-00-206-3716 | 1 | 45 | 5905-00-951-5754 | 1 | 110 |
| 5310-00-208-7021 | 1 | 20 | 5905-00-952-4716 | 1 | 102 |
| 5310-00-209-0330 | 1 | 30 | 5905-00-959-6008 | 1 | 110 |
| 5905-00-215-5910 | 1 | 79 | 5905-00-964-2219 | 1 | 110 |
| 5905-00-225-4027 | 1 | 110 | 5905-00-964-2376 | 1 | 102 |
| 5905-00-225-8175 | 1 | 102 | 5355-00-971-0588 | 1 | 17 |
| 5950-00-237-1531 | 1 | 103 | 5820-00-974-3142 | 1 | 9 |
| 5935-00-259-2034 | 1 | 53 | 5953-00-974-5418 | 1 | 99 |
| 5310-00-261-7160 | 1 | 113 | 5340-00-975-1440 | 1 | 75 |
| 5310-00-261-7717 | 1 | 33 | 5905-00-988-0160 | 1 | 102 |
| 5340-00-264-7182 | 1 | 10 | 5905-00-989-5579 | 1 | 110 |
| 5310-00-275-1347 | 1 | 74 | 5905-00-989-6488 | 1 | 110 |
| 5310-00-275-5147 | 1 | 62 | 5905-00-990-4915 | 1 | 102 |
| 5310-00-282-4653 | 1 | 32 | 5905-00-990-4917 | 1 | 102 |
| 5325-00-291-9366 | 1 | 46 | 5905-00-990-5147 | 1 | 102 |
| 5304-00-459-4687 | 1 | 37 | 5905-00-990-5153 | 1 | 102 |
| 5905-00-558-9410 | 1 | 85 | 5905-00-990-7986 | 1 | 102 |
| 5310-00-576-0546 | 1 | 60 | 5905-00-993-1358 | 1 | 102 |
| 5310-00-584-7139 | 1 | 14 | 5905-00-993-2274 | 1 | 102 |
| 5305-00-616-2468 | 1 | 116 | 5905-00-993-6011 | 1 | 102 |
| 5310-00-616-8660 | 1 | 73 | 5905-00-993-6012 | 1 | 102 |
| 5950-00-679-9539 | 1 | 119 | 5905-00-993-6975 | 1 | 102 |
| 5905-00-702-5826 | 1 | 102 | 5930-00-996-4300 | 1 | 31 |
| 5905-00-713-2013 | 1 | 106 | 5910-00-998-1606 | 1 | 120 |
| 5975-00-727-5153 | 1 | 47 | 5905-01-060-2641 | 1 | 78 |
| 5940-00-763-1288 | 1 | 114 | | | |

| PART NUMBER | FSCM | FIG NO. | ITEM NO. | PART NUMBER | FSCM | FIG. NO. | ITEM NO. |
|-------------------|-------|---------|----------|---------------|-------|----------|----------|
| | | | | P330-0279-000 | 77250 | 1 | 66 |
| | | | | P334-4120-000 | 77250 | 1 | 62 |
| CC30LH430F | 81349 | 1 | 105 | P343-0284-000 | 77250 | 1 | 109 |
| CL632-1C | 46384 | 1 | 88 | P343-0285-000 | 77250 | 1 | 116 |
| CL832-1C | 46384 | 1 | 89 | P343-0286-000 | 77250 | 1 | 97 |
| HP6N | 09922 | 1 | 75 | P343-0290-000 | 77250 | 1 | 100 |
| LP9A1E224K | 01884 | 1 | 81 | P343-0299-000 | 77250 | 1 | 112 |
| MS15795-803B | 96906 | 1 | 38 | P343-0311-000 | 77250 | 1 | 58 |
| MS3307-4-9 | 96906 | 1 | 47 | P343-0328-000 | 77250 | 1 | 93 |
| MS35335-85 | 96906 | 1 | 98 | P343-0330-000 | 77250 | 1 | 45 |
| MS35338-136 | 96906 | 1 | 72 | P343-0332-000 | 77250 | 1 | 13 |
| MS35338-97 | 96906 | 1 | 22 | P343-0384-000 | 77250 | 1 | 56 |
| MS35338-98 | 96906 | 1 | 91 | RCR20G101KS | 81349 | 1 | 78 |
| MS35338-99 | 96906 | 1 | 60 | RCR20G271KS | 81349 | 1 | 83 |
| MS35489-11 | 96906 | 1 | 46 | RCR20G391KS | 81349 | 1 | 85 |
| MS51957-14B | 96906 | 1 | 37 | RCR20G821KS | 81349 | 1 | 79 |
| MS51957-27 | 96906 | 1 | 82 | RN65D1001F | 81349 | 1 | 102 |
| MS51957-30 | 96906 | 1 | 71 | RN65D1002F | 81349 | 1 | 110 |
| MS51957-36 | 96906 | 1 | 12 | RN65D1051F | 81349 | 1 | 102 |
| MS51959-15 | 96906 | 1 | 21 | RN65D1052F | 81349 | 1 | 110 |
| M39012-04-0002 | 81349 | 1 | 99 | RN65D1101F | 81349 | 1 | 102 |
| M39012-05-0001 | 81349 | 1 | 121 | RN65D1102F | 81349 | 1 | 110 |
| M641-5-1 | 81349 | 1 | 34 | RN65D1151F | 81349 | 1 | 102 |
| N020BRASS | 08591 | 1 | 35 | RN65D1152F | 81349 | 1 | 110 |
| P313-0045-000-000 | 77250 | 1 | 73 | RN65D12R1F | 81349 | 1 | 106 |
| P313-0053-000 | 77250 | 1 | 11 | RN65D1211F | 81349 | 1 | 102 |
| P313-0156-000 | 77250 | 1 | 20 | RN65D1212F | 81349 | 1 | 110 |
| P313-0163-000 | 77250 | 1 | 55 | RN65D1271F | 81349 | 1 | 102 |

SECTION IV

NATIONAL STOCK NUMBER AND PART NUMBER INDEX TM 11-5820-554-34P-2

| PART NUMBER | FSCM | FIG. NO. | ITEM NO. | PART NUMBER | FSCM | FIG. NO. | ITEM NO. |
|----------------|-------|----------|----------|--------------------------|-------|----------|----------|
| RN65D1331F | 81349 | 1 | 102 | 310-0056-000 | 79807 | 1 | 15 |
| RN65D1401F | 81349 | 1 | 102 | 310-0058-000 | 79807 | 1 | 59 |
| RN65D1471F | 81349 | 1 | 102 | 310-0078-000 | 79807 | 1 | 94 |
| RN65D1541F | 81349 | 1 | 102 | 321035 | 00779 | 1 | 49 |
| RN65D1621F | 81349 | 1 | 102 | 327-029X5T01022 | 72982 | 1 | 95 |
| RN65D1691F | 81349 | 1 | 102 | 330-0731-000 | 45722 | 1 | 51 |
| RN65D1781F | 81349 | 1 | 102 | 330-2420-000 | 90123 | 1 | 6 |
| RN65D1871F | 81349 | 1 | 102 | 332-14-05-034 | 71785 | 1 | 69 |
| RN65D1961F | 81349 | 1 | 102 | 334-4060-000 | 13499 | 1 | 32 |
| RN65D2051F | 81349 | 1 | 102 | | | | |
| RN65D2151F | 81349 | 1 | 102 | 4C1335 | 82389 | 1 | 122 |
| RN65D2261F | 81349 | 1 | 102 | 403 | 79963 | 1 | 114 |
| RN65D2371F | 81349 | 1 | 102 | 426-2027-000 | 2127 | 1 | 123 |
| RN65D2491F | B1349 | 1 | 102 | 458-0467—000 | 13499 | 1 | 28 |
| RN65D5361F | 81349 | 1 | 110 | | | | |
| RN65D5621F | 81349 | 1 | 110 | 542-0916-002 | 13499 | 1 | 119 |
| RN65D5901F | 81349 | 1 | 110 | 542-4114-002 | 13499 | 1 | 111 |
| RN65D6191F | 81349 | 1 | 110 | 542-4115-002 | 13499 | 1 | 115 |
| RN65D6492F | 81349 | 1 | 110 | 542-4117-002 | 13499 | 1 | 96 |
| RN65D6811F | 81349 | 1 | 110 | 543-8039-000 | 13499 | 1 | 17 |
| RN65D7151F | 81349 | 1 | 110 | 543-101-002 | 13499 | 1 | 9 |
| RN65D7501F | 81349 | 1 | 110 | 543-8111-005 | 13499 | 1 | 26 |
| RN65D7871F | B1349 | 1 | 110 | 543-8112-005 | 13499 | 1 | 25 |
| RN65D8251F | 81349 | 1 | 110 | 543-8114-U03 | 13499 | 1 | 8 |
| RN65D8661F | 81349 | 1 | 110 | 543-8116-002 | 13499 | 1 | 65 |
| RN65D9091F | 81349 | 1 | 110 | 543-8117-003 | 13499 | 1 | 5 |
| RN65D9531F | 81349 | 1 | 110 | 543-8118-004 | 13499 | 1 | 67 |
| RN70D6190F | 81349 | 1 | 80 | 544-2405-002 | 13499 | 1 | 64 |
| R3472X5-32CAPL | 12014 | 1 | 57 | 544-2422-002 | 13499 | 1 | 4 |
| ST1050-34 | 95238 | 1 | 108 | 544-2851-003 | 13499 | 1 | 87 |
| VCJ1065D | 73899 | 1 | 120 | 544-2852-000 | 13499 | 1 | 2 |
| | | | | 544-3227-000 | 13499 | 1 | 48 |
| IN82AG | 81349 | 1 | 104 | 544-3228-000 | 13499 | 1 | 42 |
| 10205-3 | 06560 | 1 | 103 | 544-3229-000 | 13499 | 1 | 44 |
| 103081-187J1 | 76854 | 1 | 39 | 544-3230-000 | 13499 | 1 | 86 |
| 1214-05 | 8189 | 1 | 113 | 544-3233-002 | 13499 | 1 | 16 |
| 1720-02 | 78189 | 1 | 33 | 544-3234-002 | 13499 | 1 | 18 |
| 1775 | 71785 | 1 | 50 | 548-1339-002 | 13499 | 1 | 3 |
| 1781 | 71785 | 1 | 52 | 6-32X1-4SPLINEOVPT416SST | 08664 | 1 | 107 |
| 19C372 | 56289 | 1 | 70 | 609-1251-001 | 13499 | 1 | 27 |
| 192971F1 | 76854 | 1 | 31 | 623-9008-001 | 1349 | 1 | 24 |
| 201-11-01-018 | 71785 | 1 | 53 | 623-9022-001 | 13499 | 1 | 23 |
| 2523-08-00HT | 78189 | 1 | 29 | 632-5234-001 | 13499 | 1 | 19 |
| 280-2946-000 | 85480 | 1 | 63 | 747RBLACK | 75543 | 1 | 10 |
| 280-3013-000 | 00000 | 1 | 90 | 757-4780-000 | 13499 | 1 | S |
| 302-1600-000 | 74921 | 1 | 36 | 790--645-001 | 13499 | 1 | 92 |
| 302-7000-000 | 74921 | 1 | 7 | 790-0647-001 | 13499 | 1 | 118 |
| 310-0045-000 | 79807 | 1 | 117 | 790-2075-001 | 13499 | 1 | 40 |
| 310-0046-000 | 79807 | 1 | 74 | | | | |
| 310-0054-000 | 79807 | 1 | 30 | 931-0170-000 | 13499 | 1 | 76 |
| 310-0055-000 | 79807 | 1 | 14 | 9348 | 24226 | 1 | 68 |

LATEST NATIONAL STOCK NUMBER ASSIGNMENT

| STOCK NUMBER | FIG. NO. | ITEM NO. |
|------------------|----------|----------|
| 5820-00-082-4082 | 1 | 1 |

LATEST PART NUMBER ASSIGNMENT

| PART NUMBER | FSCM | FIG. NO. | ITEM NO. |
|---------------|-------|----------|----------|
| C-6118/FRC—93 | 80058 | 1 | 1 |

SECTION IV

NATIONAL STOCK NUMBER AND PART NUMBER INDEX

TM 11-5820-554-34P-2

ADDITIONAL LATEST NATIONAL STOCK NUMBER ASSIGNMENTS

| STOCK NUMBER | FIG. NO. | ITEM NO. | STOCK NUMBER | FIG. NO. | ITEM NO. |
|------------------|-------------|-------------|------------------|-------------|-------------|
| 5905-00-114-5407 | 1 | 83 | 5910-00-912-6456 | 1 | 76 |
| 5910-00-476-5120 | 1 | 81 | 5950-00-959-4382 | 1 | 77 |
| 5905-00-808-0546 | 1 | 61 | 5965-00-990-8669 | 1 | 43 |
| 5910-00-814-6449 | 1 | 84 | 6625-00-995-3884 | 1 | 28 |
| 5910-00-821-5215 | 1 | 101 | 5930-00-996-4301 | 1 | 41 |
| | | | 5930-00-996-4302 | 1 | 39 |

ADDITIONAL LATEST PART NUMBER ASSIGNMENTS

| PART NUMBER | FSCM | FIG. NO. | ITEM NO. | PART NUMBER | FSCM | FIG. NO. | ITEM NO. |
|----------------|-------|-------------|-------------|----------------|-------|-------------|-------------|
| CC30LH430F | 81349 | 1 | 84 | 376-4738-00 | 13499 | 1 | 161 |
| SP57F | 80331 | 1 | 43 | 416709 | 96214 | 1 | 101 |
| 28849 | 80089 | 1 | 77 | 89077N1 | 76854 | 1 | 41 |

☆U.S. GOVERNMENT PRINTING OFFICE : 19910-281-486(42264).

RECOMMENDED CHANGES TO EQUIPMENT TECHNICAL PUBLICATIONS



THEN...JOT DOWN THE
DOPE ABOUT IT ON THIS FORM.
CAREFULLY TEAR IT OUT, FOLD IT
AND DROP IT IN THE MAIL.

SOMETHING WRONG WITH PUBLICATION

FROM: (PRINT YOUR UNIT'S COMPLETE ADDRESS)

DATE SENT

PUBLICATION NUMBER

PUBLICATION DATE

PUBLICATION TITLE

BE EXACT PIN-POINT WHERE IT IS

PAGE
NO.

PARA-
GRAPH

FIGURE
NO.

TABLE
NO.

IN THIS SPACE, TELL WHAT IS WRONG
AND WHAT SHOULD BE DONE ABOUT IT.

TEAR ALONG PERFORATED LINE

PRINTED NAME, GRADE OR TITLE AND TELEPHONE NUMBER

SIGN HERE

By Order of the Secretary of the Army:

Official:

J. C. PENNINGTON
Major General, United States Army
The Adjutant General

E. C. MEYER
General, United States Army
Chief of Staff

DISTRIBUTION:

To be distributed in accordance with DA Form 12-50, Direct and General Support maintenance requirements for AN/FRC-93.

This fine document...

Was brought to you by me:



[Liberated Manuals -- free army and government manuals](#)

Why do I do it? I am tired of sleazy CD-ROM sellers, who take publicly available information, slap “watermarks” and other junk on it, and sell it. Those masters of search engine manipulation make sure that their sites that sell free information, come up first in search engines. They did not create it... They did not even scan it... Why should they get your money? Why are not letting you give those free manuals to your friends?

I am setting this document FREE. This document was made by the US Government and is NOT protected by Copyright. Feel free to share, republish, sell and so on.

I am not asking you for donations, fees or handouts. If you can, please provide a link to liberatedmanuals.com, so that free manuals come up first in search engines:

<A HREF=<http://www.liberatedmanuals.com/>>Free Military and Government Manuals

- Sincerely
Igor Chudov
<http://igor.chudov.com/>
- [Chicago Machinery Movers](#)