

TECHNICAL MANUAL

DIRECT SUPPORT AND GENERAL SUPPORT MAINTENANCE  
REPAIR PARTS AND SPECIAL TOOLS LISTS  
(INCLUDING DEPOT MAINTENANCE REPAIR PARTS AND SPECIAL TOOLS)  
FOR  
RECEIVER, RADIO R-392/URR  
(NSN 5820-00-503-1250)

---

HEADQUARTERS, DEPARTMENT OF THE ARMY  
JULY 1977



**DIRECT SUPPORT AND GENERAL SUPPORT MAINTENANCE  
 REPAIR PARTS AND SPECIAL TOOLS LISTS  
 (INCLUDING DEPOT MAINTENANCE REPAIR PARTS AND SPECIAL TOOLS)  
 FOR  
 RECEIVER, RADIO R-392/URR  
 (NSN 5820-00-503-1250)  
 Current as of 11 March 1977**

**REPORTING OF ERRORS**

You can improve this manual by recommending improvements using DA Form 2028-2 (Test) located in the back of the manual. Simply tear out the self-addressed form, fill it out as shown on the sample, fold it where shown, and drop it in the mail.

If there are no blank DA Form 2028-2 (Test) in the back of your manual, use the standard DA Form 2028 (Recommended Changes to Publications and Blank Forms) and forward to the Commander, US Army Electronics Command, ATTN: DRSEL-MA-Q, Fort Monmouth, NJ 07703. In either case a reply will be furnished direct to you.

**Table of Contents**

	<i>Page</i>	<i>Illus Figure</i>
SECTION I. Introduction .....	1	
II. Repair parts list .....	5	
GROUP 00 Receiver, Radio R-392/URR .....	5	1
01 Panel and frame.....	7	2-5
0101 Amplifier, radio frequency .....	15	6-11
0102 Gear assembly, radio frequency, gear train assembly (No parts authorized)		
0103 Oscillator, radio frequency, crystal controlled .....	31	12-16
0104 Amplifier, intermediate frequency.....	41	17,18
0105 Amplifier, audio frequency.....	47	19-21
0106 Calibrator, crystal .....	59	22,23
0107 Oscillator, radio frequency, variable frequency.....	63	24
02 Case assembly .....	65	25
03 Mounting MT-836/URR (No parts authorized)		
SECTION III. Special tools list (Not applicable)		
IV. National stock number and part number index.....	66	

---

• This manual supersedes TM 11-5820-334-34P, 23 March 1972.

**SECTION I  
INTRODUCTION**

**1. Scope**

This manual lists spares and repair parts; special tools; special test, measurement, and diagnostic equipment (TMDE), and other special support equipment required for performance of direct support and general support maintenance of the R-392/URR. It authorizes the requisitioning and issue of spares and repair parts as indicated by the source and maintenance codes.

**2. General**

This Repair Parts and Special Tools List is divided into the following sections:

a. *Section II. Repair Parts List.* A list of spares and repair parts authorized for use in the performance of maintenance. The list also includes parts which must be removed for replacement of the authorized parts. Parts lists are composed of functional groups in numeric sequence, with the parts in each group listed in figure and item number sequence.

b. *Section III. Special Tools List.* Not applicable.

c. *Section IV. National Stock Number and Part Number Index.* A list, in National item identification number (NIIN) sequence, of all National stock numbers (NSN) appearing in the listings, followed by a list, in alphameric sequence, of all part numbers appearing in the listings. National stock numbers and part numbers are cross-referenced to each illustration figure and item number appearance.

**3. Explanation of Columns**

a. *Illustration.* This column is divided as follows:

- (1) *Figure number.* Indicates the figure number of the illustration on which the item is shown.
- (2) *Item number.* The number used to identify item called out in the illustration.

b. *Source, Maintenance, and Recoverability (SMR) Codes.*

- (1) *Source code.* Source codes indicate the manner of acquiring support items for maintenance, repair, or overhaul of end items. Source codes are entered in the first and second positions of the Uniform SMR Code format as follows:

<i>Code</i>	<i>Definition</i>
PA	Item procured and stocked for anticipated or known usage.
XD	A support item that is not stocked. When required, item will be procured through normal supply channels.

**NOTE**

Cannibalization or salvage may be used as a source of supply for any items source coded above except those coded XA and aircraft support items as restricted by AR 700-42.

- (2) *Maintenance code.* Maintenance codes are assigned to indicate the levels of maintenance authorized to USE and REPAIR support items. The maintenance codes are entered in the third and fourth positions of the Uniform SMR Code format as follows:

(a) The maintenance code entered in the third position will indicate the lowest maintenance level authorized to remove, replace, and use the support item. The maintenance code entered in the third position will indicate one of the following levels of maintenance:

<i>Code</i>	<i>Application/Explanation</i>
O	Support item is removed, replaced, used at the organizational level.
F	Support item is removed, replaced, used at the direct support level.
H	Support item is removed, replaced, used at the general support level.
D	Support items that are removed, replaced, used at depot, mobile depot, specialized repair activity only.

(b) The maintenance code entered in the fourth position indicates whether the item is to be repaired and identifies the lowest maintenance level with the capability to perform complete repair (i.e., all authorized maintenance functions). This position will contain one of the following maintenance codes:

<i>Code</i>	<i>Application/Explanation</i>
H	The lowest maintenance level capable of complete repair of the support item is the general support level.
D	The lowest maintenance level capable of complete repair of the support item is the depot level.
Z	Nonreparable. No repair is authorized.

- (3) *Recoverability code.* Recoverability codes are assigned to support items to indicate the disposition action on unserviceable items. The recoverability code is entered in the fifth position of the Uniform SMR Code format as follows:

*Recoverability codes*

*Definition*

Z - Nonreparable item. When unserviceable, condemn and dispose at the level indicated in position 3.

H - Repairable item. When uneconomically repairable, condemn and dispose at the general support level.

D - Repairable item. When beyond lower level repair capability, return to depot. Condemnation and disposal not authorized below depot level.

c. *National Stock Number.* Indicates the National stock number assigned to the item and will be used for requisitioning purposes.

d. *Part Number.* Indicates the primary number used by the manufacturer (individual, company, firm, corporation, or Government activity), which controls the design and characteristics of the item by means of its engineering drawings, specifications, standards, and inspection requirements to identify an item or range of items.

**NOTE**

When a stock numbered item is requisitioned, the repair part received may have a different part number than the part being replaced.

e. *Federal Supply Code for Manufacturer (FSCM).* The FSCM is a 5-digit numeric code listed in SB 708-42 which is used to identify the manufacturer, distributor, or Government agency, etc.

f. *Description.* Indicates the Federal item name and, if required, a minimum description to identify the item.

g. *Unit of Measure (UIM).* Indicates the standard of the basic quantity of the listed item as used in performing the actual maintenance function. This measure is expressed by a two-character alphabetical abbreviation (e.g., ea, in, pr, etc). When the unit of measure differs from the unit of issue, the lowest unit of issue that will satisfy the required units of measure will be requisitioned.

h. *Quantity Incorporated in Unit.* Indicates the quantity of the item used in the breakout shown on the illustration figure, which is prepared for a functional group, subfunctional group, or an assembly. A "V" appearing in this column in lieu of a quantity indicates that no specific quantity is applicable, (e.g., shims, spacers, etc).

**4. Special Information**

The following publications pertain to the R-392/URR and its components:

TM 11-5820-334-10, Radio Receiver R-392/URR

TM 11-5820-334-20, Radio Receiver R-392/URR

TM 11-5820-834-20P, Radio Receiver R-392/URR

TM 11-5820-334-35, Radio Receiver R-392/URR

**5. How to Locate Repair Parts**

a. When National stock number or part number is unknown.

(1) *First.* Using the table of contents, determine the functional group within which the item belongs. This is necessary since illustrations are prepared for functional groups and listings are divided into the same groups.

(2) *Second.* Find the illustration covering the functional group to which the item belongs.

(3) *Third.* Identify the item on the illustration and note the illustration figure and item number of the item.

(4) *Fourth.* Using the Repair Parts Listing, find the figure and item number noted on the illustration.

b. When National stock number or part number is known.

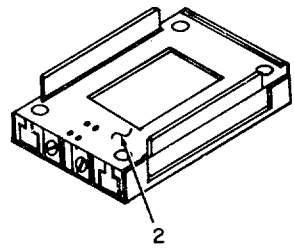
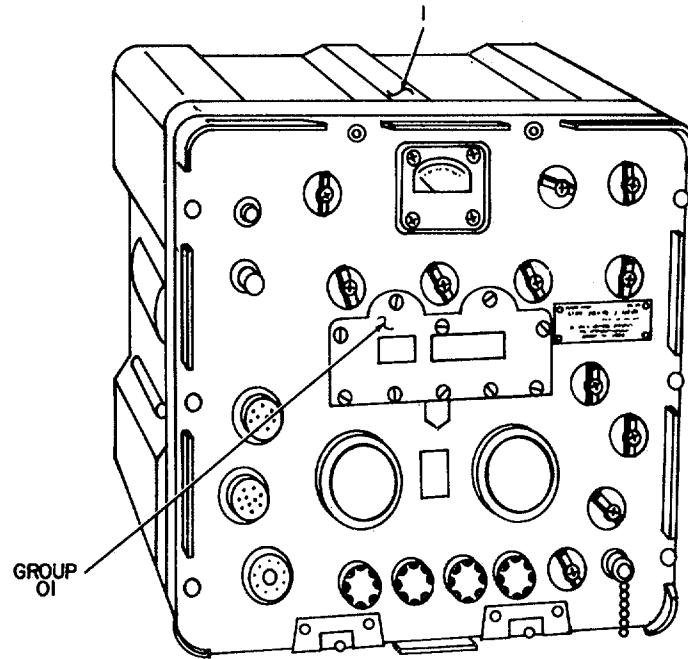
(1) *First.* Using the Index of National Stock Numbers and Part Numbers, find the pertinent National stock number or part number. This index is in NIIN sequence followed by a list of part numbers in alphameric sequence, cross-referenced to the illustration figure number and item number.

(2) *Second.* After finding the figure and item number, locate the figure and item number in the repair parts list.

**6. Abbreviations**

Not applicable.

(Next printed page is 4.)



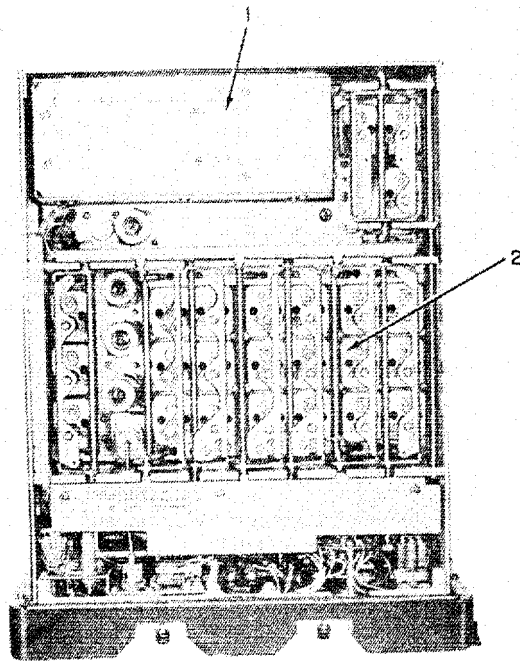
ELOIF001

Figure 1. Receiver, Radio R-392/URR.

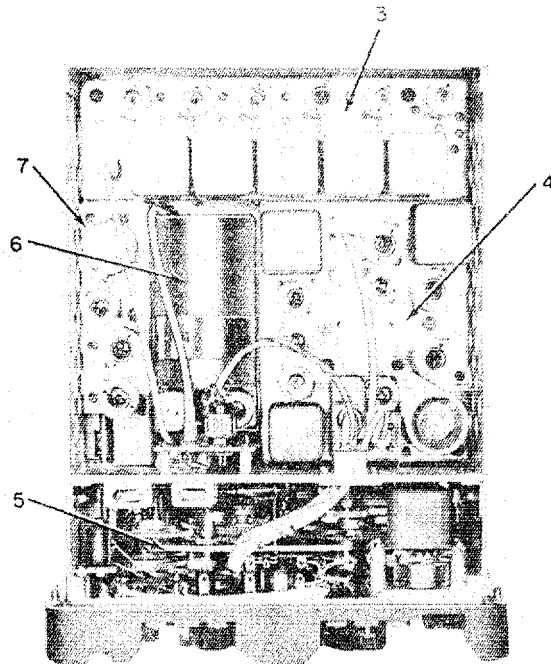
**SECTION II**

**TM 11-5820-334-34P**

(1)		(2)	(3)	(4)	(5)	(6)	(7)	(8)
ILLUSTRATION		SMR CODE	NATIONAL STOCK NUMBER	PART NUMBER	FSCM	DESCRIPTION  <i>USABLE ON CODE</i>	U/M	QTY INC IN UNIT
(a) FIG NO.	(b) ITEM NO.							
1	1	PAHDD	5820-00-503-1649	SMD357515	80063	GROUP 00 RECEIVER,RADIO R-392/URR CASE ASSEMBLY .....	EA	1
1	2	PAODD	5820-00-396-3L95	MT836URR	80058	MOUNTING MT836URR.....	EA	1



TOP VIEW



PANEL AND FRAME  
BOTTOM VIEW

ELOIF002

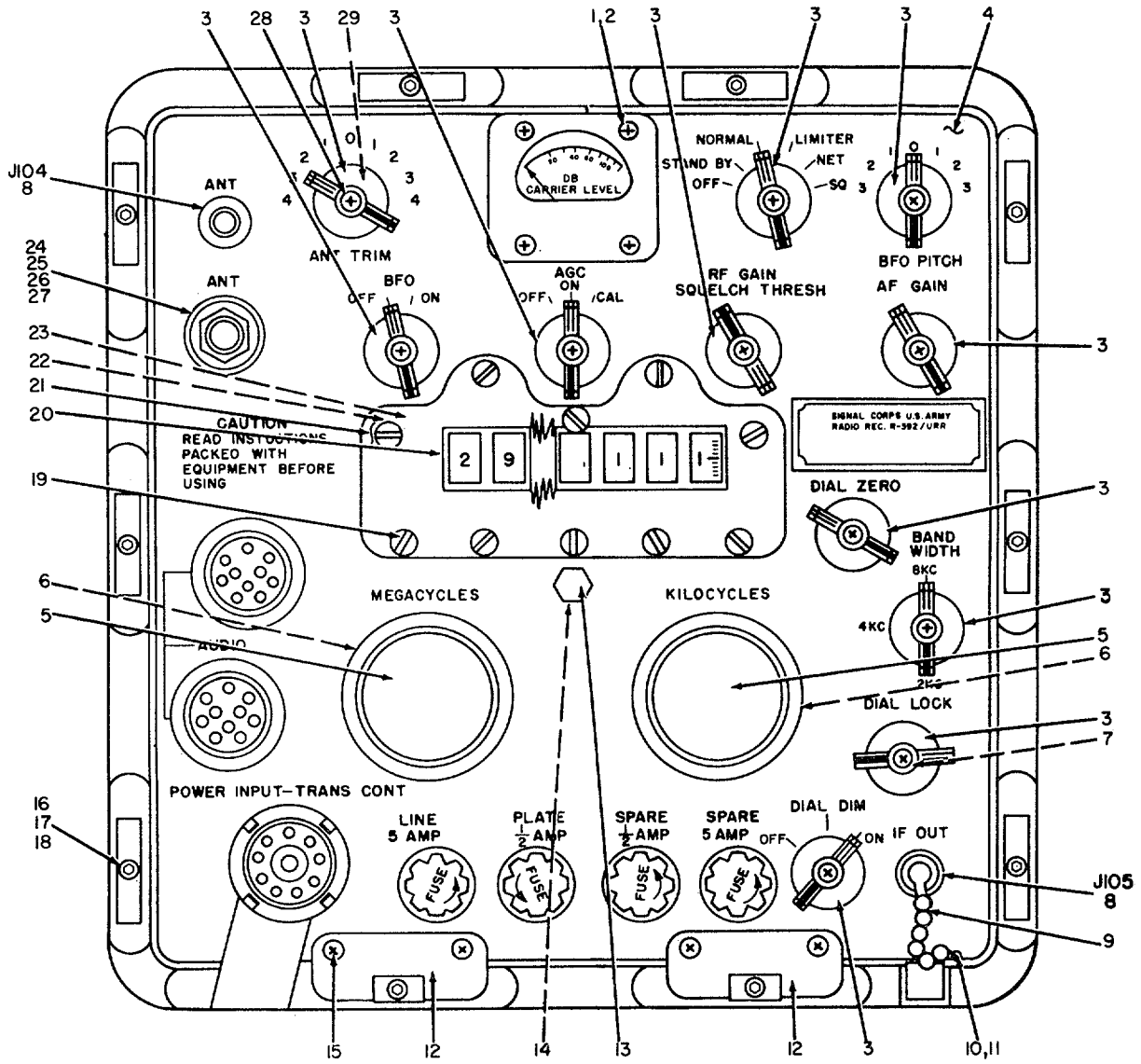
Figure 2. Panel and Frame.

SECTION II

TM 11-5820-334-34P

(1)		(2)	(3)	(4)	(5)	(6)	(7)	(8)
ILLUSTRATION		SMR CODE	NATIONAL STOCK NUMBER	PART NUMBER	FSCM	DESCRIPTION  <i>USABLE ON CODE</i>	U/M	QTY INC IN UNIT
(a) FIG NO.	(b) ITEM NO.							
						GROUP 01 PANEL AND FRAME		
2	1	PAFDD	5820-00-503-2533	SMC144716	80063	OSCILLATOR,RADIO FREQUENCY.CRYSTAL CONTROLLED .....	EA	1
2	2	PAFDD	5820-00-092-1018	SMD144678	80063	AMPLIFIER,RADIO FREQUENCY .....	EA	1
2	3	PAFDOD	5820-00-545-7202	SMD144532	80063	AMPLIFIER,INTERMEDIATE FREQUENCY .....	EA	1
2	4	PAFDD	5820-00-503-0921	SMD144561	80063	AMPLIFIER,AUDIOID FREQUENCY.....	EA	1
2	5	XDHDD		SMB178858	80063	GEAR ASSEMBLY,RADIO FREQUENCY GEAR TRAIN ASSEMBLY..	EA	1
2	6	PAFDD	5820-00-503-1138	SMD144511	80063	OSCILLATOR,RADIO FREQUENCY,VARIABLE FREQUENCY .....	EA	1
2	7	PAFDD	5820-00-322-4672	SMC144594	80063	CALIBRATOR,CRYSTAL .....	EA	1





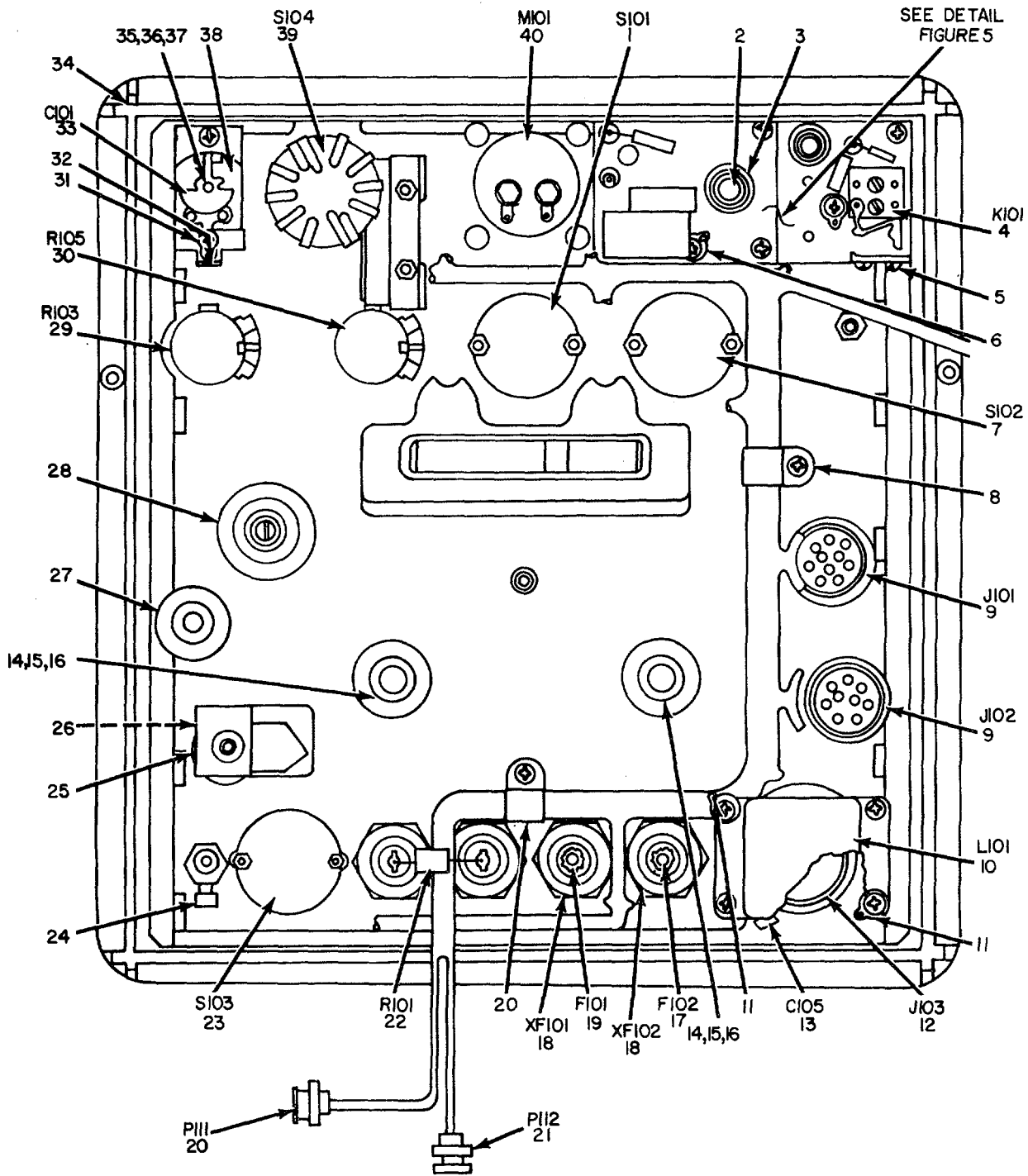
ELOIF003

Figure 3. Panel and Frame, Front View.

SECTION II

TM 11-5820-334-34P

(1)		(2)	(3)	(4)	(5)	(6)	(7)	(8)
ILLUSTRATION		SMR CODE	NATIONAL STOCK NUMBER	PART NUMBER	FSCM	DESCRIPTION	U/M	QTY INC IN UNIT
(a) FIG NO.	(b) ITEM NO.							
3	1	XDFZZ	5355-00-667-9002	MS35338-21	96906	WASHER.....	EA	4
3	2	XDFZZ		NS35216-17	96906	SCREW,MACHINE.....	EA	4
3	3	XDOZZ		SCB16552	80063	KNOB.....	EA	11
3	4	XDFZZ		SMD144657	80063	PANEL ASSEMBLY.....	EA	1
3	5	PAOZZ		SMB144517	80063	KNOB.....	EA	2
3	6	XDFZZ		SMB248829-3	80063	WASHER,FLAT.....	EA	2
3	7	XDFZZ		SMD144610-18	80063	NUT,PLAIN,HEXAGON.....	EA	11
3	8	XDFZZ		SMD144610-6	80063	CONNECTOR,RECEPTACLE,ELECTRICAL.....	EA	2
3	9	XDFZZ		SMD144610-2	80063	CAP AND CHAIN.....	EA	1
3	10	XDFZZ		MS35216-22	96906	SCREW,MACHINE.....	EA	5
3	11	XDFZZ		MS35338-22	96906	WASHER.....	EA	27
3	12	XDFZZ		SMB144332	80063	PLATE MOUNTING.....	EA	2
3	13	XDFZZ		SMB144632	80063	PLUG.....	EA	1
3	14	PAFZZ	5330-00-260-9311	AN622785	88044	PACKING,PREFORMED.....	EA	6
3	15	XDFZZ		MS35216-24	96906	SCREW,MACHINE.....	EA	5
3	16	XDFZZ		SMB143282	80063	WASHER,LOCK.....	EA	10
3	17	XDFZZ		SNB144635	80063	SCREW,CAPTIVE,SOCKET HEAD.....	EA	10
3	18	XDFZZ		SMB144610-14	80063	WASHER,LOCK.....	EA	10
3	19	XDFZZ		SNB144634	80063	SCREW,MACHINE.....	EA	10
3	20	XOFZZ		SNB144628	80063	WINDOW,OBSERVATION.....	EA	1
3	21	XDFZZ		SMB144631	80063	ESCUTCHEON PLATE.....	EA	1
3	22	XDFZZ		SMD144627	80063	ESCUTCHEON PLATE.....	EA	1
3	23	XOFZZ		SMB144629	80063	GASKET.....	EA	1
3	24	XDFZZ	SMD144610-16	80063	SCREW,SELF-LOCKING.....	EA	11	
3	25	XOFZZ	SMD144610-12	80063	WASHER,LOCK.....	EA	6	
3	26	XDFZZ	SMD144610-19	80063	NUT,PLAIN,HEXAGON.....	EA	6	
3	27	PAFZZ	5940-00-283-5386	SCC16495	80063	POST,BINDING.....	EA	1
3	28	XDFZZ		SMB144329	80063	WASHER,FLAT.....	EA	11
3	29	XDFZZ		SMB283113-1	80063	RING,RETAINING.....	EA	2



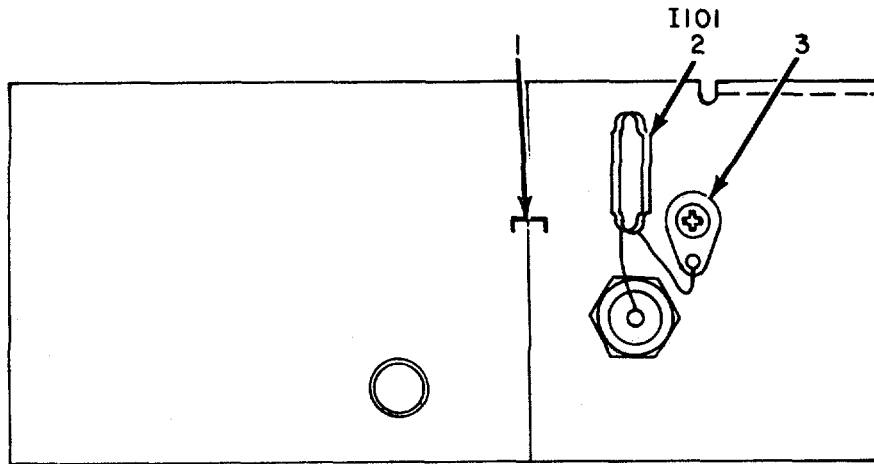
ELOIF004

Figure 4. Panel and Frame, Rear View.

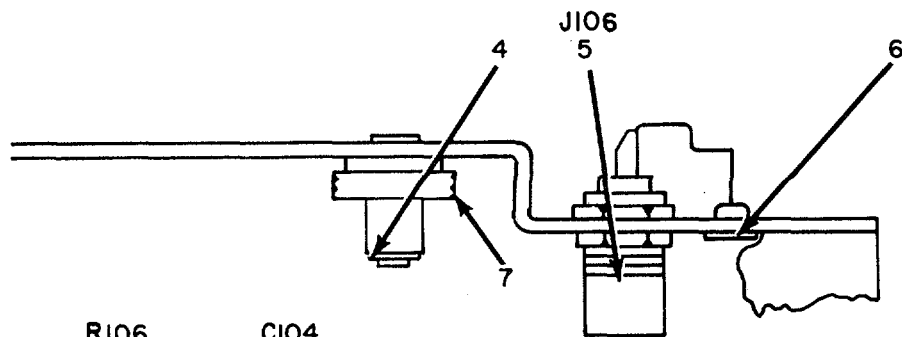
SECTION II

TM 11-5820-334-34P

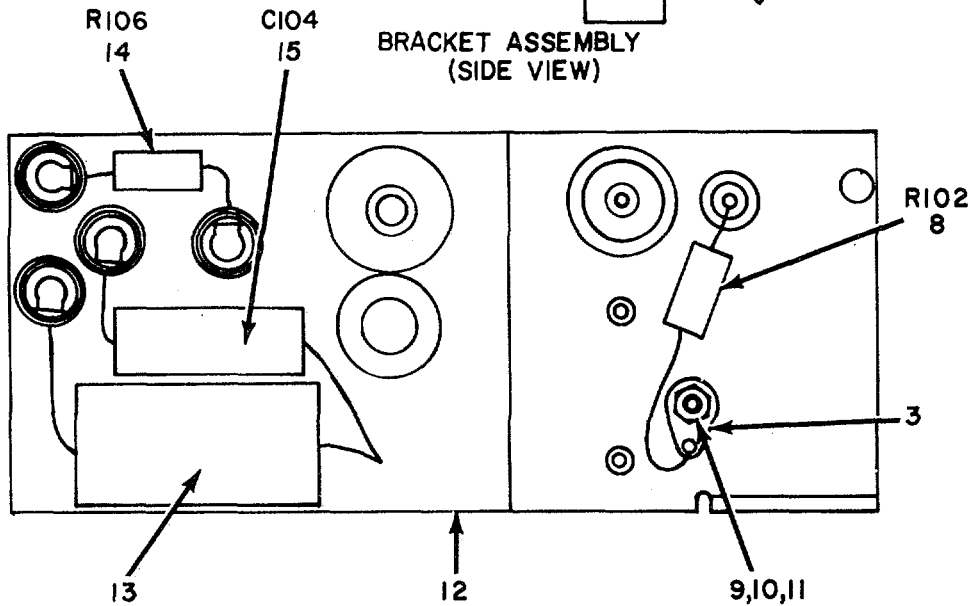
(1)		(2)	(3)	(4)	(5)	(6)	(7)	(8)
ILLUSTRATION		SMR CODE	NATIONAL STOCK NUMBER	PART NUMBER	FSCM	DESCRIPTION	U/M	QTY INC IN UNIT
(a) FIG NO.	(b) ITEM NO.							
4	1	PAFZZ	5930-00-755-5416	SMA1446616	80063	SWITCH, ROTARY.....	EA	1
4	2	XDFZZ		SMB144639	80063	SHAFT ASSEMBLY.....	EA	1
4	3	XDFZZ		SMB144672	80063	BUSHING, ELECTRICAL CONDUIT.....	EA	1
4	4	PAFLZ	5945-00-259-6446	SMC143110	80063	RELAY, ARMATURE.....	EA	1
4	5	XDFZZ		MS35216-10	96906	SCREW, MACHINE.....	EA	4
4	6	XDFZZ		SMB249257	80063	TERMINAL, SOLDER.....	EA	1
4	7	PAFZZ	5930-00-546-6287	SMA144618	80063	SWITCH, ROTARY.....	EA	1
4	8	XOFZZ		SMD144610-23	80063	CLAMP, NYLOCLIP, HP-6N.....	EA	1
4	9	PAFZZ	5935-00-549-2646	U79U	80058	CONNECTOR, RECEPTACLE, ELECTRICAL.....	EA	2
4	10	PAFZZ	5950-00-295-7823	SMC144637	80063	REACTOR.....	EA	1
4	11	XDFZZ		SMD144610-10	80063	TERMINAL, LUG.....	EA	2
4	12	PAFZZ	5935-00-258-8570	QRE18SL	81312	CONNECTOR, RECEPTACLE, ELECTRICAL.....	EA	1
4	13	PAFZZ	5910-00-257-0662	96P4130152	56289	CAPACITOR, FIXED, PAPER.....	EA	1
4	14	XDFZZ		SMB144359	80063	BUSHING, ELECTRICAL CONDUIT.....	EA	2
4	15	XDFZZ		SMD144610-11	80063	GASKET.....	EA	2
4	16	XDFZZ		SMD144610-20	80063	NUT, PLAIN, HEXAGON.....	EA	2
4	17	PAOZZ	5920-00-284-6781	F04ASR00A	81349	FUSE, CARTRIDGE.....	EA	1
4	18	PAFZZ	5920-00-553-4420	342006	75915	FUSEHOLDER.....	EA	2
4	19	PAOZZ	5920-00-280-8344	F02GR500A	81349	FUSE CARTRIDGE.....	EA	1
4	20	XDFZZ		SMD144610-22	300G3	CLAMP, NYLOCLIP, HP-7N.....	EA	1
4	21	PAFZZ	5935-00-259-0820	31-119	02660	CONNECTOR, PLUG, ELECTRICAL.....	EA	2
4	22	PAFZZ	5905-00-809-3275	RW30G800	81349	RESISTOR, FIXED, WIRE WOUND.....	EA	1
4	23	PAFZZ	5930-00-644-2929	SMA144617	80063	SWITCH ASSEMBLY.....	EA	1
4	24	XDFZZ		SMB144628	80063	TERMINAL, LUG.....	EA	1
4	25	PAFZZ	5340-00-209-7692	SMB144642	80063	LOCK ASSEMBLY.....	EA	1
4	26	XDFZZ		SMB144361-2	80063	GASKET.....	EA	3
4	27	XDFZZ		SMB144362	80063	BUSHING, ELECTRICAL CONDUIT.....	EA	3
4	28	XDFZZ		SMB144666	80063	CONTROL.....	EA	1
4	29	PAFZZ	5905-00-806-3622	SMB144622-2	80063	RESISTOR, VARIABLE.....	EA	1
4	30	PAFZZ	5905-00-806-3623	SMB144622-1	80063	RESISTOR, VARIABLE.....	EA	1
4	31	XDFZZ		MS35335-16	96906	WASHER.....	EA	3
4	32	XDFZZ		SMD0144610-	80063	TERMINAL, LUG.....	EA	1
4	33	PAFZZ	5910-00-666-7825	SMB144638	80063	CAPACITOR, VARIABLE, AIR.....	EA	1
4	34	PAFZZ	5330-00-545-7491	SMB144626	80063	GASKET.....	EA	1
4	35	XDFZZ		SMD144610-13	80063	WASHER, LOCK.....	EA	1
4	36	XDFZZ		MS35216-23	96906	SCREW, MACHINE.....	EA	32
4	37	XDFZZ		SMD144610-17	80063	NUT, PLAIN, HEXAGON.....	EA	1
4	38	XDFZZ		SL8144630	80063	PLATE, MOUNTING.....	EA	1
4	39	PAFZZ	5930-00-301-4573	259-0590-00	13499	SWITCH ASSEMBLY.....	EA	1
4	40	PAFZZ	6625-00-538-9700	ASP222	80130	AMMETER.....	EA	1



BRACKET ASSEMBLY (BOTTOM VIEW)



BRACKET ASSEMBLY (SIDE VIEW)



PANEL AND FRAME BRACKET ASSEMBLY (TOP VIEW)

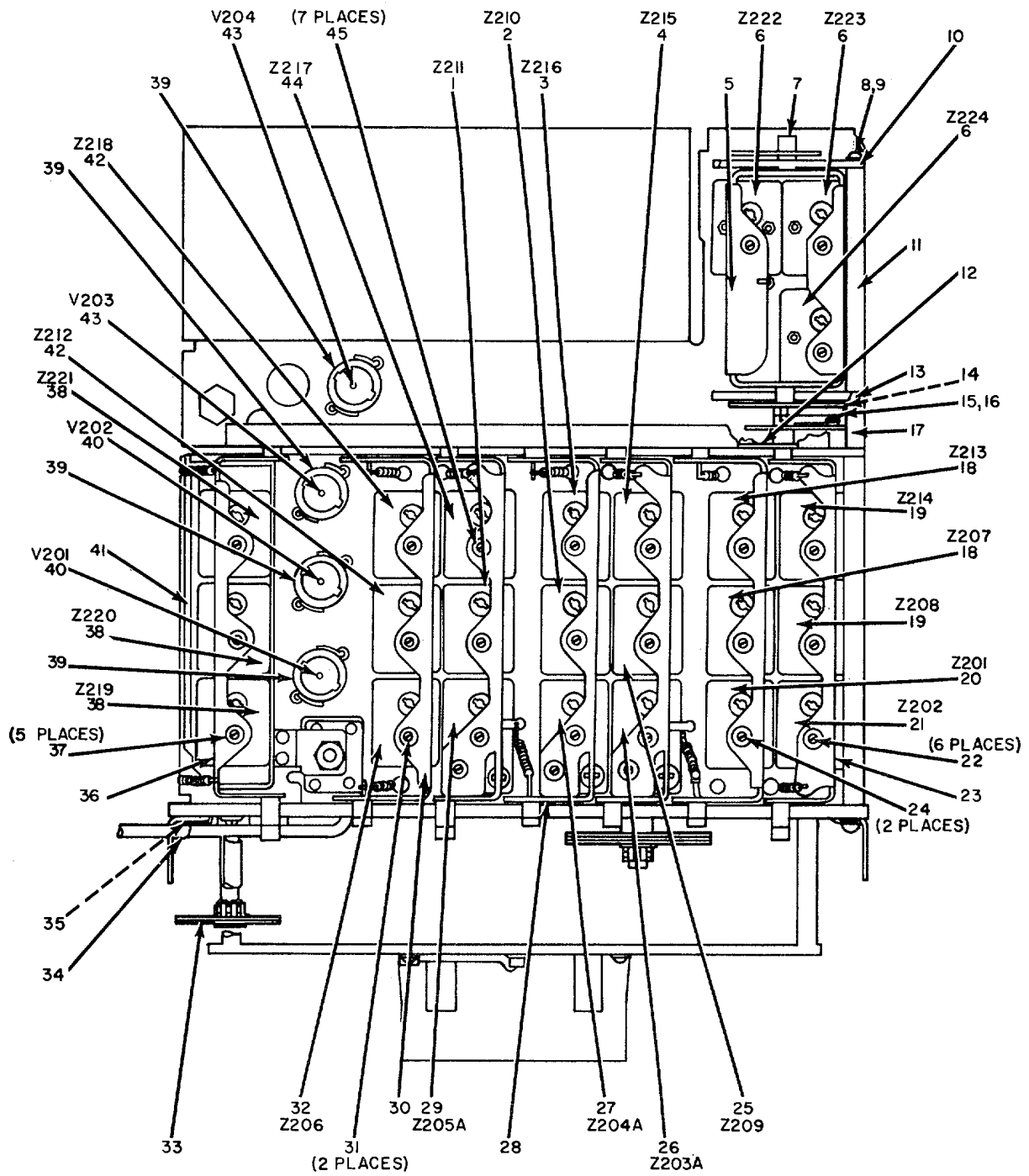
ELOIF005

Figure 5. Panel and Frame, Bracket Assembly.

SECTION II

TM 11-5820-334-34P

(1)		(2)	(3)	(4)	(5)	(6)	(7)	(8)
ILLUSTRATION		SMR CODE	NATIONAL STOCK NUMBER	PART NUMBER	FSCM	DESCRIPTION  <i>USABLE ON CODE</i>	U/M	QTY INC IN UNIT
(a) FIG NO.	(b) ITEM NO.							
5	1	XDFZZ		SMD144659	80063	BRACKET ASSEMBLY .....	EA	1
5	2	PAOZZ	6240-00-179-1811	VG-11	96906	LAMP,GLOW .....	EA	1
5	3	XDFZZ		SMB249250	80063	TERMINAL,LUG .....	EA	2
5	4	PAFZZ	5365-00-697-1728	SMB283174-L	80063	RING,RETAILING.....	EA	4
5	5	PAFZZ	5935-00-244-5728	SMD144659-7	80063	CONNECTOR, RECEPTACLE, ELECTRICAL.....	EA	1
5	6	XDFZZ		SMD144659-4	80063	TERMINAL,FEEDTHRU .....	EA	1
5	7	PAFZZ	3020-00-810-9463	SMB144660	80063	GEAR,SPUR .....	EA	1
5	8	PAFZZ	5905-00-114-5393	RCR20G224JS	81349	RESISTOR,FIXED,COMPOSITION.....	EA	1
5	9	XDFZZ		MS35337-2	96906	WASHER,LOCK .....	EA	7
5	10	XDFZZ		MS35649-44	96906	NUTT,PLAIN,HEXAGON.....	EA	1
5	11	XDFZZ		MS35216-13	96906	SCREW,MACHINE .....	EA	1
5	12	XDFZZ		SMD144461	80063	BRACKET .....	EA	1
5	13	PAFZZ	5910-00-643-9141	SMD144659-6	80063	CAPACITOR,FIXED,PAPER .....	EA	1
5	14	PAFZZ	5905-00-195-6502	RC20GF332K	81349	RESISTOR,FIXED,COMPOSITION.....	EA	1
5	15	PAFZZ	5910-00-257-0662	96P47301S2	56289	CAPACITOR,FIXED,PAPER.....	EA	1



ELOIF006

Figure 6. Amplifier, Radio Frequency.

SECTION II

TM 11-5820-334-34P

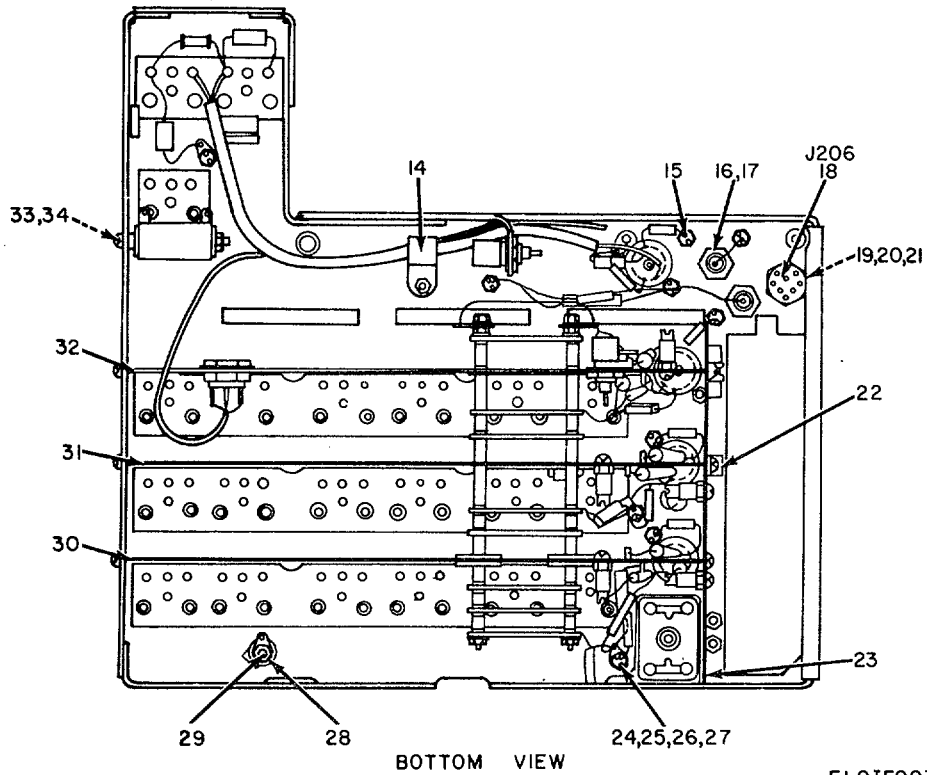
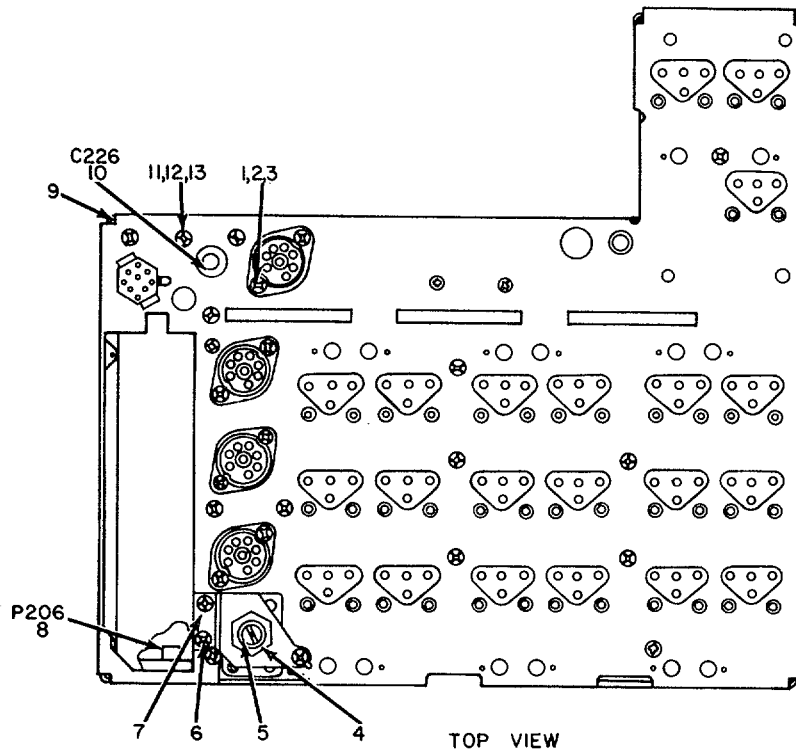
(1)		(2)	(3)	(4)	(5)	(6)	(7)	(8)
ILLUSTRATION		SMR CODE	NATIONAL STOCK NUMBER	PART NUMBER	FSCM	DESCRIPTION  USABLE ON CODE	U/M	QTY INC IN UNIT
(a) FIG NO.	(b) ITEM NO.							
6	1	PAFZZ	5950-00-392-6561	SMD144686-2	80063	GROUP 0101 AMPLIFIER,RADIO FREQUENCY		
6	2	PAFZZ	5950-00-392-6560	SMD144683-1	80063	TRANSFORMER,RADIO FREQUENCY .....	EA	1
6	3	PAFDD	5820-00-571-1839	SMD144683-2	80063	TRANSFORMER,RADIO FREQUENCY.....	EA	1
6	4	PAFDD	5820-00-571-1838	SMD144681-2	80063	TUNER,RADIO FREQUENCY.....	EA	1
6	5	XDDZZ		SMC144809	80063	TUNER,RADIO FREQUENCY.....	EA	1
6	6	PAFZZ	5950-00-392-6563	SMC144809	80063	RACK ASSEMBLY .....	EA	1
6	7	XDDZZ		SMD144681	80063	TRANSFORMER,RADIO FREQUENCY .....	EA	3
6	8	XDDZZ		SMD144793	80063	SHAFT ASSEMBLY .....	EA	1
6	9	XDDZZ		SMD144678-10	80063	NUT .....	EA	1
6	10	XDDZZ		SMB144708	80063	STUD,PLAIN .....	EA	1
6	11	XDDZZ		SMB144803	80063	PLATE ASSEMBLY .....	EA	1
6	12	XDDZZ		SMB144693	80063	SPACER,SLEEVE .....	EA	4
6	13	XDDZZ		SMC144106	80063	STIFFENER,ELECTRICAL.....	EA	1
6	14	XDDZZ		SMB144780	80063	PLATE ASSEMBLY .....	EA	1
6	15	XDDZZ		SMB249257	80063	TERNINAL SOLDER.....	EA	1
6	16	PADZZ	5365-00-697-1728	SMB144698	80063	LINK,TERMINAL CONNECTING.....	EA	1
6	17	XDDZZ		SMB283174-1	80063	RING,RETAINING.....	EA	2
6	18	PAFZZ	5950-00-392-6557	SMB144694	80063	SPACER,SLEEVE .....	EA	4
6	19	PAFZZ	5950-00-392-6558	SMD144679	80063	TRANSFORMER,RADIO FREQUENCY .....	EA	2
6	20	PAFZZ	5950-00-392-6564	SMD144680	80063	TRANSFORMER,RADIO FREQUENCY .....	EA	2
6	21	PAFZZ	5950-00-392-6565	SMD144688	80063	TRANSFORMER,RADIO FREQUENCY .....	EA	1
6	22	PAFZ	5950-00-645-4583	SMD144689	80063	TRANSFORMER,RADIO FREQUENCY .....	EA	1
6	23	PAFZZ		SMB178749	80063	CORE,ADJUSTABLE TUNING.....	EA	6
6	24	XDFZZ		SMC144817	80063	RACK ASSEMBLY .....	EA	1
6	25	PAFZZ	5950-00-392-6569	88-1086M0D	78488	CORE,ADJUSTABLE TUNING.....	EA	2
6	26	PAFDD	5820-00-571-2556	SMD144681-1	80063	TRANSFORMER,RADIO FREQUENCY .....	EA	1
6	27	PAFDD	5820-00-541-3672	SMD0145003	80063	TRANSFORMER,RADIO FREQUENCY .....	EA	1
6	28	PADZZ	5820-00-571-1836	SMD144992	80063	TUNER,RADIO FREQUENCY.....	EA	1
6	29	PAFDD	5820-00-571-1837	SMD144992	80063	TUNER,RADIO FREQUENCY.....	EA	1
6	30	XDDZZ		SMC144712	80063	RACK,SLUG.....	EA	1
6	31	XDFZZ		SMC145011	80063	TUNER,RADIO FREQUENCY.....	EA	1
6	32	PAFZZ	5950-00-392-6569	SMC144774	80063	RACK,SLUG.....	EA	2
6	33	XDDZZ		SMC1L8695	80063	CORE,ADJUSTABLE TUNING.....	EA	2
6	34	XDDZZ		SMD144691	80063	TRANSFORMER,RADIO FREQUENCY .....	EA	1
6	35	XDDZZ		SMD144798	80063	GEAR ASSEMBLY .....	EA	1
6	36	XDDZZ		SMB144700	80063	STRAP,RETAINING .....	EA	1
6	37	PAFZZ	5950-00-645-4584	SMD144678-14	80063	WASHER,FLAT.....	EA	1
6	38	PAFZZ	5950-00-660-7667	SMC144805	80063	RACK,SLUG.....	EA	1
6	39	PAOZZ	5960-00-860-7709	SMB178751	80063	CORE,ADJUSTABLE TUNING.....	EA	5
				SMD144690	80063	TRANSFORMER,RADIO FREQUENCY .....	EA	3
				M24251-6-2	81349	SHIELD,ELECTRON TUBE.....	EA	4



SECTION II

TM 11-5820-334-34P

(1) ILLUSTRATION		(2)	(3)	(4)	(5)	(6)	(7)	(8)
(a) FIG NO.	(b) ITEM NO.	SMR CODE	NATIONAL STOCK NUMBER	PART NUMBER	FSCM	DESCRIPTION  <i>USABLE ON CODE</i>	U/M	QTY INC IN UNIT
6	40	PAOZZ	5960-00-777-3235	2ZfZ6	49671	ELECTRON TUBE.....	EA	2
6	41	PAFZZ		SMC144820	80063	RACK ASSEMBLY .....	EA	1
6	42	PAFZZ	5950-00-392-6562	SMD144692	80063	TRANSFORMER, RADIO FREQUENCY .....	EA	2
6	43	PAOZZ	5960-00-188-0897	26C6	81349	ELECTRON TUBE.....	EA	2
6	44	PAFDD	5820-00-547-3673	SMDI44686-1	80063	TUNER,RADIO FREQUENCY.....	EA	1
6	45	PAFZZ	5950-00-698-0222	88-1666M0D	78488	CORE.ADJUSTABLE TUNING.....	EA	7



ELOIF007

Figure 7. Amplifier, Radio Frequency, Top and Bottom View

SECTION II

TM 11-5820-334-34P

(1)		(2)	(3)	(4)	(5)	(6)	(7)	(8)
ILLUSTRATION		SMR CODE	NATIONAL STOCK NUMBER	PART NUMBER	FSCM	DESCRIPTION	U/M	QTY INC IN UNIT
(a) FIG NO.	(b) ITEM NO.							
7	1	XDDZZ		MS35216-12	96906	SCREW,MACHINE .....	EA	13
7	2	XDDZZ		SMD144882-14	80063	TERMINAL .....	EA	3
7	3	XDDZZ		SMD144882-11	80063	NUT,PLAIN,HEXAGON.....	EA	8
7	4	XDDZZ		SMD144882-10	80063	NUT,PLAIN,HEXAGON.....	EA	1
7	5	XDDZZ		1720-00	78189	WASHER,LOCK .....	EA	1
7	6	XDDZZ		MS35216-14	96906	SCREW,MACHINE .....	EA	5
7	7	XDDZZ		SMC144887	80063	BRACKET,ANGLE .....	EA	1
7	8	PAFZZ	5935-00-549-1699	82-830	02660	CONNECTOR,PLUG,ELECTRICAL.....	EA	1
7	9	XDDZZ		SMC144898	80063	CHASSIS ASSEMBLY .....	EA	1
7	10	XDFZZ		86P47401S5	56289	CAPACITOR,FIXED,PAPER .....	EA	1
7	11	PADZZ	531D-0-550-3715	MS35333-70	96906	WASHER .....	EA	36
7	12	XDDZZ		SMD144882-13	80063	TERMINAL .....	EA	11
7	13	XDDZZ		MS35216-11	96906	SCREW,MACHINE .....	EA	15
7	14	XDDZZ		SMD144882-3	80063	CLAMP,ELECTRICAL .....	EA	1
7	15	XDDZZ		SMB249265	80063	TERMINAL, INSULATED.....	EA	1
7	16	XDDZZ		SMD144882-18	80063	SCREW,MACHINE .....	EA	2
7	17	XDDZZ		SMD144882-7	80063	NUT,PLAIN,HEXAGON.....	EA	2
7	18	PAFZZ	593-00-788-8486	MH9M	66099	CONNECTOR,RECEPTACLE.ELECTRICAL.....	EA	1
7	19	XDDZZ		SMD144882-9	80063	NUT,PLAIN,HEXAGON.....	EA	2
7	20	XDDZZ		SMD144882-20	80063	WASHER .....	EA	1
7	21	PADZZ	5365-00-322-4148	SMB283201	80063	RING,RETAINING.....	EA	2
7	22	XDDZZ		SMD144882-2	80063	CLAMP,ELECTRICAL .....	EA	1
7	23	XDDZZ		SMB144896	80063	SHIELD ASSEMBLY .....	EA	1
7	24	XDDZZ		SMB249256	80063	TERMINAL,SOLDER.....	EA	3
7	25	XDDZZ		MS35338-78	96906	WASHER,LOCK .....	EA	1
7	26	XDDZZ		MS35216-18	96906	SCREW,MACHINE .....	EA	1
7	27	XDDZZ		SMB1144762-1	80063	SPACER,SLEEVE .....	EA	4
7	28	XDDZZ		MS35200-23	96906	SCREW,MACHINE .....	EA	5
7	29	XDFZZ		SMB144893	80063	CONTACT ASSEMBLY .....	EA	1
7	30	XDDZZ		SMC144891-2	80063	SHIELD .....	EA	1
7	31	XDDZZ		SMC144891-1	80063	SHIELD .....	EA	1
7	32	XDDZZ		SMC144889	80063	SHIELD .....	EA	1
7	33	XDDZZ		SMD144882-22	80063	WASHER,NONNETALLIC .....	EA	4
7	34	XDDZZ		10-15-8L	96906	WASHER .....	EA	1

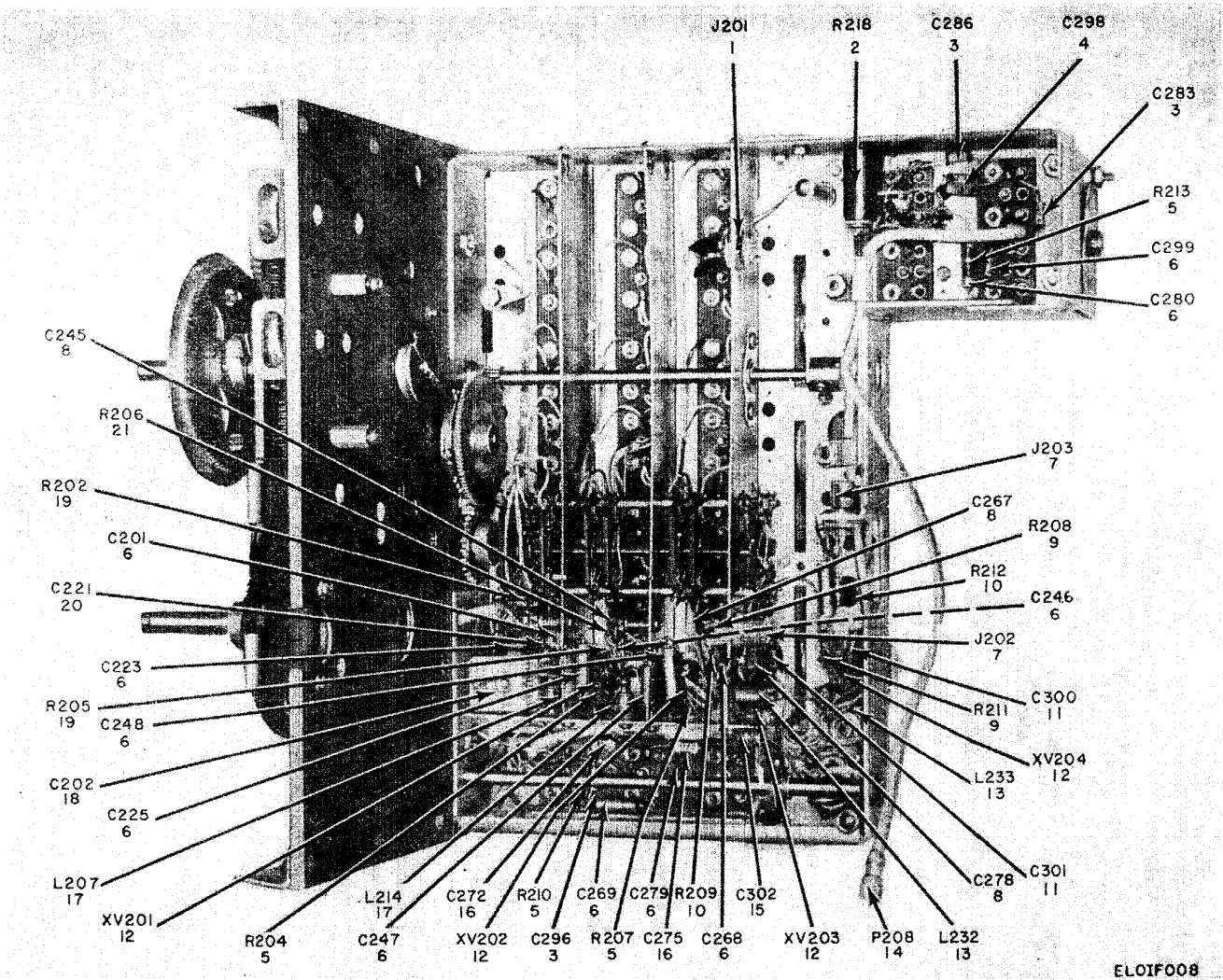


Figure 8. Amplifier, Radio Frequency, Full Bottom Interior View

ELOIF008

SECTION II

TM 11-5820-334-34P

(1) ILLUSTRATION		(2)	(3)	(4)	(5)	(6)	(7)	(8)
(a) FIG NO.	(b) ITEM NO.	SMR CODE	NATIONAL STOCK NUMBER	PART NUMBER	FSCM	DESCRIPTION  USABLE ON CODE	U/M	QTY INC IN UNIT
8	1	XDFZZ		SM8283200	80063	INSERT,ELECTRICAL CONNECTOR.....	EA	1
8	2	PAFZZ		RW30V820	81349	RESISTOR, FIXED, WIRE WOUND.....	EA	1
8	3	PAFZZ	5910-00-855-2389	CC20CJC300	81349	CAPACITOR, FIXED, CERAMIC.....	EA	3
8	4	PAFZZ	5910-00-264-9427	CM15E300J	72136	CAPACITOR, FIXED, MICA.....	EA	1
8	5	PAFZZ	5905-00-110-0196	RCR20G102JS	81349	RESISTOR, FIXED, COMPOSITION.....	EA	4
8	6	PAFZZ	5910-00-669-3636	196P10301S4	56289	CAPACITOR, FIXED, PAPER.....	EA	11
8	7	PAFZZ	5935-00-244-5728	SCB41673	80063	CONNECTOR, RECEPTACLE ELECTRICAL.....	EA	2
8	8	PAFZZ	5910-00-060-9619	CM15FD511G03	72136	CAPACITOR, FIXED, MICA.....	EA	3
8	9	PAFZZ	5905-00-192-3987	RC20GF104K	81349	RESISTOR, FIXED, COMPOSITION.....	EA	2
8	10	PAFZZ	5905-00-195-6502	RC20GF332K	81349	RESISTOR, FIXED, COMPOSITION.....	EA	2
8	11	PAFZZ	5910-00-280-8381	EBB2426	00656	CAPACITOR, FIXED, CERAMIC.....	EA	2
8	12	PAFZZ	5935-00-260-0516	TS102P01	81350	SOCKET, ELECTRON TUBE.....	EA	4
8	13	PAFZZ	5950-00-683-1344	10107-3	82142	COIL, RADIO FREQUENCY.....	EA	2
8	14	PAFZZ	5935-00-549-1699	82-830	02660	CONNECTOR, PLUG, ELECTRICAL.....	EA	1
8	15	PAFZZ	5910-00-844-6710	CP10A1K3103K3	56289	CAPACITOR, FIXED, PAPER.....	EA	1
8	16	PAFZZ	5910-00-543-0506	CC22CK1R5C	81349	CAPACITOR, FIXED, CERAMIC.....	EA	2
8	17	PAFZZ	5950-00-387-0489	C0047109	95265	COIL, RADIO FREQUENCY.....	EA	2
8	18	XDFZZ		SMB283234	80063	CAPACITOR, VARIABLE, AIR.....	EA	1
8	19	PAFZZ	5905-00-279-1754	RC20GF155J	81349	RESISTOR, FIXED, COMPOSITION.....	EA	2
8	20	PAFZZ	5910-00-842-2292	CC200K020D	81349	CAPACITOR, FIXED, CERAMIC.....	EA	1
8	21	PAFZZ	5905-00-295-3410	RC20GF473K	81349	RESISTOR, FIXED, COMPOSITION.....	EA	1

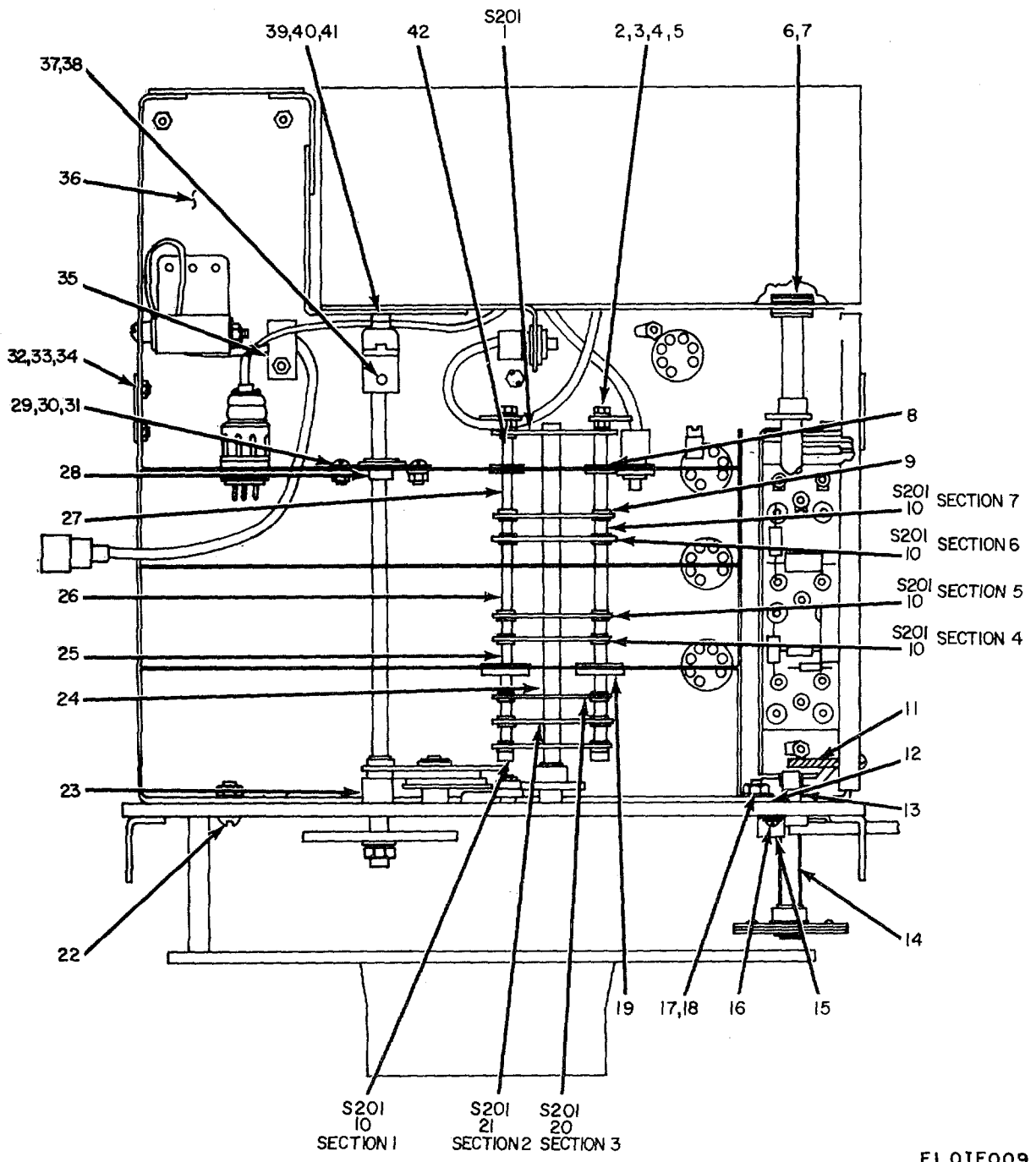


Figure 9. Amplifier, Radio Frequency, Bottom Interior View

SECTION II

TM 11-5820-334-34P

(1) ILLUSTRATION		(2)	(3)	(4)	(5)	(6)	(7)	(8)
(a) FIG NO.	(b) ITEM NO.	SMR CODE	NATIONAL STOCK NUMBER	PART NUMBER	FSCM	DESCRIPTION  USABLE ON CODE	U/M	QTY INC IN UNIT
9	1	XDFZZ		SMB144885	80063	SWITCH SECTION,ROTARY.....	EA	1
9	2	XDDZZ		SMD144882-8	80063	NUT,PLAIN,HEXAGON.....	EA	6
9	3	XDDZZ		SMB144890	80063	STUD,PLAIN.....	EA	2
9	4	XDDZZ		SMB249250	80063	TERMINAL LUG.....	EA	2
9	5	PADZZ	5310-00-734-5661	MS35337-78	96906	WASHER,LOCK.....	EA	12
9	6	XDDZZ		SMD144678-8	80063	RING.....	EA	1
9	7	XDDZZ		SMB144713	80063	RETAINER,BRACKET.....	EA	1
9	8	XDDZZ		SMD144882-21	80063	WASHER,FLAT.....	EA	4
9	9	XDDZZ		SMD144882-6	80063	WASHER,FLAT.....	EA	32
9	10	PAFZZ	5930-00-644-0229	SMB118789	80063	SWITCH SECTION,ROTARY.....	EA	5
9	11	XDDZZ		MS35216-22	96906	SCREW,MACHINE.....	EA	12
9	12	XDDZZ		SMD144678-9	80063	PIN.....	EA	2
9	13	XDOZZ		SMB144784	80063	STUD ASSEMBLY.....	EA	1
9	14	XDDZZ		SMB144791	80063	SHAFT ASSEMBLY.....	EA	1
9	15	XDDZZ		SMD144678-4	80063	STRAP,RETAINING.....	EA	1
9	16	XDDZZ		MS35216-24	96906	SCREW,MACHINE.....	EA	1
9	17	XDDZZ		SMD144678-11	80063	NUT,PLAIN,HEXAGON.....	EA	2
9	18	XDDZZ		SMB144527-2	80063	RING.....	EA	1
9	19	XDDZZ		SMB144892	80063	WASHER,FLAT.....	EA	4
9	20	PAFZZ	5930-00-697-3379	SMB144886	80063	SWITCH SECTION,ROTARY.....	EA	1
9	21	PAFZZ	5930-00-548-6942	SMB14484	80063	SWITCH SECTION,ROTARY.....	EA	1
9	22	XDOZZ		MS35216-41	96906	SCREW,MACHINE.....	EA	1
9	23	XDDZZ		SMB144695	80063	SPACER,SLEEVE.....	EA	4
9	24	XDDZZ		SMB144696	80063	SHAFT,SHOULDER.....	EA	1
9	25	XDDZZ		SMD249226-6	80063	SPACER,SLEEVE.....	EA	4
9	26	XDDZZ		SMD14488Z-5	80063	SPACER,SLEEVE.....	EA	2
9	27	XDDZZ		SMD144882-4	80063	SPACER,SLEEVE.....	EA	2
9	28	XDDZZ		SMB178483-2	80063	WASHER,FLAT.....	EA	1
9	29	XDDZZ		MS5216-23	96906	SCREW,MACHINE.....	EA	12
9	30	XDDZZ		SMB18759	80063	BEARING,PLAIN,SPHERICAL.....	EA	1
9	31	PADZZ	5310-00-934-9747	102-356	80063	NUTPLAIN,HEXAGON.....	EA	7
9	32	XDDZZ		SMD144678-13	80063	NUT,PLAIN,HEXAGON.....	EA	4
9	33	PADZZ	5310-00-543-4652	I702-00	78189	WASHER,LOCK.....	EA	42
9	34	XODZZ		MS35200-13	96906	SCREYWMACHINE.....	EA	4
9	35	XDDZZ		SMD144678-5	80063	CLAMP,ELECTRICAL.....	EA	1
9	36	XDFZZ		SMD149882	80063	CHASSIS,ELECTRICAL EQUIPMENT.....	EA	1
9	37	XDDZZ		SMB356778	80063	COUPLING,INSULATED.....	EA	1
9	38	XDDZZ		MS51017-33	96906	SETSCREW.....	EA	4
9	39	XDDZZ		SMB249201	80063	STRAP,RETAINING.....	EA	2
9	40	XDDZZ		MS35335-2	96906	WASHER,LOCK.....	EA	21

**SECTION II**

**TM 11-5820-334-34P**

(1)		(2)	(3)	(4)	(5)	(6)	(7)	(8)
ILLUSTRATION		SMR CODE	NATIONAL STOCK NUMBER	PART NUMBER	FSCM	DESCRIPTION  <i>USABLE ON CODE</i>	U/M	QTY INC IN UNIT
(a) FIG NO.	(b) ITEM NO.							
9	41	PADZZ	5305-00-059-8460	MS3521625	96906	SCREW,MACHINNE.....	EA	1
9	42	XDDZZ		SMB249226-2	80063	SPACER,SLEEVE .....	EA	10

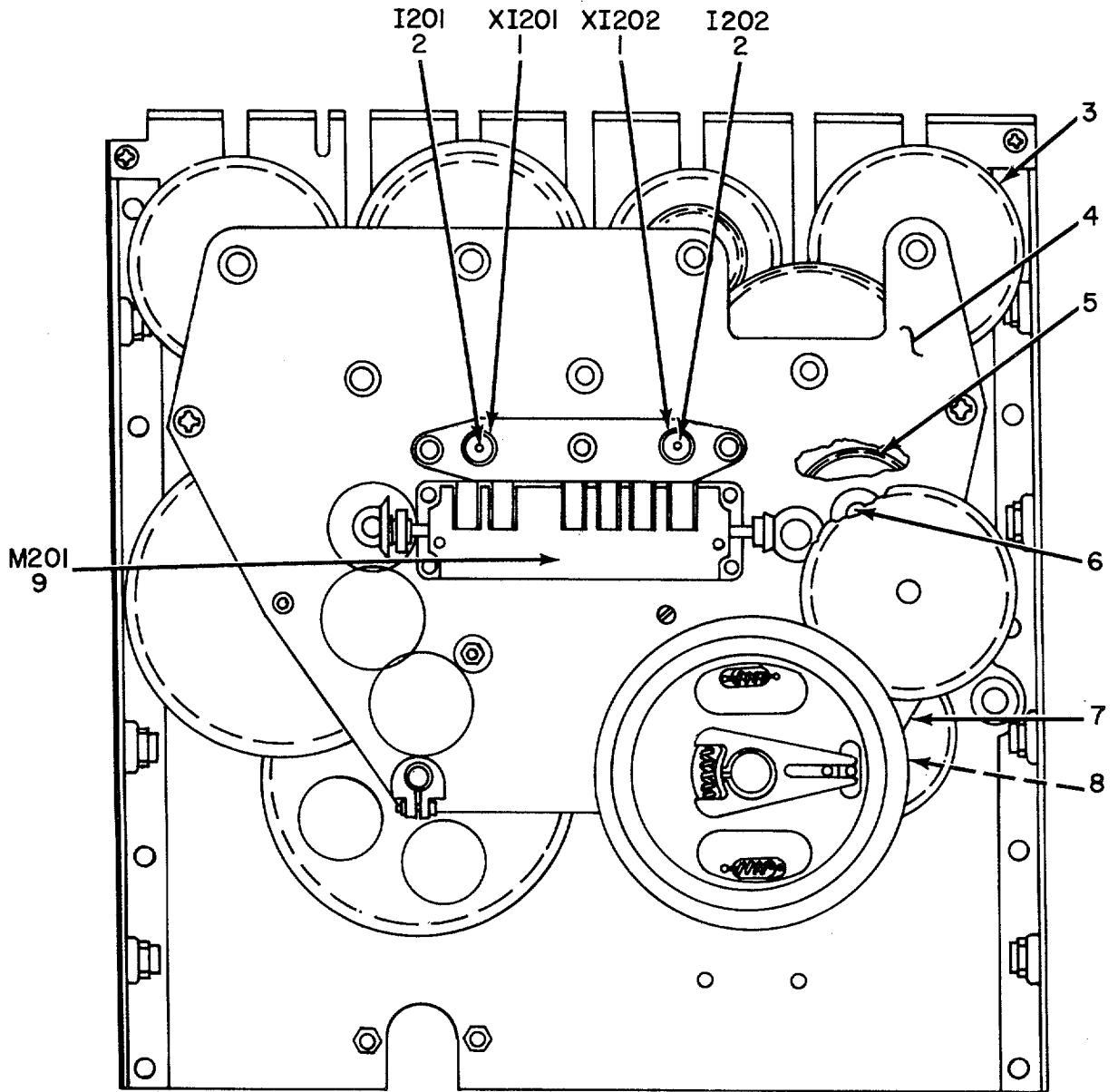
24/(25 blank)



SECTION II

TM 11-5820-334-34P

(1) ILLUSTRATION		(2)	(3)	(4)	(5)	(6)	(7)	(8)
(a) FIG NO.	(b) ITEM NO.	SMR CODE	NATIONAL STOCK NUMBER	PART NUMBER	FSCM	DESCRIPTION  USABLE ON CODE	U/M	QTY INC IN UNIT
10	1	XDDZZ		MS35216-40	96906	SCREW,MACHINE .....	EA	3
10	2	PADZZ	5310-00-596-7693	MS35335-3	96906	WASHER,LOCK .....	EA	5
10	3	XDDZZ		SMB144703	80063	SHAFT,SHOULDER .....	EA	1
10	4	XDDZZ		SMB178830	80063	SCREW,MACHINE .....	EA	1
10	5	XDDZZ		SMB144705	80063	SHAFT,SHOULDER .....	EA	1
10	6	XDDZZ		SD144678-12	80063	NUT,PLAIN,HEXAGON .....	EA	10
10	7	PAFZZ	5940-00-542-9890	SM8178486	80063	CLAMP,LOOP .....	EA	3
10	8	XDDZZ		SM0144678-16	80063	SCREW .....	EA	4
10	9	XDDZZ		MS35337-2	96906	WASHER,LOCK .....	EA	16
10	10	XDDZZ		SMD1446178-15	80063	SCREW .....	EA	7
10	11	XDDZZ		SMB144451	80063	CLAMP .....	EA	7
10	12	PADZZ	5365-00-598-1300	SMB283174-3	80063	RING,RETAINING .....	EA	4
10	13	XDDZZ		SMB248870	80063	WASHER,STOP .....	EA	22
10	14	XDDZZ		SMB248867	80063	WASHER,FLAT .....	EA	20
10	15	XDDZZ		SMB248869	80063	WASHER,STOP .....	EA	2
10	16	XDDZZ		SMB283160	80063	PIN .....	EA	2
10	17	XDDZZ		SMB248873	80063	COLLAR,SHAFT .....	EA	2
10	18	PADZZ	5365-00-282-0782	SMB283171-1	80063	RING,RETAINING .....	EA	2
10	19	XDDZZ		SMB144709	80063	WASHER,FLAT .....	EA	7
10	20	XDDZZ		SMB144528-2	80063	WASHER,FLAT .....	EA	10



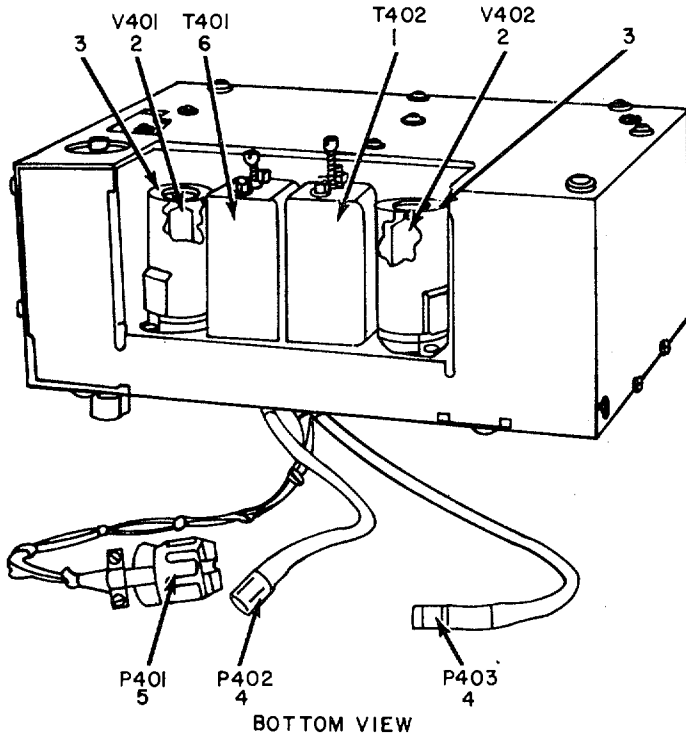
ELOIF011

Figure 11 . Amplifier, Radio Frequency, Front Panel Rear View .

SECTION II

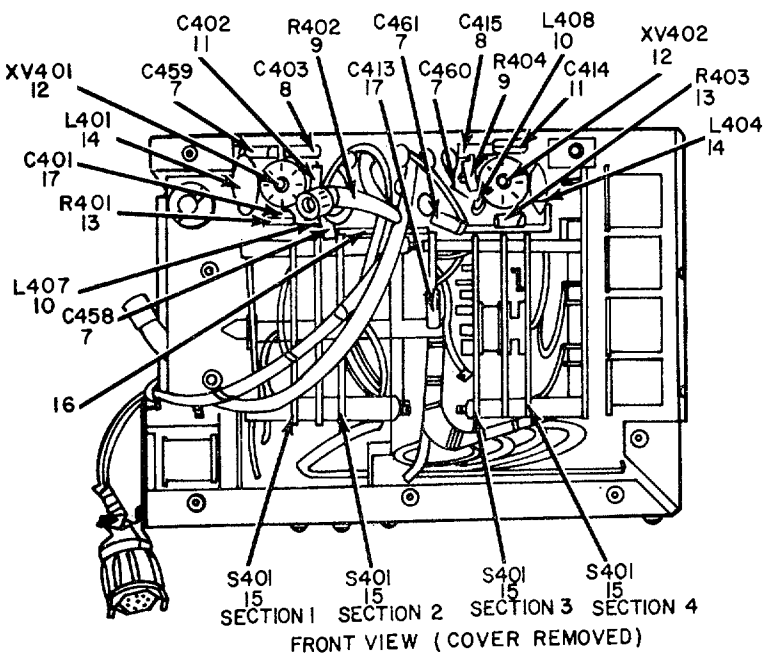
TM 11-5820-334-34P

(1)		(2)	(3)	(4)	(5)	(6)	(7)	(8)
ILLUSTRATION		SMR CODE	NATIONAL STOCK NUMBER	PART NUMBER	FSCM	DESCRIPTION  <i>USABLE ON CODE</i>	U/M	QTY INC IN UNIT
(a) FIG NO.	(b) ITEM NO.							
11	1	XDFZZ		SMB144842	80063	LAMPHOLDER.....	EA	2
11	2	PAOZZ	6240-00-155-8714	313	08806	LAMP, INCANDESCENT .....	EA	2
11	3	PADZZ	5820-0D-463-3963	SMD144916	80063	TRAIN ASSEMBLY.....	EA	1
11	4	XDDZZ		SMD144841	80063	PLATE ASSEMBLY.....	EA	1
11	5	XDDZZ		SMB144826	80063	GEAR ASSEMBLY.....	EA	1
11	6	XDDZZ		SMB144704	80063	SHAFT, SHOULDER.....	EA	2
11	7	XDDZZ		SMC144877	80063	PLATE ASSEMBLY.....	EA	1
11	8	XDDZZ		SMB283161	80063	PIN .....	EA	1
11	9	PAFZZ	6680-00-7571855	AX75818-1	79142	COUNTER, ROTATING, FIXED MOUNTING.....	EA	1



NOT ILLUSTRATED

REF DES.	ITEM NO.
C405	18
C407	19
C409	20
C411	21
C417	19
C419	22
C421	23
C423	24
C425	21
C427	25
C429	26
C431	27
C433	27
C434	28
C445	29
C447	29
C449	30
C451	31
C453	32
C455	21
C457	20



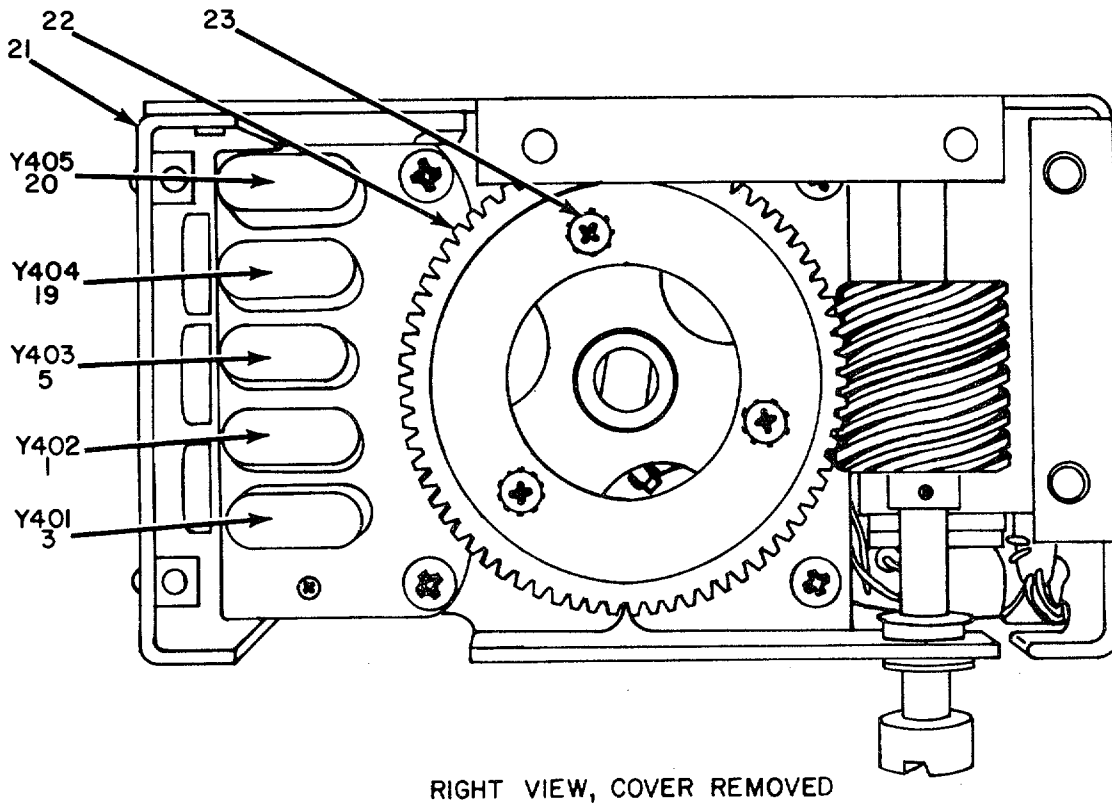
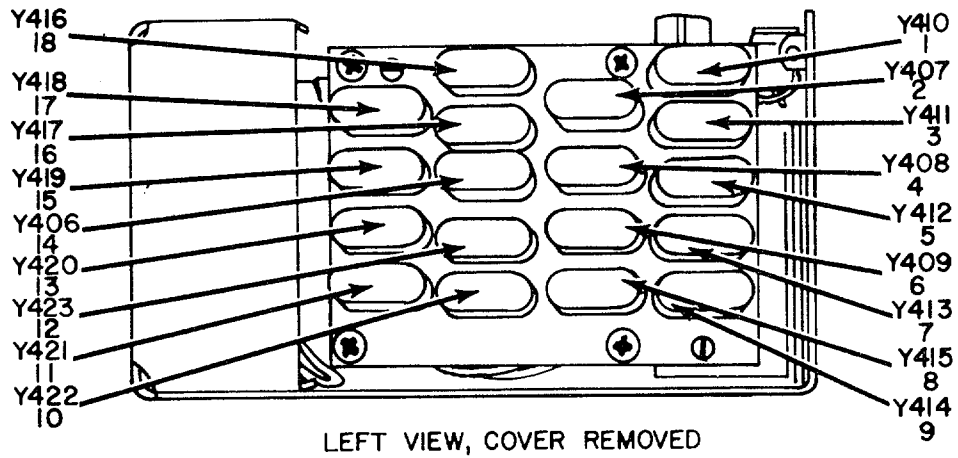
ELOIF012

Figure 12. Oscillator, Radio Frequency, Crystal Controlled .  
30

SECTION II

TM 11-5820-334-34P

(1) ILLUSTRATION		(2)	(3)	(4)	(5)	(6)	(7)	(8)
(a) FIG NO.	(b) ITEM NO.	SMR CODE	NATIONAL STOCK NUMBER	PART NUMBER	FSCM	DESCRIPTION  USABLE ON CODE	U/M	QTY INC IN UNIT
						GROUP 0103 OSCILLATOR,RADIO FREQUENCY.  CRYSTAL CONTROLLED		
12	1	PAFZZ	5950-00-521-6756	SMD144770	80063	TRANSFORMER,RADIO FREQUENCY .....	EA	1
12	2	PAOZZ	5960-00-188-3553	6AJ5	81349	ELECTRON TUBE.....	EA	2
12	3	XDDZZ		SMC143429-1	80063	SHIELD,ELECTRON TUBE.....	EA	2
12	4	PAFZZ	5935-00-549-1699	82-830	02660	CONNECTOR,PLUG ELECTRICAL.....	EA	2
12	5	PAFZZ	5935-00-636-5913	26-191	02660	INSERT,CONNECTOR ELECTRICAL.....	EA	1
12	6	PAFZZ	5950-00-645-4660	SMD144771	80063	TRANSFORMER,RADIO FREQUENCY .....	EA	1
12	7	PAFZZ	5910-00-280-8381	EB82426	00656	CAPACITOR,FIXED,CERAMIC.....	EA	4
12	8	XDFZZ		196PI030251	56289	CAPACITOR,FIXED,PAPER .....	EA	2
12	9	PAFZZ	5905-00-110-0196	RCR20G102JS	81349	RESISTOR,FIXED.COMPOSITION.....	EA	2
12	10	PAFZZ	5950-00-683-7344	10107-3	82142	COIL,RADIO FREQUENCY.....	EA	2
12	11	PAFZZ	5910-00-270-4853	CM15E820G	72136	CAPACITOR,FIXED,MICA .....	EA	2
12	12	PAFZZ	5935-00-260-0516	TS102P01	81350	SOCKET,ELECTRON TUBE.....	EA	2
12	13	PAFZZ	5905-00-192-3987	RC2OGF104K	81349	RESISTOR,FIXED.COMPOSITION.....	EA	2
12	14	PAFZZ	5950-00-387-0489	C0047109	95265	COIL,RADIO FREQUENCY.....	EA	2
12	15	PAFZZ	5930-00-636-4625	SMC145036	80063	SWITCH SECTION,ROTARY.....	EA	4
12	16	XDDZZ		SMC144754	80063	BRACKET ASSEMBLY .....	EA	1
12	17	PAFZZ	5910-00-2649420	300-1	80063	CAPACITOR,FIXED,MICA .....	EA	2
12	18	PAFZZ	5910-00-063-0695	CM15E680G	72136	CAPACITOR,FIXED,MICA .....	EA	1
12	19	PAFZZ	5910-00-984-8373	CM15FD101GP3	72136	CAPACITOR,FIXED,MICA .....	EA	2
12	20	PAFZZ	5910-00-892-9904	CM15ED390G03	72136	CAPACITOR,FIXED,MICA .....	EA	2
12	211	XDFZZ		CM150270J	72136	CAPACITOR,FIXED,MICA .....	EA	3
12	22	PAFZZ	5910-00-832-5722	CM15FD750G03	72136	CAPACITOR,FIXED,MICA .....	EA	1
12	23	XDFZZ		CM15D820J	81349	CAPACITOR,FIXED,MICA .....	EA	1
12	24	PAFZZ	5910-000444067	CM15D430J	72136	CAPACITOR,FIXED,MICA .....	EA	1
12	25	PAFZZ	5910-00-681-6994	CM15E151G	72136	CAPACITOR,FIXED,MICA .....	EA	1
12	26	PAFZZ	5910-00-227-0793	CM5E101J	72136	CAPACITOR,FIXED,MICA .....	EA	1
12	27	PAFZZ	5910-00-926-9776	CM15FD620G03	72136	CAPACITOR,FIXED,MICA .....	EA	2
12	28	XDFZZ		CM15D681G	72136	CAPACITOR,FIXED,MICA .....	EA	1
12	29	PAFZZ	5910-00-668-7937	CM15B100J	72136	CAPACITOR,FIXED,MICA .....	EA	2
12	30	XDFZZ		CM15D120J	72136	CAPACITOR,FIXED,MICA .....	EA	1
12	31	PAFZZ	5910-00-2649420	CM15C200J	72136	CAPACITOR,FIXED,MICA .....	EA	1
12	32	PAFZZ	5910-00-241-0449	CM150240J	72136	CAPACITOR,FIXED,MICA .....	EA	1



ELOIF013

Figure 13. Oscillator, Radio Frequency, Crystal Controlled, Left and Right Views, Cover Removed.

## SECTION II

TM 11-5820-334-34P

(1)		(2)	(3)	(4)	(5)	(6)	(7)	(8)
ILLUSTRATION		SMR CODE	NATIONAL STOCK NUMBER	PART NUMBER	FSCM	DESCRIPTION  USABLE ON CODE	U/M	QTY INC IN UNIT
(a) FIG NO.	(b) ITEM NO.							
13	1	XDFZZ		CR18U8000KC	81349	CRYSTAL UNIT,QUARTZ	EA	2
13	2	XDFZZ		CR18U15000KC	81349	CRYSTAL UNIT,QUARTZ	EA	1
13	3	PAFZZ	5955-00-248-0686	CR18U9000KC	81349	CRYSTAL UNIT,QUARTZ	EA	2
13	4	XDFZZ		CR18AU6200-000KC	81349	CRYSTAL UNIT,QUARTZ	EA	1
13	5	PAFZZ	5955-00-892-3760	CR18AU10-00000MHZ	81349	CRYSTAL UNIT,QUARTZ	EA	2
13	6	PAFZZ	5955-00-089-3073	CR18AU14-00000MHZ	81349	CRYSTAL UNIT,QUARTZ	EA	1
13	7	XDFZZ		CR18AU11000KC	81349	CRYSTAL UNIT,QUARTZ	EA	1
13	8	PAFZZ	5955-00-187-1914	CR18U8500-000KC	81349	CRYSTAL UNIT,QUARTZ	EA	1
13	9	PAFZZ	5955-00-709-5335	CR18AU1300-00KC	81349	CRYSTAL UNIT,QUARTZ	EA	1
13	10	PAFZZ	5955-00-709-5430	CR18U10500-00KC	81349	CRYSTAL UNIT,QUARTZ	EA	1
13	11	PAFZZ	5955-00-728-5535	CR18AU115000-0MHZ	81349	CRYSTAL UNIT,QUARTZ	EA	1
13	12	PAFZZ	5955-00-734-4826	CR18AU9500-000KC	81349	CRYSTAL UNIT,QUARTZ	EA	1
13	13	PAFZZ	5955-00-667-2409	CR18AU12500-00KC	81349	CRYSTAL UNIT,QUARTZ	EA	1
13	14	PAFZZ	5955-00-058-3937	CR18AU12-00000MHZ	81349	CRYSTAL UNIT,QUARTZ	EA	1
13	15	PAFZZ	5955-00-186-1497	CR18AU9666-667KC	81349	CRYSTAL UNIT,QUARTZ	EA	1
13	16	XDFZZ		CR18U10666-67KC	81349	CRYSTAL UNIT,QUARTZ	EA	1
13	17	PAFZZ	5955-00-667-2436	CR18U10333-333KC	81349	CRYSTAL UNIT,QUARTZ	EA	1
13	18	PAFZZ	5955-00-842-3947	CR18AY11333-333K		CRYSTAL UNIT,QUARTZ	EA	1
				C	81349			
13	19	XDFZZ		CR18U12600KC	81349	CRYSTAL UNIT,QUARTZ	EA	1
13	20	XDFZZ		CR18U7000-000KC	81349	CRYSTAL UNIT,QUARTZ	EA	1
13	21	XDFZZ		SMC144729	80063	COVER,CRYSTAL	EA	1
13	22	XDFZZ		SMB8144726	80063	WHEEL,OSCILLATOR	EA	1
13	23	XDDZZ		MS35216-11	96906	SCREW,MACHINE	EA	3

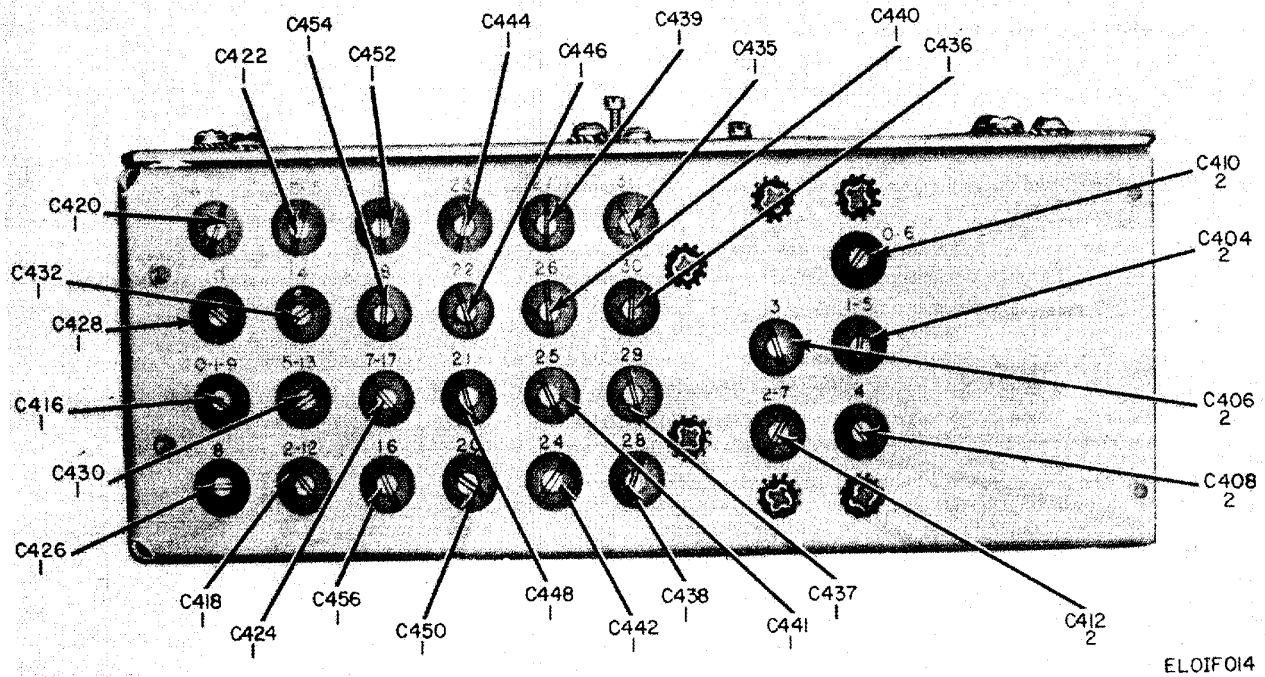


Figure 14. Oscillator, Radio Frequency, Crystal Controlled, Top View.



SECTION II

TM 11-5820-334-34P

(1) ILLUSTRATION		(2)	(3)	(4)	(5)	(6)	(7)	(8)
(a) FIG NO.	(b) ITEM NO.	SMR CODE	NATIONAL STOCK NUMBER	PART NUMBER	FSCM	DESCRIPTION  <i>USABLE ON CODE</i>	U/M	QTY INC IN UNIT
14	1	XDFZZ		SMB145035	80063	CAPACITOR ASSEMBLY	EA	24
14	2	XDFZZ		SMB144748	80063	CAPACITOR ASSEMBLY	EA	5

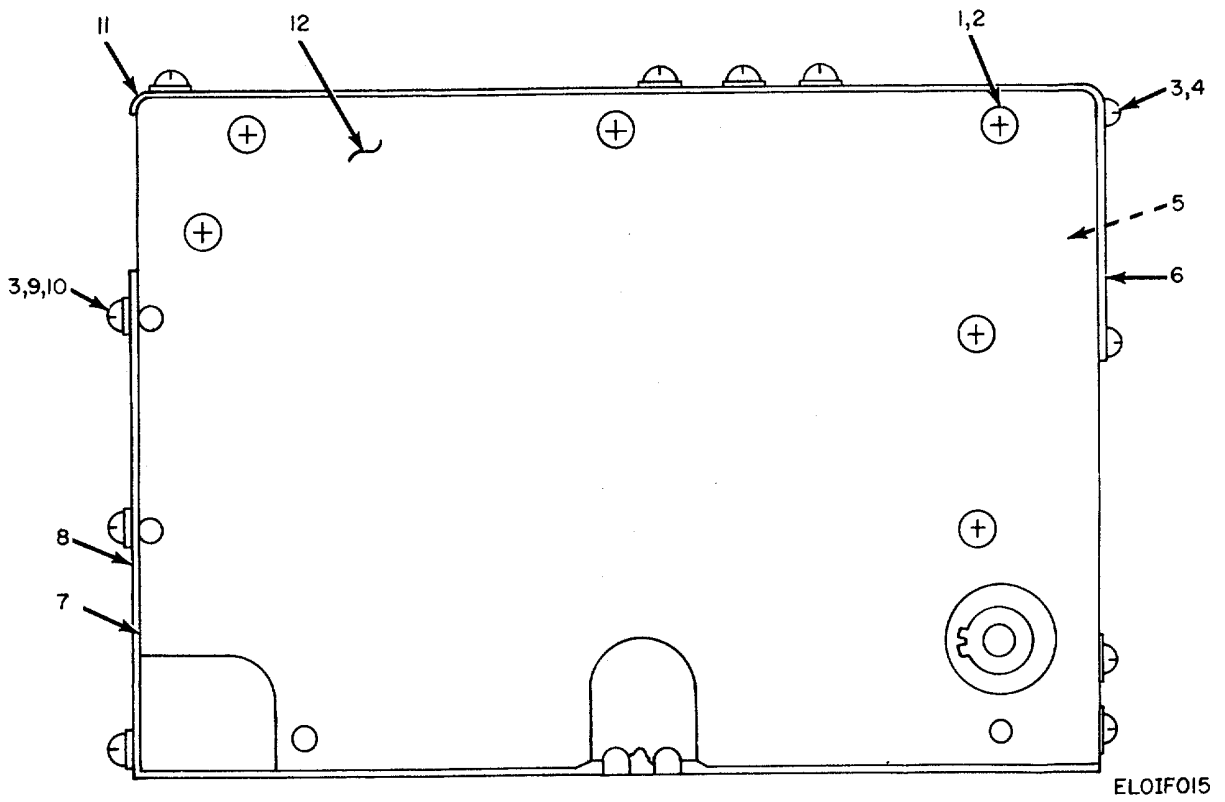


Figure 15. Oscillator, Radio Frequency, Crystal Controlled, Chassis Assembly, Side View.

## SECTION II

TM 11-5820-334-34P

(1)		(2)	(3)	(4)	(5)	(6)	(7)	(8)
ILLUSTRATION		SMR CODE	NATIONAL STOCK NUMBER	PART NUMBER	FSCM	DESCRIPTION  <i>USABLE ON CODE</i>	U/M	QTY INC IN UNIT
(a) FIG NO.	(b) ITEM NO.							
15	1	XDDZZ		MS35216-22	96906	SCREW,MACHINE	EA	14
15	2	XDDZZ		7S35335-16	96906	WASHER	EA	14
15	3	XDDZZ		MS35216-12	96906	SCREW,MACHINE	EA	5
15	4	PADZZ	5310-00-616-3554	MS35335-15	96906	WASHER	EA	2
15	5	XDDZZ		SMB144718	80063	INSULATOR,PLATE	EA	1
15	6	XDFZZ		SMB144719	80063	COVER.CRYSTAL	EA	1
15	7	XDDZZ		SM8144717	80063	INSULATOR,PLATE	EA	1
15	8	XDFZZ		SMB144767	80063	COVER,CRYSTAL	EA	1
15	9	XDDZZ		MS51795-304	96906	WASHER	EA	3
15	10	XDDZZ		MS3338-78	96906	WASHER,LOCK	EA	3
15	11	XDFZZ		SMB144720	80063	COVER,OSCILLATOR	EA	1
15	2	XDFZZ		SMD144724	80063	OSCILLATOR ASSEMBLY	EA	1

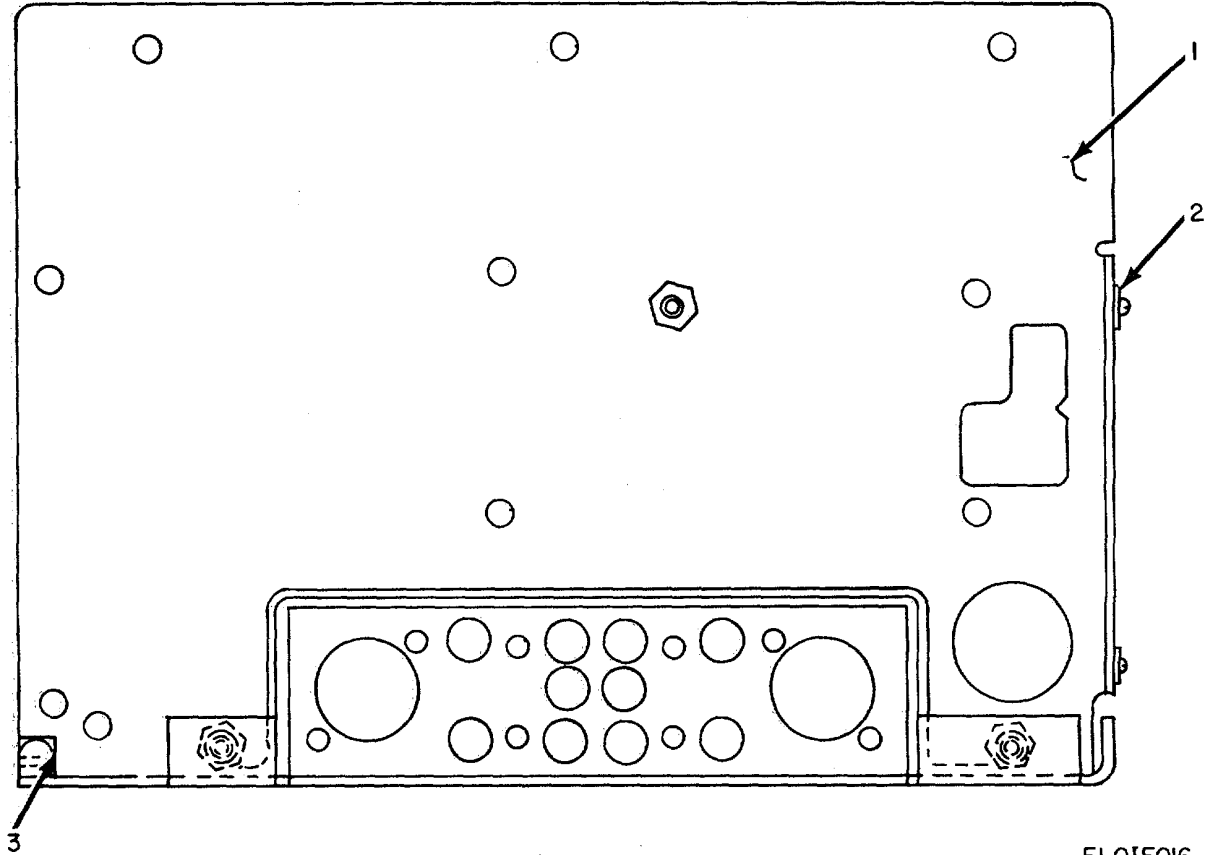
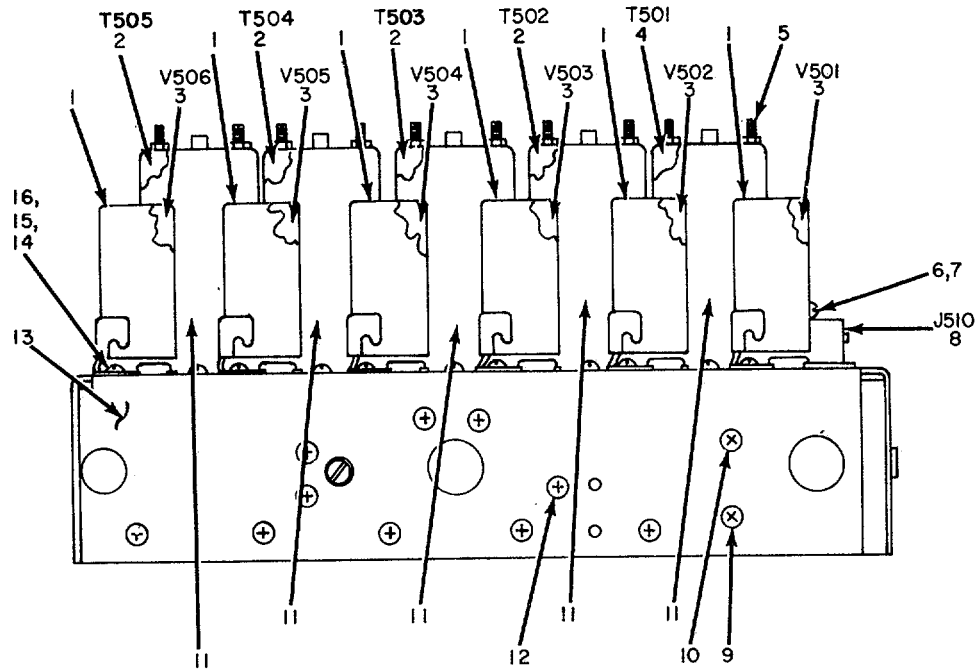


Figure 16. Oscillator, Radio Frequency, Crystal Controlled, Chassis Assembly, Front View.

SECTION II

TM 11-5820-334-34P

(1)		(2)	(3)	(4)	(5)	(6)	(7)	(8)
ILLUSTRATION		SMR CODE	NATIONAL STOCK NUMBER	PART NUMBER	FSCM	DESCRIPTION  <i>USABLE ON CODE</i>	U/M	QTY INC IN UNIT
(a) FIG NO.	(b) ITEM NO.							
16	1	XDDZZ		SMC144731	80063	CHASSIS, OSCILLATOR	EA	1
16	2	XDDZZ		SMC283166-2	80063	NUT,INSERT,CAPTIVE	EA	24
16	3	XDDZZ		SMB144721	80063	INSERT,SCREW,THREADED	EA	5



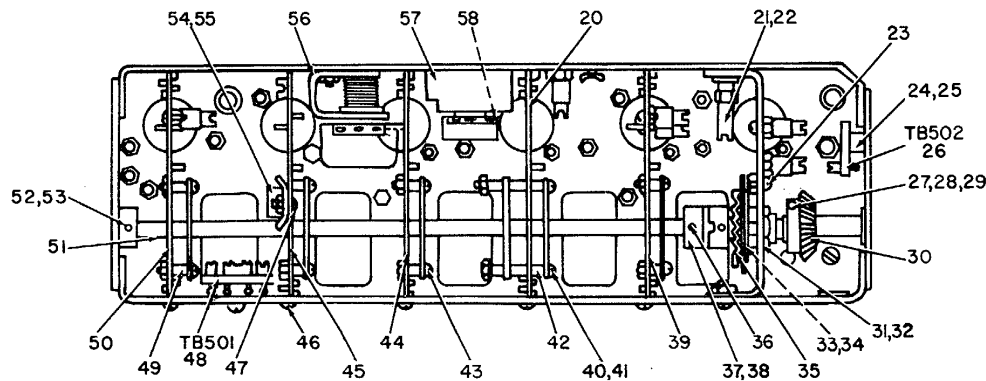
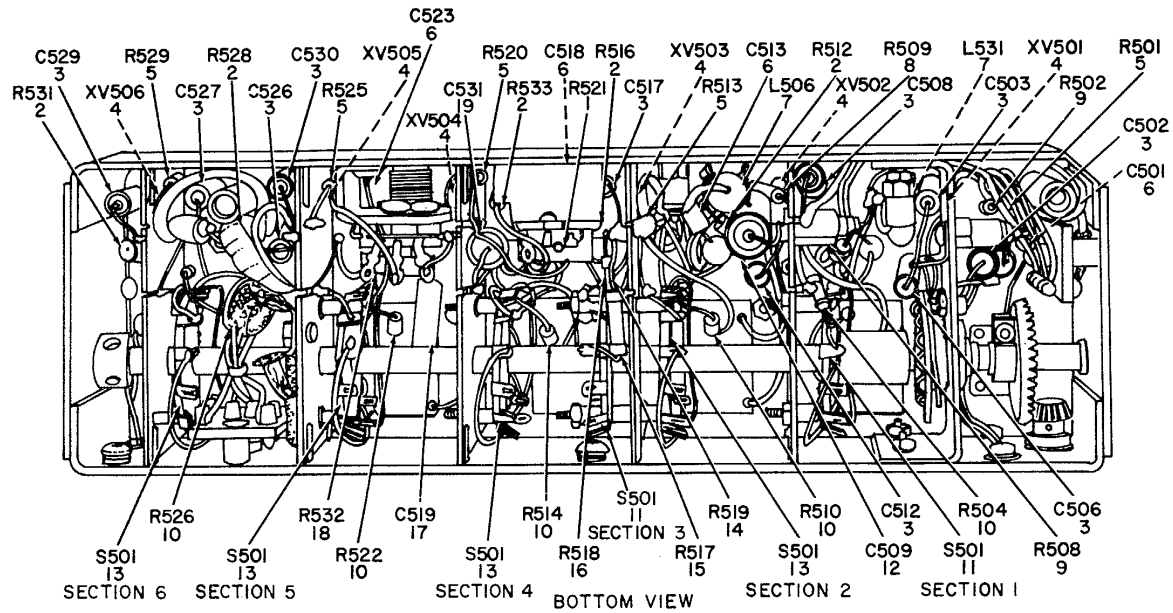
ELOIF017

Figure 17. Amplifier, Intermediate Frequency.

## SECTION II

TM 11-5820-334-34P

(1)		(2)	(3)	(4)	(5)	(6)	(7)	(8)
ILLUSTRATION		SMR CODE	NATIONAL STOCK NUMBER	PART NUMBER	FSCM	DESCRIPTION  <i>USABLE ON CODE</i>	U/M	QTY INC IN UNIT
(a) FIG NO.	(b) ITEM NO.							
						GROUP 0104 AMPLIFIER, INTERMEDIATE FREQUENCY		
17	1	PAOZZ	5960-00-860-7709	M24251-6-2	81349	SHIELD, ELECTRON TUBE	EA	6
17	2	PAFZZ	5950-00-648-1977	SMD144534	80063	TRANSFORMER, INTERMEDIATE FREQUENCY	EA	4
17	3	PAOZZ	5960-00-188-0827	26A6	81349	ELECTRON TUBE	EA	6
17	4	PAFZZ	5950-00-648-2370	SMD144535	80063	TRANSFORMER, INTERMEDIATE FREQUENCY	EA	1
17	5	PAFZZ	5310-00-616-3554	MS35335-29	96906	WASHER	EA	10
17	6	XDDZZ		SMD144532-11	80063	SCREW	EA	12
17	7	XDDZZ		SMD144532-8	80063	WASHER	EA	4
17	8	PAFZZ	5935-00-201-3511	UG290AU	80058	CONNECTOR, RECEPTACLE	EA	1
17	9	XDDZZ		MS35200-14	96906	SCREW, MACHINE	EA	1
17	10	XDDZZ		MS35200-13	96906	SCREW, MACHINE	EA	6
17	11	XDFZZ		SMB178526	80063	SHIELD, COIL	EA	5
17	12	XDDZZ		MS35200-11	96906	SCREW, MACHINE	EA	1
17	13	XDDZZ		SMC144556	80063	CHASSIS ASSEMBLY	EA	1
17	14	XDDZZ		MS35216-12	96906	SCREW, MACHINE	EA	13
17	15	PADZZ	5310-00-950-1310	MS15795-204	96906	WASHER	EA	12
17	16	XDDZZ		MS35649-44	96906	NUT	EA	37



NOT ILLUSTRATED

REF. DES.	ITEM NO.
C507	6
C522	3
R506	2
R507	5
R524	2

ELOIFO18

BOTTOM VIEW WIRING HARNESS EXTRACTED

Figure 18. Amplifier, Intermediate Frequency, Bottom Views.



## SECTION II

TM 11-5820-334-34P

(1) ILLUSTRATION		(2)	(3)	(4)	(5)	(6)	(7)	(8)
(a) FIG NO.	(b) ITEM NO.	SMR CODE	NATIONAL STOCK NUMBER	PART NUMBER	FSCM	DESCRIPTION  <i>USABLE ON CODE</i>	U/M	QTY INC IN UNIT
18	1	PAFZZ	5905-00-806-3627	SMB144536	80063	RESISTOR,VARIABLE	EA	1
18	2	PAFZZ	5905-00-110-0196	RCR2OG102JS	81349	RESISTOR,FIXED.CCMPOSITION	EA	7
18	3	PAFZZ	5910-00-669-3636	196P10301S4	56289	CAPACITOR,FIXED,PAPER	EA	11
18	4	PAFZZ	5935-00-260-0516	TS102P01	81350	SOCKET,ELECTRON TUBE	EA	6
18	5	PAFZZ	5905-00-114-5398	RCR2OG225JS	81349	RESISTOR,FIXED,COMPOSITION	EA	6
18	6	PAFZZ	5910 -00-666-8877	CM15D471G	81349	CAPACITOR,FIXED,MICA	EA	5
18	7	PAFZZ	5950-00-387-0489	C0047109	95265	COIL,RADIO FREQUENCY	EA	2
18	8	PAFZZ	5905-00-111-8357	RCR20G681JS	81349	RESISTOR,FIXED,COMPOSITION	EA	1
18	9	PAFZZ	5905-00-192-3987	RC20GF104K	81349	RESISTOR,FIXED,COMPOSITION	EA	2
18	10	XDFZZ		NA15X2R70J	81349	RESISTOR,FIXED,FILM	EA	5
18	11	PAFZZ	5930-00-548-9455	SMB178517	80063	SWITCH SECTION,ROTARY	EA	2
18	12	PAFZZ	5910-00-899-4395	CP09A1KB104K3	56289	CAPACITOR,FIXED,PAPER	EA	1
18	13	PAFZZ	5930-00-503-4704	SMB178518	80063	SWITCH SECTION,ROTARY	EA	4
18	14	PAFZZ	5905-00-224-6388	MILR55182-5	81349	RESISTOR,FIXED,FILM	EA	1
18	15	PAFZZ	5905-00-539-3234	RN20X6811F	81349	RESISTOR,FIXED,FILM	EA	1
18	16	PAFZZ	5905-00-556-5228	RN70B1822F	81349	RESISTOR,FIXED.FILM	EA	1
18	17	PAFZZ	5910-00-821-4702	CPO5A1KE103K3	56289	CAPACITOR,FIXED,PAPER	EA	1
18	18	PAFZZ	5905-00-806-3628	SMC2832005-1	80063	RESISTOR,VARIABLE	EA	1
18	19	PAFZZ	5910-00-818-9758	CPO5A1KB224K3	81349	CAPACITOR,FIXED,PAPER	EA	1
18	20	XDDZZ		SMC144544	80063	SHIELD,COIL	EA	1
18	21	PADZZ	5940-00-665-5764	103A2	92825	TERMINAL,STUD	EA	20
18	22	XDDZZ		MS35216-11	96906	SCREW,MACHINE	EA	18
18	23	XDDZZ		SMB249256	80063	TERMINAL,LUG	EA	3
18	24	XDDZZ		MS35200-22	96906	SCREW,MACHINE	EA	2
18	25	XDDZZ		MS35338-21	96906	WASHER	EA	6
18	26	XDFZZ		SMB144553	80063	TERMINAL BOARD	EA	1
18	27	XDDZZ		SMD144532-15	80063	NUT	EA	3
18	28	XDDZZ		SMD144532-12	80063	SCREW,MACHINE	EA	1
18	29	XDDZZ		SMB144451	80063	CLAMP	EA	1
18	30	PAFZZ	3020-00-777-1417	SMB144542	80063	GEAR,BEVEL	EA	1
18	31	XDDZZ		MS35216-23	96906	SCREW,MACHINE	EA	2
18	32	XDDZZ		SMC144539	80063	SHIELD,COIL	EA	1
18	33	XDDZZ		SMD144532-14	80063	SCREW,MACHINE	EA	2
18	34	XDDZZ		SMD144532-6	80063	WASHER,LOCK	EA	2
18	35	PAFZZ	5930-00-806-6113	SMB144533	80063	DETENT,SWITCH	EA	1
18	36	XDDZZ		SMB283169	80063	SETSCREW	EA	6
18	37	XDDZZ		AN565D6L2	88044	SCREW,FLUTED	EA	4
18	38	XDDZZ		SMD144532-4	80063	NUT,PLAIN,HEXAGON	EA	1
18	39	XDDZZ		SMC144538	80063	SHIELD,COIL	EA	1
18	40	XDDZZ		SMD144532-9	80063	WASHER	EA	24

## SECTION II

TM 11-5820-334-34P

(1) ILLUSTRATION		(2)	(3)	(4)	(5)	(6)	(7)	(8)
(a) FIG NO.	(b) ITEM NO.	SMR CODE	NATIONAL STOCK NUMBER	PART NUMBER	FSCM	DESCRIPTION  <i>USABLE ON CODE</i>	U/M	QTY INC IN UNIT
18	41	XDDZZ		SMD144532-13	80063	SCREW,MACHINE	EA	5
18	42	XDDZZ		SMB249226-2	80063	SPACER,SLEEVE	EA	12
18	43	XDDZZ		AN500C4-10	88044	SCREW	EA	5
18	44	XDDZZ		SMC144545	80063	SHIELD,COIL	EA	1
18	45	XDDZZ		SMC144546	80063	SHIELD,COIL	EA	1
18	46	XDDZZ		MS35216-13	96906	SCREW,MACHINE	EA	18
18	47	XDDZZ		AN500C4-8	88044	SCREW	EA	3
18	48	XDFZZ		SMB144550	80063	TERMINAL BOARD	EA	1
18	49	XDDZZ		SMB249226-1	80063	SPACER,SLEEVE	EA	12
18	50	XDDZZ		SMC144547	80063	SHIELD,COIL	EA	1
18	51	XDDZZ		SMB144537	80063	SHAFT,STRAIGHT	EA	1
18	52	XDDZZ		SMB144527	80063	SPACER,SLEEVE	EA	2
18	53	XDDZZ		SMD144532-7	80063	WASHER	EA	1
18	54	XDDZZ		SMB143409	80063	TERMINAL,LUG	EA	2
18	55	XDFZZ		SMD144532-5	80063	CLAMP,CABLE	EA	1
18	56	XDDZZ		SMB144548	80063	BRACKET ASSEMBLY	EA	1
18	57	XDDZZ		SMB144559	80063	BRACKET ASSEMBLY	EA	1
18	58	XDDZZ		MS35200-12	96906	SCREW,MACHINE	EA	4

44/(45 blank)

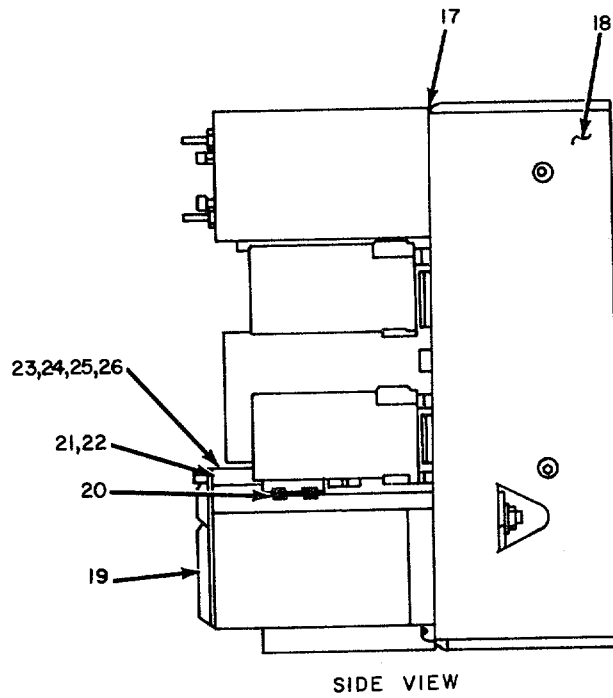
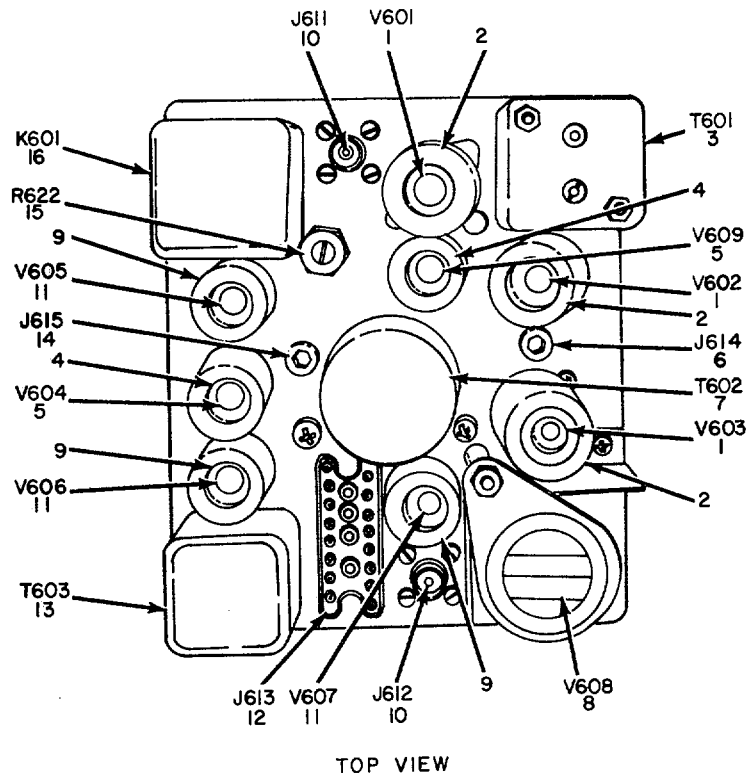


Figure 19. Amplifier, Audio Frequency.

ELOIF019

## SECTION II

TM 11-5820-334-34P

(1) ILLUSTRATION		(2)	(3)	(4)	(5)	(6)	(7)	(8)
(a) FIG NO.	(b) ITEM NO.	SMR CODE	NATIONAL STOCK NUMBER	PART NUMBER	FSCM	DESCRIPTION  <i>USABLE ON CODE</i>	U/M	QTY INC IN UNIT
						GROUP 0105 AMPLIFIER,AUDIO FREQUENCY		
19	1	PAOZZ	5960-00-166-7663	12AU7	81349	ELECTRON TUBE	EA	3
19	2	PAOZZ	5960-00-860-7710	M24251-6-5	81349	SHIELD,ELECTRON TUBE	EA	3
19	3	PAFZZ	5950-00-648-2385	SMD144562	80063	TRANSFORM,INTERMEDIATE FREQUENCY	EA	1
19	4	PAOZZ	5960-00-860-7709	M24251-6-2	81349	SHIELD,ELECTRON TUBE	EA	2
19	5	PAOZZ	5960-00-188-0827	26A6	81349	ELECTRON TUBE	EA	2
19	6	PAFZZ	5935-00-501-5488	105-603-5	74970	JACK,TIP	EA	1
19	7	PAFZZ	5950-00-568-4844	SMC144565	80063	TRANSFORMER,RADIO FREQUENCY	EA	1
19	8	PAOZZ	5960-00-100-7111	26A7GT	81349	ELECTRON TUBE OR	EA	1
19	8	PAOHH	5820-00-448-6763	SMC356720	80063	AUDIO MODULE ASSEMBLY	EA	1
19	9	XDOZZ		SMC143429-1	80063	SHIELD,ELECTRON TUBE	EA	3
19	10	PAFZZ	5935-00-201-3511	UG290AU	80058	CONNECTOR,RECEPTACLE	EA	2
19	11	PAOZZ	5960-00-188-3553	6AJ5	81349	ELECTRON TUBE	EA	3
19	12	PAFZZ	5935-00-660-5590	126-806	02660	CONNECTOR,RECEPTACLE,ELECTRICAL	EA	1
19	13	PAFZZ	5950-00-812-6106	SMC144571	80063	TRANSFORMER,AUDIO FREQUENCY	EA	1
19	14	PAFZZ	5935-00-501-5487	105-602-5	74970	JACK,TIP	EA	1
19	15	XDFZZ		SMB144563	80063	RESISTOR,VARIABLE	EA	1
19	16	PAFZZ	5945-00-258-9852	SMC144572	80063	RELAY,ARMATURE	EA	1
19	17	XDDZZ		SMB178526	80063	SHIELD,COIL	EA	1
19	18	XDDZZ		SMC144589	80063	CHASSIS ASSEMBLY	EA	1
19	19	XDFZZ		SMB144567	80063	RETAINER,ELECTRON TUBE	EA	1
19	20	XDDZZ		SMB144573	80063	SHIELD,COIL	EA	1
19	21	XDDZZ		SMB144568	80063	SHAFT,STRAIGHT	EA	1
19	22	PAFZZ	5820-00-537-4822	SMB178564	80063	SPRING,HELICAL.COMPRESSION	EA	1
19	23	XDDZZ		MS35335-2	96906	WASHER,LOCK	EA	11
19	24	XDDZZ		MS35216-24	96906	SCREW,MACHINE	EA	4
19	25	PAFZZ	5365-00-285-6688	5133-15	79136	RING,RETAINING	EA	1
19	26	PADZZ	5310-00-934-9747	102-3S6	80063	NUT,PLAIN,HEXAGON	EA	9

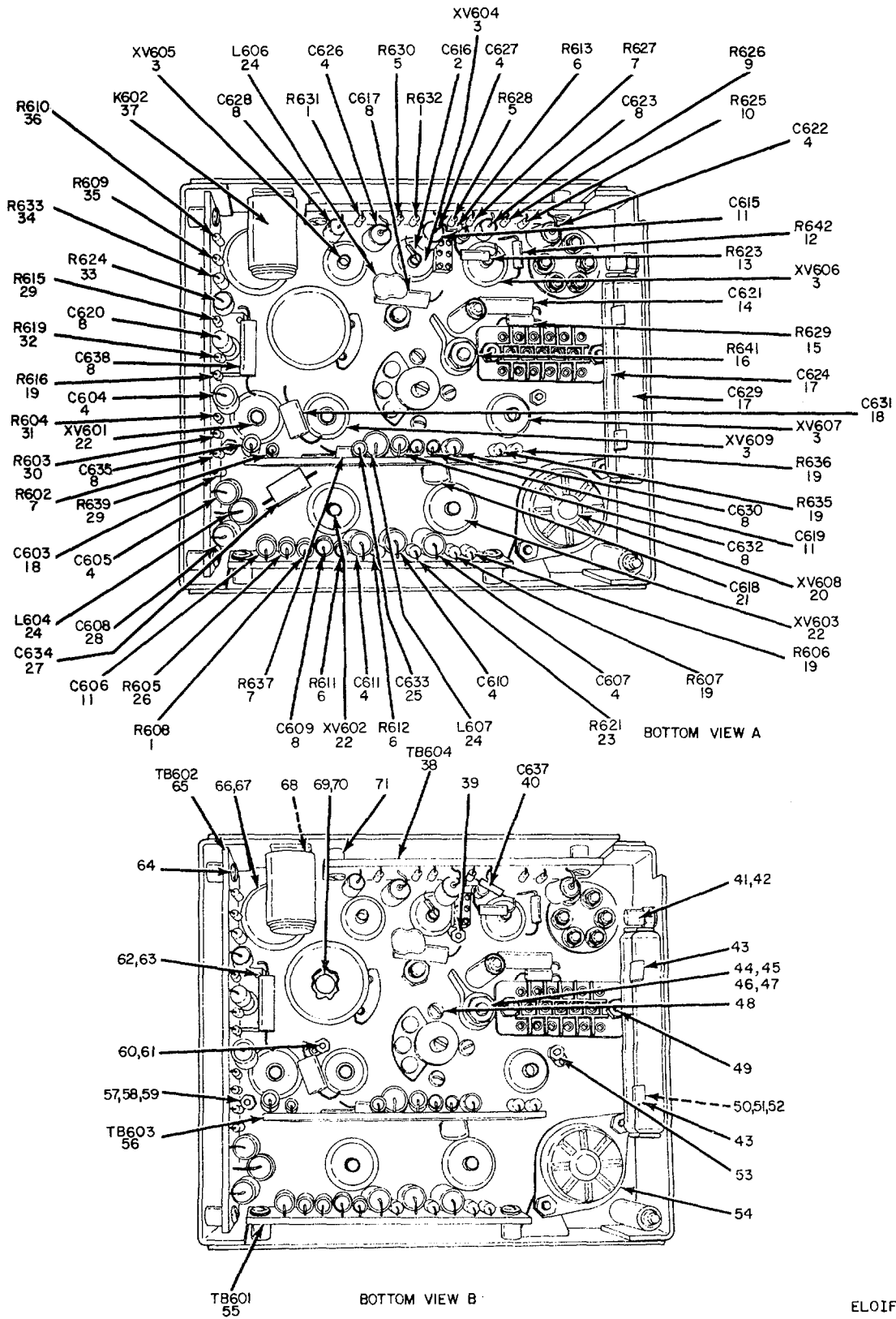


Figure 20. Amplifier, Audio Frequency, Bottom Interior Views.

## SECTION II

TM 11-5820-334-34P

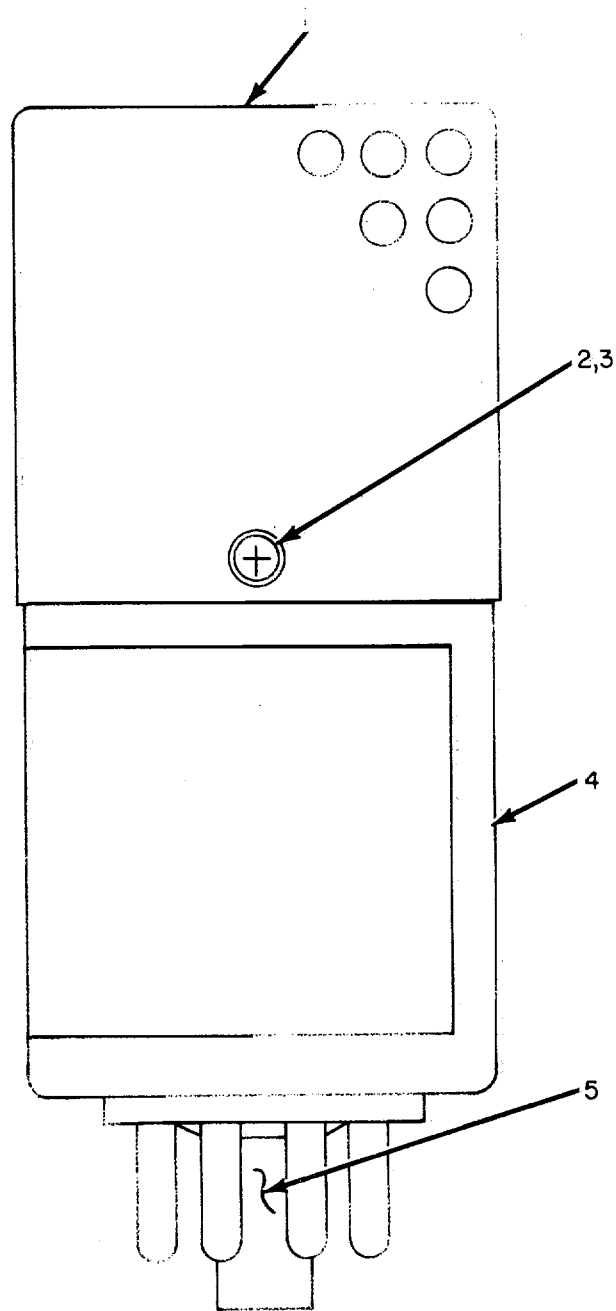
(1) ILLUSTRATION		(2)	(3)	(4)	(5)	(6)	(7)	(8)
(a) FIG NO.	(b) ITEM NO.	SMR CODE	NATIONAL STOCK NUMBER	PART NUMBER	FSCM	DESCRIPTION  <i>USABLE ON CODE</i>	U/M	QTY INC IN UNIT
20	1	PAFZZ	5905-00-185-6946	RC20GF474K	81349	RESISTOR, FIXED, COMPOSITION	EA	3
20	2	XDFZZ		CC20CH070F	61349	CAPACITOR, FIXED, CERAMIC	EA	1
20	3	PAFZZ	5935-00-260-0516	TS102P01	81350	SOCKET, ELECTRON TUBE	EA	5
20	4	PAFZZ	5910-00-899-4395	CP09A1KB04K3	56289	CAPACITOR, FIXED, PAPER	EA	8
20	5	PAFZZ	5905-00-185-8518	RC20GF103K	81349	RESISTOR, FIXED, COMPOSITION	EA	2
20	6	PAFZZ	5905-00-114-5393	RCR20G224JS	81349	RESISTOR, FIXED, COMPOSITION	EA	3
20	7	PAFZZ	5905-00-114-5398	RCR20G225JS	81349	RESISTOR, FIXED, COMPOSITION	EA	3
20	8	PAFZZ	5910-00-669-3636	196P10301S4	56289	CAPACITOR, FIXED, PAPER	EA	9
20	9	PAFZZ	5905-00-106-1282	RCR20G223JS	81349	RESISTOR, FIXED, COMPOSITION	EA	1
20	10	PAFZZ	5905-00-295-3410	RC20GF473K	81349	RESISTOR, FIXED, COMPOSITION	EA	1
20	11	PAFZZ	5910-00-984-8373	CM15FD101GP3	81349	CAPACITOR, FIXED, MICA	EA	3
20	12	PAFZZ	5905-00-192-3987	RC20GF104K	81349	RESISTOR, FIXED, COMPOSITION	EA	1
20	13	PAFZZ	5905-00-279-1866	RC20GF106K	81349	RESISTOR, FIXED, COMPOSITION	EA	1
20	14	PAFZZ	5910-00-833-4408	CP12A1KF103K3	56289	CAPACITOR, FIXED, PAPER	EA	1
20	15	PAFZZ	5905-00-247-8682	RCR20G825JS	81349	RESISTOR, FIXED, COMPOSITION	EA	1
20	16	PAFZZ	5905-00-100-4745	RW30G121	81349	RESISTOR, FIXED, WIRE WOUND	EA	1
20	17	XDFZZ		29F496	08806	CAPACITOR, FIXED, ELECTROLYTIC	EA	2
20	18	PAFZZ	5910-00-666-8877	CM15D471G	81349	CAPACITOR, FIXED, MICA	EA	2
20	19	PAFZZ	5905-00-409-7616	RC20GF105K	81349	RESISTOR, FIXED, COMPOSITION	EA	5
20	20	PAFZZ	5935-00-063-5789	TS101PO1	81350	SOCKET, ELECTRON TUBE	EA	1
20	21	PAFZZ	5910-00-901-8949	CM15ED300G03	81349	CAPACITOR, FIXED, MICA	EA	1
20	22	PAFZZ	5935-00-812-4886	TS103PO1	81350	SOCKET, ELECTRON TUBE	EA	3
20	23	PAFZZ	5905-00-195-6451	RC20GF472K	81349	RESISTOR, FIXED, COMPOSITION	EA	1
20	24	PAFZZ	5950-00-387-0489	C0047109	95265	COIL, RADIO FREQUENCY	EA	3
20	25	PAFZZ	5910-00-667-5565	605	72136	CAPACITOR, FIXED, MICA	EA	1
20	26	PAFZZ	5905-00-104-8335	RC20GF124K	81349	RESISTOR, FIXED, COMPOSITION	EA	1
20	27	XDFZZ		SMB283234	80063	CAPACITOR, VARIABLE, CERAMIC	EA	1
20	28	PAFZZ	5910-00-543-9577	196P47301S4	56289	CAPACITOR, FIXED, PAPER	EA	1
20	29	PAFZZ	5905-00-110-0196	RCR20C102JS	81349	RESISTOR, FIXED, COMPOSITION	EA	2
20	30	PAFZZ	5905-00-171-2005	RC20GF471K	81349	RESISTOR, FIXED, COMPOSITION	EA	1
20	31	PAFZZ	5905-00-104-8345	RC20GF560K	81349	RESISTOR, FIXED, COMPOSITION	EA	1
20	32	PAFZZ	5905-00-279-1754	RC20GF155J	81349	RESISTOR, FIXED, COMPOSITION	EA	1
20	33	PAFZZ	5905-00-155-0435	RCR42G390JS	81349	RESISTOR, FIXED, COMPOSITION	EA	1
20	34	PAFZZ	5905-00-247-8732	RCR32G471JS	81349	RESISTOR, FIXED, COMPOSITION	EA	1
20	35	PAFZZ	5905-00-279-2672	RC20GF182K	81349	RESISTOR, FIXED, COMPOSITION	EA	1
20	36	PAFZZ	5905-00-245-0023	RC20GF682K	81349	RESISTOR, FIXED, COMPOSITION	EA	1
20	37	PAFZZ	5945-00-259-6446	SMC143770	80063	RELAY, ARMATURE	EA	1
20	38	XDFZZ		SMB144586	80063	TERMINAL BOARD	EA	1
20	39	XDDZZ		MS35216-13	96906	SCREW, MACHINE	EA	2
20	40	PAFZZ	5905-00-993-2380	CM15CD120-J03	72136	CAPACITOR, FIXED, MICA	EA	1

## SECTION II

TM 11-5820-334-34P

(1) ILLUSTRATION		(2)	(3)	(4)	(5)	(6)	(7)	(8)
(a) FIG NO.	(b) ITEM NO.	SMR CODE	NATIONAL STOCK NUMBER	PART NUMBER	FSCM	DESCRIPTION  USABLE ON CODE	U/M	QTY INC IN UNIT
20	41	PADZZ	5940-00-665-5764	103A2	92825	TERMINAL,STUD	EA	3
20	42	XDDZZ		MS35200-11	96906	SCREW,MACHINE	EA	2
20	43	XDFZZ		SMB144566	80063	RETAINER,CAPACITOR	EA	2
20	44	PADZZ	5970-00-284-7900	SMD144561-17	80063	WASHER,NONMETALLIC	EA	4
20	45	XDDZZ		104-1S--8L	96906	WASHER	EA	1
20	46	XDDZZ		8-32NC2B3-32	77250	NUT,PLAIN,HEXAGON	EA	21
20	47	XDDZZ		MS35200-48	96906	SCREW,MACHINE	EA	1
20	48	XDDZZ		MS35216-11	96906	SCREW,MACHINE	EA	3
20	49	PADZZ	5305-00-059-8451	MS35216-16	96906	SCREW	EA	2
20	50	XDDZZ		MS35200-27	96906	SCREW,MACHINE	EA	2
20	51	XDDZZ		SMB144569	80063	SPACER,SLEEVE	EA	2
20	52	XDDZZ		SMD144561-22	80063	WASHER,FLAT	EA	2
20	53	XDDZZ		SMB143506	80063	TERMINAL,LUG	EA	1
20	54	PADZZ	5820-00-537-4822	SMB144570	80063	SPACER,SLEEVE	EA	1
20	55	XDFZZ		SMB144576	80063	TERMINAL BOARD	EA	1
20	56	XDFZZ		SMB144582	80063	TERMINAL BOARD	EA	1
20	57	XDDZZ		4-40NC281-4	17250	NUT,PLAIN,HEXAGON	EA	19
20	58	XDDZZ		MS35216-12	96906	SCREW,MACHINE	EA	14
20	59	PADZZ	5310-00-543-4652	1702-00	78189	WASHER,LOCK	EA	21
20	60	XDDZZ		SMB249256	80063	TERMINAL,LUG	EA	5
20	61	PADZZ	5940-00-258-5327	103A1	92825	TERMINAL,STUD	EA	4
20	62	XDDZZ		104-33-3A	80063	WASHER,LOCK	EA	8
20	63	XDDZZ		SMD144561-21	80063	SCREW,MACHINE	EA	8
20	64	XDDZZ		MS35216-23	96906	SCREW,MACHINE	EA	8
20	65	XDFZZ		SMB144579	80063	TERMINAL BOARD	EA	1
20	66	XDDZZ		6-32NB3-32	83385	NUT,PLAIN,HEXAGON	EA	2
20	67	XDDZZ		SMB249257	80063	TERMINAL	EA	3
20	68	XDDZZ		MS35200-10	96906	SCREW,MACHINE	EA	4
20	69	XDDZZ		SM5144561-20	80063	NUT	EA	1
20	70	XDDZZ		1220-02	78189	WASHER,LOCK	EA	1
20	71	XDDZZ		SMB144564	80063	SPACER,SLEEVE	EA	1

50/(51 blank)

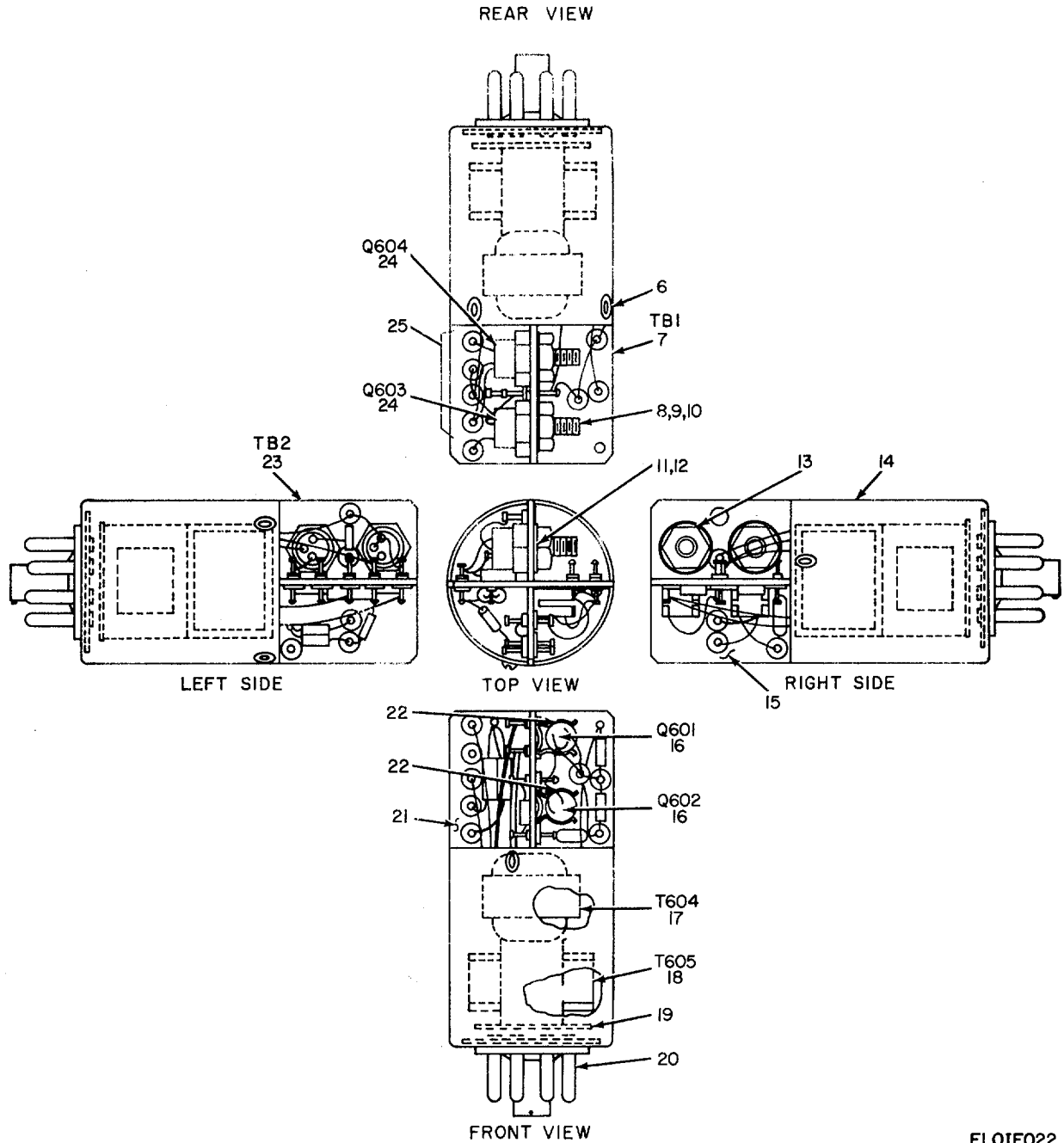


FRONT VIEW

ELOIF021

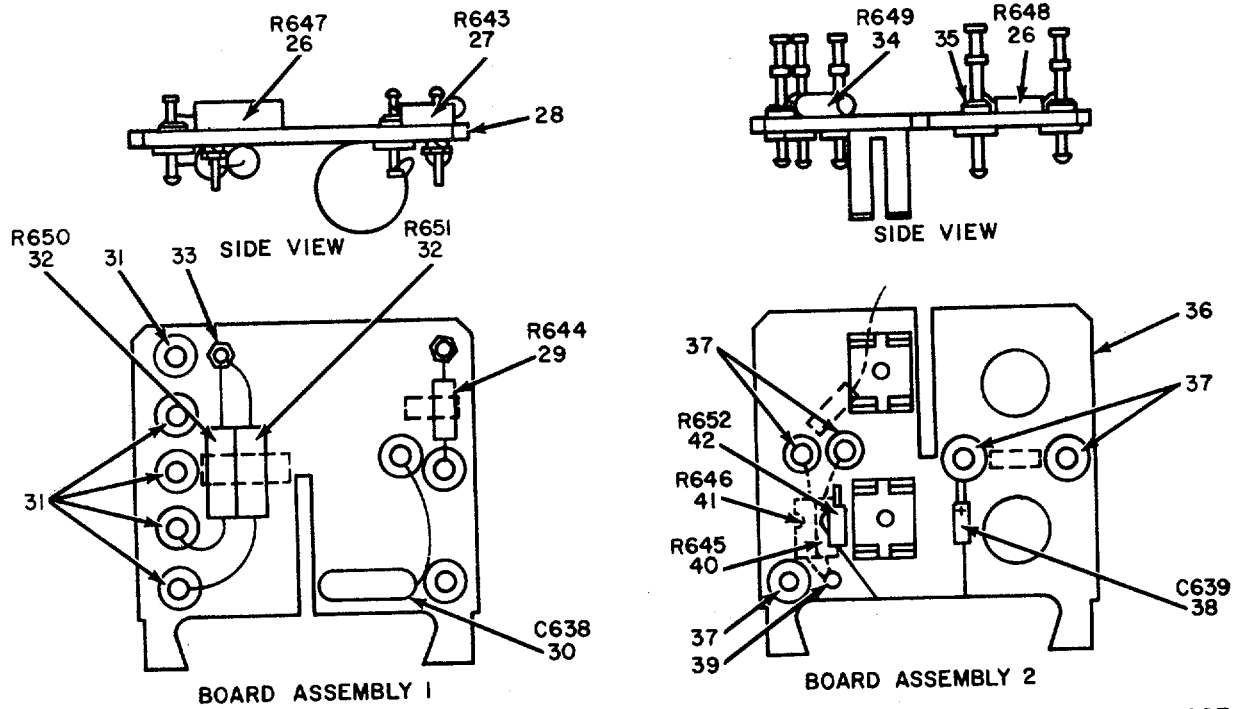
Figure 21. Amplifier, Audio Frequency, Audio Module Assembly  
(Sheet 1 of 3).





ELOIF022

Figure 21. Amplifier, Audio Frequency, Audio Module Assembly (Sheet 2 of 3).



ELOIF023

Figure 21. Amplifier, Audio Frequency, Audio Module Assembly  
(Sheet 3 of 3).

## SECTION II

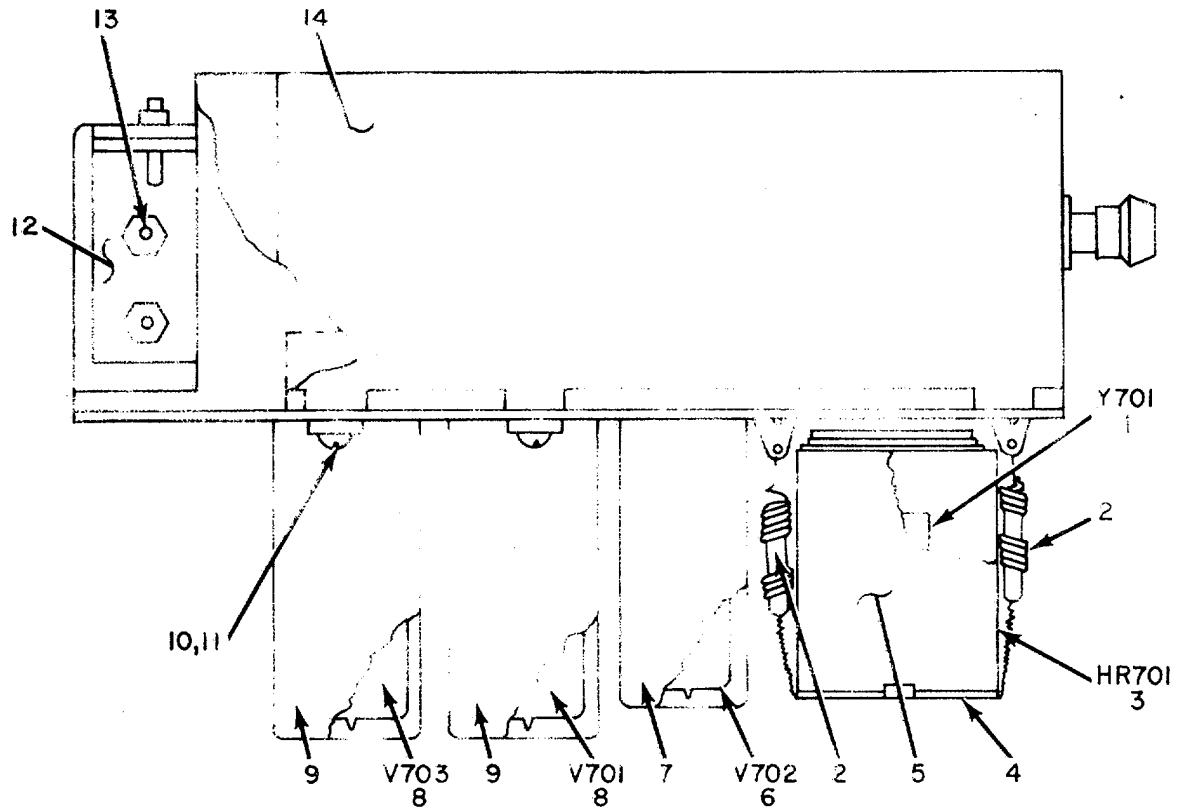
TM 11-5820-334-34P

(1) ILLUSTRATION		(2)	(3)	(4)	(5)	(6)	(7)	(8)
(a) FIG NO.	(b) ITEM NO.	SMR CODE	NATIONAL STOCK NUMBER	PART NUMBER	FSCM	DESCRIPTION  <i>USABLE ON CODE</i>	U/M	QTY INC IN UNIT
21	1	XDFZZ		SMB356721	80063	COVER,AUDIO MODULE	EA	1
21	2	XDFZZ		MS35216-12	96906	SCREW,MACHINE	EA	6
21	3	PAFZZ	5310-00-058-3599	MS35335-57	96906	WASHER,LOCK	EA	3
21	4	XDDZZ		SMD357513	80063	AUDIO MODULE SUBASSEMBLY	EA	1
21	5	XDDZZ		SMB356726	80063	PLUG ASSEMBLY	EA	1
21	6	XDDZZ		SMD357513-1	80063	INSERT,SCREW,THREADED	EA	3
21	7	XDFZZ		SMB356729	80063	TERMINAL BOARD ASSEMBLY	EA	1
21	8	PADZZ	5310-00-209-1239	MS35335-60	96906	WASHER,LOCK	EA	2
21	9	PADZZ	5310-00-619-1148	MS15795-308	96906	WASHER,FLAT	EA	2
21	10	PADZZ	5310-00-270-8810	MS35650-104	96906	NUT,PLAIN,HEXAGON	EA	2
21	11	XDDZZ		SMB340312	80063	WASHER	EA	2
21	12	XDDZZ		SMC357233-4	80063	SPACER,SLEEVE	EA	2
21	13	XDDZZ		SMC357233-3	80063	INSULATOR,WASHER	EA	4
21	14	XDDZZ		SMB356224	80063	ADAPTER	EA	1
21	15	XDFZZ		SMC357217	80063	TERMINAL BOARD	EA	1
21	16	PAFZZ	5961-00-577-6131	2N336	80131	TRANSISTOR	EA	2
21	17	XDFZZ		SMC357256	80063	TRANSFORMER	EA	1
21	18	XDFZZ		SMC357257	80063	TRANSFORMER	EA	1
21	19	XDDZZ		SMB356754	80063	INSULATION,DISK	EA	1
21	20	XDFZZ		SMB356722	80063	PLUG,OCTAL	EA	1
21	21	XDFZZ		SMB356755	80063	TERMINAL BOARD	EA	1
21	22	XDFZZ		SMB356733-1	80063	CLIP,SPRING TENSION	EA	2
21	23	XDFZZ		SMB356730	80063	TERMINAL BOARD ASSEMBLY	EA	1
21	24	PAFZZ	5961-00-724-6904	2N498A	80131	TRANSISTOR	EA	2
21	25	XDFZZ		SMC357233	80063	TERMINAL BOARD ASSEMBLY	EA	1
21	26	PAFZZ	5905-00-686-9997	RC07GF682J	81349	RESISTOR,FIXED,COMPOSITION	EA	2
21	27	PAFPZ	5905-00-681--8823	RC07GF684J	81349	RESISTOR,FIXED,COMPOSITION	EA	1
21	28	XDFZZ		SMB356732	80063	TERMINAL BOARD SUBASSEMBLY	EA	1
21	29	PAFZZ	5905-00-686-3356	RCO7GF823J	81349	RESISTOR,FIXED,COMPOSITION	EA	1
21	30	XDFZZ		SMB356729-1	60063	CAPACITOR,FIXED,CERAMIC	EA	1
21	31	XDDZZ		SMB356732-2	80063	TERMINAL FEEDTHRU, INSULATOR	EA	5
21	32	PAFZZ	5905-00-081-6137	RW59V5R1	81349	RESISTOR,FIXED,WIRE WOUND	EA	2
21	33	XDDZZ		SMB356733-2	80063	TERMINAL,STUD	EA	3
21	34	PAFZZ	5905-00-683-2246	RC07GF473J	81349	RESISTOR,FIXED,COMPOSITION	EA	1
21	35	XDDZZ		SMB356733-4	60063	ITERMINAL,FEEDTHRU,INSULATOR	EA	1
21	36	XDFZZ		SMB356733	60063	TERMINAL BOARD SUBASSEMBLY	EA	1
21	37	XDDZZ		SMB356732-3	80063	TERMINAL,FEEDTHRU,INSULATOR	EA	5
21	38	PAFZZ	5910-00-495-0042	CSR136105KS	81349	CAPACITOR,FIXED,ELECTROLYTIC	EA	1
21	39	XDDZZ		SMB356733-3	80063	TERMINAL,STUD	EA	3
21	40	PAFZZ	5905-00-691-0195	RC07GF562J	81349	RESISTOR,FIXED,COMPOSITION	EA	1

**SECTION II**

**TM 11-5820-334-34P**

(1) ILLUSTRATION		(2)	(3)	(4)	(5)	(6)	(7)	(8)
(a) FIG NO.	(b) ITEM NO.	SMR CODE	NATIONAL STOCK NUMBER	PART NUMBER	FSCM	DESCRIPTION  <i>USABLE ON CODE</i>	U/M	QTY INC IN UNIT
21	41	PAFZZ	5905-00-686=9996	RCO7GF821J	81349	RESISTOR, FIXED, COMPOSITION	EA	1
21	42	PAFZZ	5905-00-726-3807	RCO7GF912J	81349	RESISTOR, FIXED, COMPOSITION	EA	1



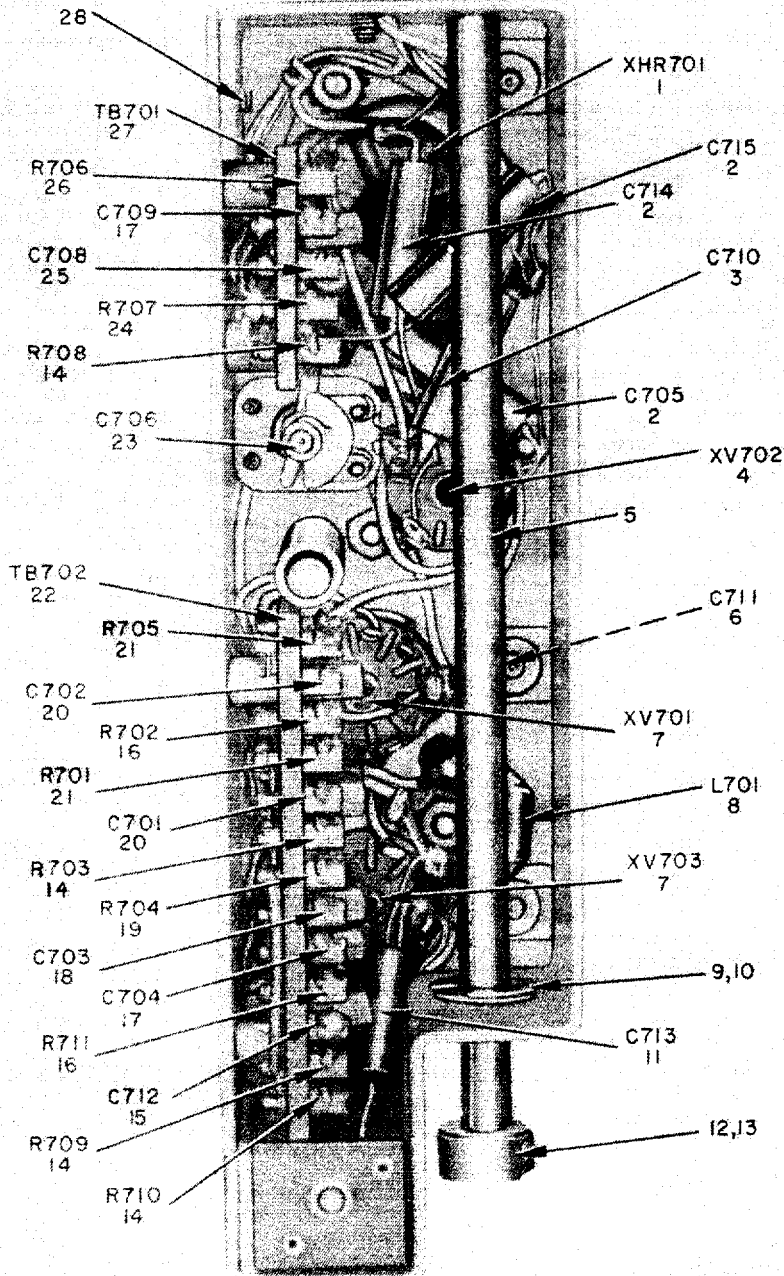
ELOIF024

Figure 22. Calibrator, Crystal

## SECTION II

TM 11-5820-334-34P

(1)		(2)	(3)	(4)	(5)	(6)	(7)	(8)
ILLUSTRATION		SMR CODE	NATIONAL STOCK NUMBER	PART NUMBER	FSCM	DESCRIPTION  <i>USABLE ON CODE</i>	U/M	QTY INC IN UNIT
(a) FIG NO.	(b) ITEM NO.							
						GROUP 0106 CALIBRATOR,CRYSTAL		
22	1	PAFZZ	5955-00-951-9143	RC47U	81349	CRYSTAL UNIT,QUARTZ	EA	1
22	2	PAFZZ	5360-00-777-6817	SMD144595	80063	SPRING,HELICAL,EXTENSION	EA	2
22	3	PAFZZ	5955-00-667-4564	TGO-1C	71034	OVEN,CRYSTAL	EA	1
22	4	XDDZZ		SMC178506	80063	BRACKET,ANGLE	EA	1
22	5	XDDZZ		SMB144540	80063	OVEN ASSEMBLY	EA	1
22	6	PAOZZ	5960-00-188-0827	26A6	81349	ELECTRON TUBE	EA	1
22	7	PAOZZ	5960-00-860-7709	M24251-6-2	81349	SHIELD,ELECTRON TUBE	EA	1
22	8	PAOZZ	5960-00-166-7663	12AU7	81349	ELECTRON TUBE	EA	2
22	9	PAOZZ	5960-00-860-7710	M24251-6-5	81349	SHIELD,ELECTRON TUBE	EA	2
22	10	PADZZ	5310-00-209-1366	MS35335-58	96906	WASHER	EA	3
22	11	XDDZZ		MS35216-23	96906	SCREW	EA	3
22	12	XDDZZ		SMB144596	80063	BRACKET,ANGLE	EA	1
22	13	XDDZZ		MS35200-23	96906	SCREW,MACHINE	EA	2
22	14	XDDZZ		SMC144600	80063	CHASIS	EA	1



ELOIF025

Figure 23. Calibrator, Crystal Bottom View.

## SECTION II

TM 11-5820-334-34P

(1) ILLUSTRATION		(2)	(3)	(4)	(5)	(6)	(7)	(8)
(a) FIG NO.	(b) ITEM NO.	SMR CODE	NATIONAL STOCK NUMBER	PART NUMBER	FSCM	DESCRIPTION  <i>USABLE ON CODE</i>	U/M	QTY INC IN UNIT
23	1	PAFZZ	5935-00-063-5789	TS101PO1	81350	SOCKET,ELECTRON TUBE	EA	1
23	2	PAFZZ	5910-00-821-4702	CP05A1KE103K3	81349	CAPACITOR,FIXED PAPER	EA	3
3	3	PAFZZ	5910-00-669-3636	196P10301S4	56289	CAPACITOR,FIXED PAPER	EA	1
23	4	PAFZZ	5935-00-260-0516	TS102POL	81350	SOCKET,ELECTRON TUBE	EA	1
23	5	XDDZZ		SMB144529	80063	SHAFT ASSEMBLY	EA	1
23	6	PAFZZ	5910-00-850-0540	CM15E51OG	72136	CAPACITOR,FIXED,MICA	EA	1
23	7	PAFZZ	5935-00-812-4936	TS103P01	81350	SOCKET,ELECTRON TUBE	EA	2
23	8	PAFZZ	5950-00-387-0489	C0047109	95265	COIL,RADIO FREQUENCY	EA	1
23	9	XDDZZ		SMB144527-2	80063	RING	EA	1
23	10	PADZZ	5305-00-805-9748	MS51053-112	96906	SCREW,SOCKET HEAD	EA	2
23	11	XDFZZ		SMD144592-20	80063	CAPACITOR,FIXED,CERAMIC	EA	1
23	12	XDDZZ		SMB144527-1	80063	RING	EA	1
23	13	XDDZZ		SMB283169	80063	SCREW	EA	2
23	14	PAFZZ	5905-00-185-8518	RC20GF103K	81349	RESISTOR,FIXED,COMPOSITION	EA	4
23	15	PAFZZ	5910-00-060-9619	CM15FD11G03	72136	CAPACITOR,FIXED,MICA	EA	1
23	16	PAFZZ	5905-00-192-3987	RC20GF104K	81349	RESISTOR,FIXED,COMPOSITION	EA	2
23	17	PAFZZ	5910-00-984-8373	CM15FD1O1GP3	81349	CAPACITOR,FIXED,MICA	EA	2
23	18	PAFZZ	5910-00-270-4853	CM15E820G	72136	CAPACITOR,FIXED,MICA	EA	1
23	19	PAFZZ	5905-00-195-6451	RC20GF472K	81349	RESISTOR,FIXED,COMPOSITION	EA	1
23	20	PAFZZ	5910-00-667-5565	605	72136	CAPACITOR,FIXED,MICA	EA	2
23	21	PAFZZ	5905-00-106-1282	RCR20G223JS	81349	RESISTOR,FIXED,CONPOSITION	EA	2
23	22	XDFZZ		SMB144611	80063	TERMINAL BOARD	EA	1
23	23	PAFZZ	5910-00-649-3022	160-110-4	74970	CAPACITOR, VARIABLE,AIR	EA	1
23	24	PAFZZ	5905-00-295-3410	RC20GF473K	81349	RESISTOR,FIXED,COMPOSITION	EA	1
23	25	PAFZZ	5910-00-299-2323	SMB144611-5	80063	CAPACITOR,FIXED,CERAMIC	EA	1
23	26	PAFZZ	5905-00-409-7616	RC20GF1O5K	81349	RESISTOR,FIXED,COMPOSITION	EA	1
23	27	XDFZZ		SMC144607	80063	TERMINAL BOARD	EA	1
23	28	XDDZZ		MS35200-12	96906	SCREW,MACHINE	EA	2



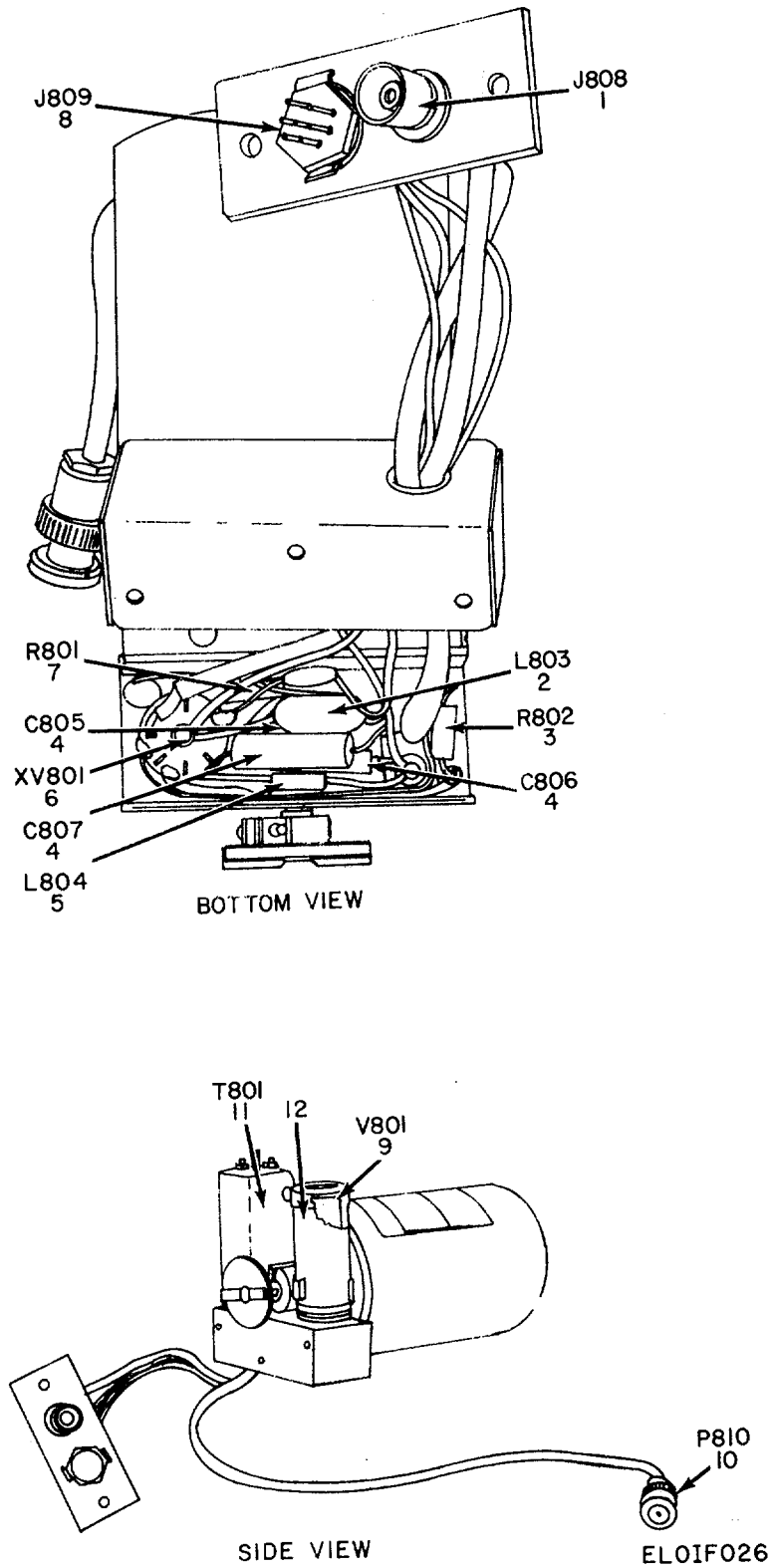


Figure 24. Oscillator, Radio Frequency, Variable Frequency, Bottom and Side Views.

## SECTION II

TM 11-5820-334-34P

(1) ILLUSTRATION		(2)	(3)	(4)	(5)	(6)	(7)	(8)
(a) FIG NO.	(b) ITEM NO.	SMR CODE	NATIONAL STOCK NUMBER	PART NUMBER	FSCM	DESCRIPTION  <i>USABLE ON CODE</i>	U/M	QTY INC IN UNIT
						GROUP 0107 OSCILLATOR,RADIO FREQUENCY, VARIABLE FREQUENCY		
24	1	PAFZZ	5935-00-244-5728	SCB41673	80063	CONNECTOR,RECEPTACLE,ELECTRICAL	EA	1
24	2	PAFZZ	5950-00-387-0489	C0047109	95265	COIL,RADIO FREQUENCY	EA	1
24	3	PAFZZ	5905-00-195-5514	RC20GF152K	81349	RESISTOR,FIXED,COMPOSITION	EA	1
24	4	PAFZZ	5910-00-821-4702	CP05A1KE103K3	56289	CAPACITOR,FIXED,PAPER	EA	3
24	5	PAFZZ	5950-00-683-7344	10107-3	82142	COIL,RADIO FREQUENCY	EA	1
24	6	PAFZZ	5935-00-260-0516	TS102P01	81350	SOCKET,ELECTRON TUBE	EA	1
24	7	PAFZZ	5905-00-114-5489	RCR20G823JS	81349	RESISTOR,FIXED,COMPOSITION	EA	1
24	8	PAFZZ	5935-00-636-5913	26-191	02660	INSERT,CONNECTOR,ELECTRICAL	EA	1
24	9	PAOZZ	5960-00-188-0987	2606	81349	ELECTRON TUBE	EA	1
24	10	PAFZZ	5935-00-259-0820	31-119	02660	CONNECTOR,PLUG,ELECTRICAL	EA	1
24	11	PAFZZ	5950-00-647-8096	SMD249235	80063	TRANSFORMER,INTERMEDIATE FREQUENCY	EA	1
24	12	PAOZZ	5960-00-860-7709	M24251-6-2	81349	SHIELD,ELECTRON TUBE	EA	1

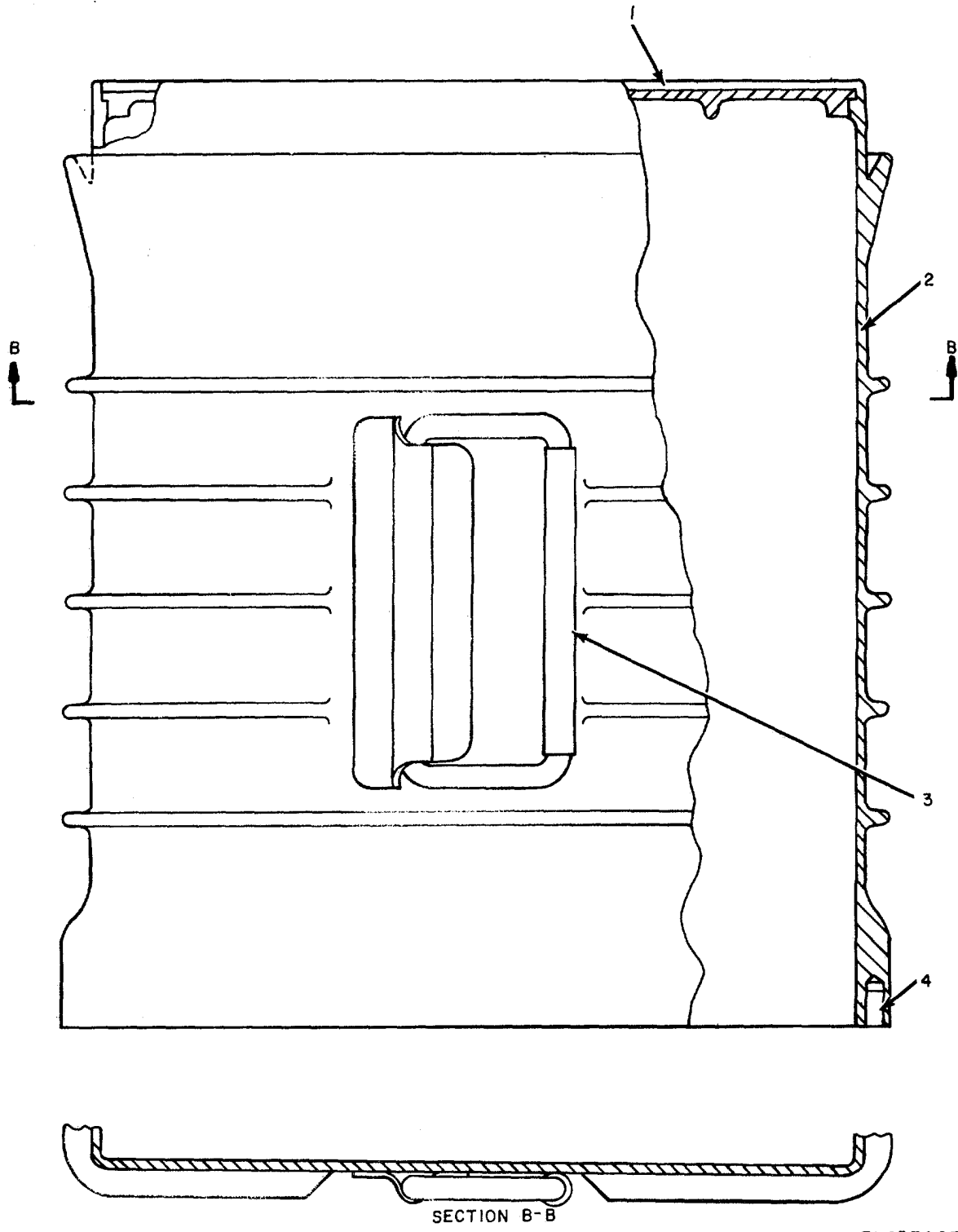


Figure 25. Case Assembly.

SECTION II

TM 11-5820-334-34P

(1)		(2)	(3)	(4)	(5)	(6)	(7)	(8)
ILLUSTRATION		SMR CODE	NATIONAL STOCK NUMBER	PART NUMBER	FSCM	DESCRIPTION  <i>USABLE ON CODE</i>	U/M	QTY INC IN UNIT
(a) FIG NO.	(b) ITEM NO.							
25	1	XDOZZ		SMD357519	80063	GROUP 02 CASE ASSE#MLY EXTRUSION,BOTTOM	EA	V
25	2	XDOLZ		SMD357518	80063	EXTRUSION.SIDE	EA	V
25	3	XDDZZ		SMD357515-2	800631	HANDLE ASSEMBLY	EA	2
25	4	XDOZZ		SMD357515-1	80063	INSERT,SCREWI,HREA0E	EA	5

**SECTION IV. NATIONAL STOCK NUMBER AND PART NUMBER INDEX**  
**NOTE: LATEST NATIONAL STOCK NUMBER AND PART NUMBER ARE**  
**INCLUDED AT END OF INDEX**

<u>STOCK NUMBER</u>	<u>FIGURE NO.</u>	<u>ITEM NO.</u>	<u>STOCK NUMBER</u>	<u>FIGURE NO.</u>	<u>ITEM NO.</u>
5310-00-058-3599	21	3	5365-00-282-0782	10	18
5305-C0-059-8451	20	49	5940-00-283-5386	3	21
53C5-00-059-8460	9	41			
5910-00-063-0695	12	18	5920-00-284-6187	4	17
5935-00-063-5189	20	20	5970-00-284-7900	20	44
5935-00-063-5189	23	1	5365-00-285-6688	19	25
5820-00-092-1018	2	2	5905-00-295-3410	8	21
5905-00-100-4745	20	16	5905-00-295-3410	20	10
5960-00-100-7111	19	8	5905-00-295-3410	23	24
6240-00-155-8714	11	2	5950-00-295-7823	4	10
			5910-00-299-2323	23	25
5960-00-166-7663	19	1	5930-00-301-4573	4	39
5960-00-166-7663	22	8	5365-00-322-4148	7	21
5905-00-171-2005	20	30	5820-00-322-4672	2	7
5905-00-185-6946	20	1	5950-00-387-0489	8	17
5905-00-185-8518	20	5	5950-00-387-0489	2	14
5905-00-185-8518	23	14	5950-00-381-0489	18	7
5955-00-187-1914	13	8	5950-00-387-0489	20	24
			5950-00-387-0489	23	8
5960-000-188-0827	17	3	5950-00-387-0489	24	2
5960-00-188-0827	19	5	5950-00-392-6557	6	18
5960-00-188-0827	22	6	5950-00-392-6558	6	19
			5950-00-392-6559	6	25
5960-00-188-0897	6	43	5950-00-392-6560	6	2
			5950-00-392-6561	6	1
5950-00-168-0087	24	9	5950-00-392-6562	6	42
5950-00-392-6563	6	6			
5960-00-188-3553	12	2	5950-00-392-6564	6	20
5960-00-188-3553	19	11	5950-00-392-6565	6	21
5905-00-192-3987	8	9	5950-00-392-6569	6	32
59C5-00-192-3987	12	13			
5905-00-192-3987	18	9	5905-00-409-7616	20	19
5905-OCG-192-3987	20	12	5905-00-409-7616	23	26
5905-00-192-3987	23	16	5820-00-448-6763	19	8
5905-00-195-5514	24	3	5820-00-463-3963	11	3
5905-00-195-6451	20	23	5935-00-501-5487	19	14
5905-00-195-645 L	23	19	5935-00-501-5488	19	6
5905-00-195-6502	5	14	5820-00-503-0921	2	4
59(5-00-195-6502	8	10	5820-00-503-1138	2	6
5935-00-201-3511	17	8	5820-C0-503-1649	1	1
5935-CC-201-3511	19	10	5820-00-503-2533	2	1
5310-00-209-1239	21	8	5930-00-503-4704	18	13
5310-00-209-1366	22	10	5950-00-521-6756	12	1
5340-00-20-7692	4	25	5820-00-537-4822	19	22
5910-00-227-0793	12	26	5820-00-537-4822	20	54
5910-00-241-0449	12	32	6625-00-538-9700	4	40
5935-00-244-5728	5	5	5905-00-539-3234	18	15
5935-00-244-5728	8	7	5940-00-542-9890	10	7
5935-00-244-5728	24		5310-00-543-4652	9	33
5905-00-245-0023	20	36	5310-00-543-4652	20	59
S955-00-248-0686	13	3	5910-00-543-9577	20	28
591-00-257-0662	4	13	5820-00-545-7202	2	3
59 0-00-257 -0662	5	15	5330-00-545-7491	4	34
5940-00-258-5327	20	61	5930-00-546-6287	4	1
5945-00-258-9852	19	16	5820-00-547-3672	6	27
5935-00-259-0820	4	20	5820-00-547-3673	6	44
5935-00-259-0820	24	10	5930-00-548-6542	9	21
5945-00-259-6446	4	4	5930-00-548-9455	18	11
5945-00-259-6446	20	37	5935-00-C549-1699	7	8
5935-00-26C-0516	8	12	5935-00-549-1699	8	14
5935-00-260-0516	12	12	5935-00-549-1699	12	4
5935-00-26C-0516	18	4	5935-00-549-2646	4	9
5935-00-260-0516	20	3	5310-00-550-3715	1	11
5935-00-260-0516	23	4	5905-00-556-5228	18	16
5935-00-260-0516	24	6	5950-00-568-4844	19	7
5330-00-260-9311	3	14	5820-00-571-1836	6	28
5910-00-264-9420	12	17	5820-CO-571-1837	6	29
5910-00-264-9420	12	31	5820-00-571-1838	6	4
5910-00-264-9427	8	4	5820-00-571-1839	6	3
5910-C00-270-4853	12	11	5820-00-571-2556	6	26
591i-00-270-4853	23	18	5961-00-577-6131	21	16
5310-00-270-8810	21	10	5310-00-596-7693	10	2
5905-00-279-1866	20	13	5B65-00-598-1300	10	12
5905-00-279-2672	20	35	5310-00-616-3554	15	4
			5310-00-616-3554	17	5
			5310-00-619-1148	21	9
5930-00-636-4625	12	15			
5920-00-280-8344	4	19	5935-00-636-5913	12	5
5910-60-280-8381	8	11	5935-00-636-5913	24	8
5910-00-280-8381	12	7	5910-00-643-9141	5	13

SECTION IV. NATIONAL STOCK NUMBER AND PART NUMBER INDEX

<u>STOCK NUMBER</u>	<u>FIGURE NO.</u>	<u>ITEM NO.</u>	<u>STOCK NUMBER</u>	<u>FIGURE NO.</u>	<u>ITEM NO.</u>
5930-00-644-0229	9	10	5905-00-686-9997	21	26
5930-00-644-2929	4	23	5905-00-691-0195	21	40
5950-00-645-4583	6	22	5365-00-697-1728	5	4
5950-00-645-4584	6	37	5365-00-697-1728	6	16
5950-00-645-4660	12	6	5930-00-697-3379	9	20
5950-00-647-8096	24	11	5955-00-709-5335	13	9
5950-00-648-1977	17	2	5961-00-724-6904	21	24
5950-00-648-2370	17	4	5905-00-726-3807	21	42
5950-00-648-2385	19	3	5955-00-734-4326	13	12
5910-00-649-3022	23	23	5310-00-734-5661	9	5
t935-00-660-5590	19	12	6680-00-752-7855	11	9
595C-0-660-7667	6	38	5930-00-755-5416	4	1
5940-00-665-5764	18	21	3020-00-777-1417	11	30
5940-00-665-5764	20	41			
5910-00-666-7825	4	33	5960-00-777-3235	6	40
5910-00-666-8877	18	6	5360-00-777-6817	22	2
5910-00-666-8877	20	18	5955-00-786-1497	13	15
5955-00-667-2409	13	13	5935-00-168-8486	7	18
5955-00-667-2436	13	17	5305-00-805-9748	23	10
5955-00-667-4564	22	3	5905-00-806-3622	4	29
5910-00-667-5565	20	25	5905-00-806-3623	4	30
5910-00-667-5565	23	20	5905-00-806-3627	18	1
5355-00-667-9002	3	5	5905-C0-806-628	18	18
5910-00-668-7937	12	29	5930-00-806-6113	18	35
5910-00-669-3636	8	6	3020-00-818-9463	5	7
5910-00-669-3636	18	3	5935-00-819-4986	20	22
5910-00-669-3636	20	8	5935-00-812-4936	23	7
5910-00-669-3636	23	3	5950-00-612-6106	19	13
5905-00-681-8823	21	27	5910-00-842-2292	8	20
5905-00-683-2246	21	34	5955-00-842-3941	13	18
5950-00-683-1344	8	13	5310-00-934-9747	9	31
5950-00-683-7344	24	5	5310-00-934-9747	19	26
5905-00-686-3356	21	29	5310--00-950-1310	17	15
5905-00-686-9996	21	41	5S55-00-951-9143	22	1

<u>PART NUMBER</u>	<u>FSCM</u>	<u>FIG. NO.</u>	<u>ITEM NO.</u>	<u>PART NUMBER</u>	<u>FSCM</u>	<u>FIG. NO.</u>	<u>ITEM NO.</u>
AN500C4-10	88044	18	43	CRILAYII333-333KC	81349	13	18
AN500C4-8	88044	18	47				
AN56506L2	88044	18	37	CR18U10333-333KC	81349	13	17
AN6227B5	88044	3	14	CR18U10500-00KC	81349	13	10
ASP222	80130	4	40	CR18U10666-67KC	81349	13	16
AX75818-1	79142	11	9				
CC20CH07OF	81349	20	2	CR18U12600KC	81349	13	19
CC20CJO300	81349	8	3				
CC20CK020D	81349	8	20	CR18UI5000KC	81349	13	2
				CR18U7000-00KC	81349	13	20
CMISBIOOJ	72136	12	29	CR18U8COOKC	81349	13	1
				CR18U8500-000KC	81349	13	8
CM5C200J	72136	12	31	CR18U9000KC	81349	13	3
CMI50120J	72136	12	30	CSR136105KS	81349	21	38
CM150240J	72136	12	32				
CS150270J	72136	12	21	C0047109	95265	8	17
CM15D430J	72136	12	24	C0047109	95265	12	14
CM150471G	81349	18	6	C0047109	95265	18	7
CM150471G	81349	20	18	C0047109	95265	20	24
				C0047109	95265	23	8
				C0047109	95265	24	2
CM15681G	72136	12	28	E882426	00656	1	11
				E882426	00656	12	7
CM150820J	81349	12	23				
CM1SE101J	72136	12	26	FO2GR500A	81349	4	19
CM1SE151G	72136	12	25	F04A5ROOA	81349	4	17
				MH9M	66099	7	18
CM15E300J	72136	8	4	MS15795-204	96906	17	15
				MS15795-304	96906	15	9
CMISE510G	72136	23	6	MS15795-308	96906	21	9
CMISE620J	72136	12	27	MS35200-10	96906	20	68
CM15E680G	72136	12	18	MS35200-11	96906	17	12
CM15E820G	72136	12	11	MS35200-11	96906	20	42
CM15E820G	72136	23	18	MS35200-12	96906	18	58
CR18AUI1000KC	81349	13	7	MS35200-12	96906	23	28
CR18AUI115000-OMHC	81349	13	11	MS35200-13	96906	9	34
CR18AUI2500-00KC	81349	13	13	MS35200-13	96906	17	10
CR18AUI3000-00KC	81349	13	9	MS35200-14	96906	17	9
CR18AU9500-000KC	81349	13	12	MS35200-22	96906	18	24
CR18AU9666-667KC	81349	13	15	MS35200-23	96906	7	28

SECTION IV. NATIONAL STOCK NUMBER AND PART NUMBER INDEX

PART NUMBER	FSCM	FIG. NO.	ITEM NO.	PART NUMBER	FSCM	FIG. NO.	ITEM NO.
MS535200-23	96906	22	13	RC20GF106K	81349	20	13
MS35200-27	96906	20	50	RC20GF124K	81349	20	26
MS35200-48	96906	20	47	RC20GF152K	81349	24	3
MS35216-10	96906	4	5	RC20GF155J	81349	8	19
MS535216-11	96906	7	13	RC20GF155J	81349	20	32
MS35216-11	96906	13	23	RC20GF182K	81349	20	35
MS35216-11	96906	18	22				
MS35216-1i	96906	20	48				
MS35216-12	56906	7	1				
MS35216-12	96906	15	3				
MS35216-12	96906	17	14				
MS35216-12	96906	20	58				
MS35216-12	96906	21	2	RC20GF332K	81349	5	14
MS35216-13	96906	5	11	RC20GF332K	81349	8	10
MS35216-13	96906	18	46	RC20GF471K	81349	20	30
MS35216-13	96906	20	39	RC20GF472K	81349	20	23
MS35216-14	S6906	7	6	RC20GF472K	81349	23	19
MS35216-16	96906	20	49	RC20GF473K	81349	8	21
MS35216-17	96906	3	2	RC20GF473K	81349	20	10
MS35216-18	96906	7	26	RC20GF473K	81349	23	24
MS35216-22	96906	3	10	RC20GF474K	81349	20	1
MS35216-22	96906	9	11	RC20GF560K	81349	20	31
MS35216-22	96906	15	1				
MS35216-23	96906	4	36	RC20GF682K	81349	20	36
MS35216-23	96906	9	29				
MS35216-23	96906	18	31				
MS35216-23	96906	20	64				
MS35216-23	96906	22	11				
MS35216-24	96906	3	15	RC47U	81349	22	1
MS35216-24	96906	9	16	RN20X6811F	d1349	18	15
MS35216-24	96906	19	24				
MS35216-25	96906	9	41	RN7081822F	81349	18	16
MS35216-40	96906	10	1	RW30G121	81349	20	16
MS35216-41	96906	9	22				
MS35333-70	96906	7	11				
MS35335-15	96906	15	4	RW59V5R1	81349	21	32
MS35335-16	96906	4	31	SC816552	80063	3	3
MS35335-2	96906	9	40	SC841673	80063	8	7
MS35335-2	96906	19	23	SC841673	80063	24	1
MS35335-29	96906	17	5	SCC16495	80063	3	27
MS35335-3	96906	10	2	SMA144617	80063	4	23
MS535335-57	96906	21	3	SMA144618	80063	4	7
MS535335-58	96906	22	10	SMA146616	80063	4	1
HS35335-60	96906	21	8	SM8143282	80063	3	16
MS35337-2	96906	5	9	SM8143409	80063	18	54
MS35337-2	96906	10	9	SM8143506	80063	20	53
MS35337-78	96906	9	5	SM8144329	80063	3	28
MS35338-21	96906	3	1	SM8144332	80063	3	12
MS35338-21	96906	18	25	SM8144359	80063	4	14
MS535338-22	96906	3	11	SM8144361-2	80063	4	26
MS35338-78	96906	7	25	SM8144362	80063	4	27
MS35338-78	96906	15	10	SM8144451	80063	10	11
MS35649-44	96906	5	10	SM8144451	80063	18	29
MS35649-44	96906	17	16	SM8144517	80063	3	5
MS35650-104	96906	21	10	SM8144527	80063	18	52
MS51017-33	96906	9	38	SM8144527-1	80063	23	12
MS51053-112	96906	23	10	SMB144527-2	80063	9	18
MT836URR	80058	1	12	SM8144527-2	80063	23	9
NA15X2R70J	81349	18	10	SM8144528-2	80063	10	20
QRE18SL	81312	4	12	SM8144529	80063	23	5
RC07GF473J	81349	21	34	SM8144533	80063	18	35
RC07GF562J	81349	21	40	SM8144536	80063	18	1
RC07GF682J	81349	21	26	SM8144537	80063	18	51
RC07GF684J	81349	21	27	SM8144540	80063	22	5
RC07GF82LJ	81349	21	41	SM8144542	80063	18	30
RC07GF823J	81349	21	29	SM8144548	80063	18	56
RC0TGF912J	81349	21	42	SM8144550	80063	18	48
				SM8144553	80063	18	26
				SM8144559	80063	18	57
				SM8144563	80063	19	15
				SM8144564	80063	20	71
				SM8144566	80063	20	43
RC20GF103K	81349	20	5	SM8144567	80063	19	19
RC20GF103K	81349	23	14	SM8144568	80063	19	21
RC20GF104K	81349	8	9	SM8144569	80063	20	51
RC20GF104K	81349	12	13	SM8144570	80063	20	54
RC20GF104K	81349	18	9	SM8144573	80063	19	20
RC20GF104K	81349	20	12	SM8144576	80063	20	55
RC20GF104K	81349	23	16	SM8144579	80063	20	65
RC20GF105K	81349	20	19	SM8144582	80063	20	56
RC20GF105K	81349	23	26				

SECTION IV. NATIONAL STOCK NUMBER AND PART NUMBER INDEX

PART NUMBER	FSCM	FIG. NO.	ITEM NO.	PART NUMBER	FSCM	FIG. NO.	ITEM NO.
SMB144586	80063	20	38	SMB249250	80063	5	3
SMB144596	80063	22	12	SMB249250	80063	9	4
SMB144611	80063	23	22	SMB249256	80063	7	24
SMB144611-5	80063	23	25	SMB249256	80063	18	23
SMB144622-1	80063	4	30	SMB249256	80063	20	60
SMB144622-2	80063	4	29	SMB249257	80063	4	6
SMB144625	80063	4	24	SMB249257	80063	6	14
SMB144626	80063	4	34	SMB249257	80063	20	67
SMB144628	80063	3	20	SMB249265	80063	7	15
SMB144629	80063	3	23	SMB283160	80063	10	16
SMB144630	80063	4	38	SMB283161	80063	11	8
SMB144631	80063	3	21	SMB283169	80063	18	36
SMB144632	80063	3	13	SMB283169	80063	23	13
SMB144634	80063	3	19	SMB283171-1	80063	10	18
SMB144635	80063	3	17	SMB283173-1	80063	3	29
SMB144638	80063	4	33	SMB283174-1	80063	5	4
SMB144639	80063	4	2	SMB283174-1	80063	6	16
SMB144660	80063	5	7	SMB283174-3	80063	10	12
SMB144666	80063	4	28	SMB283200	80063	8	1
SMB144672	80063	4	3	SMB283201	80063	7	21
SMB144693	80063	6	11	SMB283234	80063	8	18
SMB144694	80063	6	17	SMB283234	80063	20	27
SMB144695	80063	9	23	SMB340312	80063	21	11
SMB144696	80063	9	24	SMB356224	80063	21	14
SMB144698	80063	6	15	SMB356721	80063	21	1
SMB144700	80063	6	34	SMB356722	80063	21	20
SMB144703	80063	10	3	SMB356726	80063	21	5
SMB144704	80063	11	6	SMB356729	80063	21	7
SMB144705	80063	10	5	SMB356729-1	80063	21	30
SMB144708	80063	6	9	SMB356730	80063	21	23
SMB144709	80063	10	19	SMB356732	80063	21	28
SMB144713	80063	9	7	SMB356732-2	80063	21	31
SMB144717	80063	15	7	SMB356732-3	80063	21	37
SMB144718	80063	15	5	SMB356733	80063	21	36
SMB144719	80063	15	6	SMB356733-1	80063	21	22
SMB144720	80063	15	11	SMB356733-2	80063	21	33
SMB144721	80063	16	3	SMB356733-3	80063	21	39
SMB144726	80063	13	22	SMB356733-4	80063	21	35
SMB144748	80063	14	2	SMB356754	80063	21	19
SMB144762-1	80063	7	27	SMB356755	80063	2	1
SMB144767	80063	15	8	SMB356778	80063	9	37
SMB144780	80063	6	13	SMC143429-1	80063	12	3
SMB144784	80063	9	13	SMC143429-1	80063	19	9
SMB144791	80063	9	14	SMC143770	80063	4	4
SMB144803	80063	6	10	SMC143770	80063	20	37
SMB144842	80063	11	1	SMC144538	80063	18	39
SMB144884	80063	9	21	SMC144539	80063	18	32
SMB144885	80063	9	1	SMC144544	80063	18	20
SMB144886	80063	9	20	SMC144545	80063	18	44
SMB144890	80063	9	3	SMC144546	80063	18	45
SMB144892	80063	9	19	SMC144547	80063	18	50
SMB144893	80063	7	29	SMC144556	80063	17	13
SMB144896	80063	7	23	SMC144565	80063	19	7
SMB145035	80063	14	1	SMC144571	80063	19	13
SMB178483-2	80063	9	28	SMC144572	80063	19	16
SMB178486	80063	10	7	SMC144589	80063	19	18
SMB178517	80063	18	11	SMC144594	80063	2	7
SMB178518	80063	18	13	SMC144600	80063	22	14
SMB178526	80063	17	11	SMC144607	80063	23	27
SMB178526	80063	19	17	SMC144637	80063	4	10
SMB178564	80063	19	22	SMC144642	80063	4	25
SMB178749	80063	6	22	SMC144661	80063	5	12
SMB178751	80063	6	37	SMC144706	80063	6	12
SMB178759	80063	9	30	SMC144712	80063	6	28
SMB178789	80063	9	10	SMC144716	80063	2	1
SMB178830	80063	10	4	SMC144729	80063	13	21
SMB178858	80063	2	5	SMC144731	80063	16	1
SMB248829-3	80063	3	6	SMC144754	80063	12	16
SMB248867	80063	10	14	SMC144774	80063	6	30
SMB248869	80063	10	15	SMC144793	80063	6	7
SMB248870	80063	10	13	SMC144805	80063	6	36
SMB248873	80063	10	17	SMC144809	80063	6	5
SMB249201	80063	9	39	SMC144817	80063	6	23
SMB249226-1	80063	18	49	SMC144820	80063	6	41
SMB249226-2	80063	9	42	SMC144877	80063	11	7
SMB249226-2	80063	18	42	SMC144887	80063	7	7
SMB249226-6	80063	9	25				



SECTION IV. NATIONAL STOCK NUMBER AND PART NUMBER INDEX

PART NUMBER	FSCM	FIG. NO.	ITEM NO.	PART NUMBER	FSCM	FIG. NO.	ITEM NO.
SMC144889	80063	7	32	SMD144686-1	80063	6	44
SMC144891-1	80063	7	31	SMD144686-2	80063	6	1
SMC144891-2	80063	7	30	SMD144687	80063	6	6
SMC144898	80063	7	9	SMD144688	80063	6	20
SMC145036	80063	12	15	SMD144689	80063	6	21
SMD144690	80063	6	38				
SMD144691	80063	6	32				
SMC178506	80063	22	4	SMD144692	80063	6	42
SMC178695	80063	6	31	SMD144724	80063	15	12
SMC283166-2	80063	16	2	SMD144770	80063	12	1
SMC2832005-1	80063	18	18	SMD144771	80063	12	6
SMC356720	80063	19	8	SMD144798	80063	6	33
SMC357217	80063	21	15	SMD144826	80063	11	5
SMC357233	80063	21	25	SMD144841	80063	11	4
SMC357233-3	80063	21	13	SMD144882-10	80063	7	4
SMC357233-4	80063	21	12	SMD144882-11	80063	7	3
SMC357256	80063	21	17	SMD144882-13	80063	7	12
SMC357257	80063	21	18	SMD144682-14	80063	7	2
SMD144511	80063	2	6	SMD144882-18	80063	7	16
SMD144532	80063	2	3	SMD144882-2	80063	7	22
SMD144532-11	80063	17	6	SMD144882-20	80063	7	20
SMD144532-12	80063	18	28	SMD144882-21	80063	9	8
SMD144532-13	80063	18	41	SMD144882-22	80063	7	33
SMD0144532-14	80063	18	33	SMD144882-3	80063	7	L4
SMD144532-15	80063	18	27	SMD144882-4	80063	9	27
SMD144532-4	80063	18	38	SMD144882-5	80063	9	26
SMD144532-5	80063	18	55	SMD144882-6	80063	9	9
SMD144532-6	80063	18	34	SMD144882-7	80063	7	17
SMD144532-7	80063	18	53	SMD144882-8	80063	9	2
SMD144532-8	80063	17	7	SMD144b82-9	80063	7	19
SMD144532-9	80063	18	40	SMD144916	80063	11	3
SMD144534	80063	17	2	SMD144992	80063	6	27
SMD144535	80063	17	4	SMD145003	80063	6	26
SMD144561	80063	2	4	SMD145011	80063	6	29
SMD144561-17	80063	20	44	SMD14S882	80063	9	36
SMD144561-20	80063	20	69	SMD249235	80063	24	11
SMD144561-21	80063	20	63	SMD357513	80063	21	4
SMD0144561-22	80063	20	52	SMD357513-1	80063	21	6
SMD144562	80063	19	3	SMD357515	80063	1	1
SMD144592-20	80063	23	1	SMD357515-1	80063	25	4
SMD144595	80063	22	2	SMD357515-2	80063	25	3
SMD144610-"10	80063	4	11	SMD357518	80063	25	2
SMD144610-11	80063	4	15	SMD357519	80063	25	1
SMD144610-12	80063	3	25	TG0-1C	71034	22	3
SMD144610-13	80063	4	35	TS101P01	81350	20	20
SMD144610-14	80063	3	18	TS101P01	81350	23	1
SMD144610-16	80063	3	24	TS102P01	81350	8	12
SMD144610-17	80063	4	37	TS102P01	81350	12	12
SMD144610-18	80063	3	7	TS102P01	81350	18	4
SMD144610-19	80063	3	26	TS102P01	81350	20	3
SMD144610-2	80063	3	9	TS102P01	81350	23	4
SMD144610-20	80063	4	16	TS102P01	81350	24	6
SMD144610-22	80063	4	21	TS103P01	81350	0	22
SMD144610-23	80063	4	8	TS103P01	81350	3	1
SMD144610-6	80063	3	8	UG290AU	80058	7	8
SMD144610-7	80063	4	32	UG290AU	80058	9	10
SMD144627	80063	3	22	U79U	80058	4	9
SMD144657	80063	3	4				
SMD144659	80063	5	1	VG-1]	96906	5	2
SMD144659-4	80063	5	6	10107-3	82142	8	13
SMD144659-6	80063	5	13	101C7-3	82142	12	10
SMD144659-7	80063	5	5	10107-3	82142	24	5
SMD144678	80063	2	2	102-356	80063	9	31
SMD144678-10	80063	6	8	102-356	80063	19	26
SMD144678-11	80063	9	17	103A1	92825	20	61
SMD144678-12	80063	10	6	103A2	92825	18	21
SMD144678-13	80063	9	32	103A2	92825	20	41
SMD144678-14	80063	6	35	104-15-8L	96906	7	34
SMD144678-15	80063	10	10	104-1S--L	96906	20	45
SMD144678-16	80063	10	8	104-33-3A	80063	20	62
\$MD144678--4	80063	9	15	105-602-5	74970	19	14
SMD144678-5	80063	9	35	105603-5	74970	19	6
SMD0144678-8	80063	9	6				
SMD144678-9	80063	9	12	12AU7	81349	19	1
SMD144679	80063	6	18	12AU7	81349	22	8
SMD144680	80063	6	19	1220-02	78189	20	70
SMD144681-1	80063	6	25	126-806	02660	19	12
SMD144681-2	80063	6	4	160-110-4	74970	23	23
SMD144683-1	80063	6	2	1702-00	78189	9	33
SMD144683-2	80063	6	3	1702-00	78189	20	59

**SECTION IV.**

**NATIONAL STOCK NUMBER AND PART INDEX**

<b>PART NUMBER</b>	<b>FSCM</b>	<b>FIG. NO.</b>	<b>ITEM NO.</b>	<b>PART NUMBER</b>	<b>FSCM</b>	<b>FIG. NO.</b>	<b>ITEM NO.</b>
1720-00	78189	7	5	31-119	02660	4	20
196P10301S4	56289	8	6	31-119	02660	24	10
196P10301S4	56289	18	3	313	08806	11	2
196P10301S4	56289	20	8	342006	75915	4	18
196P10301S4	56289	23	3	4-40NC2B1-4	77250	20	57
196P10302S1	56289	12	8	5133-15	79136	19	25
6-32NC2B3-32	83385	20	66				
6AJ5	81349	12	2				
196P47301S4	56289	20	28	6AJ5	81349	19	11
2N336	80131	21	16	605	72136	20	25
2N498A	80131	21	24	605	72136	23	20
259-0590-00	13499	4	39	7535335-16	96906	15	2
26-191	02660	12	5	8-32NC2B3-32	77250	20	46
26-191	02660	24	8	82-830	02660	7	8
82-830	02660	8	14				
26A6	81349	17	3	82-830	02660	12	4
26A6	81349	19	5	86P47401S5	56289	7	10
26A6	81349	22	6	88-1666MOD	78488	6	45
26A7GT	81349	19	8	88-2086MOD	78488	6	24
26C6	81349	6	43				
26D6	81349	24	9				
26FZ6	49671	6	40	96P47301S2	56289	4	13
29F496	08806	20	17	96P47301S2	56289	5	15
300-1	80063	12	17				

**LATEST NATIONAL STOCK NUMBER ASSIGNMENTS**

<b>STOCK NUMBER</b>	<b>FIGURE NO.</b>	<b>ITEM NO.</b>	<b>STOCK NUMBER</b>	<b>FIGURE NO.</b>	<b>ITEM NO.</b>
5955-00-058-3937	13	14	5905-00-279-1754	8	19
5905-00-081-6137	21	32	5905-00-279-1754	20	32
5955-00-089-3073	13	6	5820-00-396-3195	1	12
5905-00-106-1282	20	9	5910-00-495-0042	21	38
5905-00-106-1282	23	21	5920-00-553-4420	4	18
5905-00-110-0196	8	5	5910-00-681-6994	12	25
5905-00-110-0196	12	9	5950-00-683-7344	12	10
5905-00-110-0196	18	2	5950-00-698-0222	6	45
5905-00-110-0196	20	29	5955-00-709-5430	13	10
5905-00-110-0196	8	5	5955-00-728-5535	13	11
5905-00-110-0196	12	9	5960-00-860-7709	6	39
5905-00-110-0196	18	2	5960-00-860-7709	17	1
5905-00-110-0196	20	29	5960-00-860-7709	19	4
5905-00-111-8357	18	8	5960-00-860-7709	2	27
5905-00-114-5393	5	8	5960-00-860-7709	24	2
5905-00-114-5393	20	6	5960-00-860-7710	19	2
5905-00-114-5489	24	7	5960-00-860-7710	22	9
5905-00-156-0435	20	33	5955-00-892-3760	13	5
5910-00-901-8949	20	21			
6240-00-179-1811	5	2	5910-00-926-9776	12	27
5905-00-247-8682	20	15	5910-00-984-8373	20	11
5905-00-247-8732	20	34			
5935-00-258-8570	4	12	5910-00-984-8373	23	17

**LATEST PART NUMBER ASSIGNMENTS**

<b>PART NUMBER</b>	<b>FSCM</b>	<b>FIG. NO.</b>	<b>ITEM NO.</b>	<b>PART NUMBER</b>	<b>FSCM</b>	<b>FIG. NO.</b>	<b>ITEM NO.</b>
CM15ED300G03	81349	20	21	M24251-6-5	81349	22	9
CM15FD101GP3	81349	20	11	RCR20G102JS	81349	8	5
CM15FD101GP3	81349	23	17	RCR20G102JS	81349	12	9
CR18AU100-000000MHZ	81349	13	5	RCR20G102JS	81349	18	2
CR18AU12-000000MHZ	81349	13	14	RCR20G102JS	81349	20	29
CR18AU14-000000MHZ	81349	13	6	RCR20G223JS	81349	20	9
CR18AU6200-000KC	81349	13	4	RCR20G223JS	81349	23	21
CSR136105KS	81349	21	38	RCR20G224JS	81349	5	8
M24251-6-2	81349	6	39	RCR20G224JS	81349	20	6
M24251-6-2	81349	17	1	RCR20G681JS	81349	18	8
M24251-6-2	81349	19	4	RCR20G823JS	81349	24	7
M24251-6-2	81349	22	7	RCR20G825JS	81349	20	15
M24251-6-2	81349	24	12	RCR32G471JS	81349	20	34
M24251-6-5	81349	19	2	RCR42G390JS	81349	20	33

NOTE; SEE PAGE 72 FOR ADDITIONAL LATEST NATIONAL STOCK NUMBER AND PART NUMBER ASSIGNMENTS

SECTION IV. NATIONAL STOCK NUMBER AND PART NUMBER INDEX

<u>STOCK NUMBER</u>	<u>FIGURE NO.</u>	<u>ITEM NO.</u>	<u>STOCK NUMBER</u>	<u>FIGURE NO.</u>	<u>ITEM NO.</u>
5910-00-821-4702	18	17			
5910-00-044-4067	12	24	5910-00-821-4702	23	2
5910-00-060-9619	8	8	5910-00-821-4702	24	4
5910-00-060-9619	23	15	5910-00-832-5722	12	22
5905-00-104-8335	20	26	5910-00-833-4408	20	14
5905-00-104-8345	20	31	5910-00-844-6710	8	15
5905-00-114-5398	18	5	5910-00-850-0540	23	6
5905-00-114-5398	20	7	5910-00-855-2389	8	3
5905-00-224-6388	2	14	5910-00-892-9904	12	20
5910-00-543-0506	8	16	5910-00-899-4395	18	12
5910-00-899-4395	20	4			
5905-00-809-3275	4	22	5910-00-984-8373	12	19
5905-00-809-3275	8	2	5905-00-993-2380	20	40
5910-00-818-9758	18	19			

ADDITIONAL LATEST PART NUMBER ASSIGNMENTS

<u>PART NUMBER</u>	<u>FSCM</u>	<u>FIG. NO.</u>	<u>ITEM NO.</u>	<u>PART NUMBER</u>	<u>FSCM</u>	<u>FIG. NO.</u>	<u>ITEM NO.</u>
CC22CK1R5C	81349	8	16	CP05A3UEIO3K3	81349	24	4
CM15CD120-J03	81349	20	40	CP09A1KB104K3	81349	18	12
CM15ED390G03	81349	12	20	CP09A1KB104K3	81349	20	4
CM15FD101GP3	81349	12	19	CP10A1K3103K3	81349	8	15
CM15FD511G03	81349	8	8	CP12A1KF103K3	81349	20	14
CM15FD511G03	81349	23	15	MILR55182-5	81349	2	14
CM15FD750G03	81349	12	22	RRCR20G225JS	81349	18	5
CP05A1KB224K3	81349	18	19	RRCR20G225JS	81349	20	7
CP05A1KE103K3	81349	18	17	RW30V820	81349	4	22
CP05AiKE103K3	81349	23	2	RW30V820	81349	8	2

By Order of the Secretary of the Army:

**BERNARD W. ROGERS**  
*General, United States Army*  
*Chief of Staff*

Official:


**PAUL T. SMITH**  
*Major General, United States Army*  
*The Adjutant General*

DISTRIBUTION:

To be distributed in accordance with DA Form 12-51, Direct/General Support TMP literature requirements for R-392/URR.

\* U.S. GOVERNMENT PRINTING OFFICE : 1990 0 - 262-912 (30515)

RECOMMENDED CHANGES TO EQUIPMENT TECHNICAL PUBLICATIONS

 <div style="border: 1px solid black; border-radius: 15px; padding: 5px; display: inline-block; margin-left: 20px;"> <p style="margin: 0;"><i>THEN...JOT DOWN THE DOPE ABOUT IT ON THIS FORM. CAREFULLY TEAR IT OUT, FOLD IT AND DROP IT IN THE MAIL.</i></p> </div>		SOMETHING WRONG WITH PUBLICATION		
		FROM: (PRINT YOUR UNIT'S COMPLETE ADDRESS)		
PUBLICATION NUMBER		DATE SENT		
PUBLICATION DATE		PUBLICATION TITLE		
BE EXACT PIN-POINT WHERE IT IS				
PAGE NO.	PARA- GRAPH	FIGURE NO.	TABLE NO.	<p style="text-align: center; font-weight: bold;">IN THIS SPACE, TELL WHAT IS WRONG AND WHAT SHOULD BE DONE ABOUT IT.</p>
PRINTED NAME, GRADE OR TITLE AND TELEPHONE NUMBER			SIGN HERE	

# The Metric System and Equivalents

## Linear Measure

1 centimeter = 10 millimeters = .39 inch  
 1 decimeter = 10 centimeters = 3.94 inches  
 1 meter = 10 decimeters = 39.37 inches  
 1 dekameter = 10 meters = 32.8 feet  
 1 hectometer = 10 dekameters = 328.08 feet  
 1 kilometer = 10 hectometers = 3,280.8 feet

## Weights

1 centigram = 10 milligrams = .15 grain  
 1 decigram = 10 centigrams = 1.54 grains  
 1 gram = 10 decigram = .035 ounce  
 1 decagram = 10 grams = .35 ounce  
 1 hectoGram = 10 decagrams = 3.52 ounces  
 1 kiloGram = 10 hectoGrams = 2.2 pounds  
 1 quintal = 100 kiloGrams = 220.46 pounds  
 1 metric ton = 10 quintals = 1.1 short tons

## Liquid Measure

1 centiliter = 10 milliliters = .34 fl. ounce  
 1 deciliter = 10 centiliters = 3.38 fl. ounces  
 1 liter = 10 deciliters = 33.81 fl. ounces  
 1 dekaliter = 10 liters = 2.64 gallons  
 1 hectoliter = 10 dekaliters = 26.42 gallons  
 1 kiloliter = 10 hectoliters = 264.18 gallons

## Square Measure

1 sq. centimeter = 100 sq. millimeters = .155 sq. inch  
 1 sq. decimeter = 100 sq. centimeters = 15.5 sq. inches  
 1 sq. meter (centare) = 100 sq. decimeters = 10.76 sq. feet  
 1 sq. dekameter (are) = 100 sq. meters = 1,076.4 sq. feet  
 1 sq. hectometer (hectare) = 100 sq. dekameters = 2.47 acres  
 1 sq. kilometer = 100 sq. hectometers = .386 sq. mile

## Cubic Measure

1 cu. centimeter = 1000 cu. millimeters = .06 cu. inch  
 1 cu. decimeter = 1000 cu. centimeters = 61.02 cu. inches  
 1 cu. meter = 1000 cu. decimeters = 35.31 cu. feet

## Approximate Conversion Factors

To change	To	Multiply by	To change	To	Multiply by
inches	centimeters	2.540	ounce-inches	Newton-meters	.007062
feet	meters	.305	centimeters	inches	.394
yards	meters	.914	meters	feet	3.280
miles	kilometers	1.609	meters	yards	1.094
square inches	square centimeters	6.451	kilometers	miles	.621
square feet	square meters	.093	square centimeters	square inches	.155
square yards	square meters	.836	square meters	square feet	10.764
square miles	square kilometers	2.590	square meters	square yards	1.196
acres	square hectometers	.405	square kilometers	square miles	.386
cubic feet	cubic meters	.028	square hectometers	acres	2.471
cubic yards	cubic meters	.765	cubic meters	cubic feet	35.315
fluid ounces	milliliters	29.573	cubic meters	cubic yards	1.308
pints	liters	.473	milliliters	fluid ounces	.034
quarts	liters	.946	liters	pints	2.113
gallons	liters	3.785	liters	quarts	1.057
ounces	grams	28.349	liters	gallons	.264
pounds	kiloGrams	.454	grams	ounces	.035
short tons	metric tons	.907	kiloGrams	pounds	2.205
pound-feet	Newton-meters	1.356	metric tons	short tons	1.102
pound-inches	Newton-meters	.11296			

## Temperature (Exact)

°F	Fahrenheit temperature	5/9 (after subtracting 32)	Celsius temperature	°C
----	------------------------	----------------------------	---------------------	----



This fine document...

Was brought to you by me:



## [Liberated Manuals -- free army and government manuals](#)

Why do I do it? I am tired of sleazy CD-ROM sellers, who take publicly available information, slap “watermarks” and other junk on it, and sell it. Those masters of search engine manipulation make sure that their sites that sell free information, come up first in search engines. They did not create it... They did not even scan it... Why should they get your money? Why are not letting you give those free manuals to your friends?

I am setting this document FREE. This document was made by the US Government and is NOT protected by Copyright. Feel free to share, republish, sell and so on.

I am not asking you for donations, fees or handouts. If you can, please provide a link to [liberatedmanuals.com](http://liberatedmanuals.com), so that free manuals come up first in search engines:

<A HREF=<http://www.liberatedmanuals.com/>>Free Military and Government Manuals</A>

- Sincerely  
Igor Chudov  
<http://igor.chudov.com/>
- [Chicago Machinery Movers](#)