
TECHNICAL MANUAL

DIRECT SUPPORT MAINTENANCE REPAIR PARTS
AND SPECIAL TOOLS LISTS
(INCLUDING DEPOT MAINTENANCE REPAIR
PARTS AND SPECIAL TOOLS)
FOR
TELEPHONE SET TA-341B/TT
(NSN 5805-01-039-3499)

HEADQUARTERS, DEPARTMENT OF THE ARMY

3 APRIL 1981

TECHNICAL MANUAL }
No. 11-5805-384-30P }

HEADQUARTERS
DEPARTMENT OF THE ARMY
WASHINGTON, DC, 3 April 1981

**DIRECT SUPPORT MAINTENANCE REPAIR PARTS
AND SPECIAL TOOLS LISTS
(INCLUDING DEPOT MAINTENANCE REPAIR
PARTS AND SPECIAL TOOLS)
FOR
TELEPHONE SET TA-341B/TT
(NSN 5805-01-039-3499)**

Current as of 20 October 1980

REPORTING ERRORS AND RECOMMENDING IMPROVEMENTS

You can help improve this manual. If you find any mistakes or if you know of a way to improve the procedures, please let us know. Mail your letter, DA Form 2028 (Recommended Changes to Publications and Blank Forms), or DA Form 2028-2 located in back of this manual direct to Commander, US Army Communications and Electronics Materiel Readiness Command, ATTN: DRSEL-ME-MQ, Fort Monmouth, NJ 07703.

In either case, a reply will be furnished direct to you.

Table of Contents

	Page	Illus Figure
SECTION I. Introduction	1	
II. Repair Parts List.....	5	
Group 00 Telephone Set TA-341B/TT.....	5	1
01 Telephone Set Assembly.....	7	2
0101 Base Plate Assembly.....	13	3
Battery Case and Cover Assemblies.....	17	4
Handset Handle Assembly.....	19	5
010101 Printed Circuit Card Assembly	23	6
010102 Hookswitch Assembly.....	27	7
SECTION III. Special Tools List (Not applicable)		
IV. National Stock Number and Part Number Index	28	

*This manual supersedes so much of TM 11-5805-384-34, 29 November 1974, as pertains to repair parts and special tools list.

SECTION I INTRODUCTION

1. Scope

This manual lists spares and repair parts; special tools; special test, measurement, and diagnostic equipment (TMDE), and other special support equipment required for performance of direct support maintenance of the TA-341B/TT. It authorizes the requisitioning and issue of spares and repair parts as indicated by the source and maintenance codes.

2. General

This Repair Parts and Special Tools List is divided into the following sections:

a. *Section II. Repair Parts List.* A list of spares and repair parts authorized for use in the performance of maintenance. The list also includes parts which must be removed for replacement of the authorized parts. Parts lists are composed of functional groups in numeric sequence, with the parts in each group listed in figure and item number sequence.

b. *Section III. Special Tools List. Not applicable.*

c. *Section IV. National Stock Number and Part Number Index.* A list, in National item identification number (NIIN) sequence, of all National stock numbers (NSN) appearing in the listings, followed by a list, in alphameric sequence, of all part numbers appearing in the listings. National stock numbers and part numbers are cross-referenced to each illustration figure and item number appearance.

3. Explanation of Columns

a. *Illustration.* This column is divided as follows:

(1) *Figure number.* Indicates the figure number of the illustration on which the item is shown.

(2) *Item number.* The number used to identify item called out in the illustration.

b. *Source, Maintenance, and Recoverability (SMR) Codes.*

(1) *Source code.* Source codes indicate the manner of acquiring support items for maintenance, repair, or overhaul of end items. Source codes are entered in the first and second positions of the Uniform SMR Code format as follows:

Code

Definition

PA - Item procured and stocked for anticipated or known usage.

AD - Item to be assembled at depot maintenance level.

XA - Item is not procured or stocked because the requirements for the item will result in the replacement of the next higher assembly.

XB - Item is not procured or stocked. If not available through salvage, requisition.

XD - A support item that is not stocked. When required, item will be procured through normal supply channels.

NOTE

Cannibalization or salvage may be used as a source of supply for any items source coded above except those coded XA and aircraft support items as restricted by AR 700-42.

(2) *Maintenance code.* Maintenance codes are assigned to indicate the levels of maintenance authorized to USE and REPAIR support items. The maintenance codes are entered in the third and fourth positions of the Uniform SMR Code format as follows:

(a) The maintenance code entered in the third position will indicate the lowest maintenance level authorized to remove, replace, and use the support item. The maintenance code entered in the third position will indicate one of the following levels of maintenance:

Code

Application/Explanation

O - Support item is removed, replaced, used at the organizational level.

F - Support item is removed, replaced, used at the direct support level.

D - Support items that are removed, replaced, used at depot, mobile depot, specialized repair activity only.

(b) The maintenance code entered in the fourth position indicates whether the item is to -be repaired and identifies the lowest maintenance level with the capability to perform complete repair (i.e., all authorized maintenance functions). This position will contain one of the following maintenance codes:

Code

Application/Explanation

D - The lowest maintenance level capable of complete repair of the support item is the depot level.

<i>Code</i>	<i>Application/Explanation</i>
-------------	--------------------------------

Z - Nonreparable. No repair is authorized.

- (3) *Recoverability code.* Recoverability codes are assigned to support items to indicate the disposition action on unserviceable items. The recoverability code is entered in the fifth position of the Uniform SMR Code format as follows:

<i>Recoverability codes</i>	<i>Definition</i>
-----------------------------	-------------------

Z - Nonreparable item. When unserviceable, condemn and dispose at the level indicated in position 3.

D - Repairable item. When beyond lower level repair capability, return to depot. Condemnation and disposal not authorized below depot level.

- c. *National Stock Number.* Indicates the National stock number assigned to the item and will be used for requisitioning purposes.

- d. *Part Number.* Indicates the primary number used by the manufacturer (individual, company, firm, corporation, or Government activity), which controls the design and characteristics of the item by means of its engineering drawings, specifications, standards, and inspection requirements to identify an item or range of items.

NOTE

When a stock numbered item is requisitioned, the repair part received may have a different part number than the part being replaced.

- e. *Federal Supply Code for Manufacturer (FSCM).* The FSCM is a 5-digit numeric code listed in SB 708-41/42 which is used to identify the manufacturer, distributor, or Government agency, etc.

- f. *Description.* Indicates the Federal item name and, if required, a minimum description to identify the item.

- g. *Unit of Measure (U/M).* Indicates the standard of the basic quantity of the listed item as used in performing the actual maintenance function. This measure is expressed by a two-character alphabetical abbreviation (e.g., ea, in, pr, etc). When the unit of measure differs from the unit of issue, the lowest unit of issue that will satisfy the required units of measure will be requisitioned.

- h. *Quantity Incorporated in Unit.* Indicates the quantity of the item used in the breakout shown on the illustration figure, which is prepared for a functional group, subfunctional group, or an assembly.

4. Special Information

- a Detailed assembly instructions for items source coded to be assembled are found in TM 11-5805-384-34. Assembly components are listed immediately following the item to be assembled.

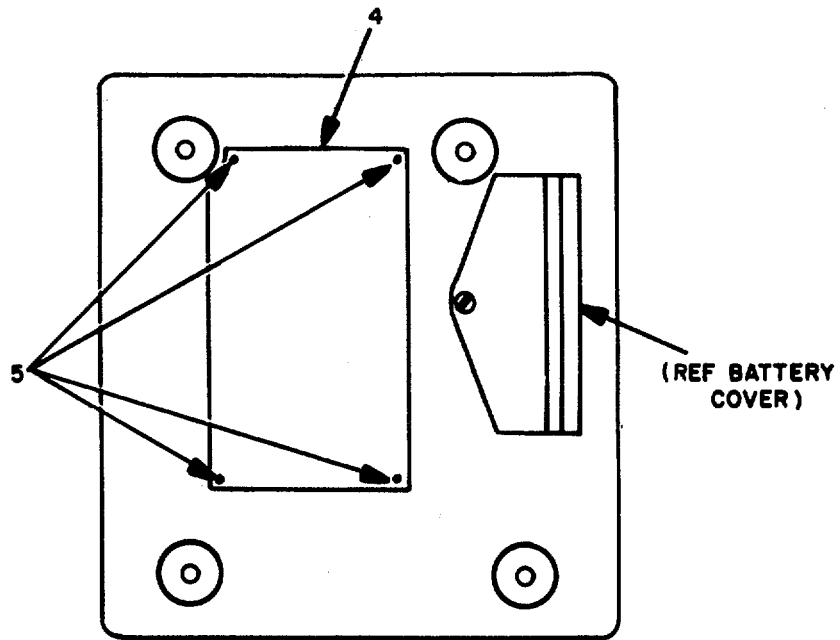
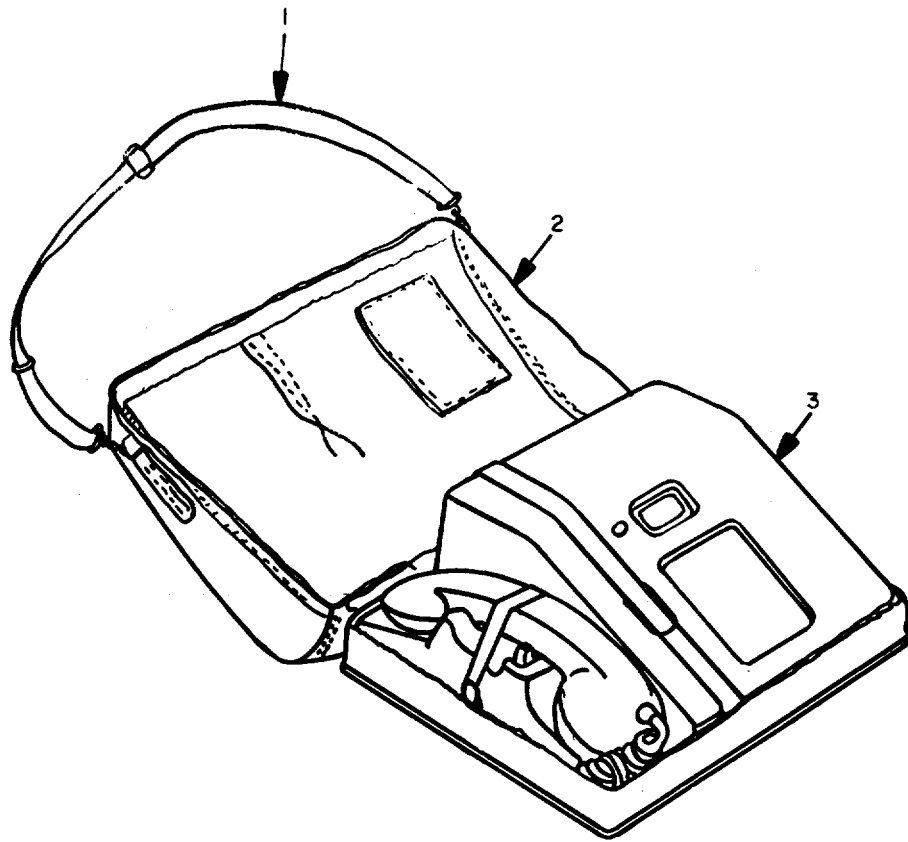
- b. The following publications pertain to the TA-341B/TT and its components:
 TM 11-5805-384-12, Telephone Sets TA-341/TT, TA-341A/TT and TA341B/TT
 TM 11-5805-384-20P, Telephone Set TA-341B/TT
 TM 11-5805-384-34, Telephone Sets TA-341/TT and TA-341A/T and TA-341B/TT

5. How to Locate Repair Parts

- a. When National stock number or part number is unknown.
 - (1) *First.* Using the table of contents, determine the functional group within which the item belongs. This is necessary since illustrations are prepared for functional groups and listings are divided into the same groups.
 - (2) *Second.* Find the illustration covering the functional group to which the item belongs.
 - (3) *Third.* Identify the item on the illustration and note the illustration figure and item number of the item.
 - (4) *Fourth.* Using the Repair Parts Listing, find the figure and item number noted on the illustration.
- b. When National stock number or part number is known.
 - (1) *First.* Using the Index of National Stock Numbers and Part Numbers, find the pertinent National stock number or part number. This index is in NIIN sequence followed by a list of part numbers in alphameric sequence, cross-referenced to the illustration figure number and item number.
 - (2) *Second.* After finding the figure and item number, locate the figure and item number in the repair parts list.

6. Abbreviations

Not applicable.



BOTTOM VIEW OF TELEPHONE

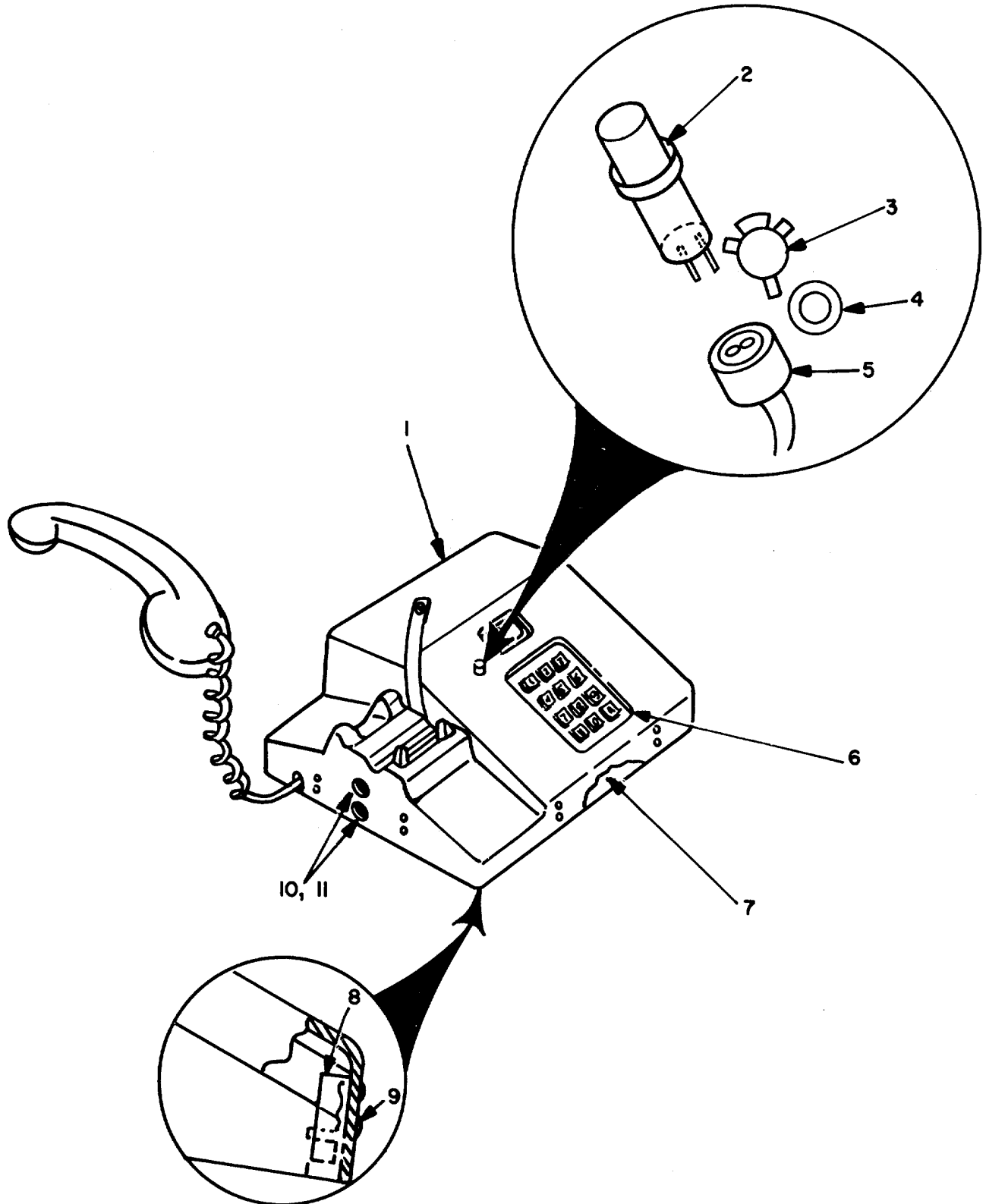
EL6QJ001

Figure 1. Telephone Set TA-341B/TT

SECTION II

TM 11-5805-384-30P

(1) ILLUSTRATION		(2)	(3)	(4)	(5)	(6)	(7)	(8)
(a) FIG NO.	(b) ITEM NO.	SMR CODE	NATIONAL STOCK NUMBER	PART NUMBER	FSCM	DESCRIPTION <i>USABLE ON CODE</i>	U/M	QTY INC IN UNIT
						GROUP 00 TELEPHONE SET TA-341811T		
1	1	XDOZZ		SNC751153	80063	SLING,CARRYING CASE	EA	1
1	2	XDOZZ		SMD751154	80063	CASE, CARRYING	EA	1
1	3	XDODD		S075L1156	80063	TELEPHONE SET ASSY	EA	1
1	4	XDOZZ		SMD751155	80063	PLATE,IDENT	EA	1
1	5	PAFZZ	5320-00-860-6605	A0328S	01707	RIVET,BLIND.....	EA	4



EL6QJ002

Figure 2. Telephone Set Assembly

SECTION II

TM 11-5805-384-30P

(1) ILLUSTRATION		(2)	(3)	(4)	(5)	(6)	(7)	(8)
(a) FIG NO.	(b) ITEM NO.	SMR CODE	NATIONAL STOCK NUMBER	PART NUMBER	FSCM	DESCRIPTION <i>USABLE ON CODE</i>	U/M	QTY INC IN UNIT
						GROUP 01 TELEPHONE SET ASSEMBLY		
2	1	XBDZZ		SM0751158	80063	TELEPHONE SHL ASSY	EA	1
2	2	PAFZZ	5805-01-081-9754	SM8928345	80063	CARTRIDGE,LED.....	EA	1
2	3	XDFZZ/		SM8928346	80063	CLIP,MOUNTING	EA	1
2	4	XDFZZ		SM8928347	80063	WASHER,LED	EA	1
2	5	PAFZZ	6250-00-996-5260	515-0012	72619	CONNECTOR,LED CRTG	EA	1
2	6	XBDZZ		SHCT51159	80063	BEZEL,KEYSET	EA	1
2	7	ADFDD		SMD75L157	80063	BASE PLATE ASSEMBLY	EA	1
2	8	XBDZZ		SMC751161	80063	BRACKET,HOUSING.....	EA	6
2	9	PAFZZ	5320-00-173-8785	MS16535-93	96906	RIVET,TUBULAR	EA	14
2	10	PAFZZ	5325-00-387-4914	MS27981-4N	96906	POST	EA	2
2	11	PAFZZ	5325-00-613-7956	MS27981-6V	96906	STUD,POSITIVE LOCK	EA	2

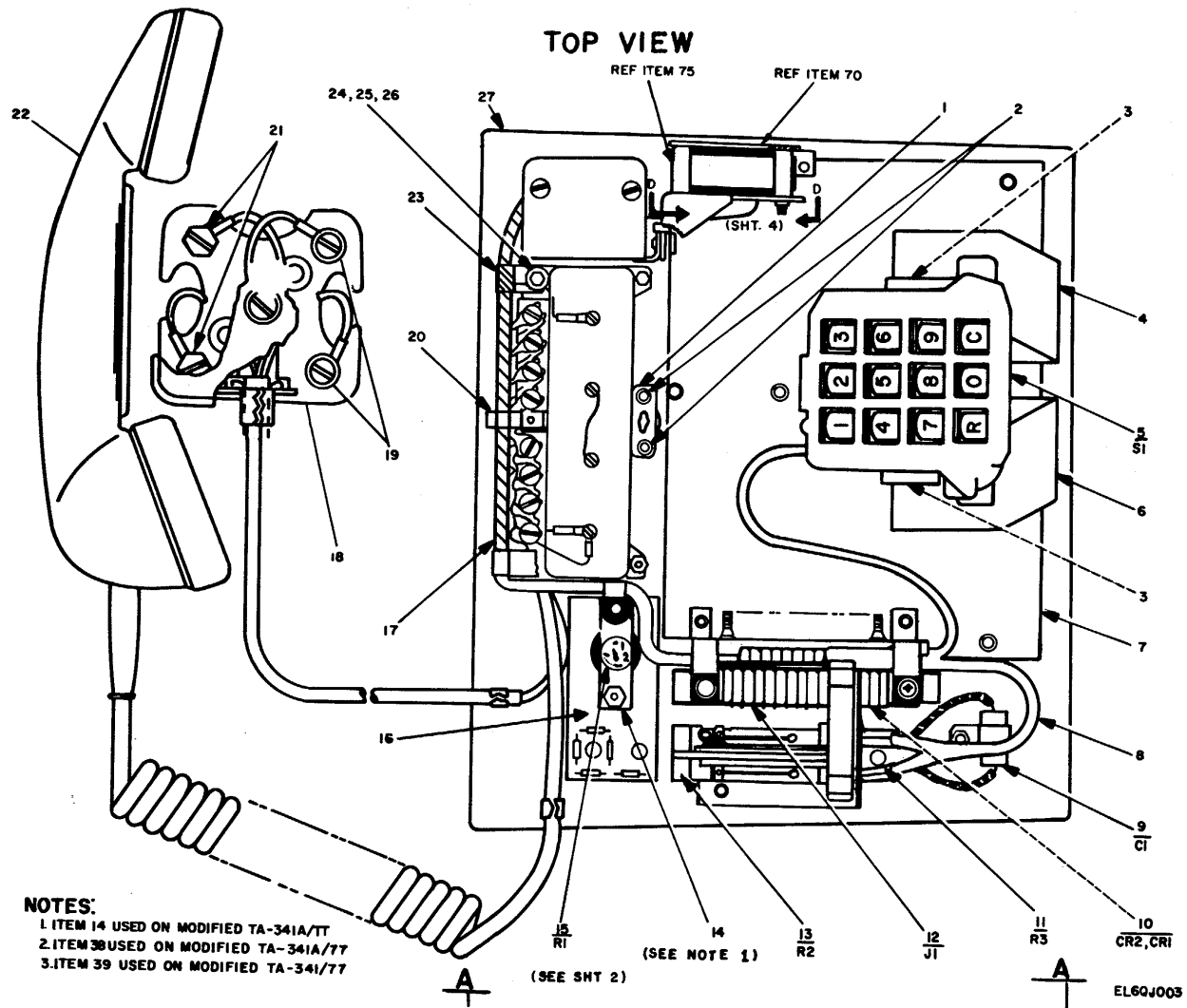
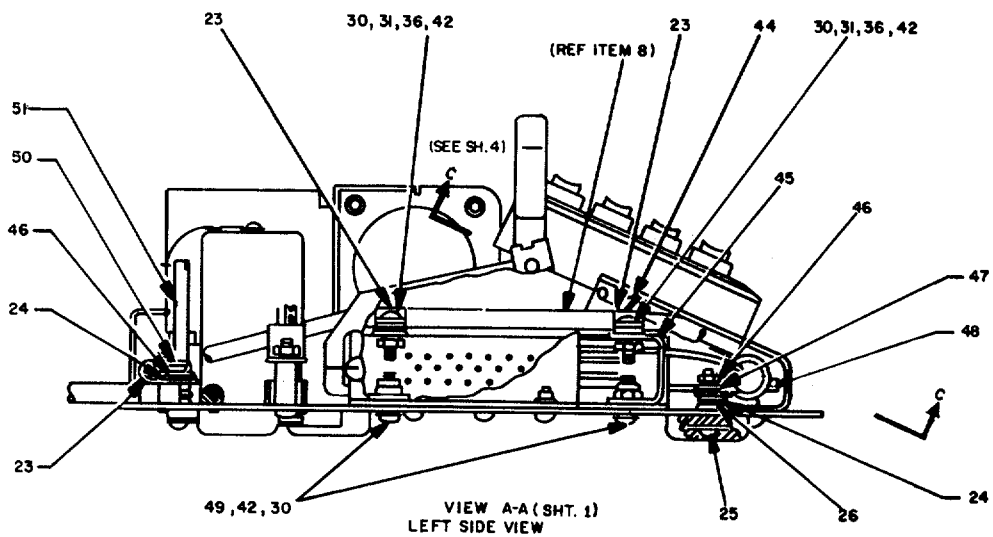
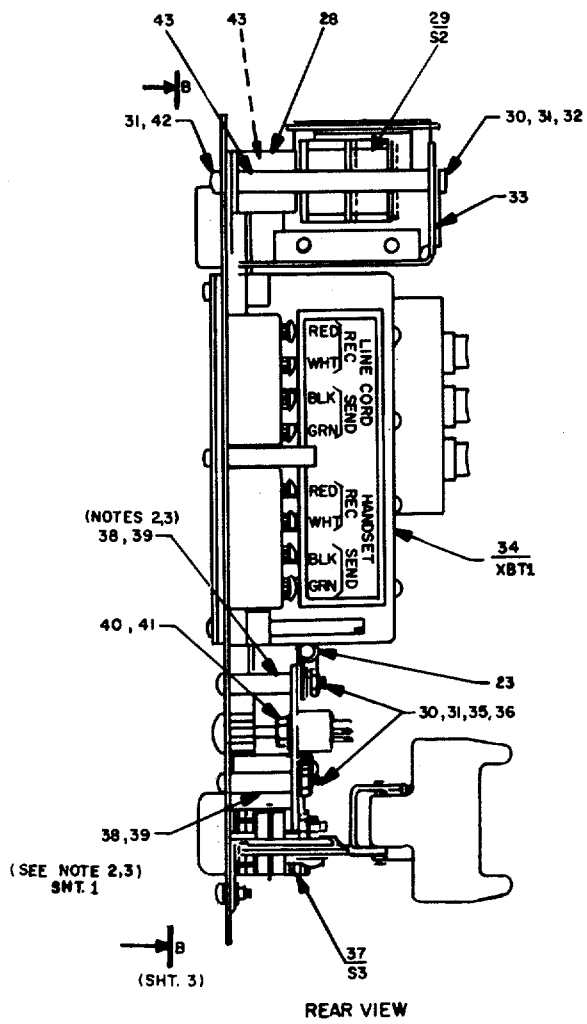
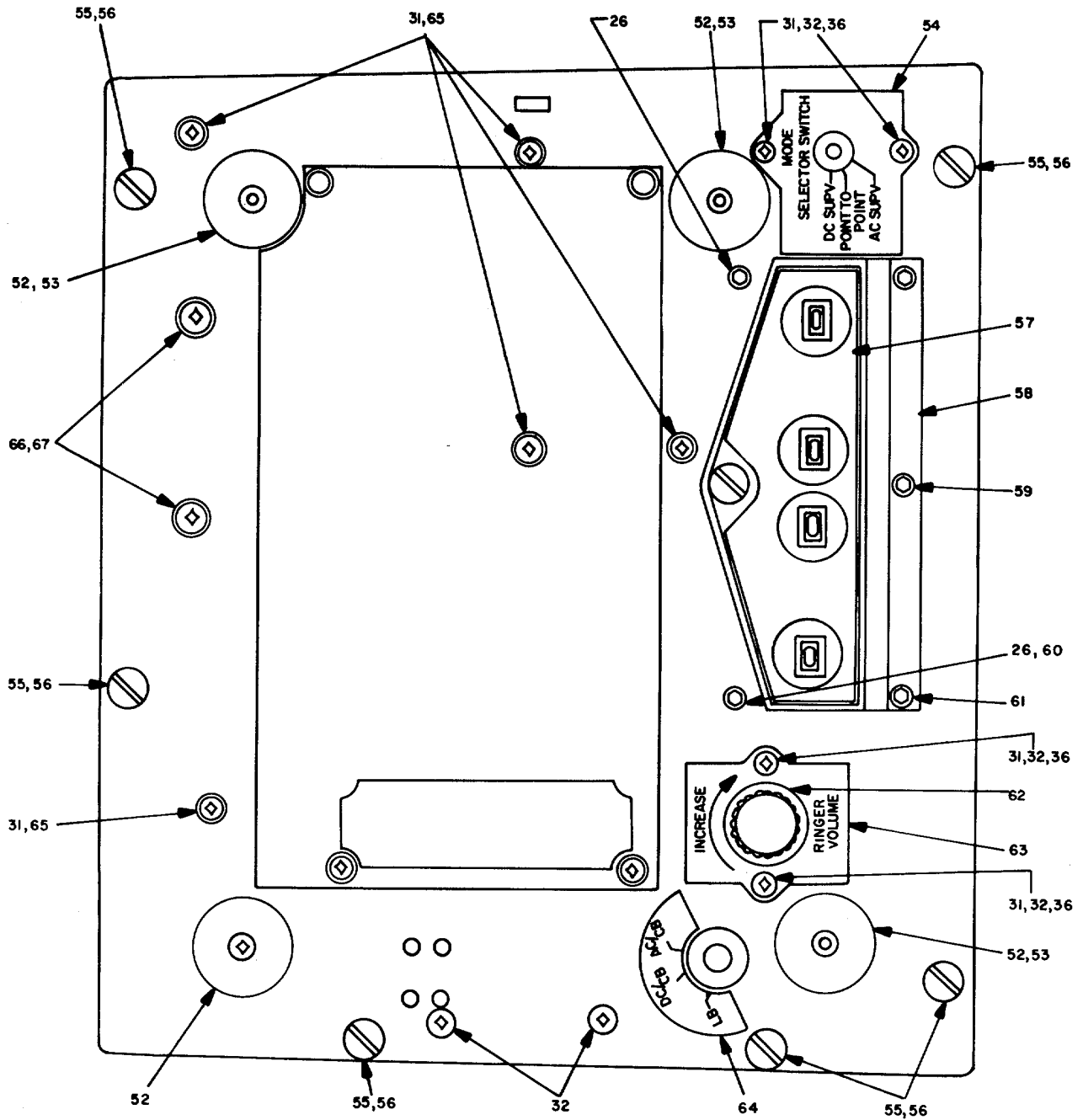


Figure 3. Base Plate Assembly (Sheet 4 of 4)



EL6Q004

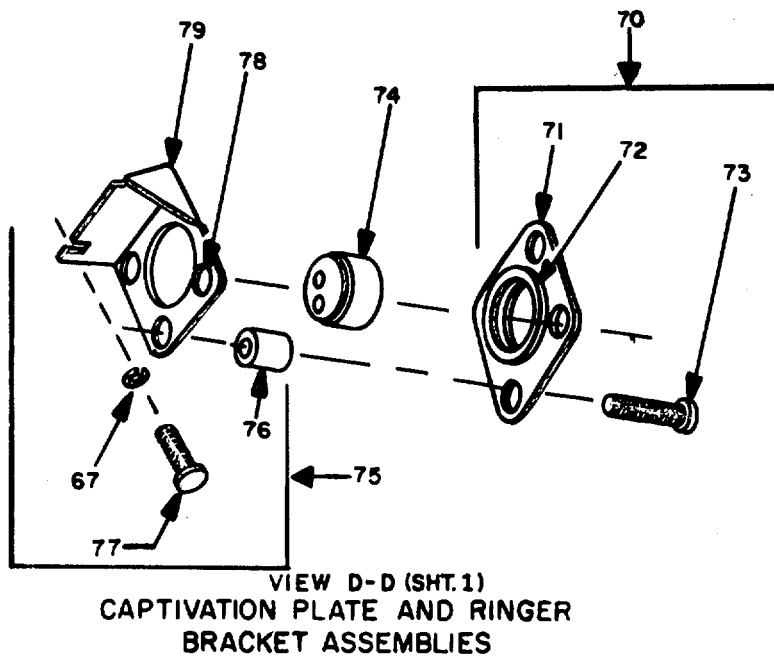
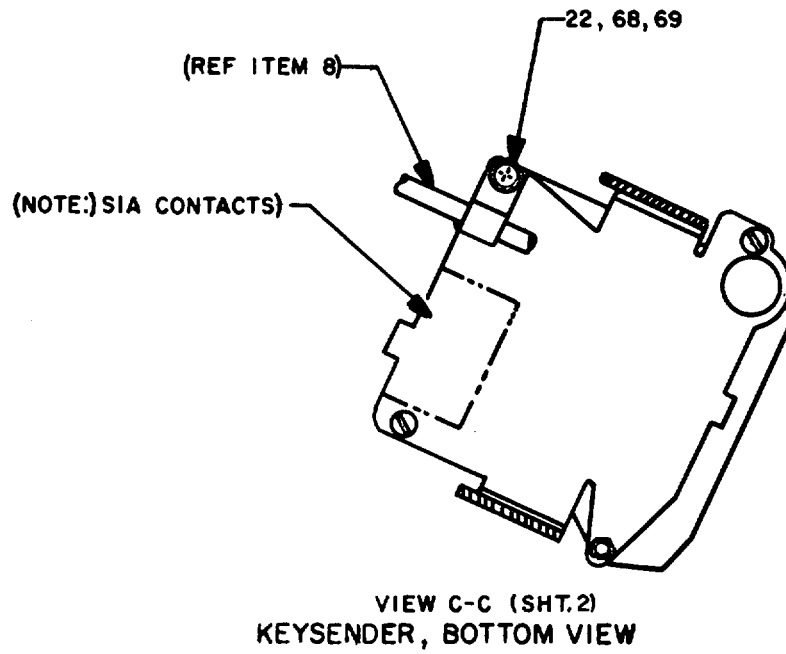
Figure 3. Base Plate Assembly (Sheet 2 of 4)



VIEW B-B SHT 2, BOTTOM VIEW

EL6QJ005

Figure 3. Base Plate Assembly (Sheet 3 of 4)



EL6QJ006

Figure 3. Base Plate Assembly (Sheet 4 of 4)

SECTION II

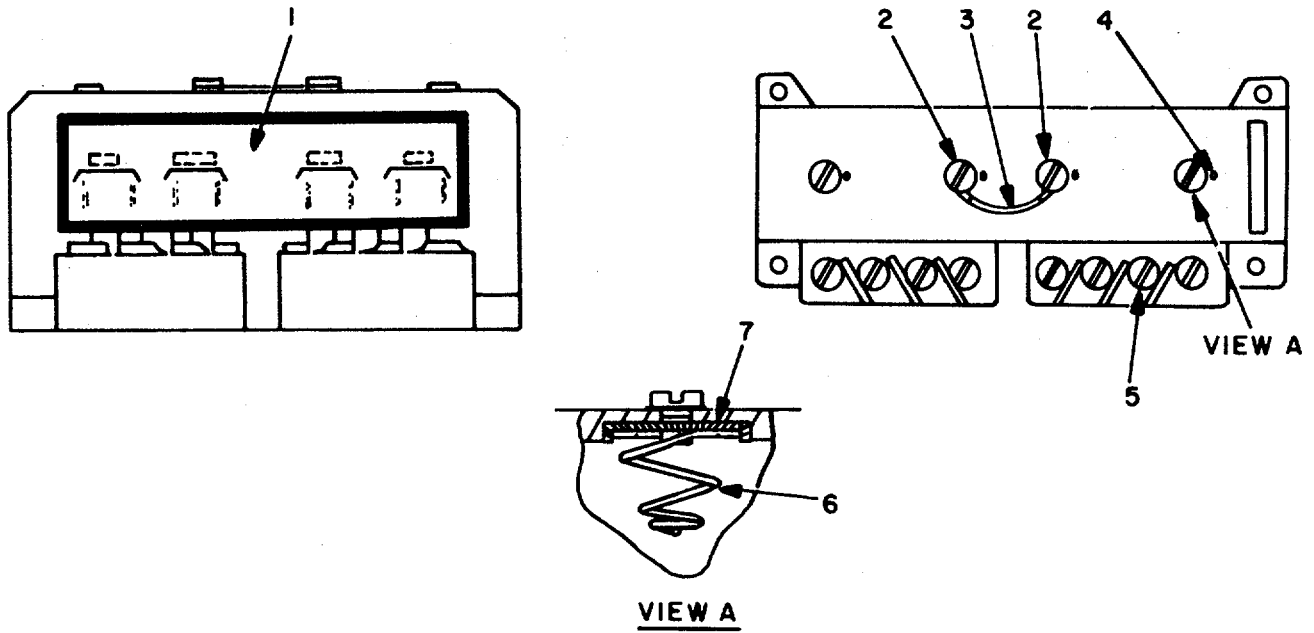
TM 11-5805-384-30P

(1) ILLUSTRATION		(2)	(3)	(4)	(5)	(6)	(7)	(8)
(a) FIG NO.	(b) ITEM NO.	SMR CODE	NATIONAL STOCK NUMBER	PART NUMBER	FSCM	DESCRIPTION USABLE ON CODE	U/M	QTY INC IN UNIT
						GROUP 0101 BASE PLATE ASSEMBLY		
3	1	PAFZZ	5325-00-731-0316	82-35-295-15	94222	RECEPTACLE,TURNLOCK.....	EA	1
3	2	PAFZZ	5320-00-117-6938	MS20426A03-4	96906	RIVET,SOLID.....	EA	2
3	3	XDFZZ		SM8751157-8	80063	SCREW,MACHINE.....	EA	2
3	4	XDFZZ		SMBT51182	80063	BRACKET,MOUNTING KEYSER (RH).....	EA	1
3	5	PAFZZ	5805-00-007-4081	11378-1	25397	KEYSENDER,SWITCH.....	EA	1
3	6	XDFZZ		SMC51183	80063	BRACKET,MOUNTING, KEYSER (LH).....	EA	1
3	7	PAFDD	5805-00-334-6165	SMD751170	80063	CIRCUIT CARD ASSY.....	EA	1
3	8	XBDDD		SMD751180	80063	CABLE ASSEMBLY.....	EA	1
3	9	XDFZZ		CL658D391KPE	81349	CAP.FIXED,ELCTLT.....	EA	1
3	10	PADZZ	5961-00-702-3435	IN3600	81349	SEMICONDUCTOR.....	EA	2
3	11	XDFZZ		RL20S20270J	81349	RESISTOR,FIXED,FILM.....	EA	1
3	12	PAFZZ	5935-00-335-8763	501353-028	16512	BACKPLANE.....	EA	1
3	13	PAFZZ	5905-00-901-4016	RL200S02J	81349	RESISTOR,FIXED,FILM.....	EA	1
3	14	XDFZZ		SM8751173	80063	PLATE,MOUNTING USED ON MODIFIED.....	EA	1
						TA-341A/TT ONLY		
3	15	PAFZZ	5905-00-581-6185	RV6NAYS5D502A	81349	RINGER,VOLUME CONT.....	EA	1
3	16	XDFDD		SMC964218	80063	CIRCUIT CARD ASSY.....	EA	1
3	17	XBDZZ		SMD928352	80063	CABLE.....	EA	1
3	18	PAOZZ	5805-00-348-3833	SMC751184	80063	DESK CORD AND CONNECTOR BLOCK ASSEMBLY.....	EA	1
3	19	XDOZZ		SMB751201	80063	SCREW,MACHINE.....	EA	2
3	20	XDFZZ		SMB751176	80063	GUARD,CABLE.....	EA	1
3	21	XDOZZ		SMB751256	80063	SCREW,MACHINE.....	EA	2
3	22	PAOZZ	5965-00-312-2524	SMD751185	80063	HAND SET.....	EA	1
3	23	PADZZ	5340-00-956-4436	3-16-4T	95987	CLAMP,LOOP.....	EA	5
3	24	PADZZ	5310-00-782-1349	MS15795-804	96906	WASHER,FLAT.....	LA	1
3	25	PADZZ	5305-00-054-5653	MS51957-19	96906	SCREW,MACHINE.....	EA	1
3	26	PADZZ	5310-00-982-4999	MS21044-C04	96906	NUT,SELF-LOCKING.....	EA	1
3	27	XDFZZ		SMD751165	80063	PLATE,BASE.....	EA	1
3	28	XDFZZ		SMC751172	80063	BRACKET,ELECTRICAL.....	EA	1
3	29	XDFZZ		SROSN3083MPC	04655	MODE SEL SWITCH.....	EA	1
3	30	PADZZ	5310-00-722-5998	MS15795-805	96906	WASHER,FLAT.....	EA	1
3	31	PADZZ	5310-00-929-6395	MS35338-136	96906	WASHER,LOCK.....	EA	5
3	32	PAFZZ	5305-00-054-6652	MS51957-28	96906	SCREW,MACHINE.....	EA	2
3	33	XOFZZ		SMD751252	80063	SHIELD,SWITCH.....	EA	1
3	34	XDFZZ		SMD751166	80063	BATTERY CASE ASSY.....	EA	1
3	35	PADZZ	5305-00-054-6659	MS51957-35	96906	SCREW,MACHINE.....	A	2
3	36	PADZZ	5310-00-934-9761	MS35649-264	96906	NUT,PLAIN,HEXAGON.....	EA	2
3	37	PAFDD	5805-01-024-9277	SMD751171	80063	HOOKSWITCH ASSEMBLY.....	EA	1
3	38	XDFZZ		SMB751157-1	80063	SPACER,SLEEVE USED ON MODIFIED TA-341/TT ONLY....	EA	2
3	39	XDFZZ		SMB928351	80063	SPACER,SLEEVE USED ON MODIFIED TA-341A/TT ONLY....	EA	2

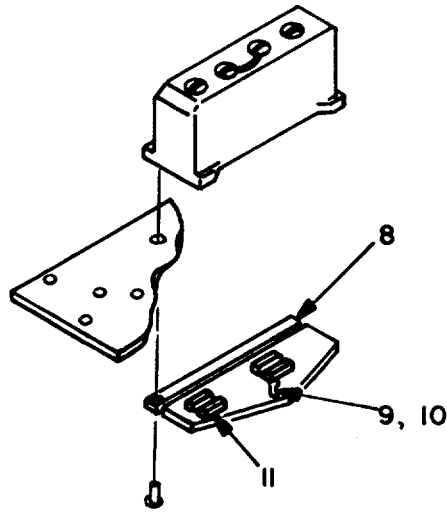
SECTION II

TM 11-5805-384-30P

(1)		(2)	(3)	(4)	(5)	(6)	(7)	(8)
ILLUSTRATION		SMR CODE	NATIONAL STOCK NUMBER	PART NUMBER	FSCM	DESCRIPTION	U/M	QTY INC IN UNIT
(a) FIG NO.	(b) ITEM NO.							
3	40	PAFZZ	5310-00-543-2740	MS35333-74	96906	WASHER, LOCK	EA	1
3	41	PAFZZ	5310-00-899-9944	MS25082-813	96906	NUT, PLAIN, HEXAGON	EA	1
3	42	PAOZZ	5305-00-054-6654	MS51957-30	96906	SCREW, MACHINE	EA1	1
3	43	XDFZZ		SMB751248	80063	SPACER, SLEEVE	EA	2
3	44	PAFZZ	5305-00-310-7306	SMB751157-3	80063	SCREW, SPECIAL	EA	2
3	45	XDFZZ		SMC751186	80063	BRACKET, CABLE CLAMP	EA	2
3	46	PAFZZ	5310-00-934-9748	MS35649-244	96906	NUT, PLAIN, HEXAGON	EA	1
3	47	PAFZZ	5310-00-933-8118	MS35338-135	96906	WASHER, LOCK	EA	1
3	48	XDFZZ		3-8-4T	95987	CLAMP, LOOP	EA	1
3	49	PAFZZ	5310-00-982-6813	MS21044-C06	96906	NUT, SELF-LOCKING	EA	2
3	50	PADZZ	5310-00-550-3715	MS35333-70	96906	WASHER, LOCK	EA	1
3	51	XBDZZ		SMB751187	80063	STUD, WIRE RETAINING	EA	1
3	52	XDFZZ		CM4748W	70485	PAD, TELEPHONE	EA	4
3	53	PAFZZ	5320-00-173-8796	MS16535-179	96906	RIVET, TUBULAR	EA	1
3	54	XDFZZ		SMC751188	80063	PLATE, IDENT	EA	1
3	55	PAFZZ	5365-00-725-0969	MS16633-4018	96906	RING, RETAINING	EA	6
3	56	XDFZZ	5305-00-162-4589	SMB751179	80063	SCREW, EXTERNALLY	EA	6
3	57	XAFZZ		SMC751167	80063	BTRY CASE COV ASSY	EA	1
3	58	XDFZZ		SMB751177	80063	PLATE, CLAMPING	EA	1
3	59	PAFZZ	5305-00-054-5649	MS51957-15	96906	SCREW, MACHINE	EA	1
3	60	PAFZZ	5305-00-054-5652	M51951-18	96906	SCRE W, MACHINE	EA	2
3	61	PAFZZ	5305-00-054-5655	MS51957-21	96906	SCREW, MACHINE	EA	2
3	62	PAFZZ	5355-00-057-7794	MS91528-0C1B	96906	KNOB	EA	1
3	63	XDFZZ		SMC751189	80063	PLATE, IDENT	EA	1
3	64	XDFZZ		SMB964217	80063	DECAL, LB/CB MODE SW	EA	1
3	65	PAFZZ	5305-00-054-6650	MS51957-26	96906	SCREW, MACHINE	EA	5
3	66	PAFZZ	5305-00-054-6666	MS51957-41	96906	SCREW, MACHINE	EA	2
3	67	PAFZZ	5310-00-933-8119	MS35338-137	96906	WASHER, LOCK	EA	2
3	68	PAFZZ	5340-00-061-2057	3-32-4T	95987	CLAMP, LOOP	EA	1
3	69	XDFZZ		MS24622-12	96906	SCREW, TAPPING	EA	1
3	70	XDFZZ		SMC751254	80063	PLATE, ASSEMBLY, CAPTIVATION	EA	1
3	71	XDFZZ		SMC751250	80063	PLATE, CAPTIVATION	EA	1
3	72	XDFZZ	5330-01-015-1241	SMB751253	83063	GASKET	EA	2
3	73	PAFZZ	5305-30-777-5984	MS24693-C32	96906	SCREW, MACHINE	EA	4
3	74	PAFZZ	5965-00-549-0220	TA-235/PT	80058	RCVR ELEM, TELEPHONE	EA	1
3	75	XDFZZ		SMD751251	80063	BRACKET ASSEMBLY	EA	1
3	76	XDFZZ		SMB751251-3	80063	PIN, STRAIGHT	EA	1
3	77	PAFZZ	5305-00-054-6665	MS51957-40	969061	SCREW, MACHINE	EA	2
3	78	PAFZZ	5310-00-589-8028	FE632	46384	NUT, PLAIN, CLINCH	EA	4
3	79	XDFZZ		SMD751251-1	80063	BRACKET	EA	1



BATTERY CASE ASSEMBLY



BATTERY CASE COVER ASSEMBLY

EL6QJ007

Figure 4. Base Plate Assembly, Battery Case and Cover Assemblies

SECTION II

TM 11-5805-384-30P

(1) ILLUSTRATION		(2)	(3)	(4)	(5)	(6)	(7)	(8)
(a) FIG NO.	(b) ITEM NO.	SMR CODE	NATIONAL STOCK NUMBER	PART NUMBER	FSCM	DESCRIPTION <i>USABLE ON CODE</i>	U/M	QTY INC IN UNIT
4	1	XDFZZ		SMC751194	80063	PLATE,INSTRUCTION	EA	1
4	2	PAFZZ	5940-00-644-9295	321017	00779	TERMINAL,LUG	EA	2
4	3	XDFZZ		QQW343-22AWG	81348	WIRE,ELECTRICAL	EA	1
4	4	PAFZZ	5325-00-303-1409	SNB751196	80063	EYELET	EA	4
4	5	PAFZZ	5305-00-310-7305	SMB751192	80063	SCREW,SPECIAL	EA	8
4	6	PAFZZ	5360-00-304-9201	SMC751193	80063	SPRING,HLCL CPRSN	EA	4
4	7	XDFZZ		SMC751195	80063	INSERT,SPRING	EA	1
4	8	PAFZZ	5320-00-855-0559	MS16535-90	96906	RIVET,TUBULAR	EA	6
4	9	PAFZZ	5325-00-954-7293	2F160	94222	STUD,TURNLOCK	EA	1
4	10	PAFZZ	5310-00-845-5472	82-32-101-17	94222	RETAINER,TURNLOCK	EA	1
4	11	XDFZZ		SMB751199	80063	CLIP,ELECTRICAL	EA	2

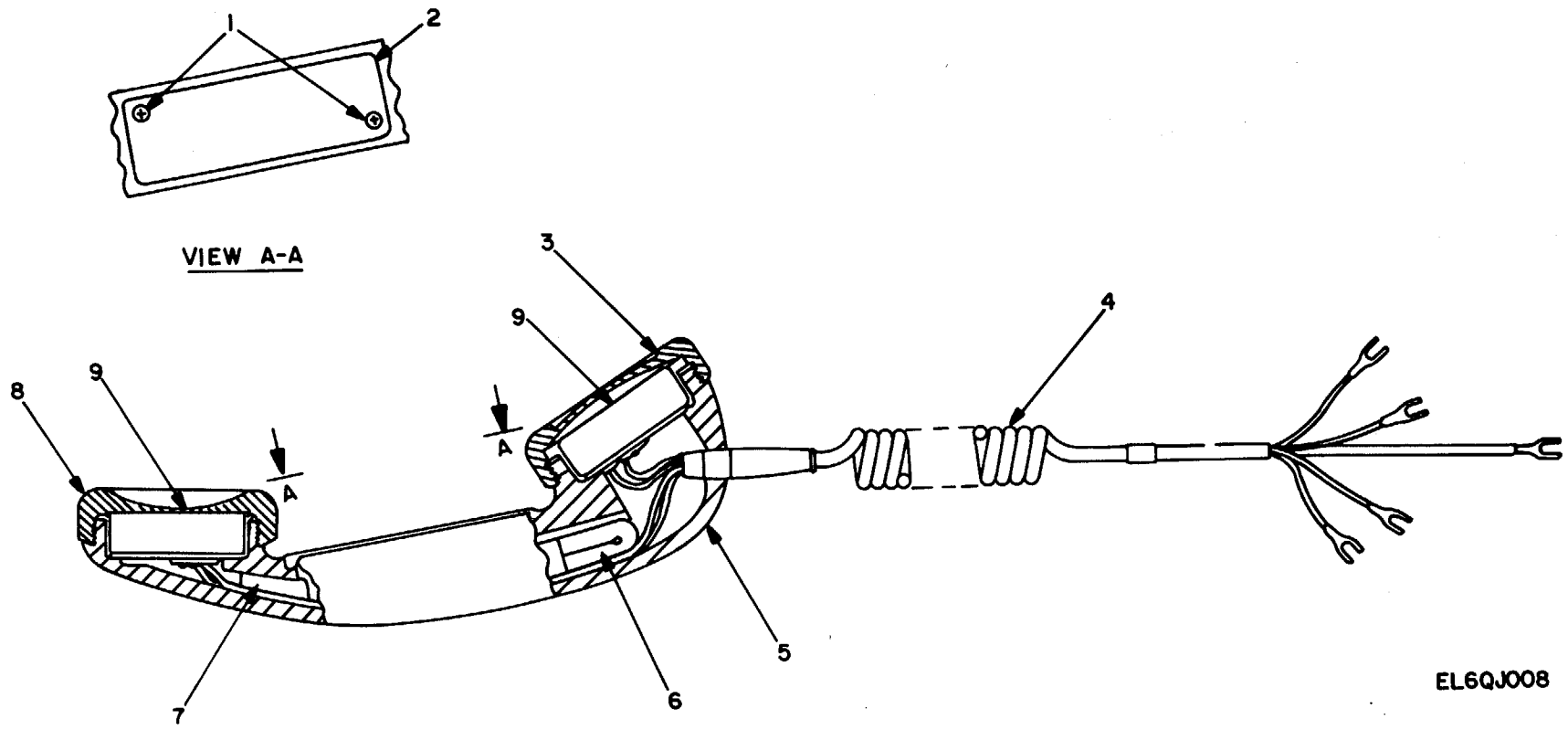


Figure 5. Base Plate Assembly, Handset Handle Assembly

SECTION II

TM 11-5805-384-30P

(1)		(2)	(3)	(4)	(5)	(6)	(7)	(8)
ILLUSTRATION		SMR CODE	NATIONAL STOCK NUMBER	PART NUMBER	FSCM	DESCRIPTION <i>USABLE ON CODE</i>	U/M	QTY INC IN UNIT
(a) FIG NO.	(b) ITEM NO.							
5	1	PAFZZ	5305-00-056-9961	MS24693-C4	96906	SCREW,MACHINE.....	EA	2
5	2	XDFZZ		SMC751207	80063	COVER,HDL,HANDSET	EA	1
5	3	PAOZZ	5805-00-348-3850	SMD751204	80063	CAP,XMTR,HANDSET	EA	1
5	4	PAOZZ	5805-00-348-3851	SMC751206	80063	CORD ASSY,HANDSET	EA	1
5	5	XDFZZ		SMD751203	80063	HANDLE,HANDSET	EA	1
5	6	XDFZZ		SMB751209	80063	DECOUPLER,ACOUSTIC	EA	1
5	7	XDFZZ		SMB751208	80063	DECOUPLER,ACOUSTIC	EA	1
5	8	XDOZZ		SMD751205	80063	LAP,RCVR,HANDSET	EA	1
5	9	PAOZZ	5965-00-549-0220	TA-235/PT	80058	RCVR-XMTR ELEM,TEL.....	A	2

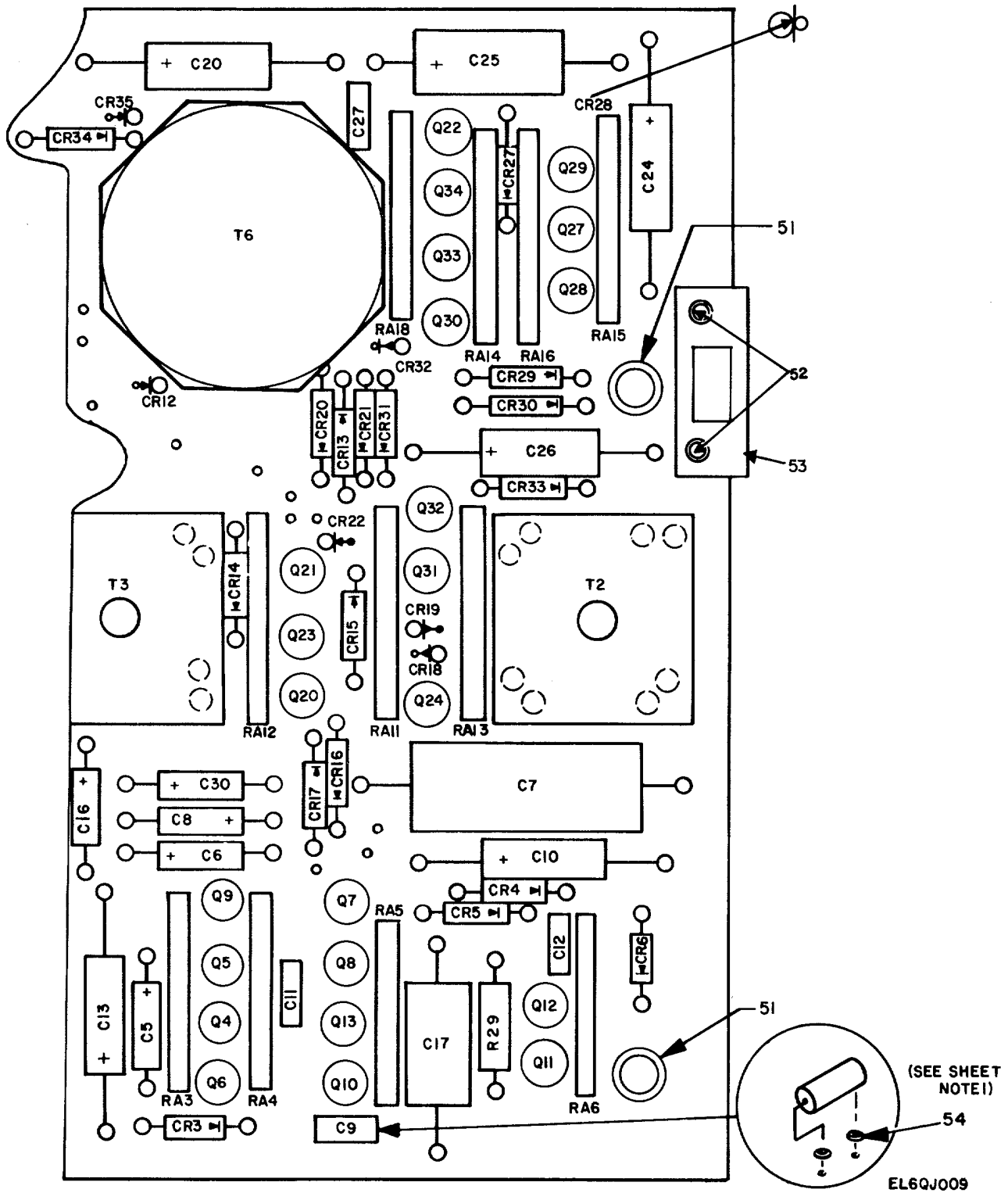
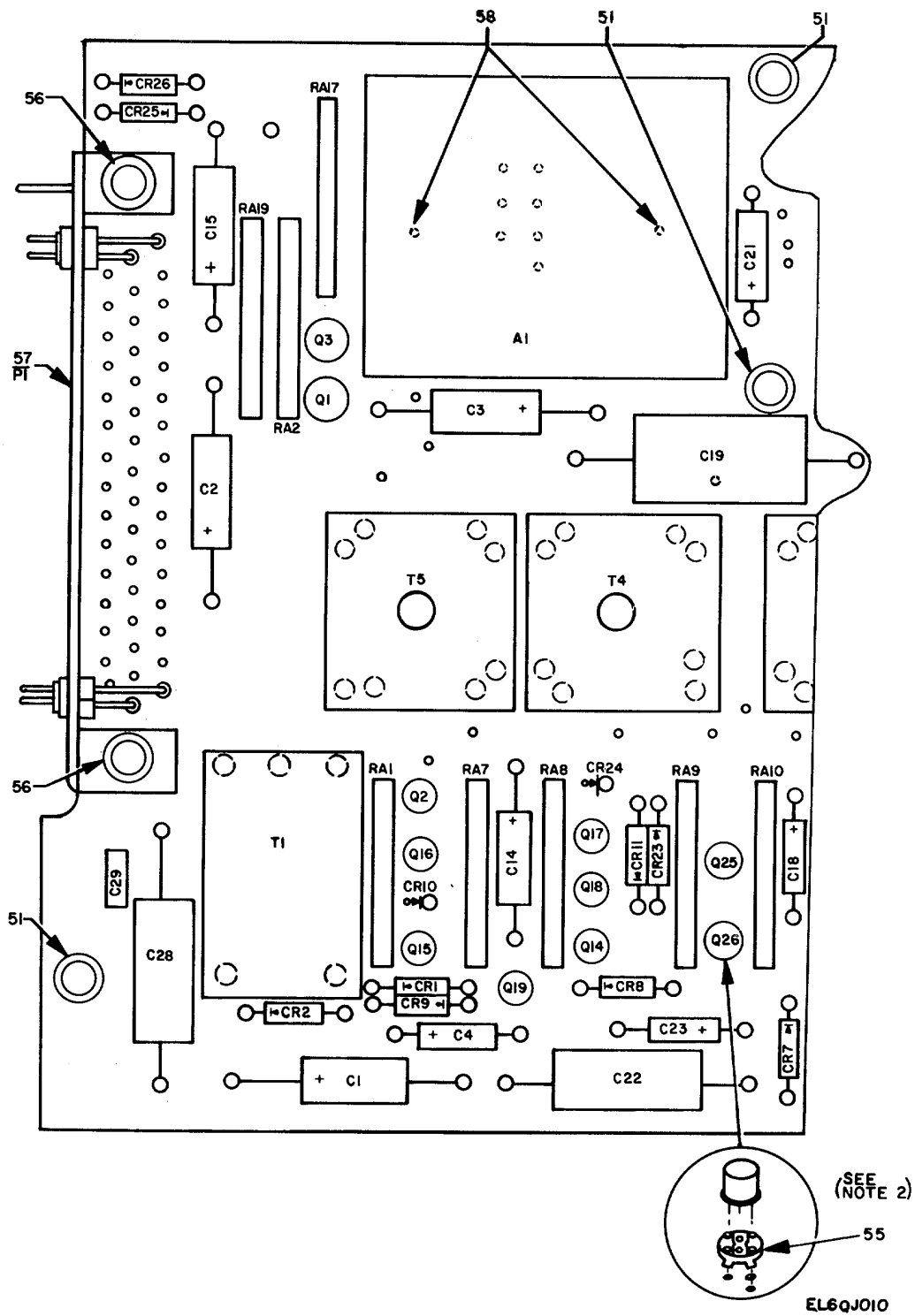


Figure 6. Printed Circuit Card Assembly (Sheet 1 of 3)



NOTES:

1. ITEM 54 USED FOR MOUNTING C9, C11 C12, C27, CR24, CR32, T1, THRU T6.
2. ITEM 55 USED FOR MOUNTING Q1 THRU Q34.

Figure 6. Printed Circuit Card Assembly (Sheet 2 or 3)

REF. DES.	ITEM NO.	REF. DES.	ITEM NO.	REF. DES.	ITEM. NO.	REF. DES.	ITEM NO.
A1	1	C24	16	Q15	22	RA5	29
C1	2	C25	17	Q16	24	RA6	30
C2	3	C26	12	Q17	23	RA7	31
C3	4	C27	11	Q18	24	RA8	32
C4	5	C28	18	Q19	22	RA9	33
C5	5	C29	19	Q20	24	RA10	34
C6	5	C30	5	Q21	23	RA11	35
C7	6	CR1 TO CR18	20	Q22	23	RA12	36
C8	7	CR19	21	Q23	23	RA14	37
C9	8	CR20	20	Q24	22	RA14	38
C10	9	CR21	20	Q25	22	RA15	39
C11	10	CR22	21	Q26	24	RA16	40
C12	11	CR23	21	Q27	24	RA17	41
CI13	12	CR24 TO CR35	20	Q28	24	RA18	42
C14	9	Q1 TO Q5	22	Q29	22	RA19	43
C15	4	Q6	23	Q30	23	R29	44
C16	5	Q7	22	Q31	23	TI	45
C17	13	Q8	22	Q32	23	T2	46
C18	5	Q9	24	Q33	22	T3	47
C19	14	Q10	23	Q34	23	T4	48
C20	4	Q11	24	RA1	25	T5	49
C21	5	Q12	22	RA2	26	T6	50
C22	15	Q13	24	RA3	27		
C23	5	Q14	23	RA4	28		

EL6QJO11

Figure 6. Printed Circuit Card Assembly (Sheet 3 of 3)

SECTION II

TM 11-580384-30P

(1) ILLUSTRATION		(2)	(3)	(4)	(5)	(6)	(7)	(8)
(a) FIG NO.	(b) ITEM NO.	SMR CODE	NATIONAL STOCK NUMBER	PART NUMBER	FSCM	DESCRIPTION USABLE ON CODE	U/M	QTY INC IN UNIT
						GROUP 010101 PRINTED CIRCUIT CARD ASSEMBLY		
6	1	PADZZ	5805-00-401-3437	A1382	23939	AMPLIFIER,AUDIO.....	EA	1
6	2	XDDZZ		CL658D181KPE	81349	CAP,FX,ELCTLT.....	EA	1
6	3	XDDZZ		CL658D470KPE	81349	CAP,FX,ELCTLT.....	EA	1
6	4	XDDZZ		CL65AE150KPE	81349	CAP,FX,ELCTLT.....	EA	3
6	5	PADZZ	5910-00-460-0850	CSR13G105MM	81349	CAP,FX,ELCTLT.....	EA	8
6	6	PADZZ	5910-00-480-6891	LS9A1A274F	01884	CAP,FXD,PLASTIC.....	EA	1
6	7	PADZZ	5910-00-054-0266	CSR13G124KM	81349	CAP,FXD,ELCTLT.....	EA	1
6	8	PADZZ	5910-00-496-7007	CK068X124K	81349	CAP,FXD,CERAMIC.....	EA	1
6	9	XDDZZ		SMA751260	80063	CAP,FXD,ELCTLT.....	EA	2
6	10	PADZZ	5910-00-400-4526	CK06RX474K	81349	CAP,FXD,CERAMIC.....	EA	1
6	11	XDDZZ		CK068X223M	81349	CAP,FXD,CERAMIC.....	EA	2
6	12	XDDZZ		CL65BP1R7KPE	81349	CAP,FXD,ELCTLT.....	EA	2
6	13	PADZZ	5910-00-233-3120	LS9A1A683F	01884	CAP,FXD,PLASTIC.....	EA	1
6	14	PADZZ	5910-00-480-6890	LS9A1A224F	01884	CAP,FXD,PLASTIC.....	EA	1
6	15	PADZZ	5910-00-481-1012	LS9A1A104F	01884	CAP,FXD,PLASTIC.....	EA	1
6	16	PADZZ	5910-00-420-8555	CSR13G225KM	81349	CAP,FXD,ELCTLT.....	EA	1
6	17	PADZZ	5910-00-469-5614	CSR13E476KM	81349	CAP,FXD,ELCTLT.....	EA	1
6	18	XDFZZ		CL65BD391KPE	81349	CAP,FXD,ELCTLT.....	EA	1
6	19	PADZZ	5910-00-460-0847	CK068X104M	81349	CAP,FXD,CERAMIC.....	EA	1
6	20	PADZZ	5961-00-702-3435	1N3600	81349	SEMICON DVC,DIODE.....	EA	32
6	21	PADZZ	5961-00-852-7549	1N754A	81349	SEMICON DVC,DIODE.....	EA	3
6	22	PADZZ	5961-00-814-9532	2N2484	81349	TRANSISTOR.....	EA	14
6	23	PADZZ	5961-00-226-8584	2N2222	81349	TRANSISTOR.....	EA	11
6	24	PADZZ	5961-01-004-5864	2N2907	81349	TRANSISTOR.....	EA	9
6	25	PADZZ	5905-00-005-3000	SMD751236-2	80063	RES,FXD,FILM(NTWK).....	EA	1
6	26	XDDZZ		SMD751236-3	80063	RES,FXD,FILM(NTWK).....	EA	1
6	27	PADZZ	5905-00-005-3002	SMD751236-4	80063	RES,FXD,FILM(NTWK).....	EA	1
6	28	XDDZZ		SMD751236-5	80063	RES,FXD,FILM(NTWK).....	EA	1
6	29	PADZZ	5905-00-005-3004	SMD751236-7	80063	RES,FXD,FILM(NTWK).....	EA	1
6	30	PADZZ	5905-00-005-3005	SMD751236-8	80563	RES,FXD,FILM(NTWK).....	EA	1
6	31	PADZZ	5905-00-005-3006	SMD751236-9	80063	RES,FXD,FILM(NTWK).....	EA	1
6	32	PADZZ	5905-00-005-3007	SMD751236-10	80063	RES,FXD,FILM(NTWK).....	EA	1
6	33	PADZZ	5905-00-005-3008	SMD751236-11	80063	RES,FXD,FILM(NTWK).....	EA	1
6	34	PADZZ	5905-00-005-3009	SMD751236-12	80063	RES,FXD,FILM(NTWK).....	EA	1
6	35	PADZZ	5905-00-005-3010	SMD751236-13	80063	RES,FXD,FILM(NTWK).....	EA	1
6	36	PADZZ	5905-00-005-3011	SMD751236-14	80063	RES,FXD,FILM(NTWK).....	EA	1
6	37	PADZZ	5905-00-005-3012	SMD751236-15	80063	RES,FXD,FILM(NTWK).....	EA	1
6	38	XDDZZ		SMD751236-16	80063	RES,FXD,FILM(NTWK).....	EA	1
6	39	XDDZZ		SMD751236-17	80063	RES,FXD,FILM(NTWK).....	EA	1

SECTION II

TM 11-580384-30P

(1) ILLUSTRATION		(2)	(3)	(4)	(5)	(6)	(7)	(8)
(a) FIG NO.	(b) ITEM NO.	SMR CODE	NATIONAL STOCK NUMBER	PART NUMBER	FSCM	DESCRIPTION USABLE ON CODE	U/M	QTY INC IN UNIT
6	40	PADZZ	5905-00-005-3015	SMD751236-18	80063	RES,FXD,FILM (NTWK).....	EA	1
6	41	PADZZ	5905-00-349-6196	SMD751236-19	80063	RES,FXD,FILM (NTWK).....	EA	1
6	42	PADZZ	5905-00-005-3017	SMD751236-20	80063	RES,FXD,FILM (NTWK).....	EA	1
6	43	XDDZZ		SMD751236-21	80063	RES,FXD,FILM (NTWK).....	EA	1
6	44	XDDZZ		RNR60K3092FM	81349	RES,FXD,FILM (NTWK).....	EA	1
6	45	PADZZ	5950-00-328-4328	SMC751237	80063	TRANSFORMER,AF	EA	1
6	46	PADZZ	5950-00-328-4334	SMC751238	80063	TRANSFORMER,AF	EA	1
6	47	PADZZ	5950-00-328-4409	SMC751241	80063	TRANSFORMER,AF	EA	1
6	48	XDDZZ		SMC751239	80063	TRANSFORMER,AF	EA	1
6	49	XDDZZ		SMC751240	80063	TRANSFORMER,AF	EA	1
6	50	XDDZZ		SMC751242	80063	TRANSFORMER,AF	EA	1
6	51	XDDZZ		1546	91833	SPACER,SLEEVE	EA	5
6	52	PADZZ	5320-00-721-5244	MS16535-77	96906	RIVET,TUBULAR	EA	2
6	53	XBDZZ		SMB751235	80063	PLATE.....	EA	1
6	54	PADZZ	5999-00-929-3086	7717-18-DAP	13103	MOUNTING PAD.....	EA	34
6	55	PADZZ	5999-01-019-6678	SM8751245	80063	MTG PAD, TRANSISTOR	EA	34
6	56	XDDZZ		MS16535-175	96906	RIVET,TUBULAR	EA	2
6	57	XDDZZ		501256-02B	16512	CONNECTOR PLUG,ELEC	EA	1
6	58	PADZZ	5310-00-595-6425	AN960C4L	88044	WASHER,FLAT	EA	2

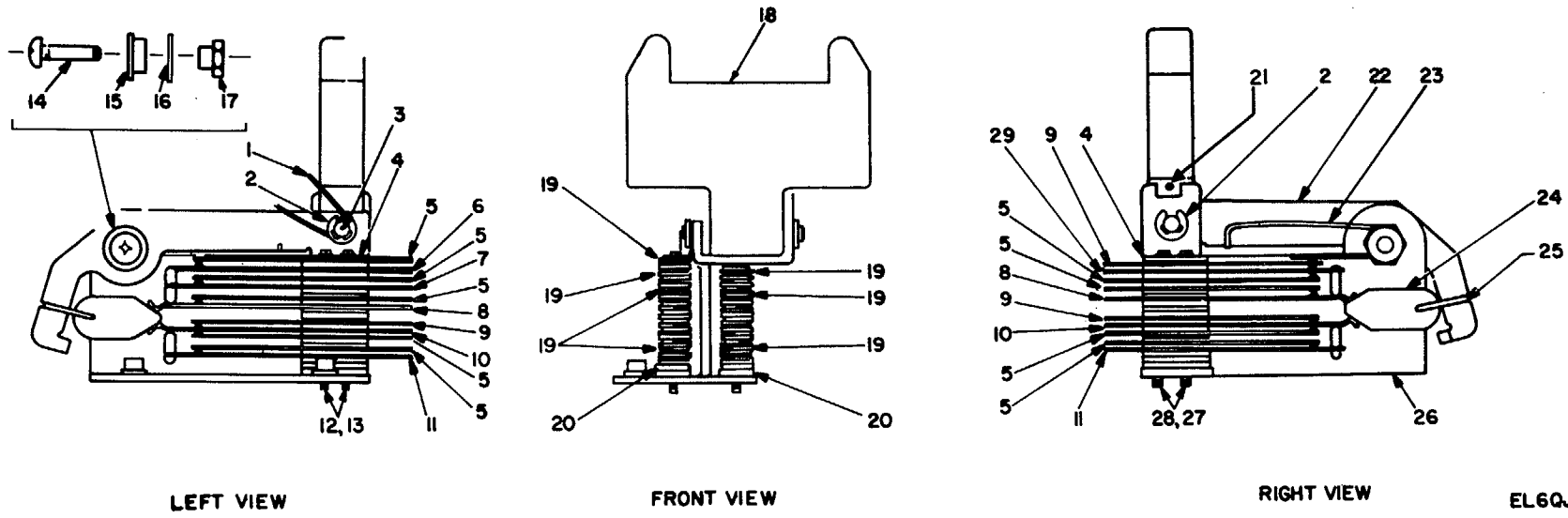


Figure 7. Hookswitch Assembly

SECTION II

TM 11-580384-30P

(1) ILLUSTRATION		(2)	(3)	(4)	(5)	(6)	(7)	(8)
(a) FIG NO.	(b) ITEM NO.	SMR CODE	NATIONAL STOCK NUMBER	PART NUMBER	FSCM	DESCRIPTION USABLE ON CODE	U/M	QTY INC IN UNIT
GROUP 010102 HOOKSWITCH ASSEMBLY								
7	1	XBDZZ	5365-00-816-4239	SMB751227	60063	SPRING, PLUNGER RTN.....	EA	1
7	2	PADZZ		MS16633-1012	96906	RING,RETAINING	EA	2
7	3	XBDZZ		SMB751220	80063	PIN,GROOVE	EA	1
7	4	XBDZZ		SMB751222	80063	PLATE,BINDER.....	EA	2
7	5	XBDZZ		SMC751217	80063	SPRING,CONTACT	EA	9
7	6	XBDZZ		SMC751215	80063	SPRING,CONTACT	EA	1
7	7	XBDZZ		SMC751212	80063	SPRING,CONTACT	EA	1
7	8	XBDZZ		SMC751210	80063	SPRING,CONTACT	EA	2
7	9	XBDZZ		SMC751216	80063	SPRING,CONTACT	EA	3
7	10	XBDZZ		SMC751211	80063	SPRING,CONTACT	EA	2
7	11	XBDZZ		SMC751213	80063	SPRING,CONTACT	EA	2
7	12	XBDZZ		FFS926S348 X1566		SCREW,MACHINE.....	EA	1
7	13	XBDZZ	5305-00-054-6654	SMB751171-2	81348 80063	SLEEVEING	EA	2
7	14	PADZZ		MS51957-30	96906	SCREW,MACHINE.....	EA	1
7	15	XBDZZ		SMB751230	80063	INSULTOR,BUSHING	EA	1
7	16	XBDZZ		SMB751231	80063	INSULATOR,WASHER	EA	1
7	17	XBDZZ		SMB751221	80063	NUT,HEXAGON	EA	1
7	18	XBDZZ		SMC751229	80063	PLUNGER,HOOKSWITCH.....	EA	1
7	19	XBDZZ		SMB751218	80063	INSULATOR,PLATE.....	EA	7
7	20	XBDZZ		SMB751219	80063	INSULATOR,PLATE.....	EA	29
7	21	PAOZZ		MS16562-194	96906	PIN,SPRING	EA	1
7	22	XBDZZ		SMC751223	80063	ARM,HOOKSWITCH.....	EA	1
7	23	XBDZZ	SMC751226	80063	SPR,HOOKSWITCH RTN	EA	1	
7	24	XBDZZ	SMC751224	80063	CAM,HUOKSWITCH.....	EA	1	
7	25	XBDZZ	SMB751228	80063	SPRING,CLIP-CAM.....	EA	1	
7	26	XBDZZ	SMB751225	80063	FRAME ASSEMBLY	EA	1	
7	27	XBDZZ	FFS926S348 X1066		SCREW,MACHINE.....	EA	1	
7	28	XBDZZ	5315-00-844-5644	SMB751171-1	81348 80063	SLEEVEING	EA	2
7	29	XBDZZ		SMC751214	80063	SPRING,CONTACT	EA	1

NATIONAL STOCK NUMBER AND PART NUMBER INDEX
NOTE: LATEST NATIONAL STOCK NUMBER AND PART NUMBER
ASSIGNMENTS ARE INCLUDED AT END OF INDEX.

STOCK NUMBER	FIGURE NO.	ITEM NO.	STOCK NUMBER	FIGURE NO.	ITEM NO.
5905-00-005-3000	6	25	5805-00-401-3437	6	1
5905-00-005-3002	6	27	5910-00-420-8555	6	16
5905-00-005-3004	6	29	5910-00-460-0847	6	19
5905-00-005-3005	6	30	5910-00-460-0850	6	5
5905-00-005-3006	6	31	5910-00-469-5614	6	17
5905-00-005-3007	6	32	5910-00-480-6890	6	14
5905-00-005-3008	6	33	5910-00-480-6891	6	6
5905-00-005-3009	6	34	5910-00-481-1012	6	15
5905-00-005-3010	6	35	5910-00-496-7007	6	8
5905-00-005-3011	6	36	5310-00-543-2740	3	40
5905-00-005-3012	6	37	5965-00-549-0220	3	74
5905-00-005-3015	6	40	5965-00-549-0220	5	9
5905-00-005-3017	6	42	5310-00-550-3715	3	50
5805-00-007-4081	3	5	5905-00-581-6185	3	15
5910-00-054-0266	6	7	5310-00-589-8028	3	78
5305-00-054-5649	3	59	5310-00-595-6425	6	58
5305-00-054-5652	3	60	5940-00-644-9295	4	2
5305-00-054-5653	3	25	5961-00-702-3435	3	10
5305-00-054-5655	3	61	5961-00-702-3435	6	20
5305-00-054-6650	3	65	5320-00-721-5244	6	52
5305-00-054-6652	3	32	5310-00-722-5998	3	30
5305-00-054-6654	3	42	5365-00-725-0969	3	55
5305-00-054-6654	7	14	5325-00-731-0316	3	1
5305-00-054-6659	3	35	5305-00-177-5984	3	13
5305-00-054-6665	3	77	5310-00-782-1349	3	24
5305-00-054-6666	3	66	5961-00-814-9532	6	22
5305-00-056-9961	5	1	5365-00-816-4239	7	2
5355-00-057-7794	3	62	5315-00-844-5644	7	21
5340-00-061-2057	3	68	5310-00-845-5472	4	10
5961-00-852-7549	6		5961-00-845-7549	6	21
5320-00-117-6938	3	2	5320-00-855-0559	4	8
5305-00-162-4589	3	56	5320-00-860-6605	1	5
5320-00-173-8785	2	9	5310-00-899-9944	3	41
5320-00-173-8796	3	53	5905-00-901-4016	3	13
5961-00-226-8584	6	23	5999-00-929-3086	6	54
5910-00-233-3120	6	13	5310-00-929-6395	3	31
5325-00-303-1409	4	4	5310-00-933-8118	3	47
5360-00-304-9201	4	6	5310-00-933-8119	3	67
5305-00-310-7305	4	5	5310-00-934-9748	3	46
5305-00-310-7306	3	44	5310-00-934-9761	3	36
5950-00-328-4328	6	45	5325-00-954-7293	4	9
5950-00-328-4334	6	46	5340-00-956-4436	3	23
5950-00-328-4409	6	47	5310-00-982-4999	3	20
5805-00-334-6165	3	7	5310-00-982-6813	3	49
5935-00-335-8763	3	12	6250-00-996-5260	2	5
5805-00-348-3833	3	18	5961-01-004-5864	6	24
5805-00-348-3850	5	3	5330-01-015-1241	3	72
5805-00-348-3851	5	4	5999-01-019-6678	6	55
5905-00-349-6196	6	41	5805-01-024-9277	3	37
5965-00-372-2524	3	22	5805-01-081-9754	2	2
5910-00-400-4526	6	10			

PART NUMBER	FSCM	FIG. NO.	ITEM NO.	PART NUMBER	FSCM	FIG. NO.	ITEM NO.
AD32BS	07707	1	5	LS9A1A683F	01884	6	13
AN960C4L	88044	6	58	M515795-804	96906	3	24
A1382	23939	6	1	MS15795-805	96906	3	30
CK06BX104M	81349	6	19	MS16535-175	96906	6	56
CK06BX124K	81349	6	8	MS16535-179	96906	3	53
CK06BX223M	81349	6	11	MS16535-77	96906	6	52
CK068X474K	81349	6	10	MS16535-90	96906	4	8
CL65BD181KPE	81349	6	2	MS16535-93	96906	2	9
CL65BD391KPE	81349	3	9	MS16562-194	96906	7	21
CL65BD391KPE	81349	6	18	MS16633-1012	96906	1	2
CL65BD470KPE	81349	6	3	MS16633-4018	96906	3	55
CL65BE150KPE	81349	6	4	MS20426AD3-4	96906	3	2
CL65BPIR7KPE	81349	6	12	MS21044-C04	96906	3	26
CM4748W	70485	3	52	MS21044-C06	96906	3	49
CSR13E476KM	81349	6	17	MS524622-12	96906	3	69
CSR13G105MM	81349	6	5	MS24693-C32	96906	3	73
CSR13G124KM	81349	6	7	MS24693-C4	96906	5	1
CSR13G225KM	81349	6	16	MS25082-813	96906	3	41
FE632	46384	3	78	MS27981-4N	96906	2	10
FFS926S348X10666	81348	7	27	MS27981-6N	96906	2	11
FFS926S348X15666	81348	7	12	MS35333-70	96906	3	50
LS9AIA104F	01884	6	15	MS35333-74	96906	3	40
LS9A1A224F	01884	6	14	M535338-135	96906	3	47
LS9A1A274F	01884	6	6	MS35338-136	96906	3	31

SECTION IV. NATIONAL STOCK NUMBER AND PART NUMBER INDEX

PART NUMBER	FSCM	FIG. NO.	ITEM NO.	PART NUMBER	FSCM	FIG. NO.	ITEM NO.
MS35338-137	96906	3	67	SMC751213	80063	7	11
MS35649-244	96906	3	46	SMC751214	80063	7	29
MS35649-264	96906	3	36	SMC751215	80063	7	6
MS51957-15	96906	3	59	SMC751216	80063	7	9
MS51957-18	96906	3	60	SMC751217	80063	7	5
MS51957-19	96906	3	25	SMC751223	80063	7	22
MS51957-21	96906	3	61	SMC751224	80063	7	24
MS51957-26	96906	3	65	SMC751226	80063	7	23
MS51957-28	96906	3	32	SMC751229	80063	7	18
MS51957-30	96906	3	42	SMC751237	80063	6	45
MS51957-30	96906	7	14	SMC751238	80063	6	46
MS51957-35	96906	3	35	SMC751239	80063	6	48
M551957-40	96906	3	77	SMC751240	80063	6	49
MS51957-41	96906	3	66	SMC751241	80063	6	47
MS91528-0C18	96906	3	62	SMC751242	80063	6	50
QQW343-22AWG	81348	4	3	SMC751250	80063	3	71
RL20S102J	81349	3	13	SMC751254	80063	3	70
RL20S270J	81349	3	11	SMC964218	80063	3	16
RNR60K3092FM	81349	6	44	SMD751154	80063	1	2
RV6NAYSD502A	81349	3	15	SMD751155	80063	1	4
SMA751260	80063	6	9	SMD751156	80063	1	3
SMB751157-1	80063	3	38	SMD751157	80063	2	7
SMB751157-3	80063	3	44	SMD751158	80063	2	1
SMB751157-8	80063	3	3	SMD751165	80063	3	27
SMB751171-1	80063	7	28	SMD751166	80063	3	34
SMB751171-2	80063	1	13	SMD751170	80063	3	7
SMB751173	80063	3	14	SMD751171	80063	3	37
SMB751176	80063	3	20	SMD751180	80063	3	8
SMB751177	80063	3	58	SMD751185	80063	3	22
SMB751179	80063	3	56	SMD751203	80063	5	5
SMB751182	80063	3	4	SMD751204	80063	5	3
SMB751181	80063	3	51	SMD751205	80063	5	8
SMB751L92	80063	4	5	SMD751236-10	80063	6	32
SMB751196	80063	4	4	SMD751236-11	80063	6	33
SMB751199	80063	4	11	SMD751236-12	80063	6	34
SMB751201	80063	3	19	SMD751236-13	80063	6	35
SMB751208	80063	5	7	SMD751236-14	80063	6	36
SMB751209	80063	5	6	SMD751236-15	80063	6	37
SMB751218	80063	7	19	SMD751236-16	80063	6	38
SMB751219	80063	7	20	SMD751236-17	80063	6	39
SMB751220	80063	7	3	SMD751236-18	80063	6	40
SMB751221	80063	7	17	SMD751236-19	80063	6	41
SMB751222	80063	7	4	SMD751236-2	80063	6	24
SMB751225	80063	7	26	SMD751236-20	80063	6	42
SMB751227	80063	7	1	SMD751236-21	80063	6	43
SMB751228	80063	7	25	SMD751236-3	80063	b	20
SMB751230	80063	7	15	SMD751236-4	80063	6	21
SMB751231	80063	7	16	SMD751236-5	80063	6	5
SMB751235	80063	6	53	SMD751236-7	80063	6	29
SMB751245	80063	6	55	SMD751236-8	80063	6	30
SMB751248	80063	3	43	SMD751236-9	80063	6	31
SMB751251-3	80063	3	76	SMD751251	80063	3	75
SMB751253	80063	3	72	SMD751251-1	80063	3	79
SMB751256	80063	3	21	SMD751252	80063	3	33
SMB928345	80063	2	2	SMD928352	80063	3	17
SMB928346	80063	2	3	SR05N30B3MPC	04655	3	29
SMB928347	80063	2	4	TA-235/PT	80058	3	14
SMB928351	80063	3	39	TA-235/PT	80058	5	9
SMB964217	80063	3	64	1N3600	81349	3	10
SMC751153	80063	1	1	1N3600	81349	6	20
SMC751159	80063	2	6	1N754A	81349	6	21
SMC751161	80063	2	8	11378-1	25397	3	5
SMC751167	80063	3	57	1566	91833	6	51
SMCT51172	80063	3	28	2F160	94222	4	9
SMC751183	80063	3	6	2N2222	81349	6	23
SMC751184	80063	3	18	2N2484	81349	6	22
SMC751186	80063	3	45	2N2907	81349	6	24
SMC751188	80063	3	54	3-16-4T	95987	3	23
SMC751189	80063	3	63	3-32-4T	95987	3	68
SMC751193	80063	4	6	3-8-4T	95987	3	48
SMC751194	80063	4	1	321017	00779	4	2
SMC751195	80063	4	7	501256-02B	16512	6	57
SMC751206	80063	5	4	501353-02B	16512	3	12
SMC751207	80063	5	2	515-0012	72619	2	5
SMC751210	80063	7	8	7717-18-DAP	13103	6	54
SMC751211	80063	7	10	82-32-101-17	94222	4	10
SMC751212	80063	7	7	82-35-295-15	94222	3	1

LATEST NATIONAL STOCK NUMBER ASSIGNMENTS

STOCK NUMBER	FIG. NO.	ITEM NO.
5325-00-387-4914	2	10
5325-00-613-7956	2	11

RECOMMENDED CHANGES TO EQUIPMENT TECHNICAL PUBLICATIONS



THEN...JOT DOWN THE
DOPE ABOUT IT ON THIS FORM.
CAREFULLY TEAR IT OUT, FOLD IT
AND DROP IT IN THE MAIL.

SOMETHING WRONG WITH PUBLICATION

FROM: (PRINT YOUR UNIT'S COMPLETE ADDRESS)

DATE SENT

PUBLICATION NUMBER

PUBLICATION DATE

PUBLICATION TITLE

BE EXACT PIN-POINT WHERE IT IS

PAGE NO.	PARA-GRAPH	FIGURE NO.	TABLE NO.
----------	------------	------------	-----------

IN THIS SPACE, TELL WHAT IS WRONG
AND WHAT SHOULD BE DONE ABOUT IT.

TEAR ALONG PERFORATED LINE

PRINTED NAME, GRADE OR TITLE AND TELEPHONE NUMBER

SIGN HERE

By Order of the Secretary of the Army:

E.C. MEYER
General, United States Army
Chief of Staff

Official:

J.C. PENNINGTON
Major General, United States Army
The Adjutant General

DISTRIBUTION:

Active Army

HISA (Ft Monmouth) (21)	USAES (2)
USAINSCOM (2)	USAICS (3)
COE (1)	MAAG (1)
TSG (1)	USARMIS (1)
USAARENBD (1)	USAERDAA (1)
DARCOM (1)	USAERDAW (1)
TRADOC (2)	Ft Gordon (10)
OS Maj Comd (4)	Ft Carson (5)
TECOM	Ft Gillem (10)
USACC (4)	Ft Richardson (CERCOM Ofc) (2)
MDW (1)	Army Dep (1) except
Armies (2)	SAAD (30)
Corps (2)	TOAD (14)
Svc Colleges (1)	SHAD (2)
USASIGS (5)	USA Dep (1)
USAADS (2)	Sig Sec USA Dep (1)
USAFAS (2)	Units org under foll TOE: (2)
USAARMS (2)	29-207
USAIS (2)	29-610

NG: None

USAR: None

For explanation of abbreviations used see, AR 310-50

This fine document...

Was brought to you by me:



[Liberated Manuals -- free army and government manuals](#)

Why do I do it? I am tired of sleazy CD-ROM sellers, who take publicly available information, slap “watermarks” and other junk on it, and sell it. Those masters of search engine manipulation make sure that their sites that sell free information, come up first in search engines. They did not create it... They did not even scan it... Why should they get your money? Why are not letting you give those free manuals to your friends?

I am setting this document FREE. This document was made by the US Government and is NOT protected by Copyright. Feel free to share, republish, sell and so on.

I am not asking you for donations, fees or handouts. If you can, please provide a link to liberatedmanuals.com, so that free manuals come up first in search engines:

<A HREF=<http://www.liberatedmanuals.com/>>Free Military and Government Manuals

- Sincerely
Igor Chudov
<http://igor.chudov.com/>
- [Chicago Machinery Movers](#)