

TECHNICAL MANUAL

ORGANIZATIONAL, DIRECT SUPPORT, AND GENERAL SUPPORT MAINTENANCE

**REPAIR PARTS AND SPECIAL TOOLS LISTS
(INCLUDING DEPOT MAINTENANCE REPAIR PARTS AND SPECIAL TOOLS LISTS)**

FOR

**TELEPHONE TERMINAL SET AN TCC-62
(NSN 5805-00-868-8217)**

**HEADQUARTERS, DEPARTMENT OF THE ARMY
JULY 1976**

**Organizational, Direct Support, and General Support Maintenance
Repair Parts and Special Tools Lists
(Including Depot Maintenance Repair Parts and Special Tools Lists)
For
TELEPHONE TERMINAL SET AN/TCC-62
(NSN 5805-0868-8217)**

Current as of 29 March 1976

REPORTING OF ERRORS

You can improve this manual by recommending improvements using DA Form 2028-2 (Test) located in the back of the manual. Simply tear out the self-addressed form, fill it out as shown on the sample, fold it where shown, and drop it in the mail.

If there are no blank DA Form 2028-2 (Test) in the back of your manual, use the standard DA Form 2028 (Recommended Changes to Publications and Blank Forms) and forward to the Commander, US Army Electronics Command, ATTN: DRSELMA-Q, Fort Monmouth, New Jersey 07703.

In either case a reply will be furnished direct to you.

SECTION		Page	Illus Figure
	I. Introduction	1	
	II. Repair parts list	7	
Group	00 Telephone Terminal Set AN/TCC-62	7	1
	01 Shelter, Electrical Equipment		
	S-302/TCC-62	9	2-5
	Shelter, Electrical Equipment		
	S-302/TCC62, Power Entrance Box.....	17	6
	Shelter, Electrical Equipment		
	S-302/TCC-62, Video Entrance Box	19	7
	Shelter, Electrical Equipment		
	S-302/TCC-62, Power Distribution Panel	21	8
	02 Converter, Telephone Signal CV-1548/G (See TM 11-5805367-25P/2 for parts)		
	03 Multiplexer TD-204/U (See TM 11-5850467-25P/2 for parts)		
	OR		
	Multiplexer TD-754/G (See TM 11-5805-383-12 and TM 11-5805-38345 for parts)		
	04 Multiplexer TD452/U (See TM 11-5805467-25P/3-1 for parts)		
	05 Regulator CN-514/GRC (See TM 11-5820-461-25P for parts)		
	06 Intercommunications Station LS-147C/FI (See TM 11-5830-221-24P for parts)		
	07 Telephone Set TA-312/PT (See TM 11-5805-201-12 and TM 11-5805-20135 for parts)		
	08 Overvoltage Control	23	9
SECTION	III. Special tools list (Not applicable)		
	IV. National stock number and part number index	22	24

*This manual supersedes so much of TM 11-5805459-15, 14 April 1969, as pertains to repair parts and special tools list.

SECTION I

INTRODUCTION

1. Scope

This manual lists repair parts and special tools required for performance of organizational, direct support, and general support maintenance of the AN/TCC62.

2. General

This Repair Parts and Special Tools List is divided into the following sections:

a. *Section II. Repair Parts List.* A list of repair parts authorized for use in the performance of maintenance. The list also includes parts which must be removed for replacement of the authorized parts. Parts lists are composed of functional groups in ascending numerical sequence, with the parts in each group listed in figure and item number sequence.

b. *Section III. Special Tools List.* Not applicable.

c. *Section IV. National Stock Number and Part Number Index.* A list, in ascending National item identification number (NIIN, last 9 digits) sequence, of all National stock numbers appearing in the listings, followed by a list, in alphameric sequence, of all part numbers appearing in the listings. National stock number and part numbers are cross-referenced to each illustration figure and item number appearance.

3. Explanation of Columns

The following provides an explanation of columns found in the tabular listings:

a. *Illustration.* This column is divided as follows:

(1) *Figure number.* Indicates the figure number of the illustration in which the item is shown.

(2) *Item number.* The number used to identify each item called out in the illustration.

b. *Source, Maintenance, and Recoverability Codes (SMR).*

(1) *Source code.* Source codes are assigned to support items to indicate the manner of acquiring support items for maintenance, repair, or overhaul of end items. Source codes are entered in the first and second positions of the Uniform SMR Code format as follows:

<i>Code</i>	<i>Definition</i>
PA	-Item procured and stocked for anticipated or known usage.
PD	-Support item, excluding support equipment, procured for initial issue or outfitting and stocked only for subsequent or additional initial issues or outfittings. Not subject to automatic replenishment.

<i>Code</i>	<i>Application/Explanation</i>
O	-Support item is removed, replaced, used at the organizational level.
F	-Support item is removed, replaced, used at the direct support level.
(b) The maintenance code entered in the fourth position indicates whether the item is to be repaired and identifies the lowest maintenance level with the capability to perform complete repair (i.e., all authorized maintenance functions). This position will contain one of the following maintenance codes:	

<i>Code</i>	<i>Definition</i>
XD	-A support item that is not stocked. When required, item will be procured through normal supply channels.

NOTE

Cannibalization or salvage may be used as a source of supply for any items source coded above except those coded, XA, XD, and aircraft support items as restricted by AR 70042.

(2) *Maintenance code.* Maintenance codes are assigned to indicate the levels of maintenance authorized to USE and REPAIR support items. The maintenance codes are entered in the third and fourth positions of the Uniform SMR Code format as follows:

(a) The maintenance code entered in the third position will indicate the lowest maintenance level authorized to remove, replace, and use the support item. The maintenance code entered in the third position will indicate one of the following levels of maintenance:

<i>Code</i>	<i>Application/Explanation</i>
D	-The lowest maintenance level capable of

Code *Application/Explanation*

complete repair of the support item is the depot level.

Z -Nonreparable. No repair is authorized.

(3) *Recoverability code.* Recoverability codes are assigned to support items to indicate the disposition action on unserviceable items. The recoverability code is entered in the fifth position of the Uniform SMR Code format as follows:

Recoverability

Codes *Definition*

Z -Nonreparable item. When unserviceable, condemn and dispose at the level indicated in position 3.

D-Reparable item. When beyond lower level repair capability, return to depot. Condemnation and disposal not authorized below depot level.

L -Reparable item. Repair, condemnation, and disposal not authorized below depot/specialized repair activity level.

c. *National Stock Number.* Indicates the National stock number assigned to the item and will be used for requisitioning purposes.

d. *Part Number.* Indicates the primary number used by the manufacturer (individual, company, firm, corporation, or Government activity), which controls the design and characteristics of the item by means of its engineering drawings, specifications standards, and inspection requirements, to identify an item or range of items.

NOTE

When a stock numbered item is requisitioned, the repair part received may have a different part number than the part being replaced.

e. *Federal Supply Code for Manufacturer (FSCM).* The FSCM is a 5-digit numeric code listed in SB 708-42 which is used to identify the manufacturer, distributor, or Government agency, etc.

f. *Description.* Indicates the Federal item name and, if required, a minimum description to identify the item.

g. *Unit of Measure (U/M).* Indicates the standard of the basic quantity of the listed item as used in performing the actual maintenance function. This measure is expressed by a two character alphabetical abbreviation (e.g., ea, in, pr, etc.). When the unit of measure differs from the unit of issue, the lowest unit of issue that will satisfy the required units of measure will be requisitioned.

h. *Quantity Incorporated in Unit.* Indicates the quantity of the item used in the breakout shown on the illustration figure, which is prepared for a functional group, subfunctional 9 group, or an assembly.

4. Special Information

The following publications pertain to the AN/parTCC-62 and its components:

TM 11-5805-201-12, Telephone Set TA-312/PT TM 11-5805-201-35, Telephone Set TA-312/PT

TM 11-5805-359-15, Telephone Terminal Set AN/TCC-62

TM 11-5805-367-12, Multiplexers TD-202/U, TD-203/U, TD-204/U, TD-352/U, and TD-353/U; Restorer, Pulse Form TD-206/U, and Converter, Telephone Signal CV-1548/G and CV-1548A/G

TM 11-5805-367-25P/2, Multiplexer TD-204/U TM 11-5805-367-25P/3-1, Multiplexer TD-352/U

TM 11-5805-367-25P/5, Converter, Telephone Signal CV-1548/G, CV-1548A/G and 18A4 Panel Assembly

TM 11-5805-367-34-5, Converter, Telephone Signal CV-1548/G and CV-1548A/G

TM 11-5805-367-35/2, Multiplexer TD-204/U TM 11-5805-367-35/3, Multiplexer TD-352/U and TD-353/U

TM 11-5805-383-12, Multiplexer TD-754/G TM 11-5805-383-35, Multiplexer TD-754/G

TM 11-5820461-12, Radio Sets AN/GRC50(V)1, 2, 3, 4, and 5, and Radio Sets AN/GRC-50A(V)1, 2, 3, 4, 5, 6, 7, 8, 9, 10, and 11

TM 11-5820-461-25P, Radio Sets AN/GRC-50(V)1, 2, 3, 4, and 5, and AN/GRC-50A(V)1, 2, 3, 4, and 5

TM 11-5820-461-35, Radio Sets AN/GRC-50(V)1, 2, 3, 4, and 5, and Radio Sets AN/GRC-50A(V)1, 2, 3, 4, 5, 6, 7, 8, 9, 10, and 11 and Test Facilities Kit MK-715/GRC-50(V)

TM 11-5830-221-12, Intercommunication Stations LS-147A/FI, LS-147B/FI, LS-147C/FI, and LS-147D/FI

TM 11-5830-221-24P, Intercommunication Station LS-147C/FI TM 11-5830-221-35, Intercommunication Stations LS-147A/FI, LS-147B/FI, LS-147C/FI, and LS-147D/FI

TM 11-6110-245-15, Voltage Regulator CN-514/GRC

5. How to Locate Repair Parts

a. When National stock number of part number is unknown.

(1) *First.* Using the table of contents, determine the functional group within which the repair part belongs. This is

necessary since illustrations are prepared for functional groups and listings are divided into the same groups.

(2) *Second.* Find the illustration covering the functional group to which the repair part belongs.

(3) *Third.* Identify the repair part on the illustration and note the illustration figure and item number of the repair part.

(4) *Fourth.* Using the Repair Parts Listing, find the figure and item number noted on the illustration.

b. When National stock number or part number is known.

(1) *First.* Using the Index of National Stock Numbers and Part Numbers, find the pertinent National stock number of part number. This index is in ascending NIIN sequence -followed by a list of part numbers in ascending alphameric sequence, cross-referenced to the illustration figure number and item number.

(2) *Second.* After finding the figure and item number, locate the figure and item number in the repair parts list.

6. Abbreviations

Not applicable.

(Next printed page is 5)

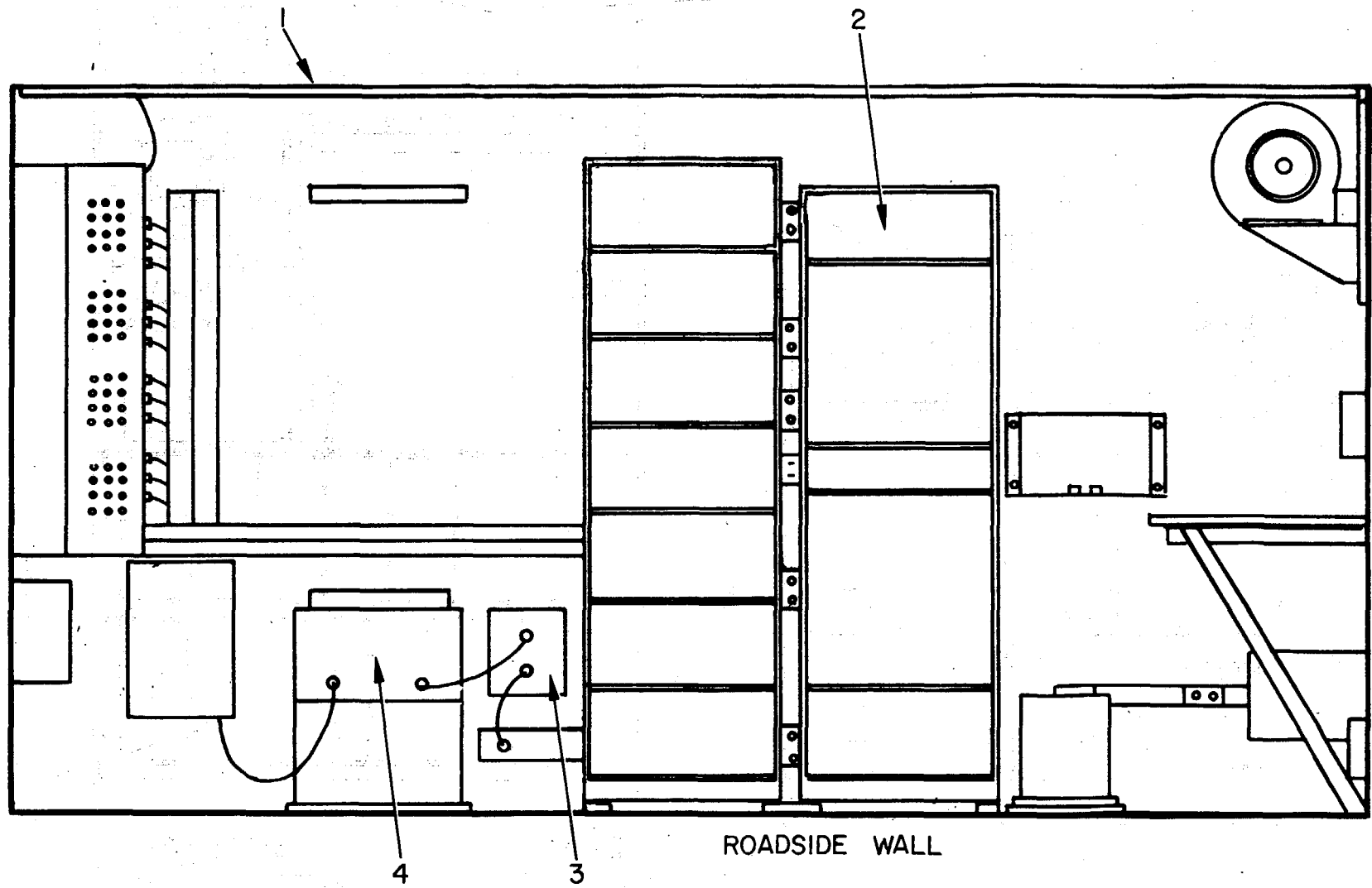
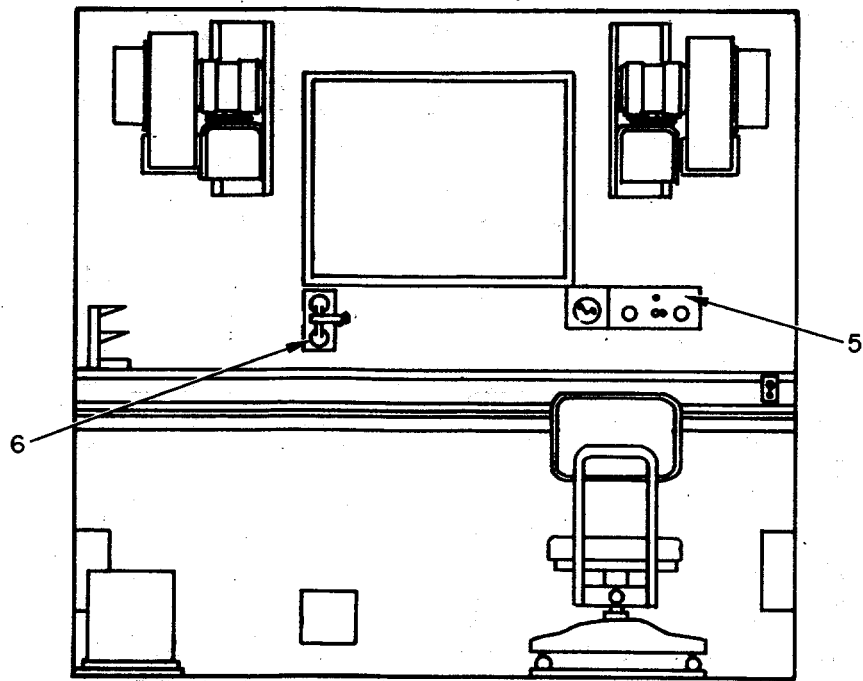
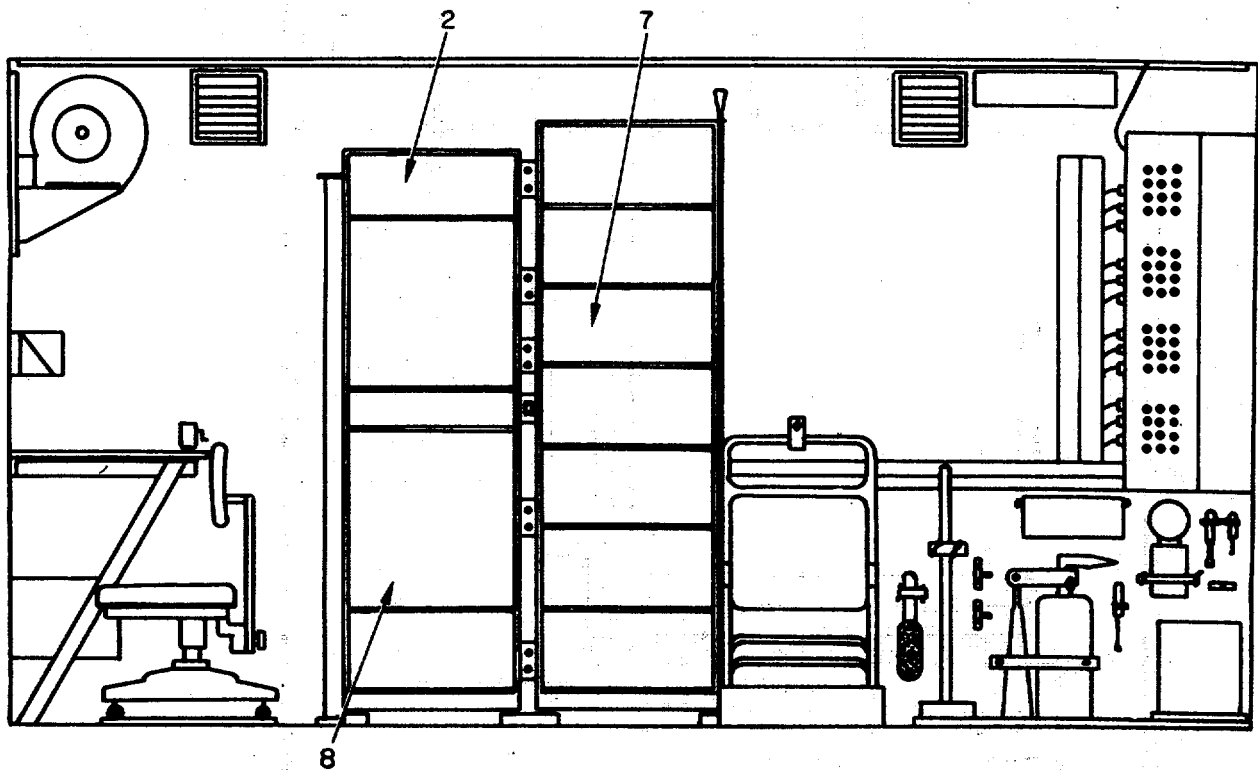


Figure 1. Telephone Terminal Set, AN/TCC-62 (Sheet 1 of 2).



FRONT WALL



CURBSIDE WALL

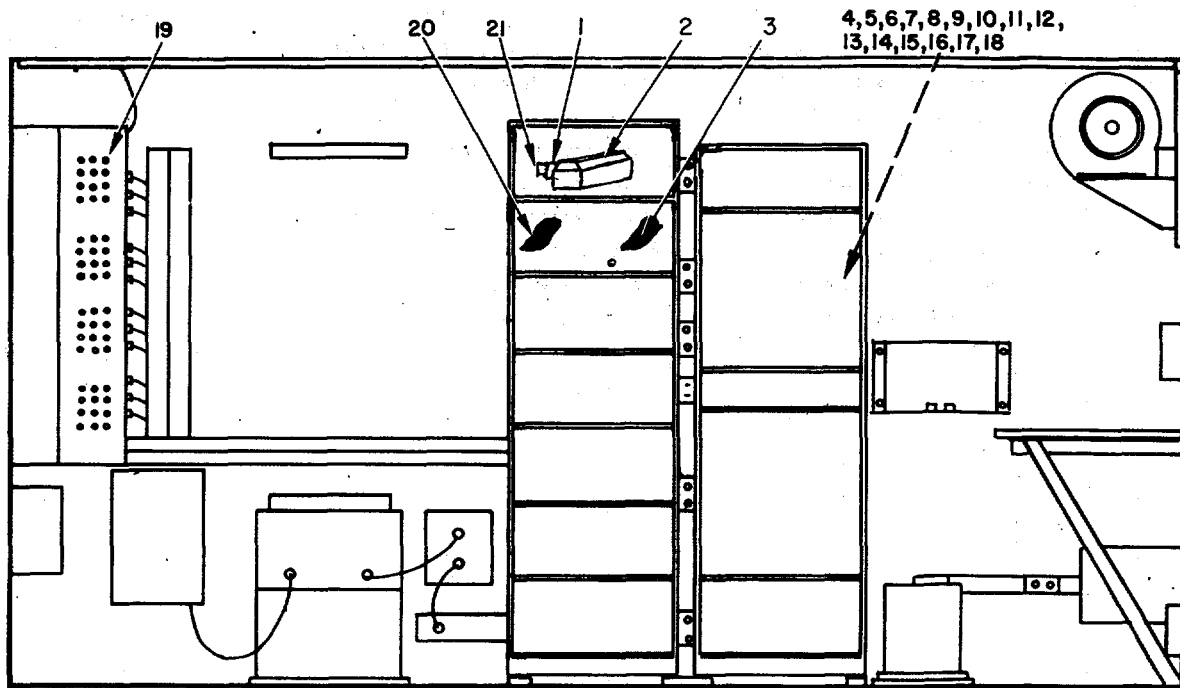
ELOKPO02

Figure 1. Telephone Terminal Set, AN/TCC-62 (Sheet 2 of 2).

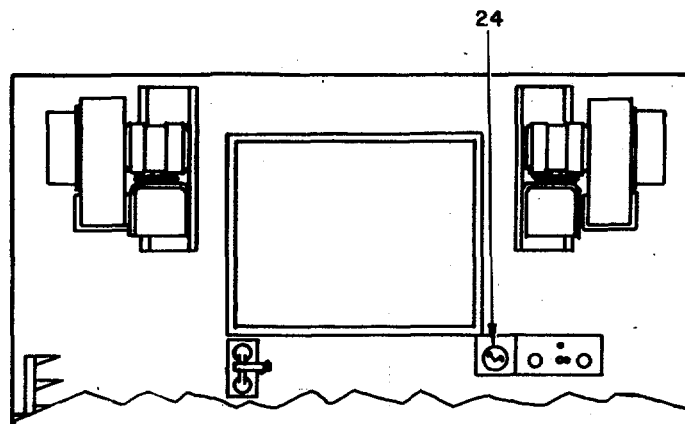
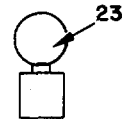
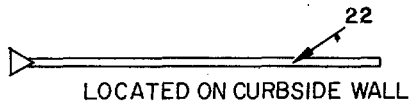
SECTION II

TM 11-5805-358-24P

(1) ILLUSTRATION		(2)	(3)	(4)	(5)	(6)	(7)	(8)
(a) FIG NO.	(b) ITEM NO.	SMR CODE	NATIONAL STOCK NUMBER	PART NUMBER	FSCM	DESCRIPTION <i>USABLE ON CODE</i>	U/M	QTY INC IN UNIT
						GROUP 00 TELEPHONE TERMINAL SET AN/TCC-62		
1	1	XDODD		S302TCC62	80058	SHELTER,ELECTRICAL EQUIPMENT	EA	1
1	2	PDODD	5805-0-900-B200	TD204U	80058	MULTIPLEXER,OR	EA	2
1	2	PDODD	5820-00-930-8078	TD754GG	80058	MULTIPLEXER,DR	EA	2
1	3	PDODD		SCC532282	80063	OVERVOLTAGE CONTROL	EA	1
1	4	PDODD	6110-00-064-5478	CN514GRC	80058	REGULATOR	EA	1
1	5	PDODD	5830-00-752-5357	LS147CFI	80058	INTERCOMMUNICATIONS STATION	EA	1
1	6	PDDOD	5805O543-0012	TA312PT	80058	TELEPHONE SET	EA	1
1	7	PDODD	5805-00-069-8795	CV154SG	8005S	CONVERTER,TELEPHDNE SIGNAL	EA	8
1	8	POODD	5805-00-98S-C153	TD353U	80058	MULTIPLEXER	EA	2



ROADSIDE WALL



PART OF FRONT WALL

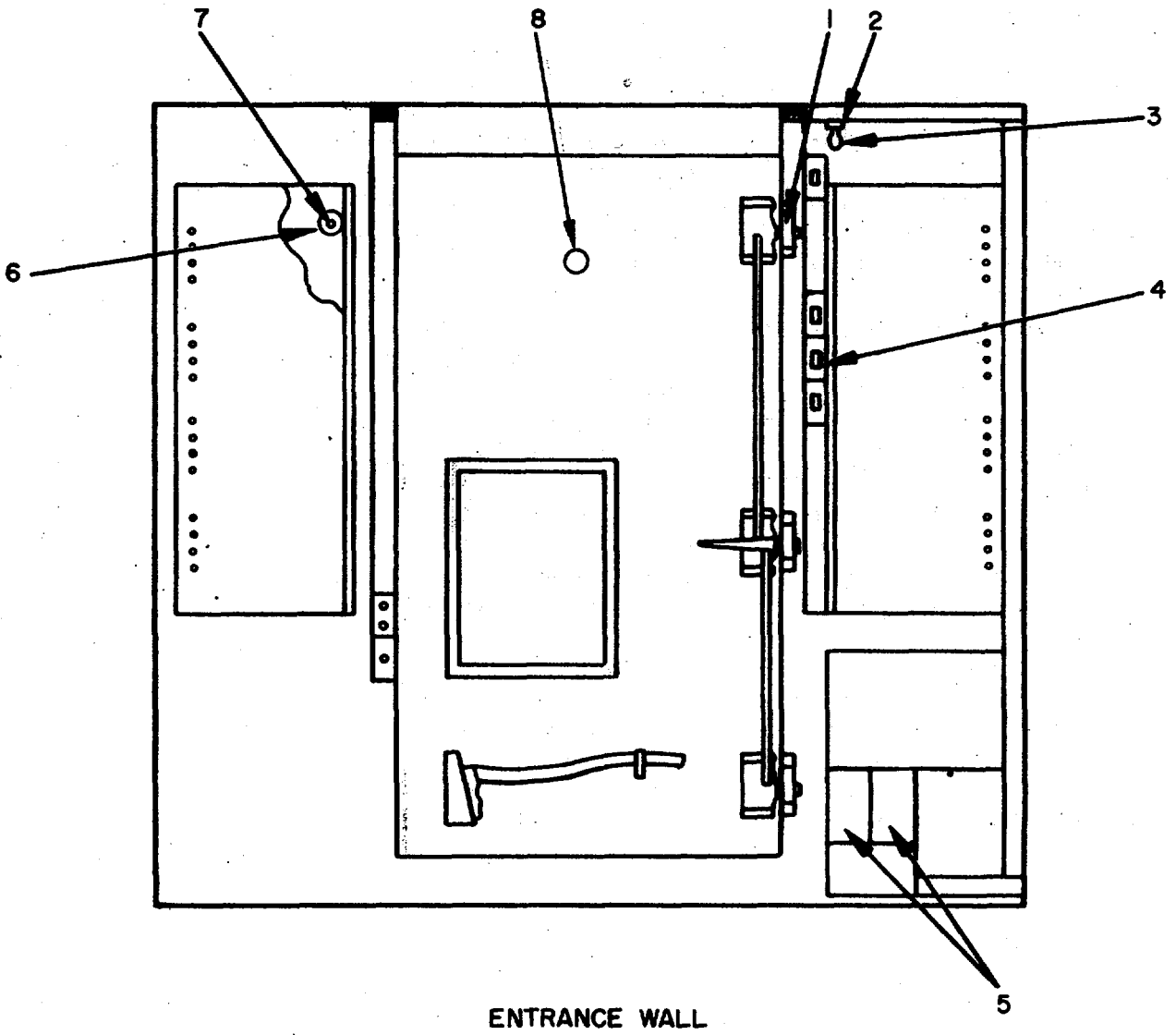
ELOKPO03

Figure 2. Shelter, Electrical Equipment, S-302/TCC-62.

SECTION II

TM 11-5805-358-24P

(1) ILLUSTRATION		(2)	(3)	(4)	(5)	(6)	(7)	(8)
(a) FIG NO.	(b) ITEM NO.	SMR CODE	NATIONAL STOCK NUMBER	PART NUMBER	FSCM	DESCRIPTION <i>USABLE ON CODE</i>	U/M	QTY INC IN UNIT
						GROUP 01 SHELTER,ELECTRICAL EQUIPMENT S-302/TCC-62		
2	1	PAOZZ	5410-00-793-2021	MK68OG	80058	REPAIR KIT,ELECTRONIC EQUIPMENT SHELTER	EA	1
2	2	PAFZZ	5410-00-T71-3354	MK681G	80058	REPAIR KIT,ELECTRONIC EQUIPMENT SHELTER	EA	1
2	3	PAOZZ	5120-00-946-5114	EQA26SH	95344	GRIP,CABLE	EA	1
2	4	PAFZZ	5935-00-064-5731	U237G	80058	CONNECTOR.PLUG,ELECTRICAL	EA	3
2	5	PAFZZ	5120-00-787-5196	U238G	80058	CONNECTCR,RECEPTACLE,ELECTRICAL	EA	2
2	6	PAFZZ	6145-00-161-09L3	RG62AU	80058	CABLE,RADIO FREQUENCY	EA	1
2	7	PAFZZ	5935-00-295-3129	5262	74545	CONNECTOR,RECEPTACLE,ELECTRICAL	EA	14
2	8	PAOZZ	6145-00-504-1015	C003MDE3-160390	81349	CABLE,POWER,ELECTRICAL	EA	1
2	9	PAFZZ	5935-00-350-1834	5261	74545	CONNECTOR,RECEPTACLE,ELECTRICAL	EA	1
2	10	PAOZZ	5935-00-659-1562	QCK24-0719	06473	KIT,CLAMP	EA	1
2	11	PAFZZ	6145-00-752-2473	SCA46608	80063	CABLE,POWER,ELECTRICAL	EA	1
2	12	PAFZZ	5935-00-636-7145	UP121M	80058	CONNECTOR,PLUG,ELECTRICAL	EA	2
2	13	PAFZZ	6145-00-926-6417	SMC530073	80063	CABLE,RADIO FREQUENCY	EA	1
2	14	PAFZZ	5935-00-933-3454	5361	74545	CONNECTOR,RECEPTACLE,ELECTRICAL	EA	2
2	15	PAFZZ	5915-00-946-5369	JW17-1122	05571	FILTER,AUDIO	EA	6
2	6	PAOZZ	5935-00-930-1210	13738	91737	CONNECTOR,RECEPTACLE,RADIO FREQUENCY	EA	2
2	17	PAFZZ	5935-00-949-5244	13739	91737	CONNECTOR,PLUG.RADIO FREQUENCY	EA	2
2	18s	PAFZZ		IGS251	74545	CONNECTCR,RECEPTACLE,ELECTRICAL	EA	2
2	19	PAFZZ	5930-00-087-4712	8906Ki384	15605	SWITCH,TOGGLE	EA	96
2	20	PAOZZ	512C0--946-5148	EQA68PH	95344	GRIP,CABLE	EA	1
2	21	PAFZZ	5410-00-973-2936	MK679G	80058	MAINTENANCE KIT,ELECTRONIC EQUIPMENT SHELTER	EA	1
2	22	PAOZZ	5975-00-224-5260	MX148G	80058	RQD,GROUND	EA	1
2	23	PAOZZ	6230-00-729-9614	2106-7	32572	LANTERN,ELECTRIC	EA	1
2	24	PAFDL	6645-00-410-2395	SCC539475	80063	CLOCK,AIRCRAFT,MECHANICAL	EA	1



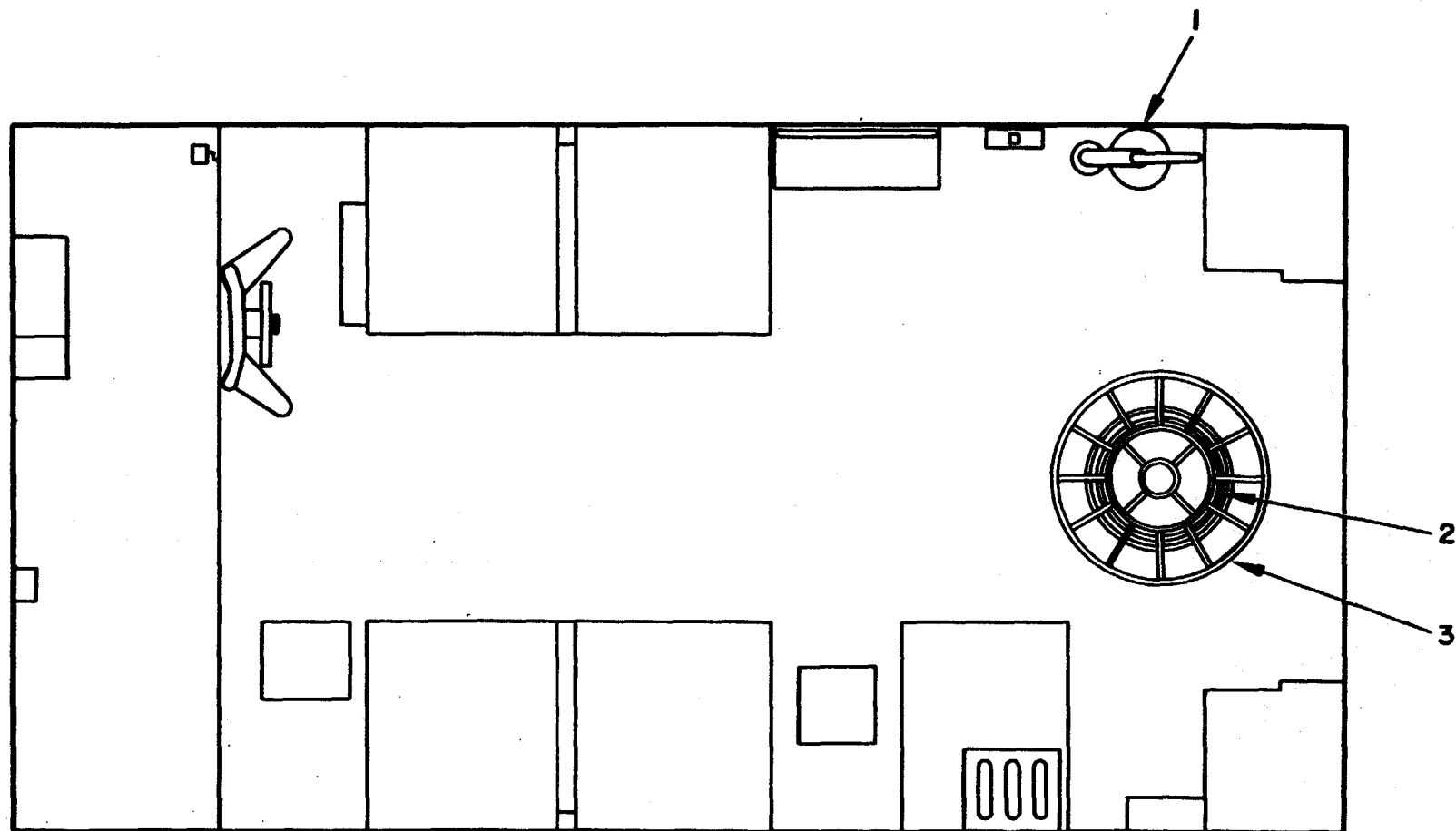
ELOKP004

Figure 3. Shelter, Electrical Equipment, S-302/TCC-62, Entrance Wall.

SECTION II

TM 11-5805-358-24P

(1) ILLUSTRATION		(2)	(3)	(4)	(5)	(6)	(7)	(8)
(a) FIG NO.	(b) ITEM NO.	SMR CODE	NATIONAL STOCK NUMBER	PART NUMBER	FSCM	DESCRIPTION <i>USABLE ON CODE</i>	U/M	QTY INC IN UNIT
3	1	PAFZZ	5930-00-027-2313	8Z2RQ18T	91929	SWITCH,SENSITIVE	EA	1
3	2	PAFZZ	6250-00-299-6562	4109	74545	LAMPHOLDER	EA	1
3	3	PAOZZ	6240-00-635-9753	NE34	81349	LAMP,GLOW	EA	1
3	4	PAFZZ	5930-00-865-6101	5521-1	03497	SWITCH,TOGGLE	EA	4
3	5	PAFZZ	5915-00-909-7762	SP289	81831	FILTER,POWER	EA	2
3	6	PAOZZ	5970-00-869-6263	SCC76202-1	80063	CAP,ELECTRICAL	EA	422
3	7	PAFZZ	5940-00-283-5386	U106U	80058	POST,BINDING	EA	422
3	8	PAOZZ	5340-00-930-1476	CBLQ1	23404	PEEPSIGHT	EA	1



FLOOR PLAN

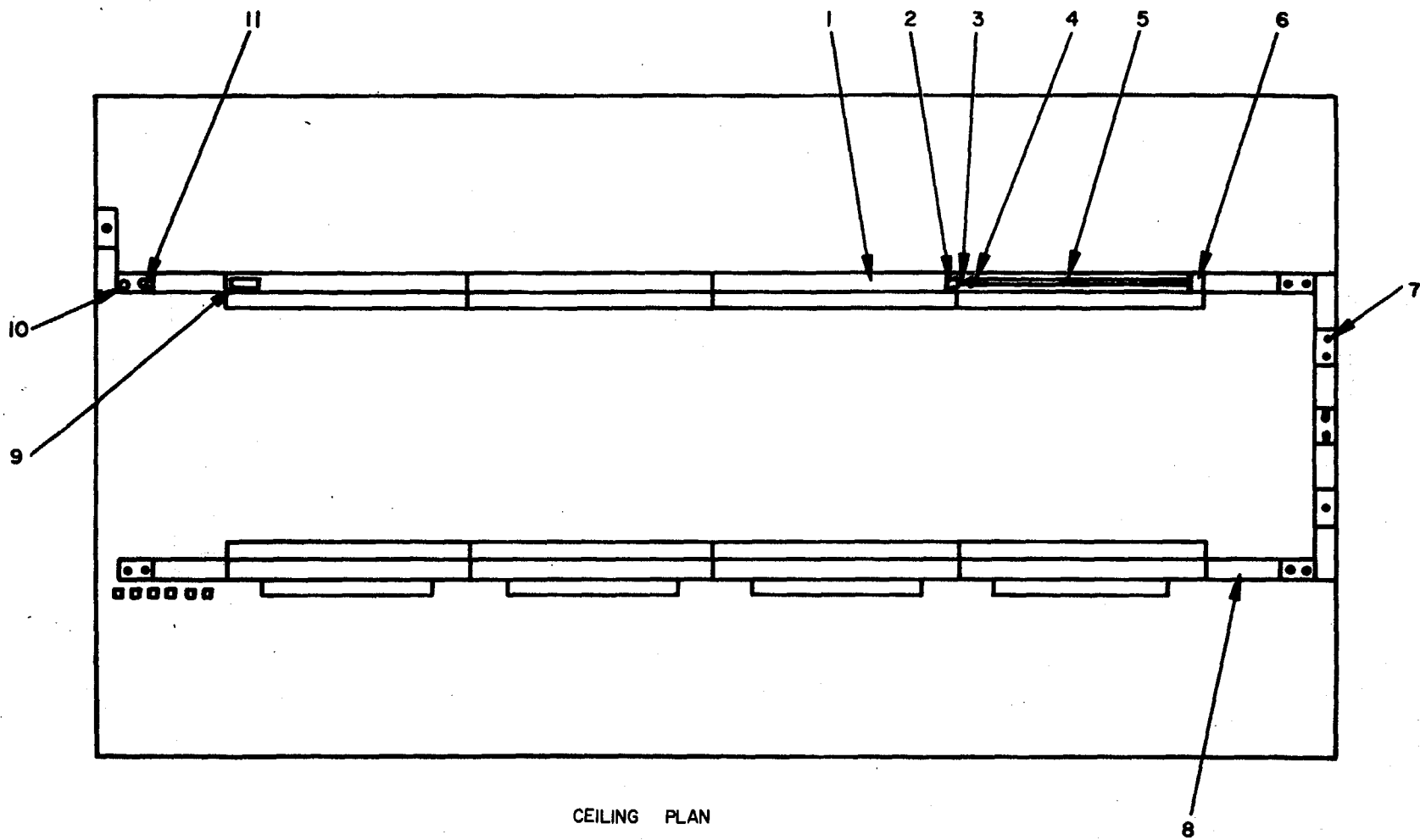
ELOOKP005

Figure 4. Shelter, Electrical Equipment, S-302/TCC-62, Floor Plan.

SECTION II

TM 11-5805-358-24P

(1) ILLUSTRATION		(2)	(3)	(4)	(5)	(6)	(7)	(8)
(a) FIG NO.	(b) ITEM NO.	SMR CODE	NATIONAL STOCK NUMBER	PART NUMBER	FSCM	DESCRIPTION <i>USABLE ON CODE</i>	U/M	QTY INC IN UNIT
4	1	PAOZZ	4210-00-270-4512	SCD539482	80063	FIRE EXTINGUISHER	EA	1
4	2	PAOZZ	5995-00-134-7159	CX7453AU	80058	CABLE ASSEMBLY,POWER,ELECTRICAL	EA	1
4	3	PAOZZ	8130-00-656-1090	RC435U	80058	REEL,CA8LE	EA	1



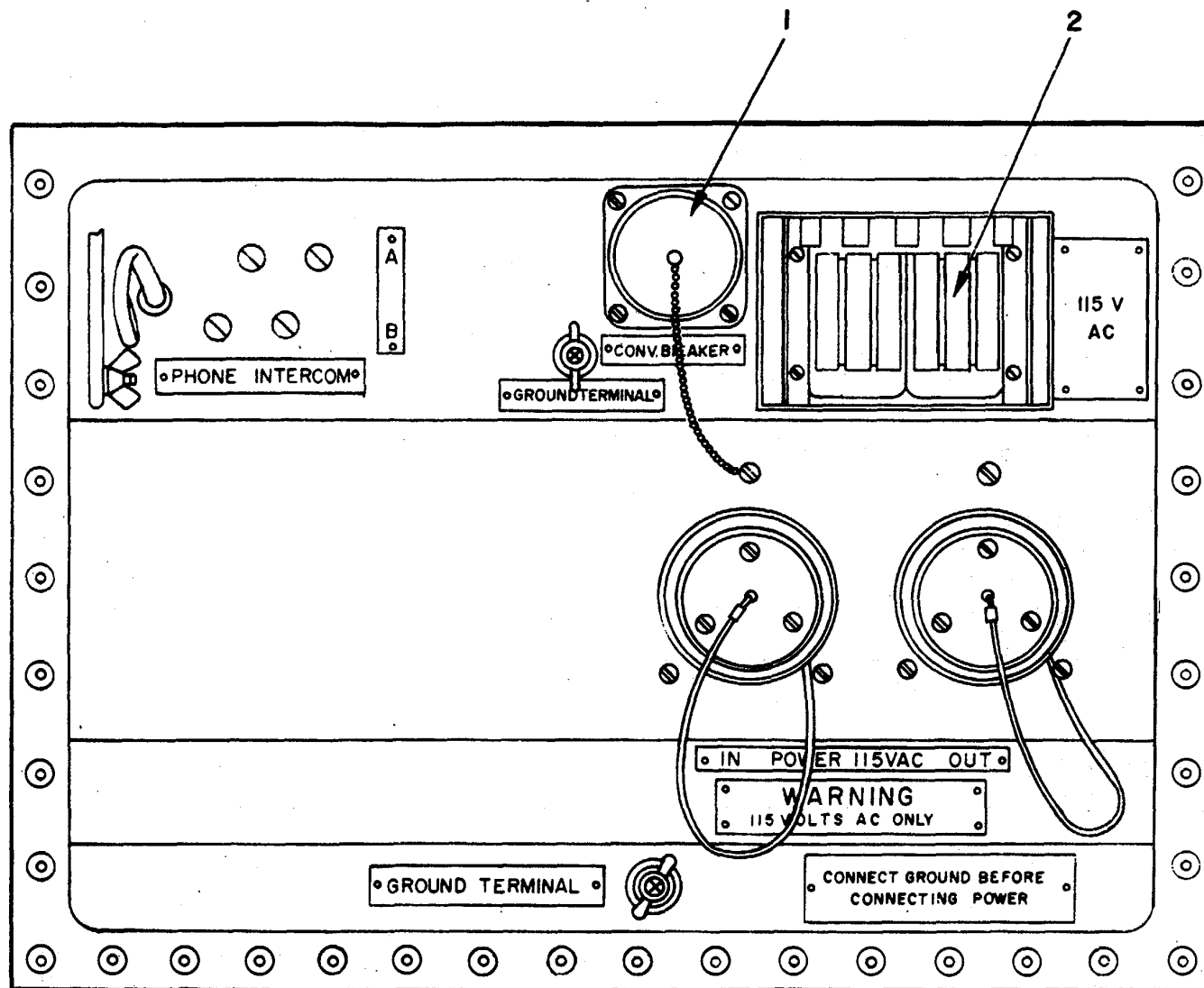
ELOKPO06

Figure 5. Shelter, Electrical Equipment, S-302/TCC-62, Ceiling Plan.

SECTION II

TM 11-5805-358-24P

(1) ILLUSTRATION		(2)	(3)	(4)	(5)	(6)	(7)	(8)
(a) FIG NO.	(b) ITEM NO.	SMR CODE	NATIONAL STOCK NUMBER	PART NUMBER	FSCM	DESCRIPTION <i>USABLE ON CODE</i>	U/M	QTY INC IN UNIT
5	1	PAOZZ	6210-00-921-6682	SCC539466	80063	SHIELD,LIGHT	EA	16
5	2	PAOZZ	5910-00-553-6096	591A	02777	FILTER,SUPPRESSOR	EA	16
5	3	PAOZZ	6250-00-299-2884	FS2	71183	STARTER,FLUORESCENT	EA	16
5	4	PAFZZ		78X736	24446	LAMPHOLOER	EA	16
5	5	PAOZZ	6240-00-152-2996	F2OTL2CW	24446	LAMP,FLUORESCENT	EA	16
5	6	PAFZZ	6250-00-175-2559	78X491	24446	LAMPHOLDER	EA	16
5	7	PAFZZ	59350C-999-6934	5225	75582	SWITCH AND RECEPTACLE ASSEMBLY	EA	2
5	8	PAOZZ	6210-00-930-1217	SCC547186	80063	SHIELD,LIGHT	EA	3
5	9	PAOZZ	6250-00-804-3449	89G457D	24455	8ALLAST,LAKP	EA	16
5	10	PAOZZ	6240-00-274-4027	25T8DC	24446	LAMP,INCANDESCENT	EA	6
5	11	PAFZZ	6250-00-995-9074	12-240	72619	LAMPHOLDER	EA	6



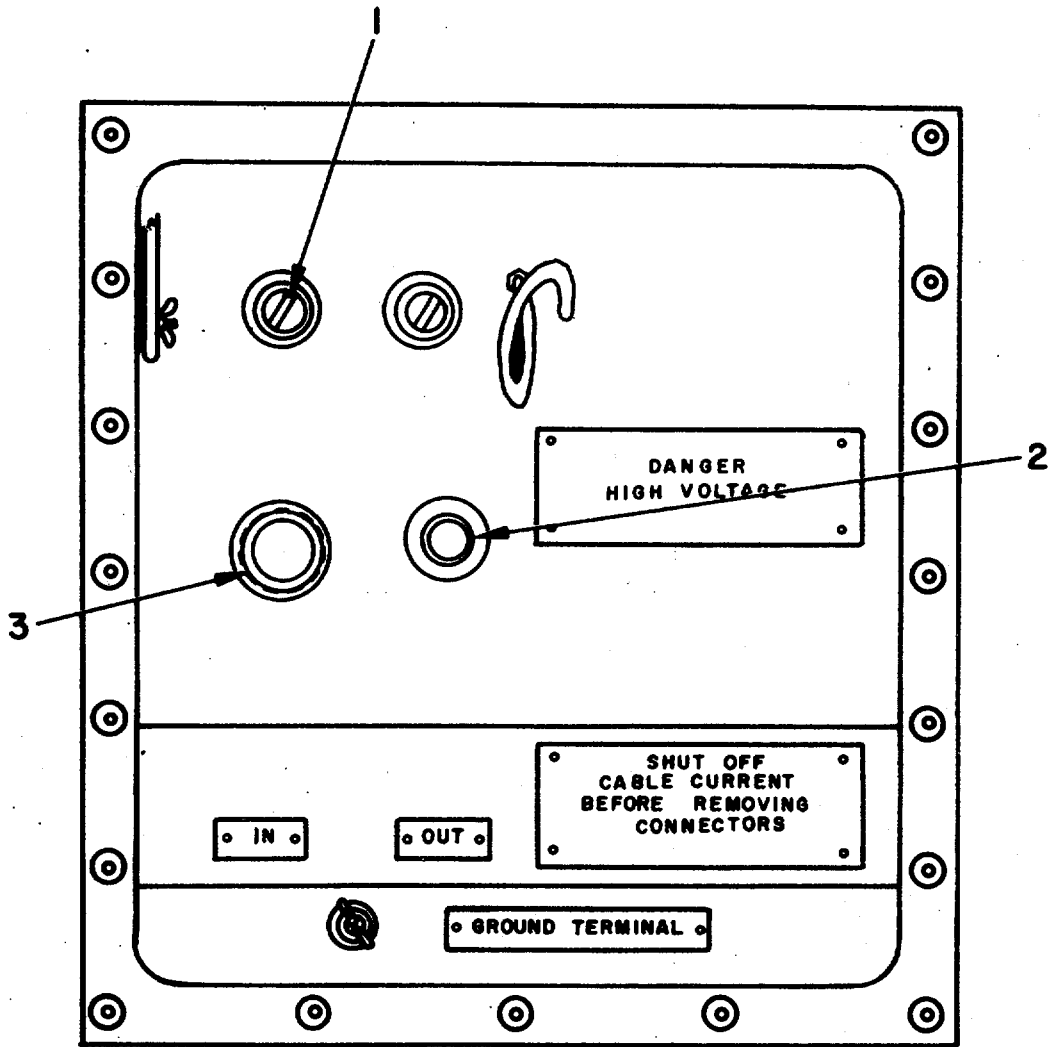
ELOKPO07

Figure 6. Shelter, Electrical Equipment, S-302/TCC-62, Power Entrance Box.

SECTION II

TM 11-5805-358-24P

(1) ILLUSTRATION		(2)	(3)	(4)	(5)	(6)	(7)	(8)
(a) FIG NO.	(b) ITEM NO.	SMR CODE	NATIONAL STOCK NUMBER	PART NUMBER	FSCM	DESCRIPTION <i>USABLE ON CODE</i>	U/M	QTY INC IN UNIT
6	1	PAOZZ	5975-00-947-3068	M378OFS	21873	COVER,ELECTRICAL	EA	1
6	2	PAFZZ	6610-00-437-4064	105-201-101	79405	BREAKER,CIRCUIT	EA	1



ELOKP008

Figure 7. Shelter, Electrical Equipment, S-302/TCC-62, Video Entrance Box.

SECTION II

TM 11-5805-358-24P

(1) ILLUSTRATION		(2)	(3)	(4)	(5)	(6)	(7)	(8)
(a) FIG NO.	(b) ITEM NO.	SMR CODE	NATIONAL STOCK NUMBER	PART NUMBER	FSCM	DESCRIPTION <i>USABLE ON CODE</i>	U/M	QTY INC IN UNIT
7	1	PAOZZ	5920-00-930-2307	SCB547223	80063	ARRESTOR,LIGHTING	EA	2
7	2	PAFZZ	5935-00-946-1272	ESC194240	80063	CONNECTOR,RECEPTACLE,ELECTRICAL	EA	1
7	3	PAFZZ	5935-00-947-2925	ESC194239	80063	CONNECTOR,RECEPTACLE,ELECTRICAL	EA	1

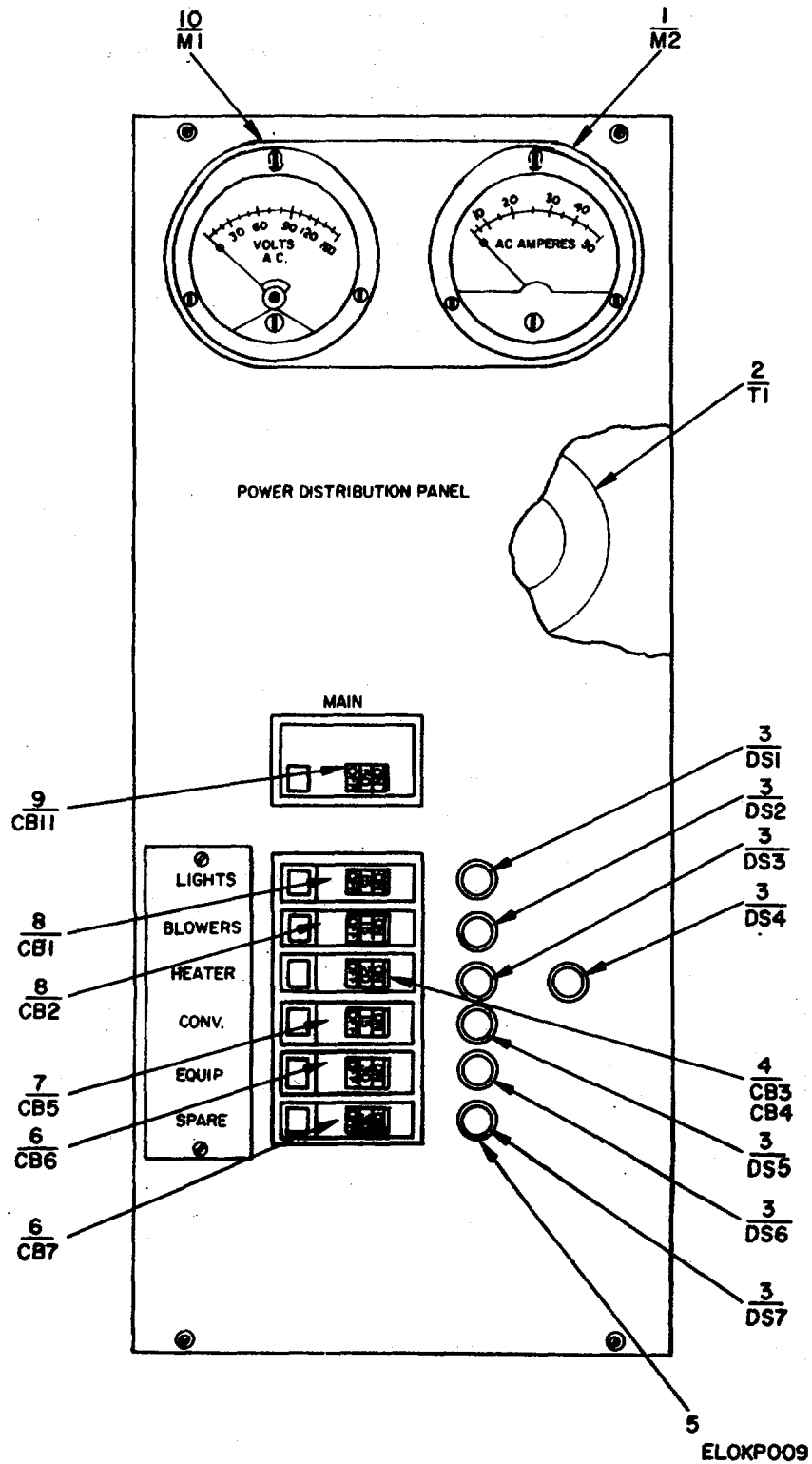
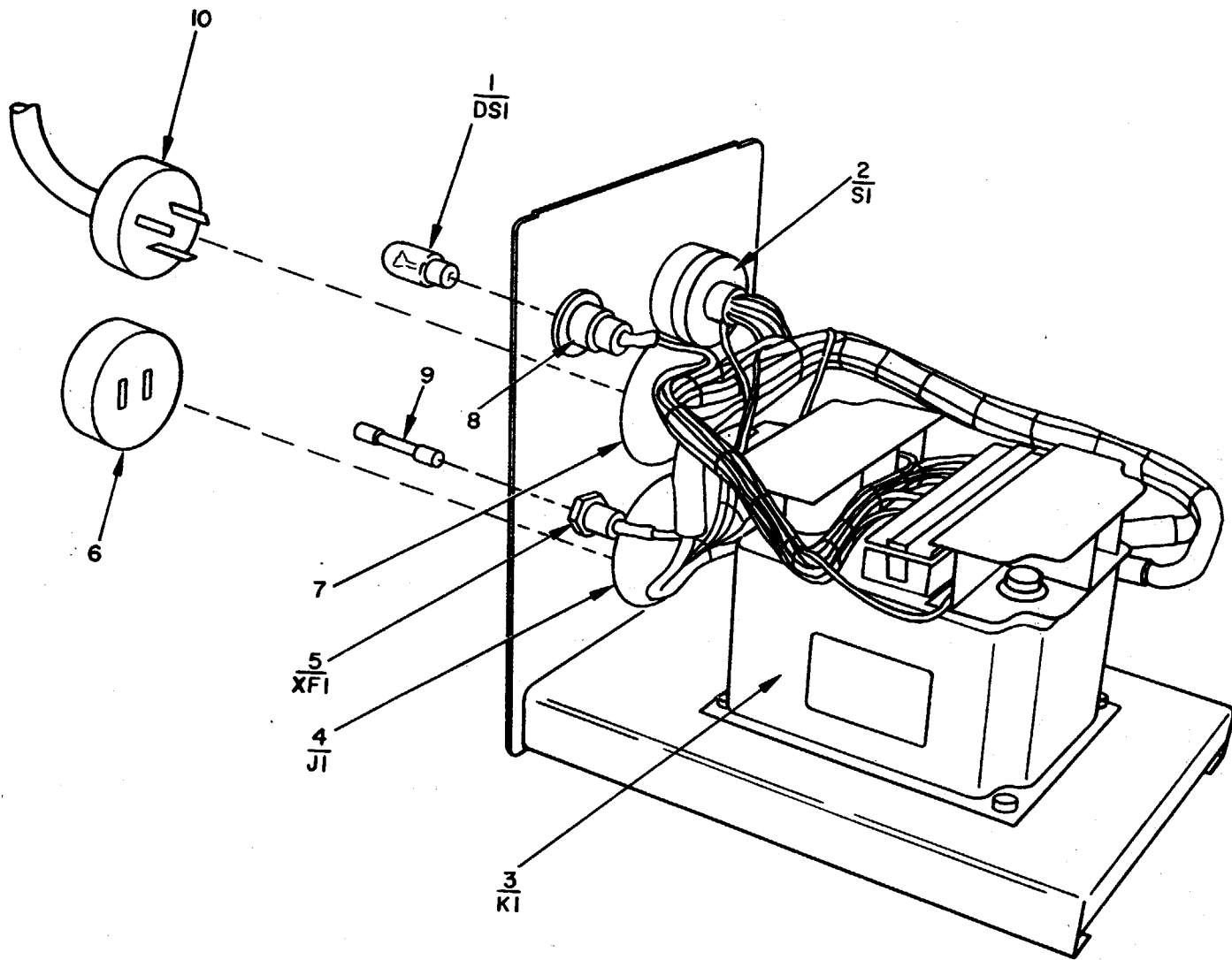


Figure 8. Shelter, Electrical Equipment, S-302/TCC-62, Power Distribution Panel.

SECTION II

TM 11-5805-358-24P

(1) ILLUSTRATION		(2)	(3)	(4)	(5)	(6)	(7)	(8)
(a) FIG NO.	(b) ITEM NO.	SMR CODE	NATIONAL STOCK NUMBER	PART NUMBER	FSCM	DESCRIPTION <i>USABLE ON CODE</i>	U/M	QTY INC IN UNIT
8	1	PAFZZ	6625-00-752-8464	MR36WIO0ACAAR	81349	AMMETER	EA	1
8	2	PAFZZ	5950-00-892-8208	3CT11B	93993	TRANSFORMER,CURRENT	EA	1
8	3	PAOZZ	6240-00-223-9100	NE51	81349	LAMP.GLCW	EA	7
8	4	PAFZZ	5925-00-011-2540	QO-2020	90211	BREAKER,CIRCUIT	EA	2
8	5	PAFZZ	6210-00-949-8353	37-0480-33L-245	726L9	LAMPHOLDER	EA	7
8	6	PAFZZ	5925-00-682-4096	Q1-L30	90211	BREAKER,CIRCUIT	EA	2
8	7	PAFZZ	5925-00-583-7941	QO-120	90211	BREAKER,CIRCUIT	EA	1
8	8	PAFZZ	5925-00-818-4811	QO-115	90211	BREAKER.CIRCUIT	EA	2
8	9	PAFZZ	5925-00-785-9531	QO-260	90211	BREAKER.CIRCUIT	EA	1
8	10	PAFZZ	6625-00-669-5019	MR36W150ACVVR	81349	VOLTMETER	EA	1



ELOKPOIO

Figure 9. Overvoltage Control.

SECTION II

TM 11-5805-358-24P

(1) ILLUSTRATION		(2)	(3)	(4)	(5)	(6)	(7)	(8)
(a) FIG NO.	(b) ITEM NO.	SMR CODE	NATIONAL STOCK NUMBER	PART NUMBER	FSCM	DESCRIPTION <i>USABLE ON CODE</i>	U/M	QTY INC IN UNIT
						GROUP 08 OVERVOLTAGE CCNTROL		
9	1	PAOZZ	6240-00-223-9100	NE51	81349	LAMP,GLCN	EA	1
9	2	PAFZZ	5930-00-044-3549	HS25201-9	96906	SWITCH,TDGGLE	EA	1
9	3	PAFZZ	5945-00-0874305	SCC532287	80063	RELAV,POWER	EA	1
9	4	PAFZZ	5935-00-087-5421	QZA24A22P	02660	CONNECTOR,PLUG,ELECTRICAL	EA	1
9	5	PAFZZ	592040-462-3342	34200L	75915	FUSEHOLCER	EA	1
9	6	PAFZZ	5935-00-892-9078	Q2A24A22S	02660	CONNECTOR,RECEPTACLE.ELECTRICAL	EA	1
9	?	PAFZZ	5935-00-892-9002	Q7A24A22S	02660	CONNECTOR,PLUG,ELECTRICAL	EA	1
9	8	PAOZZ	6210-00-840-L007	52408-991-241	72619	LAMPHOLDER	EA	1
9	9	PAOZZ	5920-00-280-B344	F02A250VI-2A	81349	FUSE,CARTRIDGE	EA	1
9	10	PAFZZ	5935-00-892-9083	Q7A24A22P	02660	CONNECTOR,PLUG,ELECTRICAL	EA	2

NOTE: LATEST NATIONAL STOCK NUMBER ASSIGNMENTS AT END OF INDEX

STOCK NUMBER	FIGURE NO.	ITEM NO.	STOCK NUMBER	FIGURE NO.	ITEM NO.
5930-00-027-2313	3	1	6625-00-752-8464	8	1
5930-00-044-3549	9	2	5410-00-771-3354	2	2
6110-00-064-5478	1	4	5925-00-785-9531	8	9
5935-00-064-5731	2	4	5410-00-793-2021	2	1
5805-00-069-8795	1	7	6250-00-804-3449	5	9
5930-00-087-4712	2	19	5925-00-818-4811	8	8
5935-00-087-5421	9	4	6210-00-840-1057	9	8
5995-00-134-7159	4	2	5930-00-865-6101	3	4
6240-00-152-2996	5	5	5970-00-869-6263	3	6
6145-00-161-0913	2	6	5950-00-892-8208	8	2
6250-00-175-2559	5	6	5935-00-892-9078	9	6
6240-00-223-9100	8	3	5935-00-892-9082	9	7
6240-00-223-9100	9	1	5935-00-892-9083	9	10
5975-00-224-5260	2	22	5805-00-900-8200	1	2
4210-00-270-4512	4	1	5915-00-909-7762	3	5
6240-00-274-4027	5	10	6210-00-921-6682	5	1
5920-00-280-8344	9	9	6145-00-926-6417	2	13
5940-00-283-5386	3	7	5935-00-930-1210	2	16
6250-00-299-2884	5	3	6210-00-930-1217	5	8
6250-00-299-6562	3	2	5340-00-930-1476	3	8
5935-00-350-1834	2	9	5920-00-930-2307	7	1
6645-00-410-2395	2	24	5820-00-930-8078	1	2
6145-00-504-1015	2	8	5935-00-933-3454	2	14
5805-00-543-0012	1	6	5935-00-946-1272	7	2
5910-00-553-6096	5	2	5120-00-946-5114	2	3
5925-00-583-7941	8	7	5120-00-946-5148	2	20
6240-00-635-9753	3	3	5915-00-946-5369	2	15
5935-00-636-7145	2	12	5935-00-947-2925	7	3
8130-00-656-1090	4	3	5975-00-947-3068	6	1
5935-00-659-1562	2	10	5935-00-949-5244	2	17
6625-00-669-5019	8	10	6210-00-949-8353	8	5
5925-00-682-4096	8	6	5410-00-973-2936	2	21
6230-00-729-9614	2	23	5805-00-985-9153	1	8
6145-00-752-2473	2	11	6250-00-995-9074	5	11
5830-00-752-5357	1	5	5935-00-999-6934	5	7

PART NUMBER	FSCM	FIG. NO.	ITEM NO.	PART NUMBER	FSCM	FIG. NO.	ITEM NO.
BZ2RQ18T	91929	3	1	SCB547223	80063	7	1
CB101	23404	3	8	SCC532282	80063	1	3
CN514GRC	80058	1	4	SCC532287	80063	9	3
CV1548G	80058	1	7	SCC539466	80063	5	1
CX7453AU	80058	4	2	SCC539475	80063	2	24
C003MDE3-160390	81349	2	8	SCC547186	80063	5	8
EQA26SH	95344	2	3	SCC76202-1	80063	3	6
EQA68PH	95344	2	20	SCD539482	80063	4	1
ESC194239	80063	7	3	SMC530073	80063	2	13
ESC194240	80063	7	2	SP289	81831	3	5
FS2	71183	5	3	S302TCC62	80058	1	1
F02A250Vi-2A	81349	9	9	TA312PT	80058	1	6
F20T12CW	24446	5	5	TD204U	80058	1	2
IG5251	74545	2	18	TD353U	80058	1	8
JW17-1122	05571	2	15	TD754G	80058	1	2
LS147CFI	80058	1	5	UP121M	80058	2	12
MK679G	80058	2	21	U106U	80058	3	7
MK68OG	80058	2	1	U237G	80058	2	4
MK68iG	80058	2	2	U238G	80058	2	5
MR36WIOACAAR	81349	8	1	105-201-101	79405	6	2
MR36WISOACVVR	81349	8	10	12-240	72619	5	11
MS25201-9	96906	9	2	13738	91737	2	16
MXI48G	80058	2	22	13739	91737	2	17
M3780FS	21873	6	1	2106-7	32572	2	23
NE34	81349	3	3	25T8DC	24446	5	10
NE51	81349	8	3	3CT11B	93993	8	2
NE51	81349	9	1	342001	75915	9	5
QCK24-0719	06473	2	10	37-0480-331-245	72619	8	1
QO-115	90211	8	8	4109	74545	3	2
QO-120	90211	8	7	5225	75582	5	7
QO-130	90211	8	6	52408-991-241	72619	9	8
QO-2020	90211	8	4	5261	74545	2	9
QO-260	90211	8	9	5262	74545	2	7
Q2A24A22P	02660	9	4	5361	74545	2	14
Q2A24A22S	02660	9	6	5521-1	03497	3	4
Q7A24A22P	02660	9	10	591A	02777	5	2
Q7A24A22S	02660	9	7	78X491	24446	5	6
PC435U	80058	4	3	78X736	24446	5	4
RG62AU	80058	2	6	89G457D	24455	5	9
SCA46608	80063	2	11	8906K1384	15605	2	19

STOCK NUMBER	FIGURE NO.	ITEM NO.
5925-00-011-2540	8	4
5945-00-087-4305	9	3
5935-00-295-3129	2	7
6610-00-437-4064	6	2
5920-00-462-3342	9	5
51P-00-787-5196	2	5

By Order of the Secretary of the Army:

FRED C. WEYAND
General, United States Army
Chief of Staff

Official:

PAUL T. SMITH
Major General, United States Army
The Adjutant General

DISTRIBUTION:

Active Army:

USASA (2)
COE (1)
TSG (1)
USAARENBD (1)
DARCOM (1)
TRADOC (2)
OS Maj. Comd (4)
LOGCOMDS (3)
MICOM (2)
TECOM (2)
USACC-CONUS (2)
USACC-EUR (2)
USACC-PAC (2)
USACC-A (2)
USACC-SO (2)
USACCESS T(2)

USACC (4)
MDW (1)
Armies (2)
Corps (2)
HISA (Ft Monmouth) (33)
Svc Colleges (1)
USASESS (5)
USAADS (2)
USAFAS (2)
USAARMS (2)
USAIS (2)

USAES (2)
USAINTCS (3)
MAAG (1)
USARMIS (1)
Installations (1) except
Fort Carson (5)
Fort Gillem (10)
Fort Gordon (10)
Fort Huachuca (10)
Ft Richardson (ECOM Ofc) (2)
LBAD (14)
SAAD (30)
TOAD (14)
SHAD (3)
SigFLDMS (1)

USAERDAA (1)
USAERDAW (1)
Units org under fol TOE: (1)
112-5
11-86
11-87
11-302
11-327
11-347
11-357
29-134
29136

NG: None

USAR: None

For explanation of abbreviations used see, AR 31040

RECOMMENDED CHANGES TO EQUIPMENT TECHNICAL PUBLICATIONS



THEN...JOT DOWN THE
DOPE ABOUT IT ON THIS FORM.
CAREFULLY TEAR IT OUT, FOLD IT
AND DROP IT IN THE MAIL.

SOMETHING WRONG WITH PUBLICATION

FROM: (PRINT YOUR UNIT'S COMPLETE ADDRESS)

DATE SENT

PUBLICATION NUMBER

PUBLICATION DATE

PUBLICATION TITLE

BE EXACT PIN-POINT WHERE IT IS

PAGE
NO.

PARA-
GRAPH

FIGURE
NO.

TABLE
NO.

IN THIS SPACE, TELL WHAT IS WRONG
AND WHAT SHOULD BE DONE ABOUT IT.

TEAR ALONG PERFORATED LINE

PRINTED NAME, GRADE OR TITLE AND TELEPHONE NUMBER

SIGN HERE

THE METRIC SYSTEM AND EQUIVALENTS

WEIGHT MEASURE

1 Centimeter = 10 Millimeters = 0.01 Meters = 0.3937 Inches
 1 Meter = 100 Centimeters = 1000 Millimeters = 39.37 Inches
 1 Kilometer = 1000 Meters = 0.621 Miles

WEIGHTS

1 Gram = 0.001 Kilograms = 1000 Milligrams = 0.035 Ounces
 1 Kilogram = 1000 Grams = 2.2 lb.
 1 Metric Ton = 1000 Kilograms = 1 Megagram = 1.1 Short Tons

LIQUID MEASURE

1 Milliliter = 0.001 Liters = 0.0338 Fluid Ounces
 1 Liter = 1000 Milliliters = 33.82 Fluid Ounces

SQUARE MEASURE

1 Sq. Centimeter = 100 Sq. Millimeters = 0.155 Sq. Inches
 1 Sq. Meter = 10,000 Sq. Centimeters = 10.76 Sq. Feet
 1 Sq. Kilometer = 1,000,000 Sq. Meters = 0.386 Sq. Miles

CUBIC MEASURE

1 Cu. Centimeter = 1000 Cu. Millimeters = 0.06 Cu. Inches
 1 Cu. Meter = 1,000,000 Cu. Centimeters = 35.31 Cu. Feet

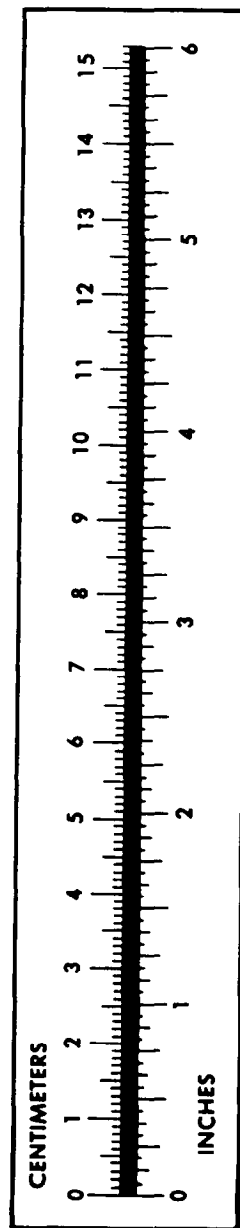
TEMPERATURE

$5/9(^{\circ}\text{F} - 32) = ^{\circ}\text{C}$
 212° Fahrenheit is equivalent to 100° Celsius
 90° Fahrenheit is equivalent to 32.2° Celsius
 32° Fahrenheit is equivalent to 0° Celsius
 $9/5^{\circ}\text{C} + 32 = ^{\circ}\text{F}$

APPROXIMATE CONVERSION FACTORS

TO CHANGE	TO	MULTIPLY BY
Inches	Centimeters	2.540
Feet	Meters	0.305
Yards	Meters	0.914
Miles	Kilometers	1.609
Square Inches	Square Centimeters	6.451
Square Feet	Square Meters	0.093
Square Yards	Square Meters	0.836
Square Miles	Square Kilometers	2.590
Acres	Square Hectometers	0.405
Cubic Feet	Cubic Meters	0.028
Cubic Yards	Cubic Meters	0.765
Fluid Ounces	Milliliters	29.573
its	Liters	0.473
arts	Liters	0.946
allons	Liters	3.785
Ounces	Grams	28.349
Pounds	Kilograms	0.454
Short Tons	Metric Tons	0.907
Pound-Feet	Newton-Meters	1.356
Pounds per Square Inch	Kilopascals	6.895
Miles per Gallon	Kilometers per Liter	0.425
Miles per Hour	Kilometers per Hour	1.609

TO CHANGE	TO	MULTIPLY BY
Centimeters	Inches	0.394
Meters	Feet	3.280
Meters	Yards	1.094
Kilometers	Miles	0.621
Square Centimeters	Square Inches	0.155
Square Meters	Square Feet	10.764
Square Meters	Square Yards	1.196
Square Kilometers	Square Miles	0.386
Square Hectometers	Acres	2.471
Cubic Meters	Cubic Feet	35.315
Cubic Meters	Cubic Yards	1.308
Milliliters	Fluid Ounces	0.034
Liters	Pints	2.113
Liters	Quarts	1.057
ers	Gallons	0.264
ms	Ounces	0.035
ograms	Pounds	2.205
Metric Tons	Short Tons	1.102
Newton-Meters	Pounds-Feet	0.738
Kilopascals	Pounds per Square Inch	0.145
ometers per Liter	Miles per Gallon	2.354
ometers per Hour	Miles per Hour	0.621



This fine document...

Was brought to you by me:



[Liberated Manuals -- free army and government manuals](#)

Why do I do it? I am tired of sleazy CD-ROM sellers, who take publicly available information, slap “watermarks” and other junk on it, and sell it. Those masters of search engine manipulation make sure that their sites that sell free information, come up first in search engines. They did not create it... They did not even scan it... Why should they get your money? Why are not letting you give those free manuals to your friends?

I am setting this document FREE. This document was made by the US Government and is NOT protected by Copyright. Feel free to share, republish, sell and so on.

I am not asking you for donations, fees or handouts. If you can, please provide a link to liberatedmanuals.com, so that free manuals come up first in search engines:

<A HREF=<http://www.liberatedmanuals.com/>>Free Military and Government Manuals

- Sincerely
Igor Chudov
<http://igor.chudov.com/>
- [Chicago Machinery Movers](#)