

TECHNICAL MANUAL

ORGANIZATIONAL, DIRECT SUPPORT,  
AND GENERAL SUPPORT  
MAINTENANCE REPAIR PARTS  
AND SPECIAL TOOLS LIST  
(INCLUDING DEPOT MAINTENANCE  
REPAIR PARTS AND SPECIAL TOOLS)

FOR

REELING MACHINE,  
CABLE, ENGINE DRIVEN  
RL-207 / G AND RL-207A / G  
(NSN 3895-00-892-4583)



Technical Manual }  
 No. 11-3895-209-24P }

HEADQUARTERS  
 DEPARTMENT OF THE ARMY  
 Washington, DC 31 August 1976

**ORGANIZATIONAL, DIRECT SUPPORT, AND GENERAL SUPPORT  
 MAINTENANCE REPAIR PARTS AND SPECIAL TOOLS LIST  
 (INCLUDING DEPOT MAINTENANCE REPAIR PARTS AND SPECIAL TOOLS  
 FOR  
 REELING MACHINE, CABLE, ENGINE DRIVEN RL-207 / G AND RL-207A / G  
 (NSN 3895-00-892-4583)**

Current as of 6 May 1976

**REPORTING OF ERRORS**

You can improve this manual by recommending improvements using DA Form 2028-2 (Test ) located in the back of the manual. Simply tear out the self-addressed form, fill it out as shown on the sample, fold it where shown, and drop it in the mail.

If there are no blank DA Form 2028-2 (Test) in the back of your manual, use the standard DA Form 2028 (Recommended Changes to Publications and Blank Forms) and forward to the Commander, US Army Electronics Command, ATTN: DRSEL-MA-Q, Fort Monmouth, New Jersey 07703.

In either case a reply will be furnished direct to you.

		Table of Contents	Page	Illus Figure
SECTION	I.	Introduction . . . . .	1	
	II.	Repair parts list . . . . .	5	
Group	00.	Reeling Machine, Cable, Engine Driven RL-207/G and RL-207A/G . . . . .	5	1-4
	01	Clutch and brake assembly 1A1 1A1 . . . . .	15	5
	02	Clutch and brake assembly 1A2 1A2 . . . . .	19	6
	03	Exhaust system 1A3 1A3 . . . . .	23	7
	04	Fuel system 1A4 . . . . .	25	8
	05	Housing and bearing assembly 1A7 . . . . .	27	9
	06	Housing and bearing assembly 1A8 . . . . .	29	10
	07	Oil drain <small>drain</small> assembly 1A9 . . . . .	31	11
	08	Pillow block <small>block</small> assembly 1A10 . . . . .	33	12
	09	Guard wrapper 1A6 . . . . .	35	13
SECTION	III.	Special tools list (Not applicable)		
	IV.	National stock number <small>number</small> and part number index . . . . .	36	

\*This manual supersedes TM 11-3895-209-34P, 4 May 1971, and so much of TM 11-3895-209-12, 28 May 1962, including C2, 25 August 1969, as pertains to repair parts and special tools list.



SECTION I

INTRODUCTION

**1. Scope**

This manual lists repair parts and special tools required for performance or organizational, direct support, and general support maintenance of RL-207/G and RL-207A/G.

**2. General**

This Repair Parts and Special Tools List is divided into the following sections:

*a. Section II. Repair Parts List.* A list of repair parts authorized for use in the performance of maintenance. The list also includes parts which must be removed for replacement of the authorized parts. Parts lists are composed of functional groups in ascending numerical sequence, with the parts in each group listed in figure and item number sequence.

*b. Section III. Special Tools List.* Not applicable.

*c. Section IV. Natural Stock Number and Part Number Index.* A list, in ascending National item identification number (NIIN, last 9 digits) sequence, of all National stock numbers appearing in the listings, followed by a list, in alphameric sequence, of all part numbers appearing in the listings. National stock number and part numbers are cross-referenced to each illustration figure and item number appearance.

**3. Explanation of Columns**

The following provides an explanation of columns found in the tabular listings:

*a. Illustration.* This column is divided as follows:

(1) *Figure number.* Indicates the figure number of the illustration in which the item is shown.

(2) *Item number.* The number used to identify each item called out in the illustration.

*b. Source, Maintenance, and Recoverability Codes (SMR).*

(1) *Source code.* Source codes are assigned to support items to indicate the manner of acquiring support items for maintenance, repair, or overhaul of end items. Source codes are entered in the first and second positions of the Uniform SMR Code format as follows:

<i>Code</i>	<i>Definition</i>
PA-	Item procured and stocked for anticipated or known usage.

<i>Code</i>	<i>Definition</i>
XD -	A support item that is not stocked. When required, item will be procured through normal supply channels.

**NOTE**

Cannibalization or salvage may be used as a source of supply for any items source coded above except those coded XA, XD, and aircraft support items are restricted by AR 700-42.

(2) *Maintenance code.* Maintenance codes are assigned to indicate the levels of maintenance authorized to USE and REPAIR support items. The maintenance codes are entered in the third and fourth positions of the Uniform SMR Code format as follows:

(a) The maintenance code entered in the third position will indicate the lowest maintenance level authorized to remove, replace, and use the support item. The maintenance code entered in the third position will indicate one of the following levels of maintenance:

<i>Code</i>	<i>Application/Explanation</i>
O-	Support item is removed, replaced, used at the organizational level.
F-	Support item is removed, replaced, used at the direct support level.

(b) The maintenance entered in the fourth position indicates whether the item is to be repaired and identifies the lowest maintenance level with the capability to perform complete repair (i.e., all authorized maintenance functions). This position will contain one of the following maintenance codes:

<i>code</i>	<i>Application/Explanation</i>
F-	The lowest maintenance level capable of complete repair of the support item is the direct support level.
Z-	Nonreparable. No repair is authorized.

(3) *Recoverability code.* Recoverability codes are assigned to support items to indicate the disposition action on unserviceable items. The recoverability code is entered in the fifth position of the Uniform SMR Code format as follows:

Recoverability  
code

Definition

Z - Nonreparable item. When unserviceable, condemn and dispose at the level indicated in position 3.

F - Reparable item. When uneconomically repairable, condemn and dispose at the direct support level.

c. *National Stock Number.* Indicates the National stock number assigned to the item and will be used for requisitioning purposes.

d. *Part Number.* Indicates the primary number used by the manufacturer (individual, company, firm, corporation, or Government activity), which controls the design and characteristics of the item by means of its engineering drawings, specifications standards, and inspection requirements, to identify an item or range of items.

**NOTE**

When a stock numbered item is requisitioned, the repair part received may have a different part number than the part being replaced.

e. *Federal Supply Code for Manufacturer (FSCM).* The FSCM is a 5-digit numeric code listed in SB 708-42 which is used to identify the manufacturer, distributor, or Government agency, etc.

f. *Description.* Indicates the Federal item name and, if required, a minimum description to identify the item.

g. *Unit of Measure (U/M).* Indicates the standard of the basic quantity of the listed item as used in performing the actual maintenance function. This measure is expressed by a two-character alphabetical abbreviation (e.g., ea, in, pr, etc.). When the unit of measure differs from the unit of issue, the lowest unit of issue that will satisfy the required unit of measure will be requisitioned.

h. *Quantity Incorporated in Unit.* Indicates the

quantity of the item used in the breakout shown on the illustration figure, which is prepared for a functional group, subfunctional group, or an assembly.

**4. Special Information**

The following publications pertain to the RL-207/G and RL-207A/G and its components: TM 11-3895-209-12, Reeling Machines, Cable, Engine Driven RL-207/G and RL-207A/G TM 11-3895-209-35, Reeling Machine, Cable, Engine Driven RL-207/G

**5. How to Locate Repair Parts**

a. When National stock number or part number is unknown.

(1) *First.* Using the table of contents, determine the functional group within which the repair part belongs. This is necessary since illustrations are prepared for functional groups and listings are divided into the same groups.

(2) *Second.* Find the illustration covering the functional group to which the repair part belongs.

(3) *Third.* Identify the repair part on the illustration and note the illustration figure and item number of the repair part.

(4) *Fourth.* Using the Repair Parts Listing, find the figure and item number noted on the illustration.

b. When National stock number or part number is known.

(1) *First.* Using the Index of National Stock Numbers and Part Numbers, find the pertinent National stock number or part number. This index is in ascending NIIN sequence followed by a list of part numbers in ascending alphameric sequence, cross-referenced to the illustration figure number and item number.

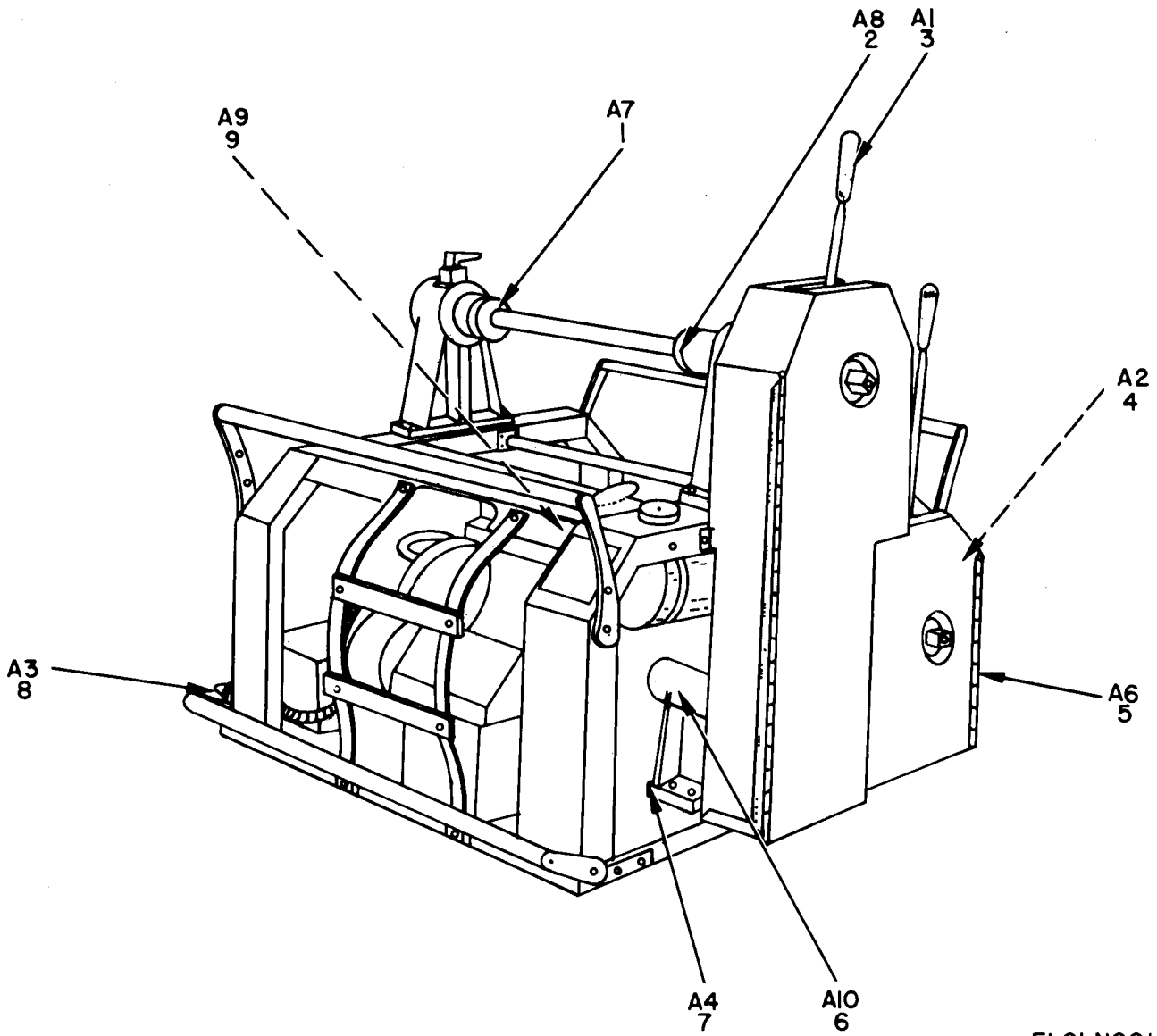
(2) *Second.* After finding the figure and item number, locate the figure and item number in the repair parts list.

**6. Abbreviations**

Not applicable.

(Next printed page is 4)





ELOLN001

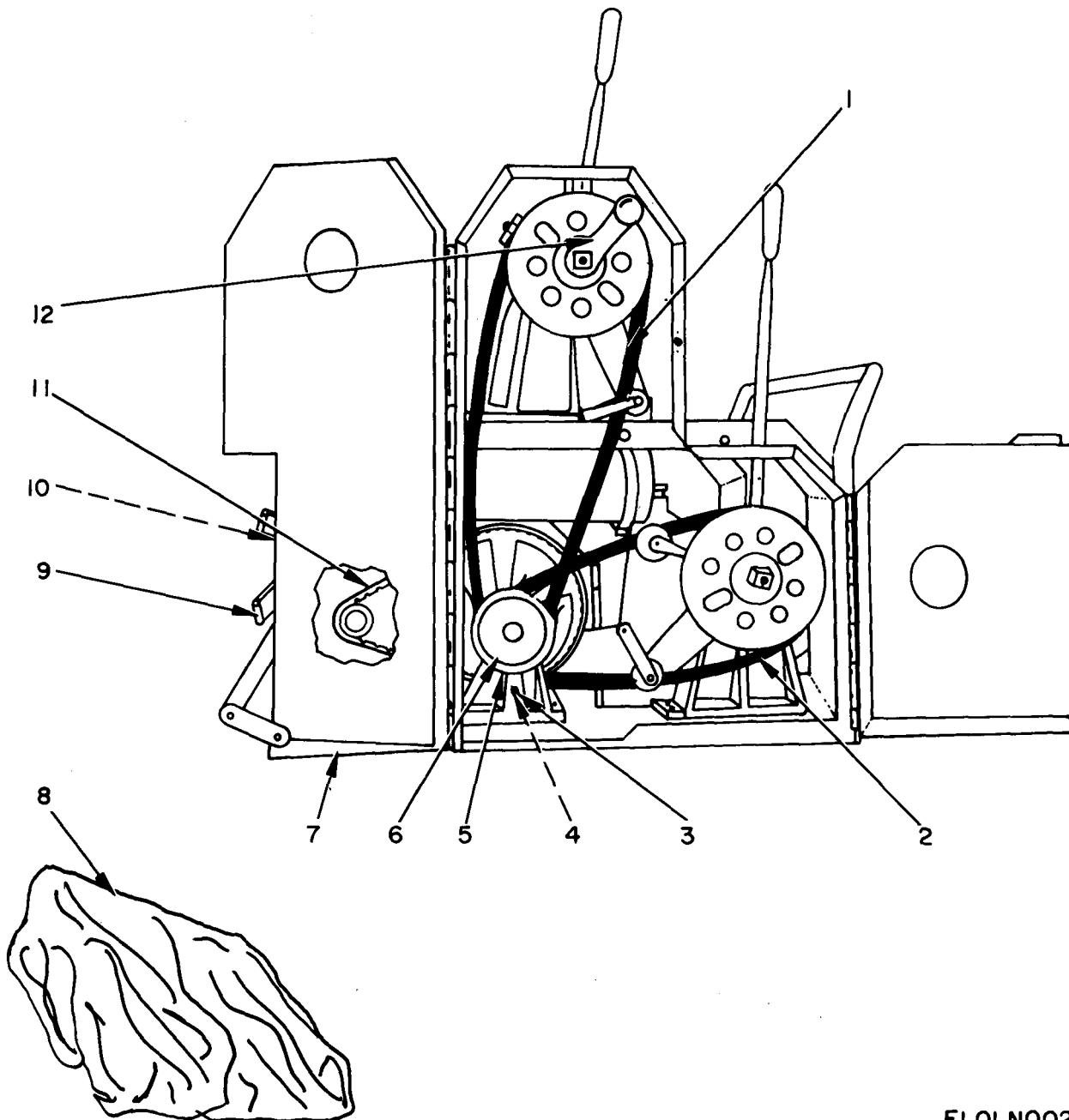
Figure 1. Reeling Machine, Cable, Engine Driven RL-207/G and RL-207A/G.



SECTION II

TM 11-3895-209-24P

(1) ILLUSTRATION		(2)	(3)	(4)	(5)	(6)	(8)
(a) FIG NO.	(b) TEM NO.	SMR CODE	NATIONAL STOCK NUMBER	PART NUMBER	FSCM	DESCRIPTION  USABLE ON CODE	QTY INC IN UNIT
						GROUP 00 REELING MACHINE, CABLE, ENGINE DRIVEN RL-207/G AND RL-207A/G	
1	1	0DFFF		3MD340188GR1	0063	HOUSING AND BEARING ASSEMBLY 1A7	1
1	2	0DFFF		3MD340188GR2	0063	HOUSING AND BEARING ASSEMBLY 1A8	1
1	3	0DFFF		3CD555927GR1	0063	CLUTCH AND BRAKE ASSEMBLY 1A1	1
1	4	0DFFF		3CD555927GR2	0063	CLUTCH AND BRAKE ASSEMBLY 1A2	1
1	5	0DFFF		3CD555947	0063	GUARD WRAPPER 1A6	1
1	6	0DFFF		3MD158376	0063	PILLOW BLOCK ASSEMBLY 1A10	1
1	7	0DFFF		3MC340193	0063	FUEL SYSTEM ASSEMBLY 1A4	1
1	8	0DFFF	1990-00-563-0847	3MD158379	0063	EXHAUST SYSTEM 1A3	1
1	9	0DFFF		3MB158383	0063	OIL DRAIN ASSEMBLY 1A9	1
						5	



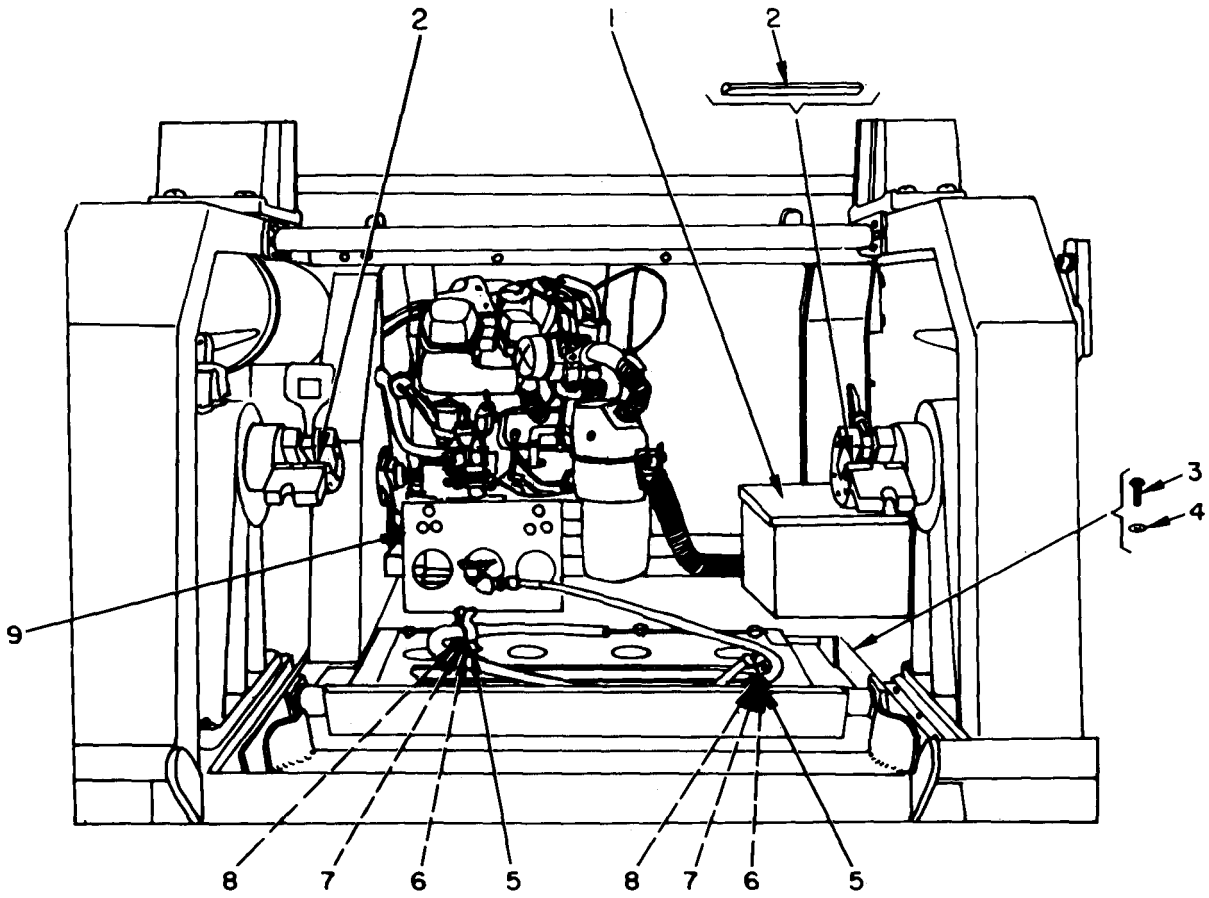
ELOLN002

Figure 2. Reeling Machine, Cable, Engine Driven RL-207/G and RL-207A/G, Side View.

## SECTION II

TM 11-3895-209-24P

(1) ILLUS (a) FIG NO.	(2) TIC (b) ITEM NO.	(3) SMR CODE	(4) NATIONAL STOCK NUMBER	(5) PART NUMBER	(6) FSCM	DESCRIPTION	USABLE ON CODE	(7) U/M	(8) QTY INC IN UNIT
2	1	DOZZ		BB0	4161	BELT, V		EA	1
2	2	DOZZ		BB6	4161	BELT, V		EA	1
2	3	DFZZ		N65-4-6	8044	BOLT, MACHINE		EA	1
2	4	DFZZ	310-00-582-5965	N935-416	8044	WASHER, LOCK		EA	1
2	5	DFZZ		CC555940	0063	BELT SPACER		EA	1
2	6	DFZZ		MB322636	0063	PULLEY, GROOVE		EA	1
2	7	DFZZ		MB322703	0063	STOP, DOOR		EA	1
2	8	AFZZ	895-00-815-6556	MD158385	0063	COVER, REELING MACHINE		EA	1
2	9	DFZZ		MC340217	0063	ENGINE GUARD		EA	1
2	10	DFZZ		3125-3	8553	CLAMP, ENGINE HARNESS		EA	1
2	11	DOZZ		10L100	3842	BELT, POSITIVE DRIVE		EA	1
2	12	AFZZ	895-00-127-0969	IC4A	0058	CRANK, HAND		EA	1



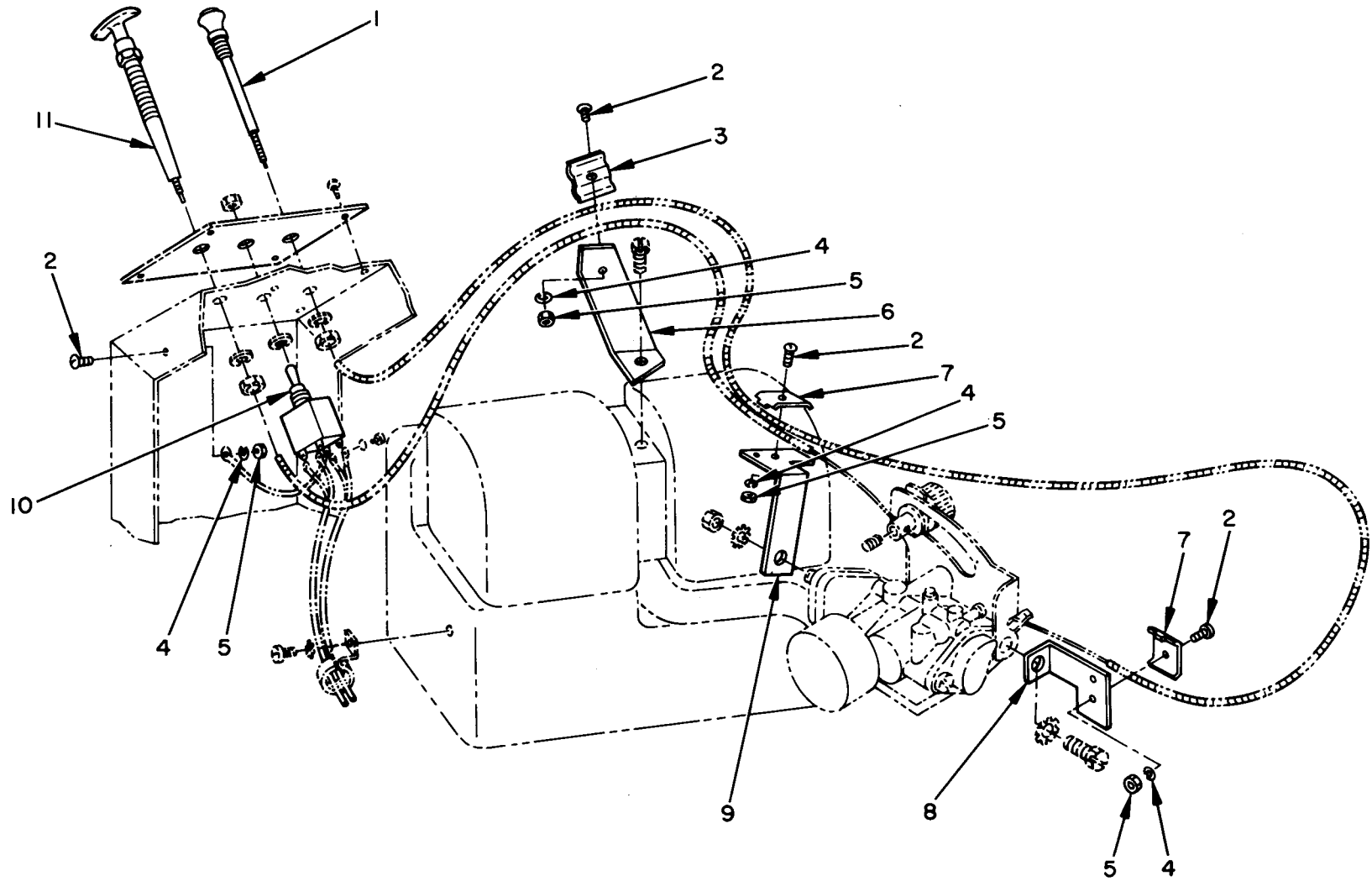
ELOLN003

Figure 3. Reeling Machine, Cable, Engine Driven RL-207/G and RL-207A/G, Front View.

SECTION II

TM 11-3895-209-24P

(1) ILLUSTRATION		(2)	(3)	(4)	(5)	(6)	(7)	(8)
(a) FIG NO	(b) TEM NO	SMR CODE	NATIONAL STOCK NUMBER	PART NUMBER	FSCM	DESCRIPTION	USABLE ON CODE	QTY INC IN UNIT
3	1	XDFZZ		SMC322579	8006	TOOL BOX		EA 1
3	2	XDFZZ		SMB322665	8006	SHAFT, REEL, SPINDEL		EA 2
3	3	XDFZZ	5305-00-068-05	AN65-4-4	8804	BOLT, MACHINE		EA 1
3	4	XDFZZ	5310-00-582-59	AN935-416	8804	WASHER, LOCK		EA 1
3	5	PAFZZ	5340-00-801-75	1B	9202	CLAMP, OIL DRAIN RETURN		EA 2
3	6	XDFZZ		MS20341-8A	9690	NUT, PLAIN, HEXAGON		EA 2
3	7	XDFZZ		MS35225-45	9690	SCREW, MACHINE		EA 2
3	8	XDFZZ		AN935-8	8804	WASHER, LOCK		EA 2
3	9	XDFZZ		SCD555935	8006	ENGINE, SUPPORT		EA 1



ELOLN004

Figure 4. Reeling Machine, Cable, Engine Driven RL-207/G and RL-207A/G, Partially Exploded View.

SECTION II

TM 11-3895-209-24P

(1) ILLUSTRATION		(2)	(3)	(4)	(5)	(6)	(7)	(8)
(a) FIG NO	(b) ITEM NO.	SMR CODE	NATIONAL STOCK NUMBER	PART NUMBER	FSCM	DESCRIPTION	U M	QTY INC IN UNIT
4	1	DFZZ		SC8555941	1006	ROD, CHOKE CONTROL	EA	1
4		DFZZ		AN520-10-12	8044	SCREW, MACHINE	EA	4
4		DFZZ		SMB158390	1006	CL AMP, CONTROL ROD	EA	1
4	4	DFZZ	1310-00-045-3296	AN935-10	8044	WASHER, LOCK	EA	4
4		DFZZ		MS20341-10A	1690	NUT, PLAIN, HEXAGON	EA	4
4	6	DFZZ		SMB158388	006	BRACKET, CONTROL ROD	EA	1
4		DFZZ		SMB322697	1006	CL AMP, CONTROL ROD	EA	2
4	8	DFZZ		SMB158389	006	BRACKET, CONTROL ROD	EA	1
4	8	DFZZ		SMB158392	006	BRACKET, CONTROL ROD	EA	1
4	10	DFZZ	1930-00-655-1575	MS35059-22	1690	SWITCH, TOGGLE	EA	1
4	11	DFZZ		SC8555942	006	ROD, THROTTLE CONTROL	EA	1

11/(12 blank)





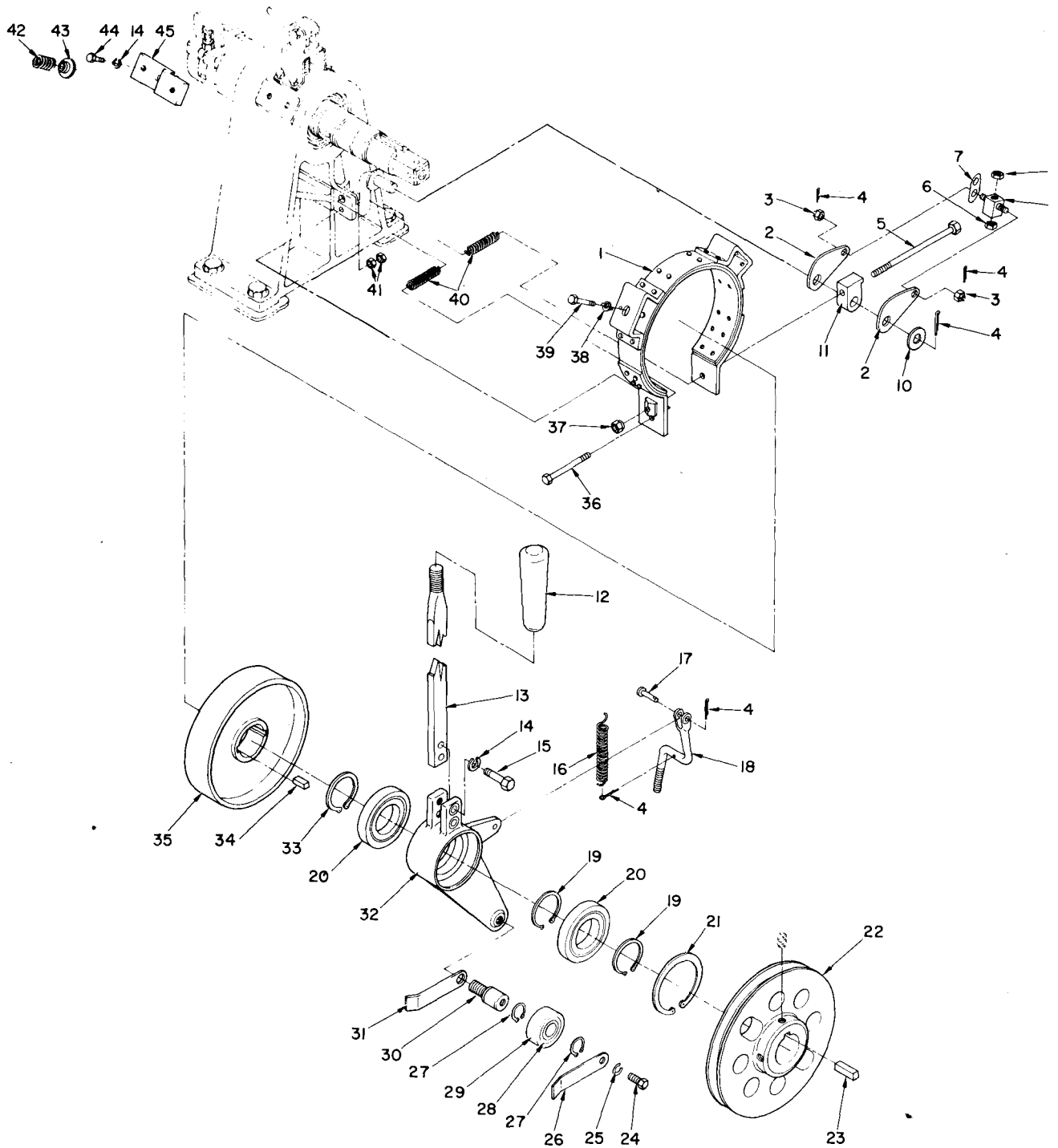


Figure 5. Clutch and Brake Assembly 1A1 (Sheet 1 of 2).

ELOLN005

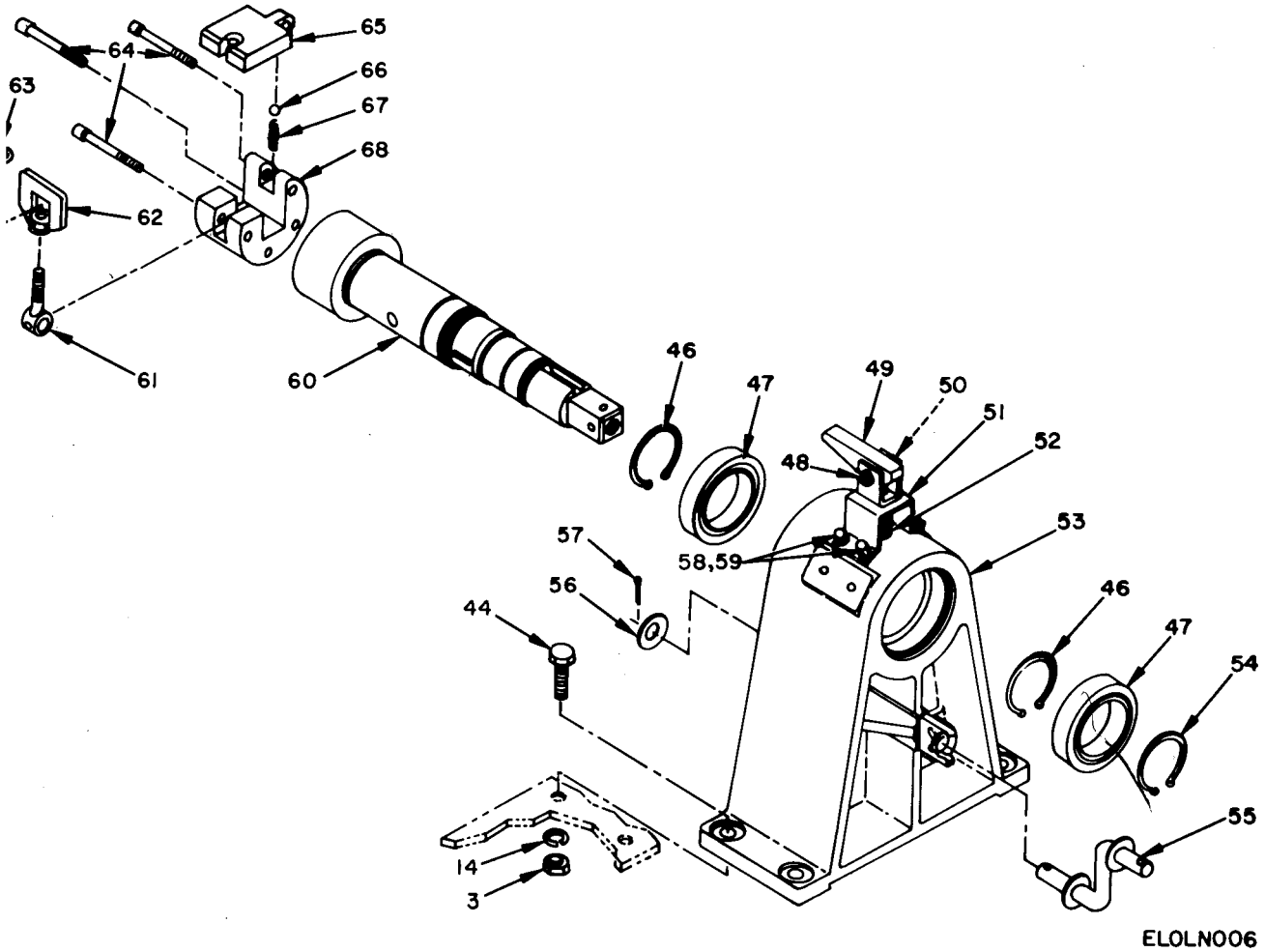


Figure 5. Clutch and Brake Assembly 1A1 (Sheet 2 of 2).

## SECTION II

TM 11-3895-209-24P

(1)		(2)	(3)	(4)	(5)	(6)	(7)	(8)
LLUS	TIC	SMR CODE	NATIONAL STOCK	PART NUMBER	FSCM	DESCRIPTION	U/M	QTY INC IN UNIT
(a) FIG NO	(b) TEM NO							
						GROUP 01 CLUTCH AND BRAKE ASSEMBLY 1A1		
	1	PAF77	3895-00-060-3727	SMC322602	80063	BRAKE BAND ASSEMBLY	EA	1
5		XDFZZ		SMB340213	80063	CAM, CONTROL	EA	2
	3	XDFZZ	5310-00-298-9267	AN315-8	88044	NUT, PLAIN, HEXAGON	EA	2
5	4	XDFZZ	5315-00-839-5820	MS24665-134	96906	PIN, COTTER	EA	5
5	5	XDFZZ		AN60-4-26	88044	BOLT, MACHINE	EA	1
5	6	XDFZZ	5310-00-167-1285	AN310-4	88044	NUT, PLAIN, HEXAGON	EA	1
5	7	XDFZZ		SCB555926	80063	PLATE, SPRING ATTACHMENT	EA	1
5	8	XDFZZ		AN325-5	88044	NUT, PLAIN, HEXAGON	EA	1
	9	XDFZZ		SMB322593	80063	CAM EYE, BRAKE	EA	1
5	10	XDFZZ	5310-00-167-0823	AN960-816	88044	WASHER, FLAT	EA	1
5	11	XDFZZ		SMB322594	80063	CAM STOP	EA	1
5	12	XDFZZ	3895-00-537-2505	145	80813	HANDLE, CONTROL	EA	1
5	13	XDFZZ		SMB322654-2	80063	ARM, CONTROL	EA	1
5	14	XDFZZ	5310-00-637-9541	AN935-616	88044	WASHER, LOCK	EA	3
5	15	XDFZZ		SCD555927-16	80063	BOLT, MACHINE	EA	1
5	16	XDFZZ		SCD555939	80063	SPRING, HELICAL EXTENSION	EA	1
5	17	XDFZZ		AN121760	88044	PIN, CLEVIS	EA	1
5	18	XDFZZ		SCC555931	80063	ROD, OPERATING	EA	1
5	19		5365-00-281-6655	5100-156	79136	RING, RETAINING	EA	2
5	20	PAF77	3110-00-107-7576	9108PP	21335	BEARING, BALL	EA	2
5	21	XDFZZ		N5000-268	79136	RING, RETAINING	EA	1
5	22	PAF77	3020-00-086-6672	SMC322635	80063	PULLEY, REEL DRIVE	EA	1
5	23	XDFZZ		SMB158387-2	80063	KEY, MACHINE	EA	1
5	24	XDFZZ		AN65-5-6	88044	BOLT, MACHINE	EA	1
5	25		5310-00-407-9566	AN935-516	88044	WASHER, LOCK	EA	1
5	26	XDFZZ		SMB322683-1	80063	GUIDE, PLATE	EA	1
5	27	XDFZZ		SCD555927-5	80063	RING, RETAINING	EA	2
5	28	XDFZZ		SCC555925	80063	PULLEY, IDLER	EA	1
5	29	PAFZZ	3110-00-198-2462	W204PP	21335	BEARING, BALL	EA	1
5	30	XDFZZ		SMB322652	80063	SHAFT, IDLER	EA	1
5	31	XDFZZ		SMB322684-1	80063	GUIDE, PLATE	EA	1
5	32	XDFZZ		SCD555930	80063	ARM, IDLER	EA	1
5	33	XDFZZ		5100-162	79136	RING, RETAINING	EA	1
5	34	XDFZZ	5315-00-060-3137	SMB322595	80063	KEY, MACHINE	EA	1
5	35	XDFZZ		SMC322592	80063	BRAKE DRUM	EA	1
5	36	XDFZZ		SCD555927-14	80063	SCREW, MACHINE	EA	1
5	37	XDFZZ		SMB322600	80063	NUT, PLAIN, HEXAGON	EA	1
5	38	XDFZZ		SMB158380	80063	WASHER, LOCK	EA	2
5	39	XDFZZ	5306-00-225-8500	MS35291-35	96906	BOLT, MACHINE	EA	2
5	40	PAFZZ	5360-00-889-3218	SMB322596	80063	SPRING, HELICAL COMPRESSION	EA	2

## SECTION II

TM 11-3895-209-24P

(1)		(2)	(3)	(4)	(5)	(6)	(7)	(8)
LLUS	LTIO	SMR CODE	NATIONAL STOCK NUMBER	PART NUMBER	FSCM	DESCRIPTION	USABLE ON CODE	QTY INC IN UNIT
(a) FIG NO.	(b) TEM NO.							
5	41	XDFZZ		MS35690-422	96906	NUT, PLAIN, HEXAGON	E	2
5	42	XDFZZ		SMB322597	80063	SPRING, HELICAL COMPRESSION	E	1
5	43	XDFZZ		SMB322598	80063	SEAT, SPRING	E	1
5	44	XDFZZ		AN65-6-10	88044	BOLT, MACHINE	E	2
5	45	XDFZZ		SMB322614	80063	BRACKET, BRAKE BAND	E	2
5	46	XDFZZ	5365-00-263-5860	5100-196	79136	RING, RETAINING	E	2
5	47	PAFZZ	3110-00-114-5990	210PP	21335	BEARING, BALL	E	2
5	48	XDFZZ		AN65-5-14	88044	BOLT, MACHINE	E	1
5	49	XDFZZ		SMB340215	80063	CAM, CONTROL	E	1
5	50	XDFZZ		22NE058	72962	NUT, SELF-LOCKING, HEXAGON	E	1
5	51	XDFZZ		SMC340194	80063	PIN ASSEMBLY	E	1
5	52	PAFZZ	5360-00-889-3217	SMB322694	80063	SPRING, HELICAL COMPRESSION	E	1
5	53	XDFZZ		SMD322618	80063	HOUSING, BEARING	E	1
5	54	XDFZZ	5365-00-804-9732	N5000-354	79136	RING, RETAINING	E	1
5	55	XDFZZ		SMB322601	80063	LEVER, ARM	E	1
5	56	XDFZZ	5310-00-584-5272	AN935-816	88044	WASHER, LOCK	E	2
5	57	XDFZZ		SMB322702	80063	PIN, LOCKING	E	1
5	58	XDFZZ	5305-00-068-0500	AN65-4-4	88044	BOLT, MACHINE	E	2
5	59	XDFZZ	5310-00-582-5965	AN935-416	88044	WASHER, LOCK	E	2
5	60	XDFZZ		SMC322619-1	80063	SHAFT, REEL DRIVE	E	1
5	61	XDFZZ		SMB340205-2	80063	BOLT, LOCK	E	1
5	62	XDFZZ		SMB322610	80063	NUT, PLAIN, WING	E	1
5	63	XDFZZ		5133-3	79136	RING, RETAINING	E	1
5	64	XDFZZ		SCD555927-13	80063	SCREW, CAP, SOCKET HEAD	E	3
5	65	XDFZZ		SMB322670-1	80063	PLATE, LOCKING	E	1
5	66	XDFZZ		SCD555927-15	80063	BEARING, BALL	E	1
5	67	PAFZZ	5360-00-060-3128	SMB322700-2	80063	SPRING, LATCH	E	1
5	68	XDFZZ		SMB322612-3	80063	COLLAR, REEL DRIVE SHAFT	E	1

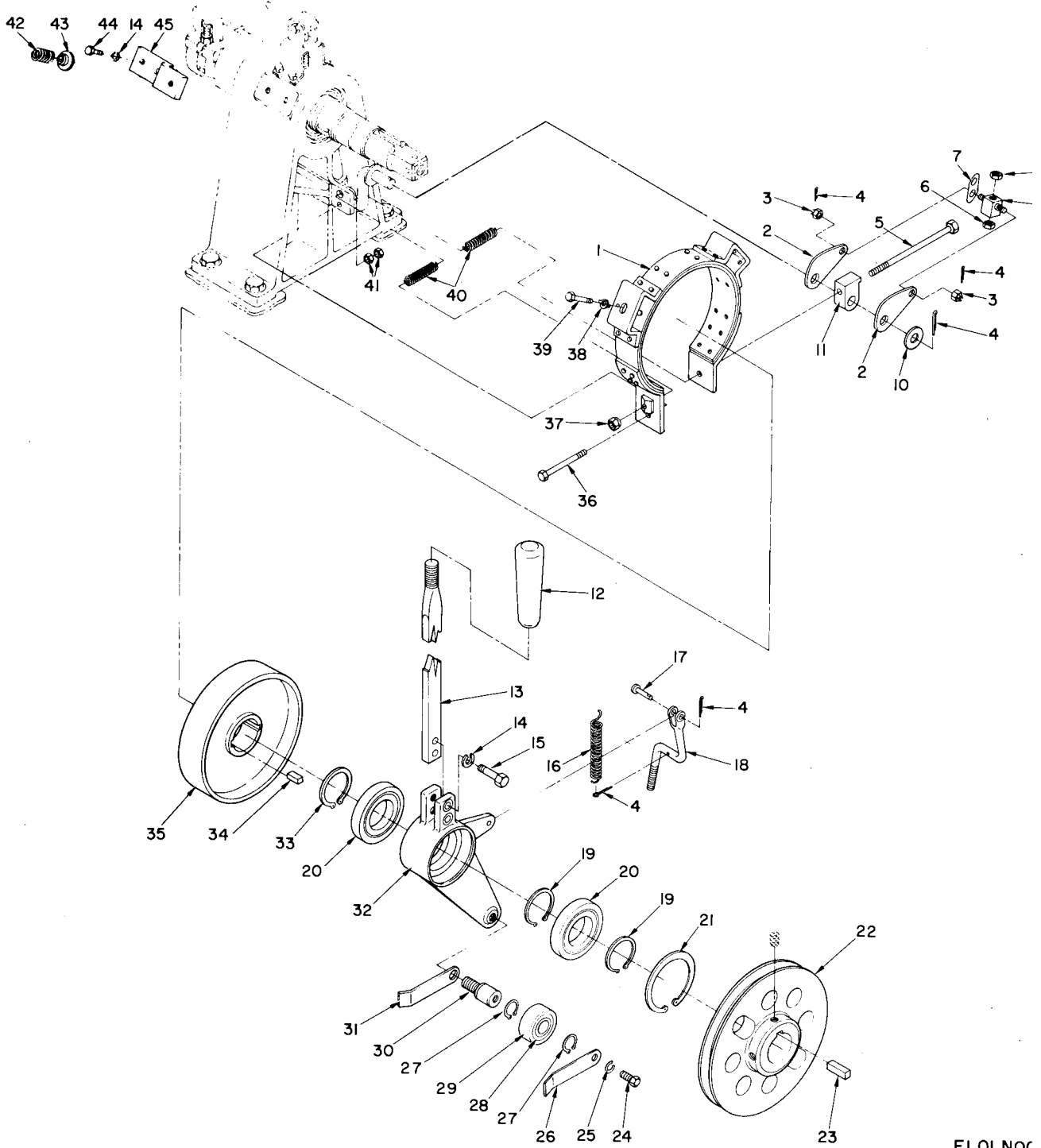


Figure 6. Clutch and Brake Assembly 1A2 (Sheet 1 of 2).

ELOLNOC

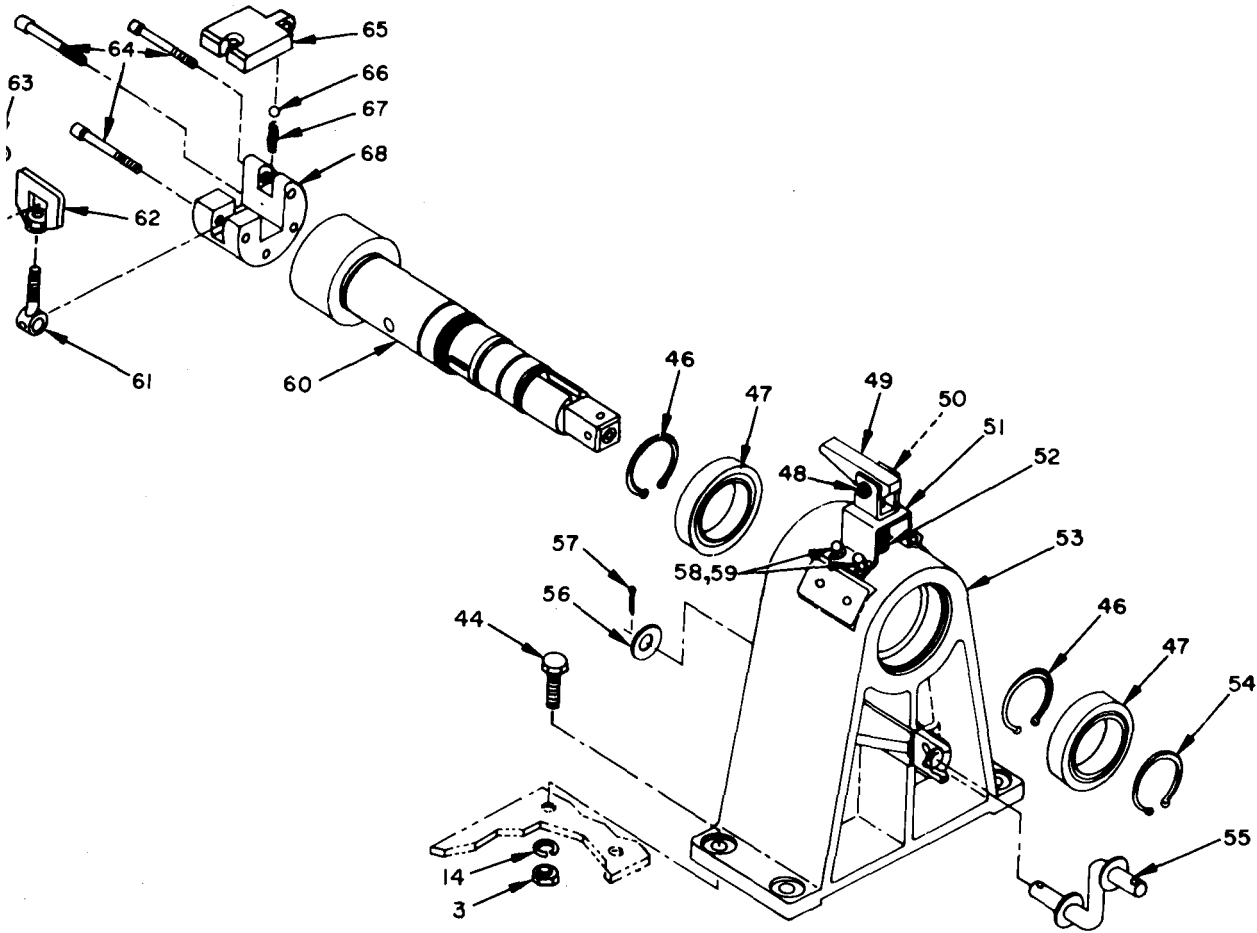


Figure 6. Clutch and Brake Assembly 1A2 (Sheet 2 of 2),

## SECTION II

TM 11-3895-209-24P

(1) LUS1 (a) FIG NO.	(2) TION (b) TEM NO	(3) SMR CODE	(4) NATIONAL STOCK NUMBER	(5) PART NUMBER	(6) FSCM	(7) DESCRIPTION  USABLE ON CODE	(8) QTY INC IN UNIT
GROUP 02 CLUTCH AND BRAKE ASSEMBLY 1A2							
6	1	PAFZZ	3895-00-060-3727	SMC322602	80063	BRAKE BAND ASSEMBLY	EA 1
6	2	XDFZZ		SMB340213	80063	CAM, CONTROL	EA 2
6	3	XDFZZ	5310-00-298-9267	AN315-8	88044	NUT, PLAIN, HEXAGON	EA 2
6	4		5315-00-839-5820	MS24665-134	96906	PIN, COTTER	EA 5
6	5	XDFZZ		AN60-4-26	88044	BOLT, MACHINE	EA 1
6	6	XDFZZ	5310-00-167-1285	AN310-4	88044	NUT, PLAIN, HEXAGON	EA 1
6	7	XDFZZ		SCB555926	80063	PLATE, SPRING ATTACHMENT	EA 1
6	8	XDFZZ		AN325-5	88044	NUT, PLAIN, HEXAGON	EA 1
6	9	XDFZZ		SMB322593	80063	CAM EYE, BRAKE	EA 1
6	10	XDFZZ	5310-00-167-0823	AN960-816	88044	WASHER, FLAT	EA 1
6	11	XDFZZ		SMB322594	80063	CAM STOP	EA 1
6	12		3895-00-537-2505	145	80813	HANDLE, CONTROL	EA 1
6	13	XDFZZ	3895-00-560-2239	SMB322654-1	80063	ARM, CONTROL	EA 1
6	14	XDFZZ	5310-00-637-9541	AN935-616	88044	WASHER, LOCK	EA 3
6	15	XDFZZ		SCD55927-16	80063	BOLT, MACHINE	EA 1
6	16	XDFZZ		SCB555939	80063	SPRING, HELICAL EXTENSION	EA 1
6	17	XDFZZ		AN121760	88044	PIN, CLEVIS	EA 1
6	18	XDFZZ		SCC555931	80063	ROD, OPERATING	EA 1
6	19	XDFZZ	5365-00-281-6655	5100-156	79136	RING, RETAINING	EA 2
6	20	PAFZZ	3110-00-107-7576	9108PP	21335	BEARING, BALL	EA 2
6	21	XDFZZ		N5000-268	79136	RING, RETAINING	EA 1
6	22	PAFZZ	3020-00-086-6672	SMC322635	80063	PULLEY, REEL DRIVE	EA 1
6	23	XDFZZ		SMB158387-2	80063	KEY, MACHINE	EA 1
6	24	XDFZZ		AN65-5-6	88044	BOLT, MACHINE	EA 1
6	25	XDFZZ	5310-00-407-9566	AN935-516	88044	WASHER, LOCK	EA 1
6	26	XDFZZ		SMB322683-2	80063	GUIDE PLATE	EA 1
6	27	XDFZZ		SCD555927-5	80063	RING, RETAINING	EA 2
6	28	XDFZZ		SCC555924	80063	PULLEY, IDLER	EA 1
6	29	PAFZZ	3110-00-198-2462	W204PP	21335	BEARING	EA 1
6	30	XDFZZ		SMB322652	80063	SHAFT, IDLER	EA 1
6	31	XDFZZ		SMB322684-2	80063	GUIDE PLATE	EA 1
6	32	XDFZZ		SCD555929	80063	ARM, IDLER	EA 1
6	33	XDFZZ		5100-162	79136	RING, RETAINING	EA 1
6	34	XDFZZ	5315-00-060-3137	SMB322595	80063	KEY, MACHINE	EA 1
6	35	XDFZZ		SMC322592	80063	BRAKE DRUM	EA 1
6	36	XDFZZ		SCD555927-14	80063	SCREW, MACHINE	EA 1
6	37	XDFZZ		SMB322600	80063	NUT, PLAIN, HEXAGON	EA 1

SECTION II

(1)	(2)	(3)	(4)	(5)	(6)	(7)	(8)
ILLUS FIG NO.	ITIO TEM NO.	SMR CODE	NATIONAL STOCK NUMBER	PART NUMBER	FSCN	DESCRIPTION  USABLE ON	QTY INC IN UNIT
6	38	XDFZZ		SMB158380	8006	WASHER, LOCK	2
6	39	XDFZZ	5306-00-225-8500	MS35291-35	9690	BOLT, MACHINE	
6	40	PAFZZ	5360-00-889-3218	SMB322596	8006	SPRING, HELICAL COMPRESSION	2
6	41	XDFZZ		MS35690-422	9690	NUT, PLAIN, HEXAGON	2
6	42	XDFZZ		SMB322597	8006	SPRING, HELICAL COMPRESSION	1
6	43	XDFZZ		SMB322598	8006	SEAT, SPRING	1
6	44	XDFZZ		AN65-6-10	8804	BOLT, MACHINE	2
6	45	XDFZZ		SMB322614	8006	BRACKET, BRAKE BAND	2
6	46	XDFZZ	5365-00-263-5860	5100-196	7913	RING, RETAINING	2
6	47	PAFZZ	3110-00-114-5990	210PP	2133	BEARING, BALL	2
6	48	XDFZZ		22NE058	7296	NUT, PLAIN, HEXAGON	1
6	49	XDFZZ		SMB340215	8006	CAM, CONTROL	1
6	50	XDFZZ		AN65-5-14	8804	BOLT, MACHINE	1
6	51	XDFZZ		SMC340194	8006	PIN ASSEMBLY	1
6	52	PAFZZ	5360-00-889-3217	SMB322694	8006	SPRING, HELICAL COMPRESSION	1
6	53			SMD322618	8006	HOUSING, BEARING	1
6	54	XDFZZ	5365-00-804-9732	N5000-354	7913	RING, RETAINING	1
6	55	XDFZZ		SMB322601	8006	LEVER ARM	1
6	56	XDFZZ	5310-00-584-5272	AN935-816	8804	WASHER, LOCK	2
6	57	XDFZZ		SMB322702	8006	PIN, LOCKING	1
6	58	XDFZZ	5305-00-068-0500	AN65-4-4	8804	BOLT, MACHINE	2
6	59	XDFZZ	5310-00-582-5965	AN935-416	8804	WASHER, LOCK	2
6	60	XDFZZ		SMC322619-2	8006	SHAFT, REEL DRIVE	1
6	61	XDFZZ		SMB340205-1	8006	BOLT, LOCK	1
6	62	XDFZZ		SMB322610	8006	NUT, PLAIN, WING	1
6	63	XDFZZ		5133-3	7913	RING, RETAINING	1
6	64	XDFZZ		SCD555927-13	8006	SCREW, CAP, SOCKET HEAD	3
6	65	XDFZZ		SMB322670-1	8006	PLATE, LOCKING	1
6	66	XDFZZ		SCD555927-15	8006	BALL, BEARING	1
6	67	PAFZZ	5360-00-060-3127	SMB322700-1	8006	SPRING, LATCH	1
6	68	XDFZZ		SMB322612-1	8006	COLLAR, REEL DRIVE SHAFT	1

20/(21 blank)





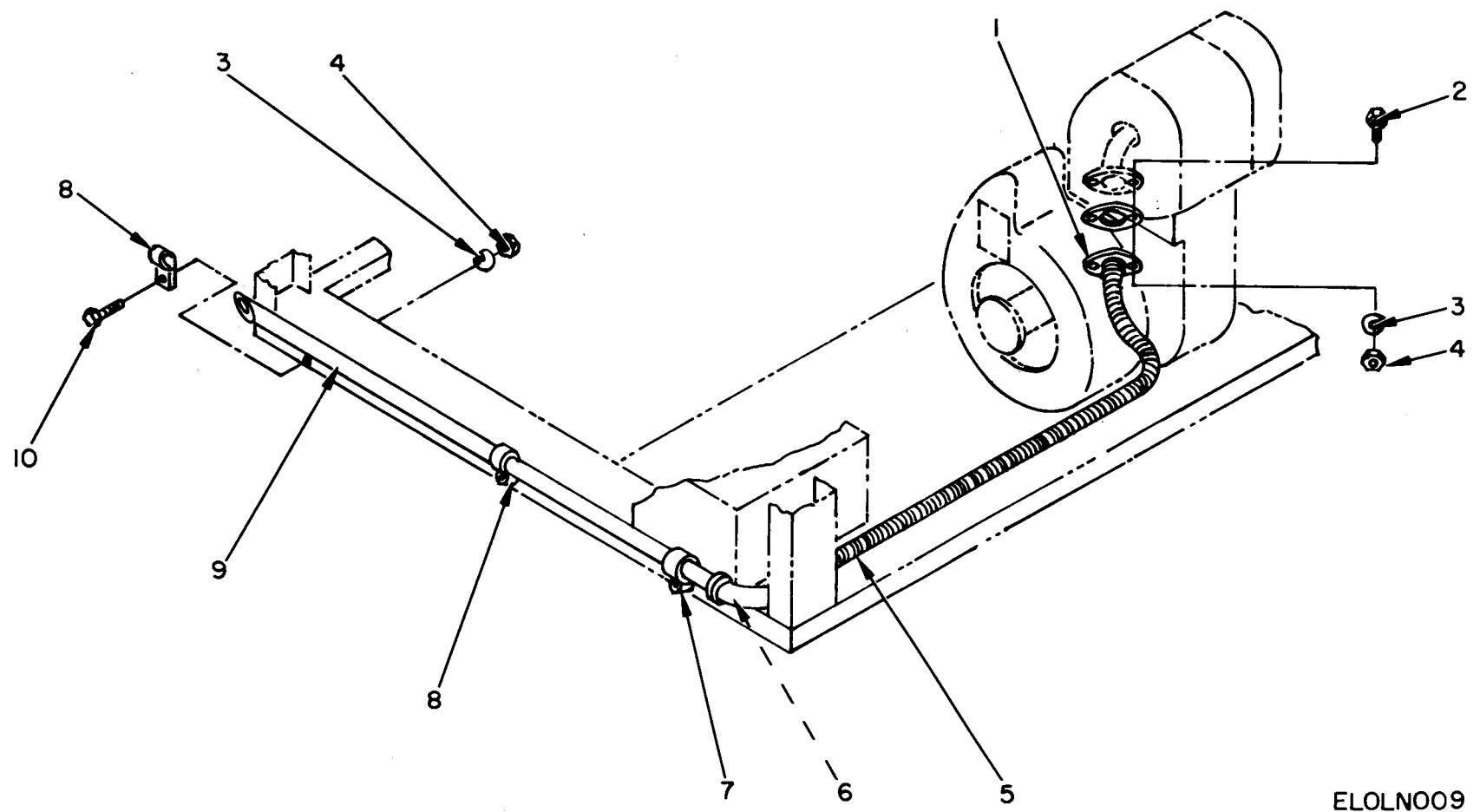


Figure 7. Exhaust System 1A3.

ELOLN009

SECTION II

TM 11-3895-209-24P

(1) ILLUSTRATION (a) FIG NO	(2) ITEM NO	(3) SMR CODE	(3) NATIONAL STOCK NUMBER	(4) PART NUMBER	(5) FSCM	(6) DESCRIPTION  USABLE ON CODE	(7) QTY	(8) UNIT
	1	XDFZZ		SCB621096	30063	GROUP 03 EXHAUST SYSTEM 1A3 FLANGE	A	1
7	2	XDFZZ		AN65-5-10	38044	BOLT, MACHINE	A	2
7	3	XDFZZ	5310-00-407-956	AN935-516	38044	WASHER, LOCK	A	3
7	4	XDFZZ		AN335-5	38044	NUT, PLAIN, HEXAGON	A	3
7	5	XDFZZ		SMB158400	30063	HOSE, METAL, FLEXIBLE	A	1
7	6	XDFZZ		SMB158396	30063	COUPLING, EXHAUST	A	1
7	7	XDFZZ		SMB158398-1	30063	CLAMP, EXHAUST SYSTEM	A	1
7	8	XDFZZ		SMB158398-2	30063	CLAMP, EXHAUST SYSTEM	A	2
7	9	XDFZZ		SMB158399	30063	PIPE, EXHAUST	A	1
7	10	XDFZZ		AN65-5-6	38044	BOLT, MACHINE	A	1

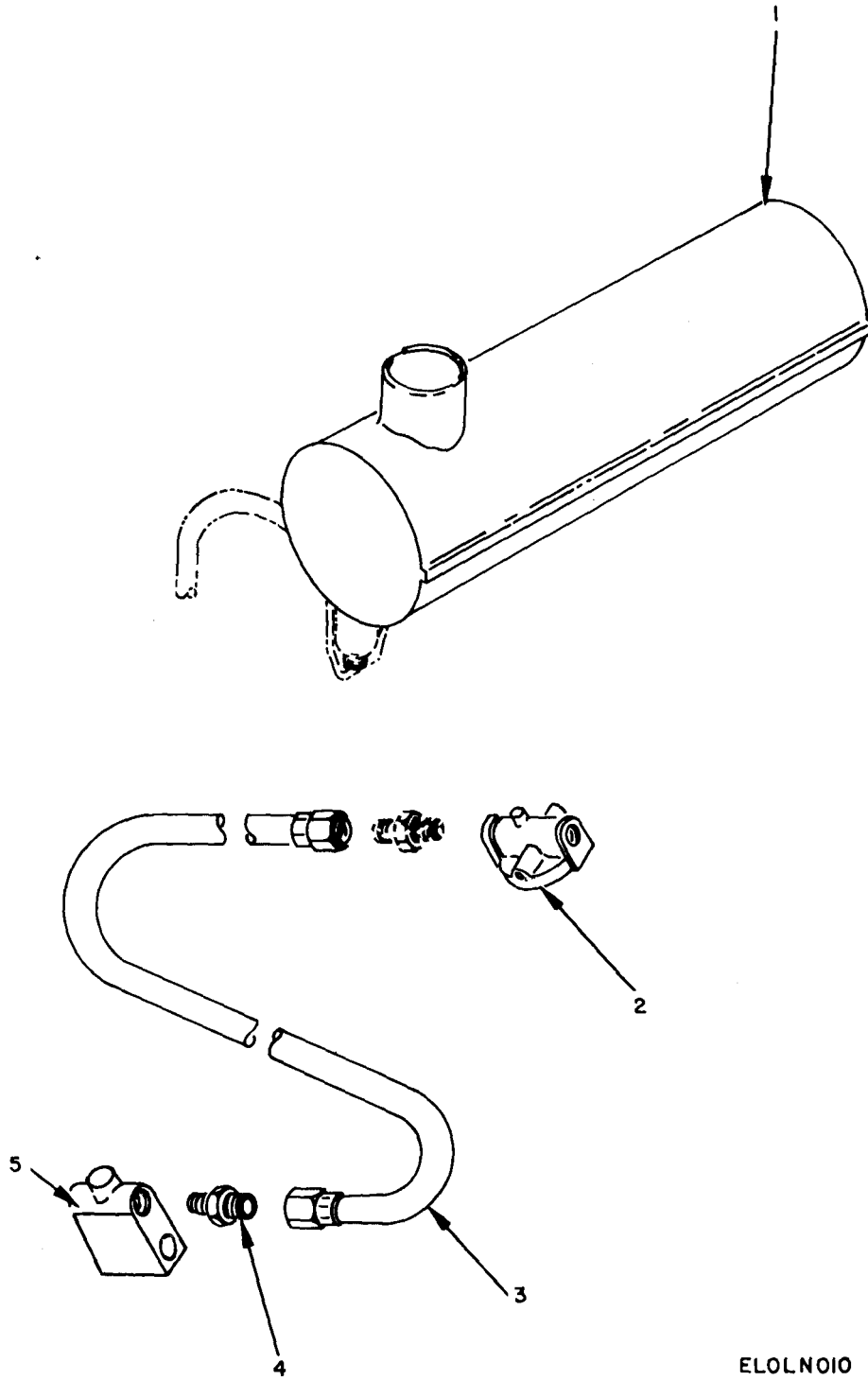


Figure 8. Fuel System 1A4.

ELOLNOIO

SECTION II

TM 11-3895-209-24P

(1) ILLUSTRATION		(2)	(3)	(4)	(5)	(6)	(7)	(8)
(a) FIG NO.	(b) TEM NO.	SMR CODE	NATIONAL STOCK NUMBER	PART NUMBER	FSCM	DESCRIPTION	USABLE ON CODE	U/A
						GROUP 04 FUEL SYSTEM 1A4		
8	1	PAFZZ	2910-00-563-0845	SMD322645	30063	TANK , LIQUID GAS		EA 1
8	2	XDFZZ		SMC340193-2	30063	FUEL FILTER		EA 1
8	3	XDFZZ		1254-14	35804	FUEL LINE		EA 1
8	4	XDFZZ		3325-2	35804	NIPPLE , HEXAGON		A 1
8	5	XDFZZ		250-4	35804	ADAPTER, STRAP PIPE TO HOSE		A 1

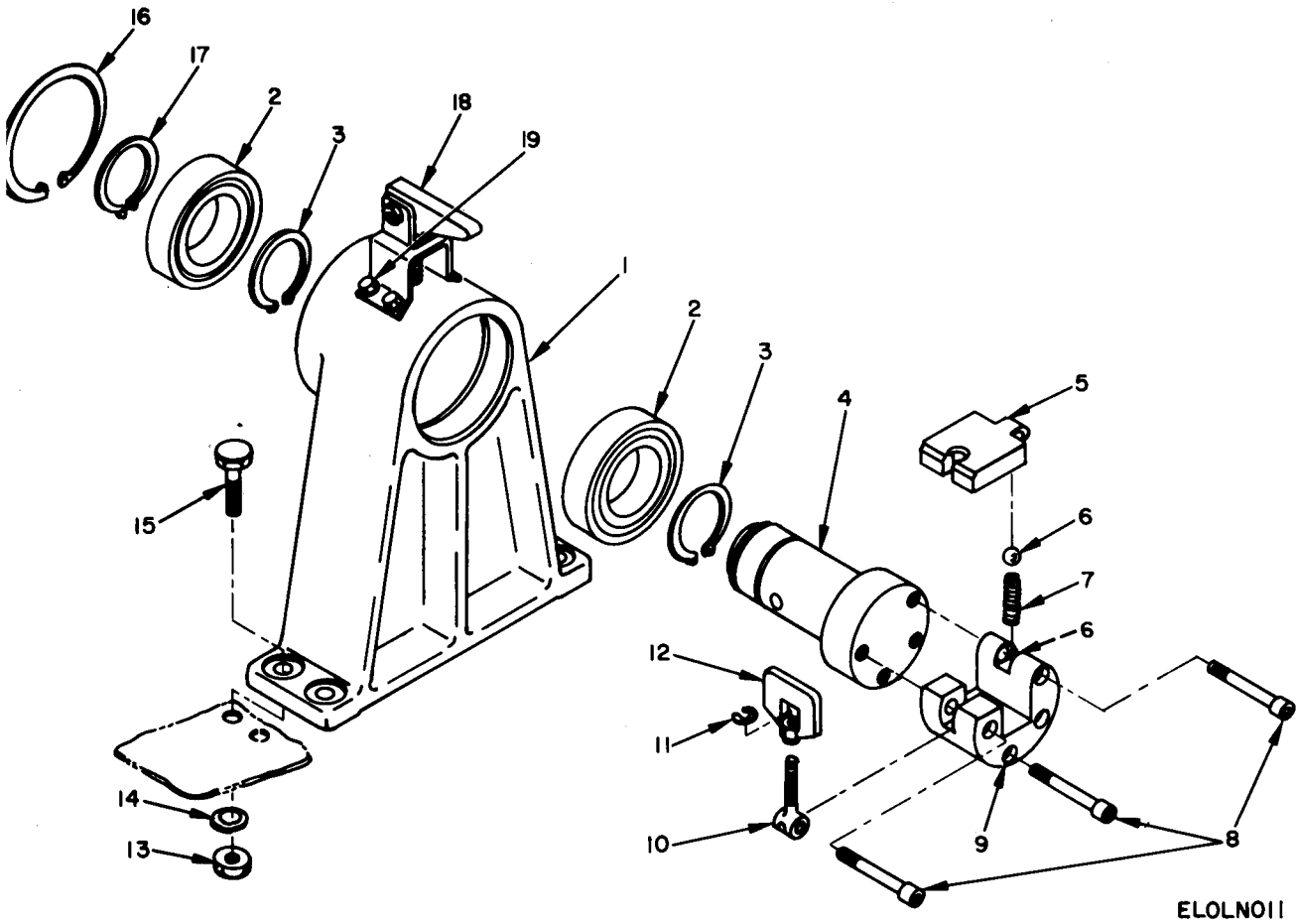
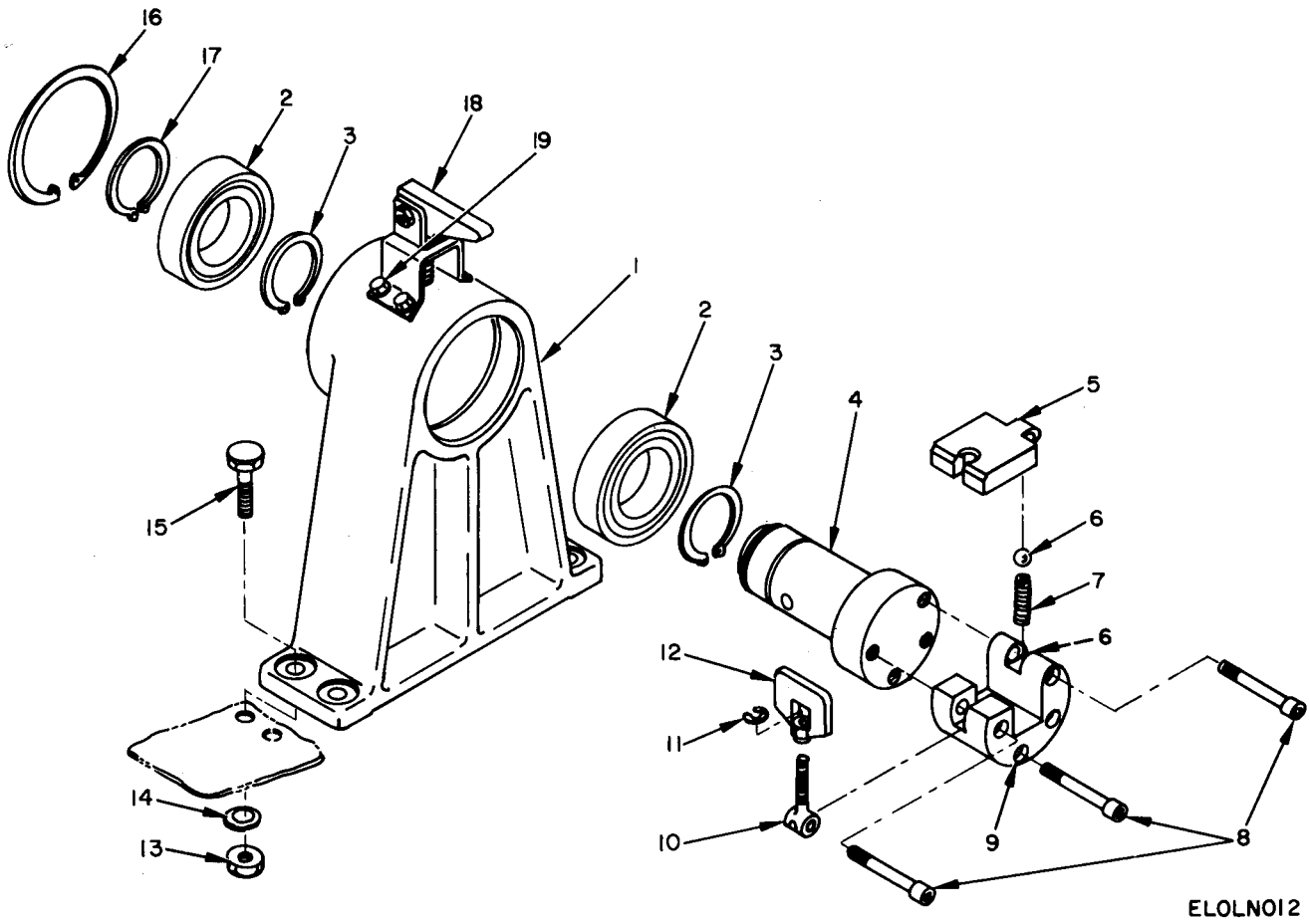


Figure 9. Housing and Bearing Assembly 1A7.

ELOLN011

(1) ILLUSTRATION		(2) SMR CODE	(3) NATIONAL STOCK NUMBER	(4) PART NUMBER	(5) FSCM	(6) DESCRIPTION	(7) USABLE ON CODE	(8) QTY INC IN UNIT
(a) FIG NO	(b) TEM NO							
						<b>GROUP 05 HOUSING AND BEARING ASSEMBLY 1A7</b>		
2	1	XDFZZ		SMD322615	30063	HOUSING , BEARING	A	1
2	2	FAFZZ	3110-00-114-5090	210PP	21335	BEARING , BALL	A	2
	3	XDFZZ	5365-00-263-5860	5100-196	79136	RING , RETAINING	A	2
	4	XDFZZ		SMC322617-2	30063	SHAFT , REEL SUPPORT	A	1
	5	XDFZZ		SMB322670-2	30063	PLATE , LOCKING	A	1
	6	XDFZZ		SMD340188-5	30063	BEARING , BALL	A	2
	7	PAFZZ	5360-00-060-3123	SMB322700-2	30063	SPRING , LATCH	A	1
	8	PAFZZ	5305-00-638-1398	MS35458-41	96906	SCREW , CAP , SOCKET HEAD	A	3
	9	XDFZZ		SMB322612-4	30063	COLLAR , SHAFT	A	1
3	10	XDFZZ		SMB340205-2	30063	BOLT , LOCK	A	1
	11	XDFZZ		AN935-716	88044	WASHER , LOCK	A	1
	12	XDFZZ		SMB322610	30063	NUT , PLAIN , WING	A	1
	13	XDFZZ		AN335B7	88044	NUT , PLAIN , HEXAGON	A	4
	14	XDFZZ	5310-00-582-5965	AN935-416	88044	WASHER , LOCK	A	4
2	15	XDFZZ		MS35309-90	96906	SCREW , MACHINE	A	4
2	16	XDFZZ	5365-00-622-1799	5133-37	79136	RING , RETAINING	A	1
2	17	XDFZZ	5365-00-304-9732	N5000-354	79136	RING , RETAINING	A	1
2	23	XDFZZ		SMC340194	30063	PIN ASSEMBLY	A	1
2	19	XDFZZ	5305-00-068-0500	AN65-4-4	88044	BOLT , MACHINE	A	4



ELOLN012

Figure 10. Housing and Bearing Assembly 1A8.



## SECTION II

TM 11-3895-209-24P

(1)		(2)	(3)	(4)	(5)	(6)	(7)	(8)
LLUS FIG NO.	TIC (b) TEA NO.	SMR CODE	NATIONAL STOCK NUMBER	PART NUMBER	FSCM	DESCRIPTION	USABLE ON CODE	QTY INC IN UNIT
						GROUP 06 HOUSING AND BEARING ASSEMBLY 1A8		
10	1	XDFZZ		SMD322615	80063	HOUSING, BEARING	EA	
10	2	PAFZZ	3110-00-114-5990	210PP	21335	BEARING, BALL	EA	
10	3	XDFZZ	5365-00-263-5860	5100-196	79136	RING, RETAINING	EA	2
10	4	XDFZZ		SMC322617-1	80063	SHAFT, REEL SUPPORT	EA	1
10	5	XDFZZ		SMB322670-2	80063	PLATE, LOCKING	EA	
10	6	XDFZZ		SMB340188-5	80063	BEARING, BALL	EA	2
10	7	PAFZZ	5360-00-060-3127	SMB322700-1	80063	SPRING, LATCH	EA	1
10	8	PAFZZ	5305-00-688-1398	MS35458-41	96906	SCREW, CAP, SOCKET HEAD	EA	3
10	9	XDFZZ		SMB322612-2	80063	COLLAR, SHAFT	EA	1
10	10	XDFZZ		SMB340205-1	80063	BOLT, LOCK	EA	1
10	11	XDFZZ		AN935-716	88044	WASHER, LOCK	EA	1
10	12	XDFZZ		SMB322610	80063	NUT, PLAIN, WING	EA	1
10	13	XDFZZ		AN335B7	88044	NUT, PLAIN, HEXAGON	EA	4
10	14	XDFZZ	5310-00-582-5965	AN935-416	88044	WASHER, LOCK	EA	4
10	15	XDFZZ		MS35309-90	96906	SCREW, MACHINE	EA	4
10	16	XDFZZ	5365-00-622-1799	5133-37	79136	RING, RETAINING	EA	1
10	17	XDFZZ	5365-00-804-9732	N5000-354	79136	RING, RETAINING	EA	1
10	18	XDFZZ		SMC340194	80063	PIN ASSEMBLY	EA	1
10	19	XDFZZ	5305-00-068-0500	AN65-4-4	88044	BOLT, MACHINE	EA	4

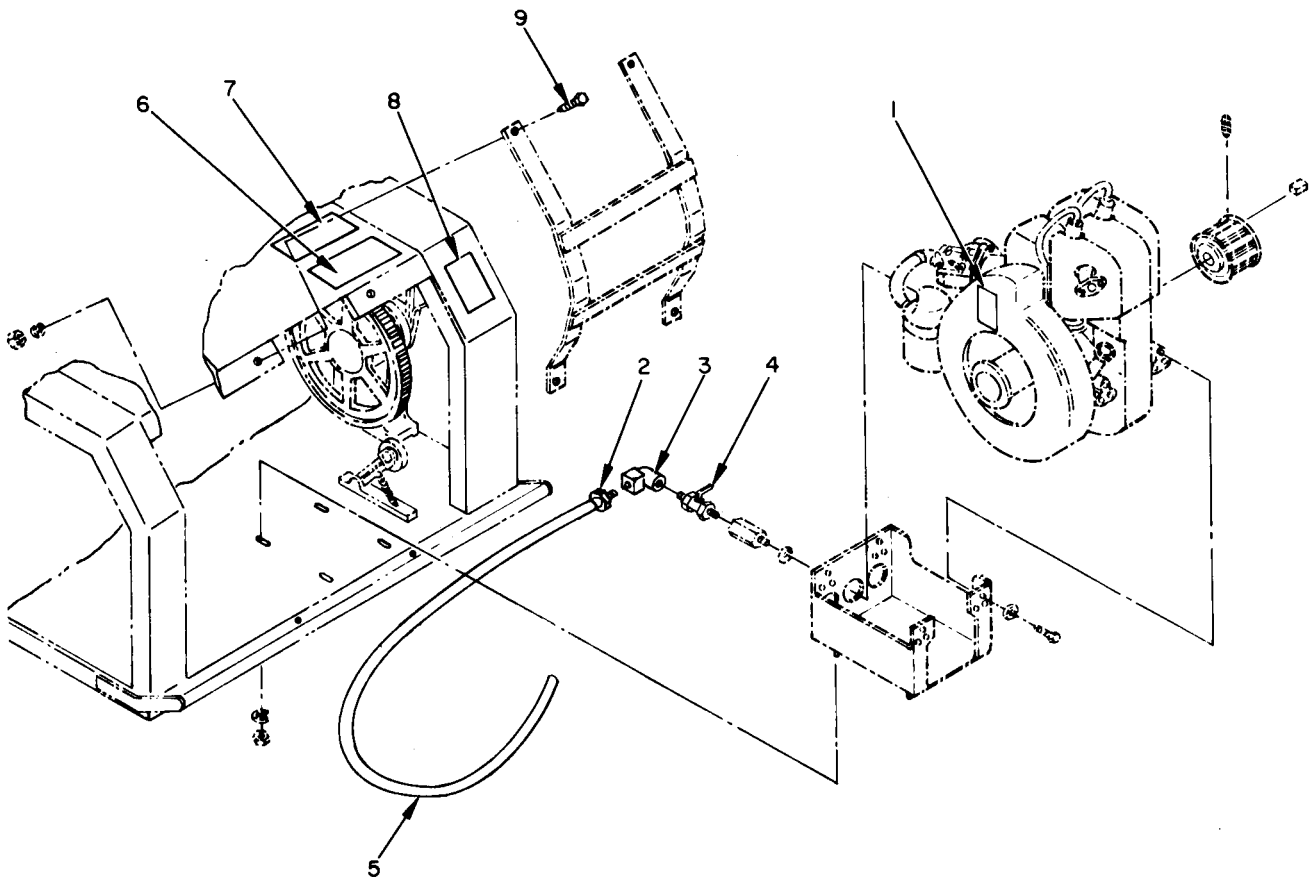


Figure 11. Oil Drain Assembly 1A9.

EL0LN013

## SECTION II

TM 11-3895-209-24P

(1) ILLUSTRATION		(2)	(3)	(4)	(5)	(6)	(7)	(8)
(a) FIG NO	(b) ITEM NO	SMR CODE	NATIONAL STOCK NUMBER	PART NUMBER	SCN	DESCRIPTION  USABLE ON CODE	VM	QTY INC IN UNIT
						GROUP 07 OIL DRAIN ASSEMBLY 1A9		
11	1	XDFZZ		SMB340204	006	PLATE, IDENTIFICATION	EA	1
11	2	XDFZZ		SMB340214	006	NIPPLE, PIPE	EA	1
11	3	XDFZZ		3400-4	580	ELBOW, PIPE TO HOSE	EA	1
11	4	XDFZZ		SMB340223	006	VALVE , GLOBE	EA	1
11	5	XDFZZ		SMB340224	006	HOSE ASSEMBLY , RUBBER		1
11	6	XDFZZ		SCC555923	006	PLATE , INSTRUCTION		1
11	7	XDFZZ		SMB158378	006	PLATE , INSTRUCTION		1
11	8	XDFZZ		SMB158384	006	PLATE, IDENTIFICATION		1
11	9	XDFZZ		SCD555928-16	006	SCREW , DRIVE		4

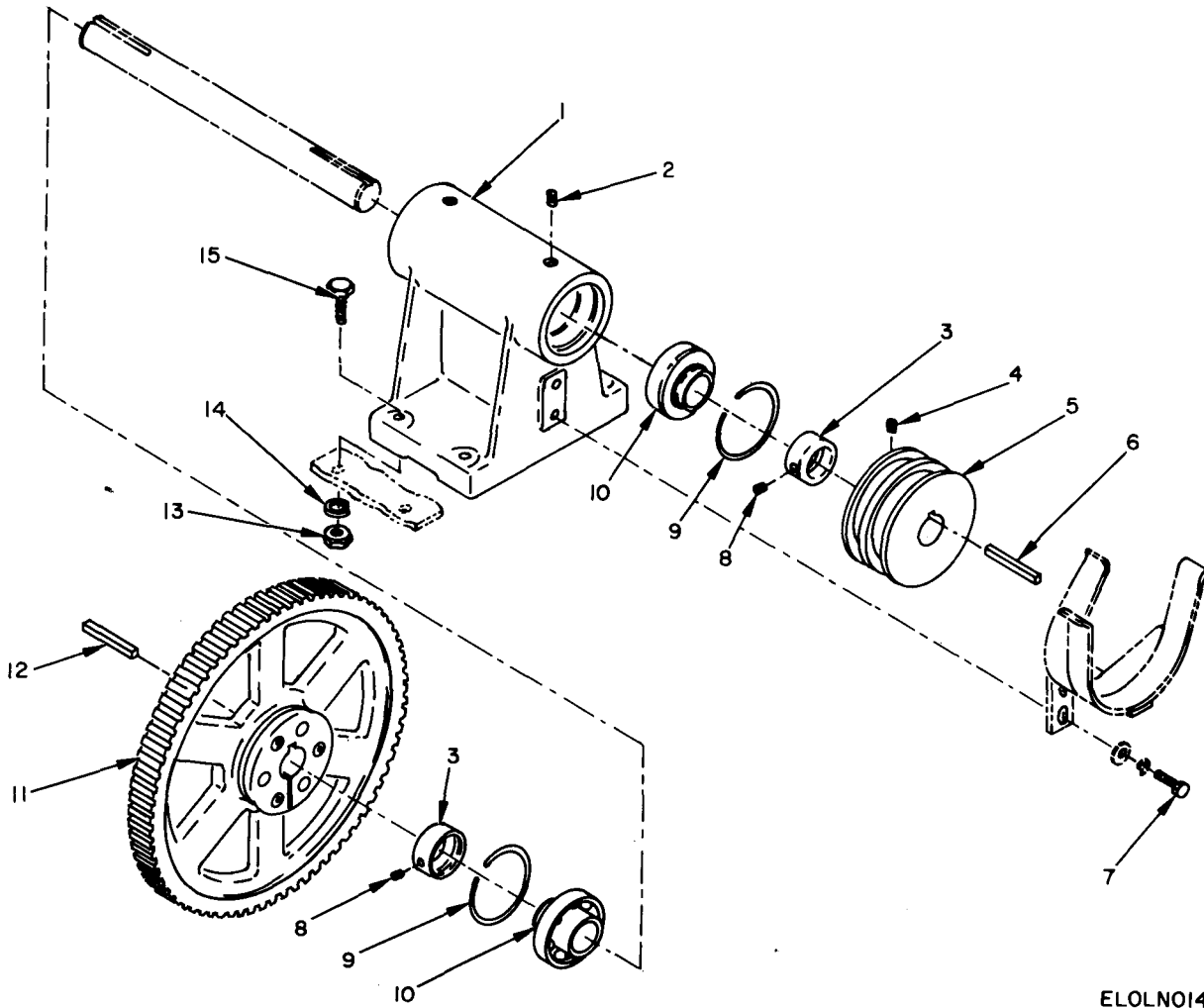


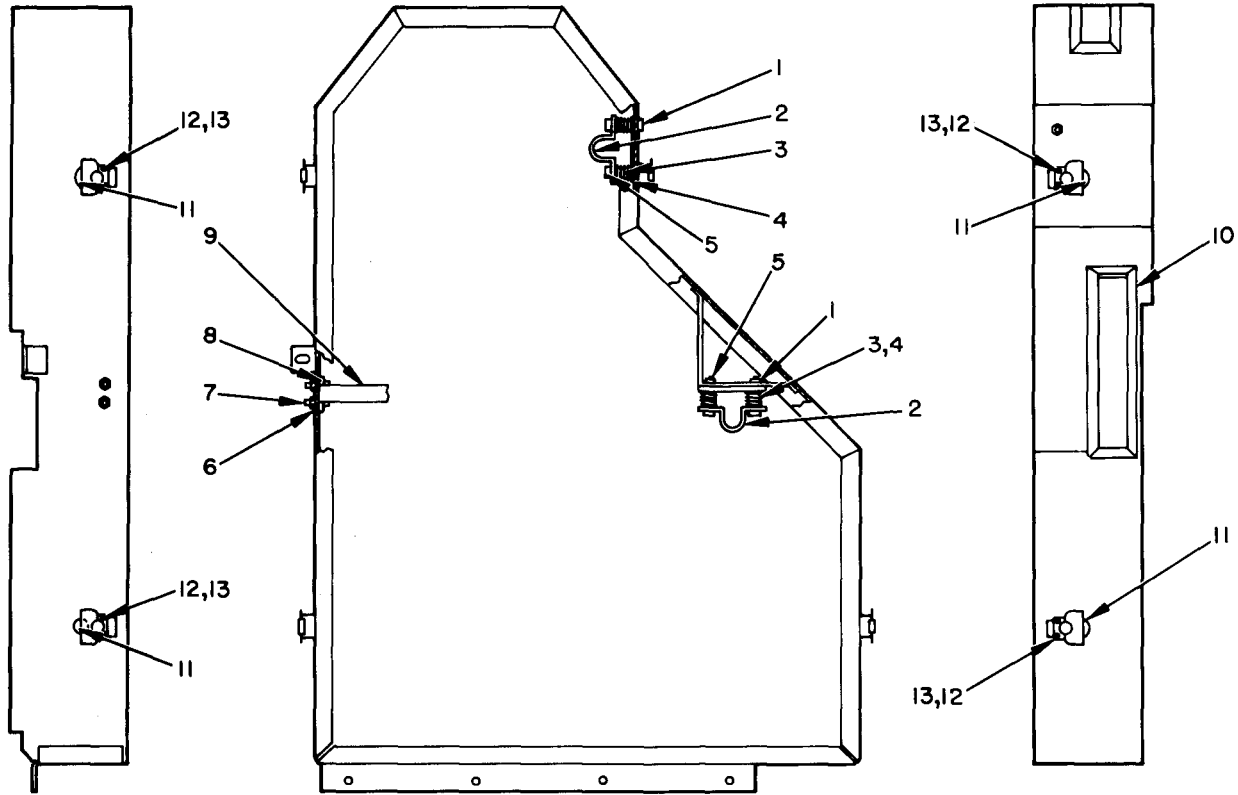
Figure 12. Pillow Block Assembly 1A10.

ELOLN014

## SECTION II

TM 11-3895-209-24P

(1)		(2)	(3)	(4)	(5)	(6)		(7)	(8)
LLUS (a) FIG NO.	TIC (b) TEN NO.	SMR CODE	NATIONAL STOCK NUMBER	PART NUMBER	FSCM	DESCRIPTION	USABLE OR CODE	U/M	QTY INC IN UNIT
						GROUP 08 PILLOW BLOCK ASSEMBLY LA1C			
12	1	XDFZZ		SMD158377	30063	PILLOW BLOCK		EA	1
12	2	XDFZZ		SMD158376-4	30063	PLUG, MACHINE THREAD		EA	1
12	3	XDFZZ		S1103K	21335	COLLAR, SHIFT		EA	2
12	4	XDFZZ		SCD555928	30063	SETSCREW		EA	1
12	5	XDFZZ		SCC555938	30063	PULLEY, GROOVE, TIMING		EA	1
12	6	XDFZZ		61	78966	KEY, WOODRUFF		EA	1
12	7	XDFZZ	5340-00-290-4518	MS2120806-15	36906	INSERT, SCREW THREAD		EA	1
12	8	XDFZZ		SCD555928-14	30063	SETSCREW		EA	2
12	9	XDFZZ		NO2WIRELOC	21335	RING, RETAINING		EA	2
12	10	XDFZZ		RA103NP	21335	BEARING, BALL		EA	2
12	11	XDFZZ		SCC555937	30063	PULLEY, GROOVE		EA	1
12	12	XDFZZ		SMD158387-1	30063	KEY, MACHINE		EA	1
12	13	XDFZZ		AN335B6	38044	NUT, PLAIN, HEXAGON		EA	1
12	14	XDFZZ		AN935-614	38044	WASHER, LOCK		EA	1
12	15	XDFZZ		MS35309-65	96906	SCREW, CAP, HEXAGON HEAD		EA	1



ELOLN015

Figure 13. Guard Wrapper 1A6.

## SECTION II

TM 11-3895-209-24P

(1) ILLUSTRATION		(2) SMR CODE	(3) NATIONAL STOCK NUMBER	(4) PART NUMBER	(5) FSCM	(6) DESCRIPTION  USABLE ON CODE	(7) M	(8) QTY INC IN UNIT
(a) FIG NO	(b) ITEM NO							
						GROUP 09 GUARD WRAPPER 1A6		
13	1	XDFE		SCB621093	80063	GUIDE, SHOE	EA	2
13	2	XDFE		SCB621092	80063	SHOE, FRAME	EA	2
13	3	XDFE		SCB621094	80063	SPRING, HELICAL COMPRESSION	EA	4
13	4	XDFE	5310-00-809-4058	MS27183-10	96906	WASHER, FLAT	EA	4
13	5	XDFE	5305-00-071-2242	MS90725-9	96906	SCREW, MACHINE	EA	4
13	6	XDFE	5310-00-159-6209	MS122032	96906	WASHER, LOCK	EA	2
13	7	XDFE	5305-00-068-0500	MS90725-3	96906	SCREW, CAP, HEXAGON HEAD	EA	2
13	8	XDFE	5310-00-997-1888	MS35649-2252	96906	NUT, PLAIN, HEXAGON	EA	2
13	9	XDFE		SCB621095	80063	POSITIONER, GUARD	EA	1
13	10	XDFE		X686	70483	RUBBER CHANNEL	EA	1
13	11	XDFE		HC365	98003	TURN CATCH	EA	4
13	12	XDFE	5305-00-993-0190	MS35206-214	96906	SCREW, MACHINE	EA	8
13	13	XDFE		MS20365-440	96906	NUT, PLAIN, HEXAGON	EA	8

SECTION IV

NATIONAL STOCK NUMBER AND PART NUMBER INDEX

TM 11-3895-209-24P

NOTE: LATEST NATIONAL STOCK NUMBER ASSIGNMENTS ARE INCLUDED AT END OF INDEX

STOCK NUMBER	FIGURE NO.	ITEM NO.	STOCK NUMBER	FIGURE NO.	ITEM NO.
5310-00-045-3296	4	4	5310-00-298-9267	5	3
5360-00-060-3127	6	67	5310-00-298-9267	6	3
5360-00-060-3127	10	7	5310-00-407-9566	5	25
5360-00-060-3128	5	67	5310-00-407-9566	6	25
5360-00-060-3128	9	7	5310-00-407-9566	7	3
5315-00-060-3137	5	34	3895-00-537-2505	5	12
5315-00-060-3137	6	34	3895-00-537-2505	6	12
3895-00-060-3727	5	1	3895-00-560-2239	6	2
3895-00-060-3727	6	1	2990-00-563-0847	1	8
5305-00-068-0500	3	3	5310-00-582-5965	2	4
5305-00-068-0500	5	58	5310-00-582-5965	3	4
5305-00-068-0500	6	58	5310-00-582-5965	5	59
5305-00-068-0500	9	19	5310-00-582-5965	6	59
5305-00-068-0500	10	19	5310-00-582-5965	9	14
5305-00-068-0500	13	7	5310-00-582-5965	10	14
5305-00-071-2242	13	5	5310-00-584-5272	5	56
3110-00-107-7576	5	20	5310-00-584-5272	6	56
3110-00-107-7576	6	20	5365-00-622-1799	9	16
3110-00-114-5990	5	47	5365-00-622-1799	10	16
3110-00-114-5990	6	47	5310-00-637-9541	5	14
3110-00-114-5990	9	2	5310-00-637-9541	6	14
3110-00-114-5990	10	2	5930-00-655-1575	4	10
5310-00-159-6209	13	6	5365-00-804-9732	5	54
5310-00-167-0823	5	10	5365-00-804-9732	6	54
5310-00-167-0823	6	10	5365-00-804-9732	9	17
5310-00-167-1285	5	6	5365-00-804-9732	10	17
5310-00-167-1285	6	6	5310-00-809-4058	13	4
3110-00-198-2462	5	29	3895-00-815-6556	2	8
3110-00-198-2462	6	29	5315-00-839-5820	5	4
5306-00-225-8500	6	38	5315-00-839-5820	6	4
5365-00-263-5860	5	46	5360-00-889-3217	5	52
5365-00-263-5860	6	46	5360-00-889-3217	6	52
5365-00-263-5860	9	3	5360-00-889-3218	5	40
5365-00-263-5860	10	3	5360-00-889-3218	6	40
5365-00-281-6655	5	19	5305-00-993-0190	13	12
5365-00-281-6655	6	19	5310-00-997-1888	13	8
5340-00-290-4518	12	7			

PART NUMBER	FSCM	FIG. NO.	ITEM NO.	PART NUMBER	FSCM	FIG. NO.	ITEM NO.
AN121760	88044	5	17	AN935-516	88044	7	3
AN121760	88044	6	17	AN935-614	88044	12	14
AN310-4	88044	5	6	AN935-616	88044	5	14
AN310-4	88044	6	6	AN935-616	88044	6	14
AN315-8	88044	5	3	AN935-716	88044	9	11
AN315-8	88044	6	3	AN935-716	88044	10	11
AN325-5	88044	5	8	AN935-8	88044	3	8
AN325-5	88044	6	8	AN935-816	88044	5	56
AN335-5	88044	7	4	AN935-816	88044	6	56
AN335B6	88044	12	13	AN960-816	88044	5	10
AN335B7	88044	9	13	AN960-816	88044	6	10
AN335B7	88044	10	13	C3125-3	78553	2	10
AN520-10-12	88044	4	2	GC4A	30058	2	12
AN60-4-26	88044	5	5	HC 765	38003	13	11
AN60-4-26	88044	6	5	MS122032	36906	13	6
AN65-4-4	88044	3	3	MS20341-10A	36906	4	5
AN65-4-4	88044	5	58	MS20341-8A	36906	3	6
AN65-4-4	88044	6	58	MS20365-440	36906	13	13
AN65-4-4	88044	9	19	MS21208C6-15	36906	12	7
AN65-4-4	88044	10	19	MS24665-134	36906	5	4
AN65-4-6	88044	2	3	MS24665-134	36906	6	4
AN65-5-10	88044	7	2	MS27183-10	36906	13	4
AN65-5-14	88044	5	48	MS35059-22	36906	4	10
AN65-5-14	88044	6	50	MS35206-214	36906	13	12
AN65-5-6	88044	5	24	MS35225-45	36906	3	7
AN65-5-6	88044	6	24	MS35291-35	36906	5	39
AN65-5-6	88044	7	10	MS35291-35	36906	6	39
AN65-6-10	88044	5	44	MS35309-65	36906	12	15
AN65-6-10	88044	6	44	MS35309-90	36906	9	15
AN935-10	88044	4	4	MS35309-90	36906	10	15
AN935-416	88044	2	4	MS35458-41	36906	9	8
AN935-416	88044	3	4	MS35458-41	36906	10	8
AN935-416	88044	5	59	MS35649-2252	36906	13	8
AN935-416	88044	6	59	MS35690-422	36906	5	41
AN935-416	88044	9	14	MS35690-422	36906	6	41
AN935-416	88044	10	14	MS90725-3	36906	13	7
AN935-516	88044	5	25	MS90725-9	36906	13	5
AN935-516	88044	6	25	NO2WIRELOC	21335	12	9



SECTION IV

NATIONAL STOCK NUMBER AND PART NUMBER INDEX

TM 11-3895-209-24P

PART NUMBER	FSCM	FIG. NO.	ITEM NO	PART NUMBER	FSCM	FIG. NO.	ITEM NO.
N5000-268	79136	5	21	SMB322610	80063	10	12
N5000-268	79136	6	21	SMB322612-1	80063	6	68
N5000-354	79136	5	54	SMB322612-2	80063	10	9
N5000-354	79136	6	54	SMB322612-3	80063	5	68
N5000-354	79136	9	17	SMB322612-4	80063	9	9
N5000-354	79136	10	17	SMB322614	80063	5	45
RA10 JNP	21335	12	10	SMB322614	80063	6	45
SC B555926	80063	5	7	SMB322636	80063	2	6
SCB555926	80063	6	7	SMB322652	80063	5	30
SCB555939	80063	6	5	SMB322652	80063	6	30
SC B555941	80063	4	1	SMB322654-1	80063	6	13
SCB555942	80063	4	11	SMB322654-2	80063	5	13
SC B621092	80063	13	2	SMB322665	80063	3	2
SCB621093	80063	13	1	SMB322670-1	80063	5	65
SC B621094	80063	13	3	SMB322670-1	80063	6	65
SC B621095	80063	13	9	SMB322670-2	80063	9	5
SCB621096	80063	7	1	SMB322670-2	80063	10	5
SCC555923	80063	11	6	SMB322683-1	80063	5	26
SCC555924	80063	6	28	SMB322683-2	80063	6	26
SCC555925	80063	5	28	SMB322684-1	80063	5	31
SCC555931	80063	5	18	SMB322684-2	80063	6	31
SCC555931	80063	6	18	SMB322694	80063	5	52
SCC555937	80063	12	11	SMB322694	80063	6	52
SCC555938	80063	12	5		80063	4	7
SCC555940	80063	2	5	SMB322700-1	80063	6	67
SCD55592 7-13	80063	5	64	SMB322700-1	80063	10	7
SCD555927-13	80063	6	64	SMB322700-2	80063	5	67
SC D555927-14	80063	5	36	SMB322700-2	80063	9	7
SCD555927-14	80063	6	36	SMB322702	80063	5	57
SCD555927-15	80063	5	66	SMB322702	80063	6	57
SCD555927-15	80063	6	66	SMB322703	80063	2	7
SCD555927-16	80063	5	15	SMB340204	80063	11	1
SCD555927-16	80063	6	15	SMB340205-1	80063	6	61
SCD555927-5	80063	5	27	SMB340205-1	80063	10	10
SCD555927-5	-	6	27	SMB340205-2	-	5	61
SCD555927GR1	80063	1	3	SMB340205-2	80063	9	10
SCD555927GR2	80063	1	4	SMB340213	80063	5	2
SCD555928	80063	12	4	SMB340213	80063	6	2
SCD555928-14	80063	12	8	SMB340214	80063	11	2
SCD555928-16	80063	11	9	SMB340215	80063	5	49
SCD555929	80063	6	32	SMB340215	80063	6	49
SC D555930	80063	5	32	SMB340223	80063	11	4
SCD555935	80063	3	9	SMB340224	80063	11	5
SCD555939	80063	5	16	SMC322579	80063	3	1
SCD555947	80063	1	16	SMC322592	80063	5	35
SMB158378	80063	11	7	SMC322592	-	6	35
SMB158380	80063	5	38	SMC322602	80063	5	1
SMB158380	80063	6	38	SMC322602	80063	6	1
SMB158383	80063	1	9	SMC322617-1	80063	10	4
SMB158384	80063	11	8	SMC322617-2	80063	9	4
SMB158387-2	80063	5	23	SMC322619-1	80063	5	60
SMB158387-2	80063	6	23	SMC322619-2	80063	6	60
SMB158388	80063	4	6	SMC322635	80063	5	22
SMB158389	80063	4	8	SMC322635	80063	6	22
SMB158390	80063	4	3	SMC340193	80063	1	7
SMB158392	80063	4	9	SMC340193-2	80063	8	2
SMB158396	80063	7	6	SMC340194	80063	5	51
SMB158398-1	80063	7	7	SMC340194	80063	6	6
SMB158398-2	80063	7	8	SMC340194	80063	9	9
SMB158399	80063	7	9	SMC340194	80063	10	10
SMB158400	80063	7	5	SMC340217	80063	2	9
SMB322593	80063	5	9	SMD158376	80063	1	6
SMB322593	80063	6	9	SMD158376-4	80063	12	2
SMB322594	80063	5	11	SMD158377	80063	12	1
SMB322594	80063	6	11	SMD158379	80063	1	8
SMB322595	80063	5	34	SMD158385	80063	2	8
SMB322595	80063	6	34	SMD158387-1	80063	12	12
SMB322596	80063	5	40	SMD322615	80063	9	1
SMB322596	80063	6	40	SMD322615	80063	10	10
SMB322597	80063	5	42	SMD322618	80063	5	53
SMB322597	80063	6	42	SMD322618	80063	6	53
SMB322598	80063	5	43	SMD322645	80063	8	1
SMB322598	80063	6	43	SMD340188-5	80063	9	6
SMB322600	80063	5	37	SMD340188-5	80063	10	6
SMB322601	80063	6	37	SMD340188GR1	80063	1	1
SMB322601	80063	5	55	SMD340188GR2	80063	1	2
SMB322610	80063	6	55	S1103K	21335	12	3
SMB322610	80063	5	62	W204PP	21335	5	29
SMB322610	80063	6	62	W204PP	21335	6	29
SMB322610	80063	9	12	X686	70485	13	10

**SECTION IV**

**NATIONAL STOCK NUMBER AND PART NUMBER INDEX**

**TM 11-3895-209-24P**

PART NUMBER	FSCM	FIG. NO.	ITEM NO.	PART NUMBER	FSCM	FIG. NO.	ITEM NO.
1B	92026	3	5	5100-156	79136	6	9
1254-14	85804	8	3	5100-162	79136	5	33
145	80813	5	12	5100-162	79136	6	33
145	80813	6	1	5100-196	79136	5	46
210PP	21335	5	47	5100-196	79136	6	46
210PP	21335	6	47	5100-196	79136	9	3
210PP	21335	9	2	5100-196	79136	10	3
210PP	21335	10	2	5133-3	79136	5	63
22 NE058	72962	5	50	5133-3	79136	6	63
22 NE058	72962	6	48	5133-37	79136	9	16
250-4	85804	8	5	5133-37	79136	10	16
3325-2	85804	8	4	6B80	24161	2	1
3400-4	85804	11	3	61	78966	12	6
4BB6	24161	2	2	9108PP	21335	5	20
510L100	73842	2	11	9108PP	21335	6	10
5100-156	79136	5	19				

LATEST NATIONAL STOCK NUMBER ASSIGNMENTS

STOCK NUMBER	FIGURE NO.	ITEM NO.
3020-00-086-6672	5	22
3020-00-086-6672	6	22
3895-00-127-0969	2	12
5306-00-225-8500	5	39
2910-00-563-0845	8	1
5305-00-688-1398	9	8
5305-00-688-1398	10	8
5340-00-801-7545	3	5

RECOMMENDED CHANGES TO EQUIPMENT TECHNICAL MANUALS



# SOMETHING WRONG WITH THIS MANUAL?

THEN... JOT DOWN THE DOPE ABOUT IT ON THIS FORM, TEAR IT OUT, FOLD IT AND DROP IT IN THE MAIL!

FROM: (YOUR UNIT'S COMPLETE ADDRESS)

Commander  
Stateside Army Depot  
ATTN: AMSTA-US  
Stateside, N.J. 07703

DATE 10 July 1975

PUBLICATION NUMBER

TM 11-5840-340-12

DATE

23 Jan 74

TITLE

Radar Set AN/SPC-76

BE EXACT... PIN-POINT WHERE IT IS

PAGE NO.	PARA-GRAPH	FIGURE NO.	TABLE NO.
2-25	2-28		
3-10	3-3		3-1
5-6	5-8		
		FO3	

IN THIS SPACE TELL WHAT IS WRONG AND WHAT SHOULD BE DONE ABOUT IT:

Recommend that the installation antenna alignment procedure be changed through to specify a 2° IFF antenna lag rather than 1°.

REASON: Experience has shown that with only a 1° lag, the antenna servo system is too sensitive to wind gusting in excess of 25 knots, and has a tendency to rapidly accelerate and decelerate as it hunts, causing strain to the drive train. Hunting is minimized by adjusting the lag to 2° without degradation of operation.

Item 5, Function column. Change "2 db" to "3db."

REASON: The adjustment procedure for the TRANS POWER FAULT indicator calls for a 3 db (500 watts) adjustment to light the TRANS POWER FAULT indicator.

Add new step f.1 to read, "Replace cover plate removed in step e.1, above."

REASON: To replace the cover plate.

Zone C 3. On J1-2, change "+24 VDC to "+5 VDC."

REASON: This is the output line of the 5 VDC power supply. + 24 VDC is the input voltage.

TEAR ALONG DOTTED LINE

TYPED NAME, GRADE OR TITLE, AND TELEPHONE NUMBER

SSG I. M. DeSpirito 999-1776

SIGN HERE:

*SSG I. M. DeSpirito*

DA FORM 2028-2 (TEST) 1 AUG 74

P.S.--IF YOUR OUTFIT WANTS TO KNOW ABOUT YOUR MANUAL "FIND" MAKE A CARBON COPY OF THIS AND GIVE IT TO YOUR HEADQUARTERS.

HISA 1686-75



RECOMMENDED CHANGES TO EQUIPMENT TECHNICAL MANUALS



# SOMETHING WRONG WITH THIS MANUAL?

THEN... JOT DOWN THE DOPE ABOUT IT ON THIS FORM, TEAR IT OUT, FOLD IT AND DROP IT IN THE MAIL!

FROM: (YOUR UNIT'S COMPLETE ADDRESS)

DATE

PUBLICATION NUMBER

DATE

TITLE

BE EXACT... PIN-POINT WHERE IT IS

IN THIS SPACE TELL WHAT IS WRONG AND WHAT SHOULD BE DONE ABOUT IT:

PAGE NO.	PARA-GRAPH	FIGURE NO.	TABLE NO.
----------	------------	------------	-----------

TEAR ALONG DOTTED LINE

TYPED NAME, GRADE OR TITLE, AND TELEPHONE NUMBER

SIGN HERE:

FILL IN YOUR  
UNIT'S ADDRESS

FOLD BACK

DEPARTMENT OF THE ARMY

\_\_\_\_\_  
\_\_\_\_\_

OFFICIAL BUSINESS  
PENALTY FOR PRIVATE USE \$300

POSTAGE AND FEES PAID  
DEPARTMENT OF THE ARMY  
DOD 314



Commander  
US Army Electronics Command  
ATTN: DRSEL-MA-Q  
Fort Monmouth, New Jersey 07703

CUT ALONG DOTTED LINE

FOLD BACK

RECOMMENDED CHANGES TO EQUIPMENT TECHNICAL MANUALS



THEN... JOT DOWN THE DOPE ABOUT IT ON THIS FORM, TEAR IT OUT, FOLD IT AND DROP IT IN THE MAIL!

# SOMETHING WRONG WITH THIS MANUAL?

FROM: (YOUR UNIT'S COMPLETE ADDRESS)

DATE

PUBLICATION NUMBER

DATE

TITLE

BE EXACT... PIN-POINT WHERE IT IS

IN THIS SPACE TELL WHAT IS WRONG AND WHAT SHOULD BE DONE ABOUT IT:

PAGE NO.	PARA-GRAPH	FIGURE NO.	TABLE NO.
----------	------------	------------	-----------

TEAR ALONG DOTTED LINE

TYPED NAME, GRADE OR TITLE, AND TELEPHONE NUMBER

SIGN HERE:

FILL IN YOUR  
UNIT'S ADDRESS



FOLD BACK

DEPARTMENT OF THE ARMY

\_\_\_\_\_  
\_\_\_\_\_

OFFICIAL BUSINESS  
PENALTY FOR PRIVATE USE \$300

POSTAGE AND FEES PAID  
DEPARTMENT OF THE ARMY  
DOD 314



Commander  
US Army Electronics Command  
ATTN: DRSEL-MA-Q  
Fort Monmouth, New Jersey 07703

CUT ALONG DOTTED LINE

FOLD BACK



RECOMMENDED CHANGES TO EQUIPMENT TECHNICAL MANUALS



THEN...JOT DOWN THE DOPE ABOUT IT ON THIS FORM, TEAR IT OUT, FOLD IT AND DROP IT IN THE MAIL!

# SOMETHING WRONG WITH THIS MANUAL?

FROM: (YOUR UNIT'S COMPLETE ADDRESS)

DATE

PUBLICATION NUMBER

DATE

TITLE

BE EXACT...PIN-POINT WHERE IT IS

IN THIS SPACE TELL WHAT IS WRONG AND WHAT SHOULD BE DONE ABOUT IT:

PAGE NO.

PARA-GRAPH

FIGURE NO.

TABLE NO.

TEAR ALONG DOTTED LINE

TYPED NAME, GRADE OR TITLE, AND TELEPHONE NUMBER

SIGN HERE:

FILL IN YOUR  
UNIT'S ADDRESS

FOLD BACK

DEPARTMENT OF THE ARMY

---

---

OFFICIAL BUSINESS  
PENALTY FOR PRIVATE USE \$300

POSTAGE AND FEES PAID  
DEPARTMENT OF THE ARMY  
DOD 314



Commander  
US Army Electronics Command  
ATTN: DRSEL-MA-Q  
Fort Monmouth, New Jersey 07703

CUT ALONG DOTTED LINE

FOLD BACK

By order of the Secretary of the Army:

FRED C. WEYAND  
General, United States Army  
Chief of Staff

Official:

PAUL T. SMITH  
Major General, United States Army  
The Adjutant General

**DISTRIBUTION:**

*Active Army:*

USASA (2)	Units org under fol TOE: (1)
COE (1)	5-101
TSG (1)	5-401
USAARENBD (1)	6-100
DARCOM (1)	6-300
TRADOC (2)	6-401
OS Maj Comd (4)	6-502
LOGCOMDS (3)	6-555
MICOM (2)	6-556
TECOM (2)	6-575
USACC (4)	6-576
MDW (1)	7
Armies (2)	11-15
Corps (2)	11-16
HISA (Ft Monmouth) (33)	11-17
Svc Colleges (1)	11-18
USASESS (5)	11-19
USAADS (2)	11-25
USAFAS (2)	11-27
USAARMS (2)	11-35
USAIS (2)	11-38
USAES (2)	11-45
USAICS (3)	11-47
MAAG (1)	11-85
USARMIS (1)	11-87
Installations (1) except	11-97
Fort Carson (5)	11-98
Fort Gillem (10)	11-117
Fort Gordon (10)	11-127
Fort Huachuca (10)	11-147
Ft Richardson (ECOM Ofc) (2)	11-225
LBAD (14)	11-227
SAAD (30)	11-228
TOAD (14)	11-327
SHAD (3)	11-357
SigFLDMS (1)	11-500(AA-AC)
USAERDAA (1)	17
USAERDAW (1)	37

NG: State AG (3); Units - Same as Active Army except Allowance is one copy per unit.

USAR: None













This fine document...

Was brought to you by me:



## [Liberated Manuals -- free army and government manuals](#)

Why do I do it? I am tired of sleazy CD-ROM sellers, who take publicly available information, slap “watermarks” and other junk on it, and sell it. Those masters of search engine manipulation make sure that their sites that sell free information, come up first in search engines. They did not create it... They did not even scan it... Why should they get your money? Why are not letting you give those free manuals to your friends?

I am setting this document FREE. This document was made by the US Government and is NOT protected by Copyright. Feel free to share, republish, sell and so on.

I am not asking you for donations, fees or handouts. If you can, please provide a link to [liberatedmanuals.com](http://liberatedmanuals.com), so that free manuals come up first in search engines:

<A HREF=<http://www.liberatedmanuals.com/>>Free Military and Government Manuals</A>

- Sincerely  
Igor Chudov  
<http://igor.chudov.com/>
- [Chicago Machinery Movers](#)