

**TECHNICAL MANUAL**

**DIRECT SUPPORT AND GENERAL SUPPORT MAINTENANCE  
REPAIR PARTS AND SPECIAL TOOLS LISTS  
(INCLUDING DEPOT MAINTENANCE REPAIR PARTS AND SPECIAL TOOLS)**

**FOR**

**REELING MACHINES, CABLE, MOTOR DRIVEN**

**RL-172/G (NSN 3895-00-892-2495)**

**AND**

**RL-172A/G (NSN 3895-00-900-8320)**

**DIRECT SUPPORT AND GENERAL SUPPORT MAINTENANCE  
REPAIR PARTS AND SPECIAL TOOLS LISTS  
(INCLUDING DEPOT MAINTENANCE REPAIR PARTS AND SPECIAL TOOLS)  
FOR  
REELING MACHINES, CABLE, MOTOR DRIVEN  
RL-172/G (NSN 3895-00-892-2495)  
AND  
RL-172A/G (NSN 3895-00-900-8320)**

*Current as of 15 March 1977*

**REPORTING OF ERRORS**

**You can improve this manual by recommending improvements using DA Form 2028-2 (Test) located in the back of the manual. Simply tear out the self addressed form, fill it out as shown on the sample, fold it where shown, and drop it in the mail.**

**If there are no blank DA Forms 2028-2 (Test) in the back of your manual, use the standard DA Form 2028 (Recommended Changes to Publications and Blank Forms) and forward to the Commander, US Army Electronics Command, ATTN: DRSEL -MA -Q, Fort Monmouth, NJ 07703.**

**In either case a reply will be furnished direct to you.**

	Page	Illus figure
SECTION I. INTRODUCTION .....	1	
II. REPAIR PARTS LIST .....	5	
Group 00 Reeling Machines, Cable, Motor Driven		
RL-172/G, RL-172A /G .....	5	1-6
01 Motor, DC .....	21	7
SECTION III. SPECIAL TOOLS LIST (Not applicable)		
IV. NATIONAL STOCK NUMBER AND PART NUMBER INDEX .....	22	

\*This manual supersedes TM 11-3895-207-35P, 27 May 1971.

## SECTION I

## INTRODUCTION

**1. Scope**

This manual lists spares and repair parts; special tools; special test, measurement, and diagnostic equipment (TMDE), and other special support equipment required for performance of direct support and general support maintenance of the RL-72/G and RL-172A/G. It authorizes the requisitioning and issue of spares and repair parts as indicated by the source and maintenance codes.

**2. General**

This Repair Parts and Special Tools list is divided into the following sections:

*a. Section II. Repair Parts List.* A list of spares and repair parts authorized for use in the performance of maintenance. The list also includes parts which must be removed for replacement of the authorized parts. Parts lists are composed of functional groups in numeric sequence, with the parts in each group listed in figure and item number sequence.

*b. Section III. Special Tools List.* Not applicable.

*c. Section IV. National Stock Number and Part Number Index.* A list, in National item identification number (NIIN) sequence, of all National Stock numbers (NSN) appearing in the listings followed by a list, in alphabetic sequence, of all part numbers appearing in the listings. National stock numbers and part numbers are cross-referenced to each illustration figure and item number appearance.

**3. Explanation of Columns**

*a. Illustration.* This column is divided as follows:

(1) *Figure number.* Indicates the figure number of the illustration on which the item is shown.

(2) *Item number.* The number used to identify item called out in the illustration.

*b. Source, Maintenance, and Recoverability (SMR) Codes.*

(1) *Source code.* Source codes indicate the manner of acquiring support items for maintenance, repair, or overhaul of end items. Source codes are entered in the first and second positions of the Uniform SMR Code format as follows:

<i>Code</i>	<i>Definition</i>
PA	Item procured and stocked for anticipated or known usage.
XD	A support item that is not stocked. When required, item will be procured through normal supply channels.

**NOTE**

Cannibalization or salvage may be used as a source of supply for any items source coded above except those coded XA and aircraft support items as restricted by AR 700-42.

(2) *Maintenance code.* Maintenance codes are assigned to indicate the levels of maintenance authorized to USE and REPAIR support items. The maintenance codes are entered in the third and fourth positions of the Uniform SMR Code format as follows:

(a) The maintenance code entered in the third position will indicate the lowest maintenance level authorized to remove, replace, and use the support item. The maintenance code entered in the third position will indicate one of the following levels of maintenance:

<i>Code</i>	<i>Application/Explanation</i>
C	Crew or operator maintenance performed within organizational maintenance.
O	Support item is removed, replaced, used at the organizational level.
F	Support item is removed, replaced, used at the direct support level.
H	Support item is removed, replaced, used at the general support level.

(b) The maintenance code entered in the fourth position indicates whether the item is to be repaired and identifies the lowest maintenance level with the capability to perform complete repair (i.e., all authorized maintenance functions). This position will contain one of the following maintenance codes:

<i>Code</i>	<i>Application/Explanation</i>
F	The lowest maintenance level capable of complete repair of the support item is the direct support level.
H	Supowest maintenance level capable of complete repair of the support item is the general support level.
Z	Nonreparable. No repair is authorized.

(3) *Recoverability code.* Recoverability codes are assigned to support items to indicate the disposition action on unserviceable items. The recoverability code is entered in the fifth position of the Uniform SMR Code format as follows:

<i>Recoverability codes</i>	<i>Definition</i>
Z	Nonreparable item. When unserviceable, condemn and dispose at the level indicated in position 3.

F-Reparable item. When uneconomically reparable, condemn and dispose at the direct support level.

H-Reparable item. When uneconomically reparable, condemn and dispose at the general support level.

D-Reparable item. When beyond lower repair capability, return to depot. Condemnation and disposal not authorized below depot level.

c. *National Stock Number.* Indicates the National stock number assigned to the item and will be used for requisitioning purposes.

d. *Part Number.* Indicates the primary number used by the manufacturer (individual, company, firm, corporation, or Government activity), which controls the design and characteristics of the item by means of its engineering drawings, specifications, standards, and inspection requirements to identify an item or range of items.

**NOTE**

When a stock numbered item is requisitioned, the repair part received may have a different part number than the part being replaced.

e. *Federal Supply Code for Manufacturer (FSCM).* The FSCM is a 5-digit numeric code listed in SB 708-42 which is used to identify the manufacturer, distributor, or Government agency, etc.

f. *Description.* Indicates the Federal item name and, if required, a minimum description to identify the item.

g. *Unit of Measure (U/M).* Indicates the standard of the basic quantity of the listed item as used in performing the actual maintenance function. This measure is expressed by a two-character alphabetical abbreviation (e.g., ea, in, pr, etc). When the unit of measure differs from the unit of issue, the lowest unit of issue that will satisfy the required units of measure will be requisitioned.

h. *Quantity Incorporated in Unit.* Indicates the quantity of the item used in the breakout shown on the illustration figure, which is prepared for a functional group, subfunctional group, or an assembly.

**4. Special Information**

a. Usable on codes are shown in the description column. Uncoded items are applicable to all models.

Identification of the usable on codes used in this publication are:

<i>Code</i>	<i>Used on</i>
4PW	RL-172/G
2QW	RL - 172A/G

b. The following publications pertain to the RL-172/G and RL-172A/G and its components:

TM 11-3895-207-10, Reeling Machines, Cable, Motor Driven RL-172/G and RL-172A/G

TM 11-3895-207-20, Reeling Machines, Cable, Motor Driven RL-172/G and RL-172A/G

TM 11-3895-207-20P Reeling Machines, Cable, Motor Driven RL-172/G and RL-172A/G

TM 11-3895-207-35, Reeling Machines, Cable, Motor Driven RL-172/G and RL-172A/G

**5. How to Locate Repair Parts**

a. When National stock number or part number is unknown:

(1) *First.* Using the table of contents, determine the functional group within which the item belongs. This is necessary since illustrations are prepared for functional groups and listings are divided into the same groups.

(2) *Second.* Find the illustration covering the functional group to which the item belongs.

(3) *Third.* Identify the item on the illustration and note the illustration figure and item number of the item.

(4) *Fourth.* Using the Repair Parts Listing, find the figure and item number noted on the illustration.

b. When National stock number or part number is known:

(1) *First.* Using the Index of National Stock Numbers and Part Numbers, find the pertinent National stock number or part number. This index is in NIIN sequence followed by a list of part numbers in alphameric sequence, cross-referenced to the illustration figure number and item number.

(2) *Second.* After finding the figure and item number, locate the figure and item number in the repair parts list.

**6. Abbreviations**

Not applicable.

(Next printed page is 4)

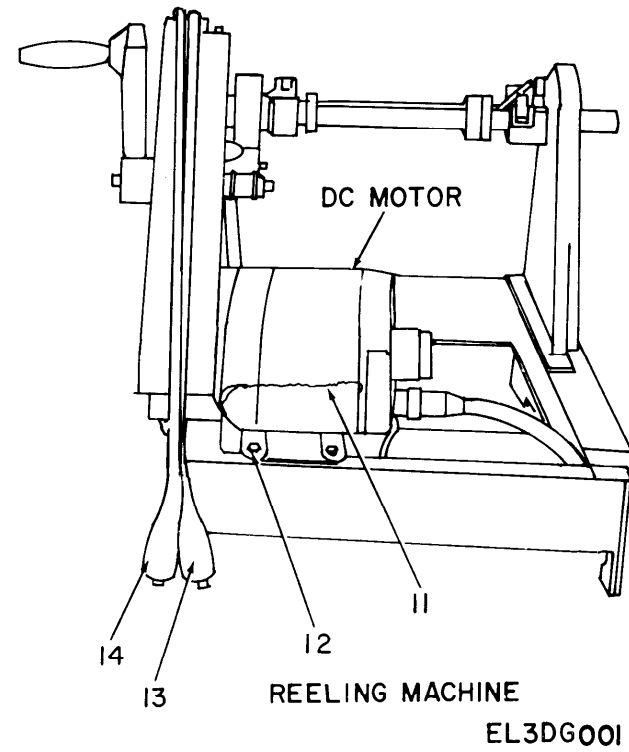
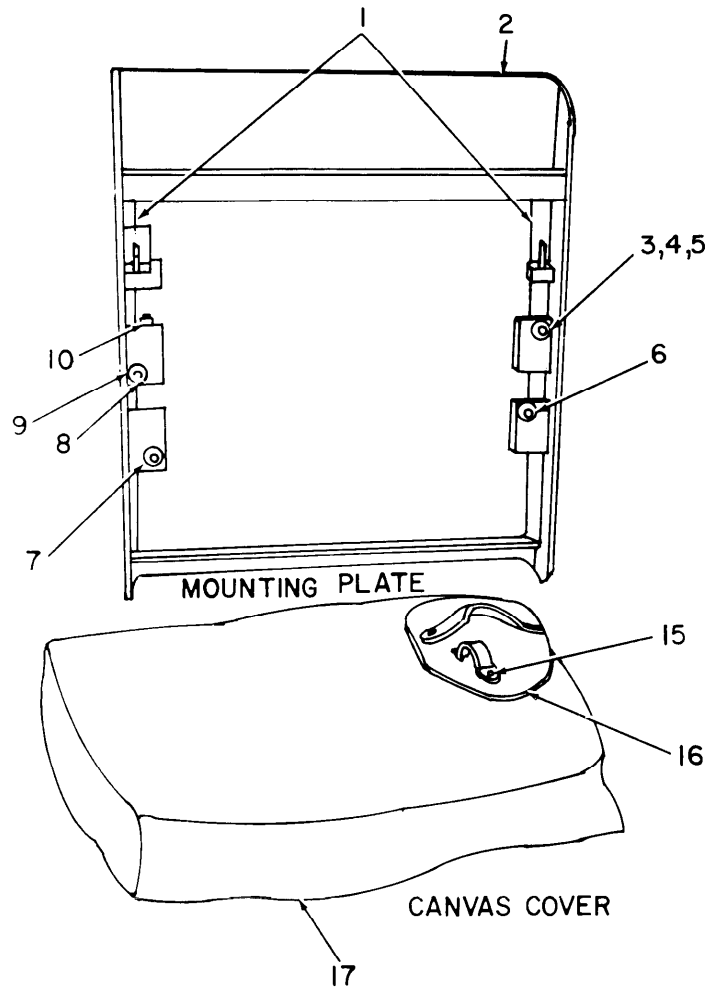
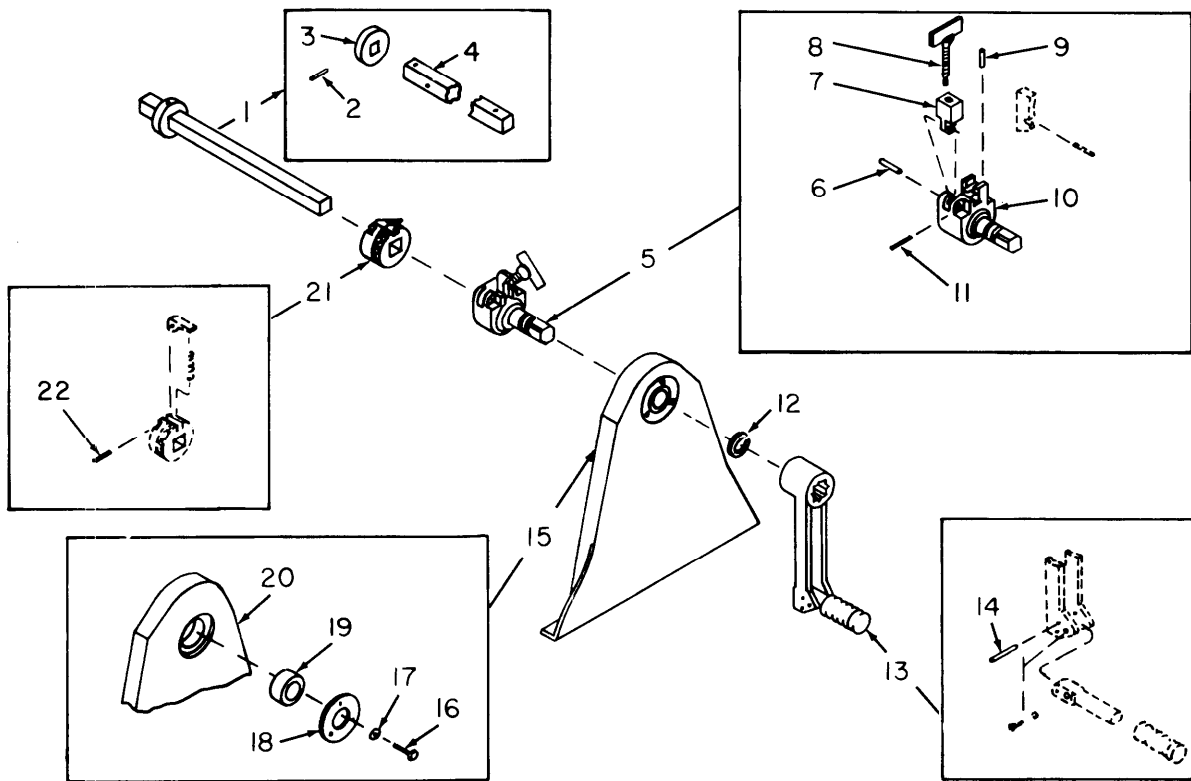


Figure 1. Reeling Machines, Cable, Motor Driven RL-172/G and RL-172A/G.

SECTION II. REPAIR PARTS LIST

(1)	(2)	(3)	(4)	(5)	(6)	(7)	(8)
ILLUSTRATION							
(a)	(b)	NATIONAL			DESCRIPTION		QTY
FIG	ITEM	STOCK	PART				INC
NO.	NO.	CODE	NUMBER	NUMBER	FSCM	UOC	U\M
							UNIT
					GROUP 00 REELING MACHINES, CABLE, MOTOR DRIVEN,		
					RL-172/AND RL-172A/G		
1	1	XDFZZ		SMB425419	80063		EA 2
1	2	PAFZZ	3895-00-929-3593	SMC351231	80063	2QW	EA 1
1	3	XDFZZ	5305-00-269-3216	MS90725-66	96906		EA 2
1	4	XDFZZ		MS15795-15	96906		EA 14
1	5	XDFZZ	5310-00-637-9541	MS35338-46	96906		EA 14
1	6	PAFZZ	5305-00-269-3218	MS90725-68	96906		EA 4
1	7	PAOZZ	5305-00-269-3223	MS90725-73	96906	2QW	EA 4
1	8	XDFZZ		SMB425418	80063		EA 4
1	9	XDFZZ	5310-00-543-5092	MS35690-601	96906		EA 14
1	10	XDFZZ	5305-00-269-3211	MS90725-60	96906		EA 2
1	11	PAFHH	6105-00-857-9951	SMC425373	03510		EA 1
1	12	XDFZZ		SMB351221	80063		EA 2
1	13	PAFZZ	5975-00-727-6099	SMC425383-4	80063		EA 1
1	14	PAFZZ	5975-00-727-6098	SMC425383-3	80063		EA 1
1	15	XDFZZ		SCD6371-2	73604		EA 6
1	16	PAOZZ	8415-00-498-9444	SCD6371	80063		EA 1
1	17	PAOZZ	3895-00-919-4237	SMC425423	80063		EA 1



EL3DG002

Figure 2. Reeling Machine, Cable, Motor Driven RL-172/G and RL-172A/G, Reel Shaft Support (Crank Side), Exploded View.

SECTION II

(1) ILLUSTRATION (a) FIG NO.	(b) ITEM NO.	(2) SMR CODE	(3) NATIONAL STOCK NUMBER	(4) PART NUMBER	(5) FSCM	(6) DESCRIPTION	(7) UOC U/M	(8) QTY INC IN UNIT
2	1	PAOZZ	3895-00-802-2618	SMC425340	80063	AXLE ASSEMBLY	EA	1
2	2	XDFZZ	5315-00-846-8337	MS171659	96906	PIN, SPRING	EA	1
2	3	XDFZZ		SMB425342	80063	COLLAR, AXLE	EA	1
2	4	XDFZZ		SMC425341	80063	AXLE, CABLE REEL	EA	1
2	5	XDFZZ		SMD425353	80063	SUPPORT SHAFT ASSEMBLY	EA	1
2	6	XDFZZ	5315-00-290-7519	MS171684	96906	PIN, SPRING	EA	1
2	7	XDFZZ		SMB425352	80063	NUT, SWING	EA	1
2	8	XDFZZ		SMB425347	80063	THUMBSCREW	EA	1
2	9	XDFZZ	5315-00-753-3894	MS16562-238	96906	PIN, SPRING	EA	1
2	10	XDFZZ		SMB425354	80063	SHAFT, SUPPORT	EA	1
2	11	XDFZZ	5315-00-841-4442	MS16562-224	96906	PIN, SPRING	EA	1
2	12	XDFZZ		MS9013-30	96906	RING, RETAINING	EA	1
2	13	PAOZZ	3895-00-802-2617	SMC425358	80063	CRANK ASSEMBLY, HAND	EA	1
2	14	XDFZZ	5315-00-063-9016	MS171657	96906	PIN, SPRING	EA	1
2	15	XDFZZ		SMD425302	80063	REEL SUPPORT ASSEMBLY	EA	1
2	16	XDFZZ	5305-00-988-1724	MS35206-280	96906	SCREW, MACHINE	EA	1
2	17	XDFZZ	5310-00-582-5965	MS35338-44	96906	WASHER, LOCK	EA	1
2	18	XDFZZ	3895-00-802-2621	SMB425306	80063	PLATE, BEARING	EA	1
2	19	XDFZZ	3110-00-033-8454	SMB425305	76062	BEARING, BALL	EA	1
2	20	XDFZZ		SMD425303	80063	ARM, REEL SUPPORT	EA	1
2	21	PAOZZ	3895-00-802-2619	SMB425343	80063	ADJUST COLLAR ASSEMBLY	EA	1
2	22	XDFZZ		MS171530	96906	PIN, SPRING	EA	1



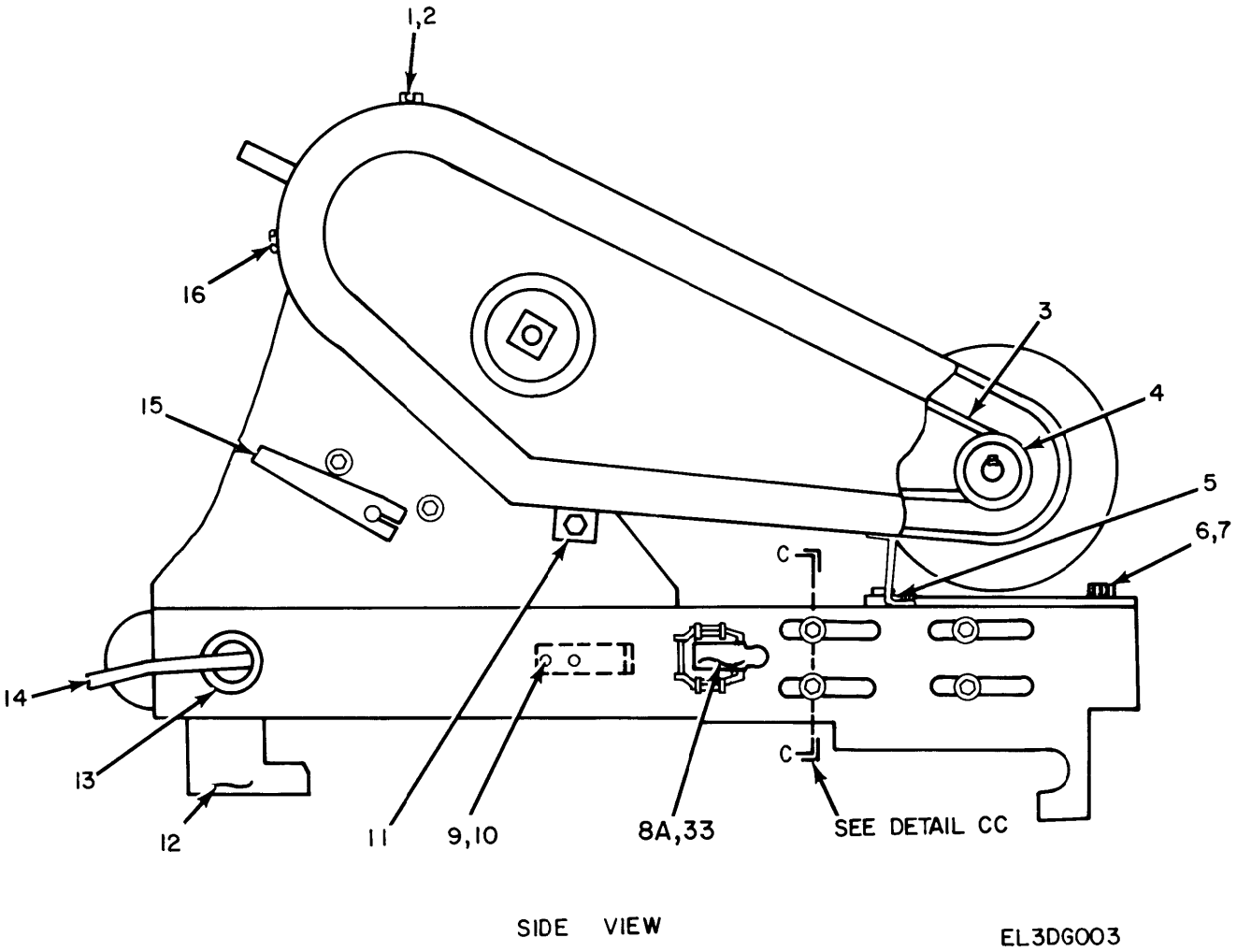


Figure 3. Reeling Machines, Cable, Motor driven RL-172/G and RL-172A/G (Sheet 1 of 3).

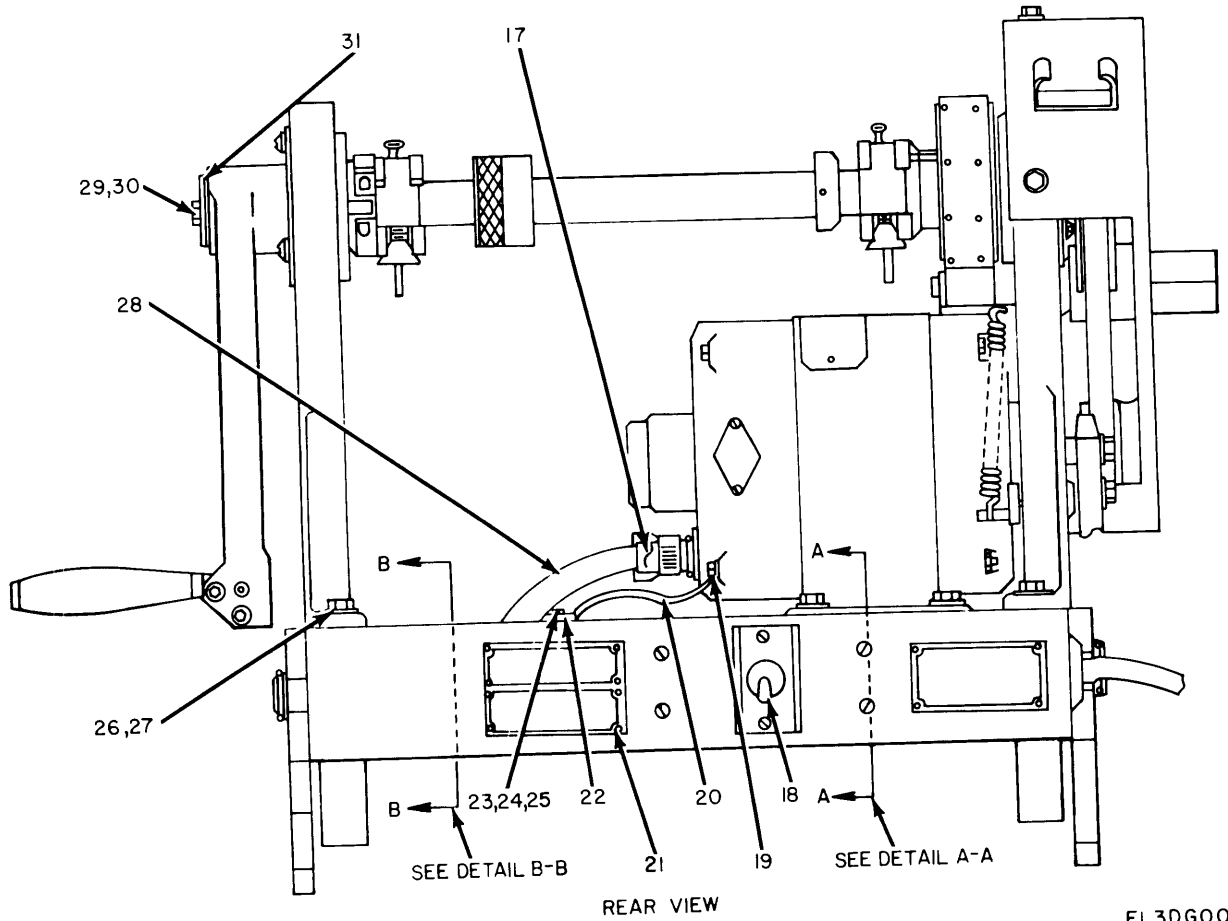


Figure 3. Reeling Machines, Cable, Motor Driven RL-172/G and RL-172A/G, (Sheet 2 of 3).

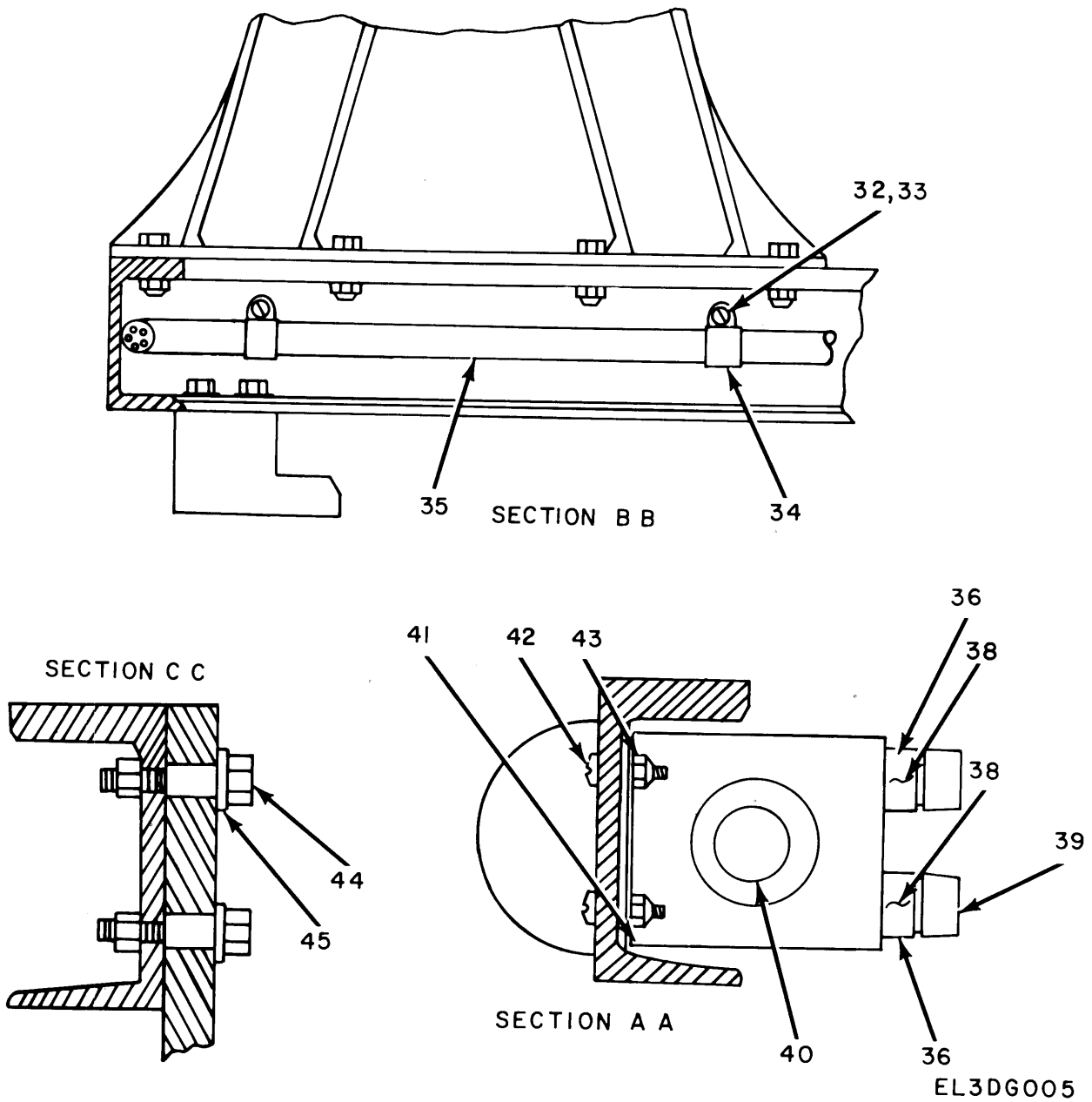


Figure 3. Reeling Machines, Cable, Motor Driven  
RL-172/G and RL-172A/G (Sheet 3 of 3).

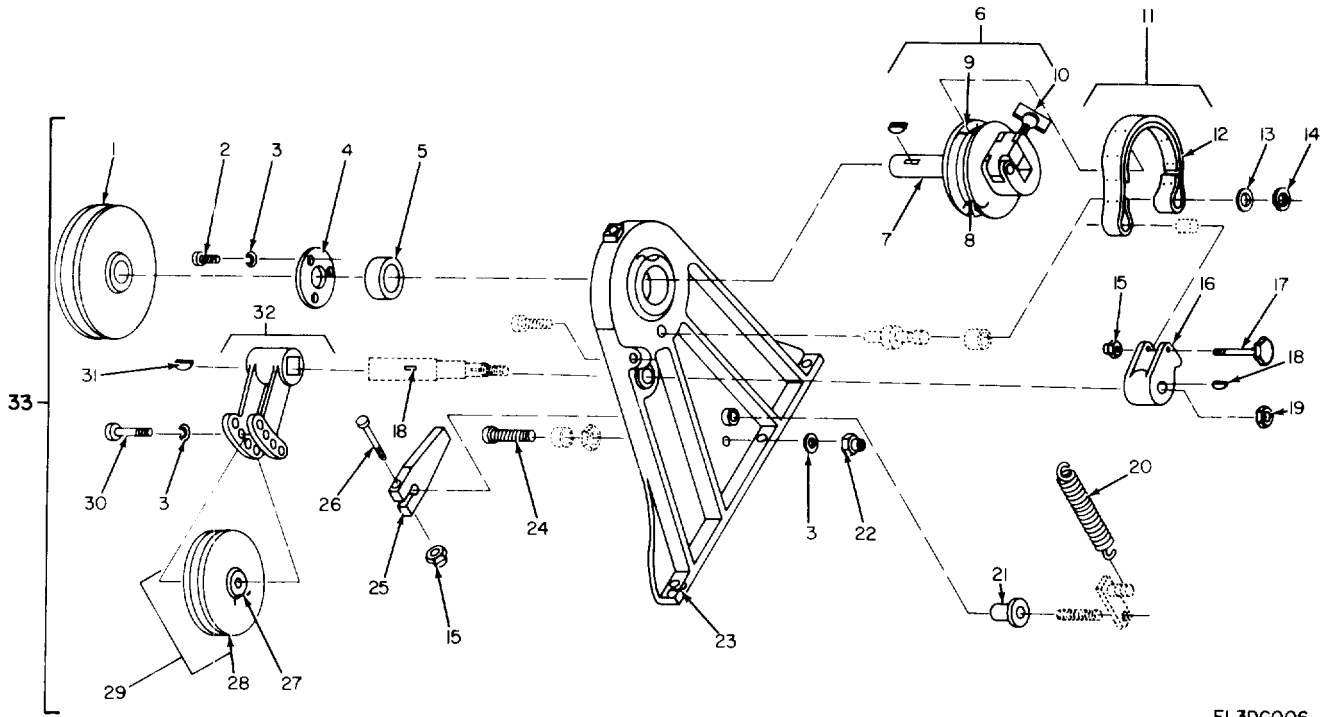
SECTION II

(1) ILLUSTRATION (a) FIG NO.	(b) ITEM NO.	(2) SMR CODE	(3) NATIONAL STOCK NUMBER	(4) PART NUMBER	(5) FSCM	(6) DESCRIPTION	(7) UOC	(8) U\M	(8) QTY INC IN UNIT
3	1	XDFZZ	5305-00-267-8978	MS90726-12	96906	SCREW,CAP,HEXAGON		EA	1
3	2	XDFZZ	5310-00-582-5965	MS35338-44	96906	WASHER,LOCK		EA	13
3	3	PAOZZ	3030-00-554-8315	SMB425334	80063	BELT,V		EA	1
3	4	XDFZZ		SMC425338	71041	PULLEY,GROOVE		EA	1
3	5	XDFZZ	5305-00-068-0504	MS90726-3	96906	SCREW,CAP,HEXAGON		EA	1
3	6	XDFZZ	5305-00-269-2803	MS90726-60	96906	SCREW,CAP,HEXAGON		EA	8
3	7	XDFZZ	5310-00-080-6004	MS15795-14	96906	WASHER,FLAT		EA	5
3	8	XDFZZ		MS35222-63	96906	SCREW,MACHINE	2QW	EA	6
3	8A	PAFZZ	5340-00-543-4091	SCD20649	80063	CATCH,SNAP		EA	2
3	9	XDFZZ		MS35222-68	96906	SCREW,MACHINE	2QW	EA	4
3	10	XDFZZ	5310-00-877-5797	MS21044-N3	96906	NUT,SELF-LOCKING,HEXAGON	2QW	EA	4
3	11	XDFZZ	5305-00-267-8972	MS90726-1	96906	SCREW,CAP,HEXAGON		EA	1
3	12	XDFZZ	5310-00-637-9541	MS35338-46	96906	WASHER,LOCK		EA	1
3	13	XDFZZ	5325-00-290-3777	MS35489-77	96906	GROMMET,RUBBER		EA	2
3	14	XDFZZ		SMC425384-1	81349	CABLE,SUPPORT PURPOSE		EA	1
3	15	PAFZZ	5999-00-501-8369	SMC425383-2	81349	CLIP,ELECTRICAL	2QW	EA	2
3	16	XDFZZ	5305-00-068-0506	MS90726-6	96906	SCREW,CAP,HEXAGON		EA	1
3	17	XDFZZ		SMB425396	80063	WASHER		EA	2
3	18	PAFZZ	5930-00-615-7885	MS25105-21	96906	SWITCH,TOGGLE		EA	1
3	19	XDFZZ	5940-00-534-0986	MS35436-4	96906	TERMINAL,LUG		EA	1
3	20	PAFZZ	6145-00-577-8452	SMB425422-1	92194	BRAID,WIRE		EA	1
3	21	XDFZZ	5305-00-253-5607	MS21318-8	96906	SCREW,DRIVE		EA	12
3	22	XDFZZ	5940-00-892-7592	MS35440-2	96906	TERMINAL,LUG		EA	1
3	23	XDFZZ	5305-00-984-4988	MS35221-228	96906	SCREW,MACHINE		EA	1
3	24	XDFZZ	5310-00-045-4007	MS35338-41	96906	WASHER,LOCK		EA	1
3	25	XDFZZ		SMB425398	72962	NUT,SELF-LOCKING,SPECIAL		EA	5
3	26	XDFZZ	5305-00-269-2805	MS90726-62	96906	SCREW,CAP,HEXAGON		EA	8
3	27	XDFZZ	5310-00-950-0039	MS21044-N6	96906	NUT,SELF-LOCKING,HEXAGON		EA	8
3	28	XDFZZ		SMC425384	80063	CABLE ASSEMBLY		EA	1
3	29	XDFZZ	5305-00-269-2801	MS90726-58	96906	SCREW,CAP,HEXAGON		EA	2
3	30	XDFZZ		MS35338-8	96906	WASHER,LOCK		EA	20
3	31	PAFZZ	5365-00-663-2125	AN3420-10	88044	BUSHING,SLEEVE		EA	1
3	32	XDFZZ		MS35222-61	96906	SCREW,MACHINE		EA	2
3	33	XDFZZ	5310-00-045-3296	MS35338-5	96906	WASHER,LOCK		EA	8
3	34	XDFZZ	5340-00-597-9520	MS9024-11	96906	CLAMP,LOOP		EA	2
3	35	PAFFZ	3895-00-089-2718	SMC425383	80063	CABLE ASSEMBLY	2QW	EA	1
3	36	XDFZZ		MILF19207TYPEFHN	81349	FUSEHOLDER		EA	2
3	38	PAOZZ	5920-00-686-9512	MS90081-14	96906	FUSE,CARTRIDGE		EA	2
3	39	PAOZZ	5920-00-878-7770	6775	71400	CAP,ELECTRICAL		EA	2
3	40	XDFZZ		MS3106A18-118	96906	CONNECTOR,PLUG		EA	1

SECTION II

(1) ILLUSTRATION	(2)	(3)	(4)	(5)	(6)	(7)	(8)
FIG NO.	ITEM NO.	SMR CODE	NATIONAL STOCK NUMBER	PART NUMBER	FSCM	DESCRIPTION	QTY INC IN UNIT
3	41	PAFZZ	5330-00-999-1924	SMB425388	80063	GASKET, SWITCHBOX	EA 1
3	42	XDFZZ		MS35221-32	96906	SCREW, MACHINE	EA 6
3	43	XDFZZ	5310-00-081-8087	MS21044-N06	96906	NUT, SELF-LOCKING, HEXAGON	EA 4
3	44	XDFZZ	5305-00-267-8977	MS90726-10	96906	SCREW, CAP, HEXAGON	EA 9
3	45	XDFZZ	5310-00-809-3078	MS15795-11	96906	WASHER, FLAT	EA 8





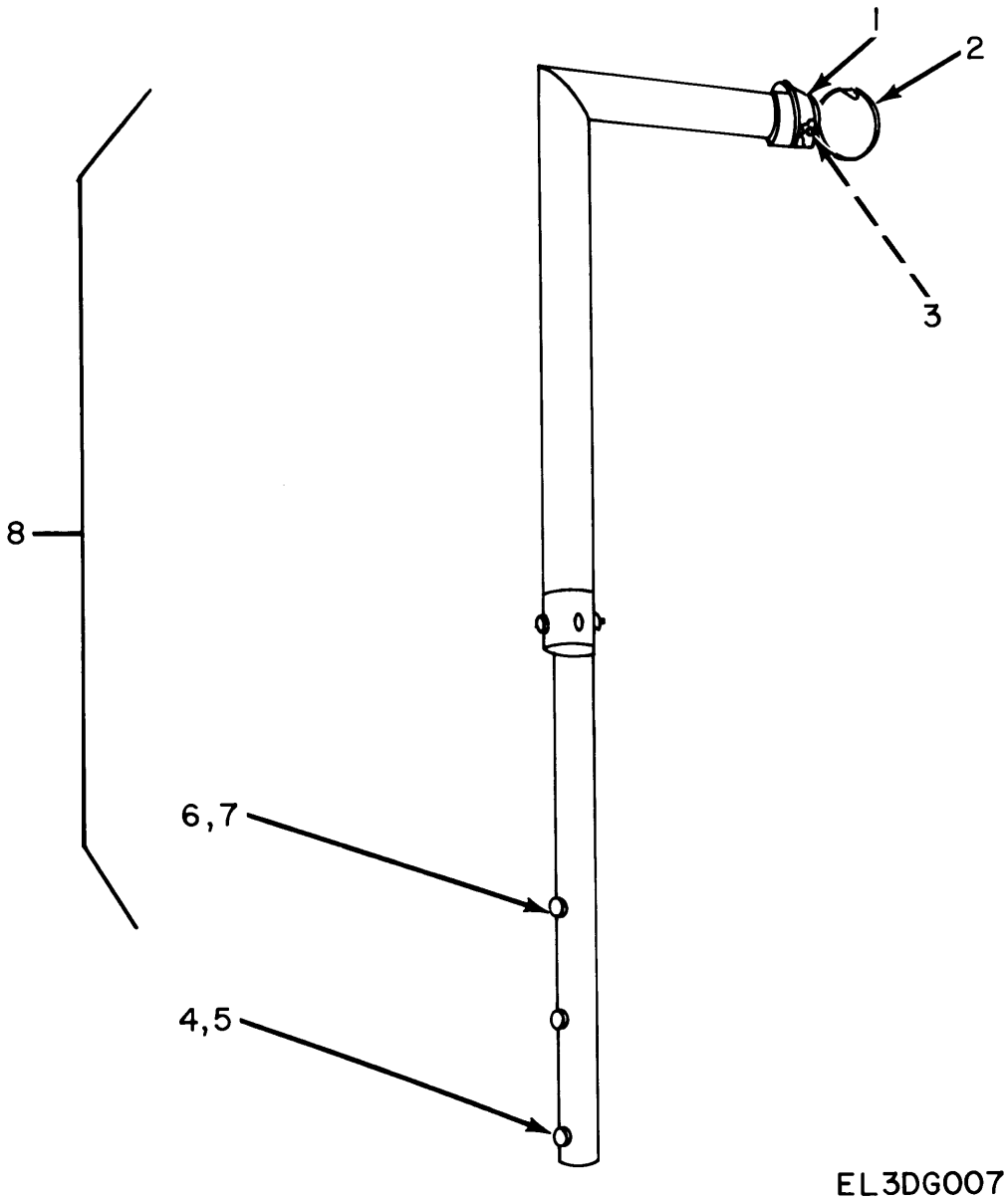
EL3DG006

Figure 4. Reeling Machine, Cable, Motor Driven RL-172/G, Reel Shaft Support (Belt Side), Exploded View.

SECTION II

(1) ILLUSTRATION (a) FIG NO.	(b) ITEM NO.	(2) SMR CODE	(3) NATIONAL STOCK NUMBER	(4) PART NUMBER	(5) FSCM	(6) DESCRIPTION	(7) UOC U/M	(8) QTY INC IN UNIT
4	1	XDFZZ		SMC425337	80063	PULLEY,GROOVE	EA	1
4	2	XDFZZ	5305-00-988-1724	MS35206-280	96906	SCREW,MACHINE	EA	5
4	3	XDFZZ	5310-00-582-5965	MS35338-44	96906	WASHER,LOCK	EA	3
4	4	XDFZZ		SMB425306	80063	PLATE,BEARING	EA	1
4	5	PAFZZ	3110-00-033-8454	SMB425305	76062	BEARING,BALL	EA	2
4	6	XDFZZ		SMD425350	80063	DRIVE SHAFT ASSEMBLY	EA	1
4	7	XDFZZ		SMD425351	80063	SHAFT,DRIVE	EA	1
4	8	XDFZZ	5315-00-290-7519	MS171684	96906	PIN,SPRING	EA	1
4	9	XDFZZ	5315-00-841-4442	MS16562-224	96906	PIN,SPRING	EA	1
4	10	XDFZZ		SMB425347	80063	THUMBSCREW	EA	1
4	11	PAOZZ	3895-00-802-2623	SMC425324	80063	BRAKE BAND ASSEMBLY	EA	1
4	12	XDFZZ		SMC425324-1	76105	RIVET,TUBULAR	EA	12
4	13	XDFZZ		SMB351226	80063	WASHER,FLAT	EA	1
4	14	XDFZZ		MS9013-12	96906	RING,RETAINING	EA	1
4	15	XDFZZ	5310-00-877-5796	MS21044-N4	96906	NUT,SELF-LOCKING,HEXAGON	EA	10
4	16	XDFZZ		SMC425320	80063	BRAKE CLEVAGE ASSEMBLY	EA	1
4	17	XDFZZ	5305-00-267-8979	MS90726-13	96906	SCREW,CAP,HEXAGON	EA	1
4	18	XDFZZ		AN280-606	88044	KEY,WOODRUFF	EA	2
4	19	XDFZZ		MS20365-624	96906	NUT,SELF-LOCKING,HEXAGON	EA	1
4	20	PAFZZ	5360-00-819-4614	SMB425311	80063	SPRING,HELICAL,EXTENSION	EA	1
4	21	XDFZZ		SMB425339	71041	BEARING,SLEEVE	EA	1
4	22	XDFZZ	5310-00-723-4458	MS35690-401	96906	NUT,PLAIN,HEXAGON	EA	4
4	23	XDFZZ		SMB425398	72962	NUT,SELF-LOCKING,SPECIAL	EA	2
4	24	XDFZZ	5305-00-071-2239	MS90725-12	96906	SCREW,CAP,HEXAGON	EA	2
4	25	XDFZZ		SMB425313	80063	LEVER	EA	1
4	26	XDFZZ	5305-00-267-8977	MS90726-10	96906	SCREW,CAP,HEXAGON	EA	1
4	27	PAFZZ	3110-00-158-6295	SMB425319	21335	BEARING,BALL	EA	1
4	28	PAFZZ	3020-00-856-8407	SMB425318	80063	PULLEY,GROOVE	EA	1
4	29	XDFZZ		SMB425317	80063	IDLER PULLEY ASSEMBLY	EA	1
4	30	XDFZZ	5305-00-267-8976	MS90726-11	96906	SCREW,CAP,HEXAGON	EA	1
4	31	PAFZZ	5315-00-209-7325	AN280-405	88044	KEY,WOODRUFF	EA	1
4	32	PAFZZ	3895-00-802-2622	SMC425328	80063	BRACKET ASSEMBLY,IDLER PULLEY	EA	1
4	33	XDFZZ		SMD425307	80063	REEL SUPPORT ARM ASSEMBLY	EA	1



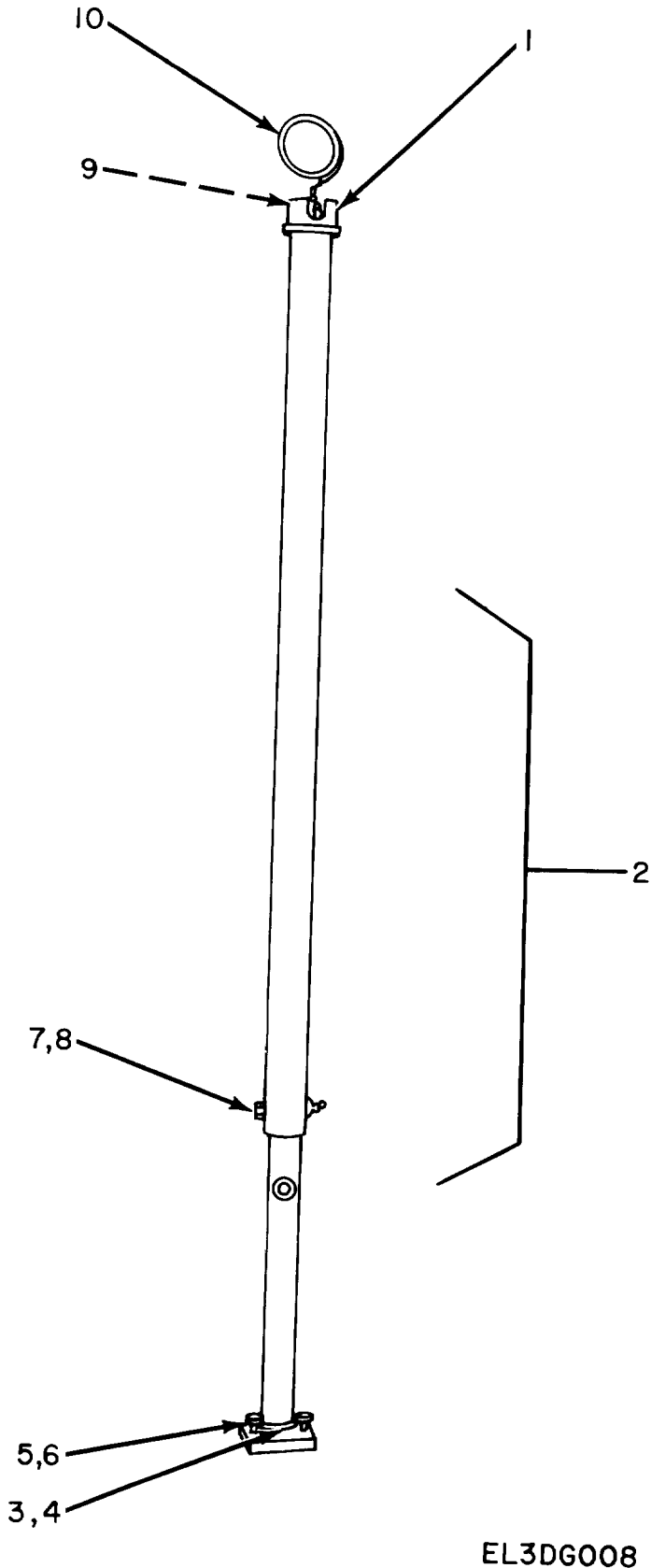


EL3DG007

Figure 5. Reeling Machines, Cable, Motor Driven RL-172/G and RL-172A/G Mast, Wire Guide MX-7247/G.

SECTION II

(1) ILLUSTRATION (a) FIG NO.	(b) ITEM NO.	(2) SMR CODE	(3) NATIONAL STOCK NUMBER	(4) PART NUMBER	(5) FSCM	(6) DESCRIPTION	(7) UOC U/M	(8) QTY INC IN UNIT
5	1	XDFZZ		SCB441874	80063	CAP	EA	1
5	2	PAFZZ	5975-00-999-9388	SCB441873	80063	RING, BRIDLE	EA	1
5	3	XDFZZ	5310-00-761-6882	MS35690-402	96906	NUT, PLAIN, HEXAGON	EA	1
5	4	XDFZZ	5306-00-225-9096	MS90726-41	96906	SCREW, CAP, HEXAGON	EA	3
5	5	XDFZZ	5310-00-616-3023	MS15795-212	96906	WASHER, FLAT	EA	3
5	6	XDFZZ	5310-00-407-9566	MS35337-26	96906	WASHER, LOCK	EA	3
5	7	XDFZZ		MS35690-522	96906	NUT, PLAIN, HEXAGON	EA	3
5	8	PAFFD	3895-00-197-6376	SCC441876	80063	MAST WIRE GUIDE MX-7247/G	EA	1

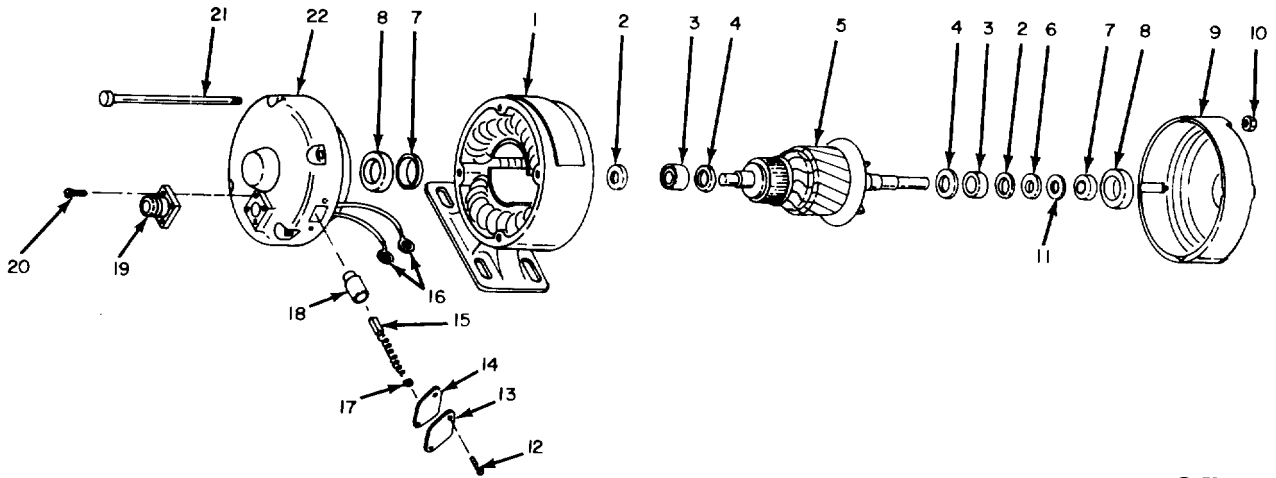


EL3DG008

Figure 6. Reeling Machines, Cable Motor Driven RL-172/G and RL-172A/G, Mast, Wire Guide MX-7248/G.

SECTION II

(1) ILLUSTRATION (a) FIG NO.	(b) ITEM NO.	(2) SMR CODE	(3) NATIONAL STOCK NUMBER	(4) PART NUMBER	(5) FSCM	(6) DESCRIPTION	(7) UOC U/M	(8) QTY INC IN UNIT
6	1	XDFZZ		SCB441874	80063	CAP	EA	1
6	2	PAFFD	3895-00-197-6378	SCC441868	80063	MAST WIRE GUIDE MX-7248/G	EA	1
6	3	XDFZZ	5306-00-225-9096	MS90726-41	96906	SCREW,CAP,HEXAGON	EA	3
6	4	XDFZZ	5310-00-616-3023	MS15795-212	96906	WASHER,FLAT	EA	3
6	5	XDFZZ		MS35337-26	96906	WASHER,LOCK	EA	3
6	6	XDFZZ		MS35690-522	96906	NUT,PLAIN,HEXAGON	EA	3
6	7	XDFZZ		MS35690-622	96906	NUT,PLAIN,HEXAGON	EA	2
6	8	XDFZZ		SCB441875	80063	SCREW,CAP,HEXAGON	EA	2
6	9	XDFZZ	5310-00-761-6882	MS35690-402	96906	NUT,PLAIN,HEXAGON	EA	2
6	10	PAFZZ	5975-00-999-9388	SCB441873	80063	RING,BRIDLE	EA	1



EL306009

Figure 7. Motor D-C, Exploded View.

SECTION II

(1) ILLUSTRATION (a) FIG NO.	(2) (b) ITEM NO.	(3) SMR CODE	(4) NATIONAL STOCK NUMBER	(5) PART NUMBER	(6) DESCRIPTION FSCM	(7) UOC U\M	(8) QTY INC IN UNIT
GROUP 01 MOTOR D-C							
7	1	XDHZZ		344C447BTG4	01288 STATOR, ASSEMBLY	2QW EA	1
7	2	XDHZZ		621A124AAP5	01288 WASHER, FLAT	2QW EA	2
7	3	XDHZZ		625A858AYP1	01288 BEARING, BALL	2QW EA	2
7	4	XDHZZ		625A800ANP1	01288 WASHER, FLAT	2QW EA	2
7	5	XDHZZ		621A859AAG1	01288 FAN, ARMATURE	2QW EA	1
7	6	XDHZZ		621A127AAP1	01288 WASHER, FLAT	EA	1
7	7	XDHZZ		627A107AEP1	01288 BEARING, SLEEVE	2QW EA	2
7	8	XDHZZ		627A106AEP1	01288 PACKING, PREFORMED	EA	2
7	9	XDHZZ		5841607JLP9	01288 ENDBELL, SHAFT	2QW EA	1
7	10	XDHZZ		N210P16B6	01288 NUT, PLAIN, HEXAGON	2QW EA	4
7	11	XDHZZ		621A111ACP1	01288 WASHER, FLAT	EA	1
7	12	XDHZZ		N37P3006B6	01288 SCREW, MACHINE	2QW EA	4
7	13	XDHZZ		161L201AFG1	01288 PLATE, BRUSH	EA	2
7	14	XDHZZ		625A703ABP1	24446 GASKET	2QW EA	2
7	15	PAHZZ	5977-00-994-5870	625A611ABGR5MA	01288 BRUSH, ELECTRICAL CONTACT	EA	2
7	16	XDHZZ		625A501CMG4	01288 LEAD, ELECTRICAL	EA	2
7	17	PAHZZ	5977-00-808-7203	625A707ADP1	01288 CAP, ELECTRICAL	2QW EA	2
7	18	XDHZZ		161L200ADGR4	01288 HOLDER, BRUSH	2QW EA	2
7	19	XDHZZ		MS3102A18-11P	01288 CONNECTOR, RECEPTACLE	EA	1
7	20	XDHZZ		N37P9008B6	01288 SCREW, MACHINE	2QW EA	4
7	21	XDHZZ		N44P16104B6	01288 BOLT, MACHINE	2QW EA	4
7	22	XDHZZ		324D847AAP1	01288 ENDBELL, BRUSH	EA	1

## NATIONAL STOCK NUMBER AND PART NUMBER INDEX

NOTE: LATEST NATIONAL STOCK NUMBER AND PART NUMBER ASSIGNMENTS ARE INCLUDED AT END OF INDEX

STOCK NUMBER	FIGURE		ITEM		STOCK NUMBER	FIGURE		ITEM
	NO.	NO.	NO.	NO.		NO.	NO.	
3110-00-033-8454	4		5		5930-00-615-7885	3		18
5310-00-045-3296	3		33		5310-00-616-3023	5		5
5305-00-068-0504	3		5		5310-00-616-3023	6		4
5305-00-068-0506	3		16					
5305-00-071-2239	4		24		5365-00-663-2125	3		31
5310-00-081-8087	3		43		5975-00-727-6098	1		14
3895-00-089-2718	3		35		5975-00-727-6099	1		13
3110-00-158-6295	4		27		5315-00-753-3894	2		9
3895-00-197-6376	5		8		5310-00-761-6882	5		3
3895-00-197-6378	6		2		5310-00-761-6882	6		9
5315-00-209-7325	4		31		3895-00-802-2617	2		13
5305-00-253-5607	3		21		3895-00-802-2618	2		1
5305-00-267-8972	3		11					
5305-00-267-8977	3		44		3895-00-802-2619	2		21
5305-00-267-8977	4		26		3895-00-802-2622	4		32
5305-00-267-8978	3		1		3895-00-802-2623	4		11
5305-00-267-8979	4		17		5977-00-808-7203	7		17
5305-00-269-2801	3		29		5310-00-809-3078	3		45
5305-00-269-2803	3		6		5360-00-819-4614	4		20
5305-00-269-2805	3		26					
5305-00-269-3211	1		10		5315-00-846-8337	2		2
5305-00-269-3216	1		3		6105-00-857-9951	1		11
5305-00-269-3218	1		6		5310-00-877-5796	4		15
					5310-00-877-5797	3		10
5305-00-269-3223	1		7		5920-00-878-7770	3		39
					5940-00-892-7592	3		22
5325-00-290-3777	3		13		3895-00-919-4237	1		17
5999-00-501-8369	3		15		3895-00-929-3593	1		2
5940-00-534-0986	3		19		5977-00-994-5870	7		15
5310-00-543-5092	1		9		5330-00-999-1924	3		41
3030-00-554-8315	3		3		5975-00-999-9388	5		2
6145-00-577-8452	3		20		5975-00-999-9388	6		10
5340-00-597-9520	3		34					

PART NUMBER	FSCM	FIG.		ITEM		PART NUMBER	FSCM	FIG.		ITEM
		NO.	NO.	NO.	NO.			NO.	NO.	
AN280-405	88044	4		31						
AN280-606	88044	4		18						
AN3420-10	88044	3		31		MS35338-8	96906	3		30
						MS35436-4	96906	3		19
						MS35440-2	96906	3		22
MILF19207TYPEFHN	81349	3		36		MS35489-77	96906	3		13
MS15795-11	96906	3		45		MS35690-401	96906	4		22
MS15795-14	96906	3		7		MS35690-402	96906	5		3
MS15795-15	96906	1		4		MS35690-402	96906	6		9
MS15795-212	96906	5		5		MS35690-522	96906	5		7
MS15795-212	96906	6		4		MS35690-522	96906	6		6
MS16562-238	96906	2		9		MS35690-601	96906	1		9
MS171530	96906	2		22		MS35690-622	96906	6		7
MS171657	96906	2		14		MS9013-12	96906	4		14
MS171659	96906	2		2		MS9013-30	96906	2		12
MS171684	96906	2		6		MS9024-11	96906	3		34
MS171684	96906	4		8		MS90725-12	96906	4		24
						MS90725-60	96906	1		10
						MS90725-66	96906	1		3
MS20365-624	96906	4		19		MS90725-68	96906	1		6
MS21044-N06	96906	3		43						
MS21044-N3	96906	3		10		MS90725-73	96906	1		7
MS21044-N4	96906	4		15		MS90726-1	96906	3		11
MS21044-N6	96906	3		27		MS90726-10	96906	3		44
MS21318-8	96906	3		21		MS90726-10	96906	4		26
MS25105-21	96906	3		18		MS90726-11	96906	4		30
MS3102A18-11P	1288	7		19		MS90726-12	96906	3		1
MS3106A18-118	96906	3		40		MS90726-13	96906	4		17
						MS90726-3	96906	3		5
MS35221-32	96906	3		42		MS90726-41	96906	5		4
						MS90726-41	96906	6		3
						MS90726-58	96906	3		29
MS35222-61	96906	3		32		MS90726-6	96906	3		16
MS35222-63	96906	3		8		MS90726-60	96906	3		6
MS35222-68	96906	3		9		MS90726-62	96906	3		26
MS35337-26	96906	5		6		N210P16B6	1288	7		10
MS35337-26	96906	6		5		N37P3006B6	1288	7		12
						N37P9008B6	1288	7		20
MS35338-5	96906	3		33		N44P16104B6	1288	7		21
						SCB441873	80063	5		2
						SCB441873	80063	6		10
						SCB441874	80063	5		1

## NATIONAL STOCK NUMBER AND PART NUMBER INDEX

PART NUMBER	FSCM	FIG. NO.	ITEM NO.	PART NUMBER	FSCM	FIG. NO.	ITEM NO.
SCB441874	80063	6	1	SMC425338	71041	3	4
SCB441875	80063	6	8	SMC425340	80063	2	1
SCC441868	80063	6	2	SMC425341	80063	2	4
SCC441876	80063	5	8	SMC425358	80063	2	13
SCD6371	80063	1	16	SMC425373	3510	1	11
SCD6371-2	73604	1	15	SMC425383	80063	3	35
SMB351221	80063	1	12				
SMB351226	80063	4	13	SMC425383-2	81349	3	15
SMB425305	76062	2	19	SMC425383-3	80063	1	14
SMB425305	76062	4	5	SMC425383-4	80063	1	13
SMB425306	80063	2	18	SMC425384	80063	3	28
SMB425306	80063	4	4	SMC425384-1	81349	3	14
SMB425311	80063	4	20	SMC425423	80063	1	17
SMB425313	80063	4	25	SMD425302	80063	2	15
SMB425317	80063	4	29	SMD425303	80063	2	20
SMB425318	80063	4	28	SMD425307	80063	4	33
SMB425319	21335	4	27	SMD425350	80063	4	6
SMB425334	80063	3	3	SMD425351	80063	4	7
SMB425339	71041	4	21	SMD425353	80063	2	5
SMB425342	80063	2	3	161L200ADGR4	1288	7	18
SMB425343	80063	2	21	161L201AFG1	1288	7	13
SMB425347	80063	2	8	324D847AAP1	1288	7	22
SMB425347	80063	4	10	344C447BTG4	1288	7	1
SMB425352	80063	2	7	5841607JLP9	1288	7	9
SMB425354	80063	2	10	621A111ACP1	1288	7	11
SMB425388	80063	3	41	621A124AAP5	1288	7	2
SMB425396	80063	3	17	621A127AAP1	1288	7	6
SMB425398	72962	3	25	621A859AAG1	1288	7	5
SMB425398	72962	4	23	625A501CMG4	1288	7	16
SMB425418	80063	1	8	625A611ABGR5MA	1288	7	15
SMB425419	80063	1	1	625A703ABP1	24446	7	14
SMB425422-1	92194	3	20	625A707ADP1	1288	7	17
SMC351231	80063	1	2	625A800ANP1	1288	7	4
SMC425320	80063	4	16	625A858AYP1	2188	7	3
SMC425324	80063	4	11	627A106AEP1	1288	7	8
SMC425324-1	76105	4	12	627A107AEP1	1288	7	7
SMC425328	80063	4	32	6775	71400	3	39
SMC425337	80063	4	1				

## LATEST NATIONAL STOCK NUMBER ASSIGNMENTS

STOCK NUMBER	FIGURE NO.	ITEM NO.
3110-00-033-8454	2	19
5310-00-045-4007	3	24
5315-00-063-9016	2	14
5310-00-080-6004	3	7
5306-00-225-9096	5	4
5306-00-225-9096	6	3
5305-00-267-8976	4	30
5315-00-290-7519	2	6
5315-00-290-7519	4	8
5310-00-407-9566	5	6
8415-00-498-9444	1	16
5310-00-582-5965	2	17
5310-00-582-5965	3	2
5310-00-582-5965	4	3
5310-00-637-9541	1	5
5310-00-637-9541	3	12
5310-00-723-4458	4	22
3895-00-802-2621	2	18
5315-00-841-4442	2	11
5315-00-841-4442	4	9
3020-00-856-8407	4	28
5310-00-950-0039	3	27
5305-00-984-4988	3	23
5305-00-988-1724	2	16
5305-00-988-1724	4	2



NATIONAL STOCK NUMBER AND PART NUMBER INDEX  
LATEST PART NUMBER ASSIGNMENTS

PART NUMBER	FSCM	FIG. NO.	ITEM NO.
MS16562-224	96906	2	11
MS16562-224	96906	4	9
MS35206-280	96906	2	16
MS35206-280	96906	4	2
MS35221-228	96906	3	23
MS35338-41	96906	3	24
MS35338-44	96906	2	17
MS35338-44	96906	3	2
MS35338-44	96906	4	3
MS35338-46	96906	1	5
MS35338-46	96906	3	12

ADDITIONAL LATEST NATIONAL STOCK NUMBER ASSIGNMENTS

STOCK NUMBER	FIGURE NO.	ITEM NO.
5340-00-543-4091	3	8A
5920-00-686-9512	3	38

ADDITIONAL LATEST PART NUMBER ASSIGNMENTS

PART NUMBER	FSCM	FIG. NO.	ITEM NO.
MS90081-14	96906	3	38
SCD20649	80063	3	8A

By Order of the Secretary of the Army:

BERNARD W. ROGERS  
 General, *United States Army*  
 Chief of Staff

Official:

PAUL T. SMITH  
 Major General, *United States Army*  
 The Adjutant General

Distribution:

*Active Army:*

USASA (2)	6-100	7-100
COE (1)	6-155	7-102
TSG (1)	6-166	11-97
USAARENBD (1)	6-167	11-98
DARCOM (1)	6-175	11-117
TECOM (2)	6-185	11-127
USACC (4)	6-186	11-215
TRADOC (2)	6-200	11-217
OS Maj Comd (4)	6-201	11-302
MDW (1)	6-216	11-500 (AA-AC)
Armies (2)	6-300	17
Corps (2)	6-347	17-51
HISA (Ft Monmouth) (33)	6-365	17-55
Ft Richardson (ECOM Ofc) (2)	6-401	17-100
Instl (2) except	6-405	17-102
Ft Gillem (10)	6-406	29-75
Ft Gordon (10)	6-407	29-76
Ft Huachuca (1)	6-425	29-105
Ft Carson (5)	6-426	29-134
SAAD (30)	6-427	29-136
LBAD (14)	6-435	37
TOAD (14)	6-436	37-100
SHAD (3)	6-437	37-102
Svc Colleges (1)	6-445	44-2
USMA (2)	6-447	44-12
USAICS (3)	6-455	44-85
USAADS (2)	6-456	44-86
USAFAS (2)	6-457	44-235
USAARMS (2)	6-467	44-236
USAIS (2)	6-502	44-535
USAES (2)	6-525	44-536
USACRTC (2)	6-526	55-16
MAAG (1)	6-555	57
USARMIS (1)	6-556	57-100
USAERDAA (1)	6-557	77-100
USAERDAW (1)	6-558	
Sig FLDMS (1)	6-575	
Units org under fol TOE:-1 ea.	6-576	
5-25	6-577	
5-26	6-615	
5-35	6-616	
5-36	6-617	
5-145	6-619	
5-146	7	
5-155	7-15	
5-156	7-42	
6-37	7-45	

ARNG: State AG (3); Units – Same as Active Army except allowance is one (1) copy per unit.

USAR: None.

For explanation of abbreviations used, see AR 310-50.



RECOMMENDED CHANGES TO EQUIPMENT TECHNICAL MANUALS



**SOMETHING WRONG WITH THIS MANUAL?**

THEN... JOT DOWN THE DOPE ABOUT IT ON THIS FORM, TEAR IT OUT, FOLD IT AND DROP IT IN THE MAIL!

FROM: (YOUR UNIT'S COMPLETE ADDRESS)

Commander  
Stateside Army Depot  
ATTN: AMSTA-US  
Stateside, N.J. 07703

DATE 10 July 1975

PUBLICATION NUMBER TM 11-5840-340-12	DATE 23 Jan 74	TITLE Radar Set AN/P-3-76
---	-------------------	------------------------------

BE EXACT... PIN-POINT WHERE IT IS				IN THIS SPACE TELL WHAT IS WRONG AND WHAT SHOULD BE DONE ABOUT IT:
PAGE NO.	PARA-GRAPH	FIGURE NO.	TABLE NO.	
2-25	2-28			<p>Recommend that the installation antenna alignment procedure be changed through to specify a 2° IFF antenna lag rather than 1°.</p> <p>REASON: Experience has shown that with only a 1° lag, the antenna servo system is too sensitive to wind gusting in excess of 20 knots, and has a tendency to rapidly accelerate and decelerate as it hunts, causing strain to the drive train. Hunting is minimized by adjusting the lag to 2° without degradation of operation.</p>
3-10	3-3		3-1	<p>Item 5, Function column. Change "2 db" to "3db."</p> <p>REASON: The adjustment procedure for the TRANS POWER FAULT indicator calls for a 3 db (500 watts) adjustment to light the TRANS POWER FAULT indicator.</p>
5-6	5-8			<p>Add new step f.1 to read, "Replace cover plate removed in step e.1, above."</p> <p>REASON: To replace the cover plate.</p>
		FO3		<p>Zone C 3. On J1-2, change "+24 VDC to "+5 VDC."</p> <p>REASON: This is the output line of the 5 VDC power supply. + 24 VDC is the input voltage.</p>

TEAR ALONG DOTTED LINE

TYPED NAME, GRADE OR TITLE, AND TELEPHONE NUMBER SSG I. M. DeSpirito 999-1776	SIGN HERE: <i>SSG I. M. DeSpirito</i>
--	--





FILL IN YOUR  
UNIT'S ADDRESS

FOLD BACK

DEPARTMENT OF THE ARMY

OFFICIAL BUSINESS

PENALTY FOR PRIVATE USE, \$300

POSTAGE AND FEES PAID  
DEPARTMENT OF THE ARMY  
DOD-314



Commander  
US Army Electronics Command  
ATTN: DRSEL-MA-Q  
Fort Monmouth, New Jersey 07703

TEAR ALONG DOTTED LINE

FOLD BACK

REVERSE OF DA FORM 2028-2 (TEST)





FILL IN YOUR  
UNIT'S ADDRESS



FOLD BACK

DEPARTMENT OF THE ARMY



OFFICIAL BUSINESS

PENALTY FOR PRIVATE USE, \$300

POSTAGE AND FEES PAID  
DEPARTMENT OF THE ARMY  
DOD-314



Commander  
US Army Electronics Command  
ATTN: DRSEL-MA-Q  
Fort Monmouth, New Jersey 07703

TEAR ALONG DOTTED LINE

FOLD BACK

RECOMMENDED CHANGES TO EQUIPMENT TECHNICAL MANUALS



# SOMETHING WRONG WITH THIS MANUAL?

THEN... JOT DOWN THE DOPE ABOUT IT ON THIS FORM, TEAR IT OUT, FOLD IT AND DROP IT IN THE MAIL!

FROM: (YOUR UNIT'S COMPLETE ADDRESS)

DATE

PUBLICATION NUMBER

DATE

TITLE

BE EXACT... PIN-POINT WHERE IT IS

IN THIS SPACE TELL WHAT IS WRONG AND WHAT SHOULD BE DONE ABOUT IT:

PAGE NO.	PARA-GRAPH	FIGURE NO.	TABLE NO.
----------	------------	------------	-----------

TEAR ALONG DOTTED LINE

TYPED NAME, GRADE OR TITLE, AND TELEPHONE NUMBER

SIGN HERE:

DA FORM 2028-2 (TEST)  
1 AUG 74

P.S.--IF YOUR OUTFIT WANTS TO KNOW ABOUT YOUR MANUAL "FIND," MAKE A CARBON COPY OF THIS AND GIVE IT TO YOUR HEADQUARTERS.

FILL IN YOUR  
UNIT'S ADDRESS

FOLD BACK

DEPARTMENT OF THE ARMY

OFFICIAL BUSINESS

PENALTY FOR PRIVATE USE, \$300

POSTAGE AND FEES PAID  
DEPARTMENT OF THE ARMY  
DOD-314



Commander  
US Army Electronics Command  
ATTN: DRSEL-MA-Q  
Fort Monmouth, New Jersey 07703

TEAR ALONG DOTTED LINE

FOLD BACK

REVERSE OF DA FORM 2028-2 (TEST)





This fine document...

Was brought to you by me:



## [Liberated Manuals -- free army and government manuals](#)

Why do I do it? I am tired of sleazy CD-ROM sellers, who take publicly available information, slap “watermarks” and other junk on it, and sell it. Those masters of search engine manipulation make sure that their sites that sell free information, come up first in search engines. They did not create it... They did not even scan it... Why should they get your money? Why are not letting you give those free manuals to your friends?

I am setting this document FREE. This document was made by the US Government and is NOT protected by Copyright. Feel free to share, republish, sell and so on.

I am not asking you for donations, fees or handouts. If you can, please provide a link to [liberatedmanuals.com](http://liberatedmanuals.com), so that free manuals come up first in search engines:

<A HREF=<http://www.liberatedmanuals.com/>>Free Military and Government Manuals</A>

- Sincerely  
Igor Chudov  
<http://igor.chudov.com/>
- [Chicago Machinery Movers](#)