

TECHNICAL MANUAL
DIRECT SUPPORT MAINTENANCE
REPAIR PARTS AND SPECIAL TOOLS LIST
FOR
STABILITY AUGMENTATION
SYSTEM AMPLIFIERS

114E3030-40 (NSN 6615-00-691-3685)

114E3030-42 (NSN 6615-00-872-3197)

114E3030-43 (NSN 6615-00-999-3467)

114E3030-47 (NSN 1680-00-827-0531)

114E3030-49 (NSN 6615-00-179-4973)

FOR
CH-47A, CH-47B, AND CH-47C

HELICOPTERS

HEADQUARTERS, DEPARTMENT OF THE ARMY

5 MARCH 1985

TECHNICAL MANUAL }
No. 11-1680-201-30P }

HEADQUARTERS
DEPARTMENT OF THE ARMY
WASHINGTON, DC, 5 March 1985

**DIRECT SUPPORT MAINTENANCE
REPAIR PARTS AND SPECIAL TOOLS LIST**

FOR

STABILITY AUGMENTATION SYSTEM AMPLIFIERS

114E3030-40 (NSN 6615-00-691-3685)

114 E3030-42 (NSN 6615-00-872-3197)

114 E3030-43 (NSN 6615-00-999-3467)

114E3030-47 (NSN 1680-00-827-0531)

114E3030-49 (NSN 6615-00-179-4973)

FOR

CH-47A, CH-47B, AND CH-47C HELICOPTERS

Current as of 7 July 1984

REPORTING ERRORS AND RECOMMENDING IMPROVEMENTS
You can help improve this manual. If you find any mistakes or if you know of a way to improve the procedures, please let us know. Mail your letter, DA Form 2028 (Recommended Changes to Publications and Blank Forms), or DA Form 2028-2 located in the back of this manual direct to: Commander, US Army Communications-Electronics Command and Fort Monmouth, ATTN: DR-SEL-ME-MP, Fort Monmouth, NJ 07703-5007. In either case, a reply will be furnished direct to you.

Table of Contents

	Page	Illus Figure
SECTION I. Introduction	1	
II. Repair Parts List	5	

*This manual supersedes TM 11-1680-201-34P, 17 April 1975.

		<u>Page</u>	<u>Illus Figure</u>
GROUP	00	Stability Augmentation System Amplifiers for CH-47A, CH-47B, and CH-47C Helicopters	
	01	Amplifier Assy SAS 114E3030-40, -42, -43, -47, - 49	5 1
	02	Demodulator Modulator Assy 114V5000-2.....	11 2
	03	Amplifier Component Assy 114E3049-42.....	16 3
	04	Calibration Component Assy 114E3049-41, -43, -44, 114V5011-1, -3	21 4
	05	Miscellaneous Component A Card 114E3049-40, -456, -46, -60, 114V5015-2, - 4	29 9
	06	Miscellaneous Component B Card 114V5003-3, -4, - -7, -8.....	33 6
	07	Differential Pressure Sensor 114H5400-2, -3, -4.....	39 7
	08	Wring Harness Assy	43 8
SECTION	III.	Special Tools	
GROUP	09	Special Tools List.....	45 9
SECTION	IV.	National Stock Number and Part Number Index	46

SECTION I

INTRODUCTION

1. Scope

This manual lists spares and repair parts; special tools; special test, measurement, and diagnostic equipment (TMDE), and other special support equipment required for performance of direct support maintenance of the Stability Augmentation System Amplifiers. It authorizes the requisitioning and issue of spares and repair parts as indicated by the source and maintenance codes.

2. General

This Repair Parts and Special Tools List is divided into the following sections:

a. Section II. Repair Parts List. A list of spares and repair parts authorized for use in the performance of maintenance. The list also includes parts which must be removed for replacement of the authorized parts. Parts lists are composed of functional groups in numeric sequence, with the parts in each group listed in figure and item number sequence.

b. Section III. Special Tools List. A list of special tools, special TMDE, and other special support equipment authorized for the performance of maintenance.

c. Section IV. National Stock Number and Part Number Index. A list, in National item identification number (NIIN) sequence, of all National stock numbers (NSN) appearing in the listings, followed by a list, in alphameric sequence, of all part numbers appearing in the listings. National stock numbers and part numbers are cross-referenced to each illustration figure and item number appearance.

3. Explanation of Columns

a. Illustration. This column is divided as follows:

(1) *Figure number.* Indicates the figure number of the illustration on which the item is shown.

(2) *Item number.* The number used to identify item called out in the illustration.

b. Source, Maintenance, and Recoverability (SMR) Codes.

(1) *Source code.* Source codes indicate the manner of acquiring support items for maintenance, repair, or overhaul of end items. Source codes are entered in the first and second positions of the Uniform SMR Code format as follows:

<i>Code</i>	<i>Definition</i>
PA--	Item procured and stocked for anticipated or known usage.
PG--	Item procured and stock to provide for sustained support for the life of the equipment. It is applied to an item peculiar to the equipment which, because of probable discontinuance or shutdown of production facilities, would prove uneconomical to reproduce at a later time.
XA--	Item is not procured or stocked because the requirements for the item will result in the replacement of the next higher assembly.
XB--	Item is not procured or stocked. If not available through salvage, requisition.
XD--	A support item that is not stocked. When required, item will be procured through normal supply channels.

NOTE

Cannibalization or salvage may be used as a source of supply for any items source coded above except those coded XA and aircraft support items as restricted by AR 750-1.

(2) *Maintenance code.* Maintenance codes are assigned to indicate the levels of maintenance authorized to USE and REPAIR support items. The maintenance codes are entered in the third and fourth positions of the Uniform SMR Code format as follows:

(a) The maintenance code entered in the third position will indicate the lowest maintenance level authorized to remove, replace, and use the support item. The maintenance code entered in the third position will indicate one of the following levels of maintenance:

<i>Code</i>	<i>Application/Explanation</i>
F--	Support item is removed, replaced, used at the direct support level.

(b) The maintenance code entered in the fourth positions indicates whether the item is to be repaired and identifies the lowest maintenance level with the capability to perform complete repair (i.e., all authorized maintenance functions). This position will contain one of the following maintenance codes:

<i>Code</i>	<i>Application/Explanation</i>
F--	The lowest maintenance level capable of complete repair of the support item is the direct support level.
H--	The lowest maintenance level capable of complete repair of the support item is the general support level.
D--	The lowest maintenance level capable of complete repair of the support item is the depot level.
L--	Repair restricted to designated specialized repair activity.
Z--	Nonreparable. No repair is authorized.

(3) *Recoverability code.* Recoverability codes are assigned to support items to indicate the disposition action on unserviceable items. The recoverability code is entered in the fifth position of the Uniform SMR Code format as follows:

<i>Recoverability codes</i>	<i>Definition</i>
Z--	Nonreparable item. When unserviceable, condemn and dispose at the level indicated in position 3.
F--	Reparable item. When uneconomically repairable, condemn and dispose at the direct support level.
H--	Reparable item. When uneconomically repairable, condemn and dispose at the general support level.
D--	Reparable item. When beyond lower level repair capability, return to depot. Condemnation and disposal not authorized below depot level.
L--	Reparable item. Repair, condemnation, and disposal not authorized below depot/specialized repair activity level.

c. National Stock Number. Indicates the National stock number assigned to the item and will be used for requisitioning purposes.

d. Federal Supply Code for Manufacturer (FSCM). The FSCM is a 5-digit numeric code listed in SB 708-41/42 which is used to identify the manufacturer, distributor, or Government agency, etc.

e. Part Number. Indicates the primary number used by the manufacturer (individual, company, firm, corporation, or Government activity), which controls the design and characteristics of the item by means of its engineering drawings, specifications, standards, and inspection requirements to identify an item or range of items.

NOTE

When a stock numbered item is requisitioned, the repair part received may have a different part number than the part being replaced.

f. Description. Indicates the Federal item name and, if required, a minimum description to identify the item. When the part to be used differs between serial numbers of the same model, the effective serial numbers are shown as the last line of the description. In the Special Tools List, the initial basis of issue (BOI) appears as the last line in the entry for each special tool, special TMDE, and other special support equipment. When density of equipments supported exceeds density spread indicated in the basis of issue, the total authorization is increased accordingly.

g. Unit of Measure (U/M). Indicates the standard of the basic quantity of the listed item as used in performing the actual maintenance function. This measure is expressed by a two-character alphabetical abbreviation (e.g., ea, in, pr, etc). When the unit of measure differs from the unit of issue, the lowest unit of issue that will satisfy the required units of measure will be requisitioned.

h. Quantity Incorporated in Unit. Indicates the quantity of the item used in the breakout shown on the illustration figure, which is prepared for a functional group, subfunctional group, or an assembly.

4. Special Information

a. Usable on codes are shown in the description column. Uncoded items are applicable to all models. Identification of the usable on codes used in this publication are:

<i>Code</i>	<i>Used on</i>
2EC	CH-47A
2ES	CH-47C
5FT	CH-47B

b. The following publications pertain to the SAS Amplifiers for the CH-47A, B, and C helicopters and their components:

TM 11-6625-613-12, Simulator Aircraft Displacement AN/ASM-120

TM 11-6625-646-15, Test Set Stabilization Equipment TS-1894/ASM

TM 11-6625-646-24P, Test Set Stabilization Equipment TS-1894/ASM

c. National stock numbers (NSN's) that are missing from P source coded items have been applied for and will be added to this TM by future change/revision when they are entered in the Army Master Data File (AMDF). Until the NSN's are established and published, submit exception requisitions to:

Commander, US Army Communications-Electronics Command and Fort Monmouth, ATTN: DR-SEL-MM, Fort Monmouth, NJ 07703-5007 for the part required to support your equipment.

5. How to Locate Repair Parts

a. When National stock number or part number is unknown.

(1) *First.* Using the table of contents, determine the functional group within which the item belong This is necessary since illustrations are prepared for functional groups and listings are divided into the same groups.

(2) *Second.* Find the illustration covering the functional group to which the item belongs.

(3) *Third.* Identify the item on the illustration and note the illustration figure and item number c the item.

(4) *Fourth.* Using the Repair Parts Listing, find the figure and item number noted on the illustration.

b. When National stock number or part number is known.

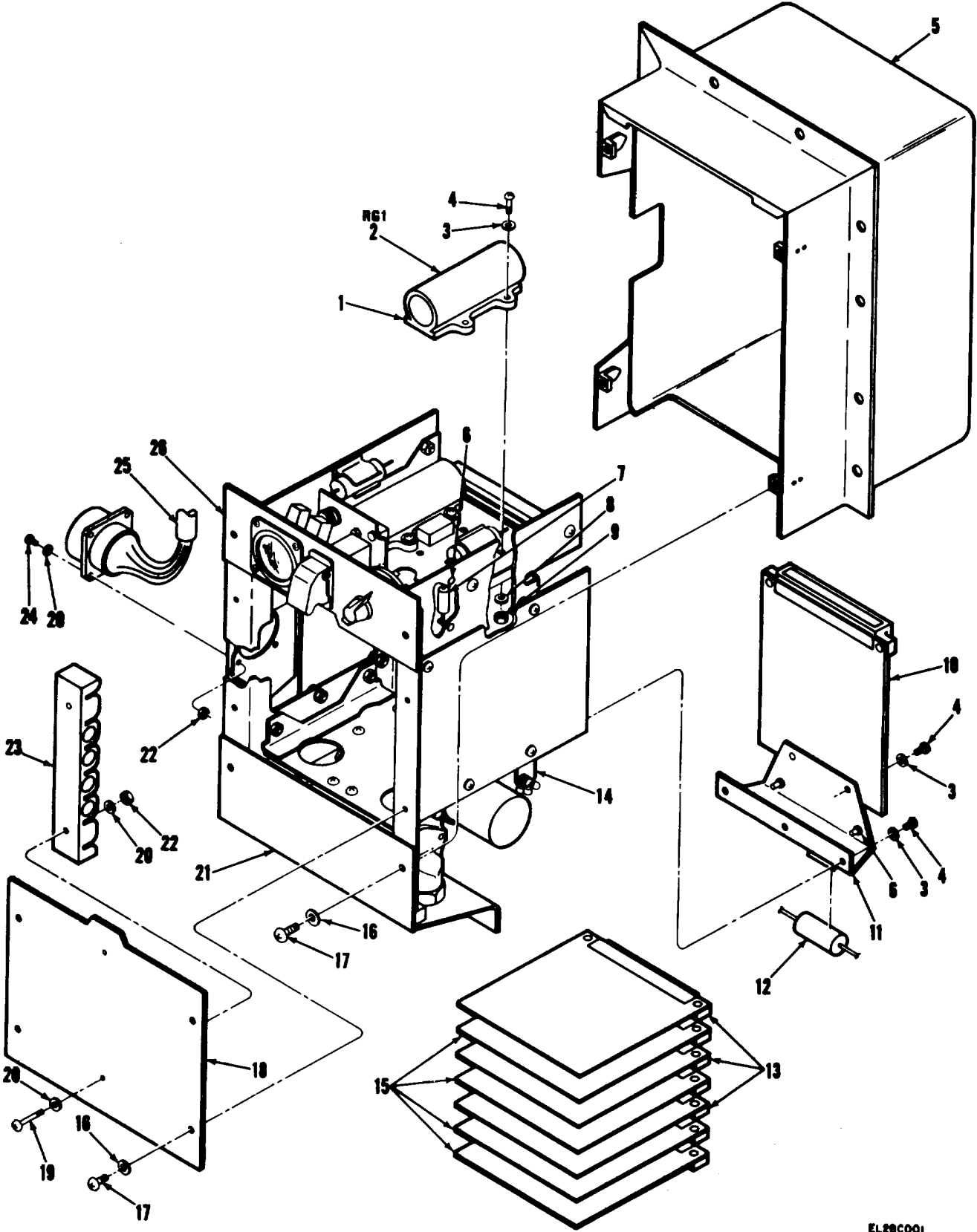
(1) *First.* Using the index of National Stock Numbers and Part Numbers, find the pertinent National stock number or part number. This index is in NIIN sequence followed by a list of part numbers in alphameric sequence, cross-referenced to the illustration figure number and item number.

(2) *Second.* After finding the figure and item number, locate the figure and item number in the repair parts list.

6. Abbreviations

Not applicable.

(Next printed page is 4.)



EL29C001

Figure 1. Amplifier Assy SAS 114E3030-40,-43,-47,-49 (Sheet 1 of 3)

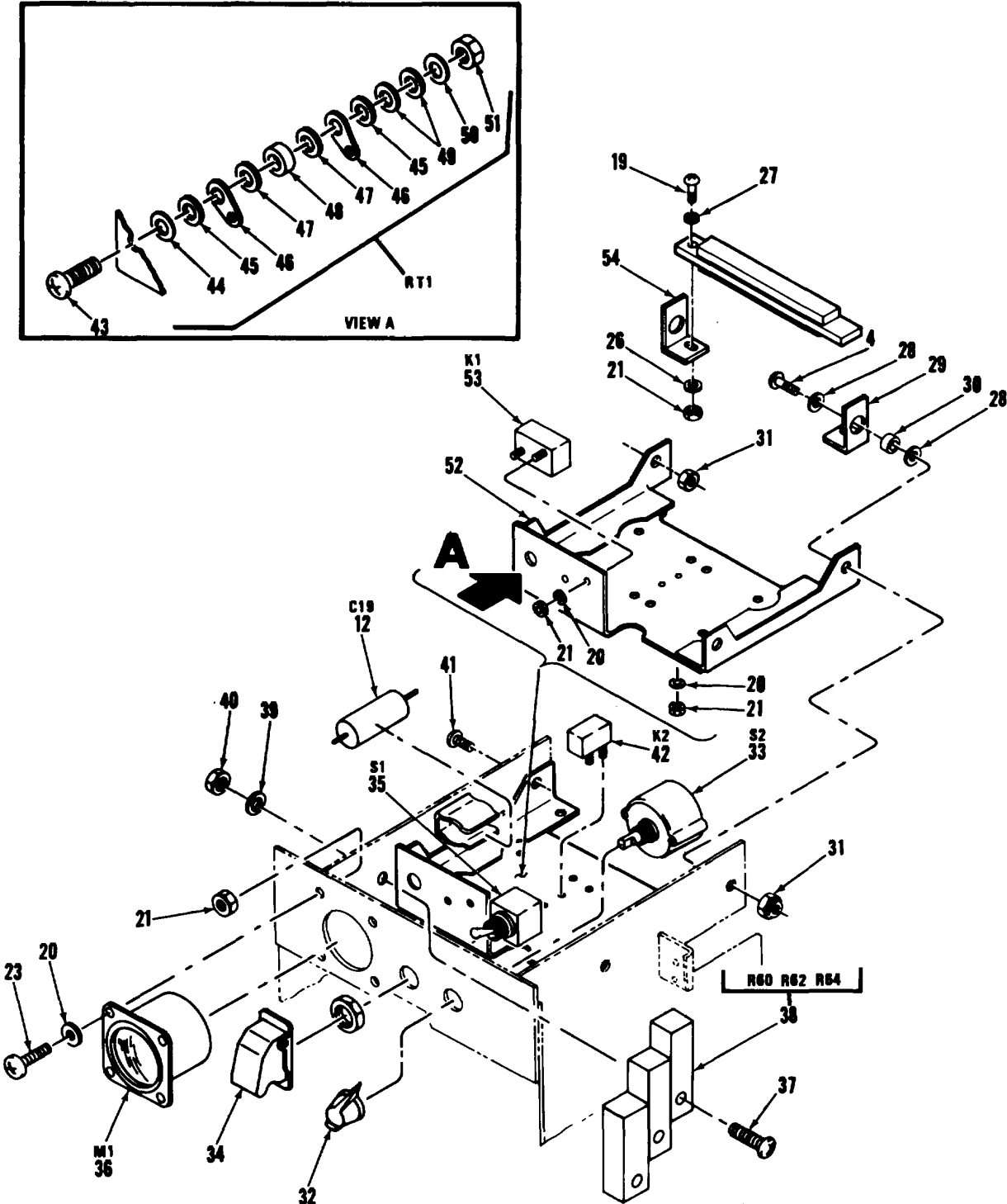
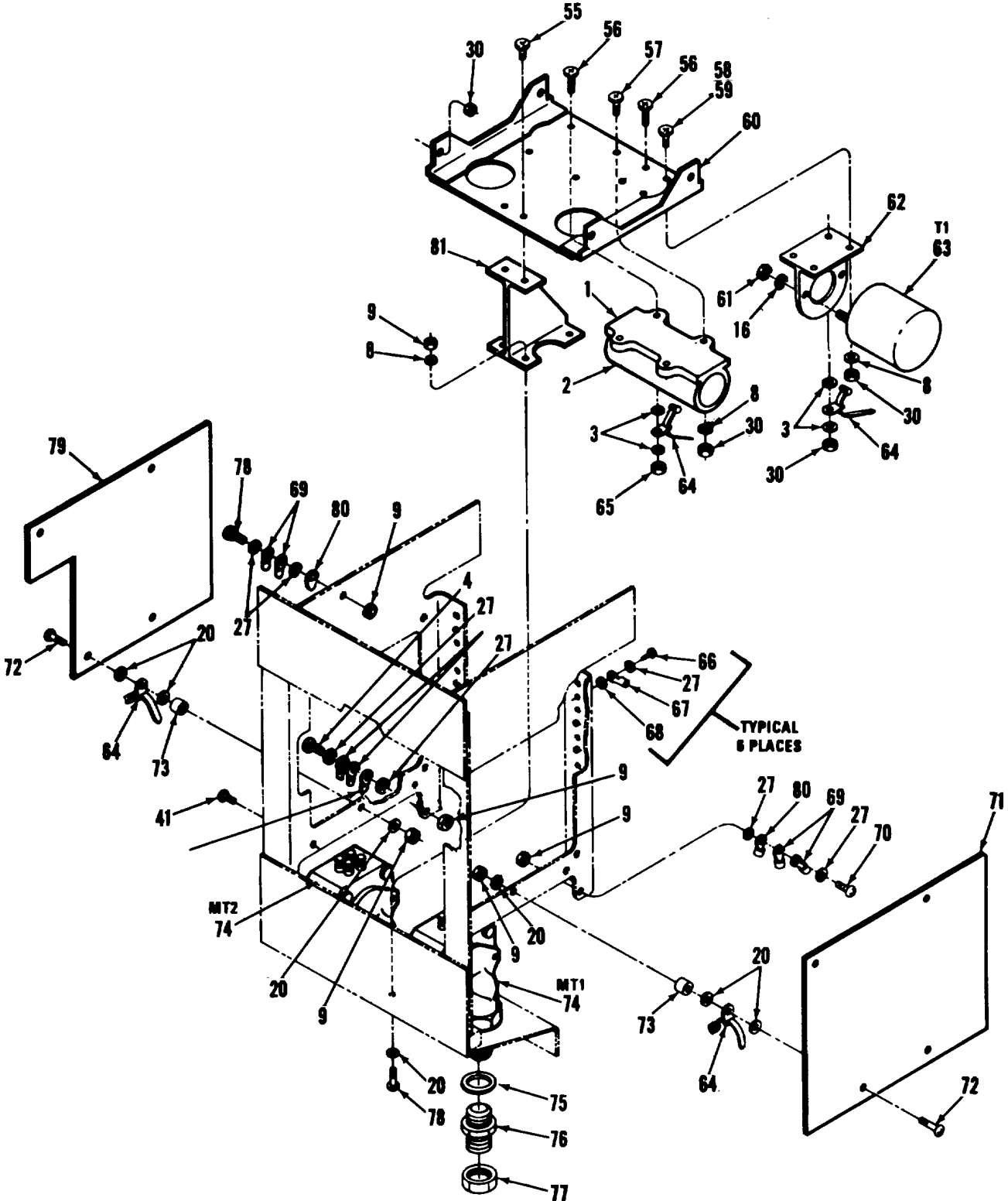


Figure 1. Amplifier Assy SAS 114E3030-40,-43,-47,-49 (Sheet 2 of 3)



EL28CO03

Figure 1. Amplifier Assy SAS 114E3030-40,-43,-47,-49 (Sheet 3 of 3)

SECTION II

TM 11-1680-201-30P

(1) ILLUSTRATION		(2)	(3)	(4)	(5)	(6) DESCRIPTION	(7)	(8)
(a) FIG NO.	(b) ITEM NO.	SMR CODE	NATIONAL STOCK NUMBER	FSCM	PART NUMBER	USABLE ON CODE	U/M	QTY INC IN UNIT
						GROUP 01 AMPLIFIER ASSY SAS 114E3030-40,-42,-43,-47,-49		
1	1	XBFZZ		61515	90025	BRACKET,MTG USED ON 114E3030-49,-47,-43,-42,-40.....	EA	3
1	2	PAFLL	6615-00-010-1427	61515	204040	GYROSCOPE,RATE USED ON 114E3030-49,-47,-43,-42,-40.....	EA	3
1	3	PAFZZ	5310-00-184-8988	88044	AN960D6L	WASHER,FLAT USED ON 114E3030-49,-47,-43,-42,-40.....	EA	60
1	4	PAFZZ	5305-00-984-4988	96906	NS35206-25	SCREW,MACHINE USED ON 114E3030-49..... 2ES	EA	4
1	5	XBFZZ		77272	114E3050-19	BOX ASSY,SHT METAL ... USED ON 114E3030-49,-47,-43ES,5FT	EA	1
1	5	XBFZZ		77272	114E305D-14	BOX ASSY,SHT METAL USED ON 114E3030-43,-42..... 2EC	EA	1
1	5	XBFZZ		77272	114E305D-6	BOX ASSY,SHT METAL USED ON 114E3030-42,-40..... 2EC	EA	1
1	6	PAFZZ	5940-00-715-4300	98291	RSTSM4TUR	TERMINAL USED ON 114E3030-49,-42,-40..... 2ES,2EC	EA	6
1	7	PAFZZ	5905-00-110-0991	81349	RCR32G151JS	RESISTOR.FIXED,COMP USED ON 114E3030-49,-42,-40.....	EA	1
1	8	PAFZZ	5310-00-167-0738	88044	AN960D6	WASHER,FLAT USED ON 114E3030-49,-47,-43,-42,-40.....	EA	17
1	9	PAFZZ	5310-00-811-3494	96906	MS21044N08	NUT,SELF-LOCKING,HE USED ON 114E310-49,-47,-43,-42,-40.... 2ES	EA	6
1	10	PAFLL	6615-00-179-4967	77272	114V5011-3	CIRCUIT CARD ASSEMB USED ON 114E3030-49..... 2ES	EA	1
1	10	PAFZZ	5826-00-089-9514	77272	114V5011-1	CIRCUIT CARD ASSEMB USED ON 114E3030-47..... 5FT	EA	1
1	10	XBFDZ	1680-00-999-3470	77272	114E3049-44	NETWORK,CALIBRATION USED ON 114E3030-43,-42..... 2EC	EA	1
1	10	XBFZZ	6615-00-871-8543	77272	114E3049-43	CIRCUIT CARD ASSEMB USED ON 114F3030-42..... 2EC	EA	1
1	10	XBFZZ	1680-00-792-9829	77272	114E3049-41	PRINTED CIRCUIT BOA USED ON 114E3030-40..... 2EC	EA	1
1	11	XBFZZ		77272	114E3029-67	CHANNEL ASSY USED ON 114E3030-49,-47,-43,-42.....	EA	1
1	11	XBFZZ		77272	114E3029-64	CHANNEL ASSY USED ON 114E3230-42-40..... 2EC	EA	1
1	12	PAFZZ	5910-00-024-7546	81349	M39022/01-1673	CAPACITOR.FIXED,NET USED ON 114E3030-49,-47,-43,-42,-40...	EA	3
1	13	PAFDD	1680-00-792-9836	77272	114V5000-2	PRINTED CIRCUIT BOA USED ON 114E3030-49,-47,-43,-42,-40....	EA	3
1	14	PAFZZ		77272	114E3050D-7	CHASSIS ASSY USED ON 114E3030-49.-471-43 (EFFECTIVITY: 66-19032 AND SUBS)	EA	1
1	14	PAFZZ		77272	114E3050-16	CHASSIS ASSY USED ON 114E3030-43 (EFFECTIVITY 64-13154 THRU 66-19031)..... 2EC	EA	
1	14	PAFZZ		77272	114E3050-13	CHASSIS ASSY USED ON 114E3030-42,-40..... 2EC	EA	1
1	15	PAFHH	5821-00-764-5386	77272	114E3049-42	CIRCUIT CORD ASSEMB USED ON 114E3030-49,-47,-43,-42,-40EA		4
1	16	PAFZZ	5310-00-184-8987	88044	AN960D8L	WASHER,FLAT USED ON 114E3030-49,-47,-43,-42,-40.....	EA	10
1	17	PAFZZ	5305-00-984-6193	96906	MS35206-245	SCREW,MACHINE USED ON 1143030-49,-47,-43,-42,-40.....	EA	4
1	18	XAFZZ		77272	114E3029-61	PANEL,CIRCUIT BOARD USED ON 114E3030-49,-47,-43,-42,-40..	EA	1
1	19	PAFZZ	5305-00-983-6730	96906	MS35206-218	SCREW.MACHINE USED ON 114E3030-49,-47,-43.....	EA	4
1	19	PAFZZ	5305-00-842-0239	80205	NAS602-7P	SCREW,MACHINE USED ON 114E3030-49,-47,-43,-42,-40.....	EA	4
1	20	PAFZZ	5310-00-167-0737	88044	AN960D4	NASHER,FLAT USED ON 114E3030-49,-47,-43,-42,-40.....	EA	10
1	20	PAFZZ	5310-00-187-2397	88044	AN960D4L	WASHER,FLAT USED ON 114E3030-49,-47,-43,-42,-40.....	EA	6
1	21	PAFZZ	5826-00-878-4214	77272	114H5501-1	PLATE,MOUNTING USED ON 114E3030-49,-47,-43,-42,-40.....	EA	1
1	22	PAFZZ	5310-00-088-0551	96906	MS21044N04	NUT,SELF-LOCKING,HE USED ON 114E3030-49,-47,-43,-42,-40..	EA	14
1	23	XBFDZ	6615-00-780-6320	77272	114E3029-44	GUIDE,CARD USED ON 114E3030-49,-41,-43,-42,-40.....	EA	1
1	24	PAFZZ	5305-00-889-2999	96906	MS35206-217	SCRE,MACHINE USED ON 114E3030-49,-47,-43,-42,-40.....	EA	8
1	25	XBFZZ		77272	114E3030-50	WIRING HARNESS ASSY USED ON 114E3030-49..... 2ES	EA	1

SECTION II

TM 11-1680-201-30P

(1) ILLUSTRATION		(2)	(3)	(4)	(5)	(6) DESCRIPTION	(7)	(8)
(a) FIG NO.	(b) ITEM NO.	SMR CODE	NATIONAL STOCK NUMBER	FSCM	PART NUMBER	USABLE ON CODE	U/M	QTY INC IN UNIT
1	25	XBFZZ		77272	114E3030-48	WIRING HARNESS ASSY USED ON 114E3030-47 5FT	EA	1
1	25	XBFZZ		77272	114E3030-44	WIRING HARNESS ASSY USED ON 114E3030-432EC	EA	1
1	25	XBFZZ		77272	114E3030-41	WIRING HARNESS ASSY USED ON 114E3030-42,-402EC	EA	1
1	26	PAFZZ	9905-00-842-3098	77272	114H5500-2	PLATE,INSTRUCTION USED ON 114E3030-49,-47,-43,-42,-40.....	EA	1
1	27	PAFZZ	5310-00-167-0831	88044	AN960-4L	WASHER,FLAT USED ON 114E3030-49,-47,-43.....	EA	10
1	28	PAFZZ	5310-00-167-0832	88044	AN960-6L	WASHER,FLAT USED ON 114E3030-49,-47,-43.....	EA	12
1	29	XBFZZ		77272	114E3029-77	ANGLE USED ON 114E3030-49,-47,-43.....	EA	1
1	30	XBFZZ		70318	CPSS3-16-9	SPACER,SLEEVE USED ON 114E3030-49,-47,-43.....	EA	2
1	31	PAFZZ	5310-00-081-8087	96906	NS21044N06	NUT,SELF-LOCKING,HE USED ON 114E030-49..... 2ES	EA	62
1	32	PAFZZ	5355-00-682-6548	83330	2223	KNOB USED ON 114E3030-49,-47,-43,-42,-40.....	EA	1
1	33	PAFZZ	5821-00-955-5532	77272	114E3030-5	SWTTCH,PRINTED CIRC USED ON 114E3030-49-47,-43,-42,-40..	EA	1
1	34	PAFZZ	5930-00-835-6197	96906	MS25214-2	GUARD,SWITCH USED ON 114E3030-49,-47,-43,-42,-40.....	EA	1
1	35	PAFZZ	5930-00-615-7882	96906	MS35059-27	SWITCH,TOGGLE USED ON 114E3030-49,-47,-43,-42,-40.....	EA	1
1	36	PAFZZ		38315	MS15-0-5-MA	METER USED ON 114E3030-49,-47,-43,-42,-40.....	EA	1
1	37	PAFZZ	5305-00-954-3938	96906	MS35206-207	SCREW,MACHINE USED ON 114E3030-49-47,-43,-42,-40.....	EA	6
1	38	PAFZZ	5905-00-068-5920	81349	RT11C2L103	RESISTOR VARIABLE USED ON 114E3030-49.-47,-43,-42,-40.....	EA	3
1	39	PAFZZ	5310-00-183-4207	88044	AN960D3L	WASHER,FLAT USED ON 114E3030-49..... 2ES	EA	6
1	40	PAFZZ	5310-00-207-9364	81205	BACN10DN26	NUT,SELF-LOCKING,HE USED ON 114E3030-49.-47.-43.-42,-40...	EA	6
1	41	PAFZZ	5305-00-513-5790	80205	NAS602-6P	SCREW,MACHINE USED ON 114E3030-49,-47,-43..... 2ES,5FT	EA	6
1	42	PAFZZ	5945-00-660-6415	13499	974-0559-00	RELAY USED ON 114E3030-49,-47,-43,-42,-40.....	EA	1
1	43	PAFZZ	5305-00-993-1848	96906	MS35207-265	SCREW,MACHINE USED ON 114E3030-47,-43ALT FOR NAS603-12P 5FT	EA	1
1	43	PAFZZ	5305-00-841-2948	80205	NAS603-12P	SCREW,MACHINE USED ON 114E3030-49,-47,-43 ALT IS MS35207-265	EA	1
1	44	XBFZZ		89608	A811	SLEEVE,INSULATING USED ON 114E3030-49,-47,-43.....	EA	1
1	45	PAFZZ		89608	A804	WASHER,PHENOLIC USED ON 114E3030-49,-47,-43.....	EA	2
1	46	PAFZZ		89608	A808	TERMINAL USED ON 114E3030-49,-47,-43.....	EA	2
1	47	PAFZZ		89608	A806	WASHER,LEAD USED ON 114E3030-49,-47,-43.....	EA	2
1	48	PAFZZ		84239	2W752	THERMISTOR USED ON 114E3030-49,-47,-43.....	EA	1
1	49	PAFZZ		89608	A805	WASHER,STL USED ON 114E830-48,-47,-43.....	EA	2
1	50	PAFZZ		89608	A807	WASHER,STEEL SPRING .USED ON 114E3030-49,-47,-43,-42,-40	EA	1
1	51	PAFZZ	5310-00-902-6676	96906	MS21083N3	NUT,SELF-LOCKING,HE USED ON 114E3030-49,-47,-43.....	EA	1
1	52	XBFZZ		77272	114E3050-20	BRACKET ASSY USED ON 114E3030-49,-47..... 2ES,5FT	EA	1
1	52	XBFZZ		77272	114E3050-18	BRACKET ASSY USED ON 114E3030-47,-43-49..... 2ES,5FT	EA	1
1	52	XBFZZ		77272	114F3050-15	BRACKET ASSY USED ON 114E3030-43.....2EC	EA	1
1	52	XBFZZ		77272	114E3030-11	BRACKET ASSY USED ON 114E3030-42,-40.....2EC	EA	1
1	53	PAFZZ	5945-00-889-1408	99928	ARCW-4C-24A	RELAY USED ON 114E3030-49,-47,-43,-42,-40.....	EA	1
1	54	XBFZZ		77272	14E3029-78	ANGLE USED ON 114E3030-49,-47,-43.....	EA	1
1	55	PAFZZ	5305-01-148-4476	96906	MS24693-4	SCREW,MACHINE USED ON 114E3030-49,-47,-43,-42,40.....	EA	2
1	56	PAFZZ	5305-00-827-5270	96906	MS24693-29	SCREW,MACHINE USED ON 114E3030-47,-43,-42,-40,-495FT.2EC	EA	3
1	57	PAFZZ	5305-00-031-1042	96906	MS24693-28	SCREW,MACHINE USED ON 114E3030-49,-47,-43,-42,-40.....	EA	3

SECTION II

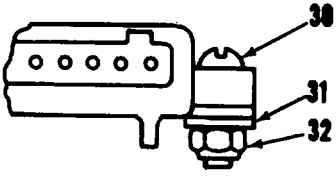
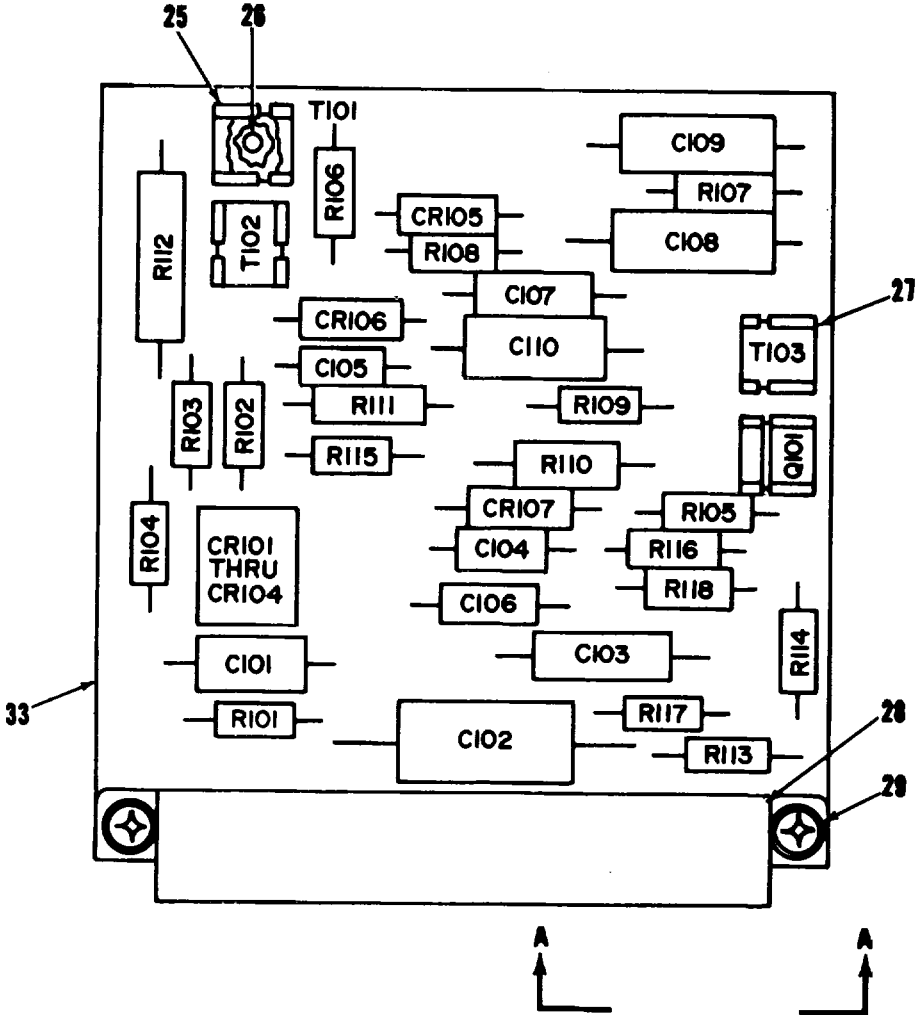
TM 11-1680-201-30P

(1) ILLUSTRATION		(2)	(3)	(4)	(5)	(6) DESCRIPTION	(7)	(8)
(a) FIG NO.	(b) ITEM NO.	SMR CODE	NATIONAL STOCK NUMBER	FSCM	PART NUMBER	USABLE ON CODE	U/M	QTY INC IN UNIT
1	58	PAFZZ	5305-01-091-1209	96906	MS24693-26	SCREW,MACHINE USED ON 114E3030-49.....	2ES EA	4
1	59	XDFZZ	5305-01-052-3304	96906	MS24693-25	SCREW,MACHINE USED ON 114E3030-47,-43,-42,-405FT,.....	2EC EA	3
1	60	PAFZZ		77272	114E30512	PLATE ASSEMBLY USED ON 114E3030-49,-47-43,-42,-40.....	EA	1
1	61	PAFZZ	5310-00-941-6019	96906	MS21083N08	NUT,SELF-LOCKING,HE USED ON 114E3030-42,-43,-47,-49.....	5FT 2EC EA	6
1	62	PAFZZ		77272	114E3D29-55	BRACKET,TEE MOUNT USED ON 114E3030-49,-47,-43,-42,-40.....	EA	1
1	63	PAFZZ	5950-00-850-6165	02640	TW25F267	TRANSFORMER,POWER USED ON 114E3030-49,-47,-43,-42,-40 ...	EA	1
1	64	PAFZZ	5975-00-825-3330	59730	TY13	STRAP,TIEDOWN,ELECT USED ON 114E3030-49,-47,-43,-42,-40 ...	EA	14
1	65	PAFZZ	5310-00-934-9747	96906	MS3549-262	NUT,PLAIN,HEXAGON USED ON 114E3030-49,-47,-43,-42,-40 .	2ES 2EC EA	1
1	66	PAFZZ	5305-00-889-3116	96906	MS35206-213	SCREW,MACHINE USED ON 114E3030-49,-47,-43,-42,-40.....	EA	6
1	67	PAFZZ	5940-00-687-0294	18876	10236719-2	TERMINAL LUG USED ON 114E3030-49,-47.....	EA	6
1	68	PAFZZ	5310-00-543-2410	96906	MS35133-40	WASHER,LOCK USED ON 114E3030-49,-47,-43,-42,-40.....	EA	6
1	69	PAFZZ	5940-00-204-8966	00779	31882	TERMINAL LUG USED ON 114E3030-43,-42,-40.....	2EC EA	7
1	70	PAFZZ	5305-00-984-4989	96906	MS35206-229	SCREW,MACHINE USED ON 114E3030-49.....	2ES EA	5
1	71	PAFFF		77272	114V5003-8	CARD ASSY USED ON 114E3030-49.....	EA	1
1	71	PAFDD	5826-00-089-9515	77272	114V5003-7	SEE FIG 6 FOR BKDN2ES,5FT CIRCUIT CARD ASSEMB USED ON 114E3030-49,-47.....	EA	1
1	71	XBFDD	1680-00-999-3571	77272	114V5003-5	SEE FIG 6 FOR BKDN2ES,5FT PRINTED CIRCUIT BOA USED ON 114E3030-43.....	EA	1
1	71	PAFFF		77272	114V5003-3	SEE FIG 6 FOR BKDN2EC CARD ASSY USED ON 114E3030-40 SEE FIG 6 FOR BKDN.....	EA	1
1	72	PAFZZ		96906	MS24693-30	SCREW,FLAT 100 DEG USED ON 114E3030-49.....	2ES EA	2
1	72	PAFZZ	5305-00-984-4992	96906	MS35206-232	SCREW,MACHINE USED ON L114E3030-49.....	2ES EA	7
1	73	PAFZZ	5365-00-302-8098	80205	NAS43DDI-16	SPACER,SLEEVE USED ON 114F303-40,-42,-43,-47.....	EA	7
1	74	PAFL	6615-00-809-5233	77272	114H5400-4	SEE FIG 7 FOR BKDN TRANSDUCER,PRESSURE USED ON 114E3030-49,-47,-43,-42,-40.....	EA	2
1	74	PAFLF	6615-00-780-6172	77212	114H5400-3	SEE FIG 7 FOR BKDN2ES,5FT TRANSDUCER,PRESSURE USED ON 114E3030-49,-47 EA.....	EA	2
1	74	PAFFF	6615-00-780-6172	77272	114H5400-3	SEE FIG 7 FOR BKDN2EC TRANSDUCER,PRESSURE USED ON 114E3030-43,-42,-40.....	EA	2
1	75	PAFZZ	5330-00-080-8282	85578	13856PC7	PACKING,PREFORMED USED ON 114E3030-49,-47,-43,-42,-40.....	EA	4
1	76	PAFZZ	4730-00-580-9165	96906	MS21924D4	NIPPLE,TUBE USED ON 114E3030-49,-47,-43,-42.....	EA	4
1	77	PAFZZ	5310-00-208-5769	88044	AN924-4 NUT,PLAIN,HEXAGON USED ON 114E3030-49,-47,-43,-42,-40	EA	4
1	78	PAFZZ	5305-00-984-4984	96906	MS35206-227	SCREW,MACHINE USED ON 114E3030-49,-47,-43,-42,-40.....	EA	4
1	79	PAFDD	6615-00-179-4969	77272	114V5015-2	CIRCUIT CARD ASSEMB USED ON 114E3030-49.....	EA	1
1	79	XBFZZ		77272	114V5015-4	SEE FIG 5 FOR BKDN2ES CARD ASSY, PRNTD CK USED ON 114E3030-49,.....	EA	1
1	19	XBFHH	1680-00-827-0527	77212	114E3049-50	SEE FIG 5 FOR BKDN2ES PRINTED CIRCUIT BOA USED ON 114E3030-47.....	EA	1
1	79	XBFDH	1680-00-999-3702	71212	114E3049-46	SEE FIG 5 FOR BKDN5FT PRINTED CIRCUIT BOA USED ON 114E3030-43.....	EA	1
1	79	XBFDD	5821-00-918-3674	77212	114E3049-45	SEE FIG 5 FOR BKDN2EC CIRCUIT CARD ASSEMB USED ON 114E3030O42.....	EA	1
1	79	PAFFF		77212	114E3049-40	SEE FIG 5 FOR BKDN2EC CARD ASSY,PRNTD CKT USED ON 114E3030-42,-40.....	EA	1

SECTION II

TM 11-1680-201-30P

(1) ILLUSTRATION		(2)	(3)	(4)	(5)	(6) DESCRIPTION	(7)	(8)
(a) FIG NO.	(b) ITEM NO.	SMR CODE	NATIONAL STOCK NUMBER	FSCM	PART NUMBER	USABLE ON CODE	U/M	QTY INC IN UNIT
1	80	XDFZZ	5940-00-534-0970	00779	31898	TERMINAL,LUG USED ON 114E3030-49-47,-43,-42,-40.....	EA	4
1	81	PAFZZ		77272	114E3029-35	SUPPORT ASSEMBLY USED ON 114E3030-49,-47,-43,-42,-40.....	EA	1
8/(9 blank)								



VIEW A-A

LEGEND FOR 114V5000-2

REF DES	ITEM NO.	REF DES	ITEM NO.	REF DES	ITEM NO.	REF DES	ITEM NO.	REF DES	ITEM NO.	REF DES	ITEM NO.	REF DES	ITEM NO.	REF DES	ITEM NO.
CR101	1	CR106	2	C104	6	C100	9	R103	12	R108	16	R113	20	R118	14
CR102	1	CR107	2	C105	6	C110	9	R104	13	R109	17	R114	21	T101	24
CR103	1	C101	3	C106	7	Q101	10	R105	14	R110	18	R115	22	T102	24
CR104	1	C102	4	C107	8	R101	11	R106	15	R111	18	R116	22	T103	24
CR105	2	C103	5	C108	9	R102	12	R107	16	R112	19	R117	23		

EL28C004

Figure 2. Demodulator Modulator Assy 114V5000-2

SECTION II

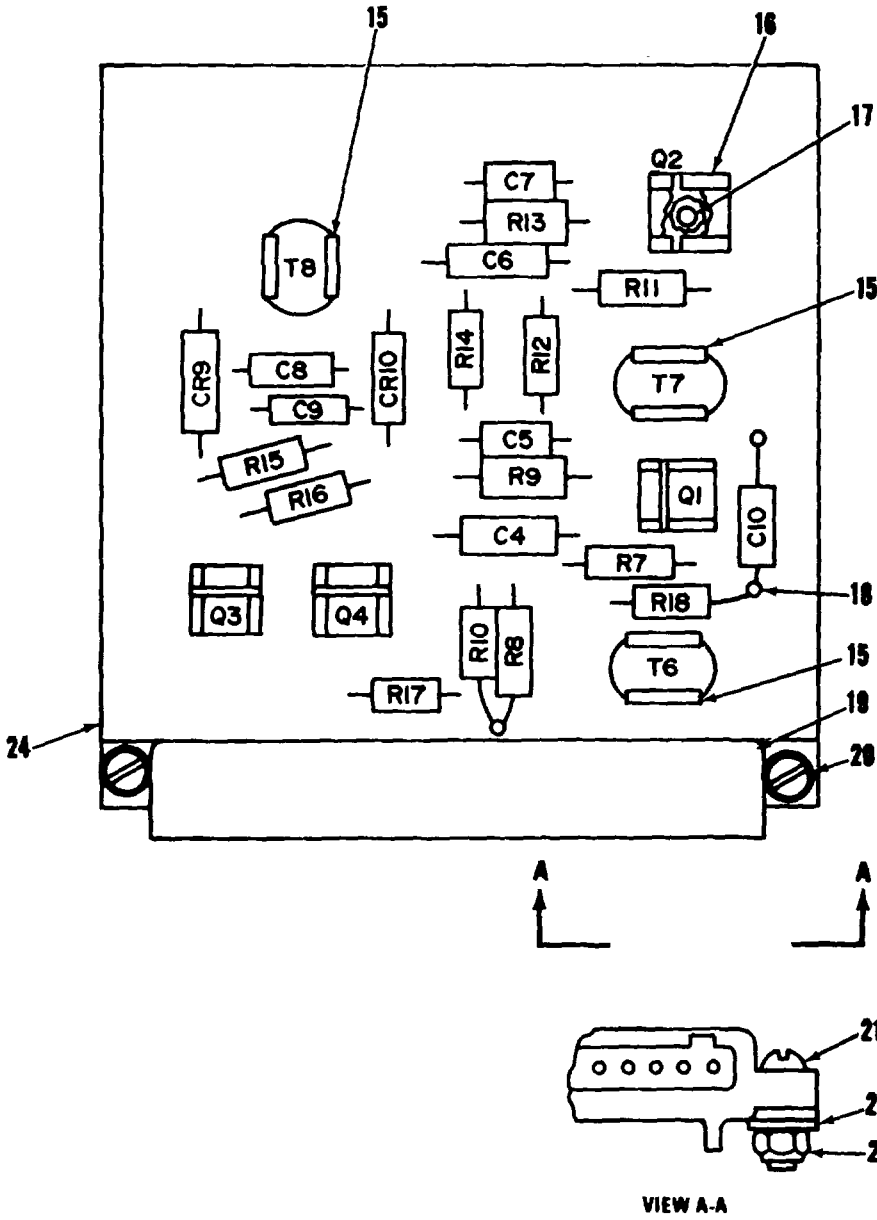
TM 11-1680-201-30P

(1) ILLUSTRATION		(2)	(3)	(4)	(5)	(6) DESCRIPTION	(7)	(8)
(a) FIG NO.	(b) ITEM NO.	SMR CODE	NATIONAL STOCK NUMBER	FSCM	PART NUMBER	USABLE ON CODE	U/M	QTY INC IN UNIT
						GROUP 02 DEMODULATOR MODULATOR ASSY 114V5000-2		
2	1	XAFZZ		01281	PS3353	RECTIFIER,SEMICONDU USED ON 114E3030-49,-47,-43,-42,-40. (114V5000-3 IS AN ALT FOR PS3353).....	EA	1
2	2	PAFZZ	5961-00-087-6047	81349	JAN-1N645	SEMICONDUCTOR DEVIC USED ON 114E3030-49,-47,-43,-42,-40	EA	3
2	3	XDFZZ	5910-00-913-4638	99515	WE2-473	CAPACITOR, FIXED, PAP USED ON 114E3030-49,-47,-43,-42,-40 ... (231A1C473M IS AN ALT FOR WE2-4731	EA	1
2	4	PAFZZ		99515	DEI-604A	CAPACITOR, PAPER USED ON 114E3030-49,-47,-43,-42,-40..... (WE1-604A OR 230B1B604F IS AN ALT FOR DEI-604 A)	EA	1
2	5	PAFZZ	5910-00-504-7171	56289	96P22391S4	CAPACITOR, FIXED, PLA USED ON 114E3030-49,-47,-43,-42,-40....	EA	1
2	6	PAFZZ	5910-00-104-0144	56289	150D105X9035AS	CAPACITOR, FIXED, ELE USED ON 114E3030-49,-47,-43,-42,-40....	EA	2
2	7	PAFZZ		95017	29F489	CAPACITOR, SOLID USED ON 114E3030-49,-47,-43,-42,-40	EA	1
2	8	PAFZZ		99515	DEI-254	CAPACITOR, PAPER USED ON 114E3030-49,-47,-43,-42,-40 (WEI-254 IS AN ALT FOR DEI-254).....	EA	1
2	9	PAFZZ	5910-00-144-4383	81349	M39003/01-3026	CAPACITOR, FIXED, ELE USED ON 114E3030-49,-47,-43,-42,-40....	EA	3
2	10	PAFZZ		81349	JAN2N652A	TRANSISTOR USED ON 114E3030-49,-47,-43,-42,-40.....	EA	1
2	11	PAFZZ	5905-00-106-9344	81349	RCR20G101JS	RESISTOR, FIXED, COMP USED ON 114E3030-49,-47,-43,-42,-40..	EA	1
2	12	PAFZZ	5905-00-141-0596	81349	RCR20G473JS	RESISTOR, FIXED COMP USED ON 1143030-49,-47,-43,-42,-40....	EA	2
2	13	PAFZZ	5905-00-114-5398	81349	RCR20G225JS	RESISTOR, FIXED. COMP USED ON 114E3030-49,-47,-43,-42,-40.. (RCR20G515JP IS AN ALT FOR RCR20G225JP).....	EA	1
2	14	PAFZZ	5905-00-426-7121	81349	RNC60K2002FS	RESISTOR, FIXED, FILM USED ON 114E3030-49,-47,-43,-42,-40.... (RN60G2002F OR CGI-4 IS AN ALT FOR RN60D2002F).....	EA	2
2	15	PAFZZ	5905-00-111-4858	81349	RCR20G471JS	RESISTOR, FIXED COMP USED ON 114E3030-49,-47,-43,-42,-40..	EA	1
2	16	PAFZZ	5905-00-110-0196	81349	RCR20G102JS	RESISTOR, FIXED, COMP USED ON 114E3030-49,-47,-43,-42,-40..	EA	2
2	17	PAFZZ	5905-00-114-5417	81349	RCR20G302JS	RESISTOR, FIXED COM USED ON 114E3030-49,-47,-43,-42,-40....	EA	1
2	18	PAFZZ	5905-00-147-2062	81349	RNC60K2212FS	RESISTOR, FIXED, FILM USED ON 114E3030-49,-47,-43,-42,-40.... (RN60G2212F OR CGI-4 IS AN ALT FOR RN60D2212FI).....	EA	2
2	18	PAFZZ	5905-00-432-6364	81349	RNC55H2052FS	RESISTOR, FIXED, FILM USED ON 114E3030-49,-47,-43,-42,-40.... (SELECT AT TEST IF REQ).....	EA	2
2	18	PAFZZ	5905-00-196-5171	81349	RNC55H2102FS	RESISTOR. FIXED, FILM USED ON 114E3030-49,-47,-43,-42,-40.... (ISELECT AT TEST IF REQ).....	EA	2
2	18	PAFPZ	5905-00-405-3022	81349	RNCSSH2212FS	RESISTOR, FIXED. FILM USED ON 114E3030-49,-47,-43,-42,-40	EA	2
2	18	PAFZZ	5905-00-138-7396	81349	RNC55H2262FS	RESISTOR, FIXED, FILM USED ON 114E3030-49,-47,-43,-42,-40.... (SELECT AT TEST IF REQ).....	EA	2
2	18	PAFZZ	5905-00-203-3929	81349	RNC55H2322FS	RESISTOR. FIXED, FILM USED ON 114E3030-49,-47,-43,-42,-40.... (SELECT AT TEST IF REQ).....	EA	2
2	18	PAFZZ	5905-00-479-9946	81349	RNC55H2372FS	RESISTOR, FIXED, FILM USED ON 1143030-49,-47,-43,-42,-40..... (SELECT AT TEST IF REQ).....	EA	2
2	19	PAFZZ	5905-00-755-5487	80294	224P-1-103	RESISTOR, VARIABLE, USED ON 114E3030-49,-47,-43,-42,-40..... (260P-1-103 IS AN ALT FOR 224P-1-103).....	EA	1
2	20	PAFZZ	5905-00-892-6578	81349	RN60D1212F	RESISTOR. FIXED, FILM USED ON 114E3030-49,-47,-43,-42,-40.... (RN60GI212F OR CGI-4 IS AN ALT FOR RN6001212F).....	EA	1
2	21	PAFZZ	5905-00-731-8329	81349	RN60D6341F	RESISTOR, FIXED, FILM USED ON 114E3030-49,-47,-43,-42,-40.... (RN60G6341F OR CGI-4 IS AN ALT FOR RN60D6341F)	EA	1
2	22	PAFZZ	5905-00-141-0591	81349	RCR20G103JS	RESISTOR, FIXED COMP USED ON 114E3030-49,-47,-43,-42,-40..	EA	2
2	23	PAFZZ	5905-00-988-2319	81349	RN60D1502F	RESISTOR, FIXED, FILM USED ON 114E3030-49,-47,-43,-42,-40.... (RN60GI502F OR CGI-4 IS AN ALT FOR RN60D1502F).....	EA	1

SECTION II

TM 11-1680-201-30P

(1) ILLUSTRATION		(2)	(3)	(4)	(5)	(6) DESCRIPTION	(7)	(8)
(a) FIG NO.	(b) ITEM NO.	SMR CODE	NATIONAL STOCK NUMBER	FSCM	PART NUMBER	USABLE ON CODE	U/M	QTY INC IN UNIT
2	24	PAFZZ	5950-00-851-4221	80223	DOT25	TRANSFORMER,AUDIO F . USED ON 114E3030-49,-47,-43,-42,-40	EA	3
2	25	PAFZZ	5340-00-826-6993	99378	100-239-0	CLIP,SPRING TENSION USED ON 114E3030-49,-47,-43,-42,-40	EA	4
2	26	PAFZZ		71279	X20998	RIVET,BLIND USED ON 114E3030-49,-47,-43,-42,-40.....	EA	4
2	27	PAFZZ	5950-00-715-4638	80223	DOT-SH	SHIELD,COIL USED ON 114E3030-69,-47,-43,-42,-40.....	EA	3
2	28	PAFZZ	5935-00-089-3062	81205	BACC45HL6	CONNECTOR,PLUG,ELEC USED ON 114E3030-49,-47,-43,-42,-40	EA	1
2	29	PAFZZ		57771	GS4-11	EYELET USED ON 114E3030-49,-47,-43,-42,-40	EA	2
2	30	PAFZZ	5305-00-842-0251	80205	NAS601-BP	SCREW,MACHINE USED ON 11E3030-49.-4771-43-42,-40..... (ALT FOR GSH-11 WHEN UIW ANNS60-IL AND NS2036-632)	EA	2
2	31	PAFZZ	5310-00-167-0832	88044	AN960-6L	WASHER,FLAT USED ON 114E300-49.-47.-43,-42,-40..... EA (ALT FOR GHS 11 WHEN U/W NAS601-8P AND 2SZ036-632)	2	
2	32	PAFZZ	5310-00-905-8451	75237	F22NTM-632	NUT,SELF LOCKING USED ON 114E3030-49,-47,-43,-42,-40..... (ALT FOR GSH-11 WHEN U/W NAS601-IP AND AN960-8P)	EA	2
2	33	XAFZZ		77272	114V5001-2	BRD,PRINTED CIRCUIT USED ON 114E33030-49,-47,-43,-42,-40	EA	1
12/(13 blank)								



LEGEND FOR 114E3049-42

REF DES	ITEM NO.	REF DES	ITEM NO.	REF DES	ITEM NO.	REF DES	ITEM NO.	REF DES	ITEM NO.	REF DES	ITEM NO.	REF DES	ITEM NO.
CR10	1	C6	3	C9	4	Q4	6	R10	8	R14	10	R18	13
CR9	1	C8	2	Q1	6	R7	7	R11	7	R15	11	T8	14
C10	5	C7	3	Q2	6	R8	7	R12	7	R16	11	T7	14
C4	2	C8	4	Q3	6	R9	8	R13	8	R17	12	T8	14

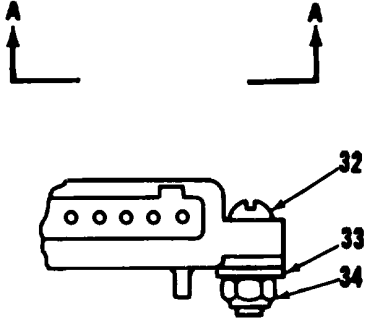
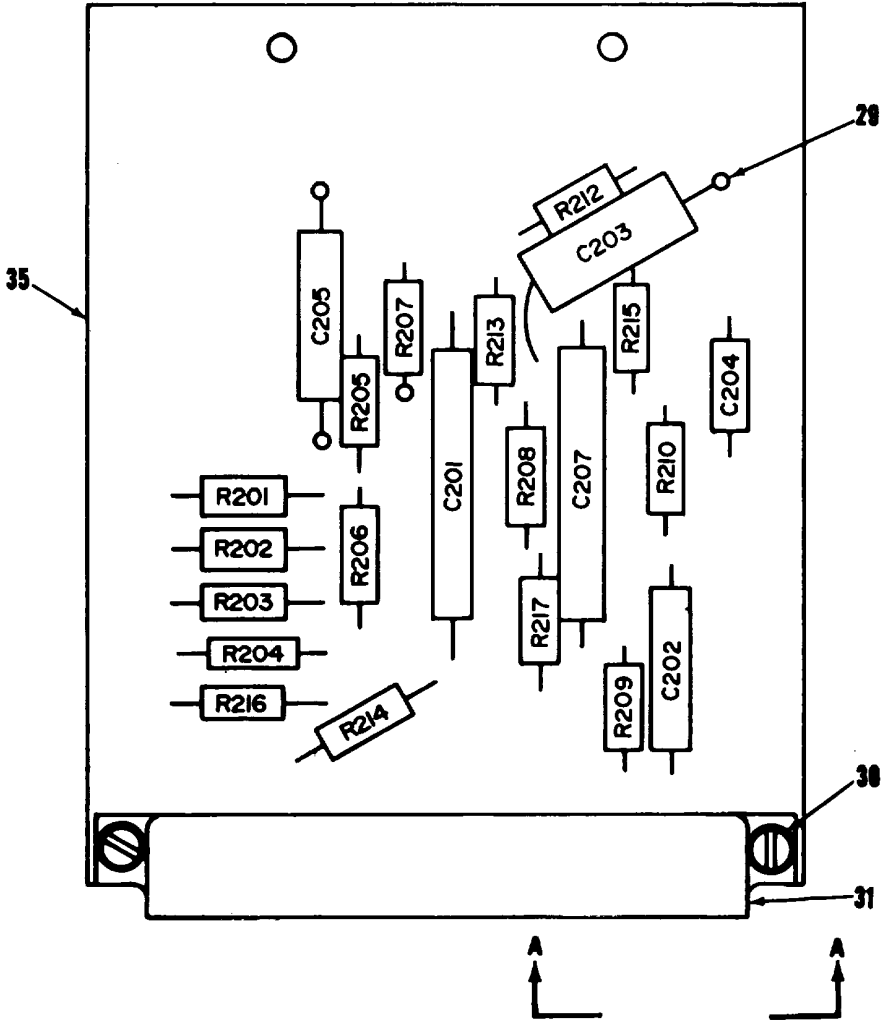
EL28C005

Figure 3. Amplifier Component Assy 114E3049-42

SECTION II

TM 11-1680-201-30P

(1) ILLUSTRATION		(2)	(3)	(4)	(5)	(6) DESCRIPTION	(7)	(8)
(a) FIG NO.	(b) ITEM NO.	SMR CODE	NATIONAL STOCK NUMBER	FSCM	PART NUMBER	USABLE ON CODE	U/M	QTY INC IN UNIT
						GROUP 03 AMPLIFIER COMPONET ASSY 114E3049-42		
3	1	PAFZZ	5961-00-087-6047	81349	JA1-N645	SEMICONDUCTOR DEVIC USED ON 114E3030-49,-47,-43,-42,..... 40(BACD5C605 IS AN ALT FOR 1N645).....	EA	2
3	2	PAFZZ	5910-00-0D7-2004	81349	M39003/01-3088	CAPACITOR, FIXED, ELE USED ON 114E3030-49-47,-43,-42,-40.....	EA	2
3	3	PAFZZ	5910-00-104-0144	56289	150010SX9035A	CAPACITOR, FIXED, ELE USED ON 114E3030-49-47,-43,-42,-40.....	EA	2
3	4	PAFZZ	59S-00-114-087	81349	139003/01-3170	CAPACITOR, FIXED, ELE USED ON 114E3030-499-47,-43,-42,-40.....	EA	2
3	5	XDFZZ	5910-00-913-463I	9515	E2-473	CAPACITOR, FIXED, PAP USED ON 114E3030-49,-47,-43,-42,-..... 40(231AIC473M IS AN ALT FOR WE2-4731)..... 2ES	EA	1
3	6	PAFZZ		81349	JAN2NZ52A	TRANSISTOR USED ON 114E3030-49,-47,-43,-42,-40.....	EA	4
3	7	PAFZZ	590-00-141-0591	81349	RCR20G103JS	RESISTOR, FIXED COMP USED ON 114E3030-49,-47,-43,-42,-40.....	EA	4
3	8	PAFZZ		81349	RCR20G160JP	RESISTOR, FIXED, COMP USED ON 114E3030-49,-47,-43,-42,-40.....	EA	2
3	9	PAFZZ	5905-00-104-348	81349	RCRD20G332JS	RESISTOR, FIXED, COMP USED ON 114E3030-49,-47,-43,-42,-40.....	EA	1
3	10	PAFZZ	5905-00-141-1130	81349	RCRZOG272JS	RESISTOR, FIXED, COMP USED ON 114E3030-49,-47,-43,-42,-40.....	EA	1
3	11	PAFZZ	5905-00-988-2319	81349	RN6001502F	RESISTOR, FIXED, FILM USED ON 114E3030-49,-4743,-42,-..... 40(RN60G1502F OR CGI-4 1502 IS AN ALT FOR RN60D1502F)	EA	2
3	12	PAFZZ	5905-00-110-0196	81349	RCIIZOGIO2JS	RESISTOR, FIXED, COMP USED ON 114E3030-49,-47,-43,-42,-40.....	EA	1
3	13	PAFZZ	5905-00-141-0592	81349	RCRZDGI22JS	RESISTOR, FIXED, COMP, USED ON 114E3030-49,-47,-43,-42,-40.....	EA	1
3	14	PAFZZ	595-00-851-42	8D0223	DOT2S	TRANSFORMER, AUDIO F USED ON 114E3030-49,-47,-43,-42,-40.....	EA	3
3	15	PAFZZ	5950-00-715-4638	80223	DOTSH	SHIELD, COIL USED ON 114E3030-49,-47,-43,-42,-40 (U/O T6 AND T8)	EA	2
3	16	PAFZZ	5340-826-6993	99378	100-239-0	CLIP, SPRING TENSION USED ON 114E300-49,-47,-43,-42,-40.....	EA	
3	17	PAFZZ		71279	2099-3-03	RIVET USED ON 114E3030-49,-47,-43,-42,-40.....	EA	7
3	18	PAFZZ	5940-01-051-2724	71279	160-2027-02-01-0	TERMINAL, STUD USED ON 114E3030-49,-47,-43,-42,-40 (160-2040 02-03-00 IS AN ALT FOR 160-2027-02-01-00).....	EA	3
3	19	PAFZZ	5935-00-023-2309	81205	8ACC45HL	CONNECTOR, PLUG, ELEC USED ON 114E3030-49,-47,-43,-42,-40.....	EA	1
3	20	PAFZZ		57771	GS4-11	EYELET USED ON 114E3030-49,-47,-43,-42,-40.....	EA	2
3	21	PAFZZ	5305-00-842-0251	80205	NAS601-8P	SCREW, MACHINE USED ON 114E3030-49,-47,-43,-42,-40.....	EA	2
3	22	PAFZZ	5310-00-167-0832	88044	AN96D-6L	WASHER, FLAT USED ON 114E3030-49,-47,-43,-42,-40.....	EA	2
3	23	PAFZZ	5310-905-8451	75237	F22NTN-632	NUT, SELF LOCKING USED ON 114E3030-49,-47,-43,-42,-40.....	EA	2
3	24	XAFZZ		77272	114E30301-40	PRINTED CIRCUIT BOA USED ON 114E3030-49,-47,-43,-42,-40.....	EA	1

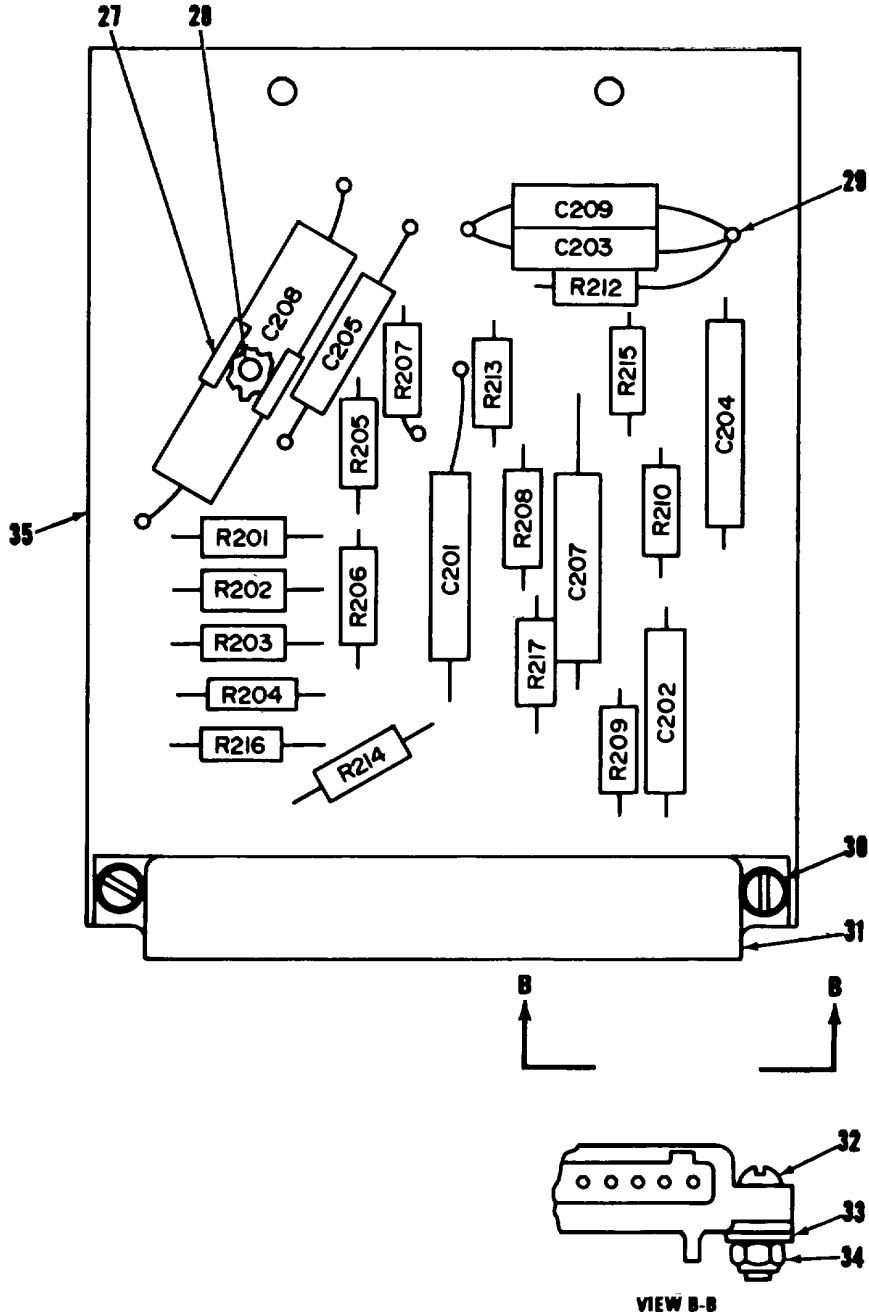


LEGEND FOR 114E3049-41

REF DES	ITEM NO.	REF DES	ITEM NO.	REF DES	ITEM NO.	REF DES	ITEM NO.	REF DES	ITEM NO.	REF DES	ITEM NO.	REF DES	ITEM NO.	REF DES	ITEM NO.
C201	1	C204	4	R201	10	R204	11	R207	14	R210	13	R214	21	R217	18
C202	2	C205	5	R202	11	R205	12	R208	15	R212	14	R215	22		
C203	3	C207	1	R203	11	R206	13	R209	16	R213	20	R218	23		

EL28C006

Figure 4. Calibration Component Assy 114E3049-41,-43,-44, 114V5011-1,-3(Sheet 1 of 5)

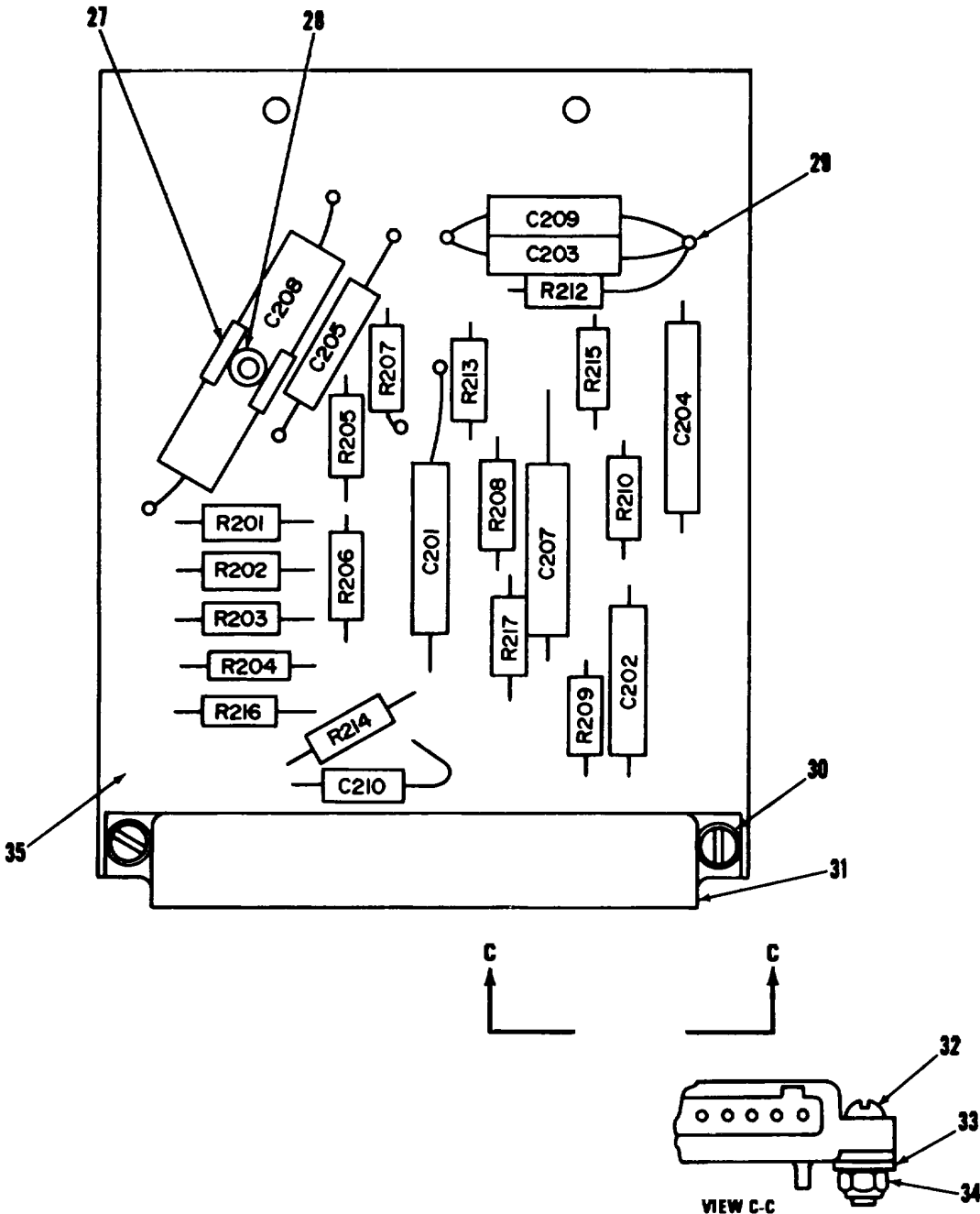


LEGEND FOR 114E3049-43

REF DES	ITEM NO.	REF DES	ITEM NO.	REF DES	ITEM NO.	REF DES	ITEM NO.	REF DES	ITEM NO.	REF DES	ITEM NO.	REF DES	ITEM NO.		
C201	1	C204	4	C208	8	R202	11	R205	12	R208	15	R212	14	R216	22
C202	2	C205	5	C209	3	R203	11	R206	13	R209	16	R213	20	R218	23
C203	3	C207	1	R201	10	R204	11	R207	14	R210	13	R214	21	R217	16

EL28C007

Figure 4. Calibration Component Assy 114E3049-41, -43, -44, 114V5011-1, -3(Sheet 2 of 5)

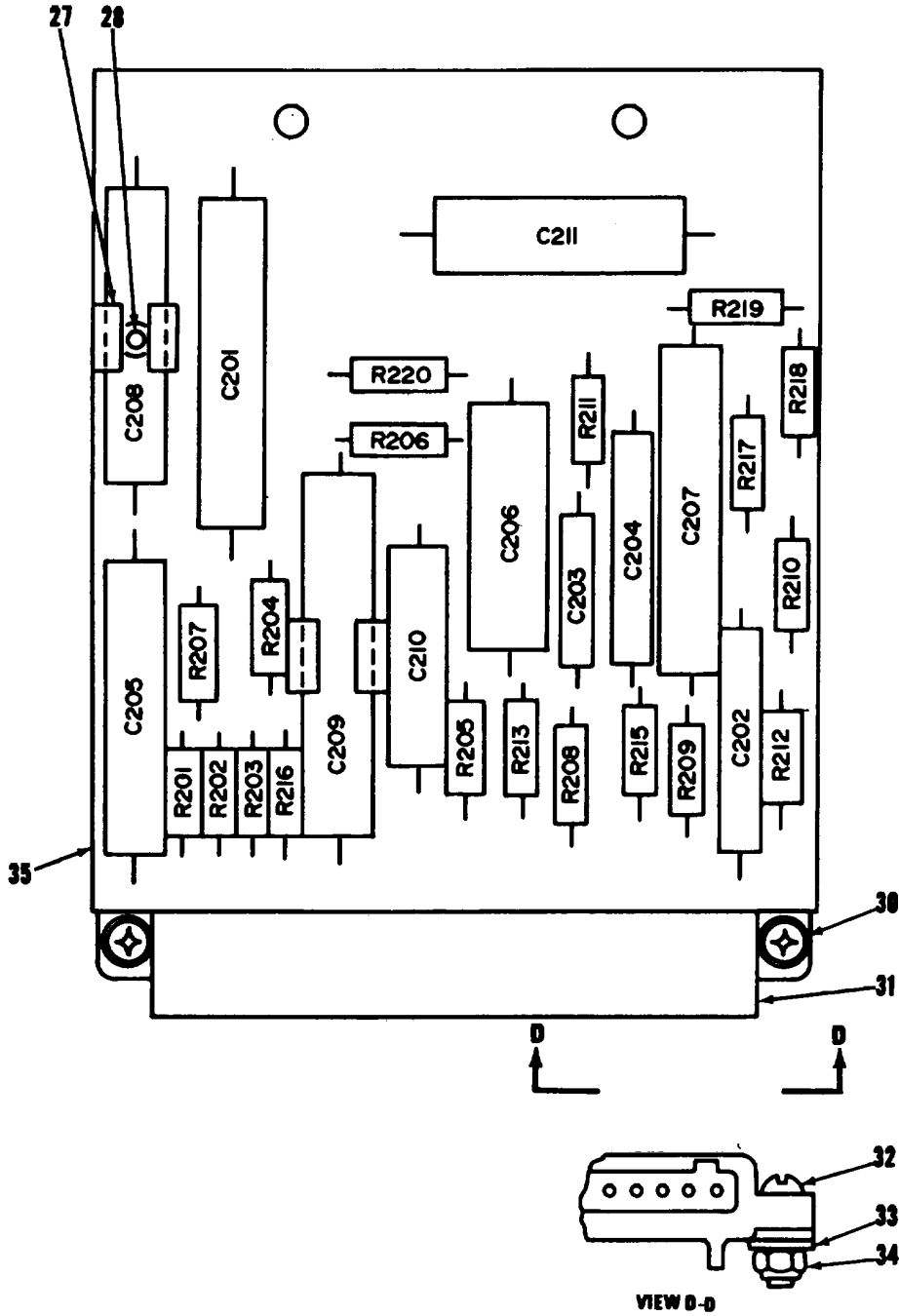


LEGEND FOR 114E3049-44

REF DES	ITEM NO.	REF DES	ITEM NO.	REF DES	ITEM NO.	REF DES	ITEM NO.	REF DES	ITEM NO.	REF DES	ITEM NO.	REF DES	ITEM NO.
C201	1	C205	5	C210	9	R204	11	R208	15	R213	20	R217	16
C202	2	C207	1	R201	10	R205	12	R209	16	R214	21		
C203	3	C208	8	R202	11	R206	13	R210	13	R215	22		
C204	4	C209	3	R203	11	R207	14	R212	14	R216	23		

EL 28C006

Figure 4. Calibration Component Assy 114E3049-41,-43,-44, 114V5011-1,-3(Sheet 3 of 5)

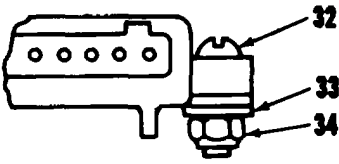
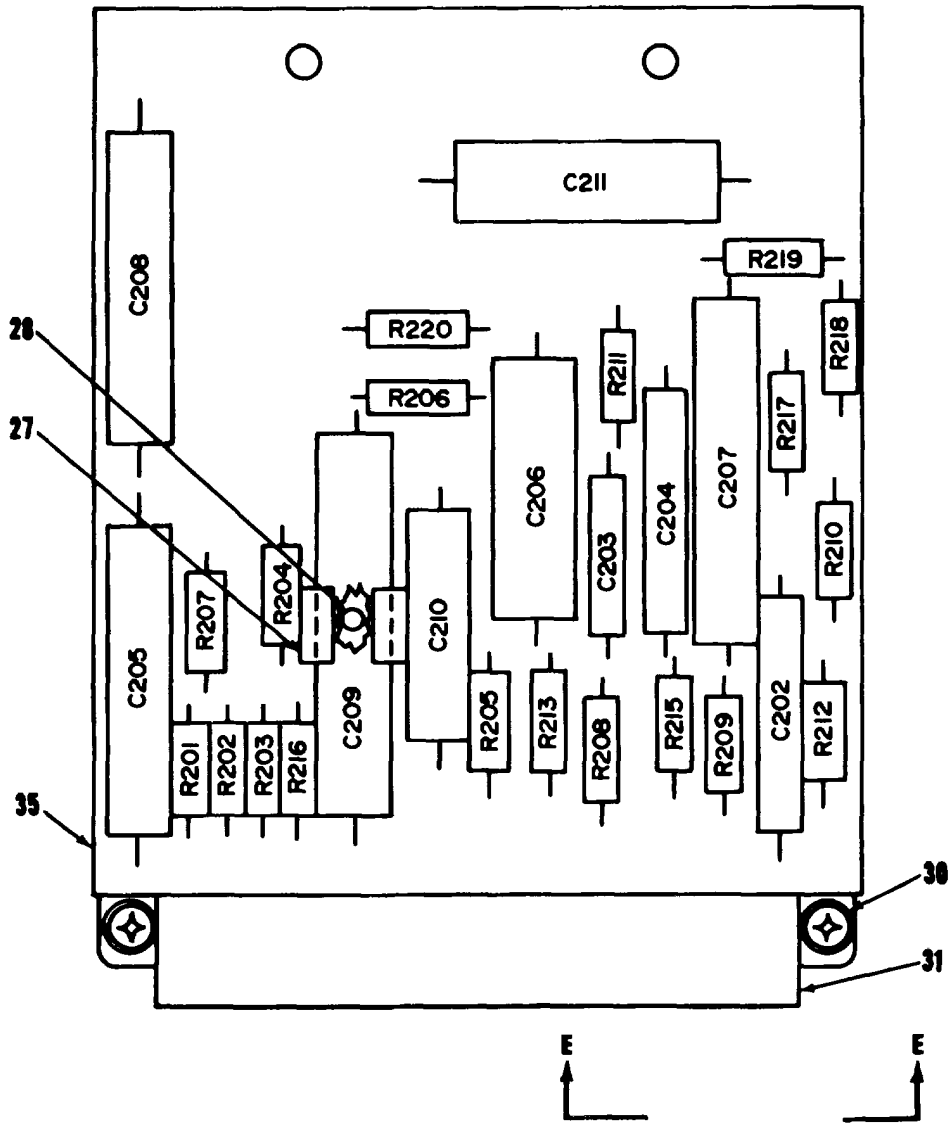


LEGEND FOR 114V5011-1

REF DES	ITEM NO.	REF DES	ITEM NO.	REF DES	ITEM NO.	REF DES	ITEM NO.	REF DES	ITEM NO.	REF DES	ITEM NO.	REF DES	ITEM NO.	REF DES	ITEM NO.
C201	1	C205	5	C209	9	R202	11	R206	13	R210	17	R215	22	R219	25
C202	2	C206	6	C210	10	R203	11	R207	14	R211	18	R216	23	R220	26
C203	3	C207	7	C211	11	R204	11	R208	15	R212	19	R217	16		
C204	4	C208	8	R201	10	R205	12	R209	16	R213	20	R218	24		

EL28C009

Figure 4. Calibration Component Assy 114E3049-41,-43,-44, 114V5011-1,-3(Sheet 4 of 5)



LEGEND FOR 114V5011-3

REF OES	ITEM NO.	REF DES	ITEM NO.	REF DES	ITEM NO.	REF OES	ITEM NO.	REF DES	ITEM NO.	REF DES	ITEM NO.	REF DES	ITEM NO.	REF DES	ITEM NO.
C202	2	C206	6	C210	8	R203	11	R207	14	R211	18	R216	23	R220	26
C203	3	C207	1	C211	9	R204	11	R208	15	R212	19	R217	16		
C204	4	C208	7	R201	10	R205	12	R209	16	R213	20	R218	24		
C205	5	C209	8	R202	11	R206	13	R210	17	R215	22	R219	25		

EL28C00

Figure 4. Calibration Component Assy 114E3049-41,-43,-44, 114V5011-1,-3(Sheet 5 of 5)

SECTION II

TM 11-1680-201-30P

(1) ILLUSTRATION		(2)	(3)	(4)	(5)	(6) DESCRIPTION	(7)	(8)
(a) FIG NO.	(b) ITEM NO.	SMR CODE	NATIONAL STOCK NUMBER	FSCM	PART NUMBER	USABLE ON CODE	U/M	QTY INC IN UNIT
						GROUP 04 CALIBRATION COMPONET ASSY 114E3049-41,-43,-44-114V5011 1,-3		
4	1	PAFZZ	5910-00-913-0495	05391	K23N1ODNS	CAPACITOR, FIXED.ELE USED ON 114E3030-49,-40 (U/ 114V5011-3).....2ES,2EC	EA	1
4	1	PAFZZ		05397	KZBN1ODNS	CAPACITOR,SOLID USED ON 114E3030-40 (U/W 114E3049-41,.. REPL BY K23N10DNS FOR C201)2EC	EA	1
4	2	PAFZZ		05397	K16N1ODNS	CAPACITOR,SOLID USED ON 114E3030-49,-47,-43,-42,-40	EA	1
4	3	PAFZZ	5910-00-013-9467	05397	KR6N1ODNS	CAPACITOR, FIXED.ELE USED ON 114E3030-49,-47(U/W..... 114V5011-1-3)2ES,5FT	EA	1
4	3	PAFZZ		05391	K11N1ODNS	CAPACITOR,SOLID USED ON 114E3030-43,-42..... (U/W 114E3049-43,-44).....2EC	EA	2
4	3	PAFZZ	5910-00-913-4637	05397	K3R4N6DNS	CAPACITOR.FIXED,ELE USED ON 114E3030-40(U/W 114E3049-41 2EC	EA	1
4	4	PAFZZ	5910-00-013-9468	05391	K2RN10ODNS	CAPACITOR, FIXED,ELE USED ON 114E3030-49,-47(U/W..... 114V5011-1,-3).2ES,5FT	EA	1
4	4	PAFZZ	5910-00-913-4635	05397	KSN1OONS	CAPACITOR, FIXED,ELE USED ON 114E3030-43,-42,-40..... (U/W 114E3049-41-43-44)2EC	EA	1
4	5	PAFZZ	59LD-00-926-8045	05397	K34N1ODNS	CAPACITOR, FIXED,ELE USED ON 1143030-49,-47,-43,-42(U/W... 114E3049,-43,-44 AND 114V5011-1,-3)	EA	1
4	5	PAFZZ	5910-00-913-4634	05397	K9N1ODONS	CAPACITOR, FIXED.ELE USED ON 114E3030-40(U/W 114E3049-41,-43,-44).....2EC	EA	1
4	6	PAFZZ	5910-00-621-9880	81349	CQ05A1KB104K3	CAPACITOR, FIXED.PAP USED ON 114E3030-49,-47 (U/W..... 114V5011-1,-3)2ES,5FT	EA	2
4	T	PAFZZ		05391	K50N10DNS	CAPACITOR,SOLID USED ON 114E3030-49(U/ 114V5011-3)2ES	EA	1
4	8	PAFZZ	5910-00-013-9469	05397	K75N10DNS	CAPACITOR, FIXED,ELE USED ON 114E3030-49,-43,-42(U/W..... 114E3049-43,-44, AND 114V5011-312ES,2EC	EA	1
4	9	PAFZZ	5910-00-84-6469	81349	CP05AIKF472K3	CAPACITOR, FIXED,PAP USED ON 114E3030-49,-47(U/W..... 114V5011-1,-3)2ES,5FT	EA	1
4	9	PAFZZ		08990	CTM222VD-J	CAPACITOR USED ON 114E3030-43(U/W 114E3049-44)2EC. EA	1	
4	10	PAFZZ	5905-00-114-5381	81349	RRCR20G118JS	RESISTOR, FIXED,COMP USED ON 114E2186-49,-4T(U/W..... 114V5011-1,-3)2ES,5FT	EA	1
4	10	PAFZZ	5905-00-400-4502	81349	RRCR20G430JP	RESISTOR, FIXED,COMP USED ON 114E3030-43,-42,-40(U/W..... 114E3049-41-43-442EC	EA	1
4	11	PAFZZ	5905-00-104-8336	81349	RRCR20GIOIJS	RESISTOR, FIXED,COMP USED ON 114E3030-49(U/W 114V5011-3) 2ES	EA	2
4	11	PAFZZ	5905-00-106-9345	81349	RRCR20DG683JS	RESISTOR, FIXED,COMP USED ON 114E3030-49(U/W 114V5011-3), 2ES	EA	1
4	12	PAFZZ	5905-00-189-2486	81349	RNC60K8062FS	RESISTOR, FIXED,FILN..... USED ON 14E3030-49,-47,-43,-42,-40	EA	1
4	13	PAFZZ	5905-00-192-3488	81349	RNC60K9092FS	RESISTOR, FIXED,FILN..... USED ON 114E3030-43,-42,-40(U/W 114E3049-41,-43,-41 2EC	EA	2
4	14	PAFZZ	5905-00-988-2319	81349	RN6DDISO2F	RESISTOR, FIXED,FILM USED ON 114E3030-43,-42,-40 (U/W 114E3049-41,-43,-4,4).....2EC	EA	2
4	14	PAFZZ	5905-00-42-6846	81349	RN60CT501F	RESISTOR, FIXED,FILMUSED ON 114E3030-491(U/W 114V5011-3) 2ES	EA	1
4	15	PAFZZ	5905-00-189-2487	81349	RNC60K8662FS	RESTSTOR.FIXED,FILM USED ON 114E3030-49,-47, (U/W..... 114V5011-1-3)2ES,5FT	EA	1
4	15	PAFZZ	5905-00-192-3876	81349	RNC60KI503FS	RESISTOR, FIXED,FILM USED ON 114E3030,-43,-42,-40(U/W 114E3049-41,-43-44).....2EC	EA	1
4	16	XDFZZ	5905-00-763-6563	81349	RN60D3573F	RESISTOR, FIXED,FILM USED ON 114E3030-49,-47,-43,-42,-40....	EA	2

SECTION II

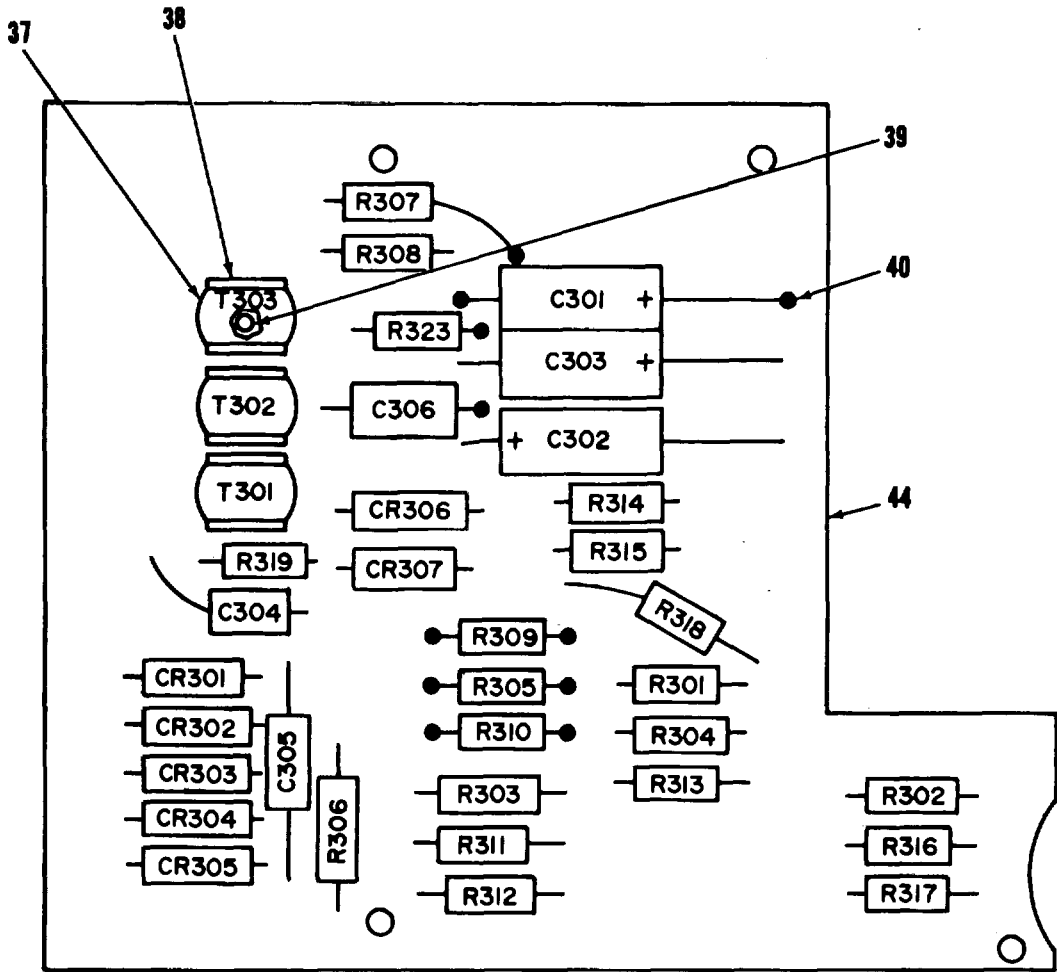
TM 11-1680-201-30P

(1) ILLUSTRATION		(2)	(3)	(4)	(5)	(6) DESCRIPTION	(7)	(8)
(a) FIG NO.	(b) ITEM NO.	SMR CODE	NATIONAL STOCK NUMBER	FSCM	PART NUMBER	USABLE ON CODE	U/M	QTY INC IN UNIT
4	17	PAFZZ	5905-00-764-2614	81349	RN00S43F	RESISTOR, FIXED, FILM USED ON 114E3030-49-47(U/W 114V5011-1,-3) 2ES,5FT	EA	1
4	18	PAFZZ	5905-00-025-5987	81349	RNCGOK491FS	RESISTOR, FIXED, FILM USED ON 114E3030-49-47(U/W 114V5011-1,-3) 2ES,5FT	EA	1
4	19	PAFZZ	5005-00-451-7414	81349	RNC&OK2003FS	RESISTOR, FIXED, FILM USED ON 114E3030-49-47(U/W 114V5011-1,-3) 2ES,5FT	EA	1
4	20	PAFZZ	5905-00-914-5517	81349	RN600945*3	RESISTOR, FIXED, FILM USED ON 114E3030-49-47(U/W 114V5011-1,-3) 2ES,5FT	EA	1
4	20	PAFZZ	5905-00-451-7414	81349	RNCOK2003FS	RESISTOR, FIXED, FILM USED ON 114E30-43.-42,-40(U/W 114E3049.-41,-43.-44) 2EC	EA	1
4	21	PAFZZ	5905-00-141-0599	81349	RCR20G3 93JP	RESISTOR, FIXED, COMP USED ON 114E3030-43(U/W 114E3049.-44,-43) 2EC	EA	1
4	21	PAFZZ		81349	RCR20G304JP	RESISTOR, FIXED, FILM USED ON 114E30-43.-42,-40(U/W 2EC	EA	1
4	22	PAFZZ	5905-00-969-5549	81349	RN600464ZF	RESISTOR, FIXED, FILM USED ON 114E3030-49,-47(U/W 2ES,5FT	EA	1
4	22	PAFZZ	5905-00-129-2456	81349	RNCEIOSKI3FS	RESISTOR, FIXED, FILM USED ON 114E30-43.-42,-40(U/W 114E3049.-41,-43.-44) 2EC	EA	1
4	23	PAFZZ		81349	RC120G360JP	RESISTOR, FIXED, FILM USED ON 114E3030-49,-47(U/W 114V5011-1,-3) (SELECT AT TEST) 2ES,5FT	EA	1
4	23	PAFZZ	5905-00-104-8349	81349	RCR2G050JP	RESISTOR, FIXED, COMP USED ON 114E3030-43(U/W 114E3049-44)(SELECT AT TEST) 2EC	EA	1
4	23	PAFZZ	5905-00-111-4734	81349	RCR20G360JP	RESISTOR, FIXED, COMP USED ON 114E3030-42,-40(U/W 114E3049-41,-43) 2ES	EA	1
4	24	PAFZZ	5905-00-052-2395	81349	RN60D4992F	RESISTOR, FIXED, FILM USED ON 114E3030-49,-47(U/W 114V5011-1,-3) 2ES	EA	1
4	25	PAFZZ	5905-00-914-9254	81349	RN6005231F	RESISTOR, FIXED, FILM USED ON 114E3030-49,-47(U/W 114V5011-1,-3) 2ES,5FT	EA	1
4	26	PAFZZ	5905-00-051-8005	81349	RN60D4022F	RESISTOR, FIXED, FILM USED ON 114E3030-49,-47(U/W EA 114V5011-1,-3) 2ES,5FT	EA	1
4	27	PAFZZ	5340-00-826-6993	99381	100-239-	CLIP, SPRING TENSION USED ON 114E3030-49,-43,-42(U/W 114E3049.-43,-44 AND 114V5011-3) 2ES,2EC	EA	1
4	28	PAFZZ		71219	32-2099-02-D8-00	RIVET USED ON 114E3030-49,-43,-42(U/W 114E3049-43,-44, AND .. 114V5011-3) 2ES,2EC	EA	1
4	29	PAFZZ	5940-00-082-4869	81349	SEI2KCD0	STANDOFF. USED ON 114E3030-49,-43,-42(U/W 114E3049-43,-44)	EA	8
4	30	PAFZZ		51771	GS11	EYELET USED ON 114E3030-49,-47,-43,-42,-40 2ES,5FT	EA	2
4	31	PAFZZ	3935-00-877-9548	81205	BACC4SHL7	CONECTOR, PLUG. ELEC USED ON 114E3030-49,-47,-43,-42,-40 ...	EA	1
4	32	PAFZZ		96906	MS35206-4R4	SCREW, PAN-HD USED ON 114E3030-49,-47(U/W 114V5011-1,-3) ...	EA	2
4	32	PAFZZ	5305-00-889-3000	96906	MS352D6-230	SCREW, MACHINE USED ON 114E3030-43,-42,-40(U/W 114E3049,-41,-43,-44) 2EC	EA	2
4	33	PAFZZ	5310-00-167-0831	88044	AN96D-4L	WASHER, FLAT ... USED ON 114E3030-49,-47(U/W 114V5011-1,-3). 2ES, SFT	EA	2
4	33	PAFZZ	5310-00-167-0832	88044	AN966L	WASHER, FLAT ... USED ON 114E3030-43,-42,-40(U/W 114E3049,-41,-43,-44) 2EC	EA	2
4	34	PAFZZ	5310-00-088-0551	96906	MS21ID44N04	NUT, SELF-LOCKING, HE USED ON 114E3030-49,-47(U/W 114V5011-1-3) 2ES,5FT	EA	2
4	34	PAFZZ	5310-00-905-8451	96906	MS21083ND	NUT, SELF-LOCKING, HE USED ON 114E3030-49,-43,-42(U/W 114E3049.-41,-43,-44) 2ES	EA	1
4	3	XBFZZ		77212	114V510-3	PRINTED CIRCUIT BOA USED ON 114E3030-49(U/W 114V5011-3)	EA	
1					 2ES		
4	3	XBFZZ		71212	114V5010-1	BOARD, PRNTD CKT USED ON 114E3030-47(U/W 114V5011-1).5FT	EA	1

SECTION II

TM 11-1680-201-30P

(1) ILLUSTRATION		(2)	(3)	(4)	(5)	(6) DESCRIPTION	(7)	(8)
(a) FIG NO.	(b) ITEM NO.	SMR CODE	NATIONAL STOCK NUMBER	FSCM	PART NUMBER	USABLE ON CODE	U/M	QTY INC IN UNIT
4	35	XBFZZ		77272	114E30301-42	BOARD,PRNTD CKT USED ON 114E3030-43,-42(U/ 114E3049-441 2EC	EA	1
4	35	XBFZZ		77272	114E30301-41	BOARD,PRNTD CKT USED ON 114E3030-42(U/W 114E3049-43)2EC	EA	1
4	35	XBFZZ		77272	114E30301-39	BOARD,PRNTD CKT USED ON 114E3030-40(U/W 114E3049-41)2EC	EA	1
23/(24 blank)								

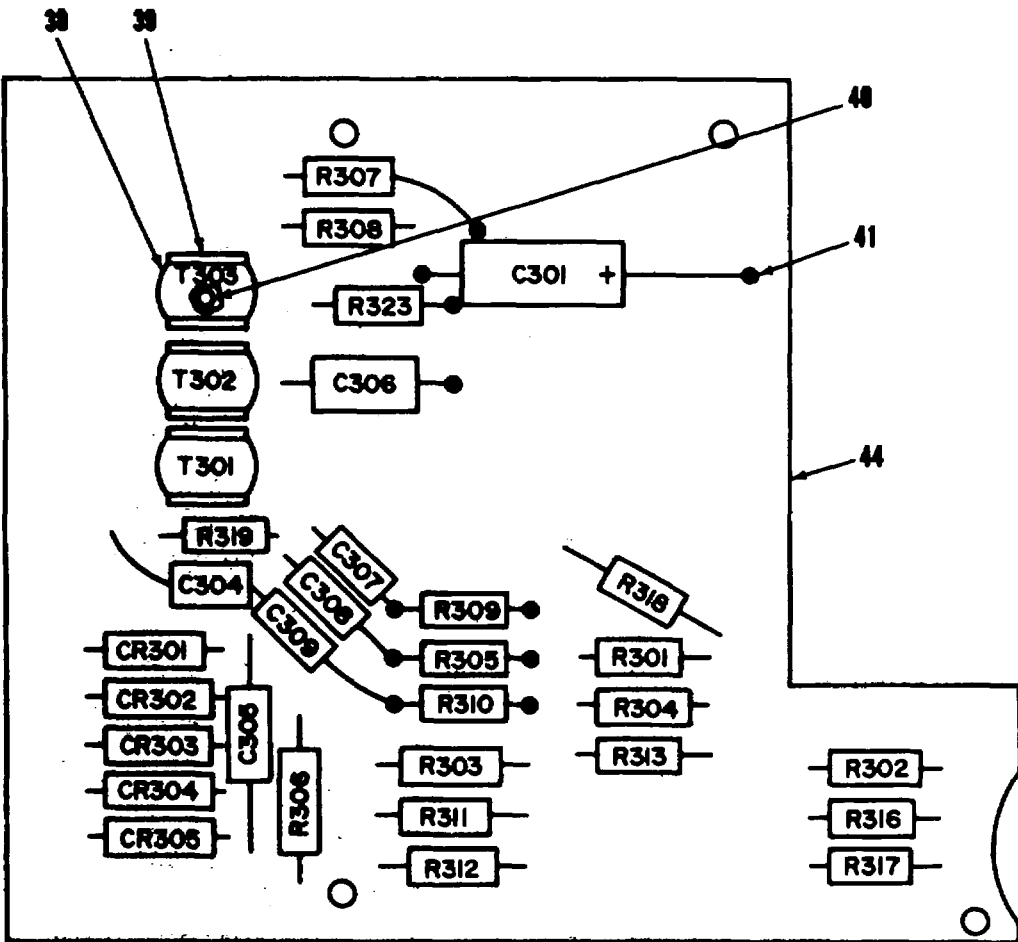


LEGENO FOR 114E 3049-40-45

REF DES	ITEM NO.	REF DES	ITEM NO.	REF DES	ITEM NO.	REF DES	ITEM NO.	REF DES	ITEM NO.	REF DES	ITEM NO.	REF DES	ITEM NO.		
CR301	2	CR306	2	C304	6	R303	17	R308	21	R313	22	R318	23	T303	35
CR302	2	CR307	2	C305	6	R304	18	R309	16	R314	17	R319	23		
CR303	2	C301	5	C306	6	R305	18	R310	16	R315	17	R323	23		
CR304	2	C302	43	R301	15	R306	19	R311	18	R318	16	T301	35		
CR305	2	C303	43	R302	18	R307	20	R312	22	R317	22	T302	35		

EL28C011

Figure 5. Miscellaneous Component A Card 114E3049-40,-45,-46,-50, 114V5015-2, -4 (Sheet 1 of 4)

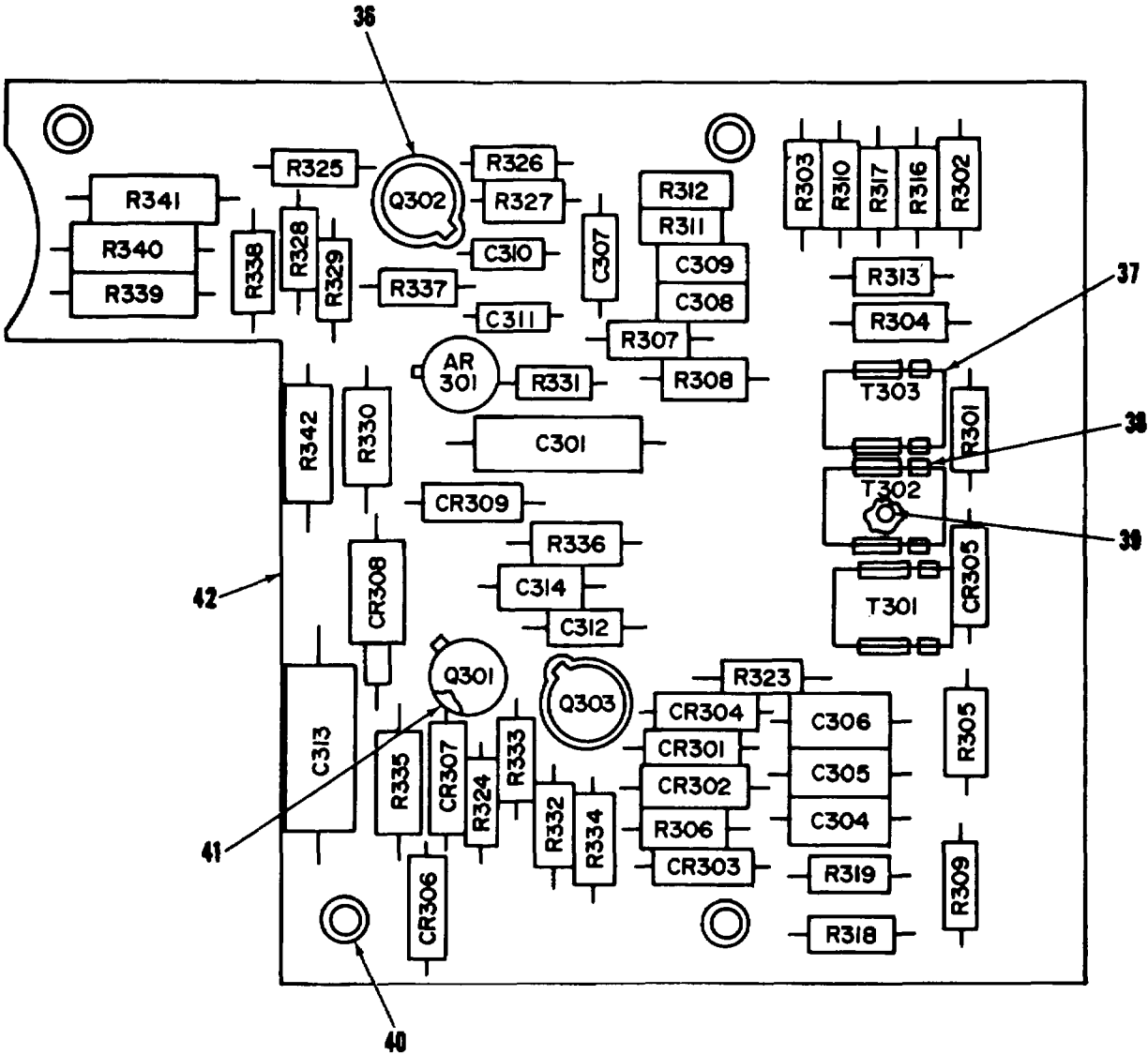


LEGEND FOR 114E3049-46-50

REF DES	ITEM NO.	REF DES	ITEM NO.	REF DES	ITEM NO.	REF DES	ITEM NO.	REF DES	ITEM NO.	REF DES	ITEM NO.	REF DES	ITEM NO.
CR301	2	C301	5	C300	7	R304	16	R300	18	R316	18	T301	35
CR302	2	C304	6	C306	7	R305	18	R310	18	R317	22	T302	35
CR303	2	C305	6	R301	15	R306	19	R311	18	R318	23	T303	35
CR304	2	C306	6	R302	18	R307	20	R312	22	R319	23		
CR305	2	C307	7	R303	17	R308	21	R313	22	R323	23		

EL28C012

Figure 5. Miscellaneous Component A Card 114E3049-40,-45,-46,-50, 114V5015-2, -4 (Sheet 2 of 4)

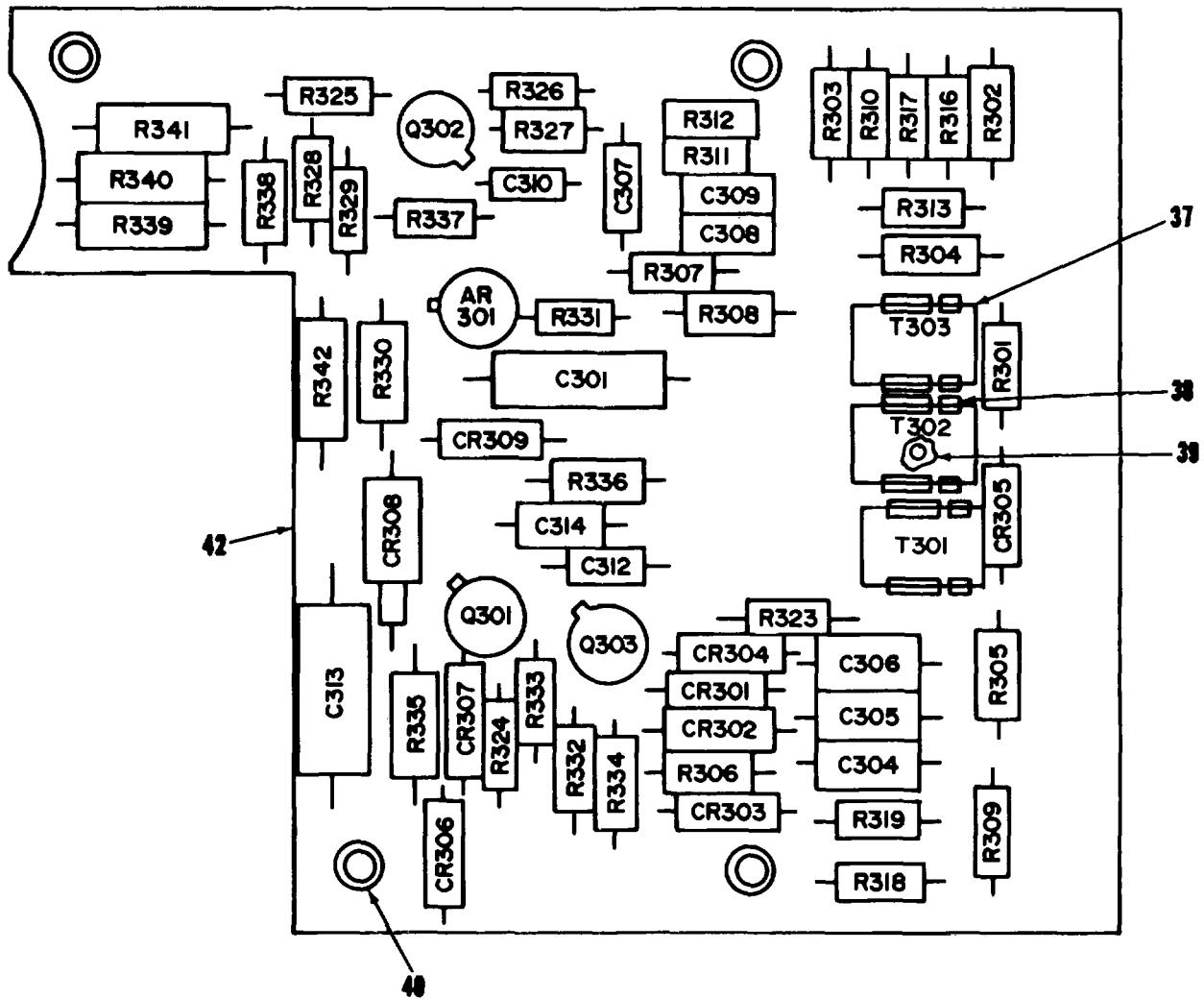


LEGEND FOR 114V5015-2

REF DES	ITEM NO.	REF DES	ITEM NO.	REF DES	ITEM NO.	REF DES	ITEM NO.	REF DES	ITEM NO.	REF DES	ITEM NO.	REF DES	ITEM NO.
AR301	1	C301	5	C313	11	R306	19	R318	23	R331	30	R341	34
CR301	2	C304	6	C314	11	R307	20	R319	23	R332	31	R342	29
CR302	2	C305	6	Q301	12	R308	21	R323	23	R333	32	T301	35
CR303	3	C306	6	Q302	13	R309	18	R324	24	R334	26	T302	35
CR304	2	C307	7	Q303	14	R310	18	R325	25	R335	33	T303	35
CR305	2	C308	7	R301	15	R311	18	R326	26	R336	33		
CR306	2	C309	7	R302	16	R312	22	R327	25	R337	27		
CR307	2	C310	8	R303	17	R313	22	R328	27	R338	27		
CR308	3	C311	8	R304	18	R316	18	R329	28	R339	34		
CR309	4	C312	10	R305	18	R317	22	R330	29	R340	34		

EL28C013

Figure 5. Miscellaneous Component A Card 114E3049-40,-45,-46,-50, 114V5015-2, -4 (Sheet 3 of 4)



LEGEND FOR 114V5015-4

REF DES	ITEM NO.	REF DES	ITEM NO.	REF DES	ITEM NO.	REF DES	ITEM NO.	REF DES	ITEM NO.	REF DES	ITEM NO.	REF DES	ITEM NO.
AR301	1	C301	5	C314	11	R307	20	R319	23	R332	31	R342	28
CR301	2	C304	6	Q301	12	R308	21	R323	23	R333	32	T301	35
CR302	2	C305	6	Q302	13	R309	18	R324	24	R334	26	T302	35
CR303	2	C306	6	Q303	14	R310	18	R325	25	R335	33	T303	35
CR304	2	C307	7	R301	15	R311	18	R326	26	R336	33		
CR305	2	C308	7	R302	16	R312	22	R327	26	R337	27		
CR306	2	C309	7	R303	17	R313	22	R328	27	R338	27		
CR307	2	C310	8	R304	18	R316	18	R329	28	R339	34		
CR308	3	C312	10	R305	18	R317	22	R330	29	R340	34		
CR309	4	C313	11	R306	18	R318	23	R331	30	R341	34		

EL2BC014

Figure 5. Miscellaneous Component A Card 114E3049-40,-45,-46,-50, 114V5015-2, -4 (Sheet 4 of 4)

SECTION II

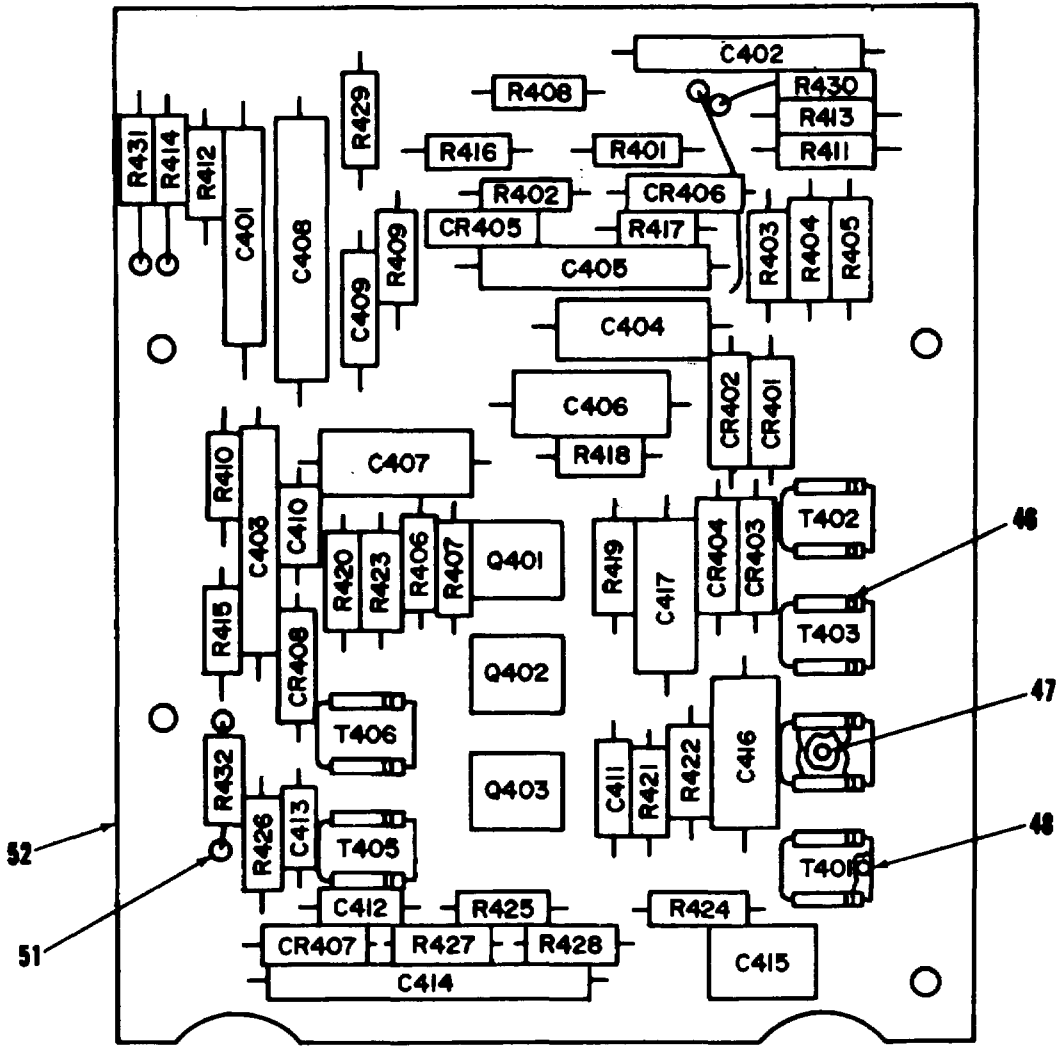
TM 11-1680-201-30P

(1) ILLUSTRATION		(2)	(3)	(4)	(5)	(6) DESCRIPTION	(7)	(8)
(a) FIG NO.	(b) ITEM NO.	SMR CODE	NATIONAL STOCK NUMBER	FSCM	PART NUMBER	USABLE ON CODE	U/M	QTY INC IN UNIT
						GROUP 05 MISCELLANEOUS COMPONET A CARD 11413049-40,-45,-46.-50, 114V5015-2,-4		
5	1	PAFZZ	6425-00-179-1684	15818	809BE	AMPLIFIER TEST USED ON 114V5015-2 & 114E3030-49 2ES	EA	1
5	1	PGFZZ	5962-01-077-2379	07263	UA741RHM	MICROCIRCUIT,LINEA USED ON 114V5015-4 & 114B3030-492ES	EA	1
5	2	PAFZZ	5961-00-106-6991	01295	IN4004	SEMICONDUCTOR DEVICUSED ON 114E3049-40,-45,114V501-2,-4 & 114E3030-49,-42,AND -40 2ES,2EC	EA	7
5	3	PAFZZ	5961-00-847-5508	81349	JANIN0245	DIODE USED ON 114V5015-2 & 114E303492ES	EA	1
5	4	PAFZZ	5961-00-855-2786	81349	JANIN30230	SEMICONDUCTOR DEVIC USED ON 114V5015-2 & 114V3030- 49.2ES	EA	1
5	5	PAFZZ	910-00-154-0547	81349	M39003-01-3032	CAPACITOR,FIXED,ELE USED ON 114V5015-2,-4 & 114E303049 2ES	EA	1
5	5	PAFZZ		56289	1090406C2030F2	CAPACITOR,PAPER USED ON 114E3049-40,-45,-46,-50 & 114E3030- 47,-43,-42,-40 5FT,2EC	EA	1
5	6	PAFZZ		99515	DE1-154	CAPACITOR,PAPER USED ON 114E3030-49-47,-43,-42,-40	EA	3
5	7	PAFZZ	5910-00-887-7743	05397	KR068J50K	CAPACITOR,FIXED,ELE USED ON 1143049-46,-47,114V5015-2,-4 & 114E3030-49,-47,-43	EA	3
5	8	XDFZZ	5910-00-784-5433	05397	KRINL20KNS	CAPACITOR,FIXED,ELE USED ON 114V5015-2,-4 & 114E3030-49 2ES	EA	1
5	9	PAFZZ	5910-01-010-6474	81349	C14BX223N	CAPACITOR,FIXED,CER USED ON 114V5015-2 & 114E3030-49.2ES	EA	1
5	10	PAFZZ	5910-00-777-6897	81349	CS138C475K	CAPACITOR,FIXED,ELE USED ON 114V5015-2,-4 & 114E303049 2ES	EA	1
5	11	PAFZZ	5910-00-783-5268	81349	CS138G226X	CAPACITOR,FIXED,ELE USED ON 114V5015-2,-4 & 114E303049 2ES	EA	1
5	12	PAFZZ	5961-00-853-2601	81349	JANZN1893	TRANSISTOR USED ON 114V5015-2,-4 & 114E3030-49 2ES	EA	1
5	13	PAFZZ	5961-00-252-1577	81349	JANZN294.6	TRANSISTOR USED ON 114V5015-2,-4 & 114E3030-49 2ES	EA	1
5	14	PAFZZ	5961-00-949-6563	81349	2N2432	TRANSISTOR USED ON 114V5015-2,-4 & 114E3030-49 2ES	EA	1
5	15	PAFZZ	5905-00-111-4858	81349	RCR20G471JS	RESISTOR,FIXED COMP USED ON 114E3049-50, 114V5015-2.-4 & 114E3030-49,-47 2ES,5FT	EA	1
5	16	PAFZZ		81349	RCR20G411JP	RESISTOR,FIXED,COMP USED ON 114E3049-40,-45,-46 & 114E3030- 43,-42,-40 2EC	EA	1
5	11	PAFZZ	5905-00-111-4734	81349	RCR20G470JP	RESISTOR,FIXED COMP USED ON 114E3049-50, 114V5015-2.-4 & 114E3030-49,-47 2ES,5FT	EA	1
5	16	PAFZZ	5905-00-104-8350	81349	RCR2DG221JP	RESISTOR,FIXED,COMP USED ON 114E3049-40,-45,-46 & 114E3030- 43,-42,-40 2EC	EA	1
5	17	PAFZZ	5905-00-114-5366	81349	RCR20G132JS	RESISTOR,FIXED COMP USED ON 114E3049-50, 114V5015-2.-4 & 114E3030-49.-47 2ES,5FT	EA	1
5	17	PAFZZ	5905-00-141-1168	81349	RCR20G222JS	RESISTOR,FIXED.COMP USED ON 11E3049-46 & 114E3030-43.2ECEA	3	
5	17	PAFZZ		81349	RCR20G222FP	RESISTOR,FIXED,COMP USED ON 114E3049-40,-45 & 114E3030-42,-40 2EC	EA	3
5	18	PAFZZ	505-00-451-7414	81349	RNC60K2003FS	RESISTOR,FIXED,FILM USED ON ALL PCB & 114E3030-49,-47,-43,- 42,-40	EA	6
5	19	PAFZZ	5905-00-104-8335	81349	RCR20G124JS	RESISTOR,FIXED,FILM USED ON ALL PCB & 114E3030-49,-47,-43,- 42,-40	EA	1
5	20	PAFZZ	5905-00-114-5407	81349	RCR20G271JS	RESISTOR,FIXED,FILM USED ON ALL PCB & 114E3030-49,-47,-43,- 42,-40	EA	1
5	21	PAFZZ	5905-00-111-4735	81349	RCR20G913JS	RESISTOR,FIXED,COMP USED ON 114E3049-50, 114V5015-2,-4 114E330-49,-47 2ES,5FT	EA	1

SECTION II

TM 11-1680-201-30P

(1) ILLUSTRATION		(2)	(3)	(4)	(5)	(6) DESCRIPTION	(7)	(8)
(a) FIG NO.	(b) ITEM NO.	SMR CODE	NATIONAL STOCK NUMBER	FSCM	PART NUMBER	USABLE ON CODE	U/M	QTY INC IN UNIT
5	21	PAFZZ	5905-00-104-8336	81349	RCR20G104JS	RESISTOR, FIXED, COMP USED ON 114E3049-40,-45,-46 & 114E3030-43,-42,-40 2EC	EA	1
5	22	PAFZZ	5905-00-104-5756	81349	RCR20G10SJS	RESISTOR, FIXED, COMP USED ON ALL PCB & 114E3030-49,-47,-43,-42,-40	EA	3
5	23	PAFZZ	590-00-114-5425	81349	RCR20G362JS	RESISTOR, FIXED, COMP USED ON ALL PCB & 114E3030-49,-47,-43,-42,-40	EA	3
5	24	PAFZZ	5905-00-141-1130	81349	RCR20G272JS	RESISTOR, FIXED, COMP USED ON 114V5015-2,-4 & 114E3030-49.2ES	EA	1
5	25	PAFZZ	5905-00-689-1290	81349	RCR05G512JP	RESISTOR, FIXED, COMP USED ON 114V5015-2,-4 & 114E3030-49.2ES	EA	2
5	26	PAFZZ	5905-00-568-7833	81349	RCR05G203JP	RESISTOR, FIXED, COMP USED ON 114V5015-2,-4 & 114E3030-49.2ES	EA	2
5	27	PAFZZ	5905-00-035-5065	91637	RS2-100R0B	RESISTOR, FIXED, WIRE USED ON 114V5015-2,-4 & 114E3030-49.2ES	EA	3
5	28	PAFZZ	5905-00-451-7410	81349	RNC55H6192FS	RESISTOR, FIXED, FILM USED ON 114V5015-2,-4 & 114E3030-49.2ES	EA	1
5	29	PAFZZ	5905-00-189-3637	81349	RNC65H7503FS	RESISTOR, FIXED, FILM USED ON 114V5015-2,-4 & 114E3030-49.2ES	EA	2
5	30	PAFZZ	5905-00-466-1219	81349	RCR05G823JP	RESISTOR, FIXED, COMP USED ON 114V5015-2,-4 & 114E3030-49.2ES	EA	1
5	31	PAFZZ	5905-00-834-2969	81349	RN60C2611F	RESISTOR, FIXED, FILM USED ON 114V5015-2,-4 & 114E3030-49.2ES	EA	1
5	32	PAFZZ	5905-00-401-7426	81349	RCR05G272JP	RESISTOR, FIXED, COMP USED ON 114V5015-2,-4 & 114E3030-49.2ES	EA	1
5	33	PAFZZ		81349	RCR32G132JP	RESISTOR, FIXED, COMP USED ON 114V5015-2,-4 & 114E3030-49.2ES	EA	2
5	34	PAFZZ	5905-00-061-5359	81349	RN65C9093F	RESISTOR, FIXED, FILM USED ON 114V5015-2,-4 & 114E3030-49.2ES	EA	3
5	35	PAFZZ	5950-00-648-4412	80223	DOT23	TRANSFORMER, AUDIO F USED ON ALL PCB & 114E3030-49,-47,-43,-42,-40	EA	3
5	36	PAFZZ	5999-00-909-0522	81205	BACP50A4	MOUNTING PAD, ELECTR USED ON 114V5012-2 & 114E3030-49.2ES	EA	1
5	37	PAFZZ	5940-00-715-4638	80223	DOTSH	SHIELD, COIL USED ON PCB & 114E3030-49,-47,-43,-42,-40	EA	3
5	38	PAFZZ	5340-00-826-6993	99378	100-239-0	CLIP, SPRING TENSION USED ON ALL PCB & 114E3030-49,-47,-43,-42,-40	EA	3
5	39	PAFZZ		71279	2099-02-08	RIVET USED ON ALL PCB & 114E3030,-49,-47,-43,-42,-40	EA	3
5	40	XBFZZ		71279	1247-11	SPACER, SLEEVE USED ON 114V5015-2,-4 & 114E3030-49.2ESE	EA	4
5	40	PAFZZ	5940-00-082-4869	81349	SE12XC01	STANDOFF USED ON 114E3049-40,-45,-46,-50 & 114E3030-47,-43,-42,-40 5FT, 2EC	EA	12
5	41	PAFZZ	5999-00-738-6013	81205	BACP50A3	MOUNTING PAD, ELECTR USED ON 114V5015-2 & 114E3030-49.2ES	EA	1
5	42	XAFZZ		77272	114V5014-1	PRINTED CIRCUIT BOA USED ON 114V5015-2,-4 & 14E3030-49.2ES	EA	1
5	42	XAFDH		77272	114E3031-44	PRINTED WIRING BOA USED ON 114E3049-46,-50 & 114E3030-47,435FT, 2EC	EA	1
5	43	PAFZZ	5910-01-119-4333	56289	109D406C2075T-2	CAPACITOR, FIXED, ELE USED ON 114E3049-40,-45 & 114E3030-42,402EC	EA	2
5	44	XAFZZ		77272	114E3031-38	BOARD, PRNTD CKT USED ON 114E3049-40 & 114E3030-402EC	EA	1
5	44	XAFZZ		77272	114E3031-43	BOARD, PRNTD CKT USED ON 114E3049-45 & 114E3030-422EC	EA	1

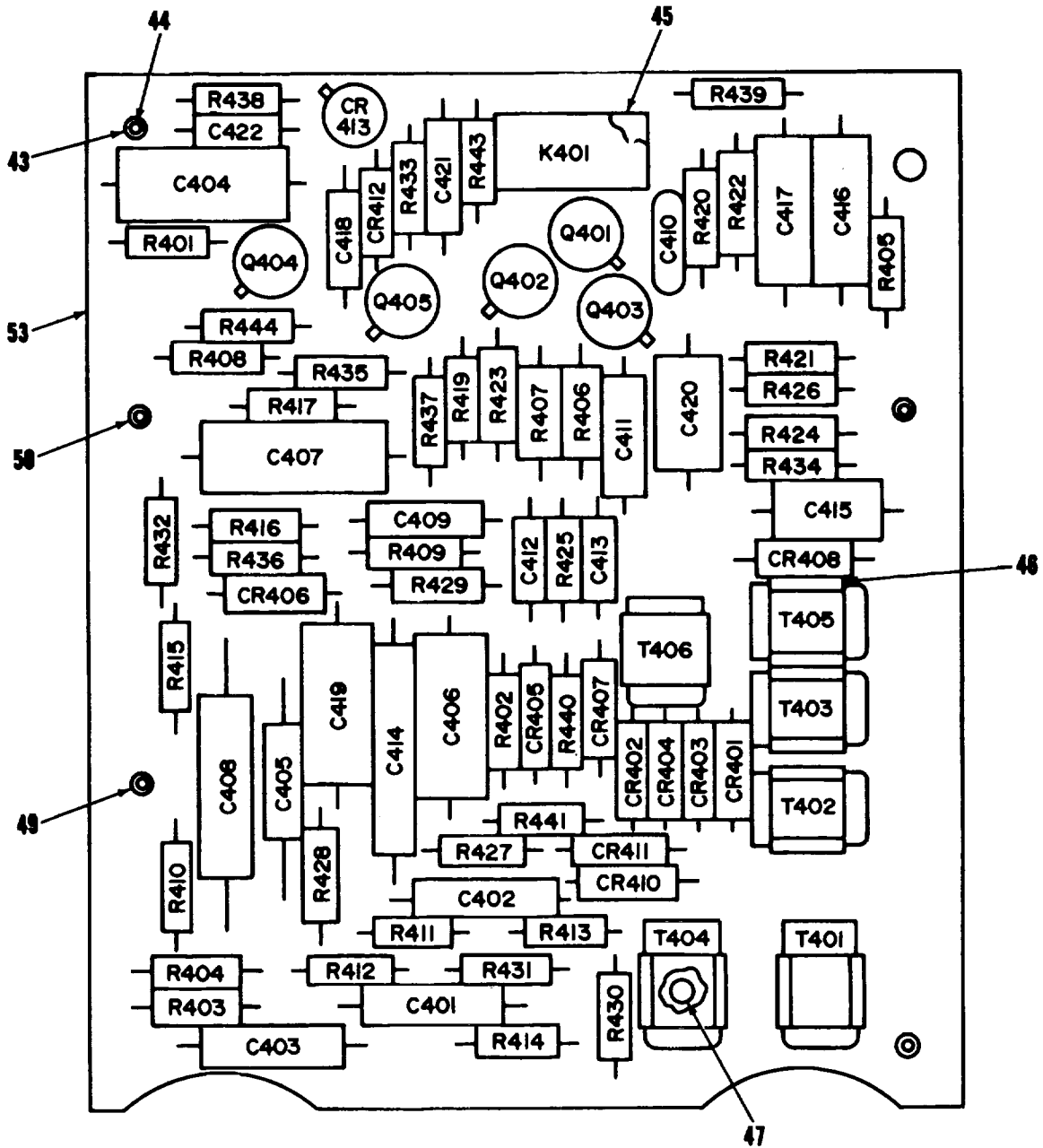


LEGEND FOR 114V5003-3-4-5

REF DES	ITEM NO.	REF DES	ITEM NO.	REF DES	ITEM NO.	REF DES	ITEM NO.	REF DES	ITEM NO.	REF DES	ITEM NO.	REF DES	ITEM NO.
CR401	1	C403	3	C413	8	R403	18	R413	25	R423	17	T401	40
CR402	1	C404	4	C414	10	R404	19	R414	26	R424	30	T402	41
CR403	1	C405	5	C415	11	R405	20	R415	25	R425	31	T403	42
CR404	1	C406	4	C416	4	R406	21	R416	26	R426	31	T404	42
CR405	1	C407	4	C417	4	R407	21	R417	20	R427	32	T405	41
CR406	1	C408	6	Q401	14	R408	22	R418	27	R428	32	T406	41
CR407	1	C409	7	Q402	15	R409	23	R419	22	R429	26		
CR408	1	C410	8	Q403	14	R410	24	R420	29	R430	34		
C401	3	C411	7	R401	17	R411	24	R421	29	R431	34		
C402	3	C412	9	R402	17	R412	24	R422	29	R432	34		

EL2BC016

Figure 6. Miscellaneous Component B Card 114V5003-3,-4, -5, -7, -8
(Sheet 1 of 2)



LEGEND FOR 114V5003-7-8

REF DES	ITEM NO.	REF DES	ITEM NO.	REF DES	ITEM NO.	REF DES	ITEM NO.	REF DES	ITEM NO.	REF DES	ITEM NO.	REF DES	ITEM NO.	REF DES	ITEM NO.
CR401	1	CR413	2	C411	7	C422	9	R405	20	R418	28	R428	32	R439	35
CR402	1	C401	3	C412	8	K401	13	R408	21	R417	29	R429	26	R440	36
CR403	1	C402	3	C413	9	Q401	14	R407	21	R419	28	R430	34	R441	37
CR404	1	C403	3	C414	10	Q402	15	R408	22	R420	29	R431	34	R443	38
CR405	1	C404	4	C415	11	Q403	14	R409	23	R421	29	R432	34	R444	38
CR406	1	C405	5	C418	4	Q404	16	R410	24	R422	29	R433	22	T401	40
CR407	1	C406	4	C417	4	Q405	18	R411	24	R423	17	R434	22	T402	41
CR408	1	C407	4	C418	12	R401	17	R412	24	R424	30	R435	22	T403	42
CR410	1	C408	6	C419	4	R402	17	R413	25	R425	31	R436	17	T404	42
CR411	1	C409	7	C420	11	R403	18	R414	25	R426	31	R437	17	T405	41
CR412	1	C410	8	C421	12	R404	19	R415	25	R427	33	R438	29	T406	41

EL2BC045

Figure 6. Miscellaneous Component B Card 114V5003-3, -4, -7, -8
(Sheet- 2 of 2)

SECTION II

TM 11-1680-201-30P

(1) ILLUSTRATION		(2)	(3)	(4)	(5)	(6) DESCRIPTION	(7)	(8)
(a) FIG NO.	(b) ITEM NO.	SMR CODE	NATIONAL STOCK NUMBER	FSCM	PART NUMBER	USABLE ON CODE	U/M	QTY INC IN UNIT
						GROUP 06 MISCELLANEOUS CONPONET 8 CARD 114V5003-3,-4,-5,-7,-8		
6	1	PAFZZ	5961-00-087-6047	81349	1N4608	SEMICONDUCTOR DEVIC USED ON 114V5003-7,-8 AND 114E3030-49,-472ES,5FT	EA	11
6	2	PAFZZ	5961-00-964-6808	03877	2N887	SEMICONDUCTOR DEVIC USED ON 114V5003-7,-8 AND 114E3030-49,-472ES	EA	1
6	3	PAFZZ	5910-00-681-3621	24446	29F408	CAPACITOR, FIXED, ELE USED ON 114E3030-49,-47,-43,-42,-40EA	3	
6	4	PAFZZ		06001	150D476X003552	CAPACITOR, SOLID USED ON 114V5003-7,-8 AND 114E3030-49,-472ES,5FT	EA	6
6	5	PAFZZ	5910-00-655-0376	01526	29F56G4	CAPACITOR, FIXED, ELE USED ON 114V5003-3,-4,-5,-7,-8 AND 114E3030-49,-47,-43,-42,-40 2ES,5FT	EA	1
6	5	PAFZZ	5910-00-339-7491	61349	MS39006/10-2415	CAPACITOR, FIXED, ELE USED ON 114V5003-3,-4,-5 AND 114E3030-40,-42,-43(ALT FOR 29F565C4) 2EC	EA	1
6	6	PAFZZ		05079	HR3.9-450C4LP1	CAPACITOR, SOLID USED ON 114V5003-3,-4,-5,-7,-8 AND 114E3030-49,-47,-43,-42,-40	EA	1
6	7	PAFZZ	5910-00-007-2004	81349	N39003/01-3068	CAPACITOR, FIXED, ELE USED ON 114V5003-3,-4,-5,-7,-8 AND 114E3030-49,-43,-42,-43,-42,-40	EA	2
6		PAFZZ	5910-00-241-6513	71590	DD102	CAPACITOR, FIXED, ELE USED ON 114V5003-3,-4,-5,-7,-8 AND 114E3030-49,-43,-42,-43,-42,-40	EA	1
6	9	PAFZZ	5910-00-104-0144	56289	150D105X9035AS	CAPACITOR, FIXED, ELE USED ON 114V5003-7,-8 AND 1143030-47,-49-49 2ES,5FT	EA	3
6	10	PAFZZ		05397	K5N15DNS	CAPACITOR, SOLID USED ON 114V5003-7,-8 AND 114E3030-47,-42ES,5FT	EA	1
6	10	PAFZZ		05397	K7RSN6DNS	CAPACITOR, SOLID USED ON 114V5003-3,-4,-5 AND 114E3030-43,-42,-40 2EC	EA	1
6	11	PAFZZ		99515	DE1-154	CAPACITOR, PAPER USED ON 1145003-7,-8 AND 114E3030-49,-472ES,5FT	EA	2
6	12	PAFZZ		06001	150D685X003558	CAPACITOR, PAPER USED ON 114V5003-7,-8 AND 114E3030-49,-472ES,5FT	EA	1
6	13	PAFZZ	5945-00-8-9106	99928	SRA2C24B	RELAY, ELECTRONAGNET USED ON 114V5003-7,-8 AND 114E3030-49,-472ES,5FT	EA	1
6	14	PAFZZ	5961-00-752-0150	81349	2N697	TRANSISTOR USED ON 114V5003-4,-5,-6,-7,-8 AND 114E33030-49-47,-43,-42,-40	EA	2
6	15	PAFZZ	5961-00-098-7835	14933	L00899	TRANSISTOR USED ON 114V5000-3,-4,-5,-7,-8 AND 114E3030-49,-47,-43,-42,-40	EA	1
6	16	PAFZZ		81349	JAN2N652A	TRANSISTOR USED ON 114V5003-7,-8 AND 114E3030-49,-472ES,5FT	EA	2
6	17	PAFZZ	5905-00-110-0196	81349	RCR20G102JS	RESISTOR, FIXED, COMP USED ON 114V5003-7,-8 AND 114E3030-49,-47 2ES,5FT	EA	5
6	18	PAFZZ	5905-00-141-0597	81349	RCR20G102JS	RESISTOR, FIXED, COMP USED ON 114V5003-7,-8 AND 114E3030-49,-47 2ES,5FT	EA	1
6	18	PAFZZ	5905-00-116-8557	81349	RCR20G14JP	RESISTOR, FIXED, COMP USED ON 114V5003-4,-5 AND 114E3030-43,-42,-402EC	EA	1
6	19	PAFZZ	5905-00-106-1273	81349	RCR20G153JS	RESISTOR, FIXED, COMP USED ON 114V5003-7,-8 AND 114E3030-49,-43,-42,-40 2ES,5FT	EA	1
6	19	PAFZZ	5S05-00-114-5441	81349	RCR20G563JP	RESISTOR, FIXED, COMP USED ON 114V5003-4,-5 AND 114E3030-43,-42,-402EC	EA	1
6	20	PAFZZ	5905-00-116-8570	81349	RCR20G912JS	RESISTOR, FIXED, COMP USED ON 114V5003-7,-8 AND 114E3030-49,-47 2ES,5FT	EA	1
6	21	PAFZZ	5905-00-051-8005	81349	RN60D4022F	RESISTOR, FIXED, COMP USED ON 114V5003-3,-4,-7,-8 AND 114E3030-49,-47,-42,-40	EA	2

SECTION II

TM 11-1680-201-30P

(1) ILLUSTRATION		(2)	(3)	(4)	(5)	(6) DESCRIPTION	(7)	(8)
(a) FIG NO.	(b) ITEM NO.	SMR CODE	NATIONAL STOCK NUMBER	FSCM	PART NUMBER	USABLE ON CODE	U/M	QTY INC IN UNIT
6	21	PAFZZ	5905-00-903-2434	81349	RN60D4532F	RESISTOR, FIXED, FILM USED ON 114V5003-5 AND 114E3030-43 2EC	EA	2
6	21	PAFZZ	5905-00-141-0597	81349	RCR20G513JS	RESISTOR, FIXED, COMP USED ON 114V5003-5 AND 143030-43	EA	1
6	22	PAFZZ	5905-00-935-B539	81349	RCR20G202JS	RESISTOR, FIXED, COMP USED ON 114V5003-7,-8 AND 114E3030-49,- 47 2ES,5FT	EA	4
6	22	PAFZZ	5905-00-110-0310	81349	RCR20G392JS	RESISTOR, FIXED, FILM USED ON 114VS003-3,-4,-5 AND 114E3030- 43,-42,-40 2EC	EA	2
6	23	PAFZZ	5905-00-141-0723	81349	RCR20G622JS	RESISTOR, FIXED, COMP USED ON 114V5003-7,-8 AND 114E3030-49,-EA 47(SELECT AT TEST)2ES,5FT	EA	1
6	23	PAFZZ	5905-00-141-0598	81349	RCR20G561JS	RESISTOR, FIXED, COMP USED ON 114V5003-7,-8 AND 114E3030-49,- 47(SLECT AT TEST)2ES,5FT	EA	1
6	23	PAFZZ	5905-00-104-8349	81349	RCR20G511JP	RESISTOR, FIXED, COMP USED ON 114V5003-7,-8 AND 114E3030-49,- 47(SLECT AT TEST)2ES,5FT	EA	1
6	23	PAFZZ	5905-00-111-4858	81349	MCR20G471JS	RESISTOR, FIXED, COMP USED ON 114V5003-3,-4,-5,-7,-8AND 114E3030-49,-47,-43,-42,-40(SELECT AT TEST)	EA	1
6	23	PAFZZ	5905-00-121-"922	81349	RCR20G431JS	RESISTOR, FIXED, COMP USED ON 114V5003-3,-4,-5,-7,-8AND 114E3030-49,-47,-43,-42,-40(SELECT AT TEST)	EA	1
6	23	PAFZZ	5905-00-116-8562	81349	RCR20G361JS	RESISTOR, FIXED, COMP USED ON 114V5003-3,-4,-5,-7,-8AND 114E3030-49,-47,-43,-42,-40(SELECT AT TEST)	EA	1
6	23	PAFZZ	5905-00-104-8334	81349	RCR20G331JP	RESISTOR, FIXED, COMP USED ON 114V5003-3,-4,-5,-7,-8 AND114E3030-49,-47,-43,-42,-40(SELECT AT TEST)	EA	1
6	23	PAFZZ	5905-00-935-8541	81349	RCR20G301JP	RESISTOR, FIXED, COMP USED ON 114V5003-3,-4,-5,-7,-8AND 114E3030-49,-47,-43,-42,-40(SELECT AT TEST)2EC	EA	1
6	23	PAFZZ	5905-00-114-5407	81349	RCR20G227JS	RESISTOR, FIXED, COMP USED ON 114V5003-3,-4,-5,-7,-8AND 114E3030-49,-47,-43,-42,-40(SELECT AT TEST)	EA	1
6	23	PAFZZ	5905-00-114-5399	81349	RCR20G241JS	RESISTOR, FIXED, COMP USED ON 114V5003-3,-4,-5,-7,-8AND AND114E3030-49,-47,-43,-42,-40(SELECT AT TEST)	EA	1
6	23	PAFZZ	5905-00-104-8350	81349	RCR20G221JS	RESISTOR, FIXED, COMP USED ON 114V5003-3,-4,-5,-7,-8AND AND114E3030-49,-47,-43,-42,-40(SELECT AT TEST)	EA	1
6	23	PAFZZ	5905-00-813-5892	81349	RCR20G391JP	RESISTOR, FIXED, COMP USED ON 114V5003-3,-4,-5,-7,-8AND 114E3030-49,-47,-43,-42,-40(SELECT AT TEST)	EA	1
6	24	PAFZZ	5905-00-233-7141	81349	RNC60K2741FS	RESISTOR, FIXED, COMP USED ON 114V5003-3,-4,-5,-7,-8 AND114E3030-49,-47,-43,-42,-40	EA	3
6	25	PAFZZ	5905-00-025-5987	81349	RNC60K2491FS	RESISTOR, FIXED, COMP USED ON 114V5003-3,-4,-5,-7,-8AND 114E3030-49,-47,-43,-42,-40(SELECT AT TEST)	EA	3
6	26	PAFZZ	5905-00-111-4734	81349	RCR20G470JP	RESISTOR, FIXED, COMP USED ON 114V5003-3,-7,-8AND 114E3030-49,- -47,-432ES,5FT	EA	2
6	26	PAFZZ	5905-00-131-9395	81349	RCR20G131JP	RESISTOR, FIXED, COMP USED ON 114V5003-3,-4,-5AND 114E3030-43, -42,-402EC	EA	2
6	27	PAFZZ	5905-00-116-8569	81349	RCR20G821JP	RESISTOR, FIXED, COMP USED ON 114V5003-3,-4,-5AND 114E3030-43, -42,-402EC	EA	1
6	28	PAFZZ	5905-00-110-0310	81349	RCR20G392JS	RESISTOR, FIXED, COMP USED ON 114V5003-7,-8 AND114E3030-49,- 472ES,5FT	EA	1
6	29	PAFZZ	5905-00-141-0591	81349	RCR20G103JS	RESISTOR, FIXED, COMP USED ON 114V5003-7,-8 AND114E3030-49,- 472ES,5FT	EA	5
6	30	PAFZZ	5905-00-111-4741	81349	RCR20G242JS	RESISTOR, FIXED, COMP USED ON 114V5003-3,-4,-5,-7,-8AND 114E3030-49,-47,-43,-42,-40	EA	1
6	31	PAFZZ	5905-00-116-8565	81349	RCR20G623JS	RESISTOR, FIXED, COMP USED ON 114V5003-3,-4,-5,-7,-8AND AND114E3030-49,-47,-43,-42,-40	EA	2
6	32	PAFZZ	5905-00-762-3597	81349	RN60D7502F	RESISTOR, FIXED, COMP USED ON 114V5003-7,-8 AND114E3030-49,- 472ES,5FT	EA	1

SECTION II

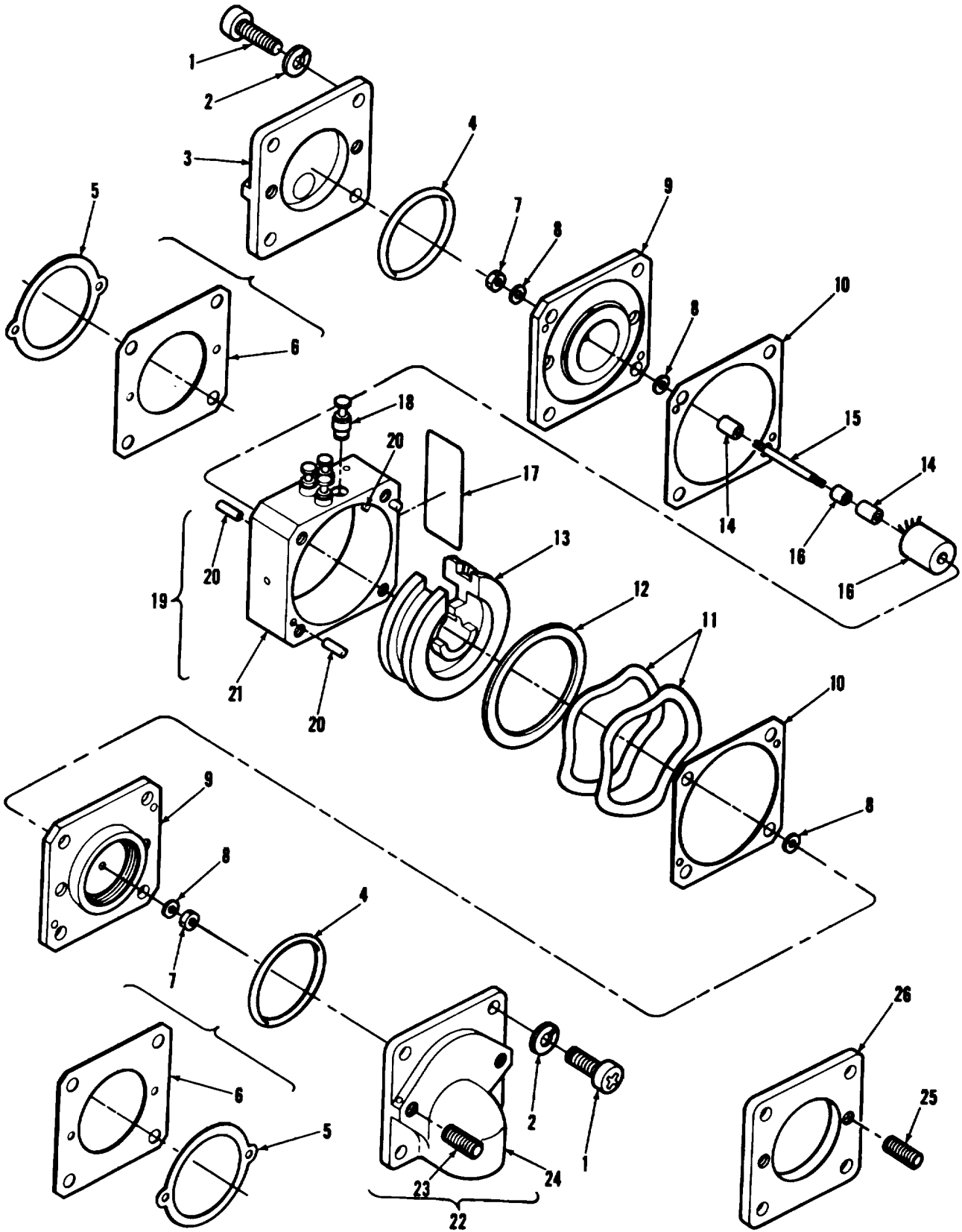
TM 11-1680-201-30P

(1) ILLUSTRATION		(2) SMR CODE	(3) NATIONAL STOCK NUMBER	(4) FSCM	(5) PART NUMBER	(6) DESCRIPTION USABLE ON CODE	(7) U/M	(8) QTY INC IN UNIT
(a) FIG NO.	(b) ITEM NO.							
6	33	PAFZZ	5905-00-780-5713	81349	RN60D6492F	RESISTOR, FIXED, FILM USED ON 114V5003-7,-8 AND 114E30303-49-47 2ES, 5FT	EA	1
6	34	PAFZZ	5905-00-141-1165	81349	RRCR20G682JS	RESISTOR, FIXED, COMP USED ON 114V5003-3,-4,-5,-7,-8 AND 114E3030-49,-47,-43,-42,-40	EA	3
6	35	PAFZZ	5905-00-813-5892	81349	RRCR20G391JP	RESISTOR, FIXED, COMP USED ON 114V5003-7,-8 AND 114E3030-49,- 47 5FT, 2EC	EA	1
6	36	PAFZZ	5905-00-426-7095	81349	RNC60K1002FS	RESISTOR, FIXED, FILM USED ON 114V5003-7,-8 2ES	EA	1
6	37	PAFZZ	5905-00-404-8782	81349	RNC01K2432FS	RESISTOR, FIXED, COMP USED ON 114V5003-7,-8 AND 114E3030-49,- 47 2ES, 5FT	EA	1
6	38	PAFZZ	5905-00-114-5399	81349	RRCR10G241JS	RESISTOR, FIXED, COMP USED ON 114V5003-7,-8 AND 114E3030-49,- 47	EA	1
6	38	PAFZZ	5905-00-126-696	81349	RRCR07G751JS	RESISTOR, FIXED, COMP USED ON 114V5003-7,-8 AND 114E3030-49,- 47 (IF REQUIRED SELECT AT TEST) 2ES, 5FT	EA	1
6	38	PAFZZ	5905-00-141-T723	81349	RRCR21G621JS	RESISTOR, FIXED, COMP USED ON 114V5003-7,-8 AND 114E3030-49,- 47 (IF REQUIRED SELECT AT TEST) 2ES, 5FT	EA	1
6	38	PAFZZ	5905-00-106-9352	81349	RRCR20G112JS	RESISTOR, FIXED, COMP USED ON 114V5003-7,-8 AND 114E3030-49,- 47 (IF REQUIRED SELECT AT TEST) 2ES, 5FT	EA	1
6	38	PAFZZ	5905-00-141-0592	81349	RRCR20G122JS	RESISTOR, FIXED, COMP USED ON 114V5003-7,-8 AND 114E3030-49,- 47 (IF REQUIRED SELECT AT TEST) 2ES, 5FT	EA	1
8	38	PAFZZ		81349	RRCR20F152JS	RESISTOR, FIXED, COMP USED ON 114V5003-7,-8 AND 114E3030-49,- 47 (IF REQUIRED SELECT AT TEST) 2ES, 5FT	EA	1
6	38	PAFZZ	5905-00-141-0593	81349	RRCR20G182JS	RESISTOR, FIXED, COMP USED ON 114V5003-7,-8 AND 114E3030-49,- 47 (IF REQUIRED SELECT AT TEST) 2ES, 5FT	EA	1
6	38	PAFZZ	5905-00-141-1168	81349	RRCR20G222JS	RESISTOR, FIXED, COMP USED ON 114V5003-7,-8 AND 114E3030-49,- 47 (IF REQUIRED SELECT AT TEST) 2ES, 5FT	EA	1
6	38	PAFZZ	5905-00-141-1130	81349	RRCR20G272JS	RESISTOR, FIXED, COMP USED ON 114V5003-7,-8 AND 114E3030-49,- 47 (IF REQUIRED SELECT AT TEST) 2ES, 5FT	EA	1
6	38	PAFZZ	5905-00-104-8348	81349	RRCR20G332JS	RESISTOR, FIXED, COMP USED ON 114V5003-7,-8 AND 114E3030-49,- 47 (IF REQUIRED SELECT AT TEST) 2ES, 5FT	EA	1
6	39	PAFZZ		81349	RC10G393JP	RESISTOR, FIXED, COMP USED ON 114V5003-7,-8 AND 114E3030-49,- 47 2ES, 5FT	EA	1
6	40	PAFZZ	5950-00-799-4163	30003	247AS-C1526	TRANSFORMER, AUDIO F USED ON 114V5003-3,-4,-5,-7,-8 AND 114E3030-49,-47,-43,-42,40	EA	1
6	41	PAFZZ	5950-00-851-4221	80223	DOT25	TRANSFORMER, AUDIO F USED ON 114V5003-3,-4,-5,-7,-8 AND 114E3030-49,-47,-43,-42,40	EA	3
6	42	PAFZZ	5950-00-64-4412	80223	DOT23	TRANSFORMER, AUDIO F USED ON 114V5003-3,-4,-5,-7,-8 AND 114E3030-49,-47,-43,-42,40	EA	1
6	43	PAFZZ	5365-00-050-7700	80205	NAS420D3-6	SPACER, SLEEVE USED ON 114V5003-8 AND 114E3030-49 2ES	EA	2
6	44	PAFZZ	5320-00-234-8574	96906	520470A3-5	RIVET, SOLID USED ON 114V5003-8 AND 114E3030-49 2ES	EA	2
6	45	PAFZZ	5999-00-481-5513	81349	H38527-6-01D	MOUNTING PAD, ELECTR USED ON 114V5003-8 AND 114E3030-49 2ES	EA	1
6	46	PAFZZ	5340-00-826-6993	99378	100-239-0	CLIP, SPRING TENSION USED ON 114V5003-7,-8 AND 114E3030-49,- 47 2ES, 5FT	EA	6
6	47	PAFZZ		71279	325-2099-02-08-0 01	RIVET USED ON 114V5003-7,-8 AND 114E3030-49-47 2ES, 5FT	EA	6
6	48	PAFZZ	5950-00-715-4638	80223	DOTSH	SHIELD, COIL USED ON 114V5003-3,-4,-5, AND 114E3030-43,42,-40 2EC	EA	6
6	49	PAFZZ		80205	350-1247-12-07-0 0	STANDOFF USED ON 114V5003-8 AND 114E3030-49 2ES	EA	1
6	50	PAFZZ		80205	350-1247-11-07-0 0	STANDOFF USED ON 114V5003-8 AND 114E3030-8 2ES	EA	3

SECTION II

TM 11-1680-201-30P

(1) ILLUSTRATION		(2)	(3)	(4)	(5)	(6)	(7)	(8)
(a) FIG NO.	(b) ITEM NO.	SMR CODE	NATIONAL STOCK NUMBER	FSCM	PART NUMBER	DESCRIPTION USABLE ON CODE	U/M	QTY INC IN UNIT
6	51	PAFZZ		88245	7602B7	EYELET USED ON 114V5003-3,-4,-S AND 114E3030-43,-42,-40 2EC	EA	7
6	52	XAFZZ		75272	114V5004-6	BOARD,PRNTD CKT USED ON 114V5003-4,-5 AND 114E303-43,-42 2EC	EA	1
6	52	XAFZZ		77272	114V5004-4	BOARD,PRNTD CKT USED ON 4V5003-3 AND 114E3030-402EC	EA	1
6	53	XAFZZ		77272	114V5004-8	BOARD,PRNTD CKT USED ON 114V5003-7,-8 ANOD 1143030-49,47 2ES,2EC	EA	1
6	53	XDFDD		77272	114V5004-7	PRINTED CIRCUIT BOA USED ON 114V5003-7,-8AND 114E3030-49, 472ES,5FT	EA	1
36/(37 blank)								



EL2BC017

Figure 7. Differential Pressure Sensor 114H5400-2,-3,-4

SECTION II

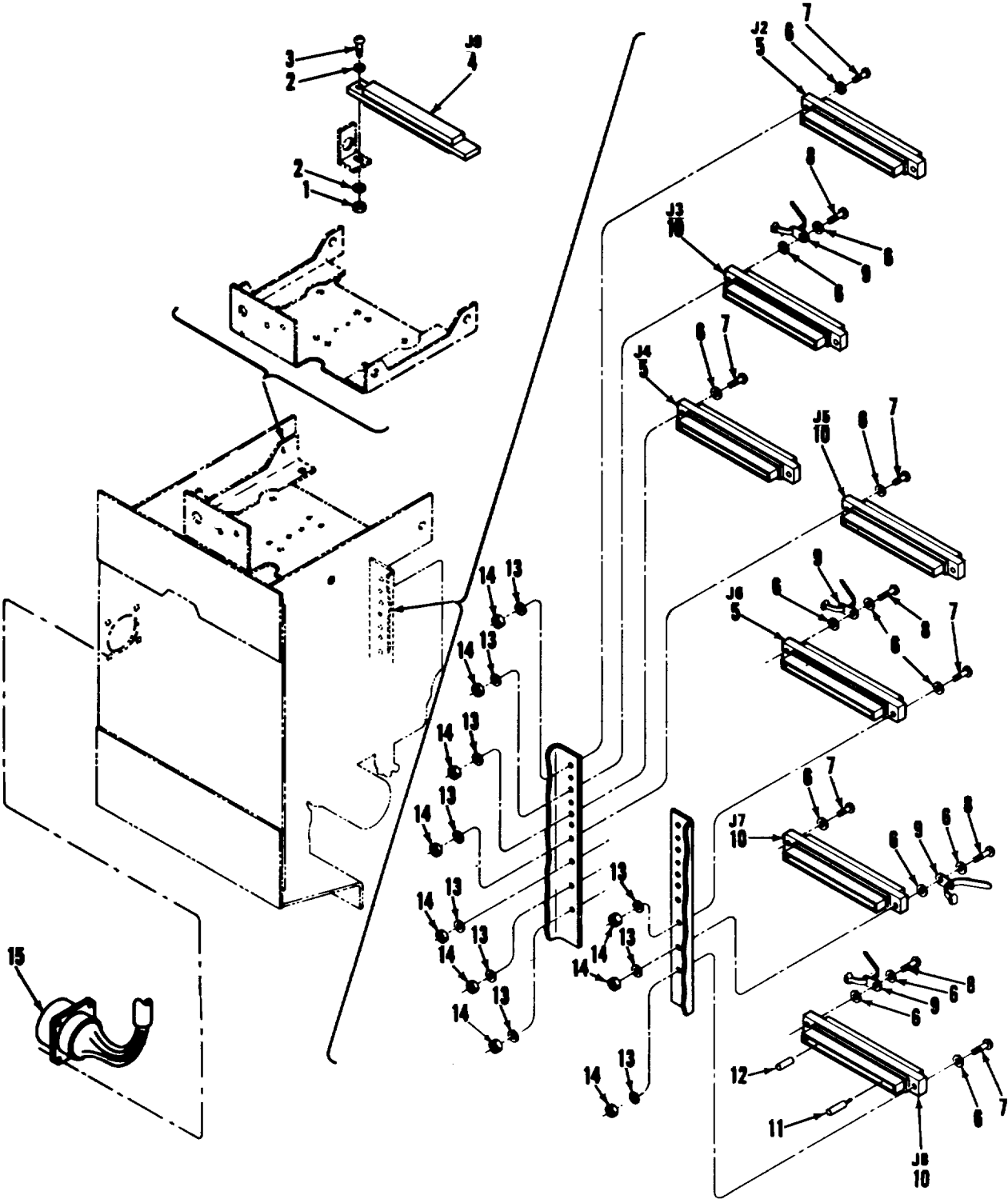
TM 11-5805-729-34P

(1) ILLUSTRATION		(2)	(3)	(4)	(5)	(6) DESCRIPTION	(7)	(8)
(a) FIG NO.	(b) ITEM NO.	SMR CODE	NATIONAL STOCK NUMBER	FSCM	PART NUMBER	USABLE ON CODE	U/M	QTY INC IN UNIT
						GROUP 07 DIFFERENTIAL PRESSURE SENSOR 114H5400-2,-3,-4		
7	1	PAFZZ	5305-00-984-6193	96906	MS535206-245	SCREW,MACHINE USED ON 114E3030-49,-47,-43,-42,-40(NAS1191C08P8N IS AN ALT FOR NS35206-245)	EA	8
7	2	PAFZZ	5310-00-045-3299	96906	MS35338-42	WASHER,LOCK USED ON 114E3030-49,-47,-43,-42,-40(NAS620-8L IS AN ALT FOR MS35338-42)	EA	8
7	3	XBFZZ		77272	114H1412-5	COVER USED ON 114E3030-49,-47,-43,-42,-40(U/W 114H5400-5)	EA	1
7	3	XBFZZ		77272	114H5401-2	COVER USED ON 114E3030-49,-47,-43,-42,-40(U/W 114H5400-2)(ALT FOR 114H5412-5)	EA	1
7	3	XBFZZ	5826-00-877-0618	77272	114H412-2	COVER,PRESSURE SENS USED ON 114E3030-49,-47,-43,-42,-40(U/W 114H5400-3,-4)(ALT FOR 114H5412-5)	EA	1
7	4	PAFZZ	5330-00-631-1341	96906	MS28775-021	PACKING,PREFORMED USED ON 114E3030-49,-47,-43,-42,-40(U/W 114H5412-5 AND 114V5400-5)	EA	2
7	5	PAFZZ	5330-00-350-4315	77272	114V5012-1	GASKET USED ON 114E3030-49,-47,-43,-42,-40(ALT FOR MS28775-021 WHEN U/W 114H5412-5 AND 114H5400-5)(PFD WHEN U/W 114H5401-1 OR 114H5412-1,-2)	EA	2
7	6	PAFZZ	5330-01-157-9849	77272	114H5409-1	GASKET USED ON 114E3030-49,-47,-43,-42,-40(ALT FOR 114V5012-1 WHEN U/W 114H5401-1,-2 OR 114H5412-1,-2)	EA	2
7	7	PAFZZ	5310-00-105-406	96906	MS35650-314	NUT,PLAIN,HEXAGON USED ON 114E3030-49,-47,-43,-42,-40	EA	2
7	8	PAFZZ	5310-00-804-0141	96906	MS15795-801	WASHER,FLAT USED ON 114E3030-49,-47,-43,-42,-40(114H5407-1 IS AN ALT FOR MS15795-801)	EA	4
7	9	PAFZZ	6615-00-953-2310	77272	114H5541-5	BELLOWS,PRESSURE USED ON 114E3030-49,-47,-43,-42,-40	EA	1
7	9	XAFZZ		77272	114H5541-1	TRANSMITTER USED ON 114E3030-49,-47,-43,-42,-40(ALT FOR 114HS541-5)	EA	2
7	10	PAFZZ	5330-01-157-9848	77272	114H5408-1	GASKET USED ON 114E3030-49,-47,-43,-42,-40 (ALT FOR 114V5012-1 WHEN U/W 114H5401-1,-2 DR 114H5412-1,-2	EA	2
7	11	PAFZZ	5310-00-969-8949	77272	114H5405-1	WASHER,SPRING TENS USED ON 114E3030-49,-47,-44,-42,-40	EA	2
7	12	PAFZZ	5365-00-781-4723	77272	VS15305C3126-24	SPACER,RING USED ON 114E3030-49,-47,-43,-40	EA	1
7	13	XBFHH	5826-00-877-0619	77272	114H5402-1	MOUNT,TRANSDUCER USED ON 114E3030-49,-47,-43,-42,-40	EA	1
7	14	PAFZZ	5365-00-824-2301	77272	114H5411-1	SPACER,SLEEVE USED ON 114E3030-49,-47,-43,-42,-40	EA	2
7	15	PAFZZ	6615-00-451-0591	77272	114H5410-3	SHAFT,STRAIGHT USED ON 114E3030-49,-47,-43,-42,-40	EA	1
7	15	PAFZZ	6615-00-781-4724	77272	114H5410-1	SHAFT,STRAIGHT USED ON 114E3030-49,-47,-43,-42,-40 (ALT FOR 114H5410-3)	EA	1
7	15	PAFZZ	6615-00-781-4724	17272	114H5410-2	SHAFT,STRAIGHT USED ON 114E3030-49,-47,-43,-42,-40 (ALT FOR 114H5410-3)	EA	1
7	16	PAFZZ	6615-00-781-0497	77272	114H5540-10	TRANSDUCER,DISPLACE USED ON 114E3030-49,-47,-43,-42,-40EA	EA	1
7	17	XBFZZ		77272	114H5406-1	PLATE,IDENT USED ON 114E3030-49,-47,-43,-42,-40	EA	1
7	18	PAFZZ	5940-00-727-4974	06413	305-04	TERMINAL,FEEDTHRU,I USED ON 114E3030-49,-47,-43,-42,-40 HF-148-1 IS AN ALT FOR 305-04)	EA	4
7	19	XBFZZ		77272	114H5403-4	HOUSING ASSY USED ON 114E3030-49,-47,-43,-42,-40	EA	1
7	19	XBFZZ		71272	114H5403-1	HOUSING ASSY USED ON 114E3030-49,-47,-43,-42,-40 (ALT FOR 114H5403-4)	EA	1
7	20	PAFZZ	5315-00-702-9650	96906	MS16555-602	PIN,STRAIGHT,HEA DLE USED ON 114E3030-49,-47,-43,-42,-40(NAS607-1-2P IS AN ALT FOR MS16555-602)	EA	6
7	21	XAFZZ		77272	114H5403-3	HOUSING USED ON 114E3030-49,-47,-43,-42,-40(U/W 114H5403-4)	EA	1
7	21	XBFZZ		77272	114H5403-2	HOUSING USED ON 114E3030-49,-47,-43,-42,-40(U/W 114H5403-1)	EA	1
7	22	XBFZZ		77272	114H5400-5	COVER ASSY USED ON 114E3030-49,-47,-43,-42,-40(U/W 114H5412-5)	EA	1

SECTION II

TM 11-1680-201-30P

(1) ILLUSTRATION		(2)	(3)	(4)	(5)	(6) DESCRIPTION	(7)	(8)
(a) FIG NO.	(b) ITEM NO.	SMR CODE	NATIONAL STOCK NUMBER	FSCM	PART NUMBER	USABLE ON CODE	U/M	QTY INC IN UNIT
7	23	PAFZZ	5305-01-006-6848	80205	NAS1081-04A7P	SETSCREW USED ON 114E3030-49,-47,-43,-42,-40(U/M 114H5400-5)	EA	2
7	24	XAFZZ		77272	114H412-4.	COVER END USED ON 1143030-49,-47,-43,-42,-40(U/M 114H5400-52ES,5FT	EA	1
7	25	PAFZZ	5305-00-421-7853	80205	NAS1081-06A7P	SETSCREW USED ON 114E3030-49,-47,-43,-42,-40(U/W 114H5401-1,114H5412-1) (NAS1081-06A7L IS AN ALT FOR NAS1081-06A7P).	EA	2
7	26	XBFZZ		77272	114H5401-1	COVER USED ON 114E3030-49,-47,-43,-42,-40(U/W 114H5400-2) (ALT FOR 114H5400-5)	EA	1
7	26	XBFZZ		77272	114H5412-1	COVER,PRESSURE SENS USED ON 114E3030-49,-47,-43,-42,-40(U/W 114H5400-3,-4) (ALT FOR 114H5400-5)	EA	1
40/(41 blank)								



EL28C016

Figure 8. Wiring Harness Assy

SECTION II

TM 11-1680-201-30P

(1) ILLUSTRATION		(2)	(3)	(4)	(5)	(6) DESCRIPTION	(7)	(8)
(a) FIG NO.	(b) ITEM NO.	SMR CODE	NATIONAL STOCK NUMBER	FSCM	PART NUMBER	USABLE ON CODE	U/M	QTY INC IN UNIT
						GROUP 08 WIRING HARNESS ASSY		
8	1	PAFZZ	5310-00-0S8-0551	96906	NS21044N04	NUT,SELF-LOCKING,HE USED ON 114E3030-40,-42,-43,-47,-49	EA	2
8	2	PAFZZ	5310-00-167-0831	88044	AN960-4L	WASHER,FLAT USED ON 114E3030-40,-42,-43,-47,-49	EA	2
8	3	PAFZZ	5305-00-983-6730	96906	NS35206-218	SCREW,MACHINE USED ON 114E3030-40,-42,-43,-47,-49	EA	2
8	4	PAFZZ	5935-00-908-9798	81205	BACC45HM7	CONNECTOR USED ON 114E3030-49,-47,-43,-42,-40	EA	1
8	5	PAFZZ	5935-00-908-9797	81205	BACCISHM6	CONNECTOR USED ON 114E3030-49,-47,-43,-42,-40	EA	3
8	6	PAFZZ	5310-00-973-8660	80063	SM-4A16109-1	WASHER,FLAT USED ON 114E3303-49,-47,-43,-42	EA	14
8	7	PAFZZ	5305-00-842-0251	80205	NAS601-8P	SCREW,MACHINE USED ON 114E3030-49 2ES	EA	11
8	8	PAFZZ	5305-00-889-3001	96906	MS35206231	SCREW,MACHINE USED ON 114E3030-49,-47,-43,-42,-40	EA	8
8	9	PAFZZ	5975-00-825-3330	59730	TY13	STRAP,TIEDOWN,ELECT USED ON 114E3030-40,-42,-43,-47,-49	EA	5
8	10	PAFZZ	5935-00-908-9796	81205	BACC45HM3	CONNECTOR BODY,RECE USED ON 114E3030-49,-47,-43,-42,-40 2ES	EA	4
8	11	XBFZZ		81205	BACC47BG1	CONTACT SOCKET USED ON 14E3030-49,-47,-43,-42,-40	EA	79
8	12	XBFZZ		81205	BACC47BF1	PLUG KEYING USED ON 114E3030-49,-47,-43,-42,-40	EA	8
8	13	PAFZZ	5310-00-184-8988	88044	AN960D6L	WASHER,FLAT U/O 114E3030-40,-42,-43,-47,-49	EA	14
8	14	PAFZZ	5310-00-905-8451	96906	MS21053N06	NUT,SELF-LOCKING,HE USED ON 114E3030-40,-42,-43,-47,-49	EA	14
8	15	PAFZZ	5935-00-989-1962	96906	MS3122E20-41P	CONNECTOR,RECEPTACL USED ON 114E3030-49,-47,-43,-42,-40.	EA	1

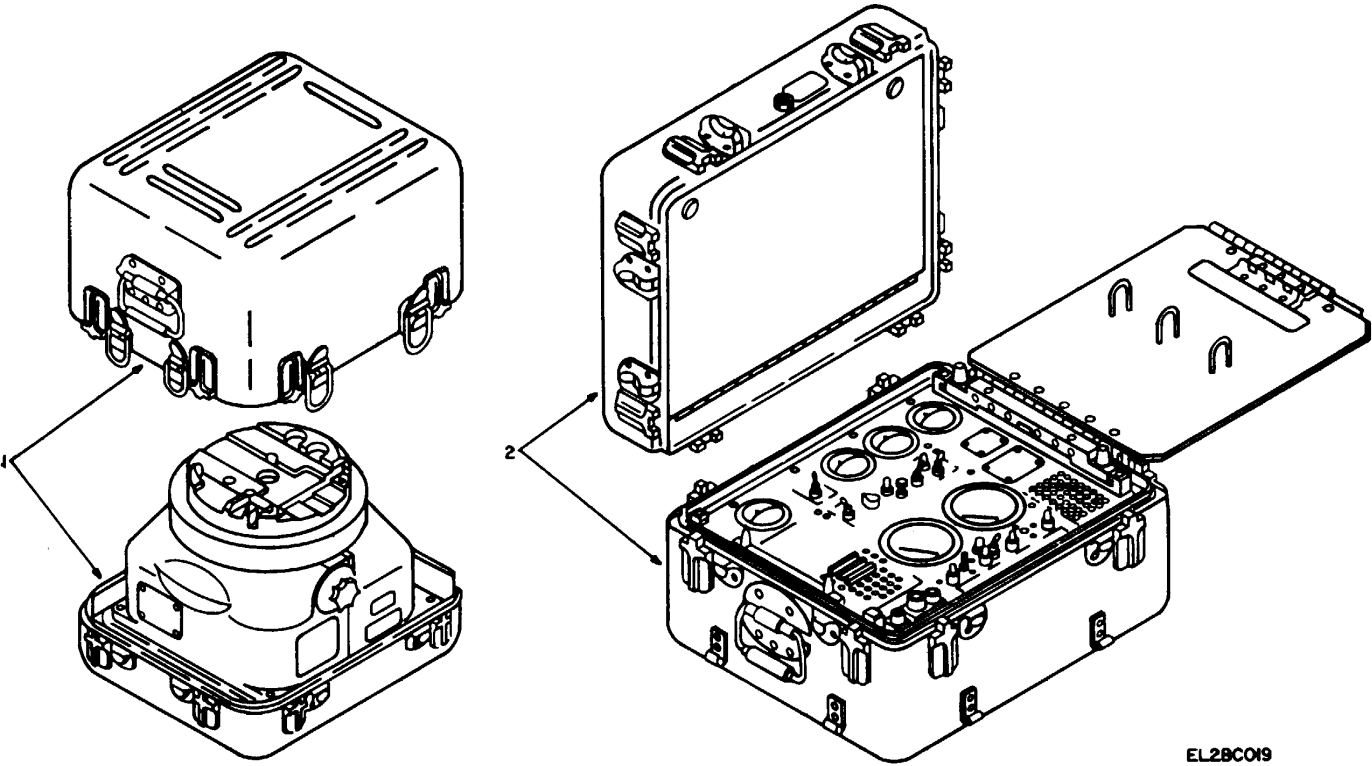


Figure 9. Special Tools

SECTION III

TM 11-1680-201-30P

(1) ILLUSTRATION		(2)	(3)	(4)	(5)	(6) DESCRIPTION	(7)	(8)
(a) FIG NO.	(b) ITEM NO.	SMR CODE	NATIONAL STOCK NUMBER	FSCM	PART NUMBER	USABLE ON CODE	U/M	QTY INC IN UNIT
						GROUP 09 SPECIAL TOOLS LIST B01: 1 AUTH PER AVIM SHOP		
9	1	PEODD	6625-906-6406	77272	114E5988-1	SIMULATOR, AIRCRAFT DISPLACEMENT AN/ASM-120	EA	1
9	2	PEODD	4920-075-1992	77272	114E5987-4	TEST SET, STABILIZATION EQUIPMENT TS-1894/ASM	EA	1
9	2	PEODD	6625-133-7834	77272	114E5917-8	TEST SET, STABILIZATION EQUIPMENT TS-1894/ASM	EA	1
					45			

NATIONAL STOCK NUMBER AND PART NUMBER INDEX

STOCK NUMBER	FIG. NO.	ITEM NO.	STOCK NUMBER	FIG. NO.	ITEM NO.
5910-00-007-2004	3	2	5901-00-116-8565	6	31
5910-00-007-2004	6	7	5901-00-116-8569	6	27
6615-00-010-1427	1	2	5905-00-116-8570	6	20
5910-00-013-9467	4	3	5905-00-121-9922	6	23
5910-00-013-9468	4	4	5905-00-126-6696	6	38
5910-00-013-9469	4	8	5905-00-131-9395	6	26
5935-00-023-2309	3	19	5905-00-138-9396	2	18
5910-00-024-7546	1	12	5905-00-141-0591	2	22
5905-00-025-5987	4	18	5905-00-141-0591	3	7
5905-00-025-5987	6	25	5905-00-141-0591	6	29
5305-00-031-1042	1	57	5905-00-141-0592	3	13
5905-00-035-5065	5	27	5905-00-141-0592	6	38
5310-00-045-3299	7	2	5905-00-141-0593	6	38
5365-00-050-7700	6	43	5905-00-141-0596	2	12
5905-00-051-8005	4	26	5905-00-141-0597	6	18
5905-00-051-8005	6	21	5905-00-141-0597	6	21
5905-00-052-2395	4	24	5905-00-141-0598	6	23
5905-00-061-5359	5	34	5905-00-141-0599	04	21
5905-00-068-5920	1	38	5905-00-141-0723	6	23
5330-00-080-8282	1	75	5905-00-141-0723	6	38
5310-00-081-8087	1	31	5905-00-141-1130	3	10
5940-00-082-4869	4	29	5905-00-141-1130	5	24
5940-00-082-4869	05	10	5905-00-141-1130	6	38
5961-00-087-6047	2	2	5905-00-141-1165	6	34
5961-00-081-6047	3	1	5905-00-141-1168	05	17
5961-00-087-6047	6	1	5905-00-141-1168	6	38
5310-00-088-0551	1	22	5910-00-144-4383	2	9
5310-00-080-0551	4	34	5905-00-147-2062	2	18
5310-00-088-0551	8	1	5910-00-154-0547	5	5
5935-00-089-3062	2	28	5310-00-167-0737	1	20
5826-00-089-9514	1	10	5310-00-167-0738	1	8
5826-00-089-9515	1	71	5310-00-167-0831	1	27
5961-00-098-7835	6	15	5310-00-167-0831	4	33
5910-00-104-0144	2	6	5310-00-167-0831	8	2
5910-00-104-0144	3	3	5310-00-167-0832	1	28
5910-00-104-0144	6	9	5310-00-167-0832	2	31
5910-00-104-5756	5	22	5310-00-167-0832	3	22
5905-00-104-8334	6	23	5310-00-167-0832	0	33
5905-00-104-8335	5	19	6625-00-179-1684	5	1
5905-00-104-8336	4	11	6615-00-179-4967	1	10
5905-00-104-8336	05	21	6615-00-179-4969	1	79
5935-00-104-8345	04	23	5310-00-143-4207	1	39
5905-00-104-8348	3	9	5310-00-184-8987	1	16
5905-00-184-8988	1	3	5310-00-184-8988	1	3
5905-00-104-8349	6	23	5310-00-184-8988	8	13
5905-00-104-8350	05	16	5310-00-187-2397	1	20
5905-00-104-8350	6	23	5905-00-189-2456	04	22
5310-00-105-4086	7	7	5905-00-189-2486	4	12
5905-00-106-1273	6	19	5905-00-189-2487	4	15
5961-00-106-6991	5	2	5905-00-189-3637	5	29
5905-00-106-9344	2	11	5905-00-192-3488	4	13
5905-00-106-9345	4	11	5905-00-192-3876	04	15
5905-00-106-9352	6	38	5905-00-196-5171	2	18
5905-00-110-0196	2	16	5905-00-203-3929	2	18
5905-00-110-0196	3	12	5940-00-204-8966	1	69
5905-00-110-0196	6	17	5310-00-207-9364	1	4
5905-00-110-0310	6	22	5310-00-208-5769	1	77
5905-00-110-0310	6	28	5905-00-233-7141	6	24
5905-00-110-0991	1	7	5320-00-234-8574	6	44
5905-00-111-4734	04	23	5910-00-241-6513	6	8
5905-00-111-4734	5	16	5961-00-252-1577	5	13
5905-00-111-4734	6	26	5365-00-302-8098	1	73
5905-00-111-4735	5	21	5910-00-339-7491	6	5
5905-00-111-4741	6	30	5330-00-350-4315	7	5
5905-00-111-4858	2	15	5905-00-400-4502	04	10
5905-00-111-4858	5	15	5905-00-401-7426	5	32
5905-00-111-4858	6	23	5905-00-404-8782	6	37
5910-00-114-0687	3	4	5905-00-405-3022	2	18
5905-00-114-5366	5	17	5305-00-421-7853	7	25
5905-00-114-5381	4	10	5905-00-426-7095	6	36
5905-00-114-5398	2	13	5905-00-426-7121	2	14
5905-00-114-5399	6	23	5905-00-432-6364	2	18
5905-00-114-5399	6	38	6615-00-451-0591	7	15
5905-00-114-5407	5	20	5905-00-451-7410	5	28
5905-00-114-5407	6	23	5905-00-451-7414	4	19
5905-00-114-5417	2	17	5905-00-451-7414	04	20
5905-00-114-5425	5	23	5905-00-451-7414	5	18
5905-00-114-5441	6	19	5905-00-466-1219	5	30
5905-00-116-8557	6	18	5905-00-479-9946	2	18
5905-00-116-8562	6	23	5999-00-481-5513	6	45

NATIONAL STOCK NUMBER AND PART NUMBER INDEX

STOCK NUMBER	FIG. NO.	ITEM NO.	STOCK NUMBER	FIG. NO.	ITEM NO.
5910-00-504-7171	2	5	5950-00-851-4221	6	41
5940-00-534-0970	1	0	5961-00-853-2601	5	12
5310-00-543-2410	1	68	5961-00-855-2786	5	4
5905-00-568-7833	5	26	5961-00-871-8543	1	10
4730-00-580-9165	1	76	5826-00-877-0618	7	3
5930-00-615-7882	1	35	5826-00-877-0619	7	13
5910-00-621-9880	4	6	5935-00-877-9548	4	31
5330-00-631-1341	7	4	5826-00-878-4214	1	21
5950-00-648-4412	5	35	5910-00-887-7743	5	7
5950-00-648-4412	6	42	5945-00-889-1401	1	53
5910-00-655-0376	6	5	5305-00-889-2999	1	24
5945-00-660-6415	1	42	5305-00-889-3000	04	32
5910-00-682-3621	6	3	5305-00-889-3001	8	8
5355-00-682-6548	1	32	5305-00-889-3116	1	66
5940-00-687-0294	1	67	5905-00-892-6578	2	20
5905-00-689-1290	5	25	5310-00-902-6676	1	51
5315-00-702-9650	7	20	5905-00-903-2434	6	21
5940-00-715-4300	1	6	5310-00-905-8451	2	32
5950-00-715-4638	2	27	5310-00-905-8451	3	23
5950-00-715-4638	3	15	5310-00-905-8451	04	34
5950-00-715-4638	5	37	5310-00-905-8451	a	14
5950-00-715-4638	6	48	5945-00-905-9106	6	13
5940-00-727-4974	7	18	5935-00-908-9796	8	10
5905-00-731-8329	2	21	5935-00-908-9797	8	5
5999-00-738-6013	5	41	5935-00-908-9798	8	4
5961-00-752-0150	6	14	5999-00-909-0522	5	36
5905-00-755-5487	2	19	5910-00-913-0495	4	1
5905-00-762-3597	6	32	5910-00-913-4634	04	5
5905-00-763-6563	4	16	5910-00-913-4635	04	4
5905-00-764-2614	4	17	5910-00-913-4637	04	3
5821-00-764-5386	1	15	5910-00-913-4638	2	3
5910-00-777-6897	5	10	5910-00-913-4638	3	5
5905-00-780-5713	6	33	5905-00-914-5517	4	20
6615-00-780-6172	1	74	5905-00-914-9254	4	25
6615-00-780-6172	1	74	5821-00-918-3674	1	79
6615-00-780-6320	1	23	5910-00-926-8045	4	5
6615-00-781-0497	7	16	5310-00-934-9747	1	65
5365-00-781-4723	7	12	5905-00-935-8539	6	22
6615-00-781-4724	7	15	5905-00-935-8541	6	23
6615-00-781-4724	7	15	5310-00-941-6019	1	61
5910-00-783-5268	5	11	5961-00-949-6563	5	14
5910-00-784-5433	5	8	6615-00-953-2310	7	9
1680-00-792-9829	1	10	5305-00-954-3938	1	37
1680-00-792-9836	1	13	5821-00-955-5532	1	33
5950-00-799-4163	6	40	5961-00-964-6808	6	2
5310-00-804-0141	7	8	5905-00-969-5849	4	22
6615-00-809-5233	1	74	5310-00-969-8949	7	11
5310-00-811-3494	1	9	5310-00-973-8660	8	6
5305-00-813-5790	1	41	5305-00-983-6730	1	19
5905-00-813-5892	6	23	5305-00-983-6730	8	3
5905-00-813-5892	6	35	5305-00-984-4984	1	78
5365-00-824-2301	7	14	5305-00-984-4988	1	4
5975-00-825-3330	1	64	5305-00-984-4989	1	70
5975-00-825-3330	8	9	530S-00-984-4992	1	72
5340-00-826-6993	2	25	5305-00-984-6193	1	17
5340-00-826-6993	3	6	5305-00-984-6193.	7	1
5340-00-826-6993	4	27	5905-00-988-2319	2	23
5340-00-826-6993	5	38	5905-00-988-2319	3	11
5340-00-826-6993	6	46	5905-00-988-2319	04	14
1680-00-827-0527	1	79	5935-00-989-1962	8	15
5305-00-827-5270	1	56	5305-00-993-1848	1	43
5905-00-834-2969	5	31	1680-00-999-3470	1	10
5930-00-835-6197	1	34	1680-00-999-3571	1	71
5305-00-841-2948	1	43	1680-00-999-3702	1	79
5305-00-842-0239	1	19	5305-01-006-6848	7	23
5305-00-842-0251	2	30	5910-00-010-6474	5	9
5305-00-842-0251	3	21	5940-01-051-2724	3	18
5305-00-842-0251	8	7	5305-01-052-3304	1	59
9905-00-842-3098	1	26	5962-01-077-2379	5	1
5905-00-842-6846	4	14	5305-01-091-1209	1	58
5910-00-844-6469	4	9	5910-01-119-4333	5	43
5961-00-847-5508	5	3	5305-01-148-4476	1	55
5950-00-850-6165	1	63	5330-01-157-9848	7	10
5950-00-851-4221	2	24	5330-01-157-9849	7	6
5950-00-851-4221	3	14			

FSCM PART NUMBER

FIGURE ITEM
NO. NO.

FSCN PART NUMBER

FIGURE ITEM
NO. NO.

SECTION IV

NATIONAL STOCK NUMBER AND PART NUMBER INDEX

TM 11-1680-201-30P

88044	AN924-4	1	77	05397	K5N10DNS	04	4
88044	AN960-4L	1	27	05397	K5N15DNS	6	10
88044	AN960-4L	4	33	05397	K50N10DNS	4	7
88044	AN960-4L	8	2	05397	K7R5N6DNS	6	10
88044	AN960-6L	1	28	05397	K75N10DNS	4	8
88044	AN960-6L	2	31	05397	K9N100NS	04	5
88044	AN960-6L	3	22	14933	L00899	6	15
88044	AN960-6L	04	33	96906	MS15795-801	7	8
88044	AN960D3L	1	39	96906	MS16555-602	7	20
88044	AN960D4	1	20	96906	MS20470A3-5	6	44
88044	AN960D4L	1	20	96906	MS21044N04	1	22
88044	AN960D6	1	8	96906	MS21044N04	4	34
88044	AN960D6L	1	3	96906	MS21044N04	8	1
88044	AN960D6L	8	13	96906	MS21044N06	1	31
88044	AN960D8L	1	16	96906	MS21044N08	1	9
99928	ARCW-4C-24A	1	53	96906	MS21083N06	04	34
89608	A804	1	45	96906	MS21083N06	8	14
89608	A805	1	49	96906	MS21083N08	1	61
89608	A806	1	47	96906	MS21083N3	1	51
89608	A807	1	50	96906	MS21924D4	1	76
89608	A808	1	46	96906	MS24693-25	1	59
89608	A811	1	44	96906	MS24693-26	1	58
81205	8ACC45HL	3	19	96906	MS24693-28	1	57
81205	BACC45HL6	2	28	96906	MS24693-29	1	56
81205	8ACC45HL7	4	31	96906	MS24693-30	1	72
81205	BACC45HM3	8	10	96906	MS24693-4	1	55
81205	8ACC45HM6	8	5	96906	MS25214-2	1	34
81205	BACC45HM7	8	4	96906	MS28775-021	7	4
81205	8ACC47BF1	8	12	96906	MS3122E20-41P	8	15
81205	8ACC47BG1	8	11	96906	MS35059-27	1	35
81205	BACN10DN26	1	40	96906	MS35206-207	1	37
81205	BACP50A3	5	41	96906	MS85206-213	1	66
81205	BACP50A4	5	36	96906	MS35206-217	1	24
81349	CK148X223M	5	9	96906	MS35206-218	1	19
70318	CPSS3-16-9	1	30	96906	MS35206-218	8	3
81349	CP05A1KF472K3	4	9	96906	MS35206-227	1	78
81349	CQ05A1KB104K3	4	6	96906	MS35206-229	1	70
81349	CS138C475K	5	10	96906	MS35206-230	04	32
81349	CS13BC226K	5	11	96906	MS35206-231	8	8
08990	CTN222VD-J	04	9	96906	MS35206-232	1	72
71590	DD1022	6	8	96906	MS35206-245	1	17
99515	DEI-254	2	8	96906	MS35206-245	7	1
99515	DE1-154	5	6	96906	MS35206-25	1	4
99515	DE1-154	6	11	96906	MS35206-4R8	4	32
99515	DE1-604A	2	4	96906	MS35207-265	1	43
80223	DOT-SH	2	27	96906	MS35338-40	1	68
80223	DOTSH	3	15	96906	MS35338-42	7	2
80223	DOTSH	5	37	96906	MS35649-262	1	65
80223	DOTSH	6	48	96906	MS35650-314	7	7
80223	DOT23	5	35	81349	M38527-6-01D	6	45
80223	DOT23	6	42	81349	M39003-01-3032	5	5
80223	DOT25	2	24	81349	M39003J01-3026	2	9
80223	DOT25	3	14	81349	M39003J01-3088	3	2
80223	DOT25	6	41	81349	M39003/01-3088	6	7
75237	F22NTM-632	Z	32	81349	M39003/01-3170	3	4
75237	F22NTM-632	3	23	81349	M39006/04-2415	6	5
57771	GS4-11	2	29	81349	M39022/01-1673	1	12
57771	GS4-11	3	20	80205	NAS1081-04A7P	7	23
57771	GS4-11	4	30	80205	NAS1081-06A7P	7	25
05079	HR3.9-450C4LP1	6	6	80205	NAS42DD3-6	6	43
38315	HS15-0-5-MA	1	36	80205	NAS43DDI-16	1	73
81349	JAN-1N645	2	2	80205	NAS601-8P	2	30
81349	JAN-1N645	3	1	80205	NAS601-8P	3	21
81349	JAN1N30238	5	4	80205	NAS601-SP	8	7
81349	JAN1N30248	5	3	80205	NAS602-6P	1	41
81349	JAN2N1893	5	12	80205	NAS602-7P	1	19
81349	JAN2N2946A	5	13	80205	NAS603-12P	1	43
81349	JAN2N652A	2	10	01281	PS3353	2	1
81349	JAN2N652A	3	6	81349	RCR05G203JP	5	26
81349	JAN2N652A	6	16	81349	RCR05G62T72JP	5	32
05397	KR06BJ50K	5	7	81349	RCR0G512JP	5	25
05397	KR6N10DNS	4	3	81349	RCR05G823JP	5	30
05397	K1R1N20KNS	5	8	81349	RCR07GT51JS	6	38
05397	K11N10DNS	04	3	81349	RCR20GFI52JS	6	38
05397	K16N10DNS	4	2	81349	RCR20G101JS	2	11
05397	K2R8N10DNS	4	4	81349	RCR20G102JS	2	16
05397	K23N10DNS	4	1	81349	RCR20G102JS	3	12
05397	K28N10DNS	04	1	81349	RCR20G102JS	6	17
05397	K3R4N6DNS	04	3	81349	RCR20G103JS	2	22
05397	K34N10DNS	4	5	81349	RCR20G103JS	3	7

NATIONAL STOCK NUMBER AND PART NUMBER INDEX

FSCM	PART NUMBER	FIGURE NO.	ITEM NO.	FSCM	PART NUMBER	FIGURE NO.	ITEM NO.
81349	RCR20G103JS	6	29	81349	RNC60K1503FS	84	15
81349	RCR20G104JS	4	11	81349	RNC60K2002FS	2	14
31349	RCR20G104JS	05	21	81349	RNC60K2003FS	4	19
81349	RCR20G105JS	5	22	81349	RNC60K2003FS	04	20
81349	RCR20G112JS	6	38	81349	RNC60K2003FS	S	18
81349	RCR20G114JP	6	18	81349	RNC60K2212FS	2	18
81349	RCR20G122JS	3	13	81349	RNC60K2432FS	6	37
81349	RCR20G122JS	6	38	81349	RNC60K2491FS	4	18
81349	RCR20G124JS	5	19	81349	RNC60K2491FS	6	25
81349	RCR20G131JP	6	26	81349	RNC60K2741FS	6	24
81349	RCR20G132JS	5	17	81349	RNC60K8062FS	4	12
81349	RCR20G153JS	6	19	81349	RNC60K8662FS	4	15
81349	RCR20G160JP	3	8	81349	RNC60K9092FS	4	13
81349	RCR20G180JS	4	10	81349	RNC65H7503FS	5	29
81349	RCR20G182JS	6	38	81349	RN60C2611F	5	31
81349	RCR20G202JS	6	22	81349	RN60C7501F	4	14
81349	RCR20G221JP	05	16	81349	RN60D1212F	2	20
81349	RCR20G221JS	6	23	81349	RN60D1502F	2	23
81349	RCR20G222FP	05	17	81349	RN60D1502F	3	11
81349	RCR20G222JS	05	17	81349	RN60D1502F	04	14
81349	RCR20G222JS	6	38	81349	RN60D1543F	4	17
81349	RCR20G225JS	2	13	81349	RN60D3573F	4	16
81349	RCR20G241JS	6	23	81349	RN60D4022F	4	26
81349	RCR20G241JS	6	38	81349	RN60D4022F	6	21
81349	RCR20G242JS	6	30	81349	RN60D4532F	6	21
81349	RCR20G271JS	5	20	81349	RN60D4642F	4	22
81349	RCR20G271JS	6	23	81349	RN60D4992F	4	24
81349	RCR20G272JS	3	10	81349	RN60D5231F	4	25
81349	RCR20G272JS	5	24	81349	RN60D6341F	2	21
81349	RCR20G272JS	6	38	81349	RN60D6492F	6	33
81349	RCR20G301JP	6	23	81349	RN60D7502F	6	32
81349	RCR20G302JS	2	17	81349	RN60D8453F	4	20
81349	RCR20G304JP	4	21	81349	RN65C9093F	5	34
81349	RCR20G331JP	6	23	98291	RSTSM4TUR	1	6
81349	RCR20G332JS	3	9	91637	RS2-100ROB	5	27
81349	RCR20G332JS	6	38	81349	RT11C2L103	1	38
81349	RCR20G360JP	4	23	81349	SE12XC01	4	29
81349	RCR20G361JS	6	23	81349	SE12XC01	05	40
81349	RCR20G362JS	5	23	80063	SM-B16109-1	8	6
81349	RCR20G391JP	6	23	99928	SRA2C248	6	13
81349	RCR20G391JP	6	35	02640	TW2SF26T	1	63
81349	RCR20G392JS	6	22	59730	TY13	1	64
81349	RCR20G392JS	6	28	59730	TY13	8	9
81349	RCR20G393JP	04	21	07263	UA741AHM	5	1
81349	RCR20G411JP	05	15	77272	VS15305C3126-24	7	12
81349	RCR20G430JP	04	10	99515	WE2-473	2	3
81349	RCR20G431JS	6	23	99515	WE2-473	3	5
81349	RCR20G470JP	04	23	11279	X20998	2	26
81349	RCR20G470JP	5	16	01295	1N4004	5	2
81349	RCR20G470JP	6	26	81349	1N4608	6	1
81349	RCR20G471JS	2	15	99378	100-239-0	2	25
81349	RCR20G471JS	5	15	99378	100-239-0	3	16
81349	RCR20G471JS	6	23	99378	100-239-0	4	27
81349	RCR20G473JS	2	12	99378	100-239-0	5	38
81349	RCR20G511JP	6	23	99378	100-239-0	6	46
81349	RCR20G513JS	6	18	18876	10236719-2	1	67
81349	RCR20G513JS	6	21	56289	109D406C2030F2	05	S
81349	RCR20G560JP	04	23	56289	109D406C2075T-2	5	43
81349	RCR20G561JS	6	23	77272	114E3029-35	1	81
81349	RCR20G563JP	6	19	77272	114E3029-44	1	23
81349	RCR20G621JS	6	23	77272	114E3029-55	1	62
81349	RCR20G621JS	6	38	77272	114E3029-61	1	18
81349	RCR20G623JS	6	31	77272	114E3029-64	1	11
81349	RCR20G682JS	6	34	77272	114F3029-67	1	11
81349	RCR20G683JS	4	11	77272	114E3029-77	1	29
81349	RCR20G821JP	6	27	77272	114E3029-78	1	54
81349	RCR20G912JS	6	0	77272	114E3030-11	1	52
81349	RCR20G913JS	5	21	77272	114E3030-41	1	25
81349	RCR32G112JP	5	3	77272	114E3030-44	1	25
81349	RCR32G151JS	1	1	77272	114E3030-48	1	25
81349	RC20G393JP	6	9	77272	114E3030-5	1	33
81349	RNC55H2052FS	2	8	77272	114E3030-50	1	25
81349	RNC55H2102FS	2	18	77272	114E3031-38	05	44
81349	RNC55H2212FS	2	18	77272	114E3031-39	04	35
81349	RNC55H2262FS	2	18	77272	114E3031-40	3	24
81349	RNC55H2322FS	2	18	77272	114E3031-41	04	35
81349	RNC55H2372FS	2	18	77272	114E3031-42	04	35
81349	RNC55H6192FS	5	28	77272	114E3031-43	05	44
81349	RNC60K1002FS	6	36	77272	114E3031-44	05	42
81349	RNC60K1103FS	04	22	77272	114E3049-40	1	79

NATIONAL STOCK NUMBER AND PART NUMBER INDEX

FSCM	PART NUMBER	FIGURE NO.	ITEM NO.	FSCM	PART NUMBER	FIGURE NO.	ITEM NO.
77272	114E3049-41	1	10	77272	114V5003-5	1	71
77272	114E3049-42	1	15	77272	114V5003-7	1	71
77272	114E3049-43	1	10	77272	114V5003-8	1	71
77272	114E3049-44	1	10	77272	114V5004-4	6	52
77272	114E3049-45	1	79	77272	114V5004-6	6	52
77272	114E3049-46	1	79	77272	114V5004-7	6	53
77272	114E3049-50	1	79	77272	114V5004-8	6	53
77272	114E3050-12	1	60	77272	114V5010-1	04	35
77272	114E3050-13	1	14	77272	114V5010-3	4	35
77272	114E3050-14	1	5	77272	114V5011-1	1	10
77272	114E3050-15	1	52	77272	114V5011-3	1	10
77272	114E3050-16	1	14	77272	114V5012-1	7	5
77272	114E3050-17	1	14	77272	114V5014-1	5	42
77272	114E3050-18	1	52	77272	114V5015-2	1	79
77272	114E3050-19	1	5	77272	114V5015-4	1	79
77272	114E3050-20	1	52	71279	1247-11	5	40
77272	114E3050-6	1	5	85578	13856PC7	1	75
77272	114HS540-10	7	16	56289	150D105X9035AS	2	6
77272	114HS5541-1	7	9	56289	150D105X9035AS	3	3
77272	114HS541-5	7	9	56289	150D105X9035AS	6	9
77272	114H5400-3	1	74	06001	150D476X003552	6	4
77272	114H5400-3	1	74	06001	150D685X003582	6	12
77272	114H5400-4	1	74	71279	160-2027-02-01-00	3	18
77272	114H5400-5	7	22	81349	2N2432	5	14
77272	114H5401-1	7	26	81349	2N697	6	14
77272	114H5401-2	7	3	03877	2N887	6	2
77212	114H5402-1	7	13	84239	2W752	1	48
77272	114H5403-1	7	19	61515	204040	1	2
77272	114H5403-2	7	21	71279	2099-02-08	5	39
77272	114H5403-3	7	21	71279	2099-3-03	3	17
77272	114H5403-4	7	19	83330	2223	1	32
77272	114H5405-1	7	11	80294	224P-1-103	2	19
77272	114H5406-1	7	17	30003	247AS-C1526	6	40
77272	114H5408-1	7	10	24446	29F408	6	3
77272	114H5409-1	7	6	95017	29F489	2	7
77272	114H5410-1	7	15	01526	29F565G4	6	5
77272	114H5410-2	7	15	06413	305-04	7	18
77272	114H5410-3	7	15	00779	31882	1	69
77272	114H5411-1	7	14	00779	31898	1	80
77272	114H5412-1	7	26	71279	325-2099-02-08-00	4	28
77272	114HS412-2	7	3	71279	325-2099-02-08-001	6	47
77272	114H5412-4	7	24	80205	350-1247-11-07-00	6	50
77272	114H5412-5	7	3	80205	350-1247-12-07-00	6	49
77272	114H5500-2	1	26	88245	760287	6	51
77272	11H15501-1	1	21	15818	8098E	5	1
77272	114V5000-2	1	13	61515	90025	1	1
77272	114V5001-2	2	33	56289	96P22391S4	2	5
77272	114V5003-3	1	71	13499	974-0559-00	1	42

By Order of the Secretary of the Army:

Official:

JOHN A. WICKMAN JR.
General United States Army
Chief of Staff

DONALD J. DELANDRO
Brigadier General United States Army
The Adjutant General

DISTRIBUTION:

To be distributed in accordance with DA Form 12-31, Direct and General Support Maintenance requirements for CH-47A and CH-47B/C.

☆U.S. GOVERNMENT PRINTING OFFICE: 1985-505-44/20036

☆U.S. GOVERNMENT PRINTING OFFICE: 1985-505-044/20036

RECOMMENDED CHANGES TO EQUIPMENT TECHNICAL PUBLICATIONS



THEN... JOT DOWN THE DOPE ABOUT IT ON THIS FORM, CAREFULLY TEAR IT OUT, FOLD IT AND DROP IT IN THE MAIL!

SOMETHING WRONG WITH THIS PUBLICATION?

FROM: (PRINT YOUR UNIT'S COMPLETE ADDRESS)

DATE SENT

PUBLICATION NUMBER

PUBLICATION DATE

PUBLICATION TITLE

BE EXACT... PIN-POINT WHERE IT IS

PAGE NO.

PARA-GRAPH

FIGURE NO.

TABLE NO.

IN THIS SPACE TELL WHAT IS WRONG AND WHAT SHOULD BE DONE ABOUT IT:

TEAR ALONG PERFORATED LINE

PRINTED NAME, GRADE OR TITLE, AND TELEPHONE NUMBER

SIGN HERE:

DA FORM 2028-2
1 JUL 79

PREVIOUS EDITIONS
• ARE OBSOLETE.

P.S.—IF YOUR OUTFIT WANTS TO KNOW ABOUT YOUR RECOMMENDATION MAKE A CARBON COPY OF THIS AND GIVE IT TO YOUR HEADQUARTERS.

PIN: 057356-000

This fine document...

Was brought to you by me:



[Liberated Manuals -- free army and government manuals](#)

Why do I do it? I am tired of sleazy CD-ROM sellers, who take publicly available information, slap “watermarks” and other junk on it, and sell it. Those masters of search engine manipulation make sure that their sites that sell free information, come up first in search engines. They did not create it... They did not even scan it... Why should they get your money? Why are not letting you give those free manuals to your friends?

I am setting this document FREE. This document was made by the US Government and is NOT protected by Copyright. Feel free to share, republish, sell and so on.

I am not asking you for donations, fees or handouts. If you can, please provide a link to liberatedmanuals.com, so that free manuals come up first in search engines:

<A HREF=<http://www.liberatedmanuals.com/>>Free Military and Government Manuals

- Sincerely
Igor Chudov
<http://igor.chudov.com/>
- [Chicago Machinery Movers](#)