

TECHNICAL MANUAL

**ORGANIZATIONAL
MAINTENANCE REPAIR PARTS AND SPECIAL TOOLS LISTS
(INCLUDING DEPOT MAINTENANCE REPAIR PARTS AND SPECIAL TOOLS)
FOR
ELECTRONICS EQUIPMENT CONFIGURATION
ARMY MODELS UH-1H AND UH-1V
WITH SLAE**

**HEADQUARTERS, DEPARTMENT OF THE ARMY
23 NOVEMBER 1982**

**ORGANIZATIONAL
MAINTENANCE REPAIR PARTS AND SPECIAL TOOLS LISTS
(INCLUDING DEPOT MAINTENANCE REPAIR PARTS AND SPECIAL TOOLS)
FOR
ELECTRONICS EQUIPMENT CONFIGURATION
ARMY MODELS UH-1H AND UH-1V
With SLAE
Current as of 21 June 1982**

REPORTING ERRORS AND RECOMMENDING IMPROVEMENTS

You can help improve this manual. If you find any mistakes or if you know of a way to improve the procedures, please let us know. Mail your letter, DA Form 2028 (Recommended Changes to Publications and Blank Forms), or DA Form 2028-2 located in the back of this manual direct to: Commander, US Army Communications-Electronics Command and Fort Monmouth, ATTN: DRSEL-ME-MP, Fort Monmouth, NJ 07703.

In either case, a reply will be furnished direct to you.

| | Page | Illus Figure |
|---|------|-----------------|
| SECTION I. Introduction | 1 | |
| II. Repair Parts List | 5 | |
| Group 00 Electronics Equipment Configuration Army Model UH-1H and UH-1V With SLAE Communications Installation Aft Section(A) | 5 | 1 |
| Installation Aft Section(B) | 7 | 2 |
| Installation Forward Nose Section (B)..... | 9 | 3 |
| Installation Forward Nose Section (C) | 11 | 4 |
| Installation Forward Roof Section (A) | 13 | 5 |
| Installation Forward Roof Section (B) | 15 | 6 |
| Installation Forward Roof Section (C)..... | 17 | 7 |
| Installation Foot Switch and Circuit Board | 19 | 8 |
| Installation Pedestal Box and Control Panel (A) | 21 | 9 |
| Installation Pedestal Box and Control Panel (C) | 23 | 10 |
| Installation Pedestal Box and Control Panel (D) | 25 | 11 |
| Instrument Panel Assembly..... | 27 | 12 |
| Electrical and Radio (A) | 29 | 13 |
| Electrical and Radio (D) | 31 | 14 |
| Equipment Installation Electrical | 33 | 15 |
| 0804 Audio Threshold Set | 35 | 16 |
| 1702 Antenna..... | 37 | 17 |
| 1704 Instrument Panel | 39 | 18 |
| 1705 Interrogator..... | 41 | 19 |
| SECTION III. Special Tools List (Not Applicable) | | |
| IV. National Stock Number and Part Number Index | 42 | |

*This manual supersedes TM 11-1520-210-20P-1, 5 October 1978 including Change 1, 4 May 1979.

SECTION I

INTRODUCTION

1. Scope

This manual lists spares and repair parts; special tools; special test, measurement, and diagnostic equipment (IMDE), and other special support equipment required for performance of organizational maintenance of the UH-1H and UH-LV. It authorizes the requisitioning and issue of spares and repair parts as indicated by the source and maintenance codes.

2. General

This Repair Parts and Special Tools List is divided into the following sections:

a. Section II. Repair Parts List. A list of spares and repair parts authorized for use in the performance of maintenance. The list also includes parts which must be removed for replacement of the authorized parts. Parts list are composed of functional groups in numeric sequence, with the parts in each group listed in figure and item number sequence.

b. Section III. Special Tools List. Not applicable.

c. Section IV. National Stock Number and Part Number Index. A list, in National item identification number (NIIN) sequence, of all National stock numbers (NSN) appearing in the listings, followed by a list, in alphanumeric sequence, of all part numbers appearing in the listings. National stock numbers and part numbers are cross-referenced to each illustration figure and item number appearance.

3. Explanation of Columns

a. Illustration. This column is divided as follows:

(1) *Figure number.* Indicates the figure number of the illustration on which the item is shown.

(2) *Item number.* The number used to identify item called out in the illustration.

b. Source, Maintenance, and Recoverability (SMR) Codes.

(1) *Source code.* Source codes indicate the manner of acquiring support items for maintenance, repair, or overhaul of end items. Source codes are entered in the first and second positions of the Uniform SMR Code format as follows:

| <i>Code</i> | <i>Definition</i> |
|-------------|--|
| PA-- | Item procured and stocked for anticipated or known usage. |
| PD-- | Support item, excluding support equipment, procured for initial issue or outfitting and stocked only |

for subsequent or additional initial issues or outfittings. Not subject to automatic replenishment.

XA--Item is not procured or stocked because the requirements for the item will result in the replacement of the next higher assembly.

XD--A support item that is not stocked. When required, item will be procured through normal supply channels.

NOTE

Cannibalization or salvage may be used as a source of supply for any items source coded above except those coded XA and aircraft support items as restricted by AR 700-42.

(2) *Maintenance code.* Maintenance codes are assigned to indicate the levels of maintenance authorized to USE and REPAIR support item.. The maintenance codes are entered in the third and fourth positions of the Uniform SMR Code format as follows:

(a) The maintenance code entered in the third position will indicate the lowest maintenance level authorized to remove, replace, and use the support item. The maintenance code entered in the third position will indicate one of the following levels of maintenance:

| <i>Code</i> | <i>Application/Explanation</i> |
|-------------|--|
| O-- | Support item is removed, replaced, used at the organizational level. |

(b) The maintenance code entered in the fourth position indicates whether the item is to be repaired and identifies the lowest maintenance level with the capability to perform complete repair (i.e., all authorized maintenance functions). This position will contain one of the following maintenance codes:

| <i>Code</i> | <i>Application/Explanation</i> |
|-------------|---|
| F-- | The lowest maintenance level capable of complete repair of the support item is the direct support level. |
| H-- | The lowest maintenance level capable of complete repair of the support item is the general support level. |
| D-- | The lowest maintenance level capable of complete repair of the support item is the depot level. |
| Z-- | Nonreparable. No repair is authorized. |

(3) *Recoverability code.* Recoverability codes are signed to support items to indicate the disposition action on unserviceable items. The recoverability code is entered in the fifth position of the Uniform SMR Code format as follows:

Recoverability codes

Definition

- Z--Nonreparable item. When unserviceable, condemn and dispose at the level indicated in position 3.
- F--Reparable item. When uneconomically reparable, condemn and dispose at the direct support level.
- H--Reparable item. When uneconomically reparable, condemn and dispose at the general support level.
- D--Reparable item. When beyond lower level repair capability, return to depot. Condemnation and disposal not authorized below depot level.
- A--Item requires special handling or condemnation procedures because of specific reasons (i.e., precious metal content, high dollar value, critical material or hazardous material). Refer to appropriate manuals/directives for specific instructions.

c. *National Stock Number.* Indicates the National stock number assigned to the item and will be used for requisitioning purposes.

d. *Federal Supply Code for Manufacturer (FSCM).* The FSCM is a 5-digit numeric code listed in SB 708-41/42 which is used to identify the manufacturer, distributor, or Government agency, etc.

e. *Part Number.* Indicates the primary number used by the manufacturer (individual, company, firm, corporation, or Government activity), which controls the design and characteristics of the item by means of its engineering drawings, specifications, standards, and inspection requirements to identify an item or range of items.

NOTE

When a stock numbered item is requisitioned, the repair part received may have a different part number than the part being replaced.

f. *Description.* Indicates the Federal item name and, if required, a minimum description to identify the item.

g. *Unit of Measure (U/M).* Indicates the standard of the basic quantity of the listed item as used in performing the actual maintenance function. This merge is expressed by a two-character Alphabetical abbreviation (e.g., ea, in, pr, etc). When the unit of measure differs from, the unit of issue, the lowest unit of issue that will satisfy the required units of measure will be requisitioned.

h. *Quantity Incorporated in Unit.* Indicates the quantity of the item used in the breakout shown on the illustration figure, which is prepared for a functional group, subfunctional group, or an assembly.

4. Special Information

a. Usable on codes are shown in the description column. Uncoded items are applicable to all models.

Identification of the usable on codes used in this publication are:

| <i>Code</i> | <i>Used on</i> |
|-------------|----------------|
| 5H2 | UH-1H |
| ETC | UH-1V |

b. The following publications pertain to the UH-1H and UH-1V and its components:

TM 11-1520-210-20, Electronics Equipment Configuration With SLAE Communications, UH-1H and UH-1V.

c. National stock numbers (NSN's) that are missing from P source coded items have been applied for and will be added to this TM by future change/revision when they are entered in the Army Master Data File (AMDF). Until the NSN's are established and published, submit exception requisitions to: Commander, US Army Communications-Electronics Command and Fort Monmouth, ATTN: DRSEL-MM, Fort Monmouth, New Jersey 07703 for the part required to support your equipment.

d. The illustrations in this manual are identical to those published in TM 11-1520-210-34P-1. Only those parts assigned the third position SMR maintenance code "C" or "O" are listed in the tabular listing; therefore, there may be a break in the item number sequence. Only illustrations containing organizational authorized items appear in this manual.

5. How to Locate Repair Parts

a. When National stock number or part number is unknown.

(1) *First.* Using the table of contents, determine the functional group within which the item belongs. This is necessary since illustrations are prepared for functional groups and listings are divided into the same groups.

(2) *Second.* Find the illustration covering the functional group to which the item belongs.

(3) *Third.* Identify the item on the illustration and note the illustration figure and item number of the item.

(4) *Fourth.* Using the Repair Parts Listing, find the figure and item number noted on the illustration.

b. When National stock number or part number is known.

(1) *First.* Using the Index of National Stock Numbers and Part Numbers, find the pertinent National stock number or part number. This index is in NIIN sequence followed by a list of part numbers in alphanumeric sequence, cross-referenced to the illustration figure number and item number.

(2) *Second.* After finding the figure and item number, locate the figure and item number in the repair parts list.

6. Abbreviations

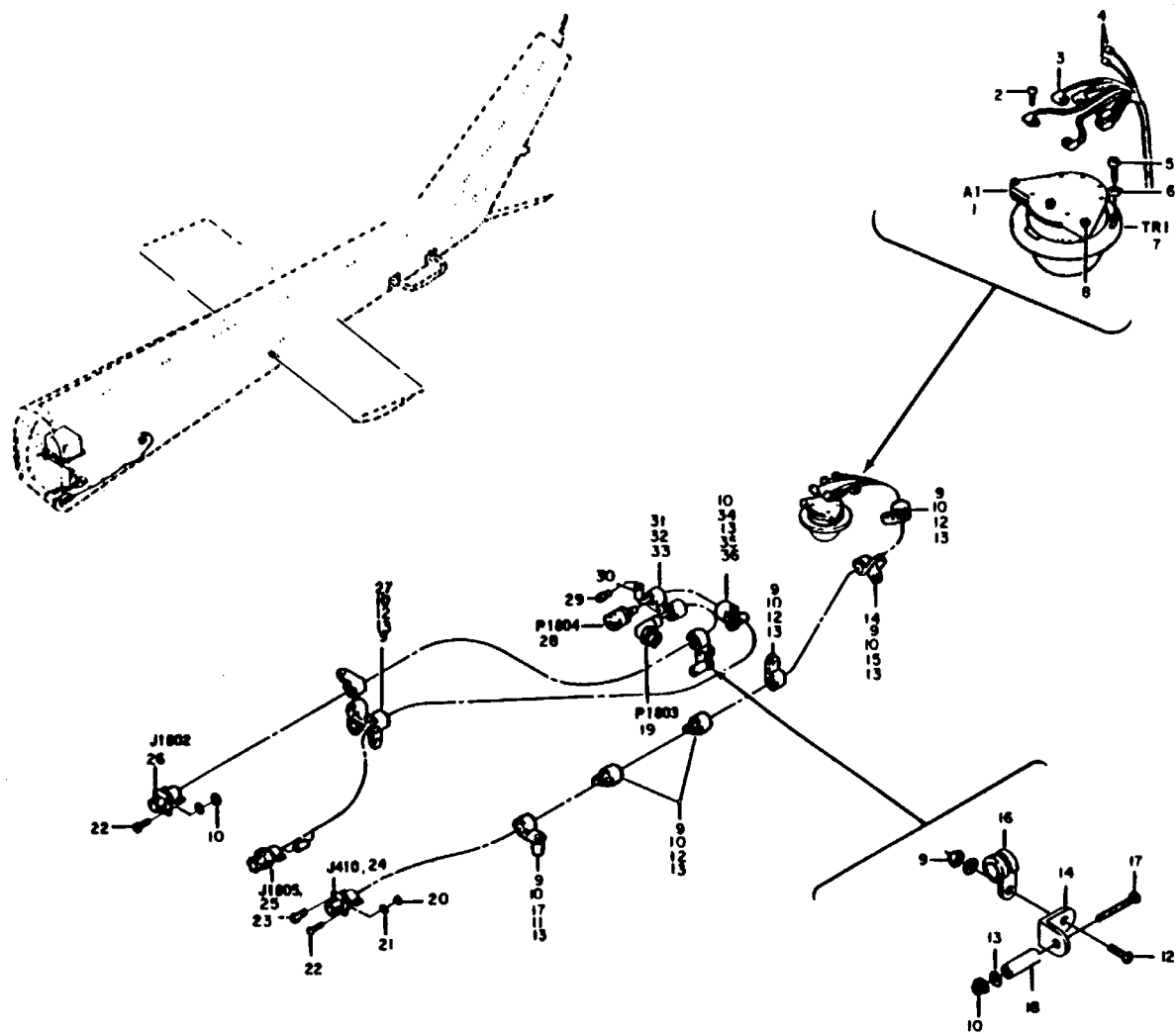
Not applicable.

(Next printed page is 4)

SECTION II

TM 11-1520-210-20P-1

| (1) ILLUSTRATION | | (2) | (3) | (4) | (5) | (6) | (7) | (8) |
|---------------------|--------------------|-------------|-----------------------------|-------|----------------|--|-----|--------------------------|
| (a) FIG NO. | (b) ITEM NO. | SMR CODE | NATIONAL STOCK NUMBER | FSCM | PART NUMBER | DESCRIPTION USABLE ON CODE | U/M | QTY INC IN UNIT |
| | | | | | | GROUP 00 ELECTRONICS EQUIPMENT CONFIGURATION ARMY MODEL UH-1H WITH SLAE COMMUNICATIONS | | |
| 1 | 6 | PAOZZ | 5305-00-984-6193 | 96906 | MS35206-245 | SCREW, MACHINE5M2 | EA | 3 |
| 1 | 7 | PAOHH | 5985-00-082-3991 | 80058 | AS-1703/AR | ANTENNA5M2 | EA | 1 |
| 1 | 8 | PAOZZ | 5310-00-905-5159 | 96906 | MS35335-87 | WASHER, LOCK5M2 | EA | 5 |
| 1 | 9 | PAOZZ | 5985-00-082-3989 | 80058 | CU-942/ARC-54 | COUPLER, ANTENNA5M2 | EA | 1 |
| 1 | 11 | PAOZZ | 5305-00-989-7434 | 96906 | MS35207-263 | SCREW, MACHINE5M2 | EA | 16 |
| 1 | 18 | PAOZZ | 5826-00-739-4479 | 80058 | AS-1304/ARN | ANTENNA5M2 | EA | 1 |
| 1 | 19 | XDOZZ | | 96906 | MS24693-243 | SCREW, MACHINE5M2 | EA | 1 |
| 1 | 24 | PAODD | 5985-00-167-7898 | 80058 | CU-1658/A | COUPLER, ANTENNA5M2 | EA | 1 |
| 1 | 25 | PAOZZ | 5983-00-937-0415 | 80058 | MT-3T85A | MOUNTING, ANTENNA5M2 | EA | 1 |



EL3UT002

Figure 2. Electronics Equipment Configuration Army Model UH-1H and UH-1V With SLAE Communications Installation Forward Nose Section (B).

SECTION II

TM 11-1520-210-20P-1

| (1) ILLUSTRATION | | (2) | (3) | (4) | (5) | (6) | (7) | (8) |
|---------------------|--------------------|-------------|-----------------------------|-------|----------------|-----------------------------------|-----|--------------------------|
| (a) FIG NO. | (b) ITEM NO. | SMR CODE | NATIONAL STOCK NUMBER | FSCM | PART NUMBER | DESCRIPTION USABLE ON CODE | U/M | QTY INC IN UNIT |
| 2 | 1 | PAOZZ | 6605-00-487-4773 | 80058 | CN-405 | COMPENSATOR-TRANSMI5M2 | EA | 1 |
| 2 | 2 | PAOZZ | 5305-00-924-8224 | 96906 | MS35273-20 | SCREW ,MACHINE5M2 | EA | 6 |
| 2 | 7 | POODD | | 81349 | 276TYPEPC2 | TRANSMITTER5M2 | EA | 1 |
| 2 | 8 | PAOZZ | 5305-00-954-8134 | 96906 | MS5215-27 | SCREW , MACHINE5M2 | EA | 3 |

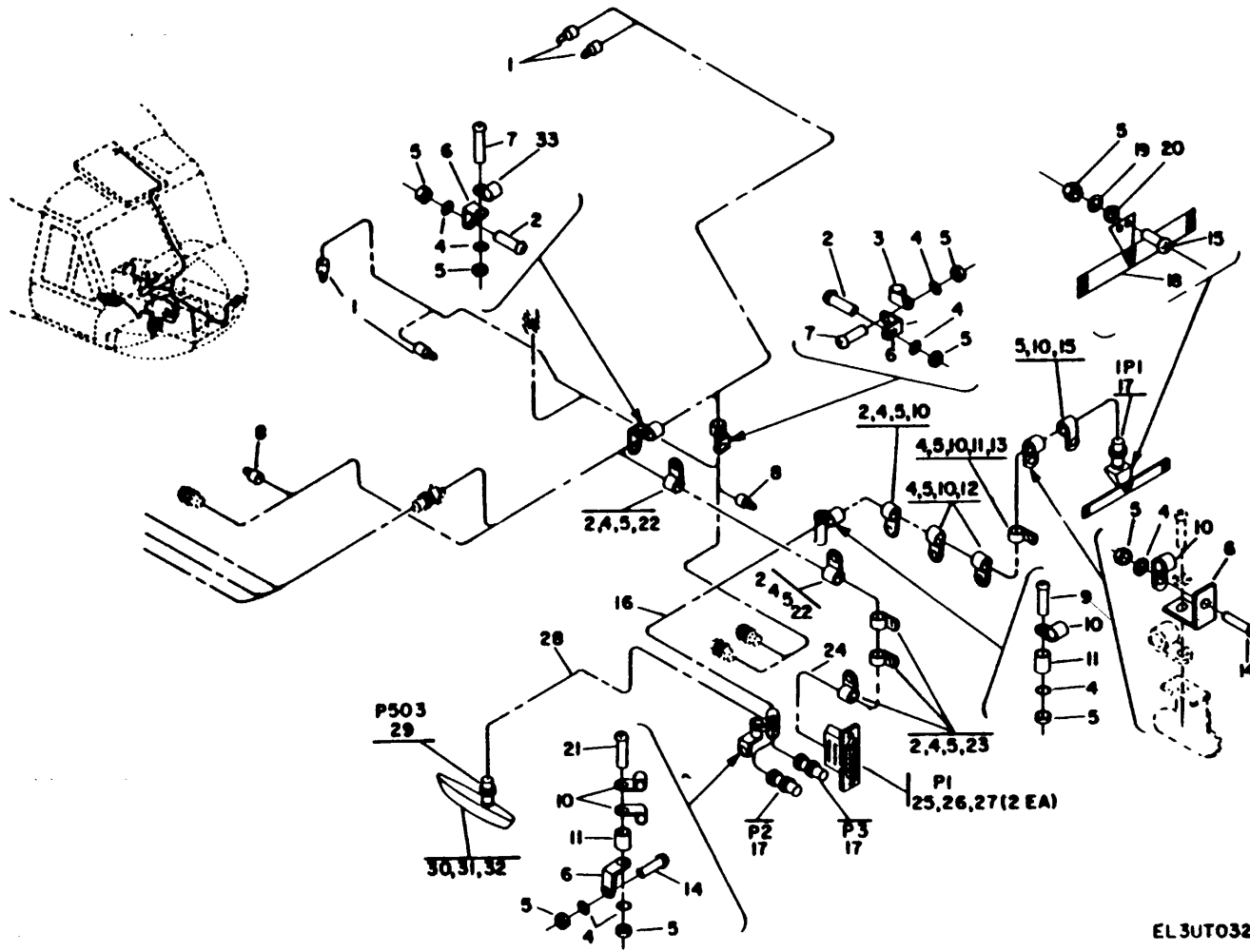


Figure 3. Electronics Equipment Configuration Army Model UH-1H and UH-1V With SLAE Communications Installation Forward Nose Section (B).

SECTION II

TM 11-1520-210-20P-1

| (1) ILLUSTRATION (a) FIG NO. | | (b) ITEM NO. | (2) SMR CODE | (3) NATIONAL STOCK NUMBER | (4) FSCM | (5) PART NUMBER | (6) DESCRIPTION USABLE ON CODE | (7) U/M | (8) QTY INC IN UNIT |
|------------------------------------|----|--------------|-----------------|------------------------------|-------------|--------------------|--|------------|------------------------|
| 3 | 5 | | PAOZZ | 5310-00-208-9255 | 96906 | MS21044 | NUT, SELF-LOCKING, HE5M2 | EA | 19 |
| 3 | 18 | | PAOZZ | | 97499 | 1560-UH1-805 | ANTENNA ASSEMBLY5M2 | EA | 1 |
| 3 | 19 | | PAOZZ | 5310-00-167-0753 | 88044 | AN960PD10L | WASHER, FLAT5M2 | EA | 2 |
| 3 | 20 | | PAOZZ | | 95987 | NW10-4373 | WASHER, FLAT5M2 | EA | 2 |
| 3 | 30 | | PAOZZ | 5985-00-607-6137 | 80058 | AT-640A/ARM | ANTENNA AT640ARM5M2 | EA | 1 |
| 3 | 31 | | XDOZZ | 5985-00-088-9044 | 96906 | MS35207-260 | SCREW, MACHINE5M2 | EA | 8 |
| 3 | 32 | | PAOZZ | 5310-00-576-5752 | 96906 | MS35333-39 | WASHER, LOCK5M2 | EA | 8 |

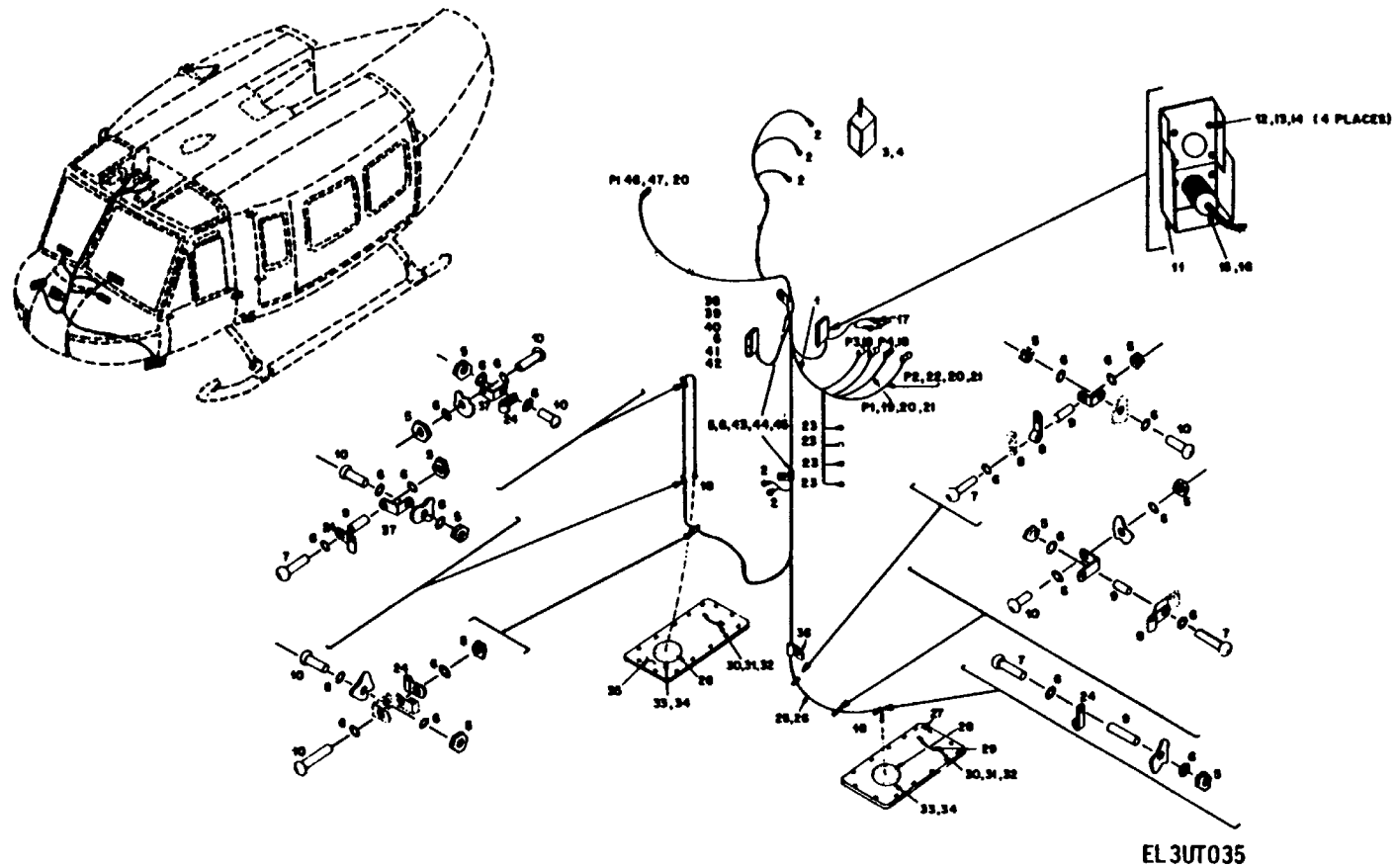
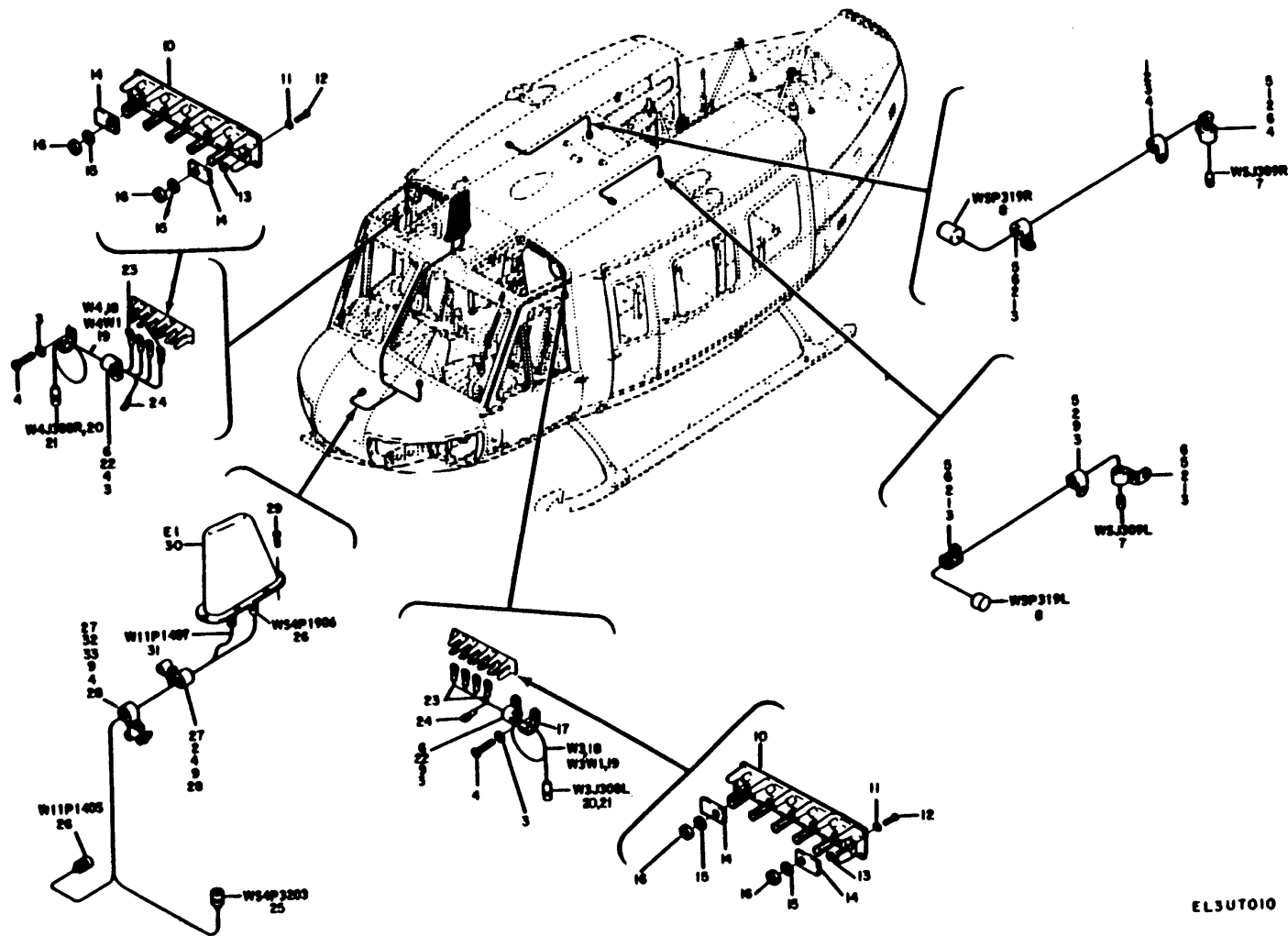


Figure 4. Electronics Equipment Configuration Army Model UH-1H and UH-1V With SLAE Communications Installation Forward Nose Section (C).

SECTION II

TM 11-1520-210-20P-1

| (1) ILLUSTRATION (a) (b) FIG ITEM NO. NO. | | (2) SMR CODE | (3) NATIONAL STOCK NUMBER | (4) FSCM | (5) PART NUMBER | (6) DESCRIPTION USABLE ON CODE | (7) U/M | (8) QTY INC IN UNIT |
|---|----|--------------------|------------------------------------|-------------|-----------------------|--|------------|---------------------------------|
| 4 | 33 | PAOFF | 5841-00-101-0330 | 80058 | AS-2595/APN-194 | ANTENNA 5M2 | EA | 2 |



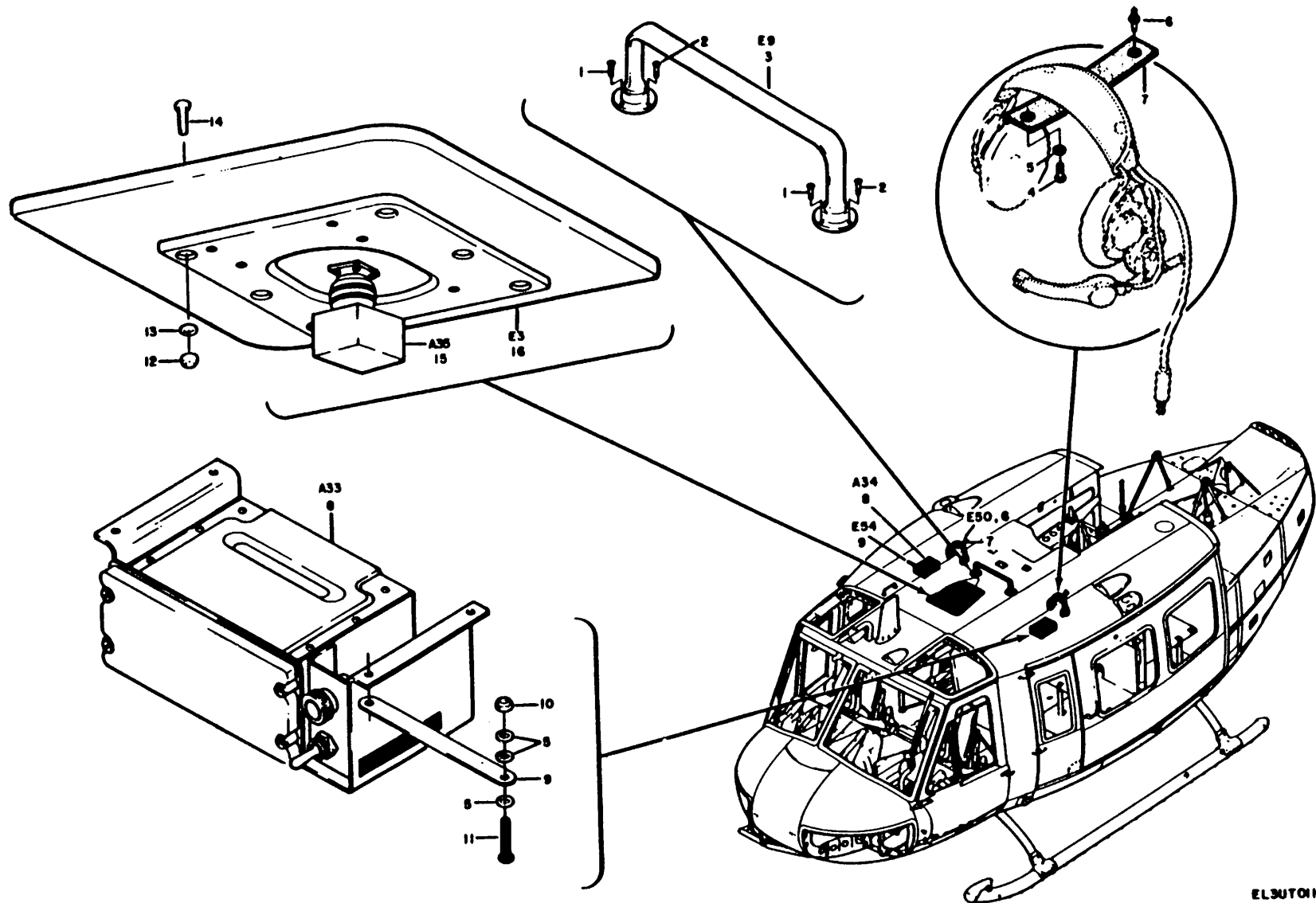
EL3UT010

Figure 5. Electronics Equipment Configuration Army Model UH-1H and UH-1V With SLAE Communications Installation Forward Roof Section (A).

SECTION II

TM 11-1520-210-20P-1

| (1) ILLUSTRATION | | (2) SMR CODE | (3) NATIONAL STOCK NUMBER | (4) FSCM | (5) PART NUMBER | (6) DESCRIPTION | USABLE ON CODE | (7) U/M | (8) QTY INC IN UNIT |
|---------------------|--------------------|--------------------|------------------------------------|-------------|-----------------------|----------------------|----------------|------------|---------------------------------|
| (a) FIG NO. | (b) ITEM NO. | | | | | | | | |
| 5 | 3 | PAOZZ | 5310-00-167-0753 | 88044 | AN960P10L | WASHER, FLAT | 5H2 | EA | 10 |
| 5 | 4 | PAOZZ | 5305-00-989-7434 | 96906 | MS35207-263 | SCREW, MACHINE | 5H2 | EA | 7 |
| 5 | 6 | PAOZZ | 5340-00-205-6301 | 96906 | | CLAMP, LOOP | 5H2 | EA | 7 |
| 5 | 17 | PAOZZ | 5340-00-176-7963 | 97499 | 70-005-1 | HOOK, STOWAGE | 5H2 | EA | 7 |
| 5 | 18 | PAOFF | | 97499 | 204-075-464-5 | CABLE ASSEMBLY | 5H2 | EA | 2 |
| 5 | 22 | PAOZZ | 5310-00-807-1474 | 96906 | MS2104213 | NUT | 5H2 | EA | 2 |
| 5 | 29 | PAOZZ | | 24446 | MS0P16018C4 | SCREW | 5H2 | EA | 6 |
| 5 | 30 | PAODZ | 5985-00-892-0895 | 80058 | AT-1108/ARC | ANTENNA | 5H2 | EA | 1 |



EL3UT01

Figure 6. Electronics Equipment Configuration Army Model UH-1H and UH-1V With SLAE Communications Installation Forward Roof Section (B).

SECTION II

TM 11-1520-210-20P-1

| (1) ILLUSTRATION | | (2) SMR CODE | (3) NATIONAL STOCK NUMBER | (4) FSCM | (5) PART NUMBER | (6) DESCRIPTION USABLE ON CODE | (7) U/M | (8) QTY INC IN UNIT |
|---------------------|--------------------|--------------------|------------------------------------|-------------|-----------------------|--|------------|---------------------------------|
| (a) FIG NO. | (b) ITEM NO. | | | | | | | |
| 6 | 1 | | 5305-00-071-1325 | 96906 | MS31960-68 | SCREW, MACHINE 5H2 | EA | 4 |
| 6 | 2 | | 5305-00-071-1323 | 96906 | MS31960-66 | SCREW, MACHINE 5H2 | EA | 4 |
| 6 | 3 | | 5985-00-089-8048 | 80058 | AS-1922A/ARC | ANTENNA 5H2 | EA | 1 |
| 6 | 4 | | 5305-00-989-7434 | 96906 | MS35207-263 | SCREW, MACHINE 5H2 | EA | 2 |
| 6 | 5 | | 5310-00-167-0753 | 88044 | AN960PD10L | WASHER, FLAT 5H2 | EA | 8 |
| 6 | 6 | | | 96906 | MS27977-268 | STUD, SNAP FASTENER..... 5H2 | EA | 2 |
| 6 | 7 | | 1560-00-701-9889 | 97499 | 204-060-956-1 | STRAP ASSY 5H2 | EA | 2 |
| 6 | 8 | | 5895-00-895-4175 | 80058 | C-6533/ARC | CONTROL, COMMUNICATI..... 5H2 | EA | 2 |
| 6 | 12 | | 5310-00-807-1473 | 96906 | MS21042L08 | NUT, SELF-LOCKING, EX..... 5H2 | EA | 6 |
| 6 | 13 | | 5310-00-184-9002 | 88044 | AN960PDSL | WASHER, FLAT 5H2 | EA | 6 |
| 6 | 14 | | 5305-00-622-9478 | 96906 | MS35265-49 | SCREWMACHINE..... 5H2 | EA | 6 |
| 6 | 16 | | 5826-00-965-9173 | 80058 | AS-1863/ARN-83 | ANTENNA 5H2 | EA | 1 |

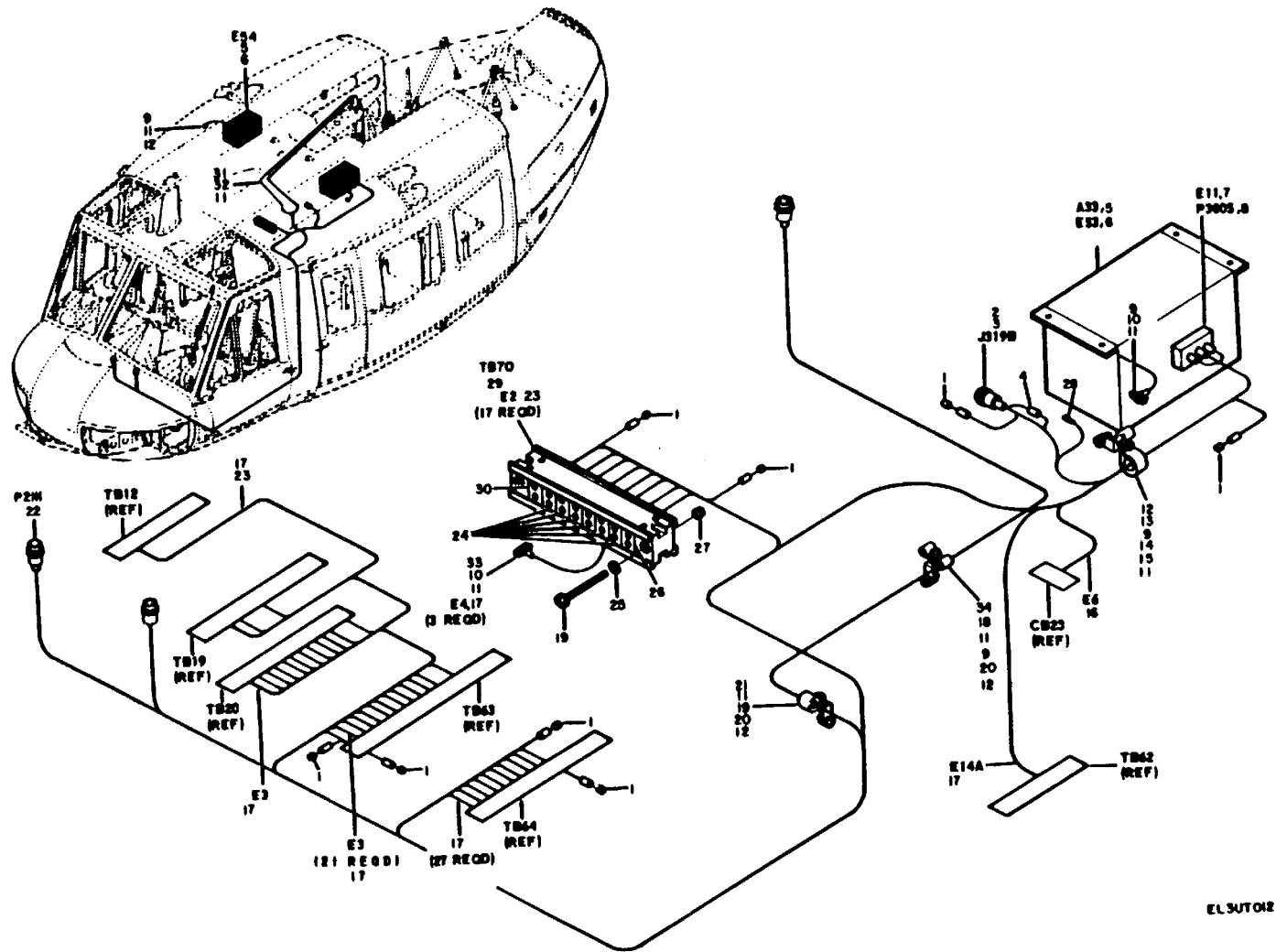


Figure 7. Electronics Equipment Configuration Army Model UH-1H and UH-1V With SLAE Communications Installation Forward Roof Section (C).

SECTION II

TM 11-1520-210-20P-1

| (1) ILLUSTRATION | | (2) | (3) | (4) | (5) | (6) | (7) | (8) |
|---------------------|--------------------|-------------|-----------------------------|-------|----------------|-----------------------------------|-----|--------------------------|
| (a) FIG NO. | (b) ITEM NO. | SMR CODE | NATIONAL STOCK NUMBER | FSCM | PART NUMBER | DESCRIPTION USABLE ON CODE | U/M | QTY INC IN UNIT |
| 7 | 2 | PAOZZ | 5999-00-137-5066 | 81349 | M39029-1-16-20 | CONTACT , ELECTRICAL 5H2 | EA | 17 |
| 7 | 5 | PAOHH | 5895-00-898-4175 | 80058 | C-6533/ARC | CONTROL, COMMUNICATI..... 5H2 | EA | 2 |
| 7 | 6 | PAOZZ | 6150-00-163-1231 | 97499 | 120-055-1-16 | BUS, CONDUCTOR..... 5H2 | EA | 2 |
| 7 | 7 | PAOZZ | 5999-00-064-1674 | 81312 | 100-20205 | CONTACT, ELECTRICAL 5H2 | EA | 42 |
| 7 | 13 | PAOZZ | 5340-00-286-9443 | 96906 | MS21919WDG9 | CLAMP, LOOP..... 5H2 | EA | 1 |
| 7 | 14 | PAOZZ | 5305-00-925-9674 | 96906 | MS27039-1-10 | SCREW, MACHINE 5H2 | EA | 6 |

SECTION II

TM 11-1520-210-20P-1

| (1) ILLUSTRATION | | (2) | (3) | (4) | (5) | (6) | (7) | (8) |
|---------------------|--------------------|-------------|-----------------------------|-------|----------------|-----------------------------------|-----|--------------------------|
| (a) FIG NO. | (b) ITEM NO. | SMR CODE | NATIONAL STOCK NUMBER | FSCM | PART NUMBER | DESCRIPTION USABLE ON CODE | U/M | QTY INC IN UNIT |
| 8 | 1 | PAOZZ | 5305-00-989-7434 | 96906 | MS35207-263 | SCREW, MACHINE 5H2 | EA | 13 |
| 8 | 2 | PAOZZ | 5310-00-167-0755 | 88044 | AN960PD10L | WASHER, FLAT 5H2 | EA | 13 |
| 8 | 3 | PAOZZ | 5826-00-740-5100 | 97499 | 205-075-325-1 | ANTENNA ASSEMBLY, AD 5H2 | EA | 1 |
| 8 | 4 | XDOZZ | 5305-00-088-9044 | 96906 | MS3507-260 | SCREW, MACHINE 5H2 | EA | 8 |
| 8 | 5 | PAOZZ | 5310-00-576-5752 | 96906 | MS35333-39 | WASHER, LOCK 5H2 | EA | 8 |
| 8 | 6 | PAOZZ | 5985-00-607-6137 | 80058 | AT-640A/ARN | ANTENNA AT640ARN 5H2 | EA | 1 |
| 8 | 7 | PAOHF | 5895-00-686-7626 | 80058 | AT-884/APX-44 | ANTENNA 5H2 | EA | 1 |
| 8 | 8 | PAOZZ | 5305-00-957-7818 | 96906 | MS24693S27 | SCREW, MACHINE 5H2 | EA | 6 |
| 8 | 29 | PAOZZ | | 73949 | X942-2 | SWITH, TRIGGER 5H2 | EA | 2 |

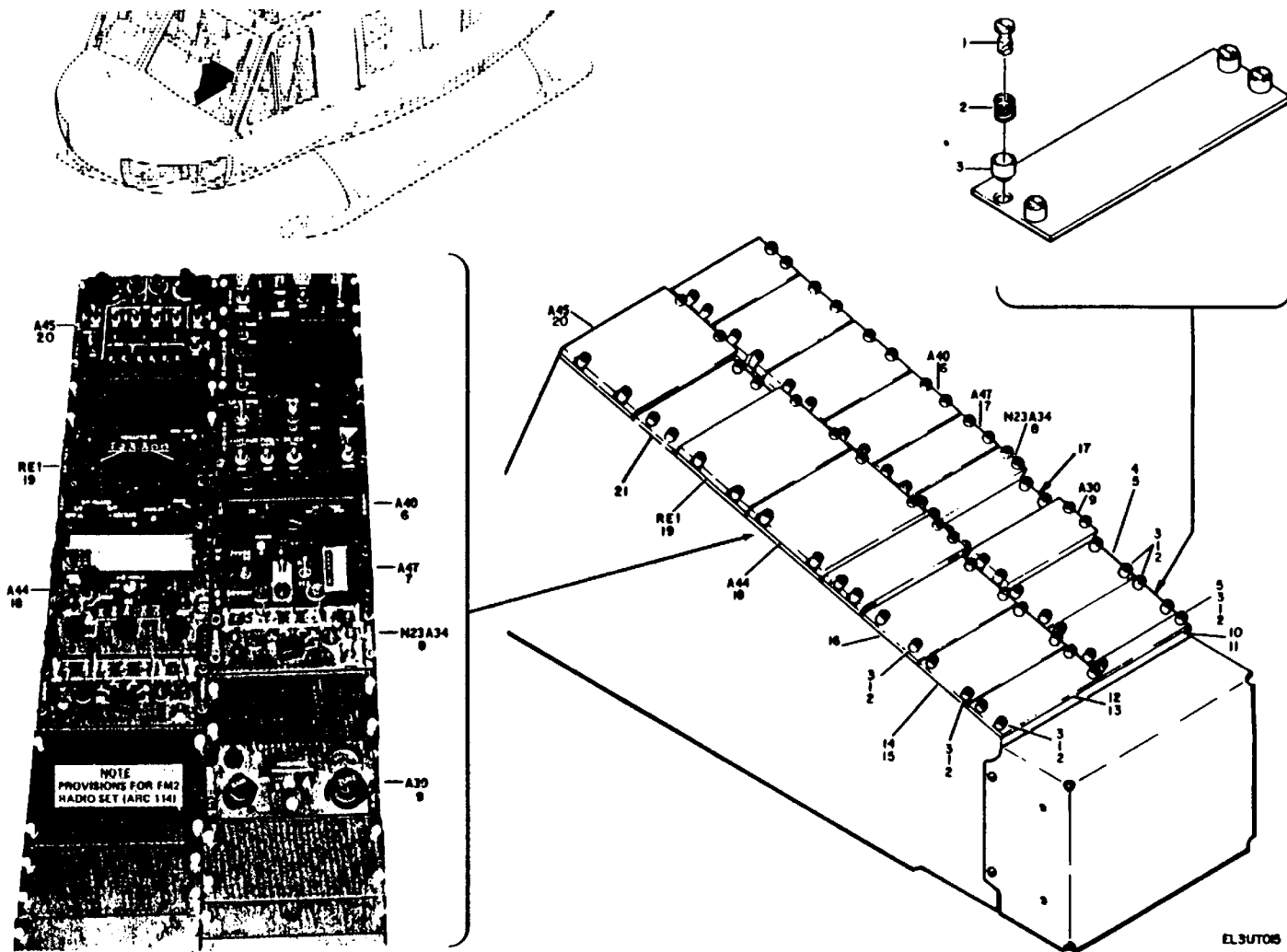
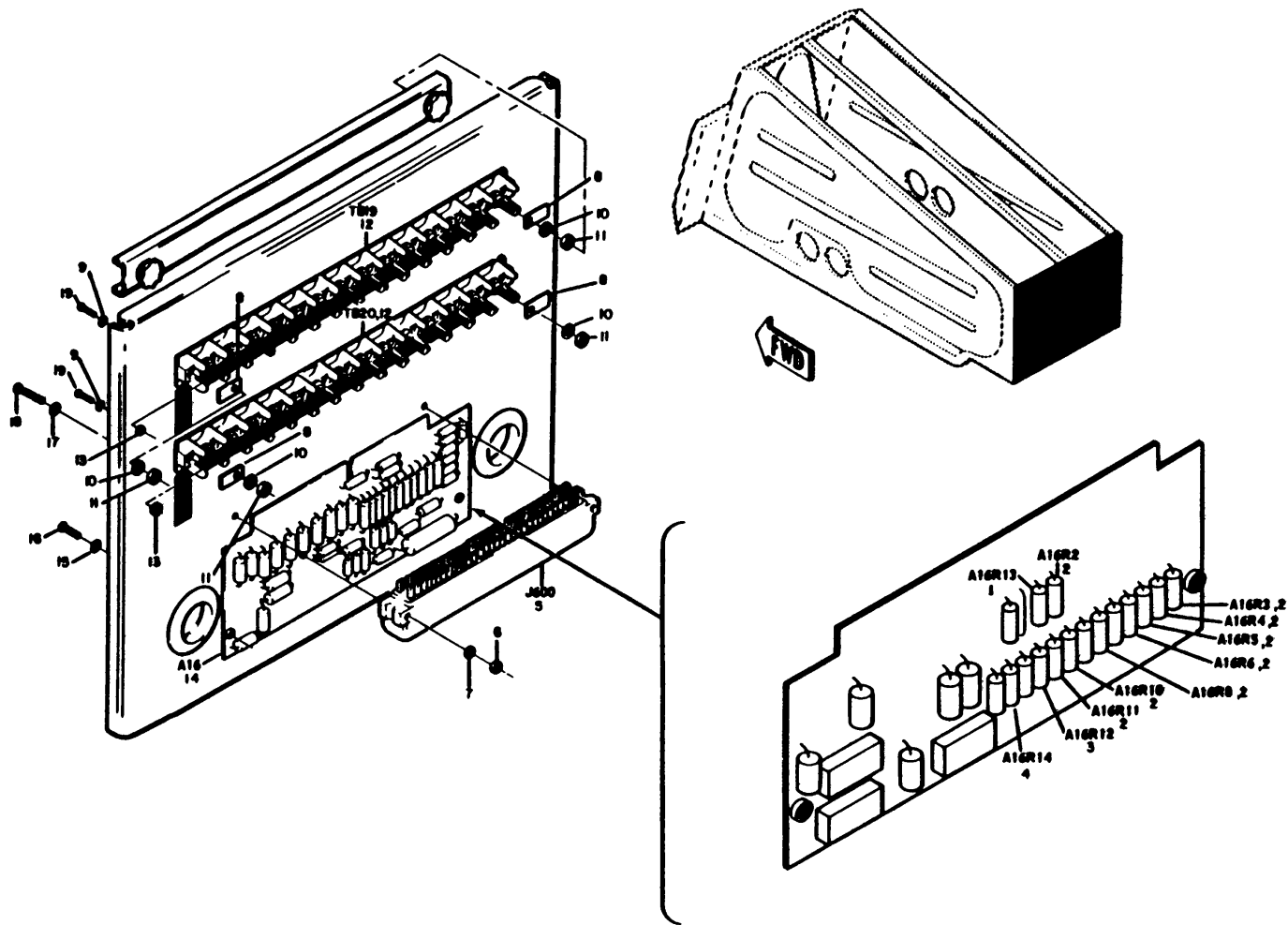


Figure 9. Electronics Equipment Configuration Army Model UH-1H and UH-1V With SLAE Communications Installation Pedestal Box and Control Panel (A).

SECTION II

TM 11-1520-210-20P-1

| (1) ILLUSTRATION | | (2) | (3) | (4) | (5) | (6) | (7) | (8) |
|---------------------|--------------------|-------------|-----------------------------|-------|-----------------|-----------------------------------|-----|--------------------------|
| (a) FIG NO. | (b) ITEM NO. | SMR CODE | NATIONAL STOCK NUMBER | FSCM | PART NUMBER | DESCRIPTION USABLE ON CODE | U/M | QTY INC IN UNIT |
| 9 | 4 | PAOZZ | 1560-00-939-7622 | 97499 | 204-075-266-1 | PANEL, BLANK.....5H2 | EA | 4 |
| 9 | 6 | PAOFF | 5821-00-082-3599 | 80058 | C-3835/ARC-54 | CONTROL, RADIO SET 5H2 | EA | 1 |
| 9 | 7 | PAOHD | 5821-00-926-7230 | 80058 | C-8157/ARC | CONTROL, INDICATOR 5H2 | EA | 1 |
| 9 | 8 | PAOHH | 5895-00-895-4175 | 80058 | C-6533/ARC | CONTROL, COMMUNICATI5H2 | EA | 1 |
| 9 | 9 | PAODD | 5826-00-985-9174 | 80058 | C-6899/ARN-83 | CONTROL, DIRECTION F5H2 | EA | 1 |
| 9 | 12 | XDOZZ | | 97499 | 204-075-266-29 | BLANK PANEL ASSY 5H2 | EA | 1 |
| 9 | 14 | PAOFF | 1560-00-994-5646 | 97499 | 204-075-266-37 | PANEL, BLANK.....5H2 | EA | 1 |
| 9 | 16 | PAODD | 5821-00-184-6065 | 80058 | AN/ARC-114 | RADIO SET5H2 | EA | 1 |
| 9 | 17 | PAODD | 5821-00-019-8405 | 80058 | C-3940/ARC-94 | CONTROL, RADIO SET 5H2 | EA | 1 |
| 9 | 18 | PAOFH | 5821-00-082-3928 | 80058 | C-6287/ARC-51BX | CONTROL, RADIO SET OR5H2 | EA | 1 |
| 9 | 19 | PDODD | 5821-00-935-5072 | 80058 | AN/ARC115 | RADIO SET AN/ARC 115.....5H2 | EA | 1 |
| 9 | 20 | PAODD | 5895-00-089-4403 | 80058 | C-6280/APX | CONTROL PANEL.....5H2 | EA | 1 |
| 9 | 21 | PAODD | 5826-00-920-7107 | 80058 | C-6873/ARC-82 | CONTROL, RADIO SET OR5H2 | EA | 1 |
| 9 | 21 | PAODD | 5826-00-149-1399 | 80058 | C-6873B/ARN-82 | CONTROL, RADIO SET 5H2 | EA | 1 |



EL3UT07

Figure 10. Electronics Equipment Configuration Army Model UH-1H and UH-1V With SLAE Configurations Installation Pedestal Box and Control Panel (C).

SECTION II

TM 11-1520-210-20P-1

| (1) ILLUSTRATION | | (2) | (3) | (4) | (5) | (6) | (7) | (8) |
|---------------------|--------------------|-------------|-----------------------------|-------|----------------|-----------------------------------|-----|--------------------------|
| (a) FIG NO. | (b) ITEM NO. | SMR CODE | NATIONAL STOCK NUMBER | FSCM | PART NUMBER | DESCRIPTION USABLE ON CODE | U/M | QTY INC IN UNIT |
| 10 | 14 | XDOFF | | 97499 | 212-075-329-7 | BOARD ASSY5H2 | EA | 1 |
| 10 | 15 | PAOZZ | 5310-00-579-0079 | 96906 | MS35333-37 | WASHER, LOCK5H2 | EA | 2 |
| 10 | 16 | PAOZZ | 5305-00-984-4988 | 96906 | MS35206-228 | SCREW, MACHINE5H2 | EA | 2 |

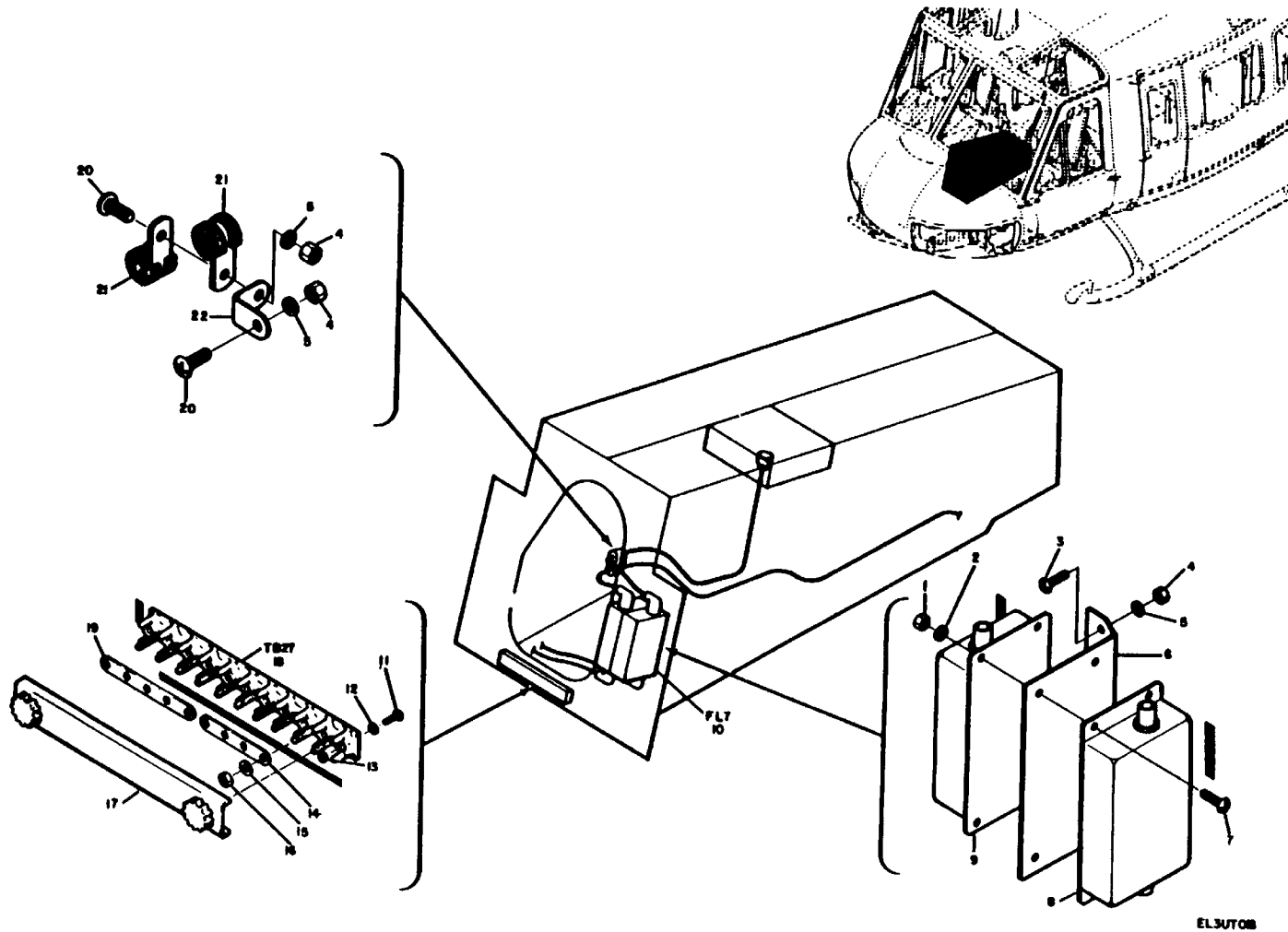
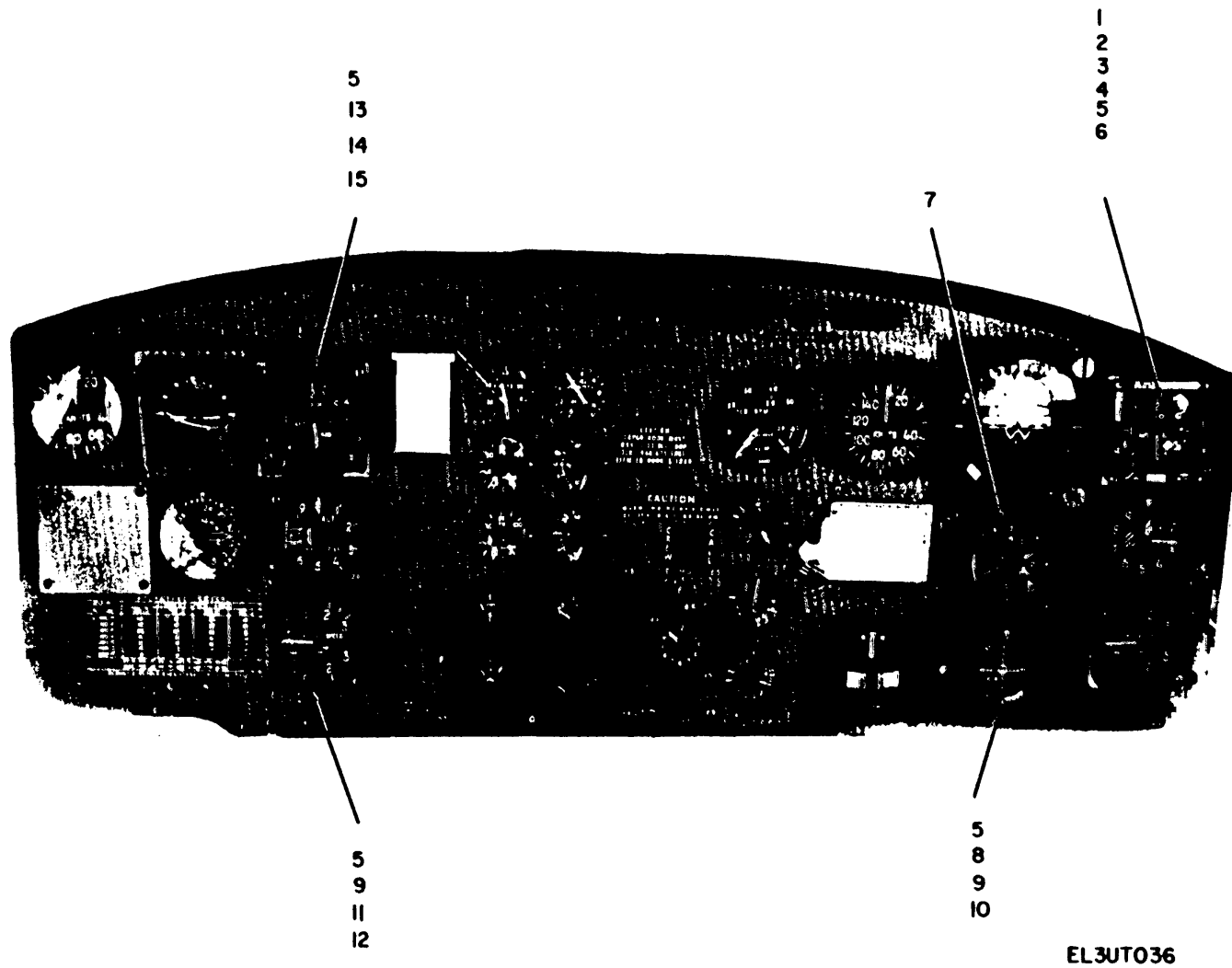


Figure 11. Electronics Equipment Configuration Army Model UH-1H and UH-1V With SLAE Communications Installation Pedestal Box and Control Panel (D).

SECTION II

TM 11-1520-210-20P-1

| (1) ILLUSTRATION | | (2) | (3) | (4) | (5) | (6) | (7) | (8) |
|---------------------|--------------------|-------------|-----------------------------|-------|----------------|-----------------------------------|-----|--------------------------|
| (a) FIG NO. | (b) ITEM NO. | SMR CODE | NATIONAL STOCK NUMBER | FSCM | PART NUMBER | DESCRIPTION USABLE ON CODE | U/M | QTY INC IN UNIT |
| 11 | 10 | PAOFF | 5915-00-631-5029 | 97499 | 212-075-328-3 | FILTER, ASSEMBLY, ELE.....5H2 | EA | 1 |



EL3UT036

Figure 12. Electronics Equipment Configuration Army Model UH-1H and UH-1V With SLAE Communications Instrument Panel Assembly.

SECTION II

TM 11-1520-210-20P-1

| (1) ILLUSTRATION | | (2) | (3) | (4) | (5) | (6) | (7) | (8) |
|---------------------|--------------------|-------------|-----------------------------|-------|-----------------|---|-----|--------------------------|
| (a) FIG NO. | (b) ITEM NO. | SMR CODE | NATIONAL STOCK NUMBER | FSCM | PART NUMBER | DESCRIPTION USABLE ON CODE | U/M | QTY INC IN UNIT |
| 12 | 1 | PAOFA | 5841-01-058-7994 | 80058 | ID-1917/APN-209 | INDICATOR, HEIGHT 5H2 | EA | 1 |
| 12 | 2 | XDOZZ | | 81996 | 1560-UH1-886 | SPACER5H2 | EA | 1 |
| 12 | 3 | PAOZZ | 5305-00-054-6659 | 96906 | MS51957-35 | SCREW, MACHINE5H2 | EA | 3 |
| 12 | 4 | PAOZZ | 5305-00-054-6660 | 96906 | MS51957-36 | SCREW, MACHINE 5H2 | EA | 1 |
| 12 | 5 | PAOZZ | 5310-00-208-4736 | 80205 | NAS487-15 | NUT, SHEET SPRING 5H2 | EA | 15 |
| 12 | 6 | PAOZZ | | 96906 | MS27130-CR88 | NUT5H2 | EA | 1 |
| 12 | 7 | PDOFF | 5826-00-897-4889 | 80058 | ID-998/ASN | INDICATOR, RADIO-MAG5H2 | EA | 1 |
| 12 | 8 | PAODD | 5826-00-402-5317 | 80058 | ID-1347-ARN-82 | INDICATOR, COURSE 5H2 | EA | 1 |
| 12 | 8 | PAODD | 5826-00-106-1722 | 80058 | ID-1347C/ARN-82 | INDICATOR, COURSE MWO55-1520-210-30-455H2 | EA | 1 |
| 12 | 9 | PAOZZ | 5305-00-957-7808 | 96906 | MS24693-BB33 | SCREW, MACHINE 5H2 | EA | 2 |
| 12 | 10 | PAOZZ | 5305-00-638-0502 | 96906 | MS35214-28 | SCREW, MACHINE 5H2 | EA | 2 |
| 12 | 11 | PAOZZ | 5826-00-849-0293 | 96906 | MS28027-2 | INDICATOR, COURSE 5H2 | EA | 1 |
| 12 | 12 | PAOZZ | 5305-00-059-8256 | 96906 | MS35214-31 | SCREW, MACHINE 5H2 | EA | 2 |
| 12 | 13 | PAOFA | 5841-01-058-7873 | 80058 | RT-1115/APN-209 | RECEIVER-TRANSMITTE5H2 | EA | 1 |
| 12 | 14 | XDOZZ | | 81996 | 1560-UH1-887 | SPACER5H2 | EA | 1 |
| 12 | 15 | PAOZZ | 5305-00-054-6662 | 96906 | MS51957-38 | SCREW, MACHINE 5H2 | EA | 4 |

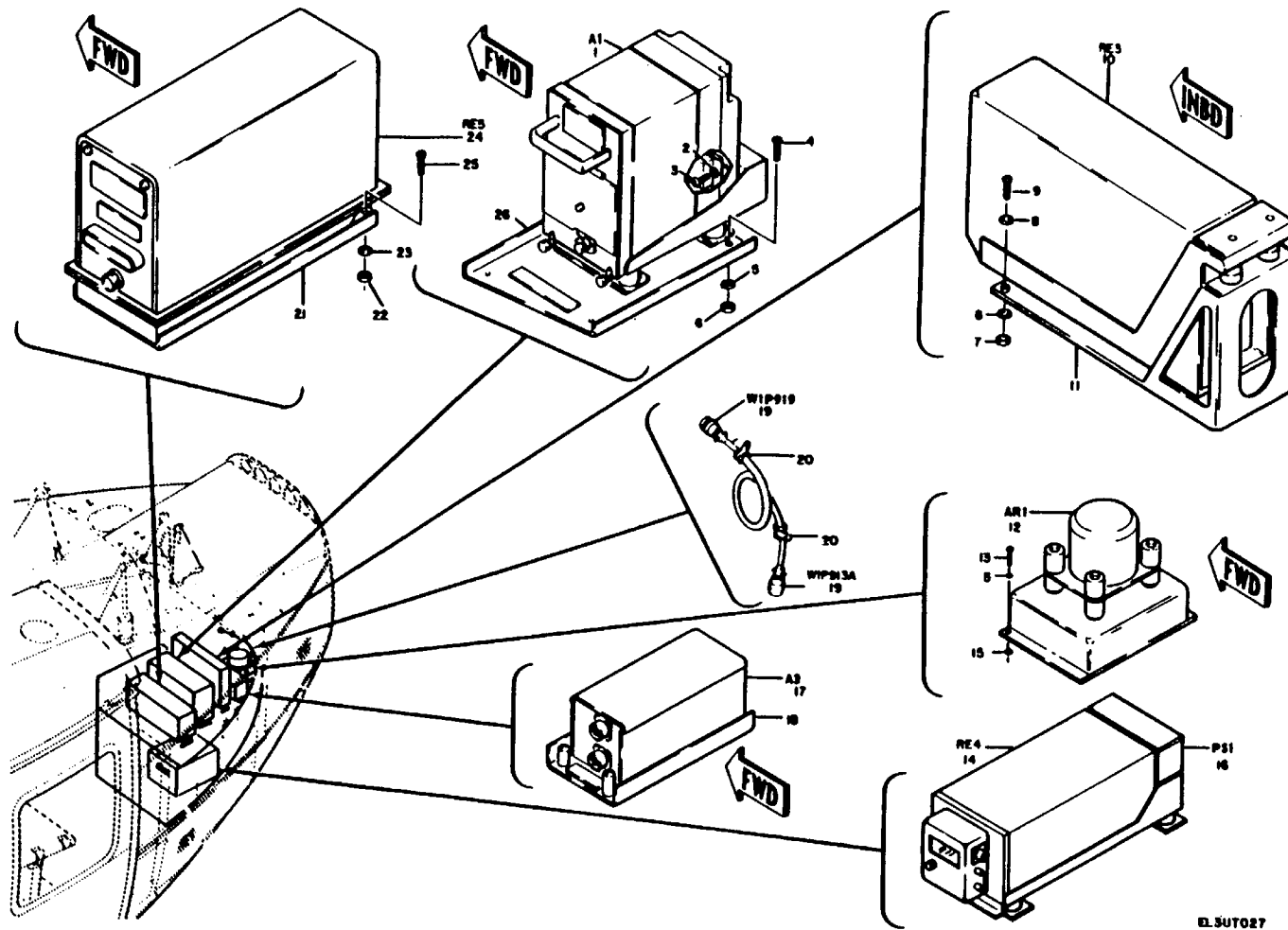


Figure 13. Electronics Equipment Configuration Army Model UH-1H and UH-1V With SLAE Communications Electrical and Radio (A).

SECTION II

TM 11-1520-210-20P-1

| (1) ILLUSTRATION | | (2) | (3) | (4) | (5) | (6) | (7) | (8) |
|---------------------|--------------------|-------------|-----------------------------|-------|-----------------|-----------------------------------|-----|--------------------------|
| (a) FIG NO. | (b) ITEM NO. | SMR CODE | NATIONAL STOCK NUMBER | FSCM | PART NUMBER | DESCRIPTION USABLE ON CODE | U/M | QTY INC IN UNIT |
| 13 | 1 | PDODD | 5810-00-061-3386 | 98230 | KITIATISEC | COMPUTER5H2 | EA | 1 |
| 13 | 2 | PAOZZ | 5310-00-187-2398 | 88044 | AN960PD6L | WASHER, FLAT5H2 | EA | 4 |
| 13 | 3 | PAOZZ | 5305-00-984-4984 | 96906 | MS35206-227 | SCREW, MACHINE5H2 | EA | 4 |
| 13 | 4 | PAOZZ | 5305-00-989-7434 | 96906 | MS35207-263 | SCREW, MACHINE5H2 | EA | 8 |
| 13 | 5 | PAOZZ | 5310-00-167-0753 | 88044 | AN960PD10L | WASHER, FLAT5H2 | EA | 12 |
| 13 | 6 | PAOZZ | 5310-00-807-1474 | 96906 | MS21042L3 | NUT, SELF-LOCKING, EX5H2 | EA | 8 |
| 13 | 7 | PAOZZ | 5310-00-807-1473 | 96906 | MS21042L08 | NUT, SELF-LOCKING, EX5H2 | EA | 8 |
| 13 | 8 | PAOZZ | 5310-00-184-9002 | 88044 | AN960PD8L | WASHER, FLAT5H2 | EA | 16 |
| 13 | 9 | PAOZZ | 5305-00-984-6194 | 96906 | MS35206-246 | SCREW, MACHINE5H2 | EA | 8 |
| 13 | 10 | PAODD | 5826-00-994-1578 | 80058 | R-1391/ARN-83 | RECEIVER, RADIO5H2 | EA | 1 |
| 13 | 12 | PAODD | 6615-00-167-9757 | 80058 | CN-998B/ASN-43 | GYROSCOPE, DISPLACEM5H2 | EA | 1 |
| 13 | 13 | PAOZZ | 5305-00-989-7434 | 96906 | MS35207-263 | SCREW, MACHINE5H2 | EA | 4 |
| 13 | 14 | PAODD | 5821-00-604-3307 | 80058 | RT-698/ARC-102 | RECEIVER-TRANSMITTE5H2 | EA | 1 |
| 13 | 15 | PAOZZ | 5310-00-807-1474 | 96906 | MS21042L3 | NUT5H2 | EA | 4 |
| 13 | 16 | PAODD | 5821-00-050-8168 | 80058 | PP-3702/ARC-102 | POWER INVERTER MOUN5H2 | EA | 1 |
| 13 | 17 | PAOZZ | 5895-00-914-3991 | 80058 | TS-1843/APX | TEST SET5H2 | EA | 1 |
| 13 | 18 | PAOZZ | 5895-00-895-4410 | 80058 | MT-3513/APX | MOUNT5H2 | EA | 1 |
| 13 | 20 | PAOZZ | 5340-00-584-6556 | 96906 | MS21919WDG10 | CLAMP, LOOP5H2 | EA | 2 |
| 13 | 21 | PAOHH | 5895-00-063-9498 | 80058 | MT-3809/APX-72 | MOUNT, TRANSPONDER5H2 | EA | 1 |
| 13 | 22 | PAOZZ | 5310-00-807-1468 | 96906 | MS21042-4 | NUT, SELF-LOCKING, EX5H2 | EA | 4 |
| 13 | 23 | PAOZZ | 5310-00-184-9001 | 88044 | AN960PD416L | WASHER, FLAT5H2 | EA | 4 |
| 13 | 24 | PAODD | 5895-00-089-7179 | 80058 | RT-859/APX-72 | RECEIVER5H2 | EA | 1 |
| 13 | 25 | PAOZZ | 5305-00-719-5088 | 96906 | MS51960-83 | SCREW, MACHINE5H2 | EA | 4 |
| 13 | 26 | PAOZZ | 5975-00-935-9582 | 80058 | MT-3949A/U | MOUNTING BASE, ELECT5H2 | EA | 1 |

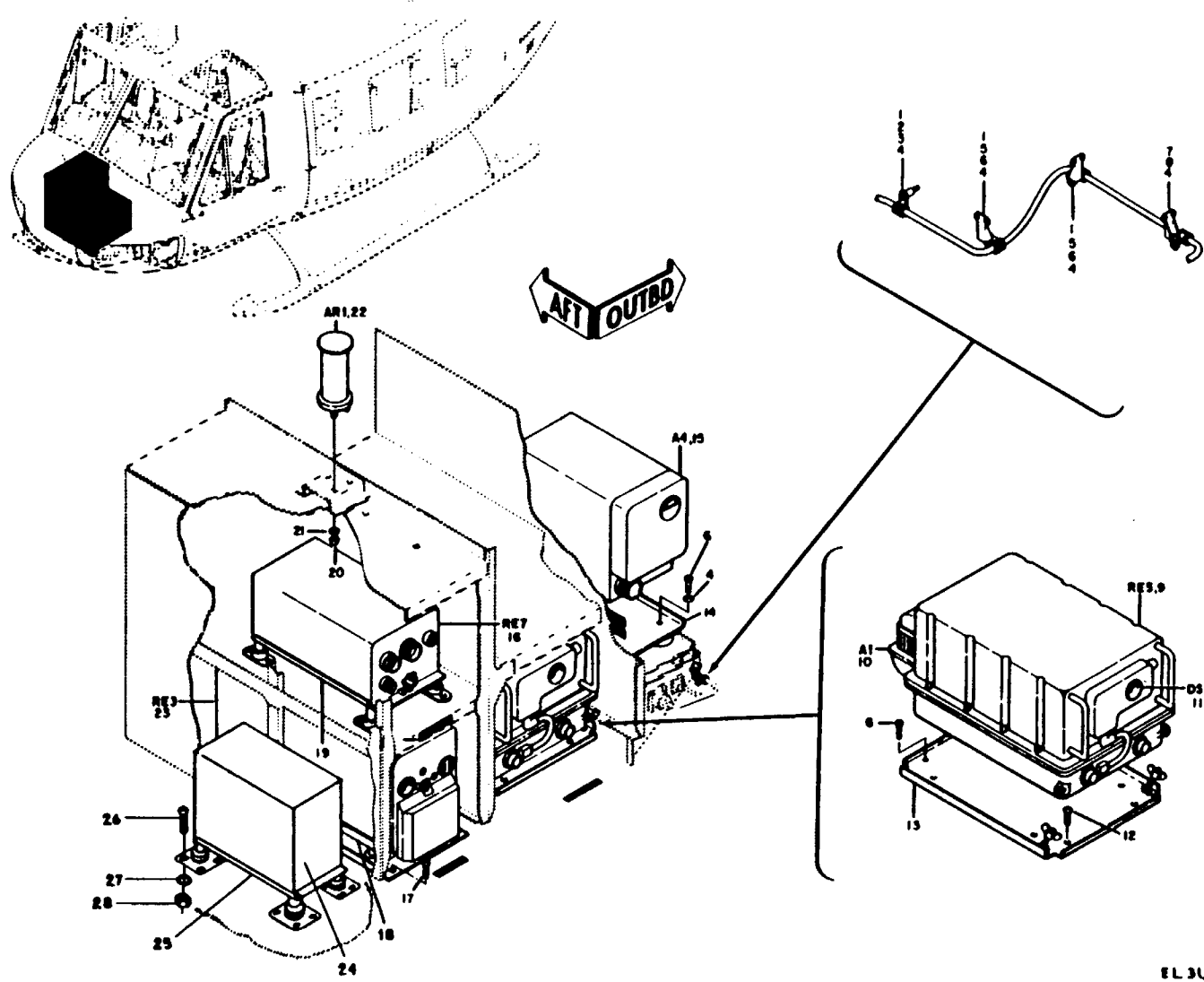


Figure 14. Electronics Equipment Configuration Army Model UH-1H and UH-1V With SLAE Communications Electrical and Radio (D).

SECTION II

TM 11-1520-210-20P-1

| (1) ILLUSTRATION | | (2) | (3) | (4) | (5) | (6) | (7) | (8) |
|---------------------|--------------------|-------------|-----------------------------|-------|-----------------|---|-----|--------------------------|
| (a) FIG NO. | (b) ITEM NO. | SMR CODE | NATIONAL STOCK NUMBER | FSCM | PART NUMBER | DESCRIPTION USABLE ON CODE | U/M | QTY INC IN UNIT |
| 14 | 9 | PAODD | 5821-00-082-3927 | 80058 | RT-742/ARC-51BX | RECEIVER.....5H2 | EA | 1 |
| 14 | 10 | PAOZZ | 5821-00-082-3701 | 80058 | HD-615/ARC-51X | COOLER, AIR, ELECTRON.....5H2 | EA | 1 |
| 14 | 11 | PAOZF | 6625-00-892-5223 | 80058 | ID-1003/ARC | INDICATOR, STANDING5H2 | EA | 1 |
| 14 | 13 | PAOZH | 5821-00-980-5789 | 80058 | MT-2653/ARC | MOUNTING5H2 | EA | 1 |
| 14 | 14 | PAOZZ | 5810-00-937-1036 | 80058 | MT-3802/ARC | MOUNTING5H2 | EA | 1 |
| 14 | 15 | PDODD | 5895-01-109-6410 | 80058 | TSEC/KY-28 | COMMUNICATION SECU5H2 | EA | 1 |
| 14 | 16 | PAODD | 5826-00-407-7300 | 80058 | R-1388/ARN-82 | RECEIVER, RADIO5H2 | EA | 1 |
| 14 | 17 | PAOZZ | 5305-00-889-3000 | 96906 | MS35206-230 | SCREW, MACHINE5H2 | EA | 8 |
| 14 | 18 | PAOFF | 5826-00-611-0865 | 80058 | MT-1175/ARN-30A | MOUNT5H2 | EA | 1 |
| 14 | 19 | PAOFF | 5826-00-920-7108 | 80058 | MT-3600/ARN-82 | MOUNTING5H2 | EA | 1 |
| 14 | 20 | PAOZZ | 5310-00-934-9747 | 96906 | MS35649-262 | NUT, PLAIN, HEXAGON5H2 | EA | 1 |
| 14 | 21 | PAOZZ | 5310-00-579-0079 | 96906 | MS35333-37 | WASHER, LOCK5H2 | EA | 1 |
| 14 | 22 | PAOZZ | 6110-00-678-8507 | 80058 | AM-3209/ASN | AMPLIFIER, ELECTRONI AM3209ASN5H2 | EA | 1 |
| 14 | 23 | PAOHH | 5821-00-082-3597 | 80058 | RT-348/ARC-54 | RECEIVER-TRANSMITTE5H2 | EA | 1 |
| 14 | 24 | PAODA | 5826-01-015-1457 | 80058 | R-1963/ARN | RECEIVER, RADIO5H2 | EA | 1 |
| 14 | 25 | PAOZF | 5826-01-022-9257 | 80058 | MT-4835/ARN | MOUNTING BASE, ELECT5H2 | EA | 1 |
| 14 | 26 | PAOZZ | 5305-00-059-3660 | 96906 | MS51958-64 | SCREW, MACHINE5H2 | EA | 16 |
| 14 | 27 | PAOZZ | 5310-00-619-1148 | 96906 | MS15795-808 | WASHER, FLAT5H2 | EA | 16 |
| 14 | 28 | PAOZZ | 5310-00-208-9255 | 96906 | MS21044C3 | NUT, SELF-LOCKING, HE5H2 | EA | 16 |

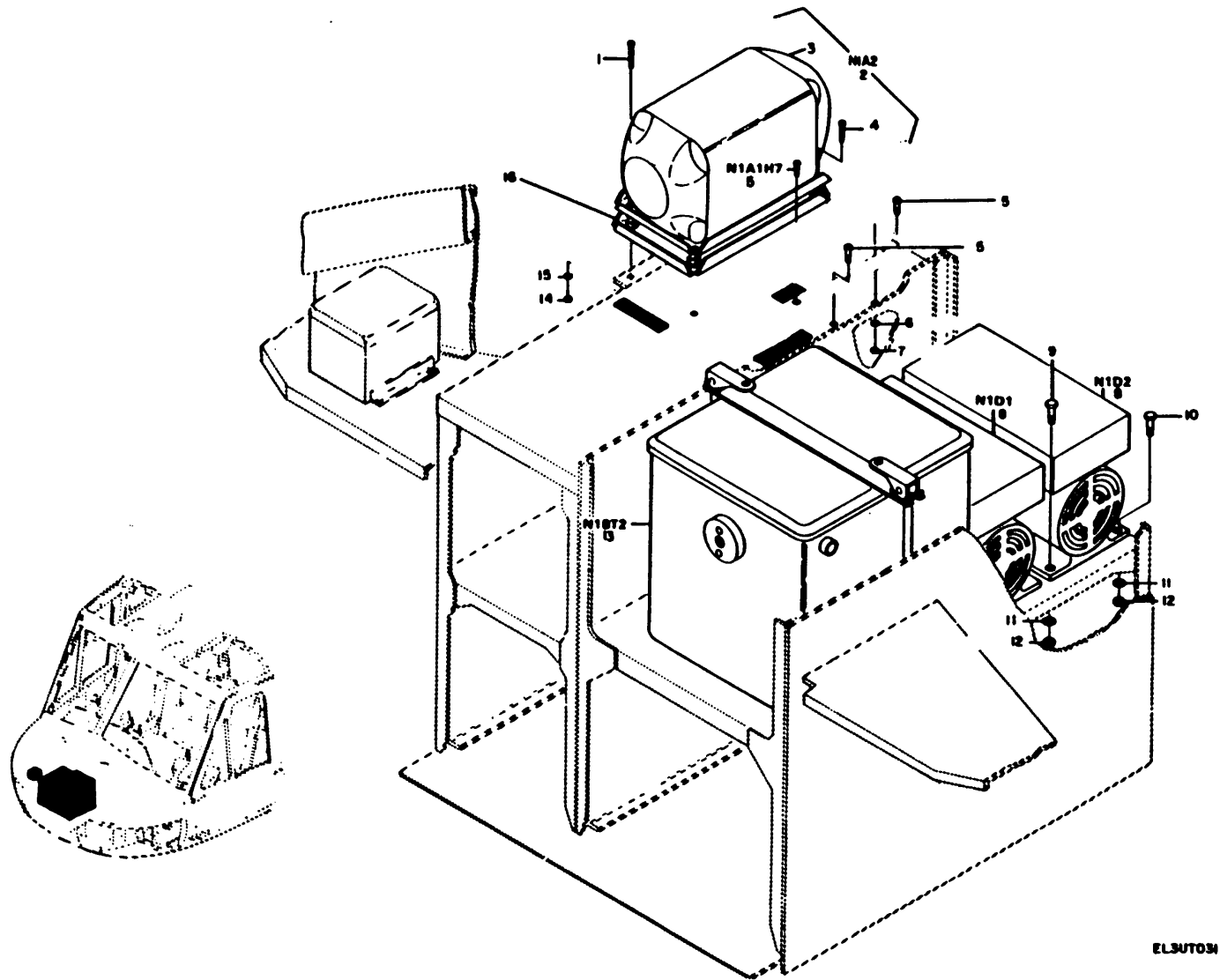


Figure 15. Electronics Equipment Configuration Army Model UH-1H and UH-1V With SLAE Communications Equipment Installation Electrical.

SECTION II

TM 11-1520-210-20P-1

| (1) ILLUSTRATION | | (2) | (3) | (4) | (5) | (6) | (7) | (8) |
|---------------------|--------------------|-------------|-----------------------------|-------|----------------|-----------------------------------|-----|--------------------------|
| (a) FIG NO. | (b) ITEM NO. | SMR CODE | NATIONAL STOCK NUMBER | FSCM | PART NUMBER | DESCRIPTION USABLE ON CODE | U/M | QTY INC IN UNIT |
| 15 | 1 | PAOZZ | 5305-00-993-2463 | 96906 | MS35207-279 | SCREW, MACHINE5H2 | EA | 2 |
| 15 | 2 | PAOHD | 6615-00-181-2719 | 78626 | 43550-2 | GYROSCOPE, DISPLACEM.....5H2 | EA | 1 |
| 15 | 3 | PAODD | 6615-00-933-6037 | 35351 | 124623-01-14 | GYROSCOPE, DISPLACEM.....5H2 | EA | 1 |
| 15 | 4 | PAOZZ | 5305-00-952-0760 | 96906 | MS35207-277 | SCREW, MACHINE5H2 | EA | 2 |
| 15 | 8 | PDODD | 6125-00-938-6539 | 80058 | PU-543A | MOTOR-GENERATOR5H2 | EA | 1 |
| 15 | 9 | PAOZZ | 5306-00-656-0358 | 88044 | AN3-6A | BOLT, MACHINE5H2 | EA | 6 |
| 15 | 10 | PAOZZ | 5306-00-151-0784 | 88044 | AN3-10A | BOLT, MACHINE5H2 | EA | 2 |
| 15 | 11 | PAOZZ | 5310-00-167-0753 | 88044 | AN960PD10L | WASHER, FLAT5H2 | EA | 8 |
| 15 | 12 | PAOZZ | 5310-00-807-1474 | 96906 | MS21042L3 | NUT5H2 | EA | 2 |
| 15 | 13 | PAOFA | 6140-00-046-1116 | 80058 | BB-433A/A | BATTERY, STORAGE5H2 | EA | 1 |
| 15 | 14 | PAOZZ | 5310-00-807-1468 | 96906 | MS21042-4 | NUT, SELF-LOCKING, EX.....5H2 | EA | 2 |
| 15 | 15 | PAOZZ | 5310-00-184-9001 | 88044 | AN960PD416L | WASHER, FLAT5H2 | EA | 2 |
| 15 | 16 | PAOZZ | 6615-00-168-0392 | 35351 | 148956-01 | MOUNTING BASE, ELECT.....5H2 | EA | 1 |

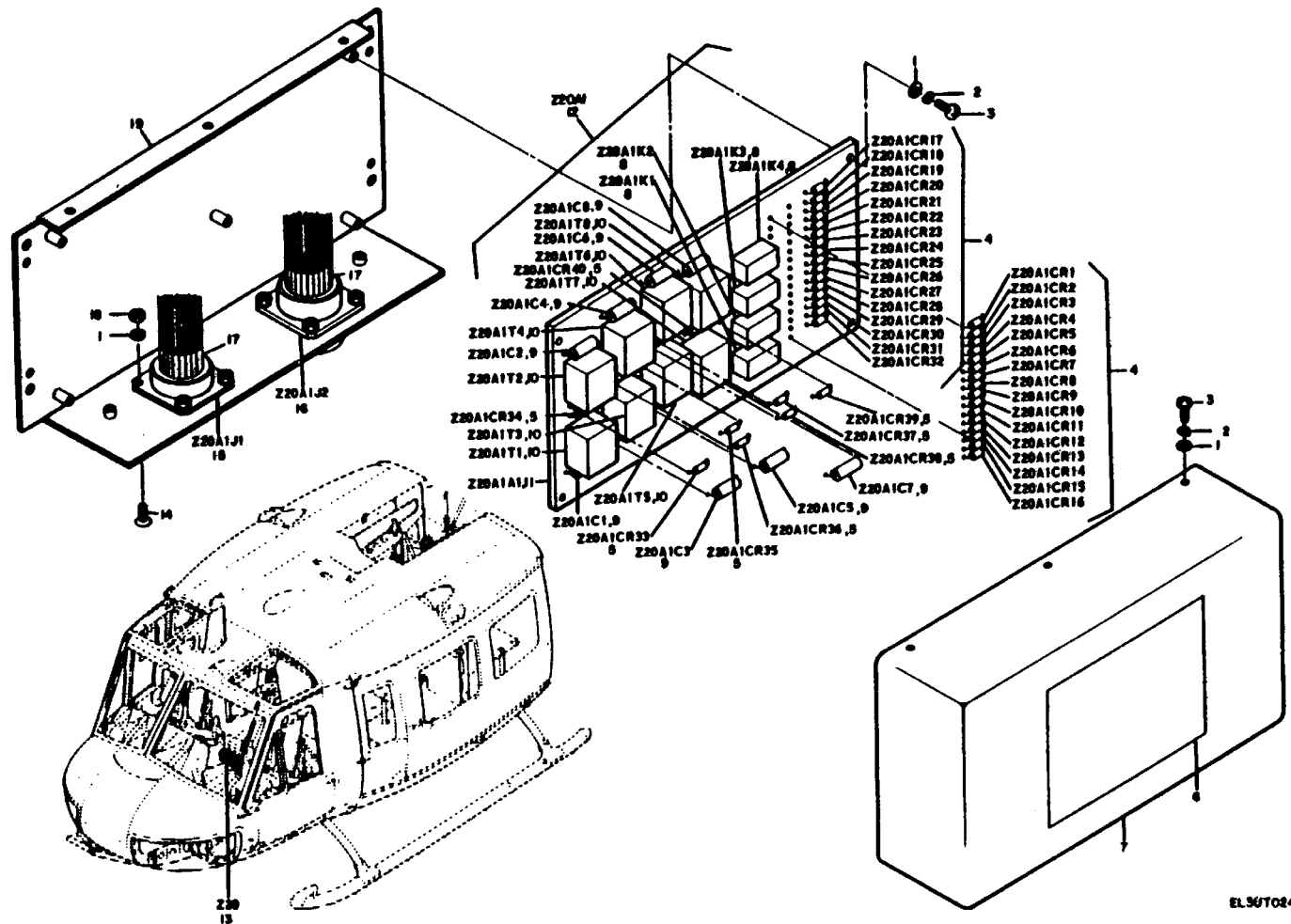
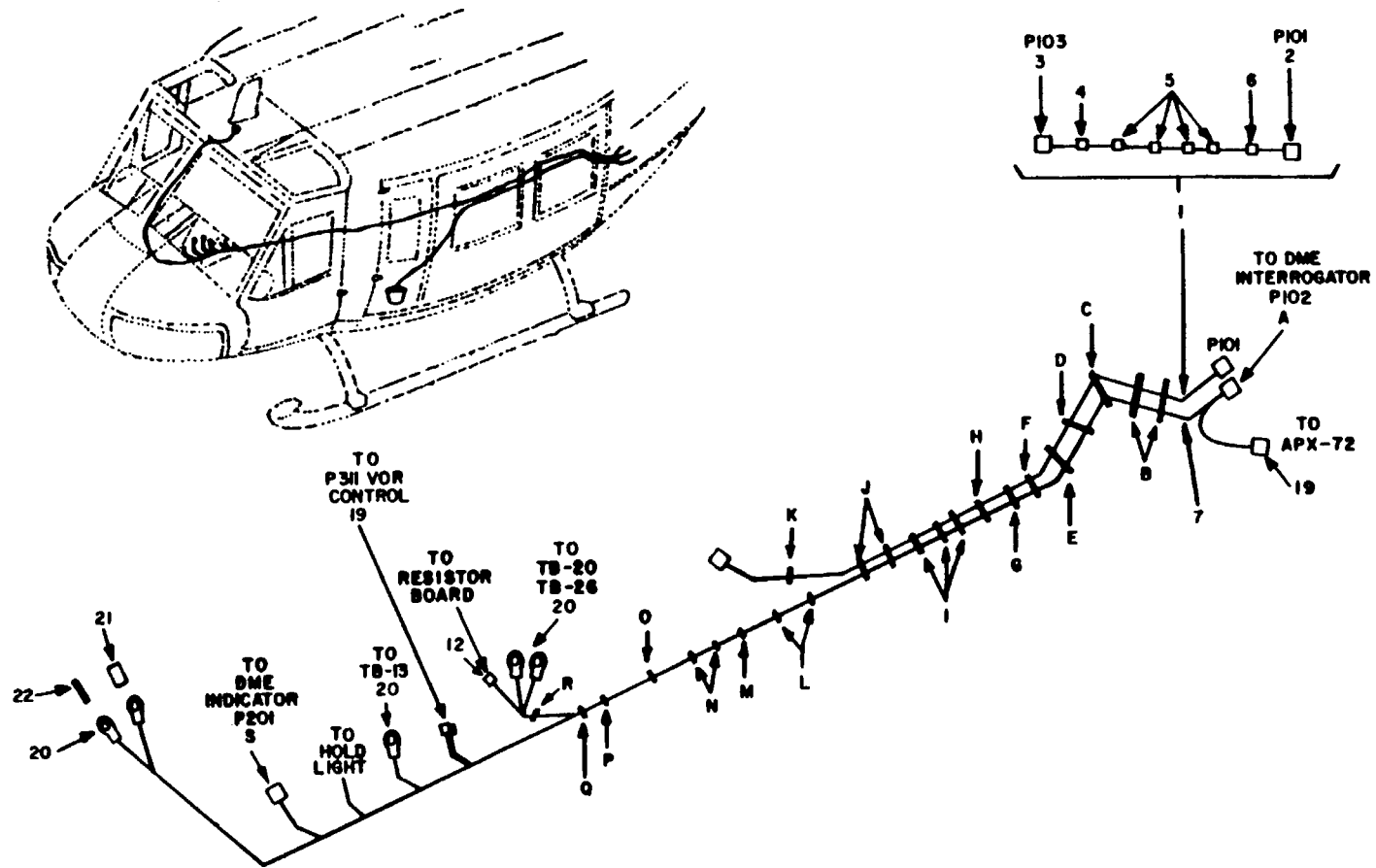


Figure 16. Electronics Equipment Configuration Army Model UH-1H and UH-1V With SLAE Communications Audio Threshold Set.

SECTION II

TM 11-1520-210-20P-1

| (1) ILLUSTRATION | | (2) | (3) | (4) | (5) | (6) | (7) | (8) |
|---------------------|--------------------|-------------|-----------------------------|-------|----------------|--|-----|--------------------------|
| (a) FIG NO. | (b) ITEM NO. | SMR CODE | NATIONAL STOCK NUMBER | FSCM | PART NUMBER | DESCRIPTION USABLE ON CODE | U/M | QTY INC IN UNIT |
| 16 | 13 | PAOHH | 5821-01-062-8195 | 80058 | MD-1047/ARC | GROUP 0804 AUDIO THRESHOLD SET DISCRIMINATOR, DISCR MD1047/ARC5H2 | EA | 1 |



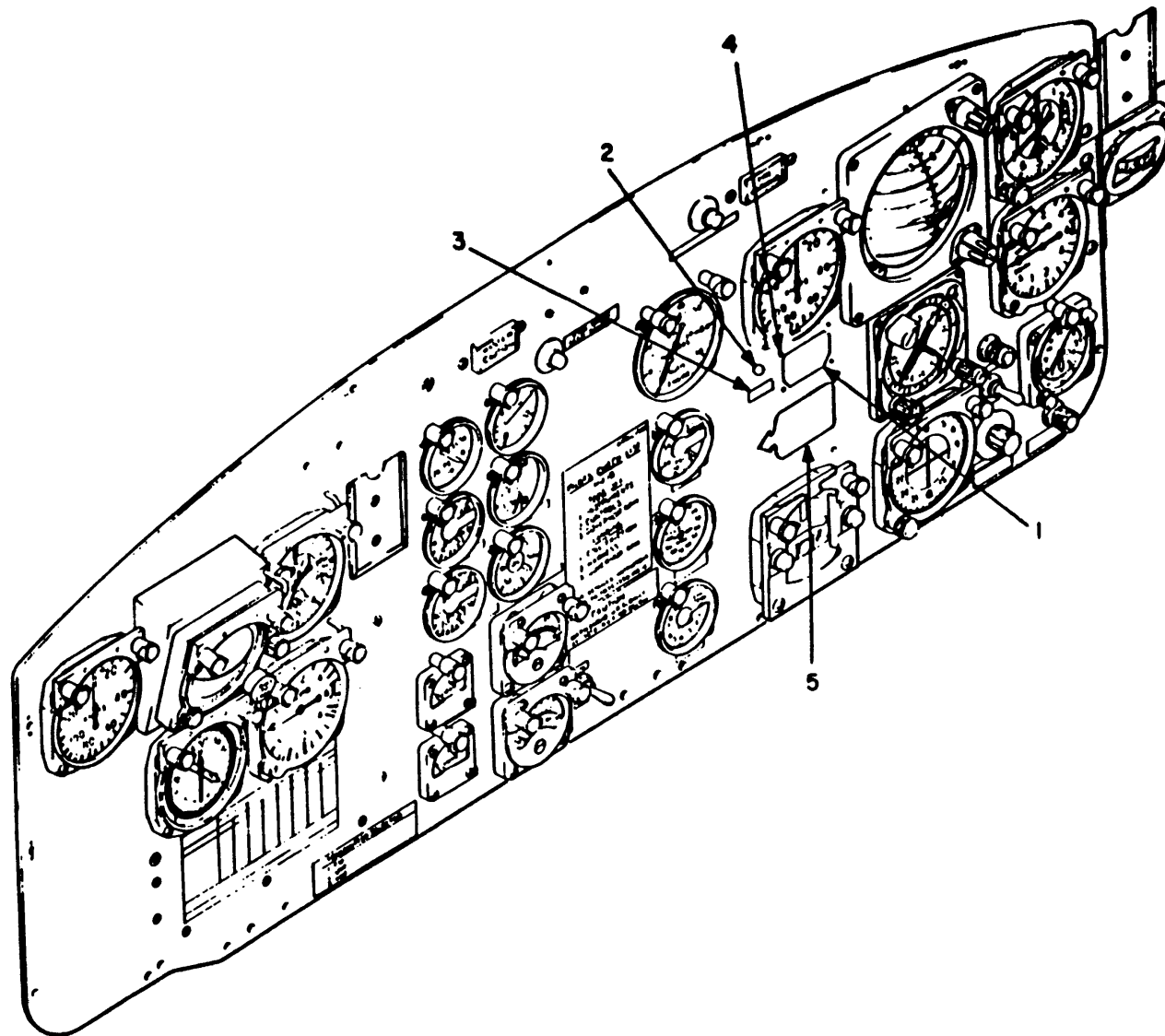
EL3UT201

Figure 17. Electronics Equipment Configuration Army Model UH-1H and UH-1V With SLAE Communications Antenna

SECTION II

TM 11-1520-210-20P-1

| (1) ILLUSTRATION | | (2) | (3) | (4) | (5) | (6) | (7) | (8) |
|---------------------|--------------------|-------------|-----------------------------|-------|----------------|---|----------|--------------------------|
| (a) FIG NO. | (b) ITEM NO. | SMR CODE | NATIONAL STOCK NUMBER | FSCM | PART NUMBER | DESCRIPTION USABLE ON CODE | U/M | QTY INC IN UNIT |
| 17 | 6 | PAOZZ | 5305-00-066-7327 | 96906 | MS24693-C28 | GROUP 1702 ANTENNA | | |
| 17 | 7 | PAODD | | 88044 | AT-741A/A | SCREW, MACHINE.....ETC ANTENNA.....ETC | EA EA | 6 1 |



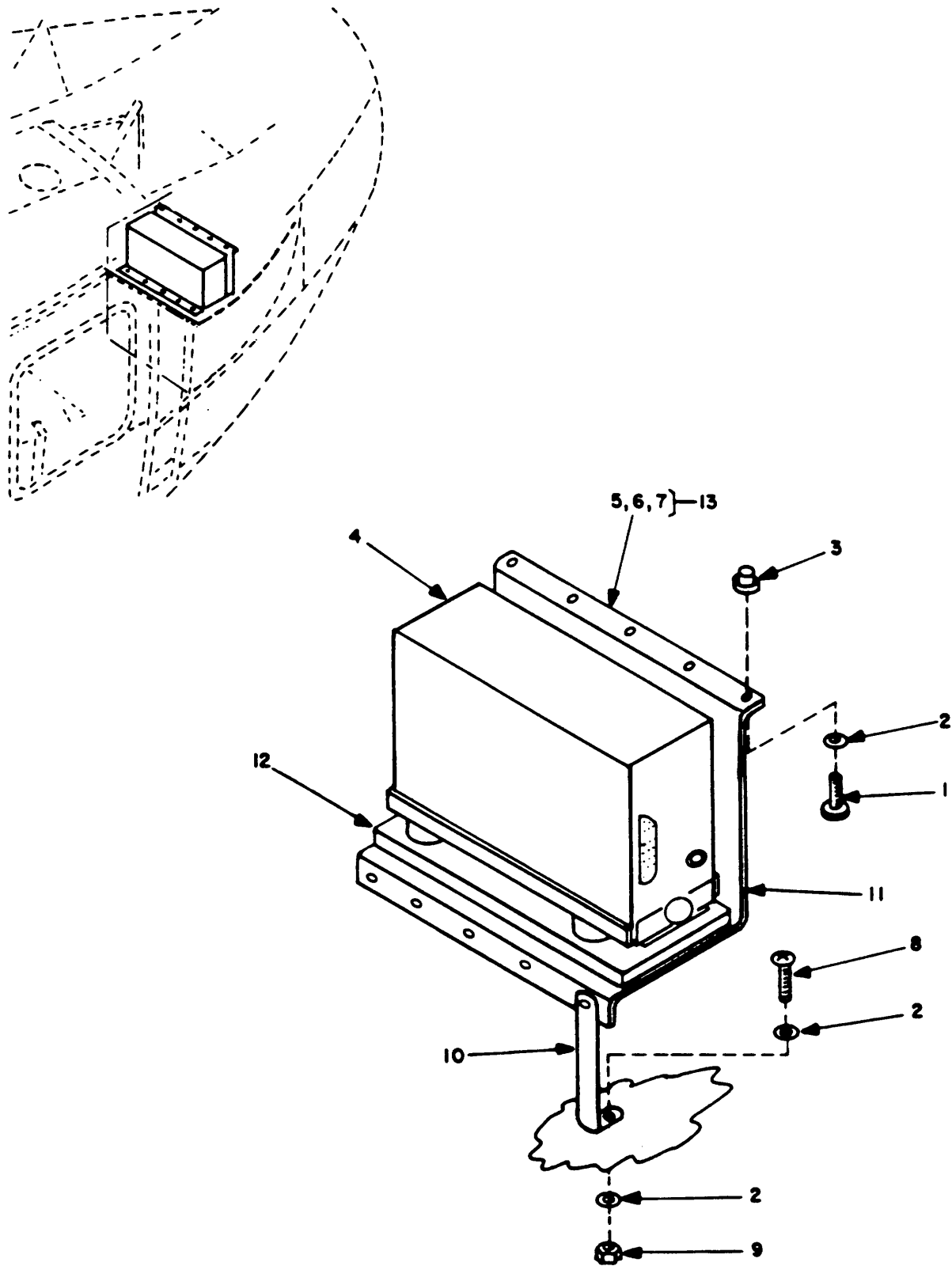
EL3UT209

Figure 18. Electronics Equipment Configuration Army Model UH-1H and UH-1V With SLAE Communications Instrument Panel.

SECTION II

TM 11-1520-210-20P-1

| (1) ILLUSTRATION | | (2) | (3) | (4) | (5) | (6) | (7) | (8) |
|---------------------|--------------------|-------------|-----------------------------|-------|-----------------|--|-----|--------------------------|
| (a) FIG NO. | (b) ITEM NO. | SMR CODE | NATIONAL STOCK NUMBER | FSCM | PART NUMBER | DESCRIPTION USABLE ON CODE | U/M | QTY INC IN UNIT |
| 18 | 1 | PAODD | | 13490 | ID-2192/ARN-124 | GROUP 1704 INSTRUMENT PANEL INDICATOR, ARN-124ETC | EA | 1 |



EL 3UT210

Figure 19. Electronics Equipment Configuration Army Model UH-1H and UH-1V With SLAE Communications Interrogator.

SECTION II

TM 11-1520-210-20P-1

| (1) ILLUSTRATION | | (2) | (3) | (4) | (5) | (6) | (7) | (8) |
|---------------------|--------------------|-------------|-----------------------------|-------|-----------------|--|-----|--------------------------|
| (a) FIG NO. | (b) ITEM NO. | SMR CODE | NATIONAL STOCK NUMBER | FSCM | PART NUMBER | DESCRIPTION USABLE ON CODE | U/M | QTY INC IN UNIT |
| 19 | 4 | PAOZZ | 5826-01-066-8600 | 80058 | RT-1294/ARN-124 | GROUP 1705 INTERROGATOR RECEIVER-TRANSMITTERETC | EA | 1 |

SECTION IV

NATIONAL STOCK NUMBER AND PART NUMBER INDEX

TM 11-1520-210-20P-1

| STOCK NUMBER | FIGURE NO. | ITEM NO. | STOCK NUMBER | FIGURE NO. | ITEM NO. |
|------------------|------------|----------|------------------|------------|----------|
| 5821-00-019-8405 | 9 | 17 | 5305-00-638-0502 | 12 | 10 |
| 5821-00-050-8168 | 13 | 16 | 5306-00-656-0358 | 15 | 9 |
| 5305-00-054-6659 | 12 | 3 | 6110-00-678-8507 | 14 | 22 |
| 5305-00-054-6660 | 12 | 4 | 5895-00-668-7626 | 8 | 7 |
| 5305-00-054-6662 | 12 | 15 | 1560-00-701-9889 | 6 | 7 |
| 5305-00-059-3660 | 14 | 26 | 5305-00-719-5088 | 13 | 25 |
| 5305-00-059-8256 | 12 | 12 | 5826-00-739-4479 | 1 | 18 |
| 5810-00-061-3386 | 13 | 1 | 5826-00-740-5100 | 8 | 3 |
| 5895-00-063-9498 | 13 | 21 | 5310-00-807-1468 | 13 | 22 |
| 5999-00-064-1674 | 7 | 7 | 5310-00-801-1468 | 15 | 14 |
| 5305-00-066-7327 | 17 | 6 | 5310-00-807-1473 | 6 | 12 |
| 5305-00-071-1323 | 6 | 2 | 5310-00-807-1473 | 13 | 7 |
| 5305-00-071-1325 | 6 | 1 | 5310-00-807-1474 | 5 | 22 |
| 5821-00-082-3597 | 14 | 23 | 5310-00-807-1474 | 13 | 6 |
| 5821-00-082-3599 | 9 | 6 | 5310-00-807-1474 | 13 | 15 |
| 5821-00-082-3701 | 14 | 10 | 5310-00-807-1414 | 15 | 12 |
| 5821-00-082-3927 | 14 | 9 | 5826-00-849-0293 | 12 | 11 |
| 5821-00-082-3928 | 9 | 18 | 5305-00-889-3000 | 14 | 17 |
| 5985-00-082-3989 | 1 | 9 | 5985-00-892-0895 | 5 | 30 |
| 9855-00-082-3991 | 1 | 7 | 6625-00-892-5223 | 14 | 11 |
| 5305-00-088-9044 | 3 | 31 | 5895-00-895-4175 | 6 | 8 |
| 5895-00-088-9044 | 8 | 4 | 5895-00-895-4175 | 7 | 5 |
| 5895-00-089-4403 | 9 | 20 | 5895-00-895-4175 | 9 | 8 |
| 5895-00-089-7179 | 13 | 24 | 5895-00-895-4410 | 13 | 18 |
| 5985-00-089-8048 | 6 | 3 | 5826-00-897-4889 | 12 | 7 |
| 5826-00-106-1722 | 12 | 8 | 5310-00-905-5159 | 1 | 8 |
| 5999-00-137-5066 | 7 | 2 | 5895-00-914-3991 | 13 | 17 |
| 5826-00-149-1399 | 9 | 22 | 5826-00-920-7107 | 09 | 21 |
| 5306-00-151-0784 | 15 | 10 | 5826-00-920-7108 | 14 | 19 |
| 6150-00-163-1231 | 7 | 6 | 5305-00-924-8224 | 2 | 2 |
| 5310-00-167-0753 | 3 | 19 | 5305-00-925-9674 | 7 | 14 |
| 5310-00-167-0753 | 5 | 3 | 5821-00-926-7230 | 9 | 7 |
| 5310-00-161-0753 | 6 | 5 | 6615-00-933-6037 | 15 | 3 |
| 5310-00-167-0753 | 8 | 2 | 5310-00-934-9747 | 14 | 20 |
| 5310-00-167-0753 | 13 | 5 | 5821-00-935-5072 | 9 | 19 |
| 5310-00-161-0753 | 15 | 11 | 5975-00-935-9582 | 13 | 26 |
| 5985-00-161-7898 | 1 | 24 | 5985-00-937-0415 | 1 | 25 |
| 6615-00-167-9757 | 13 | 12 | 5810-00-931-1036 | 14 | 14 |
| 6615-00-168-0392 | 15 | 16 | 6125-00-938-6539 | 15 | 8 |
| 5340-00-178-7963 | 5 | 17 | 1560-00-939-7622 | 9 | 4 |
| 5841-00-181-0330 | 4 | 33 | 5305-00-952-0760 | 15 | 4 |
| 6615-00-181-2719 | 15 | 2 | 5305-00-954-8134 | 2 | 8 |
| 5821-00-184-6065 | 9 | 16 | 5305-00-957-7808 | 12 | 9 |
| 5310-00-184-9001 | 13 | 23 | 5305-00-957-7818 | 8 | 8 |
| 5310-00-184-9001 | 15 | 15 | 5821-00-980-5789 | 14 | 13 |
| 5310-00-184-9002 | 6 | 13 | 5305-00-984-4984 | 13 | 3 |
| 5310-00-184-9002 | 13 | 8 | 5305-00-984-4988 | 10 | 16 |
| 5310-00-187-2398 | 13 | 2 | 5305-00-984-6193 | 1 | 6 |
| 5140-00-205-6301 | 5 | 6 | 5305-00-984-6194 | 13 | 9 |
| 5310-00-208-4736 | 12 | 5 | 5826-00-985-9173 | 6 | 16 |
| 5310-00-208-9255 | 3 | 5 | 5826-00-985-9174 | 9 | 9 |
| 5310-00-208-9255 | 14 | 28 | 5305-00-989-7434 | 1 | 11 |
| 5340-00-286-9443 | 7 | 13 | 5305-00-989-7434 | 5 | 4 |
| 5826-00-402-5317 | 12 | 8 | 5305-00-989-7434 | 06 | 4 |
| 5826-00-407-7300 | 14 | 16 | 5305-00-989-7434 | 8 | 1 |
| 6605-00-487-4773 | 2 | 1 | 5305-00-989-7434 | 13 | 4 |
| 5310-00-576-5752 | 3 | 32 | 5305-00-989-7434 | 13 | 13 |
| 5310-00-576-5752 | 8 | 5 | 5305-00-993-2463 | 15 | 1 |
| 5310-00-579-0079 | 10 | 15 | 5826-00-994-1578 | 13 | 10 |
| 5310-00-579-0079 | 14 | 21 | 1560-00-994-5646 | 9 | 14 |
| 5340-00-584-6556 | 13 | 20 | 5826-01-015-1574 | 14 | 24 |
| 5821-00-604-3307 | 13 | 14 | 5826-01-022-9257 | 14 | 25 |
| 5985-00-607-6137 | 3 | 30 | 6140-01-046-1116 | 15 | 13 |
| 5985-00-607-6131 | 8 | 6 | 5841-01-058-7873 | 12 | 13 |
| 5826-00-611-0865 | 14 | 18 | 5841-01-058-7994 | 12 | 1 |
| 5310-00-619-1148 | 14 | 27 | 5821-01-062-8195 | 16 | 13 |
| 5305-00-622-9478 | 6 | 14 | 5826-01-066-8600 | 19 | 4 |
| 5915-00-631-5029 | 11 | 10 | 5895-01-109-6410 | 14 | 15 |

| FSCM | PART NUMBER | FIGURE NO. | ITEM NO. | FSCM | PART NUMBER | FIGURE NO. | ITEM NO. |
|-------|-------------|------------|----------|-------|-------------|------------|----------|
| 80058 | AM-3209/ASN | 14 | 22 | 88044 | AN960PD10L | 06 | 5 |
| 80058 | AN/ARC-114 | 09 | 16 | 88044 | AN960PD10L | 08 | 2 |
| 80058 | AN/ARC115 | 09 | 19 | 88044 | AN960PD10L | 13 | 5 |
| 88044 | AN3-10A | 15 | 10 | 88044 | AN960PD10L | 15 | 11 |
| 88044 | AN3-6A | 15 | 9 | 88044 | AN96P04-16L | 13 | 23 |
| 88044 | AN960PD103 | 03 | 19 | 88044 | AN960PD416L | 15 | 15 |
| 88044 | AN960PD10L | 05 | 3 | 88044 | AN960PD6L | 13 | 2 |

SECTION IV

NATIONAL STOCK NUMBER AND PAT NUMBER INDEX

TM 11-1520-210-20P-1

| FSCM | PART NUMBER | FIGURE NO. | ITEM NO. | FSCM | PART NUMBER | FIGURE NO. | ITEM NO. |
|-------|-----------------|------------|----------|-------|-----------------|------------|----------|
| 88044 | AN960PD8L | 6 | 13 | 96906 | MS35207-263 | 8 | 1 |
| 88044 | AN960PD8L | 13 | 8 | 96906 | MS35207-263 | 13 | 4 |
| 80058 | AS-1304/ARN | 1 | 18 | 96906 | MS35207-263 | 13 | 13 |
| 80058 | AS-1703/AR | 1 | 7 | 96906 | MS35207-277 | 15 | 4 |
| 80058 | AS-1863/ARN-83 | 6 | 16 | 96906 | MS35207-279 | 15 | 1 |
| 80058 | AS-1922A/ARC | 6 | 3 | 96906 | MS35214-28 | 12 | 10 |
| 80058 | AS-2595/APN-194 | 4 | 33 | 96906 | MS35214-31 | 12 | 12 |
| 80058 | AT-1108/ARC | 5 | 30 | 96906 | MS35215-27 | 2 | 8 |
| 80058 | AT-640A/ARN | 3 | 30 | 96906 | MS35265-49 | 6 | 14 |
| 8(058 | AT-640A/ARN | 8 | 6 | 96906 | MS35273-20 | 2 | 2 |
| 88044 | AT-741A/A | 17 | 7 | 96906 | M535333-37 | 10 | 15 |
| 80058 | AT-884/APX-44 | 8 | 7 | 96906 | MS35333-37 | 14 | 21 |
| 80058 | BB-433A/A | 15 | 13 | 96906 | MS35333-39 | 3 | 32 |
| 80058 | C-3835/ARC-54 | 9 | 6 | 96906 | MS35333-39 | 8 | 5 |
| 80058 | C-3940/ARC-94 | 9 | 17 | 96906 | MS35335-87 | 1 | 8 |
| 80058 | C-6280/APX | 9 | 20 | 96906 | MS35649-262 | 14 | 20 |
| 80058 | C-6287/ARC-51BX | 9 | 18 | 96906 | MS51957-35 | 12 | 3 |
| 80058 | C-6533/ARC | 6 | 8 | 96906 | MS51957-36 | 12 | 4 |
| 80058 | C-6533/ARC | 7 | 5 | 96906 | MS51957-38 | 12 | 15 |
| 80058 | C-6533/ARC | 9 | 8 | 96906 | MS51958-64 | 14 | 26 |
| 80058 | C-6873/ARC-82 | 9 | 21 | 96906 | MS51960-66 | 6 | 2 |
| 80058 | C-6873B/ARN-82 | 9 | 22 | 96906 | MS51960-68 | 6 | 1 |
| 80058 | C-6899/ARN-83 | 9 | 9 | 96906 | MS51960-83 | 13 | 25 |
| 80058 | C-8157/ARC | 9 | 7 | 80005 | MT-1175/ARN-30A | 14 | 18 |
| 80058 | CN-405/ASN | 2 | 1 | 80058 | MT-2653/ARC | 14 | 13 |
| 80058 | CM-998B/ASN-43 | 13 | 12 | 80058 | MT-3513/APX | 13 | 18 |
| 80058 | CU-1658/A | 1 | 24 | 80058 | MT-3600/ARN-62 | 14 | 19 |
| 80058 | CU-942/ARC-54 | 1 | 9 | 80058 | MT-3785A5 | 1 | 25 |
| 80058 | HD-615/ARC-51X | 14 | 10 | 80058 | MT-3802/ARC | 14 | 14 |
| 80058 | ID-1003/ARC | 14 | 11 | 80058 | MT-3809/APX-72 | 13 | 21 |
| 80058 | ID-1347/ARN-82 | 12 | 8 | 80058 | MT-3949A/U | 13 | 26 |
| 80058 | ID-1347C/ARN-82 | 12 | 8 | 80058 | MT-4835/ARN | 14 | 25 |
| 80058 | ID 1917/APN-209 | 12 | 1 | 81349 | M39029-1-16-20 | 7 | 2 |
| 13499 | ID-2192/ARN-124 | 18 | 1 | 24446 | M80P16018C6 | 5 | 29 |
| 80058 | ID-998/ASN | 12 | 7 | 80205 | NAS487-15 | 12 | 5 |
| 98230 | KIT/IATSEC | 13 | 1 | 95987 | NW10-4373 | 3 | 20 |
| 80058 | MD-1047/ARC | 16 | 13 | 80058 | PP-3702/ARC-102 | 13 | 16 |
| 96906 | MS15795-808 | 14 | 27 | 83058 | PU-543A | 15 | 8 |
| 96906 | MS21042-4 | 13 | 22 | 80058 | R-1388/ARN-82 | 14 | 16 |
| 96906 | NS21042-4 | 15 | 14 | 80058 | R-1391/ARN-83 | 13 | 10 |
| 96906 | MS21042L08 | 6 | 12 | 80058 | R.-1963/ARN | 14 | 24 |
| 96906 | MS21042L08 | 13 | 7 | 80058 | RT-1115/APN-209 | 12 | 13 |
| 96906 | MS21042L3 | 5 | 22 | 80058 | RT-1294/ARN-124 | 19 | 4 |
| 96906 | MS21042L3 | 13 | 6 | 80058 | RT-348/ARC-54 | 14 | 23 |
| 96906 | MS21042L3 | 13 | 15 | 80058 | RT-698/ARC-102 | 13 | 14 |
| 96906 | MS21042L3 | 15 | 12 | 80058 | RT-742/ARC-51BX | 14 | 9 |
| 96906 | MS21044C3 | 3 | 5 | 80058 | RT-859/APX-72 | 13 | 24 |
| 96906 | MS21044C3 | 14 | 28 | 80058 | TS-1843/APX | 13 | 17 |
| 96906 | MS21919DG4 | 5 | 6 | 80058 | TSEC/KY-28 | 14 | 15 |
| 96906 | MS21919WDG10 | 13 | 20 | 73949 | X942-2 | 8 | 29 |
| 96906 | MS21919WDG9 | 7 | 13 | 81312 | 100-2020S | 7 | 7 |
| 96906 | MS24693-C28 | 17 | 6 | 97499 | 120-055-1-16 | 7 | 6 |
| 96906 | MS24693-273 | 1 | 19 | 35351 | 124623-01-14 | 15 | 3 |
| 96906 | MS24693BB33 | 12 | 9 | 35351 | 148956-0 | 15 | 16 |
| 96906 | MS24693S27 | 8 | 8 | 97499 | 1560-UH1-805 | 3 | 18 |
| 96906 | MS27039-1-10 | 7 | 14 | 81996 | 1560-UH1-886 | 12 | 2 |
| 96906 | MS27130-CR88 | 12 | 6 | 81996 | 1560-UH1-887 | 12 | 14 |
| 96906 | MS27977-268 | 6 | 6 | 97499 | 204-060-956-1 | 6 | 7 |
| 96906 | M28027-2 | 12 | 11 | 97499 | 204-075-266-1 | 9 | 4 |
| 96906 | MS35206-227 | 13 | 3 | 97499 | 204-075-266-29 | 9 | 12 |
| 96906 | MS35206-228 | 10 | 16 | 97499 | 204-075-266-37 | 9 | 14 |
| 96906 | MS35206-230 | 14 | 17 | 97499 | 204-075-464-5 | 5 | 18 |
| 96906 | MS3S206-245 | 1 | 6 | 97499 | 205-075-325-1 | 8 | 3 |
| 96906 | MS35206-246 | 13 | 9 | 97499 | 212-075-328-3 | 11 | 10 |
| 96906 | MS35207-260 | 3 | 31 | 97499 | 212-075-329-7 | 10 | 14 |
| 96906 | MS35207-260 | 8 | 4 | 81349 | 2763TYPEC2 | 2 | 7 |
| 96906 | MS35207-263 | 1 | 11 | 78626 | 43550-2 | 15 | 2 |
| 96906 | MS35207-263 | 5 | 4 | 97499 | 70-005-1 | 5 | 17 |
| 96906 | MS35207-263 | 6 | 4 | | | | |

By Order of the Secretary of the Army:

E. C. MEYER
General, United States Army
Chief of Staff

Official:

ROBERT M. JOYCE
Major General, United States Army
The Adjutant General

Distribution:

To be distributed in accordance with DA Form 12-31, Organizational Maintenance Requirements for UH-1H Aircraft.

☆U.S. GOVERNMENT PRINTING OFFICE: 1993-342-421/80979

The Metric System and Equivalents

Linear Measure

1 centimeter = 10 millimeters = .39 inch
 1 decimeter = 10 centimeters = 3.94 inches
 1 meter = 10 decimeters = 39.37 inches
 1 dekameter = 10 meters = 32.8 feet
 1 hectometer = 10 dekameters = 328.08 feet
 1 kilometer = 10 hectometers = 3,280.8 feet

Weights

1 centigram = 10 milligrams = .15 grain
 1 decigram = 10 centigrams = 1.54 grains
 1 gram = 10 decigrams = .035 ounce
 1 decagram = 10 grams = .35 ounce
 1 hectogram = 10 decagrams = 3.52 ounces
 1 kilogram = 10 hectograms = 2.2 pounds
 1 quintal = 100 kilograms = 220.46 pounds
 1 metric ton = 10 quintals = 1.1 short tons

Liquid Measure

1 centiliter = 10 milliliters = .34 fl. ounce
 1 deciliter = 10 centiliters = 3.38 fl. ounces
 1 liter = 10 deciliters = 33.81 fl. ounces
 1 dekaliter = 10 liters = 2.64 gallons
 1 hectoliter = 10 dekaliters = 26.42 gallons
 1 kiloliter = 10 hectoliters = 264.18 gallons

Square Measure

1 sq. centimeter = 100 sq. millimeters = .155 sq. inch
 1 sq. decimeter = 100 sq. centimeters = 15.5 sq. inches
 1 sq. meter (centare) = 100 sq. decimeters = 10.76 sq. feet
 1 sq. dekameter (are) = 100 sq. meters = 1,076.4 sq. feet
 1 sq. hectometer (hectare) = 100 sq. dekameters = 2.47 acres
 1 sq. kilometer = 100 sq. hectometers = .386 sq. mile

Cubic Measure

1 cu. centimeter = 1000 cu. millimeters = .06 cu. inch
 1 cu. decimeter = 1000 cu. centimeters = 61.02 cu. inches
 1 cu. meter = 1000 cu. decimeters = 35.31 cu. feet

Approximate Conversion Factors

| <i>To change</i> | <i>To</i> | <i>Multiply by</i> | <i>To change</i> | <i>To</i> | <i>Multiply by</i> |
|------------------|--------------------|--------------------|--------------------|---------------|--------------------|
| inches | centimeters | 2.540 | ounce-inches | Newton-meters | .007062 |
| feet | meters | .305 | centimeters | inches | .394 |
| yards | meters | .914 | meters | feet | 3.280 |
| miles | kilometers | 1.609 | meters | yards | 1.094 |
| square inches | square centimeters | 6.451 | kilometers | miles | .621 |
| square feet | square meters | .093 | square centimeters | square inches | .155 |
| square yards | square meters | .836 | square meters | square feet | 10.764 |
| square miles | square kilometers | 2.590 | square meters | square yards | 1.196 |
| acres | square hectometers | .405 | square kilometers | square miles | .386 |
| cubic feet | cubic meters | .028 | square hectometers | acres | 2.471 |
| cubic yards | cubic meters | .765 | cubic meters | cubic feet | 35.315 |
| fluid ounces | milliliters | 29.573 | cubic meters | cubic yards | 1.308 |
| pints | liters | .473 | milliliters | fluid ounces | .034 |
| quarts | liters | .946 | liters | pints | 2.113 |
| gallons | liters | 3.785 | liters | quarts | 1.057 |
| ounces | grams | 28.349 | liters | gallons | .264 |
| pounds | kilograms | .454 | grams | ounces | .035 |
| short tons | metric tons | .907 | kilograms | pounds | 2.205 |
| pound-feet | Newton-meters | 1.356 | metric tons | short tons | 1.102 |
| pound-inches | Newton-meters | .11296 | | | |

Temperature (Exact)

| | | | | |
|----|---------------------------|-------------------------------|------------------------|----|
| °F | Fahrenheit temperature | 5/9 (after subtracting 32) | Celsius temperature | °C |
|----|---------------------------|-------------------------------|------------------------|----|

PIN: 035256-000

This fine document...

Was brought to you by me:



[Liberated Manuals -- free army and government manuals](#)

Why do I do it? I am tired of sleazy CD-ROM sellers, who take publicly available information, slap “watermarks” and other junk on it, and sell it. Those masters of search engine manipulation make sure that their sites that sell free information, come up first in search engines. They did not create it... They did not even scan it... Why should they get your money? Why are not letting you give those free manuals to your friends?

I am setting this document FREE. This document was made by the US Government and is NOT protected by Copyright. Feel free to share, republish, sell and so on.

I am not asking you for donations, fees or handouts. If you can, please provide a link to liberatedmanuals.com, so that free manuals come up first in search engines:

<A HREF=<http://www.liberatedmanuals.com/>>Free Military and Government Manuals

- Sincerely
Igor Chudov
<http://igor.chudov.com/>
- [Chicago Machinery Movers](#)