

This copy is a reprint which includes current pages from Changes 1.

TM 10-4520-201-24P

DEPARTMENT OF THE ARMY TECHNICAL MANUAL

TECHNICAL MANUAL
ORGANIZATIONAL, DIRECT AND GENERAL SUPPORT
MAINTENANCE REPAIR PARTS

SPECIAL TOOLS LIST

HEATER, DUCT-TYPE; PORTABLE; GASOLINE;

250,000 BTU

(BASTIAN MORLEY MODEL PHDT-250)

FSN 4520-086-7676

(VOGT BROS MODEL VB67-GFC3)

FSN 4520-937-6168

(KECO INDUSTRIES MODEL H-250)

FSN 4520-255-5051

(VOGT BROS MODEL VB-3077 CS-61 AND
VOGT BROS MODEL VB-3077CS62)

FSN 4520-856-5983

HEADQUARTERS, DEPARTMENT OF THE ARMY

1 MARCH 1972

CHANGE }
No. 1 }

HEADQUARTERS
DEPARTMENT OF THE ARMY
WASHINGTON, D. C., 15 October 1973

Organizational, Direct and General Support Maintenance
Repair Parts and Special Tools list
HEATER, DUCT-TYPE PORTABLE; GASOLINE 250,000 BTU
(BASTIAN MORLEY MODEL PHDT-250) FSN 4520-086-7676
(VOGT BROS MODEL VB47-GFC3) FSN 4520-937-6168
(KECO INDUSTRIES MODEL H-250) FSN 452-255-5051
(VOGT BROS MODEL VB-3077CS-61 AND VOGT BROS MODEL
VB-077CS42)
FSN 4520-856-5983

TM 10-4520-201-24P, 1 March 1972, is changed as follows:

Page V. Line 6. Paragraph 7. Mailing address is changed to read: "Commander, U.S. Army Troop Support Command, ATTN: AMSTS-MPP, 4300 Goodfellow Blvd., St. Louis, MO 63120".

Page 3. Line 1, column 2. FSN "5305-017-0994" is changed to read: "5305-478-5752".

After line 15 add the following: *Line 15A.* col 1, PO; col. 2, 5120-965-0326; col 3, LIGHTER ASSY, SPARK; col. 4, EA; col. 5, 1; col. 7a, 6; col. 7b, 14.

Line 15B. col 1, PO; col. 2, 5120-826-0477; col. 3, FLINT TIP, 6 per box; Col. 4, EA; col. 5, 1; col. 7a, 6; col. 7b, 15.

Line 24. Column 2, FSN 5320-285-8791 is changed to read 5320-721-5239.

Page 10. Line 9, column 2, FSN 5305-017-0994 is changed to read 5305-478-5752.

Page 11. After line 12 add the following:

Line 12A. Column 1, PO; col. 2, 5120-965-0326; col. 3, LIGHTER ASSEMBLY, SPARK; col. 4, EA; col 5, 1; col. 7a, 6; col. 7b, 14.

Line 12B. Column 1, PO; col. 2, 5120-826-0477; col. 3, FLINT, TIP, 6 PER BOX; col. 4, EA; col. 5,1; col. 7A, 6; col. 7b, 15.

Page 11. Line 19, column 2, FSN 5320-285-8791 is changed to 5320-721-5239.

Page 13. Line 1, column 2, FSN 5305-0717-0996 is changed to read: 5305-446-8148.

Page 14. Line 28, column 10b, item 2 is changed to read 1. Line 29, column 10b, item 1 is changed to read 2.

After line 29, add the following:

NOTE

"Rope is not a component of burner assembly."

Page 15. Line 7, column 2, FSN 5340-492-0924 is changed to read 5390-153-4651.

Line 14. Column 2, FSN 4530-1534664 is changed to read 4530-153-4667.

Page 17. Line 20, column 2, FSN 5310-880-7740 is changed to read: 5310-829-9981.

Page 19, Line 11, column 2, FSN 4730-517-6116 is changed to read: 4730-845-6078.

Page 25. Figure 6 is superseded.

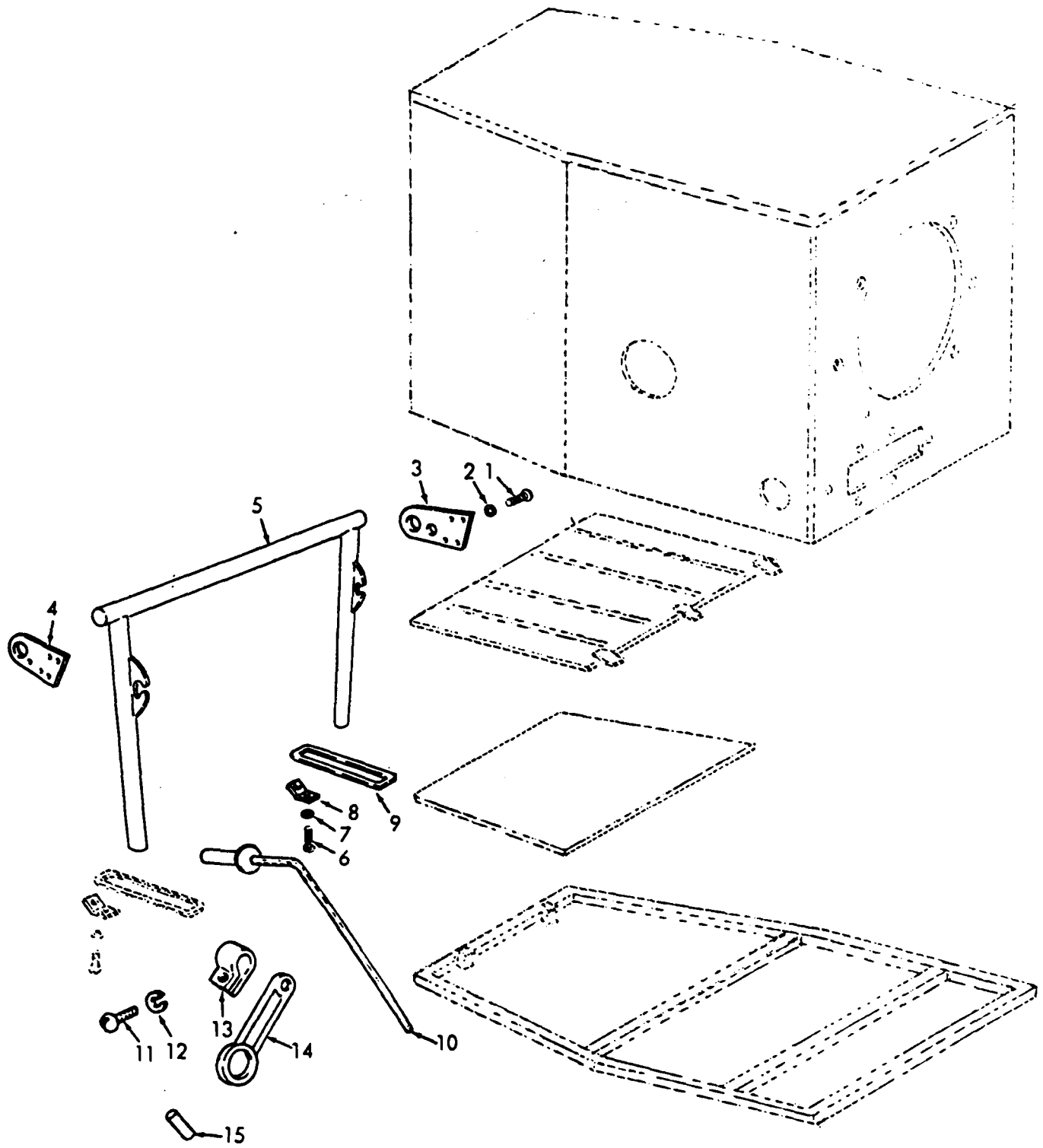


Figure 6. Cabinet handle and hardware.

Page 30. Figure 11 is superseded.

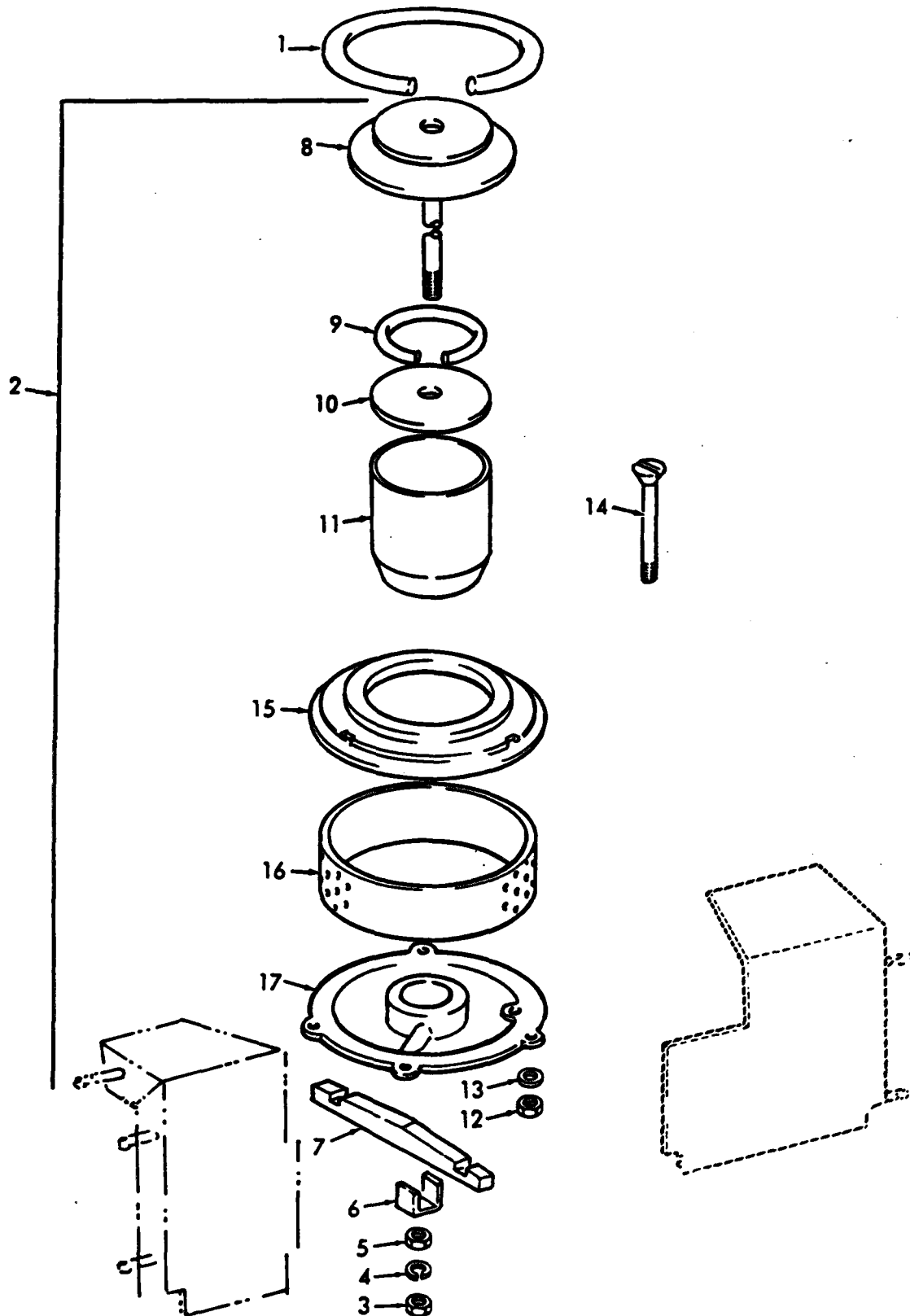


Figure 11. Fuel burner and door.

TM 10-4520-201-24P, C1

By Order of the Secretary of the Army:

CREIGHTON W. ABRAMS
General, United States Army
Chief of Staff

Official:

VERNE L. BOWERS
Major General, United States Army
The Adjutant General

Distribution:

To be distributed in accordance with DA Form 12-25C, (qty rqr block no. 598) Organizational maintenance requirements for Heaters, Space: 250,000 BTU.

TECHNICAL MANUAL }
 No. 10-4520-201-24P }

HEADQUARTERS
 DEPARTMENT OF THE ARMY
 WASHINGTON, D.C., 1 March 1972

ORGANIZATIONAL, DIRECT AND GENERAL SUPPORT,
 MAINTENANCE MANUAL REPAIR PARTS
 AND SPECIAL TOOLS LIST

 HEATER, DUCT-TYPE, PORTABLE, GASOLINE
 250,000 BTU (BASTIAN-MORLEY MODEL PHDT-250)
 FSN 4520-086-7676

 (VOGT BROS MODEL VB67-GFC3) FSN 4520-937-6168
 (KEKO INDUSTRIES MODEL H-250) FSN 4520-255-5051

 (VOGT BROS MODEL VB-3077CS-61 AND
 (VOGT BROS MODEL VB-3077CS-62) FSN 4520-856-5983

 Current as of 15 February 1972 .

SECTION		Listing page	Illust fig
I.	INTRODUCTION		
II.	REPAIR PARTS FOR ORGANIZATIONAL MAINTENANCE	1	
Group 01.	Engine and Mounting Pate.....	1	1
	Engine and Mounting Parts	20	1
	Exhaust System and Mounting Hardware	21	2
02.	Fuel Tank and Exhaust Ducts.	2	
	Fuel Tanks and Mounting Hardware	22	3
	Duct Storage and Mounting Hardware	23	4
03.	Combustion Chambers, Damper and Cabinet Handle	3	
	Dampers, Tool Pouch and Dust Clip	24	5
	Cabinet Handle and Hardware	25	6
	Duct and Attaching Parks	26	7
	Combustion Chamber	27	8
04.	Air Duct System, Wheels and Axle	4	
	Air Duct System	28	9
	Wheels, Axle and Components	29	10
05.	Fuel Burner and Door Assemblies	5	
	Fuel Burner and Door	30	11
	Burner Access Door	31	12
06.	Fuel Lines, Fittings, Filter and Valves	6	
	Fuel Lines Fittings, Filter and Valves	32	13

*This manual supersedes TM 10-4520-201-20P and TM 10-4520-201-35P 29, January 1970, including all changes.

		Listing page	Illust fig
SECTION	III. SPECIAL TOOLS, TEST AND SUPPORT EQUIPMENT (NOT APPLICABLE)		
	IV. REPAIR PARTS FOR DIRECT AND GENERAL SUPPORT MAINTENANCE	8	
Group	01. Engine and Mounting Parts..	8	
	Engine and Mounting Parts	20	1
	Exhaust System and Mounting Hardware	21	2
	02. Fuel Tank and Exhaust Ducts	9	
	Fuel Tank and Mounting Hardware	22	3
	Duct Storage and Mounting Hardware	23	4
	03. Combustion Chambers, Dampers and Cabinet Handle	10	
	Dampers, Tool Pouch and Dust Clip	24	5
	Cabinet Handle and Hardware.	25	6
	Duct and Attaching Parts	26	7
	Combustion Chamber	27	8
	04. Air Duct System, Wheels and Axle.	13	
	Air Duct System	28	9
	Wheels, Axle, and Components	29	10
	05. Fuel Burner and Door Assemblies	14	
	Fuel Burner and Door	30	11
	Burner Access Door	31	12
	06. Fuel Lines, Fittings, Filter and Valves	16	
	Fuel Lines, Fittings, Filter and Valves	32	13
SECTION	V. SPECIAL TOOLS, TEST AND SUPPORT EQUIPMENT (NOT APPLICABLE)		
	VI. FEDERAL STOCK NUMBER AND REFERENCE NUMBER INDEX	33	

SECTION I. INTRODUCTION

1. Scope

a. This manual lists repair parts, special tools, test and support equipment required for the performance of organizational, direct support, and general support maintenance of the Heater.

b. Repair parts listed represent those authorized for use at indicated maintenance levels and will be requisitioned (on an "as required" basis until stockage is justified by demand in accordance with AR 735-35 or AR 710-2).

2. General

This Repair Parts and Special Tools List is divided into the following sections:

a. *Repair Parts - Section II.* A list in figure and item number sequence, of repair parts authorized at the organizational level for the performance of maintenance, including those items which must be removed for replacement of the authorized item. Items, except kits and sets, are listed by assembly group its top down breakdown sequence.

b. *Special Tools, Test and Support Equipment - Section III.* (Not Applicable)

c. *Repair Parts - Section IV.* A list in figure and item number sequence, of the repair parts authorized for the performance of maintenance at the direct support, and general support levels, including those items which must be removed for replacement of the authorized item. Items, except kits and sets, are listed by assembly group in top down breakdown sequence.

d. *Special Tools, Test and Support Equipment -Section V.* (Not Applicable)

e. *Federal Stock Number and Reference Number Index-Section VI.* A list of Federal Stock Numbers in ascending numerical sequence followed by a list of reference numbers appearing in all listings, in ascending alpha-numeric sequence cross-referenced to the illustration figure and item number.

3. Explanation of Columns

The following provides an explanation of columns in the tabular lists in sections II through V.

a. *Source, Maintenance, and Recoverability Codes (SMR).*

(1) Source code indicates the source for the listed item. Source Codes are:

Code	<i>Explanation</i>
P	Repair parts, Special Tools and Test Equipment supplied from the GSA / DSA, or Army supply system and authorized for use at indicated maintenance levels.

<i>code</i>	<i>Explanation</i>
P2	Repair parts, Special Tools and Test Equipment which are procured and stocked for insurance purposes because the combat or military essentiality of the end item dictates that a minimum quantity be available in the supply system.
M	Repair Parts, Special Tools and Test Equipment which are not procured or stocked, as such, in the supply system but are to be manufactured at indicated maintenance levels.
A	Assemblies which are not procured or stocked as such, but are made up of two or more units. Such component units carry individual stock numbers and descriptions, are procured and stocked separately and can be assembled to form the required assembly at indicated maintenance categories.
X	Parts and assemblies that are not procured or stocked because the failure rate is normally below that of the applicable and item or component. The failure of such part of assembly should result in retirement of the and item from the supply system. .
X1	Repair parts which are not procured or stocked. The requirement for such items will be filled by the next higher assembly or component.
X2	Repair parts, Special Tools and Test Equipment which are not stocked and have no foreseen mortality. The indicated maintenance level requiring such repair parts will attempt to obtain the parts through cannibalization or salvage, the item may be requisitioned with reception data, from the end item manager, for immediate use.
G	Major assemblies that are procured with PEMA funds for initial issue only as exchange assemblies at DSU and GSU level. These assemblies will not be stocked above DS and GS level or returned to depot supply level.

NOTE

Cannibalization or salvage may be used as a source of supply for any items source coded above except those coded X1 and aircraft support items as restricted by AR 700-42.

(2) Maintenance code indicates the lowest level of maintenance authorized to install the listed item. Repair parts and special tools assigned Maintenance Code "C" may be stocked at the operator level of maintenance when authorized by the Unit Commander. The maintenance level codes are:

<i>Code</i>	<i>Explanation</i>
C	Crew or Operator
O	O—Organizational maintenance
F	Direct Support maintenance
H	General Support maintenance

(3) Recoverability code indicates whether unserviceable items should be returned for recovery or salvage. Items not coded are expendable. Recoverability codes are:

Code	Explanation
R	Applied to Repair parts. (assemblies and components) Special Tools and Test Equipment which are considered economically repairable at direct and general support maintenance levels. When the item is no longer economically repairable, it is normally disposed of at the GS level. When supply considerations dictate, some of these repair parts may be listed for automatic return to supply for depot level repair as set forth in AR 710-50. When so listed, they will be replaced by supply on an exchange basis.
s	Repair parts, Special Tool Test Equipment and assemblies which are economically repairable at DSU and GSC activities and which normally are furnished by supply on an exchange basis. When items are determined by a GSU to be uneconomically repairable, they will be evacuated to depot for evaluation and analysis before final disposition.
T	High dollar value recoverable Repair parts, Special Tools and Test Equipment which are subject to special handling and are issued on an exchange basis. Such items will be evacuated to the depot for overhaul or final disposition. Communication-Electronics and Missile support items will be repaired/ overhauled only at depots.
U	Repair parts. Special Tools and Test Equipment specifically selected for salvage by reclamation units because of precious metal content, critical materials, high dollar value or reusable casings or castings.

b. Federal Stock Number. Indicates the Federal stock number assigned to the item and will be used for requisitioning purposes.

c. Description. Indicates the Federal item name and any additional description of the item required. Assembly components and subassemblies are indented under major assemblies. The abbreviation "w / e" when used as part of the nomenclature, indicates the Federal stock number, includes all armament, equipment, accessories, and repair parts issued with the item. A part number or other reference number is followed by the applicable five-digit Federal supply code for manufacturers in parenthesis. Repair parts quantities included in kits and sets are shown in front of the repair part name. Material required for manufacture or fabrication is identified.

d. Unit of Measure (U/M). A two-character alphabetic abbreviation indicating the amount or quantity of the item, as used upon which the allowances are based. e.g., ft., ea., pr., etc.

e. (Quantity Incorporated in Unit. Indicates the quantity of the item used in the assembly group. A "V" appearing in this column in lieu of a quantity indicates that a definite quantity cannot be indicated (e.g., shims, spacers, etc).

f. Fifteen-Day Organizational Maintenance

(1) Items authorized for use as required but not for initial stockage are identified with an asterisk in the allowance column.

(2) The allowance columns are divided into four subcolumns. Indicated in each subcolumn is the total quantity of special tools authorized for the number of equipments supported. No quantitative allowances are listed in these columns for repair parts.

g. Thirty-Day DS / GS Maintenance Allowance

(1) Items authorized for use as required but not for initial stockage are identified with an asterisk in the allowance column.

(2) The allowance columns are divided into three subcolumns. The quantitative allowance of special tools for DS / GS levels of maintenance will represent initial stockage for a 30-day period for the number of equipments supported. No quantitative allowances are listed in these columns for repair parts.

h. One-Year Allowances Per 100 Equipments.

(1) Items authorized for use as required but not for initial stockage are identified with an asterisk in the allowance column.

(2) This column indicates the total quantity of special tools required for distribution and contingency planning purposes. No total quantities are listed in this column for repair parts.

i. Illustration. This column is divided as follows:

(1) *Figure number.* Indicates the figure number of the illustration on which the item is shown.

(2) *Item number.* Indicates the callout number used to reference the item on the illustration.

4. Special Information

a. Parts which require manufacture or assembly of a maintenance level higher than that authorized for installation will indicate in the source column the higher maintenance level.

b. The following publications pertain to the heater and its components:

TM 10-4520-201-14	Organizational, Direct and General Support Maintenance Manual
TM 5-2805-256-14	operator, Organizational, Direct and General Support Maintenance Manual (MIL-STD Engine)
TM 5-2805-256-24P	Organizational, Direct and General Support Maintenance Repair Parts List (MIL-STD Engine)

c. The same illustrations are used to illustrate the repair parts and special tools listed in both organizational maintenance section and direct and general support and depot maintenance section.

5. How to Locate Repair Parts

a. When the Federal Stock Number or Reference Number is Unknown:

(1) *First.* Using the table of contents determine the assembly group within which the repair part belongs. This is necessary since illustrations are prepared for assembly groups, and listings are divided into the same groups.

(2) *Second.* Find the illustration covering the assembly group to which the repair part belongs.

(3) *Third.* Identify the repair part on the illustration and note the illustration figure and item number of the repair part.

(4) *Fourth.* Using the Repair Parts Listing, find the assembly group to which the repair part belongs and locate the illustration figure and item number noted on the illustration.

b. When the Federal Stock Number or Reference Number is Known:

(1) *First.* Using the Index of Federal Stock Numbers and Reference Numbers find the pertinent Federal stock number or reference number. This index is in ascending FSN sequence followed by a list of reference numbers in alpha-numeric sequence, cross-referenced to the illustration figure number and item number.

(2) *Second.* Using the Repair Parts listing, find the assembly group of the repair part and the illustration figure number and item number referenced in the Index of Federal Stock Numbers and Reference Numbers.

c. When the Federal Stock Number or Reference Number is Known and the Repair Part is not Illustrated:

(1) *First.* Using the Index of Federal Stock Numbers and Reference Numbers find the pertinent Federal stock number or reference number in the section titled Items not Illustrated and note the group number, This section is in ascending FSN sequence followed by a list of reference numbers in alpha-numeric sequence to assembly group number.

(2) *Second.* Using the Table of Contents, locate the assembly group number and page number.

(3) *Third.* Using the applicable group number and page number, locate the pertinent stock number or reference number in the Repair Parts Listing.

6. Abbreviations

dia.....	diameter
ea.....	each
FSN.....	Federal Stock Number
in.....	inch
med.....	medium
mtg.....	mounting
NC.....	National course
NF.....	National fine
Thru.....	Through
w/ lock.....	with lock

7. Recommendations for Maintenance Publications Improvements

Report of errors, omissions, and recommendations for improving this publication by the user is encouraged. Reports should be submitted on DA Form 2028 (Recommended Changes of Publications) and forwarded direct to Commanding General, U.S. Army Mobility Equipment Command, ATTN: AMSME-MPP, 4300 Good fellow Boulevard, St. Louis, Mo. 63120.

(1) SMR CODE	(2) FEDERAL STOCK NUMBER	(3) DESCRIPTION REF NUMBER & MFR CODE	(4) USABLE ON CODE	(5) UNIT OF MEAS	(6) 15-DAY ORGANIZATIONAL MAINTENANCE ALW				(7) ILLUS- TRATION		
					QTY INC IN UNIT	(A) 1-5	(B) 6-20	(C) 21-50	(D) 51-100	(A) FIG NO	(B) ITEM NO
SECTION II - REPAIR PARTS FOR ORGANIZATIONAL MAINTENANCE											
GROUP 01 - ENGINE AND MOUNT PARTS											
X20		BASE: ENGINE MTG 5-13-2045ITEM13-1(81337) (USED WITH ENGINE FSM 2805-714-8552)		EA	1					1	1
X20		BASE: ENGINE MTG G29700(93084) (USED WITH ENGINE FSM 2805-068-7510)		EA	1					1	1
P O	5310-880-7744	NUT, PLAIN, HEXAGON: BRACKET TO BASE MTG, 5/16-18 MF		EA	4	*	*	*	*	1	2
P O	5310-167-0721	WASHER, LOCK: BRACKET TO BASE MTG		EA	4	*	*	*	*	1	3
P O	5330-871-2998	WASHER, NONMETALLIC: ENGINE MTG G29504 (93084) (USED WITH ENGINE FSM 2805-068-7510)		EA	4	*	*	*	*	1	4
P O	5310-167-0721	WASHER, LOCK: BRACKET TO BASE MTG		EA	4	*	*	*	*	1	5
P O	5305-225-9081	SCREW, CAP, HEXAGON HEAD: BRACKET TO BASE MTG		EA	4	*	*	*	*	1	6
P O	5340-871-2999	MOUNT, RESILIENT G29505 (93084) (USED WITH ENGINE FSM 2805-068-7510)		EA	2	*	*	*	*	1	7
P O	5340-871-2999	MOUNT, RESILIENT: ENGINE MTG 5-13-2047ITEM13-14 (81337) (USED WITH ENGINE FSN 2805-714-8552)		EA	2	*	*	*	*	1	7
P O	5305-068-0500	SCREW, CAP, HEXAGON HEAD: BRACKET TO ENGINE MTG, 1/4-20 X 1/2 NC		EA	12	*	*	*	*	1	8
P O	5310-595-7237	WASHER, LOCK: INTERNAL TOOTH: BRACKET TO ENGINE MTG, 3/8 IN. ID		EA	12	*	*	*	*	1	9
X20	4520-140-3854	BRACKET G29701 (93084) (USED WITH ENGINE FSM 2805-068-7510)		EA	2					1	10
X20		BRACKET: ENGINE MTG 5-13-2045ITEM13-12 (81337) (USED WITH ENGINE FSM 2805-714-8552)		EA	1					1	10
X20		BRACKET: ENGINE MTG 5-13-2047ITEM13-13 (81337) (USED WITH ENGINE FSM 2805-714-8552)		EA	1					1	11
P O	5310-880-7744	NUT, PLAIN, HEXAGON: GROUND STRAP MTG		EA	1	*	*	*	*	1	12
P O	5310-550-1130	WASHER, LOCK: GROUND STRAP MTG		EA	1	*	*	*	*	1	13
P O	5305-225-9081	SCREW, CAP, HEXAGON HEAD: GROUND STRAP MTG		EA	1	*	*	*	*	1	14
P O	5310-809-3078	WASHER, FLAT: GROUND STRAP MTG		EA	1	*	*	*	*	1	15
P O	4520-117-2510	STRAP: GROUND 5-13-2047ITEM13-16 (81337)		EA	1	*	*	*	*	1	16
P O	2805-714-8552	ENGINE, GASOLINE 1A08-2 (97403) (ISSUE UNTIL STOCK IS EXHAUSTED, THEN USE ENGINE FSN 2805-068-7510)		EA	1	*	*	*	*	1	17

(1) SMR CODE	(2) FEDERAL STOCK NUMBER	(3) DESCRIPTION REF NUMBER & MFR CODE	(4) USABLE ON CODE	(5) UNIT OF MEAS	(6) QTY INC IN UNIT	(6) 15-DAY ORGANIZATIONAL MAINTENANCE ALW				(7) ILLUS- TRATION (A) (B)	
						(A) 1-5	(B) 6-20	(C) 21-50	(D) 51-100	FIG NO	ITEM NO
P O	2990-904-4542	PIPE EXHAUST: ENGINE EXHAUST 5-13-2043ITEM58 (81337)		EA	1	*	*	*	*	2	1
P O	5305-984-6211	SCREW, MACHINE, HEXAGON HEAD: CLAMP MTG		EA	1	*	*	*	*	2	2
P O	5310-933-8120	WASHER, LOCK: CLAMP MTG		EA	1	*	*	*	*	2	3
X20		CLAMP: TUBE SUPPORT 5-13-2043ITEM58-9 (81337)		EA	1					2	4
P O	5306-225-9087	BOLT, MACHINE: BRACKET MTG		EA	1	*	*	*	*	2	5
P O	5310-974-6623	WASHER, LOCK: BRACKET MTG		EA	1	*	*	*	*	2	6
X20		BRACKET, CLAMP 5-13-2043ITEM58-10 (81337)		EA	1					2	7
P O	5305-225-3839	SCREW, CAP, HEXAGON HEAD: EXHAUST TUBE MTG		EA	2	*	*	*	*	2	8
P O	5310-933-8121	WASHER, LOCK: EXHUAST TUBE MTG		EA	2	*	*	*	*	2	9
P O	5330-116-4048	GASKET: ENGINE EXHAUST 5-13-2043ITEM58-8 (81337)		EA	1	*	*	*	*	2	10
X1		TUBE ASSEMBLY: ENGINE EXHAUST 5-13-2043ITEM58-1THUR58-7 (81337)		EA	1					2	11
		GROUP 02 - FUEL TANK AND EXHAUST DUCTS									
P O	5305-225-9081	SCREW, CAP, HEXAGON HEAD: TANK STRAP MTG		EA	2	*	*	*	*	3	1
P O	5310-880-7744	NUT, PLAIN, HEXAGON: TANK STRAP MTG		EA	2	*	*	*	*	3	2
X20	4520-153-4715	STRAP: FUEL TANK FRONT MQL317 (92870)		EA	1					3	3
P O	5305-225-9081	SCREW, CAP, HEXAGON HEAD: TANK STRAP MTG		EA	2	*	*	*	*	3	4
P O	5310-880-7744	NUT, PLAIN, HEXAGON: TANK STRAP MTG		EA	2	*	*	*	*	3	5
X20	2910-153-4716	STRAP: FUEL TANK, REAR MQL318 (92870)		EA	1					3	6
P O	2910-153-4711	TANK ASSEMBLY: FUEL G23C3 (93084)		EA	1	*	*	*	*	3	7
P O	2910-605-1353	CAP: FILLER CC2595 (80900)		EA	1	*	*	*	*	3	8
P O	6680-467-6149	CAP: FUEL LEVEL GAGE TT228 (92430)		EA	1	*	*	*	*	3	9
P O	6680-422-8538	GASKET: LEATHER, FUEL LEVEL GAGE CAP G23286 (93084)		EA	1	*	*	*	*	3	10
P O	6680-467-6150	CRYSTAL: FUEL LEVEL GAGE G23267 (96084)		EA	1	*	*	*	*	3	11
P O	6680-422-8537	GASKET: CORK, FUEL LEVEL GAGE G23288 (93084)		EA	1	*	*	*	*	3	12
P O	6680-467-6148	GAGE: FUEL LEVEL G23209 (93084)		EA	1	*	*	*	*	3	13
P O	5310-880-7744	NUT, PLAIN, HEXAGON: TANK BRACKET MTG		EA	8	*	*	*	*	3	17
P O	5310-044-6548	WASHER, FLAT: TANK BRACKET MTG		EA	4	*	*	*	*	3	19
P O	5325-153-4687	LOCK: SNAP SPRING, DUCT STORAGE TUBE MQL302 (92870)		EA	2	*	*	*	*	4	4

(1) SMR CODE	(2) FEDERAL STOCK NUMBER	(3) DESCRIPTION REF NUMBER & MFR CODE	(4) USABLE ON CODE	(5) UNIT OF MEAS	(6) 15-DAY ORGANIZATIONAL MAINTENANCE ALW				(7) ILLUS- TRATION		
					(A) INC IN UNIT	(B)	(C)	(D)	(A) FIG NO	(B) ITEM NO	
		GROUP 03 - COMBUSTION CHAMBERS, DAMPERS AND CABINET HANDLE									
P O	5305-017-0994	SCREW, TAPPING, THREAD FORMING: TOOL POUCH MTG		EA	2	*	*	*	*	5	1
X20	4520-213-9924	STRIP, TOOL POUCH MQ1603 (92870)		EA	1					5	2
X20	4520-153-4731	POUCH: TOOL MQ1600 (92870)		EA	1					5	3
P O	5310-934-9747	NUT, PLAIN, HEXAGON: UPPER AND LOWER DAMPER		EA	4	*	*	*	*	5	9
P O	5305-889-3000	SCREW, MACHINE: UPPER AND LOWER DAMPER		EA	4	*	*	*	*	5	10
X20	4520-300-0094	DAMPER: CABINET UPPER DISCHARGE OPENING MQ912 (92670)		EA	1					5	11
P O	5310-809-3078	WASHER, FLAT: CABINET LOWER AND UPPER DISCHARGE DAMPER SPACING		EA	2	*	*	*	*	5	12
P O	1730-197-5853	SPRING, HELICAL, COMPRESSION: COIL CABINET AIR DISCHARGE LOWER AND UPPER DAMPER MQ908 (92870)		EA	2	*	*	*	*	5	13
X20	4520-024-7405	HANDLE: DISCHARGE DAMPER OPERATING TC345 (92430)		EA	2					5	14
X20	4520-153-4724	DAMPER, DISCHARGE LOWER MQ914 (92870)		EA	1					5	15
P O	4520-214-3366	CLIP ASSEMBLY: SPRING LOCK DUCT LOCATING G0325A (93084)		EA	4	*	*	*	*	5	16
P O	1730-449-4835	LIGHTER, TORCH		EA	2	*	*	*	*	6	10
P O	5305-017-3394	SCREW, TAPPING, THREAD FORMING: TORCH ROD		EA	2	*	*	*	*	6	11
P O	5310-582-5965	WASHER, LOCK: TORCH ROD		EA	2	*	*	*	*	6	12
X20	5340-492-1855	CLAMP, LOOP: TORCH ROD LIGHTER G18166 (93084)		EA	2					6	13
P O	4520-153-4693	CORD ASSEMBLY: DUCT ANCHOR MQ1300 (92870)		EA	6	*	*	*	*	7	1
P O	4520-300-0333	DUCT ASSEMBLY: FLEXIBLE G32A (93084)		EA	4	*	*	*	*	7	2
X1	4520-024-7409	BAND: INTERMEDIATE FT142-48-1E (81344)		EA	20					7	3
P O	5315-153-4688	PIN, STRAIGHT, HEADED: INTERMEDIATE BAND		EA	20	*	*	*	*	7	4
X1	4520-153-4662	BAND: HEATER END FT142-48-IM (83144)		EA	4					7	5
P O	5310-637-4000	WASHER, FLAT: BAND RIVET, HEATER END		EA	32	*	*	*	*	7	6
P O	5320-285-8791	RIVET, TUBULAR: BAND		EA	32	*	*	*	*	7	7
P O	5310-761-6882	NUT, PLAIN, HEXAGON		EA	8	*	*	*	*	7	8
P O	5310-582-5965	WASHER, LOCK		EA	8	*	*	*	*	7	9
P O	5310-809-3078	WASHER, FLAT		EA	8	*	*	*	*	7	10
P O	5315-153-4624	PIN, SHOULDER, HEADLESS: DUCT BAND, DISCHARGE END		EA	8	*	*	*	*	7	11

(1) SMR CODE	(2) FEDERAL STOCK NUMBER	(3) DESCRIPTION REF NUMBER & MFR CODE	(4) USABLE ON CODE	(5) UNIT OF MEAS	(6) 15-DAY ORGANIZATIONAL MAINTENANCE ALW				(7) ILLUS- TRATION		
					QTY INC IN UNIT	(A) 1-5	(B) 6-20	(C) 21-50	(D) 51-100	(A) FIG NO	(B) ITEM NO
P O	4520-153-4694	PLATE: TRANSITION, DUCT CONNECTING FT142-0-3 (83144)		EA	2	*	*	*	*	7	12
X1	4520-153-4690	STRIP: BACKING, COIL ANCHOR G33324 (93084)		EA	6					7	13
P O	4520-153-4645	CORD ASSEMBLY, PULL: W/LOCK, DUCT EXPANDING FT142-48-1A3 (83144)		EA	24	*	*	*	*	7	14
X1	4520-153-4660	BAND: TRANSITION END FT142-48-1B (83144)		EA	4					7	15
P O	5315-153-4688	PIN, STRAIGHT, HEADED: DUCT BAND TRANSITION END		EA	4	*	*	*	*	7	16
X1	5325-375-1766	EYELET, METALLIC: W/O WASHER, BRASS BAND, TRANSITION END MQ901 (92870)		EA	20					7	17
P O	5310-375-1828	WASHER: BRASS, BAND EYELET TRANSITION END		EA	20	*	*	*	*	7	18
P O	4520-153-4658	DUCT ASSEMBLY: FLEXIBLE FT142-24-2 (83144)		EA	6	*	*	*	*	7	19
X1	4520-212-4288	STRAP, CONNECTOR: NOZZLE END G33323 (93084)		EA	6					7	20
P O	5320-285-8790	RIVET, TUBULAR: STRAP		EA	6	*	*	*	*	7	21
P O	5310-637-4000	WASHER, FLAT: CONNECTOR STRAP		EA	6	*	*	*	*	7	22
P O	5320-682-1862	RIVET, TUBULAR: OVAL HEAD, STEEL		EA	18	*	*	*	*	7	23
X1		CLIP, DEE RING 5-13-2082ITEM28-13 (83144)		EA	18					7	24
P O	5340-153-4638	RING, DEE: NOZZLE END CONNECTOR FT142-24-2G (83144)		EA	18	*	*	*	*	7	25
X1	4520-153-4691	CONNECTOR: NOZZLE END FT142-24-2B (83144)		EA	6					7	26
X1	4520-153-4686	STRIP, BACKING: BAND, TRANSITION END G33319 (93084)		EA	6					7	27
P O	5320-639-0451	RIVET, TUBULAR: BAND		EA	42	*	*	*	*	7	28
X1	4520-153-4666	BAND: TRANSITION END FT142-24-2D (83144)		EA	6					7	29
P O	5320-285-8790	RIVET, TUBULAR: BAND		EA	6	*	*	*	*	7	30
P O	5310-637-4000	WASHER, FLAT: BAND, TRANSITION END		EA	6	*	*	*	*	7	31
P O	5305-017-3394	SCREW, TAPPING, THREAD FORMING: STACK MTG		EA	1	*	*	*	*	8	1
P O	5310-582-5965	WASHER, LOCK: STACK MTG		EA	1	*	*	*	*	8	2
P O	4520-153-4677	STACK: W/SPARK ARRESTER SCREEN, EXTENSION MQ227 (92870)		EA	1	*	*	*	*	8	3
		GROUP 04 - AIR DUCT SYSTEM WHEELS AND AXLE									
P O	5310-061-4650	NUT, SELF-LOCKING, HEXAGON: FAN GUARD MTG		EA	4	*	*	*	*	9	2
P O	5310-550-1130	WASHER, LOCK: FAN GUARD MTG		EA	4	*	*	*	*	9	3
X20	4520-375-1769	GUARD: PROPELLER FAN 25064-30 (92878)		EA	1					9	4

(1) SMR CODE	(2) FEDERAL STOCK NUMBER	(3) DESCRIPTION REF NUMBER & MFR CODE	(4) USABLE ON CODE	(5) UNIT OF MEAS	(6) QTY INC IN UNIT	(6) 15-DAY ORGANIZATIONAL MAINTENANCE ALW				(7) ILLUS- TRATION (A) (B)	
						(A) 1-5	(B) 6-20	(C) 21-50	(D) 51-100	(A) FIG NO	(B) ITEM NO
P O	4520-871-3000	FAN ASSEMBLY: PROPELLER, AIR INTAKE 5-13-1011 (81337)		EA	1	*	*	*	*	9	5
P O	5306-871-3003	BOLT: HOLD DOWN FAN		EA	1	*	*	*	*	9	6
P O	5310-208-1918	NUT, SELF-LOCKING, HEXAGON: FAN GUARD HOUSING		EA	4	*	*	*	*	9	7
X20	4520-375-1776	HOUSING: BLOWER WHEEL MQ1127 (92870)		EA	1					9	8
P O	5305-724-5834	SETSCREW: WHEEL MTG		EA	2	*	*	*	*	9	9
P O	4520-587-1615	WHEEL: BLOWER G25207 (93084)		EA	1	*	*	*	*	9	10
P O	5305-017-3394	SCREW, CAP, HEXAGON HEAD: OUTER DUCT MTG		EA	3	*	*	*	*	9	13
P O	5306-298-3149	BOLT: AXLE LOCK		EA	1	*	*	*	*	10	1
P O	5306-298-3149	BOLT: AXLE MTG		EA	1	*	*	*	*	10	6
P O	5315-012-0123	PIN, COTTER: WHEEL MTG		EA	1	*	*	*	*	10	11
P O	5310-167-0825	WASHER, FLAT: WHEEL MTG		EA	2	*	*	*	*	10	12
X20	4520-375-1831	WHEEL: STEEL, HEATER AXLE MQ1001 (92870)		EA						10	13
X20	4520-375-1743	COLLAR: HEATER WHEEL SPACER MQ1003 (92870)		EA	1					10	14
P O	5315-012-0123	PIN, COTTER: WHEEL MTG		EA	1	*	*	*	*	10	15
P O	5310-167-0825	WASHER, FLAT: WHEEL MTG		EA	1	*	*	*	*	10	16
X20	4520-375-1831	WHEEL: STEEL, HEATER AXLE MQ1001 (92870)		EA	1					10	17
X20	4520-375-1743	COLLAR: HEATER WHEEL SPACER MQ1003 (92870)		EA	1					10	18
X20	2530-492-1916	AXLE, VEHICULAR, NONDRIVING: W/RETRACTABLE HANDLE, HEATER MQ1002 (92870)		EA	1					10	19
		GROUP 05 - FUEL BURNER AND DOOR ASSEMBLIES									
P O	5305-017-0998	SCREW, MACHINE, PAN HEAD: DOOR MTG		EA	8	*	*	*	*	12	1
X20	4530-492-1854	RING: ESCUTCHEON, STAINLESS STEEL MQ232 (92870)		EA	1					12	2
P O	4530-153-4628	DOOR ASSEMBLY, BURNER: ACCESS MQ1500 (92870)		EA	1	*	*	*	*	12	3
P O	5310-934-9758	NUT, PLAIN, HEXAGON: DOOR MTG		EA	3	*	*	*	*	12	4
P O	5310-045-3296	WASHER, LOCK: DOOR MTG		EA	3	*	*	*	*	12	5
P O	5310-685-8308	WASHER, FLAT: DOOR MTG		EA	3	*	*	*	*	12	6
P O	5305-088-8332	SCREW, MACHINE, FLAT HEAD: DOOR MTG		EA	3	*	*	*	*	12	7
P O	5307-153-4684	STUD ASSEMBLY: WING TK252 (92430)		EA	1	*	*	*	*	12	8
P O	4530-153-4629	GASKET: ASBESTOS CORD, DOOR MQ1504 (92870)		EA	1	*	*	*	*	12	9
P O	5305-050-9230	SCREW, MACHINE, PAN HEAD: COVER MTG		EA	4	*	*	*	*	12	10
P O	5305-050-9227	SCREW, MACHINE, PAN HEAD: COVER MTG		EA	4	*	*	*	*	12	11
P O	4530-467-6136	GASKET SET: COVER TKA254 (92430)		EA	1	*	*	*	*	12	12

(1) SMR CODE	(2) FEDERAL STOCK NUMBER	(3) DESCRIPTION REF NUMBER & MFR CODE	(4) USABLE ON CODE	(5) UNIT OF MEAS	(6) 15-DAY ORGANIZATIONAL MAINTENANCE ALW				(7) ILLUS- TRATION		
					QTY INC IN UNIT	(A) 1-5	(B) 6-20	(C) 21-50	(D) 51-100	(A) FIG NO	(B) ITEM NO
P O	4530-153-4685	GLASS: OBSERVATION 7740 (14674)		EA	1	*	*	*	*	12	13
		GROUP 06 - FUEL LINES, FITTINGS, FILTER AND VALVES									
P O	2910-838-3887	FILTER, FLUID PRESSURE: FUEL BURNER B4BD (13800)		EA	1	*	*	*	*	13	1
P O	5305-988-1723	SCREW, MACHINE: VENT		EA	1	*	*	*	*	13	2
P O	5330-297-7372	WASHER, NONMETALLIC: VENT SCREW 32015 (13800)		EA	1	*	*	*	*	13	3
P O	5310-362-7132	NUT: COVER 19220 (13800)		EA	1	*	*	*	*	13	4
P O	5330-285-3825	GASKET: COVER NUT 32014 (13800)		EA	1	*	*	*	*	13	5
P O	5330-352-5542	GASKET: SHELL 31300 (13800)		EA	1	*	*	*	*	13	6
P O	2910-153-8064	ELEMENT, FILTER RF4 (13800)		EA	1	*	*	*	*	13	7
P O	4720-871-3004	HOSE ASSEMBLY, METAL, FUEL ENGINE G08842 (93084)		EA	1	*	*	*	*	13	9
P O	4820-097-3167	VALVE, ANGLE: MAIN FUEL LINE SHUTOFF 1251-3-8 (14959)		EA	1	*	*	*	*	13	24
P O	5330-375-1799	RING: PACKING, SHUTOFF VALVE G08427 (93084)		EA	1	*	*	*	*	13	25
X20	5340-153-4630	STRAP, RETAINING: SUMP MTG MQ1215 (92870)		EA	2					13	27
P O	4730-224-0546	CAP, PIPE: BRASS, FUEL TANK SUMP DRAIN		EA	1	*	*	*	*	13	28
X20	4520-153-4626	SUMP, GASOLINE TANK: FUEL TANK TO FUEL FILTER MQ1210 (92870)		EA	1					13	29
P O	5310-880-7744	NUT, PLAIN, HEXAGON: HAND WHEEL		EA	1	*	*	*	*	13	30
P O	4530-449-4865	WHEEL, HAND METERING: BURNER FUEL LINE SHUTOFF VALVE PY17F (92870)		EA	1	*	*	*	*	13	31
P O	5310-880-7744	NUT, PLAIN, HEXAGON: BURNER POINTER		EA	2	*	*	*	*	13	32
P O	4530-375-1794	POINTER: BURNER FUEL LINE SHUTOFF MQ436 (92870)		EA	1	*	*	*	*	13	33
P O	5310-167-0721	WASHER, LOCK: BURNER POINTER		EA	1	*	*	*	*	13	34
X20	5355-825-4843	COVER, DIAL: W/RIVETS, BURNER LETTERED OPEN-CLOSE 5-13-213-48 (81337)		EA	1					13	36
X20	4530-375-1811	SPACER: BURNER FUEL LINE SHUTOFF VALVE DIAL AND PLATE MQ415 (92870)		EA	1					13	37
P O	5310-880-7744	NUT, PLAIN, HEXAGON: SPACER		EA	1	*	*	*	*	13	38
P O	5310-880-7744	NUT, PLAIN, HEXAGON: HAND WHEEL		EA	1	*	*	*	*	13	40
P O	4530-449-4865	WHEEL, HAND METERING: BURNER FUEL LINE SHUTOFF VALVE PY17F (92870)		EA	1	*	*	*	*	13	41
P O	4530-375-1794	POINTER: BURNER FUEL METERING VALVE OPERATING MQ436 (92870)		EA	1	*	*	*	*	13	44

(1)	(2)	(3)	(4)	(5)	(6)				(7)		
SMR CODE	FEDERAL STOCK NUMBER	DESCRIPTION REF NUMBER & MFR CODE	USABLE ON CODE	UNIT OF MEAS	QTY INC IN UNIT	15-DAY ORGANIZATIONAL MAINTENANCE ALW				ILLUS- TRATION (A)	(B)
						(A)	(B)	(C)	(D)	FIG NO	ITEM NO
P O	5310-880-7744	NUT, PLAIN, HEXAGON: SPACER		EA	1	*	*	*	*	13	45
X20	5355-825-4842	DIAL, FUEL METERING: W/RIVETS, BURNER LETTERED HEAT CONTROL, LOW, MED, HIGH, NUMBERED 1 THRU 8 5-13-2130-49 (81337)		EA	1					13	46
X20	4530-375-1811	SPACER: BURNER FUEL METERING VALVE CONTROL DIAL MQ415 (92870)		EA	1					13	47
P O	5310-880-7744	NUT, PLAIN, HEXAGON: SPACER		EA	1	*	*	*	*	13	48

(1)	(2)	(3)	(4)	(5)	(6)	(7)	(8)	(9)	(10)				
SMR	FEDERAL	DESCRIPTION	USABLE	UNIT	QTY	30-DAY DS MAINT	30-DAY GS MAINT	1-YR	DEPOT	ILLUS-			
CODE	STOCK		ON	OF	INC	ALLOWANCE	ALLOWANCE	ALW	MAINT	TRATION			
NUMBER	NUMBER	REF NUMBER & MFR CODE	CODE	MEAS	IN	(A)	(B)	(C)	PER	(A)	(B)		
		SECTION IV - REPAIR PARTS FOR DS, GS MAINTENANCE			UNIT	1-20	21-50	51-100	1-20	21-50	51-100		
		GROUP 01 - ENGINE AND MOUNTING PARTS							CNTGY	EQUIP	100		
										EQUIP	100		
										FIG	ITEM		
										NO	NO		
X20		BASE: ENGINE MTG 5-13-2045ITEM13-1 (81337) (USED WITH ENGINE FSN 2805-714-8552)		EA	1						1	1	
X20		BASE: ENGINE MTG G29700 (93084) (USED WITH ENGINE FSN 2805-068-7510)		EA	1						1	1	
P O	5310-880-774	NUT, PLAIN, HEXAGON: BRACKET TO BASE MTG, 5/16-18 NF		EA	4	*	*	*	*	*	*	1	2
P O	5310-167-072	WASHER, LOCK: BRACKET TO BASE MTG		EA	4	*	*	*	*	*	*	1	3
P O	5330-871-299	WASHER, NONMETALLIC: ENGINE MTG G29504 (93084) (USED WITH ENGINE FSN 2805-068-7510)		EA	4	*	*	*	*	*	*	1	4
P O	5310-167-072	WASHER, LOCK: BRACKET TO BASE MTG		EA	4	*	*	*	*	*	*	1	5
P O	5305-225-908	SCREW, CAP, HEXAGON HEAD: BRACKET TO BASE MTG		EA	4	*	*	*	*	*	*	1	6
P O	5340-871-299	MOUNT, RESILIENT G29505 (93084) (USED WITH ENGINE FSN 2805-068-7510)		EA	2	*	*	*	*	*	*	1	7
P O	5340-871-299	MOUNT, RESILIENT: ENGINE MTG 5-13-2047ITEM13-14 (81337) (USED WITH ENGINE FSN 2805-714-8552)		EA	2	*	*	*	*	*	*	1	7
P O	5305-068-050	SCREW, CAP, HEXAGON HEAD: BRACKET TO ENGINE MTG, 1/4-20 X 1/2 NC		EA	12	*	*	*	*	*	*	1	8
P O	5310-595-723	WASHER, LOCK, INTERNAL TOOTH: BRACKET TO ENGINE MTG, 3/8 IN. ID		EA	12	*	*	*	*	*	*	1	9
X20	4520-140-385	BRACKET G29701 (93084) (USED WITH ENGINE FSN 2805-068-7510)		EA	2							1	10
X20		BRACKET: ENGINE MTG 5-13-2045ITEM13-12 (81337) (USED WITH ENGINE FSN 2805-714-8552)		EA	1							1	10
X20		BRACKET: ENGINE MTG 5-13-2047ITEM13-13 (81337) (USED WITH ENGINE FSN 2805-714-8552)		EA	1							1	11
P O	5310-880-774	NUT, PLAIN, HEXAGON: GROUND STRAP MTG		EA	1	*	*	*	*	*	*	1	12
P O	5310-550-113	WASHER, LOCK: GROUND STRAP MTG		EA	1	*	*	*	*	*	*	1	13
P O	5305-225-908	SCREW, CAP, HEXAGON HEAD: GROUND STRAP MTG		EA	1	*	*	*	*	*	*	1	14
P O	5310-809-307	WASHER, FLAT: GROUND STRAP MTG		EA	1	*	*	*	*	*	*	1	15
P O	4520-117-251	STRAP: GROUND 5-13-2047ITEM13-16 (81337)		EA	1	*	*	*	*	*	*	1	16
P O	2805-714-855	ENGINE, GASOLINE 1A08-2 (97403) (ISSUE UNTIL STOCK IS EXHAUSTED, THEN USE ENGINE FSN 2805-068-7510)		EA	1	*	*	*	*	*	*	1	17

(1)	(2)	(3)	(4)	(5)	(6) 30-DAY DS MAINT ALLOWANCE			(7) 30-DAY GS MAINT ALLOWANCE			(8)	(9)	(10)	(B)	
SMR CODE	FEDERAL STOCK NUMBER	DESCRIPTION REF NUMBER & MFR CODE	USABLE ON CODE	UNIT OF MEAS	QTY INC IN UNIT	(A)	(B)	(C)	(A)	(B)	(C)	1-YR ALW PER 100 EQUIP CNTGY	DEPOT MAINT ALW PER 100 EQUIP	ILLUS- TRATION (A)	ITEM NO
P O	2990-904-4542	PIPE EXHAUST: ENGINE EXHAUST 5-13-2043ITEM58 (81337)		EA	1	*	*	*	*	*	*	*	*	2	1
P O	5305-984-6211	SCREW, MACHINE, HEXAGON HEAD: CLAMP MTG		EA	1	*	*	*	*	*	*	*	*	2	2
P O	5310-933-8120	WASHER, LOCK: CLAMP MTG		EA	1	*	*	*	*	*	*	*	*	2	3
X20		CLAMP: TUBE SUPPORT 5-13-2043ITEM58-9 (81337)		EA	1									2	4
P O	5306-225-9087	BOLT, MACHINE: BRACKET MTG		EA	1	*	*	*	*	*	*	*	*	2	5
P O	5310-974-6623	WASHER, LOCK: BRACKET MTG		EA	1	*	*	*	*	*	*	*	*	2	6
X20		BRACKET, CLAMP 5-13-2043ITEM58-10 (81337)		EA	1									2	7
P O	5305-225-3839	SCREW, CAP, HEXAGON HEAD: EXHAUST TUBE MTG		EA	2	*	*	*	*	*	*	*	*	2	8
P O	5310-933-8121	WASHER, LOCK: EXHAUST TUBE MTG		EA	2	*	*	*	*	*	*	*	*	2	9
P O	5330-116-4048	GASKET: ENGINE EXHAUST 5-13-2043ITEM58-8 (81337)		EA	1	*	*	*	*	*	*	*	*	2	10
X1		TUBE ASSEMBLY: ENGINE EXHAUST 5-13-2043ITEM58-1THRU58-7 (81337)		EA	1									2	11
		GROUP 02 - FUEL TANK AND EXHAUST DUCTS													
P O	5305-225-9081	SCREW, CAP, HEXAGON HEAD: TANK STRAP MTG		EA	2	*	*	*	*	*	*	*	*	3	1
P O	5310-880-7744	NUT, PLAIN, HEXAGON: TANK STRAP MTG		EA	2	*	*	*	*	*	*	*	*	3	2
X20	4520-153-4715	STRAP: FUEL TANK FRONT MQ1317 (92870)		EA	1									3	3
P O	5305-225-9081	SCREW, CAP, HEXAGON HEAD: TANK STRAP MG		EA	2	*	*	*	*	*	*	*	*	3	4
P O	5310-880-7744	NUT, PLAIN, HEXAGON: TANK STRAP MTG		EA	2	*	*	*	*	*	*	*	*	3	5
X20	2910-153-4716	STRAP: FUEL TANK, REAR MQ1318 (92870)		EA	1									3	6
P O	2910-153-4711	TANK ASSEMBLY: FUEL G23C3 (93084)		EA	1	*	*	*	*	*	*	*	*	3	7
P O	2910-605-1353	CAP: FILLER CC2595 (80900)		EA	1	*	*	*	*	*	*	*	*	3	8
P O	6680-467-6149	CAP: FUEL LEVEL GAGE TT228 (92430)		EA	1	*	*	*	*	*	*	*	*	3	9
P O	6680-422-8538	GASKET: LEATHER, FUEL LEVEL GAGE CAP G23286 (93084)		EA	1	*	*	*	*	*	*	*	*	3	10
P O	6680-467-6150	CRYSTAL: FUEL LEVEL GAGE G23267 (93084)		EA	1	*	*	*	*	*	*	*	*	3	11
P O	6680-422-8537	GASKET: CORK, FUEL LEVEL GAGE G23288 (93084)		EA	1	*	*	*	*	*	*	*	*	3	12
P O	6680-467-6148	GAGE: FUEL LEVEL G23209 (93084)		EA	1	*	*	*	*	*	*	*	*	3	13
P F	5305-017-3394	SCREW, TAPPING, THREAD FORMING: TANK BRACKET MTG		EA	4	*	*	*	*	*	*	*	*	3	14
P F	5310-582-5965	WASHER, LOCK: TANK BRACKET MTG		EA	4	*	*	*	*	*	*	*	*	3	15
X2F	4520-153-4717	BRACKET: FUEL TANK SUPPORT MQ1220 (92870)		EA	4									3	16

(1) SMR CODE	(2) FEDERAL STOCK NUMBER	(3) DESCRIPTION REF NUMBER & MFR CODE	(4) USABLE ON CODE	(5) UNIT OF MEAS	(6) QTY INC IN UNIT	(6) 30-DAY DS MAINT ALLOWANCE			(7) 30-DAY GS MAINT ALLOWANCE			(8) 1-YR ALW PER 100 EQUIP CNTGY	(9) DEPOT MAINT ALW PER 100 EQUIP	(10) ILLUS- TRATION	
						(A)	(B)	(C)	(A)	(B)	(C)	FIG NO	(B) ITEM NO		
P O	5310-880-7744	NUT, PLAIN, HEXAGON: TANK BRACKET MTG		EA	8	*	*	*	*	*	*	*	*	3	17
P F	5310-407-9566	WASHER, LOCK: TANK BRACKET MTG		EA	4	*	*	*	*	*	*	*	*	3	18
P O	5310-044-6548	WASHER, FLAT: TANK BRACKET MTG		EA	4	*	*	*	*	*	*	*	*	3	19
X2F	4520-153-4714	SUPPORT, FUEL: TANK MQ1221 (92870)		EA	2									3	20
P F	5310-061-4650	NUT, SELF-LOCKING, HEXAGON: CLAMP MTG		EA	4	*	*	*	*	*	*	*	*	4	1
P F	5305-225-3839	SCREW, CAP, HEXAGON HEAD: CLAMP MTG		EA	4	*	*	*	*	*	*	*	*	4	2
X2F	5340-033-6249	CLAMP, LOOP: DUCT STORAGE TUBE SUPPORT MQ1305 (92870)		EA	3									4	3
P O	5325-153-4687	LOCK: SNAP SPRING, DUCT STORAGE TUBE MQ1302 (92870)		EA	2	*	*	*	*	*	*	*	*	4	4
		GROUP 03 - COMBUSTION CHAMBERS, DAMPERS AND CABINET HANDLE													
P O	5305-017-0994	SCREW, TAPPING, THREAD FORMING: TOOL POUCH MTG		EA	2	*	*	*	*	*	*	*	*	5	1
X20	4520-213-9924	STRIP, TOOL POUCH MQ1603 (92870)		EA	1									5	2
X20	4520-153-4731	POUCH: TOOL MQ1600 (92870)		EA	1									5	3
P F	5310-934-9758	NUT, PLAIN, HEXAGON: SHIELD MTG		EA	5	*	*	*	*	*	*	*	*	5	4
P F	5310-045-3296	WASHER, LOCK: SHIELD MTG		EA	5	*	*	*	*	*	*	*	*	5	5
X2F	5310-153-4732	SPACER, TOOL POUCH HEAT SHIELD MQ1602 (92870)		EA	5									5	6
P F	5305-017-1000	SCREW, TAPPING, THREAD FORMING: SHIELD MTG		EA	5	*	*	*	*	*	*	*	*	5	7
X2F	4520-153-4727	SHIELD, HEAT TOOL: POUCH MQ1601 (92870)		EA	1									5	8
P O	5310-934-9747	NUT, PLAIN, HEXAGON: UPPER AND LOWER DAMPER		EA	4	*	*	*	*	*	*	*	*	5	9
P O	5305-889-3000	SCREW, MACHINE: UPPER AND LOWER DAMPER		EA	4	*	*	*	*	*	*	*	*	5	10
X20	4520-300-0094	DAMPER: CABINET UPPER DISCHARGE OPENING MQ912 (92870)		EA	1									5	11
P O	5310-809-3078	WASHER, FLAT: CABINET LOWER AND UPPER DISCHARGE DAMPER SPACING		EA	2	*	*	*	*	*	*	*	*	5	12
P O	1730-197-5853	SPRING, HELICAL, COMPRESSION: COIL CABINET AIR DISCHARGE LOWER AND UPPER DAMPER MQ908 (92870)		EA	2	*	*	*	*	*	*	*	*	5	13
X20	4520-024-7405	HANDLE: DISCHARGE DAMPER OPERATING TC345 (92430)		EA	2									5	14
X20	4520-153-4724	DAMPER, DISCHARGE LOWER MQ914 (92870)		EA	1									5	15
P O	4520-214-3366	CLIP ASSEMBLY: SPRING LOCK DUCT LOCATING G0325A (93084)		EA	4	*	*	*	*	*	*	*	*	5	16
P F	5305-017-3394	SCREW, TAPPING, THREAD FORMING: BRACKET MTG		EA	8	*	*	*	*	*	*	*	*	6	1

(1) SMR CODE	(2) FEDERAL STOCK NUMBER	(3) DESCRIPTION REF NUMBER & MFR CODE	(4) USABLE ON CODE	(5) UNIT OF MEAS	(6) 30-DAY DS MAINT ALLOWANCE			(7) 30-DAY GS MAINT ALLOWANCE			(8) 1-YR ALW PER 100 EQUIP CNTGY	(9) DEPOT MAINT ALW PER 100 EQUIP	(10) ILLUS- TRATION	
					(A)	(B)	(C)	(A)	(B)	(C)			(A)	(B)
P F	5310-582-5965	WASHER, LOCK: BRACKET MTG		EA	8	*	*	*	*	*	*	*	6	2
X2F	4520-153-4729	BRACKET: HEATER HANDLE TIE DOWN, RIGHT MQ915 (92870)		EA	1								6	3
X2F	4520-153-4728	BRACKET, TIE DOWN: HEATER HANDLE TIE DOWN, LEFT MQ916 (92870)		EA	1								6	4
X2F	4520-024-7403	HANDLE, HEATER MQ918 (92870)		EA	1								6	5
P F	5305-017-3394	SCREW, TAPPING, THREAD FORMING: BRACKET MTG		EA	4	*	*	*	*	*	*	*	6	6
P F	5310-582-5965	WASHER LOCK: BRACKET MTG		EA	4	*	*	*	*	*	*	*	6	7
X2F	4520-492-1852	BRACKET, HANDLE: HEATER HANDLE BRACE MQ920 (92870)		EA	2								6	8
X2F	4520-492-1853	BRACE: HEATER HANDLE MQ919 (92870)		EA	2								6	9
P O	1730-449-4835	LIGHTER, TORCH		EA	2	*	*	*	*	*	*	*	6	10
P O	5305-017-3394	SCREW, TAPPING, THREAD FORMING: TORCH ROD		EA	2	*	*	*	*	*	*	*	6	11
P O	5310-582-5965	WASHER, LOCK: TORCH ROD		EA	2	*	*	*	*	*	*	*	6	12
X20	5340-492-1855	CLAMP, LOOP: TORCH ROD LIGHTER G18166 (93084)		EA	2								6	13
P O	4520-153-4693	CORD ASSEMBLY: DUCT ANCHOR MQ1300 (92870)		EA	6	*	*	*	*	*	*	*	7	1
P O	4520-300-0333	DUCT ASSEMBLY: FLEXIBLE G32A (93084)		EA	4	*	*	*	*	*	*	*	7	2
X1	4520-024-7409	BAND: INTERMEDIATE FT142-48-1E(83144)		EA	20								7	3
P O	5315-153-4688	PIN, STRAIGHT, HEADED: INTERMEDIATE BAND		EA	20	*	*	*	*	*	*	*	7	4
X1	4520-153-4662	BAND: HEATER END FT142-48-IN(83144)		EA	4								7	5
P O	5310-637-4000	WASHER, FLAT: BAND RIVET, HEATER END		EA	32	*	*	*	*	*	*	*	7	6
P O	5320-285-8791	RIVET, TUBULAR: BAND		EA	32	*	*	*	*	*	*	*	7	7
P O	5310-761-6882	NUT, PLAIN, HEXAGON		EA	8	*	*	*	*	*	*	*	7	8
P O	5310-582-5965	WASHER, LOCK		EA	8	*	*	*	*	*	*	*	7	9
P O	5310-809-3078	WASHER, FLAT		EA	8	*	*	*	*	*	*	*	7	10
P O	5315-153-4624	PIN, SHOULDER, HEADLESS: DUCT BAND, DISCHARGE END		EA	8	*	*	*	*	*	*	*	7	11
P O	4520-153-4694	PLATE: TRANSITION, DUCT CONNECTING FT142-0-3 (83144)		EA	2	*	*	*	*	*	*	*	7	12
X1	4520-153-4690	STRIP: BACKING, COIL ANCHOR G33324 (93084)		EA	6								7	13
P O	4520-153-4645	CORD ASSEMBLY, PULL: W/LOCK, DUCT EXPANDING FT142-48-1A3(83144)		EA	24	*	*	*	*	*	*	*	7	14
X1	4520-153-4660	BAND: TRANSITION END FT142-48-1B(83144)		EA	4								7	15
P O	5315-153-4688	PIN, STRAIGHT, HEADED: DUCT BAND TRANSITION END		EA	4	*	*	*	*	*	*	*	7	16

(1) SMR CODE	(2) FEDERAL STOCK NUMBER	(3) DESCRIPTION REF NUMBER & MFR CODE	(4) USABLE ON CODE	(5) UNIT OF MEAS	(6) QTY INC IN UNIT	(7) 30-DAY DS MAINT ALLOWANCE			(8) 30-DAY GS MAINT ALLOWANCE			(9) 1-YR ALW PER 100 EQUIP CNTGY	(10) DEPOT ALW MAINT PER 100 EQUIP	(11) ILLUS- TRATION (A)	(12) ITEM NO (B)
						(A)	(B)	(C)	(A)	(B)	(C)	FIG NO	FIG NO		
X1	5325-375-1766	EYELET, METALLIC: W/O WASHER, BRASS BAND, TRANSITION END MQ901 (92870)		EA	20									7	17
P O	5310-375-1828	WASHER: BRASS, BAND EYELET TRANSITION END		EA	20	*	*	*	*	*	*	*	*	7	18
P O	4520-153-4658	DUCT ASSEMBLY: FLEXIBLE FT142-24-2(83144)		EA	6	*	*	*	*	*	*	*	*	7	19
X1	4520-212-4288	STRAP, CONNECTOR: NOZZLE END G33323 (93084)		EA	6									7	20
P O	5320-285-8790	RIVET, TUBULAR: STRAP		EA	6	*	*	*	*	*	*	*	*	7	21
P O	5310-637-4000	WASHER, FLAT: CONNECTOR STRAP		EA	6	*	*	*	*	*	*	*	*	7	22
P O	5320-682-1862	RIVET, TUBULAR: OVAL HEAD, STEEL		EA	18	*	*	*	*	*	*	*	*	7	23
X1		CLIP, DEE RING 5-13-2082ITEM28-13 (83144)		EA	18									7	24
P O	5340-153-4638	RING, DEE: NOZZLE END CONNECTOR FT142-24-2G (83144)		EA	18	*	*	*	*	*	*	*	*	7	25
X1	4520-153-4691	CONNECTOR: NOZZLE END FT142-24-2B (83144)		EA	6									7	26
X1	4520-153-4686	STRIP, BACKING: BAND, TRANSITION END G33319 (93084)		EA	6									7	27
P O	5320-639-0451	RIVET, TUBULAR: BAND		EA	42	*	*	*	*	*	*	*	*	7	28
X1	4520-153-4666	BAND: TRANSITION END FT142-24-2D (83144)		EA	6									7	29
P O	5320-285-8790	RIVET, TUBULAR: BAND		EA	6	*	*	*	*	*	*	*	*	7	30
P O	5310-637-4000	WASHER, FLAT: BAND, TRANSITION END		EA	6	*	*	*	*	*	*	*	*	7	31
P O	5305-017-3394	SCREW, TAPPING, THREAD FORMING: STACK MTG		EA	1	*	*	*	*	*	*	*	*	8	1
P O	5310-582-5965	WASHER, LOCK: STACK MTG		EA	1	*	*	*	*	*	*	*	*	8	2
P O	4520-153-4677	STACK: W/SPARK ARRESTER SCREEN, EXTENSION MQ227 (92870)		EA	1	*	*	*	*	*	*	*	*	8	3
P F	5310-880-7744	NUT, PLAIN, HEXAGON: CHAMBER ASSEMBLY		EA	4	*	*	*	*	*	*	*	*	8	4
P F	5310-407-9566	WASHER, LOCK: CHAMBER ASSEMBLY		EA	4	*	*	*	*	*	*	*	*	8	5
P F	5305-225-8497	BOLT, MACHINE: CHAMBER ASSEMBLY		EA	4	*	*	*	*	*	*	*	*	8	6
P F	5305-017-3394	SCREW, TAPPING, THREAD FORMING: SUPPORT BRACE		EA	4	*	*	*	*	*	*	*	*	8	7
P F	5310-582-5965	WASHER, LOCK: SUPPORT BRACE		EA	4	*	*	*	*	*	*	*	*	8	8
X2F	4520-492-1890	BRACE: COMBUSTION CHAMBER CHANNEL SUPPORT MQ246 (92870)		EA	2									8	9
P F	4520-153-4681	CHAMBER ASSEMBLY: COMBUSTION MQ205 (92807)		EA	1	*	*	*	*	*	*	*	*	8	10
P F	5305-050-9229	SCREW, MACHINE: CLEAN-OUT COVER, NO. 10-24 NC X 1/2 IN.		EA	12	*	*	*	*	*	*	*	*	8	11
X2F	4520-153-4721	COVER: CLEAN-OUT MQ216 (92870)		EA	2									8	12
P F	5330-153-4675	GASKET: CLEAN-OUT COVER MQ217 (93870)		EA	2	*	*	*	*	*	*	*	*	8	13

(1) SMR CODE	(2) FEDERAL STOCK NUMBER	(3) DESCRIPTION REF NUMBER & MFR CODE	(4) USABLE CN CODE	(5) UNIT OF MEAS	(6) QTY INC IN UNIT	(7) 30-DAY DS MAINT ALLOWANCE			(8) 30-DAY GS MAINT ALLOWANCE			(9) 1-YR ALW PER 100 EQUIP CNTGY	(10) DEPOT MAINT ALW PER 100 EQUIP	(11) ILLUS- TRATION (A) FIG NO	(12) ITEM NO
						(A)	(B)	(C)	(A)	(B)	(C)				
		GROUP 04 - AIR DUCT SYSTEM WHEELS AND AXLE													
P F	5305-017-0996	SCREW, TAPPING, THREAD FORMING: OUTER DUCT		EA	4	*	*	*	*	*	*	*	*	9	1
P O	5310-061-4650	NUT, SELF-LOCKING, HEXAGON: FAN GUARD MTG		EA	4	*	*	*	*	*	*	*	*	9	2
P O	5310-550-1130	WASHER, LOCK: FAN GUARD MTG		EA	4	*	*	*	*	*	*	*	*	9	3
X20	4520-375-1769	GUARD: PROPELLER FAN 25064-30 (92878)		EA	1									9	4
P O	4520-871-3000	FAN ASSEMBLY: PROPELLER, AIR INTAKE 5-13-1011 (81337)		EA	1	*	*	*	*	*	*	*	*	9	5
P O	5306-871-3003	BOLT: HOLD DOWN FAN		EA	1	*	*	*	*	*	*	*	*	9	6
P O	5310-208-1918	NUT, SELF-LOCKING, HEXAGON: FAN GUARD HOUSING		EA	4	*	*	*	*	*	*	*	*	9	7
X20	4520-375-1776	HOUSING: BLOWER WHEEL MQ1127 (92870)		EA	1									9	8
P O	5305-724-5834	SETSCREW: WHEEL MTG		EA	2	*	*	*	*	*	*	*	*	9	9
P O	4520-587-1615	WHEEL: BLOWER G25207 (93084)		EA	1	*	*	*	*	*	*	*	*	9	10
P F	5310-061-4650	NUT, SELF-LOCKING, HEXAGON: OUTER DUCT MTG		EA	3	*	*	*	*	*	*	*	*	9	11
P F	5310-550-1130	WASHER, LOCK: OUTER DUCT MTG		EA	3	*	*	*	*	*	*	*	*	9	12
P O	5305-017-3394	SCREW, CAP, HEXAGON HEAD: OUTER DUCT MTG		EA	3	*	*	*	*	*	*	*	*	9	13
P F	5310-576-5752	WASHER, LOCK: OUTER DUCT MTG		EA	4	*	*	*	*	*	*	*	*	9	14
X2F	4520-375-1754	DUCT: AIR COMBUSTION, OUTER MQ819 (92870)		EA	1									9	15
P F	5315-839-5821	PIN, COTTER: SPRING		EA	1	*	*	*	*	*	*	*	*	9	16
P F	4520-153-4697	SPRING: AIR DUCT DAMPER RETURN MQ803 (92870)		EA	1	*	*	*	*	*	*	*	*	9	17
P F	5305-208-8804	SETSCREW: AIR DUCT DAMPER LEVER ARM		EA	1	*	*	*	*	*	*	*	*	9	18
P F	5310-880-7744	NUT, PLAIN, HEXAGON: ARM ASSEMBLY		EA	1	*	*	*	*	*	*	*	*	9	19
P F	5310-045-3296	WASHER, LOCK: PULL ROD		EA	1	*	*	*	*	*	*	*	*	9	20
P F	5310-934-9758	NUT, PLAIN, HEXAGON: PULL ROD		EA	2	*	*	*	*	*	*	*	*	9	21
X2F		BOLT, SHOULDER: AIR DUCT DAMPER LEVER ARM TO ROD G14349 (93084)		EA	1									9	22
X2F	4520-024-7415	ROD, DAMPER, PULL: INNER COMBUSTION AIR DUCT DAMPER MQ800 (92870)		EA	1									9	23
P F	5315-839-5821	PIN, COTTER: SPRING		EA	1	*	*	*	*	*	*	*	*	9	24
P F	4520-492-1871	ARM ASSEMBLY, DAMPER: AIR DUCT DAMPER LEVER MQ809 (92870)		EA	1	*	*	*	*	*	*	*	*	9	25
X2F	4520-375-1747	DAMPER ASSEMBLY: BURNER AIR DUCT MQ808 (92870)		EA	1									9	26
P F	5305-017-0998	SCREW, TAPPING, THREAD FORMING: INNER AIR DUCT		EA	2	*	*	*	*	*	*	*	*	9	27
P F	5310-045-3296	WASHER, LOCK: INNER AIR DUCT		EA	2	*	*	*	*	*	*	*	*	9	28

(1)	(2)	(3)	(4)	(5)	(6) 30-DAY DS MAINT ALLOWANCE			(7) 30-DAY GS MAINT ALLOWANCE			(8) 1-YR ALW PER 100 EQUIP CNTGY	(9) DEPOT MAINT ALW PER 100 EQUIP	(10) ILLUS- TRATION (A)	(B)
SMR CODE	FEDERAL STOCK NUMBER	DESCRIPTION REF NUMBER & MFR CODE	USABLE ON CODE	UNIT OF MEAS	QTY INC IN UNIT	(A)	(B)	(C)	(A)	(B)	(C)	FIG NO	ITEM NO	
X2F	4520-525-7273	DUCT ASSEMBLY, AIR INNER: AIR COMBUSTION INNER MQ817 (92870)		EA	1							9	29	
P F	4520-492-1874	CHAMBER, BURNER, AIR: W/DRAIN TUBE, BURNER AIR MQ600 (92870)		EA	1	*	*	*	*	*	*	9	30	
P F	5310-880-7744	NUT, PLAIN, HEXAGON: HANGER		EA	12	*	*	*	*	*	*	9	31	
P F	5310-407-9566	WASHER, LOCK: HANGER MTG		EA	3	*	*	*	*	*	*	9	32	
P F	5310-934-9758	NUT, PLAIN, HEXAGON: HANGER		EA	3	*	*	*	*	*	*	9	33	
P F	5310-045-3296	WASHER, LOCK: HANGER MTG		EA	3	*	*	*	*	*	*	9	34	
P F	5305-984-6189	SCREW, MACHINE: HANGER		EA	3	*	*	*	*	*	*	9	35	
X2F	4520-449-4836	HANGER: TRIANGLE, BURNER MQ608 (92870)		EA	1							9	36	
P O	5306-298-3149	BOLT: AXLE LOCK		EA	1	*	*	*	*	*	*	10	1	
P F	5305-068-0506	SCREW, CAP, HEXAGON HEAD: BRACKET MTG		EA	2	*	*	*	*	*	*	10	2	
P F	5310-582-5965	WASHER, LOCK: BRACKET MTG		EA	3	*	*	*	*	*	*	10	3	
P F	5305-988-3785	SCREW, MACHINE: BRACKET MTG		EA	1	*	*	*	*	*	*	10	4	
X2F	4520-153-4636	BRACKET: AXLE MTG, LEFT MQ730 (92870)		EA	1							10	5	
P O	5306-298-3149	BOLT: AXLE MTG		EA	1	*	*	*	*	*	*	10	6	
P F	5305-068-0506	SCREW, CAP, HEXAGON HEAD: BRACKET MTG		EA	2	*	*	*	*	*	*	10	7	
P F	5310-582-5965	WASHER, LOCK: BRACKET MTG		EA	3	*	*	*	*	*	*	10	8	
P F	5305-988-3785	SCREW, MACHINE: BRACKET MTG		EA	1	*	*	*	*	*	*	10	9	
X2F	1730-153-4635	BRACKET: AXLE MTG, RIGHT MQ731 (92870)		EA	1							10	10	
P O	5315-012-0123	PIN, COTTER: WHEEL MTG		EA	1	*	*	*	*	*	*	10	11	
P O	5310-167-0825	WASHER, FLAT: WHEEL MTG		EA	2	*	*	*	*	*	*	10	12	
X20	4520-375-1831	WHEEL: STEEL, HEATER AXLE MQ1001 (92878)		EA	1							10	13	
X20	4520-375-1743	COLLAR: HEATER WHEEL SPACER MQ1003 (92870)		EA	1							10	14	
P O	5315-012-0123	PIN, COTTER: WHEEL MTG		EA	1	*	*	*	*	*	*	10	15	
P O	5310-167-0825	WASHER, FLAT: WHEEL MTG		EA	1	*	*	*	*	*	*	10	16	
X20	4520-375-1831	WHEEL: STEEL, HEATER AXLE MQ1001 (92870)		EA	1							10	17	
X20	4520-375-1743	COLLAR: HEATER WHEEL SPACER MQ1003 (92870)		EA	1							10	18	
X20	2530-492-1916	AXLE, VEHICULAR, NONDRIVING: W/RETRACTABLE HANDLE, HEATER MQ1002 (92870)		EA	1							10	19	
		GROUP 05 - FUEL BURNER AND DOOR ASSEMBLIES												
P F	4520-153-4674	BURNER ASSEMBLY S24300C (40563)		EA	1	*	*	*	*	*	*	11	1	
P F	5330-301-1081	ROPE, ASBESTOS: COMBUSTION CHAMBER, BURNER SEAL		FT	3	*	*	*	*	*	*	11	2	

(1) SMR CODE	(2) FEDERAL STOCK NUMBER	(3) DESCRIPTION REF NUMBER & MFR CODE	(4) USABLE ON CODE	(5) UNIT OF MEAS	(6) QTY INC IN UNIT	(7) 30-DAY DS MAINT ALLOWANCE			(8) 30-DAY GS MAINT ALLOWANCE			(9) 1-YR ALW PER 100 EQUIP CNTGY	(10) DEPOT MAINT ALW PER 100 EQUIP	(11) ILLUS- TRATION (A)	(12) ITEM NO
						(A)	(B)	(C)	(A)	(B)	(C)				
P F	5310-934-9758	NUT, PLAIN, HEXAGON: CLIP		EA	1	*	*	*	*	*	*	*	*	11	3
P F	5310-045-3296	WASHER, LOCK: CLIP		EA	1	*	*	*	*	*	*	*	*	11	4
P F	5310-934-9758	NUT, PLAIN, HEXAGON: CLIP		EA	2	*	*	*	*	*	*	*	*	11	5
X2F	5340-153-4648	CLIP, SPRING, TENSION: CHANNEL B1742A (40563)		EA	1									11	6
P F	4530-153-4649	CHANNEL: DISTRIBUTOR AND SPREADER ANCHOR G31201 (92430)		EA	1	*	*	*	*	*	*	*	*	11	7
X1	4530-153-4673	SPREADER ASSEMBLY: FRAME M3712A (40563)		EA	1									11	8
P F	5340-492-0924	RING, SNAP: SPRING, CENTER AIR DISTRIBUTOR B1320A (40563)		EA	1	*	*	*	*	*	*	*	*	11	9
X2F	4530-492-1479	BAFFLE, AIR DISTRUBUTOR H1744A (40563)		EA	1									11	10
X1	4530-153-4619	DISTRIBUTOR: CENTRAL AIR M23258 (40563)		EA	1									11	11
P F	5310-851-2674	NUT, PLAIN, HEXAGON: RING		EA	3	*	*	*	*	*	*	*	*	11	12
P F	5310-903-5966	NUT, PLAIN, HEXAGON: RING		EA	3	*	*	*	*	*	*	*	*	11	13
P F	5305-375-1801	SCREW: STAINLESS STEEL, BOWL TOP RING, FLAT HEAD		EA	3	*	*	*	*	*	*	*	*	11	14
X1	5365-153-4672	RING, RETAINING: BOWL TOP E763B (40563)		EA	1									11	15
P F	4530-153-4664	SLEEVE: PERFORATED BOWL 20558/D (40563)		EA	1	*	*	*	*	*	*	*	*	11	16
X1	4530-153-4620	VAPORIZER: BOWL 31618C (40563)		EA	1									11	17
P O	5305-017-0998	SCREW, MACHINE, PAN HEAD: DOOR MTG		EA	8	*	*	*	*	*	*	*	*	12	1
X20	4530-492-1854	RING: ESCUTCHEON, STAINLESS STEEL MQ232 (92770)		EA	1									12	2
P O	4530-153-4628	DOOR ASSEMBLY, BURNER: ACCESS MQ1500 (92870)		EA	1	*	*	*	*	*	*	*	*	12	3
P O	5310-934-9758	NUT, PLAIN, HEXAGON: DOOR MTG		EA	3	*	*	*	*	*	*	*	*	12	4
P O	5310-045-3296	WASHER, LOCK: DOOR MTG		EA	3	*	*	*	*	*	*	*	*	12	5
P O	5310-685-8308	WASHER, FLAT: DOOR MTG		EA	3	*	*	*	*	*	*	*	*	12	6
P O	5305-088-8332	SCREW, MACHINE, FLAT HEAD: DOOR MTG		EA	3	*	*	*	*	*	*	*	*	12	7
P O	5307-153-4684	STUD ASSEMBLY: WING TK252 (92430)		EA	1	*	*	*	*	*	*	*	*	12	8
P O	4530-153-4629	GASKET: ASBESTOS CORD, DOOR MQ1504 (92870)		EA	1	*	*	*	*	*	*	*	*	12	9
P O	5305-050-9230	SCREW, MACHINE, PAN HEAD: COVER MTG		EA	4	*	*	*	*	*	*	*	*	12	10
P O	5305-050-9227	SCREW, MACHINE, PAN HEAD: COVER MTG		EA	4	*	*	*	*	*	*	*	*	12	11
P O	4530-467-6136	GASKET SET: COVER TKA254 (92430)		EA	1	*	*	*	*	*	*	*	*	12	12
P O	4530-153-4685	GLASS: OBSERVATION 7740 (14674)		EA	1	*	*	*	*	*	*	*	*	12	13

(1) SMR CODE	(2) FEDERAL STOCK NUMBER	(3) DESCRIPTION REF NUMBER & MFR CODE	(4) USABLE ON CODE	(5) UNIT OF MEAS	(6) 30-DAY DS MAINT ALLOWANCE			(7) 30-DAY GS MAINT ALLOWANCE			(8) 1-YR ALW PER 100 EQUIP CNTGY	(9) DEPOT MAINT ALW PER 100 EQUIP	(10) ILLUS- TRATION	
					(A)	(B)	(C)	(A)	(B)	(C)			(A)	(B)
		GROUP 06 - FUEL LINES FITTINGS, FILTER AND VALVES												
P O	2910-838-3887	FILTER, FLUID PRESSURE: FUEL BURNER B4BD (13800)		EA	1	*	*	*	*	*	*	*	13	1
P O	5305-988-1723	SCREW, MACHINE: VENT		EA	1	*	*	*	*	*	*	*	13	2
P O	5330-297-7372	WASHER, NONMETALLIC: VENT SCREW 32015 (13800)		EA	1	*	*	*	*	*	*	*	13	3
P O	5310-362-7132	NUT: COVER 19220 (13800)		EA	1	*	*	*	*	*	*	*	13	4
P O	5330-285-3825	GASKET: COVER NUT 32014 (13800)		EA	1	*	*	*	*	*	*	*	13	5
P O	5330-352-5542	GASKET: SHELL 31300 (13800)		EA	1	*	*	*	*	*	*	*	13	6
P O	2910-153-8064	ELEMENT, FILTER RF4 (13800)		EA	1	*	*	*	*	*	*	*	13	7
P F	4730-196-2100	NIPPLE, PIPE: MAIN SHUTOFF VALVE TO FILTER		EA	1	*	*	*	*	*	*	*	13	8
P O	4720-871-3004	HOSE ASSEMBLY, METAL: FUEL ENGINE G08842 (93084)		EA	1	*	*	*	*	*	*	*	13	9
P F	4730-231-5632	ELBOW, PIPE TO TUBE: ENGINE FUEL LINE TO CARBURETOR		EA	1	*	*	*	*	*	*	*	13	10
M F		LINE ASSEMBLY: AIR VENT, FUEL TANK TO BURNER FUEL FILTER MANUFACTURE FROM:		EA	1								13	11
F	4730-011-6452	NUT, 2EA											13	11
F	4710-277-5525	TUBING, 26 IN. REQUIRED											13	11
P F	4730-254-6225	ELBOW, PIPE TO TUBE: ENGINE FUEL LINE TO FUEL TANK		EA	1	*	*	*	*	*	*	*	13	12
P F	4730-375-1757	ELBOW, PIPE: TO FILTER ELBOW		EA	1	*	*	*	*	*	*	*	13	13
P F	4730-375-1757	ELBOW: BRASS FUEL TANK LINE TO BURNER FUEL FILTER		EA	1	*	*	*	*	*	*	*	13	14
P F	5310-811-3494	NUT, SELF-LOCKING, HEXAGON: CLAMP MTG		EA	1	*	*	*	*	*	*	*	13	15
F	5340-282-7521	CLAMP, LOOP: BURNER FUEL LINE SUPPORT, OUTER		EA	1								13	16
P F	5310-934-9758	NUT, PLAIN, HEXAGON: CLAMP MTG		EA	3	*	*	*	*	*	*	*	13	17
P F	5310-043-2226	WASHER, LOCK: CLAMP MTG		EA	1	*	*	*	*	*	*	*	13	18
P F	5305-017-1000	SCREW, TAPPING, THREAD FORMING: CLAMP MTG		EA	1	*	*	*	*	*	*	*	13	19
F	5340-597-0182	CLAMP, LOOP: BURNER FUEL LINE SUPPORT, INNER		EA	1	*	*	*	*	*	*	*	13	20
P F	4520-375-1788	PAD: FELT, BURNER FUEL FILTER LINE TO CABINET INNER AND OUTER CLIP M0441 (92870)		EA	2	*	*	*	*	*	*	*	13	21
M F		LINE ASSEMBLY: FUEL BURNER MANUFACTURE FROM:		EA	1								13	52
F	4730-921-3243	NUT, 2 EA											13	22
P F	4710-277-5529	TUBING, 34 IN. REQUIRED											13	22

(1) SMR CODE	(2) FEDERAL STOCK NUMBER	(3) DESCRIPTION REF NUMBER & MFR CODE	(4) USABLE ON CODE	(5) UNIT OF MEAS	(6) 30-DAY DS MAINT ALLOWANCE			(7) 30-DAY GS MAINT ALLOWANCE			(8) 1-YR ALW PER 100 EQUIP CNTGY	(9) DEPOT MAINT ALW PER 100 EQUIP	(10) ILLUS- TRATION (A) FIG NO	(B) ITEM NO
					(A)	(B)	(C)	(A)	(B)	(C)				
P F	4520-153-4621	ORIFICE, ASSEMBLY: OVERHEAT SAFETY VALVE MQ407 (92870)		EA	1	*	*	*	*	*	*	*	13	23
P O	4820-097-3167	VALVE, ANGLE: MAIN FUEL LINE SHUTOFF 1251-3-8 (14959)		EA	1	*	*	*	*	*	*	*	13	24
P O	5330-375-1799	RING: PACKING, SHUTOFF VALVE 008427 (93084)		EA	1	*	*	*	*	*	*	*	13	25
P F	4730-011-8541	NUT, SELF-LOCKING, HEXAGON: STRAP MTG		EA	4	*	*	*	*	*	*	*	13	26
X20	5340-153-4630	STRAP, RETAINING: SUMP MTG MQ1215 (92870)		EA	2								13	27
P O	4730-224-0546	CAP, PIPE: BRASS, FUEL TANK SUMP DRAIN		EA	1	*	*	*	*	*	*	*	13	28
X20	4520-153-4626	SUMP, GASOLINE TANK: FUEL TANK TO FUEL FILTER MQ1210 (92870)		EA	1								13	29
P O	5310-880-7744	NUT, PLAIN, HEXAGON: HAND WHEEL		EA	1	*	*	*	*	*	*	*	13	30
P O	4530-449-4865	WHEEL, HAND METERING: BURNER FUEL LINE SHUTOFF VALVE PY17F (92870)		EA	1	*	*	*	*	*	*	*	13	31
P O	5310-880-7744	NUT, PLAIN, HEXAGON: BURNER POINTER		EA	2	*	*	*	*	*	*	*	13	32
P O	4530-375-1794	POINTER: BURNER FUEL LINE SHUTOFF MQ436 (92870)		EA	1	*	*	*	*	*	*	*	13	33
P O	5310-167-0721	WASHER, LOCK: BURNER POINTER		EA	1	*	*	*	*	*	*	*	13	34
P F	5310-880-7744	NUT, PLAIN, HEXAGON: SPACER		EA	1	*	*	*	*	*	*	*	13	35
X20	5355-825-4843	COVER, DIAL: W/RIVETS, BURNER LETTERED OPEN-CLOSE 5-13-213-48 (81337)		EA	1								13	36
X20	4530-375-1811	SPACER: BURNER FUEL LINE SHUTOFF VALVE DIAL AND PLATE MQ415 (92870)		EA	1								13	37
P O	5310-880-7744	NUT, PLAIN, HEXAGON: SPACER		EA	1	*	*	*	*	*	*	*	13	38
X2F	4530-375-1807	SHAFT: EXTENSION, BURNER FUEL LINE SHUTOFF VALVE MQ434 (92870)		EA	1								13	39
P O	5310-880-7744	NUT, PLAIN, HEXAGON: HAND WHEEL		EA	1	*	*	*	*	*	*	*	13	40
P O	4530-449-4865	WHEEL, HAND METERING: BURNER FUEL LINE SHUTOFF VALVE PY17F (92870)		EA	1	*	*	*	*	*	*	*	13	41
P F	5310-880-7740	NUT, PLAIN, HEXAGON: POINTER		EA	2	*	*	*	*	*	*	*	13	42
P F	5310-167-0721	WASHER, LOCK: POINTER		EA	1	*	*	*	*	*	*	*	13	43
P O	4530-375-1794	POINTER: BURNER FUEL METERING VALVE OPERATING MQ436 (92870)		EA	1	*	*	*	*	*	*	*	13	44
P O	5310-880-7744	NUT, PLAIN, HEXAGON: SPACER		EA	1	*	*	*	*	*	*	*	13	45
X20	5355-825-4842	DIAL, FUEL METERING: W/RIVETS, BURNER LETTERED HEAT CONTROL, LOW, MED, HIGH, NUMBERED 1 THRU 8 5-13-2130-49 (81337)		EA	1								13	46
X20	4530-375-1811	SPACER: BURNER FUEL METERING VALVE CONTROL DIAL MQ415 (92870)		EA	1								13	47

(1) SMR CODE	(2) FEDERAL STOCK NUMBER	(3) DESCRIPTION REF NUMBER & MFR CODE	(4) USABLE ON CODE	(5) UNIT OF MEAS	(6) 30-DAY DS MAINT ALLOWANCE			(7) 30-DAY GS MAINT ALLOWANCE			(8) 1-YR ALW PER 100 EQUIP CNTGY	(9) DEPOT MAINT ALW PER 100 EQUIP	(10) ILLUS- TRATION	
					(A)	(B)	(C)	(A)	(B)	(C)			(A)	(B)
P O	5310-880-7744	NUT, PLAIN, HEXAGON: SPACER		EA	1	*	*	*	*	*	*	*	13	48
X2F	4530-375-1806	SHAFT: EXTENSION, BURNER FUEL METERING VALVE MQ435 (92870)		EA	1								13	49
P F	5310-811-3494	NUT, SELF-LOCKING, HEXAGON: BRACKET MTG		EA	2	*	*	*	*	*	*	*	13	50
P F	5315-298-1481	PIN, COTTER: BRACKET MTG		EA	1	*	*	*	*	*	*	*	13	51
X2F	4520-153-4680	BRACKET: OVERHEAT SAFETY VALVE CAPILLARY BULB MQ716 (92870)		EA	1								13	52
P F	5305-017-0998	SCREW, TAPPING, THREAD FORMING: CLIP MTG		EA	2	*	*	*	*	*	*	*	13	53
P F	5310-045-3296	WASHER, LOCK: CLIP MTG		EA	2	*	*	*	*	*	*	*	13	54
P F	5340-492-1931	CLIP, SPRING, TENSION OVERHEAT SAFETY VALVE CAPILLARY TUBE MQ719 (92870)		EA	2	*	*	*	*	*	*	*	13	55
P F	5305-068-0500	SCREW, CAP, HEXAGON HEAD: TEE		EA	1	*	*	*	*	*	*	*	13	56
P F	5310-809-3078	WASHER, FLAT: TEE		EA	1	*	*	*	*	*	*	*	13	57
P F	4730-193-2709	NIPPLE, PIPE: TEE TO SAFETY TRIP VALVE		EA	1	*	*	*	*	*	*	*	13	58
P F	4730-153-4643	TEE, FUEL LINE MOUNT: BURNER INTERNAL FUEL LINE		EA	2	*	*	*	*	*	*	*	13	59
P F	5310-208-1918	NUT, SELF LOCKING, HEXAGON: BURNER PLATE		EA	1	*	*	*	*	*	*	*	13	60
P F	5310-582-5965	WASHER, LOCK: BURNER PLATE		EA	1	*	*	*	*	*	*	*	13	61
X2F	4530-375-1792	PLATE: BURNER FUEL METERING VALVE MQ406 (92870)		EA	1								13	62
P F	4530-375-1825	VALVE ASSEMBLY: BRASS, BURNER FUEL METERING 25060-34-8 (92878)		EA	1	*	*	*	*	*	*	*	13	63
P F	5330-467-6144	RING: PACKING, VALVE 25060-34-14 (92878)		EA	1	*	*	*	*	*	*	*	13	64
P F	4730-188-1857	NIPPLE, PIPE: BURNER FUEL METERING VALVE TO TEE		EA	1	*	*	*	*	*	*	*	13	65
P F	5305-017-0998	SCREW, TAPPING, THREAD FORMING: CLIP MTG		EA	2	*	*	*	*	*	*	*	13	66
P F	5310-043-2226	WASHER, LOCK: CLIP MTG		EA	2	*	*	*	*	*	*	*	13	67
X2F	4520-492-1881	CLIP, SPRING, TENSION: FUEL VAPORIZER LINE 25060-34-3 (92878)		EA	1								13	68
P F	4730-042-8988	PLUG, PIPE: BURNER FUEL VAPORIZER LINE CLEANOUT, SQUARE HEAD		EA	1	*	*	*	*	*	*	*	13	69
P F	4730-249-2029	TEE, PIPE: BURNER FUEL		EA	1	*	*	*	*	*	*	*	13	70
P F	4520-492-1880	LINE, FUEL VAPORIZER MQ614 (92870)		EA	1	*	*	*	*	*	*	*	13	71
P F	4730-277-5553	ELBOW, PIPE, STREET, FUEL VAPORIZER LINE TO BURNER		EA	1	*	*	*	*	*	*	*	13	72
P F	4530-449-4853	VALVE ASSEMBLY: W/DIAPHRAGMS, SAFETY TRIP MQ419 (92870)		EA	1	*	*	*	*	*	*	*	13	73
P F	4530-449-4854	DIAPHRAGM KIT: TRIP VALVE G27222 (93084)		EA	1	*	*	*	*	*	*	*	13	74
P F	5305-068-0500	SCREW, CAP, HEXAGON HEAD: TEE		EA	1	*	*	*	*	*	*	*	13	75

(1)	(2)	(3)	(4)	(5)	(6) 30-DAY DS MAINT ALLOWANCE			(7) 30-DAY GS MAINT ALLOWANCE			(8)	(9)	(10) ILLUS- TRATION		
SMR CODE	FEDERAL STOCK NUMBER	DESCRIPTION REF NUMBER & MFR CODE	USABLE ON CODE	UNIT OF MEAS	QTY INC IN UNIT	(A)	(B)	(C)	(A)	(B)	(C)	1-YR ALW PER 100 EQUIP CNTGY	DEPOT MAINT ALW PER 100 EQUIP	FIG NO	ITEM NO
P F	5310-809-3078	WASHER, FLAT: TEE		EA	1	*	*	*	*	*	*	*	*	13	76
P F	4730-196-1973	NIPPLE, PIPE: TEE TO SAFETY TRIP VALVE		EA	1	*	*	*	*	*	*	*	*	13	77
P F	4730-153-4643	TEE, FUEL LINE MOUNT: BURNER INTERNAL FUEL LINE		EA	1	*	*	*	*	*	*	*	*	13	78
P F	5310-208-1918	NUT, SELF-LOCKING, HEXAGON: BURNER FUEL PLATE		EA	1	*	*	*	*	*	*	*	*	13	79
X2F	4530-375-1811	SPACER: FUEL METERING MQ415 (92870)		EA	1									13	80
X2F	4530-375-1792	PLATE: BURNER FUEL LINE SHUTOFF VALVE MQ406 (92870)		EA	1									13	81
P F	5330-467-6144	RING: PACKING, VALVE 25060-34-14 (92878)		EA	1	*	*	*	*	*	*	*	*	13	82
P F	4530-375-1826	VALVE: W/BRASS DISC, BURNER FUEL LINE SHUTOFF G22444A (93084)		EA	1	*	*	*	*	*	*	*	*	13	83
P F	4730-189-2741	NUT, UNION: 1/2 IN. 5-13-2041-10-18 (41947)		EA	2	*	*	*	*	*	*	*	*	13	84
P F	4710-421-9355	TUBING, COPPER 5-13-2041-10-15 (81337)		EA	1	*	*	*	*	*	*	*	*	13	85
P F	4730-517-6116	UNION, HALF: 1/4 NPT X 1/2 IN. COPPER TUBE 5-13-2041-10-17 (41947)		EA	1	*	*	*	*	*	*	*	*	13	86
P F	4730-921-3242	UNION, HALF: 3/8 X 1/2 IN. 5-13-2041-10-16 (96906)		EA	1	*	*	*	*	*	*	*	*	13	87
P F	4820-449-4868	VALVE: SAFETY, OVERHEAT, CAPILLARY BULB OPERATED 2-13-2041P10-9 (81337)		EA	1	*	*	*	*	*	*	*	*	13	88

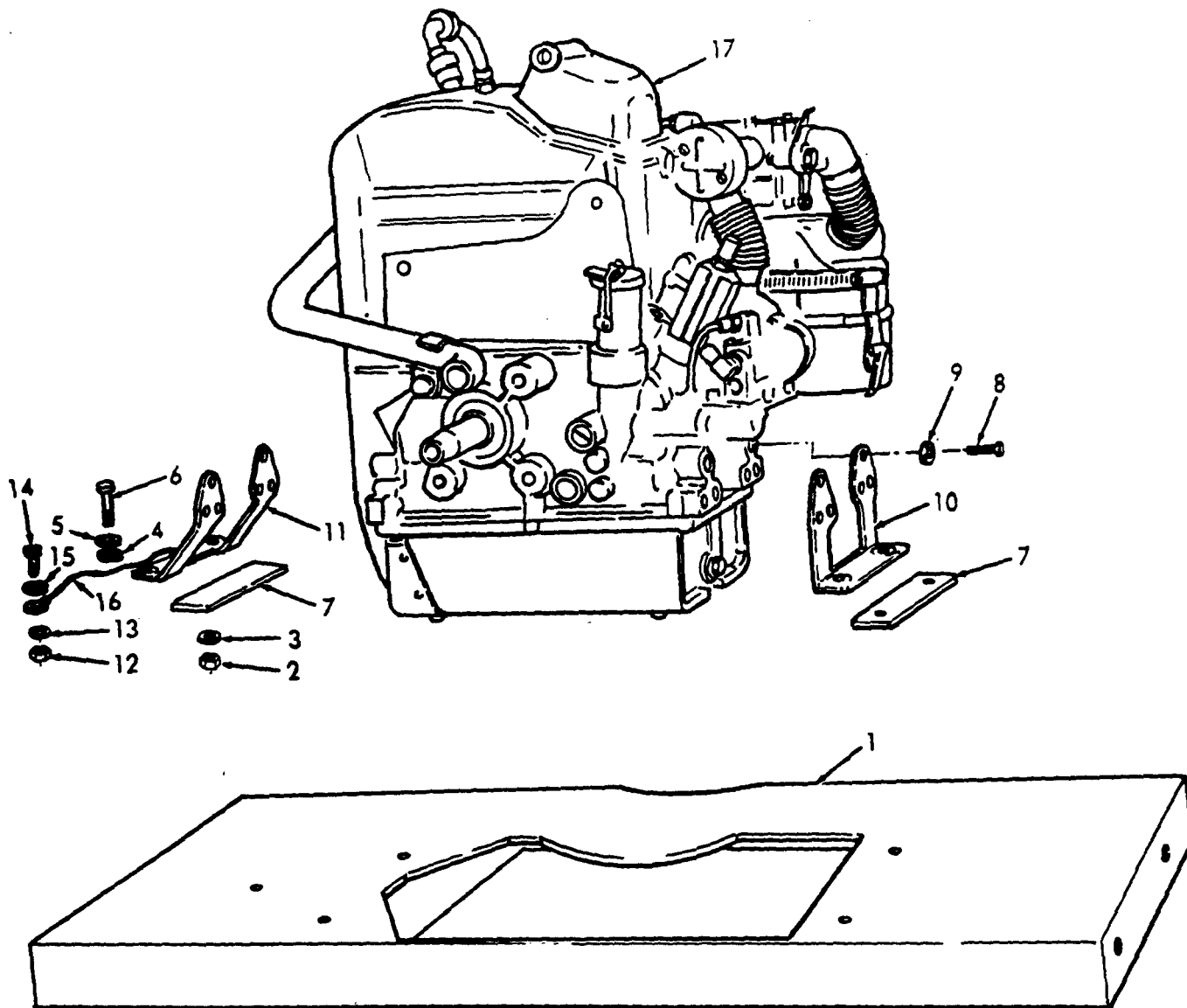


Figure 1. Engine and Mounting Parts

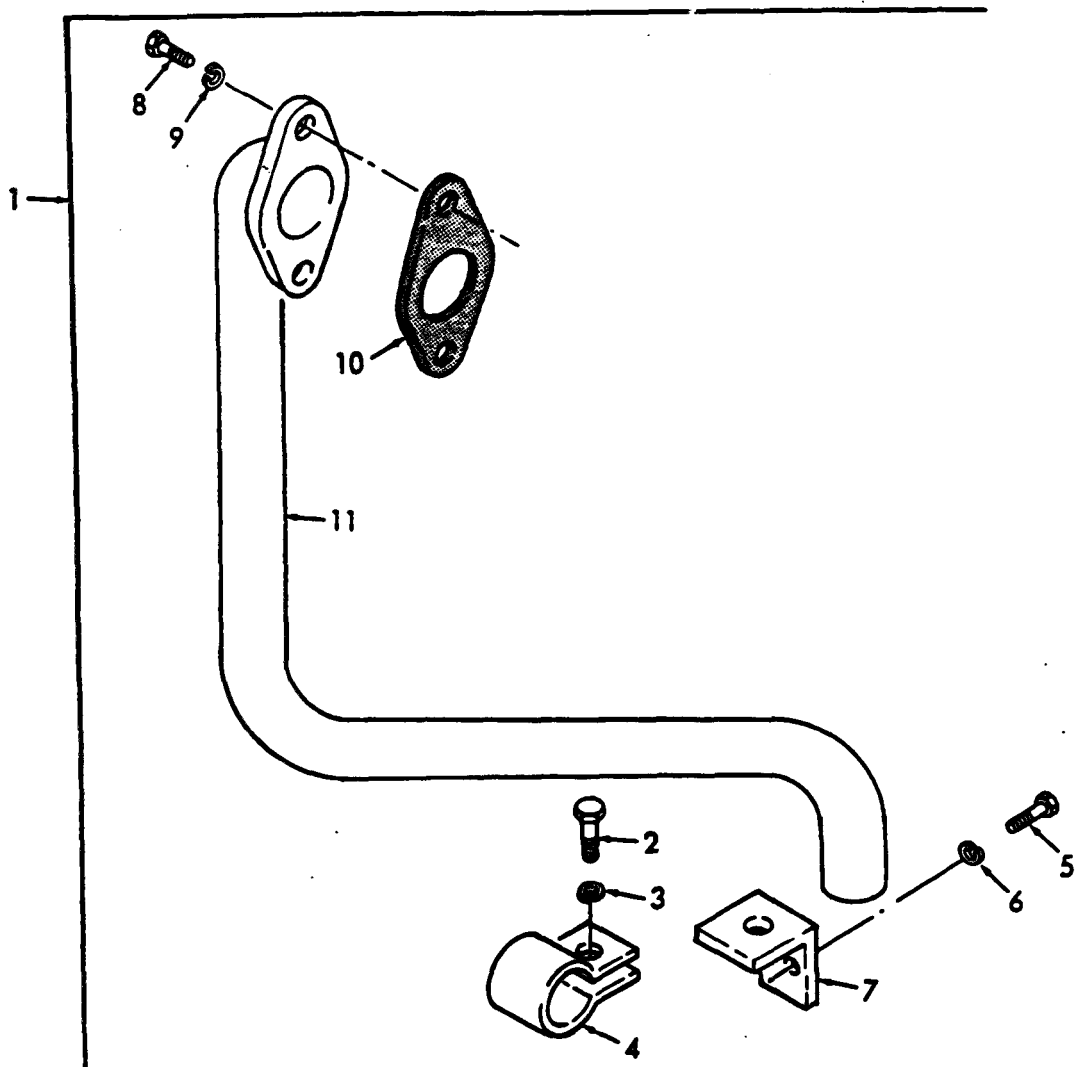


Figure 2. Exhaust System and Mounting Hardware

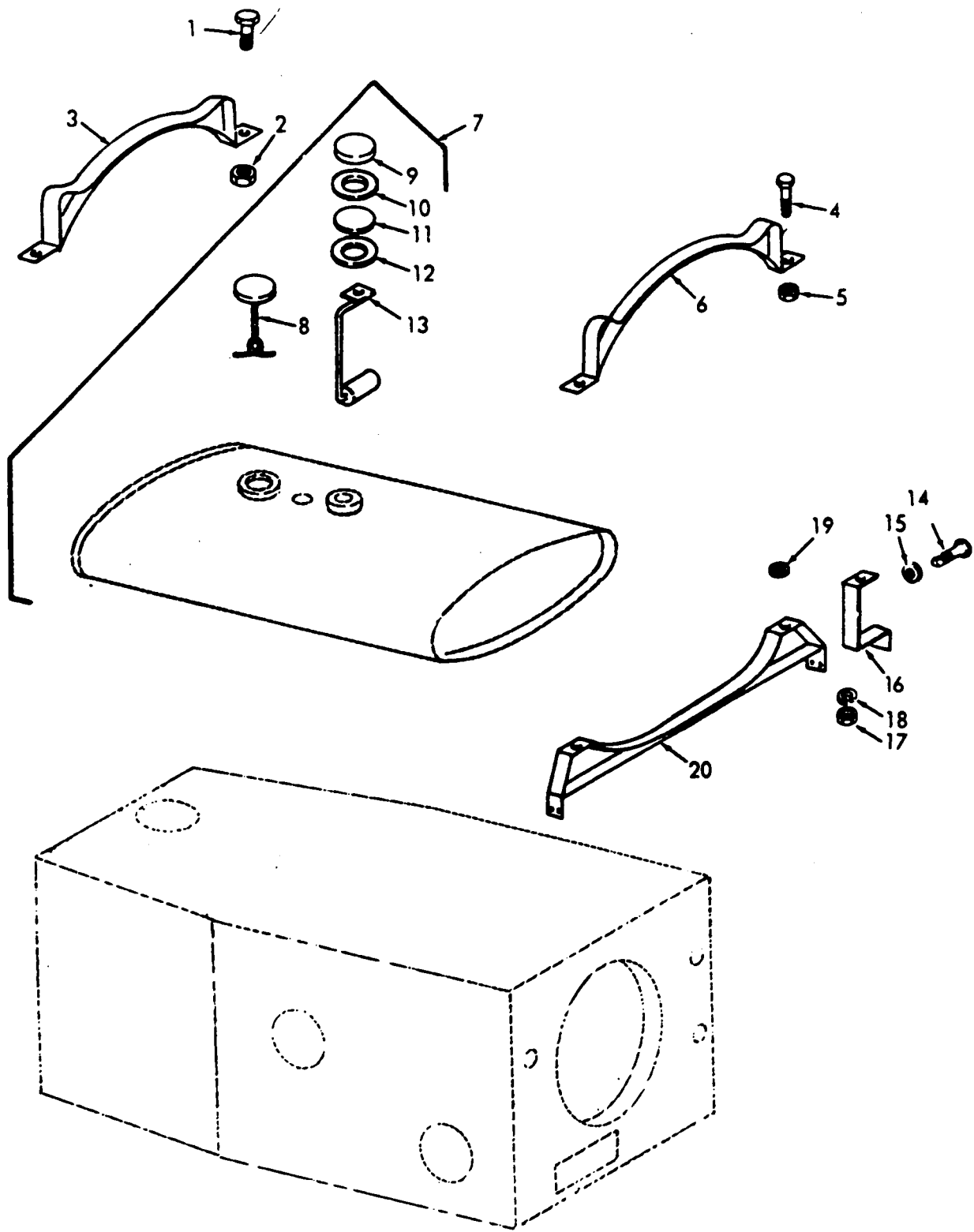


Figure 3. Fuel Tank and Mounting Hardware

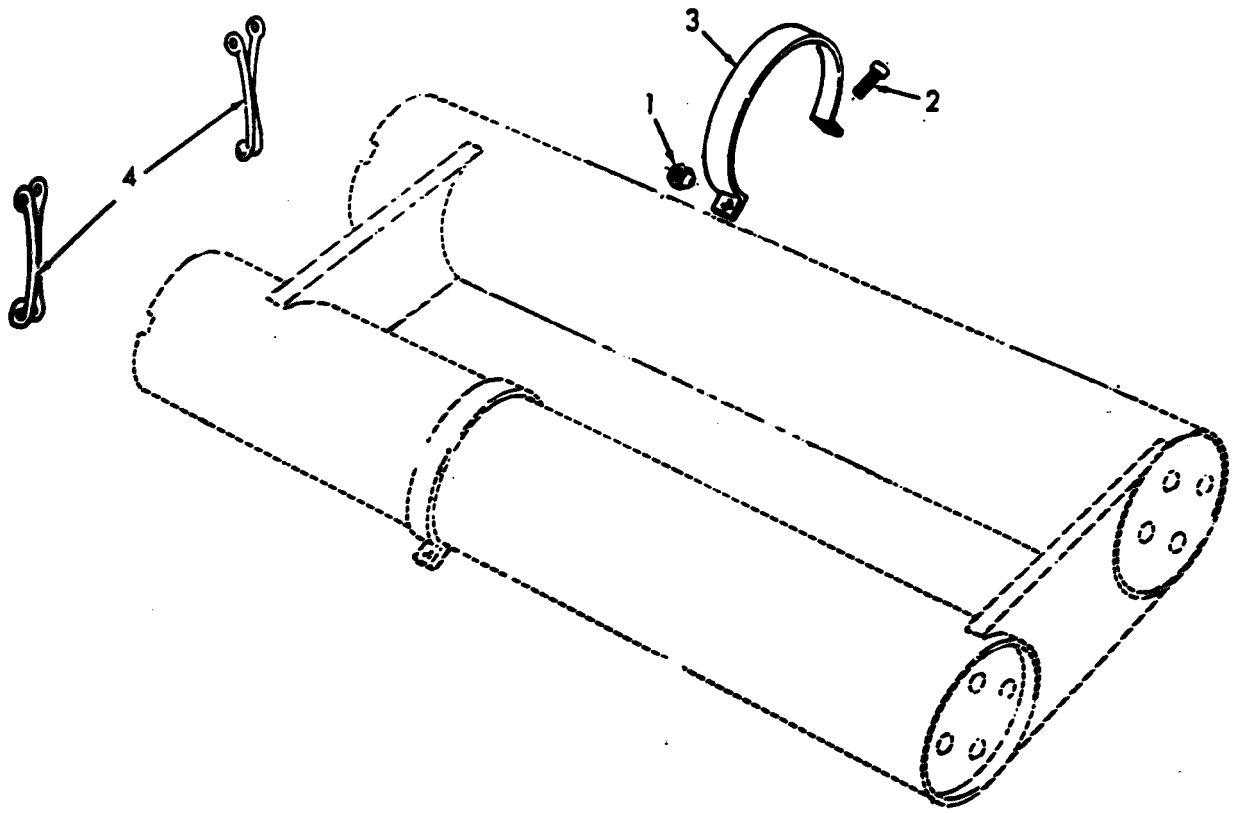


Figure 4. Duct Storage and Mounting Hardware

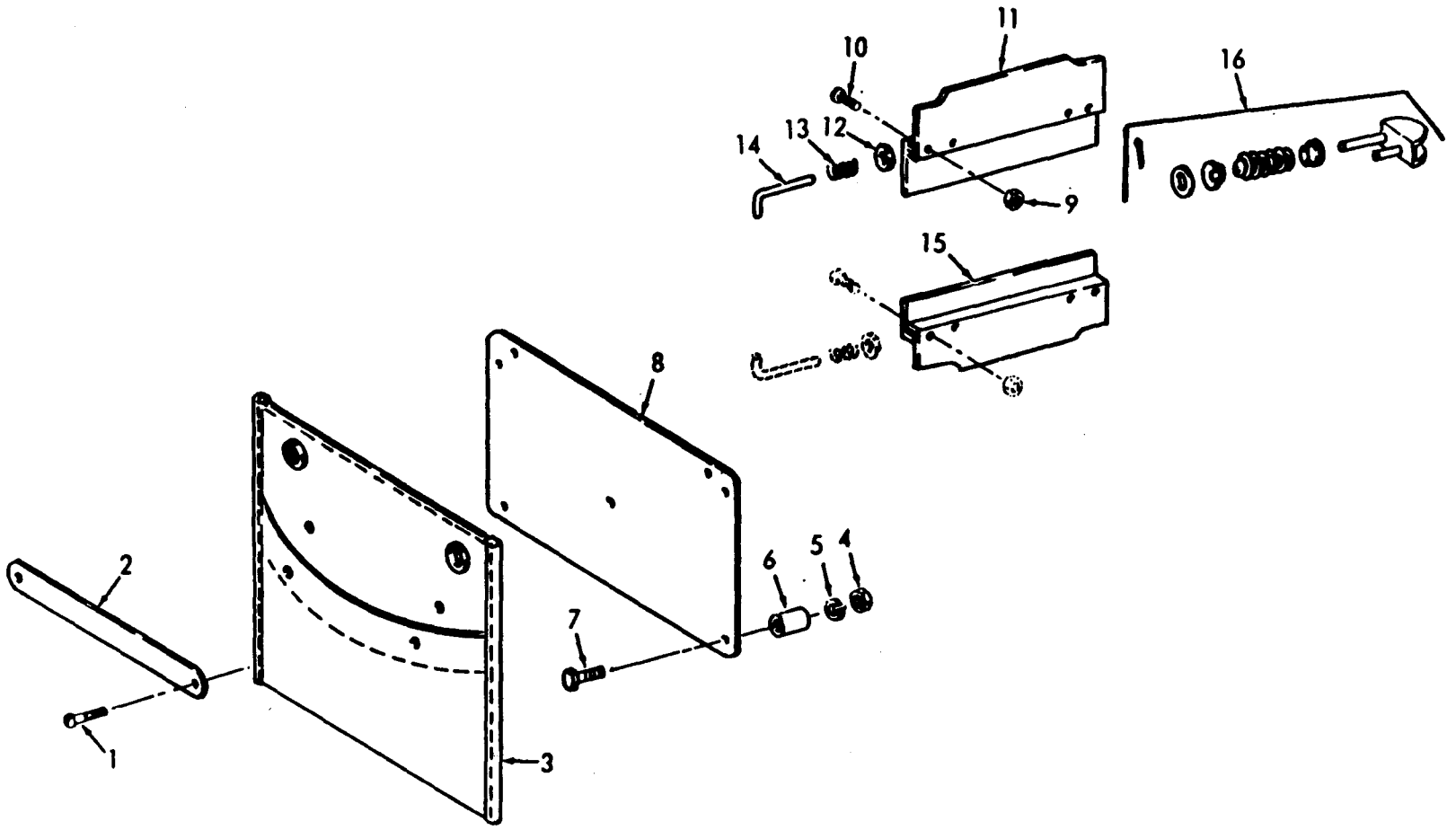


Figure 5. Dampers, Tool Pouch and Dust Clip

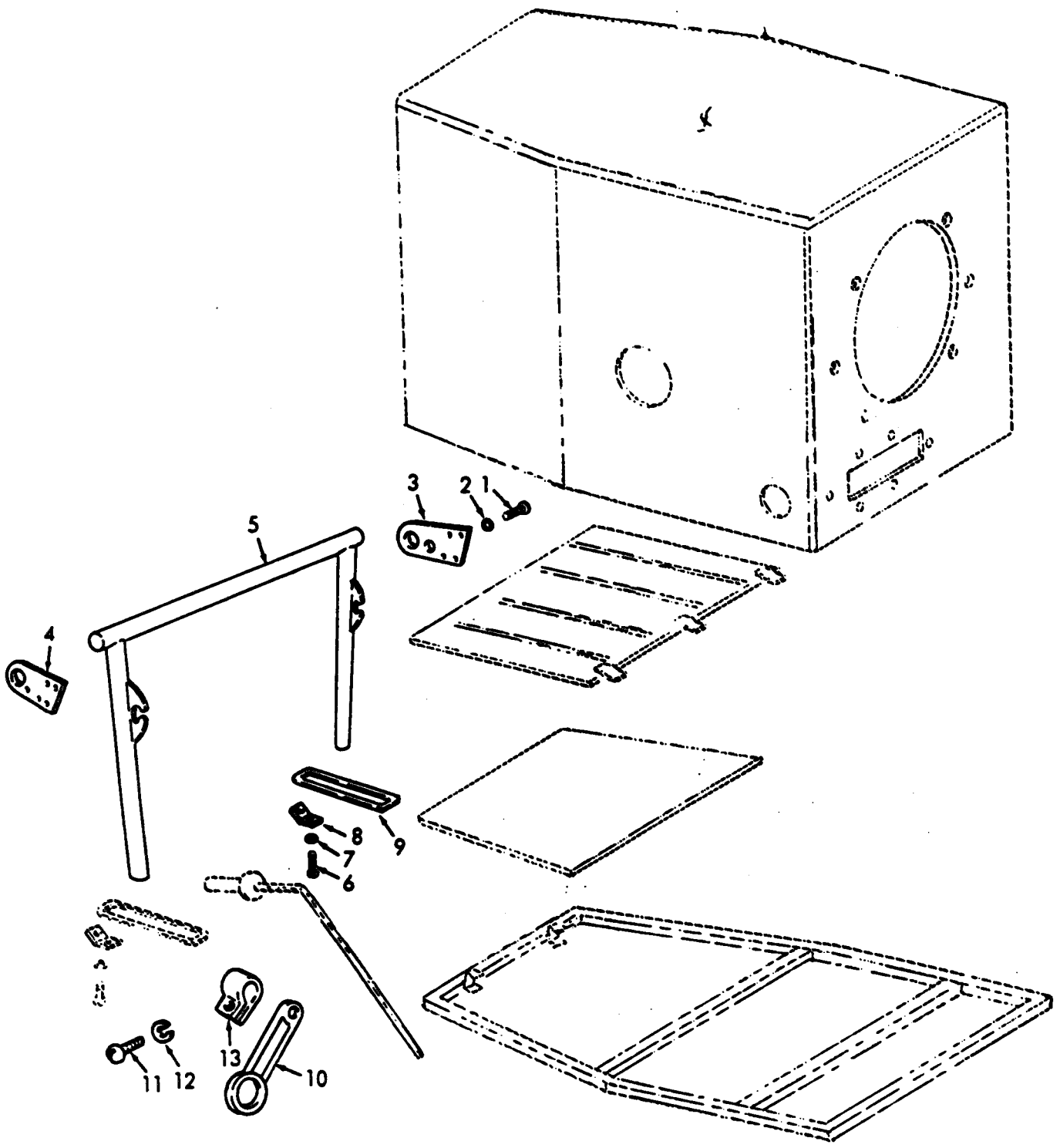


Figure 6. Cabinet Handle and Hardware

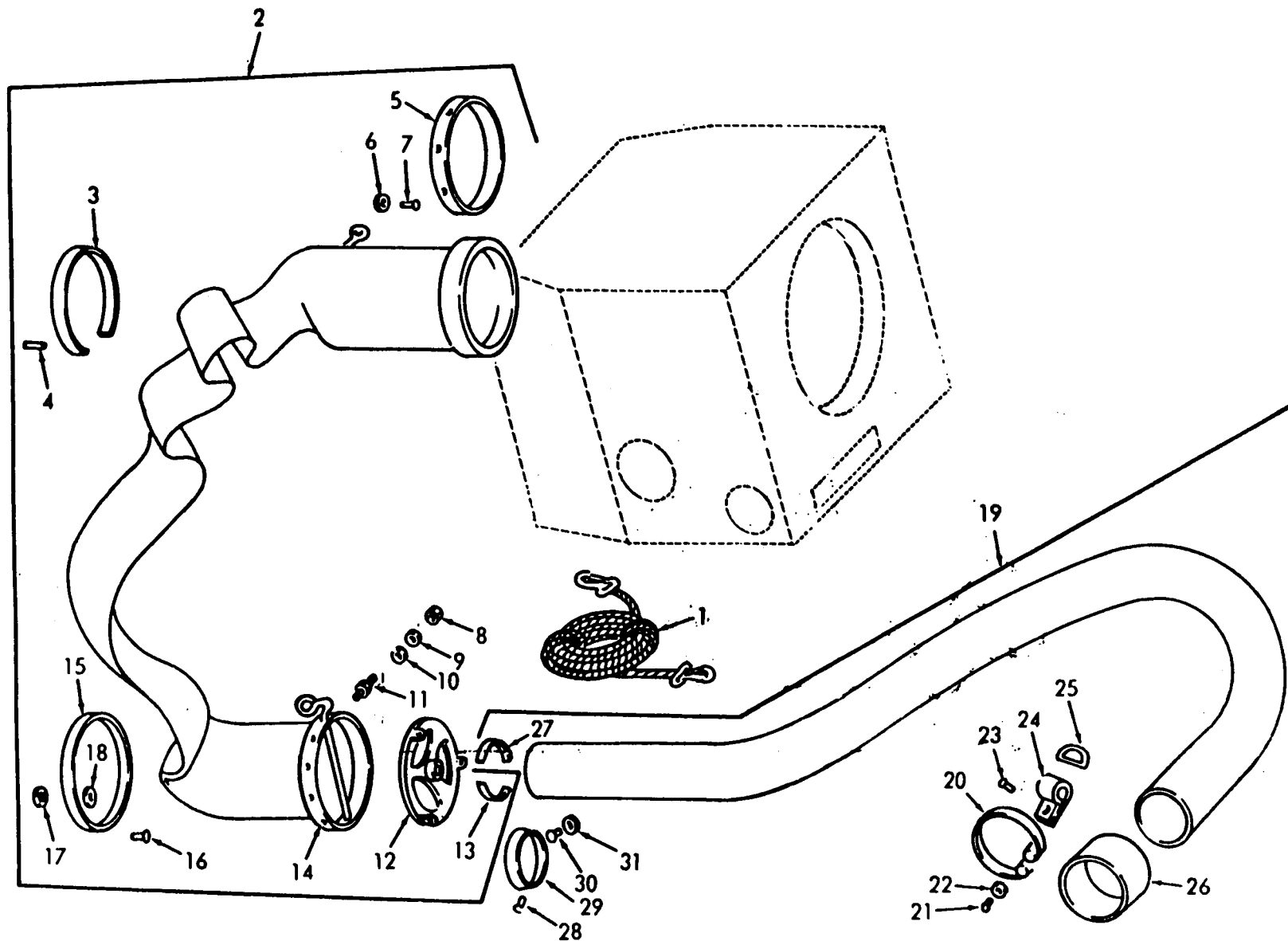


Figure 7. Duct and Attaching Parts

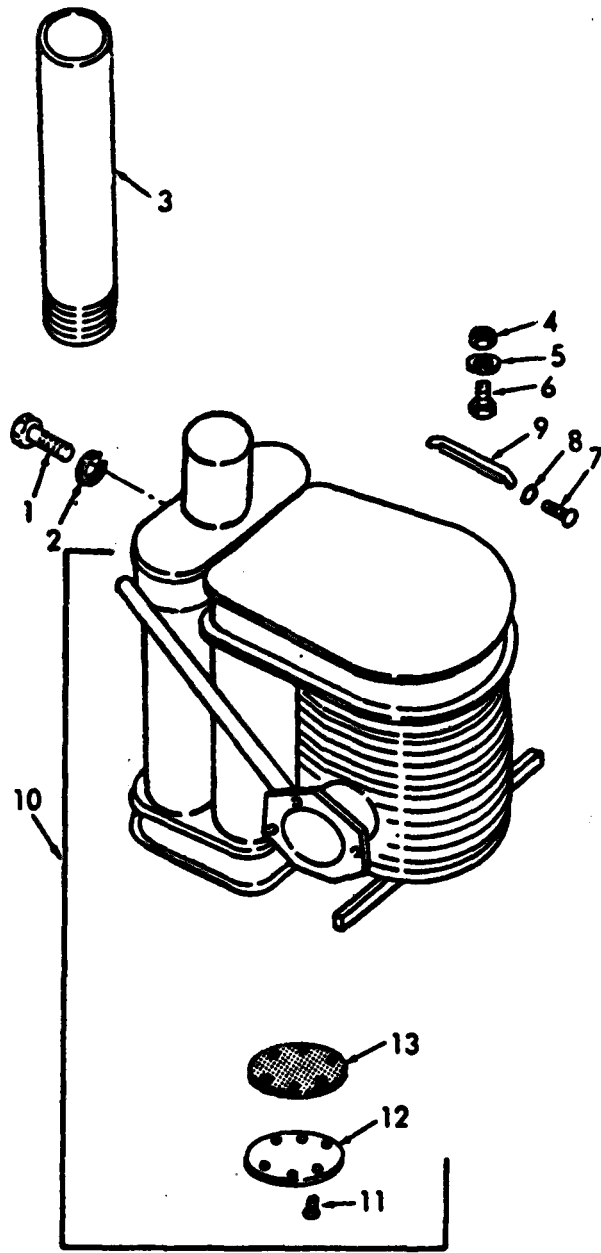


Figure 8. Combustion Chamber

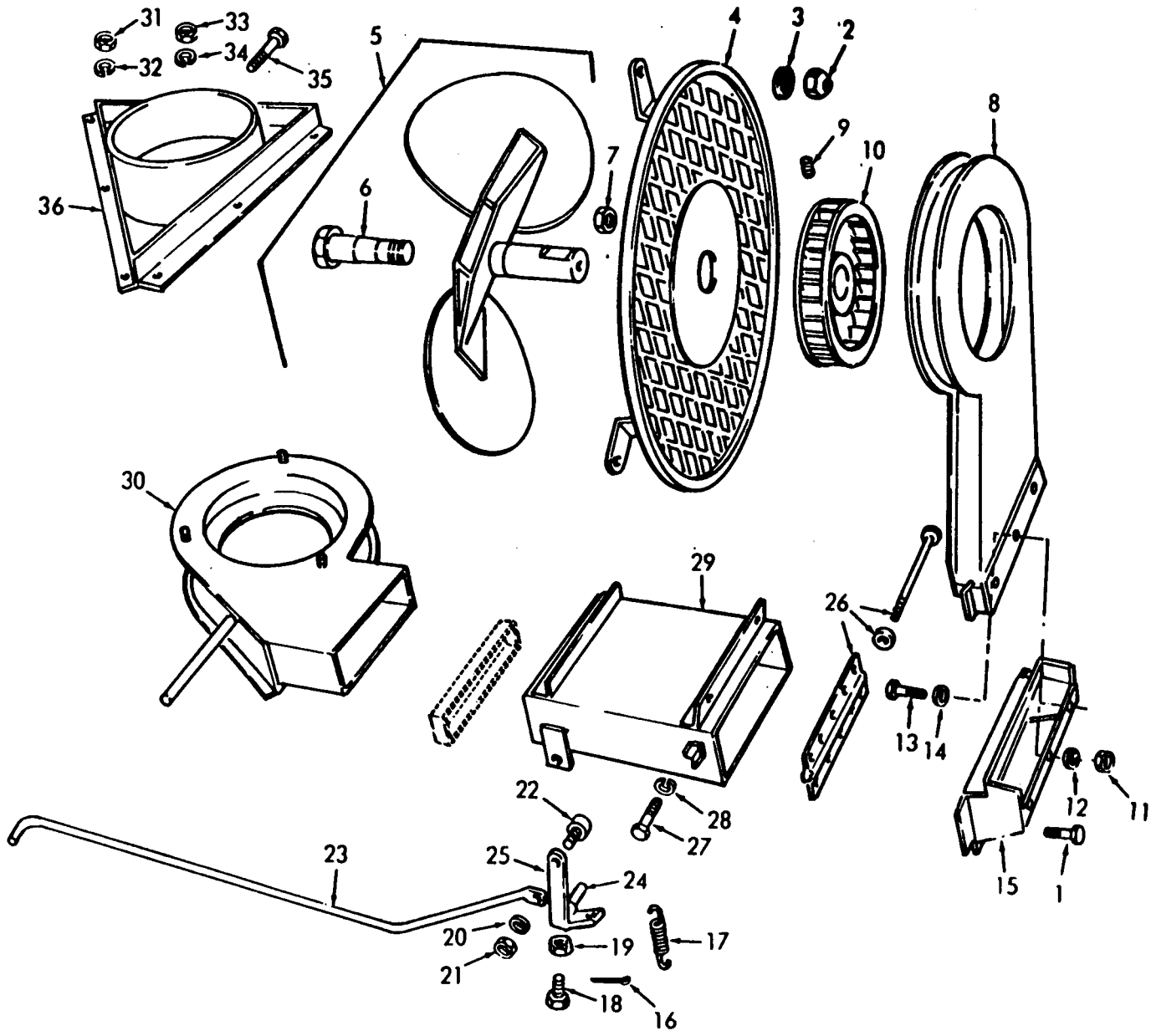


Figure 9. Air Duct System

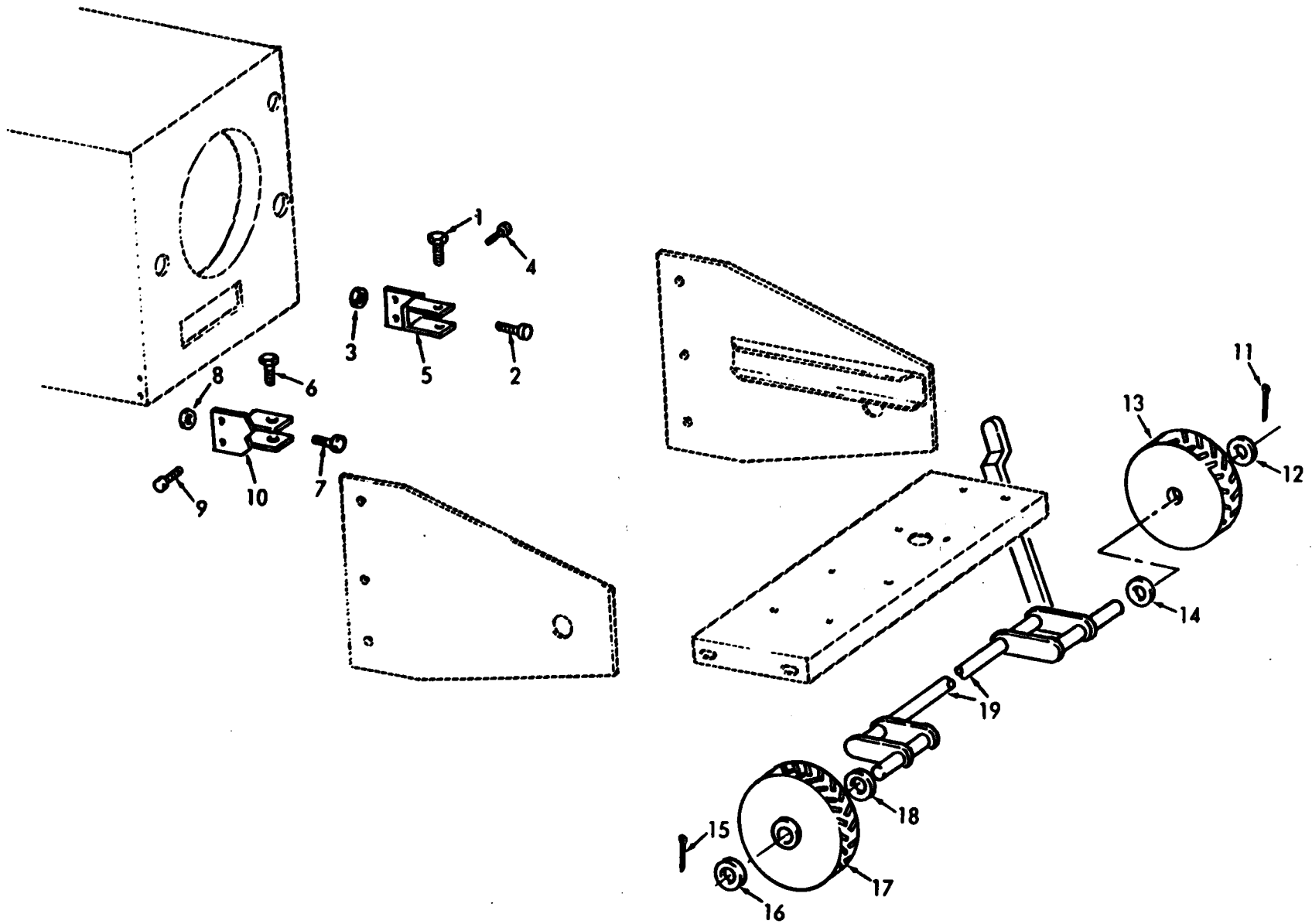


Figure 10. Wheels, Axle and Components

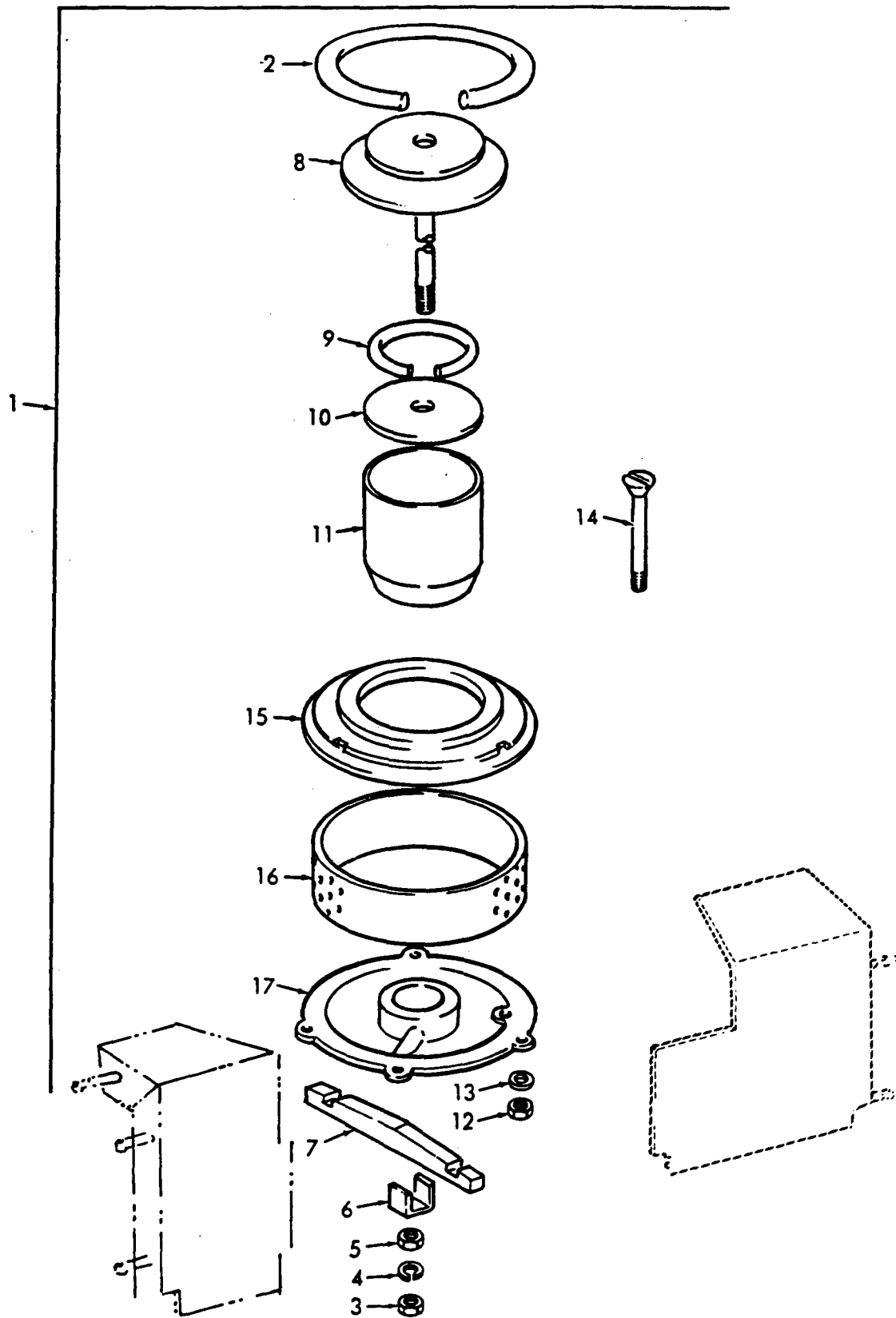


Figure 11. Fuel Burner and Door

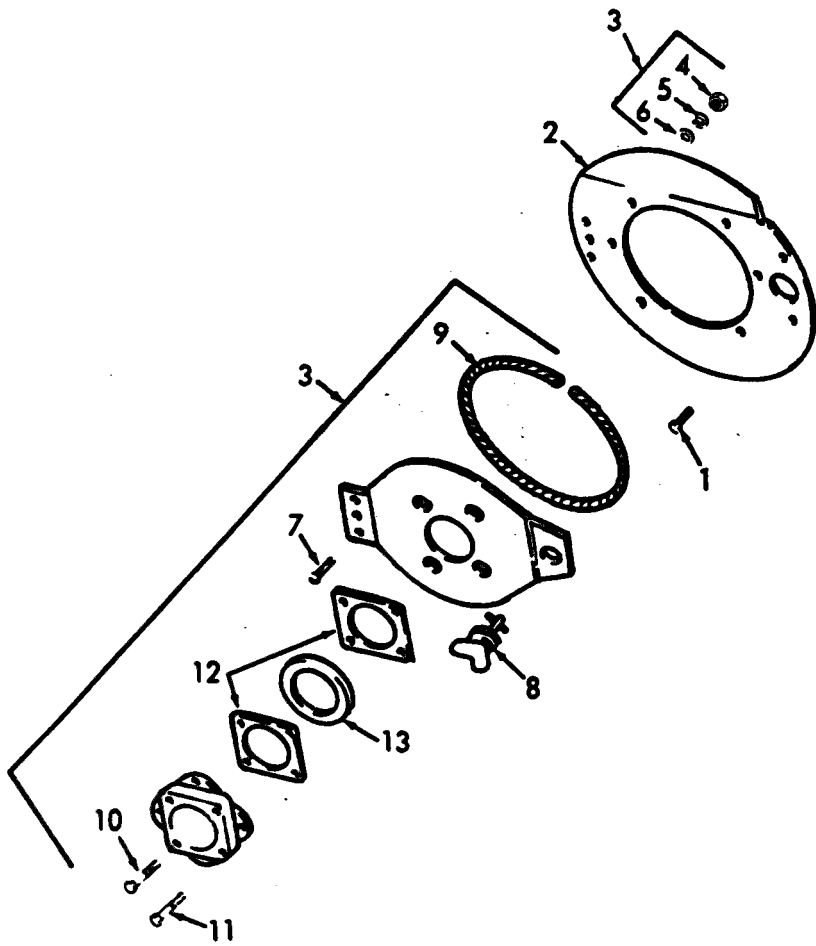


Figure 12. Burner Access Door

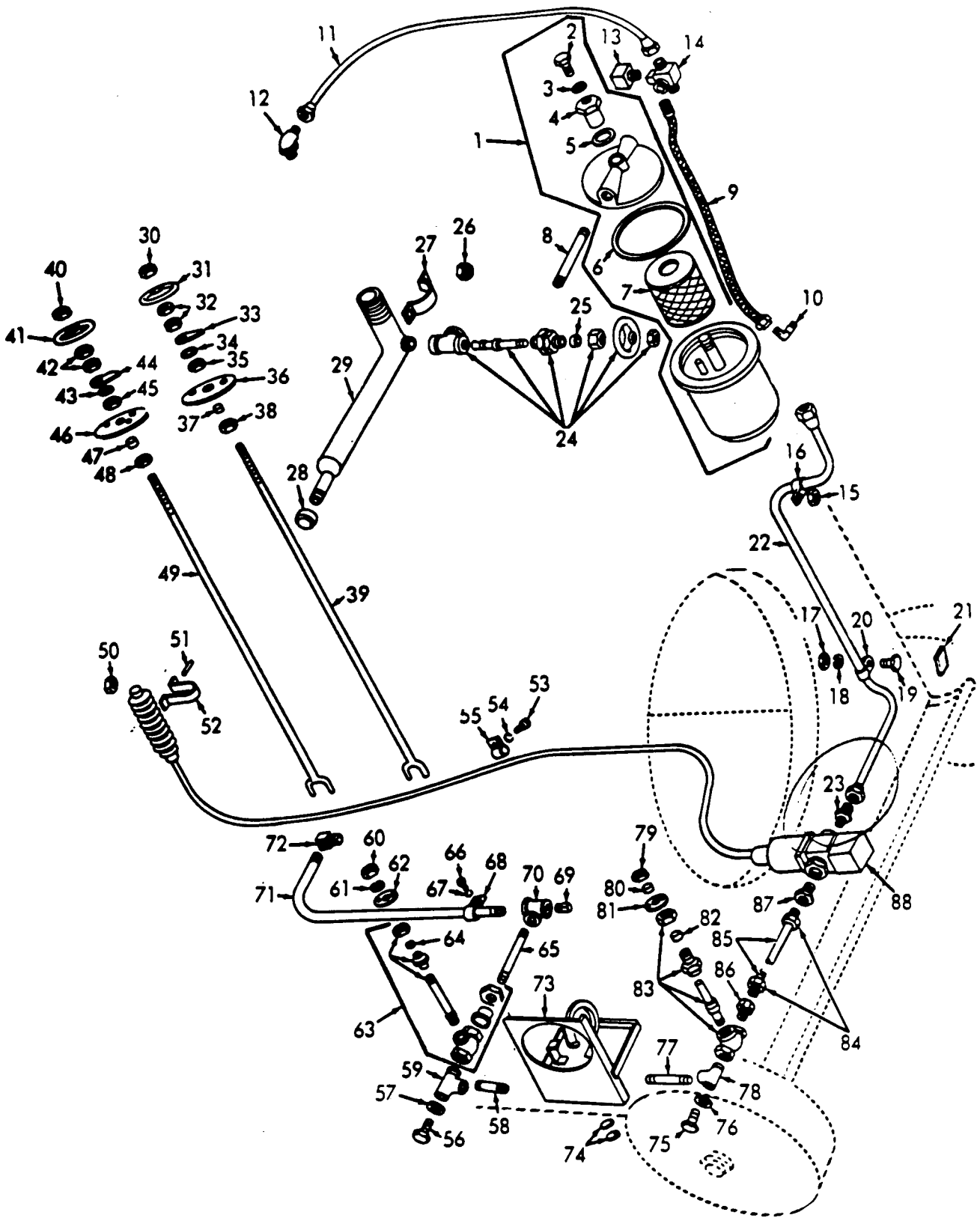


Figure 13. Fuel Lines, Fittings, Filter and Valves

SECTION VI. INDEX-FEDERAL STOCK NUMBER AND REFERENCE NUMBER

CROSS-REFERENCE TO FIGURE AND ITEM NUMBER

STOCK NUMBER	FIGURE NO	ITEM NO	STOCK NUMBER	FIGURE NO	ITEM NO
1730-153-4635	10	10	4530-375-1807	13	39
1730-197-5853	5	13	4530-375-1811	13	37
1730-449-4835	6	10		13	47
2530-492-1916	10	19		13	80
2805-714-8552	1	17	4530-375-1825	13	63
2910-153-4711	3	7	4530-375-1826	13	83
2910-153-4716	3	6	4530-449-4853	13	73
2910-153-8064	13	7	4530-449-4854	13	74
2910-605-1353	3	8	4530-449-4865	13	31
2910-838-3887	13	1		13	41
2990-904-4542	2	1	4530-467-6136	12	12
4520-024-7403	6	5	4530-492-1479	11	10
4520-024-7405	5	14	4530-492-1854	12	2
4520-024-7409	7	3	4710-277-5525	13	11
4520-024-7415	9	23	4710-277-5529	13	22
4520-117-2510	1	16	4710-421-9355	13	85
4520-140-3854	1	10	4720-871-3004	13	9
4520-153-4621	13	23	4730-011-6452	13	11
4520-153-4626	13	29	4730-011-8541	13	26
4520-153-4636	10	5	4730-042-8988	13	69
4520-153-4645	7	14	4730-153-4643	13	59
4520-153-4658	7	19		13	78
4520-153-4660	7	15	4730-188-1857	13	65
4520-153-4662	7	5	4730-189-2741	13	84
4520-153-4666	7	29	4730-193-2709	13	58
4520-153-4674	11	1	4730-196-1973	13	77
4520-153-4677	8	3	4730-196-2100	13	8
4520-153-4680	13	52	4730-224-0546	13	28
4520-153-4681	8	10	4730-231-5632	13	10
4520-153-4686	7	27	4730-249-2029	13	70
4520-153-4690	7	13	4730-254-6225	13	12
4520-153-4691	7	26	4730-277-5553	13	72
4520-153-4693	7	1	4730-375-1757	13	13
4520-153-4694	7	12	4730-375-1757	13	14
4520-153-4697	9	17	4730-517-6116	13	86
4520-153-4714	3	20	4730-921-3242	13	87
4520-153-4715	3	3	4730-921-3243	13	22
4520-153-4717	3	16	4820-097-3167	13	24
4520-153-4721	8	12	4820-449-4868	13	88
4520-153-4724	5	15	5305-017-0994	5	1
4520-153-4727	5	8	5305-017-0996	9	1
4520-153-4728	6	4	5305-017-0998	9	27
4520-153-4729	6	3		12	1
4520-153-4731	5	3		13	53
4520-212-4288	7	20		13	66
4520-213-9924	5	2	5305-017-1000	5	7
4520-214-3366	5	16		13	19
4520-300-0094	5	11	5305-017-3394	3	14
4520-300-0333	7	2		6	1
4520-375-1743	10	14		6	6
	10	18		6	11
4520-375-1747	9	26		8	1
4520-375-1754	9	15		8	7
4520-375-1769	9	4		9	13
4520-375-1776	9	8	5305-050-9227	12	11
4520-375-1788	13	21	5305-050-9229	8	11
4520-375-1831	10	13	5305-050-9230	12	10
	10	17	5305-068-0500	1	8
4520-449-4836	9	36		13	56
4520-492-1852	6	8		13	75
4520-492-1853	6	9	5305-068-0506	10	2
4520-492-1871	9	25		10	7
4520-492-1874	9	30	5305-088-8332	12	7
4520-492-1880	13	71	5305-208-8804	9	18
4520-492-1881	13	68	5305-225-3839	2	8
4520-492-1890	8	9	5305-225-3839	4	2
4520-525-7273	9	29		8	6
4520-587-1615	9	10	5305-225-9081	1	6
4520-871-3000	9	5	5305-225-9081	1	14
4530-153-4619	11	11	5305-225-9081	3	1
4530-153-4620	11	17	5305-225-9081	3	4
4530-153-4628	12	3	5305-375-1801	11	14
4530-153-4629	12	9	5305-724-5834	9	9
4530-153-4649	11	7	5305-889-3000	5	10
4530-153-4664	11	16	5305-984-6189	9	35
4530-153-4673	11	8	5305-984-6211	2	2
4530-153-4685	12	13	5305-988-1723	13	2
4530-375-1792	13	62	5305-988-3785	10	4
	13	81		10	9
4530-375-1794	13	33	5306-225-9087	2	5
	13	44	5306-298-3149	10	1
4530-375-1806	13	49		10	6
			5306-871-3003	9	6

SECTION VI. INDEX-FEDERAL STOCK NUMBER AND REFERENCE NUMBER

CROSS-REFERENCE TO FIGURE AND ITEM NUMBER

STOCK NUMBER	FIGURE NO	ITEM NO	STOCK NUMBER	FIGURE NO	ITEM NO
5307-153-4684	12	8	5310-934-9758	11	3
5310-043-2226	13	18		11	5
	13	67		12	4
5310-044-6548	3	19		13	17
5310-045-3296	5	5	5310-974-6623	2	6
	9	20	5315-012-0123	10	11
	9	28		10	15
	9	34	5315-153-4624	7	11
	11	4	5315-153-4688	7	4
	12	5		7	16
	13	54	5315-298-1481	13	51
5310-061-4650	4	1	5315-839-5821	9	16
	9	2		9	24
	9	11	5320-285-8790	7	21
5310-153-4732	5	6		7	30
5310-167-0721	1	3	5320-285-8791	7	7
5310-167-0721	1	5	5320-639-0451	7	28
	13	34	5320-682-1862	7	23
	13	43	5325-153-4687	4	4
5310-167-0825	10	12	5325-375-1766	7	17
	10	16	5330-116-4048	2	10
5310-208-1918	9	7	5330-153-4675	8	13
	13	60	5330-285-3825	13	5
	13	79	5330-297-7372	13	3
5310-362-7132	13	4	5330-301-1081	11	2
5310-375-1828	7	18	5330-352-5542	13	6
5310-407-9566	3	18	5330-375-1799	13	25
	8	5	5330-467-6144	13	64
	9	32		13	82
5310-550-1130	1	13	5330-871-2998	1	4
	9	3	5340-033-6249	4	3
	9	12	5340-153-4630	13	27
5310-576-5752	9	14	5340-153-4638	7	25
5310-582-5965	3	15	5340-282-7521	13	16
	6	2	5340-492-0924	11	9
	6	7	5340-492-1855	6	13
	6	12	5340-492-1931	13	55
	7	9	5340-597-0182	13	20
	8	2	5340-871-2999	1	7
	8	8	5340-871-2999	1	7
	10	3	5355-825-4842	13	46
	10	8	5355-825-4843	13	36
	13	61	5365-153-4672	11	15
5310-595-7237	1	9	6680-422-8537	3	12
5310-637-4000	7	6	6680-422-8538	3	10
	7	22	6680-467-6148	3	13
	7	31	6680-467-6149	3	9
5310-685-8308	12	6	6680-467-6150	3	11
5310-761-6882	7	8			
5310-809-3078	1	15			
	5	12			
	7	10			
	13	57			
	13	76			
5310-811-3494	13	15			
	13	50			
5310-851-2674	11	12			
5310-880-7740	13	42			
5310-880-7744	1	2			
	1	12			
	3	2			
	3	5			
	3	17			
	8	4			
	9	18			
	9	31			
	13	30			
	13	32			
	13	35			
	13	38			
	13	40			
	13	45			
	13	48			
5310-903-5966	11	13			
5310-933-8120	2	3			
5310-933-8121	2	9			
5310-934-9747	5	9			
5310-934-8758	5	4			
	9	21			
	9	33			

SECTION VI. INDEX-FEDERAL STOCK NUMBER AND REFERENCE NUMBER
 CROSS-REFERENCE TO FIGURE AND ITEM NUMBER

REFERENCE NO	MFR CODE	FIG NO	ITEM NO	REFERENCE NO	MFR CODE	FIG NO	ITEM NO
B1320A	40563	11	9	MQ415	92870	13	80
B480	13900	13	1	MQ419	92870	13	73
CC2595	80900	3	8	MQ434	92870	13	39
E763B	40563	11	15	MQ435	92870	13	49
FT142-0-3	83144	7	12	MQ436	92870	13	33
FT142-24-2	83144	7	18		92870	13	44
FT142-24-2B	83144	7	26	MQ441	92870	13	21
FT142-24-2D	83144	7	29	MQ600	92870	9	30
FT142-24-2G	83144	7	25	MQ608	92870	9	36
FT142-48-1A3	83144	7	14	MQ614	92870	13	71
FT142-48-1B	83144	7	15	MQ716	92870	13	52
FT142-48-1E	83144	7	3	MQ719	92870	13	55
FT142-48-1H	83144	7	5	MQ730	92870	10	5
G0325A	93084	5	16	MQ731	92870	10	10
G08427	93084	13	25	MQ800	92870	9	23
G08842	93084	13	9	MQ803	92870	9	17
G14349	93084	9	22	MQ808	92870	9	26
G18166	93084	6	13	MQ809	92870	9	25
G22444A	93084	13	83	MQ817	92870	9	29
G23C3	93084	3	7	MQ819	92870	9	15
G23209	93084	3	13	MQ901	92870	7	17
G23267	93084	3	11	MQ908	92870	5	13
G23286	93084	3	10	MQ912	92870	5	11
G23288	93084	3	12	MQ914	92870	5	15
G25207	93084	9	10	MQ915	92870	6	3
G27222	93084	13	74	MQ916	92870	6	4
G29504	93084	1	4	MQ918	92870	6	5
G29505	93084	1	7	MQ919	92870	6	9
G29700	93084	1	1	MQ920	92870	6	8
G29701	93084	1	10	PY17F	92870	13	31
G31201	93084	11	7		92870	13	41
G32A	93084	7	2	RF4	13800	13	7
G33319	93084	7	27	S243000C	40563	11	1
G33323	93084	7	20	TC345	92430	5	14
G33324	93084	7	13	TKA254	92430	12	12
H1744A	40563	11	10	TK252	92430	12	8
H2325B	40563	11	11	TT228	92430	3	9
H3712A	40563	11	8	1A08-2	97403	1	17
MQ1001	92870	10	13	1251-3-8	14959	13	24
	92870	10	17	19220	13800	13	4
MQ1002	92870	10	19	20558D	40563	11	16
MQ1003	92870	10	14	25060-34-14	92878	13	64
	92870	10	18		92878	13	82
MQ1127	92870	9	8	25060-34-3	92878	13	68
MQ1210	92870	13	29	25060-34-8	92878	13	63
MQ1215	92870	13	27	25064-30	92878	9	4
MQ1220	92870	3	16	31300	13800	13	6
MQ1221	92870	3	20	31618C	40563	11	17
MQ1300	92870	7	1	32014	13800	13	5
MQ1302	92870	4	4	32015	13800	13	3
MQ1317	92870	3	3	5-13-1011	81337	9	5
MQ1318	92870	3	6	5-13-2041-10-15	81337	13	85
MQ1500	92870	12	3	5-13-2041-10-16	81337	13	87
MQ1504	92870	12	9	5-13-2041-10-17	41947	13	86
MQ1600	92870	5	3	5-13-2141-10-18	41947	13	84
MQ1601	92870	5	8	5-13-2041-10-9	81337	13	88
MQ1602	92870	5	6	5-13-2043ITEM58	81337	2	1
MQ1603	92870	5	2	5-13-2043ITEM58-1T	81337	2	11
MQ205	92870	8	10	5-13-2043ITEM58-10	81337	2	7
MQ216	92870	8	12	5-13-2043ITEM58-8	81337	2	10
MQ217	92870	8	13	5-13-2043ITEM58-9	81337	2	4
MQ227	92870	8	3	5-13-2045ITEM13-1	81337	1	1
MQ232	92870	12	2	5-13-2045ITEM13-12	81337	1	10
MQ246	92870	8	9	5-13-2047ITEM13-13	81337	1	11
MQ406	92870	13	62	5-13-2047ITEM13-14	81337	1	7
	92870	13	81	5-13-2147ITEM13-16	81337	1	16
MQ407	92870	13	23	5-13-2082ITEM28-13	83144	7	24
MQ415	92870	13	37	5-13-213-48	81337	13	36
	92870	13	47	5-13-2130-49	81337	13	46
				7740	14674	12	13

By Order of the Secretary of the Army:

W. C. WESTMORELAND,
General, United States Army.
Chief of Staff.

Official:

VERNE L. BOWERS,
Major General United States Army,
The Adjutant General.

Distribution: **Distribution:**

To be distributed in accordance with DA Form 12-25C (qty rqr block no. 598)
Organizational maintenance requirements for Heaters, Space, 250,000 BTU.

RECOMMENDED CHANGES TO EQUIPMENT TECHNICAL PUBLICATIONS



THEN...JOT DOWN THE DOPE ABOUT IT ON THIS FORM. CAREFULLY TEAR IT OUT, FOLD IT AND DROP IT IN THE MAIL.

SOMETHING WRONG WITH PUBLICATION

FROM: (PRINT YOUR UNIT'S COMPLETE ADDRESS)

DATE SENT

PUBLICATION NUMBER

PUBLICATION DATE

PUBLICATION TITLE

BE EXACT PIN-POINT WHERE IT IS

PAGE NO.

PARA-GRAPH

FIGURE NO.

TABLE NO.

IN THIS SPACE, TELL WHAT IS WRONG AND WHAT SHOULD BE DONE ABOUT IT.

TEAR ALONG PERFORATED LINE

PRINTED NAME, GRADE OR TITLE AND TELEPHONE NUMBER

SIGN HERE

THE METRIC SYSTEM AND EQUIVALENTS

WEIGHT MEASURE

1 Centimeter = 10 Millimeters = 0.01 Meters = 0.3937 Inches
 1 Meter = 100 Centimeters = 1000 Millimeters = 39.37 Inches
 1 Kilometer = 1000 Meters = 0.621 Miles

WEIGHTS

Gram = 0.001 Kilograms = 1000 Milligrams = 0.035 Ounces
 1 Kilogram = 1000 Grams = 2.2 lb.
 1 Metric Ton = 1000 Kilograms = 1 Megagram = 1.1 Short Tons

LIQUID MEASURE

1 Milliliter = 0.001 Liters = 0.0338 Fluid Ounces
 1 Liter = 1000 Milliliters = 33.82 Fluid Ounces

SQUARE MEASURE

1 Sq. Centimeter = 100 Sq. Millimeters = 0.155 Sq. Inches
 1 Sq. Meter = 10,000 Sq. Centimeters = 10.76 Sq. Feet
 1 Sq. Kilometer = 1,000,000 Sq. Meters = 0.386 Sq. Miles

CUBIC MEASURE

1 Cu. Centimeter = 1000 Cu. Millimeters = 0.06 Cu. Inches
 1 Cu. Meter = 1,000,000 Cu. Centimeters = 35.31 Cu. Feet

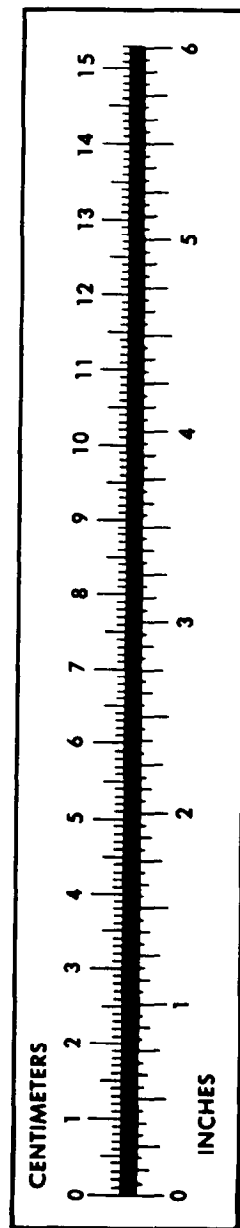
TEMPERATURE

$5/9(^{\circ}\text{F} - 32) = ^{\circ}\text{C}$
 212° Fahrenheit is equivalent to 100° Celsius
 90° Fahrenheit is equivalent to 32.2° Celsius
 32° Fahrenheit is equivalent to 0° Celsius
 $9/5^{\circ}\text{C} + 32 = ^{\circ}\text{F}$

APPROXIMATE CONVERSION FACTORS

TO CHANGE	TO	MULTIPLY BY
Inches	Centimeters	2.540
Feet	Meters	0.305
Yards	Meters	0.914
Miles	Kilometers	1.609
Square Inches	Square Centimeters	6.451
Square Feet	Square Meters	0.093
Square Yards	Square Meters	0.836
Square Miles	Square Kilometers	2.590
Acres	Square Hectometers	0.405
Cubic Feet	Cubic Meters	0.028
Cubic Yards	Cubic Meters	0.765
Fluid Ounces	Milliliters	29.573
its	Liters	0.473
arts	Liters	0.946
allons	Liters	3.785
Ounces	Grams	28.349
Pounds	Kilograms	0.454
Short Tons	Metric Tons	0.907
Pound-Feet	Newton-Meters	1.356
Pounds per Square Inch	Kilopascals	6.895
Miles per Gallon	Kilometers per Liter	0.425
Miles per Hour	Kilometers per Hour	1.609

TO CHANGE	TO	MULTIPLY BY
Centimeters	Inches	0.394
Meters	Feet	3.280
Meters	Yards	1.094
Kilometers	Miles	0.621
Square Centimeters	Square Inches	0.155
Square Meters	Square Feet	10.764
Square Meters	Square Yards	1.196
Square Kilometers	Square Miles	0.386
Square Hectometers	Acres	2.471
Cubic Meters	Cubic Feet	35.315
Cubic Meters	Cubic Yards	1.308
Milliliters	Fluid Ounces	0.034
Liters	Pints	2.113
Liters	Quarts	1.057
ers	Gallons	0.264
ms	Ounces	0.035
ograms	Pounds	2.205
Metric Tons	Short Tons	1.102
Newton-Meters	Pounds-Feet	0.738
Kilopascals	Pounds per Square Inch	0.145
ometers per Liter	Miles per Gallon	2.354
ometers per Hour	Miles per Hour	0.621



PIN: 028381-001

This fine document...

Was brought to you by me:



[Liberated Manuals -- free army and government manuals](#)

Why do I do it? I am tired of sleazy CD-ROM sellers, who take publicly available information, slap “watermarks” and other junk on it, and sell it. Those masters of search engine manipulation make sure that their sites that sell free information, come up first in search engines. They did not create it... They did not even scan it... Why should they get your money? Why are not letting you give those free manuals to your friends?

I am setting this document FREE. This document was made by the US Government and is NOT protected by Copyright. Feel free to share, republish, sell and so on.

I am not asking you for donations, fees or handouts. If you can, please provide a link to liberatedmanuals.com, so that free manuals come up first in search engines:

<A HREF=<http://www.liberatedmanuals.com/>>Free Military and Government Manuals

- Sincerely
Igor Chudov
<http://igor.chudov.com/>
- [Chicago Machinery Movers](#)