

TECHNICAL MANUAL
UNIT, DIRECT SUPPORT AND
GENERAL SUPPORT
REPAIR PARTS AND SPECIAL TOOLS LIST
FOR
PUMP UNIT, CENTRIFUGAL, SELF-PRIMING
CLASS 3, DIESEL-DRIVEN
MODEL PAD 125A

ARMY
(NSN 4320-01-247-7127)

MARINE CORPS
(NSN 4320-01-313-9442)

DISTRIBUTION STATEMENT A: Approved for public release; distribution is unlimited.

* This manual supersedes TM 5-4320-309-24P, dated 25 September 1990

HEADQUARTERS, DEPARTMENT OF THE ARMY
AND HEADQUARTERS, U.S. MARINE CORPS
30 JUNE 1993

CHANGE

No. 1

HEADQUARTERS
DEPARTMENT OF THE ARMY AND
HEADQUARTERS, U.S. MARINE CORPS
WASHINGTON, D.C., 30 September 1996

**Unit, Direct Support and General Support
Repair Parts and Special Tools List
for**

**PUMP UNIT, CENTRIFUGAL, SELF-PRIMING
CLASS 3, DIESEL-DRIVEN
MODEL PAD 125A
ARMY (NSN 4320-01-247-7127)
MARINE CORPS (NSN 4320-01-313-9442)**

DISTRIBUTION STATEMENT A: Approved for public release; distribution is unlimited.

TM 10-4320-309-24P/TM 4320-24P/2,30 June 1993, is changed as follows:

1. Remove and insert pages as indicated below. New or changed text material is indicated by a vertical bar in the margin. An illustration change is indicated by a miniature pointing hand.

Remove pages

i and ii
8-1 and Figure 9
9-1 and Figure 10
12-1 and Figure 13
14-1 and Figure 15
15-1 and Figure 16
16-1 and Figure 17
23-1 and Figure 24
24-1 and Figure 25
26-1 and Figure 27

Insert pages

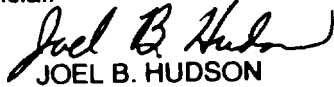
i and ii
8-1 and Figure 9
9-1 and Figure 10
12-1 and Figure 13
14-1 and Figure 15
15-1 and Figure 16
16-1 and Figure 17
23-1 and Figure 24
24-1 and Figure 25
26-1 and Figure 27

2. Retain this sheet in front of manual for reference purposes.

TM 10-4320-309-24P
TM 4320-24P/2
C1

By order of the Secretaries of the Army and Navy (Including the Marine Corps):

Official:



JOEL B. HUDSON

*Administrative Assistant to the
Secretary of the Army*
03028

DENNIS J. REIMER
*General, United States Army
Chief of Staff*

J. E. BUFFINGTON
*Rear Admiral, CEC, US Navy
Commander
Navy Facilities Engineering
Command*

M. K. HAYDEN
*Colonel, USMC
Director, Program Support
Marine Corps Systems Command*

DISTRIBUTION:

To be distributed in accordance with DA Form 12-25-E, block no. 6067, requirements for TM 10-4320-309-24P.

TECHNICAL MANUAL

NO. 10-4320-309-24P

HEADQUARTERS
DEPARTMENT OF THE ARMY
AND HEADQUARTERS, U.S. MARINE CORPS
WASHINGTON, D.C., 30 June 1993

TECHNICAL MANUAL

**Unit, Direct Support and General Support
Repair Parts and Special Tools List
for**

**Pump Unit, Centrifugal, Self-Priming
Class 3, Diesel-Driven
Model PAD 125A**

**Army (NSN 4320-01-247-7127)
Marine Corps (NSN 4320-01-313-9442)**

Current as of 5 January 1993

REPORTING ERRORS AND RECOMMENDING IMPROVEMENTS

You can help improve this manual. If you find any mistakes, or if you know of a way to improve these procedures, please let us know. Mail your letter or DA Form 2028 (Recommended Changes to Publications and Blank Forms), or DA Form 2028-2 located in the back of this manual directly to: Commander, US Army Aviation and Troop Command, ATTN: AMSAT-I-MP, 4300 Goodfellow Blvd., St. Louis, MO 63120-1798. You may also submit your recommended changes by E-mail directly to <mpmt%avma28@st-louis-emh7.army.mil>. A reply will be furnished directly to you. Instructions for sending an electronic 2028 may be found at the back of this manual immediately preceding the hard copy 2028.

Marine Corps users submit NAVMC Form 10772 Form to Commanding General, Marine Corps Logistics Base (Code 850) 814 Radford Blvd., Albany, GA 31704-1128. A reply will be furnished directly to

DISTRIBUTION STATEMENT A: Approved for public release; distribution is unlimited.

TABLE OF CONTENTS

		PAGE	ILLUS/ FIGURE
Section I	Introduction	1	
Section II	Repair Parts List		
Group 00	Centrifugal Pump, Diesel-Driven, Model PAD 125A	1-1	1
Group 01	Sound Enclosure Assembly		
	Inlet and Outlet Air Sound Enclosures	2-1	2
	Sound Enclosure Baffle	3-1	3
Group 02	Centrifugal Pump Assembly	4-1	4
Group 03	Diesel Engine Assembly	5-1	5
Group 04	Fuel System		
	Fuel Tank Assembly	6-1	6
	Fuel Injection Pipe	7-1	7
	Fuel Injection Nozzle Assembly	8-1	8
	Fuel Injection Pump Assembly	9-1	9
Group 05	Exhaust Silencer Assembly	10-1	10
Group 06	Air Cleaner Assembly		
	Air Cleaner Assembly and Air intake Bend	11-1	11

*This manual supersedes TM 5-4320-309-24P, dated 25 September 1990.

TABLE OF CONTENTS - Continued

	PAGE	ILLUS/ FIGURE
Group 07	Recoil Starter Assembly	12-1 12
Group 08	Flywheel Case	13-1 13
Group 09	Cylinder Head Assembly	
	Cylinder Head Cover	14-1 14
	Cylinder Head Components	15-1 15
Group 10	Crankcase Assembly	16-1 16
	Lube Oil Strainer Assembly	17-1 17
	Lube Oil Pump Assembly	18-1 18
	Crankcase Bearings	19-1 19
	Camshaft Assembly	20-1 20
	Balancer Shaft Assembly	21-1 21
Group 11	Governor and Speed Control Device	
	Governor Assembly	22-1 22
	Speed Control and Regulator Assembly	23-1 23
Group 12	Piston and Connecting Rod	
	Connecting Rod Assembly	24-1 24
	Piston Assembly	25-1 25
	Flywheel and Crankshaft Assembly	26-1 26
	Crankcase Cylinder Block	27-1 27
Group 13	Frame Assembly	28-1 28
Group 14	Bulk Material List	BULK-1
Section III	Special Tools List	
Group 15	Special Tools List	29-1 29
Section IV	Cross Reference Indexes	
	National Stock Number Index	I-1
	Part Number Index	I-3
	Figure and Item Number Index	I-10

**UNIT, DIRECT SUPPORT AND GENERAL SUPPORT
MAINTENANCE REPAIR PARTS AND SPECIAL TOOLS LIST**

SECTION I. INTRODUCTION

1. **SCOPE.** This RPSTL lists and authorizes spares and repair parts; special tools; special test, measurement, and diagnostic equipment (TMDE); and other special support equipment required for performance of unit, direct support and general support maintenance of the Air Conditioner. It authorizes the requisitioning, issue, and disposition of spares, repair parts and special tools as indicated by the source, maintenance and recoverability (SMR) codes.

2. **GENERAL.** In addition to this section, Introduction, this Repair Parts and Special Tools List is divided into the following sections:

a. **Section II. Repair Parts List.** A list of spares and repair parts authorized by this RPSTL for use in the performance of maintenance. This list also includes parts which must be removed for replacement of the authorized parts. Parts lists are composed of functional groups in ascending alphanumeric sequence, with the parts in each group listed in ascending figure and item number sequence. Bulk materials are listed in item name sequence. Repair parts kits are listed separately in functional groups in Section II. Repair parts for repairable special tools are also listed in this section. Items listed are shown in the associated illustration(s)/figure(s).

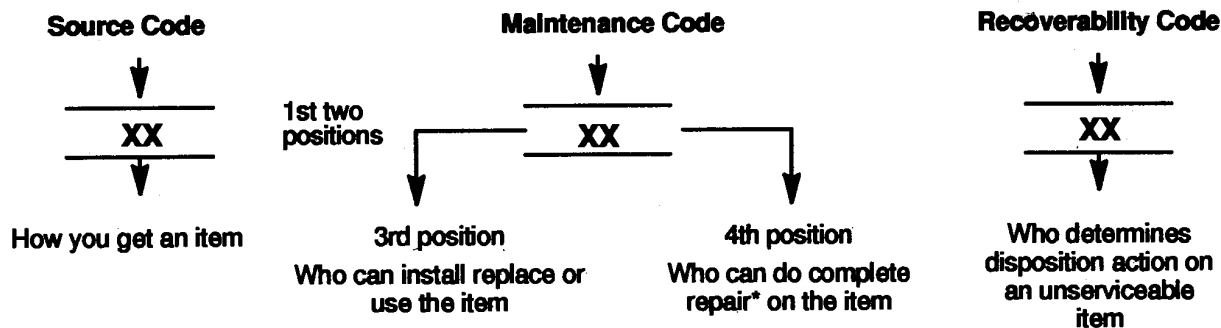
b. **Section III. Special Tools List.** A list of special tools, special TMDE, and other special support equipment authorized by this RPSTL (as indicated by Basis of Issue (BOI) information in DESCRIPTION AND USABLE ON CODE column) for the performance of maintenance.

c. **Section IV. Cross-Reference Index.** A list, in National Item Identification Number (NIIN) sequence, of all national stock numbered items appearing in the listing, followed by a list in alphanumeric sequence of all part numbers appearing in the listings. National stock numbers and part numbers are cross referenced to each illustration figure and item number appearance. The figure and item number index lists figure and item numbers in alphanumeric sequence and cross references NSN, CAGEC and part number.

3. EXPLANATION OF COLUMNS (SECTIONS II AND III).

a. **ITEM NO. (Column (1)).** Indicates the number used to identify items called out in the illustration.

b. **SMR Code (Column (2)).** The Source, Maintenance, and Recoverability (SMR) code is a 5-position code containing supply/requisitioning information, maintenance category authorization criteria, and disposition instruction, as shown in the following breakout:



* Complete Rear: Maintenance capacity, capability, and authority to perform all corrective maintenance tasks of the "Repair" function in a use/user environment in order to restore serviceability to a failed item.

(1) Source Code. The source code tells you how you get an item needed for maintenance, repair, or overhaul of an end item/equipment. Explanations of source codes follow.

Code	Explanation
PA PB PC** PD PE PF PG	<p>Stocked items; use the applicable NSN to request/requisition items with these source codes. They are authorized to the category indicated by the code entered in the 3rd position of the SMR code.</p> <p>**NOTE : Items coded PC are subject to deterioration.</p>
KD KF KB	<p>Items with these codes are not to be requested/requisitioned individually. They are part of a kit which is authorized to the maintenance category indicated in the 3rd position of the SMR code. The complete kit must be requisitioned and applied.</p>
MO (Made at unit AVUM level) MF (Made at DS/AVUM level) MH (Made at GS level) ML (Made at Specialized Repair Activity (SRA)) MD (Made at Depot)	<p>Items with these codes are not to be requested/requisitioned individually. They must be made from bulk material which is identified by the part number in the DESCRIPTION and USABLE ON CODE (UOC) column and listed in the Bulk Material group of the repair parts list in the RPSTL. If the item is authorized to you by the 3rd position code of the SMR code, but the source code indicates it is made at a higher level, order the item from the higher level of maintenance.</p>
AO (Assembled by Unit/ AVUM Level) AF (Assembled by DS/AVUM Level) AH (Assembled by GS Category) AL (Assembled by SRA) AD (Assembled by Depot)	<p>Items with these codes are not to be requested/requisitioned individually. The parts that make up the assembled item must be requisitioned or fabricated and assembled at the level of maintenance indicated by the source code. If the 3rd position code of the SMR code, authorizes you to replace the item, but the source code indicates the items are assembled at a higher level, order the item from the higher level of maintenance.</p>
XA -- Do not requisition an "XA"-coded item. Order its next higher assembly. (Also, refer to the NOTE below.)	
XB -- If an "XB" item is not available from salvage, order it using the CAGE Code and part number given.	
XC -- Installation drawing, diagram, instruction sheet, field service drawing, that is identified by manufacturer's part number.	
XD -- Item is not stocked. Order an "XD"-coded item through normal supply channels using the CAGE Code and part number given, if no NSN is available.	

NOTE

Cannibalization or controlled exchange, when authorized, may be used as a source of supply for items with the above source codes, except for those source coded "XA" or those aircraft support items restricted by requirements of AR 750-1.

(2) Maintenance Code. Maintenance codes tell you the level(s) of maintenance authorized to USE and REPAIR support items. The maintenance codes are entered in the third and fourth positions of the SMR code as follows:

(a) The maintenance code entered in the third position tells you the lowest maintenance level authorized to remove, replace, and use an item. The maintenance code entered in the third position will indicate authorization to the following levels of maintenance.

Maintenance Code

Application/Explanation

C - Crew or operator maintenance done within unit/AVUM maintenance.

O - Unit level VAVUM maintenance can remove, replace, and use the item.

F - Direct support/AVIM maintenance can remove, replace, and use the item.

H - General support maintenance can remove, replace, and use the item.

L - Specialized repair activity can remove, replace, and use the item.

D - Depot can remove, replace, and use the item.

(b) The maintenance code entered in the fourth position tells whether or not the item is to be repaired and identifies the lowest maintenance level with the capability to do complete repair (i.e., perform all authorized repair functions). This position will contain one of the following maintenance codes.

NOTE

Some limited repair may be done on an item at a lower level of maintenance, if authorized by the Maintenance Allocation Chart (MAC) and SMR codes.

Maintenance Code

Application/Explanation

O - Unit VAVUM is the lowest level that can do complete repair of the item.

F - Direct support VAVIM is the lowest level that can do complete repair of the item.

H - General Support is the lowest level that can do complete repair of the item.

L - Specialized repair activity is the lowest level that can do complete repair of the item.

D - Depot is the lowest level that can do complete repair of the item.

Z - Nonreparable. No repair is authorized.

B - No repair is authorized. No parts or special tools are authorized for the maintenance of a "B" coded item. However, the item may be reconditioned by adjusting, lubricating, etc., at the user level.

(3) Recoverability Code. Recoverability codes are assigned to items to indicate the disposition action on unserviceable items. The recoverability code is entered in the fifth position of the SMR Code as follows:

**Recoverability
Codes**

Application/Explanation

- Z - Nonreparable item. When unserviceable, condemn and dispose of the item at the level of maintenance shown in 3rd position of SMR Code.
- O - Reparable item. When not economically reparable, condemn and dispose of the item at unit or AVUM level.
- F - Reparable item. When uneconomically reparable, condemn and dispose of the item at the direct support or AVIM level.
- H - Reparable item. When uneconomically reparable, condemn and dispose of the item at the general support level.
- D - Reparable item. When beyond lower level repair capability, return to depot. Condemnation and disposal of item not authorized below depot level.
- L - Reparable item. Condemnation and disposal not authorized below specialized repair activity (SRA).
- A - Item requires special handling or condemnation procedures because of specific reasons (e.g., precious metal content, high dollar value, critical material, or hazardous material). Refer to appropriate manuals/directives for specific instructions.

c. CAGEC (Column (3)). The Commercial and Government Entity Code (CAGEC) is a 5-digit numeric code which is used to identify the manufacturer, distributor, or Government agency/activity that supplies the item.

d. PART NUMBER (Column (4)). Indicates the primary number used by the manufacturer, (individual, company, firm, corporation, or Government activity), which controls the design and characteristics of the item by means of its engineering drawings, specifications, standards, and inspection requirements to identify an item or range of items.

NOTE

When you use an NSN to requisition an item, the item you receive may have a different part number from the number listed.

e. DESCRIPTION AND USABLE ON CODE (UOC) (Column (5)). This column includes the following information:

- (1) The Federal item name and, when required, a minimum description to identify the item.
- (2) The physical security classification of the item is indicated by the parenthetical entry, e.g., Phy Sec C1 (C)-Confidential, Phy Sec C1 (S)-Secret, Phy Sec C1 (T)-Top-Secret.
- (3) Items that are included in kits and sets are listed below the name of the kit or set.
- (4) Spare/repair parts that make up an assembled item are listed immediately following the assembled item line entry.
- (5) Part numbers of bulk materials are referenced in this column in the line entry for the item to be manufactured/fabricated.
- (6) When the item is not used with all serial numbers of the same model, the effective serial numbers are shown on the last line(s) of the description (before UOC).
- (7) The usable on code, when applicable (reference paragraph 5, Special Information).
- (8) In the Special Tools List Section, the basis of issue (BOI) appears as the last line(s) in the entry for each special tool, special TMDE, and other special support equipment. When density of equipment supported exceeds density spread indicated in the basis of issue, the total authorization is increased proportionately.
- (9) The statement "END OF FIGURE" appears just below the last item description in Column (5) for a given figure in both Section II and Section III.

f. QTY (Column (6)). The QTY (quantity per figure) column indicates the quantity of the item used in the breakout shown on the illustration/figure, which is prepared for a functional group, subfunctional group, or an assembly. A "V" appearing in this column instead of a quantity indicates that the quantity is variable and may vary from application to application.

4. EXPLANATION OF INDEX FORMAT AND COLUMNS (SECTION IV).

a. NATIONAL STOCK NUMBER (NSN) INDEX.

(1) STOCK NUMBER Column. This column lists the NSN in national item identification number (NIIN) sequence. The NIIN consists of the last nine digits of the NSN, i.e.

NSN
 5305-01-574-1467
NIIN

When using this column to locate an item, ignore the first four digits of the NSN. Use the complete NSN (13 digits) when requisitioning items by stock number.

(2) FIG. Column. This column lists the number of the figure where the item is identified/located. The figures are in numerical order in Section II and Section III.

(3) ITEM Column. The item number identifies the item associated with the figure listed in the adjacent FIG. column. This item is also identified by the NSN listed on the same line.

b. PART NUMBER INDEX. Part numbers in this index are listed in ascending alphanumeric sequence (i. e., vertical arrangement of letter and number combinations which place the first letter or digit of each group in order A through Z, followed by the numbers 0 through 9, and each following letter or digit in like order).

(1) CAGEC Column. The Commercial and Government Entity Code (CAGEC) is a 5-digit numeric code used to identify the manufacturer, distributor, or Government agency/activity that supplies the item.

(2) PART NUMBER Column. Indicates the primary number used by the manufacturer (individual, firm, corporation, or Government activity), which controls the design and characteristics of the item by means of its engineering drawings, specifications, standards, and inspection requirements to identify an item or range of items.

(3) STOCK NUMBER Column. This column lists the NSN for the associated part number and manufacturer identified in the PART NUMBER and CAGEC columns to the left.

(4) FIG. Column. This column lists the number of the figure where the item is identified/located in Section II and Section III.

(5) ITEM Column. The item number is that number assigned to the item as it appears in the figure referenced in the adjacent figure number column.

c. FIGURE AND ITEM NUMBER INDEX.

(1) FIG. Column. This column lists the number of the figure where the item is identified/located in Section II and Section III.

(2) ITEM Column. The item number is that number assigned to the item as it appears in the figure referenced in the adjacent figure number column.

(3) STOCK NUMBER Column. This column lists the NSN for the item.

(4) CAGEC Column. The Commercial and Government Entity Code (CAGEC) is a 5-digit numeric code used to identify the manufacturer, distributor, or Government agency/activity that supplies the item.

(5) PART NUMBER Column. Indicates the primary number used by the manufacturer (individual, firm, corporation, or Government activity), which controls the design and characteristics of the item by means of its engineering drawings, specifications, standards, and inspection requirements to identify an item or range of items.

5. SPECIAL INFORMATION.

a. USABLE ON CODE. The usable on code appears in the lower left corner of the Description column heading. Usable on codes are shown as "UOC:.." in the Description Column justified left) on the last line of the applicable item description/nomenclature. Uncoded items are applicable to all models.

b. ASSOCIATED PUBLICATIONS. The publications listed below pertain to the Pump Assembly and its components.

<u>Publication</u>	<u>Short Title</u>
TM 10-4320-309-14	Centrifugal Pump Unit, Model PAD 125A

6. HOW TO LOCATE REPAIR PARTS.

a. When National Stock Numbers or Part Numbers are NOT Known.

(1) First. Using the table of contents, determine the assembly or subassembly group to which the item belongs. This is necessary since figures are prepared for assembly groups and subassembly groups, and listings are divided into the same groups.

- (2) Second. Find the figure covering the assembly group or subassembly group to which the item belongs.
- (3) Third. Identify the item on the figure and use the Figure and item Number Index to find the NSN.

b. When National Stock Number or Part Number is Known

- (1) First. Using the of National Stock Number and Part Number Indexes find the pertinent National Stock Number or Part Number. The NSN index is in National Item Identification Number (NIIN) sequence(see paragraph 4.a). The part numbers in the Part Number index are listed in ascending alphanumeric of the item you are looking for.

(2) Second. Turn to the figure and item number, verify that the item is the one you are looking for, then locate the item number in the repair parts list for the figures

7. ABBREVIATIONS. Abbreviations used in this manual are listed in MIL-STD-12.

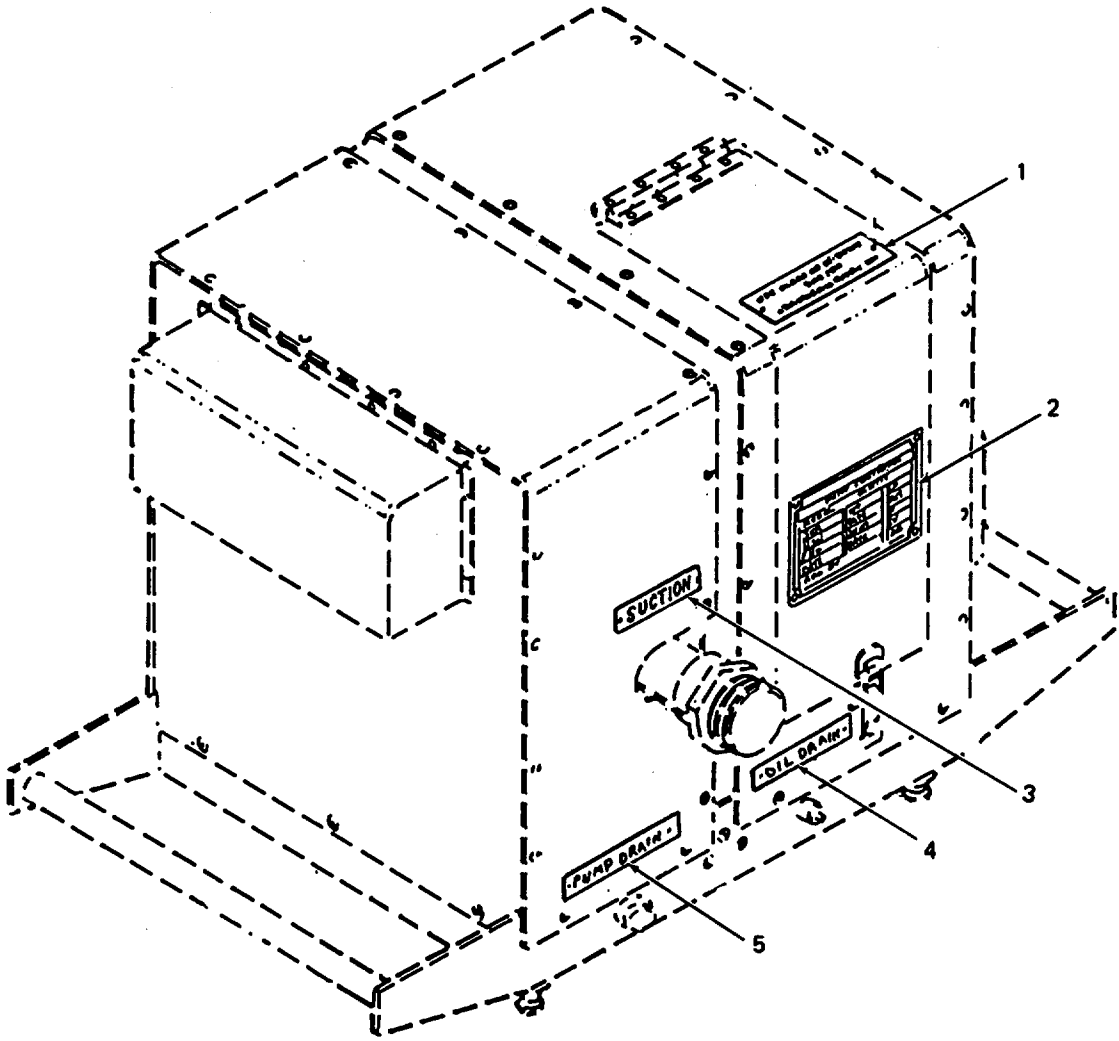


Figure 1. Diesel-Driven Centrifugal Pump Assembly, Model PAD 125A

SECTION II

TM 10-4320-309-24P
 TM 4320-24P/2

(1) ITEM NO	(2) SMR CODE	(3) CAGEC	(4) PART NUMBER	(5) DESCRIPTION AND USABLE ON CODES (UOC)	(6) QTY
			GROUP 00	CENTRIFUGAL PUMP, DIESEL-DRIVEN, MODEL PAD125A	
			FIG. 1	DIESEL-DRIVEN CENTRIFUGAL PUMP ASSEMBLY	
1	XDOZZ	97403	13228E9867	NAMEPLATE,OIL USAGE.....	1
2	XDOZZ	97403	13217E1975-1	NAMEPLATE,IDENTIFI.....	1
3	XDOZZ	97403	13228E9868	NAMEPLATE,SUCTION.....	1
4	XDOZZ	97403	13228E9857	NAMEPLATE,OIL DRAIN.....	1
5	XDOZZ	97403	13228E9856	NAMEPLATE,PUMP DRAI.....	1

END OF FIGURE

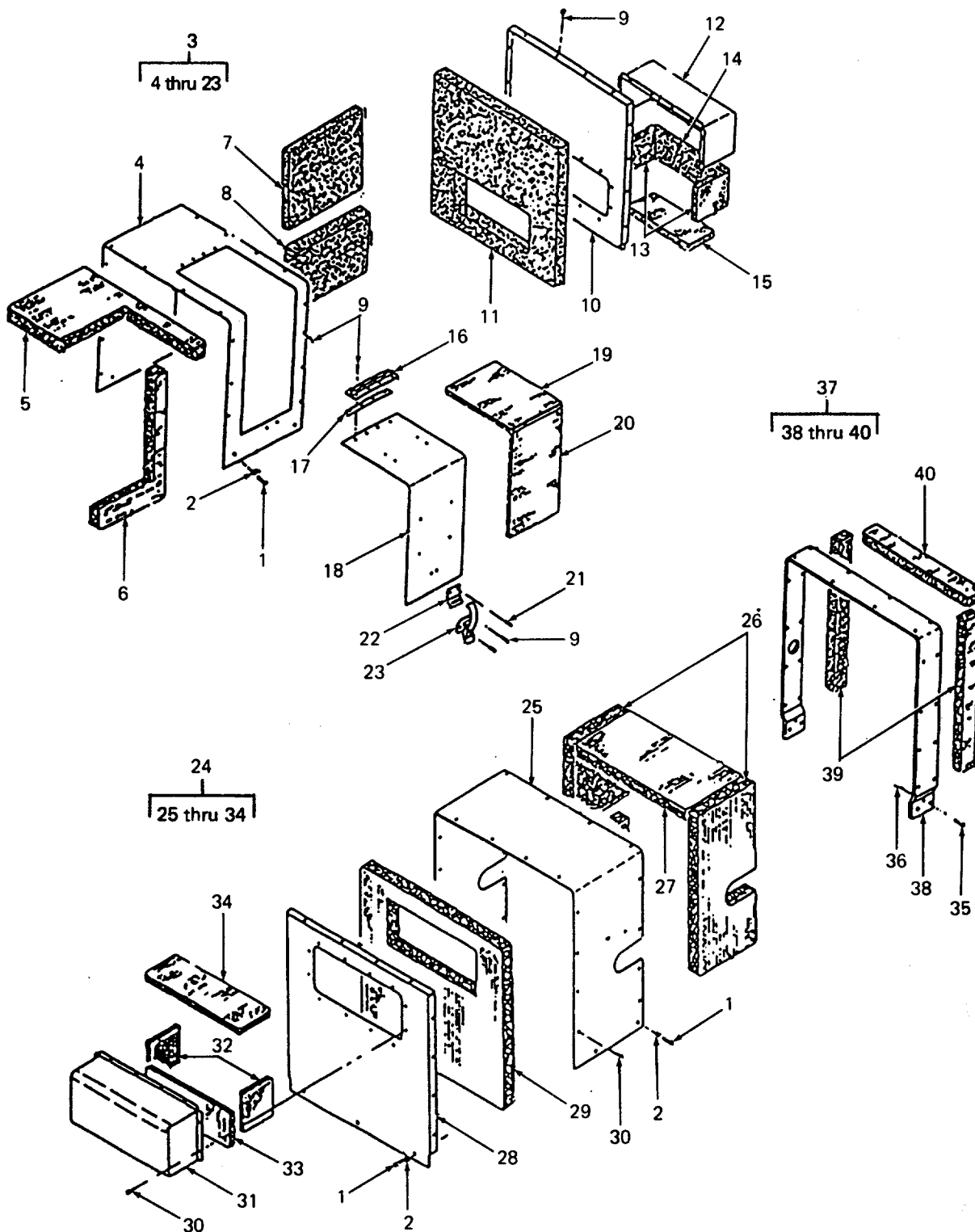


Figure 2. Inlet/Outlet Air Sound Enclosure Assembly

SECTION II

TM 10-4320-309-24P

TM 4320-24P/2

(1) ITEM NO	(2) SMR CODE	(3) CAGEC	(4) PART NUMBER	(5) DESCRIPTION AND USABLE ON CODES (UOC)	(6) QTY
GROUP 01 SOUND ENCLOSURE ASSEMBLY					
FIG. 2 INLET AND OUTLET AIR SOUND ENCLOSURE ASSEMBLIES					
1	PAOZZ	96906	MS24629-58	SCREW,TAPPING	36
2	PAOZZ	96906	MS35335-33	WASHER,LOCK.....	36
3	XDOZZ	97403	13228E9852	ENCLOSURE ASSEMBLY SOUND,INLET AIR	1
4	XDOZZ	97403	13228E9852-20	.ENCLOSURE,INLET AIR	1
5	MOOZZ	97433	13228E9852-17	.FOAM, ACOUSTICAL ENCLOSURE TOP	1
6	MOOZZ	97403	13228E9852-16	MAKE FROM BULK P/N 4100/763 1-INCH .FOAM,ACOUSTICAL FUEL TANK SIDE,	1
7	MOOZZ	97403	13228E9852-15	MAKE FROM BULK P/N 4100/763 1-INCH ..FOAM,ACOUSTICAL EXHAUST SIDE,	1
8	MOOZZ	97403	13228E9852-14	MAKE FROM BULK P/N 4100/763 1 INCH .FOAM,ACOUSTICAL EXHAUST SIDE.....	1
9	PAOZZ	81349	M24243/1-B604	BOTTOM, MAKE FROM BULK P/N 4100/763 2 INCH	30
10	XDOZZ	97403	13228E9852-4	.RIVET,BLIND	1
11	MOOZZ	97403	1322E93852-13	.ENCLOSURE, SOUND INLET AIR, BACK.	1
12	XDOZZ	97403	13228E9852-3	.FOAM, ACOUSTICAL INLET BACK,MAKE	1
13	MOOZZ	97403	13228E9852-10	FROM BULK P/N 4100/763 2 INCH.....	1
14	MOOZZ	97403	13228E9852-6	.HOOD, SOUND VENT,INLET.....	2
15	MOOZZ	97403	13228E9852-11	.FOAM, ACOUSTICAL VENT HOOD SIDE,	1
16	MCOZZ	97403	13228E9352-1	MAKE FROM BULK P/N 4100/763-2 INCH .FOAM,ACOUSTICAL VENT HOOD BACK,	1
17	MOOZZ	97403	13228E9852-19	MAKE FROM BULK P/N 4100/763-1 INCH .FOAM, ACOUSTICAL VENT HOOD TOP,	1
18	XBFZZ	97403	13228E9852-7	MAKE FROM BULK P/N 4100/763-1 INCH .HINGE MAKE FROM BULK P/N A703, 8 1	1
19	MOOZZ	97403	13228E9852-5	INCHES LONG.....	1
20	MOOZZ	97403	13228E9852-12	.SPACER,HINGE MAKE FROM BULK P/N	1
21	PAOZZ	81349	M24243/1-B403	ASTM B209.....	1
22	PAOZZ	97403	13228E9852-9	.DOOR,ACCESS	1
23	PAOZZ	71286	20LO1-I-1AA	.FOAM,ACOUSTICAL DOOR,TOP,MAKE.....	1
24	XDOZZ	97403	13228E9848	FROM BULK P/N 4100/763 1 INCH.....	1
25	XDOZZ	97403	13228E9848-10	.FOAM,ACOUSTICAL DOOR,SIDE,MAKE.....	1
26	MOOZZ	97403	13223E9848-9	FROM BULK P/N 4100/763-1 INCH..	2
27	MOOZZ	97403	13228E9848-8	.RIVET,BLIND	1
28	XDOZZ	97403	13228E9848-2	.STRIKE,CATCH	1
29	MOOZZ	97403	13228E9848-7	.LATCH,RIM.....	1
30	PAOZZ	81349	M24243/1-B604	ENCLOSURE, ASSEMBLY SOUND,OUTLET	1
				AIR	1
				.ENCLOSURE,OUTLET	2
				.FOAM, ACOUSTICAL OUTLET AIR SIDE,.....	1
				MAKE FROM BULK P/N 4100/763-2 INCH	1
				.FOAM,ACOUSTICAL OUTLET AIR TOP,	1
				MAKE FROM BULK P/N 4100/763-2 INCH	1
				.ENCLOSURE,SOUND OUTLET AIR, BACK	1
				.FOAM, ACOUSTICAL OUTLET AIR BACK,	1
				MAKE FROM BULK P/N 4100/763 -2 INCH	2
				.RIVET,BLIND	2

SECTION II

TM 10-4320-309-24P

TM 4320-24P/2

(1) ITEM NO	(2) SMR CODE	(3) CAGEC	(4) PART NUMBER	(5) DESCRIPTION AND USABLE ON CODES (UOC)	(6) QTY
31	XDOZZ	97403	13228E9848-1	.HOOD,SOUND ENCLOSURE, VENT OUTLET	1
32	MOOZZ	97403	13228E9848-6	.FOAM, ACOUSTICAL VENT HOOD SIDE,	2
				MAKE FROM BULK P/N 4100/763-1 INCH	
33	MOOZZ	97403	13228E9848-4	.FOAM,ACOUSTICAL VENT HOOD BACK,	1
				MAKE FROM BULK P/N 4100/763 - 1INCH	
34	MOOZZ	97403	13228E9848-3	.FOAM,ACOUSTICAL VENT HOOD TOP,	1
				MAKE FROM BULK P/N 4100/763 -1 INCH	
35	PAOZZ	96906	MS35206-282	SCREW,MACHINE.....	6
36	PAOZZ	96906	MS17829-4C	NUT,SELF-LOCKING,HE.....	6
37	XDOZZ	97403	13228E9860	BRACKET,SOUND ENCLOSURE ASSEMBLY..	1
38	XDOZZ	97403	13228E9860-1	.BRACKET	1
39	MOOZZ	97403	13228E9860-2	.FOAM,ACOUSTICAL BRACKET,SIDE,.....	2
				MAKE FROM BULK P/N 4100/763 -1 INCH	
40	MOOZZ	97403	13228E9860-3	.FOAM,ACOUSTICAL BRACKET, TOP,.....	1
				MAKE FROM BULK P/N 4100/763 -1 INCH	

END OF FIGURE

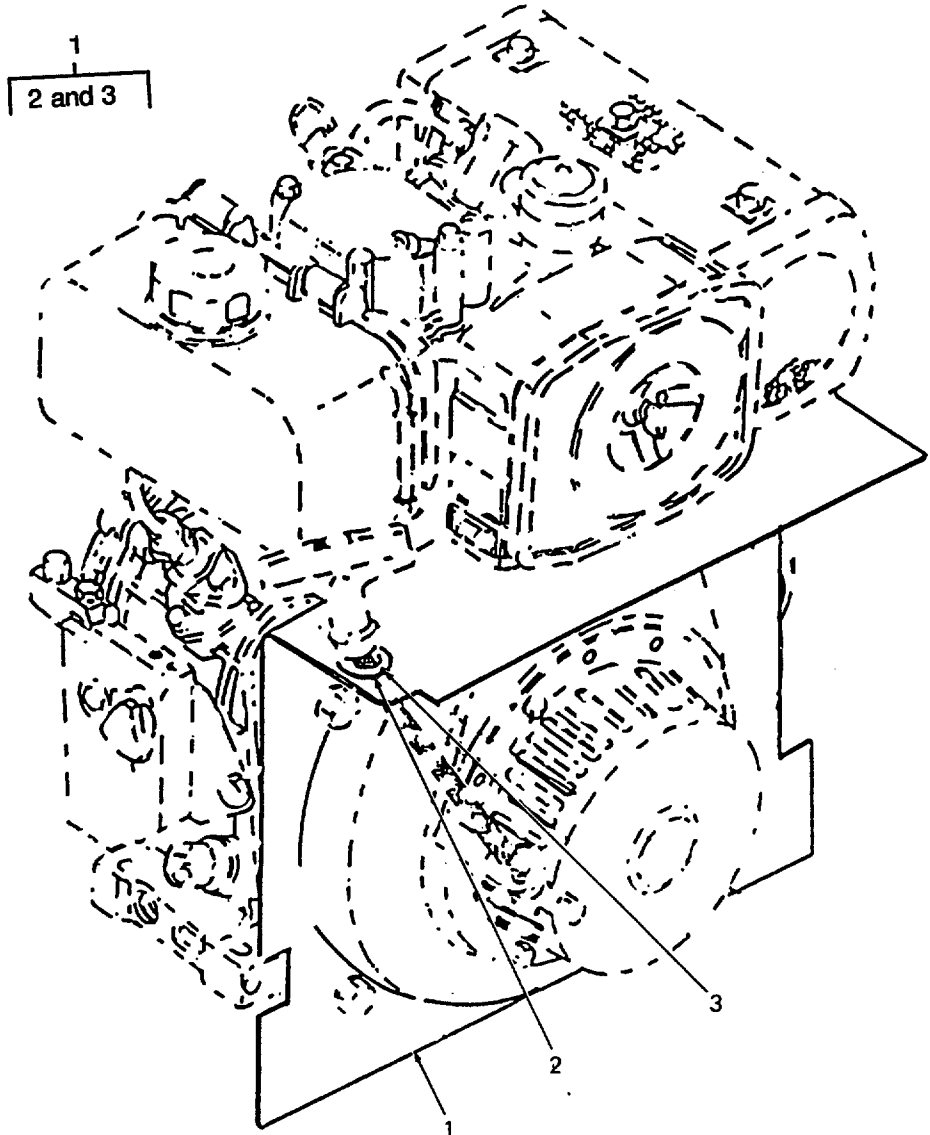


Figure 3. Sound Enclosure Baffle

SECTION II

TM 10-4320-309-24P
TM 4320-24P/2

(1) ITEM NO	(2) SMR CODE	(3) CAGEC	(4) PART NUMBER	(5) DESCRIPTION AND USABLE ON CODES (UOC)	(6) QTY
				GROUP 01 SOUND ENCLOSURE ASSEMBLY	
				FIG. 3 SOUND ENCLOSURE BAFFLE	
1	XDOZZ	97403	13228E9864	BAFFLE,SOUND ENCLOSURE	1
2	XDOZZ	96906	MS20230A4	.GROMMET.....	1
3	PAOZZ	96906	MS15795-718	.WASHER,FLAT.....	1

END OF FIGURE

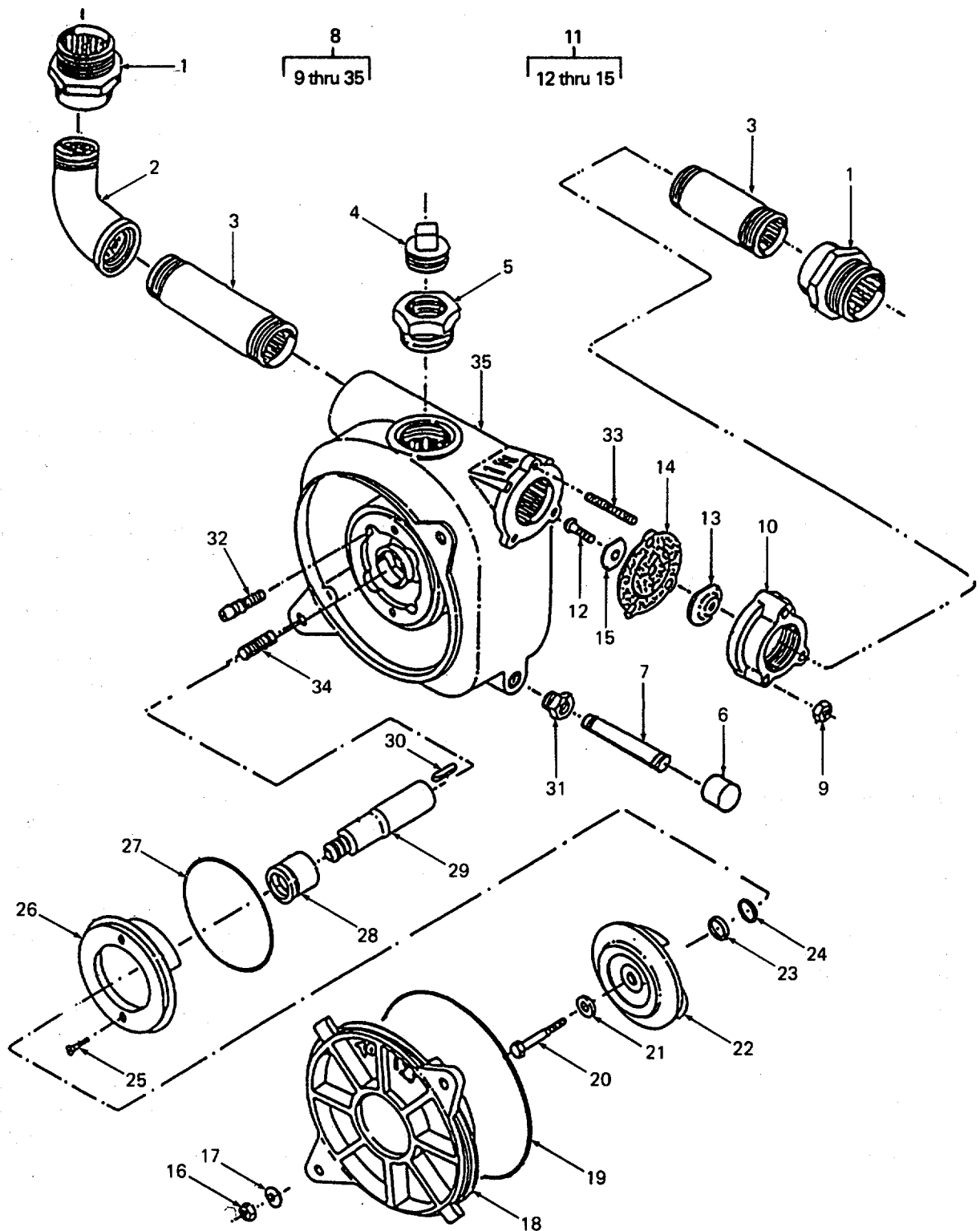


Figure 4. Centrifugal Pump Assembly

(1) ITEM NO	(2) SMR CODE	(3) CAGE C	(4) PART NUMBER	(5) DESCRIPTION AND USABLE ON CODES (UOC)	(6) QTY
GROUP 02 CENTRIFUGAL PUMP					
FIG. 4 CENTRIFUGAL PUMP					
1	PAOZZ	30659	357-2 NPT X 2 NP SH	COUPLING,PIPE	2
2	XDOZZ	96906	MS51952-9	ELBOW	1
3	XDOZZ	96906	MS51846-162	NIPPLE.....	2
4	XDOZZ	81348	WW-P-471-A-A-BU- H	PLUG, PIPE, SQUARE.....	1
5	XDOZZ	97403	13218E0468-227	BUSHING, PIPE	1
6	XDOZZ	80204	ANSI B16.3 CLASS1 50	CAP,PIPE 3/8 INCH FPT C	1
7	XDFZZ	96906	MS51953-61	NIPPLE.....	1
8	PBFFF	97403	13228E9870	PUMP, ASSEMBLY CENTRIFUGAL, 125 GPM.....	1
9	PAFZZ	96906	MS51968-5	.NUT,PLAIN,HEXAGON	3
10	XBFZZ	14180	FP4146	.FLANGE,PIPE	1
11	PAFZF	14180	A3775	.DISK,VALVE.....	1
12	PAFZZ	03950	ANSIB18.6.3 1/4- 20UNC3A 1/2L	..SCREW,MACHINE 0.25 IN X 20 UNC	1
13	XDFZZ	97403	13200E8811	..WEIGHT,CHECK VALVE	1
14	PAFZZ	97403	13200E8813	..GASKET.....	1
15	XDFZZ	97403	13200E8812	..WEIGHT,CHECK VALVE,	1
16	PAFZZ	96906	MS51968-14	.NUT,PLAIN,HEXAGON	2
17	PAFZZ	96906	MS27183-18	.WASHER,FLAT	2
18	XDFZZ	14180	FP4144	.VOLUTE,PUMP	1
19	PAFZZ	96906	MS29513-273	.PACKING,PREFORMED	1
20	XDFZZ	96906	MS90726-45	.BOLT,MACHINE	1
21	PAFZZ	14180	T22720	.RETAINER,PACKING.....	1
22	PAFZO	97403	13200E8808	.IMPELLER,PUMP,CENTR.....	1
23	PAFZZ	14180	T22719A	.SHIM 1 X.010	V
24	PAFZZ	14180	T22719B	.WASHER,FLAT 1X.005	2
25	PAFZZ	96906	MS35198-70	.SCREW,MACHINE	2
26	XDFZO	97403	13200E8815	.PLATE,WEAR,PUMP	1
27	PAFZZ	96906	MS29513-253	.PACKING,PREFORMED	1
28	PAFZZ	73680	70005-0012	.SEAL ASSEMBLY PUMP	1
29	XDFZZ	97403	13200E8804	.SHAFT,SHOULDERED	1
30	XDFZZ	96906	1MS20066-163	.KEY,MACHINE	1
31	XDFZZ	81348	WW-P-471-B-D-BD- DC	.BUSHING 0.5-14 NPT	1
32	PAFZZ	97403	13228E9869	.SCREW,CAP,SOCKET HE.....	4
33	PAFZZ	96906	MS51864-103-18	.STUD.....	3
34	PAFZZ	96906	MS51864-106-20	.STUD,PLAIN.....	2
35	XDFZZ	97403	13200E8803	.HOUSING,LIQUID PUMP	1

END OF FIGURE

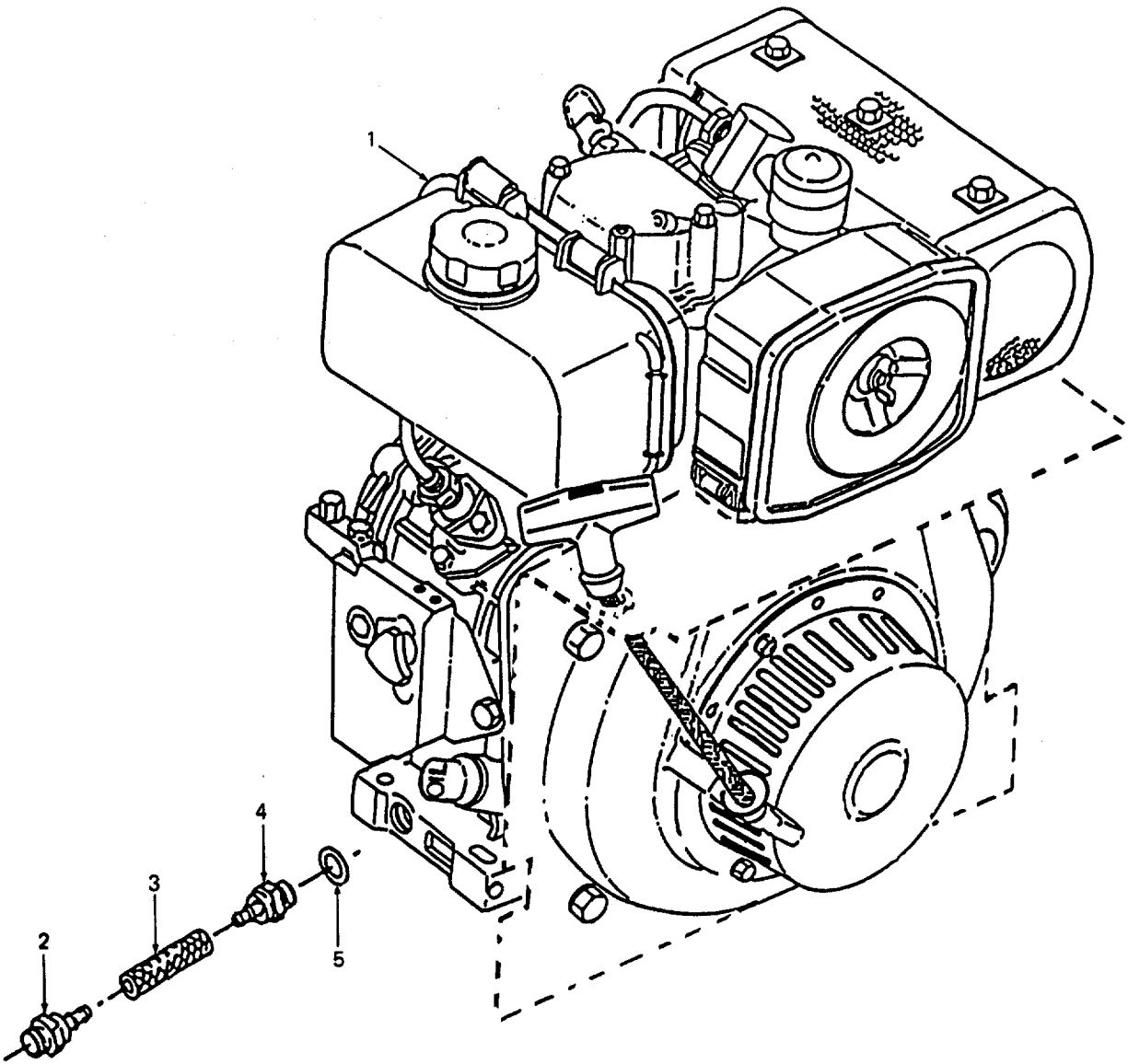


Figure 5. Diesel Engine Assembly

SECTION II

TM 10-4320-309-24P
 TM 4320-24P/2

(1) ITEM NO	(2) SMR CODE	(3) CAGE C	(4) PART NUMBER	(5) DESCRIPTION AND USABLE ON CODES (UOC)	(6) QTY
GROUP 03 ENGINE DIESEL AIR-COOLED					
FIG. 5 DIESEL ENGINE ASSEMBLY					
1	PBFFH	OAK42	114268-21010	ENGINE, ASSEMBLY DIESEL, AIR.....	1
				COOLED, 3.8 HP, CONT AT 3600 RPM.....	
2	PAFZZ	01276	FJ9068-0606S	ADAPTER, STRAIGHT, PI SOCKETLESS.	1
3	MOFZZ	01276	1525-6	HOSE, NONMETALLIC MAKE FROM BULK P/.....	1
				N 1525-6, 2.875 INCHES LONG	
4	PAFZZ	01276	07.021-10-6	ADAPTER, STRAIGHT, TU SOCKETLESS.....	1
5	PAOZZ	OAK42	43400-500490	GASKET 16 MM PART OF KIT P/N 714250	1
				-92600	

END OF FIGURE

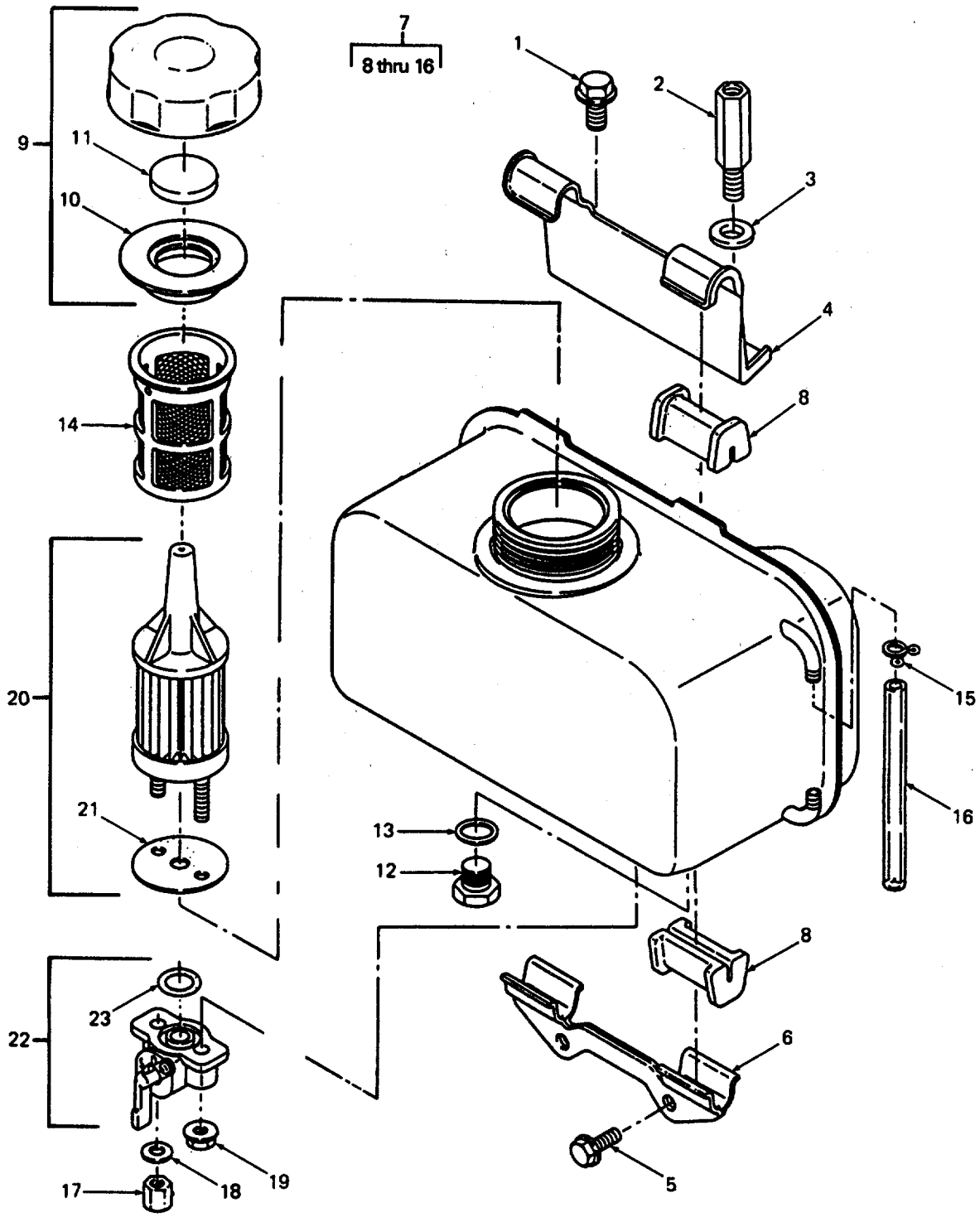


Figure 6. Fuel Tank Assembly

(1) ITEM NO	(2) SMR CODE	(3) CAGE C	(4) PART NUMBER	(5) DESCRIPTION AND USABLE ON CODES (UOC)	(6) QTY
GROUP 04 FUEL SYSTEM					
FIG. 6 FUEL TANK ASSEMBLY					
1	PAOZZ	OAK42	26106-080452	.BOLT,MACHINE FLANGED,8 MM X 16,..... PLATED.....	1
2	XBOZZ	OAK42	114650-55810	.BOLT, LIFTING	1
3	PAOZZ	OAK42	22117-080000	.WASHER,FLAT 8 MM	1
4	XDOZZ	OAK42	114252-55241	.STAY, TOP.....	1
5	PAOZZ	OAK42	26476-060142	.BOLT,MACHINE FLANGED,6 MM X 14.....	2
6	XDOZZ	OAK42	114250-55211	.STAY, BOTTOM.....	1
7	XDOZZ	OAK42	714350-55711	.TANK ASSEMBLY, FUEL	1
8	XDOZZ	OAK42	114250-55200	..DAMPER	4
9	PAOZZ	OAK42	114250-55041	..CAP,FILLER OPENING	1
10	PAOZZ	OAK42	114250-55050	...GASKET	1
11	PAOZZ	OAK42	114250-55060	...SEAL,PLAIN	1
12	PAOZZ	OAK42	23887-120002	..PLUG,EXPANSION 12 MM.....	1
13	PAOZZ	OAK42	23414-120000	..PACKING,PREFORMED	1
14	PAOZZ	OAK42	114250-55100	..FILTER,GAS.....	1
15	XDOZZ	OAK42	124722-59050	..CLAMP, SPRING.....	2
16	XDOZZ	OAK42	114350-55150	..PIPE, GUAGE	1
17	PAOZZ	OAK42	114252-55800	.NUT,PLAIN,HEXAGON	1
18	PAOZZ	OAK42	22117-060000	.WASHER,FLAT 6 MM	1
19	PAOZZ	OAK42	26366-060002	.NUT,PLAIN,HEXAGONFLANGED,6 MM...	1
20	PAOZZ	OAK42	114350-55120	.FILTER,GAS.....	1
21	PAOZZ	OAK42	114250-55130	..GASKET	1
22	PBOZZ	OAK42	114250-55300	.COCK,SHUTOFF,SCREW	1
23	PAOZZ	OAK42	24341-000150	..PACKING,PREFORMED	1

END OF FIGURE

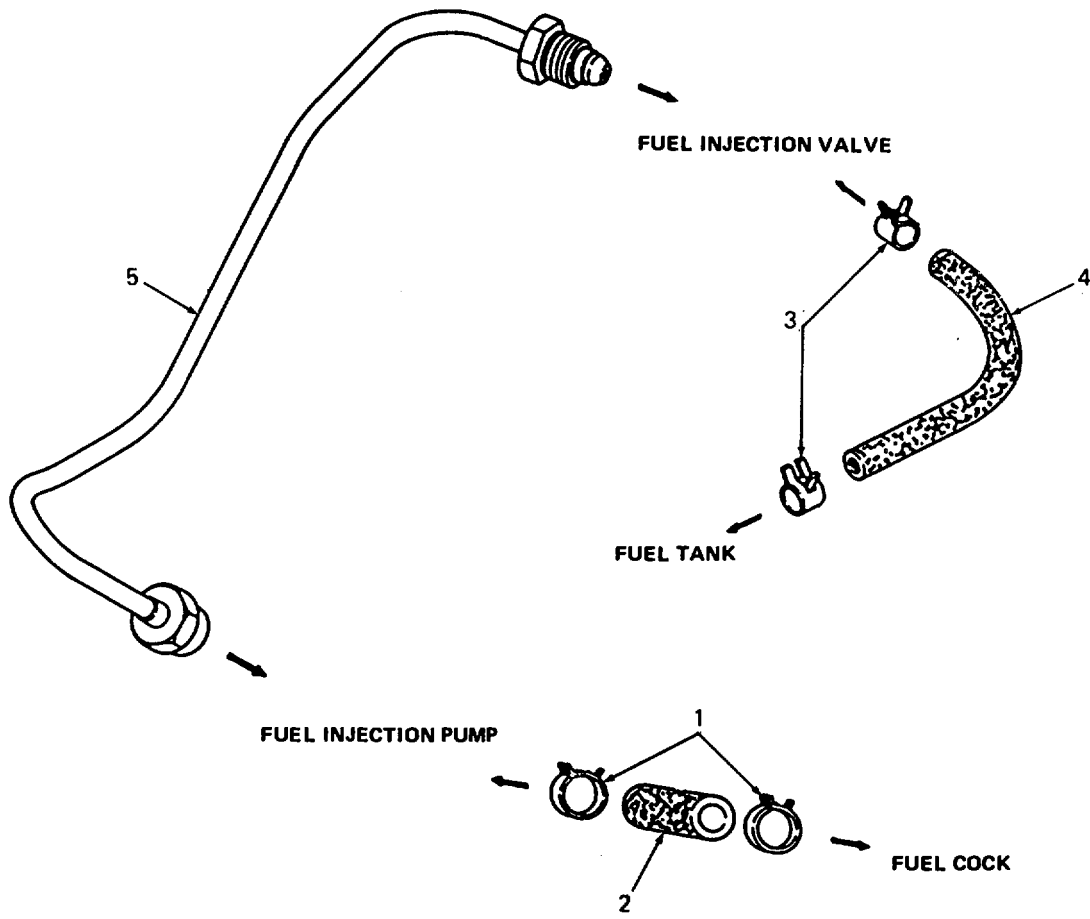


Figure 7. Fuel Injection Pipe

SECTION II

TM 10-4320-309-24P
 TM 4320-24P/2

(1) ITEM NO	(2) SMR CODE	(3) CAGE C	(4) PART NUMBER	(5) DESCRIPTION AND USABLE ON CODES (UOC)	(6) QTY
-------------------	--------------------	------------------	-----------------------	--	------------

GROUP 04 FUEL SYSTEM

FIG. 7 FUEL INJECTION PIPE

1	PAOZZ	OAK42	106990-44660	.CLAMP,LOOP	2
2	XDOZZ	OAK42	114250-59050	.PIPE, FUEL RETURN.....	1
3	PAOZZ	OAK42	124722-59050	.CLAMP,LOOP	2
4	XDOZZ	OAK42	114250-59060	.PIPE, FUEL RETURN.....	1
5	XDOZZ	OAK42	114250-598U0	.PIPE, FUEL INJECTION.....	1

END OF FIGURE

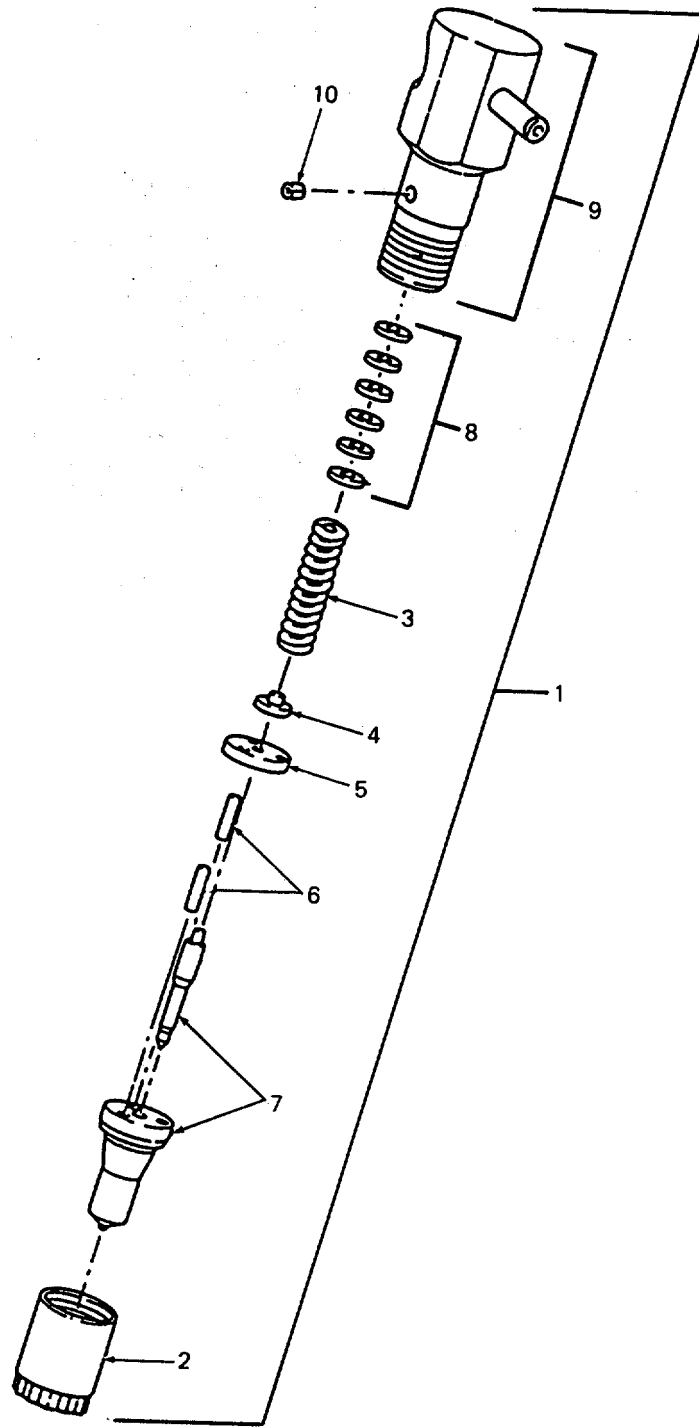


Figure 8. Fuel Injection Nozzle Assembly

TM 10-4320-309-24P C01
TM 4320-24P/2

SECTION II

(1) ITEM NO	(2) SMR CODE	(3) CAGEC CAGEC	(4) PART NUMBER	(5) DESCRIPTION AND USABLE ON CODES (UOC)	(6) QTY
GROUP 04 FUEL SYSTEM					
FIG. 8 FUEL INJECTION NOZZLE ASSEMBLY					
1	XDFFF	0AK42	714250-53101	• PUMP, FUEL, METERING FUEL INJECTION . . .	1
2	PAFZZ	0AK42	114250-53080	NUT, NOZZLE	1
3	PAFZZ	0AK42	114250-53120	•• SPRING, HELICAL,COMP	1
4	XBFZZ	0AK42	114250-53130	••RETAINER, SPRING	1
5	PAFZZ	0AK42	114250-53140	••PLATE, VALVE STOP	1
6	PAFZZ	0AK42	114250-53210	••PIN, LOCATOR	2
7	PAFFF	0AK42	114250-53001	••NOZZLE, FUEL INJECTI	10
8	XBFZZ	0AK42	114250-53400	••SHIM SET	1
9	XDFFF	0AK42	114250-53300	••HOLDER ASSEMBLY, NOZZLE	1
10	PAFZZ	0AK42	114250-53331	•••PIN,SPRING	1

END OF FIGURE

TM 10-4320-309-24P
TM 4320-24P/2

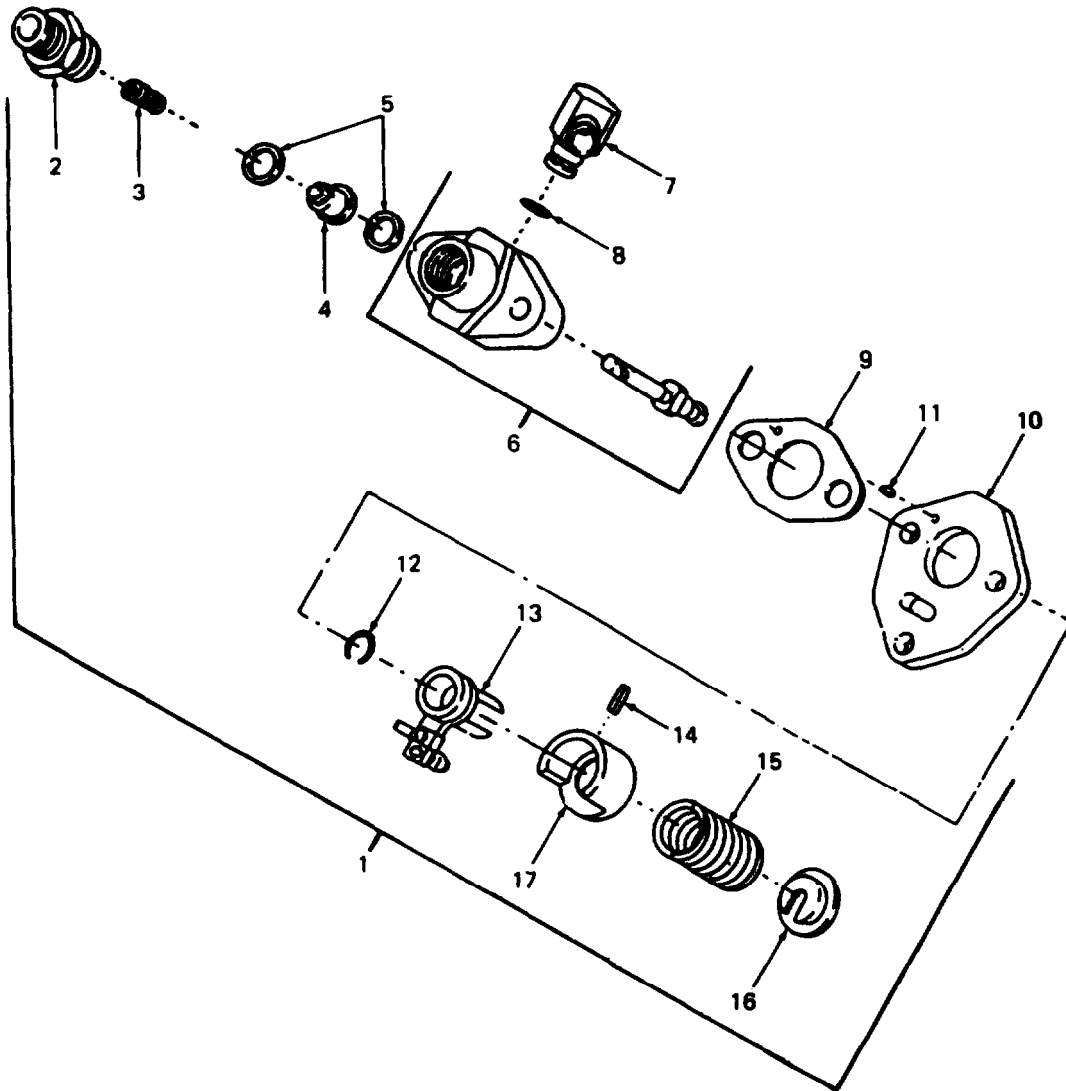


Figure 9. Fuel Injection Pump Assembly

TM 10-4320-309-24P C01
TM 4320-24P/2

SECTION II

(1) ITEM NO	(2) SMR CODE	(3) CAGEC CAGEC	(4) PART NUMBER	(5) DESCRIPTION AND USABLE ON CODES (UOC)	(6) QTY
GROUP 04 FUEL SYSTEM					
FIG. 9 FUEL INJECTION PUMP ASSEMBLY					
1	PAFFF	0AK42	714250-51701	• PUMP, FUEL, METERING	1
2	PAFZZ	0AK42	114250-51340	••HOLDER	1
3	PAFZZ	0AK42	105546-51330	••SPRING, HELICAL, COMP	1
4	PAFZZ	0AK42	114250-51300	••VALVE, ASSEMBLY	1
5	PAFZZ	0AK42	124550-51350	•• GASKET	2
6	XBFZZ	0AK42	114250-51200	•• BODY ASSY, PUMP	1
7	XDFZZ	0AK42	114250-51180	••• JOINT	1
8	PAFZZ	0AK42	114250-51190	••• PACKING,PREFORMED	1
9	PAFZZ	0AK42	105546-51020	•• GASKET	1
10	XDFZZ	0AK42	114250-51080	•• PLATE	1
11	PAFZZ	0AK42	22351-020006	••PIN, SPRING 2 X 6 MM	1
12	PAFZZ	0AK42	114250-51150	••RING, RETAINING	1
13	PAFZZ	0AK42	114250-51600	••LEVER ASSEMBLY	1
14	XBFZZ	0AK42	22351-030008	•• PIN, SPRING 3 X 8 MM	1
15	PAFZZ	0AK42	114250-51160	••SPRING, HELICAL, COMP	1
16	XBFZZ	0AK42	114250-51650	•• SEAT, SPRING	1
17	XBFZZ	0AK42	114250-51640	••SEAT, SPRING	1

END OF FIGURE

TM 10-4320-309-24P
TM 4320-24P/2

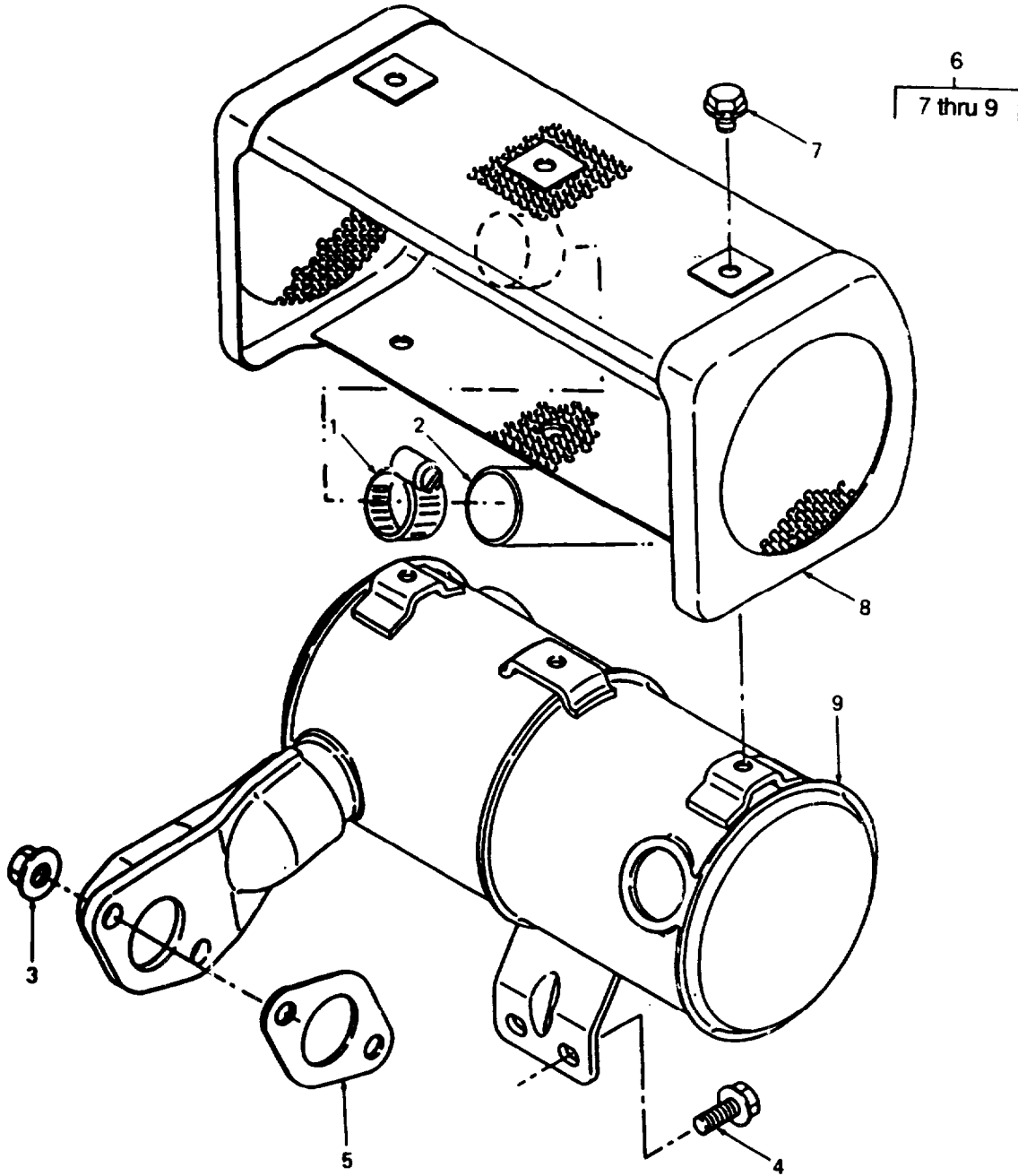


Figure 10. Exhaust Silencer Assembly

(1) ITEM NO	(2) SMR CODE	(3)	(4) PART NUMBER	(5) DESCRIPTION AND USABLE ON CODES (UOC)	(6) QTY
GROUP 05 EXHAUST SILENCER					
FIG. 10 EXHAUST SILENCER ASSEMBLY					
1	PAOZZ 81348	WW-C-440TYPE-D		CLAMP,HOSE	1
2	MOOZZ 97403	13228E9859		TUBE, EXHAUST EXTENSION, MAKE FROM.....	1
				BULK P/N ASTM B210, CUT 6 INCHES LONG, 1.25 INCH OD X .035 INCH WIDTH, ALUMINUM ALLOY 6061-T6.....	
3	PAOZZ OAK42	26366-080002		.NUT,PLAIN,HEXAGON FLANGED, 8 MM.....	2
4	PAOZZ 80204	B18231B06012N		.SCREW,CAP,HEXAGON H FLANGED, 6 MM.....	2
				X 12 MM, PLATE	
5	PAOZZ OAK42	114250-13200		.GASKET PART OF KIT P/N 714250-92600	1
6	XDOZZ OAK42	114250-13521		.SILENCER ASSEMBLY	1
7	PAOZZ 56161	10503971		..SCREW,CAP,HEXAGONH FLANGED, 6	6
				MM X 8 MM, PLATED.....	
8	XDOZZ OAK42	114250-13701		..COVER, SILENCER	1
9	PBOZZ OAK42	114250-13531		..PNEUMATIC MUFFLER,E.....	1

END OF FIGURE

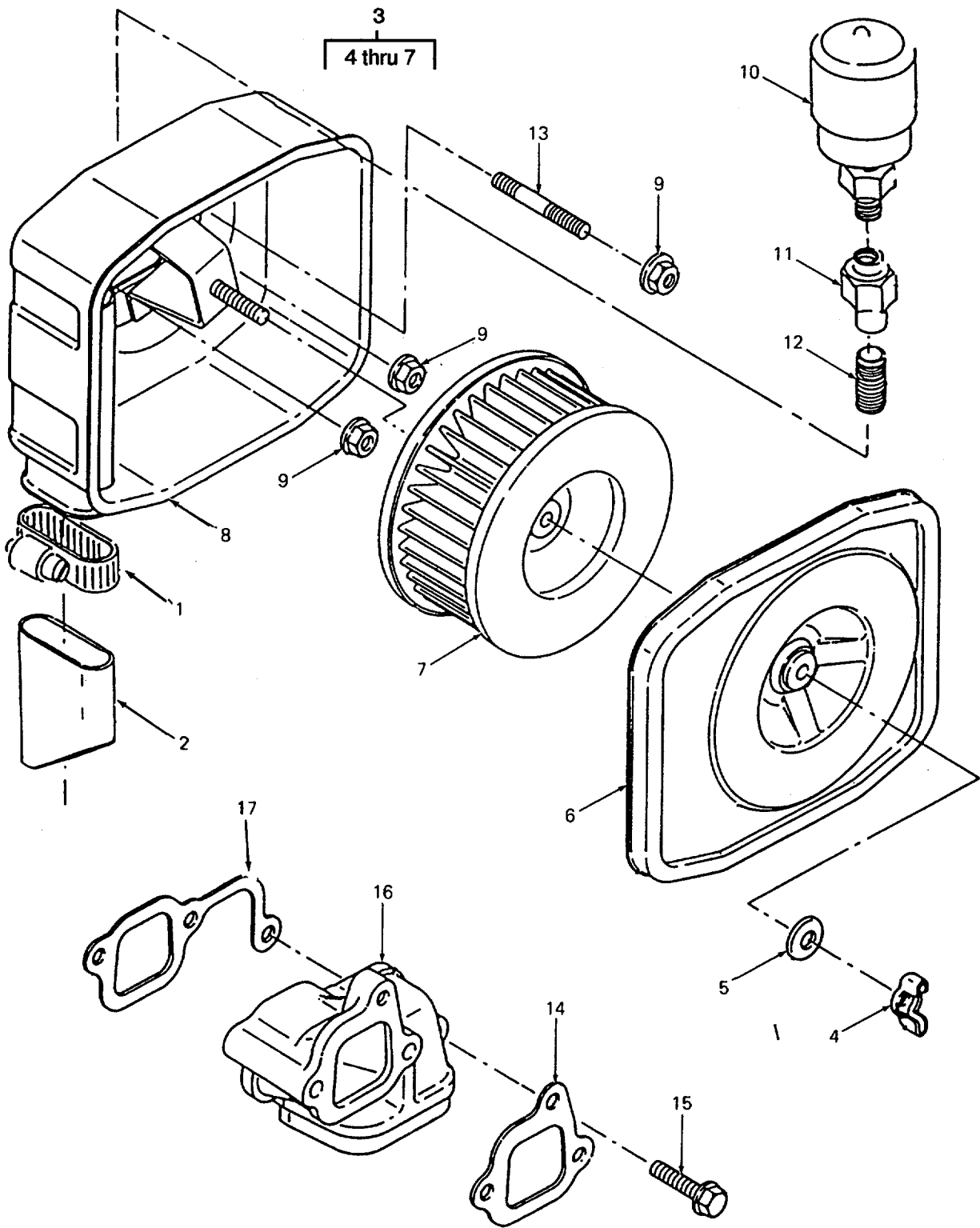


Figure 11. Air Cleaner Assembly and Air Intake Bend

(1) ITEM NO	(2) SMR CODE	(3)	(4) PART NUMBER	(5) DESCRIPTION AND USABLE ON CODES (UOC)	(6) QTY
GROUP 06 AIR CLEANER					
FIG. 11 AIRCLEANER ASSEMBLY AND AIR INTAKE BEND					
1	PAOZZ	66295	54550050	CLAMP,HOSE	1
2	MOOZZ	97403	13228E9862	HOSE, AIRINTAKE EXTENSION,MAKE..... FROM BULK P/N 70-125, CUT ON DIAGONAL 1.5	1
3	PAOFF	OAK42	714250-12560	.AIR CLEANER,INTAKE WITHOUT..... MODIFIED CASE.....	1
4	PAOZZ	OAK42	114250-12550	..NUT,PLAIN,HEXAGON 6 MM.....	1
5	PAOZZ	OAK42	114250-12560	..WASHER,SEAL.....	1
6	XDOZZ	OAK42	114250-12520	..COVER.....	1
7	PAOZZ	OAK42	114250-12580	..FILTER ELEMENT,INTA.....	1
8	XDOZZ	97403	13228E9863	.CASE, MODIFIED	1
9	PAOZZ	OAK42	26366-060002	.NUT,PLAIN,HEXAGON FLANGED, 6 MM	3
10	PAOZZ	18265	RAX-00-2350	INDICATOR,PRESSURE RESTRICTION..... WITH SAFETY FILTER FITTING AND ADAPTER.....	1
11	XDOZZ	93061	207P-2	COUPLING,PIPE 0.125 NPT	1
12	PAOZZ	96906	MS51846-6	.NIPPLE,PIPE.....	1
13	XDOZZ	OAK42	26226-060142	.STUD PLATED, 6 MM X16	1
14	PAFZZ	OAK42	114250-12210	.PACKING,PREFORMED CLEANER PART OF I KIT P/N 714250-92600.....	
15	PAFZZ	62866	10512	.SCREW,CAP,HEXAGON H FLANGED, 6 MM..... X 25, PLATED	1
16	XDFZZ	OAK42	114250-12010	.PIPE, AIR INTAKE.....	1
17	PAFZZ	OAK42	114250-12200	.GASKET PART OF KIT P/N 714250-92600	1

END OF FIGURE

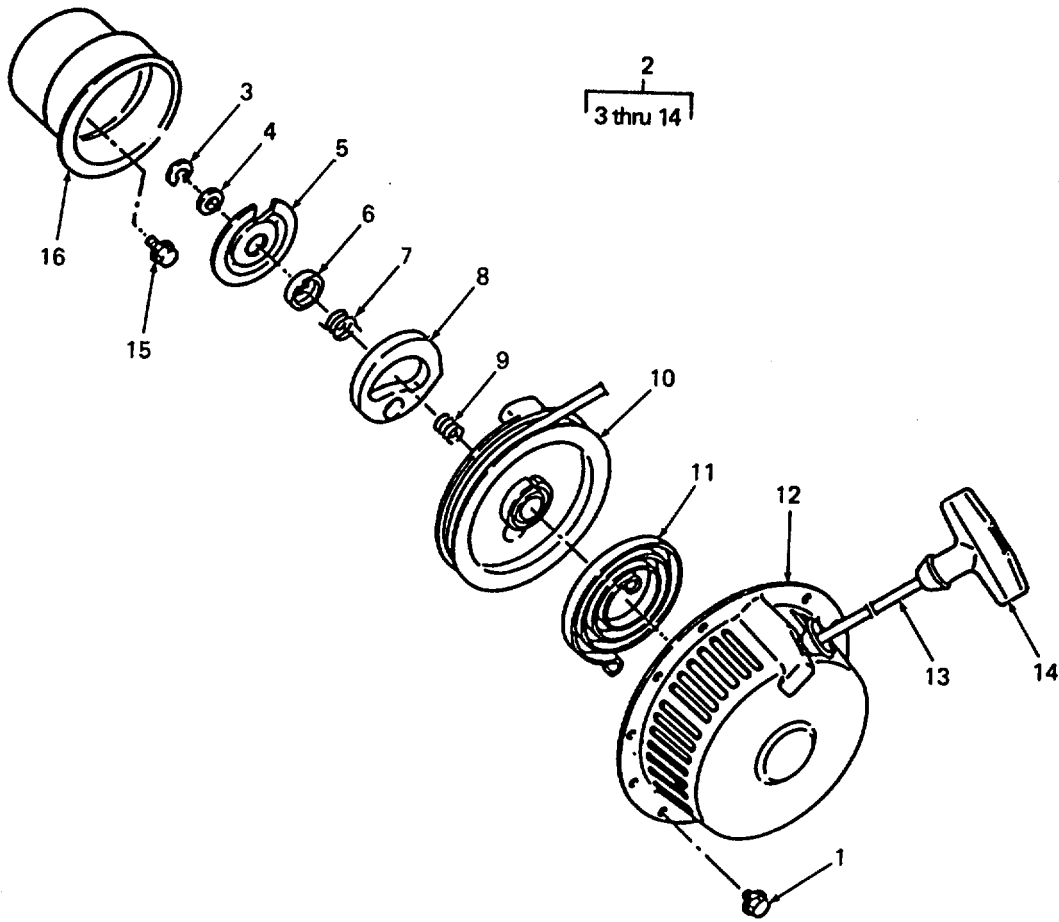


Figure 12. Recoil Starter Assembly

SECTION II

TM 10-4320-309-24P C01
 TM 4320-24P/2

(1) ITEM NO	(2) SMR CODE	(3) CAGEC	(4) PART NUMBER	(5) DESCRIPTION AND USABLE ON CODES (UOC)	(6) QTY
GROUP 07 RECOIL STARTER					
FIG. 12 RECOIL STARTER ASSEMBLY					
1	PAFZZ	56161	10503971	SCREW, CAP, HEXAGON H FLANGED, 6 MM X8, PLATED	4
2	PBFFF	0AK42	714260-76820	• STARTER, ENGINE, HAND	1
3	XBFZZ	0AK42	160260-76600	•• CLIP, RETAINING	1
4	PAFZZ	0AK42	160260-76550	•• WASHER, FLAT	1
5	XDFZZ	0AK42	160260-76590	•• PLATE, FRICTION	1
6	XBFZZ	0AK42	160260-76580	•• COVER, SPRING	1
7	PAFZZ	0AK42	160290-76570	•• SPRING, HELICAL, COMP	1
8	XBFZZ	0AK42	160260-76530	•• RATCHET	1
9	PAFZZ	0AK42	160260-76560	•• SPRING, HELICAL, COMP	1
10	XBFZZ	0AK42	160260-76520	•• REEL	1
11	PAFZZ	0AK42	160260-76540	•• SPRING, HELICAL, TORS	1
12	XDFZZ	0AK42	714260-76830	•• CASE, STARTER	1
13	PAFZZ	0AK42	160260-76630	•• STARTER ROPE, ENGINE	1
14	PAFZZ	0AK42	160260-76620	•• HANDLE, STARTING ROP	1
15	PAFZZ	80204	B18231B06012N	SCREW, CAP, HEXAGON H FLANGED, 6 MM X 12, PLATED	3
16	XDFZZ	0AK42	114250-76590	• PULLY, STARTER	1

END OF FIGURE

TM 10-4320-309-24P
TM 4320-24P/2

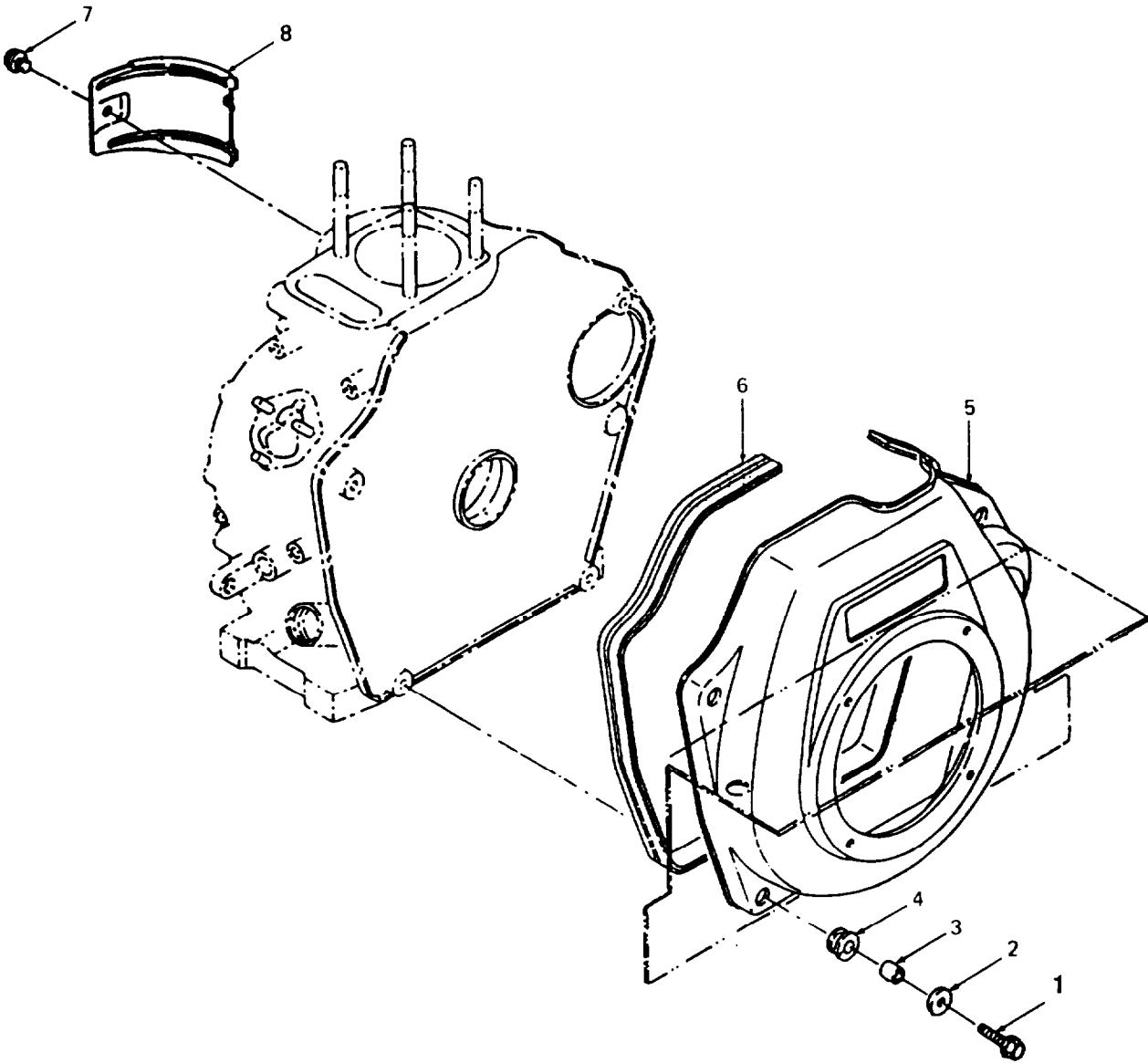


Figure 13. Flywheel Case

(1) ITEM NO	(2) SMR CODE	(3)	(4) PART NUMBER	(5) DESCRIPTION AND USABLE ON CODES (UOC)	(6) QTY
-------------------	--------------------	-----	-----------------------	--	------------

GROUP 08 FLYWHEEL CASE

FIG. 13 FLYWHEELCASE

1	PAFZZ	61080	50025900	.SCREW,CAP,HEXAGON H FLANGED, 6 MM..... X 25	4
2	PAFZZ	OAK42	160120-76940	.WASHER,FLAT	4
3	PBFZZ	OAK42	114250-45310	.COUPLING,CLAMP,GROO	4
4	PBFZZ	OAK42	114250-45300	.RETAINER,ENGINE.....	4
5	PBFZZ	OAK42	114260-45101	.HOUSING, FLYWHEEL.....	1
6	PAFZZ	OAK42	114250-45330	.SEAL,PLAIN ENCASED.....	1
7	PAOZZ	OAK42	26476-060142	.BOLT,MACHINE FLANGED, 6 MM X 14.....	1
8	PBFZZ	OAK42	114250-45211	.COVER,ACCESS	1

END OF FIGURE

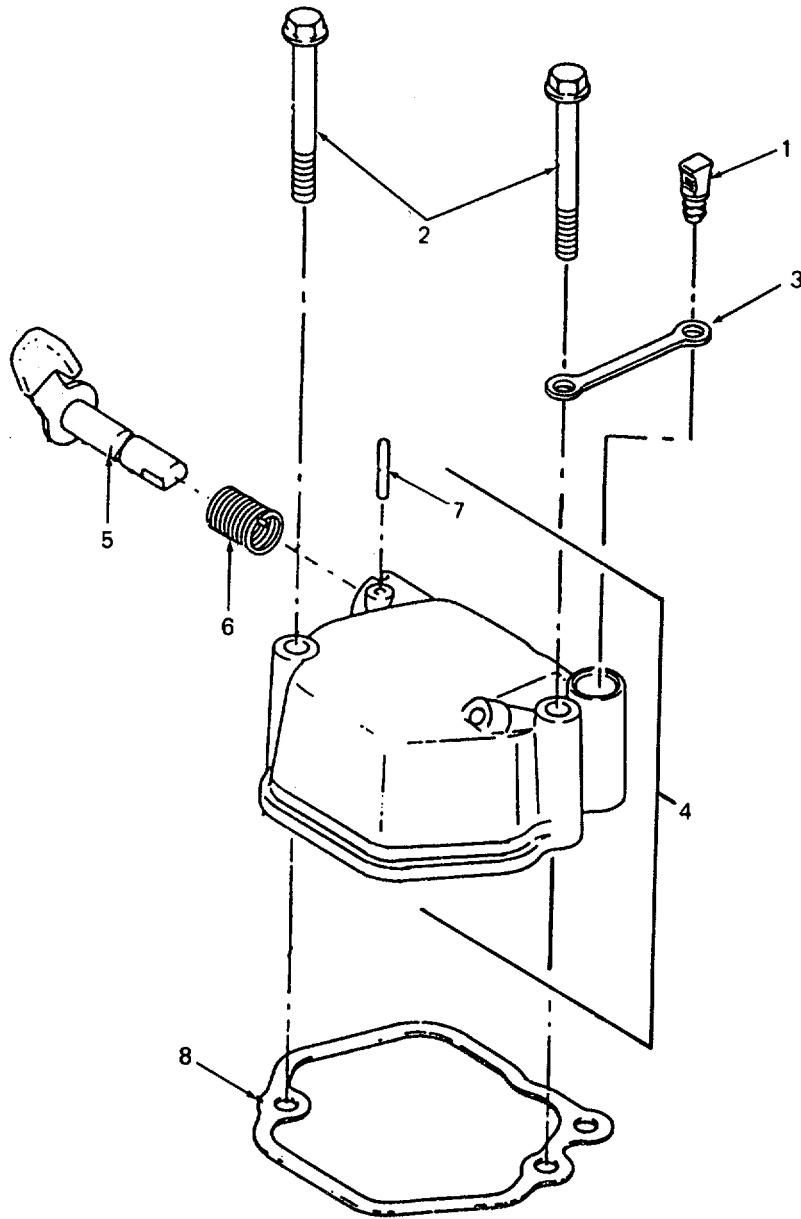


Figure 14. Cylinder Head Cover

SECTION II

TM 10-4320-309-24P C01
 TM 4320-24P/2

(1) ITEM NO	(2) SMR CODE	(3) CAGEC CAGEC	(4) PART NUMBER	(5) DESCRIPTION AND USABLE ON CODES (UOC)	(6) QTY
GROUP 09 CYLINDER HEAD ASSEMBLY					
FIG. 14 CYLINDER HEAD COVER					
1	XDOZZ	0AK42	114250-76600	• PLUNGER	1
2	PAHZZ	0AK42	26106-060552	BOLT, MACHINE FLANGED, 6 MM X 55, • PLATED	2
3	XDOZZ	0AK42	114250-76610	• HOLDER	1
4	XDFZZ	0AK42	114250-11951	• COVER ASSEMBLY, CYLINDER HEAD	1
5	XDHZZ	0AK42	114250-03591	•• LEVER, DECOMPRESSION	1
6	XDHZZ	0AK42	114250-03640	•• SPRING	1
7	XBHZZ	0AK42	22312-030160	•• PIN, STRAIGHT, HEADLE 3 MM X 16	1
8	PAOZZ	0AK42	114250-11310	• GASKET PART OF KIT P/N 714250-92600 . .	1

END OF FIGURE

TM 10-4320-309-24P
TM 4320-24P/2

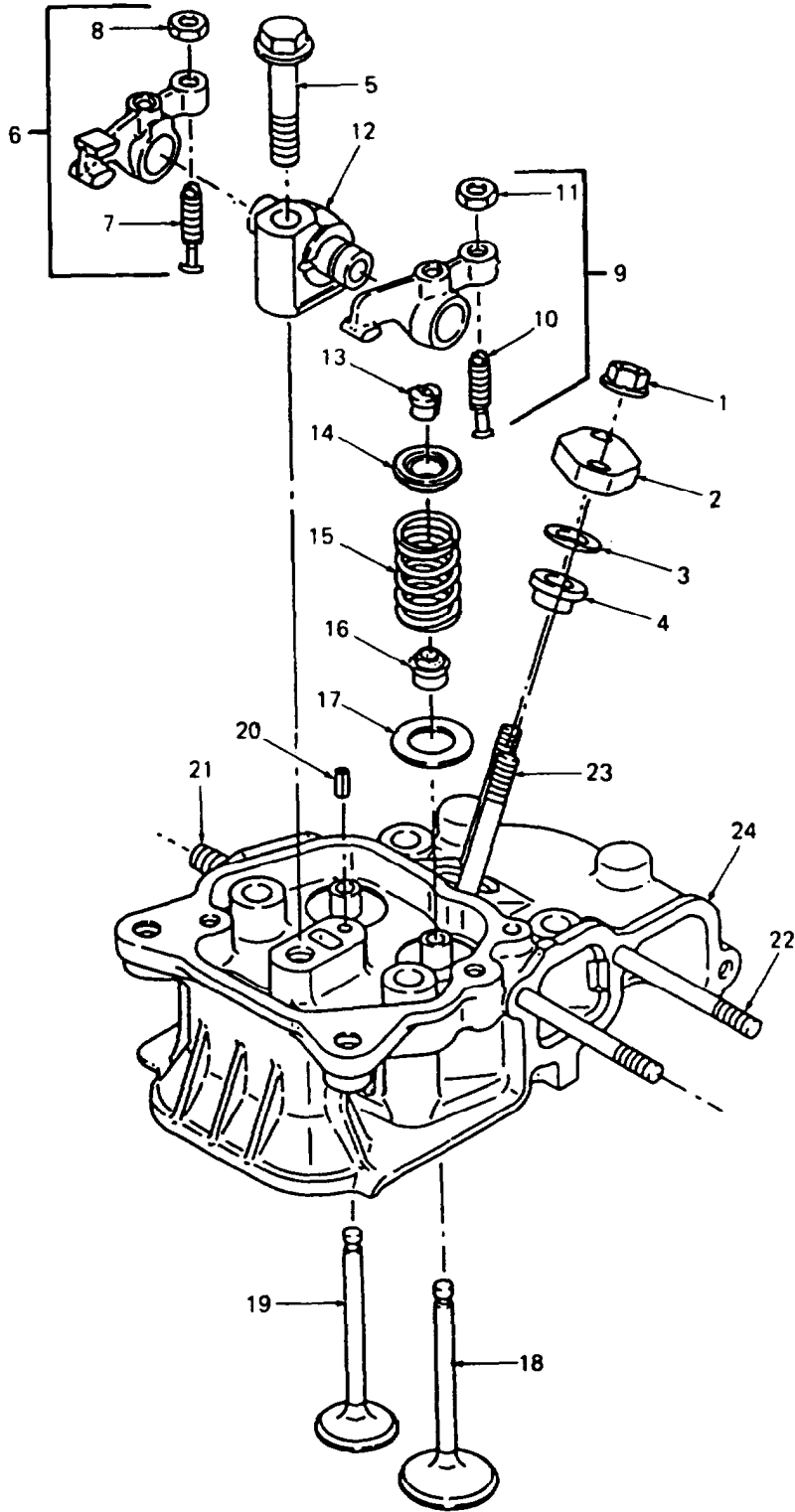


Figure 15. Cylinder Head Components

SECTION II

TM 10-4320-309-24P C01
 TM 4320-24P/2

(1) ITEM NO	(2) SMR CODE	(3) CAGEC	(4) PART NUMBER	(5) DESCRIPTION AND USABLE ON CODES (UOC)	(6) QTY
GROUP 09 CYLINDER HEAD ASSEMBLY					
FIG. 15 CYLINDER HEAD COMPONENTS					
1	PAHZZ	0AK42	26366-060002	•NUT, PLAIN, HEXAGON FLANGED, 6 MM	2
2	PBHZZ	0AK42	114250-11900	•RETAINER, DIESEL ENG	1
3	PAHZZ	0AK42	114350-11470	•SPACER, SLEEVE	1
4	PAHZZ	0AK42	114250-11460	•GASKET PART OF KIT P/N 714250-92600	1
5	PAHZZ	0AK42	26106-080452	BOLT, MACHINE FLANGED, 8 MM X 40, PLATED	1
6	PAFZZ	0AK42	114250-11661	•ROCKER ARM, ENGINE P (EXHAUST)	1
7	XBHZZ	0AK42	114250-11240	••SCREW, VALVE (EXHAUST)	1
8	XBHZZ	0AK42	26756-060002	NUT, PLAIN, HEXAGON 6 MM, PLATED (EXHAUST)	1
9	XDHZZ	0AK42	114250-11651	•ARM ASSY, VALVE ROCKER (INTAKE)	1
10	PAHZZ	0AK42	114250-11240	••SCREW, VALVE (INTAKE)	1
11	XBHZZ	0AK42	26756-060002	NUT, PLAIN, HEXAGON 6 MM, PLATED (INTAKE)	1
12	XDHZZ	0AK42	114250-11290	•SUPPORT, ROCKER ARM	1
13	PAHZZ	0AK42	714250-11570	•LOCK, VALVE SPRING R	2
14	PAHZZ	0AK42	114250-11180	SEAT, HELICAL COMPRE	2
15	XDHZZ	0AK42	114250-11120	• SPRING, VALVE	2
16	PAHZZ	0AK42	114250-11340	PACKING, PREFORMED PART OF KIT P/N 714250-92600	2
17	XBHZZ	0AK42	114250-11600	•WASHER, FLAT	2
18	XDHZZ	0AK42	114250-11101	•VALVE, INTAKE	1
19	XDHZZ	0AK42	114250-11112	•VALVE, EXHAUST	1
20	XBHZZ	0AK42	22351-040008	•PIN, SPRING 4 MM X 8	1
21	XBHZZ	0AK42	26216-080182	•STUD, PLAIN 8 MM X 18, PLATED	2
22	PAHZZ	0AK42	26226-060552	•STUD, PLAIN 6 MM X 55	2
23	PAHZZ	0AK42	26226-060502	•STUD, PLAIN 6 MM X 50	2
24	XDHHH	0AK42	114250-11020	•CYLINDER HEAD, DIESE	1

END OF FIGURE

TM 10-4320-309-24P
TM 4320-24P/2

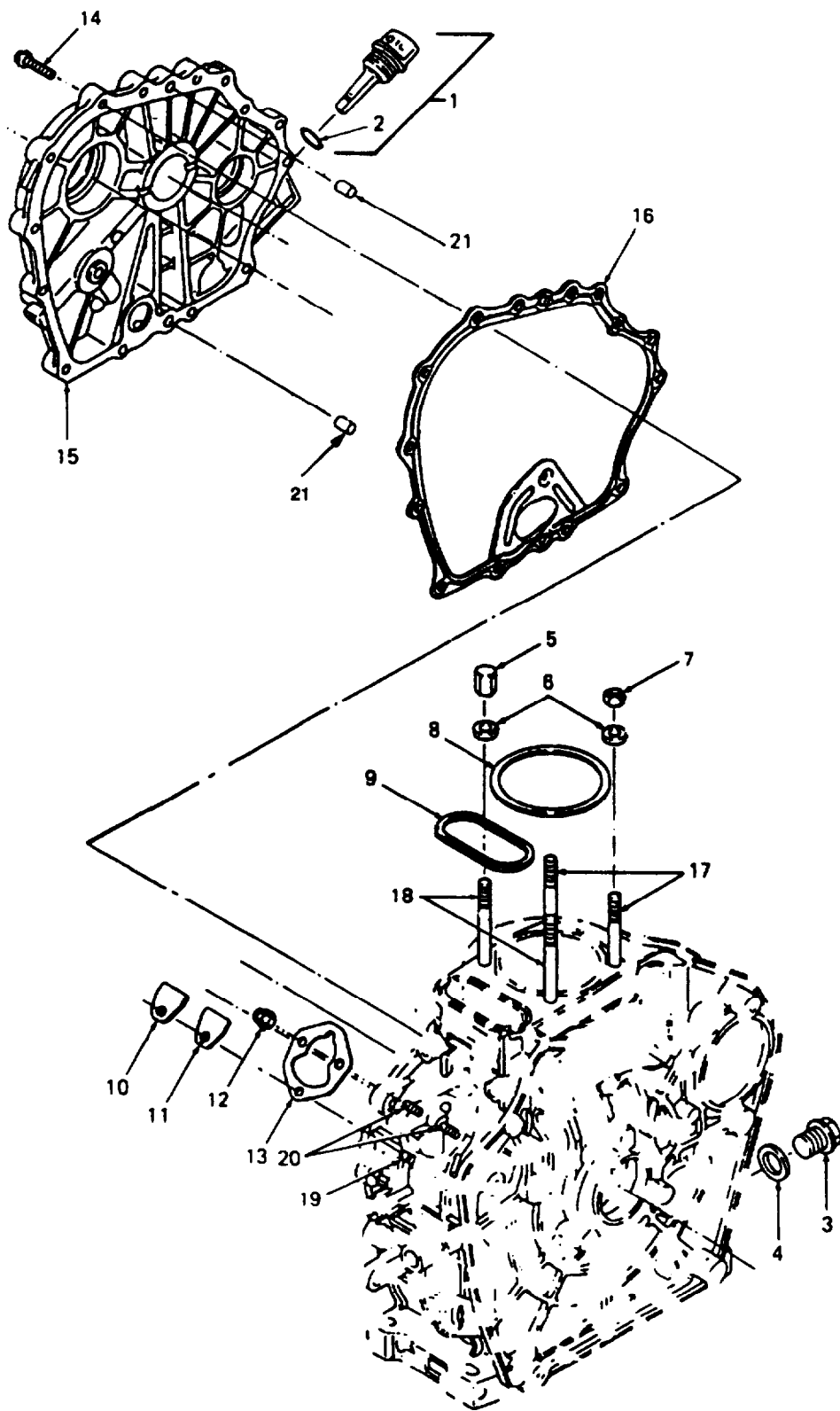


Figure 16. Crankcase Assembly

TM 10-4320-309-24P C01
TM 4320-24P12

SECTION II

(1) ITEM NO	(2) SMR CODE	(3) CAGEC	(4) PART NUMBER	(5) DESCRIPTION AND USABLE ON CODES (UOC)	(6) QTY
GROUP 10 CRANKCASE ASSEMBLY					
FIG. 16 CRANKCASE ASSEMBLY					
1	PAOZZ	0AK42	160710-01760	•CAP, FILLER OPENING	2
2	PAOZZ	0AK42	24311-000180	PACKING, PREFORMED PART OF KIT P/N 71250-92600	2
3	XDHZZ	0AK42	105425-01690	•PLUG, METRIC HEX FLANGED, 16 MM	1
4	PAHZZ	0AK42	43400-500490	•GASKET PART OF KIT P/N 714250-92600	1
5	XBHZZ	0AK42	114250-01220	•NUT, PLAIN, HEXAGON 8 MM	2
6	XBHZZ	0AK42	124950-01250	WASHER, FLAT	4
7	PAHZZ	0AK42	114250-01250	•NUT, PLAIN, HEXAGON	2
8	PAHZZ	0AK42	114250-01340	GASKET HEAD PART OF KIT P/N 714250-92600	1
9	PAHZZ	0AK42	114250-01380	PACKING, PREFORMED PART OF KIT P/N 714250-92600	1
10	XDHZZ	0AK42	114250-01830	•COVER	1
11	PAHZZ	0AK42	114250-01840	•GASKET	1
12	PAHZZ	0AK42	26366-060002	•NUT, PLAIN, HEXAGON FLANGED, 6 MM	3
13	XBHZZ	0AK42	114250-01800	•SHIMSET	1
14	PAHZZ	62866	10512	SCREW, CAP, HEXAGON H FLANGED, 6 MM • 25, PLATED	14
15	XDHZZ	0AK42	114260-01452	•COVER, CRANKCASE	1
16	PAHZZ	0AK42	114250-01411	•GASKET PART OF KIT P/N 714250-92600	1
17	XDHZZ	0AK42	114250-01210	STUD, CYLINDER HEAD	2
18	XDHZZ	0AK42	114250-01200	• STUD, CYLINDER HEAD	2
19	XDHZZ	0AK42	26226-060182	•STUD 6MM X 18, PLATED	1
20	XDHZZ	0AK42	26226-060222	•STUD 6 MM X 22, PLATED	2
21	XDHZZ	0AK42	22312-080120	•PIN, PARALLEL 8 MM X 12	2

END OF FIGURE

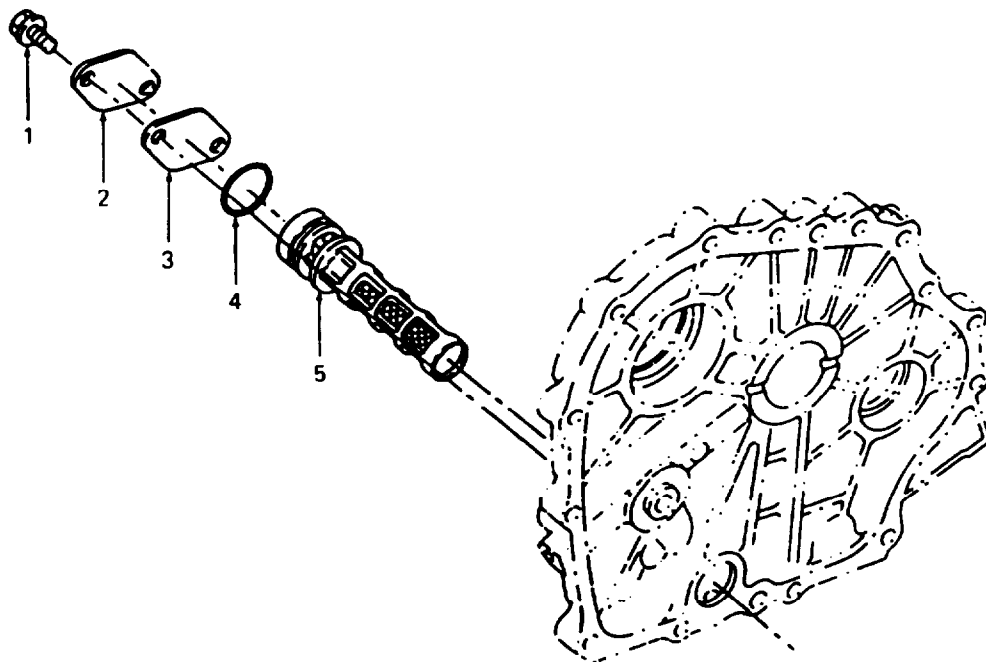


Figure 17. Lube Oil Strainer Assembly

SECTION II

TM 10-4320-309-24P
 TM 4320-24P/2

(1) ITEM NO	(2) SMR CODE	(3) FSCM	(4) PART NUMBER	(5) DESCRIPTION AND USABLE ON CODES (UOC)	(6) QTY
				GROUP 10 CRANKCASE ASSEMBLY	
				FIG. 17 LUBE OIL STRAINER ASSEMBLY	
1	PAHZZ	80204	B18231BO6012N	.SCREW,CAP,HEXAGON FLANGED, 6 MM X 12, PLATED	2
2	XDHZZ	OAK42	114250-35250	.COVER.....	1
3	XDHZZ	OAK42	114250-35270	.STRAINER,SEDIMENT PART OF KIT P/N..... 714250-92600.....	1
4	PAHZZ	OAK42	24341-000224	.PACKING,PREFORMED..	1
5	PAFZZ	OAK42	114250-35060	.FILTER,FLUID	1
END OF FIGURE					

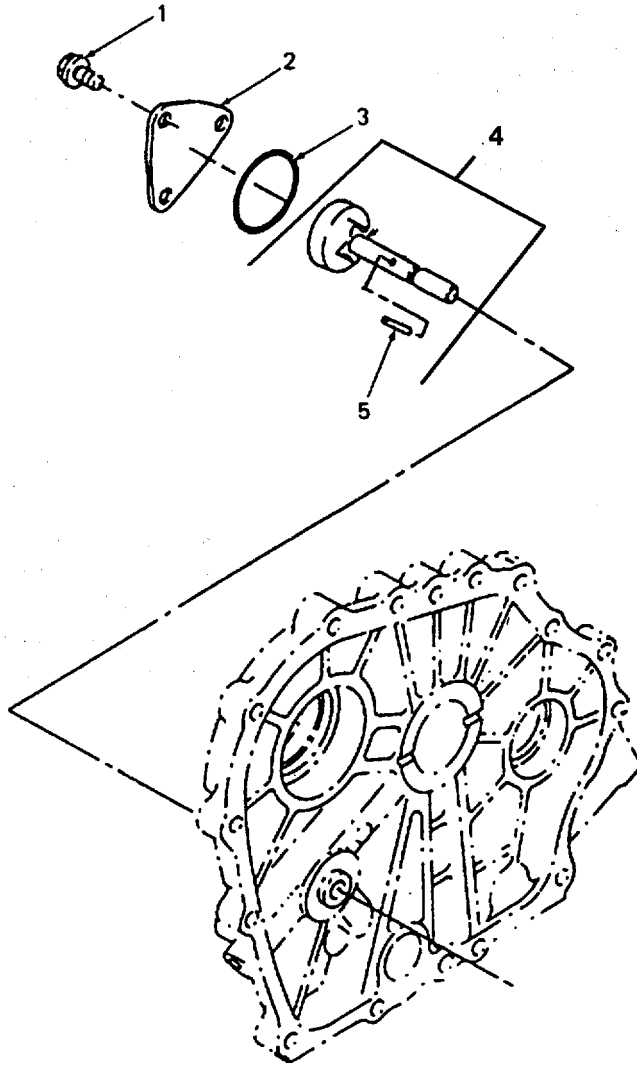


Figure 18. Lube Oil Pump Assembly

SECTION II

TM 10-4320-309-24P
 TM 4320-24P/2

(1) ITEM NO	(2) SMR CODE	(3) FSCM	(4) PART NUMBER	(5) DESCRIPTION AND USABLE ON CODES (UOC)	(6) QTY
GROUP 10 CRANKCASE ASSEMBLY					
FIG.18 LUBE OIL PUMP ASSEMBLY					
1	PAHZZ	OAK42	26476-060142	.BOLT,MACHINE FLANGED, 6 MM X 14.....	3
2	XBFZZ	OAK42	114250-32070	.COVER.....	1
3	PAFZZ	OAK42	103338-32570	.PACKING,PREFORMED OF KIT P/N.....	1
				714250-92600.....	
4	XDFZZ	OAK42	114250-32010	.PUMP ASSEMBLY, LUBE OIL	1
5	PAFZZ	OAK42	22312-030160	..PIN,STRAIGHT,HEADLE 6 MM X 14.....	1
	PAHZZ	OAK42	714250-92600	.KIT,GASKET SET.....	1
				GASKET (1) 5-5	
				GASKET (1) 10-5	
				GASKET (1) 11-17	
				GASKET (1) 14-8	
				GASKET (1) 15-4	
				GASKET (1) 16-4	
				GASKET (1) 16-8	
				GASKET (1) 16-16	
				PACKING,PREFORMED (1) 11-14	
				PACKING,PREFORMED (2) 15-16	
				PACKING,PREFORMED (2) 16-2	
				PACKING,PREFORMED (1) 16-9	
				PACKING,PREFORMED (1) 18-3	
				STRAINER,SEDIMENT (1) 17-3	
END OF FIGURE					

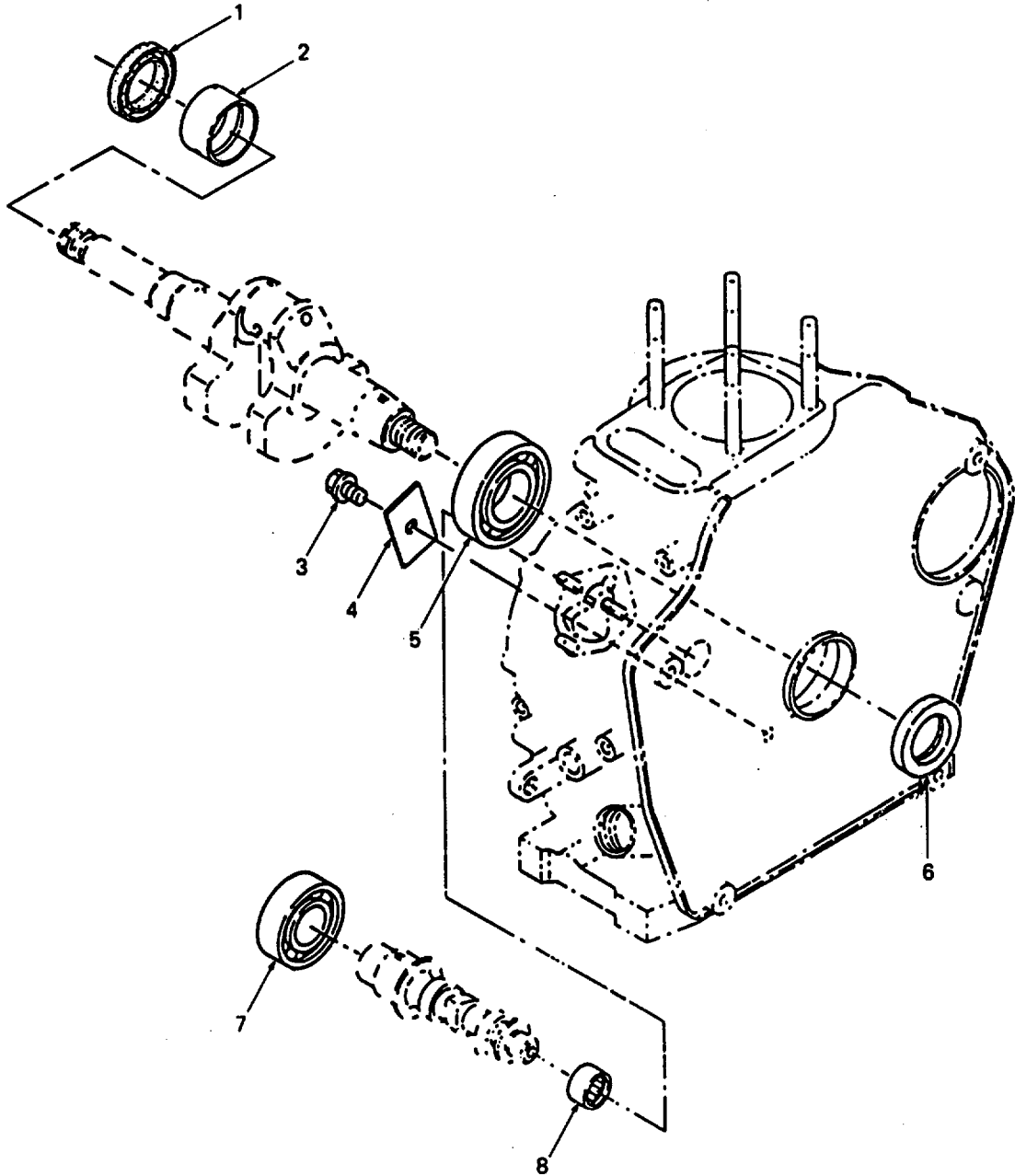


Figure 19. Crankcase Bearings

SECTION II

TM 10-4320-309-24P
 TM 4320-24P/2

(1) ITEM NO	(2) SMR CODE	(3) FSCM	(4) PART NUMBER	(5) DESCRIPTION AND USABLE ON CODES (UOC)	(6) QTY
				GROUP 10 CRANKCASE ASSEMBLY	
				FIG. 19 CRANKCASE BEARINGS	
1	PAHZZ	OAK42	160210-02220	.SEAL,PLAIN ENCASED	1
2	PAHZZ	OAK42	114250-02100	.BEARING,SLEEVE.....	1
3	PAHZZ	OAK42	26106-080122	.BOLT,MACHINE FLANGED, 8 MM X 12,.....	1
				PLATED.....	
4	PAHZZ	OAK42	114250-02030	.RETAINER,BALL,BEARI	1
5	PAHZZ	OAK42	114250-02113	.BEARING,BALL,ANNULA.....	1
6	PAHZZ	OAK42	160110-02220	.SEAL,PLAIN ENCASED	1
7	PAHZZ	OAK42	24101-062050	.BEARING,BALL,ANNULA.....	1
8	XDHZZ	OAK42	24162-152112	.BEARING, NEEDLE	1
				END OF FIGURE	

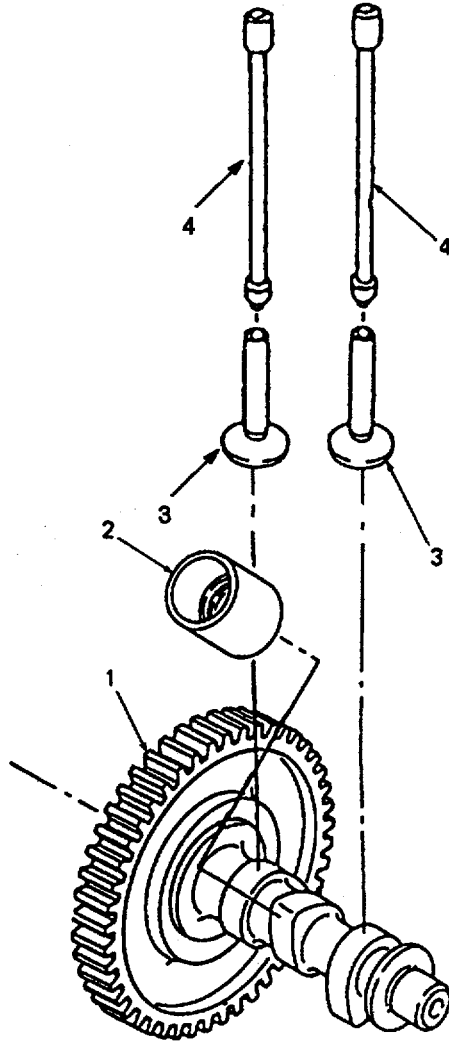


Figure 20. Camshaft Assembly

SECTION II

TM 10-4320-309-24P
 TM 4320-24P/2

(1) ITEM NO	(2) SMR CODE	(3) FSCM	(4) PART NUMBER	(5) DESCRIPTION AND USABLE ON CODES (UOC)	(6) QTY
				GROUP 10 CRANKCASE ASSEMBLY	
				FIG. 20 CAMSHAFT ASSEMBLY	
1	XDHZZ	OAK42	714260-14581	.CAMSHAFT.....	1
2	XDHZZ	OAK42	114250-14260	.TAPPET, FUEL.....	1
3	XDHZZ	OAK42	114250-14200	.TAPPET.....	2
4	XDHZZ	OAK42	114250-14450	.ROD,PUSH.....	2
END OF FIGURE					

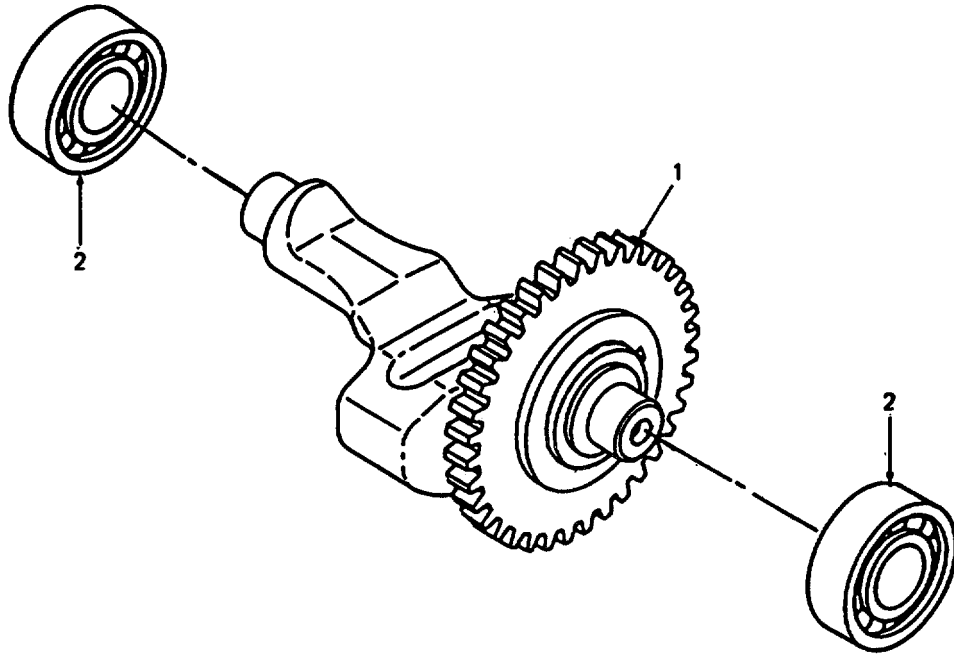


Figure 21. Balancer Shaft Assembly

SECTION II

TM 10-4320-309-24P
 TM 4320-24P/2

(1) ITEM NO	(2) SMR CODE	(3) FSCM	(4) PART NUMBER	(5) DESCRIPTION AND USABLE ON CODES (UOC)	(6) QTY
				GROUP10 CRANKCASE ASSEMBLY	
				FIG. 21 BALANCER SHAFT ASSEMBLY	
1	XDHZZ	OAK42	714250-28511	.SHAFT, BALANCER.....	1
2	PAHZZ	OAK42	24101-062024	.BEARING,BALL,ANNULA.....	2
END OF FIGURE					

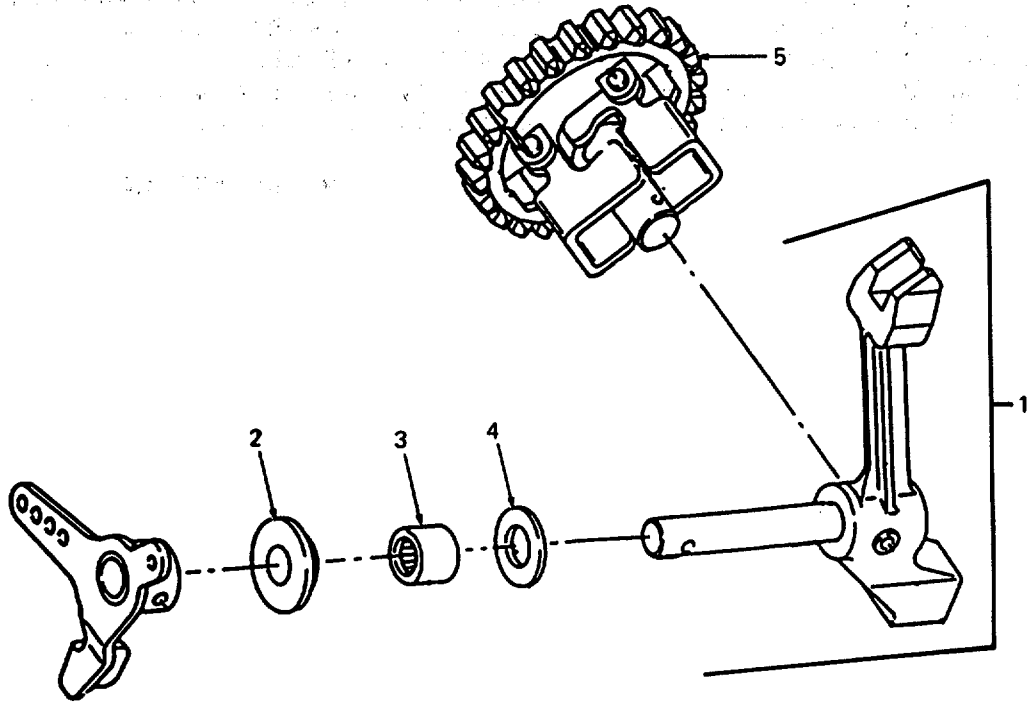


Figure 22. Governor Assembly

SECTION II

TM 10-4320-309-24P
 TM 4320-24P/2

(1) ITEM NO	(2) SMR CODE	(3) FSCM	(4) PART NUMBER	(5) DESCRIPTION AND USABLE ON CODES (UOC)	(6) QTY
				GROUP 11 GOVERNOR AND SPEED CONTROL DEVICE	
				FIG. 22 GOVERNOR ASSEMBLY	
1	XDOZZ	OAK42	714250-61500	.LEVER ASSEMBLY, GOVERNOR	1
2	XDHZZ	OAK42	114250-61900	..BUSHING, THRUST	1
3	XDHZZ	OAK42	121450-61520	..BEARING, NEEDLE	2
4	PAHZZ	OAK42	22137-080000	..WASHER,FLAT 8 MM	1
5	XDHZZ	OAK42	714250-61700	.GOVERNOR.....	1
				END OF FIGURE	

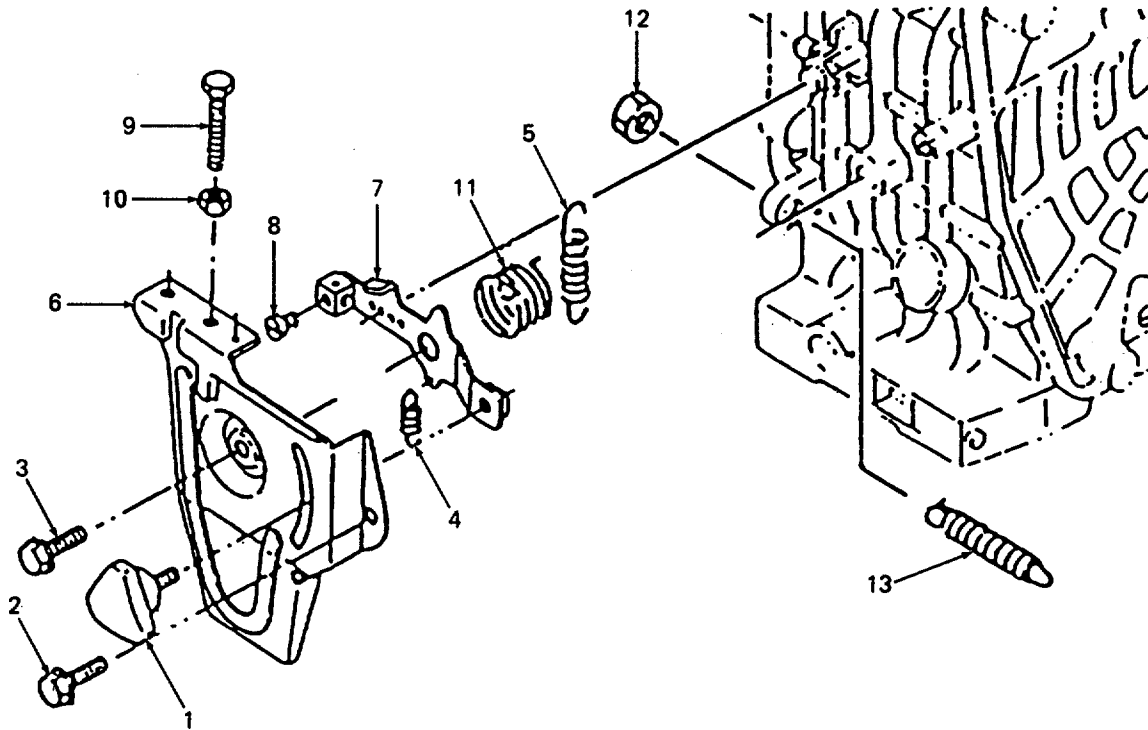


Figure 23. Speed Control and Regulator Assembly

TM 10-4320-309-24P C01
TM 4320-24P/2

SECTION II

(1) ITEM NO	(2) SMR CODE	(3) CAGEC CAGEC	(4) PART NUMBER	(5) DESCRIPTION AND USABLE ON CODES (UOC)	(6) QTY
GROUP 11 GOVERNOR AND SPEED CONTROL DEVICE					
FIG. 23 SPEED CONTROL AND REGULATOR ASSEMBLY					
1	XBHZZ	0AK42	160725-76350	• HANDLE, MANUAL CONTR 6MMX15.	1
2	PAHZZ	0AK42	26476-060142	• BOLT, MACHINE 6MM X14	1
3	PAHZZ	0AK42	26106-060202	BOLT, MACHINE 6 MM X 20	1
4	XDOZZ	0AK42	114250-66200	• SPRING, RETURN	1
5	XDHZZ	0AK42	114250-66010	• SPRING, REGULATOR	1
6	XDHZZ	0AK42	714268-66500	• BRACKET, REGULATOR	1
7	XDOZZ	0AK42	114250-66050	• HANDLE, REGULATOR	1
8	PAHZZ	0AK42	26116-040088	• BOLT, MACHINE 4 MM X8	1
9	PAHZZ	0AK42	114250-66440	• BOLT, MACHINE 6 MM	2
10	XBHZZ	0AK42	26756-060002	• NUT, PLAIN, HEXAGON	2
11	XBHZZ	0AK42	114252-66252	• SPRING, HELICAL, COMP	1
12	XBHZZ	0AK42	26696-100002	• NUT, PLAIN, HEXAGON 10 MM	1
13	XDHZZ	0AK42	114250-66550	• CONTROLLER	1

END OF FIGURE

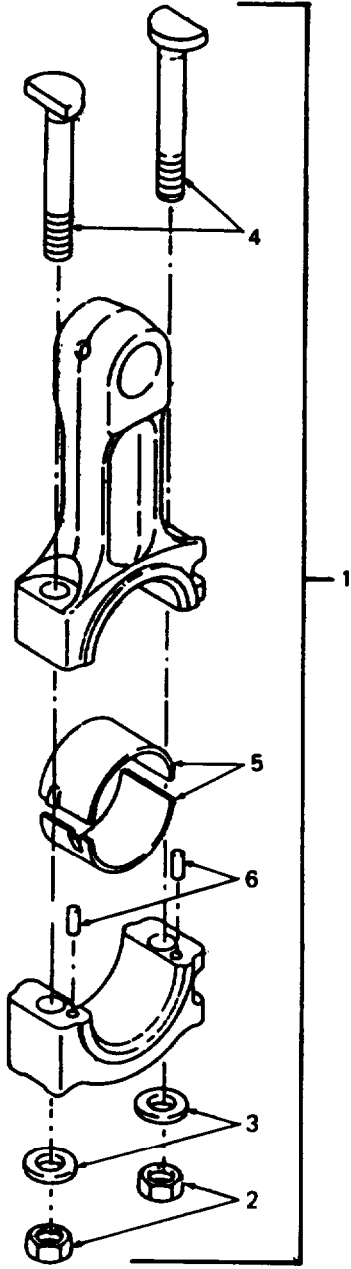


Figure 24. Connecting Rod Assembly

TM 10-4320-309-24P C01
TM 4320-24P/2

SECTION II

(1)	(2)	(3)	(4)	(5)	(6)
ITEM	SMR	CAGEC	PART	DESCRIPTION AND USABLE ON CODES (UOC)	QTY
NO	CODE	CAGEC	NUMBER		

GROUP 12 PISTON AND CONNECTING ROD
ASSEMBLY

FIG. 24 CONNECTING ROD ASSEMBLY

1	XBHZZ	0AK42	714250-23703	• CONNECTING ROD, PIST	1
2	XBHZZ	0AK42	114250-23220	• NUT, PLAIN, HEXAGON	2
3	PAHZZ	0AK42	114250-23250	•• WASHER, FLAT	2
4	PAHZZ	0AK42	114250-23200	•• BOLT, ROD	2
5	PAHZZ	0AK42	714250-23600	•• BEARING, SLEEVE	1
6	XBHZZ	0AK42	22312-030080	••PIN, STRAIGHT, HEADLE 3 MM X 8	2

END OF FIGURE

TM 10-4320-309-24F
TM 4320-24P12

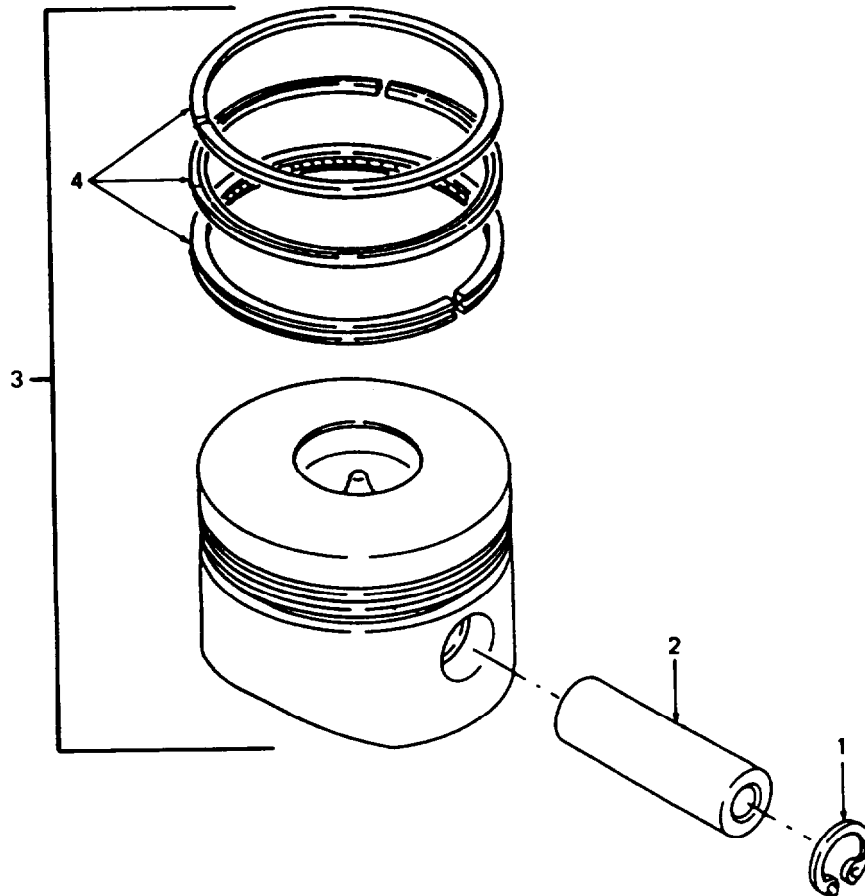


Figure 25. Piston Assembly

SECTION II

TM 10-4320-309-24P
 TM 4320-24P/2

(1) ITEM NO	(2) SMR CODE	(3) FSCM	(4) PART NUMBER	(5) DESCRIPTION AND USABLE ON CODES (UOC)	(6) QTY
				GROUP 12 PISTON AND CONNECTING ROD ASSEMBLY	
				FIG. 25 PISTON ASSEMBLY	
1	PAHZZ	OAK42	22252-000190	.RING,RETAINING	2
2	PAHZZ	OAK42	114250-22302	.PIN,PISTON	1
3	PAHHH	OAK42	714260-22720	.PISTON ASSEMBLY.....	1
4	PAHZZ	OAK42	714250-22502	..RING SET,PISTON	1
				END OF FIGURE	

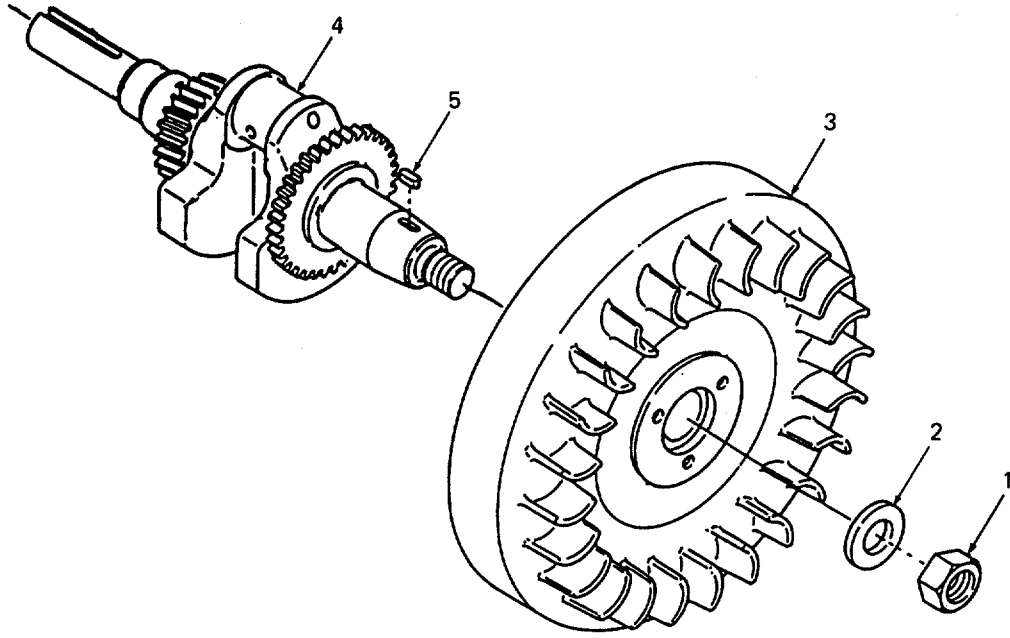


Figure 26. Flywheel and Crankshaft Assembly

SECTION II

(1) ITEM NO	(2) SMR CODE	(3) CAGEC CAGEC	(4) PART NUMBER	(5) DESCRIPTION AND USABLE ON CODES (UOC)	(6) QTY
GROUP 12 PISTON AND CONNECTING ROD ASSEMBLY					
FIG. 26 FLYWHEEL AND CRANKSHAFT ASSEMBLY					
1	PAHZZ	0AK42	103854-01221	• NUT, CRANKSHAFT	1
2	XBHZZ	0AK42	114250-21550	• WASHER, FLAT	1 ■
3	PAHZZ	0AK42	114260-21401	• FLYWHEEL, ENGINE	1
4	PBHZZ	0AK42	714268-21700	• CRANKSHAFT, ENGINE	1
5	XBHZZ	0AK42	22512-040120	• KEY, MACHINE 4 MM X 12	1 ■

END OF FIGURE

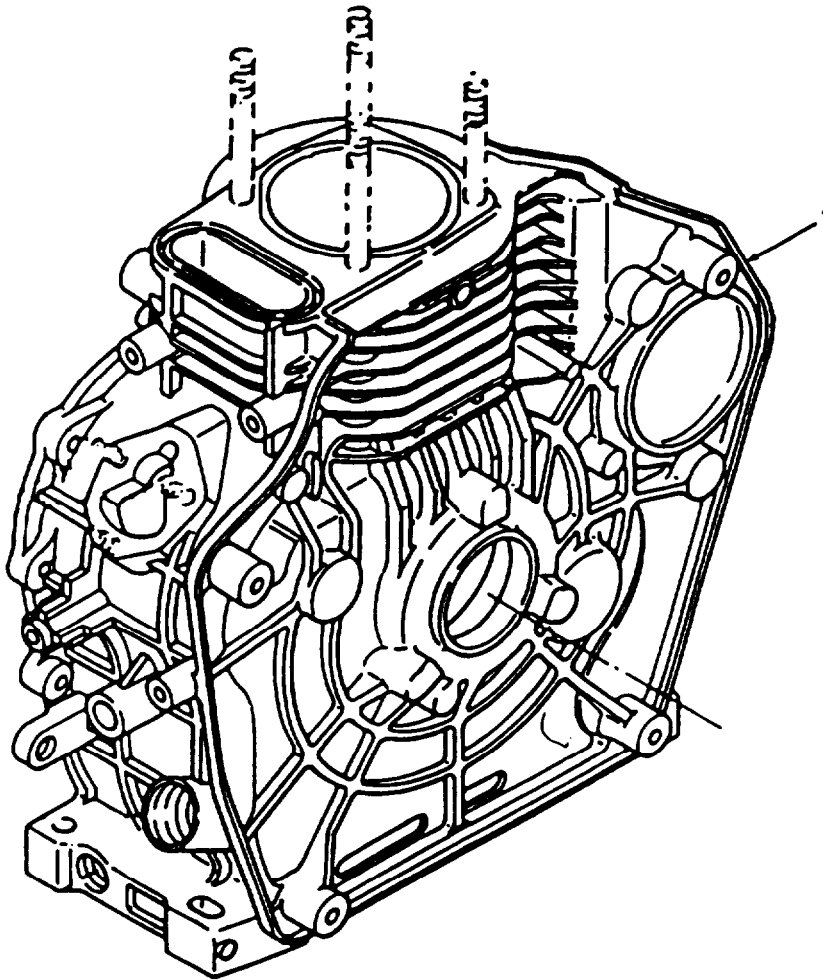


Figure 27. Crankcase Cylinder Block

SECTION II

TM 10-4320-309-24P
TM 4320-24P/2

(1) ITEM NO	(2) SMR CODE	(3) CAGEC	(4) PART NUMBER	(5) DESCRIPTION AND USABLE ON CODES (UOC) GROUP 12 PISTON AND CONNECTING ROD ASSEMBLY FIG.27 CRANKCASE CYLINDER BLOCK	(6) QTY
1	PBHHH	OAK42	714251-01563	.ENGINE BLOCK,DIESEL CRANKCASE.....	1

END OF FIGURE

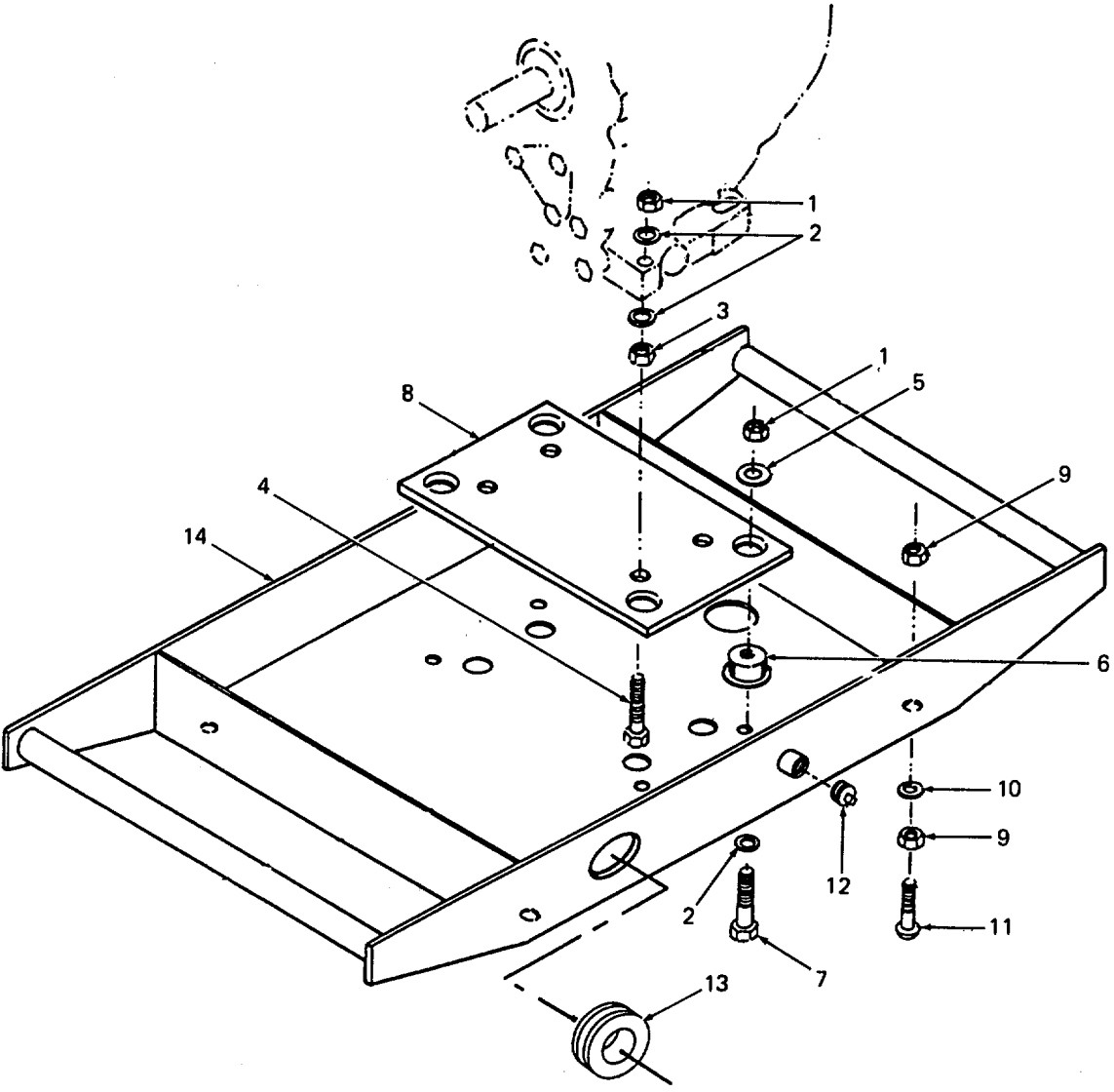


Figure 28. Frame Assembly

(1) ITEM NO	(2) SMR CODE	(3) CAGEC	(4) PART NUMBER	(5) DESCRIPTION AND USABLE ON CODES (UOC) GROUP 13 FRAME ASSEMBLY FIG. 28 FRAME ASSEMBLY	(6) QTY
1	PAFZZ	96906	MS17829-6C	NUT,SELF-LOCKING,HE	8
2	PAFZZ	96906	MS27183-14	WASHER,FLAT	12
3	PAFZZ	96906	MS51967-8	NUT.....	4
4	PAFZZ	81346	A-307	BOLT,HEX,TAP 0.375 X 16 UNC.....	4
S	XDFZZ	88044	AN970-7	WASHER,FLAT	4
6	PAFZZ	76005	J660-2	MOUNT,RESILIENT VIBRATION	4
7	PAFZZ	96906	MS90728-66	SCREW,CAP,HEXAGON H.....	4
8	XDFZZ	97403	13228E9865	PLATE, ENGINE BASE	1
9	PAFZZ	96906	MS51967-14	NUT,PLAIN,HEXAGON	8
10	PAFZZ	96906	MS27183-18	WASHER,FLAT	4
11	XDFZZ	96906	MS35751-127	BOLT,CARRIAGE HEAD ½ X 2 13UNC- 2A.....	4
12	PAFZZ	96906	MS20913-3J	PLUG,PIPE.....	1
13	PAFZZ	96906	MS35489-77	GROMMET,NONMETALLIC.....	1
14	XDFZZ	97403	13228E9866	FRAME.....	1

END OF FIGURE

SECTION II

TM 10-4320-309-24P
 TM 4320-24P/2

(1) ITEM NO	(2) SMR CODE	(3) CAGEC	(4) PART NUMBER	(5) DESCRIPTION AND USABLE ON CODES (UOC)	(6) QTY
GROUP 14 BULK MATERIALS					
FIG. BULK					
1	PAFZZ	81349	ASTMB209	ALUMINUM,SHEET .625 WIDE X .080..... THK.X 8 IN.,LONG.....	1
2	PAFZZ	62408	4100/763-1"	FOAM,ACOUSTICAL 1 INCH X 54 INCHES..... X 15 LINEAR YARDS	1
3	PAFZZ	62408	4100/763-2"	FOAM,ACOUSTICAL 2 INCHES X 54..... INCHES X 10 LINEAR YARDS.....	1
4	PAFZZ	7B735	A-703	HINGE,BUTT	1
5	PAHZZ	76371	70-125	HOSE,NONMETALLIC 1.250 INCH ID X 6..... FEET	1
6	PAHZZ	01276	1525-6	HOSE,NONMETALLIC.38 INCH ID X 6..... FEET	1
7	PAOZZ	96906	MS24629-58	SCREW,TAPPING.....	36

END OF FIGURE

BULK-1

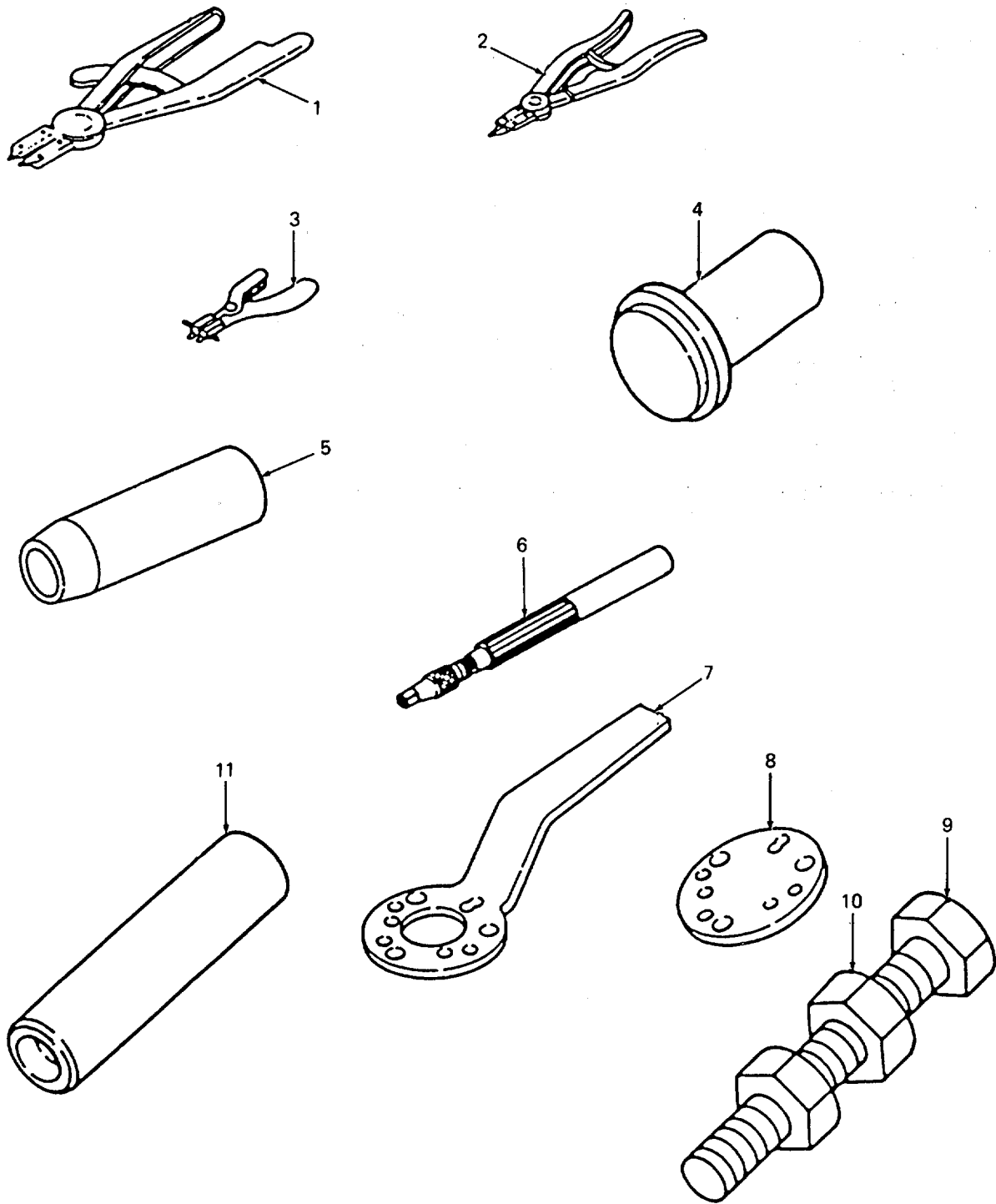


Figure 29. Special Tools (Sheet 1 of 2)

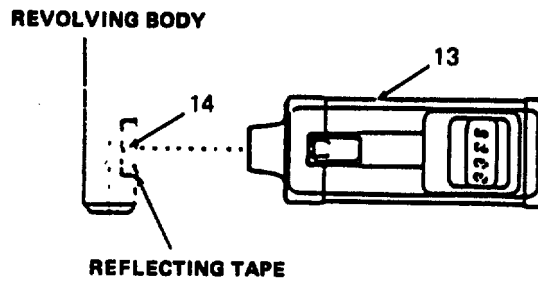
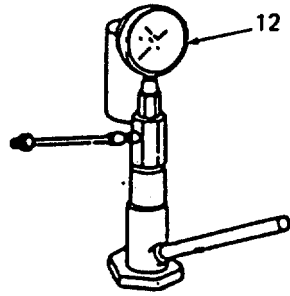


Figure 29. Special Tools (Sheet 2 of 2)

SECTION II

TM 10-4320-309-24P
 TM 4320-24P/2

(1) ITEM NO	(2) SMR CODE	(3) CAGEC	(4) PART NUMBER	(5) DESCRIPTION AND USABLE ON CODES (UOC) GROUP 15 SPECIAL TOOLS FIG. 29 SPECIAL TOOLS	(6) QTY
1	PEHZZ	OAK42	28190-000130	PLIERS,BORE.....	
2	PEHZZ	OAK42	28190-000020	PLIERS,SHAFT.....	
3	PEHZZ	OAK42	135410-92140	REMOVER,PISTON RING.....	
4	PEFZZ	OAK42	114250-92311	TOOL,FITTING,OIL SEAL.....	
5	PEFZZ	OAK42	114268-92300	GUIDE,FITTING,OIL SEAL.....	
6	PEHZZ	OAK42	28210-000010	TOOL,CLEANING, FUEL JET HOLE.....	
7	PEHZZ	OAK42	114250-92101	HANDLE,TIGHTENING FLYWHEEL.....	
8	PEHZZ	OAK42	114250-92121	EXTRACTOR,FLYWHEEL.....	
9	PEHZZ	OAK42	26116-060454	BOLT, MACHINE.....	
10	PEHZZ	OAK42	26716-060002	NUT,PLAIN,HEXAGON.....	
11	PEHZZ	OAK42	114250-92350	TOOL,FITTING.....	
12	PEHZZ	OAK42	737600-93502	TESTER,NOZZLE.....	
13	PEHZZ	OAK42	95500-001043	TACHOMETER.....	
14	PEHZZ	OAK42	9550-001041	TAPE ,REFLECTING.....	

END OF FIGURE

CROSS-REFERENCE INDEXES

NATIONAL STOCK NUMBER INDEX					
STOCK NUMBER	FIG.	ITEM	STOCK NUMBER	FIG.	ITEM
5305-00-052-6922	2	1	5310-01-322-8747	11	5
	BULK	7	3110-01-322-9532	21	2
5310-00-080-6004	28	2	3120-01-322-9560	24	5
4730-00-193-2707	11	12	2815-01-323-0286	25	2
5305-00-206-3689	4	25	2990-01-323-0307	12	2
5310-00-209-0786	2	2	2815-01-323-0351	24	1
5330-00-263-8015	4	19	2910-01-323-1274	8	7
4720-00-274-1154	BULK	6	2990-01-323-1322	12	14
5325-00-290-3777	28	13	2815-01-323-1352	15	13
5310-00-483-8790	28	1	5330-01-323-1551	9	9
5310-00-483-8792	2	36	5340-01-323-2486	BULK	4
5320-00-493-4101	2	9	5310-01-323-2683	6	17
	2	30	5330-01-323-2728	16	2
5330-00-551-3963	4	27	2815-01-323-3074	26	4
4730-00-580-6740	28	12	2940-01-323-3289	11	3
5310-00-655-9545	3	3	4820-01-323-5034	6	22
5365-00-712-5972	4	23	5307-01-323-5503	15	23
533P-00-712-7730	4	21	5307-01-323-5504	15	22
5310-00-712-7731	4	24	5340-01-323-7785	6	12
5310-00-732-0560	4	16	5340-01-323-7844	7	3
5310-00-768-0318	28	9	5340-01-323-7845	7	1
5305-00-782-9489	28	7	5360-01-324-3997	8	3
4320-00-790-6357	4	28	5360-01-324-3998	12	9
5330-00-792-6213	4	14	5360-01-324-3999	12	7
4320-00-792-8187	4	22	5360-01-324-4000	12	11
5340-00-792-8233	28	6	5340-01-324-4010	2	23
5310-00-809-5998	4	17	3120-01-324-5762	19	2
	28	10	5330-01-324-8253	19	1
5310-00-880-7746	4	9	5330-01-324-8254	19	6
5320-00-904-4136	2	21	5330-01-324-8279	18	3
5305-00-988-1726	2	35	5330-01-324-8287	11	17
4820-00-991-6517	4	11	3110-01-324-8815	19	7
5307-01-013-7888	4	33	5330-01-324-8831	15	16
5307-01-016-4423	4	34	5340-01-324-8850	15	14
5340-01-087-4612	2	22	2815-01-324-9200	13	4
6685-01-160-8579	11	10	5330-01-325-5806	6	11
5305-01-163-5075	10	7	5330-01-325-5810	6	23
	12	1	5330-01-325-5821	6	10
4730-01-303-1244	4	1	2990-01-325-8264	12	13
2940-01-310-4495	11	7	5330-01-326-2669	5	5
4730-01-310-6800	17	5		16	4
5330-01-318-8200	6	21	5330-01-326-4773	11	14
4730-01-322-4980	5	4	5330-01-326-4780	10	5
4730-01-322-4981	5	2	5330-01-326-8017	17	4
5310-01-322-8607	10	3	5330-01-326-8021	15	4
5360-01-322-8628	9	15	5330-01-326-8022	14	8
5360-01-322-8629	9	3	5310-01-327-0778	11	4
5365-01-322-8679	25	1	4240-01-327-4604	6	20
5365-01-322-8692	15	3	4240-01-328-4878	6	14
5310-01-322-8696	6	18	5330-01-330-9564	13	6

CROSS-REFERENCE INDEXES

STOCK NUMBER	FIG.	NATIONAL STOCK NUMBER INDEX		FIG.	ITEM
		ITEM	STOCK NUMBER		
5330-01-330-9612	6	13			
4330-01-353-7628	10	9			
5340-01-359-6858	16	1			

CROSS-REFERENCE INDEXES

CAGEC	PART NUMBER	PART NUMBER INDEX STOCK NUMBER	FIG.	ITEM
81346	A-307		28	4
7B735	A-703	5340-01-323-2486	BULK	4
80204	ANSI 50	B16.3CLASS1	4	6
03950	ANSIB18.6.3 1/4- 20UNC3A 1/2L		4	12
88044	AN970-7		28	5
81349	ASTMB209		BULK	1
14180	A3775	4820-00-991-6517	4	11
80204	B18231B06012N		10	4
			12	15
			17	1
01276	FJ9068-0606S	4730-01-322-4981	5	2
14180	FP4144		4	18
14180	FP4146		4	10
76005	J660-2	5340-00-792-8233	28	6
96906	MS15795-718	5310-00-655-9545	3	3
96906	MS17829-4C	5310-00-483-8792	2	36
96906	MS17829-6C	5310-00-483-8790	28	1
96906	MS20066-163		4	30
96906	MS20230A4		3	2
96906	MS20913-3J	4730-00-580-6740	28	12
96906	MS24629-58	5305-00-052-6922	2	1
			BULK	7
96906	MS27183-14	5310-00-080-6004	28	2
96906	MS27183-18	5310-00-809-5998	4	17
			28	10
96906	MS29513-253	5330-00-551-3963	4	27
96906	MS29513-273	5330-00-263-8015	4	19
96906	MS35198-70	5305-00-206-3689	4	25
96906	MS35206-282	5305-00-988-1726	2	35
96906	MS35335-33	5310-00-209-0786	2	2
96906	MS35489-77	5325-00-290-3777	28	13
96906	MS35751-127		28	11
96906	MS51846-162		4	3
96906	MS51846-6	4730-00-193-2707	11	12
96906	MS51864-103-18	5307-01-013-7888	4	33
96906	MS51864-106-20	5307-01-016-4423	4	34
96906	MS51952-9		4	2
96906	MS51953-61		4	7
96906	MS51967-14	5310-00-768-0318	28	9
96906	MS51967-8		28	3
96906	MS51968-14	5310-00-732-0560	4	16
96906	MS51968-5	5310-00-880-7746	4	9
96906	MS90726-45		4	20
96906	MS90728-66	5305-00-782-9489	28	7
81349	M24243/1-B403	5320-00-904-4136	2	21
81349	M24243/1-B604	5320-00-493-4101	2	9
			2	30
18265	RAX-00-2350	6685-01-160-8579	11	10
14180	T22719A	5365-00-712-5972	4	23

CROSS-REFERENCE INDEXES

CAGEC	PART NUMBER	PART NUMBER INDEX STOCK NUMBER	FIG.	ITEM
14180	T22719B	5310-00-712-7731	4	24
14180	T22720	5330-00-712-7730	4	21
81348	WW-C-440TYPE-D		10	1
81348	WW-P-471-A-A-BU- H		4	4
81348	WW-P-471-B-D-BD- DC		4	31
01276	07.021-10-6	4730-01-322-4980	5	4
OAK42	103338-32570	5330-01-324-8279	18	3
OAK42	103854-01221		26	1
56161	10503971	5305-01-163-5075	10	7
			12	1
62866	10512		11	15
			16	14
OAK42	105425-01690		16	3
OAK42	105546-51020	5330-01-323-1551	9	9
OAK42	105546-51330	5360-01-322-8629	9	3
OAK42	106990-44660	5340-01-323-7845	7	1
OAK42	114250-01200		16	18
OAK42	114250-01210		16	17
OAK42	114250-01220		16	5
OAK42	114250-01250		16	7
OAK42	114250-01340		16	8
OAK42	114250-01380		16	9
OAK42	114250-01411		16	16
OAK42	114250-01800		16	13
OAK42	114250-01830		16	10
OAK42	114250-01840		16	11
OAK42	114250-02030		19	4
OAK42	114250-02100	3120-01-324-5762	19	2
OAK42	114250-02113		19	5
OAK42	114250-03591		14	5
OAK42	114250-03640		14	6
OAK42	114250-11020		15	24
OAK42	114250-11101		15	18
OAK42	114250-11112		15	19
OAK42	114250-11120		15	15
OAK42	114250-11180	5340-01-324-8850	15	14
OAK42	114250-11240		15	7
			15	10
OAK42	114250-11290		15	12
OAK42	114250-11310	5330-01-326-8022	14	8
OAK42	114250-11340	5330-01-324-8831	15	16
OAK42	114250-11460	5330-01-326-8021	15	4
OAK42	114250-11600		15	17
OAK42	114250-11651		15	9
OAK42	114250-11661		15	6
OAK42	114250-11900		15	2
OAK42	114250-11951		14	4
OAK42	114250-12010		11	16
OAK42	114250-12200	5330-01-324-8287	11	17

CROSS-REFERENCE INDEXES

CAGEC	PART NUMBER	PART NUMBER INDEX STOCK NUMBER	FIG.	ITEM
OAK42	114250-12210	5330-01-326-4773	11	14
OAK42	114250-12520		11	6
OAK42	114250-12550	5310-01-327-0778	11	4
OAK42	114250-12560	5310-01-322-8747	11	5
OAK42	114250-12580	2940-01-310-4495	11	7
OAK42	114250-13200	5330-01-326-4780	10	5
OAK42	114250-13521		10	6
OAK42	114250-13531	4330-01-353-7628	10	9
OAK42	114250-13701		10	8
OAK42	114250-14200		20	3
OAK42	114250-14260		20	2
OAK42	114250-14450		20	4
OAK42	114250-21550		26	2
OAK42	114250-22302	2815-01-323-0286	25	2
OAK42	114250-23200		24	4
OAK42	114250-23220		24	2
OAK42	114250-23250		24	3
OAK42	114250-32010		18	4
OAK42	114250-32070		18	2
OAK42	114250-35060	4730-01-310-6800	17	5
OAK42	114250-35250		17	2
OAK42	114250-35270		17	3
OAK42	114250-45211		13	8
OAK42	114250-45300	2815-01-324-9200	13	4
OAK42	114250-45310		13	3
OAK42	114250-45330	5330-01-330-9564	13	6
OAK42	114250-51080		9	10
OAK42	114250-51150		9	12
OAK42	114250-51160	5360-01-322-8628	9	15
OAK42	114250-51180		9	7
OAK42	114250-51190		9	8
OAK42	114250-51200		9	6
OAK42	114250-51300		9	4
OAK42	114250-51340		9	2
OAK42	114250-51600		9	13
OAK42	114250-51640		9	17
OAK42	114250-51650		9	16
OAK42	114250-53001	2910-01-323-1274	8	7
OAK42	114250-53080		8	2
OAK42	114250-53120	5360-01-324-3997	8	3
OAK42	114250-53130		8	4
OAK42	114250-53140		8	5
OAK42	114250-53210		8	6
OAK42	114250-53300		8	9
OAK42	114250-53331		8	10
OAK42	114250-53400		8	8
OAK42	114250-55041		6	9
OAK42	114250-55050	5330-01-325-5821	6	10
OAK42	114250-55060	5330-01-325-5806	6	11
OAK42	114250-55100	4240-01-328-4878	6	14
OAK42	114250-55130	5330-01-318-8200	6	21

CROSS-REFERENCE INDEXES

CAGEC	PART NUMBER	PART NUMBER INDEX STOCK NUMBER	FIG.	ITEM
OAK42	114250-55200		6	8
OAK42	114250-55211		6	6
OAK42	114250-55300	4820-01-323-5034	6	22
OAK42	114250-59050		7	2
OAK42	114250-59060		7	4
OAK42	114250-59800		7	5
OAK42	114250-61900		22	2
OAK42	114250-66010		23	5
OAK42	114250-66050		23	7
OAK42	114250-66200		23	4
OAK42	114250-66440		23	9
OAK42	114250-66550		23	13
OAK42	114250-76590		12	16
OAK42	114250-76600		14	1
OAK42	114250-76610		14	3
OAK42	114250-92101		29	7
OAK42	114250-92121		29	8
OAKC2	114250-92311		29	4
OAK42	114250-92350		29	11
OAK42	114252-55241		6	4
OAK42	114252-55800	5310-01-323-2683	6	17
OAK42	114252-66252		23	11
OAK42	114260-01452		16,	15
OAK42	114260-21401		26	3
OAK42	114260-45101		13	5
OAK42	114268-21010		5	1
OAK42	114268-92300		29	5
OAK42	114350-11470	5365-01-322-8692	15	3
OAK42	114350-55120	4240-01-327-4604	6	20
OAK42	114350-55150		6	16
OAK42	114650-55810		6	2
OAK42	121450-61520		22	3
OAK42	124550-51350		9	5
OAK42	124722-59050		6	15
		5340-01-323-7844	7	3
OAK42	124950-01250		16	6
97403	13200E8803		4	35
97403	13200E8804		4	29
97403	13200E8808	4320-00-792-8187	4	22
97403	13200E8811		4	13
97403	13200E8812		4	15
97403	13200E8813	5330-00-792-6213	4	14
97403	13200E8815		4	26
97403	13217E1975-1		1	2
97403	13218E0468-227		4	5
97403	13228E9848		2	24
97403	13228E9848-1		2	31
97403	13228E9848-10		2	25
97403	13228E9848-2		2	28
97403	13228E9848-3		2	34
97403	13228E9848-4		2	33

CROSS-REFERENCE INDEXES

CAGEC	PART NUMBER	PART NUMBER INDEX STOCK NUMBER	FIG.	ITEM
97403	13228E9848-6		2	32
97403	13228E9848-7		2	29
97403	13228E9848-8		2	27
97403	13228E9848-9		2	26
97403	13228E9852		2	27
97403	13228E9852-1		2	16
97403	13228E9852-10		2	13
97403	13228E9852-11		2	15
97403	13228E9852-12		2	20
97403	13228E9852-13		2	11
97403	13228E9852-14		2	8
97403	13228E9852-15		2	7
97403	13228E9852-16		2	6
97403	13228E9852-17		2	5
97403	13228E9852-19		2	17
97403	13228E9852-20		2	4
97403	13228E9852-3		2	12
97403	13228E9852-4		2	10
97403	13228E9852-5		2	19
97403	13228E9852-6		2	14
97403	13228E9852-7		2	18
97403	13228E9852-9	5340-01-087-4612	2	22
97403	13228E9856		1	5
97403	13228E9857		1	4
97403	13228E9859		10	2
97403	13228E9860		2	37
97403	13228E9860-1		2	38
97403	13228E9860-2		2	39
97403	13228E9860-3		2	40
97403	13228E9862		11	2
97403	13228E9863		11	8
97403	13228E9864		3	1
97403	13228E9865		28	8
97403	13228E9866		28	14
97403	13228E9867		1	1
97403	13228E9868		1	3
97403	13228E9869		4	32
97403	13228E9870		4	8
OAK42	135410-92140		29	3
01276	1525-6		5	3
		4720-00-274-1154	BULK	6
OAK42	160110-02220	5330-01-324-8254	19	6
OAK42	160120-76940		13	2
OAK42	160210-02220	5330-01-324-8253	19	1
OAK42	160260-76520		12	10
OAK42	160260-76530		12	8
OAK42	160260-76540	5360-01-324-4000	12	11
OAK42	160260-76550		12	4
OAK42	160260-76560	5360-01-324-3998	12	9
OAK42	160260-76580		12	6
OAK42	160260-76590		12	5

CROSS-REFERENCE INDEXES

CAGEC	PART NUMBER	PART NUMBER INDEX STOCK NUMBER	FIG.	ITEM
OAK42	160260-76600		12	3
OAK42	160260-76620	2990-01-323-1322	12	14
OAK42	160260-76630	2990-01-325-8264	12	13
OAK42	160290-76570	5360-01-324-3999	12	7
OAK42	160710-01760	5340-01-359-6858	16	1
OAK42	160725-78350		23	1
71286	20L01-I-1AA	5340-01-324-4010	2	23
93061	207P-2		11	11
OAK42	22117-060000	5310-01-322-8696	6	18
OAK42	22117-080000		6	3
OAK42	22137-080000		22	4
OAK42	22252-000190	5365-01-322-8679	25	1
OAK42	22312-030080		24	6
OAK42	22312-030160		14	7
			18	5
OAK42	22312-080120		16	21
OAK42	22351-020006		9	11
OAK42	22351-030008		9	14
OAK42	22351-040008		15	20
OAK42	22512-040120		26	5
OAK42	23414-120000	5330-01-330-9612	6	13
OAK42	23887-120002	5340-01-323-7785	6	12
OAK42	24101-062024	3110-01-322-9532	21	2
OAK42	24101-062050	3110-01-324-8815	19	7
OAK42	24162-152112		19	8
OAK42	24311-000180	5330-01-323-2728	16	2
OAK42	24341-000150	5330-01-325-5810	6	23
OAK42	24341-000224	5330-01-326-8017	17	4
OAK42	26106-060202		23	3
OAK42	26106-060552		14	2
OAK42	26106-080122		19	3
OAK42	26106-080452		6	1
			15	5
OAK42	26116-040088		23	8
OAK42	26116-060454		29	9
OAK42	26216-080182		15	21
OAK42	26226-060142		11	13
OAK42	26226-060182		16	19
OAK42	26226-060222		16	20
OAK42	26226-060502	5307-01-323-5503	15	23
OAK42	26226-060552	5307-01-323-5504	15	22
OAK42	26366-060002		6	19
			11	9
			15	1
			16	12
OAK42	26366-080002	5310-01-322-8607	10	3
OAK42	26476-060142		6	5
			13	7
			18	1
			23	2
OAK42	26696-100002		23	12

CROSS-REFERENCE INDEXES

CAGEC	PART NUMBER	PART NUMBER INDEX STOCK NUMBER	FIG.	ITEM
OAK42	26716-060002		29	10
OAK42	26756-060002		15	8
			15	11
			23	10
OAK42	28190-000020		29	2
OAK42	28190-000130		29	1
OAK42	28210-000010		29	6
30659	357-2NPT X 2 NP SH	4730-01-303-1244	4	1
62408	4100/763-1"		BULK	2
62408	4100/763-2"		BULK	3
OAK42	43400-500490	5330-01-326-2669	5	5
			16	4
61080	50025900		13	1
66295	54550050		11	1
76371	70-125		BULK	5
73680	70005-0012	4320-00-790-6357	4	28
OAK42	714250-11570	2815-01-323-1352	15	13
OAK42	714250-12560	2940-01-323-3289	11	3
OAK42	714250-22502		25	4
OAK42	714250-23600	3120-01-322-9560	24	5
OAK42	714250-23703	2815-01-323-0351	24	1
OAK42	714250-28511		21	1
OAK42	714250-51701		9	1
OAK42	714250-53101		8	1
OAK42	714250-61500		22	1
OAK42	714250-61700		22	5
OAK42	714250-92600		18	
OAK42	714251-01563		27	1
OAK42	714260-14581		20	1
OAK42	714260-22720		25	3
OAK42	714260-76820	2990-01-323-0307	12	2
OAK42	714260-76830		12	12
OAK42	714268-21700	2815-01-323-3074	26	4
OAK42	714268-66500		23	6
OAK42	714350-55711		6	7
OAK42	737600-93502		29	12
OAK42	9550-001041		29	14
OAK42	95500-001043		29	13

CROSS-REFERENCE INDEXES

FIGURE AND NUMBER INDEX
CAGEC

FIG.	ITEM	STOCK NUMBER	CAGEC	PART NUMBER
BULK	1		81349	ASTMB209
BULK	2		62408	4100/763-1"
BULK	3		62408	4100/763-2"
BULK	4	5340-01-323-2486	7B735	A-703
BULK	5		76371	70-125
BULK	6	4720-00-274-1154	01276	1525-6
BULK	7	5305-00-052-6922	96906	MS24629-58
1	1		97403	13228E9867
1	2		97403	13217E1975-1
1	3		97403	13228E9868
1	4		97403	13228E9857
1	5		97403	13228E9856
2	1	5305-00-052-6922	96906	MS24629-58
2	2	5310-00-209-0786	96906	MS35335-33
2	3		97403	13228E9852
2	4		97403	13228E9852-20
2	5		97403	13228E9852-17
2	6		97403	13228E9852-16
2	7		97403	13228E9852-15
2	8		97403	13228E9852-14
2	9	5320-00-493-4101	81349	M24243/1-B604
2	10		97403	13228E9852-4
2	11		97403	13228E9852-13
2	12		97403	13228E9852-3
2	13		97403	13228E9852-10
2	14		97403	13228E9852-6
2	15		97403	13228E9852-11
2	16		97403	13228E9852-1
2	17		97403	13228E9852-19
2	18		97403	13228E9852-7
2	19		97403	13228E9852-5
2	20		97403	13228E9852-12
2	21	5320-00-904-4136	81349	M24243/1-B403
2	22	5340-01-087-4612	97403	13228E9852-9
2	23	5340-01-324-4010	71286	20LO1-1-IAA
2	24		97403	13228E9848
2	25		97403	13228E9848-10
2	26		97403	13228E9848-9
2	27		97403	13228E9848-8
2	28		97403	13228E9848-2
2	29		97403	13228E9848-7
2	30	5320-00-493-4101	81349	M24243/1-B604
2	31		97403	13228E9848-1
2	32		97403	13228E9848-6
2	33		97403	13228E9848-4
2	34		97403	13228E9848-3
2	35	5305-00-988-1726	96906	MS35206-282
2	36	5310-00-483-8792	96906	MS17829-4C
2	37		97403	13228E9860
2	38		97403	13228E9860-1
2	39		97403	13228E9860-2

CROSS-REFERENCE INDEXES

FIGURE AND NUMBER INDEX
CAGEC

FIG.	ITEM	STOCK NUMBER	CAGEC	PART NUMBER
2	40		97403	13228E9860-3
3	1		97403	13228E9864
3	2		96906	MS20230A4
3	3	5310-00-655-9545	96906	MS15795-718
4	1	4730-01-303-1244	30659	357-2 NPT X2 NP SH
4	2		96906	MS51952-9
4	3		96906	MS51846-162
4	4		81348	WW-P-471-A-A-BU- H
4	5		97403	13218E0468-227
4	6		80204	ANSI B16.3CLASS1 50
4	7		96906	MS51953-61
4	8		97403	13228E9870
4	9	5310-00-880-7746	96906	MS51968-5
4	10		14180	FP4146
4	11	4820-00-991-6517	14180	A3775
4	12		03950	ANSIB18.6.31/4- 20UNC3A 1/2L
4	13		97403	13200E8811
4	14	5330-00-792-6213	97403	13200E8813
4	15		97403	13200E8812
4	16	5310-00-732-0560	96906	MS51968-14
4	17	5310-00-809-5998	96906	MS27183-18
4	18		14180	FP4144
4	19	5330-00-263-8015	96906	MS29513-273
4	20		96906	MS90726-45
4	21	5330-00-712-7730	14180	T22720
4	22	4320-00-792-8187	97403	13200E8808
4	23	5365-00-712-5972	14180	T22719A
4	24	5310-00-712-7731	14180	T22719B
4	25	5305-00-206-3689	96906	MS35198-70
4	26		97403	13200E8815
4	27	5330-00-551-3963	96906	MS29513-253
4	28	4320-00-790-6357	73680	70005-0012
4	29		97403	13200E8804
4	30		96906	MS20066-163
4	31		81348	WW-P-471-B-D-BD- DC
4	32		97403	13228E9869
4	33	5307-01-013-7888	96906	MS51864-103-18
4	34	5307-01-016-4423	96906	MS51864-106-20
4	35		97403	13200E8803
5	1		OAK42	114268-21010
5	2	4730-01-322-4981	01276	FJ9068-0606S
5	3		01276	1525-6
5	4	4730-01-322-4980	01276	07.021-10-6
5	5	5330-01-326-2669	OAK42	43400-500490
6	1		OAK42	26106-080452
6	2		OAK42	114650-55810

CROSS-REFERENCE INDEXES

FIGURE AND NUMBER INDEX
CAGEC

FIG.	ITEM	STOCK NUMBER	CAGEC	PART NUMBER
6	3		OAK42	22117-080000
6	4		OAK42	114252-55241
6	5		OAK42	26476-060142
6	6		OAK42	114250-55211
6	7		OAK42	714350-55711
6	8		OAK42	114250-55200
6	9		OAK42	114250-55041
6	10	5330-01-325-5821	OAK42	114250-55050
6	11	5330-01-325-5806	OAK42	114250-55060
6	12	5340-01-323-7785	OAK42	23887-120002
6	13	5330-01-330-9612	OAK42	23414-120000
6	14	4240-01-328-4878	OAK42	114250-55100
6	15		OAK42	124722-59050
6	16		OAK42	114350-55150
6	17	5310-01-323-2683	OAK42	114252-55800
6	18	5310-01-322-8696	OAK42	22117-060000
6	19		OAK42	26366-060002
6	20	4240-01-327-4604	OAK42	114350-55120
6	21	5330-01-318-8200	OAK42	114250-55130
6	22	4820-01-323-5034	OAK42	114250-55300
6	23	5330-01-325-5810	OAK42	24341-000150
7	1	5340-01-323-7845	OAK42	106990-44660
7	2		OAK42	114250-59050
7	3	5340-01-323-7844	OAK42	124722-59050
7	4		OAK42	114250-59060
7	5		OAK42	114250-59800
8	1		OAK42	714250-53101
8	2		OAK42	114250-53080
8	3	5360-01-324-3997	OAK42	114250-53120
8	4		OAK42	114250-53130
8	5		OAK42	114250-53140
8	6		OAK42	114250-53210
8	7	2910-01-323-1274	OAK42	114250-53001
8	8		OAK42	114250-53400
8	9		OAK42	114250-53300
8	10		OAK42	114250-53331
9	1		OAK42	714250-51701
9	2		OAK42	114250-51340
9	3	5360-01-322-8629	OAK42	105546-51330
9	4		OAK42	114250-51300
9	5		OAK42	124550-51350
9	6		OAK42	114250-51200
9	7		OAK42	114250-51180
9	8		OAK42	114250-51190
9	9	5330-01-323-1551	OAK42	105546-51020
9	10		OAK42	114250-51080
9	11		OAK42	22351-020006
9	12		OAK42	114250-51150
9	13		OAK42	114250-51600
9	14		OAK42	22351-030008
9	15	5360-01-322-8628	OAK42	114250-51160

CROSS-REFERENCE INDEXES

FIGURE AND NUMBER INDEX
CAGEC

FIG.	ITEM	STOCK NUMBER	CAGEC	PART NUMBER
9	16		OAK42	114250-51650
9	17		OAK42	114250-51640
10	1		81348	WW-C-440TYPE-D
10	2		97403	13228E9859
10	3	5310-01-322-8607	OAK42	26366-080002
10	4		80204	B18231B06012N
10	5	5330-01-326-4780	OAK42	114250-13200
10	6		OAK42	114250-13521
10	7	5305-01-163-5075	56161	10503971
10	8		OAK42	114250-13701
10	9	4330-01-353-7628	OAK42	114250-13531
11	1		66295	54550050
11	2		97403	13228E9862
11	3	2940-01-323-3289	OAK42	714250-12560
11	4	5310-01-327-0778	OAK42	114250-12550
11	5	5310-01-322-8747	OAK42	114250-12560
11	6		OAK42	114250-12520
11	7	2940-01-310-4495	OAK42	114250-12580
11	8		97403	13228E9863
11	9		OAK42	26366-060002
11	10	6685-01-160-8579	18265	RAX-00-2350
11	11		93061	207P-2
11	12	4730-00-193-2707	96906	MS51846-6
11	13		OAK42	26226-060142
11	14	5330-01-326-4773	OAK42	114250-12210
11	15		62866	10512
11	16		OAK42	114250-12010
11	17	5330-01-324-8287	OAK42	114250-12200
12	1	5305-01-163-5075	56161	10503971
12	2	2990-01-323-0307	OAK42	714260-76820
12	3		OAK42	160260-76600
12	4		OAK42	160260-76550
12	5		OAK42	160260-76590
12	6		OAK42	160260-76580
12	7	5360-01-324-3999	OAK42	160290-76570
12	8		OAK42	160260-76530
12	9	5360-01-324-3998	OAK42	160260-76560
12	10		OAK42	160260-76520
12	11	5360-01-324-4000	OAK42	160260-76540
12	12		OAK42	714260-76830
12	13	2990-01-325-8264	OAK42	160260-76630
12	14	2990-01-323-1322	OAK42	160260-76620
12	15		80204	B18231B06012N
12	16		OAK42	114250-76590
13	1		61080	50025900
13	2		OAK42	160120-76940
13	3		OAK42	114250-45310
13	4	2815-01-324-9200	OAK42	114250-45300
13	5		OAK42	114260-45101
13	6	5330-01-330-9564	OAK42	114250-45330
13	7		OAK42	26476-060142

CROSS-REFERENCE INDEXES

FIGURE AND NUMBER INDEX
CAGEC

FIG.	ITEM	STOCK NUMBER	CAGEC	PART NUMBER
13	8		OAK42	114250-45211
14	1		OAK42	114250-76600
14	2		OAK42	26106-060552
14	3		OAK42	114250-76610
14	4		OAK42	114250-11951
14	5		OAK42	114250-03591
14	6		OAK42	114250-03640
14	7		OAK42	22312-030160
14	8	5330-01-326-8022	OAK42	114250-11310
15	1		OAK42	26366-060002
15	2		OAK42	114250-11900
15	3	5365-01-322-8692	OAK42	114350-11470
15	4	5330-01-326-8021	OAK42	114250-11460
15	5		OAK42	26106-080452
15	6		OAK42	114250-11661
15	7		OAK42	114250-11240
15	8		OAK42	26756-060002
15	9		OAK42	114250-11651
15	10		OAK42	114250-11240
15	11		OAK42	26756-060002
15	12		OAK42	114250-11290
15	13	2815-01-323-1352	OAK42	714250-11570
15	14	5340-01-324-8850	OAK42	114250-11180
15	15		OAK42	114250-11120
15	16	5330-01-324-8831	OAK42	114250-11340
15	17		OAK42	114250-11600
15	18		OAK42	114250-11101
15	19		OAK42	114250-11112
15	20		OAK42	22351-040008
15	21		OAK42	26216-080182
15	22	5307-01-323-5504	OAK42	26226-060552
15	23	5307-01-323-5503	OAK42	26226-060502
15	24		OAK42	114250-11020
16	1	5340-01-359-6858	OAK42	160710-01760
16	2	5330-01-323-2728	OAK42	24311-000180
16	3		OAK42	105425-01690
16	4	5330-01-326-2669	OAK42	43400-500490
16	5		OAK42	114250-01220
16	6		OAK42	124950-01250
16	7		OAK42	114250-01250
16	8		OAK42	114250-01340
16	9		OAK42	114250-01380
16	10		OAK42	114250-01830
16	11		OAK42	114250-01840
16	12		OAK42	26366-060002
16	13		OAK42	114250-01800
16	14		62866	10512
16	15		OAK42	114260-01452
16	16		OAK42	114250-01411
16	17		OAK42	114250-01210
16	18		OAK42	114250-01200

CROSS-REFERENCE INDEXES

FIGURE AND NUMBER INDEX
CAGEC

FIG.	ITEM	STOCK NUMBER	CAGEC	PART NUMBER
16	19		OAK42	26226-060182
16	20		OAK42	26226-060222
16	21		OAK42	22312-080120
17	1		80204	B18231B06012N
17	2		OAK42	114250-35250
17	3		OAK42	114250-35270
17	4	5330-01-326-8017	OAK42	24341-000224
17	5	4730-01-310-6800	OAK42	114250-35060
18			OAK42	714250-92600
18	1		OAK42	26476-060142
18	2		OAK42	114250-32070
18	3	5330-01-324-8279	OAK42	103338-32570
18	4		OAK42	114250-32010
18	5		OAK42	22312-030160
19	1	5330-01-324-8253	OAK42	160210-02220
19	2	3120-01-324-5762	OAK42	114250-02100
19	3		OAK42	26106-080122
19	4		OAK42	114250-02030
19	5		OAK42	114250-02113
19	6	5330-01-324-8254	OAK42	160110-02220
19	7	3110-01-324-8815	OAK42	24101-062050
19	8		OAK42	24162-152112
20	1		OAK42	714260-14581
20	2		OAK42	114250-14260
20	3		OAK42	114250-14200
20	4		OAK42	114250-14450
21	1		OAK42	714250-28511
21	2	3110-01-322-9532	OAK42	24101-062024
22	1		OAK42	714250-61500
22	2		OAK42	114250-61900
22	3		OAK42	121450-61520
22	4		OAK42	22137-080000
22	5		OAK42	714250-61700
23	1		OAK42	160725-78350
23	2		OAK42	26476-060142
23	3		OAK42	26106-060202
23	4		OAK42	114250-66200
23	5		OAK42	114250-66010
23	6		OAK42	714268-66500
23	7		OAK42	114250-66050
23	8		OAK42	26116-040088
23	9		OAK42	114250-66440
23	10		OAK42	26756-060002
23	11		OAK42	114252-66252
23	12		OAK42	26696-100002
23	13		OAK42	114250-66550
24	1	2815-01-323-0351	OAK42	714250-23703
24	2		OAK42	114250-23220
24	3		OAK42	114250-23250
24	4		OAK42	114250-23200
24	5	3120-01-322-9560	OAK42	714250-23600

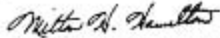
CROSS-REFERENCE INDEXES

FIGURE AND NUMBER INDEX
CAGEC

FIG.	ITEM	STOCK NUMBER	CAGEC	PART NUMBER
24	6			OAK42 22312-030080
25	1	5365-01-322-8679		OAK42 22252-000190
25	2	2815-01-323-0286		OAK42 114250-22302
25	3			OAK42 714260-22720
25	4			OAK42 714250-22502
26	1			OAK42 103854-01221
26	2			OAK42 114250-21550
26	3			OAK42 114260-21401
26	4	2815-01-323-3074		OAK42 714268-21700
26	5			OAK42 22512-040120
27	1			OAK42 714251-01563
28	1	5310-00-483-8790		96906 MS17829-6C
28	2	5310-00-080-6004		96906 MS27183-14
28	3			96906 MS51967-8
28	4			81346 A-307
28	5			88044 AN970-7
28	6	5340-00-792-8233		76005 J660-2
28	7	5305-00-782-9489		96906 MS90728-66
28	8			97403 13228E9865
28	9	5310-00-768-0318		96906 MS51967-14
28	10	5310-00-809-5998		96906 MS27183-18
28	11			96906 MS35751-127
28	12	4730-00-580-6740		96906 MS20913-3J
28	13	5325-00-290-3777		96906 MS35489-77
28	14			97403 13228E9866
29	1			OAK42 28190-000130
29	2			OAK42 28190-000020
29	3			OAK42 135410-92140
29	4			OAK42 114250-92311
29	5			OAK42 114268-92300
29	6			OAK42 28210-000010
29	7			OAK42 114250-92101
29	8			OAK42 114250-92121
29	9			OAK42 26116-060454
29	10			OAK42 26716-060002
29	11			OAK42 114250-92350
29	12			OAK42 737600-93502
29	13			OAK42 95500-001043
29	14			OAK42 9550-001041

By Order of the Secretaries of the Army and Navy (Including the Marine Corps):

Official:



MILTON H. HAMILTON
*Administrative Assistant to the
Secretary of the Army*
04450

GORDON R. SULLIVAN
*General, United States Army
Chief of Staff*

DAVID E. BOTTORFF
*Rear Admiral, CEC, US Navy
Commander
Navy Facilities Engineering
Command*

RONALD D. ELLIOT
*Executive Director
Marine Corps Systems Command*

DISTRIBUTION:

To be distributed in accordance with DA Form 12-25-E, block no. 6067, requirements for TM 10-4320-309-24P.

*U.S. GOVERNMENT PRINTING OFFICE 1993-755-120/60217

These are the instructions for sending an electronic 2028

The following format must be used if submitting an electronic 2028. The subject line must be exactly the same and all fields must be included; however only the following fields are mandatory: 1, 3, 4, 5, 6, 7, 8, 9, 10, 13, 15, 16, 17, and 27.

From: "Whomever" <whomever@avma27.army.mil>

To: mpmt%avma28@st-louis-emh7.army.mil

Subject: DA Form 2028

1. **From:** Joe Smith
2. Unit: home
3. **Address:** 4300 Park
4. **City:** Hometown
5. **St:** MO
6. **Zip:** 77777
7. **Date Sent:** 19-OCT-93
8. **Pub no:** 55-2840-229-23
9. **Pub Title:** TM
10. **Publication Date:** 04-JUL-85
11. Change Number: 7
12. Submitter Rank: MSG
13. **Submitter FName:** Joe
14. Submitter MName: T
15. **Submitter LName:** Smith
16. **Submitter Phone:** 123-123-1234
17. **Problem:** 1
18. Page: 2
19. Paragraph: 3
20. Line: 4
21. NSN: 5
22. Reference: 6
23. Figure: 7
24. Table: 8
25. Item:9
26. Total: 123
27. **Text:**

This is the text for the problem below line 27.

RECOMMENDED CHANGES TO EQUIPMENT TECHNICAL PUBLICATIONS



THEN...JOT DOWN THE DOPE ABOUT IT ON THIS FORM. CAREFULLY TEAR IT OUT, FOLD IT AND DROP IT IN THE MAIL.

SOMETHING WRONG WITH PUBLICATION

FROM: (PRINT YOUR UNIT'S COMPLETE ADDRESS)

DATE SENT

PUBLICATION NUMBER	PUBLICATION DATE	PUBLICATION TITLE
--------------------	------------------	-------------------

BE EXACT PIN-POINT WHERE IT IS				IN THIS SPACE, TELL WHAT IS WRONG AND WHAT SHOULD BE DONE ABOUT IT.
PAGE NO.	PARA-GRAPH	FIGURE NO.	TABLE NO.	

TEAR ALONG PERFORATED LINE

PRINTED NAME, GRADE OR TITLE AND TELEPHONE NUMBER	SIGN HERE
---	-----------

DA FORM 1 JUL 79 2028-2

PREVIOUS EDITIONS ARE OBSOLETE.

P.S.--IF YOUR OUTFIT WANTS TO KNOW ABOUT YOUR RECOMMENDATION MAKE A CARBON COPY OF THIS AND GIVE IT TO YOUR HEADQUARTERS.

The Metric System and Equivalents

Linear Measure

1 centimeter = 10 millimeters = .39 inch
 1 decimeter = 10 centimeters = 3.94 inches
 1 meter = 10 decimeters = 39.37 inches
 1 dekameter = 10 meters = 32.8 feet
 1 hectometer = 10 dekameters = 328.08 feet
 1 kilometer = 10 hectometers = 3,280.8 feet

Weights

1 centigram = 10 milligrams = .15 grain
 1 decigram = 10 centigrams = 1.54 grains
 1 gram = 10 decigrams = .035 ounce
 1 dekagram = 10 grams = .35 ounce
 1 hectogram = 10 dekagrams = 3.52 ounces
 1 kilogram = 10 hectograms = 2.2 pounds
 1 quintal = 100 kilograms = 220.46 pounds
 1 metric ton = 10 quintals = 1.1 short tons

Liquid Measure

1 centiliter = 10 milliliters = .34 fl. ounce
 1 deciliter = 10 centiliters = 3.38 fl. ounces
 1 liter = 10 deciliters = 33.81 fl. ounces
 1 dekaliter = 10 liters = 2.64 gallons
 1 hectoliter = 10 dekaliters = 26.42 gallons
 1 kiloliter = 10 hectoliters = 264.18 gallons

Square Measure

1 sq. centimeter = 100 sq. millimeters = .155 sq. inch
 1 sq. decimeter = 100 sq. centimeters = 15.5 sq. inches
 1 sq. meter (centare) = 100 sq. decimeters = 10.76 sq. feet
 1 sq. dekameter (are) = 100 sq. meters = 1,076.4 sq. feet
 1 sq. hectometer (hectare) = 100 sq. dekameters = 2.47 acres
 1 sq. kilometer = 100 sq. hectometers = .386 sq. mile

Cubic Measure

1 cu. centimeter = 1000 cu. millimeters = .06 cu. inch
 1 cu. decimeter = 1000 cu. centimeters = 61.02 cu. inches
 1 cu. meter = 1000 cu. decimeters = 35.31 cu. feet

Approximate Conversion Factors

To change	To	Multiply by	To change	To	Multiply by
inches	centimeters	2.540	ounce-inches	newton-meters	.007062
feet	meters	.305	centimeters	inches	.394
yards	meters	.914	meters	feet	3.280
miles	kilometers	1.609	meters	yards	1.094
square inches	square centimeters	6.451	kilometers	miles	.621
square feet	square meters	.093	square centimeters	square inches	.155
square yards	square meters	.836	square meters	square feet	10.764
square miles	square kilometers	2.590	square meters	square yards	1.196
acres	square hectometers	.405	square kilometers	square miles	.386
cubic feet	cubic meters	.028	square hectometers	acres	2.471
cubic yards	cubic meters	.765	cubic meters	cubic feet	35.315
fluid ounces	milliliters	29.573	cubic meters	cubic yards	1.308
pints	liters	.473	milliliters	fluid ounces	.034
quarts	liters	.946	liters	pints	2.113
gallons	liters	3.785	liters	quarts	1.057
ounces	grams	28.349	liters	gallons	.264
pounds	kilograms	.454	grams	ounces	.035
short tons	metric tons	.907	kilograms	pounds	2.205
pound-feet	newton-meters	1.356	metric tons	short tons	1.102
pound-inches	newton-meters	.11296			

Temperature (Exact)

°F	Fahrenheit temperature	5/9 (after subtracting 32)	Celsius temperature	°C
----	------------------------	----------------------------	---------------------	----

This fine document...

Was brought to you by me:



[Liberated Manuals -- free army and government manuals](#)

Why do I do it? I am tired of sleazy CD-ROM sellers, who take publicly available information, slap “watermarks” and other junk on it, and sell it. Those masters of search engine manipulation make sure that their sites that sell free information, come up first in search engines. They did not create it... They did not even scan it... Why should they get your money? Why are not letting you give those free manuals to your friends?

I am setting this document FREE. This document was made by the US Government and is NOT protected by Copyright. Feel free to share, republish, sell and so on.

I am not asking you for donations, fees or handouts. If you can, please provide a link to liberatedmanuals.com, so that free manuals come up first in search engines:

<A HREF=<http://www.liberatedmanuals.com/>>Free Military and Government Manuals

- Sincerely
Igor Chudov
<http://igor.chudov.com/>
- [Chicago Machinery Movers](#)