

TECHNICAL MANUAL
ORGANIZATIONAL MAINTENANCE REPAIR PARTS
AND SPECIAL TOOLS UST
TRUCK, LIFT, FORK, ELECTRIC, 4,000 LBS CAPACITY,
SOLID RUBBER TIRES
(BAKER MODEL FTD-040)
(ARMY MODEL MHE 186)
FSN 3930-064-5871

OCTOBER 1969

**ORGANIZATIONAL MAINTENANCE REPAIR PARTS AND SPECIAL
TOOLS LIST
TRUCK, LIFT, FORK, ELECTRIC, 4000 LBS CAPACITY,
SOLID RUBBER TIRES
(BAKER MODEL FTD-040)
(ARMY MODEL MHE 186)
FSN 3930-064-5871**

Current as of 15 September 1969

Section		Paragraph	Page
I.	INTRODUCTION		
	Scope	1	iii
	General	2	iii
	Explanation of columns	3	iii
	Special information	4	iv
	How to locate repair parts	5	v
	Abbreviations	6	v
	Federal supply codes for manufacturers	7	v
	Recommendations for maintenance manual improvements	8	v
II.	PRESCRIBED LOAD ALLOWANCE		vii
III.	SPECIAL TOOLS, TEST AND SUPPORT EQUIPMENT FOR ORGANIZATIONAL MAINTENANCE (NOT APPLICABLE)		
IV.	REPAIR PARTS FOR ORGANIZATIONAL; MAINTENANCE		
Group 06.	Electrical System		
	0607 Instruments		1
	0608 Miscellaneous items		1
	0609 Lights		3
	0611 Horn		3
10.	Front Axle		
	1002 Differential		4
	1003 Planetary of final drive		4
11.	Rear Axle		
	1104 Steering mechanism		4
12.	Brakes		
	1201 Hand brakes		4
	1204 Hydraulic brake system		6
	1206 Mechanical brake system		7
13.	Wheels		
	1311 Wheel assembly		7
14.	Steering		
	1401 Steering assembly		8
	1411 Hoses, lines, fittings		8

This manual, together with TM 10-3930-253-35P, 17 October 1969, supersedes TM 10-3930-253-25P, 25 June 1964, including all changes.

	Page
18. Body, Cab, Hood	
1801 Body, cab, hood assemblies	9
1806 Upholstery, seats.....	10
24. Hydraulic Lift Components	
2401 Hydraulic pump	11
2403 Hydraulic control levers and linkage	11
2404 Hydraulic tilt cylinder and tilt crank	12
2405 Hydraulic mast column	13
2406 Hydraulic lines and fittings.....	14
40. Electric Motors	
4010 Master or auxiliary control assembly.....	16
4011 Circuit breakers, cutout, fuse, and fuseholder	17
4012 Switches.....	17
4014 Registers	18
95. General Use Standardized Parts	
9501 Bulk material	18
Section V. FEDERAL STOCK NUMBER AND REFERENCE NUMBER INDEX.....	27

SECTION I

INTRODUCTION

1. Scope

This manual lists repair parts, required for the performance of organizational maintenance of the lift truck.

2. General

a. The Repair Parts List is arranged as follows:

(1) Individual parts and major assemblies are listed alphabetically by item name within the numbered functional groups.

(2) Assembly components and subassemblies are indented and listed alphabetically by item name under major assemblies.

b. This Repair Parts and Special Tools List is divided into the following sections:

(1) *Prescribed Load Allowance (PLA) - Section II.* A consolidated listing of repair parts quantitatively allocated for initial stockage at the organizational level. *This is a mandatory stockage allowance.*

(2) *Special Tools, test and Support Equipment - Section III.* A list of special tools, test and support equipment authorized for the performance of maintenance at the organizational level. (Not applicable.)

(3) *Repair Parts - Section IV.* A list of repair parts authorized for the performance of maintenance at the organizational level.

(4) *Federal Stock Number and Reference Number Indexes - Section V.* A list of Federal stock numbers followed by reference numbers in ascending alphanumeric sequence, cross referenced to index number.

3. Explanation of Columns

The following provides an explanation of columns in the tabular lists in Sections II, III, and IV;

a. *Source, Maintenance and Recoverability Codes (SMR).*

(1) Source code indicates the selection status and source for the listed item. Source codes are:

Code	<i>Explanation</i>
P	Applied to major repair parts which are stocked in or supplied from DSA/GSA or Army supply system, and authorized for use at indicated maintenance categories.
M	Applied to repair parts which are not procured or stocked, but are to be manufactured at indicated maintenance categories.

A	Applied to assemblies which are not procured or stocked as such, but are made up of two or more units, each of which carry individual stock numbers and descriptions and are procured and stocked and can be assembled by units at indicated maintenance categories.
X	Applied to parts and assemblies which are not procured or stocked, the mortality of which is normally below that of the applicable end item, and the failure of which should result in retirement of the end item from the supply system.
X1	Applied to repair parts which are not procured or stocked, the requirement for which will be supplied by use of the next higher assembly or components.
X2	Applied to repair parts which are not stocked. The indicated maintenance category requiring such repair parts will attempt to obtain them through cannibalization; if not obtainable through cannibalization, such repair parts will be requisitioned with supporting justification through normal supply channels.
C	Applied to repair parts authorized for local procurement. If not obtainable through local procurement, such repair parts will be requisitioned through normal supply channels with a supporting statement of non-availability from local procurement.
G	Applied to major assemblies that are procured with PEAM (Procurement Equipment Missile Army) funds for initial issue only to be used as exchange assemblies at DSU and GSU maintenance level. These assemblies will be stocked above DSU and GSU or returned to depot supply level.

NOTE

Source code is not shown on common hardware items known to be readily available in Army supply channels and through local procurement.

(2) Maintenance Code indicates the lowest category of maintenance authorized to install the listed item. The maintenance level code is:

Code	<i>Explanation</i>
O	Organizational maintenance

(3) Recoverability code, indicates whether unserviceable items should be returned for recovery or salvage. Items not coded are expendable. Recoverability codes are:

Code	Explanation
R	Applied to repair parts and assemblies which are economically repairable t DSU and GSU activities and normally are furnished by supply on an exchange basis.
T	Applied to high dollar value recoverable repair parts which are subject to special handling and are issued on an exchange basis. Such repair parts normally are repaired or overhauled at depot maintenance activities.
U	Applied to repair parts specifically selected for salvage by reclamation units because of precious metal content, critical materials, high dollar value reusable casings or castings.

(4) This column also lists, below the SMR code an index number for each item in ascending numerical sequence, which is used to locate items in the publication when the Federal stock number and/or reference number is known.

b. *Federal Stock Number.* This column indicates the Federal stock number for the item.

c. *Description.* This column indicates the Federal item name and any additional description of the item required. A part number or other reference number is followed by the applicable 5 digit Federal supply code for manufacturers in parentheses. Material required for manufacture or fabrication is identified.

d. *Unit of Issue.* This column indicates the unit used as a basis for issue, e.g., ea, pr, ft, yd, etc.

e. *Quantity Incorporated in Unit Pack.* This column indicates the actual quantity contained in the unit pack.

f. *Quantity Incorporated in Unit.* This column indicates the quantity of the item used in the functional group.

g. *Fifteen-Day Organizational Allowance Column (4) of Section II and Column (7) of Section III and IV.*

(1) The allowance columns are divided into four subcolumns. Indicated in each sub column is the quantity of items authorized for the number of equipments supported. Items authorized for use as required, but not for initial stockage are identified with an asterisk in the allowance column.

(2) The quantitative allowances for organizational level of maintenance represents one initial prescribed load for a 15-day period for the number of equipments supported. Units and organizations

authorized additional prescribed loads will multiply the number of prescribed loads authorized by the quantity of repair parts reflected in the appropriate density column, applicable to the number of items supported to obtain the total quantity of repair parts authorized.

(3) Organizational units providing maintenance for more than 100 of these equipments shall determine the total quantity of parts required by converting the equipment quantity to a decimal factor by placing a decimal point before the next to last digit of the number to indicate hundredths, and multiplying the decimal factor by the parts quantity authorized in the 51-100 allowance column. Example: authorized allowance for 51-100 equipments is 40; for 150 equipments multiply 40 by 1.50 or 60 parts required.

(4) Subsequent changes to allowances will be limited as follows: No change in the range of items is authorized. If additional items are considered necessary, recommendation should be forwarded to U. S. Army Mobility Equipment Command for exception or revision to the allowance list. Revisions to the range of items authorized will be made by this Command based on engineering experience, demand data, or TAERS information.

h. *Illustration Column (8).* This column is divided as follows:

(1) *Figure Number Column, (8)(a).* Indicates the figure number of the illustration in which the item is shown.

(2) *Item Number, Column (8)(b).* Indicates the callout number used to reference the items in the illustration.

4. Special Information

a. Repair parts mortality has been based on 3,000 hours of operation per year.

b. Parts which require manufacture or assembly at a category higher than that authorized for the installation will indicate in the source column the higher category.

c. The following publication pertain to the lift truck and its components:

TM 10-3930-253-12	Operator and organizational maintenance manual
TM 10-3930-253-35	Field and depot maintenance manual
TM 10-3930-253-35P	DS, GS, and depot maintenance repair parts and special tools list
LO 10-3930-253-12	Lubrication Order

5. How to Locate Repair Parts

a. When the Federal stock number or reference number is unknown:

(1) *First.* Using the table of contents determine the functional group within which the repair part belongs.

(2) *Second.* Find the illustration covering the functional group to which the repair parts belongs.

(3) *Third.* Identify the repair part on the illustration and note the illustration figure and item number on the repair part.

(4) *Fourth.* Using the Repair Parts Listing, find the functional group to which the repair part belongs and locate the illustration figure and item number noted on the illustration.

b. When the Federal stock number or reference number is known.

(1) *First.* Using the Index of Federal Stock Numbers and reference Numbers, find the pertinent federal Stock Number or reference Number. This index is in ascending alphanumeric sequence cross-referenced to an index number.

(2) *Second.* Using the Repair Part Listing, find the index number referenced in the Index of federal Stock Numbers and Reference Numbers.

6. Abbreviations.

amp	ampere(s)		
EA.....	EACH		
GRP.....	GROUP		
in.....	inch(es)		
lh.....	left hand		
NC	AMERICAN	NATIONAL	
	COARSE THREAD		
No.....	number(s)		
NPT	NATIONAL	TAPER	PIPE
	THREAD		
rh	right hand		
sh.....	sheet(s)		
thk.....	thick		
w/.....	with		

7. Federal Supply Codes for Manufacturers

Code		Manufacturer
00213	----	Sage Electronics Corp.
05415	----	Baker Division Otis Elevator Co.
12603	----	Clark Equipment Co.
24455	----	General Electric Co. Lamp Division of Consumer Products Group
24617	----	General Motors Corp.
52788	----	Saginaw Steering gear Division of General Motors Corp.
56365	----	Square D Company
60038	----	Timken Roller Bearing Co.
63477	----	Wagner Electric Corp. Wagner Division
70270	----	Alemite Corp.
71400	----	Bussman Mfg Division of McGraw-Edison Co.
72962	----	Elastic Stop Nut Corp of America
73680	----	Garlock, Inc.
78500	----	Rockwell-Standard Corp Transmission and Axle Division
80495	----	Anderson Power Products, Inc.
80713	----	Anchor Coupling Co., Inc.
88044	----	Aeronautical Standards Group Dept of Navy and Air Force
92863	----	Marvel Industries, Inc.
92985	----	L and L Mfg. Co.
92993	----	Micro Tool Co., The
97539	----	APM - Hexseal Corp.

8. Recommendations for Maintenance Manual Improvements

Report of errors, omissions, and recommendations for improving this publication by the individual user is encouraged. Reports should be submitted on DA Form 2028 (recommended Changes to Publications) and forwarded direct to Commanding General, U. S. Army Mobility Equipment Command, ATTN: AMSME-MPP, 4300 Goodfellow Boulevard, St. Louis, Mo. 63120.

SECTION II

PRESCRIBED LOAD ALLOWANCE

(1) Federal Stock Number	(2) Description Usable on Code	(3) Qty Inc. in Unit Pack	(4) 15-Day Org Maint. ALW			
			(A) 1-5	(B) 6-20	(C) 21-50	(D) 51-100
	GROUP 06 - ELECTRICAL SYSTEM					
	0607 - INSTRUMENTS					
5930-644-0110	BOOT				2	2
	0609 - LIGHTS					
6220-978-3493 6240-295-1184	HEADLIGHT LAMP				2	2
	GROUP 12 - BRAKES					
	1201 - HAND BRAKE					
2530-918-7772	SPRING					2
	1206 - MECHANICAL BRAKE SYSTEM					
5340-616-4267	SPRING					2
	GROUP 13 - WHEELS					
	1311-WHEEL ASSEMBLY					
3110-100-076	CONE AND ROLLERS				2	2
3110-277-0363	CUP				2	2
5830-292-0451	SEAL		2	2	4	8
	GROUP 24 - HYDRAULIC LIFT COMPONENTS					
	2406 - HYDRAULIC LINES AND FITTINGS					
2940-382-5051	CLAMP: hose, pump to tank					2
2940-382-8051	CLAMP: hose, valve to tank				2	2
3930-022-7092	ELEMENT				2	2
3930-276-1943	PACKING					2
5330-808-0794	PACKING					2
	GROUP 40 - ELECTRIC MOTORS					
	4011 - CIRCUIT BREAKERS, CUTOUT, FUSE, AND FUSE HOLDER					
5920-131-9840	FUSE					2
5920-131-9849	FUSE				2	2
5920-280-4007	FUSE		2	2	5	10
	4012 - SWITCHES					
5355-668-3768	KNOB					2

(1) SMR CODE INDEX NO.	(2) FEDERAL STOCK NUMBER	(3) DESCRIPTION REFERENCE NO. & MFR CODE USABLE ON CODE		(4) UNIT OF ISSUE	(5) QTY INC IN UNIT PACK	(6) QTY INC IN UNIT	(7) 15 DAY ORGANIZATIONAL MAINTENANCE ALW				(8) ILLUS- TRATION	
							(a)	(b)	(c)	(d)	(a)	(b)
							1-5	6-20	21-50	51-100	FIG NO.	ITEM NO.
		SECTION IV REPAIR PARTS FOR ORGANIZATIONAL MAINTENANCE										
00001		GROUP 06 - ELECTRIALC SYSTEM										
00002		0607 INSTRUMENTS										
P O 00003	5930-64-0110	BOOT, DUST AND MOISTURE SEAL: light N1030 (97539)		EA		1	*	*	2	2	1	2
P O 00004	6645-917-7278	METER, TIME TOTALIZING 719AV1 (05415)		EA		1	*	*	*	*	1	1
P O 00005	5930-708-0189	SWITCH, TOGGLE: headlight 11TS15-2 (92993)		EA		1	*	*	*	*	1	11
X2 O 00006		WASHER, FLAT: light switch 128MAC1 (05415)		EA		1					1	3
00007		0608 - MISCELLANEIUS ITEMS										
X2 O 00008		ANCHOR: spring, treadle return 149MD.42 (05415)		EA		1					8	4
X2 O 00009		ANGLE: treadle 283MDN1 (05415)		EA		1						
P O 00010	3010-931-4542	BALL JOINT: accelerator 14Y8568 (0541 5)		EA		2	*	*	*	*	8	1
O 00011	5306-225-8502	BOLT, MACHINE: lever stop, 5/16 in. 18 x 1 1/2 in.		EA		1	*	*	*	*		
O 00012	5306-225-8506	BOLT, MACHINES treadle stop, 5/16 in. 18 x 2 1/2 in.		EA		1	*	*	*	*		
X2 O 00013		BRACKET: master accelerator 316MMS2 (05415)		EA		1					8	7
P O 00014	3930-078-2924	CONNECTOR: battery 5816B (80495)		EA		1	*	*	*	*		
X2 O 00015		LEVER: accelerator 286MMB1 (05415)		EA		1					8	9
O 00016	5310-012-0361	NUT, PLAIN, HEXAGON: No. 10-24		EA		2	*	*	*	*		

(1) SMR CODE INDEX NO.	(2) FEDERAL STOCK NUMBER	(3) DESCRIPTION REFERENCE NO. & MFR CODE USABLE ON CODE		(4) UNIT OF ISSUE	(5) QTY INC IN UNIT PACK	(6) QTY INC IN UNIT	(7) 15 DAY ORGANIZATIONAL MAINTENANCE ALW				(8) ILLUS- TRATION	
							(a)	(b)	(c)	(d)	(a)	(b)
							1-5	6-20	21-50	51-100	FIG NO.	ITEM NO.
O 00017	5310-805-9964	NUT, PLAIN, HEXAGON: 5-16 in. 18		EA		2	*	*	*	*		
O 00018	5310-805-9964	NUT, PLAIN, HEXAGON: 5/16 in. 18		EA		2	*	*	*	*		
O 00019	5310-543-2641	NUT, PLAIN, HEXAGON: 5/16 in. 24		EA		4	*	*	*	*	8	3
O 00020	5315-839-2325	PIN, COTTER: 1/16 in. x 1/2 in.		EA		1	*	*	*	*	8	10
P O 00021	3930-054-9269	PEDAL: accelerator 730T1 (05415)		EA		1	*	*	*	*		
O 00022	5315-839-5820	PIN, COTTER 1/16 in. x 3/4 in.		EA		2	*	*	*	*		
X2 O 00023		PIN, STRAIGH HEADED: lever pivot SM1103 (05415)		EA		1					8	11
X2 O 00024		PIN, STRAIGHT, HEADLESS: bracket to treadle 16X11689 (05415)		EA		1						
X2 O 00025		PLUNGER, accelerator 445MDW1		EA		1					8	6
X2 O 00026		ROD, treadle to lever 98MAS1 (05415)		EA		1					8	2
O 00027	5306-616-1287	SCREW, CAP, HEXAGON HEAD: 5/16 in. 18 x 3/4 in.		EA		6	*	*	*	*		
O 00028	5305-012-0620	SCREW, MACHINE: flat head, No. 10-24 x 3/4 in.		EA		2	*	*	*	*		
X2 O 00029		SPRING: treadle return		EA		1					8	5
O 00030	5310-012-0386	WASHER, FLAT: 5/16 in.		EA		3	*	*	*	*	8	8
O 00031	5310-043-2226	WASHER, LOCK: No. 10		EA		2	*	*	*	*		
O 00032	5310-012-0214	WASHER, LOCK: 5/16 in.		EA		2	*	*	*	*		
O 00033	5310-012-0214	WASHER, LOCK: 5/16 in.		EA		6	*	*	*	*		

(1) SMR CODE INDEX NO.	(2) FEDERAL STOCK NUMBER	(3) DESCRIPTION REFERENCE NO. & MFR CODE USABLE ON CODE		(4) UNIT OF ISSUE	(5) QTY INC IN UNIT PACK	(6) QTY INC IN UNIT	(7) 15 DAY ORGANIZATIONAL MAINTENANCE ALW				(8) ILLUS- TRATION	
							(a)	(b)	(c)	(d)	(a) FIG NO.	(b) ITEM NO.
							1-5	6-20	21-50	51-100		
00034			0609 - LIGHTS									
P O 00035	6220-937-3493	HEADLIGHT: w/cable 42412L1 (05415)		EA		1	*	*	*	2		
X2 O 00036		STOPLIGHT-TAILLIGHT, VEHICULAR 424MAA1 (05415)		EA		1						
P O 00037	6240-295-1184	LAMP, INCANDESCENT: stoplight-taillight 1034 (24455)		EA		1	*	*	2	2		
00038			0611 - HORN									
P O 00039	2590-311-2197	CAP: horn button 5662678 (52788)		EA		1	*	*	*	*		
X2 O 00040		CONNECTOR: horn cable 26349 (52788)		EA		2						
X2 O 00041		CONTACT: horn button 266424 (52788)		EA		1						
P O 00042	2530-358-6665	COVER: horn cable connector 268298 (52788)		EA		2	*	*	*	*		
X2 O 00043		CUSHION: horn button 266425 (52788)		EA		1						
X2 O 00044		HORN ASSEMBLY 731E2 (05415)		EA		1						
P O 00045	5940-457.6414	PLATE: horn button 265325 (52788)		EA		1	*	*	*	*		
X2 O 00046		RETAINER: horn button 326MBC1 (05415)		EA		1						
X2 O 00047		SCREW: horn cable connector cover 124MBCJ1 (05415)		EA		4						
P O 00048	4305-691-4819	SCREW: horn button retainer 124MAY1 (05415)		EA		4						
P O 00049	5305-281-5890	SCREW, TAPPING, THREAD FORMING		EA		4	*	*	*	*		

(1) SMR CODE INDEX NO.	(2) FEDERAL STOCK NUMBER	(3) DESCRIPTION REFERENCE NO. & MFR CODE USABLE ON CODE		(4) UNIT OF ISSUE	(5) QTY INC IN UNIT PACK	(6) QTY INC IN UNIT	(7) 15 DAY ORGANIZATIONAL MAINTENANCE ALW				(8) ILLUS- TRATION	
							(a)	(b)	(c)	(d)	(a) FIG NO.	(b) ITEM NO.
							1-5	6-20	21-50	51-100		
X2 O 00050		WASHER, LOCK: 1G497 (52788)		EA		4						
00051		GROUP 10 - FRONT AXLE										
00052		1002 - DIFFERENTIAL										
P O 00053	4730-011-3186	PLUG, PIPE: filler square socket, 3/4 in. 14 NPT 113186 (24617)		EA		2	*	*	*	*		
P O 00054	4730-045-9771	PLUG, PIPE, MAGNETIC: drain 12500125 (18500)		EA		1	*	*	*	*		
00055		1003 - PLANETARY OR FINAL DRIVE										
P O 00056	2530-310-1914	CAP, GREASE, hub 3862J10 (78500)		EA		2	*	*	*	*		
00057		GROUP 11 - -REAR AXLE										
00058		1104 - STEERING MECHANISM										
O 00059	4730-050-4208	FITTING, LUBRICATION: center arm		EA		1	*	*	*	*	3	2
O 00060	4730-050-4203	FITTING, LUBRICATION: king pin bearing		EA		4	*	*	*	*		
00061		GROUP 12 - BRAKES										
00062		1201 - HAND BRAKES										
P O 00063	2520-025-7856	BALL JOINT 18568 (05415)		EA		2	*	*	*	*	4	15
X2 O 00064		BAR 299MVM2 (05415)		EA		1					4	18
P O 00065	2530-917-7779	CABLE: hand brake 712T1 (05415)		EA		1	*	*	*	*	1	7
X2 O 00066		CLAMP: brake cable 227X10221 (05415)		EA		2						
POR 00066A	2530-537-1048	SHOE: brake 11W2401X (05415)		EA		1	*	*	*	2		

(1) SMR CODE INDEX NO.	(2) FEDERAL STOCK NUMBER	(3) DESCRIPTION REFERENCE NO. & MFR CODE USABLE ON CODE		(4) UNIT OF ISSUE	(5) QTY INC IN UNIT PACK	(6) QTY INC IN UNIT	(7) 15 DAY ORGANIZATIONAL MAINTENANCE ALW				(8) ILLUS- TRATION	
							(a)	(b)	(c)	(d)	(a) FIG NO.	(b) ITEM NO.
							1-5	6-20	21-50	51-100		
X2 O 00067	2530-875-2012	LEVER ASSEMBLY: hand 286MAJ1 (05415)		EA		1					1	6
X2 O 00068		LINK: brake shoe 130X52777 (05415)		EA		1					4	8
X2 O 00069		NUT, HEXAGON: head brake, spring tension, seat adjusting 3X10497 (05415)		EA		1						4
O 00070	5310-655-9371	NUT, PLAIN, HEXAGON: 1/2 in. 20		EA		2	*	*	*	*	4	6
O 00071	5310-514-5005	NUT, PLAIN, HEXAGON: 1/4 in. 20		EA		2	*	*	*	*		
O 00072	5310-543-5653	NUT, PLAIN, HEXAGON: 3/8 in. 24		EA		2	*	*	*	*	4	17
X2 O 00073		NUT, SELF LOCKING: 11X11157B (05415)		EA		2					4	10
X2 O 00074	3930-833-1873	PIN: brake adjusting rod to link SN1104 (05415)		EA		1					4	13
O 00075	5315-842-3044	PIN, COTTER: 3/32 in. X 5/8 in.		EA		1	*	*	*	*	4	14
O 00076	5315-842-3044	PIN, COTTER: 3/32 in. x 5/8 in.		EA		1	*	*	*	*		
O 00077	5315-839-5822	PIN, COTTER: 1/8 in. x 7/8 in.		EA		1	*	*	*	*		
O 00078	5315-839-5821	PIN, COTTER: 1/8 in. x 3/4 in.		EA		2	*	*	*	*	4	11
X2 O 00079		PIN: link to brake shoe 297Y8325 (05415)		EA		1					4	12
X2 O 00080		PIN: spring 455675 (72962)		EA		1						
O 00081	5315-312-1067	PIN, STRAIGHT, HEADLESS		EA		1	*	*	*	*	4	1
X2 O 00082		PIN, STRAIGHT HEADED SM1106 (05415)		EA		1						
O 00083	3930-833-1873	PIN, STRAIGHT, HEADED: yoke		EA		1	*	*	*	*		
X2 O 00084		ROD: brake - SN8364 (05415)		EA		1					4	16

(1) SMR CODE INDEX NO.	(2) FEDERAL STOCK NUMBER	(3) DESCRIPTION REFERENCE NO. & MFR CODE USABLE ON CODE		(4) UNIT OF ISSUE	(5) QTY INC IN UNIT PACK	(6) QTY INC IN UNIT	(7) 15 DAY ORGANIZATIONAL MAINTENANCE ALW				(8) ILLUS- TRATION	
							(a)	(b)	(c)	(d)	(a)	(b)
							1-5	6-20	21-50	51-100	FIG NO.	ITEM NO.
P O 00085	3930-092-6909	ROD: brake shoe adjusting 203Y8346X (05415)		EA		1	*	*	*	*	4	9
X2 O 00086		ROD: seat brake adjusting 272X8346 (05415)		EA		1					4	2
O 00087	5305-225-3839	SCREW, CAP, HEXAGON HEAD: 1/4 in. 20 x 1 in.		EA		2	*	*	*	*		
X2 O 00088		SPACER: spring, handbrake seat adjusting 462MGA1 (05415)		EA		1					4	3
P O 00089	2530-917-7772	SPRING: handbrake seat adjusting 27X11074 (05415)		EA		1	*	*	*	*	4	4
X2 O 00090		STRIKER: brake rod 464X4353 (05415)		EA		1					4	7
O 00091	5310-550-2379	WASHER, FLAT: 3/8 in.		EA		1	*	*	*	*		
O 00092	5310-012-0380	WASHER, LOCK: 1/4 in.		EA		2	*	*	*	*		
O 00093	5310-543-2705	WASHER, LOCK: 3/8 in.		EA		2	*	*	*	*		
X2 O 00094		YOKE END: offset 62X9915 (05415)		EA		1					4	19
00095		1204 - HYDRAULIC BRAKE SYSTEM										
POR 00096	2530-355-1436	CYLINDER ASSEMBLY, HYDRAULIC BRAKE, MASTER FE1050 (63477)		EA		1	*	*	*	*		
O 00097	5310-012-0376	NUT, PLAIN HEXAGON: 5/16 in. 18		EA		1	*	*	*	*		
X2 O 00098		SCREW: bleed adapter 1898K713 (78500)		EA		2					2	4
O 00099	5310-359-0458	WASHER, FLAT: adapter elbow		EA		2	*	*	*	*		
O 00100	5310-012-0214	WASHER, LOCK: 5/16 in.		EA		1	*	*	*	*		

(1) SMR CODE INDEX NO.	(2) FEDERAL STOCK NUMBER	(3) DESCRIPTION REFERENCE NO. & MFR CODE USABLE ON CODE		(4) UNIT OF ISSUE	(5) QTY INC IN UNIT PACK	(6) QTY INC IN UNIT	(7) 15 DAY ORGANIZATIONAL MAINTENANCE ALW				(8) ILLUS- TRATION	
							(a)	(b)	(c)	(d)	(a)	(b)
							1-5	6-20	21-50	51-100	FIG NO.	ITEM NO.
00101		1206 - MECHANICAL BRAKE SYSTEM										
X2 O 00102		ANCHOR: spring, pedal return 134X2676 (05415)		EA		1						
X2 O 00103		NUT, anchor adjusting 7X11157 (05415)		EA		1						
O 00104	5310-732-0558	NUT, PLAINN, HEXAGON: 3/8 in. 16		EA		2	*	*	*	*	5	2
X2 O 00105		PEDAL ASSEMBLY: service brake 108R1828X (05415)		EA		1					5	1
X2 O 00106		ROD, ASSEMBLY: pedal to master cylinder 298-8556X (05415)		EA		1						
O 00107	5305-269-3216	SCREW, CAP, HEXGON HEAD: 3/8 in. 16 x 2 in.		EA		2	*	*	*	*	5	4
O 00108	5310-543-2705	WASHER, LOCK: 3/8 in.		EA		2.	*	*	*	*	5	3
00109		GROUP 13 - WHEELS										
00110		1311 - WHEEL ASSEMBLY										
P O 00111	2530-303-9897	CAP: hub, steering wheel 25W3505 (05415)		EA		2	*	*	*	*		
P O 00112	3110-100-0766	CONE AND ROLLERS, TAPERED ROLLER BEARING: inner and outer, steering wheel 3381 (60038)		EA		4	*	*	2	2	3	5
P O 00113	3110-277-0368	CUP, TAPERED ROLLER BEARING: inner and outer, steering wheel 3331 (60038)		EA		4	*	*	2	2		
O 00114	5310-637-0161	NUT, CASTELLATED, HEXAGON: bearing adjusting, steering wheel		EA		2	*	*	*	*	3	8
O 00115	5310-010-3028	NUT, PLAIN, HEXAGON		EA		24	*	*	*	*	2	7
O 00116	5310-298-1499	PIN, COTTER; 1/8 in. x 2 in.		EA		2	*	*	*	*	3	9
X2 O 00117		PLIUG: brake adjusting hole 1850R96 (78500)		EA		2	*	*	*	*	2	2
P O 00117A	5340-312-0820	BUSHING; tapered, wheel, stud 1246V334		EA		24	*	*	*	24		

(1) SMR CODE INDEX NO.	(2) FEDERAL STOCK NUMBER	(3) DESCRIPTION REFERENCE NO. & MFR CODE USABLE ON CODE		(4) UNIT OF ISSUE	(5) QTY INC IN UNIT PACK	(6) QTY INC IN UNIT	(7) 15 DAY ORGANIZATIONAL MAINTENANCE ALW				(8) ILLUS- TRATION	
							(a)	(b)	(c)	(d)	(a)	(b)
							1-5	6-20	21-50	51-100	FIG NO.	ITEM NO.
X2 O 00118		PLUG: brake inspection hole 444MBA1 (05415)		EA		2	*	*	*	*	2	3
P O 00119	2530-524-0980	RING: lock, steering wheel 30X11650 (05415)		EA		4	*	*	*	*	3	6
P O 00120	5330-292-0451	SEAL, PLAIN, ENCASED: oil, hub, steering wheel 63X1660 (73680)		EA		2	2	2	4	8	3	4
O 00121	5310-194-7317	WASHER, FLAT: 1 1/8 in.		EA		2	*	*	*	*	3	7
X2 O 00122		WASHER, LOCK: 1124-00 (72962)		EA		24					2	6
AH OR 00123		WHEEL: w/tire, steering		EA		2	*	*	*	*	3	1
00124		GROUP 14 - STEERING										
00125		1401 - STEERING ASSEMBLY										
O 00126	4730-172-0034	FITTING, LUBICATION: drag link tie rod ends		EA		2	*	*	*	*		
O 00127	4730-172-0034	FITTING, LUBRICATION: tie rod ends		EA		4	*	*	*	*	3	3
O 00128	5310-732-0558	NUT, PLAIN, HEXAGON: 3/8 in. 16		EA		4	*	*	*	*	1	8
O 00129	5315-839-5822	PIN, COTTER: 1/8 in. X 1 in.		EA		2	*	*	*	*		
O 00130	5305-269-3213	SCREW, CAP, HEXAGON HEAD: 3/8 in. 16 x 1 1/4 in.		EA		4	*	*	*	*	1	9
O 00131	5305-269-3211	SCREW, CAP, HEXAGON HEAD 3/8 in. 16 x 1 in.		EA		2	*	*	*	*	1	5
O 00132	5310-543-2705	WASHER, LOCK: 3/8 in.		EA		4	*	*	*	*	1	9
O 00133	5310-543-2705	WASHER, LOCK: 3/8 in.		EA		2	*	*	*	*	1	4
00134		1411 - Hoses, Lines, Fittings										
X2 O 00135		CLAMP, HOSE 336MCX3 (05415)		EA		1						
X2 O 00136		ELBOW: steering pump, pressure end 805KL1 (05415)		EA		1						

(1) SMR CODE INDEX NO.	(2) FEDERAL STOCK NUMBER	(3) DESCRIPTION REFERENCE NO. & MFR CODE USABLE ON CODE		(4) UNIT OF ISSUE	(5) QTY INC IN UNIT PACK	(6) QTY INC IN UNIT	(7) 15 DAY ORGANIZATIONAL MAINTENANCE ALW				(8) ILLUS- TRATION	
							(a)	(b)	(c)	(d)	(a) FIG NO.	(b) ITEM NO.
							1-5	6-20	21-50	51-100		
P O 00137	2530-755-4942	HOSE AND TUBE ASSEMBLY: power steering pressure 134MGC1 (05415)		EA		1	*	*	*	*		
P O 00138	2530-755-4943	HOSE AND TUBE ASSEMBLY: power steering return 134MGD (05415)		EA		1	*	*	*	*		
00139		GROUP 18 - BODY, CAB, HOOD										
00140		1801 - BODY, CAB, HOOD ASSEMBLIES										
X2 O 00141		BAND: static drag strap 297MAF1 (05415)		EA		2						
X2 O 00140		CLAMP: hood X8519L (05415)		EA		2						
X2 O 00143		COVER 346MLT1 (05415)		EA		1						
P O 00144	3930-063-8566	COVER: battery box, top 285MDB2 (05415)		EA		1	*	*	*	*		
X2 O 00145		COVER: battery box, side, lh 285MDA2 (05415)		EA		1						
X2 O 00146		COVER: batter box, side, rh 285MCX2 (05415)		EA		1						
X2 O 00147		COVER: cowl 285MDC2 (05415)		EA		1						
X2 O 00148		COVER: resistor 893-7135 (05415)		EA		1						
M O 00149		GASKIET: cork, cover, 1 in. x 20 in. x 1/16 in. thk MANUFACTURE FROM:										
P O 00150	5330-223-2657	SHEET CORK		SH					SEE	GRP	9501	
X2 O 00151		GUARD: motor 384MBX1 (05415)		EA		1						
X2 O 00152		PIN: battery roller 81MGP1 (05415)		EA		12						

(1) SMR CODE INDEX NO.	(2) FEDERAL STOCK NUMBER	(3) DESCRIPTION REFERENCE NO. & MFR CODE USABLE ON CODE		(4) UNIT OF ISSUE	(5) QTY INC IN UNIT PACK	(6) QTY INC IN UNIT	(7) 15 DAY ORGANIZATIONAL MAINTENANCE ALW				(8) ILLUS- TRATION	
							(a)	(b)	(c)	(d)	(a)	(b)
							1-5	6-20	21-50	51-100	FIG NO.	ITEM NO.
X2 O 00153		PLATE: floor 457MBP2 (05415)		EA		1						
X2 O 00154		PLATE: floor, rear 213R7020 (05415)		EA		1						
X2 O 00155		ROLLER: battery 456MCB1 (05415)		EA		12						
O 00156	5305-559-9202	SCREW, CAP, HEXAGON HEAD: 1/4 in. 20 x 1/2 in.		EA		6	*	*	*	*		
O 00157	5305-269-3209	SCREW, CAP, HEXAGON HEAD: 3/8 in. 16 x 3/4 in.		EA		2	*	*	*	*		
O 00158	5305-958-5245	SCREW, MACHINER: flat head, 1/4 in. 20 x 5/8 in.		EA		6	*	*	*	*		
O 00159	5305-052-8241	SCREW, TAPPING, THREAD FORMING: round head slotted, 1/4 in. 20 x 3/4 in.		EA		2	*	*	*	*		
X2 O 00160		SCREW, TAPPING, THREAD FORMING: round head, 1/4 in. 20 x 1/2 in.		EA		4						
O 00161	5310-838-6056	WASHER, FLAT: 3/8 in.		EA		2	*	*	*	*		
O 00162	5310-017-4916	WASHER, LOCK: internal - external tooth, 1/4 in.		EA		4	*	*	*	*		
O 00163	5310-012-0380	WASHER, LOCK: 1/4 in.		EA		6	*	*	*	*		
O 00164	5310-543-2705	WASHER, LOCK: 3/8 in.		EA		2	*	*	*	*		
O 00165		1806 - UPHOLSTERY, SEATS										
X2 O 00166		BRACKET: seat support 316MMR2 (05415)		EA		1						
O 00167	5315-013-7258	PIN, COTTER: 3/16 in. x 1 1/2 in.		EA		2	*	*	*	*		
X2 O 00168		PIN, STRAIGHT, HEADLESS 388X8325 (05415)		EA		1						
X2 OR 00169		SEAT ASSEMBLY: 22R13X (05415)		EA		1						
X2 O 00170		FRAME ASSEMBLY: seat 17R11721 (05415)		EA		1						

(1) SMR CODE INDEX NO.	(2) FEDERAL STOCK NUMBER	(3) DESCRIPTION REFERENCE NO. & MFR CODE USABLE ON CODE		(4) UNIT OF ISSUE	(5) QTY INC IN UNIT PACK	(6) QTY INC IN UNIT	(7) 15 DAY ORGANIZATIONAL MAINTENANCE ALW				(8) ILLUS- TRATION	
							(a)	(b)	(c)	(d)	(a) FIG NO.	(b) ITEM NO.
							1-5	6-20	21-50	51-100		
X2 O 00171		CUSHION: seat W12439 (05415)		EA		1						
X2 O 00172		CUSHION: back rest 2W12439 (05415)		EA		1						
00173		GROUP 24 - HYDRAULIC LIFT COMPONENTS										
00174		2401 - HYDRAULIC PUMP										
X2 O 00175		COUPLING: half, motor end 35X5513 (05415)		EA		1						
X2 O 00176		COUPLING: halt, pump end 72X5513 (05415)		EA		1						
P O 00177	5315-616-5526	KEY, WOODRUFF: No. 5		EA		1	*	*	*	*		
00178		2403 - HYDRAULIC CONTROL LEVERS AND LINKAGE										
P O 00179	2525-211-5946	BALL: shift lever 5X8452 (05415)		EA		2	*	*	*	*		
P O 00180	3930-066-5514	BRACKET: CONTROL VALVE 316MMX1 (05415)		EA		1	*	*	*	*	6	7
P O 00181	3040-891-3021	LEVER: control hoist 288MHD1 (05415)		EA		1	*	*	*	*	6	2
P O 00182	3930-063-8571	LEVER: control, tilt 288MHE1 (05415)		EA		1	*	*	*	*	6	10
O 00183	5310-012-0376	NUT, PLAIN, HEXAGON: 5/16 IN. 18		EA		4	*	*	*	*		
P O 00184	3930-544-2096	PIN, CONTROL LEVER X11689 (05415)		EA		4	*	*	*	*		
O 00185	5315-842-3044	PIN, COTTER: 3/32 in. x 3/4 in.		EA		4	*	*	*	*		
O 00186	5310-839-5822	PIN, COTTER: 1/8 in. x 1 in.		EA		3	*	*	*	*	6	8
P O 00187	3930-066-5497	PIN, STRAIGHT, HEADED X11689 (05415)		EA		4	*	*	*	*		

(1) SMR CODE INDEX NO.	(2) FEDERAL STOCK NUMBER	(3) DESCRIPTION REFERENCE NO. & MFR CODE USABLE ON CODE		(4) UNIT OF ISSUE	(5) QTY INC IN UNIT PACK	(6) QTY INC IN UNIT	(7) 15 DAY ORGANIZATIONAL MAINTENANCE ALW				(8) ILLUS- TRATION	
							(a)	(b)	(c)	(d)	(a) FIG NO.	(b) ITEM NO.
							1-5	6-20	21-50	51-100		
X2 O 00188		SCREW, MACHINE: flat head, 5/16 in. 18 x 7/8 in. 7G514 (12603)		EA		4						
P O 00189	3040-995-1388	SHAFT: control 494MMY1 (05415)		EA		1	*	*	*	*	6	9
P O 00190	3930-063-8603	SPACER: control lever X13193-3 (05415)		EA		1	*	*	*	*	6	11
P O 00191	3930-063-8602	SPACER: control lever X13193-2 (05415)		EA		1	*	*	*	*	6	13
X2 O 00192		WASHER, FLAT: lever spacers 22X9004 (05415)		EA		1					6	12
O 00193	5310-012-0214	WASHER, LOCK: 5/16 in.		EA		4	*	*	*	*		
O 00194		2404 - HYDRAULIC TILT CYLINDER AND TILT CRANK										
O 00195	5306-616-1287	BOLT, MACHINE: 5/16 in. 18 x 3/4 in.		EA		8	*	*	*	*		
X2 OR 00196		CYLINDER ASSEMBLY: tilt A9025DA1 (05415)		EA		2						
O 00197	4730-050-4208	FITTING, LUBRICATION: pivot pin, front		EA		2	*	*	*	*		
O 00198	4730-172-0031	FITTING, LUBRICATION: pivot pin, rear		EA		2	*	*	*	*		
O 00199	5310-720-8532	NUT, PLAIN, HEXAGON: 7/16 in. 14		EA		2	*	*	*	*		
X2 O 00200		PIN: pivot 359X8425 (05415)		EA		4						
X2 O 00201		PLATE: lock, tilt cylinder pin 46x4520 (05415)		EA		4						
P O 00202	5340-544-4335	ROD, END: piston 13W2918 (05415)		EA		2	*	*	*	*		
O 00203	5305-835-3623	SCREW, CAP, HEXAGON HEAD: 7/16 in. 14 x 2 1/4 in.		EA		2						

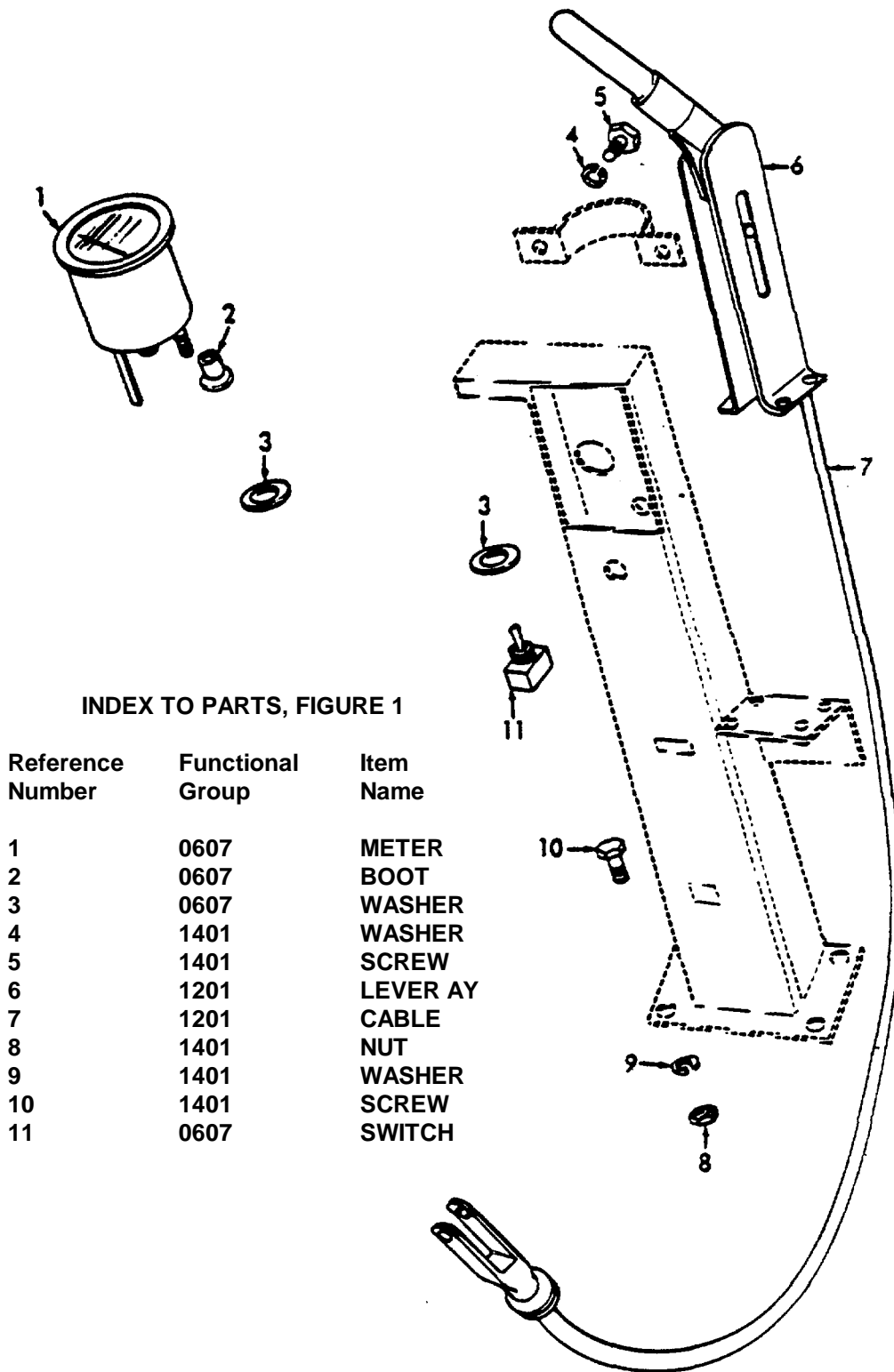
(1) SMR CODE INDEX NO.	(2) FEDERAL STOCK NUMBER	(3) DESCRIPTION REFERENCE NO. & MFR CODE USABLE ON CODE		(4) UNIT OF ISSUE	(5) QTY INC IN UNIT PACK	(6) QTY INC IN UNIT	(7) 15 DAY ORGANIZATIONAL MAINTENANCE ALW				(8) ILLUS- TRATION	
							(a)	(b)	(c)	(d)	(a) FIG NO.	(b) ITEM NO.
							1-5	6-20	21-50	51-100		
O 00204	5310-012-0214	WASHER, LOCK: 5/16 in.		EA		8	*	*	*	*		
O 00205	5310-194-0743	WASHER, LOCK: 7/16 in.		EA		2	*	*	*	*		
00206		2405 - HYDRAULIC MAST COLUMN										
X2 O 00207		CHAIN ASSEMBLY: lift 332MAB21 (05415)		EA		2						
P O 00208	4730-278-5662	FITTING, LUBICATION: crosshead 1911 (70270)		EA		2						
P O 00209	4730-172-0034	FITING, LUBRICATION: pivot pin 1613B (70270)		EA		2	*	*	*	*		
P O 00210	3930-937-3110	FORK, LIFT TRUCK A700AR4 (05415)		EA		2	*	*	*	*		
X2 O 00211		LATCH ASSEMBLY: 8W10937X (05415)		EA		2						
X2 O 00212		LOCK: fork 509MAL1 (05415)		EA		2						
X2 O 00213		PLATE: lock 299MNT1 (05415)		EA		2						
O 00214	5310-763-8901	NUT, PLAIN, HEXAGON: 3/4 in. 16		EA		4	*	*	*	*		
O 00215	5305-269-3211	SCREW, CAP, HEXAGON HEAD: 3/8 in. 16 x in.		EA		4	*	*	*	*		
O 00216	5305-269-3213	SCREW, CAP, HEXAGON HEAD: 3/8 in. 16 x 1/4 in.		EA		4	*	*	*	*		
X2 O 00217		SCREW: chain adjusting 11X12470 (05415)		EA		2						
X2 O 00218		SHAFT: fork 494MLK2 (05415)		EA		1						
X2 O 00219		SPACER: latch 654X10743 (05415)		EA		4						
O 00220	5310-543-2705	WASHER, LOCK: 3/8 in.		EA		4	*	*	*	*		

(1) SMR CODE INDEX NO.	(2) FEDERAL STOCK NUMBER	(3) DESCRIPTION REFERENCE NO. & MFR CODE USABLE ON CODE		(4) UNIT OF ISSUE	(5) QTY INC IN UNIT PACK	(6) QTY INC IN UNIT	(7) 15 DAY ORGANIZATIONAL MAINTENANCE ALW				(8) ILLUS- TRATION	
							(a)	(b)	(c)	(d)	(a) FIG NO.	(b) ITEM NO.
							1-5	6-20	21-50	51-100		
O 00221	5310-543-2705	WASHER, LOCK: 3/8 in.		EA		4	*	*	*	*		
00222		2406 - HYDRAULIC LINES AND FITTINGS										
P O 00223	4730-288-9785	ADAPTER, oil tank 16MA16UFS (80713)		EA		1	*	*	*	*	7	2
X2 O 00224		ADAPTER, PIPE TO HOSE: oil tank 4X12398 (05415)		EA		1					7	1
X2 O 00225		ADPATER, PIPE TO HOSE: tank hose to valve elbow 4X12398 (05415)		EA		1					6	5
X2 O 00226		ANGLE SUPPORT: tee, tilt cylinder line 24X7703 (05415)		EA		1						
O 00227	3930-780-5146	CAP: oil breather 2X11820 (05415)		EA		2	*	*	*	*	7	6
P O 00228	2940-382-8051	CLAMP: hose 336MAM3 (05415)		EA		1	*	*	*	2		
P O 00229	2940-382-8051	CLAMP: hose 336MAM3 (05415)		EA		2	*	*	*	2		
2X O 00230		CLAMP: tee, tilt cylinder line 162X10221 (05415)		EA		1						
X2 O 00231		COVER: filter M2032-2C (92863)		EA		1					7	5
O 00232	5305-068-0502	SCREW, CAP, HEXAGON HEAD: 1/4 in. 20 X 3/4 in.		EA		4	*	*	*	*	7	3
O 00233	5310-012-0380	WASHER, LOCK: 1/4 in.		EA		4	*	*	*	*	7	4
X2 O 00234		ELBOW, PIPE: street pump 8-18PC (92985)		EA		1						
P O 00235	4730-289-2370	ELBOW, PIPE: tilt cylinder 4MA4UFS (80713)		EA		4	*	*	*	*		

(1) SMR CODE INDEX NO.	(2) FEDERAL STOCK NUMBER	(3) DESCRIPTION REFERENCE NO. & MFR CODE USABLE ON CODE		(4) UNIT OF ISSUE	(5) QTY INC IN UNIT PACK	(6) QTY INC IN UNIT	(7) 15 DAY ORGANIZATIONAL MAINTENANCE ALW				(8) ILLUS- TRATION		
							(a)	(b)	(c)	(d)	(a)	(b)	
							1-5	6-20	21-50	51-100	FIG NO.	ITEM NO.	
X2 O 00236		ELBOW, pump 8X11926B (05415)		EA		1							
P O 00237	4730-544-4341	ELBOW: street, tilt cylinder line 19X119128 (05415)		EA		2	*	*	*	*			
X2 O 00238		ELBOW: valve 705GC3 (05415)		EA		1					6	6	
X2 O 00239		ELBOW: valve 8AEOGS (92985)		EA		1					6	3	
P O 00240	3930-022-7092	ELEMENT: oil filter M2032-36 (92863)		EA		1	*	*	2	2	7	7	
P O 00241	3930-755-4971	HOSE ASSEMBLY: rubber, lift cylinder 134MGF2 (05415)		EA		1	*	*	*	*			
X2 O 00242		HOSE ASSEMBLY: rubber, pump to valve 134MGF1 (05415)		EA		1							
X2 O 00243		HOSE ASSEMBLY: rubber, tee to tilt cylinder, front 134MBB11 (05415)		EA		2							
X2 O 00244		HOSE ASSEMBLY: rubber, tilt cylinder to tee, rear 134MBB9 (05415)		EA		2							
X2 O 00245		HOSE ASSEMBLY: rubber, valve to pump 134MGE1 (05415)		EA		2							
X2 O 00246		HOSE , RUBBER: pump to tank 134MGB1 (05415)		EA		1							
X2 O 00247		HOSE, RUBBER: valve to tank 134MFL4 (05415)		EA		1							
O 00248	5310-584-5005	NUT, PLAIN, HEXAGON: 1/4 in. 20		EA		2	*	*	*	*			
P O 00249	3930-276-1943	PACKING, PREFORMED: filter cover M2032-7 (92863)		EA		1	*	*	*	2			
P O 00250	5330-808-0794	PACKING, PREFORMED: hose fitting AN6290-8 (8804)		EA		4	*	*	*	2			

(1) SMR CODE INDEX NO.	(2) FEDERAL STOCK NUMBER	(3) DESCRIPTION REFERENCE NO. & MFR CODE USABLE ON CODE		(4) UNIT OF ISSUE	(5) QTY INC IN UNIT PACK	(6) QTY INC IN UNIT	(7) 15 DAY ORGANIZATIONAL MAINTENANCE ALW				(8) ILLUS- TRATION	
							(a)	(b)	(c)	(d)	(a) FIG NO.	(b) ITEM NO.
							1-5	6-20	21-50	51-100		
O 00251	3930-063-8700	PLUG, PIPE: oil tank		EA		1	*	*	*	*		
X2 O 00252		PLUG, PIPE: tank drain 4X11300B (05415)		EA		2					7	8
X2 O 00253		PLUG, PIPE: valve elbow 16X11300B (05415)		EA		1					6	4
O 00254	5305-071-2238	SCREW, CAP, HEXAGON HEAD: 1/4 in. 20 x 1 3/4 in.		EA		2	*	*	*	*		
X2 O 00255		TEE: tilt cylinder line 5X11931B (05415)		EA		2						
00256		GROUP 40 - ELECTRIC MOTORS										
00257		4010 - MASTER OR AUXILAIRY CONTROL ASSEMBLY										
M O 00258		CORK: electrical equipment box cover, 1 in. x 74 in., 1/16 in. thk MANUFACTURE FROM:										
P O 00259	5330-223-2657	SHEET, CORK		SH				SEE	GRP	9501		
M O 00260		CORK: fuse box cover gasket, 1 in. x 19 in., 1/16 in. thk MANUFACTURE FROM:										
P O 00261	5330-223-2657	SHEET CORK		SH				SEE	GRP	9501		
M O 00262		CORK fuse box cover gasket, 1 in. x 18 in., 1/16 in. thk MANUFACTURE FROM										
P O 00263	5330-223-2657	SHEET, CORK		SH				SEE	GRP	9501		
X2 O 00264		COVER: electrical equipment box 303MBP1 (05415)		EA		1						
X2 O 00265		COVER: fuse box 346MNK1 (05415)		EA		1						
X2 O 00266		COVER: fuse box 346MNL1 (05415)		EA		1						
X2 O 00267		TIP contact D334S3G2 (56365)		EA		8						

(1) SMR CODE INDEX NO.	(2) FEDERAL STOCK NUMBER	(3) DESCRIPTION REFERENCE NO. & MFR CODE USABLE ON CODE		(4) UNIT OF ISSUE	(5) QTY INC IN UNIT PACK	(6) QTY INC IN UNIT	(7) 15 DAY ORGANIZATIONAL MAINTENANCE ALW				(8) ILLUS- TRATION	
							(a)	(b)	(c)	(d)	(a)	(b)
							1-5	6-20	21-50	51-100	FIG NO.	ITEM NO.
X2 O 00268		TIP: contact D334S3G2 (56365)		EA		8						
X2 O 00269		TIP: contact D334S3G2 (56365)		EA		2						
00270		4011 - CIRCUIT BREAKERS, CUTOUT, FUSE AND FUSEHOLDER										
P O 00271	5920-131-9849	FUSE, CARTRIDES drive d pump motor, 200 amp ACK200 (71400)		EA		2	*	*	2	2		
P O 00272	5920-131-9840	FUSE,CARTRIDGE: steer motor, 120 sp ACK120 (71400)		EA		1	*	*	*	2		
P O 00273	5920-280-4007	FUSE, CARTRIDGE: 14 amp drive and steer motor thermostat, horn lights, meter time totalizer, pump motor thermostat		EA		5	2	2	5	10		
O 00274	5310-011-4379	NUT, PLAIN, HEXAGON: brass, 1/4 in. 20MC		EA		4	*	*	*	*		
X2 O 00275		WASHER, FLAT: brass, 1/4 in. 9414920 (24617)		EA		4						
O 00276	5310-012-030	WASHER, LOCK 1/4 in. SFE14 (71400)		EA		4	*	*	*	*		
00277		4012 - SWITCHES										
X2 O 00278		CLAMP: mounting 128Y10221 (05415)		EA		1						
P O 00279	3930-397-7116	COVER 2870C5G1 (56365)		EA		1	*	*	*	*		
P O 00280	3930-307-6362	LEVER: operating 2870C5G1 (56365)		EA		1	*	*	*	*		
P O 00281	5355-668-376	KNOB: lever 9203W7 (56365)		EA		1	*	*	*	2		
P O 00282	5340-755-4995	SPRING: microswitch 41XY11313 (05415)		EA		1	*	*	*	*		
X2 O 00283	5330-375-0563	WASHER: cover screw 306X29 (56365)		EA		2						

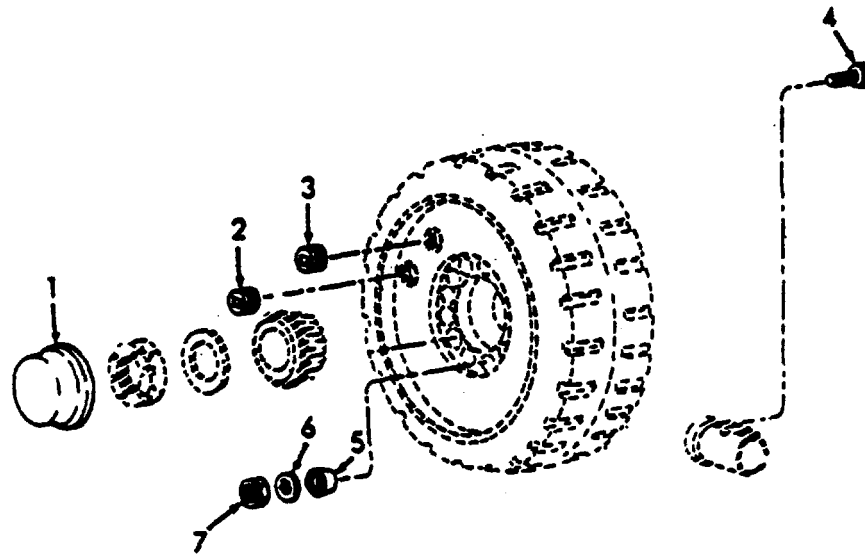


INDEX TO PARTS, FIGURE 1

Reference Number	Functional Group	Item Name
1	0607	METER
2	0607	BOOT WASHER
3	0607	WASHER
4	1401	WASHER SCREW
5	1401	SCREW
6	1201	LEVER AY
7	1201	CABLE
8	1401	NUT
9	1401	WASHER
10	1401	SCREW
11	0607	SWITCH

ME 3930-253-20P/1

Figure 1. Instruments



ME 3930-253-20P/2

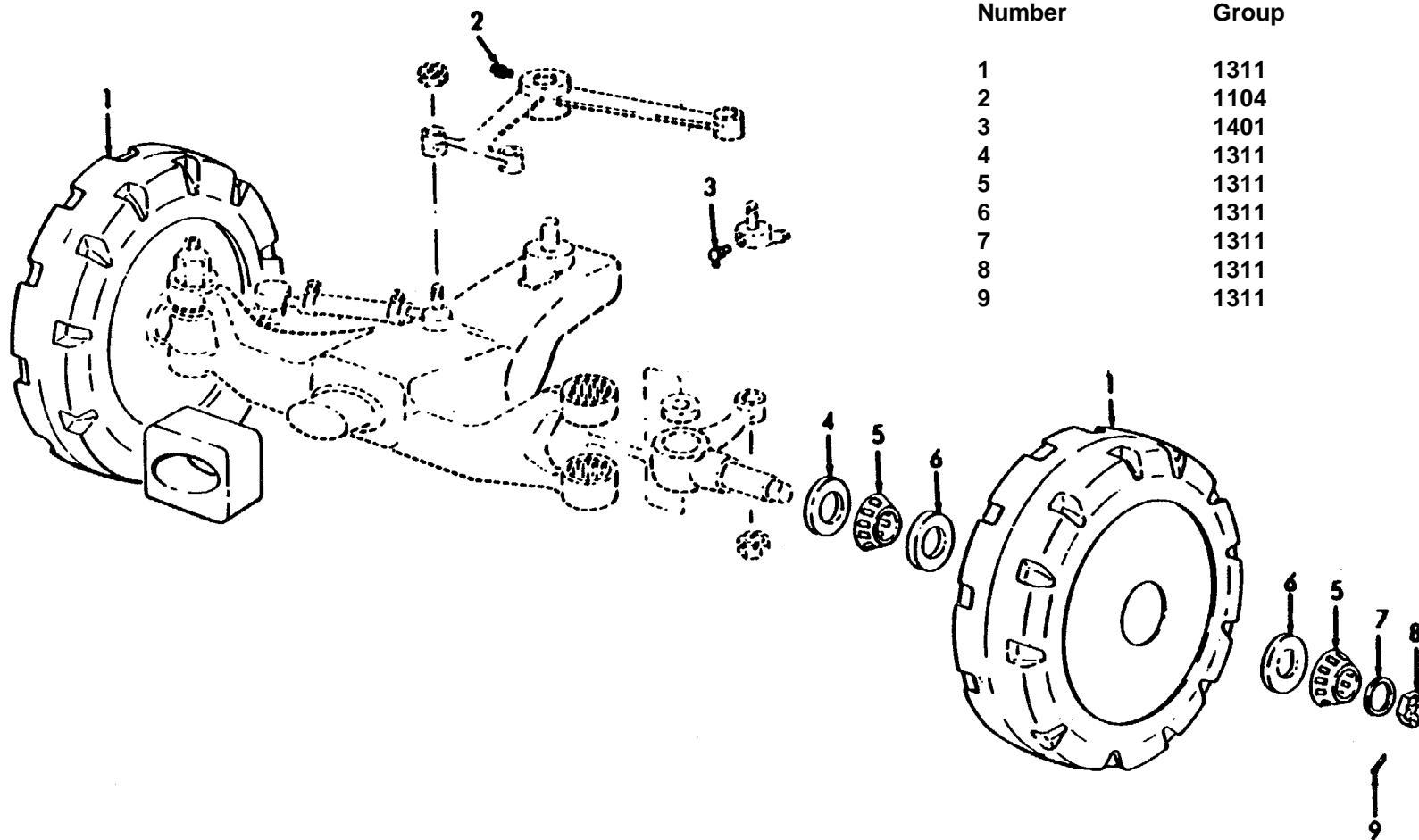
Figure 2. Front Axle Final Drive.

INDEX TO PARTS, FIGURE 2

Reference Number	Functional Group	Item Name
1	1003	CAP
2	1311	PLUG
3	1311	PLUG
4	1204	SCREW
5	1311	BUSHING
6	1311	WASHER
7	1311	NUT

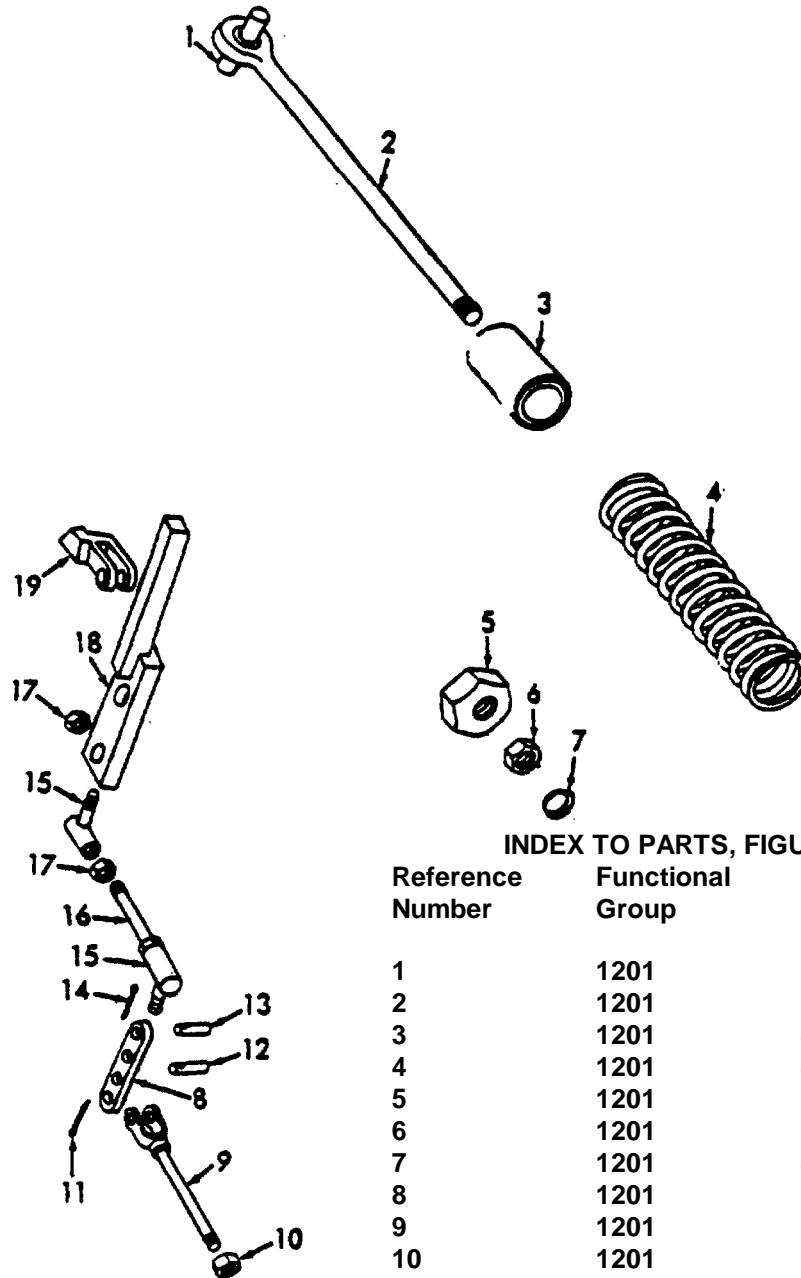
INDEX TO PARTS, FIGURE 3

Reference Number	Functional Group	Item Name
1	1311	WHEEL
2	1104	FITTING
3	1401	FITTING
4	1311	SEAL
5	1311	CONE
6	1311	RING
7	1311	WASHER
8	1311	NUT
9	1311	PIN



ME 3930-253-20P/3

Figure 3. Rear Axle, Steering.

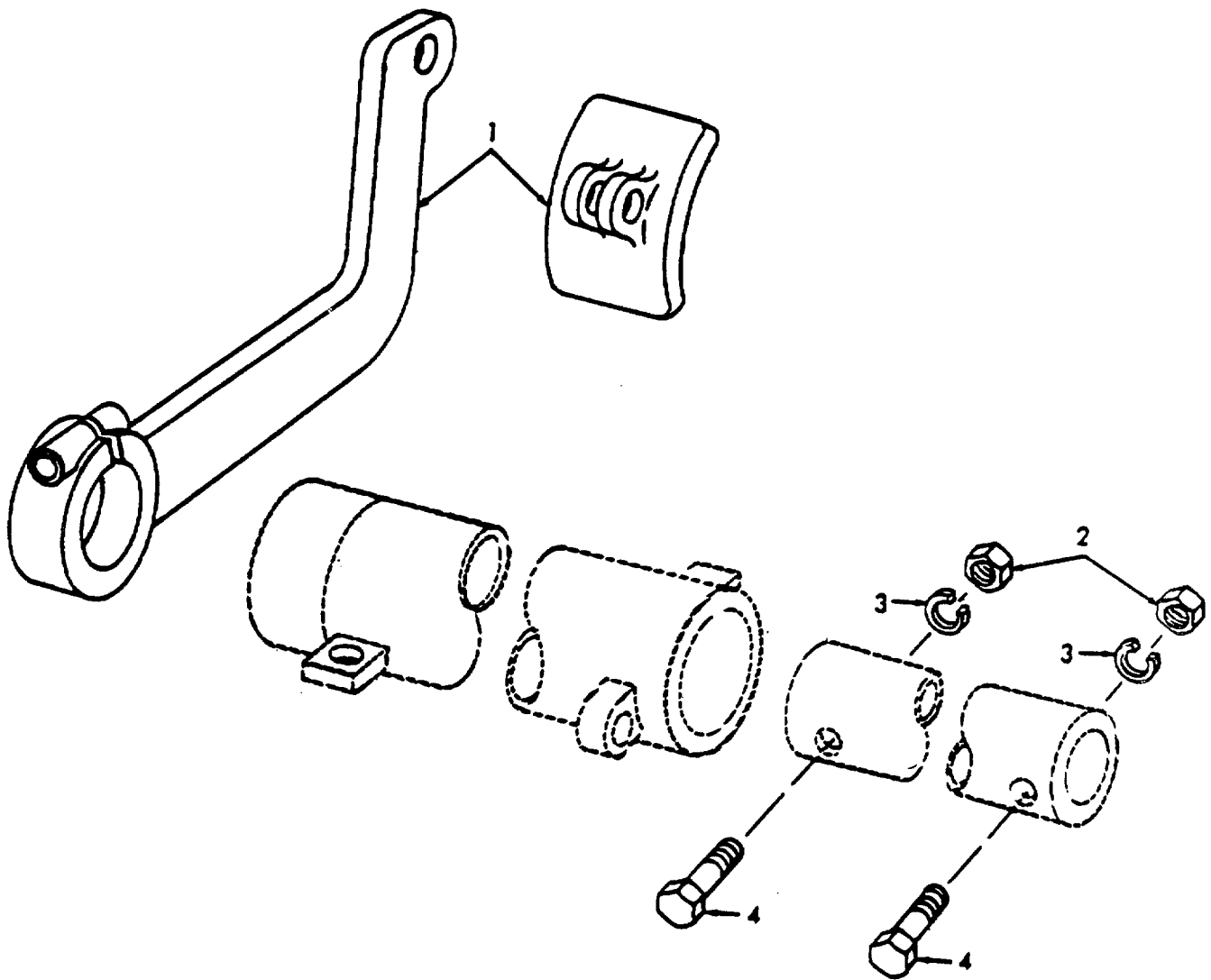


INDEX TO PARTS, FIGURE 4

Reference Number	Functional Group	Item Name
1	1201	PIN
2	1201	ROD
3	1201	SPACER
4	1201	SPRING
5	1201	NUT
6	1201	NUT
7	1201	STRIKER
8	1201	LINK
9	1201	ROD
10	1201	NUT
11	1201	PIN
12	1201	PIN
13	1201	PIN
14	1201	PIN
15	1201	BALL JOINT
16	1201	ROD
17	1201	NUT
18	1201	BAR
19	1201	YOKE

ME 3930-253-20P/4

Figure 4. Hand Brake.

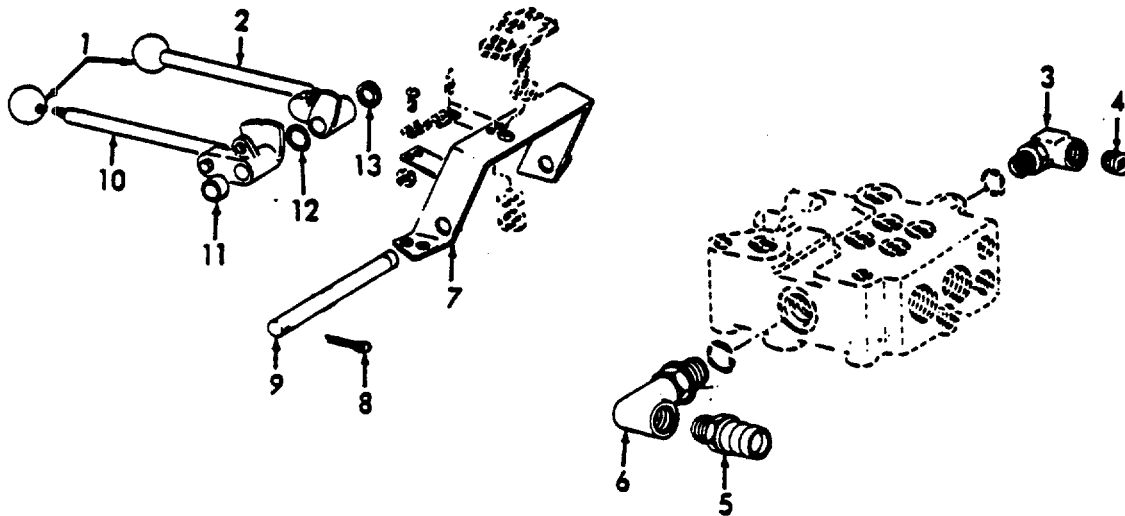


ME 3930-253-20P/5

Figure 5. Brake Pedal, Shaft.

INDEX TO PARTS, FIGURE 52

Reference Number	Functional Group	Item Name
1	1206	PEDAL AY
2	1206	NUT
3	1206	WASHER
4	1206	SCREW



ME 3930-253-20P/6

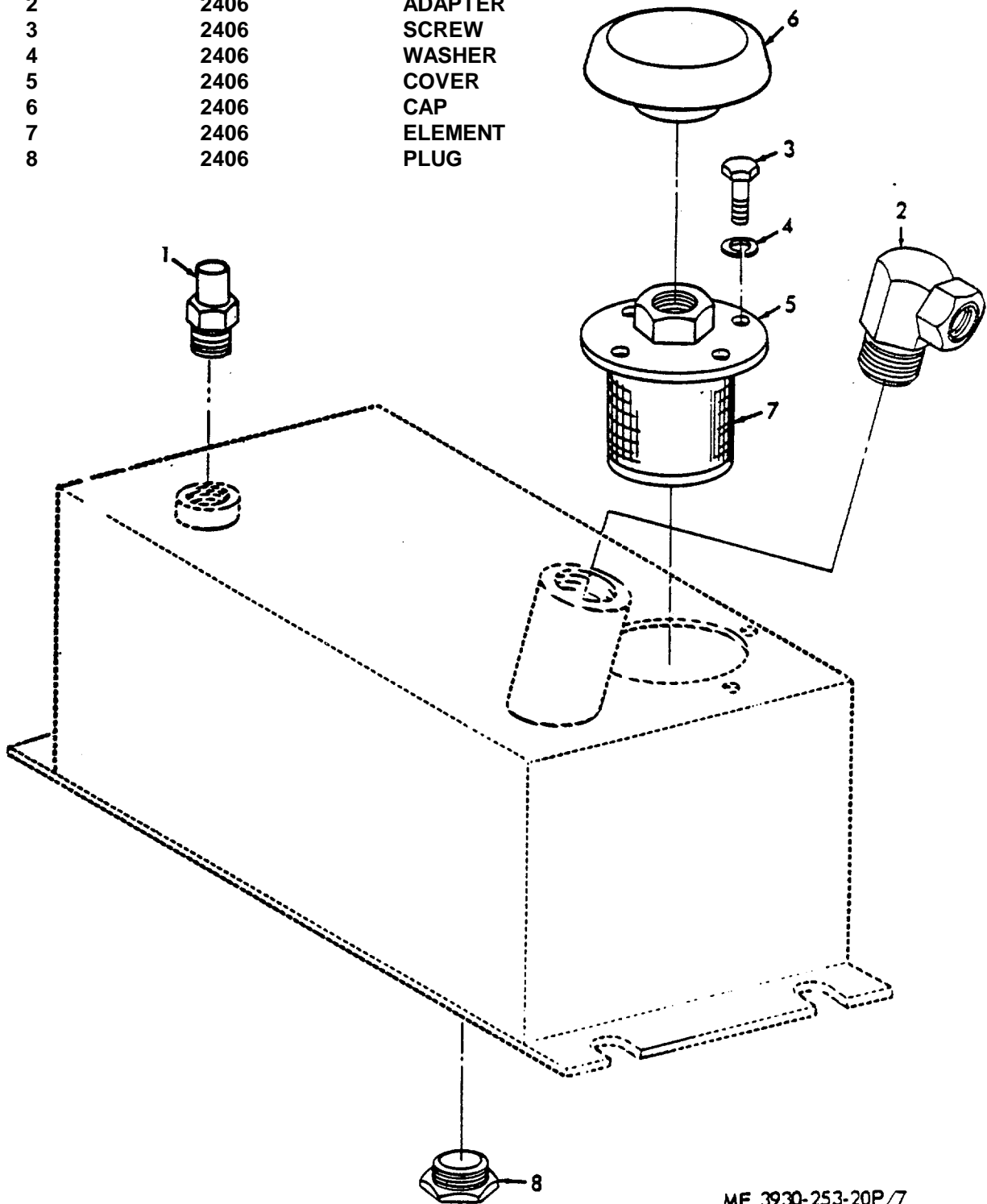
Figure 6. Hydraulic Control Valve, Linkage.

INDEX TO PARTS, FIGURE 6

Reference Number	Functional Group	Item Name
1	2403	BALL
2	2403	LEVER
3	2406	ELBOW
4	2406	PLUG
5	2406	ADAPTER
6	2406	ELBOW
7	2403	BRACKET
8	2403	PIN
9	2403	SHAFT
10	2403	LEVER
11	2403	SPACER
12	2403	WASHER
13	2403	SPACER

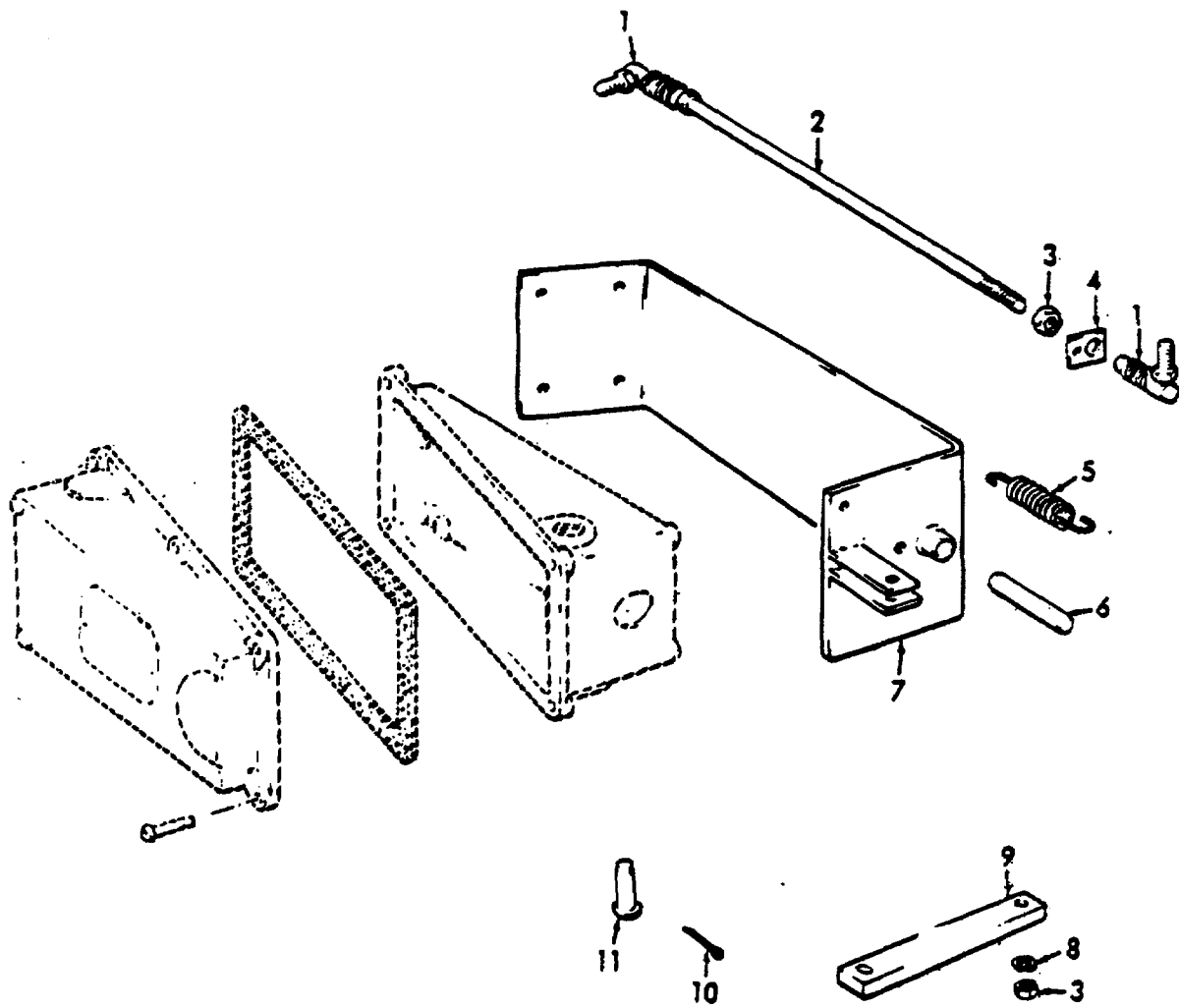
INDEX TO PARTS, FIGURE 7

Reference Number	Functional Group	Item Name
1	2406	ADAPTER
2	2406	ADAPTER
3	2406	SCREW
4	2406	WASHER
5	2406	COVER
6	2406	CAP
7	2406	ELEMENT
8	2406	PLUG



ME 3930-253-20P/7

Figure 7. Hydraulic Oil Tank.



ME 3930-253-20P/8

Figure 8. Accelerating Pedal, Linkage.

INDEX TO PARTS, FIGURE 2

Reference Number	Functional Group	Item Name
1	0608	ALL JOINT
2	0608	ROD
3	0608	NUT
4	0608	ANCHOR
5	0608	SPRING
6	0608	PLUNGER
7	0608	BRACKET
8	0608	WASHER
9	0609	LEVER
10	0608	PIN
11	0608	PIN

**SECTION V. INDEX-FEDERAL STOCK NUMBER AND REFERENCE NUMBER
CROSS-REFERENCE TO INDEX NUMBER**

<u>STOCK NUMBER</u>	<u>INDEX NUMBER</u>	<u>STOCK NUMBER</u>	<u>INDEX NUMBER</u>
2520-025-7856	00063	5305-269-3211	00215
2520-211-5946	00179	5305-269-3212	00130
2530-303-9897	00111	5305-269-3213	00216
2530-310-1914	00056	5305-269-3216	00107
2530-355-1436	00096	5305-281-5890	00049
2530-358-6665	00042	5305-559-9202	00156
2530-524-0980	00119	5305-691-4819	00048
2530-755-4942	00137	5305-835-3623	00203
2530-755-4943	00138	5305-958-5245	00158
2530-875-2012	00067	5306-226-8502	00011
2530-917-7772	00089	5306-226-8506	00012
2530-917-7779	00065	5306-616-1287	00027
2590-311-2197	00039	5306-616-1287	00195
2940-382-8051	00228	5310-010-3028	00115
2940-382-8051	00229	5310-011-4379	00274
3010-931-4542	00010	5310-012-0214	00032
3040-891-3021	00181	5310-012-0214	00033
3040-995-1388	00189	5310-012-0214	00100
3110-100-0766	00112	5310-012-0214	00193
3110-277-0368	00113	5310-012-0214	00204
3930-022-7092	00240	5310-012-0361	00016
3930-054-9269	00021	5310-012-0376	00097
3930-063-8566	00144	5310-012-0376	00183
3930-063-8571	00182	5310-012-0380	00092
3930-063-8602	00191	5310-012-0380	00163
3930-063-8603	00190	5310-012-0380	00233
3930-063-8700	00251	5310-012-0380	00276
3930-066-5497	00187	5310-012-0386	00030
3930-066-5514	00180	5310-017-4916	00162
3930-078-2924	00014	5310-043-2226	00031
3930-092-6909	00085	5310-194-0743	00205
3930-276-1943	00249	5310-194-7317	00121
3930-307-6362	00280	5310-298-1499	00116
3930-397-7116	00279	5310-359-0458	00099
3930-544-2096	00184	5310-543-2641	00019
3930-755-4971	00241	5310-543-2705	00093
3930-780-5146	00227	5310-543-2705	00108
3930-833-1873	00074	5310-543-2705	00132
3930-833-1873	00083	5310-543-2705	00133
3930-937-3110	00210	5310-543-2705	00164
4730-011-3186	00053	5310-543-2705	00220
4730-045-9771	00054	5310-543-2705	00221
4730-050-4203	00060	5310-543-5653	00072
4730-050-4208	00059	5310-550-2379	00091
4730-050-4208	00197	5310-584-5005	00071
4730-172-0031	00198	5310-584-5005	00248
4730-172-0034	00126	5310-637-0161	00114
4730-172-0034	00127	5310-655-9371	00070
4730-172-0034	00209	5310-720-8532	00199
4730-278-5662	00208	5310-732-0558	00104
4730-288-9785	00223	5310-732-0558	00128
4730-289-2370	00235	5310-763-8901	00214
4730-544-4341	00237	5310-805-9964	00017
5305-012-0620	00028	5310-805-9964	00018
5305-052-8241	00159	5310-838-6056	00161
5305-068-0502	00232	5315-013-7258	00167
5305-071-2238	00254	5315-312-1067	00081
5305-225-3939	00087	5315-616-5526	00177
5305-269-3209	00157	5315-839-2325	00020
5305-269-3211	00131	5315-839-5820	00022

**SECTION V. INDEX-FEDERAL STOCK NUMBER AND REFERENCE NUMBER
CROSS-REFERENCE TO INDEX NUMBER (Continued)**

<u>STOCK NUMBER</u>	<u>INDEX NUMBER</u>	<u>STOCK NUMBER</u>	<u>INDEX NUMBER</u>
5315-839-5821	00078	5330-808-0794	00250
5315-839-5822	00077	5340-544-4335	00202
5315-839-5822	00129	5340-708-0189	00005
5315-839-5822	00186	5340-755-4995	00282
5315-842-3044	00075	5355-668.3768	00281
5315-842-3044	00076	5920-131-9840	00272
5315-842-3044	00185	5920-131-9849	00271
5330-223-2557	00288	5920-280-4007	00273
5330-223-2657	00150	5930-644-0110	00003
5330-223-2657	00259	5940-457-6414	00045
5330-223-2657	00261	6220-937-3493	00035
5330-223-2657	00263	6240-295-1184	00037
5330-292-0451	00120	6645-917-7278	00004
5330-375-0563	00283		

<u>REFERENCE NO.</u>	<u>MFG CODE</u>	<u>INDEX NO.</u>	<u>REFERENCE NO.</u>	<u>MFG CODE</u>	<u>INDEX NO.</u>
ACK120	71400	00272	11X11157B	05415	00073
ACK200	71400	00271	11X21470	05415	00217
AN6290-8	88044	00250	1124-00	72962	00122
A700AR4	05415	00210	113186	24617	00053
A9025DA1	05415	00196	124MAX1	05415	00048
D334S3G2	56365	00267	124MCJ1	05415	00047
D334S3G2	56365	00268	1250U125	78500	00054
D334D3G2	56365	00269	128MAC1	05415	00006
FE1050	63477	00096	128X10221	05415	00278
M2032-2C	92863	00231	13W2918	05415	00202
M2032-36	92863	00240	130X52777	05415	00068
M2032-7	92863	00249	134MBB11	05415	00243
N1030	97539	00003	134MBB9	05415	00244
SFE14	71400	00276	134MFL4	05415	00247
SN1103	05415	00023	134MGB1	05415	00246
SN1104	05415	00074	134MGC1	05415	00137
SN1106	05415	00082	134MGD1	05415	00138
SN8364	05415	00084	134MGE1	05415	00245
TYPEM	00213	00285	134MGF1	05415	00242
W12439	05415	00171	134MGF2	05415	00241
X1689	05415	00184	134X2676	05415	00102
X11689	05415	00187	14X8568	05415	00010
X13193-2	05415	00191	149MDA2	05415	00008
X13193-3	05415	00190	16MA16UFS	80713	00223
Y8519L	05415	00142	16X11300B	05415	00253
Y8568	05415	00063	16X11689	05415	00024
10G497	52788	00050	1613B	70270	00209
1034	24455	00037	162X10221	05415	00230
108R1828X	05415	00105	17R11721	05L15	00170
11TS15-2	92993	00005	1850R96	78500	00117

**SECTION V. INDEX-FEDERAL STOCK NUMBER AND REFERENCE NUMBER
CROSS-REFERENCE TO INDEX NUMBER (Continued)**

<u>REFERENCE NO.</u>	<u>MFG CODE</u>	<u>INDEX NO.</u>	<u>REFERENCE NO.</u>	<u>MFG CODE</u>	<u>INDEX NO.</u>
189E713	78500	00098	346MNL1	05415	00266
19X11912B	05415	00237	35Y5513	05415	00175
1911	702070	00208	359Y8425	05415	00200
2W12439	05415	00172	384MBX1	05415	00151
2Y11820	05415	00227	2862J10	78500	00056
203Y8346X	05415	00085	388Y8325	05415	00168
213R7020	05415	00154	4MA4UFS	80713	00235
22R13X	05415	00169	4X11300B	05415	00252
22Y9004	05415	00192	4X12398	05415	00225
227X10221	05415	00066	41X11313	05415	00282
24Y7703	05415	00226	424MAA1	05415	00036
25W3505	05415	00111	424MBL1	05415	00035
26349	52788	00040	441MEF1	05415	00224
265325	52788	00045	444MBA1	05415	00118
266424	52788	00041	445MDW1	05415	00025
266425	52788	00043	455675	72962	00080
268298	52788	00042	456MCB1	05415	00155
27X11074	05415	00089	457MBP2	05415	00153
272X8346	05415	00086	46Y4520	05415	00201
283MDN1	05415	00009	462MGA1	05415	00088
285MICY2	05415	00146	464Y4353	05415	00090
285MDA2	05415	00145	494MLK2	05415	00218
285MDB2	05415	00144	494MMY1	05415	00189
285MDC2	05415	00147	5Y11931B	05415	00255
286MAJ1	05415	00067	5Y8452	05415	00179
286MBB1	05415	00015	509MAL1	05415	00212
2870B3X2	56365	00279	5662678	52788	00039
2870C5G1	56365	00280	5816B	80495	00014
288MHD1	05415	00181	62X9915	05415	00094
288MHE1	05415	00182	63X1660	73680	00120
297MAF1	05415	00141	654Y10743	05415	00219
297Y8325	05415	00079	7G514	12603	00188
298-8556X	05415	00106	7Y11157	05415	00103
299MNT1	05415	00213	705GC3	05415	00238
299MVM2	05415	00064	712T1	05415	00065
3X10497	05415	00069	719AV1	05415	00004
30X11650	05415	00119	72Y5513	05415	00176
303MBP1	05415	00264	730T1	05415	00021
306X29	56365	00283	731E2	05415	00044
316MMR2	05415	00166	8-18PC	92985	00234
316MMS2	05415	00013	8AE0GS	92985	00239
316MMY1	05415	00181	8W10937X	05415	00211
326MBC1	05415	00046	8Y11926B	05415	00236
33MAM3	05415	00229	805KL1	05415	00136
332MAB21	05415	00207	81MGP1	05415	00152
3331	60038	00113	893-7135	05415	00148
336MAM3	05415	00228	9203W7	56365	00281
336MICY3	05415	00138	9414920	24617	00275
3381	60038	00112	98MAS1	05415	00029
346MLT1	05415	00143	98MHA1	05415	00026
346MNK1	05415	00265			

By Order of the Secretary of the Army:

Official:

KENNETH G. WICKHAM,
*Major General, United States Army,
The Adjutant General*

W. C. WESTMORELAND,
*General, United States Army,
Chief of Staff*

Distribution:

To be distributed in accordance with DA Form 12-25, Section I, (qty rqr block No. 190) Organizational Maintenance requirements for Truck, Fork Lift, Electrical.

RECOMMENDED CHANGES TO EQUIPMENT TECHNICAL PUBLICATIONS



THEN...JOT DOWN THE DOPE ABOUT IT ON THIS FORM. CAREFULLY TEAR IT OUT, FOLD IT AND DROP IT IN THE MAIL.

SOMETHING WRONG WITH PUBLICATION

FROM: (PRINT YOUR UNIT'S COMPLETE ADDRESS)

DATE SENT

PUBLICATION NUMBER

PUBLICATION DATE

PUBLICATION TITLE

BE EXACT PIN-POINT WHERE IT IS

PAGE NO.	PARA-GRAPH	FIGURE NO.	TABLE NO.

IN THIS SPACE, TELL WHAT IS WRONG AND WHAT SHOULD BE DONE ABOUT IT.

PRINTED NAME, GRADE OR TITLE AND TELEPHONE NUMBER

SIGN HERE

The Metric System and Equivalents

Linear Measure

1 centimeter = 10 millimeters = .39 inch
 1 decimeter = 10 centimeters = 3.94 inches
 1 meter = 10 decimeters = 39.37 inches
 1 dekameter = 10 meters = 32.8 feet
 1 hectometer = 10 dekameters = 328.08 feet
 1 kilometer = 10 hectometers = 3,280.8 feet

Weights

1 centigram = 10 milligrams = .15 grain
 1 decigram = 10 centigrams = 1.54 grains
 1 gram = 10 decigrams = .035 ounce
 1 decagram = 10 grams = .35 ounce
 1 hectogram = 10 decagrams = 3.52 ounces
 1 kilogram = 10 hectograms = 2.2 pounds
 1 quintal = 100 kilograms = 220.46 pounds
 1 metric ton = 10 quintals = 1.1 short tons

Liquid Measure

1 centiliter = 10 milliliters = .34 fl. ounce
 1 deciliter = 10 centiliters = 3.38 fl. ounces
 1 liter = 10 deciliters = 33.81 fl. ounces
 1 dekaliter = 10 liters = 2.64 gallons
 1 hectoliter = 10 dekaliters = 26.42 gallons
 1 kiloliter = 10 hectoliters = 264.18 gallons

Square Measure

1 sq. centimeter = 100 sq. millimeters = .155 sq. inch
 1 sq. decimeter = 100 sq. centimeters = 15.5 sq. inches
 1 sq. meter (centare) = 100 sq. decimeters = 10.76 sq. feet
 1 sq. dekameter (are) = 100 sq. meters = 1,076.4 sq. feet
 1 sq. hectometer (hectare) = 100 sq. dekameters = 2.47 acres
 1 sq. kilometer = 100 sq. hectometers = .386 sq. mile

Cubic Measure

1 cu. centimeter = 1000 cu. millimeters = .06 cu. inch
 1 cu. decimeter = 1000 cu. centimeters = 61.02 cu. inches
 1 cu. meter = 1000 cu. decimeters = 35.31 cu. feet

Approximate Conversion Factors

<i>To change</i>	<i>To</i>	<i>Multiply by</i>	<i>To change</i>	<i>To</i>	<i>Multiply by</i>
inches	centimeters	2.540	ounce-inches	Newton-meters	.007062
feet	meters	.305	centimeters	inches	.394
yards	meters	.914	meters	feet	3.280
miles	kilometers	1.609	meters	yards	1.094
square inches	square centimeters	6.451	kilometers	miles	.621
square feet	square meters	.093	square centimeters	square inches	.155
square yards	square meters	.836	square meters	square feet	10.764
square miles	square kilometers	2.590	square meters	square yards	1.196
acres	square hectometers	.405	square kilometers	square miles	.386
cubic feet	cubic meters	.028	square hectometers	acres	2.471
cubic yards	cubic meters	.765	cubic meters	cubic feet	35.315
fluid ounces	milliliters	29.573	cubic meters	cubic yards	1.308
pints	liters	.473	milliliters	fluid ounces	.034
quarts	liters	.946	liters	pints	2.113
gallons	liters	3.785	liters	quarts	1.057
ounces	grams	28.349	liters	gallons	.264
pounds	kilograms	.454	grams	ounces	.035
short tons	metric tons	.907	kilograms	pounds	2.205
pound-feet	Newton-meters	1.356	metric tons	short tons	1.102
pound-inches	Newton-meters	.11296			

Temperature (Exact)

°F	Fahrenheit temperature	5/9 (after subtracting 32)	Celsius temperature	°C
----	---------------------------	-------------------------------	------------------------	----

This fine document...

Was brought to you by me:



[Liberated Manuals -- free army and government manuals](#)

Why do I do it? I am tired of sleazy CD-ROM sellers, who take publicly available information, slap “watermarks” and other junk on it, and sell it. Those masters of search engine manipulation make sure that their sites that sell free information, come up first in search engines. They did not create it... They did not even scan it... Why should they get your money? Why are not letting you give those free manuals to your friends?

I am setting this document FREE. This document was made by the US Government and is NOT protected by Copyright. Feel free to share, republish, sell and so on.

I am not asking you for donations, fees or handouts. If you can, please provide a link to liberatedmanuals.com, so that free manuals come up first in search engines:

<A HREF=<http://www.liberatedmanuals.com/>>Free Military and Government Manuals

- Sincerely
Igor Chudov
<http://igor.chudov.com/>
- [Chicago Machinery Movers](#)