

TECHNICAL MANUAL

UNIT, DIRECT SUPPORT AND

GENERAL SUPPORT MAINTENANCE

REPAIR PARTS AND SPECIAL TOOLS LIST

FOR

AIR CONDITIONER, A/E32C-39,

HORIZONTAL, COMPACT,

54, 000 BTU/HR, COOLING

34, 000 BTU/HR, HEATING

20/VOLT, 3 PHASE, 50/60 HERTZ

MODEL 12090-605

NSN 4120-01-150-8112

Approved for public release; Distribution is unlimited.

***This manual supersedes TM 5-4120-390-24P, 20 July 1987, including all changes.**

HEADQUARTERS, DEPARTMENT OF THE ARMY
22 MARCH 1991

TM 9-4120-390-24P
C4

HEADQUARTERS
DEPARTMENT OF THE ARMY
WASHINGTON, D.C., 7 November 1996

CHANGE
NO. 4

Unit, Direct Support and General Support Maintenance
Repair Parts and Special Tools List
for

**AIR CONDITIONER, A/E32C-39, HORIZONTAL, COMPACT,
54, 000 BTU/HR COOLING
34, 000 BTU/HR HEATING
208 VOLTS, 3 PHASE, 50/60 HERTZ
MODEL 12090-605
NSN 4120-01-150-8112**

DISTRIBUTION STATEMENT A: Approved for public release; distribution is unlimited.

TM 9-4120-390-24P, 22 March 1991, is changed as follows:

1. Remove and insert pages as indicated below. New or changed text material is indicated by a vertical bar in the margin. An illustration change is indicated by a miniature pointing hand.

Remove pages

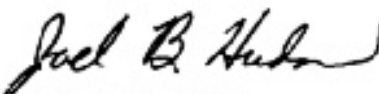
Insert pages

i	//(ii blank) 8-3 and Figure 9	i/(ii blank) 8-3 and Figure 9
---	----------------------------------	----------------------------------

2. Retain this sheet in front of manual for reference purposes.

By Order of the Secretary of the Army:

Official:


JOEL B. HUDSON
Administrative Assistant to the
Secretary of the Army
02934

DENNIS J. REIMER
General, United States Army
Chief of Staff

DISTRIBUTION:

To be distributed in accordance with DA Form 12-25-E, block no. 5730 requirements for TM 9-4120-390-24P.

CHANGE
NO. 3

HEADQUARTERS
DEPARTMENT OF THE ARMY
WASHINGTON, D.C., 24 January 1996

Unit, Direct Support and General Support Maintenance
Repair Parts and Special Tools List
for

**AIR CONDITIONER, A/E32C-39, HORIZONTAL, COMPACT,
54, 000 BTU/HR COOLING
34, 000 BTU/HR HEATING
208 VOLTS, 3 PHASE, 50/60 HERTZ
MODEL 12090-605
NSN 4120-01-150-8112**

DISTRIBUTION STATEMENT A: Approved for public release; distribution is unlimited.

TM 94120-390-24P, 22 March 1991, is changed as follows:

1. Remove and insert pages as indicated below. New or changed text material is indicated by a vertical bar in the margin. An illustration change is indicated by a miniature pointing hand.

Remove pages

1-1
2-1 through 2-4
3-1 through 3-6
4-1 through 4-4
5-1 and 5-2
7-1 and Figure 8
8-1 and 8-2
I-1 and I-2

I-3 and I-4

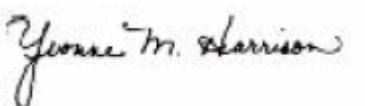
I-7 through I-12

Insert pages

1-1
2-1 through 2-4
3-1 through 3-6
4-1 through 4-4
5-1 and 5-2
7-1 and Figure 8
8-1 and 8-2
I-1 and I-2
I-2.1/(I-2.2 blank)
I-3 and I-4
I-4.1/(I-4.2 blank)
I-7 through I-12

2. Retain this sheet in front of manual for reference purposes.

By Order of the Secretary of the Army:

Official: 
YVONNE M. HARRISON
*Administrative Assistant to the
Secretary of the Army*
01290

DENNIS J. REIMER
*General, United States Army
Chief of Staff*

DISTRIBUTION:

To be distributed in accordance with DA Form 12-25-E, block no. 5730, requirements for TM 9-4120-390-24P.

CHANGE
NO. 2

HEADQUARTERS
DEPARTMENT OF THE ARMY
WASHINGTON, D.C., 29 May 1995

Unit, Direct Support and General Support Maintenance
Repair Parts and Special Tools List
for

**AIR CONDITIONER, A/E32C-39, HORIZONTAL, COMPACT,
54, 000 BTU/HR COOLING
34, 000 BTU/HR HEATING
208 VOLTS, 3 PHASE, 50/60 HERTZ
MODEL 12090-605
NSN 4120-01-150-8112**

DISTRIBUTION STATEMENT A: Approved for public release; distribution is unlimited

TM 9-4120-390-24P, 22 March 1991, is changed as follows:

1. Remove and insert pages as indicated below. New or changed text material is indicated by a vertical bar in the margin. An illustration change is indicated by a miniature pointing hand.

Remove pages

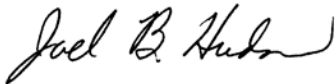
i/(ii blank)
9-1
I-1 through I-4
I-9 and I-10

Insert pages

i/(ii blank)
9-1
I-1 through I-4
I-9 and I-10

2. Retain this sheet in front of manual for reference purposes.

By Order of the Secretary of the Army:



JOEL B. HUDSON
*Acting Administrative Assistant to the
Secretary of the Army
00480*

GORDON R. SULLIVAN
*General, United States Army
Chief of Staff*

DISTRIBUTION:

To be distributed in accordance with DA Form 12-25-E, block no. 5730, requirements for TM 9-4120-390-24P.

CHANGE
NO. 1

HEADQUARTERS
DEPARTMENT OF THE ARMY
WASHINGTON, D.C. 30 June 1993

Unit, Direct Support and General Support Maintenance
Repair Parts and Special Tools List
for

**AIR CONDITIONER, A/E32C-39, HORIZONTAL, COMPACT,
54, 000 BTU/HR COOLING
34, 000 BTU/HR, HEATING
208 VOLT, 3 PHASE, 50/60 HERTZ
MODEL 12090-605
NSN 4120-01-150-8112**

DISTRIBUTION STATEMENT A: Approved for public release; distribution is unlimited.

TM 9-4120-390-24P, 22 March 1991, is changed as follows:

1. Remove and insert pages as indicated below. New or changed text material is indicated by a vertical bar in the margin. An illustration change is indicated by a miniature pointing hand.

Remove pages

i/(ii blank)
3-1 and 3-2
8-1 and 8-2
I-3 and I-4
I-7 and I-8

Insert pages

i/(ii blank)
3-1 and 3-2
8-1 and 8-2
I-3 and I-4
I-7 and I-8

2. Retain this sheet in front of manual for reference purposes.

By Order of the Secretary of the Army:

Official: 

MILTON H. HAMILTON
*Administrative Assistant to the
Secretary of the Army*

GORDON R. SULLIVAN
*General, United States Army
Chief of Staff*

DISTRIBUTION:

To be distributed in accordance with DA Form 12-25-E, block no. 5730, requirements for TM 9-4120-390-24P.

TECHNICAL MANUAL

NO. 9-4120-390-24P

HEADQUARTERS
DEPARTMENT OF THE ARMY
WASHINGTON, D.C., 22 March 1991

Unit, Direct Support and General Support Maintenance
Repair Parts and Special Tools List
for

**AIR CONDITIONER, A/E32C-39, HORIZONTAL, COMPACT,
54, 000 BTU/HR COOLING, 34, 000 BTU/HR HEATING,
208 VOLT, 3 PHASE, 50/60 HERTZ,
MODEL 12090-605
NSN 4120-01-150-8112**

Current as of 5 February 1991

REPORTING ERRORS AND RECOMMENDING IMPROVEMENTS

You can help improve this manual. If you find any mistakes, or if you know of a way to improve these procedures, please let us know. Mail your letter or DA Form 2028 (Recommended Changes to Publications and Blank Forms), or DA Form 2028-2 located in the back of this manual directly to: Commander, US Army Aviation and Troop Command, ATTN: AMSAT-I-MP, 4300 Goodfellow Blvd., St. Louis, MO 63120-1798. You may also submit your recommended changes by E-mail directly to <mpmt%avma28@st-louis-emh7.army.mil>. A reply will be furnished directly to you. Instructions for sending an electronic 2028 may be found at the back of this manual immediately preceding the hard copy 2028.

DISTRIBUTION STATEMENT A: Approved for public release; distribution is unlimited.

TABLE OF CONTENTS

			PAGE	ILLUS/ FIG.
SECTION	I	INTRODUCTION.....	1	
SECTION	II	REPAIR PARTS LIST	1-1	
GROUP	01	Air Ducts and Storage Racks	1-1	
		Doors and Access Covers.....	2-1	2
GROUP	02	Refrigerant System Installation.....	3-1	3
GROUP	03	Control Panel Assembly	4-1	4
GROUP	04	Electrical Installation.....	5-1	5
GROUP	05	Heater Assembly	6-1	6
GROUP	06	Condenser Fan Assembly	7-1	7
GROUP	07	Blower Assembly	8-1	8
GROUP	08	Frame Assembly	9-1	9
GROUP	09	Bulk Materials List	Bulk-1	
SECTION	III	SPECIAL TOOLS LIST (NOT APPLICABLE)		
SECTION	IV	NATIONAL STOCK NUMBER AND PART NUMBER INDEX	I-1	

*This manual supersedes TM 5-4120-390-24P, 20 July 1987, including changes.

**UNIT, DIRECT SUPPORT
AND GENERAL SUPPORT
MAINTENANCE REPAIR PARTS AND SPECIAL TOOLS LIST**

SECTION I. INTRODUCTION

1. SCOPE. This RPSTL lists and authorizes spares and repair parts; special tools; special test, measurement, and diagnostic equipment (TMDE); and other special support equipment required for performance of unit, direct support, and general support maintenance of the Air Conditioner, Model 12090-605. It authorizes the requisitioning, issue, and disposition of spares, repair parts and special tools as indicated by the source, maintenance and recoverability (SMR) codes.

2. GENERAL. In addition to this section, Introduction, this Repair Parts and Special Tools List is divided into the following sections:

a. Section II. Repair Parts List. A list of spares and repair parts authorized by this RPSTL for use in the performance of maintenance. The list also includes parts which must be removed for replacement of the authorized parts. Parts lists are composed of functional groups in ascending alphanumeric sequence, with the parts in each group listed in ascending figure and item number sequence. Bulk materials are listed in item name sequence. Repair parts kits are listed separately in their own functional group within Section II. Repair parts for repairable special tools are also listed in this section. Items listed are shown on the associated illustration(s)/ figure(s).

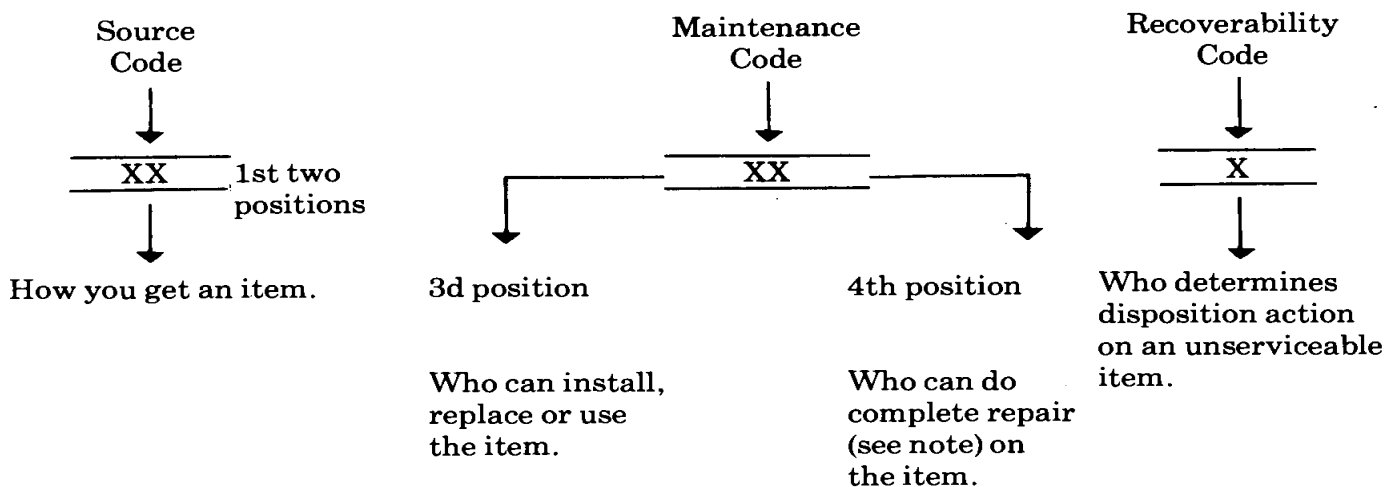
b. Section III Special Tools List. A list of special tools, special TMDE, and other special support equipment authorized by this RPSTL (as indicated by Basis of Issue (BOI) information in DESCRIPTION AND USABLE ON CODE column) for the performance of maintenance.

c. Section IV. Cross-references Indexes. A list, in National Item Identification Number (NIIN) sequence, of all National stock numbered items appearing in the listing, followed by a list in alphanumeric sequence of all part numbers appearing in the listings. National stock numbers and part numbers are cross referenced to each illustration figure and item number appearance. The figure and item number index lists figure and item number in alphanumeric sequence and cross references NSN, CAGEC and part number.

3. EXPLANATION OF COLUMNS (SECTIONS II AND III).

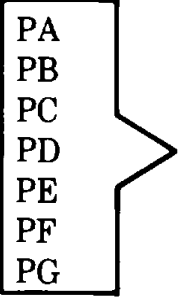
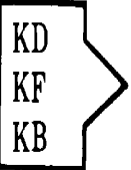
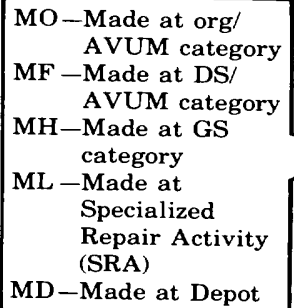
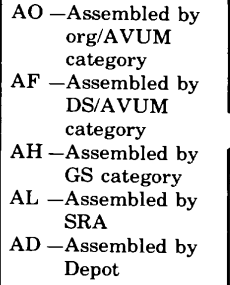
a. ITEM NO. (Column (1)). Indicates the number used to identify items called out in the illustration.

b. SMR Code (Column (2)). The Source, Maintenance, and Recoverability (SMR) code is a 5-position code containing supply/requisitioning information, maintenance category authorization criteria, and disposition instruction, as shown in the following breakout:



*Complete Repair: Maintenance capacity, capability, and authority to perform all corrective maintenance tasks the 'Repair' function in a use/user environment in order to restore serviceability to a failed item.

(1) Source Code. The source code tells you how to get an item needed for maintenance, repair, or overhaul of an end item/equipment. Explanations of source codes follows:

Code	Explanation
 <p>PA PB PC PD PE PF PG</p>	<p>Stocked items; use the applicable NSN to request/requisition items with these source codes. They are authorized to the category indicated by the code entered in the 3rd position of the SMR code.</p> <p>**NOTE: Items coded PC are subject to deterioration.</p>
 <p>KD KF KB</p>	<p>Items with these codes are not to be requested/requisitioned individually. They are part of a kit which is authorized to the maintenance category indicated in the 3rd position of the KB SMR code. The complete kit must be requisitioned and applied.</p>
 <p>MO—Made at org/ AVUM category MF—Made at DS/ AVUM category MH—Made at GS category ML—Made at Specialized Repair Activity (SRA) MD—Made at Depot</p>	<p>Items with these codes are not to be requested/requisitioned individually. They must be made from bulk material which is identified by the part number in the DESCRIPTION and USABLE ON CODE (UOC) column and listed in the Bulk Material group of the repair (parts list in this RPSTL. If the item is authorized to you by the 3rd position code of the SMR code, but the source code indicates it is made at a higher level, order the item from the higher level of maintenance.</p>
 <p>AO—Assembled by org/AVUM category AF—Assembled by DS/AVUM category AH—Assembled by GS category AL—Assembled by SRA AD—Assembled by Depot</p>	<p>Items with these codes are not to be requested/requisitioned individually. The parts that make up the assembled item must be (requisitioned or fabricated and assembled at the level of maintenance indicated by the source code. If the 3rd position code of the SMR (code authorizes you to replace the item, but the source code indicates the items are assembled at a higher level, order the item from the higher level of maintenance.</p>
<p>XA- Do not requisition A" --coded item. Order its next higher assembly. (Also, refer to the NOTE below.)</p> <p>XB - If an 'XB, item is not available from salvage, order it using the CAGEC and part number given.</p> <p>XC - Installation drawing, diagram, instruction sheet, field service drawing, that is identified by Reciprocating Compressor manufacturer's part number.</p> <p>XD - Item is not stocked. Order an XD"-coded item through normal supply channels using the CAGEC and part number given if no NSN is available.</p>	

NOTE

Cannibalization or controlled exchange, when authorized, may be used as a source of supply for items with the above source codes, except for those source coded "XA" or those aircraft support items restricted by requirements of AR 750-1.

(2) **Maintenance Code.** Maintenance codes tell you the level(s) of maintenance authorized to USE and REPAIR support items. The maintenance codes are entered in the third and fourth positions of the SMR code as follows:

(a) The maintenance code entered in the third position tells you the lowest maintenance level authorized to remove, replace, and use an item. The maintenance code entered in the third position will indicate authorization to one of the following levels of maintenance.

Code	Application/Explanation
C-	Crew or operator maintenance done within organizational or aviation unit maintenance.
O-	Organizational or aviation unit category can remove, replace, and use the item.
F-	Direct support or aviation intermediate level can remove, replace, and use the item.
H-	General support level can remove, replace, and use the item.
L-	Specialized repair activity can remove, replace, and use the item.
D-	Depot level can remove, replace, and use the item.

(b) The maintenance code entered in the fourth position tells whether or not the item is to be repaired and identifies the lowest maintenance level with the capability to do complete repair (i.e., perform all authorized repair functions). NOTE: Some limited repair may be done on the item at a lower level of maintenance, if authorized by the Maintenance Allocation Chart (MAC) and SMR codes. This position will contain one of the following maintenance codes.

Code	Application/Explanation
O-	Organizational or (aviation unit) is the lowest level that can do complete repair of the item.
F-	Direct support or aviation intermediate is the lowest level that can do complete repair of the item.
H-	General support is the lowest level that can do complete repair of the item.
L-	Specialized repair activity is the lowest level that can do complete repair of the item.
D-	Depot is the lowest level that can do complete repair of the item.
Z-	Nonreparable. No repair is authorized.
B-	No repair is authorized. (No parts or special tools are authorized for the maintenance of a "B" coded item.) However, the item may be reconditioned by adjusting, lubricating, etc., at the user level.

(3) **Recoverability Code.** Recoverability codes are assigned to items to indicate the disposition action on unserviceable items. The recoverability code is entered in the fifth position of the SMR Code as follows:

Recoverability Codes	Application/Explanation
Z -	Nonreparable item. When unserviceable, condemn and dispose of the item at the level of maintenance shown in third position of SMR Code.
O -	Reparable item. When not economically repairable, condemn and dispose of the item at organizational or aviation unit level.
F -	Reparable item. When uneconomically repairable, condemn and dispose of the item at the direct support or aviation intermediate level.
H -	Reparable item. When uneconomically repairable, condemn and dispose of the item at the general support level.
D -	Reparable item. When beyond lower level repair capability, return to depot. Condemnation and disposal of item not authorized below depot level.
L -	Reparable item. Condemnation and disposal not authorized below specialized repair activity (SRA).
A -	Item requires special handling or condemnation procedures because of specific reasons (e.g., precious metal content, high dollar value, critical material, or hazardous material). Refer to appropriate manuals/directives for specific instructions.

c. CAGEC (Column (3)). The Commercial and Government Entity Code (CAGEC) is a 5-digit numeric code which is used to identify the manufacturer, distributor, or Government agency, etc., that supplies the item.

d. PART NUMBER (Column (4)). Indicates the primary number used by the manufacturer (individual, company, firm, corporation, or Government activity), which controls the design and characteristics of the item by means of its engineering drawings, specifications standards, and inspection requirements to identify an item or range of items.

NOTE

When you use an NSN to requisition an item, the item you receive may have a different part number from the part ordered.

e. DESCRIPTION AND USABLE ON CODE (UOC) (Column (5)). This column includes the following information:

(1) The Federal item name and, when required, a minimum description to identify the item.

(2) The physical security classification of the item is indicated by the parenthetical entry, e.g., PhySec C1--Confidential, PhySec C1 (S-Secret, PhySec C1 (T)-Top Secret.

(3) Items that are included in kits and sets are listed below the name of the kit or set.

(4) Spare/repair parts that make up an assembled item are listed immediately following the assembled item line entry.

(5) Part numbers for bulk materials are referenced in this column in the line item entry for the item to be manufactured/fabricated.

(6) When the item is not used with all serial numbers of the same model, the effective serial numbers are shown on the-last line(s) of the description (before UOC).

(7) The usable on code, when applicable (see paragraph 5, Special Information).

(8) In the Special Tools List section, the basis of issue (BOI) appears as the last line(s) in the entry for each special tool, special TMDE, and other special support equipment. When density of equipments supported exceeds density spread indicated in the basis of issue, the total authorization is increased proportionately.

(9) The statement "END OF FIGURE" appears just below the last item description in Column 5 for a given figure in both Section II and Section III.

(10) The indenture, shown as dots appearing before the repair part, indicates that the item is a repair part of the next higher assembly.

f. QTY (Column (6)). The QTY (quantity per figure column) indicates the quantity of the item used in the breakout shown on the illustration figure, which is prepared for a functional group, subfunctional group, or an assembly. A 'v' appearing in this column in lieu of a quantity indicates that the quantity is variable and may vary from application to application.

4. EXPLANATION OF COLUMNS (SECTION IV).

a. NATIONAL STOCK NUMBER (NSN) INDEX.

(1) **STOCK NUMBER column.** This column lists the NSN by National item identification number (NIIN) sequence. The NIIN consists of the last nine digits of the NSN, i.e.

NSN
<hr style="width: 100%;"/>
5305-01-574-1467
NIIN

When using this column to locate an item, ignore the first 4 digits of the NSN. However, the complete NSN should be used when ordering items by stock number.

(2) **FIG. column.** This column lists the number of the figure where the item is identified/located. The figures are in numerical order in Section II and Section III.

(3) **ITEM column.** The item number identifies the item associated with the figure listed in the adjacent FIG. column. This item is also identified by the NSN listed on the same line.

b. PART NUMBER INDEX. Part numbers in this index are listed by part number in ascending alpha-numeric sequence (i.e., vertical arrangement of letter and number combination which places the first letter or digit of each group in order A through Z, followed by the numbers 0 through 9 and each following letter or digit in like order).

(1) **CAGEC column.** The Commercial and Government Entity Code (CAGEC) is a 5-digit numeric code used to identify the manufacturer, distributor, or Government agency, etc., that supplies the item.

(2) **PART NUMBER column.** Indicates the primary number used by the manufacturer (individual, firm, corporation, or Government activity), which controls the design and characteristics of the item by means of its engineering drawings, specifications standards, and inspection requirements to identify an item or range of items.

(3) **STOCK NUMBER column.** This column lists the NSN for the associated part number and manufacturer identified in the PART NUMBER and CAGEC columns to the left.

(4) **FIG. column.** This column lists the number of the figure where the item is identified/located in Sections II and III.

(5) **ITEM column.** The item number is that number assigned to the item as it appears in the figure referenced in adjacent figure number column.

c. FIGURE AND ITEM NUMBER INDEX

(1) **FIG. column.** This column lists the number of the figure where the item is identified/located in Section II and In.

(2) **ITEM column.** The item number is that number assigned to the item as it appears in the figure referenced in the adjacent figure number column.

(3) **STOCK NUMBER column.** This column lists the NSN for the item.

(4) **CAGEC column.** The Commercial and Government Entity Code (CAGEC) is a 5-digit numeric code used to identify the manufacturer, distributor, or Government agency, etc., that supplies the item.

(5) **PART NUMBER column.** Indicates the primary number used by the manufacturer (individual, firm, corporation, or Government activity), which controls the design and characteristics of the item by means of its engineering drawings, specifications standards, and inspection requirements to identify an item or range of items.

5. SPECIAL INFORMATION.

a. **USABLE ON CODE.** The usable on code appears in the lower corner of the Description column heading. Usable on codes are shown as 'UOC:" in the Description Column (justified left) on the last line applicable item description/nomenclature. Uncoded items are applicable to all models.

b. **ASSOCIATED PUBLICATIONS.** The publications listed below pertains to the Air Conditioner, Model 12090-605 and its components.

Publication	Short Title
TM 5-4120-390-14	Operation and Maintenance Instructions

6. HOW TO LOCATE REPAIR PARTS.

a. When National Stock Number or Part Number is NOT Known.

(1) **First.** Using the table of contents, determine the assembly group or subassembly group to which the item belongs. This is necessary since figures are prepared for assembly groups and subassembly groups, and listings are divided into the same groups.

(2) **Second.** Find the figure covering the assembly group or subassembly group to which the item belongs.

(3) **Third.** Identify the item on the figure and note the item number.

(4) **Fourth.** Refer to the Repair Parts List for the figure to find the part number for the item number noted on the figure.

(5) **Fifth.** Refer to the Part Number Index to find the NSN, if assigned.

b. When National Stock Number or Part Number is Known.

(1) **First.** Using the Index of National Stock Numbers and Part Numbers, find the pertinent National Stock Number or Part Number. The NSN index is in National Item Identification Number (NIIN) sequence (see c-4a.(1)). The part numbers in the Part Number index as listed in ascending alphanumeric sequence (see paragraph c-4.b). Both indexes cross-reference you to the illustration figure and item number of the item you are looking for.

(2) **Second.** After finding the figure and item number, verify that the item is the one you are looking for, then locate the item number in the repair parts list for the figure.

7. ABBREVIATIONS. Abbreviations used in this manual are listed in MIL-STD-12.

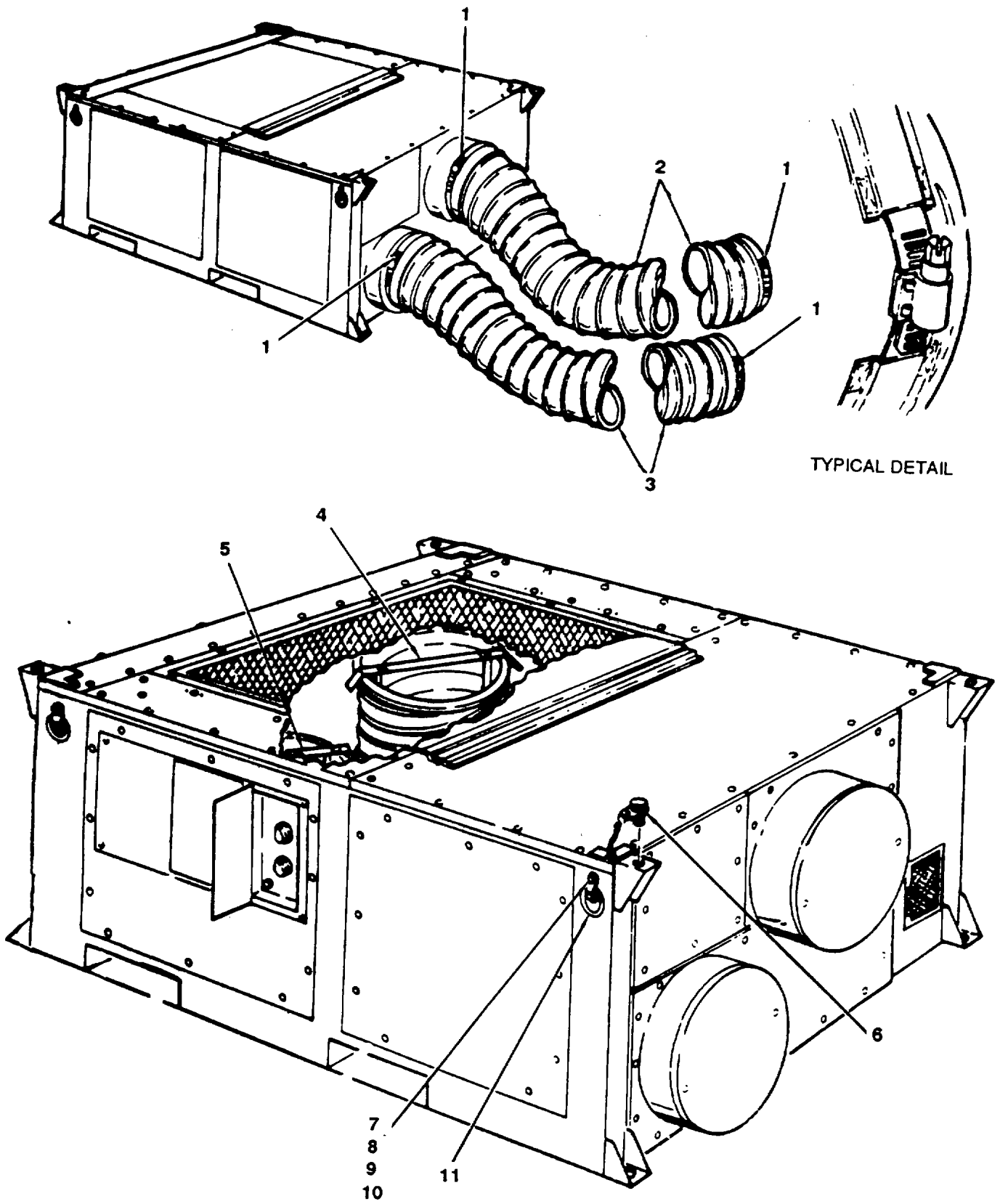


Figure 1. Air Ducts and Storage Racks

SECTION II

(1) ITEM NO	(2) SMR CODE	(3) FSCM	(4) PART NUMBER	(5) DESCRIPTION AND USABLE ON CODE (UOC)	(6) QTY
				GROUP 01 DOORS AND ACCESS COVERS	
				FIG. 1 AIR DUCTS AND STORAGE RACKS	
1	PAOZZ	66295	C256-PS	CLAMP. HOSE	4
2	PAOZZ	16632	FLX.1501-0004	DUCT, 9 Fr. LG	1
3	PAOZZ	16632	FLX.1501-0003	DUCT, 7 Fr. LG	1
4	XBOZZ	90598	12089-100	RACK, DUCT, 9 FT	1
5	XBOZZ	90598	12088-100	RACK, DUCT, 7 FT	1
6	XBOZZ	90598	12075-101	BOLT, STACKING	8
6A	PAOZZ	80205	NAS1090-2	· SHOOK	8
6B	PAOZZ	81348	RR-C-271, TY2CL3	CHAIN, SASH	8
6C	PAOZZ	96906	MS90728-159	· BOLT, STACKING	8
7	PAOZZ	96906	MS90725-34	SCREW	8
8	PAOZZ	96906	MS35338-45	WASHER, LOCK	8
9	PAOZZ	96906	MS27183-12	WASHER, FLAT	16
10	PAOZZ	96906	MS51967-5	NUT	8
11	PAOZZ	98313	FDK-2850M1	RING AND CLIP	4

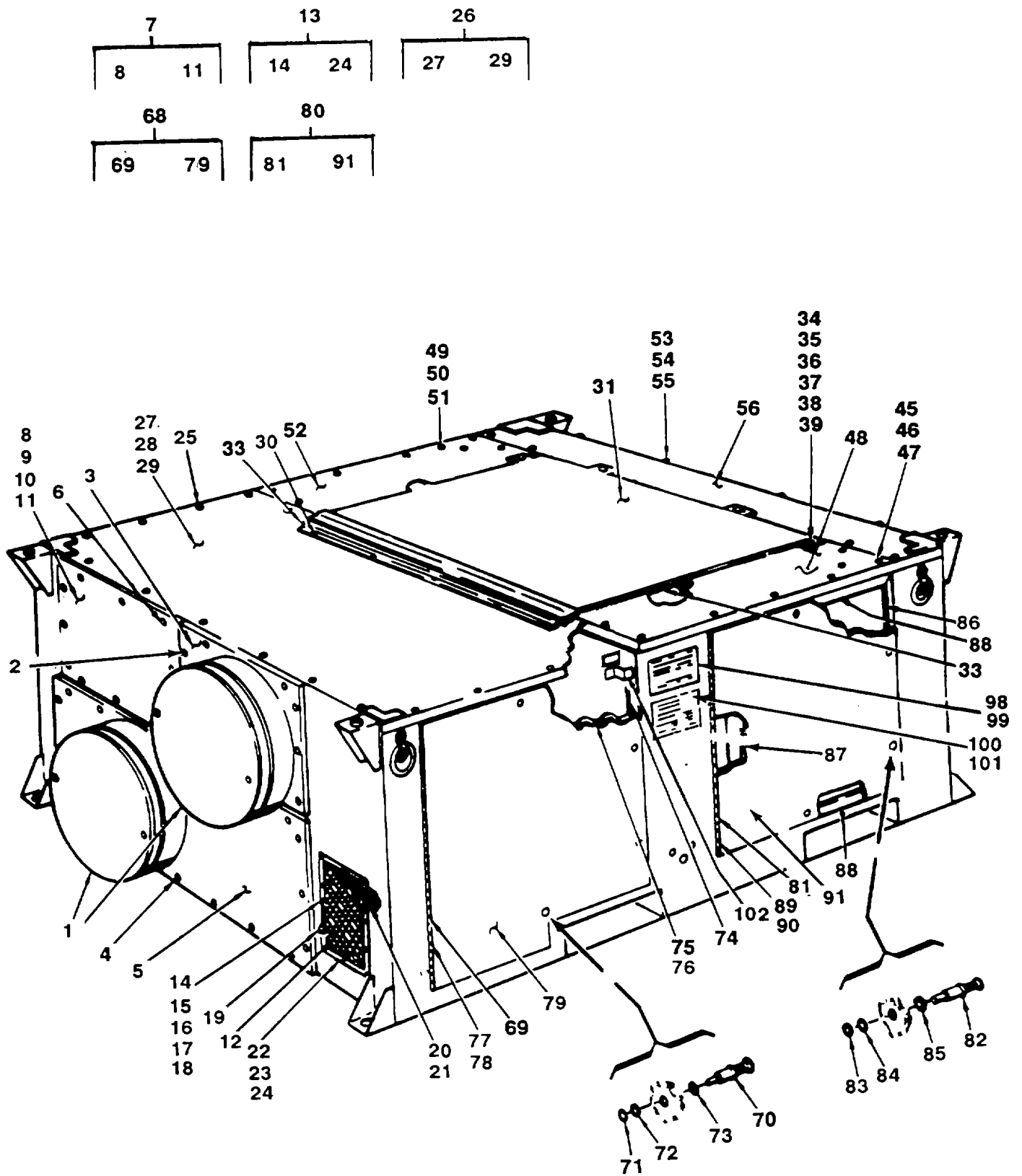


Figure 2. Door and Access Covers (Sheet 1 of 2)

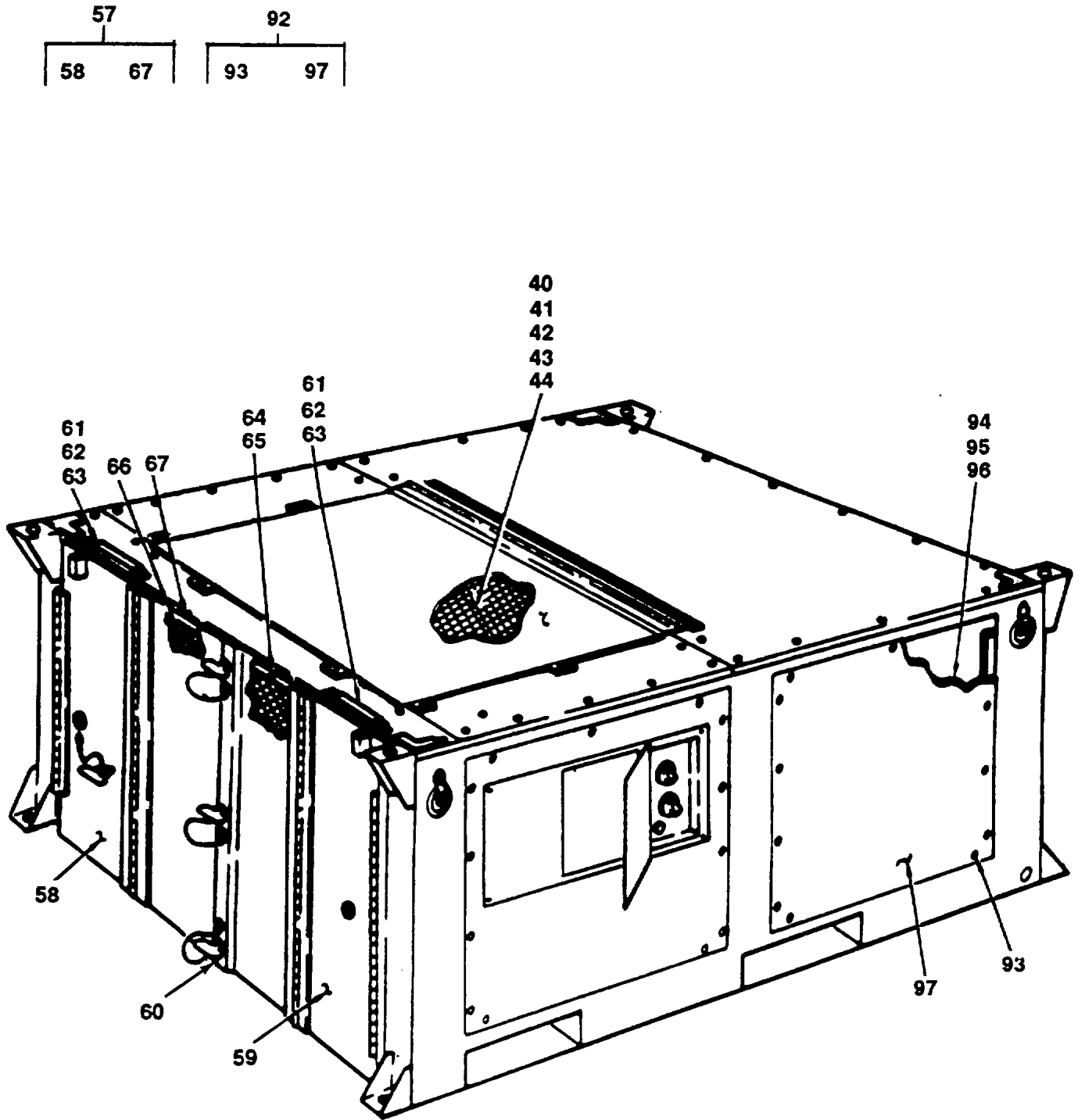


Figure 2. Door and Access Covers (Sheet 2 of 2)

(1) ITEM NO	(2) SMR CODE	(3) FSCM	(4) PART NUMBER	(5) DESCRIPTION AND USABLE ON CODE (UOC)	(6) QTY
				GROUP 01 DOORS AND ACCESS COVERS	
				FIG. 2 DOORS AND ACCESS COVERS	
1	PA0ZZ	90598	12057-1	COVER, DUCT	2
2	PAOZZ	96906	MS35206-267	SCREW	12
3	XB0ZZ	90598	12058-100	ADAPTER. DUCT	1
4	PAOZZ	96906	MS35206-267	SCREW	22
5	XB0ZZ	90598	12056-100	ADAPTER, DUCT	1
6	PAOZZ	96906	MS35206-264	SCREW	12
7	XB0ZZ	90598	12055-100	PANEL, FRONT	1
8	MOOZZ	90598	12055-2	• INSULATION, M/F INSULATION P/N HH-1-558	V
9	POOZZ	84568	81-10	• ADHESIVE	V
10	MOOZZ	90598	12055-4	• GASKET, STRIP, M/F INSULATION P/N M1-R-6130	V
11	XB0ZZ	90598	12055-1	• PANEL, BLANK	1
12	PA0ZZ	07707	SD42BS	RIVET	6
13	XBOOO	90598	12001-100	DAMPER ASSY. FRESH AIR	1
14	PAOZZ	96906	MS35206-263	• SCREW	1
15	PA0ZZ	96906	MS27183-8	• WASHER. FLAT	2
16	PA0ZZ	96906	MS35338-43	• WASHER. 100K	1
17	PA0ZZ	96906	MS35649-202	• NUT, HEX	1
18	PA0ZZ	97403	13211E8322	• CHAIN, BEAD	1
19	XBOZO	97403	13211E8305	• END BELL	1

(1) ITEM NO	(2) SMR CODE	(3) FSCM	(4) PART NUMBER	(5) DESCRIPTION AND USABLE ON CODE (UOC)	(6) QTY
20	PAOZZ	07707	SD42BS	• RIVET	8
21	XBOZZ	97403	13211E8191	• HINGE	2
22	XBOZZ	90598	12005-100	• DOOR, AIR DAMPER	1
23	MOOZZ	86730	4111NDB	•• GASKET STRIP, M/F INSULATION P/N MILR-6130	V
24	XBOZZ	90598	12035-100	• FRAME AIR DAMPER	1
25	PAOZZ	78189	TEKS10-32XI/2	SCREW, SELF-TAP #10-32 X 1/2 LG.	26
26	XBOOO	90598	12064-100	PANEL, TOP FRONT	1
27	MOOZZ	90598	12064-2	• INSULATION, M/F INSULATION P/N H-I--558	V
28	PCOZZ	59503	81-10	• ADHESIVE	V
29	XBOZZ	90598	12064-1	• PANEL, BLANK	1
30	PAOZZ	07707	SD42BS	RIVET	9 _
31	XBOOO	90598	12135-100	COVER, HINGED	1
32	XBOOZZ	71126	S-6432B	• HINGE	1
33	XBOZZ	90598	12135-10	• GASKET	1
34	PAOZZ	71286	4002-8S	• STUD	6
35	PAOZZ	71286	40G26-1	• RING, SNAP	6
36	PAOZZ	71286	4002-SW-SS	• WASHER, RETAINING	6
37	PAOZZ	71286	4002NS	• GROMMET	6

(1) ITEM NO	(2) SMR CODE	(3) FSCM	(4) PART NUMBER	(5) DESCRIPTION AND USABLE ON CODE (UOC)	(6) QTY
38	PAOZZ	71286	40S39	• SEAL	6
39	PAOZZ	71286	40G11-3	• SEAL	6
40	PAOZZ	96906	MS35206-264	SCREW, MACHINE	10
41	PAOZZ	96906	MS27183-10	WASHER, FLAT	10
42	PAOZZ	96906	MS35338-43	WASHER, LOCK	10
43	PAOZZ	78553	C9030-100Z-1	NUT, SPEED U	10
44	XBOZZ	90598	12018-100	GRILLE, CONDENSER FAN	1
45	PAOZZ	96906	MS35206-263	SCREW, MACHINE	6
46	PAOZZ	96906	MS35338-43	WASHER, LOCK	6
47	PAOZZ	96906	MS27183-8	WASHER, FLAT	6
48	XBOZZ	90598	12043-101	PANEL, TOP LEFT	1
49	PAOZZ	96906	MS35206-263	SCREW, MACHINE	6
50	PAOZZ	96906	MS35338-43	WASHER, LOCK	6
51	PAOZZ	96906	MS27183-10	WASHER, FLAT	6
52	XBOZZ	90598	12047-101	PANEL, TOP RIGHT	1
53	PAOZZ	96906	MS35206-264	SCREW, MACHINE	4
54	PAOZZ	96906	MS35338-43	WASHER, LOCK	4
55	PAOZZ	96906	MS27183-10	WASHER, FLAT	4
56	XBOZZ	90598	12070-101	PANEL, TOP REAR	1
57	XDOOO	90598	12134-100	GRILLE AND COVER ASSY	1

(1) ITEM NO	(2) SMR CODE	(3) FSCM	(4) PART NUMBER	(5) DESCRIPTION AND USABLE ON CODE (UOC)	(6) QTY
58	XBOZZ	90598	12132-100	• COVER, GRILL-LEFT	1
59	XBOZZ	90598	12133-100	• COVER, GRILL-RIGHT	1
60	PAOZZ	90598	TC4021	• THUMBSCREW	4
61	PAOZZ	96906	MS35206-245	• SCREW, PAN HD	4
62	PAOZZ	96906	MS21044-NO8	• NUT, HEX, SELF-LOCKING	4
63	XBOZZ	90598	12136-100	• POSITIONER, DOOR	2
64	PAOZZ	96906	MS35206-280	• SCREW, MACHINE	18
65	PAOZZ	96906	MS35338-44	• WASHER, LOCK	18
66	XBOZZ	90598	12011-101	• GRILL CONDENSER	1
67	MOOZZ	90598	12090-190	• GASKET, M/F INSULATION P/N MIL-R-6130	V
68	XBOOO	90598	12016-100	DOOR, LEFT FRONT	1
69	PAOZZ	07707	SD62BS	• RIVET	5
70	PAOZZ	71286	4002-28S	• STUD	4
71	PAOZZ	71286	4002-SW-SS	• WASHER. RETAINING	4
72	PAOZZ	71286	40G26-1	• RING, BEARING	4
73	PAOZZ	71286	4002NS	• GROMMET, STUD	4
74	MOOZZ	86730	4111NDB	• GASKET STRIP, M/F INSULATION P/N ML-R-6130	V
75	MOOZZ	90598	12016-7	• INSULATION, M/F INSULATION P/N MIL-I-16562	V

(1) ITEM NO	(2) SMR CODE	(3) FSCM	(4) PART NUMBER	(5) DESCRIPTION AND USABLE ON CODE (UOC)	(6) QTY
76	PCOZZ	84568	81-10	• ADHESIVE	V
77	PAOZZ	07707	SD62BS	• RIVET	5
78	XBOZZ	96906	MS20257C2-2800	* HINGE, PIANO	1
79	XBOZZ	90598	12016-1	• DOOR, BLANK	1
80	XBOOO	90598	12015-101	DOOR, LEFT-REAR	1
81	PAOZZ	07707	SD42BS	• RIVET	5
82	PAOZZ	71286	4002-28S	• STUD	4
83	PAOZZ	71286	4002-SW-SS	• WASHER, RETAINING	4
84	PAOZZ	71286	40G-26-1	• RING, RETAINING	4
85	PAOZZ	71286	4002NS	• GROMMET, STUD	4
86	MOOZZ	90598	12015-10	• GASKET STRIP, M/F INSULATION P/N MIL-R-6130	V
87	MOOZZ	90598	12015-11	• GASKET STRIP, M/F INSULATION P/N MIL-R-6130	V
88	MOOZZ	90598	12015-4	• GASKET STRIP, M/F INSULATION P/N MIL-R-6130	V
89	PAOZZ	07707	SD42BS	• RIVET	5
90	XBOZZ	96906	MS20257C2-2500	* HINGE, PIANO	1
91	XBOZZ	90598	12015-1	• DOOR, BLANK	1
92	XBOOO	90598	12045-100	PANEL, RIGHT FRONT	1
93	PAOZZ	96906	MS35206-267	• SCREW	14

(1) ITEM NO	(2) SMR CODE	(3) FSCM	(4) PART NUMBER	(5) DESCRIPTION AND USABLE ON CODE (UOC)	(6) QTY
94	MOOZZ	90598	12045-4	• GASKET STRIP, M/F INSULATION P/N MI-R-6130	V
95	MOOZZ	90598	12045-2	• INSULATION, M/F INSULATION P/N HH-I-558	V
96	PCOZZ	84568	81-10	• ADHESIVE	V
97	XBOZZ	90598	12045-1	• PANEL, BLANK	1
98	PAOZZ	07707	SD42BS	RIVET, BLIND	4
99	XBOZZ	90598	12041-6	PLATE, IDENTIFICATION	1
100	PAOZZ	07707	SD42BS	RIVET, BLIND	4
101	XBOZZ	97403	13229E7158	PLATE, IDENTIFICATION, MOD	1

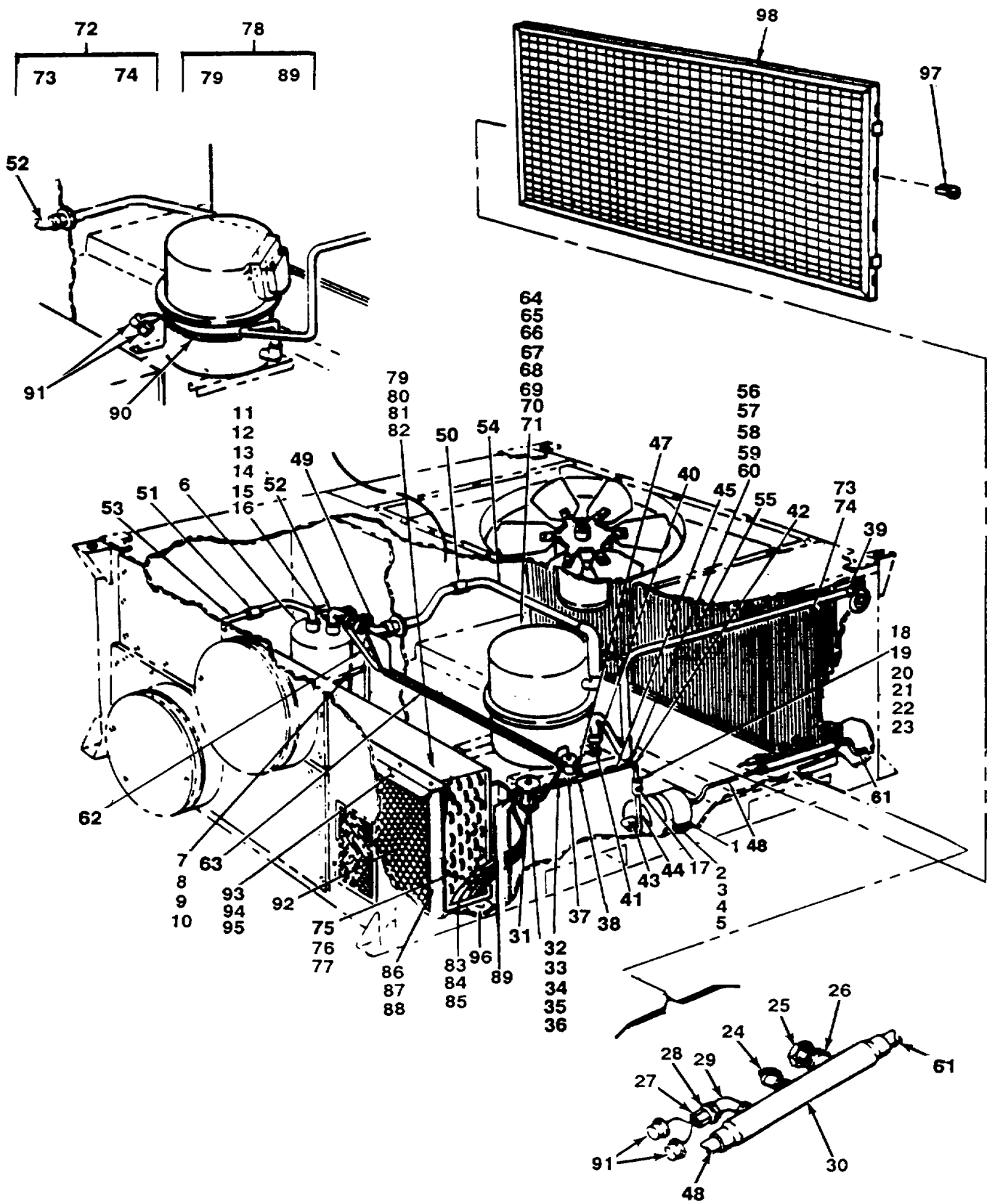


Figure 3. Refrigerant System Installation

(1) ITEM NO	(2) SMR CODE	(3) FSCM	(4) PART NUMBER	(5) DESCRIPTION AND USABLE ON CODE (UOC)	(6) QTY
				GROUP 02 REFRIGERATION PIPING FIG. 3 REFRIGERANT SYSTEM INSTALLATION	
1	PAFZZ	58727	AL24-5SC	DEHYDRATOR, DESICCANT	1
2	PAFZZ	96906	MS35206-264	SCREW, MACHINE	2
3	PAFZZ	96906	MS35338-43	WASHER, LOCK	2
4	PAFZZ	96906	MS27183-8	WASHER, FLAT	2
5	XDFZZ	90598	12008-1	CLAMP, DEHYDRATOR	1
6	PAFZZ	97765	3832	ACCUMULATOR	1
7	PAFZZ	96906	MS90725-5	SCREW, CAP	2
8	PAFZZ	96906	MS3533844	WASHER, LOCK	2
9	PAFZZ	96906	MS27183-10	WASHER, FLAT	2
10	XBFZZ	90598	12007-1	CLAMP, ACCUMULATOR	1
11	PAFZZ	96906	MS90725-5	BOLT, MACHINE	4
12	PAFZZ	96906	MS27183-10	WASHER, FLAT	4
13	PAFZZ	96906	MS3533844	WASHER, LOCK	4
14	PAFZZ	96906	MS51967-8	NUT	1
15	PAFZZ	96906	MS35338-46	WASHER, LOCK	1
16	XBFZZ	90598	12054-100	BRACKET, ACCUMULATOR	1
17	PBFZZ	58553	50-10S	INDICATOR, LIQUID	1
18	PAFZZ	96906	MS35206-264	SCREW	2
19	PAFZZ	96906	MS27183-8	WASHER, FLAT	4
20	PAFZZ	96906	MS3533843	WASHER, LOCK	2
21	PAFZZ	96906	MS35649-202	NUT	2

(1) ITEM NO	(2) SMR CODE	(3) FSCM	(4) PART NUMBER	(5) DESCRIPTION AND USABLE ON CODE (UOC)	(6) QTY
22	XBFZZ	90598	12091-1	CLAMP, LIQUID INDICATOR	1
23	XBFZZ	90598	12092-1	GASKET, RUBBER, LIQUID INDICATOR	1
24	PAFZZ	07295	VUS3-46AC	VALVE CHARGING	2
25	PAFZZ	58553	92-180DEG	PLUG. FUSIBLE, 3/8 IN. NPFIM	1
26	PAFZZ	90598	12140-1	ADAPTER, FITTING	1
27	PAPZZ	73803	2OPS002BB4 5K375K	SWITCH, PRESSURE, 1/4 FEMALE FLARE	1
28	PAFZZ	41947	A3494	ADAPTER, FITTING 3/8 OD. X 1/4 FLARE	1
29	PAFZZ	41947	W2612	ELBOW, TUBE FTG.90° 3/8 X 3/8	1
30	XBFZZ	90598	12125-1	MANIFOLD	1
31	PAFZZ	78462	XVE4CP100	VALVE, EXPANSION	1
32	PAFZZ	96906	MS35206264	SCREW	1
33	PAFZZ	96906	MS27183-8	WASHER, FLAT	
34	PAFZZ	96906	MS35338-43	WASHER. LOCK	1
35	PAFZZ	96906	MS35649-202	NUT	1
36	PAFZZ	96906	MS21919WDF18	CLAMP	1
37	PAFZZ	91494	328VA70328-048	VALVE, QUENCH	1
38	PAFZZ	41947	W4011	TEE, TUBE, O.D. 5/8 X 1/2 X 3/8	1
39	PAFZZ	41947	W2034	ELBOW, TUBE, 90° O.D. 7/8 X 7/8	1

(1) ITEM NO	(2) SMR CODE	(3) FSCM	(4) PART NUMBER	(5) DESCRIPTION AND USABLE ON CODE (UOC)	(6) QTY
40	PAFZZ	41947	W1037	COUPLING, REDUCING 7/8 X 1/2	1
41	XBFZZ	81348	WWT799 TYPELCL2	TUBE, STRAIGHT	1
42	PAFZZ	41947	W2722	ELBOW, TUBE, 900 O.D. 5/8 X 5/8	1
43	PAFZZ	41947	W2822	ELBOW, TUBE, FTG. 900° 5/8 X 5/8	1
44	MFFZZ	90598	12090-113	TUBE, BENT M/F COPPER TUBE P/N ASTM-B280 5/8 OD.	V
45	MFFZZ	90598	12090-114	TUBE, STRAIGHT M/F COPPER TUBE P/N ASTM-B280 5/8 01)D.	V
46	MFFZZ	90598	12090-115	TUBE BENT MWF COPPER TUBE P/N ASTM-B280 1/2 OD.	V
47	MFFZZ	90598	12090-116	TUBE, BENT M/F COPPER TUBE P/N ASTM-B280 3/8 OD.	V
48	MFFZZ	90598	12090-112	TUBE, BENT M/F COPPER TUBE P/N ASTM-B280 5/8 OD.	V
49	MFFZZ	90598	12090-122	INSULATION, FLEX M/F INSULATION P/N MIL-P- 15280, TYPE 2	V
50	MFFZZ	90598	12090-121	INSULATION, FLEX M/F INSULATION P/N MIL-P-15280, TYPE 2	V
51	MFFZZ	90598	12090-120	INSULATION, FLEX M/F INSULATION P/N MIL-P- 15280	V

(1) ITEM NO	(2) SMR CODE	(3) FSCM	(4) PART NUMBER	(5) DESCRIPTION AND USABLE ON CODE (UOC)	(6) QTY
62	MFFZZ	90598	12126-1	TUBE, BENT M/F COPPER TUBE P/N ASTM-B280 1 1/8 OD.	V
63	MFFZZ	90598	12090-106	TUBE, BENT M/F COPPER TUBE P/N ASTM-B280 1 1/8 OD.	V
54	MFFZZ	90598	12090-168	TUBE, BENT M/F COPPER TUBE P/N ASTM-B280 1 1/8 OD.	V
55	MFFZZ	90598	12090-168	TUBE, BENT M/F COPPER TUBE P/N ASTM-B280 7/8 OD.	V
56	PAFZZ	96906	M835206-264	SCREW	1
57	PAFZZ	96906	MS27183-8	WASHER, FLAT	1
58	PAFZZ	96906	M835838-43	WASHER, LOCK	1
59	PAFZZ	96906	M835649-202	NUT	1
60	PAFZZ	96906	MS21919WDF14	CLAMP, LOOP, 7/8 IN	1
61	PAFZZ	90598	12090-110	TUBE, BENT M/F COPPER TUBE P/N ASTM-B280 5/8 O.D.	V
62	MFFZZ	90598	12090-117	TUBE, BENT M/F COPPER TUBE P/N ASTM-B280 1/2 O.D.	V
63	MFFZZ	90598	12090-119	TUBE, BENT M/F COPPER TUBE P/IN ASTM-B280 1/4 O.D.	V

(1) ITEM NO	(2) SMR CODE	(3) FSCM	(4) PART NUMBER	(5) DESCRIPTION AND USABLE ON CODE (UOC)	(6) QTY
64	PAFZZ	96906	MS90725-41	BOLT, MACHINE, CPRSR MTG	4
65	PAFZZ	96906	MS27183-12	WASHER, FLAT, CPRSR MTG	4
66	PAFZZ	90598	12124-1	WASHER. FLAT, CPRSR MTG	8
67	PAFZZ	96906	MS35338-45	WASHER, LOCK, CPRSR MTG	4
68	PAFZ	96906	MS5 1967-5	NUT, CPRSR MTG	4
69	PAFZZ	59431	AG5568E	COMPRESSOR, REFRIG	1
70	PAFZZ	59431	MP100-12	MOUNT, RESILIENT, CPRSR MTG	6
71	XBFZZ	59431	70465	SLEEVE, CPRSR MTG	6
72	PBFZZ	90598	12022-100	COIL ASSY. CONDENSER	1
73	XBFZZ	96906	MS27130-531K	• NUT, RIVET, BLIND	4
74	XBFZZ	39433	3CZ1403H-0 30.00 X 041.00	• COIL, CONDENSER	1
75	PAFZZ	96906	MS90725-3	BOLT, MACHINE	6
76	PAFZZ	96906	MS35333-40	WASHER, LOCK	6
77	PAFZZ	96906	MS27183-10	WASHER, FLAT	6
78	PAFFF	90598	12076-100	COIL ASSY, EVAPORATOR	1
79	PAFZZ	96906	MS90725-3	• BOLT, MACHINE	4
80	PAFZZ	96906	MS35333-44	• WASHER. LOCK	4
81	PAFZ	96906	MS27183-10	• WASHER, FLAT	4

(1) ITEM NO	(2) SMR CODE	(3) FSCM	(4) PART NUMBER	(5) DESCRIPTION AND USABLE ON CODE (UOC)	(6) QTY
82	XBFZZ	90598	12077-100	• TOP PLATE, COIL	1
83	PAFZZ	96906	M890725-3	• BOLT MACHINE	4
84	PAFZZ	96906	MS27183-10	• WASHER, FLAT	4
85	XBFZZ	90598	12078-100	• BOTTOM PLATE, COIL	1
86	XBFZZ	90598	12079-100	• BAFFLE, COIL L.S.	1
87	XBFZZ	90598	12080-100	• BAFFLE, COIL R.S.	1
88	PBFZZ	39433	4EZ100/6C/016 /25 X 042/00	• COIL, EVAPORATOR	1
89	PAFZZ	70255	7-3-6	• DISTRIBUTOR	1
90	PAOZZ	96303	14-02-100-2	HEATER, CRANKCASE	1
91	PAOZZ	96906	MS27429-1	CONNECTOR, O.D. TERMINAL	8
92	PAOZZ	90598	12118-1	FILTER, AIR	1
93	PAOZZ	96906	MS90725-3	BOLT, MACHINE	16
94	PAOZZ	96906	MS3538-44	WASHER, LOCK	16
95	PAOZZ	90598	12081-100	BAFFLE, COIL TOP	1
96	XBOZZ	90598	12121-100	SHIELD, DRIP	1
97	PAOZZ	97403	13229E6146	CLIP, U	8
98	PAOZZ	97403	18229E6147	GUARD, COIL	1

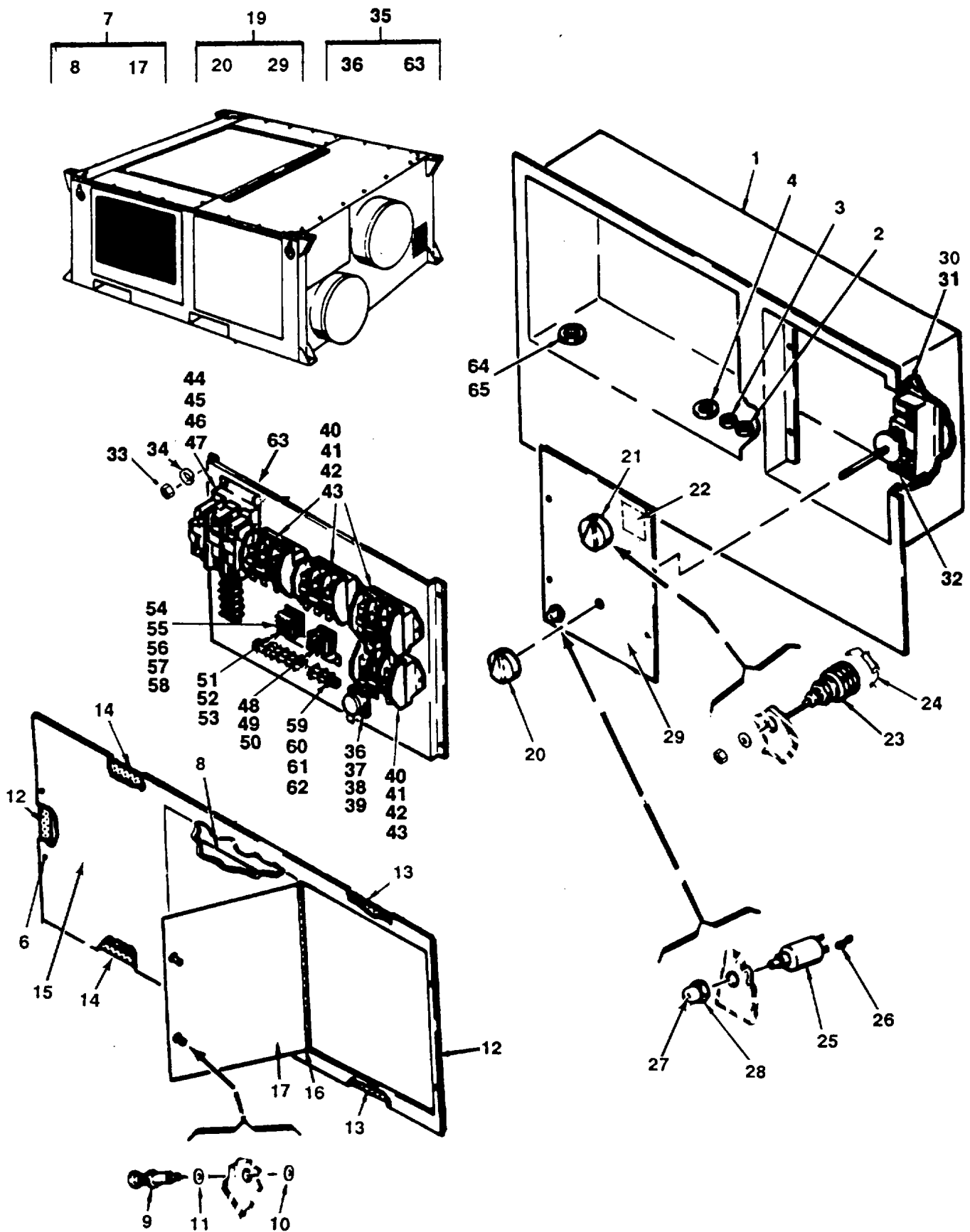


Figure 4. Control Panel Assembly

(1) ITEM NO	(2) SMR CODE	(3) FSCM	(4) PART NUMBER	(5) DESCRIPTION AND USABLE ON CODE (UOC)	(6) QTY
				GROUP 03 CONTROL PANEL ASSEMBLY	
				FIG. 4 CONTROL PANEL ASSEMBLY	
	XBOZZ	90598	12082-104	PANEL ASSEMBLY, CONTROL	1
1	XBOOO	90598	12026-100	• ENCLOSURE. CONTROL PANEL	1
2	PAOZZ	96906	MS35490-2	• GROMMET	1
3	PAOZZ	96906	MS35490-12	• GROMMET	1
4	PAOZZ	96906	MS35490-22	• GROMMET	1
5	XBOZZ	90598	120984	• PLATE, INSTRUCTION	1
6	PAOZZ	96906	MS35206-263	• SCREW	8
7	XBOOO	90598	12052-103	•• COVER ASSY	1
8	XBOZZ	90598	120974	•• PLATE, DIAGRAM	1
9	PAOZZ	71286	4002-8S	•• STUD ASSEMBLY	2
10	PAOZZ	71286	40G26-1	•• RING, RETAINING	2
11	PAOZZ	71286	4002NS	•• GROMMET, STUD	2
12	MOOZZ	90598	120524	•• GASKET STRIP, M/F INSULATION P/N MILR-6130	V
13	MOOZZ	90598	12052-9	•• GASKET STRIP, M/F INSULATION P/N MILR-6130	V
14	MOOZZ	90598	12052-10	•• GASKET STRIP, M/F INSULATION P/N MIR-6130	V
15	XBOZZ	90598	12052-1	•• COVER, BLANK	1
16	XBOZZ	96906	MS20257C 2-1344	•• HINGE	1
17	XBOZZ	90598	12052-2	•• DOOR	1

(1) ITEM NO	(2) SMR CODE	(3) FSCM	(4) PART NUMBER	(5) DESCRIPTION AND USABLE ON CODE (UOC)	(6) QTY
18	PAOZZ	96906	MS35206-259	• SCREW	4
19	XBOOO	90598	12084-100	• PANEL, SUB R.H.	1
20	PAOZZ	86797	RB75	•• KNOB	1
21	PAOZZ	86797	RB175	•• KNOB	1
22	XBOZZ	90598	12120-1	•• PLATE, INSTRUCTION	1
23	PAOZZ	82121	32303AS	•• SWITCH, ROTARY	1
24	PAOZZ	75382	600RJ3	•• JUMPER	1
25	PAOZZ	06402	45-700P105AMP	•• CIRCUIT BREAKER	1
26	PAOZZ	59730	FTA250	•• ADAPTER TERMINAL	1
27	PAOZZ	97539	NC-3030	•• BOOT, PUSH BUTTON	1
28	PAOZZ	97539	2500/1/6	•• ADAPTER BUSHING	1
29	XBOZZ	90598	12074-1	•• PANEL. BLANK	1
30	PAOZZ	96906	MS35649-262	• NUT	4
31	PAOZZ	96906	MS35649-37	• WASHER, LOCK	4
32	PAOZZ	50831	A36AGA9	• THERMOSTAT	1
33	PAOZZ	96906	MS35649-2252	• NUT	4
34	PAOZZ	96906	MS35333-40	• WASHER. LOCK	4

(1) ITEM NO	(2) SMR CODE	(3) FSCM	(4) PART NUMBER	(5) DESCRIPTION AND USABLE ON CODE (UOC)	(6) QTY
35	XBOOO	90598	12083-101	• PANEL, SUB. L. H	1
36	PAOZZ	96906	MS35206-261	•• SCREW	1
37	PAOZZ	96906	MS35333-39	•• WASHER, LOCK	1
38	PAOZZ	96906	MS35649-202	•• NUT	1
39	PAOZZ	14859	60006A1	•• RELAY, TIME DELAY	1
40	PAOZZ	96906	MS35206-268	•• SCREW	8
41	PAOZZ	96906	MS35333-39	•• WASHER, LOCK	8
42	PAOZZ	96906	MS35649-202	•• NUT	8
43	PAOZZ	23826	41NB30AFX26	•• CONTRACTOR, MAGNETIC	4
44	PAOZZ	96906	MS35206-244	•• SCREW	4
45	PAOZZ	96906	MS35333-38	•• WASHER	4
46	PAOZZ	96906	MS35649-282	•• NUT	4
47	PAOZZ	14604	30DO-303SV	•• CONTRACTOR, COMPRESSOR	1
48	PAOZZ	96906	MS35206-226	•• SCREW	1
49	PAOZZ	96906	MS35333-37	•• WASHER, LOCK	1
50	PAOZZ	04221	157-10T1A4	•• RELAY, ARMATURE	1
51	PAOZZ	96906	MS35206-226	•• SCREW	1

(1) ITEM NO	(2) SMR CODE	(3) FSCM	(4) PART NUMBER	(5) DESCRIPTION AND USABLE ON CODE (UOC)	(6) QTY
52	PAOZZ	96906	M835333-37	•• WASHER, LOCK	1
53	PAOZZ	04221	157-10T1A3	•• RELAY, ARMATURE	1
54	PAOZZ	00779	61045-1	•• ADAPTER, TERMINAL	6
55	PAOZZ	96906	MS35206-232	•• SCREW	2
56	PAOZZ	96906	M835333-97	•• WASHER, LOCK	2
57	PAOZZ	96906	MS35649-262	•• NUT	2
58	XBOZZ	75382	603-5F, STY13C	•• BLOCK, TERMINAL	1
59	PAOZZ	96906	MS35206-232	•• SCREW	2
60	PAOZZ	96906	MS3533-37	•• WASHER, LOCK	2
61	PAOZZ	96906	MS35649-262	•• NUT	2
62	XBOZZ	90598	12103-100	•• BOARD, TERMINAL	1
63	XBOZZ	90598	12053-100	•• PANEL, BLANK	1
64	PAOZZ	59730	144	•• NUT, LOCK	1
65	PAOZZ	59730	2559	•• CONNECTOR, CABLE	1

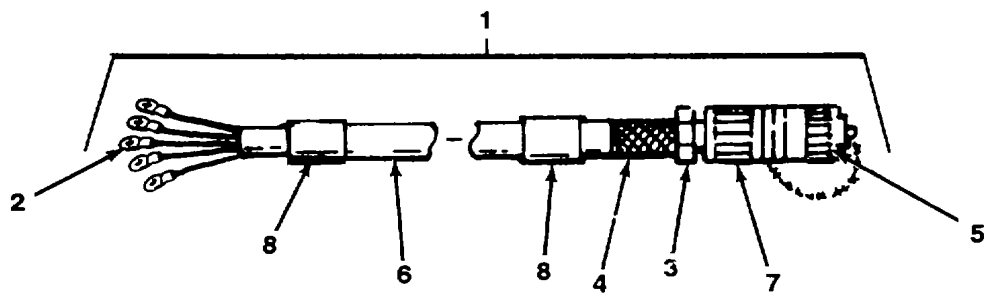
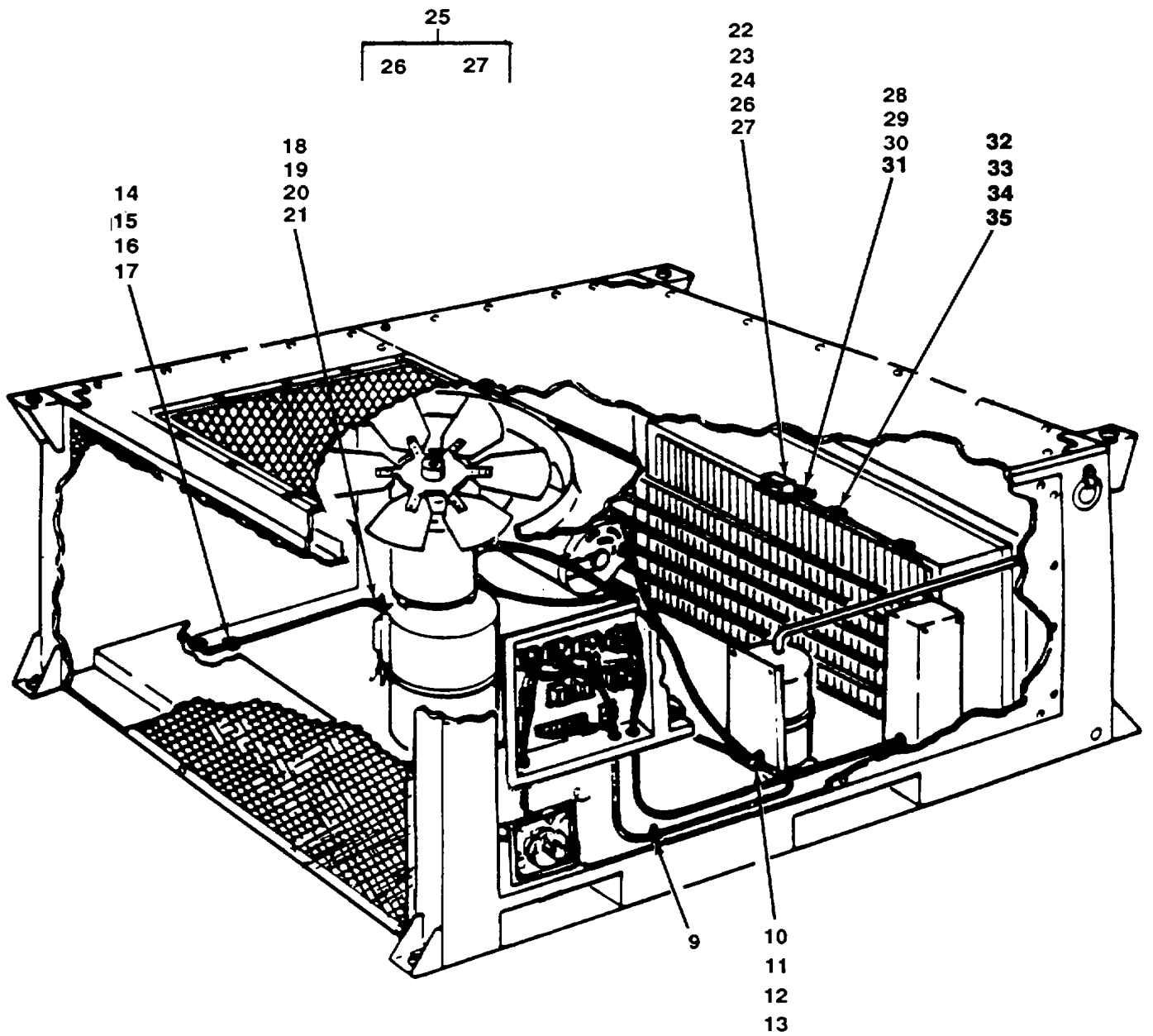


Figure 5. Electrical Installation

(1) ITEM NO	(2) SMR CODE	(3) FSCM	(4) PART NUMBER	(5) DESCRIPTION AND USABLE ON CODE (UOC)	(6) QTY
				GROUP 04 ELECTRICAL INSTALLATION	
				FIG. 5 ELECTRICAL INSTALLATION	
1	PAOOO	90598	12139-100	CABLE ASSEMBLY, POWER	1
2	PAOZZ	59730	RE267	• RING, TERMINAL	5
8	XBOZZ	96906	MS23747-2	• GLAND, CABLE	1
4	XBOZZ	96906	MS90561-2	• GRIP, CABLE	1
5	XBOZZ	96906	MS905644C	• COVER, ELECTRICAL	1
6	XBOZZ	90598	12139-1	• CABLE, ELECTRICAL	1
7	PAOZZ	96906	MS90656C3 2412P	• CONNECTOR, STRAIGHT	1
8	XBOZZ	90598	12139-7	• BAND, MARKER	2
9	PAOZZ	59730	TY25M	STRAP, RETAINING	V
10	PAOZZ	96906	MS35650-302	NUT	1
11	PAOZZ	96906	MS35338-43	WASHER, LOCK	1
12	PAOZZ	96906	MS27183-8	WASHER, FLAT	1
18	PAOZZ	96906	MS21322-41	CLAMP, LOOP, 1116-IN	1
14	PAOZZ	96906	MS35650-302	NUT	2
15	PAOZZ	96906	MS35338-43	WASHER, LOCK	2
16	PAOZZ	96906	MS27183-8	WASHER, FLAT	2
17	PAOZZ	96906	MS21919WDG6	CLAMP, LOOP, 3/8 IN	2
18	PAOZZ	96906	MS36660-302	NUT	1
19	PAOZZ	96906	MS35338-43	WASHER, LOCK	1
20	PAOZZ	96906	M827183-8	WASHER, FLAT	1
21	PAOZZ	96906	MS21322-38	CLAMP, LOOP, 1/2 IN	1

(1) ITEM NO	(2) SMR CODE	(3) FSCM	(4) PART NUMBER	(5) DESCRIPTION AND USABLE ON CODE (UOC)	(6) QTY
22	PAOZZ	96906	MS35206-244	SCREW	2
23	PAOZZ	96906	MS35338-42	WASHER, LOCK	2
24	PAOZZ	96906	MS35649-282	NUT	2
25	PAOZZ	90598	12051-101	SWITCH, HIGH TEMP. CUTOUT	1
26	PAOZZ	14859	20640L73-321-397	• SWITCH, HIGH TEMP	1
27	PAOZZ	09922	PQ18R256M	• TERMINAL, QUICK DISCONNECT	2
28	PAOZZ	96906	MS35206-226	SCREW	2
29	PAOZZ	96906	MS35338-42	WASHER, LOCK	2
30	PAOZZ	96906	MS35649-282	NUT	2
31	XBOZZ	90598	12036-1	BRACKET, HIGH TEMP. SWITCH	1
32	PAOZZ	96906	MS35206-244	SCREW	2
33	PAOZZ	96906	MS35338-42	WASHER, LOCK	2
34	PAOZZ	96906	MS35649-282	NUT	2
35	PAOZZ	96906	MS21322-32	CLAMP, LOOP, 1/8 IN	2

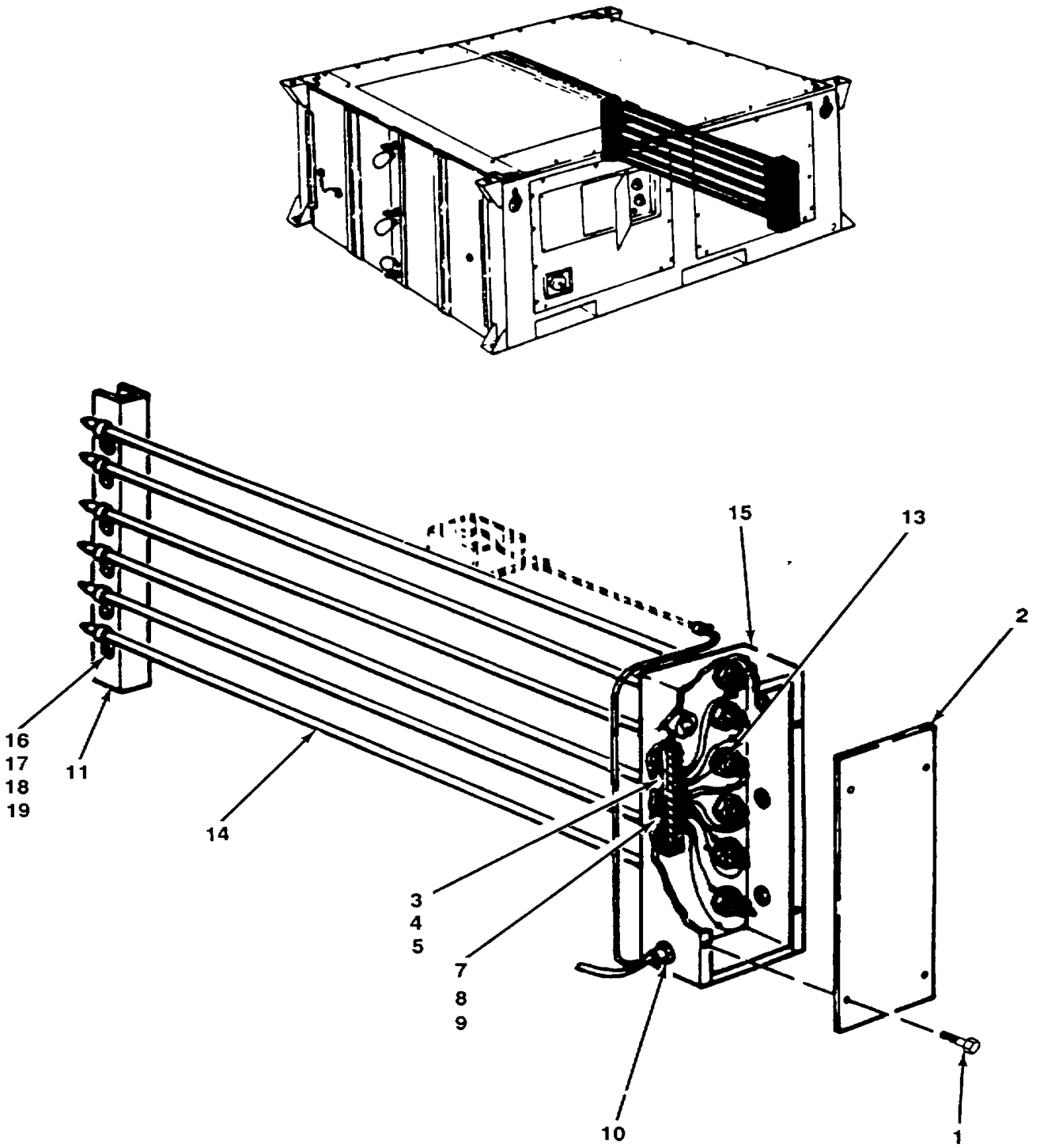
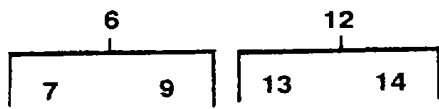


Figure 6. Heater Assembly

(1) ITEM NO	(2) SMR CODE	(3) FSCM	(4) PART NUMBER	(5) DESCRIPTION AND USABLE ON CODE (UOC)	(6) QTY
				GROUP 05 HEATER ASSEMBLY	
				FIG. 6 HEATER ASSEMBLY	
1	PAOZZ	96906	MS35206-259	SCREW	4
2	XBOZZ	90598	12072-1	COVER	1
3	PAOZZ	96906	MS35206-232	SCREW	2
4	PAOZZ	96906	MS35333-37	WASHER, LOCK	2
5	PAOZZ	96906	MS35649-262	NUT	2
6	XBOZZ	90598	12050-100	BLOCK, TERMINAL	1
7	PAOZZ	75382	KT53	• TAB, TERMINAL	6
8	PAOZZ	75382	KT48	• TAB, TERMINAL	10
9	PAOZZ	75382	899-10-F	• BLOCK, TERMINAL	1
10	PAOZZ	28520	UB 875	BUSHING, ELECTRICAL	1
11	XBOZZ	90598	12059-100	END, HEATER	1
12	PAOZZ	90598	12086-100	ELEMENT, HEATING	6
13	PAOZZ	98410	BB 8141	• TERMINAL, QUICK DISCONNECT	12
14	XBOZZ	06646	322-873964-001	• ELEMENT, HEATING	6
15	XBOZZ	90598	12063-101	END, HEATER	1
16	PAOZZ	96906	MS35206-263	SCREW	6
17	PAOZZ	96906	MS35338-43	WASHER, LOCK	6
18	PAOZZ	96906	MS35649-202	NUT	6
19	XBOZZ	90598	12014-1	STRAP, RETAINING	6

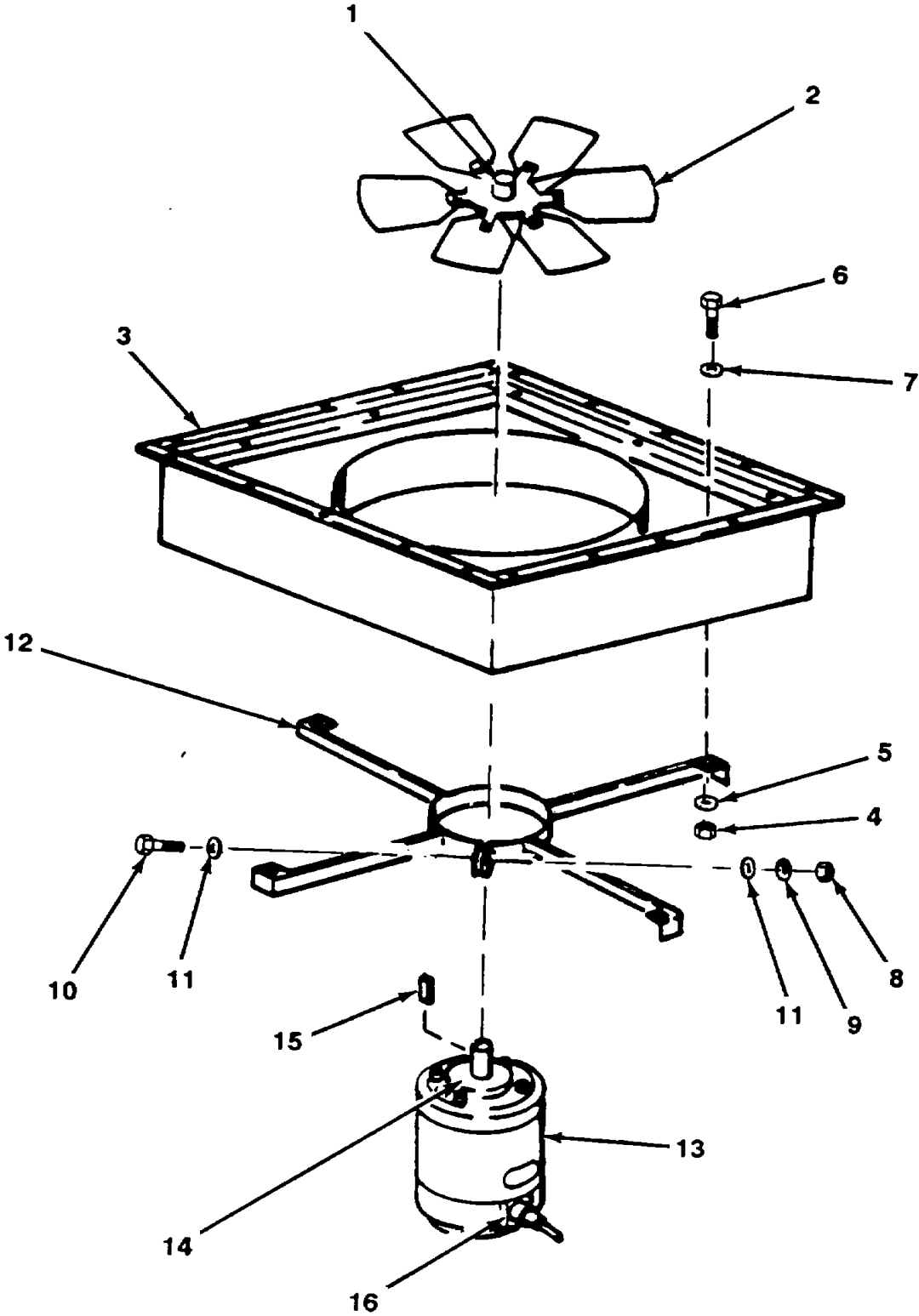


Figure 7. Condenser Fan Assembly

(1) ITEM NO	(2) SMR CODE	(3) FSCM	(4) PART NUMBER	(5) DESCRIPTION AND USABLE ON CODE (UOC)	(6) QTY
				GROUP 06 CONDENSER FAN ASSEMBLY	
				FIG. 7 CONDENSER FAN ASSEMBLY	
1	PAOZZ	22038	3246-029	SCREW, SET	1
2	PAOZZ	22038	CT6-24-22	IMF.T R.1, CONDENSER FAN	1
3	XBOZZ	90598	12019-101	FRAME, FAN AND MOTOR	1
4	PAOZZ	96906	MS5196%7-2	NUT	4
5	PAOZZ	96906	MS35338-44	WASHER, LOCK	4
6	PAOZZ	96906	MS90725-6	BOLT, MACHINE	4
7	PAOZZ	96906	MS27183-10	WASHER, FLAT	4
8	PAOZZ	96906	MS51967-5	NUT	1
9	PAOZZ	96906	MS3533845	WASHER, LOCK	1
10	PAOZZ	96906	MS90725-36	BOLT, MACHINE	1
11	PAOZZ	96906	MS27183-12	WASHER, FLAT	2
12	XBOZZ	90598	12017-100	SUPPORT, MOTOR	1
13	PAOZZ	92940	601995	MOTOR, CONDENSER FAN	1
14	PAOZZ	92940	04-A09101-02-00	• BEARING, BALL	2
15	PAOZZ	92940	23-A02741-06-00	KEY, SHAFT	1
16	XBOZZ	49367	DB8	BUSHING, STRAIN RFI.TFF	1

(1) ITEM NO	(2) SMR CODE	(3) FSCM	(4) PART NUMBER	(5) DESCRIPTION AND USABLE ON CODE (UOC)	(6) QTY
				GROUP 07 BLOWER ASSEMBLY	
				FIG. 8 BLOWER ASSEMBLY	
1	PAOZZ	96906	MS90725-34	BOLT, MACHINE	2
2	PAOZZ	96906	MS35338-45	WASHER, LOCK	2
8	PAOZZ	96906	MS27183-12	WASHER, FLAT	2
4	PAOOO	90598	12061-100	BLOWER, EVAPORATOR, MODIFIED	1
5	PAOZZ	07707	AD42BS	• RIVET, BLIND	3
6	XBOZZ	90598	12061-3	• BRACKET, BLOWER	1
7	XBOOO	35197	A10-10ATCD	• FAN, CENTRIFUGAL	1
8	XBOZZ	35197	022918-08	•• SHAFT, FAN	1
9	PAOZZ	35197	017740-01	•• BEARING, BALL	2
10	PAOZZ	35197	008360-12	••IMPELLER, FAN	1
11	XBOZZ	35197	017841-02	• HOUSING, FAN	1
12	XBOZZ	35197	006052-03	••CUTOFF	1
18	PAOZZ	96906	MS90725-5	BOLT, MACHINE	22
14	PAOZZ	96906	MS27183-10	WASHER, FLAT	22
15	PAOZZ	96906	MS35338-44	WASHER, LOCK	22
16	PAOZZ	96906	MS51967-2	NUT	22
17	PAOZZ	96906	MS35206-264	SCREW	2
18	XBOZZ	90598	12062-100	PLENUM	1
19	PAOZZ	96906	MS90725-32	BOLT, MACHINE	2

(1) ITEM NO	(2) SMR CODE	(3) FSCM	(4) PART NUMBER	(5) DESCRIPTION AND USABLE ON CODE (UOC)	(6) QTY
20	PAOZZ	96906	MS35338-45	WASHER, LOCK	2
21	PAOZZ	96906	MS27183-12	WASHER, FLAT	2
22	XBOZZ	90598	12060-100	SUPPORT, BLOWER	1
23	PAOZZ	24161	AX35	BELT, V	1
24	PAOZZ	71176	1VL44 5-8	PULLEY, GROOVE	1
25	PAOZZ	9G100	122051	BUSHING, PULLEY	2
26	PAOZZ	9G100	121023	PULLY, GROOVE, HIGH SPEED	1
27	PAOZZ	9G100	121027	PULLEY GROOVE, LOW SPEED	1
28	PAOZZ	96906	MS51967-2	NUT	1
29	PAOZZ	96906	MS35338-44	WASHER, LOCK	1
30	PAOZZ	96906	MS90725-12	SCREW, CAP	1
31	PAOZZ	96906	MS27183-10	WASHER, FLAT	1
32	PAOZZ	96906	MS51967-8	NUT	2
33	PAOZZ	96906	MS27183-14	WASHER, FLAT	2
34	PAOZZ	96906	MS35338-46	WASHER, LOCK	1
35	PAOZZ	90598	12013-1	BOLT, EYE, ADJUSTING	1
36	PAOZZ	96906	MS90725-6	BOLT, MACHINE	4
37	PAOZZ	96906	MS35338-44	WASHER, LOCK	4
38	PAOZZ	96906	MS27183-10	WASHER, FLAT	4

(1) ITEM NO	(2) SMR CODE	(3) FSCM	(4) PART NUMBER	(5) DESCRIPTION AND USABLE ON CODE (UOC)	(6) QTY
39	PAOZZ	92940	601996	MOTOR, EVAPO	1
40	PAOZZ	96906	MS90725-6	BOLT, MACHINE	2
41	PAOZZ	96906	MS35338-44	WASHER, LOCK	2
42	PAOZZ	96906	MS27183-10	WASHER, FLAT	2
43	XBOZZ	90598	12038-100	SUPPORT, MOTOR	1
44	PAOZZ	96906	MS90725-34	BOLT, MACHINE	2
45	PAOZZ	96906	MS35338-45	WASHER, LOCK	2
46	PAOZZ	96906	MS27183-12	WASHER, FLAT	2
47	XBOZZ	90598	12037-100	BRACKET, MOTOR	1
48	PAOZZ	96906	MS35206-244	SCREW	2
49	PAOZZ	96906	MS35338-42	WASHER, LOCK	2
50	PAOZZ	96906	MS35649-282	NUT, HEX	2
51	PAOZZ	90598	12051-101	SWITCH, HIGH TEMP CUTOUT	1
52	XDOZZ	92940	28A03938-01-00	CLAMP	2

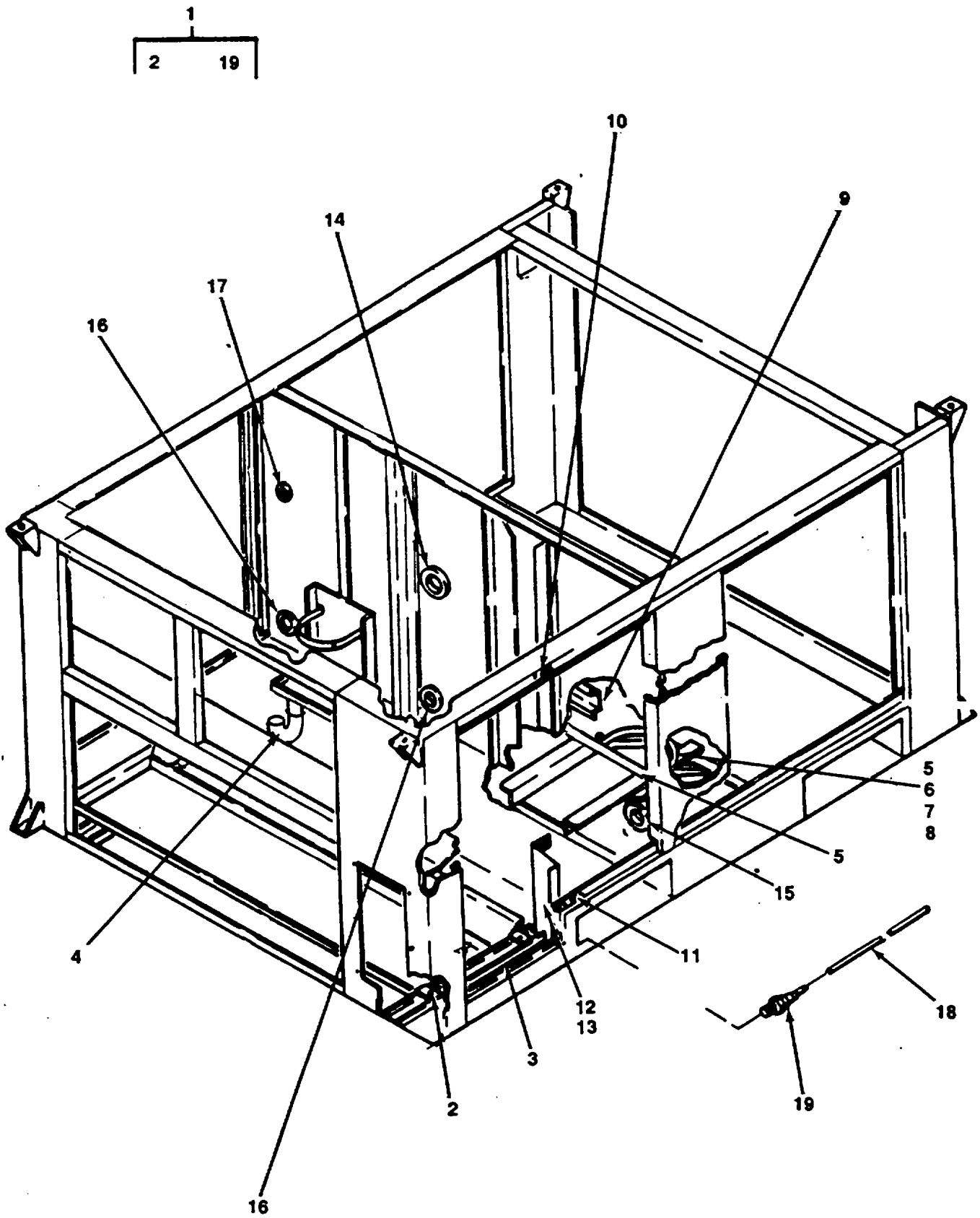


Figure 9. Frame Assembly

(1) ITEM NO	(2) SMR CODE	(3) FSCM	(4) PART NUMBER	(5) DESCRIPTION AND USABLE ON CODE (UOC)	(6) QTY
				GROUP 08 FRAME ASSEMBLY	
				FIG. 9 FRAME ASSEMBLY	
1	XBFZZ	90598	12073-102	FRAME	1
2	XBFZZ	90598	12073-33	• PLATE	2
3	XBFZZ	90598	12073-16	• PAN, DRIP	1
4	PAOZZ	97403	13229E6145-1	• HOSE, DRAIN	1
5	PAFZZ	96906	MS90725-39	• BOLT, MACHINE	2
6	PAFZZ	96906	MS35338-45	• WASHER, LOCK	2
7	PAFZZ	96906	MS27183-12	• WASHER, FLAT	2
8	XBFZZ	90598	12073-17	• MOUNT, COMPRESSOR	1
9	XBFZZ	90598	12073-41	• SUPPORT, COMPRESSOR	1
10	PAFZZ	07707	SD42BS	• RIVET, BLIND	8
11	XBFZZ	71286	244-16	• RECEPTACLE, STUD ASSY	4
12	PAFZZ	07707	SD42BS	• RIVET, BLIND	2
13	XBFZZ	90598	12119-1	• MOUNT, VALVE	1
14	PAFZZ	14829	1110	• GROMMET, PLASTIC, 1-1/8 IN. I.D	1
15	PAFZZ	14829	560	• GROMMET, PLASTIC, 5/8 IN. I.D	1
16	PCFZZ	96906	MS36490-12	• GROMMET, RUBBER, 3/8 IN. I.D	2
17	PCFZZ	96906	MS35490-2	• GROMMET, RUBBER, 1/8 IN. I.D	2
18	PAOZZ	79470	H10008	• HOSE, 1/2 I. X 3140 O.D. X 15 FT. LG	2
19	PAOZZ	30327	KF08-04PS	• CONNECTOR, HOSE-BARBED 1/4 MPTX, 1/2 O.D	2

(1) ITEM NO	(2) SMR CODE	(3) FSCM	(4) PART NUMBER	(5) DESCRIPTION AND USABLE ON CODE (UOC)	(6) QTY
				GROUP 09 BULK MATERIAL LIST	
				FIG. BULK	
1	PAFZZ	81348	HH-I-558	INSULATION, TYPE 1 1IN. STOCK 18 X 18	V
2	PAFZZ	81348	MIL-R-6130	INSULATION, ADHESIVE BACKED, TYPE 2, GRADE A, COND. SOFT, 1/8 THICK X 1/2 WIDE	V
3	PAFZZ	81349	MII-I-16562	TYPE M, 1/2 STOCK 24 X 24	V
4	PAFZZ	81349	MIL-P-15280	INSULATION, TYPE 2, FORM 1, 1 5/8 I.D. X 3/4 WALL	V
5	PAFZZ	81349	MIL-P-15280	INSULATION, TYPE 2, FORM 1, 1 1/8 I.D. X 3/4 WALL	V
6	PAFZZ	81349	MIL-P-15280	INSULATION, TYPE 2, FORM 1, 1 1/8 I.D. X 3/8 WALL	V
7	PAFZZ	81349	ASTM-B280 1 1/8 O.D.	COPPER TUBE	V
8	PAFZZ	81349	ASTM-B280 7/8 O.D.	COPPER TUBE	V
9	PAFZZ	81349	ASTM-B280 5/8 O.D.	COPPER TUBE	V
10	PAFZZ	81349	ASTM-B280 1/2 O.D.	COPPER TUBE	V
11	PAFZZ	81349	ASTM-B280 1/4 O.D	COPPER TUBE	V
12	PAOZZ	81349	M5086/1-18-9	WIRE	V
13	PAOZZ	81349	M5086/1-12-9	WIRE	V
14	PAOZZ	81349	M5086/2-10-9	WIRE	V
15	PAOZZ	81349	M5086/2-8-9	WIRE	V
16	PAFZZ	81349	MIL-R-6130	ADHESIVE BACKED, TYPE 2, GRADE A, COND. SOFT, 1/8 THICK X 3/8 WIDE	V
17	PAFZZ	81349	ASTM-B280 3/8 O.D.	COPPER TUBE	V
				END OF FIGURE	

Section III. SPECIAL TOOLS LIST

(Not Applicable)

SECTION IV

CROSS- REFERENCE-INDEXES
NATIONAL STOCK NUMBER INDEX

STOCK NUMBER	FIG.	ITEM	STOCK NUMBER	FIG.	ITEM
3020-00-992-1206	8	24	5305-00-984-4992	6	3
31100-0533-9592	7	14	5305-00-984-6192	4	44
3130-00-027-5946	8	9	5305-00-984-6192	5	23
4010-00-171-4512	1	6B	5305-04-984-6192	5	32
4030-00-821-8404	1	6A	5305-00-984-6192	8	48
4130-00-106-5657	2	18	5305-00-984-6193	2	61
4130-01-415-9395	3	6	5305-00-984-6206	4	18
4130-00-415-9461	3	95	5305-00-984-6206	6	1
4130-00-415-9468	3	78	5305-041984-6208	4	36
4130-00-434-0159	3	92	5305-00-984-6210	2	14
4130-40-493-7707	3	1	5305-00-984-6210	2	45
4130-01-120-1620	3	72	5305-00-984-6210	2	49
4130-01-145-9466	3	69	5305-00-984-6210	4	6
4130-01-146-9687	3	88	5305-00-984-6210	6	16
4130-01-306-9532	8	4	5305-00-984-6211	2	6
4140-40-545-3422	7	2	5305-00-984-6211	2	40
4140-01-120-1622	8	10	5305-00-984-6211	2	53
4540-40-518-1331	3	90	5305-00-984-6211	3	2
4540-01-151-4740	6	12	5305-00-984-6211	3	18
4720-00-845-3032	9	18	5305-00-984-6211	3	32
4730-00-202-9200	3	28	5305-00-984-6211	3	56
4730-00-254-6447	3	39	5305-00-984-6211	8	17
4730-00-683-3362	3	29	5305-00-984-6214	2	4
4730-04-813-3193	3	43	5305-004984-6214	2	2
4730-00-815-5681	3	38	5305-00-984-6214	2	93
4730-00-913-0766	9	19	5305-00-984-6215	4	40
4730-40-995-9667	3	40	5305-00-988-1724	2	64
4730-01-275-0050	3	42	5305-01-156-5431	2	25
4820-00-103-5562	3	31	5305-01-302-8809	7	1
4820-00-545-0936	3	37	5306-00-225-8497	8	19
4820-00-936-2235	3	24	5306-00-225-8499	1	7
5305-00-068-0500	3	75	5306-00-225-8499	8	1
5305-00-068-0500	3	79	5306-00-225-8499	8	44
5305-00-068-0500	3	83	5306-00-225-8503	9	5
5305-00-068-0500	3	93	5306-00-226-4834	3	64
5305-00-468-4501	3	7	5306-00-565-5404	8	35
5305-00-068-0501	3	11	5306-01-075-8519	7	10
5305-00-068-0501	8	13	5307-01-301-7371	2	34
5305-00-068-0502	7	6	5310-00-080-6004	8	33
5305-00-068-0502	8	36	5310-00-081-4219	1	9
5305-00-068-0502	8	40	5310-00-081-4219	3	65
5305-40-071-2509	8	30	5310-00-081-4219	7	11
5305-00-432-3755	1	6C	5310-00-081-4219	8	3
5305-00-925-0628	2	60	5310-00-081-4219	8	21
5305-00-984-4983	4	48	5310-00-081-4219	8	46
5305-00-984-4983	4	51	5310-00-081-4219	9	7
5305-00-984-4983	5	28	5310-00-194-1483	3	80
5305-40-984-4992	4	55	5310-00-407-9566	1	8
5305-40-984-4992	4	59	5310-00-407-9566	3	67

SECTION IV

CROSS- REFERENCE-INDEXES
NATIONAL STOCK NUMBER INDEX

STOCK NUMBER	FIG.	ITEM	STOCK NUMBER	FIG.	ITEM
5310-00-407-9566	7	9	5310-00-809-4058	2	51
5310-00-407-9566	8	2	5310-00-809-4058	2	55
5310-00-407-9566	8	20	5310-00-809-4058	3	9
5310-00-407-9566	8	43	5310-00-809-4058	3	12
5310-00-407-9566	9	6	5310-00-809-4058	3	77
5310-00-453-3296	2	16	5310-00-809-4058	3	81
5310-00-453-3296	2	42	5310-00-809-4058	3	84
5310-00-453-3296	2	46	5310-00-809-4058	7	7
5310-00-453-3296	2	50	5310-00-809-4058	8	14
5310-00-453-3296	2	54	5310-00-809-4058	8	31
5310-00-453-3296	3	3	5310-00-809-4058	8	38
5310-00-453-3296	3	20	5310-00-809-4058	8	42
5310-00-453-3296	3	34	5310-00-809-8546	2	15
5310-00-453-3296	3	58	5310-00-809-8546	2	47
5310-00-453-3296	5	11	5310-00-809-8546	3	4
5310-00-453-3296	5	15	5310-00-809-8546	3	19
5310-00-453-3296	5	19	5310-00-809-8546	3	33
5310-00-453-3296	6	17	5310-00-809-8546	3	57
5310-00-550-1130	3	76	5310-00-809-8546	5	12
5310-00-550-1130	4	34	5310-00-809-8546	5	16
5310-00-559-0079	4	45	5310-00-809-8546	5	20
5310-00-576-5752	4	37	5310-00-811-3494	2	62
5310-00-576-5752	4	41	5310-00-880-7144	1	10
5310-00-579-0079	4	31	5310-00-880-7144	3	68
5310-00-579-0079	4	49	5310-00-880-7144	7	8
5310-00-579-0079	4	52	5310-00-934-9747	4	30
5310-00-579-0079	4	56	5310-00-934-9747	4	57
5310-00-579-0079	4	60	5310-00-934-9747	4	61
5310-00-579-0079	6	4	5310-00-934-9747	6	5
5310-00-582-5965	2	65	5310-00-934-9751	5	10
5310-00-582-5965	3	8	5310-00-934-9751	5	14
5310-00-582-5965	3	13	5310-00-934-9751	5	18
5310-00-582-5965	3	94	5310-00-934-9757	4	46
5310-00-582-5965	7	5	5310-00-934-9757	5	35
5310-00-582-5965	8	15	5310-00-934-9757	5	41
5310-00-582-5965	8	29	5310-00-934-9757	5	45
5310-00-582-5965	8	37	5310-00-934-9757	8	50
5310-00-582-5965	8	41	5310-00-934-9758	2	17
5310-00-595-7237	5	23	5310-00-934-9758	3	21
5310-00-595-7237	5	29	5310-00-934-9758	3	35
5310-00-595-7237	5	33	5310-00-934-9758	3	59
5310-00-595-7237	8	49	5310-00-934-9758	4	38
5310-00-618-4674	2	39	5310-00-934-9758	4	42
5310-00-732-0558	3	14	5310-00-934-9758	6	18
5310-00-732-0558	8	32	5310-00-984-0388	2	36
5310-00-761-6882	7	4	5310-00-984-0388	2	71
5310-00-761-6882	8	16	5310-00-984-0388	2	83
5310-00-761-6882	8	28	5310-00-997-1888	4	33
5310-00-80-94058	2	41	5310-01-130-9065	3	15

SECTION IV

CROSS- REFERENCE-INDEXES
NATIONAL STOCK NUMBER INDEX

STOCK NUMBER	FIG.	ITEM	STOCK NUMBER	FIG.	ITEM
5310-01-130-9065	8	34			
5310-01-148-2683	3	66			
5310-01-301-7194	2	43			

I-2.1/(I-2.2 blank)

SECTION IV

CROSS- REFERENCE-INDEXES
NATIONAL STOCK NUMBER INDEX

STOCK NUMBER	FIG.	ITEM	STOCK NUMBER	FIG.	ITEM
5320-00-850-3247	2	69	5935-00-114-8833	5	7
5320-00-850-3247	2	77	5940-00-276-0678	4	26
5320-00-879-4473	2	12	5940-00-535-2622	6	8
5320-00-879-4473	2	20	5940-00-762-5019	6	7
5320-00-879-4473	2	30	5940-00-804-9185	3	91
6532-00-879-4473	2	81	5940-01-063-9908	4	54
5320-00-079-4473	2	89	5940-01-303-7417	6	19
5320-00-879-4473	2	98	5940-01-305-6502	6	9
5320-00-879-4473	2	100	5945-00-534-7805	4	47
5320-00-879-4473	9	10	5945-00-534-7810	4	50
5320-00-879-4473	9	12	5945-00-534-7815	4	53
5320-00-899-0981	8	5	5945-01-148-8518	4	39
5325-00-174-5316	4	2	5945-01-161-8124	4	43
5325-00-174-5316	9	17	5975-00-074-2072	5	9
5325-00-263-6651	4	3	5975-00-177-2819	6	10
5325-00-263-6651	9	16	5975-00-583-2960	4	65
5325-00-270-8890	4	4	5975-00-642-7265	4	64
5325-00-369-2721	2	37	5975-00-682-0306	4	27
5325-00-369-2721	2	73	6105-00-531-0563	8	39
5325-00-369-2721	2	85	6105-00-535-2630	7	13
5325-00-869-2721	4	11	6105-01-295-8948	3	26
5325-00-559-7849	2	70	6150-00-069-7737	4	24
5325-00-559-7849	2	82	6680-00-777-9797	3	17
5325-00-559-7849	4	9	8040-01-302-8816	2	9
5325-00-559-7850	9	15	8040-01-302-8816	2	28
5325-00-970-2417	9	14	8040-01-302-8816	2	76
5340-00-351-4085	3	60	8040-01-302-8816	2	96
5340-00-696-7856	3	70			
5340-00-598-0146	5	17			
5340-00-826-3969	3	36			
5340-00-898-2083	5	21			
6540-00-923-1195	5	13			
5340-00-936-8885	5	35			
5640-01-128-4326	4	28			
5340-01-292-4818	3	25			
5355-00-126-2790	4	20			
5355-00-926-5289	4	21			
5865-00-171-8725	2	38			
5365-00-543-3388	2	35			
5365-00-543-3388	2	72			
5365-00-543-3388	2	84			
5365-00-543-3388	4	10			
5925-00-887-9380	4	25			
5930-00-551-0458	4	32			
5930-00-554-9358	3	27			
5930-00-600-7465	4	23			
5930-00-295-8947	5	26			
5980-01-295-8947	5	25			
5993-01-295-8947	8	51			

SECTION IV

NATIONAL STOCK NUMBER AND PART NUMBER INDEX				
PART NUMBER INDEX				
FSCM	PART NUMBER	STOCK NUMBER	FIG.	ITEM
35197	A-10IOATCD		8	7
41947	A3494	4730-00-202-9200	3	28
50831	A36AGA9	5930-00-551-0458	4	32
07707	AD42BS	5320-00-899-0981	8	5
59431	AG5568E	4130-01-145-9466	3	69
58727	AL24-5SC	4130-00-493-7707	3	1
24161	AX35		7	23
98410	BB8141	5940-01-303-7417	6	13
66295	C256-PS		1	1
78553	C9030-10Z-1	5310-01-301-7194	2	43
22038	CT6-24-22	4140-00-545-3422	7	2
49367	DB8		7	16
98313	FDK-2850M1		1	11
16632	FLX1501-0003		1	3
16632	FLX1501-0004		1	2
59730	FTA250	5940-00-276-0678	4	26
79470	H10008	4720-00-845-3032	9	18
30327	KFO8g04PS	4730-00-913-0766	9	19
75382	KT48	5940-00-535-2622	6	8
75382	KT53	5940-00-176-5019	6	7
59431	MP100-12	5340-00-596-7856	3	70
96906	MS20257C2-1344		4	16
96906	MS20257C2-2500		2	90
96906	MS20257C2-2800		2	78
96906	MS21044-NO8	5310-00-811-3494	2	62
96906	MS21322-32	5340-00-935-8885	5	35
96906	MS21322-38	5340-00-898-2083	5	21
96906	MS21322-41	5340-00-923-1195	5	13
96906	MS21919WDF14	5340-00-351-4085	3	60
96906	MS21919WDF18	5340-00-826-3969	3	36
96906	MS21919WDG6	5340-00-598-0146	5	17
96906	MS23747-2		5	3
96906	MS27130-531K		3	73
96906	MS27183-10	5310-00-809-4058	2	41
96906	MS27183-10	5310-00-809-4058	2	51
96906	MS27183-10	5310-00-809-4058	2	55
96906	MS27183-10	5310-00-809-4058	3	9
96906	MS27183-10	5310-00-809-4058	3	12
96906	MS27183-10	5310-00-809-4058	3	77
96906	MS27183-10	5310-00-809-4058	3	81
96906	MS27183-10	5310-00-809-4058	3	84
96906	MS27183-10	5310-00-809-4058	7	7
96906	MS27183-10	5310-00-809-4058	8	14
96906	MS27183-10	5310-00-809-4058	8	31
96906	MS27183-10	5310-00-809-4058	8	38
96906	MS27183-10	5310-00-809-4058	8	42
96906	MS27183-12	5310-00-081-4219	1	9
96906	MS27183-12	5310-00-081-4219	3	65
96906	MS27183-12	5310-00-081-4219	7	11

SECTION IV

NATIONAL STOCK NUMBER AND PART NUMBER INDEX PART NUMBER INDEX				
FSCM	PART NUMBER	STOCK NUMBER	FIG.	ITEM
96906	MS27183-12	5310-00-081-4219	8	3
96906	MS27183-12	5310-00-081-4219	8	21
96906	MS27183-12	5310-00-081-4219	8	46

SECTION IV

NATIONAL STOCK NUMBER AND PART NUMBER INDEX				
PART NUMBER INDEX				
FSCM	PART NUMBER	STOCK NUMBER	FIG.	ITEM
96906	MS27183-12	5310-00-081-4219	9	7
96906	MS27183-14	5310-00-080-6004	8	33
96906	MS27183-8	5310-00-809-8546	2	15
96906	MS27183-8	5310-00-809-8546	2	47
96906	MS27183-8	5310-00-809-8546	3	4
96906	MS27183-8	5310-00-809-8546	3	19
96906	MS27183-8	5310-00-809-8546	3	33
96906	MS27183-8	5310-00-809-8546	3	57
96906	MS27183-8	5310-00-809-8546	5	12
96906	MS27183-8	5310-00-809-8546	5	16
96906	MS27183-8	5310-00-809-8546	5	20
96906	MS27429-1	5940-00-804-9185	3	91
96906	MS35206-226	5305-00-984-4983	4	48
96906	MS35206-226	5305-00-984-4983	4	51
96906	MS35206-226	5305-00-984-4983	5	28
96906	MS35206-232	5305-00-984-4992	4	55
96906	MS35206-232	5305-00-984-4992	4	59
96906	MS35206-232	5305-00-984-4992	6	3
96906	MS35206-244	5305-00-984-6192	4	44
96906	MS35206-244	5305-00-984-6192	5	23
96906	MS35206-244	5305-00-984-6192	5	32
96906	MS36206-244	5305-00-984-6192	8	48
96906	MS35206-245	5305-00-984-6193	2	61
96906	MS35206-259	5305-00-984-6206	4	18
96906	MS35206-259	5305-00-984-6206	6	1
96906	MS35206-261	5305-00-984-6208	4	36
96906	MS35206-263	5305-00-984-6210	2	14
96906	MS35206-263	5305-00-984-6210	2	45
96906	MS35206-263	5305-00-984-6210	2	49
96906	MS35206-263	5305-00-984-6210	4	6
96906	MS35206-263	5305-00-984-6210	6	16
96906	MS35206-264	5305-00-984-6211	2	6
96906	MS35206-264	5305-00-984-6211	2	40
96906	MS35206-264	5305-00-984-6211	2	53
96906	MS35206-264	5305-00-984-6211	3	2
96906	MS35206-264	5305-00-984-6211	3	18
96906	MS35206-264	5305-00-984-6211	3	32
96906	MS35206-264	5305-00-984-6211	3	56
96906	MS35206-264	5305-00-984-6211	8	17
96906	MS35206-267	5305-00-984-6214	2	4
96906	MS35206-267	5305-00-984-6214	2	2
96906	MS35206-267	5305-00-984-6214	2	93
96906	MS35206-268	5305-00-984-6215	4	40
96906	MS35206-280	5305-00-988-1724	2	64
96906	MS35333-37	5310-00-579-0079	4	31
96906	MS35333-37	5310-00-579-0079	4	49
96906	MS35333-37	5310-00-579-0079	4	52
96906	MS35333-37	5310-00-579-0079	4	56
96906	MS35333-37	5310-00-579-0079	4	60

SECTION IV

NATIONAL STOCK NUMBER AND PART NUMBER INDEX				
PART NUMBER INDEX				
FSCM	PART NUMBER	STOCK NUMBER	FIG.	ITEM
96906	M835333-37	5310-00-579-0079	6	4
96906	M835333-38	5310-00-559-0070	4	45
96906	MS35333-39	5310-00-576-5752	4	37
96906	MS35333-39	5310-00-576-5752	4	41
96906	MS35333-40	5310-00-550-1130	3	76
96906	MS35333-40	5310-00-550-1130	4	34
96906	MS35333-44	5310-00-194-1483	3	80
96906	MS35338-42	5310-00-595-7237	5	23
96906	MS35338-42	5310-00-595-7237	5	29
96906	MS35338-42	5310-00-595-7237	5	33
96906	MS35338-42	5310-00-595-7237	8	49
96906	MS35338-43	5310-00-453-3296	2	16
96906	MS35338-43	5310-00-453-3296	2	42
96906	MS35338-43	5310-00-453-3296	2	46
96906	MS35338-43	5310-00-453-3296	2	50
96906	MS35338-43	5310-00-453-3296	2	54
96906	MS3533843	5310-00-453-3296	3	3
96906	MS35338-43	5310-00-453-3296	3	20
96906	MS3533843	5310-00-453-3296	3	34
96906	MS35338-43	5310-00-453-3296	3	58
96906	MS35338-43	5310-00-453-3296	5	11
96906	MS35338-43	5310-00-453-3296	5	15
96906	MS3633843	5310-00-453-3296	5	19
96906	MS35338-43	5310-00-453-3296	6	17
96906	MS35338-44	5310-00-582-5965	2	65
96906	MS35338-44	5310-00-582-5965	3	8
96906	MS35338-44	5310-00-582-5965	3	13
96906	MS3533844	5310-00-582-5965	3	94
96906	MS3633844	5310-00-582-5965	7	5
96906	M83633844	5310-00-582-5965	8	15
96906	MS3633844	5310-00-582-5965	8	29
96906	MS35338-44	5310-00-582-5965	8	37
96906	MS36338-44	5310-00-582-5965	8	41
96906	MS35338-45	5310-00-407-9566	1	8
96906	MS35338465	5310-00-407-9566	3	67
96906	MS3533845	5310-00-407-9566	7	9
96906	MS35338-4	5310-00-407-9566	8	2
96906	MS35338-45	5310-00-407-9566	8	20
96906	MS3533846	5310-00-407-9566	8	45
96906	MS3533845	5310-00-407-9566	9	6
96906	MS3533846	5310-01-130-9065	3	15
96906	MS35338-46	5310-01-130-9065	8	34
96906	MS35490-12	5325-00-263-6651	4	3
96906	MS35490-12	5325-00-263-6651	9	16
96906	MS35490-2	5326-00-174-5316	4	2
96906	MS35490-2	5325-00-174-5316	9	17
96906	MS35490-22	5325-00-270-8890	4	4
96906	MS35649-202	5310-00-934-9758	2	17
96906	MS35649-202	5310-00-934-9758	3	21

SECTION IV

NATIONAL STOCK NUMBER AND PART NUMBER INDEX				
PART NUMBER INDEX				
FSCM	PART NUMBER	STOCK NUMBER	FIG.	ITEM
96906	MS35649-202	5310-00-934-9758	3	35
96906	MS35649-202	5310-00-934-9758	3	59
96906	MS35649-202	5310-00-934-9758	4	38
96906	MS35649-202	5310-00-934-9758	4	42
96906	MS35649-202	5310-00-934-9758	6	18
96906	MS35649-2252	5310-00-937-1888	4	33
96906	MS35649-262	5310-00-934-9747	4	30
96906	MS35649-262	5310-00-934-9747	4	57
96906	MS35649-262	5310-00-934-9747	4	61
96906	MS35649-262	5310-00-934-9747	6	5
96906	MS35649-282	5310-00-934-9757	4	46
96906	MS35649-282	5310-00-934-9757	5	24
96906	MS35649-282	5310-00-934-9757	5	30
96906	MS35649-282	5310-00-934-9757	5	34
96906	MS35649-282	5310-00-934-9757	8	50
96906	MS35650-302	5310-00-934-9751	5	10
96906	MS35650-302	5310-00-934-9751	5	14
96906	MS35650-302	5310-00-934-9751	5	18
96906	MS51967-2	5310-00-761-6882	7	4
96906	MS51967-2	5310-00-761-6882	8	16
96906	MS51967-2	5310-00-761-6882	8	28
96906	MS51967-5	5310-00-880-7144	1	10
96906	MS51967-5	5310-00-880-7144	3	68
96906	MS51967-5	5310-00-880-7144	7	8
96906	MS51967-8	5310-00-732-0558	3	14
96906	MS51967-8	5310-00-732-0558	8	32
96906	MS90556C2412P	5935-00-114-8833	5	7
96906	MS90561-2		5	4
96906	MS905644C		5	5
96906	MS90725-12	5305-00-072-2509	8	30
96906	MS90725-3	5305-00-068-0500	3	75
96906	MS90725-3	5305-00-068-0500	3	79
96906	MS90725-3	5305-00-068-0500	3	83
96906	MS90725-3	5305-00-068-0500	3	93
96906	MS90725-32	5306-00-225-8497	8	19
96906	MS90725-34	5306-00-225-8499	1	7
96906	MS90725-34	5306-00-225-8499	8	1
96906	MS90725-34	5306-00-225-8499	8	44
96906	MS90725-36	5306-01-075-8519	7	10
96906	MS90725-39	5306-00-225-8503	9	5
96906	MS90725-41	5306-00-226-4834	3	64
96906	MS90725-5	5305-00-068-0501	3	7
96906	MS90725-5	5305-00-068-0501	3	11
96906	MS90725-5	5305-00-068-0501	8	13
96906	MS90725-6	5305-00-068-0502	7	6
96906	MS90725-6	5305-00-068-0502	8	36
96906	MS90725-6	5305-00-068-0502	8	40
96906	MS90728-159	5305-00-432-3755	1	6C
80205	NAS1090-2	4030-00-821-8404	1	6A

SECTION IV

NATIONAL STOCK NUMBER AND PART NUMBER INDEX				
PART NUMBER INDEX				
FSCM	PART NUMBER	STOCK NUMBER	FIG.	ITEM
97539	NC-3030	5975-00-682-0306	4	27
09922	PQ18R256M		5	27
86797	RB175	5355-00-926-5289	4	21
86797	RB75	5355-00-126-2790	4	20
59730	RE267		5	2
81348	RR-C-271,TY2CL3	4010-00-171-4512	1	6B
71126	S-6432B		2	32
07707	SD42BS	5320-00-879-4473	2	12
07707	SD42BS	5320-00-879-4473	2	20
07707	SD42BS	5320-0-879-4473	2	30
07707	SD42BS	5320-00-879-4473	2	81
07707	SD42BS	5320-00-879-4473	2	89
07707	SD42BS	5320-00-879-4473	2	98
07707	SD42BS	5320-00-879-4473	2	100
07707	SD42BS	5320-00-879-4473	9	10
07707	SD42BS	5320-00-879-4473	9	12
07707	SD62BS	5320-00-850-3247	2	69
07707	SD62BS	5324-00-850-3247	2	77
90598	TC4021	5305-00-925-0628	2	60
78189	TEKS10-32X1/2	5305-01-156-5431	2	25
59730	TY25M	5975-00-074-2072	5	9
28520	UB875	5975-00-177-2819	6	10
07295	VUS3-46AC	4820-00-936-2235	3	24
41947	W-4011	4730-00-815-5681	3	38
41947	W1037	4730-00-995-9667	3	40
41947	W2034	4730-00-254-6447	3	39
41947	W2612	4730-00-683-3362	3	29
41947	W2722	4730-01-275-0050	3	42
41947	W2822	4730-00-813-3193	3	43
81348	WWT799TYPECL2		3	41
78462	XVE4CP100	4820-00-103-5562	3	31
35197	006052-03		8	12
35197	008360-12	4140-01-120-1622	8	10
35197	017740-01	3130-00-027-5946	8	9
35197	017841-02		8	11
35197	022918-08		8	8
92940	04-A09101-02-00	3110-00-533-9592	7	14
14829	1110		2	13
90598	12005-100		2	22
90598	12007-1		3	10
90598	12008-1		3	5
90598	12011-101		2	66
90598	12013-1	5306-00-565-5404	8	29
90598	12014-1		6	19
90598	12015-1		2	91
90598	12015-10		2	86
90598	12015-101		2	80
90598	12015-11		2	87
90598	12015-4		2	88
90598	12016-1		2	79

SECTION IV

NATIONAL STOCK NUMBER AND PART NUMBER INDEX PART NUMBER INDEX				
FSCM	PART NUMBER	STOCK NUMBER	FIG.	ITEM
90598	1201-100		2	68
90598	12016-7		2	75
90698	12017-100		7	12
90598	12018-100		2	44
90598	12019-101		7	a
90598	12022-100	4180-01-120-1620	8	72
90598	12026-100		4	1
90598	12035-100		2	24
90598	12036-1		5	81
90598	12037-100		8	47
90598	12038-100		8	43
90598	12041-		2	99
90598	12043-101		2	97
90598	12045-100		2	92
90598	12046-2		2	95
90598	12045-4		2	94
90598	12047-101		2	52
90598	12050-100		6	6
90598	12051-101	5930-01-295-8947	5	25
90598	12051-101	5930-01-295-8947	8	51
90598	12052-1		4	15
90598	12052-10		4	14
90598	120b2-103		4	7
90598	12052-2		4	17
90598	12052-4		4	12
90598	12052-9		4	13
90598	12065-100		4	63
9098	12054-100		3	16
9098	12055-1		2	11
90696	2065-100		2	7
90596	1205-2		2	8
90598	12055-4		2	10
90598	12056-100		2	5
90598	12057-1		2	1
90598	12058-100		2	3
90b98	12059-100		6	11
90598	00-100		8	22
90598	12061-100	4130-01-306-9532	8	4
90598	120614		8	6
90598	1200-100		8	18
90598	1208101		6	15
90696	12061		2	29
90596	12064-100		2	26
90598	12064-2		2	27
90696	12070-101		2	56
90598	12072-1		6	2
90698	1207S-102		9	1
90598	12073-16		9	3

SECTION IV

NATIONAL STOCK NUMBER AND PART NUMBER INDEX				
PART NUMBER INDEX				
FSCM	PART NUMBER	STOCK NUMBER	FIG.	ITEM
90598	12073-17		9	8
90598	12073-33		9	2
90598	1207341		9	9
90598	12074-1		4	29
90598	12075-101		1	6
90598	12076-100	4130-00-415-9468	3	78
90598	12077-100		3	82
90598	12078-100		3	85
90598	12079-100		3	86
90598	12080-100		3	87
90598	12081-100	4130-00-415-9461	3	95
90598	12082-104		4	
90598	12083-101		4	35
90598	12084-100		4	19
90598	12086-100	4540-01-151-4740	6	12
90598	12088-100		1	5
90598	12089-100		1	4
90598	12090-106		3	53
90598	12090-110		3	61
90598	12090-112		3	48
90598	12090-113		3	44
90598	12090-114		3	45
90598	12090-115		3	46
90598	12090-116		3	41
90598	12090-117		3	62
90598	12090-119		3	63
90598	12090-120		3	51
90598	12090-121		3	50
90598	12090-122		3	49
90598	12090-158		3	55
90598	12090-163		3	54
90598	12090-190		2	67
90598	12091-1		3	22
90598	12092-1		3	23
90598	120974		4	8
90598	120984		4	5
9(3100	121023		8	26
9G100	121027		8	27
90598	12103-100		4	62
90598	12118-1	4130-00-434-0159	3	92
90598	12119-1		9	13
90598	12120-1		4	22
90598	12121-100		3	96
90598	12124-1	5310-01-148-2683	3	66
90598	12125-1		3	30
90598	12126-1		3	52

SECTION IV

NATIONAL STOCK NUMBER AND PART NUMBER INDEX				
PART NUMBER INDEX				
FSCM	PART NUMBER	STOCK NUMBER	FIG.	ITEM
90598	12132-100		2	58
90598	12133-100		2	59
90598	12134-100		2	57
90598	12135-10		2	33
90598	12135-100		2	31
90598	12136-100		2	63
90598	12139-1		5	6
90598	12139-100		5	1
90598	12139-7		5	8
90598	12140-1	6105-01-295-8948	3	26
9G100	122051		8	25
96303	13-02-100-2	4540-00-518-1331	3	90
97403	13211E8191		2	21
97403	13211E8305		2	19
97403	13211E8322	4130-00-106-5657	2	18
97403	13229E6145-1		9	4
97403	13229E6146		3	97
97403	13229E6147		3	98
97403	13229E7158		2	101
59730	144	5975-00-642-7265	4	64
04221	157-10TIA3	5945-00-534-7815	4	53
04221	157-10T1A4	5945-00-534-7810	4	50
71176	1VL445-8	3020-00-992-1206	8	24
14859	20640L73-321-397	5930-01-003-2625	5	26
73803	20PS002BB450K375K	5930-00-554-9358	3	27
92940	23-A02741-06-00		7	15
71286	244-16		9	11
97539	2500/1/6	5340-01-128-4326	4	28
59730	2559	5975-00-583-2960	4	65
14604	30DO-303SV	5945-00-534-7805	4	47
06646	322-873964-001		6	14
82121	32303AS	5930-00-600-7465	4	23
22038	3246-029	5305-01-302-8809	7	1
91494	328VA70328-048	4820-00-545-0936	3	37
97765	3832	4130-00-415-9395	3	6
39433	3CZ1403H-030.00 X 041.00		3	74
71286	4002-8S	5307-01-301-7371	2	34
71286	4002-8S	5325-00-559-7849	4	9
71286	4002-28S	5325-00-559-7849	2	70
71286	4002-28S	5325-00-559-7849	2	82
71286	4002-SW-SS	5310-00-984-0388	2	36
71286	4002-SW-SS	5310-00-984-0388	2	71
71286	4002-SW-SS	5310-00-984-0388	2	83
71286	4002NS	5325-00-369-2721	2	37
71286	4002NS	5325-00-369-2721	2	73
71286	4002NS	5325-00-369-2721	2	85
71286	4002NS	5325-00-369-2721	4	11
71286	40G26-1	5365-00-543-3388	2	72
71286	40G26-1	5365-00-543-3388	2	84

SECTION IV

NATIONAL STOCK NUMBER AND PART NUMBER INDEX				
PART NUMBER INDEX				
FSCM	PART NUMBER	STOCK NUMBER	FIG.	ITEM
71286	40G11-3	5310-00-618-4674	2	39
71286	40G26-1	5365-00-543-3388	2	35
71286	40G26-1	5365-00-543-3388	2	72
71286	40G26-1	5365-00-543-3388	2	84
71286	40G26-1	5365-00-543-3388	4	10
71286	40S37G	5307-01-301-7371	2	34
71286	40S39	5365-00-171-8725	2	38
86730	4111NDB		2	23
86730	4111NDB		2	74
23826	41NB30AFX26	5945-01-161-8124	4	43
06402	45-700P105AMP	5925-00-887-9380	4	25
39433	4EZ100/6C)016/25X042/00	4130-01-146-9687	3	88
58553	50-10S	6680-00-777-9797	3	17
14829	560	5325-00-559-7850	9	15
14859	60006A1	5945-01-148-8518	4	39
74382	600RJ3	6150-00-069-7737	4	24
92940	601995	6105-00-535-2630	7	13
92940	601996	6105-00-531-0563	8	39
75382	603-SF.STY13C		4	58
00779	61045-1	5940-01-063-9908	4	54
70255	7-3-6		3	89
59431	70465		3	71
84568	81-10	8040-01-302-8816	2	9
84568	81-10	8040-01-302-8816	2	28
84568	81-10	8040-01-302-8816	2	76
84568	81-10	8040-01-302-8816	2	96
75382	899-10-F	5940-01-305-6502	6	9
58553	92-180DEG	5340-01-292-4818	3	25

By Order of the Secretary of the Army:

CARL E. VUONO
General, United States Army
Chief of Staff

Official:

THOMAS F. SIKORA
Brigadier General, United States Army
The Adjutant General

DISTRIBUTION:

To be distributed in accordance with DA Form 12-25E, (qty. rqr. block no. 2408).

*U.S. GOVERNMENT PRINTING OFFICE: 1966 · 406-21/53280

These are the instructions for sending an electronic 2028

The following format must be used if submitting an electronic 2028. The subject line must be exactly the same and all fields must be included; however only the following fields are mandatory: 1, 3, 4, 5, 6, 7, 8, 9, 10, 13, 15, 16, 17, and 27.

From: "Whomever" <whomever@avma27.army.mil>
To: mpmtWavma28@st-louis-emh7.army.mil

Subject: DA Form 2028

1. **From:** Joe Smith
2. **Unit:** home
3. **Address:**4300 Park
4. **City:** Hometown
5. **St:** MO
6. **Zip:** 77777
7. **Date Sent:** 19-OCT-93
8. **Pub no:** 55-2840-229-23
9. **Pub Title:** TM
10. **Publication Date:** 04-JUL-85
11. **Change Number:** 7
12. **Submitter Rank:** MSG
13. **Submitter FName:** Joe
14. **Submitter MName:** T
15. **Submitter LName:** Smith
16. **Submitter Phone:** 123-123-1234
17. **Problem:** 1
18. **Page:** 2
19. **Paragraph:** 3
20. **Line:** 4
21. **NSN:** 5
22. **Reference:** 6
23. **Figure:** 7
24. **Table:** 8
25. **Item:** 9
26. **Total:** 123
27. **Text:**

This is the text for the problem below line 27.

RECOMMENDED CHANGES TO EQUIPMENT TECHNICAL PUBLICATIONS



THEN... JOT DOWN THE DOPE ABOUT IT ON THIS FORM, CAREFULLY TEAR IT OUT, FOLD IT AND DROP IT IN THE MAIL!

SOMETHING WRONG WITH THIS PUBLICATION?

FROM: (PRINT YOUR UNIT'S COMPLETE ADDRESS)

DATE SENT

PUBLICATION NUMBER

PUBLICATION DATE

PUBLICATION TITLE

BE EXACT... PIN-POINT WHERE IT IS

PAGE NO.

PARA-GRAPH

FIGURE NO.

TABLE NO.

IN THIS SPACE TELL WHAT IS WRONG AND WHAT SHOULD BE DONE ABOUT IT:

TEAR ALONG PERFORATED LINE

PRINTED NAME, GRADE OR TITLE, AND TELEPHONE NUMBER

SIGN HERE:

DA FORM 2028-2
1 JUL 79

PREVIOUS EDITIONS ARE OBSOLETE.

P.S.—IF YOUR OUTFIT WANTS TO KNOW ABOUT YOUR RECOMMENDATION MAKE A CARBON COPY OF THIS AND GIVE IT TO YOUR HEADQUARTERS.

THE METRIC SYSTEM AND EQUIVALENTS

NEAR MEASURE

1 Centimeter = 10 Millimeters = 0.01 Meters = 0.3937 Inches
 1 Meter = 100 Centimeters = 1000 Millimeters = 39.37 Inches
 1 Kilometer = 1000 Meters = 0.621 Miles

WEIGHTS

1 Gram = 0.001 Kilograms = 1000 Milligrams = 0.035 Ounces
 1 Kilogram = 1000 Grams = 2.2 lb.
 1 Metric Ton = 1000 Kilograms = 1 Megagram = 1.1 Short Tons

LIQUID MEASURE

1 Milliliter = 0.001 Liters = 0.0338 Fluid Ounces
 1 Liter = 1000 Milliliters = 33.82 Fluid Ounces

SQUARE MEASURE

1 Sq. Centimeter = 100 Sq. Millimeters = 0.155 Sq. Inches
 1 Sq. Meter = 10,000 Sq. Centimeters = 10.76 Sq. Feet
 1 Sq. Kilometer = 1,000,000 Sq. Meters = 0.386 Sq. Miles

CUBIC MEASURE

1 Cu. Centimeter = 1000 Cu. Millimeters = 0.06 Cu. Inches
 1 Cu. Meter = 1,000,000 Cu. Centimeters = 35.31 Cu. Feet

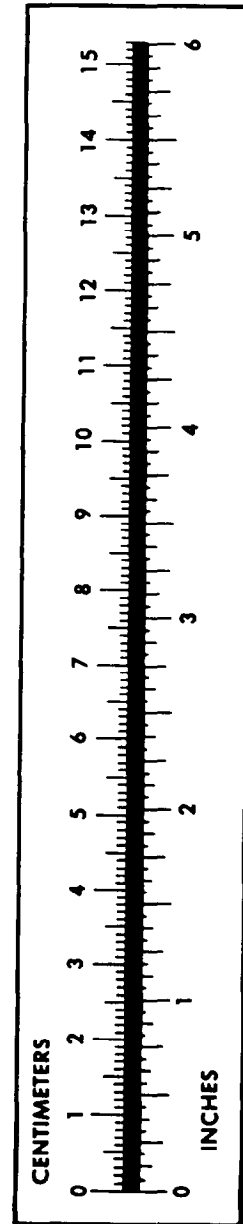
TEMPERATURE

$5/9(^{\circ}\text{F} - 32) = ^{\circ}\text{C}$
 212° Fahrenheit is equivalent to 100° Celsius
 90° Fahrenheit is equivalent to 32.2° Celsius
 32° Fahrenheit is equivalent to 0° Celsius
 $9/5^{\circ}\text{C} + 32 = ^{\circ}\text{F}$

APPROXIMATE CONVERSION FACTORS

TO CHANGE	TO	MULTIPLY BY
Inches	Centimeters	2.540
Feet	Meters	0.305
Yards	Meters	0.914
Miles	Kilometers	1.609
Square Inches	Square Centimeters	6.451
Square Feet	Square Meters	0.093
Square Yards	Square Meters	0.836
Square Miles	Square Kilometers	2.590
Acres	Square Hectometers	0.405
Cubic Feet	Cubic Meters	0.028
Cubic Yards	Cubic Meters	0.765
Fluid Ounces	Milliliters	29.573
its	Liters	0.473
arts	Liters	0.946
allons	Liters	3.785
Ounces	Grams	28.349
Pounds	Kilograms	0.454
Short Tons	Metric Tons	0.907
Pound-Feet	Newton-Meters	1.356
Pounds per Square Inch	Kilopascals	6.895
Miles per Gallon	Kilometers per Liter	0.425
Miles per Hour	Kilometers per Hour	1.609

TO CHANGE	TO	MULTIPLY BY
Centimeters	Inches	0.394
Meters	Feet	3.280
Meters	Yards	1.094
Kilometers	Miles	0.621
Square Centimeters	Square Inches	0.155
Square Meters	Square Feet	10.764
Square Meters	Square Yards	1.196
Square Kilometers	Square Miles	0.386
Square Hectometers	Acres	2.471
Cubic Meters	Cubic Feet	35.315
Cubic Meters	Cubic Yards	1.308
Milliliters	Fluid Ounces	0.034
Liters	Pints	2.113
Liters	Quarts	1.057
ers	Gallons	0.264
ms	Ounces	0.035
ograms	Pounds	2.205
Metric Tons	Short Tons	1.102
Newton-Meters	Pounds-Feet	0.738
Kilopascals	Pounds per Square Inch	0.145
ometers per Liter	Miles per Gallon	2.354
ometers per Hour	Miles per Hour	0.621



PIN: 068224-004

This fine document...

Was brought to you by me:



[Liberated Manuals -- free army and government manuals](#)

Why do I do it? I am tired of sleazy CD-ROM sellers, who take publicly available information, slap “watermarks” and other junk on it, and sell it. Those masters of search engine manipulation make sure that their sites that sell free information, come up first in search engines. They did not create it... They did not even scan it... Why should they get your money? Why are not letting you give those free manuals to your friends?

I am setting this document FREE. This document was made by the US Government and is NOT protected by Copyright. Feel free to share, republish, sell and so on.

I am not asking you for donations, fees or handouts. If you can, please provide a link to liberatedmanuals.com, so that free manuals come up first in search engines:

<A HREF=<http://www.liberatedmanuals.com/>>Free Military and Government Manuals

- Sincerely
Igor Chudov
<http://igor.chudov.com/>
- [Chicago Machinery Movers](#)