

DEPARTMENT OF THE ARMY TECHNICAL MANUAL

OPERATOR'S,
ORGANIZATIONAL, DIRECT SUPPORT, GENERAL
SUPPORT, AND DEPOT MAINTENANCE
REPAIR PARTS AND SPECIAL TOOL LISTS
FOR
PUMP KIT, HYDRAULIC OIL, GUN
RECOIL M3, 5000 PSI MAXIMUM
PRESSURE, DOUBLE ACTING HAND
PUMP (BLACKHAWK INDUSTRIAL
PRODUCTS COMPANY MODEL
HP-5003-92-00 AND HP-5003-92-07)
(4933-712-2378)

Headquarters, Department of the Army, Washington, D.C.
17 February 1970

This manual is current to 14 January 1970

	Page
SECTION I. INTRODUCTION	1
II. MAINTENANCE ALLOCATION CHART	4
III. BASIC ISSUE ITEMS, ORGANIZATIONAL REPAIR PARTS AND SPECIAL TOOLS LIST	6
IV. TOOLS AND SUPPORT EQUIPMENT	8
V. DIRECT SUPPORT, GENERAL SUPPORT, AND DEPOT REPAIR PARTS	10
VI. FEDERAL STOCK NUMBER AND REFERENCE NUMBER INDEX	11

*This manual supersedes TM 9-4933-201-12P, 24 March 1965.

CHANGE
No. 2

HEADQUARTERS
DEPARTMENT OF THE ARMY
WASHINGTON, D. C., 12 April 1973

Operator's,
Organizational, Direct Support, General
Support, and Depot Maintenance
Repair Parts and Special Tool Lists
for
PUMP KIT, HYDRAULIC OIL, GUN RECOIL:
M3, 5000 PSI MAXIMUM PRESSURE,
DOUBLE ACTING HAND PUMP
(BLACKHAWK INDUSTRIAL PRODUCTS COMPANY,
MODEL HP-5003-92-00 AND HP-5003-92-07)
(4933-712-2378)

This change is current as of 28 February 1973

TM 9-4933-201-15P, 17 February 1970, is changed
as follows:

Page 3. Paragraph 7 is superseded as follows:

7. Federal Supply Codes for Manufacturer's

<i>Federal Supply codes</i>	<i>Manufacturer's services and standards</i>
14846	Wright Tool Company
19204	Rock Island Arsenal
81348	Federal Specifications Promulgated by General Services Administration Washington, D.C.

Paragraph 8 is superseded as follows:

**8. Reporting of Equipment Publication
Improvements**

The reporting of errors, omissions, and recommendations for improving this publication by the individual user is encouraged. Reports should be submitted on DA Form 2028 (Recommended Changes to Publications) and forwarded direct to Commander, US Army Weapons Command, ATTN: AMSWE-MAS, Rock Island, IL 61201.

Paragraph 9 is added as follows:

9. Parts included with End Item

Parts included with end item and considered a

component or part of item configuration are listed in the following table. The manufacturer's code (FSCM) listed before part number in table is described in paragraph 7 above.

PART	FSCM: PART NUMBER
ADAPTER PLUG OIL FILLING: 1/8-27NPT	19204:6221723
ADAPTER PLUG OIL FILLING: 5/8-18UNF 3A	19204:6221724
CAP, ADAPTER: **B	19204:7550256
CAP OIL FILLER GUN: 5/8-18UNF-3B	*A 19204:5169905
CAP OIL FILLER GUN: 0.6299 Thd	*A 19204:5154555
CHEST OIL PUMP WOOD:	19204:6539364
FUNNEL:	81348:LF1593
HOSE:	19204:6221731
RULE, STEEL, MACHINIST'S: *A	81348:GGGR791
RULE DIP STICK: **B	19204:7550072

*A FOR MODEL HP 5003-92-00 ONLY
**B FOR MODEL HP 5003-92-07 ONLY

Page 8. "Section IV. TOOLS AND SUPPORT EQUIPMENT" is rescinded.

Page 9, figure 2. Delete the following item numbers from figure 2: 1 through 7, and 9.

Page 11. Section VI is superseded as follows:

Section VI. INDEX-FEDERAL STOCK NUMBER AND REFERENCE

NUMBER CROSS-REFERENCE TO FIGURE AND ITEM NUMBER

<i>Stock No.</i>	<i>Figure No.</i>	<i>Item No.</i>	<i>Stock No.</i>	<i>Figure No.</i>	<i>Item No.</i>
4730-238-9245	1	23	4933-489-8358	1	7
4933-449-7166	1	—	4933-489-8360	1	—
4933-489-8356	1	15	4933-490-0878	1	—

<i>Reference No.</i>	<i>Mfg Code</i>	<i>Figure No.</i>	<i>Item No.</i>	<i>Reference No.</i>	<i>Mfg Code</i>	<i>No.</i>	<i>Item No.</i>
BM 1.245	14846	1	23	P60	14846	2	8
KH-2506-00-00	14846	1	—	P60.05	14846	1	25
KH-2506-92-00	14846	1	—	P60.264-2	14846	1	1
KH-2506-92-01	14846	1	—	P60.51-1	14846	1	7
KH-5003-92-03	14846	1	15	7550134	19204	2	8

By Order of the Secretary of the Army:

CREIGHTON W. ABRAMS
General, United States Army
Chief of Staff

Official:

VERNE L. BOWERS
Major General, United States Army
The Adjutant General

Distribution:

Active Army:

DCSLOG (3)
CNGB (1)
COE (3)
Dir of Trans (2)
CONARC (3)
ARADCOM (2)
ARADCOM Rgn (2)
Armies (3) except
 Seventh (5)
 Eighth (5)
AMC (10)
OS Maj CoMd (1)
LOGGOMD (3)

WECOM (10)
Ft Knox FLDMS (10)
Instl (2)
Army Depot (2) except
 TEAD (5)
ACSC-E (1)
USAOC&S (2)
USACDCEC (10)
MECOM (3)
Gen Dep (2)
USACOMZEUR (2)
PC (2)
USARMIS, Guatemala (1)

NG: None

USAR: None

For explanation of abbreviations used, see AR 310-50.

TM 9-4933-201-15P

Changes No. 1

HEADQUARTERS
DEPARTMENT OF THE ARMY
Washington, D. C., 5 May 1970

Operator's
Organizational, Direct Support, General
Support, and Depot Maintenance
Repair Parts and Special Tool Lists
FOR
PUMP KIT, HYDRAULIC OIL, GUN
RECOIL M3, 5000 PSI MAXIMUM
PRESSURE, DOUBLE ACTING HAND
PUMP (BLACKHAWK INDUSTRIAL
PRODUCTS COMPANY MODEL
HP-5003-92-00 AND HP-5003-92-07)
(4933-712-2378)

TM 9-4933-201-15P, 17 February 1970, is changed as follows:

Page 8.

Section IV. TOOLS AND SUPPORT EQUIPMENT

Item	Action	Source, Maint. and Recov. Code			Federal Stock No.	Description Reference No. & Mfr. Code
		(A) Source	(B) Maint.	(C) Recov		
9	Add Source, Maint. Recov. Code and FSN	P	O	-	4933-469-5005	CAP, ADAPTER HOLE * * * THE OTHER END 7550256 (19204)
10	Add Source, Maint. Recov. Code, FSN, and Change Description	P	O	-	4933-469-5004	RULE, DIP STICK 7550072 (19204)

**Section VI. INDEX-FEDERAL STOCK NUMBER AND REFERENCE
NUMBER CROSS-REFERENCE TO FIGURE AND ITEM NUMBER**

Add the following in numeric sequence:

Stock Number	Figure No.	Item No.
4933-469-5004	2	9
4933-469-5005	2	-

By Order of the Secretary of the Army

W. C. WESTMORELAND
General, United States Army
Chief of Staff

Official:

KENNETH G. WICKHAM
Major General, United States Army
The Adjutant General

Distribution:

Active Army:

DCSLOG (1)
CNGB (1)
C of Engrs (3)
Dir of Trans (2)
C of Spt S (2)
ACSC-E (1)
USACDCOA (1)
USACDCEC (10)
LOGCOMD (3)
USCONARC (3)
USAMC (10)
ARADCOM (2)
ARADCOM Rgn (2)
USAWECOM (75)
USAMECOM (3)

OS Maj Comd
Armies (3) except
Seventh USA (5)
Eighth USA (5)
Corps (2)
Instl (2) except
USAECFB (3)
USAOC&S (2)
Gen Dep (2)
Army Dep (2) except
TEAD (5)
PG (2)
USARMIS, Guatemala (1)
USACOMZEUR (2)
Ft. Knox FLDMS (10)

ARNG: None.

USAR: None.

For explanation of abbreviations used, see AR 310-50.

Section I. INTRODUCTION

1. Scope

This manual lists basic issue items and repair parts required for the performance of operator, organizational direct support, general support, and depot maintenance of the pump kit.

2. General

This Basic Issue Items, Repair Parts and Special Tools list is divided into the following sections:

a. Basic Issue Items. Not applicable.

b. Maintenance and Operating Supplies. Not applicable.

c. Maintenance Allocation Chart-Section II. The maintenance allocation chart for the pump kit listing all maintenance and repair operations authorized for each maintenance echelon.

d. Prescribed Load Allowance (PLA). Not applicable.

e. Repair Parts-Section III. A list of repair parts authorized for the performance of maintenance at the organizational level in figure and item number sequence.

f. Tools and Support Equipment-Section IV. A list of tools and support equipment authorized for the performance of maintenance at the organizational level.

g. Repair Parts-Section V. A list of repair parts authorized for the performance of maintenance at the direct support, general support, and depot level in figure and item number sequence.

h. Special Tools, Test and Support Equipment. Not applicable.

i. Federal Stock Number and Reference Number Index-Section VI. A list of Federal stock numbers in ascending numerical sequence, followed by a list of reference numbers appearing in all the listings, in ascending alpha-numeric sequence, cross-referenced to the illustration figure number and item number.

3. Explanation of Columns

The following provides an explanation of columns in tabular lists in Section III through V.

a. Source, Maintenance, and Recoverability Codes (SMR).

(1) *Source code.* Indicates the selection status and source for the listed item. Source codes used are:

Code	Explanation
P	Applied to repair parts which are stocked in or supplied from GSA/DSA, or Army supply system and authorized for use at indicated maintenance categories.
M	Applied to repair parts which are not procured or stocked but are to be manufactured at indicated maintenance categories.
A	Applied to assemblies which are not procured or stocked as such but are made up of two or more units, each of which carry individual stock numbers and descriptions and are procured and stocked and can be assembled by units at indicated maintenance categories.
X	Applied to parts and assemblies which are not procured or stocked; the mortality of which normally is below that of the applicable end item; and the failure of which should result in retirement of the end item from the supply system.
X1	Applied to repair parts which are not procured or stocked, the requirement for which will be supplied by use of next higher assembly or component.
X2	Applied to repair parts which are not stocked. The indicated maintenance category requiring such repair parts will attempt to obtain through cannibalization; if not obtainable through cannibalization, such repair parts will be requisitioned with supporting justification through normal supply channels.
G	Applied to major assemblies that are procured with PEMA funds for initial issue only to be used as exchange assemblies at DSU and GSU level. These assemblies will not be stocked above DSU and GSU level or returned to depot supply level.

(2) *Maintenance code.* Indicates the lowest category of maintenance authorized to install the listed item. Maintenance level codes are:

Code	Explanation
C	Operator/Crew maintenance
O	Organizational maintenance
F	Direct support maintenance
H	General support maintenance
D	Depot maintenance

(3) *Recoverability code.* Indicates whether unserviceable items should be returned for recovery or salvage. Items not coded are expendable. Recoverability codes are:

Code	Explanation
R	Applied to repair parts (assemblies and components) which are considered economically repairable at direct and general support maintenance levels. When the maintenance capability to repair these items does not exist, they are normally disposed of at the GS level. When supply consideration dictate, some of these repair parts may be listed for automatic return to supply for depot level repair as set forth in AR 710-50. When so listed, they will be replaced by supply on an exchange basis.
T	Applied to high dollar value recoverable repair parts which are subject to special handling and are issued on an exchange basis. Such repair parts normally are repaired or overhauled at depot maintenance activities.
U	Applied to repair parts specifically selected for salvage by reclamation units because of precious metal content, critical materials, or high dollar value reusable casings or castings.

NOTE: When no code is indicated in the recoverability column, the part will be considered expendable.

b. Federal Stock Number. Indicates the Federal stock number assigned to the item and will be used for requisitioning purposes.

c. Description. Indicates the Federal item name and any additional description required. A part number or other reference number is followed by the applicable five-digit Federal supply code for manufacturers in parentheses.

d. Unit of Measure (U/M). A two character alphabetic abbreviation indicating the amount or quantity of the item upon which the allowances are based, e.g., EA, PR, etc.

e. Quantity Incorporated in Unit. Indicates the quantity of the item used in the assembly group.

f. Quantity Furnished with Equipment. Not applicable.

g. 15-Day Organizational Maintenance Allowance.

(1) The allowance columns are divided into four subcolumns. Indicated in each subcolumn opposite the first appearance of each item is the total quantity of items authorized for the number of equipments supported. Subsequent appearances of the same item will have the letters "REF" in the allowance columns. Items authorized for use as required but not for initial stockage

are identified with an asterisk in the allowance column.

(2) The quantitative allowances for organizational level of maintenance represents one initial prescribed load for a 15-day period for the number of equipments supported. Units and organizations authorized additional prescribed loads will multiply the number of prescribed loads authorized by the quantity of repair parts reflected in the appropriate density column to obtain the total quantity of repair parts authorized.

(3) Organizational units providing maintenance for more than 100 of these equipments shall determine the total quantity of parts required by converting the equipment quantity to a decimal factor by placing a decimal point before the next to the last digit of the number to indicate hundredths, and multiplying the decimal factor by the parts quantity authorized in the 51-100 allowance column. Example, authorized allowance for 51-100 equipments is 12; for 140 equipments multiply 12 by 1.40 or 16.80 rounded off to 17 parts required.

(4) Subsequent changes to allowances will be limited as follows: No change in the range of items is authorized. If additional items are considered necessary, recommendation should be forwarded to Commanding General, U.S. Army Weapons Command, Rock Island, Illinois 61201, for exception or revision to the allowance list. Revisions to the range of items authorized will be based upon engineering experience, demand data, or The Army Equipment Record System (TAERS) information.

h. 30-Day DS/GS Maintenance Allowances.

NOTE: Allowances in (GS Column are for GS maintenance only.

(1) The allowance columns are divided into three subcolumns. Indicated in each subcolumn, opposite the first appearance of each item, is the total quantity of items authorized for the number of equipments supported. Subsequent appearances of the same item will have the letters "REF" in the applicable allowance columns. Items authorized for use as required but not for initial stockage are identified with an asterisk in the allowance column.

(2) The quantitative allowances for DS/GS levels of maintenance will represent initial stockage for a 30 day period for the number of equipments supported.

(3) Determination of the total quantity of parts required for maintenance of more than 100 of these equipments can be accomplished by con-

verting the equipment quantity to a decimal factor by placing a decimal point before the next to last digit of the number to indicate hundredths, and multiplying the decimal factor by the parts quantity authorized allowance for 51-100 allowance column. Example, authorized allowance for 51-100 allowance column. Example, authorized allowance for 51-100 is 40; for 150 equipments multiply 40 by 1.50 or 60 parts required.

i. *1-Year Allowance Per 100 Equipments/Contingency Planning Purposes.* This column indicates opposite the first appearance of each item the total quantity required for distribution and contingency planning purposes. The range of items indicate the total quantities of all authorized items required to provide for adequate support of 100 equipments for one year.

j. *Depot Maintenance Allowance per 100 Equipments.* This column indicates opposite the first appearance of each item, the total quantity authorized for depot maintenance of 100 equipment. Subsequent appearances of the same item will have the letters "REF" in the allowance column. Items authorized for use as required but not for initial stockage are identified with an asterisk in the allowance column.

k. *Illustration.*

(1) *Figure number.* Indicates the figure number of the illustration in which the item is shown.

(2) *Item number.* Indicates the callout number used to reference the item in the illustration.

4. Special Information

Identifications of the usable on codes included in column 3 of this publication are:

Code	Used On
A	Model HP 5003-92-00
B	Model HP 5003-92-07

5. How to Locate Repair Parts

a. When Federal stock number or reference number is unknown.

(1) *First.* Using the table of contents, determine the assembly group i.e. pump kit, within which the repair part belongs. This is necessary since, illustrations are prepared for assembly groups and listings are divided into the same groups.

(2) *Second.* Find the illustration covering the assembly group to which the repair part belongs.

(3) *Third.* Identify the repair part on the illustration and note the illustration figure and item number of the repair part.

(4) *Fourth.* Using the Repair Parts Listing, find the assembly group to which the repair part belongs and locate the illustration figure and item number noted on the illustration.

b. When Federal stock number or reference number is known:

(1) *First.* Using the Index of Federal Stock Numbers and Reference Numbers, find the pertinent Federal stock number or reference number. This index is in ascending FSN sequence followed by a list of reference numbers in ascending alphanumeric sequence, cross-referenced to the illustration figure number and item number.

(2) *Second.* Using the Repair Part Listing, find the assembly group of the repair part and the illustration figure number and item number referenced in the Index of Federal Stock Numbers and Reference Numbers.

6. Abbreviations

Abbreviations	Explanation
c/o	consist of
cm	centimeter(s)
deg	degree(s)
flex.	flexible
hd	head
mm	millimeter(s)
nom	nominal
o/a	overall
sp	special
stor	storage
w/	with

7. Federal Supply Codes for Manufacturer's

Federal Supply Codes	Manufacturer's Services and Standards
14846	Wright Tool Company (Agent for Blackhawk Industrial products Co.)
19204	Rock Island Arsenal
37163	Lufkin Rule Company

8. Recommendations for Maintenance Publication Improvements

Report of errors, omissions, and recommendations for improving this publication by the individual user is encouraged. Reports should be submitted on DA Form 2028 (Recommended Changes to DA Publications) and forwarded direct to Commanding General, Headquarters, U.S. Army Weapons Command, ATTN: AMSWE-SMM-P, Rock Island, Illinois 61201.

Section II.

MAINTENANCE ALLOCATION CHART

1. General

The maintenance allocation chart allocates maintenance operations to the proper category of maintenance. Allocations of maintenance operations is made on the basis of time, tools, and skills normally available to the various categories of maintenance to combat situation and influenced by maintenance policy and sound maintenance practices, as outlined in AR 750-5.

2. Explanation of Format

Purpose and use of the maintenance allocation chart format are as follows:

a. Column 1, Group Number. Column 1 lists group numbers, the purpose of which is to identify components, assemblies, subassemblies and modules with the next higher assembly.

b. Column 2, Functional Group. Column 2 lists the noun names of components, assemblies, subassemblies and modules on which maintenance is authorized.

c. Column 3, Maintenance Functions. Column 3 lists the category of maintenance.

d. Column 4, Tools and Equipment. This column will be used to specify, by code, those tools and test equipment required to perform the designated function.

e. Column 5, Remarks. Self-explanatory.

3. Maintenance Functions

Maintenance functions will be limited to and defined as follows:

INSPECT	To determine serviceability of an item by comparing its physical, mechanical, and electrical characteristics with established standards.
TEST	To verify serviceability and to detect electrical or mechanical failure by use of test equipment.
SERVICE	To clean, to preserve, to charge, and to add fuel, lubricants, cooling agents, and air.
ADJUST	To rectify to the extent necessary to bring into proper operating range.

ALIGN

To adjust specified variable elements of an item to bring to optimum performance.

CALIBRATE

To determine the corrections to be made in the readings of instruments or test equipment used in precise measurement. Consists of the comparison of two instruments, one of which is a certified standard of known accuracy, to detect and adjust any discrepancy in the accuracy of the instrument being compared with the certified standard.

INSTALL

To set up for use in an operational environment such as an emplacement, site, or vehicle.

REPLACE

To replace unserviceable items with serviceable assemblies, subassemblies, or parts.

REPAIR

To restore an item to serviceable condition. This includes, but is not limited to, inspection, cleaning, preserving, adjusting, replacing, welding, riveting and strengthening.

OVERHAUL

To restore an item to a completely serviceable condition as prescribed by maintenance serviceability standards.

REBUILD

To restore an item to a standard as nearly as possible to original or new condition in appearance, performance, and life expectancy. This is accomplished through complete disassembly of the item, inspection of all parts or components, repair or replacement of worn or unserviceable elements (items) using original manufacturing tolerances and specifications, and subsequent reassembly of the item.

MAINTENANCE
LEVEL

The letter placed in the appropriate column indicates the level responsible for performing that particular maintenance function. The maintenance level codes used are:

Maintenance Level	Code
Operator/Crew	C
Organizational Maintenance	O
Direct Support Maintenance	F
General Support Maintenance	H
Depot Maintenance	D

MAINTENANCE ALLOCATION CHART FOR

PUMP KIT, HYDRAULIC OIL

(1) GROUP NUMBER	(2) FUNCTIONAL GROUP	(3) MAINTENANCE FUNCTION											(4) TOOLS AND EQUIPMENT	(5) REMARKS
		INSPECT	TEST	SERVICE	ADJUST	ALIGN	CALIBRATE	INSTALL	REPLACE	REPAIR	OVERHAUL	REBUILD		
1	Pump Kit	C		C	C			F			H	D		
	Rocker Arm and Handle	C		C					O	O				
	Pump Head	O		O					F					
	Reservoir Vent	C							O	O				
	Piston	O		O					O					
	Service Parts	O							O	O				
	Gaskets and Small Parts	C							O					
	Tools & Support Equipment	O		O					O					
	Base Pump	O		O					F					

SECTION III. REPAIR PARTS LIST - ORGANIZATIONAL

(1)			(2)	(3)	(4)	(5)	(6)				(7)	
SOURCE, MAINT. AND RECOV. CODE			FEDERAL STOCK NO.	DESCRIPTION	UNIT OF MEAS	QTY. INC. IN UNIT	15-DAY ORGANIZATIONAL MAINT. ALLOWANCE				ILLUSTRATION	
(A)	(B)	(C)		REFERENCE NUMBER & MFR. CODE			(A)	(B)	(C)	(D)	(A)	(B)
SOURCE	MAINT.	RECOV.					1-5	6-20	21-50	51-100	FIGURE NO.	ITEM NO.
P	O		4933-489-8360	REPAIR PARTS PARTS KIT, PUMP C/O ONE EA ITEMS 8,9,11,14,18, AND 24; TWO EA ITEMS 2,3,4,5, AND 12; AND FOUR EA ITEM 17 KH-2506-92-00 (14846)	EA	1	*	2	2	4	1	
P	O		4933-449-7166	SERVICE KIT C/O ONE EA ITEMS 15,18,19,20,21,22; AND 2 EA ITEMS 6,13, AND 16 KH-2506-92-01 (14846)	EA	1	*	2	4	8	1	
P	O		4933-489-8358	PISTON PUMP P60.51-1 (14846)	EA	1	*	*	*	2	1	7
P	O		4933-490-0878	ROCKER ARM AND HANDLE REPLACEMENT KIT C/O ONE EA ITEMS 10,11,26, AND 27 KH-2506-00-00 (14846)	EA	1	*	*	2	2	1	
P	O		4933-489-8356	RESERVOIR, VENT KIT FILLER PLUG KH-5003-92-03 (14846)	EA	1	*	2	2	2	1	15
P	O		4730-238-9245	PLUG, PIPE SP BM 1.245 (14846)	EA	1	*	*	2	2	1	23

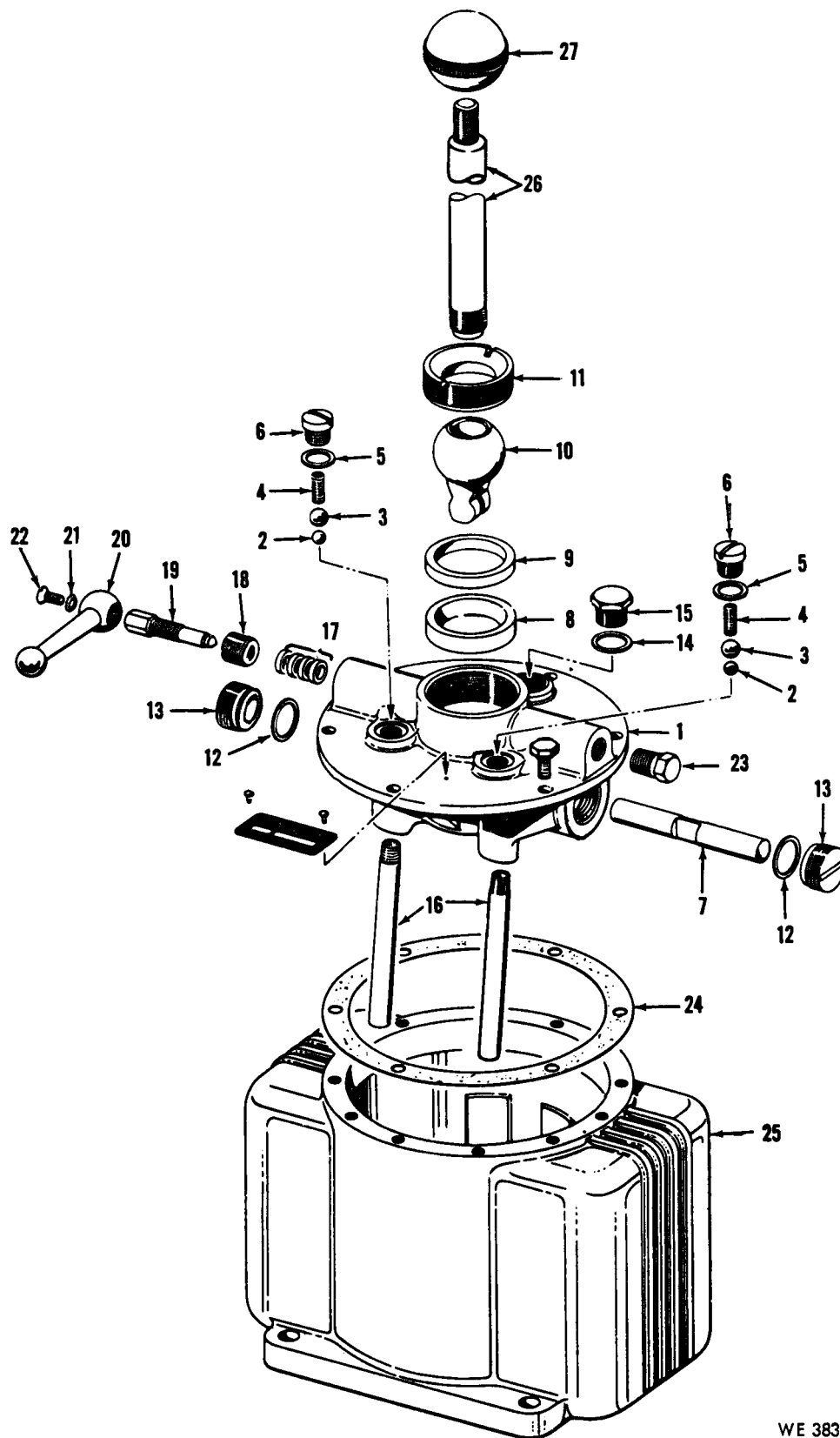
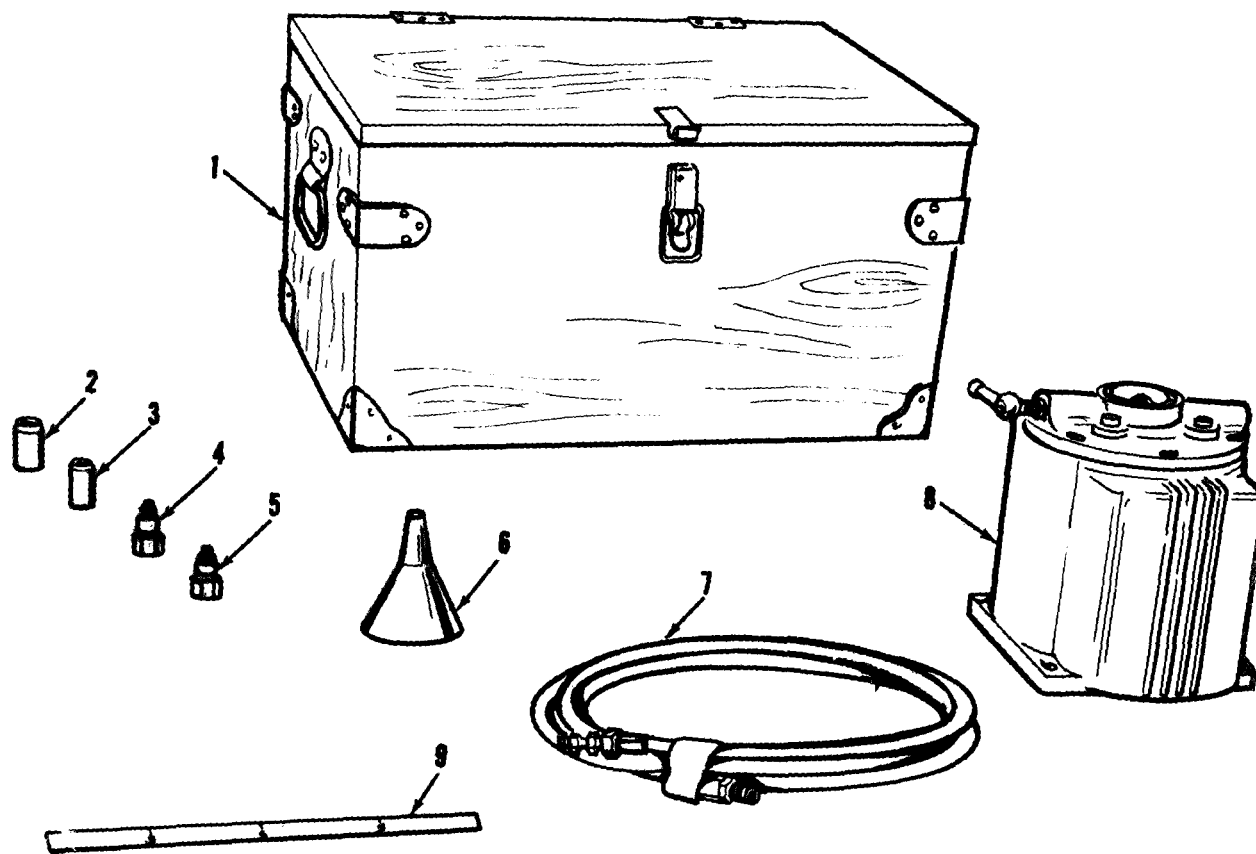


Figure 1. Pump Kit.

SECTION IV. TOOLS AND SUPPORT EQUIPMENT													
(1)		(2)	(3)		(4)	(5)	(6)				(7)		
SOURCE, MAINT. AND RECOV. CODE		FEDERAL STOCK	DESCRIPTION		UNIT OF	UNIT INC. IN	15-DAY ORGANIZATIONAL MAINT. ALLOWANCE				ILLUSTRATION		
(A)	(B)	(C)	NO.				(A)	(B)	(C)	(D)	(A)	(B)	
SOURCE	MAINT.	RECOV.		REFERENCE NUMBER & MFR. CODE	USABLE ON CODE	ISSUE	QTY.	1-5	6-20	21-50	51-100	FIGURE NO.	ITEM NO.
P	O		4930-449-6900	TOOLS AND SUPPORT EQUIPMENT CHEST, OIL PUMP STOR, WOOD F6539364 (14846)		EA	1	*	*	*	*	2	1
P	O		4930-449-9644	CAP, ADAPTER HOLE A 5/8-18 THD A5169905 (14846)		EA	1	*	*	*	*	2	2
P	O		4930-449-9642	CAP, ADAPTER HOLE A 16 MM A5154555 (14846)		EA	1	*	*	*	*	2	3
P	O		4930-449-6812	ADAPTER, PUMP 5/8-18 THD B6221724 (14846)		EA	1	*	*	*	*	2	4
P	O		4930-449-6811	ADAPTER, PUMP 16 MM B6221723 (14846)		EA	1	*	*	*	*	2	5
P	O		7240-286-8778	FUNNEL, COPPER W/STRAINER SFAX,-41-F-3570 (14846)		EA	1	*	*	*	*	2	6
P	O		4930-449-6636	HOSE, RUBBER HIGH-PRESSURE B621731 (14846)		EA	1	*	*	*	*	2	7
P	O		5210-600-5757	RULE, STEEL A FLEX., 30CM 2100ME-30CM (37163)		EA	1	*	*	*	*	2	9
				CAP, ADAPTER HOLE B PLASTIC, DRILLED BOTH ENDS, 16 MM THD ONE END, 5/8-18 THD OTHER END 7550256 (19204)		EA	1	*	*	*	*	2	
				RULE B 7550072 (19204)		EA	1	*	*	*	*	2	9



WE 3840X

Figure 2. Tools and support equipment.

SECTION V. REPAIR PARTS
DIRECT SUPPORT, GENERAL SUPPORT AND DEPOT MAINTENANCE
REPAIR PARTS LIST

(1)			(2)	(3)	(4)	(5)	(6)			(7)			(8)	
ACT	SOURCE, MAINT. AND RECOV. CODE			FEDERAL STOCK NO.	DESCRIPTION			30-DAY DS MAINT. ALLOWANCE			30-DAY GS MAINT. ALLOWANCE			1 YR. ALW. PER 100 EQUIP ENTGEY
ON	(A)	(B)	(C)			UNIT OF MEAS	QTY. INC. IN UNIT	(A)	(B)	(C)	(A)	(B)	(C)	
CODE	SOURCE	MAINT.	RECOV.		REFERENCE NUMBER & MFR. CODE	USABLE ON CODE		1-20	21-50	51-100	1-20	21-50	51-100	
	X	F			HEAD, PUMP W/PLUGS P60.264-2 (14846)		EA 1	*	*	*	*	*	*	*
	X	F			BASE, PUMP P60.05 (14846)		EA 1	*	*	*	*	*	*	*
	X1	F	R		PUMP, HYDRAULIC OIL B 7550134 (19204)		EA 1	*	*	*	*	*	*	*
	X1	F	R		PUMP, HYDRAULIC OIL A P60 (14846)		EA 1	*	*	*	*	*	*	*

SECTION VI. INDEX-FEDERAL STOCK NUMBER AND REFERENCE

NUMBER CROSS-REFERENCE TO FIGURE AND ITEM NUMBER

STOCK NUMBER	FIGURE NO.	ITEM NO.	STOCK NUMBER	FIGURE NO.	ITEM NO.
4730-238-9245	1	23	4933-449-7166	1	
4930-449-6636	2	7	4933-489-8356	1	15
4930-449-6811	2	5	4933-489-8358	1	7
4930-449-6812	2	4	4933-489-8360	1	
4930-449-6900	2	1	4933-490-0878	1	
4930-449-9642	2	3	5210-600-5757	2	9
4930-449-9644	2	2	7240-286-8778	2	6

Reference No.	Mfg Code	Fig No.	Item No.	Reference No.	Mfg Code	Fig No.	Item No.
A5154555	14846	2	3	KH-5003-92-03	14846	1	15
A5169905	14846	2	2	P60	14846	2	8
B621731	14846	2	7	P60.05	14846	1	25
B6221723	14846	2	5	P60.51-1	14846	1	7
B6221724	14846	2	4	P60.264-2	14846	1	1
BM 1.245	14846	1	23	SF AX2-41-F-3570	14846	2	6
F6539364	14846	2	1	2100ME-30CM	37163	2	9
KH-2506-00-00	14846	1		7550072	19204	2	9
KH-2506-92-00	14846	1		7550134	19204	2	8
KH-2506-92-01	14846	1		7550256	19204	2	

By Order of the Secretary of the Army:

W. C. WESTMORELAND,
*General, United States Army,
Chief of Staff.*

Official:

KENNETH G. WICKHAM,
*Major General, United States Army,
The Adjutant General.*

DISTRIBUTION:

Active Army:

DCSLOG (1)
CNGB (1)
CofEngrs (3)
Dir of Trans (2)
CofSpts (2)
ACSC-E (1)
USACDCOA (1)
USCONARC (3)
USAMC (10)
ARADCOM (2)
ARADCOM Rgn (2)
OS Maj Comd (1)
Base Comd (2)
Ft Knox FLDMS (10)
USAOC&S (2)
USACDCEC (10)

LOGCOMD (3)
Armies (3) except
Seventh USA (5)
EUSA (5)
Corps (2)
USAWECOM (75)
USA Mbl Equip Cen (3)
GENDEP (2)
Army Dep (2) except
TEAD (5)
USACOMZEUR (2)
PG (2)
Instl (2) except
Ft Belvoir (1)
USAEPPG (1)
Mil Msn, Guatemala (1)

NG: None

USAR: None

For explanation of abbreviations used, see AR 310-50

This fine document...

Was brought to you by me:



[Liberated Manuals -- free army and government manuals](#)

Why do I do it? I am tired of sleazy CD-ROM sellers, who take publicly available information, slap “watermarks” and other junk on it, and sell it. Those masters of search engine manipulation make sure that their sites that sell free information, come up first in search engines. They did not create it... They did not even scan it... Why should they get your money? Why are not letting you give those free manuals to your friends?

I am setting this document FREE. This document was made by the US Government and is NOT protected by Copyright. Feel free to share, republish, sell and so on.

I am not asking you for donations, fees or handouts. If you can, please provide a link to liberatedmanuals.com, so that free manuals come up first in search engines:

<A HREF=<http://www.liberatedmanuals.com/>>Free Military and Government Manuals

- Sincerely
Igor Chudov
<http://igor.chudov.com/>
- [Chicago Machinery Movers](#)