

DEPARTMENT OF THE ARMY TECHNICAL MANUAL

DIRECT SUPPORT, GENERAL SUPPORT
AND DEPOT MAINTENANCE
REPAIR PARTS AND SPECIAL TOOLS LIST
FOR
TELESCOPE, MOUNT: M90
1240-344-4689

HEADQUARTERS, DEPARTMENT OF THE ARMY
JANUARY 1970

Technical Manual }
No. 9-1240-35035P }

HEADQUARTERS,
DEPARTMENT OF THE ARMY
WASHINGTON, D.C. 20315 7 Jan. 70

DIRECT SUPPORT, GENERAL SUPPORT AND DEPOT MAINTENANCE

REPAIR PARTS AND SPECIAL TOOLS LIST

TELESCOPE MOUNT: M90

(1240-344 4689)

Section		<i>Paragraph</i>	<i>Page</i>
I.	INTRODUCTION		
	Scope	1	2
	General	2	2
	Explanation of columns	3	2
	Special Information	4	4
	How to locate repair parts	5	4
	Abbreviations	6	4
	Federal supply codes for manufacturers	7	4
	Recommendations for maintenance publications	8	4
II.	REPAIR PARTS FOR DIRECT SUPPORT, GENERAL SUPPORT, AND DEPOT MAINTENANCE	—	6
III.	SPECIAL TOOLS, TEST AND SUPPORT EQUIPMENT FOR DIRECT SUPPORT, GENERAL SUPPORT, AND DEPOT MAINTENANCE	—	10
IV.	INDEX-FEDERAL STOCK NUMBER AND REFERENCE NUMBER CROSS-REFERENCE TO FIGURE AND ITEM NUMBER	—	16

This manual supersedes SM ORD 8 SNL F-392, dated 26 March 1954 with changes 1, 2, and 3

Section I. INTRODUCTION

1. Scope.

This manual lists repair parts, special tools, and equipment required for the performance of direct support, general support, and depot maintenance of the telescope mount M90.

2. General.

This Repair Parts and 'Special Tools List is divided into the following sections:

a. Repair Parts-Section II. A list of repair parts for the performance of maintenance at the direct support, general support, and depot level in figure and item number sequence.

b. Special Tools, Test and Support Equipment-Section III. A list of special tools, test and support equipment for the performance of maintenance at the direct support, general support, and depot level.

c. Federal Stock Number and Reference Number Index-Section IV. A list of Federal Stock Numbers in ascending numerical sequence followed by a list of reference numbers in ascending alpha-numeric sequence, cross-referenced to the illustration figure number and item number.

3. Explanation of Columns.

The following provides an explanation of columns in the tabular lists in Sections II and III.

a. Source, Maintenance and Recoverability Codes (SMR), Column 1:

(1) Source code, indicates the selection status and source for the listed item. Source codes are:

Code	Explanation
P	Repair parts, special tools, and test equipment which are stocked in or supplied from the GSA/DSA, or Army supply system and authorized for use at indicated maintenance categories.
P-2	Repair parts, special tools and test equipment which are procured and stocked for insurance purposes because the combat or military essentially of the end item

Code	Explanation
	dictates that a minimum quantity be available in the supply system.
P9	Assigned to items which are NSA design controlled; unique repair parts, special tools, test, measuring and diagnostic equipment, which are stocked and supplied by the Army COMSEC logistic system, and which are not subject to the provisions of AR 380-41.
P10	Assigned to items which are NSA design controlled: special tools, test measuring and diagnostic equipment for COMSEC support, which are accountable under the provision of AR 380-41, which are stocked and supplied by the Army COMSEC logistic system.
M	Repair parts which are not procured or stocked, but are to be manufactured in indicated levels.
A	Assemblies which are not procured or stocked as such, but are made up of two or more units. Such component units carry individual stock numbers and descriptions, are procured and stocked separately and can be assembled to form the required assembly at indicated maintenance categories.
X	Parts and assemblies which are not procured or stocked and the mortality of which normally is below that of the applicable end item or component. The failure of such part or assembly should result in retirement of the end item from the supply system.
X1	Repair parts which are not procured or stocked. The requirements for such items will be filled by use of the next higher assembly or component.
X2	Repair parts which are not stocked. The indicated maintenance category requiring such repair parts will attempt to obtain same through cannibalization.

Where such repair parts are not obtainable through cannibalization, requirements will be requisitioned with accompanying justification, through normal supply channels.

G Major assemblies that are procured with PEMA funds for initial issue only as exchange assemblies at DSU and GSU level. These assemblies will not be stocked above DS and GS level or returned to depot supply level.

(2) Maintenance code, indicated the lowest category of maintenance authorized to install the listed item. The maintenance level codes are:

Code	Explanation
O	Organizational maintenance.
F	Direct support maintenance.
H	General support maintenance.
D	Depot maintenance.

(3) Recoverability code, indicates whether unserviceable items should be returned for recovery or salvage. Items not coded are expendable.

Recoverability codes are:

Code	Explanation
R	Applied to repair parts (assemblies and components) which are considered economically repairable at direct and general support maintenance levels. When the maintenance capability to repair these items does not exist, they are normally disposed of at the GS level. When supply considerations dictate, some of these spare parts may be listed for automatic return to supply for depot level repair as set forth in AR 700-50. When so listed they will be replaced by supply on an exchange basis.

S Repair parts and assemblies which are economically repairable at DSU and GSU activities and which normally are furnished by supply on an exchange basis. When items are determined by a GSU to be uneconomically repairable, they will be evacuated to a depot for evaluation and analysis before final disposition.

b. *Federal Stock Number, Column 2.* This column indicates the Federal stock number assigned to the item and will be used for requisitioning purposes.

c. *Description, Column 3.* This column indicates the Federal item name and any additional Description of the item required. The abbreviation "w/e" when used as a part of the nomenclature,

indicates the Federal stock number includes all armament, equipment, accessories, and repair parts issued with the item. A part number or other five-digit Federal supply code for manufacturers in parentheses.

d. *Unit of Measure (u/m), Column 4.* A 2 character alphabetic abbreviation indicating the amount or quantity of the item upon which the allowances are based, e.d., ft, ea, pr, etc.

e. *Quantity Incorporated in Unit, Column 5.* This column indicates the quantity of the item used in the assembly group. A "V" appearing in this column in lieu of a quantity indicates that a definite quantity cannot be indicated (e.g., shims, spacers, gaskets, etc.)

f. *30-day DS-GS Maintenance Allowances, Columns 6 and 7.*

Note Allowances in GS column are for GS maintenance only.

(1) The allowance columns are divided into three sub-columns. Indicated in each sub-column, opposite the first appearance of each item, is the total quantity of items authorized for the number of equipment supported. Subsequent appearances of the same item will have the letters "REF" in the applicable allowance columns. Items authorized for use as required but not for initial stockage are identified with an asterisk in the allowance column.

(2) The quantitative allowances for DS/GS levels of maintenance will represent initial stockage for a 30-day period for the number of equipment supported.

(3) Determination of the total quantity of parts required for maintenance of more than 100 of these equipment can be accomplished by converting the equipment quantity to a decimal factor by placing a decimal point before the next to last digit of the number to indicate hundredths, and multiplying the decimal factor by the parts quantity authorized in the 51-100 allowance column. Example, authorized for 51-100 equipment is 40; for 150 equipment multiply 40 by 1.50 or 60 parts required.

g. *1-year Allowances per 100 Equipment/Contingency Planning Purposes, Column 8.* This column indicates opposite the first appearance of each item the total quantity required for distribution and contingency planning purposes. The range of items indicates that total quantities of all authorized items required to provide for adequate support of 100 equipment for one year.

h. *Depot Maintenance Allowance per 100 Equipment, Column 9.* This column indicates

opposite the first appearance of each item, the total quantity authorized for depot maintenance of 100 equipment. Subsequent appearances of the same item will have the letters "REF" in the allowance column. Items authorized for use as required but not for initial stockage are identified with an asterisk in the allowance column.

i. Illustration, Column 10. This column is divided as follows:

(1) *Figure Number, Column 10a.* Indicates the figure number of the illustration in which the item is shown.

(2) *Item Number, Column 10b.* Indicates the callout number used to reference the item in the illustration.

4. Special Information.

a. Telescope Mount, M90 is used with:

Rifle, Recoilless, 106-mm, M40A1 (Mount M79)

Rifle, Recoilless, 106-mm, M40A1 (Mount M92)

Rifle, Self-Propelled, 106-mm, M50

Rifle, Self-Propelled, 106-mm, M50A1.

b. Action change codes indicated in the left hand margin of the listing page denotes the following:

N. Indicates an added item not included in previous publications.

C. Indicates a change in data.

F. Indicates a change in FSN only

c. The following publications pertain to telescope mount M90 and its components:

TM9-6141 Field and Depot Maintenance
Manual

SNL F-92 Ord 8 Field and Depot Maintenance
Allowances

5. How to Locate Repair Parts.

a. When Federal stock number or reference number is unknown.

(1) *First.* Find the illustration covering the assembly group to which the repair part belongs.

(2) *Second.* Identify the repair part on the illustration and note the illustration figure and item number of the repair part.

(3) *Third.* Using the Repair Parts Listing, find the assembly group to which the repair part belongs and locate the illustration figure and item number noted on the illustration.

b. When Federal Stock number or reference number is known:

(1) *First.* Using the Index of Federal Stock Numbers and Reference Numbers find the pertinent Federal Stock Number or reference number.

This index is in ascending FSN sequence followed by a list of reference numbers in ascending alpha-numeric sequence, cross-referenced to the illustration figure number and item number.

(2) *Second.* Using the Repair Part Listing, find the assembly group of the repair part and the illustration figure number and item number referenced in the Index of Federal Stock Numbers and Reference Numbers.

6. Abbreviations.

Abbreviations	Explanation
acrflt	across flats
aly stl	alloy steel
cd pl	cadmium plate
cp	cone paint
cres	corrosion resistant steel
crpl	chromium plate
cskh	countersunk head
dia	diameter
dr	drilled
ext	external
fig	figure
filh	fillister head
fl	flat
fnsh	finish
hex	hexagon
hex soc	hexagonal socket
id	inside diameter
intl	internal
1	long
mscr	machine screw
no	number
od	outside diameter
psvt	passivate
rec	recessed
scr	screw
sltd	slotted
stl	steel
t	teeth
thd	thread
thk	thick
trq	torque
unc	unified course thread
unf	unified fine thread
w	wide

7. Federal Supply Codes for Manufacturers.

Code	Manufacturer
19200	Frankford Arsenal, Philadelphia, Pa.
96906	Military Standard Promulgated by Standardization Division, Directorate of Logistics Services DSA.
21450	Ordnance Corps Engineering Standards, Rock Island Arsenal, Rock Island, Illinois.

8. Recommendations for Maintenance Publication Improvements.

Report of errors, omissions, and recommendations for improving this publication by the individual user is

encouraged. Reports should be submitted on DA Form 2028 (Recommended Changes to DA Publications) and forwarded direct to the Commanding Officer, Frankford

Arsenal, ATTN: AMSWE-SMF-, Philadelphia, Pa. 19137.

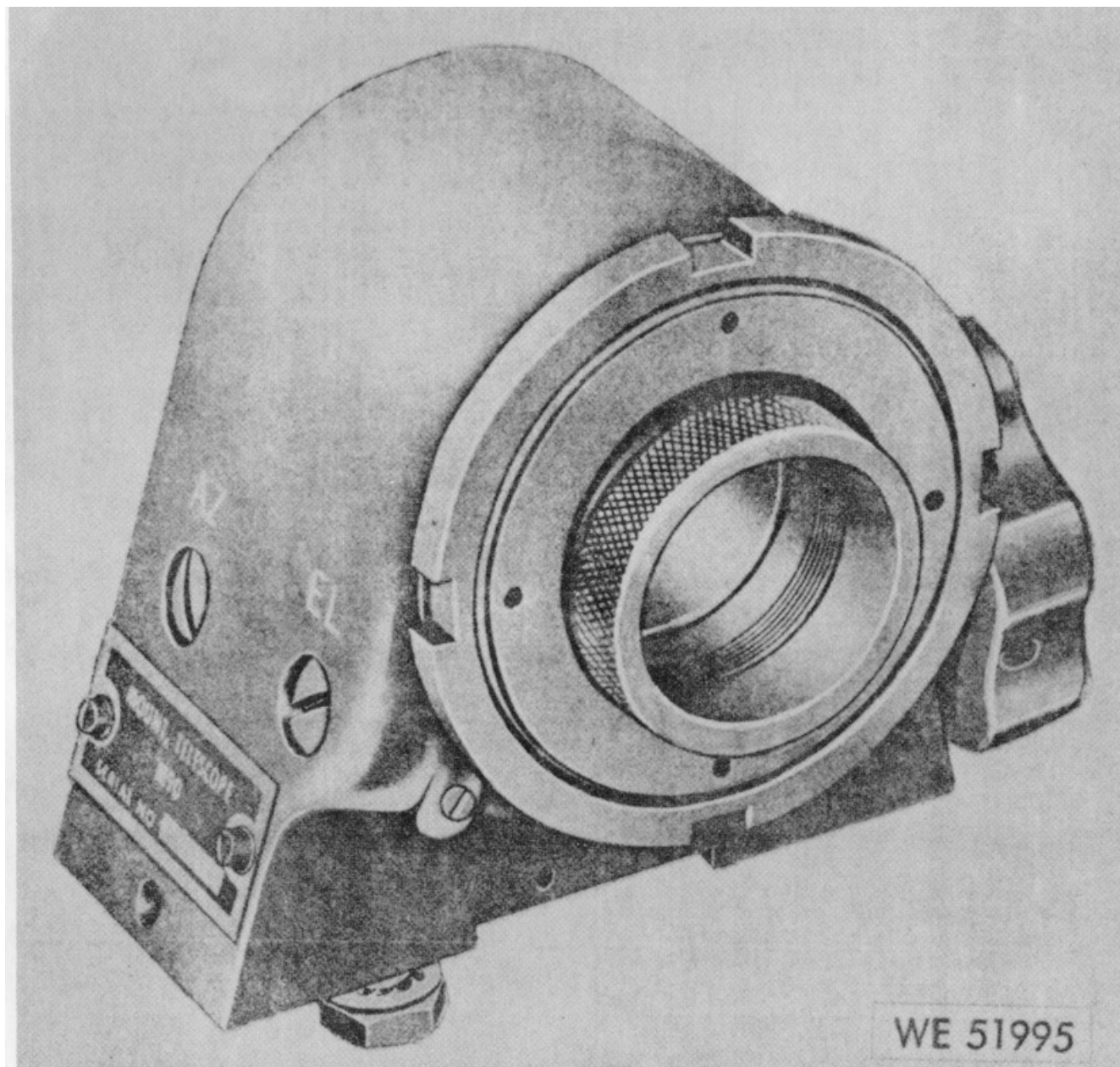


Figure 1. Mount telescope M90 (8299670)

SECTION II. REPAIR PARTS FOR DIRECT SUPPORT, GENERAL SUPPORT and DEPOT MAINTENANCE

Act on Code	(1) Source Maint and Recov Code			(2) Federal Stock No.	(3) Description <i>Reference Number & Mfr Code</i> <i>Usable on Code</i>	(4) Unit of Meas	(5) Qty Inc in Unit	(6) 30-Day DS Maint Allowance			(7) 30-Day GS Maint Allowance			(8) 1-Yr Alw Per 100 Equip Cntgcy	(9) Depot Maint Alw Per 100 Equip	(10) Illustration	
	(a) Source	(b) Maint	(c) Recov					(a) 1-20	(b) 21-50	(c) 51-100	(a) 1-20	(b) 21-50	(c) 51-100			(a) Fig. No.	(b) Item No.
C	P-F-			5315-058-9737	MOUNT TELESCOPE M90 Pin, Spring Tubular, Slt'd, Cres Psvt Fnsh, 3/32 Dia, 7/8 L MS16562-217 (96906)	EA	1	*	2	2	*	2	2	24	20	2	1
C	P-F-			5355-565-1092	Knob 8299662 (19200)	EA	1	*	2	2	*	2	2	24	4	2	2
C	P-F-			5330-531-2695	Washer, Nonmetallic 8299675 (19200)	EA	1	*	2	2	*	2	2	24	10	2	3
C	P-F-			5305-550-0156	Screw, Special 8299750 (19200)	EA	1	*	2	2	*	2	2	24	10	2	4
C	P-F-			4730-278-5332	Plug, Machine Thread 5034655 (19200)	EA	1	*	2	2	*	2	2	24	6	2	5
C	P-F-			5340-209-8501	Spring, Helical, Compression 5031370 (19200)	EA	1	*	2	2	*	2	2	24	10	2	6
C	P-F-			1290-546-9743	Plunger, Worm 8299732 (19200)	EA	1	*	2	2	*	2	2	24	6	2	7
C	P-D-				Setscrew 5039618 (19200)	EA	1								10	2	8
N	P-D-			5305-068-6708	Setscrew Hex Soc, Cp, Cres, Psvt Fnsh, No. 2 64UNF-3A, 1/8 L MS51038-16 (96906)	EA	1								10	2	9
N	P-F-			1290-692-1515	Cap, Ball 7680256 (19200)	EA	1	*	2	2	*	2	2	24	6	2	10
N	P-D-			1290-546-9740	Shaft 8299673 (19200)	EA	1								4	2	11
N	P-F-			1290-692-1516	Socket, Ball 7680257 (19200)	EA	1	*	2	2	*	2	2	24	8	2	12
C	P-D-			5305-550-0606	Screw, Special 8299668 (19200)	EA	2								5	2	13
C	P-D-			1290-546-9742	Worm 8299679 (19200)	EA	2								6	2	14
C	P-D-			5305-550-0606	Screw, Special 8299668 (19200) (See Fig. 2,Item 13 for allowances)	EA	REF								REF	2	15

SECTION II. REPAIR PARTS FOR DIRECT SUPPORT, GENERAL SUPPORT and DEPOT MAINTENANCE - Cont.

Act on Code	(1) Source Maint and Recov Code			(2) Federal Stock No.	(3) Description <i>Reference Number & Mfr Code</i> <i>Usable on Code</i>	(4) Unit of Meas	(5) Qty Inc in Unit	(6) 30-Day DS Maint Allowance			(7) 30-Day GS Maint Allowance			(8) 1-Yr Alw Per 100 Equip Cntgcy	(9) Depot Maint Alw Per 100 Equip	(10) Illustration	
	(a) Source	(b) Maint	(c) Recov					(a) 1-20	(b) 21-50	(c) 51-100	(a) 1-20	(b) 21-50	(c) 51-100			(a) Fig. No.	(b) Item No.
C	P-D-			1290-546-9742	Worm 8299679 (19200) (See Fig 2, Item 14 for Allowances)	EA	REF								REF	2	16
C	P-F-			5305-550-0156	Screw, Special 8299750 (19200) (See Fig 2, Item 4 for Allowances)	EA	REF	REF	REF	REF	REF	REF			REF	2	17
N	P-F-			5340-816-4239	Ring, Retaining Ext, Stl, Cd Pl, 0.094 Shaft Dia MS16633-1012 (96906)	EA	1	*	2	2	*	2	2	24	6	2	18
N	M-F-				Gib 8299674 (19200)		1									2	19
C	P-F-			5310-531-0935	Nut, Plain, Round 8299665 (19200)	EA	1	*	2	2	*	2	2	24	6	2	20
C	P-F-			1290-535-7760	Ring, Externally Threaded 8299666 (19200)	EA	1	*	2	2	*	2	2	24	6	2	21
C	P-H-			5330-599-8743	Packing Preformed 8299735 (19200)	EA	2					2	2	24	12	2	22
C	P-D-			5310-564-7403	Nut, Plain Knurled 8299664 (19200)	EA	1								6	2	23
N	X2-H-				Gear, Worm 8299672 (19200)	EA	2									2	24
C	P-D-			1240-561-0681	Ring, Gimbal 8299667 (19200)	EA	2								4	2	25
C	P-D-			1240-546-9739	Shoe 8299669 (19200)	EA	4								10	2	26
N	P-D-			5305-701-5230	Screw, Machine F1, Cskh, Cross Rec, Cres, Psvt Fnsh, No 2 65UNF-2A, 1/4 L MS51960-8 (96906)	EA	1								8	2	27
N	M-D-				Key, Machine 8299721 (19200)		1									2	28
N	X2-H-				Socket 8299671 (19200)	EA	1									2	29
C	P-D-			1240-561-0681	Ring, Gimbal 8299667 (19200)	EA	REF								REF	2	30

SECTION II. REPAIR PARTS FOR DIRECT SUPPORT, GENERAL SUPPORT and DEPOT MAINTENANCE - Cont.

Act on Code	(1) Source Maint and Recov Code			(2) Federal Stock No.	(3) Description <i>Reference Number & Mfr Code</i> <i>Usable on Code</i>	(4) Unit of Meas	(5) Qty Inc in Unit	(6) 30-Day DS Maint Allowance			(7) 30-Day GS Maint Allowance			(8) 1-Yr Alw Per 100 Equip Cntgcy	(9) Depot Maint Alw Per 100 Equip	(10) Illustration		
	(a) Source	(b) Maint	(c) Recov					(a) 1-20	(b) 21-50	(c) 51-100	(a) 1-20	(b) 21-50	(c) 51-100			(a) Fig. No.	(b) Item No.	
C	P-D-			1240-546-9739	(See Fig. 2, Item 25 for Allowances) Shoe 8299669 (19200)	EA	REF								REF	2	31	
N	X2-H-				(See Fig. 2, Item 26 for Allowances) Gear, Worm 8299672 (19200)	EA	REF										2	32
C	P-H-			5330-599-8743	(Initially Listed as Fig. 2, Item 24) Packing Preformed 8299735 (19200)	EA	REF				REF	REF	REF		REF	2	33	
N	X2-F-			5305-057-0498	(See Fig. 2, Item 22 for Allowances) Screw, Machine Pnh, Cross Rec, Cres, Psvt Fnsh, No. 2 64UNF-3/16 L MS51958-2 (96906)	EA	2										2	34
N	X2-F-			5310-543-4652	Washer, Lock F1, Intl T, Cres, Psvt Fnsh, 0.200 OD, 0.015 Thk, No 2 Scr Size MS35333-69 (96069)	EA	2										2	35
C	M-H-				Plate Identification 8299711 (19200)	EA	1										2	36
N	P-F-			5305-983-8084	Screw, Cap, Socket Head Hex, Aly Stil, Crpl, 1/4 20UNC-3A, 3/4 L MS16997-60 (96906)	EA	4	*	2	2	*	2	2	24	20		2	37
N	P-F-			5310-543-2740	Washer, Lock F1, Intl T, Cres, Psvt Fnsh, 0.478 OD, 0.028 Thk, 1/4 Scr Size MS35333-74 (96906)	EA	4	*	2	2	*	2	2	24	10		2	38
N	X1-				Mount 8299663 (19200)		1										2	39

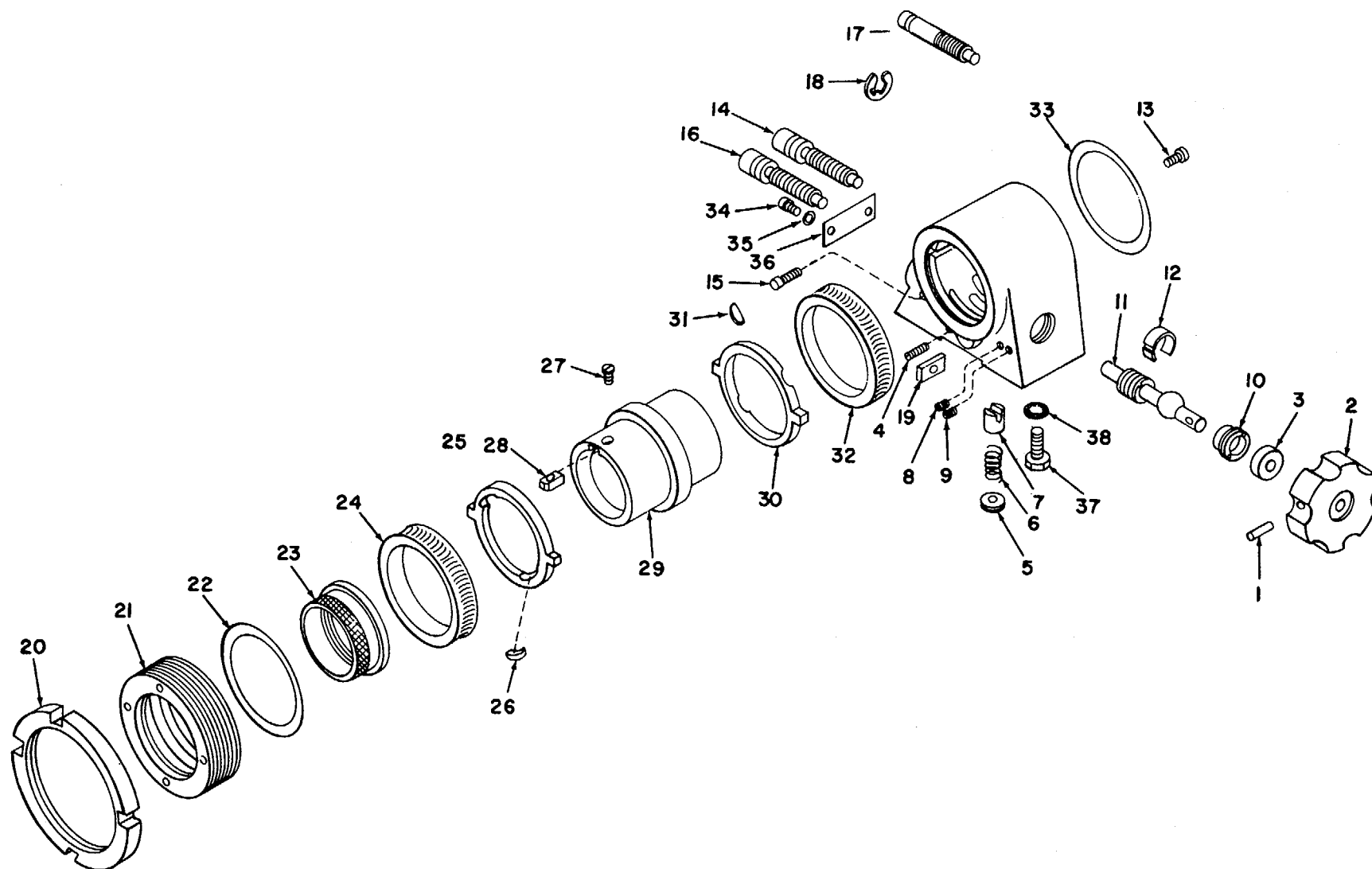
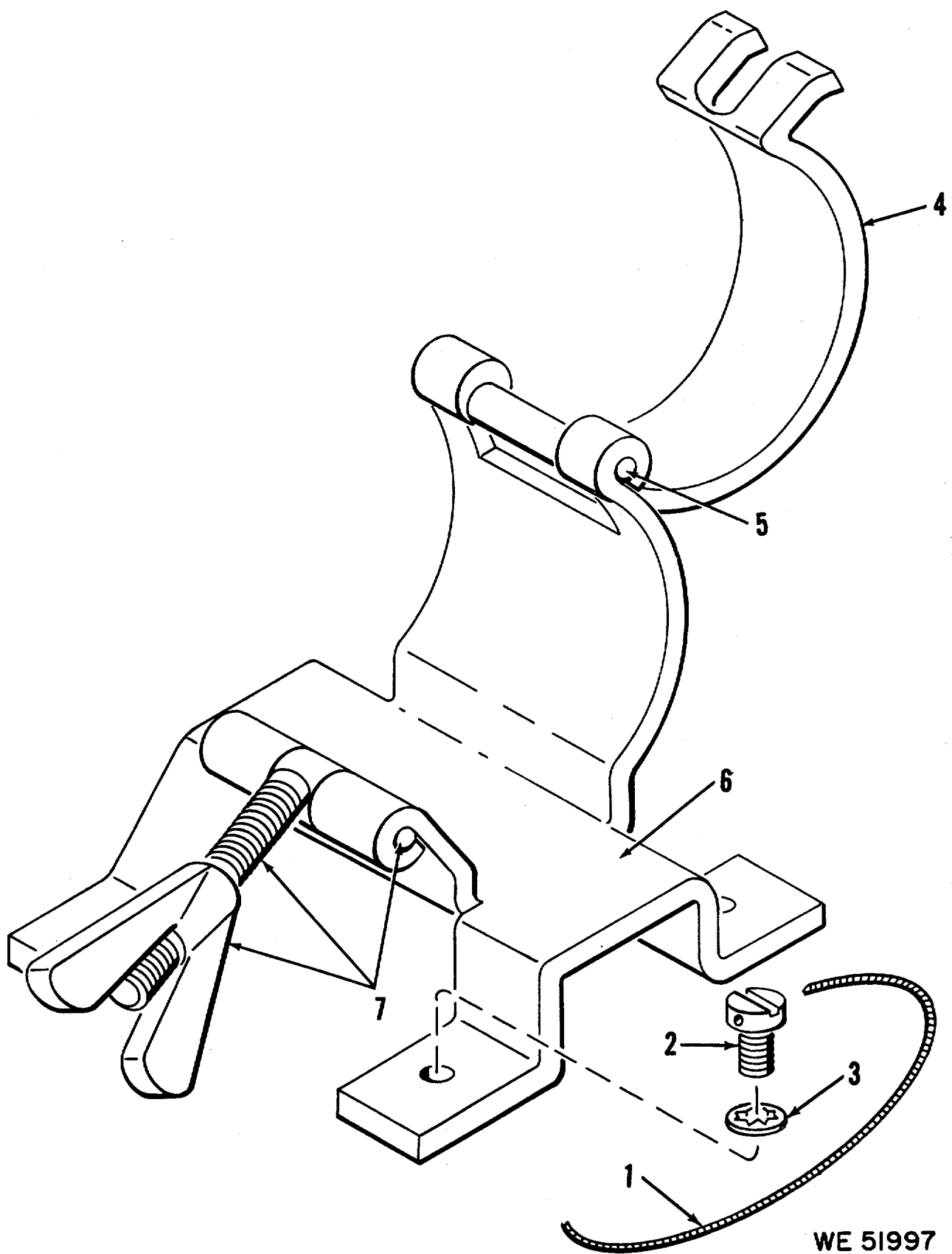


Figure 2. Mount telescope M90 (8299670)— exploded view.

**SECTION III. SPECIAL TOOLS, TEST AND SUPPORT EQUIPMENT FOR DIRECT SUPPORT,
GENERAL SUPPORT and DEPOT MAINTENANCE**

Act on Code	(1) Source Maint and Recov Code			(2) Federal Stock No.	(3) Description <i>Reference Number & Mfr Code</i> <i>Usable on Code</i>	(4) Unit of Meas	(5) Qty Inc in Unit	(6) 30-Day DS Maint Allowance			(7) 30-Day GS Maint Allowance			(8) 1-Yr Alw Per 100 Equip Cntgcy	(9) Depot Maint Alw Per 100 Equip	(10) Illustration	
	(a)	(b)	(c)					(a)	(b)	(c)	(a)	(b)	(c)			(a)	(b)
	Source	Maint	Recov					1-20	21-50	51-100	1-20	21-50	51-100			Fig. No.	Item No.
C	P-F-			1290-535-7761	TOOLS AND EQUIPMENT EQUIPMENT Clamp, Riveted 8299677 (19200)	EA	1	*	*	2	*	*	2	24	10	3	—
C	P-F-R			1290-300-8034	Cover, Mount Telescope 8293769 (19200) REPAIR PARTS FOR EQUIPMENT CLAMP, RIVETED 8299677	EA	1	*	*	2	*	*	2	24	4	4	—
N	P-F-			9505-293-4208	Wire, Lock MS20995-C32 (96906)	EA	V	*	*	*	*	*	*	3	1	3	1
N	P-F-			5305-912-7643	Screw, Machine Dr, Filh, Sltd, Cres, Psvt Fnsh, No 8 36UNF-2A, 7/16 L MS35276-244 (96906)	EA	4	*	2	2	*	2	2	24	10	3	2
N	P-F-			5310-019-0670	Washer, Lock F1, Intl T, 0.176 ID, 0.340 OD, 0.023 Thk No 8 Scr Size MS35333-106 (96906)	EA	4	*	2	2	*	2	2	24	10	3	3
N	X1-				Clamp 5321106 (19200)	1										3	4
N	X1-				Pin 8299727 (19200)	1										3	5
N	X1-				Bracket 8299678 (19200)	1										3	6
N	X1-				Nut 7646222 (19200)	1										3	7



WE 51997

Figure 3. Clamp, riveted (8299677)

**SECTION III. SPECIAL TOOLS, TEST AND SUPPORT EQUIPMENT FOR DIRECT SUPPORT,
GENERAL SUPPORT and DEPOT MAINTENANCE**

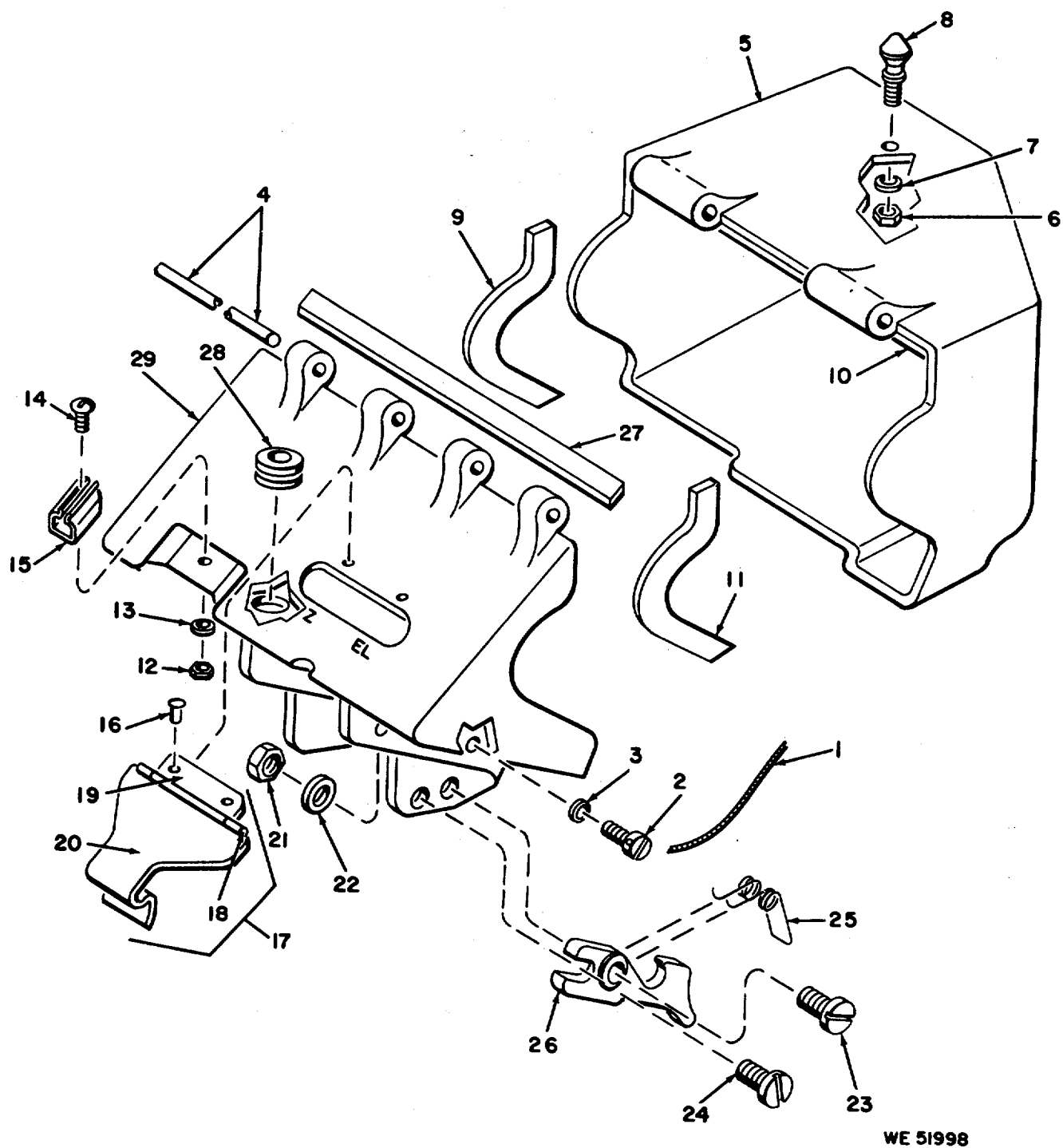
Act on Code	(1) Source Maint and Recov Code			(2) Federal Stock No.	(3) Description <i>Reference Number & Mfr Code</i> <i>Usable on Code</i>	(4) Unit of Meas	(5) Qty Inc in Unit	(6) 30-Day DS Maint Allowance			(7) 30-Day GS Maint Allowance			(8) 1-Yr Alw Per 100 Equip Cntgcy	(9) Depot Maint Alw Per 100 Equip	(10) Illustration	
	(a) Source	(b) Maint	(c) Recov					(a) 1-20	(b) 21-50	(c) 51-100	(a) 1-20	(b) 21-50	(c) 51-100			(a) Fig. No.	(b) Item No.
N	P-F-			COVER, MOUNT TELESCOPE, 8293769 9505-293-4208	Wire, Lock MS20995-C32 (96906) (See Fig. 3, Item 1 for Allowances)	EA	REF	REF	REF	REF	REF	REF	REF		REF	4	1
N	P-F-			5305-912-4839	Screw, Machine Dr, Filh, Sltd, Cres, Psvt Fnsh, No 10 32UNF-2A, 7/16 L MS35276-262 (96906)	EA	6	*	2	2	*	2	2	24	10	4	2
N	P-F-			5310-543-5933	Washer, Lock F1, Intl T, Cres, Psvt Fnsh, 0.381 OD, 0.025 Thk, No 10 Bolt Size MS35333-73 (96906)	EA	7	*	2	2	*	2	2	24	20	4	3
C	P-F-			5315-058-9776	Pin, Spring 589776 (21450)	EA	2	*	2	2	*	2	2	24	6	4	4
N	X1-				Cap 8299753 (19200)		1									4	5
N	P-F-			5310-050-3529	Nut, Plain, Hexagon Mscr, Cres, Psvt Fnsh, No 10 32UNF-28, 0.0375 W Acrflt, 0.130 Thk MS35650-304 (96906)	EA	1	*	2	2	*	2	2	24	10	4	8
N	P-F-			5310-543-5933	Washer, Lock F1, Int T, Cres, Psvt Fnsh, 0.381 OD, 0.025 Thk, No 10 Bolt Size MS35333-73 (96906) (See Fig. 4, Item 3 for Allowances)	EA	REF	REF	REF	REF	REF	REF	REF		REF	4	7
C	P-F-			5307-310-2556	Stud, Snap Fastener 8299754 (19200)	EA	1	*	2	2	*	2	2	24	8	4	8
C	P-F-			1290-300-8037	Seal, Rubber Strip 8299757 (19200)	EA	2	*	2	2	*	2	2	24	10	4	9
C	P-F-			1240-310-2557	Rubber Strip, Cellular 8299762 (19200)	EA	2	*	2	2	*	2	2	24	6	4	10

**SECTION III. SPECIAL TOOLS, TEST AND SUPPORT EQUIPMENT FOR DIRECT SUPPORT,
GENERAL SUPPORT and DEPOT MAINTENANCE**

Act on Code	(1) Source Maint and Recov Code			(2) Federal Stock No.	(3) Description <i>Reference Number & Mfr Code</i> <i>Usable on Code</i>	(4) Unit of Meas	(5) Qty Inc in Unit	(6) 30-Day DS Maint Allowance			(7) 30-Day GS Maint Allowance			(8) 1-Yr Alw Per 100 Equip Cntgcy	(9) Depot Maint Alw Per 100 Equip	(10) Illustration	
	(a) Source	(b) Maint	(c) Recov					(a) 1-20	(b) 21-50	(c) 51-100	(a) 1-20	(b) 21-50	(c) 51-100			(a) Fig. No.	(b) Item No.
C	P-F-			1290-300-8086	Seal, Rubber Strip 8299756 (19200)	EA	2	*	2	2	*	2	2	24	10	4	11
N	P-F-			5310-934-9759	Nut, Plain, Hexagon Cres, Psvt Fnsh, No 8 32UNC-2B MS35649-284 (96906)	EA	1	*	2	2	*	2	2	24	10	4	12
N	P-F-			5310-543-2739	Washer, Lock F1, Intl T, Cres, Psvt Fnsh, 0.178 ID, 0.840 OD, 0.023 Thk, No 8 Scr Size MS85883-72 (96906)	EA	1	*	2	2	*	2	2	24	10	4	18
N	P-F-			5805-701-5058	Screw, Machine Pnh, Cross Rec, Cres, Psvt Fnsh, No 8 86UNF-2A, 5/16 L MS51958-42 (96906)	EA	1	*	2	2	*	2	2	24	10	4	14
C	P-F-			5340-598-9826	Clip, Spring Tension 8299755 (19200)	EA	1	*	2	2	*	2	2	24	6	4	15
N	P-F-			5820-233-9501	Rivet, Tubular MS2045066B6 (96906)	EA	2	*	2	2	*	2	2	24	10	4	16
C	P-F-			1290-300-8088	Flap, Pinned 8299760 (19200)	EA	1	*	2	2	*	2	2	24	4	4	17
N	X1-				Wire (Spec QQ-W-821)		1									4	18
N	X1-				Leaf, Butt Hinge 8299758 (19200)		1									4	19
N	X1-				Flap 8299759 (19200)		1									4	20
N	P-F-			5310-906-1691	Nut, Plain, Hexagon Cres, Psvt Fnsh, 1/4 Dia Thd, 0.665 Thk, 1.299 W Acrlt MS51972-1 (16906)	EA	2	*	2	2	*	2	2	24	8	4	21
N	P-F-			5810-543-2740	Washer, Lock F1, Intl T, Cres, Psvt Fnsh, 0.478 OD, 0.028 Thk, 1/4 Scr. Size MS3533-74 (96906)m	EA	2	REF	REF	REF	REF	REF	REF		REF	4	22

**SECTION III. SPECIAL TOOLS, TEST AND SUPPORT EQUIPMENT FOR DIRECT SUPPORT,
GENERAL SUPPORT and DEPOT MAINTENANCE**

Act on Code	(1) Source Maint and Recov Code			(2) Federal Stock No.	(3) Description <i>Reference Number & Mfr Code</i> <i>Usable on Code</i>	(4) Unit of Meas	(5) Qty Inc in Unit	(6) 30-Day DS Maint Allowance			(7) 30-Day GS Maint Allowance			(8) 1-Yr Alw Per 100 Equip Cntgcy	(9) Depot Maint Alw Per 100 Equip	(10) Illustration	
	(a)	(b)	(c)					(a)	(b)	(c)	(a)	(b)	(c)			(a)	(b)
	Source	Maint	Recov					1-20	21-50	51-100	1-20	21-50	51-100			Fig. No.	Item No.
C		P-F-		5306-207-4954	See Fig. 2, Item 38 for Allowances) Screw Shoulder 8299751 (19200)	EA	2	*	2	2	*	2	2	24	6	4	23
C		P-F-		5305-207-4954	Screw, Shoulder 8299751 (19200) (See Fig. 4, Item 23 for Allowances)	EA	REF	REF	REF	REF	REF	REF	REF		REF	4	24
C		P-F-		5340-664-6751	Spring, Helical, Torsion 8299740 (19200)	EA	1	*	2	2	*	2	2	24	6	4	25
C		P-F-		1290-300-8035	Latch 8299685 (19200)	EA	1	*	2	2	*	2	2	24	6	4	26
C		P-F-		1240-310-2557	Rubber Strip, Cellular 8299762 (19200) See Fig. 4, Item 10 for Allowances)	EA	REF	REF	REF	REF	REF	REF	REF		REF	4	27
N		P-F-			Grommet, Rubber 7595129 (19200)	EA	1	*	2	2	*	2	2	24	10	4	28
N		X1			Base 8299752 (19200)		1									4	29



WE 51998

Figure 4. Cover, mount telescope (8293769)

SECTION IV
INDEX - FEDERAL STOCK NUMBER CROSS- REFERENCE TO FIGURE AND ITEM NUMBER

STOCK NUMBER	FIG.	ITEM	STOCK NUMBER	FIG.	ITEM
1240-310-2557	4	27	5305-912-4839	4	2
1240-310-2557	4	10	5305-912-7643	3	2
1240-546-9739	2	26	5305-983-8084	2	87
1240-546-9739	2	31	5307-310-2556	4	8
1240-561-0681	2	30	5310-019-0670	3	8
1240-561-0681	2	25	5310-050-3529	4	6
1290-300-8035	4	2	5310-531-0935	2	20
1290-300-8036	4	11	6531-543-2739	4	18
1290-300-8037	4	9	5310-543-2740	2	88
1290-300-8038	4	17	5310-543-2740	4	22
1290-535-7760	2	21	6310-543-4652	2	85
1290-546-9740	2	11	5310-543-5933	4	7
1290-546-9742	2	14	5310-643-5933	4	8
1290-546-9742	2	16	5310-564-7403	2	23
1290-546-9743	2	7	5310-905-1691	4	21
1290-692-1515	2	10	5310-934-9759	4	12
1290-692-1516	2	12	5315-058-9737	2	1
4730-278-5332	2	5	5315-058-9776	4	4
5305-057-0498	2	34	5320-233-9501	4	16
5305-057-0498	2	34	5330-531-2695	2	8
5305-068-6708	2	9	5330-599-8743	2	22
5305-207-4954	4	24	5330-599-8743	2	88
5305-207-4954	4	23	5340-209-8501	2	6
5305-550-0156	2	4	5340-598-9826	4	15
5305-550-0156	2	17	5340-664-6751	4	25
5305-550-0606	2	15	5340-816-4239	2	18
5305-550-0606	2	13	5355-565-1092	2	2
5305-701-5058	4	14	9505-293-4208	4	1
5305-701-5230	2	27	9505-293-4208	3	1

SECTION IV
INDEX — REFERENCE NUMBER CROSS-REFERENCED TO FIGURE AND ITEM NUMBER

REFERENCE NO.	MFR CODE	FIG. NO.	ITEM NO.	REFERENCE NO.	MFR CODE	FIG. NO.	ITEM. NO
MS16562-217	96906	2	1	MS51958-2	96906	2	34
MS16633-1012	96906	2	18	MS51958-42	96906	4	14
MS16997-60	96906	2	37	MS51960-8	96906	2	27
MS2045066B6	96906	4	16	MS51972-1	96906	4	21
MS20995-C32	96906	8	1	689776	21450	4	4
MS35276-244	96906	8	2	5031370	19200	2	6
MS35276-262	96906	4	2	5034655	19200	2	5
MS35333-106	96906	3	3	5039618	19200	2	8
MS35333-69	96069	2	35	5321106	19200	8	4
MS35333-72	96906	4	13	7595129	19200	4	28
MS35333-73	96906	4	3	7646222	19200	8	7
MS35333-74	96906	2	38	7680256	19200	2	10
MS35649-284	96906	4	12	7680257	19200	2	12
MS35650-304	96906	4	6	8299662	19200	2	2
MS51038-16	96906	2	9	8299663	19200	2	39

SECTION IV
INDEX — REFERENCE NUMBER CROSS-REFERENCED TO FIGURE AND ITEM NUMBER

REFERENCE NO.	MFR CODE	FIG. NO.	ITEM NO.	REFERENCE NO.	MFR CODE	FIG. NO.	ITEM. NO
8299664	19200	2	23	8299727	19200	8	5
8299665	19200	2	20	8299732	19200	2	7
8299666	19200	2	21	8299735	19200	2	22
8299667	19200	2	25	8299740	19200	4	25
8299668	19200	2	13	8299750	19200	2	17
8299669	19200	2	26	8299750	19200	2	4
8299671	19200	2	29	8299751	19200	4	28
8299672	19200	2	24	8299762	19200	4	29
8299673	19200	2	11	8299753	19200	4	5
8299674	19200	2	19	8299754	19200	4	8
8299675	19200	2	3	8299755	19200	4	15
8299678	19200	3	6	8299756	19200	4	11
8299679	19200	2	14	8299757	19200	4	9
8299679	19200	2	16	8299758	19200	4	19
8299685	19200	4	26	8299759	19200	4	20
8299711	19200	2	36	8299760	19200	4	17
8299721	19200	2	28	8299762	19200	4	10

GPO 825-15-3

By Order of the Secretary of the Army:

Official:

KENNETH G. WICKHAM

*Major General , United States Army,
The Adjutant General*

W. C. WESTMORELAND

*General, United States Army
Chief of Staff*

DISTRIBUTION:

To be distributed in accordance with DA Form 12-41, (qty rqr block no. 74) direct and general support maintenance requirements for Telescope, Mount.

* U.S. GOVERNMENT PRINTING OFFICE : 1993 0 - 342-421 (62428)

RECOMMENDED CHANGES TO EQUIPMENT TECHNICAL PUBLICATIONS



THEN... JOT DOWN THE
DOPE ABOUT IT ON THIS
FORM, CAREFULLY TEAR IT
OUT, FOLD IT AND DROP IT
IN THE MAIL!

SOMETHING WRONG WITH THIS PUBLICATION?

FROM: (PRINT YOUR UNIT'S COMPLETE ADDRESS)

DATE SENT

PUBLICATION NUMBER

PUBLICATION DATE

PUBLICATION TITLE

BE EXACT... PIN-POINT WHERE IT IS

PAGE
NO.

PARA-
GRAPH

FIGURE
NO.

TABLE
NO.

IN THIS SPACE TELL WHAT IS WRONG
AND WHAT SHOULD BE DONE ABOUT IT:

TEAR ALONG PERFORATED LINE

PRINTED NAME, GRADE OR TITLE, AND TELEPHONE NUMBER

SIGN HERE:

DA FORM 2028-2
1 JUL 79

PREVIOUS EDITIONS
ARE OBSOLETE.

P.S.—IF YOUR OUTFIT WANTS TO KNOW ABOUT YOUR
RECOMMENDATION MAKE A CARBON COPY OF THIS
AND GIVE IT TO YOUR HEADQUARTERS.

This fine document...

Was brought to you by me:



[Liberated Manuals -- free army and government manuals](#)

Why do I do it? I am tired of sleazy CD-ROM sellers, who take publicly available information, slap “watermarks” and other junk on it, and sell it. Those masters of search engine manipulation make sure that their sites that sell free information, come up first in search engines. They did not create it... They did not even scan it... Why should they get your money? Why are not letting you give those free manuals to your friends?

I am setting this document FREE. This document was made by the US Government and is NOT protected by Copyright. Feel free to share, republish, sell and so on.

I am not asking you for donations, fees or handouts. If you can, please provide a link to liberatedmanuals.com, so that free manuals come up first in search engines:

<A HREF=<http://www.liberatedmanuals.com/>>Free Military and Government Manuals

- Sincerely
Igor Chudov
<http://igor.chudov.com/>
- [Chicago Machinery Movers](#)