

# TM 5-4320-248-25P

DEPARTMENT OF THE ARMY TECHNICAL MANUAL

---

ORGANIZATIONAL, DIRECT AND  
GENERAL SUPPORT, AND DEPOT  
MAINTENANCE REPAIR PARTS AND  
SPECIAL TOOLS LIST

FUEL SYSTEM, TRANSFER, PORTABLE,  
PUMP, CENTRIFUGAL, 100 GPM; TWO  
DISCHARGE HOSE ASSEMBLIES;  
ONE SUCTION HOSE ASSEMBLY;  
TWO NON-AUTOMATIC NOZZLE  
ASSEMBLIES; ONE MONITOR GO-NO-GO  
GAGE, 100 GPM; 3 HP GASOLINE ENGINE;  
ONE BASKET ASSEMBLY KENCO  
MODEL 114MX1A FSN 4320-900-8544

---

HEADQUARTERS, DEPARTMENT OF THE ARMY

FEBRUARY 1968



**Organizational, Direct And General Support, And Depot  
Maintenance****Repair Parts And Special Tools List**

FUEL SYSTEM, TRANSFER, PORTABLE, PUMP, CENTRIFUGAL,  
**100 GPM; TWO DISCHARGE HOSE ASSEMBLIES; ONE SUCTION  
 HOSE ASSEMBLY; TWO NON-AUTOMATIC NOZZLE ASSEM-  
 BLIES; ONE MONITOR GO-NO-GO GAGE, 100 GPM; 3 HP  
 GASOLINE ENGINE; ONE BASKET ASSEMBLY KENCO MODEL  
 114MX1A**

FSN 4320-900-8544

CURRENT AS OF NOVEMBER 1967

|   | Paragraph | Page |
|---|-----------|------|
| SECTION I. INTRODUCTION   |           |      |
| Scope -----   | 1         | iii  |
| General- - - - -  | 2         | iii  |
| Explanation of columns- - - - -   | 3         | iii  |
| Special information- - - - -  | 4         | vi   |
| How to locate repair parts - - - - -  | 5         | vi   |
| Abbreviations -----   | 6         | vi   |
| Federal supply codes for manufactures -----   | 7         | vi   |
| Recommendations for maintenance manual improvements -----   | 8         | vi   |
| II. PRESCRIBED LOAD ALLOWANCE - - - - -   |           | vii  |
| III. SPECIAL TOOLS, TEST AND SUPPORT EQUIPMENT<br>FOR ORGANIZATIONAL MAINTENANCE (NOT APPLICABLE) |           |      |
| SECTION IV. REPAIR PARTS FOR ORGANIZATIONAL MAINTENANCE   |           |      |
| Group 01. Engine  |           |      |
| 0100 Engine assembly -----  |           | 1    |
| 0106 Engine lubrication system -----  |           | 1    |
| 0107 Engine starting system -----   |           | 2    |
| 03. Fuel System   |           |      |
| 0301 Carburetor -----   |           | 3    |
| 0304 Air cleaner -----  |           | 3    |
| 0306 Tanks, lines, and fittings -----   |           | 4    |
| 0308 Engine speed governor -----  |           | 4    |
| 04. Exhaust System  |           |      |
| 0401 Muffler and pipes -----  |           | 5    |
| 05. Cooling System  |           |      |
| 0502 Shrouds -----  |           | 5    |
| 06. Electrical System   |           |      |
| 0605 Ignition components -----  |           | 6    |
|   |           | i    |

|   | Page |
|---|------|
| Group 15. Frame   |      |
| 1501 Frame assembly -----   | 8    |
| 22. Body Chassis or Hull and Accessory Items  |      |
| 2202 Accessory items -----  | 9    |
| 2210 Data plates and instruction holders -----  | 10   |
| 72. Dispensing and Servicing Equipment Components   |      |
| 7202 Pumps and meters -----   | 11   |
| 7203 Valves, fittings, nozzles -----  | 12   |
| 7204 Miscellaneous parts and accessories -----  | 13   |
| SECTION V. REPAIR PARTS FOR DS, GS, AND DEPOT MAINTENANCE   |      |
| Group 01. Engine  |      |
| 0100 Engine assembly -----  | 16   |
| 0101 Crankcase, block, cylinder head -----  | 17   |
| 0102 Crankshaft -----   | 18   |
| 0104 Pistons, connecting rods -----   | 18   |
| 0105 Valves, camshafts and timing system -----  | 18   |
| 0106 Engine lubrication system -----  | 19   |
| 0107 Engine starting system -----   | 20   |
| 03. Fuel System   |      |
| 0301 Carburetor -----   | 21   |
| 0304 Air cleaner -----  | 23   |
| 0306 Tanks, lines, and fittings -----   | 23   |
| 0308 Engine speed governor -----  | 24   |
| 04. Exhaust System  |      |
| 0401 Muffler and pipes -----  | 26   |
| 05. Cooling System  |      |
| 0502 Shrouds -----  | 26   |
| 06. Electrical System   |      |
| 0605 Ignition components -----  | 27   |
| 15. Frame   |      |
| 1501 Frame assembly -----   | 28   |
| 22. Body Chassis or Hull, and Accessory Items   |      |
| 2202 Accessory items -----  | 29   |
| 2210 Data plates and instruction holders -----  | 31   |
| 72. Dispensing and Servicing Equipment Components   |      |
| 7202 Pumps and meters -----   | 31   |
| 7203 Valves, fittings, nozzles -----  | 33   |
| 7204 Miscellaneous parts and accessories -----  | 35   |
| SECTION VI. SPECIAL TOOLS, TEST AND SUPPORT EQUIPMENT FOR DS,<br>GS, AND DEPOT MAINTENANCE (NOT APPLICABLE) |      |
| VII. INDEX-FEDERAL STOCK NUMBER AND REFERENCE NUMBER,<br>CROSS-REFERENCE TO INDEX NUMBER -----              | 52   |

## SECTION I.

### INTRODUCTION

#### 1. Scope

This manual lists repair parts required for the performance of organizational, direct support, general support, and depot maintenance of the pump.

#### 2. General

a. The repair parts list is arranged as follows:

- (1) Individual parts and major assemblies are listed alphabetically by item name within the numbered functional groups.
- (2) Assembly components and subassemblies are intended and listed alphabetically by item name under major assemblies.

b. This Repair Parts and Special Tools List is divided into the following sections.

- (1) *Prescribed Load Allowance (PLA)-Section II.* A consolidated listing of repair parts quantitatively allocated for initial stockage at the organizational level. *This is a mandatory minimum stockage allowance.*
- (2) *Special Tools, Test and Support Equipment-Section III.* A list of special tools test and support equipment authorized for the performance of maintenance at the organizational level. (NOT APPLICABLE)
- (3) *Repair Parts-Section IV.* A list of repair parts authorized for the performance of maintenance at the organizational level.
- (4) *Repair Parts-Section V.* A list of repair parts authorized for the performance of maintenance at the direct

support, general support, and depot level.

- (5) *Special Tools, Test and Support Equipment-Section VI.* A list of special tools, test and support equipment authorized for the performance of maintenance at the direct support, general support, and depot level. (NOT APPLICABLE)
- (6) *Federal Stock Number and Reference Number Index-Section VII.* A list of Federal stock numbers followed by reference numbers, appearing in all the listings, in ascending alphanumeric sequence cross-referenced to index number.

#### 3. Explanation of Columns

The following provides an explanation of columns in the tabular lists in Sections II through VI.

a. *Source, Maintenance, and Recoverability Codes (SMR).*

- (1) *Source Code.* Indicates the selection status and source for the listed item. Source codes used are:

| Code | Explanation  |
|------|--|
| P    | Applied to repair parts which are stocked in or supplied from DSA/GSA or Army supply system, and authorized for use at indicated maintenance categories.   |
| M    | Applied to repair parts which are not procured or stocked but are to be manufactured at indicated maintenance categories.  |
| A    | Applied to assemblies which are not procured or stocked as such but made up of two or more units, each of which carry individual stock numbers and descriptions and are procured and stocked and can be assembled by units at indicated maintenance categories |

| Code | Explanation   |
|------|---|
| X    | Applied to parts and assemblies which are not procured or stocked, the mortality of which is normally below that of the applicable end item, and the failure of which should result in retirement of the end item from the supply system.   |
| X1   | Applied to repair parts which are not procured or stocked, the requirement for which will be supplied by use of the next higher assembly or components.   |
| X2   | Applied to repair parts which are not stocked. The indicated maintenance category requiring such repair parts will attempt to obtain them through cannibalization; if not obtainable through cannibalization, such repair parts will be requisitioned with supporting justification through normal supply channels. |
| C    | Applied to repair parts authorized for local procurements. If not obtainable from local procurement, such repair parts will be requisitioned through normal supply channels with a supporting statement of nonavailability from local procurement.  |
| G    | Applied to major assemblies that are procured with PEMA (Procurement Equipment Missile Army) funds for initial issue to be used as exchange assemblies at DSU and GSU maintenance level. These assemblies will not be stocked above DSU and GSU level or returned to depot supply level.                            |

*Note.* Source code and level of maintenance are not shown on common hardware items known to be readily available in Army supply channel and through local procurement.

- (2) *Maintenance Code.* Indicates the lowest category of maintenance authorized to install the listed item. The maintenance level codes are:

| Code | Explanation                 |
|------|-----------------------------|
| O    | Organizational maintenance  |
| F    | Direct support maintenance  |
| H    | General support maintenance |
| D    | Depot maintenance           |

- (3) *Recoverability Code.* Indicates whether unserviceable items should be returned for recovery or salvage. Items not coded are expendable. Recoverability codes are:

| Code | Explanation   |
|------|---|
| R    | Applied to repair parts and assemblies which are economically repairable at DSU and GSU activities and normally are furnished by supply on an exchange basis.   |
| T    | Applied to high dollar value recoverable repair parts which are subject to special handling and are issued on an exchange basis. Such repair parts normally are repaired or overhauled at depot maintenance activities. |
| u    | Applied to repair parts specifically selected for salvage by reclamation unit because of precious metal content, critical materials, high dollar value reusable casings or castings.                                    |

- (4) This column also lists, below the SMR code, an index number for each item in ascending numerical sequence, which is used to locate items in the publication when the Federal stock number and/or reference number is known.

*b. Federal Stock Number.* Indicates the Federal stock number for the item.

*c. Description.* Indicates the Federal item name and any additional description of the item required. A part number or other reference number is followed by the applicable five-digit Federal supply code for manufacturers in parentheses.

*d. Unit of Issue.* Indicates the unit used as a basis for issue, e.g. ea, pr, ft, yd, etc.

*h. Quantity Incorporated in Unit Pack.* Indicates the actual quantity contained in the unit pack.

*f. Quantity Incorporated in Unit.* Indicates the quantity of the item used in the functional group.

*g. Fifteen-Day Organizational Maintenance Allowances.*

- (1) The allowance columns are divided into four subcolumns. Indicated in each subcolumn opposite the first appearance of each item is the total quantity of items authorized for the number of equipments supported. Subsequent appearances of the same item will have no entry in the allowance columns but will have in the description column a reference to the first appearance of the item. Items authorized

for use as required but not for initial stockage are identified with an-asterisk in the allowance column,

- (2) The quantitative allowances for organizational level of maintenance represents one initial prescribed load for a 15-day period for the number of equipments supported. Units and organizations authorized additional prescribed loads will multiply the number of prescribed loads authorized by the quantity of repair parts reflected in the appropriate density column to obtain the total quantity of repair parts authorized.
- (3) Organizational units providing maintenance for more than 100 of these equipments shall determine the total quantity of parts required by converting the equipment quantity to a decimal factor by placing a decimal point before the next to last digit of the number to indicate hundredths, and multiplying the decimal factor by the parts quantity authorized in the 51-100 allowance column. Example, authorized allowance for 51-100 equipments is 12; for 140 equipments multiply 12 by 1.40 or 16.80 rounded off to 17 parts required.
- (4) Subsequent changes to allowances will be limited as follows: No change in the range of items is authorized. If additional items are considered necessary, recommendation should be forwarded to U.S. Army Mobility Equipment Command for exception or revision to the allowance list. Revisions to the range of items authorized will be made by this Command based upon engineering experience, demand data, or TAERS information.

*h. Thirty-Day DS/GS Allowances.*

- (1) The allowance columns are divided into three subcolumns. Indicated in each subcolumn, opposite the first appearance of each item, is the total quantity of items authorized for the number of equipments supported. Subsequent appearance of the same item will have no entry in the allow-

ance column, but will have in the description column a reference to the first appearance of the item. Items authorized for use as required but not for initial stockage are identified with an asterisk in the allowance column.

- (2) The quantitative allowances for DS/GS levels of maintenance will represent initial stockage for a 30-day period for the number of equipments supported.
- (3) Determination of the total quantity of parts required for maintenance of more than 100 of these equipments can be accomplished by converting the equipment quantity to a decimal factor by placing a decimal point before the next to last digit of the number to indicate hundredths, and multiplying the decimal factor by the parts quantity authorized in the 51-100 allowance column. Example, authorized allowance for 51-100 equipments is 40; for 150 equipments multiply 40 by 1.50 or 60 parts required.

*i. One-Year Allowances Per 100 Equipments/Contingency Planning Purposes.* Indicates opposite the first appearance of each item the total quantity required for distribution and contingency planning purposes. The range of items indicates total quantities of all authorized items required to provide for adequate support of 100 equipments for one year.

*j. Depot Maintenance Allowance Per 100 Equipments.* Indicates opposite the first appearance of each item the total quantity authorized for depot maintenance of 100 equipments. Subsequent appearances of the same item will have no entry in this column, but will have in the description column a reference to the first appearance of the item. Items authorized for use but not for initial stockage are identified with an asterisk in the allowance column.

*k. Illustration.*

- (1) *Figure Number.* Indicates the figure number of the illustration in which the item is shown.
- (2) *Item Number.* Indicates the callout number to reference the item in the illustration.

#### 4. Special Information

- a. Repair parts mortality has been based on 1000 hours of operation per year.
- b. Parts which require manufacture or assembly at a category higher than that authorized for installation will indicate in the source column the higher category.
- c. The following publication pertains to the pump and its components:

TM 5-4320-248-Operator, organizational,  
15 direct support, general support, and  
depot maintenance  
manual.

#### 5. How to Locate Repair Parts

a. When Federal stock number or reference number is unknown:

- (1) *First.* Using the table of contents, determine the functional group within which the repair part belongs.
- (2) *Second.* Find the illustration covering the functional group to which the repair part belongs,
- (3) *Third.* Identify the repair part on the illustration, and note the illustration figure and item number of the repair part.
- (4) *Fourth.* Using the Repair Parts Listing, find the functional group to which the repair part belongs and locate the illustration figure and item number noted on the illustration.

b. When Federal stock number or reference number is known:

- (1) *First.* Using the index of Federal stock numbers and reference numbers, find the pertinent Federal Stock number or reference number. This in-

dex is in ascending alphanumeric sequence cross-referenced to an index number.

- (2) *Second.* Using the repair part listing, find the index number referenced in the index of Federal stock numbers and reference numbers,

#### 6. Abbreviations

GPM -----Gallons Per Minute  
hp -----horse power  
in. -----inch, inches  
lg -----long, length  
mtg-----mounting  
std-----standard  
thd -----thread  
w/ -----with

#### 7. Federal Supply Codes for Manufacturers

| Code      | Manufacturers   |
|-----------|---|
| 08484 --- | Breeze Corporation Inc.   |
| 08645 --- | Briggs and Stratton Corp.                                       |
| 25500 --- | Goodyear Aircraft Corp.   |
| 38508 --- | Marsh Instrument Co., Division of<br>Colorado Oil and Gas Corp. |
| 81718 --- | OPW Division of Dover Corp.                                     |
| 88795 --- | Kenco Pump Division of American<br>Crucible Products Co.        |
| 90005 --- | Bendix Corp., The Filter Division                               |
| 98906 --- | Military Standards  |

#### 8. Recommendations for Maintenance Manual Improvements

Report of errors, omissions, and recommendations for improving this publication by the individual user is encouraged. Reports should be submitted on DA Form 2028 (Recommended Changes to DA Publications) and forwarded direct to the Commanding General, U. S. Army Mobility Equipment Command, ATTN: AMSME-MPP, 4300 Goodfellow Blvd., St. Louis, Mo. 63120,



## SECTION II

### PRESCRIBED LOAD ALLOWANCE

| (1)<br>Federal<br>stock<br>number | (2)<br>Description<br><br>useable on code                             | (3)<br>Qty<br>inc in<br>unit<br>pack | (4)<br>day org maint. alw |             |              |               |
|-----------------------------------|---|--------------------------------------|---------------------------|-------------|--------------|---------------|
|                                   |   |                                      | (a)<br>1-5                | (b)<br>6-20 | (c)<br>21-50 | (d)<br>51-100 |
|                                   | Group 01-ENGINE   |                                      |                           |             |              |               |
|                                   | 0100-ENGINE ASSEMBLY  |                                      |                           |             |              |               |
| 2805-828-0783                     | GASKET SET: engine<br>(08645) 297275                                  |                                      | *                         | *           | 2            | 2             |
|                                   | Group 0106-ENGINE LUBRICATION<br>SYSTEM                               |                                      |                           |             |              |               |
| 2805-776-2282                     | GROMMET : breather cover<br>(08645) 66578                             |                                      | *                         | *           | 2            | 2             |
|                                   | Group 0107-ENGINE STARTING<br>SYSTEM                                  |                                      |                           |             |              |               |
| 2990-174-5255                     | ROPE, ENGINE STARTER: 47 1/8 in. lg.<br>(08645) 294584                |                                      | 2                         | 2           | 4            | 8             |
|                                   | Group 03-FUEL SYSTEM  |                                      |                           |             |              |               |
|                                   | 0301-CARBURETOR   |                                      |                           |             |              |               |
| 2910-920-5361                     | CARBURETOR ASSEMBLY<br>(08645) 296784                                 |                                      | *                         | *           | 2            | 2             |
|                                   | 0304-AIR CLEANER  |                                      |                           |             |              |               |
| 2940-688-7912                     | FILTER ELEMENT, AIR INTAKE<br>(08645) 27987                           |                                      | *                         | *           | *            | 2             |
|                                   | 0308-ENGINE SPEED GOVERNOR  |                                      |                           |             |              |               |
| 2990-624-0260                     | SPRING, CONTROL ROD<br>(08645) 26855                                  |                                      | *                         | *           | *            | 2             |
| 2990-898-2097                     | SPRING, GOVERNOR LINK<br>(08645) 260585                               |                                      | *                         | *           | *            | 2             |
| 3340-945-0493                     | SPRING, GOVERNOR LEVER<br>(08645) 260545                              |                                      | *                         | *           | *            | 2             |
|                                   | Group 06-ELECTRICAL SYSTEM  |                                      |                           |             |              |               |
|                                   | 0605-IGNITION COMPONENTS  |                                      |                           |             |              |               |
| 2805-624-0284                     | PARTS KIT, IGNITION: breaker points<br>and condenser ( 08645 ) 294628 |                                      | *                         | 2           | 2            | 4             |
| 2920-294-3747                     | PLUG, SPARK W/GASKET<br>(08645) CJ8                                   |                                      | 2                         | 2           | 4            | 8             |
| 3970-789-1925                     | INSULATOR, PLATE: terminal;<br>condenser lead (08645) 66935           |                                      | *                         | *           | 2            | 2             |
|                                   | Group 22-CHASSIS OR HULL,<br>AND ACCESSORY ITEMS                      |                                      |                           |             |              |               |
|                                   | 2202-ACCESSORY ITEMS  |                                      |                           |             |              |               |
| 1720-916-1883                     | HOSE ASSEMBLY, DISCHARGE :<br>rubber w/coupling (88795) SX937         |                                      | *                         | *           | *            | 2             |
| 1730-360-0595                     | GASKET<br>(81718) H6430M  |                                      | *                         | 2           | 2            | 2             |
|                                   | Group 72-DISPENSING AND<br>SERVICING EQUIPMENT<br>COMPONENTS          |                                      |                           |             |              |               |
|                                   | 7204-MISCELLANEOUS<br>PARTS AND ACCESSORIES                           |                                      |                           |             |              |               |
| 1320-920-5342                     | CLAMP, HOSE<br>(88795) QS200M28A                                      |                                      | *                         | *           | *            | 2             |
| 1930-872-1779                     | ELEMENT, FILTER<br>(90005) 041420S                                    |                                      | 2                         | 2           | 4            | 8             |
| 5330-526-7517                     | O-RING, 100 GPM GAGE<br>(96906) MS29513-249                           |                                      | *                         | 2           | 2            | 4             |



| (1)<br>SMR<br>CODE<br>INDEX<br>NO. | (2)<br>FEDERAL<br>STOCK<br>NUMBER | (3)<br>DESCRIPTION<br><br>REFERENCE NO. & MFR. CODE<br><br>USABLE ON CODE   | (4)<br>UNIT OF<br>ISSUE | (5)<br>QTY<br>INC<br>IN<br>UNIT<br>PACK | (6)<br>QTY<br>INC<br>IN<br>UNIT | (7)<br>15-DAY ORGANIZATIONAL<br>MAINTENANCE ALW |      |       |        | (8)<br>ILLUS-<br>TRATION |             |
|------------------------------------|-----------------------------------|---|-------------------------|---|---------------------------------|---|------|-------|--------|--------------------------|-------------|
|                                    |                                   |   |                         |   |                                 | (a)   | (b)  | (c)   | (d)    | (a)                      | (b)         |
|                                    |                                   |   |                         |   |                                 | 1-5   | 6-20 | 21-50 | 51-100 | FIG<br>NO.               | ITEM<br>NO. |
| 00001                              |                                   | SECTION IV - REPAIR PARTS FOR<br>ORGANIZATIONAL MAINTENANCE   |                         |   |                                 |   |      |       |        |                          |             |
| 00001A                             |                                   | GROUP 01 - ENGINE   |                         |   |                                 |   |      |       |        |                          |             |
| 00001B                             |                                   | 0100 - ENGINE ASSEMBLY  |                         |   |                                 |   |      |       |        |                          |             |
| P O<br>00004                       | 2805-828-0783                     | GASKET SET: ENGINE<br>297275 (08645)  | EA                      |   | 1                               | *   | *    | 2     | 2      |                          |             |
| X1<br>00005                        | 2940-608-8514                     | GASKET: AIR CLEANER<br>27660 (08645)  | EA                      |   | 1                               | SEE GRP 0304                                    |      |       |        |                          |             |
| X1<br>00006                        | 2940-171-7935                     | GASKET: CARBURETOR M/G<br>27402 (08645)   | EA                      |   | 1                               | SEE GRP 0301                                    |      |       |        |                          |             |
| X1<br>00009                        | 2910-898-2094                     | GASKET: FUEL TANK MTG<br>27911 (08645)  | EA                      |   | 1                               | SEE GRP 0306                                    |      |       |        |                          |             |
| 00049                              |                                   | 0106 - ENGINE LUBRICATION SYSTEM  |                         |   |                                 |   |      |       |        |                          |             |
| O<br>00050                         | 5306-073-8255                     | BOLT, ASSEMBLED WASHER: BREATHER MTG<br>93394 (08645)   | EA                      |   | 2                               |   |      |       |        | 5                        | 8           |
| P O<br>00051                       | 2805-624-0282                     | BREATHER, VALVE CHAMBER<br>294178 (08645)   | EA                      |   | 1                               | *   | *    | *     | *      | 5                        | 4           |
| P O<br>00052                       | 2805-422-5804                     | CAP, OIL FILLER: CRANKCASE COVER<br>69345 (08645)   | EA                      |   | 1                               | *   | *    | *     | *      | 2                        | 11          |
| X1<br>00053                        | 2805-678-4431                     | GASKET: VALVE CHAMBER COVER MTG<br>27549 (08645)<br>(COMPONENT OF GASKET SET, Stock No.<br>2805-828-0783, GROUP 0100) | EA                      |   | 1                               |   |      |       |        | 5                        | 3           |
| P O<br>00054                       | 2805-776-2282                     | GROMMET: BREATHER COVER<br>66578 (08645)  | EA                      |   | 1                               | *   | *    | 2     | 2      | 5                        | 5           |
| X20<br>00055                       |                                   | GROMMET, BREATHER TUBE<br>67608 (08645)   | EA                      |   | 1                               |   |      |       |        | 5                        | 7           |

| (1)<br>SMR<br>CODE<br>INDEX<br>NO. | (2)<br>FEDERAL<br>STOCK<br>NUMBER | (3)<br>DESCRIPTION<br><br>REFERENCE NO. & MFR. CODE<br><br>USABLE ON CODE | (4)<br>UNIT OF<br>ISSUE | (5)<br>QTY<br>INC<br>IN<br>UNIT<br>PACK | (6)<br>QTY<br>INC<br>IN<br>UNIT | (7)<br>15-DAY ORGANIZATIONAL<br>MAINTENANCE ALW |      |       |        | (8)<br>ILLUS-<br>TRATION |             |
|------------------------------------|-----------------------------------|---|-------------------------|---|---------------------------------|---|------|-------|--------|--------------------------|-------------|
|                                    |                                   |   |                         |   |                                 | (a)   | (b)  | (c)   | (d)    | (a)                      | (b)         |
|                                    |                                   |   |                         |   |                                 | 1-5   | 6-20 | 21-50 | 51-100 | FIG<br>NO.               | ITEM<br>NO. |
| O<br>00056                         | 4730-192-9481                     | NIPPLE, PIPE: OIL FILLER, 3/4 IN, 2 IN LG<br>91258 (08645)                | EA                      |   | 1                               |   |      |       |        | 2                        | 12          |
| P O<br>00057                       | 2805-849-3141                     | TUBE, BREATHER<br>230634 (08645)  | EA                      |   | 1                               | *   | *    | *     | *      | 5                        | 6           |
| 00058                              |                                   | 0107 - ENGINE STARTING SYSTEM   |                         |   |                                 |   |      |       |        |                          |             |
| P O<br>00059                       | 2990-907-0644                     | CLUTCH ASSEMBLY STARTER<br>298310 (08645)                                 | EA                      |   | 1                               | *   | *    | *     | *      |                          |             |
| X1<br>00060                        | 3110-100-6180                     | BEARING, BALL: CLUTCH HOUSING<br>63770 (08645)                            | EA                      |   | 6                               |   |      |       |        | 4                        | 16          |
| X1<br>00061                        | 5840-787-6662                     | BUMPER, STARTER PULLEY<br>66528 (08645)                                   | EA                      |   | 1                               |   |      |       |        | 4                        | 10          |
| X1<br>00062                        | 2990-768-0723                     | GRIP, ENGINE STARTER<br>66728 (08645)                                     | EA                      |   | 1                               |   |      |       |        | 4                        | 5           |
| X20<br>00063                       |                                   | HOUSING, STARTER CLUTCH<br>211383 (08645)                                 | EA                      |   | 1                               |   |      |       |        | 4                        | 17          |
| X1<br>00064                        | 5315-855-4336                     | PIN, STARTER GRIP<br>230228 (08645)                                       | EA                      |   | 1                               |   |      |       |        | 4                        | 6           |
| X1<br>00065                        | 2990-786-2030                     | PULLEY, ENGINE STARTER<br>294088 (08645)                                  | EA                      |   | 1                               |   |      |       |        | 4                        | 9           |
| P O<br>00066                       | 2990-930-1737                     | RATCHET, REWIND<br>298436 (08645)   | EA                      |   | 1                               | *   | *    | *     | *      | 4                        | 15          |
| P O<br>00067                       | 2990-174-5255                     | ROPE, ENGINE STARTER: 47 1/8 IN LG<br>294584 (08645)                      | EA                      |   | 1                               | 2   | 2    | 4     | 8      | 4                        | 2           |
| X20<br>00068                       | 2990-930-1738                     | SCREEN, REWIND STARTER PULL<br>221661 (08645)                             | EA                      |   | 1                               |   |      |       |        | 4                        | 12          |
| O<br>00069                         | 5305-719-4603                     | SCREW, ASSEMBLED WASHER: SCREEN MFG<br>93042 (08645)                      | EA                      |   | 4                               |   |      |       |        | 4                        | 11          |

| (1)<br>SMR<br>CODE<br>INDEX<br>NO. | (2)<br>FEDERAL<br>STOCK<br>NUMBER | (3)<br>DESCRIPTION<br><br>REFERENCE NO. & MFR. CODE<br><br>USABLE ON CODE  | (4)<br>UNIT<br>OF<br>ISSUE | (5)<br>QTY<br>INC<br>IN<br>UNIT<br>PACK | (6)<br>QTY<br>INC<br>IN<br>UNIT | (7)<br>15-DAY ORGANIZATIONAL<br>MAINTENANCE ALW |      |       |        | (8)<br>ILLUS-<br>TRATION |             |
|------------------------------------|-----------------------------------|--|----------------------------|---|---------------------------------|---|------|-------|--------|--------------------------|-------------|
|                                    |                                   |  |                            |   |                                 | (a)   | (b)  | (c)   | (d)    | (a)                      | (b)         |
|                                    |                                   |  |                            |   |                                 | 1-5   | 6-20 | 21-50 | 51-100 | FIG<br>NO.               | ITEM<br>NO. |
| P 0<br>00070                       | 2990-769-4104                     | SPRING, REWIND STARTER<br>294303 (08645)   | EA                         |   |                                 | *   | *    | *     | *      | 4                        | 3           |
| X20<br>00071                       |                                   | WASHER, CLUTCH RETAINER<br>221653 (08645)  | EA                         |   |                                 |   |      |       |        | 4                        | 14          |
| X20<br>00072                       |                                   | WASHER, RUBBER, RATCHET SEALING<br>68238 (08645)   | EA                         |   |                                 |   |      |       |        | 4                        | 13          |
| 00073                              |                                   | GROUP 03 - FUEL SYSTEM   |                            |   |                                 |   |      |       |        |                          |             |
| 000734                             |                                   | 0301 - CARBURETOR  |                            |   |                                 |   |      |       |        |                          |             |
| P 0<br>00074                       | 2910-920-5361                     | CARBURETOR ASSEMBLY<br>296784 (08645)  | EA                         |   | 1                               | *   | *    | 2     | 2      | 6                        | 7           |
| X1<br>00094                        | 2940-171-7935                     | GASKET: CARBURETOR MTG<br>27402 (08645)<br>(COMPONENT OF GASKET SET, STOCK No.<br>2805-828-0783, SEE GROUP 0100) | EA                         |   | 1                               |   |      |       |        | 6                        | 6           |
| X20<br>00095                       |                                   | SCREW, ASSEMBLED WASHER: CARBURETOR TO FUEL<br>TANK MTG, 10-32 THD SIZE, 5/8 IN LG<br>93341 (08645)              | EA                         |   | 3                               |   |      |       |        | 6                        | 12          |
| X20<br>00097                       |                                   | SCREW, CAP, HEXAGON HEAD: CARBURETOR TO ENGINE MTG<br>1/4-20 THD SIZE, 3/4 IN LG<br>93357 (08645)                | EA                         |   | 2                               |   |      |       |        | 6                        | 5           |
| 00100                              |                                   | 0304 - AIR CLEANER   |                            |   |                                 |   |      |       |        |                          |             |
| P 0<br>00101                       | 2940-294-1599                     | AIR CLEANER, INTAKE<br>294870 (08645)  | EA                         |   | 1                               | *   | *    | *     | *      | 6                        | 2           |
| P 0<br>00102                       | 2940-688-7912                     | FILTER ELEMENT, AIR INTAKE<br>27987 (08645)  | EA                         |   | 1                               | *   | *    | *     | 2      | 6                        | 3           |
| X1<br>00103                        | 2940-608-8514                     | GASKET: AIR CLEANER<br>(COMPONENT OF GASKET SET STOCK No. 2805-828-0783,<br>SEE GROUP 0100)<br>27660 (08645)     | EA                         |   | 1                               |   |      |       |        | 6                        | 4           |
| X20<br>00104                       |                                   | SCREW, AIR CLEANER<br>93322 (08645)  | EA                         |   | 1                               |   |      |       |        | 6                        | 1           |

| (1)<br>SMR<br>CODE<br>INDEX<br>NO. | (2)<br>FEDERAL<br>STOCK<br>NUMBER | (3)<br>DESCRIPTION<br><br>REFERENCE NO. & MFR. CODE<br><br>USABLE ON CODE                                      | (4)<br>UNIT<br>OF<br>ISSUE | (5)<br>QTY<br>INC<br>IN<br>UNIT<br>PACK | (6)<br>QTY<br>INC<br>IN<br>UNIT | (7)<br>15-DAY ORGANIZATIONAL<br>MAINTENANCE ALW |      |       |        | (8)<br>ILLUS-<br>TRATION |             |
|------------------------------------|-----------------------------------|--|----------------------------|---|---------------------------------|---|------|-------|--------|--------------------------|-------------|
|                                    |                                   |  |                            |   |                                 | (a)   | (b)  | (c)   | (d)    | (a)                      | (b)         |
|                                    |                                   |  |                            |   |                                 | 1-5   | 6-20 | 21-50 | 51-100 | FIG<br>NO.               | ITEM<br>NO. |
| C0105                              |                                   | 0306 - TANKS, LINES, AND FITTINGS  |                            |   |                                 |   |      |       |        |                          |             |
| X20<br>00106                       |                                   | TANK, FUEL<br>296591 (08645)   | EA                         |   | 1                               |   |      |       |        | 6                        | 9           |
| P 0<br>00107                       | 2910-707-7503                     | CAP, FUEL TANK<br>293270 (08645)   | EA                         |   | 1                               | *   | *    | *     | *      | 6                        | 11          |
| X1<br>00108                        | 2910-898-2094                     | GASKET: FUEL TANK MTG<br>27911 (08645)<br>(COMPONENT OF GASKET SET Stock No.<br>2805-828-0783, SEE GROUP 0100) | EA                         |   | 1                               |   |      |       |        | 6                        | 8           |
| X20<br>00109                       |                                   | SCREW, CAP, HEXAGON HEAD: TANK MTG, 1/4-20<br>THD SIZE<br>93343 (08645)  | EA                         |   | 1                               |   |      |       |        | 6                        | 10          |
| 00110                              |                                   | 0308 - ENGINE SPEED GOVERNOR   |                            |   |                                 |   |      |       |        |                          |             |
| X20<br>00117                       |                                   | BUSHING: GOVERNOR LEVER<br>23688 (08645)   | EA                         |   | 1                               |   |      |       |        | 8                        | 10          |
| X20<br>00115                       |                                   | BRACKET: CONTROL ROD MTG<br>221384 (08645)   | EA                         |   | 1                               |   |      |       |        | 8                        | 5           |
| X20<br>00116                       | 2990-787-6665                     | BRACKET, MECHANICAL GOVERNOR: THROTTLE CONTROL<br>220691 (08645)   | EA                         |   | 1                               |   |      |       |        | 8                        | 12          |
| X20<br>00119                       |                                   | LEVER, GOVERNOR<br>294077 (08645)  | EA                         |   | 1                               |   |      |       |        | 8                        | 16          |
| X20<br>00120                       |                                   | LEVER, MECHANICAL GOVERNOR<br>220690 (08645)   | EA                         |   | 1                               |   |      |       |        | 8                        | 7           |
| X20<br>00121                       | 2990-920-5347                     | LINK, GOVERNOR<br>260544 (08645)   | EA                         |   | 1                               |   |      |       |        | 8                        | 14          |
| X20<br>00122                       |                                   | NUT, CONTROL ROD<br>230149 (08645)   | EA                         |   | 1                               |   |      |       |        | 8                        | 3           |
| X20<br>00125                       |                                   | ROD, CONTROL: GOVERNOR<br>230680 (08645)   | EA                         |   | 1                               |   |      |       |        | 8                        | 6           |

| (1)<br>SMR<br>CODE<br>INDEX<br>NO. | (2)<br>FEDERAL<br>STOCK<br>NUMBER | (3)<br>DESCRIPTION<br><br>REFERENCE NO. & MFR. CODE<br><br>USABLE ON CODE                  |  | (4)<br>UNIT OF<br>ISSUE | (5)<br>QTY<br>INC<br>IN<br>UNIT<br>PACK | (6)<br>QTY<br>INC<br>IN<br>UNIT | (7)<br>15-DAY ORGANIZATIONAL<br>MAINTENANCE ALW |      |       |        | (8)<br>ILLUS-<br>TRATION |             |
|------------------------------------|-----------------------------------|--|--|-------------------------|---|---------------------------------|---|------|-------|--------|--------------------------|-------------|
|                                    |                                   |  |  |                         |   |                                 | (a)   | (b)  | (c)   | (d)    | (a)                      | (b)         |
|                                    |                                   |  |  |                         |   |                                 | 1-5   | 6-20 | 21-50 | 51-100 | FIG<br>NO.               | ITEM<br>NO. |
| X20<br>00126                       |                                   | SCREW, ASSEMBLED WASHER: BRACKET MTG, 10-24 THD SIZE,<br>9/16 IN LG<br>93062 (08645)       |  | EA                      |   | 1                               |   |      |       |        | 8                        | 11          |
| O<br>00128                         | 5306-543-5219                     | SCREW, ASSEMBLED WASHER: THROTTLE LEVER MTG,<br>10-24 THD SIZE, 3/8 IN LG<br>93067 (08645) |  | EA                      |   | 1                               |   |      |       |        | 8                        | 9           |
| O<br>00129                         | 5305-719-4783                     | SCREW, MACHINE: LEVER MTG<br>93100 (08645)   |  | EA                      |   | 1                               |   |      |       |        | 8                        | 17          |
| P O<br>00131                       | 2990-624-0260                     | SPRING, CONTROL ROD<br>26855 (08645)   |  | EA                      |   | 1                               | *   | *    | *     | 2      | 8                        | 4           |
| P O<br>00132                       | 5340-945-0493                     | SPRING, GOVERNOR LEVER<br>260545 (08645)   |  | EA                      |   | 1                               | *   | *    | *     | 2      | 8                        | 15          |
| P O<br>00133                       | 2990-898-2097                     | SPRING, GOVERNOR LINK<br>260585 (08645)  |  | EA                      |   | 1                               | *   | *    | *     | 2      | 8                        | 13          |
| X20<br>00134                       |                                   | WASHER: GOVERNOR BRACKET AND LEVER MTG<br>66432 (08645)                                    |  | EA                      |   | 2                               |   |      |       |        | 8                        | 8           |
| 00137                              |                                   | GROUP 04 - EXHAUST SYSTEM  |  |                         |   |                                 |   |      |       |        |                          |             |
| 00137A                             |                                   | 0401 - MUFFLER AND PIPES   |  |                         |   |                                 |   |      |       |        |                          |             |
| X20<br>00138                       | 5975-152-1075                     | LOCKNUT, EXHAUST, MUFFLER<br>91811 (08645)   |  | EA                      |   | 1                               |   |      |       |        | 8                        | 1           |
| P O<br>00139                       | 2990-269-7145                     | MUFFLER, EXHAUST<br>89966 (08645)  |  | EA                      |   | 1                               | *   | *    | *     | *      | 8                        | 2           |
| 00140                              |                                   | GROUP 05 - COOLING SYSTEM  |  |                         |   |                                 |   |      |       |        |                          |             |
| 00140A                             |                                   | 0502 - SHROUDS   |  |                         |   |                                 |   |      |       |        |                          |             |
| X20<br>00141                       | 2930-537-1363                     | COVER, CYLINDER HEAD<br>220581 (08645)   |  | EA                      |   | 1                               |   |      |       |        | 4                        | 1           |

| (1)<br>SMR<br>CODE<br>INDEX<br>NO. | (2)<br>FEDERAL<br>STOCK<br>NUMBER | (3)<br>DESCRIPTION<br><br>REFERENCE NO. & MFR. CODE<br><br>USABLE ON CODE                    | (4)<br>UNIT OF ISSUE | (5)<br>QTY<br>INC<br>IN<br>UNIT<br>PACK | (6)<br>QTY<br>INC<br>IN<br>UNIT | (7)<br>15-DAY ORGANIZATIONAL<br>MAINTENANCE ALW |      |       |        | (8)<br>ILLUS-<br>TRATION |             |
|------------------------------------|-----------------------------------|--|----------------------|---|---------------------------------|---|------|-------|--------|--------------------------|-------------|
|                                    |                                   |  |                      |   |                                 | (a)   | (b)  | (c)   | (d)    | (a)                      | (b)         |
|                                    |                                   |  |                      |   |                                 | 1-5   | 6-20 | 21-50 | 51-100 | FIG<br>NO.               | ITEM<br>NO. |
| X20<br>00142                       | 2930-537-1360                     | DEFLECTOR, AIR<br>220692 (08645)   | EA                   |   | 1                               |   |      |       |        | 9                        | 7           |
| X20<br>00143                       |                                   | HOUSING, BLOWER<br>294260 (08645)  | EA                   |   | 1                               |   |      |       |        | 4                        | 4           |
| O<br>00144                         | 5305-719-4603                     | SCREW, ASSEMBLED WASHER: CYLINDER SHIELD MTG<br>93042 (08645)                                | EA                   |   | 1                               |   |      |       |        | 5                        | 1           |
| X20<br>00145                       |                                   | SCREW, CAP, HEXAGON: SHROUD MTG, 1/4-20 THD SIZE,<br>9/16 IN LG<br>92666 (08645)             | EA                   |   | 3                               |   |      |       |        | 4                        | 7           |
| X20<br>00146                       |                                   | SHIELD, CYLINDER<br>220478 (08645)   | EA                   |   | 1                               |   |      |       |        | 5                        | 2           |
| X20<br>00147                       |                                   | WASHER, LOCK: INTERNAL AND EXTERNAL TEETH,<br>SHROUD MTG, 1/4 IN SCREW SIZE<br>92778 (08645) | EA                   |   | 3                               |   |      |       |        | 4                        | 8           |
| 00148                              |                                   | GROUP 06 - ELECTRICAL SYSTEM   |                      |   |                                 |   |      |       |        |                          |             |
| 00148A                             |                                   | 0605 - IGNITION COMPONENTS   |                      |   |                                 |   |      |       |        |                          |             |
| P-O<br>00149                       | 2920-920-5373                     | ARMATURE, MAGNETO<br>298502 (08645)  | EA                   |   | 1                               | *   | *    | *     | *      | 9                        | 6           |
| O<br>00150                         | 5305-010-0752                     | BOLT: CONDENSER LEAD MTG<br>92786 (08645)  | EA                   |   | 1                               |   |      |       |        | 9                        | 17          |
| X20<br>00151                       |                                   | CLAMP: CONDENSER MTG<br>260455 (08645)   | EA                   |   | 1                               |   |      |       |        | 9                        | 15          |
| X20<br>00152                       | 2920-537-1365                     | COVER, CONTACT SET<br>220366 (08645)   | EA                   |   | 1                               |   |      |       |        | 9                        | 9           |
| P O<br>00153                       | 2805-920-5385                     | FLYWHEEL ASSEMBLY, MAGNETO<br>296884 (08645)   | EA                   |   | 1                               | *   | *    | *     | *      | 4                        | 20          |
| P O<br>00154                       | 5970-789-1925                     | INSULATOR, PLATE: TERMINAL, CONDENSER LEAD<br>66935 (08645)                                  | EA                   |   | 1                               | *   | *    | 2     | 2      | 9                        | 19          |



| (1)<br>SMR<br>CODE<br>INDEX<br>NO. | (2)<br>FEDERAL<br>STOCK<br>NUMBER | (3)<br>DESCRIPTION<br><br>REFERENCE NO. & MFR. CODE<br><br>USABLE ON CODE |  | (4)<br>UNIT OF<br>ISSUE | (5)<br>QTY<br>INC<br>IN<br>UNIT<br>PACK | (6)<br>QTY<br>INC<br>IN<br>UNIT | (7)<br>15-DAY ORGANIZATIONAL<br>MAINTENANCE ALW |      |       |        | (8)<br>ILLUS-<br>TRATION |             |
|------------------------------------|-----------------------------------|---|--|-------------------------|---|---------------------------------|---|------|-------|--------|--------------------------|-------------|
|                                    |                                   |   |  |                         |   |                                 | (a)   | (b)  | (c)   | (d)    | (a)                      | (b)         |
|                                    |                                   |   |  |                         |   |                                 | 1-5   | 6-20 | 21-50 | 51-100 | FIG<br>NO.               | ITEM<br>NO. |
| P O<br>00155                       | 5315-598-5970                     | KEY, MACHINE: FLY WHEEL MTG<br>61760 (08645)                              |  | EA                      |   | 1                               | *   | *    | *     | *      | 4                        | 19          |
| P O<br>00156                       | 2920-213-1147                     | LEAD, ELECTRICAL, SPARK PLUG: ARMATURE<br>293141 (08645)                  |  | EA                      |   | 1                               | *   | *    | *     | *      | 9                        | 5           |
| O<br>00157                         | 5310-596-5224                     | NUT, HEXAGON: CONDENSER LEAD MTG<br>90576 (08645)                         |  | EA                      |   | 1                               |   |      |       |        | 9                        | 20          |
| P O<br>00158                       | 2805-624-0284                     | PARTS KIT, IGNITION: BREAKER POINTS AND CONDENSER<br>294628 (08645)       |  | EA                      |   | 1                               | *   | 2    | 2     | 4      | 9                        | 12          |
| X20<br>00159                       | 5340-286-4566                     | SPRING, HELICAL, EXTENDED: BREAKER ARM<br>26018 (08645)                   |  | EA                      |   | 1                               |   |      |       |        | 9                        | 11          |
| P O<br>00160                       | 2920-294-3747                     | PLUG, SPARK, WITH GASKET<br>CJ8 (08645)                                   |  | EA                      |   | 1                               | 2   | 2    | 4     | 8      | 9                        | 3           |
| P O<br>00161                       | 2920-356-1333                     | PLUNGER, BREAKER POINT<br>65704 (08645)                                   |  | EA                      |   | 1                               | *   | *    | *     | *      | 9                        | 13          |
| O<br>00162                         | 5305-992-0440                     | SCREW, ASSEMBLED WASHER<br>93381 (08645)                                  |  | EA                      |   | 3                               |   |      |       |        | 9                        | 8           |
| O<br>00163                         | 5305-719-4603                     | SCREW, ASSEMBLED WASHER: CONDENSER CLAMP MTG<br>93042 (08645)             |  | EA                      |   | 1                               |   |      |       |        | 9                        | 14          |
| O<br>00164                         | 5305-543-5220                     | SCREW, ASSEMBLED WASHER: DUST COVER MTG<br>93014 (08645)                  |  | EA                      |   | 2                               |   |      |       |        | 9                        | 10          |
| O<br>00165                         | 5310-721-4667                     | WASHER, FLAT: FLYWHEEL MTG<br>220865 (08645)                              |  | EA                      |   | 1                               |   |      |       |        | 4                        | 18          |
| O<br>00166                         | 5310-011-5544                     | WASHER, LOCK: CONDENSER LEAD MTG  |  | EA                      |   | 2                               |   |      |       |        | 9                        | 18          |
| X20<br>00167                       | 6150-624-0279                     | WIRE, ELECTRICAL: LEAD, CONDENSER TO INSULATOR<br>293999 (08645)          |  | EA                      |   | 1                               |   |      |       |        | 9                        | 16          |

| (1)<br>SMR<br>CODE<br>INDEX<br>NO. | (2)<br>FEDERAL<br>STOCK<br>NUMBER | (3)<br>DESCRIPTION<br><br>REFERENCE NO. & MFR. CODE<br><br>USABLE ON CODE | (4)<br>UNIT OF<br>ISSUE | (5)<br>QTY<br>INC<br>IN<br>UNIT<br>PACK | (6)<br>QTY<br>INC<br>IN<br>UNIT | (7)<br>15-DAY ORGANIZATIONAL<br>MAINTENANCE ALW |      |       |        | (8)<br>ILLUS-<br>TRATION |             |
|------------------------------------|-----------------------------------|---|-------------------------|---|---------------------------------|---|------|-------|--------|--------------------------|-------------|
|                                    |                                   |   |                         |   |                                 | (a)   | (b)  | (c)   | (d)    | (a)                      | (b)         |
|                                    |                                   |   |                         |   |                                 | 1-5   | 6-20 | 21-50 | 51-100 | FIG<br>NO                | ITEM<br>NO. |
| 00168                              |                                   | GROUP 15 - FRAME  |                         |   |                                 |   |      |       |        |                          |             |
| 00168A                             |                                   | 1501 - FRAME ASSEMBLY   |                         |   |                                 |   |      |       |        |                          |             |
| X20<br>00169                       |                                   | BASE ASSEMBLY<br>SX1610 (88795)   | EA                      |   | 1                               |   |      |       |        |                          |             |
| X20<br>00170                       |                                   | BASE, LEFT<br>SX1644A (88795)   | EA                      |   | 1                               |   |      |       |        | 10                       | 3           |
| X20<br>00170A                      |                                   | BASE, RIGHT<br>SX1644B (88795)  | EA                      |   | 1                               |   |      |       |        | 10                       | 3           |
| X20<br>00171                       |                                   | BASKET, CARRYING<br>SX700 (88795)   | EA                      |   | 1                               |   |      |       |        | 10                       | 8           |
| X20<br>00172                       |                                   | BOLT: BASE MTG, 5/16-18 THD SIZE, 1 1/2 IN LG<br>BE002A7 (88795)          | EA                      |   | 4                               |   |      |       |        | 10                       | 9           |
| X20<br>00173                       |                                   | BOLT: SUPPORT AND SPACER MTG, 3/8-16 THD SIZE, 9 IN LG<br>SX1094 (88795)  | EA                      |   | 2                               |   |      |       |        | 10                       | 5           |
| X20<br>00174                       |                                   | NUT, HEXAGON: BASE MTG, 5/16-18 THD SIZE<br>BG002B2 (88795)               | EA                      |   | 4                               |   |      |       |        | 10                       | 6           |
| X20<br>00175                       |                                   | NUT, STOP: SUPPORT AND SPACER MTG, 3/8-16 THD SIZE<br>SX989 (88795)       | EA                      |   | 2                               |   |      |       |        | 10                       | 1           |
| X20<br>00176                       |                                   | SPACER, BASE: 4-5/8 IN LG<br>SX988 (88795)                                | EA                      |   | 2                               |   |      |       |        | 10                       | 2           |
| X20<br>00177                       |                                   | SUPPORT, FILTER ASSEMBLY<br>SX1091 (88795)                                | EA                      |   | 2                               |   |      |       |        | 10                       | 4           |
| X20<br>00178                       |                                   | WASHER, LOCK: BASE MTG, 5/16 IN SCREW SIZE<br>AH002B1 (88795)             | EA                      |   | 4                               |   |      |       |        | 10                       | 7           |

| (1)<br>SMR<br>CODE<br><br>INDEX<br>NO. | (2)<br>FEDERAL<br>STOCK<br>NUMBER | (3)<br>DESCRIPTION<br><br>REFERENCE NO. & MFR. CODE   | (4)<br>UNIT OF<br>ISSUE<br><br>USABLE ON CODE | (5)<br>QTY<br>INC<br>IN<br>UNIT<br>PACK | (6)<br>QTY<br>INC<br>IN<br>UNIT | (7)<br>15-DAY ORGANIZATIONAL<br>MAINTENANCE ALW |             |              |               | (8)<br>ILLUS-<br>TRATION |                    |
|--|-----------------------------------|---|---|---|---------------------------------|---|-------------|--------------|---------------|--------------------------|--------------------|
|  |                                   |   |   |   |                                 | (a)<br>1-5                                      | (b)<br>6-20 | (c)<br>21-50 | (d)<br>51-100 | (a)<br>FIG<br>NO.        | (b)<br>ITEM<br>NO. |
|  |                                   |   |   |   |                                 |   |             |              |               |                          |                    |
| 00179                                  |                                   | GROUP 22 - BODY CHASSIS OR HULL, AND ACCESSORY ITEMS  |   |   |                                 |   |             |              |               |                          |                    |
| 00179A                                 |                                   | 2202 - ACCESSORY ITEMS  |   |   |                                 |   |             |              |               |                          |                    |
| X20<br>00180                           |                                   | ACCESSORY HOSE AND NOZZLE PACKAGE<br>SX1077 (88795)   | EA  |   | 1                               |   |             |              |               |                          |                    |
| P O<br>00181                           | 4720-946-9960                     | HOSE ASSEMBLY, SUCTION, RUBBER: WITH COUPLING<br>SX848 (88795)<br>(COMPONENTS SAME AS HOSE ASSEMBLY, STOCK No.<br>4720-916-1883, EXCEPT WHERE INDIVIDUAL COMPONENTS<br>ARE ANNOTATED) | EA  |   | 1                               | *   | *           | *            | *             |                          |                    |
| P O<br>00182                           | 4720-916-1883                     | HOSE ASSEMBLY, DISCHARGE: RUBBER W/COUPLING<br>SX937 (88795)  | EA  |   | 2                               | *   | *           | *            | 2             | 11                       |                    |
| X1<br>00183                            |                                   | HOSE, DISCHARGE: 50 FT<br>546-622-048 (25500)<br>(USED WITH HOSE ASSEMBLY, STOCK No.<br>4720-916-1883, ONLY)  | EA  |   | 2                               |   |             |              |               | 11                       | 1                  |
| X1<br>00184                            |                                   | HOSE, SUCTION, FUEL: 10 FT<br>541-621-048 (25500)<br>(USED WITH HOSE ASSEMBLY, STOCK No.<br>4720-946-9960 ONLY)   | EA  |   | 1                               |   |             |              |               | 11                       | 2                  |
| X1<br>00185                            |                                   | CLAMP, HOSE<br>AR005A1 (08484)  | EA  |   | 12                              |   |             |              |               | 11                       | 8                  |
| X1<br>00186                            | 4730-542-4031                     | COUPLING, HALF QUICK<br>633C (81718)  | EA  |   | 3                               |   |             |              |               | 11                       | 10                 |
| X1<br>00187                            |                                   | COUPLER, HOSE, SHANK<br>SX1616 (81718)  | EA  |   | 3                               |   |             |              |               |                          |                    |
| X1<br>00188                            |                                   | FINGER RING<br>SX1605 (88795)   | EA  |   | 6                               |   |             |              |               |                          |                    |
| P O<br>00189                           | 4730-360-0595                     | GASKET<br>H6430M (81718)  | EA  |   | 3                               | *   | 2           | 2            | 2             |                          |                    |

| (1)<br>SMR<br>CODE<br><br>INDEX<br>NO. | (2)<br>FEDERAL<br>STOCK<br>NUMBER | (3)<br><br>DESCRIPTION<br><br><br>REFERENCE NO. & MFR. CODE<br><br><br><br><br><br><br><br><br><br><br><br><br><br><br><br><br><br><br><br><br><br><br><br><br><br><br><br><br><br><br><br><br><br><br><br><br><br><br><br><br><br><br><br><br><br><br><br><br><br><br><br><br><br><br><br><br><br><br><br><br><br><br><br><br><br><br><br><br><br><br><br><br><br><br><br><br><br><br><br><br><br><br><br><br><br><br><br><br><br><br><br><br><br><br><br><br><br><br><br><br><br><br><br><br><br><br><br><br><br><br><br><br><br><br><br><br><br><br><br><br><br><br><br><br><br><br><br><br><br><br><br><br><br><br><br><br><br><br><br><br><br><br><br><br><br><br><br><br><br><br><br><br><br><br><br><br><br><br><br><br><br><br><br><br><br><br><br><br><br><br><br><br><br><br><br><br><br><br><br><br><br><br><br><br><br><br><br><br><br><br><br><br><br><br><br><br><br><br><br><br><br><br><br><br><br><br><br><br><br><br><br><br><br><br><br><br><br><br><br><br><br><br><br><br><br><br><br><br><br><br><br><br><br><br><br><br><br><br><br><br><br><br><br><br><br><br><br><br><br><br><br><br><br><br><br><br><br><br><br><br><br><br><br><br><br><br><br><br><br><br><br><br><br><br><br><br><br><br><br><br><br><br><br><br><br><br><br><br><br><br><br><br><br><br><br><br><br><br><br><br><br><br><br><br><br><br><br><br><br><br><br><br><br><br><br><br><br><br><br><br><br><br><br><br><br><br><br><br><br><br><br><br><br><br><br><br><br><br><br><br><br><br><br><br><br><br><br><br><br><br><br><br><br><br><br><br><br><br><br><br><br><br><br><br><br><br><br><br><br><br><br><br><br><br><br><br><br><br><br><br><br><br><br><br><br><br><br><br><br><br><br><br><br><br><br><br><br><br><br><br><br><br><br><br><br><br><br><br><br><br><br><br><br><br><br><br><br><br><br><br><br><br><br><br><br><br><br><br><br><br><br><br><br><br><br><br><br><br><br><br><br><br><br><br><br><br><br><br><br><br><br><br><br><br><br><br><br><br><br><br><br><br><br><br><br><br><br><br><br><br><br><br><br><br><br><br><br><br><br><br><br><br><br><br><br><br><br><br><br><br><br><br><br><br><br><br><br><br><br><br><br><br><br><br><br><br><br><br><br><br><br><br><br><br><br><br><br><br><br><br><br><br><br><br><br><br><br><br><br><br><br><br><br><br><br><br><br><br><br><br><br><br><br><br><br><br><br><br><br><br><br><br><br><br><br><br><br><br><br><br><br><br><br><br><br><br><br><br><br><br><br><br><br><br><br><br><br><br><br><br><br><br><br><br><br><br><br><br><br><br><br><br><br><br><br><br><br><br><br><br><br><br><br><br><br><br><br><br><br><br><br><br><br><br><br><br><br><br><br><br><br><br><br><br><br><br><br><br><br><br><br><br><br><br><br><br><br><br><br><br><br><br><br><br><br><br><br><br><br><br><br><br><br><br><br><br><br><br><br><br><br><br><br><br><br><br><br><br><br><br><br><br><br><br><br><br><br><br><br><br><br><br><br><br><br><br><br><br><br><br><br><br><br><br><br><br><br><br><br><br><br><br><br><br><br><br><br><br><br><br><br><br><br><br><br><br><br><br><br><br><br><br><br><br><br><br><br><br><br><br><br><br><br><br><br><br><br><br><br><br><br><br><br><br><br><br><br><br><br><br><br><br><br><br><br><br><br><br><br><br><br><br><br><br><br><br><br><br><br><br><br><br><br><br><br><br><br><br><br><br><br><br><br><br><br><br><br><br><br><br><br><br><br><br><br><br><br><br><br><br><br><br><br><br><br><br><br><br><br><br><br><br><br><br><br><br><br><br><br><br><br><br><br><br><br><br><br><br><br><br><br><br><br><br><br><br><br><br><br><br><br><br><br><br><br><br><br><br><br><br><br><br><br><br><br><br><br><br><br><br><br><br><br><br><br><br><br><br><br><br><br><br><br><br><br><br><br><br><br><br><br><br><br><br><br><br><br><br><br><br><br><br><br><br><br><br><br><br><br><br><br><br><br><br><br><br><br><br><br><br><br><br><br><br><br><br><br><br><br><br><br><br><br><br><br><br><br><br><br><br><br><br><br><br><br><br><br><br><br><br><br><br><br><br><br><br><br><br><br><br><br><br><br><br><br><br><br><br><br><br><br><br><br><br><br><br><br><br><br><br><br><br><br><br><br><br><br><br><br><br><br><br><br><br><br><br><br><br><br><br><br><br><br><br><br><br><br><br><br><br><br><br><br><br><br><br><br><br><br><br><br><br><br><br><br><br><br><br><br><br><br><br><br><br><br><br><br><br><br><br><br><br><br><br><br><br><br><br><br><br><br><br><br><br><br><br><br><br><br><br><br><br><br><br><br><br><br><br><br><br><br><br><br><br><br><br><br><br><br><br><br><br><br><br><br><br><br><br><br><br><br><br><br><br><br><br><br><br><br><br><br><br><br><br><br><br><br><br><br><br><br><br><br><br><br><br><br><br><br><br><br><br><br><br><br><br><br><br><br><br><br><br><br><br><br><br><br><br><br><br><br><br><br><br><br><br><br><br><br><br><br><br><br><br><br><br><br><br><br><br><br><br><br><br><br><br><br><br><br><br><br><br><br><br><br><br><br><br><br><br><br><br><br><br><br><br><br><br><br><br><br><br><br><br><br><br><br><br><br><br><br><br><br><br><br><br><br><br><br><br><br><br><br><br><br><br><br><br><br><br><br><br><br><br><br><br><br><br><br><br><br><br><br><br><br><br><br><br><br><br><br><br><br><br><br><br><br><br><br><br><br><br><br><br><br><br><br><br><br><br><br><br><br><br><br><br><br><br><br><br><br><br><br><br><br><br><br><br><br><br><br><br><br><br><br><br><br><br><br><br><br><br><br><br><br><br><br><br><br><br><br><br><br><br><br><br><br><br><br><br><br><br><br><br><br><br><br><br><br><br><br><br><br><br><br><br><br><br><br><br><br><br><br><br><br><br><br><br><br><br><br><br><br><br><br><br><br><br><br><br><br><br><br><br><br><br><br><br><br><br><br><br><br><br><br><br><br><br><br><br><br><br><br><br><br><br><br><br><br><br><br><br><br><br><br><br><br><br><br><br><br><br><br><br><br><br><br><br><br><br><br><br><br><br><br><br><br><br><br><br><br><br><br><br><br><br><br><br><br><br><br><br><br><br><br><br><br><br><br><br><br><br><br><br><br><br><br><br><br><br><br><br><br><br><br><br><br><br><br><br><br><br><br><br><br><br><br><br><br><br><br><br><br><br><br><br><br><br><br><br><br><br><br><br><br><br><br><br><br><br><br><br><br><br><br><br><br><br><br><br><br><br><br><br><br><br><br><br><br><br><br><br><br><br><br><br><br><br><br><br><br><br><br><br><br><br><br><br><br><br><br><br><br><br><br><br><br><br><br><br><br><br><br><br><br><br><br><br><br><br><br><br><br><br><br><br><br><br><br><br><br><br><br><br><br><br><br><br><br><br><br><br><br><br><br><br><br><br><br><br><br><br><br><br><br><br><br><br><br><br><br><br><br><br><br><br><br><br><br><br><br><br><br><br><br><br><br><br><br><br><br><br><br><br><br><br><br><br><br><br><br><br><br><br><br><br><br><br><br><br><br><br><br><br><br><br><br><br><br><br><br><br><br><br><br><br><br><br><br><br><br><br><br><br><br><br><br><br><br><br><br><br><br><br><br><br><br><br><br><br><br><br><br><br><br><br><br><br><br><br><br><br><br><br><br><br><br><br><br><br><br><br><br><br><br><br><br><br><br><br><br><br><br><br><br><br><br><br><br><br><br><br><br><br><br><br><br><br><br><br><br><br><br><br><br><br><br><br><br><br><br><br><br><br><br><br><br><br><br><br><br><br><br><br><br><br><br><br><br><br><br><br><br><br><br><br><br><br><br><br><br><br><br><br><br><br><br><br><br><br><br><br><br><br><br><br><br><br><br><br><br><br><br><br><br><br><br><br><br><br><br><br><br><br><br><br><br><br><br><br><br><br><br><br><br><br><br><br><br><br><br><br><br><br><br><br><br><br><br><br><br><br><br><br><br><br><br><br><br><br><br><br><br><br><br><br><br><br><br><br><br><br><br><br><br><br><br><br><br><br><br><br><br><br><br><br><br><br><br><br><br><br><br><br><br><br><br><br><br><br><br><br><br><br><br><br><br><br><br><br><br><br><br><br><br><br><br><br><br><br><br><br><br><br><br><br><br><br><br><br><br><br><br><br><br><br><br><br><br><br><br><br><br><br><br><br><br><br><br><br><br><br><br><br><br><br><br><br><br><br><br><br><br><br><br><br><br><br><br><br><br><br><br><br><br><br><br><br><br><br><br><br><br><br><br><br><br><br><br><br><br><br><br><br><br><br><br><br><br><br><br><br><br><br><br><br><br><br><br><br><br><br><br><br><br><br><br><br><br><br><br><br><br><br><br><br><br><br><br><br><br><br><br><br><br><br><br><br><br><br><br><br><br><br><br><br><br><br><br><br><br><br><br><br><br><br><br><br><br><br><br><br><br><br><br><br><br><br><br><br><br><br><br><br><br><br><br><br><br><br><br><br><br><br><br><br><br><br><br><br><br><br><br><br><br><br><br><br><br><br><br><br><br><br><br><br><br><br><br><br><br><br><br><br><br><br><br><br><br><br><br><br><br><br><br><br><br><br><br><br><br><br><br><br><br><br><br><br><br><br><br><br><br><br><br><br><br><br><br><br><br><br><br><br><br><br><br><br><br><br><br><br><br><br><br><br><br><br><br><br><br><br><br><br><br><br><br><br><br><br><br><br><br><br><br><br><br><br><br><br><br><br><br><br><br><br><br><br><br><br><br><br><br><br><br><br><br><br><br><br><br><br><br><br><br><br><br><br><br><br><br><br><br><br><br><br><br><br><br><br><br><br><br><br><br><br><br><br><br><br><br><br><br><br><br><br><br><br><br><br><br><br><br><br><br><br><br><br><br><br><br><br><br><br><br><br><br><br><br><br><br><br><br><br><br><br><br><br><br><br><br><br><br><br><br><br><br><br><br><br><br><br><br><br><br><br><br><br><br><br><br><br><br><br><br><br><br><br><br><br><br><br><br><br><br><br><br><br><br><br><br><br><br><br><br><br><br><br><br><br><br><br><br><br><br><br><br><br><br><br><br><br><br><br><br><br><br><br><br><br><br><br><br><br><br><br><br><br><br><br><br><br><br><br><br><br><br><br><br><br><br><br><br><br><br><br><br><br><br><br><br><br><br><br><br><br><br><br><br><br><br><br><br><br><br><br><br><br><br><br><br><br><br><br><br><br><br><br><br><br><br><br><br><br><br><br><br><br><br><br><br><br><br><br><br><br><br><br><br><br><br><br><br><br><br><br><br><br><br><br><br><br><br><br><br><br><br><br><br><br><br><br><br><br><br><br><br><br><br><br><br><br><br><br><br><br><br><br><br><br><br><br><br><br><br><br><br><br><br><br><br><br><br><br><br><br><br><br><br><br><br><br><br><br><br><br><br><br><br><br><br><br><br><br><br><br><br><br><br><br><br><br><br><br><br><br><br><br><br><br><br><br><br><br><br><br><br><br><br><br><br><br><br><br><br><br><br><br><br><br><br><br><br><br><br><br><br><br><br><br><br><br><br><br><br><br><br><br><br><br><br><br><br><br><br><br><br><br><br><br><br><br><br><br><br><br><br><br><br><br><br><br><br><br><br><br><br><br><br><br><br><br><br><br><br><br><br><br><br><br><br><br><br><br><br><br><br><br><br><br><br><br><br><br><br><br><br><br><br><br><br><br><br><br><br><br><br><br><br><br><br><br><br><br><br><br><br><br><br><br><br><br><br><br><br><br><br><br><br><br><br><br><br><br><br><br><br><br><br><br><br><br><br><br><br><br><br><br><br><br><br><br><br><br><br><br><br><br><br><br><br><br><br><br><br><br><br><br><br><br><br><br><br>< |
|--|-----------------------------------|--|
|--|-----------------------------------|--|

| (1)<br>SMR<br>CODE<br>INDEX<br>NO. | (2)<br>FEDERAL<br>STOCK<br>NUMBER | (3)<br>DESCRIPTION<br><br>REFERENCE NO. & MFR. CODE<br><br>USABLE ON CODE                | (4)<br>UNIT OF<br>ISSUE | (5)<br>QTY<br>INC<br>IN<br>UNIT<br>PACK | (6)<br>QTY<br>INC<br>IN<br>UNIT | (7)<br>15-DAY ORGANIZATIONAL<br>MAINTENANCE ALW |      |       |        | (8)<br>ILLUS-<br>TRATION |             |
|------------------------------------|-----------------------------------|--|-------------------------|---|---------------------------------|---|------|-------|--------|--------------------------|-------------|
|                                    |                                   |  |                         |   |                                 | (a)   | (b)  | (c)   | (d)    | (a)                      | (b)         |
|                                    |                                   |  |                         |   |                                 | 1-5   | 6-20 | 21-50 | 51-100 | FIG<br>NO.               | ITEM<br>NO. |
| 00203                              |                                   | GROUP 72 - DISPENSING AND SERVICING EQUIPMENT COMPONENTS                                 |                         |   |                                 |   |      |       |        |                          |             |
| 00203A                             |                                   | 7202 - PUMPS AND METERS  |                         |   |                                 |   |      |       |        |                          |             |
| X20<br>00204                       |                                   | PUMP ASSEMBLY<br>SX1603 (88795)<br>(INCLUDES COMPONENTS OF KIT, STOCK No. 4320-989-3259) | EA                      |   | 1                               |   |      |       |        |                          |             |
| X1<br>00205                        |                                   | CASING ASSEMBLY<br>SX1608 (88795)  | EA                      |   | 1                               |   |      |       |        |                          |             |
| X1<br>00207                        |                                   | CAP ASSEMBLY, DUST<br>SX1604 (88795)   | EA                      |   | 1                               |   |      |       |        | 12                       | 22          |
| X1<br>00208                        | 4730-555-1562                     | CAP<br>634B (81718)  | EA                      |   | 1                               |   |      |       |        |                          |             |
| X1<br>00209                        | 4010-628-5276                     | CHAIN ASSEMBLY, SINGLE SECURITY<br>H6682M (81718)  | EA                      |   | 1                               |   |      |       |        |                          |             |
| X1<br>00210                        |                                   | FINGER, RING<br>SX1605 (88795)   | EA                      |   | 2                               |   |      |       |        |                          |             |
| P O<br>00211                       | 4730-360-0595                     | GASKET: DUST CAP<br>H6430M (81718)<br>(INITIALLY LISTED AS INDEX No. 00189)              | EA                      |   | 1                               |   |      |       |        | 12                       | 23          |
| X20<br>00213                       | 4730-805-6726                     | COUPLING, HALF QUICK: PUMP CASING<br>633F (81718)  | EA                      |   | 3                               |   |      |       |        | 12                       | 25          |
| X20<br>00214                       |                                   | ELBOW, SIDE OUTLET, PUMP: ALL ENDS FEMALE,<br>1 1/2-11 1/2 THD SIZE<br>SX990 (88795)     | EA                      |   | 1                               |   |      |       |        | 12                       | 1           |
| X20<br>00215                       |                                   | HANDLE, PUMP<br>C2002A1 (88795)  | EA                      |   | 1                               |   |      |       |        | 12                       | 2           |
| X20<br>00216                       |                                   | NIPPLE: 1 1/2 IN, ALUM, 2 IN LG PUMP CASING<br>SX715 (88795)                             | EA                      |   | 1                               |   |      |       |        | 12                       | 27          |

| (1)<br>SMR<br>CODE<br>INDEX<br>NO. | (2)<br>FEDERAL<br>STOCK<br>NUMBER | (3)<br>DESCRIPTION<br><br>REFERENCE NO. & MFR. CODE<br><br>USABLE ON CODE | (4)<br>UNIT OF ISSUE | (5)<br>QTY<br>INC<br>IN<br>UNIT<br>PACK | (6)<br>QTY<br>INC<br>IN<br>UNIT | (7)<br>15-DAY ORGANIZATIONAL<br>MAINTENANCE ALW |      |       |        | (8)<br>ILLUS-<br>TRATION |             |
|------------------------------------|-----------------------------------|---|----------------------|---|---------------------------------|---|------|-------|--------|--------------------------|-------------|
|                                    |                                   |   |                      |   |                                 | (a)   | (b)  | (c)   | (d)    | (a)                      | (b)         |
|                                    |                                   |   |                      |   |                                 | 1-5   | 6-20 | 21-50 | 51-100 | FIG<br>NO.               | ITEM<br>NO. |
| X20<br>00217                       |                                   | NUT, CAP: PUMP CASING, 3/8-16 THD SIZE<br>BG001A2 (88795)                 | EA                   |   | 2                               |   |      |       |        | 12                       | 24          |
| X20<br>00218                       |                                   | PLUG, PIPE: 1/2 IN NPT PUMP CASING<br>AJ002A4 (88795)                     | EA                   |   | 1                               |   |      |       |        | 12                       | 21          |
| X20<br>00221                       |                                   | ADAPTER ASSEMBLY<br>SX1609 (88795)  | EA                   |   | 1                               |   |      |       |        | 12                       |             |
| X20<br>00224                       |                                   | BOLT: PUMP MTG, 5/16-18 THD SIZE, 5/8 IN LG<br>BE002A2 (88795)            | EA                   |   | 1                               |   |      |       |        | 12                       | 20          |
| X20<br>00225                       |                                   | BOLT: PUMP TO ENGINE MTG, 5/16-24 THD SIZE, 3/4 IN LG<br>BE001A3 (88795)  | EA                   |   | 4                               |   |      |       |        | 12                       | 12          |
| X20<br>00226                       |                                   | BOLT, MACHINE: PUMP MTG, 5/16-18 THD SIZE, 1 IN LG<br>BE002A5 (88795)     | EA                   |   | 1                               |   |      |       |        | 12                       | 17          |
| X20<br>00228                       |                                   | NUT, HEXAGON: PUMP ADAPTER MTG, 3/8-16 THD SIZE<br>BG002B3 (88795)        | EA                   |   | 4                               |   |      |       |        | 12                       | 14          |
| X20<br>00229                       |                                   | NUT, HEXAGON: PUMP MTG, 5/16-18 THD SIZE<br>BG002B2 (88795)               | EA                   |   | 5                               |   |      |       |        | 12                       | 19          |
| X20<br>00230                       |                                   | WASHER, FLAT: PUMP MTG, 5/16 IN SCREW SIZE<br>AD001A1 (88795)             | EA                   |   | 1                               |   |      |       |        | 12                       | 18          |
| X20<br>00231                       |                                   | WASHER, LOCK: PUMP MTG, 5/16 IN SCREW SIZE<br>AH002B1 (88795)             | EA                   |   | 10                              |   |      |       |        | 12                       | 13          |
| X20<br>00232                       |                                   | WASHER, LOCK: PUMP ADAPTER, 3/8 IN SCREW SIZE<br>AH002B2 (88795)          | EA                   |   | 4                               |   |      |       |        | 12                       | 15          |
| 00238                              |                                   | 7203 - VALVES, FITTINGS, NOZZLES  |                      |   |                                 |   |      |       |        |                          |             |
| P OR<br>00239                      | 4320-946-9961                     | NOZZLE ASSEMBLY, NONAUTOMATIC<br>SX931A (88795)                           | EA                   |   | 2                               | *   | *    | *     | *      |                          |             |
| X20<br>00241                       | 4730-715-1558                     | COUPLING, HALF, QUICK<br>633B (81718)                                     | EA                   |   | 1                               |   |      |       |        |                          |             |

| (1)<br>SMR<br>CODE<br>INDEX<br>NO. | (2)<br>FEDERAL<br>STOCK<br>NUMBER | (3)<br>DESCRIPTION<br><br>REFERENCE NO. & MFR. CODE               | (4)<br>UNIT OF<br>ISSUE | (5)<br>QTY<br>INC<br>IN<br>UNIT<br>PACK | (6)<br>QTY<br>INC<br>IN<br>UNIT | (7)<br>15-DAY ORGANIZATIONAL<br>MAINTENANCE ALW |      |       |        | (8)<br>ILLUS-<br>TRATION |             |
|------------------------------------|-----------------------------------|---|-------------------------|---|---------------------------------|---|------|-------|--------|--------------------------|-------------|
|                                    |                                   |   |                         |   |                                 | (a)   | (b)  | (c)   | (d)    | (a)                      | (b)         |
|                                    |                                   |   |                         |   |                                 | 1-5   | 6-20 | 21-50 | 51-100 | FIG<br>NO.               | ITEM<br>NO. |
| X20<br>00243                       |                                   | PLUG ASSEMBLY, DUST<br>SX1617 (88795)                             | EA                      |   | 1                               |   |      |       |        |                          |             |
| X20<br>00244                       |                                   | CHAIN, BRASS: 6 IN<br>H6682M (81718)                              | EA                      |   | 1                               |   |      |       |        | 13                       | 11          |
| X20<br>00245                       |                                   | COUPLER<br>SX888 (81718)  | EA                      |   | 1                               |   |      |       |        | 13                       | 3           |
| P O<br>00246                       | 4730-360-0595                     | GASKET<br>H6430M (81718)<br>(INITIALLY LISTED AS INDEX No. 00189) | EA                      |   | 1                               |   |      |       |        | 13                       | 2           |
| X20<br>00247                       | 4730-595-3846                     | PLUG, DUST<br>634A (81718)  | EA                      |   | 1                               |   |      |       |        | 13                       | 1           |
| X20<br>00248                       |                                   | RING, FINGER<br>SX1605 (88795)                                    | EA                      |   | 2                               |   |      |       |        | 13                       | 10          |
| X1<br>00249                        |                                   | SCREEN, FILTER: 100 MESH<br>153 (81718)                           | EA                      |   | 1                               |   |      |       |        | 13                       | 5           |
| X20<br>00250                       |                                   | SCREW, GROUNDING WIRE<br>SX1048 (88795)                           | EA                      |   | 1                               |   |      |       |        | 13                       | 9           |
| X20<br>00251                       |                                   | SPOUT, RIGID: NOZZLE ASSEMBLY<br>CC296 1 1/2X1 5/8 (81718)        | EA                      |   | 1                               |   |      |       |        | 13                       | 6           |
| X20<br>00252                       |                                   | WIRE ASSEMBLY, GROUNDING<br>190W (81718)                          | EA                      |   | 1                               |   |      |       |        | 13                       | 8           |
| 00253                              |                                   | 7204 - MISCELLANEOUS PARTS AND ACCESSORIES                        |                         |   |                                 |   |      |       |        |                          |             |
| X20<br>00254                       |                                   | GAGE ASSEMBLY, 30-NO-GO: 100 GPM<br>SX1611 (88795)                | EA                      |   | 1                               |   |      |       |        |                          |             |
| X1<br>00256                        |                                   | COVER, END: 100 GPM<br>SX1613 (88795)                             | EA                      |   | 1                               |   |      |       |        | 15                       | 5           |
| P O<br>00257                       | 4930-872-1779                     | ELEMENT, FILTER<br>041420S (90005)                                | EA                      |   | 5                               | 2   | 2    | 4     | 8      | 15                       | 1           |

| (1)<br>SMR<br>CODE<br>INDEX<br>NO. | (2)<br>FEDERAL<br>STOCK<br>NUMBER | (3)<br>DESCRIPTION<br><br>REFERENCE NO. & MFR. CODE<br><br>USABLE ON CODE | (4)<br>UNIT<br>OF<br>ISSUE | (5)<br>QTY<br>INC<br>IN<br>UNIT<br>PACK | (6)<br>QTY<br>INC<br>IN<br>UNIT | (7)<br>15-DAY ORGANIZATIONAL<br>MAINTENANCE ALW |      |       |        | (8)<br>ILLUS-<br>TRATION |             |
|------------------------------------|-----------------------------------|---|----------------------------|---|---------------------------------|---|------|-------|--------|--------------------------|-------------|
|                                    |                                   |   |                            |   |                                 | (a)   | (b)  | (c)   | (d)    | (a)                      | (b)         |
|                                    |                                   |   |                            |   |                                 | 1-5   | 6-20 | 21-50 | 51-100 | FIG<br>NO.               | ITEM<br>NO. |
| P O<br>00259                       | 5330-526-7517                     | O RING, 100 GPM GAGE<br>MS29513-249 (96906)                               | EA                         |   | 1                               | *   | 2    | 2     | 4      | 15                       | 4           |
| X20<br>00260                       |                                   | ADAPTER, HOSE<br>MAB6 (88795)   | EA                         |   | 2                               |   |      |       |        | 14                       | 8           |
| X20<br>00261                       | 4730-805-6726                     | ADAPTER, HOSE: 1 1/2 IN<br>633F (81718)                                   | EA                         |   | 2                               |   |      |       |        | 14                       | 2           |
| X1<br>00262                        |                                   | CAP ASSEMBLY, DUST<br>SX1604 (88795)                                      | EA                         |   | 2                               |   |      |       |        | 14                       | 4           |
| X1<br>00263                        |                                   | DUST CAP<br>634B (88795)  | EA                         |   | 2                               |   |      |       |        |                          |             |
| X1<br>00264                        |                                   | FINGER RING<br>SX1605 (88795)   | EA                         |   | 4                               |   |      |       |        |                          |             |
| P O<br>00265                       | 4730-360-0595                     | GASKET<br>H6430M (81718)<br>(INITIALLY LISTED AS INDEX No. 00189)         | EA                         |   | 2                               |   |      |       |        | 14                       | 3           |
| X1<br>00266                        | 4010-628-5276                     | CHAIN, ASSEMBLY, SING<br>H6682M (81718)                                   | EA                         |   | 2                               |   |      |       |        |                          |             |
| P O<br>00267                       | 4320-920-5342                     | CLAMP, HOSE<br>QS200M28A (88795)  | EA                         |   | 4                               | *   | *    | *     | 2      | 14                       | 9           |
| X20<br>00268                       | 4730-020-9293                     | COUPLER: 1 1/2 IN<br>633H (81718)   | EA                         |   | 1                               |   |      |       |        | 14                       | 12          |
| X20<br>00269                       |                                   | HOSE, GAGE CONNECTING<br>SX1619 (88795)                                   | EA                         |   | 1                               |   |      |       |        | 14                       | 10          |
| X20<br>00270                       |                                   | NIPPLE: 1 1/2, ALUM, 2 IN LG<br>SX715 (88795)                             | EA                         |   | 1                               |   |      |       |        | 14                       | 5           |
| P O<br>00271                       | 6685-923-7077                     | GAGE, PRESSURE, DIAL<br>022-171 (38508)                                   | EA                         |   | 2                               | *   | *    | *     | *      | 14                       | 7           |
| X20<br>00272                       |                                   | PLUG ASSEMBLY, DUST<br>SX1617 (88795)                                     | EA                         |   | 1                               |   |      |       |        | 14                       | 11          |



| (1)<br>SMR<br>CODE<br><br>INDEX<br>NO. | (2)<br>FEDERAL<br>STOCK<br>NUMBER | (3)<br>DESCRIPTION<br><br>REFERENCE NO. & MFR. CODE<br><br>USABLE ON CODE |  | (4)<br>UNIT OF<br>ISSUE | (5)<br>QTY<br>INC<br>IN<br>UNIT<br>PACK | (6)<br>QTY<br>INC<br>IN<br>UNIT | (7)<br>15-DAY ORGANIZATIONAL<br>MAINTENANCE ALW |      |       |        | (8)<br>ILLUS-<br>TRATION |                    |
|--|-----------------------------------|---|--|-------------------------|---|---------------------------------|---|------|-------|--------|--------------------------|--------------------|
|  |                                   |   |  |                         |   |                                 | (a)   | (b)  | (c)   | (d)    | (a)<br>FIG<br>NO.        | (b)<br>ITEM<br>NO. |
|  |                                   |   |  |                         |   |                                 | 1-5   | 6-20 | 21-50 | 51-100 |                          |                    |
| X1<br>00273                            | 4730-360-0595                     | FINGER RING<br>SX1605 (88795)   |  | EA                      |   | 2                               |   |      |       |        |                          |                    |
| P 0<br>00274                           |                                   | GASKET<br>H6430M (81718)<br>(INITIALLY LISTED AS INDEX NO. 00189)         |  | EA                      |   | 1                               |   |      |       |        | 14                       | 3                  |
| X1<br>00275                            |                                   | PLUG, HOSE<br>634A (81718)  |  | EA                      |   | 1                               |   |      |       |        |                          |                    |
| X1<br>00276                            |                                   | CHAIN ASSEMBLY, SINGLE<br>H6682M (81718)                                  |  | EA                      |   | 1                               |   |      |       |        |                          |                    |
| X20<br>00277                           | 4010-628-5276                     | TEE, ALUM: 1 1/2, 1/2 X 1/2<br>SX733 (88795)                              |  | EA                      |   | 1                               |   |      |       |        | 14                       | 1                  |



| (1)<br>SMR<br>CODE<br>INDEX<br>NO. | (2)<br>FEDERAL<br>STOCK<br>NUMBER | (3)<br>DESCRIPTION<br><br>REFERENCE NO. & MFR. CODE<br><br>USABLE ON CODE   | (4)<br>UNIT OF<br>ISSUE | (5)<br>QTY<br>INC<br>IN<br>UNIT<br>PACK | (6)<br>QTY<br>INC<br>IN<br>UNIT | (7) 30-DAY<br>DS MAINT<br>ALLOWANCE |     |     | (8) 30-DAY<br>GS MAINT<br>ALLOWANCE |     |     | (9)<br>1-YR<br>ALW<br>PER<br>100<br>EQUIP<br>CNTGCT | (10)<br>DEPOT<br>MAINT<br>ALW-<br>PER<br>100<br>EQUIP | (11) ILLUS-<br>TRATION |                    |
|------------------------------------|-----------------------------------|---|-------------------------|---|---------------------------------|-------------------------------------|-----|-----|-------------------------------------|-----|-----|---|---|------------------------|--------------------|
|                                    |                                   |   |                         |   |                                 | (a)                                 | (b) | (c) | (a)                                 | (b) | (c) |   |   | (a)<br>FIG<br>NO.      | (b)<br>ITEM<br>NO. |
| 00013                              |                                   | 0101 - CRANKCASE, BLOCK, CYLINDER HEAD  |                         |   |                                 |                                     |     |     |                                     |     |     |   |   |                        |                    |
| X2F<br>00014                       |                                   | BOLT, ASSEMBLED WASHER: CRANKCASE COVER MTG<br>93032 (08645)  | EA                      |   | 6                               |                                     |     |     |                                     |     |     |   |   | 2                      | 1                  |
| X2F<br>00015                       |                                   | BOLT, MACHINE: CYLINDER HEAD MTG, 5/16-18 THD SIZE,<br>1 15/16 IN LG<br>93111 (08645)                                 | EA                      |   | 5                               |                                     |     |     |                                     |     |     |   |   | 9                      | 4                  |
| X2F<br>00016                       |                                   | BOLT, MACHINE: CYLINDER HEAD MTG, 5/16-18 THD SIZE,<br>2-5/16 IN LG<br>93113 (08645)                                  | EA                      |   | 3                               |                                     |     |     |                                     |     |     |   |   | 9                      | 1                  |
| X2F<br>00017                       | 2805-658-3916                     | COVER, CRANKCASE<br>294306 (08645)  | EA                      |   | 1                               |                                     |     |     |                                     |     |     |   |   | 2                      | 2                  |
| X1<br>00018                        | 2805-678-4432                     | GASKET: CRANKCASE COVER MTG<br>27586 (08645)<br>(COMPONENT OF GASKET SET, STOCK No.<br>2805-828-0783, SEE GROUP 0100) | EA                      |   | 1                               |                                     |     |     |                                     |     |     |   |   | 2                      | 3                  |
| X2F<br>00019                       | 2805-920-5383                     | CYLINDER ASSEMBLY<br>296610 (08645)   | EA                      |   | 1                               |                                     |     |     |                                     |     |     |   |   | 1                      | 4                  |
| P F<br>00020                       | 2805-351-6692                     | SEAL, OIL, PLAIN ENCASED: CRANKSHAFT<br>89660 (08645)   | EA                      |   | 1                               | *                                   | 2   | 2   | *                                   | 2   | 2   | 20  | 20  | 1                      | 5                  |
| P F<br>00021                       | 2805-624-0278                     | SEAL, OIL: CRANKCASE COVER<br>293740 (08645)  | EA                      |   | 1                               | *                                   | 2   | 2   | *                                   | 2   | 2   | 20  | 20  | 2                      | 16                 |
| X1<br>00022                        | 2805-678-4395                     | GASKET: CYLINDER HEAD MTG<br>27670 (08645)<br>(COMPONENT OF GASKET SET, STOCK No.<br>2805-828-0783, SEE GROUP 0100)   | EA                      |   | 1                               |                                     |     |     |                                     |     |     |   |   | 9                      | 21                 |
| P F<br>00023                       | 2805-594-1030                     | HEAD, CYLINDER<br>210812 (08645)  | EA                      |   | 1                               | *                                   | *   | *   | *                                   | *   | *   | 5   | 5   | 9                      | 2                  |
| F<br>00024                         | 4730-950-7613                     | PLUG, PIPE: OIL DRAIN<br>91249 (08645)  | EA                      |   | 1                               |                                     |     |     |                                     |     |     |   |   | 1                      | 9                  |

| (1)<br>SMR<br>CODE<br>INDEX<br>NO. | (2)<br>FEDERAL<br>STOCK<br>NUMBER | (3)<br>DESCRIPTION<br><br>REFERENCE NO. & MFR. CODE<br><br>USABLE ON CODE | (4)<br>UNIT OF<br>ISSUE | (5)<br>QTY<br>INC<br>IN<br>UNIT<br>PACK | (6)<br>QTY<br>INC<br>IN<br>UNIT | (7) 30-DAY<br>DS MAINT<br>ALLOWANCE |       |        | (8) 30-DAY<br>GS MAINT<br>ALLOWANCE |       |        | (9)<br>1-YR<br>ALW<br>PER<br>100<br>EQUIP<br>CNTGCT | (10)<br>DEPOT<br>MAINT<br>ALW-<br>PER<br>100<br>EQUIP | (11) ILLUS-<br>TRATION |             |
|------------------------------------|-----------------------------------|---|-------------------------|---|---------------------------------|-------------------------------------|-------|--------|-------------------------------------|-------|--------|---|---|------------------------|-------------|
|                                    |                                   |   |                         |   |                                 | (a)                                 | (b)   | (c)    | (a)                                 | (b)   | (c)    |   |   | (a)                    | (b)         |
|                                    |                                   |   |                         |   |                                 | 1-20                                | 21-50 | 51-100 | 1-20                                | 21-50 | 51-100 |   |   | FIG<br>NO.             | ITEM<br>NO. |
| 00025                              |                                   | 0102 - CRANKSHAFT   |                         |   |                                 |                                     |       |        |                                     |       |        |   |   |                        |             |
| P F<br>00026                       | 3110-144-9004                     | BEARING, BALL, ANNULAR: CRANKSHAFT<br>99158 (08645)                       | EA                      |   | 1                               | *                                   | *     | 2      | *                                   | *     | 2      | 10  | 10  | 3                      | 10          |
| P F<br>00027                       | 2805-920-5384                     | CRANKSHAFT<br>260182 (08645)  | EA                      |   | 1                               | *                                   | *     | *      | *                                   | *     | *      | 5   | 5   | 3                      | 9           |
| 00028                              |                                   | 0104 - PISTONS, CONNECTING RODS   |                         |   |                                 |                                     |       |        |                                     |       |        |   |   |                        |             |
| P F<br>00029                       | 2805-949-0543                     | PISTON ASSEMBLY, STANDARD<br>295455 (08645)                               | EA                      |   | 1                               | *                                   | *     | *      | *                                   | *     | *      | 5   | 5   | 3                      | 3           |
| P F<br>00030                       | 2805-353-7712                     | PIN, PISTON, STANDARD<br>291925 (08645)                                   | EA                      |   | 1                               | *                                   | *     | *      | *                                   | *     | *      | 5   | 5   | 3                      | 2           |
| P F<br>00031                       | 5340-356-1325                     | RING, RETAINING: PISTON PIN<br>26026 (08645)                              | EA                      |   | 2                               | 2                                   | 2     | 3      | 2                                   | 2     | 3      | 30  | 30  | 3                      | 1           |
| P F<br>00032                       | 2805-608-8509                     | ROD ASSEMBLY, CONNECTING<br>294367 (08645)                                | EA                      |   | 1                               | 2                                   | 2     | 3      | 2                                   | 2     | 3      | 30  | 30  | 3                      | 5           |
| F<br>00033                         | 5306-817-0730                     | BOLT, MACHINE: CONNECTING ROD LOCK<br>92296 (08645)                       | EA                      |   | 2                               |                                     |       |        |                                     |       |        |   |   | 3                      | 7           |
| K2F<br>00034                       | 2805-678-4423                     | DIPPER, CONNECTING ROD<br>220670 (08645)                                  | EA                      |   | 1                               |                                     |       |        |                                     |       |        |   |   | 3                      | 8           |
| P F<br>00035                       | 2805-608-8508                     | LOCK, CONNECTING ROD SCREW<br>220756 (08645)                              | EA                      |   | 1                               | 2                                   | 2     | 3      | 2                                   | 2     | 3      | 30  | 30  | 3                      | 6           |
| P F<br>00036                       | 2805-920-5387                     | RING SET, STANDARD, PISTON<br>295657 (08645)                              | EA                      |   | 1                               | 2                                   | 2     | 3      | 2                                   | 2     | 3      | 30  | 30  | 3                      | 4           |
| 00037                              |                                   | 0105 - VALVES, CAMSHAFTS, AND TIMING SYSTEM                               |                         |   |                                 |                                     |       |        |                                     |       |        |   |   |                        |             |
| P F<br>00038                       | 2805-678-4421                     | CAMSHAFT, WITH GEAR<br>210453 (08645)                                     | EA                      |   | 1                               | *                                   | *     | *      | *                                   | *     | *      | 5   | 5   | 1                      | 17          |

| (1)<br>SMR<br>CODE<br>INDEX<br>NO. | (2)<br>FEDERAL<br>STOCK<br>NUMBER | (3)<br>DESCRIPTION<br><br>REFERENCE NO. & MFR. CODE<br><br>USABLE ON CODE | (4)<br>UNIT<br>OF<br>ISSUE | (5)<br>QTY<br>INC<br>IN<br>UNIT<br>PACK | (6)<br>QTY<br>INC<br>IN<br>UNIT | (7) 30-DAY<br>DS MAINT<br>ALLOWANCE |     |     | (8) 30-DAY<br>GS MAINT<br>ALLOWANCE |     |     | (9)<br>1-YR<br>ALW<br>PER<br>100<br>EQUIP<br>CNTGCT | (10)<br>DEPOT<br>MAINT<br>ALW-<br>PER<br>100<br>EQUIP | (11) ILLUS-<br>TRATION |                    |
|------------------------------------|-----------------------------------|---|----------------------------|---|---------------------------------|-------------------------------------|-----|-----|-------------------------------------|-----|-----|---|---|------------------------|--------------------|
|                                    |                                   |   |                            |   |                                 | (a)                                 | (b) | (c) | (a)                                 | (b) | (c) |   |   | (a)<br>FIG<br>NO.      | (b)<br>ITEM<br>NO. |
| P F<br>00039                       | 5315-276-4081                     | PIN, STRAIGHT, HEADLESS: EXHAUST VALVE<br>230126 (08645)                  | EA                         |   | 1                               | *                                   | *   | *   | *                                   | *   | *   | 5   | 5   | 1                      | 13                 |
| P F<br>00040                       | 5315-248-0052                     | PIN, STRAIGHT, HEADLESS: INTAKE VALVE<br>23187 (08645)                    | EA                         |   | 1                               | *                                   | *   | *   | *                                   | *   | *   | 5   | 5   | 1                      | 12                 |
| P F<br>00041                       | 2805-353-7587                     | RETAINER, EXHAUST VALVE<br>230127 (08645)                                 | EA                         |   | 1                               | *                                   | *   | *   | *                                   | *   | *   | 5   | 5   | 1                      | 14                 |
| P F<br>00042                       | 2805-342-7432                     | ROTATOR CAP, EXHAUST VALVE<br>292259 (08645)                              | EA                         |   | 1                               | *                                   | *   | 2   | *                                   | *   | 2   | 10  | 10  | 1                      | 15                 |
| P F<br>00043                       | 2805-356-1334                     | SEAT, VALVE SPRING: INTAKE<br>23184 (08645)                               | EA                         |   | 1                               | *                                   | *   | *   | *                                   | *   | *   | 5   | 5   | 1                      | 11                 |
| P F<br>00044                       | 2805-254-1370                     | SPRING, HELICAL, COMPRESSION, EXHAUST VALVE<br>26478 (08645)              | EA                         |   | 1                               | *                                   | 2   | 2   | *                                   | 2   | 2   | 20  | 20  | 1                      | 16                 |
| P F<br>00045                       | 2805-992-0403                     | SPRING, HELICAL, COMPRESSION, INTAKE VALVE<br>260552 (08645)              | EA                         |   | 1                               | *                                   | 2   | 2   | *                                   | 2   | 2   | 20  | 20  | 1                      | 10                 |
| P F<br>00046                       | 2805-678-4425                     | TAPPET, VALVE<br>230173 (08645)   | EA                         |   | 2                               | *                                   | *   | *   | *                                   | *   | *   | 5   | 5   | 1                      | 1                  |
| P F<br>00047                       | 2805-920-5388                     | VALVE, EXHAUST<br>296676 (08645)  | EA                         |   | 1                               | *                                   | 2   | 2   | *                                   | 2   | 2   | 15  | 15  | 1                      | 2                  |
| P F<br>00048                       | 2805-018-5293                     | VALVE, INTAKE<br>296677 (08645)   | EA                         |   | 1                               | *                                   | *   | 2   | *                                   | *   | 2   | 10  | 10  | 1                      | 3                  |
| 00049                              |                                   | 0106 - ENGINE LUBRICATION SYSTEM  |                            |   |                                 |                                     |     |     |                                     |     |     |   |   |                        |                    |
| O<br>00050                         | 5306-073-8255                     | BOLT, ASSEMBLED WASHER: BREATHER MTG<br>93394 (08645)                     | EA                         |   | 2                               |                                     |     |     |                                     |     |     |   |   | 5                      | 8                  |
| P O<br>00051                       | 2805-624-0282                     | BREATHER, VALVE CHAMBER<br>294178 (08645)                                 | EA                         |   | 1                               | *                                   | *   | *   | *                                   | *   | *   | 5   | 5   | 5                      | 4                  |
| P O<br>00052                       | 2805-422-5804                     | CAP, OIL FILLER: CRANKCASE COVER<br>69345 (08645)                         | EA                         |   | 1                               | *                                   | *   | *   | *                                   | *   | *   | 5   | 5   | 2                      | 11                 |

| (1)<br>SMR<br>CODE<br>INDEX<br>NO. | (2)<br>FEDERAL<br>STOCK<br>NUMBER | (3)<br>DESCRIPTION<br><br>REFERENCE NO. & MFR. CODE<br><br>USABLE ON CODE   | (4)<br>UNIT<br>OF ISSUE | (5)<br>QTY<br>INC<br>IN<br>UNIT<br>PACK | (6)<br>QTY<br>INC<br>IN<br>UNIT | (7) 30 DAY<br>DS MAINT<br>ALLOWANCE |       |        | (8) 30-DAY -<br>GS MAINT<br>ALLOWANCE |       |        | (9)<br>1-YR<br>ALW<br>PER<br>100<br>EQUIP<br>CNTGCT | (10)<br>DEPOT<br>MAINT<br>ALW-<br>PER<br>100<br>EQUIP | (11) ILLUS-<br>TRATION |             |
|------------------------------------|-----------------------------------|---|-------------------------|---|---------------------------------|-------------------------------------|-------|--------|---------------------------------------|-------|--------|---|---|------------------------|-------------|
|                                    |                                   |   |                         |   |                                 | (a)                                 | (b)   | (c)    | (a)                                   | (b)   | (c)    |   |   | (a)                    | (b)         |
|                                    |                                   |   |                         |   |                                 | 1-20                                | 21-50 | 51-100 | 1-20                                  | 21-50 | 51-100 |   |   | FIG<br>NO.             | ITEM<br>NO. |
| X1<br>00053                        | 2805-678-4431                     | GASKET: VALVE CHAMBER COVER MTG<br>27549 (08645)<br>(COMPONENT OF GASKET SET, STOCK No.<br>2805-828-0783, SEE GROUP 0100) | EA                      |   | 1                               |                                     |       |        |                                       |       |        |   |   | 5                      | 3           |
| P O<br>00054                       | 2805-776-2282                     | GROMMET: BREATHER COVER<br>66578 (08645)  | EA                      |   | 1                               | 2                                   | 2     | 3      | 2                                     | 2     | 3      | 30  | 30  | 5                      | 5           |
| X20<br>00055                       |                                   | GROMMET, BREATHER TUBE<br>67608 (08645)   | EA                      |   | 1                               |                                     |       |        |                                       |       |        |   |   | 5                      | 7           |
| O<br>00056                         | 4730-192-9481                     | NIPPLE, PIPE: OIL FILLER, 3/4 IN, 2 IN LG<br>91258 (08645)  | EA                      |   | 1                               |                                     |       |        |                                       |       |        |   |   | 2                      | 12          |
| P O<br>00057                       | 2805-849-3141                     | TUBE, BREATHER<br>230634 (08645)  | EA                      |   | 1                               | *                                   | *     | *      | *                                     | *     | *      | 5   | 5   | 5                      | 6           |
| 00058                              |                                   | 0107 - ENGINE STARTING SYSTEM   |                         |   |                                 |                                     |       |        |                                       |       |        |   |   |                        |             |
| P O<br>00059                       | 2990-907-0644                     | CLUTCH ASSEMBLY STARTER<br>298310 (08645)   | EA                      |   | 1                               | *                                   | *     | 2      | *                                     | *     | 2      | 10  | 10  |                        |             |
| X1<br>00060                        | 3110-100-6180                     | BEARING, BALL: CLUTCH HOUSING<br>63770 (08645)  | EA                      |   | 6                               |                                     |       |        |                                       |       |        |   |   | 4                      | 16          |
| X1<br>00061                        | 5840-787-6662                     | BUMPER, STARTER PULLEY<br>66528 (08645)   | EA                      |   | 1                               |                                     |       |        |                                       |       |        |   |   | 4                      | 10          |
| X1<br>00062                        | 2990-768-0723                     | GRIP, ENGINE STARTER<br>66728 (08645)   | EA                      |   | 1                               |                                     |       |        |                                       |       |        |   |   | 4                      | 5           |
| X20<br>00063                       |                                   | HOUSING, STARTER CLUTCH<br>211383 (08645)   | EA                      |   | 1                               |                                     |       |        |                                       |       |        |   |   | 4                      | 17          |
| X1<br>00064                        | 5315-855-4336                     | PIN, STARTER GRIP<br>230228 (08645)   | EA                      |   | 1                               |                                     |       |        |                                       |       |        |   |   | 4                      | 6           |
| X1<br>00065                        | 2990-786-2030                     | PULLEY, ENGINE STARTER<br>294088 (08645)  | EA                      |   | 1                               |                                     |       |        |                                       |       |        |   |   | 4                      | 9           |
| P O<br>00066                       | 2990-930-1737                     | RATCHET, REWIND<br>298436 (08645)   | EA                      |   | 1                               | *                                   | *     | *      | *                                     | *     | *      | 5   | 5   | 4                      | 15          |

| (1)<br>SMR<br>CODE<br>INDEX<br>NO. | (2)<br>FEDERAL<br>STOCK<br>NUMBER | (3)<br>DESCRIPTION<br><br>REFERENCE NO. & MFR. CODE<br><br>USABLE ON CODE | (4)<br>UNIT OF<br>ISSUE | (5)<br>QTY<br>INC<br>IN<br>UNIT<br>PACK | (6)<br>QTY<br>INC<br>IN<br>UNIT | (7)<br>30-DAY<br>DS MAINT<br>ALLOWANCE |       |        | (8)<br>30-DAY<br>GS MAINT<br>ALLOWANCE |       |        | (9)<br>1-YR<br>ALW<br>PER<br>100<br>EQUIP<br>CNTGCT | (10)<br>DEPOT<br>MAINT<br>ALW-<br>PER<br>100<br>EQUIP | (11)<br>ILLUS-<br>TRATION |             |
|------------------------------------|-----------------------------------|---|-------------------------|---|---------------------------------|--|-------|--------|--|-------|--------|---|---|---------------------------|-------------|
|                                    |                                   |   |                         |   |                                 | (a)                                    | (b)   | (c)    | (a)                                    | (b)   | (c)    |   |   | (a)                       | (b)         |
|                                    |                                   |   |                         |   |                                 | 1-20                                   | 21-50 | 51-100 | 1-20                                   | 21-50 | 51-100 |   |   | FIG<br>NO.                | ITEM<br>NO. |
| P O<br>00067                       | 2990-174-5255                     | ROPE, ENGINE STARTER: 47 1/8 IN LG<br>294584 (08645)                      | EA                      |   | 1                               | 4                                      | 8     | 17     | 4                                      | 8     | 17     | 200   | 200   | 4                         | 2           |
| X20<br>00068                       | 2990-930-1738                     | SCREEN, REWIND STARTER PULL<br>221661 (08645)                             | EA                      |   | 1                               |  |       |        |  |       |        |   |   | 4                         | 12          |
| O<br>00069                         | 5305-719-4603                     | SCREW, ASSEMBLED WASHER: SCREEN MTG<br>93042 (08645)                      | EA                      |   | 4                               |  |       |        |  |       |        |   |   | 4                         | 11          |
| P O<br>00070                       | 2990-769-4104                     | SPRING, REWIND STARTER<br>294303 (08645)                                  | EA                      |   | 1                               | *                                      | *     | 2      | *                                      | *     | 2      | 10  | 10  | 4                         | 3           |
| X20<br>00071                       |                                   | WASHER, CLUTCH RETAINER<br>221653 (08645)                                 | EA                      |   | 1                               |  |       |        |  |       |        |   |   | 4                         | 14          |
| X20<br>00072                       |                                   | WASHER, RUBBER, RATCHET SEALING<br>68238 (08645)                          | EA                      |   | 1                               |  |       |        |  |       |        |   |   | 4                         | 13          |
| 00073                              |                                   | GROUP 03 - FUEL SYSTEM  |                         |   |                                 |  |       |        |  |       |        |   |   |                           |             |
| 00073A                             |                                   | 0301 - CARBURETOR   |                         |   |                                 |  |       |        |  |       |        |   |   |                           |             |
| P O<br>00074                       | 2910-920-5361                     | CARBURETOR ASSEMBLY<br>296784 (08645)                                     | EA                      |   | 1                               | 2                                      | 2     | 3      | 2                                      | 2     | 3      | 30  | 30  | 6                         | 7           |
| X2F<br>00075                       | 2910-920-5369                     | CAP. SPRING<br>221377 (08645)   | EA                      |   | 1                               |  |       |        |  |       |        |   |   | 7                         | 4           |
| X2F<br>00076                       | 2910-920-5370                     | COVER, DIAPHRAGM<br>210959 (08645)  | EA                      |   | 1                               |  |       |        |  |       |        |   |   | 7                         | 7           |
| X2F<br>00077                       |                                   | CRANK, BELL<br>297069 (08645)   | EA                      |   | 1                               |  |       |        |  |       |        |   |   | 7                         | 11          |
| P F<br>00078                       | 2910-920-5368                     | DIAPHRAGM, CARBURETOR<br>270026 (08645)                                   | EA                      |   | 1                               | 2                                      | 2     | 3      | 2                                      | 2     | 3      | 30  | 30  | 7                         | 5           |
| P F<br>00079                       | 5330-924-0090                     | GASKET, NEEDLE VALVE NUT<br>66594 (08645)                                 | EA                      |   | 1                               | 2                                      | 4     | 8      | 2                                      | 4     | 8      | 100   | 100   | 7                         | 18          |
| X1<br>00080                        | 2910-920-5371                     | HOUSING, FUEL PIPE<br>296178 (08645)                                      | EA                      |   | 1                               |  |       |        |  |       |        |   |   |                           |             |





| (1)<br>SMR<br>CODE<br>INDEX<br>NO. | (2)<br>FEDERAL<br>STOCK<br>NUMBER | (3)<br>DESCRIPTION<br><br>REFERENCE NO. & MFR. CODE<br><br>USABLE ON CODE                                     | (4)<br>UNIT<br>OF ISSUE | (5)<br>QTY<br>INC<br>IN<br>UNIT<br>PACK | (6)<br>QTY<br>INC<br>IN<br>UNIT | (7) 30-DAY<br>DS MAINT<br>ALLOWANCE |       |        | (8) 30-DAY<br>GS MAINT<br>ALLOWANCE |       |        | (9)<br>1-YR<br>ALW<br>PER<br>100<br>EQUIP<br>CNTGCT | (10)<br>DEPOT<br>MAINT<br>ALW-<br>PER<br>100<br>EQUIP | (11) ILLUS-<br>TRATION |             |
|------------------------------------|-----------------------------------|---|-------------------------|---|---------------------------------|-------------------------------------|-------|--------|-------------------------------------|-------|--------|---|---|------------------------|-------------|
|                                    |                                   |   |                         |   |                                 | (a)                                 | (b)   | (c)    | (a)                                 | (b)   | (c)    |   |   | (a)                    | (b)         |
|                                    |                                   |   |                         |   |                                 | 1-20                                | 21-50 | 51-100 | 1-20                                | 21-50 | 51-100 |   |   | FIG<br>NO.             | ITEM<br>NO. |
| X20<br>00095                       |                                   | SCREW, ASSEMBLED WASHER: CARBURETOR TO FUEL<br>TANK MTG, 10-32 THD SIZE, 5/8 IN LG<br>93341 (08645)           | EA                      |   | 3                               |                                     |       |        |                                     |       |        |   |   | 6                      | 12          |
| X2F<br>00096                       |                                   | SCREW: BELL CRANK MTG<br>230671 (08645)   | EA                      |   | 1                               |                                     |       |        |                                     |       |        |   |   | 7                      | 12          |
| X20<br>00097                       |                                   | SCREW, CAP, HEXAGON HEAD: CARBURETOR TO ENGINE MTG<br>1/4-20 THD SIZE, 3/4 IN LG<br>93357 (08645)             | EA                      |   | 2                               |                                     |       |        |                                     |       |        |   |   | 6                      | 5           |
| X2F<br>00098                       |                                   | SCREW, DIAPHRAGM COVER<br>93141 (08645)   | EA                      |   | 4                               |                                     |       |        |                                     |       |        |   |   | 7                      | 8           |
| X2F<br>00099                       |                                   | SCREW, MACHINE, THROTTLE: SPEED ADJUSTING<br>93392 (08645)  | EA                      |   | 1                               |                                     |       |        |                                     |       |        |   |   | 7                      | 1           |
| 00100                              |                                   | 0304 - AIR CLEANER  |                         |   |                                 |                                     |       |        |                                     |       |        |   |   |                        |             |
| P 0<br>00101                       | 2940-294-1599                     | AIR CLEANER, INTAKE<br>294870 (08645)   | EA                      |   | 1                               | *                                   | *     | *      | *                                   | *     | *      | 5   | 5   | 6                      | 2           |
| P 0<br>00102                       | 2940-688-7912                     | FILTER ELEMENT, AIR INTAKE<br>27987 (08645)   | EA                      |   | 1                               | *                                   | 2     | 2      | *                                   | 2     | 2      | 20  | 20  | 6                      | 3           |
| X1<br>00103                        | 2940-608-8514                     | GASKET: AIR CLEANER<br>27600 (08645)<br>(COMPONENT OF GASKET SET, Stock No. 2805-828-0783,<br>SEE GROUP 0100) | EA                      |   | 1                               |                                     |       |        |                                     |       |        |   |   | 6                      | 4           |
| X20<br>00104                       |                                   | SCREW, AIR CLEANER<br>93322 (08645)   | EA                      |   | 1                               |                                     |       |        |                                     |       |        |   |   | 6                      | 1           |
| 00105                              |                                   | 0306 - TANKS, LINES, AND FITTINGS   |                         |   |                                 |                                     |       |        |                                     |       |        |   |   |                        |             |
| X20<br>00106                       |                                   | TANK, FUEL<br>296591 (08645)  | EA                      |   | 1                               |                                     |       |        |                                     |       |        |   |   | 6                      | 9           |
| P 0<br>00107                       | 2910-707-7503                     | CAP, FUEL TANK<br>293270 (08645)  | EA                      |   | 1                               | *                                   | *     | 2      | *                                   | *     | 2      | 10  | 10  | 6                      | 11          |



| (1)<br>SMR<br>CODE<br>INDEX<br>NO. | (2)<br>FEDERAL<br>STOCK<br>NUMBER | (3)<br>DESCRIPTION<br><br>REFERENCE NO. & MFR. CODE                      USABLE ON CODE    | (4)<br>UNIT OF<br>ISSUE | (5)<br>QTY<br>INC<br>IN<br>UNIT<br>PACK | (6)<br>QTY<br>INC<br>IN<br>UNIT | (7) 30 DAY<br>DS MAINT<br>ALLOWANCE |       |        | (8) 30-DAY<br>GS MAINT<br>ALLOWANCE |       |        | (9)<br>1-YR<br>ALW<br>PER<br>100<br>EQUIP<br>CNTGCT | (10)<br>DEPOT<br>MAINT<br>ALW-<br>PER<br>100<br>EQUIP | (11)<br>ILLUS-<br>TRATION |            |
|------------------------------------|-----------------------------------|--|-------------------------|---|---------------------------------|-------------------------------------|-------|--------|-------------------------------------|-------|--------|---|---|---------------------------|------------|
|                                    |                                   |  |                         |   |                                 | (a)                                 | (b)   | (c)    | (a)                                 | (b)   | (c)    |   |   | (a)                       | (b)        |
|                                    |                                   |  |                         |   |                                 | 1-20                                | 21-50 | 51-100 | 1-20                                | 21-50 | 51-100 |   |   | FIG<br>NO.                | ITEM<br>NO |
| X20<br>00122                       |                                   | NUT, CONTROL ROD<br>230149 (08645)   | EA                      |   | 1                               |                                     |       |        |                                     |       |        |   |   | 8                         | 3          |
| F<br>00123                         | 5315-626-1789                     | PIN, STOP: GOVERNOR LEVER SHAFT<br>93043 (08645)   | EA                      |   | 1                               |                                     |       |        |                                     |       |        |   |   | 2                         | 15         |
| X2F<br>00124                       | 2805-679-5784                     | RETAINER, GOVERNOR SHAFT<br>230177 (08645)   | EA                      |   | 1                               |                                     |       |        |                                     |       |        |   |   | 2                         | 6          |
| X20<br>00125                       |                                   | ROD, CONTROL: GOVERNOR<br>230680 (08645)   | EA                      |   | 1                               |                                     |       |        |                                     |       |        |   |   | 8                         | 6          |
| X20<br>00126                       |                                   | SCREW, ASSEMBLED WASHER: BRACKET MTG, 10-24 THD SIZE,<br>9/16 IN LG<br>93062 (08645)       | EA                      |   | 1                               |                                     |       |        |                                     |       |        |   |   | 8                         | 11         |
| F<br>00127                         | 5305-753-4269                     | SCREW, CAP, SLOTTED: GOVERNOR MTG<br>93064 (08645)   | EA                      |   | 2                               |                                     |       |        |                                     |       |        |   |   | 2                         | 9          |
| O<br>00128                         | 5306-543-5219                     | SCREW, ASSEMBLED WASHER: THROTTLE LEVER MTG,<br>10-24 THD SIZE, 3/8 IN LG<br>93067 (08645) | EA                      |   | 1                               |                                     |       |        |                                     |       |        |   |   | 8                         | 9          |
| O<br>00129                         | 5305-719-4783                     | SCREW, MACHINE: LEVER MTG<br>93100 (08645)   | EA                      |   | 1                               |                                     |       |        |                                     |       |        |   |   | 8                         | 17         |
| X2F<br>00130                       | 2910-711-5609                     | SHAFT, GOVERNOR LEVER<br>230181 (08645)  | EA                      |   | 1                               |                                     |       |        |                                     |       |        |   |   | 2                         | 13         |
| P O<br>00131                       | 2990-624-0260                     | SPRING, CONTROL ROD<br>26055 (08645)   | EA                      |   | 1                               | *                                   | 2     | 2      | *                                   | 2     | 2      | 15  | 15  | 8                         | 4          |
| P O<br>00132                       | 5340-945-0493                     | SPRING, GOVERNOR LEVER<br>260545 (08645)   | EA                      |   | 1                               | *                                   | 2     | 2      | *                                   | 2     | 2      | 15  | 15  | 8                         | 15         |
| P O<br>00133                       | 2990-898-2097                     | SPRING, GOVERNOR LINK<br>260585 (08645)  | EA                      |   | 1                               | *                                   | 2     | 2      | *                                   | 2     | 2      | 15  | 15  | 8                         | 13         |
| X20<br>00134                       |                                   | WASHER: GOVERNOR BRACKET AND LEVER MTG<br>66432 (08645)                                    | EA                      |   | 2                               |                                     |       |        |                                     |       |        |   |   | 8                         | 8          |
| F<br>00135                         | 5310-353-7577                     | WASHER, FLAT: GOVERNOR LEVER SHAFT<br>22826 (08645)  | EA                      |   | 1                               |                                     |       |        |                                     |       |        |   |   | 2                         | 14         |



| (1)<br>SMR<br>CODE<br>INDEX<br>NO. | (2)<br>FEDERAL<br>STOCK<br>NUMBER | (3)<br>DESCRIPTION<br><br>REFERENCE NO. & MFR. CODE<br><br>USABLE ON CODE | (4)<br>UNIT OF ISSUE | (5)<br>QTY<br>INC<br>IN<br>UNIT<br>PACK | (6)<br>QTY<br>INC<br>IN<br>UNIT | (7) 30-DAY<br>DS MAINT<br>ALLOWANCE |       |        | (8) 30-DAY<br>GS MAINT<br>ALLOWANCE |       |        | (9)<br>1-YR<br>ALW<br>PER<br>100<br>EQUIP<br>CNTGCT | (10)<br>DEPOT<br>MAINT<br>ALW-<br>PER<br>100<br>EQUIP | (11) ILLUS-<br>TRATION |            |
|------------------------------------|-----------------------------------|---|----------------------|---|---------------------------------|-------------------------------------|-------|--------|-------------------------------------|-------|--------|---|---|------------------------|------------|
|                                    |                                   |   |                      |   |                                 | (a)                                 | (b)   | (c)    | (a)                                 | (b)   | (c)    |   |   | (a)                    | (b)        |
|                                    |                                   |   |                      |   |                                 | 1-20                                | 21-50 | 51-100 | 1-20                                | 21 50 | 51-100 |   |   | FIG<br>NO.             | ITEM<br>NO |
| 00148                              |                                   | GROUP 06 - ELECTRICAL SYSTEM  |                      |   |                                 |                                     |       |        |                                     |       |        |   |   |                        |            |
| 00148A                             |                                   | 0605 - IGNITION COMPONENTS  |                      |   |                                 |                                     |       |        |                                     |       |        |   |   |                        |            |
| P O<br>00149                       | 2920-920-5373                     | ARMATURE, MAGNETO<br>298502 (08645)                                       | EA                   |   | 1                               | *                                   | *     | *      | *                                   | *     | *      | 3   | 3   | 9                      | 6          |
| O<br>00150                         | 5305-010-0752                     | BOLT: CONDENSER LEAD MTG<br>92786 (08645)                                 | EA                   |   | 1                               |                                     |       |        |                                     |       |        |   |   | 9                      | 17         |
| X20<br>00151                       |                                   | CLAMP: CONDENSER MTG<br>260455 (08645)                                    | EA                   |   | 1                               |                                     |       |        |                                     |       |        |   |   | 9                      | 15         |
| X20<br>00152                       | 2920-537-1365                     | COVER, CONTACT SET<br>220366 (08645)                                      | EA                   |   | 1                               |                                     |       |        |                                     |       |        |   |   | 9                      | 9          |
| P O<br>00153                       | 2805-920-5385                     | FLYWHEEL ASSEMBLY, MAGNETO<br>296884 (08645)                              | EA                   |   | 1                               | *                                   | *     | 2      | *                                   | *     | 2      | 5   | 5   | 4                      | 20         |
| P O<br>00154                       | 5970-789-1925                     | INSULATOR, PLATE: TERMINAL, CONDENSER LEAD<br>66935 (08645)               | EA                   |   | 1                               | 2                                   | 2     | 3      | 2                                   | 2     | 3      | 30  | 30  | 9                      | 19         |
| P O<br>00155                       | 5315-598-5970                     | KEY, MACHINE: FLYWHEEL MTG<br>61760 (08645)                               | EA                   |   | 1                               | *                                   | *     | 2      | *                                   | *     | 2      | 10  | 10  | 4                      | 19         |
| P O<br>00156                       | 2920-213-1147                     | LEAD, ELECTRICAL, SPARK PLUG: ARMATURE<br>293141 (08645)                  | EA                   |   | 1                               | *                                   | *     | *      | *                                   | *     | *      | 5   | 5   | 9                      | 5          |
| O<br>00157                         | 5310-596-5224                     | NUT, HEXAGON: CONDENSER LEAD MTG<br>90576 (08645)                         | EA                   |   | 1                               |                                     |       |        |                                     |       |        |   |   | 9                      | 20         |
| P O<br>00158                       | 2805-624-0284                     | PARTS KIT, IGNITION: BREAKER POINTS AND CONDENSER<br>294628 (08645)       | EA                   |   | 1                               | 2                                   | 4     | 8      | 2                                   | 4     | 8      | 100   | 100   | 9                      | 12         |
| X20<br>00159                       | 5340-286-4566                     | SPRING, HELICAL, EXTENDED: BREAKER ARM<br>26018 (08645)                   | EA                   |   | 1                               |                                     |       |        |                                     |       |        |   |   | 9                      | 11         |
| P O<br>00160                       | 2920-294-3747                     | PLUG, SPARK, WITH GASKET<br>CJ8 (08645)                                   | EA                   |   | 1                               | 4                                   | 8     | 17     | 4                                   | 8     | 17     | 200   | 200   | 9                      | 3          |



| (1)<br>SMR<br>CODE<br>INDEX<br>NO. | (2)<br>FEDERAL<br>STOCK<br>NUMBER | (3)<br>DESCRIPTION<br><br>REFERENCE NO. & MFR. CODE<br><br>USABLE ON CODE   | (4)<br>UNIT OF<br>ISSUE | (5)<br>QTY<br>INC<br>IN<br>UNIT<br>PACK | (6)<br>QTY<br>INC<br>IN<br>UNIT | (7)<br>30-DAY<br>DS MAINT<br>ALLOWANCE |       |        | (8)<br>30-DAY<br>GS MAINT<br>ALLOWANCE |       |        | (9)<br>1-YR<br>ALW<br>PER<br>100<br>EQUIP<br>CNTGCTY | (10)<br>DEPOT<br>MAINT<br>ALW-<br>PER<br>100<br>EQUIP | (11)<br>ILLUS-<br>TRATION |             |
|------------------------------------|-----------------------------------|---|-------------------------|---|---------------------------------|--|-------|--------|--|-------|--------|--|---|---------------------------|-------------|
|                                    |                                   |   |                         |   |                                 | (a)                                    | (b)   | (c)    | (a)                                    | (b)   | (c)    |  |   | (a)                       | (b)         |
|                                    |                                   |   |                         |   |                                 | 1-20                                   | 21-50 | 51-100 | 1-20                                   | 21-50 | 51-100 |  |   | FIG<br>NO.                | ITEM<br>NO. |
| X20<br>00174                       |                                   | NUT, HEXAGON: BASE MTG, 5/16-18 THD SIZE<br>BG002B2 (88795)   | EA                      |   | 4                               |  |       |        |  |       |        |  |   | 10                        | 6           |
| X20<br>00175                       |                                   | NUT, STOP: SUPPORT AND SPACER MTG, 3/8-16 THD SIZE<br>SX989 (88795)   | EA                      |   | 2                               |  |       |        |  |       |        |  |   | 10                        | 1           |
| X20<br>00176                       |                                   | SPACER, BASE: 4-5/8 IN. LG<br>SX988 (88795)   | EA                      |   | 2                               |  |       |        |  |       |        |  |   | 10                        | 2           |
| X20<br>00177                       |                                   | SUPPORT, FILTER ASSEMBLY<br>SX1091 (88795)  | EA                      |   | 2                               |  |       |        |  |       |        |  |   | 10                        | 4           |
| X20<br>00178                       |                                   | WASHER, LOCK: BASE MTG, 5/16 IN SCREW SIZE<br>AH002B1 (88795)   | EA                      |   | 4                               |  |       |        |  |       |        |  |   | 10                        | 7           |
| 00179                              |                                   | GROUP 22 - BODY CHASSIS OR HULL, AND ACCESSORY ITEMS  |                         |   |                                 |  |       |        |  |       |        |  |   |                           |             |
| 00179A                             |                                   | 2202 - ACCESSORY ITEMS  |                         |   |                                 |  |       |        |  |       |        |  |   |                           |             |
| X20<br>00180                       |                                   | ACCESSORY HOSE AND NOZZLE PACKAGE<br>SX1077 (88795)   | EA                      |   | 1                               |  |       |        |  |       |        |  |   |                           |             |
| P O<br>00181                       | 4720-946-9960                     | HOSE ASSEMBLY, SUCTION, RUBBER: WITH COUPLING<br>SX848 (88795)<br>(COMPONENTS SAME AS HOSE ASSEMBLY, Stock No.<br>4720-916-1883, EXCEPT WHERE INDIVIDUAL COMPONENTS<br>ARE ANNOTATED) | EA                      |   | 1                               | *                                      | *     | *      | *                                      | *     | *      | 5  | 5   |                           |             |
| P O<br>00182                       | 4720-916-1883                     | HOSE ASSEMBLY, DISCHARGE: RUBBER W/COUPLING<br>SX937 (88795)  | EA                      |   | 2                               | *                                      | 2     | 2      | *                                      | 2     | 2      | 20   | 20  | 11                        |             |
| X1<br>00183                        |                                   | HOSE, DISCHARGE: 50 FT<br>546-622-048 (25500)<br>(USED WITH HOSE ASSEMBLY, Stock No.<br>4720-916-1883, ONLY)  | EA                      |   | 2                               |  |       |        |  |       |        |  |   | 11                        | 1           |
| X1<br>00184                        |                                   | HOSE, SUCTION, FUEL: 10 FT<br>541-621-048 (25500)<br>(USED WITH HOSE ASSEMBLY, Stock No.<br>4720-946-9960 ONLY)   | EA                      |   | 1                               |  |       |        |  |       |        |  |   | 11                        | 2           |
| X1<br>00185                        |                                   | CLAMP, HOSE<br>AR005A1 (08484)  | EA                      |   | 12                              |  |       |        |  |       |        |  |   | 11                        | 8           |





| SMR<br>CODE<br>INDEX<br>NO. | FEDERAL<br>STOCK<br>NUMBER | DESCRIPTION  | UNIT OF ISSUE | QTY<br>INC<br>IN<br>UNIT<br>PACK | QTY<br>INC<br>IN<br>UNIT | 30-DAY<br>DS MAINT<br>ALLOWANCE |       |        | 30-DAY<br>GS MAINT<br>ALLOWANCE |       |        | 1-YR<br>ALW<br>PER<br>100<br>EQUIP<br>CNTGCTY | DEPOT<br>MAINT<br>ALW-<br>PER<br>100<br>EQUIP | ILLUS-<br>TRATION |             |    |
|-----------------------------|----------------------------|--|---------------|----------------------------------|--------------------------|---------------------------------|-------|--------|---------------------------------|-------|--------|---|---|-------------------|-------------|----|
|                             |                            |  |               |                                  |                          | (a)                             | (b)   | (c)    | (a)                             | (b)   | (c)    |   |   | (a)               | (b)         |    |
|                             |                            |  |               |                                  |                          | 1-20                            | 21-50 | 51-100 | 1-20                            | 21-50 | 51-100 |   |   | FIG<br>NO.        | ITEM<br>NO. |    |
| 00199                       |                            | 2210 - DATA PLATES AND INSTRUCTION HOLDERS   |               |                                  |                          |                                 |       |        |                                 |       |        |   |   |                   |             |    |
| X20<br>00200                |                            | DRIVE SCREW<br>BH002A (88795)  | EA            |                                  | 4                        |                                 |       |        |                                 |       |        |   |   |                   |             |    |
| X20<br>00201                |                            | IDENTIFICATION, PLATE<br>G3020A2 (88795)   | EA            |                                  | 1                        |                                 |       |        |                                 |       |        |   |   |                   |             |    |
| X20<br>00202                | 2930-537-1364              | PLATE IDENTIFICATION: CYLINDER SHIELD<br>220478 (08645)                                  | EA            |                                  | 1                        |                                 |       |        |                                 |       |        |   |   |                   |             |    |
| 00203                       |                            | GROUP 72 - DISPENSING AND SERVICING EQUIPMENT COMPONENTS                                 |               |                                  |                          |                                 |       |        |                                 |       |        |   |   |                   |             |    |
| 00203A                      |                            | 7202 - PUMPS AND METERS  |               |                                  |                          |                                 |       |        |                                 |       |        |   |   |                   |             |    |
| X20<br>00204                |                            | PUMP ASSEMBLY<br>SX1603 (88795)<br>(INCLUDES COMPONENTS OF KIT, STOCK No. 4320-989-3259) | EA            |                                  | 1                        |                                 |       |        |                                 |       |        |   |   |                   |             |    |
| X1<br>00205                 |                            | CASING ASSEMBLY<br>SX1608 (88795)  | EA            |                                  | 1                        |                                 |       |        |                                 |       |        |   |   |                   |             |    |
| X2F<br>00206                |                            | CASING, PUMP<br>E9001A1 (88795)  | EA            |                                  | 1                        |                                 |       |        |                                 |       |        |   |   |                   | 12          | 26 |
| X1<br>00207                 |                            | CAP ASSEMBLY, DUST<br>SX1604 (88795)   | EA            |                                  | 1                        |                                 |       |        |                                 |       |        |   |   |                   | 12          | 22 |
| X1<br>00208                 | 4730-555-1562              | CAP<br>634B (81718)  | EA            |                                  | 1                        |                                 |       |        |                                 |       |        |   |   |                   |             |    |
| X1<br>00209                 | 4010-628-5276              | CHAIN ASSEMBLY, SINGLE<br>H6682M (81718)   | EA            |                                  | 1                        |                                 |       |        |                                 |       |        |   |   |                   |             |    |
| X1<br>00210                 |                            | FINGER, RING<br>SX1605 (88795)   | EA            |                                  | 2                        |                                 |       |        |                                 |       |        |   |   |                   |             |    |
| P O<br>00211                | 4730-360-0595              | GASOLINE DUST CAP<br>H6430M (81718)<br>(INITIALLY LISTED AS INDEX No. 00189)             | EA            |                                  | 1                        |                                 |       |        |                                 |       |        |   |   |                   | 12          | 23 |

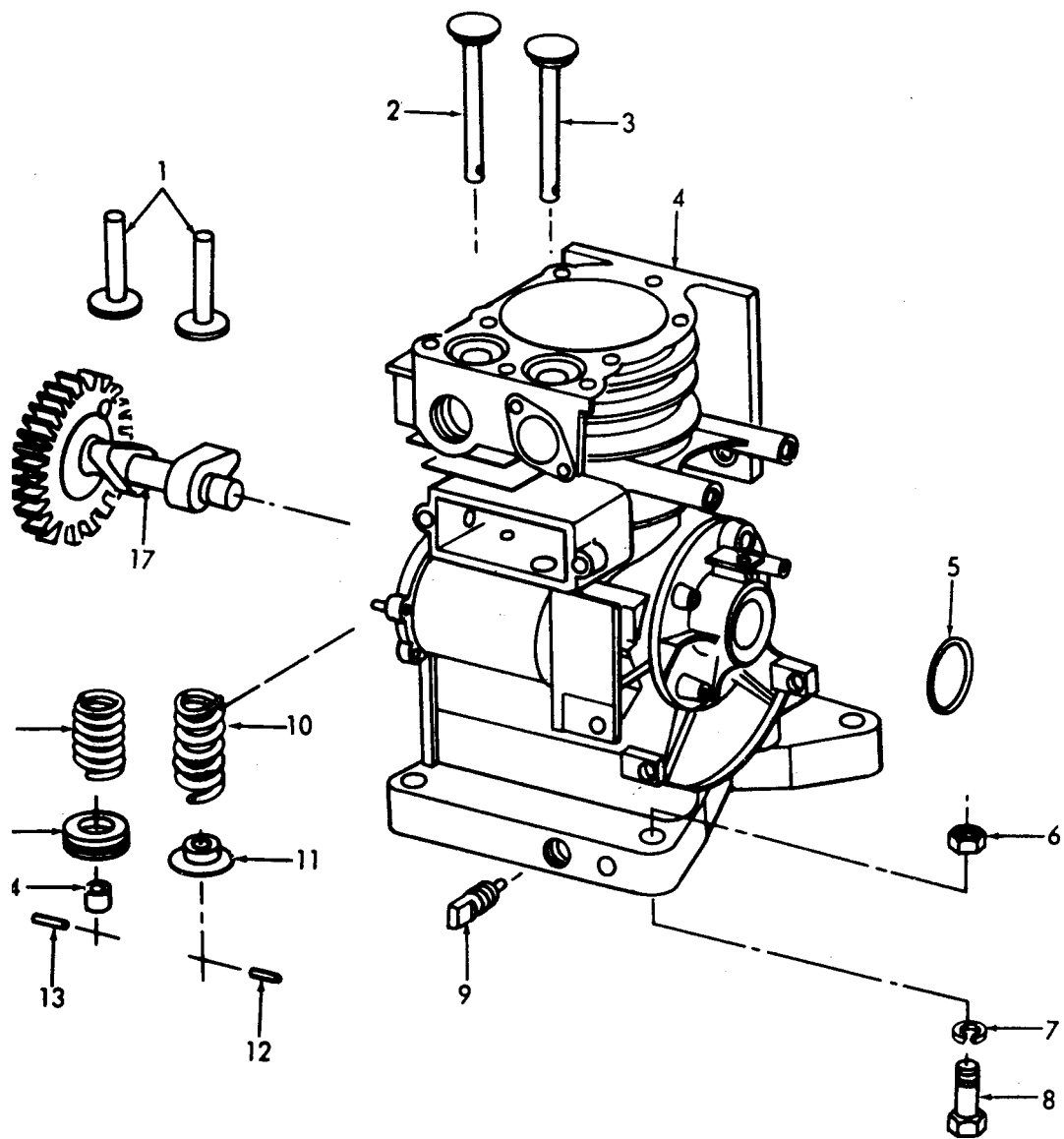


| SMR<br>CODE<br>INDEX<br>NO. | FEDERAL<br>STOCK<br>NUMBER | DESCRIPTION   | UNIT OF<br>ISSUE | QTY<br>INC<br>IN<br>UNIT<br>PACK | QTY<br>INC<br>IN<br>UNIT | DS MAINT<br>ALLOWANCE |       |        | GS MAINT<br>ALLOWANCE |       |        | 1-YR<br>ALW<br>PER<br>100<br>EQUIP<br>CNTGCV | DEPOT<br>MAINT<br>ALW-<br>PER<br>100<br>EQUIP | ILLUS-<br>TRATION |             |    |
|-----------------------------|----------------------------|---|------------------|----------------------------------|--------------------------|-----------------------|-------|--------|-----------------------|-------|--------|--|---|-------------------|-------------|----|
|                             |                            |   |                  |                                  |                          | (a)                   | (b)   | (c)    | (a)                   | (b)   | (c)    |  |   | (a)               | (b)         |    |
|                             |                            |   |                  |                                  |                          | 1-20                  | 21-50 | 51-100 | 1-20                  | 21-50 | 51-100 |  |   | FIG<br>NO.        | ITEM<br>NO. |    |
| X20<br>00226                | 4320-946-9948              | BOLT, MACHINE: PUMP MTG, 5/16-18 THD SIZE, 1 IN LG<br>BE002A5 (88795) | EA               |                                  | 1                        |                       |       |        |                       |       |        |  |   |                   | 12          | 17 |
| P F<br>00227                |                            | IMPELLER, PUMP<br>A7004A1 (88795)                                     | EA               |                                  | 1                        | *                     | *     | *      | *                     | *     | *      | 5  | 5   | 12                | 5           |    |
| X20<br>00228                |                            | NUT, HEXAGON: PUMP ADAPTER MTG, 3/8-16 THD SIZE<br>BG002B3 (88795)    | EA               |                                  | 4                        |                       |       |        |                       |       |        |  |   | 12                | 14          |    |
| X20<br>00229                |                            | NUT, HEXAGON: PUMP MTG, 5/16-18 THD SIZE<br>BG002B2 (88795)           | EA               |                                  | 5                        |                       |       |        |                       |       |        |  |   | 12                | 19          |    |
| X20<br>00230                |                            | WASHER, FLAT: PUMP MTG, 5/16 IN SCREW SIZE<br>AD001A1 (88795)         | EA               |                                  | 1                        |                       |       |        |                       |       |        |  |   | 12                | 18          |    |
| X20<br>00231                |                            | WASHER, LOCK: PUMP MTG, 5/16 IN SCREW SIZE<br>AH002B1 (88795)         | EA               |                                  | 10                       |                       |       |        |                       |       |        |  |   | 12                | 13          |    |
| X20<br>00232                |                            | WASHER, LOCK: PUMP ADAPTER, 3/8 IN SCREW SIZE<br>AH002B2 (88795)      | EA               |                                  | 4                        |                       |       |        |                       |       |        |  |   | 12                | 15          |    |
| P F<br>00233                | 4320-989-3259              | KIT, PUMP SEAL AND GASKET<br>K214-5 (88795)                           | EA               |                                  | 1                        | 2                     | 2     | 2      | 2                     | 2     | 2      | 25   | 25  |                   |             |    |
| X1<br>00234                 | 5330-924-0050              | GASKET, CASING<br>B1004A1 (88795)                                     | EA               |                                  | 1                        |                       |       |        |                       |       |        |  |   | 12                | 10          |    |
| X1<br>00235                 |                            | SEAL, SHAFT: 3/4 IN<br>AE002A1 (88795)                                | EA               |                                  | 1                        |                       |       |        |                       |       |        |  |   | 12                | 6           |    |
| X1<br>00236                 | 4320-946-9947              | SEAT, SHAFT SEAL<br>A6001A1 (88795)                                   | EA               |                                  | 1                        |                       |       |        |                       |       |        |  |   | 12                | 9           |    |
| X1<br>00237                 | 4320-920-5343              | SLEEVE, SHAFT<br>E4002A1 (88795)                                      | EA               |                                  | 1                        |                       |       |        |                       |       |        |  |   | 12                | 7           |    |
| 00238                       |                            | 7203 - VALVES, FITTINGS, NOZZLES                                      |                  |                                  |                          |                       |       |        |                       |       |        |  |   |                   |             |    |
| P OR<br>00239               | 4320-946-9961              | NOZZLE ASSEMBLY, NONAUTOMATIC<br>SX931A (88795)                       | EA               |                                  | 2                        | *                     | *     | *      | *                     | *     | *      | 5  | 5   |                   |             |    |



| (1)<br>SMR<br>CODE<br>INDEX<br>NO. | (2)<br>FEDERAL<br>STOCK<br>NUMBER | (3)<br>DESCRIPTION<br><br>REFERENCE NO. & MFR. CODE<br><br>USABLE ON CODE | (4)<br>UNIT OF ISSUE | (5)<br>QTY<br>INC<br>IN<br>UNIT<br>PACK | (6)<br>QTY<br>INC<br>IN<br>UNIT | (7)<br>30-DAY<br>DS MAINT<br>ALLOWANCE |       |        | (8)<br>30-DAY<br>GS MAINT<br>ALLOWANCE |       |        | (9)<br>1-YR<br>ALW<br>PER<br>100<br>EQUIP<br>CENTG | (10)<br>DEPOT<br>MAINT<br>ALW-<br>PER<br>100<br>EQUIP | (11)<br>ILLUS-<br>TRATION |             |
|------------------------------------|-----------------------------------|---|----------------------|---|---------------------------------|--|-------|--------|--|-------|--------|--|---|---------------------------|-------------|
|                                    |                                   |   |                      |   |                                 | (a)                                    | (b)   | (c)    | (a)                                    | (b)   | (c)    |  |   | (a)                       | (b)         |
|                                    |                                   |   |                      |   |                                 | 1-20                                   | 21-50 | 51-100 | 1-20                                   | 21-50 | 51-100 |  |   | FIG<br>NO.                | ITEM<br>NO. |
| 00253                              |                                   | 7204 - MISCELLANEOUS PARTS AND ACCESSORIES                                |                      |   |                                 |  |       |        |  |       |        |  |   |                           |             |
| X20<br>00254                       |                                   | GAGE ASSEMBLY, GO-NO-GO: 100 GPM<br>SX1611 (88795)                        | EA                   |   | 1                               |  |       |        |  |       |        |  |   |                           |             |
| X1<br>00255                        |                                   | GAGE, GO-NO-GO: 100 GPM<br>0441075 (90005)                                | EA                   |   | 1                               |  |       |        |  |       |        |  |   | 14                        | 6           |
| X1<br>00255A                       |                                   | CLAMP, GAGE GO-NO-GO<br>AR010A1 (08484)                                   | EA                   |   | 2                               |  |       |        |  |       |        |  |   | 15                        | 2           |
| X1<br>00256                        |                                   | COVER, END 100 GPM<br>SX1613 (88795)                                      | EA                   |   | 1                               |  |       |        |  |       |        |  |   | 15                        | 5           |
| P 0<br>00257                       | 4930-872-1779                     | ELEMENT, FILTER<br>041420S (90005)  | EA                   |   | 5                               | 4                                      | 8     | 17     | 4                                      | 8     | 17     | 200  | 200   | 15                        | 1           |
| X2F<br>00258                       |                                   | HOUSING, GAGE GO-NO-GO<br>SX1660 (90005)                                  | EA                   |   | 1                               |  |       |        |  |       |        |  |   | 15                        | 3           |
| P 0<br>00259                       | 5330-526-7517                     | O RING, 100 GPM GAGE<br>MS29513-249 (96906)                               | EA                   |   | 1                               | 2                                      | 4     | 8      | 2                                      | 4     | 8      | 100  | 100   | 15                        | 4           |
| X20<br>00260                       |                                   | ADAPTER, HOSE<br>MAB6 (88795)   | EA                   |   | 2                               |  |       |        |  |       |        |  |   | 14                        | 8           |
| X20<br>00261                       | 4730-805-6726                     | ADAPTER, HOSE: 1 1/2 IN<br>633F (81718)                                   | EA                   |   | 2                               |  |       |        |  |       |        |  |   | 14                        | 2           |
| X1<br>00262                        |                                   | CAP ASSEMBLY, DUST<br>SX1604 (88795)                                      | EA                   |   | 2                               |  |       |        |  |       |        |  |   | 14                        | 4           |
| X1<br>00263                        |                                   | DUST CAP<br>634B (88795)  | EA                   |   | 2                               |  |       |        |  |       |        |  |   |                           |             |
| X1<br>00264                        |                                   | FINGER RING<br>SX1605 (88795)   | EA                   |   | 4                               |  |       |        |  |       |        |  |   |                           |             |
| P 0<br>00265                       | 4730-360-0595                     | GASKET<br>H6430M (81718)<br>(INITIALLY LISTED AS INDEX No. 00189)         | EA                   |   | 2                               |  |       |        |  |       |        |  |   | 14                        | 3           |





4320-248-25P/1

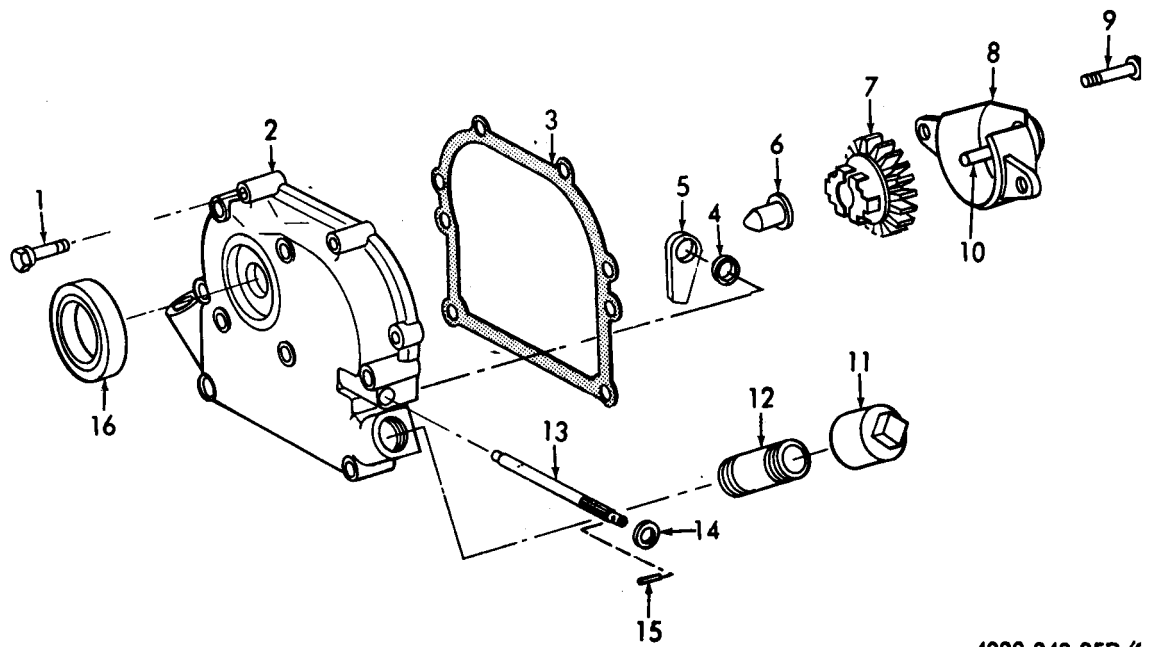
FIGURE NO. 1 CYLINDER, VALVES AND CAMSHAFT

LEGEND TO PARTS, FIGURE 1

| ITEM NO. | FUNCT GROUP | ITEM NAME   |
|----------|-------------|-------------|
| 1        | 0105        | TAPPET      |
| 2        | 0105        | VALVE       |
| 3        | 0105        | VALVE       |
| 4        | 0101        | CYLINDER AY |
| 5        | 0101        | SEAL        |
| 6        | 0100        | NUT         |

| ITEM NO. | FUNCT GROUP | ITEM NAME |
|----------|-------------|-----------|
| 7        | 0100        | WASHER    |
| 8        | 0100        | BOLT      |
| 9        | 0101        | PLUG      |
| 10       | 0105        | SPRING    |
| 11       | 0105        | SEAT      |
| 12       | 0105        | PIN       |

| ITEM NO. | FUNCT GROUP | ITEM NAME   |
|----------|-------------|-------------|
| 13       | 0105        | PIN         |
| 14       | 0105        | RETAINER    |
| 15       | 0105        | ROTATOR CAP |
| 16       | 0105        | SPRING      |
| 17       | 0105        | CAMSHAFT    |



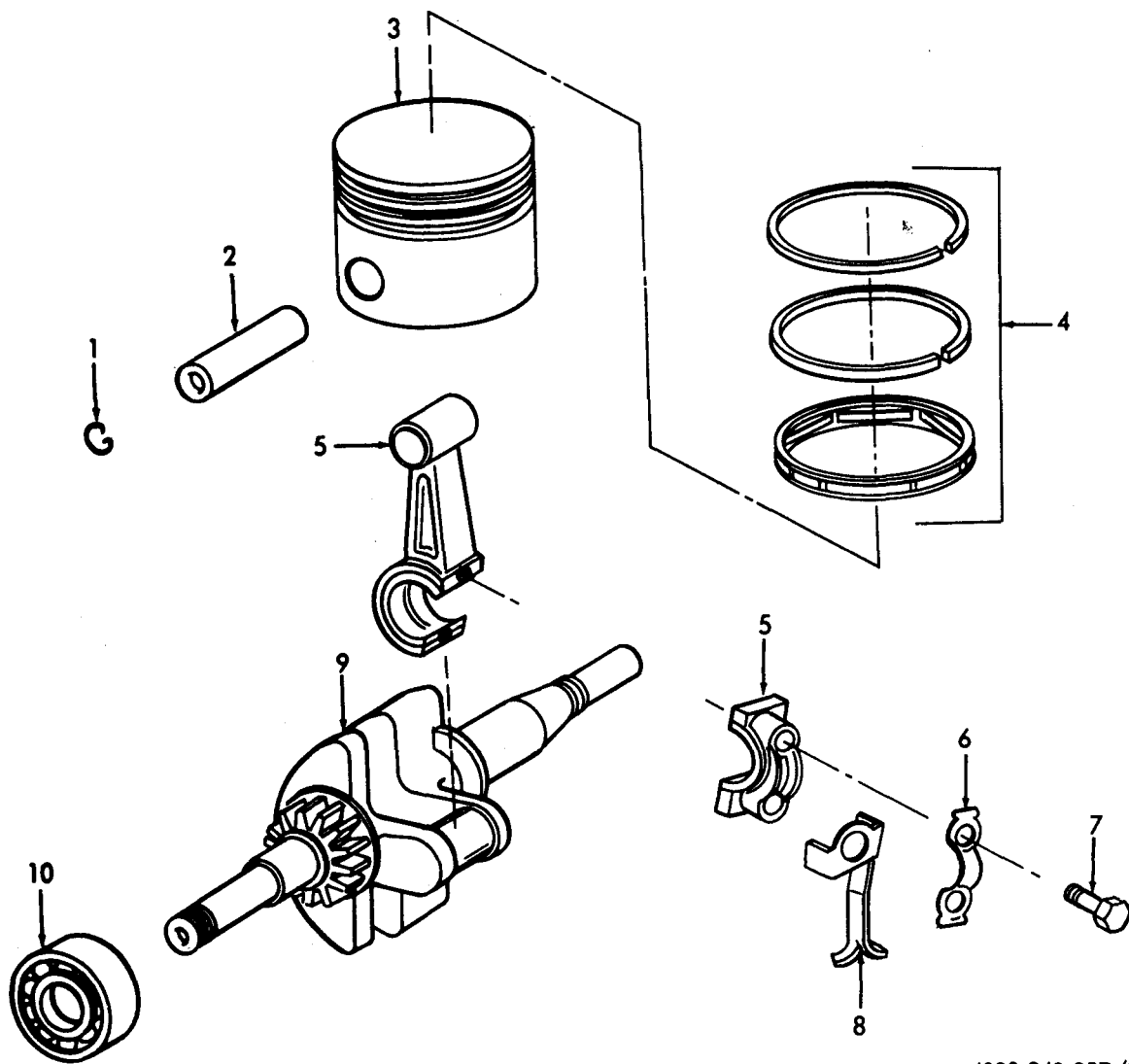
4320-248-25P/;

FIGURE No. 2 CYLINDER COVER AND GOVERNOR

LEGEND TO PARTS, FIGURE 2

| ITEM NO. | FUNCT GROUP | ITEM NAME |
|----------|-------------|-----------|
| 1        | 0101        | BOLT      |
| 2        | 0101        | COVER     |
| 3        | 0101        | GASKET    |
| 4        | 0308        | WASHER    |
| 5        | 0308        | FOLLOWER  |
| 6        | 0308        | RETAINER  |
| 7        | 0308        | GEAR      |
| 8        | 0308        | BODY      |
| 9        | 0308        | SCREW     |
| 10       | 0308        | SHAFT     |
| 11       | 0106        | CAP       |
| 12       | 0106        | NIPPLE    |
| 13       | 0308        | SHAFT     |
| 14       | 0308        | WASHER    |
| 15       | 0308        | PIN       |
| 16       | 0101        | SEAL      |





4320-248-25P/3

FIGURE NO. 3 PISTON, CONNECTING ROD AND CRANKSHAFT

LEGEND TO PARTS, FIGURE 3

| ITEM NO. | FUNCT GROUP | ITEM NAME | ITEM NO. | FUNCT GROUP | ITEM NAME  |
|----------|-------------|-----------|----------|-------------|------------|
| 1        | 0104        | RING      | 6        | 0104        | LOCK       |
| 2        | 0104        | PIN       | 7        | 0104        | BOLT       |
| 3        | 0104        | PISTON AY | 8        | 0104        | DI PPER    |
| 4        | 0104        | RING SET  | 9        | 0102        | CRANKSHAFT |
| 5        | 0104        | ROD AY    | 10       | 0102        | BEARING    |

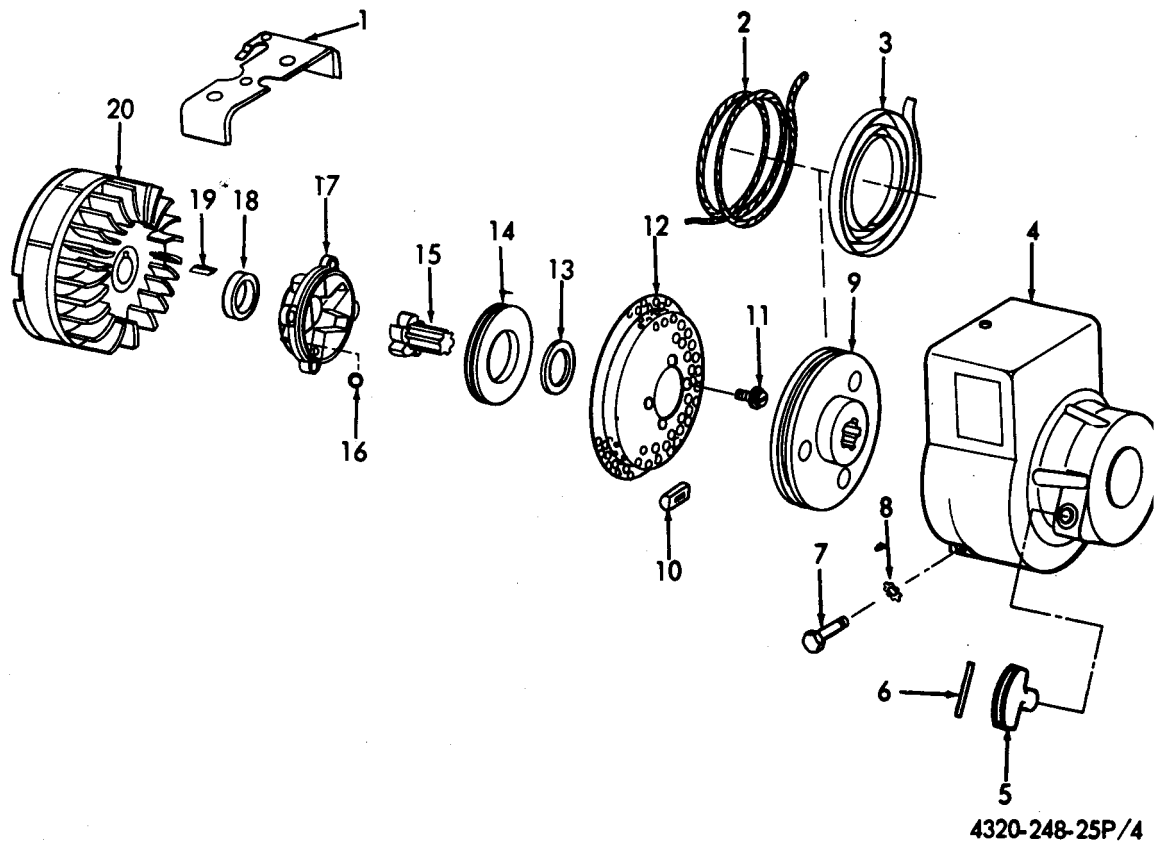
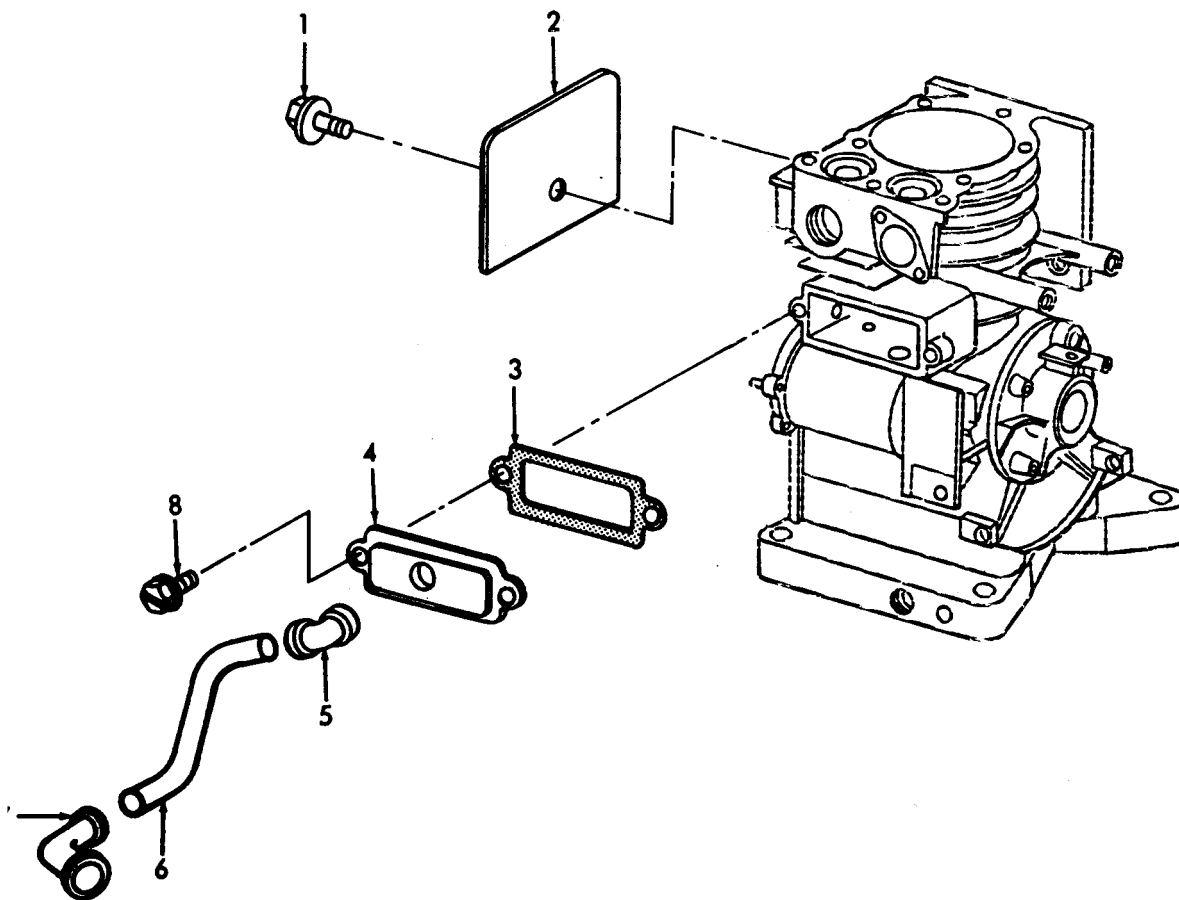


FIGURE No. 4 REWINDSTARTER, FLYWHEEL

LEGEND TO PARTS, FIGURE 4

| ITEM NO. | FUNCT GROUP | ITEM NAME | ITEM NO. | FUNCT GROUP | ITEM NAME | ITEM NO. | FUNCT GROUP | ITEM NAME   |
|----------|-------------|-----------|----------|-------------|-----------|----------|-------------|-------------|
| 1        | 0502        | COVER     | 8        | 0502        | WASHER    | 15       | 0107        | RATCHET     |
| 2        | 0107        | ROPE      | 9        | 0107        | PULLEY    | 16       | 0107        | BEARING     |
| 3        | 0107        | SPRING    | 10       | 0107        | BUMPER    | 17       | 0107        | HOUSING     |
| 4        | 0502        | HOUSING   | 11       | 0107        | SCREW     | 18       | 0605        | WASHER      |
| 5        | 0107        | GRIP      | 12       | 0107        | SCREEN    | 19       | 0605        | WASHER      |
| 6        | 0107        | PIN       | 13       | 0107        | WASHER    | 20       | 0605        | FLYWHEEL AY |
| 7        | 0502        | SCREW     | 14       | 0107        | WASHER    |          |             |             |



4320-248-25P/5

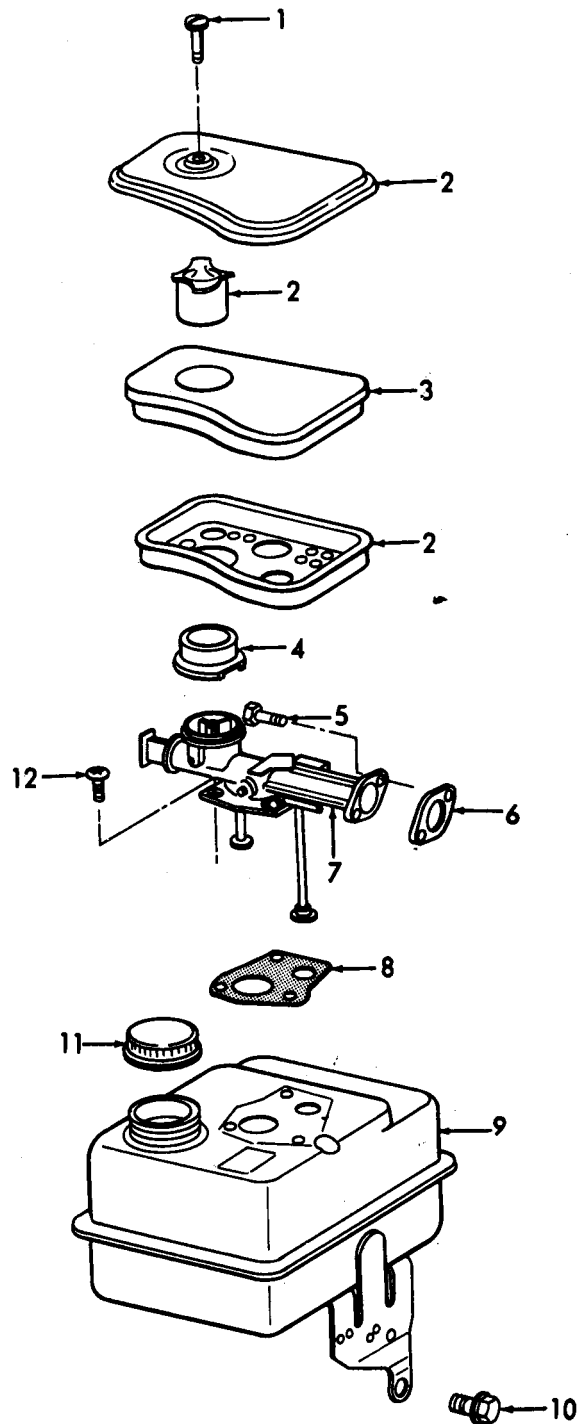
FIGURE NO. 5 CRANKCASE BREATHER

LEGEND TO PARTS, FIGURE 5

| ITEM<br>NO. | FUNCT<br>GROUP | ITEM<br>NAME | ITEM<br>NO. | FUNCT<br>GROUP | ITEM<br>NAME |
|-------------|----------------|--------------|-------------|----------------|--------------|
| 1           | 0502           | SCREW        | 5           | 0106           | GROMMET      |
| 2           | 0502           | SHIELD       | 6           | 0106           | TUBE         |
| 3           | 0106           | GASKET       | 7           | 0106           | GROMMET      |
| 4           | 0106           | BREATHER     | 8           | 0106           | BOLT         |

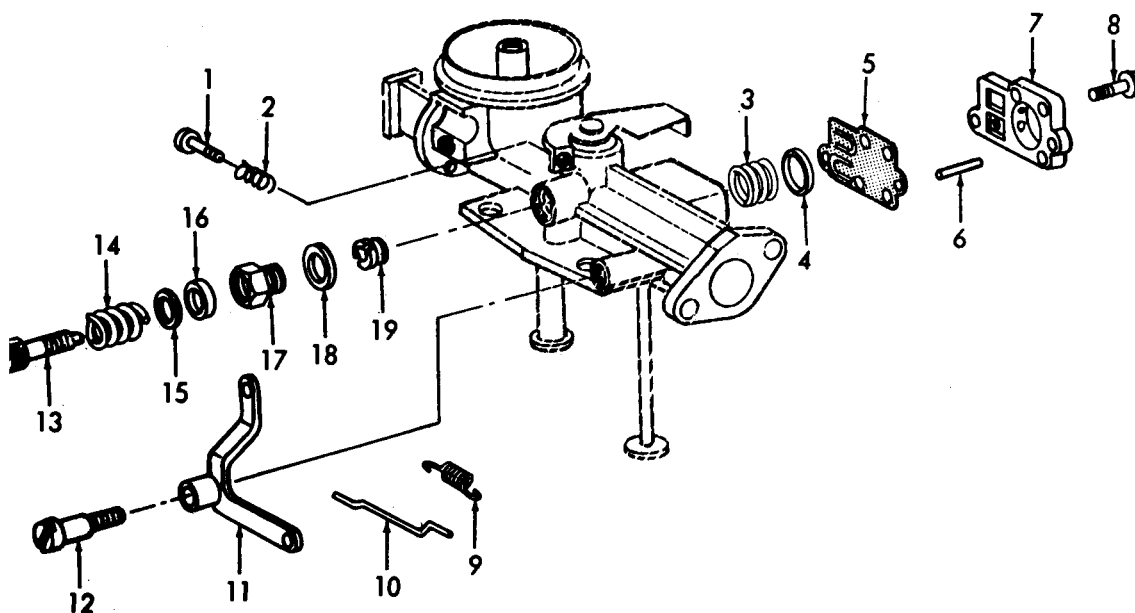
LEGEND TO PARTS, FIGURE 6

| ITEM NO. | FUNCT GROUP | ITEM NAME      |
|----------|-------------|----------------|
| 1        | 0304        | SCREW          |
| 2        | 0304        | AIR CLEANER    |
| 3        | 0304        | FILTER ELEMENT |
| 4        | 0304        | GASKET         |
| 5        | 0301        | SCREW          |
| 6        | 0301        | GASKET         |
| 7        | 0301        | CARBURETOR AY  |
| 8        | 0306        | GASKET         |
| 9        | 0306        | TANK           |
| 10       | 0306        | SCREW          |
| 11       | 0306        | CAP            |
| 12       | 0301        | SCREW          |



4320-248-25P/6

FIGURE NO. 6 FUEL TANK, CARBURETOR AND AIR CLEANER

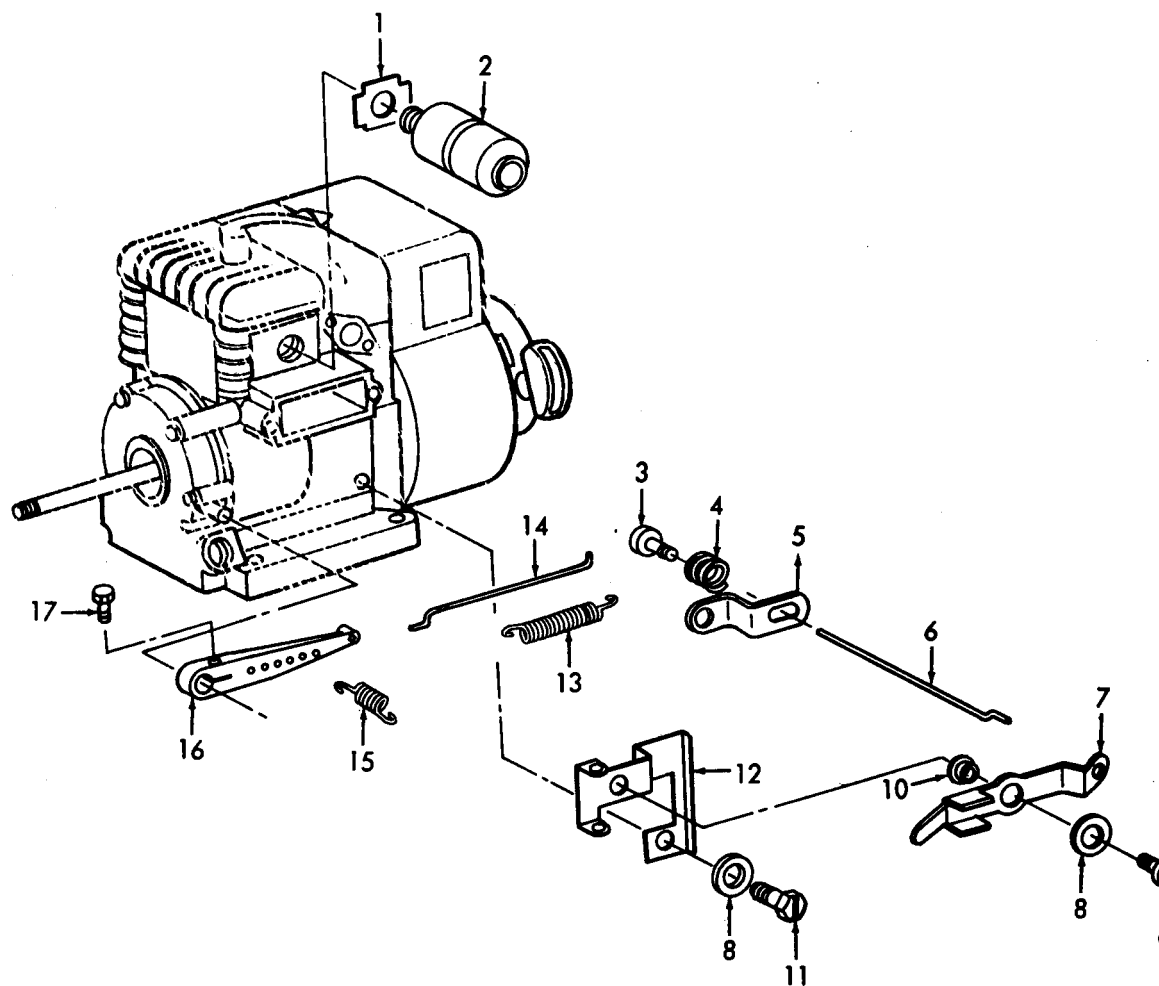


4320-248-25P/7

FIGURE NO. 7 CARBURETOR

LEGEND TO PARTS, FIGURE 7

| ITEM NO. | FUNCT GROUP | ITEM NAME | ITEM NO. | FUNCT GROUP | ITEM NAME |
|----------|-------------|-----------|----------|-------------|-----------|
| 1        | 0301        | SCREW     | 11       | 0301        | CRANK     |
| 2        | 0301        | SPRING    | 12       | 0301        | SCREW     |
| 3        | 0301        | SPRING    | 13       | 0301        | VALVE     |
| 4        | 0301        | CAP       | 14       | 0301        | SPRING    |
| 5        | 0301        | DIAPHRAGM | 15       | 0301        | WASHER    |
| 6        | 0301        | PIN       | 16       | 0301        | PACKING   |
| 7        | 0301        | COVER     | 17       | 0301        | NUT       |
| 8        | 0301        | SCREW     | 18       | 0301        | GASKET    |
| 9        | 0301        | SPRING    | 19       | 0301        | SEAT      |
| 10       | 0301        | LINK      |          |             |           |

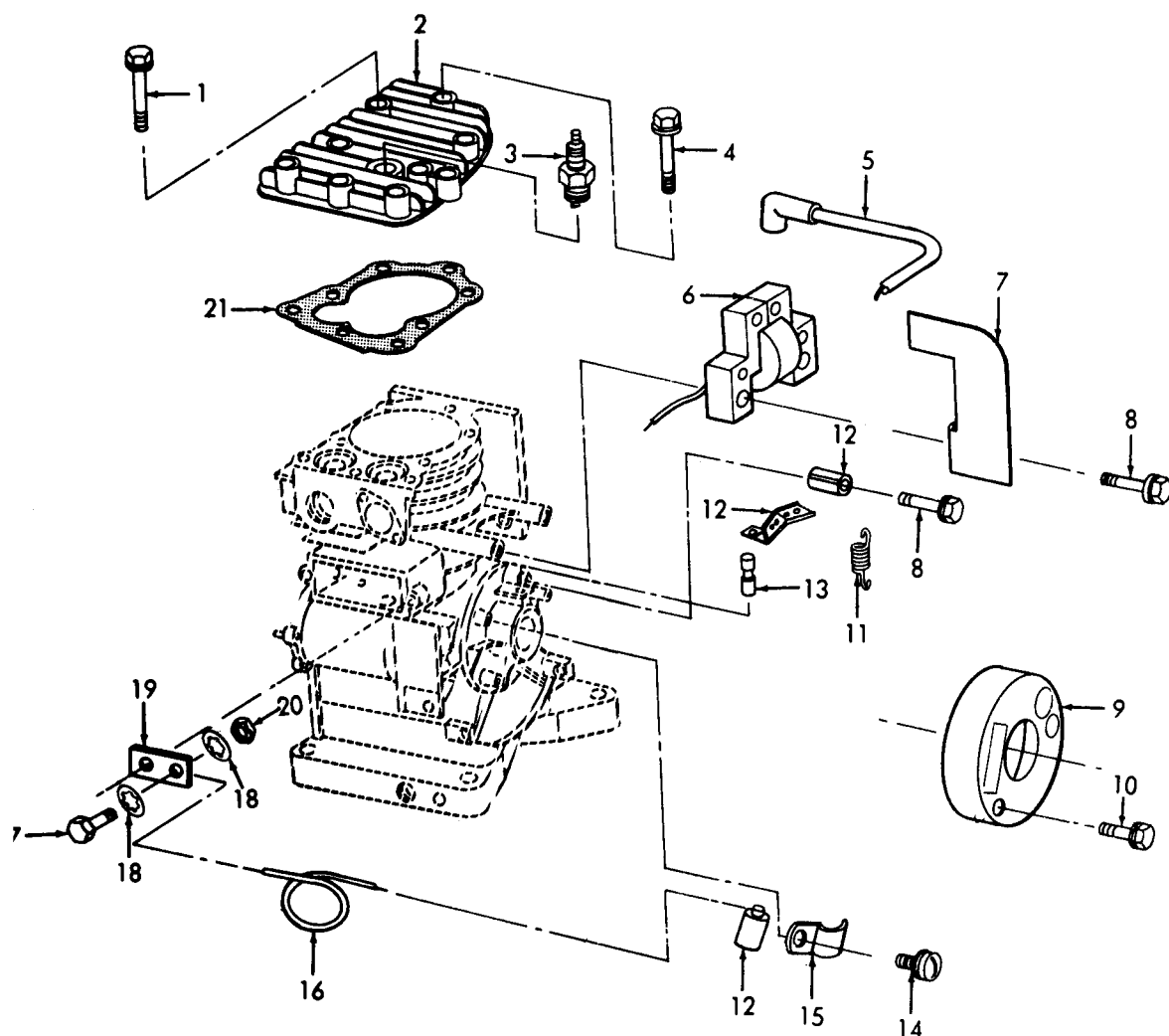


4320-248-25P/

FIGURE No. 8 MUFFLER AND GOVERNOR CONTROLS

LEGEND TO PARTS, FIGURE 8

| ITEM<br>NO. | FUNCT<br>GROUP | ITEM<br>NAME | ITEM<br>NO. | FUNCT<br>GROUP | ITEM<br>NAME |
|-------------|----------------|--------------|-------------|----------------|--------------|
| 1           | 0401           | LOCKNUT      | 10          | 0308           | BUSHING      |
| 2           | 0401           | MUFFLER      | 11          | 0308           | SCREW        |
| 3           | 0308           | NUT          | 12          | 0308           | BRACKET      |
| 4           | 0308           | SPRING       | 13          | 0308           | SPRING       |
| 5           | 0308           | BRACKET      | 14          | 0308           | LINK         |
| 6           | 0308           | ROD          | 15          | 0308           | SPRING       |
| 7           | 0308           | LEVER        | 16          | 0308           | LEVER        |
| 8           | 0308           | WASHER       | 17          | 0308           | SCREW        |
| 9           | 0308           | SCREW        |             |                |              |

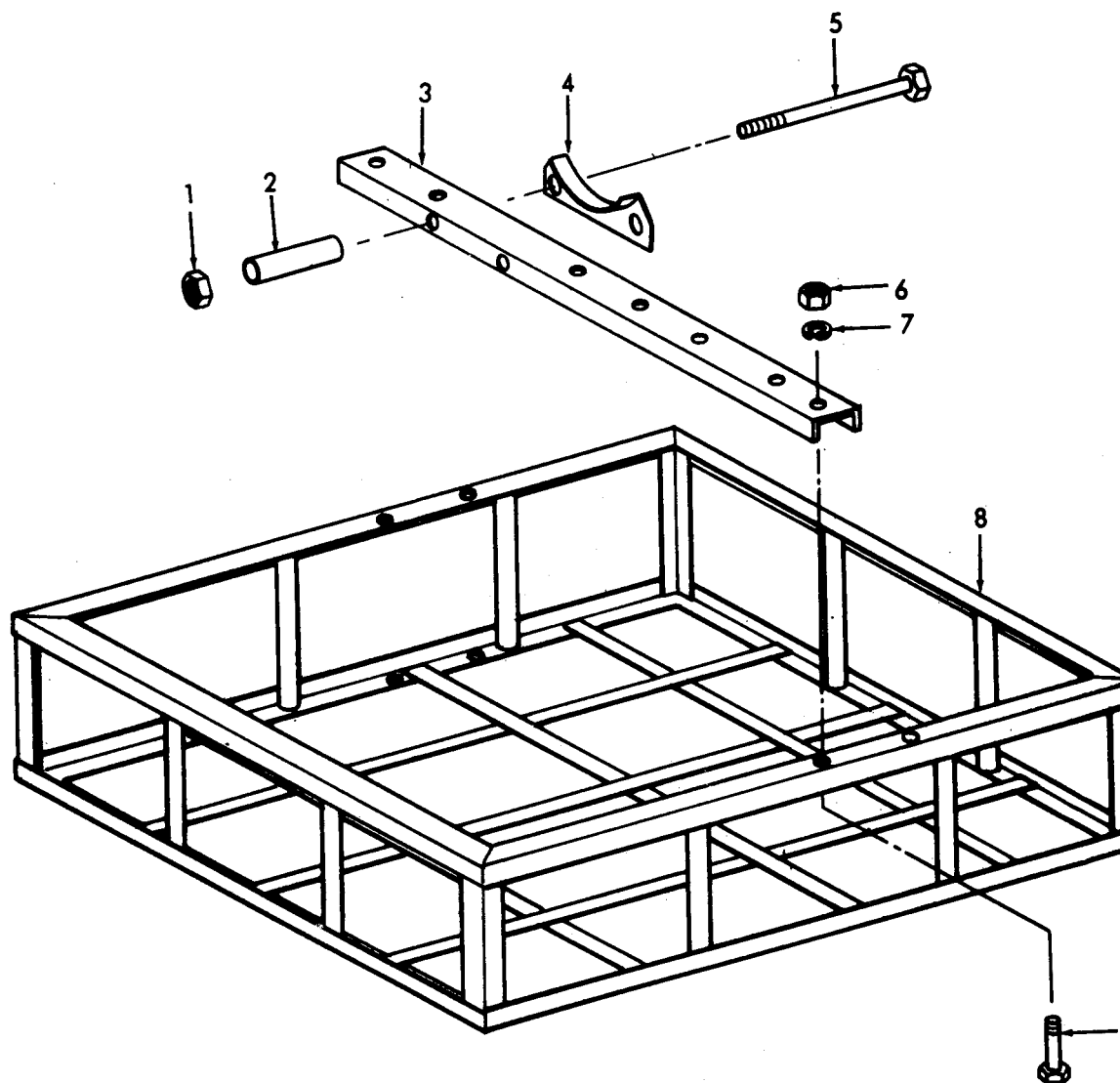


4320-248-25P/9

FIGURE NO. 9 CYLINDER HEAD AND IGNITION COMPONENTS

LEGEND TO PARTS, FIGURE 9

| ITEM NO. | FUNCT GROUP | ITEM NAME | ITEM NO. | FUNCT GROUP | ITEM NAME | ITEM NO. | FUNCT GROUP | ITEM NAME |
|----------|-------------|-----------|----------|-------------|-----------|----------|-------------|-----------|
| 0101     |             | BOLT      | 8        | 0605        | SCREW     | 15       | 0605        | CLAMP     |
| 0101     |             | HEAD      | 9        | 0605        | COVER     | 16       | 0605        | WIRE      |
| 0605     |             | PLUG      | 10       | 0605        | SCREW     | 17       | 0605        | BOLT      |
| 0101     |             | BOLT      | 11       | 0605        | SPRING    | 18       | 0605        | WASHER    |
| 0605     |             | LEAD      | 12       | 0605        | PARTS KIT | 19       | 0605        | INSULATOR |
| 0605     |             | ARMATURE  | 13       | 0605        | PLUNGER   | 20       | 0605        | NUT       |
| 0502     |             | DEFLECTOR | 14       | 0605        | SCREW     | 21       | 0101        | GASKET    |



4320-248-25P/10

FIGURE NO. 10 BASKET AND FRAME

LEGEND TO PARTS, FIGURE 10

| ITEM NO. | FUNCT GROUP | ITEM NAME |
|----------|-------------|-----------|
| 1        | 1501        | NUT       |
| 2        | 1501        | SPACER    |
| 3        | 1501        | BASE      |

| ITEM NO. | FUNCT GROUP | ITEM NAME |
|----------|-------------|-----------|
| 4        | 1501        | SUPPORT   |
| 5        | 1501        | BOLT      |
| 6        | 1501        | NUT       |

| ITEM NO. | FUNCT GROUP | ITEM NAME |
|----------|-------------|-----------|
| 7        | 1501        | WASHER    |
| 8        | 1501        | BASKET    |
| 9        | 1501        | BOLT      |



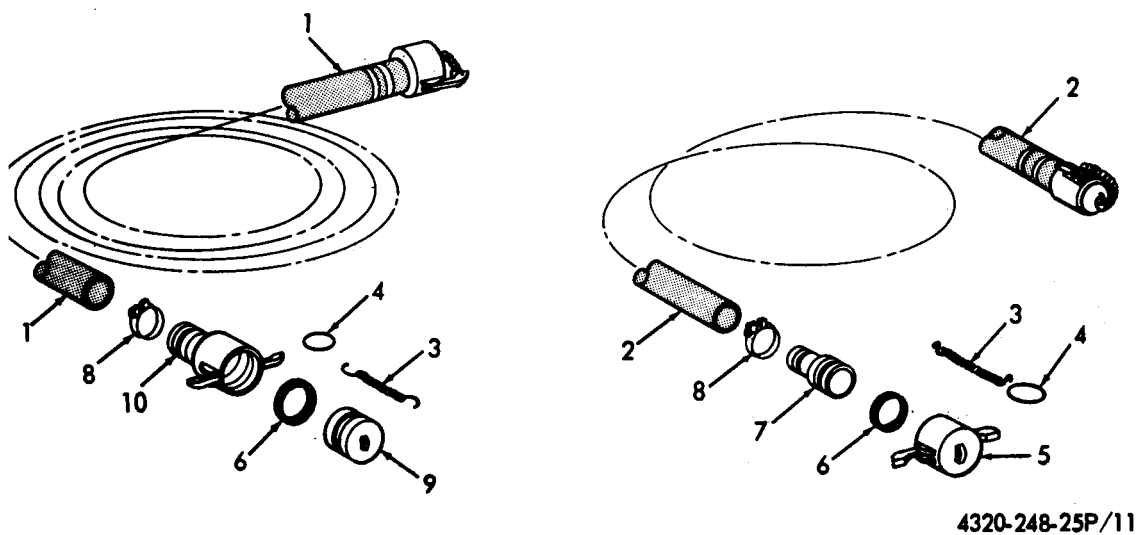
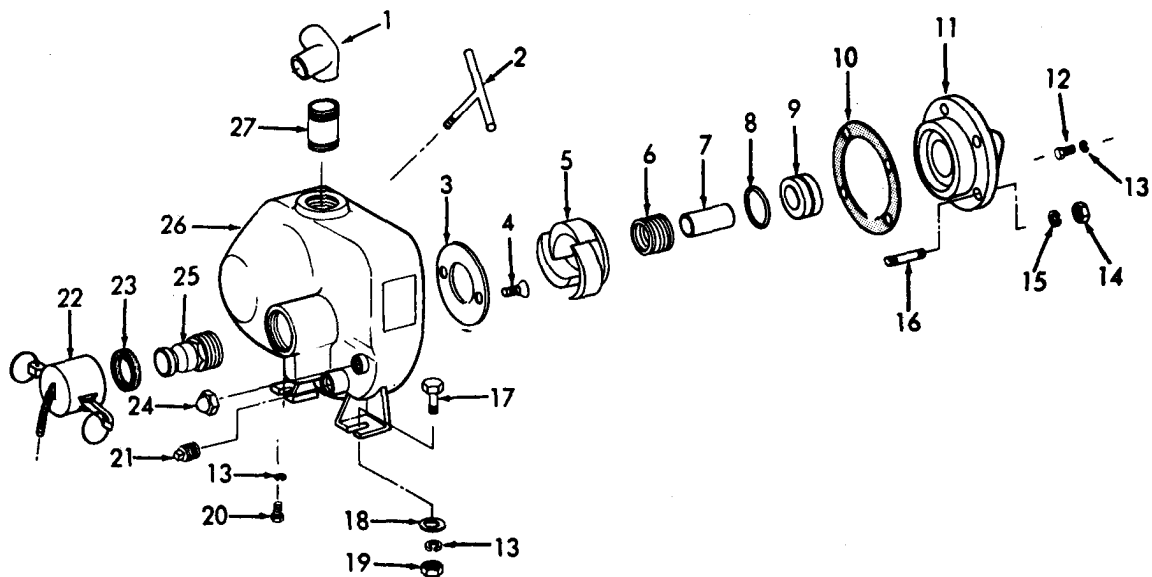


Figure No. 11 HOSE

LEGEND TO PARTS, FIGURE 11

| ITEM NO. | FUNCT GROUP | ITEM NAME |
|----------|-------------|-----------|
| 1        | 2202        | HOSE      |
| 2        | 2202        | HOSE      |
| 3        | 2202        | CHAIN AY  |
| 4        | 2202        | RI NG     |
| 5        | 2202        | CAP       |
| 6        | 2202        | GASKET    |
| 7        | 2202        | COUPLI NG |
| 8        | 2202        | CLAMP     |
| 9        | 2202        | PLUG      |
| 10       | 2202        | COUPLI NG |

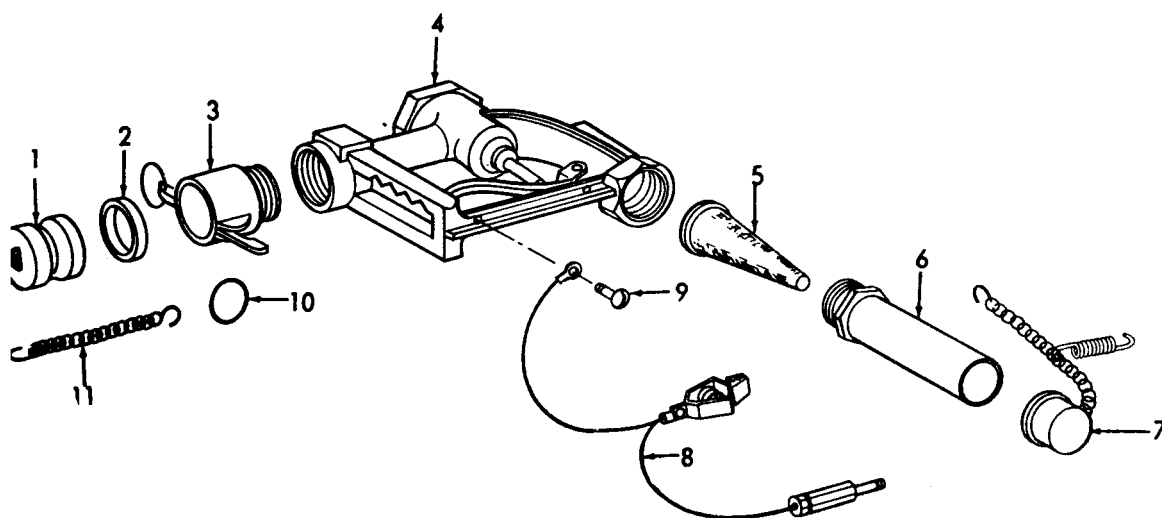


4320-248-25P/1

FIGURE NO. 12 PUMP

LEGEND TO PARTS, FIGURE 12

| ITEM NO. | FUNCT GROUP | ITEM NAME | ITEM NO. | FUNCT GROUP | ITEM NAME | ITEM NO. | FUNCT GROUP | ITEM NAME |
|----------|-------------|-----------|----------|-------------|-----------|----------|-------------|-----------|
| 1        | 7202        | ELBOW     | 10       | 7202        | GASKET    | 19       | 7202        | NUT       |
| 2        | 7202        | HANDLE    | 11       | 7202        | ADAPTER   | 20       | 7202        | BOLT      |
| 3        | 7202        | PLATE     | 12       | 7202        | BOLT      | 21       | 7202        | PLUG      |
| 4        | 7202        | BOLT      | 13       | 7202        | WASHER    | 22       | 7202        | CAP AY    |
| 5        | 7202        | IMPELLER  | 14       | 7202        | NUT       | 23       | 7202        | GASKET    |
| 6        | 7202        | SEAL      | 15       | 7202        | WASHER    | 24       | 7202        | NUT       |
| 7        | 7202        | SLEEVE    | 16       | 7202        | STUD      | 25       | 7202        | COUPLING  |
| 8        | 7202        | O RING    | 17       | 7202        | BOLT      | 26       | 7202        | CASING    |
| 9        | 7202        | SEAT      | 18       | 7202        | WASHER    | 27       | 7202        | NI PPLE   |

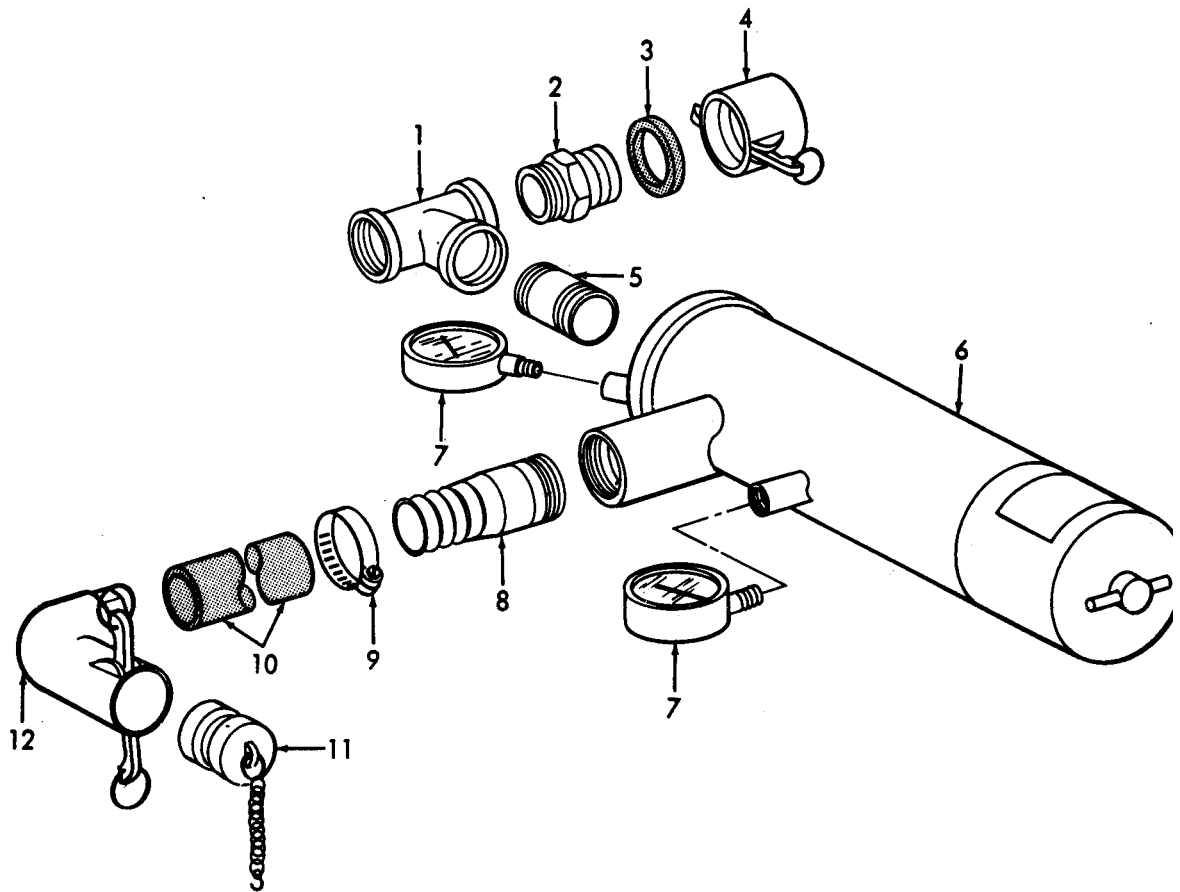


4320-248-25P/13

FIGURE NO. 13 NOZZLE

LEGEND TO PARTS, FIGURE 13

| ITEM NO. | FUNCT GROUP | ITEM NAME |
|----------|-------------|-----------|
| 1        | 7203        | PLUG      |
| 2        | 7203        | GASKET    |
| 3        | 7203        | COUPLER   |
| 4        | 7203        | NOZZLE    |
| 5        | 7203        | SCREEN    |
| 6        | 7203        | SPOUT     |
| 7        | 7203        | CAP AY    |
| 8        | 7203        | WIRE AY   |
| 9        | 7203        | SCREW     |
| 10       | 7203        | RING      |
| 11       | 7203        | CHAIN     |

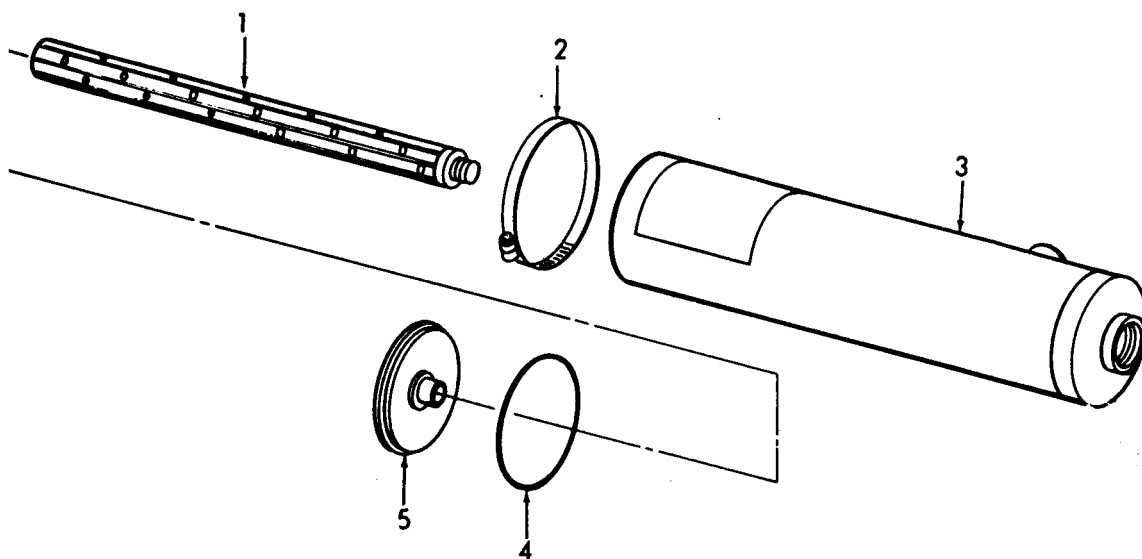


4320-248-25P/14

FIGURE NO. 14 MONITOR

LEGEND TO PARTS, FIGURE 14

| ITEM NO. | FUNCT GROUP | ITEM NAME | ITEM NO. | FUNCT GROUP | ITEM NAME |
|----------|-------------|-----------|----------|-------------|-----------|
| 1        | 7204        | TEE       | 7        | 7204        | GAGE      |
| 2        | 7204        | ADAPTER   | 8        | 7204        | ADAPTER   |
| 3        | 7204        | GASKET    | 9        | 7204        | CLAMP     |
| 4        | 7204        | CAP AY    | 10       | 7204        | NOSE      |
| 5        | 7204        | NIPPLE    | 11       | 7204        | PLUG AY   |
| 6        | 7204        | GAGE      | 12       | 7204        | COUPLER   |



4320-248-25P/15

FIGURE NO. 15 GAGE Go- No - Go

LEGEND TO PARTS, FIGURE 15

| ITEM<br>NO. | FUNCT<br>GROUP | ITEM<br>NAME |
|-------------|----------------|--------------|
| 1           | 7204           | ELEMENT      |
| 2           | 7204           | CLAMP        |
| 3           | 7204           | HOUSING      |
| 4           | 7204           | O Ri ng      |
| 5           | 7204           | COVER        |

Section VII. INDEX-FEDERAL STOCK NUMBER AND REFERENCE NUMBER  
CROSS-REFERENCE TO INDEX NUMBER

| <u>STOCK NUMBER</u> | <u>INDEX NUMBER</u> | <u>STOCK NUMBER</u> | <u>INDEX NUMBER</u> |
|---------------------|---------------------|---------------------|---------------------|
| 2805-018-5293       | 00048               | 4010-628-5276       | 00209               |
| 2805-254-1370       | 00044               |                     | 00266               |
| 2805-342-7432       | 00042               |                     | 00276               |
| 2805-351-6692       | 00020               | 4320-920-5342       | 00267               |
| 2805-353-7587       | 00041               | 4320-920-5343       | 00237               |
| 2805-353-7712       | 00030               | 4320-946-9947       | 00236               |
| 2805-356-1334       | 00043               | 4320-946-9948       | 00227               |
| 2805-422-5804       | 00052               | 4320-946-9949       | 00219               |
| 2805-594-1030       | 00023               | 4320-946-9961       | 00239               |
| 2805-608-8508       | 00035               | 4320-989-3259       | 00233               |
| 2805-608-8509       | 00032               | 4720-916-1883       | 00182               |
| 2805-624-0278       | 00021               | 4720-946-9960       | 00181               |
| 2805-624-0282       | 00051               | 4730-020-9293       | 00268               |
| 2805-624-0284       | 00158               | 4730-192-9481       | 00056               |
| 2805-658-3916       | 00017               | 4730-360-0595       | 00189               |
| 2805-678-4395       | 00008               |                     | 00197               |
|                     | 00022               |                     | 00211               |
| 2805-678-4421       | 00038               |                     | 00246               |
| 2805-678-4423       | 00034               |                     | 00274               |
| 2805-678-4425       | 00046               | 4730-360-1595       | 00265               |
| 2805-678-4431       | 00010               | 4730-542-4030       | 00193               |
|                     | 00053               | 4730-542-4031       | 00186               |
| 2805-678-4432       | 00007               | 4730-555-1562       | 00195               |
|                     | 00018               |                     | 00208               |
| 2805-679-5779       | 00118               | 4730-595-3846       | 00192               |
| 2805-679-5784       | 00124               |                     | 00247               |
| 2805-776-2282       | 00054               |                     | 00275               |
| 2805-828-0783       | 00004               | 4730-715-1558       | 00241               |
| 2805-849-3141       | 00057               | 4730-805-6726       | 00213               |
| 2805-920-5383       | 00019               |                     | 00261               |
| 2805-920-5384       | 00027               | 4730-950-7613       | 00024               |
| 2805-920-5385       | 00153               | 4930-872-1779       | 00257               |
| 2805-920-5387       | 00036               | 5305-010-0752       | 00150               |
| 2805-920-5388       | 00047               | 5305-543-5220       | 00164               |
| 2805-949-0543       | 00029               | 5305-719-4603       | 00144               |
| 2805-992-0403       | 00045               |                     | 00069               |
| 2805-999-5238       | 00003               |                     | 00163               |
| 2910-707-7503       | 00107               | 5305-719-4783       | 00129               |
| 2910-711-5609       | 00130               | 5305-753-4269       | 00127               |
| 2910-893-5072       | 00082               | 5305-992-0440       | 00162               |
| 2910-893-5073       | 00088               | 5306-073-8255       | 00050               |
| 2910-898-2094       | 00108               | 5306-543-5219       | 00128               |
| 2910-898094         | 00009               | 5306-817-0730       | 00033               |
| 2910-920-5361       | 00074               | 5310-011-5544       | 00166               |
| 2910-920-5363       | 00087               | 5310-353-7577       | 00135               |
| 2910-920-5368       | 00078               | 5310-596-5224       | 00157               |
| 2910-920-5369       | 00075               | 5310-721-4667       | 00165               |
| 2910-920-5370       | 00076               | 5315-248-0052       | 00040               |
| 2910-920-5371       | 00080               | 5315-276-4081       | 00039               |
| 2910-949-2135       | 00083               | 5315-598-5970       | 00155               |
| 2920-213-1147       | 00156               | 5315-626-1789       | 00123               |
| 2920-294-3747       | 00160               | 5315-855-4336       | 00064               |
| 2920-356-1333       | 00161               | 5315-924-0051       | 00085               |
| 2920-537-1365       | 00152               | 5330-250-0238       | 00223               |
| 2920-920-5373       | 00149               | 5330-526-7517       | 00259               |
| 2930-537-1360       | 00142               | 5330-924-0049       | 00084               |
| 2930-537-1363       | 00141               | 5330-924-0050       | 00234               |
| 2930-537-1364       | 00202               | 5330-924-0090       | 00079               |
| 2940-171-7935       | 00006               | 5340-286-4566       | 00159               |
|                     | 00094               | 5340-356-1325       | 00031               |
| 2940-294-1599       | 00101               | 5340-531-7989       | 00240               |
| 2940-608-8514       | 00005               | 5340-923-7050       | 00090               |
|                     | 00103               | 5340-923-9875       | 00089               |
| 2940-688-7912       | 00102               | 5340-945-0493       | 00132               |
| 2990-174-5255       | 00067               | 5840-787-6662       | 00061               |
| 2990-269-7145       | 00139               | 5970-789-1925       | 00154               |
| 2990-624-0260       | 00131               | 5975-152-1075       | 00138               |
| 2990-678-1220       | 00136               | 6150-624-0279       | 00167               |
| 2990-768-0723       | 00062               | 6685-923-7077       | 00271               |
| 2990-769-4104       | 00070               |                     |                     |
| 2990-786-2030       | 00065               |                     |                     |
| 2990-787-6665       | 00116               |                     |                     |
| 2990-898-2097       | 00133               |                     |                     |
| 2990-907-0644       | 00059               |                     |                     |
| 2990-920-5347       | 00121               |                     |                     |
| 2990-930-1737       | 00066               |                     |                     |
| 2990-930-1738       | 00068               |                     |                     |
| 2990-992-0405       | 00111               |                     |                     |
| 3110-100-6180       | 00060               |                     |                     |
| 3110-144-9004       | 00026               |                     |                     |
| 4010-628-5276       | 00191               |                     |                     |
|                     | 00100               |                     |                     |

Section VII. INDEX - FEDERAL STOCK NUMBER AND REFERENCE NUMBER  
CROSS-REFERENCE TO INDEX NUMBER

| <u>REFERENCE No.</u> | <u>MFA CODE</u> | <u>INDEX No.</u> | <u>REFERENCE No.</u> | <u>MFA CODE</u> | <u>INDEX No.</u> |
|----------------------|-----------------|------------------|----------------------|-----------------|------------------|
| AD001A1              | 88795           | 00230            | SX888                | 81718           | 00245            |
| AE002A1              | 88795           | 00235            | SX931A               | 88795           | 00239            |
| AH002B1              | 88795           | 00012            | SX937                | 88795           | 00182            |
|                      |                 | 00178            | SX988                | 88795           | 00176            |
|                      |                 | 0231             | SX989                | 88795           | 00175            |
| AH002B2              | 88795           | 00232            | SX990                | 88795           | 00214            |
| AJ002A4              | 88795           | 00218            | 022-171              | 38508           | 00271            |
| AR005A1              | 08484           | 00185            | 0414205              | 90005           | 00257            |
| AR010A1              | 08484           | 00255            | 0441075              | 90005           | 00255            |
| AB001A1              | 88795           | 00236            | 153                  | 81718           | 00249            |
| A7004A1              | 88795           | 00227            | 190W                 | 81718           | 00252            |
| 80001A1              | 88795           | 00220            | 210                  | 81718           | 00242            |
| BE002A7              | 88795           | 00172            | 210226               | 08645           | 00113            |
| BE001A3              | 88795           | 00225            | 210227               | 08645           | 00112            |
| BE002A2              | 88795           | 00224            | 210453               | 08645           | 00038            |
| BE002A5              | 88795           | 00226            | 210812               | 08645           | 00023            |
| BE002A7              | 88795           | 00002            | 210959               | 08645           | 00076            |
| BF001A1              | 88795           | 00212            | 211383               | 08645           | 00063            |
| BG001A2              | 88795           | 00217            | 220366               | 08645           | 00152            |
| BG002B2              | 88795           | 00011            | 220381               | 08645           | 00118            |
|                      |                 | 00174            | 220478               | 08645           | 00146            |
|                      |                 | 00229            |                      |                 | 00202            |
| BG002B3              | 88795           | 00228            | 220581               | 08645           | 00141            |
| BH002A               | 88795           | 00200            | 220670               | 08645           | 00034            |
| B1004A1              | 88795           | 00234            | 220680               | 08645           | 00136            |
| CC2961 1-2X1 5-8     | 81718           | 00251            | 220690               | 08645           | 00120            |
| CJ8                  | 08645           | 00160            | 220691               | 08645           | 00116            |
| C2002A1              | 88795           | 00215            | 220692               | 08645           | 00142            |
| C3012A1              | 88795           | 00219            | 220756               | 08645           | 00035            |
| D7002A1              | 88795           | 00222            | 220865               | 08645           | 00165            |
| E4002A1              | 88795           | 00237            | 221377               | 08645           | 00075            |
| E9001A1              | 88795           | 00206            | 221384               | 08645           | 00115            |
| G3020A2              | 88795           | 00201            | 221653               | 08645           | 00071            |
| H6430M               | 81718           | 00189            | 221661               | 08645           | 00068            |
|                      |                 | 00197            | 22235                | 08645           | 00093            |
|                      |                 | 00211            | 22826                | 08645           | 00135            |
|                      |                 | 00246            | 230126               | 08645           | 00039            |
|                      |                 | 00265            | 230127               | 08645           | 00041            |
|                      |                 | 00274            | 230149               | 08645           | 00122            |
| H6682M               | 81718           | 00191            | 230173               | 08645           | 00046            |
|                      |                 | 00196            | 230177               | 08645           | 00124            |
|                      |                 | 00209            | 230181               | 08645           | 00130            |
|                      |                 | 00244            | 230228               | 08645           | 00064            |
|                      |                 | 00266            | 230445               | 08645           | 00114            |
|                      |                 | 00276            | 230590               | 08645           | 00083            |
| K214-5               | 88795           | 00233            | 230591               | 08645           | 00087            |
| MA86                 | 88795           | 00260            | 230634               | 08645           | 00057            |
| MS29513-216          | 96906           | 00223            | 230671               | 08645           | 00096            |
| MS29513-249          | 96906           | 00259            | 230680               | 08645           | 00125            |
| QS200M28A            | 88795           | 00267            | 23184                | 08645           | 00043            |
| SX1048               | 88795           | 00250            | 23187                | 08645           | 00040            |
| SX1077               | 88795           | 00180            | 23433                | 08645           | 00082            |
| SX1091               | 88795           | 00177            | 23688                | 08645           | 00117            |
| SX1094               | 88795           | 00173            | 26018                | 08645           | 00159            |
| SX1603               | 88795           | 00204            | 260182               | 08645           | 00027            |
| SX1604               | 88795           | 00194            | 26026                | 08645           | 00031            |
|                      |                 | 00207            | 260455               | 08645           | 00090            |
|                      |                 | 00262            |                      |                 | 00151            |
| SX1605               | 88795           | 00188            | 260544               | 08645           | 00121            |
|                      |                 | 00198            | 260545               | 08645           | 00132            |
|                      |                 | 00210            | 260552               | 08645           | 00045            |
|                      |                 | 00248            | 260563               | 08645           | 00081            |
|                      |                 | 00264            | 260564               | 08645           | 00091            |
|                      |                 | 00273            | 260575               | 08645           | 00092            |
| SX1608               | 88795           | 00205            | 260585               | 08645           | 00133            |
| SX1609               | 88795           | 00221            | 26336                | 08645           | 00089            |
| SX1610               | 88795           | 00169            | 26478                | 08645           | 00044            |
| SX1611               | 88795           | 00254            | 26855                | 08645           | 00131            |
| SX1613               | 88795           | 00256            | 270026               | 08645           | 00078            |
| SX1616               | 81718           | 00187            | 27402                | 08645           | 00094            |
| SX1617               | 88795           | 00190            | 27549                | 08645           | 00010            |
|                      |                 | 00243            |                      |                 | 00053            |
|                      |                 | 00272            | 27586                | 08645           | 00007            |
| SX1619               | 88795           | 00269            |                      |                 | 00018            |
| SX1644A              | 88795           | 00170            | 27660                | 08645           | 00005            |
| SX16448              | 88795           | 0170A            |                      |                 | 00103            |
| SX1660               | 90005           | 00258            | 27670                | 08645           | 00008            |
| SX700                | 88795           | 00171            |                      |                 | 00022            |
| SX715                | 88795           | 00216            | 27911                | 08645           | 00009            |
|                      |                 | 00270            |                      |                 | 00108            |
| SX733                | 88795           | 00277            | 27987                | 08645           | 00102            |
| SX848                | 88795           | 00181            | 291925               | 08645           | 00030            |

| <u>REFERENCE No.</u> | <u>MFG CODE</u> | <u>INDEX No.</u> | <u>REFERENCE No.</u> | <u>MFG CODE</u> | <u>INDEX No</u> |
|----------------------|-----------------|------------------|----------------------|-----------------|-----------------|
| 292259               | 08645           | 00042            | 93113                | 08645           | 0001            |
| 293141               | 08645           | 00156            | 93141                | 08645           | 0005            |
| 293270               | 08645           | 00107            | 93265                | 08645           | 0008            |
| 293740               | 08645           | 00021            | 93322                | 08645           | 0010            |
| 293999               | 08645           | 00167            | 93341                | 08645           | 0005            |
| 294077               | 08645           | 00119            | 93343                | 08645           | 0010            |
| 294088               | 08645           | 00065            | 93357                | 08645           | 0005            |
| 294178               | 08645           | 00051            | 93381                | 08645           | 0016            |
| 294260               | 08645           | 00143            | 93392                | 08645           | 0005            |
| 294303               | 08645           | 00070            | 93394                | 08645           | 0005            |
| 294306               | 08645           | 00017            | 99158                | 08645           | 0002            |
| 294367               | 08645           | 00032            |                      |                 |                 |
| 294584               | 08645           | 00067            |                      |                 |                 |
| 294628               | 08645           | 00158            |                      |                 |                 |
| 294870               | 08645           | 00101            |                      |                 |                 |
| 294932               | 08645           | 00111            |                      |                 |                 |
| 295455               | 08645           | 00029            |                      |                 |                 |
| 295657               | 08645           | 00036            |                      |                 |                 |
| 296C                 | 81718           | 00240            |                      |                 |                 |
| 296178               | 08645           | 00080            |                      |                 |                 |
| 296591               | 08645           | 00106            |                      |                 |                 |
| 296610               | 08645           | 00019            |                      |                 |                 |
| 296676               | 08645           | 00047            |                      |                 |                 |
| 296677               | 08645           | 00048            |                      |                 |                 |
| 296784               | 08645           | 00074            |                      |                 |                 |
| 296811               | 08645           | 00086            |                      |                 |                 |
| 296884               | 08645           | 00153            |                      |                 |                 |
| 297069               | 08645           | 00077            |                      |                 |                 |
| 297275               | 08645           | 00004            |                      |                 |                 |
| 297961               | 08645           | 00088            |                      |                 |                 |
| 298310               | 08645           | 00059            |                      |                 |                 |
| 298436               | 08645           | 00066            |                      |                 |                 |
| 298502               | 08645           | 00149            |                      |                 |                 |
| 541-621-048          | 25500           | 0084             |                      |                 |                 |
| 546-622-048          | 25500           | 00183            |                      |                 |                 |
| 61760                | 08645           | 00155            |                      |                 |                 |
| 6338                 | 81718           | 00241            |                      |                 |                 |
| 633C                 | 81718           | 00186            |                      |                 |                 |
| 633E                 | 81718           | 00193            |                      |                 |                 |
| 633F                 | 81718           | 00213            |                      |                 |                 |
|                      |                 | 00261            |                      |                 |                 |
| 633H                 | 81718           | 00268            |                      |                 |                 |
| 634A                 | 81718           | 00192            |                      |                 |                 |
|                      |                 | 00247            |                      |                 |                 |
|                      |                 | 00275            |                      |                 |                 |
| 634B                 | 81718           | 00195            |                      |                 |                 |
|                      |                 | 00208            |                      |                 |                 |
|                      | 88795           | 00263            |                      |                 |                 |
| 63770                | 08645           | 00060            |                      |                 |                 |
| 65704                | 08645           | 00161            |                      |                 |                 |
| 65978                | 08645           | 00084            |                      |                 |                 |
| 66432                | 08645           | 00134            |                      |                 |                 |
| 66528                | 08645           | 00061            |                      |                 |                 |
| 66578                | 08645           | 00054            |                      |                 |                 |
| 66594                | 08645           | 00079            |                      |                 |                 |
| 66728                | 08645           | 00062            |                      |                 |                 |
| 66935                | 08645           | 00154            |                      |                 |                 |
| 67608                | 08645           | 00055            |                      |                 |                 |
| 68238                | 08645           | 00072            |                      |                 |                 |
| 69345                | 08645           | 00052            |                      |                 |                 |
| 81232                | 08645           | 00003            |                      |                 |                 |
| 89660                | 08645           | 00020            |                      |                 |                 |
| 89966                | 08645           | 00139            |                      |                 |                 |
| 90576                | 08645           | 00157            |                      |                 |                 |
| 91249                | 08645           | 00024            |                      |                 |                 |
| 91258                | 08645           | 00056            |                      |                 |                 |
| 91811                | 08645           | 00138            |                      |                 |                 |
| 92296                | 08645           | 00033            |                      |                 |                 |
| 92666                | 08645           | 00145            |                      |                 |                 |
| 92778                | 08645           | 00147            |                      |                 |                 |
| 92786                | 08645           | 00150            |                      |                 |                 |
| 93014                | 08645           | 00164            |                      |                 |                 |
| 93032                | 08645           | 00014            |                      |                 |                 |
| 93042                | 08645           | 00144            |                      |                 |                 |
|                      |                 | 00069            |                      |                 |                 |
|                      |                 | 00163            |                      |                 |                 |
| 93043                | 08645           | 00123            |                      |                 |                 |
| 93062                | 08645           | 00126            |                      |                 |                 |
| 93064                | 08645           | 00127            |                      |                 |                 |
| 93067                | 08645           | 00128            |                      |                 |                 |
| 93100                | 08645           | 00129            |                      |                 |                 |
| 93111                | 08645           | 00015            |                      |                 |                 |



By Order of the Secretary of the Army:

Official:

HAROLD K. JOHNSON,  
*General, United States Army,*  
*Chief of Staff.*

KENNETH G. WICKHAM,  
*Major General, United States Army,*  
*The Adjutant General.*

To be distributed in accordance with DA Form 12-25, Section I, requirements for Organizational Maintenance, Mobility Support Equipment for Pumps, Centrifugal, Petroleum.





**TM 5-4320-248-25P FUEL SYSTEM, TRANSFER, PORTABLE, PUMP, CENTRIFUGAL, 100 GPM—1968**

PIN: 008476-000

This fine document...

Was brought to you by me:



### [Liberated Manuals -- free army and government manuals](#)

Why do I do it? I am tired of sleazy CD-ROM sellers, who take publicly available information, slap “watermarks” and other junk on it, and sell it. Those masters of search engine manipulation make sure that their sites that sell free information, come up first in search engines. They did not create it... They did not even scan it... Why should they get your money? Why are not letting you give those free manuals to your friends?

I am setting this document FREE. This document was made by the US Government and is NOT protected by Copyright. Feel free to share, republish, sell and so on.

I am not asking you for donations, fees or handouts. If you can, please provide a link to [liberatedmanuals.com](http://liberatedmanuals.com), so that free manuals come up first in search engines:

<A HREF=<http://www.liberatedmanuals.com/>>Free Military and Government Manuals</A>

- Sincerely  
Igor Chudov  
<http://igor.chudov.com/>
- [Chicago Machinery Movers](#)