

TECHNICAL MANUAL

**ORGANIZATIONAL, DIRECT SUPPORT AND
GENERAL SUPPORT MAINTENANCE
REPAIR PARTS AND SPECIAL TOOLS LIST
(INCLUDING DEPOT MAINTENANCE REPAIR PARTS
AND SPECIAL TOOLS)**

FOR

**COMPRESSOR UNIT, RECIPROCATING,
15 CFM, 175 PSI,
ELECTRIC MOTOR DRIVEN
MODEL R122RAAB, PART NO. 84950
(NSN 4310-01-139-4815)**



HEADQUARTERS, DEPARTMENT OF THE ARMY

21 FEBRUARY 1985

CHANGE

NO. 1

HEADQUARTERS
DEPARTMENT OF THE ARMY
WASHINGTON, D. C., 18 MAY 1992

**Organizational, Direct Support and General Support
Maintenance Repair Parts and Special Tools List
(Including Depot Maintenance Repair Parts
and Special Tools List)
for**

**COMPRESSOR UNIT, RECIPROCATING,
15 CFM, 175 PSI,
ELECTRIC MOTOR DRIVEN
MODEL R122RAAB, PART NO. 84950
(NSN 4310-01-139-4815)**

Approved for public release; Distribution is unlimited

TM 5-4310-375-24P, 21 February 1985 is changed as follows:

1. Remove and insert pages as indicated below. New or changed text material is indicated by a vertical bar in the margin. An illustration change is indicated by a miniature pointing hand.

Remove pages

Insert pages

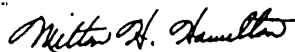
I-1 through I-4

I-1 through I-4

2. Retain this sheet in front of manual for reference purposes.

By Order of the Secretary of the Army:

Official:



MILTON H. HAMILTON
*Administrative Assistant to the
Secretary of the Army*

01390

GORDON R. SULLIVAN
*General, United States Army
Chief of Staff*

DISTRIBUTION:

To be distributed in accordance with DA Form 12-25E, (qty rqr block no. 0338).

TECHNICAL MANUAL

TM 5-4310-375-24P

HEADQUARTERS
DEPARTMENT OF THE ARMY
WASHINGTON, D.C. 21 February 1985

**ORGANIZATIONAL, DIRECT SUPPORT AND
GENERAL SUPPORT MAINTENANCE
REPAIR PARTS AND SPECIAL TOOLS LIST
(INCLUDING DEPOT MAINTENANCE REPAIR PARTS AND SPECIAL TOOLS)
FOR
COMPRESSOR UNIT, RECIPROCATING, 15 CFM, 175 PSI,
ELECTRIC MOTOR DRIVEN
MODEL R122RAAB, PART NO. 84950
(NSN 4310-01-139-4815)**

Current as of 5 October 1984

REPORTING OF ERRORS AND RECOMMENDING IMPROVEMENTS

You can help improve this manual. If you find any mistakes or if you know of a way to improve the procedures, please let us know. Mail your letter, DA Form 2028 (Recommended Changes to Publications and Blank Forms) or DA Form 2028-2 located in the back of this manual direct to: Commander, U.S. Army Troop Support Command, ATTN: AMSTR-MPS, 4300 Goodfellow Blvd., St. Louis, MO 63120-1798. A reply will be furnished to you.

TABLE OF CONTENTS

| | Listing Page | Illus Figure |
|--|-----------------|-----------------|
| Section I. Introduction | 1 | |
| II. Repair parts list | 1-1 | |
| Group 01 Compressor drive | | |
| Belt guard, drive belts and pulley | 1-1 | 1 |
| 02 Electric motor and controls | | |
| Starter assembly, motor controller. | 2-1 | 2 |
| Electric motor assembly | 3-1 | 3 |
| Pressure switch assembly | 4-1 | 4 |
| 03 Compressor assembly | | |
| Air compressor assembly | 5-1 | 5 |
| Inlet air filter assembly | 6-1 | 6 |
| Cylinder head, first and second stage valves | 7-1 | 7 |
| Intercooler and aftercooler | 8-1 | 8 |
| Cylinder, pistons, and connecting rods | 9-1 | 9 |
| Flywheel, crankshaft, bearings, seal and frame | 10-1 | 10 |
| 04 Air receiver system | | |
| Air receiver tank, gauge, and valves | 11-1 | 11 |
| 05 Air discharge system | | |
| Discharge hose, inflator gauge, and valve | 12-1 | 12 |
| III. Special tools list (Not Applicable) | | |
| IV. National Stock Number, Part Number Index | I-1 | |

ORGANIZATIONAL, MAINTENANCE REPAIR PARTS AND SPECIAL TOOLS LIST

SECTION I. INTRODUCTION

1. Scope.

This RPSTL lists and authorizes spares and repair parts; special tools; special Test, Measurement, and Diagnostic Equipment (TMDE); and other special support equipment required for performance of Organizational, Direct Support, and General Support Maintenance of the Air Compressor Unit. It authorizes the requisitioning, issue, and disposition of spares, repair parts and special tools as indicated by the Source, Maintenance and Recoverability (SMR) codes.

2. General.

In addition to this section, Introduction, this Repair Parts and Special Tools List is divided into the following sections:

a. Section II. Repair Parts List. A list of spares and repair parts authorized by this RPSTL for use in the performance of maintenance. The list also includes parts which must be removed for replacement of the authorized parts. Parts lists are composed of functional groups in ascending alphanumeric sequence, with the parts in each group listed in ascending figure and item number sequence. Bulk materials are listed in item name sequences. Repair parts kits are listed separately in their own functional group within Section II. Repair parts for repairable special tools are also listed in this section. Items listed are shown on the associated illustration(s) /figure(s).

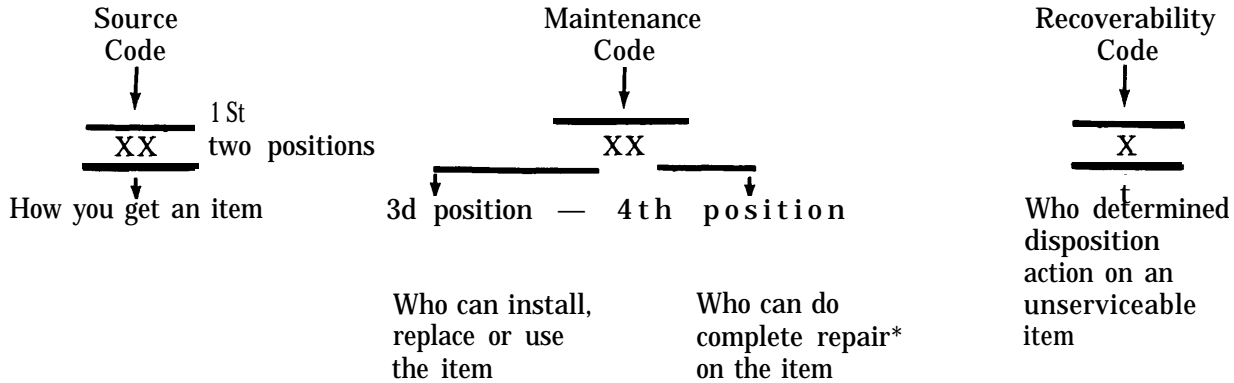
b. Section III. Special Tools List. A list of special tools, special TMDE, and other special support equipment authorized by this RPSTL (as indicated by Basis of Issue (BOI) information in DESCRIPTION AND USABLE ON CODE column) for the performance of maintenance.

c. Section IV. National stock Number and part Number Index. A list, in National Item Identification Number (NIIN) sequence, of all National stock numbered items appearing in the listings, followed by a list of alphanumeric sequence of all part numbers appearing in the listings. National stock numbers and part numbers are cross-referenced to each illustration figure and item number appearance.

3. Explanation of Columns. (Sections II and III).

a. ITEM NO. (Column (1)). Indicates the number used to identify items called out in the illustration.

b. SMR Code (Column (2)). The Source, Maintenance, and Recoverability (SMR) code is a 5-position code containing supply/requisitioning information, maintenance category authorization criteria, and disposition instructions, as shown in the following breakout:



*Complete Repair: Maintenance capacity, capability, and authority to perform all the corrective maintenance tasks of the "Repair" function in a use/user environment in order to restore serviceability to a failed item.

(1) Source Code. The source code tells you how you get an item needed for maintenance, repair, or overhaul of an end item/equipment. Explanations of source codes follow:

| Code | Explanation |
|--|---|
| <div style="border: 1px solid black; padding: 5px; display: inline-block;"> PB PC** PD PE PF PG </div> | Stocked items; use the applicable NSN to request/requisition items with these source codes. They are authorized to the category indicated by the code entered in the 3d position of the SMR code. |

**NOTE Items coded PC are subject to deterioration.

| | |
|---|---|
| <div style="border: 1px solid black; padding: 5px; display: inline-block;"> KD KF KB </div> | Items with these codes are not to be requested/requisitioned individually. They are part of a kit which is authorized to the maintenance category indicated in the 3d position of the SMR code. The complete kit must be requisitioned and applied. |
|---|---|

| | Explanation |
|--|--|
| <div style="border: 1px solid black; padding: 5px; display: inline-block;"> MO – (Made at Org AVUM Level MF – (Made at DS Level) MH – (Made at GS Level) ML – (Made at Spe- cialized Repair Act (SRA)) MD – (Made at Depot) </div> | Items with these codes are not to be requested/requisitioned individually. They must be made from bulk material which is identified by the part number in the DESCRIPTION and USABLE ON CODE (UOC) column and listed in the Bulk Material group in the repair parts list in this RPSTL. If the item is authorized to you by the 3d position code of the SMR code, but the source code indicates it is made at a higher level, order the item from the higher level of maintenance. |

Code

Explanation

| |
|---|
| <div> <div> AO – (Assembled by org/AVUM level)</div> <div>AF – (Assembled by DS AVIM Level)</div> <div>AH – (Assembled by GS Category)</div> <div>AL – (Assembled by SRA)</div> <div>AD – (Assembled by Depot)</div> </div> |
|---|

NOTE

Cannibalization or controlled exchange, when authorized, maybe used as a source of supply for items with the above source codes, except for those source coded “XA” or those aircraft support items restricted by requirements of AR 700-42.

(2) Maintenance Code. Maintenance codes tell you the level(s) of maintenance authorized to USE and REPAIR support items. The maintenance codes are entered in the third and fourth positions of the SMR Code as follows:

(a) The maintenance code entered in the third position tells you the lowest maintenance level authorized to remove, replace, and use an item. The maintenance code entered in the third position will indicate authorization to one of the following categories of maintenance.

| Code | Application/Explanation |
|------|--|
| C | –Crew or operator maintenance done within organizational or aviation unit maintenance. |
| O | –Organizational or aviation unit category can remove, replace, and use the item. |
| F | –Direct support or aviation intermediate level can remove, replace, and use the item. |
| H | –General support level can remove, replace, and use the item. |

| Code | Application/Explanation |
|------|---|
| L | –Specialized repair activity can remove, replace, and use the item. |
| D | –Depot category can remove, replace, and use the item. |

(b) The maintenance code entered in the fourth position tells you whether or not the item is to be repaired and identifies the lowest maintenance level with the capability to do complete repair (i.e., perform all authorized repair functions). (NOTE: Some limited repair may be done on the item at a lower level of maintenance, if authorized by the Maintenance Allocation Chart (MAC) and SMR codes.) This position will contain one of the following maintenance codes.

| Code | Application/Explanation |
|------|---|
| 0 | –Organizational or aviation unit is the lowest level that can do complete repair of the item. |
| F | –Direct support or aviation intermediate is the lowest level that can do complete repair of the item. |
| H | –General support is the lowest level that can do complete repair of the item. |
| L | –Specialized repair activity (designate the specialized repair activity) is the lowest level that can do complete repair of the item. |
| D | –Depot is the lowest level that can do complete repair of the item. |
| Z | –Nonreparable. No repair is authorized. |
| B | –No repair is authorized. (No parts or special tools are authorized for the maintenance of a “B”coded item.) However, the item may be reconditioned by adjusting, lubricating, etc., at the user level. |

(3) Recoverability Code. Recoverability codes are assigned to items to indicate the disposition action on unserviceable items. The recoverability code is entered in the fifth position of the SMR Code as follows:

| Recoverability Codes | Application/Explanation |
|----------------------|---|
| z | –Nonreparable item. When unserviceable, condemn and dispose of the item at the level of maintenance shown in 3d position of SMR code. |
| 0 | –Reparable item. When uneconomically reparable, condemn and dispose of the item at organizational or aviation unit level. |

| Recoverability Code | Application/Explanation |
|------------------------|--|
| F | –Reparable item. When uneconomically reparable, condemn and dispose of the item at the direct support or aviation intermediate level. |
| H | –Reparable item. When uneconomically reparable, condemn and dispose of the item at the general support level. |
| D | –Reparable item. When beyond lower level repair capability, return to depot. Condemnation and disposal of item not authorized below depot level. |
| L | –Reparable item. Condemnation and disposal not authorized below specialized repair activity (SRA). |
| A | –Item requires special handling or condemnation procedures because of specific reasons (i.e., precious metal content, high dollar value, critical material, or hazardous material). Refer to appropriate manuals/directives for specific instructions. |

c. FSCM (Column (3)). The Federal Supply Code for Manufacturer (FSCM) is a 5-digit numeric code which is used to identify the manufacturer, distributor, or Government agency, etc., that supplies the item.

d. PART NUMBER (Column 4)). Indicates the primary number used by the manufacturer (individual, company, firm, corporation, or Government activity), which controls the design and characteristics of the item by means of its engineering drawings, specifications, standards, and inspection requirements to identify an item or range of items.

NOTE

When you use an NSN to requisition an item, the item you receive may have a different part number from the part ordered.

e. DESCRIPTION AND USABLE ON CODE (UOC) (Column (5)). This column includes the following information:

- (1) The Federal item name and, when required, a minimum description to identify the item.
- (2) The physical security classification of the item is indicated by the parenthetical entry (e.g., Phy Sec Cl (C) - Confidential, Phy Sec Cl (S) -Secret, Phy Sec Cl (T) - Top Secret).
- (3) Items that are included in kits and sets are listed below the name of the kit or set.
- (4) Spare/repair parts that make up an assembled item are listed immediately following the assembled item line entry.

(5) Part numbers for bulk materials are referenced in this column in the line item entry for the item to be manufactured/fabricated.

(6) When the item is not used with all serial numbers of the same model, the effective serial numbers are shown on the last line(s) of the description (before UOC).

(7) The usable on code, when applicable (see paragraph 5, Special Information).

(8) In the Special Tools List section, the basis of issue (BOI) appears as the last line(s) in the entry for each special tool, special TMDE, and other special support equipment. When density of equipments supported exceed density spread indicated in the basis of issue, the total authorization is increased proportionately.

(9) The statement "END OF FIGURE" appears just below the last item description in Column 5 for a given figure in both Section II and Section III.

f. QTY (Column (6)). The QTY (quantity per figure column) indicates the quantity of the item used in the breakout shown on the illustration figure, which is prepared for a functional group, subfunctional group, or an assembly. A "V" appearing in this column in lieu of a quantity indicates that the quantity is variable and the quantity may vary from application to application.

4. Explanation of Columns (Section IV).

a. NATIONAL STOCK NUMBER (NSN) INDEX.

(1) STOCK NUMBER column. This column lists the NSN by National item identification number (NIIN) sequence. The NIIN consists of the last nine digits of the NSN i.e. NIIN (5305-01-574-1467). When using this column to locate an item, ignore the first 4 digits of the NSN. However, the complete NSN should be used when ordering items by stock number.

(2) FIG. column. This column lists the number of the figure where the item is identified/located. The figures are in numerical order in Section II and Section III.

(3) ITEM column. The item number identified the item associated with the figure listed in the adjacent FIG. column. This item is also identified by the NSN listed on the same line.

b. PART NUMBER INDEX. Part numbers in this index are listed by part number in ascending alphanumeric sequence (i.e., vertical arrangement of letter and number combination which places the first letter or digit of each group in order A through Z, followed by the numbers O through 9 and each following letter or digit in like order).

(1) FSCM column. The Federal Supply Code for Manufacturer (FSCM) is a 5-digit numeric code used to identify the manufacturer, distributor, or Government agency, etc., that supplies the item.

(2) PART NUMBER column. Indicates the primary number used by the manufacturer (individual, firm, corporation, or Government activity), which controls the design and characteristics of the item by means of its engineering drawings, specifications standards, and inspection requirements to identify an item or range of items.

(3) STOCK NUMBER column. This column lists the NSN for the associated part number and manufacturer identified in the PART NUMBER and FSCM columns to the left.

(4) FIG. column. This column lists the number of the figure where the item is identified/located in Sections II and 111.

(5) ITEM column. The item number is that number assigned to the item as it appears in the figure referenced in adjacent figure number column.

5. Special Information. Use the following subparagraphs as applicable:

a. Usable On Code. The usable on code appears in the lower left corner of the Description column heading. Usable on codes are shown as UOC:“ in the Description Column (justified left) on the first line applicable item description/nomenclature. Uncoded items are applicable to all models.

b. Associated Publications. The publication listed below pertains to the Air Compressor Unit and its components.

| Publication | Short Title |
|------------------|----------------------------------|
| TM 5-4310-374-14 | Compressor Unit, 15 CFM, 175 PSI |

6. How To Locate Repair Parts.

a. When National Stock Number or Part Number is NOT Known:

(1) First. Using the table of contents, determine the assembly group or subassembly group to which the item belongs. This is necessary since figures are prepared for functional groups and subassembly groups, and listings, are divided into the same groups.

(2) Second. Find the figure covering the assembly group or subassembly group to which the item belongs.

(3) Third. Identify the item on the figure and note the item number.

(4) Fourth. Refer to the Repair Parts List for the figure to find the part number for the item number noted on the figure.

(5) Fifth. Refer to the Part Number Index to find the NSN, if assigned.

b. When National Stock Number or Part Number is Known:

(1) First. Using the Index of National Stock Numbers and Parts Numbers, find the pertinent National Stock Number or Part Number. The NSN index is in National Item Identification Number (NIIN) sequence (see 4a (1)). The part numbers in the Part Number index are listed in ascending alphanumeric sequence (see paragraph 4b). Both indexes cross-reference you to the illustration figure and item number of the item you are looking for.

(2) Second. After finding the figure and item number, verify that the item is the one you are looking for, then locate the item number in the repair parts list for the figure.

7. Abbreviations. Abbreviations used in this manual are listed in MIL-STD-12.

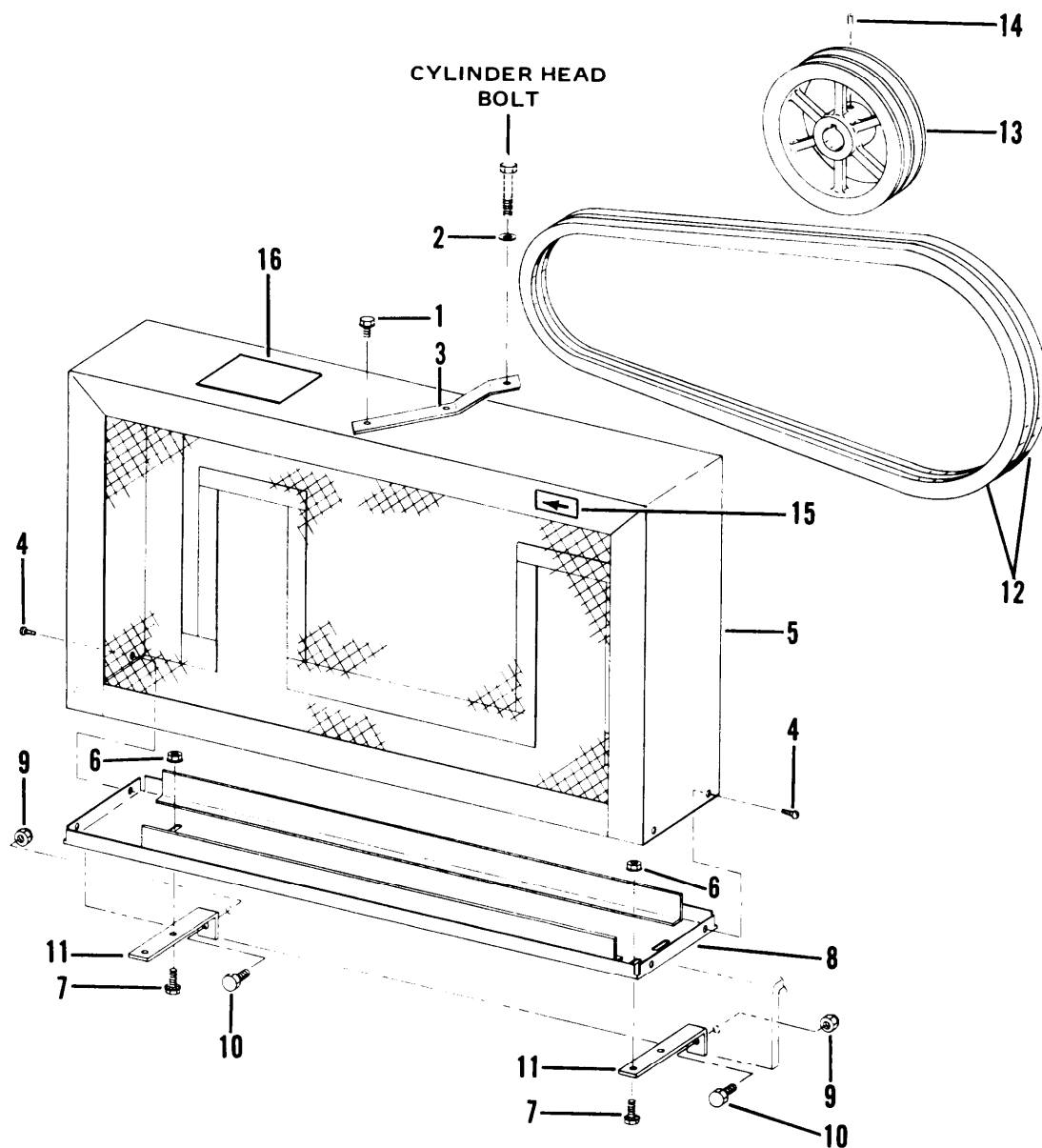


Figure 1. Belt guard, drive belts and pulley

SECTION II

| (1) ITEM NO | (2) SMR CODE | (3) FSCM | (4) PART NUMBER | (5) DESCRIPTION AND USABLE ON CODES (UOC) | (6) QTY |
|-------------------|--------------------|-------------|-----------------------|--|------------|
| | | | | GROUP 01 COMPRESSOR DRIVE | |
| | | | | FIG. 1 BELT GUARD, DRIVE BELTS AND PULLEY | |
| 1 | PAOZZ | 24617 | 274825 | SCREW, CAP, HEXAGON HEAD | 2 |
| 2 | PAOZZ | 96906 | MS27183-13 | WASHER, FLAT | 1 |
| 3 | XDOZZ | 16004 | 85455 | BRACE, BELT GUARD | 1 |
| 4 | PAOZZ | 16004 | 80476 | SCREW, SELF TAPPING | 4 |
| 5 | PAOZZ | 16004 | 84957 | GUARD, MECHANICAL DRIVE | 1 |
| 6 | PAOZZ | 16004 | 9416918 | NUT, PLAIN, EXTENDED | 4 |
| 7 | PAOZZ | 24617 | 274825 | SCREW, CAP, HEXAGON HEAD | 4 |
| 8 | XBOZZ | 16004 | 85402 | BASE, BELT GUARD | 1 |
| 9 | PAOZZ | 96906 | MS51922-17 | NUT, SELF LOCKING, HEXAGON | 2 |
| 10 | PAOZZ | 96906 | MS90725-60 | SCREW, CAP, HEXAGON HEAD | 2 |
| 11 | XBOOO | 16004 | 85454 | BRACKET, SUPPORT, BELT GUARD | 2 |
| 12 | PAOZZ | 81300 | AP71 | BELT, V | 2 |
| 13 | XBFZZ | 76241 | D2900 | PULLEY, DRIVE, MOTOR | 1 |
| 14 | PAOZZ | 96906 | MS51963-83 | SETSCREW | 2 |
| 15 | XBOZZ | 16004 | 69719 | DECAL, ROTATION | 1 |
| 16 | XBOZZ | 16004 | 67093 | DECAL, DRIVE BELTS | 1 |
| | | | | END OF FIGURE | |

SECTION IV

TM 5-4310-375-24P

NATIONAL STOCK NUMBER AND PART NUMBER INDEX

| STOCK NUMBER | NATIONAL STOCK NUMBER INDEX | |
|------------------|-----------------------------|------|
| | FIG. | ITEM |
| 4310-01-179-2424 | 10 | 21 |
| 4310-01-179-2521 | 10 | 28 |
| 4820-01-179-5345 | 5 | 4 |
| | 11 | 1 |
| 4820-01-179-5372 | 11 | 16 |
| 4720-01-179-5414 | 12 | 2 |
| 4310-01-179-6057 | 8 | 5 |
| 4310-01-179-6058 | 8 | 8 |
| 4310-01-179-6059 | 8 | 11 |
| 431041-179-6060 | 8 | 14 |
| 4310-01-179-6061 | 9 | 18 |
| 4310-01-179-6062 | 10 | |
| 4310-01-179-6172 | 9 | 6 |
| 4310431-179-6178 | 10 | |
| 4310-01-179-6179 | 9 | 16 |
| 3110-01-180-6527 | 10 | 18 |
| 4730-01-181-5777 | 12 | 4 |
| 3120-01-185-2800 | 3 | 17 |

SECTION II

TM 5-4310-375-24P

| (1) ITEM NO | (2) SMR CODE | (3) FSCM | (4) PART NUMBER | (5) DESCRIPTION AND USABLE ON CODES (UOC) | (6) QTY |
|-------------------|--------------------|-------------|-----------------------|--|------------|
| | | | | GROUP 02 ELECTRIC MOTOR AND CONTROLS | |
| | | | | FIG. 2 STARTER ASSEMBLY, MOTOR CONTROLLER | |
| 1 | PAOZZ | 16004 | 9416918 | NUT, PLAIN, EXTENDED | 4 |
| 2 | PAOZZ | 24617 | 274825 | SCREW, CAP, HEXAGON HEAD | 4 |
| 3 | PAOZZ | 96906 | MS27183-11 | WASHER, FLAT | 2 |
| 4 | XBOZZ | 72971 | 11-50 | BOX CONNECTOR, ELECTRICAL | 1 |
| 5 | XBOZZ | 72971 | 12-50B | BOX CONNECTOR, ELECTRICAL | 1 |
| 6 | XBOZZ | 16004 | 85481 | CONDUIT, FLEXIBLE | 1 |
| 7 | PAOOO | 16004 | 85359 | CONTROL BOX ASSEMBLY | 1 |
| 8 | PAFZZ | 16004 | 29084 | .WIRE, ELECTRICAL, NO. 14 AWG, RED, 13 IN LONG | 1 |
| 9 | PAFZZ | 16004 | 29084 | .WIRE, ELECTRICAL, NO. 14 AWG, RED, 22 IN LONG | 1 |
| 10 | XBFZZ | 16004 | 80557-1 | .RESET, OVERLOAD | 1 |
| 11 | PAFZZ | 27193 | 10250T20KB | .SWITCH, ROTARY | 1 |
| 12 | PAFZZ | 15605 | 10250TM42 | .PLATE, INSTRUCTION | 1 |
| 13 | PAOZZ | 96906 | MS35207-261 | .SCREW, MACHINE, PANEL MOUNTING | 4 |
| 14 | XBOZZ | 16004 | 85297-1 | .PANEL, CONTACTOR MOUNTING | 1 |
| 15 | PAOZZ | 96906 | MS35649-202 | .NUT, PLAIN, HEXAGON | 3 |
| 16 | PAOZZ | 96906 | MS35338-43 | .WASHER, LOCK | 3 |
| 17 | PAOZZ | 96906 | MS35206-263 | .SCREW, MACHINE, ROUND HEAD | 3 |
| 18 | PAFFF | 27192 | A11CNOB | .STARTER, MOTOR | 1 |
| 19 | PAFZZ | 15605 | C10CXB | ..POWER UNIT, CONTACTOR | 1 |
| 20 | XBFZZ | 27192 | 49-4114 | ...COVER, POWER UNIT | 1 |
| 21 | PAOZZ | 15605 | 69-2765 | ...SPRING | 1 |
| 22 | PAOZZ | 27192 | 48-1019 | ...ARMATURE LEVER | 1 |
| 23 | PAFZZ | 27192 | 9-1887-2 | ...COIL, ELECTRICAL | 1 |
| 24 | PAFZZ | 27192 | H-1043 | ..HEATER, THERMAL RELE | 3 |
| 25 | PAFZZ | 27192 | 6-23-2 | .CONTACTS, SET | 1 |
| 26 | XBFZZ | 27192 | 11-2280 | ..SCREW, STATIONARY CONTACT | 6 |
| 27 | XBFZZ | 27192 | 23-5529 | ..CONTACT, STATIONARY | 6 |
| 28 | XBFZZ | 27192 | 23-5528 | ..CONTACT, MOVABL | 3 |
| 29 | XBFZZ | 27192 | 55-1954 | ..RETAINER, CONTACT | 3 |
| 30 | XBFZZ | 27192 | 69-4358 | ..SPRING, CONTACT | 3 |
| 31 | XBFZZ | 02929 | 32F648 | .PLUG, SHEET METAL | 1 |
| 32 | XBFZZ | 16004 | 68749 | .SCREW, SELF TAPPING | 6 |
| 33 | XBFZZ | 16004 | 85487 | .PLATE, VOLTAGE IDENTIFICATION | 1 |
| 34 | XBFZZ | 16004 | 85488 | .PLATE, OPERATION INSTRUCTIONS | 1 |
| 35 | XBFZZ | 16004 | 84955-1 | .ENCLOSURE, MOTOR CONTROLLER | 1 |
| | | | | END OF FIGURE | |

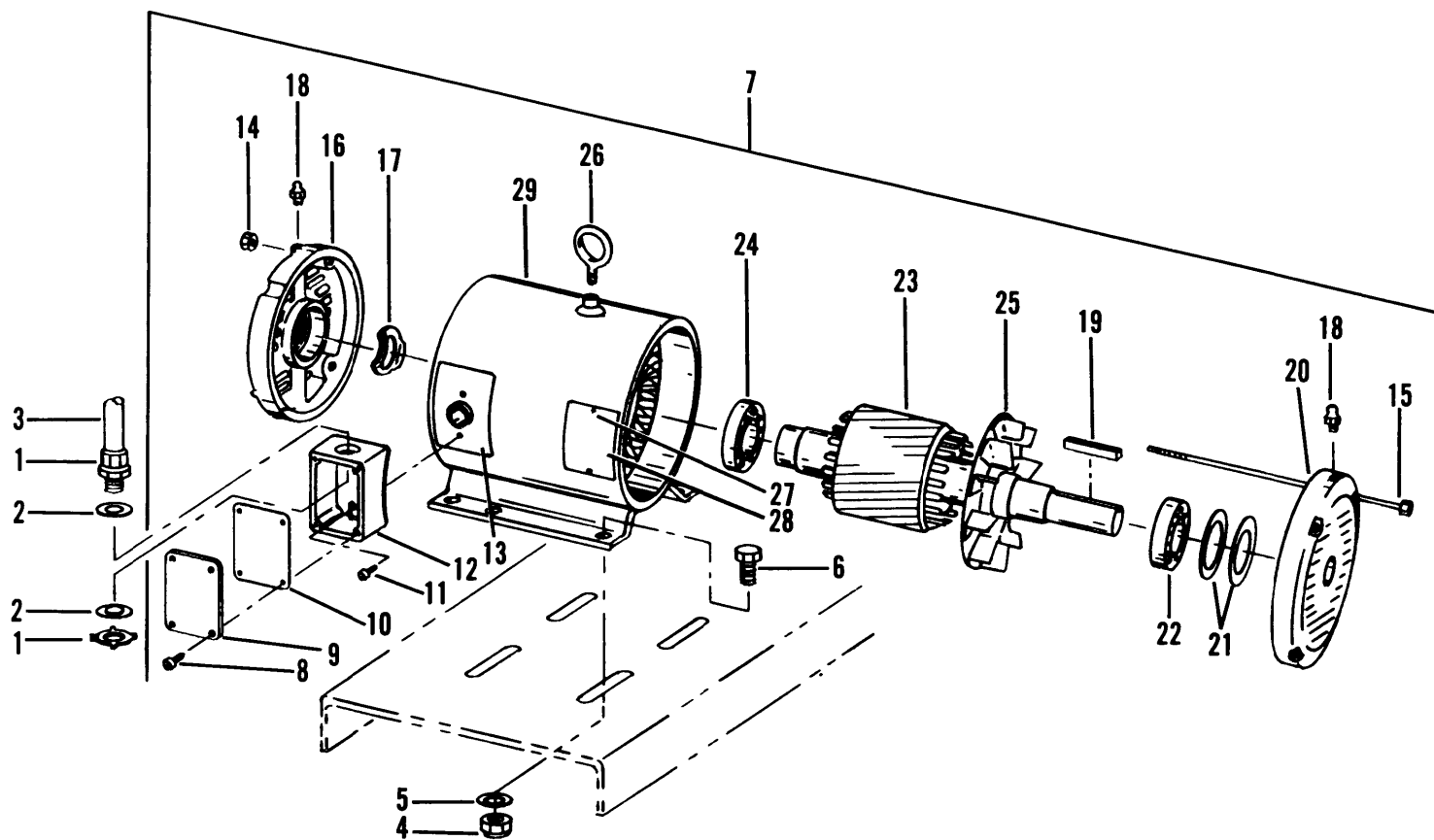


Figure 3. Electric motor assembly

| (1) ITEM NO | (2) SMR CODE | (3) FSCM | (4) PART NUMBER | (5) DESCRIPTION AND USABLE ON CODES (UOC) | (6) QTY |
|-------------------|--------------------|-------------|-----------------------|--|------------|
| | | | | GROUP 02 ELECTRIC MOTOR AND CONTROLS | |
| | | | | FIG. 3 ELECTRIC MOTOR ASSEMBLY | |
| 1 | PAOZZ | 72971 | 11-50 | BOX CONNECTOR, ELECTRICAL | 1 |
| 2 | PAOZZ | 72971 | 201 | WASHER, SHOULDERED | 2 |
| 3 | PAOZZ | 16004 | 85480 | CONDUIT, METAL, FLEXIBLE | 1 |
| 4 | PAOZZ | 96906 | MS51922-17 | NUT, SELF LOCKING, HEXAGON | 4 |
| 5 | PAOZZ | 96906 | MS27183-13 | WASHER, FLAT | 4 |
| 6 | PAOZZ | 96906 | MS90725-62 | SCREW, CAP, HEXAGON HEAD | 4 |
| 7 | PAFFF | 05472 | M3311T | MOTOR ASSEMBLY, ELECTRIC | 1 |
| 8 | PAOZZ | 96906 | MS35206-244 | .SCREW, MACHINE, CONDUIT BOX LID | 4 |
| 9 | XBOZZ | 05472 | 37CB4500 | .LID, CONDUIT BOX | 1 |
| 10 | XBOZZ | 05472 | 37GS1001 | .GASKET, LID | 1 |
| 11 | XBOZZ | 05472 | 10XN2520A10 | .SCREW, CONDUIT BOX | 2 |
| 12 | XBOZZ | 05472 | 37CB3000 | .BOX, CONDUIT | 1 |
| 13 | XBOZZ | 05472 | 37GS1000 | .GASKET, CONDUIT BOX | 1 |
| 14 | XBOZZ | 05472 | XY3118A12 | .NUT, THROUGH BOLT | 4 |
| 15 | XBOZZ | 05472 | HA3104A14 | .THROUGH BOLT | 4 |
| 16 | XBOZZ | 05472 | 37EP3200A01 | .ENDPLATE, CLOSED END | 1 |
| 17 | PAOZZ | 05472 | HW5100A06 | .WASHER, THRUST | 1 |
| 18 | PAOZZ | 05472 | HW4500A01 | .FITTING, LUBRICATION | 2 |
| 19 | PAFZZ | 05472 | MR5000A31 | .KEY, MOTOR SHAFT | 1 |
| 20 | PAFZZ | 05472 | 37EP3201A01 | .ENDPLATE, SHAFT END | 1 |
| 21 | PAFZZ | 05472 | HA1000A34 | .GUARD, BEARING | 2 |
| 22 | PAOZZ | 05472 | BG6307B03 | .BEARING, SHAFT END | 1 |
| 23 | XBOZZ | 05472 | 37RAB001X054 | .ROTOR AND SHAFT | 1 |
| 24 | PAFZZ | 05472 | BG6206B03 | .BEARING, CLOSED END | 1 |
| 25 | XBFZZ | 05472 | 37FN4001A02 | .FAN, INTERNAL | 1 |
| 26 | XBFZZ | 05472 | HW3200A01 | .EYE BOLT | 1 |
| 27 | XBOZZ | 05472 | 85XU0407A04 | .SCREW, NAMEPLATE | 2 |
| 28 | XDOZZ | 05472 | NP0005 | .NAMEPLATE, MOTOR | 1 |
| 29 | XBOZZ | 05472 | 37SAB001X054 | .STATOR ASSEMBLY | 1 |
| | | | | END OF FIGURE | |

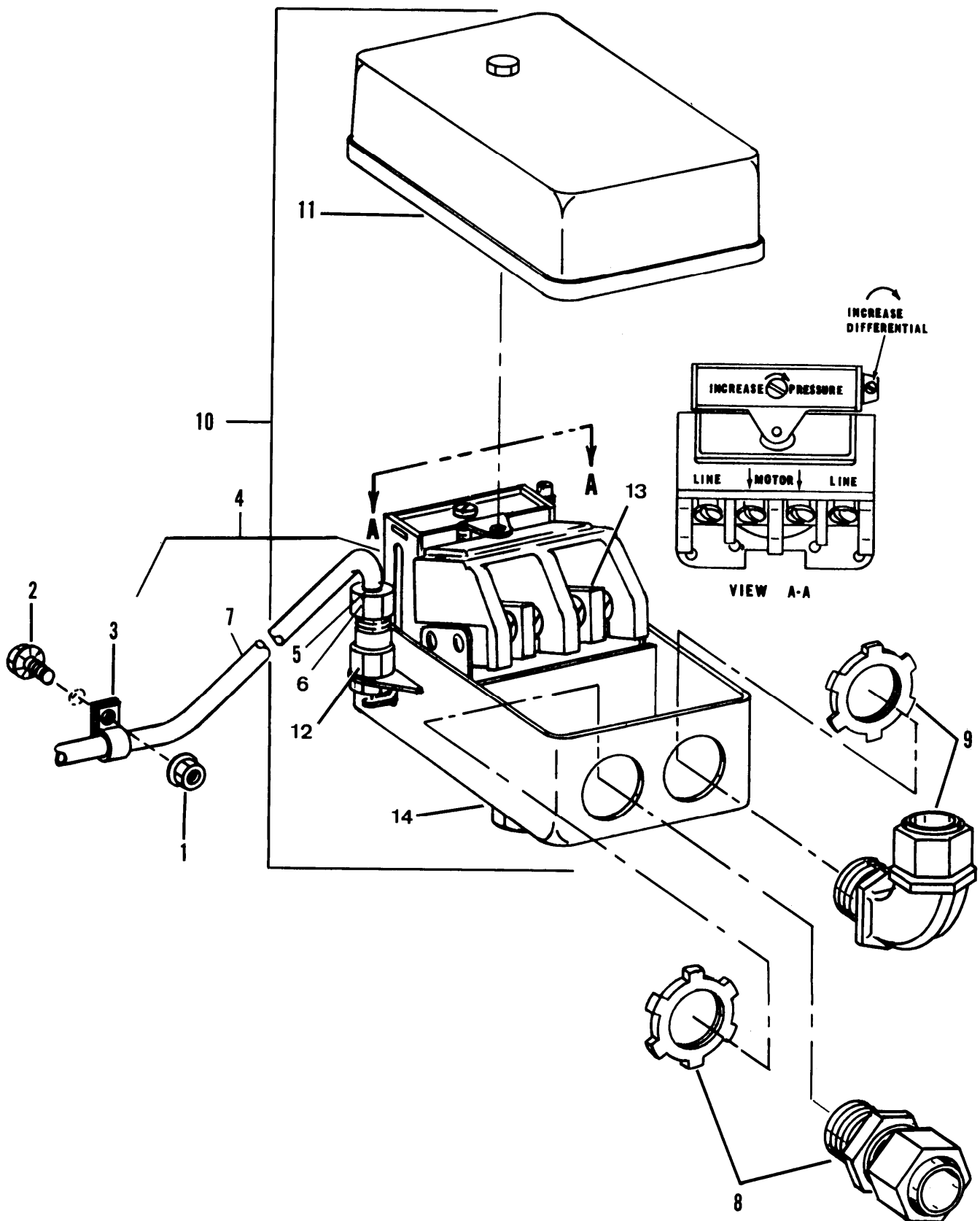


Figure 4. Pressure switch assembly

| (1) ITEM NO | (2) SMR CODE | (3) FSCM | (4) PART NUMBER | (5) DESCRIPTION AND USABLE ON CODES (UOC) | (6) QTY |
|-------------------|--------------------|-------------|-----------------------|--|------------|
| | | | | GROUP 02 ELECTRIC MOTOR AND CONTROLS | |
| | | | | FIG. 4 PRESSURE SWITCH ASSEMBLY | |
| 1 | PAFZZ | 16004 | 9416918 | NUT, PLAIN, EXTENDED | 2 |
| 2 | PAFZZ | 24617 | 274825 | SCREW, CAP, HEXAGON HEAD | 2 |
| 3 | PAFZZ | 01276 | 900729-18 | CLAMP, LOOP | 2 |
| 4 | PAFZZ | 16004 | 85484 | TUBE ASSEMBLY, METAL UNLOADER | 1 |
| 5 | PAFZZ | 96906 | MS39177-3 | .SLEEVE, COMPRESSION | 2 |
| 6 | PAFZZ | 96906 | MS39-176-3 | .NUT, TUBE COUPLING | 2 |
| 7 | XBOZZ | 16004 | 50959 | .TUBING, COPPER, 1/4 OD. | 59 |
| 8 | XBOZZ | 72971 | 11-50 | BOX CONNECTOR, ELECTRICAL | REF |
| 9 | XBOZZ | 72971 | 12-50B | BOX CONNECTOR, ELECTRICAL | 1 |
| 10 | PAFFZ | 23826 | 69HAU1 | SWITCH, PRESSURE | 1 |
| 11 | XDFZZ | 23826 | D9271-15 | .COVER, PRESSURE SWITCH | 1 |
| 12 | PAFZF | 23826 | D27100001 | .UNLOADER VALVE PRESSURE SWITCH | 1 |
| 13 | KFFZZ | 23826 | | .BOARD AND CONTACTS, PARTS OF KIT P/N75HA69 | 1 |
| 14 | KFFZZ | 23826 | | .DIAPHRAGM, PRESSURE SWITCH, PART OF KIT P/N 75HA60 | 1 |
| | PAFZZ | 23826 | 75HA69 | REPAIR KIT, PRESSURE SWITCH | 1 |
| | | | | BOARD AND CONTACTS, (1) 4-13 | |
| | | | | DIAPHRAGM, (1) 4-14 | |
| | | | | END OF FIGURE | |

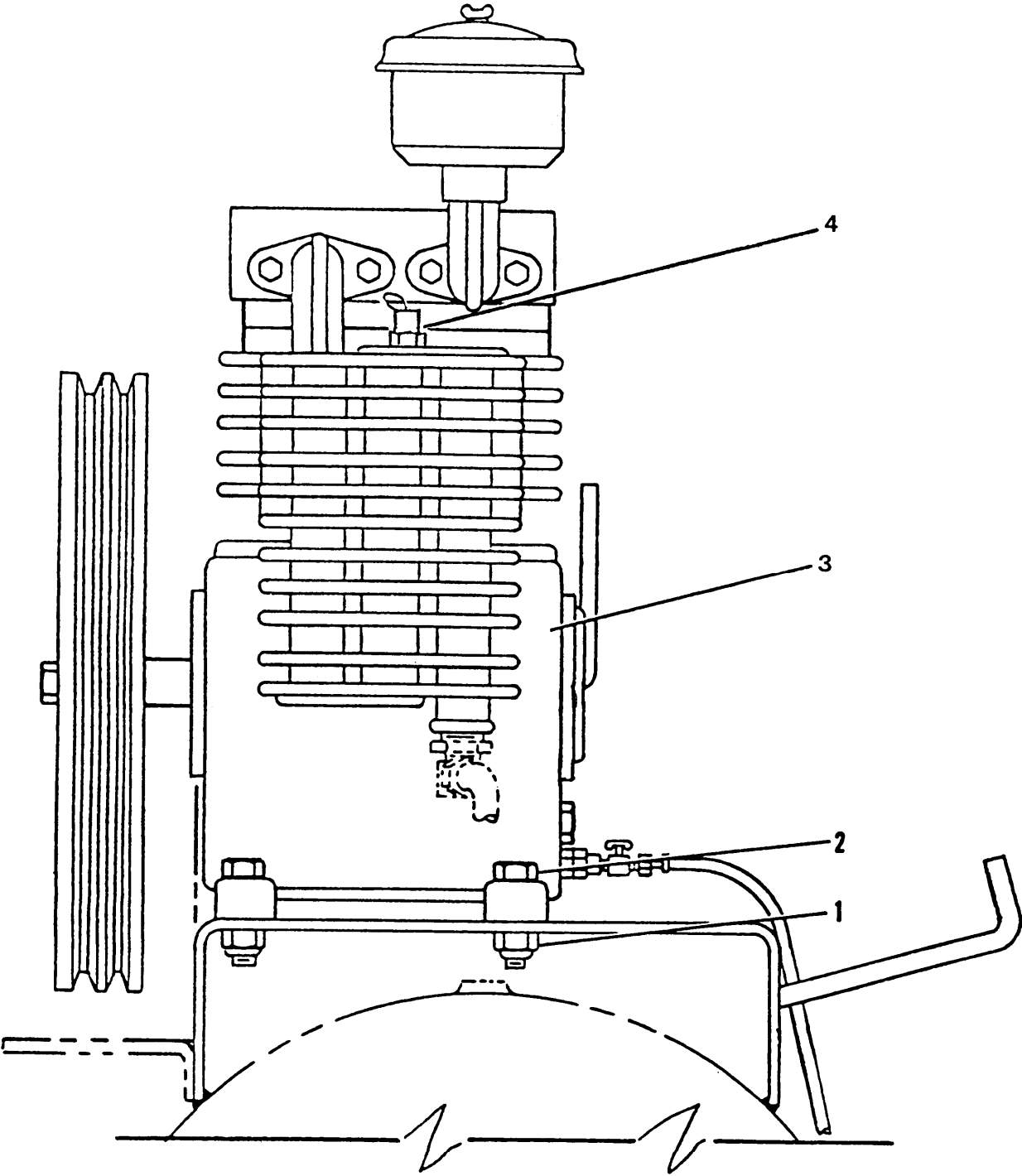


Figure 5. Air compressor assembly

SECTION II

TM 5-4310-375-24P

| (1) ITEM NO | (2) SMR CODE | (3) FSCM | (4) PART NUMBER | (5) DESCRIPTION AND USABLE ON CODES (UOC) | (6) QTY |
|-------------------|--------------------|-------------|-----------------------|--|------------|
| | | | | GROUP 03 COMPRESSOR ASSEMBLY | |
| | | | | FIG. 5 AIR COMPRESSOR ASSEMBLY | |
| 1 | PAOZZ | 96906 | MS51922-33 | NUT, SELF LOCKING, HEXAGON | 4 |
| 2 | PAOZZ | 96906 | MS51095-416 | SCREW, CAP, HEXAGON HEAD | 4 |
| 3 | PAOZZ | 62106 | T35 | COMPRESSOR, RECIPROCATING, AIR. | 1 |
| 4 | PAOZZ | 34494 | 48A22OPS11/ 4NPT | VALVE, SAFETY RELIEF | 1 |
| | | | | END OF FIGURE | |

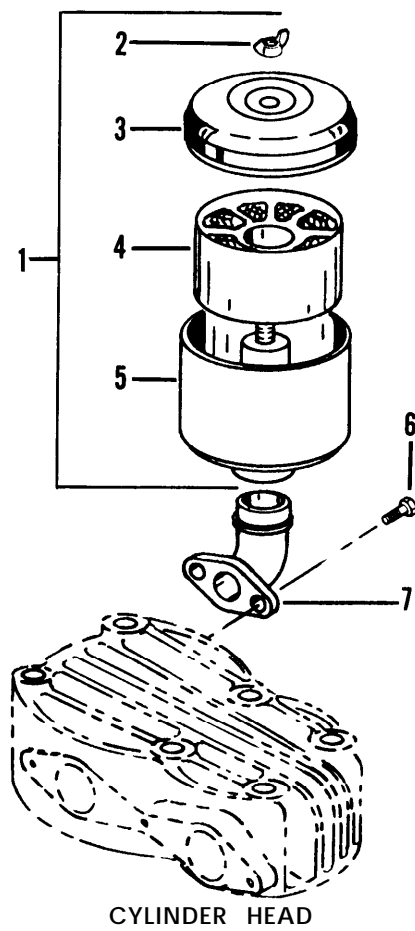


Figure 6. Inlet air filter assembly

| (1) ITEM NO | (2) SMR CODE | (3) FSCM | (4) PART NUMBER | (5) DESCRIPTION AND USABLE ON CODES (UOC) | (6) QTY |
|-------------------|--------------------|-------------|-----------------------|--|------------|
| | | | | GROUP 03 COMPRESSOR ASSEMBLY | |
| | | | | FIG. 6 INLET AIR FILTER ASSEMBLY | |
| 1 | PAOOO | 62106 | 100.0.162 | .FILTER ASSEMBLY, INLET | 1 |
| 2 | XAOZZ | 62106 | | ..NUT, WING | 1 |
| 3 | XAOZZ | 62106 | | ..COVER, INLET FILTER | 1 |
| 4 | XAOZZ | 62106 | | ..ELEMENT, INLET FILTER | 1 |
| 5 | XAOZZ | 62106 | | ..BASE, INLET FILTER | 1 |
| 6 | PAOZZ | 62106 | M10X25DIN9- 33-8.8 | .SCREW, CAP, HEXAGON HEAD | 2 |
| 7 | XDOZZ | 62106 | 100.0.120 | .TUBE, INLET FILTER | 1 |
| | | | | END OF FIGURE | |

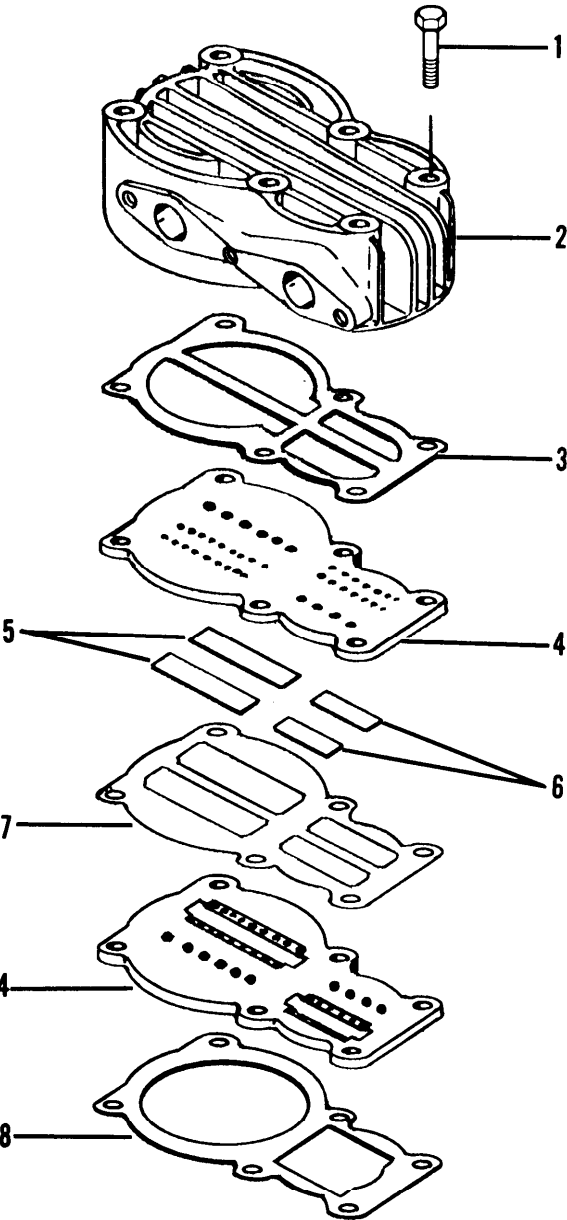


Figure 7. Cylinder head, first and second stage valves

| (1) ITEM NO | (2) SMR CODE | (3) FSCM | (4) PART NUMBER | (5) DESCRIPTION AND USABLE ON CODES (UOC) | (6) QTY |
|-------------------|--------------------|-------------|-----------------------|--|------------|
| | | | | GROUP 03 COMPRESSOR ASSEMBLY | |
| | | | | FIG. 7 CYLINDER HEAD, FIRST AND SECOND STAGE VALVES | |
| 1 | PAOZZ | 62106 | M10X90DIN- 931-8.8 | .BOLT, CYLINDER HEAD | 6 |
| 2 | PAOZZ | 62106 | 100.0.515 | .CYLINDER HEAD, COMPRESSOR. | 1 |
| 3 | KFHZZ | 62106 | 100.0.251 | .GASKET, CYLINDER HEAD, PART OF KIT P/N 100.1.805 . . . | 1 |
| 4 | XBHZZ | 62106 | 100.0.345 | .PLATE, VALVE | 2 |
| 5 | KFHZZ | 62106 | 100.0.525 | .VALVE, LOW PRESSURE, PART OF KIT P/N 100.1.805 | 2 |
| 6 | KFHZZ | 62106 | 100.0.527 | .VALVE, HIGH PRESSURE, PART OF KIT P/N 100.1.805 | 2 |
| 7 | KFOZZ | 62106 | 100.0.240 | .GASKET, VALVE PLATE, PART OF KIT P/N 100.1.805 | 1 |
| 8 | KFOZZ | 62106 | 100.0.198 | .GASKET, VALVE, PART OF KIT P/N 100.1.805 | 1 |
| | | | | END OF FIGURE | |

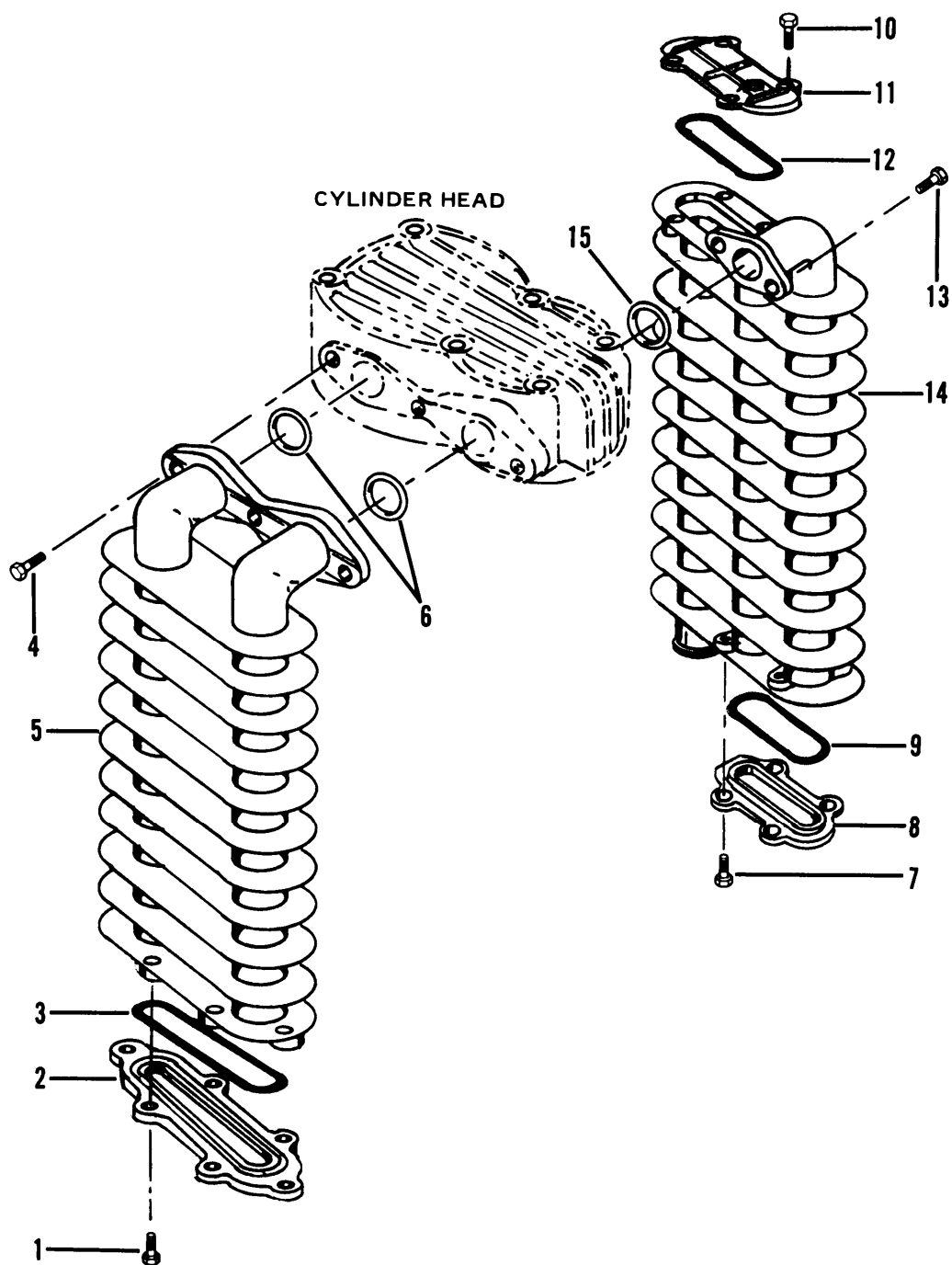


Figure 8. Intercooler and aftercooler

SECTION II

TM 5-4310-375-24P

| (1) ITEM NO | (2) SMR CODE | (3) FSCM | (4) PART NUMBER | (5) DESCRIPTION AND USABLE ON CODES (UOC) | (6) QTY |
|-------------------|--------------------|-------------|-----------------------|---|------------|
| | | | | GROUP 03 COMPRESSOR ASSEMBLY | |
| | | | | FIG. 8 INTERCOOLER AND AFTERCOOLER | |
| 1 | PAFZZ | 62106 | M6X12DIN933-8.8 | .SCREW, INTERCOOLER CAP | 6 |
| 2 | PAHZZ | 62106 | 100.0.107 | .CAP, INTERCOOLER | 1 |
| 3 | KFOZZ | 62106 | 100.0.201 | .GASKET, INTERCOOLER CAP, PART OF KIT P/N 100.1.806 | 1 |
| 4 | PAFZZ | 62106 | M10X25DIN-933-8.8 | .SCREW, CAP, HEXAGON HEAD, INTERCOOLER FLANGE .. | 3 |
| 5 | PAFZZ | 62106 | 100.0.087 | .INTERCOOLER | 1 |
| 6 | KFOZZ | 62106 | 100.0.322 | .GASKET, INTERCOOLER, PART OF KIT P/N 100.1.806 | 2 |
| 7 | PAOZZ | 62106 | M6X12DIN-933-8.8 | .SCREW, AFTERCOOLER CAP | 4 |
| 8 | PAHZZ | 62106 | 100.0.109 | .CAP, LOWER, AFTERCOOLER | 1 |
| 9 | KFHZZ | 62106 | 100.0.208 | .GASKET, LOWER CAP, PART OF KIT P/N 100.1.806 | 1 |
| 10 | PAFZZ | 62106 | M6X12DIN-933-8.8 | .SCREW, AFTERCOOLER CAP | 4 |
| 11 | PAHZZ | 62106 | 100.0.108 | .CAP, UPPER, AFTERCOOLER | 1 |
| 12 | KFHZZ | 62106 | 100.0.204 | .GASKET, UPPER CAP, PART OF KIT P/N 100.1.806 | 1 |
| 13 | PAFZZ | 62106 | M10X25DIN-933-8.8 | .SCREW, CAP, HEXAGON HEAD | 2 |
| 14 | PAFZZ | 62106 | 100.0.090 | .AFTERCOOLER | 1 |
| 15 | KFOZZ | 62106 | 100.0.322 | .GASKET, COOLER, PART OF KIT P/N 100.1.806 | 1 |
| | | | | END OF FIGURE | |

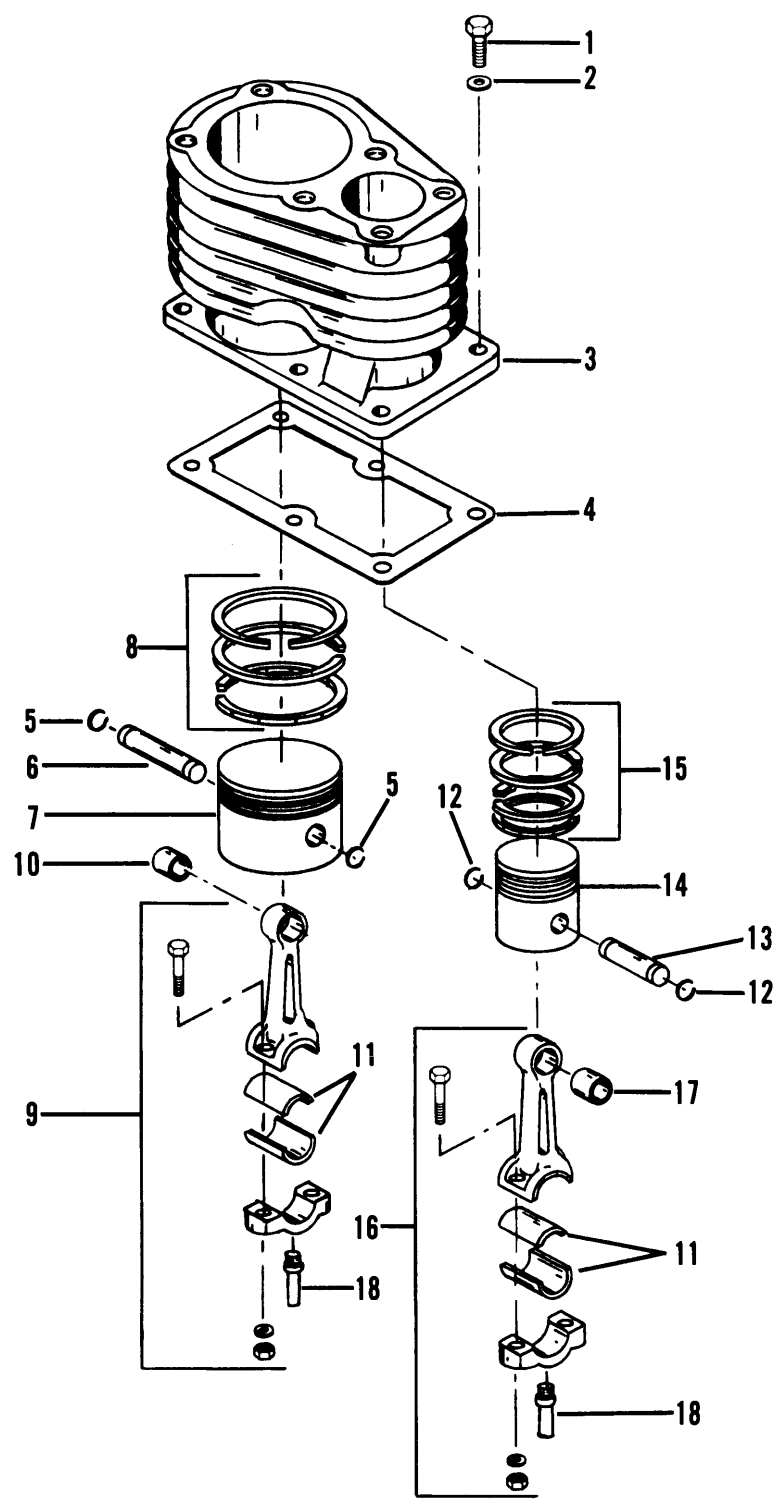


Figure 9. Cylinder, pistons and connecting rods

| (1) ITEM NO | (2) SMR CODE | (3) FSCM | (4) PART NUMBER | (5) DESCRIPTION AND USABLE ON CODES (UOC) | (6) QTY |
|-------------------|--------------------|-------------|-----------------------|--|------------|
| | | | | GROUP 03 COMPRESSOR ASSEMBLY | |
| | | | | FIG. 9 CYLINDER, PISTONS AND CONNECTING RODS | |
| 1 | PAFZZ | 62106 | M10X25DIN-933-8.8 | .SCREW, CAP, HEXAGON HEAD | 6 |
| 2 | PAFZZ | 62106 | 10.5DIN125ST | .WASHER, FLAT | 6 |
| 3 | XBHZZ | 62106 | 100.0.079 | .CYLINDER, COMPRESSOR | 1 |
| 4 | KFHZZ | 62106 | 100.0.188 | GASKET, FRAME, PART OF KIT P/N 100.1.806 | 1 |
| 5 | PAHZZ | 62106 | 100.0.432 | .RING, RETAINING, LP PIN | 2 |
| 6 | PAFZZ | 62106 | 100.0.495 | .PIN, PISTON, LP | 1 |
| 7 | PAFZZ | 62106 | 100.0.359 | .PISTON, COMPRESSOR, LOW PRESSURE | 1 |
| 7 | PAFZZ | 62106 | 100.0.673 | .PISTON, COMPRESSOR, 0.5 MM, OVS | 1 |
| 7 | PAFZZ | 62106 | 100.0.672 | .PISTON, COMPRESSOR, 1.0 MM, OVS | 1 |
| 8 | KFHZZ | 62106 | 100.8.062 | .RING SET, PISTON, LP, PART OF KIT P/N 199.0.601 | 1 |
| 8 | PAHZZ | 62106 | 100.8.308 | .RING SET, PISTON, 0.5 MM, OVS | 1 |
| 8 | PAHZZ | 62106 | 100.8.309 | .RING SET, PISTON, 1.0 MM OVS | 1 |
| 9 | PAHZZ | 62106 | 100.8.034 | .CONNECTING ROD, PISTON, LP | 1 |
| 10 | KFHZZ | 62106 | 100.0.053 | .BUSHING, PISTON PIN, LP, PART OF KIT P/N 199.0.601 | 1 |
| 11 | KFFZZ | 62106 | 100.0.298 | .INSERT, CONNECTING ROD, PART OF KIT P/N 199.0.601 | 2 |
| 11 | PAFZZ | 62106 | 100.0.743 | .BEARING HALF SET | 1 |
| 11 | PAFZZ | 62106 | 100.0.744 | .BEARING HALF SET | 1 |
| 12 | PAHZZ | 62106 | 100.0.431 | .RING, RETAINING, HP PIN | 2 |
| 13 | PAFZZ | 62106 | 100.0.491 | .PIN, PISTON | 1 |
| 14 | PAFZZ | 62106 | 100.0.366 | .PISTON, COMPRESSOR, HIGH PRESSURE | 1 |
| 14 | PAFZZ | 62106 | 100.0.680 | .PISTON, COMPRESSOR | 1 |
| 14 | PAFZZ | 62106 | 100.0.681 | .PISTON, COMPRESSOR | 1 |
| 15 | KFHZZ | 62106 | 100.8.061 | .RING SET, PISTON, HP, PART OF KIT P/N 199.0.601 | 1 |
| 15 | PAHZZ | 62106 | 100.8.310 | .RING SET, PISTON | 1 |
| 15 | PAHZZ | 62106 | 100.8.311 | .RING SET, PISTON | 1 |
| 16 | PAHZZ | 62106 | 100.8.033 | .CONNECTING ROD, PISTON, HP | 1 |
| 17 | KFHZZ | 62106 | 100.0.052 | .BUSHING, PISTON PIN, HP, PART OF KIT P/N 199.0.601 | 1 |
| 18 | PAHZZ | 62106 | 100.0.021 | .ROD, OIL SPLASH | 2 |
| | | | | END OF FIGURE | |

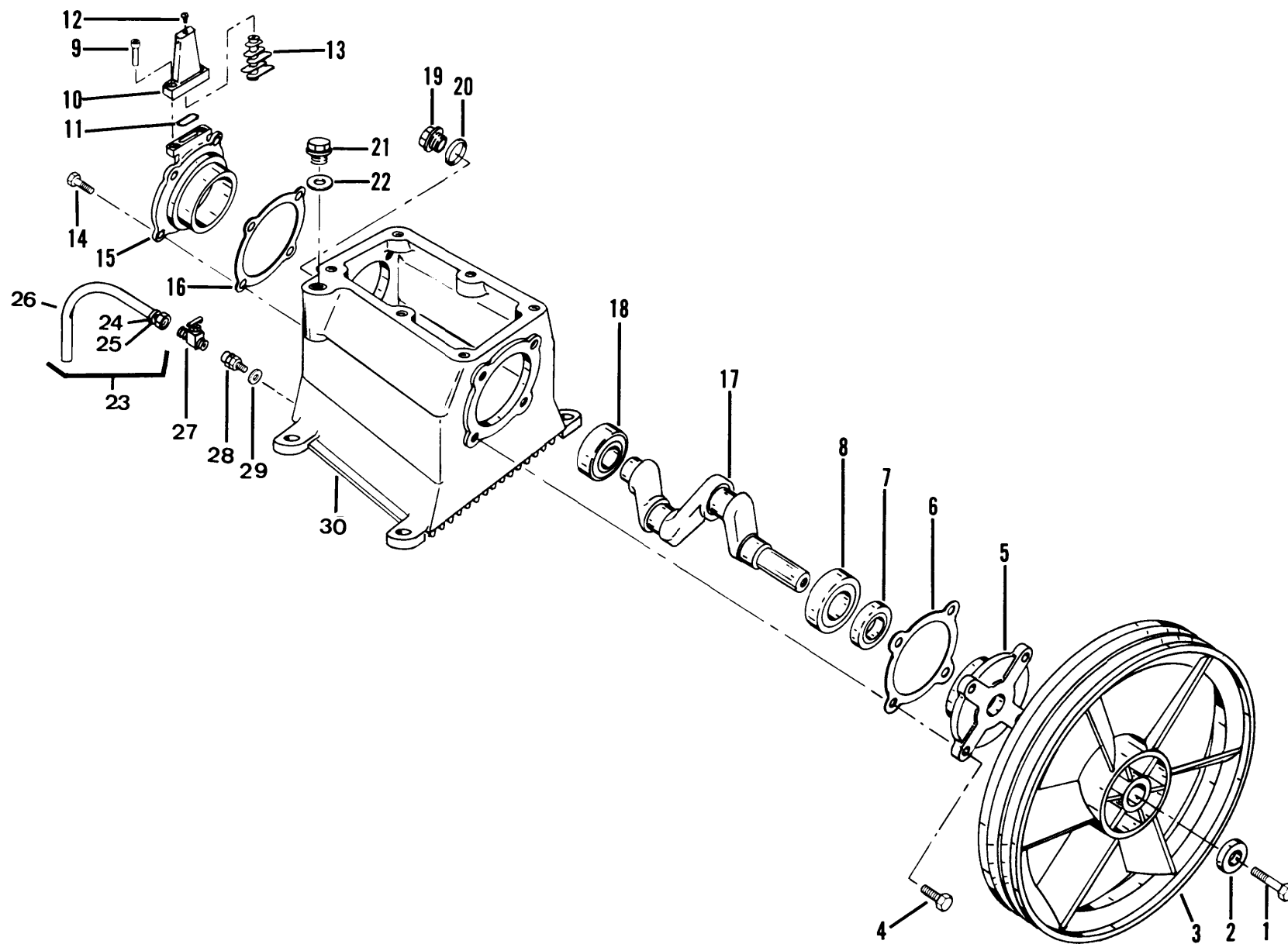


Figure 10. Flywheel, crankshaft, bearings, seal, and frame

| (1) ITEM NO | (2) SMR CODE | (3) FSCM | (4) PART NUMBER | (5) DESCRIPTION AND USABLE ON CODES (UOC) | (6) QTY |
|-------------------|--------------------|-------------|-----------------------|---|------------|
| | | | | GROUP 03 COMPRESSOR ASSEMBLY | |
| | | | | FIG. 10 FLYWHEEL, CRANKSHAFT, BEARINGS, SEAL AND FRAME | |
| 1 | PAOZZ | 62106 | M10X30LH | .BOLT, FLYWHEEL, LH | 1 |
| 2 | PAOZZ | 62983 | 471063 | .WASHER, FLAT | 1 |
| 3 | PFOZZ | 62106 | 100.0.649 | .FLYWHEEL, COMPRESSOR | 1 |
| 4 | PAFZZ | 62106 | M10X25DIN- 933-8.8 | .SCREW, CAP, HEXAGON HEAD | 4 |
| 5 | PAFZZ | 62106 | 100.0.473 | .PLATE, FRONT | 1 |
| 6 | PAFZZ | 62106 | 100.0.262 | .GASKET, PART OF KIT P/N 100.1.806 | 1 |
| 7 | PAFZZ | 62106 | 100.0.329 | .PACKING ASSEMBLY | 1 |
| 8 | PAFZZ | 62106 | 100.0.127 | .BEARING, MAIN, FRONT | 1 |
| 9 | PAFZZ | 62106 | 100.0.620 | .SCREW, CRANKCASE VENT | 2 |
| 10 | PAFZZ | 62106 | 100.8.133 | .VENT, CRANKCASE | 1 |
| 11 | PAFZZ | 62106 | 100.0.302 | .GASKET, CRANKCASE VENT | 1 |
| 12 | PAFZZ | 62106 | 100.8.133S | .SCREW, VENT BAFFLE | 1 |
| 13 | XBFZZ | 62106 | 100.8.133B | .BAFFLE, VENT | 1 |
| 14 | PAFZZ | 62106 | M10X25DIN- 933-8.8 | .SCREW, CAP, HEXAGON HEAD | 4 |
| 15 | PAFZZ | 62106 | 100.0.482 | .PLATE, REAR | 1 |
| 16 | XDOZZ | 62106 | 100.0.262 | .GASKET, PART OF KIT P/N 100.1.806 | 1 |
| 17 | PAFZZ | 62106 | 100.0.006 | .CRANKSHAFT, COMPRESSOR | 1 |
| 18 | PAFZZ | 62106 | 100.0.128 | .BEARING, MAIN, REAR | 1 |
| 19 | PAFZZ | 62106 | 100.0.306 | .INDICATOR, SIGHT, LIQUID | 1 |
| 20 | XBFZZ | 62106 | 100.0.230 | .GASKET, SIGHT GLASS | 1 |
| 21 | PAOZZ | 62106 | 100.0.501 | .CAP, FILLER OPENING | 1 |
| 22 | XDOZZ | 62106 | 100.0.269 | .GASKET, CAP, FILLER | 1 |
| 23 | XDOZZ | 16004 | 80978 | .HOSE ASSEMBLY, OIL DRAIN | 1 |
| 24 | XDOZZ | 04255 | 60X5 | .SLEEVE, TUBE | 1 |
| 25 | XDOZZ | 79470 | 61X5 | .NUT, TUBE | 1 |
| 26 | XDOZZ | 79470 | H-101-4 | .HOSE, OIL DRAIN | 16 |
| 27 | PBOZZ | 79470 | A660 | .COCK, SHUTOFF, SCREW | 1 |
| 28 | PAOZZ | 16004 | 85512 | .DRAIN ASSEMBLY, OIL | 1 |
| 29 | PCOZZ | 01276 | DA120184- B-01 | .GASKET | 1 |
| 30 | XBHZZ | 62106 | 100.0.035 | .FRAME, CRANKCASE | 1 |
| | PAOZZ | 62106 | 100.1.806 | .KIT, OIL GASKET, PART OF KIT P/N 199.0.601 | 1 |
| | | | | GASKET, (1) 8-3 | |
| | | | | GASKET, (1) 10-6 | |
| | | | | GASKET, (1) 10-16 | |
| | | | | GASKET, COOLER, (1) 8-15 | |
| | | | | GASKET, FRAME, (1) 9-4 | |
| | | | | GASKET, INTERCOOLER, (2) 8-6 | |
| | | | | GASKET, LOWER CAP, (1) 8-9 | |
| | | | | GASKET, UPPER CAP, (1) 8-12 | |
| | PAOZZ | 62106 | 100.1.805 | .KIT, PRESSURE GASKET PART OF KIT P/N199.0.601 | 1 |
| | | | | GASKET, (1) 7-3 | |
| | | | | GASKET, VALVE PLATE, (1) 7-7 | |
| | | | | GASKET VALVE, (1) 7-8 | |
| | | | | VALVE, (2) 7-6 | |

TM 5-4310-375-24P

10-2

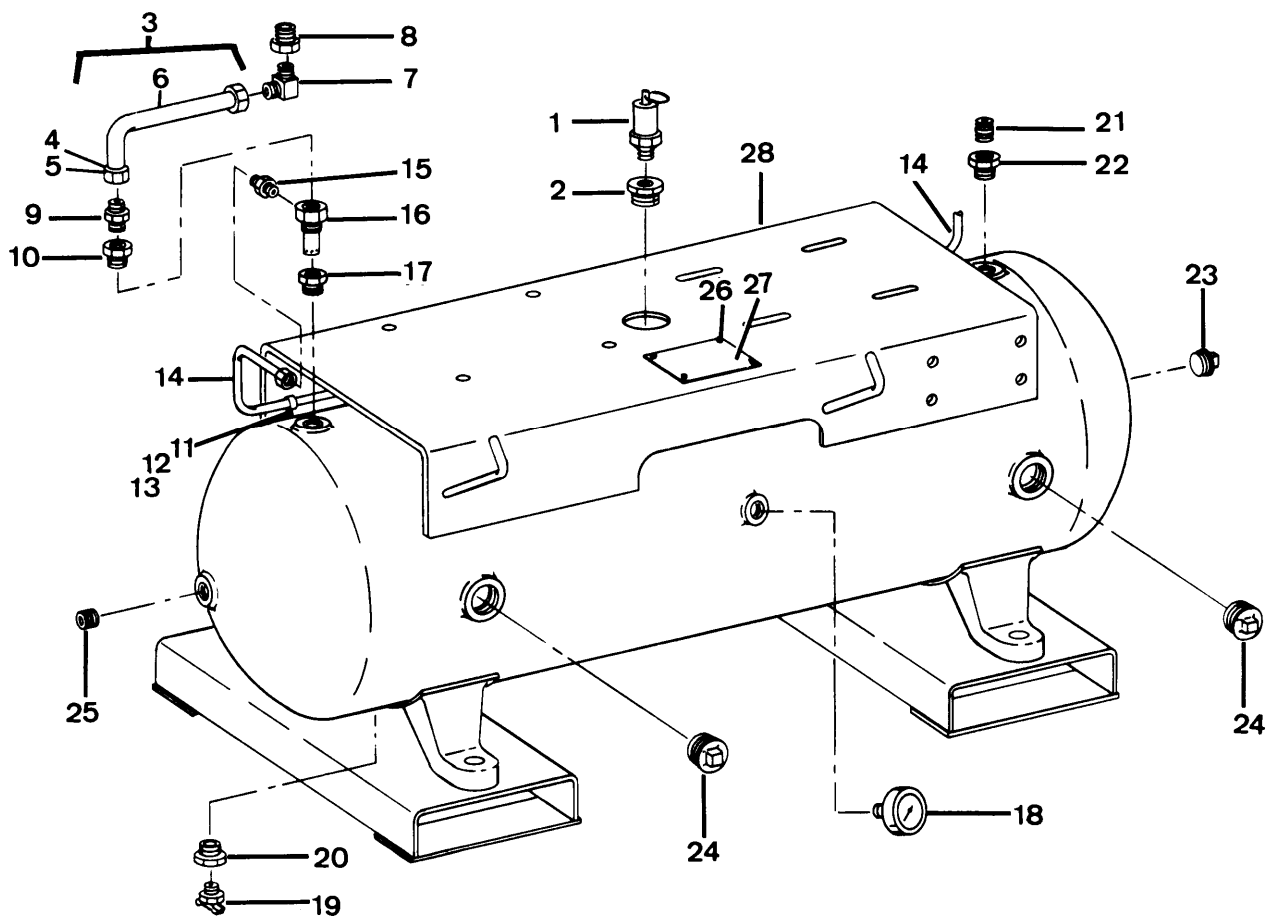


Figure 11. Air receiver tank, gauge and valves

| (1) ITEM NO | (2) SMR CODE | (3) FSCM | (4) PART NUMBER | (5) DESCRIPTION AND USABLE ON CODES (UOC) | (6) QTY |
|-------------------|--------------------|-------------|-----------------------|--|------------|
| | | | | GROUP 04 AIR RECEIVER SYSTEM | |
| | | | | FIG. 11 AIR RECEIVER TANK, GAUGE AND VALVES | |
| 1 | PAOZZ | 34494 | 48A22OPS11/ 4NPT | VALVE, SAFETY RELIEF | 1 |
| 2 | XBOZZ | 16004 | 67730 | BUSHING, REDUCING | 1 |
| 3 | | 16004 | 85482 | TUBE, ASSEMBLY, METAL, AIR OUT | 1 |
| 3 | XBOZZ | 16004 | 85482 | TUBE, ASSEMBLY, METAL | 1 |
| 4 | | 79470 | 60X8 | .SLEEVE, COMPRESSION | 2 |
| 4 | PAOZZ | 79470 | 60X12 | .SLEEVE, TUBING | 2 |
| 5 | PAOZZ | 79470 | 61X12 | .NUT, TUBE COUPLING | 2 |
| 6 | XAOZZ | 16004 | 51092 | .TUBING, COPPER, 3/4 OD, 7 IN. LONG | 1 |
| 7 | XBOZZ | 79470 | B69X12X12 | ELBOW, TUBING | 1 |
| 8 | XBOZZ | 24617 | 144056 | BUSHING, PIPE | 1 |
| 9 | XBOZZ | 79470 | B68X12X12 | CONNECTOR, TUBING | 1 |
| 10 | XBOZZ | 24617 | 144129 | ELBOW, PIPE, 3/4 NPT | 1 |
| 10 | PAOZZ | 96906 | MS51953-104 | NIPPLE, PIPE | 1 |
| 11 | PAFZZ | 24617 | 9416918 | NUT, PLAIN, EXTENDED | REF |
| 12 | PAOZZ | 24617 | 274825 | SCREW, CAP, HEXAGON HEAD | REF |
| 13 | PAFZZ | 01276 | 900729-18 | CLAMP, LOOP | REF |
| 14 | PAFZZ | 16004 | 85484 | TUBE ASSEMBLY, METAL UNLOADER | REF |
| 15 | XDOZZ | 79470 | 68X4BODY ONLY | CONNECTOR, TUBE | 1 |
| 16 | PAOZZ | 58818 | P7575A(S) | VALVE, CHECK | 1 |
| 17 | XBOZZ | 16004 | 144056 | BUSHING, REDUCING | 1 |
| 18 | PAOZZ | 61349 | 102043 | GAGE, PRESSURE, DIAL | 1 |
| 19 | PAOZZ | 96906 | MS35782-6 | COCK, DRAIN | 1 |
| 20 | XBOZZ | 24617 | 144041 | BUSHING REDUCING | 1 |
| 21 | PAOZZ | 96906 | MS51953-49 | NIPPLE, PIPE | 1 |
| 22 | XBOZZ | 16004 | 144054 | BUSHING, REDUCING | 1 |
| 23 | PAOZZ | 96906 | MS20913-10S | PLUG, PIPE | 1 |
| 24 | PAOZZ | 96906 | MS49005-18 | PLUG, PIPE | 2 |
| 25 | PAOZZ | 96906 | MS51953-97 | NIPPLE, PIPE | 1 |
| 26 | PAOZZ | 16004 | 68749 | SCREW, TAPPING | 4 |
| 27 | XBOZZ | 16004 | 66794 | PLATE, IDENTIFICATION, UNIT | 1 |
| 28 | XDFZZ | 16004 | 84952 | RECEIVER, AIR | 1 |
| | | | | END OF FIGURE | |

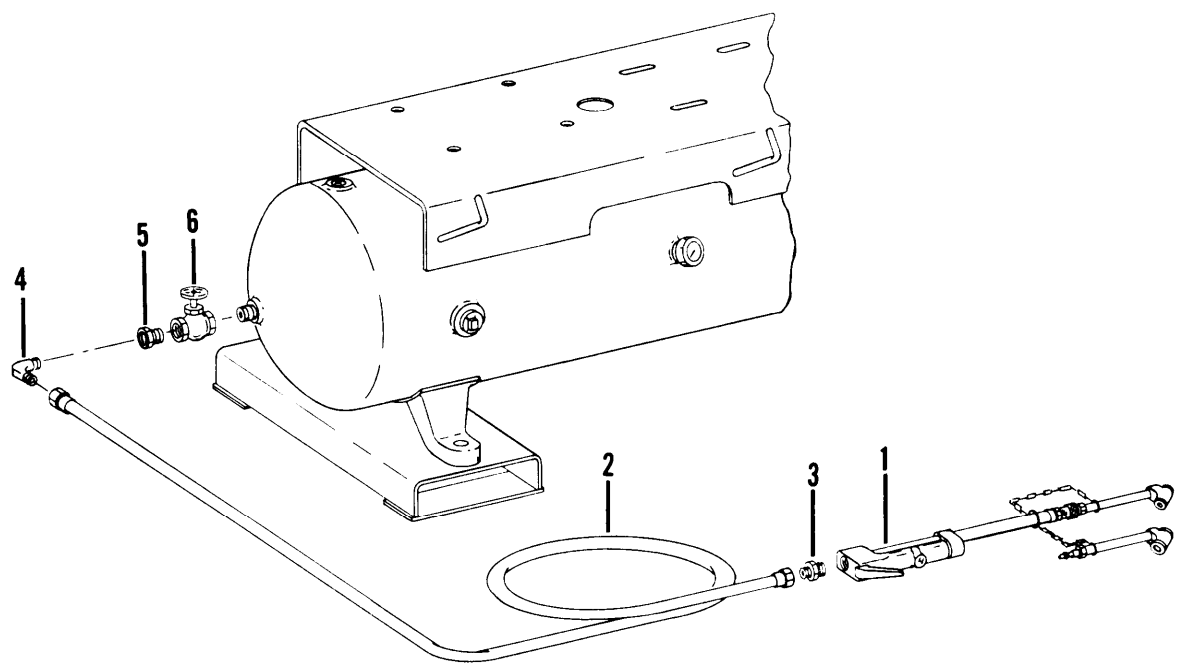


Figure 12. Discharge hose, inflator gauge and valve

| (1) ITEM NO | (2) SMR CODE | (3) FSCM | (4) PART NUMBER | (5) DESCRIPTION AND USABLE ON CODES (UOC) | (6) QTY |
|-------------------|--------------------|-------------|-----------------------|---|------------|
| | | | | GROUP 05 AIR DISCHARGE SYSTEM | |
| | | | | FIG. 12 DISCHARGE HOSE, INFLATER GAUGE AND VALVE | |
| 1 | PAOZZ | 94894 | 61J2-1506 | INFLATOR GAGE, PNEUMATIC | 1 |
| 2 | PAOZZ | 16004 | 85403 | HOSE ASSEMBLY, NONMETALLIC, AIR, 50 FT. | 1 |
| 3 | PAOZZ | 79470 | 3325X4 | NIPPLE, PIPE. | 1 |
| 4 | PAOZZ | 45681 | 1/4CR-B | ELBOW, PIPE | 1 |
| 5 | XBOZZ | 24617 | 144040 | BUSHING, REDUCING | 1 |
| 6 | PAOZZ | 14652 | 125T | VALVE, GLOBE, 3/4 NPT. | 1 |
| | | | | END OF FIGURE | |

NATIONAL STOCK NUMBER AND PART NUMBER INDEX

| NATIONAL STOCK NUMBER INDEX | | | | | |
|-----------------------------|------|------|------------------|------|------|
| STOCK NUMBER | FIG. | ITEM | STOCK NUMBER | FIG. | ITEM |
| 5945-00-001-5933 | 2 | 22 | 5999-01-170-0849 | 2 | 24 |
| 4730-00-011-4627 | 4 | 6 | 4310-01-175-0764 | 2 | 7 |
| 4730-00-019-2067 | 11 | 21 | 4330-01-175-0765 | 6 | 1 |
| 5310-00-045-3296 | 2 | 16 | 9905-01-175-7158 | 2 | 12 |
| 5310-00-087-4652 | 1 | 9 | 6105-01-175-9981 | 3 | 20 |
| | 3 | 4 | 6685-01-176-3442 | 11 | 18 |
| 5310-00-125-9924 | 3 | 2 | 4310-01-176-8397 | 9 | 7 |
| 4820-00-142-2122 | 10 | 27 | 5930-01-176-9001 | 2 | 11 |
| 5945-00-165-0369 | 2 | 25 | 4310-01-177-2178 | 9 | 8 |
| 4730-00-196-1468 | 11 | 25 | 4310-01-177-2179 | 9 | 8 |
| 4730-00-196-1499 | 11 | 10 | 4310-01-177-2180 | 9 | 15 |
| 3030-00-204-2071 | 1 | 12 | 4310-01-177-2181 | 9 | 15 |
| 4910-00-204-2644 | 12 | 1 | 4310-01-177-2199 | 9 | 7 |
| 4730-00-221-2142 | 11 | 23 | 4310-01-177-2200 | 9 | 7 |
| 5310-00-225-6993 | 5 | 1 | 4310-01-177-2201 | 9 | 14 |
| 4730-00-240-1740 | 11 | 5 | 4310-01-177-2202 | 9 | 14 |
| 5305-00-269-3213 | 3 | 6 | 4310-01-177-2203 | 9 | 14 |
| 4820-00-276-9041 | 11 | 19 | 6110-01-177-3697 | 2 | 18 |
| 4730-00-277-8289 | 12 | 3 | 5360-01-177-7995 | 2 | 21 |
| 4730-00-278-8763 | 4 | 5 | 5315-01-177-7996 | 3 | 19 |
| 4730-00-278-8767 | 11 | 4 | 5305-01-177-7997 | 10 | 9 |
| 4730-00-287-1835 | 11 | 24 | 5305-01-177-7998 | 10 | 12 |
| 5950-00-409-2192 | 2 | 23 | 5330-01-177-8255 | 10 | 6 |
| 5340-00-482-6835 | 4 | 3 | 5330-01-177-8256 | 10 | 11 |
| | 11 | 13 | 5330-01-177-8303 | 10 | 7 |
| 5930-00-521-8471 | 4 | | 3120-01-177-8391 | 9 | 11 |
| 5930-00-539-2108 | 4 | 10 | 3120-01-177-8392 | 9 | 11 |
| 5975-00-578-3666 | 3 | 1 | 6680-01-177-9439 | 10 | 19 |
| 5305-00-724-5898 | 1 | 14 | 5305-01-177-9709 | 1 | 4 |
| 5310-00-809-3078 | 2 | 3 | 3110-01-178-1534 | 3 | 22 |
| 5310-00-934-9758 | 2 | 15 | 5306-01-178-1535 | 10 | 1 |
| 5305-00-964-0589 | 5 | 2 | 3110-01-178-1536 | 10 | 8 |
| 5305-00-984-6192 | 3 | 8 | 4310-01-178-2874 | 2 | 19 |
| 5305-00-984-6210 | 2 | 17 | 4310-01-178-2875 | 10 | 15 |
| 5305-00-990-6444 | 2 | 13 | 4820-01-178-2936 | 12 | 6 |
| 5310-01-012-8962 | 1 | 6 | 4310-01-178-3298 | 10 | 3 |
| | 2 | 1 | 4310-01-178-3299 | 10 | 5 |
| | 4 | 1 | 4310-01-178-3301 | 10 | |
| | 11 | 11 | 4310-01-178-3322 | 9 | 13 |
| 5305-01-056-1501 | 1 | 1 | 4310-01-178-3342 | 10 | 17 |
| | 1 | 7 | 4310-01-178-3343 | 7 | 2 |
| | 2 | 2 | 4710-01-178-6433 | 11 | 3 |
| | 11 | 12 | 4310-01-178-8741 | 8 | 2 |
| 5330-01-074-0063 | 10 | 29 | 4310-01-178-9431 | 10 | 10 |
| 5310-01-117-2410 | 10 | 2 | 4710-01-178-9969 | 4 | 4 |
| 5305-01-118-7424 | 11 | 26 | | 11 | 14 |
| 6105-01-162-5061 | 3 | 7 | 5365-01-179-1268 | 9 | 5 |
| 4310-01-163-9558 | 5 | 3 | 5365-01-179-1269 | 9 | 12 |
| 4820-01-165-3746 | 4 | 12 | 5310-01-179-1287 | 9 | 2 |

NATIONAL STOCK NUMBER AND PART NUMBER INDEX

| STOCK NUMBER | NATIONAL STOCK NUMBER INDEX | |
|------------------|-----------------------------|------|
| | FIG. | ITEM |
| 4310-01-179-2424 | 10 | 21 |
| 4310-01-179-2521 | 10 | 28 |
| 4820-01-179-5345 | 5 | 4 |
| | 11 | 1 |
| 4820-01-179-5372 | 11 | 16 |
| 4720-01-179-5414 | 12 | 2 |
| 4310-01-179-6057 | 8 | 5 |
| 4310-01-179-6058 | 8 | 8 |
| 4310-01-179-6059 | 8 | 11 |
| 4310-01-179-6060 | 8 | 14 |
| 4310-01-179-6061 | 9 | 18 |
| 4310-01-179-6062 | 10 | |
| 4310-01-179-6172 | 9 | 6 |
| 4310-01-179-6178 | 10 | |
| 4310-01-179-6179 | 9 | 16 |
| 3110-01-180-6527 | 10 | 18 |
| 4730-01-181-5777 | 12 | 4 |
| 3120-01-185-2800 | 3 | 17 |

NATIONAL STOCK NUMBER AND PART NUMBER INDEX

| FSCM | PART NUMBER | PART NUMBER INDEX STOCK NUMBER | FIG. | ITEM |
|-------|------------------|-----------------------------------|------|------|
| 81300 | AP71 | 3030-00-204-2071 | 1 | 12 |
| 27192 | A11CNOB | 6110-01-177-3697 | 2 | 18 |
| 79470 | A660 | 4820-00-142-2122 | 10 | 27 |
| 05472 | BG6206B03 | | 3 | 24 |
| 05472 | BG6307B03 | 3110-01-178-1534 | 3 | 22 |
| 79470 | B68X12X12 | | 11 | 9 |
| 79470 | B69X12X12 | | 11 | 7 |
| 15605 | C1CXB | 4310-01-178-2874 | 2 | 19 |
| 01276 | DA120184-8-01 | 5330-01-074-0063 | 10 | 29 |
| 23826 | D27100001 | 4820-01-165-3746 | 4 | 12 |
| 76241 | D2900 | | 1 | 13 |
| 23826 | D9271-15 | | 4 | 11 |
| 79470 | H-101-4 | | 10 | 26 |
| 27192 | H-1043 | 5999-01-170-0849 | 2 | 24 |
| 05472 | HA1000A34 | | 3 | 21 |
| 05472 | HA3104A14 | | 3 | 15 |
| 05472 | HW3200A01 | | 3 | 26 |
| 05472 | HW4500A01 | | 3 | 18 |
| 05472 | HW5100A06 | 3120-01-185-2800 | 3 | 17 |
| 05472 | MR500A31 | 5315-01-177-7996 | 3 | 19 |
| 96906 | MS20913-10S | 4730-00-221-2142 | 11 | 23 |
| 96906 | MS27183-11 | 5310-00-809-3078 | 2 | 3 |
| 96906 | MS27183-13 | | 1 | 2 |
| | | | 3 | 5 |
| 96906 | MS35206-244 | 5305-00-984-6192 | 3 | 8 |
| 96906 | MS35206-263 | 5305-00-984-6210 | 2 | 17 |
| 96906 | MS35207-261 | 5305-00-990-6444 | 2 | 13 |
| 96906 | MS35338-43 | 5310-00-045-3296 | 2 | 16 |
| 96906 | MS35649-202 | 5310-00-934-9758 | 2 | 15 |
| 96906 | MS35782-6 | 4820-00-276-9041 | 11 | 19 |
| 96906 | MS39176-3 | 4730-00-011-4627 | 4 | 6 |
| 96906 | MS39177-3 | 4730-00-278-8763 | 4 | 5 |
| 96906 | MS49005-18 | 4730-00-287-1835 | 11 | 24 |
| 96906 | MS51095-416 | 5305-00-964-0589 | 5 | 2 |
| 96906 | MS51922-17 | 5310-00-087-4652 | 1 | 9 |
| | | | 3 | 4 |
| 96906 | MS51922-33 | 5310-00-225-6993 | 5 | 1 |
| 96906 | MS51953-104 | 4730-00-196-1499 | 11 | 10 |
| 96906 | MS51953-49 | 4730-00-019-2067 | 11 | 21 |
| 96906 | MS51953-97 | 4730-00-196-1468 | 11 | 25 |
| 96906 | MS51963-83 | 5305-00-724-5858 | 1 | 14 |
| 96906 | MS90725-60 | | 1 | 10 |
| 96906 | MS90725-62 | 5305-00-269-3213 | 3 | 6 |
| 62106 | M10X25DIN933-8.8 | | 6 | 6 |
| | | | 8 | 4 |
| | | | 8 | 13 |
| | | | 9 | 1 |
| | | | 10 | 4 |
| | | | 10 | 14 |

NATIONAL STOCK NUMBER AND PART NUMBER INDEX

| FSCM | PART NUMBER | PART NUMBER INDEX STOCK NUMBER | FIG. | ITEM |
|-------|------------------|-----------------------------------|------|------|
| 62106 | M10X30LH | 5306-01-178-1535 | 10 | 1 |
| 62106 | M10X90DIN931-8.8 | | 7 | 1 |
| 05472 | M3311T | 6105-01-162-5061 | 3 | 7 |
| 62106 | M6X12DIN933-8.8 | | 8 | 1 |
| | | | 8 | 7 |
| | | | 8 | 10 |
| 23826 | | | 4 | 13 |
| | | | 4 | 14 |
| | | | 6 | 2 |
| | | | 6 | 3 |
| | | | 6 | 4 |
| | | | 6 | 5 |
| 05472 | NP005 | | 3 | 28 |
| 58818 | P7575S(T) | 4820-01-179-5372 | 11 | 16 |
| 62106 | T35 | 4310-01-163-9558 | 5 | 3 |
| 05472 | XY3118A12 | | 3 | 14 |
| 45681 | 1/4CR-B | 4730-01-181-5777 | 12 | 4 |
| 62106 | 10.5DIN125ST | 5310-01-179-1287 | 9 | 2 |
| 05472 | 10XN2520A10 | | 3 | 11 |
| 62106 | 100.0.006 | 4310-01-178-3342 | 10 | 17 |
| 62106 | 100.0.021 | 4310-01-179-6061 | 9 | 18 |
| 62106 | 100.0.035 | | 10 | 30 |
| 62106 | 100.0.052 | | 9 | 17 |
| 62106 | 100.0.053 | | 9 | 10 |
| 62106 | 100.0.079 | | 9 | 3 |
| 62106 | 100.0.087 | 4310-01-179-6057 | 8 | 5 |
| 62106 | 100.0.090 | 4310-01-179-6060 | 8 | 14 |
| 62106 | 100.0.107 | 4310-01-178-8741 | 8 | 2 |
| 62106 | 100.0.108 | 4310-01-179-6059 | 8 | 11 |
| 62106 | 100.0.109 | 4310-01-179-6058 | 8 | 8 |
| 62106 | 100.0.120 | | 6 | 7 |
| 62106 | 100.0.127 | 3110-01-178-1536 | 10 | 8 |
| 62106 | 100.0.128 | 3110-01-180-6527 | 10 | 18 |
| 62106 | 100.0.162 | 4330-01-175-0765 | 6 | 1 |
| 62106 | 100.0.188 | | 9 | 4 |
| 62106 | 100.0.198 | | 7 | 8 |
| 62106 | 100.0.201 | | 8 | 3 |
| 62106 | 100.0.204 | | 8 | 12 |
| 62106 | 100.0.208 | | 8 | 9 |
| 62106 | 100.0.230 | | 10 | 20 |
| 62106 | 100.0.240 | | 7 | 7 |
| 62106 | 100.0.251 | | 7 | 3 |
| 62106 | 100.0.262 | 5330-01-177-8255 | 10 | 6 |
| | | | 10 | 16 |
| 62106 | 100.0.269 | | 10 | 22 |
| 62106 | 100.0.298 | | 9 | 11 |
| 62106 | 100.0.302 | 5330-01-177-8256 | 10 | 11 |
| 62106 | 100.0.306 | 6680-01-177-9439 | 10 | 19 |
| 62106 | 100.0.322 | | 8 | 6 |
| | | | 8 | 15 |
| 62106 | 100.0.329 | 5330-01-177-8303 | 10 | 7 |

NATIONAL STOCK NUMBER AND PART NUMBER INDEX

| FSCM | PART NUMBER | PART NUMBER INDEX STOCK NUMBER | FIG. | ITEM |
|-------|-------------|-----------------------------------|------|------|
| 62106 | 100.0.345 | | 7 | 4 |
| 62106 | 100.0.359 | 4310-01-176-8397 | 9 | 7 |
| 62106 | 100.0.366 | 4310-01-177-2201 | 9 | 14 |
| 62106 | 100.0.431 | 5365-01-179-1269 | 9 | 12 |
| 62106 | 100.0.432 | | 9 | 5 |
| 62106 | 100.0.473 | 4310-01-178-3299 | 10 | 5 |
| 62106 | 100.0.482 | 4310-01-78-2875 | 10 | 15 |
| 62106 | 100.0.491 | 4310-01-178-3322 | 9 | 13 |
| 62106 | 100.0.495 | 4310-01-179-6172 | 9 | 6 |
| 62106 | 100.0.501 | 4310-01-179-2424 | 10 | 21 |
| 62106 | 100.0.515 | 4310-01-178-3343 | 7 | 2 |
| 62106 | 100.0.525 | | 7 | 5 |
| 62106 | 100.0.527 | | 7 | 6 |
| 62106 | 100.0.620 | 5305-01-177-7997 | 10 | 9 |
| 62106 | 100.0.649 | 4310-01-178-3298 | 10 | 3 |
| 62106 | 100.0.672 | 4310-01-177-2200 | 9 | 7 |
| 62106 | 100.0.673 | 4310-01-177-2199 | 9 | 7 |
| 62106 | 100.0.680 | 4310-01-177-2202 | 9 | 14 |
| 62106 | 100.0.681 | 4310-01-177-2203 | 9 | 14 |
| 62106 | 100.0.743 | 3120-01-177-8391 | 9 | 11 |
| 62106 | 100.0.744 | 3120-01-177-8392 | 9 | 11 |
| 62106 | 100.1.805 | 4310-01-179-6062 | 10 | |
| 62106 | 100.1.806 | 4310-01-178-3301 | 10 | |
| 62106 | 100.8.033 | 4310-01-179-6179 | 9 | 16 |
| 62106 | 100.8.034 | | 9 | 9 |
| 62106 | 100.8.061 | | 9 | 15 |
| 62106 | 100.8.062 | | 9 | 8 |
| 62106 | 100.8.133 | 4310-01-178-9431 | 10 | 10 |
| 62106 | 100.8.133B | | 10 | 13 |
| 62106 | 100.8.133S | 5305-01-177-7998 | 10 | 12 |
| 62106 | 100.8.308 | 4310-01-177-2178 | 9 | 8 |
| 62106 | 100.8.309 | 4310-01-177-2179 | 9 | 8 |
| 62106 | 100.8.310 | 4310-01-177-2180 | 9 | 15 |
| 62106 | 100.8.311 | 4310-01-177-2181 | 9 | 15 |
| 61349 | 102043 | 6685-01-176-3442 | 11 | 18 |
| 15605 | 10250TM42 | 9905-01-175-7158 | 2 | 12 |
| 27193 | 10250T20KB | 5930-01-176-9001 | 2 | 11 |
| 27192 | 11-2280 | | 2 | 26 |
| 72971 | 11-50 | | 2 | 4 |
| | | | 3 | 1 |
| | | | 4 | 8 |
| 72971 | 12-50B | | 2 | 5 |
| | | | 4 | 9 |
| 14652 | 125T | 4820-01-178-2936 | 12 | 6 |
| 24617 | 144040 | | 12 | 5 |
| 24617 | 144041 | | 11 | 20 |
| 16004 | 144054 | | 11 | 22 |
| 24617 | 144056 | | 11 | 8 |
| | | | 11 | 17 |
| 24617 | 144129 | | 11 | 10 |
| 62106 | 100.0.601 | 4310-01-179-6178 | 10 | |

NATIONAL STOCK NUMBER AND PART NUMBER INDEX

| FSCM | PART NUMBER | PART NUMBER INDEX STOCK NUMBER | FIG. | ITEM |
|-------|-----------------|-----------------------------------|------|------|
| 72971 | 201 | 5310-00-125-9924 | 3 | 2 |
| 27192 | 23-5528 | | 2 | 28 |
| 27192 | 23-5529 | | 2 | 27 |
| 24617 | 274825 | 5305-01-056-1501 | 1 | 1 |
| | | | 1 | 7 |
| | | | 2 | 2 |
| | | | 4 | 2 |
| | | | 11 | 12 |
| | | | 2 | 2 |
| 16004 | 29084 | | 2 | 8 |
| | | | 2 | 9 |
| 02929 | 32F648 | | 2 | 31 |
| 79470 | 3325X4 | 4730-00-277-8289 | 12 | 3 |
| 05472 | 37CB3000 | | 3 | 12 |
| 05472 | 37CB4500 | | 3 | 9 |
| 05472 | 37EP3200A01 | | 3 | 16 |
| 05472 | 37EP3201A01 | 6105-01-175-9981 | 3 | 20 |
| 05472 | 37FN4001A02 | | 3 | 25 |
| 05472 | 37GS1000 | | 3 | 13 |
| 05472 | 37GS1001 | | 3 | 10 |
| 05472 | 37RAB001X054 | | 3 | 23 |
| 05472 | 37SAB001X054 | | 3 | 29 |
| 62983 | 471063 | 5310-01-117-2410 | 10 | 2 |
| 27192 | 48-1019 | 5945-00-001-5933 | 2 | 22 |
| 34494 | 48A22OPS11/4NPT | 4820-01-179-5345 | 5 | 4 |
| | | | 11 | 1 |
| 27192 | 49-4114 | | 2 | 20 |
| 16004 | 50959 | | 4 | 7 |
| 16004 | 51092 | | 11 | 6 |
| 27192 | 55-1954 | | 2 | 29 |
| 27192 | 6-23-2 | 5945-00-165-0369 | 2 | 25 |
| 79470 | 60X12 | | 11 | 4 |
| 04255 | 60X5 | | 10 | 24 |
| 79470 | 60X8 | 4730-00-278-8767 | 11 | 4 |
| 94894 | 61J2-1506 | 4910-00-204-2644 | 12 | 1 |
| 79470 | 61X12 | 4730-00-240-1740 | 11 | 5 |
| 79470 | 61X5 | | 10 | 25 |
| 16004 | 66794 | | 11 | 27 |
| 16004 | 67093 | | 1 | 16 |
| 16004 | 67730 | | 11 | 2 |
| 79470 | 68X4BODY ONLY | | 11 | 15 |
| 16004 | 68749 | | 2 | 32 |
| | | | 11 | 26 |
| 15605 | 69-2765 | 5360-01-177-7995 | 2 | 21 |
| 27192 | 69-4358 | | 2 | 30 |
| 23826 | 69HAU1 | 5930-00-539-2108 | 4 | 10 |
| 16004 | 69719 | | 1 | 15 |
| 23826 | 75HA69 | 5930-00-521-8471 | 4 | |
| 16004 | 80476 | 5305-01-177-9709 | 1 | 4 |
| 16004 | 80557-1 | | 2 | 10 |
| 16004 | 80978 | | 10 | 23 |
| 16004 | 84952 | | 11 | 28 |

NATIONAL STOCK NUMBER AND PART NUMBER INDEX

| FSCM | PART NUMBER | PART NUMBER INDEX STOCK NUMBER | FIG. | ITEM |
|-------|-------------|-----------------------------------|------|------|
| 16004 | 84955-1 | | 2 | 35 |
| 16004 | 84957 | 3020-01-178-6662 | 1 | 5 |
| 05472 | 85XU0407A04 | | 3 | 27 |
| 16004 | 85297-1 | | 2 | 14 |
| 16004 | 85359 | 4310-01-175-0764 | 2 | 7 |
| 16004 | 85402 | | 1 | 8 |
| 16004 | 85403 | 4720-01-179-5414 | 12 | 2 |
| 16004 | 85454 | | 1 | 11 |
| 16004 | 85455 | | 1 | 3 |
| 16004 | 85480 | | 3 | 3 |
| 16004 | 85481 | | 2 | 6 |
| 16004 | 85482 | 4710-01-178-6433 | 11 | 3 |
| | | | 11 | 3 |
| 16004 | 85484 | 4710-01-178-9969 | 4 | 4 |
| | | | 11 | 14 |
| 16004 | 85487 | | 2 | 33 |
| 16004 | 85488 | | 2 | 34 |
| 16004 | 85512 | 4310-01-179-2521 | 10 | 28 |
| 27192 | 9-1887-2 | 5950-00-409-2192 | 2 | 23 |
| 01276 | 900729-18 | 5340-00-482-6835 | 4 | 3 |
| | | | 11 | 13 |
| 16004 | 9416918 | 5310-01-012-8962 | 1 | 6 |
| | | | 2 | 1 |
| | | | 4 | 1 |
| | | | 11 | 11 |

By Order of the Secretary of the Army:

JOHN H. WICKHAM, JR.
General, United States Army
Chief of Staff

Official:

DONALD J. DELANDRO
Brigadier General, United States Army
The Adjutant General

DISTRIBUTION:

To be distributed in accordance with DA Form 12-25A, Organizational, Direct Support and General Support Maintenance Requirements for Air Compressor.



THEN... JOT DOWN THE
DOPE ABOUT IT ON THIS
FORM. CAREFULLY TEAR IT
OUT, FOLD IT AND DROP IT
IN THE MAIL!

SOMETHING WRONG WITH THIS PUBLICATION?

FROM: (PRINT YOUR UNIT'S COMPLETE ADDRESS)

PFC JOHN DOE
COA, 3d ENGINEER BN
FT. LEONARDWOOD, MD 63108

DATE SENT

PUBLICATION NUMBER

TM 5-4310-375-24P

PUBLICATION DATE

21 Feb 85

PUBLICATION TITLE

Compressor Unit, Reciprocating,
15 CFM 175 PSI

BE EXACT. PIN-POINT WHERE IT IS

| PAGE NO | PARA- GRAPH | FIGURE NO | TABLE NO |
|------------|----------------|--------------|-------------|
| 6 | 2-1 a | | |
| B1 | | 4-3 | |
| 125 | line 20 | | |

IN THIS SPACE TELL WHAT IS WRONG
AND WHAT SHOULD BE DONE ABOUT IT:

In line 6 of paragraph 2-1a the manual states the engine has 6 Cylinders. The engine on my set only has 4 Cylinders. Change the manual to show 4 Cylinders.

Callout 16 on figure 4-3 is pointing at a bolt. In key to figure 4-3, item 16 is called a shim - Please correct one or the other.

I ordered a gasket, item 19 on figure B-16 by NSN 2910-00-762-3001. I got a gasket but it doesn't fit. Supply says I got what I ordered, so the NSN is wrong. Please give me a good NSN

PRINTED NAME, GRADE OR TITLE, AND TELEPHONE NUMBER

JOHN DOE, PFC (268) 317-7111

SIGN HERE

JOHN DOE

DA FORM 1 JUL 79 2028-2

PREVIOUS EDITIONS
ARE OBSOLETE.

DRSTS-M Overprint 1, 1 Nov 80

PS--IF YOUR OUTFIT WANTS TO KNOW ABOUT YOUR
RECOMMENDATION MAKE A CARBON COPY OF THIS
AND GIVE IT TO YOUR HEADQUARTERS

TEAR ALONG PERFORATED LINE

FILL IN YOUR
UNIT'S ADDRESS

FOLD BACK

DEPARTMENT OF THE ARMY

POSTAGE AND FEES PAID
DEPARTMENT OF THE ARMY
DOD 314



OFFICIAL BUSINESS
PENALTY FOR PRIVATE USE \$300

COMMANDER
U S ARMY TROOP SUPPORT COMMAND
ATTN: AMSTR-MPS
4300 GOODFELLOW BOULEVARD
ST. LOUIS, MO 63120-1798

TEAR ALONG PERFORATED LINE

RECOMMENDED CHANGES TO EQUIPMENT TECHNICAL PUBLICATIONS



THEN... JOT DOWN THE
DOPE ABOUT IT ON THIS
FORM. CAREFULLY TEAR IT
OUT. FOLD IT AND DROP IT
IN THE MAIL!

SOMETHING WRONG WITH THIS PUBLICATION?

FROM: (PRINT YOUR UNIT'S COMPLETE ADDRESS)

DATE SENT

PUBLICATION NUMBER

TM 5-4310-375-24P

PUBLICATION DATE

21 Feb 85

PUBLICATION TITLE

Compressor Unit, Reciprocating,
15 CFM, 175 PSI

BE EXACT. PIN-POINT WHERE IT IS

PAGE
NO

PARA-
GRAPH

FIGURE
NO

TABLE
NO

IN THIS SPACE TELL WHAT IS WRONG
AND WHAT SHOULD BE DONE ABOUT IT:

PRINTED NAME, GRADE OR TITLE, AND TELEPHONE NUMBER

SIGN HERE:

DA FORM 2028-2
1 JUL 79

PREVIOUS EDITIONS
ARE OBSOLETE.
DRSTS-M Overprint 2, 1 Nov 80.

P.S.--IF YOUR OUTFIT WANTS TO KNOW ABOUT YOUR
RECOMMENDATION MAKE A CARBON COPY OF THIS
AND GIVE IT TO YOUR HEADQUARTERS

TEAR ALONG PERFORATED LINE

FILL IN YOUR
UNIT'S ADDRESS

FOLD BACK

DEPARTMENT OF THE ARMY

POSTAGE AND FEES PAID
DEPARTMENT OF THE ARMY
DOD 314



OFFICIAL BUSINESS
PENALTY FOR PRIVATE USE \$300

COMMANDER
US ARMY TROOP SUPPORT COMMAND
ATTN: AMSTR-MPS
4300 GOODFELLOW BOULEVARD
ST. LOUIS, MO 63120-1798

TEAR ALONG PERFORATED LINE

RECOMMENDED CHANGES TO EQUIPMENT TECHNICAL PUBLICATIONS



THEN... JOT DOWN THE
DOPE ABOUT IT ON THIS
FORM. CAREFULLY TEAR IT
OUT. FOLD IT AND DROP IT
IN THE MAIL!

SOMETHING WRONG WITH THIS PUBLICATION?

FROM: (PRINT YOUR UNIT'S COMPLETE ADDRESS)

DATE SENT

PUBLICATION NUMBER

TM 5-4310-375-24P

PUBLICATION DATE

21 Feb 85

PUBLICATION TITLE

Compressor Unit, Reciprocating,
15 CFM, 175 PSI

BE EXACT PIN-POINT WHERE IT IS

PAGE
NO

PARA-
GRAPH

FIGURE
NO

TABLE
NO

IN THIS SPACE TELL WHAT IS WRONG
AND WHAT SHOULD BE DONE ABOUT IT:

PRINTED NAME, GRADE OR TITLE, AND TELEPHONE NUMBER

SIGN HERE

DA FORM 2028-2
1 JUL 79

PREVIOUS EDITIONS
ARE OBSOLETE.
DRSTS-M Overprint 2, 1 Nov 80.

P S --IF YOUR OUTFIT WANTS TO KNOW ABOUT YOUR
RECOMMENDATION MAKE A CARBON COPY OF THIS
AND GIVE IT TO YOUR HEADQUARTERS.

TEAR ALONG PERFORATED LINE

FILL IN YOUR
UNIT'S ADDRESS

FOLD BACK

DEPARTMENT OF THE ARMY

POSTAGE AND FEES PAID
DEPARTMENT OF THE ARMY
DOD 314



OFFICIAL BUSINESS
PENALTY FOR PRIVATE USE \$300

COMMANDER
U S ARMY TROOP SUPPORT COMMAND
ATTN: AMSTR-MPS
4300 GOODFELLOW BOULEVARD
ST. LOUIS, MO 63120-1798

TEAR ALONG PERFORATED LINE

RECOMMENDED CHANGES TO EQUIPMENT TECHNICAL PUBLICATIONS



THEN... JOT DOWN THE
DOPE ABOUT IT ON THIS
FORM. CAREFULLY TEAR IT
OUT. FOLD IT AND DROP IT
IN THE MAIL!

SOMETHING WRONG WITH THIS PUBLICATION?

FROM: (PRINT YOUR UNIT'S COMPLETE ADDRESS)

DATE SENT

PUBLICATION NUMBER

TM 5-4310-375-24P

PUBLICATION DATE

21 Feb 85

PUBLICATION TITLE

Compressor Unit, Reciprocating,
15 CFM, 175 PSI

BE EXACT... PIN-POINT WHERE IT IS

PAGE
NO

PARA-
GRAPH

FIGURE
NO

TABLE
NO

IN THIS SPACE TELL WHAT IS WRONG
AND WHAT SHOULD BE DONE ABOUT IT:

TEAR ALONG PERFORATED LINE

PRINTED NAME, GRADE OR TITLE, AND TELEPHONE NUMBER

SIGN HERE

DA FORM 2028-2
1 JUL 79

PREVIOUS EDITIONS
ARE OBSOLETE.
DRSTS-M Overprint 2, 1 Nov 80.

P.S.--IF YOUR OUTFIT WANTS TO KNOW ABOUT YOUR
RECOMMENDATION MAKE A CARBON COPY OF THIS
AND GIVE IT TO YOUR HEADQUARTERS

FILL IN YOUR
UNIT'S ADDRESS

FOLD BACK

DEPARTMENT OF THE ARMY

POSTAGE AND FEES PAID
DEPARTMENT OF THE ARMY
DOD 314



OFFICIAL BUSINESS
PENALTY FOR PRIVATE USE \$300

COMMANDER
U S ARMY TROOP SUPPORT COMMAND
ATTN: AMSTR-MPS
4300 GOODFELLOW BOULEVARD
ST. LOUIS, MO 63120-1798

TEAR ALONG PERFORATED LINE

The Metric System and Equivalents

Linear Measure

1 centimeter = 10 millimeters = .39 inch
 1 decimeter = 10 centimeters = 3.94 inches
 1 meter = 10 decimeters = 39.37 inches
 1 dekameter = 10 meters = 32.8 feet
 1 hectometer = 10 dekameters = 328.08 feet
 1 kilometer = 10 hectometers = 3,280.8 feet

Weights

1 centigram = 10 milligrams = .15 grain
 1 decigram = 10 centigrams = 1.54 grains
 1 gram = 10 decigrams = .035 ounce
 1 dekagram = 10 grams = .35 ounce
 1 hectogram = 10 dekagrams = 3.52 ounces
 1 kilogram = 10 hectograms = 2.2 pounds
 1 quintal = 100 kilograms = 220.46 pounds
 1 metric ton = 10 quintals = 1.1 short tons

Liquid Measure

1 centiliter = 10 milliliters = .34 fl. ounce
 1 deciliter = 10 centiliters = 3.38 fl. ounces
 1 liter = 10 deciliters = 33.81 fl. ounces
 1 dekaliter = 10 liters = 2.64 gallons
 1 hectoliter = 10 dekaliters = 26.42 gallons
 1 kiloliter = 10 hectoliters = 264.18 gallons

Square Measure

1 sq. centimeter = 100 sq. millimeters = .155 sq. inch
 1 sq. decimeter = 100 sq. centimeters = 15.5 sq. inches
 1 sq. meter (centare) = 100 sq. decimeters = 10.76 sq. feet
 1 sq. dekameter (are) = 100 sq. meters = 1,076.4 sq. feet
 1 sq. hectometer (hectare) = 100 sq. dekameters = 2.47 acres
 1 sq. kilometer = 100 sq. hectometers = .386 sq. mile

Cubic Measure

1 cu. centimeter = 1000 cu. millimeters = .06 cu. inch
 1 cu. decimeter = 1000 cu. centimeters = 61.02 cu. inches
 1 cu. meter = 1000 cu. decimeters = 35.31 cu. feet

Approximate Conversion Factors

| <i>To change</i> | <i>To</i> | <i>Multiply by</i> | <i>To change</i> | <i>To</i> | <i>Multiply by</i> |
|------------------|--------------------|--------------------|--------------------|---------------|--------------------|
| inches | centimeters | 2.540 | ounce-inches | newton-meters | .007062 |
| feet | meters | .305 | centimeters | inches | .394 |
| yards | meters | .914 | meters | feet | 3.280 |
| miles | kilometers | 1.609 | meters | yards | 1.094 |
| square inches | square centimeters | 6.451 | kilometers | miles | .621 |
| square feet | square meters | .093 | square centimeters | square inches | .155 |
| square yards | square meters | .836 | square meters | square feet | 10.764 |
| square miles | square kilometers | 2.590 | square meters | square yards | 1.196 |
| acres | square hectometers | .405 | square kilometers | square miles | .386 |
| cubic feet | cubic meters | .028 | square hectometers | acres | 2.471 |
| cubic yards | cubic meters | .765 | cubic meters | cubic feet | 35.315 |
| fluid ounces | milliliters | 29.573 | cubic meters | cubic yards | 1.308 |
| pints | liters | .473 | milliliters | fluid ounces | .034 |
| quarts | liters | .946 | liters | pints | 2.113 |
| gallons | liters | 3.785 | liters | quarts | 1.057 |
| ounces | grams | 28.349 | grams | gallons | .264 |
| pounds | kilograms | .454 | grams | ounces | .035 |
| short tons | metric tons | .907 | kilograms | pounds | 2.205 |
| pound-feet | newton-meters | 1.356 | metric tons | short tons | 1.102 |
| pound-inches | newton-meters | .11296 | | | |

Temperature (Exact)

| | | | | |
|----|------------------------|----------------------------|---------------------|----|
| °F | Fahrenheit temperature | 5/9 (after subtracting 32) | Celsius temperature | °C |
|----|------------------------|----------------------------|---------------------|----|

057263

This fine document...

Was brought to you by me:



[Liberated Manuals -- free army and government manuals](#)

Why do I do it? I am tired of sleazy CD-ROM sellers, who take publicly available information, slap “watermarks” and other junk on it, and sell it. Those masters of search engine manipulation make sure that their sites that sell free information, come up first in search engines. They did not create it... They did not even scan it... Why should they get your money? Why are not letting you give those free manuals to your friends?

I am setting this document FREE. This document was made by the US Government and is NOT protected by Copyright. Feel free to share, republish, sell and so on.

I am not asking you for donations, fees or handouts. If you can, please provide a link to liberatedmanuals.com, so that free manuals come up first in search engines:

<A HREF=<http://www.liberatedmanuals.com/>>Free Military and Government Manuals

- Sincerely
Igor Chudov
<http://igor.chudov.com/>
- [Chicago Machinery Movers](#)