

TECHNICAL MANUAL

**ORGANIZATIONAL, DIRECT SUPPORT
AND GENERAL SUPPORT MAINTENANCE
REPAIR PARTS AND SPECIAL TOOLS LIST**

**COMPRESSOR, RECIPROCATING: AIR:
15 CFM, 175 PSI, TANK MOUNTED, GED
(BAUER MODEL KAB-545-15)
NSN 4310-01-069-6935**

Approved for public release; distribution is unlimited.

* This manual supersedes TM5-431 0-363-24P, 3 July 1980.

HEADQUARTERS, DEPARTMENT OF THE ARMY

28 AUGUST 1989

TECHNICAL MANUAL

No. 5-4310-363-24P

HEADQUARTERS
DEPARTMENT OF THE ARMY
WASHINGTON, D. C., 28 August 1989

**Organizational, Direct Support and General Support Maintenance
and Repair Parts and Special Tools List
(Including Depot Maintenance Repair Parts and Special Tools List)
for
COMPRESSOR, RECIPROCATING: AIR: 15 CFM, 175 PSI, TANK MOUNTED, GED
(BAUER MODEL KAB-545-15)
(NSN 4310-01 -069-6935)**

Current as of May 10, 1989

REPORTING OF ERRORS AND RECOMMENDING IMPROVEMENTS

You can help improve this manual. If you find any mistake or if you know of a way to improve the procedures, please let us know. Mail your letter, DA Form 2028 (Recommended Changes to Publications and Blank Forms) or DA Form 2028-2 located in the back of this manual direct to: Commander, U.S. Army Troop Support Command ATTN: AMSTR-MCTS, 4300 Goodfellow Blvd., St. Louis, MO 63120-1798. A reply will be finished directly to you.

Approved for public release; distribution is unlimited.

TABLE OF CONTENTS

		Page	Illustr/ Figure
Section I.	Introduction	1	
Section II.	Repair Parts List		
Group 01	Engine and Related Parts	1-1	1
Group 02	Fuel Tank and Related Parts,	2-1	2
Group 03	Air Tank, Tool Box, Frame and Related Parts	3-1	3
Group 04	Belt, Belt Guard, Pulley and Stub Shaft	4-1	4
Group 05	Compressor Assembly		
	Tube Assemblies	5-1	5
	Intake and Exhaust Valves	6-1	6
	Head Unloaders and Pilot Valve	7-1	7
	Air Cleaner	8-1	8
	Pistons, Connecting Rods and Cylinder Block	9-1	9
Section III.	Special Tools List (Not Applicable)		
Section IV.	Cross-Reference Index	I-1	
	National Stock Number Index	I-1	
	Part Number Index	I-2	
	Figure and Item Number Index.	I-7	

*This manual supersedes TM 5-4310-363-24P, 3 July 1980.

Organizational , Direct Support, and General Support Maintenance
Repair Parts and Special Tools List

COMPRESSOR, RECIPROCATING; AIR:
15 CFM, 175 PSI, TANK MOUNTED, GED
(BAUER MODEL KAB-545-15)
NSN 4310-01-069-6935

SECTION I. INTRODUCTION

1. **SCOPE.** This RPSTL lists and authorizes spares and repair parts; special tools; special test, measurement, and diagnostic equipment (TMDE); and other special support equipment required for performance of organizational, direct support, general support and depot maintenance of the Compressor, Reciprocating Air Section. It authorizes the requisitioning, issue, and disposition of spares, repair parts and special tools as indicated by the source, maintenance and recoverability (SMR) codes.

2. **GENERAL.** In addition to this section, Introduction, this Repair Parts and Special Tools List is divided into the following sections:

a. **Section II. Repair Parts List.** A list of spares and repair parts authorized by this RPSTL for USE in the performance of maintenance. The list also includes parts which must be removed for replacement of the authorized parts. Parts lists are composed of functional groups in ascending alphanumeric sequence, with the parts in each group listed in ascending figure and item number sequence. Bulk materials are listed in item name sequence. Repair parts kits are listed separately in their own functional group within Section II. Repair parts for repairable special tools are also listed in this section. Items listed are shown on the associated illustration(s)/figure(s).

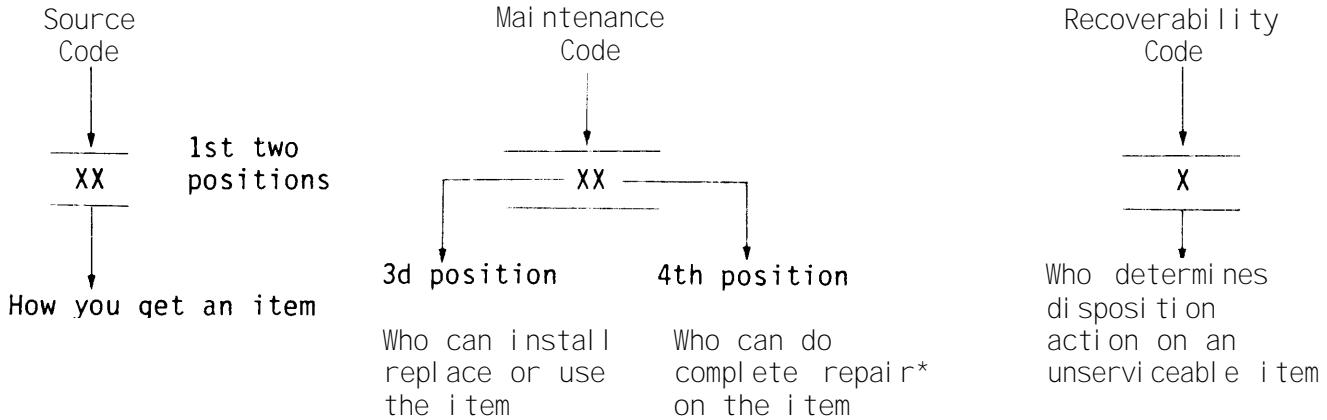
b. **Section III. Special Tools List.** A list of special tools, special TMDE, and other special support equipment authorized by this RPSTL (as indicated by Basis of Issue (BOI) information in DESCRIPTION AND USABLE ON CODE column) for the performance of maintenance.

c. **Section IV. Cross-references Indexes.** A list, in National Item Identification Number (NIIN) sequence, of all National stock numbered items appearing in the listing, followed by a list in alphanumeric sequence of all part numbers appearing in the listings. National stock numbers and part numbers are cross-referenced to each illustration figure and item number appearance. The figure and item number index lists figure and item number in alphanumeric sequence and cross-references NSN, FSCM and part number.

3. **Explanation OF COLUMNS (SECTIONS II AND III).**

a. **ITEM NO. (Column (1)).** Indicates the number used to identify items called out in the illustration.

b. **SMR Code (Column (2)).** The Source, Maintenance, and Recoverability (SMR) code is a 5-position code containing supply/requisitioning information, maintenance category authorization criteria, and disposition instruction, as shown in the following breakout:



*Complete Repair: Maintenance capacity, capability, and authority to perform all corrective maintenance tasks of the "Repair" function in a use/user environment in order to restore serviceability to a failed item.

(1) **Source Code.** The source code tells you how to get an item needed for maintenance, repair, or overhaul of an end item/equipment. Explanations of source codes follows:

Code	Explanation
<div style="border: 1px solid black; padding: 5px; display: inline-block;"> PA PB PC** PD PE PF PG </div>	Stocked items; use the applicable NSN to request/requisition items with these source codes. They are authorized to the category indicated by the code entered in the 3d position of the SMR code.
<div style="border: 1px solid black; padding: 5px; display: inline-block;"> KD KF KB </div>	**NOTE : Items coded PC are subject to deterioration. Items with these codes are not to be requested/requisitioned individually. They are part of a kit which is authorized to the maintenance category indicated in the 3d position of the SMR code. The complete kit must be requisitioned and applied.

	Explanation
<div style="border: 1px solid black; padding: 5px; display: inline-block;"> MO--(Made at org. AVUM Level MF--(Made at DS/ AVUM Level MH--(Made at GS Level) ML--Made at Specialized Repair Activity (SRA)) MD--(Made at Depot) </div>	Items with these codes are not to be requested/requisitioned individually. They must be made from bulk material which is identified by the part number in the DESCRIPTION and USABLE ON CODE (UOC) column and listed in the Bulk Material group of the repair parts list in this RPSTL. If the item is authorized to you by the 3d position code of the SMR code, but the source code indicates it is made at a higher level, order the item from the higher level of maintenance.

Code	Explanation
AO--(Assembled by org/AVUM Level)	<p>Items with these codes are not to be requested/requisitioned individually. The parts that make up the assembled item must be requisitioned or fabricated and assembled at the level of maintenance indicated by the source code. If the 3d position code of the SMR code authorizes you to replace the item, but the source code indicates the items are assembled at a higher level, order the item from the higher level of maintenance.</p>
AF--(Assembled by DS/AVIM Level)	
AH--(Assembled by GS Category)	
AL--(Assembled by SRA)	
AD--(Assembled by Depot)	

Code	Explanation
XA--Do not requisition an "XA"-coded item. Order its next higher assembly. (Also, refer to the NOTE below.)	
XB--If an "XB" item is not available from salvage, order it using the FSCM and part number given.	
XC--Installation drawing, diagram, instruction sheet, field service drawing, that is identified by manufacturer's part number.	
XD--Item is not stocked. Order an "XD"-coded item through normal supply channels using the FSCM and part number given, if no NSN is available.	

NOTE

Cannibalization or controlled exchange, when authorized, may be used as a source of supply for items with the above source codes, except for those source coded "XA" or those aircraft support items restricted by requirements of AR 750-1.

- (2) **Maintenance Code.** Maintenance codes tell you the level(s) of maintenance authorized to USE and REPAIR support items. The maintenance codes are entered in the third and fourth positions of the SMR code as follows:

- (a) The maintenance code entered in the third position tells you the lowest maintenance level authorized to remove, replace, and use an item. The maintenance code entered in the third position will indicate authorization to one of the following levels of maintenance.

Code	Application/Explanation
c	--Crew or operator maintenance done within organizational or aviation unit maintenance.
o	--Organizational or aviation unit category can remove, replace, and use the item.
F	--Direct support or aviation intermediate level can remove, replace, and use the item.

H --General support level can remove, replace, and use the item.

L --Specialized repair activity can remove, replace, and use the item.

D --Depot level can remove, replace, and use the item.

- (b) The maintenance code entered in the fourth position tells whether or not the item is to be repaired and identifies the lowest maintenance level with the capability to do complete repair (i.e. perform all authorized repair functions.) NOTE: Some limited repair may be done on the item at a lower level of maintenance, if authorized by the Maintenance Allocation Chart (MAC) and SMR codes. This position will contain one of the following maintenance codes.

Code	Application/Explanation
O	--Organizational or (aviation unit) is the lowest level that can do complete repair of the item.
F	--Direct support or aviation intermediate is the lowest level that can do complete repair of the item.
H	--General Support is the lowest level that can do complete repair of the item.
L	--Specialized repair activity is the lowest level that can do complete repair of the item.
D	--Depot is the lowest level that can do complete repair of the item.
Z	--Nonreparable. No repair is authorized.
B	--No repair is authorized. (No parts or special tools are authorized for the maintenance of a "B" coded item). However, the item may be reconditioned by adjusting, lubricating, etc., at the user level.

- (3) **Recoverability Code.** Recoverability codes are assigned to items to indicate the disposition action on unserviceable items. The recoverability code is entered in the fifth position of the SMR Code as follows:

Recoverability Codes	Application/Explanation
Z	--Nonreparable item. When unserviceable, condemn and dispose of the item at the level of maintenance shown in 3d position of SMR Code.

Recoverability

Codes

Application/Explanation

- o --Reparable item. When uneconomically reparable, condemn and dispose of the item at organizational or aviation unit level.
- F --Reparable item. When uneconomically reparable, condemn and dispose of the item at the direct support or aviation intermediate level.
- H --Reparable item. When uneconomically reparable, condemn and dispose of the item at the general support level.
- D --Reparable item. When beyond lower level repair capability, return to depot. Condemnation and disposal of item not authorized below depot level.
- L --Reparable item. Condemnation and disposal not authorized below specialized repair activity (SRA).
- A --Item requires special handling or condemnation procedures because of specific reasons (e.g., precious metal content, high dollar value, critical material, or hazardous material). Refer to appropriate manuals/directives for specific instructions.

c. **FSCM (Column {3})**. The Federal Supply Code for Manufacturer (FSCM) is a 5-digit numeric code which is used to identify the manufacturer, distributor, or Government agency, etc., that supplies the item.

d. **PART NUMBER (Column (4))**. Indicates the primary number used by the manufacturer, (individual, company, firm, corporation, or Government activity), which controls the design and characteristics of the item by means of its engineering drawings, specifications standards, and inspection requirements to identify an item or range of items.

NOTE

When you use an NSN to requisition an item, the item you receive may have a different part number from the part ordered.

e. **DESCRIPTION AND USABLE ON CODE (UOC) (Column (5))**. This column includes the following information:

- (1) The Federal item name and, when required, a minimum description to identify the item.
- (2) The physical security classification of the item is indicated by the parenthetical entry, e.g., Phy Sec C1 - Confidential, Phy Sec C1 (S) - Secret, Phy Sec C1 (T) - Top Secret.

- (3) Items that are included in kits and sets are listed below the name of the kit or set.
- (4) Spare/repair parts that make up an assembled item are listed immediately following the assembled item line entry.
- (5) Part numbers for bulk materials are referenced in this column in the line item entry for the item to be manufactured/fabricated.
- (6) When the item is not used with all serial numbers of the same model, the effective serial numbers are shown on the last line(s) of the description (before UOC).
- (7) The usable on code, when applicable (see paragraph 5, Special Information).
- (8) In the Special Tools List section, the basis of issue (**BOI**) appears as the last line(s) in the entry for each special tool, special TMDE, and other special support equipment. When density of equipments supported exceeds density spread indicated in the basis of issue, the total authorization is increased proportionately.
- (9) The statement "END OF FIGURE" appears just below the last item description in Column 5 for a given figure in both Section II and Section **III**.
- (10) The indenture, shown as dots appearing before the repair part, indicates that the item is a repair part of the next higher assembly.

f. **QTY (Column (6)).** The QTY (quantity per figure column) indicates the quantity of the item used in the breakout shown on the illustration figure, which is prepared for a functional group, subfunctional group, or an assembly. A V appearing in this column in lieu of a quantity indicates that the quantity is variable and may vary from application to application.

4. Explanation of COLUMNS (SECTION IV).

a. NATIONAL STOCK NUMBER (NSN) INDEX.

- (1) **STOCK NUMBER column.** This column lists the NSN by National item identification number

(**NIIN**) sequence. The **NIIN** consists of the last nine digits of the
 NSN, i.e. $\frac{\text{NSN}}{(5305-01-574-1467)}$.
NIIN

When using this column to locate an item, ignore the first 4 digits of the NSN. However, the complete NSN should be used when ordering items by stock number.

- (2) **FIG. column.** This column lists the number of the figure where the item is identified/located. The figures are in numerical order in Section II and Section **III**.

- (3) **ITEM column.** The item number identifies the item associated with the figure listed in the adjacent FIG. column. This item is also identified by the NSN listed on the same line.

b. PART NUMBER INDEX. Part numbers in this index are listed by part number in ascending alphanumeric sequence (i.e., vertical arrangement of letter and number combination which places the first letter or digit of each group in order A through Z, followed by the numbers 0 through 9 and each following letter or digit in like order).

- (1) **FSCM column.** The Federal Supply Code for Manufacturer (FSCM) is a 5-digit numeric code used to identify the manufacturer, distributor, or Government agency, etc., that supplies the item.
- (2) **PART NUMBER column.** Indicates the primary number used by the manufacturer (individual, firm, corporation, or Government activity), which controls the design and characteristics of the item by means of its engineering drawings, specifications standards, and inspection requirements to identify an item or range of items.
- (3) **STOCK NUMBER column.** This column lists the NSN for the associated part number and manufacturer identified in the PART NUMBER and FSCM columns to the left.
- (4) **FIG. column.** This column lists the number of the figure where the item is identified/located in Sections II and III.
- (5) **ITEM column.** The item number is that number assigned to the item as it appears in the figure referenced in adjacent figure number column.

c. FIGURE AND ITEM NUMBER INDEX.

- (1) **FIG. column.** This column lists the number of the figure where the item is identified/located in Section **II and III**.
- (2) **ITEM column.** The item number is that number assigned to the item as it appears in the figure referenced in the adjacent figure number column.
- (3) **STOCK NUMBER column.** This column lists the NSN for the item.
- (4) **FSCM column.** The Federal Supply Code for Manufacturer (FSCM) is a 5-digit numeric code used to identify the manufacturer, distributor, or Government agency, etc., that supplies the item.
- (5) **PART NUMBER column.** Indicates the primary number used by the manufacturer (individual, firm, corporation, or Government activity), which controls the design and characteristics of the item by means of its engineering drawings, specifications standards, and inspection requirements to identify an item or range of items.

5. SPECIAL INFORMATION.

a. **USABLE ON CODE.** The usable on code appears in the lower left corner of the Description column heading. Usable on codes are shown as "UOC" in the Description Column (justified left) on the last line applicable item description/nomenclature. Uncoded items are applicable to all models.

b. **ASSOCIATED PUBLICATIONS.** The publications listed below pertain to the Air Compressor Section, and its components.

Publication	Short Title
TM 5-4310-363-14	Compressor, Reciprocating: Air: (Bauer Model KAB-545-15)

6. HOW TO LOCATE REPAIR PARTS.

a. When National Stock Number or Part Number is NOT Known.

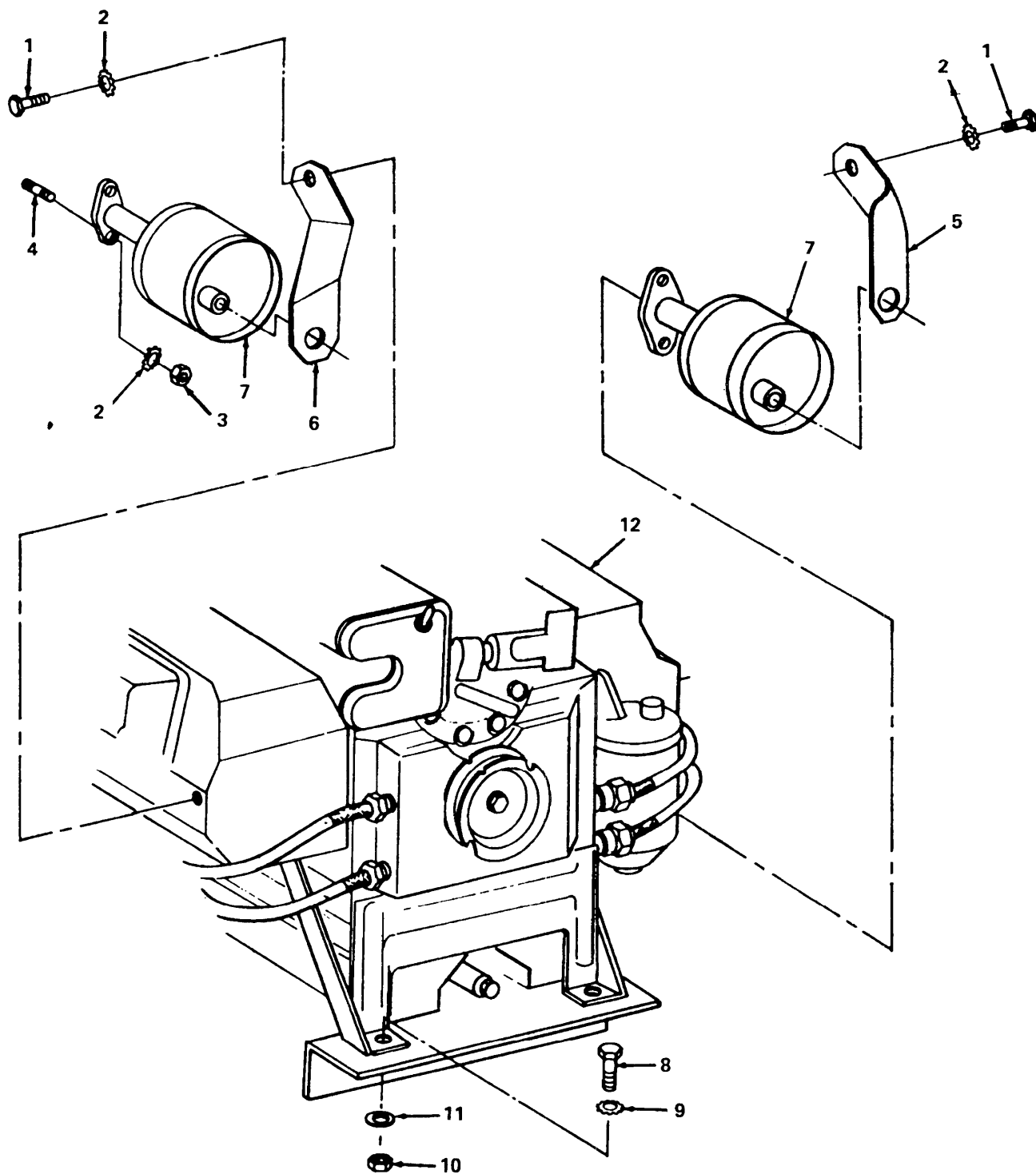
- (1) **First.** Using the table of contents, determine the assembly group for subassembly group to which the item belongs. This is necessary since figures are prepared for assembly groups and subassembly groups, and listings are divided into the same groups.
- (2) **Second.** Find the figure covering the assembly group or subassembly group to which the item belongs.
- (3) **Third.** Identify the item on the figure and note the item number.
- (4) **Fourth.** Refer to the Repair Parts List for the figure to find the part number for the item number noted on the figure.
- (5) **Fifth.** Refer to the Part Number Index to find the NSN, if assigned.

b. When National Stock Number or Part Number is Known:

- (1) **First.** Using the Index of National Stock Numbers and Part Numbers, find the pertinent National Stock Number or Part Number. The NSN index is in National Item Identification Number **(NIIN) sequence (see 4a(1))**. The part numbers in the Part Number index are listed in ascending alphanumeric sequence (see paragraph 4b). Both indexes cross-reference you to the illustration figure and item number of the item **you** are looking for.
- (2) **Second.** After finding the figure and item number, verify that the item is the one you are looking for, then locate the item number in the repair parts list for the figure.

7. ABBREVIATIONS. Abbreviations that are not listed in MIL-STL-12 are listed below.

Abbreviations	Explanation	Abbreviations	Explanation
ASSY	Assembly	HD	Head
IN.	Inch	LG	Long
W/	With	INCL	Including
HEX	Hexagonal	STD	Standard



4761-001

Figure 1. Engine and Related Parts.

SECTION II			TM5-4310-363-24P		
(1)	(2)	(3)	(4)	(5)	(6)
ITEM	SMR		PART		
NO	CODE	FSCM	NUMBER	DESCRIPTION AND USABLE ON CODES(UOC)	QTY
GROUP 01 ENGINE AND RELATED PARTS					
FIG. 1 ENGINE AND RELATED PARTS					
1	PAOZZ	96906	MS90725-6	SCREW,CAP,HEXAGON H.....	2
2	PAOZZ	96906	MS35338-57	WASHER,LOCK.....	3
3	PAOZZ	96906	MS51972-1	NUT,PLAIN,HEXAGON.....	4
4	PAOZZ	57328	20670-3-000316	STUD,PLAIN.....	4
5	XBOZZ	57328	20670-3-000244	BRACKET,MUFFLER RIGHT.....	1
6	XBOZZ	57328	20670-3-000242	BRACKET,MUFFLER LEFT.....	1
7	XBOZZ	57328	20655-3-000118	MUFFLER,EXHAUST.....	2
8	PAOZZ	96906	MS90725-34	BOLT,MACHINE.....	4
9	XDOZZ	96906	MS35338-45	WASHER,LOCK.....	4
10	PAOZZ	96906	MS51967-5	NUT,PLAIN,HEXAGON.....	4
11	PAOZZ	57328	55005-S	WASHER,FLAT.....	4
12	PDFHH	97403	13206E0000-3	ENGINE,GASOLINE (SEE TM5-2805-203-24P FOR REPAIR PARTS).....	1

END OF FIGURE

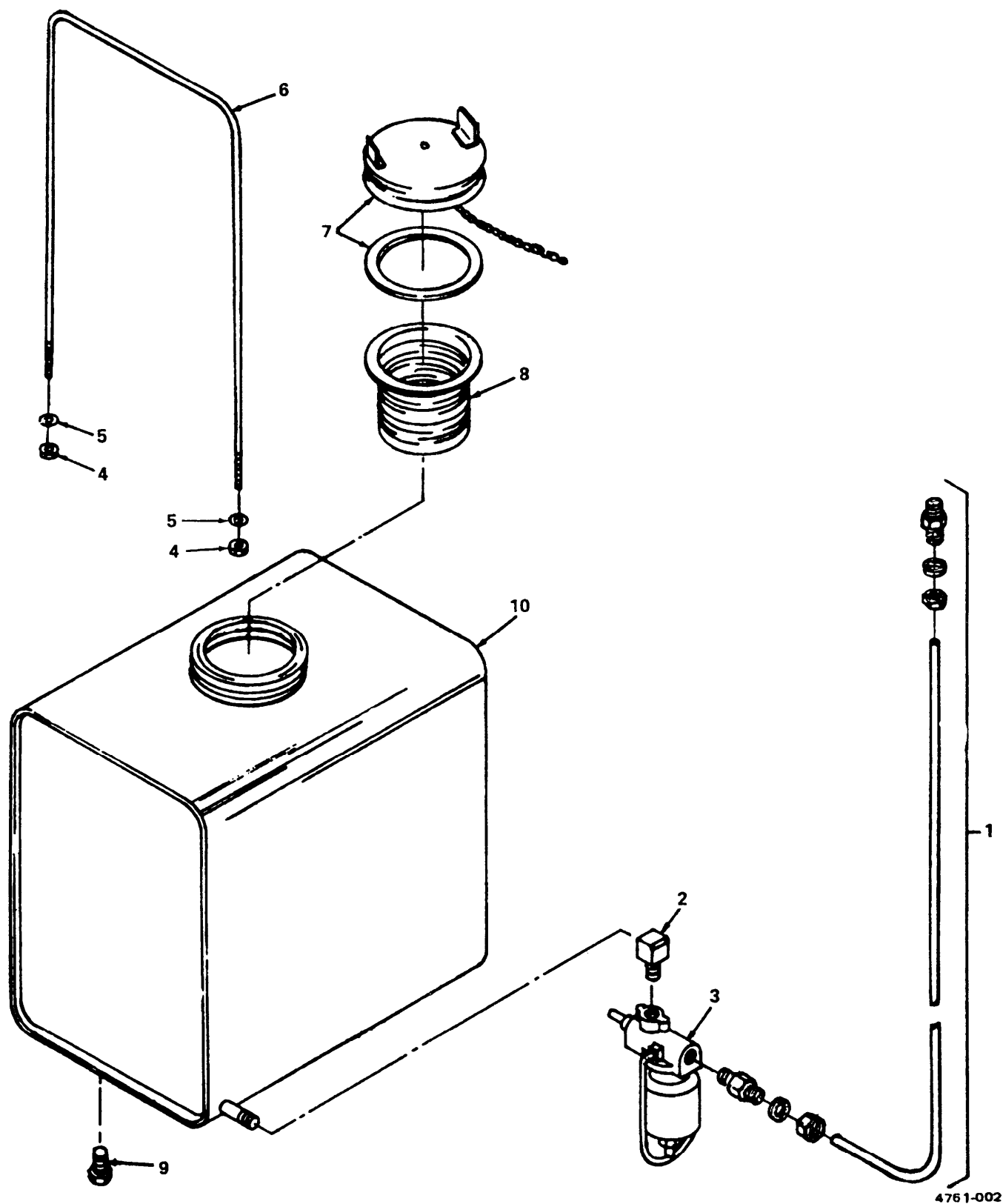


Figure 2. Fuel Tank and Related Parts.

SECTION II			TM5-4310-363-24P		
(1)	(2)	(3)	(4)	(5)	(6)
ITEM	SMR		PART		
NO	CODE	FSCM	NUMBER	DESCRIPTION AND USABLE ON CODES(UOC)	QTY

GROUP 02 FUEL TANK AND RELATED PARTS

FIG. 2 FUEL TANK AND RELATED PARTS

1	XBOZZ	57328	20605-3-000114	TUBE ASSEMBLY.....	1
2	PBOZZ	96906	MS51952-1	ELBOW,PIPE.....	1
3	PAOZZ	96906	MS51086-1	STRAINER,SEDIMENT.....	1
4	PAOZZ	96906	MS51967-2	NUT,PLAIN,HEXAGON.....	4
5	PAOZZ	96906	MS35338-57	WASHER,LOCK.....	4
6	XBOZZ	57328	20630-3-000271	CLAMP.....	2
7	XBOZZ	57328	20630-3-000317	CAP.....	1
8	XBOZZ	57328	20630-3-000319	SCREEN,FILTER.....	1
9	XBOZZ	57328	69001-S	PLUG.....	1
10	XBOFF	57328	20630-3-000098	TANK,FUEL.....	1

END OF FIGURE

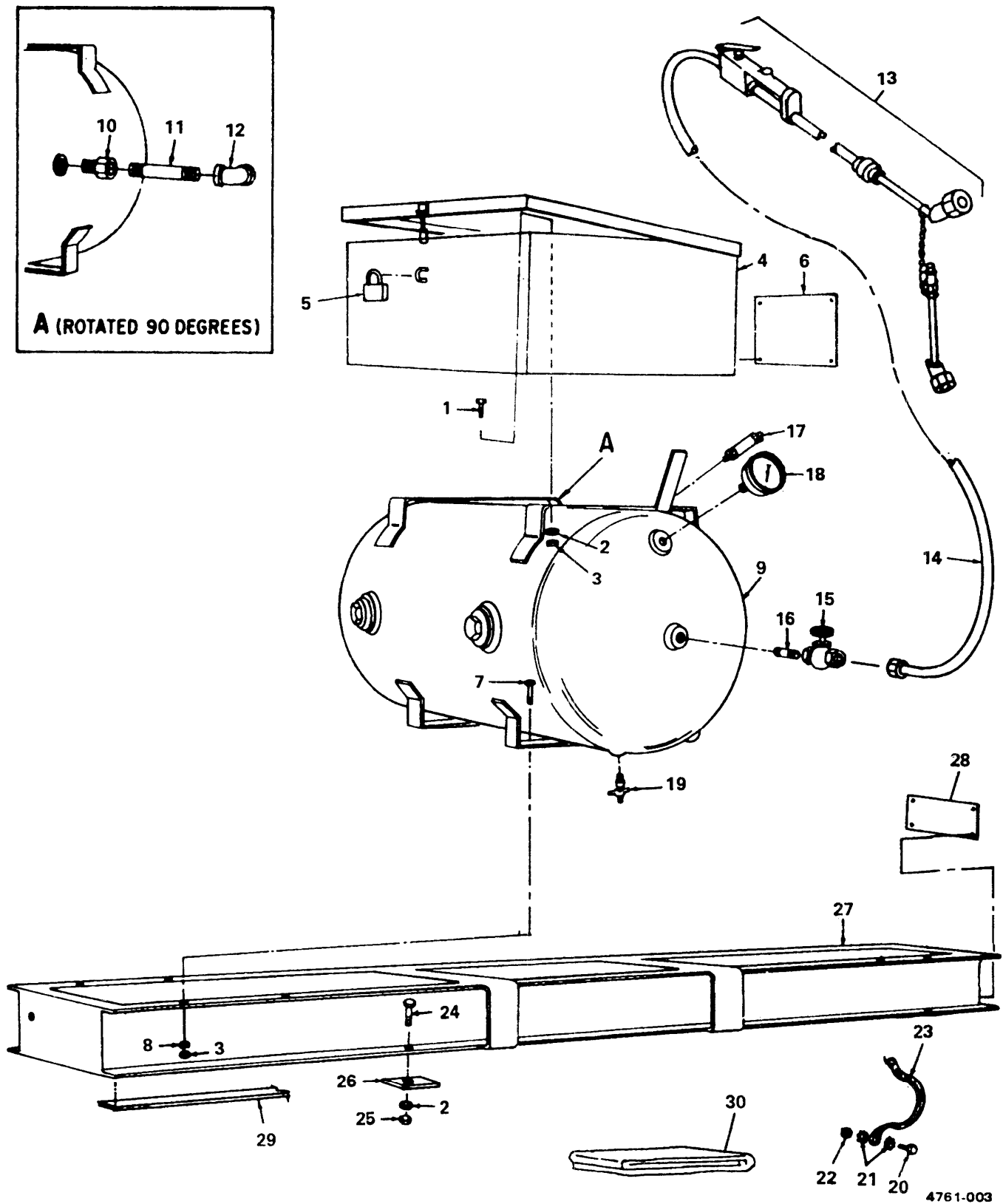


Figure 3. Air Tank, Tool Box, Frame and Related Parts.

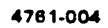
SECTION II			TM5-4310-363-24P		
(1) ITEM NO	(2) SMR CODE	(3) FSCM	(4) PART NUMBER	(5) DESCRIPTION AND USABLE ON CODES(UOC)	(6) QTY

GROUP 03 AIR TANK, TOOL BOX, FRAME
AND RELATED PARTS

FIG. 3 AIR TANK, TOOL BOX, FRAME
AND RELATED PARTS

1	PAOZZ	96906	MS90725-32	BOLT,MACHINE.....	4
2	PAOZZ	96906	MS35338-46	WASHER, LOCK.....	8
3	PAOZZ	96906	MS51967-5	NUT,PLAIN,HEXAGON.....	4
4	XBOZZ	57328	20630-3-000108	BOX,TOOL.....	1
5	XBOZZ	57328	20660-3-000221	PADLOCK.....	1
6	XBOZZ	57328	20994-3-000123	PLATE,OPERATION.....	1
7	PAOZZ	96906	MS90725-32	BOLT,MACHINE.....	4
8	XDOZZ	96906	MS35338-45	WASHER, LOCK.....	8
9	XBOZZ	57328	20730-3-000090	RECEIVER,AIR.....	1
10	XDFZZ	75336	224A	VALVE,CHECK.....	1
11	XBOZZ	57328	4-1/4X3/4	NIPPLE,PIPE 3/4.....	1
12	XBFZZ	57328	90 DEG X 3/4	ELBOW,PIPE.....	1
13	PAOZZ	94894	61J2-1506	INFLATOR-GAGE,PNEUM.....	1
14	PAOZZ	57328	20605-3-000125	HOSE ASSEMBLY,NONM.....	1
15	PAOZZ	75336	501 1/4	VALVE,GLOBE.....	1
16	XBOZZ	57328	1/4 NPT	NIPPLE,CLOSE 1/4NPT.....	1
17	PAOZZ	75336	112C1/4 200	.VALVE,SAFETY RELIEF.....	1
18	PBOZZ	38508	J5458	GAGE,PRESSURE,DIAL.....	1
19	XAOZZ	07455	A321P4	PETCOCK,DRAIN.....	1
20	PAOZZ	96906	MS90725-6	SCREW,CAP,HEXAGON H.....	1
21	PAOZZ	96906	MS35335-33	WASHER, LOCK.....	2
22	XDOZZ	96906	MS51967-2	NUT,PLAIN,HEXAGON.....	1
23	XBOZZ	57328	20630-3-000285	STRAP,GROUND.....	1
24	PAOZZ	96906	MS90725-62	SCREW,CAP,HEXAGON H.....	8
25	PAOZZ	96906	MS51967-8	NUT,PLAIN,HEXAGON.....	8
26	XBOZZ	57328	20655-3-000252	CLAMP,HOLD-DOWN.....	4
27	XBFFF	57328	20760-3-000241	FRAME,MOUNTING.....	1
28	XBOZZ	57328	20994-3-000124	PLATE,IDENTIFICATIO.....	1
29	XBOZZ	57328	20760-3-000249	STRIP,FILLER.....	2
30	XBOZZ	57328	20625-3-000219	COVER,CANVAS.....	1

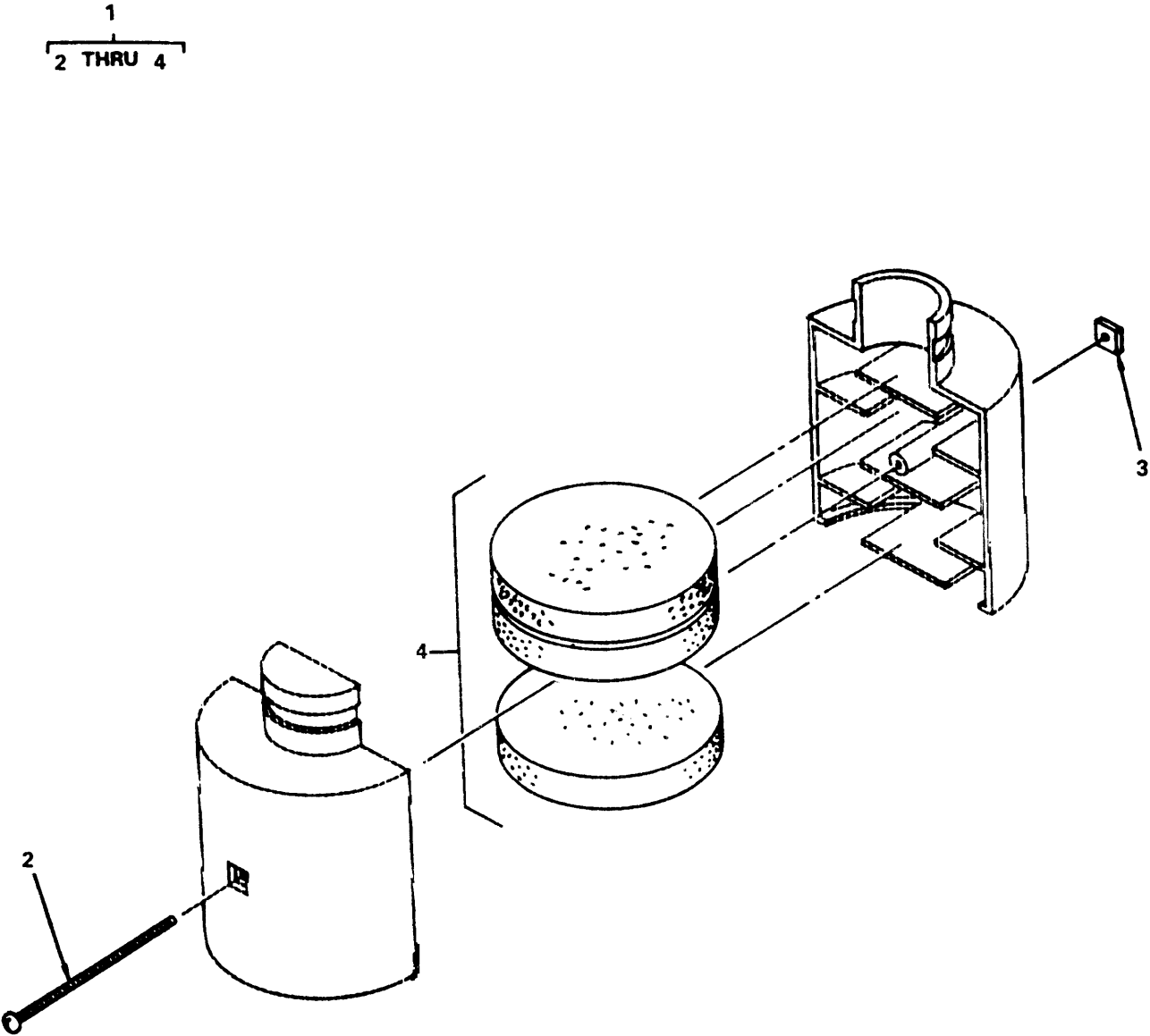
END OF FIGURE



4-1

SECTION II			TM5-4310-363-24P			
(1)	(2)	(3)	(4)	(5)	(6)	
ITEM	SMR		PART			
NO	CODE	FSCM	NUMBER	DESCRIPTION AND USABLE ON CODES(UOC)	QTY	
GROUP 04 BELT, BELT GUARD, PULLEY AND STUB SHAFT						
FIG. 4 BELT, BELT GUARD, PULLEY AND STUB SHAFT						
1	PAOZZ	96906	MS18154-58	SCREW,CAP,HEXAGON H.....	6	
2	XDOZZ	96906	MS35338-45	WASHER,LOCK.....	4	
3	PAOZZ	57328	55005-S	WASHER,FLAT.....	4	
4	PAOZZ	96906	MS51967-5	NUT,PLAIN,HEXAGON.....	3	
5	XBOZZ	57328	20620-3-000121	BRACKET,B.....	1	
6	XBOZZ	57328	20620-3-000250	BRACKET,BELT GUARD.....	1	
7	XBOZZ	57328	20620-3-000122	BRACKET,A.....	1	
8	XBOZZ	57328	20620-3-000097	GUARD,BELT.....	1	
9	PAOZZ	96906	MS39242-54-2	BELTS,V,MATCHED SET.....	2	
10	XBOFF	57328	20620-3-000096	SHIELD.....	1	
11	XBOZZ	57328	3/8-24X5/8	SETSCREW.....	1	
12	XBOZZ	57328	3/8-24X3/4	SETSCREW.....	1	
13	XBOZZ	76241	DX2350	PULLEY,ENGINE.....	1	
14	PBOZZ	76241	XB1	BUSHING,PULLEY.....	1	
15	XBOZZ	57328	20670-3-000320	KEY,MACHINE.....	1	
16	PAOZZ	96906	MS90725-8	SCREW,CAP,HEXAGON H.....	4	
17	XDOZZ	96906	MS35338-45	WASHER,LOCK.....	4	
18	XBOZZ	57328	20220-3-000026	SHAFT,COUPLER.....	1	

END OF FIGURE

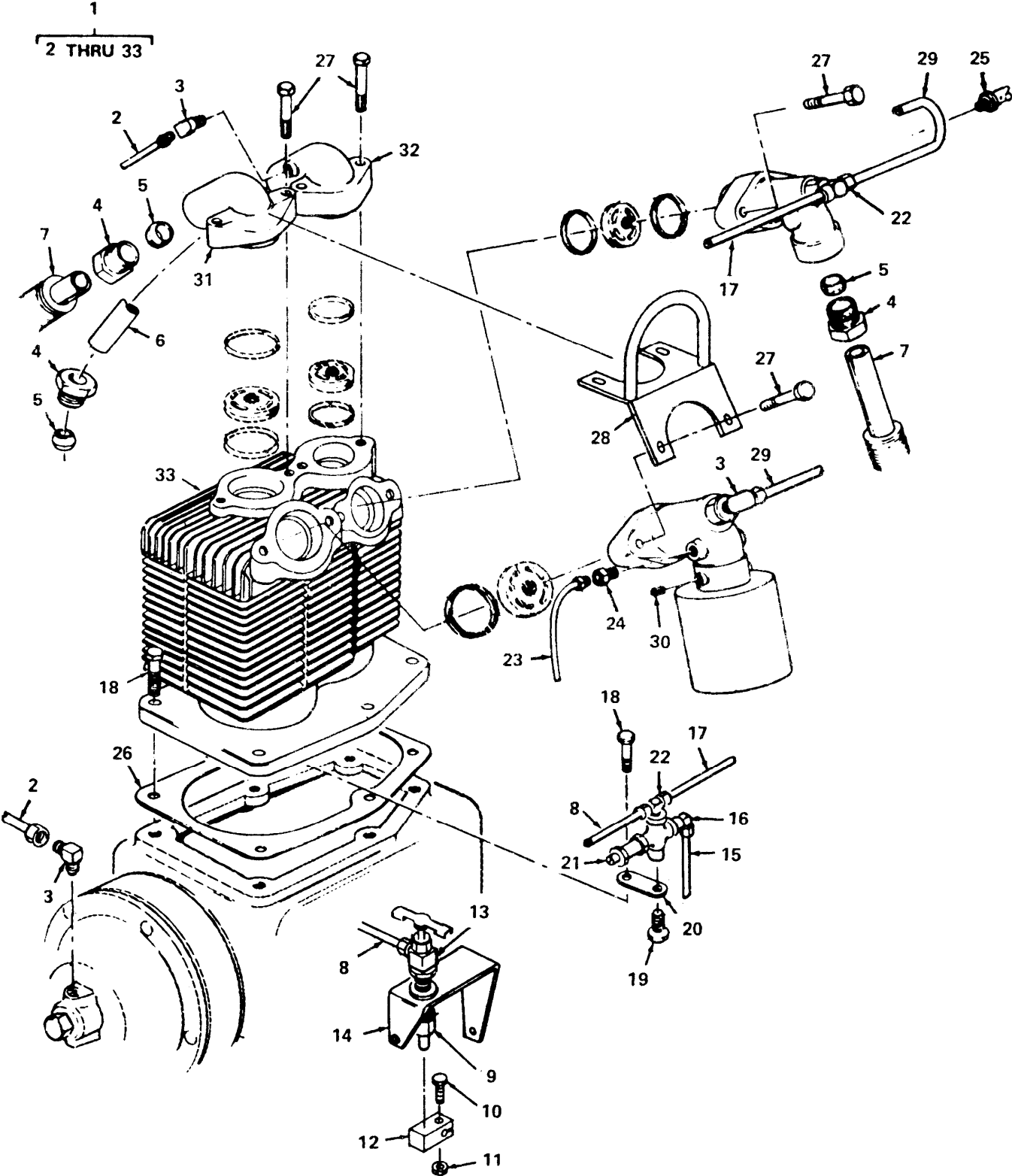


4761-008

Figure 5. Air Cleaner.

SECTION II			TM 5-4310-363-24P		
(1)	(2)	(3)	(4)	(5)	(6)
ITEM	SMR		PART		
NO	CODE	FSCM	NUMBER	DESCRIPTION AND USABLE ON CODES(UOC)	QTY
GROUP 05 COMPRESSOR ASSEMBLY					
FIG. 5 AIR CLEANER					
1	XBOZZ	11568	Z828	.AIR CLEANER,INTAKE.....	1
2	XBOZZ	11568	P4751	..SCREW,MACHINE.....	1
3	XBOZZ	11568	P4752	..NUT,PLAIN,SQUARE.....	1
4	PAOZZ	11568	Z837	..FILTER ELEMENT,FLUI.....	1

END OF FIGURE

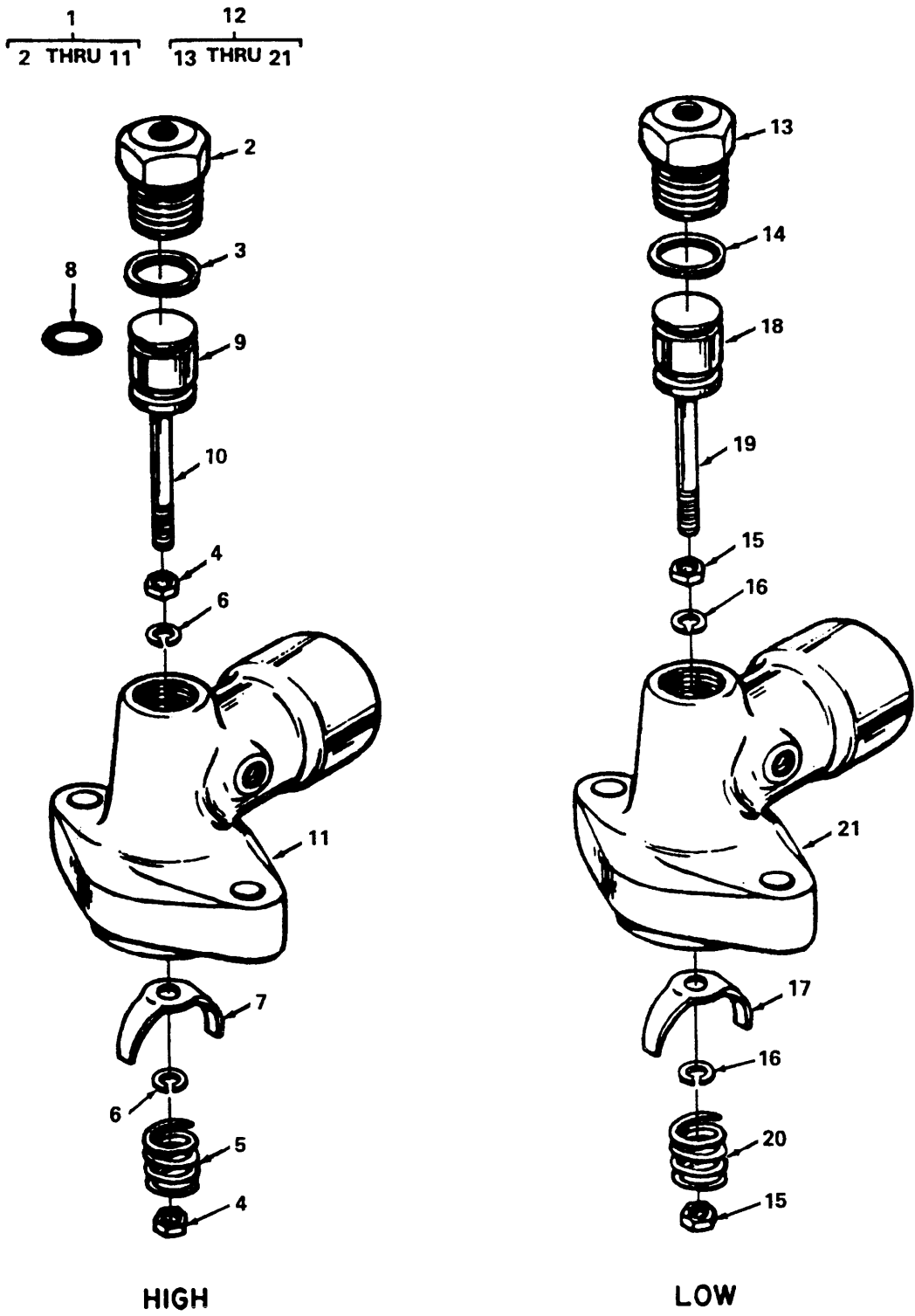


4761-006

Figure 6. Tube Assemblies.

SECTION II			TM5-4310-363-24P			
(1)	(2)	(3)	(4)	(5)	(6)	
ITEM	SMR		PART			
NO	CODE	FSCM	NUMBER	DESCRIPTION AND USABLE ON CODES(UOC)	QTY	
GROUP 05 COMPRESSOR ASSEMBLY						
FIG. 6 TUBE ASSEMBLIES						
1	PBOFZ	11568	R15A	COMPRESSOR,RECIPROC.....	1	
2	XBOZZ	11568	SB250A	.TUBE ASSEMBLY,METAL.....	1	
3	XDOZZ	11568	Z513	.ELBOW,PIPE TO TUBE.....	3	
4	PAOZZ	11568	SE5-41	.INVERTED NUT,TUBE C.....	4	
5	PAOZZ	11568	SE5-42	.SLEEVE,COMPRESSION,.....	4	
6	XBOZZ	57328	20500-3-000295	.TUBE,AFTERCOOLER.....	1	
7	XBOZZ	11568	RE4-12A	.TUBE ASSEMBLY,METAL.....	4	
8	XBOZZ	57328	20510-3-000322	.TUBE,SLOW-DOWN.....	1	
9	PAOZZ	11568	Z266	.CYLINDER ASSEMBLY,H.....	1	
10	PAOZZ	57328	63016-S	.SCREW,CAP,HEXAGON H.....	1	
11	PAOZZ	57328	53003-S	.NUT,SELF-LOCKING,HE.....	1	
12	PAOZZ	57328	20670-3-000251	.ARM.....	1	
13	XBOZZ	79470	A555	.VALVE,ANGLE.....	1	
14	XBOZZ	57328	20670-3-000243	.BRACKET.....	1	
15	XBOZZ	57328	20510-3-000321	.TUBE,SENSING.....	1	
16	XBOZZ	11568	Z499	.FITTING,COMPRESSION.....	1	
17	XBOZZ	11568	M801	.TUBE,ACTUATING.....	1	
18	XDFZZ	96906	MS90726-87	.SCREW,CAP,HEXAGON H.....	6	
19	PAOZZ	96906	MS18154-58	.SCREW,CAP,HEXAGON H.....	1	
20	XBOZZ	11568	M807	.BRACKET,MOUNT.....	1	
21	PBOZZ	11568	Z180	.VALVE,ANGLE.....	1	
22	XBOZZ	11568	Z535	.TEE.....	2	
23	XBOZZ	11568	UB375	.TUBE,BREATHER.....	1	
24	PAOZZ	96906	MS39169-15	.ADAPTER,STRAIGHT,PI.....	1	
25	PAOZZ	75336	125 1-4 75PSI	.VALVE,SAFETY RELIEF.....	1	
26	KFFZZ	11568	NR29A	.GASKET PART OF KIT P/N Z764.....	1	
27	PAOZZ	11568	M1737	.SCREW,CAP,HEXAGON H.....	8	
28	XBOZZ	57328	20655-3-000117	.EYE,LIFTING.....	1	
29	PBOZZ	11568	M705	.TUBE,MANIFOLD.....	1	
30	XBOZZ	11568	M432	.SETSCREW.....	1	
31	PAOZZ	11568	RE10-2E	.ELBOW,FLANGE TO TUB.....	1	
32	PAOZZ	11568	NR2B	.MANIFOLD,COMPRESSOR.....	1	
33	XBFFH	11568	NR-14-6B	.CYLINDER.....	1	

END OF FIGURE



4761-007

Figure 7. Unloader Head, High and Low Pressure.

SECTION II			TM5-4310-363-24P			
(1)	(2)	(3)	(4)	(5)	(6)	
ITEM	SMR		PART			
NO	CODE	FSCM	NUMBER	DESCRIPTION AND USABLE ON CODES(UOC)	QTY	
GROUP 05 COMPRESSOR ASSEMBLY						
FIG. 7 UNLOADER HEAD, HIGH AND LOW PRESSURE						
1	XB000	11568	Z597	.UNLOADER ASSEMBLY HIGH PRESSURE...	1	
2	XBOZZ	11568	N1-15-6	..CYLINDER.....	1	
3	XBOZZ	11568	N34	..GASKET.....	1	
4	PAOZZ	11568	M926A	..NUT,PLAIN,HEXAGON.....	4	
5	PBOZZ	10001	731113PC1	..SPRING,HELICAL,COMP.....	1	
6	PAOZZ	96906	MS35335-33	..WASHER,LOCK.....	2	
7	XBOZZ	11538	N1-15-13	..CLAW.....	1	
8	PAOZZ	11568	OR111	..PACKING,PREFORMED.....	1	
9	XBOZZ	11568	N1-15-4	..PISTON.....	1	
10	XBOZZ	11568	N1-15-3	..ROD,PISTON.....	1	
11	XBOZZ	11568	NE15-2A	..MANIFOLD,INTAKE HIGH PRESSURE....	1	
12	XB000	11568	Z596	.UNLOADER ASSEMBLY LOW PRESSURE....	1	
13	XBOZZ	11568	N1-15-6	..CYLINDER.....	1	
14	XBOZZ	11568	N34	..GASKET.....	1	
15	PAOZZ	11568	M926A	..NUT,PLAIN,HEXAGON.....	3	
16	PAOZZ	96906	MS35335-33	..WASHER,LOCK.....	2	
17	XBOZZ	11568	N1-21-13	..CLAW.....	1	
18	XBOZZ	11568	N1-15-4	..PISTON.....	1	
19	XBOZZ	11568	N1-15-3	..ROD,PISTON.....	1	
20	PBOZZ	10001	731113PC1	..SPRING,HELICAL,COMP.....	1	
21	XBOZZ	11568	R10HUB2	..MANIFOLD,INTAKE LOW PRESSURE.....	1	

END OF FIGURE

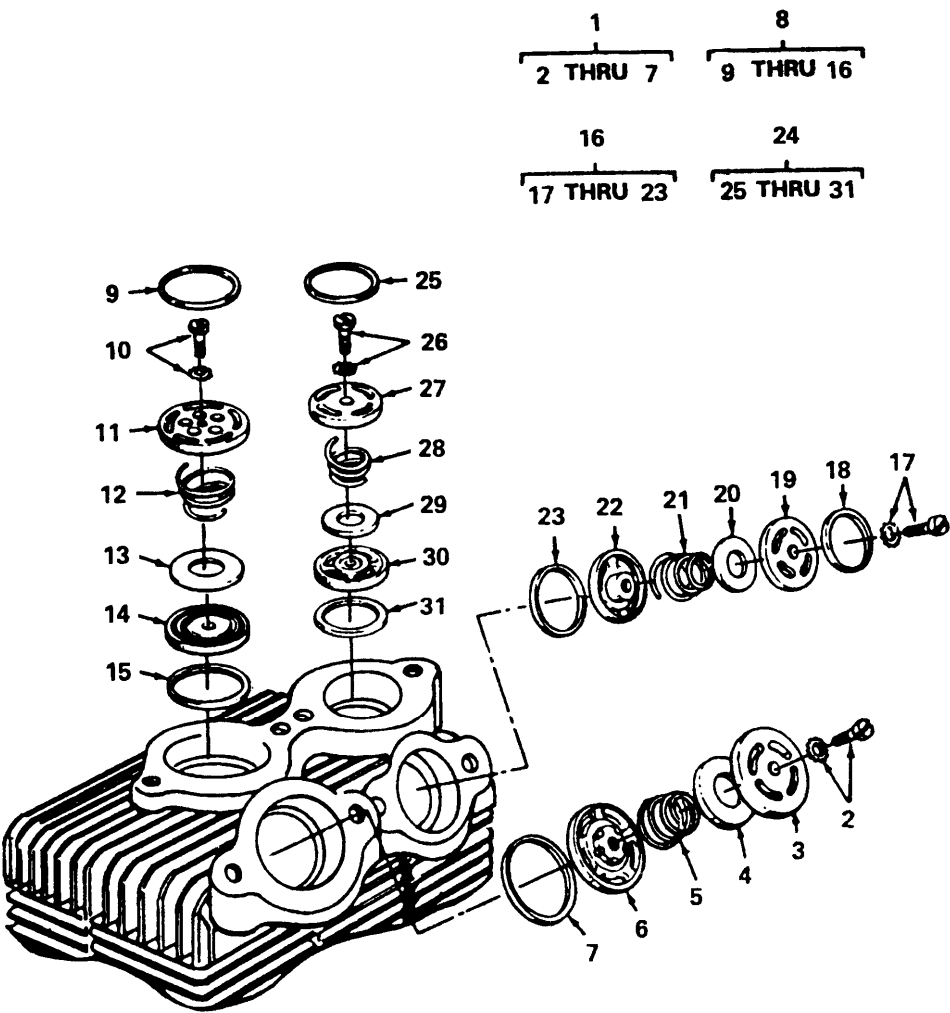
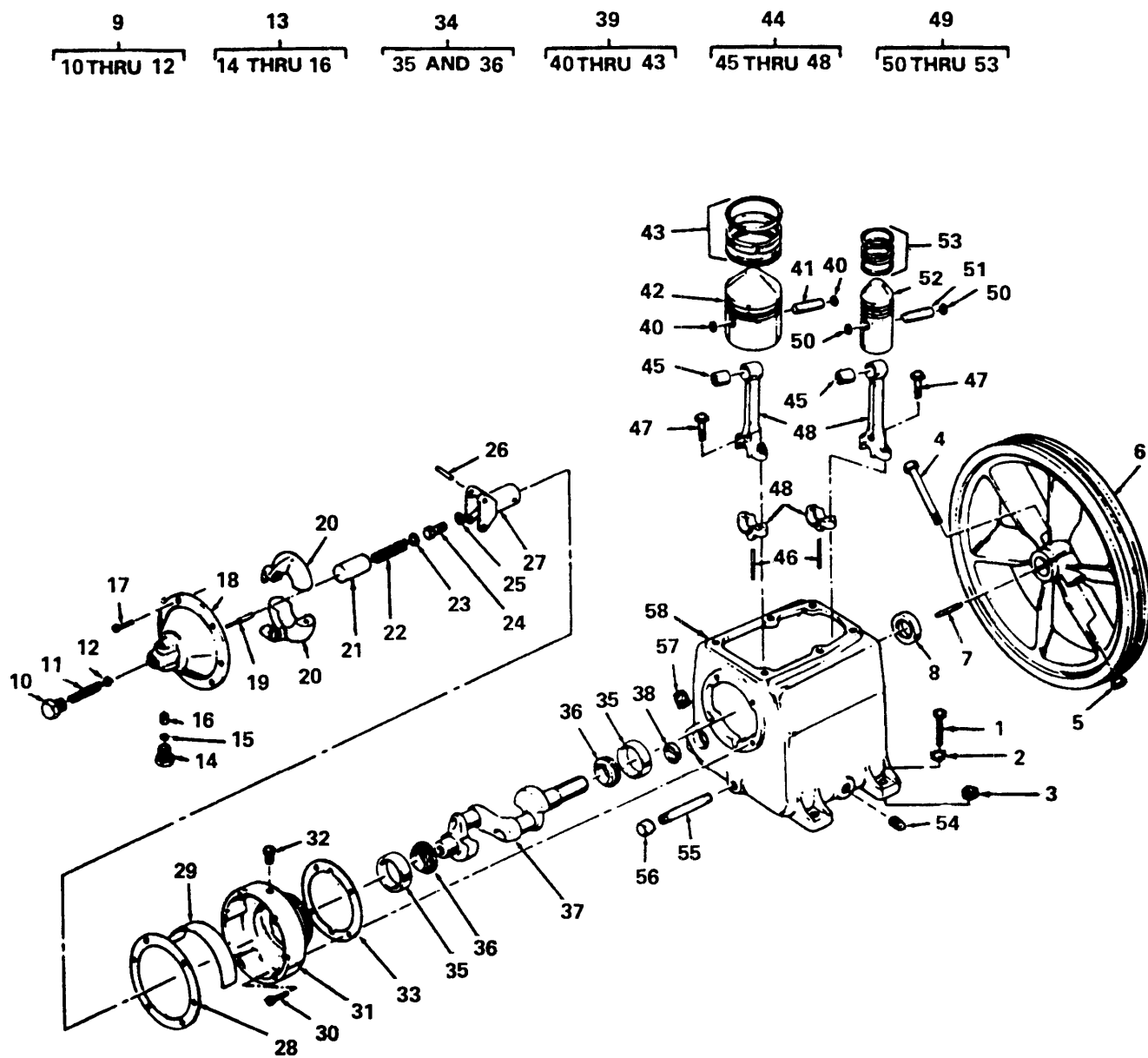


Figure 8. Intake and Exhaust Valves.

SECTION II			TM5-4310-363-24P		
(1)	(2)	(3)	(4)	(5)	(6)
ITEM	SMR		PART		
NO	CODE	FSCM	NUMBER	DESCRIPTION AND USABLE ON CODES(UOC)	QTY
GROUP 05 COMPRESSOR ASSEMBLY					
FIG. 8 INTAKE AND EXHAUST VALVES					
1	KFFZZ	11568	Z812	.CARTRIDGE,SUCTION V ASSEMBLY, INTAKE PART OF KIT P/N Z102.....	1
2	PAFZZ	11568	P4544A	..SCREW,ASSEMBLED WAS.....	1
3	XAFZZ	11568	RE14-71A	..SEAT,VALVE.....	1
4	XBFZZ	11568	RE14-70	..WASHER,FLAT.....	1
5	XBFZZ	11568	RE14-58	..SPRING,HELICAL,COMP.....	1
6	XBFZZ	11568	M2098	..CAGE,INTAKE VALVE.....	1
7	KFFZZ	11568	P4134A	..GASKET PART OF KIT P/N Z102G.....	1
8	KFFZZ	11568	Z813	.PARTS KIT,COMPRESSO PART OF KIT P/N Z102.....	1
9	KFFZZ	11568	P4135A	..GASKET PART OF KIT P/N Z102G.....	1
10	PAFZZ	11568	P-4543A	..MSCR FILH 10-32.....	1
11	XAFZZ	11568	M2099	..CAGE,EXHAUST VALVE.....	1
12	XBFZZ	11568	RE10-59	..SPRING,HELICAL,COMP.....	1
13	XDFZZ	11568	RE10-61	..WASHER,FLAT.....	1
14	XAFZZ	11568	M2097	..SEAT,EXHAUST VALVE.....	1
15	KFFZZ	11568	P4135A	..GASKET PART OF KIT P/N Z102G.....	1
16	KFFZZ	11568	Z113	.VALVE ASSEMBLY,INLE PART OF KIT P/N Z102.....	1
17	XBFZZ	11568	RE7-81	..SCREW,ASSEMBLED WAS.....	1
18	XBFZZ	11568	P4137A	..GASKET.....	1
19	XBFZZ	11568	RE7-56A	..SEAT,VALVE.....	1
20	XBFZZ	11568	RE10-62	..WASHER,FLAT.....	1
21	XBFZZ	11568	RE7-60	..SPRING,HELICAL,COMP.....	1
22	XBFZZ	11568	M2101	..CAGE,INTAKE VALVE.....	1
23	KFFZZ	11568	P4136A	..GASKET PART OF KIT P/N Z102G.....	1
24	KFFZZ	11568	Z115	.VALVE ASSEMBLY,DISC PART OF KIT P/N Z102.....	1
25	KFFZZ	11568	P4137A	..GASKET PART OF KIT P/N Z102G.....	1
26	XBFZZ	11568	RE7-81	..SCREW,ASSEMBLED WAS.....	1
27	XBFZZ	11568	M2100	..CAGE,EXHAUST.....	1
28	XBFZZ	11568	RE7-60	..SPRING,HELICAL,COMP.....	1
29	XBFZZ	11568	RE10-62	..WASHER,FLAT.....	1
30	XBFZZ	11568	RE7-57A	..SEAT,VALVE.....	1
31	KFFZZ	11568	P4136A	..GASKET PART OF KIT P/N Z102G.....	1
	PAFZZ	11568	Z102	PARTS KIT,COMPRESSO.....	V
				CARTRIDGE,SUCTION V(1)	8-1
				PARTS KIT,COMPRESSO(1)	8-8
				VALVE ASSEMBLY,INLE(1)	8-16
				VALVE ASSEMBLY,DISC(1)	8-24
	PAFZZ	11568	Z102G	GASKET SET.....	1
				GASKET (1)	8-7
				GASKET (1)	8-9
				GASKET (1)	8-15
				GASKET (1)	8-23
				GASKET (1)	8-25
				GASKET (1)	8-31

END OF FIGURE



4761-009

Figure 9. Pistons, Connecting Rods and Cylinder Block.

SECTION II			TM5-4310-363-24P			
(1)	(2)	(3)	(4)	(5)	(6)	
ITEM	SMR		PART			
NO	CODE	FSCM	NUMBER	DESCRIPTION AND USABLE ON CODES(UOC)	QTY	
GROUP 05 COMPRESSOR ASSEMBLY						
FIG. 9 PISTONS, CONNECTING RODS AND CYLINDER BLOCK						
1	PAOZZ	96906	MS90725-62	.SCREW,CAP,HEXAGON H.....	4	
2	PAOZZ	96906	MS35338-46	.WASHER,LOCK.....	8	
3	PAOZZ	96906	MS51967-8	.NUT,PLAIN,HEXAGON.....	4	
4	PAOZZ	96906	MS90728-123	.SCREW,CAP,HEXAGON H.....	1	
5	PAOZZ	12603	6108	.NUT,PLAIN,HEXAGON.....	1	
6	PBOZZ	11568	NR7A	.FLYWHEEL COMPRESSOR.....	1	
7	XDOZZ	11568	SE5-8	.KEY,MACHINE.....	1	
8	PAFZZ	11568	OSN4	.SEAL,PLAIN ENCASED.....	1	
9	PAOOZ	11568	Z124-14A	.PARTS KIT,SAFETY RE.....	1	
10	XBOZZ	11568	NR101	..BODY,RELEASE VALVE.....	1	
11	PAOZZ	11568	SE5-91	..SPRING,HELICAL,COMP.....	1	
12	PAOZZ	96906	MS19060-4814	..BALL,BEARING.....	1	
13	PAOOZ	11568	Z60A	.BREATHER UNLOADER.....	1	
14	XAOZZ	11568	M1046	..BODY,UNLOADER.....	1	
15	XAOZZ	11568	M98A	..FELT,MECHANICAL,PRE.....	1	
16	XDOZZ	11568	M97A	..SCREEN,MUFFLER,COMP.....	1	
17	PAOZZ	11568	SE14-84	.SCREW,MACHINE.....	6	
18	XBOZZ	11568	RE10-100A	.COVER,GOVERNOR.....	1	
19	PAOZZ	11568	SE5-86B	.PLUNGER,DETENT.....	1	
20	PAOZZ	11568	SE5-82A	.WEIGHT GOVERNOR.....	2	
21	PAOZZ	11568	SE5-87	.RETAINER,HELICAL CO.....	1	
22	PAOZZ	11568	SE5-90	.SPRING,HELICAL,COMP.....	1	
23	PAOZZ	27315	3612V004	.WASHER,FLAT.....	1	
24	XBOZZ	11568	SE14-94	.SCREW.....	1	
25	XDOZZ	12603	4E07J	.WASHER,LOCK.....	1	
26	PAOZZ	11568	SE5-92A	.PIN,SPRING.....	2	
27	PAOZZ	11568	SE5-83B	.SPINDLE GOVERNOR.....	1	
28	KFOZZ	11568	SE14-89	.GASKET PART OF KIT P/N Z764.....	1	
29	XBOZZ	11568	NR104	.PLATE,BAFFLE.....	1	
30	PAOZZ	96906	MS18154-60	.SCREW,CAP,HEXAGON H.....	4	
31	XBOZZ	11568	NR80A	.HOUSING,GOVERNOR.....	1	
32	PAOZZ	96906	MS39169-15	.ADAPTER,STRAIGHT,PI.....	1	
33	PAOZZ	11568	Z130	.GASKET SET.....	1	
34	PAFZZ	11568	ZNR16	.BEARING,ROLLER,TAPE.....	2	
35	XAFZZ	11568	NR16	..CUP,TAPERED ROLLER.....	1	
36	XAFZZ	11568	NR16A	..CONE AND ROLLERS,TA.....	1	
37	XBFFZ	11568	R15-5	.CRANKSHAFT,COMPRESS.....	1	
38	PAOZZ	11568	RE7-14	.INDICATOR,SIGHT,LIQ.....	1	
39	PBFFZ	11568	ZR15-4	.PISTON,COMPRESSOR.....	1	
40	XBFFZ	11568	R10-102	..RING,PISTON PIN.....	2	
41	XBFFZ	11568	R10-21	..PIN,STRAIGHT,HEADLE.....	1	
42	XBFFZ	11568	R15-4	..PISTON,COMPRESSOR.....	1	
43	PAFZZ	11568	Z179C	..RING SET,PISTON.....	1	
44	XBFFF	11568	Z750	.ROD ASSEMBLY.....	2	
45	PAFZZ	11568	R10-37	..BEARING,SLEEVE.....	2	
46	XBFFZ	11568	R15-24	..DIPPER.....	2	
47	XBFFZ	11568	M1583	..BOLT,ROD.....	4	

SECTION II			TM5-4310-363-24P		
(1)	(2)	(3)	(4)	(5)	(6)
ITEM	SMR		PART		
NO	CODE	FSCM	NUMBER	DESCRIPTION AND USABLE ON CODES(UOC)	QTY
48	XBFZZ	11568	M1582	..ROD,CONNECTION.....	2
49	XBFFZ	11568	ZR10-4	.PISTON,COMPRESSOR.....	1
50	XBFZZ	11568	R10-102	..RING,PISTON PIN.....	2
51	XBFZZ	11568	R10-21	..PIN,STRAIGHT,HEADLE.....	1
52	XBFZZ	11568	R10-4	..PISTON,HIGH PRESSUR.....	1
53	PAFZZ	11568	Z189B	..RING SET,PISTON.....	1
54	XBOZZ	11568	M504	.PLUG,PIPE.....	2
55	PAOZZ	96906	MS51953-63	.NIPPLE,PIPE.....	1
56	PAOZZ	11568	M461	.CAP,PIPE.....	1
57	XDOZZ	96906	MS51884-9	.PLUG,PIPE.....	1
58	XBFFH	11568	M1820	.CRANKCASE.....	1
	PAOZZ	11568	Z764	GASKET KIT.....	V
				GASKET (1) 6-26	
				GASKET (1) 9-28	

END OF FIGURE

Section **III.** SPECIAL TOOLS LIST

(Not Applicable)

SECTION IV

TM5-4310-363-24P

CROSS-REFERENCE INDEXES

STOCK NUMBER		NATIONAL STOCK NUMBER INDEX		STOCK NUMBER	
	FIG.	ITEM		FIG.	ITEM
5310-00-007-9869	9	23	5310-00-768-0318	9	5
4820-00-013-7320	9	9	4310-00-773-7986	9	43
4730-00-053-0266	2	2	5360-00-850-5541	9	22
5330-00-065-0338	7	8	4730-00-850-7971	6	4
5305-00-068-0502	1	1	3030-00-854-7351	4	9
	3	20	4310-00-860-9004	6	1
5305-00-071-2079	9	4	2990-00-863-0926	9	27
3110-00-100-6008	9	34	4310-00-873-1766	9	6
5305-00-115-9526	4	1	4720-00-874-3179	3	14
	6	19	5330-00-875-4107	8	
5305-00-151-6876	9	17	5310-00-880-7744	1	10
5315-00-168-2969	9	26		3	3
4730-00-195-5708	6	31		4	4
4730-00-196-1546	9	55	5340-00-884-4582	9	21
3110-00-198-1050	9	12	4310-00-896-2105	9	20
5360-00-200-6879	7	5	4310-00-896-5984	9	13
	7	20	5310-00-905-1691	1	3
4910-00-204-2644	3	13	2910-00-905-9792	2	3
5310-00-209-0786	3	21	4310-00-922-1911	6	9
	7	6	5330-00-927-5652	9	33
	7	16	5305-00-942-2196	9	30
4730-00-213-0651	9	56	5310-01-043-6822	7	4
5305-00-225-3839	4	16		7	15
5306-00-225-8497	3	1	5305-01-064-6251	8	2
	3	7	5305-01-064-6252	8	10
5306-00-225-8499	1	8	6685-01-078-7556	3	18
5305-00-269-3213	3	24	5305-01-087-1932	6	10
	9	1	5330-01-099-7483	9	
4730-00-270-6113	6	5	4310-01-101-7195	5	4
4730-00-273-8561	6	24	5307-01-102-1929	1	4
	9	32	4820-01-109-1399	3	15
4310-00-283-3288	6	32	5310-01-113-1306	6	11
5305-00-331-4856	6	27	5310-01-118-1198	1	11
6680-00-377-4915	9	38		4	3
4310-00-413-4021	9	39	2805-01-139-0596	1	12
4820-00-421-6984	6	25	3120-01-151-1680	4	14
4820-00-477-7958	3	17	4730-01-152-2355	6	29
4310-00-479-8856	8		5930-01-186-0423	6	12
3120-00-493-3912	9	45			
5310-00-584-7890	1	2			
	2	5			
5360-00-616-4373	9	11			
5340-00-625-6747	9	19			
5310-00-637-9541	3	2			
	9	2			
4310-00-649-8398	9	53			
5310-00-732-0558	3	25			
	9	3			
5310-00-761-6882	2	4			
4820-00-762-4266	6	21			

CROSS-REFERENCE INDEXES

		PART NUMBER INDEX			
FSCM	PART NUMBER	STOCK NUMBER	FIG.	ITEM	
07455	A321P4		3	19	
79470	A555		6	13	
76241	DX2350		4	13	
38508	J5458	6685-01-078-7556	3	18	
96906	MS18154-58	5305-00-115-9526	4	1	
			6	19	
96906	MS18154-60	5305-00-942-2196	9	30	
96906	MS19060-4814	3110-00-198-1050	9	12	
96906	MS35335-33	5310-00-209-0786	3	21	
			7	6	
			7	16	
96906	MS35338-45		1	9	
			3	8	
			4	2	
			4	17	
96906	MS35338-46	5310-00-637-9541	3	2	
			9	2	
96906	MS35338-57	5310-00-584-7890	1	2	
			2	5	
96906	MS39169-15	4730-00-273-8561	6	24	
			9	32	
96906	MS39242-54-2	3030-00-854-7351	4	9	
96906	MS51086-1	2910-00-905-9792	2	3	
96906	MS51884-9		9	57	
96906	MS51952-1	4730-00-053-0266	2	2	
96906	MS51953-63	4730-00-196-1546	9	55	
96906	MS51967-2	5310-00-761-6882	2	4	
			3	22	
96906	MS51967-5	5310-00-880-7744	1	10	
			3	3	
			4	4	
96906	MS51967-8	5310-00-732-0558	3	25	
			9	3	
96906	MS51972-1	5310-00-905-1691	1	3	
96906	MS90725-32	5306-00-225-8497	3	1	
			3	7	
96906	MS90725-34	5306-00-225-8499	1	8	
96906	MS90725-6	5305-00-068-0502	1	1	
			3	20	
96906	MS90725-62	5305-00-269-3213	3	24	
			9	1	
96906	MS90725-8	5305-00-225-3839	4	16	
96906	MS90726-87		6	18	
96906	MS90728-123	5305-00-071-2079	9	4	
11568	M1046		9	14	
11568	M1582		9	48	
11568	M1583		9	47	
11568	M1737	5305-00-331-4856	6	27	
11568	M1820		9	58	
11568	M2097		8	14	
11568	M2098		8	6	

SECTION IV

TM5-4310-363-24P

CROSS-REFERENCE INDEXES

FSCM	PART NUMBER	PART NUMBER INDEX STOCK NUMBER	FIG.	ITEM
11568	M2099		8	11
11568	M2100		8	27
11568	M2101		8	22
11568	M432		6	30
11568	M461	4730-00-213-0651	9	56
11568	M504		9	54
11568	M705	4730-01-152-2355	6	29
11568	M801		6	17
11568	M807		6	20
11568	M926A	5310-01-043-6822	7	4
			7	15
11568	M97A		9	16
11568	M98A		9	15
11568	NE15-2A		7	11
11568	NR-14-6B		6	33
11568	NR101		9	10
11568	NR104		9	29
11568	NR16		9	35
11568	NR16A		9	36
11568	NR2B	4310-00-283-3288	6	32
11568	NR29A		6	26
11568	NR7A	4310-00-873-1766	9	6
11568	NR80A		9	31
11538	N1-15-13		7	7
11568	N1-15-3		7	10
			7	19
11568	N1-15-4		7	9
			7	18
11568	N1-15-6		7	2
			7	13
11568	N1-21-13		7	17
11568	N34		7	3
			7	14
11568	P-4543A	5305-01-064-6252	8	10
11568	P4134A		8	7
11568	P4135A		8	9
			8	15
11568	P4136A		8	23
			8	31
11568	P4137A		8	18
			8	25
11568	P4544A	5305-01-064-6251	8	2
11568	P4751		5	2
11568	P4752		5	3
11568	RE10-100A		9	18
11568	RE10-2E	4730-00-195-5708	6	31
11568	RE10-59		8	12
11568	RE10-61		8	13
11568	RE10-62		8	20
			8	29
11568	RE14-58		8	5

SECTION IV

TM5-4310-363-24P

CROSS-REFERENCE INDEXES

FSCM	PART NUMBER	PART NUMBER INDEX STOCK NUMBER	FIG.	ITEM
11568	RE14-70		8	4
11568	RE14-71A		8	3
11568	RE4-12A		6	7
11568	RE7-14	6680-00-377-4915	9	38
11568	RE7-56A		8	19
11568	RE7-57A		8	30
11568	RE7-60		8	21
			8	28
11568	RE7-81		8	17
			8	26
11568	R10-102		9	40
			9	50
11568	R10-21		9	41
			9	51
11568	R10-37	3120-00-493-3912	9	45
11568	R10-4		9	52
11568	R10HUB2		7	21
11568	R15-24		9	46
11568	R15-4		9	42
11568	R15-5		9	37
11568	R15A	4310-00-860-9004	6	1
11568	SB250A		6	2
11568	SE14-84	5305-00-151-6876	9	17
11568	SE14-89		9	28
11568	SE14-94		9	24
11568	SE5-41	4730-00-850-7971	6	4
11568	SE5-42	4730-00-270-6113	6	5
11568	SE5-8		9	7
11568	SE5-82A	4310-00-896-2105	9	20
11568	SE5-83B	2990-00-863-0926	9	27
11568	SE5-86B	5340-00-625-6747	9	19
11568	SE5-87	5340-00-884-4582	9	21
11568	SE5-90	5360-00-850-5541	9	22
11568	SE5-91	5360-00-616-4373	9	11
11568	SE5-92A	5315-00-168-2969	9	26
11568	UB375		6	23
76241	XB1	3120-01-151-1680	4	14
11568	ZNR16	3110-00-100-6008	9	34
11568	ZR10-4		9	49
11568	ZR15-4	4310-00-413-4021	9	39
11568	Z102	4310-00-479-8856	8	
11568	Z102G	5330-00-875-4107	8	
11568	Z113		8	16
11568	Z115		8	24
11568	Z124-14A	4820-00-013-7320	9	9
11568	Z130	5330-00-927-5652	9	33
11568	Z179C	4310-00-773-7986	9	43
11568	Z180	4820-00-762-4266	6	21
11568	Z189B	4310-00-649-8398	9	53
11568	Z266	4310-00-922-1911	6	9
11568	Z499		6	16

SECTION IV

TM5-4310-363-24P

CROSS-REFERENCE INDEXES

FSCM	PART NUMBER	PART NUMBER INDEX STOCK NUMBER	FIG.	ITEM
11568	Z513		6	3
11568	Z535		6	22
11568	Z596		7	12
11568	Z597		7	1
11568	Z60A	4310-00-896-5984	9	13
11568	Z750		9	44
11568	Z764	5330-01-099-7483	9	
11568	Z812		8	1
11568	Z813		8	8
11568	Z828		5	1
11568	Z837	4310-01-101-7195	5	4
11568	OR111	5330-00-065-0338	7	8
11568	OSN4		9	8
57328	1/4 NPT		3	16
75336	112C1/4 200	4820-00-477-7958	3	17
75336	125 1-4 75PSI	4820-00-421-6984	6	25
97403	13206E0000-3	2805-01-139-0596	1	12
57328	20220-3-000026		4	18
57328	20500-3-000295		6	6
57328	20510-3-000321		6	15
57328	20510-3-000322		6	8
57328	20605-3-000114		2	1
57328	20605-3-000125	4720-00-874-3179	3	14
57328	20620-3-000096		4	10
57328	20620-3-000097		4	8
57328	20620-3-000121		4	5
57328	20620-3-000122		4	7
57328	20620-3-000250		4	6
57328	20625-3-000219		3	30
57328	20630-3-000098		2	10
57328	20630-3-000108		3	4
57328	20630-3-000271		2	6
57328	20630-3-000285		3	23
57328	20630-3-000317		2	7
57328	20630-3-000319		2	8
57328	20655-3-000117		6	28
57328	20655-3-000118		1	7
57328	20655-3-000252		3	26
57328	20660-3-000221		3	5
57328	20670-3-000242		1	6
57328	20670-3-000243		6	14
57328	20670-3-000244		1	5
57328	20670-3-000251	5930-01-186-0423	6	12
57328	20670-3-000316	5307-01-102-1929	1	4
57328	20670-3-000320		4	15
57328	20730-3-000090		3	9
57328	20760-3-000241		3	27
57328	20760-3-000249		3	29
57328	20994-3-000123		3	6
57328	20994-3-000124		3	28
75336	224A		3	10

SECTION IV

TM5-4310-363-24P

CROSS-REFERENCE INDEXES

FSCM	PART NUMBER	PART NUMBER INDEX STOCK NUMBER	FIG.	ITEM
57328	3/8-24X3/4		4	12
57328	3/8-24X5/8		4	11
27315	3612V004	5310-00-007-9869	9	23
57328	4-1/4X3/4		3	11
12603	4E07J		9	25
75336	501 1/4	4820-01-109-1399	3	15
57328	53003-S	5310-01-113-1306	6	11
57328	55005-S	5310-01-118-1198	1	11
			4	3
94894	61J2-1506	4910-00-204-2644	3	13
12603	6108	5310-00-768-0318	9	5
57328	63016-S	5305-01-087-1932	6	10
57328	69001-S		2	9
10001	731113PC1	5360-00-200-6879	7	5
			7	20
57328	90 DEG X 3/4		3	12

SECTION IV

TM5-4310-363-24P

CROSS-REFERENCE INDEXES

FIG.	ITEM	FIGURE AND ITEM NUMBER INDEX STOCK NUMBER	FSCM	PART NUMBER
1	1	5305-00-068-0502	96906	MS90725-6
1	2	5310-00-584-7890	96906	MS35338-57
1	3	5310-00-905-1691	96906	MS51972-1
1	4	5307-01-102-1929	57328	20670-3-000316
1	5		57328	20670-3-000244
1	6		57328	20670-3-000242
1	7		57328	20655-3-000118
1	8	5306-00-225-8499	96906	MS90725-34
1	9		96906	MS35338-45
1	10	5310-00-880-7744	96906	MS51967-5
1	11	5310-01-118-1198	57328	55005-S
1	12	2805-01-139-0596	97403	13206E0000-3
2	1		57328	20605-3-000114
2	2	4730-00-053-0266	96906	MS51952-1
2	3	2910-00-905-9792	96906	MS51086-1
2	4	5310-00-761-6882	96906	MS51967-2
2	5	5310-00-584-7890	96906	MS35338-57
2	6		57328	20630-3-000271
2	7		57328	20630-3-000317
2	8		57328	20630-3-000319
2	9		57328	69001-S
2	10		57328	20630-3-000098
3	1	5306-00-225-8497	96906	MS90725-32
3	2	5310-00-637-9541	96906	MS35338-46
3	3	5310-00-880-7744	96906	MS51967-5
3	4		57328	20630-3-000108
3	5		57328	20660-3-000221
3	6		57328	20994-3-000123
3	7	5306-00-225-8497	96906	MS90725-32
3	8		96906	MS35338-45
3	9		57328	20730-3-000090
3	10		75336	224A
3	11		57328	4-1/4X3/4
3	12		57328	90 DEG X 3/4
3	13	4910-00-204-2644	94894	61J2-1506
3	14	4720-00-874-3179	57328	20605-3-000125
3	15	4820-01-109-1399	75336	501 1/4
3	16		57328	1/4 NPT
3	17	4820-00-477-7958	75336	112C1/4 200
3	18	6685-01-078-7556	38508	J5458
3	19		07455	A321P4
3	20	5305-00-068-0502	96906	MS90725-6
3	21	5310-00-209-0786	96906	MS35335-33
3	22		96906	MS51967-2
3	23		57328	20630-3-000285
3	24	5305-00-269-3213	96906	MS90725-62
3	25	5310-00-732-0558	96906	MS51967-8
3	26		57328	20655-3-000252
3	27		57328	20760-3-000241
3	28		57328	20994-3-000124
3	29		57328	20760-3-000249

SECTION IV

TM5-4310-363-24P

CROSS-REFERENCE INDEXES

FIG.	ITEM	FIGURE AND ITEM NUMBER STOCK NUMBER	INDEX FSCM	PART NUMBER
3	30		57328	20625-3-000219
4	1	5305-00-115-9526	96906	MS18154-58
4	2		96906	MS35338-45
4	3	5310-01-118-1198	57328	55005-S
4	4	5310-00-880-7744	96906	MS51967-5
4	5		57328	20620-3-000121
4	6		57328	20620-3-000250
4	7		57328	20620-3-000122
4	8		57328	20620-3-000097
4	9	3030-00-854-7351	96906	MS39242-54-2
4	10		57328	20620-3-000096
4	11		57328	3/8-24X5/8
4	12		57328	3/8-24X3/4
4	13		76241	DX2350
4	14	3120-01-151-1680	76241	XB1
4	15		57328	20670-3-000320
4	16	5305-00-225-3839	96906	MS90725-8
4	17		96906	MS35338-45
4	18		57328	20220-3-000026
5	1		11568	Z828
5	2		11568	P4751
5	3		11568	P4752
5	4	4310-01-101-7195	11568	Z837
6	1	4310-00-860-9004	11568	R15A
6	2		11568	SB250A
6	3		11568	Z513
6	4	4730-00-850-7971	11568	SE5-41
6	5	4730-00-270-6113	11568	SE5-42
6	6		57328	20500-3-000295
6	7		11568	RE4-12A
6	8		57328	20510-3-000322
6	9	4310-00-922-1911	11568	Z266
6	10	5305-01-087-1932	57328	63016-S
6	11	5310-01-113-1306	57328	53003-S
6	12	5930-01-186-0423	57328	20670-3-000251
6	13		79470	A555
6	14		57328	20670-3-000243
6	15		57328	20510-3-000321
6	16		11568	Z499
6	17		11568	M801
6	18		96906	MS90726-87
6	19	5305-00-115-9526	96906	MS18154-58
6	20		11568	M807
6	21	4820-00-762-4266	11568	Z180
6	22		11568	Z535
6	23		11568	UB375
6	24	4730-00-273-8561	96906	MS39169-15
6	25	4820-00-421-6984	75336	125 1-4 75PSI
6	26		11568	NR29A
6	27	5305-00-331-4856	11568	M1737
6	28		57328	20655-3-000117

SECTION IV

TM5-4310-363-24P

CROSS-REFERENCE INDEXES

FIG.	ITEM	FIGURE AND ITEM NUMBER INDEX STOCK NUMBER	FSCM	PART NUMBER
6	29	4730-01-152-2355	11568	M705
6	30		11568	M432
6	31	4730-00-195-5708	11568	RE10-2E
6	32	4310-00-283-3288	11568	NR2B
6	33		11568	NR-14-6B
7	1		11568	Z597
7	2		11568	N1-15-6
7	3		11568	N34
7	4	5310-01-043-6822	11568	M926A
7	5	5360-00-200-6879	10001	731113PC1
7	6	5310-00-209-0786	96906	MS35335-33
7	7		11538	N1-15-13
7	8	5330-00-065-0338	11568	OR111
7	9		11568	N1-15-4
7	10		11568	N1-15-3
7	11		11568	NE15-2A
7	12		11568	Z596
7	13		11568	N1-15-6
7	14		11568	N34
7	15	5310-01-043-6822	11568	M926A
7	16	5310-00-209-0786	96906	MS35335-33
7	17		11568	N1-21-13
7	18		11568	N1-15-4
7	19		11568	N1-15-3
7	20	5360-00-200-6879	10001	731113PC1
7	21		11568	R10HUB2
8		4310-00-479-8856	11568	Z102
8		5330-00-875-4107	11568	Z102G
8	1		11568	Z812
8	2	5305-01-064-6251	11568	P4544A
8	3		11568	RE14-71A
8	4		11568	RE14-70
8	5		11568	RE14-58
8	6		11568	M2098
8	7		11568	P4134A
8	8		11568	Z813
8	9		11568	P4135A
8	10	5305-01-064-6252	11568	P-4543A
8	11		11568	M2099
8	12		11568	RE10-59
8	13		11568	RE10-61
8	14		11568	M2097
8	15		11568	P4135A
8	16		11568	Z113
8	17		11568	RE7-81
8	18		11568	P4137A
8	19		11568	RE7-56A
8	20		11568	RE10-62
8	21		11568	RE7-60
8	22		11568	M2101
8	23		11568	P4136A

SECTION IV

TM5-4310-363-24P

CROSS-REFERENCE INDEXES

FIG.	ITEM	FIGURE AND ITEM NUMBER INDEX STOCK NUMBER	FSCM	PART NUMBER
8	24		11568	Z115
8	25		11568	P4137A
8	26		11568	RE7-81
8	27		11568	M2100
8	28		11568	RE7-60
8	29		11568	RE10-62
8	30		11568	RE7-57A
8	31		11568	P4136A
9		5330-01-099-7483	11568	Z764
9	1	5305-00-269-3213	96906	MS90725-62
9	2	5310-00-637-9541	96906	MS35338-46
9	3	5310-00-732-0558	96906	MS51967-8
9	4	5305-00-071-2079	96906	MS90728-123
9	5	5310-00-768-0318	12603	6108
9	6	4310-00-873-1766	11568	NR7A
9	7		11568	SE5-8
9	8		11568	OSN4
9	9	4820-00-013-7320	11568	Z124-14A
9	10		11568	NR101
9	11	5360-00-616-4373	11568	SE5-91
9	12	3110-00-198-1050	96906	MS19060-4814
9	13	4310-00-896-5984	11568	Z60A
9	14		11568	M1046
9	15		11568	M98A
9	16		11568	M97A
9	17	5305-00-151-6876	11568	SE14-84
9	18		11568	RE10-100A
9	19	5340-00-625-6747	11568	SE5-86B
9	20	4310-00-896-2105	11568	SE5-82A
9	21	5340-00-884-4582	11568	SE5-87
9	22	5360-00-850-5541	11568	SE5-90
9	23	5310-00-007-9869	27315	3612V004
9	24		11568	SE14-94
9	25		12603	4E07J
9	26	5315-00-168-2969	11568	SE5-92A
9	27	2990-00-863-0926	11568	SE5-83B
9	28		11568	SE14-89
9	29		11568	NR104
9	30	5305-00-942-2196	96906	MS18154-60
9	31		11568	NR80A
9	32	4730-00-273-8561	96906	MS39169-15
9	33	5330-00-927-5652	11568	Z130
9	34	3110-00-100-6008	11568	ZNR16
9	35		11568	NR16
9	36		11568	NR16A
9	37		11568	R15-5
9	38	6680-00-377-4915	11568	RE7-14
9	39	4310-00-413-4021	11568	ZR15-4
9	40		11568	R10-102
9	41		11568	R10-21
9	42		11568	R15-4

SECTION IV

TM5-4310-363-24P

CROSS-REFERENCE INDEXES

FIG.	ITEM	FIGURE AND ITEM NUMBER INDEX STOCK NUMBER	FSCM	PART NUMBER
9	43	4310-00-773-7986	11568	Z179C
9	44		11568	Z750
9	45	3120-00-493-3912	11568	R10-37
9	46		11568	R15-24
9	47		11568	M1583
9	48		11568	M1582
9	49		11568	ZR10-4
9	50		11568	R10-102
9	51		11568	R10-21
9	52		11568	R10-4
9	53	4310-00-649-8398	11568	Z189B
9	54		11568	M504
9	55	4730-00-196-1546	96906	MS51953-63
9	56	4730-00-213-0651	11568	M461
9	57		96906	MS51884-9
9	58		11568	M1820

By Order of the Secretary of the Army:

CARL E. VUONO
General United States Army
Chief of Staff

Official:

WILLIAM J. MEEHAN, II
Brigadier General United States Army
The Adjutant General

DISTRI BUTI ON:

To be distributed in accordance with DA Form 12-25A, Unit, Direct Support and General Support maintenance requirements for Compressor, Reciprocating, Air, Gas, Tank Mounted, 15 CFM, 175 PSI (KAB-545-15



THEN... JOT DOWN THE
DOPE ABOUT IT ON THIS
FORM. CAREFULLY TEAR IT
OUT, FOLD IT AND DROP IT
IN THE MAIL!

SOMETHING WRONG WITH THIS PUBLICATION?

FROM: (PRINT YOUR UNIT'S COMPLETE ADDRESS)

PFC JOHN DOE
COA, 3d ENGINEER BN
FT. LEONARDWOOD, MD 63108

DATE SENT

PUBLICATION NUMBER

TM 5-4310-363-24P

PUBLICATION DATE

28 August 1989

PUBLICATION TITLE

COMPRESSOR, RECIPROCATING GED

BE EXACT PIN-POINT WHERE IT IS

PAGE NO	PARA- GRAPH	FIGURE NO	TABLE NO
6	2-1 a		
B1		4-3	
125	line 20		

IN THIS SPACE TELL WHAT IS WRONG
AND WHAT SHOULD BE DONE ABOUT IT:

In line 6 of paragraph 2-1a the manual states the engine has 6 Cylinders. The engine on my set only has 4 Cylinders. Change the manual to show 4 Cylinders.

Callout 16 on figure 4-3 is pointing at a bolt. In key to figure 4-3, item 16 is called a shim - Please Correct one or the other.

I ordered a gasket, item 19 on figure B-16 by NSN 2 910-00-762-3001. I got a gasket but it doesn't fit. Supply says I got what I ordered, so the NSN is wrong. Please give me a good NSN

PRINTED NAME, GRADE OR TITLE AND TELEPHONE NUMBER

JOHN DOE, PFC (268) 317-7111

SIGN HERE

JOHN DOE

DA FORM 2028-2

1 JUL 79

PREVIOUS EDITIONS
ARE OBSOLETE.

DRSTS-M Overprint 1, 1 Nov 80

PS--IF YOUR OUTFIT WANTS TO KNOW ABOUT YOUR
RECOMMENDATION MAKE A CARBON COPY OF THIS
AND GIVE IT TO YOUR HEADQUARTERS

TEAR ALONG PERFORATED LINE

FILL IN YOUR
UNIT'S ADDRESS

FOLD BACK

DEPARTMENT OF THE ARMY

POSTAGE AND FEES PAID
DEPARTMENT OF THE ARMY
DOD 314



OFFICIAL BUSINESS
PENALTY FOR PRIVATE USE \$300

COMMANDER
U S ARMY TROOP SUPPORT COMMAND
ATTN: AMSTR-MCTS
4300 GOODFELLOW BOULEVARD
ST. LOUIS, MO 63120-1798

TEAR ALONG PERFORATED LINE

RECOMMENDED CHANGES TO EQUIPMENT TECHNICAL PUBLICATIONS



THEN... JOT DOWN THE
DOPE ABOUT IT ON THIS
FORM. CAREFULLY TEAR IT
OUT, FOLD IT AND DROP IT
IN THE MAIL!

SOMETHING WRONG WITH THIS PUBLICATION?

FROM: (PRINT YOUR UNIT'S COMPLETE ADDRESS)

DATE SENT

PUBLICATION NUMBER

TM 5-4310-363-24P

PUBLICATION DATE

28 August 1989

PUBLICATION TITLE

COMPRESSOR, RECIPROCATING GED

BE EXACT PIN-POINT WHERE IT IS

PAGE
NO

PARA-
GRAPH

FIGURE
NO

TABLE
NO

IN THIS SPACE TELL WHAT IS WRONG
AND WHAT SHOULD BE DONE ABOUT IT:

PRINTED NAME, GRADE OR TITLE, AND TELEPHONE NUMBER

SIGN HERE

DA FORM 2028-2
1 JUL 79

PREVIOUS EDITIONS
ARE OBSOLETE.
DRSTS-M Overprint 2, 1 Nov 80.

P.S.--IF YOUR OUTFIT WANTS TO KNOW ABOUT YOUR
RECOMMENDATION MAKE A CARBON COPY OF THIS
AND GIVE IT TO YOUR HEADQUARTERS

TEAR ALONG PERFORATED LINE

FILL IN YOUR
UNIT'S ADDRESS

FOLD BACK

DEPARTMENT OF THE ARMY

POSTAGE AND FEES PAID
DEPARTMENT OF THE ARMY
DOD 314



OFFICIAL BUSINESS
PENALTY FOR PRIVATE USE \$300

COMMANDER
U S ARMY TROOP SUPPORT COMMAND
ATTN: AMSTR-MCTS
4300 GOODFELLOW BOULEVARD
ST. LOUIS, MO 63120-1798

TEAR ALONG PERFORATED LINE

RECOMMENDED CHANGES TO EQUIPMENT TECHNICAL PUBLICATIONS



THEN... JOT DOWN THE
DOPE ABOUT IT ON THIS
FORM. CAREFULLY TEAR IT
OUT. FOLD IT AND DROP IT
IN THE MAIL.

SOMETHING WRONG WITH THIS PUBLICATION?

FROM: (PRINT YOUR UNIT'S COMPLETE ADDRESS)

DATE SENT

PUBLICATION NUMBER

TM 5-4310-363-24P

PUBLICATION DATE

28 August 1989

PUBLICATION TITLE

COMPRESSOR, RECIPROCATING GED

BE EXACT PIN-POINT WHERE IT IS

PAGE
NO

PARA-
GRAPH

FIGURE
NO

TABLE
NO

IN THIS SPACE TELL WHAT IS WRONG
AND WHAT SHOULD BE DONE ABOUT IT:

PRINTED NAME, GRADE OR TITLE, AND TELEPHONE NUMBER

SIGN HERE

DA FORM 2028-2
1 JUL 79

PREVIOUS EDITIONS
ARE OBSOLETE.
DRSTS-M Overprint 2, 1 Nov 80.

P S --IF YOUR OUTFIT WANTS TO KNOW ABOUT YOUR
RECOMMENDATION MAKE A CARBON COPY OF THIS
AND GIVE IT TO YOUR HEADQUARTERS

TEAR ALONG PERFORATED LINE

FILL IN YOUR
UNIT'S ADDRESS

FOLD BACK

DEPARTMENT OF THE ARMY

POSTAGE AND FEES PAID
DEPARTMENT OF THE ARMY
DOD 314



OFFICIAL BUSINESS
PENALTY FOR PRIVATE USE \$300

COMMANDER
U S ARMY TROOP SUPPORT COMMAND
ATTN: AMSTR-MCTS
4300 GOODFELLOW BOULEVARD
ST. LOUIS, MO 63120-1798

TEAR ALONG PERFORATED LINE

RECOMMENDED CHANGES TO EQUIPMENT TECHNICAL PUBLICATIONS



THEN... JOT DOWN THE
DOPE ABOUT IT ON THIS
FORM. CAREFULLY TEAR IT
OUT. FOLD IT AND DROP IT
IN THE MAIL!

SOMETHING WRONG WITH THIS PUBLICATION?

FROM: (PRINT YOUR UNIT'S COMPLETE ADDRESS)

DATE SENT

PUBLICATION NUMBER

TM 5-4310-363-24P

PUBLICATION DATE

28 August 1989

PUBLICATION TITLE

COMPRESSOR, RECIPROCATING GED

BE EXACT PIN-POINT WHERE IT IS

PAGE
NO

PARA-
GRAPH

FIGURE
NO

TABLE
NO

IN THIS SPACE TELL WHAT IS WRONG
AND WHAT SHOULD BE DONE ABOUT IT:

TEAR ALONG PERFORATED LINE

PRINTED NAME, GRADE OR TITLE, AND TELEPHONE NUMBER

SIGN HERE

DA FORM 2028-2
1 JUL 79

PREVIOUS EDITIONS
ARE OBSOLETE.
DRSTS-M Overprint 2, 1 Nov 80.

P.S. --IF YOUR OUTFIT WANTS TO KNOW ABOUT YOUR
RECOMMENDATION MAKE A CARBON COPY OF THIS
AND GIVE IT TO YOUR HEADQUARTERS

FILL IN YOUR
UNIT'S ADDRESS

FOLD BACK

DEPARTMENT OF THE ARMY

POSTAGE AND FEES PAID
DEPARTMENT OF THE ARMY
DOD 314



OFFICIAL BUSINESS
PENALTY FOR PRIVATE USE \$300

COMMANDER
U S ARMY TROOP SUPPORT COMMAND
ATTN: AMSTR-MCTS
4300 GOODFELLOW BOULEVARD
ST. LOUIS, MO 63120-1798

TEAR ALONG PERFORATED LINE

The Metric System and Equivalents

Linear Measure

1 centimeter = 10 millimeters = .39 inch
 1 decimeter = 10 centimeters = 3.94 inches
 1 meter = 10 decimeters = 39.37 inches
 1 dekameter = 10 meters = 32.8 feet
 1 hectometer = 10 dekameters = 328.08 feet
 1 kilometer = 10 hectometers = 3,280.8 feet

Weights

1 centigram = 10 milligrams = .15 grain
 1 decigram = 10 centigrams = 1.54 grains
 1 gram = 10 decigram = .035 ounce
 1 dekagram = 10 grams = .35 ounce
 1 hectogram = 10 dekagrams = 3.52 ounces
 1 kilogram = 10 hectograms = 2.2 pounds
 1 quintal = 100 kilograms = 220.46 pounds
 1 metric ton = 10 quintals = 1.1 short tons

Liquid Measure

1 centiliter = 10 milliliters = .34 fl. ounce
 1 deciliter = 10 centiliters = 3.38 fl. ounces
 1 liter = 10 deciliters = 33.81 fl. ounces
 1 dekaliter = 10 liters = 2.64 gallons
 1 hectoliter = 10 dekaliters = 26.42 gallons
 1 kiloliter = 10 hectoliters = 264.18 gallons

Square Measure

1 sq. centimeter = 100 sq. millimeters = .155 sq. inch
 1 sq. decimeter = 100 sq. centimeters = 15.5 sq. inches
 1 sq. meter (centare) = 100 sq. decimeters = 10.76 sq. feet
 1 sq. dekameter (are) = 100 sq. meters = 1,076.4 sq. feet
 1 sq. hectometer (hectare) = 100 sq. dekameters = 2.47 acres
 1 sq. kilometer = 100 sq. hectometers = .386 sq. mile

Cubic Measure

1 cu. centimeter = 1000 cu. millimeters = .06 cu. inch
 1 cu. decimeter = 1000 cu. centimeters = 61.02 cu. inches
 1 cu. meter = 1000 cu. decimeters = 35.31 cu. feet

Approximate Conversion Factors

<i>To change</i>	<i>To</i>	<i>Multiply by</i>	<i>To change</i>	<i>To</i>	<i>Multiply by</i>
inches	centimeters	2.540	ounce-inches	newton-meters	.007062
feet	meters	.305	centimeters	inches	.394
yards	meters	.914	meters	feet	3.280
miles	kilometers	1.609	meters	yards	1.094
square inches	square centimeters	6.451	kilometers	miles	.621
square feet	square meters	.093	square centimeters	square inches	.155
square yards	square meters	.836	square meters	square feet	10.764
square miles	square kilometers	2.590	square meters	square yards	1.196
acres	square hectometers	.405	square kilometers	square miles	.386
cubic feet	cubic meters	.028	square hectometers	acres	2.471
cubic yards	cubic meters	.765	cubic meters	cubic feet	35.315
fluid ounces	milliliters	29.573	cubic meters	cubic yards	1.308
pints	liters	.473	milliliters	fluid ounces	.034
quarts	liters	.946	liters	pints	2.113
gallons	liters	3.785	liters	quarts	1.057
ounces	grams	28.349	liters	gallons	.264
pounds	kilograms	.454	grams	ounces	.035
short tons	metric tons	.907	kilograms	pounds	2.205
pound-feet	newton-meters	1.356	metric tons	short tons	1.102
pound-inches	newton-meters	.11296			

Temperature (Exact)

°F	Fahrenheit temperature	5/9 (after subtracting 32)	Celsius temperature	°C
----	------------------------	----------------------------	---------------------	----

This fine document...

Was brought to you by me:



[Liberated Manuals -- free army and government manuals](#)

Why do I do it? I am tired of sleazy CD-ROM sellers, who take publicly available information, slap “watermarks” and other junk on it, and sell it. Those masters of search engine manipulation make sure that their sites that sell free information, come up first in search engines. They did not create it... They did not even scan it... Why should they get your money? Why are not letting you give those free manuals to your friends?

I am setting this document FREE. This document was made by the US Government and is NOT protected by Copyright. Feel free to share, republish, sell and so on.

I am not asking you for donations, fees or handouts. If you can, please provide a link to liberatedmanuals.com, so that free manuals come up first in search engines:

<A HREF=<http://www.liberatedmanuals.com/>>Free Military and Government Manuals

- Sincerely
Igor Chudov
<http://igor.chudov.com/>
- [Chicago Machinery Movers](#)