

DEPARTMENT OF THE ARMY TECHNICAL MANUAL

FIELD AND DEPOT MAINTENANCE
REPAIR PARTS AND SPECIAL TOOL LISTS

INDICATOR, OUTLET VALVE LEAKAGE,
M4A1
(FSN 6665-738-2128)
(END ITEM CODE 667)

HEADQUARTERS, DEPARTMENT OF THE ARMY

FEBRUARY 1964

TECHNICAL MANUAL }
 No. 3-6665-209-35P }

HEADQUARTERS
 DEPARTMENT OF THE ARMY
 WASHINGTON D.C., 14 February 1964

**FIELD AND DEPOT MAINTENANCE
 REPAIR PARTS AND SPECIAL TOOL LISTS**

**INDICATOR, OUTLET VALVE LEAKAGE, M4A1
 (FSN 6665-738-2128)**

| SECTION | | Paragraph | Page |
|-----------|---------------------------------------|-----------|------|
| I. | INTRODUCTION | | |
| | Purpose and scope ----- | 1 | ii |
| | Explanation of columns ----- | 2 | ii |
| | Abbreviations ----- | 3 | iv |
| | Suggestions and recommendations ----- | 4 | iv |
| II. | FUNCTIONAL PARTS LIST | | |
| GROUP 100 | Chassis ----- | | 1 |
| 200 | Cabinet ----- | | 26 |
| 300 | Cover ----- | | 28 |
| 400 | Probe ----- | | 31 |
| 500 | Accessory equipment ----- | | 35 |
| 600 | Bulk material ----- | | 36 |
| III. | INDEXES | | |
| | Alphabetical index ----- | | 38 |
| | Federal stock number index ----- | | 53 |

SECTION I

INTRODUCTION

1. Purpose and Scope

This manual provides a list of repair parts for the M4A1 Outlet Valve Leakage Indicator. It is to be used by maintenance and supply personnel as a requisitioning reference document. It contains within appropriate functional groups, those repair parts authorized for applicable maintenance echelons. Appropriate allowance factors to be used in computing allowance quantities are included.

2. Explanation of Columns

a. Index Number. A number is assigned to each repair part to facilitate indexing and referencing. The numbers are identical to those assigned to the same assembly, subassembly, and repair parts in TM 3-6665-20920P.

b. S, M, R Code. Source, maintenance, and recoverability codes are assigned in accordance with AR 700-18 as follows:

- (1) *Source.* The source code consists of a number which identifies the technical service having supply responsibility for the repair part, and a code symbol which indicates the source from which the repair part may be obtained.

(a) Technical services having supply responsibility are identified by the following numbers which constitute the first element of the source code:

- 3 — Chemical Corps
- 5 — Corps of Engineers
- 8 — Medical Service Corps
- 9 — Ordnance Corps
- 10 — Quartermaster Corps
- 11 — Signal Corps
- 55 — Transportation Corps

(b) Code symbols indicating the source of repair parts are the second element of the source code, and are as follows:

1. Code "P" - Repair parts which are high mortality parts; procured by technical s e r v i c e s,

stocked in and supplied from the technical service depot system, and authorized for use at indicated maintenance echelons.

2. Code "P1" — Repair parts which are low mortality parts; procured by technical services, stocked only in and supplied from technical service key depots, and authorized for installation at indicated maintenance echelons.
3. Code "M" — Repair parts which are not procured or stocked but are to be manufactured at indicated maintenance echelons.
4. Code "X2" — Repair parts which are not stocked. The indicated maintenance echelon requiring such repair parts will attempt to obtain them through cannibalization; if not obtainable through cannibalization, such repair parts will be requisitioned with supporting justification through normal supply channels.

(2) *Maintenance Code.* The maintenance code consists of a single letter denoting the lowest echelon of maintenance authorized to install or manufacture the repair parts as follows:

O—Organizational Maintenance
(1st and 2nd echelons)
Maintenance echelons are
defined in AR 750-5.

F—Field Maintenance (3d echelon).

H—Field Maintenance (4th echelon).

D—Depot Maintenance (5th echelon).

(3) *Recoverability Code.* The recoverability code consists of a single letter which indicates that the responsible technical service desires the return of unserviceable repair parts for recovery or salvage. When no code is indicated in the recoverability column the part will be considered

expendable. The following code will be used:

R—Repair parts and assemblies which are economically repairable at field maintenance activities (3d and 4th echelon) and are normally furnished by supply on an exchange basis.

c. *Federal Stock Number.* Federal stock numbers are assigned by the Federal Cataloging Program and are to be used in accordance with AR 708-15.

d. *Description.* The approved Federal item name appears in upper case (capital) letters. Modifiers necessary for proper identification appear in lower case (small) letters.

e. *Unit of Issue.* The unit of issue for each item listed is indicated in this column.

f. *Expendability.* The symbol NX indicates that an item is nonexpendable. When no symbol appears, the item is expendable.

g. *Quantity per Unit.* The quantity listed in this column is the quantity of the repair part used in the group, section, assembly, or subassembly indicated. If a repair part has more than one application, the quantity per unit becomes the total quantity per equipment and is indicated only in the initial appearance of the part. This column remains blank in all subsequent appearances of the repair part. Unless otherwise indicated, the unit of measure applicable to the quantity per unit is the same as the unit of issue.

h. Allowances.

- (1) The numbers listed in the third and fourth echelon columns are allowance factors which are to be used in computing authorized allowance for 15 days maintenance of 100 equipments.
- (2) To compute an authorized quantity for 3rd and 4th echelon, multiply the number of equipments supported by the allowance factor and divide this product by 100. The result, rounded to the nearest whole number, is the authorized quantity. Examples are as follows:

A. Quantity of equipment supported 50

Allowance factor 1.7 per 100

$$\begin{array}{r} \text{Authorized quantity} \\ 50 \times 1.7 \\ \hline \\ 100 \end{array} = .85$$

This quantity is greater than 0.5 and less than 1.0. Therefore, the authorized quantity is 1.

B. Quantity of equipment supported 103

Allowance factor 4.1 per 100

$$\begin{array}{r} \text{Authorized quantity} \\ 103 \times 4.1 \\ \hline \\ 100 \end{array} = 4.223$$

The decimal portion is less than 0.5. Therefore, the authorized quantity is 4.

- (3) Allowance numbers in the fifth echelon column represent quantities recommended for the overhaul of 100 major components and/or end items.
- (4) An asterisk appearing in an allowance column indicates that the item may be requisitioned for immediate usage by the echelon indicated.
- (5) The allowance factors for a repair part with more than one application are indicated only in the initial appearance of the part.
- (6) When supply records are established by field maintenance echelons, demand experience is to be used to compute stockage objectives on repair parts included in this initial guide quantity list for a period of time prescribed by the major commander within the limitations of AR 710-25. Repair parts allocated to each of these echelons, but not included in the initial stockage, may be added to stocks when demand experience justifies a stockage objective of at least one.

i. Maintenance Echelons.

- (1) Maintenance echelons are defined in AR 750-5. The mission of field maintenance organizations in the continental United States are assigned in AR 750-7. The missions of

depot maintenance organizations in the continental United States are assigned in AR 780-370. The missions of field and depot maintenance organizations in oversea commands are assigned by the theatre commander.

i. Illustrations. This column contains the figure number of each illustration and the item number of that illustration for indicated repair parts.

3. Abbreviations.

The abbreviations used herein are defined as follows:

- AC-----alternating current
- alw-----allowances
- amp-----ampere (s)
- AR-----as required
- AWG -----American wire gauge
- bg -----bag
- C-----centigrade
- cad -----cadmium
- cn-----can
- cy-----cycle
- deg -----degree
- DC-----direct current
- dia -----diameter(s)
- DPDT-----double pole-double throw
- dwg -----drawing
- ea-----each
- ech-----echelon
- equip-----equipment
- ft -----foot, feet
- hd -----head
- h -----high, height
- in.-----inch (es)
- id -----inside diameter(s)
- lb-----pound (s)
- lg -----length, long
- max -----maximum
- med-----medium
- meg -----megohm (s)
- MFD -----microfarad (s)
- min -----minimum
- mtd -----mounted
- mtg-----mounting
- NC-----American National Coarse
Thread
- NF-----American National Fine
Thread

- No.-----number
- nom, -----nominal
- NPT -----American Standard Taper
Pipe Thread
- NX -----nonexpendable
- O/A -----overall
- od -----outside diameter(s)
- pkg -----package
- pltd -----plated
- porm -----plus or minus
- pr -----pair
- pt -----pint(s)
- rd -----round
- rh -----right hand
- SPST-----single pole - single throw
- temp-----temperature
- thd -----thread(s) (ed)
- thk -----thick(ness)
- UP -----microfarad(s)
- UNC -----Unified Coarse Thread
- UNF -----Unified Fine Thread
- UUF -----micromicrofarad
- u/w -----used with
- v -----volt(s)
- w-----watt, wide, width
- w/ -----with
- w/o-----without

4. Suggestions and Recommendations

a. Notice of discrepancies and/or suggested changes are requested and encouraged. They should be forwarded through command channels on DA Form 2028 to the Commanding General, U.S. Army Edgewood Arsenal, ATTN: SMUEA-EIS-EM-ES, Edgewood Arsenal, Md. (21010).

b. Suggestions and recommendations for changes to repair parts allocations and allowance factors should include the following minimum data for each repair part concerned:

- (1) Stock number.
- (2) Nomenclature.
- (3) End item in which the part is incorporated.
- (4) Number of demands in 90 days.
- (5) Number of end items supported.
- (6) Recommended action and brief justification.

SECTION II. FUNCTIONAL PARTS LIST

| INDEX NO. | S, M, R CODE | | | | | FEDERAL STOCK NUMBER | DESCRIPTION | UNIT OF ISSUE | EXPEND-ABILITY | QUANTITY PER UNIT | 15 DAY MAINT ALW PER 100 EQUIP | | | ILLUS-TRATIONS | |
|-----------|-------------------|--------|-------------------|-----------------|---------|----------------------|--|---------------|----------------|-------------------|--------------------------------|---------|---------|----------------|---------|
| | MATERIEL CODE NO. | SOURCE | MAINTENANCE LEVEL | RECOVER-ABILITY | 3RD ECH | | | | | | 4th ECH | 5th ECH | FIG. NO | ITEM NO. | |
| | | | | | | | | | | | | | | | |
| 1 | | | | | | 6665-738-2128 | INDICATOR, OUTLET VALVE LEAKAGE, M4A1 GROUP 100 CHASSIS Electrical Components Section | ea | NX | | | | | 1 | |
| 2 | 3 | P1 | O | R | | 6665-779-5928 | CHASSIS ASSEMBLY, ELECTRIC | ea | | 1 | * | * | 2 | 2, | 3 |
| 3 | 11 | P1 | H | | | 5910-984-2274 | CAPACITOR, FIXED, MICA DIELECTRIC, .003 MFD, 500 v DC, 2 uninsulated wire lead type terminals | ea | | 1 | | * | 10 | 3 | 11 |
| 4 | 11 | P1 | H | | | 5910-811-5517 | CAPACITOR, FIXED, PAPER DIELECTRIC, 1 section, 600 v DC, 2 UF porm 10%, metal case, 2 lug type terminals | ea | | 1 | | * | 10 | 3 | 15 |
| 5 | 11 | P | O | | | 5960-228-3765 | ELECTRON TUBE, glass envelope, triode amplifier | ea | | 1 | (20) | (20) | 100 | 2 | 11 |
| 6 | 10 | P1 | F | | | 5325-801-3103 | GROMMET, RUBBER, synthetic rubber, 1-1/2 in. od of flange, 1-1/4 in. od of groove, 3/32 in. thk flange, 1/2 in. dia hole, 1/4 in. h overall, 1/16 in. w groove | ea | | 5 | * | * | * | 3 | 1 |
| 7 | 9 | P1 | F | | | 5310-014-4530 | NUT, PLAIN, HEXAGON, steel, cad or zinc pltd, No. 6-32 NC-2B | ea | | 24 | * | * | * | 2 | 2 |
| 8 | 3 | P1 | H | | | 5310-081-8087 | NUT, SELF-LOCKING, HEXAGON, steel, cad pltd, No. 6-32 UNC-3B | ea | | 28 | | * | * | 2 3 | 15 9 |
| 9 | 11 | P1 | H | | | 5940-753-5151 | PLATE, DESIGNATION, aluminum, white inscription, black background, No. 1 thru 16 | ea | | 1 | | * | * | 2 | 16 |
| 10 | 3 | P1 | H | | | 5945-801-6529 | RELAY, ARMATURE, 115 v, 4 terminals for contacts | ea | | 1 | | * | 10 | 2 | 21 |
| 11 | 11 | P1 | H | | | 5945-069-6545 | RELAY, ARMATURE, 115 v, 6 terminals for contacts 2 terminals for coil, continuous duty, dustproof, 3300 OHM | ea | | 1 | | * | 10 | 2 | 7 |

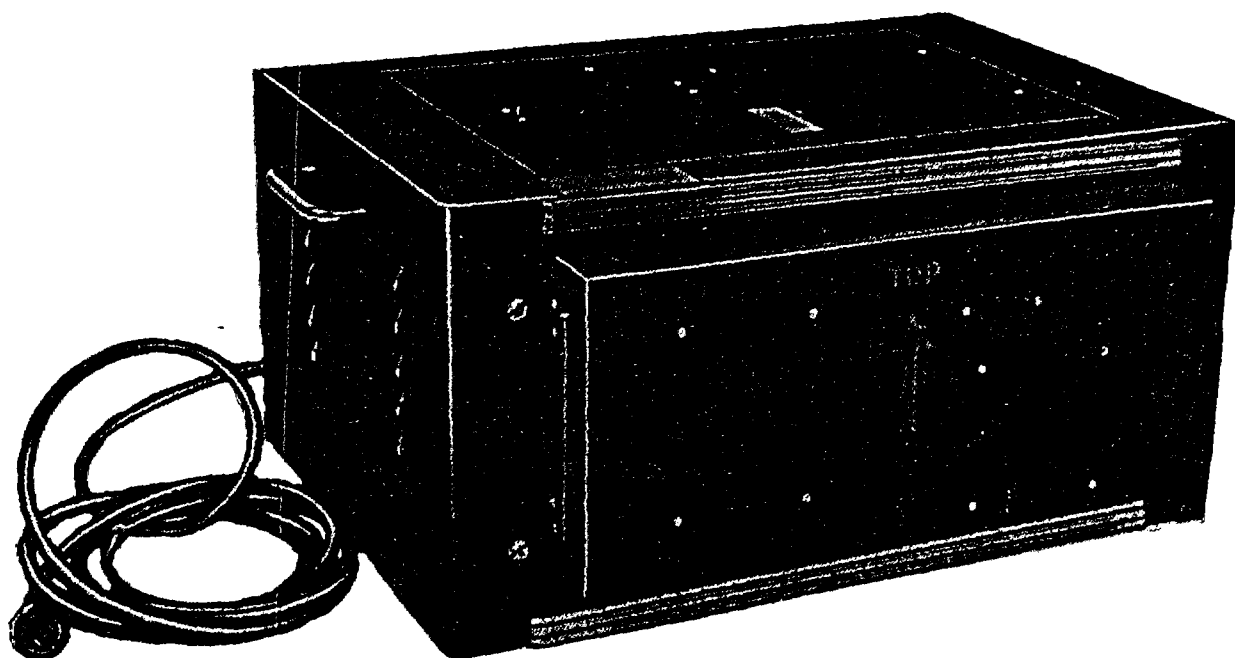


Figure 1. M4A1 outlet valve leakage indicator, right front view.

| INDEX NO. | S, M, R CODE | | | | FEDERAL STOCK NUMBER | DESCRIPTION | UNIT OF ISSUE | EXPEND-ABILITY | QUANTITY PER UNIT | 15 DAY MAINT ALW PER 100 EQUIP | | | ILLUS-TRATIONS | |
|-----------|-------------------|--------|-------------------|-----------------|----------------------|---|---------------|----------------|-------------------|--------------------------------|---------|---------|----------------|----------|
| | MATERIEL CODE NO. | SOURCE | MAINTENANCE LEVEL | RECOVER-ABILITY | | | | | | 3RD ECH | 4th ECH | 5th ECH | FIG. NO | ITEM NO. |
| | | | | | | | | | | | | | | |
| 12 | 11 | P1 | H | | 5905-815-4765 | RESISTOR, FIXED, COMPOSITION, 1/2 w, rated at 70 deg C ambient temp, 2 wire lead type terminals | ea | | 1 | | * | 10 | 3 | 12 |
| 13 | 11 | P1 | H | | 5805-279-1754 | RESISTOR, FIXED, COMPOSITION, 1.5 meg, 1/2 watt power, insulated, 2 wire lead type terminals | ea | | 1 | | * | 10 | 3 | 14 |
| 14 | 11 | P1 | H | | 5905-186-3008 | RESISTOR, FIXED, COMPOSITION, 100 OHMS, 1/2 watt, 0.375 In. lg, 0.138 in. od, Insulated, 2 wire lead type terminals | ea | | 1 | | * | 10 | 3 | 10 |
| 15 | 3 | P1 | H | | 6665-811-4740 | ROD, ALUMINUM | ea | | 2 | | * | * | 2 | 12 |
| 16 | 9 | P1 | F | | 5305-043-5885 | SCREW, MACHINE, pan hd, slotted, steel, cad or zinc pltd, No. 6-32 UNC-2A, 5/16 In. lg | ea | | 10 | * | * | * | 2 | 4 |
| 17 | 9 | P1 | F | | 5305-043-6666 | SCREW, MACHINE, pan hd, slotted, steel, cad or zinc pltd, No. 6-32 UNC-2A, 5/8 in. lg | ea | | 15 | * | * | * | 2 | 18 |
| 18 | 9 | P1 | F | | 5305-043-6671 | SCREW, MACHINE, pan hd, slotted, steel, cad or zinc pltd, No. 6-32 UNC-2A, 1-1/2 in. lg | ea | | 4 | * | * | * | 2 | 20 |
| 19 | 9 | P1 | H | | 5305-043-6690 | SCREW, MACHINE, pan hd, slotted, steel, cad or zinc pltd, No. 8-32 UNC-2A, 3/16 in. lg | ea | | 2 | | * | * | 3 | 2 |
| 20 | 9 | P1 | H | | 5305-043-6695 | SCREW, MACHINE, pan hd, slotted, steel, cad or zinc pltd, No. 8-32 UNC-2A, 1/2 in. lg | ea | | 2 | | * | * | 2 | 13 |
| 21 | 9 | P1 | F | | 5305-043-6700 | SCREW, MACHINE, steel, cad or zinc pltd, No. 8-32 NC. 1-1/4 In. lg | ea | | 2 | * | * | * | 2 | 9 |
| 22 | 3 | P1 | H | | 5935-232-3786 | SOCKET, ELECTRON TUBE, octal, molded plastic, 4 solder tab type grounding lug terminals | ea | | 1 | | * | * | 3 | 8 |
| 23 | 3 | P1 | F | | 6665-778-9589 | SPACER | ea | | 4 | * | * | * | 2 | 6 |
| 24 | 3 | P1 | H | | 5930-063-7257 | SWITCH, DPDT, 6 solder lug type terminals, bushing mtg, AC, 250 v max | ea | | 1 | | * | * | 2 | 14 |
| | | | | | | | | | | | | | 3 | 4 |

| INDEX NO. | S, M, R CODE | | | | | FEDERAL STOCK NUMBER | DESCRIPTION | UNIT OF ISSUE | EXPEND-ABILITY | QUANTITY PER UNIT | 15 DAY MAINT ALW PER 100 EQUIP | | | ILLUS-TRATIONS | |
|-------------------------------|-------------------|--------|-------------------|-----------------|---------------|---|-------------|---------------|----------------|-------------------|--------------------------------|---------|---------|----------------|--|
| | MATERIEL CODE NO. | SOURCE | MAINTENANCE LEVEL | RECOVER-ABILITY | 3RD ECH | | | | | | 4th ECH | 5th ECH | FIG. NO | ITEM NO. | |
| | | | | | | | | | | | | | | | |
| 25 | 11 | P1 | H | | 5940-271-4622 | TERMINAL BOARD, plastic, 1 terminal, solder lug type, 11/16 in. lg | ea | | 1 | | * | * | 3 | 13 | |
| 26 | 3 | P1 | H | | 5940-083-6057 | TERMINAL BOARD, plastic, 16 terminals, barrier type, 6-5/8 in. lg, 7/8 in. w, 13/32 in. h | ea | | 1 | | * | * | 2 | 17 | |
| 27 | 11 | P1 | H | | 5940-682-2776 | TERMINAL BOARD, plastic, 16 terminals, spade lug type, 6-5/8 in. lg, 1/2 in. w, 3/32 in. thk, terminal mounted | ea | | 1 | | * | * | 2 | 19 | |
| 28 | 3 | P | H | | 6645-078-4142 | TIMER, INTERVAL | ea | | 1 | | 1 | 2 | 2 | 5 | |
| 29 | 3 | P | H | | 6645-078-4143 | TIMER, INTERVAL, 110 v, 60 cycle, equipped w/ automatic electric circuit control switch | ea | | 1 | | 1 | 2 | 2 | 1 | |
| 30 | 11 | P1 | H | | 5950-817-5134 | TRANSFORMER, POWER, STEP-DOWN AND STEP-UP, double shell, metal case, primary 117 volts, 60 cycles single phase, 10 wire lead type terminals, stud mtg | ea | | 1 | | * | 2 | 2 | 8 | |
| 31 | 3 | P1 | F | | 5310-045-0591 | WASHER, LOCK, steel, split helical ring, cad or zinc pltd, No. 6 nom screw size | ea | | 40 | * | * | * | 2 | 3 | |
| 32 | 9 | P1 | F | | 5310-209-5309 | WASHER, LOCK, steel, split helical ring, cad or zinc pltd, No. 8 nom screw size | ea | | 29 | * | * | * | 2 3 | 10 3 | |
| Mechanical Components Section | | | | | | | | | | | | | | | |
| 33 | 3 | P1 | O | R | 6665-778-6003 | CHASSIS ASSEMBLY | ea | | 1 | * | * | 5 | 4, 5, 6 | | |
| 34 | 3 | P1 | F | | 4730-554-7792 | ADAPTER, STRAIGHT, PIPE TO HOSE, brass, let end, thd male, 1/8 in. - 27 NPT, 2nd end, unthreaded male, 1/4 in. nom hose size, 1-3/8 in. lg overall | ea | | 3 | * | * | * | 4 | 44 | |
| 85 | 5 | P1 | F | | 4730-618:0509 | ADAPTER, STRAIGHT, PIPE TO TUBE, brass, let end, thd male, 1/4 in. od tube, 7/16 in. - 20 thd size, 2nd end, thd male, 1/8 in. - 27 NPT | ea | | 6 | * | * | * | 5 6 | 16 11 | |

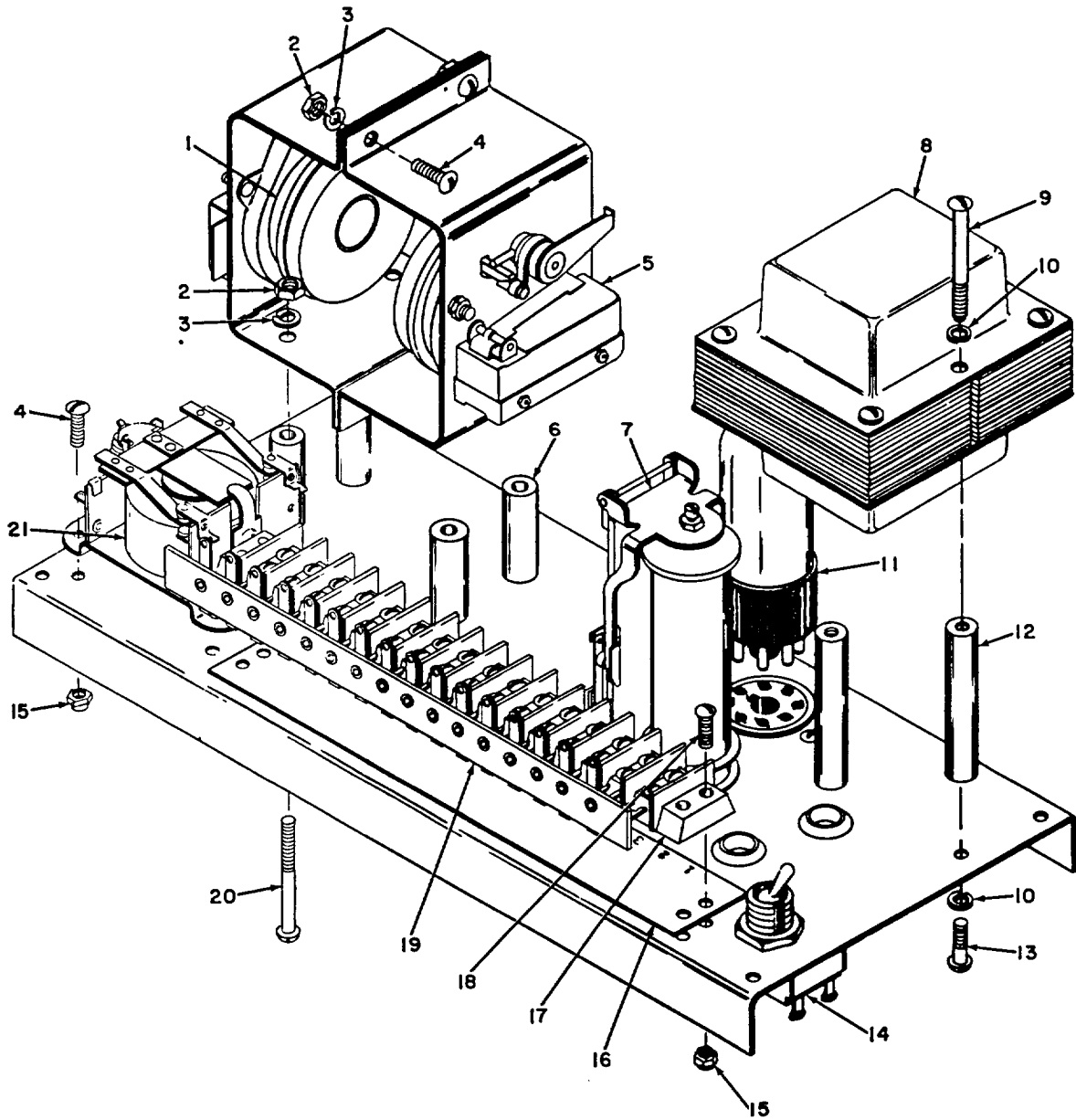


Figure 2. Electric chassis assembly, top view.

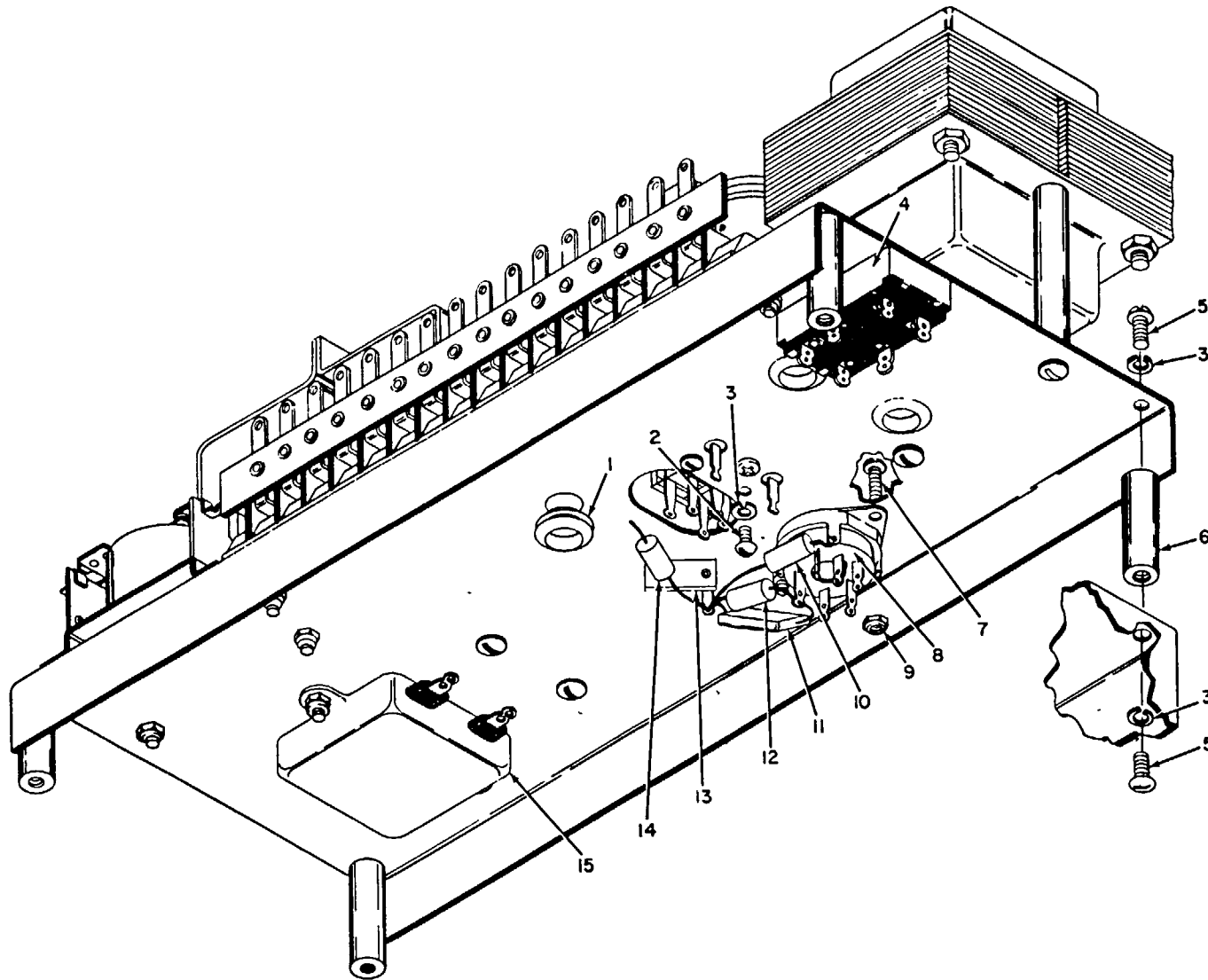


Figure 3. Electric chassis assembly, bottom view.

| INDEX NO. | S, M, R CODE | | | | | FEDERAL STOCK NUMBER | DESCRIPTION | UNIT OF ISSUE | EXPEND-ABILITY | QUANTITY PER UNIT | 15 DAY MAINT ALW PER 100 EQUIP | | | ILLUS-TRATIONS | |
|-----------|-------------------|--------|-------------------|-----------------|---------------|---|-------------|---------------|----------------|-------------------|--------------------------------|---------|---------|----------------|--|
| | MATERIEL CODE NO. | SOURCE | MAINTENANCE LEVEL | RECOVER-ABILITY | 3RD ECH | | | | | | 4th ECH | 5th ECH | FIG. NO | ITEM NO. | |
| | | | | | | | | | | | | | | | |
| 36 | 3 | P1 | O | | 6665-778-7117 | ADAPTER, TEST VALVE | ea | | 2 | * | * | * | 4 | 2 | |
| 37 | 5 | P1 | F | | 6350-284-1357 | BELL, ELECTRIC, 6 v, 60 cycle, nonadjustable, aluminized, 5 in. lg, 3 in. w, 1 in. h | ea | | 1 | | * | * | 5 | 22 | |
| 38 | 3 | X2 | H | | 6665-893-2659 | BLOCK, ORIFICE | ea | | 1 | | * | * | 5 | 17 | |
| 39 | 11 | X2 | H | | 5895-323-9921 | BRACKET | pr | | 1 | | * | * | 4 | 27 | |
| 40 | 3 | M | H | | | BRACKET, MICRO SWITCH | ea | | 1 | | | | 4 | 47 | |
| 41 | 3 | M | H | | | BRACKET, PANEL GUIDE, LEFT HAND | ea | | 1 | | | | 4 | 41 | |
| 42 | 3 | M | H | | | BRACKET, PANEL GUIDE, RIGHT HAND | ea | | 1 | | | | 4 | 21 | |
| 43 | 3 | X2 | H | | 6665-778-3481 | BRACKET, VALVE MOUNTING | ea | | 1 | | * | * | 6 | 14 | |
| 44 | 3 | P1 | H | | 6665-778-3484 | BUSHING, TEST VALVE | ea | | 1 | | * | * | 4 | 6 | |
| 45 | 3 | P1 | H | | 6665-778-7121 | CAP, FILTER | ea | | 3 | | * | * | 6 | 25 | |
| 46 | 11 | P1 | H | | 5910-112-7524 | CAPACITOR, FIXED, PAPER DIELECTRIC, 600 v DC, 100, 000 UUF, metal case, uninsulated, hermetically sealed, 1 in. deep, 3/4 in. h, 1-13/16 in. w, 2 terminal lug type | ea | | 1 | | * | 5 | 5 | 19 | |
| 47 | 3 | P1 | H | | 6665-778-3485 | COLLAR, TEST VALVE | ea | | 1 | | * | * | 4 | 15 | |
| 48 | 11 | P1 | F | | 5935-807-7979 | CONNECTOR, PLUG, ELECTRICAL, 4 contacts, plastic dielectric, w/inclosing metal shell, polarized, nonlocking type | ea | | 2 | * | * | * | 4 | 38 | |
| 49 | 11 | P1 | H | | 5935-644-6804 | CONNECTOR, RECEPTACLE, ELECTRICAL, 2 contacts, plastic dielectric, nonlocking type | ea | | 1 | | * | * | 4 | 31 | |
| 50 | 11 | P1 | H | | 5935-817-6463 | CONNECTOR, RECEPTACLE, ELECTRICAL, 4 contacts, plastic dielectric, straight, polarized, nonlocking type, 2 mtg holes | ea | | 2 | | * | * | 4 5 | 39 18 | |

| INDEX NO. | S, M, R CODE | | | | | FEDERAL STOCK NUMBER | DESCRIPTION | UNIT OF ISSUE | EXPEND-ABILITY | QUANTITY PER UNIT | 15 DAY MAINT ALW PER 100 EQUIP | | | ILLUS-TRATIONS | |
|-----------|-------------------|--------|-------------------|-----------------|---------------|--|-------------|---------------|----------------|-------------------|--------------------------------|---------|---------|----------------|--|
| | MATERIEL CODE NO. | SOURCE | MAINTENANCE LEVEL | RECOVER-ABILITY | 3RD ECH | | | | | | 4th ECH | 5th ECH | FIG. NO | ITEM NO. | |
| | | | | | | | | | | | | | | | |
| 51 | 5 | P1 | H | | 4730-277-5552 | ELBOW, PIPE, brass, 1st end, thd female, 1/8 in. - 27 NPT, 2nd end, thd male, 1/8 in. - 27 NPT, 90 deg | ea | | 5 | | * | * | 4 | 43 | |
| 52 | 5 | P1 | F | | 4730-810-9803 | ELBOW, PIPE TO TUBE, brass, 1/8 in. - 27 thd size NPT 1/4 in. - 24 thd size NF tube end | ea | | 10 | * | * | * | 6 | 3 | |
| 53 | 5 | P1 | H | | 4730-822-6801 | ELBOW, PIPE TO TUBE, brass, 1/4 in. od tube, 1/4 m. -18 thd size | ea | | 1 | | * | * | 6 | 18 | |
| 54 | 3 | P | O | | 6665-778-3482 | FILTER, ORIFICE, pkg 10 per bag | bg | 4 ea | 20 | 40 | 200 | | 6 | 6 | |
| 55 | 3 | P1 | H | | 6665-784-0001 | FLANGE, FILTER MOUNTING | ea | | 2 | | * | * | 6 | 5 | |
| 56 | 3 | P1 | H | | 6665-784-0002 | FLANGE, TEST VALVE | ea | | 1 | | * | * | 4 | 13 | |
| 57 | 5 | P | O | | 5920-280-8348 | FUSE | ea | | 1 | (8) | (10) | 20 | 4 | 36 | |
| 58 | 11 | P1 | F | | 5920-581-7213 | FUSE HOLDER, extractor post type, 1 cartridge type, 1-1/4 in. lg, 1/4 in. dia, plastic body, 2 terminals | ea | | 1 | * | * | * | 4 | 37 | |
| | | | | | | | | | | | | | 5 | 20 | |
| 59 | 3 | P1 | H | | 6685-624-3667 | GAGE, PRESSURE, DIAL INDICATING, diaphragm type, pressure scale, 3-1/2 in. dia dial size, 3 mtg holes, double connection, steel case | ea | | 1 | | * | * | 4 | 9 | |
| 60 | 9 | P1 | F | | 5325-753-3959 | GROMMET, RUBBER, natural rubber, 7/16 m. od, 5J6 in. od groove, 3/32 m. thk flange, 3/16 in. dia hole, 7/32 in. h o/a | ea | | 1 | * | * | * | 5 | 30 | |
| 61 | 10 | P1 | F | | 5325-801-3103 | GROMMET, RUBBER, synthetic rubber, 1-1/2 in. od of flange, 1-1/4 in. od of groove, 3/32 in. thk flange, 1/2 in. dia hole, 1/4 in. h overall, 1/16 in. w groove (See index No. 6 for quantities and allowances) | ea | | | | | | 4 | 28 | |
| 62 | 3 | M | H | | | HANDLE, PANEL | ea | | 2 | | * | * | 5 | 1 | |
| 63 | 3 | P1 | H | | 6665-778-7118 | HOLDER, FILTER | ea | | 1 | | * | * | 6 | 7 | |
| 64 | 3 | P1 | H | | 6665-778-7119 | HOUSING, BLEEDER | ea | | 1 | | * | * | 4 | 45 | |

| INDEX NO. | S, M, R CODE | | | | | FEDERAL STOCK NUMBER | DESCRIPTION | UNIT OF ISSUE | EXPEND-ABILITY | QUANTITY PER UNIT | 15 DAY MAINT ALW PER 100 EQUIP | | | ILLUS-TRATIONS | |
|-----------|-------------------|--------|-------------------|-----------------|---------------|---|-------------|---------------|----------------|-------------------|--------------------------------|---------|---------|----------------|--|
| | MATERIEL CODE NO. | SOURCE | MAINTENANCE LEVEL | RECOVER-ABILITY | 3RD ECH | | | | | | 4th ECH | 5th ECH | FIG. NO | ITEM NO. | |
| | | | | | | | | | | | | | | | |
| 65 | 3 | X2 | H | | 6665-778-3487 | HOUSING, ORIFICE | ea | | 2 | | * | * | 6 | 23 | |
| 66 | 3 | X2 | H | | 5355-808-0067 | KNOB, setscrew type, octagon shape, phenolic body, black body, w/o marking | ea | | 1 | | * | * | 5 | 8 | |
| 67 | 5 | P | O | | 6240-143-3049 | LAMP, INCANDESCENT, 120 v, 6 w, type S-6, white light | ea | | 3 | 2 | 2 | 6 | 4 5 | 24 10 | |
| 68 | 5 | P1 | F | | 6210-814-4124 | LIGHT, INDICATOR, 5/8 in. d(ha lens, red, 1 incandescent type screw base lamp, S-6 bulb, 2 solder lug type terminals, mtd by threaded bushing | ea | | 1 | * | * | 2 | 5 | 27 | |
| 69 | 5 | P1 | F | | 6210-081-0831 | LIGHT, INDICATOR, w/lens, 1 in. dia, green, 1 lamp, incandescent type, screw base, S-6 bulb, 2 terminals | ea | | 1 | * | * | 2 | 4 | 7 | |
| 70 | 5 | P1 | F | | 6210-754-8312 | LIGHT, INDICATOR, w/lens, 1 in. dia, red, 1 lamp, incandescent type, screw base, S-6 bulb, 2 terminals | ea | | 1 | * | * | 2 | 4 | 8 | |
| 71 | 3 | P1 | F | | 6665-780-0583 | LOCK, SHAFT | ea | | 1 | * | * | * | 5 | 29 | |
| 72 | 3 | X2 | F | | 6665-778-3486 | NAME PLATE | ea | | 1 | * | * | * | 5 | 25 | |
| 73 | 11 | P1 | F | | 4730-278-3758 | NIPPLE, PIPE. brass, 1/8 in. nom pipe size 1/8 in. - 27 NPT | ea | | 3 | * | * | * | 6 | 27 | |
| 74 | 3 | P1 | H | | 6665-780-0585 | NUT, BLEEDER LOCK | ea | | 1 | | * | * | 5 | 6 | |
| 75 | 9 | P1 | F | | 5310-013-4530 | NUT, PLAIN, HEXAGON, steel, cad or zinc pltd, No. 6-32 NC-2B (See index No. 7 for quantities and allowances) | ea | | | | | | 4 5 | 29 13 | |
| 76 | 9 | P1 | F | | 5310-012-0622 | NUT, PLAIN, HEXAGON, steel, cad or zinc pltd, No. 8-32 NC-2B | ea | | 17 | * | * | * | 4 6 | 26 17 | |
| 77 | 9 | P1 | F | | 5310-012-0361 | NUT, PLAIN, HEXAGON, steel, cad or zinc pltd, No. 10-24 NC-2B | ea | | 8 | * | * | * | 4 | 40 | |

| INDEX NO. | S, M, R CODE | | | | | FEDERAL STOCK NUMBER | DESCRIPTION | UNIT OF ISSUE | EXPEND-ABILITY | QUANTITY PER UNIT | 15 DAY MAINT ALW PER 100 EQUIP | | | ILLUS-TRATIONS | |
|-----------|-------------------|--------|--------------------|-----------------|---------------|---|-------------|---------------|----------------|-------------------|--------------------------------|---------|---------|----------------|--|
| | MATERIEL CODE NO. | SOURCE | MAINTENAN CE LEVEL | RECOVER-ABILITY | 3RD ECH | | | | | | 4th ECH | 5th ECH | FIG. NO | ITEM NO. | |
| | | | | | | | | | | | | | | | |
| 78 | 3 | P1 | F | | 5310-081-8087 | NUT, SELF-LOCKING, HEXAGON, steel, cad pltd, No. 6-32 NC-3B (See index No. 8 for quantities and allowances) | ea | | | | | | 6 | 20 | |
| 79 | 3 | P1 | H | | 4730-541-6188 | NUT, TUBE COUPLING, brass, u/w 1/4 in. od tube size, 3/4 in, lg overall, 7/16 in. -20 UNF-2B, 5 per fiber can | cn | 19 ea | | * | * | | 4 | 11 | |
| | | | | | | | | | | | | | 5 | 15 | |
| | | | | | | | | | | | | | 6 | 10 | |
| 80 | 3 | X2 | H | | 6665-778-3483 | PANEL | ea | | 1 | | * | * | 5 | 11 | |
| 81 | 3 | P1 | O | | 6665-798-3442 | PLUNGER, TEST VALVE | ea | | 1 | * | * | * | 4 | 1 | |
| 82 | 11 | P1 | H | | 5905-810-3979 | RESISTOR, FIXED, WIRE WOUND, 150 OHM, 5 w, w/2 mounting brackets, 4 in. lg of body | ea | | 1 | | * | 5 | 5 | 21 | |
| 83 | 3 | P1 | F | | 6665-779-5921 | SCREW, BLEEDER ADJUST | ea | | 1 | * | * | * | 5 | 5 | |
| 84 | 3 | P1 | F | | 5305-012-5622 | SCREW, DRIVE, steel, cad or zinc pltd, rd hd, 0.073 in. size, 3/16 in. lg | ea | | 4 | * | * | * | 5 | 26 | |
| 85 | 3 | P1 | F | | 5305-253-5623 | SCREW, DRIVE, steel, cad or zinc pltd, No. 8 screw size, 1/2 in. lg | ea | | 2 | * | * | * | 5 | 28 | |
| 86 | 9 | P1 | F | | 5305-043-6639 | SCREW, MACHINE, pan hd, slotted, steel, cad or zinc pltd, No. 4-40 NC-2A, 5/16 in. lg | ea | | 22 | * | * | * | 6 | 24 | |
| 87 | 9 | P1 | F | | 5305-043-6642 | SCREW, MACHINE, pan hd, slotted, steel, cad or zinc pltd, No. 4-40 NC-2A, 1/2 in. lg | ea | | 6 | * | * | * | 6 | 9 | |
| 88 | 9 | P1 | F | | 5305-043-6663 | SCREW, MACHINE, pan hd, slotted, steel, cad or zinc pltd, No. 6-32 UNC-2A, 3/8 in. lg | ea | | 10 | * | * | * | 4 | 32 | |
| | | | | | | | | | | | | | 5 | 9 | |
| 89 | 9 | P1 | H | | 5305-043-6665 | SCREW, MACHINE, pan hd, slotted, steel, cad or zinc pltd, No. 6-32 UNC-2A, 1/2 in. lg | ea | | 8 | | * | * | 5 | 31 | |
| | | | | | | | | | | | | | 6 | 21 | |
| 90 | 3 | P1 | F | | 5305-639-4629 | SCREW, MACHINE, pan hd, slotted, steel, cad or zinc pltd, No. 6-32 NC-2A, 1 in. lg | ea | | 2 | * | * | * | 4 | 49 | |

| INDEX NO. | S, M, R CODE | | | | | FEDERAL STOCK NUMBER | DESCRIPTION | UNIT OF ISSUE | EXPEND-ABILITY | QUANTITY PER UNIT | 15 DAY MAINT ALW PER 100 EQUIP | | | ILLUS-TRATIONS | |
|-----------|-------------------|--------|-------------------|-----------------|---------------|--|-------------|---------------|----------------|-------------------|--------------------------------|---------|---------|----------------|---------|
| | MATERIEL CODE NO. | SOURCE | MAINTENANCE LEVEL | RECOVER-ABILITY | 3RD ECH | | | | | | 4th ECH | 5th ECH | FIG. NO | ITEM NO. | |
| | | | | | | | | | | | | | | | |
| 91 | 9 | P1 | F | | 5305-043-6693 | SCREW, MACHINE, pan hd, slotted, steel, cad or zinc pltd, No. 8-32 NC-2A, 3/8 in. lg | ea | | 16 | * | * | * | 3 6 | 5 15 | |
| 92 | 9 | P1 | F | | 5305-043-6696 | SCREW, MACHINE, pan hd, slotted, steel, cad or zinc pltd, No. B-32 UNC-2A, 5/8 in. lg | ea | | 3 | * | * | * | 4 5 | 10 7 | |
| 93 | 9 | P1 | F | | 5305-043-6730 | SCREW, MACHINE, pan hd, slotted, steel, cad or zinc pltd, No. 10-24 UNC-2A, 3/8 in. g | ea | | 4 | * | * | * | 4 | 23 | |
| 94 | 9 | P1 | H | | 5305-043-6732 | SCREW, MACHINE, pan hd, slotted, steel, cad or zinc pltd, No. 10-24 UNC-2A, 1/2 in. lg | ea | | 16 | | * | * | 4 6 | 42 13 | |
| 95 | 9 | P1 | F | | 5305-043-6750 | SCREW, MACHINE, pan hd, slotted, steel, cad or zinc pltd, No. 10-32 UNF-2A, 1/2 in. lg | ea | | 2 | * | * | * | 6 | 26 | |
| 96 | P1 | F | | | 5305-059-4553 | SCREW, MACHINE, steel, cad or zinc pltd, flat counter-sunk hd, slot drive, No. 6-32 NC-2A, 1/2 in. lg | ea | | 4 | * | * | * | 4 | 14 | |
| 97 | 10 | P1 | F | | 5305-818-4991 | SETSCREW, socket hd, steel, cad or zinc pltd, No. 8-32 NC-3, 5/16 in. lg, flat point | ea | | 2 | * | * | * | 4 | 12 | |
| 98 | 9 | P1 | F | | 5305-682-5989 | SETSCREW, steel, cad or zinc finish, headless, No. 10-32 NF-3, 5/16 in. lg | ea | | 1 | * | * | * | 4 | 5 | |
| 99 | 3 | P1 | H | | 6665-780-0584 | SLEEVE | ea | | 1 | | * | * | 4 | 3 | |
| 101 | 3 | X2 | H | | 6665-778-3480 | SPACER | ea | | 4 | | * | * | 3 | 6 | |
| 102 | 3 | P1 | H | | 6665-833-1219 | SPRING, HELICAL COMPRESSION, steel, 4 coils, 0.043 in. size of material, 0.750 in. free O/A lg of spring, 0.406 in. id of spring | ea | | 1 | | * | * | 4 | 4 | |
| 103 | 3 | P | H | | 6665-777-1053 | SWITCH | ea | | 1 | | | 5 | 10 | 4 48 | |
| 104 | 11 | P1 | H | | 5930-265-6296 | SWITCH, PUSH, plastic body, 1 plunger w/button 3/8 in. lg, 6 solder lug type terminals, bushing mtg | ea | | 1 | | | * | 2 | 4 5 | 17 4 |

| INDEX NO. | S, M, R CODE | | | | | FEDERAL STOCK NUMBER | DESCRIPTION | UNIT OF ISSUE | EXPEND-ABILITY | QUANTITY PER UNIT | 15 DAY MAINT ALW PER 100 EQUIP | | | ILLUS-TRATIONS | |
|-----------|-------------------|--------|-------------------|-----------------|---|----------------------|-------------|---------------|----------------|-------------------|--------------------------------|---------|-------------|----------------|--|
| | MATERIEL CODE NO. | SOURCE | MAINTENANCE LEVEL | RECOVER-ABILITY | 3RD ECH | | | | | | 4th ECH | 5th ECH | FIG. NO | ITEM NO. | |
| | | | | | | | | | | | | | | | |
| 105 | 11 | P1 | H | 5930-756-0271 | SWITCH, ROTARY, 3 position, 2 moving contacts, 8 fixed contacts, 4 dummy terminals, 2 poles, 3 throws, nonshorting type contacts, bushing mtd, rd type, w/separable knob, solder lug type | ea | | 1 | | 1 | 2 | 4 5 | 18 3 | | |
| 106 | 5 | P1 | H | 5930-198-3938 | SWITCH, TOGGLE, SPST, bat type actuator, 2 screw type terminals, bushing mtg | ea | | 3 | | * | 6 | 4 5 | 19 2 | | |
| 107 | 3 | P1 | H | 4730-820-1556 | TEE, PIPE, brass, 1st, 2nd ends, threaded female, 1/8 in. -27 NPT, rh, 0.54 in. leg lg, 3rd end, threaded female, 1/8 in. -27 NPT, rh, 0.43 in. leg lg | ea | | 1 | | * | * | 6 | 28 | | |
| 108 | 11 | P1 | H | 5940-983-6045 | TERMINAL BOARD, plastic, 4 terminals, double screw type, 2-1/8 in. lg. 7/8 in. w, 13/32 in. thk | ea | | 1 | | * | * | 6 | 19 | | |
| 109 | 11 | P1 | H | 5940-983-6047 | TERMINAL BOARD, plastic, 6 terminals, barrier type, double screw type, 2-7/8 in. Lg, 7/8 m. w, 13/32 in. h | ea | | 1 | | * | * | 5 | 23 | | |
| 110 | 11 | P1 | H | 5950-811-5557 | TRANSFORMER, POWER, STEP-DOWN, open frame, primary 117 v, 60 cy, secondary 6.3 v, 1.2 amps, 5 wire lead type terminals, 2 mtg holes | ea | | 1 | | * | 2 | 5 | 24 | | |
| 111 | 5 | X2 | F | 4710-277-5525 | TUBE, COPPER, seamless, 1/4 in. od, 0.035 in. wall thk, 25 to 30 ft lg | ft | | 16 | | * | * | * | 4 5 6 | 46 14 2 | |
| 112 | 3 | P1 | O | 4720-849-3206 | TUBE, RUBBER, 1/8 in. id, 1/8 in. wall thk | ft | | 1 in. | | * | * | * | 6 | 22 | |
| 113 | 5 | P1 | O | 4720-244-7786 | TUBE, RUBBER, natural rubber, black, 3/16 min. id, 3/8 in. od | ft | | 6 in. | | * | * | * | 4 | 16 | |
| 114 | 3 | P1 | O | 4720-244-7789 | TUBE, RUBBER, natural rubber, black, 1/4 m. id, 3/32 in. wall thk | ft | | 18 in. | | * | * | * | 4 | 20 | |
| 115 | 55 | P1 | H | 4810-632-4888 | VALVE, SOLENOID | ea | | 2 | | * | * | 6 | 4 | | |
| 116 | 55 | P1 | H | 4810-777-6601 | VALVE, SOLENOID | ea | | 2 | | * | + | 6 | 1 | | |

| INDEX NO. | S, M, R CODE | | | | | FEDERAL STOCK NUMBER | DESCRIPTION | UNIT OF ISSUE | EXPEND-ABILITY | QUANTITY PER UNIT | 15 DAY MAINT ALW PER 100 EQUIP | | | ILLUS-TRATIONS | |
|---------------------|-------------------|--------|-------------------|-----------------|---------------|--|-------------|---------------|----------------|-------------------|--------------------------------|---------|---------|----------------|--|
| | MATERIEL CODE NO. | SOURCE | MAINTENANCE LEVEL | RECOVER-ABILITY | 3RD ECH | | | | | | 4th ECH | 5th ECH | FIG. NO | ITEM NO. | |
| | | | | | | | | | | | | | | | |
| 117 | 9 | P1 | F | | 5310-043-2226 | WASHER, LOCK, split helical, steel, cad or zinc pltd, med, No. 10 nom screw size | ea | | 22 | * | * | * | 4 6 | 22 12 | |
| 118 | 9 | P1 | F | | 5310-209-5311 | WASHER, LOCK, steel, split helical ring, cad or zinc pltd, No. 4 nom screw size | ea | | 56 | * | * | * | 6 | 8 | |
| 119 | 9 | P1 | F | | 5310-045-0591 | WASHER, LOCK, steel, split helical ring, cad or zinc pltd, No. 6 nom screw size (See index No. 31 for quantities and allowances) | ea | | | | | | 4 5 | 30 12 | |
| 120 | 9 | P1 | F | | 5310-209-5309 | WASHER, LOCK, steel, split helical ring, cad or zinc pltd, No. 8 nom screw size (See index No. 32 for quantities and allowances) | ea | | | | | | 4 6 | 25 16 | |
| CALIBRATOR ASSEMBLY | | | | | | | | | | | | | | | |
| 121 | 3 | P | H | R | 6665-779-5931 | CALIBRATOR ASSEMBLY | ea | | 1 | | 5 | 10 | 7 | | |
| 122 | 5 | P1 | F | | 4730-618-0509 | ADAPTER, STRAIGHT, PIPE TO TUBE, brass, 1st end, thd male, 1/4 in. od tube, 7/16 in. -20 thd size, 2nd end, thd male, 1/8 in. -27 NPT (See index No. 35 for quantities and allowances) | ea | | | | | | 7 | 1 | |
| 123 | 3 | M | H | | | BRACKET, CALIBRATOR | ea | | 1 | | | | 7 | 16 | |
| 124 | 3 | P1 | H | | 6665-779-5938 | BUSHING, CONTACTOR NEEDLE | ea | | 1 | | * | * | 7 | 12 | |
| 125 | 3 | P1 | F | | 4820-812-9029 | COCK, PLUG, 1/8 in. valve size, brass, 1/4 in. nom od tube size, 1/8 in. nom pipe size, lever handle | ea | | 2 | * | * | * | 7 | 34 | |
| 126 | 3 | P1 | H | | 6665-779-5933 | COLLAR, WORM SHAFT | ea | | 1 | | * | * | 7 | 26 | |
| 127 | 5 | P1 | F | | 4730-810-9804 | CROSS, PIPE, brass, 1/8 in. -27 NPT thd size | ea | | 2 | * | * | * | 7 | 2 | |
| 128 | 3 | P | H | | 6665-779-5940 | DIAPHRAGM | ea | | 1 | | (5) | 10 | 7 | 5 | |

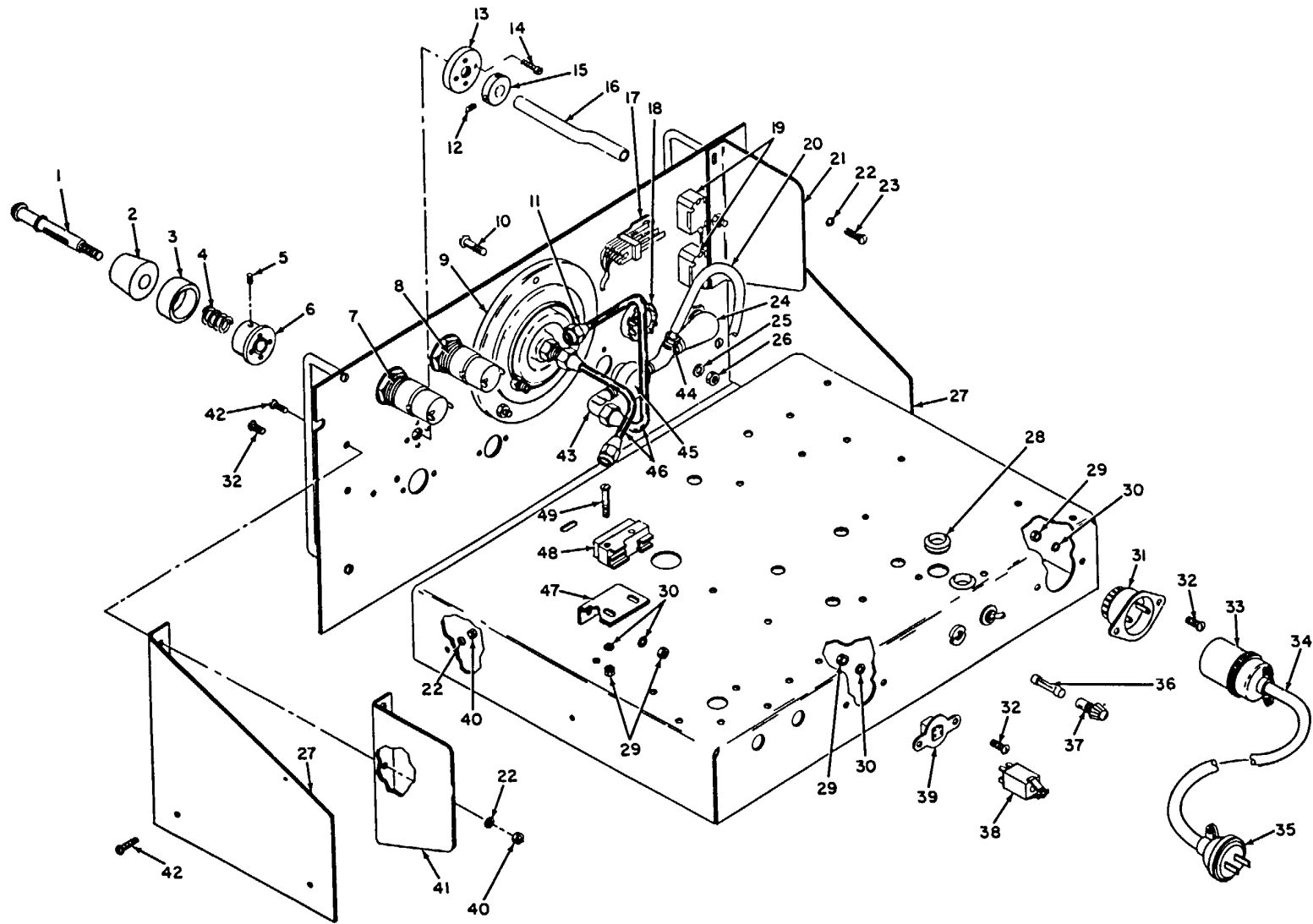


Figure 4. Chassis assembly, rear view.

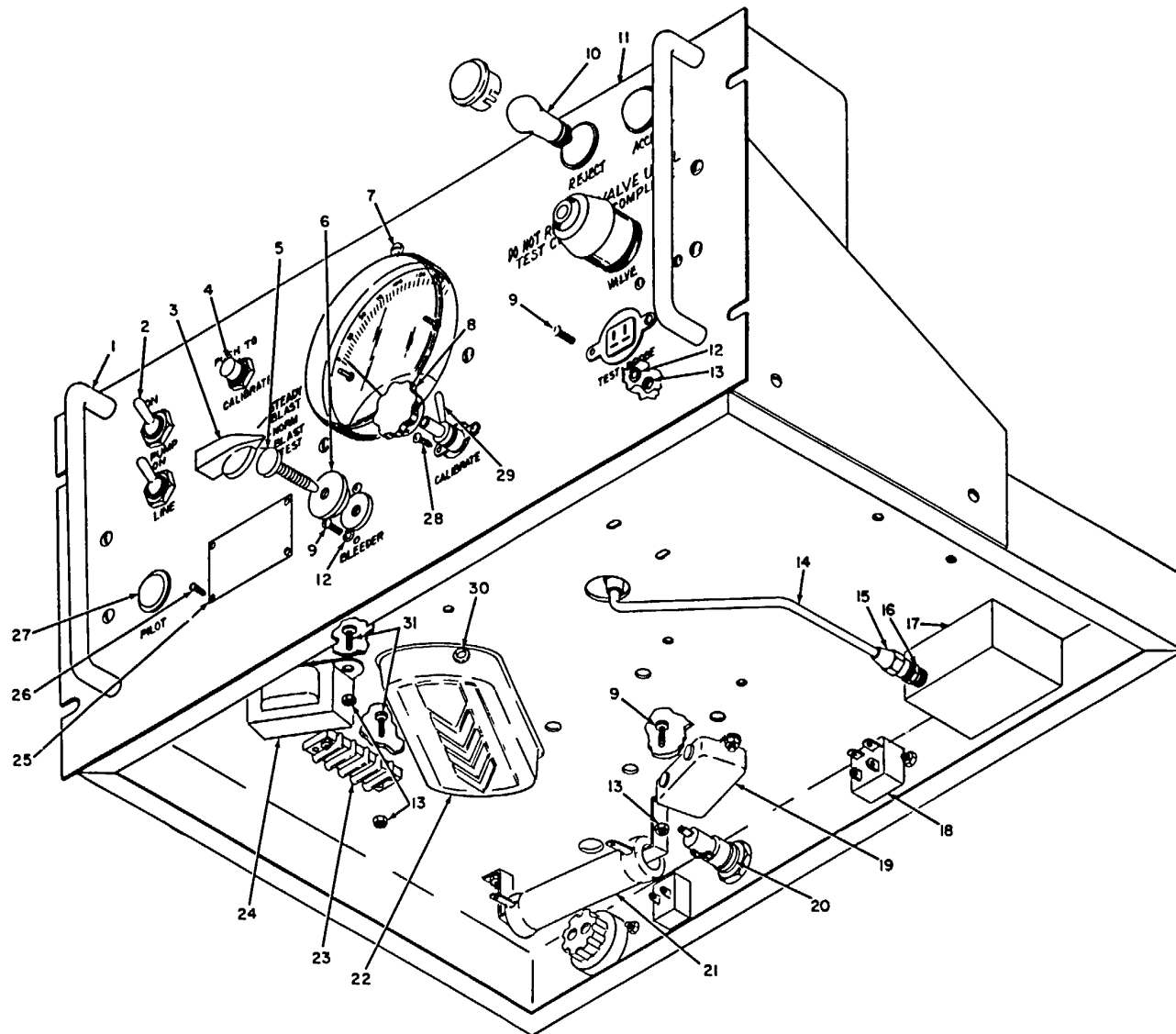


Figure 5. Chassis assembly, front and bottom view.

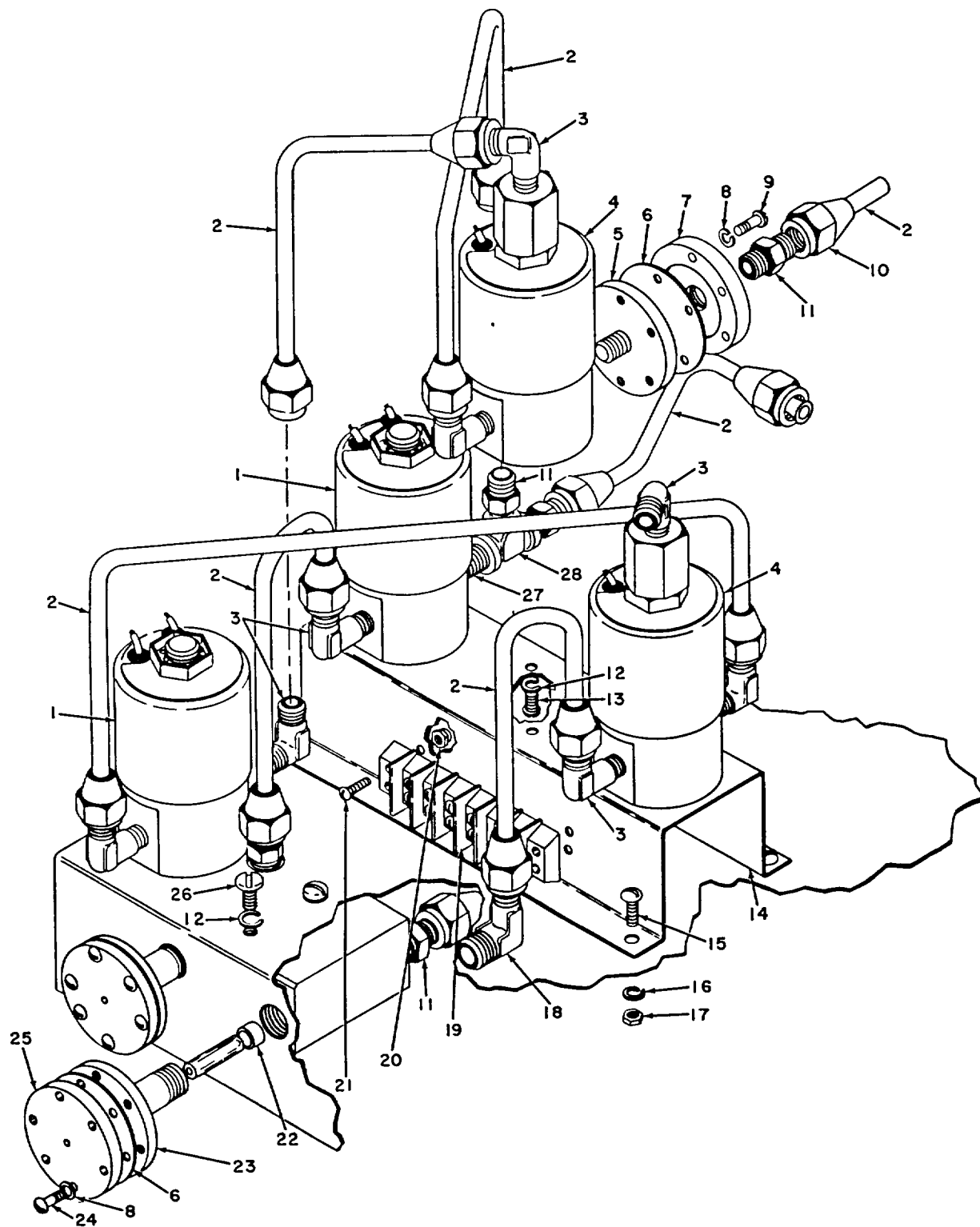


Figure 6. Chassis assembly - solenoid valves.

| INDEX NO. | S, M, R CODE | | | | | FEDERAL STOCK NUMBER | DESCRIPTION | UNIT OF ISSUE | EXPEND-ABILITY | QUANTITY PER UNIT | 15 DAY MAINT ALW PER 100 EQUIP | | | ILLUS-TRATIONS | |
|-----------|-------------------|--------|-------------------|-----------------|---------------|---|-------------|---------------|----------------|-------------------|--------------------------------|---------|---------|----------------|--|
| | MATERIEL CODE NO. | SOURCE | MAINTENANCE LEVEL | RECOVER-ABILITY | 3RD ECH | | | | | | 4th ECH | 5th ECH | FIG. NO | ITEM NO. | |
| | | | | | | | | | | | | | | | |
| 129 | 5 | P | H | | 4730-277-5552 | ELBOW, PIPE, brass, let end, thd female, 1/8 in. -27 NPT, 2nd end, thd male, 1/8 in. -27 NPT, 90 deg (See index No. 51 for quantities and allowances) | ea | | | | | | 7 | 33 | |
| 130 | 5 | P1 | F | | 4730-810-9803 | ELBOW, PIPE TO TUBE, brass, 1/8 in. -27 thd size NPT 1/4 in. -24 thd size NF tube end (See index No. 52 for quantities and allowances) | ea | | | | | | 7 | 11 | |
| 131 | 3 | P1 | F | | 5325-281-6594 | GROMMET, RUBBER, 7/16 in. od, 7/32 in. dia hole, 3/16 in. overall h, 1/16 in. w of groove | ea | | 3 | * | * | * | 7 | 14 | |
| 132 | 3 | X2 | H | | 6665-779-5932 | HOUSING, CALIBRATOR | ea | | 1 | | * | * | 7 | 8 | |
| 133 | 3 | P1 | H | | 6665-779-5937 | INSULATOR, CONTACTOR | ea | | 1 | | * | * | 7 | 13 | |
| 134 | 3 | P1 | H | | 6665-779-5941 | NEEDLE ASSEMBLY | ea | | 1 | | * | * | 7 | 15 | |
| 135 | 11 | P1 | F | | 4730-278-3758 | NIPPLE, PIPE, brass, 1/8 in. nom pipe size, 1/8 in. -27 NPT (See index No. 73 for quantities and allowances) | ea | | | | | | 7 | 3 | |
| 136 | 11 | P1 | F | | 5315-808-7283 | PIN, GROOVED, HEADLESS, steel, cad or zinc pltd 3/8 in. lg | ea | | 1 | * | * | * | 7 | 28 | |
| 137 | 3 | X2 | H | | 6665-779-5939 | PLATE, CALIBRATOR | ea | | 1 | | * | * | 7 | 4 | |
| 138 | 3 | P1 | H | | 5340-200-2637 | RING, RETAINING, bryllium copper | ea | | 3 | | * | * | 7 | 19 | |
| 139 | 9 | P1 | F | | 5305-043-6639 | SCREW, MACHINE, pan hd, slotted, steel, cad or zinc pltd, No. 4-40 NC-2A, 5/16 in. lg (See Index No. 86 for quantities and allowances) | ea | | | | | | 7 | 29 | |
| 140 | 9 | P1 | F | | 5305-043-5885 | SCREW, MACHINE, pan hd, slotted, steel, cad or zinc pltd, No. 6-32 UNC-2A, 5/16 in. lg (See index No. 16 for quantities and allowances) | ea | | | | | | 7 | 6 | |
| 141 | 9 | P1 | F | | 5305-043-6694 | SCREW, MACHINE, pan hd, slotted, steel, cad or zinc pltd, No. 8-32 UNC-2A, 7/16 in. lg | ea | | 4 | * | * | * | 7 | 31 | |

| INDEX NO. | S, M, R CODE | | | | FEDERAL STOCK NUMBER | DESCRIPTION | UNIT OF ISSUE | EXPEND-ABILITY | QUANTITY PER UNIT | 15 DAY MAINT ALW PER 100 EQUIP | | | ILLUS-TRATIONS | |
|-----------|-------------------|--------|-------------------|-----------------|----------------------|---|---------------|----------------|-------------------|--------------------------------|---------|---------|----------------|----------|
| | MATERIEL CODE NO. | SOURCE | MAINTENANCE LEVEL | RECOVER-ABILITY | | | | | | 3RD ECH | 4th ECH | 5th ECH | FIG. NO | ITEM NO. |
| | | | | | | | | | | | | | | |
| 142 | 9 | P1 | F | | 5305-043-6697 | SCREW, MACHINE, pan hd, slotted, steel, cad or zinc pltd, No. 8-32 UNC-2A, 3/4 in. lg | ea | | 4 | * | * | * | 7 | 10 |
| 143 | 9 | P1 | F | | 5305-043-6748 | SCREW, MACHINE, pan hd, slotted, steel, cad or zinc pltd, No. 10-32 UNF-2A, 3/8 in. lg | ea | | 1 | * | * | * | 7 | 18 |
| 144 | 9 | P1 | F | | 5305-249-0527 | SETSCREW, hexagon socket, headless, cup point, No. 8-32 NC-3A, 3/16 in. lg | ea | | 1 | * | * | * | 7 | 25 |
| 145 | 9 | P1 | F | | 5305-249-0526 | SETSCREW, hexagon socket, headless, No. 8-32 NC-SA, 3/8 in. lg | ea | | 1 | | * | * | 7 | 27 |
| 146 | 3 | P1 | H | | 6665-784-0003 | SHAFT, STOP | ea | | 1 | | * | * | 7 | 24 |
| 147 | 3 | P1 | H | | 6665-779-5935 | SHAFT, WORM | ea | | 1 | | * | * | 7 | 20 |
| 148 | 3 | P1 | H | | 6665-815-6107 | SPRING, HELICAL, COMPRESSION, steel, cad pltd, 9 coils, 8 active coils, 0.018 in. size of material | ea | | 1 | | * | 10 | 7 | 21 |
| 149 | 11 | P1 | F | | 5940-283-8478 | TERMINAL, LUG, bronze, w/locking device, for No. 6 screw, 7/8 in. lg, 5/16 in. w, 0.018 in. h | ea | | 1 | * | * | * | 7 | 7 |
| 150 | 11 | P1 | F | | 5940-155-7685 | TERMINAL, LUG, bronze, w/locking device, for No. 10 screw, 57/64 in. lg. 11/32 in. w, 5/64 in. h | ea | | 1 | * | * | * | 7 | 17 |
| 151 | 5 | X2 | F | | 4710-277-5525 | TUBE, COPPER, seamless, 1/4 in. od, 0.035 in. wall thk, 25 to S0 ft lg (See index No. 111 for quantities and allowances) | ft | | | | | | 7 | 35 |
| 152 | 9 | P1 | F | | 5310-198-9348 | WASHER, FLAT, rd, steel, cad or zinc pltd, No. 8 nom screw size | ea | | 4 | * | * | * | 7 | 32 |
| 153 | 3 | P1 | H | | 5310-632-6721 | WASHER, FLAT, rd, steel, No. 4 nom screw size | ea | | 1 | | * | * | 7 | 22 |
| 154 | 9 | P1 | F | | 5310-209-5311 | WASHER, LOCK, steel, split helical ring, cad or zinc pltd, No. 4 nom screw size (See index No. 118 for quantities and allowances) | ea | | | | | | 7 | 30 |

| INDEX NO. | S, M, R CODE | | | | | FEDERAL STOCK NUMBER | DESCRIPTION | UNIT OF ISSUE | EXPEND-ABILITY | QUANTITY PER UNIT | 15 DAY MAINT ALW PER 100 EQUIP | | | ILLUS-TRATIONS | |
|-----------|-------------------|--------|-------------------|-----------------|---------------|--|-------------|---------------|----------------|-------------------|--------------------------------|---------|---------|----------------|--|
| | MATERIEL CODE NO. | SOURCE | MAINTENANCE LEVEL | RECOVER-ABILITY | 3RD ECH | | | | | | 4th ECH | 5th ECH | FIG. NO | ITEM NO. | |
| | | | | | | | | | | | | | | | |
| 155 | 9 | P1 | F | | 5310-209-5309 | WASHER, LOCK, steel, split helical ring, cad or zinc pltd, No. 8 nom screw size (See index No. 32 for quantities and allowances) | ea | | | | | | 7 | 9 | |
| 156 | 3 | P1 | H | | 6665-779-5934 | WORM POWER CORD | ea | | 1 | * | * | | 7 | 23 | |
| 157 | 5 | P | F | | 6150-081-6742 | CABLE ASSEMBLY, POWER, ELECTRICAL, 2 conductors, rubber jacket, 12 ft lg, o/a, w/male and female plug | ea | | 1 | 1 | * | * | 4 | 34 | |
| 158 | 3 | P | F | | 5935-170-8139 | CONNECTOR, PLUG, ELECTRICAL, standard, straight shape, nonlocking type | ea | | 1 | 1 | 2 | 50 | 4 | 35 | |
| 159 | 3 | P | F | | 5935-259-4229 | CONNECTOR, PLUG, ELECTRICAL, universal, straight shape, nonlocking type, 1/2 in. cable HOLDER, ORIFICE | ea | | 1 | 1 | 2 | 50 | 4 | 33 | |
| 160 | 3 | P1 | F | | 6665-779-5930 | HOLDER, BALANCED ORIFICE | ea | | 1 | * | * | * | 8 | 3 | |
| 161 | 3 | P1 | F | | 6665-779-9120 | CAP, BALANCED ORIFICE | ea | | 2 | * | * | * | 8 | 1 | |
| 162 | 3 | P1 | F | | 4720-068-4249 | TUBE, RUBBER, natural rubber, 0. 125 in. id, 0.094 in. wall thk MOTOR AND PUMP ASSEMBLY | ft | | 1/2 in. | * | * | * | 8 | 2 | |
| 163 | 3 | P | F | R | 6665-779-5926 | MOTOR AND PUMP ASSEMBLY | ea | | 1 | 1 | 1 | 5 | 9 | | |
| 164 | 3 | P1 | F | | 4730-554-7792 | ADAPTER, STRAIGHT, PIPE TO HOSE, brass, 1st end, thd male, 1/8 in. -27 NPT, 2nd end, unthreaded male, 1/4 in. nom hose size,-1-3/8 in. lg overall (See index No. 34 for quantities and allowances) | ea | | | | | | 9 | 8 | |

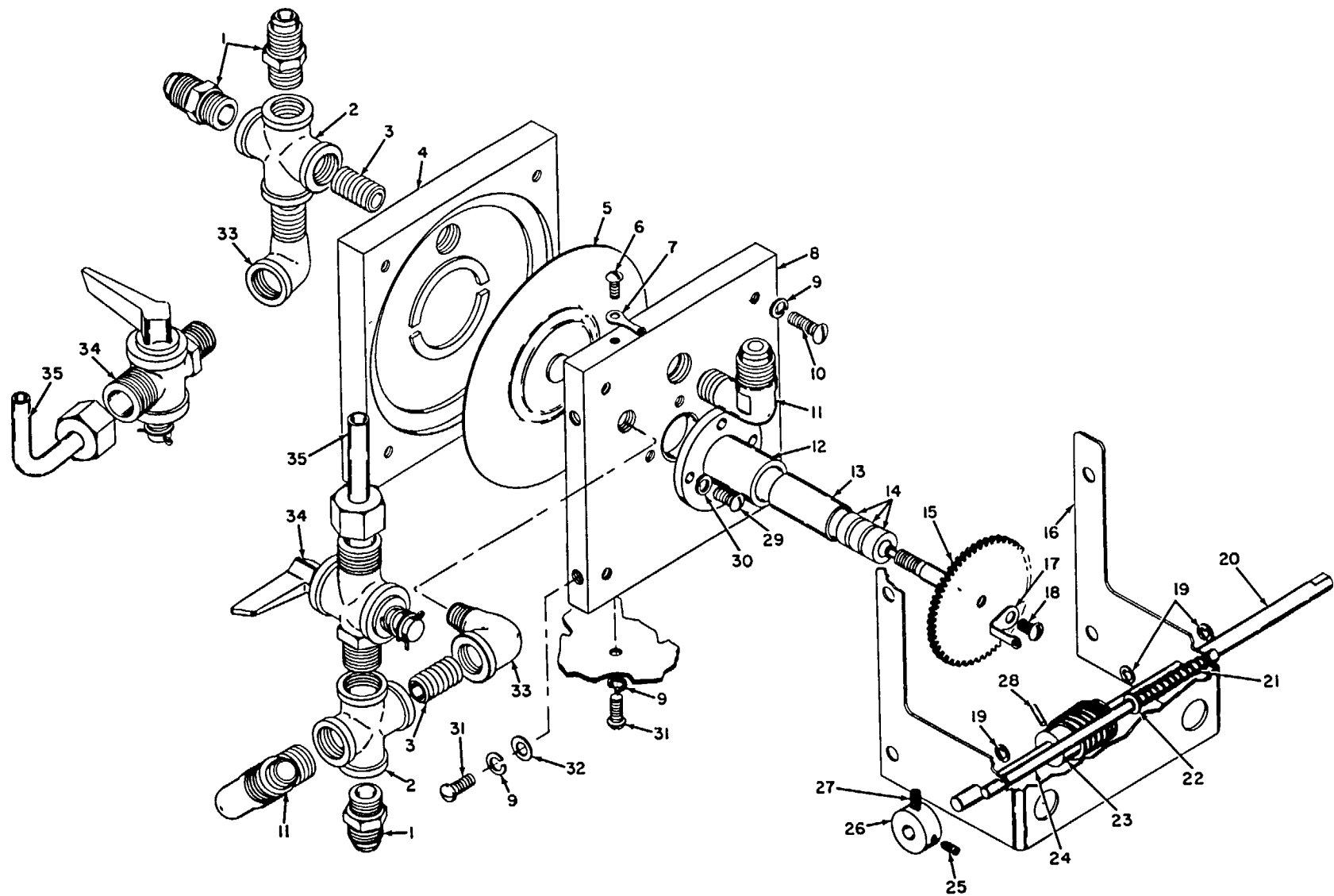


Figure 7. Calibrator assembly.

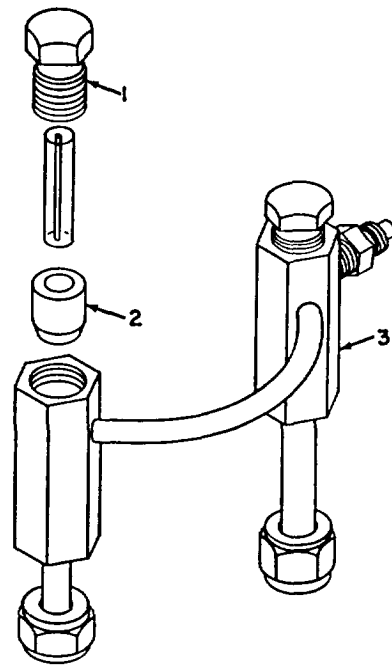


Figure 8. Orifice holder.

| INDEX NO. | S, M, R CODE | | | | | FEDERAL STOCK NUMBER | DESCRIPTION | UNIT OF ISSUE | EXPEND-ABILITY | QUANTITY PER UNIT | 15 DAY MAINT ALW PER 100 EQUIP | | | ILLUS-TRATIONS | |
|-----------|-------------------|--------|-------------------|-----------------|---------|---|-------------|---------------|----------------|-------------------|--------------------------------|---------|---------|----------------|--|
| | MATERIEL CODE NO. | SOURCE | MAINTENANCE LEVEL | RECOVER-ABILITY | 3RD ECH | | | | | | 4th ECH | 5th ECH | FIG. NO | ITEM NO. | |
| | | | | | | | | | | | | | | | |
| 165 | 3 | X2 | H | 6665-778-9591 | | BRACKET, PUMP MOUNTING | ea | | 1 | | * | * | 9 | 28 | |
| 166 | 11 | P1 | H | 5977-730-7070 | | BRUSH, ELECTRICAL CONTACT, 3/16 in. dia, 1/2 in. lg, w/shunt spring and terminal | ea | | 2 | | * | * | 9 | 37 | |
| 167 | 11 | P1 | H | 5977-843-6359 | | BRUSH, ELECTRICAL CONTACT, 1/4 m. x 1/4 in., 3/4 in. lg, w/shunt spring and terminal | ea | | 2 | | * | * | 9 | 35 | |
| 168 | 3 | P1 | F | 4730-011-2877 | | BUSHING, PIPE, brass, 1/4 in. -18 NPT to 1/8 in. -27 NPT | ea | | 2 | * | * | * | 9 | 6 | |
| 169 | 3 | P1 | H | 6665-779-5922 | | CAM, PUMP | ea | | 1 | | * | * | 9 | 21 | |
| 170 | 3 | P1 | H | 6665-778-7121 | | CAP, FILTER (See index No. 45 for quantities and allowances) | ea | | | | | | 9 | 3 | |
| 171 | 5 | P1 | H | 4730-784-6783 | | CUP, OIL | ea | | 1 | | * | * | 9 | 26 | |
| 172 | 3 | X2 | H | 6665-778-9590 | | CYLINDER, PUMP | ea | | 1 | | * | * | 9 | 23 | |
| 173 | 3 | X2 | H | 6665-085-8908 | | DISK, MOTOR, MOUNT | ea | | 1 | | * | * | 9 | 17 | |
| 174 | 5 | P1 | H | 4730-277-5552 | | ELBOW, PIPE, brass, 1st end, thd female, 1/8 in. -27 NPT, 2nd end, thd male, 1/8 in. -27 NPT, 90 deg (See index No. 51 for quantities and allowances) | ea | | | | | | 9 | 7 | |
| 175 | 5 | P1 | F | 4730-842-3524 | | ELBOW, PIPE TO HOSE, brass, 1/4 plastic to 1/8 NPT, 3/8-24 | ea | | 1 | * | * | * | 9 | 27 | |
| 176 | 3 | P | O | 6665-778-3482 | | FILTER, ORIFICE, pkg 10 per bag (See index No. 54 for quantities and allowances) | bg | | | | | | 9 | 4 | |
| 177 | 3 | P1 | H | 6665-784-0001 | | FLANGE, FILTER MOUNTING (See index No. 55 for quantities and allowances) | ea | | | | | | 9 | 5 | |
| 178 | 3 | M | H | | | HANDLE, VALVE | ea | | 1 | | | | 9 | 10 | |
| 179 | 3 | X2 | H | 6665-784-1598 | | HOUSING, BLOWER | ea | | 1 | | * | * | 9 | 13 | |

| INDEX NO. | S, M, R CODE | | | | | FEDERAL STOCK NUMBER | DESCRIPTION | UNIT OF ISSUE | EXPEND-ABILITY | QUANTITY PER UNIT | 15 DAY MAINT ALW PER 100 EQUIP | | | ILLUS-TRATIONS | |
|-----------|-------------------|--------|-------------------|-----------------|---------------|--|-------------|---------------|----------------|-------------------|--------------------------------|---------|---------|----------------|----|
| | MATERIEL CODE NO. | SOURCE | MAINTENANCE LEVEL | RECOVER-ABILITY | 3RD ECH | | | | | | 4th ECH | 5th ECH | FIG. NO | ITEM NO. | |
| | | | | | | | | | | | | | | | |
| 180 | 5 | P1 | H | | 4450-396-0296 | IMPELLER | ea | | 1 | | * | * | 9 | 14 | |
| 181 | 5 | P1 | H | | 6105-974-1236 | MOTOR, UNIVERSAL | ea | | 1 | | * | * | 9 | 18 | |
| 182 | 9 | P1 | F | | 5310-012-0622 | NUT, PLAIN, HEXAGON, steel, cad or zinc pltd, No. 8-32 NC-2B (See index No. 76 for quantities and allowances) | ea | | | | | | 9 | 16 | |
| 183 | 9 | P1 | H | | 5310-800-5282 | NUT, PLAIN, HEXAGON, steel, cad or zinc pltd, 1/4 in. -20 UNC-2B | ea | | 5 | | * | * | 9 | 31 | |
| 184 | 3 | P1 | H | | 6665-778-9592 | PISTON, PUMP | ea | | 1 | | * | * | 9 | 22 | |
| 185 | 5 | P1 | O | | 4710-809-8149 | PLASTIC TUBING, polyethylene, 0.250 in. od, 0.040 in. wall thk, 300 in. lg. white | ft | | 6-1/2 in. | | * | * | * | 9 | 20 |
| 186 | 3 | X2 | H | | 6665-784-1597 | PLATE, BLOWER MOUNTING | ea | | 1 | | * | * | 9 | 36 | |
| 187 | 9 | P1 | H | | 5305-043-6639 | SCREW, MACHINE, pan hd, slotted, steel, cad or zinc pltd, No. 4-40 NC-2A, 5/16 in. lg (See index No. 86 for quantities and allowances) | ea | | | | | | 9 | 1 | |
| 188 | 9 | P1 | F | | 5305-019-3257 | SCREW, MACHINE, pan hd, slotted, steel, cad or zinc pltd, No. 6-32 UNC-2A, 1/4 in. lg | ea | | 7 | | * | * | * | 9 | 39 |
| 189 | 9 | P1 | F | | 5305-043-6666 | SCREW, MACHINE, pan hd, slotted, steel, cad or zinc pltd, No. 6-32 UNC-2A, 5/8 in. lg (See index No. 17 for quantities and allowances) | ea | | | | | | 9 | 34 | |
| 190 | 9 | P1 | F | | 5305-043-6728 | SCREW, MACHINE, pan hd, slotted, steel, cad or zinc pltd, No. 10-24 UNC-2A, 1/4 in. lg | ea | | 1 | | * | * | * | 9 | 25 |
| 191 | 3 | P1 | H | | 5305-558-3679 | SCREW, MACHINE, pan hd, slotted, steel, cad or zinc pltd, 1/4 in. -20 NC-2A, 1 in. lg | ea | | 4 | | * | * | 9 | 32 | |
| 192 | 3 | P1 | F | | 5305-811-2061 | SETSCREW, steel, headless, socket drive, No. 8-32 NC-3, 1/2 in. lg, dog point | ea | | 2 | | * | * | * | 9 | 19 |
| 193 | 3 | P1 | H | | 6665-778-9593 | SPACER, BLOWER HOUSING | ea | | 1 | | * | * | 9 | 15 | |

| INDEX NO. | S, M, R CODE | | | | | FEDERAL STOCK NUMBER | DESCRIPTION | UNIT OF ISSUE | EXPEND-ABILITY | QUANTITY PER UNIT | 15 DAY MAINT ALW PER 100 EQUIP | | | ILLUS-TRATIONS | |
|-----------|-------------------|--------|-------------------|-----------------|---------------|---|-------------|---------------|----------------|-------------------|--------------------------------|---------|---------|----------------|--|
| | MATERIEL CODE NO. | SOURCE | MAINTENANCE LEVEL | RECOVER-ABILITY | 3RD ECH | | | | | | 4th ECH | 5th ECH | FIG. NO | ITEM NO. | |
| | | | | | | | | | | | | | | | |
| 194 | 8 | P1 | O | | 6640-441-0000 | STOPPER, RUBBER, No. 4 | ea | | 1 | * | * | * | 9 | 12 | |
| 195 | 5 | X2 | F | | 4710-277-5526 | TUBE, COPPER, seamless, 5/16 in. od, 0.035 in. wall thk, 25 to 30 ft lg | ft | | 1-1/2 1 n. | | * | * | 9 | 11 | |
| 196 | 3 | P1 | O | | 4720-244-7789 | TUBE, RUBBER, natural rubber, black, 1/4 m. id, 3/32 in. wall thk (See index No. 114 for quantities and allowances) | ft | | | | | | 9 | 9 | |
| 197 | 5 | P1 | F | | 4720-235-1781 | TUBE, RUBBER, pure gum, natural, 1/4 in. id, 1/8 in. wall thk | ft | | 3.5 in. | * | * | * | 9 | 29 | |
| 198 | 3 | P1 | F | | 6665-970-0002 | VALVE AND BLOWER ADAPTER | ea | | 1 | * | * | * | 9 | 38 | |
| 199 | 3 | P1 | F | | 5310-809-3078 | WASHER, FLAT, steel, cad or zinc, 1/4 in. nom bolt size | ea | | 5 | * | * | * | 9 | 30 | |
| 201 | 9 | P1 | F | | 5310-209-5311 | WASHER, LOCK, steel, split helical ring, cad or zinc pltd, No. 4 nom screw size (See index No. 118 for quantities and allowances) | ea | | | | | | 9 | 2 | |
| 202 | 9 | P1 | F | | 5310-045-0591 | WASHER, LOCK, steel, split helical ring, cad or zinc pltd, No. 6 nom screw size (See index No. 31 for quantities and allowances) | ea | | | | | | 9 | 33 | |
| 203 | 3 | P1 | F | | 5330-618-7768 | WASHER, NONMETALLIC, fiber, 7/16 in. od, 13/64 in. id, 1/16 in. thk | ea | | 1 | * | * | * | 9 | 24 | |
| | | | | | | VALVE ASSEMBLY | | | | | | | | | |
| 204 | 3 | P1 | F | | 6665-784-9221 | VALVE ASSEMBLY | ea | | 1 | * | * | * | 10 | | |
| 205 | 5 | P1 | H | | 4730-011-9928 | BUSHING, PIPE, brass, 3/8 in.-18 NPT to 1/4 in.-18 NPT | ea | | 2 | | * | * | 10 | 1 | |
| 206 | 9 | P1 | F | | 5310-012-0622 | NUT, PLAIN, HEXAGON, steel, cad or zinc pltd, No. 8-32 NC-2B (See index No. 76 for quantities and allowances) | ea | | | | | | 10 | 4 | |

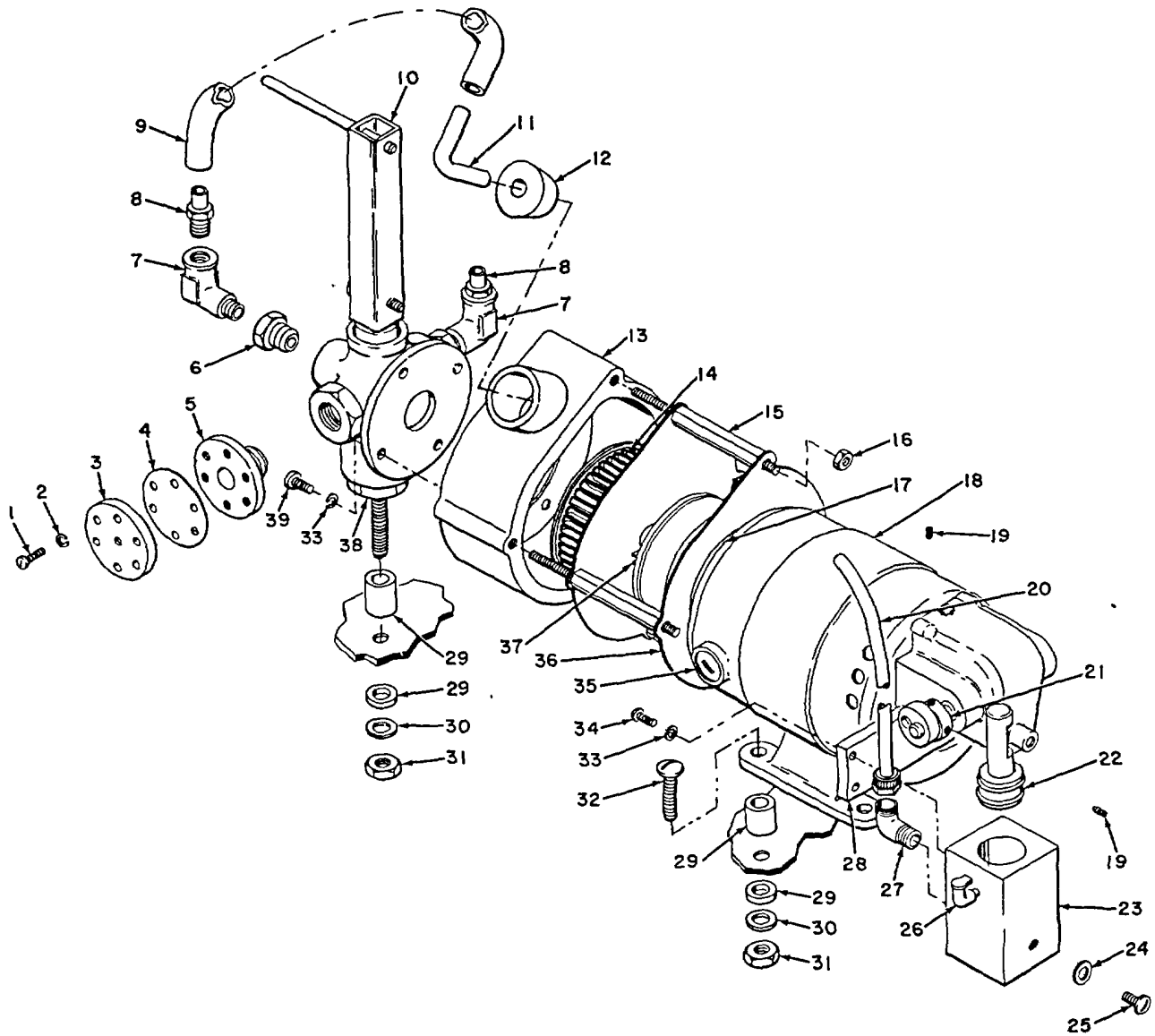


Figure 9. Motor and pump assembly.

| INDEX NO. | S, M, R CODE | | | | | FEDERAL STOCK NUMBER | DESCRIPTION | UNIT OF ISSUE | EXPEND-ABILITY | QUANTITY PER UNIT | 15 DAY MAINT ALW PER 100 EQUIP | | | ILLUS-TRATIONS | |
|---------------------|-------------------|--------|-------------------|-----------------|---------------|--|-------------|---------------|----------------|-------------------|--------------------------------|---------|---------|----------------|--|
| | MATERIEL CODE NO. | SOURCE | MAINTENANCE LEVEL | RECOVER-ABILITY | 3RD ECH | | | | | | 4th ECH | 5th ECH | FIG. NO | ITEM NO. | |
| | | | | | | | | | | | | | | | |
| 207 | 9 | P1 | F | | 5305-043-6693 | SCREW, MACHINE, pan hd, slotted, steel, cad or zinc pltd, No. 8-32 NC-2A, 3/8 in. lg (See Index No. 91 for quantities and allowances) | ea | | | | | | 10 | 2 | |
| 208 | 9 | P1 | F | | 5310-209-5309 | WASHER, LOCK, steel, split helical ring, cad or zinc pltd, No. 8 nom screw size (See index No. 32 for quantities and allowances) | ea | | | | | | 10 | 3 | |
| GROUP 200 - CABINET | | | | | | | | | | | | | | | |
| 209 | 3 | P1 | D | R | 6665-777-6599 | CABINET ASSEMBLY | ea | | 1 | | | | 5 | 11 | |
| 210 | 3 | P1 | F | | 6665-776-4394 | BRACKET, PROBE RETAINING | ea | | 1 | * | * | * | 11 | 7 | |
| 211 | 3 | X2 | D | | 6665-776-8820 | CABINET | ea | | 1 | | | * | 11 | 1 | |
| 212 | 11 | P1 | F | | 5940-258-6412 | CLIP, ELECTRICAL, ferrule style accommodates 9/16 in. dia material, bronze, uninsulated, 13/16 in. h, 19/32 in. lg, 5/8 in. w, 30 amp, 250 v | ea | | 1 | * | * | * | 11 | 4 | |
| 213 | 3 | P1 | F | | 6665-085-8944 | DIAGRAM, WIRING | ea | | 1 | * | * | * | 11 | 10 | |
| 214 | 3 | P1 | H | | 6665-970-0001 | HANDLE, PANEL | ea | | 2 | | * | * | 11 | 14 | |
| 215 | 9 | P1 | F | | 5310-013-4524 | NUT, PLAIN, HEXAGON, steel, cad or zinc pltd, No. 4-40 NC-2B | ea | | 20 | * | * | * | 11 | 5 | |
| 216 | 9 | P1 | F | | 5310-013-4530 | NUT, PLAIN, HEXAGON, steel, cad or zinc pltd, No. 6-32 NC-2B (See index No. 7 for quantities and allowances) | ea | | | | | | 11 | 2 | |
| 217 | 9 | P1 | F | | 5305-983-6652 | SCREW, CAP, steel, cad or zinc pltd, w/chromate, flat fillister hd, No. 10-32 NF-3A, 3/4 in. lg | ea | | 4 | * | * | * | 11 | 15 | |
| 218 | 9 | P1 | F | | 5305-043-6638 | SCREW, MACHINE, pan hd, slotted, steel, cad or zinc pltd, No. 4-40 NC-2A, 1/4 in. lg | ea | | 8 | * | * | * | 11 | 8 | |

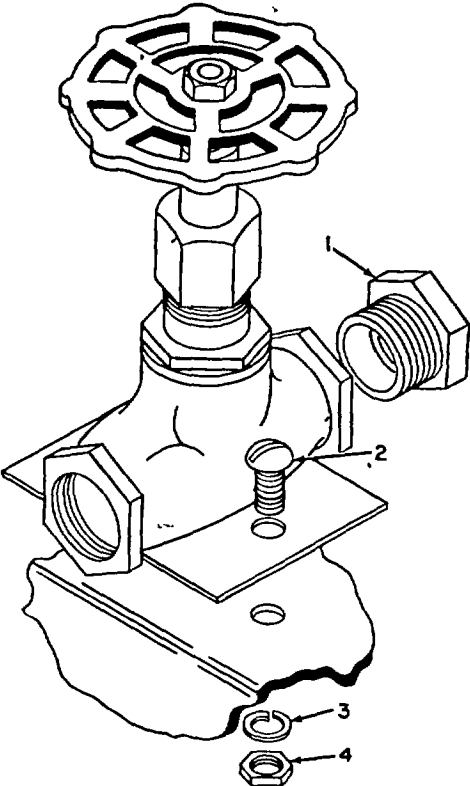


Figure 10. Valve assembly.

| INDEX NO. | S, M, R CODE | | | | | FEDERAL STOCK NUMBER | DESCRIPTION | UNIT OF ISSUE | EXPEND-ABILITY | QUANTITY PER UNIT | 15 DAY MAINT ALW PER 100 EQUIP | | | ILLUS-TRATIONS | |
|-------------------|-------------------|--------|-------------------|-----------------|---------------|--|-------------|---------------|----------------|-------------------|--------------------------------|---------|---------|----------------|--|
| | MATERIEL CODE NO. | SOURCE | MAINTENANCE LEVEL | RECOVER-ABILITY | 3RD ECH | | | | | | 4th ECH | 5th ECH | FIG. NO | ITEM NO. | |
| | | | | | | | | | | | | | | | |
| 219 | 9 | P1 | F | | 5305-019-3257 | SCREW, MACHINE, pan hd, slotted, steel, ad or zinc pltd, No. 6-32 UNC-2A, 1/4 In. lg (See index No. 188 for quantities and allowances) | ea | | | | | | 11 | 9 | |
| 220 | 9 | P1 | F | | 5305-43-6693 | SCREW, MACHINE, pan d, slotted, steel, cad or zinc pltd, No. 8-32 NC-2A, 3/8 in. lg (See index No. 91 for quantities and allowances) | ea | | | | | | 11 | 12 | |
| 221 | 3 | P1 | F | | 6665-776-8822 | SPRING, BRACKET | ea | | 1 | * | * | * | 11 | 11 | |
| 222 | 9 | P1 | F | | 5310-209-5311 | WASHER, LOCK, steel, split helical ring, cad or zinc pltd, No. 4 nom screw size (See index No. 118 for quantities and allowances) | ea | | | | | | 11 | 6 | |
| 223 | 9 | P1 | F | | 5310-045-0591 | WASHER, LOCK, steel, split helical ring, cad or zinc pltd, No. 6 nom screw size (See index No. 31 for quantities and allowances) | ea | | | | | | 11 | 3 | |
| 224 | 9 | P1 | F | | 5310-209-5309 | WASHER, LOCK, steel, split belies ring, cad or zinc pltd, No. 8 nom screw size (See Index No. 32 for quantities and allowances) | ea | | | | | | 11 | 13 | |
| GROUP 300 - COVER | | | | | | | | | | | | | | | |
| 225 | 3 | P1 | O | R | 6665-775-8936 | COVER, PANEL ASSEMBLY | ea | | 1 | * | * | * | 12 | | |
| 226 | 3 | P1 | F | | 6665-776-4388 | CLIP | ea | | 4 | * | * | * | 12 | 17 | |
| 227 | 3 | P1 | F | | 5940-666-4843 | CLIP, ELECTRICAL, phosphor bronze, uninsulated, 29/64 in. h, 5/16 in. lg, 11/32 in. w | ea | | 5 | * | * | * | 12 | 2 | |
| 228 | 3 | X2 | D | | 6665-776-4387 | COVER | ea | | 1 | | | * | 12 | 5 | |
| 229 | 3 | X2 | D | | 6665-776-4386 | HANDLE, COVER | ea | | 2 | | | * | 12 | 7 | |
| 230 | 9 | P1 | H | | 5305-043-6640 | SCREW, MACHINE, pan hd, slotted, steel, cad or zince pltd, No. 4-40 NC-2A, 3/8 in. lg | ea | | 4 | | * | * | 12 | 11 | |

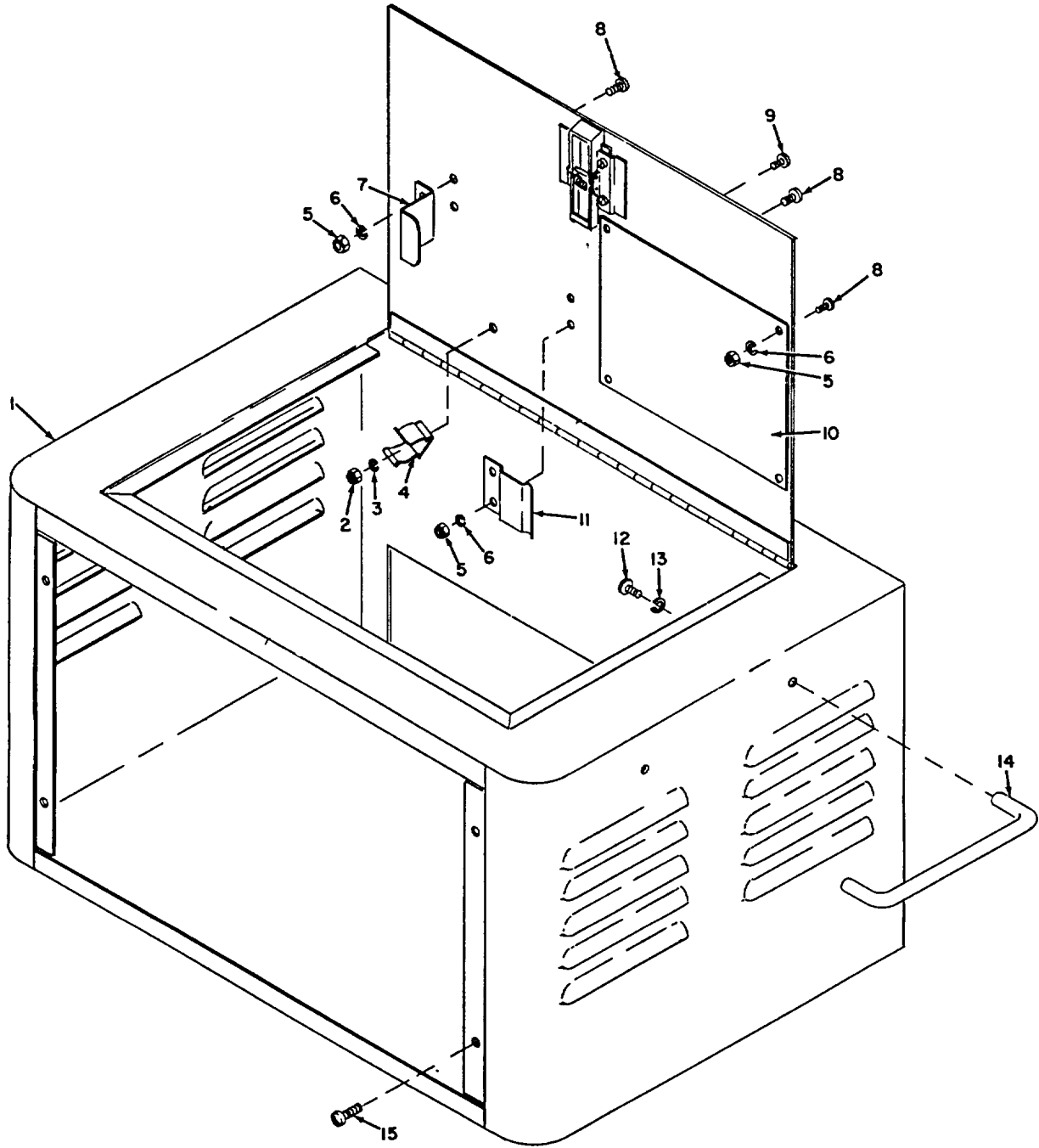


Figure 11. Cabinet assembly.

| INDEX NO. | S, M, R CODE | | | | | FEDERAL STOCK NUMBER | DESCRIPTION | UNIT OF ISSUE | EXPEND-ABILITY | QUANTITY PER UNIT | 15 DAY MAINT ALW PER 100 EQUIP | | PER 100 EQUIP | ILLUS-TRATIONS | |
|-----------|-------------------|--------|-------------------|-----------------|---------------|--|-------------|---------------|----------------|-------------------|--------------------------------|---------|---------------|----------------|----------|
| | MATERIEL CODE NO. | SOURCE | MAINTENANCE LEVEL | RECOVER-ABILITY | 3RD ECH | | | | | | 4th ECH | 5th ECH | | FIG. NO | ITEM NO. |
| | | | | | | | | | | | | | | | |
| 231 | 3 | P1 | D | | 6665-085-8945 | DIAGRAM, VACUUM | ea | | 1 | | | * | 12 | 6 | |
| 232 | 3 | X2 | F | | 6665-776-4390 | MANOMETER, WATER | ea | | 1 | * | * | * | 12 | 19 | |
| 233 | 9 | P1 | F | | 5310-013-4524 | NUT, PLAIN, HEXAGON, steel, cad or zinc pltd, No. 4-40 NC-2B (See index No. 215 for quantities and allowances) | ea | | | | | | 12 | 9 | |
| 234 | 9 | P1 | F | | 5310-013-4530 | NUT, PLAIN. HEXAGON, steel, cad or zinc pltd, No. 6-32 NC-2B (See index No. 7 for quantities and allowances) | ea | | | | | | 12 | 13 | |
| 235 | 3 | P | O | | 6665-808-8830 | ORIFICE, pyrex, size 1 | ea | | 2 | 3 | 5 | 60 | 12 | 14 | |
| 236 | 3 | P | O | | 6665-808-8832 | ORIFICE, pyrex, size 3 | ea | | 2 | 3 | 5 | 60 | 12 | 15 | |
| 237 | 3 | X2 | D | | 6665-775-8931 | PLATE, MANOMETER MTG | ea | | 1 | | | * | 12 | 4 | |
| 238 | 3 | P1 | F | | 6665-775-8934 | SCALE, MANOMETER | ea | | 1 | * | * | * | 12 | 3 | |
| 239 | 10 | P1 | F | | 5305-043-6637 | SCREW, MACHINE, pan hd, slotted, steel, cad or zinc pltd, No. 4-40 NC-2A, 3/16 in. lg | ea | | 23 | * | * | * | 12 | 1 | |
| 240 | 9 | P1 | F | | 5305-043-5885 | SCREW. MACHINE, pan hd, slotted, steel, cad or zinc pltd, No. 6-32 UNC-2A, 5/16 in. lg (See index No. 16 for quantities and allowances) | ea | | | | | | 12 | 10 | |
| 241 | 3 | P1 | 11 | | 6665-775-8933 | SPRING | ea | | 4 | | * | * | 12 | 20 | |
| 242 | 3 | P1 | F | | 5340-291-3679 | STRAP, RETAINING, steel, 5/16 in. inside h, 1/2 in. id, 1/2 in. w overall, 7/16 in. from center of arch to mtg hole center, 0.974 in. lg overall, 0.147 in. dia mtg hole, 0.037 in. thk material | ea | | 4 | * | * | * | 12 | 16 | |
| 243 | 5 | P1 | O | | 4720-809-3191 | TUBE, RUBBER, natural rubber, 1/8 in. id, 1/8 in. wall thk, 30 in. lg | ea | | 1 | * | * | * | 12 | 18 | |

| INDEX NO. | S, M, R CODE | | | | | FEDERAL STOCK NUMBER | DESCRIPTION | UNIT OF ISSUE | EXPEND-ABILITY | QUANTITY PER UNIT | 15 DAY MAINT ALW PER 100 EQUIP | | | ILLUS-TRATIONS | |
|-------------------|-------------------|--------|-------------------|-----------------|---------------|---|-------------|---------------|----------------|-------------------|--------------------------------|---------|---------|----------------|--|
| | MATERIEL CODE NO. | SOURCE | MAINTENANCE LEVEL | RECOVER-ABILITY | 3RD ECH | | | | | | 4th ECH | 5th ECH | FIG. NO | ITEM NO. | |
| | | | | | | | | | | | | | | | |
| 244 | 9 | P1 | F | | 5310-209-5311 | WASHER, LOCK, steel, split helical ring, cad or zinc pltd, No. 4 nom screw size (See index No. 118 for quantities and allowances) | ea | | | | | | 12 | 8 | |
| 245 | 9 | P1 | F | | 5310-045-0591 | WASHER, LOCK, steel, split helical ring, cad or zinc pltd, No. 6 nom screw size (See index No. 31 for quantities and allowances) | ea | | | | | | 12 | 12 | |
| GROUP 400 - PROBE | | | | | | | | | | | | | | | |
| 246 | 3 | P1 | O | R | 6665-792-2534 | PROBE ASSEMBLY | ea | | 1 | * | * | * | 13 | | |
| 247 | 3 | P1 | F | | 4730-554-7792 | ADAPTER, STRAIGHT, PIPE TO HOSE, brass, 1st end, thd male, 1/8 in.-27 NPT, 2nd end, unthreaded male, 1/4 in. nom hose size, 1-3/8 in. lg overall (See index No. 34 for quantities and allowances) | ea | | | * | * | * | 13 | 19 | |
| 248 | 3 | P1 | O | | 6665-778-7117 | ADAPTER, TEST VALVE (See index No. 36 for quantities and allowances) | ea | | | | | | 13 | 4 | |
| 249 | 3 | X2 | H | | 6665-792-2535 | BARREL, TEST PROBE | ea | | 1 | | * | * | 13 | 3 | |
| 250 | 3 | B2 | H | | 6665-792-2536 | BRACKET, MASK TESTING | ea | | 1 | | * | * | 13 | 15 | |
| 251 | 5 | P1 | O | | 4730-585-8621 | CLAMP, HOSE, steel, 13/16 in. to 7/8 in. id | ea | | 2 | 2 | 2 | 50 | 13 | 17 | |
| 252 | 11 | P1 | F | | 5935-807-7979 | CONNECTOR, PLUG, ELECTRICAL, 4 contacts, plastic dielectric, w/inclosing metal shell, polarized, non-locking type (See index No. 48 for quantities and allowances). | ea | | | | | | 13 | 12 | |
| 253 | 3 | X2 | F | | 8665-792-2538 | COVER, SWITCH | ea | | 1 | * | * | * | 13 | 11 | |
| 254 | 11 | P1 | F | | 5970-836-2246 | INSULATION SLEEVING, ELECTRICAL, flexible, fiber, color coded black .204 in. ld, 42 in. lg, vinyl coated, varnish impregnation | ea | | 1 | * | * | * | 13 | 13 | |

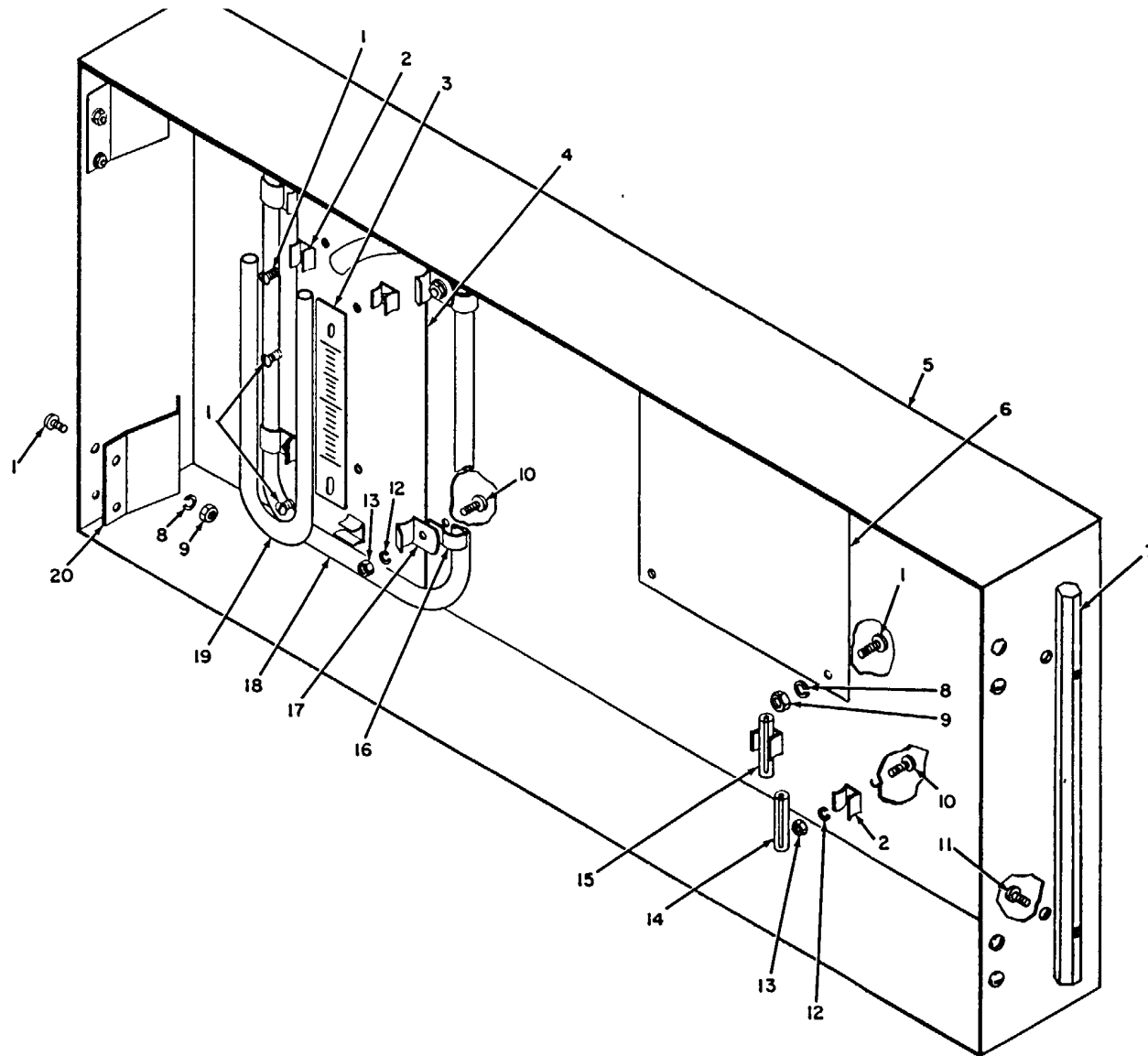


Figure 12. Panel cover assembly.

| INDEX NO. | S, M, R CODE | | | | FEDERAL STOCK NUMBER | DESCRIPTION | UNIT OF ISSUE | EXPEND-ABILITY | QUANTITY PER UNIT | 15 DAY MAINT ALW PER 100 EQUIP | | | ILLUS-TRATIONS | |
|-----------|-------------------|--------|-------------------|-----------------|----------------------|---|---------------|----------------|-------------------|--------------------------------|---------|---------|----------------|----------|
| | MATERIEL CODE NO. | SOURCE | MAINTENANCE LEVEL | RECOVER-ABILITY | | | | | | 3RD ECH | 4th ECH | 5th ECH | FIG. NO | ITEM NO. |
| | | | | | | | | | | | | | | |
| 255 | 3 | P1 | F | | 5970-067-7635 | INSULATION SLEEVING, ELECTRICAL, flexible, plastic, color coded black 7/8 In. id, vinyl coated | ft | | 3 | * | * | * | 13 | 18 |
| 256 | 3 | P1 | F | | 5970-184-2002 | INSULATION TAPE, ELECTRICAL, black rubber, adhesive, 3/4 in. w, 30 ft roll, 0.027 in. thk | ft | | 1 | * | * | * | | |
| 257 | 9 | P1 | H | | 5320-165-8793 | RIVET, SOLID, flush countersunk head, aluminum alloy, 1/16 in. dia, 3/16 in. lg | ea | | 2 | | * | * | 13 | 9 |
| 258 | 3 | P1 | F | | 6665-778-9586 | SCREW ASSEMBLY | ea | | 1 | * | * | * | 13 | 14 |
| 259 | 10 | P1 | F | | 5305-043-6637 | SCREW, MACHINE, pan hd, slotted, steel, cad or zinc pltd, No. 4-40 NC-2A, 3/16 in. lg (See index No. 239 for quantities and allowances) | ea | | | | | | 13 | 8 |
| 260 | 9 | P1 | F | | 5305-010-1014 | SCREW, MACHINE, brass, flat countersunk hd, No. 6-32 NC-2A, 7/8 in. lg | ea | | 2 | * | * | * | 13 | 1 |
| 261 | 3 | P1 | O | | 6665-778-9587 | SCREW, MASK TIP | ea | | 1 | * | * | * | 13 | 5 |
| 262 | 3 | P1 | O | | 6665-778-9588 | SCREW, MASK TIP | ea | | 1 | * | * | * | | |
| 263 | 3 | P1 | H | | 6665-776-4393 | SPRING, TRIGGER | ea | | 1 | | * | * | 13 | 6 |
| 264 | 3 | P | H | | 5930-975-6967 | SWITCH, SENSITIVE | ea | | 1 | | 2 | 5 | 13 | 2 |
| 265 | 3 | P | O | | 6665-792-2539 | TIP, MASK TESTING | ea | | 1 | 5 | 10 | 50 | 13 | 4 |
| 266 | 3 | P | O | | 6665-792-2540 | TIP, MASK TESTING | ea | | 1 | 2 | 2 | 15 | 13 | 4 |
| 267 | 3 | P1 | H | | 6665-776-4392 | TRIGGER, TEST PROBE | ea | | 1 | | * | * | 13 | 10 |
| 268 | 3 | P1 | F | | 4720-826-8598 | TUBING, RUBBER, neoprene, clear, 1/4 in. id, 1/8 in. wall thk 36 in. lg | ft | | 3 | * | * | * | 13 | 16 |
| 269 | 9 | P1 | F | | 5310-209-5311 | WASHER, LOCK, steel, split helical ring, cad or zinc pltd, No. 4 nom screw size (See index No. 118 for quantities and allowances) | ea | | | | | | 13 | 7 |

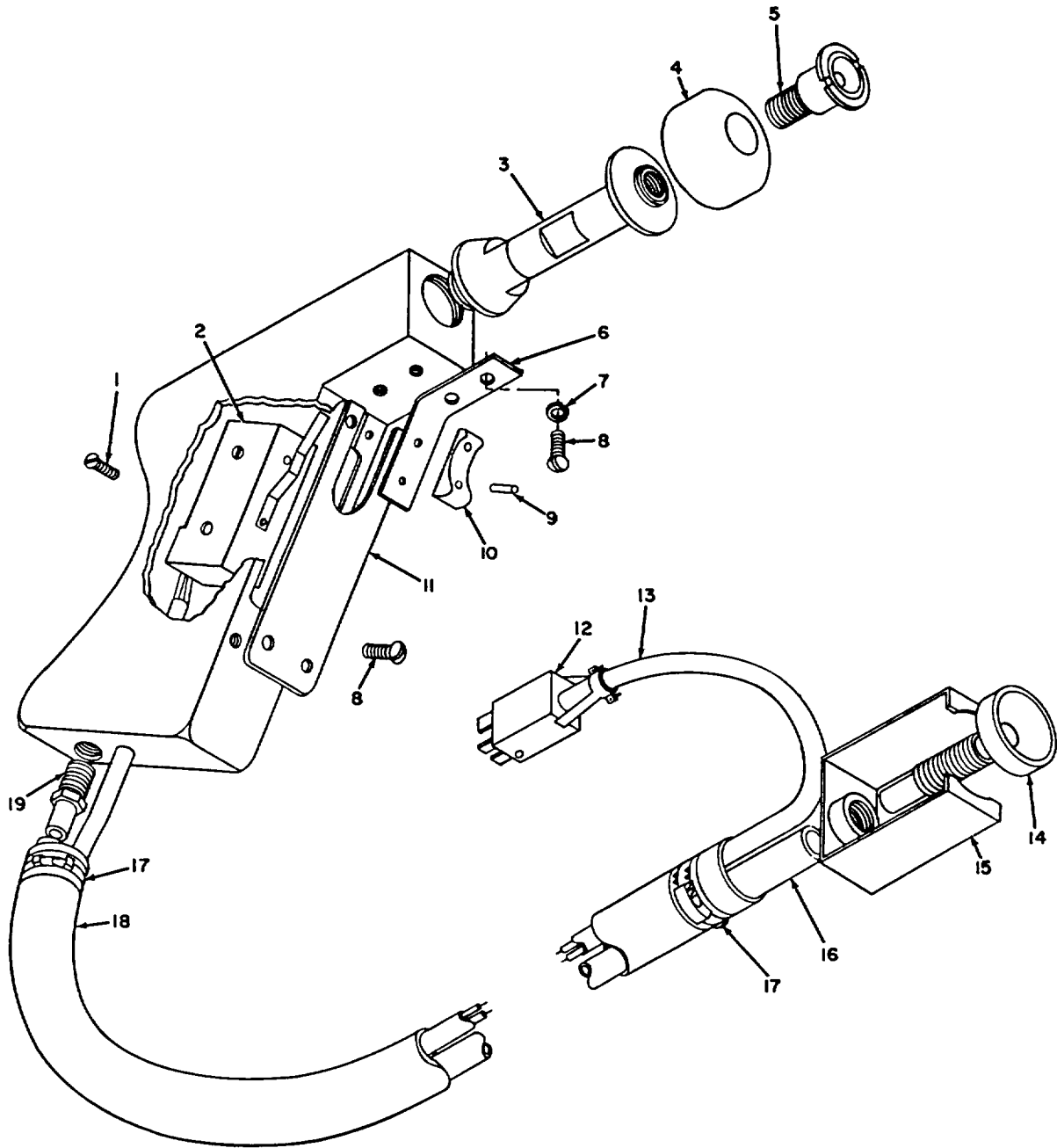


Figure 13. Test probe assembly.

| INDEX NO. | S, M, R CODE | | | | | FEDERAL STOCK NUMBER | DESCRIPTION | UNIT OF ISSUE | EXPEND-ABILITY | QUANTITY PER UNIT | 15 DAY MAINT ALW PER 100 EQUIP | | PER 100 EQUIP | ILLUS-TRATIONS | |
|---------------------------------|-------------------|--------|-------------------|-----------------|---------------|--|-------------|---------------|----------------|-------------------|--------------------------------|---------|---------------|----------------|--|
| | MATERIEL CODE NO. | SOURCE | MAINTENANCE LEVEL | RECOVER-ABILITY | 3RD ECH | | | | | | 4th ECH | FIG. NO | | ITEM NO. | |
| | | | | | | | | | | | | | 5th ECH | | |
| GROUP 500 - ACCESSORY EQUIPMENT | | | | | | | | | | | | | | | |
| 270 | 3 | P1 | F | | 6665-784-1602 | ADAPTER, TESTING | ea | | 2 | * | * | 5 | | | |
| 271 | 3 | P1 | F | | 6665-736-3229 | ADAPTER, TESTING | ea | | 2 | * | * | 5 | | | |
| 272 | 3 | P | O | | 6665-808-8830 | ORIFICE, pyrex, size 1 (See index No. 235 for quantities and allowances) | ea | | | | | | | | |
| 273 | 3 | X2 | O | | 6665-808-8831 | ORIFICE, pyrex, size 2 | ea | | 2 | * | * | * | | | |
| 274 | 3 | P | O | | 6665-808-8832 | ORIFICE, pyrex, size 3 (See index No. 236 for quantities and allowances) | ea | | | | | | | | |
| 275 | 3 | P1 | O | | 6665-808-8836 | ORIFICE, pyrex, size 7 | ea | | 2 | * | * | * | | | |
| 276 | 3 | P1 | O | | 6665-809-0466 | ORIFICE, pyrex, size 14 | ea | | 1 | * | * | * | | | |
| 277 | 3 | P1 | O | | 6665-809-0467 | ORIFICE, pyrex, size 15 | ea | | 2 | * | * | * | | | |
| 278 | 3 | P1 | O | | 6665-809-0468 | ORIFICE, pyrex, size 16 | ea | | 1 | * | * | * | | | |
| 279 | 3 | P1 | O | | 6665-474-7261 | ORIFICE, pyrex, size 17 | ea | | 2 | * | * | * | | | |
| 280 | 3 | P1 | O | | 6665-076-6992 | ORIFICE, pyrex, size 18 | ea | | 2 | * | * | * | | | |
| 281 | 3 | P1 | O | | 6665-076-6991 | ORIFICE, pyrex, size 19 | ea | | 2 | * | * | * | | | |
| 282 | 3 | P1 | O | | 6665-076-6990 | ORIFICE, pyrex, size 20 | ea | | 1 | * | * | * | | | |
| 283 | 3 | P1 | O | | 6665-076-6989 | ORIFICE, pyrex, size 21 | ea | | 1 | * | * | * | | | |
| 284 | 3 | P1 | O | | 6665-798-3438 | PLUNGER, TEST VALVE ASSEMBLY | ea | | 1 | * | * | 5 | | | |
| 285 | 3 | P1 | O | | 6665-070-5551 | ADAPTER (Dwg B136-45-195) | ea | | 1 | * | * | * | | | |
| 286 | 3 | P1 | O | | 6665-070-5554 | ADAPTER (Dwg B136-45-149) | ea | | 1 | * | * | * | | | |

| INDEX NO. | S, M, R CODE | | | | | FEDERAL STOCK NUMBER | DESCRIPTION | UNIT OF ISSUE | EXPEND-ABILITY | QUANTITY PER UNIT | 15 DAY MAINT ALW PER 100 EQUIP | | PER 100 EQUIP | ILLUS-TRATIONS | |
|---------------------------|-------------------|--------|-------------------|-----------------|---------------|--|-------------|---------------|----------------|-------------------|--------------------------------|---------|---------------|----------------|----------|
| | MATERIEL CODE NO. | SOURCE | MAINTENANCE LEVEL | RECOVER-ABILITY | 3RD ECH | | | | | | 4th ECH | 5th ECH | | FIG. NO | ITEM NO. |
| | | | | | | | | | | | | | | | |
| 287 | 3 | P1 | O | | 6665-798-3441 | ADAPTER (Dwg A136-44-96) | ea | | 1 | * | * | 5 | | | |
| 288 | 3 | P1 | O | | 6665-798-8832 | ADAPTER (Dwg A136-44-37) | ea | | 1 | * | * | 5 | | | |
| 289 | 3 | P1 | O | | 6665-798-8833 | ADAPTER (Dwg A136-45-148) | ea | | 1 | * | * | 5 | | | |
| 290 | 3 | P1 | O | | 6665-798-8834 | ADAPTER (Dwg A136-45-134) | ea | | 1 | * | * | 5 | | | |
| 291 | 3 | P1 | O | | 6665-070-5555 | ADAPTER, CANISTER MOUNTING (Dwg C136-45-194) | ea | | 1 | * | * | 5 | | | |
| 292 | 3 | P1 | O | | 6665-070-5556 | ADAPTER, TESTING (Dwg C136-45-196) | ea | | 1 | * | * | 5 | | | |
| 293 | 3 | P1 | O | | 6665-070-5550 | ADAPTER ASSEMBLY (Dwg B136-45-190) | ea | | 1 | * | * | * | | | |
| 294 | 3 | P1 | O | | 6665-070-5549 | BARREL ASSEMBLY (Dwg B136-45-191) | ea | | 1 | * | * | * | | | |
| 295 | 3 | P1 | O | | 6665-070-5553 | CUP (Dwg A136-45-180) | ea | | 1 | * | * | * | | | |
| 296 | 3 | P1 | O | | 6665-784-9220 | PLUNGER, TEST VALVE (Dwg A25-3-172) | ea | | 1 | * | * | 5 | | | |
| 297 | 3 | P1 | O | | 5330-799-6445 | RETAINER (Dwg A136-45-146) | ea | | 1 | * | * | 5 | | | |
| 298 | 3 | P1 | O | | 6665-732-3394 | TIP, TESTING (Dwg B136-45-181) | ea | | 1 | * | * | | | | |
| GROUP 600 - BULK MATERIAL | | | | | | | | | | | | | | | |
| 299 | 9 | P1 | F | | 8040-275-1230 | ADHESIVE, 1 pt can | cn | | AR | * | * | 1 | | | |
| 301 | 11 | P1 | H | | 6145-548-2966 | WIRE, ELECTRICAL, Insulated, stranded, No. 18 AWG, copper, tinned finish, color coded black | ft | | AR | | * | * | | | |
| 302 | 11 | P1 | H | | 6145-836-5654 | WIRE, ELECTRICAL, Insulated, stranded, No. 18 AWG, copper, tinned finish, color coded black w/red tracer | ft | | AR | | * | * | | | |
| 303 | 11 | P1 | H | | 6145-548-2975 | WIRE, ELECTRICAL, insulated, stranded, No. 18 AWG, copper, tinned finish, color coded blue | ft | | AR | | * | * | | | |

| INDEX NO. | S, M, R CODE | | | | FEDERAL STOCK NUMBER | DESCRIPTION | UNIT OF ISSUE | EXPEND-ABILITY | QUANTITY PER UNIT | 15 DAY MAINT ALW PER 100 EQUIP | | | ILLUS-TRATIONS | |
|-----------|-------------------|--------|-------------------|-----------------|----------------------|---|---------------|----------------|-------------------|--------------------------------|---------|---------|----------------|----------|
| | MATERIEL CODE NO. | SOURCE | MAINTENANCE LEVEL | RECOVER-ABILITY | | | | | | 3RD ECH | 4th ECH | 5th ECH | FIG. NO | ITEM NO. |
| | | | | | | | | | | | | | | |
| 304 | 11 | P1 | H | | 6145-548-2965 | WIRE, ELECTRICAL, insulated stranded, No. 18 AWG, copper, tinned finish, color coded brown | ft | AR | | * | * | | | |
| 305 | 11 | P1 | H | | 6145-548-2962 | WIRE, ELECTRICAL, insulated, stranded, No. 18 AWG, copper, tinned finish, color coded green | ft | AR | | * | * | | | |
| 306 | 11 | P1 | H | | 6145-754-8124 | WIRE, ELECTRICAL, insulated, stranded, No. 18 AWG, copper, tinned finish, color coded orange | ft | AR | | * | * | | | |
| 307 | 11 | P1 | H | | 6145-295-0820 | WIRE, ELECTRICAL, insulated, stranded, No. 18 AWG, copper, tinned finish, color coded red | ft | AR | | * | * | | | |
| 308 | 11 | P1 | H | | 6145-838-7829 | WIRE, ELECTRICAL, insulated, stranded, No. 18 AWG, copper, tinned finish, color coded white | ft | AR | | * | * | | | |
| 309 | 11 | P1 | H | | 6145-839-3166 | WIRE, ELECTRICAL, insulated, stranded, No. 18 AWG, copper, tinned finish, color coded white w/orange and violet tracers | ft | AR | | * | * | | | |
| 310 | 11 | P1 | H | | 6145-548-1422 | WIRE, ELECTRICAL, insulated, stranded, No. 18 AWG, copper, tinned finish, color coded white w/orange tracer | ft | AR | | * | * | | | |
| 311 | 11 | P1 | H | | 6145-834-1304 | WIRE, ELECTRICAL, insulated, stranded, No. 18 AWG, copper, tinned finish, color coded white w/red tracer | ft | AR | | * | * | | | |
| 312 | 11 | P1 | H | | 6145-295-0836 | WIRE, ELECTRICAL, insulated, stranded, No. 18 AWG, copper, tinned finish, color coded yellow | ft | AR | | * | * | | | |

SECTION III. INDEXES

ALPHABETICAL INDEX

| FEDERAL STOCK NUMBER | DESCRIPTION | INDEX NO. |
|-------------------------|---------------------------------|-----------------|
| 6665-070-5551 | ADAPTER | 285 |
| 6665-070-5554 | ADAPTER | 286 |
| 6665-798-3441 | ADAPTER | 287 |
| 6665-798-8832 | ADAPTER | 288 |
| 6665-798-8833 | ADAPTER | 289 |
| 6665-798-8834 | ADAPTER | 290 |
| 6665-070-5555 | ADAPTER, CANISTER MOUNTING | 291 |
| 4730-554-7792 | ADAPTER, STRAIGHT, PIPE TO HOSE | 34, 164, 247 |
| 4730-618-0509 | ADAPTER, STRAIGHT, PIPE TO TUBE | 35, 122 |
| 6665-778-7117 | ADAPTER, TEST VALVE | 36, 248 |
| 6665-070-5556 | ADAPTER, TESTING | 292 |
| 6665-784-1602 | ADAPTER, TESTING | 270 |
| 6665-736-3229 | ADAPTER, TESTING | 271 |
| 6665-070-5550 | ADAPTER ASSEMBLY | 293 |
| 8040-275-1230 | ADHESIVE | 299 |
| 6665-792-2535 | BARREL, TEST PROBE | 249 |
| 6665-070-5529 | BARREL ASSEMBLY | 294 |
| 6350-284-1357 | BELL, ELECTRIC | 37 |
| 6665-893-2659 | BLOCK, ORIFICE | 38 |
| 5895-323-9921 | BRACKET | 39 |

ALPHABETICAL INDEX (cont'd)

| FEDERAL STOCK NUMBER | DESCRIPTION | INDEX NO. |
|----------------------|--|-----------|
| | BRACKET, CALIBRATOR | 123 |
| 6665-792-2536 | BRACKET, MASK TESTING | 250 |
| | BRACKET, MICRO SWITCH | 40 |
| | BRACKET, PANEL GUIDE, LEFT HAND | 41 |
| | BRACKET, PANEL GUIDE, RIGHT HAND | 42 |
| 6665-776-4394 | BRACKET, PROBE RETAINING | 210 |
| 6665-778-9591 | BRACKET, PUMP MOUNTING | 165 |
| 6665-778-3481 | BRACKET, VALVE MOUNTING | 43 |
| 5977-730-7070 | BRUSH, ELECTRICAL CONTACT, 3/16 in. dia, 1/2 in. lg | 166 |
| 5977-843-6359 | BRUSH, ELECTRICAL CONTACT, 1/4 in. x 1/4 in., 3/4 in. lg | 167 |
| 6665-779-5938 | BUSHING, CONTACTOR NEEDLE | 124 |
| 4730-011-2877 | BUSHING, PIPE, 1/4 in. -18 NPT to 1/8 in. -27 NPT | 168 |
| 4730-011-9928 | BUSHING, PIPE, 3/8 in. -18 NPT to 1/4 in. -18 NPT | 205 |
| 6665-778-3484 | BUSHING, TEST VALVE | 44 |
| 6665-776-8820 | CABINET | 211 |
| 6665-777-6599 | CABINET ASSEMBLY | 209 |
| 6150-081-6742 | CABLE ASSEMBLY, POWER, ELECTRICAL | 157 |
| 6665-779-5931 | CALIBRATOR ASSEMBLY | 121 |
| 6665-779-5922 | CAM, PUMP | 169 |

ALPHABETICAL INDEX (cont'd)

| FEDERAL STOCK NUMBER | DESCRIPTION | INDEX NO. |
|----------------------|--|-----------|
| 6665-779-9120 | CAP, BALANCED ORIFICE | 161 |
| 6665-778-7121 | CAP, FILTER | 45, 170 |
| 5910-984-2274 | CAPACITOR, FIXED, MICA DIELECTRIC | 3 |
| 5910-112-7524 | CAPACITOR, FIXED, PAPER DIELECTRIC 100, 000 UUF | 46 |
| 5910-811-5517 | CAPACITOR, FIXED, PAPER DIELECTRIC 2 UUF | 4 |
| 6665-778-6003 | CHASSIS ASSEMBLY | 33 |
| 6665-779-5928 | CHASSIS ASSEMBLY, ELECTRIC | 2 |
| 4730-585-8621 | CLAMP, HOSE | 251 |
| 6665-776-4388 | CLIP | 226 |
| 5940-666-4843 | CLIP, ELECTRICAL, 5/16 in. lg | 227 |
| 5940-258-6412 | CLIP, ELECTRICAL, 19/32 in. lg | 212 |
| 4820-812-9029 | COCK, PLUG | 125 |
| 6665-778-3485 | COLLAR, TEST VALVE | 47 |
| 6665-779-5933 | COLLAR, WORM SHAFT | 126 |
| 5935-807-7979 | CONNECTOR, PLUG, ELECTRICAL, 4 contacts | 48, 252 |
| 5935-170-8139 | CONNECTOR, PLUG, ELECTRICAL, standard | 158 |
| 5935-259-4229 | CONNECTOR, PLUG, ELECTRICAL, universal | 159 |
| 5935-644-6804 | CONNECTOR, RECEPTACLE, ELECTRICAL, 2 contacts | 49 |
| 5935-817-6463 | CONNECTOR, RECEPTACLE, ELECTRICAL, 4 contacts | 50 |

ALPHABETICAL INDEX (cont'd)

| FEDERAL STOCK NUMBER | DESCRIPTION | INDEX NO. |
|----------------------|--|-----------------|
| 6665-776-4387 | COVER | 228 |
| 6665-775-8936 | COVER, PANEL ASSEMBLY | 225 |
| 6665-792-2538 | COVER, SWITCH | 253 |
| 4730-810-9804 | CROSS, PIPE | 127 |
| 6665-070-5553 | CUP | 295 |
| 4730-784-6783 | CUP, OIL | 171 |
| 6665-778-9590 | CYLINDER, PUMP | 172 |
| 6665-085-8945 | DIAGRAM, VACUUM | 231 |
| 6665-085-8944 | DIAGRAM, WIRING | 213 |
| 6665-779-5940 | DIAPHRAGM | 128 |
| 6665-085-8908 | DISK, MOTOR, MOUNT | 173 |
| 4730-277-5552 | ELBOW, PIPE | 51, 129, 174 |
| 4730-842-3524 | ELBOW, PIPE TO HOSE | 175 |
| 4730-822-6801 | ELBOW, PIPE TO TUBE, 1/4 in. -18 thd size | 53 |
| 4730-810-9803 | ELBOW, PIPE TO TUBE, 1/4 in. -24 thd size | 52, 130 |
| 5960-228-3765 | ELECTRON TUBE, glass envelope, triode amplifier | 5 |
| 6665-778-3482 | FILTER, ORIFICE | 54, 176 |
| 6665-784-0001 | FLANGE, FILTER MOUNTING | 55, 177 |
| 6665-784-0002 | FLANGE, TEST VALVE | 56 |

ALPHABETICAL INDEX (cont'd)

| FEDERAL STOCK NUMBER | DESCRIPTION | INDEX NO. |
|----------------------|--|-----------|
| 5920-280-8348 | FUSE | 57 |
| 5920-581-7213 | FUSE HOLDER | 58 |
| 6685-624-3667 | GAGE, PRESSURE, DIAL INDICATING | 59 |
| 5325-753-3959 | GROMMET, RUBBER, 3/16 in. dia hole | 60 |
| 5325-281-6594 | GROMMET, RUBBER, 7/32 in. dia hole | 131 |
| 5325-801-3103 | GROMMET, RUBBER, 1/2 in. dia hole | 6, 61 |
| 6665-776-4386 | HANDLE, COVER | 229 |
| | HANDLE, PANEL | 62 |
| 6665-970-0001 | HANDLE, PANEL | 214 |
| | HANDLE, VALVE | 178 |
| 6665-779-5930 | HOLDER, BALANCED ORIFICE | 160 |
| 6665-778-7118 | HOLDER, FILTER | 63 |
| 6665-778-7119 | HOUSING, BLEEDER | 64 |
| 6665-784-1598 | HOUSING, BLOWER | 179 |
| 6665-779-5932 | HOUSING, CALIBRATOR | 132 |
| 6665-778-3487 | HOUSING, ORIFICE | 65 |
| 6665-738-2128 | INDICATOR, OUTLET VALVE LEAKAGE, M4A1 | 1 |
| 4450-396-0296 | IMPELLER | 180 |
| 5970-836-2246 | INSULATION SLEEVING, ELECTRICAL, .204 in. id | 254 |
| 5970-067-7635 | INSULATION SLEEVING, ELECTRICAL, 7/8 in. id | 255 |

ALPHABETICAL INDEX (cont'd)

| FEDERAL STOCK NUMBER | DESCRIPTION | INDEX NO. |
|----------------------|---|--------------------|
| 5970-184-2002 | INSULATION TAPE, ELECTRICAL | 256 |
| 6665-779-5937 | INSULATOR, CONTACTOR | 133 |
| 5355-808-0067 | KNOB | 66 |
| 6240-143-3049 | LAMP, INCANDESCENT | 67 |
| 6210-814-4124 | LIGHT, INDICATOR, 5/8 in. dia lens, red | 68 |
| 6210-081-0831 | LIGHT, INDICATOR, 1 in. dia, green | 69 |
| 6210-754-8312 | LIGHT, INDICATOR, 1 in. dia, red | 70 |
| 6665-780-0583 | LOCK, SHAFT | 71 |
| 6665-776-4390 | MANOMETER, WATER | 232 |
| 6105-974-1236 | MOTOR, UNIVERSAL | 181 |
| 6665-779-5926 | MOTOR AND PUMP ASSEMBLY | 163 |
| 6665-778-3486 | NAME PLATE | 72 |
| 6665-779-5941 | NEEDLE ASSEMBLY | 134 |
| 4730-278-3758 | NIPPLE, PIPE | 73, 135 |
| 6665-780-0585 | NUT, BLEEDER LOCK | 74 |
| 5310-013-4524 | NUT, PLAIN, HEXAGON, No. 4-40 NC-2B | 215, 233 |
| 5310-013-4530 | NUT, PLAIN, HEXAGON, No. 6-32 NC-2B | 7, 75, 216, 234 |
| 5310-012-0622 | NUT, PLAIN, HEXAGON, No. 8-32 NC-2B | 76, 182, 206 |
| 5310-012-0361 | NUT, PLAIN, HEXAGON, No. 10-24 NC-2B | 77 |
| 5310-800-5282 | NUT, PLAIN, HEXAGON, 1/4 in. -20 UNC-2B | 183 |

ALPHABETICAL INDEX (cont'd)

| FEDERAL STOCK NUMBER | DESCRIPTION | INDEX NO. |
|----------------------|--|-----------|
| 5310-081-8087 | NUT, SELF-LOCKING, HEXAGON, No. 6-32 UNC-3B | 8, 78 |
| 4730-541-6188 | NUT, TUBE COUPLING, 7/16 in. -20 UNF-2B | 79 |
| 6665-808-8830 | ORIFICE, pyrex, size 1 | 235, 272 |
| 6665-808-8831 | ORIFICE, pyrex, size 2 | 273 |
| 6665-808-8832 | ORIFICE, pyrex, size 3 | 236, 274 |
| 6665-808-8836 | ORIFICE, pyrex, size 7 | 275 |
| 6665-809-0466 | ORIFICE, pyrex, size 14 | 276 |
| 6665-809-0467 | ORIFICE, pyrex, size 15 | 277 |
| 6665-809-0468 | ORIFICE, pyrex, size 16 | 278 |
| 6665-474-7261 | ORIFICE, pyrex, size 17 | 279 |
| 6665-076-6992 | ORIFICE, pyrex, size 18 | 280 |
| 6665-076-6991 | ORIFICE, pyrex, size 19 | 281 |
| 6665-076-6990 | ORIFICE, pyrex, size 20 | 282 |
| 6665-076-6989 | ORIFICE, pyrex, size 21 | 283 |
| 6665-778-3483 | PANEL | 80 |
| 5315-808-7283 | PIN, GROOVED, HEADLESS, 3/8 in. lg | 136 |
| 6665-778-9592 | PISTON, PUMP | 184 |
| 4710-809-8149 | PLASTIC TUBING, 0.250 in. od | 185 |
| 6665-784-1597 | PLATE, BLOWER MOUNTING | 186 |
| 6665-779-5939 | PLATE, CALIBRATOR | 137 |

ALPHABETICAL INDEX (cont'd)

| FEDERAL STOCK NUMBER | DESCRIPTION | INDEX NO. |
|----------------------|---|-----------|
| 5940-753-5151 | PLATE, DESIGNATION | 9 |
| 6665-775-8931 | PLATE, MANOMETER MTG | 237 |
| 6665-784-9220 | PLUNGER, TEST VALVE | 296 |
| 6665-798-3442 | PLUNGER, TEST VALVE | 61 |
| 6665-798-3438 | PLUNGER, TEST VALVE ASSEMBLY | 284 |
| 6665-792-2534 | PROBE ASSEMBLY | 246 |
| 5945-801-6529 | RELAY, ARMATURE, 4 terminals for contacts | 10 |
| 5945-069-6545 | RELAY, ARMATURE, 6 terminals for contacts | 11 |
| 5905-279-1754 | RESISTOR, FIXED, COMPOSITION, 1.5 meg | 13 |
| 5905-815-4765 | RESISTOR, FIXED, COMPOSITION, 1/2 w | 12 |
| 5905-186-3008 | RESISTOR, FIXED, COMPOSITION, 100 OHMS 1/2 w | 14 |
| 5905-810-3979 | RESISTOR, FIXED, WIRE WOUND, 150 OHMS, 5w | 82 |
| 5330-799-6445 | RETAINER | 297 |
| 5340-200-2637 | RING, RETAINING | 138 |
| 5320-165-8793 | RIVET, SOLID, 3/16 in. lg | 257 |
| 6665-811-4740 | ROD, ALUMINUM | 15 |
| 6665-775-8934 | SCALE, MANOMETER | 238 |
| 6665-779-5921 | SCREW, BLEEDER ADJUST | 83 |
| 5305-983-6652 | SCREW, CAP, No. 10-32 NF-3A, 3/4 in. lg | 217 |
| 5305-012-5622 | SCREW, DRIVE, 0.073 in. size, 3/16 in. lg | 84 |
| 5305-253-5623 | SCREW, DRIVE, No. 8 screw size, 1/2 in. lg | 85 |

ALPHABETICAL INDEX (cont'd)

| FEDERAL STOCK NUMBER | DESCRIPTION | INDEX NO. |
|-------------------------|--|-----------------|
| 5305-059-4553 | SCREW, MACHINE, countersunk hd, No. 6-32 NC-2A, 1/2 in. lg | 96 |
| 5305-010-1014 | SCREW, MACHINE, flat countersunk hd, No. 6-32 NC-2A, 7/8 in. lg | 260 |
| 5305-043-6700 | SCREW, MACHINE, No. 8-32 NC, 1-1/4 in. lg | 21 |
| 5305-043-6637 | SCREW, MACHINE, pan hd, No. 4-40 NC-2A, 3/16 in. lg | 239, 259 |
| 5305-043-6638 | SCREW, MACHINE, pan hd, No. 4-40 NC-2A, 1/4 in. lg | 218 |
| 5305-043-6639 | SCREW, MACHINE, pan hd, No. 4-40 NC-2A, 5/16 in. lg | 86, 139, 187 |
| 5305-043-6640 | SCREW, MACHINE, pan hd, No. 4-40 NC-2A, 3/8 in. lg | 230 |
| 5305-043-6642 | SCREW, MACHINE, pan hd, No. 4-40 NC-2A. 1/2 in. lg | 87 |
| 5305-019-3257 | SCREW, MACHINE, pan hd, No. 6-32 UNC-2A, 1/4 in. lg | 188, 219 |
| 5305-043-5885 | SCREW, MACHINE, pan hd, No. 6-32 UNC-2A, 5/16 in. lg | 16, 140, 240 |
| 5305-043-6663 | SCREW, MACHINE, pan hd, No. 6-32 UNC-2A, 3/8 in. lg | 88 |
| 5305-043-6665 | SCREW, MACHINE, pan hd, No. 6-32 UNC-2A, 1/2 in. lg | 89 |
| 5305-043-6666 | SCREW, MACHINE, pan hd, No. 6-32 UNC-2A, 5/8 in. lg | 17, 189 |
| 5305-639-4629 | SCREW, MACHINE, pan hd, No. 6-32 NC-2A, 1 in. lg | 90 |
| 5305-043-6671 | SCREW, MACHINE, pan hd, No. 6-32 UNC-2A, 1-1/2 in. lg | 18 |

ALPHABETICAL INDEX (cont'd)

| FEDERAL STOCK NUMBER | DESCRIPTION | INDEX NO. |
|-------------------------|---|-----------------|
| 5305-043-6690 | SCREW, MACHINE, pan hd, No. 8-32 UNC-2A, 3/16 in. lg | 19 |
| 5305-043-6693 | SCREW, MACHINE, , pan hd, No. 8-32 NC-2A, 3/8 in. lg | 91, 207, 220 |
| 5305-043-6694 | SCREW, MACHINE, pan hd, No. 8-32 UNC-2A, 7/16 in. lg | 141 |
| 5305-043-6695 | SCREW; MACHINE, pan hd, No. 8-32 UNC-2A, 1/2 in. lg | 20 |
| 5305-043-6696 | SCREW, MACHINE, pan hd, No. 8-32 UNC-2A, 5/8 in. lg | 92 |
| 5305-043-6697 | SCREW, MACHINE, pan hd, No. 8-32 UNC-2A, 3/4 in. lg | 142 |
| 5305-043-6728 | SCREW, MACHINE, pan hd, No. 10-24 UNC-2A, 1/4 in. lg | 190 |
| 5305-043-6730 | SCREW, MACHINE, pan hd, No. 10-24 UNC-2A, 3/8 in. lg | 93 |
| 5305-043-6748 | SCREW, MACHINE, pan hd, No. 10-32 UNF-2A, 3/8 in. lg | 143 |
| 5305-043-6732 | SCREW, MACHINE, pan hd, No. 10-24 UNC-2A, 1/2 in. lg | 94 |
| 5305-043-6750 | SCREW, MACHINE, pan hd, No. 10-32 UNF-2A, 1/2 in. lg | 95 |
| 5305-558-3679 | SCREW, MACHINE, pan hd, 1/4 in. -20 NC-2A, 1 in. lg | 191 |
| 6665-778-9587 | SCREW, MASK TIP | 261 |
| 6665-778-9588 | SCREW, MASK TIP | 262 |
| 6665-778-9586 | SCREW ASSEMBLY | 258 |

ALPHABETICAL INDEX (cont'd)

| FEDERAL STOCK NUMBER | DESCRIPTION | INDEX NO. |
|-------------------------|---------------------------------------|--------------|
| 5305-249-0527 | SETSCREW, No. 8-32 NC-3A, 3/16 in. lg | 144 |
| 5305-818-4991 | SETSCREW, No. 8-32 NC-3, 5/16 in. lg | 97 |
| 5305-249-0526 | SETSCREW, No. 8-32 NC-3A, 3/8 in. lg | 145 |
| 5305-811-2061 | SETSCREW, No. 8-32 NC-3, 1/2 in. lg | 192 |
| 5305-682-5989 | SETSCREW, No. 10-32 NF-3, 5/16 in. lg | 98 |
| 6665-784-0003 | SHAFT, STOP | 146 |
| 6665-779-5935 | SHAFT, WORM | 147 |
| 6665-780-0584 | SLEEVE | 99 |
| 5935-232-3786 | SOCKET, ELECTRON TUBE | 22 |
| 6665-778-3480 | SPACER | 101 |
| 6665-778-9589 | SPACER | 23 |
| 6665-778-9593 | SPACER, BLOWER HOUSING | 193 |
| 6665-775-8933 | SPRING | 241 |
| 6665-776-8822 | SPRING, BRACKET | 221 |
| 6665-833-1219 | SPRING, HELICAL COMPRESSION, 4 coils | 102 |
| 6665-815-6107 | SPRING, HELICAL, COMPRESSION, 9 coils | 148 |
| 6665-776-4393 | SPRING, TRIGGER | 263 |
| 6640-441-0000 | STOPPER, RUBBER | 194 |
| 5340-291-3679 | STRAP, RETAINING | 242 |
| 6665-777-1053 | SWITCH | 103 |
| 5930-063-7257 | SWITCH, DPDT | 24 |

ALPHABETICAL INDEX (cont'd)

| FEDERAL STOCK NUMBER | DESCRIPTION | INDEX NO. |
|-------------------------|---|--------------|
| 5930-265-6296 | SWITCH, PUSH | 104 |
| 5930-756-0271 | SWITCH, ROTARY | 105 |
| 5930-975-6967 | SWITCH, SENSITIVE | 264 |
| 5930-198-3938 | SWITCH, TOGGLE, SPST | 106 |
| 4730-820-1556 | TEE, PIPE | 107 |
| 5940-283-8478 | TERMINAL, LUG, for No. 6 screw | 149 |
| 5940-155-7685 | TERMINAL, LUG, for No. 10 screw | 150 |
| 5940-271-4622 | TERMINAL BOARD, 1 terminal, 11/16 in. lg | 25 |
| 5940-983-6045 | TERMINAL BOARD, 4 terminals, 2-1/8 in. lg | 108 |
| 5940-983-6047 | TERMINAL BOARD, 6 terminals, 2-7/8 in. lg | 109 |
| 5940-983-6057 | TERMINAL BOARD, 16 terminals, barrier type, 6-5/8 in. lg | 26 |
| 5940-682-2776 | TERMINAL BOARD, 16 terminals, spade lug type, 6-5/8 in. lg | 27 |
| 6645-078-4142 | TIMER, INTERVAL | 28 |
| 6645-078-4143 | TIMER, INTERVAL | 29 |
| 6665-792-2539 | TIP, MASK TESTING | 265 |
| 6665-792-2540 | TIP, MASK TESTING | 266 |
| 6665-732-3394 | TIP, TESTING | 298 |
| 5950-811-5557 | TRANSFORMER, POWER, STEP-DOWN | 110 |
| 5950-817-5134 | TRANSFORMER, POWER, STEP-DOWN AND STEP-UP | 30 |
| 6665-776-4392 | TRIGGER, TEST PROBE | 267 |

ALPHABETICAL INDEX (cont'd)

| FEDERAL STOCK NUMBER | DESCRIPTION | INDEX NO. |
|----------------------|--|------------------------------------|
| 4710-277-5525 | TUBE, COPPER, 1/4 in. od, 0.035 in. wall thk | 111, 151 |
| 4710-277-5526 | TUBE, COPPER, 5/16 in. od, 0.035 in. wall thk | 195 |
| 4720-809-3191 | TUBE, RUBBER, 1/8 in. id, 1/8 in. wall thk | 243 |
| 4720-849-3206 | TUBE, RUBBER, 1/8 in. id, 1/8 in. wall thk | 112 |
| 4720-244-7786 | TUBE, RUBBER, amber, 3/16 in. id, 3/8 in. od | 113 |
| 4720-244-7789 | TUBE, RUBBER, amber, 1/4 in. id, 3/32 in. wall thk | 114, 196 |
| 4720-826-8598 | TUBING, RUBBER, 1/4 in. id, 1/8 in. wall thk | 268 |
| 4720-235-1781 | TUBE, RUBBER, 1/4 in. id, 1/8 in. wall thk | 197 |
| 4720-068-4249 | TUBE, RUBBER, 11/32 in. od, 3/32 in. wall thk | 162 |
| 4810-632-4888 | VALVE, SOLENOID | 115 |
| 4810-777-6601 | VALVE, SOLENOID | 116 |
| 6665-970-0002 | VALVE AND BLOWER ADAPTER | 198 |
| 6665-784-9221 | VALVE ASSEMBLY | 204 |
| 5310-632-6721 | WASHER, FLAT, No. 4 screw size | 153 |
| 5310-198-9348 | WASHER, FLAT, No. 8 screw size | 152 |
| 5310-809-3078 | WASHER, FLAT, 1/4 in. bolt size | 199 |
| 5310-209-5311 | WASHER, LOCK, No. 4 screw size | 118, 154, 201, 222, 244, 269 |
| 5310-045-0591 | WASHER, LOCK, No. 6 screw size | 31, 119, 202, 223, 245 |

ALPHABETICAL INDEX (cont'd)

| FEDERAL STOCK NUMBER | DESCRIPTION | INDEX NO. |
|-------------------------|--|------------------------------|
| 5310-209-5309 | WASHER, LOCK, No. 8 screw size | 32, 120, 155, 208, 224 |
| 5310-043-2226 | WASHER, LOCK, No. 10 screw size | 117 |
| 5330-618-7768 | WASHER, NONMETALLIC, 13/64 in. id | 203 |
| 6145-548-2966 | WIRE, ELECTRICAL, No. 18 AWG, color coded black | 301 |
| 6145-836-5654 | WIRE, ELECTRICAL, No. 18 AWG, color coded black w/red tracer | 302 |
| 6145-548-2975 | WIRE, ELECTRICAL, No. 18 AWG, color coded blue | 303 |
| 6145-548-2965 | WIRE, ELECTRICAL, No. 18 AWG, color coded brown | 304 |
| 6145-548-2962 | WIRE, ELECTRICAL, No. 18 AWG, color coded green | 305 |
| 6145-754-8124 | WIRE, ELECTRICAL, No. 18 AWG, color coded orange | 306 |
| 6145-295-0820 | WIRE, ELECTRICAL, No. 18 AWG, color coded red | 307 |
| 6145-838-7829 | WIRE, ELECTRICAL, No. 18 AWG, color coded white | 308 |
| 6145-839-3166 | WIRE, ELECTRICAL, No. 18 AWG, color coded white w/orange and violet tracers | 309 |
| 6145-548-1422 | WIRE, ELECTRICAL, No. 18 AWG, color coded white w/orange tracer | 310 |
| 6145-834-1304 | WIRE, ELECTRICAL, No. 18 AWG, color coded white w/red tracer | 311 |

ALPHABETICAL INDEX (cont'd)

| FEDERAL STOCK NUMBER | DESCRIPTION | INDEX NO. |
|-------------------------|---|--------------|
| 6145-295-0836 | WIRE, ELECTRICAL, No. 18 AWG, color coded yellow | 312 |
| 6665-779-5934 | WORM | 156 |

| FEDERAL STOCK NUMBER INDEX | | | |
|----------------------------|--------------|----------------------|--------------|
| FEDERAL STOCK NUMBER | INDEX NUMBER | FEDERAL STOCK NUMBER | INDEX NUMBER |
| 4450-396-0296 | 180 | 4730-822-6801 | 53 |
| 4710-277-5525 | 111, 151 | 4730-842-3524 | 175 |
| 4710-277-5526 | 195 | 4810-632-4888 | 115 |
| 4710-809-8149 | 185 | 4810-777-6601 | 116 |
| 4720-068-4249 | 162 | 4820-812-9029 | 125 |
| 4720-235-1781 | 197 | 5305-010-1014 | 260 |
| 4720-244-7789 | 114, 196 | 5305-012-5622 | 84 |
| 4720-809-3191 | 243 | | |
| 4720-826-8598 | 268 | 5305-019-3257 | 188, 219 |
| 4730-011-2877 | 168 | 5305-043-5885 | 16, 140, 240 |
| 4730-011-9928 | 205 | 5305-043-6637 | 239, 259 |
| 4730-277-5552 | 51, 129, 174 | 5305-043-6638 | 218 |
| 4730-278-3758 | 73, 135 | 5305-043-6639 | 86, 139, 187 |
| 4730-541-6188 | 79 | 5305-043-6640 | 230 |
| 4730-554-7792 | 34, 164, 247 | 5305-043-6642 | 87 |
| 4730-585-8621 | 251 | 5305-043-6663 | 88 |
| 4730-618-0509 | 35, 122 | 5305-043-6665 | 89 |
| 4730-784-6783 | 171 | 5305-043-6666 | 17, 189 |
| 4730-810-9803 | 52, 130 | 5305-043-6671 | 18 |
| 4730-810-9804 | 127 | 5305-043-6690 | 19 |
| 4730-820-1556 | 107 | 5305-043-6693 | 91, 207, 220 |

| FEDERAL STOCK NUMBER INDEX (cont'd) | | | |
|-------------------------------------|--------------|----------------------|--------------------------|
| FEDERAL STOCK NUMBER | INDEX NUMBER | FEDERAL STOCK NUMBER | INDEX NUMBER |
| 5305-043-6694 | 141 | 5310-013-4524 | 215, 233 |
| 5305-043-6695 | 20 | 5310-013-4530 | 7, 75, 216, 234 |
| 5305-043-6696 | 92 | 5310-043-2226 | 117 |
| 5305-043-6697 | 142 | 5310-045-0591 | 31, 119, 202, 223, 245 |
| 5305-043-6700 | 21 | 5310-081-8087 | 8, 78 |
| 5305-043-6728 | 190 | 5310-198-9348 | 152 |
| 5305-043-6730 | 93 | 5310-209-5309 | 32, 120, 155, 208 224 |
| 5305-043-6732 | 94 | 5310-209-5311 | 118, 154, 201, 222 |
| 5305-043-6748 | 143 | | 244, 269 |
| 5305-043-6750 | 95 | 5310-632-6721 | 153 |
| 5305-059-4553 | 96 | | |
| 5305-249-0526 | 145 | 5310-800-5282 | 183 |
| 5305-249-0527 | 144 | 5310-809-3078 | 199 |
| 5305-253-5623 | 85 | 5315-808-7283 | 136 |
| 5305-558-3679 | 191 | 5325-281-6594 | 131 |
| 5305-639-4629 | 90 | 5325-753- 3959 | 60 |
| 5305-682-5989 | 98 | 5325-801-3103 | 6, 61 |
| 5305-811-2061 | 192 | 5330-618-7768 | 203 |
| 5305-818-4991 | 97 | 5330-799-6445 | 297 |
| 5305-983-6652 | 217 | 5340-200-2637 | 138 |
| 5310-012-0361 | 77 | 5340-291-3679 | 242 |
| 5310-012-0622 | 76, 182, 206 | 5355-808-0067 | 66 |

| FEDERAL STOCK, NUMBER INDEX (cont'd) | | | |
|---|---------------------|-----------------------------|---------------------|
| FEDERAL STOCK NUMBER | INDEX NUMBER | FEDERAL STOCK NUMBER | INDEX NUMBER |
| 5895-323-9921 | 39 | 5940-258-6412 | 212 |
| 5905-186-3008 | 14 | 5940-271-4622 | 25 |
| 5905-279-1754 | 13 | 5940-283-8478 | 149 |
| 5905-810-3979 | 82 | 5940-666-4843 | 227 |
| 5905-815-4765 | 12 | 5940-682-2776 | 27 |
| 5910-112-7524 | 46 | 5940-753-5151 | 9 |
| 5910-811-5517 | 4 | 5940-983-6045 | 108 |
| 5910-984-2274 | 3 | 5940-983-6047 | 109 |
| 5920-280-8348 | 57 | 5940-983-6057 | 26 |
| 5920-581-7213 | 58 | 5945-069-6545 | 11 |
| 5930-063-7257 | 24 | 5945-784-7903 | 28 |
| 5930-198-3938 | 106 | 5945-801-6529 | 10 |
| 5930-265-6296 | 104 | 5950-811-5557 | 110 |
| 5930-756-0271 | 105 | 5950-817-5134 | 30 |
| 5935-170-8139 | 158 | 5960-228-3765 | 5 |
| 5935-232-3786 | 22 | 5970-184-2002 | 256 |
| 5935-259-4229 | 159 | 5977-730-7070 | 166 |
| 5935-644-6804 | 49 | 5977-843-6359 | 167 |
| 5935-807-7979 | 48, 252 | 6105-974-1236 | 181 |
| 5935-817-6463 | 50 | 6145-295-0820 | 307 |
| 5940-155-7685 | 150 | 6145-295-0836 | 312 |

| FEDERAL STOCK NUMBER INDEX (cont'd) | | | |
|-------------------------------------|--------------|----------------------|--------------|
| FEDERAL STOCK NUMBER | INDEX NUMBER | FEDERAL STOCK NUMBER | INDEX NUMBER |
| 6145-548-1422 | 310 | 6665-070-5553 | 295 |
| 6145-548-2962 | 305 | 6665-070-5554 | 286 |
| 6145-548-2965 | 304 | 6665-070-5555 | 291 |
| 6145-548-2966 | 301 | 6665-070-5556 | 292 |
| 6145-548-2975 | 303 | 6665-076-6989 | 283 |
| 6145-754-8124 | 306 | 6665-076-6990 | 282 |
| 6145-834-1304 | 311 | 6665-076-6991 | 281 |
| 6145-836-5654 | 302 | 6665-076-6992 | 280 |
| 6145-838-7829 | 308 | 6665-085-8908 | 173 |
| 6145-839-3166 | 309 | 6665-085-8944 | 213 |
| 6150-081-6742 | 157 | 6665-474-7261 | 279 |
| 6210-081-0831 | 69 | 6665-732-3394 | 298 |
| 6210-754-8312 | 70 | 6665-736-3229 | 271 |
| 6210-814-4124 | 68 | 6665-738-2128 | 1 |
| 6240-143-3049 | 67 | 6665-775-8931 | 237 |
| 6350-284-1357 | 37 | 6665-775-8933 | 241 |
| 6640-441-0000 | 194 | 6665-775-8934 | 238 |
| 6645-171-9636 | 29 | 6665-775-8936 | 225 |
| 6665-070-5549 | 294 | 6665-776-4386 | 229 |
| 6665-070-5550 | 293 | 6665-776-4387 | 228 |
| 6665-070-5551 | 285 | 6665-776-4388 | 226 |

| FEDERAL STOCK NUMBER INDEX (cont'd) | | | |
|-------------------------------------|--------------|----------------------|--------------|
| FEDERAL STOCK NUMBER | INDEX NUMBER | FEDERAL STOCK NUMBER | INDEX NUMBER |
| 6665-776-4390 | 232 | 6665-778-9586 | 258 |
| 6665-776-4392 | 267 | 6665-778-9587 | 261 |
| 6665-776-4393 | 263 | 6665-778-9588 | 262 |
| 6665-776-4394 | 210 | 6665-778-9589 | 23 |
| 6665-776-8820 | 211 | 6665-778-9590 | 172 |
| 6665-776-8822 | 221 | 6665-778-9591 | 165 |
| 6665-777-1053 | 103 | 6665-778-9592 | 184 |
| 6665-777-6599 | 209 | 6665-778-9593 | 193 |
| 6665-778-3480 | 101 | 6665-779-5921 | 83 |
| 6665-778-3481 | 43 | 6665-779-5922 | 169 |
| 6665-778-3482 | 54, 176 | 6665-779-5926 | 163 |
| 6665-778-3483 | 80 | 6665-779-5928 | 2 |
| 6665-778-3484 | 44 | 6665-779-5930 | 160 |
| 6665-778-3485 | 47 | 6665-779-5931 | 121 |
| 6665-778-3486 | 72 | 6665-779-5932 | 132 |
| 6665-778-3487 | 65 | 6665-779-5933 | 126 |
| 6665-778-6003 | 33 | 6665-779-5934 | 156 |
| 6665-778-7117 | 36, 248 | 6665-779-5935 | 147 |
| 6665-778-7118 | 63 | 6665-779-5937 | 133 |
| 6665-778-7119 | 64 | 6665-779-5938 | 124 |
| 6665-778-7121 | 45, 170 | 6665-779-5939 | 137 |

| FEDERAL STOCK NUMBER INDEX (cont'd) | | | |
|-------------------------------------|--------------|----------------------|--------------|
| FEDERAL STOCK NUMBER | INDEX NUMBER | FEDERAL STOCK NUMBER | INDEX NUMBER |
| 6665-779-5940 | 128 | 6665-798-3441 | 287 |
| 6665-779-5941 | 134 | 6665-798-3442 | 81 |
| 6665-779-9120 | 161 | 6665-798-8832 | 288 |
| 6665-780-0583 | 71 | 6665-798-8833 | 289 |
| 6665-780-0584 | 99 | 6665-798-8834 | 290 |
| 6665-780-0585 | 74 | 6665-808-8830 | 235, 272 |
| 6665-784-0001 | 55, 177 | 6665-808-8831 | 273 |
| 6665-784-0002 | 56 | 6665-808-8832 | 236, 274 |
| 6665-784-0003 | 146 | 6665-808-8836 | 275 |
| 6665-784-1597 | 186 | 6665-809-0466 | 276 |
| 6665-784-1598 | 179 | 6665-809-0467 | 277 |
| 6665-784-1602 | 270 | 6665-809-0468 | 278 |
| 6665-784-9220 | 296 | 6665-811-4740 | 15 |
| 6665-784-9221 | 204 | 6665-815-6107 | 148 |
| 6665-792-2534 | 246 | 6665-833-1219 | 102 |
| 6665-792-2535 | 249 | 6665-893-2659 | 38 |
| 6665-792-2536 | 250 | 6665-970-0001 | 214 |
| 6665-792-2538 | 253 | 6665-970-0002 | 198 |
| 6665-792-2539 | 265 | 6685-624-3667 | 59 |
| 6665-792-2540 | 266 | 8040-275-1230 | 299 |
| 6665-798-3438 | 284 | | |

By Order of the Secretary of the Army:

Official:

EARLE G. WHEELER,
*General, United States Army,
Chief of Staff.*

J. C. LAMBERT,
*Major General, United States Army,
The Adjutant General.*

Distribution:

Active Army:

CNGB (1)
USA Maint Ed (2)
USACBRCCA (2)
USAADCDA (2)
USAARMCDA (2)
USAARTYCDA (2)
USAAVNCCA (2)
USAICDA (2)
USASWCDA (2)
USA Armor Cen (2)
USA Arty Cen (2)
USA Engr Cen (2)
USA GM Cen (2)
USAIC (2)
USCONARC (10)
ARADCOM (5)
ARADCOM Rgn (5)
Armies (5)
USMA (10)
Svc Colleges (10)
Br Svc Sch (10) except

USACMLSCH (50)
GENDEP (OS), (5)
Dep (OS) (5)
A Dep (5)
USASMCOM (1)
USAMUCOM (5)
USAMC (5)
USAOSA (2)
POE (1)
Instl (2)
USA Trans Tml Comd (1)
Army Tml (1)
Arsenals (3) except
Edgewood (50)
PG (5)
USA Corps (1)
Units org under fol TOE:
3-47 (1)
3-147 (1)
3-500 (EA-EB) (1)

NG: State AG (3); Divisions (1).

USAR: None.

For explanation of abbreviations used, **see AR 320-50.**

TM 3-6665-209-35P INDICATOR, OUTLET VALVE LEAKAGE, M4A1-1964

This fine document...

Was brought to you by me:



[Liberated Manuals -- free army and government manuals](#)

Why do I do it? I am tired of sleazy CD-ROM sellers, who take publicly available information, slap “watermarks” and other junk on it, and sell it. Those masters of search engine manipulation make sure that their sites that sell free information, come up first in search engines. They did not create it... They did not even scan it... Why should they get your money? Why are not letting you give those free manuals to your friends?

I am setting this document FREE. This document was made by the US Government and is NOT protected by Copyright. Feel free to share, republish, sell and so on.

I am not asking you for donations, fees or handouts. If you can, please provide a link to liberatedmanuals.com, so that free manuals come up first in search engines:

<A HREF=<http://www.liberatedmanuals.com/>>Free Military and Government Manuals

- Sincerely
Igor Chudov
<http://igor.chudov.com/>
- [Chicago Machinery Movers](#)