

TECHNICAL MANUAL

**OPERATOR'S, ORGANIZATIONAL,
DIRECT SUPPORT AND GENERAL SUPPORT
MAINTENANCE MANUAL**

**(INCLUDING REPAIR PARTS AND SPECIAL TOOLS LIST)
FOR**

**PREAMPLIFIER, LOGARITHMIC
AM-6681(V)1/U**

(HEWLETT-PACKARD MODEL 8808A)

(NSN 6625-00-134-3557)

HEADQUARTERS, DEPARTMENT OF THE ARMY

12 MARCH 1981



5

SAFETY STEPS TO FOLLOW IF SOMEONE IS THE VICTIM OF ELECTRICAL SHOCK

1

DO NOT TRY TO PULL OR GRAB THE INDIVIDUAL

2

IF POSSIBLE, TURN OFF THE ELECTRICAL POWER

3

IF YOU CANNOT TURN OFF THE ELECTRICAL POWER, PULL, PUSH, OR LIFT THE PERSON TO SAFETY USING A DRY WOODEN POLE OR A DRY ROPE OR SOME OTHER INSULATING MATERIAL

4

SEND FOR HELP AS SOON AS POSSIBLE

5

AFTER THE INJURED PERSON IS FREE OF CONTACT WITH THE SOURCE OF ELECTRICAL SHOCK, MOVE THE PERSON A SHORT DISTANCE AWAY AND IMMEDIATELY START ARTIFICIAL RESUSCITATION

TM 11-6625-2872-14&P

TEHNICAL MANUAL

No. 11-6625-2872-14&P



HEADQUARTERS
DEPARTMENT OF THE ARMY
WASHINGTON, DC, 12 March 1981

**OPERATOR'S, ORGANIZATIONAL, DIRECT SUPPORT,
AND GENERAL SUPPORT MAINTENANCE MANUAL
(INCLUDING REPAIR PARTS AND SPECIAL TOOLS LIST)**

FOR

**PREAMPLIFIER, LOGARITHMIC AM-6681(V)I/U
(HEWLETT-PACKARD MODEL 8808A)
(NSN 6625-00-134-3557)**

REPORTING ERRORS AND RECOMMENDING IMPROVEMENTS

You can help Improve this manual. If you find any mistakes or if you know of a way to improve the procedures, please let us know. Mail your letter, DA Form 2028 (Recommended Changes to Publications and Blank Forms), or DA Form 2028-2 located in back of this manual direct to Commander, US Army Communications and Electronics Materiel Readiness Command, ATTN: DRSEL-ME-MQ, Fort Monmouth, NJ 07703. In either case, a reply will be furnished direct to you.

This manual is an authentication of the manufacturer's commercial literature which, through usage, has been found to cover the data required to operate and maintain this equipment. Since the manual was not prepared in accordance with military specifications, the format has not been structured to consider levels of maintenance.

TABLE OF CONTENTS

SECTION		Paragraph	Page
0.	INTRODUCTION		
	Scope	0-1	0-1
	Indexes of Publications	0-2	0-1
	Maintenance Forms, Records, and Reports	0-3	0-1
	Reporting Equipment Improvement Recommendations (EIR).....	0-4	0-1
	Administrative Storage	0-5	0-1
	Destruction of Army Electronics Materiel	0-6	0-1
I.	GENERAL INFORMATION		
	Description	1-1	1
II.	INSTALLATION		
	Portable Case or Rack Mounting	2-1	3
	Installation in Sanborn Recording Systems	2-5	3
III.	OPERATION		
	Operating Controls.....	3-1	3
	Balancing	3-9	4
	Calibration	3-11	4
	Alternate Calibration Procedure	3-12	4
	Operation	3-14	4
	50 dB Span Operation	3-17	5
	100 dB Span Operation	3-21	5
	Operation with Monitoring Instruments.....	3-25	5
	Simultaneous Recording and Monitoring of 8808A Output	3-27	5
IV.	PRINCIPLES OF OPERATION		
	Output	4-1	6
	Stage Description	4-2	6
	Signal Flow.....	4-3	6
	Dynamic Range	4-4	6
	Block Diagram Information	4-5	6
	Detector Outputs	4-6	6
	DB SPAN Switch Circuit	4-7	6
	LOG ZERO Level Setting	4-8	6
V.	REPLACEABLE PARTS		
	Introduction.....	5-1	8
	Ordering Information.....	5-3	8

TABLE OF CONTENTS - Continued

		Page
APPENDIX	A. REFERENCES	A-1
	B. COMPONENTS OF END ITEM LIST (COEIL) (Not applicable)	
	C. BASIC ISSUE ITEMS LIST (BIIL) (Not applicable)	
	D. MAINTENANCE ALLOCATION	
Section	I. Introduction.....	D-1
	II. Maintenance Allocation Chart for Plug-In Amplifier AM-6681(V)1/U	D-3
	III. Tool and Test Equipment Requirements for Plug-In Amplifier AM-6681(V)1/U	D-4

LIST OF ILLUSTRATIONS

Number		Page
1-1	8808A Log Level Preamplifier	1
4-1	8808A Successive Detector	7
4-2	8808A Block Diagram	7
FO 5-1	Model 8808A Log Level Schematic	In back of manual

LIST OF TABLES

Number		Page
1-1	Specifications	2
3-1	Bottom and Full Scale Signal Levels	3
5-1	Reference Designation Index	9
5-2	Part Number - National Stock Number Cross Reference Index	17

SECTION 0

INTRODUCTION

0-1. SCOPE.

This manual describes Logarithmic Preamplifier AM-6681(V)1/U and provides instructions for operation and maintenance. Throughout this manual, the preamplifier is referred to as Hewlett-Packard Model 8808A Log-Audio Preamplifier.

0-2. INDEXES OF PUBLICATIONS.

a. DA Pam 310-4. Refer to the latest issue of DA Pam 310-4 to determine whether there are new editions, changes, or additional publications pertaining to the equipment.

b. DA Pam 310-7. Refer to DA Pam 310-7 to determine whether there are modification work orders (MWO's) pertaining to the equipment.

0-3. MAINTENANCE FORMS, RECORDS, AND REPORTS.

a. Reports of Maintenance and Unsatisfactory Equipment. Department of the Army forms and procedures used for equipment maintenance will be those prescribed by TM 38-750, The Army Maintenance Management System.

b. Report of Item and Packaging Discrepancies. Fill out and forward SF 364 (Report of Discrepancy (ROD)) as prescribed in AR 735-11-2/DLAR 4140.55/NAVMATINST 4355.73/AFR 400-54/MCO 4430.3E.

c. Discrepancy in Shipment Report (DISREP) (SF 361). Fill out and forward Discrepancy in Shipment Report (DISREP) (SF 361) as prescribed in AR 55-38/NAVSUPINST 4610.33B/AFR 75-18/MCO P4610.19C and DLAR 4500.15.

0-4. REPORTING EQUIPMENT IMPROVEMENT RECOMMENDATIONS (EIR).

If your equipment needs improvement, let us know. Send us an EIR. You, the user, are the only one who can tell us what you don't like about your equipment. Let us know why you don't like the design. Tell us why a procedure is hard to perform. Put it on an SF 368 (Quality Deficiency Report). Mail it to Commander, US Army Communications and Electronics Materiel Readiness Command, ATTN: DRSEL-ME-MQ, Fort Monmouth, New Jersey 07703. We'll send you a reply.

0-5. ADMINISTRATIVE STORAGE.

Administrative storage of equipment issued to and used by Army activities shall be in accordance with TM 740-90-1.

0-6. DESTRUCTION OF ARMY ELECTRONICS MATERIEL.

Destruction of Army electronics materiel to prevent enemy use shall be in accordance with TM 750-244-2.

SECTION I GENERAL INFORMATION

1-1. DESCRIPTION.

1-2 The 8808A is a Log Level Preamplifier which produces a dc output proportional to the logarithm of the ac input signal, over an extremely wide range of signal amplitudes. The input signal dynamic range can be up to 100 dB (100,000:1). In addition, a 50 dB (320:1) span is provided for greater signal resolution

1-3. The Preamplifier is designed for use with low output impedance accelerometers, as well as vibration and acoustic transducers, which have outputs in the frequency range of 5 Hz to 100 kHz. It is also useful for continuous monitoring or recording of signal output in dB during frequency analysis of amplifiers, filters, transmission networks, and similar devices.

1-4. The 8808A can be plugged into Sanborn direct writing recording systems. When used with recorders having 50 division chart paper, the calibrated output is 2 dB per division for the 100 dB span, or 1 dB per division for the 50 dB span. Also, the preamplifier can be benchtop or rack mounted, with the output connected to a monitoring instrument such as a voltmeter or oscilloscope. For recording, a strip chart recorder or magnetic tape recorder can be connected to the output.

1-5. The range switch provides nine bottom scale sensitivities in 10 dB steps from 0 dBV to -80 dBV (dBV = decibels referred to 1 volt RMS). For the 50 dB span, the full scale signal is 50 dB above the bottom scale level. For the 100 dB span, the full scale signal is 100 dB above the bottom scale level.

1-6. All nine RANGE switch positions can be used with the 50 dB span. The four switch positions outlined in red on the panel (-50, -60, -70, -80) are used for the 100 dB span only.

1-7. Specifications for the 8808A Log Level Preamplifier are given in Table 1-1.

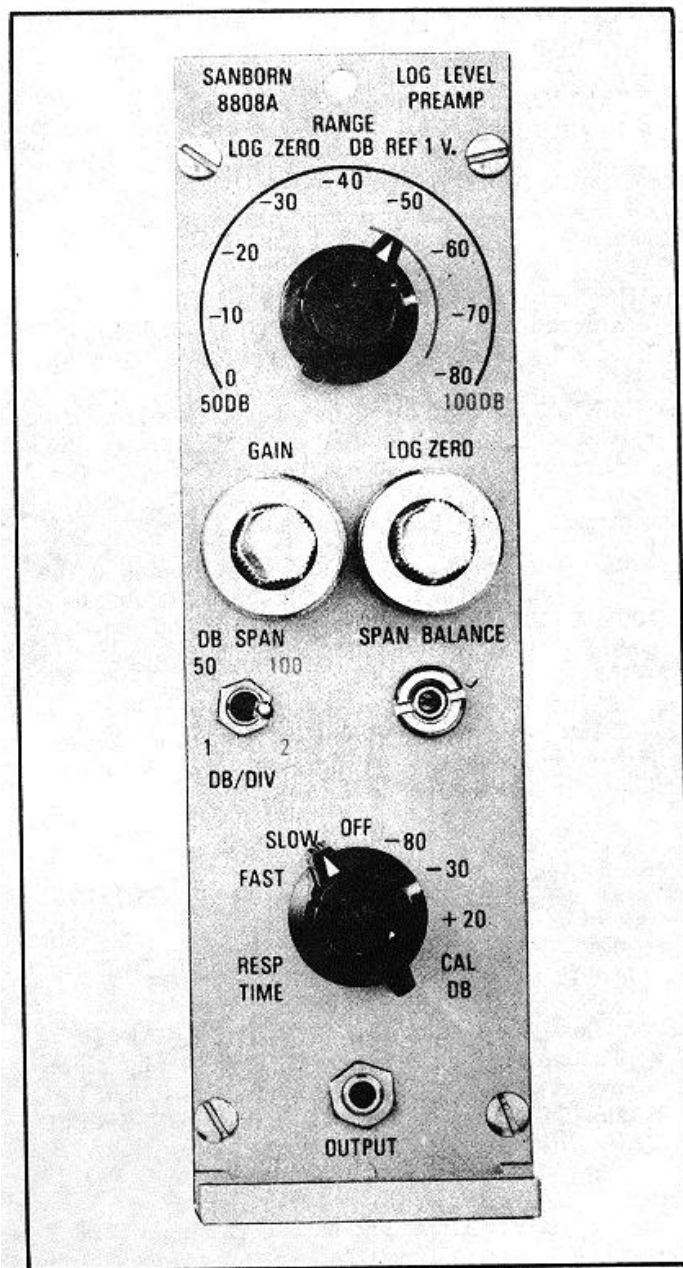


Figure 1-1. 8808A Log Level Preamplifier

Table 1-1. Specifications

ELECTRICAL SPECIFICATIONS

INPUT RESISTANCE: Single-ended to ground 1 megohm minimum.

SIGNAL DETECTION: Full-wave average. 50 dB or 100 dB span, switch selected from front panel.

DETECTION ACCURACY: ± 1 dB maximum error, sine wave input.

MAXIMUM SENSITIVITY: 100 μ V rms of sine wave corresponds to bottom scale on most sensitive range.

GAIN STABILITY: Temperature: Less than 2 dB/10°C, 0° to 40°C. Line Voltage: Less than 0.5 dB, 103 to 127 volts.

ATTENUATION: 50 dB span ranges: 9 bottom scale ranges at -80 dBV to 0 dBV in 10 dB steps corresponding to 100 μ V, 320 μ V, 1 mV, 3.2 mV, 10 mV, 32 mV, 100 mV, 320 mV and 1 volt. Top scale is nominally 50 dB (320X) above bottom scale.

100 dB span ranges: 4 bottom scale ranges at -80 dBV to -50 dBV in 10 dB steps corresponding to 100 μ V, 320 μ V, 1 mV and 3.2 mV. Top scale is normally 100 dB (100,000X) above bottom scale.

ATTENUATION ACCURACY: $\pm 3\%$ maximum error (0.25 dB) for -80 to -50 dBV attenuation ranges. For other ranges, detection error (± 1 dB) may add to attenuation error.

OUTPUT: Single-ended to ground, ± 2.5 V maximum or 0 to +5 volts across 1000 ohms minimum.

OUTPUT RESISTANCE: Approximately 10 ohms.

SIGNAL BANDWIDTH: 5 Hz to 100 kHz, less than 3 dB down from mid-band level on SLOW response range. 500 Hz to 100 kHz on FAST response range.

SIGNAL CREST FACTOR: 3 to 1 at full scale on 100 dB span, ± 500 volts peak maximum allowed.

DETECTION RESPONSE TIME: For a step change in input amplitude with ratio of 40 dB (100:1) or greater, the time required for the output to increase or decrease between values corresponding to 105 and 90% of the maximum applied signal (i.e., 20 dB below max. applied signal and 1 dB below max applied signal) is approximately 20 msec in FAST position and 2 sec in SLOW position. i. e., average rate of change of output under these conditions corresponds to approximately 900 dB/sec in FAST: 9 dB/sec in SLOW.

OUTPUT NOISE: Maximum noise appears at bottom scale. 50 dB span: 80 mV pp: 100 dB span: 40 mV pp.

INTERNAL CALIBRATION: -80 and +20 dBV, internally adjustable; -30 dBV accurate to + 0.5 dB. Stability: less than 0.25 dB, 10° to 40°C or 103 to 127 volts; approximately 500 Hz.

GENERAL SPECIFICATIONS

Terminals: DC output on front panel. Input and auxiliary DC output on rear of mating power supply.

Front Panel Controls: RANGE switch; GAIN potentiometer locking; LOG ZERO, 10-turn potentiometer, locking; 50/100 dB SPAN switch; SPAN BALANCE, screwdriver adjust; RESPONSE TIME/CAL switch.

Internal Controls: Signal Board: Balance adjust; CAL adjust (2); Zero Suppression adjust; Attenuator compensation trimmers (4). Detector Board: 100 dB span mid-scale adjust.

Weight: Approximately 5 lb. (2, 3 kg).

Front Panel Dimensions: 7" high, 2-1/16" wide (178 x 52 mm).

Note: When Preamplifier is used in a recording system, these specifications are affected by performance of the recorder and driver amplifiers. (Consult data sheet of appropriate system for details.)

All Sanborn 8800 Series Amplifiers are tested for performance under normal production environmental conditions: ambient temperature 20° to 30° C and relative humidity less than 80% unless otherwise noted.

SECTION II INSTALLATION

2-1. PORTABLE CASE OR RACK MOUNTING.

2-2. The 8808A is operated as a self-contained instrument using an 860-500 Power Supply to furnish operating power for the preamplifier. The preamplifier power supply combination operates on a 115/230 volt 50 or 60 Hz power line. See the power supply Operating and Service Manual, IM-860-500-3.

2-3. The preamplifier power supply combination can be mounted in the 860-1400 Case for single channel benchtop operation. For two channel operation, two preamplifiers and power supplies mount in an 860-200 Module, for benchtop or rack mounting.

2-4. When the 8808A is operated with the 860-500 Power Supply, preamplifier input and output signal connections are made on the rear panel of the power supply as follows:

Signal Input Jack J3: Plus (+) signal pin A
Signal ground pin B
Mating connector is 10G3-34FW

Signal Output Jack J2: Plus (+) signal pin A
Signal ground pin E
Mating connector is 10B9-5MW

For monitoring, connect the preamplifier output signal to a voltmeter, oscilloscope, or other voltage indicating instrument which has a signal range of 0 to +5 volts or 2.5 volts. The output signal can be recorded using a strip chart recorder, magnetic tape recorder, or other instrument which will operate with an input of 0 to +5 volts, or ± 2.5 volts.

2-5. INSTALLATION IN SANBORN RECORDING SYSTEMS.

2-6. The 8808A can be installed in Sanborn Recording Systems 7701A, 7702A, 7704A, 7706A, 7708A, for 1, 2, 4, 6, or 8 channels of recording using the heated stylus recording technique. Operating power for the preamplifier is supplied by the recording system. See the recording system instruction manual for installation information.

2-7. The 7701A Recorder is supplied in a portable case. The 7702A Recorder is supplied either in a mobile cart, or for rack mounting. The 7706A, 7708A Recorders are rack mounted.

SECTION III OPERATION

3-1. OPERATING CONTROLS.

3-2. RANGE switch selects the bottom scale signal level. Scale is calibrated in dBV (decibels referred to a 1 volt rms signal). Full scale signal for 50 Db span operation is 50 dB above bottom scale signal. For 100 dB span, full scale signal is 100 dB above bottom scale signal. Bottom scale and corresponding full scale signal levels for each setting of the RANGE switch are given in Table 3-1.

3-3. DB SPAN switch selects either 50 dB or 100 dB maximum span between the bottom scale and full scale input signal levels.

NOTE

On the 100 dB span, only the -50, -60, -70, -80 RANGE switch positions are used.

Switch also indicates recorder calibration: 1 dB/div for 50 dB span. 2 dB/div for 100 dB span.

50 DB SPAN Range Switch Setting	Bottom Scale		Full Scale	
	<u>dBV</u>	<u>Volts rms</u>	<u>dBV</u>	<u>Volts rms</u>
0	0	1 V	+50	316 V
-10	-10	.316V	+40	100 V
-20	-20	.100V	+30	31.6 V
-30	-30	31.6 mnV	+20	10 V
-40	-40	10 mV	+10	3.16 V
-50	-50	3.16 mV	0	1 V
-60	-60	1 mV	-10	.316 V
-70	-70	316 μ V	-20	.1 V
-80	-80	100 μ V	-30	31.6 mV
100 DB SPAN				
-50	-50	3.16 mV	+50	316 V
-60	-60	1 mV	+40	100 V
-70	-70	316 μ V	+30	31.6 V
-80	-80	100 μ V	+20	10 V

Table 3-1. Bottom and Full Scale Signal Levels

3-4. GAIN control sets the preamplifier output level for a full scale cal signal applied to the preamplifier input. For use in recording systems, full scale output corresponds to the top division on the recorder chart (approx. -2.5 volts preamp output). For use with a voltmeter or oscilloscope, full scale output is +5 volts.

3-5. LOG ZERO control sets the preamplifier output level for a bottom scale cal signal applied to the preamplifier input. For use in recording systems, bottom scale output-corresponds to the bottom division on the recording chart (approx. -2.5 volts preamp output). For use with a voltmeter or oscilloscope, bottom scale output is 0 volts.

3-6. SPAN BALANCE control balances the preamplifier, to obtain the same output on the 100 and 50 dB spans for a -80 dBV calibration signal level.

3-7. RESP TIME./CAL DB switch selects the operating mode. FAST and SLOW response times are the use positions. OFF position disconnects the input signal from the preamplifier, and grounds the preamplifier input. -80, -30, +20 dB CAL positions select calibration voltage levels supplied by a 500 Hz oscillator in the preamp.

3-8. OUTPUT jack provides the preamplifier output signal at the front panel, for monitoring purposes. Mates with 10G2-22MW plug.

3-9. BALANCING

3-10. Allow preamplifier to warm up several minutes before balancing.

- a. Set the RESP TIME/CAL DB and RANGE switches to the -80 position.
- b. Adjust the LOG ZERO control for approximately bottom scale output.
- c. Alternately set the DB SPAN switch to the 50 and 100 positions while adjusting the SPAN BALANCE control for minimum change in the preamp output.

NOTE

Approximately ± 20 mV noise normally present at the preamplifier output will cause a slight fluctuation in the reading observed on a voltmeter or oscilloscope connected to the output.

3-11. CALIBRATION

- a. Set the DB SPAN switch to 100.
- b. Set the RANGE switch to 80.
- c. Set the RESP TIME/CAL DB switch to -80.
- d. Adjust the LOG ZERO control for bottom scale output.
- e. Set the RESP TIME/CAL DB switch to +20 and adjust the GAIN control for full scale output.
- f. Repeat steps 3-11 (c) through 3-11 (e) to eliminate the effects of control interaction.
- g. Set the RESP TIME/CAL DB switch to OFF. With the switch OFF, a negative voltage is normally present at the preamp output, which will position the recorder stylus offscale.

NOTE

Preamp RANGE switch must be in the -80 position during the calibration procedure.

3-12. ALTERNATE CALIBRATION PROCEDURE.

3-13. To calibrate the preamplifier with the DB SPAN switch in the 50 dB position, use the below procedure:

- a. Set the DB SPAN switch to 50.
- b. Set the RANGE switch to -80.
- c. Set the RESP TIME/CAL DB switch to -80.
- d. Adjust the LOG ZERO control for bottom scale output.
- e. Set the RESP TIME/CAL DB switch to -30 and adjust the GAIN control for full scale output.
- f. Repeat steps 3-13 (c, d, e) to eliminate the effects of control interaction.
- g. Set the RESP TIME/CAL DB switch to OFF. With the switch OFF, a negative voltage is normally present at the preamp output, which will position the recorder stylus offscale.

3-14. OPERATION

3-15. Set RESP TIME/CAL DB switch to OFF. Connect input signal to preamplifier. For applications where preamplifier is installed in Sanborn recorder, the output signal is displayed on recorder chart paper. For applications where the preamplifier output is to be monitored with an oscilloscope or voltmeter, the output is available from the preamplifier front panel OUTPUT jack, or from a rear connector on the preamplifier power supply.

3-16. Set the DB SPAN switch to the 50 dB or 100 dB position, depending on the expected range of input signal amplitudes.

3-17. 50 dB SPAN OPERATION.

3-18. Set the RANGE switch to the position which corresponds to the minimum expected signal level. See examples 1 and 2.

EXAMPLE 1: Minimum expected signal level 10 mV rms. This corresponds to a -40 dBV signal level (see Table 3-1). Set the RANGE switch to the -40 dBV position. The full scale signal level is 50 dB higher:

$$\begin{array}{r} -40 \text{ dBV} \\ \text{add } +50 \text{ dB} \\ \hline +10 \text{ dBV} = \text{Full scale input signal} = 3.16 \text{ volts rms} \end{array}$$

EXAMPLE 2: Minimum expected signal level .5 volt rms. This corresponds to a -6 dBV signal level. Since there is no -6 dBV switch position, set the switch to the next lower step, which is -10 dBV. The full scale signal level is 50 dB higher:

$$\begin{array}{r} -10 \text{ dBV} \\ \text{add } +50 \text{ dB} \\ \hline -40 \text{ dBV} \quad \text{Full scale input signal} = 100 \text{ volts rms} \end{array}$$

3-19. Set the RESP TIME/CAL DB switch to the FAST or SLOW position, depending on the signal bandwidth, and the detection response time desired. (For FAST response, the preamp bandwidth is 500 to 100,000 Hz. For SLOW response, bandwidth is 5 to 100,000 Hz.)

3-20. For 50 division chart paper, the calibration is 1 dB/div. The bottom division on the chart represents the bottom scale signal level in dB indicated on the RANGE switch.

3-21. 100 dB SPAN OPERATION.

3-22. Only the four RANGE switch positions outlined in red (-80, -70, -60, -50) are used for the 100 dB span. Set the RANGE switch to the position which corresponds to the expected minimum signal level.

EXAMPLE 1: Minimum expected signal is 1 mV rms. This corresponds to a -60 dBV level (see Table 3-1). Set RANGE switch to the -60 dBV bottom scale position. The full scale signal level is 100 dB higher:

$$\begin{array}{r} -60 \text{ dBV} \\ \text{add } +100 \text{ dB} \\ \hline +40 \text{ dBV} = \text{Full scale input signal} = 100 \text{ volts rms} \end{array}$$

EXAMPLE 2: Minimum expected signal is

500 μ V rms. This corresponds to a -66 dBV level. Set the RANGE switch to the next lower step, which is the -70 dBV bottom scale position. The full scale signal level is 100 dB higher:

$$\begin{array}{r} -70 \text{ dBV} \\ \text{add } +100 \text{ dB} \\ \hline +30 \text{ dBV} = \text{Full scale input signal} = 31.6 \text{ volts rms} \end{array}$$

3-23. Set the RESP TIME/CAL DB switch to the FAST or SLOW position, depending on the signal bandwidth, and the detection response time desired. (For FAST response, the preamp bandwidth is 500 to 100,000 Hz. For SLOW response, bandwidth is 5 to 100,000 Hz.)

3-24. For 50 division chart paper, the calibration is 2 dB/div. The bottom division on the chart represents the bottom scale signal level in dBV indicated on the RANGE switch.

3-25. OPERATION WITH MONITORING INSTRUMENTS.

3-26. When the preamplifier output is connected only to a monitoring instrument such as a dc voltmeter or oscilloscope, perform the balancing (Section 3-9) and calibration (Section 3-11) procedure as indicated. Bottom scale output refers to 0 volts preamplifier output. Full scale output is -5 volts preamplifier output. The 50 dB span calibration is .1 volts/dB. The 100 dB span calibration is .05 volts/dB.

3-27. SIMULTANEOUS RECORDING AND MONITORING OF 8808A OUTPUT.

3-28. To simultaneously record and monitor the 8808A output signal, perform the balancing and calibration procedure using the recorder. The dc voltmeter, oscilloscope, or other monitoring instrument connected to the output of the preamp will read approximately -2.5 volts for a bottom scale input signal, and approximately +2.5 volts for a full scale input signal. The monitor instrument calibration is .1 V/dB on the 50 dB span, and .05 V/dB on the 100 dB span.

SECTION IV PRINCIPLES OF OPERATION

4-1. The 8808A Log Level Preamplifier is designed to produce a logarithmic output (in decibel units) on a linear scale for a wide dynamic range (100 dB) of input signals. The wide dynamic range is achieved by the use of a combination of series and shunt successive detector stages. The block diagram (Figure 4-1) shows a simple series of successive detector stages with logarithmic compression networks, similar to those used in the 8808A.

4-2. Each stage consists of a linear amplifier having a gain of 16-2/3 dB. Limiting diodes at the input of each stage prevent amplifier saturation. The full-wave detector output drives a logarithmic response shaping network. The outputs of all stages are connected to a summing resistor. This series of stages handles the first 50 dB of amplifier signal input. For 100 dB span operation, a second series of successive detectors covers the remaining 50 dB of signal range.

4-3. Signal flow as shown in Figure 4-1 is as follows: A small ac signal appearing at the input is amplified by stage 3, but not sufficiently to provide detector output. The signal is further amplified by stage 2, but is still not sufficient amplitude to detect. The signal is amplified by stage 1 to a level sufficient to operate the first detector. The output of the fullwave detector is compressed by a three-line segment logarithmic compression network. All compression network outputs are connected to the summing resistor. As the input level increases, successive compression in stages 2 and 3 perform a similar function, feeding their output to the summing junction.

4-4. The very wide dynamic range of the 8808A is made possible by the progressive summing of the outputs of each of the detector stages, which by themselves operate linearly over a 16-2/3dB range.

4-5. The overall block diagram for the 8808A is shown in Figure 4-2. A signal at the input sees the input Attenuator which is followed by a differential, low noise operational amplifier using field effect transistors. The amplifier output is connected to a series of detector and compressor networks to provide the first 50 dB of operating range. A shunt signal path with a hybrid emitter follower drives the lower series of detector networks for the remaining, 50 dB of signal level.

4-6. The detector outputs are summed into a balanced dc amplifier. The SPAN BALANCE, control and zero suppression circuit outputs are also summed into the balanced amplifier. The action of the SPAN BALANCE control is to produce the same bottom scale output from the dc amplifier on the 50 dB and 100 dB spans. The zero suppression circuit works in conjunction with the input Attenuator.

4-7. The DB SPAN switch circuit is located in the feedback loop of the balanced dc amplifier to produce a 2:1 gain change in the amplifier output, depending on the setting of the SPAN switch.

4-8. The output of the balanced amplifier is fed to a shunt gain control, followed by the output differential to single-ended dc amp which has a dc signal summed in from the LOG ZERO control to set log zero level.

ELECTRICAL SAFETY

The electrical safety of this product has been considered in its design and production, and its construction has employed techniques and components in accordance with the National Electrical Code and Underwriters Laboratories, Inc. These safety features apply only if the product is connected to a primary power distribution system which provides adequate grounding and is installed and maintained in accordance with the National Electrical Code. When this product is interconnected with other electrical appliances in its normal operation, it is important that these other appliances also be provided with adequate grounding protection, where required, if they are, in turn, connected to a primary power source. Faults occurring in any interconnected appliance can degrade the safety of this product by means of the electrical interconnections necessary for its normal systems operation. Recommendations indicating some of the accessory appliances which may be used with this product are given elsewhere in this publication.

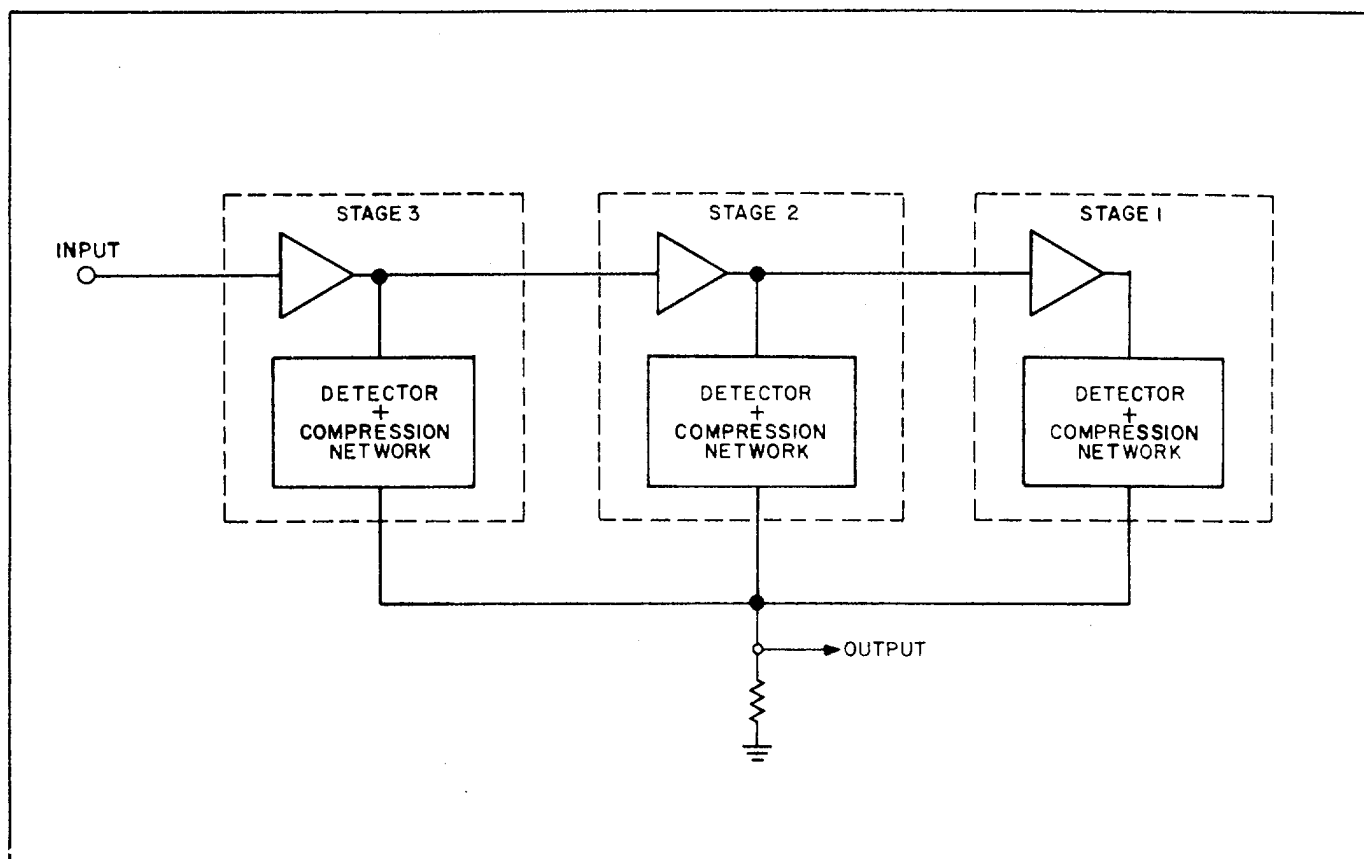


Figure 4-1. 8808A Successive Detector Stages

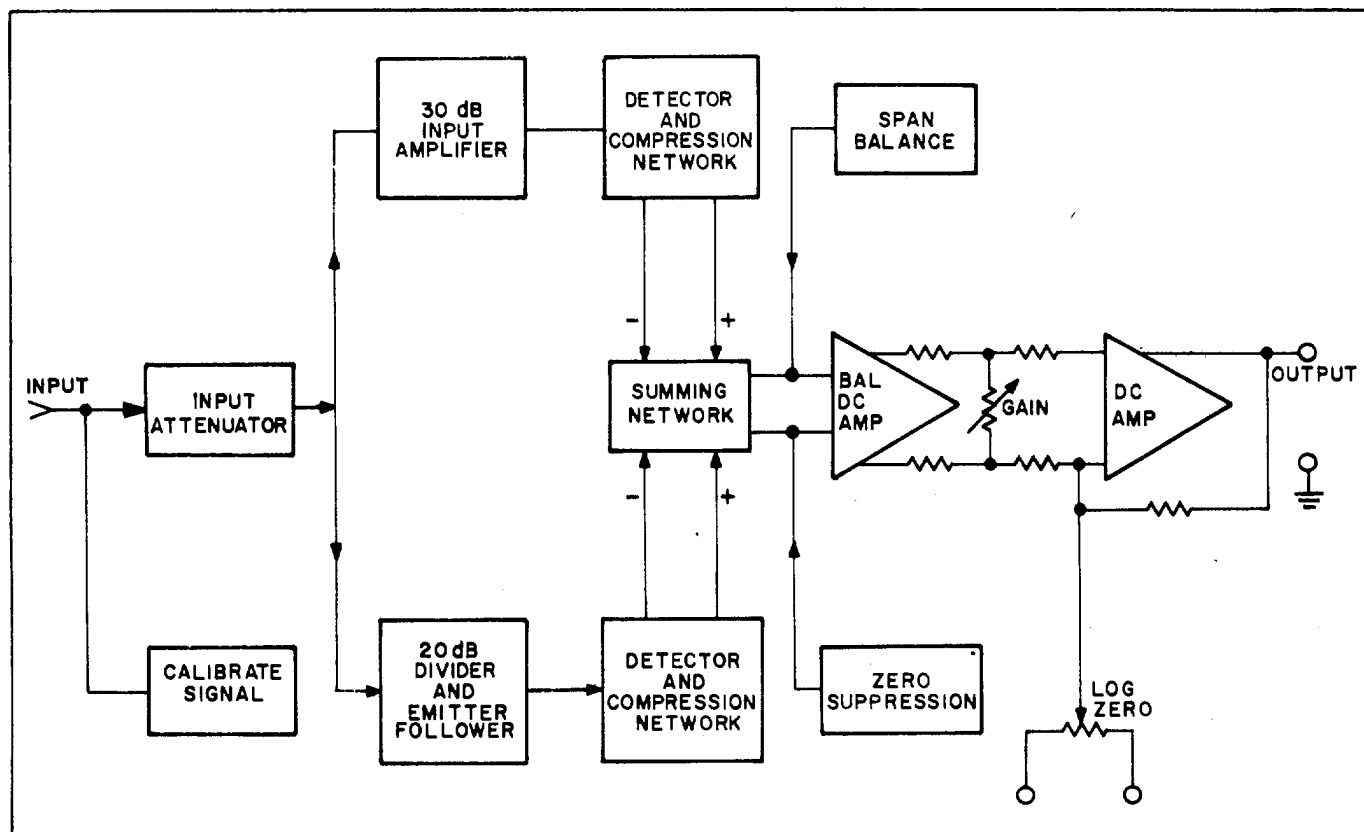


Figure 4-2. 8808A Block Diagram

SECTION V REPLACEABLE PARTS

5-1. INTRODUCTION.

5-2. This section contains information for locating and ordering replacement parts. Table 5-1 provides the following information for each item.

- a. Lists electrical parts in alpha-numeric order of their reference designators.
- b. The Sanborn stock number.
- c. The part description.
- d. Lists miscellaneous parts in numerical order

5-3. ORDERING INFORMATION.

5-4. To order a replacement part, note the part number and then cross reference that part number to the National Stock Number in table 5-2; then order through normal ordering channels. If the part number does not have a National Stock Number, then order the part through normal ordering channels using the commercial part number. Specify the following information for each part:

- a. Model and s/n of the instrument.
- b. Sanborn stock number.
- c. Circuit reference designator.
- d. Description.

5-5. To order a part not listed in the tables, give a complete description of the part and include its function and location.

REFERENCE DESIGNATORS

A = assembly	F = fuse	Q = transistor	V = vacuum tube
B = motor	FL = filter	R = resistor	photocell, etc.
BT = battery	HR = heater	RT = thermistor	W = cable
C = capacitor	J = jack	S = switch	X = socket
CP = coupler	K = relay	T = transformer	XDS = lampholder
CR = diode	L = inductor	TB = terminal board	XF = fuseholder
DL = delay line	M = meter	TC = thermocouple	Y = crystal
DS = device signaling (lamp)	MP = mechanical part	TP = test point	Z = network
E = miscellaneous electronic part	P = plug		

ABBREVIATIONS.*

A = amperes	fil hd = fillister head	n = nano (10^{-9})	rot = rotary
ACC = accessories	flm = film	NC = normally closed	s-b = slow-blow
AFC = automatic frequency control	FR = front	Ne = neon	scon = semiconductor
Al = aluminum	fwd = forward	NETWRK = network	Se = selenium
AMP = amplifier	fxd = fixed	Ni Pl = nickel plate	sect = section(s)
as ord = as ordered	G c/s = gigacycles per second (see G Hz)	NO = normally open	SEMS = machine screw with washer
Be Cu = beryllium copper	Ge = germanium	NPN = negative positive negative	SEQ = sequential
BFO = beat frequency oscillator	GEN = generator	NPO = negative positive zero (zero temperature coefficient)	Si = silicon
bh = binder head	G Hz = gigacycles per second	nsr = not separately replaceable	sil = silver
bp = bandpass	gl = glass	obd = order by description	sl = slide
brs = brass	grd = ground(ed)	od = outside diameter	SPDT = single-pole double-throw
c/s = cycles/second (see Hz)	h = henry(ies)	ov hd = oval head	spl = special
CALIB = calibration	hex = hexagonal	ox = oxide	SPST = single-pole single-throw
ccw = counterclockwise	Hg = mercury	pc = printed circuit board	sst = stainless steel
cd pl = cadmium plate	Hz = cycle per second	PEMS = circular press fitted nut	SWTCH = switch
cer = ceramic	imp = impregnated	pF = picofarad (10^{-12} farads)	Ta = tantalum
ch = channel	incd = incandescent	PH = phone	td = time delay
cmo = cabinet mount only	ins = insulation(ed)	ph brz = phosphor bronze	Ti = titanium
coef = coefficient	ips = inches per second	Phl hd = Phillips head	tog = toggle
com = common	k, K = kilo (1000)	piv = peak inverse voltage	tol = tolerance
comp = composition	Kc, k c/s = kilocycles (see k Hz)	pk = peak	trim. = trimmer
conn = connector	KEPS = hex nut with lockwasher	PNL = panel	twl = traveling wave tube
CRT = cathode-ray tube	k Hz = kilocycles/second	PNP = positive negative positive	μ or U = micro (10^{-6})
cw = clockwise	lin = linear taper	poly = polystyrene	μ A = microamperes
dB = decibel	lkwash = lockwasher	por = porcelain	μ F = microfarads
dep C = deposited carbon	log = logarithmic taper	pos = position(s)	μ V = microvolts
DISP = display	lp flt = low-pass filter	pot = potentiometer	V = volt(s)
DPDT = double-pole double-throw	m = milli (10^{-3})	pp = peak-to-peak	vac = vacuum
DPST = double-pole single-throw	mA = milliamperes	PREAMP = preamplifier	Vacw = volt(s) alternating current working
EIA = tubes or transistors meeting Electronic Industries Association standards will normally result in instrument operating within specifications; tubes and transistors selected for best performance will be supplied if ordered by stock numbers	M = mega (10^6)	prec = precision (temperature coefficient, long term stability, and/or tolerance)	var = variable
elect = electrolytic	M c/s = megacycles (see M Hz)	pt = point	Vdcw = volt(s) direct current working
encap = encapsulated	met flm = metal film	rec = recorder	W = watt(s)
F = farad(s)	mfr = manufacturer	rect = rectifier	w/ = with
fet = field effect transistor	mH = millihenry	rev = reverse	w/o = without
fh = flat head	M Hz = megacycles/second	rf = radio frequency	wiv = reverse working voltage
FIG = figure	minat = miniature	rh = round head	ww = wirewound
	mom = momentary	rmo = rack mount only	Ω = ohm
	mtg = mounting	rms = root-mean-square	
	mV = millivolt		
	mW = milliwatt		
	my = mylar®		

* Electric Accounting Machines (EAM) capitalize all abbreviations

Table 5-1. Reference Designation Index

Circuit Reference	Part Number	Description	Assembly Location
END ITEM	8808A	LOG LEVEL PREAMPLIFIER	A1
	08808-60020	PRINTED CIRCUIT BOARD ASSY.	A2
	08808-60030	PRINTED CIRCUIT BOARD ASSY.	A3
	08808-60050	SWITCH ASSEMBLY	A4
		ACCESSORY	Page 15
		MISCELLANEOUS	Page 16
C1	8PA-6	Capacitor, 100 pF	A2
C2	8PA-6	Same, as C1	A2
C3	0121-0163	Capacitor, 7-45 pF	A2
C4	0160-2388	Capacitor, 47 MFD 400V	A2
C5	8PA-35	Capacitor, 1000 pF 5%	A2
C6	0160-2386	Capacitor, 470 pF	A2
C7	0121-0160	Capacitor, 210-1000 pF	A2
C8	0160-2384	Capacitor, 120 pF	A2
C9	0121-0160	Same as C7	A2
C10	0160-2383	Capacitor, 100 pF 1%	A2
C11	8C-61	Capacitor, 20 MFD 20V	A2
C12	8C-61	Same as C11	A2
C13	0160-2387	Capacitor, 1000 pF 1%	A2
C14	8B-201	Capacitor, .0047 MFD 10%	A2
C15	8B-213	Capacitor, .0033 MFD	A2
C16	8B-145	Capacitor, .005 MFD 5%	A2
C17	0180-0374	Capacitor, 10 MFD 20V	A3
C18	8B-68	Capacitor, .01 MFD	A3
C19	0180-0022	Capacitor, 3.9 MFD 35V	A3
C20	8T-31	Capacitor, .22 MFD	A3
C21	0180-0374	Same as C17	A3
C22	0180-0195	Capacitor, .33 MFD	A3
C23	0180-0022	Same as C19	A3
C24	8T-31	Same as C20	A3
C25	0180-0374	Same as C17	A3
C26	0180-0195	Same as C22	A3
C27	0180-0022	Same as C19	A3
C28	8B-68	Same as C18	A3
C29	8B-68	Same as C18	A3
C30	0121-0163	Capacitor, 7-45 pF	A2
C31	0160-2385	Capacitor, 150 pF	A2
C32	8B-68	Same as C18	A3
C33	0180-0022	Same as C19	A3
C34	0180-0374	Same as C17	A3
C35	8B-68	Same as C18	A3
C36	0180-0022	Same as C19	A3
C37	8T-31	Same as C20	A3
C38	0180-0374	Same as C17	A3
C39	8B-68	Same as C18	A3
C40	0180-0022	Same as C19	A3
C41	8T-31	Same as C20	A3
C42	0180-0374	Same as C17	A3
C43	8B-68	Same as C18	A3
C44	0180-0022	Same as C19	A3

Table 5-1. Reference Designation Index (Cont.)

Circuit Reference	Part Number	Description	Assembly Location
C45	5080-3722	Capacitor, 27 MFD 10V	A2
C46	5080-3723	Capacitor, .22 MFD	A2
C47	5080-3722	Same as C45	A2
C48	5080-3723	Same as C46	A2
C49	8B-68	Capacitor, .01 MFD	A2
C50	8B-68	Same as C49	A2
C51	8B-68	Same as C49	A2
C52	8B-213	Same as C15	A2
C53	0180-1862	Capacitor, 120 MFD 15V	A3
C54	0180-1862	Same as C53	A3
C55	0180-1862	Capacitor, 120 MFD 15V	A2
C56	0180-1862	Same as C55	A2
C57	8B-181	Capacitor, .22 MFD	A2
C58	8E-28	Capacitor 0033 MFD	A2
C59	8E-28	Same as C58	A2
C61	8E-21	Capacitor, 68 pF	A2
CR1	16A-79	Diode	A2
CR2	16A-79	Same as CR1	A2
CR3	16A-79	Same as CR1	A2
CR4	16A-79	Same as CR1	A2
CR5	16A-79	Same as CR1	A2
CR6	16A-83	Diode (3 Pellet)	A2
CR7	16A-83	Same as CR6	A2
CR8	16A-79	Diode	A3
CR9	16A-79	Same as CR8	A3
CR10	16A-79	Same as CR8	A3
CR11	16A-79	Same as CR8	A3
CR12	1901-0378	Diode, Silicon Stabistor (2 Pellet)	A3
CR13	1901-0378	Same as CR12	A3
CR14	1910-0016	Diode, Germanium	A3
CR15	1910-0016	Same as CR14	A3
CR16	16A-45A	Diode	A3
CR17	1901-0378	Same as CR12	A3
CR18	1901-0377	Diode, Silicon Stabistor (3 Pellet)	A3
CR19	16A-79	Same as CR8	A3
CR20	16A-79	Same as CRR	A3
CR21	16A-79	Same as CR8	A3
CR22	16A-79	Same as CR8	A3
CR23	1901-0378	Same as CR12	A3
CR24	1901-0378	Same as CR12	A3
CR25	1910-0016	Same as CR14	A3
CR26	1910-0016	Same as CR14	A3
CR27	16A-45A	Same as CR16	A3
CR28	1901-0378	Same as CR12	A3
CR29	1901-0377	Same as CR18	A3
CR30	16A-79	Same as CR8	A3
CR31	16A-79	Same as CR8	A3
CR32	16A-79	Same as CR8	A3
CR33	16A-79	Same as CR8	A3
CR34	1901-0378	Same as CR12	A3
CR35	1901-0378	Same as CR12	A3
CR36	16A-45A	Same as CR16	A3
CR37	16A-45A	Same as CR16	A3
CR38	16A-45A	Same as CR16	A3
CR39	1901-0378	Same as CR12	A3

Table 5-1. Reference Designation Index (Cont.)

Circuit Reference	Part Number	Description	Assembly Location
CR40	1901-0377	Same as CR18	A3
CR41	1910-0016	Same as CR14	A3
CR42	1910-0016	Same as CR14	A3
CR43	16A-45A	Same as CR16	A3
CR44	1901-0378	Same as CR12	A3
CR45	16A-79	Same as CR8	A3
CR46	16A-79	Same as CR8	A3
CR47	16A-79	Same as CR8	A3
CR48	16A-79	Same as CR8	A3
CR49	1901-0378	Same as CR12	A3
CR50	1901-0378	Same as CR12	A3
CR51	1910-0016	Same as CR14	A3
CR52	1910-0016	Same as CR14	A3
CR53	16A-45A	Same as CR16	A3
CR54	1901-0378	Same as CR12	A3
CR55	1901-0377	Same as CR18	A3
CR56	16A-79	Same as CR8	A3
CR57	16A-79	Same as CR8	A3
CR58	16A-79	Same as CR8	A3
CR59	16A-79	Same as CR8	A3
CR60	1901-0378	Same as CR12	A3
CR61	1901-0378	Same as CR12	A3
CR62	1910-0016	Same as CR14	A3
CR63	1910-0016	Same as CR14	A3
CR64	16A-45A	Same as CR16	A3
CR65	1901-0378	Same as CR12	A3
CR66	1901-0377	Same as CR18	A3
CR67	16A-79	Same as CR8	A3
CR68	16A-79	Same as CR8	A3
CR69	16A-79	Same as CR8	A3
CR70	16A-79	Same as CR8	A3
CR71	1901-0378	Same as CR12	A3
CR72	1901-0378	Same as CR12	A3
CR73	1910-0016	Same as CR14	A3
CR74	1910-0016	Same as CR14	A3
CR75	16A-45A	Same as CR16	A3
CR76	1901-0378	Same as CR12	A3
CR77	1901-0377	Same as CR18	A3
CR78	16A-45A	Diode	A2
CR79	16A-45A	Same as CR78	A2
CR80	16A-45A	Same as CR78	A2
J1	10G16-IMX	Connector, 16-pin	A1
J2	10G2-22FX	Mini-Jack	A1
Q1A, 1B	1855-0031	Transistor, Field Effect	A2
Q2	1854-0202	Transistor, 2N3390	A2
Q3	1854-0202	Same as Q2	A2
Q4	16T-81	Transistor, SM9143	A2
Q5	16T-81	Same as Q4	A2
Q6	16T-79	Transistor, 2N3391	A3
Q7	16T-50	Transistor, 2N1309	A3
Q8	16T-79	Same as Q6	A3
Q9	16T-50	Same as Q7	A3
Q10	16T-79	Same as Q6	A3
Q11	16T-50	Same as Q7	A3

Table 5-1. Reference Designation Index (Cont.)

Circuit Reference	Part Number	Description	Assembly Location
Q12	16T-78	Transistor, 2N3393	A2
Q13	16T-76	Transistor, 53-10	A2
Q14	16T-79	Same as Q6	A3
Q15	16T-50	Same as Q7	A3
Q16	16T-79	Same as Q6	A3
Q17	16T-50	Same as Q7	A3
Q18	16T-79	Same as Q6	A3
Q19	16T-50	Same as Q7	A3
Q20	5080-3724	Transistor, 54-23	A2
Q21	5080-3724	Same as Q20	A2
Q22	16T-76	Same as Q13	A2
Q23	16T-76	Same as Q13	A2
Q24	16T-78	Same as Q12	A2
Q25	16T-78	Same as Q12	A2
Q26	16T-81	Same as Q4	A2
Q27	16T-61	Transistor, 2N3053	A2
Q28	16T-61	Same as Q27	A2
Q29	16T-61	Same as Q27	A2
R1	50AB-155J	Resistor, 1.5 Meg $\pm 5\%$	A4
R2	50AB-335J	Resistor, 3.3 Meg $\pm 5\%$	A4
R3	0698-4981	Resistor, 32.4K 1%o	A2
R4	50E-124F	Resistor, 120K 1%	A2
R5	50E-825-3F	Resistor, 825K 1%	A4
R6	50E-976-3F	Resistor, 976K 1%	A2
R7	50E-205F	Resistor, 2 Meg 1%	A2
R8	50AB-472J	Resistor, 4.7K 5%	A2
R9	50E-503F	Resistor, 50K 1%	A2
R10	56PA-17	Potentiometer, 250 Ohm	A2
R11	50E-403F	Resistor, 40K 1%	A2
R12	50E-503F	Same as R9	A2
R13	50AB-472J	Same as R8	A2
R14	0757-0309	Resistor, 61.9K 1%	A2
R15	50E-104F	Resistor, 100K%	A2
R16	50E-104F	Same as R15	A2
R17	50E-204F	Resistor, 200K 1%	A2
R18	50AB-472J	Same as R8	A2
R19	50AB-222J	Resistor, 2.2K 5%	A2
R20	50AB-471J	Resistor, 470 Ohm 5%	A2
R21	50E-316-2F	Resistor, 31.6K 1%	A2
R22	50AB-331J	Resistor, 330 Ohm 5%	A2
R23	50AB--221J	Resistor, 220 Ohm 5%	A2
R24	50E-101F	Resistor, 100 Ohm 1%	A2
R25	50AB-223J	Resistor, 22K $\pm 5\%$	A3
R26	50AB-472.J	Resistor. 4.7K $\pm 5\%$	A3
R27	50E-133-2F	Resistor, 13.3K $\pm 1\%$	A3
R28	50E-202F	Resistor, 2K $\pm 1\%$	A3
R29	50AB-472J	Same as R26	A3
R30	50AB-332J	Resistor, 3.3K $\pm 5\%$	A3
R31	50E-153F	Resistor, 15K $\pm 1\%$	A3
R32	50E-153F	Same as R31	A3
R33	50E-104F	Resistor, 100K $\pm 1\%$	A3
R34	50E-104F	Same as R33	A3
R35	50AB-152J	Resistor, 1. 5K 5%	A2
R36	50E-504F	Resistor, 500K $\pm 1\%$	A3
R37	50E-353F	Resistor, 35K $\pm 1\%$	A3

Table 5-1. Reference Designation Index (Cont.)

Circuit Reference	Part Number	Description	Assembly Location
R38	50E-105F	Resistor, 1 Meg $\pm 1\%$	A3
R39	50E-105F	Same as R38	A3
R40	50AB-223J	Same as R25	A3
R41	50AB-472J	Same as R26	A3
R42	50E-133-2F	Same as R27	A3
R43	50E-202F	Same as R28	A3
R44	50AB-472J	Same as R26	A3
R45	50AB-332J	Same as R30	A3
R46	50E-153F	Same as R31	A3
R47	50E-153F	Same as R31	A3
R48	50E-104F	Same as R33	A3
R49	50E-104F	Same as R33	A3
R50	50E-504F	Same as R36	A3
R51	50E-353F	Same as R37	A3
R52	50E-105F	Same as R38	A3
R53	50E-105F	Same as R38	A3
R54	50AB-223J	Same as R25	A3
R55	50AB-472J	Same as R26	A3
R56	50E-133-2F	Same as R27	A3
R57	50E-202F	Same as R28	A3
R58	50AB-472J	Same as R26	A3
R59	50AB-332J	Same as R30	A3
R60	50E-153F	Same as R31	A3
R61	50E-153F	Same as R31	A3
R62	50E-104F	Same as R33	A3
R63	50E-104F	Same as R33	A3
R64	50E-105F	Same as R38	A3
R65	50E-104F	Same as R33	A3
R66	50E-105F	Same as R38	A3
R67	50E-105F	Same as R38	A3
R68	50E-185F	Resistor, 1.8 Meg 1%	A2
R69	50E-204F	Same as R17	A2
R70	50AB-224J	Resistor, 220K 5%	A2
R71	50E-153F	Same as R31	A3
R72	50E-153F	Same as R31	A3
R73	50E-104F	Same as R33	A3
R74	50E-104F	Same as R33	A3
R75	50E-504F	Same as R36	A3
R76	50E-204F	Resistor, 200K $\pm 1\%$	A3
R77	50E-105F	Same as R38	A3
R78	50E-105F	Same as R38	A3
R79	50AB-223J	Same as R25	A3
R80	50AB-472J	Same as R26	A3
R81	50E-133-2F	Same as R27	A3
R82	50E-202F	Same as R28	A3
R83	50AB-472J	Same as R26	A3
R84	50AB-332J	Same as R30	A3
R85	50E-153F	Same as R31	A3
R86	50E-153F	Same as R31	A3
R87	50E-104F	Same as R33	A3
R88	50E-104F	Same as R33	A3
R89	50E-504F	Same as R36	A3
R90	50E-353F	Same as R37	A3
R91	50E-105F	Same as R38	A3
R92	50E-105F	Same as R38	A3
R93	50AB-223J	Same as R25	A3
R94	50AB-472J	Same as R26	A3

Table 5-1. Reference Designation Index (Cont.)

Circuit Reference	Part Number	Description	Assembly Location
R95	50E-133-2F	Same as R27	A3
R96	50E-202F	Same as R28	A3
R97	50AB-472J	Same as R26	A3
R98	50AB-332J	Same as R30	A3
R99	50E-153F	Same as R31	A3
R100	50E-153F	Same as R31	A3
R101	50E-104F	Same as R33	A3
R102	50E-104F	Same as R33	A3
R103	50E-504F	Same as R36	A3
R104	50E-353F	Same as R37	A3
R105	50E-105F	Same as R38	A3
R106	50E-105F	Same as R38	A3
R107	50AB-223J	Same as R25	A3
R108	50AB-472J	Same as R26	A3
R109	50E-103F	Resistor, 10K 1%	A3
R110	50E-202F	Same as R28	A3
R111	50AB-472J	Same as R26	A3
R112	56PA-47	Potentiometer, 10K	A3
R113	50AB-332J	Same as R30	A3
R114	50E-153F	Same as R31	A3
R115	50E-153F	Same as R31	A3
R116	50E-104F	Same as R33	A3
R117	50E-104F	Same as R33	A3
R118	50E-504F	Same as R36	A3
R119	50E-353F	Same as R37	A3
R120	50E-105F	Same as R38	A3
R121	50E-105F	Same as R38	A3
R122	50AB-221J	Same as R23	A2
R123	50AB-123J	Resistor, 12K 5%	A2
R124	50AB-474J	Resistor, 470K 5%	A2
R125	50AB-474J	Same as R124	A2
R126	50AB-123J	Same as R123	A2
R127	50E-103F	Resistor, 10K 1%	A2
R128	50AB-682J	Resistor, 6.8K 5%	A2
R129	56PA-47	Potentiometer, 10K	A2
R130	50E-503F	Same as R9	A2
R131	50E-503F	Same as R9	A2
R132	50E-101F	Same as R24	A2
R133	50E-158-OF	Resistor, 158 Ohm 1%	A2
R134	56PA-17	Same as R10	A2
R135	56PA-37	Potentiometer, 2. 5K	A2
R136	50E-202F	Resistor, 2K 1%	A2
R137	0757-1011	Resistor, 18K 1%	A2
R138	50E-500F	Resistor, 50 Ohm 1%	A4
R139	50E-252F	Resistor, 2. 5K 1%	A2
R140	50E-500F	Same as R138	A4
R141	50E-500F	Same as R138	A4
R142	50E-500F	Same as R138	A4
R143	50E-500F	Same as R138	A4
R144	0811-1797	Resistor, 50K 3%	A2
R145	56S-8	Potentiometer, 1000 Ohm (SPAN BAL)	A1
R146	50E-254F	Resistor, 250K 1%	A2
R147	50AB-153J	Resistor, 15K 5%	A2
R148	50AB-153J	Same as R147	A2
R149	50E-254F	Same as R146	A2
R150	50E-253F	Resistor, 25K 1%	A2
R151	50AB-124J	Resistor, 120K 5%	A2

Table 5-1. Reference Designation Index Cont.

Circuit Reference	Part Number	Description	Assembly Location
R152	50E-253F	Same as R150	A2
R153	50AB-103J	Resistor, 10K 5%	A2
R154	50AB-392J	Resistor, 3.9K 5%	A2
R155	0811-1797	Same as R144	A2
R156	50E-303F	Resistor, 30K 1%	A2
R157	50AB-123J	Same as R123	A2
R158	50E-303F	Same as R156	A2
R159	0811-1797	Same as R144	A2
R160	0811-1797	Same as R144	A2
R161	50E-104-2F	Resistor, 10.4K 1%	A2
R162	50E-752F	Resistor, 7.5K 1%	A2
R163	50E-503F	Same as R9	A2
R164	50E-103F	Same as R127	A2
R165	50E-103F	Same as R127	A2
R166	56S-35	Potentiometer, 250K (GAIN)	A1
R167	50E-253F	Same as R150	A2
R168	50E-103F	Same as R127	A2
R169	50E-103F	Same as R127	A2
R170	50E-316-2F	Same as R21	A2
R171	50AB-472J	Same as R8	A2
R172	50AB-123J	Same as R123	A2
R173	50AB-272J	Resistor, 2.7K 5%	A2
R174	50AB-121J	Resistor, 120 Ohm 5%	A2
R175	50E-403F	Same as R11	A2
R176	56E-7	Potentiometer, 50K (LOG ZERO)	A1
R177	50E-403F	Same as R11	A2
R178	50AB-100J	Resistor, 10 Ohm s5%	A3
R179	50AB-100J	Same as R178	A3
R180	50E-154F	Resistor, 150K 1%	A2
R181	50AB-562J	Resistor, 5.6K 5%	A2
S1	62B-219	Switch, Rotary	A1
S2	62B-220	Switch, Wafer 3-Section, 9-Position	A4
S3	62D-48	Switch, Toggle DPDT	A1
T1	56T-11	Thermister, 20K	A2
	10G2-22MW	ACCESSORY Phone Plug	A1

Table 5-1. Reference Designation Index (Cont.)

Quantity	Part Number	Description	Assembly Location
MISCELLANEOUS			
2	0370-0077	Knob	A1
1	652-65	Nameplate (08808-00020)	A1
1	816-64	Plate, Connector	A1
1	833-5 P1	Stand-Off	A1
1	833-6 P1	Nut	A1
1	860-3002	Chassis, Upper	A1
1	860-3003	Chassis, Lower	A1
2	860-4005	Plate, Side	A1
1	08800-20010	Handle	A1
1	08808-00010	Panel, Front	A1
1	08808-00050	Bracket, Printed Circuit Board	A1
1	752-427	Printed Board	A2
1	01260-20501	Heat Sink, Bottom	A2
1	01260-20601	Heat Sink, Top	A2
1	752-428	Printed Board	A3
<u>SHAFT LOCK (1/8 SHAFT) 817-C1</u>			
1	817-5	Bushing, Shaft Lock	
1	817-2	Knob, Shaft Lock	
1	7-7	Washer, Shaft Lock (Lower)	
1	817-6	Washer, Shaft-Lock (Upper)	
1	817-1	Nut, Shaft-Lock	
1	81D-4-3/2Z	3/32 x 4-40 Allen Head Set Screw	
1	81D-4-2Z	1/8" x 4-40 Allen Head Set Screw	
<u>SHAFT LOCK (1/4" SHAFT) 817-C2</u>			
1	817-4	Bushing, Shaft-Lock	
1	817-3	Knob, Shaft-Lock	
1	817-7	Washer, Shaft-Lock (Lower)	
1	817-6	Washer, Shaft-Lock (Upper)	
1	817-1	Nut, Shaft-Lock	
1	81D-4-3/2Z	3/32 x 4-40 Allen Head Set Screw	
1	81D-4-2Z	1/8" x 4-40 Allen Head Set Screw	

Table 5-2.

**PART NUMBER - NATIONAL STOCK NUMBER
CROSS REFERENCE INDEX**

PART NUMBER	FSCM	NATIONAL STOCK NO.	PART NUMBER	FSCM	NATIONAL STOCK NO.
0180-0022	28480	5910-00-538-3597			
0180-0195	28480	5910-00-444-6642			
0180-0374	28480	5910-00-931-7050			
0370-0077	28480	5355-00-767-9444			
0370-1107	28480	5355-01-011-4975			
0698-3420	28480	5905-00-931-4067			
0757-0309	28480	5905-00-632-5238			
0757-0837	28480	5905-00-850-2180			
0757-0843	28480	5905-00-830-6751			
1910-0016	28480	5961-00-954-9182			
5080-3724	28480	5961-00-105-4694			
8808A	28480	6625-00-134-3557			

Foldout figure 5-1 is located in back of the manual.

APPENDIX A**REFERENCES**

DA Pam 310-4	Index of Technical Publications: Technical Manuals, Technical Bulletins, Supply Manuals (Types 7, 8, and 9), Supply Bulletins, and Lubrication Orders.
DA Pam 310-7	US Army Equipment Index of Modification Work Orders.
TB 11-6625-2751-35	Calibration Procedures for Dual Channel Recorder RO-460(V1)/U (HP Model 7702B) and Oscillographic Recorder (HP Model 7418A); Preamplifier Power Supply (HP 8848A); Preamplifier Plug-In Unit PL-1306A/U (HP Model 8803A); and Preamplifier Plug-In Units (HP Models 8801A, 8802A, 8805A, and 8808A).
TB 43-180	Calibration Requirements for the Maintenance of Army Materiel.
TB 385-4	Safety Precautions for Maintenance of Electrical/Electronic Equipment.
TM 11-6625-537-14-1	Operator's, Organizational, Direct Support and General Support Maintenance Manual: Electronic Voltmeters. ME-202A/U (NSN 6625-00-709-0288) and ME-202B/U (NSN 6625-00-972-4046).
TM 11-6625-654-14	Operator's, Organizational, Direct Support, and General Support Maintenance Repair Parts and Special Tools List (Including Depot Maintenance Repair Parts and Special Tools List) for Multimeter AN/USM-223.
TM 11-6625-683-15	Operator's, Organizational, Direct Support, General Support and Depot Maintenance Manual: Signal Generator AN/URM-127 (NSN 6625-00-783-5965).
TM 11-6625-2658-14	Operator's, Organizational, Direct Support, and General Support Maintenance Manual for Oscilloscope AN/USM-281C (NSN 6625-00-106-9622).
TM 38-750	The Army Maintenance Management System (TAMMS)

TM 740-90-1	Administrative Storage of Equipment.
TM 750-244-2	Procedures for Destruction of Electronics Materiel to Prevent Enemy Use (Electronics Command).

APPENDIX D

MAINTENANCE ALLOCATION

Section I. INTRODUCTION

D-1. General

This appendix provides a summary of the maintenance operations for the AM-6681 (V)/U. It authorizes categories of maintenance for specific maintenance functions on repairable items and components and the tools and equipment required to perform each function. This appendix may be used as an aid in planning maintenance operations.

D-2. Maintenance Function

Maintenance functions will be limited to and defined as follows:

- a. Inspect.* To determine the serviceability of an item by comparing its physical, mechanical, and/or electrical characteristics with established standards through examination.
- b. Test.* To verify serviceability and to detect incipient failure by measuring the mechanical or electrical characteristics of an item and comparing those characteristics with prescribed standards.
- c. Service.* Operations required periodically to keep an item in proper operating conditions, i.e., to clean (decontaminate), to preserve, to drain, to paint, or to replenish fuel, lubricants, hydraulic fluids, or compressed air supplies.
- d. Adjust.* To maintain, within prescribed limits, by bringing into proper or exact position, or by setting the operating characteristics to the specified parameters.
- e. Align.* To adjust specified variable elements of an item to bring about optimum or desired performance.
- f. Calibrate.* To determine and cause corrections to be made or to be adjusted on instruments or test measuring and diagnostic equipments used in precision measurement. Consists of comparisons of two instruments, one of which is a certified standard of known accuracy, to detect and adjust any discrepancy in the accuracy of the instrument being compared.
- g. Install.* The act of emplacing, seating, or fixing into position an item, part, module (component or assembly) in a manner to allow the proper functioning of the equipment or system.
- h. Replace.* The act of substituting a serviceable like type part, subassembly, or module (component or assembly) for an unserviceable counterpart.
- i. Repair.* The application of maintenance services (inspect, test, service, adjust, align, calibrate, replace) or other maintenance actions (welding, grinding, riveting, straightening, facing, remachining, or resurfacing) to restore serviceability to an item by correcting specific damage, fault, malfunction, or failure in a part, subassembly, module (component or assembly), end item, or system.
- j. Overhaul.* That maintenance effort (service/action) necessary to restore an item to a completely serviceable/operational condition as prescribed by maintenance standards (i.e., DMWR) in appropriate technical publications. Overhaul is normally the highest degree of maintenance performed by the Army. Overhaul does not normally return an item to like new condition.
- k. Rebuild.* Consists of those services actions necessary for the restoration of unserviceable equipment to a like new condition in accordance with original manufacturing standards. Rebuild is the highest degree of materiel maintenance applied to Army equipment. The rebuild operation includes the act of returning to zero those age measurements (hours, miles, etc.) considered in classifying Army equipments/components.

D-3. Column Entries

- a. Column 1, Group Number.* Column 1 lists group numbers, the purpose of which is to identify components, assemblies, subassemblies, and modules with the next higher assembly.
- b. Column 2, Component/Assembly.* Column 2 contains the noun names of components, assemblies, subassemblies, and modules for which maintenance is authorized.
- c. Column 3, Maintenance Functions.* Column 3 lists the functions to be performed on the item listed in column 2. When items are listed without maintenance functions, it is solely for purpose of having the group numbers in the MAC and RPSTL coincide.
- d. Column 4, Maintenance Category.* Column 4 specifies, by the listing of a "worktime" figure in the appropriate subcolumn(s), the lowest level of maintenance authorized to perform the function listed in column 3. This figure represents the active time required to perform that maintenance function at the indicated category of maintenance. If the number or complexity of the tasks within the listed maintenance function vary at different maintenance categories, appropriate "worktime" figures will be shown for each category. The number of task-hours specified by the "worktime" figure represents the average time required to restore an item (assembly, subassembly, component, module, end item or system) to a serviceable condition under typical field operating conditions. This time includes preparation time, troubleshooting time, and quality assurance/quality control time in addition to the time required to perform the specific tasks identified for the maintenance functions authorized in the maintenance allocation chart. Subcolumns of column 4 are as follows:
- C - Operator/Crew
 - O - Organizational
 - F - Direct Support
 - H - General Support
 - D - Depot
- e. Column 5, Tools and Equipment.* Column 5 specifies by code, those common tool sets (not individual tools) and special tools, test, and support equipment required to perform the designated function.
- f. Column 6, Remarks.* Column 6 contains an alphabetic code which leads to the remark in section IV, Remarks, which is pertinent to the item opposite the particular code.

D-4. Tool and Test Equipment Requirement (sect III)

- a. Tool or Test Equipment Reference Code.* The numbers in this column coincide with the numbers used in the tools and equipment column of the MAC. The numbers indicate the applicable tool or test equipment for the maintenance functions.
- b. Maintenance Category.* The codes in this column indicate the maintenance category allocated the tool or test equipment.
- c. Nomenclature.* This column lists the noun name and nomenclature of the tools and test equipment required to perform the maintenance functions.
- d. National/NATO Stock Number.* This column lists the National/NATO stock number of the specified tool or test equipment.
- e. Tool Number.* This column lists the manufacturer's part number of the tool followed by the Federal Supply Code for manufacturers (5-digit) in parentheses.

D-5. Remarks (sect IV)

Not applicable.

**SECTION II. MAINTENANCE ALLOCATION CHART
FOR
PLUG-IN AMPLIFIER AM-6681(V)1/U**

(1) GROUP NUMBER	(2) COMPONENT/ASSEMBLY	(3) MAINTENANCE FUNCTION	(4) MAINTENANCE CATEGORY					(5) TOOLS AND EQPT	(6) REMARKS
			C	O	F	H	D		
00	PLUG-IN AMPLIFIER AM-6681(V)1/U	Inspect	0.5					Visual only	
		Service		0.5				6	
		Adjust				0.5		1,2,3	
		Test				1.0		1 thru 4	
		Repair				1.0		5	
		Overhaul					2.0	5	

**SECTION III TOOL AND TEST EQUIPMENT REQUIREMENTS
FOR
PLUG-IN AMPLIFIER AM-6681(V) 1/U**

TOOL OR TEST EQUIPMENT REF CODE	MAINTENANCE CATEGORY	NOMENCLATURE	NATIONAL/NATO STOCK NUMBER	TOOL NUMBER
1	H,D	VOLTMETER, ELECTRONIC ME-202	6625-00-972-4046	
2	H,D	OSCILLOSCOPE AN/USM-281C	6625-00-106-9622	
3	H,D	GENERATOR. SIGNAL AN/URM-127	6625-00-783-5965	
4	H,D	MULTIMETER AN/USM-223	6625-00-999-7465	
5	H,D	TOOL KIT, ELECTRONIC EQUIPMENT TK-100/G	5180-00-605-0079	
6	0	TOOL AND TEST EQUIPMENT AVAILABLE TO THE ORGANIZATIONAL REPAIRPERSON BECAUSE OF ASSIGNED MISSION.		



SALES & SERVICE OFFICES

UNITED STATES

ALABAMA
8290 Whitesburg Dr., S.E.
P.O. Box 4207
Huntsville 35802
Tel: (205) 881-4591
TWX: 810-726-2204
Medical Only
228 W. Valley Ave.,
Room 302
Birmingham 35209
Tel: (205) 879-2081/2

ARIZONA
2356 E. Magnolia St.
Phoenix 85034
Tel: (602) 244-1361
TWX: 910-951-1331
2424 East Aragon Rd.
Tucson 85706
Tel: (602) 889-4661

ARKANSAS
Medical Service Only
Little Rock 72205
Tel: (501) 664-8773

CALIFORNIA
1430 East Orangeflorpe Ave.
Fullerton 92631
Tel: (714) 870-1000
TWX: 910-592-1288

3939 Lankershim Boulevard
North Hollywood 91604
Tel: (213) 877-1282
TWX: 910-499-2170

6305 Arizona Place
Los Angeles 90045
Tel: (213) 649-2511
TWX: 910-328-6147

Los Angeles
Tel: (213) 776-7500
3003 Scott Boulevard
Santa Clara 95050
Tel: (408) 249-7000
TWX: 910-338-0518

Ridgescrat
Tel: (714) 446-6165
2220 Watt Ave.
Sacramento 95825
Tel: (916) 482-1463
TWX: 910-367-2092

9606 Aero Drive
P.O. Box 23333
San Diego 92123
Tel: (714) 279-3200
TWX: 910-335-2000
Calculators Only
601 California St.
San Francisco 94108
Tel: (415) 989-8470

COLORADO
5600 South Ulster Parkway
Englewood 80110
Tel: (303) 771-3455
TWX: 910-935-0705

CONNECTICUT
12 Lunar Drive
New Haven 06525
Tel: (203) 389-6551
TWX: 710-465-2029

FLORIDA
P.O. Box 24210
2806 W. Oakland Park Blvd.
Fort Lauderdale 33307
Tel: (305) 731-2020
TWX: 510-955-4089

Jacksonville
Medical Service only
Tel: (904) 725-6333

P.O. Box 13910
6177 Lake Ellenor Dr.
Orlando 32809
Tel: (305) 859-2900
TWX: 810-850-0113

21 East Wright St.
Suite 1
Pensacola 32501
Tel: (904) 434-3081

GEORGIA
P.O. Box 28234
400 Interstate North
Atlanta 30328
Tel: (404) 434-4000
TWX: 810-766-4890

HAWAII
2875 So. King Street
Honolulu 96814
Tel: (808) 955-4455

ILLINOIS
5500 Howard Street
Skokie 60076
Tel: (312) 677-0400
TWX: 910-223-3613

St. Joseph
Tel: (217) 469-2133

INDIANA
7301 North Shadeland Ave.
Indianapolis 46250
Tel: (317) 842-1000
TWX: 810-260-1796

IOWA
1902 Broadway
Iowa City 52240
Tel: (319) 338-9466
Night: (319) 338-9467

KANSAS
Derby
Tel: (316) 267-3655

LOUISIANA
P.O. Box 840
3239 Williams Boulevard
Kenner 70052
Tel: (504) 721-6201
TWX: 810-955-5524

KENTUCKY
Medical/Calculator Only
8003 Troutwood Court
Louisville 40291
Tel: (502) 426-4341

MARYLAND
6707 Whitestone Road
Baltimore 21207
Tel: (301) 944-5400
TWX: 710-862-9157

4 Choke Cherry Road
Rockville 20850
Tel: (301) 948-6370
TWX: 710-828-9685

710-828-0487
P.O. Box 1648
2 Choke Cherry Road
Rockville 20850
Tel: (301) 948-6370
TWX: 710-828-9684

MASSACHUSETTS
32 Hartwell Ave.
Lexington 02173
Tel: (508) 526-2485
TWX: 910-983-0550

MICHIGAN
23855 Research Drive
Farmington 48024
Tel: (313) 476-6400
TWX: 810-242-2900

MINNESOTA
2400 N. Prior Ave.
Roseville 55113
Tel: (612) 636-0700
TWX: 910-563-3734

MISSISSIPPI
Jackson
Medical Service only
Tel: (601) 982-9363

MISSOURI
11131 Colorado Ave.
Kansas City 64137
Tel: (816) 763-8000
TWX: 910-771-2087

148 Weldon Parkway
Maryland Heights 63043
Tel: (314) 567-1455
TWX: 910-764-0830

NEBRASKA
Medical Only
11902 Elm Street
Suite 4C
Omaha 68144
Tel: (402) 333-6017

NEW JERSEY
W. 120 Century Rd.
Paramus 07652
Tel: (201) 265-5000
TWX: 910-990-4951

NEW MEXICO
P.O. Box 11634
Station E
11300 Lomas Blvd., N.E.
Albuquerque 87123
Tel: (505) 282-1330
TWX: 910-989-1185

NEW YORK
156 Wyatt Drive
Las Cruces 88001
Tel: (505) 526-2485
TWX: 910-983-0550

NEW YORK
6 Automation Lane
Computer Park
Albany 12205
Tel: (518) 458-1550
TWX: 710-441-8270

Calculators Only
1251 Avenue of the Americas
Floor 32 - Suite 3296
New York City 10020
Tel: (212) 265-5575

New York City
Manhattan, Bronx
Contact Paramus, NJ Office
Tel: (201) 265-5000
Brooklyn, Queens, Richmond
Contact Woodbury, NY Office
Tel: (516) 921-0300

201 South Avenue
Poughkeepsie 12601
Tel: (914) 454-7330
TWX: 510-248-0012

39 Saginaw Drive
Rochester 14623
Tel: (716) 473-9500
TWX: 510-253-5981

5858 East Molloy Road
Syracuse 13211
Tel: (315) 455-2486
TWX: 710-541-0482

1 Crossways Park West
Woodbury 11797
Tel: (516) 921-0300
TWX: 510-221-2168

NORTH CAROLINA
P.O. Box 5188
1923 North Main Street
High Point 27262
Tel: (919) 885-8101
TWX: 910-926-1516

OHIO
16500 Sprague Road
Cleveland 44130
Tel: (216) 243-7300
Night: 243-7305
TWX: 610-423-9431

PANAMA
Electrónico Balboa, S.A.
P.O. Box 4929
Calle Samuel Lewis
Ciudad de Panama
Tel: 64-2700
Telex: 3431103 Curunda.
Canal Zone
Cable: ELECTRON Panama

PARAGUAY
Z.J. Melamed S.R.L.
Division: Aparatos y Equipos
Medicos
Scientificos y de
Investigacion
P.O. Box 676
Chile, 482, Edificio Victoria
Asuncion
Tel: 4-5069, 4-6272
Cable: RAMEL

PERU
Compañia Electro Médica S.A.
Ave. Enrique Canaval 312
San Isidro
Castilla 1030
Lima
Tel: 22-3900
Cable: ELMED Lima

PUERTO RICO
San Juan Electronics, Inc.
P.O. Box 5167
Ponce de León 154
Pda. 3-PTA de Tierra
San Juan 00906
Tel: (809) 725-3342, 722-3342
Cable: SATRONICS San Juan
Telex: SATRON 3450 332

URUGUAY
Pablo Ferrando S.A.
Comercial e Industrial
Avenida Italia 2877
Casilla de Correo 370
Montevideo
Tel: 40-3102
Cable: RADIUM Montevideo

330 Progress Rd.
Dayton 45449
Tel: (513) 859-8202
TWX: 810-459-1925
1041 Kingsmill Parkway
Columbus 43229
Tel: (614) 436-1041

OKLAHOMA
P.O. Box 32008
Oklahoma City 73132
Tel: (405) 721-0200
TWX: 910-830-6862

OREGON
17890 SW Boones Ferry Road
Tualatin 97062
Tel: (503) 620-3350
TWX: 910-467-8714

PENNSYLVANIA
111 Zeta Drive
Pittsburgh 15238
Tel: (412) 782-0400
Night: 782-0401
TWX: 710-795-3124

1021 8th Avenue
King of Prussia Industrial Park
King of Prussia 19406
Tel: (215) 265-7000
TWX: 510-660-2670

SOUTH CAROLINA
6941-0 N. Trenholm Road
Columbia 29260
Tel: (803) 762-6493

TENNESSEE
Memphis
Medical Service only
Tel: (901) 274-7472

Nashville
Medical Service only
Tel: (615) 244-5448

TEXAS
P.O. Box 1270
201 E. Arapaho Rd.
Richardson 75080
Tel: (214) 231-6101
TWX: 910-667-4723

UTAH
2890 South Main Street
Salt Lake City 84115
Tel: (801) 487-0715
TWX: 910-925-5681

VIRGINIA
Medical Only
P.O. Box 12778
No. 7 Koger Exec. Center
Suite 212
Norfolk 23502
Tel: (804) 497-1026/7

P.O. Box 9854
2914 Hungary Springs Road
Richmond 23228
Tel: (804) 285-3431
TWX: 710-956-0157

WASHINGTON
Bellevue Office Pk.
1203-114th SE
Bellevue 98004
Tel: (206) 454-3971
TWX: 910-443-2446

WEST VIRGINIA
Medical/Analytical Only
Charleston
Tel: (304) 345-1640

WISCONSIN
9431 W. Beloit Road
Suite 117
Milwaukee 53227
Tel: (414) 541-0550
FOR U.S. AREAS
NOT LISTED:

Contact the regional office
nearest you: Atlanta, Georgia...
North Hollywood, California...
Rockville, Md. Choke Cherry Rd.)
Maryland...Skokie, Illinois.
Their complete addresses
are listed above.

***Service Only**

CANADA

ALBERTA
Hewlett-Packard (Canada) Ltd.
11748 Kingsway Ave.
Edmonton T5S 0X5
Tel: (403) 452-9670
TWX: 610-831-2431
Hewlett-Packard (Canada) Ltd.
915-42 Avenue S.E. Suite 102
Calgary T2G 1Z1
Tel: (403) 287-1672

BRITISH COLUMBIA
Hewlett-Packard (Canada) Ltd.
837 E. Cordova Street
Vancouver V6A 3P2
Tel: (604) 254-0531
TWX: 610-922-5059

MANITOBA
Hewlett-Packard (Canada) Ltd.
513 Century St.
St. James
Winnipeg R3H 0L8
Tel: (204) 786-7581
TWX: 610-671-3531

NOVA SCOTIA
Hewlett-Packard (Canada) Ltd.
800 Windmill Road
Dartmouth B3C 1L1
Tel: (902) 469-7820

ONTARIO
Hewlett-Packard (Canada) Ltd.
1785 Woodward Dr.
Ottawa K2C 0P9
Tel: (613) 225-6530
TWX: 610-562-8968

Hewlett-Packard (Canada) Ltd.
6877 Goreway Drive
Mississauga L4V 1L9
Tel: (416) 578-9430
Night: 578-9436
TWX: 610-492-4246

QUEBEC
Hewlett-Packard (Canada) Ltd.
275 Hymus Blvd.
Pointe Claire H9R 1G7
Tel: (514) 697-4232
TWX: 610-422-3022
TLX: 05-821521 HPCL

Hewlett-Packard (Canada) Ltd.
2376 Galvani Street
Ste-Foy G1N 4G4
Tel: (418) 688-8710

**FOR CANADIAN AREAS
NOT LISTED:**
Contact Hewlett-Packard (Canada)
Ltd. in Mississauga

CENTRAL AND SOUTH AMERICA

ARGENTINA
Hewlett-Packard Argentina
S.A.C. Ltda.
Lavalle 1171-3° Piso
Buenos Aires
Tel: 35-0436, 35-0627, 35-0341
Telex: 012-1009
Cable: HEWPACK ARG

BOLIVIA
Stambuk & Mark (Bolivia) Ltda
Av. Mariscal. Santa Cruz 1342
La Paz
Tel: 40626, 53163, 52421
Telex: 3560014
Cable: BUKMAR

BRAZIL
Hewlett-Packard Do Brasil
I.E.C. Ltda.
Rua Frei Caneca, 1 152-Bela Vista
01307-São Paulo-SP
Tel: 288-71-11, 287-81-20,
287-61-93
Telex: 309151 2.3
Cable: HEWPACK São Paulo

Hewlett-Packard Do Brasil
I.E.C. Ltda.
Praca Dom Feliciano, 78-8°
andar (Sala 806/8)
9000-Porto Alegre-RS
Tel: 25-84-70-DDD (0512)
Cable: HEWPACK Porto Alegre
Hewlett-Packard Do Brasil
I.E.C. Ltda.
Rua Siqueira Campos, 53, 4°
andar Copacabana
2000-Rio de Janeiro-GB
Tel: 257-80-94-DDD (021)
Telex: 2100 79 HEWPACK
Cable: HEWPACK
Rio de Janeiro

CHILE
Calchini y Metcalfe Ltda
Calle Lira 81, Oficina 5
Casilla 2118
Santiago, I
Tel: 398613
Cable: CALMET

COLOMBIA
Instrumentación
Henrik A. Langebaek & Kier S.A.
Carrera 7 No. 48-59
Apartado Aéreo 6287
Bogotá, I.D.E.
Tel: 45-78-06, 45-55-46
Cable: AARIS Bogotá
Telex: 44400INSTCO

COSTA RICA
Cientifica Costarricense S.A.
Apartado 10159
San José
Tel: 21-86-13
Cable: GALGRU San José

GUATEMALA
IPESA
Avenida La Reforma 3-48,
Zona 9
Guatemala
Tel: 63627, 64786
Telex: 4192 TELTRO GU

MEXICO
Hewlett-Packard Mexicana,
S.A. de C.V.
Torres Adalid No. 21, 11° Piso
Col. del Valle
México 12, D.F.
Tel: (505) 543-42-32
Telex: 017-74-507
Hewlett-Packard Mexicana,
S.A. de C.V.
Ave. Constitución No. 2184
Monterrey, N.L.
Tel: 48-71-32, 48-71-84

NICARAGUA
Roberto Terán G.
Apartado Postal 689
Edificio Terán
Managua
Tel: 3451, 3452
Cable: ROTERAN Managua

PANAMA
Electrónico Balboa, S.A.
P.O. Box 4929
Calle Samuel Lewis
Ciudad de Panama
Tel: 64-2700
Telex: 3431103 Curunda.
Canal Zone
Cable: ELECTRON Panama

PARAGUAY
Z.J. Melamed S.R.L.
Division: Aparatos y Equipos
Medicos
Scientificos y de
Investigacion
P.O. Box 676
Chile, 482, Edificio Victoria
Asuncion
Tel: 4-5069, 4-6272
Cable: RAMEL

PERU
Compañia Electro Médica S.A.
Ave. Enrique Canaval 312
San Isidro
Castilla 1030
Lima
Tel: 22-3900
Cable: ELMED Lima

PUERTO RICO
San Juan Electronics, Inc.
P.O. Box 5167
Ponce de León 154
Pda. 3-PTA de Tierra
San Juan 00906
Tel: (809) 725-3342, 722-3342
Cable: SATRONICS San Juan
Telex: SATRON 3450 332

URUGUAY
Pablo Ferrando S.A.
Comercial e Industrial
Avenida Italia 2877
Casilla de Correo 370
Montevideo
Tel: 40-3102
Cable: RADIUM Montevideo

VENEZUELA
Hewlett-Packard de Venezuela
C.A.
Apartado 50933
Edificio Segre
Tercera Transversal
Los Ruices Norte
Caracas 107
Tel: 35-00-11
Telex: 21146 HEWPACK
Cable: HEWPACK Caracas

FOR AREAS NOT LISTED.
CONTACT:
Hewlett-Packard
Inter-Américas
3200 Hillview Ave.
Palo Alto, California 94304
Tel: (415) 493-1501
TWX: 910-373-1260
Cable: HEWPACK Palo Alto
Telex: 034-8300, 034-8493

EUROPE

AUSTRIA
Hewlett-Packard Ges m b H
Handelska 52 3
P.O. Box 7
A-1205 Vienna
Tel: (0222) 33 66 06 to 09
Cable: HEWPAK Vienna
Telex: 75923 hewpak a

BELGIUM
Hewlett-Packard Benelux
S.A. N.V.
Avenue de Col-Vert, 1.
(Groenkruglaan)
B-1170 Brussels
Tel: (02) 672 22 40
Cable: PALOBEN Brussels
Telex: 23 494 paloben bru

DENMARK
Hewlett-Packard A/S
Datavej 52
DK-3460 Birkerød
Tel: (01) 81 66 40
Cable: HEWPAK A/S
Telex: 166 40 hp as
Hewlett-Packard A/S
Navervej 1
DK-8600 Silkeborg
Tel: (06) 82 71 66
Telex: 166 40 hp as
Cable: HEWPAK AS

FINLAND
Hewlett-Packard Oy
Nahkahuutuntie 5
P.O. Box 6
SF-00211 Helsinki 21
Tel: 6923031
Cable: HEWPAK Oy Helsinki
Telex: 12-15363

FRANCE
Hewlett-Packard France
Quartier de Courtabœuf
Boite Postale No. 6
F-91401 Orsay
Tel: (1) 907 76 25
Cable: HEWPAK Orsay
Telex: 60048
Hewlett-Packard France
Agence Régionale
Chemin des Mouilles
Boite Postale No. 12
F-69130 Ecullay
Tel: (78) 33 81 25
Cable: HEWPAK Ecullay
Telex: 31 617
Hewlett-Packard France
Agence Régionale
Zone Aéronautique
Avenue Clément Ader
F-31770 Colomiers
Tel: (61) 78 11 55
Telex: 51957

Hewlett-Packard France
Agence Régionale
Centre d'aviation générale
F-13721 Aéroport de
Marignane
Tel: (91) 89 12 36
TWX 41770 F

Hewlett-Packard France
Agence Régionale
D-Avenue de la Robertsau
F-67000 Strasbourg
Tel: 74912 F
Telex: 74 912 F
Hewlett-Packard France
Agence Régionale
74, Allée de la Robertsau
F-67000 Strasbourg
Tel: (86) 35 23 20/21
Telex: 89141
Cable: HEWPAK STABG

Medical/Calculator Only
Hewlett-Packard France
Agence Régionale
Centre Vauban
201, rue Colbert
F-59000 Lille
Tel: (20) 51 44 14

GERMAN FEDERAL REPUBLIC
Hewlett-Packard GmbH
Vertriebszentrale Frankfurt
Bernerstrasse 117
Postfach 560 140
D-6000 Frankfurt 56
Tel: (0611) 50 04-1
Cable: HEWPAKSA Frankfurt
Telex: 52 49 fra
Hewlett-Packard GmbH
Technisches Büro Böblingen
Herrenbergerstrasse 110
D-7030 Böblingen, Württemberg
Tel: (07031) 66 72 87
Cable: HEPAK Böblingen
Telex: 72 65 739 bbn
Hewlett-Packard GmbH
Technisches Büro Düsseldorf
Vogelsanger Weg 38
D-4000 Düsseldorf
Tel: (0211) 63 80 31/5
Telex: 6506 533 hpsd d
Hewlett-Packard GmbH
Technisches Büro Hamburg
Wendenstrasse 23
D-2000 Hamburg 1
Tel: (040) 24 13 93
Cable: HEWPAKSA Hamburg
Telex: 21 63 032 hphd d

Hewlett-Packard GmbH
Technisches Büro Hannover
Mellendorfer Strasse 3
D-3000 Hannover-Kleefeld
Tel: (0511) 55 60 46
Telex: 092 3259

Hewlett-Packard GmbH
Technisches Büro Nürnberg
Hersbruckerstrasse 42
D-85000 Nürnberg
Tel: (0911) 57 10 68
Telex: 623 850
Hewlett-Packard GmbH
Technisches Büro München
Unterhachinger Strasse 28
ISAR Center
D-8012 Ottenbrunn
Tel: (089) 601 30 61/7
Telex: 52 49 85
Cable: HEWPAKSA München

(West Berlin)
Hewlett-Packard GmbH
Technisches Büro Berlin
Keith Strasse 2-4
D-1000 Berlin 30
Tel: (030) 24 90 86
Telex: 18 34 05 hpbld n

GREECE
Kostas Karayannis
18, Ermou Street
GR-Athens 126
Tel: 3230-303 Sales/SVC
3230-305 Adm. Order Proc.
Cable: RAKAR Athens
Telex: 21 59 62 kkar gr
Hewlett-Packard S.A.
Mediterranean & Middle East
Operations
35 Kolokotroni Street
Platia Kefallariou
GR-Kifissia-Athens
Tel: 8080357, 8080359,
8080429, 8016993
Telex: 21 6588
Cable: HEWPAKSA Athens

Analytical Only
"INTECO" G. Papathanassiou & Co.
Marin 17
GR - Athens 103
Tel: 521 915
Cable: INTEKNA
Telex: 21 5329 INTE GR
Medical Only
Technomed Hellas Ltd.
52, Skoufa Street
GR - Athens 135
Tel: 628 972
Cable: ETALAK Athens
Telex: 21-4693 ETAL GR

IRELAND
Hewlett-Packard Ltd.
King Street Lane
Winnersh, Wokingham
GB-Berkshire RG11 5AR
Tel: Wokingham 784774
Telex: 847178/848179
Hewlett-Packard Ltd.
"The Griftons"
Stanford New Road
GB-Aldershot, Cheshire
Tel: (061) 928-9021
Telex: 668068

ITALY
Hewlett-Packard Italiana S.p.A.
Via Amerigo Vesputici 2
I-20124 Milan
Tel: (2) 6251 (10 lines)
Cable: HEWPAKIT Milan
Telex: 32046
Hewlett-Packard Italiana S.p.A.
Via Pietro Maroncelli 40
(ang. Via Visentini)
I-35100 Padova
Tel: 66 40 62/65 31 88
Cable: HEWPAKIT Via Milan
Telex: 32046 via Milan

Medical Only
Hewlett-Packard Italiana S.p.A.
Via Medaglie d'Oro, 2
I-56100 Pisa
Tel: (050) 2 32 04
Telex: 32046 via Milan
Hewlett-Packard S.p.A.
Via G. Armellini 10
I-00143 Rome-Eur
Tel: (6) 591254/5
Cable: HEWPAKIT Rome
Hewlett-Packard Italiana S.p.A.
Via San Quintino, 46
I-10121 Turin
Tel: 53 82 64/54 84 68
Telex: 32046 via Milan

Medical/Calculators Only
Hewlett-Packard Italiana S.p.A.
Via Principe Nicola 43 G/C
I-95126 Catania
Tel: (095) 370505

LUXEMBURG
Hewlett-Packard Benelux
S.A./N.V.
Avenue de Col-Vert, 1.
(Groenkruglaan)
B-1170 Brussels
Tel: (02) 672 22 40
Cable: PALOBEN Brussels
Telex: 23 494

NETHERLANDS
Hewlett-Packard Benelux N.V.
Weerdestein 117
P.O. Box 7825
NL-Amsterdam, 1011
Tel: (020) 5411522
Cable: PALOBEN Amsterdam
Telex: 13 216 hepa nl

NORWAY
Hewlett-Packard Norge A/S
Nesveien 13
Box 149
N-1344 Haslum
Tel: (02) 53 83 60
Telex: 16621 hpnas n

POLAND
Analytical/Medical Only
Hewlett-Packard
Warsaw Technical Office
Szpitalna 1
00-120 Warsaw
Tel: 258031
Telex: 812453

PORTUGAL
Teletra-Empresa Técnica de
Equipamentos Eléctricos S.a.r.l.
Rua Rodrigo da Fonseca 103
P.O. Box 2531
P-Lisbon 1
Tel: (19) 68 60 72
Cable: TELETRA Lisbon
Telex: 12598
Mundinter
Intercambio Mundial de Comércio
Sarl Avenida Antonio Augusto
de Aguiar 136
P.O. Box 2761
P - Lisbon
Tel: (19) 53 21 31/7
Cable: INTERCAMBIO Lisbon

SPAIN
Hewlett-Packard Española, S.A.
Jard. de No.
E-Madrid 16
Tel: (1) 458 26 00 (10 lines)
Telex: 23515 hpe
Hewlett-Packard Española, S.A.
Milanesado 21-23
E-Barcelona 17
Tel: (3) 203 0200 (5 lines)
Telex: 52603 hpsbe e
Hewlett-Packard Española, S.A.
Av Ramon y Cajal, 1
Edificio Sevilla I, planta 9ª
E-Sevilla
Tel: 64 44 54/58

Hewlett-Packard Española S.A.
Edificio Albia II 7º B
E-Bilbao
Tel: 23 063 623 86
Calculators Only
Hewlett-Packard Española S.A.
Alvaro Bazan, 12
(Edificio Luz)
E - Valencia - 10
Tel: 60 42 00

SWEDEN
Hewlett-Packard Sverige AB
Enighetsvägen 1-3
Fack
S-161 20 Bromma 20
Tel: (08) 730 05 50
Cable: MEASUREMENTS
Stockholm
Telex: 10721
Hewlett-Packard Sverige AB
Hagapergsgatan 3C
S-431 41 Mölndal
Tel: (031) 27 68 00/01
Telex: Via Bromma only

SWITZERLAND
Hilbert-Packard (Schweiz) AG
Zürcherstrasse 20
P.O. Box 64
CH-6952 Schlitten Zurich
Tel: (01) 98 18 21
S-431 41 Mölndal
Tel: (031) 27 68 00/01
Telex: Via Bromma only

UNITED KINGDOM
Hewlett-Packard Ltd.
King Street Lane
Winnersh, Wokingham
GB-Berkshire RG11 5AR
Tel: Wokingham 784774
Telex: 847178/848179
Hewlett-Packard Ltd.
"The Griftons"
Stanford New Road
GB-Aldershot, Cheshire
Tel: (061) 928-9021
Telex: 668068

TURKEY
Teknol Engineering Bureau
Saglik Sok No. 15/1
Ayaspa-Beyoglu
P.O. Box 437 Beyoglu
TR-Istanbul 16
Tel: 49 40 40
Cable: TELEMANTEL Istanbul

YUGOSLAVIA
Iskra-Standard/Hewlett-Packard
Topniska 56/3
61000 Ljubljana
Tel: 315-879/321-674
Telex: 31300

Hewlett-Packard Ltd
c/o Makro
South Service Wholesale Centre
Amber Way
Halesowen Industrial Estate
GB-Halesowen, Worcs
Tel: Birmingham 7860

Hewlett-Packard Ltd.
4th Floor
Wedge House
799, London Road
GB-Thornton Heath CR4 6XL
Surrey
Tel: (01) 684 0105
Telex: 946825

Hewlett-Packard Ltd.
c/o Makro
South Service Wholesale Centre
Wear Industrial Estate
Washington
GB-New Town, County Durham
Tel: Washington 464001 ext. 57/58
Hewlett-Packard Ltd.'s registered
address for V.A.T. purposes
only
70, Finsbury Pavement
London, EC2A1SX
Registered No. 690597

USSR
Hewlett-Packard USSR
c/o Commercial Office
American Embassy (Box M)
A-1001 Vienna, Austria
Tel: 221-79-71
Telex: 7825 hewpak SU

SOCIALIST COUNTRIES
PLEASE CONTACT:
Hewlett-Packard S.A.
7, rue du Bois-du-Lan
P.O. Box 29
CH-1217 Meyrin 1 Geneva
Switzerland
Tel: (022) 41 54 00
Cable: HEWPAKSA Geneva
Telex: 2 24 86

AFRICA, ASIA, AUSTRALIA

ANGOLA
Teletra
Empresa Técnica de
Equipamentos
Eléctricos, S.A.R.L.
R. Barbosa Rodrigues, 42-1ºDT.
Caixa Postal, 6467-Luanda
Tel: 35515/6
Cable: TELETRA Luanda

AUSTRALIA
Hewlett-Packard Australia
Pty. Ltd.
31-41 Joseph Street
Blackburn, Victoria 3130
Tel: 89-6351, 89-6306
Telex: 31-024
Cable: HEWPAK Melbourne
Hewlett-Packard Australia
Pty. Ltd.
31 Bridge Street
Pymble
New South Wales, 2073
Tel: 448-8566
Telex: 21581
Cable: HEWPAK Sydney
Hewlett-Packard Australia
Pty. Ltd.
97 Churchill Road
Prospect 5082
South Australia
Tel: 44 8151
Cable: HEWPAK Adelaide
Hewlett-Packard Australia
Pty. Ltd.
141 Stirling Highway
Clarendon, W.A. 5010
Tel: 88-5455
Telex: 93859
Cable: HEWPAK

Hewlett-Packard Australia
Pty. Ltd.
121 Wollongong Street
Fyshwick, A.C.T., 2609
Tel: 85 3733
Hewlett-Packard Australia
Pty. Ltd.
5th Floor
Teachers Union Building
495-499 Boundary Street
Spring Hill, 4000 Queensland
Tel: 25-1544
Telex: AA-42133

CEYLON
United Electricals Ltd.
P.O. Box 681
60, Park St
Colombo 2
Tel: 26696
Cable: HOTPOINT Colombo

CYPRUS
Kyproukos
19 Gregorios & Xenopoulos Rd
P.O. Box 1152
CY-Nicosia
Tel: 45628-29
Cable: KYPRONICS PANDEHIS

HONG KONG
Schmidt & Co. (Hong Kong) Ltd.
P.O. Box 297
Connaught Centre
39th Floor
Connaught Road, Central
Hong Kong
Tel: 240168, 232735
Telex: HKX4786
Cable: SCHMIDTICO Hong Kong

INDIA
Blue Star Ltd.
Kasturi Buildings
Jamshedi Tata Rd.
Bombay 400 020
Tel: 29 50 21
Cable: BLUEFROST
Cable: BLUEFROST

Blue Star Ltd.
Sahas
414/2 Vir Savakar Marg
Prabhadvi
Bombay 400 025
Tel: 45 76 87
Telex: 4093
Cable: FROSTBLUE
Blue Star Ltd.
Band Box House
Prabhadvi
Bombay 400 025
Tel: 45 73 01
Telex: 3751
Cable: BLUESTAR

Blue Star Ltd.
1440 Civil Lines
Kampur 208 001
Tel: 6 88 82
Cable: BLUESTAR
Blue Star Ltd.
7 Hare Street
P.O. Box 506
Calcutta 700 001
Tel: 23-0131
Telex: 655
Cable: BLUESTAR

Blue Star Ltd.
Blue Star House
34 Ring Road
Lalpur Nagar
New Delhi 110 024
Tel: 62 32 76
Telex: 2463
Cable: BLUESTAR
Blue Star Ltd.
Blue Star House
11/11A Magarath Road
Bangalore 560 025
Tel: 55688
Cable: BLUESTAR

Blue Star Ltd.
Meerakshi Mandran
xxvi/1678 Mahatma Gandhi Rd.
Cochin 682 016 Kerala

Blue Star Ltd.
1-1-17/171
Sarajini Devi Road
Secunderabad 500 003
Tel: 7 63 91, 7 73 93
Cable: BLUEFROST
Telex: 459
Blue Star Ltd.
23/24 Second Line Beach
Madras 600 001
Tel: 23954
Cable: BLUESTAR

Blue Star Ltd.
Nathral Mansions
2nd Floor Bistapur
Jamshedpur 831 001
Tel: 38 04
Cable: BLUESTAR
Telex: 240

INDONESIA
BECCA Indonesia P.T.
P.O. Box 498
1st Floor J.L. Cikini Raya 61
Jakarta
Tel: 58038, 40389, 49886
Telex: 2695 Jakarta

IRAN
Multi Corp International Ltd.
Avenue Serya 130
P.O. Box 1212
IR-Teheran
Tel: 83 10 35-39
Cable: MULTICORP Tehran
Telex: 2893 mci tn

ISRAEL
Electronics & Engineering
Div. of Motorola Israel Ltd.
17 Aminadav Street
Tel-Aviv
Tel: 36941 (3 lines)
Cable: BASTEL Tel-Aviv
Telex: 33589

JAPAN
Yokogawa-Hewlett-Packard Ltd.
Ohashi Building
1-59-1 Yoyogi
Shibuya-ku, Tokyo
Tel: 03-70-2281-92
Telex: 232-2024YHP
Cable: YHPMARKET TOK 23-724
Yokogawa-Hewlett-Packard Ltd.
Nishi Baragi Bldg
2-2-8 Kasuga
Ibaragi-Shi
Osaka
Tel: (0726) 23-1641
Telex: 5332-385 YHP OSAKA

Yokogawa-Hewlett-Packard Ltd.
Nakano Building
No. 24 Kamisazuma-cho
Nakamura-ku, Nagoya City
Tel: (052) 571-5171

Yokogawa-Hewlett-Packard Ltd.
Tanigawa Building
2-24-1 Tsuruya-cho
Kanagawa-ku
Yokohama, 221
Tel: 045-312-1252
Cable: 382-3204 YHP YOK
Yokogawa-Hewlett-Packard Ltd.
Mito Mitsui Building
1-4-73 San-no-maru
Mito, 310
Tel: 0292-25-7470
Yokogawa-Hewlett-Packard Ltd.
Inoue Building
1948-3 Asahi-cho, 1-chome
Atsugi, 243
Tel: 0462-24-0452

KENYA
Technical Engineering Services
P.O. Box 18311
Nairobi, Kenya
Tel: 57726
Cable: PROTON

KOREA
American Trading Company
Korea
I.P.O. Box 1103
Dae Kyung Bldg., 8th Floor
107 Sejong-Ro,
Chonggyu-Ku, Seoul
Tel: (4 lines) 73-8924-7
Cable: AMTRACO Seoul

KUWAIT
Al-Khalidiya Trading &
Contracting Co.
Al Soor Street
Mishan Bldg. No. 4
Kuwait
Tel: 42 99 10
Cable: VISICOUNT

LEBANON
Constantin E. Macridis
Clemenceau Street 34
P.O. Box 7213
R.L. Beirut
Tel: 220846
Telex: 21114 Leb
Cable: ELECTRONUCLEAR Beirut

MALAYSIA
MECOMB Malaysia Ltd.
2 Lorong 13/6A
Section 13
Petaling Jaya, Selangor
Cable: MECOMB Kuala Lumpur

MOZAMBIQUE
A.N. Gonçalves, Lda
162, 1º Apt. 14, Av. D. Luis
Caixa Postal 107
Lourenço Marques
Tel: 27091, 27114
Telex: 6-203 Negon Mo
Cable: NEGON

NEW ZEALAND
Hewlett-Packard (N.Z.) Ltd.
94-96 Dixon Street
P.O. Box 9443
Courtenay Place,
Wellington
Tel: 59-559
Telex: 3898
Cable: HEWPAK Wellington
Hewlett-Packard (N.Z.) Ltd.
Pakuranga Professional Centre
267 Pakuranga Highway
Box 51992
Pakuranga
Tel: 569-651
Cable: HEWPAK Auckland
Analytical/Medical Only
Dental & Medical Supply Co. Ltd.
Scientific Division
79 Carlton Gore Road
Newmarket
P.O. Box 1234
Auckland
Tel: 75-288
Cable: DENTAL Auckland

NGERIA
The Electronics
& Instrumentations Ltd.
N6B/770 Oyo Road
Oluseun House
P.M.B. 5402
Ibadan
Tel: 22325
Cable: THETEL Ibadan
The Electronics Instrumentations
& Instrumentations Ltd. (TEIL)
16th Floor Cocoa House
P.M.B. 5402
Ibadan
Tel: 22325
Cable: THETEL Ibadan

PAKISTAN
Mushko & Company, Ltd.
Oosman Chambers
Abdullah Haroon Road
Karachi 3
Tel: 511027, 512927
Cable: COOPERATOR Karachi
Mushko & Company, Ltd.
36B, Satellite Town
Rawalpindi
Tel: 41924
Cable: FEMUS Rawalpindi

PHILIPPINES
Electromex, Inc.
8th Floor, Amalgamated
Development Corp. Bldg.
Ayala Avenue, Makati, Rizal
C.C.P.O. Box 1028
Makati, Rizal
Tel: 86-18-87, 87-76-77,
Tel: 532687, 930338
Cable: ELEMEX Manila

SINGAPORE
Mechanical & Combustion
Engineering Company Pte.,
10/12, Jalan Kilang
Red Hill Industrial Estate
Singapore, 3
Tel: 59-151 (7 lines)
Cable: MECOMB Singapore
Hewlett-Packard Singapore
(Pte.) Ltd.
Blok. 2, 6th FLOOR, Jalan
Bukit Merah
Red Hill Industrial Estate
Singapore, 3
Tel: 533022
Telex: HPSG RS 21486
Cable: HEWPAK, Singapore

SOUTH AFRICA
Hewlett-Packard South Africa
(Pty.), Ltd.
Hewlett-Packard House
Daphne Street, Wendywood
Sandton, Transvaal 2001
Tel: 802-1040
Telex: SA45-4782JH
Cable: HEWPAK
Hewlett-Packard South Africa
(Pty.), Ltd.
Bree Street
Cape Town
Tel: 2-6941/23
Cable: HEWPAK Cape Town
Telex: 0006 CT
Hewlett-Packard South Africa
(Pty.), Ltd.
841 Ridge Road, Durban
P.O. Box 37099
Overport, Durban, 4067
Tel: 88-6102
Telex: 6-7854

TAIWAN
Hewlett-Packard Taiwan
39 Chung Shiao West Road
Sec. Overseas Insurance
Corp. Bldg., 7th Floor
Taipei
Tel: 389180, 1, 2
Telex: TP824 HEWPAK
Cable: HEWPAK Taipei
Hewlett-Packard Taiwan
39, Po-Ai Lane, San Min Chu,
Keelung
Tel: 297319

THAILAND
UNIMESA Co., Ltd.
Elsom Research Building
Bangkok Sukumvit Ave.
Bangkok
Tel: 532687, 930338
Cable: UNIMESA Bangkok

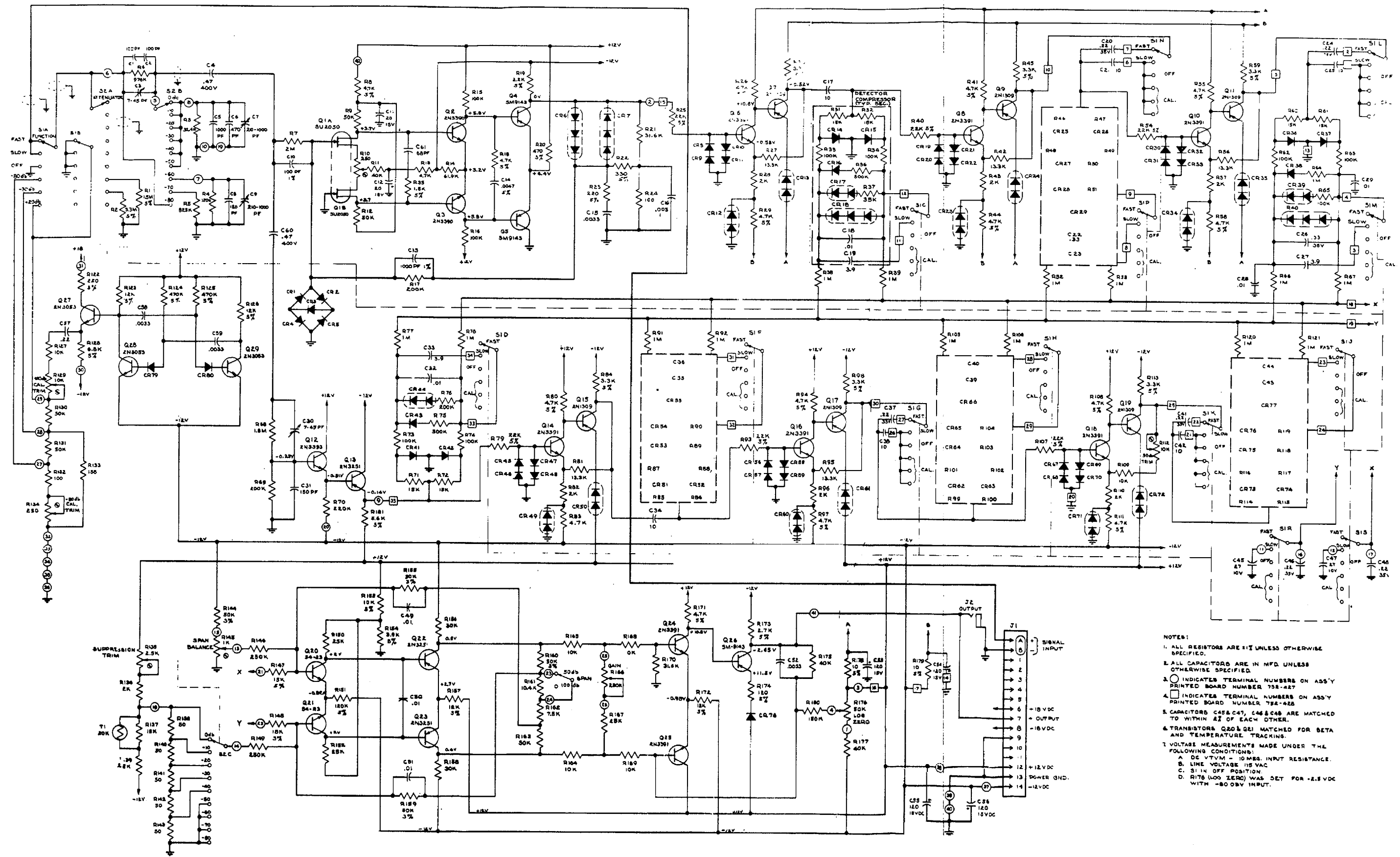
UGANDA
Uganda Tele-Electric Co., Ltd.
P.O. Box 4449
Kampala
Cable: COMCO Kampala

VIETNAM
Peninsular Trading Inc.
P.O. Box, 3
216 Hien-Vuong
Saigon
Tel: 20-805, 93388
Cable: PENARIS, SAIGON 242

ZAMBIA
R.J. Tibury (Zambia) Ltd.
P.O. Box 2792
Lusaka
Zambia, Central Africa
Tel: 78793
Cable: ARJAYTEE, Lusaka

MEDITERRANEAN AND MIDDLE EAST COUNTRIES
NOT SHOWN PLEASE
CONTACT:
Hewlett-Packard S.A.
Mediterranean and Middle
East Operations
35, Kolokotroni Street
GR-Kifissia-Athens
Tel: 21-6588
Cable: HEWPAKSA Athens

OTHER AREAS NOT LISTED, CONTACT:
Hewlett-Packard
Export Trade Company
3200 Hillview Ave.
Palo Alto, California 94304
Tel: (415) 493-1501
TWX: 910-373-1267
Cable: HEWPAK Palo Alto
Telex: 034-8300, 034-8493



FO 5-1. Model 8808A Log Level Schematic

RECOMMENDED CHANGES TO EQUIPMENT TECHNICAL PUBLICATIONS



THEN...JOT DOWN THE
DOPE ABOUT IT ON THIS FORM.
CAREFULLY TEAR IT OUT, FOLD IT
AND DROP IT IN THE MAIL.

SOMETHING WRONG WITH PUBLICATION

FROM: (PRINT YOUR UNIT'S COMPLETE ADDRESS)

DATE SENT

PUBLICATION NUMBER

PUBLICATION DATE

PUBLICATION TITLE

BE EXACT PIN-POINT WHERE IT IS

PAGE
NO.

PARA-
GRAPH

FIGURE
NO.

TABLE
NO.

IN THIS SPACE, TELL WHAT IS WRONG
AND WHAT SHOULD BE DONE ABOUT IT.

PRINTED NAME, GRADE OR TITLE AND TELEPHONE NUMBER

SIGN HERE

DA FORM 2028-2
1 JUL 79

PREVIOUS EDITIONS
ARE OBSOLETE.

P.S.--IF YOUR OUTFIT WANTS TO KNOW ABOUT YOUR
RECOMMENDATION MAKE A CARBON COPY OF THIS
AND GIVE IT TO YOUR HEADQUARTERS.

By Order of the Secretary of the Army:

Official:

J. C. PENNINGTON
Major General, United States Army
The Adjutant General

E. C. MEYER
General, United States Army
Chief of Staff

Distribution:

To be distributed in accordance with special mailing list.

This fine document...

Was brought to you by me:



[Liberated Manuals -- free army and government manuals](#)

Why do I do it? I am tired of sleazy CD-ROM sellers, who take publicly available information, slap “watermarks” and other junk on it, and sell it. Those masters of search engine manipulation make sure that their sites that sell free information, come up first in search engines. They did not create it... They did not even scan it... Why should they get your money? Why are not letting you give those free manuals to your friends?

I am setting this document FREE. This document was made by the US Government and is NOT protected by Copyright. Feel free to share, republish, sell and so on.

I am not asking you for donations, fees or handouts. If you can, please provide a link to liberatedmanuals.com, so that free manuals come up first in search engines:

<A HREF=<http://www.liberatedmanuals.com/>>Free Military and Government Manuals

- Sincerely
Igor Chudov
<http://igor.chudov.com/>
- [Chicago Machinery Movers](#)