

TECHNICAL MANUAL

ORGANIZATIONAL, DIRECT SUPPORT, AND GENERAL SUPPORT
MAINTENANCE REPAIR PARTS AND SPECIAL TOOL LISTS
(INCLUDING DEPOT MAINTENANCE REPAIR PARTS AND SPECIAL TOOLS)
FOR

MESSAGE CENTERS

**AN/GSQ-80 (NSN 9999-00-066-4524),
AN/GSQ-80A (NSN 9999-00-245-1840),
AND
AN/GSQ-80B (NSN 9999-00-245-1840)**

TECHNICAL MANUAL }
 No. 11-5895-365-24P }

HEADQUARTERS
 DEPARTMENT OF THE ARMY
 WASHINGTON, DC, 23 November 1976

**ORGANIZATIONAL, DIRECT SUPPORT, AND GENERAL SUPPORT
 MAINTENANCE REPAIR PARTS AND SPECIAL TOOLS LIST
 (INCLUDING DEPOT MAINTENANCE REPAIR PARTS AND SPECIAL TOOLS)
 FOR
 MESSAGE CENTERS
 AN/GSQ-80 (NSN 9999-00-066-4524),
 AN/GSQ-80A (NSN 9999-00-245-1840),
 AND
 AN/GSQ-80B (NSN 9999-00-245-1840)**

Current as of 9 August 1976

REPORTING OF ERRORS

You can improve this manual by recommending improvements using DA Form 2028-2 (Test) located in the back of the manual. Simply tear out the self addressed form, fill it out as shown on the sample, fold it where shown, and drop it in the mail.

If there are no blank DA Form 2028-2 (Test) in the back of your manual, use the standard DA Form 2028 (Recommended Changes to Publications and Blank Forms) and forward to the Commander, US Army Electronics Command, ATTN: DRSEL-MA-Q, Fort Monmouth, New Jersey 07703.

In either case a reply will be furnished direct to you.

Table of Contents

		Page	Illus Figure
SECTION	I. Introduction -----	1	
	II. Repair parts list _____	5	
Group	00 Message Centers AN/GSQ-80, AN/GSQ-80A, and AN/GSQ-80B _____	5	1
	01 Intercommunication Station LS-147C/FI (See TM 11-5830-221-24P for parts.)		
	02 Telephone Set TA-312/PT (See TM 11-5605-201-12 and TM 11-5605-20145 for parts.)		
	03 Shelters S-280A/G, S-280B/G, and S-141/G _____	11	2
	0301 Power distribution panel _____	15	3
	0302 Cable, Power Electrical CX-7705/U _____	17	4
	0303 Cable, Power Electrical CX-7453/U _____	19	5
	0304 Cable assembly, telephone 4 foot lone o/a _____	21	6
SECTION	III. Special tools list (Not applicable)		
	IV. National stock number and part number index _____	22	

•This manual supersedes so much of TM 11-5895-365-15, 8 April 1966, including Change 2, 21 January 1970, as pertains to repair parts and special tools list.

SECTION I

INTRODUCTION

1. Scope

This manual lists repair parts and special tools required for performance of organizational, direct support, and general support maintenance of the AN/GSQ-80, AN/GSQ-80A, and AN/GSQ-80B.

2. General

This Repair Parts and Special Tools List is divided into the following sections:

a. *Section II. Repair Parts List.* A list of repair parts authorized for use in the performance of maintenance. The list also includes parts which must be removed for replacement of the authorized parts. Parts lists are composed of functional groups in ascending numerical sequence, with the parts in each group listed in figure and item number sequence.

b. *Section III. Special Tools List.* Not applicable.

c. *Section IV. National Stock Number and Part Number Index.* A list, in ascending National item identification number (NIIN, last 9 digits) sequence, of all National stock numbers appearing in the listings, followed by a list, in alphameric sequence, of all part numbers appearing in the listings. National stock number and part numbers are cross-referenced to each illustration figure and item number appearance.

3. Explanation of Columns

The following provides an explanation of columns found in the tabular listings:

a. *Illustration.* This column is divided as follows:

(1) *Figure number.* Indicates the figure number of the illustration in which the item is shown.

(2) *Item number.* The number used to identify each item called out in the illustration.

b. *Source, Maintenance, and Recoverability Codes (SMR).*

(1) *Source code.* Source codes are assigned to support items to indicate the manner of acquiring support items for maintenance, repair, or overhaul of end items. Source codes are entered in the first and second positions of the Uniform SMR Code format as follows:

<i>Code</i>	<i>Definition</i>
PA	Item procured and stocked for anticipated or known usage.
PD	Support item, excluding support equipment, procured for initial issue or outfitting and

<i>Code</i>	<i>Definition</i>
	stocked only for subsequent or additional initial issues or outfittings. Not subject to automatic replenishment.
XD	A support item that is not stocked. When required, item will be procured through normal supply channels.

NOTE

Cannibalization or salvage maybe used as a source of supply for any items source coded above except those coded XA, XD, and aircraft support items as restricted by AR 700-42.

(2) *Maintenance code.* Maintenance codes are assigned to indicate the levels of maintenance authorized to USE and REPAIR support items. The maintenance codes are entered in the third and fourth positions of the Uniform SMR Code format as follows:

(a) The maintenance code entered in the third position will indicate the lowest maintenance level authorized to remove, replace, and use the support item. The maintenance code entered in the third position will indicate one of the following levels of maintenance:

<i>Code</i>	<i>Application/Explanation</i>
O	Support item is removed, replaced, used at the organizational level.
F	Support item is removed, replaced, used at the direct support level.
H	Support item is removed, replaced, used at the general support level.

(b) The maintenance code entered in the fourth position indicates whether the item is to be repaired and identifies the lowest maintenance level with the capability to perform complete repair (i. e., all authorized maintenance functions). This position will contain one of the following maintenance codes:

<i>Code</i>	<i>Application/Explanation</i>
O	The lowest maintenance level capable of complete repair of the support item is the organizational level.
F	The lowest maintenance level capable of complete repair of the support item is the direct support level.
H	The lowest maintenance level capable of complete

Code *Application/Explanation*
 repair of the support item is the general support level.

Z —Nonreparable. No repair is authorized.

(3) *Recoverability code*. Recoverability codes are assigned to support items to indicate the disposition action on unserviceable items. The recoverability code is entered in the fifth position of the Uniform SMR Code format as follows:

<i>Recoverability codes</i>	<i>Definition</i>
Z	—Nonreparable item. When unserviceable, condemn and dispose at the level indicated in position 3.
F	—Reparable item. When uneconomically reparable, condemn and dispose at the direct support level.
H	—Reparable item. When uneconomically reparable, condemn and dispose at the general support level.
D	—Reparable item. When beyond lower level repair capability, return to depot. Condemnation and disposal not authorized below depot level.

c. *National Stock Number*. Indicates the National stock number assigned to the item and will be used for requisitioning purposes.

d. *Part Number*. Indicates the primary number used by the manufacturer (individual, company, firm, corporation, or Government activity), which controls the design and characteristics of the item by means of its engineering drawings, specifications standards, and inspection requirements, to identify an item or range of items.

NOTE

When a stock numbered item is requisitioned, the repair part received may have a different part number than the part being replaced.

e. *Federal Supply Code for Manufacturer (FSCM)*. The FSCM is a 5-digit numeric code listed in SB 70842 which is used to identify the manufacturer, distributor, or Government agency, etc.

f. *Description*. Indicates the Federal item name and, if required, a minimum description to identify the item.

g. *Unit of Measure (U/M)*. Indicates the standard of the basic quantity of the listed item as used in performing the actual maintenance function. This measure is expressed by a two-character alphabetical abbreviation (e. g., ea, in, pr, etc.). When the unit of measure differs from the unit of issue, the lowest unit of issue that will satisfy the required units of measure will be requisitioned.

h. *Quantity Incorporated in Unit*. Indicates the quantity of the item used in the breakout shown on the

illustration figure, which is prepared for a functional group, subfunctional group, or an assembly.

4. Special Information

a. Usable on codes are shown in the description column. Uncoded items are applicable to all models. Identification of the usable on codes used in this publication are:

<i>Code</i>	<i>Used on</i>
2QE	AN/GSQ-80
2W5	AN/GSQ-80A
2Y7	AN/GSQ-80B

b. The following publications pertain to the AN/GSQ-80, AN/GSQ-80A and AN/GSQ-80B and its components:

- TM 11-2300-369-15-1, Installation of Telephone Sets TA-312/PT and TA-1/PT with reel equipment CE-11 in gun, AAA-20MM, XM167.
- TM 11-5410-206-14P, Shelter, Electrical Equipment S-141/G and S-141B/G.
- TM 11-5410-213-14P, Shelter, Electrical Equipment S-280A/G (NSN 5410-00-999-6022) and S-280B/G (NSN 5410-00-117-2868).
- TM 11-5805-201-12, Telephone Set TA-312/PT (TO 31W1-2PT-291).
- TM 11-5805-201-35, Telephone Set TA-312/PT (TO 31W1-2PT-292).
- TM 11-5830-221-12, Intercommunication Stations LS-147A/FI, LS-147B/FI, LS-147C/FI and LS-147D/FI.
- TM 11-5830-221-24P, Intercommunication Station LS-147C/FI, FSN 5830-752-5357.
- TM 11-5830-221-35, Intercommunication Stations LS-147A/FI, LS-147B/FI, LS-147C/FI and LS-147D/FI.
- TM 11-5895-365-15, Message Centers AN/GSQ-80, AN/GSQ-80A and AN/GSQ-80B.

5. How to Locate Repair Parts

a. When National stock number or part number is unknown.

(1) *First*. Using the table of contents, determine the functional group within which the repair part belongs. This is necessary since illustrations are prepared for functional groups and listings are divided into the same groups.

(2) *Second*. Find the illustration covering the functional group to which the repair part belongs.

(3) *Third*. Identify the repair part on the illustration and note the illustration figure and item number of the repair part.

(4) *Fourth*. Using the Repair Parts Listing, find the figure and item number noted on the illustration.

b. When National stock number or part number is known.

(1) *First*. Using the Index of National Stock

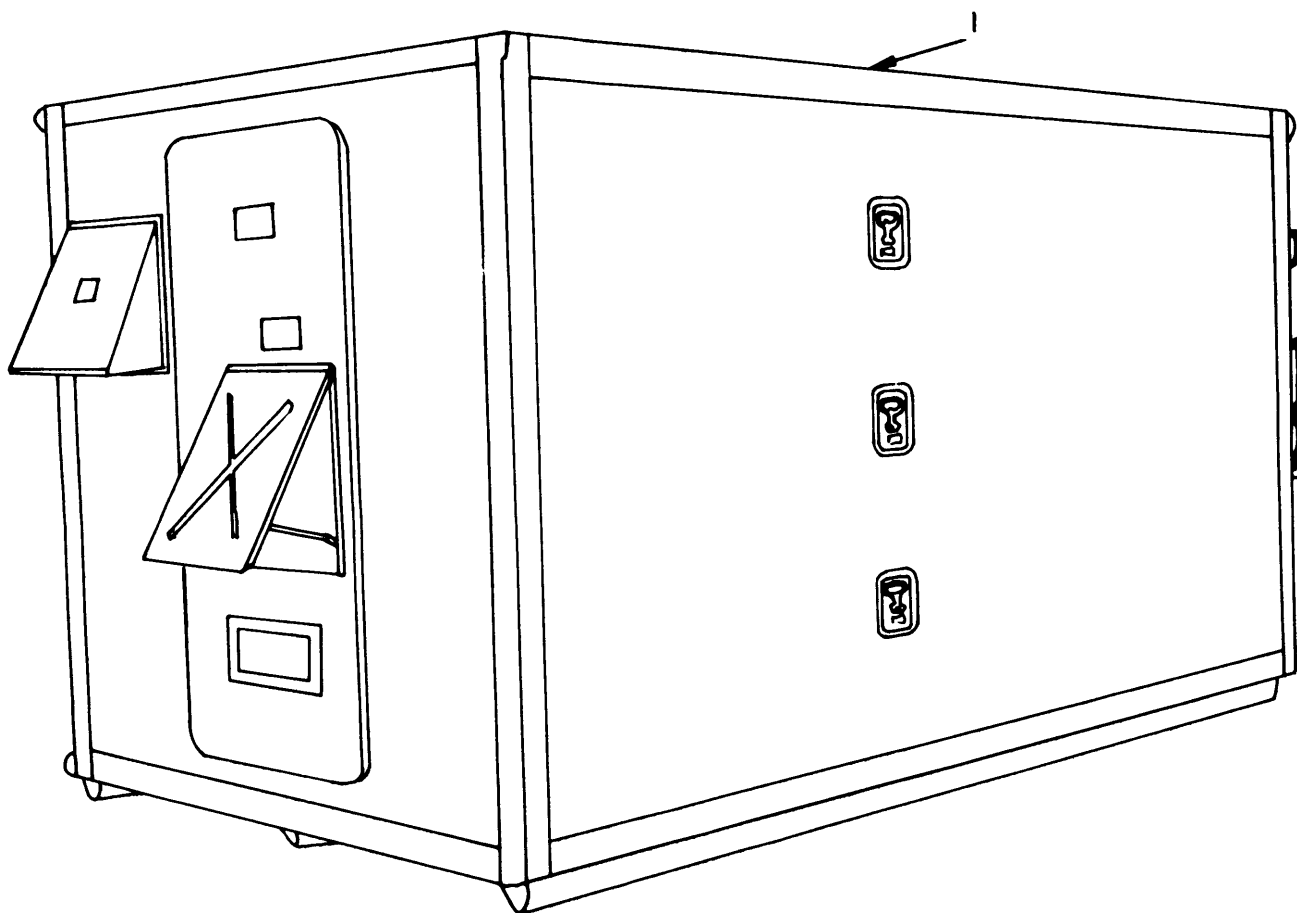
Numbers and Part Numbers, find the pertinent National stock number or part number. This index is in ascending NIIN sequence followed by a list of part numbers in ascending alphanumeric sequence, cross-referenced to the illustration figure number and item number.

(2) *Second.* After finding the figure and item number, locate the figure and item number in the repair parts list.

6. Abbreviations

Not applicable.

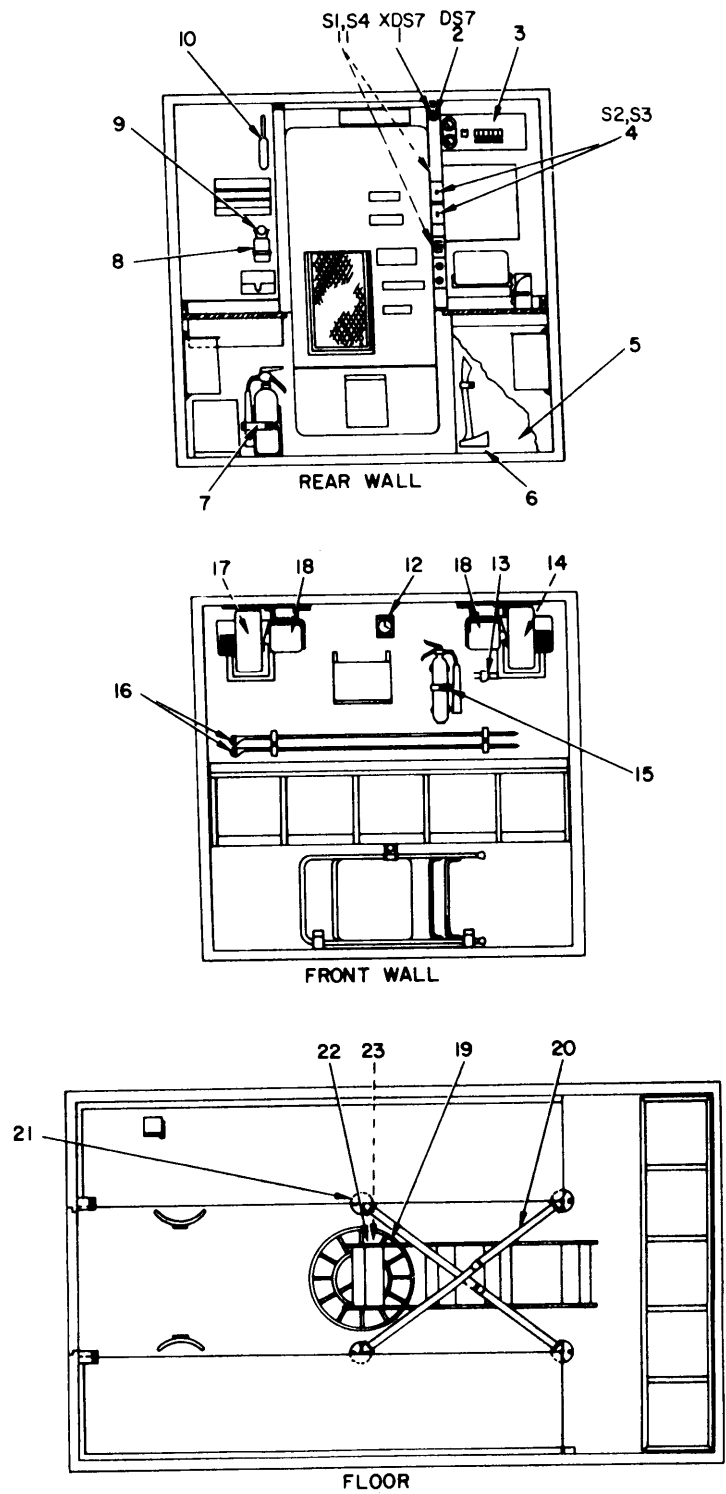
(Next printed page is 4)



ELONGOOI

Figure 1. Message Centers, AN/GSQ-80, AN/GSQ-80A, AN/GSQ-80B.

SECTION II			TM11-5895-365-24P				(7)	(8)
(1)	(2)	(3)	(4)	(5)	(6)		QTY	
ILLUSTRATION								
(a)	(b)	NATIONAL	DESCRIPTION			INC		
FIG	ITEM	STOCK	PART				IN	
NO.	NO.	NUMBER	NUMBER	FSCM	USABLE ON CODE	U\M	UNIT	
GROUP 00 MESSAGE CENTERS, AN/GSQ-80A, AN/GSQ-80B								
1	1	PDOHD 9999-00-066-4524	S-141/G	80058	SHELTER,MODIFIED FOR AN/GSQ-80 OR 2QE	EA	1	
1	1	PDOHD 5410-00-999-6022	S-280A/G	80058	SHELTER,MODIFIED FOR AN/GSQ-80A OR 2W5	EA	1	
1	1	PDOHD 5410-00-117-2868	S-280B/G	80058	SHELTER,MODIFIED FOR AN/GSQ-80B 2Y7	EA	1	



ELONG002

Figure 2. Shelters S-141/G, S-280A/G and S-280B/G (Sheet 1 of 5).

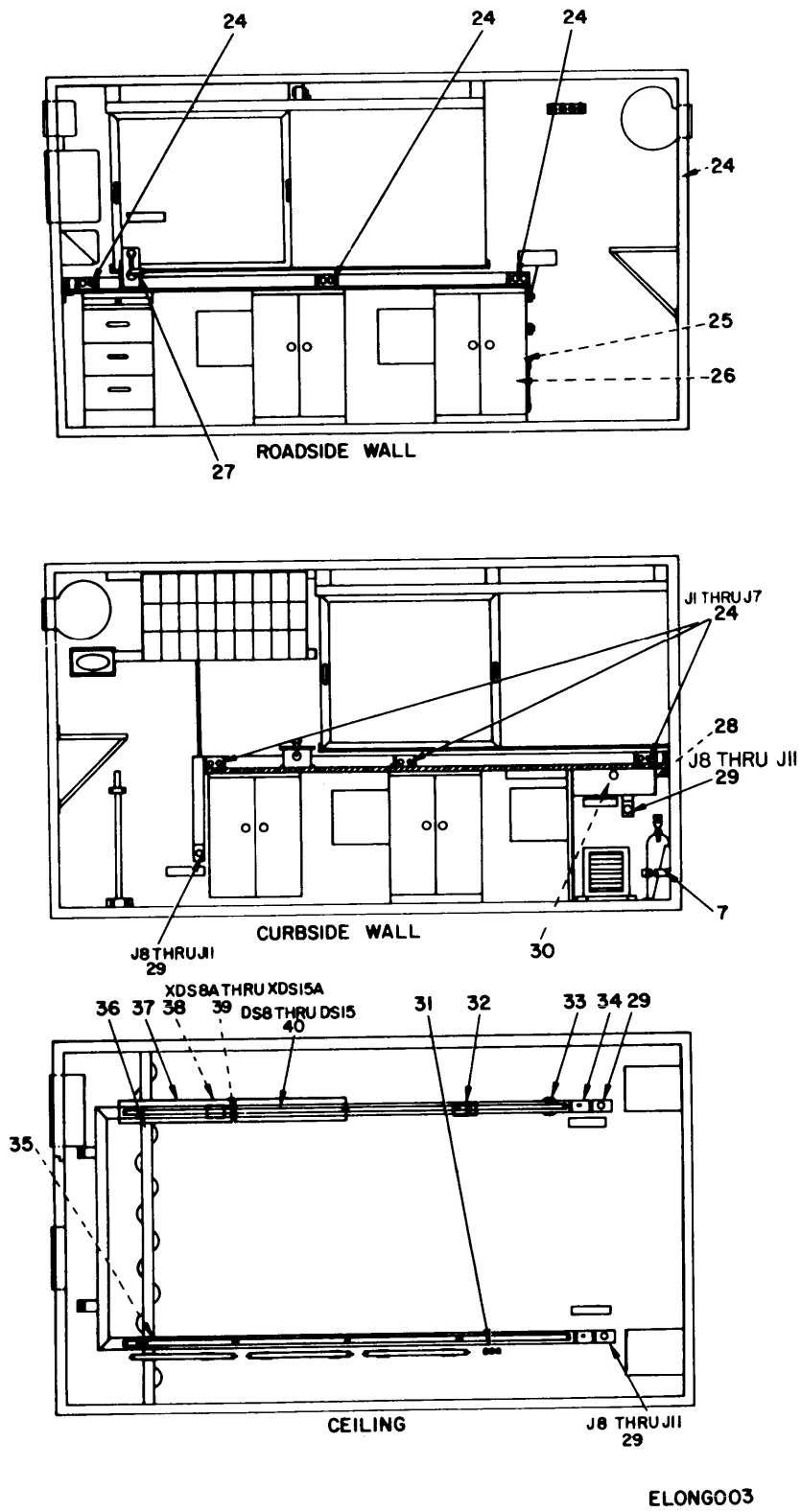
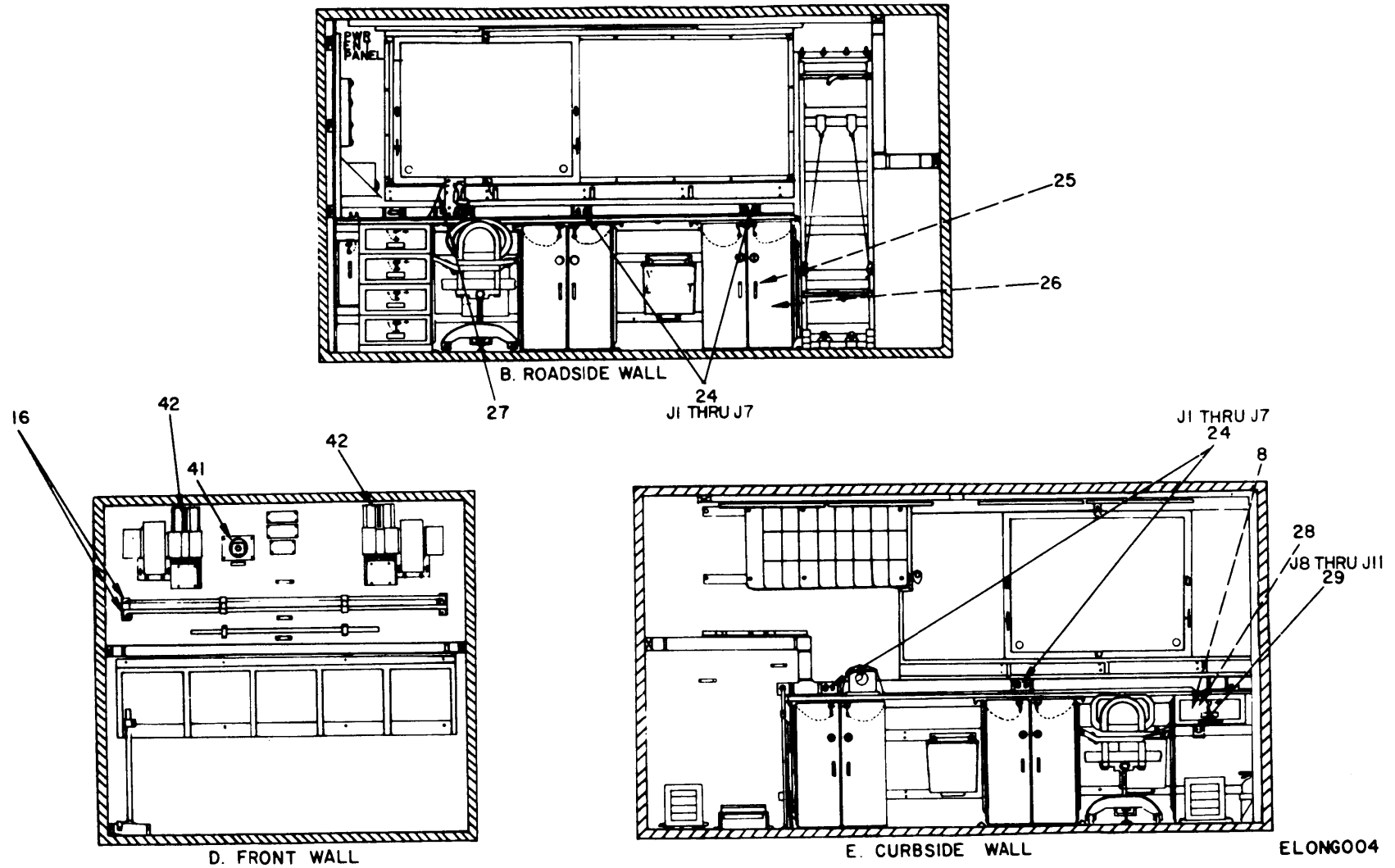


Figure 2. Shelters S-141/G, S-280A/G and S-280B/G (Sheet 2 of 5).



ELONG004

Figure 2. Shelters S-141/G, S-280A/G and S-280B/G (Sheet 3 of 5).

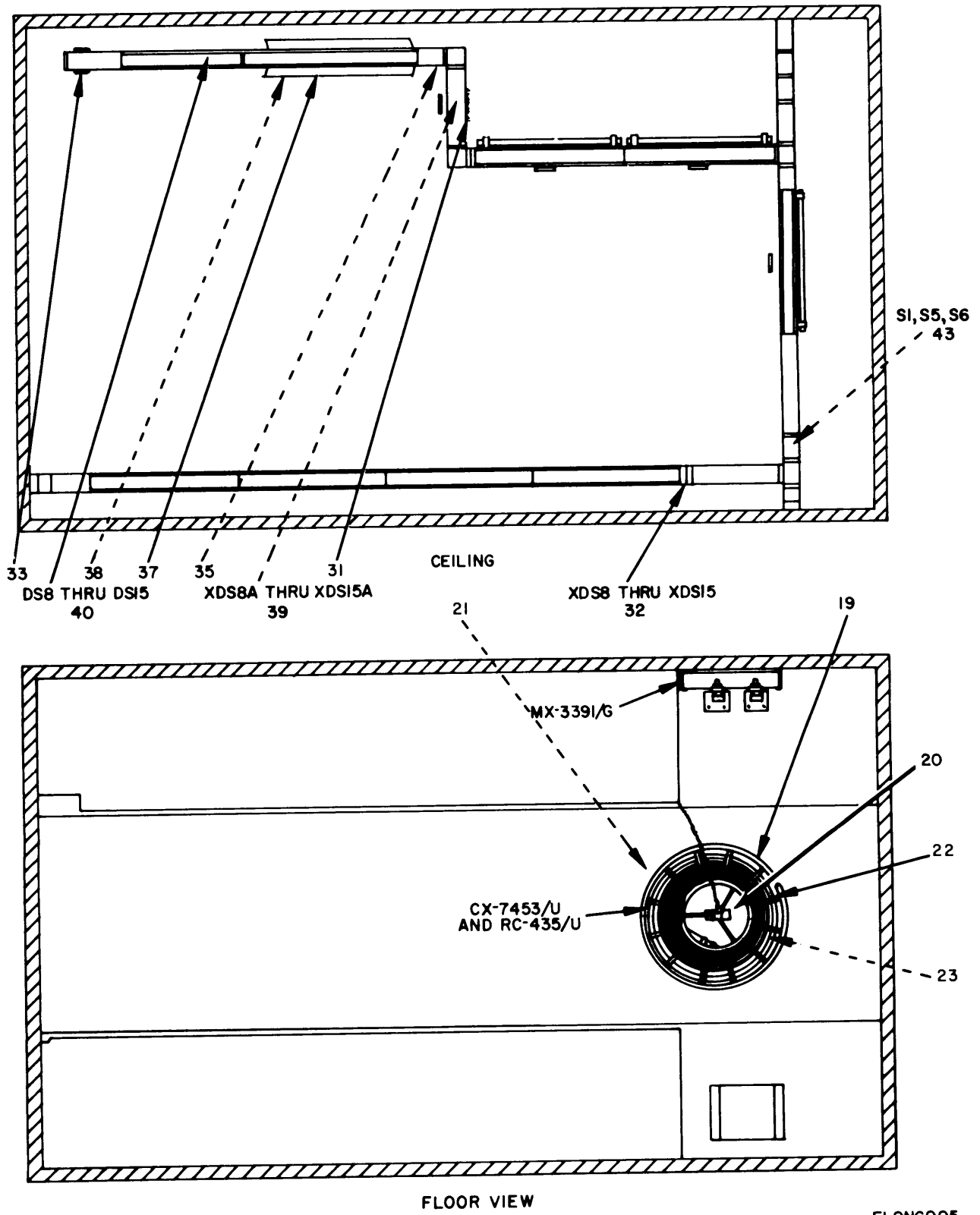
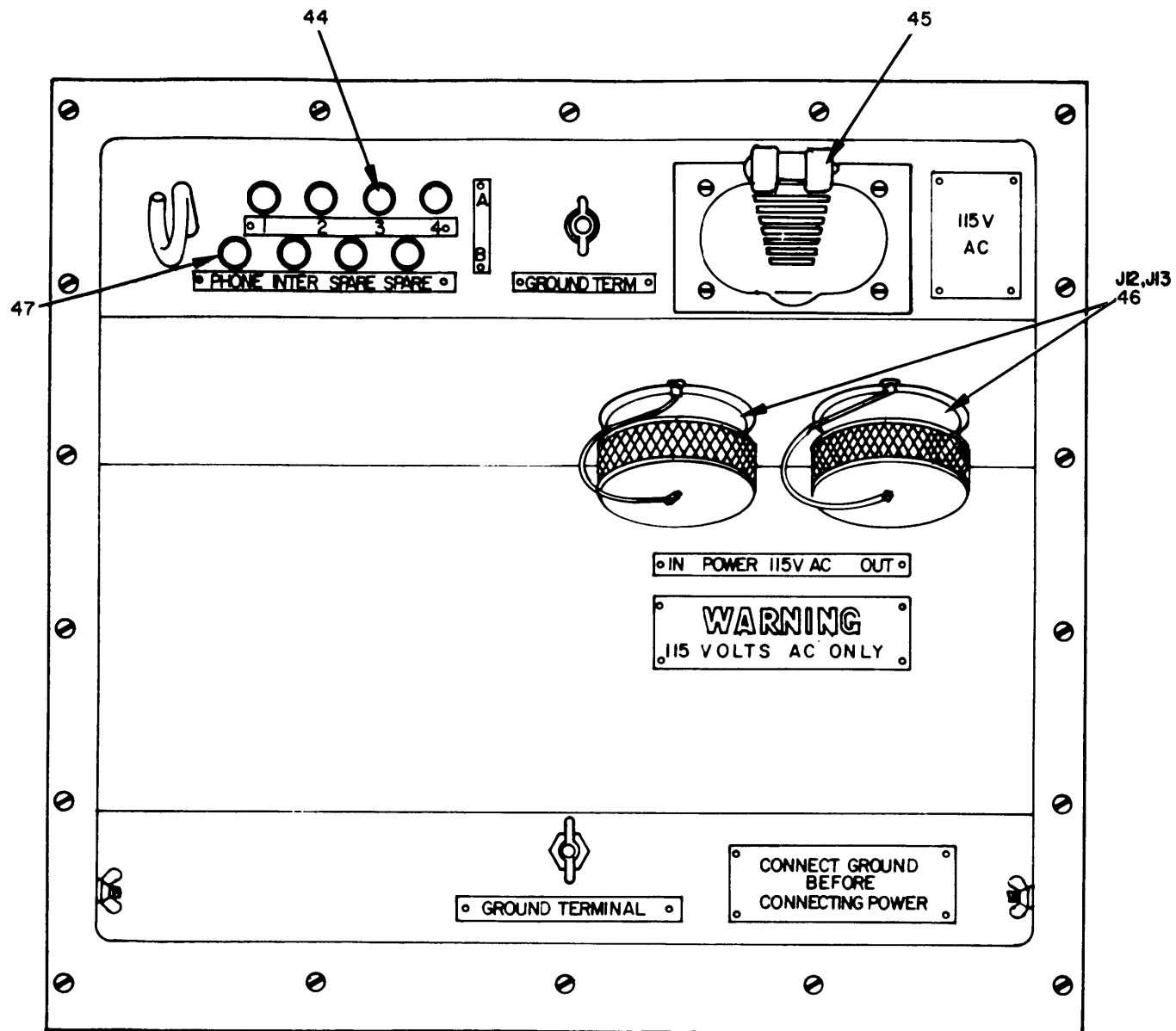


Figure 2. Shelters S-141/G, S-280A/G and S-280B/G (Sheet 4 of 5).

ELONG005

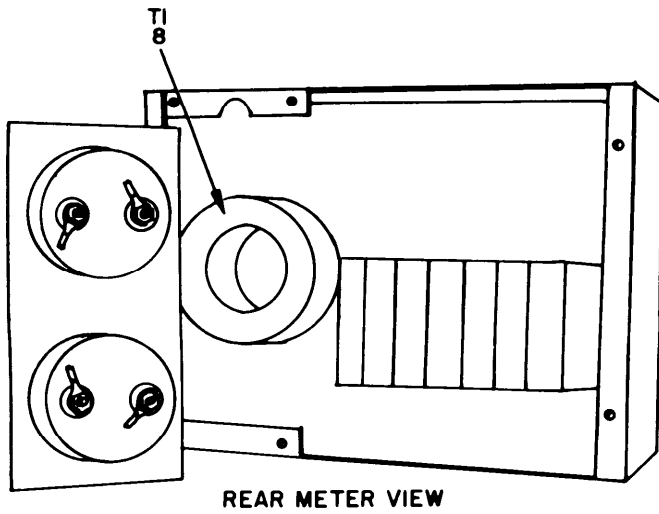
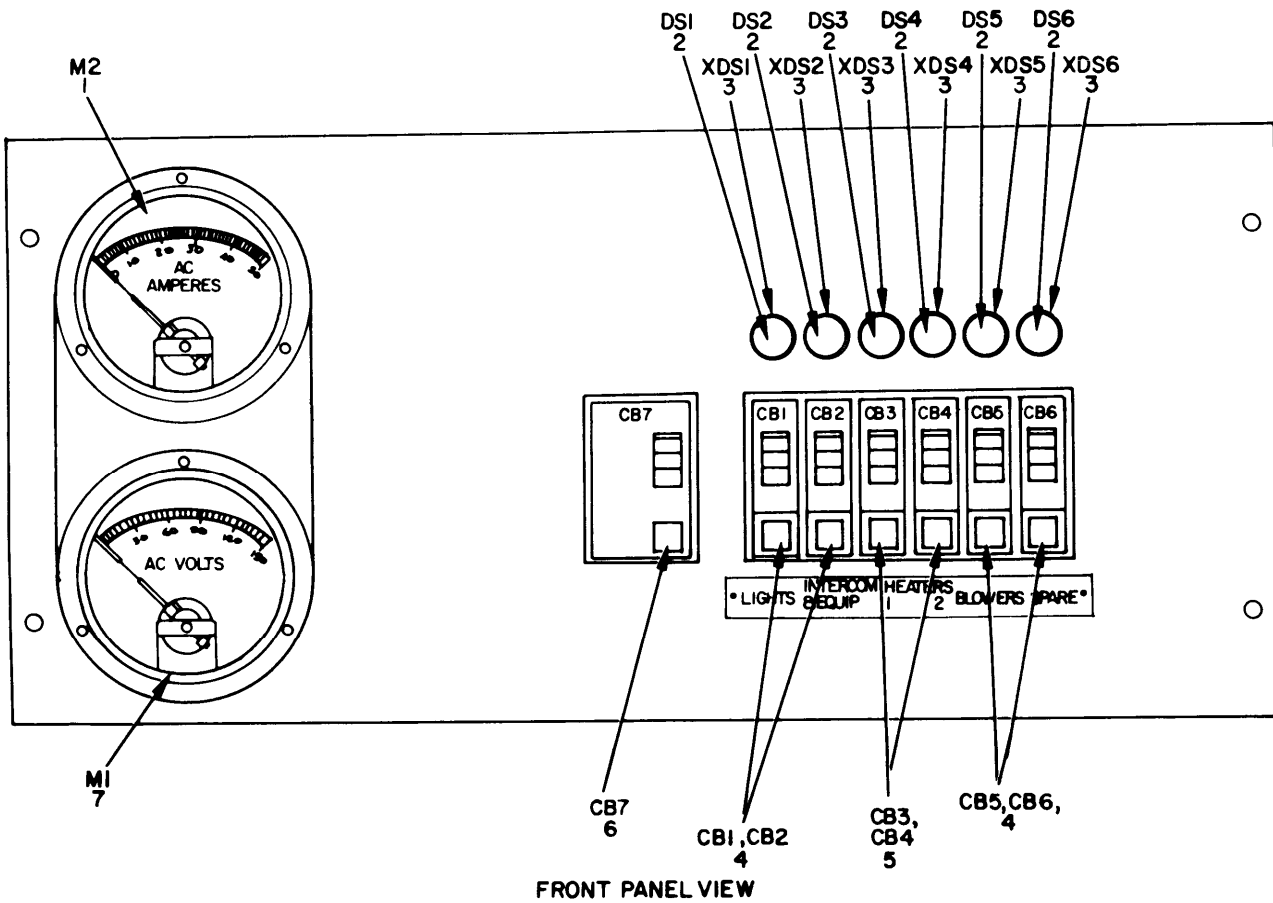


ELONG006

Figure 2. Shelters S-141/G, S-280A/G and S-280B/G (Sheet 5 of 5).

SECTION II				TM11-5895-365-24P					
(1)	(2)	(3)	(4)	(5)	(6)		(7)	(8)	
ILLUSTRATION				DESCRIPTION					QTY
(a)	(b)	NATIONAL	PART				U\M	INC	
FIG	ITEM	STOCK	NUMBER	FSCM		USABLE ON CODE		IN	
NO.	NO.	NUMBER	NUMBER					UNIT	
						GROUP 03 SHELTERS S-141/G, S-280A/G, S-280B/G			
2	1	PAOZZ 6250-00-299-6562	4109	74545	LAMPHOLDER		EA	1	
2	2	PAOZZ 6240-09-635-9753	M15098-3-002	81349	LAMP,GLOW NE-34		EA	1	
2	3	XDOFF	SCD628052	80063	POWER DISTRIBUTION PANEL		EA	1	
2	4	PAOZZ 5930-00-865-6101	5521-1	24455	SWITCH,TOGGLE 2QE		EA	3	
2	4	PAOZZ 5930-00-865-6101	5521-1	24455	SWITCH,TOGGLE 2W5,2Y7		EA	2	
2	5	PAOFF 4940-00-752-2525	SMB352166	80063	LEAD,ELECTRICAL		EA	1	
2	6	PAOZZ 5110-00-293-2339	SCC539541	80063	AXE		EA	1	
2	7	PAOZZ 4210-00-595-4085	SCC539468	80063	BRACKET		EA	1	
2	8	PAOZZ 6230-00-729-9614	SCC539491	80063	LANTERN,ELECTRIC		EA	1	
2	9	PAOZZ 6240-00-155-7786	PR2	08108	LAMP,INCANDESCENT		EA	1	
2	10	PAOZZ 7920-00-342-4521	SCC539469	80063	BRUSH,DUSTING		EA	1	
2	11	PAOZZ 5930-00-959-3441	BZ2RQ181P4	91929	SWITCH,SENSITIVE 2QE		EA	1	
2	11	PAOZZ 5930-00-683-2703	BZ2RQ18A2	91929	SWITCH,SENSITIVE 2W5,2Y7		EA	1	
2	12	PAOHH 6645-00-950-8599	AT-11	81349	CLOCK,AIRCRAFT,MECHANICAL 2QE		EA	1	
2	13	PAOZZ 5935-00-149-3985	9754	74545	CONNECTOR,PLUG,ELECTRICAL 2QE		EA	2	
2	14	PAOZZ 4140-00-926-4190	SMC542696-2	80063	IMPELLER,FAN 2QE		EA	1	
2	15	PAOZZ 4210-00-383-7127	PRB-2-1/2	33525	BRACKET 2QE		EA	1	
2	16	PAOZZ 5975-00-224-5260	MX-148/G	80058	ROD,GROUND		EA	2	
2	17	PAOZZ 4140-00-926-4189	SMC542696-1	80063	IMPELLER,FAN 2QE		EA	1	
2	18	PAOZZ 6105-00-999-4814	KH37KG712X	24455	MOTOR,ELECTRICAL 2QE		EA	2	
2	19	PAOZZ 8130-00-656-1090	RC-435/U	80058	REEL,CABLE		EA	1	
2	20	PAOZZ 5410-00-792-6336	705	81902	STRAP ASSEMBLY,TIE DOWN		EA	2	
2	21	PAOZZ 5410-00-792-7335	SMB542412	80063	TIE DOWN PLATE ASSEMBLY		EA	4	
2	22	XDOOF	CX-7453/U	80058	CABLE ASSEMBLY,POWER,ELECTRICAL		EA	1	
2	23	XDOOF	CX-7705/U	80058	CABLE,POWER,ELECTRICAL		EA	1	
2	24	PAOZZ 5935-00-644-8597	9200	04009	CONNECTOR,RECEPTACLE,ELECTRICAL 2QE,2W5		EA	7	
2	24	XDOZZ	5262	74545	CONNECTOR,RECEPTACLE,ELECTRICAL 2Y7		EA	7	
2	25	PAHZZ 5410-00-973-2936	MK-679/G	24455	MAINTENCE KIT,ELECTRONIC		EA	1	
2	26	PAFZZ 5410-00-771-3354	MK-681/G	80058	REPAIR KIT,ELECTRONIC EQUIPMENT SHELTER MK-681/G		EA	1	
2	27	PAOOF 5995-00-752-2566	SCD383873GP3	80063	CABLE ASSEMBLY,TELEPHONE		EA	2	
2	28	PAOZZ 6240-00-143-3070	50W/RS	24455	LAMP,INCANDESCENT		EA	1	
2	29	PAOZZ 5935-00-359-6025	9210	74545	CONNECTOR,RECEPTACLE,ELECTRICAL 2QE		EA	4	
2	29	PAOZZ 5935-00-359-6025	9210	74545	CONNECTOR,RECEPTACLE,ELECTRICAL 2W5		EA	2	
2	29	XDOZZ	7210B	74545	CONNECTOR,RECEPTACLE,ELECTRICAL 2W5		EA	2	
2	29	PAOZZ 5935-00-350-1834	5261	74545	CONNECTOR,RECEPTACLE,ELECTRICAL 2Y7		EA	2	
2	29	PAOZZ 5935-00-933-3454	5361	74545	CONNECTOR,RECEPTACLE,ELECTRICAL 2Y7		EA	2	
2	30	PAOZZ 6230-00-115-2687	SCC539496	80063	LIGHT,EXTENSION		EA	1	
2	31	PAOZZ 6250-00-299-2884	FS2	71183	STARTER,FLUORESCENT 2QE		EA	8	
2	31	PAOZZ 6250-00-299-2884	FS2	71183	STARTER,FLUORESCENT 2W5,2Y7		EA	9	

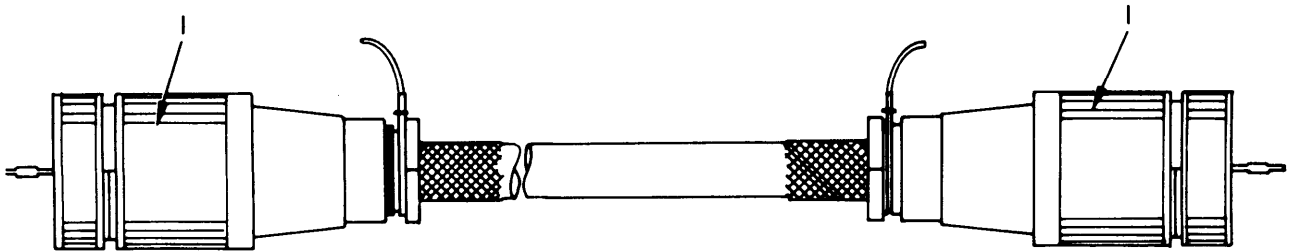
SECTION II		TML1-5895-365-24P							
(1)	(2)	(3)	(4)	(5)	(6)	(7)	(8)		
ILLUSTRATION					DESCRIPTION		QTY	INC	
(a)	(b)	NATIONAL	PART	FSCN	USABLE ON CODE	U/M	IN		
FIG	ITEM	STOCK	NUMBER						
NO.	NO.	NUMBER							
2	32	PAOZZ	6250-00-175-2559	78X491	24455	LAMPHOLDER	2QE	EA	8
2	32	PAOZZ	6250-00-175-2559	78X491	24455	LAMPHOLDER	2W5,2Y7	EA	9
2	33	PAOZZ	6210-00-757-9694	P40	19634	RETAINER,LAMP	2QE	EA	16
2	34	XDOZZ		5051-1	24455	SWITCH,TOGGLE	2QE	EA	2
2	35	PAOZZ	5910-00-553-6096	SCC33033-4	80063	CAPACITOR,FIXED,PAPER	2QE	EA	8
2	36	PAOZZ	7230-00-729-6339	SMC352521GR1	80063	CURTAIN,BLACKOUT SELECT	2QE	EA	1
2	36	PAOZZ	5410-00-792-6341	SMC352521GR2	80063	CURTAIN,BLACKOUT	2QE	EA	1
2	37	PAOZZ	6210-00-921-6682	SCC539466	80063	SHIELD,LIGHT	2QE	EA	8
2	37	PAOZZ	6210-00-921-6682	SCC539466	80063	SHIELD,LIGHT	2W5,2Y7	EA	9
2	38	PAOZZ	6250-00-804-3449	89457D	24455	BALLAST,LAMP	2QE	EA	8
2	39	PAOZZ	6250-00-299-6093	78X736	24455	LAMPHOLDER	2QE	EA	8
2	39	PAOZZ	6250-00-299-6093	78X736	24455	LAMPHOLDER	2W5,2Y7	EA	9
2	40	PAOZZ	6240-00-152-2996	F20T12CW	24455	LAMP,FLUORESCENT	2QE	EA	8
2	40	PAOZZ	6240-00-152-2996	F20T1CW	24455	LAMP,FLUORESCENT	2W5,2Y7	EA	9
2	41	PAOZZ	6645-00-410-2395	SCC539475	80063	CLOCK,WALL	2W5,2Y7	EA	1
2	42	PAOZZ	6105-00-111-2546	SCD539615-2	80063	MOTOR,ELECTRICAL	2W5,2Y7	EA	2
2	43	XDOZZ		F3036	24446	SWITCH,TOGGLE	2W5,2Y7	EA	3
2	44	PAOZZ	5940-00-283-5386	U-106/U	80058	POST BINDING		EA	8
2	45	PAOZZ	5975-00-879-7234	5211	74545	COVER,ELECTRICAL OUTLET		EA	1
2	46	PAOZZ	5935-00-064-5732	U-238B/G	81349	CONNECTOR,RECEPTACLE,ELECTRICAL		EA	2
2	47	PAOZZ	5970-00-869-6263	SCC76202-1	80063	CAP,ELECTRICAL		EA	8



ELONG007

Figure 3. Power Distribution Panel.

SECTION II						TML1-5895-365-24P	
(1)	(2)	(3)	(4)	(5)	(6)	(7)	(8)
ILLUSTRATION							
(a)	(b)	NATIONAL			DESCRIPTION		QTY
FIG	ITEM	STOCK	PART				INC
NO.	NO.	NUMBER	NUMBER	FSCN		USABLE ON CODE	IN
							UNIT
GROUP 0301 POWER DISTRIBUTION PANEL							
3	1	PAOZZ	6625-00-892-5315	MR36W50SPECR	81349		EA 1
3	2	PAOZZ	6240-00-179-1814	NE-45	08108		EA 6
3	3	PAOZZ	6250-00-079-9888	4-12-18	95263	2QE	EA 6
3	3	PAOZZ	6250-00-761-6330	4-06	72619	2W5,2Y7	EA 6
3	4	PAOZZ	5925-00-818-4811	Q0-115	81487		EA 4
3	5	PAOZZ	5925-00-583-7941	Q0-120	88753		EA 2
3	6	PAOZZ	5925-00-703-6084	Q0-250	04809		EA 1
3	7	PAOZZ	6625-00-341-4071	MR36W150ACVVR	81349		EA 1
3	8	PAOZZ	5950-00-705-9105	3CT35B	93993		EA 1



ELONG009

Figure 4. Cable, Power, Electrical CX-7705/U.

SECTION II				TM11-5895-365-24P			
(1)	(2)	(3)	(4)	(5)	(6)	(7)	(8)
ILLUSTRATION				DESCRIPTION			
(a)	(b)	NATIONAL		PART		QTY	
FIG	ITEM	SMR	STOCK	NUMBER		INC	
NO.	NO.	CODE	NUMBER	FSCM	USABLE ON CODE	U\M	UNIT
GROUP 0302 CABLE, POWER, ELECTRICAL CX-7705/U							
4	1	PAOZZ	5935-00-064-5731	U-237B/G	81349	EA	2
CONNECTOR, PLUG, ELECTRICAL							

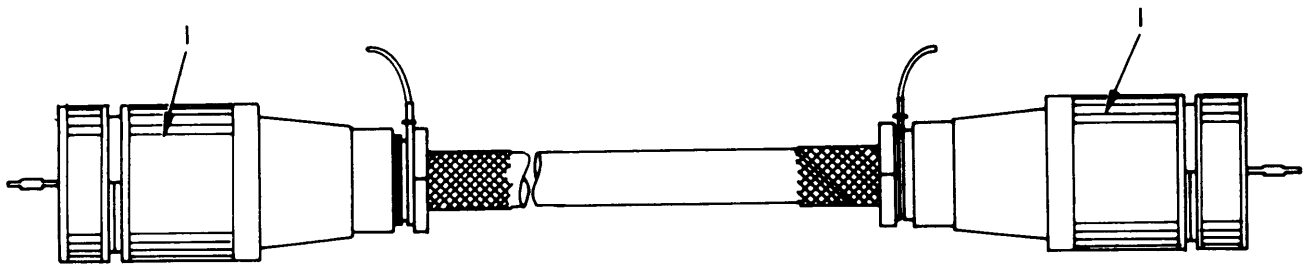


Figure 5. Cable, Power, Electrical CX-7453/U.

SECTION II				TM11-5895-365-24P			
(1)	(2)	(3)	(4)	(5)	(6)	(7)	(8)
ILLUSTRATION				DESCRIPTION			
(a)	(b)	NATIONAL		PART		QTY	
FIG	ITEM	SMR	STOCK	NUMBER		INC	
NO.	NO.	CODE	NUMBER	FSCM	USABLE ON CODE	U\M	UNIT
GROUP 0303 CABLE, POWER, ELECTRICAL CX-7453/U							
5	1	PAOZZ	5935-00-064-5731	U-237B/G	81349	EA	2
CONNECTOR, PLUG, ELECTRICAL							

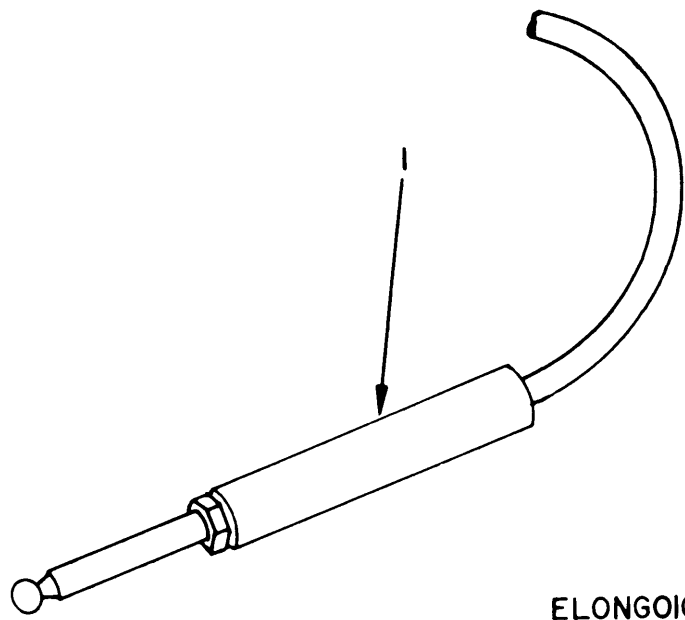


Figure 6. Cable Assembly, Telephone 4 Foot Long O/A

SECTION II				TM11-5895-365-24P			
(1)	(2)	(3)	(4)	(5)	(6)	(7)	(8)
ILLUSTRATION				DESCRIPTION			
(a)	(b)	NATIONAL		FSCM		QTY	
FIG	ITEM	SMR	STOCK	PART	USABLE ON CODE	U\M	INC
NO.	NO.	CODE	NUMBER	NUMBER			IN
				UNIT			
GROUP 0304 CABLE ASSEMBLY, TELEPHONE							
4 FT LONG O/A							
6	1	XDOZZ	J310	80058	JACK, TELEPHONE	EA	1

NATIONAL STOCK NUMBER AND PART NUMBER INDEX

NOTE: LATEST NATIONAL STOCK NUMBER ASSIGNMENTS ARE INCLUDED AT END OF INDEX

STOCK NUMBER	FIGURE NO.	ITEM NO.	STOCK NUMBER	FIGURE NO.	ITEM NO.
5935-00-064-5731	5	1	8130-00-656-1090	2	19
5935-00-064-5731	4	1	5930-00-683-2703	2	11
5935-00-064-5732	2	46	5925-00-703-6084	3	6
9999-00-066-4524	1	1	5950-00-705-9105	3	8
6250-00-079-9888	3	3	6230-00-729-9614	2	8
6105-00-111-2546	2	42			
6230-00-115-2687	2	30	4940-00-752-2525	2	5
5410-00-117-2868	1	1	5995-00-752-2566	2	27
6240-00-143-3070	2	28	6210-00-757-9694	2	33
5935-00-149-3985	2	13	6250-00-761-6330	3	3
6240-00-152-2996	2	40	5410-00-771-3354	2	26
6240-00-155-7786	2	9	5410-00-792-6335	2	21
6240-00-179-1814	3	2	5410-00-792-6336	2	20
5975-00-224-5260	2	16	7230-00-792-6339	2	36
5940-00-283-5386	2	44	5410-00-792-6341	2	36
5110-00-293-2339	2	6	6250-00-804-3449	2	38
6250-00-299-2884	2	31	5925-00-818-4811	3	4
6250-00-299-6093	2	39	5970-00-869-6263	2	47
6250-00-299-6562	2	1	5975-00-879-7234	2	45
6625-00-341-4071	3	7	6625-00-892-5315	3	1
7920-00-342-4521	2	10	6210-00-921-6682	2	37
5935-00-350-1834	2	29	4140-00-926-4189	2	17
5935-00-359-6025	2	29	4140-00-926-4190	2	14
4210-00-383-7127	2	15	5935-00-933-3454	2	29
6645-00-410-2395	2	41	6645-00-950-8599	2	12
5910-00-553-6096	2	35	5930-00-959-3441	2	11
5925-00-583-7941	3	5	5410-00-973-2936	2	25
4210-00-595-4085	2	7	6105-00-999-4814	2	18
6240-00-635-9753	2	2	5410-00-999-6022	1	1

PART NUMBER	FSCM	FIG. NO.	ITEM NO.	PART NUMBER	FSCM	FIG. NO.	ITEM NO.
AT-11	81349	2	12	SCC76202-1	80063	2	47
BZ2RQ18A2	91929	2	11	SCD383873GP3	80063	2	27
BZ2RQ181P4	91929	2	11	SCD539491	80063	2	8
CX-7453/U	80058	2	22	SCD539615-2	80063	2	42
CX-7705/U	80058	2	23	SCD628052	80063	2	3
FS2	71183	2	31	SMB352166	80063	2	5
F20T12CW	24455	2	40	SMB542412	80063	2	21
F3036	24446	2	43	SMC352521GP1	80063	2	36
J310	80058	6	1	SMC542696GP1	80063	2	14
KH37KG712X	24455	2	18	SMC542696GP2	80063	2	17
MK-679/G	24455	2	25	U-106/U	80058	2	44
MK-681/G	80058	2	26	U-237B/G	81349	5	1
MR36W150ACVVR	81349	3	7	U-237B/G	81349	4	1
MR36W50SPECR	81349	3	1	U-238B/G	81349	2	46
MX-148/G	80058	2	16				
M15098-3-002	81349	2	2	3CT35B	93993	3	8
NE45	8108	3	2	6-Apr	72619	3	3
PRB-2-1/2	33525	2	15	4/12/18	95263	3	3
PR2	24455	2	9	4109	74545	2	1
P40	19634	2	33	50W/RS	24455	2	28
Q0-115	81487	3	4	5051-1	24455	2	34
Q0-120	88753	3	5	5211	74545	2	45
Q0-250	4809	3	6	5261	74545	2	29
RC-435/U	80058	2	19	5262	74545	2	24
S-141/G	80058	1	1	5361	74545	2	29
S-280A/G	80058	1	1	5521-1	24455	2	4
S-280B/G	80058	1	1	705	81902	2	20
SCC33033-4	80063	2	35	7210B	74545	2	29
SCC352521GP2	80063	2	36	78X491	24455	2	32
SCC539466	80063	2	37	78X736	24455	2	39
SCC539468	80063	2	7	89457D	24455	2	38
SCC539469	80063	2	10	9200	4009	2	24
SCC539475	80063	2	41	9210	74545	2	29
SCC539496	80063	2	30	9754	74545	2	13
SCC539541	80063	2	6				

LATEST NATIONAL STOCK NUMBER ASSIGNMENTS

STOCK NUMBER	FIGURE NO.	ITEM NO.
6250-00-175-2559	2	39
5930-00-865-6101	2	4



SOMETHING WRONG WITH THIS MANUAL?

THEN... JOT DOWN THE DOPE ABOUT IT ON THIS FORM, TEAR IT OUT, FOLD IT AND DROP IT IN THE MAIL!

FROM: (YOUR UNIT'S COMPLETE ADDRESS)

Commander
Stateside Army Depot
ATTN: AMSTA-US
Stateside, N.J. 07703

DATE 10 July 1975

PUBLICATION NUMBER TM 11-5840-340-12	DATE 23 Jan 74	TITLE Radar Set AN/PSC-76
---	-------------------	------------------------------

BE EXACT... PIN-POINT WHERE IT IS				IN THIS SPACE TELL WHAT IS WRONG AND WHAT SHOULD BE DONE ABOUT IT:
PAGE NO.	PARA-GRAPH	FIGURE NO.	TABLE NO.	
2-25	2-28			<p>Recommend that the installation antenna alignment procedure be changed through to specify a 2° IFF antenna lag rather than 1°.</p> <p>REASON: Experience has shown that with only a 1° lag, the antenna servo system is too sensitive to wind gusting in excess of 25 knots, and has a tendency to rapidly accelerate and decelerate as it hunts, causing strain to the drive train. Hunting is minimized by adjusting the lag to 2° without degradation of operation.</p>
3-10	3-3		3-1	<p>Item 5, Function column. Change "2 db" to "3db."</p> <p>REASON: The adjustment procedure for the TRANS POWER FAULT indicator calls for a 3 db (500 watts) adjustment to light the TRANS POWER FAULT indicator.</p>
5-6	5-8			<p>Add new step f.1 to read, "Replace cover plate removed in step e.1, above."</p> <p>REASON: To replace the cover plate.</p>
		FO3		<p>Zone C 3. On J1-2, change "+24 VDC to "+5 VDC."</p> <p>REASON: This is the output line of the 5 VDC power supply. + 24 VDC is the input voltage.</p>

TEAR ALONG DOTTED LINE

TYPED NAME, GRADE OR TITLE, AND TELEPHONE NUMBER SSG I. M. DeSpiritof 999-1776	SIGN HERE: <i>SSG I. M. DeSpiritof</i>
---	---



SOMETHING WRONG WITH THIS MANUAL?

THEN... JOT DOWN THE DOPE ABOUT IT ON THIS FORM, TEAR IT OUT, FOLD IT AND DROP IT IN THE MAIL!

FROM: (YOUR UNIT'S COMPLETE ADDRESS)

DATE

PUBLICATION NUMBER

DATE

TITLE

BE EXACT... PIN-POINT WHERE IT IS

IN THIS SPACE TELL WHAT IS WRONG AND WHAT SHOULD BE DONE ABOUT IT:

PAGE NO.	PARA-GRAPH	FIGURE NO.	TABLE NO.
----------	------------	------------	-----------

TEAR ALONG DOTTED LINE

TYPED NAME, GRADE OR TITLE, AND TELEPHONE NUMBER

SIGN HERE:

FILL IN YOUR
UNIT'S ADDRESS

FOLD BACK

DEPARTMENT OF THE ARMY

OFFICIAL BUSINESS
PENALTY FOR PRIVATE USE, \$300

POSTAGE AND FEES PAID
DEPARTMENT OF THE ARMY
DOD-314



Commander
US Army Electronics Command
ATTN: DRSEL-MA-Q
Fort Monmouth, New Jersey 07703

TEAR ALONG DOTTED LINE

FOLD BACK



THEN... JOT DOWN THE DOPE ABOUT IT ON THIS FORM, TEAR IT OUT, FOLD IT AND DROP IT IN THE MAIL!

SOMETHING WRONG WITH THIS MANUAL?

FROM: (YOUR UNIT'S COMPLETE ADDRESS)

DATE

PUBLICATION NUMBER

DATE

TITLE

BE EXACT... PIN-POINT WHERE IT IS

IN THIS SPACE TELL WHAT IS WRONG AND WHAT SHOULD BE DONE ABOUT IT:

PAGE NO.	PARA-GRAPH	FIGURE NO.	TABLE NO.
----------	------------	------------	-----------

TEAR ALONG DOTTED LINE

TYPED NAME, GRADE OR TITLE, AND TELEPHONE NUMBER

SIGN HERE:

FILL IN YOUR
UNIT'S ADDRESS

FOLD BACK

DEPARTMENT OF THE ARMY

OFFICIAL BUSINESS
PENALTY FOR PRIVATE USE, \$300

POSTAGE AND FEES PAID
DEPARTMENT OF THE ARMY
DOD-314



Commander
US Army Electronics Command
ATTN: DRSEL-MA-Q
Fort Monmouth, New Jersey 07703

TEAR ALONG DOTTED LINE

FOLD BACK



THEN... JOT DOWN THE DOPE ABOUT IT ON THIS FORM, TEAR IT OUT, FOLD IT AND DROP IT IN THE MAIL!

SOMETHING WRONG WITH THIS MANUAL?

FROM: (YOUR UNIT'S COMPLETE ADDRESS)

DATE

PUBLICATION NUMBER

DATE

TITLE

BE EXACT. . . PIN-POINT WHERE IT IS

IN THIS SPACE TELL WHAT IS WRONG AND WHAT SHOULD BE DONE ABOUT IT:

PAGE NO.	PARA-GRAPH	FIGURE NO.	TABLE NO.
----------	------------	------------	-----------

TEAR ALONG DOTTED LINE

TYPED NAME, GRADE OR TITLE, AND TELEPHONE NUMBER

SIGN HERE:

DA FORM 1 AUG 74 2028-2 (TEST)

P.S.--IF YOUR OUTFIT WANTS TO KNOW ABOUT YOUR MANUAL "FIND," MAKE A CARBON COPY OF THIS AND GIVE IT TO YOUR HEADQUARTERS.

FILL IN YOUR
UNIT'S ADDRESS

FOLD BACK

DEPARTMENT OF THE ARMY

OFFICIAL BUSINESS

PENALTY FOR PRIVATE USE, \$300

POSTAGE AND FEES PAID
DEPARTMENT OF THE ARMY
DOD-314



Commander
US Army Electronics Command
ATTN: DRSEL-MA-Q
Fort Monmouth, New Jersey 07703

TEAR ALONG DOTTED LINE

FOLD BACK

By Order of the Secretary of the Army:

BERNARD W. ROGERS
General, United States Army
Chief of Staff

DISTRIBUTION:

Active Army:

USASA (2)
COE (1)
TSG (1)
USAARENBD (1)
DARCOM (1)
TRADOC (2)
OS Maj Comd (4)
LOGCOMDS (3)
MICOM (2)
TECOM (2)
USACC (4)
MDW (1)
Armies (2)
Corps (2)
HISA (Ft Monmouth) (33)
Svc Colleges (1)
USASIGS (5)
USAADS (2)
USAFAS (2)
USAARMS (2)
USAIS (2)
USAES (2)
USAICS (3)
MAAG (1)
USARMIS (1)
SigFLDMS (1)
USAERDAA (1)
USAERDAW (1)

Installations (2) except
Fort Carson (5)
Fort Gillem (10)
Fort Huachuca (10)
Ft Richardson (ECOM Ofc) (2)
LBAD (14)
SAAD (30)
TOAD (14)
SHAD (3)
Units org under fol TOE: (1)
5-52
5-112
7
11-85
11-95
11-97
11-98
11-117
11-127
11-137
11-147
11-225
11-358
11-500 (AA-AC)
17
37
44-535
44-537
57-102

NG: None

USAR: None

For explanation of abbreviations used see, AR 310-50

This fine document...

Was brought to you by me:



[Liberated Manuals -- free army and government manuals](#)

Why do I do it? I am tired of sleazy CD-ROM sellers, who take publicly available information, slap “watermarks” and other junk on it, and sell it. Those masters of search engine manipulation make sure that their sites that sell free information, come up first in search engines. They did not create it... They did not even scan it... Why should they get your money? Why are not letting you give those free manuals to your friends?

I am setting this document FREE. This document was made by the US Government and is NOT protected by Copyright. Feel free to share, republish, sell and so on.

I am not asking you for donations, fees or handouts. If you can, please provide a link to liberatedmanuals.com, so that free manuals come up first in search engines:

<A HREF=<http://www.liberatedmanuals.com/>>Free Military and Government Manuals

- Sincerely
Igor Chudov
<http://igor.chudov.com/>
- [Chicago Machinery Movers](#)