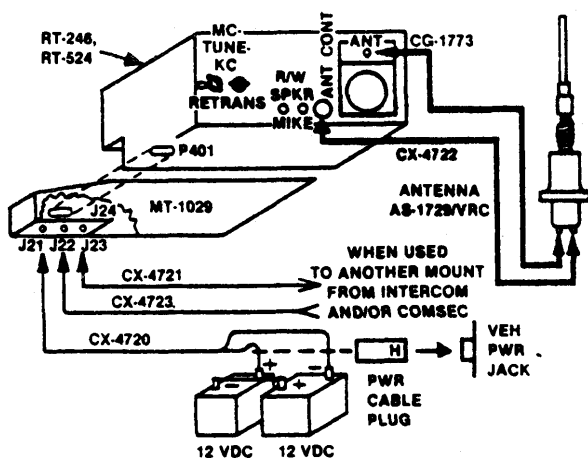


OPERATOR QUICK CHECKS FOR RECEIVER - TRANSMITTERS RT-248(*)/VRC (5820-00-892-0823) & RT-524(*)/VRC (5820-00-892-0822)

DISTRIBUTION: ACTIVE ARMY, USAR, ARNG: To be distributed in accordance with DA Form 12-51, Operator Maintenance requirement for RT-246/VRC and RT-524/VRC with AN/VRC -12 and AN/VRC -42 thru 49.



CAUTION

- DON'T:** Start Vehicle Jeep or Track With Commo On
- DON'T:** Paint Antenna or Matching Unit
- DON'T:** Wash Commo With High Pressure Hose
- DON'T:** Turn Off Engine of Track Vehicles Before Commo Is Off
- DON'T:** Hook Up Commo Mounts Until You Are Sure of (+ or -) Polarity

SYMPTOM: Dial lamp lights; no sound heard in speaker and earphone (SQUELCH OFF).

- STEP 1** Check to see if power circuit breakers have been tripped. Check antenna control cable connections at RT ANT CONT jack and antenna base; then turn power switch to OFF (breaker-reset) then back to low or high.
- STEP 2** Check to see that power cable is firmly connected to underside (left-outside jack) of RT mount. Check to see if rubber cover at J-24 on MT-1029 is removed.
FIRMLY TIGHTEN POWER CABLE PLUG TO JACK.
- STEP 3** Check to see that RT is properly secured to mount. Push the RT back on the mount as far as it will go, engage mount clamps with RT feat; then tighten clamps securely by turning thumbscrews clockwise (finger tight).
- STEP 4** Check power cable connection to vehicle power source. WHEEL VEHICLE: RED/WHITE WIRE TO POSITIVE (+) TERMINAL OF ONE BATTERY (1); GREEN/BLACK WIRE TO NEGATIVE (-) TERMINAL OF THE OTHER BATTERY (2). ADDITIONALLY, NEGATIVE (-) TERMINAL OF (1) BATTERY STRAPPED TO POSITIVE (+) TERMINAL OF (2) BATTERY.
TRACK VEHICLE: FIRMLY TIGHTEN POWER CABLE PLUG TO VEHICLE MASTER POWER JACK.
- STEP 9** Check for weak or dead vehicle batteries. WITH RT TURNED ON, TURN VEHICLE HEAD LAMPS ON; THEN CHECK HEAD LAMPS INTENSITY.

By Order of the Secretary of the Army

official:

J. C. PENNINGTON
Major General, United States Army
The Adjutant General

E. C. MEYER
General, United States Army
Chief of Staff

SYMPTOM: Dial lamp not lit in speaker and earphone (SQUELCH OFF).

STEP 1 Check X-mode cap connection to RT X-mode jack. Finally, TIGHTEN X-MODE CAP PLUG TO JACK.

SYMPTOM Dial lamp light; normal speaker sound, no sound heard in earphones.

STEP 1 Clean audio plug and jack contacts. Remove audio accessory and clean contacts of audio jack and audio plug with pencil eraser.

STEP 2 Check for defective audio accessory. Substitute a known good audio accessory

STEP 3 Check for defective audio jack. Connect a known good audio accessory to a different audio jack.

SYMPTOM: RT blower runs; receiver sound quieted; no voice sidetone when PUSH-TO-TALK switch is pressed (SQUELCH OFF)

STEP 1 Remove audio accessory. Clean audio accessory plug and audio receptacle with pencil eraser

STEP 2 Check for defective audio accessory. Substitute a known good audio accessory.

STEP 3 Check for defective audio accessory jack. Connect a known good audio accessory to a different audio accessory.

STEP 4 Check X MODE cap connection to RT X-MODE jack

SYMPTOM: With squelch switch at NEW ON, cannot hear distant station reply; call lamp does not light.

STEP 1 Turn your squelch switch to OFF and communicate with station Tell distant station to place his squelch in NEW ON.

STEP 2 Determine If distant station is too far away for his squelch tone to activate your receiver. Communicate with distant station with the squelch on your R.T set to NEW OFF.

STEP 3 Check Xmode cap connecton to RT X-MODE jack.

SYMPTOM: RT blower runs; receiver should quieted; no voice sidetone when PUSH-TO-TALK switch is pressed (SQUELCH OFF).

STEP 1 Check to see that RT tuning controls are set to assigned frequency

STEP 2 Check RT for normal operation. Try to communicate with a nearby radio set, if available

STEP 3 Check antenna matching unit. Change RT MHz (MC) control to a new frequency. Listen for switching noise at matching unit Return RT MHz (MC) control to operating frequency

STEP 4 Check frequency range switch on matching unit. Range switch should agree with frequency setting of RT unit. Manually tune matching unit, if possible.

STEP 5 Check to see that antenna elements center pins and two each base copper strips are present and intact. Check to see that both antenna elements are screwed on tightly, and all antenna cables are tight. Antenna must be in upright position. Tighten all screws to cable connections

SYMPTOM: RT blower does not run; receiver sound heard when PUSH-TO-TALK switch is pressed (SQUELCH OFF.)

STEP 1 Disconnect antenna control cable from RT. Turn power switch to OFF (breaker-reset) then back LOW or HIGH.

STEP 2 Remove audio accessory and clean contacts of audio receptacle and audio plug with pencil eraser.

STEP 3 Check for defective audio accessory. Substitute a known good audio accessory.

STEP 4 Check for defective audio accessory jack. Connect a known good audio accessory to a different audio receptacle.

For assistance, NAME _____

call ORGAN. MAINT TELE. NO. _____

COMMENTS: Send DA Form 2028 to: Cdr. CERCOM,

ATTN: DRSEL-ME-MQ, Fort Monmouth, NJ 07703.

This fine document...

Was brought to you by me:



[Liberated Manuals -- free army and government manuals](#)

Why do I do it? I am tired of sleazy CD-ROM sellers, who take publicly available information, slap “watermarks” and other junk on it, and sell it. Those masters of search engine manipulation make sure that their sites that sell free information, come up first in search engines. They did not create it... They did not even scan it... Why should they get your money? Why are not letting you give those free manuals to your friends?

I am setting this document FREE. This document was made by the US Government and is NOT protected by Copyright. Feel free to share, republish, sell and so on.

I am not asking you for donations, fees or handouts. If you can, please provide a link to liberatedmanuals.com, so that free manuals come up first in search engines:

<A HREF=<http://www.liberatedmanuals.com/>>Free Military and Government Manuals

- Sincerely
Igor Chudov
<http://igor.chudov.com/>
- [Chicago Machinery Movers](#)