

TECHNICAL MANUAL

**ORGANIZATIONAL MAINTENANCE
REPAIR PARTS AND SPECIAL TOOLS LIST**

**RADIO TELETYPEWRITER SET
AN/GRC-142B
(NSN 5815-00-443-5511)**

HEADQUARTERS, DEPARTMENT OF THE ARMY

1 AUGUST 1985

**ORGANIZATIONAL MAINTENANCE
REPAIR PARTS AND SPECIAL TOOLS LIST**

**RADIO TELETYPEWRITER SET
AN/GRC-142B**

(NSN 5815-00-443-5511)

Current as of 11 February 1985

**REPORTING OF ERRORS AND
RECOMMENDING IMPROVEMENTS**

You can help improve this manual. If you find any mistakes or if you know of a way to improve the procedures, please let us know. Mail your letter, DA Form 2028 (Recommended Change to Publications and Blank Forms), or DA Form 2028-2 located in the back of this manual direct to Commander, US Army Communications-Electronics Command and Fort Monmouth, ATTN: DRSEL-ME-MP, Fort Monmouth, NJ 07730-5007.

In either case, a reply will be furnished direct to you.

Table of Contents

		Page	Illus Figure
SECTION I.	Introduction	1	
II.	Repair Parts List	1	
GROUP 00	Radio Teletypewriter Set AN/GRC-142B,		
	Major Component Locations	II-1	1A
	Radio TTY Set AN/GRC-142B	II-3	1
	Shelter, Electronic Equipment,		
	S-502/GRC-142B	II-5	2
	Tie Down Assembly, SC-D-781188GR1	II-6	10
	Cable Installation, SM-A-613027	II-6	12
	Chair Assembly, SM-D-613130	II-7	19
	Cover Assembly, SC-D-595020	II-7	23
16	Cable Assemblies (No parts authorized)		
17	Remote Control Assembly C-7279/GRC-142 (No parts authorized)		
19	Power Distribution Panel SB-3358/GRC Panel, Power Distribution, SB-3358/GRC	II-7	111
22	Switch Assembly SA-1650/GRC Switch Assembly, SA-1650/GRC	II-7	112
GROUP 23	Power Terminal Assembly (No parts authorized)		
27	Interconnecting Box J-2728/GRC-142 (No parts authorized)		
28	Power Signal Entrance Box (No parts authorized)		
SECTION III.	Special Tools List (Not applicable)		
IV.	Illustrations (Located at the end of section H)		
V.	National Stock Number and Part Number Index	I-1	

* This manual supersedes so much of TM 11-5815-334-20P, 9 January 1978 as pertains to the AN/GRC-142B.

SECTION I INTRODUCTION

1. Scope

This manual lists and authorizes spares and repair parts; special tools; special test, measurement, and diagnostic equipment (TMDE); and other special support equipment required for performance of organizational maintenance of the AN/GRC-142B. It authorizes the requisitioning, issue, and deposition of spares, repair parts and special tools as indicated by the source, maintenance and recoverability (SMR) codes.

2. General

This Repair Parts and Special Tools List is divided into the following sections:

a. Section II. Repair Parts List. A list of spares and repair parts authorized by this RPSTL for use in the performance of maintenance. The list also includes parts which must be removed for replacement of the authorized parts. Parts list are composed of functional groups in ascending numeric sequence, with the parts in each group listed in ascending item number sequence. Figure numbers are listed directly beneath the group header.

b. Section III. Special Tools List. Not applicable.

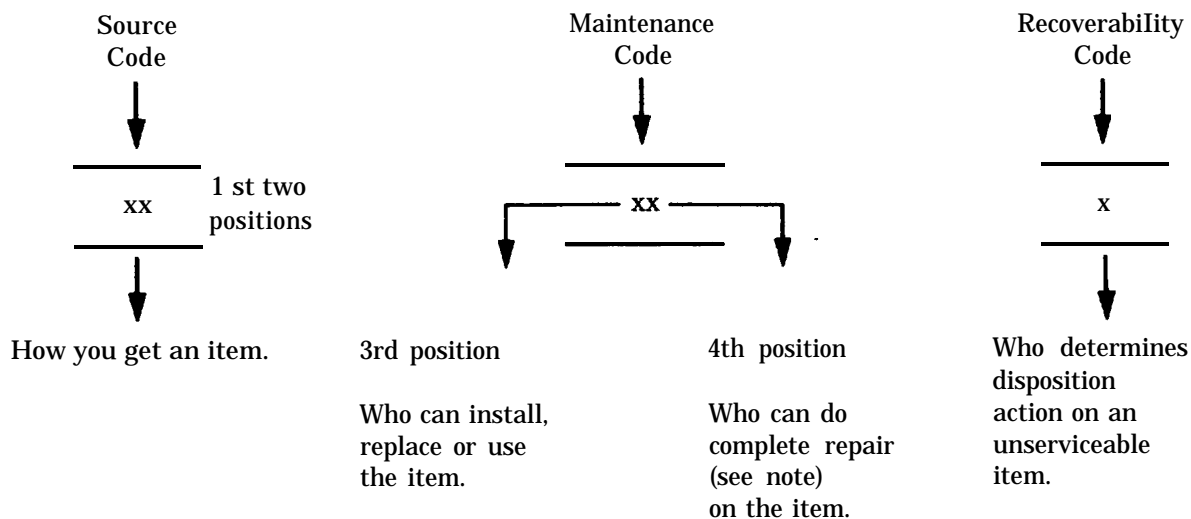
c. Section IV. Illustrations. Located at the end of section II.

d. Section V. National Stock Number and Part Number Index. A list, in National item identification number (NIIN) sequence, of all National stock numbered items appearing in the listing, followed by a list in alphameric sequence of all part numbers appearing in the listings. National stock numbers and part numbers are cross-referenced to each illustration figure and item number appearance.

3. Explanation of Columns (Section II and III)

a. Item No. (Column (1)). Indicates the number used to identify items called out in the illustration.

b. SMR code (Column (2)). The source, maintenance and recoverability (SMR) code is a five-position code containing supply/requisitioning information, maintenance category authorization criteria, and disposition instruction, as shown in the following breakout:



NOTE

Complete repair: Maintenance capacity, capability, and authority to perform all corrective maintenance tasks of the "Repair" function in a use/user environment in order to restore serviceability to a failed item.

(1) *Source code.* The source code tells you how to get an item needed for maintenance, repair, or overhaul of an end item/equipment. Explanations of source codes follows:

<i>Code</i>	<i>Explanation</i>
PA PB PC PD PE PF PG	Stocked items use the applicable NSN to request/requisition items with these source codes. They are authorized to the category indicated by the code entered in the third position of the SMR code.

NOTE

Items coded PC are subject to deterioration.

KD KF KB	Items with these codes are not to be requested/requisitioned individually. They are part of a kit which is authorized to the maintenance category indicated in the third position of the SMR code. The complete kit must be requisitioned and applied.
----------------	--

MO—Made at org/AVUM category MF—Made at DS/AVUM category MH—Made at GS category ML—Made at Specialized Repair Activity (SRA) MD—Made at Depot	Items with these codes are not to be requested/requisitioned individually. They must be made from bulk material which is identified by the part number in the description and usable on code (UOC) column and listed in the Bulk Material group of the repair parts list. If the item is authorized to you by the third position code of the SMR code, but the source code indicates it is made at a higher category, order the item from the higher category of maintenance.
--	---

AO—Assembled by org/AVUM category AF—Assembled by DS/AVIM category AH—Assembled by GS category AL—Assembled by SRA AD—Assembled by Depot	Items with these codes are not to be requested/requisitioned individually. The parts that make up the assembled item must be requisitioned or fabricated and assembled at the category of maintenance indicated by the source code. If the disposition code of the SMR code authorizes you to replace the item, but the source code indicates the item is assembled at a higher category, order the item from the higher category of maintenance.
---	---

<i>Code</i>	<i>Explanation</i>
XA	DO not requisition an "XA" coded item. Order its next higher assembly.
XB	If an "XB" item is not available from salvage, order it using the FSCM and part number given.
XC	Installation drawing, diagram, instruction sheet, field service drawing, that is identified by manufacturer's part number.
XD	Item is not stocked. Order an "XD" coded item through normal supply channels using the FSCM and part number given, if no NSN is available.

NOTE

Cannibalization or controlled exchange, when authorized, maybe used as a source of supply for items with the above source codes, except for those source coded "XA" or those aircraft support items restricted by requirements of AR 750-1.

(2) *Maintenance code.* Maintenance codes tell you the category of maintenance authorized to USE and REPAIR support items. The maintenance codes are entered in the third and fourth positions of the SMR code as follows:

(a) The maintenance code entered in the third position tells you the lowest maintenance category authorized to remove, replace, and use an item. The maintenance code entered in the third position will indicate authorization to one of the following categories of maintenance.

<i>Code</i>	<i>Application/Explanation</i>
-------------	--------------------------------

- C—Crew or operator maintenance done within organizational or aviation maintenance.
- O—Organizational or aviation unit category can remove, replace, and use the item.
- F—Direct support or aviation intermediate category can remove, replace, and use the item.
- H—General support category can remove, replace, and use the item.
- L—Specialized repair activity can remove, replace, and use the item.
- D—Depot category can remove, replace, and use the item.

(b) The maintenance code entered in the fourth position tells whether or not the item is to be repaired and identifies the lowest maintenance category with the capability to do complete repair (i.e., perform all authorized repair functions). This position will contain one of the following maintenance codes.

NOTE

Some limited repair may be done on the item at a lower category of maintenance, if authorized by the Maintenance Allocation Chart (MAC) and SMR codes.

<i>Code</i>	<i>Application/Explanation</i>
-------------	--------------------------------

- O—Organizational or aviation unit is the lowest category that can do complete repair of the item.
- F—Direct support or aviation intermediate is the lowest category that can do complete repair of the item.
- H—General support is the lowest category that can do complete repair of the item.
- L—Specialized repair activity (designate the specialized repair activity) is the lowest category that can do complete repair of the item.
- D—Depot is the lowest category that can do complete repair of the item.
- Z—Nonreparable. No repair is authorized.
- B—No repair is authorized. (No parts or special tools are authorized for the maintenance of a "B" coded item.)
However, the item may be reconditioned by adjusting, lubricating, etc., at the user category.

(3) *Recoverability code.* Recoverability codes are assigned to items to indicate the disposition action on unserviceable items. The recoverability code is entered in the fifth position of the SMR code as follows:

Recoverability
Code

Application/Explanation

- Z—Nonreparable Item. When unserviceable, condemn and dispose of the item at the category of maintenance shown in the third position of SMR Code.
- O—Reparable item. When uneconomically repairable, condemn and dispose of the item at organizational or aviation unit category.
- F—Reparable item. When uneconomically repairable, condemn and dispose of the item at direct support or aviation intermediate category.
- H—Reparable item. When uneconomically repairable, condemn and dispose of the item at general support category.
- D—Reparable item. When beyond lower category repair capability, return to depot. Condemnation and disposal of item not authorized below depot category.
- L—Reparable item. Condemnation and disposal not authorized below specialized repair activity (SRA).
- A—Item requires special handling or condemnation procedures because of specific reasons (e.g., precious metal content, high dollar value, critical material, or hazardous material). Refer to appropriate manuals/directives for specific instructions.

c. *FSCM (Column (3))*. The Federal Supply Code for Manufacturer (FSCM) is a 5-digit numeric code which is used to identify the manufacturer, distributor, or Government agency, etc., that supplies the item.

d. *Part Number (Column (4))*. Indicates the primary number used by the manufacturer (individual, company, firm, corporation, or Government activity), which controls the design and characteristics of the item by means of its engineering drawings, specifications, standards, and inspection requirements to identify an item or range of items.

NOTE

When you use a NSN to requisition an item, the item you receive may have a different part number from the part ordered.

e. *Description and Usable on Code (UOC) (Column (5))*. This column includes the following information.

(1) The Federal item name and, when required, a minimum description to identify the item.

(2) Usable on code, when applicable (para 5).

(3) The statement "END OF FIGURE" appears just below the last item description in Column (5) for a given figure in both section II and section III.

f. *Qty (Column (6))*. Indicates the quantity of the item used in the breakout shown on the illustration figure, which is prepared for a functional group, subfunctional group, or an assembly. A "V" appearing in this column in lieu of a quantity indicates that the quantity is variable and the quantity may vary from application to application.

4. Explanation of Columns (Section IV)

a. *National Stock Number (NSN) Index*.

(1) *Stock number column*. This column lists the NSN by National item identification number (NIIN) sequence. The NIIN consists of the last nine digits of the NSN. When using this column to locate an item, ignore the first four digits of the NSN. When requisitioning items use the complete NSN (13 digits).

(2) *Fig. column*. This column lists the number of the figure where the item is identified/located. The illustrations are in numerical sequence in sections II and III.

(3) *Item column*. The item number identifies the item associated with the figure listed in the adjacent Fig. column. This item is also identified by the NSN listed on the same line.

b. *Part Number Index*. Part numbers in this index are listed by part number in ascending alphanumeric sequence.

(1) *FSCM column*. This column lists the Federal supply code for manufacturer (FSCM).

(2) *Part number column*. This column indicates the part number assigned to the item.

(3) *Stock number column*. This column lists the National stock number for the associated part number and manufacturer identified in the part number and FSCM columns to the left.

(4) *Fig. column*. This column lists the number of the figure where the item is identified/located in sections II and III.

(5) *Item column*. The item number is that number assigned to the item as it appears in the figure referenced in the adjacent figure number column.

5. Special Information

a. Usable on Code. The usable on code appears in the lower left corner of the description column heading. Usable on codes are shown as "UOC": in the description column (justified left) on the first line applicable item description nomenclature. Uncoded items are applicable to all models. Identification of the usable on codes used in this RPSTL are:

<i>Code</i>	<i>Used on</i>
3G7	AN/GRC-142B

b. The following publications pertain to the AN/GRC-142B and its components

TM 11-5038, Control Group AN/GRA-6.

TM 11-5410-212-15P, Shelter, Electrical Equipment S-318/G.

TM 11-5805-201-12, Telephone Set TA-312/PT.

TM 11-5805-201-20P, Telephone Set TA-312/PT.

TM 11-5805-387-15-1, Modem Radio Teletypewriter MD-522/GRC.

TM 11-5805-387-15-2, Radio Teletypewriter Modem MD-522A/GRC.

TM 11-5805-387-20P-2, Modem Radio Teletypewriter MD-522A/GRC.

TM 11-5815-200-12, Teletypewriter Sets AN/FGC-20, AN/FGC-20X, AN/FGC-21, AN/FGC-66, AN/FGC-159, AN/FGC-159X, AN/FGC-160, AN/FGC-177, AN/UGC-4, AN/UGC-29, AN/UGC-29X, and Teleprinter TT-259/FG.

TM 11-5815-238-12, Teletypewriter sets AN/GGC-3, and AN/GGC-3A and Teletypewriter Reperforator-Transmitters TT-76/GGC, TT-76A/GGC, TT-76B/GGC, and TT-76C/GGC.

TM 11-5815-238-20P, Teletypewriter Sets AN/GGC-3, and AN/GGC-3A and Teletypewriter Reperforator-Transmitters TT-76/GGC, TT-76A/GGC, TT-76B/GGC, and TT-76C/GGC.

TM 11-5815-334-12, Radio Teletypewriter Sets AN/GRC-142, AN/GRC-142A, AN/GRC-142B, AN/GRC-122, AN/GRG-122A, and AN/GRC-122B.

TM 11-5815-334-20P, Radio Teletypewriter Sets AN/GRC-142, AN/GRC-142A, AN/GRC-142B, AN/GRC-122, AN/GRG-122A, and AN/GRC-122B.

TM 11-5815-338-15, Device, Low Level Signaling TT-523/GGC and TT-523A/GGC.

TM 11-5820-489-20P, Control Group AN/GRA-6.

TM 11-5820-520-12, Radio Sets AN/GRG-106 and AN/GRC-106A.

TM 11-5820-765-12, Power Supplies PP-4763/GRC and PP-4763A/GRC.

TM 11-5965-222-14P, Dynamic Loudspeaker LS-166/U.

TM 11-6125-252-15P, Motor-Generator PU-724/G.

TM 11-6625-333-15, Standing-Wave-Ratio Power Meter ME-165/G.

c. Illustrations - Listing. The illustrations in this RPSTL are identical to those published in TM 11-5815-334-34P-1. Only those parts coded "C" or "O" in the third position of the SMR code are listed in the tabular listing; therefore, there may be a break in the item number sequence, figure number and page number. Only illustrations containing organizational or aviation unit authorized items appear in this RPSTL.

TM 11-6625-333-15P, Standing-Wave-Ratio Power Meter ME-165/G.

d. National Stock Numbers. National stock numbers (NSN's) that are missing from P source coded items have been applied for and will be added to this TM by future change/revision when they are entered in the Army Master Data File (AMDF). Until the NSN's are established and published, submit exception requisitions to: Commander, US Army Communications-Electronics Command and Fort Monmouth, ATTN: AMSEL-MM, Fort Monmouth, NJ 07703-5006 for the part required to support your equipment.

e. Stacked Format. This RPSTL is arranged in a stacked format. All illustrations are located at the end of section II and are in numerical sequence.

6. How to Locate Repair Parts

a. When National stock number or part number is not known.

(1) *First.* Using the table of contents, determine the assembly group or subassembly group to which the item belongs. This is necessary since figures are prepared for assembly groups and subassembly groups, and listings are divided into the same groups.

(2) *Second.* Find the figure covering the assembly group or subassembly group to which the item belongs.

(3) *Third.* Identify the item on the figure and note the item number.

(4) *Fourth.* Refer to the Repair Parts List for the figure to find the part number for the item number noted on the figure.

(5) *Fifth.* Refer to the Part Number Index to find the NSN, if assigned.

b. When National stock number or part number is known.

(1) *First.* Using the index of National stock numbers and part numbers, find the pertinent National stock number or part number. The NSN index is in National item identification number (NIIN) sequence (para 4a(1)). The part numbers in the part number index are listed in ascending alphanumeric sequence (para 4b). Both indexes cross-reference you to the illustration figure and item number of the item you are looking for.

(2) *Second.* After finding the figure and item number, verify that the item is the one you're looking for, then locate the item number in the repair parts list for the figure.

(1) ITEM NO	(2) SMR CODE	(3) FSCM	(4) PART NUMBER	(5) DESCRIPTION AND USABLE ON CODE (UOC)	(6) QTY
				GROUP 00 RADIO TELETYPEWRITER SET AN/GRC-142B MAJOR COMPONENT LOCATIONS	
				FIGURE 1A	
1	PDOFF	80058	MD-522A/GRC	MODEM RADIO UOC: 3G7	1
1	PDOFF	80058	MD-522/GRC	MODEM RADIO UOC: 3G7	1
2	XBOFF	80058	SA-1650/GRC	SWITCH ASSEMBLY SEE FIGURE 112 FOR PARTS BREAKDOWN UOC: 3G7	1
3	PAOZZ	80063	SM-C-613238	FILTER, AIR UOC: 3G7	1
4	PDOFF	80063	SC-DL-613212	POWER SIGNAL ENTR UOC: 3G7	1
5	PAOZZ	96906	MS15586-7	LAMP INCANDESANT SPARE BULB IN STORAGE BOX UOC: 3G7	3
6	PAOZZ	80063	SM-C-603132-2	CABLE ASSEMBLY UOC: 3G7	1
7	PAOFF	80058	J-2728/GRC-142	INTERCONNECTING BOX SEE FIGURE 117 FOR PARTS BREAKDOWN UOC: 3G7	2
8	PAOFF	80058	SB-3358/GRC	PANEL POWER DISTR SEE FIGURE 111 FOR PARTS BREAKDOWN UOC: 3G7	1
9	XBOFF	80063	SC-DL-613235	POWER TERMINAL ASSY UOC: 3G7	1
10	PDOFF	80058	TT-98B/FG	TELETYPEWRITER UOC: 3G7	1
10	PDOFF	80058	TT-722/TG	TELETYPEWRITER SET UOC: 3G7	1
11	PAOZZ	80063	SC-DL-446065	COVER DUST UOC: 3G7	2
12	PAOZZ	80063	SM-C-603103	CABLE, ASSEMBLY UOC: 3G7	1
13	XBOZZ	80063	SM-C-603104	CABLE, ASSEMBLY UOC: 3G7	1
14	PDOFF	80058	PP-4763/GRC	POWER SUPPLY UOC: 3G7	1
15	PFOFF	80058	TA-312/PT	TELEPHONE UOC: 3G7	1
16	PAOFF	80058	PU-724A/G	INVERTER POWER UOC: 3G7	1
17	PAOZZ	96906	MS35307-307	SCREW MACHINE UOC: 3G7	4
18	PAOZZ	96906	MS35307-306	SCREW MACHINE UOC: 3G7	12
19	XBOZZ	80063	SM-B-613099	NUT BAR	2

SECTION II

TM 11-5815-334-20P-1

(1) ITEM NO	(2) SMR CODE	(3) FSCM	(4) PART NUMBER	(5) DESCRIPTION AND USABLE ON CODE (UOC)	(6) QTY
20	PDOFF	81349	MILH52641	UOC: 3G7 HEATER ASSEMBLY	1
21	PDOFF	80058	LS-166/U	UOC: 3G7 LOUDSPEAKER	1
22	PAOZZ	96906	MS35307-306	UOC: 3G7 SCREW MACHINE	12
23	PAOZZ	96906	MS15795-810	UOC: 3G7 WASHER FLAT	44
24	PAOZZ	96906	MS16228-1	UOC: 3G7 NUT-SELF LOCKING	20
25	PAOZZ	96906	MS35338-139	UOC: 3G7 WASHER LOCK	36
26	PAOZZ	96906	MS35307-313	UOC: 3G7 SCREW MACHINE	8
27	PAOZZ	96906	MS16228-1	UOC: 3G7 NUT SELF LOCKING	8
28	PAOZZ	96906	MS35338-139	UOC: 3G7 WASHER LOCK	20
29	PAOZZ	96906	MS15795-810	UOC: 3G7 WASHER FLAT	44
30	PDOFF	80058	TT-76/GRC	UOC: 3G7 REPERF TRANS TELETY	1
31	PDOFF	80058	TT-523A/GGC	UOC: 3G7 LOW LEVEL SIG DEVCE	1
32	PAOZZ	96906	MS35308-314	UOC: 3G7 SCREW MACHINE	8
33	PAOZZ	96906	MS45904-68	UOC: 3G7 WASHER LOCK	8
34	PDOFF	80058	AN/GRC-106A	UOC: 3G7 RADIO SET	1
35	XBOZZ	80063	SM-C-603138	UOC: 3G7 CABLE ASSEMBLY	1
36	PDOFF	80058	RT-834/GRC	UOC: 3G7 RECEIVER TRANSMITTR	1
36	PDOFF	80063	SC-DL-502715	UOC: 3G7 RECEIVER TRANSMITTR	1
37	PAOZZ	96906	MS15795-805	UOC: 3G7 WASHER FLAT	2
38	PAOZZ	96906	MS21083C06	UOC: 3G7 NUT SELF-LOCKING	2
39	PAOZZ	81349	A13A1	UOC: 3G7 CLOCK	1
40	PAOZZ	96906	MS17821-1-9	UOC: 3G7 CLAMP CABLE STRAP	2
41	PAOZZ	80063	SC-D-781188GRI	UOC: 3G7 TIEDOWN ASSEMBLY	1
42	XBOZZ	80063	SM-B-603572	UOC: 3G7 SPACER	3
43	PDOFF	80063	SC-DL-613365-1FT	UOC: 3G7 CALBE ASSEMBLY USED WITH HUNTER HEATER (ONLY)	1

SECTION II

TM 11-5815-334-20P-1

(1) ITEM NO	(2) SMR CODE	(3) FSCM	(4) PART NUMBER	(5) DESCRIPTION AND USABLE ON CODE (UOC)	(6) QTY
44	PDOFF	80063	SM-D-539485	HEATER UOC: 3G7	1
44	PDOFF	81349	MILH52204	HEATER UOC: 3G7	1
44	PDOFF	46522	MH15B3C1	HEATER OR UOC: 3G7	1
45	PDOFF	80058	ME-165/G	STANDING WAVE RATIO UOC: 3G7	1
46	PAOZZ	96906	MS51958-66	SCREW MACHINE UOC: 3G7	6
47	PAOZZ	96906	MS15795-808	WASHER FLAT UOC: 3G7	10
48	PAOZZ	96906	MS35338-138	WASHER LOCK UOC: 3G7	6
49	XBOZZ	80063	SM-C-603141-2	CABLE ASSEMBLY UOC: 3G7	1
50	XBOZZ	80063	SM-C-613284	CABLE ASSEMBLY UOC: 3G7	1
GROUP 00 RADIO TELETYPEWRITER SET AN/GRC-142B					
FIGURE 1					
1	PAOZZ	81349	ME-3-3-45	FUEL CONTAINER	1
2	PDOFF	80058	S-502/GRC-142B	SHELTER, NONEXPANDAB	1
5	PAOZZ	80058	MX-148/G	ROD, GROUND	2
6	XBOFF	80058	PP-4763()/GRC	POWER SUPPLY	1
7	XBOFF	80058	ME-165()/G	METER, SWR-POWER	1
8	XBOFF	80058	CX-10171/U(MOD)	CABLE, SPCL PURP, ELE	1
9	XBOFF	80058	AM-3349	AMPLIFIER, RF	1
10	XBOFF	80058	RT-662/GRC	RECEIVER-TRANSMITTE	1
11	XBOFF	80058	CX-10099()/U(7IN)	CABLE, SPCL PURP, ELE	1
12	XBOFF	80063	SM-C-613156	CABLE, SPCL PURP, ELE	1
15	PDOFF	80058	MD-522A/GRC	MODEM, RADIO TELETYP	1
19	XBOFF	80058	TT-98()/FG(MOD)	TELETYPEWRITER	1
20	PDOFF	80058	TA-312()/PT	TELEPHONE SET	2
21	XBOFF	80063	SM-B-603214	PAPER ROLL, TTY	4
22	PAOZZ	81349	UU-T-120	TTY TAPE, YELLOW	8
23	XBOFF	80058	C-433()/GRC	CONTROL UNIT, REMOTE	1
24	XBOFF	80058	LS-166U	LOUDSPEAKER, DYANAMI	1
26	XBOFF	80063	SM-C-613149	CABLE, SPCL PURP, ELE	1
27	XBOFF	80058	CG-409H/U(8IN)	CABLE, SPCL PURP, ELE	1
28	PAOZZ	80058	TT-523A/GGC	SIGNAL ITEM DEVICE	1
29	XBOFF	80058	TT-76()/GGC(MOD)	TELETYPEWRITER	1
30	PAOFF	80058	PU-724A/G	INVERTER, POWER, STAT	2
30A	XBOFF	80058	CX-4541/U	CABLE, SPCL PURP, ELE	1
31	XBOFF	80058	MX-3453()/G	LADDER, VEH BOARDING	1
32	XBOFF	80063	SM-D-613356-1	HEATER, MULTI FUEL	1
33	XBOFF	80063	SM-D-613356-2	THERMOSTAT	1
34	PAOFF	80058	MT-3140/GRC-106-,	MOUNTING	2

SECTION II

TM 11-5815-334-20P-1

(1) ITEM NO	(2) SMR CODE	(3) FSCM	(4) PART NUMBER	(5) DESCRIPTION AND USABLE ON CODE (UOC)	(6) QTY
35	PAOZZ	81349	MIL-H-54647(ME)	HEATER, ELECTRIC	1
36	XBOFF	80058	UG-201()/U	ADAPTER	1
37	XBOFF	80063	SM-B-500418	ROPE	2
38	PAOZZ	80058	CW-206/GR	BAG, TEXTILE	1
39	PDOZZ	80058	AB-652/GR	BASE, MAST	1
40	XBOFF	80058	MS-118-A	MAST SECTION	2
41	XBOFF	80058	MS-117-A	MAST SECTION	2
42	XBOFF	80058	MS-116-A	MAST SECTION	5
43	PAOZZ	80063	SC-C-446046	ANTENNA TIP ASSEMB	2
44	XBOFF	80063	SM-C-500427	CLAMP	1
45	PAOZZ	80063	SM-D-500428	COVER, ANTENNA	1
46	PAOZZ	81349	UG-306	CONN, PLUG, ELEC	1
47	XBOFF	80058	CX-1852/U(8FT)	CABLE, SPCL PURP, ELE	1
48	PAOZZ	80058	H-227/U	HEADSET, ELECTRICAL	1
49	PAOZZ	80058	M-29B/U	MICROPHONE, CARBON	1
50	PAOZZ	80058	KY-116/U	KEY, TELEGRAPH	1
51	XBOFF	80058	H-33()/PT	HANDSET	2
52	XBOFF	80058	RC-432()/G	REELING MACHINE, CBL	1
53	XBOFF	80058	C-434()/GRC	CONTROL UNIT, LOCAL	1
54	XBOFF	80058	CW-189()/GR	BAG	1
55	XBOFF	80058	IL-4()/GRA-4	INSULATOR	1
56	XBOFF	80063	SC-A-46858	TAPE, MEASURING, RF	1
57	XBOFF	80058	J-654()/G	INTERCONNECTING BOX	1
58	XBOFF	80058	CX-7303()/G	WIRE, ANTENNA	V
59	XBOFF	80058	CG-678()/U(75FT)	CABLE, SPCL PURP, ELE	1
60	PAOZZ	80058	MX-2706/G	HALYARD, ANTENNA	2
61	PAOZZ	81349	MIL-B-43064SIZE1	LOG BOOK	1
62	PAOZZ	81349	F02A250V2A	FUSE, CARTRIDGE	5
63	PAOFF	80063	SC-C-446368	CABLE ASSEMBLY, RADI	1
64	XBOFF	80058	CG-692/U75	CABLE, SPCL PURP, ELE	1
65	PAOZZ	81349	NL422B66-624	INSULATOR	12
66	XBOFF	09922	KS-90	SPLICE, SPLIT-BOLT	18
67	PAOFF	81349	F02B32V5A	FUSE, CARTRIDGE	12
68	PAOZZ	81349	F02B32V30A	FUSE, CARTRIDGE	12
69	PAOZZ	81349	F02B250V	FUSE, CARTRIDGE	12
70	PAOZZ	81349	F03B32V	FUSE, CARTRIDGE	6
71	PAOZZ	96906	MS25237-327	LAMP, INCANDESCENT	2
72	PAOZZ	80063	SC-B-19491	CLAMP ASSY, ANTENNA	3
74	PAOZZ	80058	BG-175	BAG GENERAL PURPOSE	1
75	XBOFF	80058	AB-155()V	ANTENNA	3
76	XBOFF	80058	RC-435	CABLE REEL	1
77	PAOZZ	81349	RE-49F258	NO NAME	1
82	PAOZZ	96906	MS35307-313	SCREW, CAP, HEXAGON H	4
83	PAOZZ	96906	MS15795-810	WASHER, FLAT	4
84	PAOZZ	96906	MS35338-139	WASHER, LOCK	24
85	PAOZZ	96906	MS16228-1	NUT, SELF-LOCKING, HE	16
86	PAOZZ	96906	MS15795-814	WASHER, FLAT	8
87	PAOZZ	96906	MS35338-141	WASHER, LOCK	8
88	PAOZZ	96906	MS35307-359	SCREW, CAP, HEXAGON H	8
89	PAOZZ	96906	MS51958-68	SCREW, MACHINE	6
90	PAOZZ	96906	MS35338-138	WASHER, LOCK	6
91	PAOZZ	96906	MS15795-808	WASHER, FLAT	6

SECTION II

TM 11-5815-334-20P-1

(1) ITEM NO	(2) SMR CODE	(3) FSCM	(4) PART NUMBER	(5) DESCRIPTION AND USABLE ON CODE (UOC)	(6) QTY
92	PAOZZ	96906	MS35307-314	SCREW,CAP,HEXAGON H	4
93	PAOZZ	96906	MS35307-307	SCREW,CAP,HEXAGON, H	6
94	PAOZZ	96906	MS35307-309	SCREW,CAP,HEXAGON H	4
95	PAOZZ	96906	MS35307-308	SCREW,CAP,HEXAGON H	4
96	PAOZZ	96906	MS21083C4	NUT,SELF-LOCKING,HE	8
97	PAOZZ	96906	MS35308-314	SCREW,CAP,HEXAGON H	8
GROUP 00 SHELTER,ELEC EQUIPMENT S-502/GRC-142B					
FIGURE 2					
13	PAOFF	80063	SM-D-613048	POWER SIGNAL	1
43	PAOZZ	80063	SC-D-781188GRI	TIEDOWN ASSEMBLY	1
47	XBOFF	99539	FR2-3/4-11848	FIRE EXTINGUISH	1
52	PAOZZ	57566	8910	CLOCK,PANEL	1
56	PAOFF	96906	MS17821-1-9	STRAP,LINE SUPPORT	8
64	PEOZZ	79796	15H	HAMMER,HAND	1
93	XBOFF	80063	SM-B-603148	LEAD,ELECTRICAL	1
101	PAOFF	80063	SM-D-613130	CHAIR,ROTARY	1
105	PAOFF	80058	SA-1650/GRC	SWITCH ASSEMBLY	1
107	PAOFF	80058	J-2728/GRC-142	INTERCONNECTING BOX	2
109	PAOFF	80058	SB-3358/GRC	PANEL,POWER DISTRIB	1
121	PAOZZ	80063	SM-D-603394	TARPAULIN	1
122	PAOZZ	80063	SM-C-613229	PIPE,EXHAUST	2
132	PAOZZ	80063	SM-C-613220	CLAMP,ELECTRICAL	4
174	PAOZZ	96906	MS15586-7	LAMP,INCANDESCENT	2
225A	XBOFF	80063	SM-B-613099	NUT,BAR	2
226	PAOZZ	80063	SM-C-603812	ADAPTER KIT,GRAVITY	1
227	PAOFF	80058	C-7279/GRC-142	REMOTE CONTROL	1
228	XBOFF	80063	SM-D-603382	PENNANT,SIGNAL	3
229	XBOFF	95344	QAJ118H	GRIP,CABLE	1
230	XBOFF	80063	SM-B-603149	LEAD,ELECTRICAL	1
231	PAOZZ	80063	SC-DL-446065	COVER,DUST	2
232	XBOFF	80063	SM-B-613366-1	SCREWDRIVER	1
233	XBOFF	80063	SM-B-613366-2	SCREWDRIVER	1
234	PEOZZ	55719	137	PLIERS,COMBINATION	1
235	XBOFF	55719	D-76	WRENCH,ADJUSTABLE	1
236	XBOFF	55719	1015KC	WRENCH SET,HEX	1
237	XBOFF	55719	0E-16-18	WRENCH SET,OPEN	1
238	PAOZZ	80063	SC-D-539483	FIRST AID KIT	1
239	PAOZZ	96906	MS25237-327	LAMP,INCANDESCENT	1
240	PAOZZ	80063	SC-C-539491	FLASHLIGHT	1
248	PAOZZ	96906	MS35338-139	WASHER,LOCK	128
249	PAOZZ	96906	MS15795-810	WASHER,FLAT	312
255	PAOZZ	96906	MS51958-65	SCREW,MACHINE	28
256	PAOZZ	96906	MS35338-138	WASHER,LOCK	112
260	PAOZZ	96906	MS51958-64	SCREW,MACHINE	91
261	XBOZZ	96906	MS15795-808	WASHER,FLAT	249
292	PAOZZ	96906	MS16996-53	SCREW,CAP,SOCKET	4

SECTION II

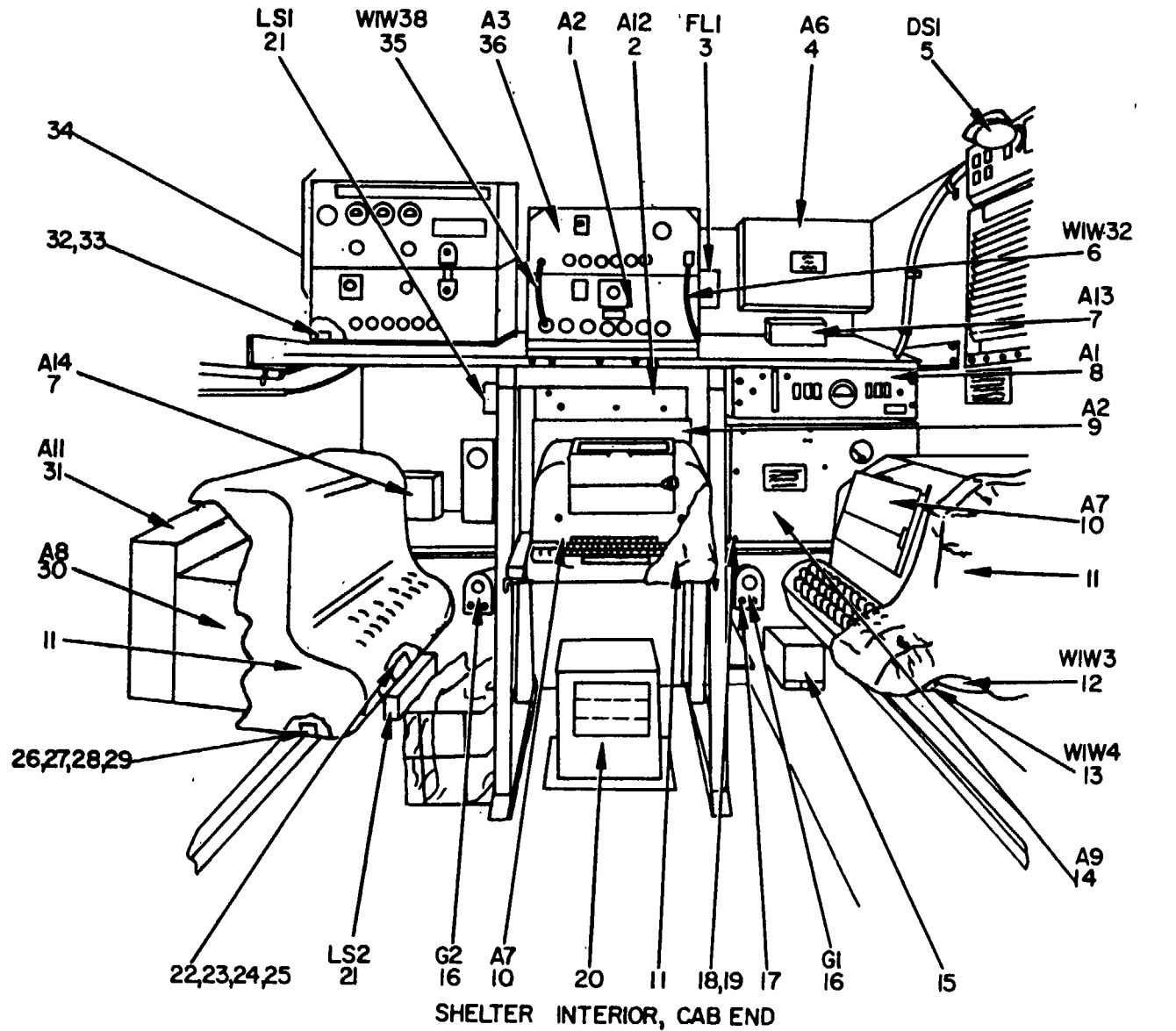
TM 11-5815-334-20P-1

(1) ITEM NO	(2) SMR CODE	(3) FSCM	(4) PART NUMBER	(5) DESCRIPTION AND USABLE ON CODE (UOC)	(6) QTY
GROUP 00 TIE DOWN ASSEMBLY (SC-D-781188/GR1)					
FIGURE 10					
1	XBOFF	80063	SC-D-781187GRI	BRACKET ASSY	1
2	XBOFF	80063	SC-B-781186	KNOB ASSY	1
GROUP 00 CABLE INSTALLATION, (SM-A-613027)					
FIGURE 12					
1	XBOFF	80063	SM-C-613332	CABLE, SPCL PURP, ELE	1
2	PAOZZ	80063	SM-C-603102	CABLE ASSEMBLY, SPEC	1
3	PAOZZ	80063	SM-C-603103	CABLE ASSEMBLY, SPEC	1
4	XBOFF	80063	SM-C-603104	CABLE, SPCL PURP, ELE	1
5	PAOZZ	80063	SM-C-603105	CABLE ASSEMBLY, SPEC	1
6	XBOFF	80063	SM-C-613333	CABLE, SPCL PURP, ELE	1
7	PAOZZ	80063	SM-C-603107	CABLE ASSEMBLY, S	1
8	XBOFF	80063	SM-C-603108	CABLE, SPCL PURP, ELE	1
9	XBOFF	80063	SM-C-603109	CABLE, SPCL PURP, ELE	1
10	XBOFF	80063	SM-C-603110	CABLE, SPCL PURP, ELE	1
11	PFOFF	80063	SM-C-603111	CABLE ASSEMBLY, SPEC	1
12	XBOFF	80063	SM-C-603112	CABLE, SPCL PURP, ELE	1
13	XBOFF	80063	SM-C-603113	CABLE ASSEMBLY, SPEC	1
14	XBOFF	80063	SM-C-603114	CABLE, SPCL PURP, ELE	1
15	PAOFF	80063	SM-C-603115	CABLE, SPCL PURP, ELE	1
16	PAOFF	80063	SM-C-603117	CABLE ASSEMBLY, SPEC	1
17	XBOFF	80063	SM-C-603118	CABLE ASSEMBLY, SPEC	1
18	XBOFF	80063	SM-C-603124	CABLE ASSEMBLY, SPEC	1
19	XBOFF	80063	SM-C-603125	CABLE, SPCL PURP, ELE	1
20	XBOFF	80063	SM-C-613334	CABLE, SPCL PURP, ELE	1
21	XBOFF	80063	SM-C-613335	CABLE, SPCL PURP, ELE	1
22	XBOFF	80063	SM-C-613349	CABLE, SPCL PURP, ELE	1
23	XBOFF	80063	SM-C-613336	CABLE, SPCL PURP, ELE	1
24	XBOFF	80063	SM-C-613337	CABLE, SPCL PURP, ELE	1
25	XBOFF	80063	SM-C-613149	CABLE, SPCL PURP, ELE	1
26	XBOFF	80063	SM-C-613156	CABLE, SPCL PURP, ELE	1
27	PAOZZ	80063	SM-C-613147	CABLE ASSEMBLY, S	1
28	PAOZZ	80063	SM-C-613155	CABLE ASSEMBLY, S	1
29	PAOZZ	80063	SM-C-613165	CABLE ASSEMBLY, SPEC	1
30	PAOZZ	80063	SM-C-613166	CABLE ASSEMBLY, SPEC	1
31	XBOFF	80063	SM-C-603138	CABLE, SPCL PURP, ELE	1
32	PAOFF	80063	SM-C-603139	CABLE, SPCL PURP, ELE	1
33	XBOFF	80063	SM-C-613284	CABLE, SPCL PURP, ELE	1
34	XBOFF	80063	SM-C-613338	CABLE, SPCL PURP, ELE	1
35	XBOFF	80063	SM-C-612899	CABLE, SPCL PURP, ELE	1
36	PAOZZ	80063	SM-C-613236	CABLE ASSEMBLY, S	1
37	XBOFF	80058	CX-107171/U (6FT) (MODIFIED)	LEAD, ELECTRICAL	1
38	PAOZZ	80063	SM-C-613152	CABLE ASSEMBLY, RADI	1

SECTION II

TM 11-5815-334-20P-1

(1) ITEM NO	(2) SMR CODE	(3) FSCM	(4) PART NUMBER	(5) DESCRIPTION AND USABLE ON CODE (UOC)	(6) QTY
GROUP 00 CHAIR ASSY, (SM-D-613130)					
FIGURE 19					
1	XBOFF	80063	SM-D-613126	CHAIR, ROTARY	1
2	PAOZZ	80063	SM-C-613119	CATCH, FLUSH	2
3	XBOFF	07707	SSD68BS	RIVET	6
4	PAOFF	80063	SM-B-613125	PLATE, ADAPTER	2
5	PAOZZ	96906	MS35691-19	NUT, PLAIN, HEXAGON	4
6	PAOZZ	96906	MS35338-141	WASHER, LOCK	4
7	PAOZZ	96906	MS15795-814	WASHER, FLAT	5
8	XBOFF	00652	GDE-4001	BELT, SEAT	2
9	PAOZZ	96906	MS35307-365	SCREW, CAP, HEXAGON H	1
10	PAOZZ	96906	MS35307-358	SCREW, CAP, HEXAGON H	3
GROUP 00 COVER ASSY, (SC-D-595028)					
FIGURE 23					
2	XBOFF	03614	MDA10A250V	FUSE	1
GROUP 19 PANEL POWER DISTRIBUTION, SB-3358/GRC					
FIGURE 111					
16	PAOZZ	81349	LC12GT	LENS, IND LIGHT	2
17	PAOZZ	96906	MS25237-327	LAMP, INCANDESCENT	2
GROUP 22 SWITCH ASSY, SA-1650/GRC					
FIGURE 112					
16	PAOZZ	81349	LC14RD3	LENS, LIGHT	1
17	PAOZZ	81349	NE51	LAMP, GLOW	1



EL2EFOOI

Figure 1A. Radio Teletypewriter Set AN/GRC-142B, Major Component Locations
(Sheet 1 of 2).

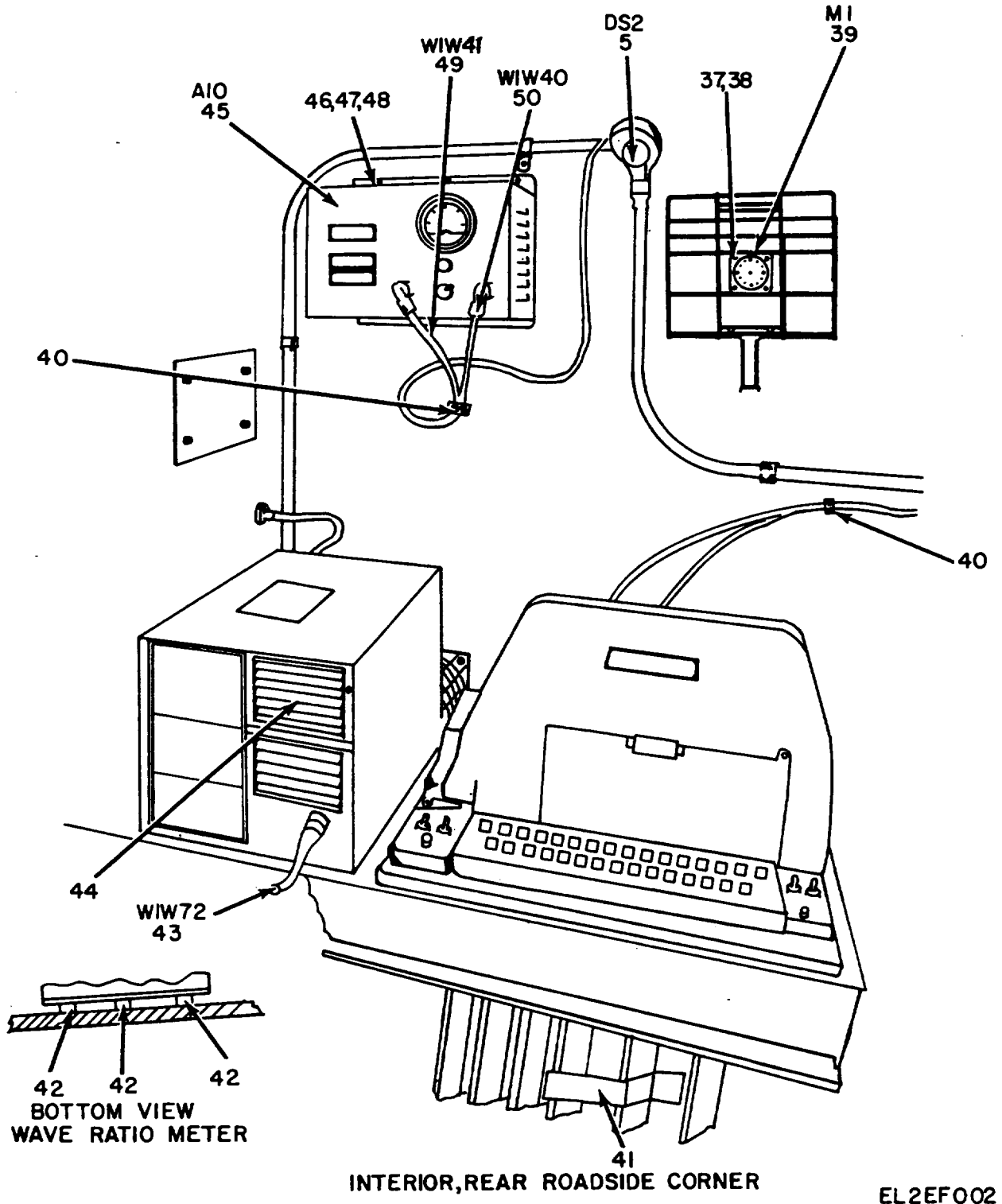
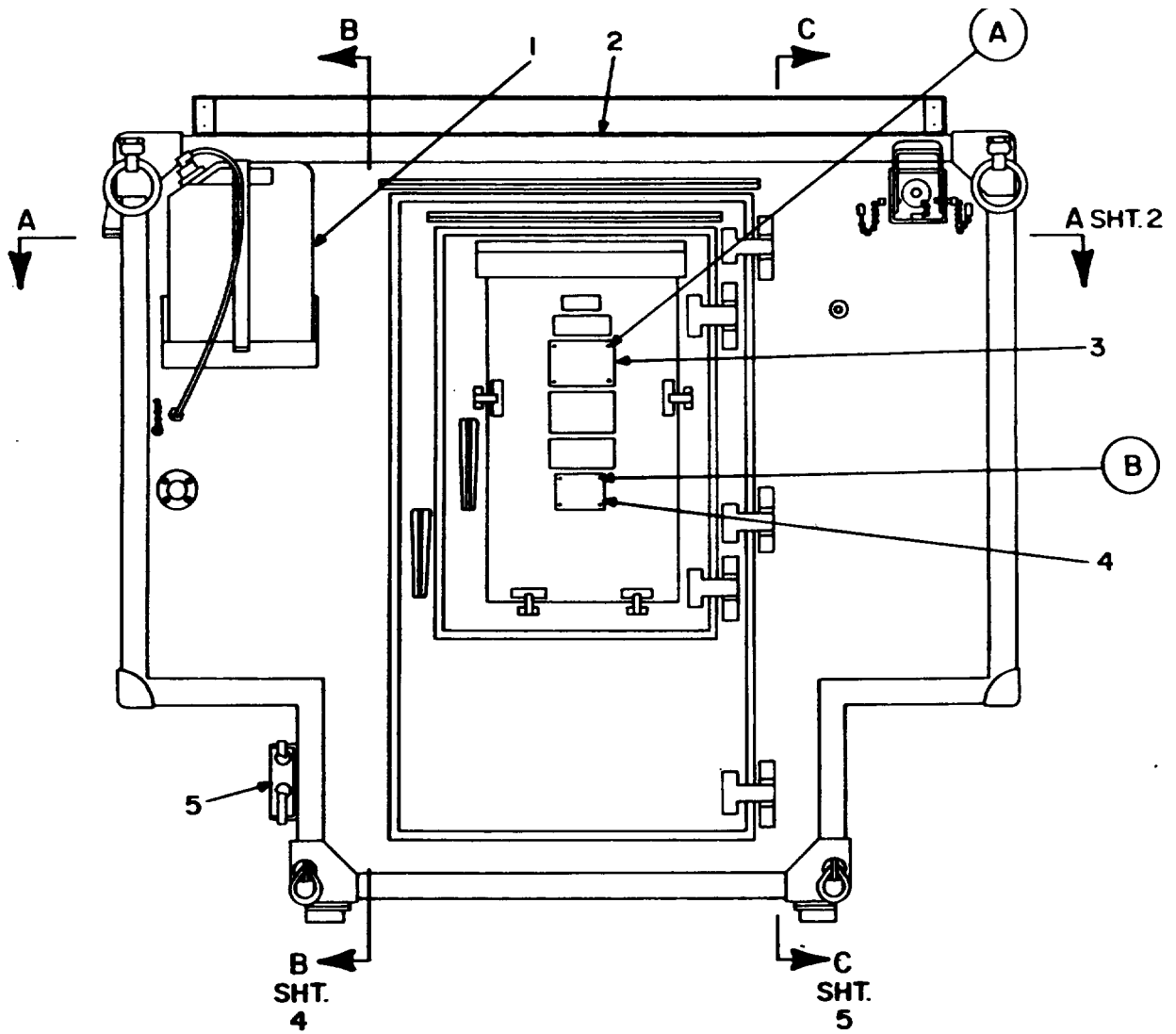


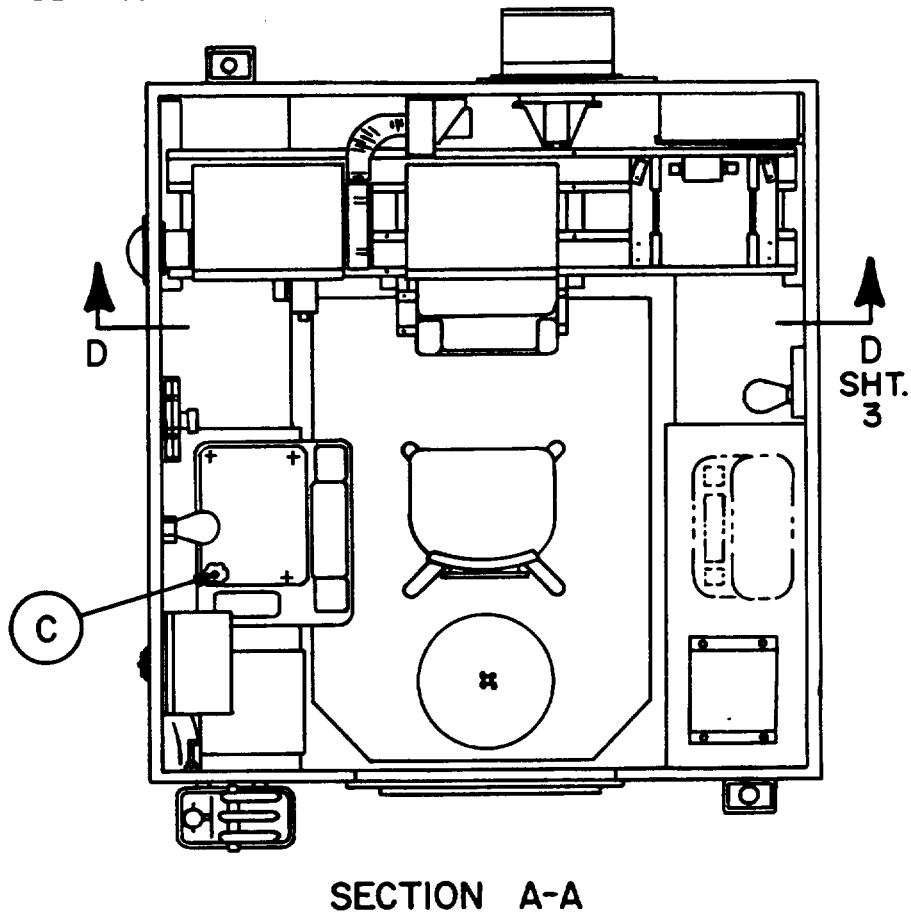
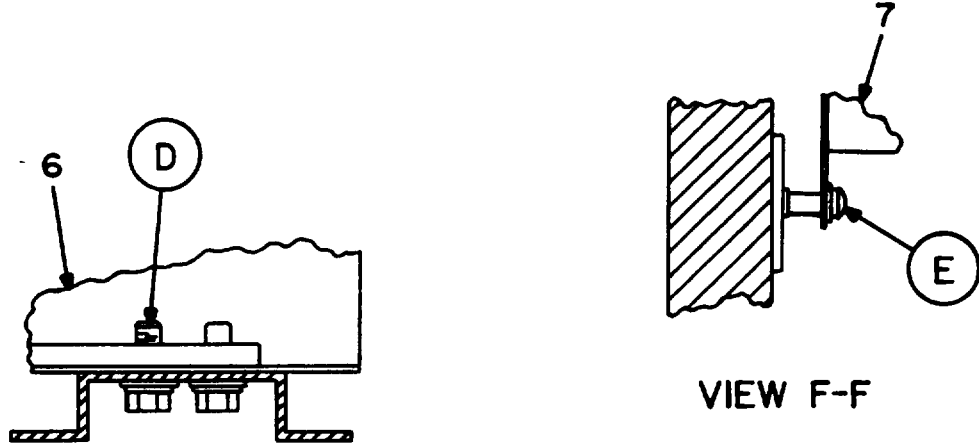
Figure 1A. Radio Teletypewriter Set AN/GRC-142B, Major Component Locations
(Sheet 2 of 2).



SEE SHEET 6 FOR ENCIRCLED DETAILS.

EL2EF400

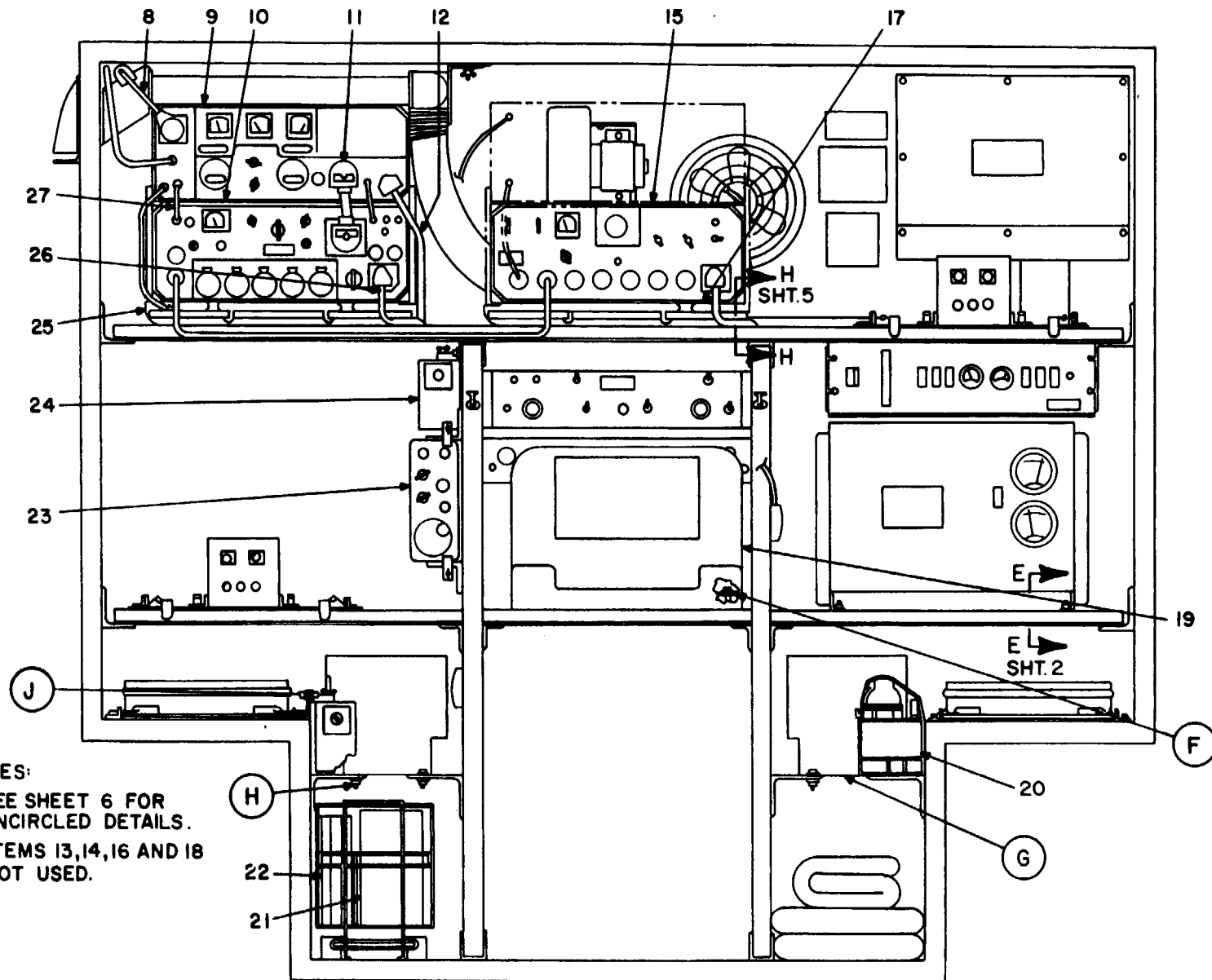
Figure 1. Radio TTY set, AN/GRC-142B (Sheet 1 of 6).



SEE SHEET 6 FOR ENCIRCLED DETAILS.

EL2EF401

Figure 1. Radio TTY set, AN/GRC-142B (Sheet 2 of 6).

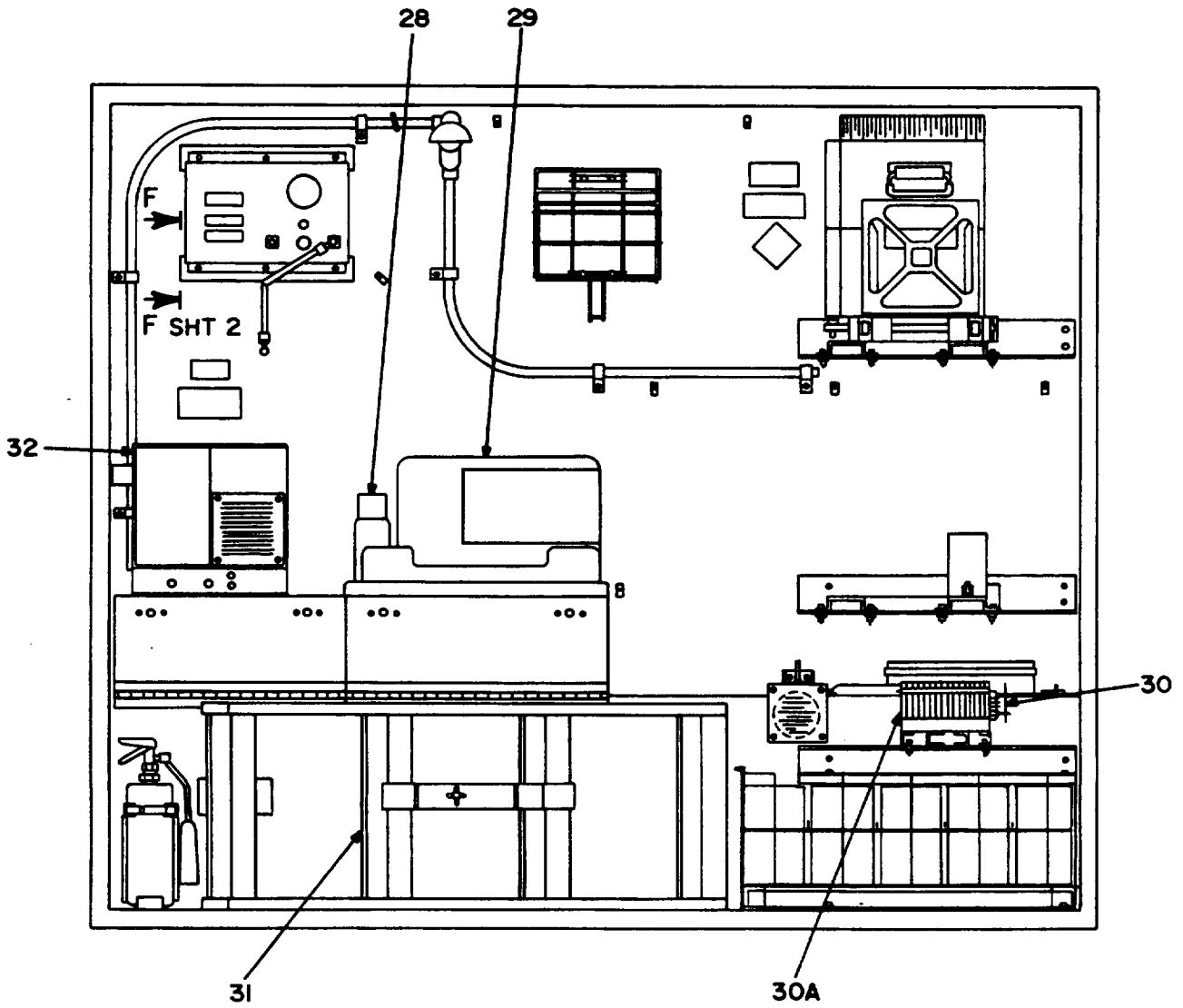


NOTES:
 1. SEE SHEET 6 FOR
 ENCIRCLED DETAILS.
 2. ITEMS 13,14,16 AND 18
 NOT USED.

SECTION D-D

EL2EF402

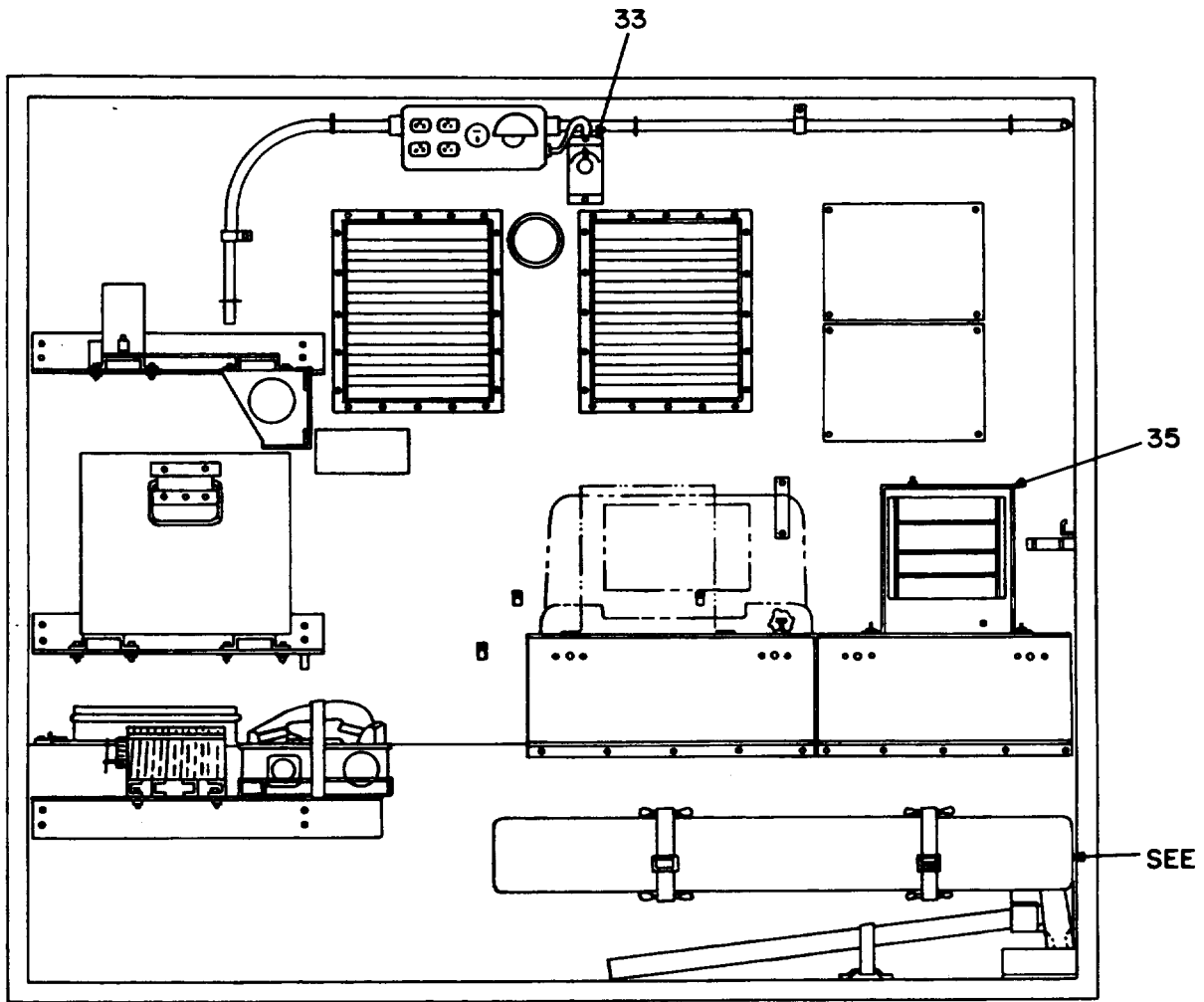
Figure 1. Radio TTY set, AN/GRC-142B (Sheet 3 of 6).



SECTION B-B

EL2EF403

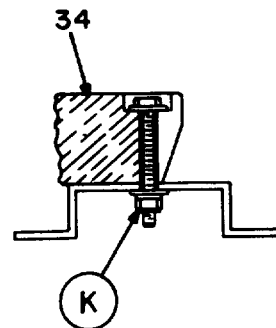
Figure 1. Radio TTY set, AN/GRC-142B (Sheet 4 of 6).



SECTION C-C

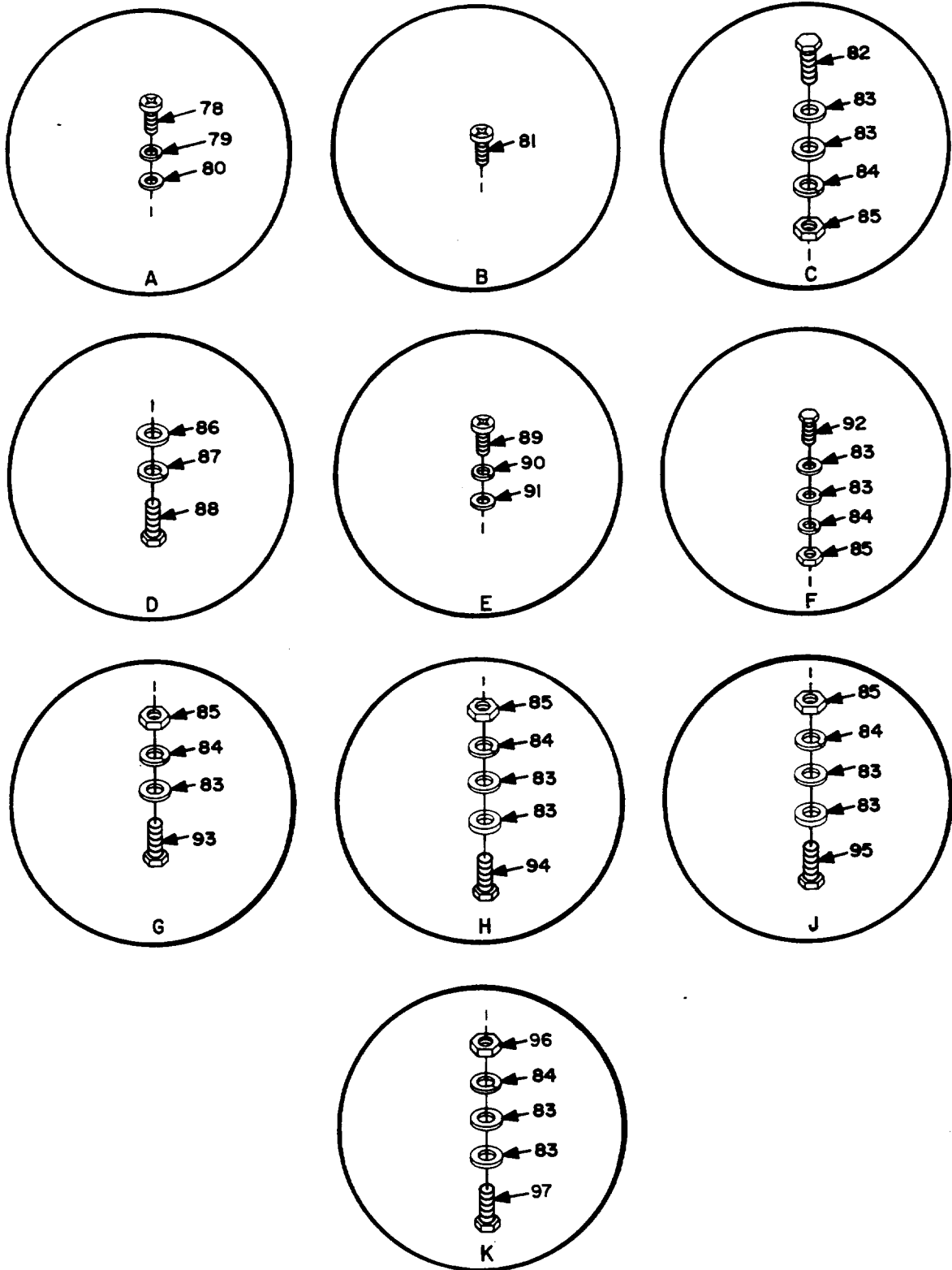
NOTES:

1. THE FOLLOWING ITEMS ARE STOWED:
 36,37,38,39,40,41,42,43,44,45,46,47,48,
 49,50,51,52,53,54,55,56,57,58,59,60,61,
 62,63,64,65,66,67,68,69,70,71,72,74,75,
 76,77.
2. SEE SHEET 6 FOR ENCIRCLED DETAILS.
3. ITEM 73 NOT USED.



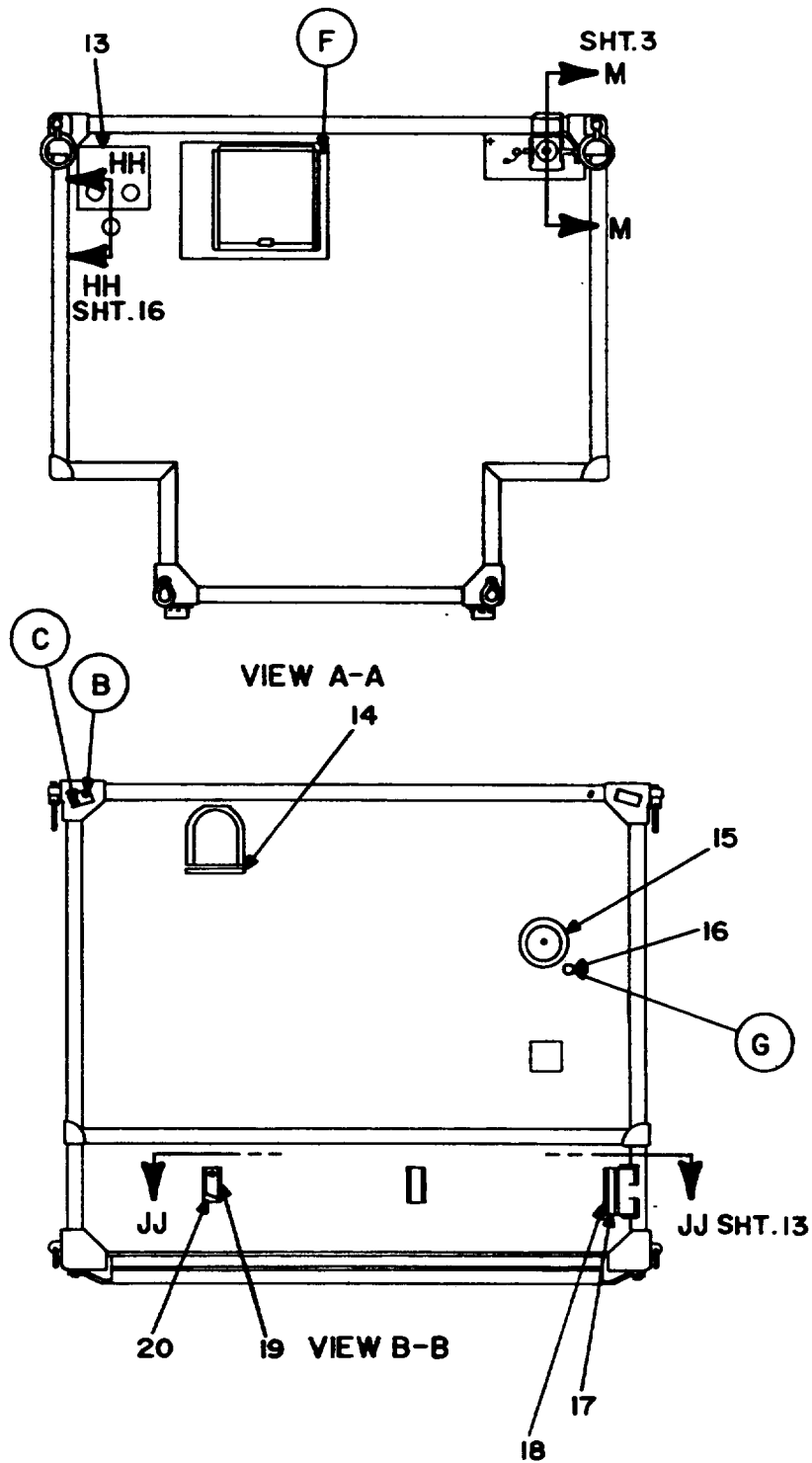
SECTION H-H

EL2EF404



EL2EF405

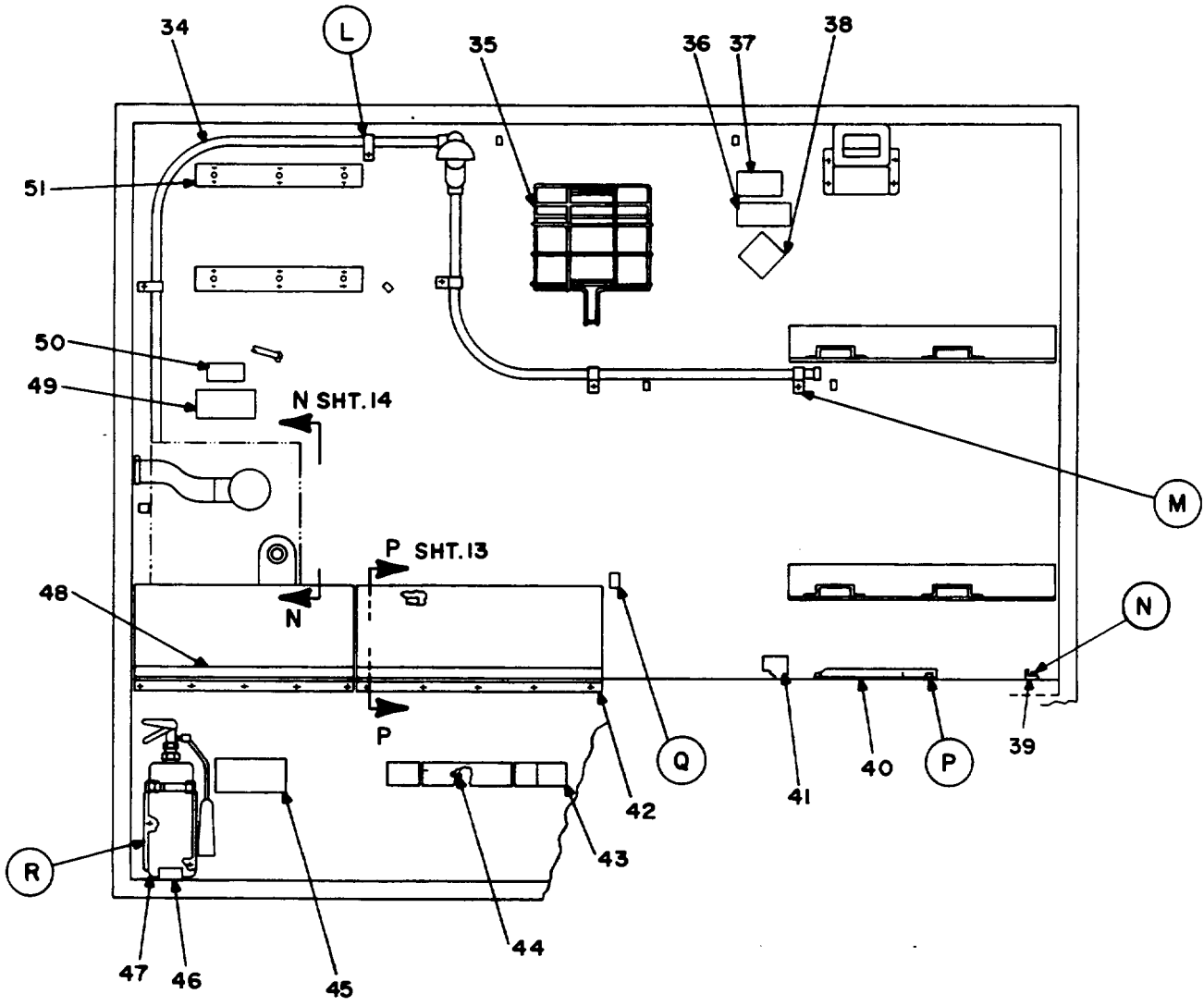
Figure 1. Radio TTY set, AN/GRC-142B (Sheet 6 of 6).



SEE SHEETS 18 THRU 23 FOR ENCIRCLED DETAILS.

EL2EF407

Figure 2. Shelter, elec. equipment, S-502/GRC-142B, (sheet 1 of 15).

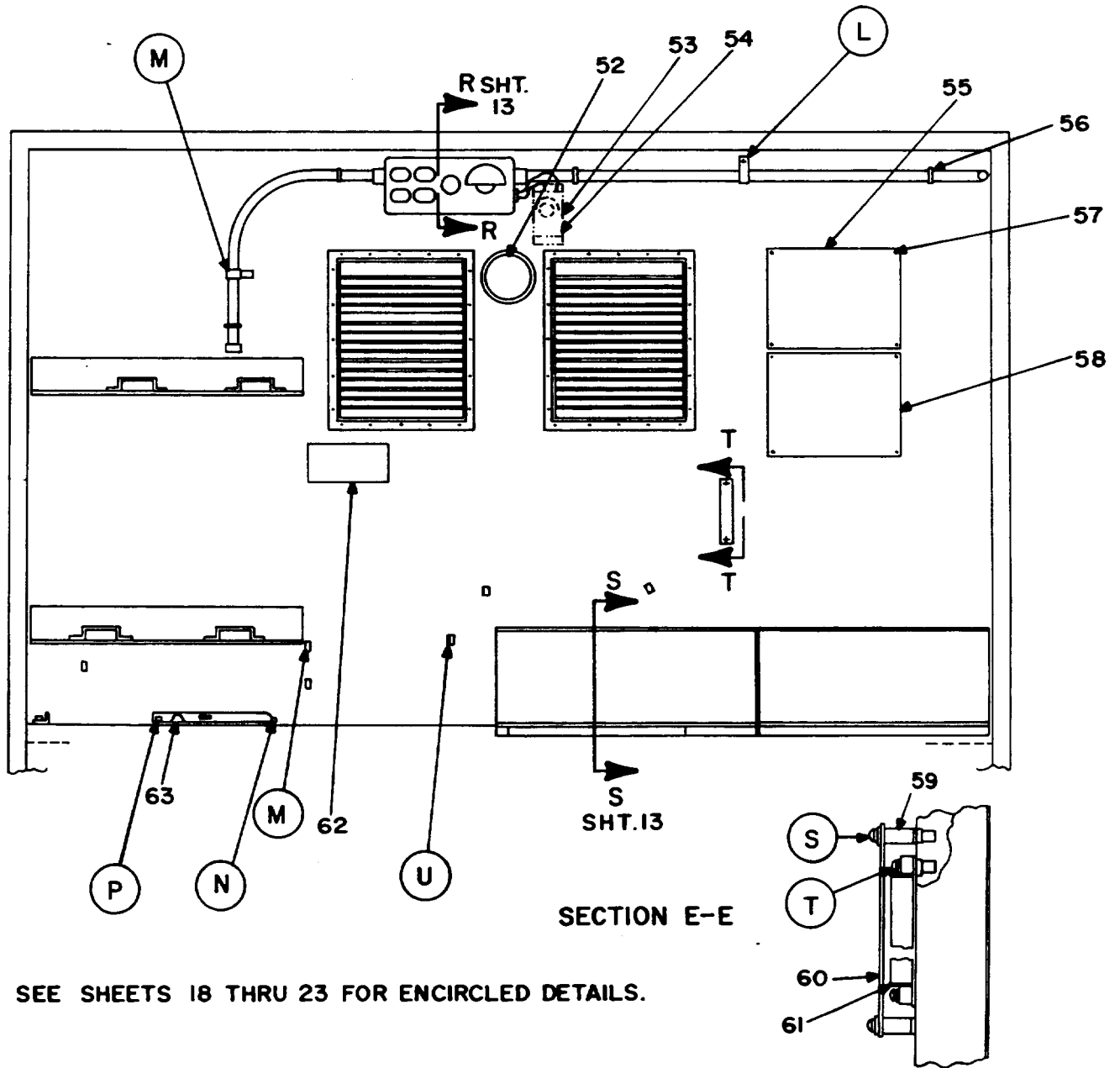


SECTION D-D

SEE SHEETS 18 THRU 23 FOR ENCIRCLED DETAILS.

EL2EF409

Figure 2. Shelter, elec. equipment, S-502/GRC-142B, (Sheet 2 of 15).



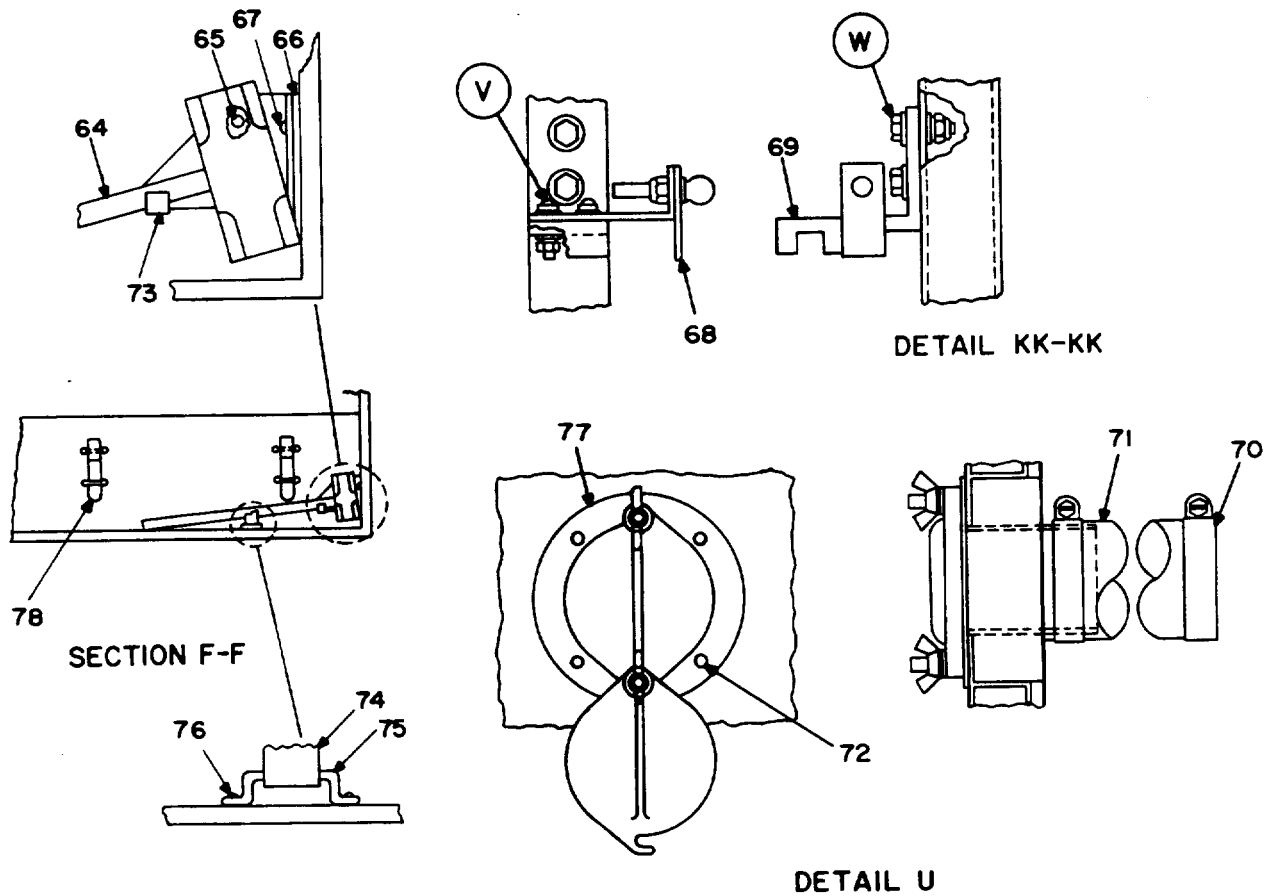
SEE SHEETS 18 THRU 23 FOR ENCIRCLED DETAILS.

SECTION E-E

SECTION T-T

EL2EF410

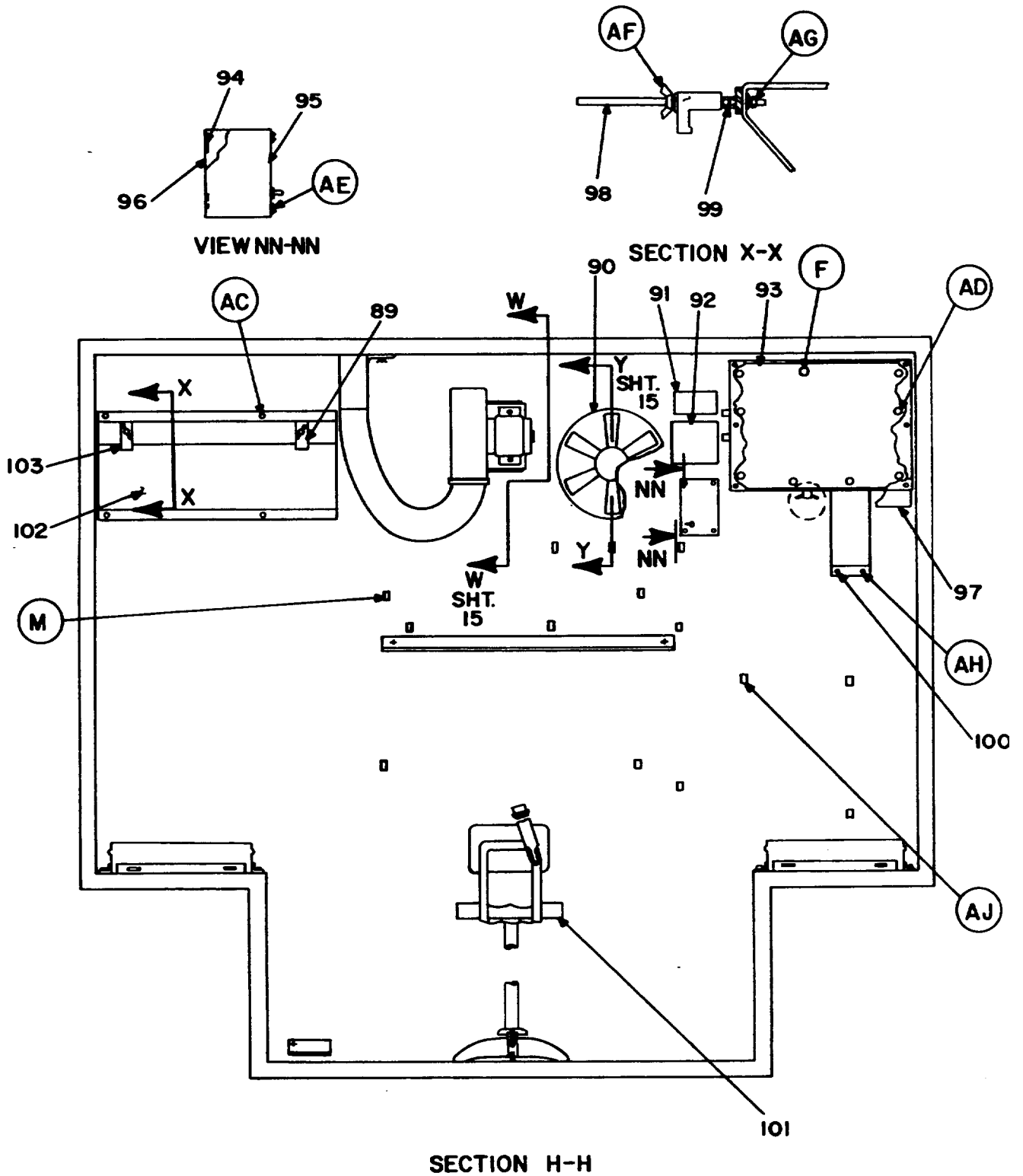
Figure 2. Shelter, elec. equipment, S-502/GRC-142B, (Sheet 3 of 15).



SEE SHEETS 18 THRU 23 FOR ENCIRCLED DETAILS.
ITEM 79 NOT USED.

EL2EF411

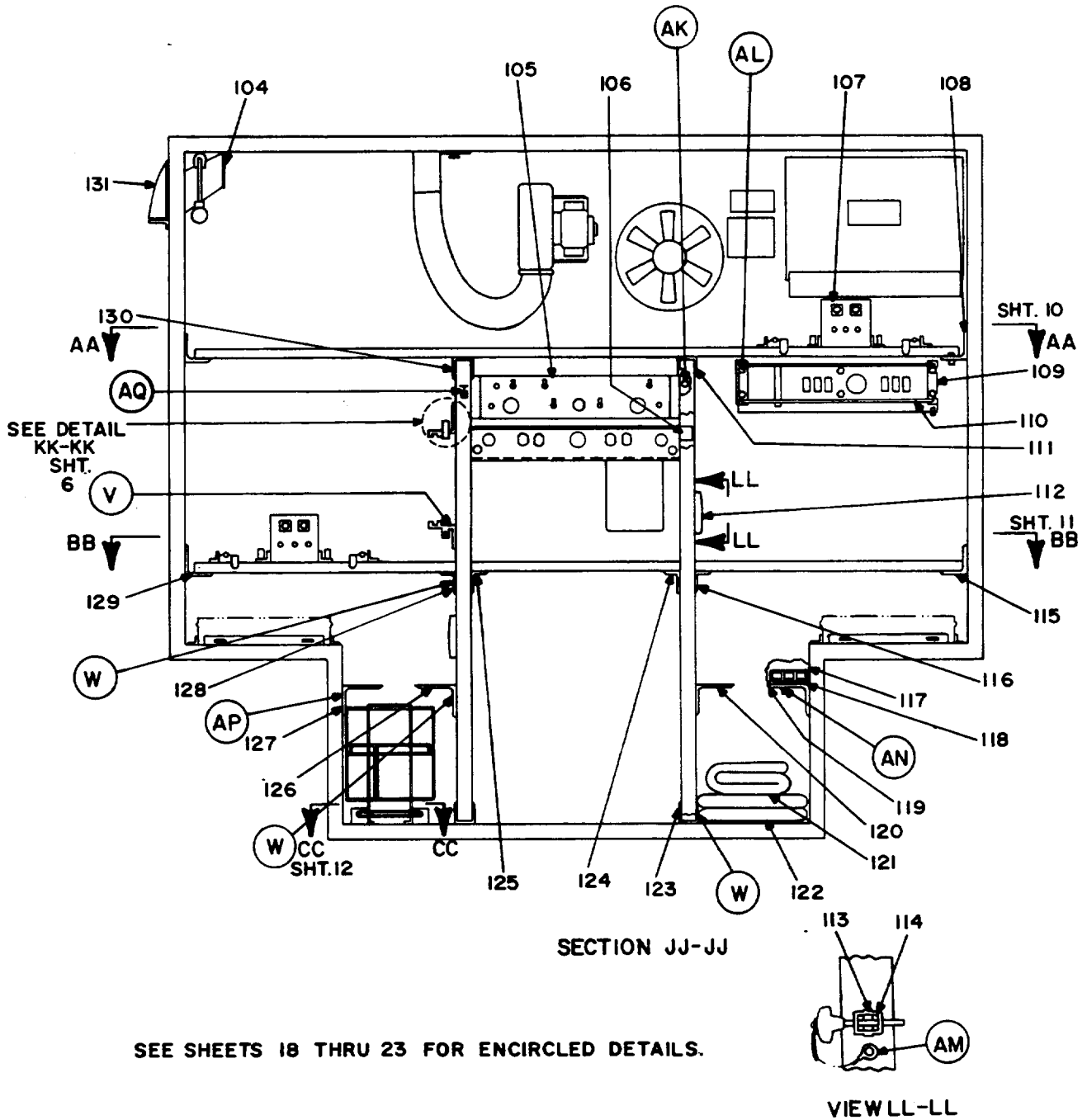
Figure 2. Shelter, elec. equipment, S-502/GRC-142B, (Sheet 4 of 15).



SEE SHEETS 18 THRU 23 ENCIRCLED DETAILS.

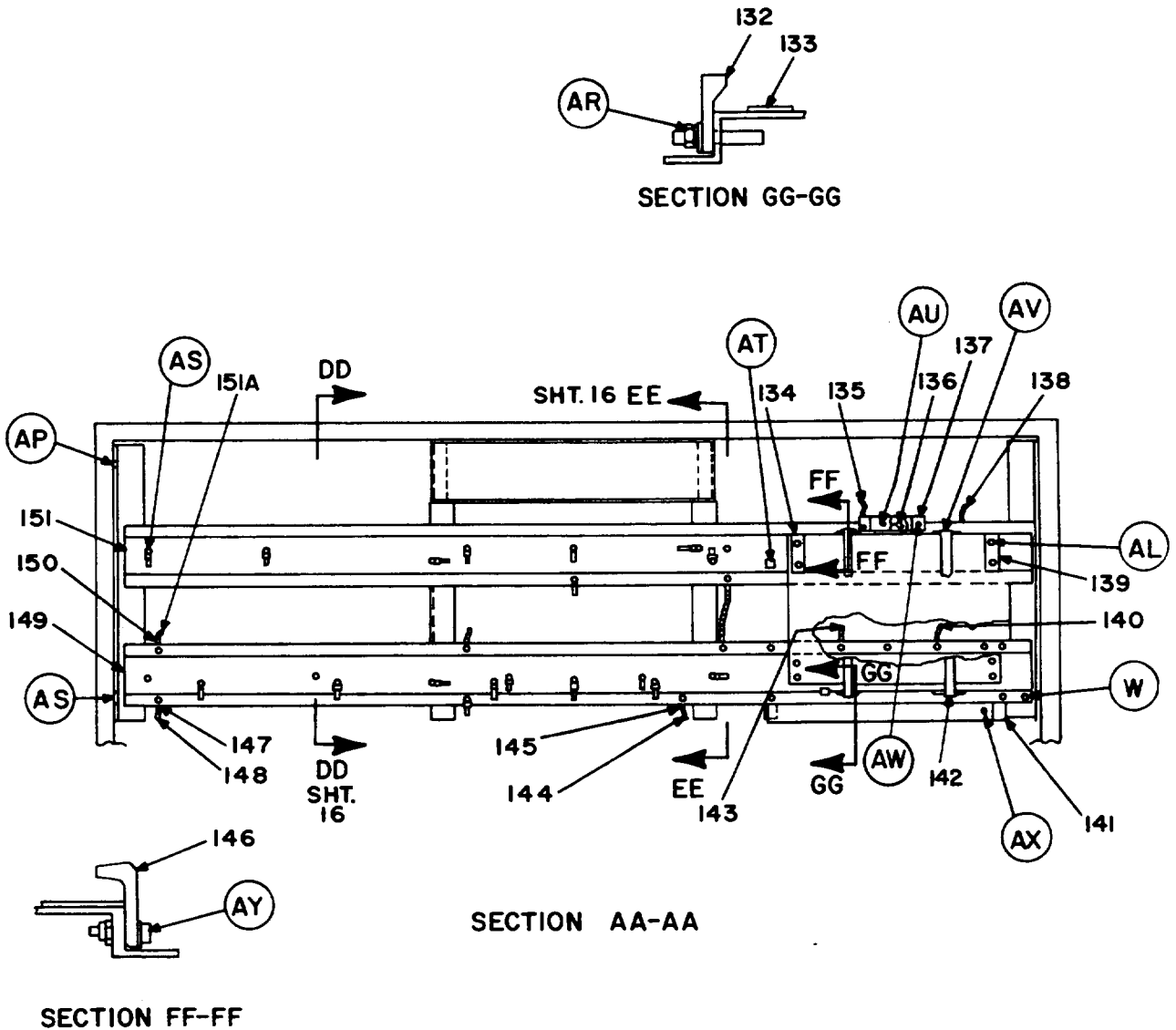
EL2EF413

Figure 2. Shelter, elec. equipment, S-502/GRC-142B, (Sheet 5 of 15).



EL2EF414

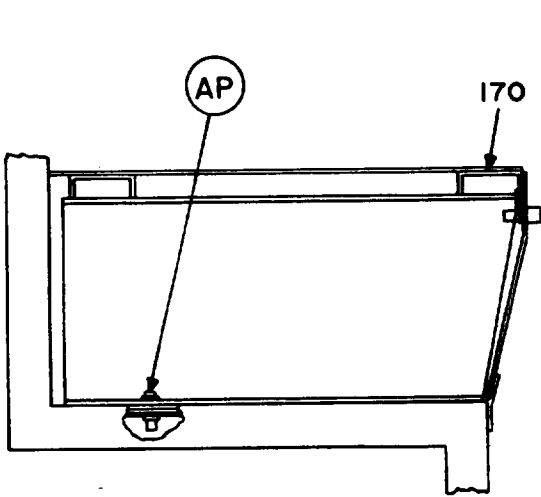
Figure 2. Shelter, elec. equipment, S-502/GRC-142B, (Sheet 6 of 15).



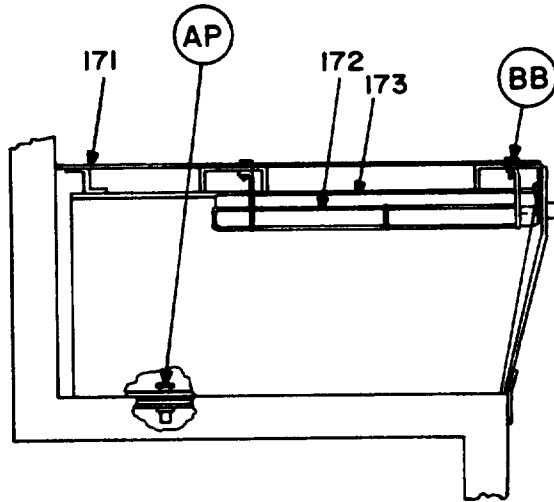
SEE SHEETS 18 THRU 23 FOR ENCIRCLED DETAILS.

EL2EF415

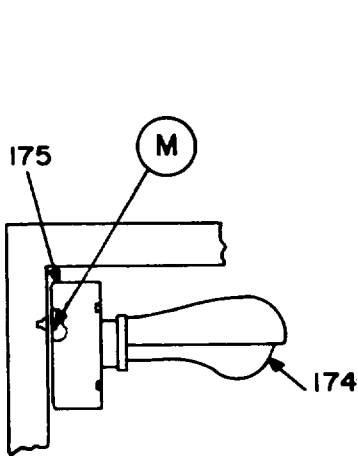
Figure 2. Shelter, elec. equipment, S-502/GRC-142B, (Sheet 7 of 15).



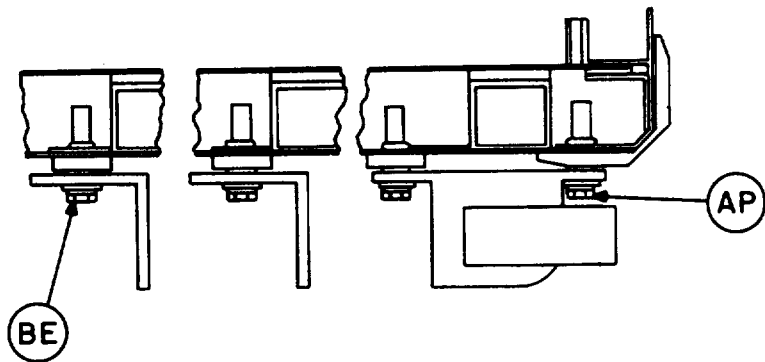
SECTION S-S



SECTION P-P



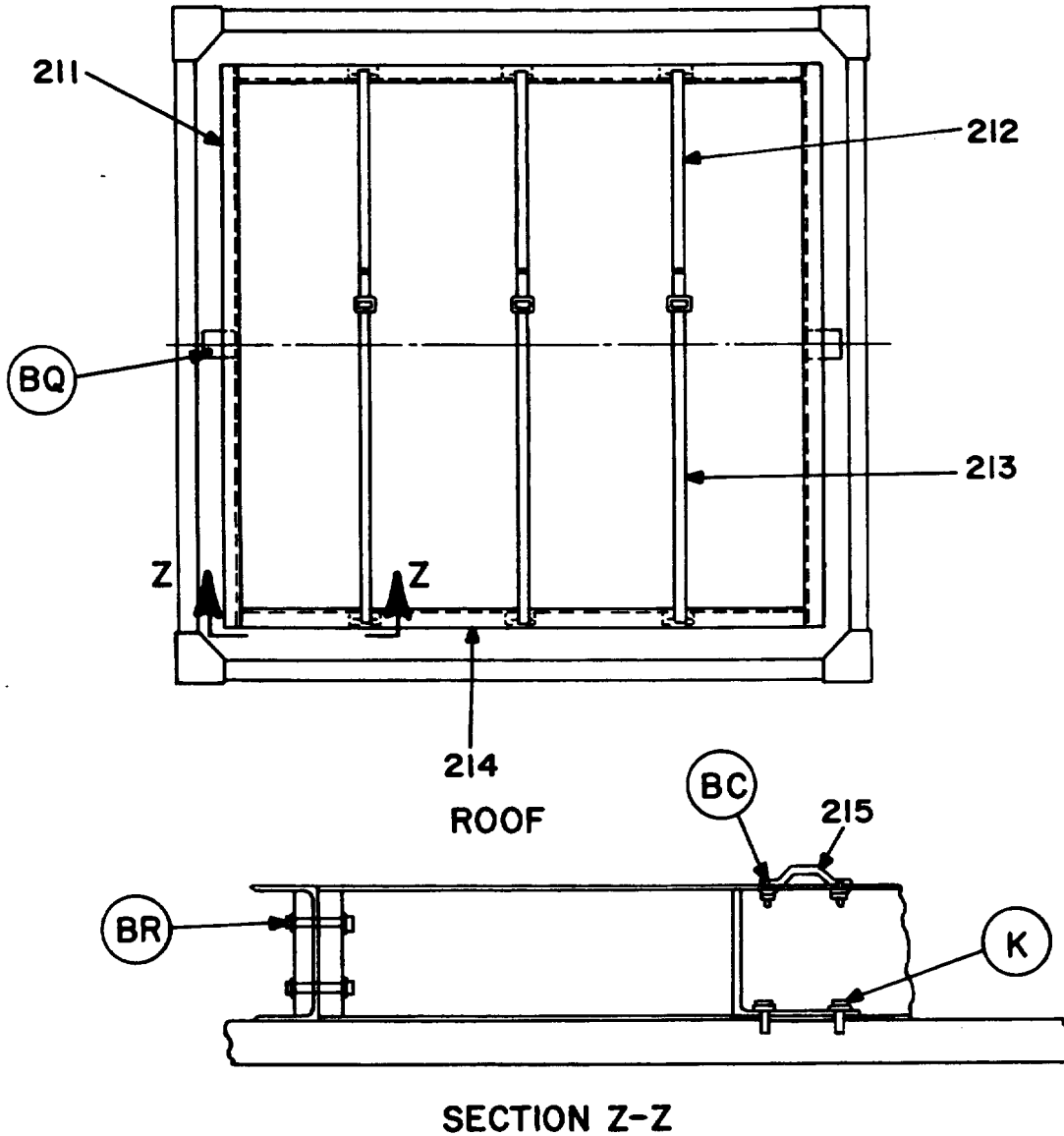
SECTION R-R



SECTION JJ-JJ

SEE SHEETS 18 THRU 23 FOR ENCIRCLED DETAILS.

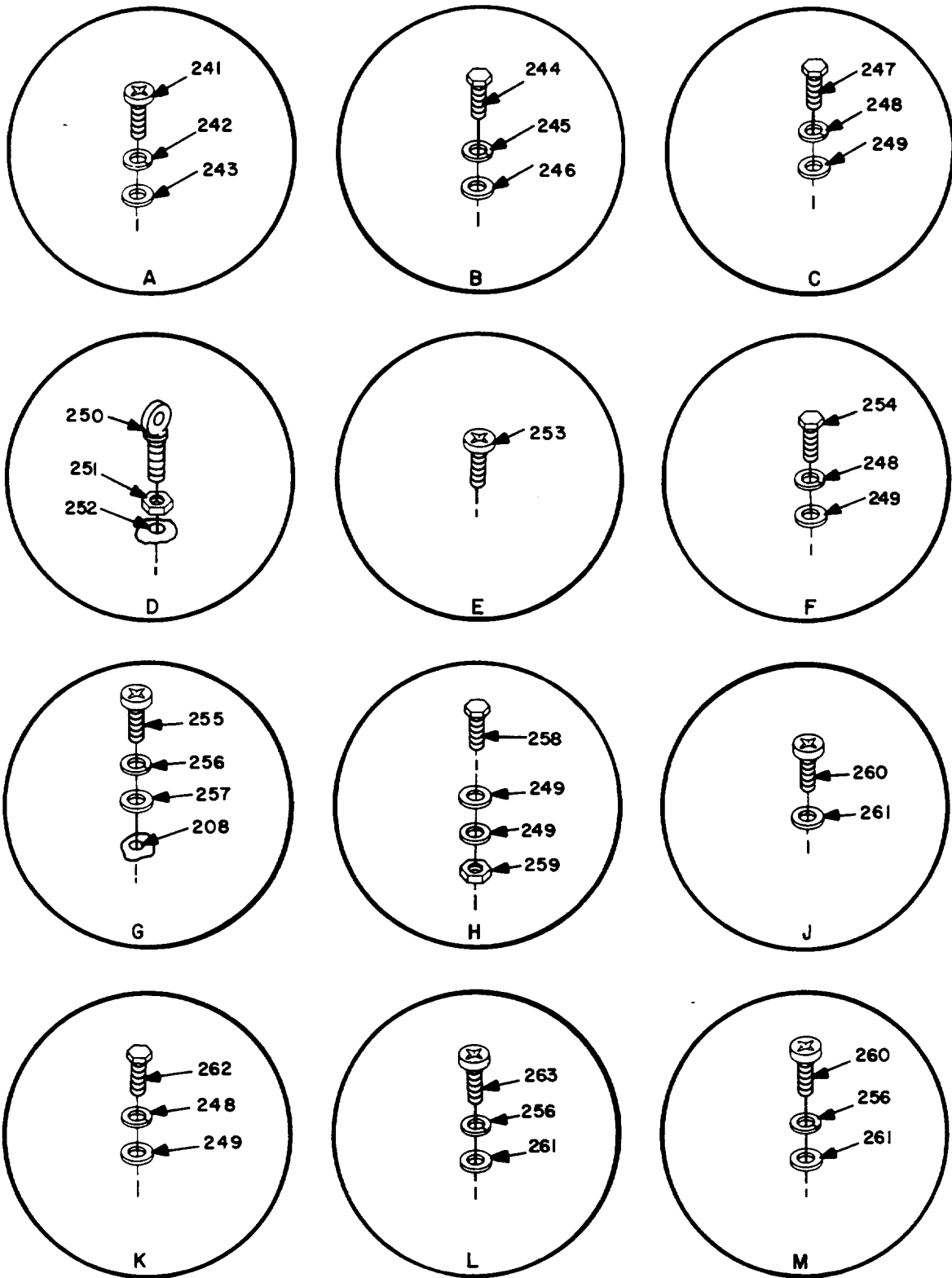
EL2EF418



NOTE:

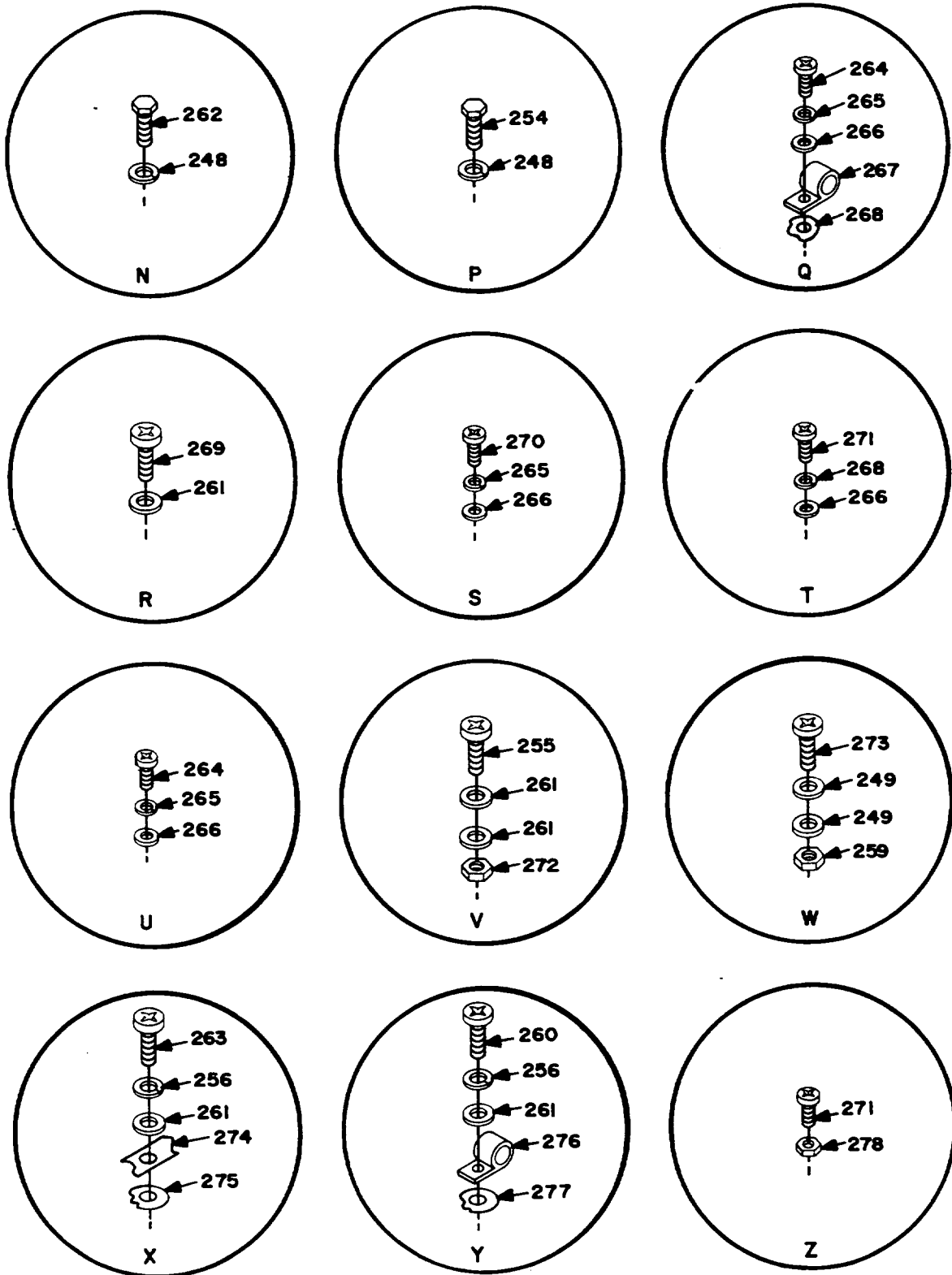
1. THE FOLLOWING ITEMS ARE NOT ILLUSTRATED: 216,217,218,219,220, 221,222,223,224,225,225A.
2. THE FOLLOWING ITEMS ARE STOWED: 226,227,228,229,230,231,232,233, 234,235,236,237,238,239,240.
3. SEE SHEETS 18 THRU 23 FOR ENCIRCLED DETAILS.

EL2EF422



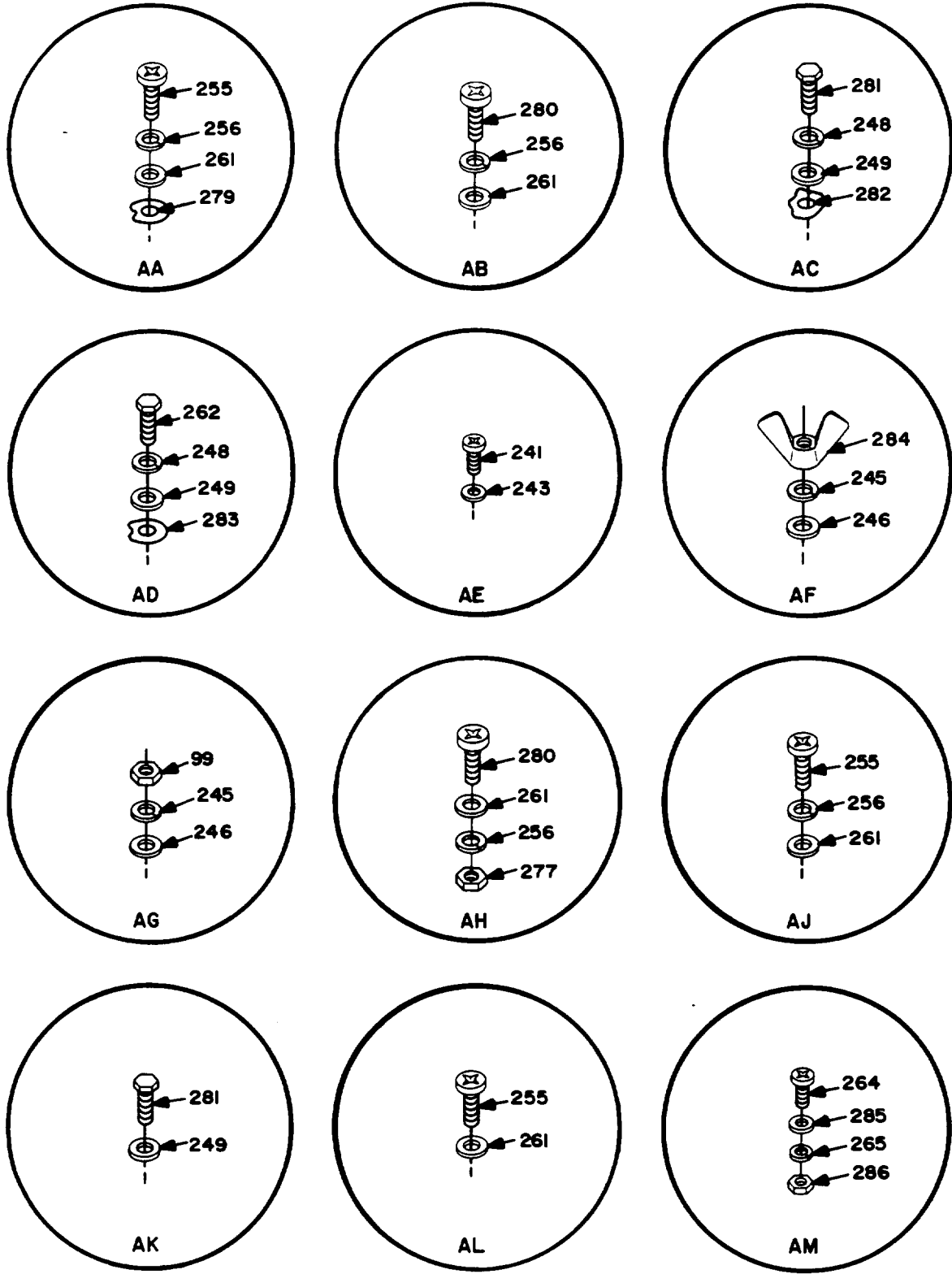
EL2EF423

Figure 2. Shelter, elec. equipment, S-502/GRC-142B, (Sheet 10 of 15).



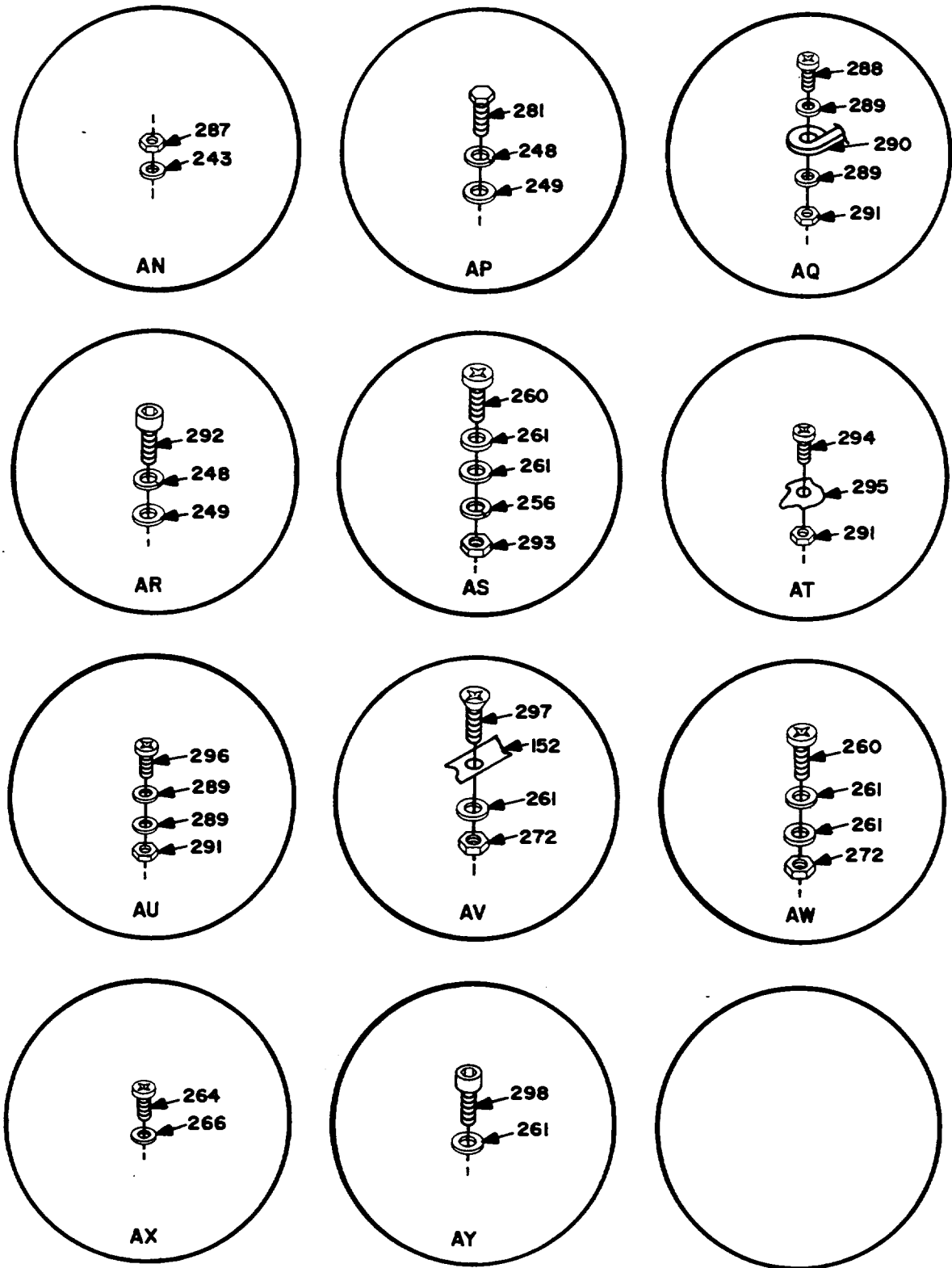
EL2EF424

Figure 2. Shelter, elec. equipment, S-502/GRC-142B, (Sheet 11 of 15).



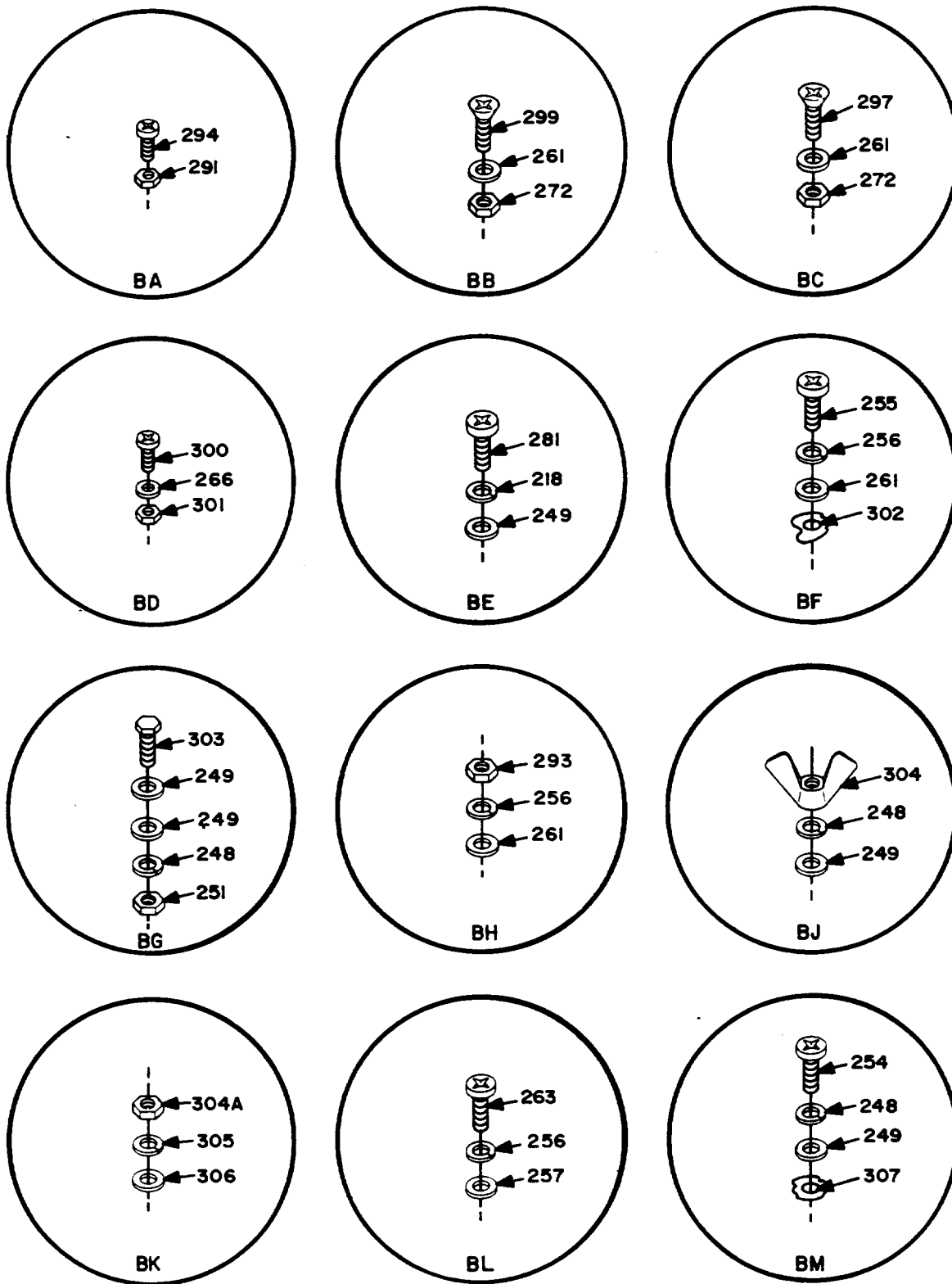
EL2EF425

Figure 2. Shelter, elec. equipment, S-502/GRC-142B, (Sheet 12 of 15).



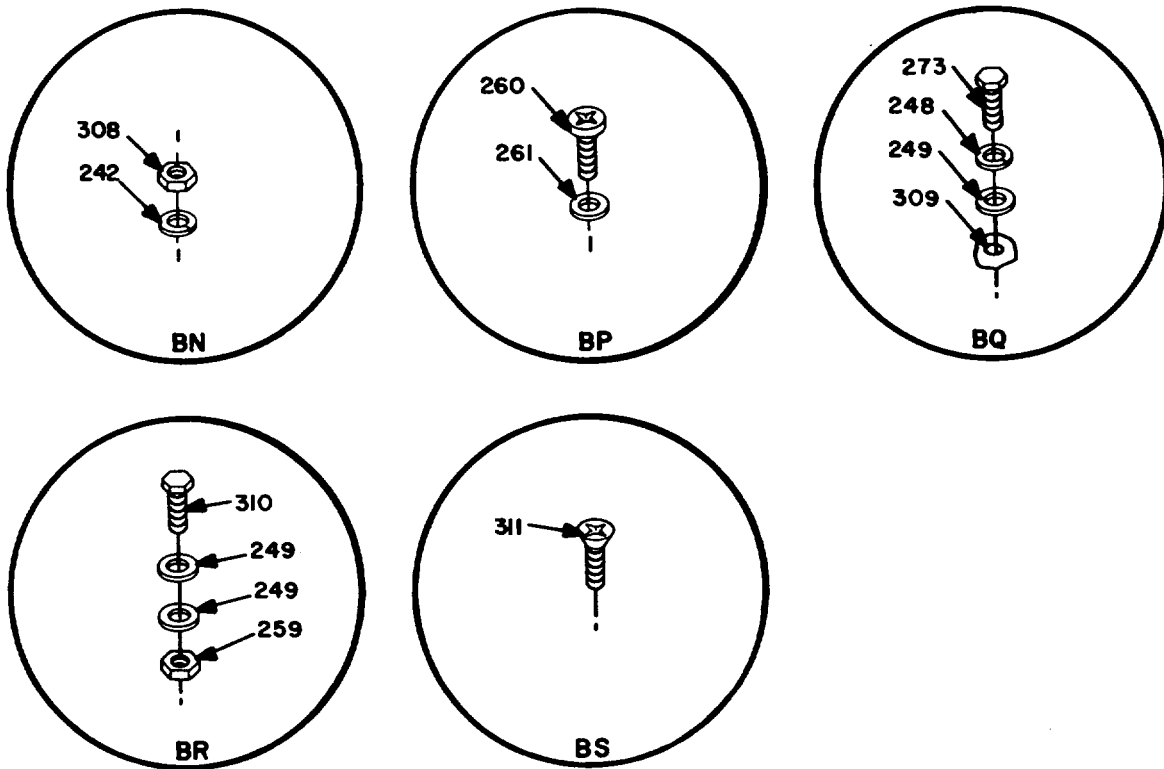
EL2EF426

Figure 2. Shelter, elec. equipment, S-502/GRC-142B, (Sheet 13 of 15).



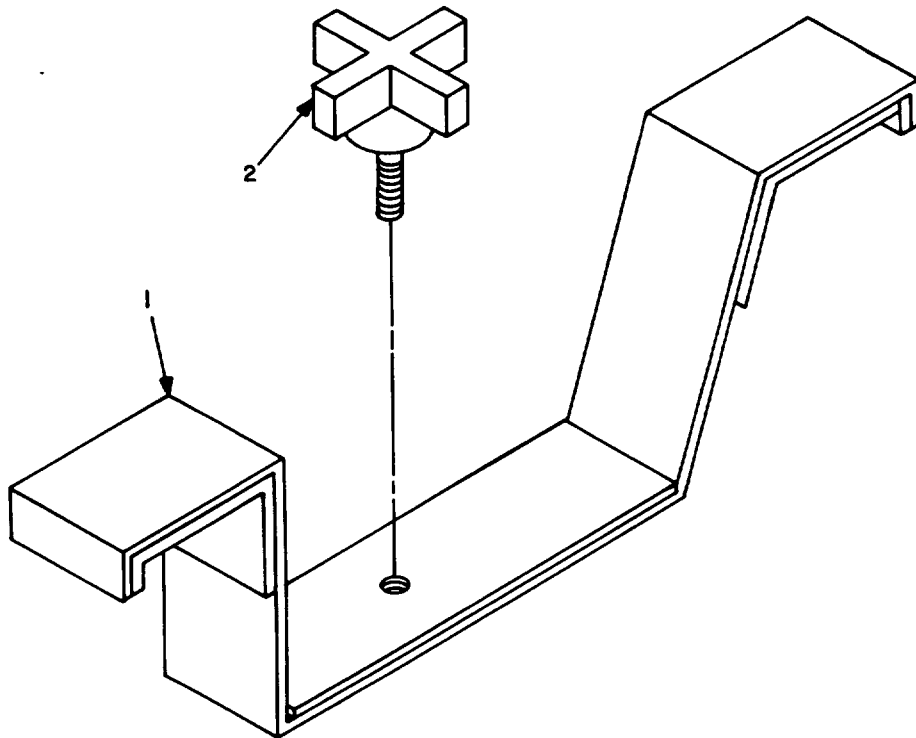
EL2EF427

Figure 2. Shelter, elec. equipment, S-502/GRC-142B, (Sheet 14 of 15).



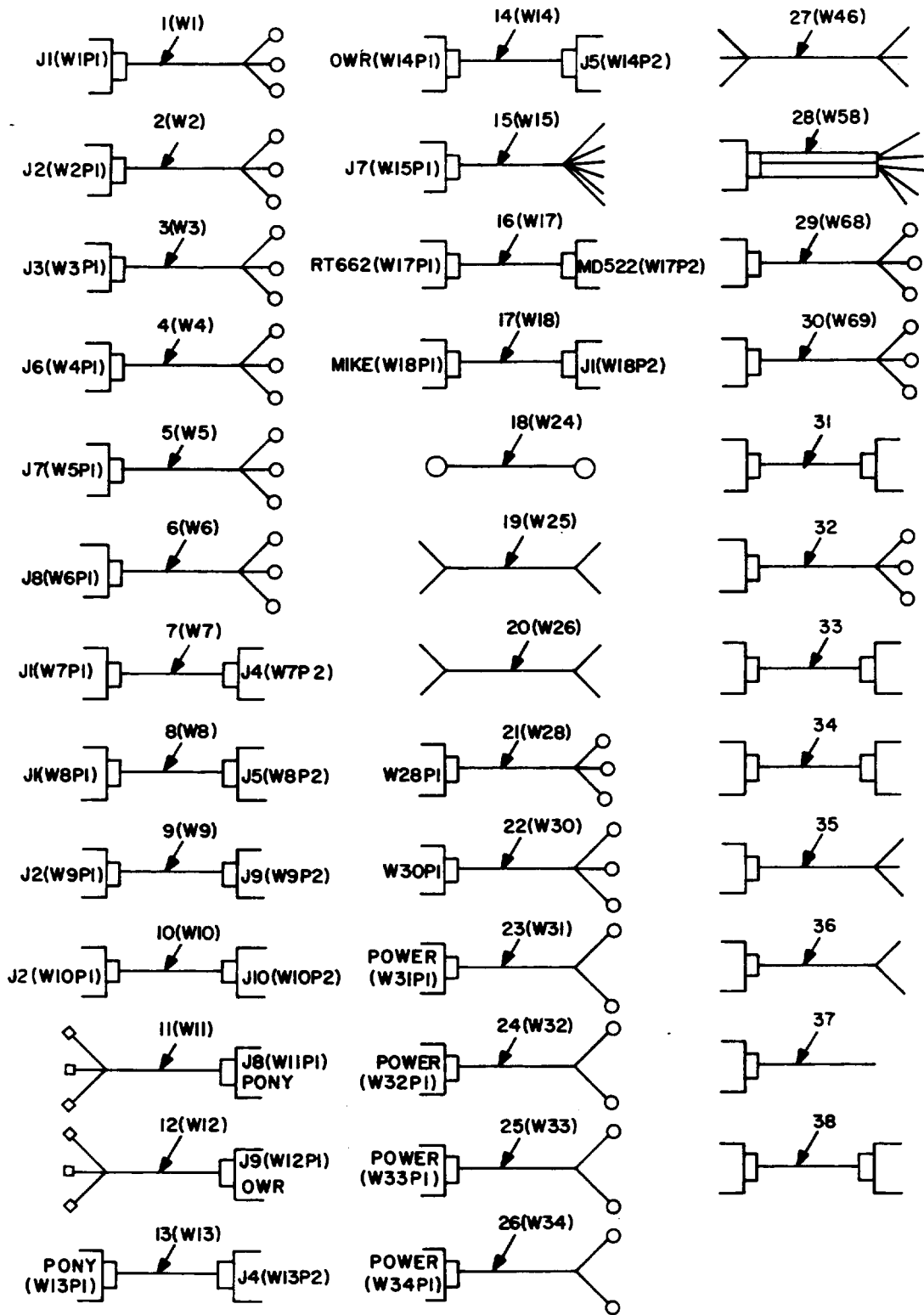
EL2EF428

Figure 2. Shelter, elec. equipment, S-502/GRC-142B, (Sheet 15 of 15).



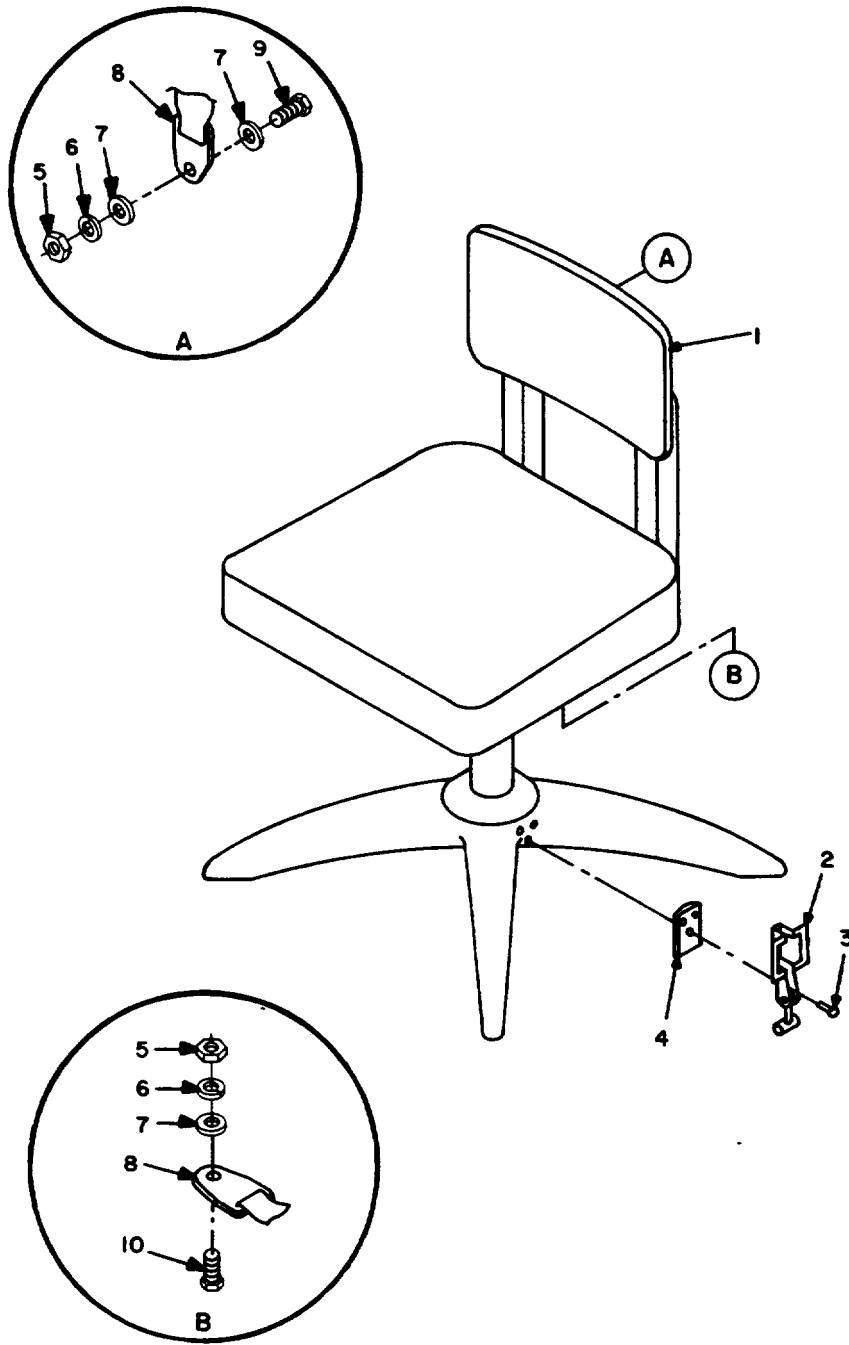
EL2EF435

Figure 10. Tie down assy, SC-D-781188GR1.



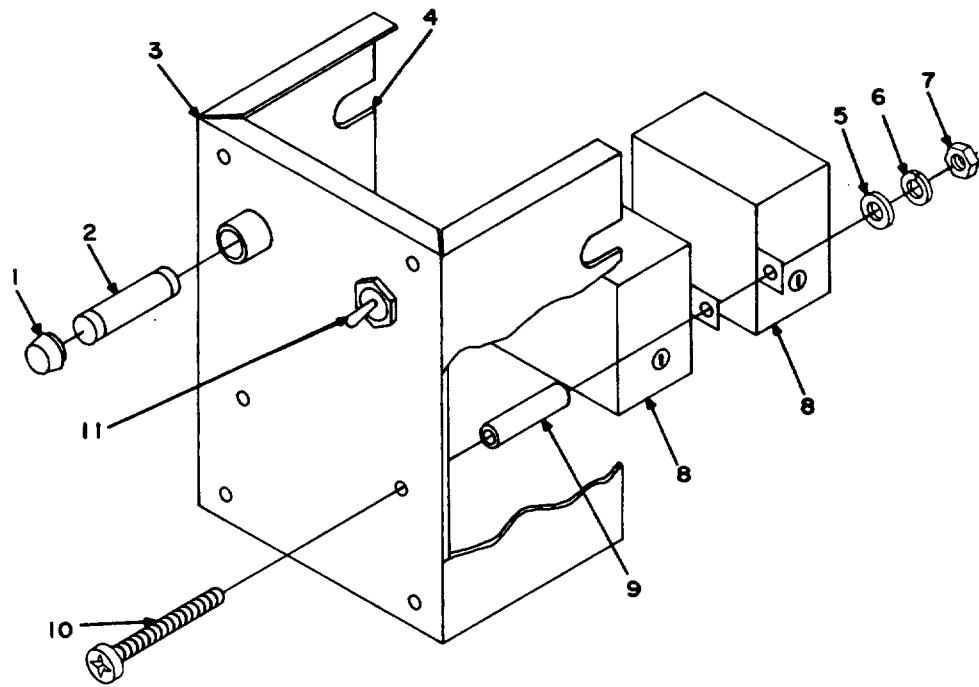
EL2EF429

Figure 12. Cable installation, SM-A-613027.



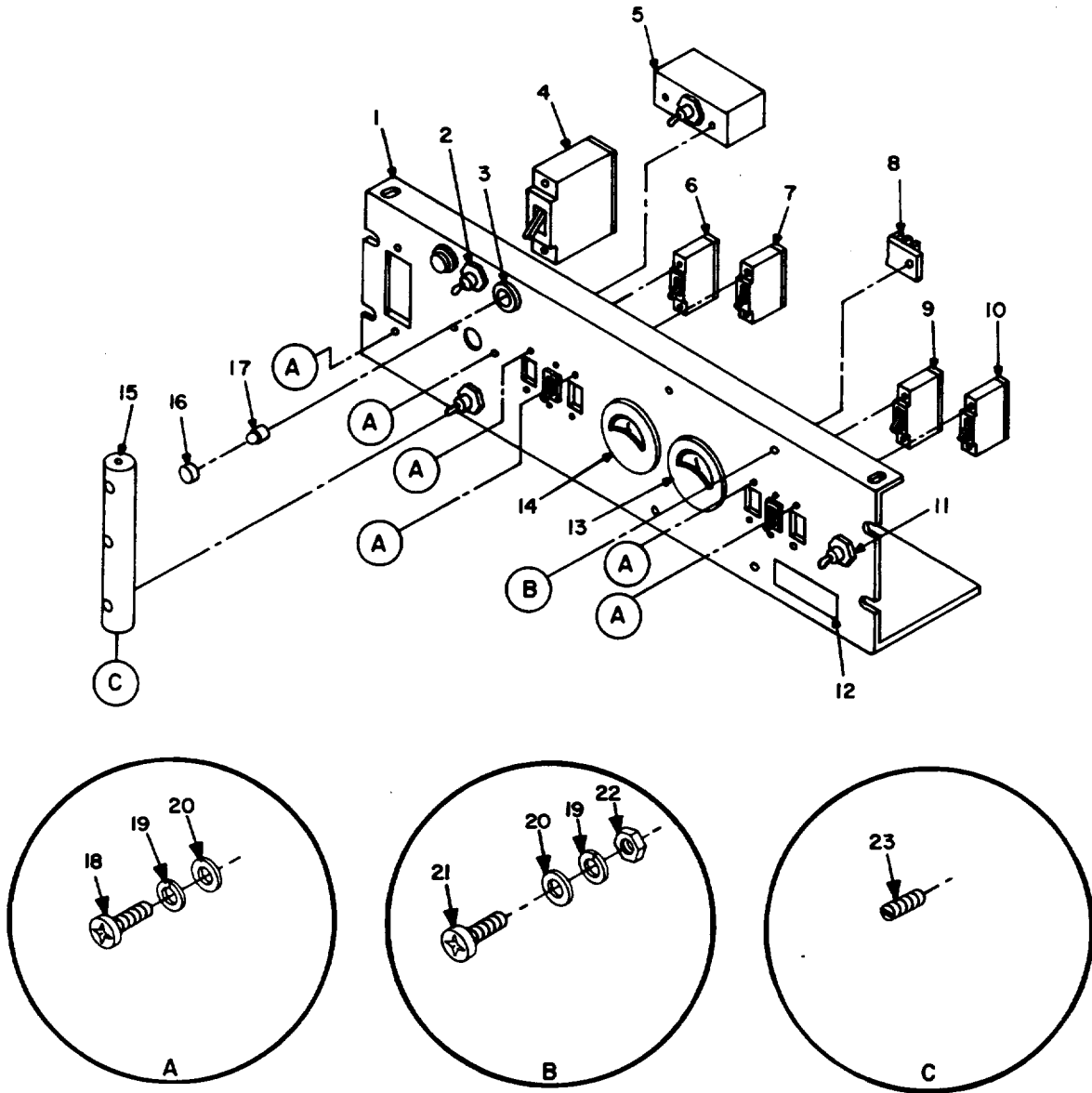
EL2EF430

Figure 19. Chair assy, SM-D-613130.



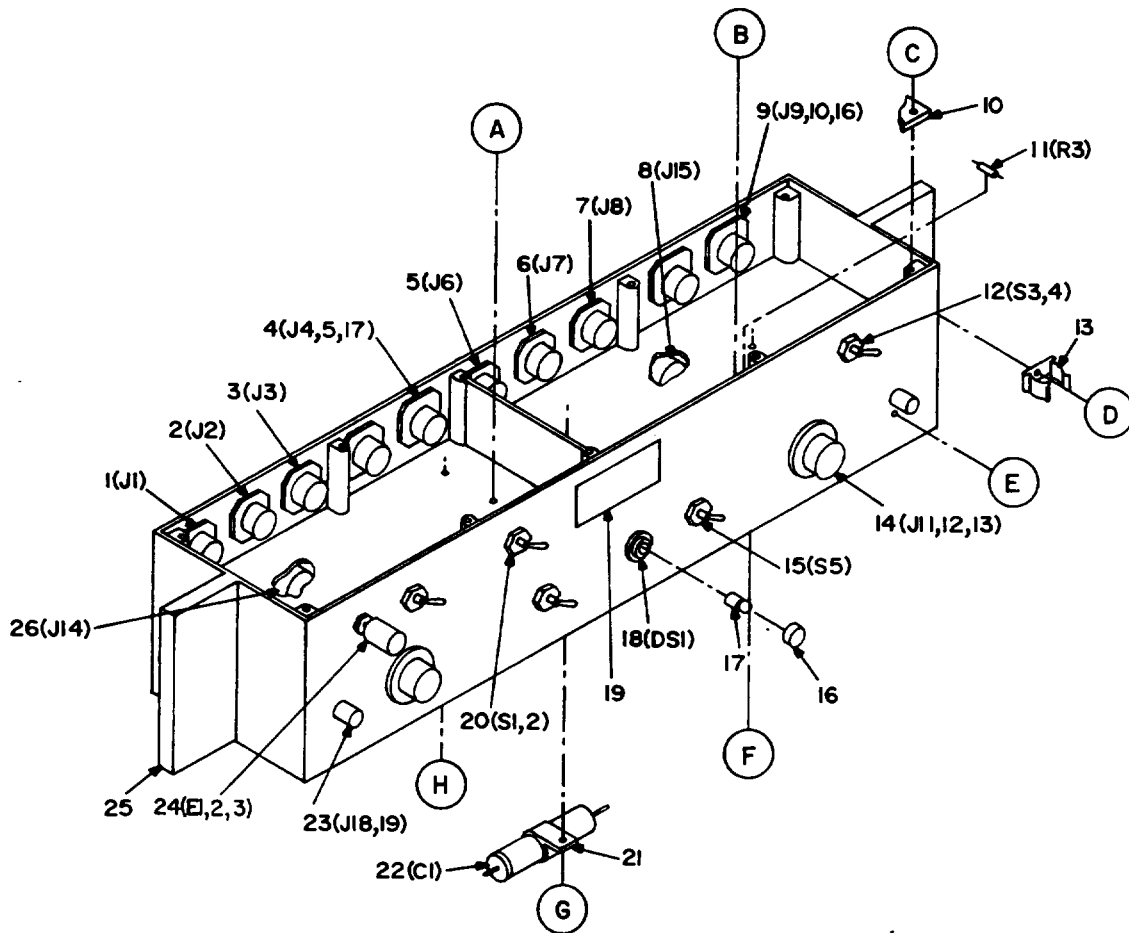
EL2EF434

Figure 23. Cover assy, SC-D-595028.



EL2EF431

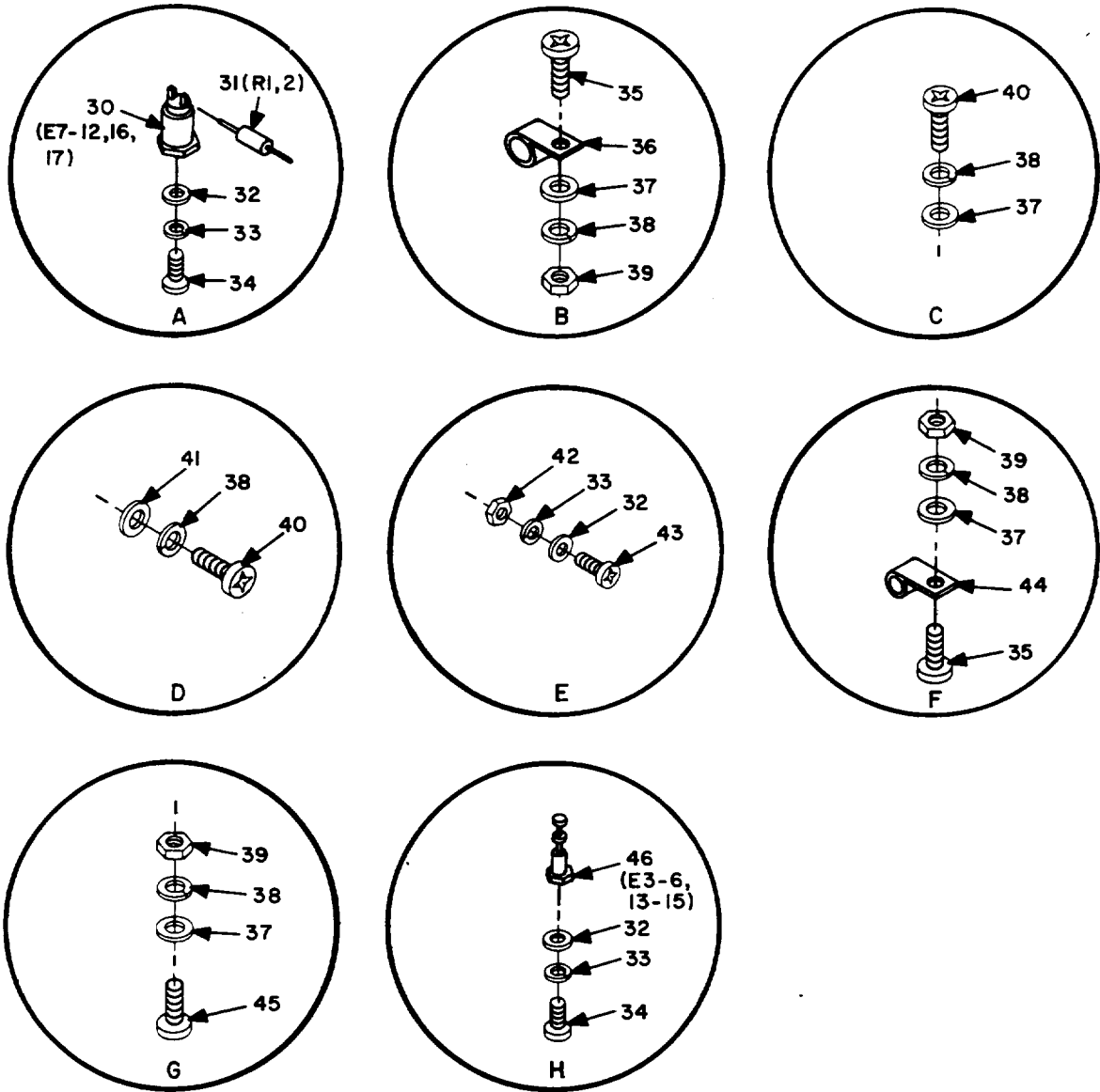
Figure 111. Panel, power distribution, SB-3358/GRC.



NOTE: ITEMS 27,28 & 29 NOT ILLUSTRATED.
 SEE SHEET 2 FOR ENCIRCLED DETAILS.

EL2EF432

Figure 112. Switch assy, SA-1650/GRC, (Sheet 1 of 2).



EL2EF433

Figure 112. Switch assy, SA-1650/GRC, (Sheet 2 of 2).

NATIONAL STOCK NUMBER AND PART NUMBER INDEX

		NATIONAL STOCK NUMBER INDEX			
STOCK NUMBER	FIG.	ITEM	STOCK NUMBER	FIG.	ITEM
5305-00-021-3620	1	93	5305-00-721-8010	1	92
	1A	17	5310-00-722-5998	1A	37
5305-00-059-3660	2	260	5310-00-727-5223	1	85
5305-00-059-3661	2	255		1A	24
5305-00-059-3662	1A	46		1A	27
5305-00-059-3664	1	89	6230-00-729-9614	2	240
5820-00-078-4769	1	45	6210-00-753-2834	112	16
5820-00-078-4770	1	39	5310-00-773-7618	1	86
5820-00-078-5614	1	34		19	7
6240-00-155-7836	1	71	5305-00-814-7395	1	97
	2	239		1A	32
	111	17	5305-00-847-1159	19	9
6240-00-155-8651	2	174	4520-00-878-9393	1A	44
	1A	5	5310-00-889-2528	1A	33
5995-00-165-3728	1	63	5965-00-892-0722	1	49
5995-00-177-4678	1A	43	5985-00-893-1438	1	60
4520-00-177-6198	1A	20	5310-00-897-6145	1	96
5820-00-200-2329	1	38	5815-00-919-4800	1	15
5305-00-207-8253	1	95		1A	1
5815-00-220-5255	2	105	5310-00-925-9646	1A	38
5820-00-223-7548	1A	34	5815-00-926-7377	2	107
5975-00-224-5260	1	5		1A	7
5965-00-226-2915	1	48	5985-00-930-7223	1	43
6110-00-228-8570	2	109	5815-00-933-5566	2	231
	1A	8		1A	11
5965-00-243-6420	1A	21	5310-00-933-8120	1	90
7110-00-273-8791	2	101		2	256
5920-00-280-4960	1	62		1A	48
6645-00-410-2395	2	52	5310-00-933-8121	1	84
5411-00-432-2342	1	2		2	248
5975-00-497-2158	2	56		1A	25
	1A	40		1A	28
6115-00-498-3973	1	74	5820-00-935-0033	1A	36
5815-00-503-2760	1A	30	6150-00-935-0257	12	32
5815-00-503-2764	1A	10	7240-00-935-3272	2	226
5805-00-503-3395	1	50	5985-00-935-8653	1	72
5805-00-543-0012	1	20	5820-00-937-5530	2	121
	1A	15	5815-00-937-5973	2	227
5305-00-579-5238	1	94	5820-00-937-7690	1A	14
5310-00-582-5677	1	83	6645-00-950-8599	1A	39
	2	249	5310-00-984-7042	1	87
	1A	23		19	6
	1A	29	5310-00-989-5956	19	5
5305-00-616-6370	1	82	5815-00-999-3048	1	28
	1A	26		1A	31
5305-00-632-2777	19	10	5815-00-999-5277	1A	1
6625-00-682-4464	1A	45	5815-01-017-9172	1A	10
5305-00-702-4523	1A	18	5410-01-070-3808	2	43
	1A	22		1A	41
5305-00-717-5460	1	88	6130-01-092-5998	1	30

NATIONAL STOCK NUMBER AND PART NUMBER INDEX

		NATIONAL STOCK NUMBER INDEX			
STOCK NUMBER	FIG.	ITEM	STOCK NUMBER	FIG.	ITEM
6130-01-092-5998	1A		16		
5120-01-133-0026	2		234		
5995-01-137-3772	12		16		
5995-01-140-9303	12		29		
5995-01-145-3918	12		5		
2990-01-145-4843	2		122		
5999-01-153-0785	2		132		
5995-01-161-3831	12		38		
5995-01-161-9407	12		11		
5340-01-167-5702	19		2		
5995-01-170-5082	1A		12		
	12		3		
5995-01-170-5083	12		2		
5995-01-170-5084	1A		6		
5840-01-190-5306	19		4		

NATIONAL STOCK NUMBER AND PART NUMBER INDEX

FSCM	PART NUMBER	PART NUMBER INDEX	
		STOCK NUMBER	FIG. ITEM
80058	AB-155()V		1 75
80058	AB-652/GR	5820-00-078-4770	1 39
80058	AM-3349		1 9
80058	AN/GRC-106A	5820-00-223-7548	1A 34
81349	A13A1	6645-00-950-8599	1A 39
80058	BG-175	6115-00-498-3973	1 74
80058	C-433()/GRC		1 23
80058	C-434()/GRC		1 53
80058	C-7279/GRC-142	5815-00-937-5973	2 227
80058	CG-409H/U(8IN)		1 27
80058	CG-678()/U(75FT)		1 59
80058	CG-692/U75		1 64
80058	CW-189()/GR		1 54
80058	CW-206/GR	5820-00-200-2329	1 38
80058	CX-10099()/U(7IN)		1 11
80058	CX-10171/U(MOD)		1 8
80058	CX-107171/U(6FT)		12 37
	(MODIFIED)		
80058	CX-1852/U(8FT)		1 47
80058	CX-4541/U		1 30A
80058	CX-7303()/G		1 58
55719	D-76		2 235
99539	FR2-3/4-11848		2 47
81349	F02A250V2A	5920-00-280-4960	1 62
81349	F02B250V		1 69
81349	F02B32V30A		1 68
81349	F02B32V5A		1 67
81349	F03B32V		1 70
00652	GDE-4001		19 8
80058	H-227/U	5965-00-226-2915	1 48
80058	H-33()/PT		1 51
80058	IL-4()/GRA-4		1 55
80058	J-2728/GRC-142	5815-00-926-7377	2 107
			1A 7
80058	J-654()/G		1 57
09922	KS-90		1 66
80058	KY-116/U	5805-00-503-3395	1 50
81349	LC12GT		111 16
81349	LC14RD3	6210-00-753-2834	112 16
80058	LS-166/U	5965-00-243-6420	1A 21
80058	LS-166U		1 24
80058	M-29B/U	5965-00-892-0722	1 49
80058	MD-522/GRC	5815-00-999-5277	1A 1
80058	MD-522A/GRC	5815-00-919-4800	1 15
			1A 1
03614	MDA10A250V		23 2
80058	ME-165()/G		1 7
80058	ME-165/G	6625-00-682-4464	1A 45
81349	ME-3-3-45		1 1
46522	MH15B3C1	4520-00-878-9393	1A 44

NATIONAL STOCK NUMBER AND PART NUMBER INDEX

FSCM	PART NUMBER	PART NUMBER INDEX		ITEM
		STOCK NUMBER	FIG.	
81349	MIL-B-43064SIZE1		1	61
81349	MIL-H-54647(ME)		1	35
81349	MILH52204		1A	44
81349	MILH52641	4520-00-177-6198	1A	20
80058	MS-116-A		1	42
80058	MS-117-A		1	41
80058	MS-118-A		1	40
96906	MS15586-7	6240-00-155-8651	2	174
			1A	5
96906	MS15795-805	5310-00-722-5998	1A	37
96906	MS15795-808		1	91
			2	261
			1A	47
96906	MS15795-810	5310-00-582-5677	1	83
			2	249
			1A	23
			1A	29
96906	MS15795-814	5310-00-773-7618	1	86
			19	7
96906	MS16228-1	5310-00-727-5223	1	85
			1A	24
			1A	27
96906	MS16996-53		2	292
96906	MS17821-1-9	5975-00-497-2158	2	56
			1A	40
96906	MS21083C06	5310-00-925-9646	1A	38
96906	MS21083C4	5310-00-897-6145	1	96
96906	MS25237-327	6240-00-155-7836	1	71
			2	239
			111	17
96906	MS35307-306	5305-00-702-4523	1A	18
			1A	22
96906	MS35307-307	5305-00-021-3620	1	93
			1A	17
96906	MS35307-308	5305-00-207-8253	1	95
96906	MS35307-309	5305-00-579-5238	1	94
96906	MS35307-313	5305-00-616-6370	1	82
			1A	26
96906	MS35307-314	5305-00-721-8010	1	92
96906	MS35307-358	5305-00-632-2777	19	10
96906	MS35307-359	5305-00-717-5460	1	88
96906	MS35307-365	5305-00-847-1159	19	9
96906	MS35308-314	5305-00-814-7395	1	97
			1A	32
96906	MS35338-138	5310-00-933-8120	1	90
			2	256
			1A	48
96906	MS35338-139	5310-00-933-8121	1	84
			2	248
			1A	25
			1A	28

NATIONAL STOCK NUMBER AND PART NUMBER INDEX

FSCM	PART NUMBER	PART NUMBER INDEX		ITEM
		STOCK NUMBER	FIG.	
96906	MS35338-141	5310-00-984-7042	1	87
			19	6
96906	MS35691-19	5310-00-989-5956	19	5
96906	MS45904-68	5310-00-889-2528	1A	33
96906	MS51958-64	5305-00-059-3660	2	260
96906	MS51958-65	5305-00-059-3661	2	255
96906	MS51958-66	5305-00-059-3662	1A	46
96906	MS51958-68	5305-00-059-3664	1	89
80058	MT-3140/GRC-106	5820-00-078-5614	1	34
80058	MX-148/G	5975-00-224-5260	1	5
80058	MX-2706/G	5985-00-893-1438	1	60
80058	MX-3453()/G		1	31
81349	NE51		112	17
81349	NL422B66-624		1	65
80058	PP-4763()/GRC		1	6
80058	PP-4763/GRC	5820-00-937-7690	1A	14
80058	PU-724A/G	6130-01-092-5998	1	30
			1A	16
95344	QAJ118H		2	229
80058	RC-432()/G		1	52
80058	RC-435		1	76
81349	RE-49F258		1	77
80058	RT-662/GRC		1	10
80058	RT-834/GRC	5820-00-935-0033	1A	36
80058	S-502/GRC-142B	5411-00-432-2342	1	2
80058	SA-1650/GRC	5815-00-220-5255	2	105
			1A	2
80058	SB-3358/GRC	6110-00-228-8570	2	109
			1A	8
80063	SC-A-46858		1	56
80063	SC-B-19491	5985-00-935-8653	1	72
80063	SC-B-781186		10	2
80063	SC-C-446046	5985-00-930-7223	1	43
80063	SC-C-446368	5995-00-165-3728	1	63
80063	SC-C-539491	6230-00-729-9614	2	240
80063	SC-D-539483		2	238
80063	SC-D-781187GRI		10	1
80063	SC-D-781188GRI	5410-01-070-3808	2	43
			1A	41
80063	SC-DL-446065	5815-00-933-5566	2	231
			1A	11
80063	SC-DL-502715		1A	36
80063	SC-DL-613212		1A	4
80063	SC-DL-613235		1A	9
80063	SC-DL-613365-1FT	5995-00-177-4678	1A	43
80063	SM-B-500418		1	37
80063	SM-B-603148		2	93
80063	SM-B-603149		2	230
80063	SM-B-603214		1	21
80063	SM-B-603572		1A	42
80063	SM-B-613099		2	225A

NATIONAL STOCK NUMBER AND PART NUMBER INDEX

FSCM	PART NUMBER	PART NUMBER INDEX	
		STOCK NUMBER	FIG. ITEM
80063	SM-B-613099		1A 19
80063	SM-B-613125	5840-01-190-5306	19 4
80063	SM-B-613366-1		2 232
80063	SM-B-613366-2		2 233
80063	SM-C-500427		1 44
80063	SM-C-603102	5995-01-170-5083	12 2
80063	SM-C-603103	5995-01-170-5082	1A 12
			12 3
80063	SM-C-603104		1A 13
			12 4
80063	SM-C-603105	5995-01-145-3918	12 5
80063	SM-C-603107		12 7
80063	SM-C-603108		12 8
80063	SM-C-603109		12 9
80063	SM-C-603110		12 10
80063	SM-C-603111	5995-01-161-9407	12 11
80063	SM-C-603112		12 12
80063	SM-C-603113		12 13
80063	SM-C-603114		12 14
80063	SM-C-603115		12 15
80063	SM-C-603117	5995-01-137-3772	12 16
80063	SM-C-603118		12 17
80063	SM-C-603124		12 18
80063	SM-C-603125		12 19
80063	SM-C-603132-2	5995-01-170-5084	1A 6
80063	SM-C-603138		1A 35
			12 31
80063	SM-C-603139	6150-00-935-0257	12 32
80063	SM-C-603141-2		1A 49
80063	SM-C-603812	7240-00-935-3272	2 226
80063	SM-C-612899		12 35
80063	SM-C-613119	5340-01-167-5702	19 2
80063	SM-C-613147		12 27
80063	SM-C-613149		1 26
			12 25
80063	SM-C-613152	5995-01-161-3831	12 38
80063	SM-C-613155		12 28
80063	SM-C-613156		1 12
			12 26
80063	SM-C-613165	5995-01-140-9303	12 29
80063	SM-C-613166		12 30
80063	SM-C-613220	5999-01-153-0785	2 132
80063	SM-C-613229	2990-01-145-4843	2 122
80063	SM-C-613236		12 36
80063	SM-C-613238		1A 3
80063	SM-C-613284		1A 50
			12 33
80063	SM-C-613332		12 1
80063	SM-C-613333		12 6
80063	SM-C-613334		12 20
80063	SM-C-613335		12 21

NATIONAL STOCK NUMBER AND PART NUMBER INDEX

FSCM	PART NUMBER	PART NUMBER INDEX	
		STOCK NUMBER	FIG. ITEM
80063	SM-C-613336		12 23
80063	SM-C-613337		12 24
80063	SM-C-613338		12 34
80063	SM-C-613349		12 22
80063	SM-D-500428	5820-00-078-4769	1 45
80063	SM-D-539485		1A 44
80063	SM-D-603382		2 228
80063	SM-D-603394	5820-00-937-5530	2 121
80063	SM-D-613048		2 13
80063	SM-D-613126		19 1
80063	SM-D-613130	7110-00-273-8791	2 101
80063	SM-D-613356-1		1 32
80063	SM-D-613356-2		1 33
07707	SSD68BS		19 3
80058	TA-312()/PT	5805-00-543-0012	1 20
80058	TA-312/PT	5805-00-543-0012	1A 15
80058	TT-523A/GGC	5815-00-999-3048	1 28
			1A 31
80058	TT-722/TG	5815-01-017-9172	1A 10
80058	TT-76()/GGC(MOD)		1 29
80058	TT-76/GRC	5815-00-503-2760	1A 30
80058	TT-98()/FG(MOD)		1 19
80058	TT-98B/FG	5815-00-503-2764	1A 10
80058	UG-201()/U		1 36
81349	UG-306		1 46
81349	UU-T-120		1 22
55719	0E-16-18		2 237
55719	1015KC		2 236
55719	137	5120-01-133-0026	2 234
79796	15H		2 64
57566	8910	6645-00-410-2395	2 52

By Order of the Secretary of the Army:

JOHN A. WICKHAM JR.
General, United States Army
Chief of Staff

Official:

DONALD J. DELANDRO
Brigadier General, United States Army
The Adjutant General

DISTRIBUTION:

To be distributed in accordance with DA Form 12-51 literature requirements for AN/GRC-142B.

RECOMMENDED CHANGES TO EQUIPMENT TECHNICAL PUBLICATIONS



THEN... JOT DOWN THE DOPE ABOUT IT ON THIS FORM. CAREFULLY TEAR IT OUT, FOLD IT AND DROP IT IN THE MAIL!

SOMETHING WRONG WITH THIS PUBLICATION?

FROM: (PRINT YOUR UNIT'S COMPLETE ADDRESS)
 Commander
 Stateside Army Depot
 ATTN: AMSTA-US
 Stateside, N.J. 07703-5007

DATE SENT
 10 July 1975

PUBLICATION NUMBER TM 11-5840-340-20P	PUBLICATION DATE 23 Jan 78	PUBLICATION TITLE Radar Set AN/PRC-76
--	-------------------------------	--

BE EXACT... PIN-POINT WHERE IT IS				IN THIS SPACE TELL WHAT IS WRONG AND WHAT SHOULD BE DONE ABOUT IT:
PAGE NO.	PARA-GRAPH	FIGURE NO.	TABLE NO.	
33				For item 2, change the NSN to read: 5835-00-134-9186. Reason: Accuracy.
44		19		Identify the cover on the junction box (item no. 5). Reason: It is a separate item and is not called out on figure 19.
45				Add the cover of the junction box as an item in the listing for figure 19. Reason: Same as above

SAMPLE

PRINTED NAME, GRADE OR TITLE, AND TELEPHONE NUMBER
 SSG I. M. DeSpirit of 999-1776

SIGN HERE

TEAR ALONG PERFORATED LINE

RECOMMENDED CHANGES TO EQUIPMENT TECHNICAL PUBLICATIONS

SOMETHING WRONG WITH THIS PUBLICATION?



THEN...JOT DOWN THE DOPE ABOUT IT ON THIS FORM. CAREFULLY TEAR IT OUT, FOLD IT AND DROP IT IN THE MAIL.

FROM: (PRINT YOUR UNIT'S COMPLETE ADDRESS)

DATE SENT

PUBLICATION NUMBER

TM 11-5815-334-20P-1

PUBLICATION DATE

1 August 1985

PUBLICATION TITLE

Radio Teletypewriter Set
AN/GRC-142B

BE EXACT PIN-POINT WHERE IT IS

PAGE NO.	PARA-GRAPH	FIGURE NO.	TABLE NO.
----------	------------	------------	-----------

IN THIS SPACE TELL WHAT IS WRONG AND WHAT SHOULD BE DONE ABOUT IT:

TEAR ALONG PERFORATED LINE

PRINTED NAME GRADE OR TITLE AND TELEPHONE NUMBER

SIGN HERE

DA FORM 2028-2
1 JUL 79

PREVIOUS EDITIONS ARE OBSOLETE

P.S.--IF YOUR OUTFIT WANTS TO KNOW ABOUT YOUR RECOMMENDATION MAKE A CARBON COPE OF THIS AND GIVE IT TO YOUR HEADQUARTERS.

FILL IN YOUR
UNIT'S ADDRESS

FOLD BACK

DEPARTMENT OF THE ARMY

OFFICIAL BUSINESS

Commander
US Army Communications-Electronics Command
and Fort Monmouth
ATTN: AMSEL-ME-MP
Fort Monmouth, New Jersey 07703-5007

TEAR ALONG PERFORATED LINE

THE METRIC SYSTEM AND EQUIVALENTS

LENGTH MEASURE

1 Centimeter = 10 Millimeters = 0.01 Meters = 0.3937 Inches
 1 Meter = 100 Centimeters = 1000 Millimeters = 39.37 Inches
 1 Kilometer = 1000 Meters = 0.621 Miles

WEIGHTS

1 Gram = 0.001 Kilograms = 1000 Milligrams = 0.035 Ounces
 1 Kilogram = 1000 Grams = 2.2 lb.
 1 Metric Ton = 1000 Kilograms = 1 Megagram = 1.1 Short Tons

LIQUID MEASURE

1 Milliliter = 0.001 Liters = 0.0338 Fluid Ounces
 1 Liter = 1000 Milliliters = 33.82 Fluid Ounces

SQUARE MEASURE

1 Sq. Centimeter = 100 Sq. Millimeters = 0.155 Sq. Inches
 1 Sq. Meter = 10,000 Sq. Centimeters = 10.76 Sq. Feet
 1 Sq. Kilometer = 1,000,000 Sq. Meters = 0.386 Sq. Miles

CUBIC MEASURE

1 Cu. Centimeter = 1000 Cu. Millimeters = 0.06 Cu. Inches
 1 Cu. Meter = 1,000,000 Cu. Centimeters = 35.31 Cu. Feet

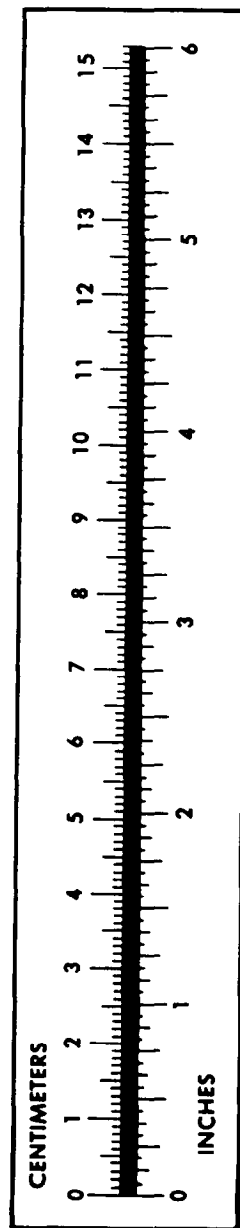
TEMPERATURE

$5/9(^{\circ}\text{F} - 32) = ^{\circ}\text{C}$
 212° Fahrenheit is equivalent to 100° Celsius
 90° Fahrenheit is equivalent to 32.2° Celsius
 32° Fahrenheit is equivalent to 0° Celsius
 $9/5^{\circ}\text{C} + 32 = ^{\circ}\text{F}$

APPROXIMATE CONVERSION FACTORS

TO CHANGE	TO	MULTIPLY BY
Inches	Centimeters	2.540
Feet	Meters	0.305
Yards	Meters	0.914
Miles	Kilometers	1.609
Square Inches	Square Centimeters	6.451
Square Feet	Square Meters	0.093
Square Yards	Square Meters	0.836
Square Miles	Square Kilometers	2.590
Acres	Square Hectometers	0.405
Cubic Feet	Cubic Meters	0.028
Cubic Yards	Cubic Meters	0.765
Fluid Ounces	Milliliters	29.573
its	Liters	0.473
arts	Liters	0.946
gallons	Liters	3.785
Ounces	Grams	28.349
Pounds	Kilograms	0.454
Short Tons	Metric Tons	0.907
Pound-Feet	Newton-Meters	1.356
Pounds per Square Inch	Kilopascals	6.895
Miles per Gallon	Kilometers per Liter	0.425
Miles per Hour	Kilometers per Hour	1.609

TO CHANGE	TO	MULTIPLY BY
Centimeters	Inches	0.394
Meters	Feet	3.280
Meters	Yards	1.094
Kilometers	Miles	0.621
Square Centimeters	Square Inches	0.155
Square Meters	Square Feet	10.764
Square Meters	Square Yards	1.196
Square Kilometers	Square Miles	0.386
Square Hectometers	Acres	2.471
Cubic Meters	Cubic Feet	35.315
Cubic Meters	Cubic Yards	1.308
Milliliters	Fluid Ounces	0.034
Liters	Pints	2.113
Liters	Quarts	1.057
ers	Gallons	0.264
ms	Ounces	0.035
ograms	Pounds	2.205
Metric Tons	Short Tons	1.102
Newton-Meters	Pounds-Feet	0.738
Kilopascals	Pounds per Square Inch	0.145
ometers per Liter	Miles per Gallon	2.354
ometers per Hour	Miles per Hour	0.621



PIN: 058166-000

This fine document...

Was brought to you by me:



[Liberated Manuals -- free army and government manuals](#)

Why do I do it? I am tired of sleazy CD-ROM sellers, who take publicly available information, slap “watermarks” and other junk on it, and sell it. Those masters of search engine manipulation make sure that their sites that sell free information, come up first in search engines. They did not create it... They did not even scan it... Why should they get your money? Why are not letting you give those free manuals to your friends?

I am setting this document FREE. This document was made by the US Government and is NOT protected by Copyright. Feel free to share, republish, sell and so on.

I am not asking you for donations, fees or handouts. If you can, please provide a link to liberatedmanuals.com, so that free manuals come up first in search engines:

<A HREF=<http://www.liberatedmanuals.com/>>Free Military and Government Manuals

- Sincerely
Igor Chudov
<http://igor.chudov.com/>
- [Chicago Machinery Movers](#)