

ARMY
NAVY
AIR FORCE

TM-11-5805-714-34P
EE119-DC-PLG-010/E154 C10333
31W2-2TTC39-44-1

**DIRECT SUPPORT AND GENERAL SUPPORT MAINTENANCE
REPAIR PARTS AND SPECIAL TOOLS LIST
(INCLUDING DEPOT MAINTENANCE REPAIR PARTS AND SPECIAL TOOLS)
CONTROL, REMOTE SWITCHBOARD
C-10333/TTC-39 (V)
(NSN 5805-01-147-8638)**

DEPARTMENTS OF THE ARMY, THE NAVY, AND THE AIR FORCE

20 August 1984

Technical Manual
 No. 11-5805-714-34P
 Technical Order
 No. 31W2-2TTC39-44-1
 Technical Manual
 EE 119-DC-PLG-010/E154 C10333

DEPARTMENTS OF THE ARMY
 THE AIR FORCE AND THE NAVY

Washington, DC, 20 August 1984

**DIRECT SUPPORT AND GENERAL SUPPORT MAINTENANCE
 REPAIR PARTS AND SPECIAL TOOLS LIST
 (INCLUDING DEPOT MAINTENANCE REPAIR PARTS AND SPECIAL TOOLS)
 CONTROL, REMOTE SWITCHBOARD
 C-10333/TTC-39(V)
 (NSN 5805-01-147-8638)
 Current as of 7 April 1984**

REPORTING ERRORS AND RECOMMENDING IMPROVEMENTS

You can help improve this manual. If you find any mistakes or if you know of a way to improve the procedures, please let us know. Mail your letter, DA Form 2028 (Recommended Changes to Publications and Blank Forms) DA Form 2028-2 located in the back of this manual direct to: Commander, US Army Communications-Electronics Command and Fort Monmouth, ATTN: DRSEL-ME-MP, Fort Monmouth, NJ 07703-5007.

For Air Force, submit AFTO Form 22 (Technical Order System Publication Improvement Report and Reply) in accordance with paragraph 6-5, Section VI, T.O. 00-5-1. Forward direct to prime ALC/MST.

For Navy, mail comments to the Commander, Naval Electronics Systems Command, ATTN: ELEX 8122, Washington, DC 20360.

In either case, a reply will be furnished direct to you.

Table of Contents

	Page	Illus. Figure
Section I. Introduction	1	
II. Repair Parts List	5	
Group 00 Control, Remote Switchboard C-10333/TTC-39(V)	5	1
Headset-Microphone SM-813544	9	2
Rotary File SM-D-744700	11	3
Cable Assy, Power SM-D-812394-1	13	4
Connector Assy SM-D-812280-2	15	5
Card Set	17	6
01 Printed Circuit Cards A1, A2, A3, A4, A5		
Circuit Card Assy, CSP1 SM-E-815555	19	7
Circuit Card Assy, CSP2 SM-E-815556	23	8
Circuit Card Assy, CSP3 SM-E-815557	27	9
Circuit Card Assy, CSP4 SM-E-815558	29	10
Circuit Card Assy, CSPMD SM-E-816538	31	11
02 Keyboard (See Group 00 for listing of parts)		
03 Power Supply (No parts authorized)		
04 Card Nest (See Group 00 for listing of parts)		
Group 05 Signal Cables Internal		
Cable Assy Signal, SM-D-817252-2	35	12
Cable Assy Signal, SM-D-817253-2	37	13
Section III. Special Tools List (Not applicable)		
IV. National Stock Number and Part Number Index	38	

SECTION I INTRODUCTION

1. Scope

This manual lists spares and repair parts; Special Tools; special test, measurement, and diagnostic equipment (TMDE), and other special support equipment required for performance of direct support and general support maintenance of the C-10333/TTC-39(V). It authorizes the requisitioning and issue of spares and repair parts as indicated by the source and maintenance codes.

2. General

This Repair Parts and Special Tools List is divided into the following sections:

a. *Section II.* Repair Parts List. A list of spares and repair parts authorized for use in the performance of maintenance. The list also includes parts which must be removed for replacement of the authorized parts. Parts lists are composed of functional groups in numeric sequence, with the parts in each group listed in figure and item number sequence.

b. *Section III.* Special Tools List. Not applicable.

c. *Section IV.* National Stock Number and Part Number Index. A list, in National item identification number (NIIN) sequence, of all National stock numbers (NSN) appearing in the listings, followed by a list, in alphanumeric sequence, of all part numbers appearing in the listings. National stock numbers and part numbers are cross-referenced to each illustration figure and item number appearance.

3. Explanation of Columns

a. *Illustration.* This column is divided as follows:

(1) *Figure Number.* Indicates the figure number of the illustration on which the item is shown.

(2) *Item Number.* The number used to identify item called out in the illustration.

b. *Source, Maintenance, and Recoverability (SMR) Codes.*

(1) *Source code.* Source codes indicate the manner of acquiring support items for maintenance, repair, or overhaul of end items. Source codes are entered in the first and second positions of the Uniform SMR Code format as follows:

Code	Definition
------	------------

PA - Item procured and stocked for anticipated or known usage.

PB - Item procured and stocked for insurance purpose because essentiality dictates that a minimum quantity be available in the supply system.

PC - Item procured and stocked and which otherwise would be coded PA except that it is deteriorative in nature.

PD - Support item, excluding support equipment, procured for initial issue or outfitting and stocked only for subsequent or additional initial issues or outfittings. Not subject to automatic replenishment.

PE - Support equipment procured for initial issue or outfitting to specified maintenance repair activities.

PF - Support equipment which will not be stocked but which will be centrally procured on demand.

PG - Item procured and stocked to provide for sustained support for the life of the equipment. It is applied to an item peculiar to the equipment which, because of probable discontinuance or shutdown of production facilities, would prove uneconomical to reproduce at a later time.

KD - An item of a depot overhaul/repair kit and not purchased separately. Depot kit defined as a kit that provides items required at the time of overhaul or repair.

KF - An item of a maintenance kit and not purchased separately. Maintenance kit defined as a kit that provides an item that can be replaced at organizational or intermediate levels of maintenance.

KB - Item included in both a depot overhaul/repair kit and a maintenance kit.

MO - Item to be manufactured or fabricated at organizational level.

MF - Item to be manufactured or fabricated at the direct support maintenance level.

MH - Item to be manufactured or fabricated at the general support maintenance level.

MD - Item to be manufactured or fabricated at the depot maintenance level.

AO - Item to be assembled at organizational level.

AF - Item to be assembled at direct support maintenance level.

AH - Item to be assembled at general support maintenance level.

AD - Item to be assembled at depot maintenance level.

XA - Item is not procured or stocked because the requirements for the item will result in the replacement of the next higher assembly.

XB - Item is not procured or stocked. If not available through salvage, requisition.

XC - Installation drawing, diagram, instruction sheet, field service drawing, that is identified by manufacturer's part number.

XD - A support item that is not stocked. When required, item will be procured through normal supply channels.

NOTE

Cannibalization or salvage may be used as a source of supply for any items source coded above except those coded XA and aircraft support items as restricted by AR 750-1.

(2) *Maintenance code.* Maintenance codes are assigned to indicate the levels of maintenance authorized to USE and REPAIR support items. The maintenance codes are entered in the third and fourth positions of the Uniform SMR Code format as follows:

(a) The maintenance code entered in the third position will indicate the lowest maintenance level authorized to remove, replace, and use the support item. The maintenance code entered in the third position will indicate one of the following levels of maintenance:

- | Code | Application/Explanation |
|------|--|
| C | Crew or operator maintenance performed within organizational maintenance. |
| O | Support item is removed, replaced, used at the organizational level. |
| F | Support item is removed, replaced, used at the direct support level. |
| H | Support item is removed, replaced, used at the general support level. |
| D | Support items that are removed, replaced, used at depot, mobile depot, specialized repair activity only. |

(b) The maintenance code entered in the fourth position indicates whether the item is to be repaired and identifies the lowest maintenance level with the capability to perform complete repair (i.e., all authorized maintenance functions). This position will contain one of the following maintenance codes:

- | Code | Application/Explanation |
|------|--|
| O | The lowest maintenance level capable of complete repair of the support item is the organizational level. |
| F | The lowest maintenance level capable of complete repair of the support item is the direct support level. |
| H | The lowest maintenance level capable of complete repair of the support item is the general support level. |
| D | The lowest maintenance level capable of complete repair of the support is the depot level. |
| L | Repair restricted to designated specialized repair activity. |
| Z | Nonrepairable. No repair is authorized. |
| B | No repair is authorized. The item may be reconditioned by adjusting, lubricating, etc., at the user level. No parts or special tools are procured for the maintenance this item. |

(3) *Recoverability code.* Recoverability codes are assigned to support items to indicate the disposition action on serviceable items. The recoverability code is entered in the fifth position of the Uniform SMR Code format as follows:

- | Recoverability codes | Definition |
|----------------------|---|
| Z | Nonrepairable item. When unserviceable, condemn and dispose at the level indicated in position 3. |
| O | Reparable item. When uneconomically repairable, condemn and dispose at organizational level. |
| F | Reparable item. When uneconomically repairable, condemn and dispose at the direct support level. |
| H | Reparable item. When uneconomically repairable, condemn and dispose at the general support level. |
| D | Reparable item. When beyond lower level repair capability, return to depot. Condemnation and disposal not authorized below depot level. |
| L | Reparable item. Repair, condemnation, and disposal not authorized below depot/specialized repair activity level. |

A - Item requires special handling or condemnation procedures because of specific reasons (i.e., precious metal content, high dollar value, critical material or hazardous material). Refer to appropriate manuals/directives for specific instructions.

c. *National Stock Number.* Indicates the National stock number assigned to the item and will be used for requisitioning purposes.

d. *Federal Supply Code for Manufacturer (FSCM).* The FSCM is a 5-digit numeric code listed in SB 708-41/42 which is used to identify the manufacturer, distributor, or Government agency, etc.

e. *Part Number.* Indicates the primary number used by the manufacturer (individual, company, firm, corporation, or Government activity), which controls the design and characteristics of the item by means of its engineering drawings, specifications, standards, and inspection requirements to identify an item or range of items.

NOTE

When a stock numbered item is requisitioned, the repair part received may have a different part number than the part being replaced.

f. *Description.* Indicates the Federal item name and, if required, a minimum description to identify the item.

g. *Unit of Measure (U/M).* Indicates the standard of the basic quantity of the listed item as used in performing the actual maintenance function. This measure is expressed by a two-character alphabetical abbreviation (e.g., ea, in, pr, etc). When the unit of measure differs from the unit of issue, the lowest unit of issue that will satisfy the required units of measure will be requisitioned.

h. *Quantity Incorporated in Unit.* Indicates the quantity of the item used in the breakout shown on the illustration figure, which is prepared for a functional group, subfunctional group, or an assembly.

4. Special Information

- a. The following publications pertain to the C-10333/TTC-39(V) and its components:
TM 11-5805-714-12, Control, Remote Switchboard C-10333/TTC-39(V).
TM 11-5805-714-20P, Control, Remote Switchboard C-10333/TTC-39(V).
TM 11-5805-714-34, Control, Remote Switchboard C-10333/TTC-39(V).

b. National stock numbers (NSN's) that are missing from P source coded items have been applied for and will be added to this TM by future change/revision when they are entered in the Army Master Data File (AMDF). Until the NSN's are established and published, submit exception requisitions to: Commander, US Army Communications - Electronics Command and Fort Monmouth, ATT: DRSEL-MM, Fort Monmouth, New Jersey 07703-5007 for the part required to support your equipment.

5. How to Locate Repair Parts

a. When National stock number or part number is unknown.

(1) *First.* Using the table of contents, determine the functional group within which the item belongs. This is necessary since illustrations are prepared for functional groups and listings are divided into the same groups.

(2) *Second.* Find the illustration covering the functional group to which the item belongs.

(3) *Third.* Identify the item on the illustration and note the illustration figure and item number of the item.

(4) *Fourth.* Using the Repair Parts Listing, find the figure and item number noted on the illustration.

b. When the National stock number or part number is known.

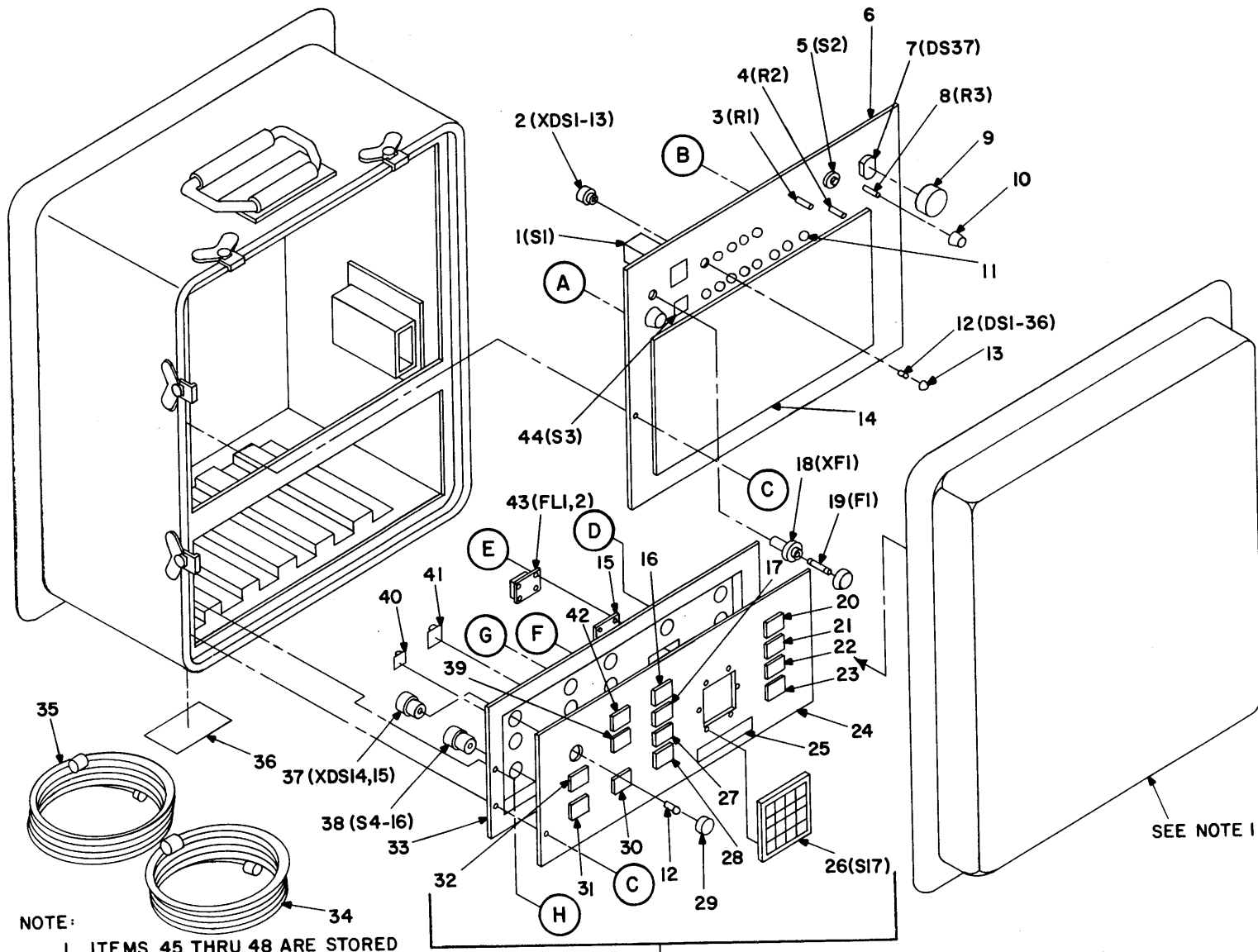
(1) *First.* Using the Index ,of National Stock Numbers and Part Numbers, find the pertinent National stock number or part number. This index is in NIIN sequence followed by a list of part numbers in alphanumeric sequence, cross-referenced to the illustration figure number and item number.

(2) *Second.* After finding the figure and item number, locate the figure and item number in the repair parts list.

6. Abbreviations

Not applicable.

(Next printed page is 4.1)



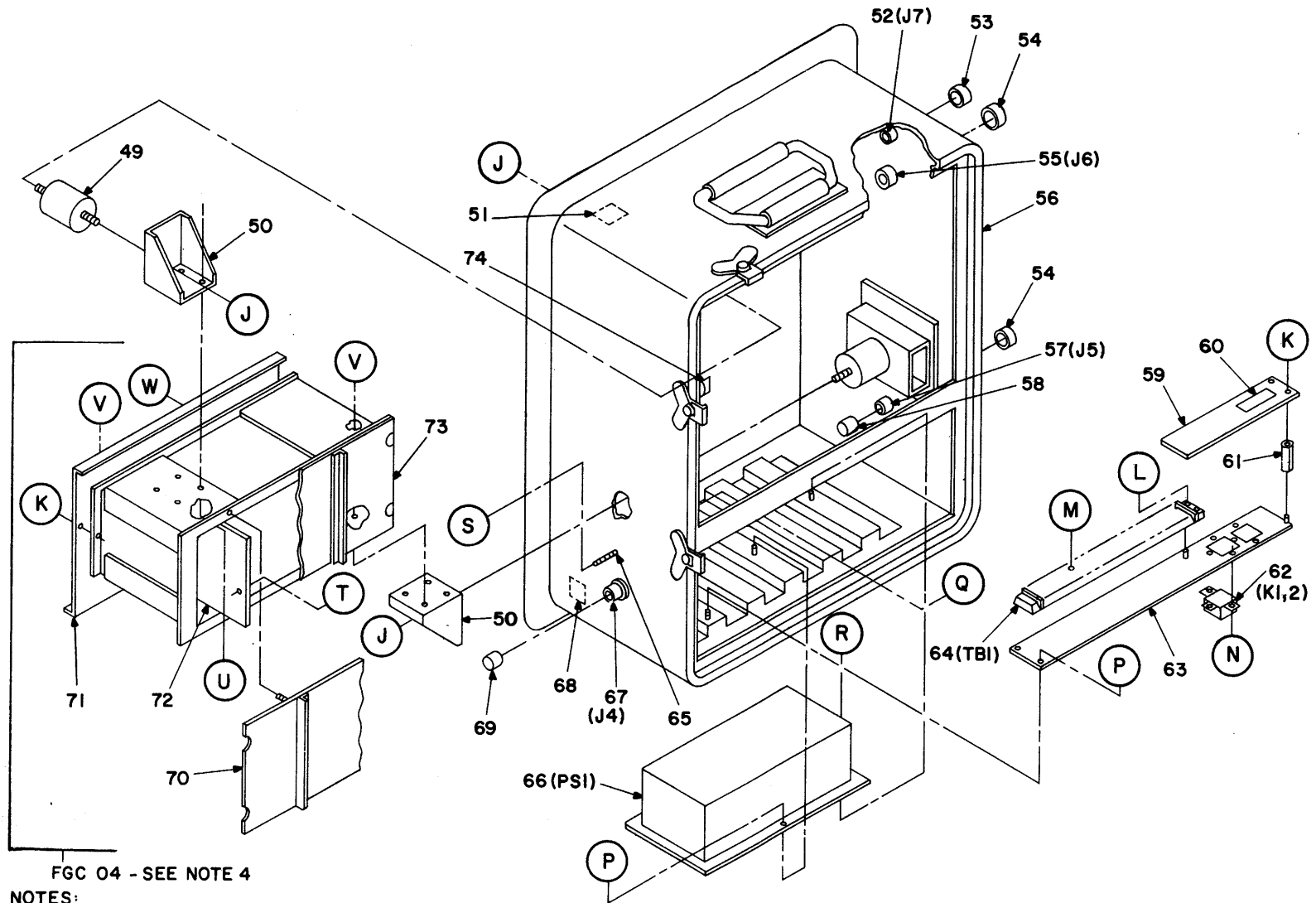
NOTE:

1. ITEMS 45 THRU 48 ARE STORED IN THE CASE LID.
2. ITEMS 12,16,17,20 THRU 32,39,42 ARE PART OF FGC 02.
3. SEE SHEETS 3 AND 4 FOR ENCIRCLED DETAILS.

FGC 02 - SEE NOTE 2

EL8FC001

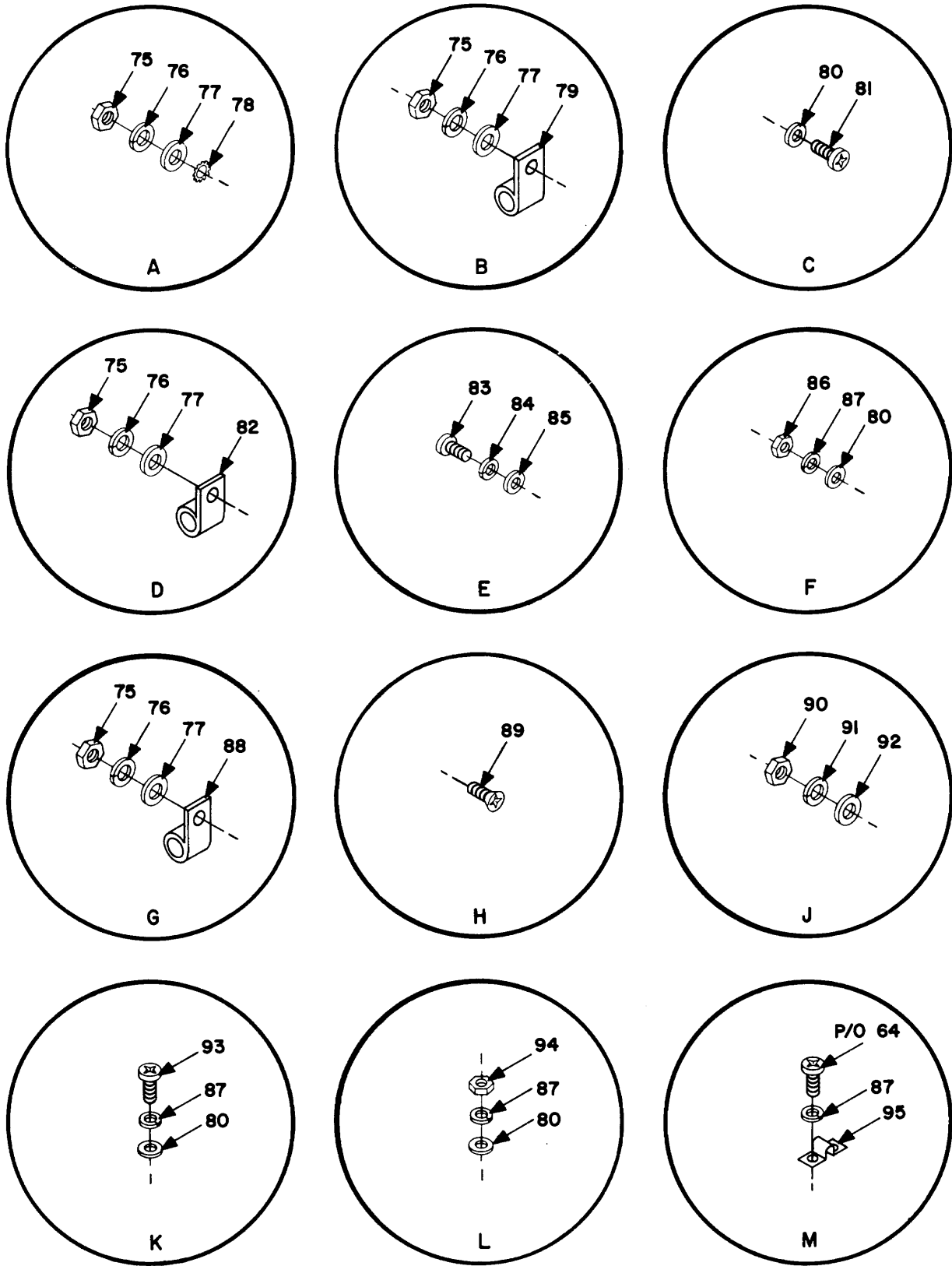
Figure 1. Control, remote switchboard C-10333/TTC-39 (Sheet 1 of 4).



FGC 04 - SEE NOTE 4
 NOTES:
 3. SEE SHEETS 3 AND 4 FOR ENCIRCLED DETAILS
 4. ITEMS 70 THRU 73 ARE PART OF FGC 04.

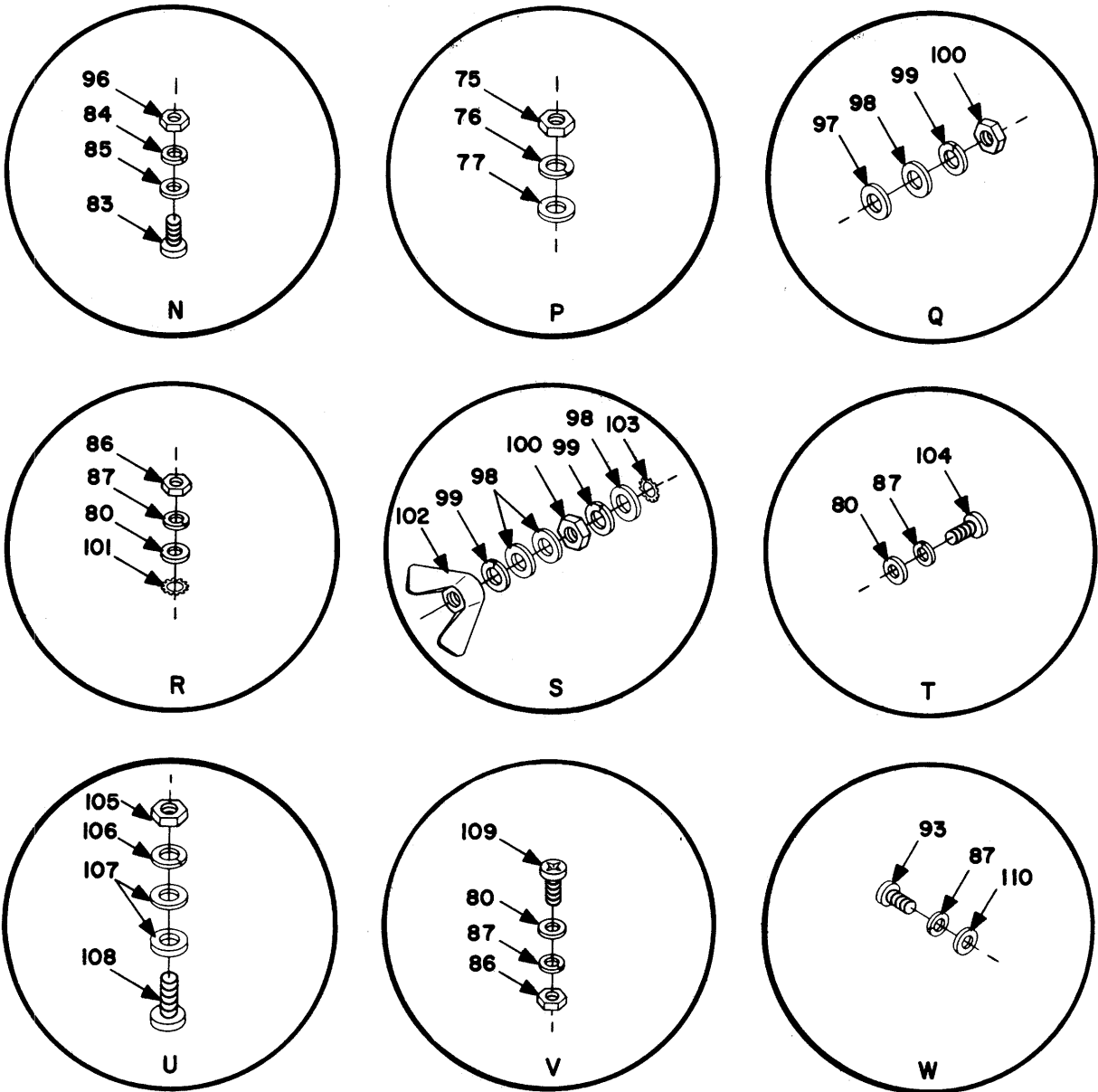
EL8FC002

Figure 1. Control, remote switchboard C-10333/TTC-39 (Sheet 2 of 4).



EL8FC003

Figure 1. Control, remote switchboard C-10333/TTC-39 (Sheet 3 of 4).



EL8FC004

Figure 1. Control, remote switchboard C-10333/TTC-39 (Sheet 4 of 4).

SECTION II

TM 11-5805-714-34P/31W2-2TTC39-44-1/EE119-DC-PLG-010/E154 C10333

(1) ILLUSTRATION		(2) SMR CODE	(3) NATIONAL STOCK NUMBER	(4) FSCM	(5) PART NUMBER	(6) DESCRIPTION USABLE ON CODE	(7) U/M	(8) QTY INC IN UNIT
(a) FIG NO.	(b) ITEM NO.							
1	1	PAFZZ			1OHA36C1F171L(W) MINLIRV13	GROUP 00 CONTROL, REMOTE SWITCHBOARD 0-10333/TTC-39(V) SWITCH, PB ILLUM	EA	1
1	2	PAOZZ	6210-00-438-2234	96182 81349	LH73-2	LIGHT, INDICATOR	EA	13
1	3	PAFZZ	5905-00-929-3286	81349	RV6SAYSD501A	RESISTOR, VARIABLE,	EA	1
1	4	PAFZZ	5905-00-929-3287	81349	RV6SAYSDIO2A	RESISTOR, VARIABLE,	EA	1
1	5	PAFZZ	5930-00-892-9419	96906	MS27903-1	SWITCH,PUSH	EA	1
1	6	XBFZZ		80063	SM-D-812255	PANEL FRONT, TOP	EA	1
1	7	XDFZZ		97942	138L739H01	ALARM,AUDIBLE, LANOI	EA	1
1	8	PAFZZ	5905-00-404-0252	81349	RV6SAYSD252A	RESISTOR, VARIABLE,	EA	1
1	9	XBFZZ		80063	SM-C-812376	COVER, ALARM	EA	1
1	10	PAOZZ	5355-00-839-2138	96906	MS91528-2EIB	KNOB	EA	3
1	11	PAOZZ	62L0-00-231-0613	81349	LC27RN2	LENS, LIGHT	EA	1
1	12	PAOZZ	6240-00-132-4011	11744	CM7333	LAMP, INCANDESCENT	EA	36
1	13	PAOZZ	6210-00-169-6129	81349	LC27WT2	LENS, LIGHT	EA	12
1	14	XBFZZ		80063	SM-O-812256	COVER, ACCESS	EA	1
1	15	XBFZZ		80063	SM-C-812267	NUT PLATE	EA	1
1	16	PAFZZ	6210-01-149-2196	12522	R6UF24445-HOLO 1	LENS,PB SWITCH	EA	1
1	17	PAFZZ		12522	RbOF24445-HOLO 2	LENS,PB SWITCH	EA	1
1	18	PAFZZ	5920-00-887-6514	81349	FHN55W	FUSEHOLDER, EXTRACTO	EA	2
1	19	PAOZZ	5920-00-281-0210	81349	FO2A25OV4AS	FUSE, CARTRIDGE	EA	2
1	20	PAFZZ	6210-00-316-1890	12522	R60F24445-KERING	LENSE SWITCH ACTUATI	EA	1
1	21	PAFZZ	6210-00-316-2023	12522	R60F24445COMMONR	LENSE SWITCH ACTUATI	EA	1
1	22	PAFZZ	6210-00-316-2044	12522	R60F24445RELEASE 1	LENSE SWITCH ACTUATI	EA	1
1	23	XDFZZ	6210-00-316-2057	12522	R60F24445RELEASE 2	LENS, SWITCH ACTUATI	EA	1
1	24	XBFZZ		80063	SM-D-812257	PANEL, BLANK	EA	1
1	25	XBFZZ		80063	SM-C-813870	DECAL,CAUTION	EA	1
1	26	PAFZZ	5930-01-149-2979	91929	PX2P16K10A1B-015	SW, PUSH TEL.	EA	1
1	27	PAFZZ		12522	R60F24445-HOLD 3	LENS, PB SWITCH	EA	1
1	28	PAFZZ	6210-00-316-2016	12522	R60F24445CALL/SE IZE	LENS, SWITCH ACTUAT	EA	1
1	29	PAFZZ		80U63	SM-A-838435-1	LENS, PB SWITCH	EA	2
1	30	PAFZZ	6Z10-01-148-2734	12522	R60F24445-QUEUE ANSWER	LENS, PB SWITCH	EA	1
1	31	PAFZZ	6213-01-147-9227	12522	R60F24445-SWITCH	LENS, PB SWITCH	EA	1
1	32	PAFZZ	62L0-01-147-9226	12522	R60F24445-ANSWER	LENS,PB SWITCH	EA	1
1	33	XBFZZ		80063	SM-D-812256	PANEL, BLANK	EA	1
1	34	PAOFF	5995-01-141-3934	80063	SM-D-817252-2	CABLE ASSEMBLY POWE	EA	1
1	35	PAOFF	5995-01-141-3935	80063	SM-D-817253-2	CABLE ASSEMBLY POWE	EA	1

SECTION II

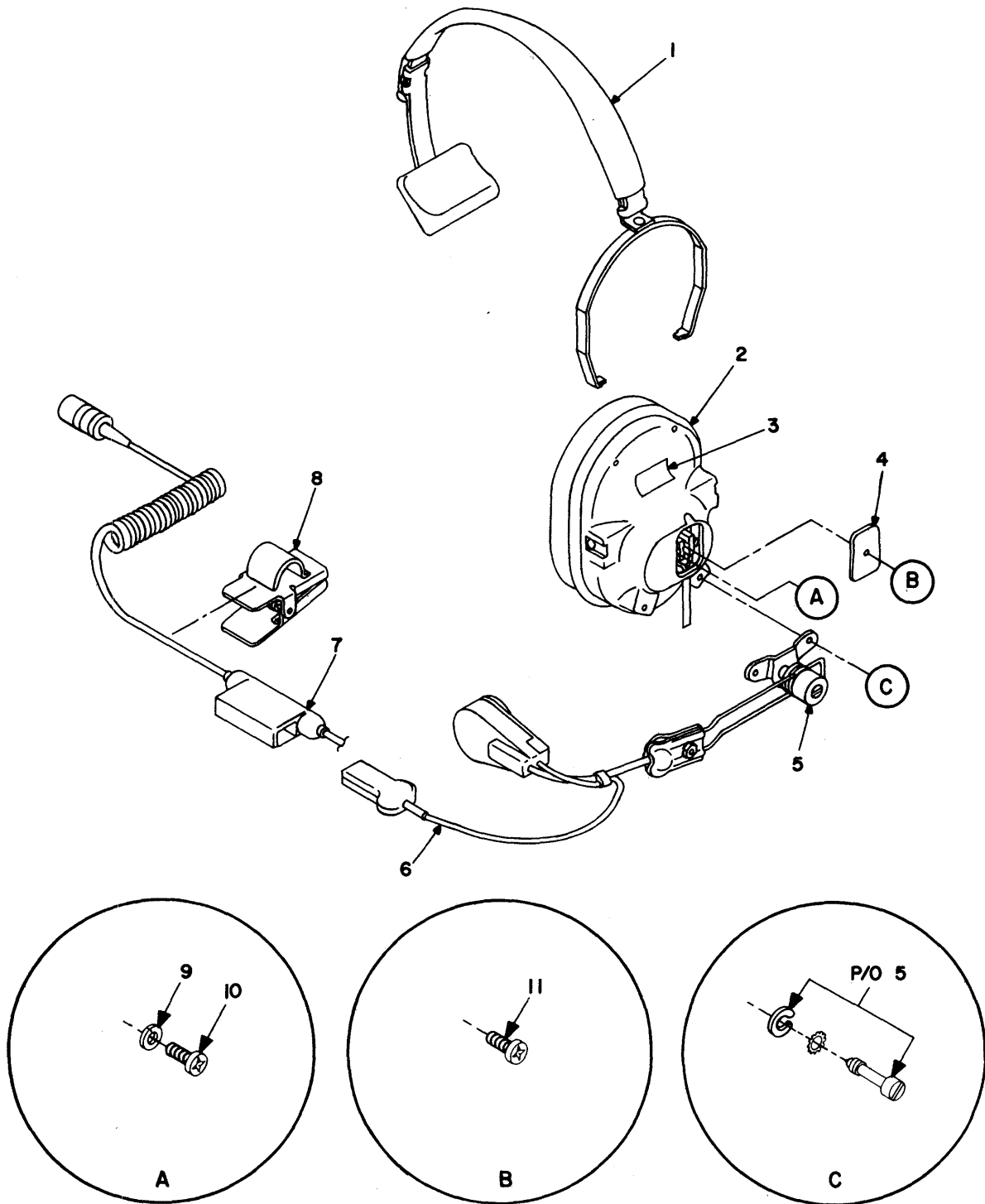
TM 11-5805-714-34P/31W2-2TTC39-44-1/EE119-DC-PLG-010/E154 C10333

(1) ILLUSTRATION		(2) SMR CODE	(3) NATIONAL STOCK NUMBER	(4) FSCM	(5) PART NUMBER	(6) DESCRIPTION USABLE ON CODE	(7) U/M	(8) QTY INC IN UNIT
(a) FIG NO.	(b) ITEM NO.							
1	36	XBFZZ		80063	SM-D-817305-2	PLATE, IDENT	EA	1
1	37	XBFZZ		12522	R62S001-2	LIGHT, INDICATOR	EA	2
1	38	PAFZZ	5930-00-396-3671	12522	66S-04-A/045	SWITCH, PUSH	EA	13
1	39	PAFZZ	6210-01-164-4713		R60F24445-SPLIT	LENS, SWITCH ACTUATI	EA	1
				12522	2			
1	40	PAFZZ		34785	021-0188	CLAMP, LOOP	EA	1
1	41	PAFZZ	5340-01-144-1799	34785	021-0250	CLIP, SPRING TENSION	EA	1
1	42	PAFZZ	6213-01-152-8032		R60F24445-SPLIT	LENS.SWITCH ACUATI	EA	1
				12522	1			
1	43	PAFZZ	5915-01-125-5840	81349	M15733/32-0001	FILTER, R1	EA	2
1	44	PAFZZ		80063	SM-A-838448-1	SWITCH, PUSH	EA	1
1	45	PAOFF	5965-01-141-3938	80063	SM-D-813544	HEADSET-MICROPHONE	EA	1
1	46	XBFZZ		80063	SM-D-744700	ROTARY FILE	EA	1
1	47	PAFZZ	5995-01-141-3933	80063	SM-D-812394-1	CABLE ASSEMBLY, PJW	EA	1
1	48	XBFZZ		80063	SM-C-814431-4	CORD, SHDCK	EA	1
1	49	XBFZZ		81860	29620-1A	MOUNT, RESILIENT	EA	4
1	50	XBFZZ		80063	SM-C-812262	BRKT, ISOLTR MTG	EA	4
1	51	XBFZZ		34785	021-0500	CLAMP, LOOP	EA	3
1	52	PAFZZ		77820	21-293709-200	CONN.RCPT, ELEC	EA	1
1	53	PAOZZ	5935-01-159-1634	77820	10-427950-099	COVER, ELEC CONN	EA	1
1	54	PAOZZ	5935-01-159-1633	77820	10-427950-139	COVER, ELEC CONN	EA	2
1	55	PAFZZ		77820	21-293713-201	CONN, RCPT, ELEC	EA	1
1	56	XBFZZ		80063	SM-D-817251	CASE,EQUIPMENT	EA	1
1	57	PAFZZ	5935-00-532-0909	96906	MS27468T13B8P	CONNECTOR, RECEPTACL	EA	1
1	58	PAFZZ		07418	SE6F0904A1.0-34	ADAPTER	EA	1
1	59	XBFZZ		80063	SM-8-812253	COVER, PROTECTIVE	EA	1
1	60	XBFZZ		80063	SM-C-811960-1	DECAL, CAUTION	EA	1
1	61	XDFZZ	5340-00-886-6156	06540	8220-55-0632-7	POST, ELECTRICAL-MED	EA	4
1	62	PAFZZ	5945-01-165-8466	77342	FC4145-2	RELAY, MIN DPDT	EA	2
1	63	XBFZZ		80063	SM-D-817532	PLATE, TB MTG	EA	1
1	64	PAFZZ	5940-00-949-5551	81349	38TB23	TERMINAL BOARD	EA	1
1	65	XBFZZ		80063	SM-8-81089	STUD, GROUNDING	EA	1
1	66	PAODD	5805-01-121-6546	11352	70418-01	POWER SUPPLY	EA	1
1	67	PAFZZ		80063	SM-A-838008-1	CONN, RCPT, ELEC	EA	1
1	68	PAFZZ	5975-01-035-5338	34785	021-0375	CLAMP, CABLE	EA	4
1	69	PAOZZ	5935-01-421-2772	87557	9115C0046	COVER, ELECTRICAL CO	EA	1
1	70	XBFZZ		80063	SM-D-812260	COVER, NEST	EA	1
1	71	XBFZZ		80063	SM-D-d12260-2	CONNECTOR ASSEMBLLY	EA	1
1	72	XBFZZ		80063	SM-C-812263	GUIDE, CARD	EA	2
1	73	XBFFF		80063	SM-D-812261	CHASIS.NEST	EA	1
1	74	XBFZZ		80063	021-0625	CLAMP, LOOP	EA	2

SECTION II

TM 11-5805-714-34P/31W2-2TTC39-44-1/EE119-DC-PLG-010/E154 C10333

(1) ILLUSTRATION		(2) SMR CODE	(3) NATIONAL STOCK NUMBER	(4) FSCM	(5) PART NUMBER	(6) DESCRIPTION USABLE ON CODE	(7) U/M	(8) QTY INC IN UNIT
(a) FIG NO.	(b) ITEM NO.							
1	75	PAFZZ	5310-00-934-9765	96906	MS35650-304	NUT,PLAIN, HEXAGON	EA	23
1	76	PAFZZ	5310-00-933-8120	96906	MS35338-138	WASHER, LOCK	EA	23
1	77	PAFZZ	5310-00-6L9-1148	96906	MS15795-808	WASHER, FLAT	EA	20
1	78	PAFZZ	5313-00-209-1239	96906	MS35335-60	WASHER, LOCK	EA	3
1	79	PAFZZ	5343-00-721-53L5	96906	MS25281-R5	CLAMP,LOOP	EA	1
1	80	PAFZZ	5310-00-973-8660	80063	SM-B-416109-L	WASHER, FLAT	EA	71
1	81	PAFZZ	5305-00-054-6655	96906	MS1957-31	SCREW, MACHINE	EA	28
1	82	PAFZZ	5340-00-989-9224	96906	MS25281-R6	CLAMP, LOOP	EA	1
1	83	PAFZZ	5305-00-054-5649	96906	MS1957-15	SCREW, MACHINE	EA	18
1	84	PAFZZ	5310-00-933-8118	96906	MS35338-135	WASHER, LOCK	EA	18
1	85	PAFZZ	5310-00-595-6211	96906	MS15795-803	WASHER, FLAT	EA	18
1	86	PAFZZ	5310-00-934-9761	96906	MS35649-264	NUT,PLAIN, HEXAGON	EA	13
1	87	PAFZZ	5310-00-929-6395	96906	MS35338-136	WASHER, LOCK	EA	97
1	88	PAFZZ	5340-00-988-3210	96906	MS25281-R4	CLAMP, LOOP	EA	1
1	89	PAFZZ	5305-00-066-7327	96906	MS24693-C28	SCREW, MACHINE	EA	6
1	90	PAFZZ	5310-00-903-1524	96906	MS1972-3	NUT, PLAIN, HEXAGON	EA	8
1	91	PAFZZ	5310-00-984-7042	96906	MS35338-141	WASHER, LOCK	EA	8
1	92	PAFZZ	5310-00-595-6057	96906	MS15195-815	WASHER, FLAT	EA	8
1	93	PAFZZ	5305-00-054-6652	96906	MS1957-28	SCREW, MACHINE	EA	16
1	94	PAFZZ	5310-00-616-8660	18876	9052346	NUT, PLAIN, HEXAGON	EA	4
1	95	XBFZZ	6150-00-519-27L4	75382	601J	BUS, CONDUCTOR	EA	5
1	96	PAFZZ	5310-00-934-9748	96906	MS35649-244	NUT, PLAIN, HEXAGON	EA	6
1	97	XBFZZ		80205	NAS1523C6W	PACKING w/RET	EA	1
1	98	PAFZZ	5310-00-773-7618	96906	MS15795-814	WASHER,FLAT	EA	4
1	99	PAFZZ	5310-00-984-7042	96906	MS35338-141	WASHER, LOCK	EA	3
1	100	PAFZZ	5310-00-245-3612	96906	MS35650-3384	NUT, PLAIN,HEXAGON	EA	2
1	101	PAFZZ	5310-00-209-1366	96906	MS35335-56	WASHER,LOCK	EA	1
1	102	PAFZZ	5310-00-827-8487	96906	MS35426-16	NUT, PLAIN, WING	EA	1
1	103	PAFZZ	5310-00-209-0790	96906	MS35335-63	WASHER, LOCK	EA	1
1	104	PAFZZ	5305-00-054-6654	96906	MS1957-30	SCREW, MACHINE	EA	18
1	105	PAFZZ	5310-00-934-9759	96906	MS35649-284	NUT,PLAIN, HEXAGON	EA	16
1	106	PAFZZ	5310-00-933-8119	96906	MS35338-137	WASHER, LOCK	EA	16
1	107	PAFZZ	5310-00-880-5978	96906	MS15795-607	WASHER, FLAT	EA	32
1	108	PAFZZ	5305-00-054-6672	96906	MS1951-47	SCREW, MACHINE	EA	16
1	109	PAFZZ	5305-00-054-6651	96906	MS1957-27	SCREW, MACHINE	EA	6
1	110	PAFZZ	5310-00-713-7624	08226	REW620-6	WASHER, FLAT	EA	1



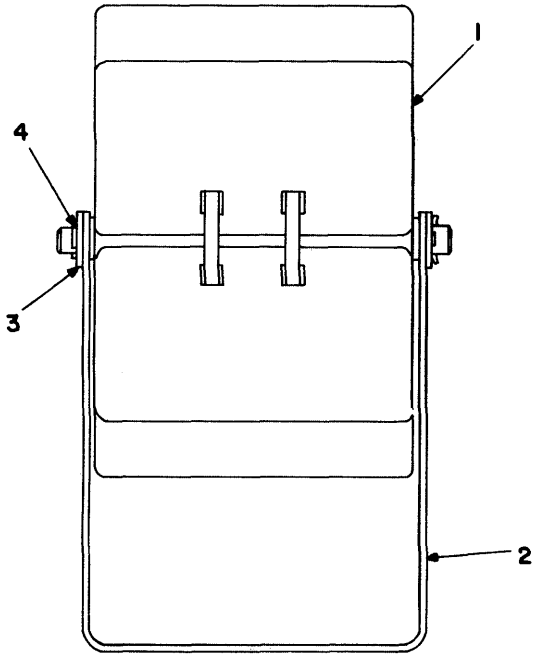
EL8FC005

Figure 2. Headset-microphone SM-D-813544.

SECTION II

TM 11-5805-714-34P/31W2-2TTC39-44-1/EE119-DC-PLG-010/E154 C10333

(1) ILLUSTRATION		(2)	(3)	(4)	(5)	(6)	(7)	(8)
(a) FIG NO.	(b) ITEM NO.	SMR CODE	NATIONAL STOCK NUMBER	FSCM	PART NUMBER	DESCRIPTION USABLE ON CODE	U/M	QTY INC IN UNIT
2	1	PAFZZ	5965-00-058-1288	80063	SM-C-430274	HEADBAND, HEADSET	EA	1
2	2	PAFZZ	5965-00-930-0130	80063	SM-D-436220	EARPHONE CUP ASSY	EA	1
2	3	XBFZZ		80063	SM-C-813545	PLATE, IDENT-HST	EA	1
2	4	PAFZZ	5965-00-485-9575	80063	SM-B-436227	ACCESS COVER HEADSE	EA	1
2	5	PAFZZ	6625-00-402-5212	80063	SM-C-436139	BRACKET, MICROPHONE	EA	1
2	6	PAFZZ	5965-01-151-4333	80063	SM-D-317818	MIC, BOOM ASSY	EA	1
2	7	PAFZZ	5995-01-146-6902	18068	10574	CORD ASSEMBLY, ELECT	EA	1
2	8	PAFZZ	5343-00-134-3846	80063	SM-B-436240	CLIP ASSEMBLY	EA	1
2	9	XBFZZ		78189	1202-00-00-0500	WASHER, LOCK	EA	2
2	10	PAFZZ	5305-00-059-8226	96906	MS35214-1	SCREW, MACHINE	EA	2
2	11	PAFZZ	5305-00-812-3549	96906	MS35214-5	SCREW, MACHINE	EA	1



EL8FC006

Figure 3. Rotary file SM-D-744700.

SECTION II

TM 11-5805-714-34P/31W2-2TTC39-44-1/EE119-DC-PLG-010/E154 C10333

(1) ILLUSTRATION		(2)	(3)	(4)	(5)	(6) DESCRIPTION	(7)	(8)
(a) FIG NO.	(b) ITEM NO.	SMR CODE	NATIONAL STOCK NUMBER	FSCM	PART NUMBER	USABLE ON CODE	U/M	QTY INC IN UNIT
3	1	XBFZZ		80063	SM-0-744700-1	FILE,WHEEL	EA	1
3	2	XBFZZ		80063	SM-D-744699	RACKET	EA	1
3	3	PAFZZ	5310-00-625-5756	96906	MS15795-81Z	WASHER,FLAT	EA	2
3	4	PAFZZ	5315-00-234-1861	81343	AS123788	PIN,COTTEK	EA	2

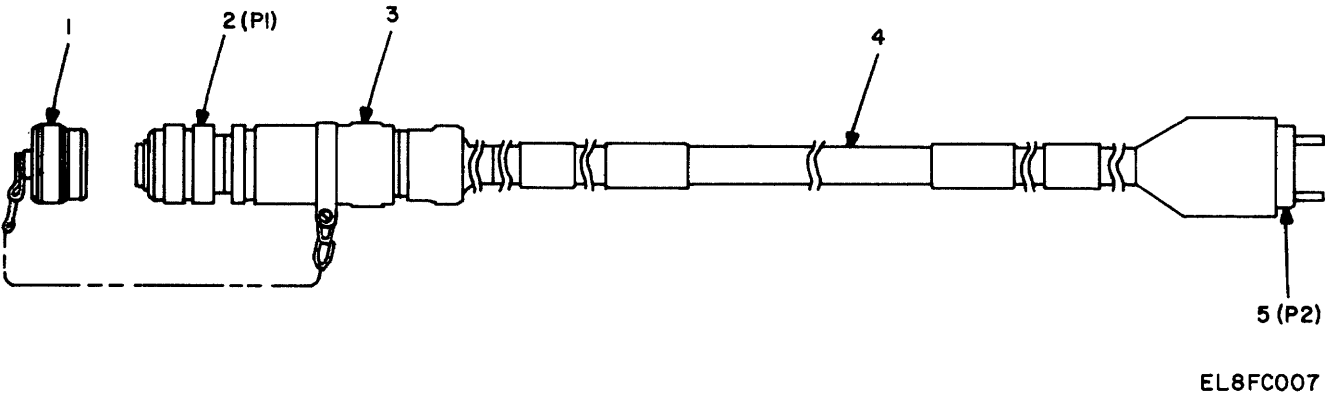


Figure 4. Cable assy, power SM-D-812394-1.

SECTION II

TM 11-5805-714-34P/31W2-2TTC39-44-1/EE119-DC-PLG-010/E154 C10333

(1) ILLUSTRATION		(2)	(3)	(4)	(5)	(6)	(7)	(8)
(a) FIG NO.	(b) ITEM NO.	SMR CODE	NATIONAL STOCK NUMBER	FSCM	PART NUMBER	DESCRIPTION USABLE ON CODE	U/M	QTY INC IN UNIT
4	1	PAFZZ	5935-01-030-3055	96906	MS2750B13C	COVER, ELECTRICAL CO	EA	1
4	2	PAFZZ	5935-01-046-9753	96906	MS27467T13B8S	CONNECTOR, PLUG, ELEC	EA	1
4	3	PAFZZ	5935-01-151-6568		S1613-0906-2.5C- 34	ADAPTER	EA	1
4	4	XBFZZ		07418	CU-03HDF(3/20)03	CABLE, SPCL PURPOSE	FT	26
4	5	PAFZZ	5935-00-148-8190	81349 74545	75 8215-C	CONNECTOR, PLUG, ELEC	EA	1

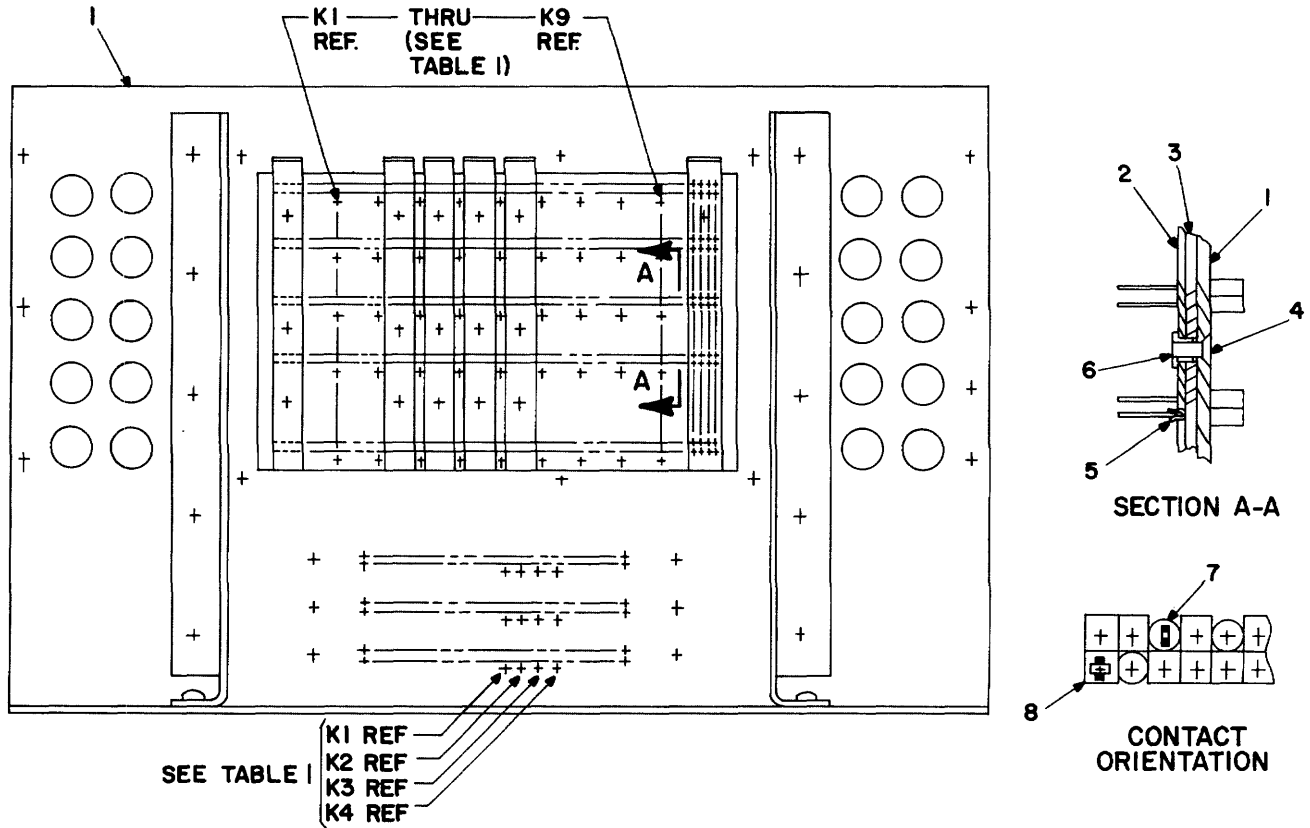


TABLE 1		
CONN. NO.	KEYING NO.	INSTALL ITEM NO.
XA1	K2, K7	9
XA2	K4, K9	
XA3	K3, K8	
XA4	K5, K9	
XA5	K1, K6	
J1	K3, K4	9
J2	K2, K4	
J3	K1, K4	

TABLE 2		
CONN. NO.	PIN NO.	INSTALL ITEM NO.
XA1	17, 18, 47, 48, 67, 68, 97, 98	7
XA5	47, 48, 67, 68	7
J1	4, 9, 10, 19, 20, 55, 56, 63, 64	7

TABLE 3		
CONN. NO.	PIN NO.	INSTALL ITEM NO.
XA1	5, 43, 61, 55, 56, 33	5
XA2	5, 107, 43, 61, 55, 56	
XA3	5, 107, 55, 56, 61	
XA4	5, 107, 43, 61, 55, 56	
XA5	5, 107, 43, 61, 55, 56	

NOTE : INSTALL ITEM NO. 8 AT ALL CONNECTOR POSITIONS EXCEPT PIN NUMBERS NOTED IN TABLE 2 AND KEYING POSITIONS

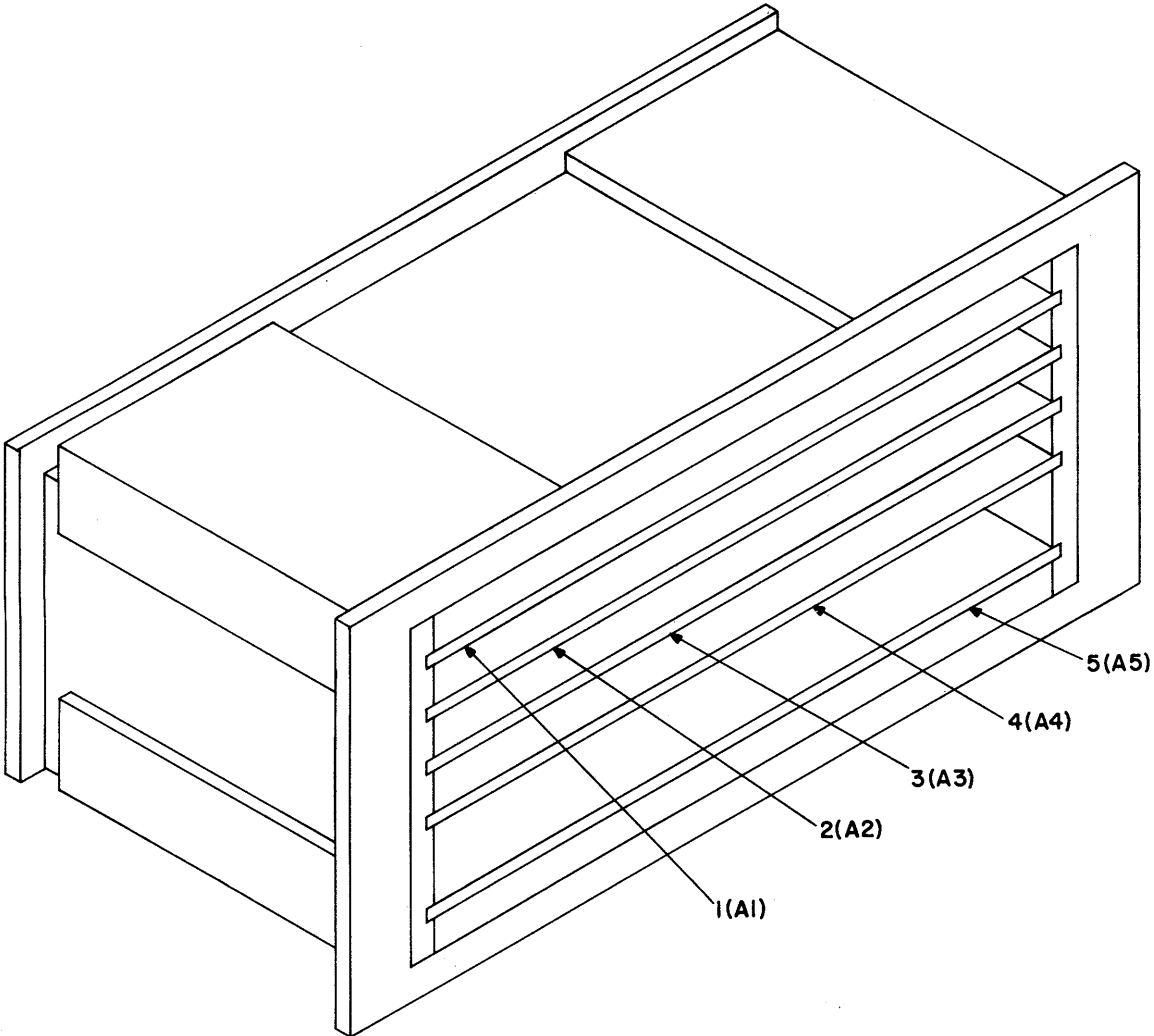
EL8FC008

Figure 5. Connector assy SM-D-812280-2.

SECTION II

TM 11-5805-714-34P/31W2-2TTC39-44-1/EE119-DC-PLG-010/E154 C10333

(1) ILLUSTRATION		(2)	(3)	(4)	(5)	(6)	(7)	(8)
(a) FIG NO.	(b) ITEM NO.	SMR CODE	NATIONAL STOCK NUMBER	FSCM	PART NUMBER	DESCRIPTION USABLE ON CODE	U/M	QTY INC IN UNIT
5	1	XBFZZ		80063	SM-D-812264	PLATE, CONNECTOR	EA	1
5	2	XBFZZ		80063	SM-C-812266	BUS, CONDUCTOR	EA	6
5	3	XBFZZ		80063	SM-C-812265	INSULATOR	EA	1
5	4	XBFZZ	5305-01-145-6947	80063	SM-C-811069	SCREW MACHINE	EA	18
5	5	XBFZZ		80063	SM-A-838338-1	SPRING BUSHING	EA	29
5	6	PAFZZ	5310-01-155-1907	80063	SM-C-811067	BUSHING.INSUL	EA	18
5	7	PAFZZ	5999-01-152-6772	80063	SM-A-742210-9	CONTACT AND INSULAT	EA	21
5	8	PAFZZ	5999-01-152-6771	80063	SM-A-742210-6	CUNTACT AND INSULAT	EA	737
5	9	PAFZZ	5999-01-15e-6770	80063	SM-A-742210-5	CONTACT AND INSULAT	EA	16



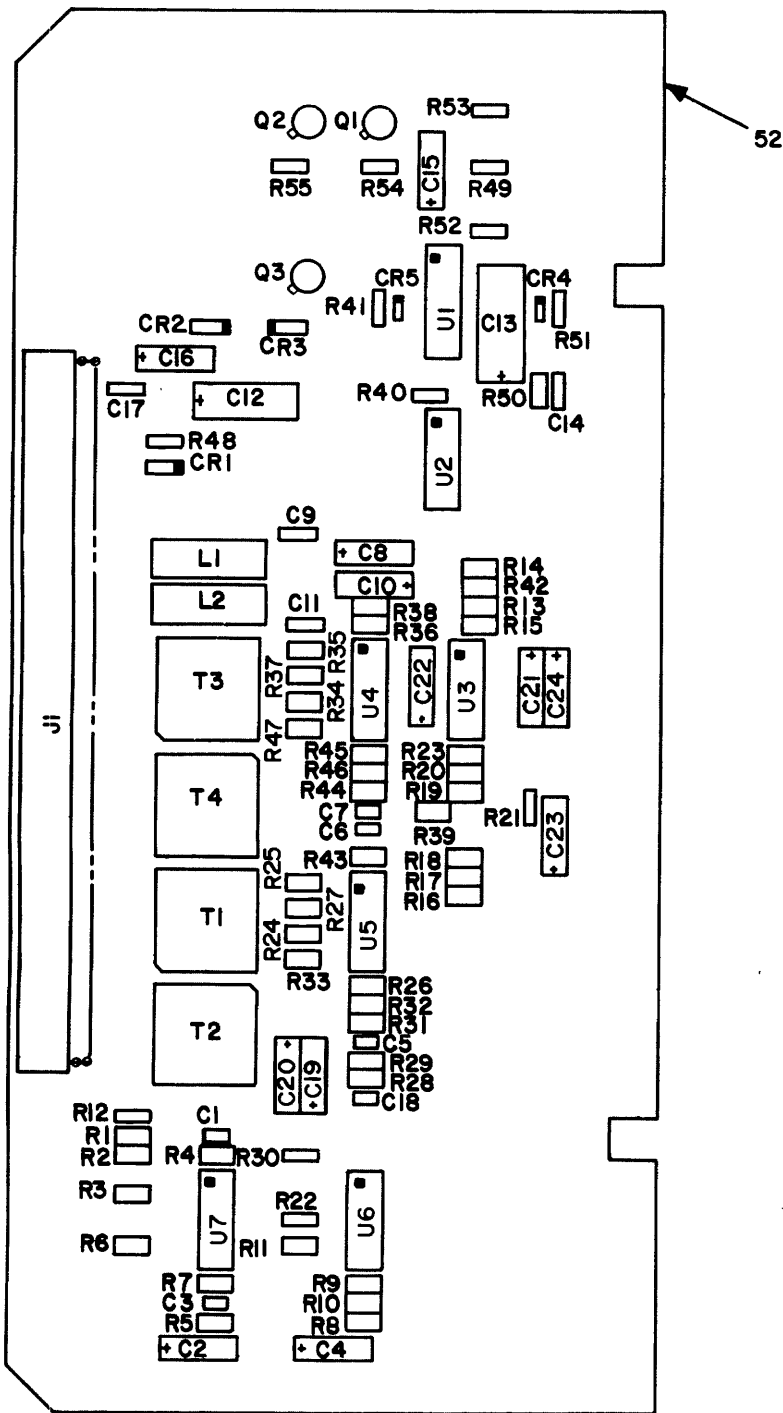
EL8FC009

Figure 6. Card set.

SECTION II

TM 11-5805-714-34P/31W2-2TTC39-44-1/EE119-DC-PLG-010/E154 C10333

(1) ILLUSTRATION		(2)	(3)	(4)	(5)	(6)	(7)	(8)
(a) FIG NO.	(b) ITEM NO.	SMR CODE	NATIONAL STOCK NUMBER	FSCM	PART NUMBER	DESCRIPTION USABLE ON CODE	U/M	QTY INC IN UNIT
6	1	PAODA	5805-01-120-3111	80063	SM-E-815555	CIRCUIT CARD ASSEMB	EA	1
6	2	PAOZA	5805-01-120-3112	80063	SM-E-815556	CIRCUIT CARD ASSEMB	EA	1
6	3	PAOZA	5805-01-120-3113	80063	SM-E-815557	CIRCUIT CARD ASSEMB	EA	1
6	4	PAODA	5805-01-120-3114	80063	SM-E-815558	CIRCUIT CARD ASSEMB	EA	1
6	5	PAODA	5805-01-120-3198	80063	SM-E-816538	CIRCUIT CARD ASSEMB	EA	1



PREFIX REFERENCE DESIGNATIONS WITH AI

REF. DES.	ITEM NO.	REF. DES.	ITEM NO.
CR1-3	1	R19	32
CR4,5	2	R20	26
C1	3	R21	33
C2	4	R22	34
C3	5	R23	35
C4	4	R24	36
C5-7	6	R25	23
C8	4	R26	37
C9	7	R27	38
C10	4	R28,29	28
C11	7	R30	34
C12	8	R31	39
C13	9	R32	40
C14	10	R33	41
C15	11	R34	36
C16	12	R35	23
C17	13	R36	37
C18	6	R37	38
C19-22	14	R38	34
C23,24	15	R39	32
J1	16	R40	42
L1,2	17	R41	43
Q1-3	18	R42	34
R1	19	R43,44	28
R2	20	R45	39
R3	21	R46	40
R4	22	R47	41
R5	20	R48,49	44
R6,7	22	R50	45
R8-10	23	R51	44
R11	24	R52	46
R12	25	R53	47
R13	26	R54	44
R14	27	R55	46
R15	28	T1-4	48
R16	29	U1	49
R17	30	U2	50
R18	31	U3-7	51

EL8FC010

Figure 7. Circuit card assy, CSP1 SM-E-81555.

SECTION II

TM 11-5805-714-34P/31W2-2TTC39-44-1/EE119-DC-PLG-010/E154 C10333

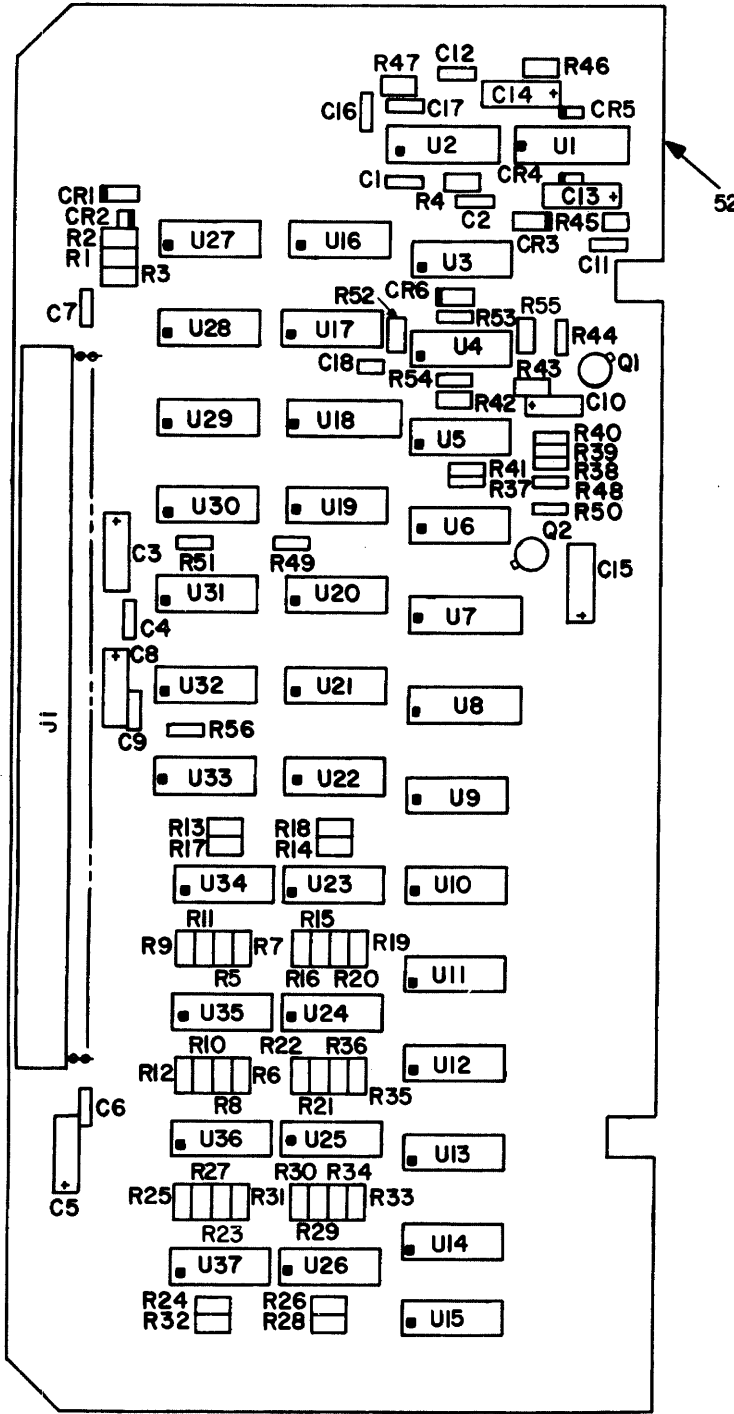
(1) ILLUSTRATION		(2)	(3)	(4)	(5)	(6) DESCRIPTION	(7)	(8) QTY INC IN UNIT
(a) FIG NO.	(b) ITEM NO.	SMR CODE	NATIONAL STOCK NUMBER	FSCM	PART NUMBER	USABLE ON CODE	U/M	
						GROUP 01 PRINTED CIRCUIT CARDS A1, A2, A3, A4, A5		
7	1	PADZZ	5961-00-702-3435	81349	JAN1N3600	SEMICONDUCTOR DEVIC	EA	3
7	2	PADZZ	5961-01-038-6918	81349	JAN1N4148-1	SEMICONDUCTOR DEVIC	EA	2
7	3	PADZZ	5910-00-010-8498	81349	M39014/01-1345	CAPACITOR, FIXED, CER	EA	1
7	4	PADZZ	5910-00-113-5475	81349	M39003/01-3006	CAPACITOR, FIXED, ELE	EA	4
7	5	PADZZ	5910-00-113-5277	81349	M39014/01-1563	CAPACITOR, FIXED, CER	EA	2
7	6	PADZZ	5910-00-114-0755	81349	M39014/01-1329	CAPACITOR, FIXED, CER	EA	4
7	7	XDDZZ	5910-00-010-8718	81349	M39014/02-1338	CAPACITOR, FIXED, CER	EA	2
7	8	PADZZ	5910-00-236-8766	81349	M39003/01-3094	CAPACITOR, FIXED, ELE	EA	1
7	9	PADZZ	5910-00-164-2972	81349	M39003/01-3029	CAPACITOR, FIXED, ELE	EA	1
7	10	PADZZ	5910-00-113-5499	81349	M39014/02-1350	CAPACITOR, FIXED, CER	EA	1
7	11	PADZZ	5910-00-192-7180	81349	M39003-01-2979	CAPACITOR, FIXED, ELE	EA	1
7	12	PADZZ	5910-00-007-3974	61349	M39003/01-2991	CAPACITOR, FIXED, ELE	EA	1
7	13	PADZZ	5910-00-113-5465	81349	M39014-02-1360	CAPACITOR, FIXED, CER	EA	1
7	14	PADZZ	5910-00-144-4381	81349	M39003/01-3024	CAPACITOR, FIXED, ELE	EA	4
7	15	PADZZ	5910-00-007-2003	81349	M39003/01-3009	CAPACITOR, FIXED, ELE	EA	2
7	16	PADZZ	5935-01-146-2960	05041	000403-0191	CONNECTOR, RECEPTCL	EA	1
7	17	PADZZ	5950-01-092-2993	96906	MS21380-29	COIL, RADIO FREQUENC	EA	2
7	18	PADZZ	5961-00-951-8757	81349	JA2NZN22ZA	TRANSISTOR	EA	3
7	19	PADZZ	5905-00-484-7889	81349	RNC55H1780FS	RESISTOR, FIXED, FILM	EA	1
7	20	PADZZ	5905-00-138-3376	81349	RNCSSH1001FR	RESISTOR, FIXED, FILM	EA	2
7	21	PADZZ	5905-00-284-6117	81349	RNC55H1021FS	RESISTOR, FIXED, FILM	EA	1
7	22	PADZZ	5905-00-479-9946	81349	RNC55H2372FR	RESISTOR, FIXED, FILM	EA	3
7	23	PADZZ	5905-00-256-8893	81349	RNC55H1962FR	RESISTOR, FIXED, FILM	EA	5
7	24	PADZZ	5905-00-139-1925	81349	RNC55H6491FR	RESISTOR, FIXED, FILM	EA	1
7	25	PADZZ	5905-00-141-1183	81349	RCRU7G101JS	RESISTOR, FIXED, COMP	EA	1
7	26	PADZZ	5905-00-138-7399	81349	RNC55HS11FR	RESISTOR, FIXED, FILM	EA	2
7	27	PADZZ	5905-00-479-9948	81349	RNC55H4121FS	RESISTOR, FIXED, FILM	EA	1
7	28	PADZZ	5905-00-236-0513	81349	RNC55H3482FR	RESISTOR, FIXED, FILM	EA	5
7	29	PADZZ	5935-00-412-0172	81349	RNC55H5622FS	RESISTOR, FIXED, FILM	EA	1
7	30	PADZZ	5905-00-401-7433	81349	RNC55H1622FS	RESISTOR, FIXED, FILM	EA	1
7	31	PADZZ	5905-00-256-5029	81349	RNC55H3162FR	RESISTOR, FIXED, FILM	EA	1
7	32	PADZZ	5905-00-466-1308	81349	RNC55H1331FR	RESISTOR, FIXED, FILM	EA	1
7	33	PADZZ	5905-00-136-8405	81349	RCRO7G131JS	RESISTOR, FIXED, COMP	EA	1
7	34	PADZZ	5905-00-114-0710	81349	RCRO7G331JS	RESISTOR, FIXED, COMP	EA	4
7	35	PADZZ	5905-00-480-5193	81349	RNC55H1691FR	RESISTOR, FIXED, FILM	EA	1
7	36	PADZZ	5905-00-236-0970	81349	RNC55H549DVS	RESISTOR, FIXED, FILM	EA	2
7	31	PADZZ	5905-00-405-3022	81349	RNC55H2Z12FS	RESISTOR, FIXED, FILM	EA	2
7	38	PADZZ	59U5-00-137-4815	81349	RNC-5H1052FS	RESISTOR, FIXED, FILM	EA	2

SECTION II

TM 11-5805-714-34P/31W2-2TTC39-44-1/EE119-DC-PLG-010/E154 C10333

(1) ILLUSTRATION		(2)	(3)	(4)	(5)	(6) DESCRIPTION	(7)	(8) QTY INC IN UNIT
(a) FIG NO.	(b) ITEM NO.	SMR CODE	NATIONAL STOCK NUMBER	FSCM	PART NUMBER	USABLE ON CODE	U/M	
7	39	PADZZ	5905-00-403-4452	81349	RNC55H7502FS	RESISTOR, FIXED, FILM	EA	2
7	40	PADZZ	5905-00-169-3419	81349	RNC55H5360FS	RESISTOR, FIXED, FILM	EA	2
7	41	PADZZ	5905-00-480-4026	81349	RNC55H1402FS	RESISTOR, FIXED, FILM	EA	2
7	42	PADZZ	5905-00-131-9729	81349	RCR07G302JS	RESISTOR, FIXED, COMP	EA	1
7	43	PADZZ	5905-00-111-1679	81349	RCR07G512JS	RESISTOR, FIXED, COMP	EA	1
7	44	PADZZ	5905-00-110-7620	81349	RCR071G02JS	RESISTOR, FIXED, COMP	EA	4
7	45	PADZZ	5905-00-401-7432	81349	RNC55H1003FR	RESISTOR, FIXED, FILM	EA	1
7	46	PADZZ	5905-00-114-0711	81349	RCR07G472JS	RESISTOR, FIXED, COMP	EA	2
7	47	PADZZ	5905-00-115-3560	81349	KCR07G183JS	RESISTOR, FIXED, COMP	EA	1
7	48	PADZZ	5950-01-022-2089	80063	SM-A-742456-1	TRANSFORMER, AUDIO F	EA	4
7	49	PADZZ	5962-01-078-5916	34148	F96L02DMQB	MICROCIRCUIT, DIGITA	EA	1
7	50	PADZZ	5962-01-058-7977	81349	M38510/30203BCB	MICROCIRCUIT, DIGITA	EA	1
7	51	PADZZ	5962-00-274-0200	81349	M38510/10102BIC	MICROCIRCUIT, LINEAR	EA	5
7	52	XADZZ		80063	SM-8-815755	PTD WIRING BD	EA	1

20/21(BLANK)



REF. DES.	ITEM NO.
CR1	1
CR2	2
CR3	3
CR4,5	4
CR6	3
C1	5
C2	6
C3	7
C4	8
C5	9
C6,7	10
C8	7
C9	8
C10	11
C11,12	6
C13,14	12
C15	13
C16	6
C17	14
C18	15
J1	16
Q1	17
Q2	18
R1,2	19
R3	20
R4	21
R5-36	22
R37	23
R38	24
R39	25
R40	26
R41	27
R42,43	28
R44	29
R45,46	30
R47	21
R48	31
R49	32
R50	33
R51	26
R52	34
R53	29
R54	35
R55	34
R56	26
U1,2	36
U3	37
U4	38
U5	39
U6	40
U7,8	41
U9	42
U10-14	43
U15	44
U16	45
U17	44
U18	41
U19	46
U20	47
U21-26	46
U27	48
U28	43
U29	49
U30	50
U31-33	46
U34-37	51

PREFIX REFERENCE DESIGNATIONS WITH A2

EL8FC011

Figure 8. Circuit card assy, CSP2 SM-E-815556.

SECTION II

TM 11-5805-714-34P/31W2-2TTC39-44-1/EE119-DC-PLG-010/E154 C10333

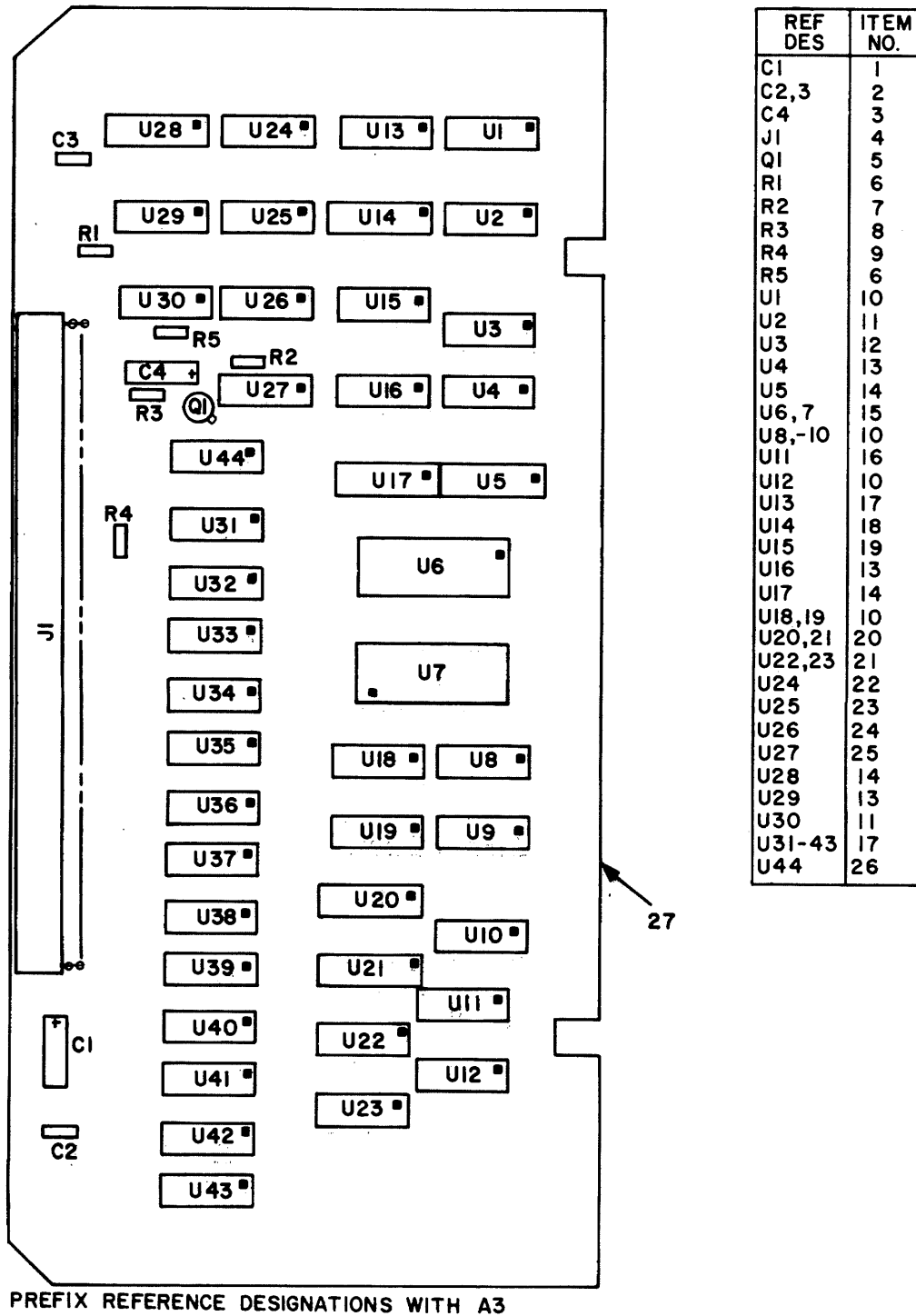
(1) ILLUSTRATION		(2) SMR CODE	(3) NATIONAL STOCK NUMBER	(4) FSCM	(5) PART NUMBER	(6) DESCRIPTION USABLE ON CODE	(7) U/M	(8) QTY INC IN UNIT
(a) FIG NO.	(b) ITEM NO.							
8	1	PADZZ	5961-00-903-2990	81349	JAN1N4372A	SEMICONDUCTOR DEVIC	EA	1
8	2	PADZZ	5961-00-894-0684	81349	JAN1NT58A	SEMICONDUCTOR DEVIC	EA	1
8	3	PADZZ	5961-00-847-5247	81349	JAN1N748A	SEMICONDUCTOR DEVIC	EA	2
8	4	PADZZ	5961-01-038-6918	81349	JAN1N4148-1	SEMICONDUCTOR DEVIC	EA	2
8	5	PADZZ	5910-00-113-5536	81349	M39014/02-1355	CAPACITOR, FIXED, CER	EA	1
8	6	PADZZ	5910-00-113-5499	81349	M39014/02-1350	CAPACITOR, FIXED, CER	EA	4
8	7	PADZZ	5910-00-113-5475	81349	M39003/01-3006	CAPACITOR, FIXED, ELE	EA	2
8	8	XDDZZ	5910-00-010-8718	81349	M39014/02-1338	CAPACITOR, FIXED, CER	EA	2
8	9	PADZZ	5910-00-001-3974	81349	M39003/01-2991	CAPACITOR, FIXED, ELE	EA	1
8	10	PADZZ	5910-00-113-5465	81349	M39014/02-1360	CAPACITOR, FIXED CER	EA	2
8	11	PADZZ	5910-00-495-0042	81349	M39003/01-3076	CAPACITOR, FIXED ELE	EA	1
8	12	PADZZ	5913-00-270-2659	81349	M39003/01-3078	CAPACITOR, FIXED, ELE	EA	2
8	13	PADZZ	5910-00-192-7180	81349	M39003-01-2979	CAPACITOR, FIXED, ELE	EA	1
8	14	PADZZ	5910-00-113-9453	81349	M39014-02-1417	CAPACITOR, FIXED, CER	EA	1
8	15	PADZZ	5910-01-102-8269	81349	CCR05CG182FR	CAPACITOR, FIXED, CER	EA	1
8	16	PADZZ	5935-01-146-2960	05041	000403-0191	CONNECTOR, RECEPTACL	EA	1
8	17	PADZZ	5961-00-226-8579	81349	JAN2N930	TRANSISTOR	EA	1
8	18	PADZZ	5961-00-925-3777	81349	JAN2N2907A	TRANSISTOR	EA	1
8	19	PADZZ	5905-0u-138-3376	81349	RNC55H1001FR	RESISTOR, FIXED, FILM	EA	2
8	20	PADZZ	5905-00-721-3617	81349	RNC55H1371FS	RESISTOR, FIXED, FILM	EA	1
8	21	PADZZ	5905-00-147-0128	81349	RNC55H9762FS	RESISTOR, FIXED, FILM	EA	2
8	22	PADZZ	5905-00-402-1194	81349	RNC55H2371FS	RESISTOR, FIXED, FILM	EA	32
8	23	PADZZ	5905-00-104-8369	81349	RCR07G362JS	RESISTOR, FIXED, COMP	EA	1
8	24	PADZZ	5905-00-131-1255	81349	RCR07G122JS	RESISTOR, FIXED, COMP	EA	1
8	25	PADZZ	5905-01-149-5101	16845	1000-483-23	RESISTOR, FIXED, FILM	EA	1
8	26	PADZZ	5905-01-110-7620	81349	RCR07G102JS	RESISTOR, FIXED, COMP	EA	3
8	27	PADZZ	5905-00-110-0388	81349	RCR07G104JS	RESISTOR, FIXED, COMP	EA	1
8	28	PADZZ	5905-00-422-4802	81349	RNC55H3481FS	RESISTOR, FIXED, FILM	EA	2
8	29	PADZZ	5935-00-141-0743	81349	RCR07G392JS	RESISTOR, FIXED, COMP	EA	2
8	30	PADZZ	5905-00-305-5509	81349	RNC55H3402FS	RESISTOR, FIXED, FILM	EA	2
8	31	PADZZ	5905-00-104-8358	81349	RCR00G822JS	RESISTOR, FIXED, COMP	EA	1
8	32	PADZZ	5905-00-114-0711	81349	RCR07G472JS	RESISTOR, FIXED, COMP	EA	1
8	33	PADZZ	5905-00-104-8357	81349	RCR07G684JS	RESISTOR, FIXED, COMP	EA	1
8	34	PADZZ	5905-00-419-2843	81349	RNC55HI503FS	RESISTOR, FIXED, FILM	EA	2
8	35	PADZZ	5905-00-244-6934	81349	RCR07G824JS	RESISTOR, FIXED, COMP	EA	1
8	36	PADZZ	5962-01-078-5916	34148	F96L020MOB	MICROCIRCUIT, DIGITA	EA	2
8	37	PADZZ	5962-01-058-1539	81349	M38510/30102BCB	MICROCIRCUIT, DIGITA	EA	1
8	38	PADZZ	5962-00-214-0200	81349	M38510/10102BIC	MICROCIRCUIT, LINEAR	EA	1
8	39	PADZZ	5962-00-361-8732	34148	340006-101-309	MICROCIRCUIT, DIGITA	EA	1
8	40	PADZZ	5962-01-061-1163	50464	1558687-01	MICROCIRCUIT, DIGITA	EA	1

SECTION II

TM 11-5805-714-34P/31W2-2TTC39-44-1/EE119-DC-PLG-010/E154 C10333

(1) ILLUSTRATION		(2)	(3)	(4)	(5)	(6) DESCRIPTION	(7)	(8)
(a) FIG NO.	(b) ITEM NO.	SMR CODE	NATIONAL STOCK NUMBER	FSCM	PART NUMBER	USABLE ON CODE	U/M	QTY INC IN UNIT
8	41	PADZZ	5962-01-067-3073	81349	M38510/30602BE8	MICROCIRCUIT, DIGITA	EA	3
8	42	PADZZ	5962-01-528-1703	17068	3183847-1-381	MICROCUIT LINEAR	EA	1
8	43	PADZZ	5962-01-039-6395	81349	M38510/30301BCB	MICROCIRCUIT, DIGITA	EA	6
8	44	PADZZ	5962-01-026-2493	81349	M38510/30007BCB	MICROCIRCUIT, DIGITA	EA	2
8	45	XDDZZ		80063	SM-A-838044-1	MICROCIRCUIT, DGTL	EA	1
8	46	PADZZ	5962-01-031-7030	81349	M38510/30001BCB	MICROCIRCUIT, DIGITA	EA	10
8	48	PADZZ	5962-01-078-5915	80063	SM-A-742443-1	MICROCIRCUIT, DIGITA	EA	1
8	49	PADZZ	5962-01-041-3214	81349	M38510/30502BCB	MICROCIRCUIT, DIGITA	EA	1
8	50	PADZZ	5962-01-031-1918	81349	M38510/3050L8CB	MICROCIRCUIT, DIGITA	EA	1
8	51	PADZZ	5962-01-026-6055	81349	M38510/300098CB	MICROCIRCUIT, DIGITA	EA	4
8	52	XADZZ		80063	SM-8-815756	PTD WIRING BD	EA	1

24/(25 BLANK)



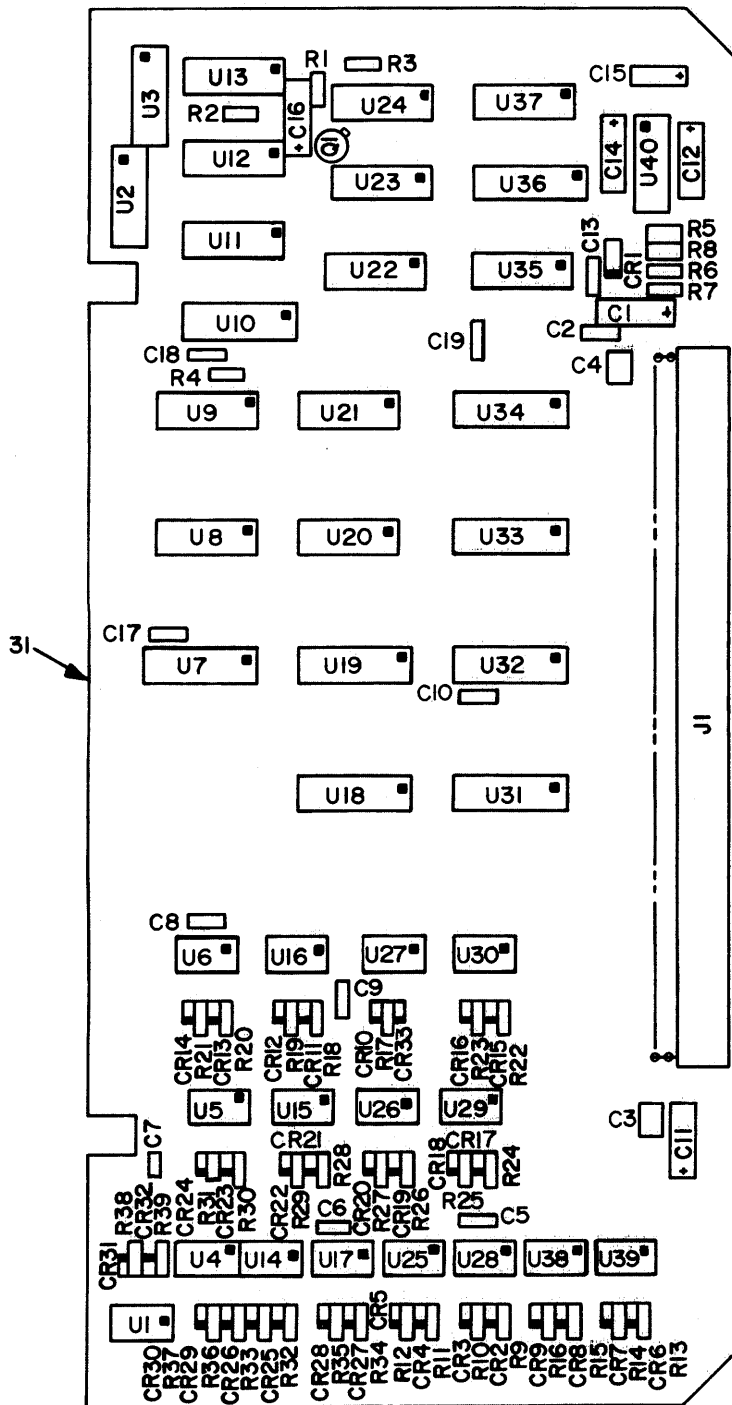
REF DES	ITEM NO.
C1	1
C2,3	2
C4	3
J1	4
Q1	5
R1	6
R2	7
R3	8
R4	9
R5	6
U1	10
U2	11
U3	12
U4	13
U5	14
U6,7	15
U8,-10	10
U11	16
U12	10
U13	17
U14	18
U15	19
U16	13
U17	14
U18,19	10
U20,21	20
U22,23	21
U24	22
U25	23
U26	24
U27	25
U28	14
U29	13
U30	11
U31-43	17
U44	26

Figure 9. Circuit card assy, CSP3 SM-E-815557.

SECTION II

TM 11-5805-714-34P/31W2-2TTC39-44-1/EE119-DC-PLG-010/E154 C10333

(1) ILLUSTRATION		(2) SMR CODE	(3) NATIONAL STOCK NUMBER	(4) FSCM	(5) PART NUMBER	(6) DESCRIPTION USABLE ON CODE	(7) U/M	(8) QTY INC IN UNIT
(a) FIG NO.	(b) ITEM NO.							
9	1	PADZZ	5910-00-007-3974	81349	M39003/01-2991	CAPACITOR, FIXED, ELE	EA	1
9	2	PADZZ	5913-00-113-5465	81349	M39014-02-1360	CAPACITOR, FIXED, CER	EA	2
9	3	PADZZ	5910-00-192-7180	81349	M39003-01-2979	CAPACITOR, FIXED, ELE	EA	1
9	4	PADZZ	5935-01-146-2960	05041	000403-0191	CONNECT.RECEPACL	EA	1
9	5	PADZZ	5961-00-925-3777	81349	JAN2N2907A	TRANSISITOR	EA	1
9	6	PADZZ	5905-00-110-7620	81349	RCR07G102JS	RESISTOR, FIXED, COMP	EA	2
9	7	PADZZ	5905-00-114-0711	81349	RCR07G472JS	RESISTOR, FIXED, COMP	EA	1
9	8	PADZZ	5905-00-104-8358	81349	RCR07G822JS	RESISTOR, FIXED, COMP.	EA	1
9	9	PADZZ	5905-00-104-8357	81349	RCR07G684JS	RESISTOR, FIXED, COMP	EA	1
9	10	PADZZ	5962-01-039-6395	81349	M38510/30301BCB	MICROCIRCUIT, DIGITA	EA	7
9	11	PADZZ	5962-01-027-6863	81349	M38510-30003BCB	MICROCIRCUIT, DIGITA	EA	2
9	12	PADZZ	5962-01-026-6055	81349	M38510/30009BCB	MICROCIRCUIT, DIGITA	EA	1
9	13	PADZZ	5962-01-041-3214	81349	M38510/30502BCB	MICROCIRCUIT, DIGITA	EA	3
9	14	PADZZ	5962-01-067-3073	81349	M38510/30602BEB	MICROCIRCUIT, DIGITA	EA	3
9	15	PADZZ	5962-00-311-3678	01295	SNC54154J-00	MICROCIRCUIT, DIGITA	EA	2
9	16	PADZZ	5962-01-026-2493	81349	M38510/30007BCB	MICROCIRCUIT, DIGITA	EA	1
9	17	PADZZ	5962-01-031-7030	81349	M38510/30001BCB	MICROCIRCUIT, DIGITA	EA	14
9	18	PADZZ	5962-01-051-3402	81349	M38510/30109BEB	MICROCIRCUIT, DIGITA	EA	1
9	19	PADZZ	5962-01-068-9593	81349	M38510/30605BCB	MICROCIRCUIT, DIGITA	EA	1
9	20	PADZZ	5962-00-272-8044	99380	0073-2090P1	MICROCIRCUIT, DIGITA	EA	2
9	21	PADZZ	5962-01-034-9832	81349	M38510/31004BCB	MICROCIRCUIT, DIGITA	EA	2
9	22	PADZZ	5962-01-031-1918	81349	M38510/30501BCB	MICROCIRCUIT, DIGITA	EA	1
9	23	PADZZ	5962-01-035-7478	81349	M38510/30302BCB	MICROCIRCUIT, DIGITA	EA	1
9	24	PADZZ	5962-01-058-1539	81349	M38510/30102BCB	MICROCIRCUIT, DIGITA	EA	1
9	25	PADZZ	5962-01-061-1163	50464	7558687-01	MICROCIRCUIT, DIGITA	EA	1
9	26	PADZZ	5962-01-048-9561	81349	M38510/15103BCB	MICROCIRCUIT, DIGITA	EA	1
9	27	XADZZ		80063	SM-B-815757	PTD WIRING BD	EA	1



PREFIX REFERENCE DESIGNATIONS WITH A4

REF. DES.	ITEM NO.
CR1	1
CR2-33	2
C1	3
C2	4
C3,4	5
C5-10	6
C11	7
C12	3
C13	4
C14	8
C15	9
C16	10
C17-19	6
J1	11
Q1	12
R1	13
R2	14
R3	15
R4	16
R5	17
R6	18
R7	19
R8	17
R9-39	20
U1	21
U2	22
U3	23
U4-6	21
U7	24
U8	23
U9	25
U10	24
U11	26
U12	27
U13	28
U14-17	21
U18,19	24
U20	29
U21	23
U22	29
U23	23
U24	29
U25-30	21
U31-34	24
U35	29
U36	24
U37	29
U38,39	21
U40	30

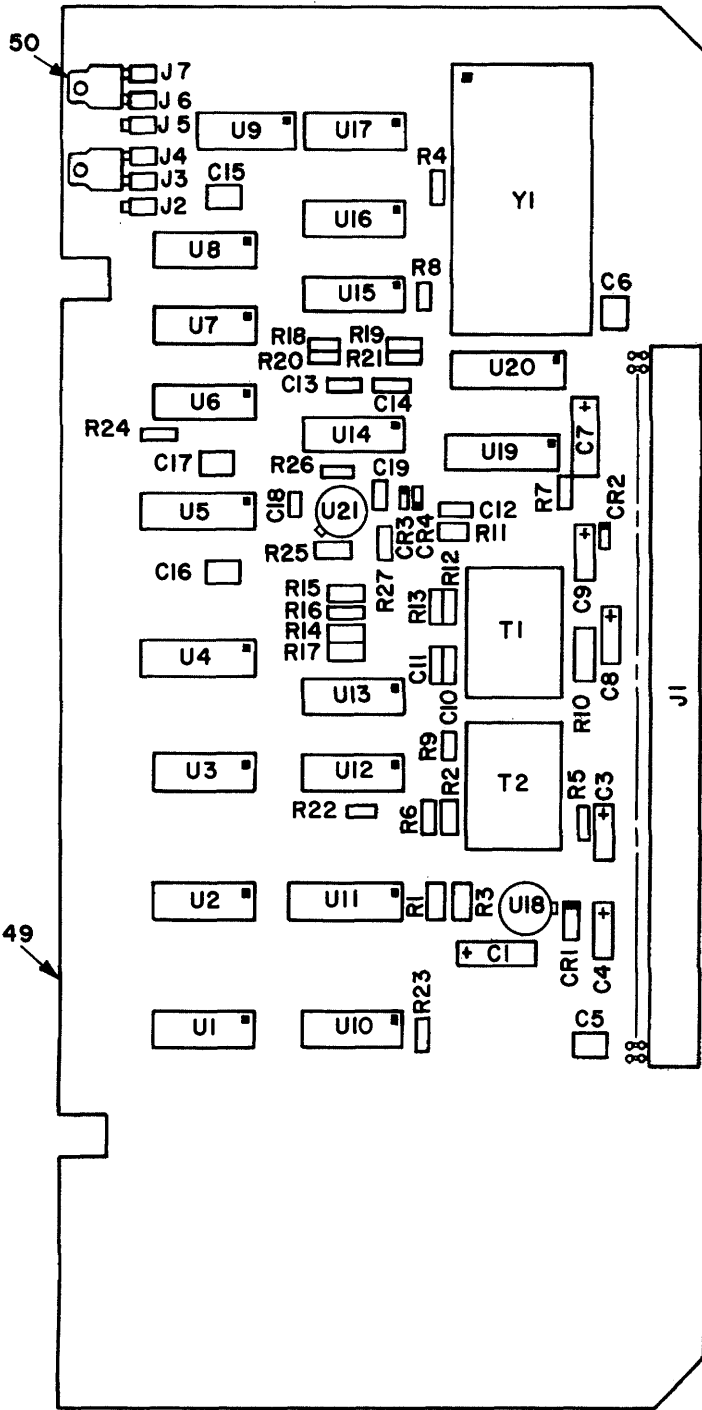
EL8FC013

Figure 10. Circuit card assy, CSP4 SM-E-815558.

SECTION II

TM 11-5805-714-34P/31W2-2TTC39-44-1/EE119-DC-PLG-010/E154 C10333

(1) ILLUSTRATION		(2)	(3)	(4)	(5)	(6) DESCRIPTION	(7)	(8) QTY INC IN UNIT
(a) FIG NO.	(b) ITEM NO.	SMR CODE	NATIONAL STOCK NUMBER	FSCM	PART NUMBER	USABLE ON CODE	U/M	
10	1	PADZZ	5961-00-847-5247	81349	JAN1N748A	SEMICONDUCTOR DEVIC	EA	1
10	2	PADZZ	5961-01-038-6918	81349	JAN1N4148-1	SEMICONDUCTOR DEVIC	EA	32
10	3	PADZZ	5910-00-113-5475	81349	M39003/01-3006	CAPACITOR, FIXED, ELE	EA	2
10	4	XDDZZ	5910-00-010-8718	81349	M39014/02-1338	CAPACITOR, FIXED, CER	EA	2
10	5	XDDZZ	5910-00-318-2161		2225-470000PF-PO	CAPACITOR, FIXED, CER	EA	2
				04222	M20PCT25WVDC			
10	6	PADZZ	5910-00-113-5499	81349	M39014/02-1350	CAPACITOR, FIXED, CER	EA	9
10	7	PADZZ	5910-00-007-3974	81349	M39003/001-2991	CAPACITOR, FIXED, ELE	EA	1
10	8	PADZZ	5910-00-270-2659	81349	M39003/01-3078	CAPACITOR, FIXED, ELE	EA	1
10	9	XDDZZ	5910-00-217-1228	81349	M39003-01-2103	CAPACITOR, FIXED, ELE	EA	1
10	10	PADZZ	5910-00-192-7180	81349	M39003-01-2979	CAPACITOR, FIXED, ELE	EA	1
10	11	PADZZ	5935-01-146-2960	05041	000403-0191	CONNECTOR, RECEPTACL	EA	1
10	12	PADZZ	5961-00-925-3717	81349	JAN2N2907A	TRANSISTOR	EA	1
10	13	PADZZ	5905-00-104-8358	81349	RCR07B822JS	RESISTOR, FIXED, COMP	EA	1
10	14	PADZZ	5905-00-114-0711	81349	RCR07G472JS	RESISTOR, FIXED, COMP	EA	1
10	15	PADZZ	5905-00-104-8357	81349	RCR07G684JS	RESISTOR, FIXED, COMP	EA	1
10	16	PADZZ	5905-00-110-7620	81349	RCR07GL02JS	RESISTOR, FIXED, COMP	EA	1
10	17	PADZZ	5905-00-419-2843	81349	RNC55H1503FS	RESISTGR, FIXED, FILM	EA	2
10	18	PADZZ	5905-00-104-8369	81349	RCR07G362JS	RESISTOR, FIXED, COMP	EA	1
10	19	PADZZ	5905-00-244-6934	81349	RCR07G824JS	RESISTOR, FIXED, COMP	EA	1
10	20	PADZZ	5905-00-119-8811	81349	RCR07G151JS	RESISTOR, FIXED, COMP	EA	31
10	21	PADZZ	5962-01-047-1758	01295	SNJ55454BJG	MICROCIRCUIT, LINEAR	EA	16
10	22	PADZZ	5962-01-031-1030	81349	M38510/30001BCB	MICROCIRCUIT, DIGITA	EA	1
10	23	PADZZ	5962-01-039-6395	81349	M38510/30301BCB	MICROCIRCUIT, DIGITA	EA	4
10	24	PADZZ	5962-00-272-8044	99380	0073-2090P1	MICROCIRCUIT, DIGITA	EA	9
10	25	PADZZ	5962-01-027-6863	81349	M38510-30003BCB	MICROCIRCUIT, DIGITA	EA	1
10	26	PADZZ	5962-01-031-1918	81349	M38510/30501BCB	MICROCIRCUIT, DIGITA	EA	1
10	27	PADZZ	5962-01-034-9832	81349	M36510/31004BCB	MICROCIRCUIT, DIGITA	EA	1
10	28	PADZZ	5962-01-067-1163	50464	7558687-01	MICROCIRCUIT, DIGITA	EA	1
10	29	PADZZ	5962-01-026-2493	81349	M38510/30007BCB	MICROCIRCUIT, DIGITA	EA	5
10	30	PADZZ	5962-00-274-0200	81349	M38510/10102BIC	MICROCIRCUIT, LINEAR	EA	1
10	31	XADZZ		80063	SM-B-815758	PTD WIRING BD	EA	1



REF DES	ITEM NO.	REF DES	ITEM NO.
CR1	1	R16	28
CR2	2	R17	17
CR3,4	3	R18	22
C1	4	R19	29
C3	5	R20	22
C4	6	R21	29
C5,6	7	R22-24	20
C7	8	R25	17
C8	5	R26	30
C9	9	R27	31
C10	10	T1,2	32
C11	11	U1	33
C12	12	U2	34
C13,14	11	U3	35
C15-17	7	U4,5	36
C18	13	U6	37
C19	14	U7	38
J1	15	U8	34
J2-7	16	U9	39
R1	17	U10	35
R2	18	U11	40
R3	19	U12	41
R4	20	U13	42
R5	21	U14	43
R6,7	22	U15	44
R8	20	U16	35
R9	22	U17	39
R10	23	U18	45
R11	24	U19	46
R12	22	U20	36
R13	25	U21	47
R14	26	Y1	48
R15	27		

PREFIX REFERENCE DESIGNATIONS WITH A5

EL8FC014

Figure 11. Circuit card assy, CSPMD SM-E-816538.

SECTION II

TM 11-5805-714-34P/31W2-2TTC39-44-1/EE119-DC-PLG-010/E154 C10333

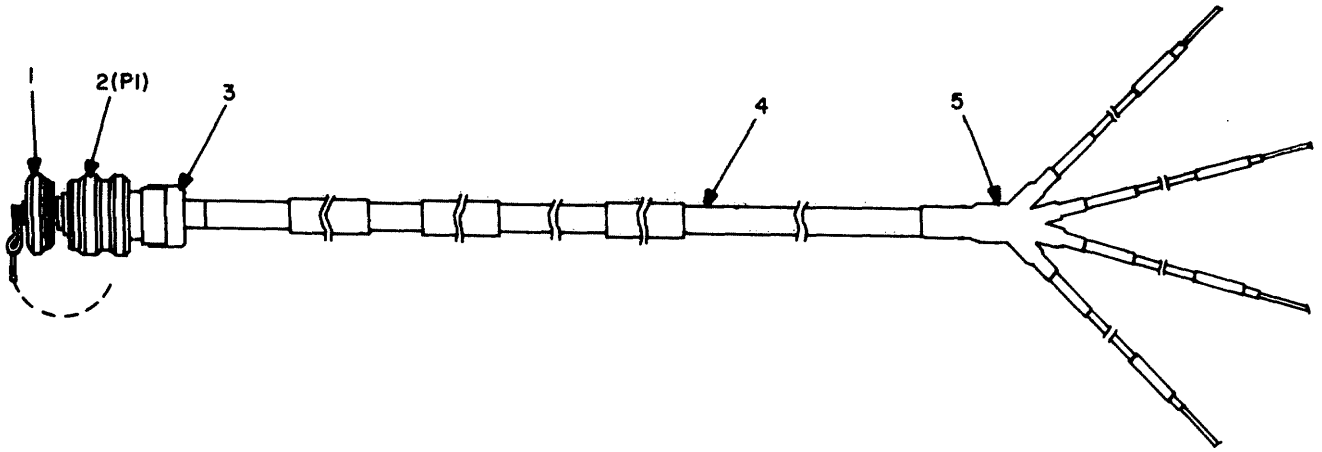
(1) ILLUSTRATION		(2) SMR CODE	(3) NATIONAL STOCK NUMBER	(4) FSCM	(5) PART NUMBER	(6) DESCRIPTION USABLE ON CODE	(7) U/M	(8) QTY INC IN UNIT
(a) FIG NO.	(b) ITEM NO.							
11	1	PADZZ	5961-00-892-1009	81349	JANLN963B	SEMICONDUCTOR DEVIC	EA	1
11	2	PADZZ	5961-00-995-2310	81349	JANLN752A	SEMICONDUCTOR DEVIC	EA	1
11	3	PADZZ	5961-01-038-6918	81349	JANLN4148-1	SEMICONDUCTOR DEVIC	EA	2
11	4	PADZZ	5910-00-010-8422	81349	M39003/0L-2964	CAPACITOR, FIXED, ELE	EA	1
11	5	PADZZ	5910-00-007-2002	81349	M39003/01-3003	CAPACITOR, FIXED, ELE	EA	2
11	6	PADZZ	5910-00-010-8159	81349	M39003/01-2988	CAPACITOR, FIXED, ELE	EA	1
11	7	XDDZZ	5910-00-318-2161		2225-470000PF-PO	CAPACITOR, FIXED, CER	EA	5
				04222	M20PCT25WVDC			
11	8	PADZZ	5910-00-007-3974	81349	M39003/01-2991	CAPACITOR, FIXED, ELE	EA	1
11	9	PADZZ	5910-00-236-8740	81349	M39003/01-2974	CAPACITOR, FIXED, ELE	EA	1
11	10	PADZZ	5910-00-113-9453	81349	M39014-02-1417	CAPACITOR, FIXED, CER	EA	1
11	11	PADZZ	5910-00-113-5499	81349	M39014/02-1350	CAPACITOR, FIXED, CER	EA	3
11	12	PADZZ	5910-00-113-9716	81349	M39014/02-1335	CAPACITOR, FIXED, CER	EA	1
11	13	PADZZ	5910-00-010-8498	81349	M39014/01-1345	CAPACITOR, FIXED, CER	EA	1
11	14	XDDZZ	5910-00-010-8718	81349	M39014/02-1338	CAPACITOR, FIXED, CER	EA	1
11	15	PADZZ	5935-01-146-2960	05041	000403-0191	CONNECTOR.RECEPTACL	EA	1
11	16	PADZZ	5935-01-144-7619		94-450-1055-01-0	JACK, TIP	EA	6
				71279	3-00			
11	17	PADZZ	5905-00-223-2741	81349	RNC55H1002FR	RESISTOR, FIXED, FILM	EA	3
11	18	PADZZ	5905-00-471-2257	81349	RNC55HL240FS	RESISTOR, FIXED, FILM	EA	1
11	19	PADZZ	5905-00-438-6429	81349	RNC55H4321FR	RESISTOR, FIXED, FILM	EA	1
11	20	PADZZ	5905-00-114-0711	81349	RCR07G472JS	RESISTOR, FIXED, COMP	EA	5
11	21	PADZZ	5961-01-148-8413	16845	1000-409-16	TRANSISTOR	EA	1
11	22	PADZZ	5905-00-110-7620	81349	RCR07G102JS	RESISTOR, FIXED, COMP	EA	6
11	23	PADZZ	5905-00-111-4742	81349	RCR20G391JS	RESISTOR, FIXED, COMP	EA	1
11	24	PADZZ	5935-00-758-5011	81349	RNC55H2871FS	RESISTOR, FIXED, FILM	EA	1
11	25	PADZZ	5905-00-141-0742	81349	RCR01GL81JS	RESISTOR, FIXED, COMP	EA	1
11	26	PADZZ	5905-00-481-1110	81349	RNC55H4991FS	RESISTOR, FIXED, FILM	EA	1
11	27	PADZZ	5905-00-005-2902	81349	RNC55H3012FS	RESISTOR, FIXED, FILM	EA	1
11	28	PADZZ	5905-00-111-4845	81349	RCR07G201JS	RESISTOR, FIXED, COMP	EA	1
11	29	PADZZ	5905-00-106-9356	81349	RCR07G203JS	RESISTOR, FIXED, COM	EA	2
11	30	PADZZ	5905-00-305-5225	81349	RNC55H1301FR	RESISTOR, FIXED, FILM	EA	1
11	31	PADZZ	5905-00-111-4727	81349	RCR07G272JS	RESISTOR, FIXED, COMP	EA	1
11	32	PADLZ	5950-01-148-6030	06918	353-0049	TRANSFORMER, AUDIO F	EA	2
11	33	PADZZ	5962-00-528-1703	77068	3183847-1-381	MICROCIRCUIT, LINEAR	EA	1
11	34	PADZZ	5962-01-041-3214	81349	M38510/30502BCB	MICROCIRCUIT, LIGIT	EA	2
11	35	PADZZ	5962-01-058-1539	81349	M38510/30102BCB	MICROCIRCUIT, DIGITA	EA	3
11	36	PADZZ	5962-01-066-1153	81349	M38510-31508BEB	MICROCIRCUIT, DIGIA	EA	3
11	37	PADZZ	5962-00-336-7466	01295	SNCS5425J-00	MICROCIRCUIT, DIGTA	EA	1
11	38	PADZZ	5962-01-039-6395	81349	M38510/30301BCB	MICROCIRCUIT, DIGITA	EA	1
11	39	PADZZ	5962-01-068-9593	81349	M38510/30605BCB	MICROCIRCUIT, DIGITA	EA	2

SECTION II

TM 11-5805-714-34P/31W2-2TTC39-44-1/EE119-DC-PLG-010/E154 C10333

(1) ILLUSTRATION		(2)	(3)	(4)	(5)	(6)	(7)	(8)
(a) FIG NO.	(b) ITEM NO.	SMR CODE	NATIONAL STOCK NUMBER	FSCM	PART NUMBER	DESCRIPTION USABLE ON CODE	U/M	QTY INC IN UNIT
11	40	PADZZ	5962-01-051-3402	81349	M38510/301098tB	MICROCIRCUIT, DIGITA.	EA	1
11	41	PADZZ	5962-00-361-8732	34148	340006-101-309	MICROCIRCUIT, DIGITA	EA	1
11	42	PADZZ	5962-01-021-6863	81349	M38510-30003BCB	MICROCIRCUIT, DIGITA	EA	1
11	43	PADZZ	5962-01-078-5915	80063	SM-A-742443-1	MICROCIRCUIT, DIGITA	EA	1
11	44	PADZZ	5962-01-031-7030	81349	M38510/30001BCB	MICROCIRCUIT, DIGITA	EA	1
11	45	PADZZ	5962-01-073-9544	13856	931205-01	MICROCIRCUIT, LINEAR	EA	1
11	46	PADZZ	5962-01-065-0880	13499	351-8434-010	MICROCIRCUIT, DIGITA	EA	1
11	47	PADZZ	5962-00-428-9550	80063	SM-A-742843-1	MICROCIRCUIT, LINEAR	EA	1
11	48	PADZZ	5805-01-079-3683	80063	SM-A-838277-1	OSCILLATOR, RADIO FR	EA	1
11	49	XADZZ		80063	SM-B-816638	PID WIRING .BO	EA	1
11	50	PADZZ	5935-00-050-5066	71279	461-2871-01-03-1 0	DUMMY CONECTOR, PLU	EA	2

32/33(BLANK)



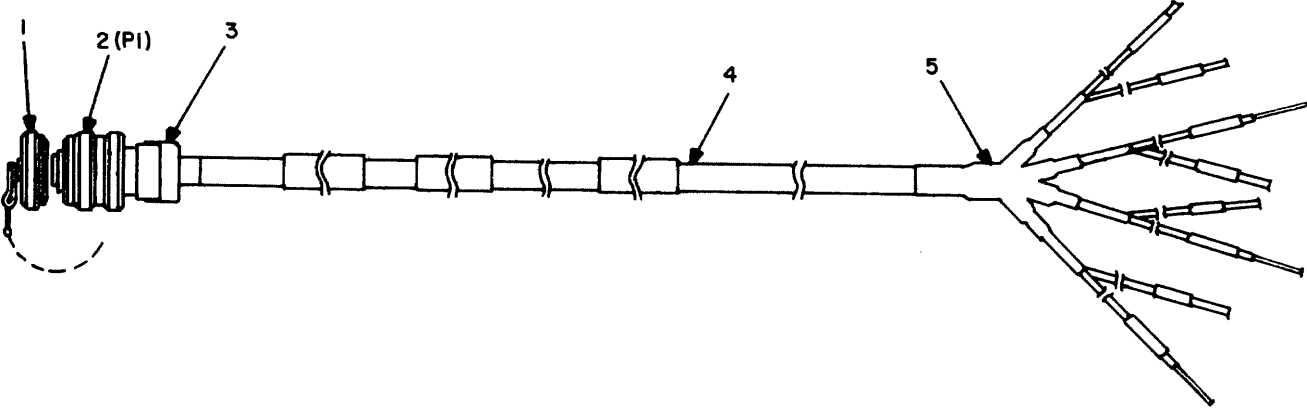
EL8FC015

Figure 12. Cable assy signal, SM-D-817252-2.

SECTION II

TM 11-5805-714-34P/31W2-2TTC39-44-1/EE119-DC-PLG-010/E154 C10333

(1) ILLUSTRATION		(2) SMR CODE	(3) NATIONAL STOCK NUMBER	(4) FSCM	(5) PART NUMBER	(6) DESCRIPTION USABLE ON CODE	(7) U/M	(8) QTY INC IN UNIT
(a) FIG NO.	(b) ITEM NO.							
12	1	PAFZZ	5935-00-009-3082	96906	MS27501B9C	GROUP 05 SIGNAL CABLES, INTERNAL COVER, ELECTRICAL CO	EA	1
12	2	PAFZZ	5935-01-123-9312	96906	MS2746T9B44S	CONNECTOR, PLUG, ELEC	EA	1
12	3	PAFZZ	5935-00-197-3916	96906	MS27506B8-2	CLAMP, CABLE, ELECTI	EA	1
12	4	XBFZZ		80063	SM-A-838029-5	CABLE, SPECIAL PURPO	FT	26
12	5	PAFZZ	5970-00-877-8458	06090	562A011-3	INSULATION SLEEVING	EA	1



EL8FC016

Figure 13. Cable assy signal, SM-D-817253-2.

SECTION II

TM 11-5805-714-34P/31W2-2TTC39-44-1/EE119-DC-PLG-010/E154 C10333

(1) ILLUSTRATION		(2)	(3)	(4)	(5)	(6) DESCRIPTION	(7)	(8) QTY INC IN UNIT
(a) FIG NO.	(b) ITEM NO.	SMR CODE	NATIONAL STOCK NUMBER	FSCM	PART NUMBER	USABLE ON CODE	U/M	
13	1	PAFZZ	5935-01-030-3055	96906	MS27501B13C	COVER, ELECTRICAL C3	EA	1
13	2	PAFZZ		96906	MS27467T13B8SC	CONN, PLUG, ELEC	EA	1
13	3	PAFZZ	5935-00-163-3651	96906	MS27506B12-2	CLAMP,CABLE,ELECTRL	EA	1
13	4	XBFZZ		80063	SM-A-838029-4	CABLE, SPECIAL, PURPO	FT	26
13	5	XBFZZ		80063	SM-A-744815-2	TRANSITION	EA	1

SECTION IV

TM 11-5805-714-34P/31W2-2TTC39-44-1/EE119-DC-PLG-010/E154 C10333

NATIONAL STOCK NUMBER AND PART NUMBER INDEX

STOCK NUMBER	FIGURE NO.	ITEM NO.	STOCK NUMBER	FIGURE NO.	ITEM NO.
5905-00-005-2902	11	27	5905-00-141-0742	11	25
5910-00-007-2002	11	5	5905-00-141-0743	8	29
5910-00-007-2003	7	15	5905-00-141-1103	1	25
5910-00-007-3974	7	12	5910-00-144-4381	7	14
5910-00-007-3974	8	9	5905-00-147-0128	8	21
5910-00-007-3974	9	1	5935-60-148-8190	4	5
5910-00-001-3974	10	7	5935-00-163-3651	13	3
5910-00-007-3914	11	8	5910-00-104-2972	7	9
5935-00-009-3082	12	1	5905-00-169-3419	7	40
5910-00-010-8159	11	6	6210-00-169-6129	1	13
5910-00-010-8422	11	4	5910-00-192-7180	7	11
5910-00-010-8498	7	3	5910-00-192-7180	8	13
5910-00-010-8498	11	13	5910-00-192-7180	9	3
5910-00-010-8718	7	7	5910-00-192-1180	10	10
5910-00-010-8718	8	8	5935-00-197-3916	12	3
5910-00-010-8718	10	4	5310-00-209-0790	1	103
5910-00-010-8718	11	14	5310-00-209-1239	1	18
5935-00-050-5066	11	50	5310-00-209-1366	1	101
5305-00-054-5649	1	83	5910-00-211-1228	10	9
5305-00-054-6651	1	109	5905-30-223-2741	11	17
5305-00-054-6652	1	93	5961-00-226-8579	8	17
5305-00-054-6654	1	104	6210-00-231-0613	1	11
5305-00-054-6655	1	81	5315-00-234-1801	3	4
5305-00-054-6072	1	108	5905-00-236-0513	7	28
5965-00-058-1288	2	1	5905-00-236-0970	?	36
5305-00-059-8226	2	10	5910-00-236-8740	11	9
5305-00-066-7327	1	89	5910-00-236-8165	1	8
5905-00-104-8357	8	33	5905-00-244-6934	8	35
5905-00-104-8357	9	9	5905-00-244-6934	10	19
5905-00-104-8357	10	15	5310-00-245-3612	1	100
5905-00-104-8358	8	31	5905-00-256-5029	7	31
5905-00-104-8358	9	8	5905-00-256-8893	7	23
5905-00-104-8358	10	13	5910-00-270-2659	8	12
5905-00-104-8369	8	23	5910-00-270-2659	10	8
5905-00-104-8369	10	18	5962-00-272-8044	9	20
5905-00-106-9356	11	29	5962-00-272-8044	10	24
5905-00-110-0388	8	21	5962-00-274-0200	7	51
5905-00-110-7620	7	44	5962-00-274-0200	8	38
5905-00-110-7620	8	26	5962-00-274-0200	10	30
5905-00-110-7620	9	6	5920-00-281-0210	1	19
5905-00-110-7620	10	16	5905-00-284-6117	7	21
5905-00-110-1620	11	22	5905-00-305-5225	11	30
5905-00-111-1679	7	43	5905-00-305-5509	8	30
5905-00-111-4127	11	31	5962-00-311-3678	9	15
5905-00-111-4742	11	23	6210-00-316-1890	1	20
5905-00-111-4845	11	28	6210-00-316-2016	1	28
5910-00-113-5277	7	5	6210-00-316-2023	1	21
5910-00-113-5465	7	13	6210-00-316-2044	1	22
5910-00-113-5465	8	10	6210-00-316-2057	1	23
5910-00-113-5465	9	2	5910-00-316-2161	10	5
5910-00-113-5475	7	4	5910-00-318-2161	11	7
5910-00-113-5475	8	7	5962-00-336-7468	11	37
5910-00-113-5475	10	3	5962-00-361-8132	8	39
5910-00-113-5499	7	10	5962-00-361-8132	11	41
5910-00-113-5499	8	6	5930-00-396-3671	1	3
5910-00-113-5499	10	6	5930-30-401-7432	7	45
5910-00-113-5499	11	22	5905-00-401-7433	7	30
5910-00-113-5536	8	5	5905-00-402-1194	8	22
5910-00-113-9453	8	14	6625-00-402-5212	2	5
5910-00-113-9453	11	10	5905-00-403-445Z	7	39
5910-00-113-9716	11	12	5905-00-404-0252	1	8
5905-00-114-0710	7	34	5905-00-405-3022	7	37
5905-00-114-0711	7	46	5905-00-412-0772	7	29
5905-00-114-0711	8	32	5905-00-419-2843	8	34
5905-00-114-0711	9	7	5905-00-419-2843	10	17
5905-00-114-0111	10	14	5935-00-421-2772	1	69
5905-00-114-0711	11	20	5905-00-422-4802	8	28
5910-00-114-0755	7	6	5962-00-428-9550	11	47
5905-00-115-3560	7	47	6210-00-438-2234	1	2
5905-00-119-8811	10	20	5905-00-438-6429	11	19
5905-00-131-1255	8	24	5905-00-486-1308	7	12
5905-00-131-9729	7	42	5905-00-471-2257	11	11
6240-00-132-4011	1	12	5905-00-479-9945	7	12
5340-00-134-3846	2	8	5905-00-479-9948	1	27
5905-00-136-8405	7	33	5905-00-480-4026	7	41
5905-00-131-4815	!	38	0905-00-450-5193	7	35
5905-00-138-3376	7	20	5905-00-481-1110	11	20
5905-00-138-3376	8	19	5905-00-484-7889	1	19
5905-00-138-7399	7	26	5965-00-485-9575	2	4
5905-00-139-1925	7	24	5910-00-495-0042	8	11

SECTION IV

TM 11-5805-714-34P/31W2-2TTC39-44-1/EE119-DC-PLG-010/E154 C10333

NATIONAL STOCK NUMBER AND PART NUMBER INDEX

STOCK NUMBER	FIGURE NO.	ITEM NO.	STOCK NUMBER	FIGURE NO.	ITEM NO.
6150-00-519-2714	1	95	5961-01-038-6918	10	2
5962-00-528-1703	8	42	5961-01-038-6918	11	3
5962-00-528-1703	11	33	5962-01-039-6395	8	43
5935-00-532-0909	1	57	5962-01-039-6395	9	10
5310-00-595-6057	1	92	5962-01-039-6395	10	23
5310-00-595-6211	1	85	5962-01-039-6395	11	38
5310-00-616-8660	1	94	5962-01-041-3214	8	49
5310-00-619-1148	1	17	5962-01-041-3214	9	13
5310-00-625-5756	3	3	5962-01-041-3214	11	34
5961-00-702-3435	7	1	5935-01-046-9753	4	2
5905-00-721-3677	8	20	5962-01-047-1758	10	21
5340-00-721-5315	1	79	5962-01-048-9561	9	26
5905-00-758-5011	11	24	5962-01-051-3402	9	18
5310-00-773-7618	1	98	5962-01-051-3402	11	40
5310-00-773-7624	1	10	5962-01-058-1539	8	37
5305-00-812-3549	2	11	5962-01-058-1539	9	24
5310-00-627-8487	1	102	5962-01-058-1539	11	35
5355-00-839-2138	1	10	5962-01-058-7977	7	50
5961-00-847-5247	8	3	5962-01-065-0880	11	46
5961-00-847-5247	10	1	5962-01-066-1153	11	36
5970-00-877-8458	12	5	5962-01-067-1163	8	40
5310-00-680-5978	1	107	5962-01-067-1163	9	25
5340-00-886-6156	1	61	5962-01-067-1163	10	28
5920-00-887-6514	1	18	5962-01-067-3073	8	41
5961-00-892-1009	11	1	5962-01-067-3073	9	14
5930-00-892-9479	1	5	5962-01-068-9593	9	19
5961-00-894-0684	8	2	5962-01-068-9593	11	39
5310-00-903-1524	1	90	5962-01-073-9544	11	45
5961-00-903-2990	8	1	5962-01-078-5915	8	48
5961-00-925-3777	8	18	5962-01-078-5915	11	43
5961-00-925-3777	9	5	5962-01-078-5916	7	49
5961-00-925-3777	10	12	5962-01-078-5916	8	36
5905-00-929-3287	1	4	5805-01-079-3683	11	48
5905-00-929-3288	1	3	5950-01-092-2993	7	17
5310-00-929-6395	1	87	5910-01-102-8269	8	15
5965-00-930-0130	2	2	5805-01-120-3111	6	1
5310-00-933-8118	1	84	5805-01-120-3112	6	2
5310-00-933-8119	1	106	5805-01-120-3113	6	3
5310-00-933-8120	1	76	5805-01-120-3114	6	4
5310-00-934-9748	1	96	5d05-01-120-3198	6	5
5310-00-934-9759	1	105	5805-01-121-6546	1	66
5310-00-934-9761	1	86	5935-01-123-9312	12	2
5310-00-934-9765	1	75	5915-01-125-5840	1	43
5940-00-949-5551	1	64	5995-01-141-3933	1	47
5961-00-951-8757	7	18	5995-01-141-3934	1	34
5310-00-913-8660	1	80	5995-01-141-3935	1	35
5310-00-984-7042	1	91	5965-01-141-3938	1	45
5310-00-984-7042	1	99	5340-01-144-1799	1	41
5340-00-988-3210	1	88	5935-01-144-7619	11	16
5340-00-989-9224	1	82	5305-01-145-6947	5	4
5961-00-995-2310	11	2	5935-01-146-2960	7	16
5950-01-022-2089	7	48	5935-01-146-2960	8	16
5962-01-026-2493	8	44	5935-01-140-2960	9	4
5962-01-026-2493	9	16	5935-01-146-2960	10	11
5962-01-026-2493	10	29	5935-01-146-2960	11	15
5962-01-026-6055	8	51	5995-01-146-6902	2	7
5962-01-026-6055	9	12	6210-01-147-9226	1	32
5962-01-027-6863	9	11	6210-01-147-9227	1	31
5962-01-027-6863	10	25	6210-01-148-2734	1	30
5962-01-027-6863	11	42	5950-01-148-6030	11	32
5935-01-030-3055	4	1	5961-01-148-8413	11	21
5935-01-030-3055	13	1	6210-01-149-2196	1	16
5962-01-031-1918	8	50	5930-01-149-2979	1	26
5962-01-031-1918	9	22	5905-01-149-5107	8	25
5962-01-031-1918	10	26	5965-01-151-4333	2	6
5962-01-031-7030	8	46	5935-01-151-6568	4	3
5962-01-031-1030	9	17	5999-01-152-6770	5	9
5962-01-031-7030	10	22	5999-01-152-6771	5	8
5962-01-031-7030	11	44	5999-01-152-6172	5	7
5962-01-034-9832	9	21	6210-01-152-8032	1	42
5962-01-034-9832	10	27	5310-01-155-1907	5	6
5975-01-035-5338	1	68	5935-01-159-1633	1	54
5962-01-035-7478	9	23	5935-01-159-1634	1	53
5961-01-038-6918	7	2	6210-01-164-4713	1	39
5961-01-038-6918	8	4	5945-01-165-8466	1	62

SECTION IV

TM 11-5805-714-34P/31W2-2TTC39-44-1/EE119-DC-PLG-010/E154 00333
 NATIONAL STOCK NUMBER AND PART NUMBER INDEX

FSCM	PART NUMBER	FIG. NO.	ITEM NO.	FSCM	PART NUMBER	FIG. NO.	ITEM NO.
81343	AS123188	3	4	81349	M38510/10102B10	8	38
81349	CCR0SCG182FR	8	15	81349	M38511/10102B10	10	30
71744	CM7333	1	12	81349	M38510/15103BCB	9	26
81349	C0-03HDF13/2010375	41	4	61349	M38510/30001BCB	8	46
77342	FC4145-2	1	62	81349	M38510/30001BCB	9	11
81349	FHN55W	1	18	81349	M38510/30001BCB	10	22
81349	F02A250V4AS	1	19	81349	M38510/30001BCB	11	44
34148	F96102DMQB	1	49	81349	M38510/30007BCB	8	44
34148	F96102DMQB	8	36	81349	M38510/30007BCB	9	16
81349	JAN1N3600	7	1	81349	M38510/30007BCB	10	29
81349	JAN1N4148-1	7	2	81349	M38510/30009BCB	8	51
81349	JAN1N4148-1	8	4	81349	M38510/30009BCB	9	12
81349	JAN1N4148-1	1	2	81349	M38510/30102BCB	8	31
81349	JAN1N4148-1	11	3	81349	M38510/30102BCB	9	24
81349	JAN1N4372A	8	1	81349	M38510/30102BCB	11	35
81349	JAN1N748A	8	3	81349	M38510/30109BEB	9	18
81349	JAN1N748A	10	1	81349	M38510/30109BEB	11	40
81349	JAN1N752A	11	2	81349	M38510/30203BCB	7	50
81349	JAN1N758A	8	2	81349	M38510/30301BCB	8	43
81349	JAN1N963G	11	1	81349	M38510/30301BCB	9	10
81349	JAN2NZ22A	7	18	81349	M38510/30301BCB	10	23
81349	JAN2NZ907A	8	18	81349	M38510/30301BCB	11	38
81349	JAN2N2907A	9	5	81349	M38510/30302BCB	9	23
81349	JAN2N2907A	10	12	81349	M38510/30501BCB	8	50
81349	JAN2N930	8	11	81349	M38510/30501BCB	9	22
81349	LC271N2	1	11	81349	M38510/30501BCB	10	26
81349	LC27WT2	1	13	81349	M38510/30502BCB	8	49
81349	LH73-2	1	2	81349	M38510/30502BCB	9	13
96906	MS15795-803	1	85	81349	M38510/30502BCB	11	34
96906	MS15795-807	1	107	81349	M38513/30602BEB	8	41
96906	MS15795-808	1	77	81349	M38510/30602BEB	9	14
96906	MS15795-812	3	3	81349	M38510/30605BCB	9	19
96906	MS15795-814	1	98	81349	M38510/30605BCB	11	39
96906	MS15795-815	1	92	81349	M38510/31004BCB	9	21
96906	MS21380-29	7	11	81349	M38510/31004BCB	10	27
96906	MS24693-C28	1	89	81349	M39003-01-2103	10	9
96906	MS25281-R4	1	88	81349	M39003-01-2979	7	11
96906	MS25281-R5	1	79	81349	M39003-01-2979	8	13
96906	MS25281-R6	1	82	81349	M39003-01-2979	9	3
96906	MS27467T13B8S	4	2	81349	M39003-31-2979	10	10
96906	MS27461T13B8SC	13	2	81349	M39003/01-2964	11	4
96906	MS27467T9844S	12	2	81349	M39003/01-2974	11	9
96906	MS27468T13B8P	1	57	81349	M39003/01-2988	11	6
96906	MS27501813C	4	1	81349	M39003/01-2991	7	12
96906	MS27501013C	13	1	81349	M39003/01-2991	8	9
96906	MS27501B9C	12	1	81349	M39003/01-2991	9	1
96906	MS27506B12-2	13	3	81349	M39003/01-2991	10	7
96906	MS1750688-2	12	3	81349	M39003/01-2991	11	8
96906	MS27903-1	1	5	81349	M39003/01-3003	11	5
96906	MS352214-1	2	10	81349	M39003/01-3006	7	4
96906	MS35214-5	2	11	81349	M39003/01-3006	8	7
96906	MS35335-58	1	101	81349	M39003/01-3006	10	3
96906	M535335-60	1	78	81349	M39003/01-3009	7	15
96906	MS35335-63	1	103	81349	M39003/01-3024	7	14
96906	M535338-135	1	84	81349	M39003/01-3029	7	9
96906	MS35338-136	1	87	81349	M39003/01-3076	8	11
96906	MS35338-13	1	106	81349	M39003/01-3078	8	12
96906	MS35338-138	1	76	81349	M39003/01-3018	10	8
96906	MS35338-141	1	91	81349	M39003/01-3094	7	8
96906	MS35338-141	1	99	81349	M39014-02-1360	1	13
96906	M535426-16	1	102	81349	M39014-02-1360	8	10
96906	MS35649-244	1	96	81349	M39014-02-1360	9	2
96906	M535649-264	1	86	81349	M39014-02-1417	8	14
96906	MS35649-264	1	105	81349	M39014-02-1417	11	10
96906	MS35650-304	1	75	81349	M39014/01-1329	7	6
96906	MS35650-3384	1	100	81349	M39014/01-1345	7	3
96906	MS51957-15	1	83	61349	M39014/01-1345	11	13
96906	MS51957-27	1	109	81349	M39314/01-1563	7	5
96906	MS51957-28	1	93	81349	M39014/02-1335	11	12
96906	MS51957-30	1	104	81349	M39014/02-1338	7	7
96906	MS51957-31	1	81	81349	M39014/02-1338	8	8
96906	MS51957-41	1	108	81349	M39014/02-1336	10	4
96906	MS519T12-3	1	90	81349	M39014/02-1338	11	14
96906	MS91528-2E1B	1	10	81349	M39014/02-1350	7	10
81349	M15733/32-0001	1	43	81349	M39014/02-1350	8	6
81349	M38510-30003BCB	9	11	81349	M39014/02-1350	10	6
81349	M38510-30003BCB	10	25	61349	M39014/02-1350	11	11
81349	M38510-30003BCB	11	42	81349	M39014/02-1355	8	5
81349	M38510-31508BEB	11	13	80205	NAS1523C6W	1	97
81349	M38510/10102BIC	7	51	91929	PX2P16K10A1B-015	1	26

SECTION IV

TM 11-5805-714-34P/31W2-2TTC3944-1/EE119-DC-PLG-010/E154 C10333
NATIONAL STOCK NUMBER AND PART NUMBER INDEX

FSCM	PART NUMBER	FIG. NO.	ITEM NO.	FSCM	PART NUMBER	FIG. NO.	ITEM NO.
81349	RCR07G101JS	7	25	12522	R60F24445-RERING	1	20
81349	RCR0G0102JS	7	44	12522	R60F24445-SPLIT 1	1	42
81349	RCR07G102JS	8	26	12522	R60F24445-SPLIT 2	1	39
81349	RCR07G102JS	9	6	12522	R60F24445-SW1TCH	1	31
81349	RCR07G102JS	10	16	12522	R60F24445CA11/SEIZE	1	28
81349	RCR07G102JS	11	12	12522	R60F24445COMMONRELEASE	1	21
81349	RCR07G104JS	8	27	12522	R60F24445RELEASE1	1	22
81349	RCR07G122JS	8	24	12522	R60F24445RELEASE2	1	23
81349	RCR07G131JS	7	33	12522	R62S001-2	1	37
81349	RCR07G151JS	10	20	07418	SE6F0904A1.0-34	1	58
81349	RCR07G181JS	11	25	80063	SM-A-742210-5	5	9
81349	RCR07G183JS	7	47	80063	SM-A-742210-6	5	8
81349	RCR07G201JS	11	28	80063	SM-A-742210-9	5	7
81349	RCR07G203JS	11	29	80063	SM-A-7142443-1	8	48
81349	RCR07G272JS	11	31	80063	SM-A-742443-1	11	43
81349	RCR07G302JS	7	42	80063	SM-A-742456-1	7	48
81349	RCR07G331JS	7	34	80063	SM-A-742843-1	11	41
81349	RCR07G362JS	8	23	80063	SM-A-744815-2	13	5
81349	RCR07G362JS	10	18	80063	SM-A-838008-1	1	61
81349	RCR07G392JS	8	29	80063	SM-A-838029-4	13	4
81349	RCR07G472JS	1	46	80063	SM-A-838029-5	12	4
61349	RCR07G472JS	8	32	80063	SM-A-838044-1	8	45
81349	RCR07G472JS	9	7	80063	SM-A-838277-1	11	48
81349	RCR07G472JS	10	14	80063	SM-A-838338-1	5	5
81349	RCR07G472JS	11	20	80063	SM-A-838435-1	1	29
81349	RCR07G512JS	7	43	80063	SM-A-838448-1	1	44
81349	RCR07G684JS	8	33	80063	SM-B-416109-1	1	80
81349	RCR07G684JS	9	9	80063	SM-B-436227	2	4
81349	RCR07G684JS	10	15	80063	SM-B-436240	2	8
81349	RCR07G822JS	8	31	80063	SM-B-811089	1	65
81349	RCR07G822JS	9	8	80063	SM-B-812253	1	59
81349	RCR07G822JS	10	11	80063	SM-B-815755	1	52
81349	RCR07G824JS	8	35	80063	SM-B-815756	8	52
81349	RCR07G824JS	10	19	80063	SM-B-815757	9	27
81349	RCR20G391JS	11	23	80063	SM-B-815758	10	31
08226	REW620-6	1	110	80363	SM-B-816638	11	49
81349	RNC55H1001FR	7	20	80063	SM-C-430274	2	1
81349	RNC55H1001FR	8	19	80063	SM-C-436139	2	5
81349	RNC55H1002FR	11	17	80063	SM-C-811067	5	6
81349	RNC55H1003FR	1	45	80063	SM-C-811069	5	4
81349	RNC55H1021FS	7	21	80063	SM-C-811960-1	1	60
81349	RNC55H1052FS	7	38	80063	SM-C-612262	1	50
81349	RNC55H1240FS	11	18	80063	SM-C-812263	1	72
81349	RNC55H1301FR	11	30	80063	SM-C-812265	5	3
81349	RNC55H1331FR	1	32	80063	SM-C-812266	5	2
81349	RNC55H1371FS	8	20	80063	SM-C-812267	1	15
81349	RNC55H1402FS	7	41	80063	SM-C-812366	1	9
81349	RNC55H1503FS	8	34	80063	SM-C-813545	2	3
81349	RNC55H1503FS	101	17	80063	SM-C-813870	1	25
81349	RNC55H1622FS	7	30	80063	SM-C-814431-4	1	48
81349	RNC55H1691FR	7	35	80063	SM-D-317318	2	6
81349	RNC55H1780FS	7	19	80063	SM-D-436220	2	2
81349	RNC55H1962FR	1	23	80063	SM-D-744699	3	2
d1349	RNC55H2212FS	7	37	80063	SM-D-744100	1	46
81349	RNC55H2311FS	8	22	80063	SM-D-744700-1	3	1
81349	RNC55H2312FR	7	22	80063	SM-D-811255	1	6
81349	RNC55H2871FS	11	24	80063	SM-D-812256	1	14
81349	RNC55H3012FS	11	27	80063	SM-D-812257	1	24
81349	RNC55H3162FR	7	31	80063	SM-D-812258	1	33
81349	RNC55H3402FS	8	30	80063	SM-D-812260	1	70
81349	RNC55H3481FS	8	28	80063	SM-D-812261	7	13
81349	RNC55H3482FR	7	28	80063	SM-D-812264	5	1
81349	RNC55H4121FS	7	27	80063	SM-D-812280-2	1	71
81349	RNC55H4321FR	11	19	80063	SM-D-812394-1	1	47
81349	RNC55H4991FS	11	26	80063	SM-D-813544	1	45
81349	RNC55H5111FR	7	26	80063	SM-D-817Z51	1	56
81349	RNC55H5360FS	7	40	80063	SM-D-817252-2	1	34
81349	RNC55H5490FS	7	36	80063	SM-D-817253-2	1	35
81349	RNC55H5622FS	7	29	80063	SM-D-817305-2	1	36
81349	RNC55H6491FR	7	24	80063	SM-D-817532	1	63
81349	RNC55H7502FS	1	39	80063	SM-E-815555	6	1
81349	RNC55H9762FS	8	21	80063	SM-E-815556	b	2
81349	RV6SAYS102A	1	4	80063	SM-E-815557	6	3
81349	RV6SAYS252A	1	8	80063	SM-E-815558	6	4
81349	RV6SAYS501A	1	3	80063	SM-E-816536	6	5
12522	R60F24445-ANSWER	1	32	01295	SNC41S25J-00	11	37
12522	R60F24445-HOLD 1	1	16	01295	SNC54154J-00	9	15
12522	R60F24445-HOLD 2	1	17	01295	SNJ55454BJG	10	21
12522	R60F24445-HOLD 3	1	27	01418	S1613-0906-2.5C-34	4	3
125Z2	R60F24445-QUEUE ANSWER	1	30	05041	000403-0191	1	16

SECTION IV

**TM 11-5805-714-34P/31W2-2TTC39-44-1/EE119-DC-PLG-010/E154 C10333
NATIONAL STOCK NUMBER AND PART NUMBER INDEX**

FSCM	PART NUMBER	FIG. NO.	ITEM NO.	FSCM	PART NUMBER	FIG. NO.	ITEM NO.
05041	000403-0191	8	16	81860	29620-1A	1	49
05041	000403-0191	9	4	77068	3183847-1-3B1	8	42
05041	000403-0191	10	11	77068	3183847-1-381	11	33
05041	000403-0191	11	15	34148	340006-101-309	8	39
99380	0073-2090P1	9	20	34148	340006-101-309	11	41
99380	0073-2090P1	10	24	13499	351-8434-010	11	46
34785	021-0188	1	40	06978	353-0049	11	32
34785	021-0250	1	41	81349	381823	1	64
34785	021-0375	1	68	71219	461-2871-01-03-10	11	50
34785	021-0500	1	51	06090	562AU11-3	12	5
80063	021-0625	1	74	75382	601J	1	95
77820	10-427950-099	1	53	12522	66S-04-A/045	1	38
77820	10-427950-139	1	54	11352	70418-01	1	66
96182	10HA3C1F171L(W)M1N1R1V13	1	1	50464	7558687-01	8	40
16845	1000-409-16	11	21	50464	7558687-01	9	25
16845	1000-483-23	8	25	50464	7558637-01	10	28
18068	10574	2	7	74545	8215-B	4	5
78189	1202-00-00-0500	2	9	06540	8220-SS-0632-7	1	61
97942	138C739H01	1	7	18876	9052346	1	94
77820	21-293709-200	1	52	87557	9115C0046	1	69
77820	21-293713-201	1	55	13856	931205-01	11	45
04222	2225-470000PF-P0M20PCT25WVDC	10	5	71279	94-453-1055-01-03-00	11	16
04222	2225-470000PF-P0M20PCT25WVDC	11	7				

By Order of the Secretary of the Army:

Official:

JOHN A. WICKHAM JR.
General, United States Army
Chief of Staff

ROBERT M. JOYCE
Major General, United States Army
The Adjutant General

DISTRIBUTION:

To be distributed in accordance with DA Form 12-51A-1 requirements for AN/TTC-39.

RECOMMENDED CHANGES TO EQUIPMENT TECHNICAL PUBLICATIONS



THEN...JOT DOWN THE DOPE ABOUT IT ON THIS FORM. CAREFULLY TEAR IT OUT, FOLD IT AND DROP IT IN THE MAIL.

SOMETHING WRONG WITH PUBLICATION

FROM: (PRINT YOUR UNIT'S COMPLETE ADDRESS)

DATE SENT

PUBLICATION NUMBER

PUBLICATION DATE

PUBLICATION TITLE

BE EXACT PIN-POINT WHERE IT IS

PAGE NO.	PARA-GRAPH	FIGURE NO.	TABLE NO.

IN THIS SPACE, TELL WHAT IS WRONG AND WHAT SHOULD BE DONE ABOUT IT.

PRINTED NAME, GRADE OR TITLE AND TELEPHONE NUMBER

SIGN HERE

The Metric System and Equivalents

Linear Measure

1 centimeter = 10 millimeters = .39 inch
 1 decimeter = 10 centimeters = 3.94 inches
 1 meter = 10 decimeters = 39.37 inches
 1 dekameter = 10 meters = 32.8 feet
 1 hectometer = 10 dekameters = 328.08 feet
 1 kilometer = 10 hectometers = 3,280.8 feet

Weights

1 centigram = 10 milligrams = .15 grain
 1 decigram = 10 centigrams = 1.54 grains
 1 gram = 10 decigrams = .035 ounce
 1 decagram = 10 grams = .35 ounce
 1 hectogram = 10 decagrams = 3.52 ounces
 1 kilogram = 10 hectograms = 2.2 pounds
 1 quintal = 100 kilograms = 220.46 pounds
 1 metric ton = 10 quintals = 1.1 short tons

Liquid Measure

1 centiliter = 10 milliliters = .34 fl. ounce
 1 deciliter = 10 centiliters = 3.38 fl. ounces
 1 liter = 10 deciliters = 33.81 fl. ounces
 1 dekaliter = 10 liters = 2.64 gallons
 1 hectoliter = 10 dekaliters = 26.42 gallons
 1 kiloliter = 10 hectoliters = 264.18 gallons

Square Measure

1 sq. centimeter = 100 sq. millimeters = .155 sq. inch
 1 sq. decimeter = 100 sq. centimeters = 15.5 sq. inches
 1 sq. meter (centare) = 100 sq. decimeters = 10.76 sq. feet
 1 sq. dekameter (are) = 100 sq. meters = 1,076.4 sq. feet
 1 sq. hectometer (hectare) = 100 sq. dekameters = 2.47 acres
 1 sq. kilometer = 100 sq. hectometers = .386 sq. mile

Cubic Measure

1 cu. centimeter = 1000 cu. millimeters = .06 cu. inch
 1 cu. decimeter = 1000 cu. centimeters = 61.02 cu. inches
 1 cu. meter = 1000 cu. decimeters = 35.31 cu. feet

Approximate Conversion Factors

<i>To change</i>	<i>To</i>	<i>Multiply by</i>	<i>To change</i>	<i>To</i>	<i>Multiply by</i>
inches	centimeters	2.540	ounce-inches	Newton-meters	.007062
feet	meters	.305	centimeters	inches	.394
yards	meters	.914	meters	feet	3.280
miles	kilometers	1.609	meters	yards	1.094
square inches	square centimeters	6.451	kilometers	miles	.621
square feet	square meters	.093	square centimeters	square inches	.155
square yards	square meters	.836	square meters	square feet	10.764
square miles	square kilometers	2.590	square meters	square yards	1.196
acres	square hectometers	.405	square kilometers	square miles	.386
cubic feet	cubic meters	.028	square hectometers	acres	2.471
cubic yards	cubic meters	.765	cubic meters	cubic feet	35.315
fluid ounces	milliliters	29.573	cubic meters	cubic yards	1.308
pints	liters	.473	milliliters	fluid ounces	.034
quarts	liters	.946	liters	pints	2.113
gallons	liters	3.785	liters	quarts	1.057
ounces	grams	28.349	liters	gallons	.264
pounds	kilograms	.454	grams	ounces	.035
short tons	metric tons	.907	kilograms	pounds	2.205
pound-feet	Newton-meters	1.356	metric tons	short tons	1.102
pound-inches	Newton-meters	.11296			

Temperature (Exact)

°F	Fahrenheit temperature	5/9 (after subtracting 32)	Celsius temperature	°C
----	---------------------------	-------------------------------	------------------------	----

PIN: 056344-000

This fine document...

Was brought to you by me:



[Liberated Manuals -- free army and government manuals](#)

Why do I do it? I am tired of sleazy CD-ROM sellers, who take publicly available information, slap “watermarks” and other junk on it, and sell it. Those masters of search engine manipulation make sure that their sites that sell free information, come up first in search engines. They did not create it... They did not even scan it... Why should they get your money? Why are not letting you give those free manuals to your friends?

I am setting this document FREE. This document was made by the US Government and is NOT protected by Copyright. Feel free to share, republish, sell and so on.

I am not asking you for donations, fees or handouts. If you can, please provide a link to liberatedmanuals.com, so that free manuals come up first in search engines:

<A HREF=<http://www.liberatedmanuals.com/>>Free Military and Government Manuals

- Sincerely
Igor Chudov
<http://igor.chudov.com/>
- [Chicago Machinery Movers](#)