

**TECHNICAL MANUAL**  
**ORGANIZATIONAL, DIRECT SUPPORT, AND**  
**GENERAL SUPPORT**  
**MAINTENANCE REPAIR PARTS AND**  
**SPECIAL TOOLS LISTS**  
**(INCLUDING DEPOT MAINTENANCE REPAIR**  
**PARTS AND SPECIAL TOOLS)**  
**FOR**  
**CONVERTER, TELEPHONE SIGNAL**  
**CV-1919/G**  
**(NSN 5805-00-910-8848)**

**HEADQUARTERS, DEPARTMENT OF THE ARMY**

**JULY 1978**



TECHNICAL MANUAL }  
 No. 11-5805-689-24P }

HEADQUARTERS  
 DEPARTMENT OF THE ARMY  
 WASHINGTON, DC, 17 July 1978

**ORGANIZATIONAL, DIRECT SUPPORT,  
 AND GENERAL SUPPORT  
 MAINTENANCE REPAIR PARTS  
 AND SPECIAL TOOLS LISTS  
 (INCLUDING DEPOT MAINTENANCE REPAIR  
 PARTS AND SPECIAL TOOLS)  
 FOR  
 CONVERTER, TELEPHONE SIGNAL CV-1919/G  
 (NSN 5805-00-910-8848)**

**REPORTING OF ERRORS**

**You can improve this manual by recommending improvements using DA Form 2028 located in the back of the manual. Simply tear out the self addressed form, fill it out as shown on the sample, fold it where shown, and drop it in the mail.**

**If there are no blank Form 2028-2 in the back of your manual, use the standard DA Form 2028 (Recommended Changes to Publications and Blank Forms) and forward to the Commander, US Army Communications and Electronics Materiel Readiness Command, ATTN: DRSEL-MA-Q, Fort Monmouth, New Jersey 07703.**

**In either case a reply will be furnished direct to you.**

Table of Contents

|   | Page | Ilus<br>Figure |
|---|------|----------------|
| SECTION I. Introduction.....                          | 1    |                |
| II. Repair parts list.....                            | 5    |                |
| Group 00 Converter, Telephone signal CV-1919/G.....   | 5    | 1              |
| 01 Chassis.....                                       | 7    | 2              |
| 02 Channel module.....                                | 9    | 3              |
| 0201 Channel module circuit card.....                 | 13   | 4              |
| 03 Common module.....                                 | 17   | 5,6            |
| 0301 Common module circuit card.....                  | 25   | 7              |
| 0302 Oscillator assembly.....                         | 27   | 8,9            |
| 0303 Keypad assembly (No parts authorized)            |      |                |
| SECTION III. Special tools list (Not applicable)      |      |                |
| IV. National stock number and parts number index..... | 30   |                |



# SECTION I

## INTRODUCTION

---

### 1. Scope

This manual lists spares and repair parts: special tools; special test, measurement, and diagnostic equipment (TMDE), and other special support equipment required for performance of organizational, direct support, and general support maintenance of the CV-19191/G. It authorizes the requisitioning and issue of spares and repair parts as indicated by the source and maintenance codes.

### 2. General

This Repair Parts and Special Tools List is divided into the following sections:

*a. Section II. Repair Parts List.* A list of spares and repair parts authorized for use in the performance of maintenance. The list also includes parts which must be removed for replacement of the authorized parts. Parts lists are composed of functional groups in numeric sequence, with the parts in each group listed in figure and item number sequence.

*b. Section III. Special Tools List.* Not applicable.

*c. Section IV. National Stock Number and Part Number Index.* A list, in National item identification number (NIIN) sequence, of all National stock numbers (NSN) appearing in the listings, followed by a list, in alphameric sequence, of all part numbers appearing in the listings. National stock numbers and part numbers are cross-referenced to each illustration figure and item number appearance.

### 3. Explanation of Columns

*a. Illustration.* This column is divided as follows:

(1) *Figure number.* Indicates the figure number of the illustration on which the item is shown.

(2) *Item number.* The number used to identify item called out in the illustration.

*b. Source, Maintenance, and Recoverability (SMR) Codes.*

(1) *Source code.* Source codes indicate the manner of acquiring support items for maintenance, repair, or overhaul of end items. Source codes are entered in the first and second positions of the Uniform SMR Code format as follows:

| <i>Code</i> | <i>Definition</i> |
|-------------|-------------------|
|-------------|-------------------|

|  |  |
|--|--|
| PA—Item procured and stocked for anticipated or known usage. |  |
|--|--|

| <i>Code</i> | <i>Definition</i> |
|-------------|-------------------|
|-------------|-------------------|

|  |  |
|--|--|
| XA—Item is not procured or stocked because the requirements for the item will result in the replacement of the next higher assembly. |  |
|--|--|

|   |  |
|---|--|
| XD—A support item that is not stocked. When required, item will be procured through normal supply channels. |  |
|---|--|

#### NOTE

Cannibalization or salvage may be used as a source of supply for any items source coded above except those coded XA and aircraft support items as restricted by AR 700-42.

(2) *Maintenance code.* Maintenance codes are assigned to indicate the levels of maintenance authorized to USE and REPAIR support items. The maintenance codes are entered in the third and fourth positions of the Uniform SMR Code format as follows:

(a) The maintenance code entered in the third position will indicate the lowest maintenance level authorized to remove, replace, and use the support item. The maintenance code entered in the third position will indicate one of the following levels of maintenance:

| <i>Code</i> | <i>Application/Explanation</i> |
|-------------|--------------------------------|
|-------------|--------------------------------|

|  |  |
|--|--|
| O—Support item is removed, replaced, used at the organizational level. |  |
|--|--|

|  |  |
|--|--|
| F—Support item is removed, replaced, used at the direct support level. |  |
|--|--|

|  |  |
|--|--|
| D—Support items that are removed, replaced, used at depot, mobile depot, specialized repair activity only. |  |
|--|--|

(b) The maintenance code entered in the fourth position indicates whether the item is to be repaired and identifies the lowest maintenance level with the capability to perform complete repair (i.e., all authorized maintenance functions). This position will contain one of the following maintenance codes:

| <i>Code</i> | <i>Application/Explanation</i> |
|-------------|--------------------------------|
|-------------|--------------------------------|

|   |  |
|---|--|
| D—The lowest maintenance level capable of complete repair of the support item is the depot level. |  |
|---|--|

|  |  |
|--|--|
| Z—Nonreparable. No repair is authorized. |  |
|--|--|

(3) *Recoverability code.* Recoverability codes are assigned to support items to indicate the disposition action on unserviceable items. The

recoverability code is entered in the fifth position of the Uniform SMR Code format as follows:

*Recoverability  
codes*

*Definition*

Z-Nonreparable item. When unserviceable, condemn and dispose at the level indicated in position 3.

D - Reparable item. When beyond lower level repair capability, return to depot. Condemnation and disposal not authorized below depot level.

L- Reparable item. Repair, condemnation, and disposal not authorized below depot/specialized repair activity level.

*c. National Stock Number.* Indicates the National stock number assigned to the item and will be used for requisitioning purposes.

*d. Part Number.* Indicates the primary number used by the manufacturer (individual, company, firm, corporation, or Government activity), which controls the design and characteristics of the item by means of its engineering drawings, specifications, standards, and inspection requirements to identify an item or range of items.

**NOTE**

When a stock numbered item is requisitioned, the repair part received may have a different part number than the part being replaced.

*e. Federal Supply Code for Manufacturer (FSCM).* The FSCM is a 5-digit numeric code listed in SB 708-42 which is used to identify the manufacturer, distributor, or Government agency, etc.

*f. Description.* Indicates the Federal item name and, if required, a minimum description to identify the item.

*g. Unit of Measure (U/M).* Indicates the standard of the basic quantity of the listed item as used in performing the actual maintenance function. This measure is expressed by a two-character alphabetical abbreviation (e.g., ea in pr, etc). When the unit of measure differs from the unit of issue, the

lowest unit of issue that will satisfy the required units of measure will be requisitioned.

*h. Quantity Incorporated in Unit.* Indicates the quantity of the item used in the breakout shown on the illustration figure, which is prepared for a functional group, subfunctional group, or an assembly.

**4. Special Information**

The following publications pertain to the CV-1919/G and its components:  
TM 11-5805-689-14, Telephone Signal CV-1919G

**5. How to Locate Repair Parts**

*a.* When National stock number or part number is unknown.

(1) *First.* Using the table of contents, determine the functional group within which the item belongs. This is necessary since illustrations are prepared for functional groups and listings are divided into the same groups.

(2) *Second.* Find the illustration covering the functional group to which the item belongs.

(3) *Third.* Identify the item on the illustration and note the illustration figure and item number of the item.

(4) *Fourth.* Using the Repair Parts Listing, find the figure and item number noted on the illustration.

*b.* When National stock number or part number is known.

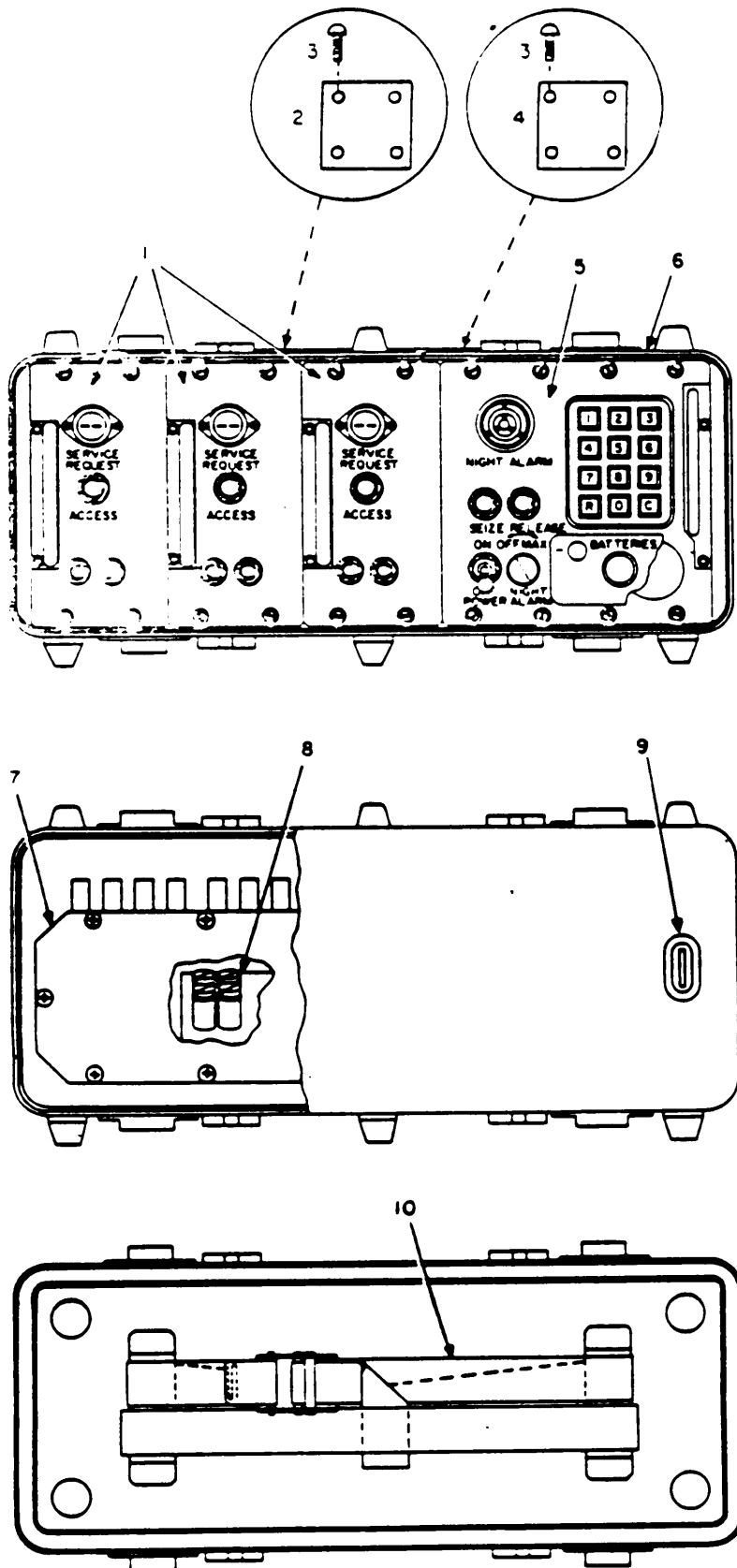
(1) *First.* Using the Index of National Stock Numbers and Part Numbers, find the pertinent National stock number or part number. This index is in NIIN sequence followed by a list of part numbers in alphanumeric sequence, cross-referenced to the illustration figure number and item number.

(2) *Second.* After finding the figure and item number, locate the figure and item number in the repair parts list.

**6. Abbreviations**

Not applicable





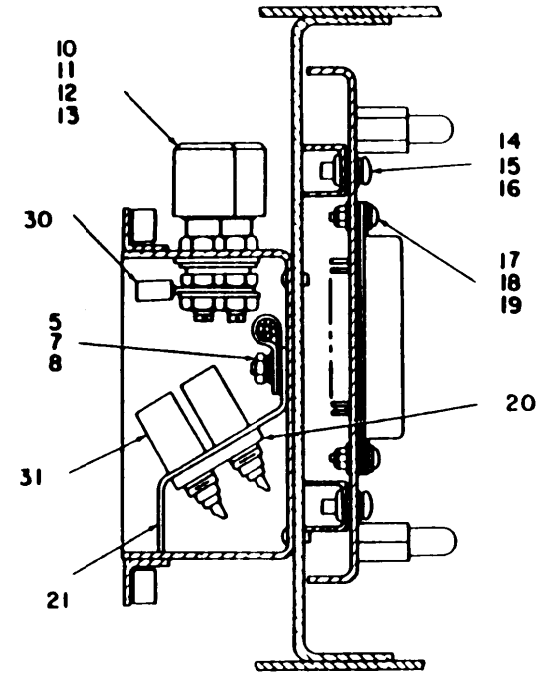
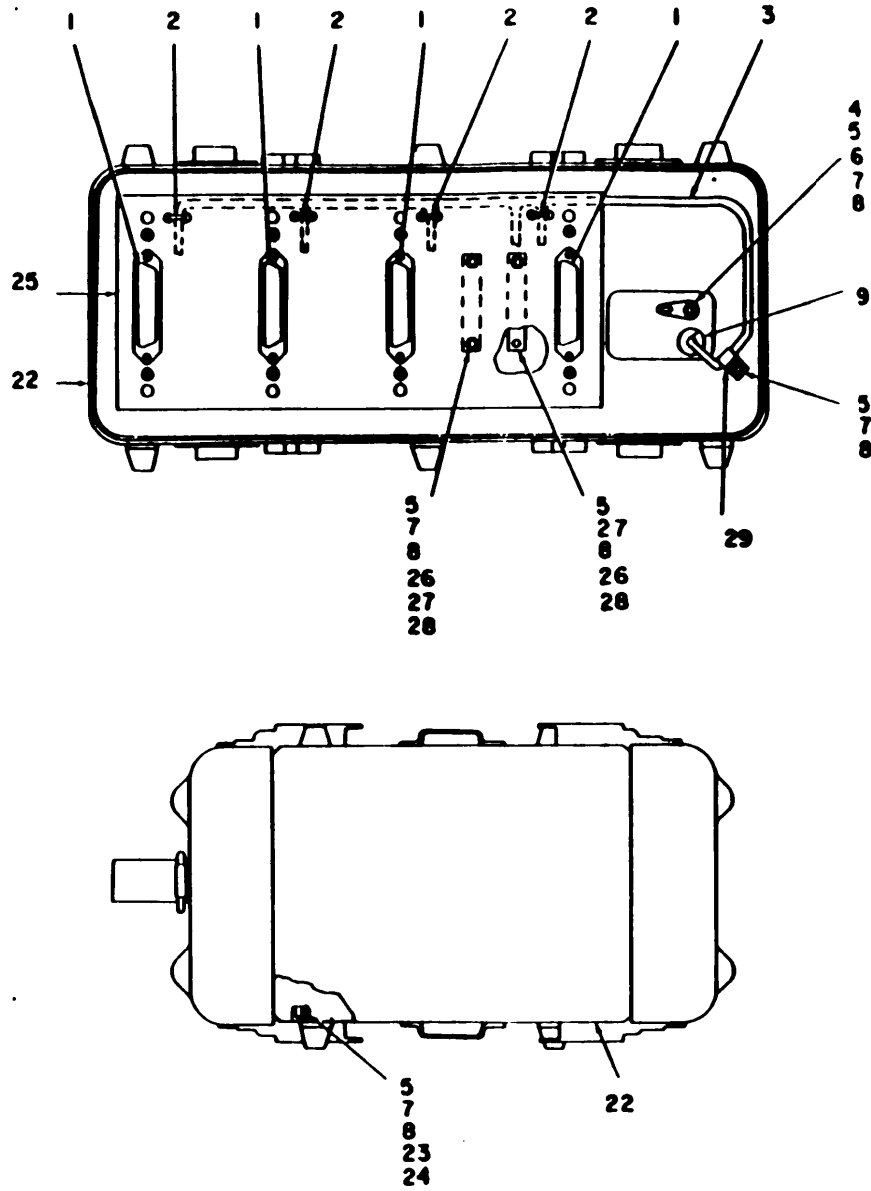
NOTE: PREFIX ALL REFERENCE DESIGNATIONS WITH AI

EL 3LM001

Figure 1. Converter, Telephone Signal CV-1919/G.



| ILLUSTRATION                         |         | NATIONAL STOCK NUMBER |                  |               | PART NUMBER |                          | DESCRIPTION | QUANTITY | UNIT |
|--------------------------------------|---------|-----------------------|------------------|---------------|-------------|--------------------------|-------------|----------|------|
| FIG NO                               | ITEM NO | SAH CODE              | NUMBER           | NUMBER        | ASCM        |                          |             |          |      |
| GROUP 00 CONVERTER, TELEPHONE SIGNAL |         |                       |                  |               |             |                          |             |          |      |
| CV-1919/G                            |         |                       |                  |               |             |                          |             |          |      |
| 1                                    | 1       | PA000                 | 5805-00-174-3523 | 111307        | 44038       | CHANNEL MODULE           | EA          | 3        |      |
| 1                                    | 2       | AD022                 |                  | 111300        | 44038       | PLATE IDENTIFICATION     | EA          | 1        |      |
| 1                                    | 3       | PAF22                 | 5320-00-117-0815 | MS20470A03-4  | 90906       | RIVET SCLID              | EA          | 8        |      |
| 1                                    | 4       | XD022                 |                  | 111351        | 44038       | PLATE INSTRUCTION        | EA          | 1        |      |
| 1                                    | 5       | PA000                 | 5805-00-174-3509 | 111308        | 44038       | COMMON MODULE            | EA          | 1        |      |
| 1                                    | 6       | AA022                 |                  | 111301        | 44038       | CASE ASSEMBLY            | EA          | 1        |      |
| 1                                    | 7       | AD022                 |                  | 111338        | 44038       | COVER ARRESTOR ENCLOSURE | EA          | 1        |      |
| 1                                    | 8       | PA022                 | 5920-00-031-5006 | PC338-4       | 27494       | PROTECTOR TELEPHONE      | EA          | 10       |      |
| 1                                    | 9       | PA022                 | 5925-00-100-8719 | 111344        | 44038       | GROMMET RUBBER           | EA          | 1        |      |
| 1                                    | 10      | PAD22                 | 5340-00-173-8118 | NAS1213410J66 | 80205       | STRAP WEBBING            | EA          | 1        |      |

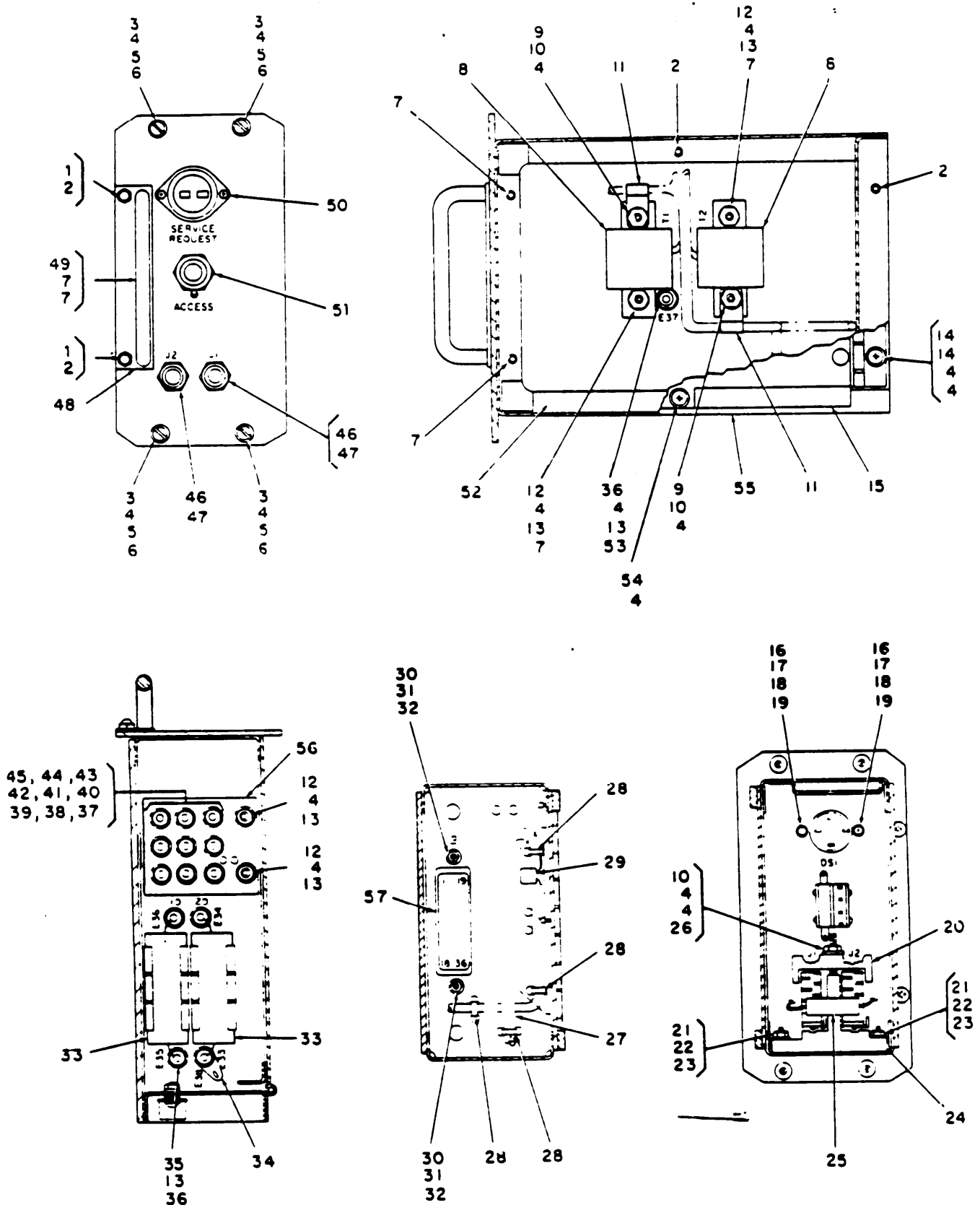


NOTE: PREFIX ALL REFERENCE DESIGNATIONS WITH AIAI

EL3LM002

Figure 2. Chassis.

| ILLUSTRATION     |                   |             |                             |                | DESCRIPTION |                             |    |
|------------------|-------------------|-------------|-----------------------------|----------------|-------------|-----------------------------|----|
| (B)<br>FIG<br>NO | (D)<br>ITEM<br>NO | SMR<br>CODE | NATIONAL<br>STOCK<br>NUMBER | PART<br>NUMBER | FSCM        |                             |    |
| GROUP 01 CHASSIS |                   |             |                             |                |             |                             |    |
| 2                | 1                 | PAFZZ       | 5935-00-578-3302            | 57-2330J       | 22600       | CONNECTOR HERMETICALLY SECT | EA |
| 2                | 2                 | PAFZZ       | 5975-00-727-5153            | MS3367-4-4     | 96906       | STRAP TIE DOWN              | EA |
| 2                | 3                 | XDFZZ       |                             | 111312         | 44038       | WIRING HARNESS              | EA |
| 2                | 4                 | PAFZZ       | 5305-00-054-6652            | MS51757-28     | 96906       | SCREW MACHINE PAN HEAD      | EA |
| 2                | 5                 | PAFZZ       | 5310-00-722-5598            | MS15795-005    | 96906       | WASHER FLAT                 | EA |
| 2                | 6                 | PAFZZ       | 5940-00-815-8958            | 2104-06-02     | 78189       | TERMINAL LUG                | EA |
| 2                | 7                 | PAFZZ       | 5310-00-929-6395            | MS35338-136    | 96906       | WASHER LOCK                 | EA |
| 2                | 8                 | PAFZZ       | 5310-00-934-9701            | MS35649-264    | 96906       | NUT PLAIN HEXAGON           | EA |
| 2                | 9                 | PAFZZ       | 5325-00-263-8632            | MS35449-6      | 96906       | GROMMET RUBBER              | EA |
| 2                | 10                | XDFZZ       |                             | 9766-145       | 72625       | INSULATOR WASHER            | EA |
| 2                | 11                | XDFZZ       |                             | 9766-143       | 44038       | INSULATOR BUSHING           | EA |
| 2                | 12                | PAFZZ       | 5940-00-727-4954            | 08-2204-0110   | 91662       | POST BINDING                | EA |
| 2                | 13                | PAFZZ       | 5330-00-108-1152            | 9769-5         | 72925       | PACKING PREFORMED           | EA |
| 2                | 14                | PAFZZ       | 5310-00-800-5970            | MS15795-007    | 96906       | WASHER FLAT                 | EA |
| 2                | 15                | PAFZZ       | 5310-00-933-8119            | MS35333-137    | 96906       | WASHER LOCK                 | EA |
| 2                | 16                | PAFZZ       | 5305-00-054-6671            | MS51957-40     | 96906       | SCREW MACHINE PAN HEAD      | EA |
| 2                | 17                | PAFZZ       | 5310-00-902-5100            | 7441430        | 72402       | NUT SELF-LOCKING HEXAGON    | EA |
| 2                | 18                | PAFZZ       | 5305-00-109-0230            | 114015         | 44038       | SCREW MACHINE               | EA |
| 2                | 19                | PAFZZ       | 5310-00-849-4145            | MS9321-04      | 96906       | WASHER FLAT                 | EA |
| 2                | 20                | PAFZZ       | 5310-00-102-5282            | 112540         | 44038       | NUT PLATE                   | EA |
| 2                | 21                | XDFZZ       |                             | 111339         | 44038       | BRACKET DOUBLE ANGLE        | EA |
| 2                | 22                | XDFZZ       |                             | 111302         | 44038       | CASE                        | EA |
| 2                | 23                | XDFZZ       |                             | 111332         | 44038       | NUT STRIP                   | EA |
| 2                | 24                | PAFZZ       | 5305-00-066-7328            | MS24693027     | 96906       | SCREW MACHINE               | EA |
| 2                | 25                | XDFZZ       |                             | 111333         | 44038       | PLATE MOUNTING CONNECTOR    | EA |
| 2                | 26                | XDFZZ       |                             | 352-11-04-001  | 71785       | TERMINAL GUARD              | EA |
| 2                | 27                | PAFZZ       | 5305-00-054-5654            | MS51757-10     | 96906       | SCREW MACHINE PAN HEAD      | EA |
| 2                | 28                | PAFZZ       | 5940-00-983-7091            | 323J11         | 00779       | TERMINAL LUG                | EA |
| 2                | 29                | PAFZZ       | 5340-00-950-4430            | 3-10-47        | 45437       | CLAMP LOOP                  | EA |
| 2                | 30                | PAFZZ       | 5940-00-813-6698            | MS25030-101    | 96906       | TERMINAL LUG                | EA |
| 2                | 31                | PAFZZ       | 6250-00-025-1960            | 405-70-4       | 81590       | LAMP HOLDER                 | EA |



NOTE PREFIX ALL REFERENCE DESIGNATIONS WITH A1A2, A1A3 AND A1A4

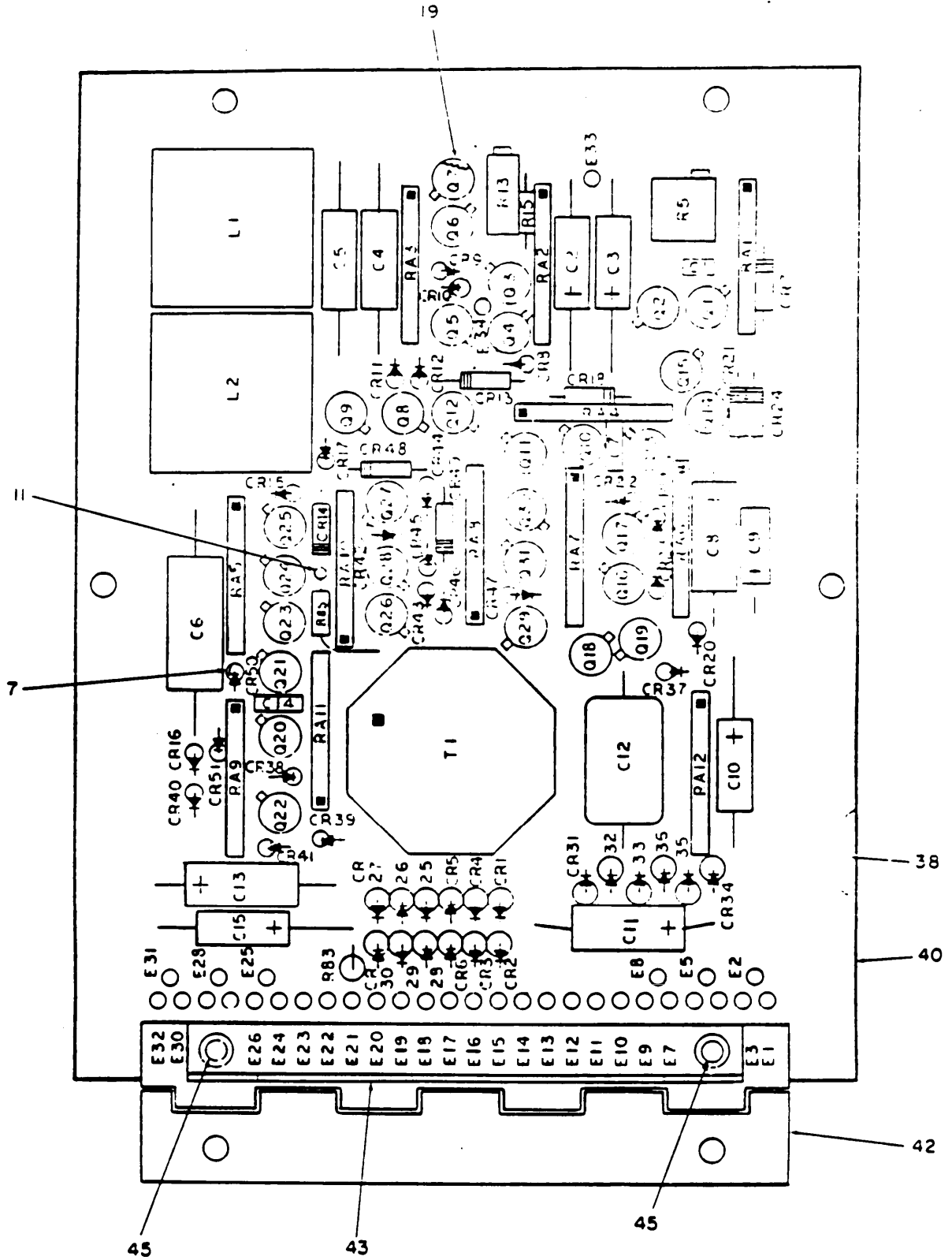
EL3LM003

Figure 3. Channel Module.

| ILLUSTRATION            |                  |             |                             |                |       | DESCRIPTION               |                          |    |
|-------------------------|------------------|-------------|-----------------------------|----------------|-------|---------------------------|--------------------------|----|
| AI<br>FIG<br>NO         | DI<br>ITEM<br>NO | SMR<br>CODE | NATIONAL<br>STOCK<br>NUMBER | PART<br>NUMBER | FSCN  |                           | QTY<br>INC<br>IN<br>UNIT |    |
| GROUP 02 CHANNEL MODULE |                  |             |                             |                |       |                           |                          |    |
| 3                       | 1                | PAF22       | 5310-00-199-7035            | MS24679-21     | 96906 | NUT PLAIN CAP             | EA                       | 2  |
| 3                       | 2                | PAF22       | 5305-00-969-6495            | MS24693C25     | 96906 | SCREW MACHINE             | EA                       | 6  |
| 3                       | 3                | PAF22       | 5305-00-933-4182            | Y9-3           | 00141 | SCREW MACHINE             | EA                       | 4  |
| 3                       | 4                | PAF22       | 5310-00-722-5950            | MS15795-805    | 96906 | WASHER FLAT               | EA                       | 20 |
| 3                       | 5                | XDF22       |                             | 117031         | 44038 | WASHER FLAT               | EA                       | 4  |
| 3                       | 6                | PAF22       | 5310-00-143-9827            | 117139         | 44038 | WASHER RECESSED           | EA                       | 4  |
| 3                       | 7                | PAF22       | 5305-00-958-2418            | MS24693C26     | 96906 | SCREW MACHINE             | EA                       | 6  |
| 3                       | 8                | PAF22       | 5950-00-100-1158            | 110771         | 44038 | TRANSFORMER ALDIO         | EA                       | 2  |
| 3                       | 9                | PAF22       | 5305-00-368-7327            | MS24693C26     | 96906 | SCREW MACHINE             | EA                       | 2  |
| 3                       | 10               | PAF22       | 5310-00-987-6913            | MS21044C06     | 96906 | NUT SELF-LOCKING HEXAGON  | EA                       | 2  |
| 3                       | 11               | PAF22       | 5340-00-956-4436            | 5-16-4T        | 45987 | CLAMP LOOP                | EA                       | 2  |
| 3                       | 12               | PAF22       | 5310-00-934-9761            | MS39649-264    | 96906 | NUT PLAIN HEXAGON         | EA                       | 4  |
| 3                       | 13               | PAF22       | 5310-00-929-6395            | MS35335-136    | 96906 | WASHER LOCK               | EA                       | 4  |
| 3                       | 14               | PAF22       | 5305-00-958-5651            | MS31457-27     | 96906 | SCREW MACHINE PAN HEAD    | EA                       | 2  |
| 3                       | 15               | PAF0L       | 5305-00-174-3508            | 111304         | 44038 | CIRCUIT CARD ASSEMBLY     | EA                       | 1  |
| 3                       | 16               | PAF22       | 5310-00-934-2013            | MS35649-224    | 96906 | NUT PLAIN HEXAGON         | EA                       | 2  |
| 3                       | 17               | PAF22       | 5310-00-595-6701            | MS15795-802    | 96906 | WASHER FLAT               | EA                       | 2  |
| 3                       | 18               | PAF22       | 5310-00-928-2640            | MS35336-134    | 96906 | WASHER LOCK               | EA                       | 2  |
| 3                       | 19               | PAF22       | 5305-00-958-5638            | MS31457-45     | 96906 | SCREW MACHINE PAN HEAD    | EA                       | 2  |
| 3                       | 20               | XDF22       |                             | 116975         | 44038 | METAINEK JACK             | EA                       | 1  |
| 3                       | 21               | PAF22       | 5310-00-982-4999            | MS21044C04     | 96906 | NUT SELF-LOCKING HEXAGON  | EA                       | 2  |
| 3                       | 22               | PAF22       | 5310-00-595-6211            | MS15795-803    | 96906 | WASHER FLAT               | EA                       | 2  |
| 3                       | 23               | PAF22       | 5305-00-068-6605            | MS24693C6      | 96906 | SCREW MACHINE             | EA                       | 2  |
| 3                       | 24               | XDF22       |                             | 116976         | 44038 | SUPPORT JACK              | EA                       | 1  |
| 3                       | 25               | PAF22       | 5905-00-823-9649            | RW81U6040F     | 81349 | RESISTOR FIXED WIRE WOUND | EA                       | 1  |
| 3                       | 26               | PAF22       | 5305-00-054-6662            | MS31457-38     | 96906 | SCREW MACHINE PAN HEAD    | EA                       | 1  |
| 3                       | 27               | XDF22       |                             | 111310         | 44038 | WIRING HARNESS            | EA                       | 1  |
| 3                       | 28               | PAF22       | 5475-00-727-5153            | MS3367-4-9     | 96906 | STRAP TIEDOWN             | EA                       | 4  |
| 3                       | 29               | PAF22       | 5310-00-496-6090            | CA0682564K     | 81349 | CAPACITOR FIXED CERAMIC   | EA                       | 1  |
| 3                       | 30               | PAF22       | 5310-00-962-5160            | 7941M36        | 72462 | NUT SELF-LOCKING HEXAGON  | EA                       | 2  |
| 3                       | 31               | PAF22       | 5310-00-899-9145            | MS5321-04      | 96906 | WASHER FLAT               | EA                       | 6  |
| 3                       | 32               | PAF22       | 5305-00-109-0280            | 114615         | 44038 | SCREW MACHINE             | EA                       | 2  |
| 3                       | 33               | PAF22       | 5310-00-100-1162            | 114299         | 44038 | CAPACITOR FIXED           | EA                       | 2  |
| 3                       | 34               | PAF22       | 5940-00-819-8550            | 2104-06-02     | 78189 | TERMINAL LUG              | EA                       | 1  |
| 3                       | 35               | XDF22       |                             | 111323         | 44038 | SPACER SLEEVE             | EA                       | 4  |
| 3                       | 36               | PAF22       | 5940-00-259-6456            | 3648-2         | 71279 | TERMINAL STUD             | EA                       | 5  |
| 3                       | 37               | PAF22       | 5935-00-764-2135            | M39024-10-06   | 81349 | JACK TIP                  | EA                       | 1  |
| 3                       | 38               | PAF22       | 5935-00-702-4199            | M39024-10-02   | 81349 | JACK TIP                  | EA                       | 1  |
| 3                       | 39               | PAF22       | 5935-00-813-5874            | M39024-10-06   | 81349 | JACK TIP                  | EA                       | 1  |

SECTION II

| ILLUSTRATION  |                            | NATIONAL STOCK NUMBER |              | PART NUMBER | PSCM                       | DESCRIPTION | UN         | QTY         |
|---------------|----------------------------|-----------------------|--------------|-------------|----------------------------|-------------|------------|-------------|
| (1)<br>FIG NO | (2)<br>ITEM NO<br>SMR CODE | (3)                   | (4)          | (5)         | (6)                        | (7)<br>UN   | (8)<br>QTY | (9)<br>UNIT |
| 3             | 40 PAFZZ                   | 5935-00-766-4232      | M39024-10-04 | 81349       | JACK TIP                   | EA          | 1          |             |
| 3             | 41 PAFZZ                   | 5935-00-733-6387      | M39024-10-05 | 81349       | JACK TIP                   | EA          | 1          |             |
| 3             | 42 PAFZZ                   | 5935-00-776-4617      | M39024-10-07 | 81349       | JACK TIP                   | EA          | 1          |             |
| 3             | 43 PAFZZ                   | 5935-00-102-7999      | M39024-10-10 | 81349       | JACK TIP                   | EA          | 1          |             |
| 3             | 44 PAFZZ                   | 5935-00-931-1967      | M39024-10-09 | 81349       | JACK TIP                   | EA          | 1          |             |
| 3             | 45 PAFZZ                   | 5935-00-728-4514      | M39024-10-01 | 81349       | JACK TIP                   | EA          | 1          |             |
| 3             | 46 PAFZZ                   | 5935-00-127-2454      | 114608       | 44038       | JACK TELEPHONE             | EA          | 2          |             |
| 3             | 47 PAFZZ                   | 5970-00-099-5694      | 114685       | 44038       | INSULATOR BUSHING          | EA          | 4          |             |
| 3             | 48 XDFZZ                   |                       | 111352       | 44038       | SPACER HANDLE              | EA          | 1          |             |
| 3             | 49 XDFZZ                   |                       | 110797       | 44038       | HANDLE BOW                 | EA          | 1          |             |
| 3             | 50 PAFZZ                   | 5805-00-094-6537      | P2-126       | 45925       | INDICATOR SIGNAL           | EA          | 1          |             |
| 3             | 51 PAFZZ                   | 5930-00-100-1174      | 114648       | 44038       | SWITCH PUSH                | EA          | 1          |             |
| 3             | 52 XDFZZ                   |                       | 111349       | 44038       | COVER CHANNEL MODULE       | EA          | 1          |             |
| 3             | 53 PAFZZ                   | 5305-00-066-7326      | M524693C24   | 96906       | SCREW MACHINE              | EA          | 1          |             |
| 3             | 54 PAFZZ                   | 5305-00-054-6654      | M531957-28   | 96906       | SCREW MACHINE PAN HEAD     | EA          | 4          |             |
| 3             | 55 XDFZZ                   |                       | 111313       | 44038       | FRAME CHANNEL MODULE       | EA          | 1          |             |
| 3             | 56 XDFZZ                   |                       | 111348       | 44038       | BRACKET MOUNTING           | EA          | 1          |             |
| 3             | 57 PAFZZ                   | 5935-00-027-4917      | 57-1036J     | 02660       | CONNECTOR RECEPTACLE ELECT | EA          | 1          |             |



NOTE PREFIX ALL REFERENCE DESIGNATIONS WITH AIA2AI

EL3LM004

Figure 4. Channel Module Circuit Card (Sheet 1 of 2).

| REF DES | ITEM NO. | REF DES | ITEM NO. | REF DES | ITEM NO. | REF DES | ITEM NO. |
|---------|----------|---------|----------|---------|----------|---------|----------|
| C1      | 27       | CR24    | 3        | E11     | 20       | RA8     | 13       |
| C2      | 25       | CR25    | 39       | E12     | 20       | RA9     | 5        |
| C3      | 25       | CR26    | 39       | E13     | 20       | RA10    | 12       |
| C4      | 46       | CR27    | 39       | E14     | 20       | RA11    | 8        |
| C5      | 46       | CR28    | 39       | E15     | 20       | RA12    | 37       |
| C6      | 4        | CR29    | 39       | E16     | 20       | Q1      | 9        |
| C7      | 29       | CR30    | 39       | E17     | 20       | Q2      | 9        |
| C8      | 32       | CR31    | 39       | E18     | 20       | Q3      | 9        |
| C9      | 31       | CR32    | 39       | E19     | 20       | Q4      | 9        |
| C10     | 36       | CR33    | 39       | E20     | 20       | Q5      | 18       |
| C11     | 2        | CR34    | 39       | E21     | 20       | Q6      | 14       |
| C12     | 35       | CR35    | 39       | E22     | 20       | Q7      | 14       |
| C13     | 2        | CR36    | 39       | E23     | 20       | Q8      | 14       |
| C14     | 6        | CR37    | 3        | E24     | 20       | Q9      | 14       |
| C15     | 1        | CR38    | 3        | E25     | 20       | Q10     | 18       |
| CR1     | 39       | CR39    | 3        | E26     | 20       | Q11     | 14       |
| CR2     | 39       | CR40    | 3        | E27     | 20       | Q12     | 14       |
| CR3     | 39       | CR41    | 3        | E28     | 20       | Q13     | 18       |
| CR4     | 39       | CR42    | 3        | E29     | 20       | Q14     | 18       |
| CR5     | 39       | CR43    | 3        | E30     | 20       | Q15     | 18       |
| CR6     | 39       | CR44    | 3        | E31     | 20       | Q16     | 18       |
| CR7     | 3        | CR45    | 3        | E32     | 20       | Q17     | 18       |
| CR8     | 3        | CR46    | 3        | E33     | 20       | Q18     | 9        |
| CR9     | 3        | CR47    | 3        | E34     | 20       | Q19     | 14       |
| CR10    | 3        | CR48    | 3        | L1      | 16       | Q20     | 18       |
| CR11    | 3        | CR49    | 3        | L2      | 15       | Q21     | 18       |
| CR12    | 3        | CR50    | 3        | R5      | 26       | Q22     | 18       |
| CR13    | 17       | CR51    | 3        | R15     | 22       | Q23     | 9        |
| CR14    | 3        | E1      | 20       | RH3     | 44       | Q24     | 9        |
| CR15    | 3        | E2      | 20       | RH5     | 10       | Q25     | 9        |
| CR16    | 3        | E3      | 20       | R13     | 21       | Q26     | 9        |
| CR17    | 3        | E4      | 20       | RA1     | 28       | Q27     | 18       |
| CR18    | 3        | E5      | 20       | RA2     | 23       | Q28     | 18       |
| CR19    | 3        | E6      | 20       | RA3     | 47       | Q29     | 18       |
| CR20    | 3        | E7      | 20       | RA4     | 24       | Q30     | 18       |
| CR21    | 3        | E8      | 20       | RA5     | 41       | Q31     | 14       |
| CR22    | 3        | E9      | 20       | RA6     | 33       | T1      | 34       |
| CR23    | 3        | E10     | 20       | RA7     | 30       |         |          |

EL3LM010

Figure 4. Channel Module Circuit Card (Sheet 1 of 2).



| ILLUSTRATION                           |                 | NATIONAL STOCK NUMBER |                           | PART NUMBER     | FSCM     | DESCRIPTION                  | QTY INC     | UNIT     |
|--|-----------------|-----------------------|---------------------------|-----------------|----------|------------------------------|-------------|----------|
| (1) FIG NO                             | (2) IBI ITEM NO | (3) SHR CODE          | (4) NATIONAL STOCK NUMBER | (5) PART NUMBER | (6) FSCM | (7) DESCRIPTION              | (8) QTY INC | (9) UNIT |
| GROUP 0201 CHANNEL MODULE CIRCUIT CARD |                 |                       |                           |                 |          |                              |             |          |
| 4                                      | 1               | XDDZZ                 |                           | CL65dE150KPE    | 81349    | CAPACITOR FIXED              | EA          | 1        |
| 4                                      | 2               | PAUZZ                 | 5910-00-861-5108          | CSR13E476KM     | 81349    | CAPACITOR FIXED ELECTROLYTIC | EA          | 2        |
| 4                                      | 3               | PAUZZ                 | 5961-00-804-0399          | 1N3600          | 81349    | SEMICONDUCTOR DEVICE DIODE   | EA          | 31       |
| 4                                      | 4               | PAUZZ                 | 5910-00-481-1012          | LC9A1A104F      | 01884    | CAPACITOR FIXED              | EA          | 1        |
| 4                                      | 5               | XDUZZ                 |                           | 111044          | 44038    | RESISTOR FIXED FILM          | EA          | 1        |
| 4                                      | 6               | PAUZZ                 | 5910-00-105-1924          | CK06BA223M      | 81349    | CAPACITOR FIXED CERAMIC      | EA          | 1        |
| 4                                      | 7               | PAUZZ                 | 5947-00-006-7193          | 114949          | 44038    | MOUNTING PAD                 | EA          | 27       |
| 4                                      | 8               | XDUZZ                 |                           | 111046          | 44038    | RESISTOR FIXED FILM          | EA          | 1        |
| 4                                      | 9               | PAUZZ                 | 5961-00-814-9532          | 2N2484          | 81349    | TRANSISTOR                   | EA          | 9        |
| 4                                      | 10              | PAUZZ                 | 5905-00-889-1968          | MN46JK681JFM    | 81349    | RESISTOR FIXED FILM          | EA          | 1        |
| 4                                      | 11              | XDUZZ                 |                           | 20648           | 88245    | TERMINAL STD                 | EA          | 1        |
| 4                                      | 12              | XDUZZ                 |                           | 111045          | 44038    | RESISTOR FIXED FILM          | EA          | 1        |
| 4                                      | 13              | XDUZZ                 |                           | 111043          | 44038    | RESISTOR FIXED FILM          | EA          | 1        |
| 4                                      | 14              | XDDZZ                 |                           | 2N2907          | 81349    | TRANSISTOR                   | EA          | 5        |
| 4                                      | 15              | PAUZZ                 | 5905-00-100-1163          | 114534          | 44038    | REACTOR                      | EA          | 1        |
| 4                                      | 16              | PAUZZ                 | 5905-00-100-1164          | 114535          | 44038    | REACTOR                      | EA          | 1        |
| 4                                      | 17              | PAUZZ                 | 5961-00-752-8121          | 1N75JA          | 81349    | SEMICONDUCTOR DEVICE DIODE   | EA          | 1        |
| 4                                      | 18              | PAUZZ                 | 5961-00-951-8757          | 2N2222          | 81349    | TRANSISTOR                   | EA          | 14       |
| 4                                      | 19              | PAUZZ                 | 5944-00-924-3088          | 7717-180AP      | 13103    | MOUNTING PAD                 | EA          | 31       |
| 4                                      | 20              | XDUZZ                 |                           | A3381-2         | 12615    | TERMINAL STD                 | EA          | 34       |
| 4                                      | 21              | PAUZZ                 | 5905-00-085-0138          | RT2202X203      | 81349    | RESISTOR VARIABLE            | EA          | 1        |
| 4                                      | 22              | PAUZZ                 | 5905-00-730-1512          | KL075003J       | 81349    | RESISTOR FIXED FILM          | EA          | 1        |
| 4                                      | 23              | XDDZZ                 |                           | 111037          | 44038    | RESISTOR FIXED FILM          | EA          | 1        |
| 4                                      | 24              | XDUZZ                 |                           | 111039          | 44038    | RESISTOR FIXED FILM          | EA          | 1        |
| 4                                      | 25              | PAUZZ                 | 5910-00-110-0409          | CL65BN47KPE     | 81349    | CAPACITOR FIXED              | EA          | 2        |
| 4                                      | 26              | PAUZZ                 | 5905-00-067-8473          | RT2202P501      | 81349    | RESISTOR VARIABLE            | EA          | 1        |
| 4                                      | 27              | PAUZZ                 | 5910-00-114-5288          | CK06BA222K      | 81349    | CAPACITOR FIXED CERAMIC      | EA          | 1        |
| 4                                      | 28              | XDUZZ                 |                           | 111036          | 44038    | RESISTOR FIXED FILM          | EA          | 1        |
| 4                                      | 29              | PAUZZ                 | 5910-00-124-3034          | CK06BA334K      | 81349    | CAPACITOR FIXED CERAMIC      | EA          | 1        |
| 4                                      | 30              | PAUZZ                 | 5905-00-481-3493          | 111047          | 44038    | RESISTOR FIXED FILM          | EA          | 1        |
| 4                                      | 31              | PAUZZ                 | 5910-00-104-3417          | CSR13F565KM     | 81349    | CAPACITOR FIXED ELECTROLYTIC | EA          | 1        |
| 4                                      | 32              | PAUZZ                 | 5910-00-441-8304          | CSR13E396KM     | 81349    | CAPACITOR FIXED ELECTROLYTIC | EA          | 1        |
| 4                                      | 33              | XDDZZ                 |                           | 111041          | 44038    | RESISTOR FIXED FILM          | EA          | 1        |
| 4                                      | 34              | PAUZZ                 | 5950-00-100-1165          | 114536          | 44038    | TRANSFORMER AUDIO            | EA          | 1        |
| 4                                      | 35              | XDUZZ                 |                           | CM20C302G03     | 81349    | CAPACITOR FIXED MICA         | EA          | 1        |
| 4                                      | 36              | XDDZZ                 |                           | CL650D470KPE    | 81349    | CAPACITOR FIXED              | EA          | 1        |
| 4                                      | 37              | XDDZZ                 |                           | 111047          | 44038    | RESISTOR FIXED FILM          | EA          | 1        |
| 4                                      | 38              | XDUZZ                 |                           | 111346          | 44038    | SPACER                       | EA          | 4        |
| 4                                      | 39              | PAUZZ                 | 5961-00-914-5746          | 1M246           | 81349    | SEMICONDUCTOR DEVICE DIODE   | EA          | 18       |

## SECTION II

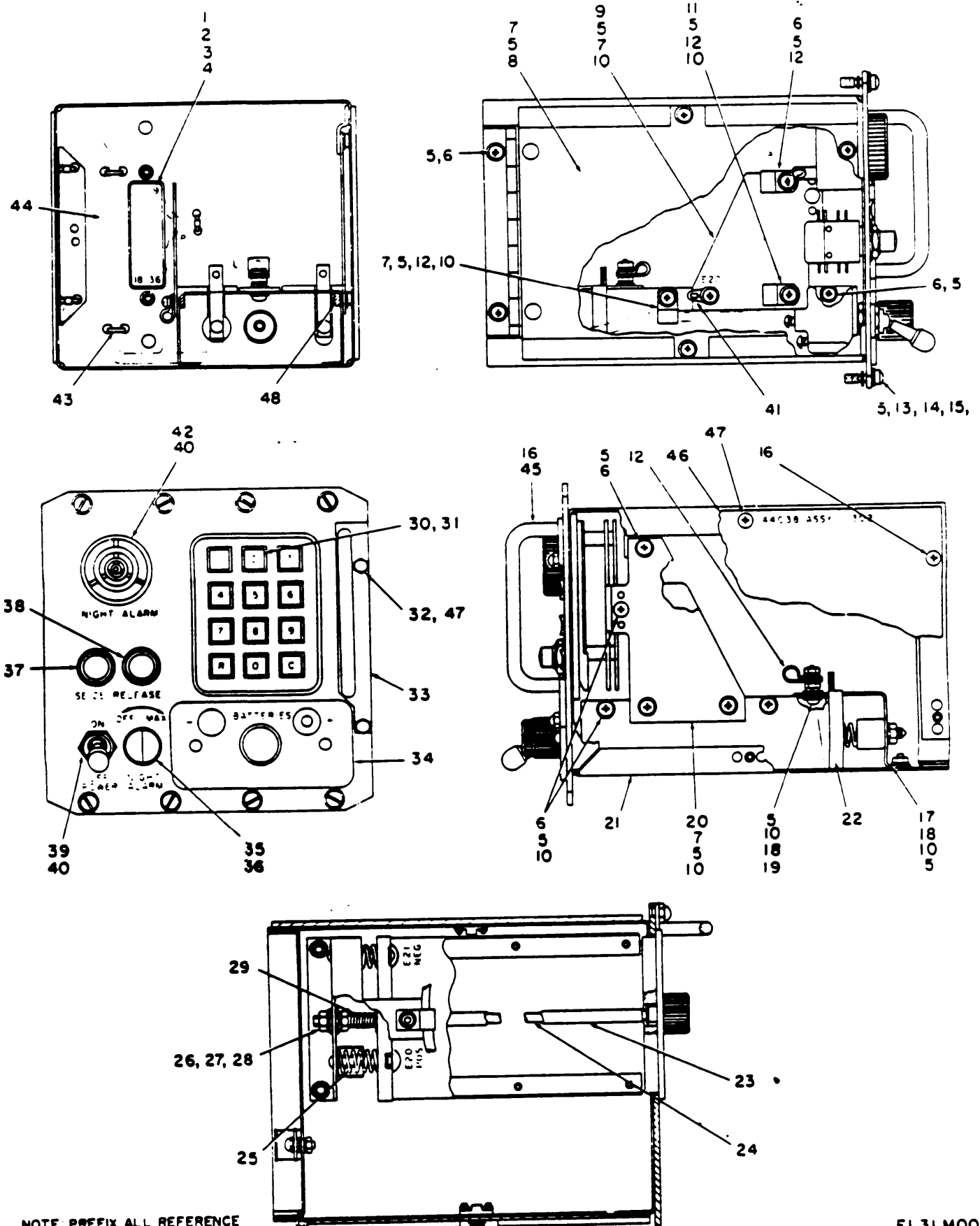
TM11-5805-689-24P

| ILLUSTRATION     |                   | SMR<br>CODE | NATIONAL<br>STOCK<br>NUMBER | PART<br>NUMBER | FSCM  | DESCRIPTION          | CLASSIFICATION CODE | QTY<br>NC<br>Y<br>UNIT |
|------------------|-------------------|-------------|-----------------------------|----------------|-------|----------------------|---------------------|------------------------|
| (A)<br>FIG<br>NO | (B)<br>ITEM<br>NO |             |                             |                |       |                      |                     |                        |
| 4                | 40                | XAUZZ       |                             | 111303         | 44030 | PRINTED WIRING BOARD |                     | EA 1                   |
| 4                | 41                | XDDZZ       |                             | 111040         | 44030 | RESISTOR FIXED FILM  |                     | EA 1                   |
| 4                | 42                | XDUZZ       |                             | 111322         | 44030 | HINGE BUTT           |                     | EA 1                   |
| 4                | 43                | XDDZZ       |                             | 111347         | 44030 | BRACKET ANGLE        |                     | EA 1                   |
| 4                | 44                | XDDZZ       |                             | RL205100J      | 81340 | RESISTOR FIXED FILM  |                     | EA 1                   |
| 4                | 45                | XDDZZ       |                             | 4516535-248    | 96900 | RIVET TUBULAR        |                     | EA 2                   |
| 4                | 46                | PADZZ       | 5910-00-100-1102            | LS9A1A223F     | 01880 | CAPACITOR FIXED      |                     | EA 2                   |
| 4                | 47                | XDDZZ       |                             | 111038         | 44030 | RESISTOR FIXED FILM  |                     | EA 1                   |

14/(15 BLANK)

14/(15 BLANK)





NOTE: PREFIX ALL REFERENCE DESIGNATIONS WITH AIA5

Figure 5. Common Module, Rear, Left Hand Side, Front, Right Hand Side and Top Views.

| ILLUSTRATION           |              | SMR CODE | NATIONAL STOCK NUMBER | PART NUMBER  | FSCM  | DESCRIPTION                | UNL | QTY |
|------------------------|--------------|----------|-----------------------|--------------|-------|----------------------------|-----|-----|
| (B) FIG NO.            | (D) ITEM NO. |          |                       |              |       |                            |     |     |
| GROUP 03 COMMON MODULE |              |          |                       |              |       |                            |     |     |
| 5                      | 1            | PAFZZ    | 5305-00-109-0280      | 114615       | 44038 | SCREW MACHINE              | EA  | 2   |
| 5                      | 2            | PAFZZ    | 5310-00-962-5160      | 79NTM3d      | 72962 | NUT SELF-LOCKING HEXAGON   | EA  | 2   |
| 5                      | 3            | PAFZZ    | 5310-00-899-9145      | MS9321-04    | 96906 | WASHER FLAT                | EA  | 8   |
| 5                      | 4            | PAFZZ    | 5935-00-027-8917      | 57-1U360     | 02660 | CONNECTOR RECEPTACLE ELECT | EA  | 1   |
| 5                      | 5            | PAFZZ    | 5310-00-722-5998      | MS15795-405  | 96906 | WASHER FLAT                | EA  | 25  |
| 5                      | 6            | PAFZZ    | 5305-00-054-6651      | MS51957-27   | 96906 | SCREW MACHINE PAN HEAD     | EA  | 9   |
| 5                      | 7            | PAFZZ    | 5305-00-054-6652      | MS51957-28   | 96906 | SCREW MACHINE PAN HEAD     | EA  | 9   |
| 5                      | 8            | PAFDL    | 5805-00-174-3506      | 111306       | 44038 | CIRCUIT CARD ASSEMBLY      | EA  | 1   |
| 5                      | 9            | XDFZZ    |                       | 111325       | 44038 | PLATE L-M                  | EA  | 1   |
| 5                      | 10           | PAFZZ    | 5310-00-929-6395      | MS35338-136  | 96906 | WASHER LOCK                | EA  | 10  |
| 5                      | 11           | PAFZZ    | 5305-00-054-6653      | MS51957-29   | 96906 | SCREW MACHINE PAN HEAD     | EA  | 1   |
| 5                      | 12           | PAFZZ    | 5340-00-956-4436      | 3-16-4T      | 95987 | CLAMP LCDP                 | EA  | 4   |
| 5                      | 13           | PAFZZ    | 5305-00-933-4162      | Y9-3         | 00141 | SCREW MACHINE              | EA  | 5   |
| 5                      | 14           | XDFZZ    |                       | 117081       | 44038 | WASHER FLAT                | EA  | 1   |
| 5                      | 15           | PAFZZ    | 5310-00-163-9827      | 117134       | 44038 | WASHER RECESSED            | EA  | 1   |
| 5                      | 16           | PAFZZ    | 5305-00-958-2916      | MS24693C26   | 96906 | SCREW MACHINE              | EA  | 1   |
| 5                      | 17           | XDFZZ    |                       | 111315       | 44038 | BRACKET TERMINAL BLOCK     | EA  | 1   |
| 5                      | 18           | PAFZZ    | 5310-00-934-9761      | MS35649-264  | 96906 | NUT PLAIN HEXAGON          | EA  | 2   |
| 5                      | 19           | PAFZZ    | 5305-00-054-6655      | MS51957-31   | 96906 | SCREW MACHINE PAN HEAD     | EA  | 1   |
| 5                      | 20           | XDFZZ    |                       | 111324       | 44038 | PLATE R M                  | EA  | 1   |
| 5                      | 21           | XDFZZ    |                       | 111314       | 44038 | FRAME COMMON MODULE        | EA  | 1   |
| 5                      | 22           | XDFZZ    |                       | 111316       | 44038 | TERMINAL BLOCK             | EA  | 1   |
| 5                      | 23           | XDFZZ    |                       | 111320       | 44038 | EXTRACTOR BATTERY          | EA  | 1   |
| 5                      | 24           | XDFZZ    |                       | 111319       | 44038 | STUD PLAIN                 | EA  | 1   |
| 5                      | 25           | PAFZZ    | 5360-00-114-5645      | 111317       | 44038 | SPRING HELICAL COMPRESSION | EA  | 2   |
| 5                      | 26           | PAFZZ    | 5310-00-934-9765      | MS35650-304  | 96906 | NUT PLAIN HEXAGON          | EA  | 2   |
| 5                      | 27           | PAFZZ    | 5310-00-619-1148      | MS15795-808  | 96906 | WASHER FLAT                | EA  | 2   |
| 5                      | 28           | PAFZZ    | 5310-00-933-4120      | MS35338-134  | 96906 | WASHER LOCK                | EA  | 2   |
| 5                      | 29           | PAFZZ    | 5360-00-114-5651      | 111318       | 44038 | SPRING HELICAL COMPRESSION | EA  | 1   |
| 5                      | 30           | PAFZZ    | 5605-00-100-1159      | 111055       | 44038 | SWITCH PUSH                | EA  | 1   |
| 5                      | 31           | XDFZZ    |                       | 111607       | 44038 | BEZEL KEYSER               | EA  | 1   |
| 5                      | 32           | PAFZZ    | 5310-00-199-7635      | MS24679-21   | 96906 | NUT PLAIN CAP              | EA  | 2   |
| 5                      | 33           | XDFZZ    |                       | 111353       | 44038 | SPACER HANDLE              | EA  | 1   |
| 5                      | 34           | XDFZZ    |                       | 111309       | 44038 | COVER BATTERY              | EA  | 1   |
| 5                      | 35           | PAFZZ    | 5905-00-911-5795      | RV2N8Y5D502A | 81349 | RESISTOR VARIABLE          | EA  | 1   |
| 5                      | 36           | PAFZZ    | 5355-00-543-0789      | MS91528-1M28 | 96906 | KNOB                       | EA  | 1   |
| 5                      | 37           | PAFZZ    | 5930-00-100-1174      | 114648       | 44038 | SWITCH PUSH                | EA  | 1   |
| 5                      | 38           | PAFZZ    | 5930-00-100-1168      | 114647       | 44038 | SWITCH PUSH                | EA  | 1   |
| 5                      | 39           | PAFZZ    | 5930-00-843-8990      | MS24658-220  | 96906 | SWITCH TOGGLE              | EA  | 1   |

## SECTION II

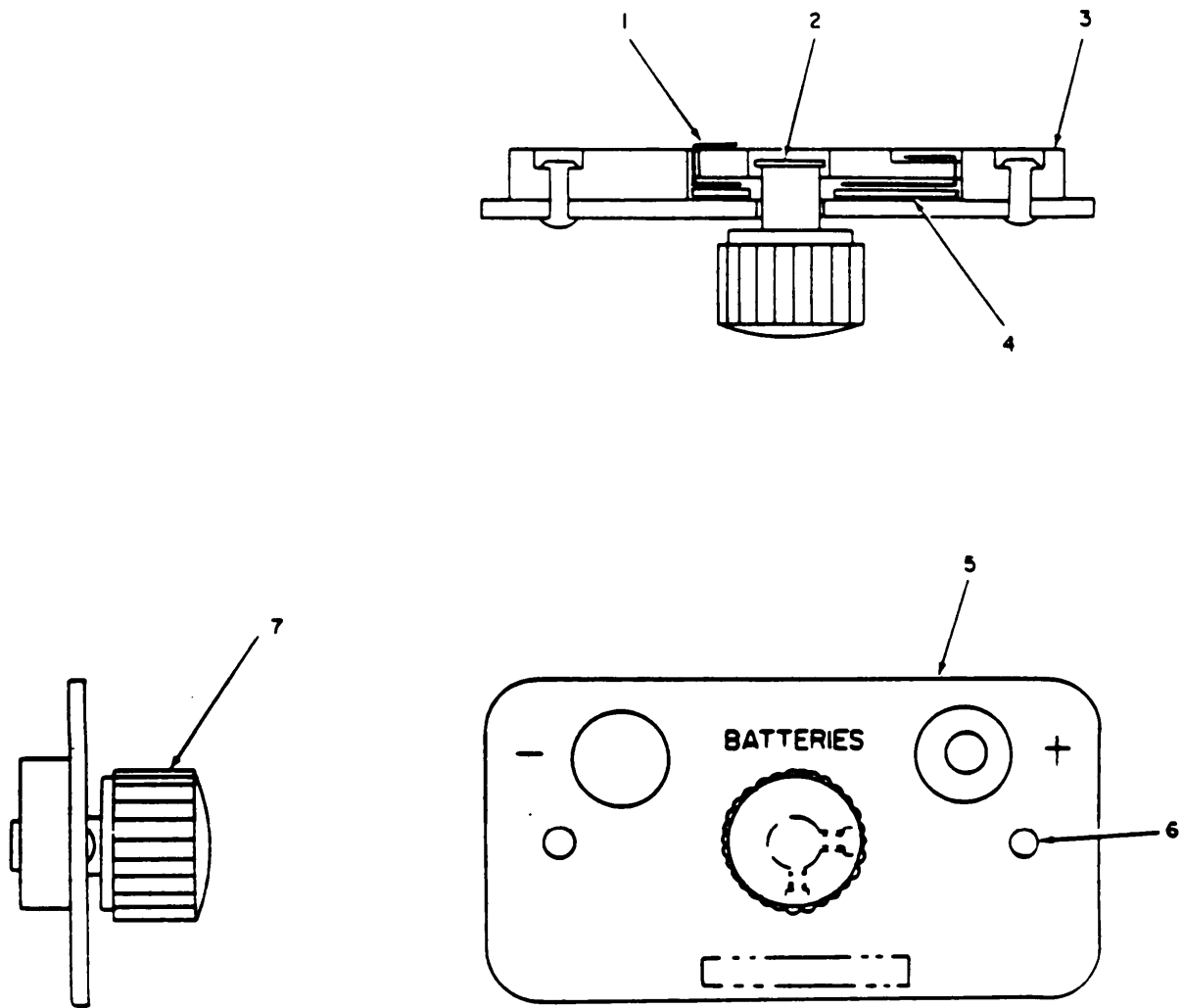
TM11-5805-689-24P

| ILLUSTRATION     |                   |                    |                                    |                       | DESCRIPTION |                     |                       |                        |
|------------------|-------------------|--------------------|------------------------------------|-----------------------|-------------|---------------------|-----------------------|------------------------|
| (8)<br>FIG<br>NO | (9)<br>ITEM<br>NO | (2)<br>SMR<br>CODE | (3)<br>NATIONAL<br>STOCK<br>NUMBER | (4)<br>PART<br>NUMBER | (5)<br>FSCM |                     | (6)<br>UNABLE ON CODE | (7)<br>QTY<br>NO<br>UN |
| 5                | 40                | PAFZZ              | 5940-00-983-7091                   | 323011                | 00779       | TERMINAL LUG        |                       | EA 4                   |
| 5                | 41                | PAFZZ              | 5940-00-815-8958                   | 2104-06-02            | 78189       | TERMINAL LUG        |                       | EA 1                   |
| 5                | 42                | PAFZZ              | 5820-00-134-9372                   | SC628M                | 90201       | LOUDSPEAKER         |                       | EA 1                   |
| 5                | 43                | PAFZZ              | 5975-00-727-5153                   | MS3367-4-9            | 96906       | STRAP TIEDOWN       |                       | EA 5                   |
| 5                | 44                | XDFZZ              |                                    | 111311                | 44038       | WIRING HARNESS      |                       | EA 1                   |
| 5                | 45                | XDFZZ              |                                    | 110787                | 44038       | HANDLE BOW          |                       | EA 1                   |
| 5                | 46                | XDFZZ              |                                    | 111321                | 44038       | COVER COMMON MODULE |                       | EA 1                   |
| 5                | 47                | PAFZZ              | 5305-00-969-6455                   | MS24693C25            | 96906       | SCREW MACHINE       |                       | EA 6                   |
| 5                | 48                | XDFZZ              |                                    | 111326                | 44038       | NUT STRIP           |                       | EA 2                   |

18/19 BLANK

18/19 BLANK





NOTE: PREFIX ALL REFERENCE DESIGNATIONS WITH AIA5

EL3LM006

Figure 6. Common Module, Battery Case, Top, Side and Front Views.

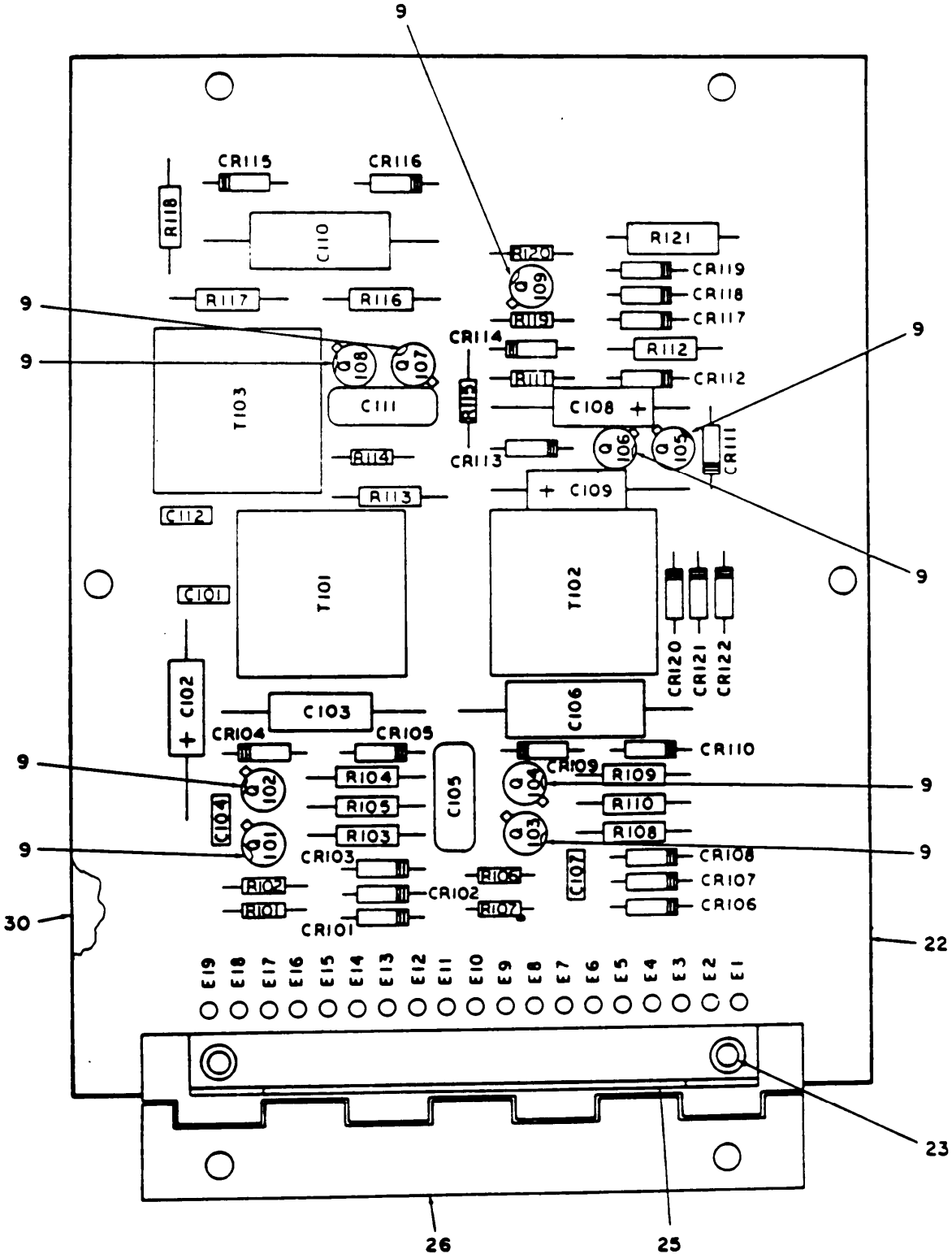


| 1)           |             | 2)       |                  | 3)                    |        | 4)          |       | 5)              |  | 6)          |  | 7)  |   | 8)   |  |
|--------------|-------------|----------|------------------|-----------------------|--------|-------------|-------|-----------------|--|-------------|--|-----|---|------|--|
| ILLUSTRATION |             |          |                  | NATIONAL STOCK NUMBER |        | PART NUMBER |       | FSCM            |  | DESCRIPTION |  | QTY |   | UNIT |  |
| (A) FIG NO   | (B) ITEM NO | SMR CODE |                  |                       |        |             |       |                 |  |             |  |     |   |      |  |
| 6            | 1           | XDDZZ    |                  |                       | 111330 |             | 44038 | BUS BATTERY     |  |             |  | EA  | 1 |      |  |
| 6            | 2           | XDDZZ    |                  |                       | 111329 |             | 44038 | BUSHING PANEL   |  |             |  | EA  | 1 |      |  |
| 6            | 3           | XDDZZ    |                  |                       | 111328 |             | 44038 | BLOCK GUIDE     |  |             |  | EA  | 1 |      |  |
| 6            | 4           | XDDZZ    |                  |                       | 111331 |             | 44038 | INSULATOR PLATE |  |             |  | EA  | 1 |      |  |
| 6            | 5           | XDDZZ    |                  |                       | 111327 |             | 44038 | PLATE FRONT     |  |             |  | EA  | 1 |      |  |
| 6            | 6           | PAFZZ    | 5320-00-679-6607 | MS16935-82            |        |             | 96906 | RIVET TUBULAR   |  |             |  | EA  | 2 |      |  |
| 6            | 7           | PAFZZ    | 5355-00-543-0789 | MS91528-1N28          |        |             | 96906 | KNOB            |  |             |  | EA  | 1 |      |  |

21/(22 BLANK)

21/(22 BLANK)





NOTE: PREFIX ALL REFERENCE DESIGNATIONS WITH AIASAI

EL3LM007

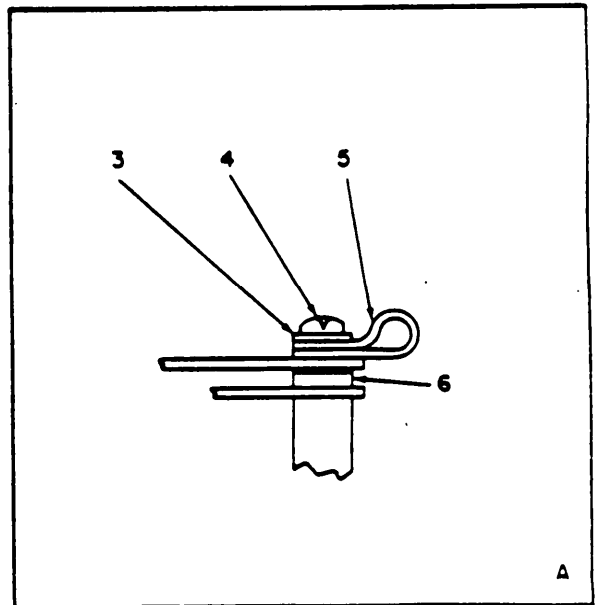
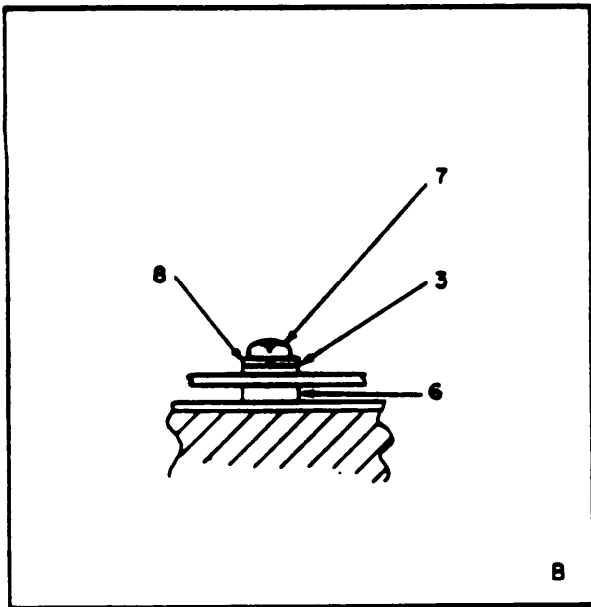
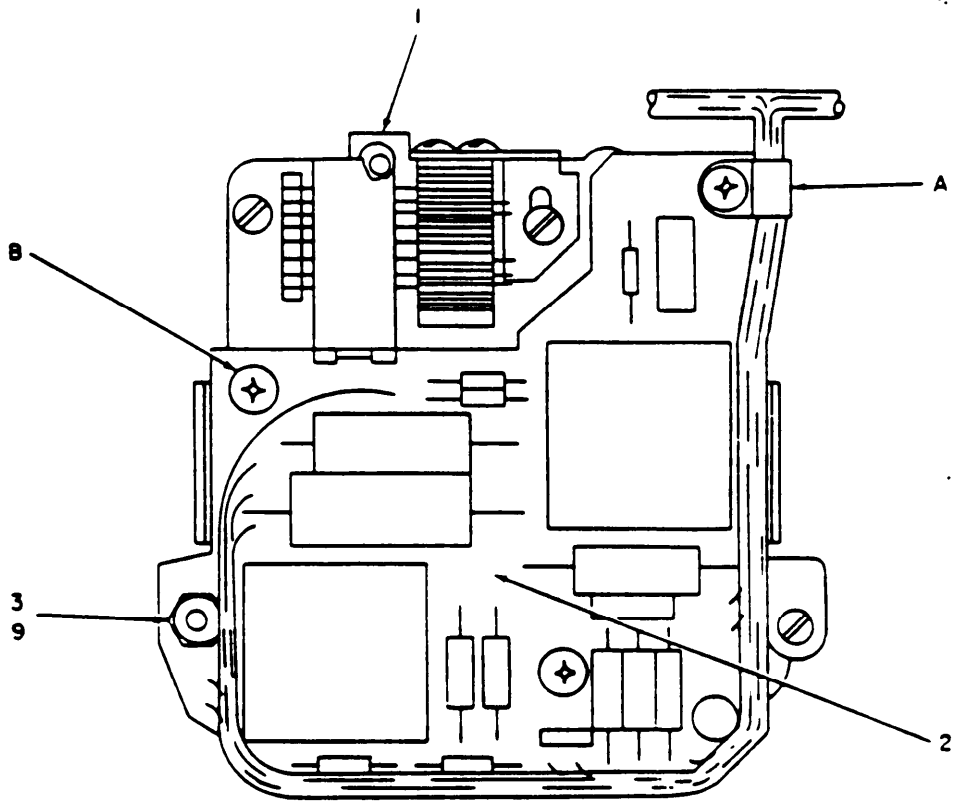
Figure 7. Common Module Circuit Card (Sheet 1 of 2).

| REF DES | ITEM NO. | REF DES | ITEM NO. |
|---------|----------|---------|----------|
| C101    | 2        | E10     | 24       |
| C102    | 32       | E11     | 24       |
| C103    | 31       | E12     | 24       |
| C104    | 3        | E13     | 24       |
| C105    | 7        | E14     | 24       |
| C106    | 13       | E15     | 24       |
| C107    | 3        | E16     | 24       |
| C108    | 20       | E17     | 24       |
| C109    | 20       | E18     | 24       |
| C110    | 13       | E19     | 24       |
| C111    | 7        | Q101    | 10       |
| C112    | 3        | Q102    | 8        |
| CR101   | 15       | Q103    | 10       |
| CR102   | 15       | Q104    | 8        |
| CR103   | 15       | Q105    | 8        |
| CR104   | 14       | Q106    | 8        |
| CR105   | 15       | Q107    | 10       |
| CR106   | 15       | Q108    | 8        |
| CR107   | 15       | Q109    | 10       |
| CR108   | 15       | R101    | 5        |
| CR109   | 14       | R102    | 5        |
| CR110   | 15       | R103    | 29       |
| CR111   | 15       | R104    | 27       |
| CR112   | 15       | R105    | 28       |
| CR113   | 15       | R106    | 5        |
| CR 1 14 | 15       | R107    | 5        |
| CR115   | 14       | R108    | 11       |
| CR116   | 15       | R109    | 11       |
| CR117   | 15       | R110    | 12       |
| CR118   | 15       | R111    | 17       |
| CR 1 19 | 15       | R112    | 19       |
| CR120   | 15       | R113    | 4        |
| CR121   | 15       | R114    | 5        |
| CR122   | 15       | R115    | 5        |
| E 1     | 24       | R116    | 11       |
| E 2     | 24       | R117    | 11       |
| E 3     | 24       | R118    | 12       |
| E 4     | 24       | R119    | 17       |
| E 5     | 24       | R120    | 16       |
| E 6     | 24       | R121    | 18       |
| E 7     | 24       | T101    | 1        |
| E 8     | 24       | T102    | 21       |
| E 9     | 24       | T103    | 6        |

EL3LM011

Figure 7. Common Module Circuit Card (Sheet 2 of 2).

| (1)<br>ILLUSTRATION                   |                    | (2)         | (3)                         | (4)            | (5)   | (6)                          | (7)            | (8)                      |
|---------------------------------------|--------------------|-------------|-----------------------------|----------------|-------|------------------------------|----------------|--------------------------|
| (a)<br>FIG<br>NO.                     | (b)<br>ITEM<br>NO. | SMR<br>CODE | NATIONAL<br>STOCK<br>NUMBER | PART<br>NUMBER | FSCM  | DESCRIPTION                  | USABLE ON CODE | QTY<br>INC<br>IN<br>UNIT |
| GROUP 0301 COMMON MODULE CIRCUIT CARD |                    |             |                             |                |       |                              |                |                          |
| 7                                     | 1                  | PADZZ       | 5950-00-099-0521            | 114652         | 44038 | TRANSFORMER AUDIO            |                | EA 1                     |
| 7                                     | 2                  | PADZZ       | 5910-00-105-1924            | CK068X223M     | 81349 | CAPACITOR FIXED CERAMIC      |                | EA 1                     |
| 7                                     | 3                  | PADZZ       | 5910-00-124-5084            | CK068X334K     | 81349 | CAPACITOR FIXED CERAMIC      |                | EA 3                     |
| 7                                     | 4                  | XDDZZ       |                             | RNR60K1073FM   | 81349 | RESISTOR FIXED FILM          |                | EA 1                     |
| 7                                     | 5                  | PADZZ       | 5905-00-730-1498            | RL075123J      | 81349 | RESISTOR FIXED FILM          |                | EA 6                     |
| 7                                     | 6                  | PADZZ       | 5950-00-099-0516            | 114538         | 44038 | TRANSFORMER AUDIO            |                | EA 1                     |
| 7                                     | 7                  | PADZZ       | 5910-00-071-7399            | CM04FD152F03   | 81349 | CAPACITOR FIXED CERAMIC      |                | EA 2                     |
| 7                                     | 8                  | PADZZ       | 5961-00-951-4756            | 2N2222         | 81349 | TRANSISTOR                   |                | EA 5                     |
| 7                                     | 9                  | PADZZ       | 5999-00-929-3086            | 7717-180AP     | 13103 | MOUNTING PAD                 |                | EA 9                     |
| 7                                     | 10                 | XDDZZ       |                             | 2N2907         | 81349 | TRANSISTOR                   |                | EA 4                     |
| 7                                     | 11                 | PADZZ       | 5905-00-432-6410            | RNR60K1001FM   | 81349 | RESISTOR FIXED FILM          |                | EA 4                     |
| 7                                     | 12                 | XDDZZ       |                             | RNR60K1820FM   | 81349 | RESISTOR FIXED FILM          |                | EA 2                     |
| 7                                     | 13                 | PADZZ       | 5910-00-481-1012            | LC9A1A104F     | 01884 | CAPACITOR FIXED              |                | EA 2                     |
| 7                                     | 14                 | PADZZ       | 5961-00-852-7549            | 1N754A         | 81349 | SEMICONDUCTOR DEVICE DIODE   |                | EA 3                     |
| 7                                     | 15                 | PADZZ       | 5961-00-604-0399            | 1N3600         | 81349 | SEMICONDUCTOR DEVICE DIODE   |                | EA 15                    |
| 7                                     | 16                 | PADZZ       | 5905-00-730-1499            | RL075153J      | 81349 | RESISTOR FIXED FILM          |                | EA 1                     |
| 7                                     | 17                 | PADZZ       | 5905-00-913-3073            | RL075103J      | 81349 | RESISTOR FIXED FILM          |                | EA 2                     |
| 7                                     | 18                 | PADZZ       | 5905-00-975-1299            | RL325101J      | 81349 | RESISTOR FIXED FILM          |                | EA 1                     |
| 7                                     | 19                 | PADZZ       | 5905-00-125-0826            | RNR60K2493FM   | 81349 | RESISTOR FIXED FILM          |                | EA 1                     |
| 7                                     | 20                 | PADZZ       | 5910-00-229-4492            | CL658C250JPE   | 81349 | CAPACITOR FIXED ELECTROLYTIC |                | EA 2                     |
| 7                                     | 21                 | PADZZ       | 5950-00-099-0520            | 114651         | 44038 | TRANSFORMER AUDIO            |                | EA 1                     |
| 7                                     | 22                 | XADDZ       |                             | 111305         | 44038 | PRINTED WIRING BOARD         |                | EA 1                     |
| 7                                     | 23                 | XDDZZ       |                             | MS16939-248    | 98906 | RIVET TUBULAR                |                | EA 2                     |
| 7                                     | 24                 | XDDZZ       |                             | 44381-2        | 12619 | TERMINAL STUD                |                | EA 19                    |
| 7                                     | 25                 | XDDZZ       |                             | 111347         | 44038 | BRACKET ANGLE                |                | EA 1                     |
| 7                                     | 26                 | XDDZZ       |                             | 111322         | 44038 | HINGE BUTT                   |                | EA 1                     |
| 7                                     | 27                 | XDDZZ       |                             | RNR60K1501FM   | 81349 | RESISTOR FIXED FILM          |                | EA 1                     |
| 7                                     | 28                 | PADZZ       | 5905-00-137-0806            | RNR60K8060FM   | 81349 | RESISTOR FIXED FILM          |                | EA 1                     |
| 7                                     | 29                 | XDDZZ       |                             | RNR60K9090FM   | 81349 | RESISTOR FIXED FILM          |                | EA 1                     |
| 7                                     | 30                 | XDDZZ       |                             | 111346         | 44038 | SPACER                       |                | EA 4                     |
| 7                                     | 31                 | PADZZ       | 5910-00-100-1102            | LS9A1A223F     | 01884 | CAPACITOR FIXED              |                | EA 1                     |
| 7                                     | 32                 | XDDZZ       |                             | CL658D470KPE   | 81349 | CAPACITOR FIXED              |                | EA 1                     |



NOTE: PREFIX ALL REFERENCE DESIGNATIONS WITH AIA555

EL3LM008

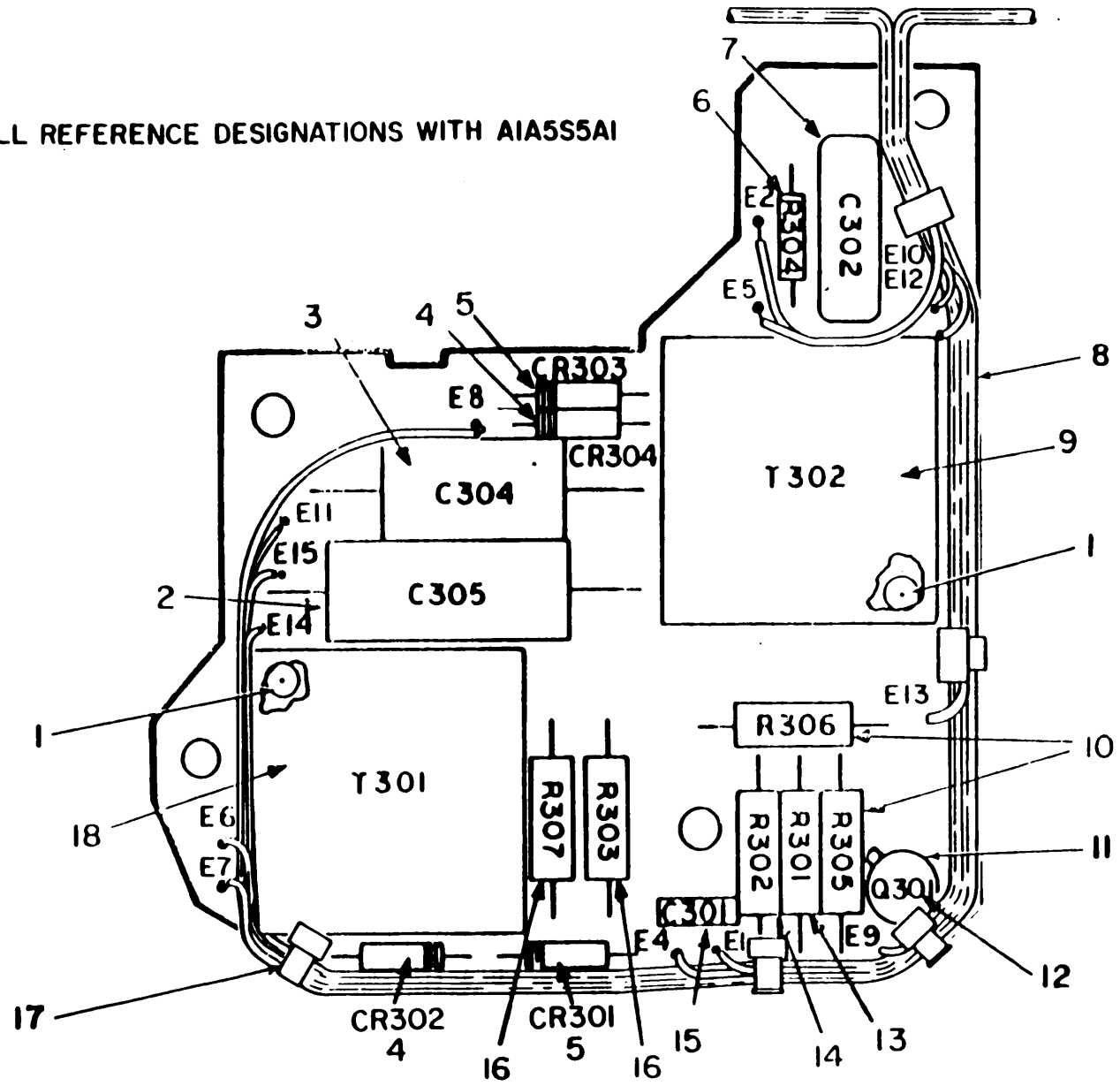
Figure 8. Oscillator Assembly, Mounting Details.

## SECTION II

TM11-5805-689-24P

| (1)<br>ILLUSTRATION            |                    | (2)         | (3)                         | (4)            | (5)   | (6)<br>DESCRIPTION           | (7)<br>USABLE ON CODE | (8)<br>QTY<br>INC<br>N<br>UNIT |
|--------------------------------|--------------------|-------------|-----------------------------|----------------|-------|------------------------------|-----------------------|--------------------------------|
| (A)<br>FIG<br>NO.              | (B)<br>ITEM<br>NO. | SMR<br>CODE | NATIONAL<br>STOCK<br>NUMBER | PART<br>NUMBER | FSCM  |                              | U/M                   |                                |
| GROUP 0302 OSCILLATOR ASSEMBLY |                    |             |                             |                |       |                              |                       |                                |
| d                              | 1                  | PAFZZ       | 5605-00-007-4081            | 11378-1        | 25397 | SWITCH PUSH                  |                       | EA 1                           |
| e                              | 2                  | PAFDD       | 5805-00-174-3511            | 111002         | 44038 | OSCILLATOR AUDIO FREQUENCY   |                       | EA 1                           |
| d                              | 3                  | PAFZZ       | 5310-00-782-1349            | MS15795-404    | 96906 | WASHER FLAT                  |                       | EA 4                           |
| d                              | 4                  | PAFZZ       | 5305-00-170-1548            | MS24626-14     | 96906 | SCREW TAPPING THREAD CUTTING |                       | EA 1                           |
| d                              | 5                  | XDDZZ       |                             | 1-8-47         | 95987 | CLAMP LOOP                   |                       | EA 1                           |
| d                              | 6                  | XDFZZ       |                             | 86148-1        | 25397 | SPACER                       |                       | EA 3                           |
| d                              | 7                  | PAFZZ       | 5305-00-054-5648            | MS51457-14     | 96906 | SCREW MACHINE PAN HEAD       |                       | EA 2                           |
| d                              | 8                  | PAFZZ       | 5310-00-933-8118            | MS35338-135    | 96906 | WASHER LOCK                  |                       | EA 2                           |
| d                              | 9                  | PAFZZ       | 5310-00-982-4999            | MS21044C04     | 96906 | NUT SELF LOCKING HEXAGON     |                       | EA 1                           |

NOTE:  
PREFIX ALL REFERENCE DESIGNATIONS WITH AIA5S5A1



EL3LM009

Figure 9. Oscillator Assembly, Circuit Cards Assembly.



## SECTION II

T11-5805-689-24P

| (1)<br>ILLUSTRATION |                   | (2)         | (3)                         | (4)            | (5)   | (6)<br>DESCRIPTION          | (7) | (8)                      |
|---------------------|-------------------|-------------|-----------------------------|----------------|-------|-----------------------------|-----|--------------------------|
| (A)<br>FIG<br>NO    | (B)<br>ITEM<br>NO | SMR<br>CODE | NATIONAL<br>STOCK<br>NUMBER | PART<br>NUMBER | FSCM  | DESCRIPTION                 | U/M | QTY<br>INC<br>IN<br>UNIT |
|                     |                   |             |                             |                |       | USABLE ON CODE              |     |                          |
| 9                   | 1                 | PAFZZ       | 5999-00-006-7193            | 114999         | 44038 | MOUNTING PAD                | EA  | 8                        |
| 9                   | 2                 | PAFZZ       | 5910-00-482-0397            | LS9A1A823F     | 01884 | CAPACITOR FIXED             | EA  | 1                        |
| 9                   | 3                 | PAFZZ       | 5910-00-482-0396            | LS9A1A393F     | 01884 | CAPACITOR FIXED             | EA  | 1                        |
| 9                   | 4                 | PADZZ       | 5961-00-404-0399            | IN3600         | 81349 | SEMICONDUCTOR DEVICE DIODE  | EA  | 2                        |
| 9                   | 5                 | PAFZZ       | 5961-00-852-7549            | IN754A         | 81349 | SEMICONDUCTOR DEVICE DIODE  | EA  | 2                        |
| 9                   | 6                 | PAFZZ       | 5905-00-727-5341            | RL07S102J      | 81349 | RESISTOR FIXED FILM         | EA  | 1                        |
| 9                   | 7                 | PAFZZ       | 5910-00-965-9441            | CM06FD102J03   | 81349 | CAPACITOR FIXEDMICA         | EA  | 1                        |
| 9                   | 8                 | XAFZZ       |                             | 111001         | 44038 | PRINTED WIRING BOARD        | EA  | 1                        |
| 9                   | 9                 | PAFZZ       | 5950-00-100-1161            | 112425         | 44038 | TRANSFORMER AUDIO FREQUENCY | EA  | 1                        |
| 9                   | 10                | XDDZZ       |                             | RNR60K1501PM   | 81349 | RESISTOR FIXED FILM         | EA  | 2                        |
| 9                   | 11                | PAFZZ       | 5999-00-929-3086            | 7717-18DAP     | 13103 | MOUNTING PAD                | EA  | 1                        |
| 9                   | 12                | PAFZZ       | 5961-00-951-8756            | 2N2222         | 81349 | TRANSISTOR                  | EA  | 1                        |
| 9                   | 13                | XDFZZ       |                             | RNR60K2102FM   | 81349 | RESISTOR FIXED FILM         | EA  | 1                        |
| 9                   | 14                | XDFZZ       |                             | RNR60K7681     | 81349 | RESISTOR FIXED FILM         | EA  | 1                        |
| 9                   | 15                | PAFZZ       | 5910-00-124-5064            | CR068X334K     | 81349 | CAPACITOR FIXED             | EA  | 1                        |
| 9                   | 16                | XDFZZ       |                             | RNR60K2430FM   | 81349 | RESISTOR FIXED FILM         | EA  | 2                        |
| 9                   | 17                | PAFZZ       | 5975-00-727-5153            | MS3367-4-9     | 96906 | STRAP TIEDOWN               | EA  | 5                        |
| 9                   | 18                | PAFZZ       | 5950-00-100-1160            | 112424         | 44038 | TRANSFORMER AUDIO FREQUENCY | EA  | 1                        |

NOTE: LATEST NATIONAL STOCK NUMBER ASSIGNMENTS ARE SHOWN IN THIS INDEX.

| STOCK NUMBER     | FIGURE NO. | ITEM NO. | STOCK NUMBER     | FIGURE NO. | ITEM NO. |
|------------------|------------|----------|------------------|------------|----------|
| 5994-00-000-0000 | 4          | 7        | 5994-00-000-0000 | 7          | 11       |
| 5995-00-000-0000 | 9          | 1        | 5995-00-000-0000 | 4          | 32       |
| 5995-00-000-0000 | 8          | 1        | 5995-00-000-0000 | 4          | 4        |
| 6250-00-000-0000 | 2          | 31       | 5995-00-000-0000 | 7          | 13       |
| 5995-00-000-0000 | 3          | 57       | 5995-00-000-0000 | 4          | 30       |
| 5995-00-000-0000 | 5          | 4        | 5995-00-000-0000 | 4          | 3        |
| 5995-00-000-0000 | 1          | 0        | 5995-00-000-0000 | 9          | 2        |
| 5995-00-000-0000 | 3          | 19       | 5995-00-000-0000 | 3          | 29       |
| 5995-00-000-0000 | 6          | 7        | 5995-00-000-0000 | 5          | 36       |
| 5995-00-000-0000 | 2          | 27       | 5995-00-000-0000 | 6          | 7        |
| 5995-00-000-0000 | 3          | 14       | 5995-00-000-0000 | 2          | 1        |
| 5995-00-000-0000 | 5          | 0        | 5995-00-000-0000 | 3          | 22       |
| 5995-00-000-0000 | 2          | 4        | 5995-00-000-0000 | 3          | 17       |
| 5995-00-000-0000 | 3          | 54       | 5995-00-000-0000 | 4          | 3        |
| 5995-00-000-0000 | 5          | 7        | 5995-00-000-0000 | 7          | 15       |
| 5995-00-000-0000 | 5          | 11       | 5995-00-000-0000 | 4          | 4        |
| 5995-00-000-0000 | 5          | 19       | 5995-00-000-0000 | 2          | 0        |
| 5995-00-000-0000 | 3          | 26       | 5995-00-000-0000 | 3          | 34       |
| 5995-00-000-0000 | 2          | 16       | 5995-00-000-0000 | 5          | 41       |
| 5995-00-000-0000 | 3          | 53       | 5995-00-000-0000 | 5          | 27       |
| 5995-00-000-0000 | 3          | 9        | 5995-00-000-0000 | 4          | 10       |
| 5995-00-000-0000 | 2          | 24       | 5995-00-000-0000 | 3          | 38       |
| 5995-00-000-0000 | 4          | 20       | 5995-00-000-0000 | 2          | 5        |
| 5995-00-000-0000 | 3          | 23       | 5995-00-000-0000 | 3          | 4        |
| 5995-00-000-0000 | 7          | 7        | 5995-00-000-0000 | 5          | 5        |
| 5995-00-000-0000 | 4          | 21       | 5995-00-000-0000 | 2          | 12       |
| 5995-00-000-0000 | 3          | 50       | 5995-00-000-0000 | 2          | 2        |
| 5995-00-000-0000 | 7          | 0        | 5995-00-000-0000 | 3          | 20       |
| 5995-00-000-0000 | 7          | 21       | 5995-00-000-0000 | 5          | 43       |
| 5995-00-000-0000 | 7          | 1        | 5995-00-000-0000 | 4          | 17       |
| 5995-00-000-0000 | 5          | 47       | 5995-00-000-0000 | 5          | 0        |
| 5995-00-000-0000 | 4          | 40       | 5995-00-000-0000 | 3          | 45       |
| 5995-00-000-0000 | 7          | 31       | 5995-00-000-0000 | 7          | 5        |
| 5995-00-000-0000 | 3          | 0        | 5995-00-000-0000 | 7          | 10       |
| 5995-00-000-0000 | 5          | 30       | 5995-00-000-0000 | 4          | 22       |
| 5995-00-000-0000 | 4          | 10       | 5995-00-000-0000 | 3          | 41       |
| 5995-00-000-0000 | 9          | 9        | 5995-00-000-0000 | 4          | 17       |
| 5995-00-000-0000 | 3          | 33       | 5995-00-000-0000 | 3          | 37       |
| 5995-00-000-0000 | 4          | 15       | 5995-00-000-0000 | 3          | 40       |
| 5995-00-000-0000 | 4          | 16       | 5995-00-000-0000 | 3          | 42       |
| 5995-00-000-0000 | 4          | 34       | 5995-00-000-0000 | 0          | 3        |
| 5995-00-000-0000 | 5          | 38       | 5995-00-000-0000 | 2          | 30       |
| 5995-00-000-0000 | 3          | 51       | 5995-00-000-0000 | 3          | 39       |
| 5995-00-000-0000 | 5          | 37       | 5995-00-000-0000 | 4          | 9        |
| 5995-00-000-0000 | 1          | 9        | 5995-00-000-0000 | 3          | 25       |
| 5995-00-000-0000 | 3          | 43       | 5995-00-000-0000 | 5          | 37       |
| 5995-00-000-0000 | 4          | 31       | 5995-00-000-0000 | 7          | 14       |
| 5995-00-000-0000 | 4          | 6        | 5995-00-000-0000 | 9          | 5        |
| 5995-00-000-0000 | 7          | 2        | 5995-00-000-0000 | 4          | 2        |
| 5995-00-000-0000 | 2          | 13       | 5995-00-000-0000 | 6          | 6        |
| 5995-00-000-0000 | 2          | 10       | 5995-00-000-0000 | 2          | 14       |
| 5995-00-000-0000 | 3          | 32       | 5995-00-000-0000 | 2          | 19       |
| 5995-00-000-0000 | 5          | 1        | 5995-00-000-0000 | 3          | 31       |
| 5995-00-000-0000 | 4          | 25       | 5995-00-000-0000 | 5          | 3        |
| 5995-00-000-0000 | 4          | 27       | 5995-00-000-0000 | 5          | 35       |
| 5995-00-000-0000 | 5          | 25       | 5995-00-000-0000 | 7          | 17       |
| 5995-00-000-0000 | 5          | 29       | 5995-00-000-0000 | 4          | 39       |
| 5995-00-000-0000 | 1          | 3        | 5995-00-000-0000 | 3          | 18       |
| 5995-00-000-0000 | 4          | 29       | 5995-00-000-0000 | 4          | 17       |
| 5995-00-000-0000 | 7          | 3        | 5995-00-000-0000 | 7          | 9        |
| 5995-00-000-0000 | 9          | 15       | 5995-00-000-0000 | 9          | 11       |
| 5995-00-000-0000 | 19         | 19       | 5995-00-000-0000 | 3          | 44       |
| 5995-00-000-0000 | 3          | 46       | 5995-00-000-0000 | 3          | 3        |
| 5995-00-000-0000 | 5          | 42       | 5995-00-000-0000 | 5          | 13       |
| 5995-00-000-0000 | 7          | 28       | 5995-00-000-0000 | 8          | 8        |
| 5995-00-000-0000 | 3          | 0        | 5995-00-000-0000 | 2          | 15       |
| 5995-00-000-0000 | 5          | 15       | 5995-00-000-0000 | 5          | 28       |
| 5995-00-000-0000 | 2          | 20       | 5995-00-000-0000 | 2          | 8        |
| 5995-00-000-0000 | 8          | 4        | 5995-00-000-0000 | 3          | 12       |
| 5995-00-000-0000 | 1          | 10       | 5995-00-000-0000 | 5          | 18       |
| 5995-00-000-0000 | 5          | 8        | 5995-00-000-0000 | 5          | 26       |
| 5995-00-000-0000 | 3          | 15       | 5995-00-000-0000 | 3          | 16       |
| 5995-00-000-0000 | 1          | 5        | 5995-00-000-0000 | 7          | 8        |
| 5995-00-000-0000 | 8          | 2        | 5995-00-000-0000 | 4          | 12       |
| 5995-00-000-0000 | 1          | 1        | 5995-00-000-0000 | 4          | 13       |
| 5995-00-000-0000 | 3          | 3        | 5995-00-000-0000 | 2          | 29       |
| 5995-00-000-0000 | 5          | 12       | 5995-00-000-0000 | 3          | 11       |
| 5995-00-000-0000 | 7          | 20       | 5995-00-000-0000 | 5          | 12       |
| 5995-00-000-0000 | 3          | 36       | 5995-00-000-0000 | 3          | 7        |
| 5995-00-000-0000 | 2          | 9        | 5995-00-000-0000 | 5          | 16       |

| STOCK NUMBER     | FIGURE NO. | ITEM NO. | STOCK NUMBER     | FIGURE NO. | ITEM NO. |
|------------------|------------|----------|------------------|------------|----------|
| 5310-00-962-5160 | 2          | 17       | 5905-00-975-1294 | 7          | 15       |
| 5310-00-962-5160 | 3          | 30       | 5310-00-982-4999 | 3          | 21       |
| 5310-00-962-5160 | 5          | 2        | 5310-00-982-4999 | 8          | 9        |
| 5910-00-965-9441 | 9          | 7        | 5310-00-982-6813 | 3          | 10       |
| 5305-00-969-6495 | 3          | 2        | 5440-00-983-7091 | 2          | 28       |
| 5305-00-969-6495 | 5          | 47       | 5440-00-983-7091 | 5          | 45       |

| PART NUMBER   | FSCM  | FIG. NO. | ITEM NO. | PART NUMBER | FSCM  | FIG. NO. | ITEM NO. |
|---------------|-------|----------|----------|-------------|-------|----------|----------|
| AB381-2       | 12615 | 4        | 20       | MS35649-264 | 96906 | 2        | 5        |
| AB381-2       | 12615 | 7        | 24       | MS35649-264 | 96906 | 3        | 12       |
| CK050A222K    | 81349 | 4        | 27       | MS35649-264 | 96906 | 5        | 12       |
| CK060A223M    | 81349 | 4        | 5        | MS35650-304 | 96906 | 5        | 25       |
| CK060A223M    | 81349 | 7        | 2        | MS51957-14  | 96906 | 8        | 7        |
| CK060A334K    | 81349 | 4        | 29       | MS51957-16  | 96906 | 2        | 27       |
| CK060A334K    | 81349 | 7        | 3        | MS51957-27  | 96906 | 3        | 14       |
| CK060A334K    | 81349 | 9        | 15       | MS51957-27  | 96906 | 5        | 6        |
| CK060A564K    | 81349 | 3        | 29       | MS51957-28  | 96906 | 2        | 4        |
| CL650C250JPE  | 81349 | 7        | 20       | MS51957-28  | 96906 | 3        | 54       |
| CL650C470KPE  | 81349 | 4        | 36       | MS51957-28  | 96906 | 5        | 7        |
| CL650C470KPE  | 81349 | 7        | 32       | MS51957-29  | 96906 | 5        | 11       |
| CL650E150CKPE | 81349 | 4        | 1        | MS51957-31  | 96906 | 3        | 19       |
| CL650N4R7KPE  | 81349 | 4        | 25       | MS51957-38  | 96906 | 3        | 20       |
| CM06FD102J03  | 81349 | 9        | 7        | MS51957-45  | 96906 | 3        | 17       |
| CM06FD152F03  | 81349 | 7        | 7        | MS51957-46  | 96906 | 2        | 15       |
| CM2JEC3J2G03  | 81349 | 4        | 35       | MS51957-46  | 96906 | 5        | 11       |
| CSR13E396AP   | 81349 | 4        | 32       | MS51957-46  | 96906 | 5        | 11       |
| CSR13E476AM   | 81349 | 4        | 2        | MS51957-46  | 96906 | 2        | 15       |
| CSR13F565KM   | 81349 | 4        | 31       | MS51957-46  | 96906 | 3        | 21       |
| IN3000        | 81349 | 7        | 15       | MS51957-46  | 96906 | 3        | 21       |
| IN3000        | 81349 | 9        | 4        | MS51957-46  | 96906 | 3        | 21       |
| IN754A        | 81349 | 7        | 14       | MS51957-46  | 96906 | 3        | 21       |
| IN754A        | 81349 | 9        | 5        | MS51957-46  | 96906 | 3        | 21       |
| LC9A1A104F    | 01884 | 4        | 4        | MS51957-46  | 96906 | 3        | 21       |
| LC9A1A104F    | 01884 | 7        | 13       | MS51957-46  | 96906 | 3        | 21       |
| LS9A1A223F    | 01884 | 4        | 46       | MS51957-46  | 96906 | 3        | 21       |
| LS9A1A223F    | 01884 | 7        | 31       | MS51957-46  | 96906 | 3        | 21       |
| LS9A1A393F    | 01884 | 9        | 3        | MS51957-46  | 96906 | 3        | 21       |
| LS9A1A823F    | 01884 | 9        | 2        | MS51957-46  | 96906 | 3        | 21       |
| MS15795-802   | 96906 | 3        | 17       | MS51957-46  | 96906 | 3        | 21       |
| MS15795-804   | 96906 | 8        | 3        | MS51957-46  | 96906 | 3        | 21       |
| MS15795-805   | 96906 | 2        | 5        | MS51957-46  | 96906 | 3        | 21       |
| MS15795-805   | 96906 | 3        | 4        | MS51957-46  | 96906 | 3        | 21       |
| MS15795-805   | 96906 | 5        | 5        | MS51957-46  | 96906 | 3        | 21       |
| MS15795-807   | 96906 | 2        | 14       | MS51957-46  | 96906 | 3        | 21       |
| MS15795-808   | 96906 | 5        | 27       | MS51957-46  | 96906 | 3        | 21       |
| MS16535-24E   | 96906 | 4        | 45       | MS51957-46  | 96906 | 3        | 21       |
| MS16535-24E   | 96906 | 7        | 23       | MS51957-46  | 96906 | 3        | 21       |
| MS16535-82    | 96906 | 6        | 6        | MS51957-46  | 96906 | 3        | 21       |
| MS2047JAC3-4  | 96906 | 1        | 3        | MS51957-46  | 96906 | 3        | 21       |
| MS21044C04    | 96906 | 3        | 21       | MS51957-46  | 96906 | 3        | 21       |
| MS21044C04    | 96906 | 8        | 9        | MS51957-46  | 96906 | 3        | 21       |
| MS21044C06    | 96906 | 3        | 10       | MS51957-46  | 96906 | 3        | 21       |
| MS24626-14    | 96906 | 8        | 4        | MS51957-46  | 96906 | 3        | 21       |
| MS24658-22U   | 96906 | 5        | 39       | MS51957-46  | 96906 | 3        | 21       |
| MS24679-21    | 96906 | 3        | 1        | MS51957-46  | 96906 | 3        | 21       |
| MS24679-21    | 96906 | 5        | 32       | MS51957-46  | 96906 | 3        | 21       |
| MS24693C25    | 96906 | 3        | 2        | MS51957-46  | 96906 | 3        | 21       |
| MS24693C25    | 96906 | 5        | 47       | MS51957-46  | 96906 | 3        | 21       |
| MS24693C26    | 96906 | 3        | 7        | MS51957-46  | 96906 | 3        | 21       |
| MS24693C26    | 96906 | 5        | 16       | MS51957-46  | 96906 | 3        | 21       |
| MS24693C27    | 96906 | 2        | 24       | MS51957-46  | 96906 | 3        | 21       |
| MS24693C28    | 96906 | 3        | 9        | MS51957-46  | 96906 | 3        | 21       |
| MS24693C6     | 96906 | 3        | 23       | MS51957-46  | 96906 | 3        | 21       |
| MS25036-101   | 96906 | 2        | 30       | MS51957-46  | 96906 | 3        | 21       |
| MS3367-4-9    | 96906 | 2        | 2        | MS51957-46  | 96906 | 3        | 21       |
| MS3367-4-9    | 96906 | 3        | 28       | MS51957-46  | 96906 | 3        | 21       |
| MS3367-4-9    | 96906 | 5        | 43       | MS51957-46  | 96906 | 3        | 21       |
| MS3367-4-9    | 96906 | 9        | 17       | MS51957-46  | 96906 | 3        | 21       |
| MS3338-134    | 96906 | 3        | 18       | MS51957-46  | 96906 | 3        | 21       |
| MS3338-135    | 96906 | 8        | 8        | MS51957-46  | 96906 | 3        | 21       |
| MS3338-136    | 96906 | 2        | 7        | MS51957-46  | 96906 | 3        | 21       |
| MS3338-136    | 96906 | 3        | 13       | MS51957-46  | 96906 | 3        | 21       |
| MS3338-136    | 96906 | 5        | 10       | MS51957-46  | 96906 | 3        | 21       |
| MS3338-137    | 96906 | 2        | 15       | MS51957-46  | 96906 | 3        | 21       |
| MS3338-138    | 96906 | 5        | 28       | MS51957-46  | 96906 | 3        | 21       |
| MS35484-6     | 96906 | 2        | 9        | MS51957-46  | 96906 | 3        | 21       |
| MS35649-224   | 96906 | 3        | 16       | MS51957-46  | 96906 | 3        | 21       |

| PART NUMBER | FSCM  | FIG. NO. | ITEM NO. | PART NUMBER   | FSCM  | FIG. NO. | ITEM NO. |
|-------------|-------|----------|----------|---------------|-------|----------|----------|
| 111001      | 44038 | 9        | 8        | 111353        | 44038 | 5        | 35       |
| 111002      | 44038 | 8        | 2        | 111007        | 44038 | 5        | 31       |
| 111036      | 44038 | 4        | 28       | 112424        | 44038 | 9        | 18       |
| 111037      | 44038 | 4        | 23       | 112425        | 44038 | 9        | 9        |
| 111038      | 44038 | 4        | 47       | 112540        | 44038 | 2        | 20       |
| 111039      | 44038 | 4        | 24       | 11378-1       | 25397 | 3        | 1        |
| 111040      | 44038 | 4        | 41       | 114259        | 44038 | 3        | 33       |
| 111041      | 44038 | 4        | 33       | 114534        | 44038 | 4        | 15       |
| 111042      | 44038 | 4        | 30       | 114535        | 44038 | 4        | 16       |
| 111043      | 44038 | 4        | 13       | 114536        | 44038 | 4        | 34       |
| 111044      | 44038 | 4        | 5        | 114538        | 44038 | 7        | 6        |
| 111045      | 44038 | 4        | 12       | 114608        | 44038 | 3        | 46       |
| 111046      | 44038 | 4        | 8        | 114615        | 44038 | 2        | 18       |
| 111047      | 44038 | 4        | 37       | 114615        | 44038 | 3        | 32       |
| 111055      | 44038 | 5        | 30       | 114615        | 44038 | 5        | 1        |
| 111301      | 44038 | 1        | 6        | 114647        | 44038 | 5        | 38       |
| 111302      | 44038 | 2        | 22       | 114648        | 44038 | 3        | 51       |
| 111303      | 44038 | 4        | 40       | 114648        | 44038 | 5        | 37       |
| 111304      | 44038 | 3        | 15       | 114651        | 44038 | 7        | 21       |
| 111305      | 44038 | 7        | 22       | 114652        | 44038 | 7        | 1        |
| 111306      | 44038 | 5        | 8        | 114959        | 44038 | 4        | 7        |
| 111307      | 44038 | 1        | 1        | 114999        | 44038 | 9        | 1        |
| 111308      | 44038 | 1        | 5        | 116485        | 44038 | 3        | 47       |
| 111309      | 44038 | 5        | 34       | 116975        | 44038 | 3        | 20       |
| 111310      | 44038 | 3        | 27       | 116976        | 44038 | 3        | 24       |
| 111311      | 44038 | 5        | 44       | 117081        | 44038 | 3        | 5        |
| 111312      | 44038 | 2        | 3        | 117061        | 44038 | 5        | 14       |
| 111313      | 44038 | 3        | 55       | 117139        | 44038 | 3        | 5        |
| 111314      | 44038 | 5        | 21       | 117139        | 44038 | 5        | 15       |
| 111315      | 44038 | 5        | 17       | 2N2222        | 81349 | 4        | 16       |
| 111316      | 44038 | 5        | 22       | 2N2222        | 81349 | 7        | 3        |
| 111317      | 44038 | 5        | 25       | 2N2222        | 81349 | 9        | 12       |
| 111318      | 44038 | 5        | 29       | 2N2484        | 81349 | 4        | 9        |
| 111319      | 44038 | 5        | 24       | 2N2907        | 81349 | 4        | 14       |
| 111320      | 44038 | 5        | 23       | 2N2907        | 81349 | 7        | 10       |
| 111321      | 44038 | 5        | 46       | 20048         | 88245 | 4        | 11       |
| 111322      | 44038 | 4        | 42       | 2104-06-02    | 78189 | 2        | 6        |
| 111322      | 44038 | 7        | 26       | 2104-06-02    | 78189 | 3        | 34       |
| 111323      | 44038 | 3        | 35       | 2104-06-02    | 78189 | 5        | 41       |
| 111324      | 44038 | 5        | 20       | 3-16-4T       | 95987 | 2        | 29       |
| 111325      | 44038 | 5        | 9        | 3-16-4T       | 95987 | 3        | 11       |
| 111326      | 44038 | 5        | 48       | 3-16-4T       | 95987 | 5        | 12       |
| 111327      | 44038 | 6        | 5        | 323011        | 00779 | 2        | 28       |
| 111328      | 44038 | 6        | 3        | 323011        | 00779 | 5        | 40       |
| 111329      | 44038 | 6        | 2        | 352-11-04-001 | 71785 | 2        | 26       |
| 111330      | 44038 | 6        | 1        | 3648-2        | 71279 | 3        | 36       |
| 111331      | 44038 | 6        | 4        | 405-60-4      | 81590 | 2        | 31       |
| 111332      | 44038 | 2        | 23       | 57-10360      | 02660 | 3        | 57       |
| 111333      | 44038 | 2        | 25       | 57-10360      | 02660 | 5        | 4        |
| 111336      | 44038 | 1        | 7        | 57-20360      | 02660 | 2        | 1        |
| 111339      | 44038 | 2        | 21       | 7717-18DAP    | 13103 | 4        | 19       |
| 111344      | 44038 | 1        | 9        | 7717-18DAP    | 13103 | 7        | 7        |
| 111346      | 44038 | 4        | 38       | 7717-18DAP    | 13103 | 9        | 11       |
| 111346      | 44038 | 7        | 30       | 79NTM38       | 72962 | 2        | 17       |
| 111347      | 44038 | 4        | 43       | 79NTM38       | 72962 | 3        | 30       |
| 111347      | 44038 | 7        | 25       | 79NTM38       | 72962 | 5        | 2        |
| 111348      | 44038 | 3        | 56       | 86148-1       | 25397 | 8        | 6        |
| 111349      | 44038 | 3        | 52       | 9765-5        | 72825 | 2        | 13       |
| 111350      | 44038 | 1        | 2        | 9766-143      | 44038 | 2        | 11       |
| 111351      | 44038 | 1        | 4        | 9766-145      | 72825 | 2        | 10       |
| 111352      | 44038 | 3        | 48       |               |       |          |          |

LATEST NATIONAL STOCK NUMBER ASSIGNMENTS

| STOCK NUMBER     | FIG. NO. | ITEM NO. |
|------------------|----------|----------|
| 5310-00-929-6395 | 2        | 7        |
| 5310-00-929-6395 | 3        | 13       |
| 5310-00-929-6395 | 5        | 10       |

RECOMMENDED CHANGES TO EQUIPMENT TECHNICAL MANUALS



**SOMETHING WRONG WITH THIS MANUAL?**

THEN...JOT DOWN THE DOPE ABOUT IT ON THIS FORM, TEAR IT OUT, FOLD IT AND DROP IT IN THE MAIL!

FROM: (YOUR UNIT'S COMPLETE ADDRESS)

Commander  
Stateside Army Depot  
ATTN: AMSTA-US  
Stateside, N.J. 07703

DATE 10 July 1975

PUBLICATION NUMBER

TM 11-5840-340-12

DATE

23 Jan 74

TITLE

Radar Set AN/PSC-76

BE EXACT...PIN-POINT WHERE IT IS

IN THIS SPACE TELL WHAT IS WRONG AND WHAT SHOULD BE DONE ABOUT IT:

| PAGE NO. | PARA-GRAPH | FIGURE NO. | TABLE NO. |
|----------|------------|------------|-----------|
| 2-25     | 2-28       |            |           |
| 3-10     | 3-3        |            | 3-1       |
| 5-6      | 5-8        |            |           |
|          |            | FO3        |           |

Recommend that the installation antenna alignment procedure be changed through to specify a 2° IFF antenna lag rather than 1°.

REASON: Experience has shown that with only a 1° lag, the antenna servo system is too sensitive to wind gusting in excess of 20 knots, and has a tendency to rapidly accelerate and decelerate as it hunts, causing strain to the drive train. Hunting is minimized by adjusting the lag to 2° without degradation of operation.

Item 5, Function column. Change "2 db" to "3db."

REASON: The adjustment procedure for the TRANS POWER FAULT indicator calls for a 3 db (500 watts) adjustment to light the TRANS POWER FAULT indicator.

Add new step f.1 to read, "Replace cover plate removed in step e.1, above."

REASON: To replace the cover plate.

Zone C 3. On J1-2, change "+24 VDC to "+5 VDC."

REASON: This is the output line of the 5 VDC power supply. + 24 VDC is the input voltage.

TEAR ALONG DOTTED LINE

TYPED NAME, GRADE OR TITLE, AND TELEPHONE NUMBER

SSG I. M. DeSpirito 999-1776

SIGN HERE:

*SSG I. M. DeSpirito*

DA FORM 2028-2

P.S.—IF YOUR OUTFIT WANTS TO KNOW ABOUT YOUR MANUAL "FIND" MAKE A CARBON COPY OF THIS AND GIVE IT TO YOUR HEADQUARTERS.

HISA 1686-75



RECOMMENDED CHANGES TO EQUIPMENT TECHNICAL MANUALS



# SOMETHING WRONG WITH THIS MANUAL?

THEN...JOT DOWN THE DOPE ABOUT IT ON THIS FORM, TEAR IT OUT, FOLD IT AND DROP IT IN THE MAIL!

FROM: (YOUR UNIT'S COMPLETE ADDRESS)

DATE

PUBLICATION NUMBER

TM 11-5805-689-24P

DATE

17 Jul 78

TITLE

BE EXACT...PIN-POINT WHERE IT IS

| PAGE NO. | PARA-GRAPH | FIGURE NO. | TABLE NO. |
|----------|------------|------------|-----------|
|----------|------------|------------|-----------|

IN THIS SPACE TELL WHAT IS WRONG AND WHAT SHOULD BE DONE ABOUT IT:

TEAR ALONG DOTTED LINE

TYPED NAME, GRADE OR TITLE, AND TELEPHONE NUMBER

SIGN HERE:

FILL IN YOUR  
UNIT'S ADDRESS

FOLD BACK

DEPARTMENT OF THE ARMY

OFFICIAL BUSINESS

PENALTY FOR PRIVATE USE, \$300

POSTAGE AND FEES PAID  
DEPARTMENT OF THE ARMY  
DDO-314



Commander  
US Army Communications and  
Electronics Materiel Readiness Command  
ATTN: DRSEL-MA-Q  
Fort Monmouth, New Jersey 07703

TEAR ALONG DOTTED LINE

FOLD BACK





# SOMETHING WRONG WITH THIS MANUAL?

THEN... JOT DOWN THE DOPE ABOUT IT ON THIS FORM, TEAR IT OUT, FOLD IT AND DROP IT IN THE MAIL!

FROM: (YOUR UNIT'S COMPLETE ADDRESS)

DATE

PUBLICATION NUMBER

TM 11-5805-689-24P

DATE

17 Jul 78

TITLE

BE EXACT... PIN-POINT WHERE IT IS

PAGE NO.

PARAGRAPH

FIGURE NO.

TABLE NO.

IN THIS SPACE TELL WHAT IS WRONG AND WHAT SHOULD BE DONE ABOUT IT:

TEAR ALONG DOTTED LINE

TYPED NAME, GRADE OR TITLE, AND TELEPHONE NUMBER

SIGN HERE:

DA FORM 2028-2

P.S.—IF YOUR OUTFIT WANTS TO KNOW ABOUT YOUR MANUAL "FIND," MAKE A CARBON COPY OF THIS AND GIVE IT TO YOUR HEADQUARTERS.

FILL IN YOUR  
UNIT'S ADDRESS

FOLD BACK

DEPARTMENT OF THE ARMY

OFFICIAL BUSINESS

PENALTY FOR PRIVATE USE, \$300

POSTAGE AND FEES PAID  
DEPARTMENT OF THE ARMY  
DOD-314



Commander  
US Army Communications and  
Electronics Material Readiness Command  
ATTN: DRSEL-MA-Q  
Fort Monmouth, New Jersey 07703

TEAR ALONG DOTTED LINE

FOLD BACK

By Order of the Secretary of the Army:

BERNARD W. ROGERS  
General, *United States Army*  
*Chief of Staff*

Official:

J.C. PENNINGTON  
*Brigadier General, United States Army*  
*The Adjutant General*

Distribution:

*Active Army:*

USAINSCOM (2)  
COE(1)  
TSG(1)  
USAARENBD (1)  
DARCOM (1)  
TRADOC (2)  
OS Maj Comd (4)  
TECOM (2)  
USACC (4)  
MDW(1)  
*Armies* (2)  
Corps (2)  
Svc Colleges (1)  
USASIGS (5)  
USAADS (2)  
USAFAS (2)  
USAARMS (2)  
USAIS (2)  
USAES (2)  
USAICS (3)  
MAAG (1)  
USARMIS (1)  
USAERDAA (1)

USAERDAIV (1)  
Ft Monmouth (HISA) (33)  
Fort Gillem (10)  
Fort Gordon (10)  
Fort Carson (5)  
Fort Huachuca (10)  
Ft Richardson (CERCOM) (2)  
Army Dep (1) except  
LBAD (14)  
SAAD (30)  
TOAD (14)  
SHAD (3)  
USA Dep (1)  
Sig Sec USA Dep (1)  
Units org under fol TOE:  
(1 cy each UNOINDG)  
11-35  
29-16  
29-26  
29-36  
29-134  
29-207 (2)  
29-610 (2)

*NG:* None

*USAR:* None

For explanation of abbreviations usdd. see AR 310-50.







This fine document...

Was brought to you by me:



## [Liberated Manuals -- free army and government manuals](#)

Why do I do it? I am tired of sleazy CD-ROM sellers, who take publicly available information, slap “watermarks” and other junk on it, and sell it. Those masters of search engine manipulation make sure that their sites that sell free information, come up first in search engines. They did not create it... They did not even scan it... Why should they get your money? Why are not letting you give those free manuals to your friends?

I am setting this document FREE. This document was made by the US Government and is NOT protected by Copyright. Feel free to share, republish, sell and so on.

I am not asking you for donations, fees or handouts. If you can, please provide a link to [liberatedmanuals.com](http://liberatedmanuals.com), so that free manuals come up first in search engines:

<A HREF=<http://www.liberatedmanuals.com/>>Free Military and Government Manuals</A>

- Sincerely  
Igor Chudov  
<http://igor.chudov.com/>
- [Chicago Machinery Movers](#)