

TECHNICAL MANUAL

ORGANIZATIONAL MAINTENANCE REPAIR PARTS

AND SPECIAL TOOLS LISTS

FOR

**REELING MACHINES, CABLE,**

**MOTOR DRIVEN RL-172/G**

**(NSN 3895-00-892-2495)**

**AND**

**RL-172A/G**

**(NSN 3895-00-900-8320)**

---

HEADQUARTERS, DEPARTMENT OF THE ARMY

JULY 1977



**ORGANIZATIONAL MAINTENANCE REPAIR PARTS AND SPECIAL TOOLS LISTS  
 FOR  
 REELING MACHINES, CABLE, MOTOR DRIVEN  
 RL-172/G (NSN 3895-00-892-2495)  
 AND  
 RL-172A/G (NSN 3895-00-900-8320)**

*Current as of 16 March 1977*

**REPORTING OF ERRORS**

**You can improve this manual by recommending improvements using DA Form 2028-2 (Test) located in the back of the manual. Simply tear out the self addressed form, fill it out as shown on the sample, fold it where shown, and drop it in the mail.**

**If there are no blank DA Forms 2028-2 (Test) in the back of your manual, use the standard DA Form 2028 (Recommended Changes to Publications and Blank Forms) and forward to the Commander, US Army Electronics Command, ATTN: DRSEL-MA-Q, Fort Monmouth, NJ 07703.**

**In either case, a reply will be furnished direct to you.**

|          |   | Page | Illus<br>Figure |
|----------|---|------|-----------------|
| S ECTION | I. INTRODUCTION .....   | 1    |                 |
|          | II. REPAIR PARTS LIST .....                                       | 5    |                 |
| Group    | 00 Reeling Machines, Cable, Motor Driven RL-172/G, RL-172AG ..... | 5    | 1-4             |
|          | 01 Motor D-C (No parts authorized)                                |      |                 |
| S ECTION | III. SPECIAL TOOLS LIST (Not applicable)                          |      |                 |
|          | IV. NATIONAL STOCK NUMBER AND PART NUMBER INDEX .....             | 13   |                 |

\* This manual supersedes TM 11-3895-207-20P, 16 May 1972.



# SECTION I INTRODUCTION

## 1. Scope

This manual lists spares and repair parts special tools; special test, measurement, and diagnostic equipment (TMDE), and other special support equipment required for performance of organizational maintenance of the RL-172/G and RL-172A/G. It authorizes the requisitioning and issue of spares and repair parts as indicated by the source and maintenance codes.

## 2. General

This Repair Parts and Special Tools List is divided into the following sections

*a. Section II. Repair Parts List.* A list of spares and repair parts authorized for use in the performance of maintenance. The list also includes parts which must be removed for replacement of the authorized parts. Parts lists are composed of functional groups in numeric sequence, with the parts in each group listed in figure and item number sequence.

*b. Section III. Special Tools List.* Not applicable.

*c. Section IV. National Stock Number and Part Number Index.* A list, in National item identification number (NIIN) sequence, of all National stock numbers (NSN) appearing in the listings, followed by a list, in alphameric sequence, of all part numbers appearing in the listings. National stock numbers and part numbers are cross-referenced to each illustration figure and item number appearance.

## 3. Explanation of Columns

*a. Illustration.* This column is divided as follows

(1) *Figure number.* Indicates the figure number of the illustration on which the item is shown.

(2) *Item number.* The number used to identify item called out in the illustration.

*b. Source, Maintenance, and Recoverability (SMR) Codes.*

(1) *Source code.* Source codes indicate the manner of acquiring support items for maintenance, repair, or overhaul of end items. Source codes are entered in the first and second positions of the Uniform SMR Code format as follows:

| <i>Code</i> | <i>Definition</i>   |
|-------------|---|
| PA-         | Item procured and stocked for anticipated or known usage.   |
| XD-A        | support item that is not stocked. When required item will be procured through normal supply channels. |

### NOTE

Cannibalisation or salvage maybe used as a source of supply for any items source coded above except those coded XA and aircraft support items as restricted by AR 700-42.

(2) *Maintenance code.* Maintenance codes are assigned to indicate the levels of maintenance authorized to USE and REPAIR support items. The maintenance codes are entered in the third and fourth positions of the Uniform SMR Code format as follows:

(a) The maintenance code entered in the third position will indicate the lowest maintenance level authorized to remove, replace, and use the support item. The maintenance code entered in the third position will indicate one of the following levels of maintenance:

| <i>Code</i> | <i>Application/Explanation</i>  |
|-------------|---|
| O           | -Support item is removed, replaced, used at the organizational level. |

(b) The maintenance code entered in the fourth position indicates whether the item is to be repaired and identifies the lowest maintenance level with the capability to perform complete repair (i.e., all authorized maintenance functions). This position will contain one of the following maintenance codes:

| <i>Code</i> | <i>Application/Explanation</i>          |
|-------------|---|
| z           | -Nonreparable. No repair is authorized. |

(3) *Recoverability code.* Recoverability codes are assigned to support items to indicate the disposition action on unserviceable items. The recoverability code is entered in the fifth position of the Uniform SMR Code format as follows:

| <i>Recoverability codes</i> | <i>Definition</i>   |
|-----------------------------|---|
| Z                           | -Nonreparable item. When unserviceable, condemn and dispose at the level indicated in position 3. |

*c. National Stock Number.* Indicates the National stock number assigned to the item and will be used for requisitioning purposes.

*d. Part Number.* Indicates the primary number used by the manufacturer (individual, company, firm, corporation, or Government activity), which controls the design and characteristic of the item by means of its engineering drawings, specifications, standards, and inspection requirements to identify an item or range of items.

### NOTE

When a stock numbered item is requisitioned, the repair part received may have a different part number than the part being replaced.

*e. Federal Supply Code for Manufacturer (FSCM).* The FSCM is a 5-digit numeric code listed in SB 708-42 which is used to identify the manufacturer, distributor, or Government agency, etc.

*f. Description.* Indicates the Federal item name and if required a minimum description to identify the item.

*g. Unit of Measure (U/M).* Indicates the standard of the basic quantity of the listed item as used in performing the actual maintenance function. This measure is expressed by a two-character alphabetical abbreviation (e.g., ea, in, pr, etc). When the unit of measure differs from the unit of issue, the lowest unit of issue that will satisfy the required units of measure will be requisitioned.

*h Quantity Incorporated in Unit.* Indicates the quantity of the item used in the breakout shown on the illustration figure, which is prepared for a functional group, subfunctional group, or an assembly.

#### 4. Special Information

*a.* Usable on codes are shown in the description column. Uncoded items are applicable to all models. Identification of the usable on codes used in this publication are:

| <i>Code</i> | <i>Used on</i> |
|-------------|----------------|
| 4PW         | RL-172/G       |
| 2QW         | RL-172A/G      |

*b.* The following publications pertain to the RL-172/G and RL-172A/G and its components  
 TM 11-3895-207-10, Reeling Machines, Cable, Motor Driven RL-172/G and RL172A/G  
 TM 11-3895-207-20, Reeling Machines, Cable, Motor Driven RL-172/G and RL-172A/G

*c.* The illustrations in this manual are identical to those published in TM 11-3895-207-34P. Only those parts assigned the third position SMR maintenance code "C" or "0" are listed in the tabular listing therefore, there may be a break in the item number se-

quence. Only illustrations containing organizational authorized items appear in this manual.

#### 5. How to Locate Repair Parts

*a.* When National stock number or part number is unknown.

(1) *First.* Using the table of contents, determine the functional group within which the item belongs. This is necessary since illustrations are prepared for functional groups and listings are divided into the same groups.

(2) *Second.* Find the illustration covering the functional group to which the item belongs.

(3) *Third.* Identify the item on the illustration and note the illustration figure and item number of the item.

(4) *Fourth.* Using the Repair Parts Listing, find the figure and item number noted on the illustration.

*b.* When National stock number or part number is known.

(1) *First.* Using the Index of National Stock Numbers and Part Numbers, find the pertinent National stock number or part number. This index is in NIIN sequence followed by a list of part numbers in alphameric sequence, cross-referenced to the illustration figure number and item number.

(2) *Second.* After finding the figure and item number, locate the figure and item number in the repair parts list.

#### 6. Abbreviations

Not applicable.

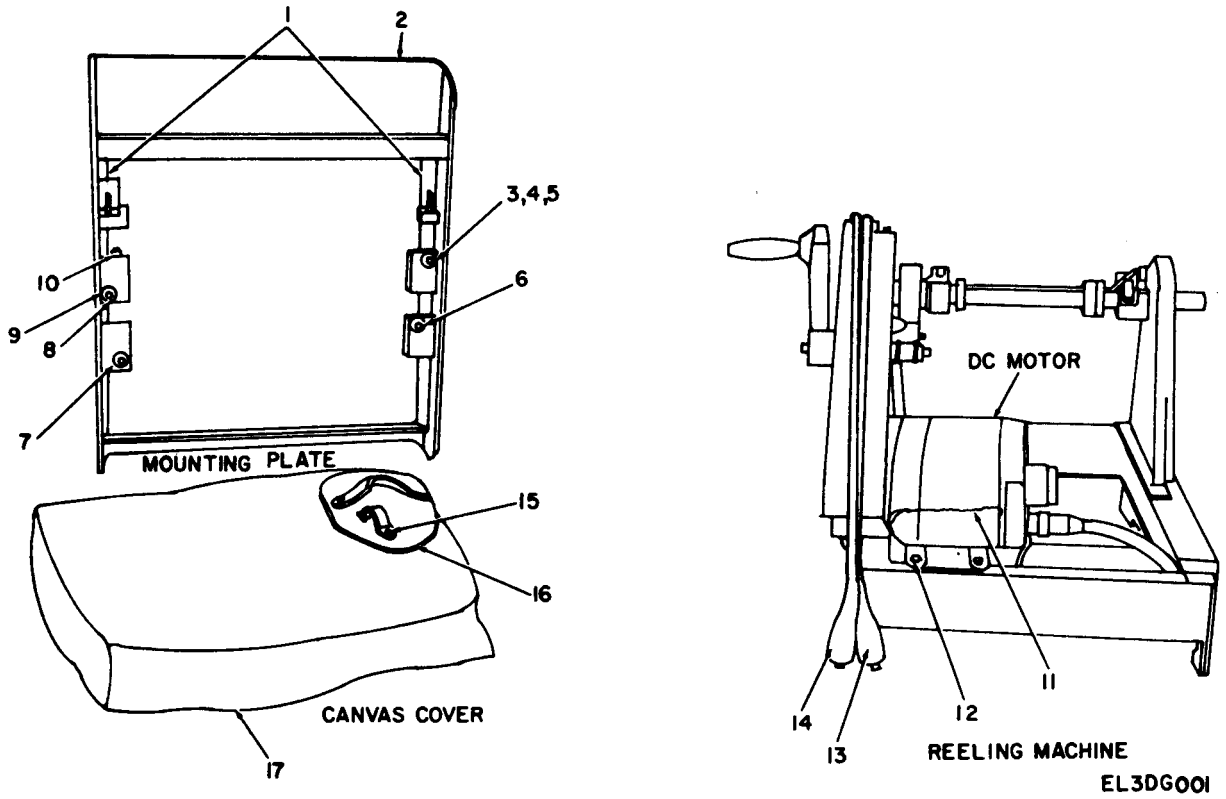
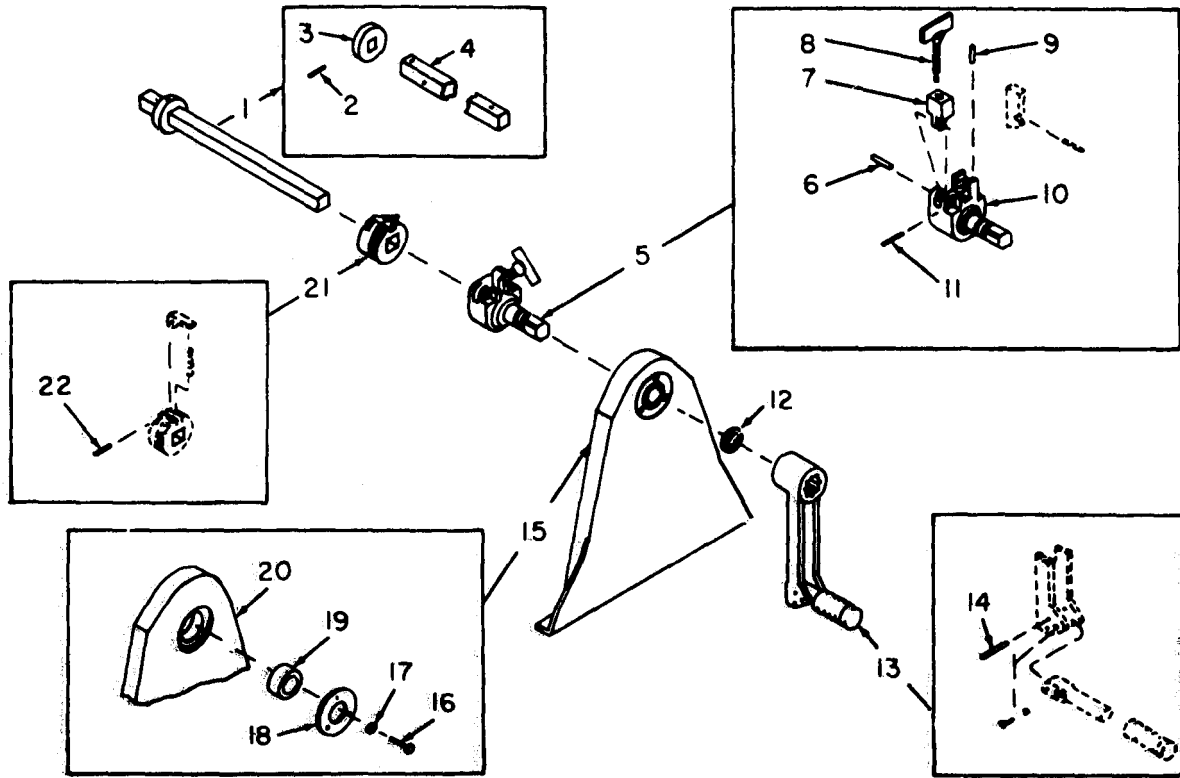


Figure 1. Reeling Machines, Cable, Motor Driven RL-172/G and RL-172A/G.

| (1)<br>ILLUSTRATION |                    | (2)         | (3)                         | (4)            | (5)   | (6)   | (7)            | (8)                      |
|---------------------|--------------------|-------------|-----------------------------|----------------|-------|---|----------------|--------------------------|
| (a)<br>FIG<br>NO.   | (b)<br>ITEM<br>NO. | SMR<br>CODE | NATIONAL<br>STOCK<br>NUMBER | PART<br>NUMBER | FSCM  | DESCRIPTION   | USABLE ON CODE | QTY<br>INC<br>IN<br>UNIT |
|                     |                    |             |                             |                |       | GROUP 00 REELING MACHINE, CABLE, MOTOR DRIVEN<br>RL-172/G AND RL-172A/G |                |                          |
| 1                   | 7                  | PAOZZ       | 5305-00-269-3223            | MS90725-73     | 96906 | SCREW, CAP HEXAGON  | 2QM            | EA 4                     |
| 1                   | 16                 | PAOZZ       | 8415-00-498-9444            | SCD6371        | 80063 | PAD LC-80 ASSEMBLY  |                | EA 1                     |
| 1                   | 17                 | PAOZZ       | 3895-00-919-4237            | SMC425423      | 80063 | COVER, CANVAS   |                | EA 1                     |



EL3DG002

Figure 2. Reeling Machines, Cable, Motor Driven RL-172/G and RL-172A/G, Reel Shaft Support (Crank Side), Exploded View.

| (1) ILLUSTRATION |             | (2)      | (3)                   | (4)         | (5)   | (6) DESCRIPTION        | (7)             | (8) |
|------------------|-------------|----------|-----------------------|-------------|-------|------------------------|-----------------|-----|
| (a) FIG NO       | (b) ITEM NO | SMR CODE | NATIONAL STOCK NUMBER | PART NUMBER | FSCM  | USABLE ON CODE         | QTY INC IN UNIT |     |
| 2                | 1           | PA0ZZ    | 3895-00-802-2618      | SMC425340   | 80063 | AXLE ASSEMBLY          | 1               |     |
| 2                | 13          | PA0ZZ    | 3895-00-802-2617      | SMC425358   | 80063 | CRANK ASSEMBLY, HAND   | 1               |     |
| 2                | 21          | PA0ZZ    | 3895-00-802-2619      | SMC425343   | 80063 | ADJUST COLLAR ASSEMBLY | 1               |     |





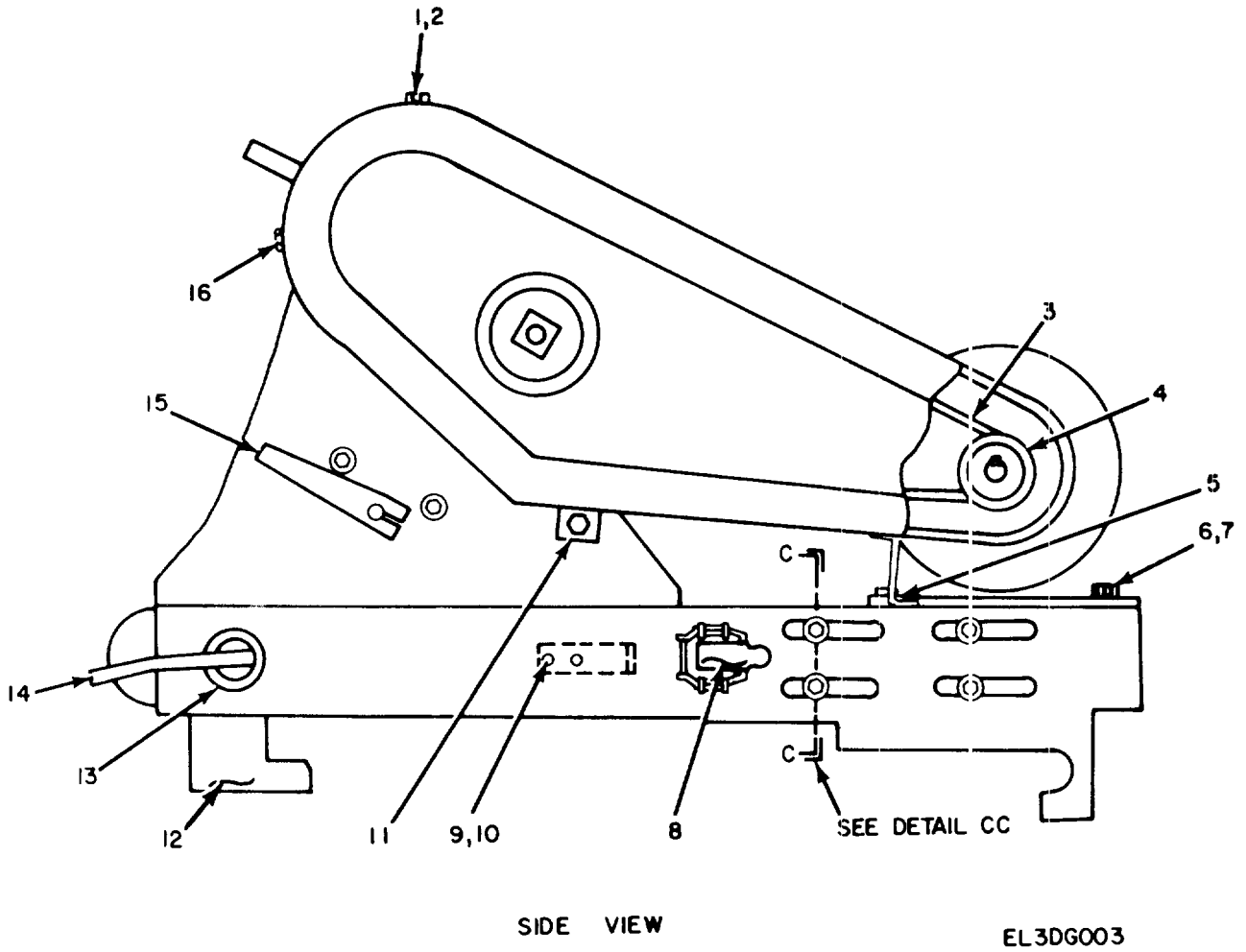
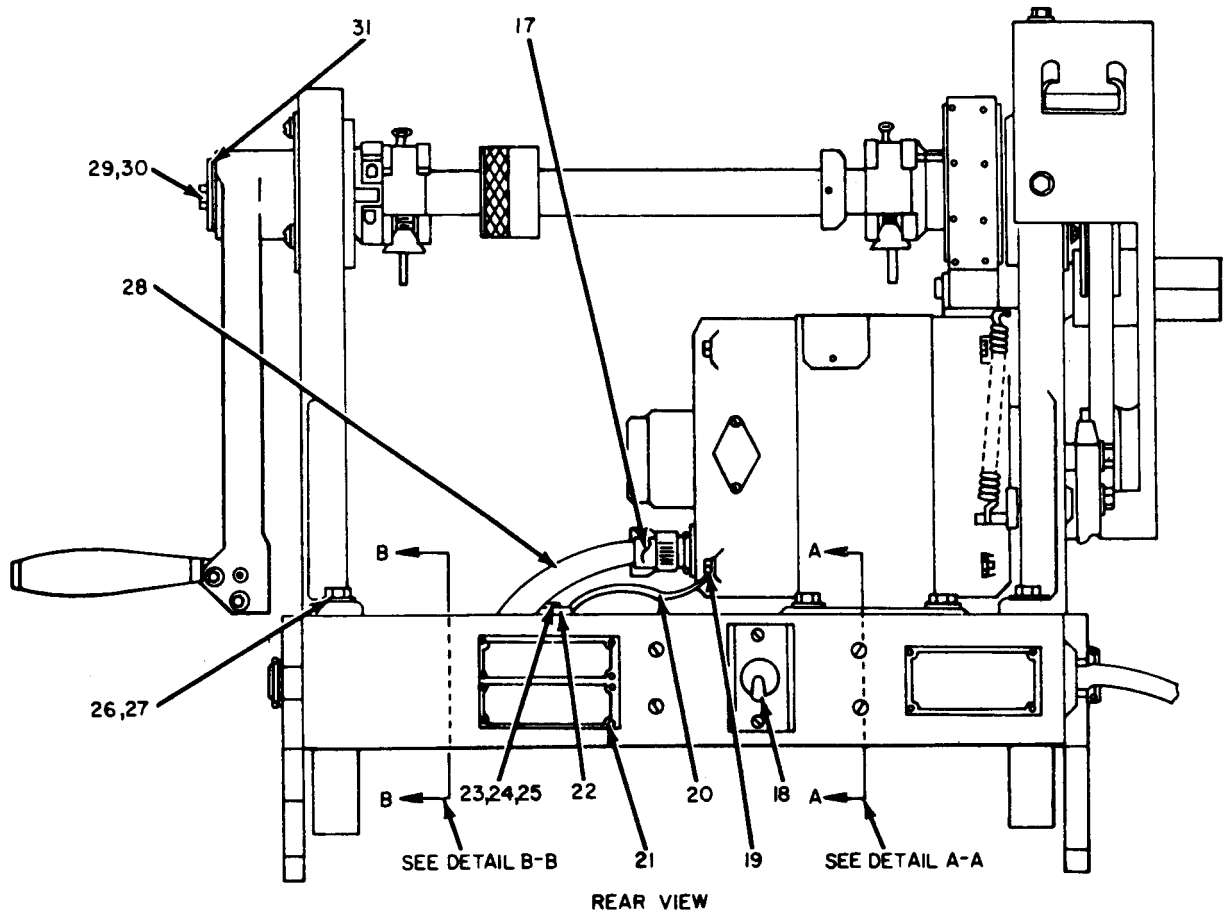


Figure 3. Reeling Machines, Cable, Motor Driven RL-172/G and RL-172A/G (Sheet 1 of 3).



EL3DG004

Figure 3. Reeling Machines, Cable, Motor Driven RL-172/G and RL-172A/G (Sheet 2 of 3).

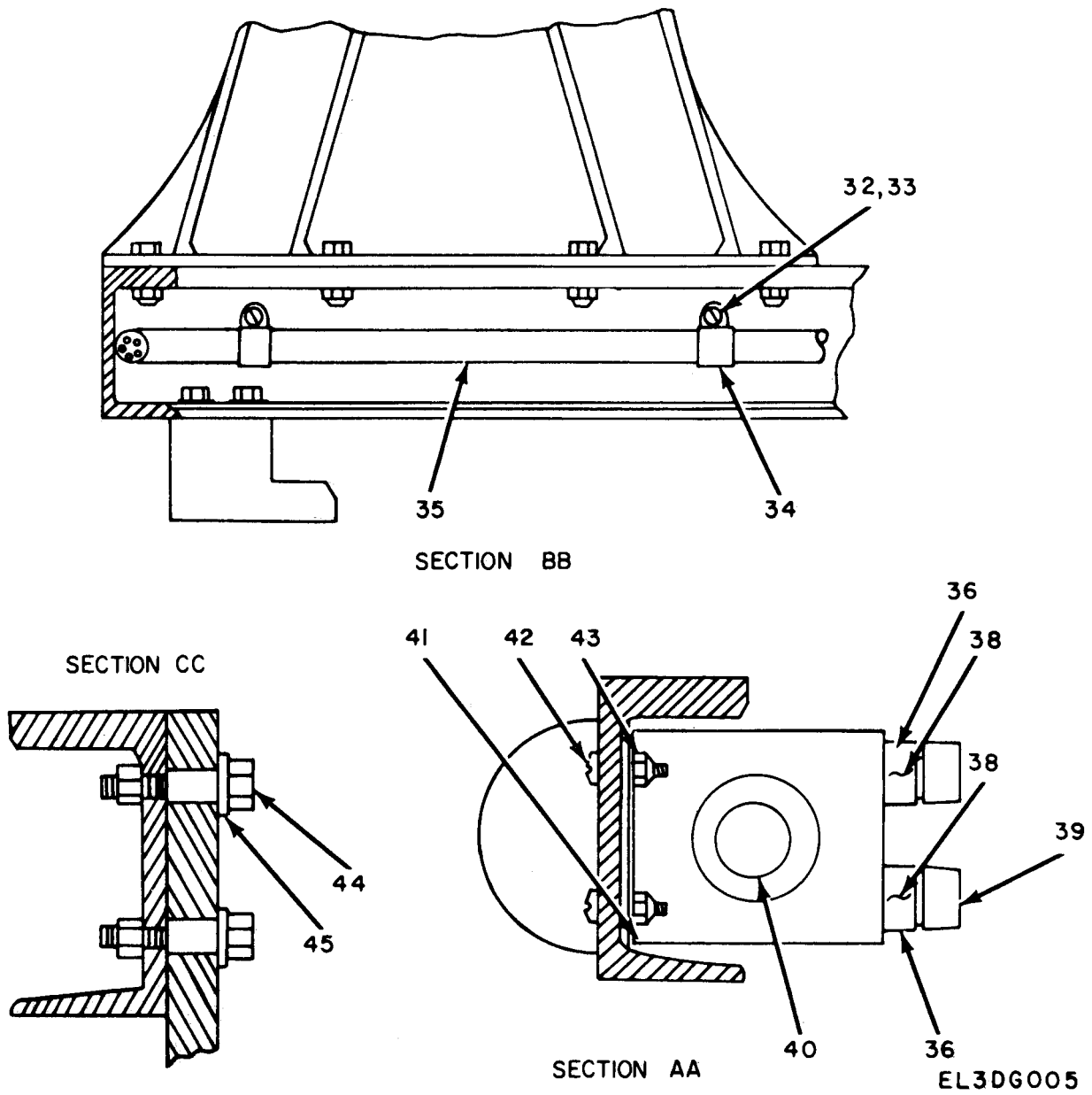
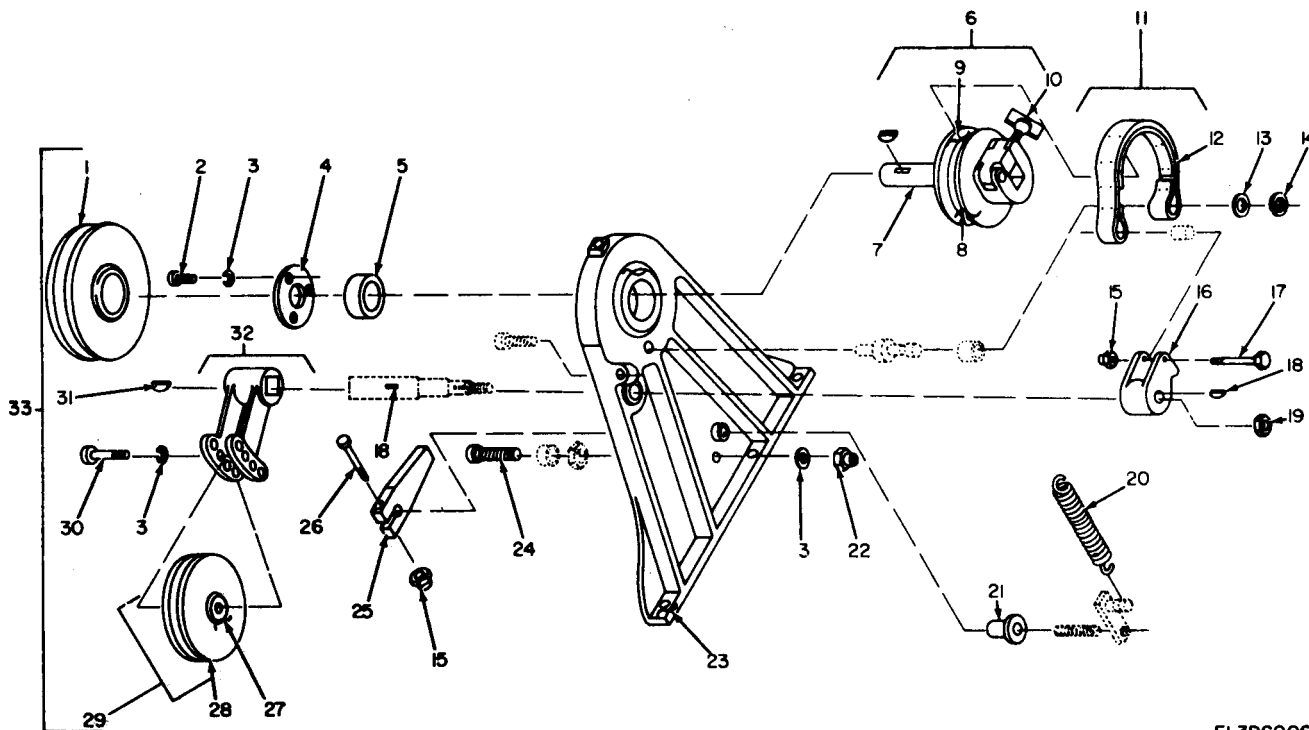


Figure 3. Reeling Machines, Cable, Motor Driven RL-172/G and RL-172A/G (Sheet 3 of 3).

| REPAIR PARTS LIST |              |                       |                  |             |                         |     |                 |
|-------------------|--------------|-----------------------|------------------|-------------|-------------------------|-----|-----------------|
| (1)               | (2)          | (3)                   | (4)              | (5)         | (6)                     | (7) | (8)             |
| ILLUSTRATION      |              | NATIONAL STOCK NUMBER |                  | PART NUMBER | DESCRIPTION             | U/M | QTY INC IN UNIT |
| (A) FIG NO.       | (B) ITEM NO. | SMR CODE              |                  |             | FSCM USABLE ON CODE     |     |                 |
| 3                 | 3            | PAOZZ                 | 3030-00-554-8315 | SMB425334   | 80063 BELT              | EA  | 1               |
| 3                 | 38           | PAOZZ                 | 5920-00-686-9512 | MS90081-14  | 96906 "FUSE, CARTRIDGE" | EA  | 2               |
| 3                 | 39           | PAOZZ                 | 5920-00-878-7770 | 6775        | 71400 "CAP, ELECTRICAL" | EA  | 2               |



EL3DGO06

Figure 4. Reeling Machines, Cable, Motor Driven RL-172/G and RL-172A/G, Reel Shaft Support (Belt Side), Exploded View.

| (1)<br>ILLUSTRATION |                    | (2)         | (3)                         | (4)            | (5)   | (6)                 | (7)            | (8)                      |
|---------------------|--------------------|-------------|-----------------------------|----------------|-------|---------------------|----------------|--------------------------|
| (a)<br>FIG<br>NO.   | (b)<br>ITEM<br>NO. | SMR<br>CODE | NATIONAL<br>STOCK<br>NUMBER | PART<br>NUMBER | FSCM  | DESCRIPTION         | USABLE ON CODE | QTY<br>INC<br>IN<br>UNIT |
| 4                   | 11                 | PAOZZ       | 3895-00-802-2623            | SMC425324      | 80063 | BRAKE BAND ASSEMBLY |                | EA 1                     |

NATIONAL STOCK NUMBER AND PART NUMBER INDEX

| STOCK NUMBER     | FIGURE NO. | ITEM NO. | STOCK NUMBER     | FIGURE NO. | ITEM NO. |
|------------------|------------|----------|------------------|------------|----------|
| 5305-00-269-3223 | 1          | 7        | 3895-00-802-2619 | 2          | 21       |
| 8415-00-498-9444 | 1          | 16       | 3895-00-802-2623 | 4          | 11       |
| 3030-00-554-8315 | 3          | 3        |                  |            |          |
| 5920-00-686-9512 | 3          | 38       | 5920-00-878-7770 | 3          | 39       |
| 3095-00-802-2617 | 2          | 13       | 3895-00-919-4237 | 1          | 17       |
| 3893-00-802-2618 | 2          | 1        |                  |            |          |

| PART NUMBER | FSCM  | FIG. NO. | ITEM NO. | PART NUMBER | FSCM  | FIGURE NO. | ITEM NO. |
|-------------|-------|----------|----------|-------------|-------|------------|----------|
| MS90081-14  | 96906 | 3        | 38       | SMC425340   | 80063 | 2          | 21       |
| SCD6371     | 80063 | 1        | 16       | SMC425343   | 80063 | 2          | 13       |
| SMB425324   | 80063 | 4        | 11       | SMC425423   | 80063 | 1          | 17       |
| SMB425334   | 80063 | 3        | 3        | 6775        | 71400 | 3          | 39       |





By Order of the Secretary of the Army

BERNARD W. ROGERS  
*General, United States Army*  
*Chief of Staff*

Official: PAUL T. SMITH  
*Major General, United States Army*  
*The Adjutant General*

Distribution:

Active Army:

|                          |       |                  |
|--------------------------|-------|------------------|
| USASA (2)                | 5-155 | 6-615            |
| COE (1)                  | 5-145 | 6-616            |
| TSG (1)                  | 5-146 | 6-617            |
| USMRENBD (1)             | 5-156 | 6-619            |
| DARCOM (1)               | 6-37  | 7                |
| TRADOC (2)               | 6-100 | 7-15             |
| OS Maj Comd (4)          | 6-155 | 7-42             |
| TECOM (2)                | 6-166 | 7-45             |
| USACC (4)                | 6-167 | 7-100            |
| MDW (1)                  | 6-175 | 7-102            |
| Armies (2)               | 6-185 | 11-97            |
| Corps (2)                | 6-186 | 11-98            |
| HISA (Ft Monmouth) (33)  | 6-200 | 11-98            |
| Svc Colleges (1)         | 6-201 | 11-117           |
| USASIGS (5)              | 6-216 | 11-127           |
| USAADS (2)               | 6-300 | 11-215           |
| USAFAS (2)               | 6-347 | 11-217           |
| USAARMS (2)              | 6-365 | 11-302           |
| USAIS (2)                | 6-401 | 11-(500) (AA-AC) |
| USAES (2)                | 6-405 | 17               |
| USAICS (3)               | 6-406 | 17-51            |
| MAAG (1)                 | 6-407 | 17-55            |
| USARMIS (1)              | 6-425 | 17-100           |
| USAERDAA (1)             | 6-426 | 17-102           |
| USAERDAW (1)             | 6-427 | 29-75            |
| USMA (2)                 | 6-435 | 26-76            |
| USACRTC (2)              | 6-436 | 29-105           |
| Instl (2) except         | 6-437 | 29-134           |
| Fort Gillem (10)         | 6-445 | 26-136           |
| Fort Huachuca (10)       | 6-447 | 37               |
| Fort Carson (5)          | 6-455 | 37-100           |
| Fort Gordon (10)         | 6-456 | 37-102           |
| LBAD (14)                | 6-457 | 44-2             |
| SAAD (30)                | 6-467 | 44-12            |
| TOAD (14)                | 6-502 | 44-85            |
| SHAD (3)                 | 6-525 | 44-88            |
| Ft Richardson (ECOM) (2) | 6-526 | 44-235           |
| Sig FLDMS (1)            | 6-555 | 44-236           |
| Units org under fol TOE  | 6-556 | 55-16            |
| (1 cy each unit)         | 6-557 | 57               |
| 5-25                     | 6-558 | 57-100           |
| 5-26                     | 6-575 | 77-100           |
| 5-35                     | 6-576 | 44-535           |
| 5-36                     | 6-577 | 44-536           |

NG: State AG (3) Units-Same as Active Army except allowance is one copy per unit.

USAR: None

For explanation of abbreviations used, see AR 310-50.





# SOMETHING WRONG WITH THIS MANUAL?

THEN... JOT DOWN THE DOPE ABOUT IT ON THIS FORM, TEAR IT OUT, FOLD IT AND DROP IT IN THE MAIL!

FROM: (YOUR UNIT'S COMPLETE ADDRESS)

Commander  
Stateside Army Depot  
ATTN: AMSTA-US  
Stateside, N.J. 07703

DATE 10 July 1975

PUBLICATION NUMBER

TM 11-5840-340-12

DATE

23 Jan 74

TITLE

Radar Set AN/SPC-76

BE EXACT... PIN-POINT WHERE IT IS

IN THIS SPACE TELL WHAT IS WRONG AND WHAT SHOULD BE DONE ABOUT IT:

| PAGE NO. | PARA-GRAPH | FIGURE NO. | TABLE NO. |
|----------|------------|------------|-----------|
| 2-25     | 2-28       |            |           |
| 3-10     | 3-3        |            | 3-1       |
| 5-6      | 5-8        |            |           |
|          |            | F03        |           |

Recommend that the installation antenna alignment procedure be changed throughout to specify a 2° IFF antenna lag rather than 1°.

REASON: Experience has shown that with only a 1° lag, the antenna servo system is too sensitive to wind gusting in excess of 25 knots, and has a tendency to rapidly accelerate and decelerate as it hunts, causing strain to the drive train. Hunting is minimized by adjusting the lag to 2° without degradation of operation.

Item 5, Function column. Change "2 db" to "3db."

REASON: The adjustment procedure for the TRANS POWER FAULT indicator calls for a 3 db (500 watts) adjustment to light the TRANS POWER FAULT indicator.

Add new step f.1 to read, "Replace cover plate removed in step e.1, above."

REASON: To replace the cover plate.

Zone C 3. On J1-2, change "+24 VDC to "+5 VDC."

REASON: This is the output line of the 5 VDC power supply. + 24 VDC is the input voltage.

TEAR ALONG DOTTED LINE

TYPED NAME, GRADE OR TITLE, AND TELEPHONE NUMBER

SSG I. M. DeSpirito 999-1776

SIGN HERE:

*SSG I. M. DeSpirito*

DA FORM 2028-2 (TEST) 1 AUG 74

P.S.--IF YOUR OUTFIT WANTS TO KNOW ABOUT YOUR MANUAL "FIND," MAKE A CARBON COPY OF THIS AND GIVE IT TO YOUR HEADQUARTERS.

HISA 1686-75





THEN... JOT DOWN THE DOPE ABOUT IT ON THIS FORM, TEAR IT OUT, FOLD IT AND DROP IT IN THE MAIL!

# SOMETHING WRONG WITH THIS MANUAL?

FROM: (YOUR UNIT'S COMPLETE ADDRESS)

DATE

PUBLICATION NUMBER      DATE      TITLE

| BE EXACT... PIN-POINT WHERE IT IS |            |            |           | IN THIS SPACE TELL WHAT IS WRONG AND WHAT SHOULD BE DONE ABOUT IT: |
|-----------------------------------|------------|------------|-----------|--|
| PAGE NO.                          | PARA-GRAPH | FIGURE NO. | TABLE NO. |  |
|                                   |            |            |           |  |

TEAR ALONG DOTTED LINE

TYPED NAME, GRADE OR TITLE, AND TELEPHONE NUMBER

SIGN HERE:

FILL IN YOUR  
UNIT'S ADDRESS

FOLD BACK

DEPARTMENT OF THE ARMY

Commander  
US Army Electronics Command  
ATTN: DRSEL-MA-Q  
Fort Monmouth, New Jersey 07703

TEAR ALONG DOTTED LINE

FOLD BACK



# SOMETHING WRONG WITH THIS MANUAL?

THEN... JOT DOWN THE DOPE ABOUT IT ON THIS FORM, TEAR IT OUT, FOLD IT AND DROP IT IN THE MAIL!

FROM: (YOUR UNIT'S COMPLETE ADDRESS)

DATE

PUBLICATION NUMBER

DATE

TITLE

BE EXACT... PIN-POINT WHERE IT IS

IN THIS SPACE TELL WHAT IS WRONG AND WHAT SHOULD BE DONE ABOUT IT:

PAGE NO.

PARA-GRAPH

FIGURE NO.

TABLE NO.

TEAR ALONG DOTTED LINE

TYPED NAME, GRADE OR TITLE, AND TELEPHONE NUMBER

SIGN HERE:

FILL IN YOUR  
UNIT'S ADDRESS

FOLD BACK

DEPARTMENT OF THE ARMY

---

---

Commander  
US Army Electronics Command  
ATTN: DRSEL-MA-Q  
Fort Monmouth, New Jersey 07703

TEAR ALONG DOTTED LINE

FOLD BACK





# SOMETHING WRONG WITH THIS MANUAL?

THEN... JOT DOWN THE DOPE ABOUT IT ON THIS FORM, TEAR IT OUT, FOLD IT AND DROP IT IN THE MAIL!

FROM: (YOUR UNIT'S COMPLETE ADDRESS)

DATE

PUBLICATION NUMBER

DATE

TITLE

BE EXACT... PIN-POINT WHERE IT IS

IN THIS SPACE TELL WHAT IS WRONG AND WHAT SHOULD BE DONE ABOUT IT:

PAGE NO.

PARA-GRAPH

FIGURE NO.

TABLE NO.

TEAR ALONG DOTTED LINE

TYPED NAME, GRADE OR TITLE, AND TELEPHONE NUMBER

SIGN HERE:

FILL IN YOUR  
UNIT'S ADDRESS

FOLD BACK

DEPARTMENT OF THE ARMY

---

---

Commander  
US Army Electronics Command  
ATTN: DRSEL-MA-Q  
Fort Monmouth, New Jersey 07703

TEAR ALONG DOTTED LINE

FOLD BACK





This fine document...

Was brought to you by me:



## [Liberated Manuals -- free army and government manuals](#)

Why do I do it? I am tired of sleazy CD-ROM sellers, who take publicly available information, slap “watermarks” and other junk on it, and sell it. Those masters of search engine manipulation make sure that their sites that sell free information, come up first in search engines. They did not create it... They did not even scan it... Why should they get your money? Why are not letting you give those free manuals to your friends?

I am setting this document FREE. This document was made by the US Government and is NOT protected by Copyright. Feel free to share, republish, sell and so on.

I am not asking you for donations, fees or handouts. If you can, please provide a link to [liberatedmanuals.com](http://liberatedmanuals.com), so that free manuals come up first in search engines:

<A HREF=<http://www.liberatedmanuals.com/>>Free Military and Government Manuals</A>

- Sincerely  
Igor Chudov  
<http://igor.chudov.com/>
- [Chicago Machinery Movers](#)