

**TECHNICAL MANUAL
OPERATOR'S, UNIT AND
DIRECT SUPPORT MAINTENANCE MANUAL
INCLUDING REPAIR PARTS AND SPECIAL TOOLS LIST)
FOR
SCOTSMAN CSW1 SELF CONTAINED
CUBER**

This technical manual is an authentication of the manufacturer's commercial literature and does not conform with the format and the content requirements normally associated with Army technical manuals. This technical manual does, however, contain all essential information required to operate and maintain the equipment.

Approved for public release: distribution is unlimited

HEADQUARTERS, DEPARTMENT OF THE ARMY

28 SEPTEMBER 1990

This technical manual is an authentication of the manufacturer's commercial literature and does not conform with the format and the content requirements normally associated with Army technical manuals. This technical manual does, however, contain all essential information required to operate and maintain the equipment.

Approved for public release; distribution is unlimited.

SUPPLEMENTARY INTRODUCTORY MATERIAL

1-1. Maintenance Forms and Records.

Department of the Army forms and procedures used for equipment maintenance will be those described by DA Pam 738-750, The Army Maintenance Management System.

1-2. Reporting Errors and Recommending Improvements.

You can help improve this manual. If you find any mistakes or if you know of a way to improve the procedures, please let us know. Mail your letters, DA Form 2028 (Recommended Changes to Publications and Blank Forms), or DA Form 2028-2 located in the back of this manual, directly to: Commander, U.S. Army Troop Support Command, ATTN: AMSTR-MCTS, 4300 Goodfellow Blvd., St. Louis, MO 63120-1798. A reply will be furnished to you.

1-3. Destruction of Army Material to Prevent Enemy Use.

Refer to TM 750-244-3 for instructions covering the destruction of Army Material to prevent enemy use.

1-4. Administrative Storage of Equipment.

a. Placement of equipment in administrative storage should be for short periods of time when a shortage of maintenance effort exists. Items should be in mission readiness within 24 hours or within the time factors as determined by the directing authority. During the storage period appropriate maintenance records will be kept.

b. Before placing equipment in administrative storage, current preventive maintenance checks and services should be completed. Shortcomings and deficiencies should be corrected, and all modification work orders (MWO's) should be applied.

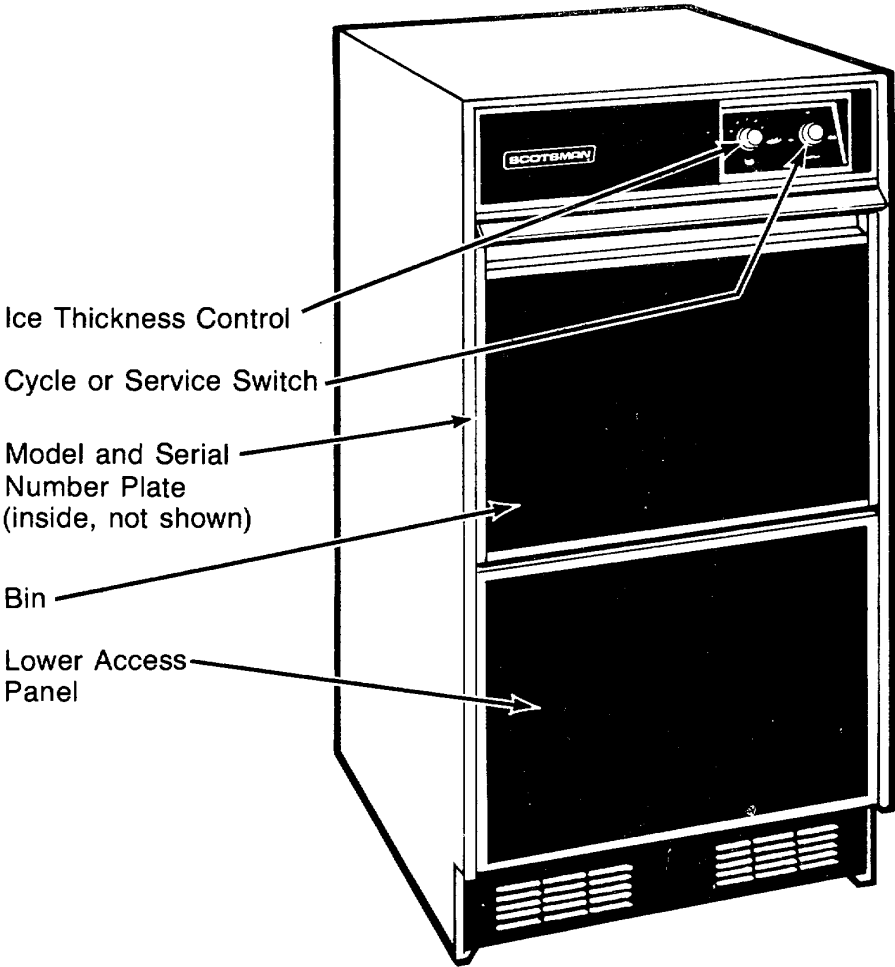
c. Storage site selection. Inside storage is preferred for items selected for administrative storage. If inside storage is not available, trucks, vans, conex containers and other containers may be used.

i/(ii Blank)

SCOTSMAN_®

COMMERCIAL ICE SYSTEMS

Use and Care Guide



Model: CSW1 AE-1 B

Part No. 758969

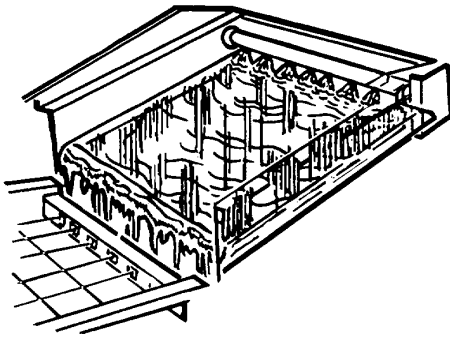
BEFORE OPERATING THE ICE MAKER

It is your responsibility to make sure that the ice maker:

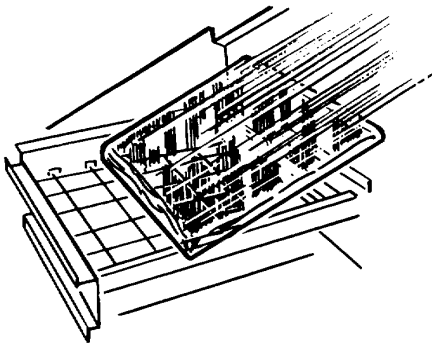
- has been installed where it is protected from the elements.
- is located so that the front is not blocked to restrict incoming or discharge air flow.
- is properly leveled.
- is located in a well ventilated area with temperatures above 55°F (13°C) and below 110°F (43°C). Best results are obtained at temperatures between 70°F (21°C) and 90°F (32°C).
- is properly connected to a water supply and drain.
- is properly connected to electricity. A 115 Volt, 60 Hz., 15 amp fused electrical supply is required. **NOTE: Time delay fuse or circuit breaker is recommended.**
- is properly electrically grounded.
- is not operated by anyone unable to use it properly.
- is used only for the job it was designed to perform.
- is properly maintained.

ICE MAKER OPERATION

How it makes ice:



1. Water is constantly circulated over a freezing plate. As the water freezes into ice the minerals in the water are rejected. This produces a clear sheet of ice with a low mineral content.



2. When the desired thickness is reached, the ice sheet is released and slides on to a cutter grid. The grid divides the sheet into individual cubes.

3. The water containing the rejected minerals is drained after each freezing cycle.

4. Fresh water enters the machine for the next ice making cycle.



5. Cubes fall into the storage bin. When the bin is full the ice maker shuts off automatically and restarts when more ice is needed.

To Operate the Ice Maker:

1. Select ice thickness (Figure 1). The ice maker has been pre-set to produce ice approximately 1/2" thick, while operating in a room ambient of 70°F (21°C).

Operation in different ambient temperatures may require readjusting the control toward "THICK" or "THIN."

Best operation will be obtained with ice 1/2" to 5/8" thick.

If operating in a warm room ambient (above 90°F (32°C)) **DO NOT** set control to maximum thickness or the unit may malfunction.

2. To start the normal ice making cycle, turn service or cycle switch to "ON."

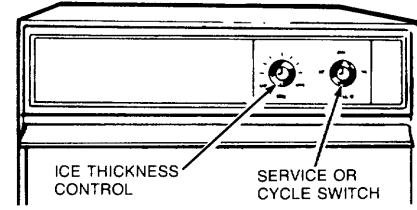


FIGURE 1

3. To stop ice maker operation, turn service or cycle switch to "OFF."

4. The "CLEAN" setting is used whenever solutions are circulated through the ice maker for cleaning. Only the water pump operates at this setting.

GENERAL CARE AND CLEANING

Periodically inspect and clean the ice maker to keep in operating at peak efficiency and to prevent premature failure of system components.

Both the ice making system and the air cooled condenser need to be cleaned regularly.

Cleaning exterior surfaces:

Wash the exterior enamel surfaces and gaskets with warm water and mild soap or detergent. Rinse and dry. Regular use of a good household appliance cleaner and wash will help protect the finish.

NOTE: Do not use harsh or abrasive cleaners on enamel surfaces as they may scratch the finish.

Cleaning the condenser:

A dirty or clogged condenser:

- prevents proper air flow.
- reduces ice making capacity.
- causes higher than recommended operating temperatures which may lead to component failure.

To Clean:

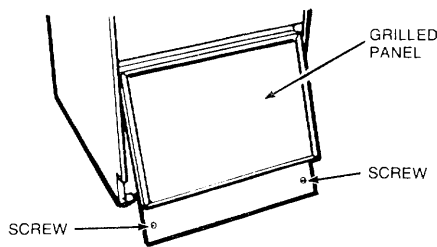


FIGURE 2

1. Disconnect electrical power supply to the machine or place the service switch in the "OFF" position. The condenser fan should not operate while removing dirt from the condenser.

2. Remove the two screws from the bottom of the grilled front panel. (Figure 2)

CAUTION: Switch must be in "OFF" position to keep condenser fan from rotating. Do not touch condenser fins. They are sharp. Refrigerant tubing gets very hot during normal operation. Be careful.

3. Pull forward and down to remove the panel.

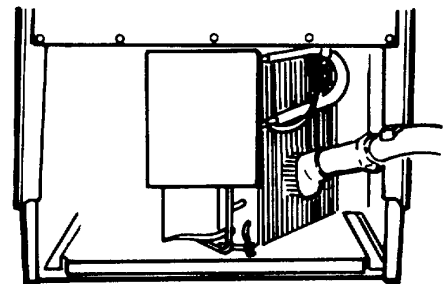


FIGURE 3

4. Remove dirt and lint from the condenser fins with a soft brush and then use a vacuum cleaner to remove the dirt from the unit compartment (Figure 3).

CAUTION: Condenser fins are sharp and can bend easily. Use care when brushing the condenser to keep from bending the fins. Condenser tubing gets hot enough during normal operation to burn your hand. Use care and do not touch the tubing.

5. Replace the grilled front panel and screws.

CLEANING AND SANITIZING THE ICE MAKING SYSTEM

Ice making system:

The minerals rejected from the circulating water during the freezing cycle will eventually form a hard scaly deposit in the water system which prevents a rapid release of the ice.

Clean-ice and water system periodically to remove mineral scale build-up. Frequency of cleaning depends on water hardness. With soft water, cleaning may not be required for several years. With hard water (15 to 20 grains/gal.) cleaning may be required as frequently as every six months.

To clean and sanitize, follow this procedure: *

*Approved by the National Sanitation Foundation.

1. Place cycle or service switch in "OFF" position.

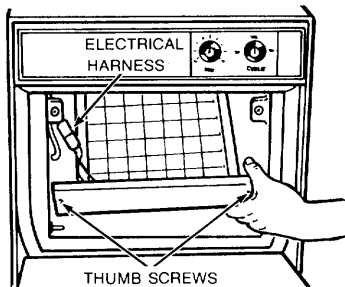


FIGURE 4

2. Remove the two thumb screws and slide the ice cutter grid out of the two slots near the water pan.
3. Unplug the electrical harness.

Any ice on the grid should be melted under running warm water. Attempting to pick the ice slab off the grid may stretch and damage grid wires.

4. Remove all ice from the storage bin and the freezing plate.
5. Drain the water pan by removing the drain plug (Figure 5) and then replace the plug.

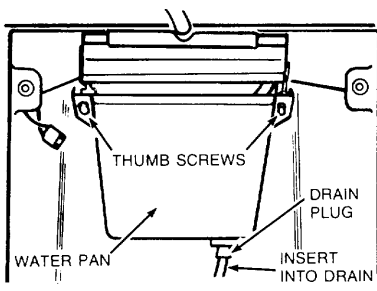


FIGURE 5

WARNING: Most ice machine cleaners are citric or phosphoric acid which can cause irritation even after dilution. In case of contact with eyes, flush eyes thoroughly with fresh water and contact a physician immediately. In case of contact with skin, rinse well with water. If swallowed, give large amounts of water and contact a physician immediately. Do not induce vomiting. KEEP OUT OF REACH OF CHILDREN.

6. Pour 1/2 gallon (1.9 L) of hot tap water into the water pan and turn the service or cycle switch to "CLEAN." This warms up the system to make the cleaning solution more effective. Let circulate for five minutes. While tap water is circulating, prepare cleaning solution. Mix:

6 oz. (170g) powdered citric, or phosphoric acid into 1/2 gallon (1.9 L) hot water

(Citric acid and phosphoric acid crystals are available from many pharmacies or scientific supply houses.) Commercial Ice Machine cleaners (liquid) are also available from your dealer or refrigeration parts supply stores. Mix according to instructions on label (total quantity 1/2 gallon [1.9 L]).

7. Turn service or Cycle switch to "OFF", drain tap water and replace plug.
8. Turn the switch to "CLEAN" and slowly pour the hot cleaning solution into the water pan. (If the solution foams while pouring, wait until foaming stops.) Then add the balance of the solution.

Allow solution to circulate until the scale has dissolved (15 to 30 minutes). Severe scale build-up may require repeated cleaning with a fresh quantity of cleaning solution.

To clean scale off the side flanges of the freezing plate, use rubber gloves and scrub with a plastic scrubby or non-soap filled stainless steel pad dipped in cleaning solution.

9. Drain the cleaning solution. Using the rubber gloves, remove the drain plug and set the switch to "OFF".
10. Replace the plug and add 1/2 gallon (1.9 L) of fresh water. Set switch to clean, circulate five minutes, drain. Repeat rinsing process.

**Removal and cleaning
of interior components:**

Do not operate unit with panels removed.

1. Turn the Cycle Control Knob to "OFF" and disconnect the electrical power supply to the machine. Open the storage bin door and remove any ice that is in the bin.

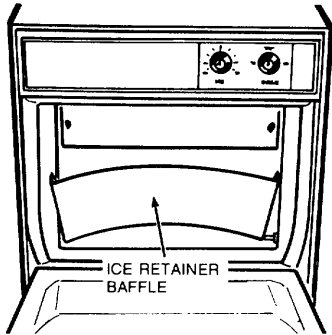


FIGURE 6

2. Remove ice retainer baffle by flexing it (Figure 6) and then slide it off the studs.

3. Remove the ice cutter grid by unscrewing the two thumb screws, sliding the grid forward and unplugging the electrical wire harness.

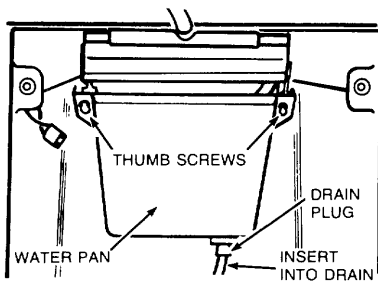


FIGURE 7

4. Remove the water pan by unscrewing the two thumb screws (Figure 7).

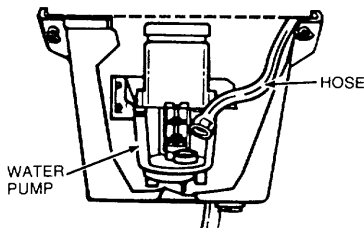


FIGURE 8

5. Remove the hose from the water pump. Clean the water inlet hose hanging in the water pan. (Figure 8)

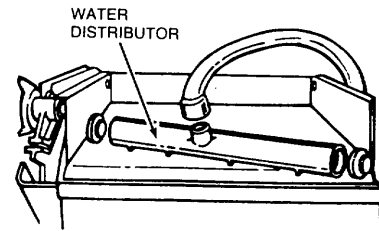


FIGURE 9

6. Remove the water distributor from the freezing plate. It is held in place by rubber end caps. Remove the inlet hose and clean all water distributor holes and the small orifice in the inlet side of the distributor. When replacing the distributor, make sure the end caps are located in the evaporator flange detents and that the water distributor holes face down.

7. Wash the **interior components** (ice retainer baffle, cutter grid, water pan, inlet hose and water distributor) and the storage bin, door gasket and ice scoop with mild soap or detergent and warm water. Rinse in clean water. These components should also be cleaned in a solution of 1 oz. (29.6 ml) of chlorine bleach in 1 gallon (3.8 L) warm water.

DO NOT WASH PLASTIC PARTS IN DISHWASHER. They cannot withstand temperatures above 145°F (63°C).

8. Replace the interior components: water distributor, inlet hose and water pan.

9. Check the following: * Hose from water valve is in water pan.

- Rubber drain plug is in water pan.
- Water distributor is seated and holes are facing down.
- Hose is reconnected to pump and water distributor.
- Hose from water pan is inserted into storage bin drain opening.

10. Reconnect electrical harness, slide cutter grid into place and tighten the thumb screws, replace the ice retainer baffle.

11. Turn Cycle Control to "ON."

CHANGING THE FRONT PANELS

See Information in Installation Instructions.

TO SHUT DOWN THE ICE MAKER

1. Turn ice maker to "OFF."
2. Remove all ice from storage bin.
3. Shut off the water supply.
4. Remove front grille (Figure 2).
5. Disconnect the inlet and outlet lines to water valve. Allow these lines to drain and then reconnect to the valve.
6. Replace front grille and screws.
7. Remove water from drain lines and drain water pan if the unit will be subjected to freezing temperatures during shut down.
8. Before using again, clean and sanitize the ice maker and storage bin.

Oiling:

All components of the ice maker are permanently lubricated at the factory. They should not require any additional oiling throughout the normal life of the machine.

SELF-SERVICE CHECK LIST

Performance problems often result from little things you can find and fix yourself.

1. Unit does not run:
 - Service or Cycle switch must be in "ON" position.
 - Check to see that power cord is plugged in.
 - Check for blown fuse or tripped circuit breaker in electrical supply to machine.
 - Room temperature must be above 55°F. (13°C). Otherwise, bin thermostat may sense cold room temperature and shut off even though bin is not full of ice. Also, unit may not restart once it does shut off.
2. Unit runs but produces no ice:
 - Service or Cycle switch must be in "ON" position.
 - Check water supply to make sure it is open.
 - If ice machine is operated at an elevation of 2,000 feet or more above sea level, both the bin thermostat and the ice thickness thermostat need to be recalibrated. See Installation Instructions.

3. Unit runs but produces very little ice:
 - Room temperature may be extremely high, over 90°F. (32°C). In this case, it is normal for ice production to be low.
 - Dirt or lint may be blocking the air flow through the finned condenser. Condenser needs to be cleaned.
 - Check to see if the unit has a scale build-up in water and freezing system. Clean, if necessary.
4. Grid is not cutting ice sheets:
 - Check the grid harness plug to make sure the connection is secure.
5. Taste in ice cubes:
 - There may be an unusually high mineral content in water supply. Water may need to be filtered or treated.
 - Do not store any foods in the ice bin.
 - Packaging material not all removed.

A more detailed "Trouble Diagnosis Chart" and other technical information is shipped with each unit and is located in the unit compartment section.

Service repair and replacement parts manuals may be ordered directly from:

Scotsman Ice Systems
505 Front Street Albert Lea, Minn. 56007
Telephone 507-373-3961

Specify the model number of the ice machine when ordering.

SCOTSMAN

A HOUSEHOLD

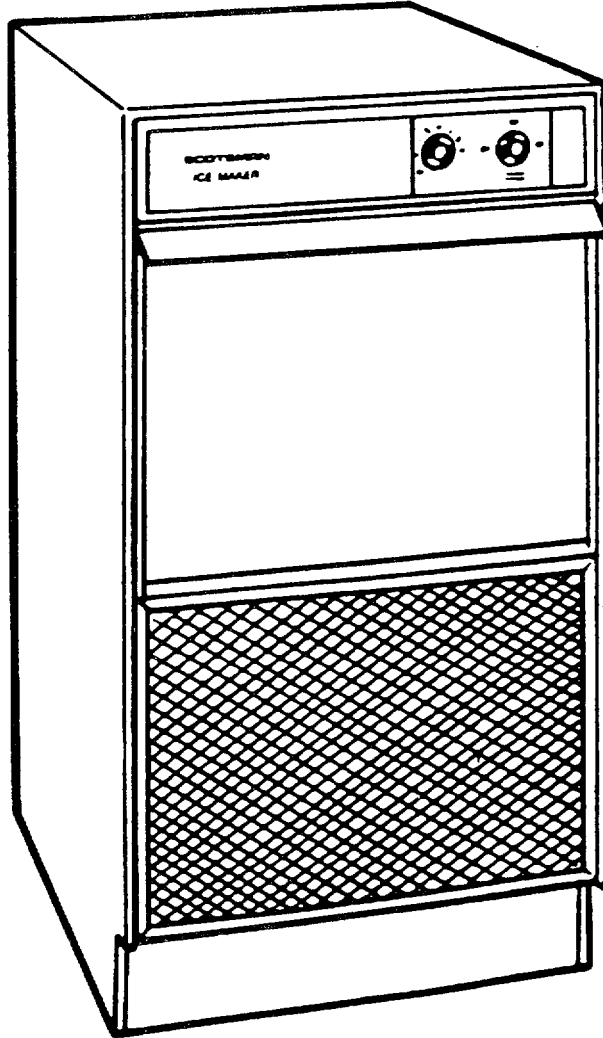
INTERNATIONAL COMPANY

PART NO. 758969

SCOTSMAN 

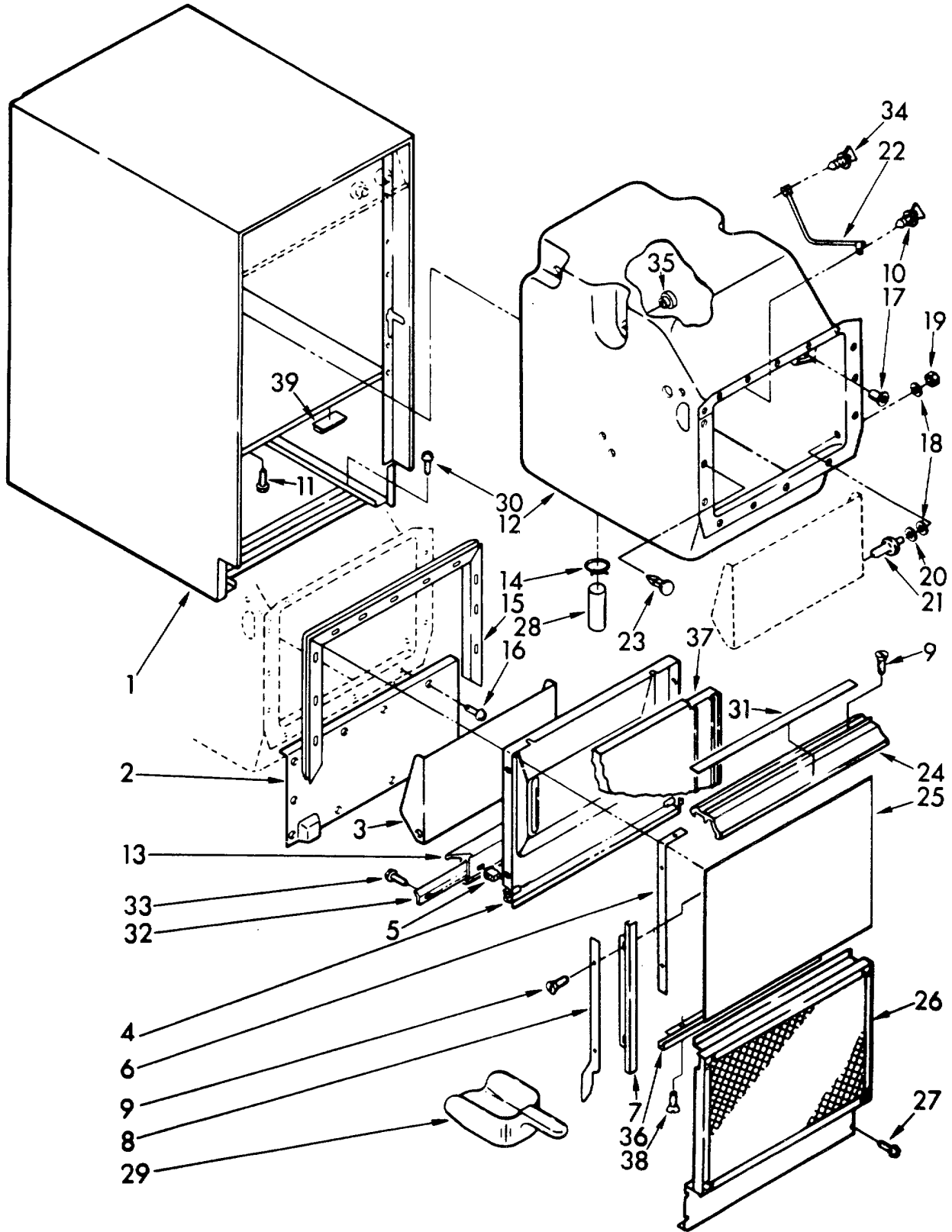
COMMERCIAL ICE SYSTEMS

REPAIR PARTS LIST
AC50A E-1



Part No. 17-1622-01

CABINET, LINER AND DOOR PARTS
For Model: AC50AE-1



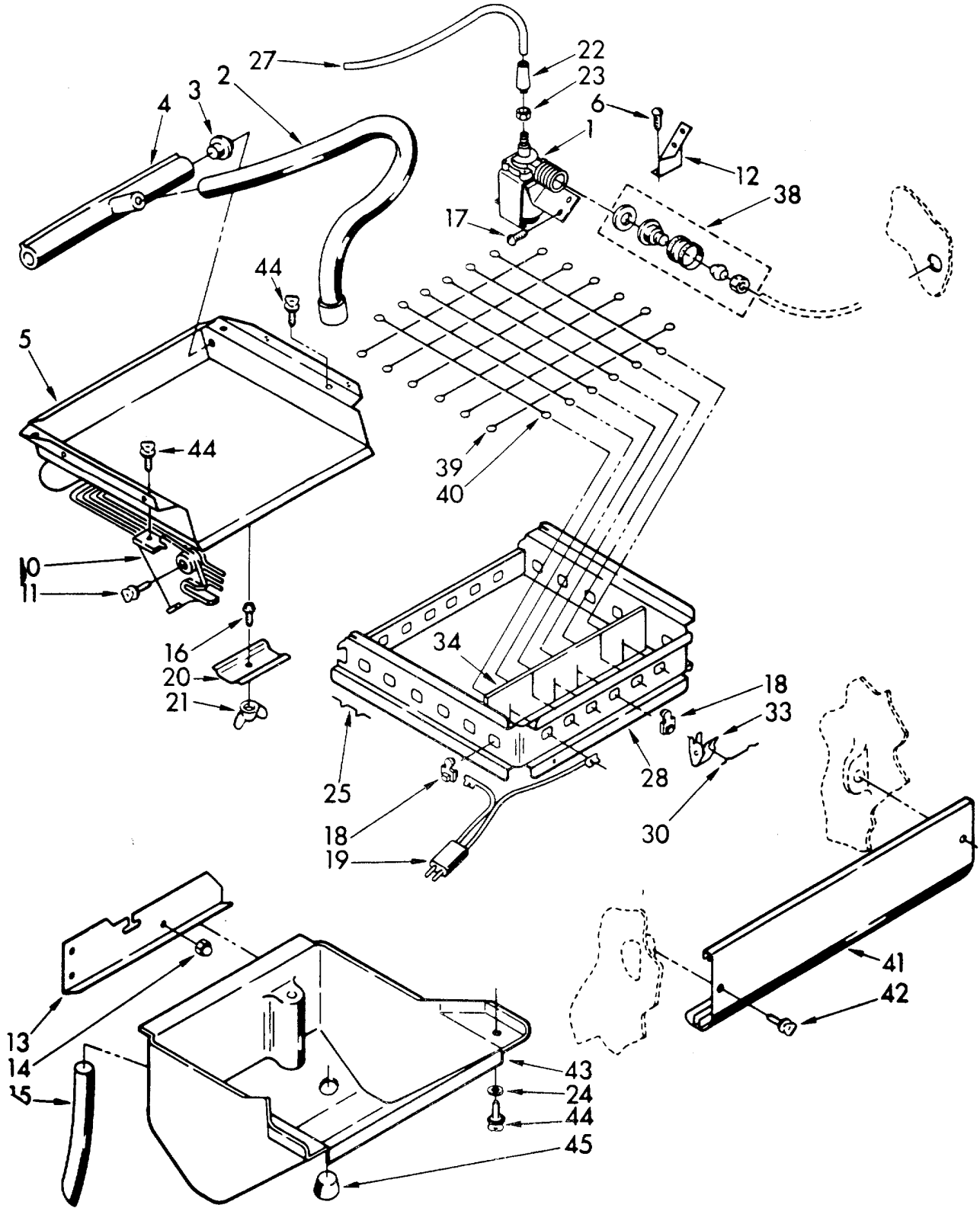
FOR ORDERING INFORMATION REFER TO PARTS PRICE LIST

CABINET, LINER AND DOOR PARTS
For Model: AC50AE-1

Illus. No.	Part No.	DESCRIPTION	Illus. No.	Part No.	DESCRIPTION	Illus. No.	Part No.	DESCRIPTION		
1	0757942	Shell	26	0593550	Grille	*0206925		Leveler, Enamel (12 Oz. Spray Can)		
2	0756563	Front, Shell	27	0681308	Screw, 8-32 x 1/2	*0350956		Enamel, Almond (13 Oz. Spray Can)		
3	0756330	Door, Inner Bin	28	0593577	Connector, Hose	0212643		Sealer, Gum (22 Pcs. 3/16" x 7")		
4	0593786	Liner, Door	29	0585158	Scoop	0479976		Kit, Insulation (5 Pcs. 3" x 24" x 48")		
5	0593192	Plug, Hinge	30	0680811	Screw, 10-32 x 3/8	0978025		Valve, Access (1/4")		
6	0593104	Strip, Tapping (2)	31	0758531	Insert, Handle	0978026		Valve, Access (5/16")		
7		Trim, Door	32	0587960	Strip, Gasket	0978027		Valve, Access (3/8")		
	0755675	R.S.	33	0681149	Screw, 8-15 x 1/2	0978028		Valve, Access (1/2")		
	0755676	L.S.	34	0681419	Thumbscrew, 10-1/2	0978029		Valve, Access (5/8")		
8	0593184	Rail, R.S.	35	0596715	Well Nut (3)	0978030		Valve, Access (3/4")		
	0593185	Rail, L.S.	36	0755677	Trim, Door (Lower)	0758459		Tech Sheet		
9	0681459	Screw, 8-32 x 5/8 (6)	37	0756655	Insulation, Door	0758532		Instructions, Installation		
10	0680930	Thumbscrew	38	0681196	Screw	0758533		Instructions, Owner's		
11	0681036	Screw, Ground	39	0596762	Retainer, Wire	0877481		List, Parts		
12	0756350	Liner (Includes Illus. 17, 18, 19, 20& 21)	Following Parts Not Illustrated			<p>*Note: DO NOT Spray Paints Where They May Come In Contact With Door Gaskets.</p>				
13	0756347	Gasket, Bottom		0503695	Cork Sealer					
14	0596023	Clamp (2)		0799351	Blend, Thinner (1 Gal.)					
15	0756663	Gasket		0797403	Cement, Insulation (1 Oz.)					
16	0595431	Screw, 8-15 x 3/8		0505587	Sealer Mastic (1 Qt.)					
17	0680982	Nut, Molly		0799833	Kit, Evaporator Repair (Aluminum Epoxy)					
18	0680902	Washer		*0206922	Primer, White (12 Oz. Spray Can)					
19	0680637	Nut, 1/4 Hex								
20	0596005	Washer (2)								
21	0596004	Stud (2)								
22	0593183	Well, Bin Thermostat								
23	0596772	Clip, Panel (16)								
24	0756662	Pull, Door								
25		Panel, Exterior								
	0756870	Vinyl, Covered								

FOR ORDERING INFORMATION REFER TO PARTS PRICE LIST

EVAPORATOR, ICE CUTTER GRID AND PUMP PARTS
For Model: AC50AE-1



FOR ORDERING INFORMATION REFER TO PARTS PRICE LIST

**EVAPORATOR, ICE CUTTER GRID AND PUMP PARTS
For Model: AC50AE-1**

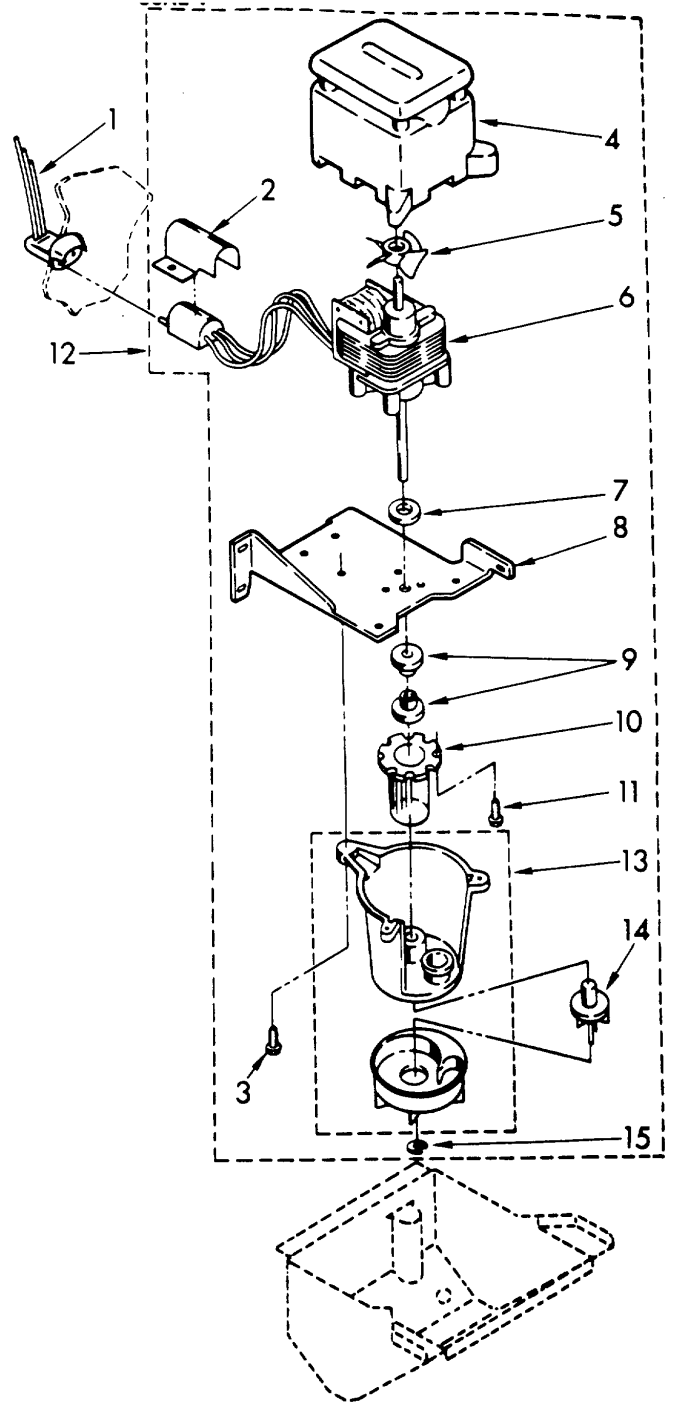
Illus. No.	Part No.	DESCRIPTION
1	0758039	Valve, Complete Water
2	0585856	Tube, Plastic
3	0564061	Plug (2)
4	0585813	Dispenser, Water
5	0758028	Evaporator
6	0681167	Screw
10	0756564	Bracket, Grid Mounting (2)
11	0681611	Thumbscrew
12	0756343	Bracket, Water Valve
13	0585853	Shelf, Water Pan
14	0681432	Nut, Acorn (3)
15	0593369	Hose, Overflow
16	0596037	Screw, 10-32 x 1/2
17	0681305	Screw, 1/4 x 20 x 1/2
18	0598277	Insulator (38)
19	0587639	Cord, Grid
20	0587662	Clamp
21	0595188	Nut, Wing
22	0841707	Insert
23	0627018	Nut & Sleeve Assembly
24	0681245	Washer
25	0587111	Pin, Cutter Wire (17)
27	0758037	Tube, Plastic
28	0563887	Frame, Grid (Not A Service Item)
30	0587112	Pin (4)
33	0564072	Clip (19)
34	0563890	Shield
38	0533238	Adapter (Supplied In Literature Package)
39	0588048	Kit (Includes 9 Pcs. 587503 Grid Cutter Wires)
40	0588109	Kit (Includes 10 Pcs. 587504 Grid Cutter Wires)
41	0593171	Panel, Grid
42	0680930	Thumbscrew, 10-32 x 5/8
43	0756659	Pan
44	0681419	Thumbscrew, 10 x 1/2
45	0593572	Stopper, Water Pan

FOR ORDERING INFORMATION REFER TO PARTS PRINCE LIST

PUMP PARTS
For Model: AC50AE-1

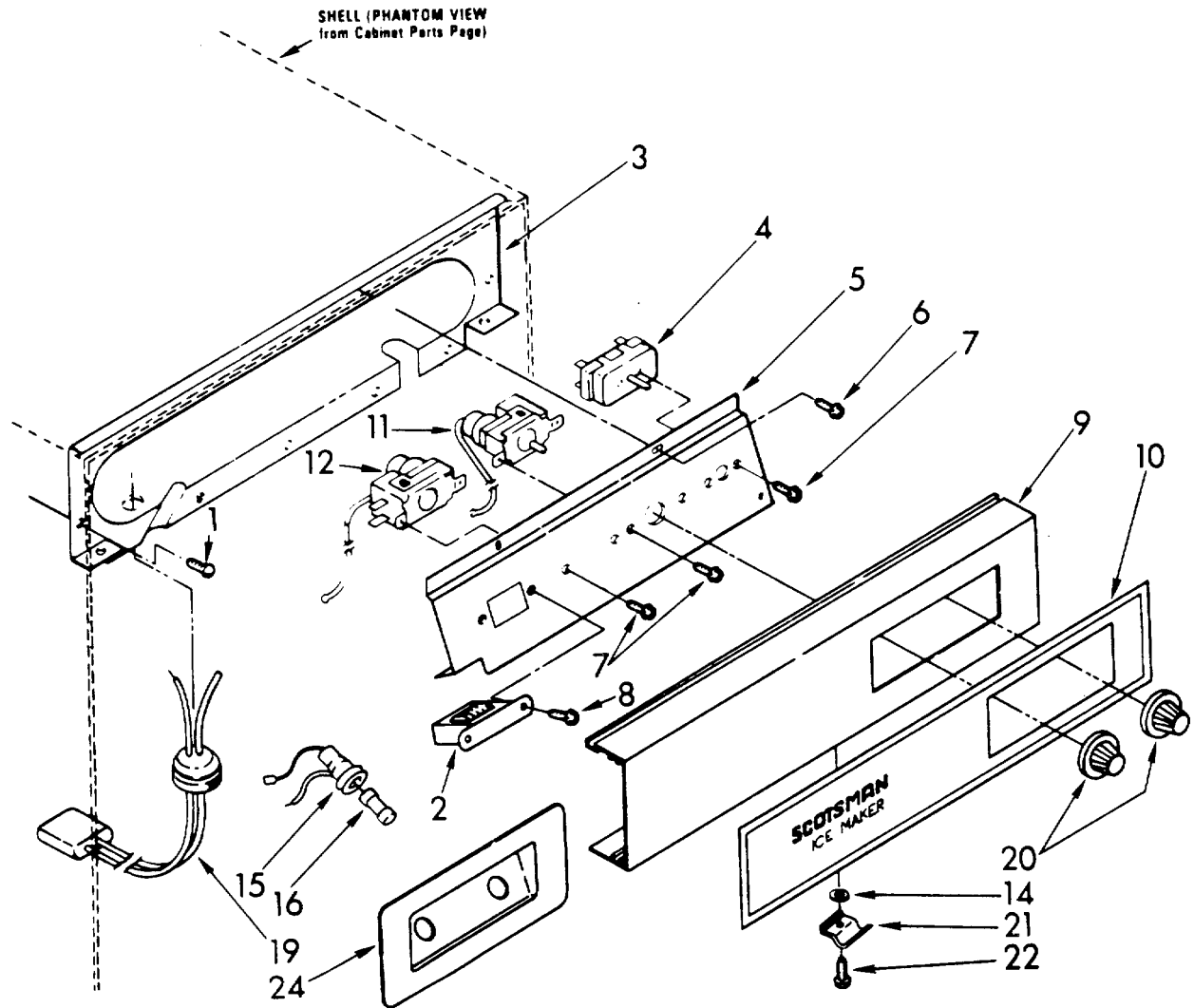
PUMP COMPLETE
0756782

Illus. No.	Part No.	DESCRIPTION
1		Plug, Pump
2		Cover, Plug
3		Screw, 8-18x3/4
4		Housing, Motor
5		Blade, Fan
6	0756950	Motor, Pump
7		Washer
8		Bracket, Pump
9		Grommet (2)
10		Sleeve
11		Crew, 8-32x3/8
12	0756782	Pump, Water
		Complete Assembly
13		Pump, Assembly
14		Impeller (Includes Retaining Ring 15)
15		Ring, Retainer



FOR ORDERING INFORMATION REFER TO PARTS PRICE LIST

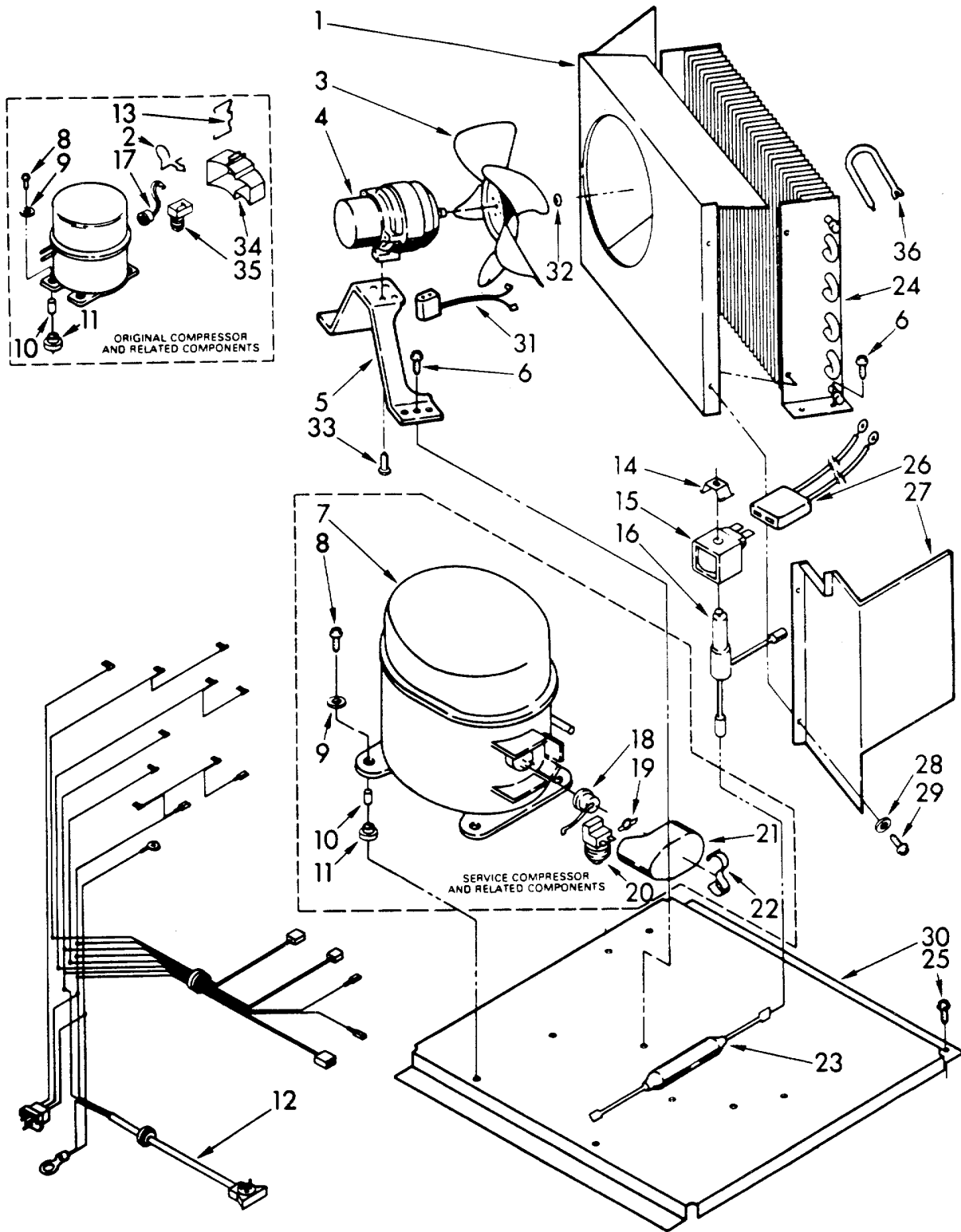
ESCUTCHEON AND CONTROL PARTS
For Model: AC50AE-1



Illus. No.	Part No.	DESCRIPTION	Illus. No.	Part No.	DESCRIPTION	Illus. No.	Part No.	DESCRIPTION
1	0681036	Screw	8	0681632	Screw	14	0681245	Washer
2	0593165	Transformer	9	0593503	Escutcheon	15	0757055	Fuse Holder
3	0756664	Escutcheon, Panel	10	0758525	Decal, Escutcheon	16	0596009	Fuse
4	0593139	Switch, Service	11	0598235	Thermostat, Evaporator	19	0756336	Harness, Grid
5	0756341	Bracket, Control	12	0593141	Thermostat, Bin Control	20	0756881	Knob
6	0595431	Screw, 8-15 x 3/8				21	0593179	Latch
7	0595005	Screw, 8-32 x 1/4				22	0595142	Screw, 8-32 x 1/2
						24	0755361	Cup, Escutcheon

FOR ORDERING INFORMATION REFER TO PARTS PRICE LIST

UNIT PARTS
For Model: AC50AE-1



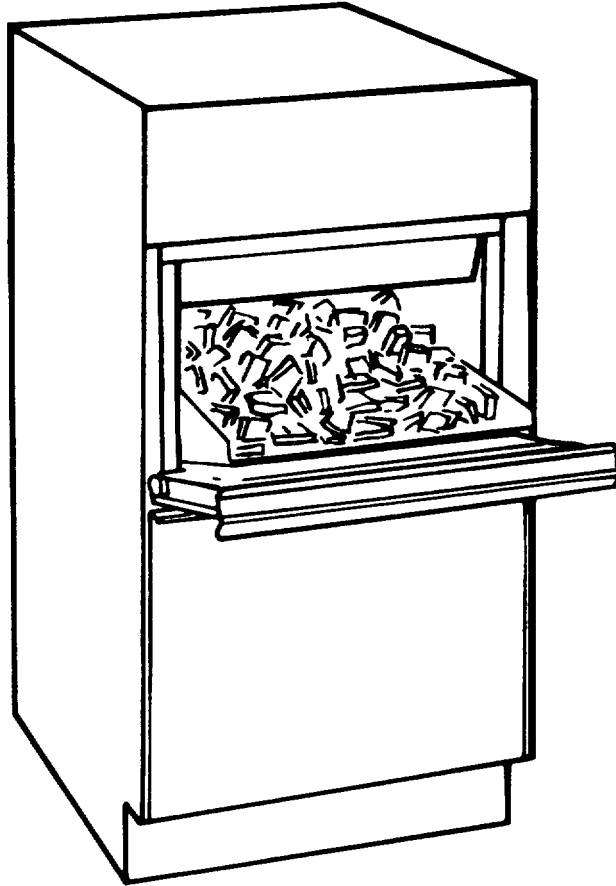
FOR ORDERING INFORMATION REFER TO PARTS PRICE LIST

UNIT PARTS
For Model: AC500AE-1

Illus. No.	Part No.	DESCRIPTION	Illus. No.	Part No.	DESCRIPTION	Illus. No.	Part No.	DESCRIPTION
1	0757955	Shroud	15	0587970	Coil, Solenoid	23	0755649	Drier
2	0727046	Clip (Used W/Original Compressor)	16	0598086	Valve Body	24	0756299	Condenser
3	0572728	Blade, Fan	17	0753505	Overload (Used W/Original Compressor)	25	0680811	Screw
4	0593363	Motor, Fan	18	0589231	Overload (Used W/Service Compressor)	26	0587971	Harness, Coil
5	0560817	Bracket	19	0549086	Spring (Used W/Service Compressor)	27	0593519	Deflector, Front
6	0681305	Screw, 1/4-20 x 1/2 (7)	20	0549337	Relay (Used W/Service Compressor)	28	0595385	Washer
7	0485780	Compressor	21	0549336	Case (Used W/Service Compressor)	29	0681167	Screw
8	0680233	Screw (4)	22	0549342	Strap, Bale (Used W/Service Compressor)	30	0756345	Base, Unit
9	0595230	Washer (4)				31	0585219	Plug, Fan Motor
10	0585564	Sleeve (4)				32	0681650	Washer, Conical
11	0596355	Grommet (4)				33	0680439	Screw, 8-36 x 1/2
12	0756657	Harness, Cabinet				34	0727044	Cover, Terminal (Used W/Original Compressor)
13	0727045	Clamp (Used W/Original Compressor)				35	0753316	Relay, Start (Used W/Original Compressor)
14	0564234	Clamp, Coil Retainer				36	0756298	Accumulator

FOR ORDERING INFORMATION REFER TO PARTS PRICE LIST

IMPORTANT
INSTALLATION INSTRUCTIONS
for



AUTOMATIC ICE MAKER
PUMP ADAPTABLE MODEL

CHANGING THE BIN DOOR AND LOWER PANEL

The storage bin door and lower panel are designed to accept an optional decorative wood panel of your choice.

The wood panel should be no more than 1/4 inch (6mm) thick. Cut it to the same size as the production metal panel. See Figure 1.

To change the bin door panel:

1. Open the bin door.
2. Remove the two screws on top of the door which hold the handle.
3. Remove the handle.
4. Slide the metal panels out.
5. Break off the ribs on the door insulation to allow for the wood thickness. See Figure 2.
6. Slide the wood panel into the door frame.
7. Replace handle and screws.

To change the lower panel:

1. Remove the two screws at the bottom that hold the lower panel assembly to the ice maker.
2. Remove the two screws on the top of the panel assembly.
3. Slide the metal panels and spacers out.
4. Slide the wood panel into the door frame.
5. Replace the top of the panel assembly.

NOTE: Make sure the galvanized panel is replaced in back of the panel assembly.

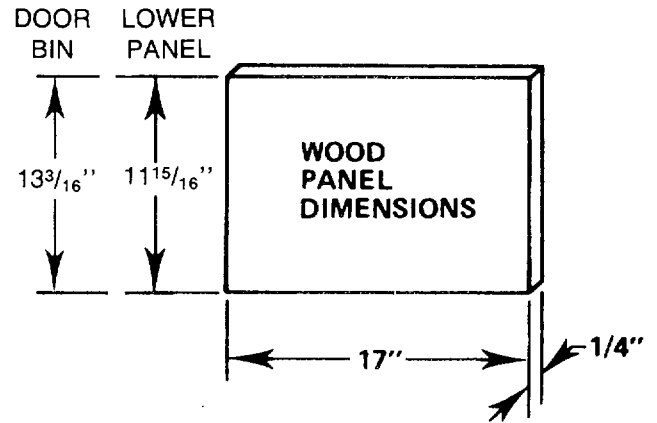
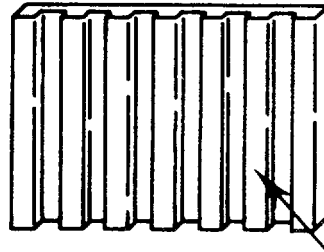


FIGURE 1



REMOVE ALL DOOR INSULATION RIBS TO ACCEPT WOOD PANEL THICKNESS

FIGURE 2

NOTE:

Only those models which presently have a solid lower panel, and a toe space grill, can be fitted with a lower wood panel.

Other models have a grill and solid toe space. These models cannot be fitted with a lower wood panel.

THERMOSTAT CALIBRATIONS

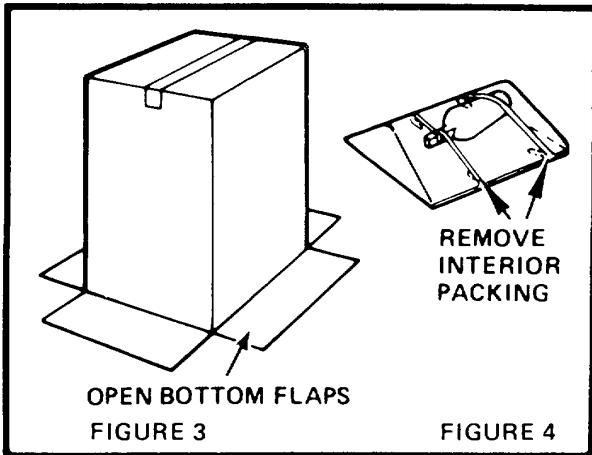
If ice maker is installed above two thousand feet of altitude, the bin and evaporator thermostats must be adjusted to a warmer setting. Disconnect electricity, remove thermostat and follow the directions for turning the altitude adjustment screw as shown in the label on each thermostat.

SHIPBOARD OPERATION

When this ice cube maker is installed aboard a ship, it will be necessary to purchase and install a water deflector. This deflector hangs between the lower edge of the evaporator and the cutter grid. It keeps the water flowing over the evaporator from spilling into the storage bin area. Order the necessary parts from your local ice maker dealer.

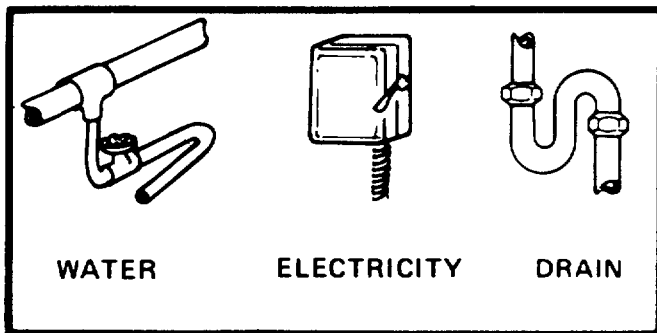
GENERAL INFORMATION

• UNPACK



- 1 Lay carton on rear face and break open bottom flaps.
- 2 Set carton upright with all four flaps outward. See Figure 3.
- 3 Lift carton up and off of machine.
- 4 Remove all tape and packaging material from the outside and inside of the cabinet. See Figure 4.
- 5 Remove the front grill; take out the screws securing the grill at the bottom and lift it free of cabinet
- 6 Turn the fan by hand to make certain it moves freely.
- 7 Loosen thumb screws holding cutter grid and water pan to "thumb tight."

• UTILITIES

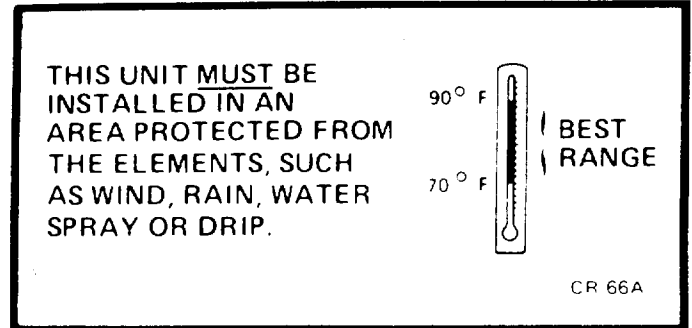


OBSERVE LOCAL CODES

Each installation is unique but will require:

- 1 A cold water inlet of 1/4" OD soft copper tubing and a shut-off valve.
- 2 Either a gravity drain system or a sump pump to lift the water to an existing drain.
- 3 An electrical branch circuit of 115 Volt, 60 Hz, 1 phase, with a 15 Amp delayed action fuse or circuit breaker.

• LOCATE UNIT



- 1 Place unit so the front side will be completely unobstructed. to provide proper air flow
- 2 Area should be well ventilated with temperature above 55°F and below 110°F. Best results are obtained between 70°F and 90°F.
- 3 Provision for electricity. water and drain connections should be determined.
- 4 The unit may be closed in on the top and three sides, but the front **MUST BE** unobstructed for air circulation and proper operation Installation should be such that the cabinet can be moved forward for servicing, if necessary.

• LEVEL UNIT

- 1 After placing unit in position, check to make certain the unit is level side to side and front to back.
- 2 Accurate leveling is essential for proper operation.
- 3 Unit should be shimmed so that it is solid as well as level. The shims should be of hard permanent type material such as masonite.
- 4 If required by sanitation code, seal the cabinet to the floor with an approved caulking compound.

FOR THE PLUMBER

CONNECT TO WATER (observe local codes)

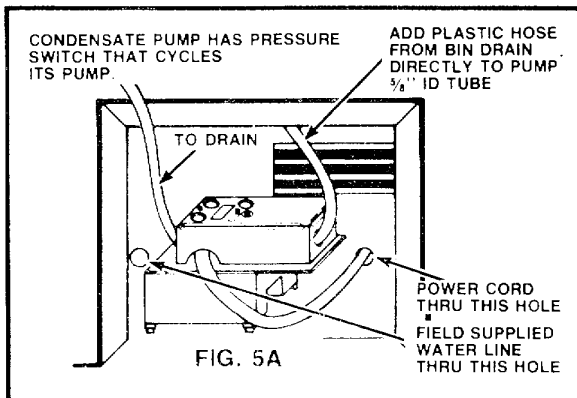
1. Use 1/4" OD soft copper tubing for the cold water supply.
2. Provide a convenient manual shut-off valve in the water line
3. Position the tubing so it can enter the access hole located in the right-hand rear of the cabinet. The tubing should extend beyond the cabinet front when the cabinet is pushed back into position. See Figure 5.

CONNECT THE DRAIN (observe local codes)

1. The unit is provided with a gravity drain.
2. The ideal installation has a standpipe (1 1/4" minimum) installed directly below the outlet of the drain tube. Refer to Figure 5 for the proper location of the standpipe.
3. It may be desirable to insulate drain line thoroughly up to drain inlet.

CONDENSATE PUMP

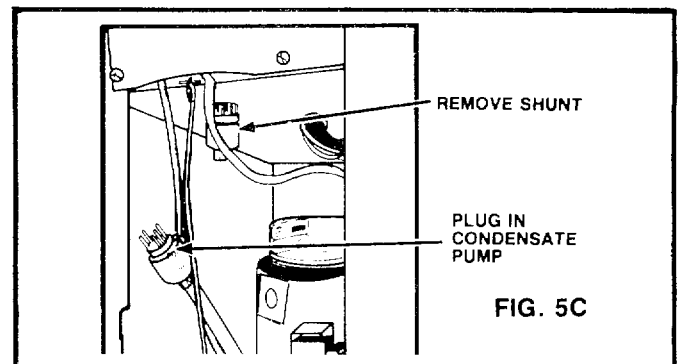
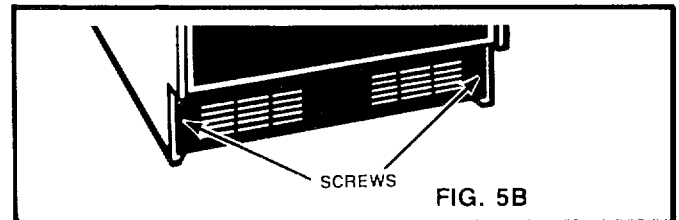
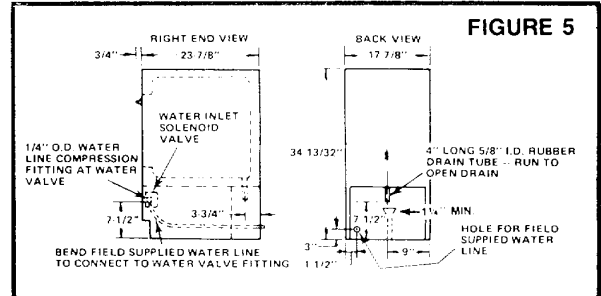
1. When drain connection below the level of the unit is not available a condensate pump may be used to lift the water to an available drain.
2. Install condensate pump on floor behind ice maker with discharge tube to the rear. Run bin drain directly into pump as shown in Figure 5A.
3. Run power cord thru hole into unit compartment (See Figure 5A)
4. Remove lower grille assembly. (See Figure 5B)
5. Remove shunt from receptacle and plug in condensate pump. (See Figure 5C)



NOTE:

Always purge the water line before making the final connection to the inlet of the water valve to prevent possible water valve malfunction.

After the cabinet is in place, bend the tubing to meet the connection at the water valve. The garden hose threaded compression fitting is found in the parts bag. This joint provides a convenient disconnect for service. Be sure the tubing is clear of compressor, to prevent rattle.



NOTE:

Do not discard shunt that is removed from receptacle. This must be replaced if unit is to be operated without condensate pump.

NOTE:

Your Ice Maker may, or may not include a DRAIN PUMP. If your Ice Maker model does not include a DRAIN PUMP, one can be ordered from your dealer.

FOR THE ELECTRICIAN

ELECTRICAL REQUIREMENTS

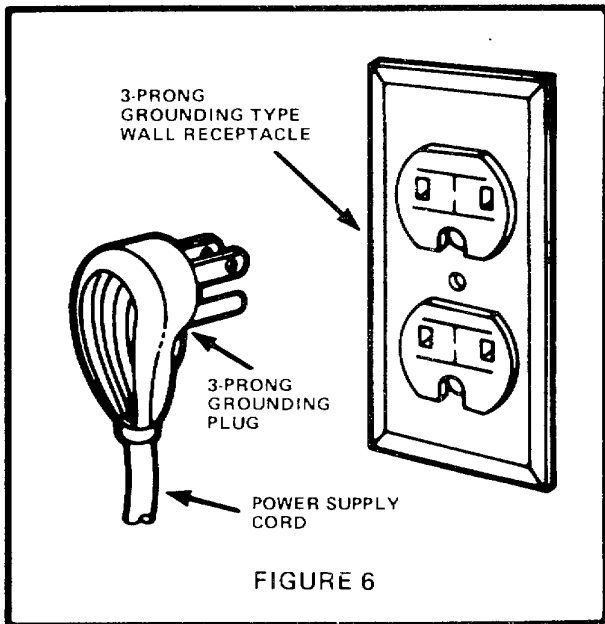
A 115 Volt, 60 Hz, AC only, 15 Amp fused electrical supply is required (time delay fuse or circuit breaker is recommended). It is recommended that a separate circuit, serving only this appliance, be provided. DO NOT use an extension cord.

ELECTRICAL GROUND IS REQUIRED ON THIS APPLIANCE.

RECOMMENDED GROUNDING METHOD

DO NOT, UNDER ANY CIRCUMSTANCES, REMOVE THE POWER SUPPLY CORD GROUND PRONG.

For your personal safety, this appliance must be grounded. This appliance is equipped with a power supply cord having a 3-prong grounding plug. To minimize possible shock hazard, the cord must be plugged into a mating 3-prong grounding type wall receptacle, grounded in accordance with the National Electrical Code and local codes and ordinances. If a mating wall receptacle is not available, it is the personal responsibility and obligation of the customer to have a properly grounded 3-prong wall receptacle installed by a qualified electrician. See Figure 6.



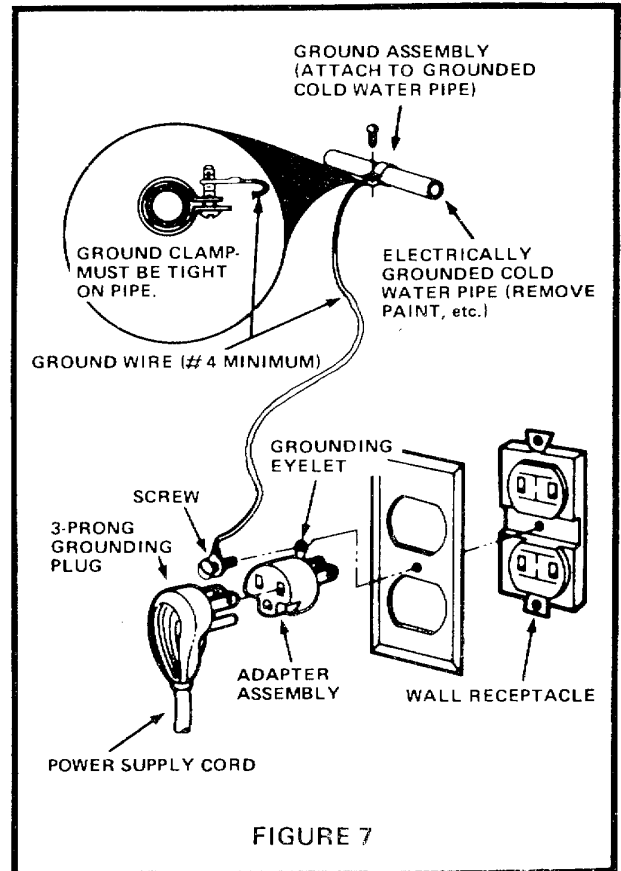
ALTERNATE GROUNDING METHOD

DO NOT, UNDER ANY CIRCUMSTANCES, REMOVE THE POWER SUPPLY CORD GROUND PRONG.

If changing and properly grounding the wall receptacle is impossible and where local codes permit (consult your electrical inspector), a temporary adapter may be plugged into the existing 2-prong wall receptacle to mate with the 3-prong power supply cord. See Figure 7. **THIS, HOWEVER, IS NOT RECOMMENDED.**

If this is done, you must connect the grounding eyelet on the adapter to the wall receptacle cover plate screw and from this same screw, you must connect a separate copper ground wire (No. 4 minimum) to a grounded cold water pipe*. See Figure 7. Do not ground to a gas supply pipe. Do not connect to electrical supply until appliance is permanently grounded.

* Cold water pipe must have metal continuity to electrical ground and not be interrupted by plastic, rubber or other electrically insulating connectors including water meter or pump) without adding a jumper wire at these connections.



HOW IT WORKS

- Compressor runs
- Condenser fan runs
- Water pump runs (circulates water)
- Cutter grid is warm to touch

WHEN THE DESIRED ICE SLAB THICKNESS IS REACHED, THE HARVEST CYCLE BEGINS AND THE FOLLOWING HAPPENS:

- Evaporator thermostat is satisfied
- Compressor keeps running
- Condenser fan stops or turns very slowly
- Water pump stops
- Hot gas solenoid opens
- Water inlet valve opens
- Excess water is flushed out of the drain pan
- Cutter grid is warm to the touch

NOTE: Normal harvest cycle takes 60 to 120 seconds.

MACHINE RESUMES FREEZING AFTER SLAB IS RELEASED FROM EVAPORATOR AND THE CUTTING PROCESS BEGINS.

WHEN THE STORAGE BIN IS FILLED, BIN THERMOSTAT OPENS.

- Cutter grid remains on

THINGS TO REMEMBER

- Water enters only during the defrost cycle. Therefore the first cycle will be completed without water in the system.
- As the room and water temperatures vary, so will the amount of ice produced. This means that higher operating temperatures will result in reduced ice production.
- The unit will shut off when ice in the storage bin touches the bin thermostat well and will automatically cycle to keep the bin full.
- The storage bin is not refrigerated and some meltage will occur. This, too, varies with the room temperature.
- The unit needs good air circulation to perform efficiently. Keep the front grill and the condenser clean.
- The water system, including filter screen in the water inlet solenoid valve, needs to be cleaned periodically for good circulation. Instructions are located on the inner door panel.

OPERATING INSTRUCTIONS

- For complete operating information, refer to the Use and Care Guide.
- Before starting, wash out interior of cabinet with a Baking Soda solution (2 tablespoons soda to a quart of warm water). Rinse thoroughly.
- Make certain the water is turned on.
- Turn switch to the "ON" position.

IMPORTANT:

Allow unit to run for 3 hours before expecting ice and for 24 hours before trying to set the thickness control.

If installed above 2,000 feet altitude, see page 2 for thermostat adjustments.

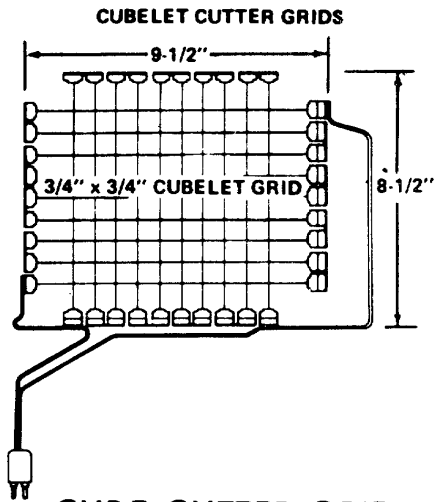
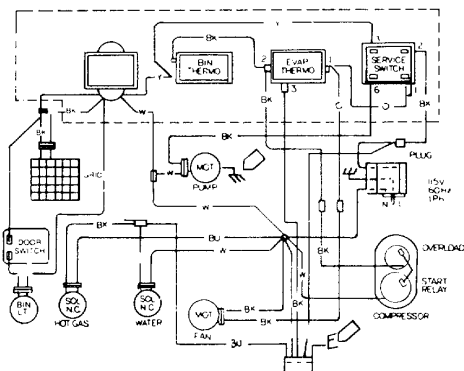
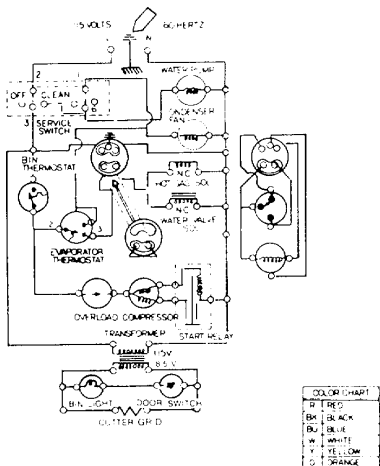
UNIT WIRING DIAGRAM

This model operates at 115 volts except for the cutter grid circuit which operates at 8.5 volts at 1 amp.

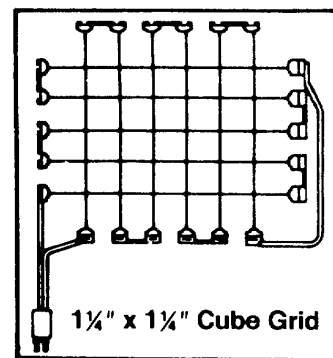
The compressor runs at all times except when the bin thermostat becomes satisfied and opens up. This de-energizes the system except for the transformer and cutter grid.

Under normal operating conditions, when the evaporator reaches the preset temperature (+10° to -30 F. depending on thickness of ice) the evaporator thermostat opens, terminating operation of the fan motor and pump motor. The hot gas solenoid and the water valve solenoid are energized at this time and remain so until the evaporator reaches 38 + 20 F.

DANGER: ELECTRIC SHOCK HAZARD
DISCONNECT POWER BEFORE SERVICING UNIT
MAXIMUM FUSE SIZE: 15 AMPS.
NOTE: CONTACTS SHOWN IN FREEZING CYCLE.
CHECK OPERATION



CUBE CUTTER GRID



Start the unit by turning the service switch to "ON" and opening the line water valve.

- ✓ NOTE: Left is "OFF" - Middle is "ON" - Right is "CLEAN." In "CLEAN" position, only the pump operates.
- ✓ Check condenser fan to make sure it is revolving.
- ✓ Water will not enter pump pan until freezing plate gets cold and machine goes into a harvest cycle.
- ✓ Check for even water flow over freezing plate. Unit must be level for proper operation.
- ✓ Check for desired cube thickness and after 24 hours adjust if necessary. Maximum ice yield will be obtained with ice thickness at 1/2" to 5/8".
- ✓ Replace grill.

Part No. 758883

Printed in U.S.A.

COMMERCIAL ICE SYSTEMS**CUSTOMER WARRANTY INFORMATION AND SCOTSMAN DISTRIBUTOR LIST
UNITED STATES AND CANADA**

Your new Scotsman Product has been designed and engineered to provide the highest quality possible.

Each unit is manufactured under stringent quality control measures to insure a quality product providing satisfactory operation to the user.

All Scotsman Commercial Products are backed by a manufacturer's limited warranty providing labor coverage for factory defects in material and/or workmanship occurring within the first twenty-four (24) months of operation. All component parts are covered for a full twenty-four (24) month period. We request that you read the warranty statements provided to become familiar with the product warranty provisions.

1. To insure that the product you have just purchased provides the high quality performance for which it was intended, it **MUST** be installed and started into operation by a qualified Scotsman service technician.
2. After the installation and start up has been completed, the Manufacturer's Registration Card

must be completed and mailed to insure that your Scotsman Product has been duly registered.

3. A listing of all Scotsman Distributors is included in this booklet. If you are not familiar with the local Scotsman service agency, please contact the nearest Scotsman Distributor listed in this booklet to obtain the name, address and telephone number of the closest Scotsman service agency.
4. In the event a problem occurs with your product during the time the unit is protected by the manufacturer's limited warranty, you **MUST** contact the closest Scotsman Distributor or service agency for service.

If for some reason you cannot get in touch with the local distributor or obtain the information you require, you may contact the Factory Service Department directly by calling the following toll free number: 1-800-533-6006.

ALABAMA**DOTHAN****Dothan Ref. Co.**

1014 Third Ave.
(205) 793-7192 Zip 36301

BIRMINGHAM**Icemakers, Inc.**

P.O. Box 31051 (3711 5th Court, No.)
(205) 591-2791 Zip 35222

HUNTSVILLE**Icemakers, Inc.**

4411-G Evangel Circle
(205) 837-8941 Zip 35805

MOBILE**Equip. Sales Corp., Inc.**

703 Western Drive
(205) 476-2220 Zip 36607

MONTGOMERY**A.I.R. Supply Co., Inc.**

P.O. Box 210301 (880 Plantation Way)
(205) 272-1280 Zip 36121-0301

ALASKA**ANCHORAGE****Pepsi-Cola Bottling Co. of Alaska, Inc.**

521 E. 104th Ave., P.O. Box 113689
(907) 522-1212 Zip 99511-3689

FAIRBANKS**Pepsi-Cola Bottling Co. of Alaska, Inc.**

1880 Marika St.
(907) 452-1404 Zip 99701

ARIZONA**PHOENIX****Phoenix Market Equipment Co.**

2922 E. McDowell
(602) 275-4441 Zip 85008

TUCSON**Ford Restaurant Equipment**

5851 E. Speedway
(602) 885-2345 Zip 85712

ARKANSAS**FORT SMITH****Refrigerated Products Co., Inc.**

424 N. Second St. (BX 381)
(501) 783-4344 Zip 72902

LITTLE ROCK**Delta Supply Company**

P.O. Box 985 (3315 W. Roosevelt Road)
(501) 664-4326 Zip 72203

CALIFORNIA**FRESNO****Pepsi-Cola/San Joaquin Btlg. Co.**

1150 East North
(209) 485-5050 Zip 93725

LAVERNE (LOS ANGELES)**Scotsman Distributors****of Los Angeles, Inc.**

1480 Arrow Hwy.
(818) 967-3961 91750
(714) 593-1366 Orange County

MODESTO**Pepsi-Cola/San Joaquin Btlg. Co.**

200 W. River Rd.
(209) 526-1644 Zip 95351

HAYWARD**Scotsman Norcal Inc.**

31119 San Benito St.
(415) 487-4200 Zip 94544

SACRAMENTO**Interstate Scotsman, Inc.**

2740 Fulton Ave., Suite 219
(916) 481-5715 Zip 95821

SAN DIEGO**Scotsman Distributors of
Southern California**

8651 Production Ave.

(619) 549-2243 Zip 92121

CALIFORNIA (Continued)**SALINAS/MONTEREY****Pepsi-Cola Bottling Co. of Salinas**

135 Martella
(408) 424-5721 Zip 93906

STOCKTON**Pepsi-Cola/San Joaquin Btlg. Co.**

4225 East Pepsi Place
(209) 931-9580 Zip 95205

COLORADO**COMMERCE CITY (DENVER)****Mountain Sales & Service, Inc.**

6759 East 50th Avenue
(303) 289-5558 Zip 80022-4618

CONNECTICUT**BRIDGEPORT****Taylor Freezer of Connecticut, Inc.**

265 Asylum Street
(203) 366-5265 Zip 06610

NORTH HAVEN**Preferred Equipment, Inc.**

450 Sackett Pt. Rd.
(203) 248-8645 Zip 06473

DELAWARE**NEWARK****Berry Refrigeration, Inc.**

2 Garfield Way
(302) 733-0933 Zip 19713

DISTRICT OF COLUMBIA**DISTRICT OF COLUMBIA**

The Zamoiski Co.
3000 Waterview Ave.
Baltimore, MD 21230-3510
(301) 539-3000

FLORIDA**HOLLY HILL****Baker Bros. Inc.**

264 Carswell Avenue
(904) 255-4523 Zip 32017

JACKSONVILLE**Solomon Refrigeration, Inc.**

P.O. Box 2400 (800 Forest Street)
(904) 353-3143 Zip 32203

MIAMI**Bayshore Equip. Dist., Inc.**

1800 N.W. 93rd Ave.
(305) 594-0747 Zip 33172

PANAMA CITY**Engineering & Equipment Co., Inc.**

1336 Florida Avenue
P.O. Box 15489
(904) 769-7641 Zip 32406

TALLAHASSEE**Engineering & Equipment Co., Inc.**

1748 Old Bainbridge Road
P.O. Box 3238
(904) 222-0750 Zip 32303

TAMPA**Coastal Distributing, Inc.**

3420 W. Laurel St

Hillsborough Co.

(813) 872-6321

Pineilas Co.

(813) 442-6942 Zip 33607

GEORGIA**ALBANY****Engineering & Equipment Co., Inc.**

P.O. Box 588 (910 Washington Street)
(912) 435-5601 Zip 31702

ATLANTA**Automatic Icemaker Co., Inc.**

700 Lake Avenue, NE
(404) 523-8688 Zip 30307

AUGUSTA**Baker Bros., Inc.**

1215 New Savannah Rd.,
P.O. Box 2183
(404) 722-0292

SAVANNAH**Solomon Ret., Inc.**

304 W. Victory Dr
(912) 232-5840 Zip 31403

HAWAII**HONOLULU****Pepsi-Cola, 7-Up Bottling Co.**

815 Waiakamilo Rd.
P.O. Box 17853
(808) 848-1777 Zip 96817

IDAHO

Please contact nearest Distributor listed in adjacent state.

ILLINOIS**ADDISON (Chicago)****Crosstown Refr. Co., Inc.**

1040B DuPage Ave.
(312) 628-6550 Zip 60148

CHAMPAIGN**Duncan Supply Company, Inc.**

217 Locust Street
(217) 352-7888 Zip 61820

PEORIA**Baker & Hauser Refrigeration**

(1330 NE Adams Street)
(309) 673-7966 Zip 61603

INDIANA**BLOOMINGTON****Duncan Supply Co., Inc.**

2285 Industrial Drive
(812) 333-8331 Zip 47401

INDIANA (Continued)**FORT WAYNE****King-Weyler Equipment, Inc.**

P.O. Box 15370 (4020 Wells Street)
(219) 482-4549 Zip 46815

INDIANAPOLIS**Duncan Supply Company, Inc.**

910 N Illinois St
(317) 634-1335 Zip 46204

KOKOMO**Duncan Supply Company, Inc.**

1100 South Ohio St.
(317) 452-5628 Zip 46901

MUNCIE**Duncan Supply Company, Inc.**

601 East 15th Street
(317) 288-5549 Zip 47302

SOUTH BEND**F.H. Langsenkamp Co.**

1139 Mishawaka Ave
(219) 233-8222 Zip 46615

TERRE HAUTE**A/C & H Supply Co., Inc.**

10 Ohio St.
(812) 232-5355 Zip 47807

IOWA**DAVENPORT****Holmes Sales & Service, Inc.**

P.O. Box 4542 (1803 W. 4th Street)
(319) 322-4212 Zip 52808

DES MOINES**Taylor Industries, Inc.**

1533 E. Euclid
(515) 262-8221 Zip 50313

KANSAS**WICHITA****Parco Distributors, Inc.**

750 East Pawnee
(316) 267-9423 Zip 67211

KENTUCKY**BOWLING GREEN****Brock-McVey Co.**

P.O. Box 1540 (704 31W By-Pass)
(502) 842-5609 Zip 42101

CORBIN**Brock-McVey Refr. Supply Co.**

U.S. 25E
(606) 528-0740 Zip 40701

HOPKINSVILLE**A/C & H Supply Co., Inc.**

1300 S Virginia
(502) 885-0859 Zip 42240

LEXINGTON**Brock-McVey Refr. Supply Co.**

P.O. Box 321
(1237 New Circle Rd N.E.)
(606) 255-1492 Zip 40555

LOUISVILLE**Scotsman of Kentuckiana**

209 E Main St.
(502) 583-0105 Zip 40202

OWENSBORO**A/C & H Supply Co., Inc.**

P.O. Box 1402
(502) 684-8881 Zip 42302-1402

PRESTONBURG**Brock-McVey Refr. Supply Co.**

374 S Lake Drive
(606) 886-6801 Zip 41653

LOUISIANA**BATON ROUGE****Acme Refrigeration**

11844 S. Choctaw
(504) 273-1740 Zip 70815

LOUISIANA (Continued)**BOSSIER CITY (SHREVEPORT)****American Refrigeration and Ice**

1100 East Side Drive
(318) 742-7325 Zip 71111

GONZALES**Acme Refr. of Gonzales**

1921 South Philippe Ave.
(504) 647-5344 Zip 70737

HAMMOND**Acme Refr. of Hammond**

312 N. Cate St.
(504) 542-1135 Zip 70404

HARAHAN (NEW ORLEANS)**Commercial & Industrial Parts Outlet**

666 Distributors Row
(504) 733-3700 Zip 70123

LAFAYETTE**Acme Refr., Inc.**

515 6th St.
(318) 433-1783 Zip 70601

LAKE CHARLES**Acme Refr., Inc.**

133 Monroe St.
(318) 234-8333 Zip 70501

LECOMPTÉ**Louisiana Foodservice, Equipment Co.**

P.O. Box 9
1181 Highway 71 South
(318) 776-5011 Zip 71346

NEW IBERIA**Acme Ref. of New Iberia**

1350 E. St. Peter
(318) 365-3449 Zip 70560

SLIDELL**Acme Ref. of Slidell**

2099 Covington Hwy, Bx. 2052
(504) 641-2055 Zip 70459

MAINE

Please contact nearest Distributor listed in adjacent state.

MARYLAND**BALTIMORE****The Zamoiski Co.**

3000 Waterview Ave.
(301) 539-3000 Zip 21230-3510

MASSACHUSETTS**HOLYOKE****Eger Engineering Corp.**

121 Main Street
(413) 532-9486 Zip 01040

WOBURN (BOSTON)**Preferred Equipment., Inc.**

130 Commerce Way
(617) 935-9130 Zip 01801

MICHIGAN**BRIDGEPORT****Michigan Carbonic of Saginaw, Inc.**

6273 Dixie Hwy.
(517) 777-5170 Zip 48722

GRAND RAPIDS**Keyes Refrigeration, Inc.**

3961 Roger B. Chaffee Blvd.
(616) 241-4495 Zip 49508

TROY (DETROIT)**Premium Equipment Sales**

1300 Souter
(313) 585-5990 Zip 48083

MINNESOTA
EAGAN (MINNEAPOLIS)
Scotsman Midwest
Division Coca-Cola Btlg. Co.
2799 Hwy 55 East
(612) 681-3575 Zip 55121

MISSISSIPPI
JACKSON
Dixie Supply
P.O. Box 7636
(490 Julienne Ave., Bldg. C-1)
(601) 354-3025 Zip 39204

MISSOURI
POPLAR BLUFF
Davis Service & Equip. Co.
Jct. Hwy. 60-67
(314) 686-2462 Zip 63901

SPRINGFIELD
National Paper & Hotel Supply
1708 N. Robberson
(417) 869-9141 Zip 65803

MONTANA
BILLINGS
N.T.C.C.
108 Moore Lane
(406) 259-0300 Zip 59102

GREAT FALLS
N.T.C.C.
601 Third Avenue South
(406) 727-9080 Zip 59403

MISSOULA
N.T.C.C.
1345 Dakota
(406) 728-7884 Zip 59801

NEBRASKA
OMAHA
Midwest Distributing Corp.
3104 Cuming St.
(402) 341-5600 Zip 68131

NEVADA
LAS VEGAS
Lloyd's Refrigeration, Inc.
3575 West Naples Drive
(702) 798-1010 Zip 89103

RENO
Silver State Refr., Inc.
5695 Panther Drive
(702) 329-4041 Zip 89506

NEW HAMPSHIRE
Please contact nearest Distributor listed in adjacent state.

NEW JERSEY
ATLANTIC CITY
Thermec Company Inc.
Products Division

122 No. California Avenue
(609) 348-9126 Zip 08401

W. CALDWELL
Montgomery Engineering Company
241 Clinton Road
P.O. Box 1225
(201) 227-9550 Zip 07006

NEW MEXICO
ALBUQUERQUE
Southwest Bar & Rest. Equip.
1215 Fourth N.W.
(505) 242-5151 Zip 87102

NEW YORK
ALBANY
A-1 Ice Equipment Distributors, Inc.
1143 Central Avenue
(518) 459-4775 Zip 12205

NEW YORK (Continued)
AUBURN (SYRACUSE)
Van-Halloran Equipment Co.
P.O. Box 1280
309 W. Genesee St.
(315) 255-3441 Zip 13021

LONG ISLAND (Farmingdale)
Reese and Long/Long Island
#2 Rome Street
(516) 454-8833 Zip 11801

NEW YORK
Reese and Long
Refrigeration Products, Inc.
1891 Park Avenue
(212) 876-7978 Zip 10035

NORTH TONAWANDA
E.E.C. Distributors, Inc.
940 River Road
(716) 693-3970 Zip 14120

ROCHESTER
Allen Associates, Inc.
60 Saginaw Drive
(716) 244-5104 Zip 14623

UTICA
Tri-Temp Refr. Equipment Co.
1046 Erie Street
(315) 735-0675 Zip 13502

NORTH CAROLINA
ASHEVILLE
Ansel's Refrigeration Co., Inc.
573 Fairview Rd., P.O. Box 5293
(704) 274-0353 Zip 28813

CHARLOTTE
Gardner & Benolt, Inc.
P.O. Box 30005 (228 East 9th Street)
(704) 332-5086 Zip 28230

FAYETTEVILLE
Noland Company
125 Drake Street
(919) 483-0341 Zip 28302

KINSTON
Noland Company
1000 Greenville Hwy.
(919) 523-6171 Zip 28501

RALEIGH
Noland Company
P.O. Box 26028
(1117 Downtown Blvd.)
(919) 832-2071 Zip 27611

WILMINGTON
Jacobi-Lewis Co., Inc.
622 South Front St.
(919) 763-6201 Zip 28401

WILSON
Noland Company
P.O. Box 2029 (Hwy. 301 No.)
(919) 243-6146 Zip 27893

WINSTON-SALEM
Salem Refrigeration Co., Inc.
600 Aureole Street
(919) 784-8815 Zip 27107

NORTH DAKOTA
Please contact nearest Distributor listed in adjacent state.

OHIO
AKRON
R. M. Paddison Company
655 N. Main Street
(216) 762-9741 Zip 44310

OHIO (Continued)
CINCINNATI
Cincinnati Ice Machine Co., Inc.
2350 Gilbert Ave.
(513) 861-9000 Zip 45206

CLEVELAND
The H. A. Redmond Company
7901 Old Rockside Rd.
(216) 447-3050 Zip 44131

COLUMBUS
Scotsman Mid-Ohio
356 No. Grant St.
(614) 221-0061-2-3-4 Zip 43215

DAYTON
Dayton Ice Machine Co., Inc.
3463 Successful Way
(513) 236-4166 Zip 45414

TOLEDO
Wichman Co.
1720 Arlington Avenue
(419) 385-9121 Zip 43609

OKLAHOMA
Please contact nearest Distributor listed in adjacent state.

OREGON
Please contact nearest Distributor listed in adjacent state.

PENNSYLVANIA
FRAZIER (Philadelphia)
S. Soski Piroeff, Inc.
335 Lancaster Ave.
(215) 648-0100 Zip 19355

HARRISBURG
United Restaurant Equipment, Inc.
2980 Jefferson St.
(717) 238-1214 Zip 17105

NORTH EAST
Lindsey Refrigeration, Inc.
P.O. Box 302
(6 Loomis Street)
(814) 725-4561 Zip 16428

PITTSBURGH
Standard Air & Lite
33rd & Liberty Ave.
(412) 281-6505 Zip 15201

WILKES-BARRE
B & R Equipment Co.
237 Old River Road
(717) 824-8945 Zip 18702

RHODE ISLAND
Please contact nearest Distributor listed in adjacent state.

SOUTH CAROLINA
AIKEN
Baker Bros., Inc.
1114 Richland Ave., W.
(803) 648-3225 Zip 29801

CHARLESTON
Noland Company
P.O. Box 71246
(3695 N. Meeting Street Road)
(803) 744-8213 Zip 29405

COLUMBIA
Noland Company
730 Elmwood Avenue
(803) 779-6680 Zip 29201

SOUTH CAROLINA (Cont.)**FLORENCE****Noland Company**

413 No. Irby Street
(803) 662-5216 Zip 29501

GREENVILLE**Palmetto Comm. Reir.**

6725 Augusta Rd.
(803) 277-6156 Zip 29605

GREENWOOD**Baker Bros., Inc.**

Sullivan Street
(803) 223-3889 Zip 29646

MYRTLE BEACH**East Coast Refrigeration**

181 Spencer St.
(803) 626-3034 Zip 29578

SPARTANBURG**Noland Company**

P.O. Box 1718 (717 Union Street)
(803) 583-2701 Zip 29301

SOUTH DAKOTA

Please contact nearest Distributor listed in adjacent state.

TENNESSEE**CHATTANOOGA****Icemakers, Inc.**

4121 South Creek Road
(615) 622-0886 Zip 37406

JOHNSON CITY**Noland Company**

Walnut & Wataugh
(615) 928-1121 Zip 37601

KINGSPORT**Noland Company**

2016 American Way
(615) 246-8171 Zip 37660

KNOXVILLE**Institutional Commercial Equipment Co.**

10001 Kingston Pike
Comm. Plaza #1
(615) 690-4423 Zip 37922

MEMPHIS**Barnett Supply Company, Inc.**

P.O. Box 4891 (2089 York Ave.)
(901) 278-0440 Zip 38104

NASHVILLE**Scotsman Supply Co.**

P.O. Box 100443 (516 5th Ave. S.)
(615) 242-6451-2-3 Zip 37210

TEXAS**AUSTIN****Mid-Tax Sales & Service**

11424 North Interregional Hwy.
(512) 836-5123 Zip 78753

BEAUMONT**Interstate Dist. of Houston**

1180 South Fourth St.
(409) 835-4904 Zip 77701

CORPUS CHRISTI**Marshall Webb Co.**

606 Tulip St.
(512) 887-1813 Zip 78408

DALLAS**Interstate Distributors, Inc.**

9136 Viscount Row (P.O. Box 569060)
(214) 631-7582 Zip 75356-9060

EL PASO**Thermal Control Inc.**

3509 Durazno
(915) 544-6634 Zip 79905

HARLINGEN**Stepco**

804 W. Harrison
(512) 423-2491 Zip 78550

HOUSTON**Scotsman-Norwood Co.**

DBA Interstate Distributors
P.O. Box 167 (640 W. 6th Ave.)
(713) 861-4455 Zip 77001

LONGVIEW**Keith's Commercial Refr.**

306 Enterprise
(214) 753-3397 Zip 75604

LUBBOCK**W-F Equipment Co.**

P.O. Box 3595 (Zip 79452)
(3612 Avenue A - Zip 79408)
(806) 763-9797

SAN ANTONIO**Marshall Webb Company**

4540 Tejasco
(512) 828-4464 Zip 78218

TEXARKANA**Phillips & Sons Refrigeration, Inc.**

1102 Bowie Street
(214) 794-8021 Zip 75501

WICHITA FALLS**Wichita Restaurant Supply, Inc.**

1122 Scott at 12th
(817) 766-4389 Zip 76307

UTAH**MURRAY (SALT LAKE CITY)****Bainco Rest. Equip., Inc.**

4868 S. State Street
(801) 263-3571 Zip 84107

VERMONT**BEURLINGTON****Blodgett Supply Company**

44 Lakeside Avenue
(802) 864-9831 Zip 05402

RUTLAND**Blodgett Supply Co.**

74 River Street
(802) 775-3342 Zip 05701

VIRGINIA**CHARLOTTESVILLE****Noland Company**

307 Ridge Street
(804) 293-5161 Zip 22901

CHESAPEAKE**Noland Company**

663 Woodlake Drive
(804) 424-5616 Zip 23320

NEWPORT NEWS**Noland Company**

12515 Jefferson
(804) 874-8000 Zip 23602

RICHMOND**Noland Company**

P.O. Box 11065
(2101 Staples Mill Road)
(804) 254-8100 Zip 23230

ROANOKE**Noland Company**

P.O. Box 13000
(1226 Center Ave. N.W.)
(703) 345-8101 Zip 24030

WASHINGTON**SEATTLE****ALPAC Corporation**

2300 26th Avenue South
(206) 323-2932 Zip 98144

WEST VIRGINIA**CHARLESTON****Hooten Equipment Co.**

P.O. Box 109 (961 Virginia Street W.)
(304) 346-0521 Zip 25302

WISCONSIN**BROOKFIELD (Milwaukee)****Wisconsin Allied Products**

4170 N. 126th Street
(414) 781-2038 Zip 53005

WYOMING

Please contact nearest Distributor listed in adjacent state.

CANADA**ALBERTA****CALGARY****Warner's Refr. Co. Ltd.**

424A 36 Ave. SE
(403) 243-0233 T2G 1W1

EDMONTON**Warner's Refr. Co. Ltd.**

11735-108th Ave.
(403) 452-7434 T5H1B8
TLX #0372479

BRITISH COLUMBIA**BURNABY****Warner's Refr. Co., Ltd.**

1769 Douglas Rd.
(604) 291-7788 V5C 5W2

KELOWNA**Werner's Refr. Co., Ltd.**

#15-1851 Kirschner Road
(604) 860-3667 VIY 4N6

VANCOUVER**Werner's Refrigeration Co., Ltd.**

156 W. 6th Ave.
(604) 876-9278 V5Y 1 K6

MANITOBA

Please contact nearest Distributor listed in adjacent province.

ONTARIO**BRAMPTON (TORONTO)****Shipley, Inc.**

22 Bramsteede Road
(416) 457-6100 L6W 1B3
TLX #0697688

QUEBEC**MONTREAL****Shipley, Inc.**

9570 Boul Del'Acadie Blvd.
(514)382-3620 H4N-1L8

SASKATCHEWAN

Please contact nearest Distributor listed in adjacent province.

SCOTSMAN

17-1862-01 (3-1-88)

505 FRONT ST.
ALBERT LEA, MN 56007-2775

A HOUSEHOLD**INTERNATIONAL COMPANY**

Printed in U.S.A.

**APPENDIX A
REFERENCES**

A-1. **Scope.** This appendix contains all forms, pamphlets and technical manuals referenced in both the Air mobile and Semitrailer mounted Laboratories.

A-2. Forms.

Recommended Changes to Publications	DA Form 2028
	DA Form 2028-2
Quality Deficiency Report.....	SF 368
Equipment Inspection and Maintenance Work Sheet.....	DA Form 2404
Hand Receipts.....	DA Form 2062

A-3. Field Manuals.

Petroleum Testing Facilities:

Laboratories and Kits	FM 10-72
Inspecting and Testing Petroleum Products.....	FM 10-70
ASTM Test Method Supplement to.....	FM 10-92C1/C2

A-4. Technical Manuals.

Atlas-Copco Compressor.....	TM 10-4310-392-13&P
Alcor Jet Fuel Thermal Oxidation Tester Operating and Maintenance Manual	TM 10-6635-210-13&P
Bacharach Gas Alarm and Calibration Data	TM 10-6665-297-13&P
Brother Portable Typewriter.....	TM 10-7430-218-13&P
Chemtrix Field Ph Meter	TM 10-6630-237-13&P
Elkay Manufacturing 30 GPH Cooler	TM 10-4130-240-13&P
Emcee Micro-Separator	TM 10-6640-222-13&P
Foxboro Pressure Recording Gauge	TM 10-6685-365-13&P
Gammon Aqua Glo Water Detector.....	TM 10-6640-221-13&P
Gammon Mini Monitor Fuel Sampling Kit.....	TM 10-6630-230-13&P
Jelrus Burn-Out Furnace	TM 10-6640-231-13&P
Koehler Cleveland Open Tester	TM 10-6630-236-13&P
Koehler Cloud and Pour Point Chamber.....	TM 10-6630-238-13&P
Koehler Copper Strip Corrosion Bomb Bath	TM 10-6640-220-13&P
Koehler Distillation Apparatus	TM 10-6630-233-13&P
Koehler Dropping Point Apparatus	TM 10-6635-211-13&P
Koehler Electric Pensky-Martins Tester.....	TM 10-6630-231-13&P
Koehler Foaming Characteristics Determination Apparatus.....	TM 10-6640-228-13&P
Koehler Kinematic Viscosity Bath.....	TM 10-6630-239-13&P
Koehler Tag Closed Cup Flash Tester.....	TM 10-6630-235-13&P
Lab-Line Explosion Proof Refrigerator.....	TM 10-6640-219-13&P
Lily Freezer.....	TM 10-6640-234-13&P
Millipore OM 39 Filter Holder	TM 10-6640-225-13&P
Millipore Vacuum Pump.....	TM 10-6640-217-13&P
Ohaus Harvard Trip Balance	TM 10-6670-278-13&P
Precision Gas-Oil Distillation Test Equipment	TM 10-6630-219-13&P
Precision General Purpose Water Bath.....	TM 10-6640-229-13&P

TM 10-6640-227-13&P

Precision High Temperature Bronze Block Gum Bath	TM 10-6630-234-13&P
Precision General Purpose Ovens.....	TM 10-6640-218-13&P
Precision Heater Instruction Manual and Parts List.....	TM 10-6640-223-13&P
Precision Oxidation Stability Bath	TM 10-6640-232-13&P
Precision Pensky-Martens Flash Testers	TM 10-6630-231-13&P
Precision Reid Vapor Pressure Bath.....	TM 10-6640-226-13&P
Precision Slo-Speed Stirrer	TM 10-6640-224-13&P
Precision Universal Centrifuge	TM 10-6640-230-13&P
Precision Universal Penetrometer	TM 10-6640-228-13&P
Sargent-Welch Vacuum Pump	TM 10-4310-391-13&P
Sartorius Analytical Balance.....	TM 10-6670-277-13&P
Scotsman Cuber	TM 10-6640-227-13&P
Soltec VOM-Multimeter.....	TM 10-6625-3127-13&P
Teel Self-Priming Centrifugal Pump.....	TM 10-6640-217-13&P
Teel Submersible Pump.....	TM 10-4320-320-13&P
Texas Instrument TI-5030II Calculator.....	TM 10-7420-210-13&P

A-5. Pamphlets.

The Army Maintenance Management System (TAMMS)	DA Pam 738-750
------------------------------------------------------	----------------

A-6. Miscellaneous Publications.

The Army Integrated Publishing and Printing Program	AR 25-30
Laboratory, Airmobile, Aviation Fuel	MIL-L-52733A(ME)
Apparatus, Instruments, Chemicals, Furniture, and Supplies for Industrial, Clinical, College and Government Laboratories	Fisher Scientific Laboratories Catalog
Petroleum-Petrochemical Testing Equipment.....	Precision Scientific Catalog

APPENDIX B

MAINTENANCE ALLOCATION CHART

Section I. INTRODUCTION

B-1. General.

a. This section provides a general explanation of all maintenance and repair functions authorized at various maintenance categories.

b. The Maintenance Allocation Chart (MAC) in Section II designates overall authority and responsibility for the performance of maintenance functions on the identified end item or component. The application of the maintenance functions to the end item or component will be consistent with the capacities and capabilities of the designated maintenance categories.

c. Section III lists the tools and test equipment (both special tools and common tool sets) required for each maintenance function as referenced from Section II.

d. Section IV contains supplemental instructions and explanatory notes for a particular maintenance function.

B-2. Maintenance Functions. Maintenance functions will be limited to and defined as follows:

a. Inspect. To determine the serviceability of an item by comparing its physical, mechanical, and/or electrical characteristics with established standards through examination (e.g., by sight, sound, or feel).

b. Test. To verify serviceability by measuring the mechanical, pneumatic, hydraulic, or electrical characteristics of an item and comparing those characteristics with prescribed standards.

c. Service. Operations required periodically to keep an item in proper operating condition, i.e., to clean (includes decontaminate, when required) to preserve, to drain, to paint, or to replenish fuel, lubricants, chemical fluids, or gases.

d. Adjust. To maintain or regulate, within prescribed limits, by bringing into proper or exact position, or by setting the operating characteristics to specified parameters.

e. Align. To adjust specified variable elements of an item to bring about optimum or desired performance.

f. Calibrate. To determine and cause corrections to be made or to be adjusted on instruments or test, measuring, and diagnostic equipments used in precision measurement. Consists of comparisons of two instruments, one of which is a certified standard of knob accuracy, to detect and adjust any discrepancy in the accuracy of the instrument being compared.

g. Remove/Install. To remove and install the same item when required to perform service or other maintenance functions. Install may be the act of emplacing, seating, or fixing into position a spare, repair part, or module (component or assembly) in a manner to allow the proper functioning of an equipment or system.

h. Replace. To remove an unserviceable item and install a serviceable counterpart in its place. "Replace" is authorized by the MAC and is shown as the third position code of the SMR code.

i. Repair. The application of maintenance services, ¹including fault location/troubleshooting,² removal/installation, and disassembly/assembly procedures,³ and maintenance actions,⁴ to identify troubles and restore serviceability to an item by correcting specific damage, fault, malfunction, or failure in a part, subassembly, module (component or assembly)end item, or system.

j. Overhaul. That maintenance effort (service/action) prescribed to restore an item to a completely serviceable/operational condition as required by maintenance standards in appropriate technical publications (i., DMWR). Overhaul is normally the highest degree of maintenance performed by the Army. Overhaul does not normally return an item to like-new condition.

k. Rebuild. Consists of those services/actions necessary for the restoration of unserviceable equipment to a like-new condition in accordance with original manufacturing standards. Rebuild is the highest degree of materiel maintenance applied to Army equipment. The rebuild operation includes the act of returning to zero those age measurements (hours/miles, etc. considered in classifying Army equipment/components).

B-3. Explanation Of Columns In The MAC, Section II.

a. Column 1. Group Number. Column 1 lists functional group code numbers, the purpose of which is to identify maintenance significant components, assemblies, subassemblies, and modules with the next higher assembly. End item group number shall be "00."

b. Column 2. Component/Assembly. Column 2 contains the names of components, assemblies, subassemblies, and modules for which maintenance is authorized.

c. Column 3. Maintenance Function. Column 3 lists the functions to be performed on the item listed in column 2. (For a detailed explanation of these functions, see paragraph B-2.)

d. Column 4. Maintenance Category. Column 4 specifies, by the listing of a work time figure in the appropriate subcolumn(s), the category of maintenance authorized to perform the function listed in column 3. This figure represents the active time required to perform that maintenance function at the indicated category of maintenance. If the number or complexity of the tasks within the listed maintenance function vary at different maintenance categories, appropriate work time figures will be shown for each category. The work time figure represents the average time required to restore an item (assembly, subassembly, component, module, end item, or system) to a serviceable condition under typical field operating conditions. This time includes preparation time (including any necessary disassembly/ assembly time), troubleshooting/fault location time, and quality assurance/quality control time in addition to the time required to perform the specific tasks identified for the maintenance functions authorized in the maintenance allocation chart. The symbol designations for the various maintenance categories are as follows:

¹ *Services - inspect, test, service, adjust, align, calibrate, and/or replace.*

² *Fault locate/troubleshoot - the process of investigating and detecting the cause of equipment malfunctioning; the act of isolating a fault within a system or unit under test (UUT).*

³ *Disassemble/assemble - encompasses the step-by-step taking apart (or breakdown) of a spare/functional group coded item to the level of its least componency identified as maintenance significant (i.e., assigned an SMR code) for the category of maintenance under consideration.*

⁴ *Actions - welding, grinding, riveting, straightening, facing, remachining, and/or resurfacing.*

- C..... Operator/Crew
- O..... Unit Maintenance
- F..... Direct Support Maintenance
- H..... General Support Maintenance
- D..... Depot Maintenance

e. Column 5. Tools and Equipment. Column 5 specifies, by code, those common tool sets (not individual tools) and special tools, TMDE, and support equipment required to perform the designated function.

f. Column 6. Remarks. This column shall, when applicable, contain a letter code, in alphabetic order, which shall be keyed to the remarks contained in section IV.

B-4. Explanation Of Columns In Tool And Test Equipment Requirements, Section III.

a. Column 1. Reference Code. The tool and test equipment reference code correlates with a code used in the MAC, section II, column 5.

b. Column 2. Maintenance Category. The lowest category of maintenance authorized to use the tool or test equipment.

c. Column 3. Nomenclature. Name or identification of the tool or test equipment.

d. Column 4. National Stock Number. The National stock number of the tool or test equipment.

e. Column 5. Tool Number. The manufacturer's part number.

B-5. Explanation Of Columns In Remarks, Section IV.

a. Column 1. Reference Code. The code recorded in Column 6, Section II.

b. Column 2. Remarks. This column lists information pertinent to the maintenance function being performed as indicated in the MAC, section II.

Section II. MAINTENANCE ALLOCATION CHART

(1) Group Number	(2) Component/Assembly	(3) Maintenance Function	(4) Maintenance Level					(5) Tools and Equipment	(6) Remarks
			UNIT		DIRECT SUPPORT	GEN. SUPPORT	DEPOT		
			C	O	F	H	D		
01	CWS1 CUBER	INSPECT REPLACE REPAIR	0.1	1.0	4.0			2 1,2,3,4	

**Section III. TOOL AND TEST EQUIPMENT REQUIREMENTS
FOR
MAINTENANCE ALLOCATION CHART**

(1) TOOL OR TEST EQUIPMENT REF CODE	(2) MAINTENANCE CATEGORY	(3) NOMENCLATURE	(4) NATIONAL/NATO STOCK NUMBER	(5) TOOL NUMBER
1	O,F	TOOL KIT, GENERAL AUTOMOTIVE	5180-00-177-7033	(50980) SC 5180-90- CL-N26
2	F	SHOP EQUIPMENT, AUTOMOTIVE MAINTENANCE AND REPAIR: COMMON No. 1 (LESS POWER)	4910-00-754-0654	(19204) SC 4910-95- CL-A74
3	F	MULTIMETER, 0-500V	6625-00-691-2453	
4	F	KIT, SOLDERING GUN, 115V, 60 CYCLE, COMPLETE WITH SOLDER AND CASE	3439-99-618-6623	

Section IV. REMARKS

NOT APPLICABLE

APPENDIX C
COMPONENTS OF END ITEM AND BASIC ISSUE ITEMS LISTS
Section I. INTRODUCTION

C-1. Scope.

This appendix lists components of end item and basic issue items for the CWS1 Cuber to help you inventory items required for safe and efficient operation.

C-2. General.

The Components of End Item and Basic Issue Items Lists are divided into the following sections:

a. Section II. Components of End Item. This listing is for informational purposes only, and is not authority to requisition replacements. These items are part of the end item, but are removed and separately packaged for transportation or shipment. As part of the end item, these items must be with the end item whenever it is issued or transferred between property accounts. Illustrations are furnished to assist you in identifying the items.

b. Section III. Basic Issue Items. These are the minimum essential items required to place the CWS1 Cuber in operation, to operate it, and to perform emergency repairs. Although shipped separately packaged, BII must be with the shelter during operation and whenever it is transferred between property accounts. The illustrations will assist you with hard-to-identify items. This manual is your authority to request/requisition replacement BII, based on TOE/MTOE authorization of the end item.

C-3. Explanation of Columns.

The following provides an explanation of columns found in the tabular listings:

a. Column (1) - Illustration Number (Illus Number). This column indicates the number of the illustration in which the item is shown.

b. Column (2) - National Stock Number. Indicates the National stock number assigned to the item and will be used for requisitioning purposes.

c. Column (3) - Description. Indicates the Federal item name and, if required, a minimum description to identify and locate the item. The last line for each item indicates the CAGEC (in parentheses) followed by the part number.

d. Column (4) - Unit of Measure (U/M). Indicates the measure used in performing the actual operational/maintenance function. This measure is expressed by a two-character alphabetical abbreviation (e.g., ea, in, pr).

e. Column (5) - Quantity required (QTY RQR). Indicates the quantity of the item authorized to be used with/on the equipment.

Section II. COMPONENTS OF END ITEM

(1) Illus Number	(2) National Stock Number	(3) Description CAGEC and Part Number	Usable On Code	(4) U/M	(5) Qty rqr
	7320-00-234-3512	CRUSHER, ICE (45168) 551, (45168) 571-06		EA	1

Section III. BASIC ISSUE ITEMS

NOT APPLICABLE

APPENDIX D
ADDITIONAL AUTHORIZATION LIST
NOT APPLICABLE

D-1/(D-2 Blank)

APPENDIX E

EXPENDABLE/DURABLE SUPPLIES AND MATERIALS LIST

NOT APPLICABLE

E-1/(E-2 Blank)

By Order of the Secretary of the Army:

CARL E. VUONO
General, United States Army
Chief of Staff

Official:

THOMAS F. SIKORA
Brigadier General, United States Army
The Adjutant General

DISTRIBUTION:

To be distributed in accordance with DA Form 12-21A, Operator, Unit and Direct Support Maintenance requirements for Laboratory, Air Mobile, Aviation Fuel

* U.S. GOVERNMENT PRINTING OFFICE: 1991 554-123/20130

The Metric System and Equivalents

Linear Measure

1 centimeter = 10 millimeters = .39 inch
 1 decimeter = 10 centimeters = 3.94 inches
 1 meter = 10 decimeters = 39.37 inches
 1 dekameter = 10 meters = 32.8 feet
 1 hectometer = 10 dekameters = 328.08 feet
 1 kilometer = 10 hectometers = 3,280.8 feet

Weights

1 centigram = 10 milligrams = .15 grain
 1 decigram = 10 centigrams = 1.54 grains
 1 gram = 10 decigrams = .035 ounce
 1 dekagram = 10 grams = .35 ounce
 1 hectogram = 10 dekagrams = 3.52 ounces
 1 kilogram = 10 hectograms = 2.2 pounds
 1 quintal = 100 kilograms = 220.46 pounds
 1 metric ton = 10 quintals = 1.1 short tons

Liquid Measure

1 centiliter = 10 milliliters = .34 fl. ounce
 1 deciliter = 10 centiliters = 3.38 fl. ounces
 1 liter = 10 deciliters = 33.81 fl. ounces
 1 dekaliter = 10 liters = 2.64 gallons
 1 hectoliter = 10 dekaliters = 26.42 gallons
 1 kiloliter = 10 hectoliters = 264.18 gallons

Square Measure

1 sq. centimeter = 100 sq. millimeters = .155 sq. inch
 1 sq. decimeter = 100 sq. centimeters = 15.5 sq. inches
 1 sq. meter (centare) = 100 sq. decimeters = 10.76 sq. feet
 1 sq. dekameter (are) = 100 sq. meters = 1,076.4 sq. feet
 1 sq. hectometer (hectare) = 100 sq. dekameters = 2.47 acres
 1 sq. kilometer = 100 sq. hectometers = .386 sq. mile

Cubic Measure

1 cu. centimeter = 1000 cu. millimeters = .06 cu. inch
 1 cu. decimeter = 1000 cu. centimeters = 61.02 cu. inches
 1 cu. meter = 1000 cu. decimeters = 35.31 cu. feet

Approximate Conversion Factors

<i>To change</i>	<i>To</i>	<i>Multiply by</i>	<i>To change</i>	<i>To</i>	<i>Multiply by</i>
inches	centimeters	2.540	ounce-inches	newton-meters	.007062
feet	meters	.305	centimeters	inches	.394
yards	meters	.914	meters	feet	3.280
miles	kilometers	1.609	meters	yards	1.094
square inches	square centimeters	6.451	kilometers	miles	.621
square feet	square meters	.093	square centimeters	square inches	.155
square yards	square meters	.836	square meters	square feet	10.764
square miles	square kilometers	2.590	square meters	square yards	1.196
acres	square hectometers	.405	square kilometers	square miles	.386
cubic feet	cubic meters	.028	square hectometers	acres	2.471
cubic yards	cubic meters	.765	cubic meters	cubic feet	35.315
fluid ounces	milliliters	29.573	cubic meters	cubic yards	1.308
pints	liters	.473	milliliters	fluid ounces	.034
quarts	liters	.946	liters	pints	2.113
gallons	liters	3.785	liters	quarts	1.057
ounces	grams	28.349	liters	gallons	.264
pounds	kilograms	.454	grams	ounces	.035
short tons	metric tons	.907	kilograms	pounds	2.205
pound-feet	newton-meters	1.356	metric tons	short tons	1.102
pound-inches	newton-meters	.11296			

Temperature (Exact)

°F	Fahrenheit temperature	5/9 (after subtracting 32)	Celsius temperature	°C
----	---------------------------	-------------------------------	------------------------	----

RECOMMENDED CHANGES TO EQUIPMENT TECHNICAL PUBLICATIONS



THEN... JOT DOWN THE DOPE ABOUT IT ON THIS FORM, CAREFULLY TEAR IT OUT, FOLD IT AND DROP IT IN THE MAIL!

SOMETHING WRONG WITH THIS PUBLICATION?

FROM: (PRINT YOUR UNIT'S COMPLETE ADDRESS)

DATE SENT

PUBLICATION NUMBER

PUBLICATION DATE

PUBLICATION TITLE

BE EXACT... PIN-POINT WHERE IT IS

IN THIS SPACE TELL WHAT IS WRONG AND WHAT SHOULD BE DONE ABOUT IT:

PAGE NO.	PARA-GRAPH	FIGURE NO.	TABLE NO.
----------	------------	------------	-----------

TEAR ALONG PERFORATED LINE

PRINTED NAME, GRADE OR TITLE, AND TELEPHONE NUMBER

SIGN HERE:

DA FORM 2028-2 JUL 79

PREVIOUS EDITIONS ARE OBSOLETE.

P.S.—IF YOUR OUTFIT WANTS TO KNOW ABOUT YOUR RECOMMENDATION MAKE A CARBON COPY OF THIS AND GIVE IT TO YOUR HEADQUARTERS.

PIN: 049175-000

This fine document...

Was brought to you by me:



[Liberated Manuals -- free army and government manuals](#)

Why do I do it? I am tired of sleazy CD-ROM sellers, who take publicly available information, slap “watermarks” and other junk on it, and sell it. Those masters of search engine manipulation make sure that their sites that sell free information, come up first in search engines. They did not create it... They did not even scan it... Why should they get your money? Why are not letting you give those free manuals to your friends?

I am setting this document FREE. This document was made by the US Government and is NOT protected by Copyright. Feel free to share, republish, sell and so on.

I am not asking you for donations, fees or handouts. If you can, please provide a link to liberatedmanuals.com, so that free manuals come up first in search engines:

<A HREF=<http://www.liberatedmanuals.com/>>Free Military and Government Manuals

- Sincerely
Igor Chudov
<http://igor.chudov.com/>
- [Chicago Machinery Movers](#)