

DEPARTMENT OF THE ARMY TECHNICAL MANUAL

ORGANIZATIONAL, DIRECT AND GENERAL SUPPORT,
AND DEPOT MAINTENANCE REPAIR PARTS
AND SPECIAL TOOLS LIST

CLEANING MACHINE, FUEL CAN AND DRUM
BARNES MODEL 4310CA, ARMY MODEL SPE 19,
(FSN 4940-268-9771)

BARNES MODEL 15801CA, ARMY MODEL SPE 19A,
(FSN 4940-658-2889)

HEADQUARTERS, DEPARTMENT OF THE ARMY
FEBRUARY 1967

TECHNICAL MANUAL }
No. 10-4940-201-25P }

HEADQUARTERS
DEPARTMENT OF THE ARMY
WASHINGTON, D.C., 7 February 1967

**Organizational, Direct and General Support,
and Depot Maintenance Repair Parts
and Special Tools List**

**CLEANING MACHINE, FUEL CAN AND DRUM
BARNES MODEL 4310CA, ARMY MODEL SPE 19,
(FSN 4940-268-9771)
BARNES MODEL 15801CA, ARMY MODEL SPE 19A,
(FSN 4940658-2889)**

	Paragraph	Page
SECTION I. INTRODUCTION		
Scope	1	ii
General	2	ii
Explanation of columns	3	ii
Special information	4	iii
Instructions for locating repair parts	5	iii
Abbreviations	6	iv
Index of Federal Supply Codes	7	iv
Reporting of equipment publication improvements	8	iv
II. PRESCRIBED LOAD ALLOWANCE		v
III. REPAIR PARTS FOR ORGANIZATIONAL MAINTENANCE		
Group 72. Dispensing and Servicing Equipment Components		
7203 Valves, fittings, lines		1
7203 Valves, fittings, lines		1
7206 Steam cleaning units		4
76. Fire Fighting Equipment Components		
7603 Fire extinguisher		5
7603 Fire extinguisher		5
SECTION IV. REPAIR PARTS FOR DS, GS, AND DEPOT MAINTENANCE		
Group 72. Dispensing and Servicing Equipment Components		
7203 Valves, fittings, lines		6
7203 Valves, fittings, lines		6
76. Fire Fighting Equipment Components		
7603 Fire extinguisher		11
SECTION V. FEDERAL STOCK NUMBER AND MANUFACTURES PART NUMBER INDEX		18

☆This manual supersedes TM 10-4940-201-20P, 3 April 1963, and TM 10-4940-201-35P, 16 April 1963.

**SECTION I
INTRODUCTION**

1. Scope

This manual contains a list of repair parts required for the performance of organizational, direct support, general support, and depot maintenance of the cleaning machine.

2. General

This repair parts list is divided into four principal sections and a Federal stock number index.

a. Section II, Prescribed Load Allowance List (PLA), is a consolidated listing of repair parts quantitatively allocated for initial stockage at the organizational level. *This is a mandatory minimum stockage allowance.*

b. Section III, Repair Parts List, is a list of repair parts authorized for the performance of maintenance at the organizational level.

c. Section IV, Repair Parts List, is a list of repair parts authorized for the performance of maintenance at the direct support, general support, and depot maintenance level.

d. Section IV, Federal Stock Number and Manufacturer's Part Number Index is an index of Federal stock numbers and manufacturer's part numbers to page and manufacturer's codes.

3. Explanation of Columns

The following provides an explanation of columns in the tabular lists.

a. Source, Maintenance, and Recoverability Codes.

- (1) Source Code indicates the selection status and source for the listed item. Source codes used are:

<i>Code</i>	<i>Explanation</i>
P.....	Applied to repair parts which are stocked in or supplied from DSA/GSA or Army supply system, and authorized for use at indicated maintenance categories.

<i>Code</i>	<i>Explanation</i>
X1.....	Applied to repair parts which are not procured or stocked, the requirement for which will be supplied by use of the next higher assembly or components.
X2.....	Applied to repair parts which are not stocked. The indicated maintenance category requiring such repair parts will attempt to obtain them through cannibalization; if not obtainable through cannibalization, such repair parts will be requisitioned with supporting justification through normal supply channels.

Note

Source code is not shown on common hardware items known to be readily available in Army supply channels and through local procurement.

- (2) Maintenance Code indicates the lowest category of maintenance authorized to maintain the listed item. The maintenance level codes are:

<i>Code</i>	<i>Explanation</i>
O	Organizational maintenance
F.....	Direct support maintenance

- (3) Recoverability Code indicates whether unserviceable items should be returned for recovery or salvage. Items not coded are expendable. The recoverability code is:

<i>Code</i>	<i>Explanation</i>
R.....	Applied to repair parts and assemblies which are economically repairable at DSU and GSU activities and normally are furnished by supply on an exchange basis.

b. Federal Stock Number indicates the Federal stock number for the item.

c. Description column indicates the Federal item name and a brief description of the item. A five-digit manufacturer's or other service code is shown followed by the manufacturer's part number. Repair parts quantities included

in kits, sets, and assemblies that differ from the actual quantity used in the specific item, are listed in parentheses following the repair part name.

d. Unit of Issue indicates the unit used as a basis of issue, e.g., ea, pr, ft, yd, etc.

e. Quantity Incorporated in Unit Pack indicates the actual quantity contained in the unit pack.

f. Quantity Incorporated in Unit indicates the actual number of parts used in the application. A zero is shown when components of kits or sets are listed that are not applicable to the specific end item.

g. Fifteen-Day Organizational Maintenance Allowance

- (1) The allowance columns are divided into four subcolumns. Indicated in each subcolumn is the quantity of items authorized for the number of equipments supported. Items authorized for use as required but not for initial stockage are identified with an asterisk in the allowance column.
- (2) The quantitative allowances for organizational level of maintenance represents one initial prescribed load for a 15-day period for the number of equipments supported. Units and organizations authorized additional prescribed loads will multiply the number of prescribed loads authorized by the quantity of repair parts reflected in the appropriate density column to obtain the total quantity of repair parts authorized.
- (3) Items identified by an asterisk may be requisitioned as required. Subsequent changes and/or additions to allowances will be limited to the provisions of AR 735-35. The range of items authorized will be made by this Command based upon engineering experience, demand data, or TAERS information.
- (4) Allowances are based on 16 hours of operation per day.

h. Thirty-Day GS Maintenance Allowance.

- (1) The allowance columns are divided into three subcolumns. Indicated in each subcolumn is the quantity of items authorized for a number of equipments supported. Items authorized for use as required but not for initial stockage are identified with an asterisk in the allowance column.
- (2) The quantitative allowances for GS levels of maintenance will represent initial stockage for a 30-day period for the number of equipments supported.

i. One-Year Allowances Per 100 Equipments/Contingency Planning Purposes indicates the quantity of items required for distribution and contingency planning purposes.

j. Illustration.

- (1) Figure Number indicates the figure number of the illustration in which the item is shown.
- (2) Item or Symbol Number indicates the callout number used to reference the item in the illustration.

4. Special Information

The following publications pertain to the cleaning machine and its components:

TM 10-4940-201-10	Operator's Manual
TM 10-4940-201-20	Organizational Maintenance Manual
TM 10-4940-201-35	Field and Depot Maintenance Manual
LO 10-4940-201-20	Lubrication Order

5. Instructions for Locating Repair Parts

a. When Federal stock number or manufacturer's part number is unknown.

- (1) *First.* Using the index of contents, determine the functional group or subgroup, i.e., engine engine assembly, transmission, transmission assembly,

within which the repair part belongs. Locate the appropriate page in the manual and identify the part.

- (2) *Second.* Locate the repair part and the illustration figure and item number as shown in the last two columns of the repair parts listing.
- (3) *Third.* Identify the repair part on the illustration.

b. When Federal Stock Number or manufacturer's part number is known.

- (1) *First.* Use the index to locate the Federal stock number or manufacturer's part number. This index is arranged in alphameric sequence cross-referenced to page number and manufacturer's code.
- (2) *Second.* Refer to the appropriate page in the parts listing. Locate the repair parts and the illustration figure and item number as shown in the last two columns of the parts listing.

6. Abbreviations

- cb columbium (niobium)
- ea each
- ft foot(feet)
- id inside diameter(s)
- in. inch(es)
- lg length(long)
- mtg mounting(s)

- NPT National pipe thread
- sp soil pipe
- sq square
- u/o used on
- w/..... with

7. Index of Federal Supply Codes

<i>Codes</i>	<i>Manufacturers</i>
00000.....	Ordnance Corps
05748.....	Barnes Mfg. Co.
15840.....	Danly Machine Specialties, Inc.
24617.....	General Motors Corp.
24981.....	Gits Brothers Mfg. Co.
61349.....	U.S. Gauge Div. of American Machine and Metals, Inc.
77414.....	Punch Lok Co.
81718.....	OPW Corp.
82240.....	Simmons Fastener Corp.
84188.....	Arsco Mfg. & Sales Corp.
96906.....	Dept. of Defense Military Standards

8. Reporting of Equipment Publication Improvements

DA Form 2028 (Recommended Changes to DA Publications) will be used for reporting discrepancies and recommendations for improving this equipment publication. This form will be completed by the individual using the manual and forwarded direct to Commanding General, U.S. Army Mobility Equipment Command, ATTN: AMSME-MPD, 4300 Goodfellow Blvd., St. Louis, Mo. 63120.

**SECTION II
PRESCRIBED LOAD ALLOWANCE**

(1) Federal stock number	(2) Description	(3) 15-day org maint alw			
		(A) 1-5	(B) 6-20	(C) 21-50	(D) 51-100
4940-360-0795	GASKET: vellumoid, left and right tank suction flange mounting (05748) 9151	*	*	*	2
4940-360-0756	GASKET: vellumoid can washer valve mounting (05748) 9149	*	2	2	4
4940-672-4772	GASKET: nozzle leg	*	2	2	4
4940-360-0765	GASKET: vellumoid, housing	*	2	2	4
4940-360-0764	GASKET: vellumoid, nozzle (05748) 9111	*	2	2	4
4940-360-0738	GASKET: drum washer pressure hose coupling and dust cap (81718) H6595M	*	*	2	2
4940-360-0737	GASKET: drum washer suction hose coupling and dust cap (81718) H6480M	*	*	2	2
4940-360-0753	GASKET: vellumoid, left and right supply line tee mtg	*	*	*	2
5325-285-3345	GROMMET, RUBBER: drum washer bracket (96906) MS35489-56	*	*	2	2
4940-360-0802	HOSE: neoprene, pressure, left and right supply line	*	*	*	2
4940-672-4781	TUBE ASSEMBLY: copper, valve supply (u/o Barnes Model 15801CA cleaning machine (05748) 15854SA	*	*	*	2
4940-360-0739	TUBE ASSEMBLY: copper, valve supply (u/o Barnes Model 4310CA cleaning machine) (05748) 9017SA	*	*	*	2
4730-3600595	GASKET: hose coupler, dust cap (81718) H6430N	*	2	2	2
4940-360-0781	GASKET: vellumoid, can cradle clamp	*	2	2	4
4940-360-0782	SPRING: can positioner	*	*	2	2
4940-904-1383	PARTS KIT: drum washer nozzle (81718) H4126	*	2	2	4

LINE NO	(1) SOURCE, MAINT. AND RECOV. CODE			(2) FEDERAL STOCK NUMBER	(3) DESCRIPTION	(4) UNIT OF ISSUE	(5) QTY INC IN UNIT PACK	(6) QTY INC IN UNIT	(7) 15 DAY ORG. MAINT. ALW.				(8) ILLUSTRATION	
	(a)	(b)	(c)										(a)	(b)
	SOURCE	MAINT.	RECOV.						MANUFACTURER'S				FIG. NO.	ITEM OR SYM. NO.
				CODE	PART NUMBER			1-5	6-20	21-50	51-100			
0001					SECTION III-REPAIR PARTS FOR ORGANIZATIONAL MAINTENANCE GROUP 72-DISPENSING AND SERVICING EQUIPMENT COMPONENTS									
0002					7203-VALVES, FITTINGS, LINES									
0003		0		5306-672 1924	BOLT U: LEFT AND RIGHT TANK SUCTION LINE BRACKET	05748 16131	EA	2	*	*	*	*	2	4
0004	X2	0		4320-360-0596	CHAIN: w/S HOOKS, LEFT AND RIGHT TANK SUCTION VALVE COUPLER DUST PLUG	81718 H6683M	EA	2	*	*	*	*		
0005	X2	0		4940-360-0711	COUPLER: FEMALE, LEFT AND RIGHT TANK VALVE, MALE THREAD	81718 633B11-2	EA	2	*	*	*	*		
0006		0		4730-360-0792	ELBOW: W/FLANGE, LEFT AND RIGHT TANK SUCTION LINE	05748 9143	EA	2	*	*	*	*	2	2
0007	X2	0		4940-360-0793	FLANGE: LEFT AND RIGHT TANK SUCTION LINE	05748 9233	EA	2	*	*	*	*		
0008	X2	0		4940-360-0793	FLANGE: LEFT AND RIGHT TANK SUCTION LINE	05748 9151	EA	2	*	*	*	*	2	
0009	P	0		4940-360-0795	GASKET: VELLUMOID, LEFT AND RIGHT TANK SUCTION FLANGE MTG		EA	2	*	*	*	*		
0010		0		4730-360-0784	NIPPLE: BRASS, LEFT AND RIGHT TANK SUCTION LINE		EA	2	*	*	*	*	2	
0011		0		5310-176-8164	NUT, PLAIN, HEXAGON: U-BOLT		EA	4	*	*	*	*	2	3
0012	X2	0		4320-360-0593	PLUG: DUST, MALE, LEFT AND RIGHT TANK SUCTION LINE ELBOW COUPLER	81718 634A11-2	EA	2	*	*	*	*	2	1
0013		0		4730-011-3180	PLUG, PIPE: BRASS, LEFT AND RIGHT TANK DRAIN, SQ HEAD	24617 113180	EA	4	*	*	*	*		
0014		0		5305-013-2119	SCREW, MACHINE		EA	16	*	*	*	*		
0015	X2	0		5325-808-6366	STUD ASSEMBLY, TURNLOCK FASTENER: ALUMINUM, LEFT AND RIGHT TANK LID	82240 07	EA	10	*	*	*	*		
0016	P	0		4940-360-0786	VALVE ASSEMBLY FLOAT, LEFT AND RIGHT TANK SUCTION LINE		EA	2	*	*	*	*		
0017		0		5310-012-0380	WASHER, LOCK: U-BOLT		EA	4	*	*	*	*		
0018		0		5310-527-3288	WASHER, LOCK		EA	16	*	*	*	*		
0019	P	0		4940-360-0789	DISC, LEFT AND RIGHT TANK FLOAT VALVE	05748 9134	EA	2	*	*	*	*		
0020	P	0		4940-672-4775	FLOAT, VALVE: LEFT AND RIGHT TANK	05748 9137	EA	2	*	*	*	*	2	8
0021	X1			4940-360-0785	HOUSING: BRASS, LEFT AND RIGHT TANK FLOAT VALVE	05748 9135	EA	2	*	*	*	*	2	5
0022		0		5315 252-5989	PIN, COTTER		EA	4	*	*	*	*		
0023	P	0		4940-360-0790	ROD: LEFT AND RIGHT TANK FLOAT VALVE	05748 9133	EA	2	*	*	*	*	2	6
0024	P	0		4940-160-0756	GASKET: VELLUMOID, CAN WASHER VALVE MTG	05748 9149	EA	10	*	2	2	4	3	26
0025	P	0	R	4540-672-4788	VALVE ASSEMBLY: CAN WASHER	05748 158415A	EA	10	*	*	*	1	6	
0031	P	0		4940-672-4772	GASKET: NOZZLE LEG		EA	10	*	2	2	4		
0032	P	0		4940 360-0765	GASKET: VELLUMOID, HOUSING		EA	10	*	2	2	4	-	28
0033	P	0		4940-360-0764	GASKET: VALLUMOID, NOZZLE	05748 9111	EA	10	*	2	2	4	3	12
0034	X2	0		4940-632-0174	NOZZLE ASSEMBLY: VALVE	61716 1700	EA	10	*	*	*	-	13	
0035		0		5305-630-2020	SCREW: NOZZLE, SELF-LOCKING		EA	30	*	*	*	*	3	14

LINE NO	(1) SOURCE, MAINT. AND RECOV. CODE			(2) FEDERAL STOCK NUMBER	(3) DESCRIPTION	(4) UNIT OF ISSUE	(5) QTY INC IN UNIT PACK	(6) QTY INC IN UNIT	(7) 15 DAY ORG. MAINT. ALW.				(8) ILLUSTRATION			
	(a) SOURCE	(b) MAINT.	(c) RECOV.						MANUFACTURER'S		(a)	(b)	(c)	(d)	(a) FIG. NO.	(b) ITEM OR SYM. NO.
									CODE	PART NUMBER						
0050		0		4730-011-3177	PLUG, PIPE: BRASS, BOOY, 50 HEAD (U/O BARNES MOOEL 15801CA, CLEANING MACHINE)	EA		10	*	*	*	*	3	27		
0057	X2	0		4940-360-0712	ADAPTER: W/SHANK, DRUM WASHER PRESSURE HOSE	EA		2	*	*	*	*	1	10		
0058	X2	0		4940-360-0713	ADAPTER: W/SHANK, DRUM WASHER SUCTION HOSE	EA		2	*	*	*	*	1	11		
0059		0		4730-277-8781	BUSHING, PIPE: BRASS, DRUM WASHER NOZZLE	EA		2	*	*	*	*				
0060	X2	0		4940-360-0716	CAP: OUST, FEMALE DRUM WASHER PRESSURE HOSE	EA		2	*	*	*	*				
0061	X2	0		4940-360-0717	CAP: DUST, FEMALE, DRUM WASHER SUCTION HOSE	EA		2	*	*	*	*				
0062	X2	0		4320-360-0594	CAP: DUST, FEMALE, LEFT AND RIGHT TANK SUPPORT GAGE TO TEE ADAPTER	EA		2	*	*	*	*				
0063	X2	0		4320-360-0596	CHAIN: W/S HOOKS, DUST PLUGS	EA		6	*	*	*	*				
0064	X2	0		4320-360-0596	CHAIN: W/S HOOKS SINGLE JACK, DUST CAPS	EA		4	*	*	*	*				
0065		0		4730-467-3514	CLAMP, HOSE: LEFT AND RIGHT SUPPLY LINE	EA		4	*	*	*	*				
0066		0		4730-494-0671	CLAMP: PRESSURE AND SUCTION HOSES	EA		16	*	*	*	*	1	1		
0067	X2	0		4940-360-0709	COUPLER: MALE, LEFT AND RIGHT DRUM WASHER PRESSURE LINE	EA		2	*	*	*	*				
0068	X2	0		4940-360-0710	COUPLER: MALE, LEFT AND RIGHT DRUM WASHER SUCTION LINE	EA		2	*	*	*	*				
0069		0		4730-360-0589	COUPLING, HALF, QUICK DISCONNECT: MALE LEFT AND RIGHT SUPPLY LINE GAGE TEE	EA		2	*	*	*	*				
0070		0		4940-360-0800	COUPLING, PIPE: BRASS, LEFT AND RIGHT SUPPLY LINE MANIFOLD	EA		2	*	*	*	*				
0071	X2	0		4940-360-0742	EDUCTOR: LEFT SUPPLY LINE	EA		1	*	*	*	*				
0072	X2	0		4940-360-0743	EDUCTOR: RIOHT SUPPLY LINE	EA		1	*	*	*	*				
0073	P	0		6685-081-7707	GAGE, PRESSURE, DIAL INDICATING: LEFT AND RIGHT SUPPLY LINE	EA		2	*	*	*	*	1	2		
0074	P	0		4940-360-0738	GASKET: DRUM WASHER PRESSURE HOSE COUPLING AND DUST CAP	EA		4	*	*	2	2				
0075	P	0		4940-360-0737	GASKET DRUM WASHER SUCTION HOSE COUPLING AND DUST CAP	EA		4	*	*	2	2				
0076	P	0		4940-360-0753	GASKET VELLUMOID, LEFT AND RIGHT SUPPLY LINE TEE MTG	EA		2	*	*	*	2				
0077	P	0		5325-285-3345	GROMMET, RUBBER: DRUM WASHER BRACKET	EA		4	*	*	2	2				
0078	P	0		4720-303-4992	HOSE GASOLINE, SYNTHETIC RUBBER, DISCHARGE, COLLAPSIBLE, W/QUICK TYPE COUPLERS ON EACH ENO, 3/4 IN. ID, 15 FT LG 05748 158685A	EA		2	*	*	*	*	1	13		
0079	P	0		4720-303-4978	HOSE: GASOLINE, SYNTHETIC RUBBER, DISCHARGE, W/MALE AND FEMALE COUPLINGS, 1 IN. ID, 15 FT LG	EA		2	*	*	*	1	8			

LINE NO	(1) SOURCE, MAINT. AND RECOV. CODE			(2) FEDERAL STOCK NUMBER	(3) DESCRIPTION	(4) UNIT OF ISSUE	(5) QTY INC IN UNIT PACK	(6) QTY INC IN UNIT	(7) 15 DAY ORG. MAINT. ALW.				(8) ILLUSTRATION			
	(a) SOURCE	(b) MAINT.	(c) RECOV.						MANUFACTURER'S		(a) 1-5	(b) 6-20	(c) 21-50	(d) 51-100	(a) FIG. NO.	(b) ITEM OR SYM. NO.
									CODE	PART NUMBER						
0080	P	0		4940-360-0802	HOSE: NEOPRENE, PRESSURE, LEFT AND RIGHT SUPPLY LINE			2	*	*	*	2	1	4		
0081	P	0		4940-672-789	MANIFOLD AND TUBE ASSEMBLY: DRUM WASHER (FOR CONVERSION OF BARNES MODEL 4310CA DRUM WASHER ASSEMBLY, ONLY)	05748 164215A	EA	2	*	*	*					
0082	X2	0			MANIFOLD ASSEMBLY: LEFT TANK SUPPLY LINE	05748 15830SA	EA	1	*	*	*	*				
0083	X2	0			MANIFOLD ASSEMBLY: RIGHT TANK SUPPLY LINE	05748 158315A	EA	1	*	*	*	*				
0084	X2	0			MANIFOLD: DRUM WASHER PRESSURE AND SUCTION TUBE	05748 15861	EA	2	*	*	*	*				
0085		0		4730-196-2008	NIPPLE, PIPE: BRASS, DRUM WASHER MANIFOLD	00000 502444	EA	2	*	*	*	*				
0086	X2	0		4940-360-0714	PLUG: DUST, MALE, LEFT AND RIGHT DRUM WASHER PRESSURE LINE	81718 614A3-4	EA	2	*	*	*	*				
0087	X2	0		4940-360-0715	PLUG: DUST, MALE, LEFT AND RIGHT DRUM WASHER SUCTION LINE		EA	2	*	*	*	*				
0088	X2	0		5340-816-4368	PLUG DUST, MALE, LEFT AND RIGHT TANK SUCTION LINE ELBOW COUPLER	81718 634A11-2	EA	2	*	*	*	*				
0089		0		4730-011-2304	PLUG, PIPE: BRASS, CAN WASHER VALVE BOOY, SQ HEAD (u/o BARNES MODEL 4310CA CLEANING MACHINE)	24617 112304	EA	10	*	*	*	*				
0090		0		4730-011-3178	PLUG, PIPE: BRASS, LEFT AND RIGHT SUPPLY LINE EDUCTOR, SQ HEAD	24617 113178	EA	2	*	*	*	*				
0091		0		4730-021-9307	PLUG, PIPE: LEFT AND RIGHT SUPPLY LINE MANIFOLD	24617 219307	EA	2								
0092	P	0		5330-508-0925	ROPE ASBESTOS: GATE VALVE PACKING (75165) STYLE 293-1-4 1 LB		EA	1	*	*	*	*				
0093		0		4730-026-0438	TEE: BRASS, RIGHT SUPPLY LINE PRESSURE GAGE	05748 9283	EA	1	*	*	*	*				
0094		0		4730-360-0747	TEE: BRASS, LEFT SUPPLY LINE PRESSURE GAGE	05748 9282	EA	1	*	*	*	*				
0095		0		4730-360-0746	TEE: W/FLANGE, BRASS, LEFT SUPPLY LINE	05748 9278	EA	1	*	*	*	*				
0096		0		4730-360-0745	TEE: W/FLANGE, BRASS, RIGHT SUPPLY LINE	05748 9277	EA	1	*	*	*	*				
0097	P	0		4940-672-4781	TUBE ASSEMBLY: COPPER VALVE SUPPLY (u/o BARNES MODEL 15801CA CLEANING MACHINE)	05748 158545A	EA	10	*	*	*	2	1	3		
0098	P	0		4940-360-0739	TUBE ASSEMBLY: COPPER, VALVE SUPPLY (u/o BARNES MODEL 4310CA CLEANING MACHINE)	05748 9017SA	EA	10	*	*	*	2				
0099	P	0		4940-602-4338	TUBE ASSEMBLY: PRESSURE DRUM WASHER	05748 14711CA	EA	2	*	*	*	*				
0100		0		4730-360-0803	UNION: BRASS, LEFT AND RIGHT SUPPLY LINE TO VALVE	05748 9267	EA	10	*	*	*	*				
0101	X2	0		4940-360-0740	VALVE ASSEMBLY: GATE, BRASS LEFT AND RIGHT SUPPLY LINE		EA	6	*	*	*	*				

LINE NO	(1) SOURCE, MAINT. AND RECOV. CODE			(2) FEDERAL STOCK NUMBER	(3) DESCRIPTION	(4) UNIT OF ISSUE	(5) QTY INC IN UNIT PACK	(6) QTY INC IN UNIT	(7) 15 DAY ORG. MAINT. ALW.				(8) ILLUSTRATION			
	(a) SOURCE	(b) MAINT.	(c) RECOV.						MANUFACTURER'S		(a) 1-5	(b) 6-20	(c) 21-50	(d) 51-100	(a) FIG. NO.	(b) ITEM OR SYM. NO.
									CODE	PART NUMBER						
0103	P	0		4940-360-0799	TIP: DRUM WASHER PRESSURE TUBE	EA		2	*	*	*	*	1	12		
0104		0		5305-013-3948	SCREW, MACHINE	EA		6	*	*	*	*				
0105	X2	0		4320-360-0594	CAP: FEMALE, DUST, PRESSURE PUMP SUCTION HOSE Y FITTING		81718 634B11-2	EA	2	*	*	*	*			
0106	X2	0		4320-360-0596	CHAIN: w/S HOOKS, PRESSURE PUMP HOSE AND Y FITTING DUST CAPS AND PLUGS		81718 H6683M	EA	5	*	*	*	*			
0107	X2	0		4940-360-0806	COUPLER: FEMALE, PUMP SUCTION HOSE Y FITTING, FEMALE THREAD		81718 633D11-2	EA	1	*	*	*	*			
0108	X2	0		4940-360-0744	FITTING, Y: BRASS, PRESSURE PUMP SUCTION HOSE		05748 9275	EA	1	*	*	*	*			
0109	P	0		4730-360-0599	GASKET: HOSE COUPLER, DUST CAP, ADAPTER AND FITTING		81718 H6430M	EA	5	*	2	2	2			
0110	P	0		4720-555-8325	HOSE ASSEMBLY, RUBBER: SUCTION, PUMP		05748 15657SA	EA	3	*	*	*	*			
0111	P	0		4940-602-4339	TUBE ASSEMBLY: SUCTION, DRUM WASHER		05748 14710CA	EA	2	*	*	*	*			
0112	X2	0		4320-360-0594	CAP: FEMALE, DUST, PRESSURE PUMP SUCTION HOSE		81718 614B11-2	EA	1	*	*	*	*			
0113		0		4730-494-0871	CLAMP: HOSE, PRESSURE PUMP SUCTION		77414 16	EA	4	*	*	*	*			
0114		0		4730-360-0591	COUPLING, HALF, QUICK DISCONNECT: W/SHANK, FEMALE PRESSURE PUMP SUCTION HOSE		81718 633C11-2	EA	1	*	*	*	*			
0115		0		4320-360-0592	COUPLING, HALF, QUICK DISCONNECT: W/SHANK, MALE, PRESSURE PUMP SUCTION HOSE			EA	1	*	*	*	*			
0116	X2	0		4320-360-0593	PLUG: MALE, DUST, PRESSURE PUMP SUCTION HOSE		81718 634A11-2	EA	1	*	*	*	*			
0117	X2	0		5340-816-4368	PLUG: MALE, DUST, PRESSURE PUMP SUCTION HOSE Y FITTING		81718 634A1 1-2	EA	1	*	*	*	*			
0118					7206-STEAM CLEANING UNITS											
0119	X2	0	R	4940-672-4766	CLEANER ASSEMBLY: LEFT	EA		1	*	*	*	*				
0120	X2	0	R	4940-672-4765	CLEANER ASSEMBLY: RIGHT	EA		1	*	*	*	*				
0121	P	0		4940-360-0785	STRAINER: BRASS, LEFT AND RIGHT TANK SUCTION LINE NIPPLE		05748 9145	EA	2	*	*	*	*	2	7	
0122	P	0		4940-360-0755	STRAINER: LEFT AND RIGHT TANK, LARGE	EA		2	*	*	*	*				
0123	P	0		4940-360-0754	STRAINER: LEFT AND RIGHT TANK, SMALL	EA		2	*	*	*	*				
0124	X2	0		4940-672-4757	CRADLE ASSEMBLY: CAN HOLDER		05748 158425A	EA	10	*	*	*	*	1	5	
0125	X2	0		4940-360-0783	BAFFLE: CAN CRADLE	EA		10	*	*	*	*				
0126	P	0		4940-360-0781	GASKET: VELLUMOID, CAN CRADLE CLAMP	EA		10	*	2	2	4				
0127		0		5305-678-6199	SCREW: SELF - LOCKING, CAN CRADLE, BUTTON SOCKET HEAD		05748 15849	EA	120	*	*	*	*			

LINE NO	(1) SOURCE, MAINT. AND RECOV. CODE			(2) FEDERAL STOCK NUMBER	(3) DESCRIPTION	(4) UNIT OF ISSUE	(5) QTY INC IN UNIT PACK	(6) QTY INC IN UNIT	(7) 15 DAY ORG. MAINT. ALW.				(8) ILLUSTRATION			
	(a) SOURCE	(b) MAINT.	(c) RECOV.						MANUFACTURER'S		(a) 1-5	(b) 6-20	(c) 21-50	(d) 51-100	(a) FIG. NO.	(b) ITEM OR SYM. NO.
									CODE	PART NUMBER						
0128	P	0		4940-360-0782	SPRING: CAN POSITIONER	EA		10	*	*	2	2				
0129	P	0		4940-904-1383	PARTS KIT: DRUM WASHER NOZZLE	EA		2	*	2	2	4				
0130	X1			4730-458-6877	DISC: LOWER	EA		1								
0131	X1			5330-766-3796	PACKING	EA		1								
0132	X1				PACKING NUT	EA		1								
0133	X1				POPPET: UPPER	EA		1								
0134	X1				SUB-ASSEMBLY, MAIN POPPET	EA		1								
0137	P	0		4940-672-4790	NOZZLE: DRUM WASHER PRESSURE AND SUCTION HOSE	EA		2	*	*	*	*	1	9		
0136					GROUP 76-FIRE FIGHTING EQUIPMENT COMPONENTS											
0137					7603-FIRE EXTINGUISHER											
0138	P	0	R	4210-202-7958	EXTINGUISHER, FIRE, CARBON DIOXIDE: CHARGED, PERMANENT SHUT-OFF TYPE VALVE, 17 LB CAPACITY	EA		2	*	*	*	*	1	7		

LINES NO	(1) SOURCE, MAINT. AND RECOV. CODE			(2) FEDERAL STOCK NUMBER	(3) DESCRIPTION	(4) UNIT OF ISSUE	(5) QTY INC IN UNIT	(6) QTY INC IN UNIT	(7) 30 DAY ORG. MAINT. ALW.			(8) 1-YR. ALW PER 100 EQUIP. CTY GCY. PLANNING	(9) DEPOT MAINT. ALW. 100 PER EQUIP.	(10) ILLUSTRATION									
	(a)	(b)	(c)						MANUFACTURER'S CODE	PART NUMBER	UNIT			PACK	UNIT	INC	INC	INC	(a)	(b)	(c)	(a)	(b)
0001					SECTION IV-REPAIR PARTS FOR DS, GS, AND DEPOT MAINTENANCE																		
0002					GROUP 72-DISPENSING AND SERVICING EQUIPMENT COMPONENTS																		
0003					7203-VALVES, FITTINGS, LINES																		
0004		0		5306-672-1924	BOLT U: LEFT AND RIGHT TANK SUCTION LINE BRACKET	05748 16131	EA	2	*	*	*	*	*		2	4							
0005	X	0		4320-360-0596	CHAIN: W/S HOOKS, LEFT AND RIGHT TANK SUCTION VALVE COUPLER DUST PLUG	81718 H6683M	EA	2	*	*	*	*	*										
0006	X2	0		4940-360-0711	COUPLER: FEMALE, LEFT AND RIGHT TANK VALVE, MALE THREAD	81718 633B11-2	EA	2	*	*	*	*	*										
0007		0		4730-360-0792	ELBOW: W/FLANGE, LEFT AND RIGHT TANK SUCTION LINE	05748 9143	EA	2	*	*	*	*	*		2	2							
0008	X2	0		4940-360-0793	FLANGE: LEFT AND RIGHT TANK SUCTION LINE	05748 9233	EA	2	*	*	*	*	*										
0009	P	0		4940-360-0795	GASKET: VELLUMOID, LEFT AND RIGHT TANK SUCTION FLANGE MTG	05748 9151	EA	2	*	2	2	20	200										
0010		0		4730-360-0784	NIPPLE: BRASS, LEFT AND RIGHT TANK SUCTION LINE		EA	2	*	*	*	*	*		2	3							
0011		0		5310-176-8164	NUT, PLAIN, HEXAGON: U-BOLT		EA	4	*	*	*	*	*		2	1							
0012	X2	0		4320-360-0593	PLUG: DUST, MALE, LEFT AND RIGHT TANK SUCTION LINE ELBOW COUPLER	81718 634A11-2	EA	2	*	*	*	*	*										
0013		0		4730-011-3180	PLUG, PIPE: BRASS, LEFT AND RIGHT TANK DRAIN, SQ HEAD	24617 113180	EA	4	*	*	*	*	*										
0014		0		5305-013-2119	SCREW, MACHINE		EA	16	*	*	*	*	*										
0015	X2	0		5325-808_6366	STUD ASSEMBLY, TURNLOCK FASTENER: ALUMINUM, LEFT AND RIGHT TANK LID	82240 07	EA	10	*	*	*	*	*										
0016	P	0		4940-360-0786	VALVE ASSEMBLY: FLOAT, LEFT AND RIGHT TANK SUCTION LINE		EA	2	*	*	2	6	10										
0017		0		5310-012-0380	WASHER, LOCK: U-BOLT		EA	4	*	*	*	*	*										
0018		0		5310-527-3288	WASHER, LOCK		EA	16	*	*	*	*	*										
0019	P	0		4940-160-078g	DISC: LEFT AND RIGHT TANK FLOAT VALVE	05748 9134	EA	2	*	*	2	6	10										
0020	P	0		4940-672-4775	FLOAT, VALVE: LEFT AND RIGHT TANK	05748 9137	EA	2	*	*	2	10	150		2	8							
0021	X1			4940-360-0788	HOUSING: BRASS, LEFT AND RIGHT TANK FLOAT VALVE	05748 9135	EA	2	*	*	*	*	*		2	5							
0022		0		5315-252-5989	PIN. COTTER		EA	4	*	*	*	*	*										
0023	P	0		4940-360-0790	ROD. LEFT AND RIGHT TANK FLOAT VALVE	05748 9133	EA	2	*	*	2	6	40		2	6							
0024	P	0		4940-360-0756	GASKET: VELLUMOID, CAN WASHER VALVE MTG	05748 91-9	EA	10	2	*	8	100	1000		3	26							
0025	P	0	R	4940-672-4758	VALVE ASSEMBLY: CAN WASHER	05748 75841SA	EA	10	*	*	2	10	50		1	6							
0026	P	F		3110-120-4464	BEARING, BALL, THRUST: PLATE	05748 9105	EA	10	*	2	2	20	100		3	3							
0027	X2	F		4730-278-5743	CUP, OIL, LUBRICATION: SUPPORT PLATE	24981 521	EA	10	*	*	*	*	*										
0028	P	F		4940-360-0759	EJECTOR ASSEMBLY: VALVE		EA	10	*	2	2	20	100		3	15							

LINES NO	(1) SOURCE, MAINT. AND RECQV. CODE			(2) FEDERAL STOCK NUMBER	(3) DESCRIPTION	(4) UNIT OF ISSUE	(5) QTY INC UNIT	(6) QTY INC UNIT	(7) 30 DAY ORG. MAINT. ALW.			(8) 1-YR. ALW PER 100 EQUIP. CTY GCY. PLANNING	(9) DEPOT MAINT. ALW. 100 PER EQUIP.	(10) ILLUSTRATION					
	(a)	(b)	(c)						MANUFACTURER'S CODEPART NUMBER	UNIT OF ISSUE	QTY INC UNIT			QTY INC UNIT	(a)	(b)	(c)	FIG. NO.	(b) ITEM OR SYM. NO.
0029		F		5305-360-0168	SCREW: SET, EJECTOR, SLOTTED, DOG POINT 05748 2723	EA		10	*	*	*	*	*		3	21			
0030		F		4730-360-0757	ELBOW: MALE, BRASS, PLATE, FLARED, 3/8 IN. NPT BY 1/2 IN. TUBE, 90 DEG 05748 9271	EA		10	*	*	*	*	*		3	6			
0031	P	0		4940-672-4772	GASKET: NOZZLE LEG	EA		10	2	4	8	100	1000						
0032	P	0		4940-360-0765	GASKET: VELLUMOID, HOUSING	EA		10	2	4	8	100	1000		3	28			
0033	P	0		4940-360-0764	GASKET: VELLUMOID, NOZZLE	EA		10	2	4	8	100	1000		3	12			
0034	X2	0		4940-612-0174	NOZZLE ASSEMBLY: VALVE	EA		10	*	*	*	*	*		3	13			
0035		0		5305-630-2020	SCREW: NOZZLE, SELF-LOCKING	EA		30	*	*	*	*	*		3	14			
0036	P	F		5330-579-7916	PACKING, PREFORMED: EJECTOR	EA		20	4	8	1	200	2000		3	16			
0037	P	F		5330-580-6044	PACKING, PREFORMED: NOZZLE LEG	EA		20	4	8	17	200	2000		3	11			
0038	P	F		5330-641-0231	PACKING, PREFORMED: PLATE	EA		21	4	8	17	200	2000		3	20			
0039		F		5315-360-0772	PIN, STRAIGHT, HEADLESS: BOOY SUPPORT END PLATE	EA		20	*	*	*	*	*						
0040	X2	F		4940-360-0760	PLATE: VALVE	EA		10	*	*	*	*	*		3	29			
0041	X2	F		5315-360-0773	PIN, STRAIGHT, HEADLESS: BODY, PLATE END	EA		10	*	*	*	*	*		3	7			
0042		F		5305-018-0021	SCREW, CAP, HEXAGON HEAD	EA		80	*	*	*	*	*		3	4			
0041		F		5310-012-0423	WASHER, LOCK	EA		80	*	*	*	*	*		3	5			
0044	X2	F		4940-360-0758	PLATE: VALVE AND CRADLE SUPPORT	EA		10	*	*	*	*	*		3	8			
0045		F		5305-018-1637	SCREW, CAP, HEXAGON HEAD	EA		20	*	*	*	*	*		3	10			
0046		F		5310-013-8542	WASHER, LOCK	EA		20	*	*	*	*	*		3	9			
0047		F		5306-360-0762	BOLT, SQUARE NECK: CARRIAGE, REWORKED, CAN CRADLE ADJUSTING SPRING	EA		20	*	*	*	*	*		3	22			
0048		F		5310-754-2006	NUT, PLAIN, HEXAGON	EA		20	*	*	*	*	*		3	1			
0049		F		5310-800-5282	NUT, PLAIN, HEXAGON	EA		40	*	*	*	*	*		3	25			
0050		0		4730-011-3177	PLUG, PIPE: BRASS, BOOY, SQ HEAD (U/O BARNES MOEEL 15801CA, CLEANING MACHINE)	EA		10	*	*	*	*	*		3	27			
0051		F		4730-360-0766	PLUG, PIPE: BRASS, REWORKED, SLOTTED, EJECTOR	EA		10	*	*	*	*	*		3	19			
0052	P	F		4940-360-0771	SPRING: COMPRESSION, CAN CRADLE ADJUSTING	EA		20	2	3	7	80	200		3	23			
0053	P	F		4940-360-0778	SPRING: COMPRESSION, EJECTOR	EA		10	2	2	3	40	100		3	17			
0054	P	F		4940-360-0770	SPRING: COMPRESSION, VALVE ADJUSTING	EA		10	2	2	3	40	100		3	2			
0055		F		5310-809 3078	WASHER, FLAT	EA		20	*	*	*	*	*		3	24			
0056		F		5310-657-9163	WASHER, FLAT: BRASS, EJECTOR (U/O BARNES MOEEL 15801CA CLEANING MACHINE)	EA		10	*	*	*	*	*		6	22			
0057	X2	0		4940-360-0712	ADAPTER: W/SHANK, DRUM WASHER PRESSURE HOSE	EA		2	*	*	*	*	*		1	10			
0058	X2	0		4940-360-0713	ADAPTER: W/SHANK, DRUM WASHER SUCTION HOSE	EA		2	*	*	*	*	*		1	11			
0059		0		4730-277-8781	BUSHING, PIPE: BRASS, DRUM WASHER NOZZLE	EA		2	*	*	*	*	*						
0060	X2	0		4940-360-0716	CAP: DUST, FEMALE, DRUM WASHER PRESSURE HOSE	EA		2	*	*	*	*	*						

LINE NO	(1) SOURCE, MAINT. AND RECOV. CODE			(2) FEDERAL STOCK NUMBER	(3) DESCRIPTION	(4) UNIT OF ISSUE	(5) QTY INC IN UNIT	(6) QTY INC IN UNIT	(7) 30 DAY ORG. MAINT. ALW.			(8) 1-YR. ALW PER 100 EQUIP. CTY GCY. PLANNING	(9) DEPOT MAINT. ALW. 100 PER EQUIP.	(10) ILLUSTRATION	
	(a)	(b)	(c)						(a)	(b)	(c)			(a)	(b)
	SOURCE	MAINT.	RECOV.												
0061	X2	0		4940-360-0717	CAP: DUST, FEMALE, DRUM WASHER SUCTION HOSE	81718 634B1	EA	2	*	*	*	*	*		
0062	X2	0		4320-360-0594	CAP: DUST, FEMALE, LEFT AND RIGHT TANK SUPPORT GAGE TO TEE ADAPTER	81718 634B11-2	EA	2	*	*	*	*	*		
0063	X2	0		4320-360-0596	CHAIN: w/s HOOKS, DUST PLUGS		EA	6	*	*	*	*	*		
0064	X2	0		4320-360-0596	CHAIN: w/s HOOKS SINGLE JACK, DUST CAPS	81718 H6683M	EA	4	*	*	*	*	*		
0065		0		4130-467-3514	CLAMP, HOSE: LEFT AND RIGHT SUPPLY LINE	84188 74	EA	4	*	*	*	*	*		
0066		0		4730-494-0871	CLAMP, PRESSURE AND SUCTION HOSES	77414 16	EA	16	*	*	*	*	*	1	14
0067	X2	0		4940-360-0709	COUPLER: MALE, LEFT AND RIGHT DRUM WASHER PRESSURE LINE	81718 633B3-4	EA	2	*	*	*	*	*		
0068	X2	0		4940-360-0710	COUPLER: MALE, LEFT AND RIGHT DRUM WASHER SUCTION LONE	81718 633B1	EA	2	*	*	*	*	*		
0069		0		4730-360-0589	COUPLING, HALF, QUICK DISCONNECT: MALE' LEFT AND RIGHT SUPPLY LINE GAGE TEE	81718 633F11-2	EA	2	*	*	*	*	*		
0070		0		4940-360-0800	COUPLING, PIPE: BRASS, LEFT AND RIGHT SUPPLY LINE MANIFOLD		EA	2	*	*	*	*	*		
0071	X2	0		4940-360-0742	EDUCTOR: LEFT SUPPLY LINE	05748 9273	EA	1	*	*	*	*	*		
0072	X2	0		4940-360-0743	EDUCTOR: RIGHT SUPPLY LINE		EA	1	*	*	*	*	*		
0073	P	0		6685-081-7707	GAGE, PRESSURE, DIAL INDICATING: LEFT AND RIGHT SUPPLY LINE	61349 5005	EA	2	*	*	2	6	10	1	2
0074	P	0		4940-360-0738	GASKET: DRUM WASHER PRESSURE HOSE COUPLING AND DUST CAP	81718 H6595M	EA	4	2	2	3	40	400		
0075	P	0		4940-360-0737	GASKET: DRUM WASHER SUCTION HOSE COUPLING AND DUST CAP	81718 H6480M	EA	4	2	2	3	40	400		
0076	P	0		4940-360-0753	GASKET: VELLUMOID, LEFT AND RIGHT SUPPLY LINE TEE MTG		EA	2	*	2	2	20	200		
0078	P	0		5325-285-3345	GROMMET, RUBBER: DRUM WASHER BRACKET	96906 MS35489-56	EA	4	2	2	3	40	200		
0079	P	0		4720-303-4992	HOSE: GASOLINE, SYNTHETIC RUBBER' DISCHARGE, COLLAPSIBLE, w/QUICK TYPE COUPLERS ON EACH END, 3/4 IN. ID 15 FT LG	05748 15868SA	EA	2	*	*	2	6	10	1	13
0080	P	0		4720-303-4978	HOSE GASOLINE, SYNTHETIC RUBBER' DISCHARGE, W/MALE AND FEMALE COUPLINGS, 1 IN. ID, 15 FT LG		EA	2	*	*	2	6	10	1	8
0081	P	0		4940-360-0802	HOSE: NEOPRENE, PRESSURE, LEFT AND RIGHT SUPPLY LINE		EA	2	*	2	2	2	100	1	4
0082	X2	0		4940-672-4789	MANIFOLD AND TUBE ASSEMBLY: DRUM WASHER (FOR CONVERSION OF BARNES MOEL 4310CA DRUM WASHER ASSEMBLY, ONLY)	05748 164215A	EA	2	*	*	2	6	10		
0083	X2	0			MANIFOLD ASSEMBLY: LEFT TANK SUPPLY LINE	05748 1 58305A	EA	1	*	*	*	*	*		
0084	X2	0			MANIFOLD ASSEMBLY: RIGHT TANK SUPPLY LINE	05748 15831SA	EA	1	*	*	*	*	*		
0084	X2	0			MANIFOLD: DRUM WASHER PRESSURE AND SUCTION TUBE	05748 15861	EA	2	*	*	*	*	*		

LINE NO	(1) SOURCE, MAINT. AND RECQV. CODE			(2) FEDERAL STOCK NUMBER	(3) DESCRIPTION	(4) UNIT OF ISSUE	(5) QTY INC IN UNIT	(6) QTY INC IN UNIT	(7) 30 DAY ORG. MAINT. ALW.			(8) 1-YR. ALW PER 100 EQUIP. CTY GCY. PLANNING	(9) DEPOT MAINT. ALW. 100 PER EQUIP.	(10) ILLUSTRATION						
	(a)	(b)	(c)						MANUFACTURER'S CODE	PART NUMBER	UNIT			INC	IN	(a)	(b)	(c)	(a)	(b)
0085		0		4730-196-2008	NIPPLE, PIPE: BRASS, DRUM WASHER MANIFOLD															
0086	X2	0		4940-360-0714	PLUG: DUST, MALE, LEFT AND RIGHT DRUM WASHER PRESSURE LINE	00000 502444	EA	2	*	*	*	*	*							
0087	X2	0		4940-360-0715	PLUG: DUST, MALE, LEFT AND RIGHT DRUM WASHER SUCTION LINE	61718 634A3-4	EA	2	*	*	*	*	*							
0088	X2	0		5340-816-4368	PLUG: DUST, MALE, LEFT AND RIGHT TANK SUCTION LINE ELBOW COUPLER	81718 634A11-2	EA	2	*	*	*	*	*							
0089		0		4730-011-2304	PLUG, PIPE: BRASS, CAN WASHER VALVE BODY, SQ HEAD (u/o BARNES MODEL 4310CA CLEANING MACHINE)	24617 112304	EA	10	*	*	*	*	*							
0090		0		4730-011-3178	PLUG, PIPE: BRASS, LEFT AND RIGHT SUPPLY LINE EDUCTOR, SQ HEAD	24617 113178	EA	2	*	*	*	*	*							
0091		0		4730-021-9307	PLUG, PIPE: LEFT AND RIGHT SUPPLY LINE MANIFOLD	24617 219307	EA	2												
0092	P	0		5330-508-0925	ROPE, ASBESTOS: GATE VALVE PACKING (75165) STYLE 293-1-4 1 LB		EA	1	*	*	2	10	100							
0093		0		4730-026-0438	TEE: BRASS, RIGHT SUPPLY LINE PRESSURE GAGE	05748 9283	EA	1	*	*	*	*	*							
0094		0		4730-360-0747	TEE: BRASS, LEFT SUPPLY LINE PRESSURE GAGE	05748 9282	EA	1	*	*	*	*	*							
0095		0		4730-360-0746	TEE: W/FLANGE, BRASS, LEFT SUPPLY LINE	05748 9278	EA	1	*	*	*	*	*							
0096		0		4730-360-0745	TEE: W/FLANGE, BRASS, RIGHT SUPPLY LINE	05748 9277	EA	1	*	*	*	*	*							
0097	P	0		4940-672-4781	TUBE ASSEMBLY: COPPER, VALVE SUPPLY (u/o BARNES MODEL 15801CA CLEANING MACHINE)	05748 158545A	EA	10	*	2	2	20	100	1	3					
0098	P	0		4940-360-0739	TUBE ASSEMBLY: COPPER, VALVE SUPPLY (u/o BARNES MODEL 4310CA CLEANING MACHINE)	05748 90175A	EA	10	*	2	2	20	100							
0099	P	0		4940-602-4338	TUBE ASSEMBLY PRESSURE, DRUM WASHER	05748 14711CA	EA	2	*	*	2	4	20							
0100		0		4730-360-0803	UNION BRASS, LEFT AND RIGHT SUPPLY LINE TO VALVE	05748 9267	EA	10	*	*	*	*	*							
0101	X2	0		4940-360-0740	VALVE ASSEMBLY: GATE, BRASS, LEFT AND RIGHT SUPPLY LINE		EA	6	*	*	*	*	*			1	1			
0102		F		5310-360-0777	WASHER, FLAT: BRASS, VALVE EJECTOR (u/o BARNES MODEL 4310CA CLEANING MACHINE)		EA	10	*	*	*	*	*							
0103	P	0		4940-360-0799	TIP: DRUM WASHER PRESSURE TUBE		EA	2	*	*	2	8	20	1	12					
0104		0		5305-013-3948	SCREW, MACHINE		EA	6	*	*	*	*	*							
0105	X2	0		4320-360-0594	CAP: FEMALE, DUST, PRESSURE PUMP SUCTION HOSE Y FITTING	81718 6344B11-2	EA	2	*	*	*	*	*							
0106	X2	0		4320-360-0596	CHAIN: w/s HOOKS, PRESSURE PUMP HOSE AND Y FITTING DUST CAPS AND PLUGS	81718 H6683M	EA	5	*	*	*	*	*							

LINE NO	(1) SOURCE MAINT. AND RECOV. CODE			(2) FEDERAL STOCK NUMBER	(3) DESCRIPTION	(4) UNIT OF ISSUE	(5) QTY IN UNIT	(6) QTY IN UNIT	(7) 30 DAY ORG. MAINT. ALW.			(8) 1-YR. ALW PER 100 EQUIP. CTY GCY PLANNING	(9) DEPT MAINT. ALW. 100 PER EQUIP.	(10) ILLUSTRATION						
	(a)	(b)	(c)						MANUFACTURER'S CODE	PART NUMBER	UNIT			PACK	UNIT	2021	5051	100	(a)	(b)
	SOURCE	MAINT.	RECOV.																	
0107	X2	0		4940-360-0806	COUPLER: FEMALE, PUMP SUCTION HOSE Y FITTING, FEMALE THREAD	EA		1	*	*	*		*							
0108	X2	0		4940-360-0744	FITTING, Y: BRASS, PRESSURE PUMP SUCTION HOSE	EA		1	*	*	*		*							
0109	P	0		4730-360-0595	GASKET: HOSE COUPLER, DUST CAP ADAPTER AND FITTING	EA		5	2	2	4	50	500							
0110	P	0		4720-555-8325	HOSE ASSEMBLY, RUBBER: SUCTION PUMP	EA		3	*	*	2	9	15							
0111	P	0		4940-602-4339	TUBE ASSEMBLY: SUCTION, DRUM WASHER	EA		2	*	*	2	6	10							
0112	X2	0		4320-360-0594	CAP: FEMALE, DUST, PRESSURE PUMP SUCTION HOSE	EA		1	*	*	*		*							
0113		0		4730-494-0871	CLAMP: HOSE, PRESSURE PUMP SUCTION	EA		4	*	*	*		*							
0114		0		4730-360-0591	COUPLING, HALF, QUICK DISCONNECT: W/SHANK, FEMALE PRESSURE PUMP SUCTION HOSE	EA		1	*	*	*		*							
0115		0		4320-360-0592	COUPLING, HALF, QUICK DISCONNECT: W/SHANK, MALE, PRESSURE PUMP SUCTION HOSE	EA		1	*	*	*		*							
0116	X2	0		4320-360-0593	PLUG: MALE, DUST, PRESSURE PUMP SUCTION HOSE	EA		1	*	*	*		*							
0117	X2	0		5340-816-4368	PLUG: MALE, DUST, PRESSURE PUMP SUCTION HOSE Y FITTING	EA		1	*	*	*		*							
0119	X2	0	R	4940-672-4766	7206-STEAM CLEANING UN' TS CLEANER ASSEMBLY: LEFT	EA		1	*	*	*		*							
0120	X2	0	R	4940-672-4765	CLEANER ASSEMBLY: RIGHT	EA		1												
0121	P	0		4940 360-0785	STRAINER: BRASS, LEFT AND RIGHT TANK * * * * *	EA		2	*	*	2	6	100	2	7					
0122	P	0		4940-360-0755	SUCTION LINE NIPPLE	EA		2	*	*	2	6	100							
0123	P	0		4940-360-0754	STRAINER: LEFT AND RIGHT TANK, LARGE	EA		2	*	*	2	6	100							
0124	X2	0		4940-672-4787	STRAINER: LEFT AND RIGHT TANK, SMALL	EA		2	*	*	2	6	100							
0125	X2	0		4940-672-4787	CRADLE ASSEMBLY: CAN HOLDER	EA		10	*	*	*		*	1	5					
0126	X2	0		4940-360-0783	BAFFLE: CAN CRADLE	EA		10	*	*	*		*							
0127	P	0		4940-160-0781	GASKET: VELLUMOID, CAN CRADLE CLAMP	EA		10	2	4	8	100	1000							
0127		0		5305-678-6199	SCREW: SELF-LOCKING, CAN CRADLE, BUTTON SOCKET HEAD	EA		120	*	*	*		*							
0128	P	0		4940-360-0782	SPRING: CAN POSITIONER	EA		10	2	2	4	40	100							
0129	P	0		4940-904-1383	PARTS KIT: DRUM WASHER NOZZLE	EA		2	2	4	8	100	200							
0130	X1			4730-458-6577	DISC: LOWER	EA		1												
0131	X1			5330-766-3796	PACKING	EA		1												
0132	X1				PACKING NUT	EA		1												
0133	X1				POPPET: UPPER	EA		1												
0134	X1				SUB-ASSEMBLY, MAIN POPPET	EA		1												

LINE NO	(1) MAINT. AND RECOV. CODE			(2) FEDERAL STOCK NUMBER	(3) DESCRIPTION	(4) UNIT OF ISSUE	(5) QTY INC IN UNIT	(6) QTY INC IN UNIT	(7) 30 DAY ORG. MAINT. ALW.			(8) 1-YR. ALW PER 100 EQUIP. CTY GCY PLANNING	(9) DEPOT MAINT. ALW. 100 PER EQUIP.	(10) ILLUSTRATION	
	(a) SOURCE	(b)	(c) RECOV.						(a)	(b)	(c)			(a) FIG. NO.	(b) ITEM OR SYM. NO.
0135	P	0		4940-672-4790	NOZZLE: DRUM WASHER PRESSURE AND SUCTION HOSE			2	*	*	*	2	10	1	9
0136					GROUP 76-FIRE FIGHTING EQUIPMENT COMPONENTS										
0137					7603-FIRE EXTINGUISHER										
0138	P	0	R	4210-202-7858	EXTINGUISHER, FIRE, CARBON DIOXIDE: CHARGED, PERMANENT SHUT-OFF TYPE VALVE, 15 LB CAPACITY			2	*	*	*	*	*	1	7

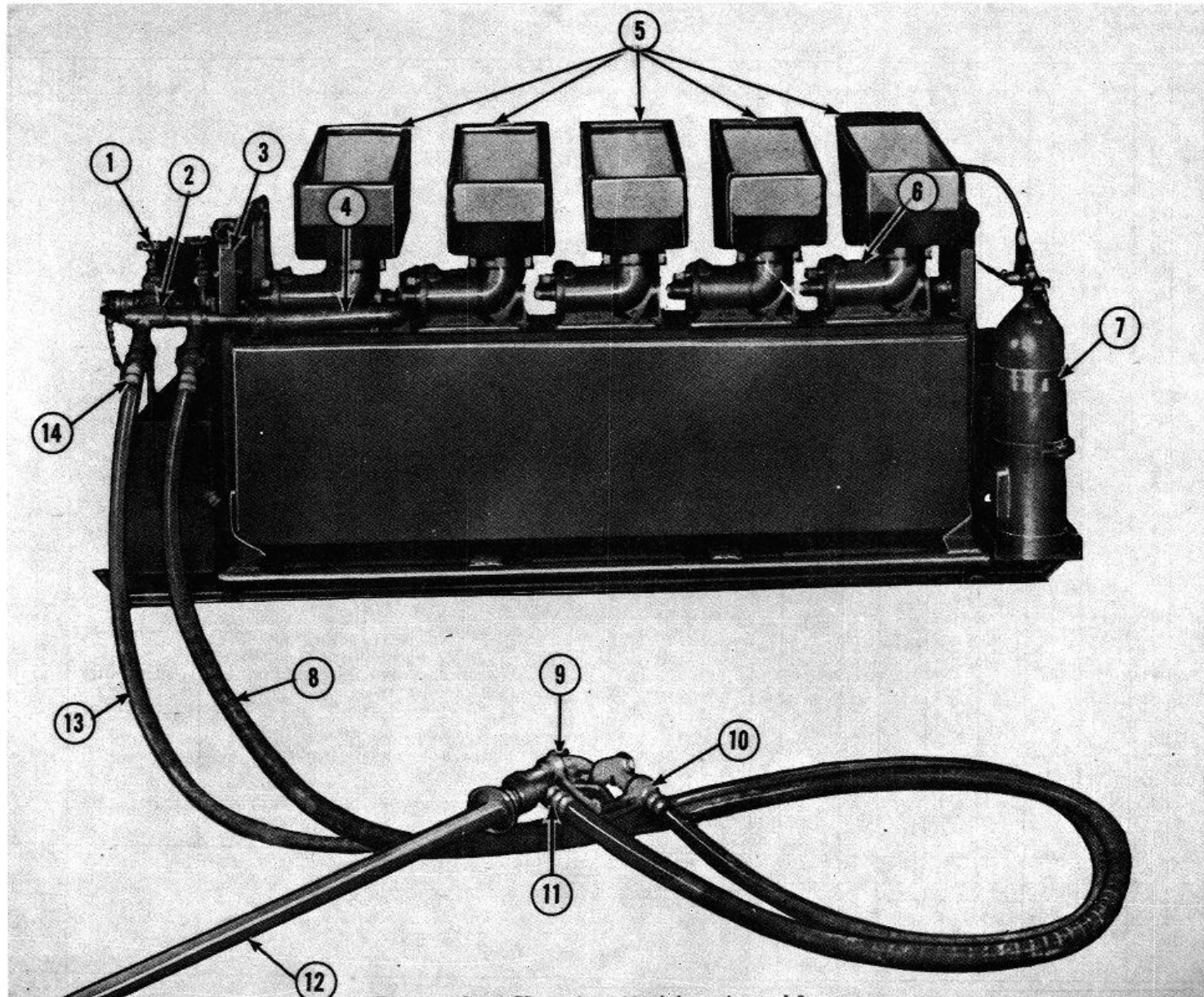


Figure 1. Cleaning Machine Assembly.

INDEX TO PARTS, FIGURE 1

REF NO.	FUNCT GROUP	ITEM NAME	REF NO.	FUNCT GROUP	ITEM NAME
1	7203	VALVE AY	8	7203	HOSE
2	7203	GAGE	9	7206	NOZZLE
3	7203	TUBE AY	10	7203	ADAPTER
4	7203	HOSE	11	7203	ADAPTER
5	7206	CRADLE AY	12	7203	TIP
6	7203	VALVE AY	13	7203	HOSE
7	7603	EXTINGUISHER	14	7203	CLAMP

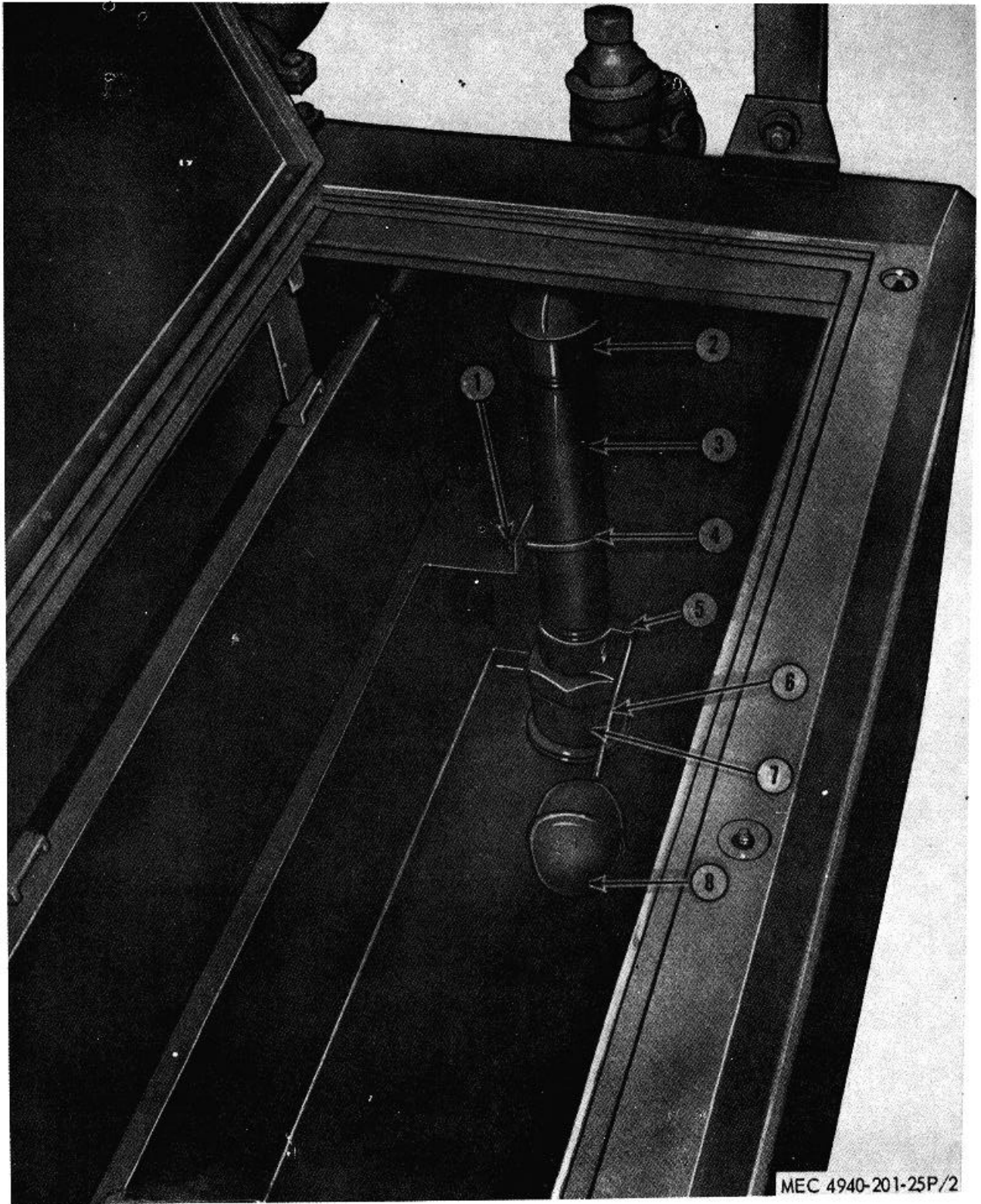


Figure 2. Float Valve Assembly.

INDEX TO PARTS, FIGURE 2

REF NO.	FUNCT GROUP	ITEM NAME	REF NO.	FUNCT GROUP	ITEM NAME
1	7203	NUT	5	7203	HOUSING
2	7203	ELBOW	6	7203	ROD
3	7203	NIPPLE	7	7206	STRAINER
4	7203	U-BOLT	8	7203	FLOAT

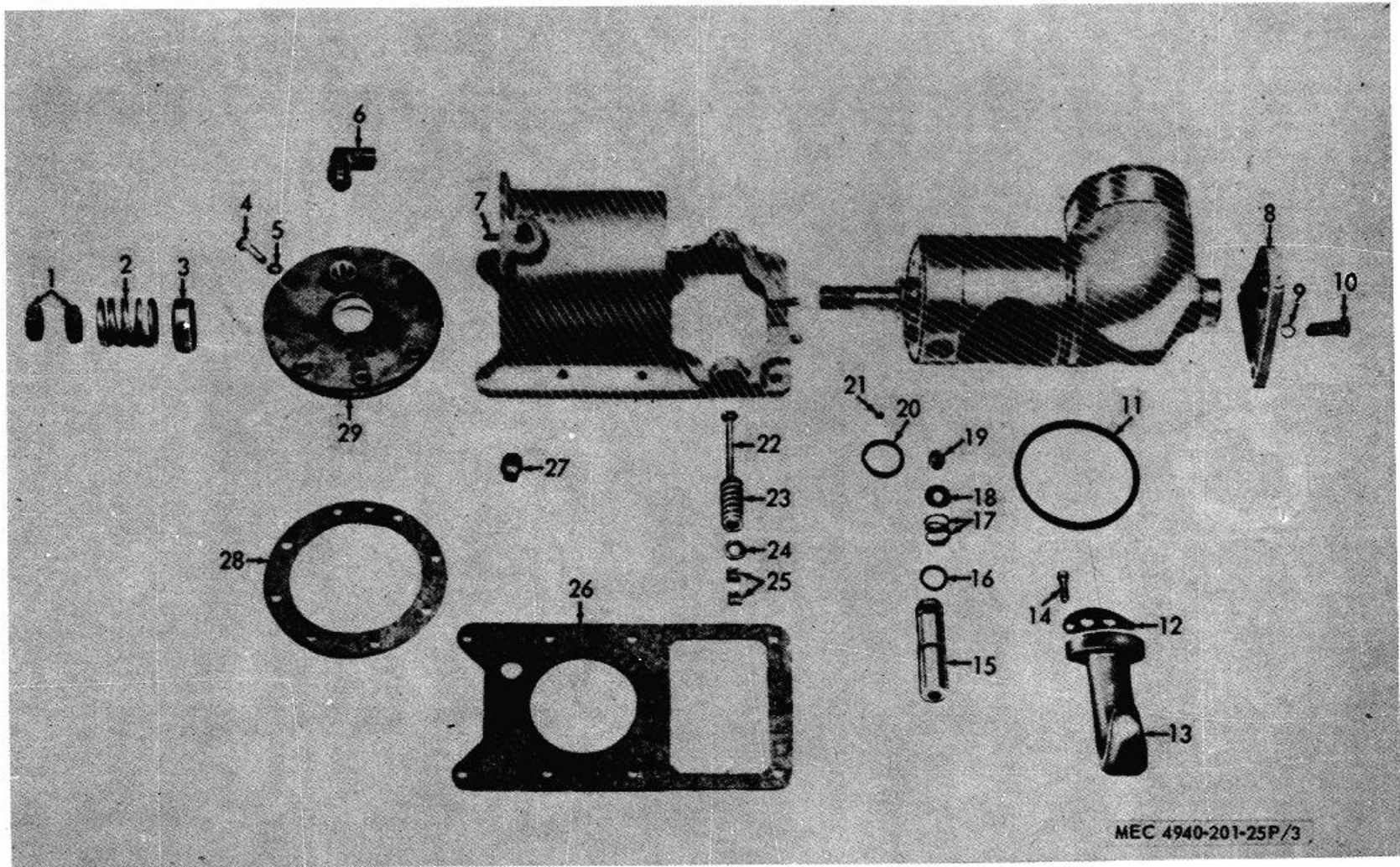


Figure 3. Cradle Valve Assembly

INDEX TO PARTS, FIGURE 3

REF NO.	FUNCT GROUP	ITEM NAME	REF NO.	FUNCT GROUP	ITEM NAME	REF NO.	FUNCT GROUP	ITEM NAME
1	7203	NUT	11	7203	PACKING	21	7203	SCREW
2	7203	SPRING	12	7203	GASKET	22	7203	BOLT
3	7203	BEARING	13	7203	NOZZLE AY	23	7203	SPRING
4	7203	SCREW	14	7203	SCREW	24	7203	WASHER
5	7203	WASHER	15	7203	EJECTOR AY	25	7203	NUT
6	7203	ELBOW	16	7203	PACKING	26	7203	GASKET
7	7203	PIN	17	7203	SPRING	27	7203	PLUG
8	7203	PLATE	18	7203	WASHER	28	7203	GASKET
9	7203	WASHER	19	7203	PLUG	29	7203	PLATE
10	7203	SCREW	20	7203	PACKING			

FEDERAL STOCK NUMBER AND PART NUMBER INDEX

NUMBER	CODE	PAGE	NUMBER	CODE	PAGE	NUMBER	CODE	PAGE
C838M	81718	005			010			009
H113RA	81718	010	4320-360-0593		001	4940-360-0715		003
H4126	81718	005			004			009
H4682	81718	010			006	4940-360-0716		002
H502N	81718	005	4320-360-0594		010			007
H6430M	81718	010			002	4940-360-0717		002
H6480M	81718	005			004			008
H6595M	81718	010			004	4940-360-0737		002
H6683M	81718	005			008			008
		010	4320-360-0596		009	4940-360-0738		002
		004			010			008
		010			001	4940-360-0739		003
		002			002			009
		008			002	4940-360-0740		003
		002			004			009
		008			006	4940-360-0742		002
		001			008			008
		002			008	4940-360-0743		002
		004			009			008
		006	4720-303-4978		002	4940-360-0744		004
		008			008			010
		009	4720-303-4992		002	4940-360-0753		002
H714M	81718	005			008			008
		010			004	4940-360-0754		004
MS28775-115	96906	007			010			010
MS28775-216	96906	007	4720-555-8325		003	4940-360-0755		004
MS35489-56	96906	002			009			010
		008	4730-011-2304		002	4940-360-0756		001
07	82240	001			007			006
		006	4730-011-3177		003	4940-360-0758		007
112304	24617	003			009	4940-360-0759		006
		009	4730-011-3178		001	4940-360-0760		007
113177	24617	002			006	4940-360-0764		001
		007	4730-021-9307		003			007
113178	24617	003			009	4940-360-0765		001
		009	4730-026-0438		003			007
113180	24617	001			009	4940-360-0770		007
		006	4730-196-2008		003	4940-360-0771		007
144065	24617	002			009	4940-360-0781		004
		007	4730-277-8781		002			010
14710CA	05748	004			007	4940-360-0782		005
		010	4730-278-5743		006			010
14711CA	05748	003	4730-360-0589		002	4940-360-0783		004
		009			008			010
15657SA	05748	004	4730-360-0591		004	4940-360-0785		004
		010			010			010
158305A	05748	003	4730-360-0595		004	4940-360-0786		001
		008			010			006
15831SA	05748	003	4730-360-0745		003	4940-360-0788		001
		008			009			006
158415A	05748	001	4730-360-0746		003	4940-360-0789		001
		006			009			006
158425A	05748	004	4730-360-0747		003	4940-360-0790		001
		010			009			006
15846	05748	007	4730-360-0757		007	4940-360-0793		001
15849	05748	004	4730-360-0766		007			006
		010	4730-360-0784		001	4940-360-0795		001
158545A	05748	003			006			006
		009	4730-360-0792		001	4940-360-0799		004
15861	05748	003			006			009
		008	4730-360-0803		003	4940-360-0800		002
15868SA	05748	002			009			008
		008	4730-458-6877		005	4940-360-0802		003
16	77414	002			010			008
		004	4730-467-3514		002	4940-360-0806		004
		008			008			010
		010	4730-494-0871		002	4940-602-4338		001
16131	05748	001			004			007
		006			008	4940-602-4339		004
16421SA	05748	003			010			010
		008	4930-360-0778		007	4940-632-0174		001
1700	81718	001	4940-360-0709		002			007
		007			008	4940-672-4765		004
190G1	81718	005	4940-360-0710		002			010
		011			008	4940-672-4766		004
219307	24617	003	4940-360-0711		001			010
		009			006	4940-672-4772		001
2723	05748	007	4940-360-0712		002			007
3110-120-4464		006			007	4940-672-4775		001
4210-202-7958		005	4940-360-0713		002			006
		011			007	4940-672-4781		003
4320-360-0592		004	4940-360-0714		003			009

FEDERAL STOCK NUMBER AND PART NUMBER INDEX

NUMBER	CODE	PAGE	NUMBER	CODE	PAGE	NUMBER	CODE	PAGE
4940-672-4787		004			009			
		010			010			
4940-672-4788		001			010			
		006	634A3-4	81718	003			
4940-672-4789		003			009			
		008	63481	81718	002			
4940-672-4790		005	008					
		011	634811-2	81718	002			
4940-904-1383		005			004			
		010			004			
500S	61349	002			008			
		008			009			
502444	00000	003			010			
		009	6685-081-7707		002			
521	24981	006			008			
5305-013-2119		001	74	84188	002			
006		008						
5305-013-3948		004	9-1206-12	15840	007			
009			9-2408-11	15840	007			
5305-018-0021		007	9017SA	05748	003			
5305-018-1637		007			009			
5305-360-0768		007	9103	05748	007			
5305-630-2020		001	9105	05748	006			
		007	9111	05748	001			
5305-678-6199		004			007			
		010	9133	05748	001			
5306-360-0762		007		006				
5306-672-1924		001	9134	05748	001			
		006			006			
5310-012-0380		001	9135	05748	001			
		006			006			
5310-012-0423		007	9137	05748	001			
5310-013-8542		007			006			
5310-176-8164		001	9143	05748	001			
		006			006			
5310-360-0777		009	9145	05748	004			
5310-527-3288		001			010			
		006	9149	05748	001			
5310-657-9163		007			006			
5310-754-2006		007	9151	05748	001			
5310-800-5282		007			006			
5310-809-3078		007	9233	05748	001			
5315-252-5989		001			006			
		006	9267	05748	003			
5315-360-0772		007			009			
5315-360-0773		007	9271	05748	007			
5325-285-3345		002	9273	05748	002			
		008			008			
5325-808-6366		001	9275	05748	004			
		006			010			
5330-508-0925		003	9277	05748	003			
		009			009			
5330-579-7916		007	9278	05748	003			
5330-580-6044		007			009			
5330-641-0231		007	9282	05748	003			
5330-766-3796		005			009			
		010	9283	05748	003			
5340-816-4368		003			009			
		004						
		009						
		010	63381	81718	002			
		008			008			
63381	81718	002	633811-2	81718	001			
		006			006			
633811-2	81718	001	63383-4	81718	002			
		006			008			
63383-4	81718	002	633C11-2	81718	004			
		008			010			
633C11-2	81718	004	633011-2	81718	004			
		010			010			
633011-2	81718	004	633E1	81718	002			
		007			007			
633E1	81718	002	633E3-4	81718	002			
		007			007			
633E3-4	81718	002	633F11-2	81718	002			
		008			008			
633F11-2	81718	002	634A11-2	81718	001			
		008			003			
634A11-2	81718	001			004			
		003			004			
		004			006			
		006						

By Order of the Secretary of the Army:

HAROLD K. JOHNSON,
*General, United States Army,
 Chief of Staff.*

Official:

KENNETH G. WICKHAM,
*Major General, United States Army,
 The Adjutant General.*

Distribution:


Active Army:

USASA (1)	Instl (2)
DCSLOG (1)	USACDEC (10)
ONGB (1)	Army Dep (4)
CAR (1)	POE (2)
USAMC (12)	USA Tml Comd (2)
USAWECOM (5)	Army Tmls (2)
USAMICOM (5)	Arsenals (2)
USAMUCOM (5)	PG (2)
USAECOM (5)	QM FLDMS (2)
USATECOM (5)	Ft Knox FLDMS (10)
USCONARC (2)	Units org under fol TOE (2 ea):
CofEngrs (6)	10-105
CofSptS (1)	10-107
Dir of Trans (1)	10-377
CC-E (1)	10-445
ARADCOM (2)	10-447
ARADCOM Rgn (2)	
LOGCOMD (1)	10-448
MDW (1)	10-458
Armies (5)	10-475
NLABS (4)	10-477
USAMEC (46)	10-770
USMA (1)	10-500 (KE)
Svc Colleges (2)	
Br Svc Sch (2) except	29-215
USAQMS (10)	29-217

NG: Note.

USAR: Same as Active Army except allowance is one copy to each unit.
 For explanation of abbreviations used see AR 320-50.

RECOMMENDED CHANGES TO EQUIPMENT TECHNICAL PUBLICATIONS

 <p style="font-size: small; margin: 0;"><i>THEN...JOT DOWN THE DOPE ABOUT IT ON THIS FORM. CAREFULLY TEAR IT OUT, FOLD IT AND DROP IT IN THE MAIL.</i></p>		SOMETHING WRONG WITH PUBLICATION	
		FROM: (PRINT YOUR UNIT'S COMPLETE ADDRESS)	
		DATE SENT	
PUBLICATION NUMBER		PUBLICATION DATE	PUBLICATION TITLE
BE EXACT PIN-POINT WHERE IT IS			
PAGE NO.	PARA-GRAPH	FIGURE NO.	TABLE NO.
IN THIS SPACE, TELL WHAT IS WRONG AND WHAT SHOULD BE DONE ABOUT IT.			
PRINTED NAME, GRADE OR TITLE AND TELEPHONE NUMBER			SIGN HERE

PIN: 028390-000

This fine document...

Was brought to you by me:



[Liberated Manuals -- free army and government manuals](#)

Why do I do it? I am tired of sleazy CD-ROM sellers, who take publicly available information, slap “watermarks” and other junk on it, and sell it. Those masters of search engine manipulation make sure that their sites that sell free information, come up first in search engines. They did not create it... They did not even scan it... Why should they get your money? Why are not letting you give those free manuals to your friends?

I am setting this document FREE. This document was made by the US Government and is NOT protected by Copyright. Feel free to share, republish, sell and so on.

I am not asking you for donations, fees or handouts. If you can, please provide a link to liberatedmanuals.com, so that free manuals come up first in search engines:

<A HREF=<http://www.liberatedmanuals.com/>>Free Military and Government Manuals

- Sincerely
Igor Chudov
<http://igor.chudov.com/>
- [Chicago Machinery Movers](#)