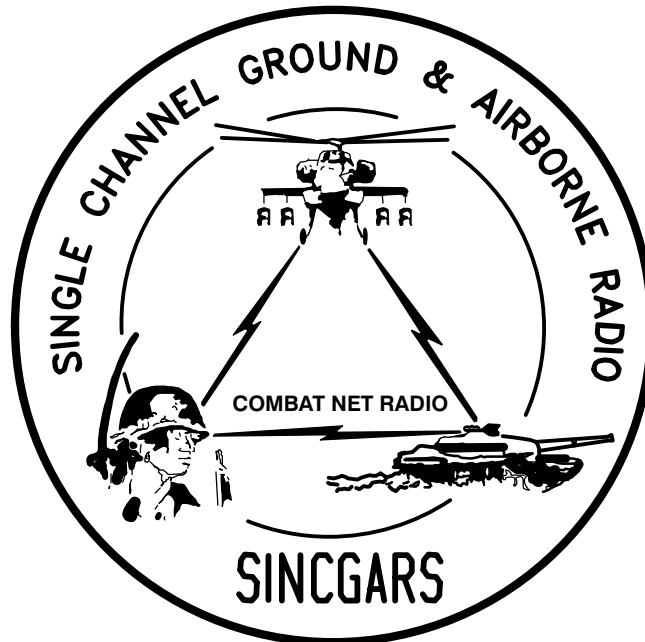


TECHNICAL BULLETIN



**INSTALLATION INSTRUCTIONS FOR
INSTALLATION KIT ELECTRONIC EQUIPMENT
MK-2202/VRC (NSN 5895-01-309-4601) (EIC: N/A)
TO PERMIT INSTALLATION OF
RADIO SET AN/VRC-87/88/90 SERIES
IN A
ELECTRONIC SHOPS, SEMITRAILER, MOUNTED
AN/ASM-189A**

Approved for public release; distribution is unlimited.

HEADQUARTERS, DEPARTMENT OF THE ARMY

1 AUGUST 1999

**INSTALLATION INSTRUCTIONS FOR
 INSTALLATION KIT ELECTRONIC EQUIPMENT
 MK-2202/VRC (NSN 5895-01-309-4601) (EIC: N/A)
 TO PERMIT INSTALLATION OF
 RADIO SET AN/VRC-87/88/90 SERIES
 IN A
 ELECTRONIC SHOPS, SEMITRAILER, MOUNTED
 AN/ASM-189A**

REPORTING OF ERRORS AND RECOMMENDING IMPROVEMENTS

You can help improve this manual. If you find any mistakes, or if you know of a way to improve the procedures, please let us know. Mail your letter, DA Form 2028 (Recommended Changes to Publications and Blank Forms) or DA 2028-2 located in back of this manual direct to: Commander, US Army Communications-Electronics Command Fort Monmouth, ATTN: AMSEL-LC-LEO-D-CS-CFO, Fort Monmouth, New Jersey 07703-5000. The Fax number is 732-532-1413, DSN 992-1413. You may also e-mail your recommendation to AMSEL-LC-LEO-PUBS-CHG@ce-com3.monmouth.army.mil.

In either case a reply will be furnished direct to you.

TABLE OF CONTENTS

Subject	Section	Page
Scope	0.1	1
General Information	0.2	1
Maintenance Forms, Records, and Reports	0.3	1
Reports of Maintenance and Unsatisfactory Equipment	0.3.1	1
Report of Packing and Handling Deficiencies	0.3.2	1
Discrepancy in Transportation Deficiency Report (TDR) (SF 361)	0.3.3	1
Consolidated Index of Army Publications	0.4	1
Purpose of Installation	1.	2
End Item or System to be Modified	2.	2
Application Times	3.	2
Time for Completion of Installation	3.1	2
Time for Installation of One Assembly or Component	3.2	2
Preparation for Installation	4.	2
Preparation of Vehicle	4.1	2
Preparation of MK	4.2	2
MK, Distribution, and Consumables	4.3	3
Tools and Test, Measurement, and Diagnostic Equipment (TMDE) Required	4.4	8
Installation Procedures	5.	9
Installation of Antenna AS-3900/VRC (antenna)	5.1	11
Installation of Antenna Base	5.1.1	11
Installation of Top Antenna Assembly	5.1.2	13
Installation of Mounting Base, Electrical Equipment MT-6352/VRC (mounting base)	5.2	14
Installation of Cables	5.3	17
Installation of Loudspeaker, Permanent Magnet LS-454/U (speaker)	5.4	19
Installation of Loudspeaker, Control-Unit LS-671/VRC	5.5	20
Post-Installation and Checkout	5.6	21
Appendix A. References		A1_

*This manual supersedes TB 11-5820-890-20-10 dated 1 September 1993.

LIST OF ILLUSTRATIONS

Figure	Title	Page
4-1	MK Illustrated Parts List	6
4-2	Illustrated Parts List for Table 4-2	7
5-1(1)	MK and Radio Installation: MK Equipment Locations	9
5-1(2)	MK and Radio Installation: Radio Equipment Locations	10
5-2(1)	Antenna Base Installation: Installing Antenna Bracket	11
5-3	Top Antenna Assembly Installation	13
5-4(1)	Mounting Base Installation: Equipment Shelf	14
5-4(2)	Mounting Base Installation: Curbside Wall	16
5-5	Cable Installation: Power and RF Cabling	18
5-6(1)	Speaker Installation-A	19
5-6(2)	Speaker Installation-B	19
5-7	Installation of Loudspeaker, Control-Unit LS-671/VRC	20
5-8	Cable Diagram: For AN/VRC-87/88/90 Series	22

LIST OF TABLES

Number	Title	Page
4-1	Parts List for Installation of Radio Set AN/VRC-87/88/90 Series	4
4-2	Additional Items Required for Installation of "D/E" Radio Sets	7

0.1 SCOPE

This technical bulletin provides Installation Instructions for Electronic Equipment MK–2202/VRC, commonly referred to as the Mounting Kit (MK). The MK shall be installed into the following type of vehicle(s):

- Electronic Shops, Semitrailer, Mounted, AN/ASM–189A

The MK is used for installation of radio set components at field locations. The information contained in this technical bulletin is the official authorization to perform the installation at the unit maintenance level.

NOTES

- This technical bulletin is not an authorization for requisition or turn-in of vehicles.
- This technical bulletin does not establish quantity or types of vehicles assigned to using units.

This technical bulletin does not contain information on the maintenance or replacement of the MKs. This information is contained in the MAC of TM 11–5820–890–20–2 and RPSTL of TM 11–5820–890–20P.

0.2 GENERAL INFORMATION.

The MK becomes operable when all the radio set components are installed in the vehicle and correct power is supplied. Refer to TM 11–5820–890–20–1 or TM 11–5820–890–20–2 for installation, Operational (OP) Check instructions, and required maintenance procedures. Refer to TM 11–5820–890–20P for repair parts.

Included in the Radio Set AN/VRC–87/88/90 Series is:

- Radio Set AN/VRC–87/88/90 Series (for RT–1523(C)/U)

0.3 MAINTENANCE FORMS, RECORDS, AND REPORTS.

0.3.1 Reports of Maintenance and Unsatisfactory Equipment. See section 4.2.2.3 for information.

0.3.2 Report of Packaging and Handling Deficiencies. See section 4.2.2.1 for information.

0.3.3 Discrepancy in Transportation Deficiency Report (TDR) (SF361). See section 4.2.2.2 for information.

0.4 CONSOLIDATED INDEX OF ARMY PUBLICATIONS.

Refer to the latest issue of DA Pam 25–30 to determine whether there are new changes, or additional publications pertaining to the equipment.

1. PURPOSE OF INSTALLATION.

The Installation Kit, Electronic Equipment MK–2202/VRC (MK) contains the items needed to mount Radio Set AN/VRC– 87/88/90 Series in a Electronic Shops, Semitrailer, Mounted, AN/ASM–189A.

2. END ITEM OR SYSTEM TO BE MODIFIED.

Not applicable.

3. APPLICATION TIMES.

3.1 Time for Completion of Installation. Using two people, a total of 2.5 work hours is required. Typical vehicle downtime is 3.0 hours.

3.2 Time for Installation of One Assembly or Component. The following table lists the time required to install one component. All times have been rounded off to the nearest half hour. The sum of these times will not reflect the typical vehicle downtime.

ITEM	SECTION	TIME
Antenna AS–3900/VRC	5.1	1.0
Mounting Base, Electrical Equipment MT–6352/VRC	5.2	1.5
Cables	5.3	1.0

4. PREPARATION FOR INSTALLATION.

This section explains how to prepare the vehicle and MK for installation.

4.1 Preparation of Vehicle. To prepare the vehicle for installation, insure that the site includes adequate lighting and a power source when drilling is required. Inspect the vehicle for damage that could affect installation. Have any such damage repaired before installing MK.

4.1.1 Items to be Removed. Remove existing AN/VRC–12 radio family installation kit/harness. See TM 11–5820–401–20–2 for removing items used with intercom systems, or TM 11–5820–401–20–1 (used without intercom systems), and TM 11–4940–246–14.

4.1.2 List of Items to be Retained. Not applicable.

4.2 Preparation of MK. To prepare MK, unpack, inspect and check inventory.

4.2.1 Precautions During Handling. Observe these steps to prevent equipment damage.

- a. Keep dust covers in place on connectors.
- b. Do not disassemble or modify parts in MK unless authorized to do so.
- c. Keep mounting hardware covered and protected until needed.
- d. When exposed to moisture, rain or salt water, keep all parts dry to prevent corrosion.

4.2.2 Unpack and Inspect Equipment.

4.2.2.1 Inspect Packaging for Evidence of Damage. Any shipping damage should be reported on SF364 Report of Discrepancy (ROD) as prescribed in AR 735–11–2/DLAR 4140.55/NAVMATINST 4355.73A/AFR 400–64/MCO 4430.3F.

4.2.2.2 Unpack and Inventory MK. If any item is missing, fill out and forward Transportation Deficiency Report (TDR) (SF361) as described in AR 55–38/NAVSUPINST 4610.33C/AFR 75–18/MCO P4610.19D/DLAR 4500.15.

4.2.2.3 Examine Each Item for Damage. If any item is damaged, fill out and forward SF364 Report of Discrepancy (ROD) as prescribed in AR 735–11–2/DLAR 4140.55/NAVMATINST 4355.73A/AFR 400–64/MCO 4430.3F. All damages should be reported as prescribed by DA Pam 738–750, as contained in Maintenance Management Update.

4.3 MK, Distribution, and Consumables.

4.3.1 Items Supplied in MK and/or Required for Installation. Use Table 4–1 and figure 4–1 to identify and inventory MK parts supplied to install Radio Set AN/VRC–87/88/90 Series. Refer to Table 4–2 and Figure 4–2 to identify additional items required to install for “D/E” Series Radio Sets.

4.3.2 Distribution and Issue Instructions.

- a. US Forces: Do not requisition MK. They will be shipped automatically.
- b. US Army Depots: Requisition MK through supply channels.
- c. Multiservice: Instructions shall be included for multiservice modifications.
- d. MAP/MAS Countries: Instructions shall be provided for MAP/MAS countries.

Table 4-1. Parts List for Installation of Radio Set AN/VRC-87/88/90 Series

NSN	ITEM DESCRIPTION AND PART NUMBER	QUANTITY IN MK	SMR CODE	FIGURE, ITEM NO.
5985-01-297-2971	Antenna AS-3900/VRC (A3017899-1)	1	PAOOF A	4-1, 2
5305-00-847-1159	Screw, Cap, Hexagon (3/8-16 x 1 3/4 in) MS35307-365	4	PAOZZA	
5310-00-913-8881	Nut, Hexagon (3/8-16 in) MS51971-3	4	PAOZZA	
5310-00-061-1258	Washer, Lock, Internal/External-Toothed (3/8 in) MS45904-76	8	PAOZZA	
5310-00-889-2527	Washer, Lock, Internal/External-Toothed (5/16 in) MS45904-72	2	PAOZZA	
5306-00-225-9086	Bolt, Machine (5/16-24 x 5/8 in) MS90726-31 (Not Used)	1	PAOZZA	
5330-01-205-2864	Gasket (A3013655-1)	1	PAOZZA	
5965-00-876-2375	Loudspeaker, Permanent Magnet LS-454/U	1	PAOZZA	4-1, 4
5975-01-188-8873	Mounting Base, Electrical Equipment MT-6352/VRC (A3013367-1)	1	PAOOF A	4-1, 1
5306-00-225-9089	Bolt, Machine (5/16-24 x 1 in) MS90726-34 (Not Used)	5	PAOZZA	
5310-00-889-2527	Washer, Lock, Internal/External-Toothed (5/16 in) MS45904-72 (Not Used)	10	PAOZZA	
5310-00-880-7746	Nut, Hexagon (5/16 - 24 in) MS51968-5 (Not Used)	5	PAOZZA	
5995-01-225-1656	Cable Assembly, Power, Electrical CX-13302/VRC (3 FT, 0 IN) (A3014039-3)	1	PAOZZA	4-1, 9
5995-01-225-1660	Cable Assembly, Radio Frequency CG-3855/VRC (21 FT, 0 IN) (A3014031-17)	1	PAOZZA	4-1, 10
	Bracket, Mounting - Antenna (A3050655-1)	1	XBOZZA	4-1, 5
5340-00-809-1490	Clamp, Loop (1/4-1/4 in) MS21333-98	2	PAOZZA	
4020-01-341-8795	Fiber Rope Assembly, Single Leg (A3167672-1)	1	PAOZZA	4-1, 8
5325-00-174-9312	Grommet, Nonmetallic (1/4 in) MS35489-36	2	PAOZZA	
5965-00-043-3463	Handset H-250/U	1	PAOZZA	4-1, 3
	Lead, Electrical - Ground Strap (5 ft, 0 in) MS39119-178	1	XBOZZA	4-1, 6
5310-00-768-0319	Nut, Hexagon (1/4 -28 in) MS51968-2	8	PAOZZA	
	Plate, Mounting, Flat (A3018330-1)	1	XBOZZA	4-1, 7

Table 4-1. Parts List for Installation of Radio Set AN/VRC-87/88/90 Series Continued

NSN	ITEM DESCRIPTION AND PART NUMBER	QUANTITY IN MK	SMR CODE	FIGURE, ITEM NO.
5305-00-267-8956	Screw, Cap, Hexagon (1/4 - 28 x 1 1/2 in) MS90726-12	2	PAOZZA	
5305-00-267-9689	Screw, Cap, Hexagon (1/4 - 28 x 4 in) MS90726-22	6	PAOZZA	
5975-00-074-2072	Strap, Tiedown, Electrical Components MS3367-1-9	10	PAOZZA	
5305-01-266-8329	Screw, Machine (M4 x 13.0 mm) (A3013115-18)	1	PAOZZA	
5310-00-543-2739	Washer, Lock, Internal-Toothed (No. 8) MS35333-72	1	PAOZZA	
5310-00-889-2528	Washer, Lock, Internal/External-Toothed (1/4 in) MS45904-68	13	PAOZZA	
5310-00-582-5965	Washer, Lock (1/4 in) MS35338-44	2	PAOZZA	

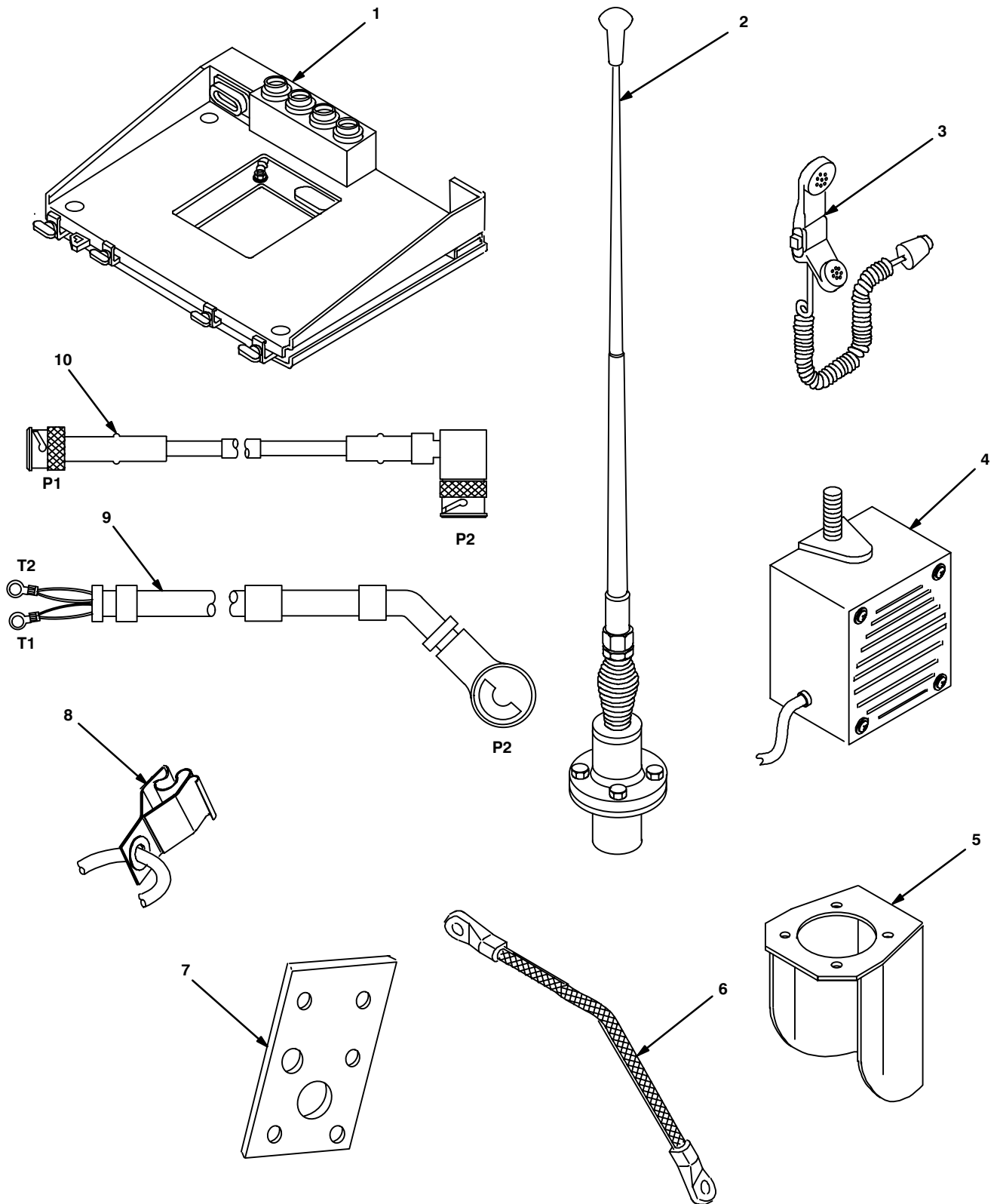


Figure 4-1. MK Illustrated Parts List

Table 4-2. Additional Items Required for Installation of Speaker for "D" Series Radio Sets

NSN	ITEM DESCRIPTION AND PART NUMBER	QUANTITY	SMR CODE	FIGURE, ITEM NO.
5965-01-222-1420	Loudspeaker, Control-Unit LS-671/VRC (A3014065-1)	1	PAOFFA	4-2, 1
5995-01-259-9283	Cable Assembly, Special Purpose, Electrical CX-13292/VRC (8 FT, 0 IN) (A3014038-12)	1	PAOZZA	4-2, 2
	Plate, Mounting (A3014550-1)	1	XBOZZA	4-2,3

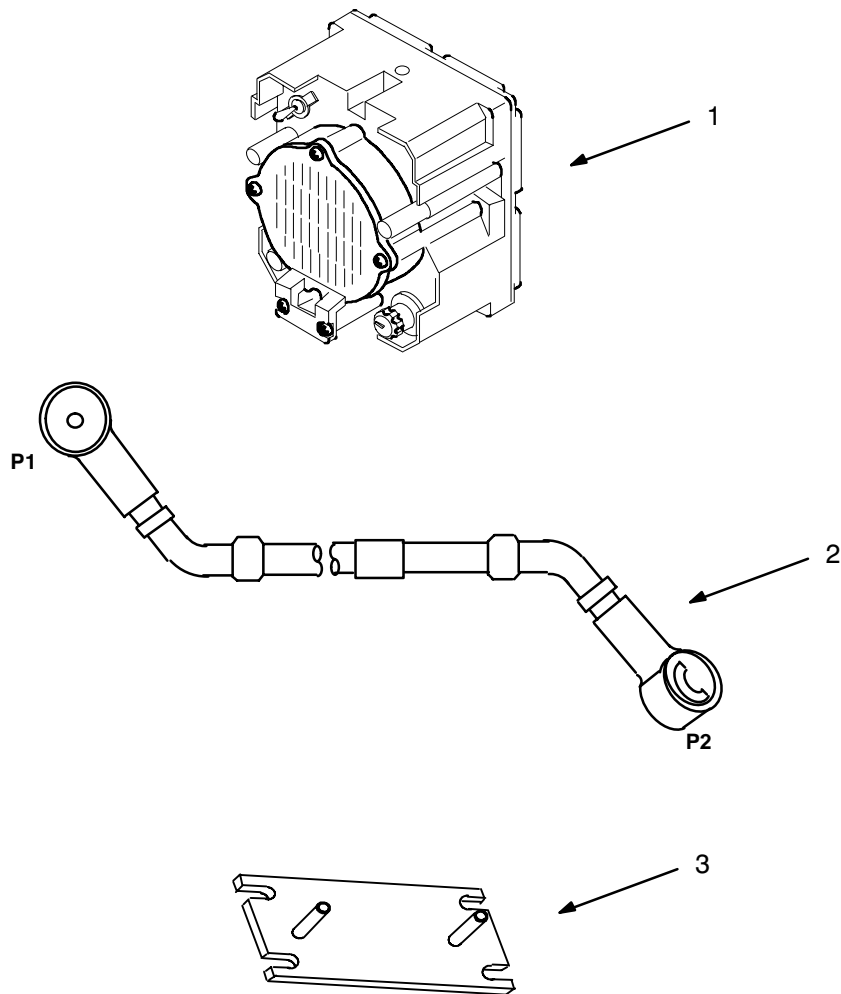


Figure 4-2. Illustrated Parts List for Table 4-2

4.3.3 Consumable Materials. The table below lists materials required for installation but not supplied with MK.

NSN	NOMENCLATURE
8040-00-117-8510	Adhesive-Sealant, Clear, RTV
6850-00-880-7616	Silicone Compound, MIL-S-8660
8030-00-292-1102	Conductive Anti-seize Compound

4.4 Tools and Test, Measurement, and Diagnostic Equipment (TMDE) Required. The following tools and TMDE are needed for installation.

NOMENCLATURE	NSN	QUANTITY
Radio Set*		1
Electric Grinder or Equivalent		1
Pocket Knife, Electrician's	5110-00-240-5943	1
Screwdriver, No. 2 Point Phillips, 4 in	5120-00-234-8913	1
Screwdriver, 1/4 in Flatblade, 4 in	5120-00-222-8852	1
Pliers, Round Nose	5120-00-240-6172	1
Pliers, Diagonal Cutting	5110-00-965-0974	1
Wrench, Open/Box: 7/16 in	5120-00-228-9505	1
1/2 in	5120-00-228-9506	1
9/16 in	5120-00-228-9507	1
3/8 in	5120-00-228-9504	1
Handle, Socket Wrench	5120-00-240-5364	1
Socket: 7/16 in	5120-00-227-6703	1
1/2 in	5120-00-237-0977	1
9/16 in	5120-00-227-6704	1
3/8 in	5120-00-227-6702	1
Electric Drill	5130-00-889-8994	1
Drill Bits: 9/32 in	5133-00-222-9374	1
13/32	5133-00-227-9668	1
3/4 in	5133-00-227-9678	1
5/16 in	5133-00-227-9662	1

* Use radio issued with your vehicle if available.

5. INSTALLATION PROCEDURES.

This section describes where and how to install all MK items in the vehicle. See figure 5-1 for an overall view of where the MK equipment, as well as radio components, will be installed. When installing MK equipment, be sure to read and follow instructions and illustrations carefully.

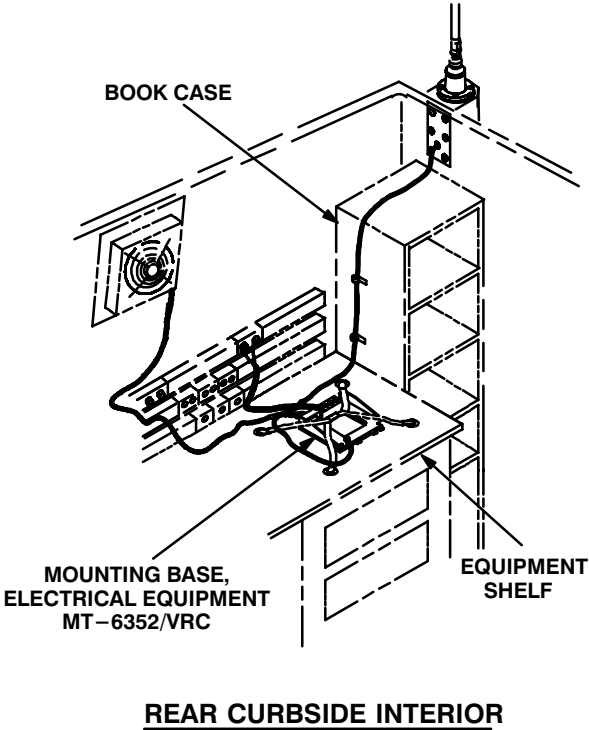
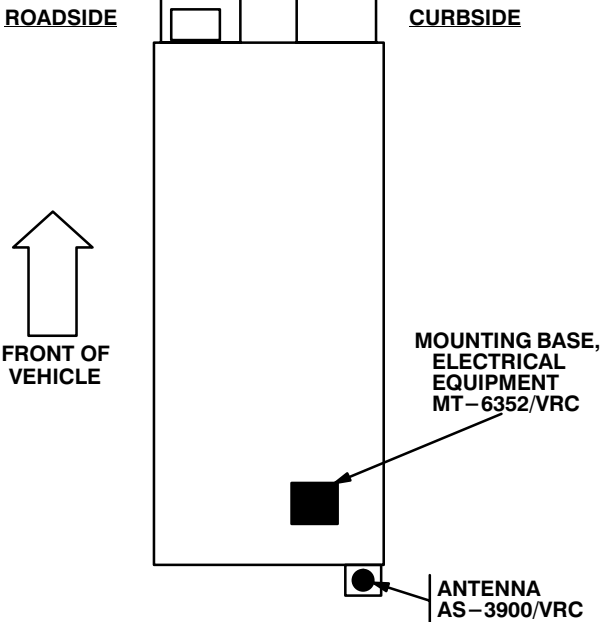
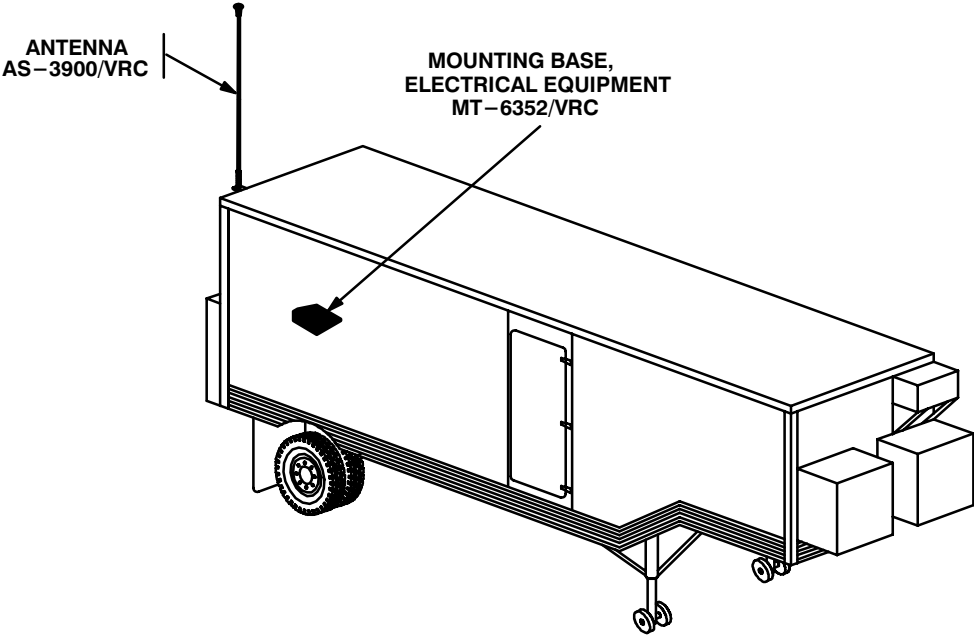
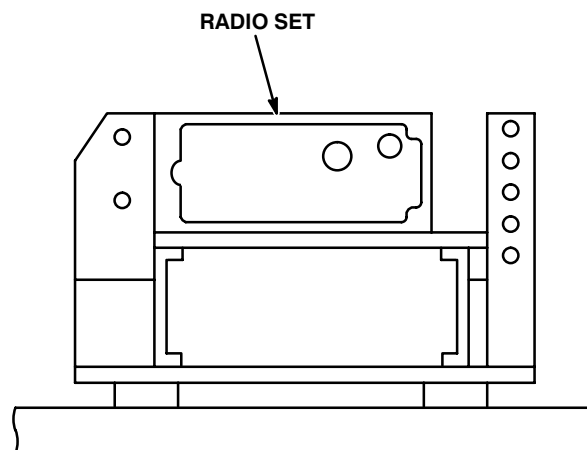


Figure 5-1 (1). MK and Radio Installation: MK Equipment Locations

5. INSTALLATION PROCEDURES. Continued

INSTALLATION
FOR
AN/VRC-87/88/90 Series



CURBSIDE EQUIPMENT SHELF

Figure 5-1 (2). MK and Radio Installation: Radio Equipment Locations

5.1 Installation of Antenna AS-3900/VRC (antenna). See figures 5-1 (1) for location.

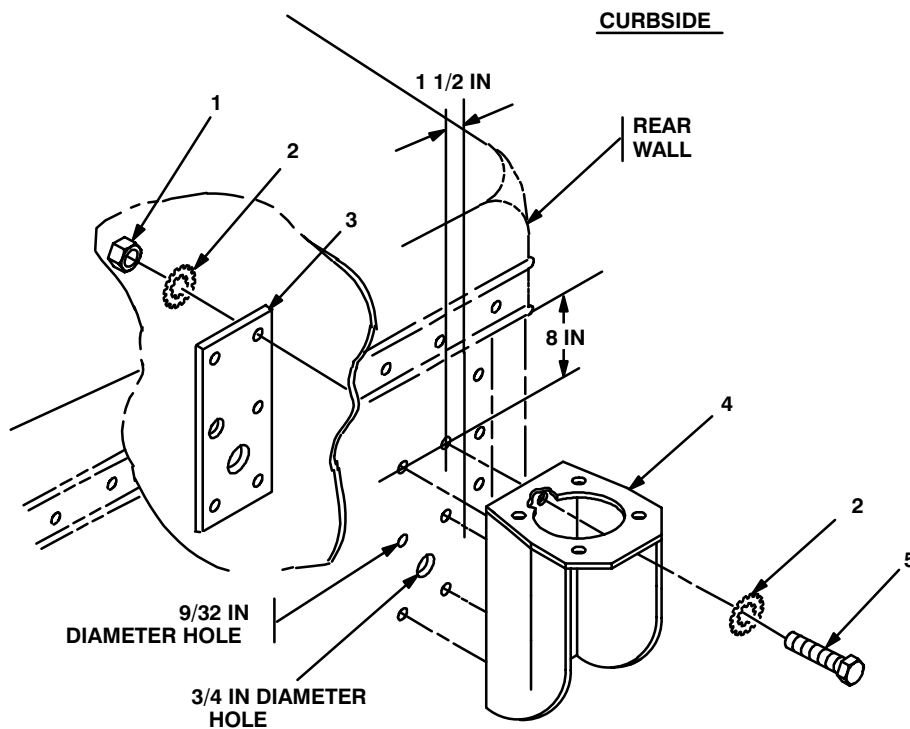
5.1.1 Installation of Antenna Base.

ITEM	ACTION	REMARKS
------	--------	---------

NOTE

Apply a thin coat of adhesive-sealant to both sides of each internal/external-toothed (IET) washer during installation, and to the area of contact where IET washer is to be placed.

- | | | |
|--|--|---|
| a. Mounting holes for antenna bracket (4). | Using dimensions shown, drill six 9/32 in diameter holes and one 3/4 in diameter hole through rear wall. See figure 5-2 (1). | Tools: Electric drill, 9/32 in and 3/4 in drill bits. |
| b. Antenna bracket (4) and mounting plate (3). | Aline over holes drilled in step a. | |



1. NUT (1/4 - 28 in)
2. IET WASHER (1/4 in)
3. MOUNTING PLATE
4. ANTENNA BRACKET
5. CAP SCREW (1/4-28 x 4 in)

Figure 5-2 (1). Antenna Base Installation: Installing Antenna Bracket

5.1.1 Installation of Antenna Base. Continued

ITEM	ACTION	REMARKS
c. Five cap screws (5), ten internal/external-toothed (IET) washers (2) and five nuts (1).	Install and secure to all holes in antenna bracket (4), except left middle hole. See figure 5-2 (1).	Tools: 7/16 in socket and 7/16 in open/box wrench.
d. Gasket (5).	Place on antenna bracket (4) and aline mounting holes. See figure 5-2 (2).	
e. Antenna base (1).	Place on top of gasket (5) and antenna bracket (4); then aline mounting holes.	
f. Four cap screws (2), eight IET washers (3) and four nuts (6).	Install and secure to antenna base (1) and antenna bracket (4).	Tools: 9/16 in socket and 9/16 in open/box wrench.
g. Ground strap (9), cap screw (8), one IET washer (12), two IET washers (7) and nut (11).	Install and secure to left middle hole in antenna bracket (4) and rear wall.	Tools: 7/16 in socket and 7/16 in open/box wrench.

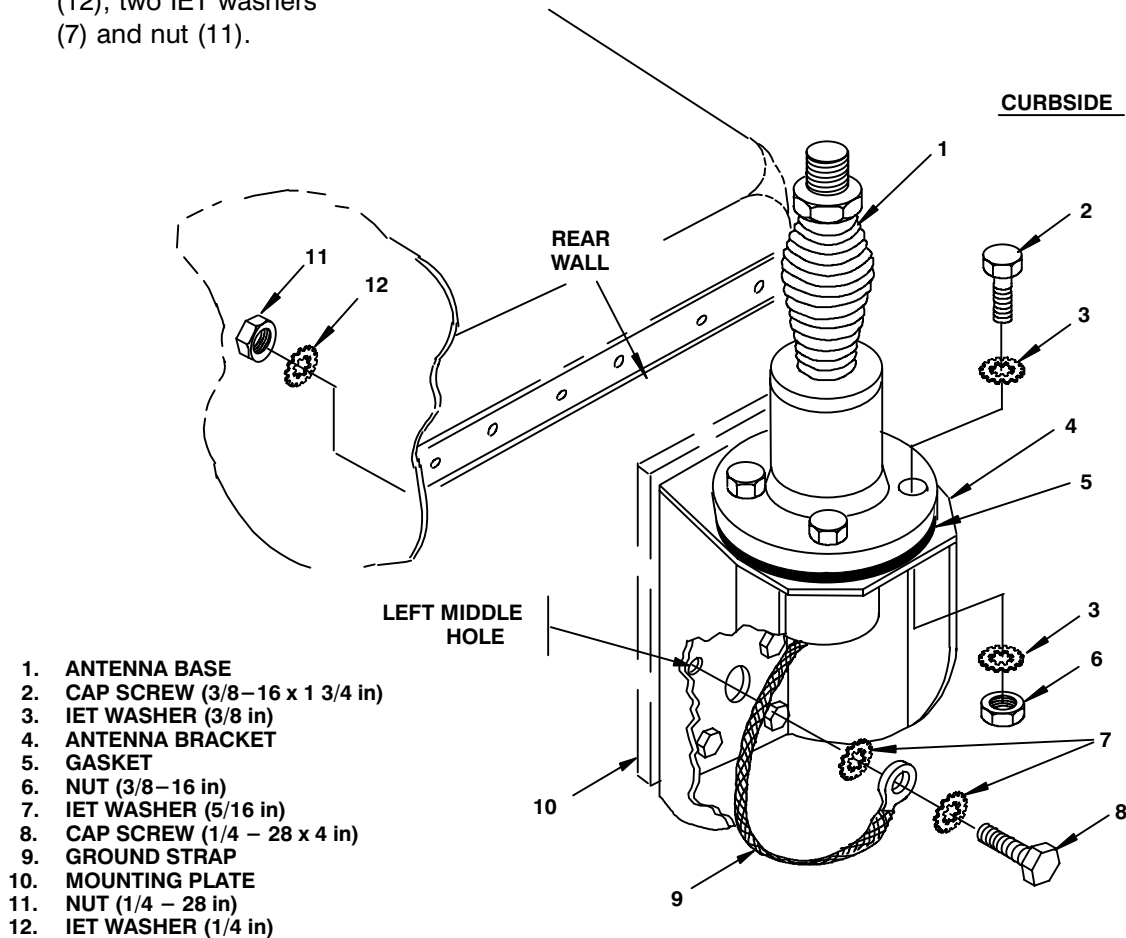
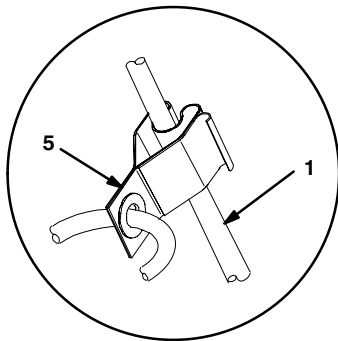


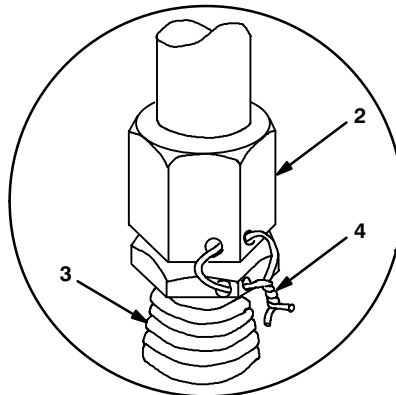
Figure 5-2 (2). Antenna Base Installation: Installing Antenna Base

5.1.2 Installation of Top Antenna Assembly. The top portion of the antenna includes a lower element and an upper element (with installed cap). Use the following procedure to assemble, install and tie down all antennas.

ITEM	ACTION	REMARKS
a. Antenna elements (1, 2).	Apply silicone compound to element threads and assemble. See figure 5-3.	
b. Antenna element (2).	Install and hand-tighten to antenna base (3).	
c. Lock wire (4).	Install to antenna element (2) and antenna base (3). See figure 5-3, detail A.	
	Cut and remove excess wire with diagonal cutting pliers.	
d. Fiber rope assembly (5).	Attach clip to antenna element (1). Tie rope to vehicle to position antenna in desired location. See figure 5-3, detail B.	



DETAIL B



DETAIL A

- 1. ANTENNA ELEMENT (UPPER)
- 2. ANTENNA ELEMENT (LOWER)
- 3. ANTENNA BASE
- 4. LOCK WIRE
- 5. FIBER ROPE ASSEMBLY

Figure 5-3. Top Antenna Assembly Installation

5.2 Installation of Mounting Base, Electrical Equipment MT-6352/VRC (mounting base). Remove and retain attaching bag of 5/16 in mounting hardware for installation. To insure good electrical grounding, any rust, corrosion or paint around mounting holes in radio shelf should be removed before installing the mounting base. See figure 5-4 and perform the following steps.

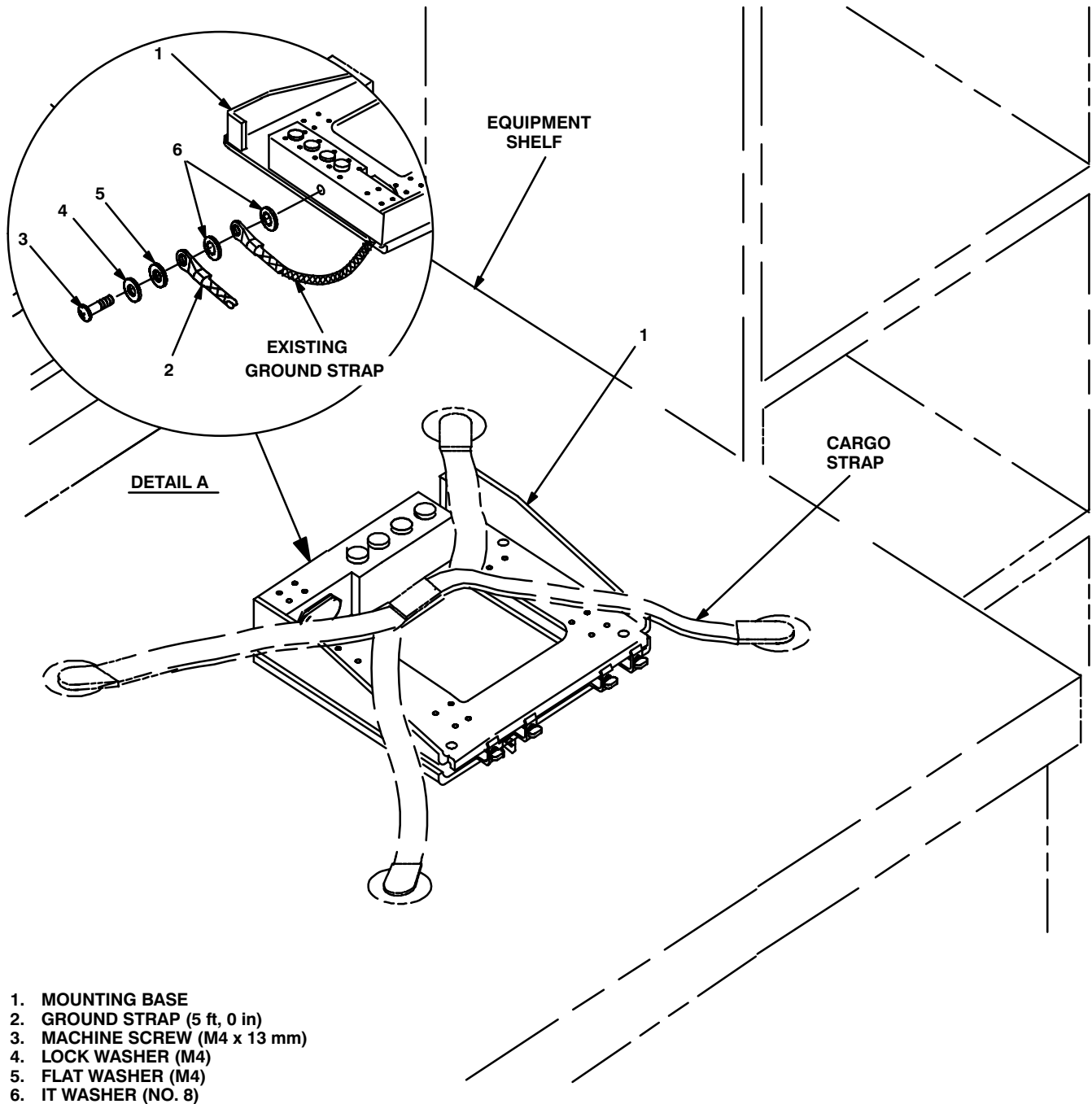
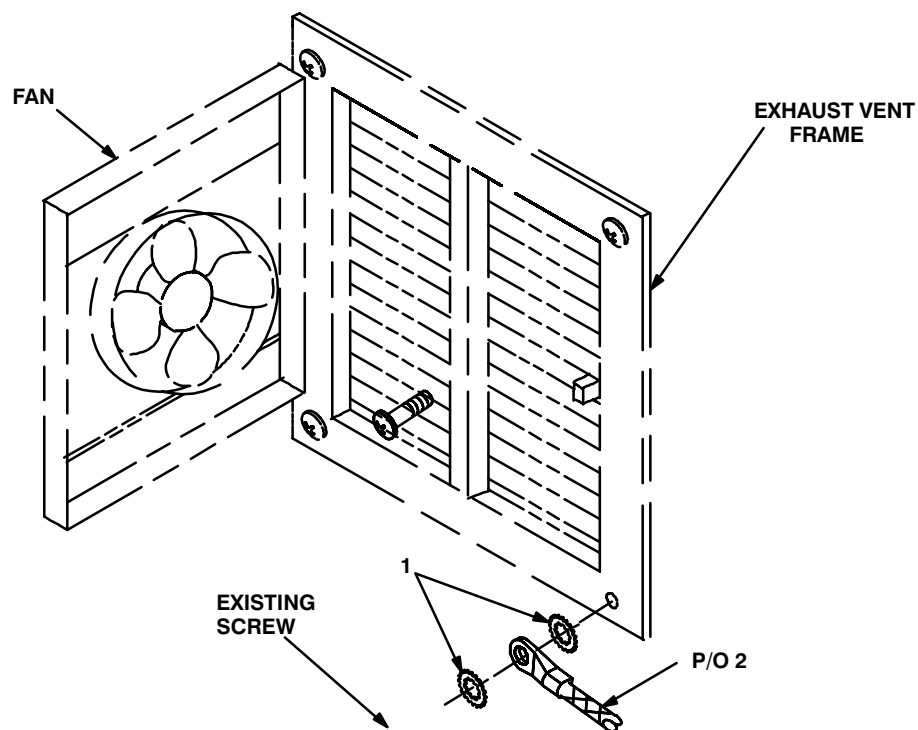


Figure 5-4 (1). Mounting Base Installation: Equipment Shelf

5.2 Installation of Mounting Base, Electrical Equipment MT-6352/VRC (mounting base). Continued

ITEM	ACTION	REMARKS
NOTE		
Apply a thin coat of adhesive-sealant to both sides of each internal/external-toothed (IET) washer during installation, and to the area of contact where IET washer is to be placed.		
a. Mounting base (1) and existing equipment shelf.	Remove a 2" square area of paint on the underside of the mounting base (1) around left front and rear mounting holes. Remove a 2" square area of paint on the existing equipment shelf around where mounting holes that mate with left front and rear mounting holes of mounting base (1) normally would be. Clean the paint removed areas and apply a thin coat of conductive anti-seize compound (CASC).	Tools: Electric grinder or equivalent.
b. Existing ground strap secured to rear of mounting base (1).	Temporarily remove. Discard existing screw. See Figure 5-4(1), Detail A.	Existing screw not shown.
c. Ground strap (2), panhead machine screw (3), one lock washer (4), one flat washer (5), two internal-toothed (IT) washers (6) and existing ground strap.	Install and secure to rear of mounting base (1).	Tools: Phillips screwdriver.
d. Mounting base (1).	Position under cargo straps on equipment shelf. See Figure 5-4(1).	
e. Cargo Straps.	Tighten and secure to mounting base (1) and equipment shelf.	
f. Non-secured end of ground strap (2) and two internal/external-toothed (IET) Washers (1).	Use existing screw, install and secure to exhaust fan vent frame. See Figure 5-4(2).	

5.2 Installation of Mounting Base, Electrical Equipment MT-6352/VRC (mounting base). Continued



- 1. IET WASHER (1/4 in)
- 2. GROUND STRAP (5 ft, 0 in)

Figure 5-4 (2). Mounting Base Installation: Curbside Wall

5.3 Installation of Cables. To accomplish the installation, leave loop clamps and tiedown straps loose enough to adjust cable slack and allow easy adjustment of equipment. When installation is complete, tighten and secure clamps and tiedown straps.

WARNING

Make sure vehicle power source is positioned OFF or disconnected before installing cables.

ITEM	ACTION	REMARKS
a. RF cable (4) connector P1.	Insert through cable hole in antenna bracket (2) and mounting plate (3); then connect and secure to antenna base (1). See figure 5–5.	
b. Two grommets (8).	Cut through on mark shown; then wrap around RF cable (4) and insert in inner and outer panels of rear wall. See figure 5–5, detail A.	Tools: Pocket knife.
c. RF cable (4).	Route across top and down side of book case to equipment shelf. See figure 5–5.	
d. Mounting holes for loop clamps (5).	Drill two 9/32 in diameter holes in left side of book case. See figure 5–5 for approximate location(s).	Tools: Electric drill and 9/32 in drill bit.
e. Two loop clamps (5), two cap screws (1/4–28 x 1 1/2 in), two lock washers (1/4 in) and two nuts (1/4–28 in).	Wrap clamps around RF cable (4); then install to holes drilled in step d.	Tools: 7/16 in socket and 7/16 in open/box wrench.
f. RF cable (4) connector P2.	Position on top of mounting base (6). See figure 5–5.	
g. Power cable (7) connector P2.	Position on top of mounting base (6).	
h. Power cable (7) terminal leads: T1 (red) and T2 (black).	Cut through and remove marked area shown; then connect and secure to proper binding posts. See figure 5–5, detail B.	Red (+) secures to positive post. Black (–) secures to negative post. Tools: Diagonal cutting pliers.
i. Adhesive–sealant.	Apply to and around previously installed grommets (8). See figure 5–5.	
j. Power cable (7) connector P2.	Connect and secure to mounting base (6) connector J1.	

5.3 Installation of Cables. Continued

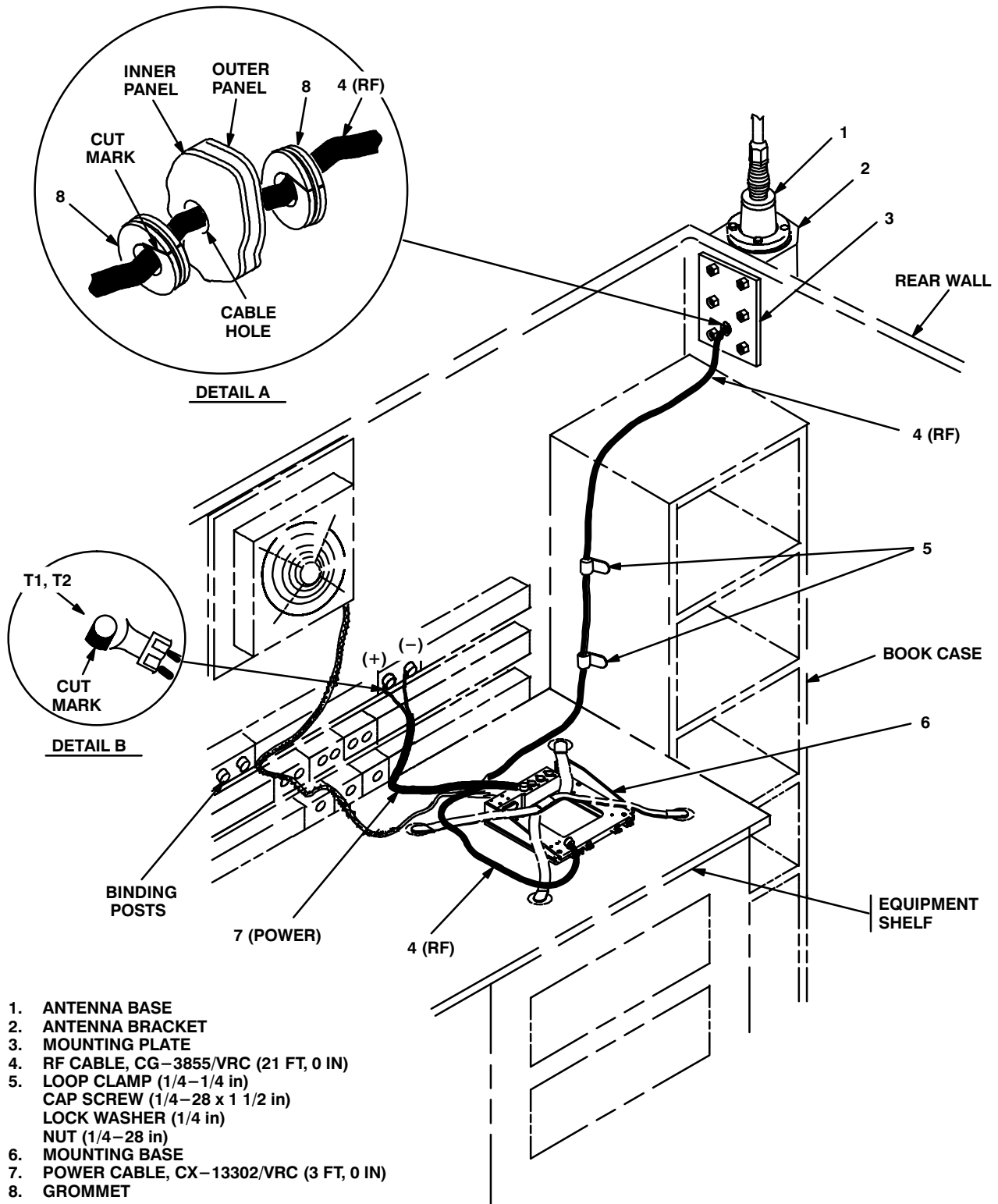
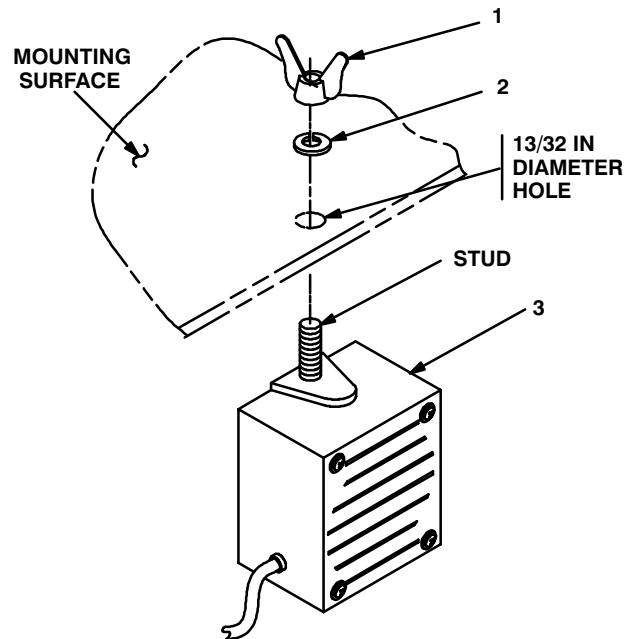


Figure 5-5. Cable Installation: Power and RF Cabling

5.4 Installation of Loudspeaker, Permanent Magnet LS-454/U (speaker). Mounting location for speaker may be determined by the vehicle commander. Typical methods used for mounting the speaker are as follows:

Method A. See figure 5-6 (1).

- a. Determine speaker (3) location.
- b. Drill $13/32$ in diameter hole through mounting surface.
- c. Insert speaker (3) stud through drilled hole; then secure with lock washer (2) and wing nut (1).



1. WING NUT ($3/8-24$ in)
2. LOCK WASHER ($3/8$ in)
3. SPEAKER
4. CAP SCREW ($1/4-20 \times 1$ in)
5. SPEAKER BRACKET
6. LOCK WASHER ($1/4$ in)
7. NUT ($1/4-20$ in)

Figure 5-6 (1). Speaker Installation - A

Method B. See figure 5-6 (2).

NOTE

Items (4), (6) and (7) are not supplied in kit.

- a. Determine speaker (3) location.
- b. Drill two $5/16$ in diameter holes through mounting surface.
- c. Install and secure two cap screws (4), two lock washers (6) and two nuts (7) to speaker bracket (5) and mounting surface.
- d. Insert speaker (3) stud through speaker bracket (5) hole; then secure with lock washer (2) and wing nut (1).

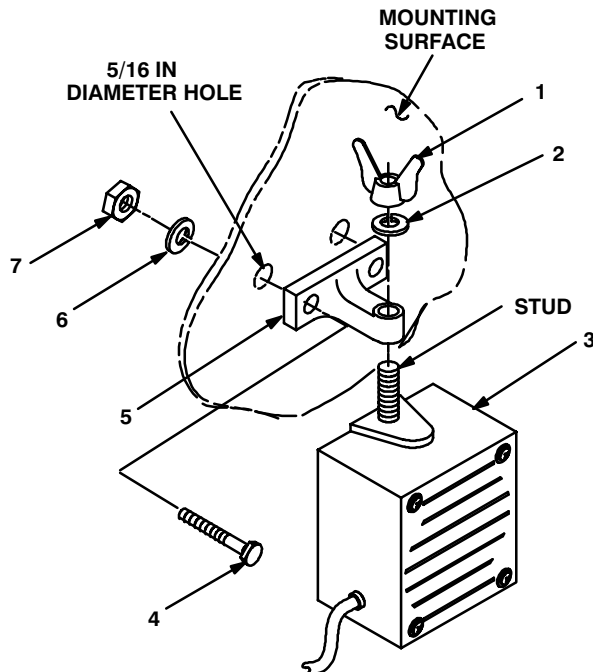


Figure 5-6 (2). Speaker Installation - B

5.5 Installation of Loudspeaker, Control-Unit, LS-671/VRC (speaker). Use the following procedures to install the speaker for "D" series radio sets.

ITEM	ACTION	REMARKS
a. Plate, mounting (1).	Use plate, mounting (1) as a template and drill two 11/32 in diameter holes in existing bookcase.	Tools: Electric drill 11/32 in drill bit.
b. Plate, mounting (1).	Align bottom slots over holes drilled in step a.	
c. Two machine bolts (4), four flat washers (3), two lock washers (2) and two nuts (5).	Align bottom slots over holes drilled in step a.	Tools: Phillips screwdriver.
d. Speaker (7).	Place on plate mounting (1).	
e. Two externally-relieved body screws (6).	Thread through and secure to speaker (7) and plate, mounting (1).	Tools: Flatblade screw-driver.
f. Handset.	Connect and secure to speaker (7) connector J2.	Tools: Flatblade screw-driver.

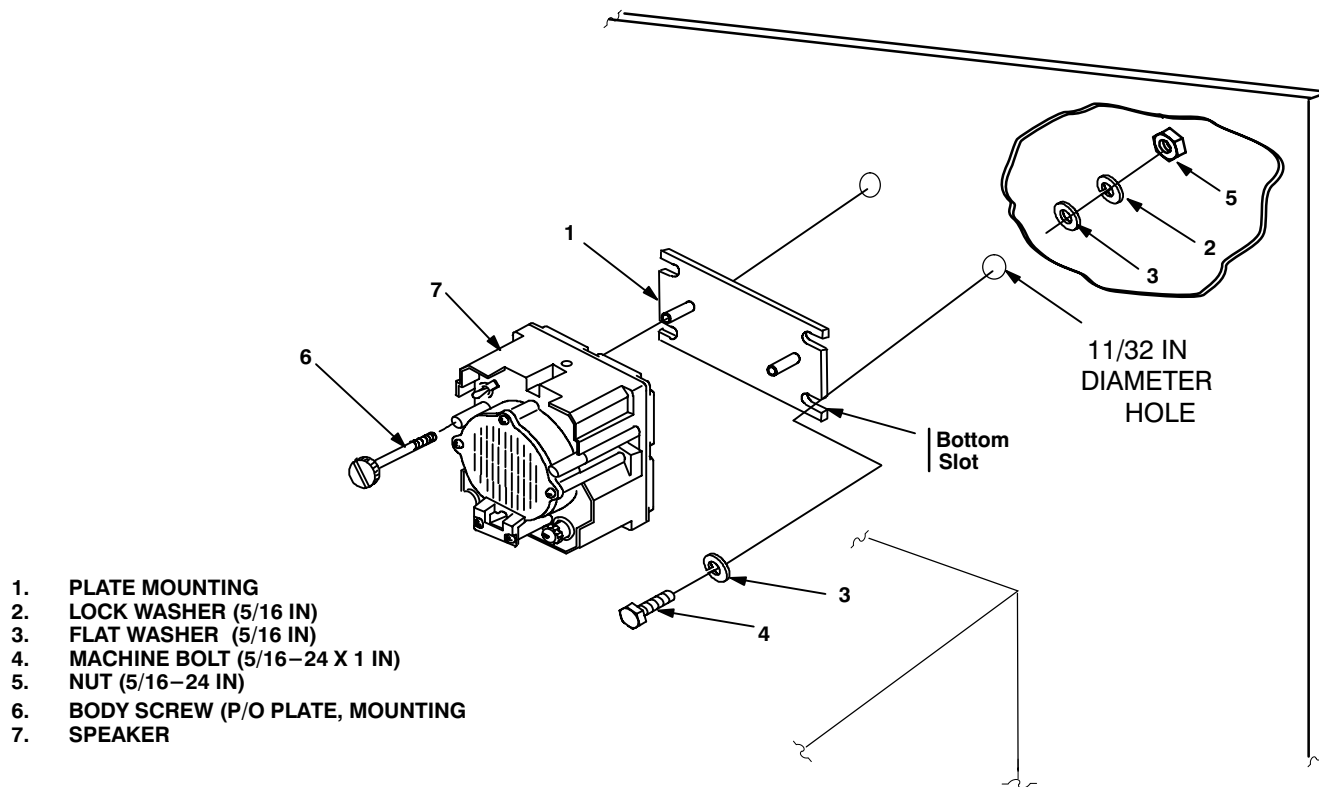
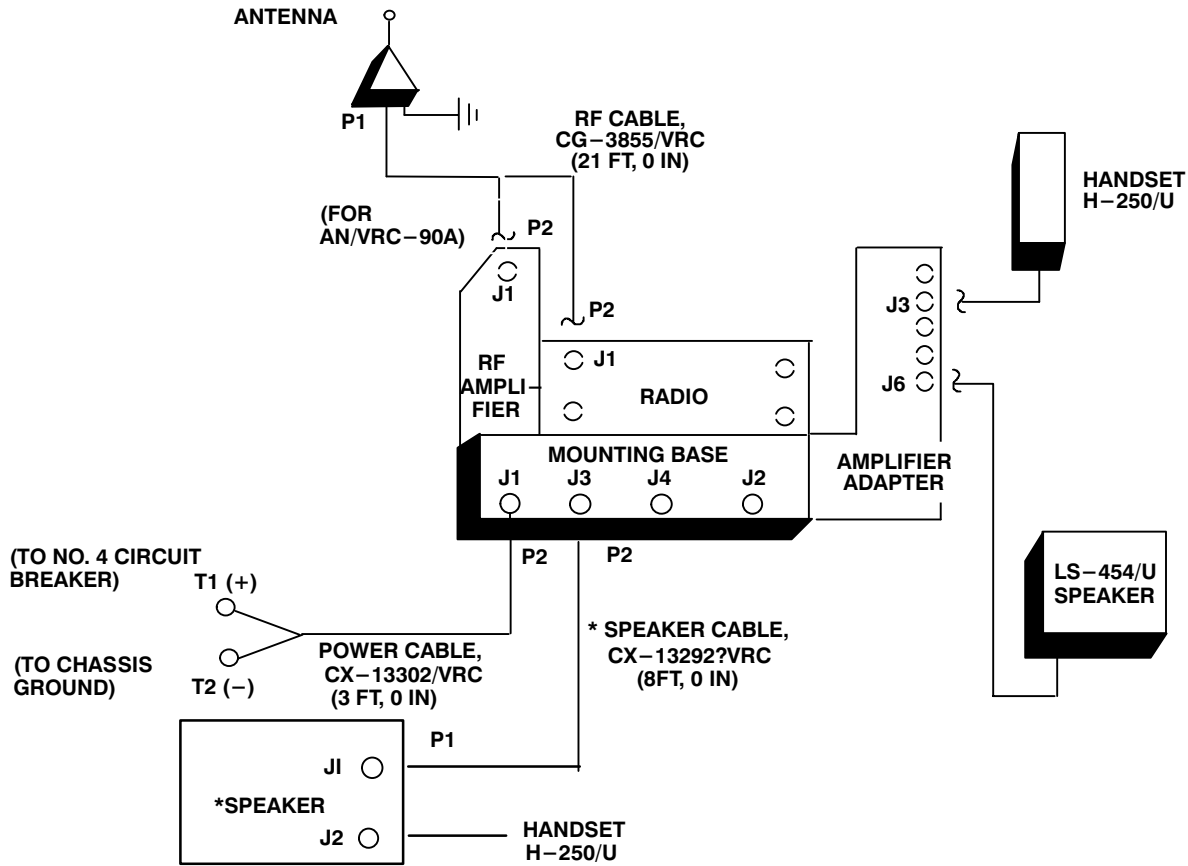


Figure 5-7. Speaker Installation

5.6 Post–Installation and Checkout. After equipment is installed and cables are connected, perform the following steps.

ITEM	ACTION	REMARKS
a. Equipment.	Check for secure mounting. Check for loose parts, connectors and mounting hardware.	
b. Cables.	Check for proper installation and connection of cables. See figure 5–8 for cable connections. Unused cables should be stowed in appropriate place inside the vehicle.	
c. Loop clamps.	Check that all have been properly installed and tightened.	
d. Protective covers.	Insure that all installed cables are covered when not in use or connected.	
e. Radio issued with vehicle.	Install and connect cables. See TM 11–5820–890–20–1 or TM 11–5820–890–20–2 for installation and Operational (OP) Check instructions.	
f. MK line replaceable units.	See TM 11–5820–890–20P for Repair Parts and Special Tools List (RPSTL) information.	

5.6 Post-Installation and Checkout. Continued



CABLE ASSEMBLY	FROM			TO		
	CABLE CONN.	UNIT	UNIT CONN.	CABLE CONN.	UNIT	UNIT CONN.
CX-13302/VRC (3 FT, 0 IN)	P2	Mounting Base	J1	T1: Red (+) T2: Black (-)	Binding posts	(+) Post (-) Post
CG-3855/VRC (21 FT, 0 IN)	P1	Antenna base	J1	P2	RF amplifier or radio	J1
Handset cable		Handset			Amplifier adapter	J3
Speaker cable		LS-454/U speaker			Amplifier adapter	J6

Figure 5-8. Cable Diagram: For AN/VRC-87/88/90 Series

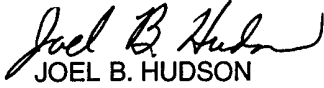
APPENDIX A

REFERENCES

AMDF	Army Master Data File (Microfiche)
AR 710-2	Supply Policy Below the Wholesale Level as Contained in Unit Supply UPDATE
AR 725-50	Requisitioning, Receipt and Issuing System in UPDATE
DA Pam 25-30	Consolidated Index of Army Publications (Microfiche)
DA Pam 710-2-1	Using Unit Supply System Manual Procedures as Contained in Unit Supply UPDATE
SB 11-131	Vehicular Radio Sets and Authorized Installations (SINCGARS)
TM 11-5820-890-10-1	Operator's Manual (ICOM Radio Sets)
TM 11-5820-890-10-3	Operator's Manual (Non-ICOM Radio Sets)
TM 11-5820-890-20-1	Unit Maintenance Manual (ICOM Radio Sets)
TM 11-5820-890-20-2	Unit Maintenance Manual (Non-ICOM Radio Sets)
TM 11-5820-890-20P	Repair Parts and Special Tools List

By Order of the Secretary of the Army:

Official:



JOEL B. HUDSON
*Administrative Assistant to the
Secretary of the Army*

9916704

ERIC K. SHINSEKI
*General, United States Army
Chief of Staff*

DISTRIBUTION:

To be distributed in accordance with the initial distribution number (IDN) 369556 requirements for TB 11-5820-890-20-10.

SOMETHING WRONG WITH THIS PUBLICATION



FROM: (PRINT YOUR UNIT'S COMPLETE ADDRESS)

Commander
Stateside Army Depot
ATTN: AMSTA-US
Stateside, NL 0703-5007

DATE SENT

10 July 1995

PUBLICATION NUMBER

TM 11-5840-340-12

PUBLICATION DATE

23 Jan 74

PUBLICATION TITLE

Radar Set AN/PRC-76

BE EXACT PIN-POINT WHERE IT IS

IN THIS SPACE TELL WHAT IS WRONG AND WHAT SHOULD BE DONE ABOUT IT:

PAGE NO	PARA-GRAPH	FIGURE NO	TABLE NO
2-25	2-28		
3-10	3-3		3-1
5-6	5-8		
		FO-3	

Recommend that the installation antenna alignment procedure be changed throughout to specify a 20 IFF antenna lag rather than 10

REASON: Experience has shown that with only a 10 lag, the antenna servo system is too sensitive to gusting in excess of 25 knots, and has a tendency to rapidly accelerate and decelerate as it hunts, causing strain to the drive train. Hunting is minimized by adjusting the lag to 20 without degradation of operation.

Item 5, Functional column. Change 2 dB" to 3 dB".

REASON: The adjustment procedure for the TRANS POWER FAULT indicator call for a 3 dB (500 watts) adjustment to light the TRANS POWER FAULT indicator.

Add new step f.1 to read, Replace cover plate removed in step d above."

REASON: To replace the cover plate.

ZONE C 3. On J1-2, change +24 VDC" to +5 VDC".

REASON: This is the output line of the 5 VDC power supply. +24 VDC is the input voltage.

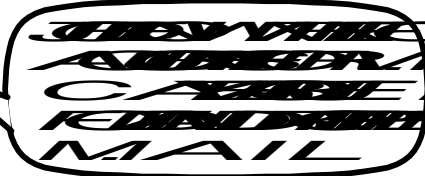
PRINTED NAME, GRADE OR TITLE AND TELEPHONE NUMBER

SSG I. M. DeSpirito 999-1779

SIGN HERE

TEAR ALONG DOTTED LINE

SOMETHING WRONG WITH THIS PUBLICATION



FROM: (PRINT YOUR UNIT'S COMPLETE ADDRESS)

DATE SENT

PUBLICATION NUMBER

PUBLICATION DATE

PUBLICATION TITLE

BE EXACT PIN-POINT WHERE IT IS

IN THIS SPACE TELL WHAT IS WRONG AND WHAT SHOULD BE DONE ABOUT IT:

PAGE NO

PARA-GRAPH

FIGURE NO

TABLE NO

TEAR ALONG DOTTED LINE

PRINTED NAME, GRADE OR TITLE AND TELEPHONE NUMBER

SSG I. M. DeSpirito 999-1779

SIGN HERE

FILL IN YOUR
UNIT'S ADDRESS

FOLD BACK

DEPARTMENT OF THE ARMY



OFFICIAL BUSINESS

PLEASE
AFFIX
STAMP
POSTAGE
REQUIRED

TEAR ALONG DOTTED LINE

Commander
U.S. Army Communications-Electronics Command
and Fort Monmouth
ATTN: AMSEL-LC-LEO-D-CS-CFO
Fort Monmouth, New Jersey 07703-5000



FOLD BACK

This fine document...

Was brought to you by me:



[Liberated Manuals -- free army and government manuals](#)

Why do I do it? I am tired of sleazy CD-ROM sellers, who take publicly available information, slap “watermarks” and other junk on it, and sell it. Those masters of search engine manipulation make sure that their sites that sell free information, come up first in search engines. They did not create it... They did not even scan it... Why should they get your money? Why are not letting you give those free manuals to your friends?

I am setting this document FREE. This document was made by the US Government and is NOT protected by Copyright. Feel free to share, republish, sell and so on.

I am not asking you for donations, fees or handouts. If you can, please provide a link to liberatedmanuals.com, so that free manuals come up first in search engines:

<A HREF=<http://www.liberatedmanuals.com/>>Free Military and Government Manuals

- Sincerely
Igor Chudov
<http://igor.chudov.com/>
- [Chicago Machinery Movers](#)