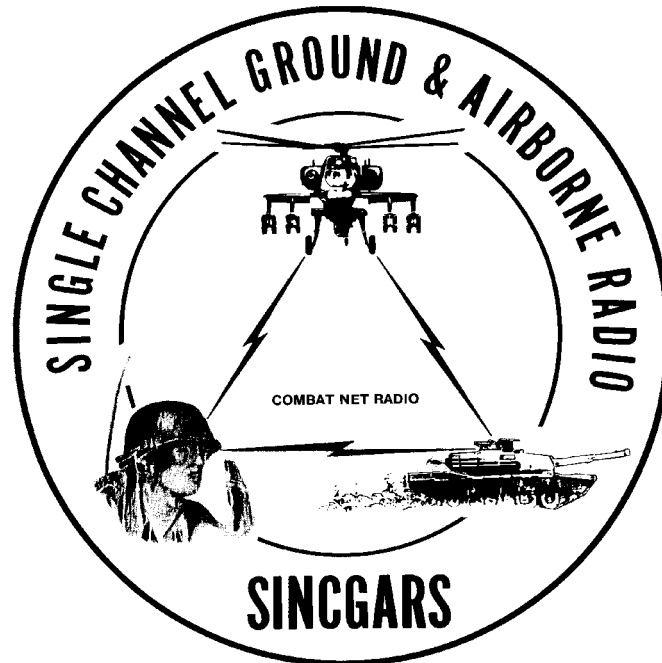


TECHNICAL BULLETIN



**INSTALLATION INSTRUCTIONS FOR
INSTALLATION KIT,
ELECTRONIC EQUIPMENT, MK-2332/VRC
(NSN 5895-01-309-9069) (EIC: N/A)
TO PERMIT INSTALLATION OF RADIO SETS
AN/VRC-87/88/90 SERIES
IN A
BASE STATION, SINGLE**

Approved for public release; distribution is unlimited.

HEADQUARTERS, DEPARTMENT OF THE ARMY

1 AUGUST 1999

**INSTALLATION INSTRUCTIONS FOR
INSTALLATION KIT
ELECTRONIC EQUIPMENT MK-2332/VRC
(NSN 5895-01-309-9069) (EIC: N/A)
TO PERMIT INSTALLATION OF RADIO SETS
AN/VRC-87/88/90 SERIES
IN A
BASE STATION, SINGLE**

REPORTING OF ERRORS AND RECOMMENDING IMPROVEMENTS

You can help improve this manual. If you find any mistakes or if you know of a way to improve the procedures, please let us know. Mail your letter, DA Form 2028 (Recommended Changes to Publications and Blank Forms), or DA Form 2028-2 located in the back of this manual direct to: Commander, US Army Communications-Electronics Command Fort Monmouth, ATTN: AMSEL-LC-LEO-D-CS-CFO, Fort Monmouth, NJ 07703-5000. The Fax number is 732-532-1413, DSN 992-1413. You may also e-mail your recommendation to AMSEL-LC—LEO-PUBS-CHG@cecom3.monmouth.army.mil.

In either case, a reply will be furnished direct to you.

TABLE OF CONTENTS

| Subject | Section | Page |
|---|---------|------|
| Scope | 0.1 | 1 |
| General Information | 0.2 | 1 |
| Maintenance Forms, Records, and Reports | 0.3 | 1 |
| Reports of Maintenance and Unsatisfactory Equipment..... | 0.3.1 | 1 |
| Report of Packing and Handling Deficiencies | 0.3.2 | 1 |
| Discrepancy in Transportation Deficiency Report (TDR) (SF 361)..... | 0.3.3 | 1 |
| Consolidated Index of Army Publications | 0.4 | 1 |
| Purpose of Installation..... | 1. | 2 |
| End Item or System to be Modified | 2. | 2 |
| Application Times..... | 3. | 2 |
| Time for Completion of Installation | 3.1 | 2 |
| Time for Installation of One Assembly or Component | 3.2 | 2 |
| Preparation for Installation | 4. | 2 |
| Preparation of Vehicle..... | 4.1 | 2 |
| Preparation of MK | 4.2 | 2 |
| MK, Distribution, and Consumables | 4.3 | 3 |
| Tools and Test, Measurement, and Diagnostic Equipment (TMDE) Required | 4.4 | 7 |
| Installation Procedures..... | 5. | 8 |
| Installation of Mounting Base, Electrical Equipment MT-6352/VRC (mounting base)..... | 5.1 | 10 |
| Installation of Loudspeaker, Permanent Magnet LS-454/U (speaker) | 5.2 | 12 |

*This manual supersedes TB 11-5820-890-20-1, dated 1 September 1993

| | | |
|--|-----|-----|
| Installation of Cables..... | 5.3 | 13 |
| Installation of Loudspeaker, Control Unit, LS-671/VRC..... | 5.4 | 14 |
| Post-Installation and Checkout..... | 5.5 | 16 |
| Appendix A References..... | | A-1 |

LIST OF ILLUSTRATIONS

| Figure | Title | Page |
|--------|--|------|
| 4-1 | MK Illustrated Parts List..... | 5 |
| 4-2 | Illustrated Parts List for Table 4-2..... | 6 |
| 5-1(1) | MK and Radio Installation: MK Equipment Locations..... | 8 |
| 5-1(2) | MK and Radio Installation: Radio Equipment Locations..... | 9 |
| 5-2 | Mounting Base Installation..... | 11 |
| 5-3(1) | Speaker Installation-A..... | 12 |
| 5-3(2) | Speaker Installation-B..... | 12 |
| 5-4 | Installation of Cables: Communications Rack, Typical..... | 13 |
| 5-5 | Installation of Loudspeaker, Control Unit, LS-671/VRC..... | 15 |
| 5-6 | Cable Diagram: For AN/VRC-87/88/90 Series..... | 17 |

LIST OF TABLES

| Table | Title | Page |
|-------|--|------|
| 4-1 | Parts List for Installation of Radio Set AN/VRC-87/88/90 Series..... | 4 |
| 4-2 | Additional Items Required for Installation of "D" and "F" Series Radio Sets..... | 6 |

0.1 SCOPE.

This technical bulletin provides installation instructions for Installation Kit, Electronic Equipment MK-2332/VRC, commonly referred to as the Mounting Kit (MK). The MK shall be installed into the following:

- Base Station, Single

The MK is used for installation of radio set components at field locations. The information contained in this technical bulletin is the official authorization to perform the installation at the unit maintenance level.

NOTES

- This technical bulletin is not an authorization for requisition or turn-in of vehicles.
- This technical bulletin does not establish quantity or types of vehicles assigned to using units.

This technical bulletin does not contain information on the maintenance or replacement of the MKs. This information is contained in the MAC of TM 11-5820-890-20-2, TM 11-5820-890-20-4 and RPSTL of TM 11-5820-890-20P.

0.2 GENERAL INFORMATION.

The MK becomes operable when all the radio set components are installed in the vehicle and correct power is supplied. Refer to TM 11-5820-890-20-1 or TM 11-5820-890-20-4 for installation, Operational (OP) Check instructions, and required maintenance procedures. Refer to TM 11-5820-890-20P for repair parts.

Included in the radio set AN/VRC-87/88/90 Series is:

- Radio Set AN/VRC-87/88/90 Series (for RT-1523(C)/U)

0.3 MAINTENANCE FORMS, RECORDS, AND REPORTS.

0.3.1 Reports of Maintenance and Unsatisfactory Equipment. See Section 4.2.2.3 for information.

0.3.2 Report of Packing and Handling Deficiencies. See Section 4.2.2.1 for information.

0.3.3 Discrepancy in Transportation Deficiency Report (TDR) (SF361). See Section 4.2.2.2 for information.

0.4 CONSOLIDATED INDEX OF ARMY PUBLICATIONS.

Refer to the latest issue of DA Pam 25-30 to determine whether there are new changes, or additional publications pertaining to the equipment.

1. PURPOSE OF INSTALLATION.

The Installation Kit Electronic Equipment MK-2332/VRC (MK) contains the items needed to mount Radio Set AN/VRC-87/88/90 Series in a Base Station, Single.

2. END ITEM OR SYSTEM TO BE MODIFIED.

Not applicable.

3. APPLICATION TIMES.

3.1 Time for Completion of Installation. Using two people, a total of 2.5 work hours is required. Typical station downtime is 3.0 hours.

3.2 Time for Installation of One Assembly or Component. The following table lists the time required to install one component. All times have been rounded off to the nearest half hour. The sum of these items will not reflect the typical vehicle downtime.

| ITEM | SECTION | TIME |
|---|---------|------|
| Mounting Base, Electrical Equipment MT-6352/VRC | 5.1 | 1.5 |
| Loudspeaker, LS-454/U | 5.2 | 0.5 |
| Cables | 5.3 | 1.0 |

4. PREPARATION FOR INSTALLATION.

This section explains how to prepare the vehicle and MK for installation.

4.1 Preparation of Vehicle. To prepare the vehicle for installation, insure that the site includes adequate lighting and a power source when drilling is required. Inspect the vehicle for damage that could affect installation. Have any such damage repaired before installing MK.

4.1.1 Items to be Removed. Remove existing AN/VRC-12 radio family installation kit/harness. See TM 11-5820-401-20-2 for removing items used with intercom systems, or TM 11-5820-401-20-1 (used without intercom systems), and TM 9-2320-289-20.

4.1.2 Items to be Retained. Not applicable.

4.2 Preparation of MK. To prepare MK, unpack, inspect and check inventory.

4.2.1 Precautions During Handling. Observe these steps to prevent equipment damage.

- a. Keep dust cover in place on connectors.
- b. Do not disassemble or modify parts in MK unless authorized to do so.
- c. Keep mounting hardware covered and protected until needed.
- d. When exposed to moisture, rain or salt water, keep all parts dry to prevent corrosion.

4.2.2 Unpack and Inspect Equipment.

4.2.2.1 Inspect Packaging for Evidence of Damage. Any shipping damage should be reported on SF364 Report of Discrepancy (ROD) as prescribed in AR 735-11-2/DLAR 4140.55/NAVMATINST 4355.73A/AFR 400-64/MCO 4430.3F.

4.2.2.2 Unpack and Inventory MK. If any item is missing, fill out and forward Transportation Deficiency Report (TDR) (SF361) as described in AR 55-38/NAVSUPINST 4610.33C/AFR 75-18/MCO P4610.19D/DLAR 4500.15.

4.2.2.3 Examine Each Item for Damage. If any item is damaged, fill out and forward SF364 Report of Discrepancy (ROD) as prescribed in AR 735-11-2/DLAR 4140.55/NAVMATINST 4355.73A/AFR-400-64/MCO 4430.3F. All damages should be reported as prescribed in DA Pam 738-750, as contained in Maintenance Management Update.

4.3 MK, Distribution and Consumables.

4.3.1 Items Supplied in MK and/or Required for Installation. Use Table 4-1 and Figure 4-1 to identify and inventory MK parts supplied to install Radio Set AN/VRC-87/88/90 Series. Use Table 4-2 and Figure 4-2 to identify and inventory additional items required for installation of "D" and "F" Series Radio Sets.

4.3.2 Distribution and Issue Instructions.

- a. US Forces: Do not requisition MK. They will be shipped automatically.
- b. US Army Depots: Requisition MK through supply channels.
- c. Multiservice: Instructions shall be included for multiservice modifications.
- d. MAP/MAS Countries: Instructions shall be provided for MAP/MAS countries.

Table 4.1. Parts List for Installation of Radio Set AN/VRC-87/88/90 Series

| NSN | ITEM DESCRIPTION AND PART NUMBER | QUANTITY IN MK | SMR CODE | FIGURE, ITEM NO. |
|------------------|--|-------------------|-------------|------------------------|
| 5975-01-188-8873 | Mounting Base, Electrical Equipment MT-6352/VRC(A3013367-1) | 1 | PAOOF A | 4-1, 1 |
| 5306-00-225-9089 | Bolt, Machine (5/16-24 x 1 in) MS90726-34 | 5 | PAOZZA | |
| 5310-00-889-2527 | Washer, Lock, Internal/External-Toothed (5/16 in) MS45904-72 | 10 | PAOZZA | |
| 5310-00-880-7746 | Nut, Hexagon (5/16-24 in) MS51968-5 | 5 | PAOZZA | |
| 5995-01-219-1843 | Cable Assembly, Power, Electrical CX-13302/VRC (13 FT, 0 IN) (A3014039-2) | 1 | PAOZZA | 4-1, 2 |
| 5965-00-876-2375 | Loudspeaker, Permanent Magnet LS-454/U | 1 | PAOZZA | 4-1, 4 |
| 5965-00-043-3463 | Handset, H-250/U | 1 | PAOZZA | 4-1, 3 |
| | Lead, Electrical (5 FT, 0 in) A3013552-8 | 1 | PAOZZA | |
| 5306-00-225-9093 | Bolt, Machine (5/16-24 x 1 1/2 in) MS90726-38 | 7 | PAOZZA | |
| 5310-00-407-9566 | Nut, Hexagon (5/16-24 in) MS51968-5 | 2 | PAOZZA | |
| 5310-00-081-4219 | Washer, Flat (5/16 in) MS27183-12 | 9 | PAOZZA | |
| 5310-00-407-9566 | Washer, Lock (5/16 in) MS35338-45 | 2 | PAOZZA | |
| 5975-00-111-3208 | Strap, Tiedown, Electrical Components MS3367-5-9 | 5 | PAOZZA | |

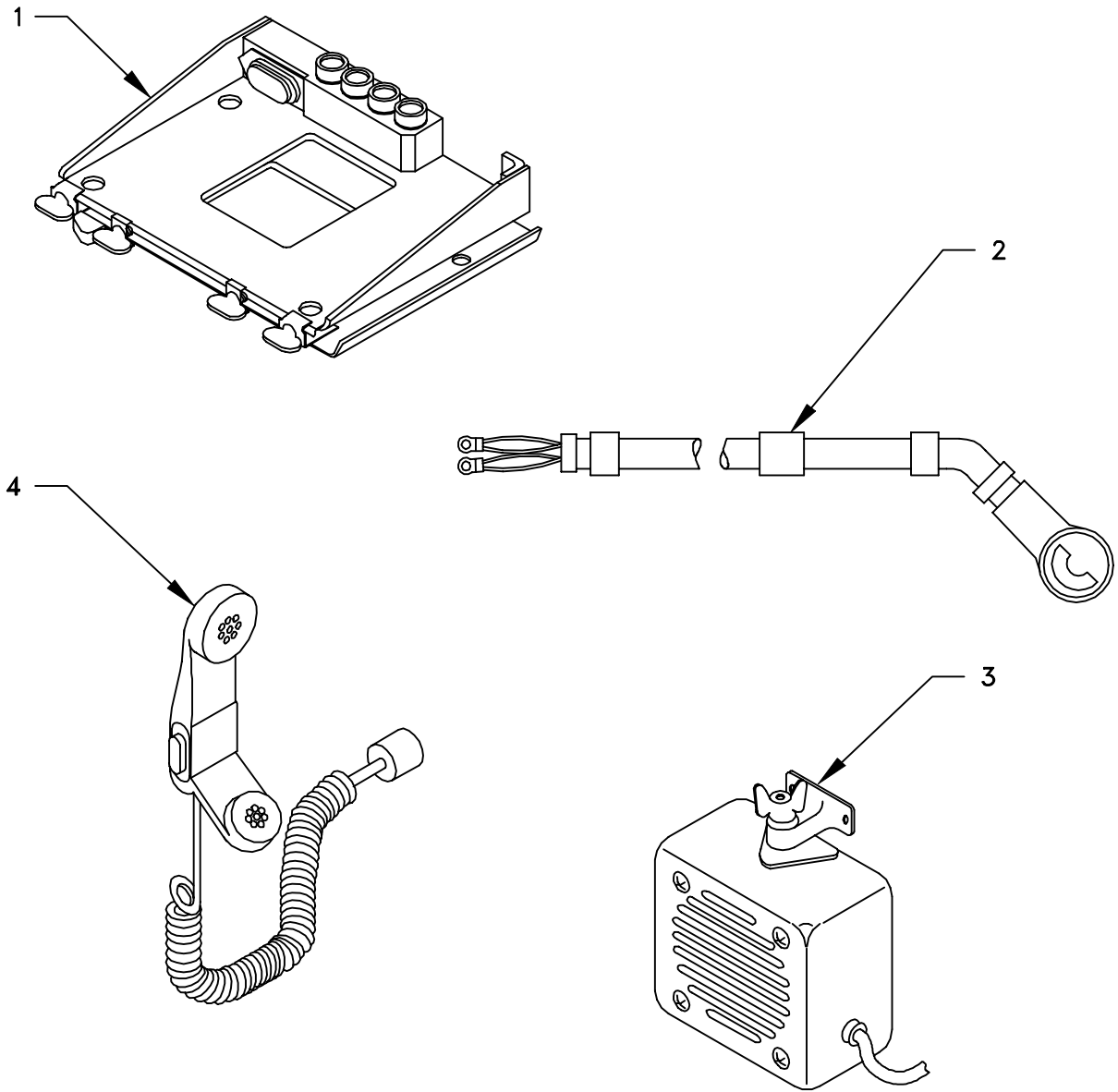


Figure 4-1. MK Illustrated Parts List

Table 4.2. Additional Items Required for Installation of “D” and “F” Radio Sets

| NSN | ITEM DESCRIPTION AND PART NUMBER | QUANTITY IN MK | SMR CODE | FIGURE, ITEM NO. |
|------------------|--|----------------|----------|------------------|
| 5965-01-222-1420 | Loudspeaker, Control Unit, LS-671/VRC (A3014065-1) | 1 | PAOFFA | 4-2, 1 |
| 5995-01-219-4704 | Cable Assembly, Special Purpose, Electrical CX-13292/VRC (6 FT, 0 IN) (A3014038-3) | 1 | PAOZZA | 4-2, 2 |
| | Plate, Mounting (A3014550-1) | 1 | XBOZZA | 4-2, 3 |

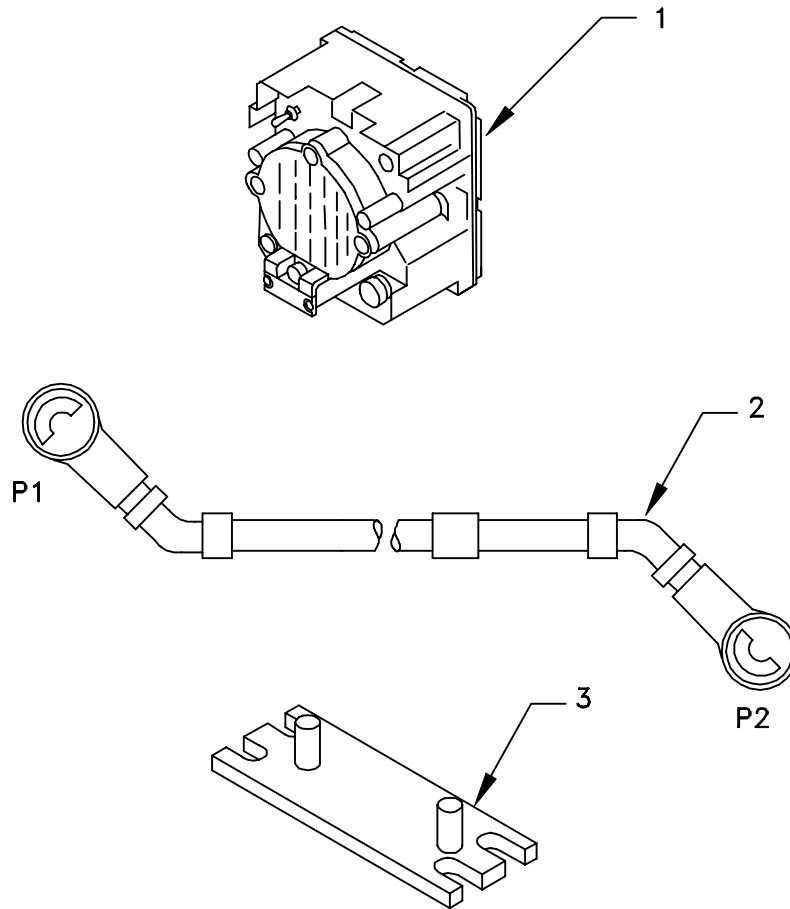


Figure 4-2. Illustrated Parts List for Table 4-2

4.3.3 Consumable Materials. The table below lists materials required for installation but not supplied with MK.

| NSN | NOMENCLATURE |
|------------------|--------------------------------|
| 8040-00-117-8510 | Adhesive-Sealant, Clear, RTV |
| 6850-00-880-7616 | Silicone Compound, MIL-S-8660 |
| 8030-00-292-1102 | Conductive Anti-seize Compound |

4.4 Tools and Test, Measurement, and Diagnostic Equipment (TMDE) Required. The following tools and TMDE are needed for installation.

| NOMENCLATURE | NSN | QUANTITY |
|---|------------------|----------|
| Radio Set* | | 1 |
| Electric Grinder or Equivalent | | 1 |
| Pocket Knife, Electrician's | 5110-00-240-5943 | 1 |
| Screwdriver, No. 2 Point Phillips, 4 in | 5120-00-234-8913 | 1 |
| Screwdriver, 1/4 in Flatblade, 4 in | 5120-00-222-8852 | 1 |
| Pliers, Round Nose | 5120-00-240-6172 | 1 |
| Pliers, Diagonal Cutting | 5110-00-965-0974 | 1 |
| Wrench, Open/Box: 1/2 in | 5120-00-228-9506 | 1 |
| Handle, Socket Wrench: 1/2 in | 5120-00-240-5364 | 1 |
| | 5120-00-227-0977 | 1 |
| Electric Drill | 5130-00-889-8994 | 1 |
| Drill Bit: 11/32 in | 5133-00-227-9664 | 1 |

* Use radio issued with your station if available.

5. INSTALLATION PROCEDURES.

This section describes where and how to install MK items in the vehicle. See Figure 5-1 for an overall view of where vehicular and MK equipment, as well as radio components, typically will be installed. When installing MK equipment, be sure to read and follow instructions and illustrations carefully.

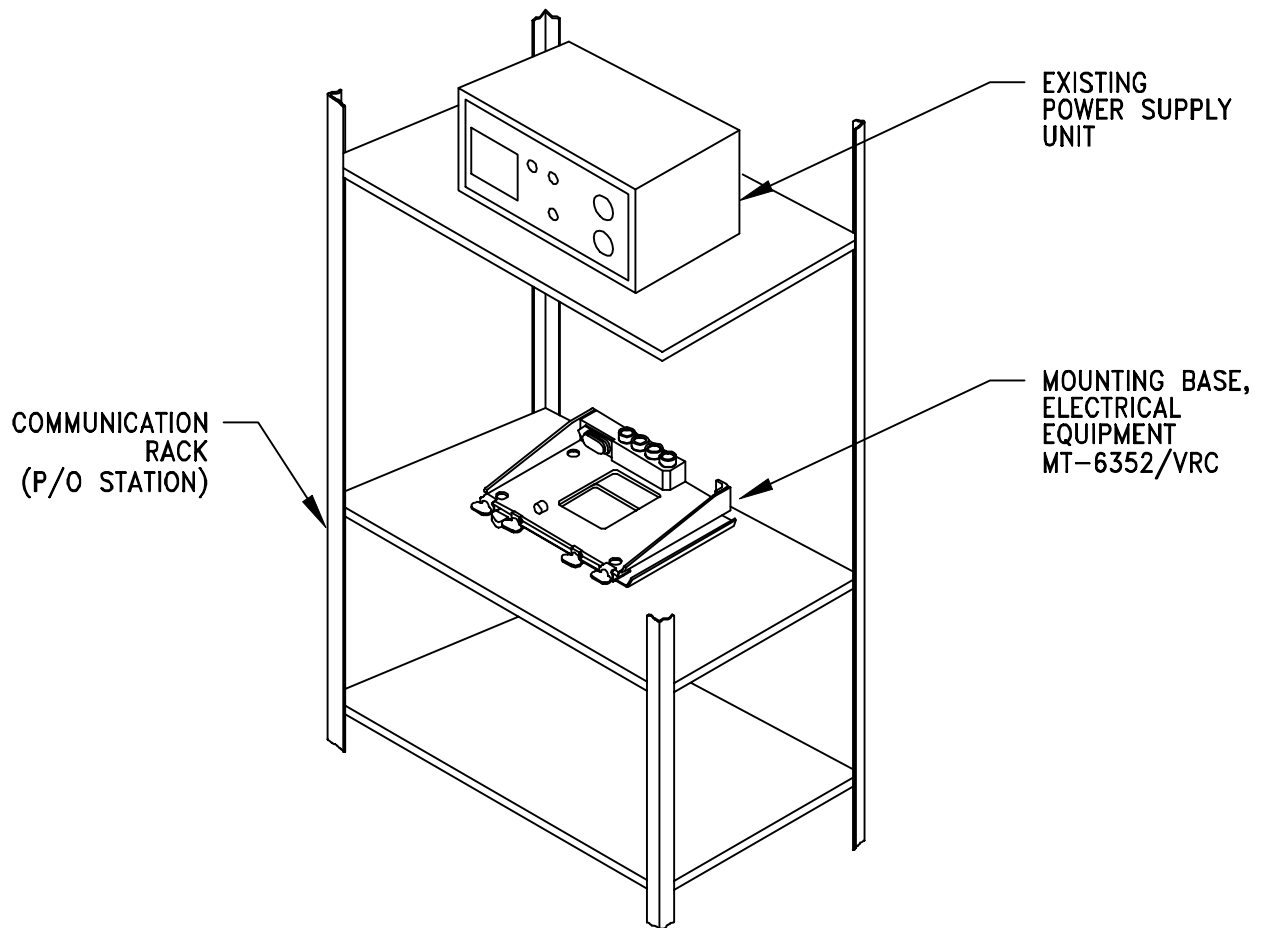


Figure 5-1 (1). MK and Radio Installation: MK Equipment Locations (Typical)

5. INSTALLATION PROCEDURES. Continued.

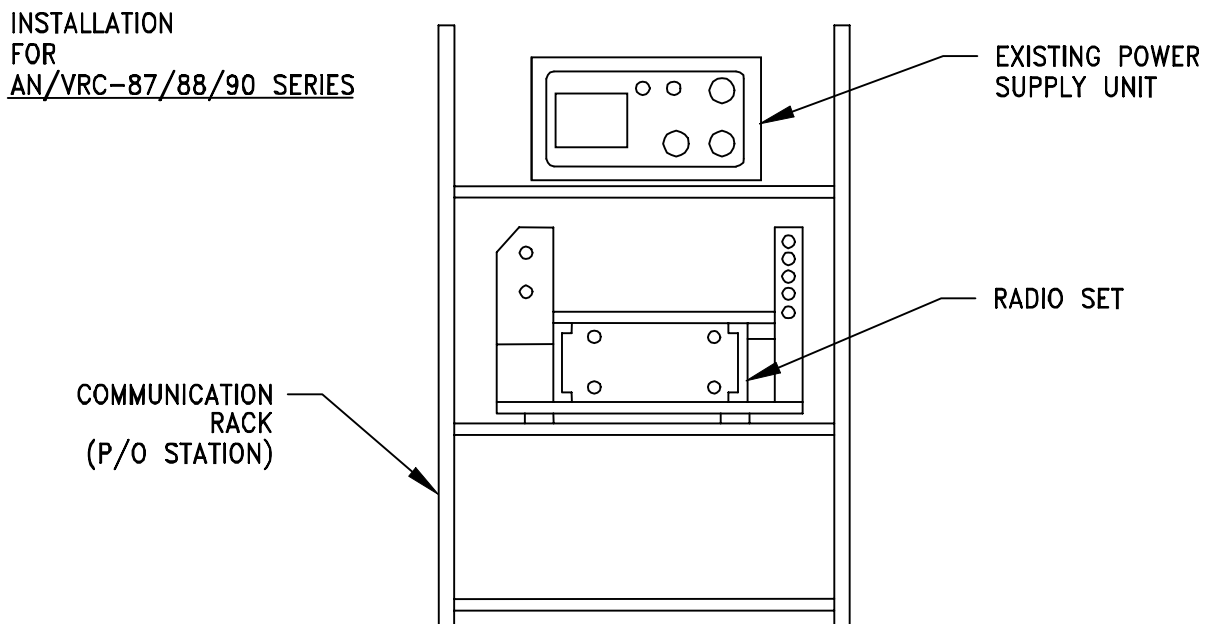
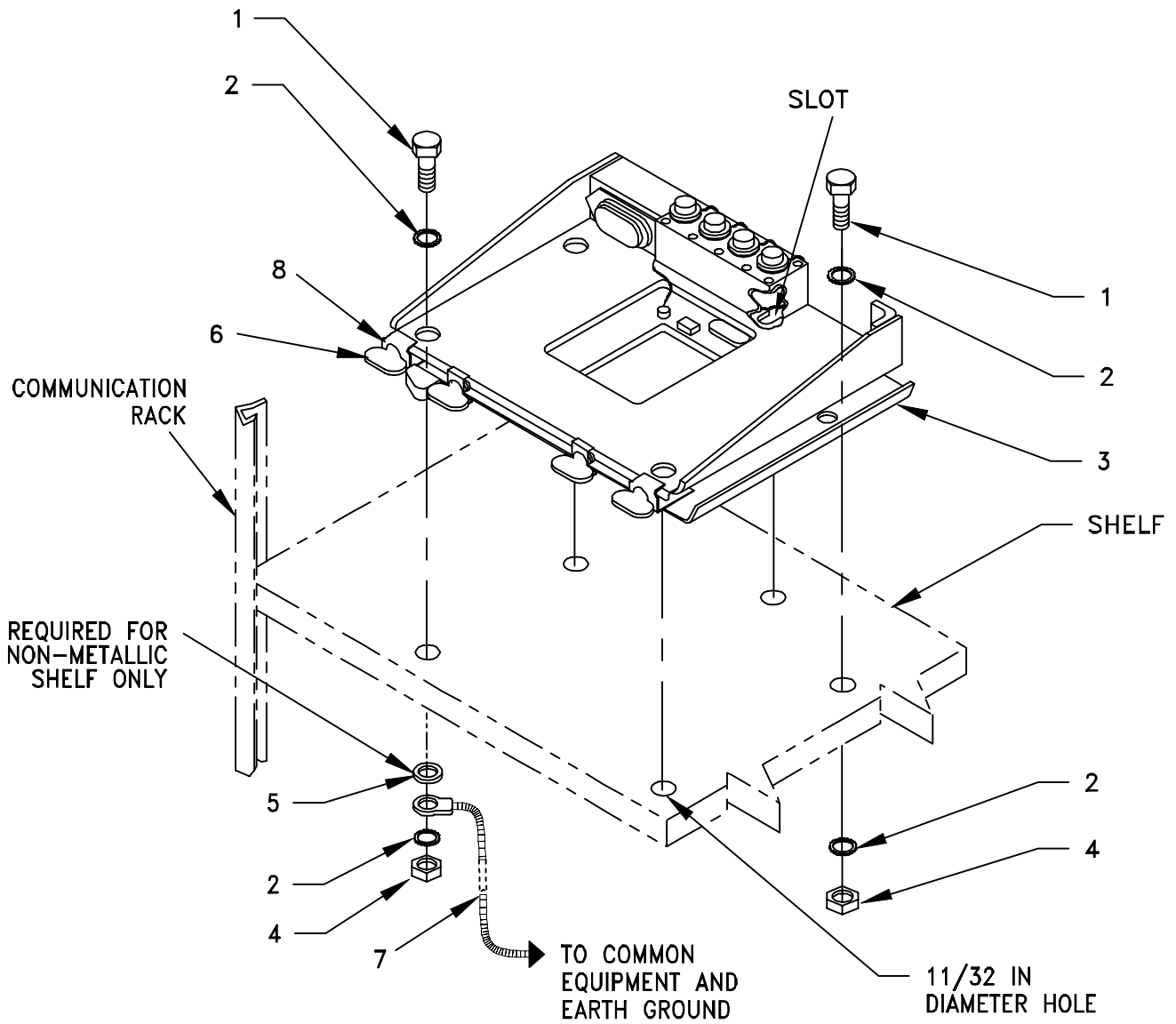


Figure 5-1 (2). MK and Radio Installation: Radio Equipment Location

5.1 Installation of Mounting Base, Electrical Equipment MT-6352/VRC (mounting base). Remove and retain attaching bag of 5/16 in mounting hardware for installation. To insure good electrical grounding, any rust, corrosion or paint around mounting holes in a metallic shelf should be removed before installing the mounting base. On a non-metallic shelf, use ground straps to insure that mounting base is attached to a common equipment and earth ground. See Figure 5-2 and perform steps a through f and step g to install mounting base on a metallic shelf and step a, c, d, e, g, and h to install mounting base on a non-metallic shelf.

| ITEM | ACTION | REMARKS |
|--|---|--|
| NOTE | | |
| Apply a thin coat of adhesive-sealant to both sides of each internal/external-toothed (IET) washer during installation, and to the area of contact where IET washer is to be placed. When installing mounting base to a thick shelf, use the longer machine bolts (5/16-24 x 1 1/2 in) supplied. | | |
| a. Mounting holes for mounting base (3). | If existing, go to step b. If not existing, use mounting base as a template and drill five 11/32 in diameter holes through shelf. See Figure 5-2. | Tools: Electric drill and 11/32 in drill bit. |
| b. For metallic shelf: mounting base (3) and shelf. | Remove a 2" square area of paint on the underside of the mounting base (3) around left front and rear mounting holes. Remove a 2" square area of paint on the existing shelf around the mounting holes drilled in step a that mate with left front and rear mounting holes of mounting base (3). Clean the paint removed areas and apply a thin coat of conductive anti-seize compound. | Tools: Electric grinder or equivalent. |
| c. Mounting base (3). | Place on shelf over mounting holes. See Figure 5-2. | |
| d. Two outer thumbscrews (6). | Turn ccw until both sets of threads have cleared center of holes. | |
| e. Mounting base (3). | Align four holes and rear slot with matching hole pattern in shelf. | |
| f. For metallic shelf: five machine bolts (1), ten internal/external-toothed (IET) washers (2) and five nuts (4). | Install and secure to mounting base (3) and shelf. | Tools: 1/2 in socket and 1/2 in open/box wrench. |
| g. For non-metallic shelf: five machine bolts (1), ten internal/external-toothed (IET) washers (2), five flat washers (5), five nuts (4) and lead, electrical (7). | Install and secure to mounting base (3) and shelf. | Tools: 1/2 in socket and 1/2 in open/box wrench. |
| h. Two outer thumbscrews (6). | Tighten and secure to rim clenching clamps (8) and mounting base (3). | |

5.2 Installation of Mounting Base, Electrical Equipment MT-6352/VRC (mounting base). Continued.



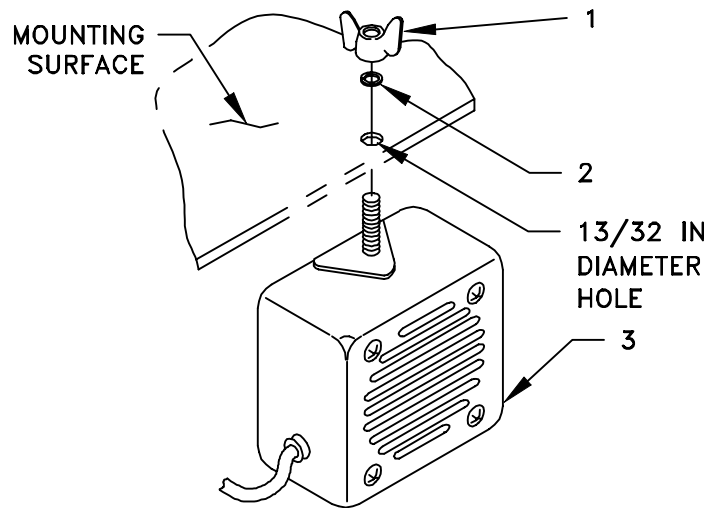
1. MACHINE BOLT (5/16-24 x 1 IN) OR MACHINE BOLT (5/16-24 x 1 1/2 IN)
2. IET WASHER (5/16 IN)
3. MOUNTING BASE
4. NUT (5/16-24 IN)
5. FLAT WASHER (5/16 IN)
6. THUMBSCREW
7. LEAD, ELECTRICAL (5 FT, 0 IN)
8. RIM CLENCHING CLAMP

Figure 5-2. Mounting Base Installation

5.2 Installation of Loudspeaker, Permanent Magnet LS-454/U (speaker). Mounting location for speakers to be determined by vehicle commander. Typical methods used for mounting the speaker are as follows:

Method A. See Figure 5-5 (1).

- a. Determine speaker (3) location.
- b. Drill $13/32$ in diameter hole through mounting surface.
- c. Insert stud on speaker (3) through drilled hole; then secure with lock washer (2) and wing nut (1).



1. WING NUT (3/8-24 IN)
2. LOCK WASHER (3/8 IN)
3. SPEAKER
4. CAP SCREW (1/4-20 x 1/IN)
5. SPEAKER BRACKET
6. LOCK WASHER (1/4 IN)
7. NUT (1/4-20 IN)

Figure 5-3 (1). Speaker Installation - A

NOTE

Items (4), (6) and (7) are not supplied in kit.

Method B. See Figure 5-5 (2).

- a. Determine speaker (3) location.
- b. Drill two $5/16$ in diameter holes through mounting surface.
- c. Install and secure two cap screws (4), two lock washers (6) and two nuts (7) to speaker bracket (5) and mounting surface.
- d. Insert speaker (3) stud through speaker bracket (5) hole; then secure with lock washer (2) and wing nut (1).

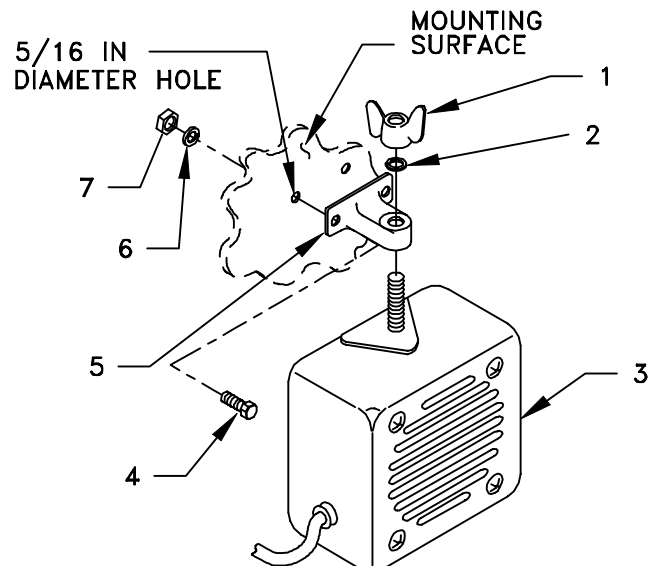


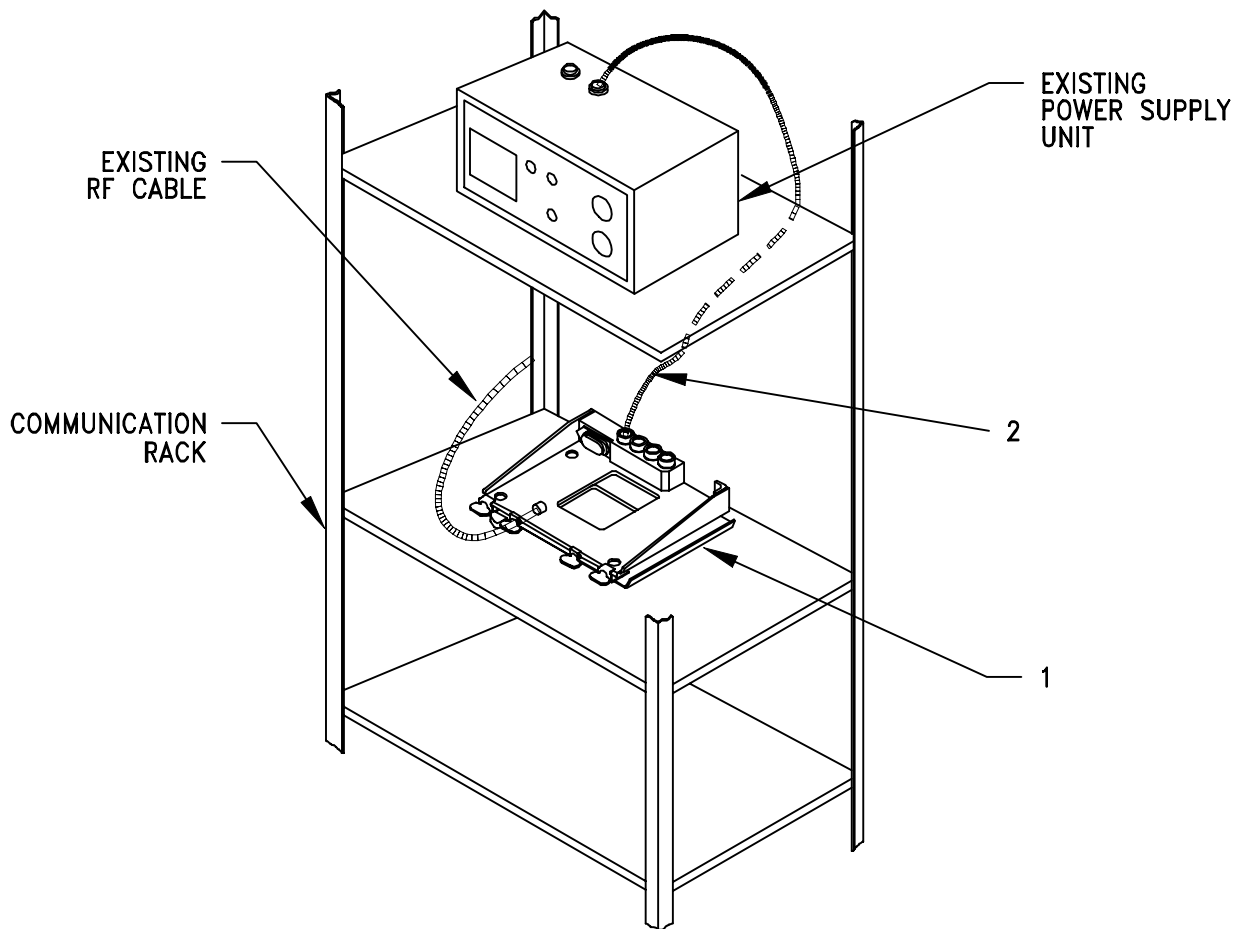
Figure 5-3 (2). Speaker Installation - B

5.3 Installation of Cables. To accomplish the installation, leave loop clamps and tiedown straps loose enough to adjust cable slack and allow easy adjustment of equipment. When installation is complete, tighten and secure all clamps, clips and tiedown straps.

WARNING

Make sure vehicle power source is positioned OFF or disconnected before installing cables.

| ITEM | ACTION | REMARKS |
|---|---|---------|
| a. Existing RF cable. | Position on mounting base (1). | |
| b. Power cable (2) connector P1. | Connect and secure to mounting base (1) connector J1. | |
| c. Power cable (2) connector T1 (red) and T2 (black). | Connect and secure to existing power supply unit. | |



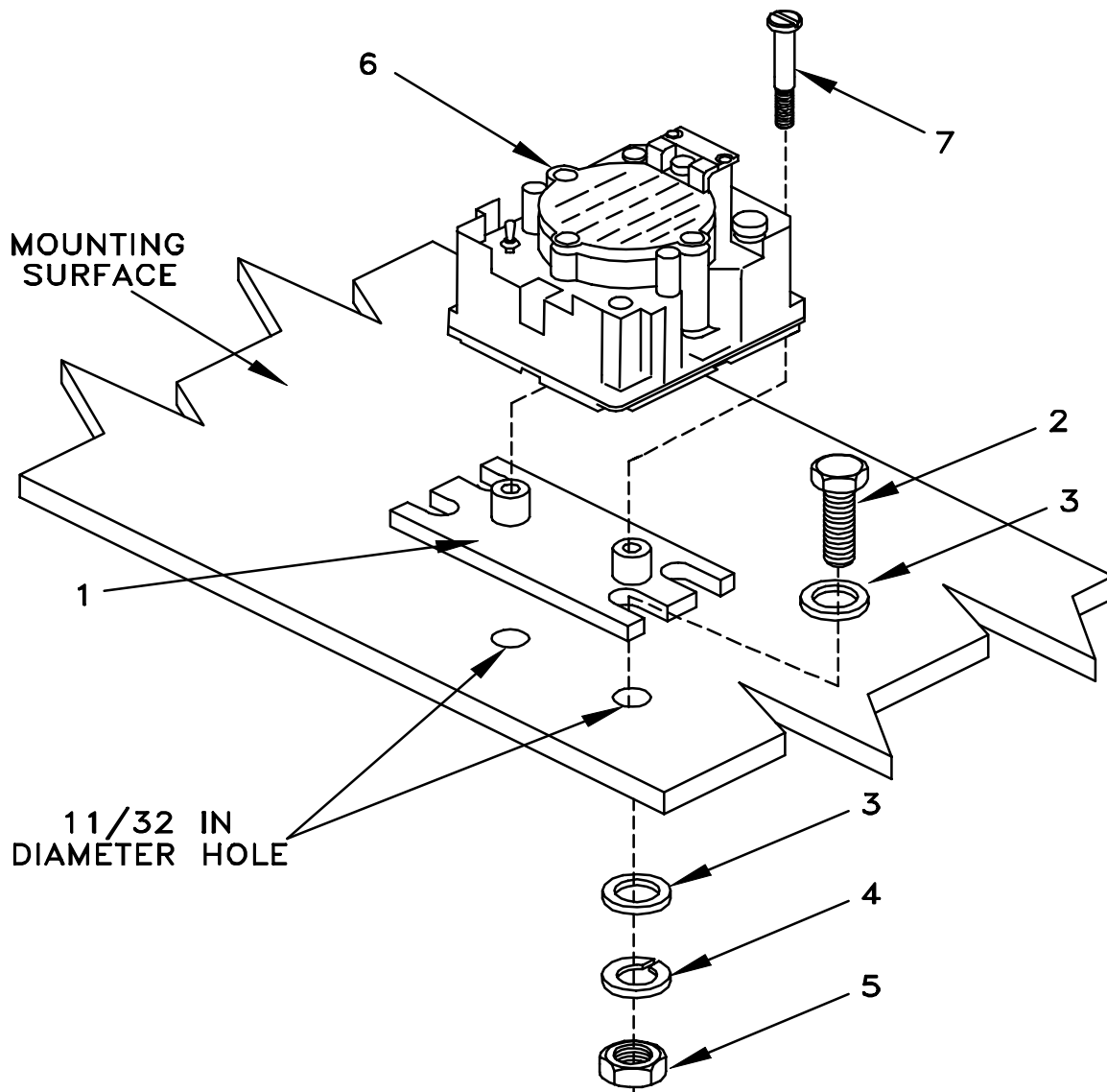
- 1. MOUNTING BASE
- 2. POWER CABLE CX-13302/VRC (13 FT, 0 IN)

Figure 5-4. Cable Installation: Communications Rack, Typical

5.4 Installation of Loudspeaker, Control-Unit, LS-671/VRC (speaker). Use the following procedure to install speaker for "D" and "F" Radio Sets. Mounting location on communications rack may be determined by the station commander.

| ITEM | ACTION | REMARKS |
|--|--|---|
| a. Mounting holes for plate, mounting (1). | Using plate, mounting (1) as a template, drill two 11/32 in diameter holes through mounting surface. See Figure 5-5. | Tools: Electric drill and 11/32 in drill bit. |
| b. Plate, mounting (1) | Align bottom slots with holes drilled in step a. | |
| c. Two machine bolts (2), two flat washers (3), two lock washers (4) and two nuts (5). | Install and secure to plate, mounting (1) and mounting surface. | Tools: 1/2 in socket and 1/2 in open/box wrench.. |
| d. Speaker (6). | Place on plate, mounting (1).. | |
| e. Two externally-relieved body screws (7). | Thread through and secure to speaker (6) and plate, mounting (1). | Tools: Flatblade screwdriver. |
| f. Handset. | Connect and secure to speaker (6) connector J2. | |

5.4 Installation of Loudspeaker, Control-Unit, LS-671/VRC (speaker). Continued



1. PLATE, MOUNTING
2. BOLT MACHINE (5/16-24 x 1 1/2 IN)
3. FLAT WASHER (5/16 IN)
4. LOCK WASHER (5/16 IN)
5. NUT (5/16 IN)
6. SPEAKER
7. BODY SCREW (P/O PLATE, MOUNTING)

Figure 5-5. Speaker Installation

5.4 Post-Installation and Checkout. After equipment is installed and cables are connected, perform the following steps.

| ITEM | ACTION | REMARKS |
|-------------------------------|---|---------|
| a. Equipment. | Check for secure mounting. Check for loose parts, connectors, and mounting hardware. | |
| b. Cables. | Check for proper installation and connection of cables. See Figure 5-6 for cable connections. Unused cables should be stowed in appropriate place inside the vehicle. | |
| c. Loop clamps. | Check that all have been properly installed and tightened. | |
| d. Protective covers. | Insure that all installed cables are covered when not in use or connected. | |
| e. Radio issued with vehicle. | Install and connect cables. See TM 11-5820-890-20-1 or TM 11-5820-890-20-4 for installation and operational (OP) checks and instructions. | |
| f. MK line replaceable units. | See TM 11-5820-890-20P for Repair Parts and Special Tools List (RPSTL) information. | |

5.5 Post-Installation and Checkout. Continued.

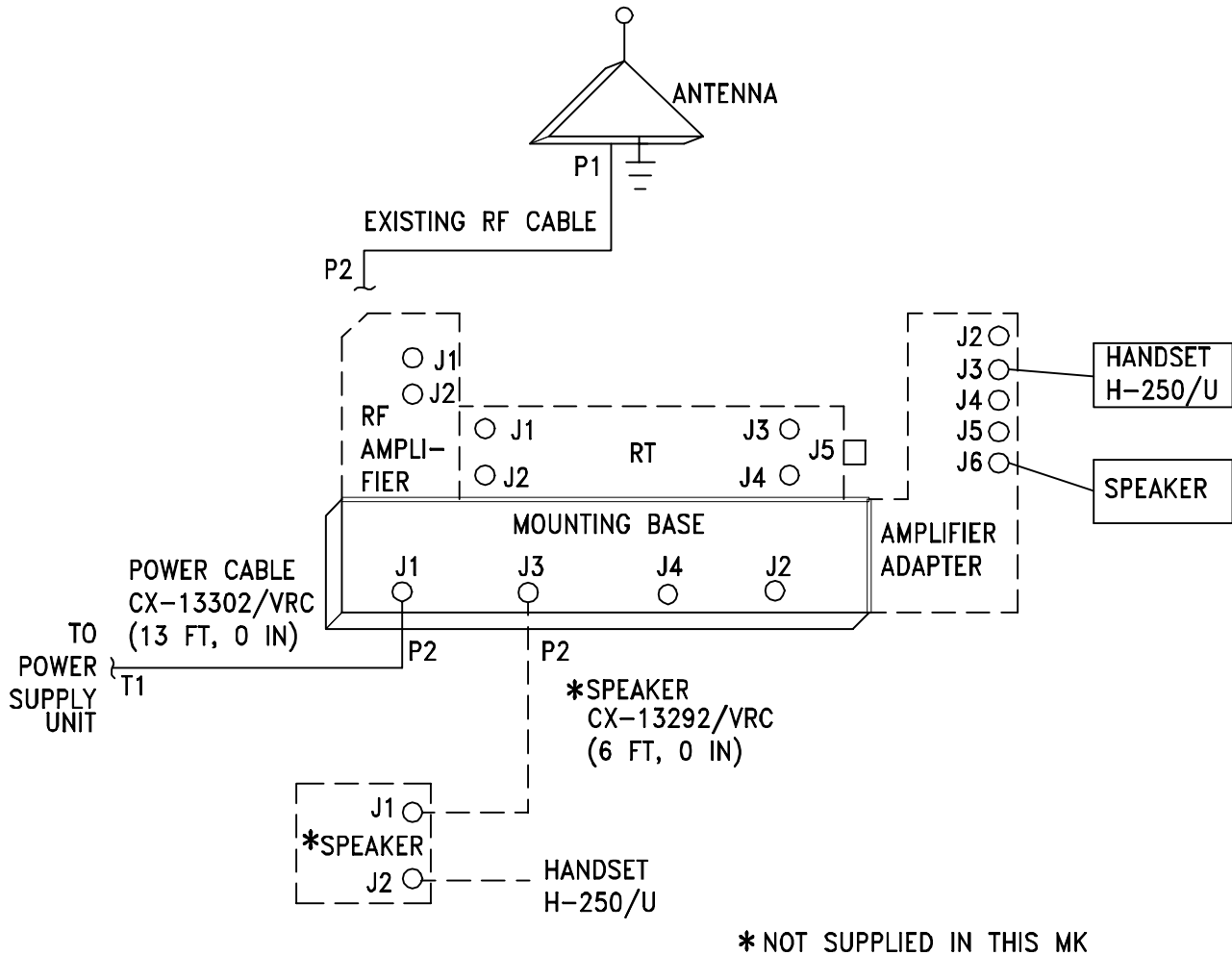


Figure 5-6. Cable Diagram: For AN/VRC-87/88/90 Series

5.5 Post-Installation and Checkout. Continued.

| CABLE ASSEMBLY | FROM | | | TO | | |
|----------------------------|-------------|--------------------|------------|------------------------------|----------------------------|------------|
| | CABLE CONN. | UNIT | UNIT CONN. | CABLE CONN. | UNIT | UNIT CONN. |
| Existing RF cable | P2 | RF amplifier or RT | J1 | P1 | Existing antenna | |
| CX-13302/VRC (13 FT, 0 IN) | P2 | Mounting base | J1 | T1: Red (+) T2: Black (-) | Existing power supply unit | |
| Speaker cable | | Amplifier-adapter | J6 | | Speaker | |
| Handset cable | | Amplifier-adapter | J3 | | Handset | |
| *CX-13292/VRC (6 FT, 0 IN) | P2 | Mounting base | J3 | P1 | *Speaker | J1 |

* Not supplied in this MK.

Figure 5-6. Cable Diagram: For AN/VRC-87/88/90 Series. Continued

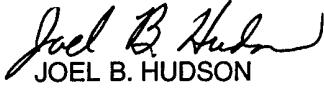
APPENDIX A

REFERENCES

| | |
|---------------------|---|
| AMDF | Army Master Data File (Microfiche) |
| AR 710-2 | Supply Policy Below the Wholesale Level as Contained in Unit Supply UPDATE |
| AR 725-50 | Requisitioning, Receipt and Issuing System in UPDATE |
| DA PAM 25-30 | Consolidated Index of Army Publications (Microfiche) |
| DA PAM 710-2-1 | Using Unit Supply System Manual Procedures as Contained in Unit Supply UPDATE |
| SB 11-131-2 | Vehicular Sets and Authorized Installations, Volume II, SINCGARS and EPLRS |
| TM 11-5820-890-10-1 | Operator's Manual (ICOM Radio Sets) |
| TM 11-5820-890-10-3 | Operator's Manual (Non-ICOM Radio Sets) |
| TM 11-5820-890-20-1 | Unit Maintenance Manual (ICOM Radio Sets, Vol. 1) |
| TM 11-5820-890-20-2 | Unit Maintenance Manual (ICOM Radio Sets, Vol. 2) |
| TM 11-5820-890-20-3 | Unit Maintenance Manual Handbook (ICOM Radio Sets) |
| TM 11-5820-890-20-4 | Unit Maintenance Manual (Non-ICOM Radio Sets) |
| TM 11-5820-890-20P | Repair Parts and Special Tools List |

By Order of the Secretary of the Army:

Official:



JOEL B. HUDSON
*Administrative Assistant to the
Secretary of the Army*

9920224

ERIC K. SHINSEKI
*General, United States Army
Chief of Staff*

DISTRIBUTION:

To be distributed in accordance with the initial distribution number (IDN) 369645 requirements for TB 11-5820-890-20-1.

SOMETHING WRONG WITH THIS PUBLICATION



THEN ... JOT DOWN THE INFO ABOUT IT ON THIS FORM. CAREFULLY TEAR IT OUT. FOLD IT AND DROP IT IN THE MAIL.

FROM: (PRINT YOUR UNIT'S COMPLETE ADDRESS)

Commander
Stateside Army Depot
ATTN: AMSTA-US
Stateside, NJ 07703-5007

DATE SENT

10 July 1995

PUBLICATION NUMBER

TM 11-5840-340-12

PUBLICATION DATE

23 Jan 74

PUBLICATION TITLE

Radar Set AN/PRC-76

BE EXACT PIN-POINT WHERE IT IS

IN THIS SPACE TELL WHAT IS WRONG AND WHAT SHOULD BE DONE ABOUT IT:

| PAGE NO | PARA-GRAPH | FIGURE NO | TABLE NO |
|---------|------------|-----------|----------|
| 2-25 | 2-28 | | |
| 3-10 | 3-3 | | 3-1 |
| 5-6 | 5-8 | | |
| | | FO-3 | |

Recommend that the installation antenna alignment procedure be changed throughout to specify a 20 IFF antenna lag rather than 10

REASON: Experience has shown that with only a 10 lag, the antenna servo system is too sensitive to gusting in excess of 25 knots, and has a tendency to rapidly accelerate and decelerate as it hunts, causing strain to the drive train. Hunting is minimized by adjusting the lag to 20 without degradation of operation.

Item 5, Functional column. Change 2 dB" to 3 dB".

REASON: The adjustment procedure for the TRANS POWER FAULT indicator call for a 3 dB (500 watts) adjustment to light the TRANS POWER FAULT indicator.

Add new step f.1 to read, Replace cover plate removed in step d above."

REASON: To replace the cover plate.

ZONE C 3. On J1-2, change +24 VDC" to +5 VDC".

REASON: This is the output line of the 5 VDC power supply. +24 VDC is the input voltage.

PRINTED NAME, GRADE OR TITLE AND TELEPHONE NUMBER

SSG I. M. DeSpirito 999-1779

SIGN HERE

TEAR ALONG DOTTED LINE

SOMETHING WRONG WITH THIS PUBLICATION



THEN ... JOT DOWN THE INFO ABOUT IT ON THIS FORM. CAREFULLY TEAR IT OUT. FOLD IT AND DROP IT IN THE MAIL.

| |
|--|
| |
|--|

| |
|-----------|
| DATE SENT |
|-----------|

| |
|--------------------|
| PUBLICATION NUMBER |
|--------------------|

| |
|------------------|
| PUBLICATION DATE |
|------------------|

| |
|-------------------|
| PUBLICATION TITLE |
|-------------------|

BE EXACT PIN-POINT WHERE IT IS

IN THIS SPACE TELL WHAT IS WRONG AND WHAT SHOULD BE DONE ABOUT IT:

| PAGE NO | PARA-GRAPH | FIGURE NO | TABLE NO |
|---------|------------|-----------|----------|
| | | | |

| |
|--|
| |
|--|

TEAR ALONG DOTTED LINE

| |
|---|
| PRINTED NAME, GRADE OR TITLE AND TELEPHONE NUMBER |
|---|

| |
|-----------|
| SIGN HERE |
|-----------|

FILL IN YOUR
UNIT'S ADDRESS

FOLD BACK

DEPARTMENT OF THE ARMY



OFFICIAL BUSINESS

PLEASE
AFFIX
STAMP
POSTAGE
REQUIRED

TEAR ALONG DOTTED LINE

Commander
U.S. Army Communications-Electronics Command
and Fort Monmouth
ATTN: AMSEL-LC-LEO-D-CS-CFO
Fort Monmouth, New Jersey 07703-5000



FOLD BACK

This fine document...

Was brought to you by me:



[Liberated Manuals -- free army and government manuals](#)

Why do I do it? I am tired of sleazy CD-ROM sellers, who take publicly available information, slap “watermarks” and other junk on it, and sell it. Those masters of search engine manipulation make sure that their sites that sell free information, come up first in search engines. They did not create it... They did not even scan it... Why should they get your money? Why are not letting you give those free manuals to your friends?

I am setting this document FREE. This document was made by the US Government and is NOT protected by Copyright. Feel free to share, republish, sell and so on.

I am not asking you for donations, fees or handouts. If you can, please provide a link to liberatedmanuals.com, so that free manuals come up first in search engines:

<A HREF=<http://www.liberatedmanuals.com/>>Free Military and Government Manuals

- Sincerely
Igor Chudov
<http://igor.chudov.com/>
- [Chicago Machinery Movers](#)